

Ex Libris



Copyright, 1930

+

Juz Lackey  
Editor-in-Chief

Robert Baker  
Business Manager

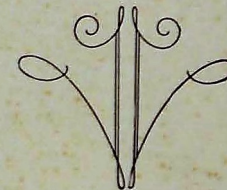
+

Photographs by  
Guthardt

Printing by  
Benson Printing Company

Engraving by  
Capitol Engraving Company

• The •  
**Champion**



Being the  
Year Book of

**Central High School**  
Chattanooga, Tenn.



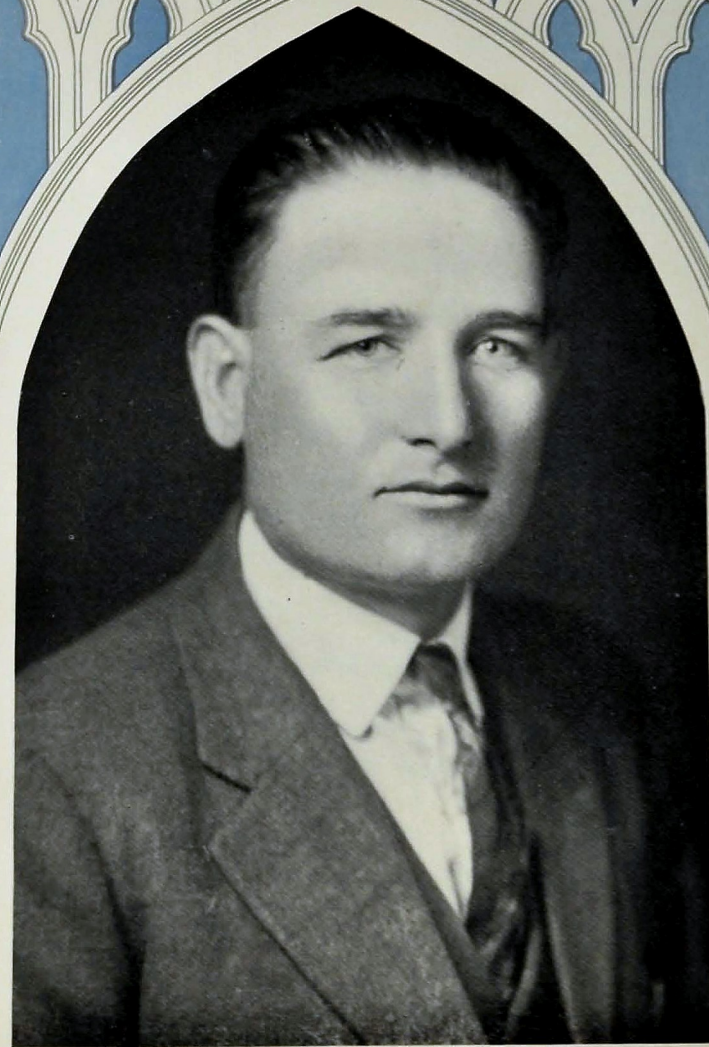
## Dedication

The Champion of 1930 is  
respectfully dedicated

to

Mr. W. P. Bales

Who in his work has taught  
"high thought, love of truth,  
courtliness, and all that makes  
a man," and who by his ex-  
emplary life has enshrined  
himself in the hearts of  
Central students as a  
knight indeed.



W. P. Bales



## Foreword

In days of chivalry "when  
kighthood was in flower,"  
the brave knight held as a  
priceless treasure his shield  
which symbolized for him  
bitter struggle often crowned  
with glorious victory.

If this volume of the Cham-  
pion of 1930, as you turn its  
pages, brings back

Olden days, golden days,  
Days so rich in memories bright;  
Happy days, gladsome days,  
Days aglow with pure delight;  
we shall be pleased.

The Editors

## Contents

Book One

**Ye School**

Book Two

**Ye Classes**

Book Three

**Ye Activities**

Book Four

**Ye Faire Ladies**

Book Five

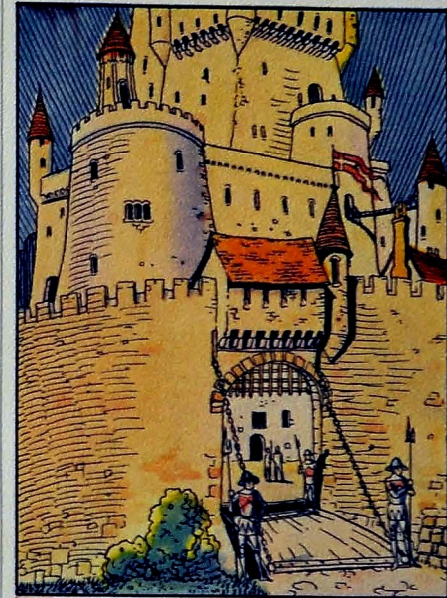
**Ye Features**



## Alma Mater

What a wonderful school is ours to love  
 With its ups and its downs and its joys;  
 What a wonderful banner the Purple  
 and Gold,  
 As it floats o'er our girls and boys.

And this wonderful school that I love  
 the best  
 Has a wonderful rep so high;  
 So you've heard of the school that's  
 true as blue,  
 Oh, that wonderful school, Central  
 High.



Book One

The School



• 1930 CHAMPION •



CENTRAL



• 1930 CHAMPION •



STACEY E. NELSON, *Principal*  
CENTRAL HIGH SCHOOL

• 1930 CHAMPION •

**I**N days of old when knights were bold it was customary for knights to ride out and attack evil forces.

Before one could become a knight he must spend a period in preparation and trial. To be a good knight one must have character. He must be strong, brave, and loyal. He must be temperate, courteous, clean, and courageous. He must be supple and efficient in the use of his weapons. Those qualities required training and self-sacrifice.

Students of Central are knights in training for service. Evil forces are present in the world today just as when knighthood was in flower. Looking from the watch-tower of Castle Central I see the tents of the black knights. I see Ignorance with his attendants. I see Poverty with his emaciated following. I see Disease with his cohorts. I see Selfishness and Greed with their company. I see Sin with his grinning devils. What an opportunity for true knights! Students of Castle Central, I herald you. Prepare! Seniors of Castle Central, I knight you. Forth to the conflict! Bear with honor your escutcheon Purple and Gold.

*S. E. Nelson*



## Department Heads



MR. W. H. TEMPLETON  
*Assistant Principal*  
*Mathematics*

MR. C. J. ANDERSON  
*Manual Arts*

MR. W. P. BALES  
*History*

MISS LEVETA EPPERSON  
*Public Speaking*

MISS MARGARET HAYS  
*Art*

MR. J. S. HUNT  
*Science*

MISS OLIVIA KIRBY  
*Music*

MISS JANNIE LLEWELLYN  
*Home Economics*

MR. S. D. PETERSEN  
*Athletics*

MR. W. A. PRICE  
*Commercial*

MR. J. A. SETLIFFE  
*Latin*

MRS. JOHN A. SHELTON  
*English*

COL. JAMES E. WARE  
*Military*

## Faculty

MISS MAMIE LOUISE BARNES  
*English*

MR. J. J. FLETCHER  
*Auto Mechanics*

MR. J. L. HAIR  
*Mathematics*

MR. J. A. HEADRICK  
*History*

MRS. VIRGIL JOHNSON  
*English*

MISS GRACE LASATER  
*Secretary*

MRS. IDA M. LONGLEY  
*English*

MISS VIRGINIA MURRAY  
*History*

MISS ELIZABETH NEWBERRY  
*English*

MISS BEULAH PARKER  
*Spanish*

MISS LILLIE SCHWARTZ  
*Latin*

MR. G. M. SWINGLEY  
*Mathematics*

MISS MARGARET WAPLES  
*French*





• 1930 CHAMPION •

## Faculty

MISS MARY BRAGG  
*Science*

MRS. HARRY L. BROWN    MISS KATHERINE BYNUM  
*French*                      *History*

MRS. MARY D. CALLIS  
*School Mother*

MISS EDNA CROSS              MISS DOROTHY DICKERSON  
*History*                      *Latin*

MISS RUTH FAIN  
*Spanish*

MISS ELSIE JANE FLEMING    MISS MARTHA GREY  
*Science*                      *English*

MR. CLEBURNE HATFIELD  
*Manual Arts*

MISS EDNA EARLE JONES    MISS ELIZABETH JONES  
*English*                      *History*

MISS FAY LEE  
*Mathematics*

MR. LARRY M. LEHTO    MISS CAROLINE LILLARD  
*Manual Arts*              *Mathematics*

MISS MARY MORGAN  
*Mathematics*

MISS ELLEN MULLENIX    MISS FREIDA MYLIUS  
*English*                      *Home Economics*

MISS IDA NICKEL  
*Commercial*

MISS HELEN PRYOR              MRS. BLANCHE ROGERS  
*Latin*                      *English*

MR. S. Q. TALLANT  
*Mathematics*



• 1930 CHAMPION •

## Faculty

MISS MARY WENE ATKINSON  
*Librarian*

MRS. HAZEL BARTON              MISS JEWEL DEAN  
*Commercial*                      *Physical Education*

SERGEANT G. M. HARRIS  
*R. O. T. C.*

MR. J. A. HOODENPYL              MISS EDMUND HOOSER  
*Chemistry*                      *English*

MISS ELIZABETH JONES  
*History*

MISS MARGARET LOWENTHAL    MR. J. C. McAMIS  
*Mathematics*                      *Physics*

MR. GEORGE MCCOY  
*History*

MISS MARJORIE MCLEOD    MR. WINSTON MASSEY  
*English*                      *Mathematics*

MISS JOE ORR  
*Biology*

MRS. GEORGE RICE              MISS MARY ELLEN RICE  
*Commercial*                      *Spanish*

MR. G. E. RUBRIGHT  
*Band Director*

MISS LETHA SMITH              MR. A. P. STEWART  
*Commercial*                      *Mathematics*

MISS MARGARET TAYLOR  
*Home Economics*

MRS. W. H. TAMPLETON    MISS MOZELLE VANDERGRIFF  
*Home Economics*              *Secretary*

MISS HELEN ZIEGLER  
*Librarian*

MISS ELIZABETH LACEY  
*Librarian*





1930 CHAMPION



## BOARD OF EDUCATION

F. E. WALKER, *Superintendent*

F. H. ALLEN

E. Y. CHAPIN

D. M. RAULSTON

HUNTER FURCHESS

MRS. H. R. LACEY, *Chairman*

W. R. ROBERTS

MRS. WILL SHEPHERD



Book Two

In Classes



• 1930 CHAMPION •



## Knights

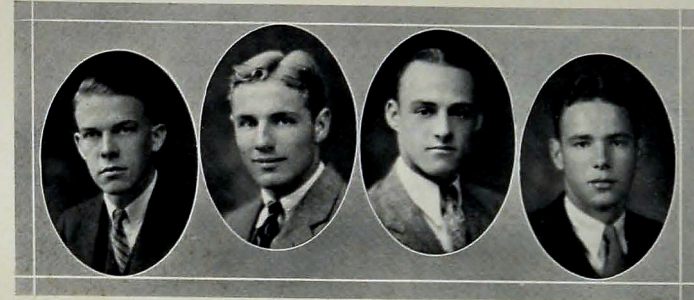


1930 CHAMPION



SENIORS

1930 CHAMPION



## Senior Class

### OFFICERS

ROBERT BAKER . . . . .	<i>President</i>
WILBUR PETERSEN . . . . .	<i>Vice-President</i>
EDWARD HEIDER . . . . .	<i>Secretary</i>
HAROLD BENNETT . . . . .	<i>Treasurer</i>



## Senior Class

JOHN FRANKLIN WRIGHT  
"John"

*"This is not conceit, my friends; it is but personal recognition of mine own excellence."*

Entered from East Side Junior High, '27; Senate, '30; Chairman Invitation Committee, '30; "Champion" Staff, '30; Dixie Interscholastic Press Convention, '30; Four-Year Honor Student; Valedictorian.

LILA MAE DUGGAN  
"Lil"

*"She smiles and smiles and will not sigh."*

Entered from Hardy Junior High, '26; Dixie Society, '27.

EVELYN E. McILLIE

*"Loveliness needs no other art or ornament."*

Entered from East Side Junior High, '27; Athletic Association, '29.

*"If to her face you would look,  
Look on her face and forget them all."*

Entered from Conner Junior High, '27.

SARAH E. WOODRUFF

*"She has a lovely face."*

Entered from Dade High, Trenton, Ga., '28; Ice Cream Force, '28; Hi-Y, '29, '30.

ERNESTINE STACY  
"Ernie"

*"There's no living with thee nor without thee."*

Entered from East Side Junior High, '27; European Society, '27, '28; Basket Ball, '27, '28, '29; Baseball, '27, '28, '29; Volley Ball, '27, '28, '29; Athletic Association, '27, '28, '29, '30; President Athletic Association, '29, '30; Senate, '29, '30; Senate Cabinet, '30; Bank, '28, '29, '30; Commercial Club, '28, '29, '30; Vice-President Lettergirls' Club, '29, '30; Honor Student.

FRANCES MARIE GAITHER  
"Frant"

*"Fairest is she that drives away the gloom with her smile."*

Entered from Williston Academy, '28; Biology Club, '29; Candy Force, '30.

THOMAS HAYES McDOWELL  
"Mac"

*"The sea is ever to a soldier kind."*

Entered from Conner Junior High, '28; R. O. T. C., '29, '30; Hi-Y, '29, '30.

## Senior Class

CARL LELAND GIBSON  
"Hoot"

*"One who never turned his back but marched breast forward."*

Entered from East Ridge, '27; Bank, '28, '29, '30; Commercial Club, '28, '29, '30; Bookstore, '28, '29; Grady Society, '29, '30; Senate, '30; Senior Play, '30; Four-Year Honor Student.

GERTRUDE SMITH  
"Trudy"

*"Success comes to those who will be successful."*

Entered from Conner Junior High, '27; Athletic Association, '29; May Festival, '29.

NAN MINERVA LOVE  
"Nannie"

*"She is a friend to all and an enemy to none."*

Entered from Conner Junior High, '28; Dixie Society, '28.

MONA JANE CRABTREE  
"Mamie"

*"Her voice is blithe, her heart is gay."*

Entered from East Side Junior High, '27; Athletic Association, '27; Wellesley Society, '27; Biology Club, '28; Eshee, '30.

ALENE STANDIFER  
"Ally"

*"She is the very flower of youth."*

Entered from Conner Junior High, '27; Athletic Association, '28.

DOROTHY VERNON LEE  
"Dot"

*"She had a face o'erspread with gladness, soft smiles and human kindness."*

Entered from Fulton High, Atlanta, '29; Girls' Glee Club, '29, '30; Varsity Glee Club, '30; Minstrel, '29; Operetta, '29.

ALMARIE WHITE  
"Happy"

*"Thy smile we ever seek."*

Entered from Lookout Junior High, '27; Dixie Society, '28; Song Leader, '30; Assistant to the Librarian, '30.

WILL H. KELLIS  
"W. H."

*"A friend, the master-piece of nature."*

Entered from East Side Junior High, '27.



## Senior Class

WILLIAM AFTON BROOKS

"Half-ton"

*"I am the master of my fate."*

Entered from Cedar Hill School, '27.

EFFIE WHITE BELL

"E"

*"Wisdom and modesty both combined."*

Entered from East Side Junior High, '27; Athletic Association, '27; Euterpean Society, '27; Biology Club, '29.

LESSIE WHITE BROWER

"L"

*"A kindly voice in many a behavior."*

Entered from East Side Junior High, '27; Euterpean Society, '27.

JANE CORBIN

"J"

*"Her eyes are the windows of her soul."*

Entered from East Side Junior High, '27; Euterpean Society, '28; Minstrel, '28; Glee Club, '28; Science Club, '29.

MARGARET ELIZABETH ELLIS

"M"

*"Being what I am, I'll be it nobly."*

Entered from Toner High, '28.

LOLA ELIZABETH SCHAEERER

"L"

*"A girl with a gentle and courteous heart."*

Entered from Lakeworth High, Lakeworth, Fla., '27.

BENNY JUANITA SHARP

"Nita"

*"Be silent and safe, for silence never betrays you."*

Entered from North Chattanooga Grammar, '27.

HARRY PLEDGER

"Pledge"

*"I always take the greatest risk."*

Entered from East Side Junior High, '27.

## Senior Class

LEE ROY CAGLE

"Reg"

*"To argue is the delight of my life."*

Entered from East Side, '26.

NANALOU MILLER

"Lou"

*"Her charms survive her beauty."*

Entered from East Side Junior High, '27; Euterpean Society, '28; Camera Club, '29, '30; Secretary Camera Club, '30; Senate, '29, '30; Science Club, '29; Biology Club, '29, '30; Vice-President Biology Club, '29; H-Y, '30.

MARY THERESA ARLEDGE

"Tessa"

*"A maiden known for quiet ways."*

Entered from East Side Junior High, '27.

MARY LUCY TETER

"Tote"

*"Smiles in the face of adversity will bring their reward."*

Entered from Topeka High, Topeka, Kan., '27.

EDITH L. ALLISON

"Edie"

*"Tall and slender as a graceful reed."*

Entered from Town Creek, Ala., '27; Athletic Association, '27, '28, '29.

ALMA FEASTER

"Al"

*"Fashioned so slenderly, so young, so fair."*

Entered from Cedar Hill, '27.

GERTRUDE BOYD

"Gert"

*"Every form of human life is romantic."*

Entered from East Side, '28; Dixie Society, '28; Booster's Club, '28; Athletic Association, '28; Ice Cream Force, '29; Biology Club, '29, '30.

THOMAS A. ERWIN

"Tommy"

*"Those who think must govern those who toil."*

Entered from Boyd Junior High, Knoxville, '27; Senate, '29, '30; Senior Play '30; Honor Roll; Salutatorian.

## Senior Class

LEE ROY CAGLE

"Reg"

*"To argue is the delight of my life."*

Entered from East Side, '26.

NANALOU MILLER

"Lou"

*"Her charms survive her beauty."*

Entered from East Side Junior High, '27; Euterpean Society, '28; Camera Club, '29, '30; Secretary Camera Club, '30; Senate, '29, '30; Science Club, '29; Biology Club, '29, '30; Vice-President Biology Club, '29; H-Y, '30.

MARY THERESA ARLEDGE

"Tessa"

*"A maiden known for quiet ways."*

Entered from East Side Junior High, '27.

MARY LUCY TETER

"Tote"

*"Smiles in the face of adversity will bring their reward."*

Entered from Topeka High, Topeka, Kan., '27.

EDITH L. ALLISON

"Edie"

*"Tall and slender as a graceful reed."*

Entered from Town Creek, Ala., '27; Athletic Association, '27, '28, '29.

ALMA FEASTER

"Al"

*"Fashioned so slenderly, so young, so fair."*

Entered from Cedar Hill, '27.

GERTRUDE BOYD

"Gert"

*"Every form of human life is romantic."*

Entered from East Side, '28; Dixie Society, '28; Booster's Club, '28; Athletic Association, '28; Ice Cream Force, '29; Biology Club, '29, '30.

THOMAS A. ERWIN

"Tommy"

*"Those who think must govern those who toil."*

Entered from Boyd Junior High, Knoxville, '27; Senate, '29, '30; Senior Play '30; Honor Roll; Salutatorian.



## Senior Class

WILLIAM H. LANGSTON

"Billy"

*"Be true to your word, and your work and your friend."*

Entered from Hardy Junior High, '27; R. O. T. C., '27, '28; "Digest," '27, '28, '29, '30; Senior Play, '30.

MARY FARROW

"May"

*"She has a pensive beauty, yet not sad."*

Entered from Lookout Junior High, '27; Dixie, '28; Biology Club, '29, '30; Assistant to Librarians, '29, '30.

EDITH ADA HIGDON

*"With a sunny smile and tender."*

Entered from Lookout Junior High, '27; Girls' Glee Club, '28, '29; Young Men's Club, '29, '30; Fisher, '30.

JESSA ANN KASSEL

"Jessa"

*"Her cheeks are pretty red as the rosebuds in the field."*

Entered from South Side Junior Grammar, '27; Athletic Association, '27; Dixie, '27; Girls' Glee Club, '29, '30.

FRANCES CAROLINE McLAUGHEN

"Frances"

*"She bore a mind that many could call but fair."*

Entered from East Side Junior High, '27; Wellesley, '27; Athletic Association, '28.

LORINE ELIZABETH RAWLINGS

"Libby"

*"There is no wisdom like frankness."*

Entered from East Side, '27; Bookstore, '29, '30; Commercial Club, '30.

EVELYN TRIBBLE

"Trib"

*"There's no living with thee nor without thee."*

Entered from Normal Park, '27.

ROBERTA FRANCES JONES

"Bertie"

*"A virtuous maiden, mild and comely."*

Entered from East Side Junior High, '27; Athletic Association, '27; Wellesley, '27.

## Senior Class

HARRY NEAL SHERRILL

"Share"

*"Persuasion tips his tongue whenever he talks."*

Entered from Conner Junior High, '28; H-I-Y, '28, '29.

EVELYN LONG

"Lyn"

*"Beautiful in form and feature; lovely as the day."*

Entered from Lookout Junior High, '27; Dixie, '27, '28; Bookstore, '28, '29.

IRENE GRANT

"Rene"

*"A trusty maiden tried and true."*

Entered from Sunnyside Grammar, '27; Athletic Association, '27; May Festival, '27; Enterprise, '27.

ANNA LEE BELL

"Annabel Lee"

*"A rare compound of oddity, frolic and fun."*

Entered from Lookout Junior High, '27; Dixie, '27, '28.

FERN LOUISE HIXSON

"Fern"

*"None knew her but to love her nor named her but to praise."*

Entered from Conner Junior High, '27; Dixie, '27, '28.

EDITH WHEELER

"Whee"

*"A beautiful type of that unchanging good."*

Entered from Mission Ridge Grammar, '27.

MILDRED THOMPSON

"Dred"

*"I think all I speak, but speak not all I think."*

Entered from Lookout Junior High, '27.

MILDRED ADELIA GREEN

"Mild"

*"It matters not what you are thought to be, but what you really are."*

Entered from East Side Junior High, '27.



## Senior Class

FRANK S. BRANNEN

"Specs"

*"The mind is the standard of the man."*

Entered from East Side Junior High, '27; H-Y, '30.

J. LUCILLE MAXWELL

"Sis"

*"There be none of Beauties daughters  
With a magic like thee."*

Entered from Hardy Junior High, '27; Dixie, '27; Athletic Association, '28; '29; May Festival, '27, '28; Home Economics Exchange, '30.

LELA PEARL WISLEY

*"A noble character is the most precious crown."*

Entered from Lookout Junior High, '28.

LENA LEE HOWARD

*"Living is the most difficult of all the arts."*

Entered from Lookout Junior High, '28.

MARGARET THOMPSON

"Mae"

*"My heart is whole, my fancy free."*

Entered from Lookout Junior High, '27.

MARGUERITE LOWRY

"Greta"

*"A good character shines in its own light."*

Entered from East Side Junior High, '27; Dixie, '28; Wellesley, '28; Biology Club, '29, '30; Biology Club Play, '29; Home Economics Exchange, '30; Science Club, '30.

ELLEN WATSON

"Ell"

*"I am never sad when I hear sweet music."*

Entered from Titusville High, Titusville, Fla., '28; Varsity Pianist, '30; Assistant to Librarians, '30.

ELIZABETH M. VANCE

"Ave"

*"And she hath smiles to earth unknown."*

Entered from Dickinson Junior High, '27; Dixie, '27, '28; Usher, '30.

## Senior Class

L. BARRY POLLARD

"Bearcat"

*"Be sure you are right, then go ahead."*

Entered from Mission Ridge Grammar, '27; "Digest," '27.

VIVIAN LOUISE VANDERGRIFF

"Vandy"

*"Shadow owes its birth to light."*

Entered from East Side Junior High, '27; Athletic Association, '27.

FRANCES LOUISE SLATEN

"Slat"

*"A smile that captures every heart."*

Entered from Lookout Junior High, '27; Athletic Association, '27; Wellesley, '27; Girl Reserves, '27, '28; Girl Scouts, '29, '30; Orchestra, '29, '30.

FLOSSIE VIRGINIA JACKSON

"Mammie"

*"Her smile is like the evening mild."*

Entered from Conner High, '28; Athenian, '28.

NELLIE GRAHAM

"Nell"

*"Her mind is bright, her heart is right."*

Entered from Conner Junior High, '28.

DOROTHY BEATRICE HOLDERMAN

"Dot"

*"Age cannot wither her."*

Entered from Lookout Junior High, '28; Candy Force, '30.

LUCILLE HAMBLIN

"Ham"

*"An Angel might have stooped and blessed her purity."*

Entered from Lookout Junior High, '28.

ADDIE ELIZABETH SCHMITT

"Libby"

*"Be everything which now thou art."*

Entered from East Side Junior High, '27; Girls' Glee Club, '30.

## Senior Class

L. BARRY POLLARD

"Bearcat"

*"Be sure you are right, then go ahead."*

Entered from Mission Ridge Grammar, '27; "Digest," '27.

VIVIAN LOUISE VANDERGRIFF

"Vandy"

*"Shadow owes its birth to light."*

Entered from East Side Junior High, '27; Athletic Association, '27.

FRANCES LOUISE SLATEN

"Slat"

*"A smile that captures every heart."*

Entered from Lookout Junior High, '27; Athletic Association, '27; Wellesley, '27; Girl Reserves, '27, '28; Girl Scouts, '29, '30; Orchestra, '29, '30.

FLOSSIE VIRGINIA JACKSON

"Mammie"

*"Her smile is like the evening mild."*

Entered from Conner High, '28; Athenian, '28.

NELLIE GRAHAM

"Nell"

*"Her mind is bright, her heart is right."*

Entered from Conner Junior High, '28.

DOROTHY BEATRICE HOLDERMAN

"Dot"

*"Age cannot wither her."*

Entered from Lookout Junior High, '28; Candy Force, '30.

LUCILLE HAMBLIN

"Ham"

*"An Angel might have stooped and blessed her purity."*

Entered from Lookout Junior High, '28.

ADDIE ELIZABETH SCHMITT

"Libby"

*"Be everything which now thou art."*

Entered from East Side Junior High, '27; Girls' Glee Club, '30.



## Senior Class

A. HORTENSE BYRD

"Harry"

*"Oh, what a face was hers to brighten light."*

Entered from East Side Junior High, '27; Treasurer Sophomore Class, '28; Dixie, '28; Ice Cream Force, '29; Treasurer Camera Club, '29; Camera Club, '29, '30.

BERNARD E. WILSON

"Barney"

*"Success is made of ambition and grit."*

Entered from Lookout Junior High, '27; R. O. T. C., '27, '28, '29, '30; Stage Crew, '27, '28, '29, '30; Hi-Y, '27, '28, '29; Grady, '28, '29, '30; Senate, '28, '29, '30; Sergeants' Club, '29; Officers' Club, '30.

CLARA ETHELYN HARRIS

*"True beauty finds its proper retreat."*

Entered from East Side Junior High, '27; Dixie,

GLADYS E. FOREST

"Gladys"

Entered from East Side Junior High, '27; Athletic Association, '27, '28, '29, '30; Junior Play, '27; Euterplan, '28; Junior Play, '29; Band, '29; Secretary-Treasurer, '29, '30; Secretary-Treasurer, '29, '30; Orchestra, '29, '30; Junior Play, '30.

BRIAN O'NEAR

"Brian"

*"She was young and very fair, bright eyes and golden hair."*

Entered from East Side Junior High, '27; Athletic Association, '27, '28; Varsity, '28; Camera Club, '29, '30; Usher, '30.

MARI WILHELMINA SCHNEIDER

"Greta"

*"A rose was she with yet her sweetest petals not unfolded."*

Entered from Sunnyside Grammar, '27; Orchestra, '27, '28, '29, '30; Violin Ensemble, '29, '30; Usher, '30.

EDWARD HEIDER

"Tete"

*"I would like to be an old man."*

Entered from Lookout Junior High, '27; Football, '28, '29, '30; Track, '28, '29, '30; Junior Play, '29; Minstrel, '29, '30; Operetta, '29, '30; Ice Cream Force, '29; Senate, '30; R. O. T. C., '28; Captain Track Team, '30; Lettermen's Club, '30; Secretary Senior Class, '30; Senior Play, '30.

CYNTHIA ANN SANDERS

"Sin"

*"How sweet and gracious even in common speech."*

Entered from East Side Junior High, '27; Wesley, '27, '28; Camera Club, '28, '29, '30; Senate, '28, '29, '30; Senate Cabinet, '30; Hi-Y, '29, '30; Usher, '30.

## Senior Class

REBA WILSON SWAFFORD

"Sister"

*"How beautiful you are."*

Entered from G. P. S., '27; Dixie, '27; Usher, '30.

CHARLES M. VALENTINE

"Heart"

*"It is well to play."*

Entered from Monroe County High, '27; R. O. T. C., '28, '29, '30; Sergeants' Club, '29; Officers' Club, '30; Camera Club, '29, '30; Hi-Y, '29, '30; Senate, '30.

BETTY SUE BLACK

"Bet"

*"Calm, sweet, and untroubled."*

Entered from East Side Junior High, '27; Dixie, '27, '28; Hi-Y, '27, '28, '29, '30; Office Force, '29, '30; Usher, '30.

JEWELL LEDFORD

"Jude"

*"Good company in a journey makes the way seem shorter."*

Entered from B. Brainerd Grammar, '27.

DOROTHY DELIA USMILLER

"Dot"

*"A smile for everyone."*

Entered from McIntire Grammar, '27; Girl Scout, '27, '28; Hi-Y, '27, '28, '29; Athletic Association, '27, '28, '29; Glee Club, '28; Biology Club, '28, '29; Girl Reserves, '28, '29.

MATTIE LEE LOVE

"Skeezix"

*"Her heart was as true as steel."*

Entered from Ringgold High, '28; Athenian, '28; Bookstore, '29, '30; C. C. C., '29, '30; Athletic Association, '29.

CHARLES MANNING FORSTNER

"Goldie Locks"

*"I am the captain of my soul."*

Entered from East Side Junior High, '27; Ice Cream Force, '29; Vice-President Camera Club, '30; Grady, '30.

CLEONA MAY BROWN

"Conle"

*"Eyes that were fountains of thought and song."*

Entered from Charles City, Iowa, '29; Operetta, '29; Girls' Glee Club, '29; Varsity Glee Club, '29, '30; Science Club, '29, '30; Vice-President Science Club, '30.



## Senior Class

HAZEL TATE

"Tater"

*"A charming creature rare is she."*

Entered from East Chattanooga Grammar, '27; May Festival, '27; Dixie, '28.

CHARLES NORTON

"Charlie"

*"Few his equal; none his superior."*

Entered from East Braddock, '27; H-Y, '27, '28, '29, '30; Vice-President, '28; President, '30; President Grady, '29; Senate, '28, '29, '30; Track Team, '28, '29, '30; Class Prophet, '30.

NAN EVELYN STEWART

*"Sunshine every day, sunshine all the way."*

Entered from East Side Junior High, '27; Bookstore, '28, '30; Commercial Club, '30.

DOROTHY HAZEL DOORLAN

*"The joy of youth and health her eyes displayed."*

Entered from East Side Junior High, '28; Dixie, '29; Bookstore, '29, '30.

MARY LOUISE RANKIN

"Rani"

*"She's as sunny as the skies in June."*

Entered from East Side Junior High, '27; Wellesley, '27, '28; Bookstore, '27, '28; Commercial Club, '28.

MARY HELEN BRACKEN

"Bake"

*"With a heart brimming full of happiness."*

Entered from Lookout Junior High, '27; Dixie, '28.

JAMES CLOSE

"Jim"

*"You're such a touchy, testy, pleasant fellow."*

Entered from Hardy Junior High, '27; Bookstore, '27, '28; R. O. T. C., '27, '28, '29, '30; Sergeants' Club, '29; Officers' Club, '30.

LOIS ALLENE BARTON

"Lo"

*"Still, but deep."*

Entered from Wallaceville Grammar, '27.

## Senior Class

MARY ELIZABETH THOMASSON

"Phebe"

*"How brilliant and mirthful the light of her eyes."*

Entered from Conner Junior High, '27; European, '27; Assistant to Librarians, '29, '30.

LE BRON ALEXANDER

"Alex"

*"Happy days, I love them!"*

Entered from Berry School, '29.

VIRGINIA L. BROOKS

"Jenny"

*"Her part has not been words, but deeds."*

Entered from Lookout Junior High, '27; Dixie, '27, '28; Athletic Association, '27; Bookstore, '29, '30; May Festival, '29; Commercial Club, '30.

RUTH VIRGINIA CONNER

"Virgie"

*"She has many a nameless virtue."*

Entered from Sunny Side, '27; Athletic Association, '29; H-Y, '30; Cheer, '30.

ANNIE MAYE BROWN

"Bulle"

*"Her eyes as stars of twilight fair."*

Entered from Ada Marriott Junior High, Miami, Fla., '27; Bookstore, '29, '30; Commercial Club, '30.

LELA AGNES HUDSON

"Aggie"

*"Whence that smile of bliss?"*

Entered from Conner Junior High, '27; Wellesley, '27, '28; Athletic Association, '27, '28; Operetta, '28; Girls' Glee Club, '27, '28, '29, '30.

IDA CRYSTAL

"Idy"

*"To be rather than to seem."*

Entered from Isidore Newman, '29; Local Girl Winner in Flag Contest, '29.

RAY LILLIAN CRYSTAL

"Cris"

*"Smooth runs the water where the brook is deep."*

Entered from Isidore Newman, '29; Volley Ball Team, '29.



## 1930 CHAMPION

## Senior Class

MARTHA RAE SMITH

"Marta"

*"Knowledge comes but wisdom lingers."*

Entered from Bellaire High, Ohio, '29.

ETHEL BACON

"Sis"

*"With modest eyes downcast she comes."*

Entered from Hill View High, Riceville, Tenn., '30.

LOUIE RUTH ROACH

"Louie"

*"I am worthy of all the honors for I love all."*

Entered from Cedar High, '28.

L. DONA WOODS

"Donna"

*"Fortune truly helps those who are of good judgment."*

Entered from Blaine High, '27.

IRENE GARNER

"Irene"

*"A loving little life of sweet small works."*

Entered from Hillsboro, Tenn., '27.

DOROTHY ELIZABETH IRWIN

"Dot"

*"And she is fair and fairer than that word of scoundrous virtues."*

Entered from East Side, '27; Wellesley, '27, '28; Commercial Club, '28; Bookstore, '28, '29.

THOMAS CHAMBERLAIN

"Tom"

*"Give me a book and the shade of a tree."*

Entered from East Side Junior High, '27.

LUCILE LEONORA FRANKLIN

"Cile"

*"Happiness is not perfected until it is shared."*

Entered from East Side, '27; Athletic Association, '27; Dixie, '27; Girl Reserves, '28, '29.

## 1930 CHAMPION

## Senior Class

MILDRED BROWN

"Milly"

*"With thee conversing I forget all time."*

Entered from North Chattanooga, '27; Athletic Association, '27; Dixie, '27; Camera Club, '29, '30; Usher, '30.

JOHN H. MARTIN

"Cute"

*"An abridgment of all that is pleasant in man."*

Entered from Cedar Hill, '27; Grady, '27, '28, '29, '30; Hi-Y, '28, '29, '30; Secretary Sophomore Class, '28.

MARY KATHRYN McCOLLUM

"Mary K."

*"Two eyes which star-like sparkle in the skies."*

Entered from E. Brainerd, '27; Thrift Sponsor, '27; Bank, '27, '28, '29; Senate, '28, '29, Hi-Y, '28, '29, '30; Usher, '28; Commercial Club, '28, '29, '30; President Bank, '29.

ALLINE HOLDER

"Lettie"

*"Her jolly disposition makes her loved by every one."*

Entered from Hardy Junior High, '28; Dixie, '28; Euterpean, '28; Bank, '28, '29, '30; Commercial Club, '29, '30; President Bank, '29.

PAULINE SULLIVAN

"Polly"

*"A girl worthy of the name."*

Entered from Grundy County, '28.

ALMA MARGUERITE EARLY

"Mickey"

*"There was a soft and pensive grace, a cast of thought upon her face."*

Bookstore, '29, '30.

BEULAH KATHRYN TURNER

"Kate"

*"Like a river was her life."*

Entered from Centenary, '28; Athletic Association, '29; Violin Quartet, '29; Violin Ensemble, '29, '30.

PAUL BEAVER

"Pol"

*"Any color so long as it's red is the color that suits me."*

Entered from Cedar Hill, '27; Grady, '27, '28, '29, '30; Hi-Y, '28, '29, '30.



## Senior Class

INEZ LACKEY  
"Nezzle"

*"Her smiling betrays the dimples we adore."*

Entered from Lookout Junior High, '28; Dixie, '28; "Digest," '28, '29, '30; Senate, '29, '30; Senate Cabinet, '30; "Kempy," '29; Usher, '30; Editor-in-Chief "Champion," '30; Sponsor Company B, '30; Athletic Association, '30; Senior Party Queen.

JAMES FOLKNER  
"Jim"

*"Life is what you make it."*

Entered from Red Bank Grammar School, '27.

PARSONS SHELLEY

*"Youth is the dawn of life."*

Entered from Washington State Academy, '27; Girls' Glee Club, '29; Ice Cream Force, '30.

ALICE W. KENDRICK

*"Consistency is the hallmark of true minds."*

Entered from East Side Junior High, '28; Biology Club, '29, '30; Library, '30.

MURIEL SMITH  
"Mimi"

*"Be my friend and teach me to be thine."*

Entered from Lookout Junior High, '27; Library Force, '29, '30; Assistant Librarians, '29, '30.

DOROTHY HESTER  
"Dot"

*"Man delights not me."*

Entered from East Side Junior High, '27.

VIOLA EDDINGTON  
"Vi"

*"She knew it not, but she was fair and like the moonbeams was her hair."*

Entered from Lookout Junior High, '27; Digest Staff, '30.

PAUL LEWIS  
"Curly"

*"When shall we look upon his like again?"*

Entered from Lookout Junior High, '27; Stage Crew, '28, '29; Camera Club, '29; Grady, '29.

## Senior Class

EDITH EVELYN FRAZIER  
"Pete"

*"She's aye sae neat, sae trim."*

Entered from Sunny Side, '27; Dixie, '27, '28; Science Club, '28; Operetta, '29; Ice Cream Force, '29; Usher, '30.

HENRIETTA EUGENIA COBLEIGH  
"Henry"

*"Knowledge comes, but wisdom lingers."*

Entered from Mission Ridge, '27; Dixie, '27; Athletic Association, '27; Boosters' Club, '27, '28; Biology Club, '29; Girls' Glee Club, '29; Ice Cream Force, '29; Library Staff, '29, '30; Usher, '30; Assistant Librarians, '29, '30.

ELOISE STANDIFER  
"Elo"

*"Her voice was exquisitely tender."*

Entered from Dickinson, '27; Athletic Association, '27, '28; Huskies' Ball, '27; May Festival, '27, '28; Volleyball, '27, '28; Candy Police, '30.

PAULINE EVANS  
"Polly"

*"How lady-like, how queen-like she appears!"*

Entered from Lookout Junior High, '28; Wellesley, '28.

MARTHA E. BROCK  
"Smathie"

*"Tis the mind that makes the body rich."*

Entered from Lookout Junior High, '27.

LELLA WILDER  
"Billie"

*"Strong in will and honest in endeavor."*

Entered from Dickinson, '27; Science Club, '27; Athletic Association, '28, '29; May Festival, '29.

JAMES H. PARKER  
"J. P."

*"Be my friend."*

Entered from Hardy Junior High, '27; R. O. T. C., '27, '28, '29, '30; Sergeants' Club, '29; Officers' Club, '30.

GORDON ORRELL  
"Buck"

*"The girls all cried, 'He's quite the kick.'"*

Entered from Lookout Junior High, '27; Grady, '28, '29.



## 1930 CHAMPION

## Senior Class

VIRGINIA E. LOWRY  
"Gin"

*"So much good, so truly tried."*

Entered from Dickinson, '27; Senate, '27, '28, '29, '30; Senate Cabinet, '30; Athletic Association, '27, '28, '29, '30; Secretary Athletic Association, '28, '29; Euterpean, '28; Senate Play, '28; May Festival, '27, '28, '29; Minstrel, '29; Operetta, '29; President Lettergirls' Club, '29, '30; Hi-Y, '30; Usher, '30; Chairman Rings and Pins Committee, '30.

WILLIAM S. AIKEN  
"Sam"

*"My days pass pleasantly away."*

Entered from East Lake, '27.

MARTHA BEATRICE McBRAYER

*"She smiles sweetly, happy or sad."*

Entered from East Lake, '27; Bookers Club, '27; Biology Club, '27; Dixie, '27; Camera Club, '27, '28; Junior Carnival, '28; Physics Club, '28.

VIRGINIA PRICE

*"In her eyes thought becomes sweeter and sweeter."*

Entered from Mission Ridge, '27; Dixie, '27; Well-Reader, '28.

MARY JOYCE HAMMOND  
"Joy"

*"Her cheek is tipped with a blush."*

Entered from Lookout Junior High, '27; Dixie, '28; Biology Club, '30; Cante Force, '30; Science Club, '30.

ADDIE BELLE MERONEY  
"Add"

*"But still her heart she kept."*

Entered from Conner Junior High, '28.

FORREST J. KIRKPATRICK  
"For Why"

*"Live while you live."*

Entered from Lookout Junior High, '27; R. O. T. C., '27, '28, '29.

SARAH INEZ COULTER  
"Sally"

*"Here's a spirit calm and crystal clear."*

Entered from East Lake Grammar, '27.

## Senior Class

HENRY NORWOOD ARCHIE  
"Smoky"

*"Happy are they who have kept a middle course."*

Entered from East Lake, '27; R. O. T. C., '27, '28, '29, '30; Sergeants' Club, '29; Officers' Club, '30; Grady, '30.

MARGARET ISABELLE FUSSELL  
"Peggy"

*"Tears, idle tears, I know not what they mean."*

Entered from East Side, '27; Dixie, '27; Camera Club, '30; Biology Club, '30; Junior Red Cross, '30.

LYDIA WILSON CARTLAND  
"Liddy"

*"A good friend is forever a good friend."*

Entered from East Side, '27; Athenian, '27.

JAMES C. MCCALL  
"Jasper"

*"He pleases every one, but cannot please himself."*

Entered from Cedar Hill, '26; R. O. T. C., '26.

SARAH ISABELL SPRUELL  
"Flossie"

*"Just looking at you makes us happy."*

Entered from Girls' High, Atlanta, '28; Girls' Glee Club, '29.

EDNA LAY  
"Ned"

*"To be efficient in a great way, that is my aim throughout the day."*

Entered from Marlon County High, '28; Orchestra, '30; Girls' Glee Club, '30; Girl Reserve, '29.

EVA RUTH HORTON  
"Sleepy"

*"Reproof on her lips, but a smile in her eye."*

Entered from Chickamauga High, '27.

JAMES R. CHANDLER  
"Jimmie"

*"A boy of hope and forward-looking mind."*

Entered from Lookout Junior High, '27; Science Club, '27, '28.



## Senior Class

NORMAN SMARTT

"Smarty"

*"The mildest manner with the bravest mind."*

Entered from East Ridge, '27; Hi-Y, '27, '28, '29, '30; Senate, '27, '28, '29, '30; Senate Play, '28; Senate President, '30.

GLADYS L. PARSONS

"Jack"

*"A dainty maid with starry eye."*

Entered from Mountain Park, '27; Athletic Association, '27, '28; Welfare, '28; Science Club, '28.

JENNIE EMILY DRYE

"Emmie"

*"The only way to have a friend is to be one."*

Entered from East Side, '27; Athletic Association, '27, '28; Biology Club, '28, '29; Assistant to Librarian, '29.

RAYMOND LEE

"Ray"

*"Wit he had, without there to make known how much he had."*

Entered from Lookout Junior High, '27.

INEZ B. WILLIAMS

"I"

*"Think twice before you speak."*

Entered from East Ridge, '27; Usher, '30.

EVELYN STRICKLAND

"Strick"

*"Keep your nose to the grindstone and you will surely prosper."*

Entered from Central High, Memphis, '26.

JEANETTE ROBINSON

"Little Bit"

*"Fewest faults with greatest beauties joined."*

Entered from Lookout Junior High, '27.

JAMES McLURE RICHARD

"Ricky"

*"An affable and courteous gentleman."*

Entered from Conner Junior High, '27; Hi-Y, '28, '29; Grady, '28, '29.

## Senior Class

WILLIAM GEORGE KEEN

"Geekee"

*"A kindly grace of manners and behavior."*

Entered from Normal Park, '27; R. O. T. C., '27, '28, '29, '30; Sergeants' Club, '29; Officers' Club, '30; Camera Club, '28, '29, '30; Hi-Y, '29, '30; Senate, '29, '30; Football, '29, '30.

KATHLEEN FAY BUOL

"Kate"

*"Slow in speech, yet sweet as springtime flowers."*

Entered from Dickinson Junior High, '27; Athletic Association, '27, '28, '29; Sponsor Company G, '30.

MARY VIRGINIA LEFEBER

"Dicky"

*"Her very frowns are fairer far than smiles of other maidens are."*

Entered from East Side Junior High, '27.

WAYNE M. TYRRELL

"Terry"

*"I have a heart with room for every joy."*

Entered from Clifton H.S., '27.

RUBY KATHERINE CRAWFORD

"Ruby"

*"Nature did her so much good she scorns the help of art."*

Entered from East Side Junior High, '27; Athletic Association, '27, '28, '29.

NORMA BELLE WILLOUGHBY

"Ma"

*"One glance at her makes her weak points seem strong."*

Entered from Harriman High, '29.

GENEVA J. EZELL

"Pee Wee"

*"I hasten to laugh at everything."*

Entered from Cedar Hill, '27; Dixie, '27; Athletic Association, '27; May Festival, '27; Enter an Operetta, '28; Hi-Y, '28, '29, '30; Treasurer Hi-Y, '30; Operetta, '29; Girls' Glee Club, '29; Camera Club, '29, '30; Varsity Glee Club, '30; Candy Force, '30; Usher, '30.

CICERO HUNT MCCLURE

"Ro"

*"He is a soldier fit to stand by Caesar and give directions."*

Entered from Sunny Side, '27; R. O. T. C., '28, '29, '30; Sergeants' Club, '29; Officers' Club, '30; Hi-Y, '29, '30; Senior Play, '30.



## Senior Class

DOROTHY ELIZABETH WHITE  
"Beth"

*"The very pattern, girl of girls."*

Entered from East Side, '27; Glee Club, '28; Wellesley, '28; "Digest," '29, '30; Biology Club, '29, '30; "Champion" Staff, '30; Hi-Y, '30; Usher, '30.

ROSE VIRGINIA WHITE  
"Bud"

*"Pure as the lily white."*

Entered from Fairmont Grammar, '27; Athletic Association, '27; May Festival, '27; "Champion" Staff, '27; Wellesley, '28; Varsity Glee Club, '29, '30; Boosters' Club, '29; Operetta, '29, '30; Biology Club, '29, '30; Hi-Y, '29, '30; Red Cross, '30; "Digest," '29; Usher, '30; Senior Class, '30; Honor Student.

LAWRENCE LEE CRISGAN  
"Law"

*"My strength is as the strength of ten, my heart is pure."*

Entered from East Side, '27; Basketball, '28, '29, '30; "Digest," '29; Lettermen's Club, '29, '30.

FRANK LINLEY BLACKLEY  
"Frank"

*"Life was made for living, I to live."*

Entered from Normal Park, '26; Hi-Y, '27, '28, '29, '30; Grady, '28, '29; Swimming Team, '28; Basketball, '29, '30; Baseball, '30; Lettermen's Club, '30.

J. T. GRANT  
"Jesse"

*"Men of few words are the best men."*

Entered from East Side Junior High, '27; Grady, '28; R. O. T. C., '27.

LESTER WARE LANSFORD  
"Leck"

*"I desire to be nobly remembered."*

Entered from Ringgold High, '29.

HOWARD HENRY  
"And How"

*"I would make reason my guide."*

Entered from Red Bank, '27; Grady, '29.

VIRGINIA FRANCES PEART  
"Pert"

*"Her voice is blithe; her heart is light."*

Entered from East Side Junior High, '27; Wellesley, '27, '28; "Digest," '29; Bookstore, '28, '29; Commercial Club, '29.

## Senior Class

HAROLD FREDERICK BENNETT  
"Hopple"

*"I am wealthy in my friends."*

Entered from Central Junior High, '27; Basketball, '28, '29, '30; Captain Basketball, '30; Baseball, '28, '29, '30; Lettermen's Club, '28, '29, '30; Treasurer Class, '29, '30; Grady, '29; All-City Basketball, '29.

CLARA BLANCHE KILLOUGH  
"Blah"

*"Sweetly sang her silver voice."*

Entered from Lookout Junior High, '27; Dixie, '28; Sponsor Company, '28, '29; Operetta, '29; Girls' Glee Club, '28, '29; Varsity Glee Club, '29, '30; Usher, '30; Science Club, '30; Battalion Sponsor, '30.

LELAND TIDWELL FUSSELL  
"Tid Bit"

*"A good soldier."*

Entered from East Side Junior High, '27; Re-entered from Nashville Central, '28; R. O. T. C., '27, '28.

REBA ELIZABETH KIMBLE  
"Reb"

*"Her care was never to offend and every creature was her friend."*

Entered from Dickson Junior High, '27; Boosters' Club, '27; Girls' Reserves, '27; Athletic Association, '27; Euterpean, '27, '28; Euterpean Operetta, '28; Gypsy Rover, '28; Minstrel, '29; Varsity Glee Club, '29; Hi-Y, '30; President Ushers, '30; Invitation Committee, '30.

LAWRENCE L. BURNETT  
"Sox"

*"Youth holds no society with grief."*

Entered from East Side Junior High, '26.

THELMA JEWELL STONE  
"Telly"

*"Her loveliness I never knew until she smiled on me."*

Entered from Cedar Hill Grammar, '26.

WILLIE MAE LEATH  
"Willie"

*"She smiled on many just for fun."*

Entered from McMinn County High, Athens, '29.

JEWEL MARGARET GRYDER  
"Madge"

*"How exquisite is the bliss of knowledge."*

Entered from East Side Junior High, '27; Entered from Tyner High, '28; Athletic Association, '27; May Festival, '27.



## 1930 CHAMPION

## Senior Class

LAURA NORWOOD ROBERSON  
"97"

*"Success follows faithful service."*

Entered from Dickinson, '27; Athletic Association, '27; May Festival, '27, '28; Euterpean, '28; Senate, '28, '29, '30; Senate Cabinet, '29, '30; "Digest," '28, '29, '30; Girl Scout, '29, '30; "Champion" Staff, '29, '30; Science Club, '30; Hi-Y, '30; Usher, '30; Class Historian, '30.

E. B. ETTER  
"Red"

*"He'll find a way."*

Entered from Viola High, '27; Band, '28, '29, '30; Football, '28, '29; Basket Ball, '29, '30.

RUTH HANSEN  
"Red"

*"A more sincere girl you will never find."*

Athletic Association, '27, '28, '29, '30; Camera Club, '28, '29.

CECILE LOUISE A. BARROWS  
"Golden"

*"Shine in Golden."*

Entered from Lookout Mountain School, '27; Wellesley, '27.

REX HAROLD HALE  
"Steen"

*"Not too serious, not too gay, but always a jolly good fellow."*

Entered from Cedar Hill, '27.

ELEANOR MARGARET BUTLER  
"Lynora"

*"Joy rises in me like a summer's morn."*

Entered from Lookout Mountain School, '27; Girl Scout, '28, '29, '30; Biology Club, '29.

SARAH RUBY WILSON  
"Rube"

*"The rose that all are praising is not the rose for me."*

Entered from L. B. M. S., Farmer, Tenn., '27; Athenian, '27, '28; Class Basket Ball, '27, '28.

E. DUDLEY BELL  
"Dude"

*"I am content only with the best."*

Entered from East Side, '27; Grady, '29; Science Club, '29; Science Club Play, '29; President Science Club, '30; Hi-Y, '29; Ice Cream Force, '29; R. O. T. C., '30.

## 1930 CHAMPION

## Senior Class

EDNA GREENE  
"Greenie"

*"I count life just something to try my strength on."*

Entered from Dickinson, '27; Wellesley, '27; Digest, '27, '28, '29, '30; Editor Digest, '30; Senate, '27, '28, '29, '30; Cabinet, '29; Vice-President Senate, '30; "Minick," '28; "Florist's Shop," '28; Operetta, '29; "Adam and Eva," '29; "Kempy," '29; "Not a Man in the House," '29; Winner City Reading Contest, '29; Representative to Knoxville, '28, '29; President Public Speaking Classes, '29; "The Rehearsal," '29; Biology Club, '28, '29, '30; Vice-President Biology Club, '30; Usher, '30; Champion Hi-Y, '28, '29, '30; Vice-President Hi-Y, '30; Class Post, '30; Invitation Committee, '30; Senior Play, '30; Athletic Association, '30; Dixie Press Convention, '28, '29, '30; Honor Student; Faculty Representative City Reading Contest, '30.

LEONA MARGARET PARK  
"Lee"

*"The proud, the shy, the sensitive—life has not many such."*

Entered from East Side, '27; Hi-Y, '27, '28, '29, '30; Secretary Hi-Y, '30; Athletic Association, '27; Usher, '29.

MARY ELIZABETH THOMAS  
"Tommit"

*"Her heart is like the moon, ever changing but always a man in it."*

Entered from Tennessee Wesleyan, '29; Ice Cream Force, '29; "Digest," '28, '30; Library Force, '30; Senate, '29, '30; Hi-Y, '29, '30; Camera Club, '29, '30; Usher, '30; Science Club, '30; Dixie Press Convention, '29, '30; Assistant to Librarians, '30.

FRED FREULER  
"Freddick"

*"None but himself is his parallel."*

Entered from East Side, '27; R. O. T. C., '27, '28, '29; Band, '28, '29; Boy Scout Club, '28.

WALTER F. WELCH  
"Tubby"

*"A man does his duty as he sees it."*

Entered from Soddy, '28; R. O. T. C., '28, '29; Second in Oratorical Contest, '28.

NORTON RUSBRIDGE  
"Rusty"

*"He is a loyal backer of his school."*

Ice Cream Force, '29; Library Staff, '29; "Digest," '30.

LAURETA SIMPSON  
"Larry"

*"Mine honor is my life; both grow in one."*

Entered from East Dale Grammar, '27; Athletic Association, '27.

JONNIE ANNE MCARTHUR  
"Mac"

*"No legacy is as rich as honesty."*

Entered from Dalton High, '28.



## Senior Class

HOWARD BROWN BLAKELY  
"Brownie"

*"He is well paid that is satisfied."*

Entered from Dickinson, '27; Grady, '29, '30; Junior Basket Ball, '29; Dixie Press Convention, '28, '29; Senate, '28, '29, '30; Senate Cabinet, '30; Hi-Y, '28, '29, '30; R. O. T. C., '28, '29, '30; Band, '28, '29, '30; Orchestra, '28, '29, '30.

MELBA LOUISE GILLESPIE  
"Gilly"

*"The race by vigors, not by vaunts is won."*

Entered from Sunnyside, '27; Operetta, '27; Dixie, '27, '28; Glee Club, '27; Camera Club, '29.

CLARENCE JAMES WITT  
"Clay"

*"A decent villain is ever ready with friends."*

Entered from Lake View Junior High, '27; R. O. T. C., '27, '28, '29, '30; Sergeants' Club, '29; Officers' Club, '30.

JOHN RICHARD BOYD  
"Jack"

*"I never dare do half as much as I can."*

Entered from Cedar Hill, '27; R. O. T. C., '28, '29, '30; Sergeants' Club, '28; Officers' Club, '30; Hi-Y, '29, '30; Treasurer Hi-Y, '30; Varsity Glee Club, '30.

BETTY HARPER  
"Bet"

*"She was a small woman, capped with many a bump."*

Entered from Sunnyside, '28; Senate, '28, '29; Hi-Y, '29; Senior Play, '30.

FOSTER LYNES  
"Lions"

*"I shall not die from worry."*

Entered from Dickinson, '27; Grady, '29.

LOUIS WARTERS SPITZER  
"Split"

*"Think when you have to but never else."*

Entered from Dickinson Junior High, '28.

BLANCHE E. SHIPLEY  
"Ship"

*"A smile for everyone."*

Re-entered Central, '27; Dixie, '27; Hi-Y, '27, '28, '29.

## Senior Class

JAMES S. ANDERSON  
"Tubby"

*"One can always be a man."*

Entered from East Ridge, '27; Football, '29, '30.

BESSY ELEANOR THWEATT  
"Bess"

*"Her eyelids covered the frankest of eyes."*

Entered from Luxora High, Luxora, Ark., '29; Biology Club, '29, '30; Senate, '30.

BEN E. JOHNSTON  
"Speedy"

*"He seemed busier than he was."*

Entered from Red Bank Grammar, '27; Camera Club, '27, '28, '29, '30; Hi-Y, '27, '28, '29, '30; Band, '28, '29; School Photographer, '28; "Champion" Staff, '30.

GEORGE LEWIS CARD  
"Corp"

*"Youth dares!"*

Entered from East Side Junior High, '27; Boy Scout, '27; Dixie Press Convention, '28; R. O. T. C., '27, '28, '29, '30; Officers' Club, '30.

SUSIE GATTIS  
"Sue"

*"Great thoughts like great deeds need no trumpet."*

Entered from Cedar Hill, '27.

RUSSELL L. BEAM  
"Sleepy"

*"Oh, Sleep! I need thee all the time."*

Entered from Conner Junior High, '27; R. O. T. C., '27, '28, '29, '30; Sergeants' Club, '30; Hi-Y, '30.

EUGENE LENNON  
"Moon"

*"A man's man."*

Entered from East Side Junior High, '28.

MILDRED JEAN JACKS  
"Jackie"

*"Her eyes were sapphires set in snow."*

Entered from East Side, '27; Wellesley, '27.



## 1930 CHAMPION

## Senior Class

EDWARD L. RHODES  
"Ed"

"Noble thoughts are good company."  
Entered from Mission Ridge, '27; R. O. T. C., '27, '28, '29, '30; Officers' Club, '30; Hi-Y, '29, '30; Senior Play, '30.

JOHN DAVID WHITESIDE  
"J. D."

"The trouble is small, the fun is great."  
Entered from East Ridge, '27; R. O. T. C., '27; Football, '30, '30.

EVELYN LAWRENCE HEWATT  
"Eve"

"Fortune is not on the side of the faint hearted."  
Entered from West Armuchee High, '27.

PAUL H. WILHOITE  
"Pete"

"Laughter whistles away the hours."  
Entered from Canandaigua, '27; Band, '28, '29, '30; Orchestra, '29, '30.

CLARA DORCAS HUNTER  
"Ella Cinders"

"A merry heart doeth good."  
Entered from Dickinson, '27; Athletic Association, '27, '28, '29; Minstrel, '28.

J. D. MORTON  
"Jade"

"My voice stuck in my throat."  
Entered from Lookout Junior High, '27; Camera Club, '29; Stage Crew, '29, '30.

CLARA OPHELIA HEWATT  
"Clarissa"

"In friendship she is true."  
Entered from West Armuchee High, '29.

CALLIE SEWELL  
"Cal"

"Ever right."  
Entered from Newman High, Georgia, '29.

## 1930 CHAMPION

## Senior Class

MARY MILDRED COOPER  
"Milly"

"She is pretty to walk with, witty to talk with, and pleasant to think on."  
Entered from Tennessee Wesleyan, '27; Dixie, '27; Ice Cream Force, '29; Biology Club, '29, '30; Usher, '30.

ELIZABETH RUTH LACEWELL  
"Ruthie"

"She has a voice of gladness and a smile."  
Entered from East Lake Grammar, '27; Athletic Association, '27, '28, '29, '30; Class Basket Ball, '27, '28, '29; Science Club, '30.

L. D. FARRAR  
"Pretty Boy"

"I march the lobby, twist my stick."  
Entered from Chattanooga High, '28.

RUTH GLOVER DONIGAN  
"Ruthie"

"Just as lovely as she can be in all she does and says."  
Entered from Miss Brown's School, Nashville, '27; "Digest," '27, '28.

ERNEST H. CORDELL  
"Cords"

"Verse sweetens toil."  
Entered from Conner Junior High, '27; Sergeants' Club, '29; Officers' Club, '30.

L. BERNICE DOTY  
"Doty"

"All the world's a stage."  
Entered from Lookout Junior High, '27; Dixie, '28; Biology Club, '29.

WILLIAM LAYSON  
"Bill"

"We needs must love the highest when we see it."  
Entered from Mission Ridge, '27; Grady, '28; Science Club, '29, '30; R. O. T. C., '28, '29, '30.

FRANK STONECIPHER  
"Stone Heart"

"Whose words all ears took capture."  
Entered from Lookout Junior High, '27; Stage Crew, '28, '29, '30; Stage Manager, '30; Senior Party King.



## Senior Class

HOLLIS L. SWAFFORD  
"Holly"

*"I dare do all that may become a man."*

Entered from East Side Junior High, '27; Football, '28, '29; Lettermen's Club, '30.

HENRIETTA BeDOIT  
"Henry"

*"I finish all I start."*

Entered from Dickinson Junior High, '28.

AGNE COX  
"Leah"

*"There is none like her none."*

Entered from Central Junior High, '28.

NEAL HETZLER  
"Neal"

*"The noblest mind the best contentment has."*

Entered from Conner Junior High, '27; H-I-Y, '28, '29; Gymnastic Team, '29.

RAYMOND L. THOMAS  
"Ray"

*"Just to live and see and hear."*

Entered from Red Bank, '27.

EDNA GOTHARD  
"Gollath"

*"The strain of music was in her blood."*

Entered from East Side Junior High, '27; Dixie, '27; Orchestra, '27, '28, '29, '30; Violin Ensemble, '29, '30.

MARY ELMORE HENDERSON  
"El"

*"Her heart was in her large sad eyes."*

Entered from Fairmount Grammar, '27; Dixie, '27; Athletic Association, '28.

WILLIS DUGGAN  
"Will"

*"If he has any faults, he has left us in doubt."*

Entered from East Chattanooga, '27; Basketball, '30.

## Senior Class

GENE THOMAS  
"Tom"

*"She is like the rosebud in early morn."*

Entered from Dickinson, '27; Dixie, '27; Boosters' Club, '27; Girls' Glee Club, '28.

DAVID LUCKEY KNOX  
"Dave"

*"His manners were gentle and complying."*

Entered from Conner Junior High, '27; Gymnastic Team, '28; H-I-Y, '28.

RICHARD K. FOX  
"Dick"

*"Smile and your load seems lighter."*

Entered from Hardy Junior High, '27; R. O. T. C., '27, '28, '29, '30; Sergeants' Club, '28; Officers' Club, '29.

RUTH NELL CATE  
"Nell"

*"Her generosity made her well liked."*

Entered from Shattuck High, '28.

RUBY CECILE JAY  
"Queenie"

*"Hang sorrow; care will kill a cat; therefore, let's be merry."*

Entered from Dickinson, '28; Dixie, '28.

ROBERT HERRING BUMPUS  
"Bumpy"

*"Sincere in all he says."*

Entered from East Side, '25; R. O. T. C., '25, '26, '27, '28; Track, '25, '26, '27, '28; Football, '25, '26, '27, '28, '30; Officers' Club, '28; Third Place Times Race, '27.

CLATIE WILLIAM MILLER  
"Clatie"

*"'Tis good will that makes friends."*

Entered from Signal Mountain Private School, '27.

MARY ELIZABETH SUTTON  
"Tut"

*"Principle is ever my motto, not expediency."*

Entered from Franklin High, '28; Girl Reserves, '28, '29.



## 1930 CHAMPION

## Senior Class

WILBUR B. PETERSEN  
"W"

*"Looked upon by all as the man he was."*

Entered from East Side, '27; Football, '27, '28, '29, '30; Class President, '27; Lettermen's Club, '27, '28, '29, '30; Basket Ball, '28, '29; Vice-President Class, '28, '29, '30; Captain Football, '30; "Champion" Staff, '30.

SUE LENA CAIN  
"Sue"

*"What sweet delight a quiet life affords."*

Entered from Chittanooga High, '27.

IVA HUMPHREY  
"Iva"

*"Say all that is necessary and nothing but what is necessary."*

Entered from Chittanooga High, '27.

HARRISON SAMUEL WEEKS  
"Hank"

*"Ye take the measure of our eyes."*

Entered from East Side, '27; Football, '29, '30; Track, '29, '30; Lettermen's Club, '28, '29, '30; Candy Force, '30; Reader of the Whi, '30.

JAMES S. MAHAN  
"Hank"

*"He is bearing quite patiently down on the ground."*

Entered from Sweetwater High, '28; R. O. T. C., '28; Track, '28; Lettermen's Club, '28, '29, '30.

CARL A. FEITZER  
"Fitz"

*"Take honor from me and my life is gone."*

Entered from East Side, '27; R. O. T. C., '27, '28, '29, '30; Sergeants' Club, '29; Officers' Club, '30; Bookstore, '28, '29; Operetta, '29; Grady, '29, '30; Senior Play, '30.

CLARENCE S. ROGERS  
"Whi"

*"Thus he bore the grand old name of gentleman."*

Entered from Hixon High, '27; R. O. T. C., '27, '28, '29; Sergeants' Club, '28; Officers' Club, '29, '30; Biology Club, '28, '29, '30; President Biology Club, '29, '30.

ERNEST C. LAWRENCE  
"Law"

*"So he worked and played, both at the same time."*

Entered from Clifton Hill, '27; Senate, '27, '28, '29, '30; Hi-Y, '28, '29; B. B. Club, '28, '29.

## Senior Class

FLOYD N. SUITS  
"Soots"

*"I am a soldier and unapt to sweep."*

Entered from Loyall Grammar, Harlan, Ky., '27; R. O. T. C., '27, '28, '29, '30; President Sergeants' Club, '29; Hi-Y, '29, '30; President Officers' Club, '30; Lieutenant-Colonel Battalion, '30.

KATHRYN CROUCH  
"Kat"

*"From a little spark may burst a mighty flame."*

Entered from Mission Ridge, '27; Wellesley, '27; Delta, '28.

ERNESTINE SHEMWELL  
"Sick"

*"Let the world slide, let the world go."*

Entered from Ft. Pierce, Fla., '28.

CHARLES LEONARD ENGERS  
"Charlie"

*"To thine assembly be true."*

Entered from East Chittanooga Grammar, '27; Football, '27, '28, '29, '30; Track, '27; Basket Ball, '28, '29, '30; Track, '28, '30; Lettermen's Club, '28, '29, '30; Candy Force, '30.

O. CROSBY GYRLEY  
"O Gee"

*"Smile and the way is clear."*

Entered from East Side, '27; R. O. T. C., '28, '29, '30; Rifle Team, '28, '29; Sergeants' Club, '29; Officers' Club, '30.

JIMMIE M. SMITH  
"Smitty"

*"A good name is as a precious ointment."*

Entered from Miami High, '27; Hi-Y, '27, '28, '29, '30; R. O. T. C., '27, '28, '29, '30; Sergeants' Club, '29; Camera Club, '29, '30; Grady, '29, '30; Officers' Club, '30.

FRANK D. SMITH  
"Dee"

*"What I will, I will, and there, and end."*

Entered from East Side, '27; Minstrel, '29; Junior Play, '29; Senate Play, '29; Operetta, '29; Varsity Glee Club, '29, '30; Boys' Quartette, '29, '30; Mixed Quartette, '29, '30; Hi-Y, '28, '30; Class Basket Ball, '28.

RALPH CREASMAN  
"Crease"

*"Work is the keynote of success."*

Entered from Hardy Junior High, '28; Hi-Y, '29; Camera Club, '29, '30; President Camera Club, '30; Grady, '29, '30; President Grady, '30.



## Senior Class

ROBERT S. BAKER  
"Bob"

*"A man he is, to all the class dear."*

Entered from Sunnyside, '27; Class President, '28, '29, '30; Junior-Senior Banquet, '29; Junior Play, '29; Senate Play, '29; Ice Cream Force, '29; Senate, '29, '30; Senate Cabinet, '30; Camera Club, '30; Grady, '30; "Champion" Staff, '30; Class Representative.

PEGGY CANTRELL  
"Peg"

*"Words, words, words!"*  
Entered from East Side, '27; Dixie, '27, '28.

THELMA ROBERTSON WAY  
"Thelma"

*"Thy soul was like a bird and darted apart."*  
Entered from Lookout Junior High, '27; Girls' Club, '27; Officers' Club, '29, '30.

THOMAS WESLEY MORGAN  
"Tom"

*"Never be taken to heart."*  
Entered from East Side, '27, '28, '29, '30; R. O. T. C., '27, '28, '29, '30; Officers' Club, '30.

GEORGE SHELTON ALDER

*"A ready smile often lifts a world of sorrow."*  
Entered from East Side, '27; Hi-Y, '27; R. O. T. C., '29, '30; Sergeants' Club, '30.

GILBERT L. SLATER  
"Slate"

*"I think it best to be a little reserved."*  
Entered from Lookout Junior High, '28; R. O. T. C., '28, '29, '30; Band, '28, '29, '30.

HENRY CLAY JOHNSON  
"Mule"

*"Everything comes if a man will only wait."*  
Entered from Dickinson Junior High, '27.

LUTHER ERSKINE EVANS  
"Erk"

*"If worry were the cause of death, I would live forever."*  
Entered from Hardy Junior High, '27.

## Senior Class

KELLEY EUGENE MASSEY  
"Nolsey"

*"What I promise to do, I'll do."*

Entered from Mission Ridge, '27; Ice Cream Force, '29; Football, '29, '30; Candy Force, '30; Grady, '30.

GRACE BACON  
"Gracie"

*"Nothing great was ever achieved without enthusiasm."*

Entered from Hill View High, Riceville, Tenn., '30.

MILDRED CORITA HANDY  
"Mild"

*"Sweet promptings to kindest deeds were in her every act."*

Entered from Elcitra High, Elcitra, Texas, '27; Biology Club, '29, '30.

ERNEST ARLEE GRAY  
"Ernie"

*"As proper a man as anyone shall see on a summer day."*

Entered from East Side, '27, R. O. T. C., '27, '28, '29, '30; Sergeants' Club, '28, '29, '30; Senior Play, '30; Officers' Club, '30.

ARTHUR GOLDMAN GREENE  
"Goldie"

*"Far from the cities and the ways of men."*

Entered from East Side, '27; R. O. T. C., '28, '29; Sergeants' Club, '29.

KARL L. EVANS  
"Carlos"

*"I obey the impulse of my heart."*

Entered from Chattanooga High, '28.

GIFFORD L. MARTIN  
"Giff"

*"Eloquent and yet how simple!"*

Entered from Newberg High, Oregon, '29; Band, '29, '30; Orchestra, '30.

JOHN HENRY GEORGE  
"Jackie"

*"Melancholy men, of all others, are most silly."*

Entered from Lookout Junior High, '27.



## 1930 CHAMPION

## Senior Class

RUTH MOONEY  
"Moon"

*"Her hair was like the moonbeams playing on spun gold."*

Entered from Clifton Hill, '26; May Festival, '26, '27, '28, '29; Athletic Association, '26, '27, '28, '29; Glee Club, '26; Senior Play, '29; Minstrel, '29; Band Sponsor, '30.

OLIN HOMER JACKSON  
"Storewall"

*"Firm of purpose, strong of heart."*

Entered from East Side Junior High, '26; Orchestra, '26, '27, '29, '30; Football, '27, '28, '29, '30; Letterman's Club, '30.

ALTON L. FARMER  
"Al"

*"I proddle with an man's business."*

Entered from Jackson Junior High, '27, R. O. T. C., '27, '28, '29; Bay State, '28, '29, '30.

NORMAN STEPHEN BOWEN  
"Bowen"

*"He was a man, taking him all in all."*

Entered from East Side Junior High, '26.

JOE CHEEK BLACK  
"Old Black Joe"

*"I never did repent for doing good."*

Entered from Lake View, '27.

WILBER EDWARD LACEWELL  
"Will"

*"A strong man is the noblest thing ever created."*

Entered from East Lake Grammar, '27; R. O. T. C., '27, '28, '29, '30; Sergeants' Club, '29; Officers' Club, '30; Best Soldier in Battalion, '29.

CHARLES CRUMP  
"Capt."

*"Ability wins us the esteem of true men."*

Entered from Disque Grammar, Gadsden, Ala., '27; Hi-Y, '27, '28, '29, '30; Band, '27, '28, '29, '30; Orchestra, '29, '30; Officers' Club, '30.

GEORGE BERNARD CRAMER  
"Romeo"

*"It is well to have something to do."*

Entered from East Side Junior High, '27; R. O. T. C., '28, '29, '30; Sergeants' Club, '29; Officers' Club, '30.

## Senior Class

RALPH EUGENE OLINGER  
"Ollie"

*"It is better to be elevated than stuck-up."*

Entered from North Chattanooga Grammar, '25; Junior Carnival, '28; Stage Crew, '28; Football, '28, '29, '30; Basketball, '29, '30.

JAMES L. DAVIS  
"Jimmie"

*"Little in body, but oh, what a mind!"*

Entered from East Side, '27; R. O. T. C., '28, '29; Sergeants' Club, '29; Officers' Club, '30; Rifle Team, '30.

JOHN FRANKLIN MARTIN  
"Marty"

*"Life is what you make it; make it worth while."*

Entered from Baylor, '29.

ROBERT COLLINS  
"Bob"

*"A gun gets you where nothing else can."*

Entered from Dickinson, '27; Band, '27, '28, '29, '30; R. O. T. C., '27, '28, '29, '30; Orchestra, '30.

DALE BLEVINS  
"Dale"

*"In him alone was natural to please."*

Entered from Elizabethton, Tennessee, '30.

PHILIP A. LICHTENSTETTER  
"Phil"

*"I am not only witty in myself, but the cause that wit is in other men."*

Entered from Dickinson, '27; R. O. T. C., '27, '28, '29, '30; Band, '27; Sergeants' Club, '29; Officers' Club, '30; Orchestra, '27, '28, '29, '30; Minstrel, '29, '30; Football, '29; Grady, '28, '29, '30.

FLORA MAE PACK  
"Flo"

*"A voice filled with all that's lovely."*

Entered from East Side, '26; Re-entered from Pleasant Hill Academy, '28; Basketball, '27, '28, '29; Varsity, '27, '28, '29; Wellesley, '27; Volley Ball, '27, '28, '29; Girls' Quartette, '27; Biology Club, '27; Minstrel, '27; Senior Play, '29; Secretary Public Speaking Classes, '29.

CARTER EVANS  
"Cart"

*"Be happy and make not others sad; this is the aim of life."*

Entered from Dickinson, '26; Manager Baseball Team, '27; R. O. T. C., '26, '27, '28, '29; Manager Basketball Team, '29, '30.



1930 CHAMPION



TOM ERWIN



CARL GIBSON



EDNA GREENE



ERNESTINE STACY

# FOUR YEAR HONOR STUDENTS



BESSYE THWEATT



ROSE WHITE



JOHN WRIGHT

1930 CHAMPION

JOHN WRIGHT  
VALEDICTORIANTOM ERWIN  
SALUTATORIANEDNA GREENE  
FACULTY REP.ROBERT BAKER  
CLASS REP.

# COMMENCEMENT SPEAKERS

LAURA ROBENSON  
HISTORIANHARRISON WEEKS  
READER OF THE WILLCHARLES NORTON  
PROPHETEDNA GREENE  
POET

# CLASS DAY SPEAKERS



# Prophecy of the Class of 1930



ONE day last September I remained at school until the late afternoon. As I left the building, my eyes caught by the beautiful glow of the sunset colors. While I gazed at this radiance my mind wandered into the realm of romance and I lazily pondered about the beauty of love, of heroism, of knightood. Like James Fitz-James, in the Scotch Highlands, I allowed my imagination to picture castles, turrets, knights and fair ladies in that glory of color. I was reminded of Elaine and Lancelot's shield as she protected it in her tower room. The scene gradually became more than idle fancy—I developed lives of reality. I revelled in the beauty of Elaine as she polished her lover's shield until it shone with the brightness of pure silver and as the rose of the sunset was reflected upon it, I seemed to glimpse my dear classmates, yet their faces were not as I had seen them during the past school days; instead they showed the development of age, the changed expression from dealing with the world and its experiences. Then I realized I was looking many years into the future, and that these faces were no longer those of youths and maidens of high school age, but of mature men and women of affairs. At once I determined to reveal to my classmates the scenes which passed before me. It is this record which I shall now give to you.

Inez Lackey, as editor of the New York Times, has won for herself recognition not only in this country but in Europe as well. Do you remember Howard Henry? He is Inez's associate editor. Lucille Maxwell, Harry Pledger, and Charles Valentine are also listed on the staff. The news writing classes seem to be well represented. Laura Roberson has at last found the perfect career in her matrimonial bureau. Laura's latest achievement has been the marriage of Edna Greene, famous actress, to her stage manager. Laura's work has also accomplished successful marriages for Mona Crabtree, Marguerite Lowry, Betty Sue Black, and Henrietta Cobligh.

An extract from the Kansas City Times: "Mary Kathryn McCollum and Virginia Lowry are dancing their way into the hearts of American theatre goers." Reba Kimball is the proud owner of a cattle ranch in Indiana. She is enjoying very much the job of "ushering" the cattle around over the hills and plains.

The Popular Mechanics of September, 1930, contains a most interesting article written by Cynthia Sanders. Cynthia is a real inventor and has a laboratory of her own. She has several assistants, among whom we find Bess Thweatt and Clarence Rogers, members of the Class of '30.

Mary Thomas is satisfied with her lot as head librarian of Washington State Library. Ernestine Shemwell and Almarie White are her assistants.

Colonel Floyd Suits is Secretary of War. Floyd feels that he was greatly benefited by his training while at Central.

Wilbur Petersen, Central's former fullback, is coach at Yale University, where his team is making an excellent record. Robert Baker is president of Washington and Lee University. It was understood that Robert would be a great leader.

Gordon Orrell, with his artistic ability, has become a second Flo Ziegfeld.

Elizabeth White is superintendent of nurses at the Physicians' and Surgeons' Hospital. Others wearing the uniform are Frances Gaither, Beulah O'Rear and Elizabeth Vance.

Jewell Ledford is the owner of a chain of cafeterias which stretches from coast to coast. Her knowledge of cooking and her executive ability enable her to manage them all.

Paul Beavert has added his name to the list of celebrated swimmers.

Dudley Bell, James McMahan, and Bernard Wilson have gone into a partnership business. They are selling fire insurance with remarkable success, due to their pleasing personalities.

Norton Rusbridge is a successful contractor of Hamilton County.

We find Cleo McClure, an actor of some note, waiting at the Ritz stage door for Leona Park, who is a famous dancer at this theatre.

Marie Schneider is touring Europe giving concerts. No one can fail to remember her and her violin. Ruth Donigan is accompanying Marie and manages her like a veteran.

Ernestine Stacy holds the national tourist record.

Blanche Killough is taking a leading role in "Il Trovatore" with the Chicago Civic Opera Company.

Mildred Jacks was presented at court in England last fall. She reports that the English are a most fascinating people.

Tom Erwin has just won a case for Kelley Massey. It seems most extraordinary that after twenty years Kelley should be charged with overstudying. It is not surprising that he was found not guilty.

Rose White has toured the world in company with Inez Williams. These two girls are famous as explorers, and have written many interesting books.

Gladys Roberts, Jewel Kroege, and Ellen Watson are directors of music at three of our large colleges.

Raymond Lieb, who is a great civil engineer, is now engrossed in the development of railroads in South America.

John H. Martin, who has amassed quite a fortune in the candy business, has recently distinguished himself in philanthropic work. He has given to many worthy causes.

Ralph Creaman is a great business man. He has become the Vogue's most dangerous rival and threatens to drive it into bankruptcy by giving a discount to all high-school students.

Rev. Charles Engers gave a very inspiring sermon last Sunday. Rev. Engers is one of the most prominent preachers of Chattanooga.

Allene Cox, Pauline Evans, Betty Harper, and Hazel Tate are now teaching teachers. The names of Allene Cox and Pauline Evans are found on the faculty list of the University of Manila. How interesting to think of their being in the Philippine Islands!

Betty Harper and Hazel Tate, faithful to their state, remained at home. Betty is connected with the Department of Public Speaking of Peabody College. While Hazel is a member of the faculty of State Teachers College at Murfreesboro.

A clipping from the Chattanooga Times: "Norman Smartt will play the lead in the attraction at the Thivoli this week, 'The King of Lovers.' A record-breaking crowd is expected."

Philip Lichtenstetter has offered to buy Tiffany's. They will probably sell.

John Foster, in 1935, made a record-breaking flight around the world. So remarkable was his speed that since that time it has not been exceeded.

Izzy Smith, the latest but not the least addition to the small group of famous flyers, recently demonstrated the practicability of his rudderless aeroplane. He names as an associate Carl Gibson, who teaches flying at Marr Field.

Another inventor of our class is Clay Johnson, who has perfected a clock which will run with any three parts missing, including the main spring.

Edward Heider has signed with Ringling Brothers. James Anderson is treasurer. Louis Kelley and Hollis Swafford now own this famous circus.

Hortense Byrd has achieved success as an interior decorator. John Wright manages her New York office, and Charles Forstner furnishes her many plans for her work.

This last glimpse is of a strange foreign atmosphere. Paris! Who of the Class of 1930 can be in Paris? The most unexpected sometimes happens. This item concerns L'Opera de Paris, where we learn that Frank Stonciper is manager and Lee Roy Lewis is head electrician. Their experience on the stage crew has served them well.

Alas, I suddenly realized that the sunset glow was fading and I could not recognize in the feeble shadows the faces of other classmates. With dismay I thought of the friends whose futures I had not been able to glimpse and who must forever remain uninformed of the experiences to come.

CHARLES NORTON.

# Will of the Class of 1930

As King Arthur received from the hands of the Lady of the Lake, Excalibur, so we, Knights and Ladies of the Graduating Class, have received from Central outstanding abilities. At his passing King Arthur spoke to Bedivere:

"My end draws nigh; 'tis time that I were gone. Take Excalibur and fling him far into the middle mire."

'Tis near the time that we were gone. In our passing it is fitting that as King Arthur returned Excalibur to the Lady of the Lake so we do hereby make, declare, and publish the following as our last will and testament, knowing that by its power it will revoke all other wills heretofore made by us: I, Robert Baker, do will to William Walker my ability as class president.

We, Dorothy Lee, Carl Schneider, Minnie Yarbrough, Philip Lichtenstetter, Olin Jackson, and Katherine Cox, Sheffield Feldman, and Bessie Snodgrass,

I, Mildred Cooper, the queen of all beauties, do leave all my admirers, except one, to Barbara Edgeman.

We, Ralph Olinger and James Anderson, do will our past actions to "Bud Fisher" for improvements on "Mutt and Jeff."

"We, Harold Bennett, Frank Blakely, and John Whiteside, do bequeath our lady-killing ways to Finley Bradford, or any other junior desiring to take them up."

We, Betty Sue Black and Reba Swafford, do leave our places at the office telephone to all who can with efficiency be marvels of information, detectives of renown.

We, Mildred Brown and Charles Valentine, do will our style of friendship to Virginia Oakley and Jimmy Bunn.

We, Howard Smith, Wilbur Petersen, Louis Kelly, and Harrison Weeks, do will our athletic ability to those four back fieldmen who, plus seven linemen, will beat Baylor, Notre Dame, and City.

I, Reba Kimball, do bequeath my executive ability as president of the Ushers to Ruth Williamson.

We, Nan Love, Louise Slaten, Evelyn Tribble, and Harry Sherrill, do leave our knowledge of verbals and our ability to quote "Hamlet" to Handle Toby, Frank McNeil, and Albert Harris.

I, Charles Engers, do will my masculine charms to my fellow "and," Chester Underwood.

I, Leona Park, leave my sweet disposition and pleasing personality to Bertha Evans.

We, Floyd Suits, Carl Pfitzer, George Keen, Richard Fox, Edward Rhodes, Cleo McClure, Bernard Wilson, and Hayes McDowell, do bequeath our commanding ways to "The Army of '31."

I, Edward Heider, do will my ability to talk to the junior whose ambition is to be like "Me."

We, Inez Lackey, Kathleen Buol, and Gladys Roberts, will our beauty and knowledge of things military to all future R. O. T. C. sponsors.

I, Lawrence Clingan, will my short hair cuts and my ways with the ladies to Vernon Hendrick.

I, Edna Greene, will my art of getting things done on time and my propensity for "Girlish Gush" to Myra Fay Graham, and Juanita Rymer, respectively.

We, Karl, Carter, Luther, and Pauline Evans, leave our faithfulness to Central to all Evans of the Freshman, Sophomore, and Junior Classes who have the capacity to love Central as much as we do.

I, Robert Bumpus, will my complexion, speed, and athletic standing to my fair brother, Ben.

We, Rose White, William Aiken, Dale Blevins, Ernest Cordell, George Cramer, Ruby Crawford, and Mary Farrow, do will our persistence for hard work to Leo Britt, Robert Chamberlain, Paul Good, Charles McNabb, Louis Miller, Jack Rose, and Roy Blades with the special request that they reserve said persistence for the study of geometry.

We, Leslie Brewer, Virginia Brooks, Mary Thomasson, and Dorothy White, will our gracefulness to all beautiful junior girls.

We, Dorothy Usmiller and L. D. Farrar, do will our popularity to Margaret Day and Buddy Saunders.

We, Viola Edgington and Bernice Doty, do will our habit of skipping chapel to no one, for it's a bad habit.

I, Willie Mae Leath, do leave my beauty and charm to my little sister, Sue.

We, Laura Roberson, Beulah O'Rear, and Virginia Lowry, do will our studious ways to Bonny Aiken, Theresa McDonald, and Marjorie Gott.

We, Jimmie Smith and Norton Rusbridge, do will our good luck at getting our lessons after reaching the classroom to Harris Billet and any other students who wish to follow such hazardous procedure.

We, Lee Roy Carle, Curtis Walden, and LeBron Alexander, do will our reserved seats in the "front" row at the chapel period to Aubrey Templeton, Kenneth Gross, and Richard Buquo with the special admonition that the iron railing in front of them is not to be used to display shoes.

We, J. D. Morton, Paul Lewis, and John Boyd do will our remarkable poetical power which we have used in writing in senior girls' memory books to Marjorie Steffner, hoping that in the near future she may be listed in "Who's Who" by the use of our talents.

I, John Wright, do will my "scant" vocabulary to Billy Austin, hoping that he will progress further than I have in writing a new "Book of Knowledge."

We, Charles Norton, Louis Dugan, and Gifford Martin, do bequeath our calm and serious dignity to the poor, green freshmen, feeling that there is enough to go around.

We do give to Mr. G. M. Swingle the residue of our class split in order that he may continue to be able to give pep speeches when called upon.

Knowing that Mr. W. H. Templeton regrets the passing of the candy crew, Howard Smith, Carter Evans, Melba Gillespie, Dorothy Holderman, Callie Sewell, Kelley Massey, Frances Gaither, and Eloise Standifer, we leave our heartiest wishes for luck that he may find a capable crew.

We, the Senior Class of 1930-1931, do hereby will to the Junior Class senior ideals, senior aspiration to be true Centralites, and senior determination to "carry on."

In testimony whereof we, the Senior Class, have hereunto set our seal this twenty-first day of May, nineteen hundred and thirty.

Signed, sealed, published, and declared by said testator, Senior Class, as and for our last will and testament, in the presence of us, who, at their request in their presence of each other, have hereunto subscribed our names as witnesses this twenty-first day of May, 1930.

HARRISON WEEKS  
CLASS 1929-1930 of Central High School.  
EDNA GREENE  
MOZELLE VANDERGRIFFE.



# History of the Class of 1930

**I**N the days of King Arthur, before a knight was sent forth to battle, the record of his life was brought out of the archives and examined by the ladies of the court, that they might determine whether or not he was worthy to represent his lord in the world. All his achievements as infant, page, squire, and newly-made knight were listed, all his pleasures discussed. Then, with the court's approval or on probation, he rode away from the castle, ready to fight for himself and his King.

The Class of 1930 is prepared to leave Castle Central after four years of service. The faculty, representing the school, is ready to decide whether we are properly fitted to enter universities or to hold positions in the business world. A demand for our history has been made—and only the Digest has kept a record of our three hundred.

There has been no Tennyson on the Digest staff to sing praises of our lives here, but the reporters have done their best, and it is to their writings that we refer you for more definite information about the knights of '30.

The first reference to the class that was green in '26 was dated late in October, and announced that the freshmen had selected their first leaders. The fact that most of the class entered from East Side Junior High was strongly evident in the election returns. Wilbur Petersen was chosen president; John Starr, vice-president; Ernest Horton, secretary; and Buford McGhee, treasurer. They were initiated at the party given by the sophomores in honor of the freshmen.

Later on, a news item stated that the Digest had some new reporters. Edna Greene, now editor-in-chief of the paper, was in the group.

I had hardly expected to find anything in the last issue of the year. Seniors were so much more important just then. But the girl athletes had burst into print in spite of the upper classmen. The silver loving cup offered by Martin-Thompson to the class making the best record was won by the freshmen. Happy days!

Then, before we could realize it, a year had gone by and fall had rolled around again. Green no longer, the new sophomores held their class election as soon as possible, according to the Digest. Robert Baker won the presidency, and Wilbur Petersen was chosen vice-president by acclamation. John Martin and Hortense Byrd were selected secretary and treasurer, respectively.

The first meeting of the Dixie Intramural Press Association was held in the middle of November. The reporter expressed it. A month later, the Digest announced that it was training cub reporters. Inez Lackey, editor-in-chief of the "Champion" this year, was one of them.

In March, 1928, the annual freshman-sophomore party was given. "The only unusual feature about this party," said the Digest the following Thursday, "was the absence of freshmen." This was easily explained. There were so many sophomores that none of the honorees were invited.

Class elections again! Juniors are important, and almost the first issue of the Digest told the world that Robert Baker and Wilbur Petersen would serve another year in their former positions. Gladys Roberts was chosen secretary and Harold Bennett, treasurer.

Ice cream! The editorial columns of the Digest thought it likely that the junior-senior banquet would be an elaborate affair, judging from the amount of ice cream daily consumed by hungry Centralites. The president of the class headed the salesmen and dispensed cones with one hand while he collected nickels in the other.

Headlines in the Digest blared forth the news that juniors were coming on in the athletic world. Think! Remember Izzy and Wilbur! You don't need to be told of their feats. A junior, Ernest Stacy, was elected president of the Girls' Athletic Association, too.

The third year class carried off the honors in the ticket-selling contest to the Central-City game, according to the front-page story about the checking up. They defeated the other classes as a whole and won three individual prizes, losing the fourth by a margin of five tickets.

The Christmas holidays flashed by and the Digest began to carry stories about "Kempy," the junior play that was to be given in April. Enough! With Frank Smith as "Kempy" and Gladys Roberts playing opposite; Inez Lackey and Iris Benton as Gladys's sisters; Bob Baker and Ed Heider working with them; Edna Greene and Jim Roberson as Ma and Pa—it was the best junior play ever presented to a Central audience. The Digest almost said so.

Then the junior party! Whoever tackled that story for the paper certainly did his duty. Full or fit for its success was given to the committees in charge, headed by Bernice Fox, Virginia Lowry, and Ed Heider.

"Good-bye, dear seniors, good-bye!" The last issue of the Digest came out before the junior-senior banquet, and so the evening at the Read House was not described in the paper. However, a front-page story told about the plans for the farewell at which the president of the Junior Class was toastmaster. It stated that six hundred guests were expected, and memory says that the two classes did not disappoint the estimator.

The Digest has given the seniors much publicity. Column after column in the school paper I found devoted to stories of the work of the class as a whole and as individuals—the offices they hold in the various organizations, the prizes they have won, the honors they have achieved.

The election of Robert Baker as president of his class for the senior year was noted in one of the first issues. Wilbur Petersen was chosen vice-president for the third time, and Harold Bennett, treasurer, for the second. Edward Heider was elected secretary by an overwhelming majority.

A few weeks later the Digest announced that Class Day speakers had been selected. The seniors elected Bernita Bowman to write the history; Edna Greene, the poem; and Charles Norton the prophecy. Bernita moved to Michigan almost immediately; however, shortly afterwards a new historian, Laura Roberson, was chosen; at the same time, Harrison Weeks was made reader of the will.

The vice-president of the Senior Class was captain of the football team, and time and again his name appeared in the headlines of the Digest. His last Central game was played against City on November 30, one of the coldest days of the winter, and the sports writers made much of the 39-0 score. That game assured the seniors that they would never see their team lose a city game. Twice in their high school career Central has won the city championship, tying once with Notre Dame and this year with Baylor for it.

Almost forty seniors were in the cast of "As You Like It," the annual Shakespearean comedy given on December 6. Edna Greene as Rosalind and Carl Pfitzer as Orlando starred. Gladys Roberts portrayed Celia, while Edward Heider was the comedian in the role of Touchstone. "One of the largest audiences Celia, while Edward Heider was the comedian in the role of Touchstone. "One of the largest audiences Celia, while Edward Heider was the comedian in the role of Touchstone."

St. Valentine's Day! The paper published Thursday, February 13, told all about the seniors' plans for the party they would have the following night. The next week's issue described the gay decorations used and the Valentine games indulged in by the guests.

The last Digest that will be published while we are at Central has been distributed. You read about the senior picnic, the junior-senior banquet, Class Day—all the activities that go to make up the last few days of high school life. In your minds you have a vivid description of the last two mentioned, and you are not likely to forget this occasion. Graduation night marks the end—and the beginning.

No longer are we high school knights. The squire of today will, next fall, don our plumage and take our places. Kneeling to their superior knowledge, we receive the sanction of our teachers and leave these halls. We will be knights in deed rather than in name—ready to hold up, as citizens of America, the standards that have become embedded in our hearts in these last happy years.

LAURA ROBERSION.



## Squires



1930 CHAMPION



JUNIORS

1930 CHAMPION



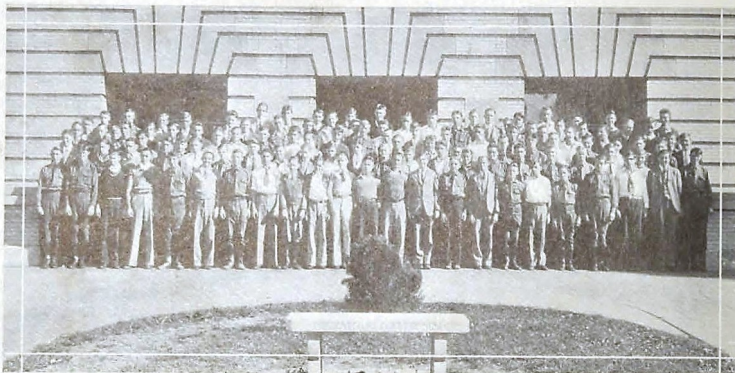
## Junior Class

### OFFICERS

WILLIAM WALLER . . . . .	<i>President</i>
FINLEY BRADFORD . . . . .	<i>Vice-President</i>
ELIZABETH TEMPLETON . . . . .	<i>Secretary</i>
D. M. RAULSTON . . . . .	<i>Treasurer</i>



## 1930 CHAMPION



## Junior Class

Dorothy Adams	Earl Burnette	Flora Daverson	Robert Hale
Catherine Addison	Oscar Burnette	Herman Davis	Nina Elizabeth Hall
Bonnie Alkin	Grace Elizabeth Burk	Eydia Elizabeth Davis	Mary Frances Hanks
Anetta Anderson	David Bush	James Davis	Robert Harris
Kathleen Anderson	Barbara Bush	Edgar Davis	Clara Harris
William Andrews	Roy Butler	Mary Lynn Davis	Kenneth Hassler
Margaret Ashworth	William Buttram	Charles Davidson	Marguerite Hartman
William Austin	Dorothy Cahoon	Ann E. Denton	George V. Headrick
Helen Bacon	Margaret Caldwell	Marjorie Dick	Geneva Heaton
Juanita Ball	Raymond Callapan	Velda May Dobbins	George Elmer Henry
George Barnes	Thomas Cantrel	Galls Dowd	Charlotte Heaton
Weyman Baumgartner	Bernard Canfield	Anna Elizabeth Dunn	Leonard Hicks
Jessie BeDol	Dorothy E. Carney	Barbara Jane Edgman	Pearl Hicks
Mayzelle Bennett	Imogene Carroll	Carroll Carney	Fred Higgins
Harris Billet	J. A. Carson	James Ellis	Pauline Higdon
Roy Blades	Eda Lorene Carter	Sylvan Erwin	Betty High
Lorina Blevins	James Carter	Clyde Erwin	Horace Humphreys
Leo Blount	Lydia Cartland	Hubert Hill	Helen Hill
Kittie Bolton	LaVerne Case	Reba Evans	Virginia Holderman
Wiley Bonert	Alice Cash	Elmer Farmer	Frances Holloway
Andrew Booth	Maxine Castleberry	Sheffield Feldman	John Ling
Mary Bouldin	George Castleman	Frances Fisher	Virginia Little
Champ Edgar Bowen	Hardie Caudle	Bessie Foster	Clay Little
Pauline Bowling	Kathryn Cavaleri	Mary E. Foster	Clyde Little
Lewis Bowman	Fred Chambers	Elma G. Hutcherson	Mary Lord
Mary E. Boyd	Robert Chamberland	Edna Jacks	Bradford Lovell
Finley Bradford	Julia Childers	Dorothy Jenkins	Elsie Lowry
Evelyn Bradford	Leon Chilcutt	Willie Mae Jennings	Alton Lynch
Thomas Bright	Irene Chumley	Doris Jett	Margaret Luther
Leo Bernard Britt	Margaret J. Clevenger	Arlene Johnson	Annie Ruth Lynch
Annie M. Brooks	Carroll Crawford Brown	Scott Johnson	Frances Payne
Louise Brown	George Collins	Dorothy Johnston	William McCarty
John Brown	Mary Catherine Cooley	Kathleen Johnston	Neva McClure
Ola Brown	Frank Cotton	Louelle Johnson	Henry McGuffey
Thelma Brown	Clara Nell Casper	Willie Johnston	Ruth McConnell
Charles Bryant	Victor Covey	Curd Jones	Neal McDonald
Kathryn Bryant	Kathryn Cox	Mildred Jones	Georgia M. McGuffey
Warren Bryare	Chester Cramer	Alman Jones	Ida Wee Mabry
Blanche Buffington	Josephine Crouch	John Jones	Mary McDonald
Robert Bullen	Chester Crick	Ada Keeton	William McMahan
Benjamin Bumpus	Edgar Crownover	Elmer Kammer	Amelia Martin
Lorraine Bunch	Maud Cunningham	Thelma Kelley	Charles McNab
Cecil Fay Bunch	Ella Dalley	Woodrow Kelley	Virginia Martin
Richard Bucho	Cecil Louise Daniels	Loraine Griffith	Frank McNeil
Opal Burgess			

## 1930 CHAMPION



## Junior Class

Gene Kemna	Marye Louise Mason	Gladys Powell	John Sullivan
Virginia Killough	Robert Mann	Daniel Power	Marjorie Steffner
Harry King	Eula May Mathis	Jessie Priddy	Oscar Sutton
Mary Augusta King	Boyd Meadows	Helen Pruett	Charlotte Stowe
Marjorie Inez Kitchens	Della Mae Maupin	Gordon Pullen	Mary Clyde Swafford
Lena Mae Klein	Lillie L. Mapnell	Anlie Rawlings	Glenn Tallant
Ailine Koons	Iris Meyer	Charles Randel	Helen Taylor
Leslie La Croy	Louis Miller	Ruth Rawlings	Geneva Tate
Rachelle Landis	Helen Miller	D. M. Raulston	Ernest Teasley
Ralph Langston	Hilda Mills	Evelyn Reese	Aubrey Templeton
Virginia Lassater	Martha Miller	Jack Rector	Gladys Thornburg
Clara Mae Lawrence	Marian Minor	Wilma Reese	Claude Tobey
Lemar Lefurgey	Harry Monroe	Ross Frank Renegar	Margaret Timmons
Elizabeth Lieb	Janet Moore	Ruth Reynolds	Hiram Tripp
Lester Loeley	Charles Eugene Moore	William Renou	Marion Timmons
Dorothy Lindeman	Clarence Moser	Wynema Rhea	Forrest Tinker
Robert Lewis	Edward Richards	Dorothy Richeson	Herstine Torrance
Katherine Lindeman	Ernest Mowery	Joe Riley	Thomas Vanzant
James Lindsey	Allene Morgan	E. C. Roach	Elizabeth Venable
Ruth Ling	James Morgan	Evelyn Robinson	Margaret Walker
Layton Limer	Mabel Morgan	Samuel Robinson	Margaret Wallace
Lillian Lois Little	John Morris	Jack Rose	William Waller
Clay Little	Elizabeth Morris	Juanita Rhymer	Sara E. Walthour
Clyde Little	Darrel Mulkey	Ray Ruggles	Louise Ward
Mary Lord	Charles Murray	Wilva Scarbrough	Marie Ware
Bradford Lovell	Elbert Scholze	James Neims	Thelma Webster
Elsie Lowry	James Neims	Irene Odessa Parker	Valeria Weigel
Alton Lynch	Charles Parker	Lydia Sells	Frances Weller
Margaret Luther	Frances Payne	Marion Seagle	Arthur Westbrook
Annie Ruth Lynch	Edmund Parks	Pauline Singeton	Catherine Wilbur
Hyacintha B. McBrian	Margaret Payne	James Smartt	Karl Wietzel
William McCarty	Thomas Peden	Laura Skolton	Ruth Wilbur
Neva McClure	Gladys Pendergrass	Regina Silger	Margaret Wilbanks
Henry McGuffey	Cecil Pemberton	Cecil Robert Smith	Irma Reba Williams
Ruth McConnell	Opal Peppers	Elizabeth Smith	David Wendley
Neal McDonald	Earl Perkinson	Lois Smith	Garvis Williams
Georgia M. McGuffey	Margaret Perkinson	Louis Spitzer	Elizabeth Williams
Ida Wee Mabry	William Phillips	Rebecca Smith	Ruth Williamson
Mary McDonald	Naomi Pickering	Marvin Stinson	Effie Wilson
William McMahan	Howard Porter	Roxie Smith	Mildred Wilson
Amelia Martin	Nora Mae Pickett	Paul Stringer	Idle Lee Wolfe
Charles McNab	Ottis Porter	Bessie Snodgrass	Edwin Woods
Virginia Martin	Evant Powell		Frances Wrinkle
Frank McNeil			



# Who's Who in the Junior Class

Name	Nickname	Ambition	Expression
VALERIA WEIGEL	Wiggle	To be able to spend all periods in the library.	Oh, well anyway!
ELIZABETH TEMPLETON	Bush Top	To be the "Walking Book of Knowledge" of Central.	How unusual!
WILLIAM WALLER	Bill	To be a dentist and get hold of Finley Bradford.	You nit-wit!
MARJORIE STEFFNER	Si	To say "see" as Miss Lowenthal does.	Well, you would!
CHARLOTTE STOWE	Charlie	To be on Broadway.	I mean to tell you.
D. M. RAULSTON	Dee Da	To sell ice cream to President Hoover.	You're right!
SHEFFIELD FELDMAN	Ikey	To play in the Cherry Show Orchestra.	Oh, that blonde of mine!
LORRAINE BUNCH	Honey-Bunch	To be a senior.	Now, now feature it.
FINLEY BRADFORD	Little Windy	To be as popular as his brother Frank.	The grunts'll get you!
JUANITA RHYMER	Johnnie	To be chief cook and hot-tle washer at Kress lunch counter.	Oh, I've met the cutest boy!
ROBERT MANN	Bob	To set stage scenes in Hollywood.	Well, now let's see!
DOROTHY CAHOON	Dot	To have all her classes in the drug store.	Sign this pass so I can go!
HARRY CORFITZSON	Fitz	To draw "Tillie the Toller" for Russ Westover.	Now, I ask you!
CHESTER CRAMMER	Ichabod	To make a non-stop flight twice around the world.	Dopeness!
HOWARD STEPHENS	Steve	To make Central's "grass cutters" team.	You wouldn't fool me, would you?
ELISABETH SMITH	Libby	To teach Miss Grey's first period English class.	If you can't feature it, I'll feature it for you.
ARLEEN JOHNSON	De-Jigger	To be as tall as Ralph Olinger.	Hey, you hickey!
GLENN TALLANT	Bright Boy	To stay in the balcony waiting (?)	Eh, what?
NEVA McCLURE	Teacher	To be an usher.	Oh, is that so?
MYRA GRAHAM	My-ra	To be an honor student.	You'd better not!
HARDIE CAUDLE	Runt	To learn to dance.	Oh, you're crazy!
KITTY BOLTON	Kit	To take Almarie's place as song leader.	Aw, shoot!
BERTHA EVANS	Bertie	To take Miss Atkinson's place as librarian.	Yeh, I guess so!
LENA MAE KLEIN	Funny Bone	To be a cheer leader.	Oh, yeah!
JACKSON RECTOR	Jack	To have Mrs. Brown help him with his Caesar.	You worm!
SAMUEL ROBINSON	Sam	To sing bass like Frank Smith.	Garlie!



## Pages



• 1930 CHAMPION •



PRODIGY M. SWINGLEY



MR. NELSON



MRS. RICE AND ?



MRS. BARTON



NEE MISS NEWBERRY



DRIB BECOMES DANGEROUS



MISS VANDERGRIFF



THREE MUSKETEERS



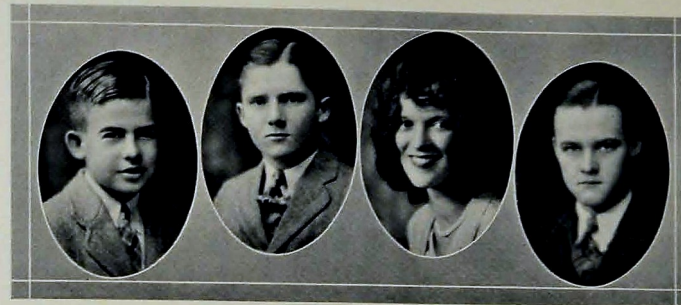
ALVA AND RED



LILAH AND DOT

SOPHOMORES

• 1930 CHAMPION •



## Sophomore Class

### OFFICERS

W. T. BALES . . . . . *President*  
 NEWTON GARMANY . . . . . *Vice-President*  
 MARGARET DAY . . . . . *Secretary*  
 JOHN SLACK . . . . . *Treasurer*





### Sophomore Class

Leola Adamson	Ruby Broome	Freda Cooper	Sidney Fine	Walter Hawkins
Marie Adamson	Alice Brown	Mary Cooper	Sarah Frazier	John Helms
Robert Agnew	Clarence Brown	Helen Copeland	Thomas Friar	William Henry
Helen Alfred	Anna L. Brown	Nellie Corbett	George Fullam	Ruby Higdon
Goldie Anderson	Anna F. Brown	Beverly Corr	Perry Gadd	David Higdon
Lucile Anderson	Frances Brown	Hazel Srawford	Everett Gallant	Katherine Hinch
Maxine Armour	Lila Brown	Mary Cross	Myrtle Gangs	Katherine Hinds
Enoch Arnold	Richard Brown	J. C. Crumbly	Willie Hitchcock	Rugby Hodgkins
Ida Armstrong	Robert Brown	Robert Cunningham	Doris Gannaway	Gertrude Hollis
Martha Arwood	William Brown	Clyde Davis	Frank Gannaway	Jewel Horton
Sinclair Ashley	Helen Browne	Gladys Davis	Frank Gardner	Mildred Hotalline
Mildred Aslinger	James Browne	Joe Davis	Newton Garmany	Charlotte Howard
Samuel Autt	George Browning	Ila Davis	Martha George	Joe Howard
Carl Baker	Garland Broyles	Roxie Davis	Roy George	Ruth Howe
T. G. Baker	Ruby Broyles	Margaret Davis	Francis Goren	Thomas Huddleston
W. T. Bales	Mildred Buffat	Muriel D'Armand	Franklin German	Mildred Hudson
Edna Ball	Lucille Burke	Anna De Yampert	Ethel Gibson	Mildred Huff
Alva Bankston	Dennis Burns	Duane Dixon	Lewellyn Gilliland	Charles Huneke
Vernold Barker	Vesta Burnett	Louise Dickert	Mildred Godsey	Clarence Hunt
Bill Bates	Pleas Burton	James Dovemus	Jack Good	Fred Huttsell
Eudora Beaver	Bruce Cain	Paul Draper	Rachel Gordon	Nat Hyden
Marvin Becker	Edwin Caldwell	Edwin Caldwell	Herbert Gornley	Harold Igou
Edith Bedlow	Robert Calhoun	Johnnie Gothard	Catherine Gould	Mary Irvine
Ethel Bell	Lillian Capehart	Edgar Gramest	Lloyd Gray	Ethel Jameson
Myrtle Bell	Lillian Cargile	W. C. Durham	Dennis Green	John Jaminton
Carter Bennett	Fielding Carmichael	Ralph Carpenter	Margaret Edens	Robert Jarvis
J. T. Bentley	Irene Carroll	Bill Carter	M. R. Elam	James Jernigan
Elizabeth Bevan	Marion Carter	Mary Carter	Lewis Ellis	Morris Johnston
Katherine Blair	Virginia Carter	Frances Case	Lorraine Elrod	Wheeler Johnston
Mildred Blaneot	Helen Castleman	Sidna Castle	Mildred Espie	Alma Jones
Inez Blalock	Barney Chastain	Betty Cleminson	Alma Evans	Jack Jones
Dorothy Boatfield	Harvey Close	Edward Cole	Mary Evans	James Jones
Esther Bolt	George Collins	George Collins	Sylvester Evans	William Jones
Kathleen Bond	Warren Conner	Harvey Connelly	Leonard Exum	Kathleen Hanks
Roy Bonine	Harry Cooke	Walter Cook	Margaret Ezell	Evelyn Hardy
Aylma Boss	Walter Cook	Mildred Figgins	Aubrey Falces	Barniel Harris
Verna Bowling			Charles Falls	Oscar Harris
Anne Boyd			Helen Farmer	Frances Harrington
Marvin Boyd			Charlie Farrow	Walter Hart
Irene Bright			Mildred Figgins	Bobby Hawkins
Omilee Brixey				
Raymond Brock				
Catherine Brooks				



### Sophomore Class

Sarah Langford	Ralph Manthe	Josephine Price	Ernest Scott	Harry Suspect
Clarence Lawrence	Grady Miller	Rebecca Procter	Paul Scruggs	Walter Swope
Mildred Lawson	Edna Mills	Violet Proper	Kathleen Sharpe	James Tate
Martha Lason	John Mingledorff	Edith Purcell	Carl Shahan	Perry Taylor
Orville Laxson	Josephine Mitchell	David Pyle	Lee Shankle	Lucy Thacker
Randell Laycock	Mary Mitts	William Quarles	John Shasteen	Velma Thedford
Martha Leath	Minnie Moore	Fannie Quinn	Victor Shemwell	Kathleen Thornton
Lilly Mae Leach	Breadland Moore	James Quinn	Fred Shippey	William Totton
Paul Lee	Francis Morgan	Amelda Rains	Glenn Silvia	Walter Travis
William Lee	Bertha Morpew	Lon Rains	Esther Singleton	Rena Trenena
Alice L'Heureux	Mary Moser	Marjorie Randle	Ruth Skelton	Mildred Tribble
Jack Lewis	Bernice Moss	Johnnie V. Rawlings	John Slack	Aura Troxler
Herbert Light	Regis Murphy	Beulah Reece	Alice Siozton	Johnnie Tucker
Thomas Lipscomb	Kathryn Mulkey	Addie Smallon	Beulah Smith	Jesse Turner
Mary Longley	Dorothy Murray	Beulah Smith	Dennis Smith	Bertrand Turnure
Elsie Lowry	Morris Myers	Jane Smith	Lille Smith	Alma Tyler
Rigsby Lucas	Helen Nash	Mary A. Rhodes	Thomas Smith	Charles Van Gorder
Randall Lynsky	Clara Newell	Dan Rice	Frank Snodgrass	Samuel Varnell
Edward McAbee	Herman Newell	John Richard	Gongo Spense	Frances Vining
Inez McBrown	R. T. Newton	John Richards	Elinor Spicer	Byron Viner
James McCall	Juanita Oler	Velma Rten	Edith Walker	Thelma Wagoner
E. G. McCarron	Clatie Orrell	Edna Ricks	Lake Stalcup	Edith Walker
Wallace McCallie	Johnnie Owenby	Edna Ritchey	Virginia Stanley	King Walker
Stella McCarty	Ward Owens	Ruth Roach	Dorothy Steffan	Edith Wallace
Edgar McClure	Mildred Palmer	John Roberson	Arman Stegall	Louise Wallace
Neva McCollier	Frank Parker	Lewis Roberson	Olivia Stegal	Dorothy Wardlaw
Willie McConnell	Bradley Parks	Louise Rogers	Marion Stephens	Hugh Wasson
Martha McCollum	Earl Parrish	Pearl Rogers	Howard Stephen	Eleanor Weller
Anna McCrary	Edna Patterson	Charles Rogers	Anita Stewart	Margie Wells
Ruth McDaniel	Gwendolyn Patterson	Evelyn Rollins	Lafan Wesley	Thelma Whitaker
Ernest McDavis	Joe Patty	Frances Ross	Mabel Stewart	Robert Whitaker
Delmos McGhee	Winburn McLaughlin	Minnie Rountree	Ray Stokes	Paul White
Margaret McKee	Dorothy McPherson	Marjorie Rowe	Victor Stone	Bessyless Wiggs
Winburn McLaughlin	Charles McPherson	Lorraine Rowland	Reece Stone	Mildred Williamson
Edgar Pearce	Allan McDonald	Paul Roy	Alma Stoner	Bob Williamson
Evelyn M. Peart	Allice Mallory	Jeanette Pendergrass	Gertrude Strong	John Williams
John Pfeizer	Edgar Mavis	John Pfeizer	Ruby Stacy	Harry A. Wilt
Martha Plumlee	William Manley	Anna Pearce	Hazel Suggs	Eleanor Workman
Edgar Pearce	D. A. Marshall	Luther Pogue	Helen Sullivan	James Worley
Charles Poole	Dorothy Martin	Herbert Powell	Harold Summers	William Wright
Frankie Power	Leonard Martin	Frankie Power	Carl Sundstrom	Lucille Young
Amon Prestwood	Zelma Martin	Cliffort Mason	George Sweets	



## Class of 1932

**I**N the days of knighthood and chivalry, it was the custom for pages to herald all tournaments, feasts, holidays, and to promote in every way the interest of their master knight and his dominions. Though they could not partake of the pleasures afforded by the combats, they eagerly watched and looked forward to the time when they would be the center of attraction as knights. Their duty, though seemingly small, had to be accomplished with the greatest of care. They realized they were preparing for the day when they would become squires, the last step before entering the coveted field of knighthood.

The pages of Central High School came to love their Alma Mater when they were les enfants. With promotion to the rank of page, they learned that when things were accomplished they were worked for rather than received as gifts.

When they entered their studies as les enfants they felt the need of a leader to carry them through the struggles which they must encounter.

At the first class meeting they selected W. T. Bales to be president of the freshmen. Those to aid as class officers were: Vice-president, John Slack; secretary, Mattie Evelyn Peart; treasurer, Newton Garmany. These leaders, with the co-operation of the entire freshman class, came through the year with colors flying, resolved that as pages they would continue to serve the school in every place where loyalty was required.

Then, at the beginning of this year having received promotion to the second stage, that of page, the company held a meeting for the purpose of again selecting leaders. W. T. Bales was re-elected president. Newton Garmany was elected vice-president, a promotion from treasurer of the les enfants. Margaret Day was selected as secretary, while John Slack was chosen to be treasurer.

The greatest event on the sophomore calendar was the page party, a gala affair with over two hundred present. It was a time when new acquaintances were made and the class came to know each other better.

The sophomores have been well represented in the activities of the school. Some have become knights of the gridiron; for example, Bob Williamson and Newton Garmany. Billy Agnew is representing sophomores on the track team. Three members of the class—Alva Bankston, Frank Gardner and W. T. Bales—stand in the literary field as members of the *Central Digest* staff. Others of our number find their names among those of the music organizations.

It is now but a few steps until we become squires when it will be our privilege to serve our master knights at the great celebration of the annual Junior-Senior banquet.

As pages we here renew our pledge to carry on the good work of our Alma Mater and whenever we can to serve our school to the best of our ability.

W. T. BALES.



## Les Enfants



1930 CHAMPION



HAROLD AND DOT



FIFI



ANDERSON &amp; AIKEN



"TIME OUT"

VIRGINIA'S  
LIL SIS

CENTRAL'S BAND



BOB



OLD GRADS



CHARLIE AND IZZIE



BAYLOR-CENTRAL



"TOBBY AND SLIM"



CENTRAL WINS

FRESHMEN

1930 CHAMPION



## Freshman Class

## OFFICERS

MILLARD LOWRY . . . . .	<i>President</i>
FRANCES HARRIS . . . . .	<i>Vice-President</i>
KATHLEEN OLINGER . . . . .	<i>Secretary</i>
MARTIN HACKNEY . . . . .	<i>Treasurer</i>



## 1930 CHAMPION



## Freshman Class

Marvin Abbott	Edna Campbell	Jack Dome	Walter Griffiths
Herman Adams	Pearl Cannon	Billy Donaldson	Velma Greene
Edith Anderson	Rose Carlisle	Richard Draughn	Elmer Greene
William Alford	Edith Carson	Dorothy Durham	Florence Gregory
Marion Anderson	Mack Coar	Carlton Durham	Earl Gryder
Reece Aymon	Frank Caruthers	William Durham	Virgil Guess
Marguerite Bachman	Roy Charlesworth	Catherine Dutton	Martin Hackney
J. M. Balfour	Nona Chipman	John Edge	Ruth Haddock
William Barber	Vada Childers	Mary Edge	Sara Hale
Frances Bass	Mildred Clark	Edwin Elder	Helen Hale
Ruby Bell	Felma Clarkson	Spofford English	Marjorie Hale
Georgia Bucknell	Frank Close	Helen Ernst	Glen Hamblen
Ray Black	Morgan Cobb	Margaret Erwin	Annie Hamilton
Joyce Blanton	Edward Cobligh	Dorothy Espy	Willard Hamilton
Leon Blackwell	William Coper	Lois Estill	Lorraine Hammond
Evelyn Blessing	Donald Coffy	Jessie Evans	Willie Hamrick
Rex Bond	Mary Cooke	David Evans	Frances Harris
Frances Bonline	John Covley	George Flink	Louise Harris
James Booth	Katherine Connally	Cleo Folkner	Robert Hittler
Cora Boudin	Evelyn Corby	Grace Forstner	Laban Head
Ray Bowen	James Cordell	Harold Foster	Juliette Heard
Floyd Boydston	Mary Coulter	Everett Fowler	Harry Heard
Robert Breedlove	Lois Cowan	Margaret Francis	John Henderson
Mildred Brockmeyer	Clara Coxe	George Freeman	Herbert Holder
John Brong	Frank Cummings	Thelma Freeman	James Holland
Charles Brooks	Florence Crabtree	Pearl Crosby	Frank Hunter
Alice Brown	Virgie Curtis	Annie Frizzell	Arthur Hurst
Charles Brown	Alhilda Cyphels	Leo Fryar	James Howard
Marguerite Brown	Pauline Brown	Edward Gann	Vivian Howren
Pauline Brown	Edith Davis	Verdun Gardner	Claudia Henson
Martha Browning	Baxter Davis	Dorothy Gibbs	Florence Hensley
Herman Broylis	Gay Day	Hattie Gober	Flora High
Louise Brynon	James Deanes	Joe Godsey	Lillian Heaton
James Bunn	Estill Dickert	Margaret Graham	Virginia Henry
Irene Butler	William Dickert	J. B. Graham	Mary Hill
Horace Caldwell	James Dobbins	Myrtle Grayson	Iris Hill
Maud Camp			Margaret Hines

## 1930 CHAMPION



## Freshman Class

Genevieve Hodges	Edna Lancaster	Buddy Sanders	Ernest Thomas
Margaret Hillard	Gertrude Lane	Everett Schwiw	Lillian Thomas
Hazel Humbert	Jaunita Lawing	Katherine Scott	Annie Tindale
Evelyn Hungate	Irene Lawson	Melva Scott	William Little
Bonny Hyde	Roland Laurence	Anne Shaw	Lillian Tripp
Martyn Ingram	Mary Lee	Dorothy Sharpe	Elizabeth Trundle
Leon Isbell	Shirley Lee	Billie Sharpe	Ruth Turner
Charles Isbill	James Lerch	Dorothy Sims	C. S. Turner
Annie Jennings	John Linn	Donald Sims	Joe Vance
Frances Jennings	Thurman Lively	Louis Sly	Helen Valentine
Henry Joiner	James London	Annie Shelton	George Vandiver
Arbie Johnson	Annie Lynch	John Sliger	Jack Wadegriff
Betty Johnson	Ishmael Lyons	Mary Smith	Frank Wagoner
Lillie Johnson	Millard Lowry	Earl Smith	Nell Walthour
Virgil Johnson	Harold Long	Virginia Smith	John Waite
Walter Johnson	Howard Luther	George Smith	Edwin Walder
James Janis	William Quinn	Hillard Snyder	John Walters
Dorothy Jones	Margre Rains	Cecil Spangler	Virgil Warren
Martha Jones	Francis Ramay	Viola Standifer	Edna Washburn
H. Kaneaster	George Ramsey	Harley Steelman	Edith Watts
Fred Keener	James Rich	James Stehman	Fay Weaver
Ira Kell	Mildred Richardson	Macon Stephens	Catherine Welch
Barney Kellis	Elizabeth Rhodes	Ralph Stevens	Willard Willhoite
Edgar Kellis	Cecil Roberts	William Stuart	Clifford Williams
Viola Kelley	Cleo Roberts	Charles Stiff	Mary Wheeler
Clifford Keefer	Willie Roberts	Anna Stringer	Mildred White
Richard Kelley	James Roberson	Margaret Sullivan	Meta White
Forrest Kimbrough	Thayer Roberts	George Stutz	Bessie Williams
Lida Kemmler	Mary Rogers	Jay Syler	Margaret Wills
Evelyn King	Marvin Rogers	Eleanor Tate	Edward Witt
Maurice King	Frater Rogers	Frank Taylor	Eugene Witt
Theresa Kipp	Kenneth Rose	Frances Taylor	Raymond Witt
George Knox	C. B. Ross	William Taylor	Marvin Woody
Kenneth Kyle	George Rous	Mildred Teasley	Thomas Wood
Thomas Lackey	Louise Ryan	Benjamin Tower	Mary Wooten
William La Berry	Martha Sanders	Blanche Thomas	Alfred Wrinkle
Raymon Landers	James Sanders		Ira Young



## The Class of 1933

THE Freshman Class of '30 began the year with great promise of accomplishing much in scholarship and all school activities. After a few days of preparation they settled down to the routine of classwork. They were unaccustomed to their new surroundings at first, but this period of adjustment gradually passed and they soon became a permanent part of the life of Central. The chapel programs where the freshmen were taught the school yells and songs, the class meetings, the friendship of the other students and of teachers made every freshman feel soon that he was a part of Central.

They call us "Les Enfants," a title that is perhaps fitting, but we are making our paths straight, building our structure of knowledge with the best material that we are able to collect. We know that our base must be strong and true. Therefore we are working as hard as we can to lay a good foundation for our later years at Central as well as for life.

We sometimes envy the upper classmen, their distinction and prominence, but we little realize how carefree we are at present. We go our way unnoticed. Being lower classmen we are allowed to grow in the shadows, letting our roots become strong, ready to uphold us in the upper grades as we are sought out for higher places. We do not have to assume the responsibility of helping to form the various committees and being officers of the many societies and publications, which are the nucleus of Central's activities. We are given allowances for some of our mistakes and great things are not expected of us.

We have elected officers for our Freshman Class and we think they will perform their duties to the best of their ability. For our president we have Millard Lowry, with Frances Harris as our vice-president. Kathleen Olinger is our secretary.

This year there is a company in the R. O. T. C. battalion which is known as the freshman company. This is Company H. Though they have had no drill they are working hard and will soon be perhaps as good as the rest of the battalion.

Not only must we learn our lessons from books, but we must increase our knowledge of conditions of living. It is necessary too that we perfect ourselves in poise and manner so that in later years we shall be at home as we advance to that enviable stage of high school seniors.

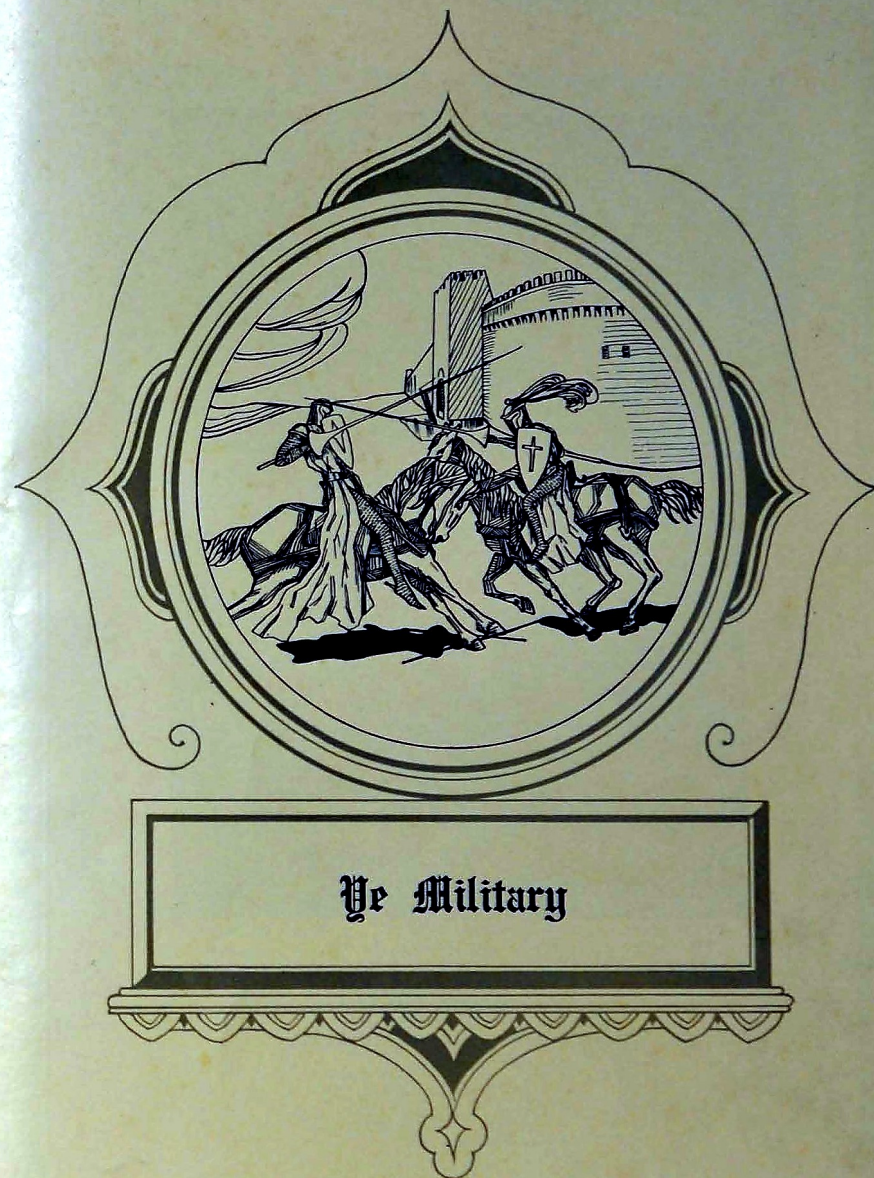
RAYMOND WITT.



Book Three

Je Activities









JAMES E. WARE  
Lieutenant-Colonel, U. S. A., Retired  
*Professor of Military Science and Tactics*



### Officers' Club

FLOYD N. SUITS . . . . . President  
CICERO MCCLURE . . . . . Vice-President  
HENRY N. ARCHY . . . . . Secretary  
JIMMIE M. SMITH . . . . . Treasurer

#### MEMBERS

SHELTON ALDER  
RUSSELL BEAM  
JOHN BOYD  
GEORGE CARD  
JAMES CLOSE  
ROBERT COLLINS  
ERNEST CORDELL  
GEORGE CRAMER  
CHARLES CRUMP

ERSKINE EVANS  
RICHARD FOX  
LELAND FUSSELL  
ERNEST GRAY  
FOREST KIRKPATRICK  
WILBUR LACEWELL  
LESTER LANSFORD  
HAYES McDOWELL  
WESLEY MORGAN  
JAMES PARKER  
GILBERT SLATER

FRANK STONECIPHER  
CHARLES VALENTINE  
BERNARD WILSON  
CLARENCE WITT  
EDWARD RHODES  
WALTER WELCH  
LOUIS SPITZER  
GEORGE KEEN  
CARL PFITZER



## STAFF OFFICERS

FLOYD N. SUITS  
LIEUTENANT COLONELC. H. MCCLURE  
MAJORDOROTHY STEFFAN  
SPONSORE. L. RHODES  
CAPTAINO. C. GURLEY  
CAPTAIN

## Sergeants' Club

RAY RUGGLES . . . . . President  
 J. B. ELLIX . . . . . Vice-President  
 W. B. SWOPE . . . . . Secretary  
 J. H. SHASTEEN . . . . . Treasurer

## SERGEANTS-AT-ARMS

C. WILLIAMS

D. E. POWER

## MEMBERS

J. O. DAVIS  
 J. E. MORGAN  
 R. BUTLER  
 G. DOWD  
 J. A. COOLEY  
 D. C. BUSH  
 C. A. OWIN  
 M. M. MINOR  
 O. M. MURRAY  
 F. CARUTHERS  
 C. TOHEY

B. GAUNTLETT  
 E. L. TEASLEY  
 R. C. SMITH  
 V. RUSBRIDGE  
 O. B. SUTTON  
 J. W. BOWERS  
 C. G. PULLEN  
 J. S. RECTOR  
 J. S. HICKS  
 H. E. BILLETT  
 S. JOHNSON

L. STALCUP  
 E. COLE  
 M. MULKY  
 C. M. MOSIER  
 J. W. O'CONNOR  
 A. POWELL  
 M. GENTER  
 A. J. BOOTH  
 H. HORTON  
 E. D. McABEE  
 HARRIS



## OFFICERS "E" COMPANY

B. E. WILSON JR.  
CAPTAINMISS INEZ LACKEY  
SPONSORW. G. KEEN  
FIRST LIEUTENANTC. J. WITT  
FIRST LIEUTENANTE. H. CORDELL  
SECOND LIEUTENANTJ. H. PARKER  
SECOND LIEUTENANTW. F. WELCH  
SECOND LIEUTENANTF. J. KIRKPATRICK  
SECOND LIEUTENANT

## Company "E"

INEZ LACKEY, *Company Sponsor*

## OFFICERS IN COMMAND

B. E. WILSON . . . . .	<i>Captain</i>	E. H. CORDELL . . . . .	<i>Second Lieutenant</i>
G. W. KEEN . . . . .	<i>First Lieutenant</i>	W. L. WELSH . . . . .	<i>Second Lieutenant</i>
C. J. WITT . . . . .	<i>First Lieutenant</i>	H. McDOWELL . . . . .	<i>Second Lieutenant</i>

## SERGEANTS

J. S. COOLEY  
J. B. ELLISJ. S. FULGHUM  
H. W. HORTON  
M. M. MINOR  
C. W. MOSERJ. H. SHASTAIN  
POWER

## CORPORALS

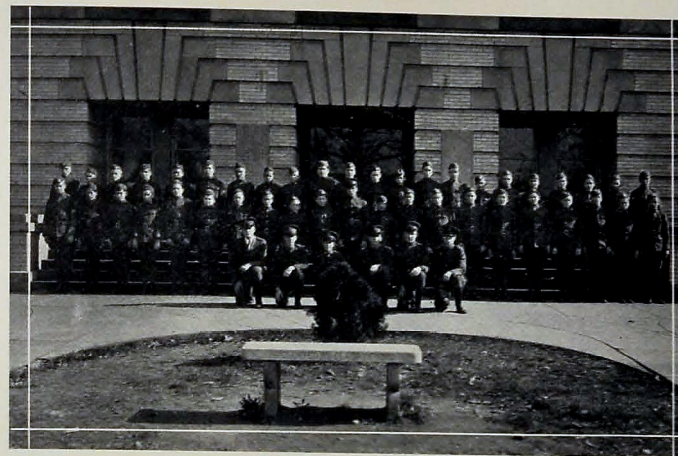
C. E. MURRAY  
D. D. BURNSD. R. PYLE  
J. E. HOWARDJ. F. MORRIS  
MASON

## PRIVATES

A. H. POWELL  
R. ALLEN  
E. W. BROWN  
B. R. CHASTAIN  
W. H. CONNER  
R. W. DAVIDSON  
G. CASTLEMAN  
D. J. GREEN  
J. E. HOWARD  
C. L. HUNEKEJ. E. JONES  
J. R. JONES  
J. J. JOHNSTON  
T. J. LIPSCOMB  
FREEMAN  
E. B. MCCLURE  
E. MCCARSON  
W. MANLEY  
W. H. MITCHELL  
D. W. QUARLESD. T. RHODES  
G. W. SILVIA  
J. T. PATTY  
E. L. SCOTT  
A. J. STEWART  
V. M. SHERWELL  
R. C. WHITAKER  
DONALDSON  
E. PARRISH  
GRYDER



## OFFICERS "F" COMPANY

H.N. ARCHHEY  
CAPTAINJ.R. BOYD  
FIRST LIEUTENANTJAMES CLOSE  
FIRST LIEUTENANTMISS HAZEL SUGGS  
SPONSORLESTER LANDSFORD  
SECOND LIEUTENANTW.G. LAYSON, JR.  
SECOND LIEUTENANTT.H. MCDOWELL  
SECOND LIEUTENANT

## Company "F"

HAZEL SUGGS, *Company Sponsor*

## OFFICERS IN COMMAND

H. N. ARCHHEY . . . . .	Captain	
J. R. BOYD . . . . .	First Lieutenant	W. G. LAYSON . . . . .
J. E. CLOSE . . . . .	First Lieutenant	L. LANSFORD . . . . .
		Second Lieutenant

## SERGEANTS

H. E. BILLETT	R. F. BUTLER	H. W. RUGGLES	D. E. McABEE
A. J. BOOTH	F. P. CARUTHERS	L. E. STALCUP	POWERS
	C. A. GUIN	R. C. STOKES	

## CORPORALS

M. A. JOHNSON	M. J. MYERS	C. R. SMITH	S. G. ROY
W. T. KELLY	R. SCOGGINS	W. J. TRAVIS	D. E. BELL

## PRIVATES

T. G. BAKER	R. L. CARPENTER	D. J. JONES	V. H. RUSBRIDGE
C. N. BENNETT	M. A. DUGGAN	W. L. JONES	F. L. SPENCE
J. T. BENTLEY	J. L. DUGGAN	H. S. KING	P. W. TAYLOR
C. C. BREWER	C. W. FARROW	R. KNIGHT	C. O. VAN GORDER
G. F. BROWNING	J. W. FLETCHER	H. L. LIGHT	T. W. VANZANTZ
C. BROTHERTON	O. J. HARRIS	W. OWEN	W. N. WORLEY
W. F. CARMICHAEL	D. A. HIGDON	W. PHILLIP	W. D. WRIGHT
A. L. NORTH	R. W. JOHNSON	H. D. RICE	T. H. LACKEY



## OFFICERS "G" COMPANY

WILBUR LACEWELL  
CAPTAINMISS KATHLEEN BUOL  
SPONSORC. S. ROGERS  
FIRST LIEUTENANTF. A. STONECIPHER  
FIRST LIEUTENANTC. M. VALENTINE  
SECOND LIEUTENANTR. L. BEAM  
SECOND LIEUTENANTG. B. CRAMER  
SECOND LIEUTENANTL. W. SPITZER  
SECOND LIEUTENANT

## Company "G"

KATHLEEN BUOL, *Company Sponsor*

## OFFICERS IN COMMAND

W. E. LACEWELL . . . . .	<i>Captain</i>		
STONECIPHER . . . . .	<i>First Lieutenant</i>	R. L. BEAM . . . . .	<i>Second Lieutenant</i>
C. G. ROGERS . . . . .	<i>First Lieutenant</i>	G. B. CRAMER . . . . .	<i>Second Lieutenant</i>
L. J. DAVIS . . . . .	<i>First Lieutenant</i>	C. M. VALENTINE . . . . .	<i>Captain</i>

## SERGEANTS

E. COLE	L. W. SPITZER	C. T. WILLIAMS	D. C. BUSH
G. P. DOWD	M. H. STINSON	H. A. CLOSE	L. E. STALCUP
	R. L. TOBY	R. C. SMITH	

## CORPORALS

F. O. COTTON	L. B. BRITT	V. S. STONE	E. B. GERMAN
--------------	-------------	-------------	--------------

## PRIVATES

E. W. ARNOLD	J. K. QUINN	J. LEWIS	E. T. RICHARDS
L. M. BOYD	R. L. GEORGE	A. R. LUCAS	J. C. PFITZER
G. R. CONNELLY	H. L. GORMLEY	R. W. LYNKEY	C. A. SHAHAN
H. M. CARTER	J. B. GOOD	R. L. MULLNER	E. W. SMITH
T. A. DOREMUS	A. W. FARRIS	F. L. MCRREE	L. S. SHANKLE
A. A. BOSS	J. B. IRVIN	O. L. MOSS	H. P. WASSOM
L. N. ELLIS	C. A. ISBILL	R. S. PARKER	J. R. TURNER
G. T. FULLAM	R. S. HAWKINS	B. S. PARKS	E. PERKINSON
		H. J. ROBERSON	



1930 CHAMPION

## OFFICERS "H" COMPANY

JIMMIE SMITH  
CAPTAINE. A. GRAY  
FIRST LIEUTENANTGEORGE CARD  
FIRST LIEUTENANTMISS GLADYS ROBERTS  
SPONSORT. L. FUSSELL  
SECOND LIEUTENANTL. E. EVANS  
SECOND LIEUTENANTJ. L. DAVIS  
SECOND LIEUTENANT

1930 CHAMPION



## Company "H"

GLADYS ROBERTS, *Company Sponsor*

## OFFICERS IN COMMAND

J. M. SMITH . . . . .	Captain	E. A. GRAY . . . . .	First Lieutenant
G. L. CARD . . . . .	First Lieutenant	E. L. EVANS . . . . .	First Lieutenant
L. T. FUSSELL . . . . .	First Lieutenant	S. G. ALDER . . . . .	Second Lieutenant

## SERGEANTS

W. B. SWOPE	L. F. HIX	J. O. DAVIS	G. C. PULLEN
		J. S. RECTOR	

## CORPORALS

V. S. BARKER	A. T. HARRIS	W. T. KELLY	T. E. LIVELY
O. B. SUTTON	E. L. TEASLEY	O. L. WILSON	

## PRIVATES

L. F. BLACKWELL	J. C. CONNER	J. T. WALTERS	F. H. HUNTER
C. H. BROWN	R. O. DRAUGHTON	L. W. FAULKNER	M. HACKNEY
J. C. BOOTH	B. C. DAVIS	H. J. GODSEY	J. L. HEAD
M. CARR	J. H. DOME	J. DEANES	H. C. JOINER
E. CALDWELL	W. T. DICKERT	L. F. HICKS	W. C. JOHNSON
M. COBB	E. E. DICKERT	L. W. GILLILAND	V. E. JOHNSON
L. CORDELL	E. P. ELDER	L. HOWARD	F. C. KEENER
F. T. CLOSE	H. FOSTER	A. S. HEARST	K. K. KYLE
C. McDONALD	F. E. MORRIS	V. C. HALE	I. A. KELL
R. MEYERS	C. MILLER	J. PARK	E. W. KELLY
M. M. LILLARD	P. W. PEDEN	D. S. SIMMS	J. D. LONDON
J. M. SYLAR	P. P. ROGERS	M. M. LOWRY	C. S. TURNER
G. H. SMITH	C. C. PAYNE	G. W. SILVIA	B. YOUNG
W. F. WILHOITE	R. B. WITT	B. T. TARVER	T. W. WILKINS
		VANDERGRIFF	



1930 CHAMPION

## BAND OFFICERS

CHARLES CRUMP  
CAPTAINMISS RUTH MOONEY  
SPONSORROBERT COLLINS  
FIRST LIEUTENANTGILBERT SLATER  
SECOND LIEUTENANTWESLEY MORGAN  
FIRST LIEUTENANTR. K. FOX  
SECOND LIEUTENANT

1930 CHAMPION



## Band

RUTH MOONEY, Band Sponsor

## OFFICERS IN COMMAND

CHARLES CRUMP . . . . .	Captain
ROBERT COLLINS . . . . .	First Lieutenant
WESLEY MORGAN . . . . .	First Lieutenant
GILBERT SLATER . . . . .	Second Lieutenant
RICHARD FOX . . . . .	Second Lieutenant
EUGENE WITT . . . . .	Drum Major

## SERGEANTS

B. BLAKELY  
E. B. ETTER  
W. SMITH

J. GOTT  
O. BURNETT  
E. PARKS

## CORPORALS

W. STEWART

F. FREULER  
K. GROSS  
W. McMAHAN

J. SMARTT

## PRIVATES

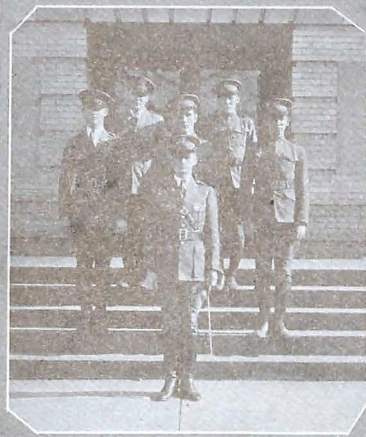
H. DAVIS  
C. DURHAM  
W. C. DURHAM  
C. GRONER

H. IGO  
A. JONES  
P. WILHOITE  
R. LEWIS  
N. HYDEN  
G. MARTIN

KING  
J. PERKINSON  
E. J. SCHOLZE  
H. TITTLE



• 1930 CHAMPION •



*THE STAFF*



*COL SUITS*

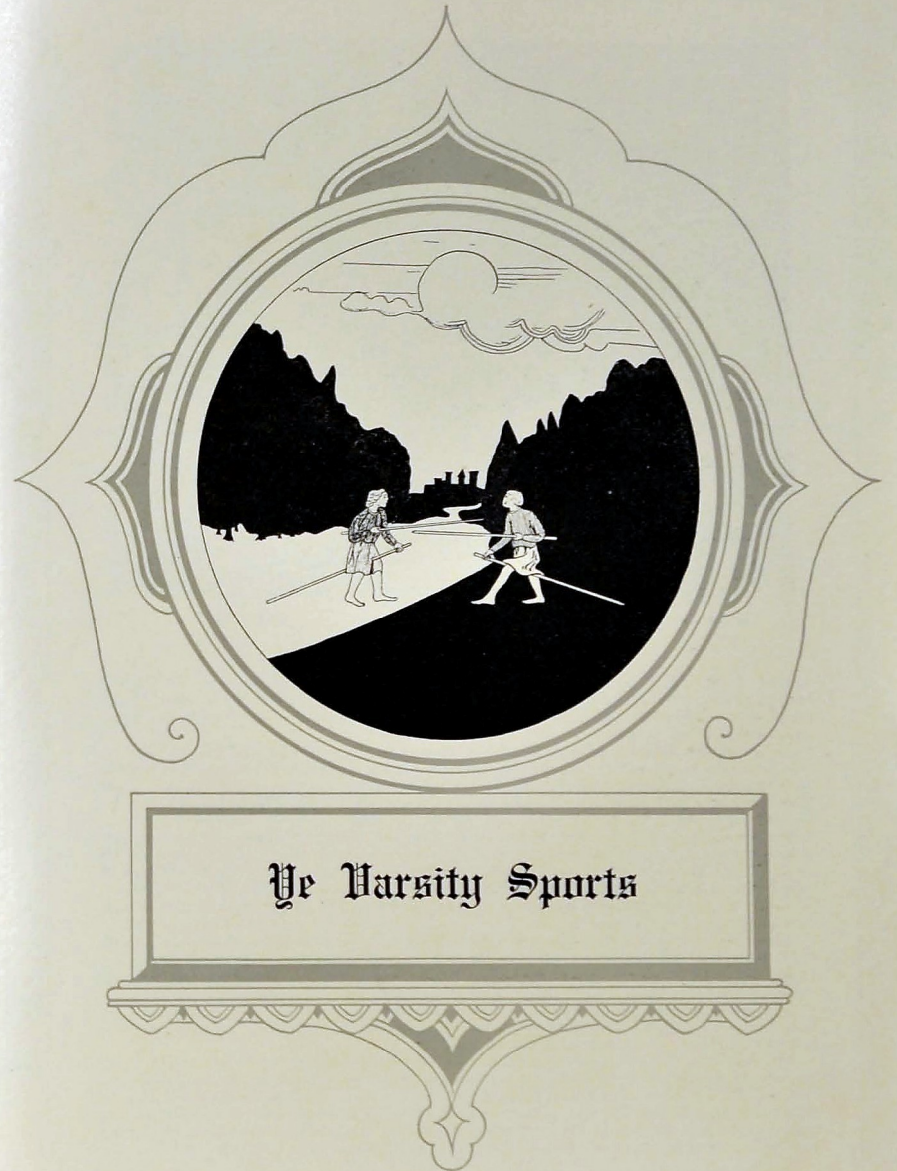


*RIFLE TEAM*



*THE COLORS*

MILITARY SNAPS



**Ye Varsity Sports**



• 1930 CHAMPION •



HEAD COACH PETERSEN

COACH BALES

COACH MCCOY

### The Coaches

HEAD COACH PETERSEN, who has finished his fifth football year as head coach for Central, has completed a very successful season. During his stay at Central Petersen has established a record which should be an inspiration to any prep school coach—that of not having lost a city series game in four years.

In her records Central classifies Coach Petersen as her most outstanding athletic director. He never fails to get results regardless of how difficult the undertaking. He coaches nothing but clean, hard, legitimate football. Teams trained by him are always noted for their clean sportsmanship, a fact which reflects characteristics of the coach. His pleasing personality, his fire and vigor always inspire his teams with the will to win.

He is well liked in local athletic circles for his fair play and for his ability as a coach. He is known not only locally, but also abroad for the splendid spirit with which he inspires his men. All coaches whose teams have played Central since Petersen has been leader are high in their praise of him and his fair dealing spirit.

While the big colleges may have their Rocknes, Warners and Staggs, among prep schools only Central has her Petersen.

Mr. Bales is the best basketball coach Central has ever had. Past performances and records of his teams bear out the statement that he knows basketball thoroughly.

Mr. Bales' teams always display the highest type of training which gives an insight into the type of a man that he is.

In addition to his work in basketball, Coach Bales is assistant coach in football where his work is also outstanding. Central is very fortunate in having on her staff such a man—one who is both a gentleman and a natural leader of men.

Mr. McCoy came to Central from the University of Chattanooga, where he starred in all branches of athletics, playing guard on the football team and forward on the basketball five.

Coach McCoy knows football and knows how to teach it. He has demonstrated this by taking an inexperienced line and making a good charging forward wall of it. He has the respect of the boys which accounts for much of his success as a coach. Since Coach McCoy has been such a valuable asset to Central, we hope that he will return to us next year.

• 1930 CHAMPION •



### Lettermen's Club

HOWARD SMITH . . . . . President  
 WILBUR PETERSEN . . . . . Vice-President  
 CHESTER UNDERWOOD . . . . . Secretary  
 HAROLD BENNETT . . . . . Treasurer

#### MEMBERS

JAMES ANDERSON  
 HAROLD BENNETT  
 FRANK BLAKELY  
 ROBERT BUMPUS  
 FINLEY BRADFORD  
 JAMES BUNN  
 LAWRENCE CLINGAN  
 HARRY COOK  
 LEON CHILLICUTT  
 CHARLES ENGERS

CARTER EVANS  
 NEWTON GARMANY  
 CLAUDE GIST  
 GOLDMAN GREENE  
 EDWARD HEIDER  
 VERNON HEADRICK  
 OLIN JACKSON  
 LOUIS KELLY  
 JOE KOPE  
 KELLEY MASSEY  
 JAMES McMAHAN

RALPH OLINGER  
 WILBUR PETERSEN  
 RALPH RUCH  
 HOLLIS SWAFFORD  
 HOWARD SMITH  
 EVERETT SCHWEIR  
 CHESTER UNDERWOOD  
 JOHN WHITESIDE  
 WILLIAM WALLER  
 HARRISON WEEKS



• 1930 CHAMPION •



WITT  
BASEBALL MGR.

CARTER EVANS - MGR  
BASKETBALL

GEO. CASTLEMAN  
AST. MGR. FOOTBALL

RHODES  
CHEER LEADER

BILL WALLER - MGR.  
FOOTBALL AND TRACK

LOWRY  
CHEER LEADER

BILL BALES  
WATER BOY

SONG LEADERS  
DOT LEE - ELIZABETH LIEB -  
GLADYS ROBERTS - ALMARIE WHITE

D.M. RAULSTON -  
CHEER LEADER

MANAGERS AND CHEER LEADERS

• 1930 CHAMPION •



WILBUR PETERSEN  
*Captain*

**Football**





## FOOTBALL SEASON, 1929-30

DECHERD, 0; CENTRAL, 13

In their first game of the season, September, 20, Central's Pupils trampled Decherd High, 13-0.

Soon after the beginning of the game Izzy Smith scored for Central. A pass for the extra point was completed.

The second and last touchdown was scored on a pass by Wilbur Petersen to Underwood. A Decherd player in trying to block it knocked it into "C's" hands.

Near the end of the fourth quarter Izzy Smith received an ankle injury which kept him out of the games the greater part of the season.

LAFAYETTE, 6; CENTRAL, 18

The following week, September 27, Central played and defeated Lafayette High, 18-6.

During the first half both teams were practically even in their playing, but in the last period Central sprinted ahead.

Much of the credit for the game was due Charles Engers who scored two of the touchdowns. One was made on a pass, and the other was due to a blocked punt.

The rest of the team played well considering that it was the second game of the season.

UNIVERSITY HIGH OF ATLANTA, 0; CENTRAL, 18

In the third game of the season the Central gridmen defeated University High School of Atlanta, 18-0.

The Georgians who were playing their first game of the season made seven fumbles, two of which were indirectly responsible for two of Central's touchdowns.

Kelly, the whole show in the first half, scored the first touchdown.

The second score was made near the end of the first half when Olinger blocked a U. S. B. punt and Clingan covered it on the five-yard line.

In the last quarter a lateral pass from Weeks to Petersen scored the final points.



Underwood and Olinger played well on the line, while Kelly and Petersen shone in the backfield.

MEMPHIS TECH, 12; CENTRAL, 13

On Friday, October 12, Central met and defeated the heavy veteran Tech High team of Memphis, the score being 13-12.

The first touchdown was scored by Underwood, who received a thirty-yard pass from Petersen and raced for a touchdown.

Heider scored the second and last touchdown for Central in the first quarter. The try for the extra point was good.

In the second quarter Cartwright, of Memphis, ran with the ball fifty-five yards and then scored Tech's first touchdown.

Many fans had left and darkness had settled over the field when Kaurer, captain of the Memphis team, passed fifty-five yards to Pate, who ran twenty for Tech's second touchdown. The kick for the extra point failed. The victory meant much to Central, as the visitors were supposed to have a much better team.

BRADLEY, 6; CENTRAL, 13

Central defeated a fighting Bradley High team October 18 at Cleveland.

The first quarter was a punting duel between Underwood of Central and Jones of Bradley. No score was made.

Kelly bucked the ball over Central's first score early in the second quarter.

Petersen scored the second touchdown in the third quarter. Underwood passed to Weeks for the extra point.

Duncan scored Bradley's only touchdown by a forward pass in the third quarter.

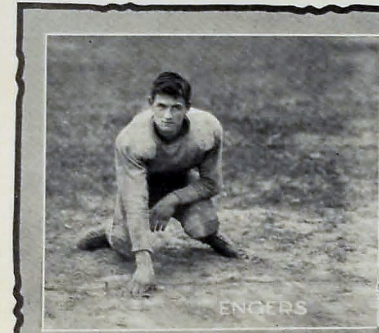
Petersen and Kelly starred for Central in the backfield while the line showed what they could do when called upon.

Izzy Smith, held on the bench the first part of the season, played for a short time.

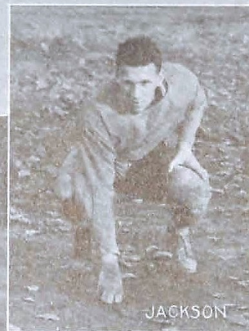
BAYLOR, 12; CENTRAL, 12

In their first city championship game of the season Central and Baylor fought to a 12-12 tie on Chamberlain Field, October 25. One of the outstanding plays of the game was Kelly's return of the kick-off.

He received the ball on Central's twenty-yard line and ran it to Baylor's thirty-four-yard line, where Baylor's safety man stopped him.







GARMANY



Early in the second quarter Petersen intercepted one of Bryan's passes and ran fifty yards for Central's last touchdown. Beaumont scored Baylor's first touchdown by bucking the ball over. A pass from Nichols to Bryan was good for Baylor's last touchdown. Headrick, Cline and the guards, Anderson, Jackson, Swafford and Bunn, starred on the line, while Kelly, Smith and Petersen were again the backfield aces.

#### ETOWAH, 7; CENTRAL, 6

November 1 Central's Purple Warriors received their first loss of a home game since 1925. They were defeated by the Etowah eleven with a score of 7-6.

York, the 250-pound fullback for the visitors, did the most of their ground gaining.

The Etowah team drew first blood scoring soon after the game started. Chaffin, quarter, scored on a sneak.

The extra point and also winning point was a pass from Chaffin to Bledsoe.

Petersen soon after the Etowah touchdown tallied for Central, but the extra point failed.

Kelly and Petersen were the ground gainers of the Central eleven. The line fought hard to back them up.

#### WINCHESTER, 7; CENTRAL, 13

On Thursday, November 7, Winchester High fell an easy victim to the Central gridmen, the score being 13-7.

The first Central touchdown play was one of the longest runs ever made on Patten Field. Kelly, the track man on the Purple eleven, ran eighty-two yards for a touchdown. The extra point failed.

In the second quarter Kelly's nose was fractured and he was forced out of the game.

Central's last touchdown was made when Petersen bucked the line for twenty yards.

Winchester's score was due to a fumble behind the Central goal line.

Weeks, Kelly and Petersen led the Central attack, while Templeton and Webb starred for Winchester.

#### NOTRE DAME, 0; CENTRAL, 26

The "Fighting Irish," who in 1928 held Central to a 6-6 tie, met a 26-0 defeat at the hands of the Purple Warriors.



The Centralites received the kickoff and started a steady march to the Irish goal.

Izzy Smith made the first touchdown on a play over tackle. He also scored the extra point on a fake play.

Petersen scored the second touchdown on a thirty-two-yard run. The extra point failed.

At the end of the half the score was 13-0.

The third touchdown of the game was scored in the third quarter by Izzy. Weeks sneaked over for the extra point.

Izzy also scored the last touchdown by a short center drive.

The whole team functioned like a well-oiled machine, every man playing the game according to Hoyle.

#### CITY, 0; CENTRAL, 39

Last but not least came the Central-City game November 30, and the overwhelming defeat at 0 the Maroon, 39-0. It was the largest number of points scored by a Central team in twenty-one years of rivalry with City.

After a steady drive Wilbur Petersen scored for Central. The pass for the extra point was incomplete.

Izzy scored next after a thirty-yard run. Underwood failed on the dropkick for the extra point.

Petersen, after a City fumble had been recovered by Olinger ran twenty-eight yards for a touchdown. Underwood scored the extra point.

In the third quarter Izzy Smith intercepted a City pass and after a few tries Petersen broke through for an eighty-two-yard run and a touchdown. Underwood's try for the extra point was good again.

Underwood kicked to Kersey, who fumbled behind the goal. Olinger recovered for Central, scoring a touchdown.

The extra point failed.

Izzy scored the last touchdown in the last quarter. A pass from Underwood to Engers was good for the extra point.

Wilbur Petersen, Izzy Smith, Harrison Weeks and Lewis Kelly added to their gridiron glories, while the line played excellent football establishing themselves City champions of 1929-'30 season, a record which Central has maintained for four consecutive years.



• 1930 CHAMPION •



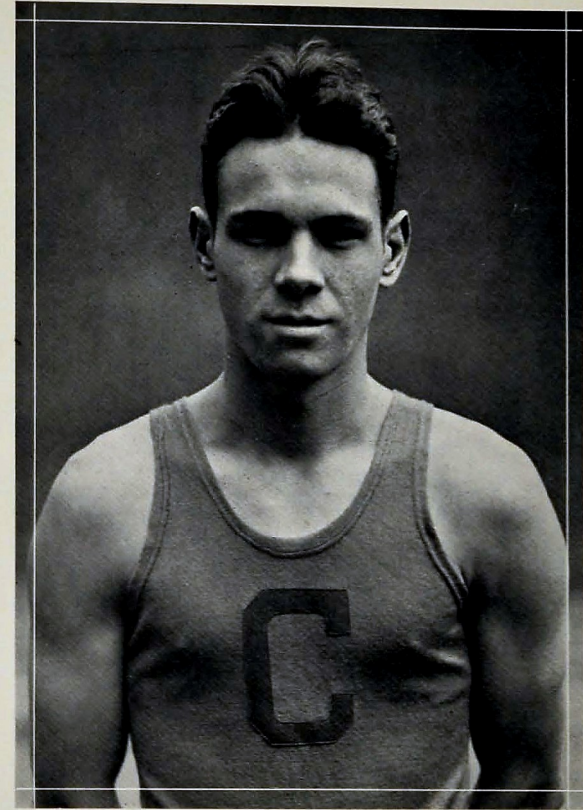
### Football Squad

*Back row, left to right*—DOE, JOHNSON, WEEKS, KELLEY, BRYAN, JACKSON, CLINGAN, UNDERWOOD, HEADRICK, OLINGER, HOLLY, BUMPUS, LACEWELL, WEITZEL, F. SMITH, GIST, KOPE.

*Middle row*—HARRIS, FOX, MCPHERSON, ROY, GARMANY, JOHNSON, GREEN, JONES, PORTER, CARTER, WHITESIDE, ADAMS, ANDERSON, LENON, SCHWIER, KING.

*Front row*—ELAM, HALL, ENGERS, BRADFORD, JOHNSTON, PHILLIPS, SWAFFORD, HEIDER, CAPTAIN PETERSEN, ETTER, L. MILLER, TEMPLETON, WILLIAMSON, A. MILLER, CHILCUTT, RUCH, BUNN.

• 1930 CHAMPION •



HAROLD BENNETT  
*Captain*

### Basketball



1930 CHAMPION



**RALPH OLINGER—Alternate Captain and Center.**

Ralph has played a prominent part in the success of Central's teams during the two years he has taken part in basketball. "Ollie's" great height makes him a much dreaded man in the eyes of all of Central's opposing teams. He usually gets the "tip-off," and is very valuable at taking the ball off the backboard. This is Ralph's last year at Central, and whatever college is so fortunate as to enroll him will have a promising prospect.

**HAROLD BENNETT—Captain and Forward.**

Harold has proved his worth many times during his three years on Central's teams. He is a good shot and can pass as very few high school players can. Harold's ability to use both hands equally well makes him a hard man to guard. Since he shows unusual skill in the game, Central will miss him very much next season. Bennett will go down in Central's hall of fame as one of the best of her fighting captains.

**FRANK BLAKELY—Forward.**

Last year Frank was a good substitute, but this year he stepped up among the regulars and has become one of the best players. "Mite" is an uncanny artist when it comes to crap-shots. He is a good floor man; in fact, he is "a good man to have around." Frank leaves this year, and his place will be hard to fill. Would that Central could get more men like him!

**PAUL ROY—Guard.**

Roy migrated to the first team from last year's Junior team. He has been a consistent player. He is tall and flings up points in a pleasing manner. Roy has another year or two with us, and great things are expected of him.

**HARRY KING—Guard.**

This was King's first year on the team, but his playing might indicate much experience. With his ideal build for a basketball player he promises to be among the best of next year's team. Central will welcome his return.

1930 CHAMPION



**CLAUDE GIST—Guard.**

"K. O." advanced from the Junior team. He is tall and well built for a guard and gives his all in a game. Claude has another year, and with this year's experience, should make an even more valuable asset to the team.

**CHARLES ENGERS—Guard.**

For all Charles may lack in height he makes up in fight. He is one of the swiftest players and fighters on the team. Charles is a good goal tosser and passes with accuracy. Engers has another year, and with added experience he should make an even better player next season.

**FRED HUTSELL—Forward.**

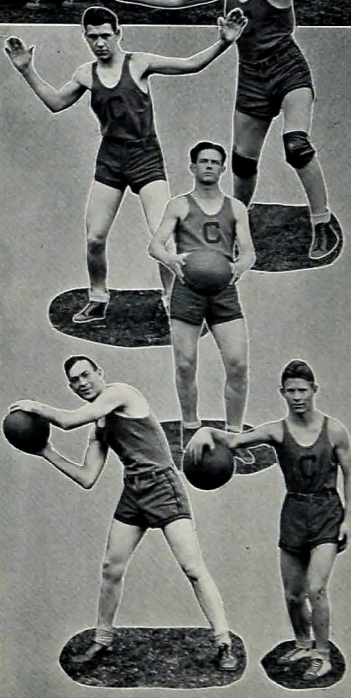
Hutsell came to Central from Calhoun, Ga. Even in this, his first year, he has shown that he has ability as a forward. "Calhoun" is a constant fighter; he makes his share of the points and guards his man well. He has in him the material for the making of a real basketball player. Central will be glad to see him return next season.

**HOWARD SMITH—Guard.**

"Izzy" received an injury in football that kept him out for the greater part of the season. However, in basketball he has made up for all lost time and has starred, as usual. "Izzy" has long been affiliated with athletics at Central, and his absence next year will be keenly felt.

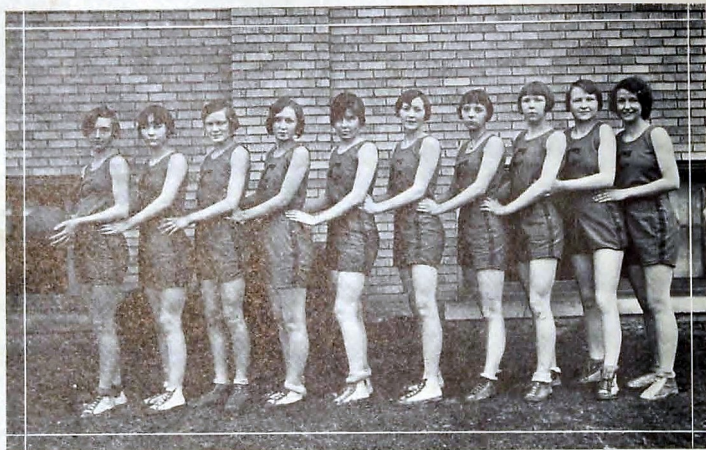
**LEON CHILCUTT—Forward.**

"Chil" advanced from last year's Junior team and played well every time he was called on. He is a steady, consistent player. Central will count on him for the next year or two. He is improving now, and by next season he should be hard to stop.





• 1930 CHAMPION •



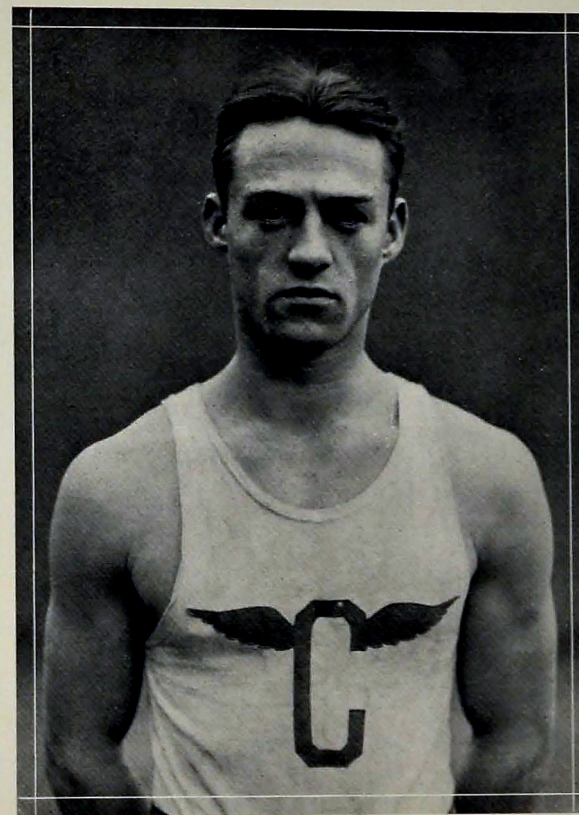
### Girls' Varsity Basketball Team

#### MEMBERS

MARY ELIZABETH EDGE	ANNIE RUTH LYNCH
GENEVA TATE	CLARA LAWRENCE
FLORA DAVERSON (Captain)	MAUDE CUNNINGHAM

EFFIE WILSON  
GLADYS THORNBURG  
JEAN HAMILTON  
MARGARET TIMMONS

• 1930 CHAMPION •



EDWARD HEIDER  
*Captain*

## Track



• 1930 CHAMPION •



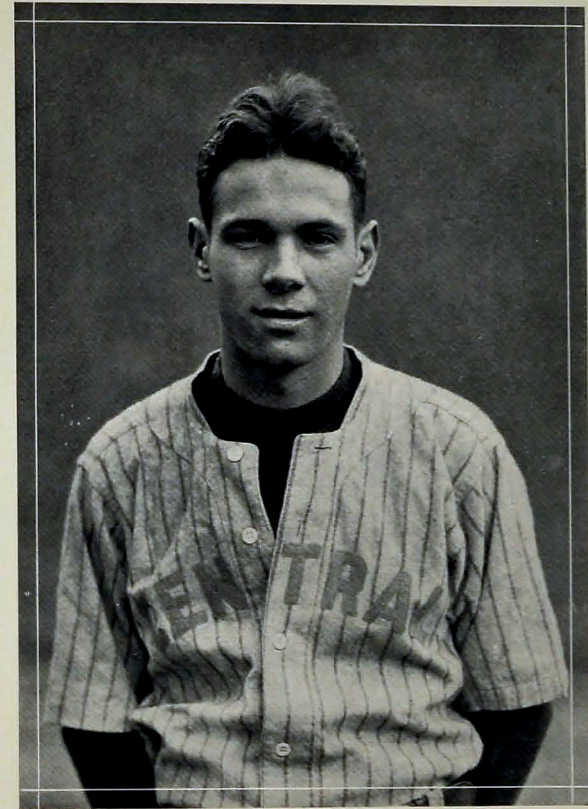
### Track Team

ED HEIDER (Captain)  
ROY CHILCUT  
RALPH RUCH  
W. CRAFTON

LOWELL BEANE  
FRANK SMITH  
LAWRENCE CLINGAN  
LEWIS KELLY

ROY STARMER  
TOM ALLISON  
CHARLES KIBLER  
HARRISON WEEKS  
A. WOOTEN  
B. HARRIS

• 1930 CHAMPION •



HAROLD BENNETT  
*Captain*

## Baseball



• 1930 CHAMPION •



### Baseball Team

HAROLD BENNETT (Captain)	Shortstop
WILBUR PETERSEN	First Base
HAROLD SMITH	Left Field
SAM VARNELL	Third Base
CHESTER UNDERWOOD	Center Field
E. C. ROACH	Right Field
J. T. GRANT	Second Base
PAUL ROY	Catcher
FINLEY BRADFORD	Pitcher
CLAUDE GIST	Utility

• 1930 CHAMPION •



MISS JEWEL DEAN  
Director

## Girls' Athletics



• 1930 CHAMPION •



SENIOR  
BASKET BALL TEAM



JUNIOR BASKET BALL TEAM



SOPHOMORE  
BASKET BALL TEAM



FRESHMAN BASKET BALL TEAM



SENIOR BASE BALL TEAM



JUNIOR BASE BALL TEAM



SOPHOMORE BASE BALL TEAM



FRESHMAN BASE BALL TEAM

SNAPS OF GIRL ATHLETES

• 1930 CHAMPION •



SENIOR  
VOLLEY BALL TEAM



JUNIOR VOLLEY BALL TEAM



SOPHOMORE  
VOLLEY BALL TEAM



FRESHMAN VOLLEY BALL TEAM



SENIOR TENNIS TEAM



JUNIOR TENNIS TEAM



SOPHOMORE TENNIS TEAM



FRESHMAN TENNIS TEAM

SNAPS OF GIRL ATHLETES



• 1930 CHAMPION •

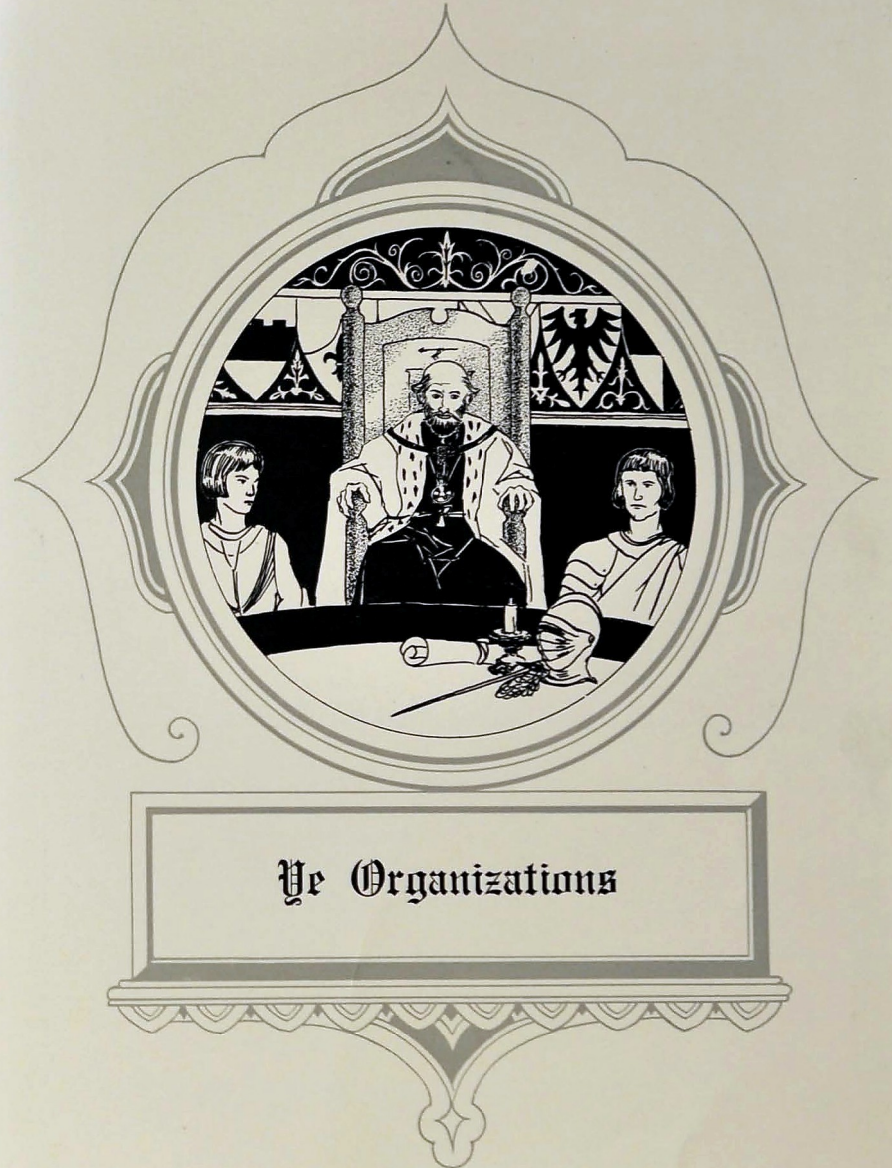


### Girls' Athletic Association

FLORA DAVERSON . . . . . *President*  
 GENEVA TATE . . . . . *Vice-President*  
 CLARA LAWRENCE . . . . . *Secretary*  
 GLADYS THORNBURG . . . . . *Treasurer*

#### MEMBERS

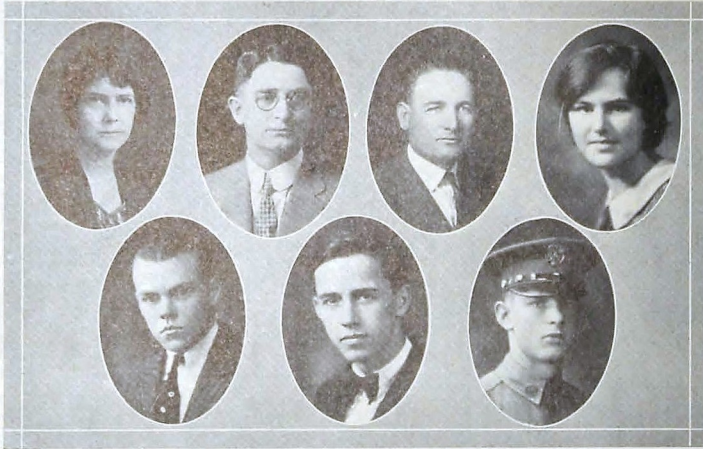
INEZ LACKEY	BONNIE HYDE	MARGARET HINES
EDNA GREENE	PAULINE SULLIVAN	MARGARET TIMMONS
MARIE MYERS	WILLIE SUE HAMICK	ESTHER BOLT
JEAN HAMILTON	ELIZABETH HALL	MARTHA GEORGE
IRENE LAWSON	PAULINE BROWN	INEZ MCBROOM
ANNIE MAE JENNINGS	REVA TREVENA	MARGARET MCKEE
KATHLEEN OLINGER	ESTELLE CARTER	AUGUSTA KING
VIRGINIA HENRY	MARY ELIZABETH EDGE	MARY LORD
HELEN ERNST	MARGARET CALDWELL	RUTH TROXLER
ANNIE CLARA LYNCH	MARY BOULDIN	EVELYN BRADFORD
BILLIE SHOPE	RUTH LACEWELL	MARY ALICE MOSER
MILDRED TIGGINS	REESE AYMOND	ALLINE KOONS
VIRGINIA WOOLSON	EFFIE WILSON	ALICE SLATEN
VIRGINIA CARTER	MAUDE CUNNINGHAM	LOIS BARTON



Ye Organizations



• 1930 CHAMPION •

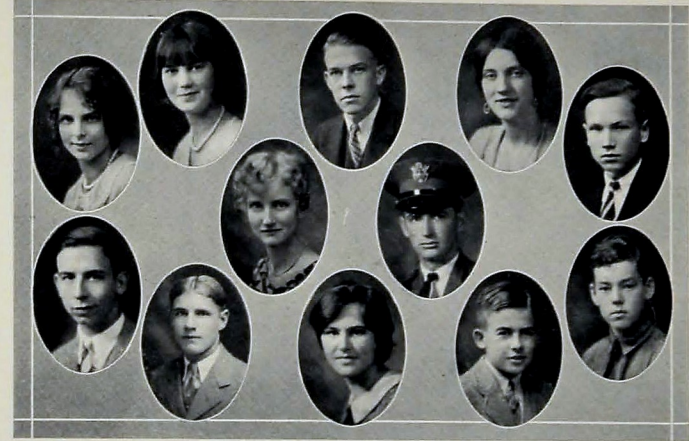


### Board of Control for Publications

#### MEMBERS

MRS. J. A. SHELTON	RUTH WILLIAMSON
MR. S. E. NELSON	CHARLES NORTON
MR. W. P. BALES	NORMAN SMARTT
EDWARD RHODES	

• 1930 CHAMPION •



### Champion Staff

INEZ LACKEY . . . . .	Editor-in-Chief
EDNA GREENE . . . . .	Associate Editor
ROBERT BAKER . . . . .	Business Manager
ELIZABETH WHITE . . . . .	Feature Editor
JOHN WRIGHT . . . . .	Senior Section Editor
LAURA ROBERSON . . . . .	Activity Editor
FLOYD SUITS . . . . .	R. O. T. C. Editor
BEN JOHNSTON . . . . .	Photographic Editor
WILBUR PETERSEN . . . . .	Athletic Editor
RUTH WILLIAMSON . . . . .	Junior Editor
W. T. BALES . . . . .	Sophomore Editor
RAYMOND WITT . . . . .	Freshman Editor



1930 CHAMPION



### Digest Editorial Staff

EDNA GREENE . . . . . *Editor-in-Chief*  
 INEZ LACKEY . . . . . *Associate Editor*  
 FRANK GARDNER . . . . . *News Editor*  
 DOROTHY POORMAN . . . . . *School Editor*  
 ALVA BANKSTON . . . . . *Sports Editor*  
 BERTHA EVANS . . . . . *Departmental Editor*  
 MARY THOMAS . . . . . *Club Editor*  
 ELIZABETH WHITE . . . . . *Feature Editor*

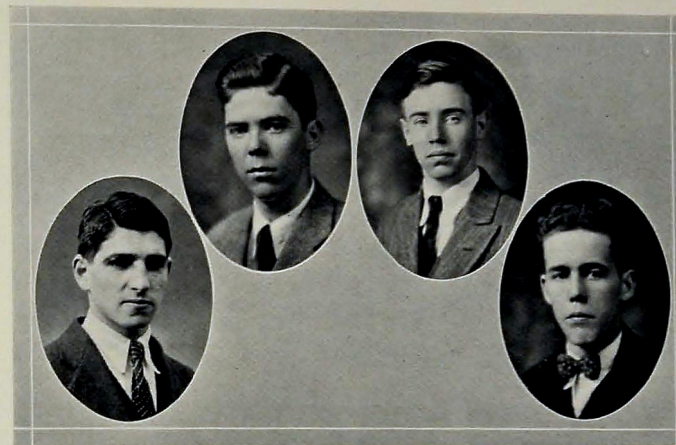
#### REPORTERS

JUANITA RHYMER . . . . . EVELYN REESE  
 LAURA ROBERSON . . . . . HERMAN ADAMS

#### CORRESPONDENTS

WILLIAM LANGSTON . . . . . HIRAM TRIPP  
 ROSE WHITE . . . . . ARLEEN JOHNSON

1930 CHAMPION



### Digest Business Staff

JOE KOPE . . . . . *Business Manager*  
 RALPH CREASMAN . . . . . *Advertising Manager*  
 ERNEST LAWRENCE . . . . . *Accountant*  
 NORTON RUSBRIDGE . . . . . *Circulation Manager*



1930 CHAMPION



## Senate Officers

NORMAN SMARTT . . . . .	President
EDNA GREENE . . . . .	Vice-President
LAURA ROBERSON . . . . .	Secretary
ERNESTINE STACY . . . . .	Assistant Secretary
MARY THOMAS . . . . .	Chaplain

## CABINET

VIRGINIA LOWRY . . . . .	Chairman Rules and Regulations Committee
ROBERT BAKER . . . . .	Chairman Membership Committee
INEZ LACKEY . . . . .	Chairman Publicity Committee
BROWN BLAKELY . . . . .	Chairman Attendance Committee
CYNTHIA SANDERS . . . . .	Chairman Finance Committee
RUTH WILLIAMSON . . . . .	Chairman Program Committee

1930 CHAMPION



## Senate

## MEMBERS

BROWN BLAKELY  
TOM ERWIN  
CARL GIBSON  
MARY K. MCCOLLUM  
CHARLES NORTON  
ERNEST LAWRENCE  
CHARLES VALENTINE  
ELSIE LOWRY  
KATHLEEN THORNTON  
KATHERINE LINDEMAN  
DOROTHY LINDEMAN  
NANALOU MILLER  
NORMAN SMARTT  
MARTHA MILLER  
BESS THWEATT  
EDNA GREENE

INEZ LACKEY  
LAURA ROBERSON  
ROBERT BAKER  
RUTH WILLIAMSON  
ALVA BANKSTON  
VIOLET PROPER  
BETTY HARPER  
CHARLOTTE STOWE  
CYNTHIA SANDERS  
MARY THOMAS  
VIRGINIA LOWRY  
ERNESTINE STACY  
JOHN WRIGHT  
BERTHA EVANS  
MARJORIE STEFFENER  
EVELYN PEART  
MARY ALICE WITT  
ROBERT MANN

SAM ROBINSON  
BOB WILLIAMSON  
FRANK GARDNER  
GLENN TALLANT  
HELEN TAYLOR  
ELISABETH SMITH  
LILLIAN LITTLE  
ROY BUTLER  
GAILS DOWD  
GLADYS ROBERTS  
JAMES ROBERSON  
KITTIE BOLTON  
W. T. BALES  
STELLA MCCARTY  
JOHN ROBERSON  
ELSIE LOWRY



• 1930 CHAMPION •

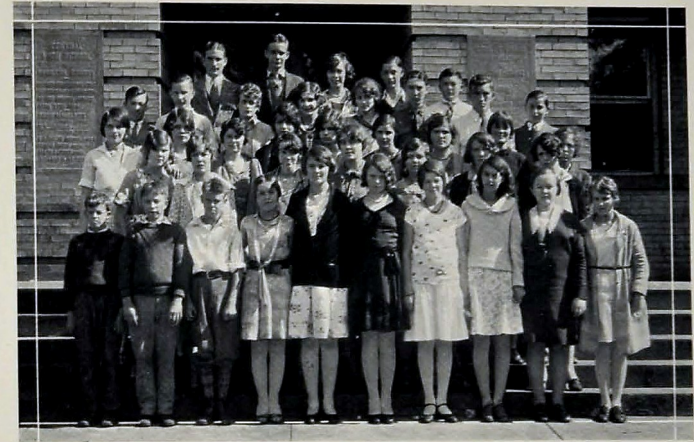


## Public Speaking Chairmen

## MEMBERS

EDNA GREENE	BETTYE CLEMENTSON
MARJORIE STEFFNER	TOM ERWIN

• 1930 CHAMPION •



## Public Speaking Classes

## MEMBERS

ROBERT BUMPUS	SUE GATTIS	ADA HIGDON
FAY FRIAR	JEWEL GRyder	NORMA HUDSON
MYRTLE GAINES	ROLAND LAWRENCE	DOROTHY LACEY
CARL GIBSON	ELIZABETH LIEB	MYRA GRAHAM
DOROTHY LINDEMAN	EDWARD McABEE	CECILE BARROWS
KATHERINE LINDEMAN	EVELYN ROBINSON	ALVA BANKSTON
DOT LEE	GEORGE ROUS	KITTIE BOLTON
SAM ROBINSON	LOUISE SLATEN	FRANK GARDNER
MINNIE ROUNTREE	FRANK SMITH	ROBERTA JONES
MARY ELIZABETH WALKER	CECIL SPANGLER	CHARLOTTE STOWE
NORMAN SMARTT	HERSTINE TORRANCE	THEODOSIA McNUTT
BONNIE AKIN	SARA E. WALTHOUR	RUTH WILLIAMSON
EMILY FRYE	WYNEMA RHEA	IRENE BRIGHT
	REBECCA SMITH	
	ALLINE KOONS	



• 1930 CHAMPION •



### Grady Literary Society

RALPH CREASMAN . . . . . *President*  
 CHARLES NORTON . . . . . *Vice-President*  
 ROBERT MANN . . . . . *Secretary*  
 J. WILEY BOWERS . . . . . *Treasurer*

#### MEMBERS

NORMAN SMARTT	ROBT. BAKER
GEORGE HENRY	CHARLES FORSTNER
MARION SEAGLE	EDWARD PARKS
DAVID RHODES	ROY STOKES
CHARLES ANDERSON	SANFORD ROY
ALVA BANKSTON	HERMAN DAVIS
HENRY ARCHY	JOHN PFITZER
JOHN MARTIN	FRANK BLAKELY
FRANK COTTON	

• 1930 CHAMPION •



### Red Cross

HENRIETTA COBLEIGH . . . . . *President*  
 MARJORIE STEFFNER . . . . . *Vice-President*  
 BARBARA BUSH . . . . . *Secretary*  
 SAM ROBINSON . . . . . *Treasurer*

#### MEMBERS

LILAH BROWN	JANE SMITH	THARMAN LIVELY
JAMES ROBERSON	EVELYN MORRIS	AUBREY TEMPLETON
KITTIE BOLTON	OMILEE BRIKEY	GAY DAY
KATHLEEN OLINGER	REBECCA SMITH	IMOGENE CARROL
CLEONA BROWN	MARTYN INGRAM	ADDIE MARONEY
VIOLET PROPER	EDITH CLARE CARSON	WILSON DOBBINS
FRANK STONECIPHER	MARY LOUISE HILL	ELMA G. HUTCHERSON
MARY FARROW	RUBY WILSON	ROBERT WHITAKER
CHARLOTTE HOWARD	REBA KIMBLE	ICIE LEE WOLFE
EDITH DAVIS	HARVEY SMITH	EDNA LAY
DORIS GANNAWAY	CARL GROVER	ELIZABETH WHEELER
ALLEN POWELL	LELA HUDSON	RUTH HULSEY
MARGARET TIMMONS	EDNA CAMPBELL	MILDRED BROWN
HOWARD TITTLE	ARTHUR WESTBROOK	MARY ELIZABETH EDGE
	HELEN FARMER	
	MARGARET FUSSELL	



## 1930 CHAMPION



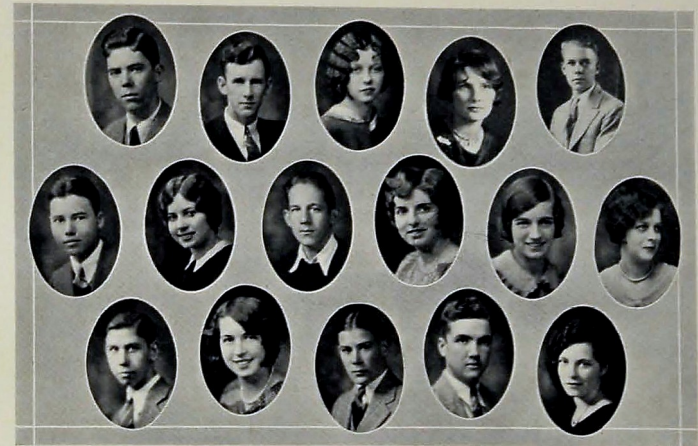
## Girl Reserves

ELSIE LOWRY . . . . . *President*  
 DOROTHY USMILLER . . . . . *Vice-President*  
 LESSIE BREWER . . . . . *Secretary*  
 LUCILE FRANKLIN . . . . . *Treasurer*

## MEMBERS

MILDRED COOPER	JEWEL KROEGER
PEGGY CANTRELL	REBA KIMBLE
DOROTHY CAHOON	EVELYN MELVILLE
GEORGIA MAYE BICKNELL	PATTYE JOHNSON
EDNA CAMPBELL	ALMA TYLER
LORAIN ADKINS	OLA BROWN
LILA MAE DUGGAN	

## 1930 CHAMPION



## Camera Club

RALPH CREASMAN . . . . . *President*  
 CHARLES FORSTNER . . . . . *Vice-President*  
 NANALOU MILLER . . . . . *Secretary*  
 HORTENSE BYRD . . . . . *Treasurer*

## MEMBERS

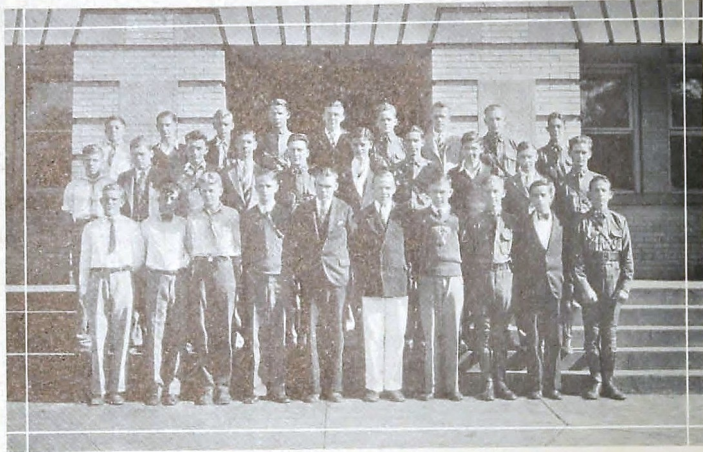
ROBERT BAKER  
 BERNARD WILSON  
 CYNTHIA SANDERS  
 JIMMIE SMITH  
 BEULAH O'REAR  
 MILDRED BROWN  
 JULIA CHILDERS  
 JAMES FOLKNER  
 RUTH HULSEY  
 GEORGE KEEN  
 EDWARD RICHARDS

MINNIE ROUNTREE  
 RACHELLE LANDIS  
 ROBERT MANN  
 ELMER FORMER  
 JANE SMITH  
 SAM ROBINSON  
 GENEVA EZELL  
 MARY THOMAS  
 MARTHA MILLER  
 HARDIE CAUDLE

EDWARD RHODES  
 EDWARD COLE  
 BILLIE WALLER  
 LOIS SMITH  
 GEORGE BRESSLER  
 CHARLES VALENTINE  
 HOMER HOLLY  
 PAUL LEWIS  
 RUTH HULSEY  
 WILLIAM MCCARDY  
 GEORGE CASTLEMAN



• 1930 CHAMPION •



### Boys' Hi-Y

CHARLES NORTON . . . . . President  
 CICERO McCLURE . . . . . Vice-President  
 NORMA SMARTT . . . . . Secretary  
 JOHN BOYD . . . . . Treasurer

#### MEMBERS

CHARLES VALENTINE	JAMES FOLKNER
ERNEST LAWRENCE	FRANK BLAKELY
ERNEST GRAY	FRANK BRANNEN
ALVA BANKSTON	FLOYD SUITS
GEORGE BRESSLER	RALPH CREASMAN
HOMER HOLLY	F. B. TAYLOR
EDWARD RHODES	J. WILEY BOWERS
EDMUND PARKS	BROWN BLAKELY

• 1930 CHAMPION •



### Girls' Hi-Y

RUTH WILLIAMSON . . . . . President  
 EDNA GREENE . . . . . Vice-President  
 LEONA PARK . . . . . Secretary  
 GENEVA EZELL . . . . . Treasurer

#### MEMBERS

BETTY SUE BLACK	VIRGINIA LOWRY	BESSIE SNODGRASS
OMILEE BRIKEY	MARGARET LUTHER	MARY E. THOMAS
GRACE BURK	MARY K. MCCOLLUM	MARJORIE STEFFNER
VIRGINIA CONNER	IDA WEE MABRY	DOROTHY USMILLER
ROXIE LEE DAVIS	NANALOU MILLER	MARY E. WALKER
BETTY HARPER	MARGARET PERKINSON	ELISABETH WHITE
DOROTHY JOHNSTON	LAURA ROBERSON	ROSE WHITE
REBA KIMBLE	CYNTHIA SANDERS	SARAH WOODALL
	ELISABETH SMITH	
	GLADYS ROBERTS	



• 1930 CHAMPION •



### Ushers

REBA KIMBLE . . . . . *President*  
GLADYS ROBERTS . . . . . *Secretary-Treasurer*

#### MEMBERS

LAURA ROBERSON  
INEZ LACKEY  
VIRGINIA LOWRY  
EDNA GREENE  
CYNTHIA SANDERS  
MONA CRABTREE  
BETTY SUE BLACK  
MILDRED BROWN  
ELIZABETH WHITE

ROSE WHITE  
LEONA PARK  
INEZ WILLIAMS  
MARY THOMAS  
EDITH FRAZIER  
GERTRUDE BOYD  
MARI SCHNEIDER  
BLANCHE KILLOUGH  
ADA HIGDON  
MARY LUCY TETER

VIRGINIA CONNER  
ELIZABETH VANCE  
MILDRED COOPER  
BEULAH O'REAR  
REBA SWAFFORD  
HENRIETTA COBLEIGH  
GENEVA EZELL  
MINNIE YARBROUGH  
MARY K. MCCOLLUM

• 1930 CHAMPION •



### Boll Weevils

FRANK STONECIPHER . . . . . *Manager*  
DAVID PYLE . . . . . *Electrician*

#### MAIN FLOOR MEN

FRANK MCNEILL . . . . . J. D. MORTON  
BERNARD WILSON . . . . . PAUL LEWIS  
ROBERT MANN

#### FLY FLOOR MEN

WALTER COOKE . . . . . HOMER HOLLY  
RALPH CARPENTER



• 1930 CHAMPION •



### Dalton Farraday Science Club

DUDLEY BELL . . . . . *President*  
 CLEONA BROWN . . . . . *Vice-President*  
 MARJORIE STEFFNER . . . . . *Secretary-Treasurer*

#### MEMBERS

KATHERINE COX  
 FRANCES LONGLEY  
 VIRGINIA MARTIN  
 WILLIAM LAYSON  
 BERTHA EVANS  
 CHARLOTTE STOWE  
 CATHERYNE WILBUR  
 LILLIAN LITTLE  
 CLARENCE ROGERS

VIOLET PROPER  
 LILAH BROWN  
 GRACE BURK  
 MARGUERITE LOWRY  
 W. H. KELLIS  
 IDA CRYSTAL  
 RAY CRYSTAL  
 SAM ROBINSON  
 GLENN TALLANT  
 RUTH WILBUR

BLANCHE KILLOUGH  
 JOYCE HAMMOND  
 BILLY GAUNTLETT  
 VICTOR COVEY  
 ARLEEN JOHNSON  
 LAURA ROBERSON  
 WALTER SMITH  
 VALERIA WEIGLE  
 BESS THWEATT

• 1930 CHAMPION •



### Biology Club

CLARENCE ROGERS . . . . . *President*  
 EDNA GREENE . . . . . *Vice-President*  
 ELIZABETH WHITE . . . . . *Secretary-Treasurer*

#### MEMBERS

MILDRED HANDY  
 BERTHA EVANS  
 DOROTHY USMILLER  
 MILDRED COOPER  
 ELMA GLENN HUTCHESON  
 CECILE BARROWS  
 ELEANOR BUTLER  
 MARY FARROW  
 MINNIE YARBROUGH  
 MABEL MORGAN  
 EMILY FRYE  
 FRANCES GAITHER  
 FRANCES WRINKLE

LORRAINE BUNCH  
 ELIZABETH TEMPLETON  
 RICHARD BUQUO  
 DOROTHY CAHOON  
 BESSYE THWEATT  
 VALERIA WEIGEL  
 JEWELL HOOPER  
 GARVIS WILLIAMS  
 JOYCE HAMMOND  
 MARGUERITE LOWRY  
 HENRIETTA COBLEIGH  
 ROSE WHITE  
 MARGARET TIMMONS

CLARENCE FRANCIS  
 DOROTHY MCPHERSON  
 PHILIP LICHTENSTETTER  
 GERARD SCRUGGS  
 LENA MAE KLEIN  
 MARGERY KITCHENS  
 RUTH RICHESON  
 ANNA LEE BELL  
 VIRGINIA BROOKS  
 MELVA SCOTT  
 STELLA McCARTY  
 ALMAN JONES  
 HERMAN DAVIS



## 1930 CHAMPION



## Domestic Art Classes

## MEMBERS

Evelyn Cash	Mary Louise Hill	Ann Denton	Ruth Ling
Alvilda Cyphers	Helen Hudgens	Alma Evans	Lillie Mae Luch
Gay Day	Marle Jones	Mamie Gilbert	Katherine Lindeman
Elizabeth Lile Yampert	Gwendolyn Patterson	Marjorie Gott	Frankie Powers
Barbara Jane Edgman	Edna Ricks	Myra Graham	Naomi Pickering
Mildred Piggins	Elizabeth Venable	Iva Humphrey	Jane Smith
Helen Hill	Gerell Weaver	Dorothy Irwin	Margaret Timmons
Alice L'Heureux	Thelma Whitaker	Mildred Jones	Thelma Wagner
Frances Longley	Martha Arwood	Mattie Lee Love	Ethel Jamison
Elsie Lowry	Helen Copeland	Mary Lord	Marie Adamson
Virginia Martin	Ella Dally	Dorothy Lankford	Lorraine Adkins
Katherine Mitts	Ruth Haddock	Sarah Lankford	Edith Bell
Edna Mills	Pearl Hicks	Zelma Martin	George Mae Bleknell
Lucile McMahan	Arleen Johnson	Teresa McDonald	Pauline Bowling
Virginia Nash	Mary Irvine	Louise Brown	Louise Brown
Margaret Payne	Thelma Kelly	Ruth Roach	Edna Campbell
Margaret Walker	Ruby Mavity	Martha Rae Smith	Rose Carlisle
Margaret Wallace	Inez Broom	Rena Trevena	Edith Davis
Mildred White	Elizabeth Reneger	Alma Tyler	Irene Garner
Katheryne Wilbur	Mary K. Richards	Zenobia Buntington	Eva Hopkins
Eleanor Butler	Charlotte Stowe	Mildred Hotaden	Mildred Hotaden
Irene Butler	Melva Scott	Bonnie Hyde	Bonnie Hyde
Edith Clare Carson	Annie L. Tindell	Sue Cain	Norma Hudson
Lois Cowan	Frances Vining	Marjorie Dick	Mildred Huff
Pearl Cannon	Vivian Workman	Roxie Lee Davis	Dorothy Lacey
Eloise Evans	Sarah Woodall	Jessie Evans	Anna McCary
Bessie Foeter	Bessy Lee Wiggs	Irma Friend	Gladys McCary
Dorothy Gibbs	Mary Alice Witt	Rachel Gordon	Mildred Peppers
Elizabeth Hall	Bonnie Mae Akin	Doris Gannaway	Martha Plumber
Margaret Hall	Maxine Armur	Irene Bright	Mary Alice Rhodes
Betty High	June Brown	Claudia Mae Henson	Velma Thedford
Ruby Higdon	Lilah Brown	Aphedra Hewitt	Elizabeth Williams
	Ethel Bell	Edna Jacks	

## 1930 CHAMPION



## Domestic Science Classes

## MEMBERS

Elizabeth Bevan	Mary Lynn Davis	Faye Friar	Laura Skelton
Kathleen Buol	Clementine Frazier	Frances Gaither	Gertrude Smith
Gertrude Boyd	Elizabeth Greene	Ethel Gibson	Helen Taylor
Pauline Brown	Frances Geren	Pattye Johnson	Margaret Thompson
Louise Bryson	Mildred Gross	Theresa Kipp	Mildred Thompson
Mildred Castleman	Roberta Hall	Blanche Meadows	Katherine Turner
Hazel Crawford	Betty Harper	Minnie Lee Morgan	Almarie White
Ethel Crabtree	Gertrude Hollis	Eunice Morgan	Martha Brock
Sue Dutton	Clara Hunter	Helen Nipper	Alice Brown
Lula Eversolle	Elma Glynn Hutcherson	Fannie Mae Quinn	Mona Chipman
Ruth Howe	Louise Kendrick	Mary Rogers	Virgie Curtis
Evelyn Hewatt	Dorothy Lindeman	Addie Smallon	Bertha Evans
Evelyn Hardy	Dorothy Martin	Margaret Sullivan	Annie Frizzell
Elsie Lowry	Nena McCollister	Annie Lou Skelton	Lorraine Griffith
Virginia Moore	Mary McDonald	Eleanore Weller	Charlotte Howard
Helen Martin	Gladys Pendergrass	Margaret Wiele	Lillie Johnson
Josephine Mitchell	Helen Pruett	Ruby Nell Hise	Alice Mallory
Kathryn McCollum	Margaret Perkinson	Nellie Graham	Dorothy Mauthe
Annie Margaret Shaw	Helen Sullivan	Charlotte Hester	Lorena Maxwell
Lucille Spier	Kathleen Sutton	Kathleen Johnston	Lillian Miller
Katheryn Scott	Elizabeth Templeton	Lucile Johnston	Hilda Mills
Virginia Stanley	Lucille Anderson	Willie Johnston	Johnnie McArthur
Mildred Tribble	Frances Benson	Reba Kimble	Ones McDonald
Kathleen Bond	Catheryn Brooks	Jewel Kroeger	Margaret Orrell
Frances Brown	Beverly Carr	Jewel Ledford	Willie Mae Roberts
Hazel Cole	Lorraine Capehart	Lucile Maxwell	Marjorie Steffner
Dorothy Durham	Mary Cooley	Mabel Morgan	Marie Tripp
Quinn Dean	Lorraine Elrod	Lorraine Hammond	Velma Green
		Johnie Rawlings	



• 1930 CHAMPION •



### Bankers

CARL GIBSON, *President*

#### MEMBERS

MARY K. McCOLLUM	DOROTHY ADAMS
ERNESTINE STACY	HARRY CORFITZSON
JANET MOORE	ELIZABETH WALTHOUR
MARGARET LUTHER	HASSIE GREENE
FRANCES FISHER	MILDRED LAWSON
ELSIE LOWRY	HENRY TATE
JOE GRIFFIN	MATTIE LEE LOVE

• 1930 CHAMPION •



### Bookstore Group

VIRGINIA BROOKS . . . . . *Supervisor*

ALMA EARLY . . . . . *Manager*

ANNIE MAYE BROWN . . . . . *Cashier*

EVELYN STEWART . . . . . *Chief Clerk*

ELIZABETH RAWLINGS . . . . . *Clerk*

MARGARETE WALLACE . . . . . *Assistant Clerk*

MARY BOULDIN . . . . . *Stock Girl*

ARTHUR WESTBROOKS . . . . . *Stockman*



1930 CHAMPION



### Commercial Teachers

#### MEMBERS

MRS. GEORGE RICE                      MR. W. A. PRICE  
MISS IDA NICKEL                      MISS LETHA SMITH  
   MRS. HAZEL BARTON

1930 CHAMPION



### Orchestra

#### MEMBERS

GEORGE BARNES	CHARLES CRUMP	ARLEEN JOHNSON
J. G. BAKER	ELLA DAILEY	WOODROW KELLEY
BROWN BLAKELY	JAMES DAVIS	MORRIS KING
MARY BOYD	EDNA GOTHARD	EDNA LAY
OSCAR BURNETTE	SHEFFIELD FELDMAN	PHILIP LICHTENSTETTER
GEORGE COLLINS	OLIN JACKSON	GIFFORD MARTIN
STELLA McCARTY	MARI SCHNEIDER	
CHARLES MURRAY	LEWIS SIR	
EDMOND PARKS	LOUISE SLATEN	
JAMES PERKINSON	JAMES SMART	
GLADYS ROBERTS	MANNING SULLIVAN	
J. D. SANDERS	GLENN TALLANT	
	KATHERINE TURNER	
	ALMA TYLER	
	RUTH WILBUR	
	PAUL WILHOITE	
	LEE SHANKLE	



1930 CHAMPION



### Varsity Glee Club

GENEVA EZELL . . . . . *President*  
 GLADYS ROBERTS . . . . . *Secretary-Treasurer*  
 KITTIE BOLTON . . . . . *Librarian*  
 ELLEN WATSON . . . . . *Pianist*

#### Sopranos

GRACE BURK	BLANCHE KILLOUGH	BESSIE FOSTER
BARBARA BUSH	DOROTHY LEE	KITTIE BOLTON
CATHERINE COX	GLADYS ROBERTS	LYDIA DAVIS
	BESSIE SNODGRASS	
	REVA TREVENA	

#### Altos

CLEONA BROWN	ADA HIGDON	ELIZABETH VENABLE
GENEVA EZELL	FRANCES LONGLEY	ROSE WHITE

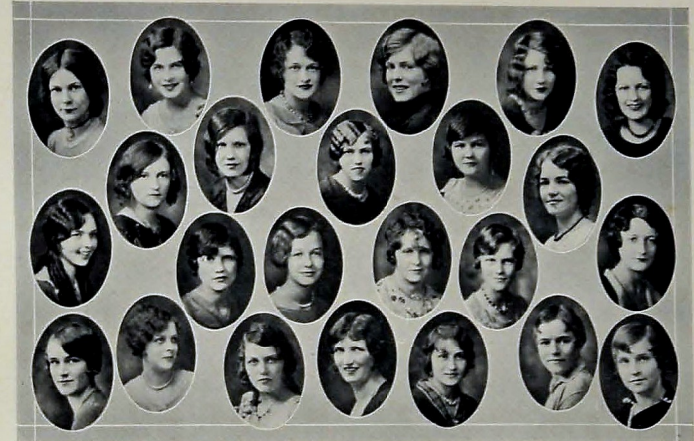
#### Tenors

SHEFFIELD FELDMAN	WILLIAM McMAHAN
LEONARD EXUM	SAM ROBINSON

#### Basses

JOHN BOYD	WILLIAM STEWART
-----------	-----------------

1930 CHAMPION



### Girls' Glee Club

LYDIA DAVIS . . . . . *President*  
 DOROTHY LEE . . . . . *Vice-President*  
 BETTYE CLEMENTSON . . . . . *Secretary-Treasurer*  
 FREDIA COOPER . . . . . *Pianist*

#### MEMBERS

MARGARET ASHWORTH	LELA AGNUS HUDSON	ELIZABETH SCHMITT
ETHEL BACON	EDNA LAY	ISABELL SPRUELL
JUANITA BALL	ELSIE LOWRY	ALMA STONER
MILDRED CASTLEMAN	RUTH McCONNELL	EVELYN STRICKLAND
JULIA CHILDERS	NAOMI PICKERING	DOROTHY USMILLER
JEWEL GANNAWAY	EVELYN REESE	EDITH WALKER
IRENE GRANT	RUTH RICHESON	ELIZABETH WALKER
BERNICE HARRIS	EVELYN ROBINSON	CATHRYNE WILBUR
VIRGINIA HENRY	EDNA RUSSELL	MONA CRABTREE



1930 CHAMPION



ERNEST G. TAYLOR

### Outlook of the Alumni

Several thousand young men and women have gone out from the portals of Central High School into the game of life. They are making good; they are reflecting credit on their Alma Mater. There is something about Central spirit that makes one want to do clean and worth while things. That is why Central alumni are succeeding. That is why they point with love and pride to a great Purple and Gold institution nestling at the foot of historic Missionary Ridge. They have had a part in its splendid growth in the past, but much remains to be done now and in the future.

The outlook of the alumni was never brighter. The pot of gold at the rainbow's end can become a glorious reality. A larger service for Central and humanity is possible. A splendid faculty, headed by a great principal, can be more loyally supported; and a fine student body can be brought to realize more and more that out in the teeming world are alumni who are backing them to the limit. A brighter, bigger day for Central is at the dawn. With all working together in spirit and fellowship there is no limit to the things that can be accomplished. Central faculty and students—the alumni pledge you their support.

ERNEST G. TAYLOR

1930 CHAMPION



### P.T. A. Officers

MRS. G. L. ROUS . . . . .	President
MR. S. E. NELSON . . . . .	Vice-President
MRS. J. E. WALKER . . . . .	Vice-President
MRS. W. A. LUTHER . . . . .	Vice-President
MRS. J. W. HELMS . . . . .	Vice-President
MRS. J. W. POORMAN . . . . .	Corresponding Secretary
MRS. WILLARD KEEN . . . . .	Recording Secretary
MRS. S. W. STEFFNER . . . . .	Treasurer



1930 CHAMPION

## Senior Play

## "AS YOU LIKE IT"

## CAST

EDWARD RHODES . . . . .	Duke, living in banishment
ORVILLE HARRIS . . . . .	Frederick, his usurping brother
JOHN BOYD } . . . . .	Lords attending on banished duke
THOMAS ERWIN } . . . . .	
CARL GIBSON . . . . .	Le Beau, a courtier attending on Frederick
PHILIP LICHTENSTETTER . . . . .	Charles, wrestler to Frederick
JAMES ROBERSON . . . . .	Oliver
DUDLEY BELL . . . . .	Jaques
CARL PFITZER . . . . .	Sons of Sir Rowland de Boys
	Orlando
PHILIP LICHTENSTETTER . . . . .	Adam
ERNEST GRAY . . . . .	Dennis
	Servants to Oliver
EDWARD HEIDER . . . . .	Touchstone, a clown
CICERO MCCLURE . . . . .	Sir Oliver Martest, a vicar
WILLIAM LAYSON . . . . .	Corin
JAMES MCMAHAN . . . . .	Silvius
	Shepherds
NORTON RUSBRIDGE . . . . .	William, a country fellow in love with Audrey
RUTH DONIGAN . . . . .	Hymen, god of marriage
EDNA GREENE . . . . .	Rosalind, daughter of the banished duke
GLADYS ROBERTS . . . . .	Celia, daughter to Frederick
MARY THOMASSON . . . . .	Phebe, a shepherdess
BETTY HARPER . . . . .	Audrey, a country wench

## Girls' Varsity Chorus

## MEMBERS

DOT LEE  
ELIZABETH SNODGRASS  
LYDIA DAVIS

FRANCES LONGLEY  
ELIZABETH VENABLE  
ADA HIGDON  
ROSE WHITE  
CLEONA BROWN

GENEVA EZELL  
CATHERINE COX  
REVA TREVENA

## Dancing Chorus

## MEMBERS

KATHLEEN THORNTON  
HELEN COPELAND

FRANCES HARRIS  
MARY ALICE WITT

VIRGINIA LOWRY  
DOT USMILLER



Book Four

Je Faire Ladies



## Ideal Woman

**I**N ye olden days it was a custom for the knights of the court to select one among their ladies who seemed to exemplify the ideal type of womanhood and to make her "queen of love and beauty." Even in those days of chivalry, it was no easy task to find a woman who possessed all of the individual traits of the "ideal woman."

The senior class of 1930, wishing to show their appreciation of true worth in womanhood, have selected six characteristics which they felt should be embodied in the ideal type of schoolgirl—namely, brilliancy, originality, friendliness, sympathy, naturalness, and constancy.

Realizing that one person could hardly possess all of these individual traits in a superlative degree, the class selected six girls, each one of whom they believed was an individual example of that characteristic.

ELIZABETH WHITE.





Laura Roberson, Original

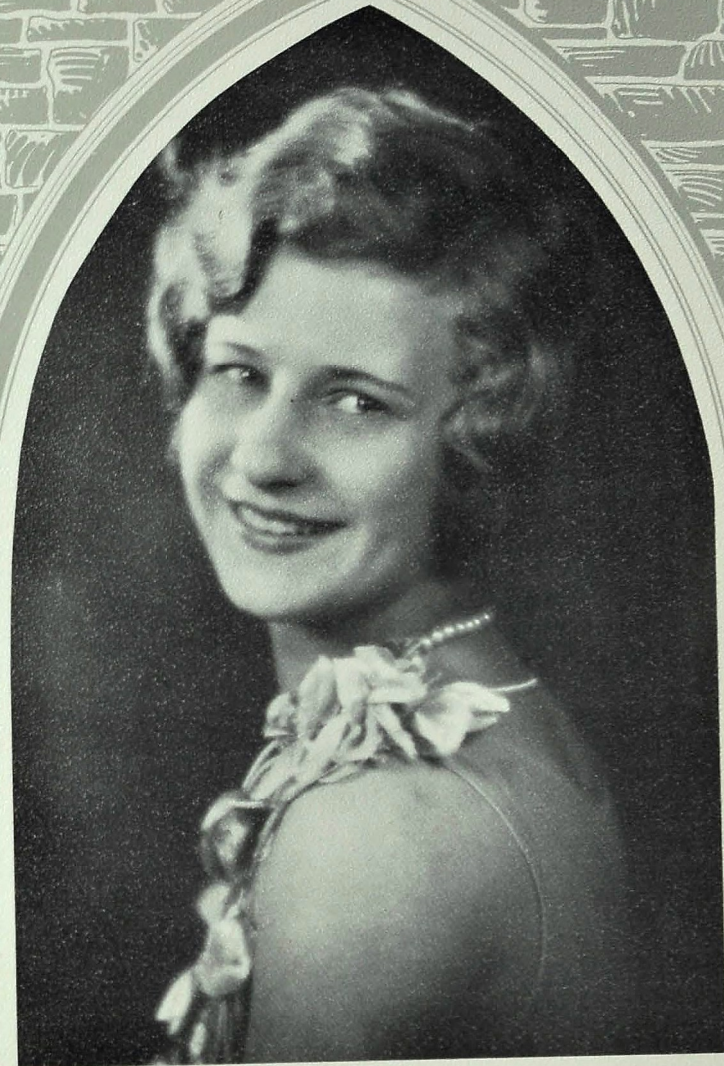


Edna Greene, Intellectual





Inez Larky, Natural



Almarie White, Constant





Cynthia Sanders, Sympathetic



Reba Kimble, Friendly



• 1930 CHAMPION •

*Loveliest of women! Heaven is in thy soul,  
Beauty and virtue shine forever around thee,  
Bright'ning each other! Thou art all divine!*

—ADDISON.



Book Five

The Features







## 1930 CHAMPION

## Calendar

Time . . . . . 1929-1930 Place . . . . . Central High School

## CHARACTERS

*Knights* . . . . . Seniors *Pages* . . . . . Sophomores  
*Squires* . . . . . Juniors *"Les Enfants"* . . . . . Freshmen

## SEPTEMBER

9. Ye court opened for ye knights, squires, and pages to enroll in ye lists.
10. "Les enfants" enroll for first time in Central.
11. Tournament opens and ye ushers begin patrole duty.
17. Ye exponents of science reorganized "Ye Biology Club."
18. First fall meeting of ye Annual Staff.
20. Ye knights of ye gridiron dash forth to joust with ye knights of Decherd High and return with a 13-0 victory.
25. Ye ladies and knight of ye Senior Class hold first meeting for election of ye class officers.
26. Lord Nelson offers two awards for ye best efforts in ye literary field on "Ye Purple Spirit." Ye tintage makers organize ye Camera Club. Ye Varsity Glee Club elects officers for term.
27. Again ye gridiron knights bring home "venison" from La Fayette High with a victory of 18-6. Ye Senior Class meets to continue ye election of ye class officers.

## OCTOBER

2. Ye knights of chemistry and physics reorganize Dalton-Farraday Science Club.
3. Ye Girl Reserves organize for a year of work.
4. Ye University school goes down before Central warriors to the tune of 18-0.
7. Ecclesiastical order of ye Boys' Hi-Y reorganized.
8. Ye board of publications meets and promise first issue of Ye Digest soon.
9. Ye knights hold third meeting.
10. Ye Senior Class meets for election of ye Class Day speakers.
11. Ye military announces officers' roster.
12. Knights of Memphis gridiron go home with 13-12 defeat.
15. D. M. Raulston is elected court cheer leader. Ye Sergeants' Club organizes.
16. Announcement is made that ye knights will present "As You Like It." Ye military officers form Officers' Club. Ye Art Studio finished and classes move in.
17. Chapel program sponsored by ye Parent-Teacher Association.
18. First session of ye Press Convention and banquet for out-of-town visitors. Ye Bradleyites take a 13-6 defeat at the hands of the Purple warriors.
19. Second session of Press Convention, University football game, sight-seeing trip, and tea at Penwomen's Club.
23. Digest announces the offer of four scholarships to ye Central seniors.
25. Baylor almost downs Purple with a score of 12-12.
27. Ye knights hold fourth meeting to complete election of Class Day speakers.
28. Ye Junior Red Cross Council organized by knights, squires, pages and "les enfants."
30. Announcement of ye Gorgas Prize Essay Contest. All state orchestra meet at Knoxville with three of ye Centralites attending.
31. Orchestra meet continued.

## 1930 CHAMPION

## NOVEMBER

1. Much gloom descends on Castle Central because ye Etowah school retired from field with a victory of 7-6. Central numbers of ye faculty attend educational meet in Knoxville. Ye tintage makers (Camera Club) entertain with a skating party.
5. Ye military musicians form Band Club.
6. In ye Digest is announced the names of the "military faire ladies."
8. Ye Winchester team goes home in defeat.
11. Armistice Day program presented by Officers' Club.
12. United States Army Band plays at Memorial Auditorium.
14. Ye science department sponsors health program.
15. Ye "Fighting Irish" fail to fight and retire with a 26-0 defeat.
18. Ye Jubilee pep meeting over defeat of Notre Dame.
20. Ye Digest offers four ten dollar prizes for string books at end of school year.
22. First snow fall of ye season, and Rhea county joust postponed.
27. Ye court of City High challenges ye court of Central to a ticket-selling contest.
28. Ye senior Class meets to stir up ye class "Pep" for ye coming turkey day tournament.
30. Ye turkey day joust ending in victory for ye Purple warriors with a score of 39-0.

## DECEMBER

2. Ye opening of ye Grand Opera season.
3. Ye big pep meeting of year to celebrate ye victory over City warriors.
4. Winners of ye "Insect Collection Contest" announced.
5. Announcement of ye engagement and approaching marriage of Miss Elizabeth Newberry and Henry B. Robinson.
6. Presentation of "As You Like It" by ye knights.
11. Ye Officers' Club initiates ye members.
20. First game of ye girls basketball team with Interstate team, which ended in defeat for ye Central team with 34-31. Beginning of ye Christmas festivities and holidays.
25. Christmas!
30. Ye five C's campaign is opened, sponsored by ye Leaders Club.

## JANUARY

1. Ye basketball team beats Vine Street Pharmacy, 29-23.
6. Ye Parent-Teacher Association holds fathers' meeting.
9. Ye Domestic Art Department presents style show.
10. Ye Latin Club, "Senatus Romantus," formed.
11. Ye girls' and boys' basketball teams victorious over South Pittsburgh High.
13. Ye examinations begin.
16. Ernestine Stacy made an usher because of Blanche Killough's marriage.
19. Ye Varsity Glee Club girls sing at ye First Presbyterian Church.

## FEBRUARY

7. Ye annual minstrel show presented.
14. Ye knights hold annual senior party.

## MARCH

7. Ye squires give annual play.
21. Ye operetta presented.
24. Ye astronomy lecture.

## MAY

1. Ye good ole May Day.
19. Ye knights enjoy picnic.
21. Ye old time Class Day for knights.
22. Ye knights have Senior Day.
23. End of ye four-year tournament in ye grand ole knight graduation.



• 1930 CHAMPION •

*Autographs*

• 1930 CHAMPION •

*Autographs*



## What's in a Name?

**S**IR Richard of Langston Castle in Eddington, was in a furious temper. The Cox crowing Early in the morning had awakened him to a Gray world. His gouty foot was Aiken and his Brewer had put too much Fussell in his ale. His daughter was raising Cain because he wanted her to marry Lawrence, the son of his old friend Thomas, the ship Chandler. Thomason was a Cooper and had plenty of Mooney. Sir Richard wanted a rich and Hale son to Lennon in his old age.

To go back a little, Sir Richard's daughter, Lady Ophelia, who was (H)arris to all of her father's estate, had fallen in Love with a Roberson, Harold Fredrick, whom his mother named for the hero in Arledge's "Mary Theresa."

Ophelia saw Harold first where the Melville and Scareborough Rhodes meet at Lansford. He being an artist was seated at his Ezell, when she rode by attended by McArthur, a Lackey. Harold knelt in the dust and cried "Olinger, my lady, and let me paint you!" It was a case of Love at first sight for both. Harold later told his friend Henry, the Wheeler, "She is such a Gurley girl and her name Pfitzer like the name Rose fits the flower."

A few days later she received a Stonecipher from him begging her to meet him at Maxwell that evening. At dusk, sitting under a Crabtree talking of their future, he took her gently in his arms and called her his Valentine. Over in a Massey clump of Bracken a blue Byrd sang "Holder! Holderman!" while a cynical Jay screamed over and over the one word "Doty."

They walked home through the Greene, Green forest, crossing the Rus'bridge where the Beaver lived at the intersection of the Crystal clear Brooks. Leaving the Wilder scenery behind they came to the fields where the Farmer had begun to Garner his grain in preparation for the autumn Feaster. They finally reached the castle after darkness. A Beam of light from the open door showed Ophelia, Clinigan to Harold; she hurried in calling, "Goodnight, my Thweatt."

She confided her secret to her maid-in-waiting Leath, who, horrified, blurted out the truth about Harold's father. Ophelia wept bitterly, but finally went to her father and told him of her interest in Harold. Sir Richard thundered, "Lieb that Robinson alone or I'll put a Price on his head! Roberts, the robber, is Sharp, but I am Smartt and I won't Standifer it. Harold shan't marry you nor encRoach on my estate by even a Stone."

"But, father, though he is a Poorman he has Witt," she protested. "He suits me better than that Archey Lawrence, and it's not Wright to part us!"

"I'll Killough, I'll kill him," raved her father, "and I'll keep you prisoner for Weeks until you say with your own lips 'Go to the Kirk-patrick and get the Parson."

I will marry Lawrence! If you do this, I will give you a White dress Scharer than a spider's Webb and a White cloak and hood for your wedding."

Ophelia, warned by his scowl, turned and hastened to her room. Knowing that she could Pledger maid Lee to secrecy, she began to Pack and to plan her elopement. McDowell, who loved Lee, was sent to Harold to tell him to meet her in the Woods at the gate O'Rear of the Park, near the Underwood, when the Bell should strike three. She said "Tell him to give four Knox when he hears me."

For her twin sisters Elsie and Esther, who were ill with "Le Feber", as Doctor Lebron called it, she left a Card that said "Dear Hulsey and Hester: I am escaping by the Crabtree near my window, and I know father will tell the Stewart to Hewitt down. Stay Close to father and comfort him! By this time tomorrow I will be Bowling along in a Cart (over) Land with Black Cate as my Handy woman. I will send her to you to learn how my father takes this, but Heider from him. Think of me (H)amblin through Norton, Franklin, Shemwell and other villages and picture me as I Frye Bacon and eggs for my love. After you Reed this Burnett!"

Now it is little to be wondered that Sir Richard felt ill used when he came down that morning. However, his morning ale was just right; the Baker had surpassed himself in making rolls; the Hunter had shot a fine Pollard from which the cook, Erwin, had prepared delicious steak; and his gout was so much improved that he felt justified, for the first time in Weeks, in eating as much as he wanted.

After breakfast, when his secretary McClure came to tell of Ophelia's elopement, he merely grunted, then smiled and said, "When she returns for something to eat, Turner away. A month or two of near starvation will hurt neither of them. Later, I'll take them both in and make Harold my Chamberlin."

ELIZABETH WHITE.





## Contributors

NATHAN L. BACHMAN, *Attorney*, 6-8428 . . . . . Hamilton National Bank Bldg.  
 BAKER DRY GOODS STORE, 2-5012 . . . . . 1424 Dodds Avenue  
 L. G. BALFOUR CO., *Jewelers* . . . . . Attleboro, Mass.  
 BENSON PRINTING CO. . . . . Nashville, Tenn.  
 CAMERON & BARR BAKING CO., 6-8176 . . . . . 1615 Cowart  
 CAPITOL ENGRAVING CO. . . . . Nashville, Tenn.  
 E. Y. CHAPIN . . . . . Chattanooga, Tenn.  
 CHATTANOOGA BUTTON & BADGE MFG. CO., 6-6934 . . . . . 720 Walnut St.  
 CHATTANOOGA DRY CLEANING CO., 6-6734 . . . . . Sixteenth and Williams  
 CHATTANOOGA GAS CO., 6-0191 . . . . . 809 Broad Street  
 CHATTANOOGA MEDICINE CO., 3-0030 . . . . . St. Elmo, Tenn.  
 DR. EWING B. CONNELL, 6-7714 . . . . . Medical Arts Bldg.  
 JUDGE WILL CUMMINGS . . . . . Hamilton County Court House  
 DAVISON CLOTHING CO., 6-1218 . . . . . 811 Market Street  
 S. T. & W. A. DEWEES CO., *Grocers*, 7-1121 . . . . . 810 Market Street  
 EDWARDS & LEBRON, INC., *Jewelers*, 6-7175 . . . . . 805 Market Street  
 W. F. FISCHER & BRO. CO., *Jewelers*, 6-0922 . . . . . 801 Market Street  
 FOX BROS. CO., *Wholesale Grocers*, 6-3139 . . . . . 1215 King Street  
 A FRIEND . . . . . Chattanooga, Tenn.  
 FULMER, REEVES & WARE, *Men's Clothing*, 6-4522 . . . . . 720 Market Street  
 GASTROVE MEDICINE CO., 6-9130 . . . . . 825 East Third Street  
 C. A. GUTHARDT, *Photographer*, 6-7335 . . . . . 726½ Market Street  
 HARDIE & CAUDLE, *Men's Clothing*, 6-7032 . . . . . 809 Market Street  
 HIGHLAND TRUST & SAVINGS BANK, 2-5224 . . . . . 1424 McCallie Avenue  
 HOME ICE CREAM CO., 2-2521 . . . . . 1211 Watkins Street  
 HOWARD'S CLEANERS, 2-9532 . . . . . 1631 McCallie Avenue  
 ROY JACKSON, *Insurance* . . . . . 909 First National Bank Bldg.  
 JOY'S, *Florists*, 6-7168 . . . . . 817 Market Street  
 KING, DOBBS & CO., *Wholesale Grocers*, 6-1251 . . . . . 416 East Eleventh Street  
 L. C. LEACH & CO., *Jewelers*, 7-2841 . . . . . 735 Market Street  
 D. B. LOVEMAN CO., *Department Store*, 6-0161 . . . . . 800 Market Street

## Contributors

GEORGE D. LYNCH & CO., *Insurance*, 6-6916 . . . . . Hamilton National Bank Bldg.  
 M. F. McDONALD GROCERY CO., 2-3125 . . . . . 2602 East Main Street  
 MARTIN-THOMPSON CO., *Sporting Goods*, 6-2433 . . . . . 706 Cherry Street  
 MILLER BROS. CO., *Department Store*, 7-1251 . . . . . 629 Market Street  
 THE DAVID J. MOLLOY CO. . . . . 2857 N. W. Avenue, Chicago, Ill.  
 MOUNTAIN CITY BUSINESS COLLEGE, 6-7157 . . . . . Times Bldg.  
 MOUNTAIN CITY STOVE & ROOFING CO., 6-0211 . . . . . Newby  
 MUTUAL DRUG CO., 2-4984 . . . . . 2100 McCallie Avenue  
 THE OCEANNA, *Lunches*, 2-9237 . . . . . 1708 McCallie Avenue  
 OFFICE SUPPLY CO., 6-8423 . . . . . 118 East Eighth Street  
 T. H. PAYNE CO., *Books and Office Supplies*, 6-9818 . . . . . 823 Market Street  
 PERRY'S KORNER, *Auto Repairs and Service*, 2-3138 . . . . . 2600 McCallie Avenue  
 PHILLIPS PLACE, *Lunches*, 2-9198 . . . . . 511 Dodds Avenue  
 RIDGE DRUG CO., *Wilbur D. Hodges*, 2-1171 . . . . . Chamberlain and Dodds Avenue  
 E. C. ROACH, *Meat Market*, 2-4122 . . . . . 2206 McCallie Avenue  
 ROGERS-BAILEY HARDWARE CO., 7-2348 . . . . . 1146 Market Street  
 R. K. SCHOLZE, *Grocer*, 2-2131 . . . . . 415 Dodds Avenue  
 SCRUGGS BROS., *Bakery*, 6-2712 . . . . . Market House  
 JAMES M. SHAW CO., *Men's Clothing*, 6-7149 . . . . . Market at Ninth Street  
 SILVER SEAL ICE CREAM CO., 7-1161 . . . . . 611 East Main Street  
 L. JACK SPENCE, INC., *Florist*, 7-1171 . . . . . 530 Market Street  
 SPITLER-RAY FURNITURE CO., 2-1514 . . . . . 2607 East Main Street  
 T. B. STAPP, *Bookstore* . . . . . 624½ Market Street  
 STERCHI BROS. & FOWLER FURNITURE CO., INC., 7-2151 . . . . . 703 Broad Street  
 TEMPLETON'S, *Jewelers*, 6-7628 . . . . . 12 West Eighth Street  
 THE TENNESSEE ELECTRIC POWER CO., 6-1121 . . . . . 540 Market Street  
 UNITED DAIRIES, INC., 6-5744 . . . . . 1017 East Twenty-third Street  
 WARE & WARE, *Men's Clothing*, 6-9164 . . . . . 618 Market Street  
 WHITE SWAN LAUNDRY, 6-2103 . . . . . 227 East Eleventh Street  
 WILKINS CANDY CO. . . . . Chattanooga, Tenn.  
 THE WILLIAMS GLASS CO., 6-8353 . . . . . 814 Lindsay Street



## THE ACCOLADE

*The youth of olden times when chivalry  
 Set standards for the measure of a man,  
 Served an apprenticeship of many years  
 For knighthood; and toiling day by day  
 In menial tasks, the polishing of arms  
 Or tending of the warriors' gallant steeds,  
 He learned that he who masters little things  
 May master large, and that the truest knight  
 Is one whose vows of loyalty and faith  
 Embrace the daily round of human life  
 As well as stirring battles with the foe.  
 So, when at last the days of service through,  
 The eager squire bent knee before his king,  
 Professed his knightly vows: to right the wrong,  
 Protect the weak, and ever keep the faith;  
 When he received his accolade, faring at once  
 Forth on his quest, he went prepared for life,  
 Not stupidly, as one who fights with windmills,  
 But wisely, knowing values, knowing truth.*

*The days of chivalry are gone, but still  
 Youth learns by little tasks to meet the world.  
 As knight his king so we our Alma Mater  
 Have served each day for knowledge, wisdom, truth,  
 In menial tasks of exercises, problems,  
 For four long years as infants, pages, squires,  
 And now our Alma Mater bestows our accolade.  
 We vow as ever youth has done to keep faith  
 With ideals we have learned within these walls;  
 To protect the weak in gentleness and kindness,  
 And to right the wrong. The banner we have loved here  
 Shall never suffer for our having borne it.  
 And as triumphantly and yet sadly,  
 We leave upon our quest, our hearts re-echo  
 A pledge of loyalty to thee, dear Central High.*

EDNA GREENE.









