





## FOREWORD

*WHEN Time with corroding finger  
Has wrought on memory's page,  
When associations no longer linger,  
But new scenes and faces you engage,  
Indulge in sweet reflection,  
Feel the thrill of recollection.*

*From the realm of memory's kingdom  
Woo them gently one by one;  
Scenes of sweet association,  
Hallowed days of work and fun;  
Forget not study day and night,  
Interspersed with pure delight.*

*In this treasure chest so precious  
From the dim and misty past,  
May you meet again in memory  
Central mates and friends so fast;  
If you find that this is true,  
We have done what we would do.*

*The Editors.*



## CONTENTS

CLASSES

MILITARY

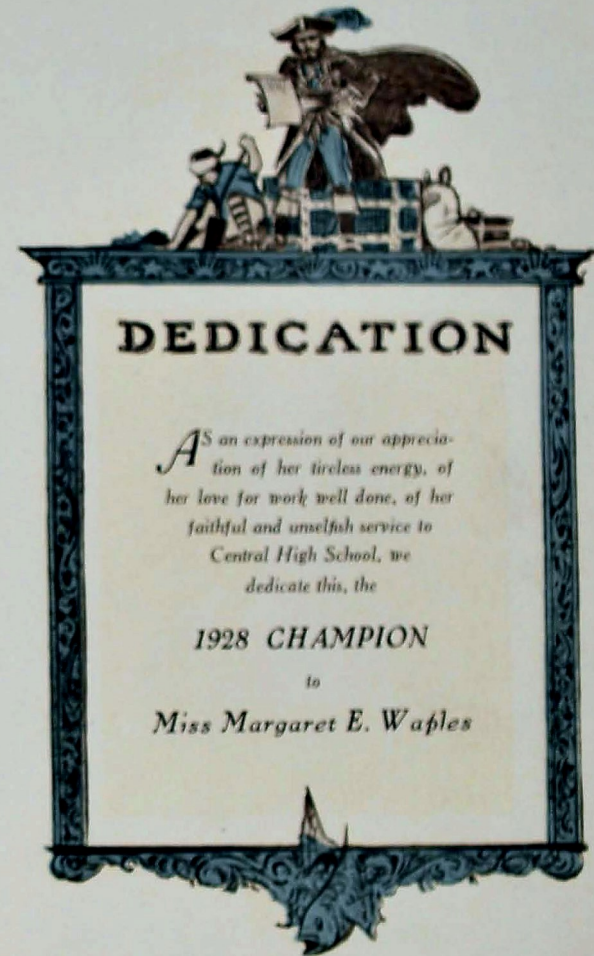
ATHLETICS

ACTIVITIES

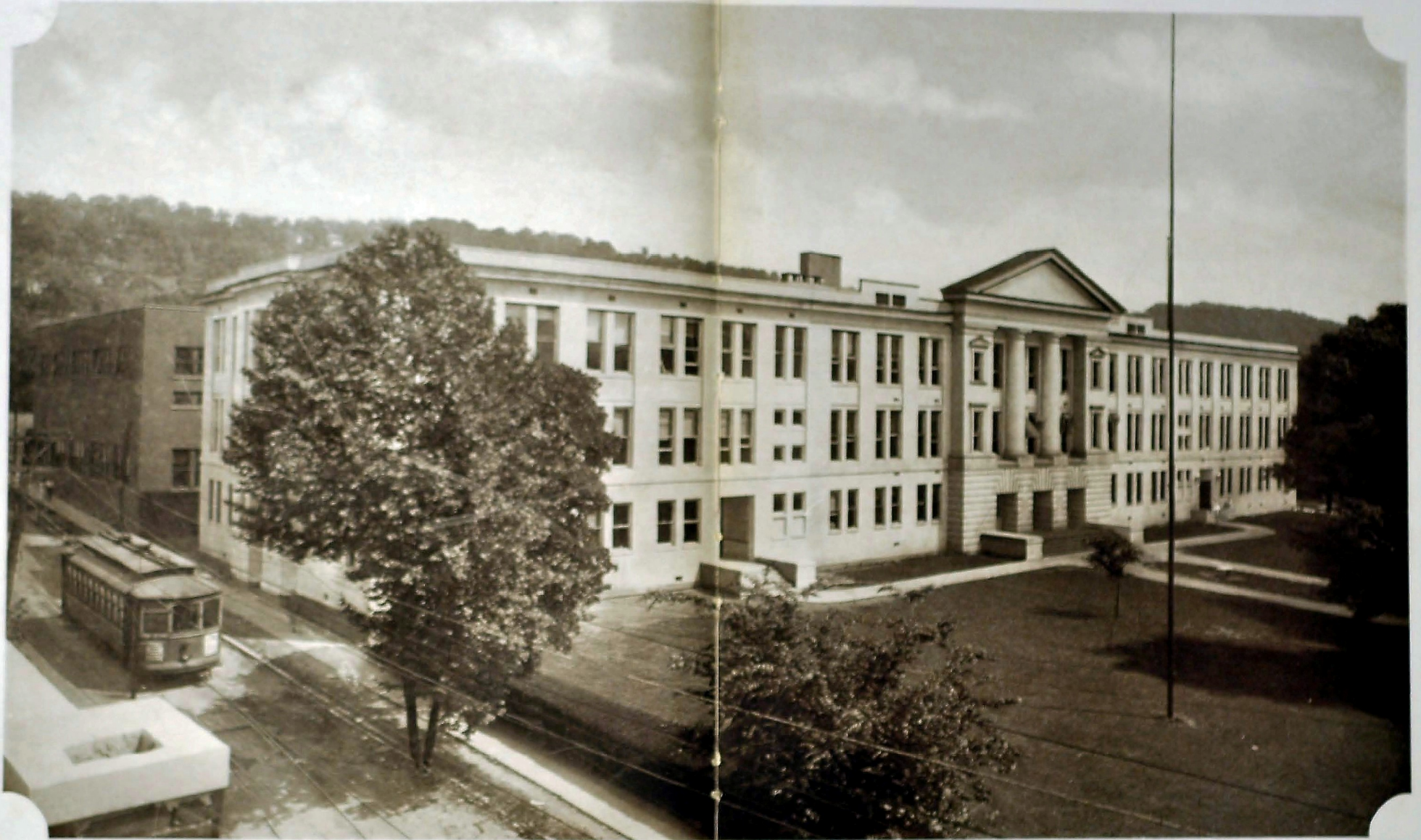
FEATURES















Board of Education of  
Hamilton County

Mrs. H. R. Lacy . . . . . *Chairman*  
Supt. J. E. Walker . . . . . *Secretary*

E. Y. Chapin  
D. M. Raulston  
Hunter Furches  
W. R. Roberts  
Mrs. L. M. Coleman



Mr. S. E. Nelson, *Principal of Central High School*



## Heads of Departments



W. H. TEMPLETON  
*Mathematics*

MRS. JOHN A. SHELTON  
*English*

J. STEGER HUNT  
*Science*

CHAS. J. ANDERSON  
*Manual Arts*

MISS SUE FINLEY  
*Music*

W. A. PRICE  
*Commercial*

MISS JANIE LLEWELLYN  
*Home Economics*

S. D. PETERSON  
*Athletics*

MRS. MARY D. CALLIS  
*School Mother*

W. P. BALES  
*History*

MISS MATTIE MAE ATKINSON  
*Physical Education*

J. A. SETLIFFE  
*Language*

MISS GRACE LASATER  
*Secretary*

MISS ESTHER HENNESSEE  
*Secretary*

MISS GARNET LEADER  
*Librarian*

COLONEL JAMES E. WARE  
*Military*

## Faculty

MISS MAMIE LOUISE BARNES  
*English*

MISS IDA NICKEL  
*Commercial Subjects*

MISS DOROTHY DICKERSON  
*Latin*

A. P. STEWART  
*Mathematics*

MISS KATHERINE BYNUM  
*History*

MISS SALLY MAY KING  
*English*

MRS. H. L. BROWN  
*French*

MISS FREIDA MYLIUN  
*Home Economics*

S. T. GANN  
*Mathematics*

MISS EDNA CROSS  
*History*

MISS MARY MORGAN  
*Spanish*

MISS BERTHA RUSSELL  
*Dramatics and Public Speaking*

J. D. SETLIFFE  
*History*

MISS EDMUND HOOSER  
*English*

MISS ELIZABETH NEWBERRY  
*English*

MISS CAROLINE LILLARD  
*Mathematics*





### Faculty



GUY M. SWINGLEY  
*Mathematics*

MRS. GEORGE RICE  
*Commercial Subjects*

MISS MARGARET WAPLEN  
*French*

MISS MILDRED WEIR  
*Science*

MRS. BLANCHE ROGERS  
*English*

MISS MARGARET LOWENTHAL  
*Mathematics*

MISS LUCILE EASTERLY  
*Home Economics*

J. A. HEADRICK  
*History*

MISS MARTHA GREY  
*English*

MRS. J. H. WITHERSPOON  
*English*

MISS ELIZABETH FISHER  
*English*

MISS BESSIE CLEMENTS  
*Spanish*

MISS LETHA SMITH  
*Commercial Subjects*

MRS. HAZEL BARTON  
*Commercial Subjects*

MRS. J. W. JACKSON  
*Latin*

CLERBURN HATFIELD  
*Manual Arts*

### Faculty



MRS. IDA M. LONGLEY  
*English*

J. L. HAIR  
*Mathematics*

W. D. VARNELL  
*Science*

MISS MARGARET TAYLOR  
*Home Economics*

S. Q. TALLANT  
*Mathematics*

MISS HELEN PRYOR  
*Latin*

MISS RUTH FAIN  
*Spanish*

MISS ELSIE JANE FLEMING  
*Science*

MISS MARY BRAGG  
*Science*

SERGEANT JAMES JONES  
*Military*

L. M. LEHITO  
*Printing*

H. B. ROBINSON  
*Physics*

MISS BEULAH PARKER  
*Mathematics*

J. J. FLETCHER  
*Auto Mechanics*

MISS AMY VINCENT  
*English*

MISS MARY ELLEN RICE  
*Spanish*

MISS VIRGINIA MURRAY  
*English*

MRS. W. H. TEMPLETON  
*Home Economics*



## "Central Is Twenty-one and Is Still Growing"

**I**N VIEW of the magnificent structure of the present Central High School, it is hard to realize that it was only twenty-one years ago that Central High School had its beginning.

In a small brick building on the northeast corner of Willow and Chamberlain Streets, the school was started, but it was not long before the enrollment outgrew such small quarters. Through the efforts of some leading citizens, public opinion was aroused to the needs of the situation and in 1906 the County Court passed a resolution authorizing the erection of a modern school building. The present site on Dodds Avenue was selected as a suitable location for a school and construction began the same year. As often happens in such cases, work on the building was delayed, thus making it necessary to hold classes for half a year in the building of the old Ridgedale Grammar School. Finally, however, the building was completed and in 1907 the school was opened with an organization of ten teachers and several hundred students. The original structure which consisted of what is now the center section was built at a total cost of \$75,000.

The first principal of the school was Mr. A. E. Darrow, under whose capable management splendid progress was made. So popular was the institution that at the end of the first year it was necessary to enlarge the building and an addition, the east wing, was made. Shortly afterward the Gymnasium was added and physical training became part of the curriculum.

The second principal was Mr. J. S. Zeigler, during whose administration the school grew steadily. In 1920 Mr. Zeigler was succeeded by Mr. S. E. Nelson.

During the eight years of Mr. Nelson's principalship the growth and development of the school have been continuous and rapid. The south wing, which contains the auditorium as well as class rooms, was added to the building in 1925. In 1926 the north wing completed the present structure, making the building one of architectural beauty and grace.

At present Central High School is one of the best equipped schools in the state while its scholastic standing places it on the list of accredited preparatory schools recognized from east to west. There are at present about sixteen hundred students and a faculty of more than sixty members. Central students and alumni now numbering in the hundreds or perhaps thousands, point with pride to their Alma Mater.

The history of the school from the beginning has been a brilliant one. The first twenty-one years of the life of a school or individual are usually fraught with doubts and uncertainties but now that Central has "attained her majority," everything indicates a future of continuous progress.

### Central's Twenty-one!

I hear a thousand voices,  
In notes blended sweet and clear,  
And still thousands more advancing  
Join in and listen there.  
It is a rare occasion,  
Which charms the very air;  
Sons and daughters pay homage  
To their Alma Mater fair.

Myriad and myriad of voices  
Chime together in familiar song,  
And others speak their praises  
Of experience rich and strong.  
No note of sadness is sounded,  
None with her can compare;  
Sons and daughters pay homage  
To their Alma Mater fair.

Up from the ranks advancing,  
What can the meaning be?  
Boys now grown into manhood,  
Doctors and lawyers I see,  
Each is bearing a banner,  
Proudly he holds it there;  
For sons and daughters pay homage  
To their Alma Mater fair.

At last the spell is broken,  
The dream unfolded lay;  
The cause of this rare occasion,  
"Central's twenty-one," they say,  
"All who know her love her,  
No one unfaithful there;  
Sons and daughters pay homage  
To their Alma Mater fair."







SENIORS





### Senior Class Officers

EUGENE MAYER	President
✓ MARY HELEN RICHARDSON	Vice-President
HOWARD ANDERSON	Secretary-Treasurer





KERMIT MAXWELL

*"I know everything except myself."*

Track Team, '25, '26, '27; Military, '26; Grady Society, '26, '27; Hi-Y, '26, '27.

JESSIE EFFERSON

*"For Nature made her thus and never made another."*

Entered from Alton Park Grammar School; Athletic Association, '25, '26, '27; Enterpriser Society, '25, '26; May Festival, '25, '26; Junior Valley Ball Team, '25.

THELMA RAY

*"She is wise if I can judge her."*

Dixie Society, '25; Girls' Athletic Association, '25, '26, '27; Dramatic, '27.

LAURA KATE EVANS

*"Speech is great, but silence is greater."*

Athletic Association, '25, '26; May Festival, '26; Dixie Society, '27, '28.

VELMA BURRELL

*"The sweetest lives are those in duty wad."*

Entered from East Side Junior High School, '25; Dixie Society, '26.

GLADYS HICKEY

*"With thee conversing I forget all time."*

Enterpriser Society, '26, '27, '28, '29; Junior Carnival, '27; Junior Play, '27; Dramatic Club, '26, '27, '28; Bonito, '26, '27, '28.

MOZELLE VANDERGRIFF

*"MOM"*

*"She has the wisdom of many, and the wit of one."*

Entered from East Side Junior High, '25; President of Enterpriser Society, '25, '26, '27, '28; President of Girls' Athletic Association, '26, '27; Class Secretary, '26; Glee Club, '25, '26; Business Manager of Annual, '28.

JOHN H. HARRISON, JR.

*"What a piece of work is man! in apprehension how like a god!"*

Senate, '28; Orchestra, '26, '27, '28; Operetta, '27; Hi-Y, '26, '27, '28; Military, '26, '27, '28; Treasurer of Officers' Club, '28.



Senior Class



RAYMOND A. ALLEY

*"He won a man, take him all in all."*

President of Bow Hi-Y, '25, '26; President of Radio Club, '24, '25; Treasurer of Sophomore Class, '25, '26; Treasurer of Junior Class, '24; Military, '25, '26, '27.

PAULINE WILLIAMS

*"What is she but the means of happiness."*

Entered from East Side Junior High School; Basketball Team, '27; Operetta, '27; Enterpriser, '26, '27.

MARY LOU PURSLEY

*"I find earth not gray, but rose."*

Dixie Society, '27, '28; Girl Reserves, '26, '27; Athletic Association, '25, '26, '27; May Festival, '25, '26.

MARGARET EVELYN LERCH

*"JONNE"*

*"Remember this—very little is needed for a happy life."*

Enterpriser Society, '26, '27; May Festival, '26; Dixie Society, '27; Chess Basketball Team, '26.

GRACE MCCRARY

*"The mildest manners and the gentlest heart."*

Hi-Y, '27, '28; Enterpriser Society, '27, '28; Athenian, '26.

SAVANNAH JONES

*"Pleasure and action make the hours seem short."*

Dixie Society, '27, '28.

CATHERINE FLEGAL

*"CAT"*

*"Good luck go with thee."*

Entered from Cedar Hill Grammar School; Enterpriser Society, '27, '28.

CLIFTON LAWRENCE

*"CLICK"*

*"No one knows what he can do until he tries."*

Eagle Scout Club, '24, '25; Stage Crew, '25, '26; Bookstore, '27; Bank, '27, '28; Commercial "C," '28.



Senior Class





CONLEY FLEGAL

*"He is well paid that is well satisfied."*

B. O. T. C., '23, '24; Grady Literary Society, '21.

JUANITA ROBINSON

*"Honest work has its own reward."*

Athenian Society, '27; Athletic Association, '25, '26.

RUSHIA MAE CHILDRESS

*"Her heart was true as steel."*

RUTH GANSLER

*"I have kept the faith."*

GOW Athletic Association, '24, '25; Wellesley Society, '25; Athenian Society, '28; Dixie Society, '28, '29; Bankers, '28, '29.

GRACIE STANCEL

*"She smiled and shadows departed."*

Enterpen Society, '28, '29.

RUTH DAVIS

*"They're only truly great who are truly good."*

Athenian Society, '28, '29; Dixie Society, '28, '29; Girls H-Y, '21, '22; Athletic Association, '24, '25.

LOSS DE LANEY

*"My mind to me a kingdom is."*

Enterpen Society, '21, '22; Athletic Association, '25, '26.

JOHN WHEELER

*"Honor lies in honest toil."*

Senior Class



EDWARD HENDERSON

*"Ed"**"He knows what is what."*

Entered from Sunny Side, '24; Military, '24, '25; Bookstore, '25, '26; Bank, '28, '29, '30; Boys' H-Y, '21, '22.

ETHEL BURNETT

*"GEORGE"**"Diligence is the mother of good fortune."*

Entered from East Side Junior High School, '25; Bank, '26, '27, '28; B. H. Society, '28, '29; Athenian Society, '21, '22; Invitation Committee, '28.

RUTH BUFFETT

*"Patience achieves more than force."*

Bookstore, '21, '22.

CATHERINE CARSON

*"To be strong is to be happy."*

Enterpen Society, '24; Dixie Society, '25, '26, '27; Bookstore Club, '28, '29; Bank, '29.

KATHERINE SLIGER

*"KITTY LOU"**"She smiles and smiles and will not sigh."*

Enterpen, '25, '26; Dixie, '27, '28; Senate, '27, '28; Bookstore Club, '21.

HELEN CORNELIA MCCLURE

*"A perfect woman, nobly planned,  
To warn, to comfort, and command."*

Entered from Middletown High School, '27; Junior Carnival, '27; Junior Orator, '27; Girls' H-Y, '28; President of Ushers, '28; Athenian Society, '21, '22; President of Athenian Society, '28; Senate, '21, '22.

LILLIE BELLE BRUCE

*"BILLIE"**"Deep brown eyes running over with glee."*

Junior Carnival, '26; May Festival, '28; Operetta, '25, '26; H-Y, '28; Dixie Society, '26, '27, '28; Camera Club, '27, '28; Sponsor, '28.

JAMES WILSON

*"I have fought a good fight."*

Military, '25, '26.

Senior Class





JOHN HENDERSON

*"Looked upon by all as the man he was."*

MABEL CRITCHELL

*"Truth is the highest thing that man may keep."*

Assistant Secretary on Digest B&amp;E, '21.

LILLIAN HAMRICK

*"Peace is always beautiful."*

Athenian Society, '24, '25, '27, '28; Wellesley Society, '26, '27; May Festival, '27; Junior Carnival, '24.

ALYCE CHATWELL

*"TRIUM"**"Saying is one thing, doing another."*

May Festival, '24; Euterpean Society, '28; Girls' H-Y, '28.

RUBY BOWLING

*"BLONDIE"**"Mine humor is my life."*

Entered from Athens High School, '25; Girls' Athletic Association, '25, '26; Dixie Society, '25, '26; Girl Reserves, '24, '27, '28; Varsity, '28; Senate, '27, '28.

GUSSIE HENRY

*"Beauty soon is never lost."*

Athenian Society, '28; Dixie Society, '24, '27; Junior Carnival, '27; Wellesley Society, '28.

EVELYN WOOD

*"Genius is only great plans."*

H-Y, '27, '28; Athenian Society, '25, '26, '27; Orchestra, '27, '28; Varsity Glee Club, '27.

TOM MOORE

*"He is complete in feature, and in mind."*

Basketball, '25, '27; Football, '25; H-Y, '26, '27; Biology Club, '24; Mathematics Club, '27.

Senior Class



MARQUIS TRIPLETT

*"TRIP"**"His heart is as far from fraud as heaven from earth."*

Senate, '26, '27, '28; H-Y, '25, '26, '27, '28; Grady Society, '27, '28; Second Lieutenant Military, '27, '28.

LOUISE CARROLL

*"TED"**"She does little kindnesses which most leave alone."*

Athenian, '25, '27; Girl Reserves, '25, '26, '27; Glee Club, '26, '27.

EMMA L'HEUREUX

*"In every rank of great or small,"**"Tis industry supports us all."*

Wellesley, '27, '28; May Festival, '26; Girl Reserves, '27, '28.

EVELYN BRACKEN

*"TOOTS"**"Her beauty hangs upon the cheek of night."*

Girls' Athletic Association, '25; Dixie Society, '27, '28; May Festival, '25.

JULIA PEARL CLARK

*"BLONDIE"**"Still but deep."*

Dixie Society, '26, '27; Euterpean Society, '27, '28.

VIRGINIA VIOLA CLONIGER

*"Ambition has no risk."*

Euterpean Society, '25, '26; Athletic Association, '25, '26; May Festival, '26; Dixie Society, '27, '28.

FRANCES EVA STANDIFER

*"Some, like stars, shed their light abroad."*

Entered from Gadsden High School; Wellesley, '27, '28.

RAYMOND HENRY BLAKE

*"SQUIRE"**"Difficulties are the things that show what men are."*

Military, '25, '26; Baseball, '26, '27; Letterman's Club, '27; H-Y, '26, '27.

Senior Class





JOHN FRANCIS BEENE

*"A man's a man for a' that."*

H. Y. '25, '26, '27, '28; Military, '25, '27, '28; Officers' Club, '25; Grady Society, '25.

RUTH MAY CONLEY

*"Her air, her manners, all who saw admired."*

Honor Cards in Bookkeeping, Typewriting, D. R.

MARIE ANNICE ERWIN

*"Her face portrays pure goodness of the soul."*

Bank, '26; Bookkeepers, '27, '28; Dixie Society, '28.

SALLIE CARIETTA SMITH

*"Wisdom is the principal thing, therefore get wisdom."*

Entered in 1925 from North Chattahoochee Grammar School; Athletic Association, '26; Dixie Society, '27.

EARLINE BOWMAN

*"A kindly grace of manner and behavior."*

Enterpriser Society, '24, '25, '26; Usher, '27, '28.

JENNIE LOU GOTHARD

*"JEAN"**"Her voice was ever soft and gentle and low."*

Entered from East Side Junior High, '25; Girls' Athletic Association, '26; Dixie Society, '26; Enterpriser Society, '27, '28; Orchestra, '26, '27, '28.

MYRL BEAVER

*"Fairest is she who drives away the gloom with her smile."*

Minstrel, '25; May Festival, '25, '26; Senate, '25, '27, '28; Senate Cabinet, '25; Secretary of Enterpriser Society, '27, '28; Junior Carnival, '27; Camera Club, '28; Usher, '28; Band Sponsor, '28.

WILLIAM D. BURNETT

*"Ay—every inch a man."*

R. O. T. C., '25; Grady Literary Society, '28.

Senior Class



CHARLES HUDLOW

*"I have said everything when I have named the man."*

Military, '25, '26; Corporal, '26, '27.

MARGARET WOODLEY

*"She had all the charm of woman."*

Athenian Society, '24; Dixie Society, '25, '26; Glee Club, '24.

IRENE CALKINS

*"BOBBIE"**"Her life has many a hope and aim."*

Dixie Society, '25, '26, '27, '28.

LAWRENCE HAYNES ROGERS

*"Men of few words are the best men."*

Military, '25, '26; Grady Literary Society, '27, '28.

FRANCES LYLE

*"FRANK"**"In her tongue is the law of kindness."*

Dixie Society, '25, '27; Athenian Society, '27, '28; Bank, '26, '27, '28; Annual Board, '27, '28.

HAZEL McDONALD

*"Oh, what a face was hers to brighten light."*

Class Treasurer, '25; Enterpriser, '25, '26, '28; Operetta, '25, '26, '27; Minstrels, '26; Varsity Glee Club, '27, '28; Junior Carnival, '27; Digest Staff, '28.

BONNIE LOUISE SMARTT

*"She scatters sunshine wherever she goes."*

Dixie Society, '27, '28; Athenian Society, '26, '27; Girls' Athletic Association, '25, '26.

HOWARD SMITH

*"Be slow in choosing a friend, slower in changing."*

Military, '25, '26, '27, '28; Second Lieutenant, '27, '28; Sergeant, '26, '27; Officers' Club.

Senior Class





J. S. LAMB

*"There is music even in his discord."*  
Military, '25, '26; Orchestra, '25, '26.

ELEANOR WOOD

*"She is the very flower of youth."*  
Athenian Society, '25, '26, '27, '28; Orchestra, '27; Glee Club, '25, '26; Usher, '24; Honor Student.

LYDIA LIBERA

*"Tis good will that makes friends."*  
Dixie Society, '25.

EDITH KELLY

*"We must have reason for speech, but for silence we need none."*  
Entered from City High, '24; Usher, '25.

MIRIAM SPENCER

*"True eyes too sure and too honest to disguise the sweet soul shining through them."*  
Bonnie, '24, '25; Athenian Society, '25, '26, '27.

MYRTLE POWERS

*"A more sincere girl you will never find."*  
Biology Club, '24, '25; Dixie Society, '25, '26.

EDNA MAE PAINTER

*"None who could be neater or brighter or sweeter."*  
Athenian Society, '24; Wellesley Society, '25, '26, '27; Biology Club, '25, '26; Girl Scout; Track, '25.

WALTER LUTHER

*"His actions speak louder than words."*  
R. O. T. C., '25-'27; Captain of Band, '25; Badminton Club, '25, '26; Hi-Y, '25, '26; Grady Society, '25; Officers' Club, '27; Dramatic Club, '27-'28; Senior First, '27; Operetta, '27; Orchestra, '28; Varsity Glee Club, '28; Eagle Scout Club, '26.

Senior Class



PAUL B. ROGERS

*"Truth is strong and abideth forever."*  
Entered from East Lake Grammar School, '24.

DOROTHY ELIZABETH ENGERS

*"DOT"*  
*"The very pattern of girls."*  
Girls' Athletic Association, '25, '26; May Festival, '25, '26; Dixie Society, '25, '26; Freshman-Sophomore Party, '25, '26; Senior Party, '25, '26.

MILDRED BOWLING

*"Whose eyes were dark, but deep and full of meaning."*  
Entered from East Lake Grammar School.

MARY ESTELLE PARKER

*"She loved her friends, forgave her foes."*  
Entered from Sheffield High School, Alabama; Dramatic Club, '25.

HAZEL VAN HOOSER

*"A heart filled with joy and friendship."*  
Entered from Chattanooga High School, '26; Dixie Society, '27.

CHRISTINE BOSS

*"A musical adept."*  
Orchestra, '26, '27, '28; Dixie Society, '27, '28; Glee Club, '26; Hi-Y, '27, '28.

LEONE CRAWLEY

*"Fairest is she who drives away the gloom with her smile."*  
Wellesley Society; Girl Scout.

ANTON BUOL

*"Give me obstacles to overcome."*  
Entered from Cedar Hill Grammar School, '25.

Senior Class





ROSS BOYD

*"He hath no enemies."*

Military, '28; H-Y; Grady Literary Society.

ALICE SUE FAIDLEY

*"If eyes were made for seeing, then beauty is its own excuse for being."*

President of Wellesley, '27; Operetta, '25; Basketball, '26, '27.

LILA MAE BOOTH

*"In her tongue is the law of kindness."*

Enterpen Society, '28, '27; Wellesley Society, '25; Biology Club, '28.

NELLE CREASMAN

*"BONNY"*

*"Her looks were like a flower in May."*

Enterpen Society, '25; Athletic Association, '25; Junior Carnival, '28.

ALMA SHADDEN

*"Her qualities are such that we can speak well of her."*

Athenian Society, '27, '25; Glee Club, '25.

MARY DUNBAR

*"She hath a heart as sound as a bell."*

Girls' Athletic Association, '25, '26; Dixie Society, '27; Athenian Society, '27; Bank, '27; Honor Student, '26, '25.

VINNIE MAE ALDER

*"A rose was she with her sweetest petals not yet unfolded."*

Entered from East Side Junior High School, '25; Enterpen Society, '27.

MERVILLE TURNER

*"Small in stature, but large in wit."*

H-Y, '25; Military, '27.

Senior Class



HORACE C. MEADOR

*"A mind to conceive, a heart to understand, and a hand to execute."*

Sergeant (Bill) Weaville, '26, '27; Stage Manager, '27, '28; English Class Secretary, '27; Winner of Map Contest, '21, '28; Art Editor of Annual, '28.

DOROTHY ADELAIDE PRENTICE

*"For what her heart thinks, her tongue speaks."*

Athenian Society, '28, '26; Dixie Society, '27, '28; Junior Carnival, '27; Camera Club, '28.

ELIZABETH G. HUNTER

*"LIB"*

*"She was a scholar and a good and wise one."*

Entered from North Chattanooga Grammar School, '26; Athenian Society, '28; Usher, '28.

RUTH HARDEN

*"JANE"*

*"Peace charmed the street beneath her feet, and honor charmed the air."*

Enterpen Society, '25, '26, '27; Minstrel, '27; Officers Play, '27; Glee Club, '27.

CHARLOTTE BROWN

*"To be rather than to seem."*

Dixie Society, '26; Enterpen Society, '27, '28; Junior Carnival.

DOROTHY ELIZABETH CONSTANT

*"Her face portrays pure goodness of the soul."*

Thrill Sponsor's Club, '26, '27; Digest Staff, '25, '28; Enterpen Society, '28.

EDITH BURRELL

*"Friendship is a sheltering tree."*

Dixie Society, '27, '28.

GROVER CAMP

*"When shall we look upon his like again?"*

Sergeant, Company "K," '27; R. O. T. C. Battalion, '25, '26, '27; Honor Battalion of Fourth Company Area; Digest Staff, '25, '26, '27.

Senior Class





THOMAS ARMSTRONG

"TOM"

*"There is no good in arguing with the inevitable."*  
Military, '24, '25, '26, '27; Officers' Club.

HALLIE GRAHAM

*"Her part has not been words but deeds."*  
Dixie Society, '26.

THELMA LINDSAY

"BETTY"

*"Every day is a fresh beginning, every morn is the world made new."*  
Ministry, '25; Biology Club, '25, Dixie Society, '25, '26, '27; Girl Reserves, '26, '27;  
Camera Club, '25, '26; Girls' Athletic Association, '24; Glee Club, '24, '26.

THOMAS HAYNES

*"A friend to all and truly made for success."*

Entered from East Side Junior High, '24; Military, '25, '26.

GENEVA JOINER

*"Were silence golden, I'd be a millionaire."*

Euterpean Society, '25, '26; May Festival, '25; Glee Club, '25; Athletic Association, '25;  
Dixie Society, '25, '26.

HAZEL WILLIAMS

*"Her voice is blithe, her heart is gay."*

SARAH JANE BARNES

*"She's all my fancy painted her; she's lovely, she's divine."* X 1986

GAINES ESTILL MAXWELL

"BROTHER"

*"I never dare to act as funny as I can."*

Track, '24, '25, '26, '27; Military, '24, '25, '26, '27; First Lieutenant, '27; Officers' Club,  
'27; Radio Club, '24; R. O. T. C. Prep, '27; Lettermen's Club, '26, '27; Rifle Team, '25,  
'26, '27.

Senior Class



RAYMOND B. MORRELL

"BUB"

*"Courage is the mark of a man."*

Entered from McCallie; Military, '24, '25, '26, '27; C. M. T. C., '27.

LULA AILEEN MCGUFFIN

*"Happiness is not perfected until it is shared."*  
Euterpean Society, '27, '28.

MARTHA SCHWIEGER

*"She speaketh not, and yet there lies a conversation in her eyes."*

NELL THURMAN

*"Thy heart of honor, thy tongue of truth."*

Entered from East Side Junior High School, '24.

VERNA EDITH FISHER

"DEE"

*"Sunshine every day, sunshine all the way."*

May Festival, '26, '27; Junior Volley Ball, '27; Junior Basketball, '27; Track, '27; Dixie  
Society, '27; Euterpean Society, '28; Athletic Association, '25, '26, '27, '28.

MARIE DOWD

*"She that brings sunshine unto others cannot keep it from herself."*

Dixie Society, '25, '26; Junior Play, '27; Senate, '26, '27, '28; Athletic Association, '25,  
'26; Camera Club, '27, '28; Treasurer of Euterpean Society, '27, '28; Treasurer of H.Y.,  
'27, '28; Vice-President of Dramatic Club, '28; Usher, '27, '28; Battalion Sponsor, '28.

ELIZABETH ALLEY

"LIBBI"

*"Let thy speech be better than silence, or be silent."*

Wellensley Society, '28; Athletic Association, '25 Festival, '25.

ANDY BOWERS

"DOC"

*"Two sources of success are known, wisdom and effort."*  
Entered from Mission Ridge School, '24; Grady Society, '27, '28.

X 3-28-54  
Senior Class





X 7-25-69

### TILLMAN GRANT

*"Write me as one who loves his fellowmen."*

Entered from Sunnyside School, '24; Military, '25; H-Y; Gladly Society.

### ELLA MAUDE BROWN

*"A countenance pleasing to the eye."*

Athletic Association, '25, '26; May Festival, '25, '26; Welleney Society, '25, '26; Glee Club, '25; Bookstore, '25; Senate, '25, '26, '27, '28; Senate Cabinet, '24; Junior Carnival, '25; Junior Play, '25; Camera Club, '25, '26; Dramatic Club, '25, '26; Enterpenn Society, '25, '26; Group Leader, '25.

### JUANITA BOWMAN

*"Superior worth her rank requires."*

Entered from Oaklawn High School, '27; Girls' Athletic Association, '28.

### EDITH BROYLES

*"Gentle and pleasing in her every movement."*

Girls' Athletic Association, '28, '27; Public Speaking and Dramatics, '28; Dixie Society, '28.

### LORA HELEN JONES

*"As welcome as the sunshine in every place."*

Girls' Athletic Association, '28; May Festival, '25, '26; Dixie Society, '25; Operetta, '25; Welleney Society, '25, '26; Senate, '25, '26, '27, '28; Glee Club, '25; Athenian Society, '28; Four-Year Honor Student.

### HELEN LOUISE SHETTER

*"Art is noble, but the sanctity of the soul is nobler yet."*

Editor, '28.

### MARY HELEN RICHARDSON

*"Here we find love of learning enshrined in a heart of gold."*

Digest Staff, '28; Athenian Society, '25, '26, '27; Dixie Society, '28; Vice-President of Sophomore Class, '24; Senate, '25, '26; Secretary of Junior Class, '27; Vice-President of Senior Class, '28; Candy Force, '28; Ice Cream Force, '27; Editor, '28.

### WILLIAM KEITH

*"Strong in will, and honest in endeavor."*

R. O. T. C., '25, '26.

Senior Class



### THOMAS JOHNSTON

*"A happy soul that all the way to heaven hath a summer's day."*

Honor Roll, '25, '26, '27, '28; Senate, '26, '27, '28; Minstrel, '26; Junior Carnival, '27; Ice Cream Force, '27; Orchestra, '28; Color Committee, '28; Annual Board, '28.

### ELSIE MAE VAN HOOSER

"KOKI"

*"A creature not too bright or good,  
For human nature's daily food."*

Entered from City High School, '26; Athletic Association, '26, '27; May Festival, '27; Dixie Society, '27, '28.

### THELMA M. RAINEY

"LITTLE BIT"

*"Here's a spirit calm and crystal clear."*

Athletic Association, '26; May Festival, '25, '26; Bookstore, '28.

### ETHEL WARREN

*"Her care was never to offend,  
And every creature was her friend."*

Entered from City High School, '27; Dixie Society, '27, '28; Biology Club, '27, '28; Girl Reserve, '27, '28.

### INEZ BLACK

*"Nothing is done that is not done well."*

Enterpenn Society, '24, '25; Athletic Association, '24, '25, '26, '27; Usher, '28.

### MILDRED WOODLEY

*"Just as lovely as she can be in all she does and says."*

Athenian Society, '24, '25; Athletic Association, '24, '25; Dixie Society, '27, '28.

### RILLA MAE MILLER

"RITZ"

*"With a way both tender and true."*

Bookstore, '28.

### DONALD L. MAGUIRE

*"His mind his kingdom is, and his will his law."*

Senior Class





JACK THOMAS

"JACK"

*"I hasten to laugh at everything."*

BONNIE KATE PAIS

*"No legacy as rich as honesty."*

Wellesley Society, '28, '27; Digest Staff, '27; Boosters' Club, '28.

GLADYS FOSTER

*"She was a phantom of delight."*

Wellesley, '24; Dixie Society, '27; Athletic Association, '24, '25; Biology Club, '25, '26.

MILDRED GOLDSMITH

*"Calm and untroubled as the summer seas."*

Entered from Cedar Hill Grammar School, '24; Enterpise Society, '27, '28; May Festival, '28.

MARTHA ELLEN PEASE

*"She had a face overspread with gladness, soft smiles and human kindness."*

Dixie Society, '27, '28; Junior Carnival, '28; Digest Staff, '28; Girls' Athletic Association, '24, '25, '26; May Festival, '28.

NETTYLU YARBROUGH

"BOOTS"

*"Fairest and most lovely from the world apart."*

Dixie Society, '28, '26; Wellesley Society, '27; Enterpise Society, '28; Usher, '28.

HELEN MILDRED MCCLURE

*"Youth holds no society with grief."*

Entered from Chickamauga Grammar School; Dixie Society, '28; Reading Contest, '27.

RUSSELL ELMER DUNCAN

"KID"

*"If foolishness extended length of life, I would live to be an old man."*

Baseball, '28, '26; Basketball, '28.

Senior Class



JOE RICHARD McREE

*"None but himself is his parallel."*

Honor Roll, '28, '25; Military, '28, '27, '28; Officers Club, '28.

NORMA ELIZABETH LIVELY

*"She fills the air around with beauty."*

Glee Club, '28, '26, '27, '28; May Festival, '28, '26; Dixie Society, '27, '28; Junior Carnival, '27.

DELLA MAE THOMAS

*"I have often heard little said is soonest mended."*

Usher, '28; Glee Club; Honor Roll.

JOHN RAMSEY

*"He is captain of his own soul."*

Home Lighting Contest Winner, '25; Debate, '25, '26, '27, '28; Hi-Y, '28, '27, '28; Minstrels, '26; Declamatory Contest, '27; Grady Society.

HARRY WILLIAMS

*"A merry heart doth good."*

Hi-Y, '28, '26, '27, '28; Debate; Grady Society, '28.

ANNIS LEE GAITHER

*"I am content only with the best."*

Entered from St. Mary's Academy, '25; Wellesley Society, '28, '27, '28; Secretary-Treasurer of Wellesley Society, '28; May Festival, '28.

LOUISE BURKHALTER

*"She's as sunny as the skies in June."*

Enterpise Society, '28, '27, '26; Athletic Association, '28, '27; Girl Reserve, '28; May Festival, '26; Junior Carnival.

LAVOY NEELY

*"Rome was not built in a day."*

Senior Class





JACK HALSELL

*"Work is the keynote of success."*

Military, '25, '26; Junior Play, '25.

MARGARET BRAMMER

*"We love her for her smile, her look, and her way of speaking gently."*

May Festival, '24; Glee Club, '25; Athenian, '25, '26, '27, '28; Hi-Y, '27, '28.

CLARISSA TOWER

*"She was young and very fair,  
Bright eyes and golden hair."*

European Society, '27, '28; Girl Reserve, '27, '28.

GEORGE SHELTON

*"To think one self be true."*

Entered from Moore County High; Honor Roll, '24; Basketball, '24; Military, '25, '26, '27.

CARL HYDE

*"I had rather be right than be President."*

Military, '25, '26, '27, '28; Officers' Club, '27, '28.

HAZEL ANDERSON

*"Joan"**"Sweet, be not proud of those two eyes which star-like sparkle in the skies."*

Girl Reserve, '27; Vice-President of Wellness, '28; Girl Scout, '27, '28; Athletic Association, '28.

NELL CORNETT

*"Babe"**"The light heart brings sunshine into the darkest day."*

Book Store, '27, '28.

FRED B. WOODS

*"Smooth runs the water where the brook is deep."*

Entered from McCallie, '24; Senate; Military, '25, '26; Boy's Hi-Y.

Senior Class



JACK HIGH

*"His manners are gentle."*

Military, '25, '26, '27, '28; Officers' Club, '27, '28; Hi-Y, '27, '28.

MIRIAM HELENE MARSHALL

*"We may so live that the light of our good work may fall in the paths of others."*

Hi-Y, '24, '25, '26; President of Hi-Y, '25; Senate, '27, '28; Senate Chairman, '28; Athenian Society, '25, '26, '27, '28; Vice-President of Athenians, '25; Usher, '26; May Festival, '25, '26, '27; Minstrel, '25, '26; Christmas Festival, '25; Honor Student.

MARGARETHA PITZER

*"A good friend is forever a friend."*

Athenian Society, '27; Bank, '27, '28; B. B. Society, '28.

DALE CASE

*"He knows what is what."*

Entered from East Lake, '23; Minstrel, '25; Glee Club, '25-'26; Band, '25-'27; Orchestra, '25; Officers' Club, '25.

BERNARD ARNOLD

*"Bernie"**"There is nothing in this world which a resolute man, who exerts himself, cannot attain."*

Radio Club, '24, '25; R. O. T. C., '25, '26; Booster Club, '26, '27; Grady Society, '27, '28; Camera Club, '27, '28; Hi-Y, '27, '28; Senior Play, '28.

ADELE BROWN

*"Those dark eyes—so dark and deep."*

May Festival, '25; Glee Club, '24, '25; Athenian Society, '27, '28.

CLINT THOMAS

*"The deed I intend is great, but what, as yet, I know not."*

R. O. T. C., '25, '26, '27; Staff Sergeant, '27; Rifle Team, '27; Junior Basketball, '25, '26; Junior Baseball, '26; Football, '26.

JOHN R. SWEETS, JR.

*"One who never turned his back, but marched breast forward."*

Entered from Normal Park School in '25; Hi-Y, '24, '25, '26; Grady Society, '26, '27, '28; Junior Carnival, '27; Junior Play.

Senior Class





RALPH HETZLER

*"Constantly striving to make my best better."*

H-Y, '24, '27, '28; Junior Carnival, '28.

EDNA EMMALINE BOWMAN

*"Ed"**"The truest self-respect is not to think of self."*

Athletic Association, '25, '26.

HADLEY MCGAUGHEY

*"Be satisfied with nothing but your best."*

Entered from Enaley High School, '28.

ST. CLAIRE SILVER

*"Saint"**"And like music on the waters is thy sweet voice to me."*

European Society, '25, '26, '27, '28; Senate, '24, '27, '28; Girl Reserves; Assistant Secretary of Senate, '28; Senate Play, '27; May Festival; Glee Club, '25, '26, '27; Varsity Glee Club, '28; Athletic Association; Minstrel, '25.

ELIZABETH HOGAN

*"Beauty is a welcome guest everywhere."*

GLENN ROY

*"My heart is whole, my fancy free."*

H-Y, '27; Ice Cream Parlor, '27; Candy Parlor, '28; Digest Staff, '27; Camera Club, '27; Boys' Glee Club, '28; Junior Carnival, '27.

MARGUERITE FOSTER

*"Peggy"**"Her heart was like the moon, ever changing, but always a man in it."*

Dixie Society, '25, '26, '27, '28; Senate, '28.

JAMES SWAFFORD

*"Smile and your load seems lighter."*

Military, '25, '26, '27, '28; Captain, Company F, '28; Vice-President of Officers' Club.

Senior Class



FLOYD LENTZ

*"Cowboy"**"Attempt the end and never stand to doubt."*

Entered from Eastdale Grammar School.

HETTIE MAE ARNOLD

*"She has many nameless virtues."*

Entered from Cedar Hill School; May Festival, '26; Usher, '28.

LOUISE STEVENS

*"Squizz"**"What sweet delight a quiet life affords."*

Honor Roll, '25, '26, '28; Bank, '28; B.B. Society, '28; Athenian Society, '27; May Festival, '25.

DOROTHY JEAN PERRY

*"Dot"**"The beauty of thy soul flows through thy fingertips as they dance lightly over the ivory keys."*

Varsity Glee Club, '26, '27; Dixie Society, '25, '26, '27, '28; Junior Carnival, '27; Candy Parlor, '28.

VIOLA FRANCES HOLDER

*"Calm, sweet and unruffled."*

Dixie Society, '25, '26, '27, '28.

EMMA ANGELL MONROE

*"Let the world slide, let the world go."*

Glee Club, '25; Dixie Society, '26, '27, '28; Biology Club, '26, '27.

RUBY LENA SMITH

*"From a little spark may burst a mighty flame."*

Entered from Normal Park School, '25; Euterpean Society, '28.

JOE E. DARR

*"Youth dares."*

Senate, '27, '28; Publicity Manager of Senate, '28; Boys' H-Y, '27, '28.

Senior Class





RALPH HETZLER

*"Constantly striving to make my best better."*  
Hi-Y, '26, '27, '28; Junior Carnival, '28.

EDNA EMMALINE BOWMAN

*"The truest self-respect is not to think of self."*  
Athletic Association, '25, '26.

HADLEY MCGAUGHEY

*"Be satisfied with nothing but your best."*  
Entered from Emory High School, '26.

ST. CLAIRE SILVER

*"And like music on the waters is thy sweet voice to me."*  
Enterpriser Society, '25, '26, '27, '28; Senate, '26, '27, '28; Glee Honorers; Assistant Secretary of Senate, '26; Senate Play, '27; May Festival; Glee Club, '25, '26, '27; Varsity Glee Club, '28; Athletic Association; Minister, '25.

ELIZABETH HOGAN

*"Beauty is a welcome guest everywhere."*

GLENN ROY

*"My heart is whole, my fancy free."*  
Hi-Y, '27; Ice Cream Fares, '27; Candy Fares, '28; Dixon Staff, '27; Camera Club, '27; Boys' Glee Club, '28; Junior Carnival, '27.

MARGUERITE FOSTER

*"Her heart was like the moon, ever changing, but always a man in it."*  
Dixie Society, '25, '26, '27, '28; Senate, '28.

JAMES SWAFFORD

*"Smile and your load seems lighter."*  
Military, '25, '26, '27, '28; Captain, Company F, '28; Vice-President of Officers' Club.

Senior Class



FLOYD LENTZ

*"Cowboy"*  
*"Attempt the end and never stand to doubt."*  
Entered from Eastdale Grammar School.

HETTIE MAE ARNOLD

*"She has many nameless virtues."*  
Entered from Cedar Hill School; May Festival, '26; Usher, '28.

LOUISE STEVENS

*"Squizz"*  
*"What sweet delight a quiet life affords."*  
Honor Roll, '25, '26, '28; Bank, '28; B.D. Society, '28; Athenian Society, '28; May Festival, '25.

DOROTHY JEAN PERRY

*"Dot"*  
*"The beauty of thy soul flows through thy fingertips as they dance lightly over the ivory keys."*  
Varsity Glee Club, '26, '27; Dixie Society, '25, '26, '27, '28; Junior Carnival, '27; Candy Fares, '28.

VIOLA FRANCES HOLDER

*"Calm, sweet and untroubled."*  
Dixie Society, '25, '26, '27, '28.

EMMA ANGELL MONROE

*"Let the world slide, let the world go."*  
Glee Club, '25; Dixie Society, '26, '27, '28; Biology Club, '26, '27.

RUBY LENA SMITH

*"From a little spark may burst a mighty flame."*  
Entered from Normal Park School, '25; Enterpriser Society, '28.

JOE E. DARR

*"Youth dares."*  
Senate, '27, '28; Publicity Manager of Senate, '28; Boys' Hi-Y, '27, '28.

Senior Class





REGINA SUNDSTROM

"BUNNY"

*"Grace was in all her steps, heaven in her eyes."*

May Festival, '25, '26, '27; Athenian Society, '25, '26, '27; Dixie Society, '25; Operetta, '25, '26, '27; Minstrel, '25, '26, '27; Ice Cream Fairs, '25; Candy Fairs, '25; Color and Decoration Committee, '25.

DOROTHY TURNER

"BOB"

*"I care for nobody, if nobody cares for me."*

Athenian Society, '25, '26; Senate, '24; Digest staff, '24; Biology Club, '24; Dixie Society, '25, '26; Annual Board, '25; Girls' Homecoming, '24, '25; Student Party Committee, '25; Junior Carnival, '27; Ice Cream Fairs, '25; Girls' Athletic Association, '24, '25; Invitation Committee, '25.

CHARLES JACKSON

"JACK"

*"Here's a man not afraid to say his say, tho' the whole town's against him."*

Vice-President of Senate, '25; Vice-President of H-Y, '24; Vice-President of Grady Society, '25; Captain of Track Team, '25; Senate Page, '24; Junior Page, '25; Letterman's Club, '25, '26, '27; Cheerleader, '25, '26.

ELIZABETH HALL

*"Her loveliness I never knew until she smiled on me."*

Athenian Society, '25, '26; Dixie Society, '27; May Festival, '25; Ice Cream Fairs, '27; Candy Fairs, '25; Color and Decoration Committee, '25.

CATHLEEN LILLIAN SHOFNER

*"To climb steep hills requires slow pace at first."*

Entered from East Side Junior High in '25.

JANE BOYD

*"Fairest, and most lovely from the world apart."*

Minstrel, '26, '27; Operetta, '26, '27; May Queen, '27; H. O. T. C. Sponsor, '27; Dixie Society, '24, '25, '26; May Festival, '26, '27, '28; Junior Carnival, '27; Candy Fairs, '24, H-Y, '24.

GEORGE E. SHIPPEY

*"Be sure you are right, then go ahead."*

Military, '25, '26.

WILMA JOHNSON

*"She smiled on many just for fun."*

Junior Carnival, '27; Basketball Team, '25, '26; Operetta, '27; Dixie Society, '25, '26; Wellesley Society, '27; Girls' Track Team, '25.

Senior Class



HELEN VIRGINIA SAVOY

*"Her eyes as stars of twilight fair."*

Camera Club, '25, '26; Diskos, '25, '26; Athletic Association, '26, '27.

WILLIAM THOMAS McLAIN

"MAC"

*"I'll not be tied to hours of pointed time, but learn my lessons as I please."*

Baseball, '26, '27.

ETTA MCBRIEN

*"Exceedingly well read."*

Enterpriser, '24; Wellesley Society, '24.

EUGENE WELCH

*"He was what man should be to woman—a gentleman."*

Varsity Glee Club, '25, '26, '27, '28; H-Y, '26, '27, '28; Senate, '26, '27, '28; Junior Play, '27; Operetta, '26; Minstrel, '26, '27; Dramatic Club, '25, '26; Ring and Pin Committee, '24.

ANNIE MAE CAWOOD

*"So excellent a student and so pure a pearl?"*

MARY ELLEN BAKER

*"As merry as the day is long."*

Athenian Society, '25; Wellesley Society, '26, '27, '28; May Festival, '26, '27, '28.

WILLIAM MADDOX COLLINS

"PEE WEE"

*"'Tis in the power of imagination."*

Entered from McCallie in '27; Swimming Team, '27, '28; Camera Club, '27, '28; Electrician, Stage Crew, '27, '28; Minstrel, '27.

PAULINE FAIRES

*"Many are the charms that the sages see in thy face."*

May Festival, '26, '27; Junior Carnival, '27; Dixie Society, '26, '27.

Senior Class





HERRERT LLOYD BUCHANAN

"BUCK"

*"Ability wins us the esteem of true men."*

Military, '25; Baseball Team, '24, '27, '28.

MILDRED ALYNE SHIELDS

*"There's life alone in duty done,  
And rest alone in striving."*

Wellfleet Society, '27; Bookkeeper on Digest Staff, '27.

WILLIE HAZEL LOWE

*"Her part has not been words, but deeds."*

Dixie Society, '28; Bookstore, '28.

HAZEL HILL

"DIMPLE"

*"Her mirth the world required; she bathed it in smiles of glee."*

May Festival, '25; Basketball, '25; Dixie Society, '27, '28; Enterpen Society, '25, '26.

ELIZABETH KEISLING

*"The sweetest noise on earth, a woman's tongue, a string which hath no discord."*

May Festival, '25; Hi-Y, '27; Usher, '28; Pianist for Variety Glee Club, '28; Athenian Society, '27, '28.

BEATRICE KEITH

*"A life that is never dull."*

Athenian Society, '27, '28.

CRATE McCLANAHAN

*"Nothing is more useful than silence."*

Dixie Society, '27; Usher, '28.

MARION EDWARD MASON

*"I hear, yet say not much, but think the more."*

Military, '25, '26, '27, '28.

Senior Class



DOROTHY MILLWOOD

"DOT"

*"Eloquent and yet how simple."*

Athenian Society, '27; Wellfleet Society, '28; Girls' Athletic Association, '25; May Festival, '25, '26.

CHARLES BICE

*"Smiles and good cheer in the face of adversity will ultimately bring their reward."*

HAZEL LEE CHASTAIN

"HAZE"

*"A more sincere girl you will never find."*

Girls' Athletic Association, '24, '25; Athenian Society, '24, '25; Boosters' Club, '26, '27; May Festival, '24, '25.

WILLIAM LOVE

"LOVE"

*"Actions speak for themselves."*

Freshman-Sophomore Party, '25; Junior Carnival, '27; Printing Staff, '27.

BLANCHE CHAMBERS

"POLLY"

*"A maid so gentle and so fair."*

May Festival, '26; Athenian Society, '27; Dixie Society, '25, '26.

CHARLES CRAIG

"FAT"

*"Oh, Work, I have followed you all the days of my life, and find you only a shade."*

Camera Club, '26, '27, '28; Military, '26, '27, '28; "Digest" Staff, '28; Grady Society, '28; Officers' Club, '28.

ADALENE HESTER

"LITTLE AD"

*"Thou art as a ray of sunshine."*

Enterpen Literary Society, '27, '28; Usher, '27, '28; May Festival, '25, '26; Athletic Association, '25, '26; Athenian, '26, '27.

MARGUERITE CRAWLEY

*"Truth is strong and abideth forever."*

Enterpen Society, '25; Wellfleet Society, '27, '28; May Festival, '25, '26.

Senior Class





## DOROTHY ARWOOD

*"Nature did her so much good, she scorned the help of art."*

Camera Club, '28; Variety Glee Club, '28; Athenian Society, '27; Dixie Society, '27, '28; Home Lighting Contest Winner, '28; Operetta, '27; Minstrel, '27.

## RALPH COOPER

*"He's a shark—enough said."*

Entered from Tennessee Wesleyan College, '27; Seneca, '28; Ill-Y, '28; Orchestra, '28.

## JESSIE ELIZABETH ELKINS

*"So much good, so truly tried,  
Some far less were desired."*

Entered from Dickson Central High, '27.

## ELMO BREWER

*"A man with an unsurpassed brain,"*

Military, '28, '29; "Edison" Staff, '28, '27; Science Club, '28.

## LOUISE JONES

*"LITTLE BIT"*

*"As for me, all I know is I know nothing."*

Dixie Society, '28, '28; Athenian Society, '27.

## JOHN RENEL HUMPHRIES, JR.

*"Not to know me argues yourself unknown."*

Basketball, '27, '28; Football, '27; Tennis, '28, '27, '28; Operetta, '26; Minstrel, '26, '27; "Edison" Staff, '28; Annual Staff, '28.

## DOROTHY HAYES

*"CHICKIE"*

*"Here was a gentle nature, kind and forbearing."*

Dramatic Club, '27, '28; Dixie Society, '28; Junior Play, '27; Secretary-Treasurer of Dramatic Club, '28; Camera Club, '28; Girl Scout, '27, '28; Junior Carnival, '27.

## EDWARD SLIGER

*"I earn what I can, get what I eat, and owe no one hate."*

Band, '28, '27, '28; Orchestra, '28, '27, '28; Camera Club, '28, '27, '28; Operetta, '26; Rank, '27.

Senior Class



## MILDRED HEMPHILL

*"A friend among friends."*

Entered from East Lake Grammar School, '28; Enterpoken Society, '28, '28, '27; Glee Club, '28, '28; Sophomore Party, '28.

## ARNER BOYD

*"A public man of light and leading."*

Science Club, '28; English Class Chairman, '28, '28; Senior Party Committee, '28.

## LOIS ALFRED

*"To her task addressed her earnest care."*

Athenian Society, '28, '27, '28; Girls' Athletic Association, '28; Girl Scouts, '28.

## WILLIAM E. CLARKE

*"He held his own among men."*

R. O. T. C., '28, '27, '28; First Lieutenant, '28; Officers' Club, '28; Honor Battalion, '28.

## LOUISE HUGHES

*"WIRE"*

*"She was just the quiet kind, whose nature never varies."*

Athenian Society, '28, '28, '27, '28; Athletic Association, '28, '28; May Festival, '28, '28.

## HENRY SWICK

*"An affable and courteous gentleman."*

Entered from East Side Junior High, '28; R. O. T. C., '28.

## MARGARET BUNCH

*"HONEY BUNCH"*

*"Her smile was like a rainbow flashing from the misty sky."*

Dixie Society, '28, '28, '28; Athenian Society, '27; Operetta, '28, '28, '28; May Festival, '28, '28; Minstrel, '28, '28; Junior Carnival, '27; Freshmen-Sophomores Party, '28; Athletic Association, '28, '28.

## EDWARD SHIPPEY

*"I awoke one morning and found myself famous."*

Military, '28, '28, '27.

Senior Class





MAUDE TAYLOR

*"Her very frowns are fairer far  
Than smiles of other maidens are."*

Entered from Chattanooga High School, '21; Dixie Society, '28.

GEORGE HAGEDORN

*"Of the wide, wide world he stands alone."*

Entered from Memphis Home School, Nashville, Tenn.; Military, '24, '27, '28; Band, '24, '27, '28.

HOWARD McCLURE

*"This is the last of work, I am content."*

Military, '24, '27, '28; H-Y, '24, '27, '28; Officers' Club, '28.

AUSTIN MOON

*"Let me be what I am, and seek not to alter me."*

Military, '24, '26, '27, '28; Band, '24, '26, '27, '28.

DOUGLAS LOTSPEICH

*"An honest man's the noblest work of God."*

Minstrel, '24; Junior Carnival, '24, '25, '26; H-Y, '24, '26, '27; Senate, '24, '27, '28; Swimming Team, '24, '27; Captain of Swimming Team, '27.

FORREST CORDELL

*"Talk to him of Jacob's ladder and he would ask the number of steps."*

Military, '24, '26, '27, '28; Officers' Club, '28; Biology Club, '27.

FLOYD WESLEY DORES

*Knowledge is proud that he has learned so much; wisdom is humble that he knows no more."*

ANNIE KATE SELLS

*"Silence is sweeter than gold."*

Dixie Society, '24, '26, '27, '28.

Senior Class



LOUIS SMARTT

"LOUIE"

*"Nothing great was ever achieved without enthusiasm."*

Senate, '26, '27, '28; H-Y, '26, '27, '28; President of Senate, '28; Military, '24, '26, '27; Editor-in-Chief of Annual, '28; Grady Society, Vice-President of Class, '28.

KATHRYN BONDS

*"A good heart is better than all the heads in the world."*

MILDRED TAYLOR

*"And like music on the waters is thy sweet voice to me."*

Entered from City High, '24; Senate, '27, '28; Camera Club, '27, '28; Dramatic Club, '28; Dixie Society, '28; Winner of Declamatory Contest, '27; Boosters' Club, '27.

MARK H. REYNOLDS

*"As a soldier none is his superior."*

Military, '24, '26, '27, '28; Major, '28; Officers' Club, '24, '27, '28; President of Dramatic Club, '28; "Digest" Staff, '27; Annual Board, '28; Senate, '26, '27, '28; H-Y, '26, '28, '27, '28; Junior Play, '27; Officers' Play, '27.

F. C. ALFORD

*"He that knows, and knows that he knows, is wise; follow him."*

JOSEPH E. MEADOWS

*"His virtues are many; his faults few."*

Military, '24, '26; "Digest" Staff, '26, '27; H-Y, '27, '28; Grady Society, '27, '28.

HAROLD DEAN

*"Listen with attention, speak with caution."*

Entered from Roseville High School, '24.

JAMES LEWIS

*"A true, strong, and sound mind is the mind that can embrace equally great things and small."*

Senior Class





EDITH McCARTY

"PEEY"

*"Who chooses me, shall gain what many men desire."*

Euterpean Society, '28, '29; Honor Roll, '28.

PAUL SELLS

"JACKHARD"

*"I am part of all that I have met."*

Football, '28, '29, '30; Basketball, '27, '28, Track, '28; Baseball, '28, '29, '30; Tennis, '28; Letterman's Club.

CHARLES LANGSTON

*"The sense of humor has other things to do than to make itself conspicuous in the act of laughter."*

Hille Team, '28, '29, '30; Military, '28, '29, '30; Officers' Club, '28.

WILLIE MAE LOWE

"YES"

*"She walks in beauty, like a night of cloudless rhimes and starry skies."*

Entered from CHS High School, '28; Junior Captain, '27; Dile Society, '27, '28; Senior Party, '28; English Class Reporter for "Tiger," '28; Minutiae, '28.

RICHARD F. DIAMOND

*"True as the dial to the sun, although it be not shined upon."*

Military, '28, '29.

JACK SHERMAN

*"Some are born great, some achieve greatness, while others have greatness thrust upon them."*

Senate Play, '28, '29, '30; Junior Play, '27; Minutiae, '28, '29; Operetta, '27; Glee Club, '27; H-Y, '28, '29, '30; Endless Club, '28, '29; President of Biology Club, '27; "Tiger" Staff, '28; Honor Student; E. O. T. C., '28, '29, '30; Corporal, '28; First Sergeant, '27; First Lieutenant, '28; Captain, '28, '29, '30; Secretary of Officers' Club, '28; Grady Society, '28.

RALPH TALLANT

*"Men must read for amusement as well as for knowledge."*

Entered Central in 1927; Orchestra, '27, '28.

FRANK CAREY

*"Great works are performed not by strength, but by persistence."*

Senior Class



RICHARD CAREY BUNN

*"With all good grace to grace a gentleman."*

Senate, '28, '29, '30; H-Y, '28, '29, '30.

DOROTHY PENNY

"DOT"

*"Everything beautiful is lovable."*

Athenian Society, '28, '29; Athletic Association, '28, '29; Euterpean Society, '28, '29, '30; Senate, '28; Camera Club, '28.

HELEN ALBERTA WOLFF

"RUGAR"

*"Full of sweet indifference."*

Wellisley Society, '28, '29, '30, '31.

ARMON COOPER

*"How far that little candle throws his light."*

Entered Central from McCallie, 1927.

MILDRED GREEN

*"Truth is within ourselves."*

MANCE SHERRILL, JR.

*"Speech is a mirror of the soul; as a man speaks, so is he."*

Entered from Baylor, 1926; H-Y, '27, '28; Senate, '27, '28.

BEVERLY WILLIAMS

*"My own thoughts are my companions."*

Entered from East Side Junior High, 1926; Dilect Staff; Bank, '27; Track.

ETTA MCBRIEN

*"Exceedingly well read."*

Euterpean, '28; Wellisley Society, '28.

Senior Class





CHARLES EDWARD HARRIS

*"Sincerity is a valuable asset."*

Business Manager of Digest, '26; H-Y, '27, '28; Biology Club, '27; Grady Society, '28.

LOUISE FULLER

*"She who seareth shall surely reap."*

Euterpean, '25, '26, '27, '28; May Festival, '24, '27; Track, '27; Girls' Athletic Association, '25, '26, '27, '28.

FRED SIMS

*"Give me liberty to know, to utter and to argue freely."*

MARGARET EVANS

*"SPOTIS"**"She is steadfast, stern, immovable."*

Bookworm, '28.

VELVO GRAHAM

*"SNOOKS"**"To know her is to love her."*

Secretary and Treasurer of Athenian Society, '26; Bonnets, '25, '26, '27, '28; Usher, '28; Bonnetry Club, '24, '25.

LADENIA HOLLIS

*"Thy smile was ever seek."*

Euterpean Society, '27, '28.

VIVIAN PEPER

*"Her eyelids dropped their silken covers."*

Euterpean Society, '24, '25, '26, '27; President of Euterpean Society; Honor Roll, '25; May Festival, '26.

JOSEPH ARLEIDGE

*"Fortune truly helps those who are of good judgment."*

Senior Class



EUGENE MAYER

*"SKEET"**"Ability wins us the esteem of true men."*

Football, '25, '26, '27, '28; Basketball, '27, '28; Track, '27, '28; Baseball, '26, '27, '28; Alternate Captain of Football Team, '27; Captain of Track Team, '28; Holder of Southern Interscholastic and City Record for Shot-put; All-City Football Team, '25, '26, '27, '28; Letterman's Club, '25, '26, '27, '28; Minister, '27, '28; Representative at Junior-Senior Banquet, '27; All-City Basketball Team, '26; President of Class, '25, '26, '27, '28; Toastmaster, '27; Best All-Round Boy in Class of '28.

ANNA MAYE LIEB

*"A gypsy stole my heart and gave a gypsy heart to me."*

Dixie Society, '25, '26, '27, '28; Junior Carnival, '27; Camera Club, '26; Patrol, '28; Oratorical Contest, '27; Song Leader, '27, '28; Basketball, '25, '26; Senior Play, '28; Senior Party Committee, '28.

ANNA LAYCOCK

*"Our past victories should be but rounds on the ladder up which we are constantly climbing."*

Athenian Society, '24, '25; Dixie Society, '26, '27.

EDWIN H. STOWE

*"The strain of music was in his blood."*

Military, '25, '26, '27, '28; Officers Club, '28.

BEN ADDIE COLEMAN

*"Thy soul was like a star and dwelt apart."*

Euterpean Society, '25, '26, '27, '28; Usher, '28; Dramatic Club, '27, '28; May Festival, '26, '27; Senior Play, '28.

LOREEN HAMILTON

*"LO"**"Effort and persistence bring satisfaction."*

Dixie Society, '27.

ETTA FRANK

*"MOUSE"**"I think all I speak, but I speak not all I think."*

Euterpean Society, '24, '25, '26; Dixie Society, '27.

LAWTON LINGENFELTER

*"For I've though vanquished, he could argue still."*

Military, '24; Band, '25; Radio Club, '25.

Senior Class





HOWARD ANDERSON

"KID"

*"A rare compound of oddity, frolic and fun."*

Basketball, '25, '26, '27, '28; Track, '24, '25, '26, '27; Baseball, '24, '25; Football, '24, '25, '26, '27; Letterman's Club, '25, '26, '27; H-Y, '25, '26, '27; Vice-President of Junior Class, '27; Secretary of Senior Class, '28; Junior Play, '25; Digest Staff, '26, '27, '28.

AUGUST CAROON

*"Ambition has no risk."*

Entered Central, '24; Re-entered from Western Kentucky State Normal, '27; Football, '25, '26; Grady Society, '25, '26; Camera Club.

FAY HESTER

*"Eyes that were fountains of thought and song."*

Drama Society, '26, '27, '28; Operetta, '27; Junior Carnival, '27.

EDWARD PETERSON

*"Observe moderation."*

Football, '26, '27, '28; Baseball, '25, '26, '27, '28; Letterman's Club, '25, '26, '27, '28.

HARRY STEGALL

*"Men are used as they use each other."*

Entered from East Side Junior High, '24; Ice Cream Force, '27; Candy Force, '28.

JOHN WALLER

"JOHNNY"

*"Nobility is the one only virtue."*

H-Y, '25, '26, '27, '28; Senate, '25, '26, '27, '28; Grady Society, '25; Letterman's Club, '25, '26; Football, '26, '27, '28; Treasurer of Class, '27, '28; Treasurer of H-Y, '28; Invitation Committee, '24; Basketball, '25; Tennis, '26; Annual Staff, '28.

WILLIAM B. GARRETT

*"I'd rather be right than president."*

Entered from Ensey High in Birmingham, Alabama; Football, '26, '27.

GLENN HUNT

*"Bravery never goes out of fashion."*

Football, '25, '26, '27, '28; Letterman's Club, '27, '28.

Senior Class



## A Few Excerpts

From a Central Pep's Diary

October 15, 1927.

March Jones and I went to Central High School by seven thirty in Senior Party. Met Fred Lantz so knew I was not late. On entering saw much decoration in colors and leaves for Student's Party. Being presented with autograph album at door did work hard to get names. Varily do believe the prize was not had there but me, for my album was full. Talking to my friend, Louis Smart, not arguing but much interested, heard a whistle, looking

around saw Miss Mary Helen Richardson on stage making a speech. Saw Father Time near and was much shocked to know that this was the modest Miss Anna Mary Lick. Saw up and on my way to Spring Room. Much laughter when Harry Williams took Mr. Palmer's picture which did develop into a handsome baby and Mr. Hendricks into a vicious cow. Many funny pictures and funny clown, Charles Jackson.

Up and down hall, had a pleasant meeting with a familiar face. Looked again, saw it to be George McIntosh of last year's class.

From here to room where fortune were told. Amazing it was to hear Mr. Robinson, Miss Newberry and Mr. Hunt lift the veil of the past and future. Knowing myself as well I must not have been told, but eagerly did I listen to others. Did strike me as wonderful the truth they did tell.

Next to winter room where I did verily believe it to be Christmas for there was Santa Claus and Christmas tree; received gladly whistle, mine being very like in appearance and sound to Mr. Nelson's.

Up and to auditorium where Jim Ward did dance like a fairy. Mildred Bowling and Nell Crossman dressed like flowers. Milton Marshall, Regis Sanderson and Elizabeth Hall like witches, and Ruth Hardin like a snowball, in dancing did surprise me at we they had of the real.

Indoor football went good, but like my friend Hatfield, disappointed that love game did not get going.

Now to cafeteria and pretty merry; and here was Mr. Nelson who did not send welcome and Dixie came with us. Much did he say which pleased me and the Senior Class. From it all we do believe that he likes us, has faith in us, and lends heavily on us for upholding ideals of school.

Thus did and night with joy everywhere, and I have not heard of a mischance to anybody through it all.

November 26, 1927.

Up early and busy all morning making ready for City-Central game. To Chamberlaine Field by one o'clock to get good seat. But not so, truly almost all seats filled, so up high I had to sit. Excitement everywhere, at two, big game called. "Central must win." Did hear yelling until I did stop my ears to keep out sound. Could not stand up; could not sit down in comfort for fear Central might lose. To top of my voice did I yell when Ray carried ball across line.

Another victory for Central as I did expect!

December 26, 1927—Senior Play.

To the Central High School auditorium, and there I saw "The Turning of the Screw," by Shakespeare, a merry comedy and very interesting. Jack Robinson's part, Petruchio, was beyond imagination. 'Twas a wonderful change in Katharine, the Shrew. Miss Anna Mary Lick, which gives us fresh reason to admire the talented Miss Lick. Never before did I believe a woman could possess so violent a temper. Louis Smart as a lord, seemed in his natural element. Drama, Petruchio's servant, Leroy Reedy, did not get the foot to perfection, which proves that it takes a wise man to play the fool. Verily, the music master could not have been better chosen for I have thought many times the actor, Fred Woods, did possess an artistic face. The audience appreciative and well-behaved which did greatly please me. The music of Miss Foley and her orchestra was very appropriate and well executed. Took great pleasure between acts to look about me to see who was present. Near me was sitting Miss Dorothy Turner whose amiable manner I did note with pleasure, and which did cause me to think how pleasant the world would be if all did entertain as friendly a manner. It did amuse me greatly to see two such small men as Kermit Maxwell and Charles Langston take out badly the stout Christopher Sly played by Charles Craig.



Reedy would make a man split himself with laughing to hear him tell Curtis, Miss Ben Addie Coleman, his master's experience.

Joseph Arledge did surprise me much for as the old man, Baptiste, I think he did a fine piece of work. But to behold their clothes was a sight worth seeing. I did like Petruchio's blue suit and fine boots which I fear were too small for Shrewman's average size foot, for they did look tight enough. I did hear the dogs were real animals of the stage and that the hunter's horn were no imitation being used that same night by regular hunters.

All in all it was an excellent play, the more I think of it the more I love the wit of it.

JOHN SWEETS.









JOE MILLER



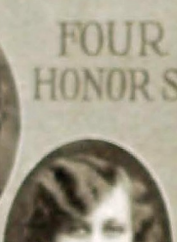
HELEN C. MCCLURE



BONNIE KATE PASS



LOUISE STEPHENS



LORA JONES



THOMAS JOHNSTON



ELEANOR WOOD



JOHN RAMSEY



MIRIAM MARSHALL



ELMO BREWER



JOHN HARRISON

### FOUR YEAR HONOR STUDENTS

JOHN RAMSEY  
VALEDICTORIANHELEN C. MCCLURE  
SALUTATORIANMIRIAM MARSHALL  
FACULTY REP.LOUIS SMARTT  
CLASS REP.

### COMMENCEMENT SPEAKERS

MARY HELEN ROBINSON  
HISTORIANHOWARD ANDERSON  
PROPHETDOROTHY TURNER  
POETJOHN HUMPHREYS  
READER OF THE WILL

### CLASS DAY SPEAKERS



## The Class of 1928

**A** CLASS history means little to the outsider, who does not understand the intangible spirit that is stored in the heart of every Central student, and particularly in the students of the Class of '28. It has been our aim, first, to let those who preceded us in these halls know that we have tried to advance the standards they left for us, and in every way live up to the priceless heritage and ideals of Central High School. It has been our further purpose to gather here and there a thread of events that may be so woven together into a web of memory that it will recall something of those days of work and happiness sustained by that intangible spirit which bound us together as brothers.

When this class came to Central in '24, four hundred strong, they very soon learned that there was no "Open Sesame" to success in their high school career. They had the usual experiences of the green freshmen who learn much, by hard knocks, in the school of experience. In the spirit of good sportsmanship these knocks were borne, and we came out the better for them. Our watchword from the first has been, "work" and "co-operation." With such a motto, supported by an admirable spirit and good judgment, the success of the class along all lines of school activities has been outstanding.

An instance of good judgment was in the choice of officers to guide through the four years of high school life. Eugene Mayer was elected president in 1924, and succeeded himself in each of the three years which followed. Eugene did his work faithfully and well, and his leadership will be always remembered with pride and pleasure. Other officers who have given the class their loyal support are Mary Helen Richardson, Howard Anderson, Muzelle Vandergriff, and John Waller. The Class of '28 commends highly the excellent and efficient service of these members, and gives to them much of the credit for the way in which the class worked so well together.

Socially, this class has proven a success. We remember well, first as guests, then as hosts, the Freshman-Sophomore parties and the Junior-Senior banquets. Many pronounced the Junior banquet of '27, at the Read House, the most orderly and most pleasing social event in the history of the school. Entertainments given by this class have always been received well. "The Goose Hangs High," a modern drama presented in our Junior year, and in the Senior year, "The Taming of the Shrew," a Shakespearean comedy, were both most creditably given. The leading roles were taken by Gladys Hickey and Jack Sherman in the Junior play, and by Anna Maye Lieb and Jack Sherman in the Senior play.

In the field of athletics this class has left a splendid record. In the two successive years that Central held the city championship, the Class of '28 was well represented in the personnel of the team. Members of the team of '27 and '28 have become immortalized in the hearts of the Central students. The Thanksgiving game made the student body realize the power of that indissoluble school spirit embodied in the team.

Many have been the associations and friendships formed here. Perhaps in years to come, over no period of our lives will the light of happy association shine more brightly than over these four years spent at Central High School. Many of the lessons taught will be forgotten; others remembered will become a part of life's rich heritage. In spite of the fact that some things must pass into oblivion, we like to think of others as lasting through life, like the staunch, true friendship of Mr. Nelson and the kind and gentle influence of Mother Callis, both of whom commanded the love and respect of every boy and girl of the class.

As the years have come and gone, each seems to fade into insignificance as compared with the last year. "As goes the Senior Class so goes the school." If this is true, from all indications the Seniors have not been faithless to their trust, for never has Central had a more successful year than that of '27-'28. This year it was found that in addition to regular work much time must be spent in keeping up the traditions and customs established by previous senior classes. Now, with many of these things behind us, and perhaps the most cherished and best yet to come, the Class of '28 all join in reverent unison to their Alma Mater, saying, "Truly it has been good to be here."

FRED WOOD.



## JUNIORS





7-2-2-86

### Junior Class Officers

FRANK BRADFORD	President
GEORGE MCCARTY	Vice-President
DOROTHY HART	Treasurer
MAUDE SMITH	Secretary

### Junior History

IN September, 1925, there set sail upon the sea of secondary education the good ship, "29," manned by a jolly crew of boys and girls. To be sure some of the sailors were a bit inexperienced. There were slight attacks of seasickness at first, and many waited that we were indeed, "all at sea." But soon the waves ceased to rock us so violently, or to seem so big, and we grew to like our new home on the "rolling deep." Then, too, we chose a valiant captain, George McCarty, who assisted by chief mates, Wilhelmina Haggard, J. T. Holden, and Harry Jackson, taught us to pull together and make speedier progress.

Our first encounter was an amicable one. The good ship, '28, thinking perhaps we felt a bit lost and lonely on the high seas, invited us to moor our boat and board theirs for the evening. We were delighted with the hospitality of their jolly class and had a very enjoyable trip, indeed. For a long while everything was peaceful and we, as freshmen, were "meek and mild."

In the fall of '26 we manned our oars with an air of seasoned veterans. There were sighs for comrades who had been lost upon the rocks, but joy in the companionship of new recruits.

(Continued on Page 68)







## Junior History

(Continued from Page 65)

Our noble captain, Frank Bradford, took the helm with Howard Hammond, Howard Smith and John Seagle as first mates. When we first left port, the harbor was hidden in a fog of confusion, but this cleared with the coming of the sun in the shape of our first class meeting.

Life at sea was rather boring and we craved excitement. Suddenly from out of the sky came a giant green bird-like object. It was manned by about 400 queer-looking individuals, whom we soon found to be Freshmen. Being of a hospitable nature we hailed them and asked them to stop with us a while. They were delighted and accepted readily. We entertained them as best we could during the evening, and when they departed from us they declared that they had had a wonderful time.

A short time later our squadron was suddenly attacked by a huge war-ship! City High! Each ship chose a group of warriors to fight for our squadron. Our ship was represented by Bradford Seagle. We waited. The routine of the ship was suspended! We watched with mingled feelings of hope and fear! At last the battle was over! The Purple and Gold crew was victorious! How proud we were of them! How proud we were of our Alma Mater!

There were many forms of amusement during the trip. There were also many troubles and trials, but before we realized it, we had reached the island called Vacation. Half of our perilous trip was over! We had a hard time entering the harbor, for it was barred by some very dangerous whirlpools—final exams. At last we were safely anchored. What a shout went up! How glad we were! Oh, how rich that island with good times! How luxuriant it was in laziness!

When the twelfth of September rolled around we were all ready to go aboard. It was decided we should change ships again. We went aboard the "Jolly Junior," which was even nicer than the "Sophisticated Sophomore." We had very few new recruits, but a number of our members had fallen in love with some of the native "hulas" and loitered on the beautiful isle.

There was a great deal of responsibility on our new ship. Our craft was one of the leaders. If we went astray the whole squadron would follow. Everyone had an especial place in the routine of work for our Alma Mater. Captain Bradford was re-elected. His mates were George McCarty, Dorothea Hart and Maude Smith. This noble crew piloted our ship through many troubled waters.

*"Soon was called a council straight,  
Brief and bitter the debate."*

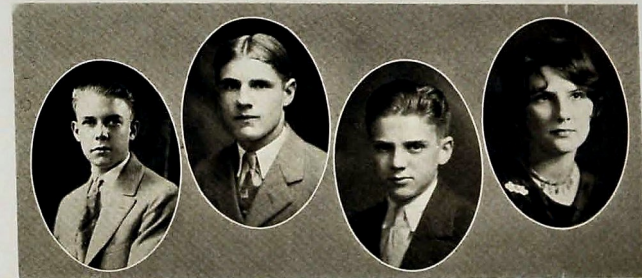
Our ship was low on provisions. We decided to be real pirates and entice all our rich friends to our lair. We erected a number of tents on our decks and used a number of clever devices and games to lure our friends to their fate. We were very successful and were able to carry huge trunks filled with golden coins to the Central High School Bank.

Several weeks later we passed the last peninsula of Vacation Island. We were so close to shore we were able to see a billboard which read, "Col. Chas. A. Lindbergh will stop at this city for a few hours today, October 5th." We decided we would declare a holiday and visit the city to see the world-famous hero. After several months of calm, peaceful weather and happy sailing we again became restless and demanded some recreation. In answer to our demands we were given a play to amuse ourselves. We chose to work. We issued invitations to all our friends to visit our ship on February 10th, to see our most brilliant and successful suitors perform. The performance was a great success and the praises we received for the star performance were numerous and enthusiastic. After the excitement caused by one dramatic attempt, life was calm and peaceful once more. But soon there rose a cloud on the horizon. Final exams were again attacking us, and struggle as we would, some of us were unable to free ourselves from their fatal clutch. Even while we were vainly trying to conquer our ever dreaded enemy, we received word that our sister ship, "Seniors," would leave us to drop anchor at her final destination. We suspended our battle and gave a final farewell party for our comrades. We had a royal feast and a jolly good time in spite of the sadness we felt as we watched our Senior ship receive her honorable discharge and sail away to unknown seas.



SOPHOMORES





### Sophomore Class Officers

ROBERT BAKER	President
WILBUR PETERSON	Vice-President
JOHN MARTIN	Secretary
HORTENSE BYRD	Treasurer





## Sophomore Class

Adams, Charles Hoy  
Adams, Justine  
Adams, Raymond D.  
Alken, William Samuel  
Akard, James Miller  
Alder, George Shelton  
Alexander, Lebron  
Allison, Edith Lucille  
Anderson, James S.  
Archey, Henry Norwood  
Arledge, Theres  
Ashworthy, Margaret V.  
Atchley, Glenn Wilson  
Ball, Mary Katherine  
Barnes, Catherine E.  
Barnes, Harold McKinley  
Barrows, Cecile Louise  
Barnett, Labera A.  
Barton, Lois Allen  
Bass, Fred Pursley  
Beak, Jacqueline  
Benn, Russell L.  
Beaver, Paul Wellington  
Bell, Anna Lee  
Bell, Edie White  
Bell, Ernest Dudley  
Bennett, Harold F.  
Benton, Iris Pearl  
Black, Betty Sue  
Black, Joe Cheek  
Bowman, Bernita Mae  
Bowen, Champ Edward  
Bowling, Helen Marie  
Bowen, Norman Steven  
Bowman, Lewis Garnett  
Boyd, Gertrude Violet  
Bracken, Mary Helen  
Bramen, Frank Steffner  
Brantley, Marguerite A.  
Bressler, Geo. Leonard  
Brewer, Lessie Viola  
Brook, Martha Elzora  
Brooks, Virginia Lillian  
Brooks, William Afton  
Brown, Annie Mae  
Brown, Mildred Ethel  
Bryson, Marie  
Burch, Alice Virginia  
Burton, Cecil  
Buttram, Justin Henry  
Buttram, Wm. Horace  
Byrd, Avis Hortense  
Baker, Robt. S., Jr.  
Cagle, George A. Mae  
Cain, Susie Lena  
Campbell, Kathryn Pearl

Camp, Myrtle Mae  
Cantrell, Peggy Bertha  
Carson, Arthur  
Caruthers, Ruth Elma  
Card, George Lewis  
Carnahan, Harry Paul  
Carland, Lydia Wilson  
Case, Dorothy Evelyn  
Case, La Verne  
Castleberry, Maxine B.  
Coyne, Wilma Belle  
Chase, Clyde Allen  
Clark, Joe Thomas  
Clinehan, Lawrence  
Cobleigh, Henrietta  
Colbert, Martha Lorene  
Conner, Ruth Virginia  
Cooper, Mary Mildred  
Cook, Roy Harry  
Cordell, Ernest Huston  
Coulter, Sarah Inez  
Cox, Bessie Aline  
Crabtree, Mona Janet  
Cramer, George Barnard  
Crane, Floyd Gremom  
Crawford, Ruby K.  
Creasman, Ralph Homer  
Crouch, Louisa  
Crump, Charles  
Cummings, Scott  
Daugherty, Arthel T.  
Davis, Edwina Mildred  
D'Armond, Richard C.  
Deering, Raymond  
Dickson, Lovell Inez  
Dietz, Madeline  
Dodd, Joe Leonard  
Doty, Lona Bernice  
Dudley, Sewell Marvin  
Dugger, Elizabeth Jane  
Duggan, James Willis  
Duggan, Lila Mae  
Duling, Josephine H.  
Dunbar, Ida Rose  
Duncan, Luther Dixie  
Dunham, Lois Anna  
Dutton, Mary Nell  
Echols, Elizabeth  
Eddington, Viola  
Ellison, Lewis  
Elliott, Richard  
Engers, Charles  
Erwin, Sylvan  
Erwin, Thomas A.  
Etrter, B. Eugene, Jr.  
Evans, Luther Erskine

Evatt, Mabel Louise  
Evans, Nellie  
Evans, Pauline Elizabeth  
Ezell, Geneva Jesse  
Farmer, Alton Loyd  
Farmer, Marguerite A.  
Farrow, Mary Irene  
Fletcher, James Henry  
Floyd, Rushy Bell  
Falkner, John Abel  
Foster, Frank  
Forstner, Charles  
Fox, Bernice Patricia  
Fox, Richard K.  
Franklin, Ada Pauline  
Franklin, Lucile Lenora  
Frazier, Edith Evelyn  
Freder, Fred  
Fry, George W.  
Fry, Jennie Emily  
Fry, William James  
Fulghum, Ben Floyd  
Fussell, Leland Tichwell  
Fussell, Margaret I.  
Gable, Alera Loyd  
Gamble, Glenn Robert  
Gannaway, Thelma  
Garner, Ethel Cecelia  
Gatis, Susie Virginia  
George, John Henry  
Gibson, Carl Leland  
Gilbert, Spencer Samuel  
Gillespie, Mabel Louise  
Gladish, Nina Belle  
Gothard, Edna Dashlie  
Graham, Nellie  
Grant, Irene  
Grant, John Theodore  
Gray, Bernice Evelyn  
Grady, Ernest Arlee  
Gray, William Dean  
Greene, Edna Elizabeth  
Gregory, Enid Horton  
Greene, Goldman Arthur  
Greene, Madelon James  
Greene, Mildred Adelia  
Griffith, Ruby Belle  
Gurley, Mabel Onida  
Gurley, Otis Curtis  
Haddock, Virginia Mae  
Hall, Frances  
Hamblin, Lucille St. E.  
Hammond, Gadon

Hammond, Mary Joyce  
Hammond, William Carl  
Handy, Mildred Corita  
Hancey, Velva Fannie  
Harris, Christina  
Harris, Ethelyn Clara  
Hortmann, Esch Carl  
Hartman, Ida Lillian  
Hartman, Irene  
Harrison, Segor  
Heathon, James Elbert  
Heard, Telma  
Heider, Edward  
Henery, Daw  
Henery, Margaret  
Henery, Wm. Howard  
Hinson, Helen Inez  
Henderson, Mary  
Hester, Dorothy E.  
Hetzler, Sydney Neal  
Higdon, Ada Edith  
Hill, Carolyn Frances  
Hixon, Fern  
Hix, Harry Warner  
Hogbin, Paul Hubert  
Holder, Ailing Mary  
Holderman, Dorothy  
Holloway, Mary K.  
Holdman, Richard Finley  
Holdman, Virginia B.  
Horton, Eva Ruth  
Housley, Virginia Louise  
Howard, Helen  
Howard, Lucille Thelma  
Hudson, Lela Agnes  
Hudlow, Roy Edwin  
Hulse, Ruth Winifred  
Hunter, Clara Dorcas  
Irwin, Dorothy E.  
Isom, Mildred Evelyn  
Jackson, Charles Minl  
Jackson, Daphna C.  
Jackson, Flossie V.  
Gray, Mildred  
Jarrett, Virginia E.  
Jay, Ruby Cecile  
Jewell, Orffut  
Johnson, Charles Scott  
Johnson, Henry Clay  
Johnson, Mabel Carline  
Johnson, Ben Francis  
Jolly, Rosalind Broome  
Jones, Lawrence  
Jones, Robert Frances  
Jones, Thelma Ree  
Keaton, Billie Margaret



## Sophomore Class

Keen, William George  
Kelso, Roy Charles  
Kenna, Gene  
Kemper, Robert Harding  
Kibler, Francis  
Kilgough, Clara Blanche  
Kimble, Reba Elizabeth  
Kirkpatrick, Joe Forrest  
Klinger, Douglas M.  
Knox, David Luckey  
Kraeger, Dorothy  
Kroeger, Jewell C.  
Lynes, Foster Samuel  
Lynch, Margaret  
Lackey, Inez  
Lacewell, Wilber Edw.  
LaFaire, Mary Virginia  
Land, Ethel Mary  
Langston, William Henry  
Lasater, Virginia Price  
Lawrence, Ernest C.  
Ledford, Jewell Hettie  
Lee, Frank Scott  
Lemare, Edwin Arthur  
Lennon, John Eugene  
Lewis, Leroy  
Lewis, Lloyd Gerald  
Lewis, Paul  
Lieb, Allen Edward  
Lieb, Raymond DeVere  
Livingston, Bernyce M.  
Livingston, Ruth  
Long, Evelyn  
Lovelie, Bradford  
Love, Mattie Lee  
Love, Nan Minerva  
Lowry, Marguerite Love  
Lowry, Morris Edward  
Lowe, Patricia Ruby  
Lowry, Virginia E.  
Mansfield, Hazel Louise  
Martin, Amelia Laura  
Martin, Arlington D.  
Martin, John H.  
Marsh, Lloyd Patrick  
Marsh, Willie Mae  
Massey, Kelly, Jr.  
Maxvity, Garnett James  
Maxwell, Lucille  
Mead, George Carroll  
Melville, Evelyn Beatrice  
Meroney, Addie Bell  
Miller, Clatie William  
Miller, Helen Josephine  
Miller, Nanalou  
Miller, Troy Franklin  
Minton, William Slater

Monroe, James Newton  
Mooney, Ernest Howard  
Morrison, Charles Francis  
Morgan, Thomas Wesley  
Morton, James David  
Moser, Fred Curtis  
Mullenix, Blanche Etala  
Mullins, Jack Manning  
Murray, Vivian B.  
Myers, Walter Everett  
McClure, Cicero Hunt  
McClum, Mary Kathryn  
McClure, Vella Elizabeth  
McDowell, Thos. Hayes  
McGaughy, Hayden P.  
McGaughy, Howard  
McKenzie, Ruth  
McKenzie, Hazel V.  
McLaughen, Francis  
McMahan, Jas. Samuel  
McSpadden, Clarence E.  
McSpadden, Edith L.  
Norton, Mildred Mary J.  
O'Rear, Beulah F.  
Orrell, J. Gordon  
Parker, Beatrice  
Parker, Bessie Lee  
Parkson, Gladys Lucille  
Parson, Glenn  
Parker, James Herbert  
Park, Leona Margaret  
Parks, Lula Ethelyn  
Pass, Howard Franklin  
Patterson, Mae Marie  
Payne, Willie Marie  
Payne, William Snow  
Peak, Luther Paul  
Pearl, Virginia  
Pendergraph, Louise H.  
Perkinson, Willie E.  
Petersen, Wilbur B.  
Pitzer, Carl August  
Phillips, Wm. Wesley  
Pickett, Margaret F.  
Pledger, Harry Anderson  
Plumlee, Robert Lee  
Pollard, Lawrence B.  
Porman, Dorothy H.  
Price, Virginia Nola  
Ragon, Carl Gentry  
Rankin, Mary Louise  
Ransom, Virginia Iduma  
Rash, Lillian Mae  
Ratliffe, Ellen Morteen  
Rawlings, Elizabeth L.  
Redmon, Bryant James

Reed, Anas Elizabeth  
Reeves, Willie Blanche  
Renegar, Ross Franklin  
Reynolds, Beatrice L.  
Reynolds, Jessie Lee  
Rhodes, Edward L.  
Richard, James McClure  
Ritchey, Frances E.  
Roberts, Gladys Ethyl  
Robinson, Jeanette  
Roberson, Laura N.  
Robinson, Owen Overall  
Rogers, Clarence Selton  
Rogers, Gearl W.  
Rountree, Suzanne  
Roy, Paul Aubry  
Rowden, J. C.  
Russell, Edna Mae  
Rushridge, Norton C.  
Sanders, Cynthia Anna  
Scott, Perrie Ruth  
Schmitt, Addie Elizabeth  
Schaefer, Lola Elizabeth  
Schlier, Pauline Grace  
Schneider, Marie W.  
Shannon, Alfred Frank  
Sharp, Juanita  
Shaw, Carrie Maye  
Sherrill, Harry Neal  
Shippey, Charles R.  
Silver, Dorothy Lee  
Sils, E. F.  
Simpson, Laureta M.  
Sivley, Paris Veolia  
Slaton, Frances Louise  
Slater, Gilbert Leo  
Slatten, Howard Arthur  
Smart, Oscar Norman  
Smith, Gertrude Lillie  
Smith, Howard W.  
Smith, Jimmie Mack  
Smith, Katherine  
Smith, Muriel  
Songer, Roy Shelton  
Stacy, Ernestine  
Standifer, Aline  
Standifer, Eloise  
Stephens, Alma May  
Stewart, Evelyn Nannie  
Stonacher, Frank A.  
Stone, Thelma Jewell  
Suits, Floyd  
Sullivan, Pauline  
Swafford, L. Hollis  
Swafford, Reba Wilson  
Talley, Mildred Eugenia

Tate, Hazel  
Taylor, Marion Georgia  
Teague, Sadie Mae  
Teter, Mary Lucy  
Thomas, Gene  
Thompson, James  
Thomasson, Mary E.  
Thompson, Margaret  
Thompson, Mildred  
Thomas, Raymond Jas.  
Tilbille, Evelyn Louise  
Trotter, Alice Lorene  
Tyrrell, Garlan  
Tyrrell, Wayne M.  
Underwood, Chester C.  
Umsiller, Dorothy Della  
Valentine, Charles Marion  
Vance, Elizabeth M.  
Vandiver, Fred Robert  
Vandergriff, Louise V.  
Vandergriff, Vivian L.  
Walden, Curtis Frank  
Walker, Willie Clinton  
Warren, Johnnie Will  
Ware, Waymond Wallace  
Watt, Clyde Ernest  
Watson, Ellen  
Watson, Ona Elizabeth  
Wheler, Edith  
White, Alma Marie  
White, Dorothy E.  
White, Edna Lucille  
Whiteside, John David  
White, Rose Virginia  
Wicks, James Murphy  
Wilson, Bernard Edgar  
Wilson, Bonnie Floren  
Wilson, Floyd Elmer  
Wilson, Grey  
Williams, Inez Beatrice  
Wilder, Lella Davis  
Wilkinson, Martha E.  
Wilson, Mildred Louise  
Wilson, Raymond Lee  
Witt, James Clarence  
Witt, Malcolm Reed  
Woods, Edwin Morris  
Wood, Helen Louise  
Wood, Mary Katherine  
Woodall, Sarah Elizabeth  
Workman, James L.  
Workman, Samuel Boyd  
Worley, Lela Pearl  
Wright, John Franklin  
Wright, Lois Aline  
Yarbrough, Minnie Marie





## The Class of 1930

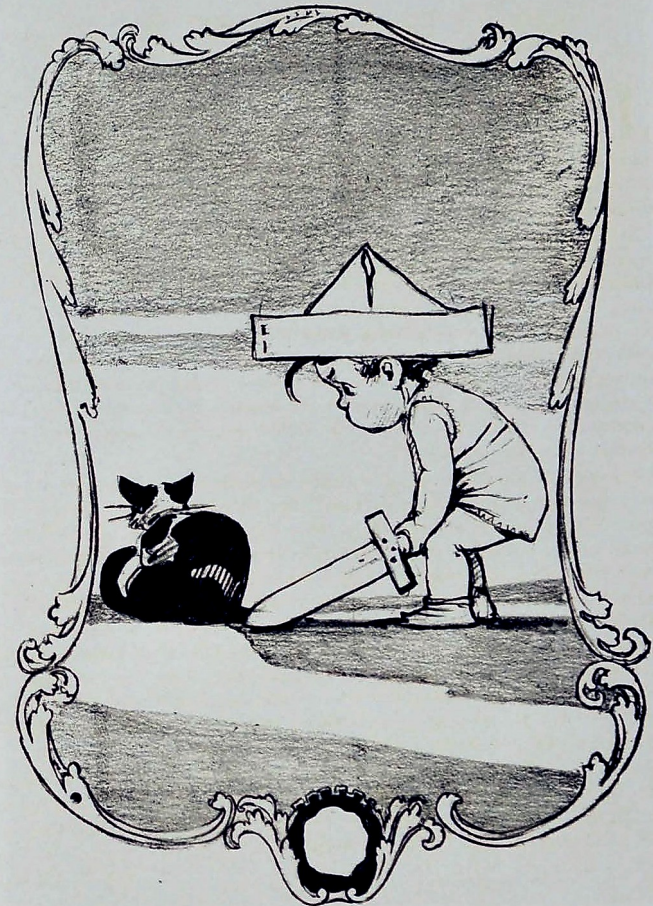
**I**F SEEMS to be a generally accepted fact that all freshmen are green—a fact fortunately not so much recognized by individuals of the class at that time, as perhaps, in the following year. The present Sophomore class was no exception to such a fact. Theirs was the true verdure of the freshman, but since greenness indicates growth, it is with a feeling not of shame, but rather of pride that this class now recalls its history of nearly two years.

It was in the early fall of 1926 when the first meeting of the class was called and out of a chaos of about four hundred or more freshmen came an organized body with Wilbur Peterson as president; Earnest Horton, vice-president; John Starr, secretary; Buford McGhee, treasurer. These officers realizing the responsibility as well as the honor conferred upon them conducted themselves in a most creditable way, whether on the football field fighting for the Purple and Gold, or at the Junior-Senior Banquet, representing the class. Very noticeable progress in these officers is indicative of the progress in the entire class. Much bashfulness has been overcome; much self-confidence and wisdom gained, while the Central spirit has become a part of the individual make-up of each member.

The class of 1930 during its existence at Central High School has been an active class manifesting commendable spirit where class pride and school spirit were contested. Whether gainers or losers the situation has been met well. In athletics the class has made a splendid record. In football, Howard Smith, Wilbur Peterson and Chester Underwood have been the means of bringing credit and honor to the Purple and Gold. In basketball likewise the class has reason to be proud of Fred Sheerer. In 1927 the freshman girls won the loving cup in girls' athletics for superiority over other classes in this line of work. In the Orchestra and Glee Club, Dorothy Martin, Jewel Kragen, Elizabeth White, Edna Gothard, Marie Schneider have made for themselves and their class a name worthy of recognition. In the ticket-selling contest of 1926, this class won third place—an honor not to be despised when the inexperience of the class of that time is considered.

In this the Sophomore year the outlook for the class of 1930 is most promising. With efficient leaders, Robert Baker, president; Wilbur Peterson, vice-president; John Martin, secretary; Hortense Byrd, treasurer, class spirit has been keen and loyalty to Central has been displayed repeatedly.

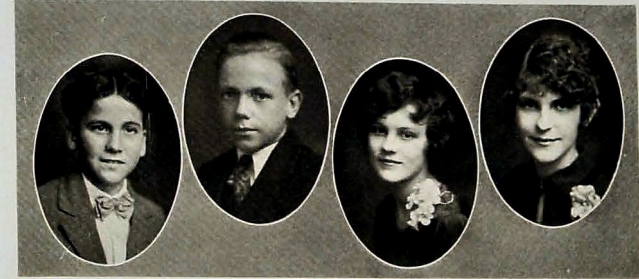
EVELYN GRAY.



FRESHMEN



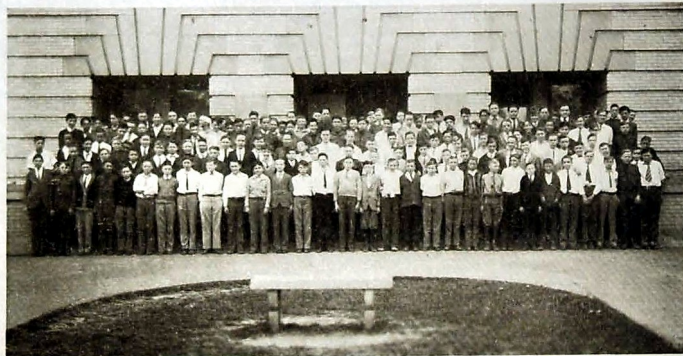




### Freshman Class Officers

BILL WALLER . . . . . *President*  
 BROWN BLAKELY . . . . . *Vice-President*  
 IDA WEE MABRY . . . . . *Secretary*  
 CORRINE MAYER . . . . . *Treasurer*





## Freshman Class

Alexander, Kate G.  
Alford, Rowena H.  
Anderson, Annette A.  
Anderson, Flora Edna  
Angle, Harold C.  
Armstrong, Wanda  
Armstrong, Willie B.  
Adams, Dorothy Weir  
Addison, Catherine L.  
Addison, Mildred Y.  
Alken, Whit Matthew  
Akin, Bonnie Mae  
Ball, Juanita  
Banks, James Ernest  
Barnes, George W.  
Barnes, Lawrence Y.  
Barnes, Mary Anita  
Beatty, Jewell Lee  
Beaver, Clyde Raymond  
Bodolt, Jessie H.  
Bell, Ike Otis  
Bennett, Winnie Lee  
Benton, Vera Edith  
Billet, Harris Ellis  
Black, Edith May  
Blakely, Howard B.  
Blanton, Verla Sue  
Blevins, Loretta Dora  
Bolton, Clyde Perry  
Booth, Andrew J.  
Bouldin, Helene  
Baldwin, Mary Frances  
Bowling, Pauline Ruth  
Bowman, Pauline F.  
Boyd, James Columbus  
Boyd, John Richard  
Britt, Leo Bernard  
Bristow, Wallace Hugh  
Brooks, Mary Lou  
Brooks, Lucille A.  
Brown, Frank Ellis  
Brown, Richard B.  
Bryant, Charles Lester  
Bryant, Kathryn E.  
Buol, Kathleen Fay  
Bucin, Richard Preston  
Burgess, Della Wynema  
Burgess, Opal Joe  
Burk, Grace Elizabeth  
Burnette, Billy Marvella  
Burnette, Oscar Gentry  
Burton, Elizabeth M.  
Bush, Barbara Irene  
Butler, Ellnor Margaret  
Butler, Roy Francis  
Cahoon, Dorothy A.  
Cahoon, Ernest R.  
Callahan, Raymond H.  
Camp, Raymond Ulus  
Carroll, Imogene L.  
Carroll, Jannie L.

Carson, Joseph A. Jr.  
Canick, Vance  
Carter, Lorene  
Caudle, Hardie E.  
Cauffman, Bernard H.  
Center, John Nolan  
Chamberlain, Robert L.  
Chamberlain, Tommy  
Chase, Harold D.  
Cherry, Don E. Jr.  
Childers, Julia E.  
Chumley, Irene  
Chumley, Jack H.  
Clark, Kathleen  
Cloninger, Margaret J.  
Collins, George M.  
Collins, Ruby Esther  
Combs, Henry Warner  
Cooper, Bessie Eloise  
Cooper, Clara Nell  
Cordell, Alleen  
Corlitzon, Francis  
Corlitzon, Harry  
Cornellison, Don F.  
Cornellison, Marshall D.  
Covey, Victor  
Crawford, George P.  
Crouch, Josephine  
Crow, Clifford Edgar  
Crownover, Paul Edgar  
Cummings, Frank W.  
Dalley, Ella W.  
Daverson, Flora Lee  
Davidson, Hallie L.  
Davis, John Oscar  
Davis, Mary Lynn  
Davis, Mary Edith  
Davis, Walter Lessely  
Davis, Harold Rowe  
Davis, Lydia Elizabeth  
Davis, William Joe  
DeArmond, Merrill E.  
Deering, Albert J.  
Denton, Ann E.  
Dickson, Duane  
Dickson, Mattie S.  
Dobbins, Velda  
Donigan, Ruth Glover  
Dowd, Patrick G.  
Duke, Robert Malcolm  
Dunn, Anna E.  
Durham, William C.  
Easterling, Metta R.  
Edgman, Barbara J.  
Eledge, Elsie Jane  
Ellis, James B. Jr.  
Elinore, Francis E.  
English, Mabel H.  
Epperson, Carl Clyde  
Estill, Lois Lucille  
Evans, Bertha Evelyn

Evans, Cecil  
Evans, Reba Matilda  
Fanburg, Jacob  
Finley, James Louis  
Finwell, Marie Lillian  
Fisher, Frances E.  
Flewellen, Gordon S.  
Flinn, Willie Lee  
Forbes, Edith Jayne  
Fox, Alberta E.  
Francis, Clarence E.  
Freeman, George B.  
Friend, Irma L.  
Frost, Lois Edna  
Fulghum, Edward S.  
Fullam, Leland  
Gardenhire, Ruby L.  
Garrett, Evelyn L.  
Gauntlett, Billy H.  
Genter, Maurice V.  
Giddens, Jewell Agnes  
Gilliland, Llewellyn W.  
Gill, Mary Luella  
Gillespie, William R.  
Gist, William Claude  
Godsey, Dorothy E.  
Gott, John Nathan  
Gott, Marjorie Brown  
Grafton, Williams K.  
Graves, Richard R.  
Grayson, Alton Alwood  
Gray, James Lawrence  
Gray, Wells Lloyd  
Green, Elizabeth M. A.  
Greene, Helen Edith  
Griffin, Joseph Homer  
Groover, Wallace R.  
Guess, Walter Lessely  
Guth, Charles S.  
Guth, Grace Vergene  
Guthrie, Marshall Mab  
Hale, Artie Virginia  
Hale, Rex Harold  
Hall, Helen Margaret  
Hall, Nina Elizabeth  
Hamilton, Leland A.  
Hamilton, Margaret E.  
Hamilton, Vagrie G.  
Hammon, Shirley E.  
Hannah, Sarah  
Harmon, Elizabeth M.  
Harper, Betty  
Harris, Albert T.  
Hart, Marguerite K.  
Haskins, Robert W.  
Hassler, Leon J. Jr.  
Hatfield, Mildred Helen  
Hayes, Marion E.  
Headrick, Verne G.  
Herron, Louella  
Henry, George Elmer

Henson, Vera Maxim  
Herron, Ruby Lea  
Hester, Charlotte C.  
Higgins, Minnie Edee  
High, Betty, Mabel  
Hill, Helen Jennie Bell  
Hill, Mabel Lorene  
Hillard, Mary Sue  
Hinds, Gladys E.  
Hitt, Mary Lou  
Hodgkins, Rugby Grant  
Holland, Clarence E.  
Holloway, Frances T.  
Horton, Herbert W.  
Hudgens, Helen  
Hughes, Mary E.  
Ingie, Christeen  
Ingie, Louise  
Isbill, Charles  
Jacks, Edna  
Jackson, Fletcher  
Jenkins, Albin  
Jenkins, Dorothy  
Jernigan, James  
Jett, Doris  
Jewell, Naomi  
Johnson, Dorothy  
Johnson, Henry  
Johnson, Herman  
Johnson, Vilma  
Johns, William  
Jones, Alice  
Jones, Calvin  
Jones, Eva  
Jones, John  
Jones, Winfred  
Kammer, Elmer D.  
Kayler, Walter J.  
Kelly, Lois  
Kelly, Woodrow T.  
Kendrick, Mary L.  
Kerley, Charles G.  
King, Harry S.  
King, Lucille  
King, Mary A.  
Klein, Lena Mae  
Knox, Iva Willard  
Lacewell, Elizabeth R.  
La Croix, Frank L.  
Landis, Rachel Mae  
Langston, Ralph  
Lawrence, Clara Mae  
Layson, William G.  
Ledford, Bessie Lucille  
Lee, J. B.  
Lee, Lillie Elvira  
Lee, Lester  
Lerch, Clarence Leo  
Lerch, Harold Edward  
Ligon, Thomas Riley  
Lindeman, Dorothy M.  
Lindsay, Marlam B.



## Freshman Class

Little, Lillian Lois  
Lively, Edward Harry  
Loeber, Doris Mae  
Long, Edna Irene  
Land, Mary Kinsey  
Lowry, Elsie Agnes  
Lowery, Helen Rebecca  
Luther, Margaret Louise  
Lyle, James Monford  
Lynch, Alton D.  
Lynch, Annie Ruth  
McBrien, Hyacinthe B.  
McBroom, John B.  
McClure, Neva L.  
McCollum, Troy G.  
McDuffie, Earnest H.  
McDonald, Teresa W.  
McDowell, Vacie  
McGhee, Buford C.  
McGhee, Margaret H.  
McGuffey, Georgia M.  
McGuffey, Henry A.  
McInturf, Aaron M.  
McKenzie, Biddie  
McKenzie, Doreen P.  
McKenzie, Roy Hadley  
McKeown, Naomi L.  
McMahan, W. T. Jr.  
Mabry, Ida Wee  
Mallory, Alice Ethel  
Maloney, Robert H.  
Mann, Edward  
Mann, Robert V.  
Mann, William L.  
Manstfield, Harrison O.  
Marshall, Mildred M.  
Martin, Dorothy A.  
Martin, Dorothy L.  
Mason, Mary L.  
Massey, Lorene L.  
Maupin, Della M.  
Maxwell, Lillie L.  
Mayer, Corrine  
Mayo, Marie Evelyn  
Meadows, Boyd Jessie  
Melton, Spencer  
Mercer, Pauline  
Miller, Donald Alfred  
Miller, Elsie Lee  
Mills, Hilda  
Miller, Louis James  
Mills, Evelyn Rose  
Minor, Mary Ingram  
Minor, Marian Morgan  
Moore, Charles William  
Moore, Irene Gwendoline  
Moore, Janet Alline  
Moore, John Paul  
Moore, Maude Jane  
Morgan, Mary Lorene

Morrison, Francis W.  
Mosier, Paris W.  
Mueller, Paul Gerpard  
Mulkey, Darrel Gordon  
Mullins, James Fred  
Murray, Charles E.  
Myers, Edwin C.  
Nelson, James D.  
Newlin, Evelyn W.  
Nichols, Mahlin W.  
Norrell, Thomas J.  
Norton, Charles L.  
O'Connor, James W.  
Oliphant, Lucille M.  
O'Rear, James C.  
Orr, Marvin Pierce  
Painter, Vesta Belle  
Parker, Adam James  
Parker, Pearl B.  
Parks, Edmund W.  
Parks, Edan Ruth  
Parks, Julian H.  
Payne, Milton E.  
Pemberton, Neal A.  
Pendergrass, Gladys L.  
Pendergrass, Harmon  
Peppers, Margaret O.  
Perkinson, Bud C.  
Perkinson, Earl F.  
Perkinson, Margaret E.  
Perry, Eurskin B.  
Phillips, William R.  
Pickering, Naomi H.  
Pippin, Carl E.  
Poe, Evelyn L.  
Pogue, Luther W.  
Poole, Charles R.  
Porter, Howard C.  
Potter, Otis P.  
Potts, Lester Coke  
Powell, Elyant Maud  
Power, Daniel B.  
Priddy, Jessie M.  
Pruett, Helen R.  
Pullen, Carl Gordon  
Rains, Clarence T.  
Randle, Charles R.  
Rawlins, Angie L.  
Rawlings, Ruth E.  
Reccord, Edna D.  
Rector, Jackson S.  
Reese, Evelyn A.  
Rhinehart, Hester E.  
Richards, Charles  
Richards, Edward T.  
Riley, Joe Charles  
Rodeh, E. C. Jr.  
Roberts, Earnest C.  
Robertson, James F.

Roberson, James M.  
Roberson, Samuel F.  
Rogers, Renard M.  
Rogers, Charles P.  
Rogers, Harry J.  
Rogers, Louise E.  
Rogers, Willie W.  
Rose, Charles J.  
Rountree, Minnie E.  
Rous, John H.  
Rowland, Pinley M.  
Rowland, Ruth  
Rudder, Edward S.  
Ruggles, Ruby W.  
Rushbridge, Van Hooser  
Randle, Charles R.  
Ryerson, George S.  
Ragon, Irene E.  
Schwier, Everett  
Scoggins, Paul Jessie  
Scruggs, Gerald H.  
Scott, Wade Matthew  
Scraggs, Paul Beckley  
Seagle, Marion E.  
Sells, Lydia F.  
Sheldon, William L.  
Shippey, George F.  
Sims, Martha J.  
Singleton, Pauline F.  
Sivley, Grover B.  
Sketton, Laura Lee  
Skipper, Fred F.  
Sliger, Dorothy R.  
Smartt, James A.  
Smith, John W.  
Smith, Conrad Reh  
Smith, Edna A.  
Smith, Edwin G.  
Smith, Elizabeth L.  
Smith, Lillian L.  
Smith, Lois G.  
Smith, Orman F.  
Smith, Roxie E.  
Smith, Walter A.  
Snodgrass, Bessie E.  
Soister, Louis W.  
Stampen, Lora H.  
Steadman, Viola  
Stephens, Howard L.  
Stephens, Ruby K.  
Steffner, Marjorie E.  
Stinson, Johnie L.  
Stinson, Martin H.  
Stove, Gertrude Lee  
Stove, John Thomas  
Stowe, Charlotte L.  
Stowe, Relie H.  
Stringer, Paul Allen  
Sullivan, John M.  
Sunstrom, Carl B.

Swafford, Clyde M.  
Swope, Walter B.  
Scholze, Elbert K.  
Tallant, William C.  
Taylor, Helen Marie  
Teasley, Ernest  
Templeton, Aubrey F.  
Templeton, Elizabeth E.  
Thapton, Edward  
Thompson, Johnie L.  
Timmins, Laura M.  
Tipton, Alma L.  
Toby, Claude  
Totton, William M.  
Torrance, Martha K.  
Tranel, Leroy D.  
Travis, Robert D.  
Travis, Walter J.  
Trimm, Joe Henegar  
Tupp, Hiram Glenwood  
Trotter, Edna B.  
Tuggle, Tommie C.  
Tyler, Alma F.  
Vanant, Thomas W.  
Vaughn, Herbert LaV.  
Varnell, Samuel L.  
Walker, Margaret E.  
Walsh, Sarah E.  
Wallace, Bruce B.  
Wallace, Margaret Ann  
Waller, William Cannon  
Walther, Sarah E.  
Warren, Helen L.  
Watson, Rachel M.  
Webster, Thelma B.  
Weidner, Alice J.  
Weigel, Valeria L.  
Wellborn, Thomas F.  
Whattery, Lillian G.  
White, Merle  
Wilbanks, Naome J.  
Wilbur, Catherine E.  
Wilbur, Ruth N.  
Withoit, Clara E.  
Wilkey, Max Rogers  
Wilkey, Opal E.  
Wilkes, Thomas W.  
Williams, Charles H.  
Williams, Garvis L.  
Williams, Mary E.  
Williams, R. Ted  
Williamson, Ruth  
Williamson, Truman C.  
Wilson, Edwin T.  
Wilson, James C.  
Wolff, Annie F.  
Wolfe, Ocie Lee  
Wood, Lila  
Wrinkle, Frances M.  
York, Ruby B.





## The Class of 1931

**L**ATE one winter evening, sitting before an open fire gazing into the dying embers I found myself trying to visualize a scene fifty years in the future while a friend and I, as elderly women, indulge in reminiscences of our high school days and I tell of a class which entered Central High School one day in September, 1927.

It was a bewildering situation—that twelfth day of September, 1927. This unwieldy mass of Freshmen—a little shy and timid from entering into a field entirely new—was the largest class that had ever entered Central. The ushers who were stationed here and there in the halls were our salvation. They were Senior girls who answered our inquiries pleasantly and directed us to our class rooms. In these trying days of the first few weeks, kindness and courtesy shown us by the faculty and upper classmen are well remembered.

Our teachers were not merely instructors, they were advisers and friends. Very soon we became acquainted with Mother Callis, our school mother, who proved a friend indeed for she was always a friend in need, ready to comfort, cheer and advise us.

In a short time we were invited to join the different societies and enter various outside activities. Many of us availed ourselves of the opportunities and soon became so interested in our work, societies, and athletics that we almost forgot that we were beginners.

Early in the autumn a lively contest was staged by Freshmen and Sophomores for subscriptions to the Central Digest. Many Freshman classes reported one hundred per cent. How proud we were of the victorious record of our first contest! The next important event was the day when we first assembled as a class to elect officers. After a lively contest, Bill Waller was chosen president; Howard Brown Blakely, vice-president; Ida Wee Mabry, treasurer; Corrine Mayer, secretary; Helen Hall and Henry Rouse, cheer leaders.

From this time on things seemed to follow fast one upon the other. In the Central-Baylor game Freshmen could not be distinguished from Seniors, for already they had caught the Central spirit. Our pride in Central's victory was demonstrated by an enthusiastic "pep meeting."

Words seem inadequate in trying to describe the spirit shown in the Central-City game. Every member of the class apparently felt his responsibility. How proudly the Purple and Gold waved over us! Were cheers ever louder? Could students have supported their team more valiantly? No wonder was it that the team won laurels under such circumstances.

How vivid the impression of the Junior carnival that year! I was never before convinced that "smoke burned," nor did I know that Juniors had such an insight into the future, for their fortune-telling was a revelation. Again class pride ran high for a dainty Freshman was nominated for Carnival Queen. The class showed good judgment in the choice of Ida Wee Mabry.

To the Press Convention which met for the first time in Chattanooga and which was sponsored by Central High School, the Freshman Class sent Robert Mann and Glenn Tallant, as representatives. These brought back an interesting report and gave inspiration for the convention next year.

Soon the year passed from autumn into winter and winter into spring which brought its festival and activities. Then came commencement when with envious eyes we watched the Seniors, hoping that we too some day might enjoy these same privileges.

Thus ended one of the happiest years of my life, so filled with bright spots that the darker days are almost entirely overshadowed.

BERTHA EVELYN EVANS.



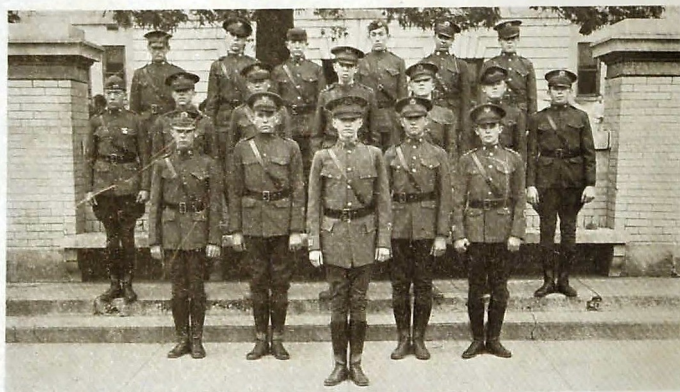
MILITARY





JAMES E. WARE  
Lieutenant-Colonel, U. S. A., Retired  
*Professor of Military Science and Tactics*





### Officers' Club

#### OFFICIALS

MAJOR MARK H. REYNOLDS	President
CAPT. JAMES K. SWAFFORD	Vice-President
CAPT. JOHN HARRISON	Treasurer
2ND LIEUT. ROY STARMER	Secretary

#### MEMBERS

MAJOR REYNOLDS

#### Captains

CORDELL  
SWAFFORD

HARRISON  
HYDE

#### First Lieutenants

HIGH  
McREE

BEANE  
SHERMAN

McCLURE  
CLARK

CRAIG  
HENDERSON

#### Second Lieutenants

STARMER  
STOWE

SMITH  
LANGSTON  
ARMSTRONG

HANSBERGER  
CASE



### Rifle Team

HARRY EVANS  
THOMAS ARMSTRONG  
GORDON LEE  
R. A. PACK  
HUGH CONNOR  
G. J. MAVITY

CARL HYDE  
MARK REYNOLDS  
JOE McREE  
LOYD SHELTON  
FRANCIS BEENE  
CHARLES LANGSTON







## BATTALION STAFF



MAJ. MARK H. REYNOLDS



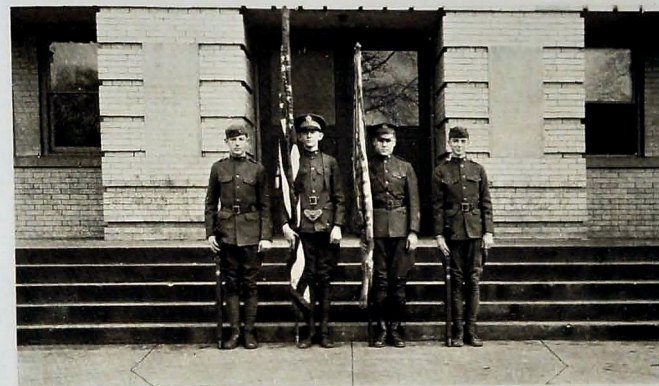
CAPT. CARL HYDE

MISS MARIE DOWD  
SPONSOR

LT. CHARLES CRAIG



LT. ROY STARNIER



## Colors

## COLOR SERGEANTS

SERGEANT A. C. DECOSTA  
SERGEANT GEORGE SHELTON

## COLOR GUARDS

ROBERT BEENE  
EDWARD RHODES

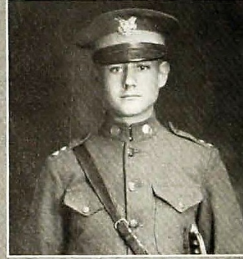




## E COMPANY OFFICERS



CAPT FORREST CORDELL



LT. JACK HIGH



LT. FRANCIS BEENE

MISS DELZELL BOYD  
SPONSOR

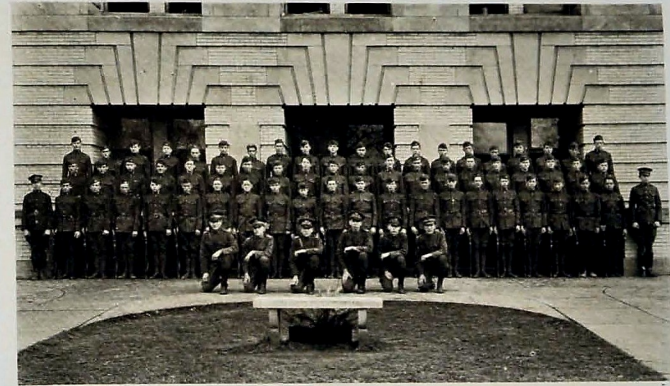
LT. JOE MCREE



LT. EDWIN STOWE



LT. HOWARD SMITH



## Company E

MARGARET DELZELL BOYD, *Company Sponsor*

## OFFICERS IN COMMAND

FORREST CORDELL . . . . .	<i>Captain</i>	EDWIN H. STOWE . . . . .	<i>Second Lieutenant</i>
JACK L. HIGH . . . . .	<i>First Lieutenant</i>	HOWARD J. SMITH . . . . .	<i>Second Lieutenant</i>
JOE MCREE . . . . .	<i>First Lieutenant</i>	LOWELL G. BEAN . . . . .	<i>First Sergeant</i>
FRANCIS J. BEENE . . . . .	<i>First Lieutenant</i>	EDWARD C. SHIPPEY . . . . .	<i>Sergeant-Major</i>

## SERGEANTS

ALONZO C. DECOSTA	HUGH L. CONNOR	JOHN H. HARRIS
CARROLL E. LITTLE	MITCHELL B. AUSTIN	G. J. MAVITY
	T. D. TURBYVILLE	
	CLIFFORD E. CAMP	

## CORPORALS

JOHN A. DUGGAN	R. F. WALLACE	J. E. CLOSE
GORDON N. LEE	R. BEENE	R. G. HODGKINS
CHARLES R. SHIPPEY	J. H. NALL	W. E. LACEWELL
CHARLES E. WEIGEL	L. D. ALLEN	J. L. WORKMAN

## PRIVATES

J. M. AKARD	C. H. GERMAN	L. P. MARTIN	C. S. ROGERS
H. N. ARCHEY	R. L. GODSEY	S. H. MELTON	J. W. RUGGLES
R. B. BOLT	G. A. GREEN	J. MILLER	J. M. ROBINSON
J. R. BOYD	J. V. HAGGARD	J. N. MONROE	O. ROBINSON
E. L. BROWN	G. S. HAMMOND	K. MASSEY	R. V. SPRIGGS
G. B. CREAMER	A. J. HITCHCOCK	F. C. MOSER	F. A. STONESIPHER
F. F. CRANE	P. H. HOGHAN	W. E. MYERS	L. M. SHELTON
E. H. EVANS	F. R. HOLMAN	M. A. NICHOLS	A. H. TREWHITT
J. F. FOSTER	N. C. JACKSON	T. J. NORRELL	F. R. VANDIVER
G. B. FREEMAN	O. K. JOHNSON	E. M. WOODS	C. M. VALENTINE
W. J. FRY	H. E. JOHNSTON	M. P. ORR	C. E. WATT
B. E. FULGHUM	W. G. KEEN	I. G. ORRELL	J. G. WILSON
J. FANBURG	P. A. LICHTENSTETTER	R. A. PECK	B. E. WILSON
J. T. GRANT	J. M. LYLE	D. E. POWER	T. G. WOODALL
	C. H. MCCLURE	E. L. RHODES	





## F COMPANY OFFICERS



CAPT. JAMES K. SWAFFORD



LT. HOWARD MCCLURE



LT. WILLIAM CLARKE

MISS LILLIE BELLE BRUCE  
SPONSOR

LT. JACK SHERMAN



LT. CHARLES LANGSTON



LT. THOMAS ARMSTRONG



## Company F

LILLIE BELLE BRUCE, *Company Sponsor*

## OFFICERS IN COMMAND

JAMES K. SWAFFORD . . . . .	<i>Captain</i>	CHARLES LANGSTON . . . . .	<i>Second Lieutenant</i>
HOWARD W. MCCLURE . . . . .	<i>First Lieutenant</i>	THOMAS M. ARMSTRONG, <i>Second Lieutenant</i>	
WILLIAM E. CLARK . . . . .	<i>First Lieutenant</i>	ODIS F. LEE . . . . .	<i>First Sergeant</i>
JACK O. SHERMAN . . . . .	<i>First Lieutenant</i>	GEORGE W. SHIPPEY . . . . .	<i>Color Sergeant</i>

(Attached)

## SERGEANTS

WILLIAM HENDERSON  
GEORGE E. SHIPPEYOLIVER T. MARTIN  
T. M. WOOD  
J. W. BUTRAMJ. H. SWICK  
A. HICKS

## CORPORALS

R. E. MCCOLLUM  
D. H. PHILLIPSF. N. SUITS  
B. B. COULTERW. D. GRAY  
P. W. MOSIER

## PRIVATES

J. E. BANKS  
H. E. BILLET  
W. K. BROOKS  
K. J. BOOTH  
J. H. BUTRAM  
J. C. BOYD  
D. E. CHERRY  
E. H. CORDELL  
H. CORFITSON  
J. H. DUNSTON  
J. B. ELLIS  
S. HARRISON  
R. W. HASKINS  
H. W. HORTON  
O. S. JEWELL  
W. H. LANGSTON  
W. G. LAYSON  
F. S. LEEB. LOVELL  
J. S. McMAHAN  
J. W. O'CONNOR  
J. H. PARKER  
R. L. PLUMLEE  
J. F. ROBERSON  
T. H. MURPHY  
C. R. SCOGGIN  
G. L. SLATER  
W. B. SWOPE  
W. J. TRAVIS  
J. H. TRIMM  
W. L. TIMBERLAKE  
J. M. WIGGS  
O. B. WALLACE  
R. L. BEAM  
C. R. BEAVERL. G. BOWMAN  
W. H. BUTRAM  
R. BUGUO  
G. L. CARD  
G. M. COLLINS  
L. J. DAVIS  
W. C. DURHAM  
L. E. EVANS  
L. T. FOSSELL  
F. FREULER  
L. FULLAM  
M. B. GENTER  
E. A. GRAY  
L. J. GRAY  
O. C. GURLEY  
L. W. GILLIAND  
A. T. HARRISC. S. JOHNSON  
J. F. KIRKPATRICK  
L. R. LEWIS  
P. S. LEWIS  
M. E. LOWERY  
G. E. LYNSEY  
O. H. MANSFIELD  
H. F. PASS  
J. R. PECK  
J. M. RICHARDS  
S. F. ROBINSON  
E. P. SELLS  
J. M. SMITH  
H. G. TRIPP  
T. C. WILLIAMS  
J. C. WITT  
T. F. WELLBURN





## BAND OFFICERS



CAPT. JOHN HARRISON



LT. JOHN PAUL HENDERSON

MISS MYRL BEAVER  
SPONSOR

LT. DALE CASE



LT. FRANK O. HANSBERGER



## Band

MYRL HELEN BEAVER, *Band Sponsor*

## OFFICERS IN COMMAND

JOHN H. HARRISON	.....	<i>Captain</i>
JOHN P. HENDERSON	.....	<i>First Lieutenant</i>
FRANK HANSBURGER	.....	<i>Second Lieutenant</i>
DALE H. CASE	.....	<i>Second Lieutenant</i>
ROBERT A. MORRISON	.....	<i>First Sergeant</i>

## SERGEANTS

W. S. CONNOR	E. L. JONES
L. E. COX	W. K. LANCASTER
H. C. PECK	

## CORPORALS

G. R. COLLINS	G. C. HAGEDORN
M. T. DELONG	A. T. MOON
M. E. SLIGER	

## MEMBERS

H. C. ANGEL	R. FOX	E. L. KEMNA	S. G. RYERSON
H. B. BLAKELY	G. W. FRY	W. T. McMAHAN	E. K. SCHOLZE
O. G. BURNETTE	J. W. GOTT	T. W. MORGAN	A. J. SMARTT
G. H. BUTLER	H. JENKINS	C. F. MORRISON	W. N. STIVERS
C. S. CRUMP	A. R. KEITH	E. W. PARKS	J. A. TIPTON
E. B. ETTER	R. C. KELSO	W. S. PAYNE	W. SMITH
	R. A. KEMPER	J. C. PERKINSON	



## The Reserve Officers Training Corps

THE duty of protecting our homes, our property and our families from the dangers of invasion by a foreign foe rests primarily with the Army and Navy, and every male citizen between the ages of eighteen and forty-five years is, in time of national emergency, subject to military duty.

The United States Army is now, under an Act of Congress composed of three parts, namely: The Regular Army, the National Guard, and the Organized Reserves.

The Regular Army has always been small and will always be relatively so. It is composed of a small body of highly trained specialists, whose duty in time of a great military emergency is to organize and equip our citizen armies, which will in the future, as in the past, make up the greater part of our military forces in time of war.

While the Regular Army is most needed and appreciated in time of war, there are many examples of its valuable peace-time service—the great Galveston flood in 1900, the destructive earthquake and fire in San Francisco in 1906, the building of the Panama Canal, the eradication of yellow fever in Cuba and Panama, thereby removing this menace from our beloved Southland; all remind us of the peace-time value of our Regular Army.

The National Guard, now better and more efficient than ever, has always covered itself with glory, as in the World War, and will ever be an important part of our national defense.

The Organized Reserves, however, is the larger part of our Army and it is with a branch of that body that I wish to deal in this article.

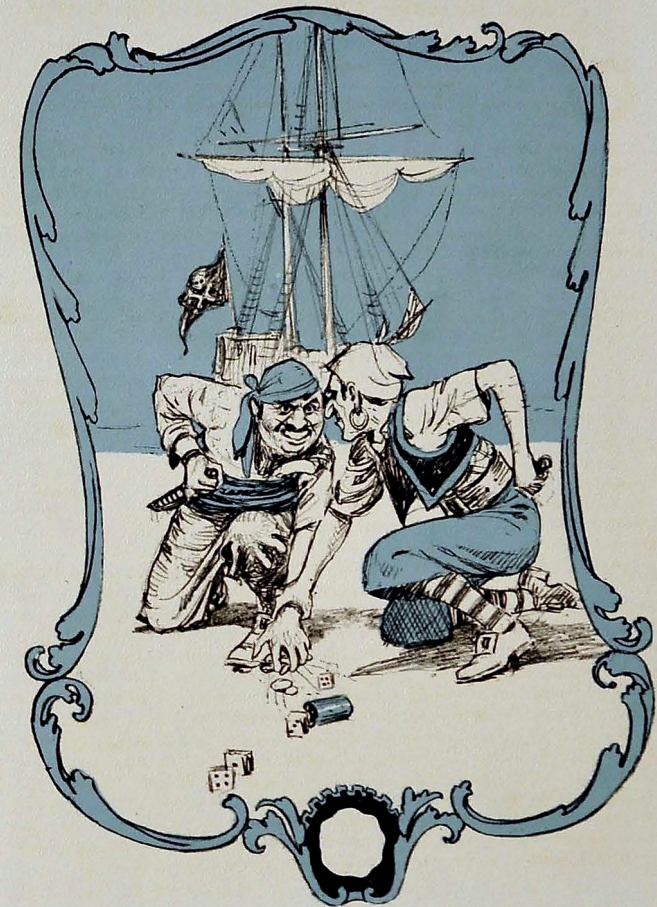
Just now we have the best and greatest number of reserve officers, for the Army, in the one hundred and fifty-two years since the birth of our nation. But this splendid body of officers, trained by experience in the World War, is being depleted each year, by retirement, disability and death. How shall we maintain this splendid reserve? The answer is: by promotion and replacement from graduates of the Reserve Officers Training Corps.

The Junior Units of the R. O. T. C., of which the Central High School Battalion is one of the very best I have ever known, will furnish a very large number of officers for the reserve and a large number of the officers of the regular service. Many appointments to the U. S. Military Academy and to the U. S. Naval Academy are members of Junior R. O. T. C. units.

Any graduate of a Junior R. O. T. C. unit, can by successfully completing two C. M. T. C. summer training courses, qualify for a commission in the reserve of the United States Army and many young men are taking advantage of this opportunity, thus fitting themselves for greater service to their government and to their communities in times of emergency.

Great as is the value of the training from the standpoint of preparedness, the value of the physical training, building of erect, active and healthy bodies; the development of potential leadership in the boy, giving him confidence in himself and starting him off in his chosen business, profession or vocation with the belief in his ability to succeed, is even greater; and the respect for legally constituted authority, observance of and obedience to reasonable rules and regulations required, is the best way to teach respect for law and order and to make good law-abiding, peaceful, happy, contented citizens—the greatest achievement of all.

LIEUTENANT-COLONEL JAMES E. WARE.



ATHLETICS





### Central's Coaching Staff

Central with sincerity and much pride makes the boast that her coaching staff is unsurpassed by any high school of the south. Without fear is such a claim made for the proof is self-evident.

Dean Peterson, one of Central's own football products with the polish of four years at Auburn and now for three years head coach of Central's "Purple Gridders," has an enviable reputation not only as a coach, but as a man. By his stern insistence on wholesome sportsmanship in every phase of the game he has taught his men not only to be good football players but with it to be clean, honest men which is, after all, the end desired. For two of the three years that he has been head coach at Central his teams have been City Champions, a record of which Central is proud.

Coach Bales, a strong support in football and head coach of basketball and baseball, is known by his work. His interest in athletics is far from narrow for it extends into almost every line, but if asked his favorite, no doubt basketball or baseball would be his reply. From a thorough knowledge of these games both in theory and practice he has made a coach loved and admired by his men both for his skill in the game, his manliness, and strength of character.

Seeing Coach Setliffe far removed from the football or track field no one would fail to recognize him as the real athlete that he is. His entire bearing is indicative of his athletic prowess. For his good sportsmanship and success in the field where he labors his men admire him. As head coach of track in 1927 he brought renewed interest to the game and developed a team for Central with one of the best records of many seasons.





CARTER EVANS-MGR. OF BASEBALL



ROBERT BUMPUS-MGR. OF TRACK



"SKEET" MAYER-CAPTAIN OF TRACK



"ED" UNDERWOOD-CAPTAIN OF FOOTBALL



"DUDLEY" HAMMOND-CAPTAIN OF BASKETBALL



CHARLES JACKSON-CHEER LEADER



"ED" PETERSON-CAPTAIN OF BASEBALL



MITCHELL AUSTIN-MGR. OF FOOTBALL



LEONARD ARNOLD-MGR. OF BASKETBALL



## Lettermen's Club

### OFFICERS

FRANK BRADFORD	President
HOMER KEY	Vice-President
HOWARD ANDERSON	Treasurer
MITCHELL AUSTIN	Manager

### MEMBERS

SKEET MAYER  
CHARLES BICE  
HERMAN UNDERWOOD  
JOHN WALLER  
HOWARD SMITH  
OWEN BARNES  
CLARENCE PALMER  
PAUL SELLS  
OBERT TIMMONS  
CARL HAMMOND  
ED PETERSON

HOWARD HAMMOND  
GEORGE MCCARTY  
RAYMOND BLAKE  
GLENN HUNT  
NEWMAN HORNER  
JAMES SEARCY  
RAYMOND DEERING  
DONALD JONES  
JOHN SEAGLE  
CHARLES JACKSON  
KERMIT MAXWELL  
ESTILL MAXWELL  
JAMES LEWIS

ROBERT BUMPUS  
JAKE LAMB  
BONDS GARMANY  
CHESTER UNDERWOOD  
W. B. GARRETT  
WILBUR PETERSEN  
M. J. O'BRIEN  
TOM McLAIN  
HAROLD REICHARD  
VERNER HEADRICK  
OTTIS LEE





X 5-8-72

CAPT. HERMAN "JUG" UNDERWOOD, *Center*  
Weight One Hundred and Seventy-Five Pounds  
*Three-Year Letterman*

Jug has been the backbone of Central's line. Working at the pivot position he has made outstanding plays both on the offensive and defensive. Since this is Jug's last year he leaves a vacancy which will be very hard to fill. As captain he has been one of the best, always ready to help and always giving all that he had to the Purple and Gold. He was chosen for the All-City team and his name will go down in Central's football history as one of the greatest of her long list of fighting captains.

HOMER "SACHEL" KEY, *Halfback*  
Weight One Hundred and Fifty Pounds  
*Two-Year Letterman*

As captain of Central's team for next year, Key deserves all the honor that has been given him. He is a true triple-threat man. He is one of the hardest driving, shiftest, and fastest halfbacks ever to wear a Central uniform. Not one game passed without Key's coming away with another star in his crown. His passing and punting could not be surpassed. By his tackling he saved many touchdowns. What would the City High game have been without Key? As a safety man he was more than once the salvation of the Purple eleven. Central is looking to him as Captain of the 1928 team to lead his men to a clean unquestioned championship.

DONALD "FATTY" JONES, *Tackle*  
Weight One Hundred and Ninety-Two Pounds  
*Three-Year Letterman*

Donald is another man of the All-City team who has been a mainstay in the line of his own home team. His plays were especially noticeable in the City High and Baylor games. His work on defense was particularly good. Central will gladly welcome his return another year as alternate captain.

HOWARD "BUS" ANDERSON, *Halfback*  
Weight One Hundred and Fifty Pounds  
*Three-Year Letterman*

Bus has a head which he knows how to use on the football field. He has that enviable trait of dependability at all times. He is always known to get his man and pave the way for the other back carrying the ball. He is a good tackler. In the Baylor and Phillips High games he played star football. There was great excitement in the Phillips High game when Bus caught a pass and with snappy side stepping ran forty yards for a touchdown. Central will miss Bus when the team is rounded up in 1928.



EDWARD "EGGHEAD" PETERSON, *Quarterback*  
Weight One Hundred and Twenty-Five Pounds  
*Four-Year Letterman*

Ed is one of the most unusual quarterbacks Central has ever called her own. With three years of rich experience, in this, his fourth year, he has played and run the team with great success. Besides receiving All-City honors for three years he was considered the best in the city on receiving passes. Leaving Central this year there is made in the Central team a wide gap which will be most difficult to fill.

RAYMOND "HOOK" DEARING, *Guard*  
Weight One Hundred and Seventy-Three Pounds  
*Two-Year Letterman*

As a guard Hook is a hard-fighting, scrappy fellow. He drives low and hard and seldom misses his man. The Purple line expects Hook back in position next fall holding that line like the great guard that he is.

OBERT "NO-HIT" TIMMONS, *Guard*  
Weight One Hundred and Sixty-Five Pounds  
*Two-Year Letterman*

Like a tower of strength in the Purple forward wall has stood Timmons for two years. Undaunted in the City High game he stopped without question attempts to gain at his expense. From the minute the whistle is blown every ounce of his strength turns into power for the Central machine. His plays are consistent. He is a hard worker from start to finish.

OWEN "BASHFUL" BARNES, *Tackle*  
Weight One Hundred and Sixty-Two Pounds  
*Two-Year Letterman*

Although this was only the second year for Barnes on the team he played like a veteran. He proved to be one of the hardest fighters Central has ever produced. He was a deadly tackler and did equally as well on the offensive. In the City High game Barnes by sheer courage and strength broke through the strong Maroon line for many an attack. Central's interest is centered on Barnes for another year. New honors it is believed await him.





## JOHN "JAR-HEAD" WALLER

Two-Year Letterman

When Waller reported for his first year he weighed little more than a hundred pounds, but the next year with added weight plus determination, he gained his 'C.' He came into possession of his second nickname, "70-Yard," when he ran a punt against Darlington in '26. As Ed Peterson's understudy in '27 he called signals when Ed was not present. This he did creditably and well. Since Waller possesses the true Central spirit, always doing his best without kicking, the team regrets that graduation robs them of such a man. Any team that gets Waller may count itself lucky.

## HOWARD "IZZY" SMITH, Halfback

Weight One Hundred and Sixty Pounds

Izzy proved without question his ability as a ball carrier in the Fort Payne, Kingsport and Notre Dame games. Whether he hit the line or ran the ends he always gained. He is a fast snappy football man though slightly "bashful." Unfortunately, during the Baylor game he was hurt and was unable to return the rest of the season. He is expected back next year and will no doubt share in the spoils of the victors.

## GLENN "LADIES' MAN" HUNT, End

Weight One Hundred and Sixty Pounds

Two-Year Letterman

Because of a shoulder injury, Glenn has been unable to enter into action as he might otherwise have done. Yet in spite of such a handicap in the Baylor and City High games he was seen stopping every attempt to get around his end. He was strong on the offensive. His loyalty to the Purple and Gold as well as his dependability have given him a place all his own on the team.

## JOHN "TRAMP" SEAGLE, Guard

Weight One Hundred and Sixty Pounds

Two-Year Letterman

There was a great addition to Central's team in 1926 when John came from Baylor and cast his lot with the Purple and Gold. He was one of the scrappiest little guards seen here in many seasons. For two years he has helped to form Central's stonewall and right well has he held this position. He is another member expected back next year to take his same old place in the same old line.



## OTIS "BIG MOUTH" LEE, End

Weight One Hundred and Fifty-Nine Pounds

One-Year Letterman

Lee has the reputation of being one of Central's fighters from start to finish. He never gives in; he never stops until the game is ended. His outlook for next year is one of the brightest of all those who are expected back.

## CHESTER "TOUCHDOWN" UNDERWOOD, End

Weight One Hundred and Fifty Pounds

One-Year Letterman

For a man entering Central for the first year, Chester has done excellent work as an end player. In the Darlington game he was given his chance and proved himself worthy. In the Phillips High and A. M. I. games he played football like an "old timer." With such a reputation for one-year Chester bids fair to follow in the footsteps of his captain brother.

## BONDS "BALL-OF-FIRE" GARMANY, Quarterback

Weight One Hundred and Thirty Pounds

One-Year Letterman

Red has always been a hard-working man. As a quarterback he is hard-driving and fast. In the Fort Payne, Red took a punt up the field for about thirty-five yards in professional style. With more experience it remains to be seen just what "Ball-of-Fire" will do.

## VERNER "SHEIK" HEADRICK, Guard

Weight One Hundred and Seventy-Six Pounds

One-Year Letterman

Headrick has the distinction of being the only freshman to make a letter this year. In spite of his lack of experience in the beginning of the year, he developed into a good guard. In the Phillips High game he stood like a bulwark and stopped all attempts made to come over him. In the next years, Central will follow with interest the development of this outstanding young player.



EUGENE "SKEET" MAYER, *Fullback*

Weight One Hundred and Eighty-Four Pounds

Although injured for much of the season, "Skeet" played star football while he was in. With him in the line there were no gains by the punting route. In the City High game, he played a big part in stopping the line attacks of the Maroon and White. Skeet has left an enviable football record at Central. His popularity among the students has been tested many times and Central will find his place one that will be hard to fill.

FRANK "WINDY" BRADFORD, *End*

Weight One Hundred and Forty-Five Pounds

*Two-Year Letterman*

Bradford is one of the best end players Central has ever produced. With such evidence of development and power Central hails with joy his return next year. As a tackler on punts he is deadly, having lived up well to his "never miss" reputation. On the offensive he always gets his man. A fellow has something to boast of if he gains a yard around Bradford's end.

WILBUR "HARDHEAD" PETERSON, *Halfback*

Weight One Hundred and Fifty-One Pounds

*One-Year Letterman*

Wilbur has the reputation of being one of the best and hardest driving backs, not only at Central, but in the city. He made a perfect running mate for Key. When Wilbur is called on to carry the ball you may well mark it down as a gain. In the City High, Phillips High and A. M. I. games it was Wilbur who starred. This last member of the Peterson family seems to have every promise of carrying on the reputation in the field of football.

PAUL "TACKHEAD" SELLS, *End*

Weight One Hundred and Forty-Two Pounds

*One-Year Letterman*

Tackhead can always be distinguished for he is one of the tallest men of the team. When Central's name and reputation are at stake, Paul's courage and fighting qualities are altogether out of proportion even to his height. It was a great disappointment to him not to get to finish the season, but an injury in the Kingsport game forced him to the side lines. He is a hard-worker and always ready to give his all for his school and team.

HOWARD "DIDLEY" HAMMOND, *End*

Weight One Hundred and Fifty Pounds

*Two-Year Letterman*

Howard knows football and knows how to play it. He was unfortunate in receiving an injury in the fourth game, which kept him on the bench for the rest of the season. Since he is the kind of player who has real "come back" Central expects him to return next year full of fight for another victorious season.

JAMES "PINKIE" LEWIS, *Halfback*

Weight One Hundred and Fifty-Five Pounds

*One-Year Letterman*

For a shifty, hard-driving backfield man, Lewis is hard to beat. On defense, for a man to get by him is a wonder. He bids fair from all appearances to be one of the outstanding figures in Central's starring line-up for 1928.

CLARENCE "SLICK" PALMER, *Guard*

Weight One Hundred and Fifty Pounds

*One-Year Letterman*

Hard work brings its own reward and that is what Palmer has enjoyed. Nothing but this best effort for his team has been acceptable to Slick. Work and hard work has been his motto since he has been numbered in Central's guard line. Central regrets that graduation will take Palmer from her.

ROBERT "SIGNALS" BUMPUS, *Center*

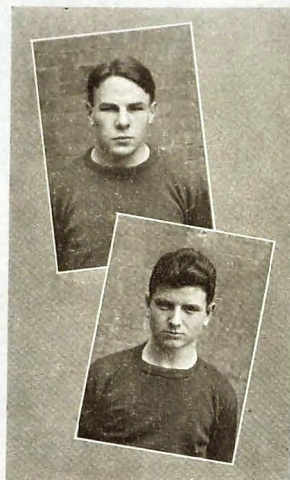
Weight One Hundred and Fifty-Three Pounds

*One-Year Letterman*

When Bumpus received his letter the student body rejoiced with him and felt that again spirit and effort had been rewarded. For four years he has come out faithfully and although he didn't play as much as some of the others, he was always there ready for service. He deserves his share of the credit for Central's victories. Next year Bumpus is expected to step into the limelight.







W. B. "SCRAPPING" GARRET, *Guard*  
Weight One Hundred and Fifty-Five Pounds  
*One-Year Letterman*

Size is not the only thing that counts in the case of a guard. Although Garret is one of the smallest men on the team he is at the same time one that everybody knows is on the firing line ready to hold his place and fight. With such bright prospects and unusual development in football playing Garret will strike the team a heavy blow by his absence next year.

J. L. "JAKIE" LAMB, *End*  
Weight One Hundred and Forty Pounds

When letters were given out, "Another one well deserved" was the remark made concerning Lamb. He has been a faithful, hard worker, always out for practice, always there to do his bit. With such promise as he has for a football career it is with sincere regret that Central gives him up this year.

### Football Score of 1928

Central . . . . .	34; Fort Payne . . . . .	6
Central . . . . .	26; Kingsport . . . . .	6
Central . . . . .	6; Notre Dame . . . . .	0
Central . . . . .	7; Darlington . . . . .	13
Central . . . . .	7; Baylor . . . . .	6
Central . . . . .	0; Bradley . . . . .	0
Central . . . . .	7; Knoxville Central . . . . .	18
Central . . . . .	26; Phillips High . . . . .	6
Central . . . . .	18; A. M. I. . . . .	6
Central . . . . .	7; City High . . . . .	0
Total . . . . .	138; Total . . . . .	61

*City Champions, 1927 and 1928*



### Football Squad of 1927

<i>Left to Right—Back Row:</i>	<i>Middle Row:</i>	<i>Front Row:</i>
COACH S. D. PETERSON	ASS'T COACH LEHTO	J. JONES
ASS'T COACH ROBINSON	C. ENGBERS	W. GRAFTON
W. DUGGAN	E. C. ROACH	W. PETERSEN
HARBINSON	J. HUMPHREYS	H. KEY
C. COCHREHAN	McCLANAHAN	C. UNDERWOOD
R. RUCH	F. SIMONS	O. LEE
C. HUDSON	R. SMITH	W. B. GARRETT
J. C. ROWDEN	R. BUMPUS	CAPT. H. UNDERWOOD
J. M. McCLURE	ED. MANN	G. HUNT
C. KELLY	T. ALLISON	J. WALLER
J. OLINGER	O. JACKSON	H. ANDERSON
A. CAHOON	F. MANSON	E. PETERSEN
L. CLINGAN	J. C. LAMB	B. GARMANY
J. HEADRICK	C. NULL	O. TIMMONS
R. DEARING	C. HEIDER	O. BARNES
H. SMITH	D. JONES	F. BRADFORD
MORRISON	C. FERGINSON	
HAMMOND	J. SEAGLE	
COACH SETLIFFE	MANAGER AUSTIN	
ASS'T COACH BALES	"WATER BOY" B. WALLER	

### CENTRAL HIGH CHAMPIONS

Central, for two years in succession, has won the City Prep Championship in football. Two beautiful silver footballs, now on display in the office, bear testimony of the superiority of these teams. In winning this year's championship, Central defeated Notre Dame, 6 to 0; Baylor, 7 to 6; City, 7 to 0. For Central this has been a very successful season, with seven victories, one tie, and two defeats.





## Basketball Men

FRANK BRADFORD, *Forward*

Windy is just as swift on the basketball court as his name indicates. His good work with the team for a second year is one reason for its continuous improvement. He has a sure eye for the basket. When he aims, cheers begin almost immediately, for it is a dead certainty that the ball is going in.

HOMER KEY, *Forward*

Key is one of Central's best all-round athletes. Of his star playing in football much has been said, but that is not all, for in basketball he has proved himself equally as good. He is quick and sure; he never misses a shot. Central expects "Satchel" to do his part in raising her points above that of any previous year.

EUGENE MAYER, *Guard*

"Skeet" is another star brought over from last year. He has the size and height together with many other desirable traits which go to make up the all-round athlete. In his position he plays well and ruins many shots for the opponents.

CARL HAMMOND, *Guard*

With three years of experience on Central's team Carl plays like a veteran. "Mutt," the center of Central's pass work can send the ball in any direction at any time. His self-possessed, cool-headed playing has meant much to his team. Others may be rattled but he always keeps that same calmness that has characterized his playing through many a game.

CAPTAIN HOWARD HAMMOND, *Center*

With three years of rich experience Didley has not only borne well his responsibility of steadying his team of 1928, but also has played the best basketball of his cage career. He is one of the most outstanding basketball players that Central has ever produced. His passing is skillful and effective and at goal shooting he is a star. When Central has the ball and when it is in Didley's possession there is no fear for the Centralite.



## Basketball Men

HAROLD REICHARD, *Forward*

"Heimie" is small but fast and moves around on the court in a pleasing way. His splendid skill at passing has fooled many an opponent. He is alert and sure which are two valuable characteristics in a basketball player.

GEORGE MCCARTY, *Guard*

George is one of the hardest fighting men on the team. He never knows the meaning of "quit." His close, careful guarding has been a big factor in holding the opponents' score down. The team counts heavily on his support.

FRED SHEERER, *Center*

Although this is Fred's first attempt on Central's team he has made good from the very beginning. He is one of the surest point makers among the cagers. From the way he hits the basket no one would ever judge him to be anything but a professional.

DONALD JONES, *Guard*

"Fatty" means business and fights with might and main when he gets on the floor. Although this is his first year on the team his playing is like that of an experienced man of long standing. His is one of the men who adds promise to Central's prospects for the season.

PAUL SELLS, *Guard*

Paul is another athlete who turns naturally from the gridiron to the cage when the season dictates. He has some advantage over the low man for he towers so far above him. He is another "Olson" when it comes to passing the ball. His shot at the goal is almost a sure point for his side.







### Track

The year 1927 was a successful one in track. Central won second place, defeating Baylor and City High for the first time in several years. First place was won by Eugene "Skeet" Mayer, in the shot put; by Howard "Bus" Anderson in the javelin throw, and by Charles Jackson in the half mile race. Kermit Maxwell won second place in the mile race. Central expects him to take a step forward and win first place this year. George McCarty won recognition in the high jump. Searcy and Preston, '27 graduates, were also outstanding men.

The prospects for the team of 1928 are favorable. About twenty-five men are expected to go out. The team will take two trips; one to Sewanee and the other to Knoxville for the State Tournament. In addition to this they will take part in the Baylor relays.

Efforts are being made to do away with the City Tournament this year and bring all the schools here that wish to compete in a Southern Tournament. It is expected that Central will carry off the honors at that meet.



### Baseball

The baseball fans of Chattanooga are looking forward with unusual enthusiasm to the 1928 season among the prep schools. An investigation of Central's prospective team seems to indicate an extraordinarily successful season.

Central will feel keenly the loss of three strong men of last year, Captain McInturf, George Cade and Ed Brown, yet with the good support of so many letter men and the addition of Dear- ing, Buchanan, Horner, there is little reason for discouragement.

The probable line-up for 1928 will be as follows:

C. HAMMONDS	First Base
BLAKE	Second Base
BICE	Second Base
ED PETERSON	Third Base
KEY	Shortstop
SELLS	Left Field
MAYER	Center Field
HORNER	Right Field
SEAGLE	Catcher
BUCHANAN	Pitcher
MCCLAINE	Pitcher
TIMMONS	Pitcher







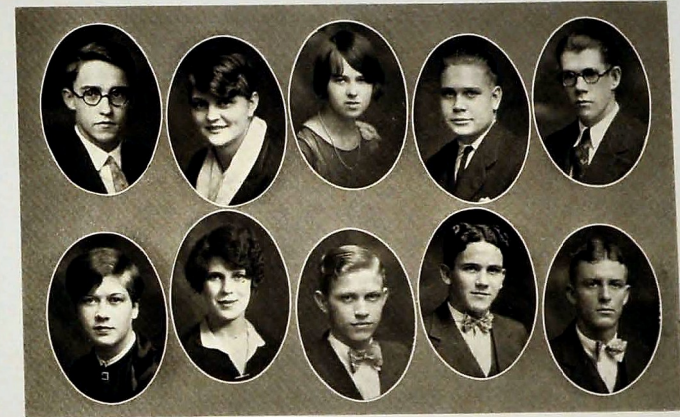
### Girls' Athletic Association

ERNESTINE STACEY	President	VIRGINIA LOWNY	Secretary
ELIZABETH DUGGER	Vice-President	GEORGIA CAGLE	Head of Sports
ROWENA ALFORD	MATTIE SUE DIXON	LOUISE KENDRICK	BEATRICE REYNOLDS
LUCILLE ALFORD	VELDA DOBBINS	CATHERINE LINDEMAN	AUBERTA SMITH
ANNETA ANDERSON	ELIZABETH DUGGIN	DOROTHY LINDEMAN	VIOLA STEADMON
EDITH ALLISON	BERTHA EVANS	MERIAM LINDSAY	LILLIAN SMITH
DOROTHY ADAMS	BARBARA EDGMAN	RACHEL LANDIS	PAULINE SULLIVAN
JUSTINE ADAMS	EMILY FRY	ANNIE LYNCH	LAURA SKELTON
CATHERINE ADDISON	SUE FAIDLEY	ELIZABETH LACEWELL	LIDIA SELLS
KATHLEEN BUOL	PAULINE FINLEY	ELSIE LOWRY	RUBY STEPHINS
VERA BENTON	FRANCES FISHER	EDNA LONG	ERNESTINE STACY
JUANITA BOWMAN	RUTH FORBES	MARGARET LUTHER	GERTRUDE STONE
EFFIE BELL	MILDRED GREEN	VIRGINIA LOWRY	CHARLOTTE STOWE
ELA BERNHEART	LUCILLE GILL	MARY LORD	ELOISE STANDIFER
MARY F. BOULDING	ALICE J. GEDDINS	MARGARET LINDEMAN	MARION TAYLOR
CHARLOTTE BROWN	DOROTHY GODSEY	HILDA MELLS	ALMA TYLER
WINNIE BENNETT	ELIZABETH GREEN	JANET MOORE	MARGARET TIMMONS
OPAL BURGESS	VALERIE HAMILTON	ADDIE MARONEY	THETA THOMPSON
BILLIE BURNETT	ELIZABETH HARMAN	DELA MAE MAUPIN	HELEN TAYLOR
PAULINE BOWLING	HELEN HUDGINS	MARGARET MCGUFFY	HUSTENE LOUVENE
ELENOR BUTLER	ELIZABETH HALL	LORINE MASSEY	ALMA TIPTON
MARY ELLEN BAKER	IDA HARTMAN	MILDRED MAUBETCSH	DOROTHY USMILLER
JOSEPHINE CROUCH	CLARA HUNTER	IRENE MOORE	MOZELL VANDERGRIFF
PEGGY CANTRELL	LUCILLE HAMBLEN	DOROTHY A. MARTIN	LILLIAN WHATLEY
RUBY CRAWFORD	AGNES HUDSON	IDA WEE MABRY	FRANCES WOLF
GEORGIA CAGLE	ALICE HELMS	LUCILLE MAXWELL	OPAL WILKEY
IMOGENE CARROLL	ENA RUTH HORTON	BEULAH O'REAR	E. WALLTOWER
WILMA COYNE	BETTY HARPER	MARY PARKER	JOSEPHINE WILBANKS
LOUISE CARROLL	BETTY HIGH	HELEN PRUETT	EDITH WHEELER
ALINE COONS	FRANCES HOLLAWAY	WILLET PERKINSON	ICIE LEE WOLF
DOROTHY CAHOON	DOROTHY JENKINS	MARGARET PERKINSON	MARGARET WALLAN
ELLA DAILY	ARLEEN JOHNSON	BEATRICE PARKER	MARGARET WALKER
FLORA DAVERSON	DOROTHY JOHNSTON	KATHERINE PENLY	THELMA WEBSTER
ANNA E. DUNN	ROBERTA JONES	EDA MAE PAINTER	CATHERINE WILBER
JOSEPHINE DAVIDSON	NAOMI JEWELL	ANGIE RAWLINGS	RUBY YORK
GLADYS DAVIDSON	LENA MAE KLEIN	RUTH RAWLINGS	MUSETTE WATSON



### A C T I V I T I E S





### Champion Staff

LOUIS SMARTT	Editor-in-Chief
MOZELLE VANDERGRIFF	Business Manager
FRANCES LYLE	Assistant Business Manager
THOMAS JOHNSTON	Photographer
HORACE MEADOR	Art Editor
DOROTHY TURNER	Senior Section Editor
DOROTHY PERRY	Society Editor
MARK REYNOLDS	Military Editor
JOHN WALLER	Athletic Editor
JOHN HUMPHRIES	Joke Editor





FIRST MEETING "DIXIE INTERSCHOLASTIC PRESS ASSOCIATION"



EDITORIAL STAFF OF "CENTRAL DIGEST"

ROSEMARY MAY . . . . . Editor	MARGARET LINDEMAN . . . . . Reporter
JACK SHERMAN . . . . . News Editor	MILDRED MAULBETSCH . . . . . Reporter
HOWARD ANDERSON . . . . . Feature Editor	HAZEL McDONALD . . . . . Reporter
ELEANOR WIGHT . . . . . Society Editor	BONNIE KATE PASS . . . . . Reporter
JOHN HUMPHREY . . . . . Sports Editor	MRS. JOHN A. SHELTON . . . . . Adviser
EDNA GREEN . . . . . Reporter	MISS MARTHA GREY . . . . . Adviser



BUSINESS STAFF OF "CENTRAL DIGEST"

CHARLES HARRIS . . . . . Business Manager	MABEL CRITCHELL . . . . . Assistant Secretary
GLEN ROY . . . . . Circulation Manager	AILEEN SHIELDS . . . . . Treasurer
DOROTHY CONSTANT . . . . . Secretary	W. A. PRICE . . . . . Adviser



PRINTING STAFF OF "CENTRAL DIGEST"

ARLON SMITH . . . . . Foreman	LYDD PEASE . . . . . Stoneman
CHARLES CRAIG . . . . . Compositor	BARRY POLLARD . . . . . Pressman
WALTER KAYLER . . . . . Compositor	EARNST MULLIGAN . . . . . Pressman
CHARLES ENGERS . . . . . Stoneman	ELLEN PEASE . . . . . Proofreader
L. M. LEHTO . . . . . Adviser	

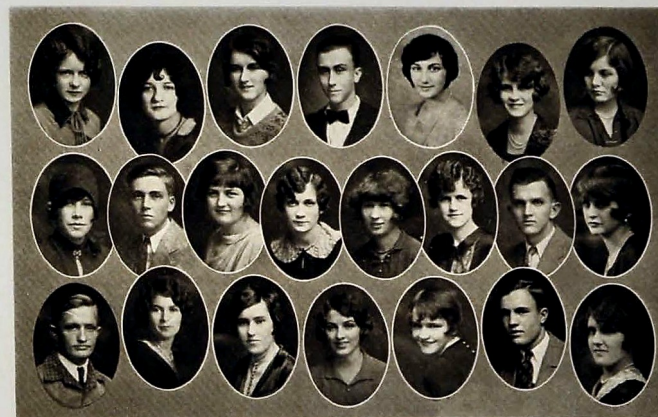




## Public Speaking Class

## OFFICERS

JOSEPH ARLEDGE	MILDRED TAYLOR
ELLA MAUDE BROWN	GLADYS HICKEY
MISS BERTHA M. RUSSELL	
<i>Director</i>	



## Public Speaking Class

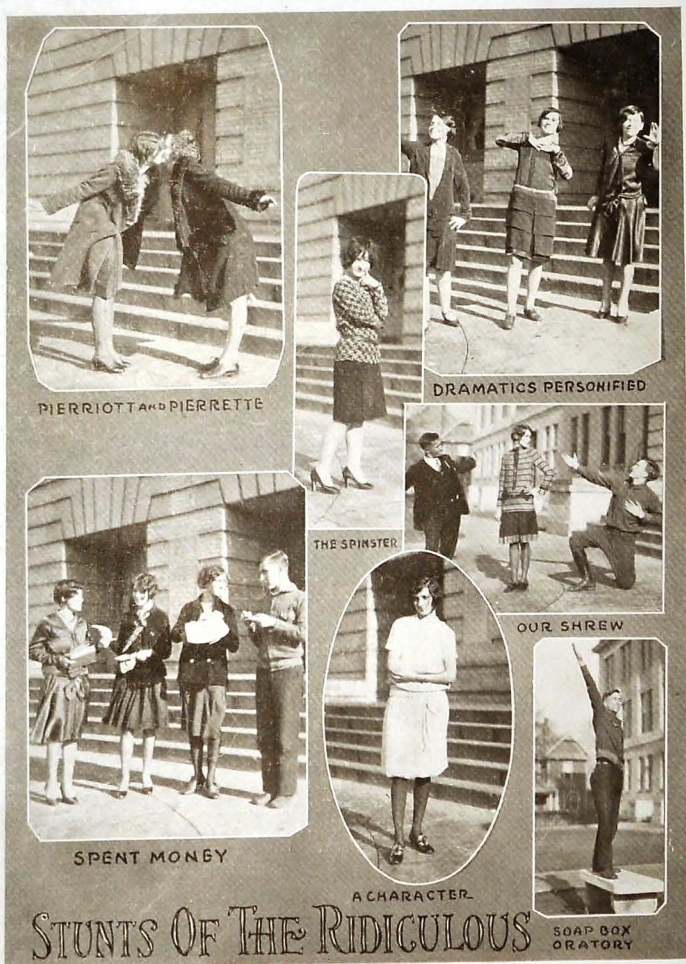
## SENIORS

RAYMOND ALLEY  
MYRL BEAVER  
ELLA MAUDE BROWN  
ANGEL MONROE  
JOSEPH ARLEDGE  
EDITH BROYLES  
BEN ADDIE COLEMAN

MARIE DOWD  
DOROTHY HAYES  
GLADYS HICKEY  
ANNA MAYE LIEB  
EDNA MAE PAINTER  
CHARLOTTE BROWN  
CATHERINE FLEGAL  
EDITH McCARTY  
LAVOY NEELY

JUANITA ROBINSON  
AUBERTA SMITH  
RUTH FORBES  
JACK SHERMAN  
MILDRED TAYLOR  
PAULINE WILLIAMS  
MARGARET LONGLEY



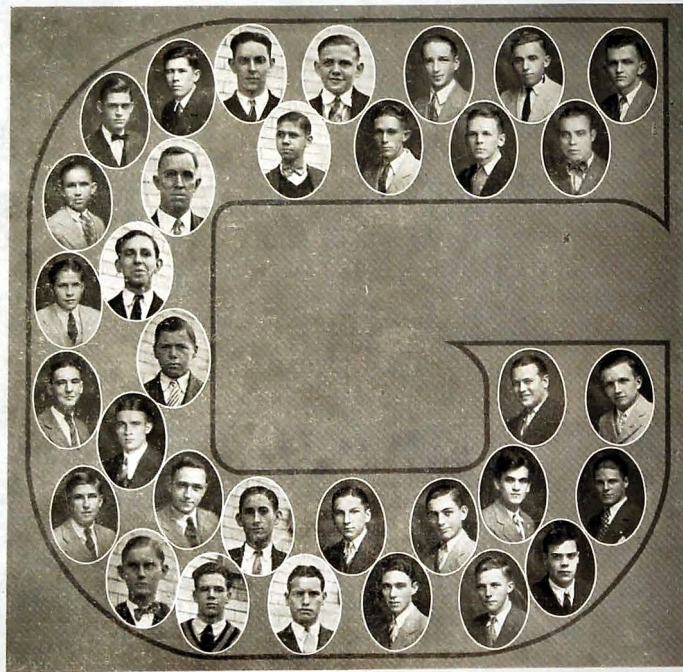


The Public Speaking and Dramatic work has proved to be a vital factor in the school life of Central. That the classes in this work have a desirable influence in the student body is shown by the number from these classes that stand foremost in the reading, declamatory and oratorical contests, the plays, and the speakers chosen to represent the school at various occasions in the city.

All phases of work from extemporaneous speaking to the acting of the most classic drama are brought out in the class work and prepared for public recital.

The technique of voice production, gesture, and stage is studied in a way that is most enjoyable as well as most profitable.





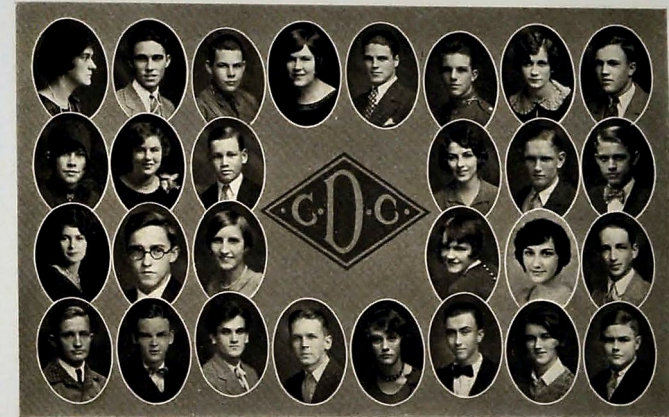
## Grady Literary Society

## OFFICERS

GEORGE McCARTY . . . . . *President*      RAYMOND ALLEY . . . . . *Secretary*  
 CHARLES JACKSON . . . . . *Vice-President*      JOHN SWEETS . . . . . *Treasurer*

## MEMBERS

FRANK BLAKELY	LAWRENCE JONES	MARQUIS TRIPLETT	ROSS BOYD
LAWRENCE H. ROGERS	PAUL BEAVER	CHARLES HUDLOW	LAWRENCE YOUNG
CARL MAXWELL	RAYMOND BLAKE	WALTER LUTHER	CHARLES E. HARRIS
HARRY WILLIAMS	ANDY BOWERS	EUGENE WELCH	GLENN ROY
TILLMAN GRANT	TROY KILLINGSWORTH	KERMITT MAXWELL	GROVER CAMP
DONALD MAGUIRE	CHAS. J. ANDERSON	ESTILL MAXWELL	JAMES FOLKNER
JOHN L. RAMSEY	JOSEPH MEADOWS	CONLEY FLEGAL	W. D. BURNETT
LOUIS SMARTT	RALPH COOPER	CHARLES MEIGEL	HUGH CONNER
MANCE SHERRILL, JR.	AUGUSTA CAHOON	FRED B. WOODS	RALPH HETZLER
	LAVOY NEELY	JOHN MARTIN	



## Dramatic Club

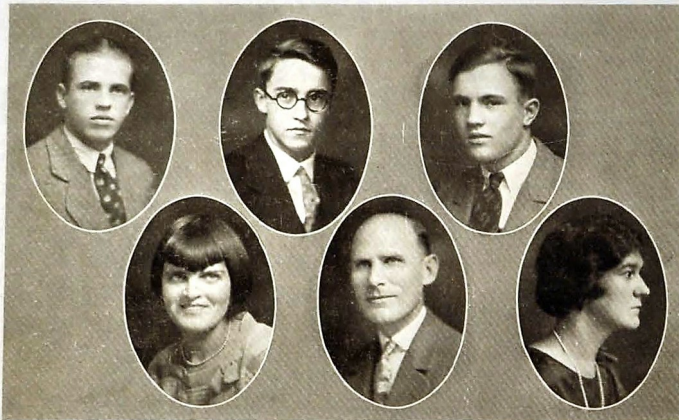
## OFFICERS

MARK REYNOLDS . . . . . *President*  
 MARIE DOWD . . . . . *Vice-President*  
 DOROTHY HAYES . . . . . *Secretary-Treasurer*

## MEMBERS

ELLA MAUDE BROWN	JOSEPH ARLEDGE	LAVOY NEELY
JACK SHERMAN	MILDRED TAYLOR	MARQUIS TRIPLETT
BEN ADDIE COLEMAN	JESSIE MCEACHERN	ANNA MAYE LIEB
BUS ANDERSON	LEWIS SMARTT	HELEN MCCLURE
KATHRYN BONDS	CHARLES LANGSTON	HOWARD MCCLURE
JOHN SWEETS	MIRIAM MARSHALL	VELVO GRAHAM
GLADYS HICKEY	FRED WOODS	KERMIT MAXWELL
	CHARLES HUDLOW	
	JOE MCREE	





### Senate Officers

LOUIS SMARTT . . . . . *President*  
 CHARLES JACKSON . . . . . *Vice-President*  
 JACK SHERMAN . . . . . *Secretary*  
 ST. CLAIRE SILVER . . . . . *Assistant Secretary*

#### SPONSORS

MR. HEADRICK

MISS RUSSELL



### Senate of 1927-'28

#### OLD MEMBERS

MYRL BEAVER  
 MARIE DOWD  
 KATHRINE BONDS  
 CHARLES JACKSON  
 KATHRINE SLIGER  
 LOUIS SMARTT  
 MARCUS TRIPLETT  
 JOE DARR  
 NORMAN SMARTT

VIRGINIA LOWREY  
 HELENE C. MCCLURE  
 VELVO GRAHAM  
 MERIAM MARSHALL  
 LUTHER CHAMBERS  
 MARK REYNOLDS  
 ST. CLAIRE SILVER  
 HARRY WILLIAMS  
 G. J. MAVITY

ELLA MAYDE BROWN  
 LORA JONES  
 M. E. HUDSON  
 NELLE GREEN  
 THOMAS JOHNSTON  
 JAMES KEEN  
 GLADYS HICKEY  
 ERNEST LAWRENCE  
 JACK SHERMAN

#### NEW MEMBERS

DOROTHY PENNY  
 MARGRET LONGLY  
 WILLIAM KEITH  
 TILMAN GRANT  
 ROBERT MANN  
 JOHN H. HARRISON  
 FRANK HANDSBERGER  
 JOHN P. HENDERSON  
 MANNING SULLIVAN

GALES DOUD  
 JOE MCREE  
 FRANCES WOODARD  
 IKE BELLE  
 MARY MINOR  
 RUTH WILLIAMSON  
 RAYMOND ALLEY  
 LAURA ROBINSON  
 ROY STARMER  
 CHARLES VALINTINO

RUTH WILBER  
 MAUDE SMITH  
 VIRGINIA ADDISON  
 CATHRINE WILBER  
 HUGH CONNOR  
 CAREY BUNN  
 EUGENE WELCH  
 CELIA ROBINSON  
 NELLE MOORE





### Athenian Society

HELEN MCCLURE . . . . .	President
MIRIAM MARSHALL . . . . .	Vice-President
VELVO GRAHAN . . . . .	Secretary-Treasurer

#### MEMBERS

LOIS ALFORD	NEVA HOOPER	ANGELL MONROE
PAULINE BARBER	ELIZABETH HENDERSON	MIRIAM MARSHALL
MARGARET BRAMMER	ELIZABETH HUNTER	MARY MINOR
ADELE BROWN	LILLIAN HAMRICK	DOROTHY NEWPORT
MARGARET BUNCH	LOUISE HUGHES	WILLETIA PERKINSON
ETHEL BURNETT	MERLE HAMRICK	MARGARET E. PERKINSON
LYDIA CARTLAND	HELEN HALL	MARGARETHA PEITZER
KATHRYN CONNER	MARGUERITE HART	GLADYS ROBERTS
FAYE CHAMBERS	LORA JONES	JUANITA ROBINSON
INEZ COULTER	REBA JOHNSON	ALMA SHADDEN
HAZEL CHASTAIN	LOUISE JONES	LOUISE STEPHENS
MARY DUNBAR	FLOSSIE JACKSON	ELIZABETH SMITH
MARY ELLISON	ELIZABETH KEISLING	MIRIAM SPENCER
KATHLEEN FITZGERALD	EDNA MAE KELLEY	RUTH WILLIAMSON
EDNA GOTHARD	CATHERINE KELLER	ELEANOR WOOD
VELVO GRAHAN	BEATRICE KEITH	FRANCES WOODARD
	FRANCES LYLE	



### Euterpean Society

MOZELLE VANDERGRIFF . . . . .	President	MYRL BEAVER . . . . .	Secretary
ADALINE HESTER . . . . .	Vice-President	MARIE DOWD . . . . .	Treasurer
CHARLOTTE BROWN . . . . .			Annual Board Chairman
LOUISE VANDERGRIFF . . . . .			Assistant Annual Board Chairman
CHARLOTTE BROWN . . . . .			Group Captain No. 1
ELLA MAUDE BROWN . . . . .			Group Captain No. 2
BEN ADDIE COLEMAN . . . . .			Digest Reporter
CATHERINE FLEGAL . . . . .			Digest Reporter

#### MEMBERS

VINNIE MAE ALDER	METTA EASTERLING	IRENE MARSHALL
LORENA BLEVINS	JESSIE EPPERSON	EDITH MCCARTY
VIRGINIA BOSTAIN	LOIS FROST	DOROTHY PENNY
MYRL BEAVER	RUTH FASHES	MABLE PRINCE
ELLA MAUDE BROWN	CATHERINE FLEGAL	FRANCES PICKETT
CHARLOTTE BROWN	VEANA FISHER	WILMA PLANZER
LOUISE BURKHALTER	JENNIE LOU GOTHARD	VIVIAN PEPER
RUBY BOWLING	IRENE GROAT	CHARLYNNE RAINS
LOIS BARTON	MILDRED GOLDSMITH	NELLIE ROYAL
ALICE VIRGINIA BURTON	MARJORIE GOTT	LAURA ROBERSON
KATHERINE BALL	GLADYS HICKEY	RUTH ROY
LOUISE CARROLL	ADALINE HESTER	BESSIE MAE SANSING
DOROTHY CONSTANT	LADENIA HOLLIS	ST. CLAIRE SILVER
MABLE CRITCHELL	ADA HIGDON	AUBERTA SMITH
MILDRED CONNALLY	RUTH HARDEN	CLARISSA TOWER
JULIA CLARK	LOIS DE LANEY	LOUISE VANDERGRIFF
ALICE CHATWELL	MARGARET LEARCH	JUANITA WALKER
BEN ADDIE COLEMAN	WILLA MOUNT	PAULINE WILLIAMS
MARIE DOWD	GRACE MCCRARY	EFFIE BELL WHITE
ANN ELIZABETH DENTON	ERNESTINE MILLWOOD	NETTYLU YARBROUGH
	LINNIE MAHAN	
	NANALOW MILLER	







### Dixie Society

KATHRYN BOND . . . . . *President*  
 FAY HESTER (Group 1) . . . . . *Vice-President*  
 MARGARET WOODLEY (Group 2) . . . . . *Vice-President*

DOROTHY TURNER	SARA BELLE HANNAH	DOROTHY ARWOOD
RUTH DAVIS	MELBA GILLESPIE	DOROTHY HAYES
REGINIA SUNDSTROM	HAZEL LOWE	VIRGINIA CLONINGER
ELIZABETH HALL	SAVANNA JONES	LAURA KATE EVANS
DOROTHY PERRY	LENA JO JOINER	DORIS JANEWAY
MARGUERITE FOSTER	MAE MARONEY	ETHEL WARREN
EDITH FRAZIER	HAZEL HILL	MARGUERITE LOWRY
LOUISE VANDERGRIFF	VIOLA HOLDER	FRANCES KIBER
CATHERINE SLIGER	"Ted" LOWE	MABEL CROCKER
MARGARET COX	JANE BOYD	MAUDE MOORE
ROBERTA BRYANT	JEWEL CHRAGER	MAEBELLE SLINSON
MILDRED WOODLEY	VIRGINIA HOUSLEY	PATRICIA LOWE
MARGARET WOODLEY	SALLIE SMITH	BONNIE SMARTT
DELZEL BOYD	LOREEN HAMILTON	CHRISTINE BOSS
GLADYS SCOTT	MARY LOU PURSLEY	BLANCHE CHAMBERS
PAULA JOSE	EILEEN PEASE	IRENE CALKINS
CRATE McCLANIHAN	DOROTHY ENGERS	MARY HELEN RICHARDSON
CORRINNE MAYER	EVELYN BRACKEN	NORMA LIVELY
ANNIE MAYE LIEB	HALLIE GRAHAM	CLARICE BRIGHT
	RUTH ACRE	



### Wellesley Society

SUE FAIDLEY . . . . . *President*      ANNIS GAITHER . . . . . *Secretary-Treasurer*  
 HAZEL ANDERSON . . . . . *Vice-President*      WILMA JOHNSON . . . . . *Cheer Leader*

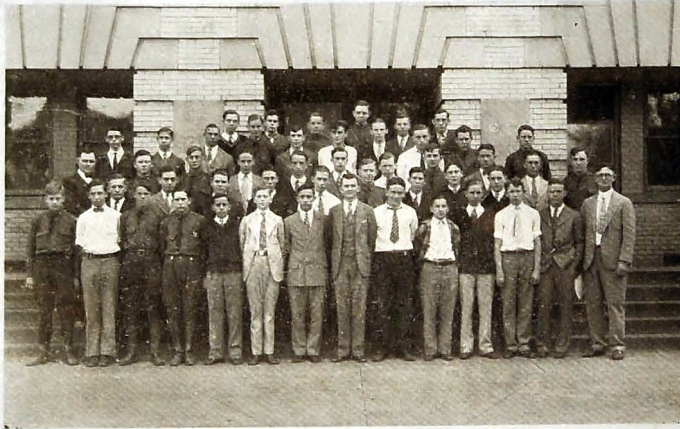
#### MEMBERS, GROUP I.

ELIZABETH ALLEY	AGNES HUDSON	JUANITA O'REAR
MARY ELLEN BAKER	GUSSIE HENRY	EDNA MAE PAINTER
BERNITA BOWMAN	EMILY ANNE HUDSON	BONNIE KATE PASS
AILEEN COOPER	ANNA RUTH HACKNEY	VIRGINIA PRICE
GEORGIA CAGLE	LUCILLE HOWARD	ALYNE SHEILDS
KATHERINE CROUCH	MILDRED KAMMER	MAUDE SMITH, <i>Chmn.</i>
BETTY CAMPBELL	DOROTHY MILLWOOD	DOROTHY USMILLER
JOSEPHINE DAVIDSON	EDNA MYERS	CLEO WATSON
ANNIS GAITHER	ANNIE McNABB	MARGUERITE WHITAKER
EDNA GREEN	ANNIE MULLER	HELEN WOLFF
PEG HACKWORTH	ARLENE MARTIN	ELINOR WHITE

#### MEMBERS, GROUP II.

HAZEL ANDERSON	WILMA JOHNSON	GRACE SPRINGER, <i>Chmn.</i>
IRIS BENTON	ROBERTA JONES	CYNTHIA SANDERS
MONA CRABTREE	EMMA L'HEUREUX	CARRIE MAE SHAW
SARAH CRODELLE	VIRGINIA LOWRY	EVA STANIFER
PEGGY CALDWELL	BIDDIE MCKENZIE	GENEVA STANIFER
EDITH DAVIS	FRANCES McLAUGHEN	DOROTHY SLIGER
VERA DAVIS	BEULAH O'REAR	BESSIE SNOGRASS
BERTHA EVANS	VIRGINIA PEACH	ELIZABETH TEMPLETON
ALICE LOUISE HELMS	MARY RANKIN	ROSE WHITE
DOROTHY IRWIN	SUZANNA ROUNTREE	MYRTLE WIETZLER
	MINNIE ROUNTREE	





## Boys' Hi-Y

RAYMOND ALLEY, *President*

## MEMBERS

BENARD ARNOLD	WALTER LUTHER
FRANK BLAKELY	GEORGE MCCARTHY
ROSS BOYD	MARK REYNOLDS
FRANCIS BEENE	GLEN ROY
RAYMOND BLAKE	JACK SHERMAN
HUGH CONNER	NORMAN SMARTT
LUTHER CHAMBERS	LOUIS SMARTT
JOE DEAN	MANCE SHERRILL
JAMES FALKNER	JAMES STEFFNER
CHARLES HARRIS	MARQUIS TRIPLETT
JOHN HARRIS	EUGENE WELCH
EUGENE JONES	HARRY WILLIAMS
CHARLES JACKSON	FLEN WARDS



## Girls' Hi-Y

MIRIAM MARSHALL . . . . . <i>President</i>	EMILY A. HUDSON . . . . . <i>Secretary</i>
KATHRYN BONDS . . . . . <i>Vice-President</i>	MARIE DOWD . . . . . <i>Treasurer</i>

## MEMBERS

JANE BOYD	ELIZABETH KEISLING
BETTY SUE BLACK	LILLIAN LOCKWOOD
LILLIE BELL BRUCE	ROSEMARY MAY
CHRISTINE BOSS	GRACE MCCRARY
MARGARET BRAMMER	HELEN MCCLURE
MARGARET COX	WILMA PLANZER
ALYCE CHATWELL	LEONA PARK
RUTH DAVIS	ROBERTA REYANT
MARY ELLISON	BLANCHE SHIPPEY
KATHLEEN FITZGERALD	DOROTHY USMILLER
DORRIS JANEWAY	FRANCES WOODARD
REBA JOHNSTON	EVELYN WOOD
	MARGUERITE WHITAKER





## Ushers

MISS WAPLES . . . . . Sponsor  
HELEN C. MCCLURE . . . . . President

## MEMBERS

HETTIE ARNOLD	ADALINE HESTER
MYRL BEAVER	ELIZABETH HUNTER
INEZ BLACK	ELIZABETH KEISLING
KATHRYN BONDS	EDITH KELLEY
RUBY BOWLING	ANNA MAE LIEB
EARLINE BOWMAN	MIRIAM MARSHALL
BEN ADDIE COLEMAN	CRATE MCCLANAHAN
MARIE DOWD	MARY HELEN RICHARDSON
VERNA E. FISHER	HELEN SHETTER
VELVO GRAHAM	DELLA MAE THOMAS
NETTYLU YARBOROUGH	



## Camera Club

KATHRYN BONDS . . . . . President  
JAMES KEEN . . . . . Vice-President

## MEMBERS

BENARD ARNOLD	RUTH FORBS
DOROTHY ARWOOD	DOROTHY HAYS
THOMAS BOLDEN	BEN JOHNSON
KATHRYN BONDS	THOMAS JOHNSTON
MYRL BEAVER	JAMES KEEN
ELLA MAUDE BROWN	GEORGE KEEN
AUGUST CAHOON	THELMA LINDSAY
HUGH CONNER	GEORGE MCCARTHY
WILLIAM COLLINS	DOROTHY PENNY
MARIE DOWD	WILMA PLANZER
JOHN DANIELS	AUBERTA SMITH
EDWARD SLIGER	





### Bank Force

PROF. W. A. PRICE, *Sponsor*

#### MEMBERS

FLOSSIE ALLEN	FRANCES LYLE
ETHEL BURNETT	GENEVA LAWRENCE
HAZEL BURGESS	CLIFTON LAWRENCE
MARY DUNBAR	EVA MOTE
BENNETT FLETCHER	MARGARETHA PFITZER
EDWARD HENDERSON	EDWARD POPE
LENA JOINER	LOUISE STEPHENS
	CLEO WATSON



### Bookstore Force

RILLA MAE MILLER . . . . . *Supervisor*  
 PROF. W. A. PRICE . . . . . *Sponsor*

#### MEMBERS

RUTH BUFFETT	CARL GERMAN
NELL CORNETT	HAZEL LOWE
MARGARET EVANS	CARL PFITZER
ANNICE ERWIN	THELMA RAINEY





### Dalton-Faraday Science Club

#### GROUP I.

ABNER BOYD . . . . . *President*  
 CHOICE RHEA . . . . . *Vice-President*  
 WILLIAM KEITH . . . . . *Secretary-Treasurer*

#### Members

BERNARD ARNOLD	DOROTHY TURNER
HELEN C. MCCLURE	ELIZABETH HALL
VERNE FISHER	CHARLES HUDLOW
LOIS ALFRED	MIRIAM MARSHALL

#### GROUP II.

ELMO BREWER . . . . . *President*  
 JAMES KEENE . . . . . *Vice-President*  
 JAMES STEFFNER . . . . . *Secretary-Treasurer*

#### Members

ELEANOR WOOD	GROVER CAMP
BEATRICE KEITH	RALPH COOPER
JOHN SWEETS	JOHN HUMPHRIES
GEORGE HAGEDORN	RUTH HARDEN

#### FACULTY ADVISERS

MISS MILDRED WEIR      MR. H. P. ROBINSON



### The Stage Crew

HORACE MEADOWS . . . . . *Manager*  
 MISS M. E. WAPLES . . . . . *Sponsor*

#### MEMBERS

CLIFFORD CAMP	DANIEL HARRIS
WILLIAM COLLINS	THOMAS JOHNSTON
GORDON HAMMOND	VANN MEADOR
WILLIAM HENDERSON	RALPH OLINGER
LLOYD SHELTON	







### Personnel of the Varsity Glee Club

**SOPRANOS:** Roberta Bryant, Barbara Bush, Eloise Faulkner, Jewel Kroeger, Wilma Planzer, Dorothy Perry, Mabelle Stinson.

**ALTOS:** Dorothy Arwood, Dorothy Martin, Hazel McDonald, St. Claire Silver, Elizabeth White.

**TENORS:** Eugene Welch, Fred Woods, Wheelan Palmer.

**BASSES:** Ford Peters, Walter Luther.

The Varsity Glee Club has had a very successful year, as has been partially shown in the number of programs that they have given both in school and out. These programs have incorporated music of many various styles and types, and have furnished educational entertainment for their audiences on numerous occasions. Their major performance for the year was the operetta, "The Gypsy Rover," which proved to be a success in every sense of the word.



### Personnel of the Orchestra

#### *Violins*

JENNIE LOU GOTHARD  
MARIE SCHNEIDER  
EDITH DAVIS  
EDNA GOTHARD  
OLIN JACKSON

JOHN M. SULLIVAN  
CHRISTINE BOSS  
MARGUERITE CHAMPION  
ALICE LOUISE HELMS  
WOODROW KELLY

HOWARD BLAKELY  
CHARLES MAURAY  
ALMA TYLER  
RUTH WILBUR  
ELLA DAILEY

#### *Piano*

EVELYN WOOD

#### *Clarinet*

WILLIAM LANCASTER

#### *Cornets*

JOHN HARRISON

GENE KEMNA

RALPH TALLANT

THOMAS JOHNSTON

#### *Saxophones*

FLORENCE SHADDEN

JAMES PERKINSON

FRANK HANSBERGER

JOHN CALDWELL

#### *Trombones*

EUGENE COX

EUGENE JONES

#### *Baritone*

ROBERT MORRISON

The orchestra at Central this year boasted a wide-spread and well-deserved popularity. Their numerous out-of-school engagements proved effective incentives for earnest and profitable work. They had the honor of performing before all the prominent clubs of the city, in the leading theatre, over the radio, and before many of the schools of the city. Central can be justly proud of an orchestra that has so honorably carried its name abroad.



## Operetta

THE operetta, the Varsity Glee Club's annual presentation, was one of unusual merit and attractiveness. The performance was indeed a credit to amateurs and showed the marks of careful direction and persistent practice.

"The Gypsy Rover" was the title of the operetta. It was arranged in three acts and was built around the character of Rob, later known as Sir Gilbert Howe, of English nobility. Rob was stolen when an infant, by his nurse, Meg, who later became the wife of Marto, a gypsy. Rob grew to manhood among the gypsies, believing Meg and Marto to be his parents.

One day, while riding with her fiancée, Lord Craven, Lady Constance-Martendale became lost in the woods. They wandered to the gypsy camp where Constance and Rob met and fell in love at first sight. Later Rob went to the home of Constance and they planned to elope but were overheard by Craven who informed Sir George and plans were made to capture him. Rob was put in prison, but managed to soon escape.

Two years elapsed and Rob had his identity and wealth revealed to him. Constance remained true to her love for Rob and on his return to England, he wooed and won her for his wife.

The major leads were ably handled by Dorothy Perry and Eugene Welch, while the following gave equally creditable performances in the minor leads: Wilma Planzer, Ford Peters, Jack Sherman, Wheelan Palmer, Roberta Bryant, Dorothy Martin, and Horace Meadors.

The costuming, the stage settings and the dancing added greatly to the brilliance of the performance. The interpretation of the lines and both the ensemble and solo vocal work showed remarkable ingenuity and talent.

## Minstrel

The 1927-28 minstrel of Central High School was presented on the evening of January twentieth with a cast of forty. Music was furnished by the R. O. T. C. band, and the usual large minstrel audience was present.

The performance was presented in three parts. These were: First, the minstrel proper; second, an olio of four acts, and finally, a one-act play. In the first part, the traditional "circle" was abandoned and the scene was laid at an old-time plantation store, with the proprietor acting as interlocutor. The blackfaces appeared as loafers, or store customers and a white quartet was present as a group of farmers "whittling" on the porch of the store. A girls chorus appeared intermittently as "Clementyne," granddaughter of the store-keeper and a few of her friends who had suddenly returned from school as a result of an unexpected holiday.

Twenty-three jokes or "stunts" together with two choruses, three solos, and one quartet were given in Part One. The "climax stunt" was a burlesque of a football player.

The olio consisted of four acts. The first of these was a song and dance act, in which nine girls took part. The second act was a "black and white" dialogue. The third was a dance act, and the last a group of songs.

For the play which concluded the performance, "The Thirteen Club," by Harry L. Newton, was presented, in which all of the "blackfaces" appearing prior to this time took part. This concluded an unusually amusing and entertaining program of two hours and a half.







## Message of Alumni President

In the memorable year of 1907 Central High School came into existence. The old Ridgedale grammar school building, at that time located at the corner of Peachtree Street and Bennett Avenue in Ridgedale, housed the first classes. On January 1, 1908, the present central building of the magnificent plant at Chamberlain and Dodds avenues was occupied. The first graduating class was composed of a mere handful of young men and women. Since that time the list of graduates has grown larger and larger with each passing year.

Hundreds of those to receive a diploma at Central have either completed or taken college work; and today, out in the busy world, together with those who were not able to continue higher educational training, they are filling places of usefulness and service. The alumni of Central are acquitting themselves in whatever place they are filling in life in a manner that reflects credit on their Alma Mater. These men and women are not only fighting life's battles cleanly and honestly, but they are also forging ahead as leaders.

Few, if any, have so conducted themselves as to bring any measure of discredit to the Purple and Gold institution so dear to the hearts of all its students and graduates. On the other hand, Central alumni by the hundreds—even thousands—are doing credit to themselves and Alma Mater. They are excelling in positions and professions of great responsibility and trust. They are mounting the ladder of success as doctors, as lawyers, as specialists, dentists, teachers, preachers, and as members of other professions and callings. In the business world, they are ably filling the most difficult and responsible places. Central girls of those early years, now to mature womanhood grown, are proving themselves ideal wives and mothers. They are gracing homes where happiness and refinement reign. They are leaders in church and social life.

The history of Central graduates is made brighter and more worth while when the records of the brave boys who volunteered for service during the Great War and went across to do their bit toward making the world safe for civilization are taken into consideration. These fighting men acquitted themselves like the true Centralites that they were. Some of them sleep in Flanders field and other quiet cemeteries of the war dead "over there."

So much for the accomplishments of Central alumni.

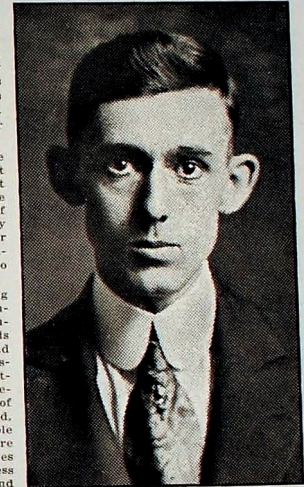
This article would not be complete without a word of tribute to those fine men and women who have taught at Central. The high and noble ideals and purposes implanted by Central teachers have caused Central graduates to rise above the commonplace and mount to the heights of accomplishment. Prof. S. E. Nelson, the present principal, is a man whose very heart beats for Central and her advancement. He is ably supported by an excellent faculty, and has worked wonders for the school.

A visit to Central's halls fills a graduate of the early years with a strange feeling. The old Purple and Gold spirit comes surging back with renewed force. Memories tug at the heart strings. The eyes become misty as scenes of by-gone days pass in review. The surroundings have changed tremendously. In those early days there was but the central building. It accommodated the student body and there was room to spare. Now, since it has proved sadly inadequate, handsome north and south wings help to take care of the vigorous young army of more than 1,500 students. There are the modern auditorium, the popular cafeteria, the well-equipped bank, and numerous other departments that were not in existence in 1907 and later terms.

Central, with proper support and backing from the county court and the school authorities, is but on the threshold of a sun-kissed future. The institution today ranks as one of the best in the accredited high school list. There is no limit to its possibilities.

Through the Central Alumni Association, two medals are now being given for the best all round graduate among the boys and girls. Members of the association are giving their support to the school in its undertakings. They are vitally interested in its growth and development. With the support of its membership, the alumni association can do great things for the school—things greater than the dreamer has yet dreamed of or that the thinker has thought of. Central may know that the alumni are with her, they are watching her success and rejoicing in it, and prophesying for her a complete fulfillment of the high hopes that they have placed in her.

ERNEST G. TAYLOR, President of Alumni Association.







MARY HELEN RICHARDSON



EUGENE MAYER





HELEN G. M<sup>C</sup>GLURE

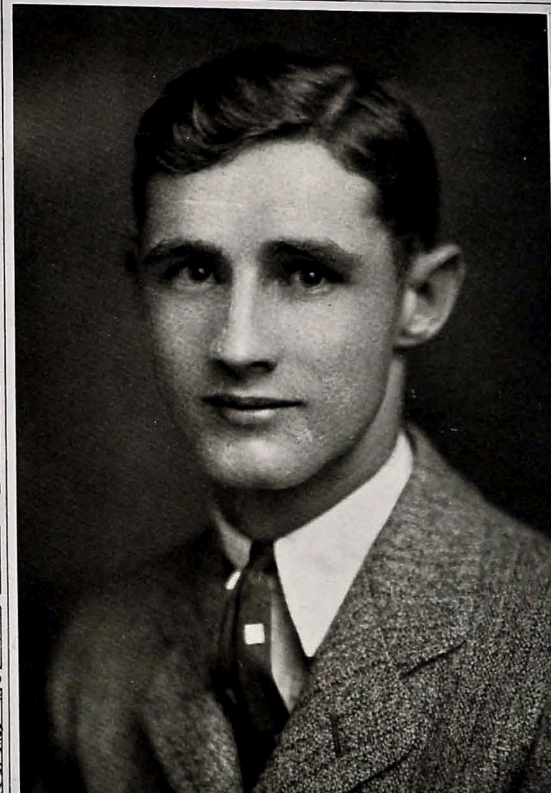


LOUIS SMARTT





SUE FAIDLEY



EDWARD PETERSON







## Jokes

"The wisest men that are  
Have never thought it treason,  
To rest a bit and jest a bit  
And balance up their reason;  
To laugh a bit and chat a bit  
And joke a bit, in season."  
—Selected.

+

Father: "How many miles to the gallon?"  
Mother: "What color is the upholstery?"  
Son: "How fast will it run?"  
Daughter: "Has it a cigarette lighter?"  
Neighbors: "How can they afford it?"

+

Professor: "Give me a quotation from the Bible."  
Student: "Judas went out and hanged himself."  
Professor: "Give another."  
Student: "Go thou and do likewise."

+

She: "Did you ever see Marion Talley?"  
He: "No, you see, I never play bridge."

+

Charles: "I was once on the stage."  
Andy: "Yeah?"  
Charles: "Yeah! I fell out of the balcony."

+

Anna May: "Do your boots hurt?"  
Jack: "No, but my feet do!"

+

Our latest Scotch importation tells how  
Sandy MacPherson decided to leave school,  
because he had to pay attention.

+

Dorothy: "How do the pedals on the piano  
work?"  
Bus: "Haven't you ever driven a Ford?"

+

"Say, give me a pound of good dog meat.  
The last I got made my old man sick."

+

Stubert Cade: "What would you do if you  
could play the piano like I can?"  
Huff O'Brien: "I'd take lessons."

+

A couple of Scotchmen made a bet to see  
who could stay under water the longest. Each  
put up fifty cents. Both were drowned.

+

She: "I was a beauty in my day."  
He: "Just another day wasted away."

+

Employer: "Yes, I advertised for a good,  
strong boy. Do you think you can fill the  
job."

Bill: "Well, I just finished licking nineteen  
other applicants outside the door."

## A SUMMER DREAM

1  
Shady spot,  
Little boy,  
Watermelon,  
Smile of joy.

2  
Large size mouth,  
Open wide;  
Watermelon  
Quick doth hide.

3  
Summer night,  
After frolic;  
Boy is doubled  
Up with colic.

4  
Mother weeps  
O'er her cares;  
Servants running,  
Father swears.

5  
Doctor comes,  
Rather gruff;  
Doses boy with  
Nasty stuff.

6  
Night hath flown,  
Colic's o'er;  
Where's the melon?  
Boy wants more.

+

Impatient young flapper: "I've been sit-  
ting here an hour and the vanishing cream  
hasn't moved yet."

+

John Waller: "When the Spaniards came  
to explore the coast of California, why did  
they not make use of the Panama Canal?"  
Ottis Lea: "They didn't know it existed."

+

"Hazel: "Who is that fellow with such  
long hair?"

Joe: "He's a fellow from Yale."

Hazel: "Oh, I've often heard of those Yale  
locks."

+

Freshman: "Should a person be punished  
for something he hasn't done?"  
Miss Barnes: "Of course not."

Freshman: "Well, I haven't done my Eng-  
lish yet."





### ALMA MATER

What a wonderful school is ours to  
love,  
With its ups and its downs and  
its joys;  
What a wonderful banner the Pur-  
ple and Gold,  
As it floats o'er our girls and  
boys.  
And this wonderful school that I  
love the best  
Has a wonderful rep so high;  
So you've heard of the school that's  
true as blue,  
Oh, that wonderful school, Cen-  
tral High.



### CONTRIBUTORS

AMERICAN HOIST CORPORATION.....	Hamilton National Bank Building
NATHAN L. BACHMAN, Attorney.....	Hamilton National Bank Building
L. G. BALFOUR Co., Jewelers.....	Attleboro, Massachusetts
BENSON PRINTING COMPANY.....	Nashville, Tennessee
CAMERON & BARR BAKERY.....	1615 Cowart Street
CAPITAL ENGRAVING COMPANY.....	Nashville, Tennessee
CHATTANOOGA GAS COMPANY.....	809 Broad Street
DR. EWING B. CONNELL.....	Volunteer Life Building
CROWN LAUNDRY.....	22-24 Market Street
JUDGE CUMMINGS.....	County Court House
DAVIDSON CLOTHING COMPANY.....	811 Market Street
S. T. & W. A. DEWEES, Groceries.....	810 Market Street
EDWARDS & LE BRON, Inc., Jewelers.....	805 Market Street
FARM FIELDS DAIRY.....	Whie Pike
W. F. FISCHER & BRO. Co., Jewelers.....	801 Market Street
FUDGE-CASEY COMPANY, Confectioners.....	707 Chestnut Street
C. A. GUTHARDT, Photographer.....	726 1/2 Market Street
HARDIE & CAUDLE, Clothing.....	809 Market Street
HOME ICE CREAM Co.....	1211 Watkins
KIMBALL ENGRAVING COMPANY.....	802 Broad Street
NELSON D. LAWING, Plumber.....	401 Dodds Ave.
D. B. LOVEMAN COMPANY, Department Store.....	Eighth and Market
GEO. D. LYNCH, Insurance.....	Hamilton National Bank Building
MARTIN-THOMPSON COMPANY, Athletic Goods.....	1100 Market Street
MEYER-LEACH JEWELRY COMPANY.....	707 Market Street
MILLER DRY CLEANING COMPANY.....	2314 East Main
MOUNTAIN CITY STOVE & ROOFING COMPANY.....	Newby
DR. H. O. NULL.....	2605 Chamberlain
THE OCEANNA, Lunches.....	1708 McCallie Ave.
T. H. PAYNE COMPANY, Books and Office Supplies.....	823 Market Street
PURITY EXTRACT & TONIC COMPANY.....	Second and Broad
THE READ HOUSE.....	Broad and West Ninth
RIDGE DRUG COMPANY.....	501 Dodds Avenue
RIDGE CAFE.....	Chamberlain and Dodds
RIDGEDALE BARBER SHOP.....	1406 Dodds Avenue
JERSEY RINGEL, Drugs.....	2100 McCallie Avenue
ROGERS BAILEY HARDWARE COMPANY.....	617 Market Street
R. K. SCHOLZE, Groceries.....	415 Dodds Avenue
JAMES M. SHAW COMPANY, Clothing.....	Market and Ninth
SILBERMAN-BLOCH COMPANY, Confectioners.....	1273 Market Street
SPITLER & RAY FURNITURE COMPANY.....	2607 East Main
STAPPS BOOK STORE.....	Market Street
TEMPLETON'S, Jewelers.....	12 West Eighth Street
TENNESSEE ELECTRIC POWER COMPANY.....	540 Market Street
C. S. WILKINS & COMPANY, Confectioners.....	Thirteenth and Carter





*"Sail on, O Class of Twenty-eight!  
Sail on, O Central, strong and great!"*



