





Copyright 1927

Reed Gardner
Editor-in-Chief

Edward L. Mitchell
Business Manager

The 1927 CHAMPION

A Year Book



Published by the Senior Class of

CENTRAL HIGH SCHOOL
CHATTANOOGA, TENN.



Dedication

To

MRS. MARY D. CALLES

Who, through her strength of character
and charm of personality, through her
loving sympathy and unselfish service,
has won for herself the name,

“Central’s Mother,”

We do affectionately dedicate this the
1927 issue of The Champion.

Foreword



An annual which would bring to every Centralite a flood of memories of the year that has passed, an annual reflecting the living, breathing spirit of the school we love, we, the Editors, have tried to publish.

As Don Quixote of old read the stories of knight errantry and through imagination entered agreeably into the past, may you through the Champion of 1927 wander pleasantly through days of yore.

If in time to come scanning these pages, you feel memory taking you back, we we shall be happy.

THE EDITORS.



Contents



ADMINISTRATION

CLASSES

ATHLETICS

MILITARY

FEATURES



Alma Mater

What a wonderful school t'is ours
to love,
With its ups and its downs and
its joys.
What a wonderful banner the
Purple and Gold,
As it floats o'er our girls and boys.
And this wonderful school that I
love the best,
Has a wonderful "rep" so high.
So you've heard of the school,
that's true as blue,
Oh that wonderful school, CEN-
TRAL HIGH!

Board of Education

OF

Hamilton County

MRS. H. R. LACEY *Chairman*
SUPT. J. E. WALKER . . . *Secretary*

E. Y. CHAPIN
D. M. RAULSTON
HUNTER FURCHES
W. R. ROBERTS
MRS. L. M. COLEMAN



MR. J. E. WALKER, Superintendent of Schools of Hamilton County



MR. S. E. NELSON, Principal Central High School

THE CHAMPION

Heads of Departments

ARTHUR L. RANKIN
Assistant Principal

MRS. JOHN A. SHELTON
English Department

MISS JANIE LLEWELLYN
Home Economics

J. A. SETTLIFFE
Language Department

W. P. BALES
History

MRS. MARY D. CALLES
School Mother

MISS MATTIE MAE ATKINSON
Physical Education

W. A. PRICE
Commercial Department

S. D. PETERSEN
Athletics

MISS SUE FINLEY
Music

J. STEGER HUNT
Science

CHAS. J. ANDERSON
Manual Arts

MISS GRACE LASSITER
Secretary

MISS ESTHER HENNESSEE
Secretary



THE CHAMPION

Faculty

MISS MARGARET LOVENTHAL
Mathematics

S. T. GASS
Mathematics

MRS. BLANCHE ROGERS
English

MISS MORGAN
Spanish

MRS. IDA LONGLEY
English

MISS EDMOND HOOSER
English

MISS ELIZABETH NEWBERRY
English

J. L. HAIR
Mathematics

MISS BERTHA RUSSELL
Public Speaking

MISS BESS CLEMENTS
Spanish

R. W. RUTLEDGE
Science

MRS. H. L. BROWN
French

MISS ELIZABETH FISHER
English



THE CHAMPION

Faculty

MISS FREIDA MYLIUS
Home Economics

CLEBURNE HATFIELD
Manual Arts

MISS SIBYL JOY INGRAM
Commercial Subjects

J. D. SETTLIFFE
History

MISS EDNA CROSS
History

J. A. HEADRICK
History

MRS. J. H. WITHERSPOON
English

MISS SALLY MAY KING
English

GUY M. SWINGLEY
Mathematics

MISS IDA NICKEL
Commercial Subjects

H. B. ROBINSON
Science

MISS MARGARET WAPLES
French

J. J. FLETCHER
Auto Mechanics

MISS BEULAH PARKER
Latin

MRS. GEORGE RICE
Commercial Subjects

THE CHAMPION

Faculty

MISS KATHERINE BYNUM
History

MISS CAROLINE LILLARD
Mathematics

MISS DOROTHY DICKERSON
Latin

MISS DOROTHY BACHTEL
Spanish

A. P. STEWART
Mathematics

MISS GARNET LEADER
Librarian

MISS MARY CHENAULT
Home Economics

MISS MARTHA GRAY
English

MISS LUCILE EASTERLY
Home Economics

J. Z. MORRIS
History

MISS MILDRED WEIR
Science

MISS MARTHA COCHRAN
Commercial Subjects

W. H. TEMPLETON
Mathematics

G. M. SCHOENOFF
Printing

MISS MARY LOUISE BARNES
English

THE CHAMPION

The Greater Central

CENTRAL HIGH SCHOOL has for many years been a center of interest among the educational institutions of this section, because of the large territory from which the student body is drawn. Her widespread influence, combined with the enthusiasm of her students and alumni, has focused the interest of the entire city and even of the state on her progress.

The school was established in the central section of the present building in 1908, with a faculty of nine and a student body of ninety-eight. In spite of the slight check caused by the great war, the growth of the school has been rapid.

In 1921, when Mr. S. E. Nelson became principal, Central was a school of nine hundred sixty-two students, with a faculty of twenty-eight. A gymnasium and manual arts building had been added to the original structure. The printing press, which was the first to be installed in a high school in this section, was another feature of which the school was very proud.

When Mr. S. E. Nelson came to Central, he had behind him an impressive record in school work. Before him was a task that would mean far greater achievement. Each year since he became principal some dream of progress has been fulfilled, until today Central is the largest county high school in Tennessee, with a record in scholarship, progressiveness, and ideals second to none.

The splendid spirit of co-operation between the principal, the faculty, students, and alumni has been one of the main factors in the unusual success of the school.

Material evidence of growth is the spacious auditorium, the new wing for the Commercial and Science Departments, the Central Bank, the Bookstore, the Automobile Paint and Repair Shop, and the office of the *Central Digest*, the weekly school paper. An evidence of the general recognition of the high standing of the school is the acceptance of credits in universities from Dartmouth in the East to Southern California in the West. The trophies, banners, and cups testify our prowess in athletics.

Such achievements have required much work, and an ordinary man would probably be content to rest, well satisfied with the progress already made, but Mr. Nelson is entering upon future plans for a greater Central, with the same spirit and faith that has already accomplished so much.

The next improvement hoped for is a new gymnasium to replace the old one, which has become inadequate for the athletic activities in which Central takes part. This will undoubtedly be built within the next few years.

The library is gradually outgrowing the room in which it has been housed for several years. Many new volumes have been added recently. The hope is that a date not far in the future will find in the building a large library room, well lighted, comfortably and adequately equipped to meet the needs of the constantly increasing student body.

Beyond those already mentioned are hopes for future developments based on the fact that since so much has been accomplished much more can be done.

Although the curriculum is one of the most inclusive and liberal in the state in the courses which it offers, there are still needs to be met. In addition to courses along commercial, scientific, lingual, musical, dramatic, and college preparatory lines, there is an outstanding demand for similar courses in journalism and art.

In addition to an expanding curriculum, Centralites dream of a greater building—a place where every department may have its own equipment and classrooms. Judging from the rapidly growing student body, this dream may become a reality in the not far distant future.

Another hope for the greater Central is that of a more extensive athletic program. With a new gymnasium in the near future, certainly it would not be improbable to see on the horizon of the future a promise of a splendid athletic field, tennis courts and an even greater staff of coaches and instructors.

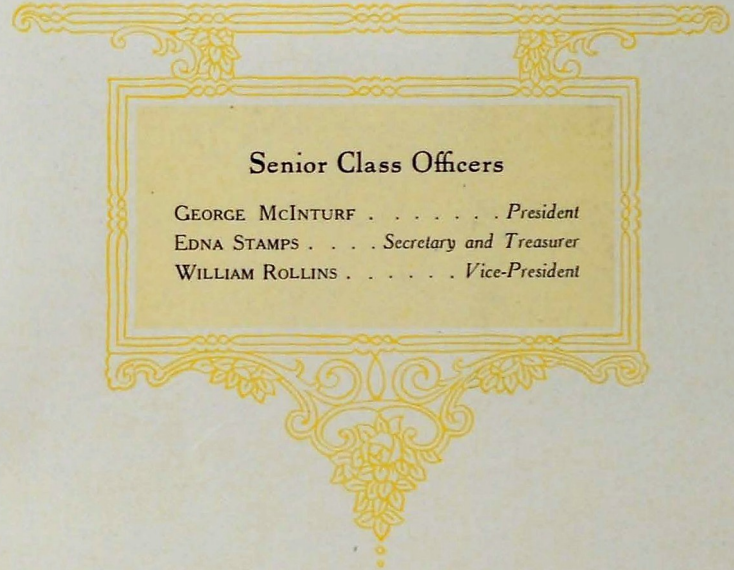
Above all her dreams Central welcomes the idea of a constantly growing Central spirit—that of co-operation, which has already worked to overcome difficulties and to lead on toward progress.

With the splendid record of the past and the promise of an even greater future, may not the students of Central High School be proud of the honor of graduation from such an institution?

VIRGINIA GODSEY.



THE CLASSES



Senior Class Officers

GEORGE MCINTURF *President*
EDNA STAMPS *Secretary and Treasurer*
WILLIAM ROLLINS *Vice-President*

SENIOR CLASS

Senior Class

CLARENCE GENTRY

"Ole Man"

"Looked upon by all as the man he was."

Entered from East Side Junior High, '25; Lettermen's Club, '25-'26-'27; R. O. T. C., '24-'25; Hi-Y, '25-'26-'27; Eagle Scout Club, '24-'25; Football, '25-'26-'27; Basketball, '25-'26-'27; Track, '27.

NELL MYNETT

"Mutzy"

"Loveliness needs no foreign aid or ornament."

Entered from South St. Elmo, '23.

DORIS CARTER

"Joe"

"A virtuous maiden, mild and comely."

Entered from St. Mary's Academy, '23; Senate, '25-'26; Dixie Society, '24-'25; Euterplan Society, '23-'24.

LAURA ROBINSON

"Bill"

"This little lady is by far the proudest little lady of all."

Entered from North Chattanooga Grammar School, '24; Athenian Society, '25-'26; Prize Cooking at Fair, '25.

GUSTAVA PLANK

"Gusta"

"She has many a nameless virtue."

Entered from Bradley High, '24; Dixie Society, '25-'26; May Festival, '25-'26.

LOUISE HESTER

"A maid as happy as the days are long."

Entered from East Side Junior High, '23; R. O. T. C. Play, '27.

ELIZABETH HIXON

"Betty"

"Youth holds no society with grief."

MAX FINLEY

"Bill"

"Good company in a journey makes the way seem shorter."

Entered from North Chattanooga Grammar School, '24; R. O. T. C., '24-'25.

Senior Class

DOYLE CURREY

"Curly"

"One who never turned his back, but marched breast forward."

Entered from Central Grammar School, '23; R. O. T. C., '24-'25-'26-'27.

HILDA WARE

"Hee Hee"

"Her heart was as true as steel."

Entered from East Side Junior High, '24; French Society, '25-'26; Wellesley Society, '26-'26; Hi-Y, '25-'26; Girls' Patrol, '26-'27; Biology Club, '24-'25-'26; Thrift Sponsor, '26-'27.

WILMA MATTIL

"Su'e"

"With modest eyes downcast she comes."

HASSEL FRICKS

"Sally"

"Be silent and safe, silence never betrays you."

Entered from South St. Elmo, '24; B. B. Society, '26-'27; Dixie Society, '27.

GRACE LERCH

"Gay"

"An angel might have stooped and blessed her purity."

Entered from Summerside, '23; Athenian, '24-'25; Dixie Society, '24-'26; Glee Club, '23-'24; Junior Carnival, '26.

PRESTON MOORER

"Pressy"

"Fairest and most lovely from the world apart."

Entered from East Side Junior High, '23; Glee Club, '25-'26; Euterplan Society, '24-'25; Junior Carnival, '26; Dixie Society, '26-'27; Senior Basketball, '27.

DORIS CHADD

"Dods"

"A maiden of bashful sincerity and comely love."

Entered from Ridge Grammar, '23; Dixie Society, '23-'24; Girl Reserves, '23-'24; Junior Carnival, '26.

CLYDE NAFTZGER

"Shadder"

"Be sure you are right then go ahead."

Entered from Central Grammar School, '23.

Senior Class

ARTHUR EVANS

"Fatty"

"Verse sav'e'ens toil, howe'er rude the sound."

Entered from Normal Park Grammar School, '24; H-Y, '24-'25-'26-'27; R. O. T. C., '24-'25-'26-'27; Junior Carnival, '26; Junior Class Football, '26.

LUCILE PEAK

"Cile"

"Slow of speech, beneficent of mind."

Entered from Central Grammar, '23; Athenian, '24-'27; Girls' Athletic Association, '24-'27.

KATHLEEN SMITH

"Kitty"

"Fashioned so slenderly, so young, so fair."

Entered from Avondale Grammar, '23; Athenian, '23-'24.

INEZ WIGGINS

"Nez"

"Were silence gold, I'd be a millionaire."

Entered from Cedar Hill, '23; Athenian, '24-'25; Junior Carnival, '26; Girls' Athletic Association, '24-'25.

HENRIETTA RANDLE

"Retta"

"Her loveliness I never knew until she smiled on me."

Entered from Dickinson, '23; Dixie Society, '24-'27.

EUDORA RAMEY

"Dody"

"A loyal and true friend."

Entered from East Side Junior High, '23; Athenian, '24-'26.

MILDRED GAMBLE

"Buck"

"She was a small woman, capped with many a bow."

Entered from East Lake Grammar, '23; Dixie Society, '25-'26-'27; Candy Force, '26-'27; Junior Carnival, '26-'27.

ORVILLE GASS

"Slim"

"God bless the man who invented sleep; so said Panzo, and so said I."

Entered from Tyner High School, '26; Senior Play, '27; Dramatic Club, '27; Minstrel, '27.

Senior Class

WEBB SPENCER

"Webb"

"He is a chip from the old block."

Entered from Clifton Hill, '23; R. O. T. C., '24-'25-'26.

FRANCES NORTH

"Fannie Ray"

"What I promise to do, I'll do."

Entered from City High, '24; Minstrel, '24-'25; Athenian, '25-'26; Junior Carnival, '25-'26.

EDNA STAMPS

"Ed"

"She had a face overspread with gladness, soft smiles and human kindness."

Entered from East Side Junior High, '23; "Digest" Reporter, '23-'24; Athenian Society, '24-'25; Dixie Society, '25-'26; B. B. Society, '25-'26-'27; Bank, '24-'27; Girls' Patrol, '26-'27; Thrift Sponsor, '27.

LEONA MCKINNEY

"Lee"

"Her heart was in her large sad eyes."

Entered from North St. Elmo, '24.

EDITH WOODARD

"Dudie"

"Sweet promptings to kindest deeds were in her every act."

Entered from East Side Junior High, '24; H-Y, '25-'27; Girls' Patrol, '26-'27; Junior Play, '27; Junior Carnival, '26; Senior Play, '27; Wellesley, '24-'25; Biology Club, '25-'26; Valedictorian, '27.

KATHERINE WEATHERLY

"Pat"

"In friendship she is true."

Entered from Dickerson, '23; H-Y, '24-'25; Girls' Patrol, '26-'27; Athenian, '24-'25.

GERTRUDE MCKINNEY

"Jack"

"No legacy is as rich as honesty."

Entered from North St. Elmo, '23; May Festival, '25-'26.

ROY BOONE

"Daniel"

"To climb steep hills requires slow pace at first."

Entered from East Side Junior High, '24; Band, '25-'26-'27; Glee Club, '25; Orchestra, '26.

Senior Class

WILLIAM PRICE
"Banker"

"If worry were the cause of death, I would live forever."
Entered from East Side Junior High, '23; R. O. T. C., '23-'26;
Bank, '23-'27; "Digest" Staff, '26-'27.

FRANCES WILLIAMSON
"Frank"

"Babble, babble, babble."
Entered from Greta Werts, '25; Euterpean, '24-'27; May Festival, '24-'25; Girls' Athletic Association, '24-'27.

CONSTANCE FULGHUM
"Connie"

"She is bearing quite gallantly down on the world."
Entered from Lookout Mountain, '23; Athenian, '24-'27.

VIVIAN RICHARDS
"Jew Baby"

"Ye were the pleasure of our eyes."
Entered from Missionary Ridge, '23; Athenian Society, '24-'25;
Hi-Y, '24-'26; Dixie Society, '25-'27; Junior Carnival, '26;
Ring and Pin Committee, '27; May Festival, '24-'26.

CHARLOTTE BROWN
"Tootsee"

"Calm and unruffled as the summer seas."
Entered From Dickinson, '23; Junior Carnival, '25-'26; Dixie Society, '24-'25.

EVELYN CHAMBERS
"Freckles"

"She was a phantom of delight."
Entered from South St. Elmo, '23; Senate, '24-'27; Hi-Y, '26-'27; Girls' Patrol, '26-'27; Junior Carnival, '26; May Festival, '24-'25; Dixie Society, '25-'26.

RUTH ARNOLD
"Woof"

"Thy smile we ever seek."
Entered from Sunnyside, '23; Athenian Society, '24-'25; Camera Club, '26-'27; May Festival, '24-'26; Twelfth Night, '27.

JOHN OLINGER
"Brat"

"He was a very perfect, gentle knight."
Entered from North Chattanooga Grammar School, '23; R. O. T. C., '23-'24-'25.

Senior Class

HARRY SNATTINGER
"Willie Lou"

"Smiles and good cheer in the face of adversity will ultimately bring their reward."

Entered from East Side Junior High, '24; Hi-Y, '25-'27; Junior Play, '26; Senior Play, '27; Junior Carnival, '26; R. O. T. C., '24-'25-'26.

THELMA DEERING
"Ted"

"Eloquent and yet how simple"
Entered from East Side Junior High, '24; Dixie Society, '24-'25-'26-'27; Euterpean Society, '25-'26; Operetta, '27; May Festival, '24-'25; Senior Basketball, '26-'27.

REIKA JONES
"Shag"

"Men were deceivers ever."
Entered from Sunnyside, '23; Athenian, '23-'24; Dixie Society, '24-'27; Minstrel, '23-'24.

JANET SMITH
"Smitte"

"Sweet, be not proud of those two eyes which star-like sparkle in the skies."

Entered from Northwestern High, '23; Junior Play, '26; Junior Carnival, '26; Euterpean, '25-'26; Dixie Society, '25-'26; Senate, '26-'27; Hi-Y, '26-'27; Senior Play, '26-'27; Thrift Sponsor, '27.

EVELYN MILLER
"Sammie"

"Think twice before you speak."
Entered from East Side Junior High, '23; Senate, '26-'27; Varsity Glee Club, '26-'27; Athenian, '24-'27; Minstrel, '25-'27; Girls' Patrol, '26-'27.

ROBBIE SMITH
"Bobbie"

"She was a child in years so timid and so young."
Entered from Avondale Grammar, '23; Athenian, '24-'27; Junior Carnival, '25-'26; May Festival, '25-'26-'27.

MAURICE RAINS

"I am never sad when I hear sweet music."
Entered from Marion County High School, '23; Athenian Society, '23-'24; Varsity Glee Club, '26-'27; Minstrel, '27; Dixie Society, '26-'27; Central Bookstore, '25-'26-'27.

JOHN THOMPSON
"Wauhatchie"

"Smile and the world smiles with you, weep and you weep alone."

Entered from Patten Chapel, '23.

Senior Class

ARNOLD BRAGG
"Pete"*"Who mixed wisdom with pleasure and wisdom with mirth."*

Entered from Avondale Grammar School, '23; R. O. T. C.; '25-'26-'27.

MARIE PARKS
"Ree"*"A kindly grace of manners and behavior."*

Entered from East Chattanooga Grammar, '23; Junior Carnival, '24; Dixie Society, '25-'26-'27; Senate, '25-'26; Junior Play, '26; Hi-Y, '26-'27; Dramatic Club, '27.

ERMA LEDFORD
"Erma"*"What sweet delight a quiet life affords."*

Entered from Tyner High, '25; Dixie Society, '25-'26; Junior Carnival, '25-'26; Girls' Athletic Association, '25-'26.

ELOISE FOLKNER
"Pat"*"Her voice was exquisitely tender."*

Entered from Hixon High, '25; Varsity Glee Club, '26-'27; Vocal Contest.

CHRISTINE FINLEY
"Chris"*"Her eyelids dropped their silken eaves."*

Entered from North Chattanooga Grammar, '23.

MILDRED STEWART
"Milly"*"Her cheek is tipped with a blush."*MARGARET STEFFNER
"Giggles"*"Her very look, her very smile shot right and left a score of arrows."*

Entered from Dickinson, '23; Junior Carnival, '24-'25; Dixie Society, '24-'27.

L. D. POTTS
"Pots"*"Success is mine (with the ladies)."*

Entered from McCallie, '23; R. O. T. C., '26-'27; Radio Club, '24-'26; Hi-Y, '25-'27; Officers' Club, '27; Senior Play, '27; Senate, '27; Grady, '25; Biology Club, '27; Dramatic Club, '27; Officers' Play, '27.

Senior Class

JACK BROWN
"Slick"*"Fortune truly helps those who are of good judgment."*

Entered from East Chattanooga Grammar School, '23; R. O. T. C., '25-'26.

INEZ VANDERGRIFT
"Nezz"*"Strong in will and honest in endeavor."*

Entered from East Side Junior High, '23; May Festival, '23; Athenian, '23-'24; Girls' Athletic Association.

LUCILLE SMITH
"Abbie"*"Happy as the day is long."*

Entered from City High, '25; Euterpeans, '25-'26-'27.

MARY GRAHAM
"Bee"*"Being what I am, I'll be it nobly."*

Entered from Sheffield Grammar, '23; Senate, '23-'24; Athenian, '23-'24; Wellesley, '24-'25; Dixie, '25-'26; Junior Carnival, '26; Girls' Patrol, '26-'27.

LOUISE COCKREHAM
"Bubbles"*"A noble character is the most precious crown."*

Entered from Ridge, '23; Dixie, '25-'26; Euterpean, '24-'25; Wellesley, '26-'27; Athenian, '23-'24.

VIRGINIA ASHBY
"Gin"*"Oh, lady, nobility is thine"*

Entered from Central Junior, '24; Wellesley Society, '25-'26; Dixie Society, '24-'25; May Festival, '25-'26.

DORA BULL
"Do Do"*"How sweet and gracious even in common speech."*

Entered from East Chattanooga Grammar, '23; Dixie Society, '24-'25-'26-'27; Hi-Y, '25-'27.

ARNOLD LYLE
"Lyle"*"Oh, but to build and build, that is the noblest of art."*

Entered from Dickinson Junior High, '23; Hi-Y, '26-'27; Biology Club, '24.



Senior Class

RALPH BROWN
"Half Pint"

"Success comes to those who will be successful."
Entered from East Chattanooga Grammar School, '23; Sophomore Party, '25; Mascot A. K. A., '25.

ETHEL CAGLE
"Epa"

"Innocent girl! Snow white flower!"
Entered from East Side Junior High, '23; Athenian, '23-'24; Dixie, '24, '27; Senior Party, '26-'27.



GRACE NELSON
"Betty"

"She smiled on many just for fun."
Entered from Normal Park, '23; Athenian, '24-'25-'26-'27; Junior Carnival, '25-'26.

ALINE COMER
"Dimples"

"Her voice is blithe, her heart is light."
Entered from East Side Junior High School; Athenian, '24-'25-'26; Junior Carnival, '25-'26; Girls' Patrol, '26-'27.



MAYBELLE TAYLOR
"Jimmie"

*"Attempt the end and never stand to doubt;
Nothing's so hard but search will find it out."*
Entered from Shepherd Grammar School, '23; Bank, '26-'27; "Digest" Staff, '26-'27; Senate, '26-'27; Athenian, '24-'27.

LUCILE WALLACE
"Cille"

"A thing of beauty is joy forever."
Entered from East Chattanooga Grammar School, '23; Athenian, '23-'24; Dixie Society, '26-'27.



ALMA BECKER
"Buster"

"Silence is more musical than any song."
Entered from Normal Park, '23; Bookstore, '26-'27; Dixie Society, '26-'27.

EDGAR BROWN
"Ed"

"My strength is as the strength of ten. My heart is pure."
Entered from East Chattanooga Grammar School, '23; Biology Club, '24-'26; "Digest" Printer, '23-'26.

Senior Class

JOE SHADDEN
"Joe"

"Observe moderation."
Entered from East Side Junior High School, '23; H-Y, '25-'26-'27; Football, '24-'25-'26; Lettermen's Club, '25-'26; Track, '25-'27; Junior Play, '26; Senior Play, '27; Minstrel, '27.

GENEVA WILLIAMS
"Gee"

"Silence is golden."
Entered From Lenoir High, '23; Dixie Society, '26-'27.

LOUISE BROWN
"Aise"

"Man delights not me."
Entered from Normal Park, '23; Glee Club, '23-'24; Athenian Society, '25-'26.

THELMA BAUMGARTNER
"Midge"

"From a little spark may burst a mighty flame."
Entered from North St. Elmo, '23; Athenian Society, '23-'24; Euterpean Society, '24-'25; May Festival, '24-'25.

MARY WIGGS
"Piggy"

"Speak less and think the more."
Entered from Rising Fawn Grammar School, '23; Athenian, '24-'25; Bookstore, '26-'27.

TENNIE HAMILTON
"Curls"

"Such joys ambitions find."
Entered from Ooltewah High, '26; Senate, '26-'27; Dixie Society, '26-'27.

MATILDA ORTMEIR
"Til"

"We needs must love the highest when we see it."
Entered from East Side Junior High, '23; Junior Carnival, '24-'25; May Festival, '24-'25; Girls' Patrol, '26-'27; Sophomore Party, '24-'26; Senior Party, '26-'27; Euterpeans, '26-'27.

HELEN HARRIS
"Possie"

"Heaven will help them that help themselves."
Entered from Ridge, '23; Athenian, '23.



Senior Class

STANSBURY McGAUGHY
"Stan"

"Life is what you make it, make it worth while."

FRANCES LONG
"Frank"

"A lovelier flower on earth was never sown."
Entered from Norman Park, '23; Dixie Society, '25-'26-'27.

PAULINE FUSSEL
"Shorty"

"But still her heart she kept."
Entered from Daisy High School, '24; Bookstore, '26-'27.

DOROTHY LILLARD
"Dot"

"The trouble is small, the fun is great."
Entered from East Lake, '23; Dixie Society, '25-'26; Athenian Society, '23-'24; Junior Carnival, '25-'26.

ASHBY BLACK
"Buddy"

"Seek the best; have nothing less."
Entered from East Side Junior High, '24; R. O. T. C., '25-'26; Hi-Y, '26-'27; Rifle Team, '25-'26.

MIRIAM HILL
"Tee Dee"

"She is a woman, therefore, may be won."
Entered from South St. Elmo, '23; Athenian Society, '24-'25; Junior Carnival, '25-'26.

THELMA MERREL
"Ted"

*"From her cheeks the glow is spread
That tints the morning hills with red."*
Entered from Carrollton, '23.

DEFOREST LOWRY
"Sir Tobby"

"Harmony is good; so am I."
Entered from East Side Junior High, '23; R. O. T. C., '23-'24-'25-'26-'27; Hi-Y, '25-'26-'27; Senior Play, '27; Junior Play, '26; Stage Crew, '25-'26-'27; Junior Carnival, '26; Central Dramatic Club, '26-'27.

Senior Class

S. B. FARMER
"Noah"

"Now for good luck cast an old shoe after me."
Entered from South St. Elmo, '23; Grady Society, '24, '27; Junior Carnival, '26; Minstrel, '27.

EVA FARMER
"Billie"

"She bore a mind that envy could call but fair."
Entered from Dickinson, '23; Senate, '26-'27; May Festival, '25-'26-'27; Track, '25-'26.

RUTH MARTIN

*"To be efficient is a great way;
That is my aim throughout the day."*
Entered from South St. Elmo, '23; Athenian Society, '23-'24; Wellesley Society, '24-'25; Girls' Athletic Association, '23-'24.

WYNETTE ALVERSON
"Betty"

*"Or light or dark or short or tall,
She sets a spring to snare them all."*
Entered from Everett Springs, '23; Dixie Society, '24-'25-'26-'27; Junior Carnival '26; Bookstore, '24-'25; Thrift Sponsor, '26-'27.

CARLOS GILLILAND
"Carl"

"My voice stuck in my throat."
Entered from Graysville High School, '24; Hi-Y, '24; Junior Carnival, '26.

PAULINE CARD

"Eternal sunshine settled on her head."

EUNICE MULKY
"Bunk"

"My heart is ever at your service."
Entered from South St. Elmo, '24; Wellesley Society, '24, '27; Junior Carnival, '26; Operetta, '25-'26; Minstrel, '25-'26; Glee Club, '24, '26.

NEAL PEAK
"Half Pint"

"Little but loud."
Entered from East Side Junior High, '24; Band, '24-'25; Minstrel, '26-'27; Operetta, '27; Orchestra, '24-'25-'26-'27.

Senior Class



PAUL WRIGHT
"Paul"

"Smile and the way is clear."
Entered from East Side Junior High, '23.

EDNA HALL
"Eddie"

"Virtue may be assailed, but never hurt."
Entered from New Hope High School, '24.



CATHERINE DAVIS
"Kitty"

"Child-like beauty, child-like sweetness marked her face."
Entered from Balrd High School, '25; Dixie Society, '25-'26;
Junior Carnival, '26-'26.

EUNICE LYLE
"Eunice"

"It matters not what you are thought to be, but what you really are."
Dixie Society, '26-'27.



EGBERT AYLESWORTH
"Speedy"

"A boy of hope and forward-looking mind."
Entered from Estella High School, '26; R. O. T. C., '26-'27.

MERLE ASHWORTH
"Merley"

"Be my friend and teach me to be thine."
Entered from East Side Junior High, '24; May Festival, '24-'26; Girls' Athletic Association, '24-'26.



SADIE ISBILL
"Yank"

"She is the very flower of youth."
Entered from Ooltewah High School, '26.

CURTIS BOOTH
"Boots"

"Wisely improve the present; it is thine."
Entered from Sunnyside Grammar School, '23; R. O. T. C., '24-'25.

Senior Class



JAMES MORGAN
"Letterman"

"If at first you don't succeed, try, try again."
Entered from North St. Elmo, '23; Football, '24, '26; "Digest" Staff, '24, '27; Lettermen's Club, '25-'26; Grady Society, '26-'27; Junior Carnival, '26.

AZILEE JOHNSTON
"Add"

"To argue is the delight of my life."
Entered from Dade County High, '24; Athenian Society, '24-'25; Dixie Society, '25-'26; Editor "Digest", '26-'27; Hi-Y, '26-'27.

RUBY HILL
"Ruby"

"Speech is great, but silence is greater."
Entered from East Side Junior High, '23; Junior Carnival, '26; Athenian Society, '24-'25; Euterpean Society, '25-'26.

WILMA JONES
"Tootsie"

"How beautiful you are!"
May Festival, '24-'25; Basketball, '24-'25; Dixie Society, '24, '27.

PAUL OVERBAY
"Paul"

"There is music even in his discord."
Entered from Norman Park Grammar School, '23; "Champion" Staff, '27; Minstrel, '27; Rifle Team, '27; Hi-Y, '26-'27; R. O. T. C., '23, '27; Senate, '23-'24; Varsity Glee Club, '27.

ELIZABETH LUPHER
"Betty"

"She is as merry as the days are long."
Entered from South St. Elmo, '23; Minstrel, '25-'26; Operetta, '25-'26; Junior Carnival, '26; Wellesley Society, '25-'26.

IRENE MARLER
"Iki"

"A girl with a gentle and courteous heart."
Entered from East Lake, '23; Dixie Society, '25, '27.

BEN O'NEAL
"Fatty"

"Smile and your load seems lighter."
Entered from Avondale, '23; R. O. T. C., '23-'24; Junior Carnival, '26.



Senior Class

CLYDE DAVIS
"Salty"

"He is a soldier fit to stand by Caesar and give direction."
Entered from McCallie, '23; R. O. T. C., '23-'27; Track, '26;
"Champion" Staff, '27; Officers' Club, '27; R. O. T. C. Play,
'27.

NEVA GRAYSON
"Joe"

"A more sincere girl you will never find."
Entered from Whitwell High School, '23.

LOUISE PARKER
"Squeeze"

"She smiles whether happy or sad."
Entered from Tyner High, '25; Dixie Society, '25-'26.

RUTH GILLILAND
"Jackie"

"How sweet and fair she seems to be."
Dixie Society, '25-'27; Girls' Patrol, '26-'27; Senate, '24-'25.

ROY WORKMAN
"Chairy"

"Ladies call him sweet."
Entered from East Side Junior High, '24; R. O. T. C., '25-'26.

PEARL ELLIS
"Betty"

"Now who could be neater or brighter or sweeter."
Entered from Marlon High School, '23.

ADELIA WALLER
"Dee"

"Sunshine every day; sunshine all the way."
Entered from City High School, '24; Athenian Society, '24-'25;
Junior Carnival, '26; Basketball, '26-'27; "Champion" Staff,
'27; Carnival Queen, '25-'26; Candy Force, '25-'27; Girls'
Athletic Association, '24-'27.

ERWIN PEASE
"Peas"

"Rome was not built in a day."
Entered from East Chattanooga Grammar School, '23; R. O.
T. C., '25-'27.

Senior Class

EDMUND LEVI
"Ed"

"Various are the tastes of men."
Entered from Dickinson Junior High, '24; R. O. T. C., '24-'25.

LOUISE BRANTLEY
"Blinky"

"'Tis good will that makes friends."
Entered from Central Grammar School, '23; Junior Carnival,
'26; Senior Play, '27; Athenian Society, '23-'24; Dixie Society,
'24-'25; "Digest" Staff, '24-'27.

LOUISE LA FERRY
"Eise"

"Principle is ever my motto, not expediency."
Entered from Central Grammar School, '23; Junior Carnival,
'26; Wellesley Society, '25-'26.

MILDRED MOORE
"Milly"

"She is like the rosebud in early morn."
Entered from McIntire, '23; Dixie Society, '24-'27; Hi-Y, '26-
'27; Junior Carnival, '26; Camera Club, '26-'27; Girls' Patrol,
'26-'27.

FRANK PURSLEY
"Nank"

"Work is the keynote of success."
Entered from Dickinson Junior High School, '23.

LUCY SNATTINGER
"Shoots"

"Mischievous, thou art afoot; take what course thou wilt."
Entered from East Side, '24; Junior Carnival, '26; Biology
Club, '25-'27; Euterpean Society, '24-'25; Minstrel, '24-'25;
Senate, '25-'27; Dixie Society, '25-'27.

LUCILE HOLLOWAY
"Lucy"

"Thoughtless of beauty, she was beauty herself."
Entered from Whitwell High School, '25; Girls' Patrol, '26-'27.

WILLIAM BALLINGER
"Manager"

*"Better that rudest work tells a story or records a fact, than
the richest without meaning."*
Entered from East Side Junior High, '24; Football Manager,
'26; Basketball Manager, '27.

Senior Class

REED GARDNER
"Clown"

"Whose words all ears took captive."

Entered from East Side Junior High, '23; Varsity Glee Club, '24, '27; Senior Play, '27; Junior Play, '26; Minstrel, '24, '27; Senate Play, '26; Grady Society, '26-27; Senate, '25, '27; Hi-Y, '25, '27; "Champion" Staff, '27; Operetta, '27.

VIOLET DIETZ
"Vi"

"The proud, the shy, the sensitive, life has not many such."

Entered from Ringgold High School, '23.

OLETA HOODENPYL
"Leta"

"There is no wisdom like frankness."

Entered from Fair Mount, '23; Euterpean Society, '23, '26; B. B., '25, '27; Commercial "C.", '27; Bank, '25, '27; Junior Carnival, '26; Thrift Sponsor, '26, '27.

MARIE WHITAKER
"Maria"

"Give me a book and the shade of a tree."

Entered from Clifton Hill, '23; Wellesley, '25, '27; Bookstore, '23, '26; "Digest" Reporter, '23, '24; Minstrel, '23-24; Basketball, '24-25; Operetta, '23, '25; Dramatic Club, '27.

LESLIE BARROWS
"Les"

"Whatsoever thine hand findeth to do, do with thy might."

Entered from Lookout Mountain Junior High School, '23; "Digest" Staff, '27.

KATHERINE ROSS
"Kitty"

"She's as sunny as the skies in June."

Entered from East Side Junior High School, '23; Athenian Society, '25-26; Dixie Society, '25-26; Camera Club, '26-27.

FRANCES RICHARDS
"Frankie"

"We love her for her smile, her look and her way of speaking gently."

Entered from Ridge, '23; Athenian Society, '24-25; Dixie Society, '25, '27; Hi-Y, '25, '27; Junior Carnival, '24, '26; Girls' Athletic Association, '26, '27.

WILLIAM ROLLINS
"Boots"

"As proper a man as anyone shall see on a summer's day."

Entered from North St. Elmo, '23; Vice-President Sophomore Class, '25; President Junior Class, '26; Vice-President Senior Class, '27; Stage Manager, '25-27.

Senior Class

HARRY MYERS
"Dago"

"I am saddest when I play."

Entered from Dickinson, '25; Band, '25; Hi-Y, '25, '27; Senior Play, '27; Senate, '25, '27; Camera Club, '25, '27; Junior Play, '26.

LOUISE SMITH
"Lou"

"Her cheeks are cherry red as the rosebuds in their bed."

Entered from East Side Junior High, '24; Athenian Society, '24-25; Dixie Society, '26-27; Junior Carnival, '26; Minstrel, '25.

LUCIA WEAVER
"Little Bitts"

"To know her is to love her."

Dixie Society, '25, '27; Junior Carnival, '26; Basketball, '25-26; May Festival, '26.

WILLIE MAE FUSSEL
"Mae"

"A charming creature rare is she."

Entered from North Chattanooga Grammar School, '23.

VICTOR STONECIPHER
"Polly"

"His actions speak louder than words."

Entered from St. Elmo Grammar School; Stage Crew, '25, '27; Junior Carnival, '26; Officers' Club, '27.

RUBY HOOD
"Ruby"

"Sweetly sang her silver voice."

Entered from North Chattanooga Grammar School, '23; Dixie Society, '24, '27; Varsity Glee Club, '26, '27; Operetta, '27; Junior Carnival, '26; Minstrel, '27; Athenian Society, '27.

JEAN KLINGER
"Ike"

"Hang sorrow, care will kill a cat; therefore, let's be merry."

Entered from East Side Junior High, '23; Wellesley Society, '24, '27; Operetta, '24-25; Minstrel, '24-25; Junior Carnival, '26.

FLOYD JOHNSTON
"Ivory"

"A merry heart doeth good like medicine."

Entered from Dickinson, '23; Stage Crew, '26-27.

Senior Class

HERBERT TATE
"Professor"*"Still water runs deep."*

Entered from East Chattanooga, '23; H-Y, '23; Senate, '25-'27; Grady Society, '25-'27; Bank, '25-'27; R. O. T. C., '23; Football Team, '26; Lettermen's Club, '27.

EMILY AULT
"Emi"*"Thy soul was like a star and dwelt apart."*HATTIE SWING
"Tim"*"She is smiles the whole day through."*

Entered from Bradley High School, '23; Athenian Society, '24-'26; May Festival, '24.

GORDON MASSENGALE
"Mass"*"You may look all around, a better soldier cannot be found."*

Entered from Central Grammar School, '23; R. O. T. C., '23-'27; Officers' Club, '27; Dramatic Club, '27.

HERBERT WENCK
"Cupper"*"Beauty is truth, truth is beauty."*

Entered from East Side Junior High, '23; R. O. T. C., '23-'27; Officers' Club, '27; Rifle Team, '27.

VIRGINIA GODSEY
"Patia"*"Wit she hath, without desire to make known how much she hath."*

Entered from Rhea County High School, '24; Dixie Society, '25-'27; Junior Carnival, '26; Camera Club, '26-'27; "Digest" Staff, '26-'27; Biology Club, '25-'27.

KATHERINE McNABB
"Kat"*"Just in thy mould and beauteous in thy form."*

Entered from Whitwell High School, '26.

REECE CAMP
"Slim"*"Ship me somewhere east of the Sun, where the best is like the worst."*

Entered from Ridgedale, '23; R. O. T. C., '24-'25; Cheer Leader, '26-'27; Eagle Scout Club, '25-'26.

Senior Class

WILLIS FISHER
"Bud"*"A romance often leaves one so unromantic."*

Entered from Normal Park, '23; Stage Crew, '25-'27; Senior Party, '27.

INEZ WOOD
"Inez"*"She is a friend to all and an enemy to none."*

Entered from North Chattanooga Grammar School, '23.

LOUISE COX
"Lize"*"Thou art as a ray of sunshine."*

Entered from East Side Junior High, '25; Minstrel, '23-'24; Dixie Society, '23-'26; Girl Reserves, '23-'26; Senate, '25-'27; Camera Club, '25-'27; Girls' Athletic Association, '26-'27.

CHARLES KELLEY
"Charlie"*"I am an associate of Comus and his midnight crew."*

Entered from East Side Junior High School, '23; Band, '24-'25.

WILLIAM BAUGHN
"Sonny"*"Oh, Work, I have followed you all the days of my life, and find you only a shade."*

Entered from East Lake, '24; R. O. T. C., '24-'26.

NADELL CATES
"Na"*"A maiden fair with many a charm."*

Entered from City High School, '23; Athenian Society, '24-'25; Dixie Society, '25-'26; Biology Club, '25-'26; Senate, '26-'27; Junior and Senior Banquet, '26.

ROBERTA TILFORD
"Berta"*"My motto is, 'Push on, keep moving'."*

Entered from East Side Junior High, '23; Athenian Society, '24-'25; Dixie Society, '25-'26; B. B., '25-'27; Junior Carnival, '24-'26; Bank, '25-'27; Commercial "C," '27.

GEORGE PORTER
"George"*"Truth is strong and abideth forever."*

Entered from Central Grammar School, '25; R. O. T. C., '26-'27.

Senior Class

JOE CARTLAND
"Joe"*"Give me again my hollow tree, a crust of bread and liberty."*

Entered from Greensboro High School, '25; Hl-Y, '25-'27; Bookstore, '27.

EMMA BELLE TUCKER
"Emmy"*"She fills the air around with beauty."*

Entered from East Side, '24; Dixie, '25-'27; Senate, '25-'27; Biology, '25-'27; Glee Club, '25-'27; Dramatic Club; May Festival, '26; Junior Carnival, '26; Girls' Patrol, '26-'27.

LOUISE ADAMS
"Tease"*"I would make reason my guide."*

Entered from Signal Mountain Grammar School, '23; Senior Volley Ball Team, '26-'27; Girls' Athletic Association, '26-'27.

TED WITT
"Ted"*"He is a loyal backer of his school."*

Entered from Hiwasee, '26; Football, '26; Lettermen's Club, '26-'27.

THOMAS PHILLIPS
"Tom"*"Never put off till tomorrow what you can do today."*

Entered from East Side Junior High, '24; Junior Carnival, '26; R. O. T. C., '24-'27.

SUSIE MAI BOLT
"Sandy"*"Charm strikes the sight, but merit wins the soul."*

Entered from North Chattanooga, '23; Athenian Society, '24-'27; Junior Carnival, '26; Girls' Athletic Association, '25-'26; May Festival, '26.

NOVELLA TATE
"Skeezyx"*"She shows what is what."*

Entered from East Chattanooga, '23; Dixie Society, '25-'26-'27.

ARTHUR GREENE
"Hot Man"*"A ready smile often lifts a world of sorrow."*

Entered from East Side Junior High School, '24; R. O. T. C., '24-'25-'26; Junior Carnival, '26; "Camplion" Annual Staff, '27.

Senior Class

GORDON MOSTELLER
"Mosty"*"When shall we look upon his like again?"*

Entered from East Side Junior High, '23; R. O. T. C., '24-'27; Officers' Club, '27.

VIRGINIA ELLIOTT
"Vi"*"Reason masters every sense and her virtues grace her birth."*

Entered from Alton Park, '23; Bank, '24-'25; Bookstore, '24-'25; "Digest" Staff, '26-'27.

GLADYS JORDON
"Pat"*"As chaste as unsunned snow."*

Entered from Centertown, '23.

GARDNER McCULLUM
"Mac"*"If foolishness extended length of life, I would live to be an old man."*

Entered from Tyner High School, '23.

DAVID HARRIS
"Bud"*"Short is my date, but deathless my renown."*

Entered from John Brown College, '24; Junior Play, '26; Minstrel, '27.

MABEL CROCKER
"Mac"*"Nature did her so much good, she scorns the help of art."*

Entered from Wertz School, '23; Athenian Society, '23-'24; Euterpean Society, '24-'25; Dixie Society, '26-'27; Hl-Y, '26-'27; May Festival, '24-'26; Girls' Athletic Association, '24-'26; Candy Force, '26-'27; Minstrel, '25-'26.

ERAH DAVIS
"Hap"*"She is loved by all who know her."*

Entered from Central Grammar School, '23; Athenian Society, '25; May Festival, '24.

BEN BONINE

"None but himself is his parallel."

Entered from Avondale Grammar School, '24; R. O. T. C., '24-'27.

Senior Class

EMORY KING
"Emory"

"Happy are they who have kept a middle course."
Entered from East Chattanooga Grammar School, '23; Biology Club, '25-'26.

MAURICE JERNIGAN
"Maurice"

"True eyes too sure and too honest to disguise the sweet soul shining through them."
Entered from South St. Elmo, '23; Athenian Society, '23; Wellesley Society, '25-'26; Junior Carnival, '25-'26; Girls' Athletic Association, '25-'26.

COSETTE BROWN
"Brownie"

"In friendship she is true."
Entered from City High School, '24; Dixie Society, '24-'26; Junior Carnival, '26; Camera Club, '25-'27; Girls' Athletic Association, '25-'26.

SPENCER COVEY
"Covey"

"Make hay while the sun shines."
Entered from New Orleans, '24; R. O. T. C., '25; Grady, '25-'27; Camera Club, '25-'27.

GERALDINE BURKHALTER
"Jerry"

"True beauty dwells in deep retreat."
Entered from East Side Junior High School, '24; Glee Club, '25-'26; Dixie Society, '24-'25; Euterpean Society, '25-'26; Girls' Athletic Association, '25-'26.

FRANK MOYERS
"A-La"

"You never can tell."
Entered from Marion High School, '25; Track, '26-'27; Baseball, '27.

BARBARA WOODFIN
"Bob"

"An excellent student is she."
Entered from Central Grammar School, '23; Athenian Society, '23-'24.

LEVON NEELY
"Hoot"

"There is none who could take his place in line."
Entered from Dickinson Junior High School, '24; R. O. T. C., '24-'25-'26-'27; Officers' Club, '27; Hi-Y, '25-'27; Declamatory Contest, '26.

Senior Class

MILLARD BROOKS
"Siadore"

"We must have reason for speech, but for silence we need none."
Entered from East Lake Grammar School, '23; R. O. T. C., '24-'25; Track, '27; Junior Carnival, '26.

HELEN LOTSPEICH
"Lipstick"

"If kindness were the full strength of life she would live forever."
Entered from Ridgedale Grammar School, '24; Dixie Society, '25-'27; Junior Carnival, '26; Junior Play, '27; Glee Club, '25-'26.

MILDRED MANSFIELD
"Toots"

"Loves all her friends and has no enemies."
Entered from Avondale Grammar School, '23; Athenian Society, '23-'24; Dixie Society, '24-'27; B. B., '25-'27; Junior Carnival, '26; Bank, '26-'27; Commercial "C", '27.

GEORGE MCINTURE
"Kid"

"Fear his equal, none his superior."
Entered from Avondale Grammar School, '23; Treasurer Freshman Class, '23; Baseball, '24-'27; Football, '23-'26 (Captain, '26); Lettermen's Club, '24-'27; Grady, '26-'27; Minstrel, '27; President Senior Class, '27; President Hi-Y, '27.

FRANK CARTER
"Parson"

"Anything worth doing is worth doing well."
Entered from Bogart High, '26.

LOUISE HUMPHREYS
"Betty"

"Feminine vanity, divine gift that makes women charming."
Entered from South St. Elmo, '23; Athenian Society, '23-'24; Dixie Society, '25-'27; Carnival, '26; Senior Play, '27.

EARL HALE
"Squirrelly"

"Sincerity is a valuable asset."
Entered from East Chattanooga Grammar School, '23; R. O. T. C., '24-'25.

W. C. ROBINSON
"Dub"

"Hannibal was a very pretty man in his day; so am I, in mine."
Entered from Cedar Hill, '23; Fresh-Soph Play, '25; Junior Play, '26; Senior Play, '27; Officers' Club, '27; Hi-Y, '27; Varsity Glee Club, Operetta, '27; Minstrel, '27.

Senior Class

JESSE FRY
"Half Fry"

"To be rather than to seem."
Entered from Tyner High School, '25; Junior Play, '26;
Junior Carnival, '26; Senior Play, '27; R. O. T. C., '25.

RUTH MYLIUS
"Tommy"

"Smooth runs the water where the brook is deep."
Entered from East Side Junior High School, '24; Secretary
Sophomore Class, '24; Senate, '25-'27; Dixie Society, '26-'27;
Girls' Hi-Y, '26-'27; Girls' Patrol, '26-'27.

JAMES MITCHELL
"Cracker"

"As a soldier none is his superior."
Entered from East Side Junior High, '23; R. O. T. C., '24-'25-
'26-'27; Officers' Club, '27; Hi-Y, '26-'27; Printing, '26-'27;
"Digest" Staff, '25-'27.

WILLIE RAE SWAFFORD
"Billie"

"She who soweth shall surely reap."
Entered from City High School, '25.

OSCAR BALDWIN
"OS"

"Why worry now, when it is so near gone."
Entered from East Dale, '23; R. O. T. C., '24-'25-'26-'27.
Officers' Club, '27.

EVA DANIELS
"Eve"

"A beautiful type of that unchanging good."
Entered from Mousu High School, '25.

MORRIS CANFIELD
"Can"

"It matters not how long you live, but how well."
Entered from Avondale Grammar School, '24; R. O. T. C.,
'25-'27; Junior Carnival, '26.

DEXTER VANZANT
"Dec"

"The noblest mind the best contentment has."
Entered from Lenoir City High School, '25; R. O. T. C.,
'26-'27.

Senior Class

FRANK STRINGER
"Red"

*"Haste thee, nymph, and bring with thee jest and youthful
jollity."*
Entered from Sunnyside, '23; Grady Society, '24-'26; Football,
'24-'26; Lettermen's Club, '25-'26; Junior Carnival, '25.

VERNA O'REAR
"Buckie"

*"She was young and very fair,
Bright eyes and golden hair."*
Entered from East Side Junior High School, '24; Dixie So-
ciety, '24-'26; May Festival, '25-'26; Junior Carnival, '25-'26;
Varsity Glee Club, '26-'27; Minstrel, '27; Operetta, '27.

KATHERINE HARRINGTON
"Kay"

"A sweet expression has that face."
Entered from East Side Junior High, '23; Athenian Society,
'25-'26; Glee Club, '25-'26; Girls' Athletic Association, '25-'26.

RALPH CARSON
"S im"

"Give every man thine ear, but few thy voice."
Entered from Ridgedale Grammar School, '23; R. O. T. C.,
'24-'25.

MARVIN MULKEY
"Red"

"He's a shark—enough said."
Entered from Central Grammar School, '23; R. O. T. C.,
'24-'26.

FREDONIA ERNST
"Dona"

*"So much good, so truly tried,
Some for less were deified."*
Entered from East Side Junior High, '23; Wellesley, '24-'25;
Girls' Athletic Association, '24-'25-'26-'27; Bookstore, '26-'27;
Dixie Society, '26-'27; Minstrel, '24-'25; May Festival, '24-'25.

ROY SNODGRASS
"Run Down"

"The harder you try, the easier the way seems."
Entered from East Side Junior High School, '23.

JOSEPH MORRIS
"Joe"

"A man with an unsurpassed brain."
Entered from Z. H. S., '25; Junior Play, '26; Senior Play, '27;
Senate, '25-'26-'27; Hi-Y, '26-'27; Dramatic Club, '27.

Senior Class

WILLIAM MORRIS
"Bill"

"He is the captain of his own soul."
Entered from S. M. A., '24; "Digest" Staff, '25; R. O. T. C., '24-'27; Junior Play, '26; Senior Play, '27; Officers' Club, '27.

KATHERINE LEE
"Kitty"

"Age cannot wither her."
Entered from South St. Elmo, '24; Senate, '25-'27; Dixie Society, '26-'27; Biology Club, '26-'27; Athenian Association, '26-'27.

JACK TIMMONS
"Jack"

"A friend in need is a friend indeed."
Entered from Avondale Grammar School, '23; R. O. T. C., '25-'27; Rifle Team, '27; Junior Carnival, '26.

LELA STROUD
"Miss Stroud"

"I think it well to be a little reserved."
Entered from City High, '25; Dixie Society, '25-'26; Girls' Patrol, '26-'27.

GEORGE BROYLES
"Tom Tody"

"Fortune is not on the side of the faint-hearted."
Entered from White County High, '25; Hi-Y, '25-'26; Junior Play, '26; Junior Carnival, '26; Senior Play, '27.

ELIZABETH BUSHNELL
"Betty"

"A merry heart doeth good."
Entered from 35th Junior High, '23; Camera Club, '26-'27; Minstrel, '26-'26; Basketball, '26-'27.

NORMAN GAITHER
"Alligator"

"I count life just something to try my strength on."
Entered from Lookout Mountain Grammar School, '23; R. O. T. C., '24-'26.

GEORGE CADE
"Akade"

"Give me sports, or give me nothing."
Football, '24-'27; Basketball, '25-'27; Baseball, '24-'27; Minstrel, '26-'27.

Senior Class

EDWARD MITCHELL
"Mitche"

"He looks only for the bright side of everything."
R. O. T. C., '24-'26; Track, '26-'27; Hi-Y, '26-'27; Junior Play, '26; Rifle Team, '26; "Champion" Staff, '27.

RUBY LEE PEPPERS
"Ruby"

"Her eyes are like the diamond spark."
Entered from Gadsden, Ala., '26; Junior Carnival, '26; Euterpean Society, '25-'26; Glee Club, '24, '27.

ROSCOE BOWERS
"Racoe"

"And even his failures leaned to virtue's side."
Entered from Mission Ridge, '23.

EDITH DAVIS
"McGrulix"

"She is steadfast, serene, unmovable."
Entered from Mission Ridge, '23; Senate, '23-'24; Athenian Society, '24-'25; Dixie Society, '25-'27; Junior Carnival, '26; Minstrel, '25-'24; May Festival, '25-'26.

HAMPTON MORGAN
"Hamp"

"Honor is purchased by deeds done, not won."
Entered from McCalle, '23; Junior Play, '26; Minstrel, '26-'27; Senior Play, '27; Band, '24-'27; Operetta, '27; Senate, '27; Hi-Y, '27; Officers' Club, '27.

IMOGENE GARDNER
"Sis"

"She is full of human kindness."
Entered from East Lake Grammar School, '24; May Festival, '24-'25; Athenian Society, '25-'26; Senate, '24-'25.

PAUL HALL
"Paul"

"He is a hit with the fair sex, but not with his lessons."
Entered from East Side Junior High School, '24.

AUBREY ANGEL
"Devil"

"To thine own self be true."
Entered from East Side Junior High, '23; R. O. T. C., '23-'25; Eagle Scout Club, '25; Track, '24-'25-'26; Swimming Team, '27; Junior Carnival, '26; Dramatic Club, '23.

Senior Class

WILLIAM MORRIS
"Bill"

"He is the captain of his own soul."
Entered from S. M. A., '24; "Digest" Staff, '25; R. O. T. C., '24-'27; Junior Play, '26; Senior Play, '27; Officers' Club, '27.

KATHERINE LEE
"Kitty"

"Age cannot wither her."
Entered from South St. Elmo, '24; Senate, '25-'27; Dixie Society, '26-'27; Biology Club, '26-'27; Athenian Association, '26-'27.

JACK TIMMONS
"Jack"

"A friend in need is a friend indeed."
Entered from Avondale Grammar School, '23; R. O. T. C., '25-'27; Rifle Team, '27; Junior Carnival, '26.

LELA STROUD
"Miss Stroud"

"I think it well to be a little reserved."
Entered from City High, '25; Dixie Society, '25-'26; Girls' Patrol, '26-'27.

GEORGE BROYLES
"Tom Tody"

"Fortune is not on the side of the faint-hearted."
Entered from White County High, '25; H-Y, '25-'26; Junior Play, '26; Junior Carnival, '26; Senior Play, '27.

ELIZABETH BUSHNELL
"Betty"

"A merry heart doeth good."
Entered from 35th Junior High, '23; Camera Club, '26-'27; Minstrel, '25-'26; Basketball, '26-'27.

NORMAN GAITHER
"Alligator"

"I count life just something to try my strength on."
Entered from Lookout Mountain Grammar School, '23; R. O. T. C., '24-'26.

GEORGE CADE
"Akade"

"Give me sports, or give me nothing."
Football, '24-'27; Basketball, '25-'27; Baseball, '24-'27; Minstrel, '26-'27.

Senior Class

EDWARD MITCHELL
"Mitche"

"He looks only for the bright side of everything."
R. O. T. C., '24-'26; Track, '26-'27; H-Y, '26-'27; Junior Play, '26; Rifle Team, '26; "Champion" Staff, '27.

RUBY LEE PEPPERS
"Ruby"

"Her eyes are like the diamond spark."
Entered from Gadsden, Ala., '26; Junior Carnival, '26; European Society, '25-'26; Glee Club, '24, '27.

ROSCOE BOWERS
"Racoe"

"And even his failures leaned to virtue's side."
Entered from Mission Ridge, '23.

EDITH DAVIS
"McGrulix"

"She is steadfast, serene, unmovable."
Entered from Mission Ridge, '23; Senate, '23-'24; Athenian Society, '24-'25; Dixie Society, '25-'27; Junior Carnival, '26; Minstrel, '23-'24; May Festival, '25-'26.

HAMPTON MORGAN
"Hamp"

"Honor is purchased by deeds done, not won."
Entered from McCallie, '23; Junior Play, '26; Minstrel, '26-'27; Senior Play, '27; Band, '24-'27; Operetta, '27; Senate, '27; H-Y, '27; Officers' Club, '27.

IMOGENE GARDNER
"Sis"

"She is full of human kindness."
Entered from East Lake Grammar School, '24; May Festival, '24-'25; Athenian Society, '25-'26; Senate, '24-'25.

PAUL HALL
"Paul"

"He is a hit with the fair sex, but not with his lessons."
Entered from East Side Junior High School, '24.

AUBREY ANGEL
"Devil"

"To thine own self be true."
Entered from East Side Junior High, '23; R. O. T. C., '23-'25; Eagle Scout Club, '25; Track, '24-'25-'26; Swimming Team, '27; Junior Carnival, '26; Dramatic Club, '23.

Senior Class

RAYMOND RUNYAN
"Onion"

"I had rather be right than to be President."
Entered from Central Grammar School, '23; R. O. T. C.,
'24-'26; Hi-Y, '26-'27.

ALMA ROSE UNDERWOOD
"Alma"

"She is as pure as the lily white."
Entered from Tennessee Wesleyan College, '24; Biology Club,
'24-'25; Honor Student, '27.

J. B. HAWKINS
"Scrubby"

"He had a daily beauty in life."
Entered from East Side Junior High, '24; R. O. T. C., '24-'26;
Bookstore, '24-'25; Bank, '25-'27; Hi-Y, '26-'27.

HAROLD CAREY
"Corporal"

"Only so much do I know as I have lived."
Entered from Signal Mountain, '23; R. O. T. C., '24-'27;
Officers' Club, '26-'27.

JAMES JULLERAT
"Jimmie"

"True success is to labor."
Entered from East Side Junior High, '23.

EUGENE CARSON
"Gene"

"I dare do all that may become a man."
Entered from Avondale Grammar School, '24; R. O. T. C.,
'26-'27.

EDWARD MORGAN
"Tubby"

*"I have drunken deep of joy and I will taste no other
wine tonight."*
Entered from East Dale, '23; Junior Play, '26; Senior Play,
'27; Radio Club, '24-'26; Stage Crew, '25-'27.

MALCOLM LYNCH
"Mal"

"As for me, all I know is I know nothing."
Entered from Red Bank, '23; R. O. T. C., '24.

Senior Class

KATHERINE COULTER
"Katrinka"

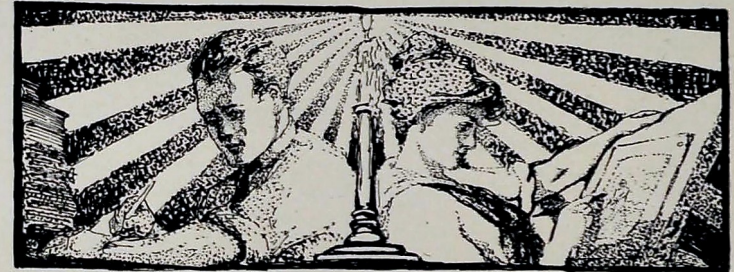
"She has a manner true and gentle."
Entered from Graysville High School, '26.

LEWIS PHILLIPS
"Phi."

"I consider luck as pluck."
Entered from Red Bank Grammar School, '23; R. O. T. C.,
'25.

ETTA TANNER
"Etta"

"Her face portrays purity of soul."
Entered from North St. Elmo School, '23.



THE CHAMPION



Four-Year Honor Students

THELMA BAUMGARTNER
EDNA STAMPS
ALMA UNDERWOOD

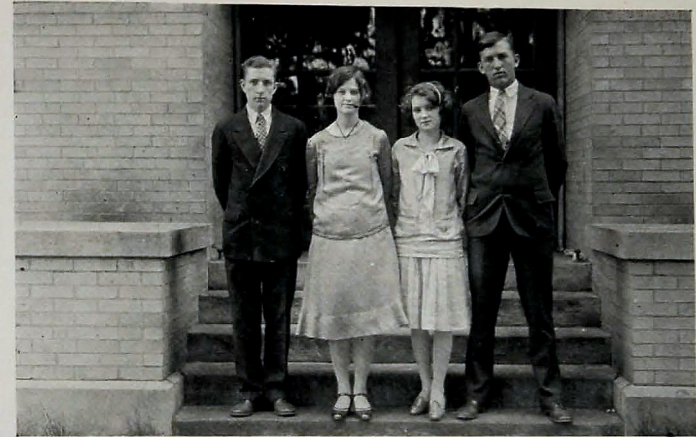
EDITH WOODARD
MAYBELLE TAYLOR

RUTH MARTIN
EVELYN CHAMBERS
RUTH MYLIUS

Of all the honors conferred upon students of Central, none is greater than that of being a Four-Year Honor Student. This is a most enviable attainment, for it designates consistent effort, unceasing perseverance as well as ability on the part of the winner.

The requirements for recognition as a Four-Year Honor Student are fifty "A's," no "F's" or "D's," with a conduct grade of "A." In addition to the scholastic requirements, the student must have taken part in school activities and must be of high moral standing.

THE CHAMPION



Commencement Speakers

"Honor to whom honor is due." The distribution of honors and medals at the end of the scholastic year is a time anxiously awaited by Central students. The culmination of the graduation exercises come on the graduation evening, when for the last time the class appears as a whole.

No more enviable honor can be conferred upon a student than that of valedictorian. This person is chosen from the Four-Year Honor Students. The happy choice of the class this year fell upon Edith Woodard, who has not only applied herself in her class work, but has used her influence for the promotion of Central's best interest.

Her ability in leadership has been seen in the capacity of president of the Girls' Patrol and president of the Girls' Hi-Y Club.

Her valedictory address, "Living Memorials," contained beautifully expressed sentiment, and was a fitting close to the commencement program.

The selection of Maybelle Taylor as salutatorian was a wise one. In addition to the honor of being one of the Four-Year Honor Students, she has the distinction of having accumulated sixty-six "A's," the highest number made by any member of the Senior Class. Her work in the Commercial Department has been outstanding. She was an able member of the *Central Digest* business staff of 1927. In her salutatory address, "The Spur to Achievement," she again gave evidence of her ability.

Probably no boy in the Senior Class has taken a more active part in school activities during his senior year than Reed Gardner.

In addition to bearing the responsibility as editor-in-chief of the 1927 CHAMPION, he has taken a leading part in dramatics, and has served as vice-president of the Boys' Hi-Y Club. His ability has been so outstanding in the Public Speaking Course that he was chosen to represent Central at Knoxville in the extemporaneous speaking contest.

His popularity with the faculty is seen in the choice of him as faculty representative. After his excellent address on China, no one doubts the wisdom of the choice.

The popularity of George McInturff in his class was most convincingly shown by the unusually large vote which was given him for class representative.

He has been an outstanding student, not only in athletics as captain of both football and baseball teams, but he has served most efficiently as president of the Class of 1927 and as president of the Boys' Hi-Y Club. His work in the Lettermen's Club has been most commendable.

In his address, "American Imperialism," in his same honest, convincing way he defended the position which seemed to him right and reasonable.

It is with love, hope, and great expectations that Central follows the Commencement Speakers of 1927.

LOUISE BRANTLEY.
EDWARD MITCHELL.

THE CHAMPION

The Class of 1927

A COMPLETE history of the Class of 1927 through its entire four years would be one typified by periods of sunshiny days of smooth sailing, with not a few dark days of rough tossing on a stormy sea. The details of such a history are numerous and interesting to only a few, so here no attempt will be made to give them all.

In September, 1923, when about four hundred youngsters, fresh from grammar school graduation, entered the walls of Central High—that school which was to become so dear to them—there was a sense of disappointment experienced in seeing that no one marvelled at the remarkable class now starting on its four-year course. We felt we were unusual, although the fact at that time passed unnoticed, for we had to prove ourselves. We heard that the spirit of this school was contagious, but coming from various schools and possessed with different attitudes toward such a question, we pondered over just what this spirit was. But at the close of the glorious football season we found that we unconsciously had that peculiar, intangible something so hard to describe, yet so keenly felt—the Central Spirit.

During these first days our difficulties were many, and all to a greater or less degree experienced "storms." In the midst of such days we were informed that we were to be guests at the annual sophomore-freshman party. This was a very happy occasion, when we met many people, enjoyed games, and learned that sophomores were not altogether our bitter foes.

Since all successful organizations must have officers, at our first class meeting we chose as our leaders for the year: Jack Bradford, president; Lester Hunt, vice-president; George Liner, secretary, and George McInturf, treasurer. Much honor and credit are due these students who so faithfully guided this ambitious class through its first struggling year, during which time an active part was taken in athletics, declamatory contests, societies, and plays. The close of the school year drew near, and we separated for the well-earned three months' vacation.

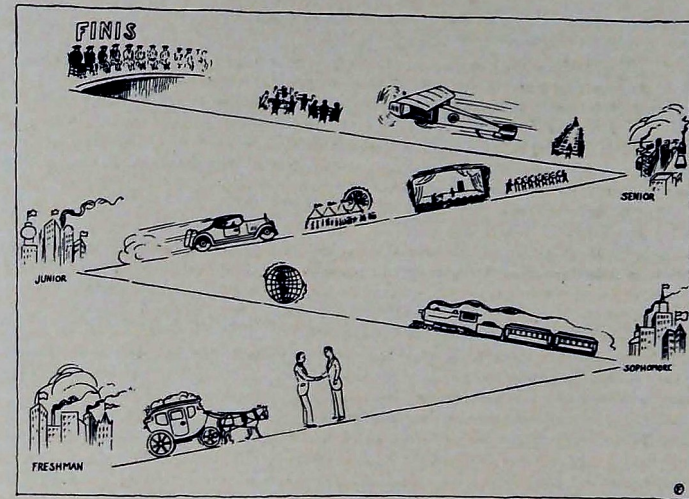
In 1924 we entered as sophomores, feeling ourselves exceedingly worldly wise from the experiences of the freshman year. Our self-importance was everywhere in evidence. In many cases it was difficult for our instructors to teach us, for we thought that we already knew much ourselves. This might be compared to that rather pitiable state of man where "he knoweth not that he knoweth not."

One of the main sources of strength in our class for the four years has been its splendid leadership. The officers selected for the sophomore year were: Arthur Hanson, president; William Rollins, vice-president; Raymond Alley, secretary, and Ruth Mylius, treasurer.

After the usual trials of the sophomore year, those of us who had successfully withstood these tests were classified as juniors.

What a joy to be juniors! We had thought if we could only reach this stage the battle would be almost won. Our leaders for this eventful year were William Rollins, president; Harry Adams, vice-president, and Edna Stamps, secretary and treasurer. Much to our delight we found this year to be different from the others. We began to realize more the importance of initiative and of doing things because it is the right thing to do. Now we entered more into school activities and found real joy in working together for our class and our school. Oh, what fun and yet what hard work it was getting ready for the carnival and for "Ingamar," the junior play. Both of these events are still considered among the best of their kind ever given at Central. The

THE CHAMPION



banquet had its usual share of thrills and excitement for us all. This delightful occasion at the Country Club, where juniors were hosts to the seniors, was unique and filled with new experiences and pleasures. In the midst of the novelties of this year, toward its close began to dawn upon us the fact that the junior "knoweth that he knoweth not."

When the class again arrived at Central in September, 1926, their hearts were filled with new hopes and the realization that they were really seniors. The officers for this year were: George McInturf, president; William Rollins, vice-president; Edna Stamp, secretary and treasurer.

As each year like a day has dawned and has passed through the heat of the noontide on to the close, so here these years passed by, each more rapidly than the one before. As we see that the sun of our senior year is so near its setting, it is with a more serious feeling than ever that we realize the meaning of the words of the poet, "Nae man can tether time nor tide." Of all the years, undoubtedly our senior year has been the most delightful. Filled from beginning to end with hard work, new tasks and untried responsibilities, but all interspersed with friendliness and co-operation, we truly feel that it has all been worth the effort. It is with a peculiar feeling of fear, commingled with self-assurance and determination, that we now face the untried field of the future, where we must demonstrate what our high school days have meant to us by proving to the world that the Central graduate "knoweth that he knoweth."

MILDRED MOORE, '27.

THE CHAMPION

Senior Days

SENIOR PARTY

The Senior Party of the year 1927 was given November 12 at the school building, which was attractively decorated in purple and gold. There was a series of entertainments in different rooms. Each student was given a program and attended each performance in groups. These entertainments were called "Cave of the Winds," "Fruit Basket," "Nuts Bag," and "The Flower Wedding." Later a program was given in the auditorium, after which the students retired to the cafeteria for refreshments. Each person had been given a little booklet for autographs and each kept his as a cherished souvenir of one of the most joyful events in his school life at Central.

THE SENIOR PLAY

A large audience witnessed a very creditable performance of "Twelfth Night" at Central High School on Friday evening, Dec. 11. It has been the custom for the Senior Class to present a Shakespearean play each year. In the estimation of many, the selection and production of "Twelfth Night," both in staging and lighting effects, as well as in other artistic requirements, eclipsed all former efforts.

It is no small thing for high school students to present a Shakespearean drama, and the cast of "Twelfth Night" deserved the honor they received for their good acting and splendid interpretation.

THE JUNIOR-SENIOR BANQUET

The Senior Class of '27 was very fortunate in being the first class to be entertained in the Crystal Ball Room of the Read House.

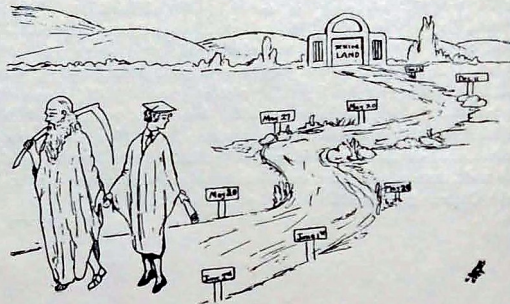
The Junior-Senior banquet is always a delightful event, both for students and the faculty. It is the last time the juniors pay tribute to the seniors, and is a crowning event in the friendships of the Junior and Senior Classes.

Program

Grand March	Rev. J. A. Settleffe
Invocation	
The Play	
The Curtain Rises	Eugene Mayer
The Players Enter	Wilber Peterson
The Comedy	Frank Bradford
The Climax Approaches	Louis Smartt
The Curtain Falls	George McInturf
Solo	Ora Grey Whiting
Curtain Calls—	
The Manager	Principal S. E. Nelson
The Directors	Superintendent J. E. Walker, Mrs. Lacey
Musical Number	Frank Hansberger
From the Audience	Dr. T. H. McCallie

CLASS SERMON

The class sermon of the Class of '27 was preached by Dr. Homer W. Carpenter at the First Christian Church, May 29. It is an annual event and a time-honored custom which serves as one of the parting admonitions to the class. This year the sermon was unusually convincing and interesting.



THE CHAMPION

THE SENIOR PICNIC

The senior picnic is the great outdoor occasion of Senior Week. On the morning of May 30, the seniors left by way of trucks and busses for the North Chickamauga Creek. No more delightful place could be found for such an event.

At the close of the day seniors expressed their appreciation of the day as another bond for binding the class more closely together.

CLASS DAY

The Class Day program was one of the prettiest events featured in the graduation exercises. The decorations were carried out in the idea of a flower garden.

A very important feature of the program was the presentation of the gift to the school from the Senior Class.

Class Day Speakers

History	William Rollins
Poem	Victor Stonecipher
Will	Carlos Gilliland
Prophecy	Evelyn Chambers
Presentation of Gift to School	George McInturf
At	Principal S. E. Nelson

GRADUATION NIGHT

Four years' work for each member of the Class of '27 was reached on the night of nineteen hundred twenty-seven. It was a sad yet happy sensation that filled the hearts of the seniors as they, dressed in cap and gown, walked down the aisle of the Memorial Auditorium to receive their diplomas and take part in the final gathering of that class. The valedictorian, Edith Woodard, and the salutatorian, Maybelle Taylor, both gave excellent addresses. The faculty representative, George McInturf, as class representative, gave a very fine address to the program by their splendid addresses. The program of the evening came to a close with the presentation of diplomas and awarding of the alumni medals.

NADELL CATES.
KATHERINE WEATHERLY.

Friendship

As I sit alone in the twilight,
Just at the close of day,
Memories like enchanting spirits
Hover along my way.

O Time, I earnestly beg
That my wish may granted be;
Turn gently backward in your flight
To nineteen hundred twenty-three.

There, in memory's sacred chamber,
Guarded by spirits rare and true,
I find like jewels in beautiful setting,
Friendships formed of rarest hue.

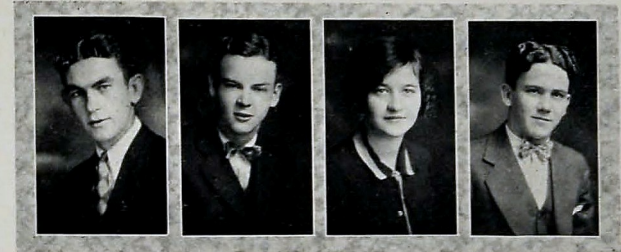
Some are like amber, rich and golden;
Some like sapphire of truest blue;
Others clear crystal like the diamond,
Cut and polished by me and by you.

These friendships are my jewels,
Precious and priceless to behold.
I shall guard and keep them always,
As rich perfume of the soul.

No longer now on trial,
Full well the test they've stood,
And now in twenty-seven
We call them genuinely good.

Oh, Central, our foster-mother,
How grateful to thee we feel,
For all thy gifts so precious,
All praise for these friendships like steel.

THE CHAMPION



Junior Class Officers

EUGENE MAYER *President*
 HOWARD ANDERSON *Vice-President*
 MARY HELEN RICHARDSON *Secretary*
 JOHN WALLER *Treasurer*

JUNIOR CLASS

THE CHAMPION



Junior Class

ALDER, VENNIE	LODS, KATHRYN	CRAVEN, LIZZIE LOU	HAYS, DOROTHY
ALLEY, ELIZABETH	BOWERS, ANDY	CRAIG, CHARLES	HOGAN, ELIZABETH
ALLEY, RAYMOND	BOSS, CHRISTINE	DAYLEY, MARIE	HARRISON, JOHN
ANDERSON, HAZEL	BOWMAN, EDNA	DARR, JOE	HAYNES, THOMAS
ANDERSON, HOWARD	BOWLING, MILDRED	DAVIS, RUTH	HAMILTON, LOREEN
ARNOLD, BERNARD	BURRELL, VELMA	DIAMOND, RICHARD	HARRIS, CHARLES
ARNOLD, HATTIE	BAKER, MARY ELLEN	DOWD, MARIE	HALL, ELIZABETH
ARWOOD, DOROTHY	BURRELL, EDITH	DUNBAR, MARY	HAMERICK, LILLIAN
ARMSTRONG, THOMAS	CAGLE, GEORGIA	DUNCAN, ELMER	HALSELL, JACK
ALFORD, FLOYD	CALKINS, IRENE	EPPERSON, JESSIE	HART, GERTON
BARNES, SARAH	CALLOWAY, CHESTER	ERWIN, ANNICE	HALLIS, LODENIA
BEAN, LOWELL	CAMP, GROVER	EVANS, LAURA K.	HAMILTON, MARTHA
BEALS, BRUCE	CARSON, KATHERINE	EVANS, HARRY	HENDERSON, EDWARD
BEAVER, MYRL	CARROL, LOUISE	EVANS, MARGARET	HETZLER, RALPH
BEENE, ROBERT	CORNETT, NELL	FAIRES, PAULINE	HEARD, CLYDE
BLACK, INEZ	CAWOOD, ANN	FAIDLEY, SUE	HEGGIE, JAMES
BLAKE, RAYMOND	CAWOOD, LOUISE	FISHER, VERNIE	HENDERSON, WILLIAM
BLAKE, WILMA	CALDWELL, MARGARET	FRANK, ETTA	HESTER, FAY
BOOTH, LILA MAE	CASTLEBERRY, AARON	FOSTER, MARGUERITE	HICKMAN, RALEIGH
BOWLING, CLARENCE	CHATWELL, ALYCE	FLEGAL, KATHERINE	HILL, LOUISE
BOWMAN, EARLINE	CHAMBERS, BLANCHE	FULGHUM, HELEN	HIXON, SALLIE
BOWLING, RUBY	CHAMBERS, LUTHER	FULLER, LOUISE	HILL, MARY REED
BOYD, REMA	CLARKE, WILLIAM	FLYNN, RUBY	HICKEY, GLADYS
BOYD, ROSS	CLARKE, JULIA	FLEGAL, CONLEY	HOLDER, VIOLA
BRAMMER, MARGARET	CLONMGER, VIRGINIA	FRIDELL, MARY ELLEN	HUDLOW, CHARLES
BROWN, EDWARD	CORDELL, FORREST	GATHER, ANNIS	HUGHES, LOUISE
BROWN, ERNEST	CONLEY, RUTH	GANSLER, RUTH	HUMPHRIES, JOHN
BRUCE, BELLE	COLEMAN, BEN ADDIE	GARRETT, W. B.	HYDE, CARL
BROWN, ELIA MAUDE	COOPER, ALINE	GARENFLO, JOHN	HOPKINS, LILLIAN
BUFFETT, RUTH	COOPER, RALPH	GRAHAM, VELVA	JOHNSTON, THOMAS
BURNETTE, WILLIAM	COSTA, DE A. C.	GRAHAM, HALLIE	JONES, DONALD
BUMPUS, ROBERT	CREASMAN, NELL	GRAFTON, EDGAR	JACKSON, CHARLES
BURNETTE, ETHEL	CRAWLEY, LEONA	GOTHARD, JENNIE L.	JONES, LOUISE
BURKHALTER, LOUISE	CRAWLEY, MARGUERITE	GRAY, MARVIN	JOHNSON, WILMA
BUNCH, MARGARET	CRITCHELL, MABEL	HANSBERGER, FRANK	JOINER, GENEVA

THE CHAMPION



Junior Class

JONES, LORA	McLAIN, THOMAS	RICHARDSON, MARY H.	SMITHERMAN, M. C.
JACKSON, CECIL	MAUNEY, THOMAS	RHEA, CHOICE	SCOTT, JOHN
JACKSON, OLIN	MOOREFIELD, RUBY	ROBINSON, JUANITA	THOMAS, CLAYTON
KELLEY, EDITH	MORRELL, RAYMOND	ROGERS, PAUL	TAYLOR, MILDRED
KEITH, BEATRICE	MACUIRE, DONALD	ROLLINS, ALBERT	THOMAS, CLINT
KEY, HOMER	MARSHALL, WILLIAM	REYNOLDS, MARK	TURNER, DOROTHY
KEITH, WILLIAM	MAXWELL, KERMIT	RAMSEY, JOHN	TURNER, NELL
KELLIS, WILL H.	MASON, MARION	ROY, GLEN	TURNER, MERVILLE
LAYCOCK, ANNA	MILLER, RILLA MAE	SILVER, ST. CLAIRE	TOWER, CLARISSA
LIBRERA, LYDIA	MILLWOOD, DOROTHY	SMITH, SALLIE	UNDERWOOD, HERMAN
LIEB, ANNA MAE	MEADOWS, JOSEPH	SMITHERMAN, CLARENCE	VANDERGRIFF, MOZELLE
LYLE, FRANCES	MOON, AUSTIN	SPENCER, MIRIAM	WEISER, EILEEN
LANGSTON, CHARLES	MOORE, WILLIAM	STEPHENS, LOUISE	WHITING, ORA GREY
LENTZ, FLOYD	MORRISON, ROBERT	SWEETS, JOHN	WILLIAMS, HARRY
LERCH, EDNA	MAYER, EUGENE	SIMS, CURTIS	WILLIAMS, PAULINE
LIVELY, NORMA	MERONEY, MAE	SMITH, RICHARD	WILSON, JAMES
LOVE, WILLIAM	MEADOR, HORACE	SMARTT, LOUIS	WALLER, JOHN
LOWE, WILLIE MAE	MULLIGAN, ERNEST	STOWE, EDWIN	WATERHOUSE, JOHN
LERCH, MARGARET	MYERS, ALMA	SMITH, ARLO	WEIDNER, LULA MAY
LAMB, J. S.	NEWPORT, DOROTHY	SCHWEIGER, MARTHA	WHEELER, JOHN
LAWRENCE, CLIFTON	PEPER, VIVIAN	SHADDEN, ALMA	WOOD, ELEANOR
LOTSPEICH, DOUGLAS	PRENTICE, DOROTHY	SHELTON, GEORGE	WOODLEY, MARGARET
PALMER, CLARENCE	SHELDON, HELEN	SHERMAN, JACK	WRIGHT, PELHAM
PEASE, ELLEN	SHIPPEY, GEORGE	SHOFNER, CATHLEEN	WILLIAMS, EDNA
PRESTON, HARLOW	SHOFNER, CATHLEEN	SMARTT, BONNIE	WHITTEN, MILTON
PFITZER, MARGARETTA	PENNY, DOROTHY	SMITH, RUBY	WILSON, HAZEL
PAINTER, EDNA MAE	POWERS, MYRTLE	STANCEL, GRACIE	WHEELER, RUTH
PENNY, DOROTHY	REICHARD, HAROLD	SUNDSTROM, REGINA	WILLIAMS, BEVERLY
POWERS, MYRTLE	RUTLEDGE, DAVID	SMITH, HOWARD	WOOD, EVELYN
REICHARD, HAROLD	ROGERS, LAWRENCE	STEGALL, HARRY	WOOD, FRED
RUTLEDGE, DAVID	RAINEY, THELMA	SAVOY, HELEN	WARREN, ETHEL
ROGERS, LAWRENCE	RAY, THELMA	SHERRILL, MANCE	WEBB, BLONDIE
RAINEY, THELMA			WELCH, EUGENE
RAY, THELMA			WILLIAMS, HERMAN
McClure, J. M.			WOLFF, HELEN
McClure, Helen			
McClure, Howard			
McDonald, Charles			
McRee, Joe			
McGuffin, Lula			
McKenzie, Wilma			
McCarthy, Edith			
McClanahan, Crate			
McGaughey, Hadley			
McCrory, Grace			

THE CHAMPION

Junior Land

FROM the land of Sophomores, we, a band of happy adventurers, set forth gaily and, in September, 1926, triumphantly entered the fields of our ambition—Junior Land. To make our sojourn here successful, we recognized the need of wise leaders, and, knowing none better than those who had led us safely through the perilous passes of Freshman and Sophomore, we again elected Eugene Mayer, president, and John Waller, treasurer. Mary Helen Richardson was transferred from the vice-presidency of sophomore days to the junior secretaryship. And Howard Anderson was elected first assistant to the president. Then we set forth on our pilgrimage, confident of overcoming all difficulties and winning many laurels.

In our expectation of success we were not disappointed. The first event of the season which tested our ability to uphold the tradition of the Junior Class was the Junior Carnival. On the school lawn the tent attractions drew the crowds as usual; and in the auditorium the entertainment, consisting of athletic demonstrations, music, a playlet, and a mock representation of the faculty, created much mirth. The climax of the evening's entertainment was the crowning of Central's Carnival Queen, who was Ora Grey Whiting, a member of the Junior Class.

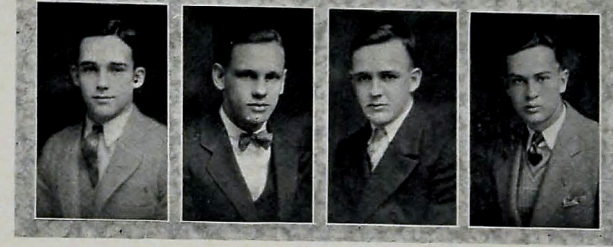
In pep meetings and on the athletic field Central rooters gaily waved caps and pon-pons of junior manufacture; a junior cheer leader, Charles Jackson, led the yells, and a junior accompanist, Evelyn Wood, played the piano. No wonder the juniors were especially enthusiastic and were able to supply their school's football team with such invaluable aids as Underwood, Mayer, Key, Donald Jones, Ed Peterson, Timmons, Anderson, Waller, and several others.

After the Christmas holidays came the annual junior play, "The Goose Hangs High," a modern Comedy by Lewis Beach, was selected and afforded ample opportunity for the display of the dramatic talent of the class. Jack Sherinan and Gladys Hickey played leading roles as Mr. and Mrs. Bernard Ingals. Both were mature parts, and the way in which the characters were portrayed reflected especial credit upon high school students. The Ingals children, a lively bunch of youngsters, were played by Ella Maud Brown, Charles Jackson, and Eugene Welch. Ora Grey Whiting took the ingenue lead. The foremost character role was that of Granny, played by Dorothy Hays. Other parts were taken by Marie Dowd, Katherine Bonds, Pe'lliam Wright, Howard Anderson, Mark Reynolds, and John Sweets.

In March came the annual declamatory and reading contest, and the juniors, with Mildred Taylor and John Ramsey as representatives, won both. Not only at Central did Mildred prove that a junior could win, but in the contest among the schools of the entire city she proved that she was entitled to the laurels of the victor. In the oratorical contest, held at Central in April, Helen Cornelia McClure was the junior representative and ran the senior winner a close second.

A new honor came to the Junior Class with the annual May festival, for Central's May queen was Jane Boyd, chosen during her sophomore year as the most graceful of the school's dancers.

Sojourners in Junior Land have indeed found it a happy and a pleasant place. If at times burdens proved a bit heavy, welcome relief was afforded by the conductor of the "Bus Line" of the *Central Digest*. Now, as we approach the boundaries of that new and unexplored territory, Senior Land, our eyes are turning toward the final milestone of our journey—the junior-senior banquet. Without a doubt the success which has been attendant upon all the other junior ventures will again follow upon our efforts and form a part of the happy memories which we shall take with us from Junior Land.



Sophomore Class Officers

FRANK BRADFORD	<i>President</i>
HOWARD HAMMOND	<i>Vice-President</i>
JOHN SEAGLE	<i>Secretary</i>
HOWARD SMITH	<i>Treasurer</i>

SOPHOMORE CLASS

THE CHAMPION



Sophomore Class

ANDREWS, WILLIAM	CAMP, MARTHA	FITCH, JOY	HUMPHREY, IVA
ACUFF, HELEN	CARTER, ARBUTUS	FITZGERALD, KATHERINE	HARTMAN, ERICK
ADAMSON, FLORIE	CHAMPION, MARGUERITE	FRY, GEORGE	HANNAH, JUANITA
AGEE, L. D.	CHANDLER, JAMES	FULGHUM, JOHNNIE	HOOPER, NEVA
ALLEN, LESTER	CONNER, KATHERINE	GARMANY, BONDS	HUDDLESTON, LILLIAN
ALLEN, FLOSSIE	CONNOR, GLADYS	GERMAN, PAUL	HAGGARD, JAMES
ALLEN, THOMAS	CONNOR, WADE	GIST, MARY ANN	HEARD, CHARLES
ALLISON, THOMAS	COLLINS, WM.	GRAY, MARY	HENDERSON, ELIZABETH
ALLENDER, DAVID	COCHRAN, CLYDE	GRAYSON, ROY	HILL, FRANCES
ANDERSON, WILLIAM	COOKE, HOWARD	GRUETTER, CHARLIE	HIGGINS, MILDRED
ANDERSON, HORTENSE	COULTER, BREWER	GREENE, EDNA	HUDSON, EMILY
APPERSON, HELEN	CORBLY, MARTIN	GRIFFITH, RUBY	IRWIN, DOROTHY
ASHWORTH, MARGARET	CRAWLEY, VERBA	GODDARD, GRACE	JOHNSON, HARRIET
BUOL, ANTON	CREDELLE, SARAH	GODSEY, ROBERT	JOHNSTON, REBA
BLAKELY, FRANK	CROCKER, MARIE	GOODWIN, ROAS LEE	JACKS, MILDRED
BALLINGER, ROBERT	CUMMINGS, JOHN	GOTTHARD, NELSON	JARRETT, VIRGINIA
BALL, HENRY	DAHLBERG, ALFRED	GURLEY, MABEL	JOINER, LENA
BARNES, CATHERINE	DANIELS, JOHN	GUTHRIE, PRESTON	JOSS, PAULA
BECK, MILDRED	DAVIS, LORENE	HAMMOND, CARL	KEEN, JAMES
BELL, JESSIE MAE	DAVIS, EDITH	HAMMOND, HOWARD	KANE, HARRIETT
BETHEA, RICHARD	DAVIS, FRANCES	HAMILTON, MARGARET	KEITH, A. R.
POLT, ROY	DAVIS, VERA	HAGGARD, WILHELMINA	KELLEY, EDNA MAE
BARNES, PAUL	DAVIDSON, JOSEPHINE	HART, DORTHEA	KELLEY, DOROTHY
BOLDEN, OZELLE	DEDMAN, EVELYN	HARDISON, JUNIOR	KRAEGER, DOROTHY
BOWMAN, BERNITA	DELONG, MARSHALL	HARRIS, ORVILLE	KAMMER, MILDRED
BOWEN, NORMAN	DERBEN, BEN	HELMS, ALICE LOUISE	KEMP, ELOISE
BOWMAN, PAULINE	DUGGAN, JOHN	HOOD, GLADYS	KELLIS, MARY LEE
BOWENS, EDNA	DUNCAN, FANNIE	HORNER, NEUMAN	KELLEY, OREN E.
BOSS, EURENE	ELDER, MURILL	HUDSON, CECIL	KELLER, CATHERINE
BLACK, MAE BELL	EDWARDS, EARL	HAMRICK, MERLE	KENDALL, ROLAND
BRADFORD, FRANK	ELLISON, MARY	HAMRICK, MERTON	LUMPKIN, SUE
BRACKEN, MARTHA	ENGLISH, MABEL	HARRIS, DANIEL	LINGERFELT, RUSSELL
BROOKS, JAMES	ERWIN, ALMA	HARRIS, JOHN	LEE, GORDON
BROWN, MARGARET	ERWIN, TOM	HUNT, KATHLYN	LEGG, INEZ
BUCHANAN, LLOYD	EVANS, CARTER	HUDLEY, FLOYD	LYNCH, MARGARET
BURGESS, HAZEL	EXUM, RUTH	HAMMOND, ARTHUR	LE FEBER, VIRGINIA
BUTLER, GEORGE	FARMER, ALTON	HICKS, ARNOLD	LEE, OTTIS
CORDELL, MARY GLADYS	FIGGINS, LAWRENCE	HITCHCOCK, ARTHUR	LANGSTON, MILDRED
CAGLE, LEE ROY	FINLEY, PAULINE	HACKWORTH, M.	

THE CHAMPION



Sophomore Class

LANKFORD, MATTIE	NELMS, RALPH	RICHEY, DILLIE	STIVERS, WINTHROP
LAWRENCE, GENEVA	NALL, JAMES	ROUSE, WILLIAM	SWAFFORD, CARL
LANGLEY, MARGARET	OWENS, HAZEL	REECE, WILSON	TALLEY, LOUISE
LENNON, EUGENE	ODELL, THELMA	ROY, RUTH	TARVIN, BLANCHE
LICHTENSTETTER, PHILIP	OLER, ELOUISE	ROYAL, NELLIE	TATE, DOROTHY
LINDEMAN, MARGARET	OWEN, ED	RAUS, MARY VIRGINIA	TURBYVILLE, THEODORE
MARTIN, OLIVER	O'REAR, JUANITA	ROBINSON, LELIA	TOOMEY, FRANCES
MOORE, THOMAS	PECK, JAMES	TROTTER, LORENE	THORNTON, LOUISE
MERRIMAN, MARIE	PECK, REECE	TANNER, IDA	TAYLOR, NANCY
MANSFIELD, RICHARD	PACK, FLORA MAE	THOMPSON, RENA	TAYLOR, PORTER
MAXWELL, HERMAN	PAYNE, ANNA	TAYLOR, PORTER	VAN HOOSER, ELISIE MAE
MYERS, EDNA	POWELL, EMMA LEE	VAN HOOSER, ELISIE MAE	WATSON, CLEO
MAHAN, LINNIE	PROCTER, JESSIE	WHITAKER, MARGUERITE	WHITMORE, MAX
MARTIN, FRANCES	PETERS, FORD	WALKER, MARTHA LEE	WIGGLE, CHARLES
MOTE, EYA	PENLEY, KATHERINE	WILLIAMS, LOVITT	WRIGHT, VESTA
MEADOR, VANN	POORMAN, FLORENCE	WILLIAMS, RUTH	WILLIAMS, BESSIE
MURPHY, THOMAS	PETTIT, CHARLES	WILTZEL, MURTELLE	WILSON, GRANVILLE
MAY, ROSEMARY	PANGLE, MARY	WATSON, ONA	WILLIAMS, CECIL
MORGAN, GLADYS	POTTER, HELEN	WILSON, EARL	WOOLSON, EARL
MORGAN, WESLEY	PEASE, LLOYD	WORKMAN, JAMES	WINTERS, MATTIE LEE
MOORER, FRANCES	POPE, EDWARD	WOODARD, FRANCES	WARE, WAYMOND
MONROE, ANGELL	PATTERSON, EDITH	WRIGHT, ELEANOR	WILHOIT, PAUL
MILWOOD, ERNESTINE	PENDERGRASS, HARRY	WHITE, ANNIE MAE	WEBSTER, VESTA
MARTIN, LORAINA	PERKINSON, WILLIE	WOOD, THOMAS	YOUNG, LAWRENCE
MOONEY, RUBY	PATTERSON, MARIE		
MAULTBETSCH, MILDRED	PARKER, ELSIE		
MAXWELL, CARL	PEARL, VIRGINIA		
MUELLER, ANNIE	PARKER, MARY LOUISE		
MCGAUGHEY, WALDO	PHILLIPS, HARRY		
MCBRAYER, BEATRICE	POE, JAMES		
MCBRIEN, HETTIE	PASS, BONNIE KATE		
MCBRIEN, NETTIE	PLANZER, WILMA		
MCCLANAHAN, FRENCH	PRINCE, MABEL		
MCCARTY, GEORGE	PHILIPS, MAURICE		
MCCLEURE, WILMA	PHILIPS, MAURICE		
MCDANIEL, NANNIE REE	PALMER, WHELAN		
NIPPER, THELMA	PARRY, HAYDEN		
NEWORTH, JOHN	QUINN, JULIA		
NICHOLS, FRANCES	RUCH, RALPH		

THE CHAMPION

Sophomore Class

JOHNNY was dozing peacefully in Granny's big rocker. Suddenly he began to shout, "Don't call me a fish! I can't help it! I'll . . .!"—but the rest of the words as they hurried out were so inaudible that his mother, coming from the kitchen, could not understand them.

"Bless his heart! He's having a bad dream," she remarked, as she looked through the door.

"Now I wonder what is bothering him?" his mother asked of no one in particular.

If she had been a mind reader she would have seen a miniature election, a duplicate of the freshman election of '26, taking place in Johnny's brain.

"My, but this ice cream is good! How about some more?"

"I wonder what has given him indigestion," his mother remarked. "He must have eaten some pickles." But it wasn't pickles this time. Johnny was remembering the refreshments at the Freshman-Sophomore Class party.

"Bradford, rah! Fifteen for Hammond!" His mother did not know it, but Johnny was dreaming of another election, this time for a wiser and more sophisticated group.

"Bradford, hit that line! Come on, Seagle! Let's have a touchdown, you Hammond!"

"He's studying too hard, poor little fellow. I'll have to see his teacher about this." His mother was becoming distressed.

"Watch that fish eat! Watch him! That's ten cakes for him!"

"I wonder if he's eaten all the cookies? I did want some for dinner"—and Mrs. Watson, much alarmed, made her way toward the pantry.

"Doesn't Frances look like a Jap?"

"Tra! La! La! I'll tell you, boys."

"Wilma and Flora Mae surely can sing." Johnny was again seeing his classmates take part in the operetta.

After this outburst, Johnny seemed to sleep peacefully. Suddenly he straightened in his chair and said with oratorical eloquence, "Give me liberty or give me death!"

"Why, he is dreaming about those declamations! Poor boy! It took him so long to learn one," his mother said as she hurried back from investigating the contents of the cookie jar.

"Let's go, Bradford! Come on, McCarty! Make that basket, Hammond!"

Johnny stretched long arms and legs and rubbed sleepy eyes.

"Ho! Hum! That was a peach of a dream. I surely would like to live that over again."

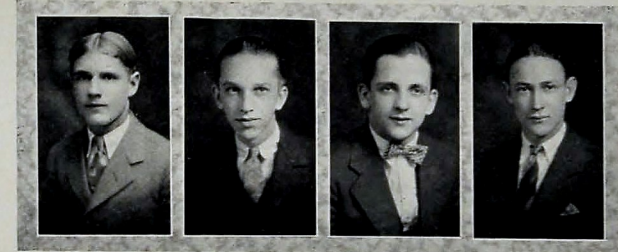
"Live what over again?" mumbled his mother, busy searching for her needle.

"My freshman and sophomore years at Central."

"It seems you'd be proud of being a junior," she remarked, "for there will be good times next year, too."

"Oh, you're right, mother, always. Anyway, there'd be those awful lessons to do all over again."

EMILY HUDSON.

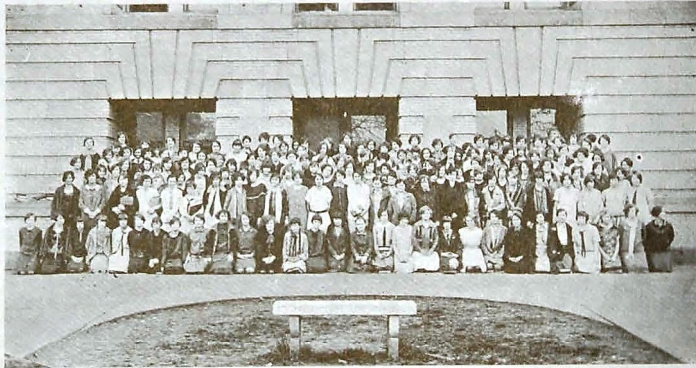


Freshman Class Officers

WILBUR PETERSON	<i>President</i>
ERNEST HORTON	<i>Vice-President</i>
JOHN STARR	<i>Secretary</i>
BUFORD MCGHEE	<i>Treasurer</i>

FRESHMAN
CLASS

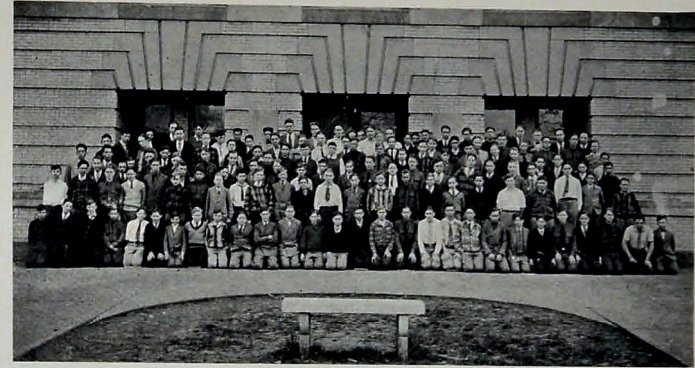
THE CHAMPION



Freshman Class

Archev, Henry	Boyd, Richard	Dove, Myra	Hill, Jack
Allison, Edith	Baker, Robert	Dickson, Inez	Haddock, Virginia
Athearn, Florence	Bushnell, Walter	Discus, Pearl	Hitt, Mary Lou
Akin, Bonnie	Beck, Audrey	Davis, James	Hamilton, Geneva
Aiken, Whit	Bragg, Catharine	Deering, Albert	Hatton, Melva
Alexander, Lebron	Bright, Clarice	Duggan, Willis	Holloway, Alleen
Alder, Shelton	Burnette, Pauline	Dial, Ellen	Harris, Clystina
Adams, Raymond	Coots, Estelle	Davis, Lorene	Haney, Velva
Akard, James	Colfield, Bernard	Dove, Margie	Henry, Howard
Ariedge, Theresa	Crow, Clifford	Deedley, Sewell	Holman, Richard
Aiken, William	Clingan, Lawrence	Slyvan, Erwin	Horton, Ernest
Adams, Clare	Case, La Verne	Edwards, William	Horton, Eva
Anderson, James	Cooper, Mildred	Engers, Charles	Hatfield, Mildred
Addison, Catharine	Carpenter, Horace	Gibson, Carl	Hester, Dorothy
Armstrong, Willie	Crouch, Cathrine	Grant, J. T.	Hudlow, Roy
Anderson, Mabel	Camp, Myette	Gothard, Edna	Hartman, Irene
Bowman, Eugene	Close, James	Green, Mildred	Howard, Almeta
Bass, Fred	Crabtree, Mona	Gryder, Jewell	Henderson, Mary
Brown, Manola	Cummings, Scott	Gillespie, Melba	Hulsey, Ruth
Burnette, Oscar	Cagle, Georgia	Grant, Irene	Hickman, Billie
Barton, Lois	Callaway, Chester	Gray, William	Hinsinger, Max
Beaver, Paul	Castleberry, Maxine	Gurley, Crosby	Hudson, Ruby
Byrd, Matty Louise	Collins, Robert	Gamble, Alera	Hix, Warner
Barrows, Cecil	Camp, Clifford	Geneva, Ezell	Hamilton, Valeria
Brooks, Lucille	Crane, Floyd	Ganner, Cecelia	Hamilton, Leland
Black, Joe	Cartland, Lydia	Greene, Paul	Hale, Rex
Bell, James	Cantrell, Peggy	Glenn, Parson	Howard, Margaret
Benton, Irose	Coulter, Inez	Gattis, Susie	Hall, Elizabeth
Brewer, Lessie	Carson, Arthur	Gillespie, Ralph	Hamilton, Margaret
Buttram, Jack	Cummings, Clarence	Gardenshire, Rachel	Hall, Helen
Bell, Effie	Chunmly, Jack	Graham, Floyd	Honer, George
Bowling, Helen	Crombie, Charles	George, Floyd	Holland, Edwin
Bressler, G. L.	Cundra, Ernest	Farrar, L. D.	Hodgkins, Rugby
Bryson, Marie	Collins, Ruby	Folkner, James	Hudgens, Helen
Black, Betty Sue	Cole, Wilford	Faires, Anna	Hill, Lorene
Brannan, Frank	Collins, George H.	Foxworth, William	Hass, Myrtle
Brown, Mildred	Campbell, Laura Kate	Frazier, Edith	Hart, Marguerite
Ball, Cathrine	Conner, Virginia	Fullam, Leland	Isom, Mildred
Beals, Jacqueline	Dafton, Andrew	Fitzgerald, Ruby	Jackson, Harry
Burton, Alice	Davis, Lydia	Fletcher, Bennett	Jackson, Jack
Barnes, George	Dugger, Elizabeth	Franklin, Clay	Johnson, Clay
Beene, Dorothy	Davis, Mary Lynn	Farmer, Margaret	Johnston, Jimmie
		Forstner, Alma	Jones, Lawrence

THE CHAMPION



Freshman Class

Jones, Thelma	Maxwell, Lucille	Robinson, Marie	Tipton, John
Jullerat, Stephen	Miller, Donald	Roberts, Gladys	Tyrell, Gallon
Johnston, Ben	Mullis, Fred	Rogers, Joe	Tyrell, Wayne
Keen, George	Moore, John	Russell, Edna	Thomas, Raymond
Kibler, Frances	Maloney, Harlow	Renegar, Ross	Thomas, Jean
Kelso, Roy	Mayer, Corinne	Ratliffe, Ellen	Thompson, James
Kenna, Eugene	Mayo, Marie	Rogers, Wynema	Talley, Mildred
Kelley, Richard	Moore, William	Rusbridge, Norton	Travis, Lena
Kelley, Massey	Mitts, Evelyn	Reynolds, Mary Lamar	Tate, Hazel
Kimble, Reba	McEachern, Jessie	Ransom, Virginia	Taylor, John
Kelley, Hazel	McDermott, Willie	Rhodes, Edward	Torrence, Herstine
Kelley, John	McDaniel, Cecile	Roberson, Laura	Tuggle, Tommie
King, Augusta	McGhee, Buford	Riddle, Edna	Trim, Joseph
Leviton, Bernard	McSpadden, C. E.	Rash, Lillian	Usmiller, Dorothy
Lord, Mary	McClure, Cicero	Reed, Avax	Vaughn, Minnie Mae
L-man, Edwin	McGaughy, Howard	Reese, Evelyn	Valentine, Charles
Lee, J. B.	McAfee, Minnie Lee	Ryerson, George	Varnel, Elora
Lee, Frank	McKenzie, Sadie	Ragon, Irene	Vaughn, Herbert
Livingston, Ruth	McCallum, Mary K.	Ruggles, Rhay	Vandergriff, Louise
Ledford, Bessie	McSpadden, Edith	Bains, Charlyne	Vandegriff, Vivian
Lynes, Foster	Newell, Frank	Shelton, Lloyd	Wood, Mary Katherine
Lacewell, Elizabeth	Nelson, Clara	Shipley, Blanche	Wilbur, Catherine
Loeber, Doris	Norton, Mildred	Smith, Orman	Wilbur, Ruth
Longbridge, Bernice	Norrell, Ernest	Scott, Pauline	Wilson, Jimmie
Nelms, James	Nelms, James	Smith, Walter	Warren, Johnnie
Norton, Charles	Norton, Charles	Sundstrom, Walter	Walthour, Elizabeth
Null, Cooper	Null, Cooper	Smith, Beulah	Welch, Earl
O'Rear, Beulah	O'Rear, Beulah	Smith, Gordon	White, Edna
Pae, Evelyn	Pemberton, Neal	Scholar, Elbert	Wattenberg, Beulah
Pemberton, Neal	Pickering, Naomi	Stacey, Ernestine	Witt, Malcolm
Pickering, Naomi	Poe, Evelyn	Simpson, Laurette	Wallace, James
Poe, Evelyn	Poole, Ralph	Stone, Lawrence	Wood, Lawrence
Pemberton, Neal	Peace, Raymond	Schneider, Marie	Wiggs, Elizabeth
Pickering, Naomi	Pledger, Harry	Samples, Ralph	Woods, Edwin
Pickett, Frances	Pfitzer, Carl	Whiteside, J. D.	Wright, Aline
Parson, Gladys	Park, Leona	Wheeler, Edith	White, Rose
Pollard, Barry	Parson, Glenn	Williams, Inez	Wilson, Ulrey
Miller, Helen	Price, Virginia	Standifer, Eloise	Wilson, Louise
Melton, Spencer	Peterson, Wilbur	Schmitt, Elizabeth	Wright, John
	Pickett, Frances	Suits, Floyd	Wilkinson, Martha
	Rawlings, Elizabeth	Shippey, Frederic	

THE CHAMPION

A Diary

Chattanooga, Tenn., May 23, 1907.

DEAR BETTY: Just recently we have moved to the old home of my great-great-grandfather, which is to me a most fascinating place. Grandmother has told me so many interesting things which happened to her here and which she used to do as a little girl, that almost every spot, every nook and corner have some happy association. Only yesterday I was on one of my investigating expeditions in the attic, and what do you imagine I found? In one corner in a rather inconspicuous spot is an old desk which appeared not to have been opened for years. I was very much thrilled as I took from the different places letters written more than a hundred years ago. My curiosity grew keener when suddenly I discovered a secret drawer. With some difficulty I opened it. Inside was only one book. Imagine my excitement when I saw the word "Diary," and the name of my great-grandmother, of whom grandmother had so often told me stories. As I turned the pages rather hurriedly to see just what was there, I found a brief record of her first year at Central High School. I could hardly wait to read it and see the comparison with our own high school days. Since I remember how much you enjoy old records and letters, perhaps sometime you might like to see the complete diary. I am sending you a copy of the record of certain days.

September 10, 1927.

Dear Diary: We began school today. It all seemed very strange and confused to me, but I soon discovered that teachers and the older students were glad to direct us to our rooms. There is a new wing under construction on the north side of the building. All day a continuous noise of the hammer and the saw was heard. For about a month the seniors and juniors will go to school one-half of the day and sophomores and freshmen the other half. I've enjoyed the day, for everything seemed so novel to me; even the noise was something different.

Dear Diary: Today we had our first class meeting, which was very interesting. We chose the following members as officers: Wilbur Peterson, president; Ernest Horton, vice-president; John Starr, secretary, and Buford Magee, treasurer. After the election the officers responded with short speeches. One of our members then led in some yells. Of all the yells, I like best the one where we spell "Central."

Dear Diary: I think the most exciting time of high school life is during the football season. The victory over Tech High was most thrilling. We have the team and the coaches this year. Not one game have we lost so far! But when we play that game with City High, we are going to win the great victory that we look forward to from year to year.

Dear Diary: I did not meet you at the appointed time last night, for I was late. The sophomores entertained the freshmen, and such a delightful time we had. The initiation of the freshman officers was the most amusing part of the program. I think ice cream and peanuts never were better than those we had last night. I feel that I know so many more people than in the beginning of the year.

November 10, 1927.

Dear Diary: We have begun our regular schedule with the full day program. The new building is completed and opened. The Home Economics, the Commercial and the Science departments opened their doors to visitors this afternoon. Everything was quite festive and party-like. I guessed at the weight of Mr. Nelson's name, but have little hopes of winning the prize. I shall keep my little glass tube as a souvenir.

November 29, 1927.

Dear Diary: Oh, that memorable Saturday after Thanksgiving! Glory to old Central, she won! The grandstand, literally packed with Central rooters, like one great mass of purple and gold, almost rocked with our yells and songs. Although Central gained in first three quarters, the latter part was a hard-fought struggle. We had a joy meeting today, when the boys of the team and coaches were presented with beautiful yellow chrysanthemums tied with purple tulle.

April 22, 1927.

Dear Diary: This was the day for the Spring Festival. One would never have known it was spring from today. Had I not been afraid I'd miss a day and maybe have to take exams, I believe I would have stayed at home. I think I've never felt a colder day in April. I am glad now that I went, for once more I am proud that I go to Central. Central, with her band leading, formed the main part of the parade. The pageant where the girls danced was beautiful. The freshman girls played an important part in the pageant.

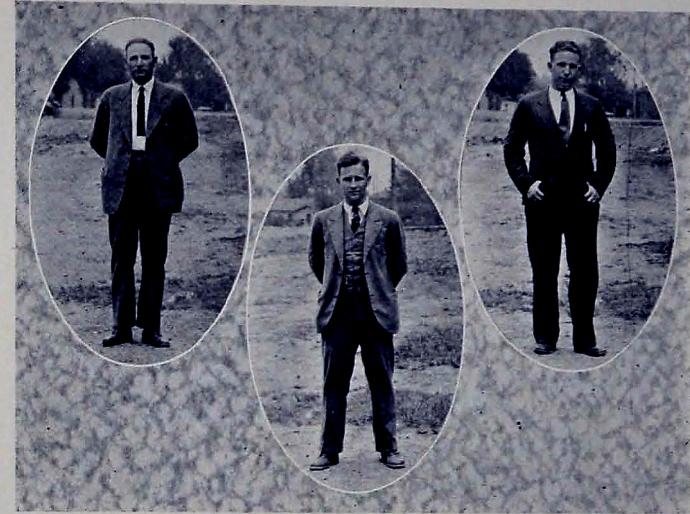
P.S. Betty, dear, with this the record of the first year of high school ends rather abruptly. It seems that just here the diary was misplaced, for later on the fact is mentioned in another record that it has been found. Doesn't it sound quaint and old-fashioned to hear how they did so long ago in 1927? Only we can know just how different things are now in these more modern times.

ROSE WHITE.



ATHLETICS

THE CHAMPION



BALES

PETERSEN

SETTLIFFE

The Coaches

PETERSEN

Coach Petersen knows Central thoroughly. When he came to Central from Auburn in 1925, to act as director of athletics and football coach, he was no stranger in our midst. He was returning to ground he knew well, to a squad with whom he had fought in his high school days, and to a field on which he had starred.

To Coach Petersen is due the gratitude of the entire student body as well as much of the glory for the splendid athletic record of the past year.

His love for fair play, his belief in clean sportsmanship and his gentlemanly manner have won for him the strong admiration not only of his team but of all who know him. Under his directorship the football team won the first clear-cut championship since 1913. Central defeated Baylor for the first time since 1918. Central undoubtedly won the championship of East Tennessee, together with as good a claim as any other team to state championship.

His conferees and all who have worked and played with him say unreservedly of him, "He is the best in the South."

BALES

Mr. Bales, the basketball and baseball coach at Central for five years, brought with him from Athens an enviable record in sports—a record which he has shown was rightly won.

Considering the circumstances under which the basketball team labored, this year has been unusually successful. Central took second place in the city meet and later won a victory over the city champions in the state meet. Each year the light on the path to Chicago grows brighter and brighter. At present it seems most encouraging for next year, and the anticipation of the team is keen.

In athletics Mr. Bales has enthusiasm for fight which he inspires in his men. He teaches his men that it is not only their business to succeed, but to continue in good spirits in the face of failure. He is courteous, gentlemanly, sincere, and with it all knows the sports which he coaches.

SETTLIFFE

Jeff Settliffe, who is track coach and assistant football coach, came to Central for the first time in 1926. In the University of Chattanooga he was president of the Lettermen's Club and took an active part in all sports.

The year that Mr. Settliffe has been in Central he has entered heart and soul into athletics. This year's football record owes much to him for his inspiration of clean play and fair fighting.

Being a track man of ability in his school days, his value as a track coach cannot be over estimated. Mr. Settliffe makes the trio of what is considered one of the finest high school coaching staffs in the South.

THE CHAMPION



Managers

BALLINGER

As manager of basketball and football, "Bill" performed his duties so well that he was awarded his letter. He worked hard not only in looking after the financial affairs, but behind the line during the games he gave encouragement and ministered to physical needs of the team.

BUMPUS

Bob is one of the most enthusiastic track men in Central. He is not only a real runner himself, but he knows how to "run" the team. The season under his management has been a very successful one.

MORGAN

James is not only one of Central's well-known football men, but he is one of the best baseball managers Central has ever had. He has shown special interest in every game. His services in managing the Baylor-Central game deserve special recognition.

Captains

MCINTURF

McInturf is one of the best captains Central has ever had. He has that "never-give-up" spirit, with which he so inspired his football team that not one game did they lose on the season schedule. To his splendid football reputation George added a splendid record as captain of the baseball team. Central will always be proud of McInturf for his clean sportsmanship and the great victories which his teams leave behind.

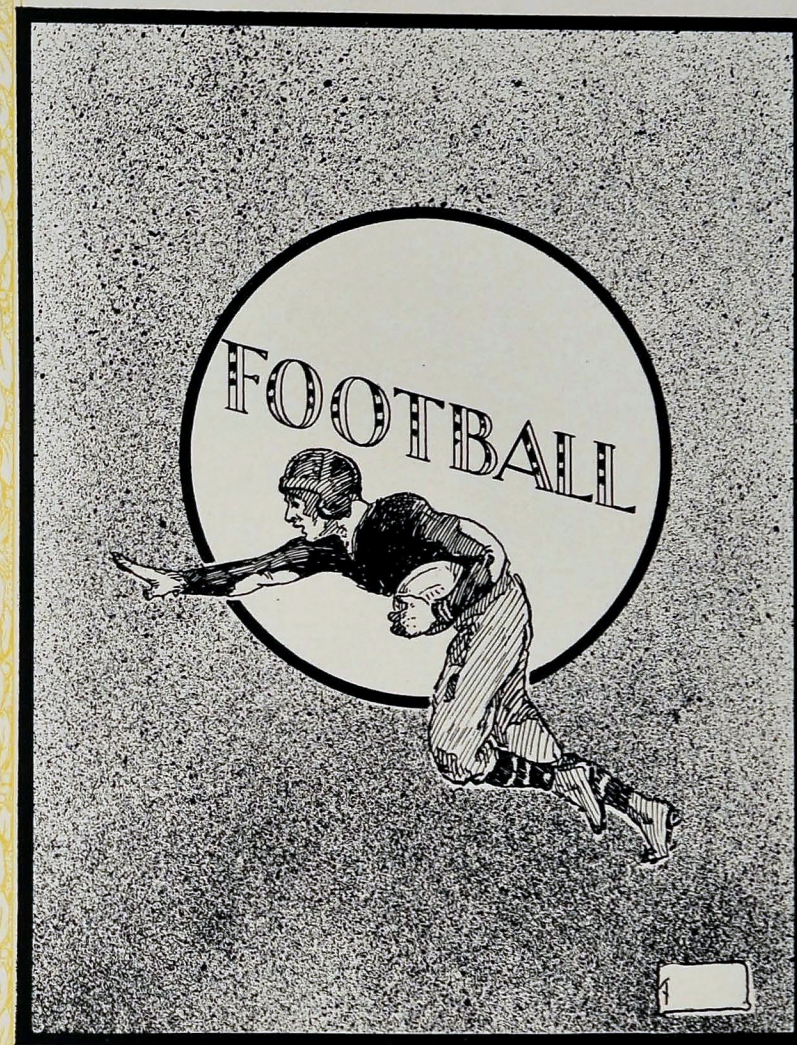
CADE

Cade has been a basketball enthusiast since he has been at Central. He puts "pep" into the team and almost invariably leads them to victory. On the basketball squad Cade leaves a vacancy which will be hard to fill.

JACKSON

As cheer leader and captain of track, Jackson is well known in athletics at Central. Bubbling over with enthusiasm, he has cheered our teams on to many victories. As captain of track he has helped develop one of the best track teams Central has had in many years.

THE CHAMPION





FRANK BRADFORD



SEAGLE



BARNES

Football Season, 1926

"We met the enemy and they were ours," is Central's boast for her football season. A just claim we feel it is, and one of which every Centralite is proud, for Central won nine and tied the tenth of the games played during the season, a record unsurpassed by any team in the state and even in the South.

CENTRAL, 14; FORT PAYNE, 0.

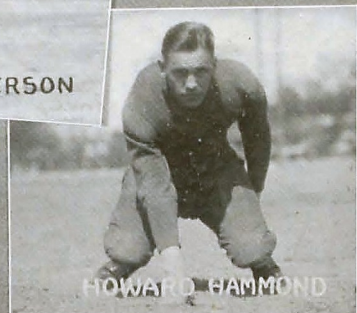
The opening game of the season was an encouraging beginning for Central, since not a score was made on the opposing side. In this game Homer Key began his starting career, which continued throughout the season. His field running and line plunging were outstanding. In the line, Underwood, McInturf, Jones, and Seagle did excellent work in stopping Fort Payne's drives.

CENTRAL, 19; BRADLEY COUNTY, 3.

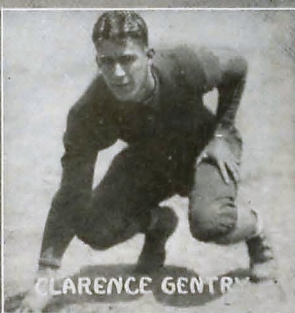
The second game of the season was a second victory for Central. Since Bradley County High School is well known for her football team, Central considered it much to her credit to defeat such a team. Shadden and Key



"BUS" ANDERSON



HOWARD HAMMOND



CLARENCE GENTRY



PETERSON



MCINTURF



JOE UNDERWOOD

showed up well in this game. Key in ground gaining, and Shadden in punting and returning punts. In the line, Tate, McInturf, and Stringer did excellent work.

CENTRAL, 18; TECH HIGH, 14.

Revenge is sweet, and revenge we had. The year previous Tech High handed Central a stinging defeat. When Central met Tech High for the annual game, she realized that this was to be one of the hardest games on the schedule. Although the score was close, Central again bore away the laurels through Cade's wonderful pass-throwing as well as through the splendid work of the entire Purple and Gold line. Keys made spectacular gains and was responsible for two touchdowns. He showed that his head was something more than a hat-rack when, in a pass from Cade, he ran three or four steps, picked up the ball and carried it to its goal. Ed Peterson, our scrappy little quarterback, ran the team well in calling signals. Underwood, McInturf, Seagle, and Gentry did noticeable work in stopping Tech High's plays. Gentry scooped up a Tech High fumble while running at top speed and went forty yards for a touchdown. Although out-weighted by twenty pounds to the man, the Central warriors put up a fight never to be forgotten by football fans in Chattanooga.



KEY



HUNT



MAYER



CADE



JONES



MORGAN



SHADDEN

CENTRAL, 34; DARLINGTON, 6.

Darlington brought to Chattanooga a fast, aggressive machine. She scored in the first two minutes of play, and appeared to be loaded for a victory. This score only aroused the Central spirit, and before the game ended Central had run up a score more than five times as large as that of Darlington. Central's unusual gain was the result of superior work in the passing of Cade, Peterson, and Keys, who also did outstanding field running.

CENTRAL, 33; BAYLOR, 0.

In this game Central met an ancient football foe, a foe who had not tasted the bitter dregs of defeat at the hands of Central since 1918.

The winners of the Red and Gray made a good start, but it was soon seen that Central was not to have her record spoiled. Baylor threatened to score early in the game, but Key made good interference and could not be stopped. The punting of Shadden and the tackling of Tate in this game was unsurpassed. Peterson as quarterback showed keen judgment in directing the game.

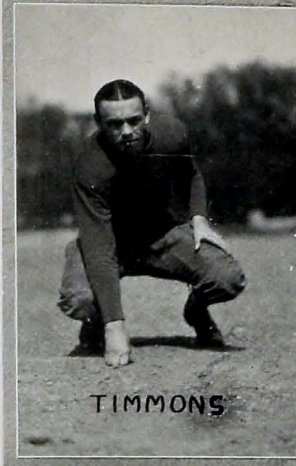
After many minutes of bruising football, the Baylor boys gathered their togs and headed for the mountain with a sad remembrance of a 34 to 0 defeat administered by the Purple and Gold. This was the largest score that Central ever made against Baylor.



TATE



STRINGER



TIMMONS



WITT



PRESTON

CENTRAL, 44; GADSDEN, 0.

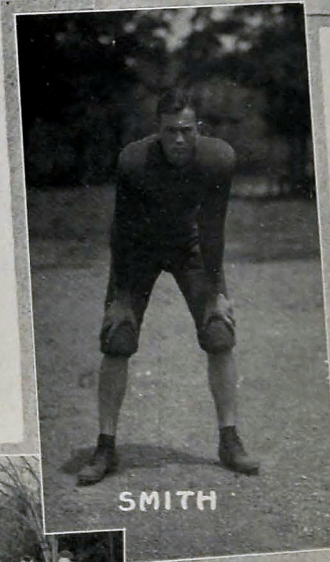
Another clean-slated victory for Central! Again Central boys were over-weighted, but the big Alabamians were no match for Central when it came to football. This game was a surprise, for everyone thought it would be a battle from start to finish. Gadsden had one of the strongest teams of any opponent of the year, but Central's warriors were "right," working together as one. The pass-catching of Gentry and Peterson couldn't be beat. Cade made the best run of the game when he dashed ninety yards from the kick-off for a touchdown. Waller, Peterson's substitute, in professional style, returned a punt seventy yards.

CENTRAL, 39; RHEA COUNTY HIGH, 0.

Central met Rhea County High with the full determination of winning by a big score, and so she did. Noteworthy playing was done by Underwood in tackling, while W. Peterson in field running time and again made big holes in Rhea High's forward wall.

CENTRAL, 20; ANNISTON, 0.

In this game Central met a well-trained team and had to fight for what she won. Anniston put up a strong fight, but through skill and hard work Central held her own well, not allowing Anniston a single score. Mayer, fullback, was knocked out in the first quarter, but a bucket of cold water revived him. His defensive game and punting were superb for the rest of the game.



SMITH



FOOT BALL SQUAD

THE CHAMPION

Football Season, 1926

CENTRAL, 7; PHILLIPS HIGH, 7.

This game was played under the handicap of bad weather and a heavier foe. Central's team showed team work far superior to Phillips' team, who out-weighted them twenty pounds to the man. Although fighting against odds, yet never forgetting the institution they were representing, the determined players of Central put up the most rugged fight ever witnessed at Rockwood Park.

Although Central outplayed the opponent for three quarters and a part of the fourth, ill fate was against them. With only two minutes to play, a forward pass was completed for sixty yards, placing the ball on Central's one-yard line. In spite of the fact that Central fought with untold energy on the fourth down, a Phillips man sneaked over for a touchdown. The game ended in a tie, 7 to 7. Neither was victor; neither was defeated.

CENTRAL, 19; CITY, 0.

Central-City game was the grand finale of the season. The Maroon and White came to Chamberlain Field thoroughly determined to blot Central's unspilled record. Central was equally determined to bring that record away unchanged except for an added victory.

This game was witnessed by one of the largest crowds ever seen on Chamberlain Field. As soon as the game was under way the superiority of the Purple and Gold was an established fact. Mayor, in his defensive work, was good. Key did a splendid bit of open field running, which

resulted in two touchdowns. The Central line did some of the best tackling and blocking of the entire season. The work of Fate, McInturf, Bradford, Gentry, Jones, Underwood, and Seagle, supported by the entire team, made this one of Central's best games of the schedule.

Thus closed one of the greatest football seasons Central has ever known. The only other team in the South which could contest with Central for Southern championship was Phillips High, whose team went down in defeat in her Thanksgiving game, while Central's record was still that of "undefeated."

Schedule, 1926

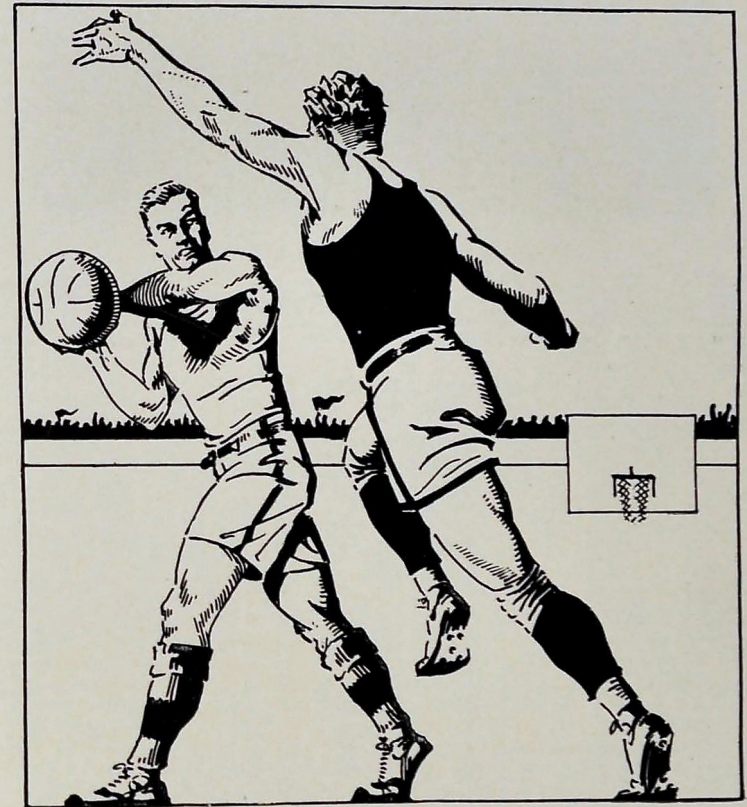
Central . . 14; Fort Payne High 0	Central . . 44; Gadsden High 0
Central . . 19; Bradley High 3	Central . . 39; Rhea County 0
Central . . 18; Tech High (Atlanta) . . . 14	Central . . 20; Alabama Military Institute . 0
Central . . 34; Darlington 6	Central . . 7; Phillips High (Birm'ham) . 7
Central . . 33; Baylor 0	Central . . 19; City High 0

Schedule, 1927

Sept. 23—Central vs. Fort Payne High School At Chattanooga	Oct. 29—Central vs. Bradley High At Cleveland
Oct. 1—Central vs. Kingsport High School At Kingsport	Nov. 4—Central vs. Knoxville Central At Knoxville
Oct. 7—Central vs. Notre Dame At Chattanooga	Nov. 11—Central vs. Phillips High At Chattanooga
Oct. 15—Central vs. Darlington At Rome, Georgia	Nov. 18—Central vs. Alabama Military Institute At Chattanooga
Oct. 22—Central vs. Baylor At Chattanooga	Nov. 26—Central vs. City High At Chattanooga

THE CHAMPION

Basketball



THE CHAMPION



Boys' Varsity Basketball Team

George Cade, Captain

Forwards: George Cade ("Arkadia"), Frank Bradford ("Winkles"), Harold Reichard ("Helme"), Homer Key ("Satchel").

Centers: Howard Hammond ("Mutt"), Ed Brown ("Miss Brown").

Running Guards: Carl Hammond ("Didley"), Paul Sells ("Jack Head").

Stationary Guards: Eugene Mayer ("Skeet"), George McCarty ("Ole Rascal").

Basketball Schedule, 1926-27

December 16—Central.....40;	Tyner	22—At Chattanooga
December 28—Central.....42;	Kingston	47—At Kingston
December 29—Central.....22;	Oliver Springs	34—At Oliver Springs
December 30—Central.....56;	Spring City	25—At Spring City
January 5—Central.....40;	Spring City	18—At Chattanooga
January 8—Central.....40;	Knox Central	31—At Chattanooga
January 10—Central.....47;	Bradley	45—At Cleveland
January 11—Central.....41;	McCallie	22—At Central
January 13—Central.....31;	Sewanee Rats	16—At Sewanee
January 16—Central.....39;	Soddy	16—At Chattanooga
January 17—Central.....25;	City High	26—At Central
January 18—Central.....27;	Daisy	46—At Chattanooga
January 20—Central.....46;	Lenoir City	25—At Chattanooga
January 25—Central.....27;	Baylor	23—At Baylor
January 28—Central.....44;	Ooltewah	25—At Chattanooga
February 1—Central.....26;	City High	35—At City High
February 2—Central.....46;	Baylor	35—At Central
February 4—Central.....40;	Trion	32—At Trion
February 7—Central.....43;	Lenoir City	36—At Lenoir City
February 8—Central.....22;	Knox City	52—At Knoxville
February 9—Central.....24;	Knox Central	22—At Knoxville
February 16—Central.....46;	Morristown	36—At Morristown
February 11—Central.....23;	Kingsport	26—At Kingsport
February 12—Central.....40;	McCallie	36—At McCallie
February 13—Central.....40;	Bristol	29—At Bristol
February 16—Central.....44;	Dalton	27—At Dalton
February 18—Central.....41;	Knox City	25—At Chattanooga
February 22—Central.....26;	Notre Dame	32—At Chattanooga
February 28—Central.....36;	Ooltewah	27—At Ooltewah
March 6—Central.....28;	McCallie	17—City Tournament
March 7—Central.....16;	City High	31—City Tournament
March 17—Central.....17;	City High	16—At Nashville (State Tournament)
March 18—Central.....23;	Knox City	24—At Nashville (State Tournament)

Total—Central.....1160; Opponents

80

THE CHAMPION

Girls' Varsity Basketball Team

ELIZABETH BUSHNELL, Captain

Guards

WILMA JOHNSON, LOUISE COX, CATHERINE BONDS, VIRGINIA GODSEY

Forwards

FLORA MAE PECK, SUE FAIDLEY, WILMA SKELTON

Center

ELIZABETH BUSHNELL

Coach

GEORGE CADE

RESULTS FOR THE SEASON

January 7—Central 23;	Rossville 8—At Chattanooga
January 14—Central 21;	Tyner 12—At Chattanooga
January 28—Central 22;	Bradley 26—At Cleveland
February 4—Central 4;	Trion 10—At Trion
February 8—Central 5;	City 7—At City High School
February 11—Central 17;	City 18—At Central High School
February 18—Central 13;	Ringgold 17—At Ringgold

81

THE CHAMPION



SENIOR



JUNIOR



MISS ATKINSON



SOPHOMORE

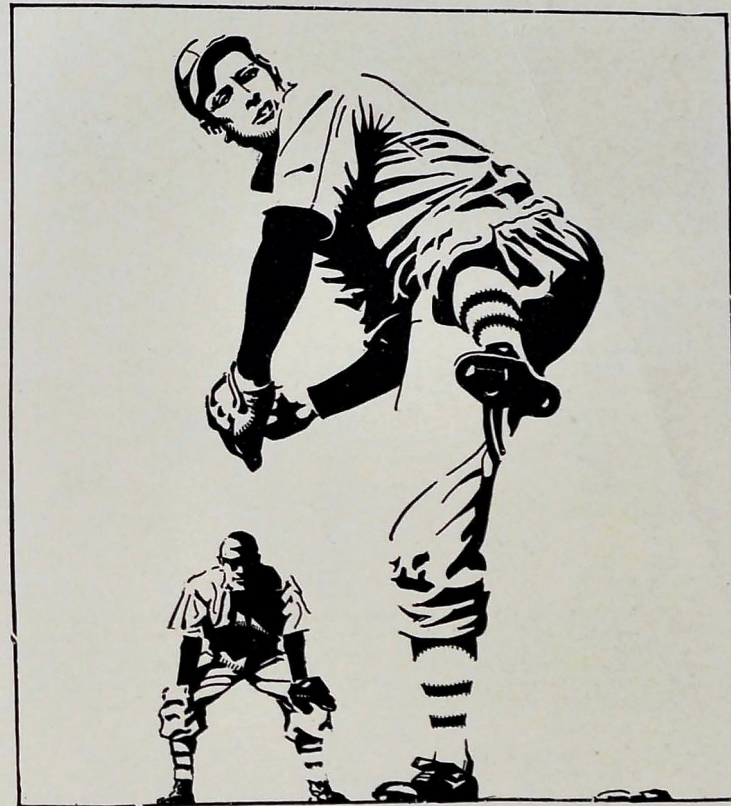


FRESHMAN

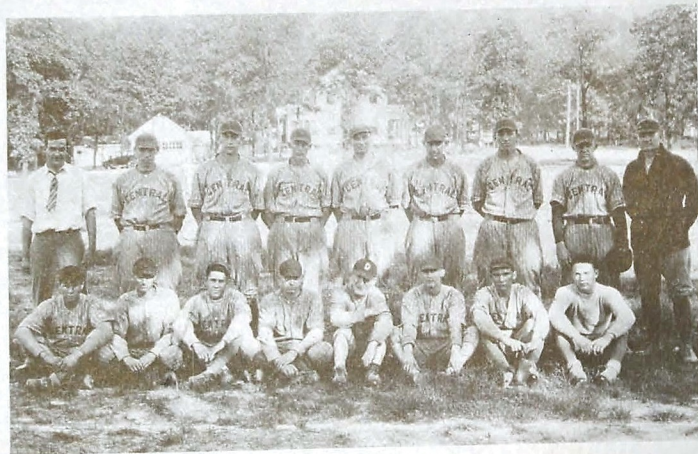
GIRLS' CLASS BASKETBALL TEAMS

THE CHAMPION

Baseball



THE CHAMPION



Baseball

GEORGE MCINTURF, *Captain**Pitchers*HOBART TIMMONS
GEORGE CADE*Second Base*BLAKE
CHARLES RICE*Center Field*

EUGENE MAYER

*Catchers*GEORGE MCINTURF
JOHN SEAGLE*Third Base*GLENN HUNT
EDWARD PETERSON*Left Field*

PAUL SELLS

*First Base*NEWMAN HORNER
CARL HAMMONDS*Right Field*

ED BROWN

Substitute Outfielder

BILL BALLINGER

Shortstop

HOMER KEYS

*Substitutes*McCLAIN
LOYD BUCHANNAN

Central is headed toward one of the best baseball seasons in many years. With the exception of one game, which was lost to Baylor by a score of five to three, Central has been victorious.

This season marks the closing careers of McInturf and Cade, whose names have been synonymous with baseball at Central for four years. Although the work of Keys, Cade, Mayer, and Timmons has been outstanding, it is realized that their success has been due largely to the splendid support of every other member of the team.

SCORE

Central 8; City High 4	Central 8; City High 4
Central 4; McCallie 3	Central 7; McCallie 7
Central 12; Bradley 5	Central 3; Baylor 5
Central 3; Baylor 1	Central 8; City High 0
Central 7; McCallie 4	

THE CHAMPION



THE CHAMPION



Track Squad

ROBERT BUMPUS, *Manager*
CHARLES JACKSON, *Captain*

JAMES SEARCY
HERMAN WILLIAMS
KERMIT MAXWELL
ESTILL MAXWELL
ED PETERSON
HOMER KEY

EDWARD MITCHELL
GEORGE MCCARTY
JOE SHADDEN
HOWARD SMITH
HOWARD ANDERSON

CLARENCE GENTRY
EUGENE MAYER
FRANK MAYER
WILLIAM SIMS
WILLIAM MORRIS
HARLOWE PRESTON

Track Season of 1927

With the participation of a large squad and the inspiring direction of Coach Settliffe, the track season of 1927 has been a successful one.

The first dual meet was held with City High. Both teams were well matched and competition was keen. Both squads put up a good fight, while City eventually slipped over with a five-point victory. The score was 45-49.

In the Baylor relays Central took part in several events and made a good record.

One of the most interesting events of the season happened on April twenty-ninth, when the Central squad journeyed to Sevanee to attend the Southern Prep School Meet. This was Central's first opportunity to show her real mettle. Of the eleven events in the finals, Central qualified for nine. "Skeet" Mayer won for himself the distinction of breaking the Southern record in the shot-put with a heave of forty-five feet and one-half inch. Kermit Maxwell and Jackson, as dash and distance men, made a good show.

In the city meet, held at Baylor School, Friday, May 13, the Central team took second place.



MILITARY

THE CHAMPION



TO CAPTAIN VAN DYKE OCHS

Because of his excellent service to and kindly interest in the members of the battalion and the whole school in its varied activities;

Because of the high esteem in which he is held by the Students, the Faculty, and the Alumni;

Regretting that his four year assignment to this station is at an end, and desiring to express our most sincere wishes for his success and happiness in the field to which he will go,

We, the R. O. T. C. of Central High, respectfully and lovingly dedicate the Military Section of the "Champion."

THE CHAMPION

THE STAFF



CLYDE DAVIS
MAJOR



LOUISE HESTER
SPONSOR

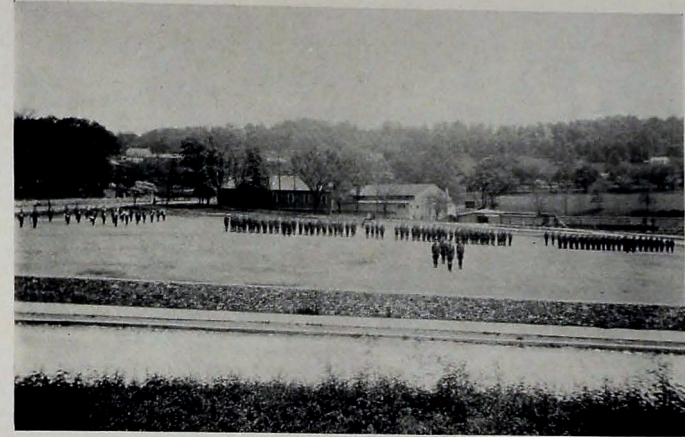


ESTILL L. MAXWELL
FIRST LIEUTENANT



VICTOR STONECIPHER
SECOND LIEUTENANT

THE CHAMPION



Inspection

Every Friday at Central the weekly inspection takes place. After the battalion is formed by the Cadet Adjutant and presented to the Cadet Major it is then inspected by the Captain. Each week Captain Ochs selects one cadet from each company for his neatness in appearance and general bearing. Later those selected from the group are brought together and a prize is awarded to the outstanding man. This is one of the steps toward choosing officers for the next year.

Following inspection, the formal ceremonies, consisting of battalion review, parade, and individual company drills, are held. Through these ceremonies, which are conducted with much skill and precision, the progress of the battalion is seen.

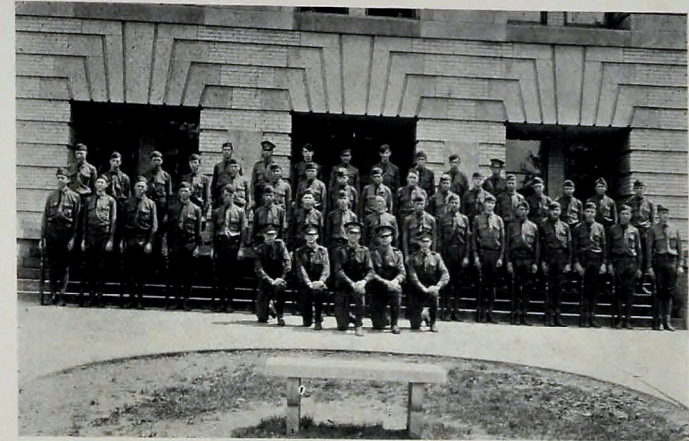
To the military boy this day, which varies from the regular routine, is most interesting, and one to which he looks forward.

THE CHAMPION

COMPANY "I" OFFICERS

HERBERT WENCK
CAPTAINJANE BOYD
SPONSORW.C. ROBINSON
FIRST LIEUTENANTARTHUR EVANS
FIRST LIEUTENANTL.D. POTTS
SECOND LIEUTENANTMARK REYNOLDS
SECOND LIEUTENANT

THE CHAMPION



Company "I"

OFFICERS IN COMMAND

H. V. WENCK	First Lieutenant	Captain
W. C. ROBINSON	First Lieutenant	
A. EVANS	First Lieutenant	
L. D. POTTS	Second Lieutenant	
M. REYNOLDS	Second Lieutenant	
F. CORDELL	First Sergeant	

SERGEANTS

J. T. BEENE
L. G. BEENE

C. N. HYDE

F. H. STOWE
J. H. SMITH

CORPORALS

M. B. AUSTIN
J. W. BUTTRAMR. E. GRAYSON
H. L. CONNERW. H. HENDERSON
C. A. LITTLE

ROSTER

T. B. ALLEN
D. H. ALEXANDER
F. F. BLAKEY
T. O. BOLDEN
T. F. CARTER
C. E. CAMP
G. I. COLLINS
C. S. CROMLEE
H. W. DEANJ. A. DUGGAN
P. S. GIRTHRIA
A. L. HAMMOND
W. E. HARDINSON
A. J. HITCHCOCK
D. W. HARRIS
W. H. JETT
A. JOHNSONW. H. KELLIE
R. H. KISER
C. N. LEE
C. T. MAXWELL
T. B. MOORE
W. E. MYERS
C. F. MCFADDEN
W. J. MALLERYF. W. NEWWORTH
W. H. ROBERTSON
E. L. RHODES
H. P. SCRUGGS
C. R. SHIPPEY
R. S. STARNER
T. D. TURBYVILLE
G. T. TAYLOR
C. G. WEIGEL

PROVISIONAL OFFICERS

W. A. BRAGG

M. CANFIELD

E. S. PEASE

THE CHAMPION

COMPANY "K" OFFICERS



GORDON MOSTELLER
CAPTAIN



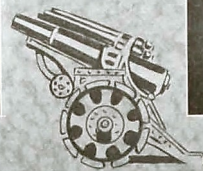
DE FOREST LOWRY
FIRST LIEUTENANT



ORA GRAY WHITING
SPONSOR

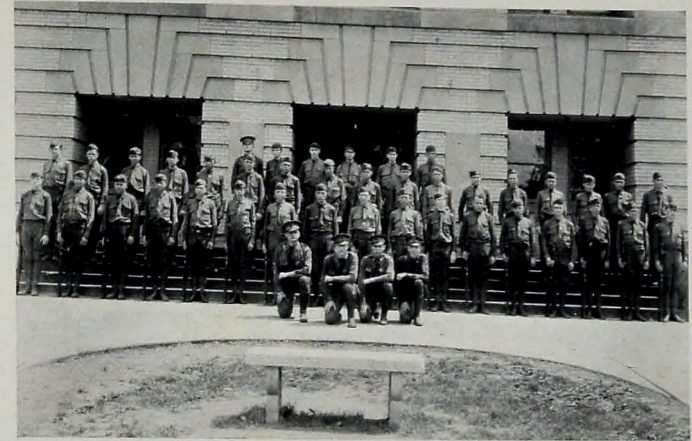


PAUL OVERBY
SECOND LIEUTENANT



THOMAS PHILLIPS
SECOND LIEUTENANT

THE CHAMPION



Company "K"

OFFICERS IN COMMAND

G. A. MOSTELLER	Captain
D. LOWRY	First Lieutenant
P. OVERBY	Second Lieutenant
T. E. PHILLIPS	Second Lieutenant
J. W. SHERMAN	First Sergeant
C. G. CRAIG	Color Sergeant

SERGEANTS

G. C. CAMP
H. C. EVANS

J. N. KEEN

R. MORRELL
J. K. SWAFFORD

CORPORALS

W. F. CLARK
J. HIGH

J. W. HARRIS
J. B. McREE

H. J. MORGAN
F. N. SUITE

ROSTER

L. L. ALEXANDER
L. D. ALLEN
E. BEENE
E. BROWN
A. W. CARSON
L. W. FIGGINS
B. FLETCHER
R. L. GODSEY
C. F. GRETTIER

J. V. HAGGARD
O. S. HARRIS
J. B. HEGGIE
C. A. HUNGATE
G. HUNLEY
J. L. ISHILL
O. K. JOHNSTON
W. E. LACEWILL
K. S. MASSEY

T. H. MURPHY
G. J. MAVITY
J. H. NALL
D. H. PHILLIPS
G. M. PORTER
H. REYNOLDS
D. W. SHELTON
F. C. SHIPPY
H. T. STEWART

H. SWICK
A. H. TRIWITT
M. J. TRIPLETT
R. B. WALLACE
J. O. WHITESIDE
T. M. WOOD
E. M. WOODS
E. T. WOOLSON

PROVISIONAL OFFICERS

B. C. BONINE

T. J. TIMMONS

THE CHAMPION

COMPANY "L" OFFICERS



WILLIAM MORRIS
CAPTAIN



OSCAR BALDWIN
FIRST LIEUTENANT



ELIZABETH LUPHER
SPONSOR

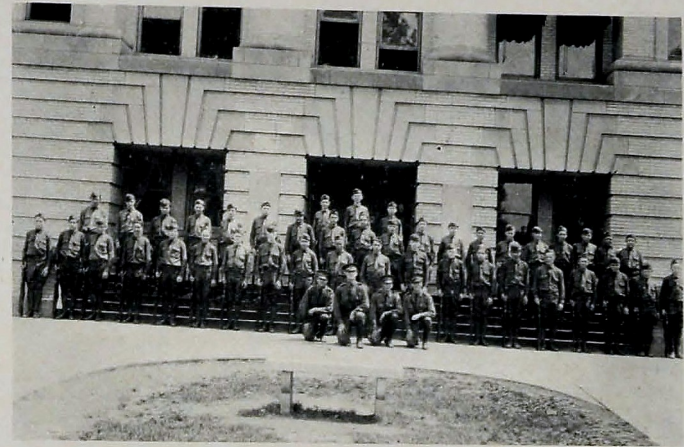


HAROLD CAREY
SECOND LIEUTENANT



GORDON MASSENGALE
SECOND LIEUTENANT

THE CHAMPION



Company "L"

OFFICERS IN COMMAND

W. MORRIS	Captain
O. BALDWIN	First Lieutenant
G. L. MASSENGALE	Second Lieutenant
H. D. CAREY	Second Lieutenant
R. BUMPUS	First Sergeant

SERGEANTS

A. C. DeCOSTA	C. LANGSTON
J. R. HALSELL	O. L. MARTIN

CORPORALS

T. M. ARMSTRONG	M. G. McLURE
J. G. HARRIS	W. E. MASON

ROSTER

W. L. ANDREWS	A. ERWIN	V. LEVATEN	P. MASCES
E. AYLESWORTH	G. H. EVANS	R. LANGSTON	H. L. PERRY
B. BALT	A. L. FARMER	P. LICKENSTITTER	C. A. PFFITZER
J. W. BROOKS	G. W. FRY	T. H. MAUNER	C. F. SHIPPEY
J. E. CLOSE	A. L. GAMMIL	F. W. MILLIS	E. SAMPLES
B. B. COULTER	W. H. GREY	H. C. MAXWELL	J. H. TRIMN
W. CRAWFORD	F. C. HARTMAN	R. E. MCCOLLUM	M. T. TURNER
F. A. CRANE	R. F. HUDLOW	S. METON	G. WILSON
J. DUNSTON	A. HICKS	W. S. MCGAUHEY	P. H. WILHOIT
S. M. DUDLEY	R. G. HODGKINS	D. R. MANSFIELD	J. WORKMAN
	S. LEWIS		

PROVISIONAL OFFICERS

L. NEELEY	D. R. VANZANT
-----------	---------------

THE CHAMPION

BAND OFFICERS



WALTER LUTHER
CAPTAIN



LOUISE COX
SPONSOR



HAMPTON MORGAN
FIRST LIEUTENANT



ROY BOONE
SECOND LIEUTENANT

THE CHAMPION



The Band

OFFICERS IN COMMAND

W. A. LUTHER	Captain
H. C. MORGAN	First Lieutenant
R. O. BOONE	Second Lieutenant
W. S. CONNER	First Sergeant
H. D. CASE	Drum Major

SERGEANTS

J. P. HENDERSON

M. E. SLIGER

J. H. MORRISON

ROSTER

R. ALLEY
H. ANGEL
H. E. BALL
C. H. BUTLER
O. BURNETT
G. R. COLLINS
E. L. COX
M. T. DeLONG

N. G. GOTHARD
A. C. HAGEDORN
F. O. HANSBERGER
E. L. JONES
A. R. KEITH
E. L. KENNA
R. KELSO
A. MOON

C. F. MORRISON
R. A. MORRISON
T. W. MORGAN
H. C. PACK
T. J. RYERSON
R. K. SHOLZE
J. A. TOMPSON
J. E. TRIPTON

THE CHAMPION

Central R. O. T. C. Battalion

SINCE 1919, Central High School Battalion of the R. O. T. C. has been making steady progress, but not until the year 1927 has our effort so surely merited us the coveted rating by the United States Government as "Honor High School" of the Fourth Corps Area, which covers the Southland. At last our dreams, our hopes, and our ambitions seem almost realized. The credit of this distinction is due primarily to our esteemed Principal, Mr. S. E. Nelson, our efficient Cadet Major Clyde E. Davis, and to Sergeant James Jones, and to the loyalty and conscientiousness of every officer and every man who wore the Purple and Gold disc.

For six years the esprit de corps of the R. O. T. C. at Central has been reflected over Chattanooga. The Central cadet has always been an example of the typical red-blooded American youth—bright-eyed, alert, and ready to meet any emergency.

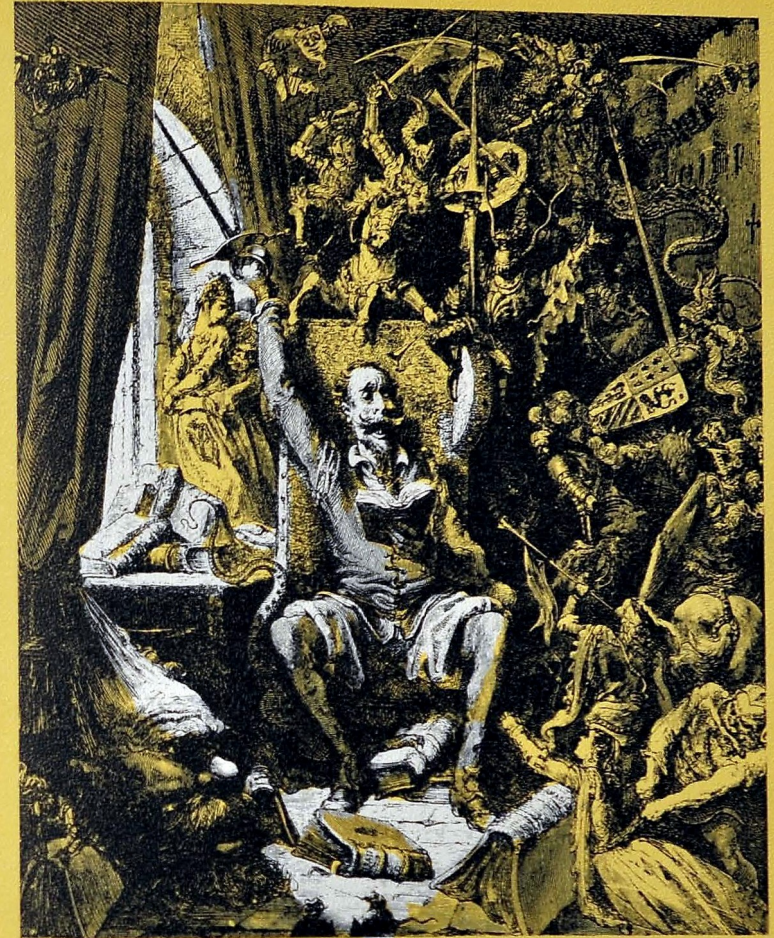
The unit is one of the best drilled and disciplined units of the R. O. T. C. in the country. It is the proud boast of the Professor of Military Science and Tactics that, in his four years of connection with the Central R. O. T. C., there has not occurred one serious breach of discipline, and never one word of disrespect or act of insubordination.

In reviewing this year's accomplishments it can be said that the R. O. T. C. of Central has taken its place in civic activities on more than one occasion. The unit has taken part in many patriotic parades and demonstrations. It has furnished guards and ushers at different times.

Mr. Guy Rubright, who has for two years been in charge of the band, has transformed what was considered a fair band, prior to his directorship, into one of the best high school bands in the South. This band has been a great asset not only to the school but to the city and county as well. It has always responded to requests for entertainments.

The R. O. T. C. has made no attempt to Prussianize or to make soldiers out of our youth. It abhors war, and leaves the making of soldiers to our regular army. The R. O. T. C. makes citizens, and one of the many obligations of citizenship is to be a soldier if it ever becomes necessary. The R. O. T. C. teaches leadership, team work, obedience, loyalty, courtesy and, last but not least, love of country. It sponsors love of the great outdoors, good sportsmanship, respect for constituted authority, and clean thinking, clean talking, and clean living. It aids the physically weak in building up a strong body through calisthenics and co-ordinating exercises; it corrects the discourteous, the careless, and slovenly boy and makes him courteous, neat and active, a good student, and an asset and a pride to his school and his community.

CAPTAIN W. V. OCHS.



FEATURES

THE CHAMPION



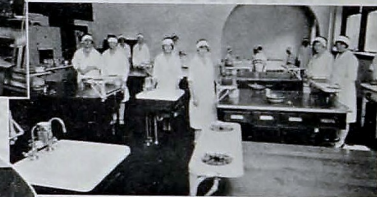
TYPE WRITING ROOM



SEWING CLASS ROOM



PHYSICS LABORATORY



CLASS IN COOKING



BIOLOGY LABORATORY



GENERAL SCIENCE CLASS



CHEMISTRY CLASS ROOM



BOOK KEEPING CLASS

THE CHAMPION



The Central Bank

EDNA STAMPS
OLETA HOODENPYL
MARIE WHITAKER
RUBERTA TILFORD
J. B. HAWKINS
MILDRED MANSFIELD
ETHEL BURNETT

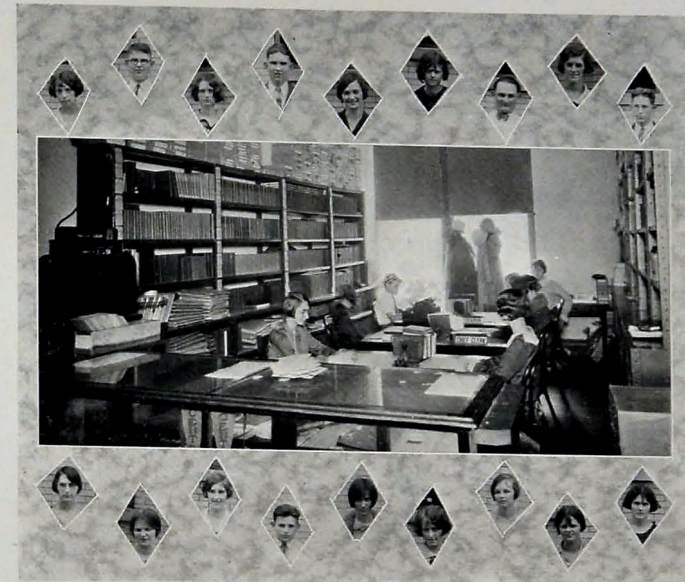
HERBERT TATE
SAM WHALEY
HASSEL FRICKS
MARY ELLEN FRIDELL
FRANCES LYLE
TILLMAN GRANT
MARY DUNBAR
RUTH WILLIAMS

FLOSSIE ALLEN
EDWARD HENDERSON
CLIFTON LAWRENCE
PAULINE BOWMAN
LAWRENCE ROGERS
MARGARETTA PEITZER
RUTH GANSLER

INSTRUCTORS

PROF. W. A. PRICE Miss IDA NICKEL
MRS. GEO. E. RICE Miss SIDYL JOY INGRAM
Miss MARTHA COCHRAN

THE CHAMPION



The Bookstore

PRESTON MOORER
MAURICE RAINS
ALMA BECKER
FREDONIA ERNST
PAULINE FUSSELL
MARY LOUISE WIGGS

EDWARD HENDERSON
CLIFTON LAWRENCE
TILLMAN GRANT
FLOYD HUNDLEY
EDWARD POPE
NELLE CORNETT

RILLA MAE MILLER
THELMA RAINEY
HELEN POTTER
MARGARET EVANS
RUTH BUFFETT
GENEVA WILLIAMS

The Commercial Department of Central performs a very important function in the way of caring for the business transactions of the school. This year they have been especially favored with a new department, affording better facilities for work.

This department offers two excellent courses to students desiring a business education. The secretarial course turns out many efficient stenographers each year and the bookkeeping course is unexcelled.

Not only in the business world of Chattanooga, but in other cities as well, are found Central students who are doing excellent work.

THE CHAMPION



The Rest Room

Just at the end of the corridor, where it is usually very dark, is the brightest little room, artistically furnished in blue and tan. It is suggestive of home with exquisite draperies and furnishings, its expressive pictures, and its cheerful flowers. Most home-like of all is the motherly advice and care with which Mrs. Mary D. Calles brings peace and happiness to all who enter here. This nook is the rendezvous of the sick, weary, and wounded. It is here that burdens are lessened or dropped, that smiles supplant tears, that high resolves show forth in the faces of those who come and go. From five to ten students seek the Rest Room each period for the comfort they are certain to receive.

*Most cheerful and peaceful, this little room,
Where is gathered all that is best
Sought by the weary in body and soul,
This dear little haven of rest.
Ministered to by a loving hand
Debarring the ogre of gloom;
Joy and happiness ever prevail,
Most loved of all, the Rest Room!*

MIRIAM MARSHALL, '28.

THE CHAMPION

The Centralite

*In the dear old halls of Central High,
The school whose worth we verify,
Are boys and girls of many types
In whom even sages might delight:
The witty, the thoughtful, the wise and gay,
And others who patiently seek each day
Truth—with effort unswerving,
Wisdom—that they may know,
Service—a love for others,
Light—of unswerving glow.
Yet while we name the many,
The fickle, the constant, the sad;
The graceful, sincere, and efficient,
The simple, the stately, the glad,
We like to think, as the days come around,
And as time rushes on in its whirl,
That there's the same love of right
In every true Centralite—boy or girl.*

THE CHAMPION

Centralite

Capable EDNA STAMPS

*"My children are my jewels,"
Said Cornelia of old,
So Central, like a mother,
With pride her gems beholds;
None does she prize more highly,
None more tenderly enfolds
Than Edna, her "Capable" child,
So tender, gentle, and mild.*

Enthusiastic REECE CAMP

*Pep's the motive power of our school,
Enthusiasm her most valued tool;
When we work, we work as one,
When we play we play for fun;
Oh, how funny we would sound
When our yells go round and round,
If on Camp we couldn't depend
To lead us straight and enthusiasm lend.*

Natural EVELYN CHAMBERS

*It's not because you are jolly,
Or seldom if ever blue;
It's not because your words
Are slow and never few;
It's not because you are pretty,
But of course we know that's true:
The reason why we love you
Is because you are you.*

THE CHAMPION

Tactful REED GARDNER

*Here's to our orator and actor, too!
It's almost incredible the things he has to do;
But he's not a shirker,
He's a real true worker,
Whose troubles are bubbles, whose task is a joy,
He meets each situation with such wisdom and
perception,
That "most tactful" they dubbed him
In the Centralite election.*

Reliable WILLIAM ROLLINS

*Reliable, dependent, sincere, and fair,
When he says "Yes," we know he'll be there;
Not only behind the scene
Does he work with his crew,
But in the limelight outside
He's sure his part to do.
Call on "Boots," he's the one
If you'd feel the work will be done.*

Athletic GEORGE CADE

*Here's to George, our football star,
In basketball he's famed afar;
His skill at tennis none can deny,
With him in baseball few can vie;
In fact, our George is hard to beat,
We call him our "all-round" athlete.*

THE CHAMPION



Loyal EDWARD MITCHELL

*Four long years you've held the banner
High and noble every foot;
Four long years you've walked beside us,
Never failed us, ne'er forsook.
Now for all your strength and courage,
For your sense of honor, too,
We are proud to call you "loyal,"
Praise your friendship as true blue.*



Industrious MARY GRAHAM

*We envy you your patience,
And your perseverance, too;
We've never known you fail or falter
When you're given work to do.
"Industry's Fortune's right hand," they say;
Always at it wins the day.
Great things of you we are expecting,
Central's hopes in you are resting.*



True JAMES MORGAN

*In our days of high school pleasure,
In our toil and in our leisure,
We've had many a turn and twirl,
We've met many a boy and girl;
Some are simply those we know,
Some ring true all through and through;
In all this host of high school seniors,
Of you they seem the surest,
So decided to call you "truest."*

THE CHAMPION



Excellent GEORGE MCINTURF

*It is with joy we honor thee,
Whose record from short-comings is so free;
You've set your standard high, we know,
Your path with credit is aglow;
"Excellent" expresses only in part
All that we feel so deep in our heart,
"Thou, in our wonder and astonishment,
Hast built thyself a livelong monument."*

Now should you like
From us all
One who would be a type,
Just add us all together,
And you'll be pretty nearly right.

CAPABLE EDNA STAMPS
ENTHUSIASTIC REECE CAMP
NATURAL EVELYN CHAMBERS
TACTFUL REED GARDNER
RELIABLE WILLIAM ROLLINS
ATHLETIC GEORGE CADE
LOYAL EDWARD MITCHELL
INDUSTRIOUS MARY GRAHAM
TRUE JAMES MORGAN
EXCELLENT GEORGE MCINTURF

THE CHAMPION

School Songs and Yells

CENTRAL MUST WIN

Central, oh, Central! Central must win!
Fight to the end, boys, never give in!

Rah! Rah! Rah!
You do your best, boys!
We'll do the rest, boys!
Fight for the victory!

Rah! Rah! Rah!
(Repeat)

SEE THE BALL

See the ball go round the end,
Good-bye, old City, good-bye!
It's in the hands of Central men,
Good-bye, old City, good-bye!

Chorus

Bye-bye, old City, by-bye, old City!
Bye-bye, old City, good-bye, old City,
Good-bye!

CHEER, BOYS, CHEER!

Cheer, boys, cheer!
Old Central's got the ball!
Cheer, boys, cheer!
Old City's going to fall!
And when we hit that line
There'll be no line at all—
There'll be a hot time
In the old town tonight!
Oh, Central—

(Repeat)

RINGS ON THEIR FINGERS

Our team has rings on their fingers
And bells on their toes;
They're the best in Chattanooga,
As everybody knows;
So pile up the score, boys,
While we yell for Central High!
For Central, Central, Central, Central High!
Oh, my!

CHEER! CHEER!

Cheer, cheer! Here we are again
To cheer old Central's name!
Loyal ever to our school,
We'll never let her honor wane.
Fight! Fight! Fight!
Her sons and daughters, ever true,
Know what her spirit rare can do,
And for her fame forever we will
Fight for aye, for old Central High!

A CANNIBAL KING

A Cannibal King, with a big nose ring,
Got struck on a Zulu maid,
And every night, when the moon shone bright
Across the canal he'd wade
To hug and kiss this dusky miss,
Out under the green-wood tree,
And when they met they sang a duet
That sounded like this to me—

Yackety, yackety, yackety, yack!
Brackety, brackety, brackety, brack!
Yackety, brackety! Sis! Boom! Bah!
Central! Central! Rah! Rah! Rah!

YELLS

C-E-N-T-R-A-L!
That's the way to spell it,
Here's the way to yell it—
Central!

Whistle! Boom!

Central, fight, fight, fight!

Yea, team! Yea, team! Yea, team!
Fight! Fight! Fight!

One zip, two zip,
Three zip, zam!
We're from Central,
And we don't give a hoochi!
Ki-yi, hoochi, ki-yi!
Hot, cold, wet or dry,
We're from Central,
Central High!

Say!—What?

That's what! What's what?

That's what they all say!

What's what they all say?

Central!

Hit 'em, Purple!

Hit 'em, Gold!

Hit 'em Central!

Knock 'em cold!

Give 'em the ax!

Give 'em the ax!

Give 'em the ax, ax, ax!

Where?

Right in the neck!

Right in the neck!

Right in the neck, neck, neck—

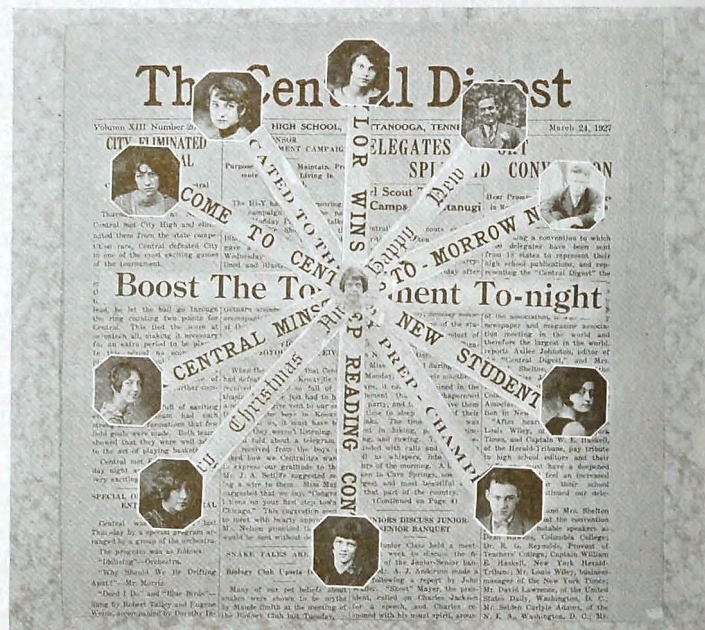
There!

THE CHAMPION

PUBLICATIONS



THE CHAMPION



Digest

EDITORIAL STAFF

AZILEE JOHNSTON	Editor-in-Chief
JAMES MORGAN	Assistant Editor
MARIE WHITAKER	News Editor
LOUISE BRANTLY	News Editor
HOWARD ANDERSON	Feature Editor
VIRGINIA GODSEY	Exchange Editor

REPORTERS

ROSEMARY MAY	ELMO BREWER
FRANCES RICHARDS	KATHRYN WEATHERLY
MRS. JOHN A. SHELTON, Faculty Adviser	

THE CHAMPION



PRINTING STAFF

LESLIE BARROWS	Foreman	ERWIN PEASE	Proofreader
ARLON SMITH	Composer	JAMES MITCHELL	Pressman

BUSINESS STAFF

WILLIAM PRICE	Business Manager	MAYBELLE TAYLOR	Bookkeeper and Treas.
MARK REYNOLDS	Advertising Manager	VIRGINIA ELLIOTT	Secretary and Typist
JOSEPH MEADOWS	Circulation Manager		

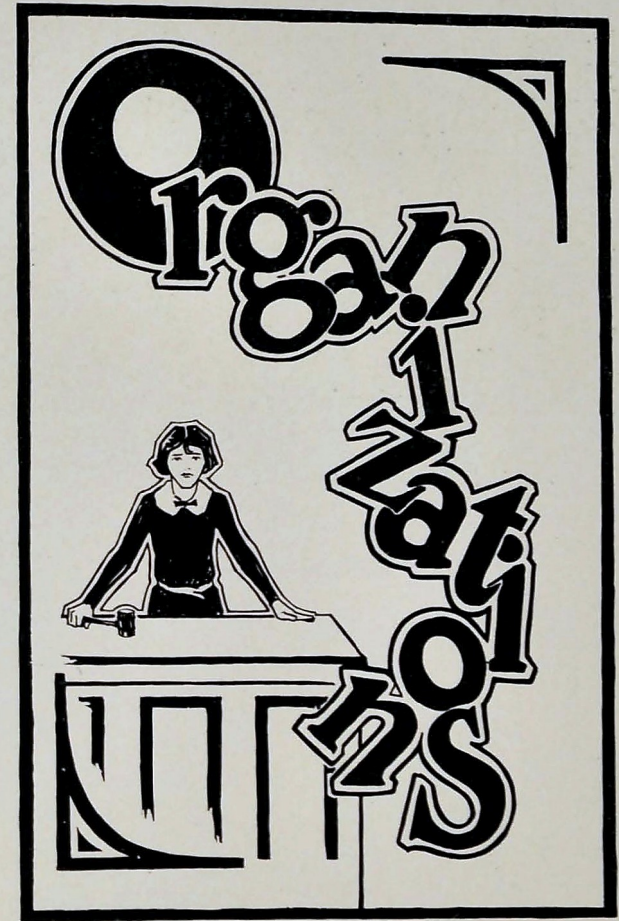
THE CHAMPION



The Champion Staff

REED GARDNER	Editor-in-Chief
REECE CAMP	Joke Editor
ADELIA WALLER	Society Editor
GEORGE CADE	Athletic Editor
ARTHUR GREEN	Senior Section Editor
CLYDE DAVIS	Military Editor
HARRY MYERS	Photographic Editor
PAUL OVERBAY	Art Editor
EDWARD MITCHELL	Business Manager

THE CHAMPION



THE CHAMPION



The Boys' Hi-Y Club

OFFICERS

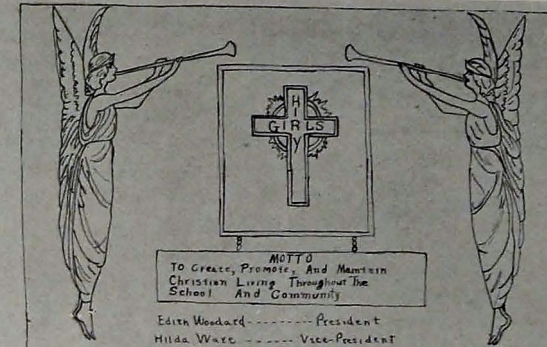
GEORGE MCINTURF	President
REED GARDNER	Vice-President
CHARLES JACKSON	Secretary
LOUIS SMARTT	Treasurer
MR. GLENN ELLIS	Supervisor
MR. GASS	Faculty Adviser

ROBERT TALLEY
EUGENE WELCH
ARNOLD LYLE
JACK SHERMAN
J. B. HAWKINS
JOE SHADDEN
CLARENCE GENTRY
JOHN WALLER
GEORGE BROYLES
HOWARD ANDERSON
GEORGE MCCARTY
JOHN SWEETS

JOE DARR
PAUL OVERBAY
PAUL QUIRK
L. D. POTTS
HAMPTON MORGAN
W. C. ROBINSON
MERVIL TURNER
LOUIS SMARTT
JOE MORRIS
DEFOREST LOWERY
EDWARD MITCHELL
WALTER LUTHER

RAYMOND BLAKE
CHARLES WEIGLE
RAYMOND ALLEY
HARRY MYERS
HARRY WILLIAMS
ASHLY BLACK, JR.
HUGH CONNOR
RAYMOND RUNYAN
NORMAN SMART
M. C. SMITHERMAN
MANCE SHERRILL
LUTHER CHAMBERS

THE CHAMPION



MOTTO
To Create, Promote, And Maintain
Christian Living Throughout The
School And Community

Edith Woodward President
Hilda Ware Vice-President
Arlene Johnston Secretary
Marie Parks Treasurer

Evelyn Chambers
 Rosemary May
 Metram Marshall
 Ruth Mylius
 Grace McCarry
 Evelyn Miller
 Mildred Moore
 Frances Richards
 Katherine Bond
 Dorothy Bryant
 Edna Hiddle

Mrs. John H. Shelton

Vivian Richards
 Kathryn Weatherly
 Frances Woodward
 Evelyn Wood
 Flora Doss
 Blanche Shipkey
 Janet Smith
 Marie Glicker
 Margaret Cox
 Christine Jones
 Margaret Brammer

Mrs. Mary H. Calles



OFFICERS



MEMBERS

THE CHAMPION



Lettermen's Club

OFFICERS

ED PETERSON *President*
 JAMES MORGAN *Vice-President*
 GEORGE CADE *Secretary-Treasurer*

MEMBERS

EDWARD BROWN	EDWARD PETERSON	FRANK STRINGER	HOWARD HAMMOND
OWEN BARNES	EUGENE MAYER	HERMAN UNDERWOOD	CHARLES JACKSON
JOHN SEAGLE	CARL HAMMOND	CLARENCE GENTRY	HERBERT TATE
ELBERT TIMMONS	HOWARD ANDERSON	JOE SHADDEN	MR. W. P. BALES
GEORGE CADE	GLEN HUNT	FRANK BRADFORD	MR. S. E. NELSON
JAMES MORGAN	HOMER KEYS	ESTILL MAXWELL	MR. S. D. PETERSON
DONALD JONES	HOWARD SMITH	GEORGE MCINTURF	MR. JEFF SETLIFFE
HOMER JONES	JOHN WALLER	M. J. O'BRIEN	

In the year 1921-22, when Mr. S. E. Nelson took over his duties as principal of Central High, he organized what is today one of the best known clubs of the school, the Lettermen's Club. The organization was formed at that time to prevent a person who had not earned a letter from wearing one.

The officers of the club for the first year were: George Lynch, president; Ernest Williams, vice-president; Billy Shadden, secretary-treasurer; Andrew Cope, sergeant-at-arms.

This club has grown from twenty members in the first year to thirty-three at present.

To be a member of the Lettermen's Club, an athlete must earn his letter in one of the four sports—football, basketball, baseball, or track. After working hard for his letter, he becomes then a candidate for membership. Later he is carried through the initiation and admitted into the club.

The Lettermen's Club of today not only prohibits non-lettermen from wearing the letter, but also tries to create a spirit of pride in achievement by making the members feel that they are working together as brothers for Central. The lettermen enjoy each year one or more social events, which help to keep them closer together. The club has always responded to calls for help in school activities and is always ready to aid the principal when their help is needed.

JAMES MORGAN, '27.

THE CHAMPION



Girls' Patrol

EDITH WOODARD *President*
 MISS MARGARET WAPLES *Sponsor*

MEMBERS

LOUISE BRANTLY	LUCILE HOLLOWAY	MATHILDA ORTMEIER
DORIS CARTER	OLITA HOODENPYLE	JANET SMITH
EVELYN CHAMBERS	AZILEE JOHNSTON	EDNA STAMPS
ALINE COMER	GRACE LERCH	LELA STROUD
RUTH GILLILAND	EVELYN MILLER	EMMA BELLE TUCKER
VIRGINIA GODSEY	MILDRED MOORE	HILDA WARE
MARY GRAHAM	RUTH MYLIUS	KATHRYN WEATHERLY

The Girls' Patrol was organized in 1925, with twenty members chosen from the Senior Class. Their duties were to clear the halls and direct students on the crowded stairs. This was necessary because of the dangerously overcrowded condition of the school before the new addition.

But now that we have the new wing, confused traffic conditions have been improved, and the duties of the patrol have changed. The girls are now endeavoring to aid in promoting the general welfare of the school. Co-operation between the faculty, students, and the patrol is a thing greatly desired.

These girls, chosen for outstanding character, executive ability, and tact, are organized as big sisters to all the lower classmen, and advisers and helpers to the whole student body.

THE CHAMPION



Officers' Club

OFFICIALS

MAJOR CLYDE DAVIS *President*
 CAPTAIN GORDON MOSTELLER *Vice-President*
 LIEUTENANT MARK REYNOLDS *Secretary and Treasurer*

MEMBERS

Captains

WILLIAM MORRIS

HERBERT WENCK

WALTER LUTHER

First Lieutenants

DEFOREST LOWERY
 W. C. ROBINSON

HAMPTON MORGAN
 ARTHUR EVANS

OSCAR BALDWIN
 ESTELL MAXWELL

Second Lieutenants

GORDON MASSENGALE
 MARK REYNOLDS
 PAUL OVERBAY

L. D. POTTS
 VICTOR STONESCIPHER

T. E. PHILIPS
 HAROLD CAREY
 ROY BOONE

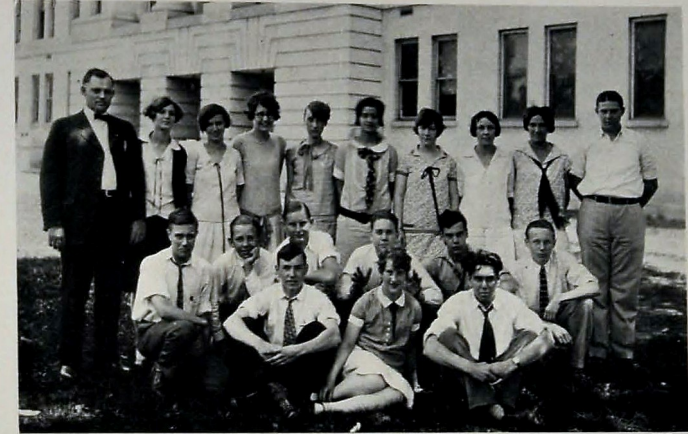
"All for one and one for all."

For several years there has been at Central an Officers' Club, but never one which has shown more spirit and interest than ours. It is the purpose of this club at all times to work for the interest of the battalion, to promote those things which will lend life and enthusiasm to the military phase of our school life.

Whenever it has seemed wise, the social side of the club life has been encouraged by parties or such functions as will bring members together on a friendly basis.

One noteworthy achievement of the year was the presentation of "Pomander Walk," given April 29, in the high school auditorium, and directed by Mrs. Longley. Among other friends to whom is due much of the credit for the progress and success of the club are Mr. S. E. Nelson and Captain Ochs.

THE CHAMPION



Camera Club

OFFICERS

HARRY MYERS *President*
 JAMES KEENE *Vice-President*
 LOUISE COX *Secretary and Treasurer*

Mr. Gass, *Sponsor*

MEMBERS

ELIZABETH BUSHNELL
 COSETTE BROWN
 ARON CASTLEBURY
 SPENCER COLBY
 CHARLES CRAIG
 WILLIAM COLLINS

FLOYD JOHNSTON
 EDWARD SLIGER
 CATHERINE ROSS
 MILDRED TAYLOR
 ELIZABETH WHALING

KATHERINE BONDS
 VIRGINIA GODSEY
 EUGENE COX
 HARRIET JOHNSON
 WILMA PLANZER
 THOMAS JOHNSTON

The Camera Club consists of a group of boys and girls who are interested in the taking and developing of pictures. The club has many hikes and campfire parties during the year. In the dark room the members of the club are given instruction in picture developing by laboratory method. The club fosters interest in different phases of school life by taking pictures at the plays and other activities.

THE CHAMPION



ORCHESTRA



GLEE CLUB

THE ORCHESTRA

The orchestra has spent a year of efficient service to their Alma Mater. They furnished music for the plays, the parties, the minstrel, the operetta; in fact, for every school event. Their activities have not been limited, however, to the entertainments within the school. On many occasions have they played at other schools in the city and at different organizations' meetings. Central High School orchestra is well known throughout the city, and upholds splendidly the name of the school it represents.

PAUL OVERBAY	BERNARD LEVITON	MARGUERITE CHAMPION	ROY BOONE
OLIN JACKSON	EDNA GOTHARD	CHARLES HEARD	HARRY MYERS
EDITH DAVIS	JAMES PERKINSON	DAVID ALLENDER	ROBERT MORRISON
MARIE SCHNEIDER	PHILIP LICKENSTETTER	ELEANOR WOOD	EUGENE COX
JENNIE LOU GOTHARD	NEAL PEAK	CHARLES MORRISON	EVELYN WOOD
CHRISTINE BOSS	ALICE LOUISE HELMS	JAMES THOMPSON	JACK JACKSON

VARSITY GLEE CLUB

The Varsity Glee Club has become a very important organization in Central High School. Their work for the year has been of a very creditable nature. They have furnished several chapel programs, and have had their part in furnishing the music for nearly every event in the school calendar. The big musical events of the year were sponsored by the group, and they were, in a great measure, responsible for the success of these performances.

ROBERTA BRYANT	ORA GREY WHITING	ELIOSE FOLKNER	W. C. ROBINSON
ALMETA HOWARD	EDNA WILLIAMS	HAZEL McDONALD	REED GARDNER
EVELYN MILLER	EDITH WOODARD	FRANCES NORTH	ED BROWN
VERNA O'REAR	RUBY HOOD	ROBERT TALLEY	GEORGE CADE
WILMA PLANZER	FLORA MAE PACK	EUGENE WELCH	HAMPTON MORGAN
	EDWARD MORGAN	PAUL OVERBAY	

MAURICE RAINS, *Accompanist*

THE CHAMPION



OPERETTA



MINSTREL

"Miss Cherry Blossom"

This brilliant operetta was presented by the Music Department on the night of April 15. The setting was Japanese, and the plot was woven around the love affair of a Japanese maiden, called Cherry Blossom, and a young American. The two leading parts were played by Ora Grey Whiting and W. C. Robinson. Other important roles were interpreted by Wilma Planzer, Reed Gardner, Pilham Wright, Paul Overbay, Hampton Morgan, and Robert Talley. Choruses of Japanese geisha and American girls and men added greatly to the success of the performance with their attractive songs and dances.

The Minstrel

The Minstrel First Part was a rollicking comedy of plantation life in good old Dixie. The numerous comedy skits were cleverly interspersed with songs and dances of every type imaginable. Important Negro parts were played by George Cade, Skeet Mayer, George McInturf, Edward Morgan, Jack Sherman, Mabelle Stinson, Evelyn Chambers, Ed Brown, and Neal Peak. Reed Gardner acted the part of the plantation owner and interlocutor.

The Minstrel Second Part was a one-act musical comedy by the name of "Cynthia's Strategy." The consent to the marriage of the daughter with her chosen lover is the center of the plot. The characters, the mother and the father, were cleverly interpreted by Evelyn Miller and Hampton Morgan. Ora Grey Whiting and W. C. Robinson played the roles of the daughter and her lover. Many choruses, and especially the boys' chorus masquerading as girls, made the production extremely interesting and colorful.

THE CHAMPION



Central Public Speaking and Dramatic Classes

EDITH WOODARD

MARIE PARKS

MISS BERTHA RUSSELL, *Adviser*
AZILEE JOHNSTON

For many years Central High School has had a high standing in Dramatics and Public Speaking. This has been witnessed by the large audiences that have attended the annual class plays and various contests, but for the first time in the history of the school we have this year an opportunity for students to study Public Speaking, Dramatics, and Expression as a special part of their curriculum.

The work in this field is divided in such a way as to give each student an equal amount of time to devote to each of the three phases included. During the year a course in Public Speaking is given wherein a careful study of outlining, writing, and the delivery of the oration is required. The work in Dramatics consists of a study of one-act plays for class work, preparing the student for the understanding of drama, stage technique, and interpretation of literature. This year the plays produced in Public Speaking were: Tarkington's "The Ghost Story," Zona Gale's "The Neighbors," Elizabeth Gole's "Not Quite Such a Goose," and Rochwell's "Magda."

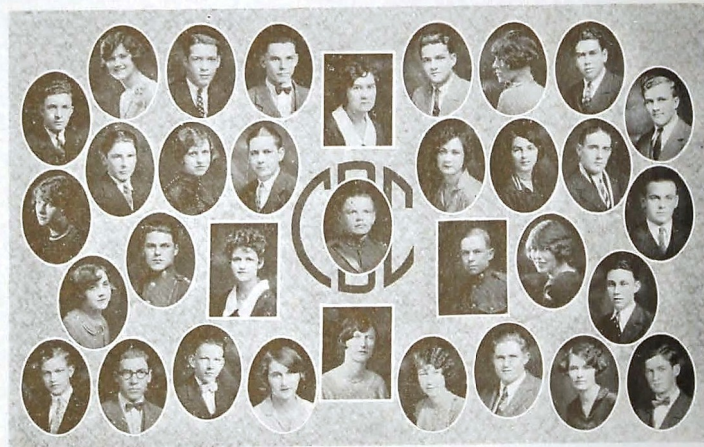
The work done in so-called Expression gives practice in breath control, voice projection, and the interpretation of the printed page.

The popularity of the course is shown by the fact that seventy students have enrolled during the first year it has been offered.

THE CHAMPION



THE CHAMPION



Central Dramatic Club

OFFICERS

DeForrest Lowry *President*
 L. D. Potts *Vice-President*
 Janet Smith *Secretary*
 Marie Parks *Treasurer*
 Miss Bertha Russell . . . *Faculty Sponsor*

MEMBERS

Reed Gardner
 Edith Woodard
 W. C. Robinson
 Jesse Fry
 Wm. Rollins
 Helen Lotspeich
 Harry Myers
 Wm. Morris
 Evelyn Chambers

Paul Overbay
 Emma Belle Tucker
 Hampton Morgan
 Gladys Hickey
 Marie Dowd
 Orville Gass
 George Broyles
 Ruth Mylius
 Walter Luther
 Hilda Ware

Eugene Welch
 Mark Reynolds
 David Harris
 Harry Snattinger
 Ruth Arnold
 Edward Morgan
 Marie Whitaker
 Joseph Morris
 Dorothy Hayes

De Forrest Lowry
 L. D. Potts
 Janet Smith
 Marie Parks
 Miss Russell
 Mildred Taylor
 Inez Oxford

Louise Cox
 Ruth Hardin
 Jessie McEachern
 David Allender
 Margaret Steffner
 Charles Jackson

THE CHAMPION



THE STAGE CREW

"Boll Weevils"

Left to Right, Fourth Row—

De Forest Lowery—*Fly Floor*
 Alvin Johnson—*Fly Floor*
 Edward Morgan—*Substitute Electrician*
 Horace Meador—*Right Stage*

Third Row—

Victor Stonecipher—*Left Stage*
 Floyd Johnston—*Curtain*
 William Henderson—*Fly Floor*

Second Row—

Willis Fisher—*Head Electrician*
 William Collins—*Assistant Electrician*

First Row—

William R. Rollins—*Stage Manager*

Left—

Miss M. E. Maples, *Faculty Adviser*

Right—

Mr. S. E. Nelson, *Principal*

THE CHAMPION



The Dixie Society

EVELYN CHAMBERS, *President*

GROUP I

MABEL CROCKER *Vice-President*
 MILDRED MOORE *Secretary*
 HILDA WARE *Treasurer*

GROUP II

HENRIETTA RANDLE *Vice-President*
 NADELL CATES *Secretary*
 LOUISE SMITH *Treasurer*

SOCIETY ROLL

Mary Ellen Fridell
 Ruth Gansler
 Geneva Joiner
 Wilma Johnson
 Erma Ledford
 Louise Parker
 Vivian Richards
 Ruth Ray
 Dorothy Usmiller
 Blondie Webb
 Irene Marler
 Novella Tate
 Hilda Ware
 Mildred Moore
 Mabel Crocker
 Evelyn Chambers
 Henrietta Randle
 Nadell Cates
 Louise Smith
 Fay Hester
 Jane Boyd
 Ruth Mylius
 Louise Brandy
 Muriel Elder

Kathrine Lee
 Janet Smith
 Marie Parks
 Katherine Bonds
 Pauline Faires
 Virginia Godsey
 Louise Jones
 Margaret Bunch
 Adella Waller
 Edna Stamps
 Mildred Mansfield
 Maurice Rains
 Roberta Tilford
 Lella Stroud
 Francis Long
 Marie Crocker
 Frankie Richards
 Helen Savoy
 Dorothy Arwood
 Dorothy Prentice
 Hassel Fricks
 Irene Grant
 Louise Vandergriff
 Dorothy Lillard

Frances Lyle
 Wynett Alverson
 Mary Ellen Fridell
 Dora Bull
 Lucile Wallace
 Mae Meroney
 Helen Lotzpeich
 Mildred Stewart
 Fredonia Ernst
 Elouise Folkner
 Lucy Snattinger
 Katherine Harrington
 Katherine Weatherly
 Azilee Johnston
 Ted Lowe
 Katherine Davis
 Grace Lerch
 Edith Davis
 Roberta Bryant
 Lucia Weaver
 Rema Boyd
 Gladys Scott
 Elizabeth Hogan
 Verna O'Rear

Mary Graham
 Anna Mae Lieb
 Louise Cochreham
 Mildred Gamble
 Louise Humphries
 Cozette Brown
 Kathrine Ross
 Lilly Belle Bruce
 Margaret Cox
 Virginia Roberts
 Thelma Lindsay
 Preston Mooror
 Thelma Deering
 Beatrice McBrayer
 Ruth Wheeler
 Ruth Gilliland
 Relka Jones
 Tena Hamilton
 Eunice Lyle
 Flossie Allen
 Virginia Ashby
 Alma Becker
 Betty Sue Black
 Mary Dunbar

Although it was organized primarily as a literary society, the Dixie Society has always stood for old Southern courtesy and hospitality. Theirs has been a twofold aim, to sponsor the best in literature and life—a high and beautiful ideal which has guided the Dixie Society always and made it the largest society in our school today.

The greatest step toward the achievement of our aims has been the society programs. The literature discussed has included many studies of the quaint manners and customs of our forefathers and of people in other lands. After these discussions there was the social hour, which has served to give a charm of manner, greater social ease, and develop conversational ability, thus helping to make all-round girls by developing a side often overlooked in the public school education and preparation for life.

The programs have brought to Central an influence that promotes courtesy and kind feeling among the students. This is justly recognized as the Dixie spirit.

THE CHAMPION



Athenian Society

OFFICERS

EVELYN MILLER *President*
 RUTH MARTIN *Vice-President*
 RUBY HOOD *Secretary and Treasurer*

SPONSORS

Miss EDMOND HOOSER

Mrs. J. K. WITHERSPOON

MEMBERS

LOIS ALFRED
 THELMA BAUMGARTNER
 MARGARET BRAMMER
 GLADYS CADE
 ALINE COMER
 MARTHA HAMILTON
 ADALENE HESTER
 RUBY HOOD

RERA JOHNSON
 EMMA L'HEUREUX
 HELEN McCLURE
 MIRIAM MARSHALL
 RUTH MARTIN
 EVELYN MILLER
 ANGELL MONROE
 WILLETTA PERKINS

EUDORA RAMEY
 LAURA ROBINSON
 MIRIAM SPENCER
 ORA GREY WHITING
 PAULINE WILLIAMS
 ELEANOR WOOD
 EVELYN WOOD
 NETTYN YARBROUGH

The Greek goddess Athena, for whom our society is named, was goddess of wisdom and patroness of arts. To understand the truth about things worth while, and to develop an appreciation of the beautiful is the lofty ideal which the Athenians consider worthy of their best efforts. Like every other organization of Central, it desires the co-operation of every student, and serves everyone who permits it to do so, for Athenians believe—

"There's a destiny that makes us brothers;
 None goes his way alone:
 All that we send into the lives of others
 Comes back into our own."

RUTH MARTIN.

THE CHAMPION



The Wellesley Society

OFFICERS

MAURICE JARNIGAN	President
MARIE WHITAKER	Vice-President
ELIZABETH WHALING	Secretary and Treasurer

SOCIETY ROLL

EUNICE MULKEY	MAUDE SMITH
ELIZABETH LUPHER	MARIE WHITAKER
ROSE MARY MAY	RUBY FITZGERALD
ALICE SUE FAIDLEY	NELL MOORE
MAURICE JARNIGAN	EMILY HUDSON
ELOISE STANDIFER	HARRIET JOHNSON
ELIZABETH WHALING	BONNIE KATE PASS
MARY VIRGINIA ROUS	CLEO WATSON

SPONSORS

MISS ELIZABETH FISHER MISS ELIZABETH NEWBERRY

The Wellesley Society was organized in 1912 for the purpose of promoting interest in literature. The name was taken from Wellesley College, a college of high literary and moral standards.

The first sponsor of the society was Mrs. L. M. Russell, who did much to promote its interest and growth. The second sponsor was Miss Edna Cuerton, now Mrs. William Jacoway. It was through her efforts that the society was able to present the school with the Wellesley Bulletin Board.

The Wellesley Society has always striven to aid in the promotion of any movement for the betterment of the school. This year an effort has been made to assist in a clean-up campaign in the corridors and study hall.

"Active in Service" is the aim of every member, with every member co-operating as one.

THE CHAMPION



Euterpean Society

OFFICERS

MOZILLE VANDERGRIFF	President
MATILDA ORTMIER	Vice-President
MYRLE BEAVER	Secretary
MARGARET STEFFNER	Treasurer

MEMBERS

A. LUCILLE SMITH	GRACE STRINGER	RUBY LEE PEPPERS
FRANCYS WILLIAMSON	MABEL PRINCE	GLADYS HICKEY
LOUISE BURKHALTER	LOIS DELANEY	VIVIAN PEPER
BLANCHE CHAMBERS	LINNIE MAHAN	CHARLOTTE BROWN
IRENE CALKINS	JESSIE EPPERSON	MARGARET STEFFNER
MATHILDA ORTMEIER	IRENE MARSHALL	FRANCES NORTH
ALBERTA SMITH	MILDRED CONNALLY	EDITH MCCARTY
DORIS CARTER	WILLA MOUNT	JESSIE PROCTOR
FRANCES TOOMEY	VIRGINIA BOSTAIN	LULA MCGUFFIN
MARY ANN GIST	MOZELLE VANDERGRIFFE	NELLIE ROYAL
RUTH CARUTHERS	GRACE MCCRARY	MYRLE BEAVER
CATHERINE FLEGAL	RUBY BOWLING	ELLA MAUDE BROWN
LENA RUEF	ST. CLAIRE SILVER	MARIE DOWD
LELIA ROBINSON		DOROTHY PENNY

Since its organization in Central High School the purpose of the Euterpean Society has been to aid in the cultivation of an appreciation for good music.

The year book of the society this year was so arranged that an opportunity was afforded of learning something of the different composers of our sacred, folk, classical, and popular music.

One of the outstanding features of the year's work was a musical program given in chapel on April the fifth, at which time officers of the Euterpean Society presided.

THE CHAMPION



The Senate

OFFICERS

REED GARDNER *President*
 HARRY MYERS *Vice-President*
 RUTH MYLIUS *Secretary*

CABINET MEMBERS

CHARLES JACKSON	HERBERT TATE
EVELYN CHAMBERS	MARIE PARKS
HARRY WILLIAMSON	EMMA BELLE TUCKER
JACK SHERMAN	

MEMBERS

WILMA PLANZER	LOUIS SMARTT	MARIE PARKS
LELIA ROBINSON	MARK REYNOLDS	JOE DARR
MARIE DOWD	JOE MORRIS	EUGENE WELCH
EVA FARMER	L. D. POTTS	LUTHER CHAMBERS
ELLA MAUDE BROWN	HUGH CONNER	G. J. MAVITY
MYRL BEAVER	CHARLES JACKSON	ERNEST HORTON
EMILY HUDSON	EVELYN MILLER	KATHERINE SLIGER
EDNA GREENE	NADELLE CATES	HAZEL McDONALD
NELL MOORE	KATHRYN LEE	MELVA HUTTON
KATHRYN BONDS	TENNIE HAMILTON	NORMAN SMARTT
VIRGINIA LOWRY	MARY GRAHAM	ERNEST LAWRENCE
GLADYS HICKEY	HELEN C. McCLURE	RUTH MYLIUS
ST. CLAIRE SILVER	LORA JONES	ARTHUR EVANS
MARQUIS TRIPLETT	MARIAM H. MARSHALL	THOMAS JOHNSTON
GEORGE GROYLES	JANET SMITH	DEFOREST LOWERY
MANCE SHERRILL	EVELYN CHAMBERS	CLARENCE SMITHERMAN
HAMPTON C. MORGAN		REED GARDNER

THE CHAMPION



The Boosters' Club

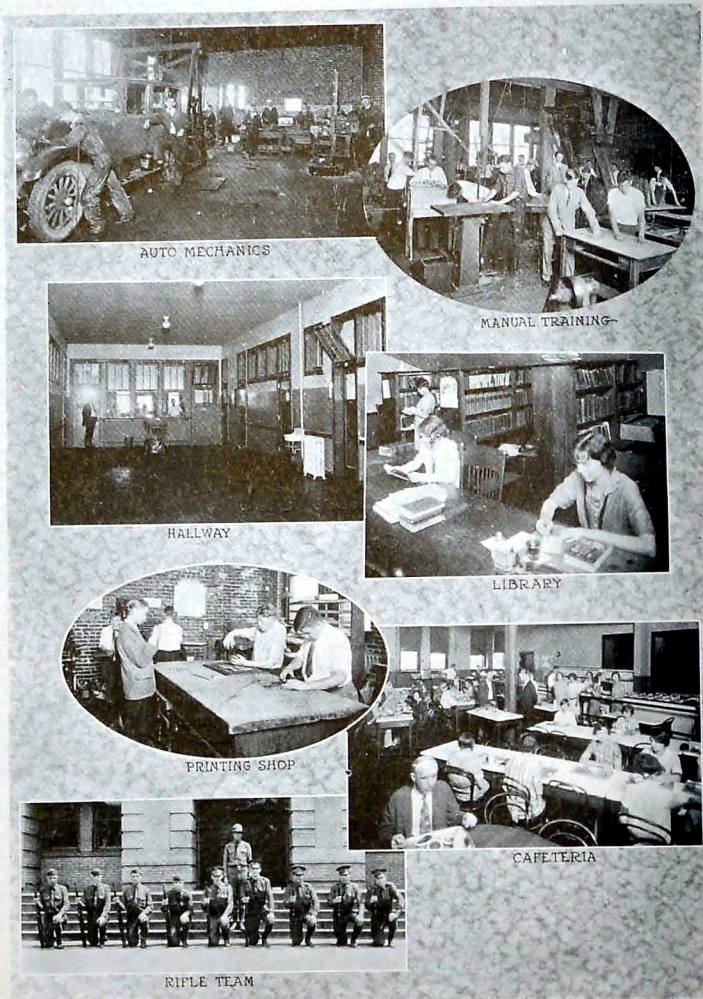
OFFICERS

WILLIAM PRICE *President*
 FRANK BRADFORD *Vice-President*
 MARY HELEN RICHARDSON *Secretary-Treasurer*

MEMBERS

HENRIETTA COBLEIGH	ARNOLD BRAGG
EDNA MYERS	ANTON BUOL
DOROTHY CONSTANT	IRENE RAGON
LOUISE WILSON	FRANK BRADFORD
ROSE WHITE	URRAY WILSON
THEODORE TURBYVILLE	MILDRED TAYLOR
KATHERINE SLIGER	MARY H. RICHARDSON
BONNIE KATE	LOUISE COX
EVA MOTE	JOE DARR
CATHERINE CARSON	HARRY POLLARD
ROY STARNER	JAMES FRYE
PAULINE WILLIAMS	ORA LOWE
J. B. HAWKINS	ED BROWN
TED WITT	MINNIE LEE McAFEE
WILLIAM LOVE	WILLIAM PRICE
ORVILLE HARRIS	MARGARET BROWN
RUTH MARTIN	BERNARD ARNOLD
HILDA WARE	CLARENCE GENTRY
JOHN HUMPHRIES	MARSHALL DeLONG
MITCHELL AUSTIN	HAZEL CHASTAIN
HARIETTA JOHNSON	FRANCES LONG
ANNA MAI LIEB	MILDRED MANSFIELD

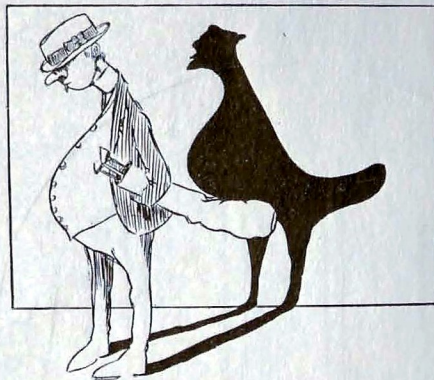
THE CHAMPION



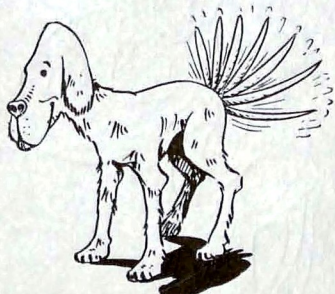
THE CHAMPION



THE CHAMPION



Silhouettes of life remind us
We must make our outline, too;
And departing leave behind us
Shadows just like me and you.



You may fear for his future, but who
could doubt his past?

Nurse: "Where are you? It is time to take
your medicine."

B. Anderson: "Yes, I know it. I'm in the
bath tub; the directions say take this medi-
cine in water."

Janet S.: "Say, did you hear about Paul
Overbay's accident?"

E. Chambers: "Oh, no, what happened?"
Janet S.: "They told me that he took his
watch up stairs and the old thing ran down."

When Louise Cox goes to bed, she puts an
alarm clock underneath the pillow and sleeps
between the ticks.

R. Workman: "What do they do in Ger-
many when it rains?"

Miss Ingram: "I think I've never heard."

R. Workman: "Just let it rain."

Chit: "Nobody likes Bill."

Chat: "Oh, yes, somebody does."

Chit: "Who?"

Chat: "Bill."

I'm just a careless school boy,
My name is Ever Green,
I saunter up and down the street
Merely to be seen.

I'm very fond of pretty girls,
And they so fond of me;
So as I wander through the world
I'm happy as can be.

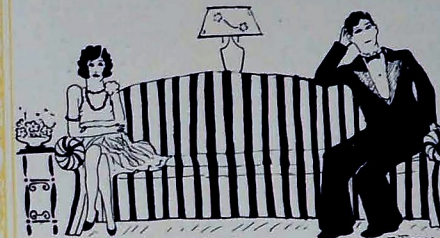
Mr. Templeton (in geometry class): "De-
termine the value of a solid. You don't need
a figure; use your head."

When the donkey saw the zebra
He began to switch his tail;
"Well, I never!" was the comment;
"There's a mule that's been in jail."

J. Morgan: "Say, Cade, have you been in
Central all your life?"
G. Cade: "No, not yet."

THE CHAMPION

Jokes



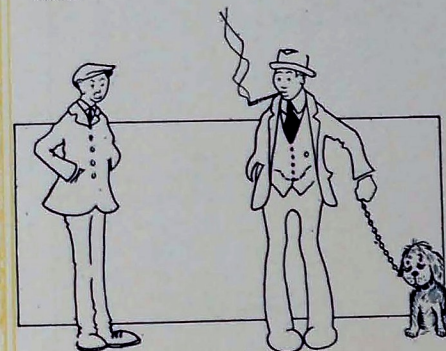
N.O. 1

TWO IS COMPANY
In the parlor there were three—
She, the parlor lamp, and he;
Two is company, no doubt,
So soon the little lamp went out.

COMPARING EXPERIENCES
"London," said Miss Waples, "is undoubt-
edly the foggiest place in the world."
"Oh, no, I beg your pardon," said Mr. Rut-
ledge. "Not that I'd like to argue, but I've
been in a place much foggier than London."
"Where is that?" asked Miss Waples.
"I don't know where it was," replied Mr.
Rutledge, "it was so foggy."

Talkative She: "Why are you always so
silent? Say something, if you have to take it
back."

Silent He: "It's better to be silent and be
thought a fool than to talk and remove all
doubt."



"Your dog male or female?"
"Neither; airedale."

Motor Cop: "So you saw the accident, sir?
What was the number of the car that knocked
this man down?"

Mr. Rankin: "Well, I'm afraid I've forgot-
ten it, but I remember noticing that if it were
multiplied by fifty the cube root of the product
would be equal to the sum of the digits re-
versed."

+++

George: "I'll tell you, dad, Mary Helen is a
bright girl. She has brains enough for two."
Dad: "Then she's the very girl for you, my
boy."



De hoot owl said to de whipporwill,
"You don't sing nuffin an' you won't keep
still;
You ought to take notice dat it would be
Polite to let folks listen to me."

Says de whipporwill to de old hoot owl,
"You sleeps all day an' at night you prowls,
An' you shows your ign'unce all complete
Interruptin' de music dat I make so sweet."

Now dat's de way wif man an' bird,
Each thinks his voice should sure be heard;
An' most of us ain' got much mo' skill
Dan de old hoot owl an' de whipporwill.
—Selected.

G. McCullum: "Mr. Headrick, did you
know girls are very much like 'cops'?"

Mr. Headrick: "In my experience I believe
I've never seen the resemblance. What is it?"

G. McCullum: "They give the sign to go
and then the sign to stop."

THE CHAMPION

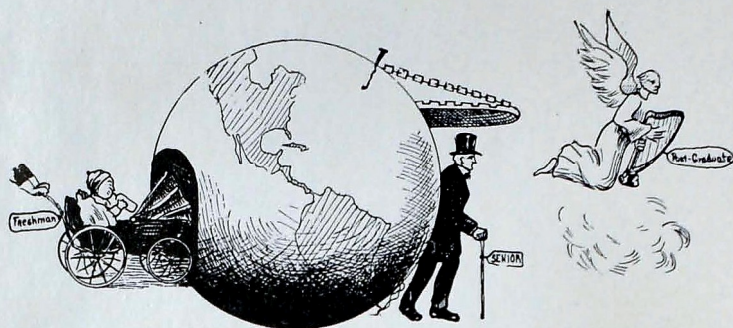
CONTRIBUTORS

NATHAN L. BACHMAN Hamilton National Bank Bldg., City
 L. G. BALFOUR CO. Attleboro, Mass.
 BENSON PRINTING CO. Nashville, Tenn.
 J. A. BURNS & SON 2451 Glass, City
 CAPITOL ENGRAVING CO. Nashville, Tenn.
 E. Y. CHAPIN City
 CHATTANOOGA GAS CO. 809 Broad St., City
 SAM A. CONNER & SON James Building, City
 DAVIDSON CLOTHING CO. 811 Market St., City
 S. T. & W. A. DEWEES 810 Market St., City
 EDWARDS & LeBRON 805 Market St., City
 ENGLERTH PHOTO SUPPLY CO. 722 Cherry St., City
 W. F. FISCHER & BRO. CO. 801 Market St., City
 A FRIEND
 HARDIE & CAUDLE 809 Market St., City
 HOME ICE CREAM CO. 1211 Watkins, City
 HOTEL PATTEN Eleventh and Georgia Ave., City
 R. H. HUNT James Building, City
 NELSON D. LAWING 401 Dodds Ave., City
 D. B. LOVEMAN CO. Eighth and Market, City
 GEO. D. LYNCH & CO. Hamilton National Bank Bldg., City
 MARTIN-THOMPSON CO. 1100 Market St., City
 MEYER-LEACH JEWELRY CO. 707 Market St., City
 MILLER BROTHERS Market and Seventh, City
 MOUNTAIN CITY STOVE & REFG. CO. Newbry, City
 T. H. PAYNE CO. 823 Market St., City
 PURITY EXTRACT & TONIC CO. Second and Broad, City
 RIDGE DRUG CO. 501 Dodds Ave., City
 ROGERS-BAILEY HARDWARE CO. 617 Market St., City
 SCRUGGS BROS. BAKERY Central Market House, City
 JAMES M. SHAW CO. Market and Ninth, City
 SILBERMAN-BLOCH CO. 1273 Market, City
 SPITLER & RAY FURNITURE CO. 2607 E. Main, City
 STAPPS BOOKSTORE Market St., City
 TENNESSEE ELECTRIC POWER CO. 540 Market St., City
 C. S. WILKINS CO. 13th & Ctr., City

THE CHAMPION

Autographs

THE CHAMPION



I shall pass through this
world but once,

Any good therefore that I can
do or any kindness that I can
show to any human being,
Let me do it now.

Let me not defer or neglect
it, for I shall not pass this
way again.

