

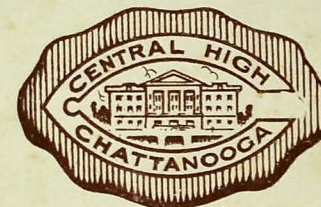
1922

Ne
Me
74

THE CHAMPION

1922

The Champion



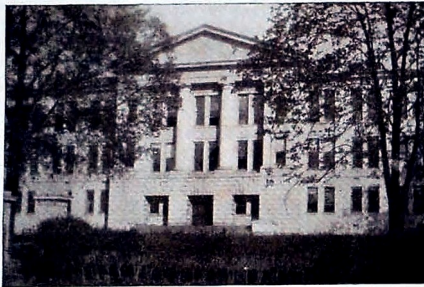
PUBLISHED BY THE
SENIOR CLASS
OF
CENTRAL HIGH SCHOOL
CHATTANOOGA, TENNESSEE
MAY 24, 1922

admission

admission

THE CHAMPION

1922



THE CHAMPION

1922

Foreword

"The Champion" entered the Lists of 1922 with the purpose of winning and presenting to you, Gentle Reader, the trophies of every worth-while event of the Tournament of the Year and hopes that the trophies herewith presented, will bring to you now, and in the years to come, memories of loyal friends and happy days hallowed by the spirit of Central High School.

THE CHAMPION

1922



PRINCIPAL, STACEY ELIJAH NELSON

THE CHAMPION

1922

To Professor
STACEY ELIJAH NELSON
OUR PRINCIPAL
A CHAMPION
OF ALL THAT IS BEST
FOR SCHOOL AND SCHOLAR
A KIND AND BRILLIANT LEADER
A MAN
WHO IS AN INSPIRATION TO THE
ENTIRE STUDENT BODY
AND FACULTY
WE
AFFECTIONATELY DEDICATE
THIS VOLUME

THE CHAMPION

1922

COUNTY JUDGE AND BOARD OF EDUCATION

JUDGE
SAM E. CONNER

CHAIRMAN
MR. J. V. TROTTER

SUPERINTENDENT
JAMES A. ROBERTS

SECRETARY
MRS. HARRY R. LACY

MR. S. W. HIXON

MR. J. W. DAVIS

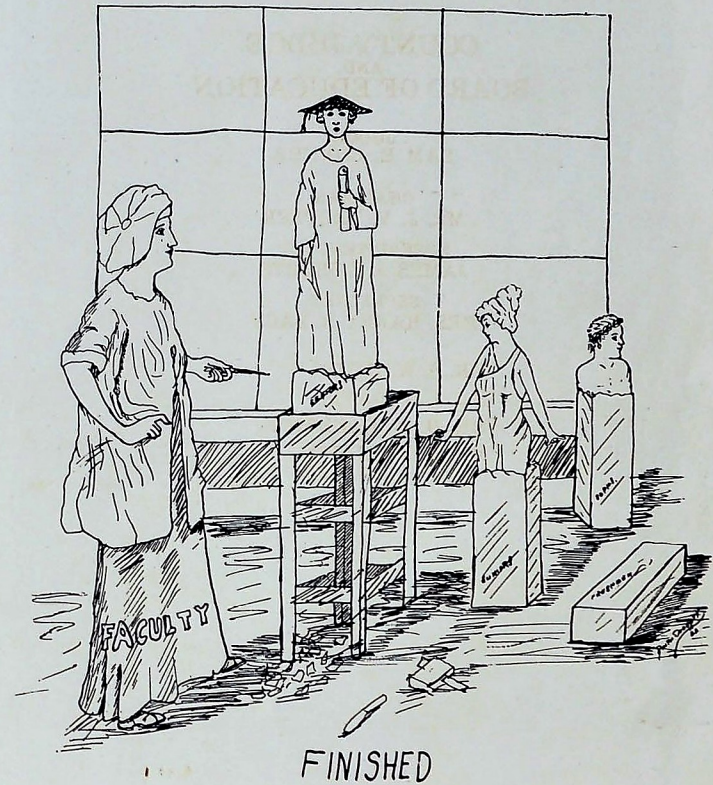
MR. D. M. RAULSTON

MR. E. Y. CHAPIN

THE CHAMPION

1922

FACULTY



THE CHAMPION

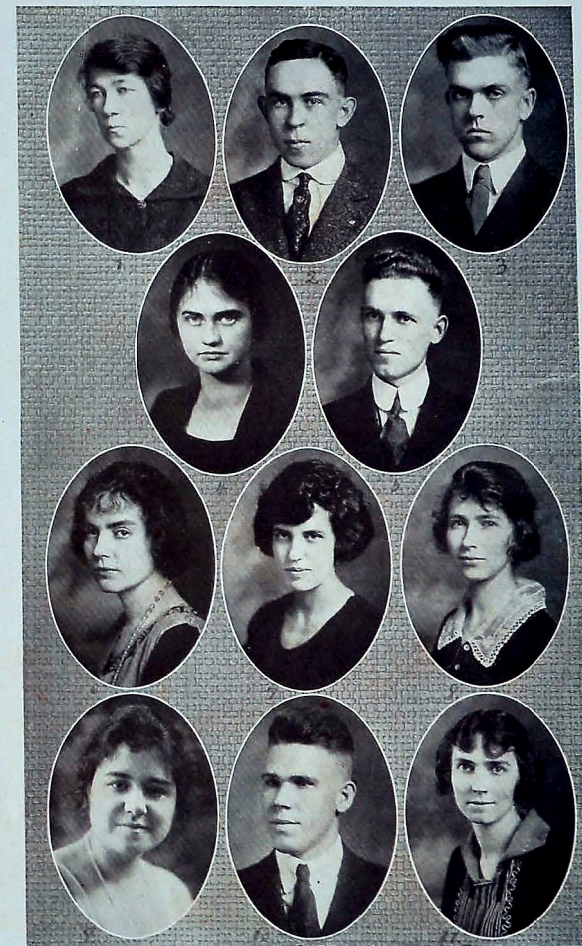
1922

PRINCIPAL AND HIS DEPARTMENT HEADS



THE CHAMPION

1922



THE CHAMPION

1922



THE CHAMPION

1922

Faculty

Page 8

PRINCIPAL AND DEPARTMENT HEADS

| | |
|--------------------------|-----------------|
| 1. Stacey E. Nelson | Principal |
| 2. Mrs. Jno. A. Shelton | English |
| 3. Arthur L. Rankin | Mathematics |
| 4. J. A. Setliffe | Language |
| 5. Wm. E. Brougher | Military |
| 6. Chas. J. Anderson | Mechanical Arts |
| 7. Miss Mildred Campbell | History |
| 8. Mrs. W. H. Pryor | Music |
| 9. Harper Cornelius | Athletics |
| 10. Buford H. Martin | Science |
| 11. K. G. Overbey | Commercial |

Page 9

FACULTY

| | |
|--------------------------|---------------------|
| 1. Miss Grace Robinson | Domestic Art |
| 2. M. E. Smith | Algebra, English I |
| 3. J. Steger Hunt | Biology |
| 4. Miss Laird Witt | Algebra I |
| 5. Knight Ferger | Manual and Track |
| 6. Miss Lonnie Norton | Gymnastics |
| 7. Miss Nelle Greenwood | English II |
| 8. Miss Ruth Bynum | English and History |
| 9. Miss Edna Cureton | Algebra I |
| 10. R. C. Wright | Spanish |
| 11. Miss Catherine Bynum | English and History |

Page 10

FACULTY

| | |
|-------------------------|------------------------|
| 1. Sergt. Jesse M. Peck | Military |
| 2. J. J. Fletcher | Auto Mechanic |
| 3. Mrs. Ida M. Longgly | English III |
| 4. G. M. Swingley | Algebra II |
| 5. Miss M. E. Waples | French |
| 6. Miss Margaret Wright | Domestic Science |
| 7. Miss Mary L. Beckham | English I |
| 8. Miss Irene Brand | Secretary to Principal |
| 9. Mrs. J. W. Jackson | Latin |
| 10. Miss Lena Pardue | Science |
| 11. Miss Frances Church | Commercial |

THE CHAMPION

1922



Annual Staff

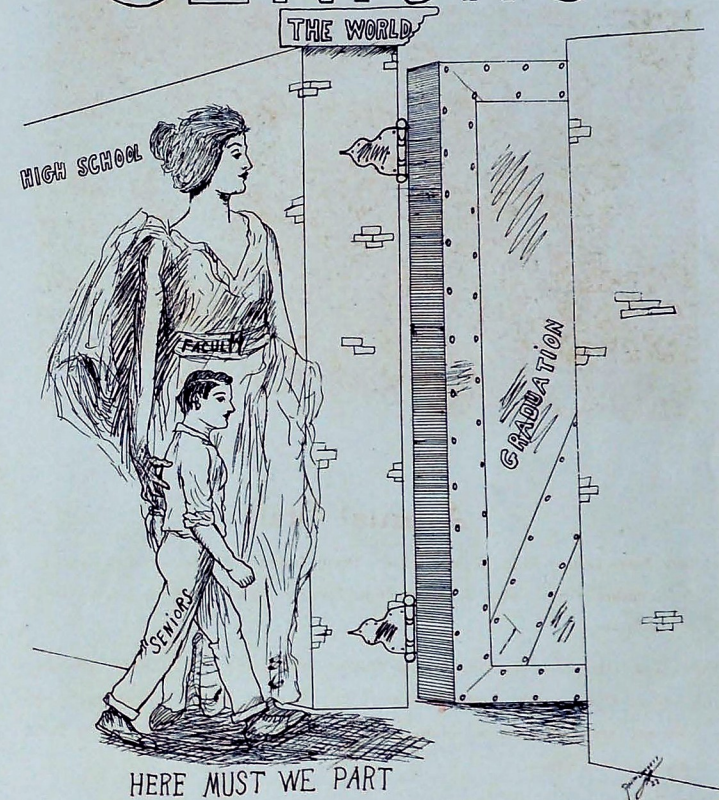
Back Row—Louesa Ellis, Society Editor; Dixie Talley, Joke Editor; Eva Ziegler, Snapshot Editor; Mrs. J. A. Shelton, Faculty Editor; Andrew Cope, Class President.

Front Row—Mr. A. L. Rankin, Faculty Business Manager; Dudley Hale, Assistant Editor; Frank Lewis, Editor in Chief; Rice Russell, Business Manager; Harry Brown, Assistant Business Manager; George Simmons, Military Editor; Ralph Duckett, Art Editor.

THE CHAMPION

1922

SENIORS



THE CHAMPION

1922



FOUR YEAR HONOR STUDENTS

Back Row—Eva Ziegler, Sammie Ault.
Sitting—Mamie Louise Barnes, Claude Geiger, Frank Lewis, Geneva Smith.

THE CHAMPION

1922



WILLIAM DUDA

"He has the prettiest love songs for maids."

Prepared at Clifton Hill School; Entered Central '18; Commercial Course; Military '18-'19-'20-'21; Second Lieutenant '21; Grady Society '18-'19-'20-'21; Glee Club '20-'21; Harp Club '20-'21; Junior Carnival '20; Prize Winner at Fair '20; Hi-Y. '21; Booster Club '21; Minstrel '22; Operetta '22.

ELMA ELIZABETH HARVIN

"ANNE"

"The purest treasure mortal times afford is spotless reputation."

Entered Central from Junior High '18; Betsy Ross '18; Declamatory Contest '20-'22; Dixie Society '20-'21-'22; Feast of the Red Corn '20 Senate '20.

MABEL McDONALD

"PATSY"

"To see her is to love her, and love but her forever."

Entered Central '18 from St. Elmo Grammar School; Betsy Ross Society '18-'19; Dixie Society '19-'20; Wellesley Society '21-'22; Physical Training '19-'20-'21; Captain of Squad '20-'21; "Prince Charming" '22; Mother Goose and Jolly Irishman '21; "As You Like It" '22; D. S. Course.

GERTRUDE C. LETNER

"TRUDY"

"In her tongue is the law of kindness."

Prepared Mission Ridge School; Entered Central '18; Member Mathematics Club '19; Commercial D. A. Course; Wellesley '20-'22; Dixie '21; Prize Winner '20-'22; Penmanship Certificate '19; Jolly Irishman '22; Glee Club '18-'22.

THE CHAMPION

1922



MABEL MARIE TOFT

"What sweet delight a quiet life affords!"

Entered Central '18 from Cedar Hill Grammar School; Betsy Ross Society '18; "Gym." '18-'19-'20; Dixie Society '21; Commercial Course.

ALICE GATES

"She is an excellent sweet lady"

Prepared at Pikeville Grammar School; Entered Bledsoe County High School '18; Grady Society '20; Entered Daisy High School; Junior Play; Entered Central High '21; Dixie Society '21-'22.

WANAKA EULALIE SANGER

"NOKA"

"She is a woman, therefore to be won."

Prepared at Grammar School in Oklahoma; Entered Central '19; Dixie Society '20-'21-'22; Gym. Class '19-'20-'21; Operetta '21; Central Girls' Reserve '21-'22.

RICE RUSSELL

"His life was gentle and the elements so mixed in him that nature might stand up and say,

"This was a man."

Prepared at Central Grammar School at Murfresboro, Tenn.; Entered Central High School from Central High at Murfresboro, Tenn., '19; First Sergeant, U. S. R. O. T. C. '21; Glee Club '21; Captain '22; Business Manager of Annual '22; Hi-Y. '22; Officers' Club '22; Rooters' Club '22.

THE CHAMPION

1922



LILA LEE RAGON

"REGGIE"

"A friend more divine than all divinities."

Entered Central '18; Prepared at Jersey Grammar School; Betsy Ross Society '18-'19; Dixie Society '19-'20-'21-'22; Junior Carnival '20; Gym. '19-'20-'21; Prince Charming Operetta '22; Librarian '21-'22; Classical Course.

MARY BEATRICE BOONE

"BABE"

"I will do anything to serve a friend."

Prepared at Ridgedale Grammar and East Side Junior High School; Entered Central '19; Betsy Ross Society '19-'21; Glee Club '20-'21-'22; Dixie Society '21-'21-'22; Gym. '19-'20-'21; Latin-English Course.

CLEO GUTHRIE

"PAT"

"Her eye beams as kindly and bright as the sun in the azure tinted sky."

Prepared at Ridgedale Grammar and Junior High School; Entered Central '19; Gym. Classes '19-'21; Dixie Society '22; 2nd Vice-President of Girls' Club '22; Operetta '22; Baylor-Central Sponsor '20; Home Economic Course.

BERTHA LORETA STARK

"My own thoughts are my companions."

Prepared at Junior High School; Entered Central '18; Betsy Ross '18; Glee Club '18; Wellesley Society '19; Dixie Society '20-'21.

THE CHAMPION

1922



BERTRICE CAROLINE AKIN
"BERT"

"You were wont to be a follower, but now you are a leader."

Prepared at South St. Elmo Grammar School '20; Entered Central from U. of C. at Athens; Dixie Society '20-'21-'22; Senate '21-'22; Preliminary Declamatory Contest (2nd Place) '21-'22; President Dixies '22; Secretary of the Interior; Senate '21-'22; Basket Ball '21-'22; Irish Minstrel '22; Cheer Leader '22.

WILLIE ANN NELMS
"BILL"

"Do you not know that I am a woman? When I think I must speak."

Prepared in Grammar School of Walker County, Georgia; Entered Central '18; Betsy Ross Society '18-'19; Wellesley '21-'22; Dixie Society '20-'21; Vice-President Wellesley '21-'22; Physical Training '19-'20-'21; Glee Club '21-'22; Junior Carnival '21; Mother Goose and Irish Minstrel '22; Old Maids' Band '21; Operetta "Prince Charming" '22; Latin-Science Course; Declamatory Contest '21-'22; Class Will.

REITA MAE HATCHER
"As pure in thoughts as angels are."

Prepared at East Chattanooga Grammar School; Entered Central '19; Betsy Ross '19; Dixies '21-'22; Glee Club '22.

MARIE DENNEY
"STRAWBERRY"

"'Twas the loveliest hair in the world."

Prepared at Avondale Grammar School. Entered Central '18; Betsy Ross '19; Wellesley '19-'20; Dixie '21-'22; Girls' Club '21-'22; Physical Training '20-'21-'22; "Prince Charming" '22.

THE CHAMPION

1922



ANDREW N. COPE
"GRAND PA"

"A boy he is, to all the class dear."

Prepared at Highland Park Grammar School and Junior High; Entered Central '18; Re-entered '20; Senate '19-'21; Sergeant-at-Arms Letter Men's Club '22; Secretary Senior Boys' Club '22; R. A. R. '22; Hi-Y '22; Military '19-'21-'22; Central Military Police '19; 1st Sergeant '21; Camp Jackson C. M. T. C.; Captain '22; Commissioned Officers' Club '22; Football '21-'22; Track '22; Annual Staff '22; Mother Goose and Irish Minstrel '22; As You Like It '22; President of Senior Class; Elected Cutest, Friendliest, Happiest, Best Allround Boy in Class '22.

RALPH DUCKETT
"JEW BABY"

"But genius must be born, it can never be taught."

Prepared at South St. Elmo Grammar School; Entered Central '18; Minstrel '21-'22; Glee Club '20-'21-'22; Harp Club '19-'20-'21-'22; Jolly Irishmen '22; Operetta '22; Junior Carnival; Senior Play; Track '19-'20-'21-'22; Football '20-'21-'22; Senate '19-'21; Henry W. Grady '20-'21-'22; Sec. H. W. Grady; Treas. H. W. Grady '22; R. A. R. '21-'22; Letter Men's Club '22; Art Editor of Annual '22.

GLADYS MAY
"COTTON"

"Silence is more eloquent than words."

Prepared at Avondale Grammar School; Entered Central '19; Betsy Ross Society '19; Dixie Society '21-'22; Operetta "Prince Charming" '22.

LOIS DAVIS
"PRISCILLA"

"Whatever her mind has ordained for herself it has achieved."

Prepared at East Lake Grammar School. Entered Central in '18; Betsy Ross Society '19; Preliminary Declamatory Contest '19-'20; Girls' Club '21; Captain of Girls' Platoon of Union Confederate Parade '21; Convention of the Muses '20; Glee Club '18-'19-'20-'21; Physical Training '20-'21; Latin-English Course; Wellesley Society '20-'21-'22.

THE CHAMPION

N.C. 1922 N.C.

Conover Normal College



BERTIE KILLIAN

"BERT"

"In each cheek appears a pretty dimple—love made those hollows."

Prepared at East Lake Grammar School; Entered Central '18. Betsy Ross Society '18-'19; Wellesley Society '19-'20-'21; Dixie Society '21-'22; Sponsor-Central-Baylor game '20; Junior Carnival '20; Senior Play "As you like it" '21; "Prince Charming Operetta" '22; Gym. '19-'21; Commercial Course.

MAMIE LOUISE BARNES

"I pray thee gentle mortal sing again."

Prepared in grammar schools of Walker County, Georgia; Entered Central '18. Betsy Ross Society '18-'19; Dixie Society '19-'20-'21; Wellesley Society '21-'22; Secretary of Wellesley, '21-'22; Spelling Contest '19-'20; Declamatory Contest '21-'22; Physical Training '19-'20-'21; Glee Club '18-'19-'20-'21-'22; Junior Carnival, '21; Mother Goose and Irish Minstrel '22; Old Maids' Band '21; Central Minstrels '22; Glee Club Operetta '22; Oratorical Contest '22; Classical Course; Four Year Honor Student; Salutatorian.

EDNA MAE PERKINSON

"TED"

"Her sunny locks hang on her temples like a golden fleece."

Prepared at Ridgedale School; Entered Central '18; Pres. of Betsy Ross '18-'19; Vice-Pres. of Class '19-'20; Dixie '20-'21-'22. Operetta '22; Irish Minstrel '22; Old Maids' Band '22; Minstrel '22; Class Historian; Latin-English Course; Belle of Beaujolais '22.

REBA PARKER

"Graceful and modest, thoughtful and kind. A more sincere girl you'll never find."

Prepared at South St. Elmo Grammar School; Entered Central '18; Latin-English Course; Betsy Ross '18; Wellesley '19; Dixie '21-'22; Girls' Club '21-'22.

THE CHAMPION

1922



Lomax & Hart

Portland Life Insurance Co.

Mountain City College

CHARLES EDWIN GORMAN

"TUBBY"

"After I have named the man, I need say no more."

Prepared at Ridgedale Grammar and Junior High School; Entered Central '18; Henry W. Grady '19-'20-'21-'22; Military '19-'20-'21-'22; Captain Company "L" '22; C. M. T. C. Camp Jackson '21; Football '22-C Lettermen's Club '22; Commissioned Officers' Club '21-'22; Glee Club '21-'22; Blackface Minstrels '22.

ALEX. C. MAXWELL, JR.

"ALICE"

"Gentle in manner, firm in reality."

Prepared at Clifton Hills School; Entered Central '18; Glee Club '20-'21-'22; Harp Club '20-'21-'22; Minstrel '22; Military, Private, '18-'19; Sergeant, '20-'21; First Sergeant, '22; Hi-Y '22; Commercial Course '18-'19-'20-'21-'22; Senior Play.

THELMA IRENE PHELPS

"Wisely and slow, they stumble that run fast."

Prepared at Oak Grove Grammar School and East Side Junior High; Entered Central '18; Betsy Ross Society '18-'19; Dixie Society '20-'21-'22; Junior Carnival '20-'21; Glee Club '21-'22; Girls' Club '21-'22; "Prince Charming" '22; Classical Course.

DOROTHY ANNE MERRILL

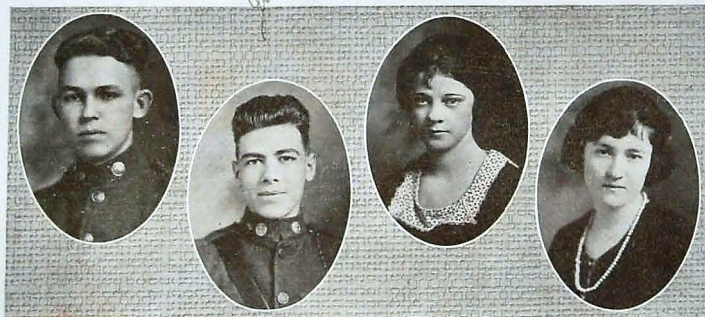
"FRECKLES"

"I have a heart with room for every joy."

Entered Central '18; Prepared Mission Ridge Grammar School; Betsy Ross '18; Wellesley '19; Dixie '20-'21-'22; Junior Carnival '20; Operetta '22; Gym. '18-'19; Glee Club '18-'18-'20-'21; Classical Course.

THE CHAMPION

1922



MAGNESS A. LEE

"DIGNIFIED"

"As dignified as the Sphinx he stood."

Prepared at East Side Junior High School; Entered Central '18; Military '19-'20-'21-'22; Senate '19-'20-'21-'22; Glee Club '22; Henry W. Grady '22; Hi-Y '22; Commercial Course.

JACK MORTON FISHER

"Though modest on his unembarrassed brow Nature had written—'Gentleman.'"

Entered Central '18 from East Lake Grammar School; Military '20-'21-'21-'22; 2nd Lieutenant '22; H. W. Grady Critic '21; Vice-President '22; Glee Club '21-'22; Junior Carnival; French Play '22; Operetta '22; Essay Contest '22.

ANNE BROWNE

"Drive these men away and I'll sit as quiet as a lamb."

Prepared at Junior High School; Entered Central '18; Home Economics course; Betsy Ross '19; Dixie '20-'21-'22; Physical Training '19-'20.

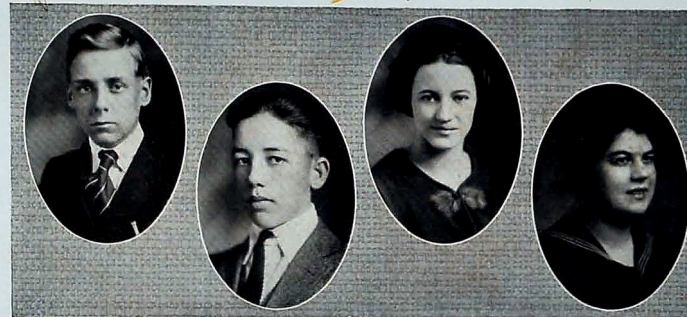
JESSIE MAE BROWN

"A noble hearted girl, a model of that class."

Prepared at East Chattanooga Grammar School; Entered Central '18; Classical Course; Junior Carnival '21; Dixies '19-'20-'21-'22; Glee Club '21-'22; Girls' Club '21-'22.

THE CHAMPION

1922



GEORGE THOMAS TAYLOR

"ICABOD"

"There is no perfecter endowment in man, than political virtue."

Prepared at Park Place Grammar School; Entered Central '18; Senate '19-'20-'21-'22; Clerk of Senate '20-'21-'22; Secretary of State '22; Senate Play '22; Henry W. Grady, '21-'22; Glee Club; Orchestra '19-'20-'21-'22; Spelling Contest '18; Preliminary Declamatory Contest '19-'20; Military '22; Mother Goose and Jolly Irishmen '22; Commercial Course. Junior Carnival '21 Hi-Y '22; Harp Club '21-'22; Elected Most Businesslike '21. Prize Winner at Fair '19-'20-'21. Ornamental Penmanship Certificate '21; Campaign Manager, Plebeian Party '22.

LOYD BROWN

"WATER BOY"

"Be silent boy! I profit not by thy talk."

Prepared at East Chattanooga School; Entered Central '18; Military '19-'20-'21-'22; Glee Club '19-'20-'21-'22; Senate '19-'20-'21-'22; Henry W. Grady '20-'21-'22; Commercial Course; Jolly Irishmen and Mother Goose '22; Prize Winner at Fair '20; Booster Club '21-'22; Baseball '20-'21-'22; Junior Carnival '20; Military Camp '19-'20; R. A. R. '21-'22; HI-Y '21-'22.

ALICE ORTMEIER

"Ah! you flavor everything; you are the vanilla of society."

Prepared at Junior High School; Entered Central '18; Member of Wellesley '18-'19-'20; Member of Senate '21-'22; Senate play '22; Glee Club '18-'19-'20-'21-'22; Sponsor VS. Baylor game '21; Prize winner at Fair '21; Girl's Basket-ball team '20; Gym. '19-'20-'21; Girl's Club '21-'22; Most daring girl of class of '22.

CATHERINE BEARDSLEY

"Man delights, not me."

Prepared at North St. Elmo School; Entered Central '18; Wellesley '18-'19-'20-'21-'22; Winner of Commercial and D. S. prizes at Fair; Member of Glee Club '21-'22.

THE CHAMPION

1922



BARNEY POWELL

"BROWNIE"

"He whistled as he went for want of thought."

Prepared at Mission Ridge Grammar School. Entered Central '18; Henry W. Grady Society '19-'20-'21-'22; Senate '20-'22; Military '19-'20-'21-'22; Drum and Bugle Corp '19-'20; Central Military Camp '19-'20 Baseball '22; Glee Club '20-'21-'22; Hi-Y. '22; Commercial Course.

HERMAN M. MATHIS

"SLATZ"

"If she understood me, what care I how far she be."

Prepared at Cedar Hill Grammar School; Entered Central '18; Henry W. Grady Society '19-'20-'21-'22; Treas. '21; Senate '20-'22; Military '19-'20-'21-'22; Drum and Bugle Corps '19-'20; Corporal '19; Sergeant '20; Second Lieutenant Co. K. '21-'22; Central Military Camp '19-'20; Junior Carnival '20; Basketball '20-'21-'22; Baseball '22; Glee Club '20-'21-'22; R. A. R. '21-'22; Commercial Courses.

FRANCES PEAK

"P-NUT"

"Independence now; and independence forever."

Entered Central '18 from Missionary Ridge Grammar School; Wellesley '19-'20-'21; Senate '21-'22; Senate Play '21-'22; Junior Carnival '21; Prize Winner at Fair '20-'21-'22; Sponsor for Baylor and City High Football Games '20-'21; Girls' Basketball Team '22; Gymnasium '20; Girls' Club '21-'22; Glee Club '19-'20-'21-'22; Most Thoughtless and Most Lucky '22.

ADA GRAHAM

"BOB"

"And violets transformed into eyes, Enshrined a soul within their blue."

Prepared at Central Grammar School. North Chattanooga: Entered Central '18; Betsy Ross Society '18; Dixie Society '19-'20-'21; Basket Ball '19; Girls' Reserve '20; Junior Carnival '20; Ways and Means Committee of Junior Class; Secretary of Girls' League '21-'22; French Play "Jean d' Arc" '21; Basket Ball '22; Mother Goose '22.

THE CHAMPION

1922



WILLIAM STEPHENSON

"BILL"

"Few sorrows hath he of his own."

Prepared at Highland Park Grammar and East Side Junior High School. Entered Central '18. Science Course. Henry W. Grady Society '20-'21; Senate '19-'22; Glee Club '21; Military '19-'20-'21-'22; First Sgt. Co. M. '22; Camp '20; Senior Boys' Society. Roosters Club. Hi-Y. '22; Capt. Junior Basket-ball '22.

JULIUS BROWN

"JUBY"

"He wore a bashful look."

Prepared at Central Grammar School; Entered Central '18; Commercial course; Military '18-'19-'20-'21-'22; Corporal '20-'21; Sergeant '21-'22; Senate '18-'19; Baseball '22; Boosters' Club, '21-'22.

DOROTHY EVELYN POLK

"DOTSIE"

"O! Blessed with temper."

Prepared at Central Grammar; Entered Central '18; Gym. Classes '19-'20-'21; Betsy Ross Society '19; Dixie Society '19-'20; Junior Carnival '20; Prince Charming Operetta '20; Commercial Course.

MAJORIE IRENE HISEY

"BUDDIE"

"In friendship she is true."

Prepared at Alton Park Grammar School; Entered Central '18; Commercial and Home Economics Course; Mathematics Club '19; Betsy Ross '19; Wellesley '20-'21-'22; Penmanship Certificate Winner '19; Prize Winner at Fair '20; Physical Training '19-'20; Inter-class Spelling Contest '21; Lawyers' Club '21; Glee Club '21-'22; Assistant Banker '22.

THE CHAMPION

1922 N.C.



GLADYS HAMIC

"PICKLES"

"A sweet and virtuous soul."

Prepared at Rising Fawn, Georgia, and Fort Payne, Alabama, Grammar Schools and at Menlo, Georgia, High School; Entered Central '20; Dixie Society '20-'21; Girls' Club '21-'22.

EVA ZIEGLER

"IGNATZ"

"Thoughtless of beauty, she was beauty's self."

Prepared at Avondale Grammar School; entered Central '18; Secretary and Treasurer Betsy Ross '18; Spelling Contest '18; Dixies '19-'20-'21; Treasurer of Dixie '22; Junior Carnival '20; Sponsor Co. M., R. O. T. C. '21; Battalion Sponsor R. O. T. C. '22; Snap Shot editor of annual '22; Vice-President of girls' League '22; French Play '22; Operetta '22; Class Representative; Four year Honor Student.

HAZEN COPP

"RUNT"

"The trouble is small, the fun is great."

Prepared at Highland Park Grammar School; Entered Central in '18; Vice-President Freshman Class '18-'19; Member of Senate '18-'19; '20-'21; '21-'22; Treasurer of Sophomore Class '19-'20; Member H. W. Grady Literary Society '19-'20; '20-'21; Junior Carnival '20; Cheer Leader '20-'21; '21-'22; Member of Hi-Y '21-'22; Manual Training Prize Winner Fair of '20; Mechanical Director Prize Winner Fair of '21; Boys' Glee Club '19-'20; '20-'21; '21-'22; First End Man in Minstrel '22; Military '18-'19; '20-'21.

JEWELL SWAN

"Responsive to the call of duty."

Prepared at Cedar Hill School; Entered Central '18; Betsy Ross Society '19; Wellesley Society '20; Entered Hiwassee College '21; Philamothesian Literary Society '21; Domestic Science and Art diploma '21; Reentered Central '22; Wellesley Society '22.

THE CHAMPION

1922



JAMES HAROLD BOWMAN

"A little nonsense now and then is relished by the wisest men."

Prepared at Rossville Grammar School; Entered Rhea High, Dayton 1918; Entered Central 1921; Military '21-'22.

FRANK MILLER PRUETTE

"BILLY WHISKERS"

"His heart's as far from fraud, as heaven from earth."

Prepared at Second District and Junior High School; Entered Central '18; Henry W. Grady '18-'19; Military '18-'19-'21-'22; 1st Lieut. Co. M, '21-'22; Commissioned Officers' Club, '21-'22; Minstrel '22; Rooters' and Boosters' Club '21; Basket Ball '21-'22; Letter Man's Club '22.

MINNIE LOU PENNEY

"HAPPY"

"The mildest manners and the gentlest heart."

Prepared at Avondale Grammar School; Entered Central '18; Home Economics Course; Member of the Betsy Ross Society '18; Gym. Classes '19-'19; Dixie Society '21; Girls' Club '21-'22.

DOROTHEA LOUISE WALTON

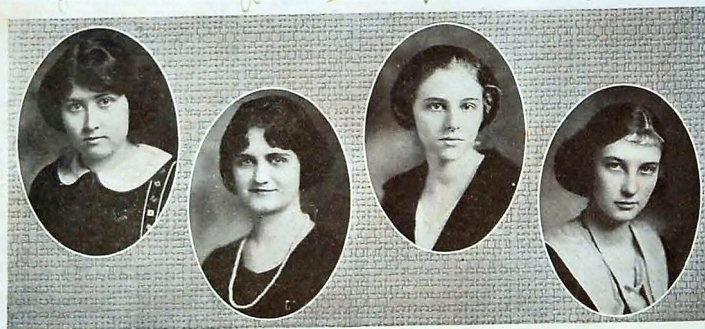
"Happy I am, from care, I'm free."

Prepared at Junior High School; Entered Central '18; Home Economics Course; Betsy Ross '19; Dixies '20-'21-'22; Physical Training '19-'20-'21.

Handwritten: Lighthouse, A. J. Jones, Dixie, J. H. Knoxville.

THE CHAMPION

1922



MARJORIE B. TOWER

"MARGE"

"Is she not a modest young lady?"

Prepared at Highland Park Grammar School and East Side Junior High School; Entered Central '18; Betsy Ross Society '18; Wellesley Society '19; Dixie Society '20-'21; Gymnasium '19-'20; Commercial and Home Economic Courses; Girls' Club '21-'22; Prince Charming '22.

RUTH WATSON

"BILLY"

"The very flower of youth."

Prepared at South St. Elmo Grammar School; Entered Central '19; Secretary Freshman Class '20; Secretary Sophomore Class '21; Secretary Senior Class '22; Wellesley '20; Vice-Pres. Dixies '21; Sec. Dixies '22; Sponsor Co. M. R. O. T. C. '22; Sponsor Central-City Football Game '22; Orchestra '20-'21-'22; Glee Club '20-'21-'22.

GRACE BOWEN

"JOY"

"A true lovable character."

Prepared at Saint Cloud Grammar School and entered Saint Cloud High School '18; Knickerbocker Literary Society '19; Glee Club and "Dress Rehearsal"; Entered Ensley High School '20; Treasurer of Argonian Literary Club, Art Club, Athletic Association, "Not A Man in the House"; Entered Central '21; Dixie '22; Girls' Club '22.

NELL McDONALD

"NEN"

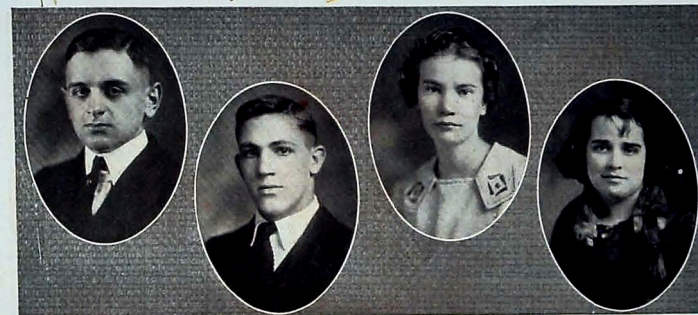
"Her air, her manners, All who saw admired."

Entered Central '18; English-Science Course; Betsy Ross '19; Dixie '20-'21-'22; Operetta '22; Spelling Contest '18; Glee Club '22; Prince Charming Operetta '22.

Handwritten: Hooker, Brown, Auburn, Collier.

THE CHAMPION

1922



HERMAN WALDORF

"Thou art the king of honor."

Entered Central '18; from Lutheran School; Commercial Course; Military '18-'19-'20-'21; Henry W. Grady Society '19-'20-'21; Boys' Glee Club '19-'20-'21-'22; Prize Winner at Fair '20; Junior Carnival '20; Hi-Y '22; Boosters' Club '22; R. A. R. '22.

ERNEST EMMERT WILLIAMS

"To argue is the delight of my heart."

Prepared at South St. Elmo; Entered Central '18; Senate '18; Military '18-'19-'20; Football '19-C-'20-'21; All-City '20-'21; Basket-Ball '21; Baseball '20-'21; R. A. R. '18-'19-'20; Letter Men's Club '21; Minstrel '22; Glee Club '18-'19-'20-'21; Hi-Y '22; Rooters' and Boosters' '21; Most Loyal and Most Popular '22.

CAROLENE BROWNIE AU

"Were silence gold, I'd be a millionaire."

Entered Central 1918; Prepared at Cedar Hill Grammar School; English Science Course; Betsy Ross Society '18-'19; Dixie Society '21-'22.

LEONA MAE COLLINS

"A merry heart maketh a cheerful countenance."

Prepared at South St. Elmo Grammar School; Entered Central '18; Re-entered Central '21 from City High School; Wellesley '18-'19; Senate '21-'22; Vice President of Dixies '22; Glee Club '18-'19; Prince Charming '22.

THE CHAMPION

1922



MARY EVELYN EVITT

"Truth is the work of God."

Prepared at Antioch Grammar School; Entered Kensington High '20; Entered Central '21; Dixie Society '21-'22; Latin-English course.

GENEVA IRENE SMITH

"To say little and perform much is the character of true greatness."

Prepared at Oak Grove and East Side Junior High Schools; Entered Central '18; Commercial Course; Betsy Ross '19; Wellesley Society '20-'21-'22; Gymnasium '20-'21; Prize Winner at Fair '19-'21; Glee Club '22; Lawyers' Club '22; Banker '22; Four Year Honor Student.

MARIE THOMAS

"REE"

"Be thine own self always and thou art lovable."

Prepared at East Lake Grammar School. Entered Central '18; Betsy Ross '19; Wellesley '20-'21; Dixie '21-'22; Junior Carnival '21; Prince Charming '22; Commercial Course; Girls' Club '22.

SOPHIA H. BORN

"SHORTY"

"She is true as she hath proved herself."

Prepared at St. Elmo Grammar School; Entered Central '18; Betsy Ross Society '18-'19; Dixie Society '19-'20-'21-'22; Basket Ball '19-'20; Physical Training '19-'20-'21; Banker '21-'22; Commercial Course.

CHS Library

THE CHAMPION

1922



LILLIAN SWAN

"As chaste as unsunned snow."

Entered Central '18 from Cedar Hill School; Inter-Class Spelling contest '18; Betsy Ross '18; Senate '20-'21; Dixie '22; Glee Club '19-'20-'21; Basket Ball '20; Gym. '19-'21.

CHARLIE TALIAFERRO

"When she will, she will, and you can depend on it."

Prepared at East Chattanooga Grammar School; Entered Central '18; Classical Course; Member Wellesley Society; Junior Carnival '21; Operetta '22.

WALTER V. MOFFITT

"THUNDER"

"An honest man's the noblest work of God."

Fayetteville High School, Arkansas, '19-'20-'21. Member National Council Literary Society; Central High School '21-'22; Member Hi-Y Club; R. O. T. C.; Corporal "L" Company; Central Minstrel '22.

ANNIE MOFFITT

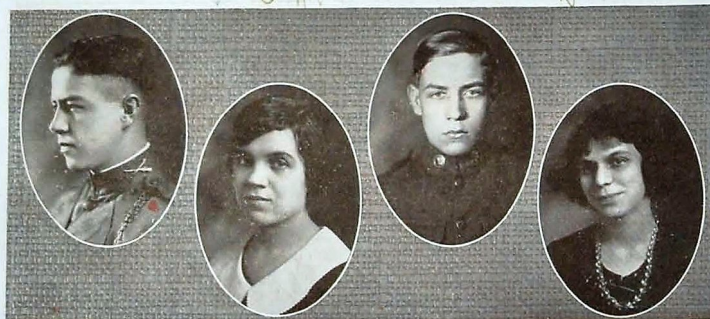
"ANN"

"Patience is the soul of peace."

Prepared at Fayetteville Grammar School in Fayetteville, Arkansas; Attended Fayetteville High School '17-'18-'19; University of Arkansas; High School '20; Entered Central '21; Dixie Literary Society '21-'22; Glee Club '21-'22; "Prince Charming" '22; Latin-English Course.

THE CHAMPION

1922



GEORGE E. SIMMONS

"SIME"

"Hard work, indeed, he does not love it; His genius is too much above it."

Prepared at South St. Elmo Grammar School; Entered Central '18; Football '20-'21-'22; Track '19-'20-'21-'22; Glee Club '19-'20-'21-'22; Junior Carnival '21; Jolly Irishmen '22; Minstrel '22; As You Like It '22; Bells of Beaujolais '22; Member of Senate '19-'20-'21-'22; R. A. R. '19-'20-'21-'22; H. A. '22; Hi-Y '22; Henry W. Grady '19-'20-'21-'22; Sergeant-at-Arms '19-'20; President '21; Secretary '22; Lettermen's Club '22; Commissioned Officers' Club '22; President C. O. C. '22; Military '19-'20-'21-'22; Corporal '19; 2nd Lieut. '20; Captain '21-'22; Military Camp '19; Camp Jackson C. M. T. C. '21; Military Editor Annual '22.

FRANCES LILLIAN MAHAFFEY

"They who are pleased themselves must always please."

Prepared at Alton Park Grammar School; Entered Central '18; Member Betsy Ross '18; Wellesley '19-'20; Dixies '21-'22; Glee Club '19-'20-'21-'22; Commercial Course; Home Economics Three Years.

CLIFFORD FRAZIER

"RIP"

"I care for nobody, no not I."

Prepared at Clifton Hill School; Entered Central '18; Grady '18-'19-'20-'21; Senate '21; Military '18-'19; '20-'21; Glee Club '21.

ROBERTA COCHRAN

"BERTA"

"It would talk! Lord how it would talk."

Prepared at Central Grammar School, North Chattanooga; Entered Central '18; Declamatory Contest '19; Girl Glee Club '20-'21; Girl reserve '19-'20; Junior Carnival '21; Dixie Society '19-'20; '21-'22; Girls' League '21-'22; "Prince Charming" '22; Distributor of Souvenirs '22.

THE CHAMPION

1922



FRANK C. LEWIS

"NICK"

"Born for success, he seemed with grace to win, with heart to hold, with shining gifts that took all eyes."

Prepared at Central Grammar School; Entered Central '18; President Class '19; Henry W. Grady Society '19-'20-'21-'22; Treasurer Grady's '21; Vice President '22; Senate '19-'21-'22; President Senate '22; Winner School Declamatory Contest '20-'22; Military Corp'l '19; Sgt. '20; Lieut. '21; Major '22; Spelling Contest '21; Glee Club '19-'20-'21-'22; Oratorical Contest '21; Junior Carnival '21; Junior Representative Banquet '21; Vice President Rooters' and Boosters' Club '22; Minstrels '21-'22; Interlocutor Minstrels '22; Irish Minstrel '22; As You Like It '22; Bells of Beaujolais '22; Hi-Y '22; Editor in Chief Annual '22; Four Year Honor Student; Valedictorian '22.

EDGAR BECK

"GRACEFUL"

"A pretty, excellent, graceful—fashionable young man."

Prepared at Normal Park and Central Grammar Schools; entered Central '18; Science Course; Class Speller '19-'21; Declamatory Contest '20-'21; Oratorical Contest '22; Henry W. Grady '19-'20-'21-'22; Vice-President Hi-Y '21-'22; Junior Carnival '20; Commissioner of Halls, Senior Boys' Club; Central Junior Basketball '21-'22; As You Like It '22; Faculty Representative; The Bells of Beaujolais.

WILMA KOONS

"COONIE"

"Worry and I have never met."

Prepared at Third District and East Side Junior High School; Entered Central '18; Betsy Ross '18-'19; Dixie Society '19-'20-'21-'22; Junior Carnival '20-'21; Convention of the Muses '20-'21; Girls Club '22; Physical Training '19-'20-'21-'22.

RUTH BYRD RABURN

"RUFUS"

"A daughter of the Gods, divinely tall, and most divinely fair."

Prepared at East Chattanooga Grammar School; Entered Central '19; President Betsy Ross Society '19-'20; Wellesley Society '20-'21; Dixie Society '22; Glee Club '21-'22; Gym. Class '19-'20-'21; English-Science Course.

THE CHAMPION

1922



HARRY N. BROWN

"WITCH"

"Thou wast a pretty fellow when thou hadst no need to care for her frowning."

Entered Central in '18; Prepared at South St. Elmo Grammar School; Military '19-'20-'21-'22; Private 1920; Sergeant '20; Sgt. Major '21; 1st. Lieut. '22; Senate '18; Grady '21-'22; President '22; Commissioned Officers' Club; Football '20-'21-'22; R. A. R. '22; Souvenirs '22; Dramatic Editor; Ass't. Business Manager; Irish Minstrel '22; Central Camp '19; C. M. T. C. '21; Letter Men's Club '22; Prize Winner at Fair '20; Glee Club '20-'21-'22.

RUTH G. SMITH

"PROMINANCE"

"Let them obey that know not how to rule."

Prepared at Oak Grove Grammar School and East Side Jr. High; Entered Central Feb. 5th, '21; A Tale of two Cities '21; "Mother Goose" '22; Declamatory Contest '21-'22; Oratorical Contest '21-'22; Wellesley; '22 Girls' Club '21-'22.

ROY BRADFORD

"He's armed without that's innocence within."

Prepared at South St. Elmo School; Entered Central '18; Commercial Course; Military Training '18-'19-'20-'21-'22; Military Tournament '20-'21; in extended order platoon. Military Tournament '21-'22.

NANCY G. CHAMBERLAIN

"NAN"

"Be sure to learn others, then turn to speak."

Prepared at Somerset Grammar School, Graduated from East Side Junior High '19; Entered Central '19; Gym. Class '20-'21-'22; Wellesley '21; Dixie '22; Girls' Club '22; Glee Club '21-'22; Junior Carnival '20; Prince Charming Operetta '22.

THE CHAMPION

1922



WALTER ANDERSON

"Tired Nature's sweet restorer—balmy sleep."

Prepared at Seale Grammar School; Entered Central from City High 1921; R. O. T. C. two years; Mother Goose Play '22; Hi-Y '22; Booster Club '22.

MARY BELLE MEACHAM

"That sweet lovely rose."

Prepared at Junior High School; Entered Central '19; Dixie Society '19-'20; Wellesley '21; Glee Club '20-'21; Physical Training '19-'20; Commercial Course; "Prince Charming" '22; Mother Goose '21.

RAYMOND GAMBLE

"COACH HIXON"

"A jolly good fellow."

Entered Central '21 from Hixon High School; Football '21-C; Basketball '21; Track '22; Letter Men's Club '22; Hi-Y '22.

LOUESA ELLIS

"Queen rose of the rosebud garden of girls."

Prepared at Cedar Hill Grammar School; Entered Central '18; Betsy Ross '18; Wellesley '19-'20; President of Wellesley '21-'22; Declamatory Contest '19; Winner of Cup for Oratory; Vice-President of Junior Class '21; Vice-President Senior Class '22; Sophomore Representative to Junior-Senior Banquet '20; Toastmistress Junior-Senior Banquet '21; Wellesley Play '21; Junior Carnival '21; Irish Minstrels '22; Prince Charming '22; Senior Play '22; Faculty Representative '22; Most Popular '22; Best All-round girl '22; Society Editor of Annual '22; Sponsor Company "L", U. S. R. O. T. C. Unit of Central '22.

THE CHAMPION

1922



LEONARD MURRAY
"LIMBERGER"

"A loyal, just and upright gentleman."

Prepared at Ridgedale Grammar School and Junior High School; Entered Central '18; Military '19-'20-'21-'22; Sergeant Major '22; Declamatory Contest '20; Glee Club '21-'22; Harp Club '21-'22; Irish Minstrel '22; Blackface Minstrel '22; Bells of Beaulais '22; Senate '21-'22; Gradys '19-'20-'21-'22; Senior Boys' Club '22; Hi-Y '22.

DUDLEY D. HALE
"UGLY"

"From the crown of his head to the sole of his foot he is all mirth."

Entered Central from Central Grammar School, La Porte, Ind. '18; Military '19-'20-'21-'22; Private '19-'20; Corporal '20-'21; Second Lieut. '21-'22; Captain '22; Commander, Military Band '22; President Rooters' and Boosters' Club '22; Senate '19-'20-'21-'22; Attorney-General '22; Henry W. Grady '19-'20-'21-'22; Black Face Minstrel '22; Irish Minstrel '22; As You Like It '22; Football '22; Class Prophet '22; Orchestra '22; Baseball '22; Assistant-Editor-in-Chief of Annual '22; Spelling Contest '22; "Wittiest" '22; Preliminary Declamatory Contest '20; Hi-Y '22.

KATIE LEE BROWN
"KATE"

"Her voice was ever soft and low, an excellent thing in woman."

Prepared at East Chattanooga Grammar School; Entered Central '18; Dixie Society '19-'20-'21; Glee Club '21; Physical Training '19-'20-'21; Prize Winner at Fair '19-'20.

ALMA FLEGAL
"Silence is more eloquent than words."

Prepared at Cedar Hill School; Entered Central '18; Betsy Ross Society '19; Wellesley Society '20-'21-'22; Penmanship Certificate '19; Prize Winner at State Fair '19-'20-'22; Glee Club '21-'22.

THE CHAMPION

1922



CLAUDE F. GEIGER

"The world knows nothing of its greatest men."

Prepared at East Chattanooga Grammar School; Entered Central '18; Classical Course; Henry W. Grady '20-'21; Senate '18-'19-'20-'21; Vice-President of Senate '21; Boosters' Club '21; Oratorical Contest '22; Military '18-'19-'20-'21; First Lieutenant and Adjutant '21; Declamatory Contest '20; As You Like It '22; Hi-Y '21; Class Representative '22; Four Year Honor Student.

DOROTHY L. COPE
"DOT"

"An excellent student."

Prepared at Ridgedale Grammar School and Junior High School; Entered Central in '18; Betsy Ross '18-'19; Dixie '21-'22; Prize on "Thrill Essay" '22; Science Course.

WENDELL BOONE

"Woman, I know not what thou art."

Prepared at Ridgedale School and Junior High; Entered Central '18; Glee Club '19-'20-'21-'22; Junior Carnival '21; Member of Senate '20-'21-'22; Member of H. Y. Club '21-'22; Military '18-'19-'20-'21-'22; Military Tournament '21-'22.

BLANCHE ELIZABETH BOYD
"PUGGINS"

"As merry as the day is long."

Prepared at Ridgedale Grammar and Missionary Ridge Grammar Schools; Entered Central '18; Gym. '19-'20-'21; Betsy Ross Society '18; Wellesley Society '19-'20; Dixie Society '20-'21; Girls' Glee Club '18; Commercial Course.

W.C. 1922 N.C.

THE CHAMPION

1922



ALTON B. HUGHES

"I am very fond of the company of ladies."

Prepared at Central Grammar School; Entered Central '18; Member Senate '19-'20; private in Military '18-'19; Entered Miami High School '19; member of Hi-Y Miami High School '19-'20; Re-entered Central '20; Henry W. Grady '20-'21; platoon sergeant in Military '20-'21; member of Hi-Y '21-'22; 1st Lieut. Military '21-'22; Senior "As You Like It" Operetta.

SAMMIE AULT

"Her glossy hair was clustered o'er a brow Bright with intelligence, fair and smooth."

Prepared at Central Grammar School; Entered Central '18; Dixie '18-'19-'20-'21-'22; Ways and Means Committee Junior Class '21; Prince Charming '22; Four Year Honor Student.

HERMAN W. NORRIS

"True as the needle to the pole, or as the dial to the sun."

Prepared at South St. Elmo Grammar School; Entered Central '18; Military '19-'20-'21-'22; Sergeant Company M, '22; Junior Carnival '21; Mother Goose '22.

HAZEL E. WILKINSON

"TAGALONG"

"Kindness is wisdom."

Prepared at Georgia Grammar School; Entered Central '18; Betsy Ross '18-'19; Dixie '20-'21-'22; Orchestra '20-'21-'22; Junior Red Cross Drive '21; Pine Breeze stamp drive '21; Gym. '19-'22; Classical and Home Economics Course.

W.C. 1922 N.C.

THE CHAMPION

1922



PATRICK MURPHY

"PAT"

"He lived at peace with all mankind."

Entered Central '21, from Seventh District A. M. Georgia; Military '21-'22; Mother Goose and Irish Minstrel '22; Boosters' Club; Manual Training Course.

GERTRUDE M. ZAHND

"Be good, sweet maid, and let who will be clever."

Prepared at North St. Elmo Grammar School; Entered Central '18; member Betsy Ross Society '18-'19; Dixies '19-'20-'21-'22; Glee Club '20-'21-'22; Operetta '22; Gym. '19-'20-'21-'22; Latin-English Course.

GEORGE D. LYNCH

"WOO LING"

"I am wealthy in my friends."

Prepared 1st District; Entered Marion County High; '16; Navy '17-'18; Entered Central '19; Senate '19; Football '19-'20-'21; Captain Football '21; Basket ball '20; R. A. R. Pres. '20-'21; Pres. Letter Men's Club '22; Athletic Editor Annual '22; Hi-Y '22; Glee Club '19-'20-'21.

EDDITH WALKER

"The lady will speak her mind."

Prepared at North Chattanooga Grammar School; Entered Central '18; Dixie '21; Wellesleys '22; Gym. '21.

THE CHAMPION

1922



NELL LOUISE BROWN
"CAROLINE"

"Her smiling face makes sunshine in a shady place."

Prepared at Mission Ridge Grammar School; Entered Central '18; Glee Club '18-'19-'20-'21; Girl Reserves '21-'22; Dixies '19-'20-'21-'22; Wellesleys '18-'19; Girls' League '21-'22; Prince Charming '22.

JOHNNIE SPRINGFIELD
"JOHN"

"I have a heart with room for every joy."

Entered Central '18 from East Lake Grammar School; Glee Club '18-'19-'20-'21; Betsy Ross Society '18; Wellesley Society '19-'20; Dixie Society '21; Junior Carnival '20; Prince Charming '22; Physical Training '18-'19-'20; Commercial Course.

NELSON DAVIS
"RED"

"You would quickly learn to know him by his voice."

Prepared at Fort Smith, Arkansas; Entered Central '19 from Goodlettsville High School, Nashville, Tenn.; R. O. T. C. '20-'21-'22; Senior Play, As You Like It '22; English-Science Course.

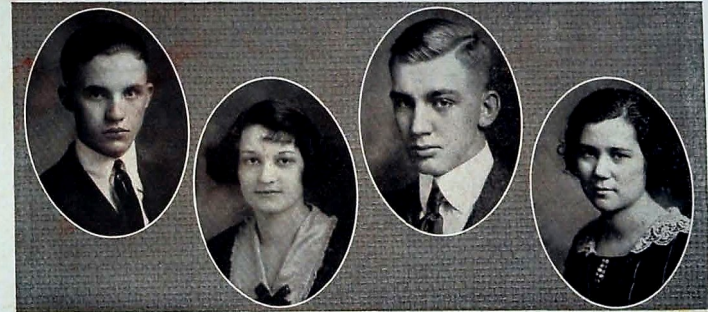
NEOCHIA CLAUSE
"PATSY"

"What I promise to do I'll do."

Prepared at East Chattanooga Grammar School; Entered Central fall of '19; Member of Betsy Ross Literary Society '19-'20; Member of Wellesley Society '20-'21-'22; Attended Summer School '21; Gymnasium '20-'21-'22; Glee Club '22; Girls' Club '21-'22; Classical Course.

THE CHAMPION

1922



WILLIAM CLARK KIRK, Jr.

"Half our knowledge we must snatch—not take."

Prepared at East Lake Grammar School; Entered Central '18; Military '19-'20-'21-'22; Commercial Course.

HIX WORKMAN

"Thou art as wise as thou art beautiful."

Prepared at Deering High School; Entered Central '21; General Course; Glee Club.

WM. SHERRILL MILIKEN
"P-NUT"

"He truly shows some sparks of wit."

Prepared at Alton Park Grammar School; Entered Central '18; Preparatory Course; Senate '18-'19-'20-'21-'22; Grady Society '19-'20-'21-'22; Military '18-'19-'20-'21; Major '20-'21; Minstrel '21; Junior Carnival '20; Declamatory Contest '21; Glee Club '18-'19-'20-'21; "Five Feet of Love" '21; Treasurer of Class '20-'21-'22; Letter Men's Club '22.

ANNIE CAROLYN TALLEY
"DIXIE"

"What I speak, my life shall prove it true."

Entered Central from Junior High '18; Betsy Ross Society '18-'19; Dixie Society '19-'20-'21-'22; Glee Club '21-'22; Declamatory Contest '21-'22; "Old Maids' Band" '22; Irish Minstrel '22; Black face minstrel '22; Senior Play, "As You Like It" '22; Bells of Beaujolais '22; Winner of Inter-prep Declamatory Contest '22; Latin-English Course.

THE CHAMPION

1922



NORINE CHADD

"TED"

"My ways are ways of pleasantness and all my paths are peace."

Prepared at East Side Grammar School; Entered Central '18; Commercial Course; Member of the Dixie Society '19-'20-'21-'22; Junior Carnival '20; Prince Charming '22; Member of Girls' Club '21-'22.

LILLIAN JOINES

"LIL"

"A true and industrious friend."

Prepared at Fourth District; Entered in '18; Latin-English Course; Betsy Ross '18; Wellesley '19-'20; Dixie '21-'22; Junior Carnival; Glee Club '20-'21; Girls' Club Operetta; Spelling Contest.

EDWINA KRICHBAUM

"With vollies of eternal babble."

Prepared at Oak Grove Grammar School and East Side Junior High School; Entered Central '19; Gymnasium Class '20-'21-'22; Basket Ball '20-'21-'22; Glee Club '21-'22; Mother Goose and Jolly Irishmen '22; Wellesley '20-'21-'22.

PAULINE VANDERGRIFF

"POLLY"

"I cannot say one thing and mean another."

Prepared at Blakewell Grammar School; Entered Soddy High School '18; Member S. H. S.; Literary Society '18-'19; Entered Central '19; Dixie '20-'21-'22; Gymnasium '20-'21-'22; Girls' Club '21-'22; Classical Course

THE CHAMPION

1922



WILLIAM POWLEDGE

"Ambition should be made of sterner stuff."

Prepared at Luthersville Grammar School, Luthersville, Ga. Entered Central '18; Member of Henry W. Grady Literary Society '19-'20-'21; Junior Carnival '21; As You Like It '22; Glee Club '20-'21-'22; Black Face Minstrel '22; Military '19-'20-'21-'22; Military Tournament '21-'22.

EVELYN VIRGINIA BUTTS

"GENE"

"She fills the air around with beauty."

Prepared at Harriman Grammar School; Entered Harriman High '18; Entered Central '21; Girl Reserves '21-'22; Dixies '21-'22; Girls' League '21-'22; Prince Charming '22.

FLORENCE GRANDIN

"Come and trip it as you go, On the light fantastic toe."

Prepared at North St. Elmo; Entered Central '18; Wellesley '19-'20-'21-'22; Girls' Reserve '20-'21-'22; Prince Charming '22; Girls' Club '22.

IRMA MARGARET ANDERSON

"IRMY"

"Thy modesty is a candle to thy merit."

Prepared at Highland Park Grammar School and East Side Junior High; Entered Central 1919; Member of Betsy Ross 1919-20; Wellesley Society 1920-21; Dixie 1922; Gym. Classes '19-'20-'21; English-Science Course.

THE CHAMPION

1922



CLARENCE WATSON
"NAPOLEON"

"Write me as one who loves his fellow men."

Prepared at North St. Elmo Grammar School; Entered Central '18; Senate '18; Henry W. Grady '20-'21; Military '18-'19-'20-'21; Senior Play '22; Hi-Y Secretary '21; Secretary Rooters' and Boosters' Club.

RUTH L. STONER
"BUNNY"

"The glass of fashion, the observed of all observers."

Prepared Missionary Ridge Grammar School; Entered Central '19; Wellesley '20-'21-'22; Girls' Reserve '21; Treasurer of Soph. Class '21; Gym. '20-'21; Sophomore Representative Junior and Senior Banquet '21; Girls' Club '22; Junior Red Cross Drive '22; Latin-English Course.

GORDON HICE GILBERT
"PEGGY"

"A man of mark."

Prepared at East Lake Grammar; Entered Central '18; Military '18-'19-'20-'21-'22; Sergeant Co. I, '21, of Co. L, '21, Lieut. of Co. L, '22; Member of Commissioned Officers' Club; Member of Harp Club '21; Glee Club '21-'22.

MARGARET ELLIS
"MARGIE"

"When she had passed, it seemed like the ceasing of exquisite music."

Prepared at Mission Ridge School. Entered Central '19; Member of Wellesley Society '19-'21-'22; Preliminary Declamatory Contest '22; Junior Carnival '21; Operetta '22; Sponsor Company "K" and Sponsor of Central and City Foot-ball Game '22; Mother Goose and Jolly Irishmen '22; President of Girls' Club of Central High '22; Prize Winner of Fair '21; Classical Course.

THE CHAMPION

1922



MADGE BAKER
"PEGGY"

"Behold the window of my heart—mine eye."

Prepared at Ridgedale Grammar and East Side Junior High School; Entered Central '18; Gym. '19-'20-'21; Betsy Ross Society '18-'19; Wellesley Society '19-'20; Dixie Society '20-'21-'22; "Prince Charming" '22; Junior Carnival '21; Commercial Course.

PAULINE GRIDER
"POLLY"

"Let the world slide, let the world go. A fig for care, a fig for woe."

Entered Central '21 From Stevenson High School; Dixie Society '21; Physical Training '21; Girls' Glee Club '21; Classical Course.

FRED B. HOW
"CHI"

"What's the use of hurrying fellows, there's plenty of time."

Prepared at H. C. Kumpf School, Kansas City, Mo.;—Central High, Kansas City, 1917-'18; Hyde Park High, Chicago 1918-'21; Entered Central High, Chattanooga 1921; Henry W. Grady Society; '21-'22; Senate '21-'22; French Play '22.

LEAH JEANETTE LEMONS
"LEMON"

" 'Tis good will that makes intelligence."

Prepared at Junior High School, Valdosta, Georgia, and at Commercial High School, Atlanta, Georgia; Entered Central '19; Dixie '20-'21-'22; Senate '20-'21-'22; Senate Play '21; Declamatory Contest '22; English-Science Course.

THE CHAMPION

1922



CATHERINE KERBY
"SCANDINAVIA"

"Sing to me again with thy dear voice."

Prepared at East Lake Grammar School; Entered Central '18; Domestic Science Course; Dixie Society '19-'20-'21-'22; Feast of the Red Corn '21; Carnival '21; Prince Charming '22; Irish Minstrel '22; Belle of Beaujolais '22.

FRED L. JONES
"CURLEY"

"My heart is ever at your service."

Entered Central '21; Prepared at McCuary County Grammar School Kentucky, Finished First year High School at Somerset, Ky.; finished 2nd and 3rd years at Whitley City, Ky.; Military '19-'22; Literary Clubs at Whitley City and at Central; Captain, Basketball Team at Whitley City; Entered Central '21; Boosters' and Rooters' Club '22; Candy Salesman for Senior Class.

THE CHAMPION

1922

Class History

AS in the olden days the city of Athens sent yearly to the Isle of Crete a tribute of youths and maidens, so every year the County of Hamilton, City of Chattanooga, and suburbs sends forth to the Realm of Learning a band of youths and maidens who are to grapple with the Minotaur, Ignorance, who long has threatened that land.

In the fall of 1918 an exceptionally promising band of lusty youth and fair maidens, who, cherishing the ambition of slaying this monster, left their grammar towed crafts, and with fear and trembling approached the Central High Labyrinth in which this monster had been entrapped, that all who had proved themselves valiant might give him battle.

Before following this gallant band too far into the labyrinth it may be well for us to note these marks of distinction which the young braves possessed; namely, that they were composed of many races, Brown and Green in particular, and were of occupations varying from the Baker with a Bell to the Hunter, a Lord, and graceful Swans. Perhaps it was well that a Copp was along for only one of the number claimed to be All-good.

Upon entering the labyrinth we were taken to the first of the chambers in which the four years' struggle was to be fought. We became very noisy, but after hearing the ringing of several bells, we became quiet. Then we were ushered into a large place called the study hall where we were to get ready for our first struggle.

Several weeks later, after getting lost and wandering into wrong compartments, we at last acquired some knowledge of life in the labyrinth, and learned the names of those creatures around us, who also were trying to cope with Ignorance. Those who laughed at us so much, and seemed to know everything, we found to be Sophomores. Those who went about quietly, tending to their own business, we learned were Juniors; and those who acted silly and did as they pleased, we found were Seniors.

We believed in system in all things and so decided to select leaders. After much deliberation we chose Nancy Dodds for President, Hazen Copp, Vice President, and Allen Pollard, Secretary and Treasurer.

A little later we were entertained by the Sophomores. They said afterwards that we were all hands and feet until the serving of the ice cream cones, but we enjoyed the party anyway, and later returned the courtesy.

One day Mr. Rankin, the little man who took our names when we talked, told us to go below. We felt that we were progressing—to be allowed to mingle with the Juniors and Seniors. We tried to have a dignified air but had to relinquish it when we were greeted by yells of "Fish! Fish!" Then we had the time of our lives. The noise was deafening. We were afraid at first, but when we saw Mr. Setliffe's broad smile, we knew everything must be all right, so we indulged in making noise, and began to feel more comfortable. Those about us sang something about a cannibal king, and yelled, "One Zip, two zip, three zip, zam," and "Hit 'em high, hit 'em low," and insisted upon putting City High in the soup.

We wondered what could occasion such demonstration of lung power. Finally we understood that there was to be a football game with City High on Thanksgiving Day. Now City High was our rival in this struggle with Ignorance, and when we sensed the situation, we had a sensation similar to that we experience when the band plays Dixie. We too were in possession of the old Central spirit which has kept the

THE CHAMPION

1922

Purple and Gold always at the top. Such was our first joy meeting. Central won the game, of course, and we were dismissed from the labyrinth to celebrate her victory with a parade in town that night.

Although there was an almost incessant struggle with the Minotaur Ignorance, there were times when the struggle was unusually hard. Soon after the new had begun to wear off our Christmas toys, we experienced a most dreadful encounter with our foe. We were disappointed in our teachers for hitherto they, as Ariadne had given to Theseus, had extended to us the silken cord of guidance, that we might not lose our way in the intricate passages of the labyrinth. We thought they knew everything, but we were greatly surprised at some of the things they did. They were so anxious to be informed upon certain topics that they asked all of us the same questions, so that they could be sure to learn all about them. They called this "Examination Week." Several of our band lost their lives in this struggle.

But we drove the Minotaur, who was suffering painfully from the loss of a hideous tusk, from the first cell of the labyrinth. Then we disbanded to rest awhile from our labors. We heard the rumor that we were the worst Freshman Class known in the history of the school, and we decided to disprove this in the coming years.

In a short time, however, we returned to the combat, and bravely entered the second passage of the labyrinth. We were not so afraid this time for we felt that we had acquired knowledge of some feats of skill. The Minotaur was there in full strength, for he had grown strong in our absence. We lost no time in selecting our leaders. We chose Frank Lewis, President; Edna Perkinson, Vice-President; Allen Pollard, Secretary; and Hazen Copp, Treasurer, and started for the combat. After several encounters with our foe, we craved some relaxation. It was a bore, and we really did not have time to do it but we condescended to entertain the "Fish."

A little later we were the envy of all other bands of adventurers when we furnished the two declaimers, Louesa Ellis and Frank Lewis to represent Central in the Inter-Preparatory Declamatory and Oratorical contest. With these and with other maneuvers we drove Ignorance from his second abode.

The next fall found us in the more spacious third compartment of the labyrinth. We were ready for the thing we must do; give the despairing and departing band of Seniors a square meal before they left. We elected Paul Cade, President; Louesa Ellis, Vice President; Frank Lewis, Secretary; and Sherrill Milliken, Treasurer.

This year the minotaur's guise challenged our initiative and we eagerly walked into the fray. The Junior Carnival was a big success, and brought out much latent talent and many striking individualities. Our young men (yes, they had grown to be young men) parted their hair in the middle and talked to the girls. Several of them were not satisfied with their peaches and cream complexion, and so blacked their faces until they shone like ebony. Everyone agreed that the success of the minstrel well repaid their efforts. Not to be outdone by the boys, some of our girls painted up and played Indians in "The Feast of Red Corn."

This year our representative, Louesa Ellis won the silver cup in oratory. Then we decided to entertain ourselves with a box supper. After pleas and threats upon the part of those in charge, the boys finally agreed to bring those girls who had no way to come. But it was all for the best, and there is still a scent of romance in the air. As entertainment for this occasion, several of the girls presented a Greek play, which was too deep for the audience, but one which was thoroughly enjoyed by them. We had supper in mock banquet style, and enjoyed speeches from mock representatives of the four classes.

THE CHAMPION

1922

About this time even the casual observer might have noticed a slight change in us—we were growing more elite. This was caused by the efforts of a new member from Chicago who tried to tell us what a "dead" time we were having, and to show us "How" to enliven it.

Several of our boys, notably Cade, Lynch, Williams, and Cope starred in Athletics this year, and helped Central to win again over City High.

Then came the crowning and final event of the Junior year—the banquet to which we had looked forward so long. Each of the three hundred guests seemed to have an enjoyable time, and voted it to be one of the prettiest banquets ever given by the Juniors.

At last our dream came true and we were ready to enter the fourth and last stronghold of the Minotaur. We did not feel as important as we had expected, but felt more insignificant than ever. We, nevertheless, were determined that this year's encounter should be a successful one. We elected Andrew Cope, President; Louesa Ellis, Vice President; Ruth Watson, Secretary; and Sherrill Milliken, Treasurer.

Strengthened by the success of our past efforts, we doubled, even trebled the force of our attacks upon the Minotaur, who sometimes appeared in one guise and sometimes in another. The Class gave an Irish Minstrel, A Box Supper, and a Shakespearean Play, "As You Like It." Our members also took part in the two operettas, "Price Charming," and "Bells of Beaujolais," the Minstrel, and the Senate play. We organized an Old Maids' Band to furnish music on certain occasions. Our class was fortunate in having three of its members, namely Dorothy Cope, Lillian Joines, and Jack Fisher win three of the awards given for the best essays submitted during the county-wide Thrift Campaign.

We Seniors also cherish the distinction of having represented Central in each of the four oratorical and declamatory contests in which Central was competing with the Preparatory schools of the City, and of winning for her three of the honors awarded in this contest, one first place and two second places. Our representatives were Dixie Talley, Louise Barnes, Frank Lewis, and Claude Geiger.

As the time is drawing near when good friends have to part, we feel sad, for in these four years we have learned to love each other. Not one of us will forget the other, but he will remember some for certain accomplishments—the Declaimers and Orators, Dixie, Louesa, Mamie, Louise, Frank, and Claude; those who cherish the ambition to become opera singers, Ralph, Katherine, and Harry (whom we wish the chance to stroll some day down the Lane to Ballybree); George and Leonard for gracefulness in feature dancing; and others for their state of being; namely, Hale, for being a noise-maker; P-Nut, for being afraid of red hair; Nell Brown for being infatuated with the McCallie boys; Bo-Beck, for being a graceful boy and breaking so many girls' hearts; and Cope, for being given to blushes.

Although we are sad at parting, we rejoice in the condition of our foe, for while we have not completely overpowered him, we have dealt him severe blows from which he will not soon recover, so we take down the sails of sadness, and hoisting the sails of gladness we embark upon a voyage upon Life's sea. With this parting injunction that all future challengers of Ignorance for whom Central High stages the combat, shall cherish and uphold the Purple and Gold as faithfully as we, the Class of '22 have tried to do.

EDNA MAE PERKINSON

Class Historian, '22.

THE CHAMPION

1922

L' Envoi

Harold Bowman

'Mid slanting rays of diamond dust
'Neath Heaven's blue dome I pondered.
A thought of worth for Classmates' trust
I Sought—In vain I pondered.

No store of wit or wisdom deep
No gems of verse possessing,
My mind must yet the promise keep.
I found the task distressing.

A friendly star gave me a wink.
A peach, pink petals showered;
I sat upon the streamlet's brink
Where willow branches lowered.

This stream keeps running all its life;
No rest, always going.
Perhaps the joy is in the strife,
Not deeds, but only doing.

So friends and Classmates, tried and true,
This message brief I'm bringing,
Care not what life may do to you,
With the swift tide keep singing.

Results are God's; the efforts ours,
So let us keep on trying.
Some reach the goal, some but half way
All one, if we're but trying.

He reck's not of our worldly worth,
This Captain by whom we're blest.
He only cares to know we've tried;
In all things to do our best.

Oh, Class of Nineteen Twenty-two
Today we join the river.
The stream of Central's flowing on,
But we have gone forever.

Ere long 'twill be the ocean's tide,
That calls our best endeavor.
Though we be scattered far and wide,
We will forget them never.

O Central, mother of our youth,
Who tenderly has guided;
Where first we questioned "what is truth?"
(And have not yet decided).

A toast of love I give to you
From Class of Nineteen twenty-two
'tis Central, Central Central!

THE CHAMPION

1922

Class Will

WE, the Senior Class of Central High School, of the County of Hamilton, State of Tennessee, being of sound mind and disposing memory, although Mr. Rankin does not think so, and knowing that our days at Central are few, do hereby, make, declare and publish the following as our last will and testament, hereby revoking all wills by us heretofore made.

I, Edgar Beck, do with all sorrow will my graceful ways to James Roberts, believing that he will be greatly improved by same.

I, Magness Lee, do will my love for Freshman girls to Winston Massey, provided that he will not love them any more than I have loved them.

I, Charlie Taliaferro, do will my large vocabulary and Century Handbook to Stanley Campbell, knowing that by combining the two he will be able to compile a dictionary that would make Webster pale into insignificance.

I, Herman Mathis, do with great reluctance, will my numerous nick-names to anyone who can keep up with them.

We, Gladys Hamic, Marie Denny, Gladys May, and Minnie Lou Penny, do will our love for pickles and peanuts to Almeda Grayson and Violet Raulston hoping that they may be as successful in eating them in school without being caught, as we have been.

I, Ralph Duckett, do will my wonderful tenor voice to Clyde Hotalen, knowing that he probably will be able to use it in singing of charms other than those of Marjory and Peggy O'Neal.

We, Ruth Stoner, Irma Anderson, Neochia Clouse and Ruth Raburn, do will our ability to do four years work in three to anyone who is silly enough to envy said ability.

We, Fred How, Miller Pruitt, Walter Anderson and Harry Brown, do with sighs on our lips, will our pleasures in English class to John Lively, Clarence Walker, Warren Martin and Harold Humphreys, wishing them as great enjoyment as we have known.

We, the L. I. S. (Louesa Ellis, Sophia Born, Mabel McDonald, Gertrude Letner, Margaret Ellis, Mamie Louise, Barnes, and Willie Ann Nelms) do with deep regret, will our ability to loaf in the restaurant at chapel to whoever can get away with it as successfully as we have done.

I, Mary Belle Meacham, do, hereby, bequeath, my ability to vamp other girls' beaux to Thelma Woodward, knowing that she can ably use the same.

We, Frances Peak, and Alice Ortmeier, do will our love for the faculty and our famous names "Teachers' Pets" to Frances Zbinden and Dolly Lundin for we feel they they will be able to sustain our reputation successfully.

I, Dudley Hale do hereby bequeath my highly developed wit to Harold Matheny in order that he may be able to fill the place he has already taken.

We, Dorothy Walton, Lillian Joines and Annie Brown do will our love for McCallie boys to Nancy Fleischman, Mary Norton, and Jennie K. Sauls, knowing that they will gladly accept the same.

I, Edwin Gorman, do will my love for a twin, to anyone who is willing to run the risk of talking to the right one.

I, Rice Russell, do will my business-like management of the annual to the class of twenty-three, wishing him all the success that I have had.

I, Alma Flegal, do will my surplus weight to Bonnie Reynolds, seeing that she is badly in need of a little more.

I, Andrew Cope, do, hereby bequeath my always visible smiles to James Searles, with the sincere hope that he will receive as much teasing concerning them as I have received.

We, Loretta Stark, Ada Graham, and Mary Evitt, do will our knowledge of triangles, and so forth to the Junior Class of next year, knowing that they will need said knowledge if they make passing grades in geometry.

THE CHAMPION

1922

We, Alton Hughes and Bertie Killian do will our places as vamps of the Senior Class to anyone who can fill them, even half so well as we have done.

I, Edna Perkinson, do will my place as pianist to anyone who is able to please Mrs. Pryor, the cheer leaders, the faculty and ten hundred students, all at one and the same time.

We, Caroline Au and Leah Lemons do will our timidity to Dorothy Ray, Dorothy How, and Mildred Price, feeling certain that they need it more than anyone else at Central.

I, Sherrill Milliken, do with fond regret, will my love for "Strawberry Blondes" to James Cade.

We, Dorothy Cope, and Jack Fisher do will our ability to write themes to the Junior Class, as we are sure they will need said ability next year.

I, William Duda, do will my "handsome looks to Delmar" Reynolds, asking him, however, to remember that "handsome is as handsome does."

We, Clark Kirk, Clarke Hunter, Claud Geiger, Roy Bradford, Wendell Boone, and Nelson Davis, do will our bashfulness in the presence of ladies to William Rogers and Taylor Quinn for we have already noticed an effort on their part to develop this particular trait of character.

We, Eva Ziegler and Roberta Cochran, do will our smiles for the boys to Gladys Marshall and Thelma Ruth McClure.

I, William Stevenson, do with fond regret, will my love for talking to Winston Massey, hoping that he will be able to talk as much as I have and get by with it.

We, Harold Bowman, and Clifford Frazier, do will our poetical abilities to anyone in the Junior Class who wishes them.

We, Pauline Grider and Johnnie Springfield, do will our powder, rouge, and lipstick to Ruby Thomas, Theresa Taylor, and Donnie Howard, asking that they remember, "that good taste is good sense."

I, Hazen Copp, do will my vocabulary to anyone with cavity large enough to handle the words that must come forth.

We, Dixie Talley and Frank Lewis, do will our oratorical abilities to Violet Raulston and Charles Forester.

We, Sophia Born and Geneva Smith, do will our positions as cashiers of the bank to Nina Lee Smith, with the wish that the books may balance as well next year as they have this year.

I, Florence Grandin, do will my ability to dance to Lois Petit, provided she use said ability only for entertainments.

We, Patrick Murphy, Herman Norris, Lloyd Brown, William Powledge and Ruth Smith, do will our aptitude for portraying Mother Goose characters to the Junior Class knowing that they probably can use the same in raising funds for their annual next year.

I, Bertrice Akin, do, with deepest regret, will my place as song leader and cheer leader for old Central to Grace Born.

We, Katherine Kerby, Lois Davis, and Elma Harvin, do will our vocal talent to the Junior Class, with the hope that they may not only equal us but even surpass Alma Gluck and Galli Curci.

We, Nellie Brown and Evelyn Butts, do will our places as "candy kids" to any one who thinks he or she is not yet sweet enough.

We, Katie Lee Brown, Reita Mae Hatcher, Dorothy Merrill, Alice Gates, Norinne Chadd, and Jessie Mae Brown do with sorrow will our quietness and ability to stay out of the principal's hands to Alma Gannaway and Ethel Pippin.

We, Leona Collins and Fred Jones, do will our ability to sell foot-ball tickets to the present Junior Class, in order that they may win the contest again next year.

THE CHAMPION

1922

We, Herman Waldorf, Clarence Watson, Barney Powell, and Julius Brown, do will our remarkable ability to learn Spanish to anyone who desires the same.

We, Wanaka Sanger, Thelma Phepps, Reba Parker, Pauline Vandergriff, Sammie Ault, and Madge Baker, do will our sunshiny ways to the Junior Class, so that when the class of twenty-two has departed old Central shall not be without them.

We, Leonard Murray, Alex Maxwell, and Walter Moffit, do with tears in our eyes, will our places as black-faced comedians in Minstrels to Lawrence Leahman and Hugh Colville.

We, Lila Ragon, Marjorie Tower, Wilma Koons, Nancy Chamberlain, and Frances Mahaffey, do, with sighs will our love for talking in the study hall to Esther Rogers, Elizabeth Hartman, and Elsie Gross.

We, George Simmons, Raymond Bamble, George Lynch, and Ernest Williams, do will our athletic prowess to Thomas Nonemacher, Roy Estes, and Scott McBryant, in order that they may be able to bring old city to defeat as successfully next year as we did this year.

I, Hix Workman, do will my ability to be absent a big part of the time and yet, make A's and B's on reports to anyone who is desirous of making a similar record.

I, Hice Gilbert, do will my shrewdness and deep thought to Horace Boydston, as I believe he seriously needs it.

I, Irene Hisey, do will my ability to vamp the bookkeeping teacher to Louise Holland.

We, Blanche Boyd and Jewell Swan, do will our many blushes to Bernice Gates and Reba Hamil.

We, Annie Moffit, Hazel Wilkinson, and Grace Bowen, do will our studious ways to the Junior Class, knowing that they will profit by the same.

I, Edwina Krichbaum, do will my love for the East Side Library to Helen Krichbaum.

We, Mabel Toft, Marie Thomas, and Dorothy Polk, do will our love for bobbed hair to Helen Cantrell and Leonora Schweir.

We, Eddith Walker and Frances Mahaffey, do will our frankness to Martha Alley, knowing that she already possesses this quality and would appreciate even more.

I, Katherine Beardsley, do will my Domestic Art notes to Mary Morgan, asking her to keep them as faithfully as I have kept them.

I, Beatrice Boone, do will my privilege to do as I please in Domestic Art to anyone who can obtain the same.

We, the class of twenty-two, do will our love and loyalty for dear old Central to the Freshman Class, wishing them all the hardships and pleasures we have enjoyed during these four short years.

Lastly, we hereby appoint Principal S. E. Nelson executor of this our last will and testament, hereby revoking all former wills by us made.

(Signed) Willie Ann Nelms

Senior Class of Central High School.

We, the undersigned, do certify that the Senior Class of Central High School, the testators, subscribed their names to this instrument in our presence, and requested of us, to sign our names thereto as witnesses to the execution thereof, which we do in the presence of the testator, and here affix our names.

Eleanor Irene Brand.

Coach Cornelius.

THE CHAMPION

1922

Class Prophecy

AFTER having interviewed a magician, a gypsy, and a clairvoyant, and having gazed upon the dregs of the coffee cup and the crystal and finding that not one of them could aid me in fulfilling my mission of revealing your future, I recalled the words, "A prophet is not without honor save in his own country," and so I journeyed to the land and abode of Father Time, who received me cordially, and when he had heard my request, drew aside the curtain of years and permitted me to look upon the year 1940.

It was the morning of Nov. 15, I had come to my office rather late that morning (it was at Dr. Mayo's sanitarium in Rochester, Minnesota). I found a telegram lying upon my desk. I opened it and read:

Chattanooga, Tenn., Nov. 15, 1940.

Dear Dud:

Come down for Thanksgiving Game.

Frank.

I happened to think that on Thanksgiving Day Central played City High. I immediately wired Frank I'd be there and began to make arrangements for the trip.

Going down to the ticket office I asked for a ticket to Chattanooga, Tenn. The man said: "Do you know anyone in Chattanooga?" "know anyone", I answered, "I should say so."

"Did you go to school there?" He asked.

"Yes," I answered, "I graduated from Central High School Class of '22."

"Dud Hale, as I live," he cried and then I recognized George Taylor so rotund (he must have weighed around 250 pounds) that I scarcely knew him.

On the train the first man I saw was Fred Howe in the capacity of conductor. He told me that William Duda was engineer and that Nelson Davis was fireman of this train.

I walked into the coach and there sat Claude Geiger a successful lawyer who was also going to the game, as he later informed me. He told me that Andrew Cope was the head of a concern called Consolidated Steel and also that Barney Powell was head of a chain of shoe stores which had a store in nearly every large city of the United States.

At a little country station a very prosperous farmer got on and kept looking at Claude and me in a very inquisitive way. Looking at him closely I recognized Alton B. Hughes. He joined our party and informed us that he had heard that the president of the railroad on whose train we were riding was none other than Rice Russell.

At Nashville we saw the inaugural procession of the Governor of Tennessee and recognized the Governor elect as Hazen Copp.

At last we arrived in Chattanooga. The first person whom we saw was Frank Lewis, the Frank of the telegram, who of course was Mayor of Chattanooga. With him was Edwin Gorman, Chief of Police, and Harold Bowman of the "Times."

We went to the car and saw that Julius Brown, President, at the wheel. The branch manager of the Southern railroad was there with Frank. He was none other than George Simmons.

At the crossing of Ninth and Market we were called down by a traffic officer, whom I saw was "P-Nut" Milliken. He was talking to a girl who on closer inspection turned out to be Frances Peak. Frank said that they were engaged to be married.

On the way to his home on Signal Mountain, Frank told me that Madge Baker and Mary Belle Meacham, his private secretary and corresponding secretary respectively, had tied for the world championship in typewriting. He also said that Magness Lee was a very fair City Attorney.

THE CHAMPION

1922

Upon arriving at the door, we were met by a charming matron, who was formerly Miss Edna Mae Perkinson. In the course of conversation she informed me that Bertrice Akin was a missionary to China, and that Jack Fisher accompanied her in the capacity of husband and Medical Missionary.

Picking up the evening paper, I saw that Miss Louesa Ellis, the noted American Dramatic Artist, and Miss Louise Barnes, the noted American Prima Donna, would give a concert in the City Auditorium. Their Accompanist was Eva Ziegler, another Artist of the American musical world.

Frank told me while eating supper that Ruth (Billie) Watson had married George Simmons as everyone had predicted; that Sophia Born was President of the Hamilton National Bank, and that Geneva Smith was Cashier. He also said that Irma Anderson was owner of one of the most famous chains of restaurants in the world and that she had her office in the James building.

I asked him about Walter Anderson. He said he was track coach at the University of Chattanooga.

I happened to pick up a book of poems written by Caroline Au and dedicated to Sammie Ault, a famous Senator at Washington, who with Edgar Sherman Beck, the other Senator from Tennessee, had finally secured Muscle Shoals for Henry Ford.

Frank said that Catherine Beardsley was professor of English at the University, and that Fred Jones was principal at Central. He also said that Harry Brown was teaching printing at Central and Lloyd Brown, manual arts.

Further information derived from the evening "News" was that Wendell Boone was its editor, and that his sister Beatrice wrote for it criticisms on the latest books. I also saw that Colonel Roy Bradford had been assigned to Fort Oglethorpe.

Frank said that Blanche Boyd was president of the Chattanooga Business Women's Club and that Jessie Mae Brown was Secretary.

When Frank showed me to my room, I saw a picture in oil, called "Graduation," hanging on the wall, and that Norine Chadd was the Artist.

The next morning Frank said he would have to go to town early so as to meet a New York contractor who was figuring on the construction of a club house. He turned out to be William Duda. His assistant engineer was William Stephenson, and his surveyor, Raymond Gamble. Katie Lee Brown, Commissioner of Public Buildings, was in charge of the work.

We then went down to get a bite of lunch, at Thompson's, where we saw Cleo Gutherie behind the cash register and Dorothy Cope walking around looking at everyone. Frank said that Dorothy was manager. Dorothy told us that Nell Brown had married her dear Edward about whom she used to talk and that Evelyn Butts was teaching violin at the Chattanooga Conservatory of Music at whose head was Alma Flegal.

As we came out of Thompson's, we nearly ran into Annie Brown and Dorothy Walton, the two inseparables. They told us that they were running a millinery shop on Broad Street.

I looked up and saw Nancy Chamberlain pass by in a Rolls-Rough, she was a rich spiritualist. Neochia Clouse assisted her in the role of confidential secretary.

Going on down the street we went into the United Cigar Store, where behind the counter stood Ralph Duckett, and he told us that Leona Collins was General Manager of a School of Salesmanship.

Frank said Lois Davis had gone to New York and that she now was called the second "Ethel Barrymore." Her leading man and husband was William Clark Kirk. Marie Denney had just written a new play for them called "High School Days." Roberta Cochran was directing them in its presentation.

Upon reading a New York paper, I learned that Margaret Ellis had made good the "Ballet Americaine" as the "Doneuse Premiere" Mary Evitt was with her in a tableau called "Dawn."

THE CHAMPION

1922

As it was now about noon, Frank suggested we repair to the Patten and to our long waited for repast. As we entered I saw Ruth Smith behind the clerk's desk and Hice Gilbert enter the manager's office. Frank said the Patten had improved since Hice had taken over its management.

After entering the dining room we looked about and saw many familiar faces. Among them Alice Gates, who was now a magazine writer of great note. Ada Graham Athletic Director at the University, and Florence Grandin the great American Authority on Chemistry.

The dinner, served excellently by Herman Mathis, was one of Pauline Grider's menus (she was the food expert engaged by the Patten to keep their meals up to standard).

After dinner, we went immediately to Andrew's Field. In about half an hour the City High School students marched in and took seats in the grandstand. A few minutes later Central came marching in and I thrilled at the sight of the "Purple and Gold," the only colors in the world. The students, some 3,000 strong, took seats in the bleachers and immediately began to yell.

The sponsors then came on the field and I saw that the chaperon was Gladys Hamic, the teacher of Junior English at Central.

In a few minutes High School trotted on the field and went through a few minutes drill. Then Central came on. With them were three men; namely, The Principal, of whom I already have spoken; Ernest Williams, the coach; Herman Norris, the Assistant coach and trainer.

When the game started, I saw immediately that it was to be a hard game. Finally Central put over one touchdown; the whistle blew and the game was over.

At the parade that night I saw Elma Harvin, Reita Mae Hatcher, and Irene Hisey, all behaving as if wild over the game. Frank said they were all stenographers at the Railway and Light Co. Lillian Joines was in a car all decorated with Purple and Gold and I saw that she wore a big diamond on her left hand. (You can guess whose).

The next day at a recital of the Chattanooga Music Club, Katherine Kirby sang "Mighty Like a Rose" and Wilma Koons played the Harp.

At this Club Meeting I learned that Bertie Killian had married John Hill, the famous short stop of the New York Giants, and I was later privileged to read a character sketch of both of them written by Edwina Kirschbaum, the New York Characterist.

I had arranged with Alex Maxwell and Pat Murphy, the owners of the Southern Aero Co., to take me back to Rochester. We were to start at noon; so near that time, Frank took me out to Marr Field and I made ready to fly. Leah Lemmons, Superintendent of Special Flights for the Company, was there to see me off. My pilot was Miller Pruette, who said that stops had been arranged at a good many big cities so that we could enjoy our trip.

Our first stop was at the metropolis of Pumpkin Center, Northwestern Tennessee. When we lit on the field, the slickest haired individual I ever saw came strolling toward us. He turned out to be Walter Moffitt, the only doctor in the Metropolis.

Taking the air next morning we headed for Memphis. On arriving there we saw another plane about to start, and as our engine was not hitting exactly right, Miller decided to go down to examine the engine. The plane we had observed contained Gertrude Letner, an owner of one of the most famous department stores in America. Mabel McDonald, her co-partner, and Herman Waldorf, the owner of the Brooklyn Dodgers.

After Miller had tuned up the motor we took the air and headed for St. Louis. About halfway there our gas gave out and we were forced to land in a little old coun-

THE CHAMPION

1922

try town, somewhere in Illinois. The first person I saw was Nell McDonald, a famous composer, who had come there for recuperation. In the course of conversation she informed me that Frances Mahaffey was the only woman Mayor New York has ever had.

After getting gas, we took off and headed for Chicago. We arrived there about dark and went to the Hotel Blackstone, where we spent the night. The next morning we saw advertised by a poster that Gladys May, Ruth Raburn, Dorothy Polk, and Alice Ortmeyer were all in town with musical comedies. Alice was with Zeigfeld; Gladys, with the Midnight Revue; Ruth, with the Music Box Revue, and Dorothy, with the Follies.

I saw a notice in the paper that Leonard Murray had perfected his new non-oscillating transformer for taking energy from the sun. Dorothy Merrill, Professor of Electro-Magnetics at Chicago University, had helped him in his experiments.

That afternoon I went to see William Powledge act in Annie Moffit's production of Shakespeare's "As You Like It." Clarence Watson was owner of the taxi cab company whose car took me to the theatre. At the theatre I met Ruth Stoner, the Authority on American Styles.

The next morning the first person I saw was Willie Ann Nelms, the Editor of the "Woman's Home Companion." She told me Reba Parker was a regular contributor to the magazine. She also said that Thelma Phelps was her editor of fiction stories.

That afternoon I received a call from Minnie Lou Penney, the most famous woman Lawyer in the World. At suppertime I saw Lila Ragon and Wanaka Sanger come strolling in to the dining room. They were making a trans-continental tour on foot.

We left the next day for Milwaukee and arrived there about noon. We went to a hotel and found that we were too late for lunch; so we went to a fashionable restaurant to get something to eat. The first person I saw was Lillian Swan. She was Soloist with the Chicago Opera Company. Charlie Taliaferro starred with her.

Marie Thomas was the chief political power in Milwaukee and a recognized authority on American Politics.

Mabel Toft and Marjorie Tower, two eminent sculptors, were there making a bronze study of "Lake Michigan in a Storm," for Pauline Vandergriff's new art museum.

Edith Walker and Hazel Wilkinson of the firm Walker and Wilkinson Landscape Gardners "Extraordinaire" were personally supervising the work on the gardens. Hix Workman, the authority on Medieval Architecture, was supervising the building of the House in the style of Henry the Eighth.

After getting gas and tuning up the motor, we headed for Rochester, Minnesota, where we arrived about nightfall.

Father Time closed the curtain of years, and I departed much wiser than before.

Dudley Hale, Prophet, Class of '22.



THE CHAMPION

1922

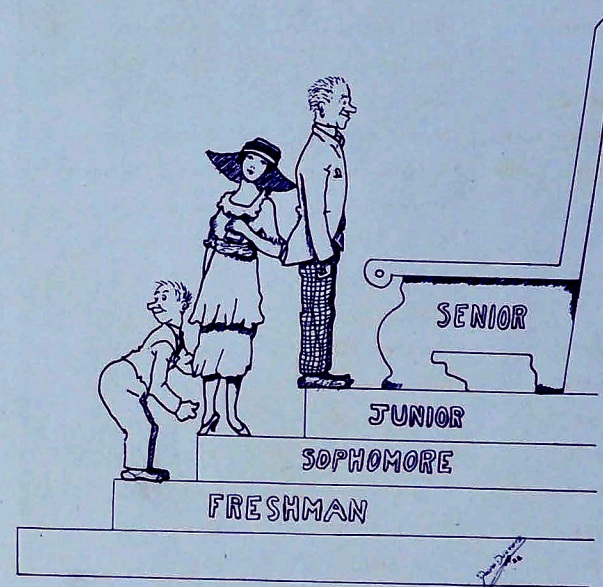
Election Returns

| | Girl | Boy |
|--------------------|------------------|-------------------|
| Most Popular | Louesa Ellis | Ernest Williams |
| Wittiest | Dixie Talley | Dudley Hale |
| Most Dignified | Edna Perkinson | Magness Lee |
| Friendliest | Ruth Watson | Andrew Cope |
| Most Timid | Caroline Au | Ralph Duckett |
| Most Stylish | Ruth Stoner | William Duda |
| Most Loyal | Bertrice Akin | Ernest Williams |
| Best Looking | Ruth Raburn | William Duda |
| Most Business Like | Sophia Born | George Taylor |
| Every Body's Buddy | Roberta Cochran | George Simmons |
| Happiest | Katherine Kirby | Andrew Cope |
| Vamp | Bertie Killian | Alton Hughes |
| Intelligent | Willie Ann Nelms | Frank Lewis |
| Luckiest | Frances Peak | Edwin Gorman |
| Most Graceful | Margaret Ellis | Edgar Beck |
| Most Athletic | Ada Graham | George Lynch |
| Thoughtless | Frances Peak | Sherrill Milliken |
| Cutest | Margaret Ellis | Andrew Cope |
| Best Sport | Blanche Boyd | George Lynch |
| Most Daring | Alice Ortmeier | Harry Brown |
| Most Prominent | Ruth Smith | Frank Lewis |

THE CHAMPION

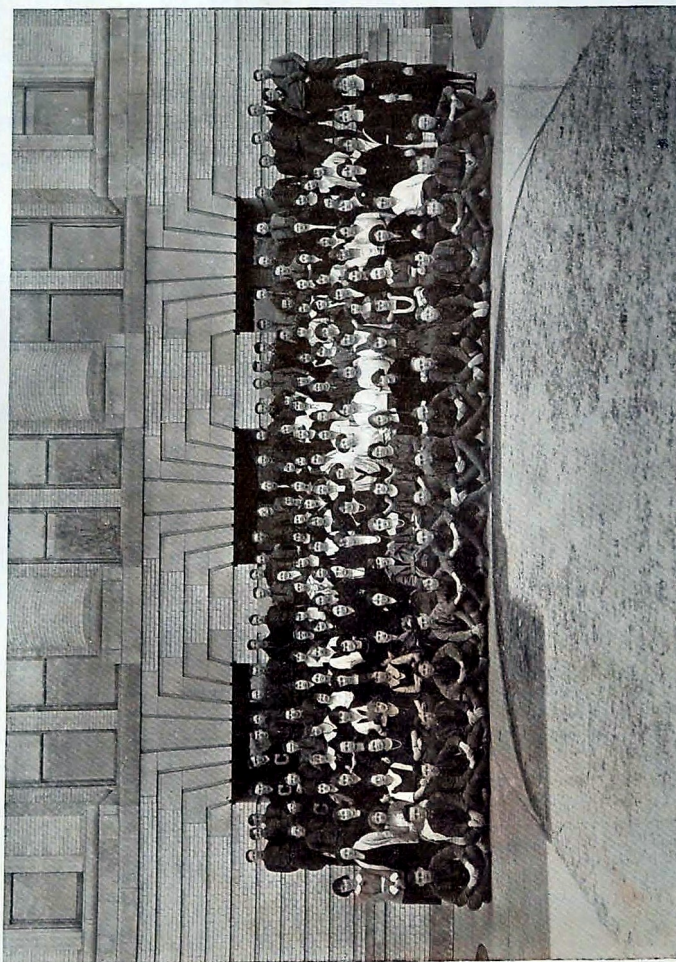
1922

LOWER CLASSES



THE CHAMPION

1922



THE JUNIOR CLASS

THE CHAMPION

1922

JUNIOR CLASS ROLL

| | | |
|---------------------------|----------------------------|-----------------------------|
| Adams, Glenda Bernice | Hays, Cecil Theodore | Phillips, Lois Elizabeth |
| Acuff, Ellis | Heider, Catherine Mary | Pickett, Raddolph |
| Algood, John Thomas | Hinch, Roy Onis | Pippin, Ethel Mary |
| Alley, Martha | Holder, Nannie | Pollard, Allen |
| Allison, Carrie Lee | Holland, Louise | Price, Myldred Turney |
| Athens, Edwin Percy | Hoover, Edith | Pryor, Helen Gertrude |
| Baker, James Hilton | Hotalen, Clyde Everett | Quinn, Taylor Lee |
| Baldwin, Beatrice Dorothy | How, Dorothy Belle | Raulston, Martha Florence |
| Barger, Addie Nancy | Howard, Donnie Mae | Raulston, Septa Violet |
| Barksdale, Ara Elizabeth | Howard, Doris | Ray, Nell Elizabeth |
| Barton, Mae Gertrude | Howard, Jim | Reynolds, Bonnie Mae |
| Beaver, Beatrice Irene | Hudson, Wendell Bernard | Reynolds, Delmar St. Claire |
| Blansit, Eula | Humphreys, Harold | Roberts, James Mirthin |
| Boeger, Ruth Marie | Hunter, Theodore Clark | Roberts, James Parren |
| Booth, Thelma Roberta | Hunter, Joseph Nelson | Rogers, William Boyd |
| Bowman, Ralph George | Jenssen, Edna Eugenna | Rowland, Oliver Milton |
| Boydston, Horace Edgar | Johnson, Mary Clemone | Runyan, Bessie Mae |
| Bragg, Thelma Irene | Jones, Allen | Runyan, Dorothy Marie |
| Brown, Anderson | Jones, Vesta Ca Ruth | Schoocraft, James Elmer |
| Buchanan, Cecil | Johnson, Sybil | Schweir, Lenora |
| Bunch, Edna Elizabeth | Jones, Fred William | Schruggs, Mary Aline |
| Burton, Floyd William | King, Harrietta Law | Seagle, Edna |
| Cade Jas. William | Keith, Loia Mary | Searles, James Clinton |
| Cantrell, Marion Agusta | Knight, Gladys Mabel | Shadden, Wulliam |
| Carson, Anna Marie | Landis, Ethel Elizabeth | Sienknecht, Emil Louis |
| Campbell, Stanley Lewes | Lane, Ira Daniel | Sims, Tom Edward |
| Cheek, Ruby Lucile | Lawson, Susie Rebecca | Sivley, Mildred Mary |
| Clark, Beulah Marie | Lewes, Charlotte Clair | Slaten, Mae Ruth |
| Cleveland, Lottie | Lively, John Jeff | Smith, Ester Elizabeth |
| Coffee, Gertrude | Ludin, Dollie Florence | Smith, Nina Lee |
| Cohill, Hugh Winthrop | Lusk, Fred | Spriggs, Mamie |
| Conway, Alice | Lyle, James | Starnes, Etta Ruth |
| Copenhaver, James Clyde | McBryant, Scott | Stanfiel, Ray Millard |
| Ceulter, Roberta Lee | McClesky, Alma Lorine | Stone, Lillie Bell |
| Crox, Thelma Jayne | McClure, Thelma Ruth | Stuart, Charles Clifford |
| Edgeman, Clarine | McDaniel, Thelma Elizabeth | Stubblefield, Nona Mae |
| Egan, Gaston Joseph | McDonald, Willie Belle | Steurken, Helen Marie |
| Elliott, Saddle | McMillian, Garnett | Taggart, Norval Alfred |
| Eskew, Harold Edge | Mabry, Floyd Edgar | Taylor, Tresa Alma |
| Estes, Roy Edwin | Marshall, Gladys Estelle | Thomas, Jimmie Rubye |
| Eubanks, Bernice | Martin, Warren Burton | Thompson, Edith |
| Ewes, Borman | Massey, Winston Louis | Thompson, Sarah Elizabeth |
| Fleshman, Nancy | Marvin, Johnnie | Thurman, Bettye Lou |
| Gannaway, Alma Ruth | Matheny, Harold Clifton | Trump, Marjorie Lucille |
| Gates, Christine Bernice | Meyers, William Roy | Turner, Claudia Inez |
| Galston, Frances Annie | Miller, Harry Marvin | Walker, Clarence |
| Grayson, Almeda | Millwood, Edith Irene | Ware, Ruth Moon |
| Griffin, Grace Armintee | Morgan, Mary Charlotte | Webster, Stanley Floyd |
| Gross, Elsie | Mount, Harry | Wetzel, Ellis Randolph |
| Hale, Albert Samuel | Mylus, Carl Robert | Whitacre, Winifred Margerie |
| Hale, Anna Ruth | O'Neal, William Lawrence | Whitside, Robert Morris |
| Hale Douglas Eugene | Parham, Thelma Rebecca | Williams, Lynn George |
| Hale, Lorena Elizabeth | Parker, Mary Alma | Williams, Thomas Lenora |
| Hamic, William Rice | Parks, Betty | Williams, Nore Belle |
| Hamil, Reba | Parks, David | Wilson, Bennett Park |
| Hamilton, Vivian Corine | Petitt, Gussie Lois | Woodward, Thelma Pauline |
| Harris, Helen Jackaline | Phelps, Ruth Eleanor | Young, Julia |
| Hartman, Elizabeth Birda | Phillips, Eva Rae | Zbinden, Frances |

THE CHAMPION

1922

Junior Class History

IN the fall of 1919 there assembled at Central one of the largest Freshman classes ever known to that institution. On account of so many Junior and Senior class meetings ahead of us we were not able to organize until the latter part of October. At that time we chose a lively bunch of officers; namely, Arthur Adair, President; Denton Albertson, Vice President; Thelma Ruth McClure, Secretary and Treasurer; and Mrs. Ida Longley, sponsor. Realizing that there were very few chances for us as Freshmen, to distinguish ourselves, we decided to make the Fresh-Soph party one of the best ever given at Central, and we did give the Sophomores a "bird" of a party. Violet Raulston was selected Freshman representative to the Junior-Senior Banquet.

As Sophomores we made for ourselves a record which not soon will be forgotten. Early in the year we organized and chose for our leaders Thelma Ruth McClure, President; Ernest Alley, Vice President; Ruth Watson, Secretary; Ruth Stoner, Treasurer; and Miss Ruth Campbell, Faculty representative, and they proved to be very efficient leaders. The first thing we did was to give the Freshmen a large party. This was a big success.

We were very proud that both the boy and girl declaimers selected from Central were sophomores, Violet Raulston and Winston Massey. We are also happy to say that in the inter-prep-school spelling contest, the Sophomore speller, Thelma Ruth McClure, failed to miss any words and brought the cup to Central.

After studying "A Tale of Two Cities" in our English course we decided to give it in chapel. The acting of the Crunchers, Madame Defarge, Miss Pross, and the other characters was admirable.

But the crowning success of our Sophomore year was the "Tatler", a newspaper which we put out. The "Tatler" was a success in every respect. The huge profit from the paper enabled us to celebrate the close of a successful year with a lawn party and picnic on the beautiful Central Lawn.

At the beginning of our Junior year James Searles was unanimously elected President, Winston Massey, Vice President; Thelma Ruth McClure, Secretary; Thelma Jayne Crox, Treasurer; and Mrs. Ida Longley, sponsor.

We realized that a large sum of money would be required for the annual Junior-Senior banquet, so we started to work early. Permission was given us to sell ice-cream, and Harold Humphreys was placed in charge of this enterprise. He has proved to be made from the sale of the cream.

In November, we gave a carnival which was conceded by all to be one of the best ever given at Central.

In the annual football game with City High a reward of thirty per cent on every dollar taken in was offered to the Juniors and Seniors, this reward to be given to the one selling the most tickets. The Juniors won and were glad to receive the money.

The Junior Class has made an enviable record in amateur dramatics, which is due to the splendid directing of Mrs. Longley. At the first of the year we presented a dramatized version of the Bible story "Paul Before Agrippa" which was so well presented that the cast was asked to give it at every church in the down town section, at those in Highland Park, and also at the University and the Manufacturers' Association. At each place the students were highly praised.

On April 13, Shakespeare's "Twelfth Night" was presented. It was truly a dramatic success.

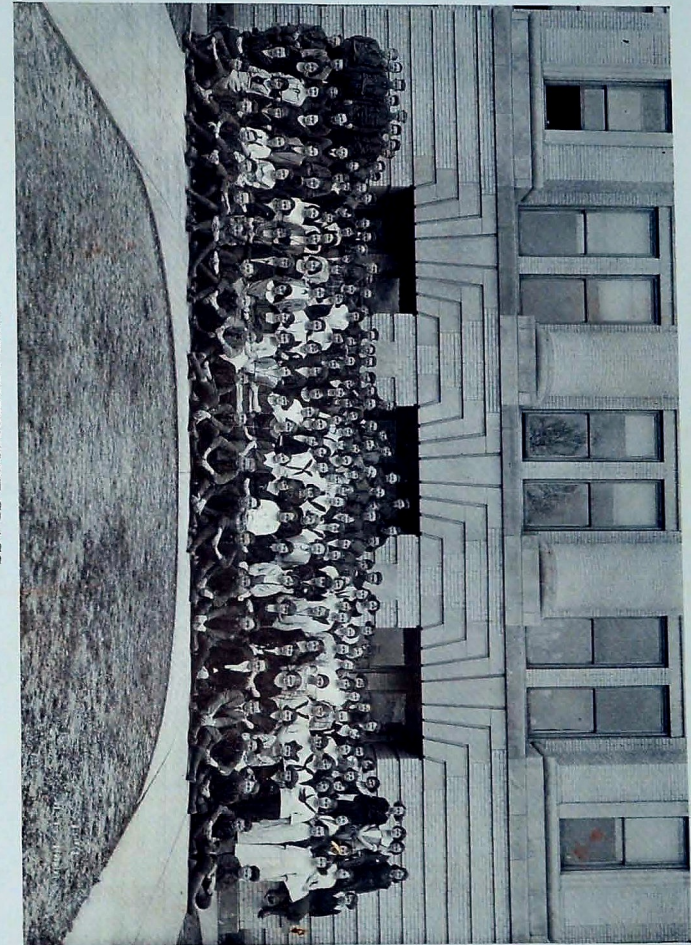
And now we Juniors are looking forward to our banquet and planning to make it one of the prettiest and most enjoyable banquets ever given to a Senior Class.

THELMA RUTH McCURE, '23.

THE CHAMPION

1922

THE SOPHOMORE CLASS



THE CHAMPION

1922

SOPHOMORE CLASS ROLL

| | | | |
|-----------------------|----------------------|--------------------|---------------------|
| Allen, Herbert | Ford, Bernice | McBrien, Katherine | Sauls, Jennie K. |
| Allen, Lucile | Forester, Charles | McClain, Reese | Schleif, Ruby |
| Allendar, Mary Louise | Fox, Harry | McClure, Florence | Scott, Grace |
| Anderson, Alice | Fry, Louise | McGee, Maud | Scott, Ruth |
| Ashby, Leland | Calloway, Lena | McDonald, Lois | Scruggs, Ruth |
| Aucott, Marion | Gamble, Evelyn | McDonald, Mary | Shadden, Vaden |
| Ault, Bryson | Gangwer, Horton | McDonald, Maybron | Shaw, Louise |
| Barksdale, Ruth | Gill, Forrest | McGee, Maud | Sherer, Hannah |
| Barnes, Bernard | Goldman, Sol | Madden, Margaret | Shimpaugh, Percy |
| Barnes, Winsley | Gothard, Louise | Mahan, Nell | Sims, Alice |
| Barton, Clarence | Graham, Ruby | Malstrom, Edwin | Sivley, Willie Mae |
| Bathman, Elizabeth | Grice, Mattie | Manning, Joy | Slaughter, Jack |
| Bethel, Daisy | Guinn, Willard | Marshall, Florence | Slaughter, Marvin |
| Blalock, Bonzie | Guthrie, Frances | Martin, Albert | Smith, Byron |
| Boling, Lee | Hale, Lucile | Martin, Elizabeth | Smith, Cleo |
| Bond, Hugh | Hammond, James | Mason, Jack | Smythe, Louis |
| Born, Grace | Hancock, Bertha | Mason, Louise | Snodgrass, Mabel |
| Born, John | Hartman, Reid | Matheny, Harold | Staples, Clara |
| Bowman, Bernice | Haynes, Frances | Mathis, Fannie Mae | Staples, Lola |
| Bowman, Catherine | Haynes, Mary Louise | Mathis, William | Steffen, Fern |
| Boyd, Ernest | Henry, David | Merrill, David | Stegall, Cora |
| Boyd, Herchel | Hicks, Ella | Milton, Sarah | Stephenson, Charles |
| Boydston, Clara | Holder, Mae | Mitchell, Richard | Stillwell, Ralph |
| Boydston, Rutha | Hollingsworth, Hazel | Molsdale, James | Strickler, Harvey |
| Bragg, John | Hoodenpyl, Goldia | Moore, Irene | Strong, Kenneth |
| Brannon, Georgia | Hoppe, Louise | Moore, Edith | Strother, Edythe |
| Brown, Annie | Hotalen, Edward | Moorman, Helene | Sturgill, Elsie |
| Buchanan, Jennie | Howard, C. W. | Morrison, James | Suggs, Vivian |
| Buhrman, Marion | Hubbard, Charlotte | Mullennix, Ellen | Swan, Nirvona |
| Burns, Melvin | Humphreys, Robert | Murdock, William | Taliaferro, Edwin |
| Cagle, Lorena | Jackson, Helen | Murray, Ruth | Templeton, Herchel |
| Cahoon, B. T. | Jackson, Arthur | Myers, Ruby | Tinker, Annie |
| Carden, Frank | James, Alice | Nelms, Gertrude | Waldrop, Marion |
| Carmin, Karl | Jarret, Aleen | Nelson, Inez | Walker, Wannie |
| Cate, William | Jenno, Ellen | Newell, Ruth | Ward, Mamie |
| Cathcart, Nelle | Jones, Glenn | Nonemacher, Thomas | Warrenfels, Douglas |
| Catlin, Margaret | Jones, Homer | Norton, Mary | Weatherford, Robert |
| Cawood, Hazel | Jones, Vesta | Oliphant, Frances | Webster, Stanley |
| Cochran, Aileen | Jordan, Charles | Orth, Sidney | Wells, Helen |
| Coe, Vida | Joran, Paul | Ortmeier, Helen | White, Frank |
| Collins, Nelle | Keaton, Lillian | Overbay, Ruth | White, Mary |
| Cook, Roger | Kelley, John | Owens, Marie | Wickser, Fritz |
| Corbly, Marie | Killian, Una | Pahmeyer, LeBaron | Willett, Florence |
| Crow, Hollie | Kirk, Idanell | Pahmeyer, Melda | Williams, Inez |
| Cry, Wallace | Koons, I. B. | Parker, Mary | Williams, Mary |
| Davis, Katharine | Kirchbaum, Helen | Peterson, Alice | Willis, Katherine |
| Dawson, Harold | LaBar, Martha | Phifer, Helen | Wilson, Charles |
| Denman, Irene | Lamb, Mildred | Poe, Lance | Wilson, Clifford |
| Dean, Reginald | Land, Mary Louise | Powers, Grace | Wilson, Christine |
| Delaney, Floyd | Leak, Mell | Prentice, Nellie | Wilson, LaMar |
| Derben, Paul | Lee, Roland | Price, Claire | Wilson, Myrtle |
| DeSha, Elmer | Lehman, Lawrence | Prince, Birdie | Witt, Beulah |
| Duggan, Lee | Lewis, Dickie Lee | Purser, Garland | Wood, Dorothy |
| Ekiss, Madeline | Lewis, Ralph | Ray, Dorothy | Woodall, John |
| Elbon, James | Light, Louise | Reynolds, Dorothy | Woods, Clara |
| Elbon, Mary | Lockmiller, Clifford | Reynolds, Paul | Woodward, Oden |
| Ellis, Velma | Long, Mildred | Roberts, Lorena | Woody, Jewel |
| Erd, John | Lotspeich, Katherine | Rogers, Landon | Workman, Mary |
| Eubanks, Bernice | Lowe, Tommie | Rogers, Elizabeth | Wright, Elaine |
| Farmer, Stewart | McBride, Evelyn | Roy, Bertha | Wright, Ida |
| Fenton, Annie | McBride, Wesley | Rutledge, Edward | Zaugg, Stanley |

THE CHAMPION

1922

Sophomore Class History

A PERSON who has no history is lucky," was once said by a famous man. This class is every thing else but lucky, and our real history started with the year 1921.

In the aforesaid year, about three hundred little emigrants drifted into Central High School and were given the customary name of "fish".

One day, when the tide of study was at ebb, and the current of demand, swept us into the upper Study Hall, we engaged ourselves with the delightful task of electing some "big fish" to care for our class, Thomas Nonemacher was elected President, Ruth Moser, Vice President, and Edwin Taliaferro, Secretary and Treasurer.

Later on in the season, some of our bolder little fishes grew brave enough to swim out into athletics, and when put thru the test of rapids and swift falls, they came out on top, as frisky and brave as any of the older trouts. Some of these were, Tom Nonemacher, Ed Taliaferro, Bernard Barnes, Billy Cate, and Reginald Dean.

But alas, we did not stop at that, for some little oratorical fishes, boldly swam into the great stream of oratory, and those fish included; Albert Martin, Una Killian, Nirvona Swan, Tom Nonemacher, and Ames Duggan.

Not only the boys showed grit out in unfamiliar streams, but also back in the class rooms and study-halls, sat the studious girls; and when the honor roll was announced in May, it was graced with so many names of "girl fishes" that space does not permit me to name them.

After a splendid vacation, we came again to Central, and we were called "Sophs". Practically our whole class returned, excepting a few, who drifted away or sought other waters. These will always be "Fish," no matter how old they live to be. They will be "Fish" until another year of hard labor in High School earns them the better name "Soph."

The class started off the new term with a bang! With a new Principal, Mr. Nelson, and a score of new teachers, we were given the right send off. We began by electing Lawrence Lehman for President; Una Killian, Vice President, Edwin Taliaferro, Secretary and Treasurer.

The "athletic fishes" were now experienced "Sophs" and found themselves a place on the regular teams. The oratorical fishes, now dignified "Sophs," secured themselves a seat upon the rostrum with the higher, "old timers."

We'll let this end our History:

O fish that swam the Central sea.

Because you know we haven't space,

To tell each thing with modest grace.

But perhaps some day you'll know why,

This class keeps working on the sly.

We want to grace the outside world

With true, intelligent boys and girls.

Elaine Wright—'24.

THE CHAMPION

1922



FRESHMAN CLASS OFFICERS

Neill Bragg, President

Laura Lewis, Vice-President

Marie Shepherd, Secretary-Treasurer

THE CHAMPION

1922

FRESHMEN CLASS ROLL

| | | |
|-------------------------|---------------------|---------------------|
| Akin, Marie | Chambers, Josephine | Fridell, Hubert |
| Alford, William | Chandler, Elizabeth | Fryar, Eva |
| Alley, Richard | Chandler, Lily | Gamble, Grady |
| Allison, Harold | Chapman, Helen | Gannaway, Frank |
| Arnold, George | Clark, Charles | Gannaway, Rowena |
| Ashby, Durwood | Clemons, Rachel | Garmany, Hampton |
| Aslinger, Elmer | Clymer, Joe | Garmany, George |
| Atkinson, Thomas | Close, Billie | Gillam, Mary |
| Au, William | Clouse, Hercul | Good, Fred |
| Aucott, Everett | Comer, Ruth | Gorenplo, Edith |
| Austin, Frances | Collins, Leta | Goulet, Harry |
| Bacon, Irene | Cope, William | Graham, Riley |
| Baker, Jewel | Copenhaver, Ireta | Gray, Annie |
| Barnes, Claude | Cox, Arthur | Green, Nellie |
| Barrick, Christine | Craig, Ralph | Hamby, Lester |
| Beene, Grace | Craig, Wilma | Hamil, Ernest |
| Bell, Hazel | Crawford, Alex | Harbour, Bonnie |
| Bentley, Evelyn | Currey, Lavene | Harmon, Dorothy |
| Bird, Elsie | Dagley, Gertrude | Harris, Thelma |
| Booth, Gladys | Daily, Hermina | Hatch, James |
| Bonnine, William | Dalton, Clarence | Hatfield, Irene |
| Boss, Bernice | Davis, Carl | Heaton, Dorothy |
| Boss, Burrell | Davis, Clara | Helms, Douglas |
| Boulton, Laura | Davis, Mattie | Henderson, Margaret |
| Bowman, Clyde | Dawson, Thomas | Henley, Ila |
| Bowman, Elinor | Deakins, Rex | Hickey, Homer |
| Bowman, Wayne | Daffron, Audrey | Hicks, Rosell |
| Boyd, James | DeFries, Lola | Hill, Algernon |
| Bradford, Marie | Delaney, Gladys | Hinds, Henry |
| Bradley, Katherine | Denny, Ralph | Hogan, Ira |
| Bragg, Neill | Desable, Jacques | Holder, Claude |
| Brewster, Rubie Lee | Dixon, Ralph | Holland, Mildred |
| Bridgman, Lillian | Dixon, Carl | Hollingsworth, Paul |
| Brooks, Hubert | Doremus, Jean | Hoodenpyle, Arlie |
| Brown, Lucile | Duckett, Clifford | Howser, Virgie |
| Brown, Marie | Dugger, Ben | Huskey, Lena |
| Bunch, Nanlee | Duncan, Leroy | Huskey, Richard |
| Bull, Beulah | Edwards, Raymond | Hyde, Hazel |
| Bryd, Gladys | Eldridge, Emma | Hyde, Mary |
| Cade, George | Ellis, Horton | Jackson, Madeline |
| Calloway, Annabel | Elrod, Blanche | Jackson, Vesta |
| Campbell, James Bernard | Engers, Marie | Jenson, Velma |
| Carroll, Clarence | Ensey, Gypsy | Johnson, Elizabeth |
| Carson, Carl | Exun, Agnes | Johnson, Stella |
| Carter, Paul | Exun, Gladys | Johnston, Annie |
| Cartwright, Rhea | Finlay, Helen | Jones, Mona |
| Carver, Ida | Finnell, Walter | Jones, Viola |
| Carver, Oliver | Fitch, James | Keith, Jean |
| Casteel, Ruth | Fortune, Kathryn | Kirby, Virginia |
| Cates, William | Foster, Perry | Kerr, Wilson |
| Cathy, Lucy | Fox, Marie | King, Cecil |
| Catlin, Earline | Francisco, Luther | Kistler, Gertrude |
| Catlin, Frances | Franks, Lillian | Kistler, Henry |
| Catlin, Raymond | Frazier, Audra | Kline, Louis |
| Cawood, Charles | French, Frances | Kountz, George |

THE CHAMPION

1922

FRESHMEN CLASS ROLL

| | | |
|----------------------|--------------------|----------------------|
| Knowles, Richard | Nichols, Richard | Silver, William |
| Lamb, Gladys | Nicholson, Waeter | Slaton, Mildred |
| Lane, Jackson | Norris, Jerome | Smedley, Marie |
| Lane Atlee | Oliver, Nellie | Smith, G. A. |
| Lauter, Elizabeth | Oneal, Gordon | Smith, Ilah |
| Lawson, Carroll | Ott, Alvis | Smith, Mitchell |
| Lehman, Nellie | Owens, Mack | Snow, Frances |
| Lerch, Louis | Palmer, Pearl | Sneyd, Doris |
| McCormick, Leonard | Parker, Hilda | Smith, Sam |
| McClannahan, William | Parker, Marie | Snyder, Edna |
| McCreary, Robert | Parker, William | Stedman, Marcus |
| McDonald, Blanche | Parks, Vergie | Steger, Sarah |
| McDonald, Lydia | Paul, Thelma | Stephens, Norris |
| McElhaney, Robbie | Peak, Arlie | Stephens, Edith |
| McKeehan, Sam | Peak, C. S. | Stivers, Fred |
| MacNabb, Edward | Peterson, Miriam | Stinson, Harold |
| McVeigh, Herbert | Phillips, Helen | Stivers, Chester |
| Magnusson, Jessie | Poe, Mary | Straker, Ida |
| Malstrom, Margaret | Price, Blanche | Summers, James |
| Marlin, Roy | Price, Margaret | Sweets, Clarence |
| Martin, Janette | Prater, John | Tarvin, Paul |
| Martin, Ralph | Proffitt, Charles | Tate, Lillie |
| Marsh, Mary | Quinn, Jennie | Thomas, Frieda |
| Massey, Lester | Ramsey, Nellie | Thompson, John |
| Maxwell, Ovie | Randolph, Fred | Thurman, Evelyn |
| Meadows, Mabel | Reed, Essie | Tribble, Ruth |
| Meadows, Earnest | Reed, Mary | Totton, Thelma |
| Meyers, Archie | Reynolds, Nell | Upchurch, Mac |
| Maichaels, Grace | Richey, Dorsie | Underwood, James |
| Michel, Helen | Roberts, Mary | Vandergriff, Raymond |
| Miller, Cora | Robinson, Herbert | Van Zant, Hazel |
| Miller, Ernest | Rogers, Edith | Van Zant, Thelma |
| Miller, J. L. | Rogers, Clinton | Veazy, Vera |
| Miller, Mildred | Rogers, Geneva | Vincent, Louise |
| Millwood, Thelma | Ross, Damon | Walker, Joe |
| Mink, Violet | Rutledge, Nora | Walker, Tom |
| Mitchell, Frederick | Scherer, Zelma | Wallace, Glenn |
| Mize, Tom | Scoggins, Evelyn | Waller, Vera |
| Monroe, Dunworth | Scott, L. D. | Waldorf, Eda |
| Moon, Idella | Seagle, Leonard | Walters, Reece |
| Mount, Oscar | Silver, Grace | Walthorn, James |
| Meyers, Frank | Silver, William | Webb, Eston |
| Lerch, Cecil | Slaton, Mildred | Weidner, Joe |
| Letner, Roberta | Smedley, Marie | Westbrook, Darrell |
| Lewis, Laura | Smith, G. A. | Whisenant, Clyde |
| Lillard, Carroll | Smith, Ilah | White, Florence |
| Lingerfelt, Irene | Smith, Mitchell | Whiteside, Margaret |
| Libgfelt, Lena | Snow, Atlee | Williams, Fred |
| Little, Ophelia | Shelton, Grace | Williams, Raymond |
| Litz, Frances | Shepherd, Marie | Wilkes, Mamie |
| Lively, Annie | Shipley, Fletcher | Wilkes, Marjorie |
| Lively, Helen | Shields, Gladys | Wilkes, Sarah |
| Livingston, Carl | Shippey, Anna | Wilson, Gertrude |
| Lord, Porter | Spencer, DeForest | Wilson, Willie |
| McBride, Ruby | Spicer, Harry | Winn, Eleanor |
| McCall, Berry | Seinknecht, Alfred | Wood, Raymond |
| McCallie, Grace | Shipley, Fletcher | Zbinden, Catherine |
| Naftzger, Gilbert | Sims, Atlee | Yates, Howard |
| Nichols, Cleo | Silver, Grace | Zilen, Hoyt |

THE CHAMPION

1922

Freshman Class History

WE three hundred and fifty young hopefuls on the opposite page are the promising youngsters of our Alma Mater. We came to her in 1921 from the various grammar schools of our county, full of ambition and having aspirations toward the Presidential chair, or fancying ourselves condescendingly accepting such trivial positions as those of Mayor, Senator, and so forth, which were urged upon us by a host of admiring friends. We have put away these thoughts until we shall become Seniors, though we shall never lose sight of them, and have immersed ourselves in our school work to win glory for Old Central.

When we first came to these halls of learning, we were in the "Fish" stage, unable to yell, unable to find the various teachers and rooms in our school building, but we have developed into proficient Centralites, and have given our quota to all the activities of our school, including athletics, literary Societies, Declamatory Contest, Plays, and the Operetta. We really show remarkable promise of acquiring fame in the school and outside world.

We have acquired the Central spirit and are working with such a will and determination to do our best, that in 1925 those who watch us march solemnly down the aisle, receive our diplomas, and march triumphantly off, will wonderingly say, "Were they ever boisterous Freshmen?"

We may be "Fish", but we're alive,

Freshmen! Freshmen! '25!

THE CHAMPION

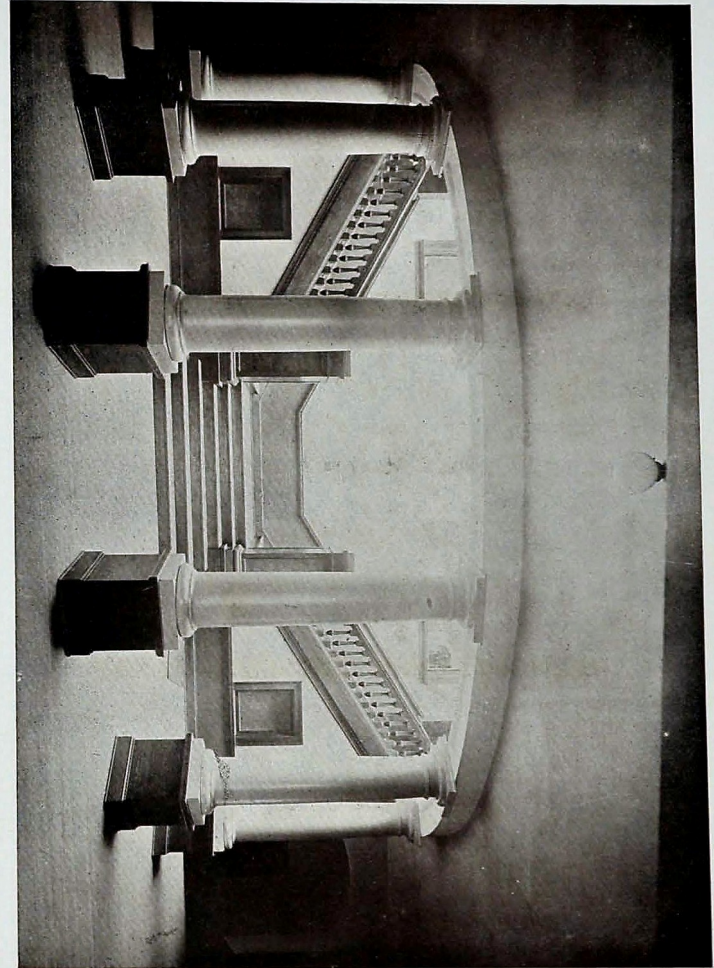
1922

In Memory of
Bessie Runyan
Class of 1923
Died March 23, 1922.

Elizabeth Marsh
Class of 1925
Died April 11, 1922.

THE CHAMPION

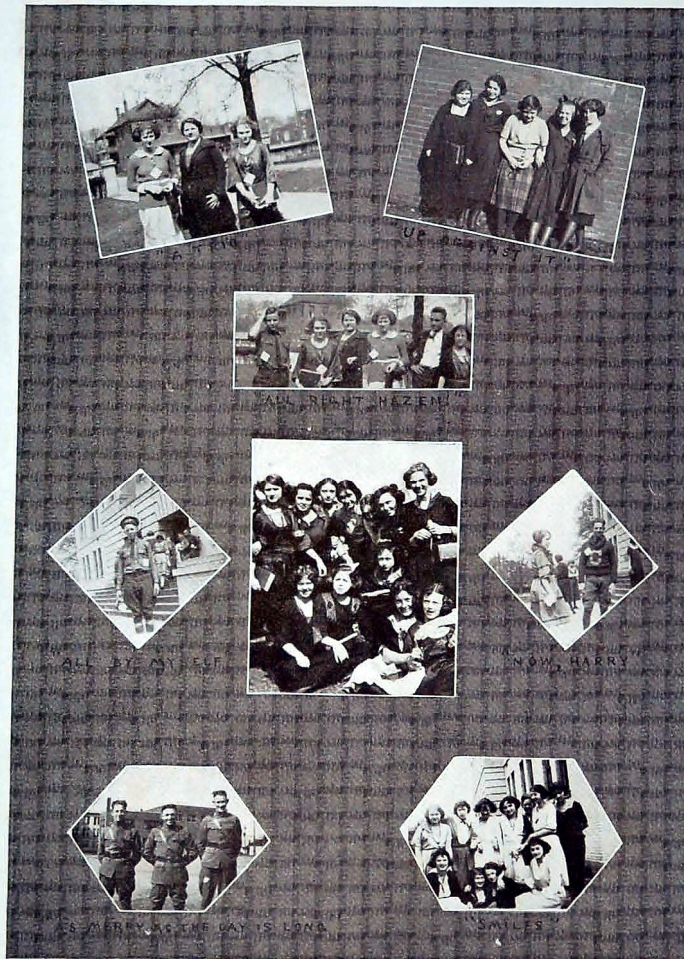
1922



THE ROTUNDA

THE CHAMPION

1922



THE CHAMPION

1922



THE CHAMPION

1922

SPEAK the speech, I pray you, as I pronounced it to you, trippingly on the tongue; but if you mouth it, as many of your players do, I had as lief the town-crier spoke my lines. Nor do not saw the air too much with your hand, thus; but use all gently: for in the very torrent, tempest,—and—as I may say—whirlwind of passion, you must acquire and beget a temperance, that may give it smoothness.

Be not too tame neither, but let your own discretion be your tutor; suit the action to the word, the word to the action; with this special observance, that you o'erstep not the modesty of nature; for anything so overdone is from the purpose of playing, whose end, both at the first and now, was and is, to hold, as 'twere, the mirror up to nature; to show virtue her own feature, scorn her own image, and the very age and body of the time his form and pressure.—Hamlet.



The Wellesley Society

THE Wellesley Society held its first meeting immediately after school began and enjoyed a remarkable increase in membership. The society has met regularly every two weeks of the scholastic year and each meeting has been full of interest and enthusiasm.

In an effort to have the Wellesley Society one in which every member shall play a very important part, the girls are launching a new plan for the arrangement and presentation of programs which bids fair to greatly enlarge the interest and also the usefulness of the society. In connection with this plan a short story contest is now being held and judging from former work of the Wellesley girls, some very clever stories will no doubt be submitted. Proper recognition will be given to the authors whose stories win first and second place.

Near the close of last year the Wellesley girls presented a short play, "An Uninvited Guest" which was a success from every viewpoint. From the proceeds of this play the Wellesleys of '21 presented the Wellesleys of '22 a beautiful walnut bulletin board which has proven both a useful and an ornamental gift. Another play is to be given soon and with the proceeds realized from it we hope to make an appropriate and substantial gift to Central.

Wellesley's slogan is "Excelsior" and it is the aim of the society to instill into the heart of every Wellesley girl an aspiration for high scholarship, an appreciation for good literature, and a desire for the development of natural talent. That this aim already has been partially accomplished is evident from the fact that the Wellesley girls have been given no small share of the honors that Central yearly bestows on her deserving students.

On the whole the society has made marked progress and has been a source of pleasure, of improvement, and enjoyment to both the faculty and the student members.

Officers

| | |
|--------------------------|----------------|
| Louesa Ellis..... | President |
| Willie Ann Nelms..... | Vice President |
| Mamie Louise Barnes..... | Secretary |
| Ruby Thomas..... | Treasurer |



Sponsors

Misses Edna Cureton,

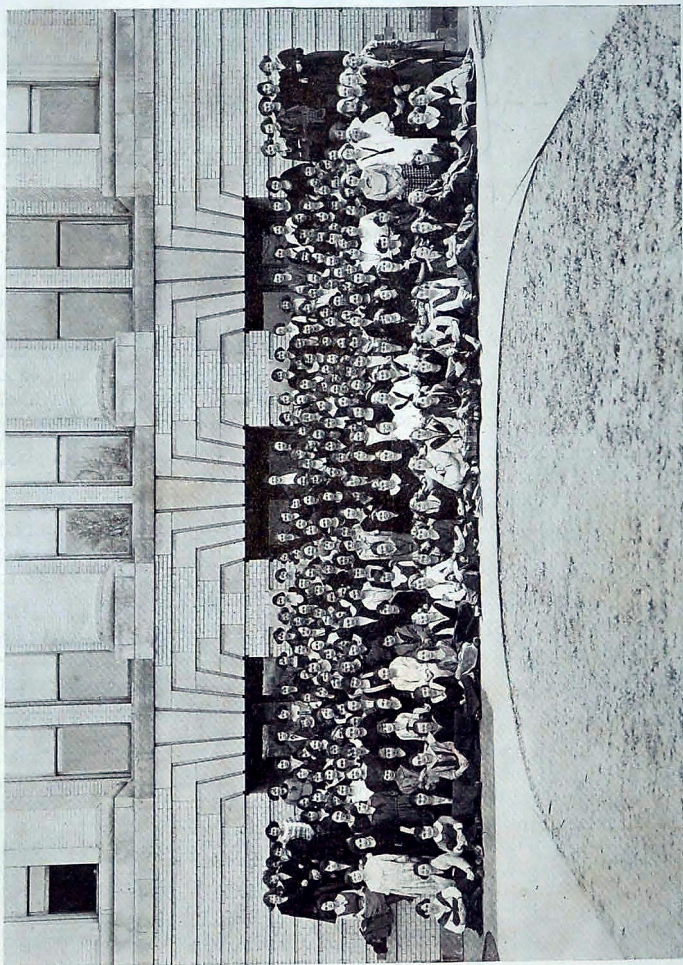
Mildred Campbell

Faculty Members

Misses Ruth Bynum,

Mrs. Shelton
Mildred Wright,

Gladys Robinson



THE DIXIES

The Dixie Society

THE Dixie Society started the year '21-'22 with two hundred and fifty members, the largest number ever known to belong to this society.

Officers for the new term were: Bertrice Akin, President; Ruth Watson, Vice President; Violet Rawlston, Secretary; and Eva Zeigler, Treasurer.

Miss Waples was elected sponsor.

A routine of miscellaneous programs was followed until the President and sponsor decided to make Dixie a Dramatic Society, with Dixie Talley as chairman. The program committee worked up many entertaining little plays which afforded opportunity for the development of histrionic ability of the girls and afforded them much pleasure.

At the mid-term new officers were elected for the Society.

Miss Akin was re-elected President; Miss Leona Collins, was elected Vice President; Miss Ruth Watson, Secretary; Miss Ruth Slaten, Treasurer.

On March 17, at the assembly period, the society gave a vaudeville which was well received.

A Basket Ball team was selected and a series of three games was played with the Wellesley Society. Dixie came out Victorious. out victorious.

This has been one of Dixie's most successful years.

THE CHAMPION

1922



Athenian Literary Society

Organized October, 1921

Officers

| | |
|-----------------------|----------------|
| Velma Jenssen..... | President |
| Elizabeth Lauter..... | Vice-President |
| Ophelia Little..... | Secretary |
| Ruth Murry..... | Treasurer |

Sponsors

| | |
|--------------------------|---------------------|
| Miss Mary Louise Beckham | Miss Frances Church |
|--------------------------|---------------------|

Program Committee

| | |
|----------------|----------------|
| Lillian Keaton | Edna Jenssen |
| Doris Sneyd | Edith Gorenflo |

THE Athenian Literary Society is one of the youngest organizations of the school, having been organized this year, but we are a living example of the old adage that "valuables come done up in small packages."

We look forward to meeting days, alternate Wednesdays, for our programs are very interesting as well as instructive, ranging from tragedy to comedy, with special programs for each holiday season. We are very proud of our Thanksgiving dramatization of "The Courtship of Miles Standish," and if our Christmas dramatization of "The Birds' Christmas Carol." Our memory books are full of souvenirs, among them the little red hearts foretelling our futures, of St. Valentine's Day, and the shamrock, reminding us of Thomas Moore, Sweet Songs of Old Erin, and last but not least, Pat and Mike.

We chose the name Athenian because at one time Athens was the center of all art and culture. Like the citizens of that famous city, we are learning to know and to love the great story tellers and dramatists.

THE CHAMPION

1922



Euterpean Literary Society

Organized October, 1921

Officers

| | |
|-------------------|-------------------------|
| Grace Powers..... | President |
| Louise Light..... | Secretary and Treasurer |

Sponsors

| | |
|------------------------|---------------------|
| Miss Nellie Greenwood, | Miss Kathryn Bynum, |
| Miss Pardue. | |

Program Committee

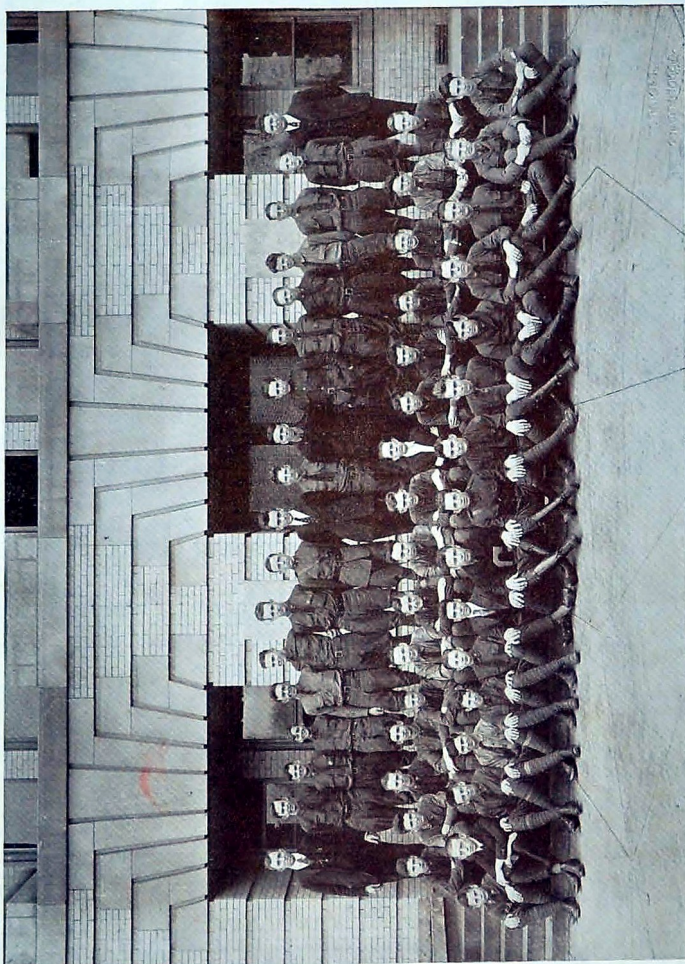
| | |
|--------------|-----------------|
| Frances Litz | Mabel Snodgrass |
| Alice Sims | Nelle Cathcart |

THE Euterpean Literary Society is very young, and consequently small, but we try to make in quality, any thing we may lack in quantity.

Meetings are held twice a month in one of the class rooms. The program consists generally of poems, short stories, and music. It is the aim of the organization to promote familiarity with the best American and English writers.

THE CHAMPION

1922



THE GRADY SOCIETY

THE CHAMPION

1922

Henry W. Grady Literary Society

THE Henry W. Grady Literary Society has had a very successful year. Although the society did not give a play, their members have taken some of the leading parts in plays given by the school.

During the year many successful debates on leading National questions have been held.

Professors Charles J. Anderson and B. H. Martin were chosen as Faculty Sponsors.

Officers

| | |
|---------------------------|------------------|
| Harry N. Brown..... | President |
| Jack M. Fisher, Jr..... | Vice-President |
| George E. Simmons..... | Secretary |
| Ralph Duckett..... | Treasurer |
| W. Sherrill Milliken..... | Sergeant at Arms |

Roll

| | | |
|-------------------|--------------------|---------------------|
| Ashby, Leland | Hartman, Reid | Pruette, Miller |
| Bragg, John | Hunter, Joe | Roberts, Milton |
| Beck, Edgar | Koons, I. B. | Sienknecht, Emil |
| Brown, Harry | Lewis, Ralph | Smyth, Louis |
| Duda, William | Lewis, Frank | Wickzer, Fritz |
| Delaney, Floyd | Lyle, James | Slaughter, Jack |
| Elbon, James | Lively, John | Slaughter, Marvin |
| Duckett, Ralph | Walker, Clarence | Stephenson, Charles |
| Farmer, Stuart | Murray, Leonard | Simmons, George E. |
| Fisher, Jack M. | Milliken, Sherrill | Taylor, George |
| Frazier, Clifford | Martin, Albert | Templeton, Hershel |
| Geiger, Claude | Malstrom, Edwin | Waldorf, Herman |
| Gorman, Edwin | Mathis, Herman | Shadden, Vaden |
| Hale, Dudley | Pickett, Randolph | Watson, Clarence |
| | Powledge, William | |

THE CHAMPION

1922



THE SENATE

THE CHAMPION

1922

The Senate

Officers

Frank Lewis.....President
 Claude Geiger.....Vice-President
 George Taylor.....Clerk

Cabinet

Bertrice Akin Leonard Murray Dudley Hale
 Percy Athens Delmar Reynolds Albert Martin

ON the whole the Senate has had a very successful year. On account of the crowded program of extra curricular activities, the open meetings have not been held at regular dates, nevertheless, the open meetings have been both interesting and educational. We have debated upon such subjects as: The Muscle Shoals, The Soldier's Bonus, Disarmament, and the Tariff.

The Senate has welcomed the large number of Freshmen who are taking an active and important part in the work of the society. Several have already earned their pins by giving the necessary number of speeches required to obtain them.

The Senate Play "When a Feller Needs a Friend," given under the direction of Mr. Smith, to raise funds to pay for the Senate pins, was presented March 13, and proved to be a decided success.

The presidential campaign is in progress as the annual goes to press. Much interest and party spirit is manifest and all things point toward a successful completion of the campaign.

Much credit for the success of the Senate is due to Mr. Rankin, and Mr. Smith for they have taken active interest in all activities of the Senate and have worked untiringly and earnestly in its behalf throughout the year.

THE CHAMPION

1922



THE CHAMPION

1922

CLUBS AND ACTIVITIES



THE CHAMPION

1922



Girls' League

ON the last Friday in September 1921, a mass meeting of the three upper classes of the girls of Central High was called by Mrs. Ida M. Longley, Dean of Girls. This meeting was called for the purpose of organizing a Welfare League, the object of which should be to advance the civic and social standards of the school, and through better acquaintance, to draw more closely together the teachers, parents, and students. Suggestions were made to the effect that the upper classes were to act as "Big Sisters" to the incoming Freshmen; to promote cleanliness in class rooms, halls and rest rooms; and to cultivate high standards of honor and the use of pure and good English.

The women teachers of the school acted as official sponsors for the League.

After several short speeches made by them, a chairman was appointed and officers for the ensuing year:

| | |
|---------------------|----------------|
| Margaret Ellis..... | President |
| Eva Ziegler..... | Vice-President |
| Ada Graham..... | Secretary |
| Cora Stegall..... | Treasurer |

The president was installed and a committee was appointed to draw up the Constitution and By-Laws of the League.

Since the League has been organized, the girls have sponsored a Parent's Tea, and have given an operetta in which one hundred and fifty girls took part.

The proceeds of the operetta will be spent for furnishing rest rooms, providing first aid cabinets, and for anything else necessary for the welfare of the school.

THE CHAMPION

1922



The HI-Y Club

THE HI-Y is a branch of the Y. M. C. A. of Chattanooga. Its object is to create, maintain, and extend through the school and community high standards of Christian character, to promote clean speech, clean athletics, and clean scholarships.

The HI-Y which was organized by Mr. Glen Ellis of the Central Y. M. C. A. held its first meeting on December 1, 1921. Billy Shadden was elected President; Edgar Beck, Vice-President; and Clarence Watson, Secretary; and Mr. Morpew, of the Y. M. C. A., sponsor of the club. The HI-Y meets every Thursday in the commercial room.

The club sent William Shadden and Thomas Nonemacher to a state-wide convention of the HI-Y which was held at Harriman. We expect to send at least one delegate to the summer camp convention which is to be held in August, at Rock Island, Tennessee.

THE CHAMPION

1922



Letter Men's Club

THE Letter Men's Club is a new organization at Central having been organized by the foot ball letter men on January 25, of this year. At this meeting the following officers were elected: George Lynch, President; Ernest Williams, Vice-President; and Bill Shadden, Secretary; Andrew Cope, Sergeant-At-Arms. The club drew up a constitution which provides for a meeting every other Tuesday, at which time a program is to be given and the business of the club discussed.

The main purpose of the club is to promote athletics in general and to restrict the wearing of letters to only those who have been legally entitled to the same. It is believed that this club will be a permanent organization in the school, because of its influence for better athletics and close friendship of the boys.

THE CHAMPION

1922



Girls' Glee Club

| | | |
|----------------------|----------------------|----------------------|
| Allen, Lucile | Hudnipple, Goldie | Ortmeir, Helen |
| Aiken, Marie | Hollingsworth, Hazel | Phelps, Ruth |
| Allison, Carrie Lee | Howard, Donnie | Phelps, Thelma |
| Bowman, Catherine | Holland, Louise | Peterson, Alice |
| Barnes, Louise | Howard, Doris | Price, Lillie |
| Beaver, Irene | Holland, Mildred | Parker, Mary |
| Bathman, Elizabeth | Hix, Roselle | Price, Mildred |
| Brown, Annie | Harvin, Elma | Pettit, Lois |
| Bradley, Katherine | Hatcher, Reita Mae | Perkinson, Edna |
| Bethel, Daisy | Joiner, Lillian | Peak, Frances |
| Boone, Beatrice | Jones, Vesta | Raburn, Ruth |
| Beardsley, Catherine | Jensen, Edna | Ray, Dorothy |
| Booth, Thelma | Jensen, Edna | Ray, Nelle |
| Boyd, Grace | Jensen, Velma | Reed, Essie Lee |
| Chamberlain, Nancy | Killian, Una | Reed, Mary |
| Collins, Nancy | Keith, Lois | Smith, Geneva |
| Corbley, Marie | Kirschbaum, Edwina | Staples, Clara |
| Clouse, Neochia | Kirschbaum, Helen | Snow, Francis |
| Copenhaver, Irene | Kerby, Katherine | Springfield, Johnnie |
| Cheek, Ruby | Lewis, Dixie Lee | Snow, Atlee |
| Davis, Lois | Land, May | Stone, Lillie |
| Ellis, Velma | Letner, Roberta | Slaton, Ruth |
| Egis, Madeline | Landis, Elizabeth | Scherril, Zelma |
| Elliott, Sadie | Leake, Nelle | Strickland, Mary |
| Fleischman, Nancy | Long, Mildred | Stegall, Cora |
| Franks, Lillian | Moffit, Annie | Strother, Edith |
| Ford, Bernice | Milligan, Virginia | Talley, Dixie |
| Flegal, Alma | Madden, Margaret | Wood, Dorothy |
| Gill, Forrest | Mullinex, Ellen | Waldorf, Ada |
| Gammill, Evelyn | Mannerling, Joy | Ward, Mamie |
| Grider, Pauline | Morgan, Mary | Williams, Mary |
| Guthrie, Frances | Mahaffey, Frances | Worsham, Mary |
| Goringfs, Edith | Meacham, Mary Belle | Watson, Ruth |
| Grice, Minnie | McDonald, Blanche | Wright, Elanie |
| Goringfs, Sarah | Moorman, Helen | Workman, Hix |
| Hisey, Irene | McDonald, Mayburn | Zahnd, Gertrude |
| How, Dorothy | Nelms, Willie Ann | |

THE CHAMPION

1922



Boys' Glee Club

Alberton, Denton
Brown, Lloyd
Boone, Wendell
Bragg, John
Brown, Harry
Cooke, Roger
Colville, Hugh
Copp, Hazen
Cahoon, B. T.
Crawford, Aley
Delaney, Floyd
Duckett, Ralph
Duda, William
Estes, Roy
Frazier, Clifford
Fox, Harry
Fisher, Jack
Gilbert, Hice
Gorman, Edwin
Gangwer, Horton
Geiger, Claude
Hale, Dudley
Heath, Roy
Howe, Fred
Hunter, Clark

Hill, Aiegernon
Hotalen, Clyde
Lynch, George
Lee, Magness
Lewis, Frank
Lehman, Lawrence
Lewis, Ralph
McBryan, Scott
Maxwell, Alex
McAllister, J. P.
Matheny, Harold
McMillon, Garnett
Milliken, Sherrill
Myers, Stewart
Mathis, Herman
Murphy, Pat
Murray, Leonard
Meyers, Archie
Nonemacher, T.
Pickett, Randolph
Pruitt, Miller
Parker, William
Pollard, Allen
Powell, Barney
Powledge, William

Quinn, Taylor
Roberts, Jas.
Roberts, Albert
Rogers, William
Russell, Rice
Roberts, Milton
Reynolds, Paul
Rutledge, Edward
Stephenson, W.
Simmons, Geo.
Shadden, Vaden
Stephenson, C.
Slaughter, Marvin
Sienknecht, Emil
Taylor, George
Waldorf, H.
Wickser, Fritz
Wilson, Park
Wood, Walter
Walker, Clarence
Williams, E.
Whittice, Fred
Woodward, Odin
Warrenfels, D.

THE CHAMPION

1922



Orators and Declaimers

Back Row: Thomas Nonemacher, Alex Maxwell, Walter Moffit, Claude Geiger, Edgar Beck, Clyde Hatcher, Frank Lewis, James Fitch, Frank Meyers.

Middle Row: Charles Forrester, Ralph Lewis, Ruth Stoner, Gertrude Zahnd, Ruth Smith, Essie Lee Reed, Irene Hisey, Dollie Lundin, Mamie Louise Barnes, Bertrice Aiken, Helen Pryor.

Bottom Row: Violet Raulston, Madeline Chamless, Uni Killian, Grace Born, Lillian Swan, Velma Jensen, Atlee Snow, Margaret Whiteside, Willie Ann Nelms, Dixie Talley, Helen Mischell.

THE CHAMPION

1922



Prize Winners

Top Row, Left to Right: Rachael Clemons, Flossie Willett, Hannah Sherer, Edna Jenson, Lillian Joines, Edwina Krichbaum, Catharine Beardsley, Blanche Boyd, Dorothy Cope.

Front Row, Left to Right: Jack Fisher, George Taylor, Gertrude Letner, Alma Flegal, Doris Howard, Sammie Ault, Mary Belle Meacham, Charlie Taliaferro, Loreta Stark.

THE CHAMPION

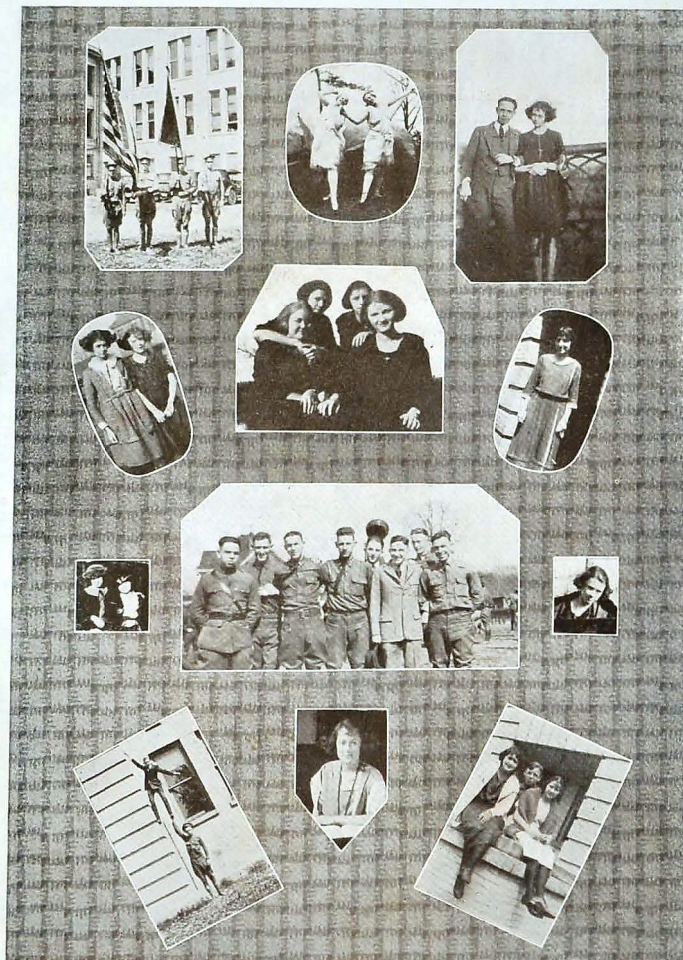
1922

School Calender

Sept. 8—School opens.
 Sept. 9-12—Registration.
 Sept. 13-19—Freshmen number 400.
 Sept. 20—First call for football men.
 Sept. 21—Seniors elect officers.
 Sept. 26—Junior elect "Red" Searles, President of their class.
 Sept. 30—Senior Box Supper.
 Oct. 1-8—Hamilton County Fair.
 Oct. 10—Enrollment of school exceeds 1,000.
 Oct. 11—Sophomores elect officers.
 Oct. 15—Annual Staff Elected.
 Oct. 16—Sherrill Milliken takes his English book home.
 Oct. 18—Military sponsors elected.
 Oct. 26—Central features—The Merrimac and the Monitor in parade for Confederate reunion.
 Oct. 28—Baylor game—Baylor 7, Central 0.
 Nov. 8—Gloom in Central Football Camps, "Red" Lynch breaks ankle.
 Nov. 12—Junior Carnival.
 Nov. 25—Thanksgiving Game; Central 21, City High 6.
 Dec. 9—Battalion entertains.
 Dec. 10-22—Battalion Airplane race.
 Dec. 23 to Jan. 2—Christmas holidays.
 Jan. 5-10—Mid-year Examinations.
 Jan. 12—Boom, for new building starts.
 Jan. 14—Basket-ball season opens.
 Jan. 16—Officers receive commissions. Andrew Cope acquires the name of "Grandpa."
 Jan. 20—George Taylor gets his annual hair-cut.
 Jan. 27—Mother Goose and Irish Minstrels.
 Feb. 10—Prince Charming presented by Girls' League.
 Feb. 14—R. O. T. C. Banner presented to school.
 Feb. 17—Basketball season closes.
 Feb. 22—Washington's Birthday celebrated.
 Feb. 23—John Brown's party visits Central.
 March 3—Minstrel (Black face).
 March 13—Senate Play.
 March 20—Edgar Beck comes to school with his shoes shined.
 March 31—Central wins honor in Inter-Preparatory Declamation and Oration Contest
 April 4—Baseball season opens with victory over McCallie.
 April 7—Central beats City in second game.
 April 14—Juniors present "Twelfth night."
 April 18—Presidential election (Senate).
 April 21—Seniors present "As You Like It."
 April 28—"Bells of Beaujolais."
 May 5—Military tournament.
 May 19—Senior Picnic.
 May 23—Junior-Senior Banquet.
 May 24—Class Day.
 May 25—Commencement.

THE CHAMPION

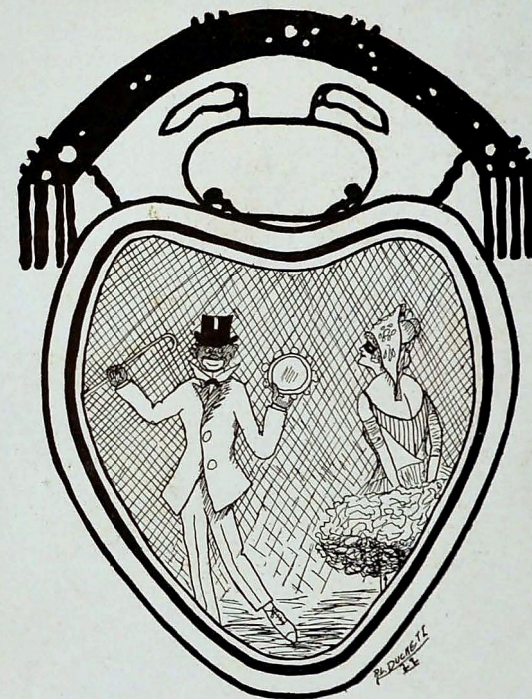
1922



THE CHAMPION

1922

DRAMATICS



THE CHAMPION

1922



"AS YOU LIKE IT."
SENIOR CLASS PLAY

THE CHAMPION

1922



The Minstrel

UNDER the direction of Mr. Arthur L. Rankin and Mrs. W. H. Pryor one of the most successful minstrel shows that has ever been given at Central High School was presented this year. The first part was composed of songs and jokes in the regular minstrel circle. The second part was a plantation scene entitled "Way Down South in Dixie."

Those taking part were as follows:

Top row: Edwin Gorman, George Simmons, Horton Gangwer, Walter Moffit, Miller Pruett, Prof. Rankin (Director), Harold Matheny, Ralph Duckett, Wm. Powledge, Scott McBryant, Leonard Murray.

Middle row: Elizabeth Bathman, Dorothy How, Louise Barnes, Edna Perkinson, Dorothy Wood, Dixie Lee Lewis.

Seated: Hazen Copp (end), Hugh Collville, Dudley Hale, Frank Lewis (Interlocutor), Wm. Duda, Ernest Williams, Laurence Lehman (end), Gene Keith, Alex Maxwell.

THE CHAMPION

1922



The Senate Play

THE Senate selected as their yearly play a three-act farce entitled, "When a Feller Needs a Friend," and presented it before a large audience on March the twenty-fourth.

The play, in brief, presented the trials and tribulations of two young men, formerly of the A. E. F., when they found themselves without money, clothes, and about to lose their home. To add to their troubles, and incidentally the humor of the play, they received word that rich relatives were coming. To prevent discovery and to cover up some previous statements was the chief concern of Tom and Bob. All of this was brought to a happy conclusion by the use of a Rug of Truth and the co-operation of the landlady and her daughter.

Essie Lee Reed very admirably portrayed the character of Liz, the landlady's untutored daughter; and Delmar Reynolds, as Tom Denker, successfully took the role of leading character. They were greatly assisted by the co-operation of Winston Massey as Bob Mills, Alice Ortmeier as Elaine Lynne, Dorothy Ray as Angela Scott, Percy Athens as Uncle Will, Florence Marshall as Aunt Alice, C. S. Peak as "Bing" Dickson, and Frances Peak as Mrs. Reese, the landlady. The chief comedy part was played excellently by George Taylor as Jerry Smith, Doctor, Captain, Cook, and Butler de luxe.

The play was selected and directed by Prof. M. E. Smith, who has been of great assistance to the Senate during the past year.

THE CHAMPION

1922

The Bells of Beaujolais

UNDER the splendid direction of Mrs. W. H. Pryor, Coerne's, The Bells of Beaujolais, a comic Operetta in two acts, was given May the fourth by members of both the Girls' and Boys' Glee Clubs. The plot was most interesting and the music especially tuneful. Each of the special features was much enjoyed, and the chorus of sixty voices was acclaimed as being exceedingly good.

Miss Waples, who served in the capacity of scenic decorator, added much to the success of the play.

Jimmy Searles, Central's all round sport, was electrician.

The cast of characters was as follows:

| | |
|--|-------------------------|
| Augustus, Duke of Beaujolais..... | Ralph Duckett |
| John Bender, A Wealthy American..... | Hazen Copp |
| Larry, Tony, Young Americans, Bender's Guests..... | Frank Lewis, John Bragg |
| Harkins, Bender's Valet..... | George Simmons |
| Pierre, A Juggler..... | Edgar Beck |
| Chicot, A Wrestler..... | Dudley Hale |
| Countess Marie, Betrothed to Duke..... | Katherine Kirby |
| Aunt Sarah Jessup, Bender's sister..... | Ruth Raburn |
| Phillis, Bender's Daughter..... | Louise Barnes |
| Bell, Her friend..... | Lois Keith |
| Yvonne, A Flower Girl..... | Edna Perkinson |
| Susette, A Candy Girl..... | Elizabeth Bathman |
| Fantine, Maid to Countess..... | Margaret Ellis |

THE CHAMPION

1922



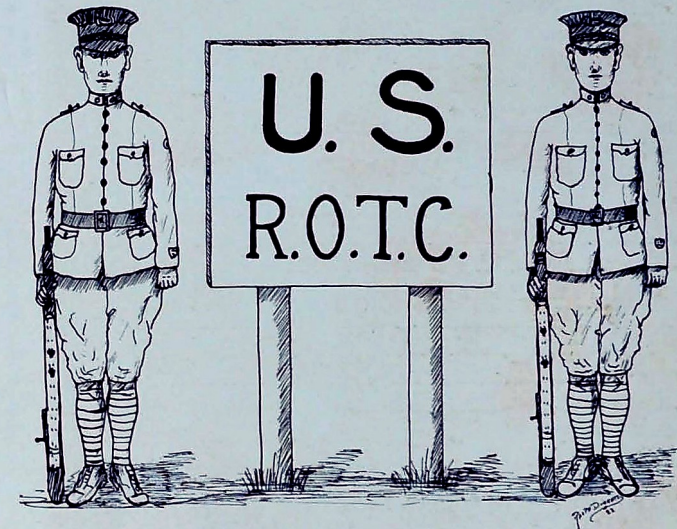
THE CHAMPION

1922

Military Section

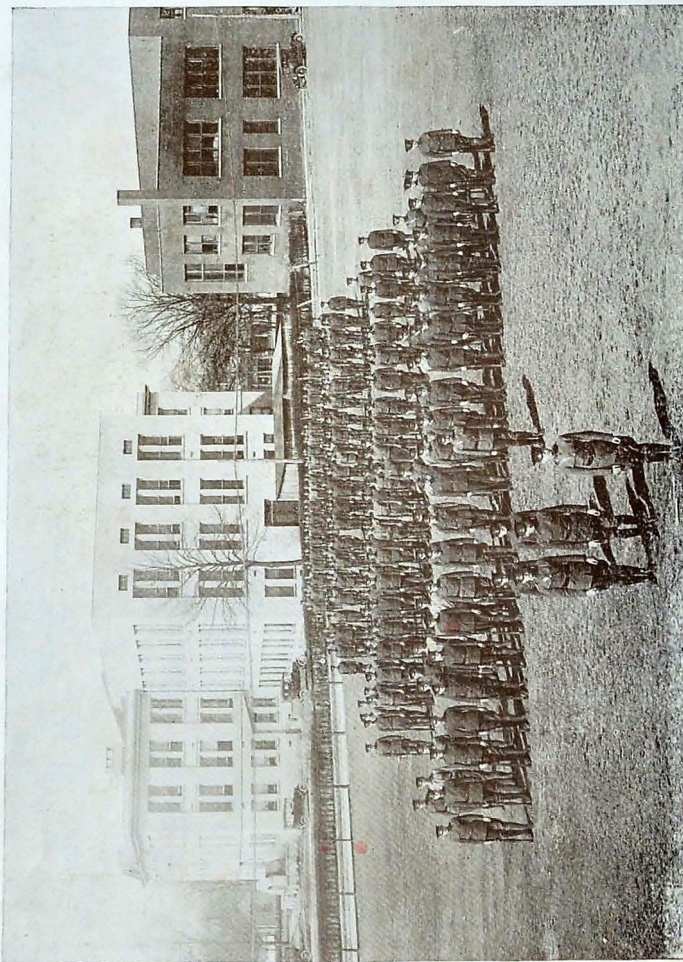
Annual

1922



THE CHAMPION

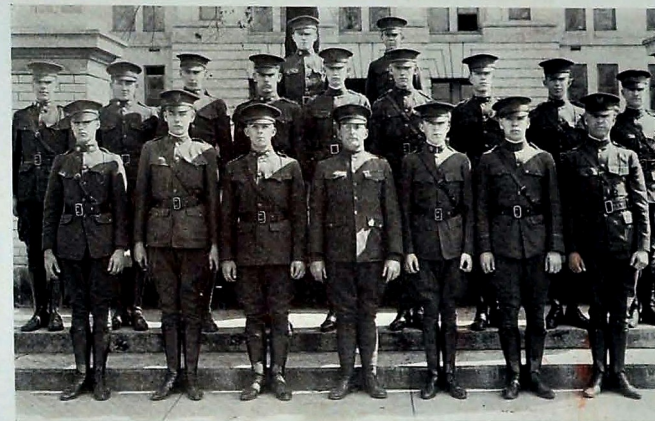
1922



Frank Lewis, Major.
 Captain Dudley Hale, Band, Lieut. Claude Geiger, Adjutant, Sgt. Major Leonard Murray, Supply Sergeant Percy Athens.

THE CHAMPION

1922



Officers

Front row:

Captains Dudley Hale, Rice Russell, Andrew Cope, Sergeant Jesse M. Peck Major Frank Lewis, Captains Edwin Gorman, George E. Simmons.

Second Row:

Lieutenants Jack Fisher, Claude Geiger, Hice Gilbert, Alton Hughes, Herman Mathis, Miller Pruette, Winston Massey, Harry Brown, William Duda.

Third row:

Bn. Supply Sergeant Percy Athens, Bn. Sergeant Major Leonard Murray.

THE CHAMPION

1922



Military Sponsors

Miss Eva Ziegler, Battalion.

Miss Louesa Ellis, Band, Frances Zbinden "I" Co., Margaret Ellis "K" Co., Lola Staples "L" Co., Ruth Watson, "M" Co.

THE CHAMPION

1922

Military

ON September 9, 1921 the Central High School Battalion entered upon its second year of R. O. T. C. work under the direction of Major William E. Brougher, Sergeant Jesse M. Peck, and Sergeant John M. Harrelson.

On September 26, the sponsors were elected by the Companies and the Battalion, they were: Miss Eva Ziegler, Battalion; Miss Frances Zbinden, "I" Co.; Miss Margaret Ellis, "K" Co.; Miss Louesa Ellis, "L" Co.; and Miss Ruth Watson, "M" Co. On February 15, 1922 Miss Lola Staples was elected sponsor of "L" Co. to succeed Miss Louesa Ellis who went as sponsor to the band.

On October 7, 1921 a Battalion competition was held in the School of the Soldier without Arms. Manual of Arms and the School of the Squad without Arms. Those winning places were: Sergeant Matheny, "M" Co.; Sergeant Allgood, "K" Co.; Corporal Albertson, "M" Co.; first, second and third respectively, in the Manual of Arms, Private Wilkerson, "M" Co.; Sergeant Matheny, "M" Co.; and Sergeant Lusk, "L" Co.; first, second, and third respectively. The Squad competition was won by a squad representing "L" Co., commanded by First Sergeant Bragg and composed of Corporal Hugh Colville, Privates Bradford, Hamilton, Hudson, Koons, M. Roberts, Rogers, and Whiteside.

An aeroplane race was held in the battalion from Dec. 5 to 23. The points to be made in the race were: neatness of appearance, best attendance and best lines at passing in review. The finish of the race found "K" Co. first, "L" Co. second, "M" Co., third, and "I" Co., fourth.

On January 20, 1922 the battalion presented a beautiful Battalion Banner to the school. The work on the banner was done by Mrs. Jesse M. Peck.

This year it was decided that the Officers be awarded written commissions. These were presented at assembly January 26, by Major Brougher. They were also awarded to the Sponsors at a later date.

The Central Battalion was well represented on the rifle team of the Chattanooga unit R. O. T. C. by Lieutenant Brown, Sergeant Sienkecht, Corporal Williams, Corporal Hale, and Private Smyth. Sergeant Sienkecht made the highest score of the unit.

Inter Company Basket-Ball games were another interesting feature of this year's work. "I" Co., won the Battalion championship, but lost to "B" Co. of Chattanooga High for the championship of the unit.

The Band, which is a new feature for the Battalion is making excellent progress under the direction of Captain Dudley Hale. The band is composed of: Sergeant How, Corporal Bragg, and Musicians L. Ashby, B. Boss, N. Y. Collins, R. Cartwright, J. DeSabra, and H. McVeigh.

The Military Tournament is to be held later in the spring at which time Central Battalion will endeavor to carry off the highest honor.

THE CHAMPION

1922



Company "M"

George E. Simmons, Captain

F. Miller Pruette, First Lieutenant Jack Fisher, Second Lieutenant

William Stephenson, First Sergeant

Sergeant Clyde Copenhaver
Sergeant Harold Matheny

Sergeant Ralph Duckett
Sergeant Herman Norris

Corporal Denton Albertson
Corporal Anderson Brown
Corporal Roy Meyers

Corporal Ralph Bowman
Corporal Garnett McMillan
Corporal Ollie Rowland

Privates

Allen, Herbert
Barnes, Winston
Bond, Hugh
Borin, John
Cate, William
Cope, William
Dawson, Harold
Desha, Elmer
Eskew, Harold
Farmer, Stewart
Forrester, Charles

Gamble, Grady
Hale, Albert
Hotalen, Edward
Howard, James
Humphries, Robert
Jones, Fred
Lively, John
Lyle, James
Martin, Warren
Mitchell, Richard
Michaels, Alton

Nichols, Richard
Nonemacher, Thomas
Pahmeyer, LeBaron
Parks, David
Pollard, Allen
Powell, Barney
Shoecraft, Elmer
Shadden, Vaden
Stillwell, Ralph
Sutton, Lewis
Walker, Clarence

Weatherford, Robert Williams, Thomas

THE CHAMPION

1922



Company "L"

Charles E. Gorman, Captain

Alton B. Hughes, First Lieutenant Hice Gilbert, Second Lieutenant

John Bragg, First Sergeant

Sergeant Julius Brown
Sergeant Clark Hunter

Sergeant Hugh Colville
Sergeant Fred Lusk

Corporal Roy Bradford
Corporal Ralph Lewis
Corporal Marvin Miller

Corporal Walter Moffit
Corporal Milton Roberts
Corporal Geo. L. Williams

Privates

Barton, Clarence
Boyd, Hershall
Cahoon, B. T.
Carmen, Carl
Cry, Wallace
Derben, Paul
Dugan, Lee
Erd, John
Fox, Harry

Frazier, Clifford
Hamilton, Randolph
Hollingsworth, Paul
Hinch, Roy
Jordan, Charles
King, Fred
Mason, Jack
Mathis, William
Meyers, Archie

Merrill, David
Molesdale, Jack
Powledge, William
Rogers, William
Seinknecht, Albert
Slaughter, Marvin
Taylor, George
Templeton, Hershall
Warrenfels, Douglas

Webster, Stanley

Whiteside, Robert

THE CHAMPION

1922



Company "K"

Andrew N. Cope, Captain

Harry Brown, First Lieutenant Herman Mathis, Second Lieutenant

Emil Sienknecht, First Sergeant

Sergeant Thomas Allgood
Sergeant Horton Gangwier

Sergeant Nelson Davis
Sergeant James Searles

Corporal Paul Reynolds
Corporal William Shadden
Corporal Floyd DeLaney

Corporal Douglas Hale
Corporal Kenneth Strong
Corporal Norval Taggart

Privates

Aslinger, Elmer
Atkinson, Thomas
Ault, William
Brown, Lloyd
Bryant, Alvin
Dean, Reginald
Elbon, James
Ewers, Dorman
Gamble, Raymond
Goldman, Sol
Hartman, Reid

Henderson, John
Henry, David
Hotalen, Clyde
Hunter, Joe
Jones, Homer
Kelley, John
Lane, Ira
Lee, Roland
Lynch, Vernon
Lockmiller, Clifford
Mitchell, Fred

Woodard, Oden

Zaugg, Stanley

Meyers, Stuart
Orth, Sidney
Pickett, Randolph
Silvers, Edward
Slaughter, Jack
Stephenson, Charles
Stivers, Fred
Sweets, Clarence
Taliaferro, Edward
Walldorf, Herman
Wetzel, Randolph

THE CHAMPION

1922



Company "I"

Rice Russell, Captain

Winston Massey, First Lieutenant William Duda, Second Lieutenant

Alex Maxwell, First Sergeant

Sergeant Wendall Boone
Sergeant Delmer Reynolds

Sergeant Magness Lee
Sergeant Clarence Watson

Corporal James Baker
Corporal Harold Humphries
Corporal Percy Shinpaugh

Corporal Stanley Campbell
Corporal Paul Jordan
Corporal Park Wilson

Privates

Acuff, Ellis
Anderson, Walter
Barnes, Benard
Bowman, Harold
Boyd, Ernest
Boydston, Horace
Carden, Frank
Cook, Rodger
Deakins, Rex
Duckett, Clifford
Egan, Gaston

Hammond, James
Guinn, Williard
Hays, Cecil
Hogan, Glen
Howard, C. W.
Jackson, Arthur
Jones, Glen
Lerch, Lewis
Murdock, William
Mylus, Carl
Murphy, Patrick

Wickzer, Fritz

Woodall, Carl

McBride, Wesley
McLain, Reece
Poe, Lance
Purser, Garland
Quinn, Taylor
Rutledge, Edward
Smith, Byron
Smyth, Lewis
Stanfield, Roy
Strickland, Harvey
White, Frank

THE CHAMPION

1922



THE CHAMPION

1922



ATHLETICS

THE CHAMPION

1922



"RUSTY"
HARPER CORNELIUS

He's a blue-blooded son of Central
The best coach that can be found,
From the rugged Rocky Mountains
To the deep Long Island Sound.
He has coached the teams at Central
And in victories and defeats,
He's been the same old "Rusty,"
Who's mighty hard to beat.

THE CHAMPION

1922

FOOT BALL SQUAD



THE CHAMPION

1922



GEORGE D. LYNCH, CAPTAIN
"RED"

"Reds" coming back to Central this year seemed our only hope for a successful football team. He was placed at quarter back and ran the team exceptionally well until he broke his ankle. His departure from Central this year will be much regretted, and the loss of his ever cheerful smile and Central "Pep" on the field will be keenly felt.



ERNEST WILLIAMS, TACKLE

Last year Clabber was said to be one of the best linesmen in the City, and great things were expected of him for this year. He was heard from, the fact was he "romped" in every game, he did his share and then about five other men's share. In the Baylor game if all had worked one-half as hard as "Clabber" there would be no Baylor score against us. After Lynch broke his ankle, Rusty tried "Clabber" at quarter but this weakened the line so much that he had to put him back. In the City High game he—well, he DID, that's all. He was an All-City man two years and it was said of him this year that he was the only natural football player on the line. Williams leaves us this year and Central needs to mourn for she is losing the best linesman she ever had.



RALPH DUCKETT, FULL

Duckett was one of the fastest men on the squad. Whenever called upon to do his bit, he always answered with all his speed which resulted in gains that took the heart out of our opponents.



EDWIN GORMAN, END
"TUBY" "LUCKY"

Tuby's first and last year proved to be a good one. He surely "hit 'em" hard and it was nothing unusual for a man to stay down when he cut him down. He held the left wing of our team well and he will be greatly missed next year.

THE CHAMPION

1922



LYNN WILLIAMS, END

Lynn Williams was the smallest man on the squad this year to make his letter. When in the game, "Little Williams" had a man to get, he got him. This is Lynn's first season out and he is one of the letter men expected back next fall.



JAMES C. SEARLES, END

It is often said that red-haired persons are real fighters and "Coo-Coo" is no exception to the rule. With Red it is fight from the first to the last whistle. This is Searles' first year on the team but he is expected back next year. His work in the Thanksgiving game gave him the second All-City honor, but next year he will not be satisfied with that.



ANDREW COPE, FULL

Cope was our most able and consistent ground gainer. A great many of Central's touchdowns can be traced to Cope's weight and his ability to take advantage of the weak points in the opponent's line. He is a man whom Central will sorely miss next season and it is with great regret that we tell him goodbye.



WILLIAM SHERRILL MILLIKIN, GUARD

This was "P-Nuts" first year to play on the team. At the first of the year he played Center and then was shifted to guard, where he played until about one week before the City High game when his arm became infected from an insect-bite which kept him out of the game. "P-Nut" did much toward putting Pep into the team and when he leaves this year, we shall lose a good man.

THE CHAMPION

1922



B. T. CAHOON, GUARD
"CHOO CHOO"

Many people know why B. T. is called "Choo Choo" but one interpretation that was heard from a member on an opposing team was, "He is as hard as a Freight train to get out of the way." Cahoon stood up to this name well and was in the way of many an opposing team's play. He was selected on the All-City second team, and will no doubt make the first team next year.



RAYMOND GAMBLE, GUARD

This was Buck's first year and not much was heard of him at the beginning of the season. He came out for practice every day tho' and it was not long until he was the best scrub on the field. After the Baylor game, he got it in his head that he was going to make the team. He did and in the City High game covered himself with glory. This was his first and last year. We are sorry to see him go.



SCOTT MCBRYANT, CENTER

Although this was Scotty's first year on the team, he maintained his position like a veteran. He did not make a bad pass all season. Scotty was selected All-City Center on the second Eleven this year. We hope that he will return next year with the same fight and pep that he had this year and that he will give all the Centers a good run for All-State.



THOMAS NONEMACHER, HALF BACK

It is nice to have a brother's previous record to try to equal but "Noney" has won his own reputation by his steady playing. "Greaser" is only a Sophomore and will be back for two more years to equal and better this year's record.

THE CHAMPION

1922



WILLIAM SHADDEN, QUARTER

Bill had been to Central before, but had been out for several years. He came back this year with the determination to make the team or break something trying. He did not break any thing for he not only made the team, but was one of the best men on it. He played half back until Lynch was hurt then Rusty shifted him to quarter. He did fairly well till the City High game. Then he stepped "loose". He ran Central's team like an old varsity quarter. He not only ran the team but he ran himself. Every time he took the ball Central's line would move down the field any where from ten yards on up.

Shadden was one of the "Big" causes of the big score against City this year. He was elected captain of the team for next year. We are expecting great things of him.



HARRY BROWN, HALF BACK
"WITCH"

Witch was not called on very often to show his stella work, but when, he was, he would take the ball and never stop till a stone wall got in his way. Brown proved to be a good scrub last year, but was not recognized until this year as a first strong man. He has the reputation of being the most daring boy in the Senior Class and many believe him to be the most daring in School. We shall regret losing him.



ROY ESTES, END

This was "Cow-five" first year out for football, but when he was put in to the game he always fought. This is Estes' Sophomore year and we hope he will be back next year with the fight and pep of this season.



GEO. E. SIMMONS
"SIME"

George's first year on the team proved a successful one. His hard-hitting tackles featured in our games and won for him a second All-City selection. His work on the team and school spirit has made him many life-long friends. "Here's for a successful college career, George."

THE CHAMPION

1922

History of Football

ABOUT two weeks before school started this year, a rumor was heard about town that Central would have no football team. Reports were out that Captain Lynch was to go to Marion County High, and that Assistant Captain Williams, and Cope would not return.

The Outlook was very bad, but on Tuesday after school started a meeting was held at which about forty boys made known their intentions of going out for practice, and by the next Monday our coach, Harper (Rusty) Cornelius strolled into camp. On the following Friday the team went to South Pittsburg where they played to a scoreless tie. Next our team invaded Rome where it defeated Darlington 7 to 6.

After this game, practically every man on the team was shifted. Williams and Simmons went to tackles, and Milliken, Cahoon, and Gamble alternated guard. McBryant went to center, and Shadden to half. Gorman and Searles went to ends. With this array we defeated Tennessee River Institute 68 to 0, Sparta 27 to 0, and Gurley 66 to 0.

On October 27, we lost to Baylor 7 to 0, notwithstanding the fact that Baylor was decisively out-played. The work of Williams, Cope, and Lynch was a feature of the game.

Then came our hard luck trip to Morgan School. Besides being beaten 31 to 0, Captain Lynch sustained a broken leg and practically every man was injured in one way or another. We were out-weighed by about fifty-pounds to the man and were unable to make a showing against them. The loss of Captain Lynch was keenly felt by the team, and much regretted by the school.

On Armistice Day luck was against us when Dayton beat us 7 to 0 on a "Fluke" on their home ground.

On the following Friday we defeated Tracy City 21 to 0.

Then came the big game of the season, that with City High School. All the boys entered the game with a grim determination to win, and we did, 21 to 6. In this game Shadden, who played quarter back displayed dark horse ability, and Cope and Brown did a good deal of ground gaining.

"Central will not have a foot ball team?" Answer—

Of ten games played we tied one, lost three, and won six. At the close of the season Williams was awarded an all City and an all State position, and of the "green" material, Searles, McBryant, Cope, Cahoon, Shadden, and Simmons were awarded positions on the second all City selections.

As a team we think we have had a successful season, for in addition to other victories this is our "Fourth" consecutive year to conquer City High School.

THE CHAMPION

1922

SPONSORS



BAYLOR GAME

Miss Alice Ortmeier, Martha Alley, Louisa Ellis, Dorothy Ray, Florence Marshall and Lela Staples. Miss Wright was the Faculty Chaperon. (Miss Lola Staples and Miss Wright are not in the picture)



CITY HIGH GAME

Misses Frances Peak, Dickie Lee Lewis, Ruth Watson, Frances Zbinden, Margaret Ellis, Evelyn McBryde. Miss Nell Greenwood was the faculty Chaperon. (Miss Evelyn McBryde and Miss Greenwood are not in the picture)

THE CHAMPION

1922



History of Basketball

WHEN Coach Cornelius sounded the call for basketball men, about eighteen men appeared in uniform.

Two weeks later the team was reduced to eight men. This team was somewhat handicapped, owing to the fact that not a letter man from last year had returned, and that Pruett was absent on account of a sprain received the first day of practice. Every man on the team was new and green to the game, and due to this fact, we won only one game. The value of basketball, however, is not all in the baskets that are caged, but in the spirit, the team work, and the splendid training that the boys receive. The way the men took hold and stood by the coach together with their splendid spirit promises a more successful season for '23. We know that with the coach who whipped this year's material into a hard-playing team, the outlook is most promising.

THE CHAMPION

1922



Girls' Basketball

UNDER the direction of Miss Lonnie Norton, the beginning of the basketball season for 1922 witnessed a revival of basket ball for girls. Two teams known as the Dixies and Wellesleys were selected from those reporting for practice, and a series of three games, in which the Dixies were the winner, was played. Three games, one of which was won by Central, were played with other schools. Most of the basket ball girls will return next year, and having had a year's experience, they then expect to make Girls' Basket ball a prominent feature of athletics at Central.

DIXIE TEAM

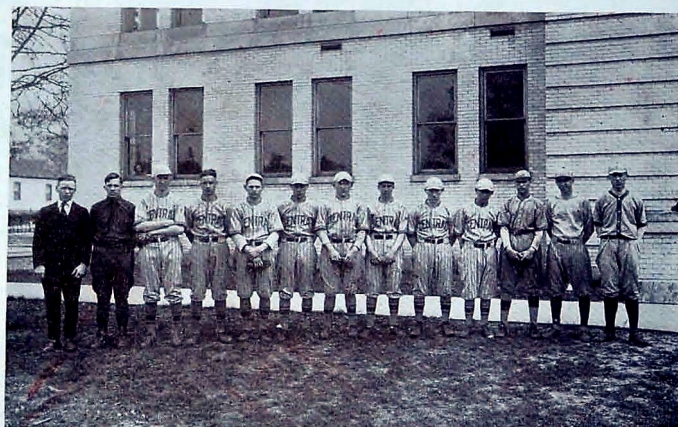
Forwards—Ada Graham, Bertrice Akin, Mildred Holland, Dolly Lunden
Center—Gertrude Coffee
Guards—Gertrude Dagley, Evelyn Gamble, Hannah Shere

WELLESLEY TEAM

Forwards—Margaret Madden, Berdie Prinell, Helen Michell, Alice Anderson
Center—Ruth Newell
Guards—Josephine Chambers, Marion Aucott, Goldia Hoodenpyl, Dorothy Reynolds

THE CHAMPION

1922



BASEBALL TEAM

Coach Cornelius, Ernest Williams, Thomas Mize, Roy Estes, Durwood Ashley, William Shadden, Scott McBryant, Louis Smythe, James Searles, Henry Kistler, Dudley Hale, Byron Smith, James Roberts.

BASEBALL

| | |
|-------------------------|--------------|
| McBryant (Captain)..... | Left Field |
| Smyth..... | Center Field |
| Searles | Right Field |
| Williams..... | Third Base |
| Ashby..... | Second Base |
| Estes..... | First Base |
| Smith | Catcher |
| Kistler | Pitcher |
| Mize | Pitcher |
| McCormick | Pitcher |

"Rusty" Cornelius, Coach

THE CHAMPION

1922

Track

AS the annual goes to press, track season is just opening. With Duckett and Searles of last year's team much splendid material may be found among the large group of boys who are trying for the team.

Every year Central has had a track team, but this year the interest is greater than ever. Duckett, Searles, and Elbon are expected to win places in the 100, 220, and 440 yard dashes, while White, Gamble, Seinknecht, and Lehman are expected to win honors in the distance runs. The relay team is unusually fast this year and is sure to make a good showing. Gangwer is to pole vault while Milliken, Williams, and Myze are putting the shot. Shinpaugh and Fisher will throw the javelin.

THE CHAMPION

1922

Scores of the Season

1921-1922

FOOT-BALL

| | | | |
|--------------|-----|--------------------------------|----|
| Central..... | 0 | Marion County..... | 0 |
| Central..... | 7 | Darlington..... | 6 |
| Central..... | 68 | Tennessee River Institute..... | 0 |
| Central..... | 27 | Sparta..... | 0 |
| Central..... | 66 | Gurley..... | 6 |
| Central..... | 0 | Baylor..... | 7 |
| Central..... | 0 | Morgan..... | 31 |
| Central..... | 0 | Rhea County..... | 7 |
| Central..... | 21 | Tracy City..... | 0 |
| Central..... | 21 | City High..... | 6 |
| TOTAL..... | 210 | OPPONENTS..... | 63 |

BASKET-BALL

| | | | |
|--------------|-----|-----------------|-----|
| Central..... | 8 | Cleveland..... | 18 |
| Central..... | 21 | Baylor..... | 25 |
| Central..... | 5 | McCallie..... | 24 |
| Central..... | 7 | City High..... | 9 |
| Central..... | 16 | Bridgeport..... | 27 |
| Central..... | 28 | Baylor..... | 12 |
| Central..... | 9 | McCallie..... | 27 |
| Central..... | 10 | City High..... | 14 |
| TOTAL..... | 114 | OPPONENTS..... | 156 |

THE CHAMPION

1922



THE CHAMPION

1922



THE CHAMPION

1922

Songs and Yells



HAZEN AND BERTRICE
IN ACTION

THE CHAMPION

1922

CENTRAL

CHORUS.

“Oh dear old Cen - tral, We’re al-ways fight-ing for you, Cen - tral,
We’ll tell the world we love you; All our boys are tried and are true, And we
sure - ly will be al-ways faith-ful to you Cen - tral You are our in-spi-ra-tion,
We’ll be true to you; Af-ter this old game is done, and old Cen-tral fought and

THE CHAMPION

1922

CENTRAL

won, oh, Cit - y, we’re sorry for you.” “Oh, dear old you.
D. S. *fz*

GOOD MORNING MR. C-H-S

CHORUS.
Not fast.

Good morn - ing Mis - ter C - H - S, Your team is sure - ly look - ing
fine, But when the last whis tle blows 'Twill be a bro-ken line: We’ve laid your record in
the thick-est dust, And win a - gain old Cen-tral must, Good morning O, Mis - ter C - H -
S, We hav-ent eas-y pick-ens, but We’ll beats you like the dickens, You’ll end up with a broken line.

THE CHAMPION

1922

4 Chorus Its a Long Way to Tipperary

Central Song

It's a long way to Tip-per-ar-y,
It's a long way to go; But a
short way to Cu-y's goal-boys. For old
Cen-tral school, you know! The say

It's a long, long way to Tipperary 4

THE CHAMPION

1922

Good-bye to old-Cit-y, And
pile-up Cen-tral's score, It's a short, short
way to Cit-y's goal boys. Make a touch-down once
more. It's a more.

D.C. 8

It's a long long way to Tipperary 4

THE CHAMPION

1922

OH BY JINGO!

CHORUS

Come on Cen-tral! Come on Cen-tral, Come won't we make
 that dear old grandstand hum When our boys come on the field
 a dandier bunch they'll never yield We'll make a touchdown 'On how joy-ful We'll make a try
 Look! Hic-tol-ly! Come on Cen-tral! Come on Cen-tral By — Oh
 By Jim-in-y sure-ly you can see why Cen-tral High is al-ways sing-ing
 With that spir-it! Gosh, her voice is ring-ing ring-ing For Cen-tral's the
 on-ly Team for me.

By G. L. G. etc.

THE CHAMPION

1922

Smiles From Central

REFRAIN

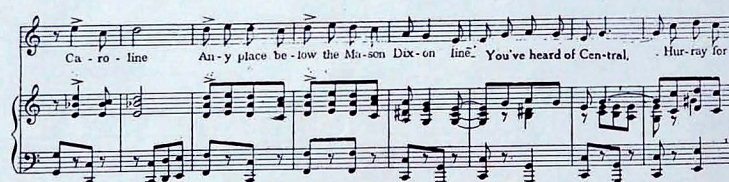
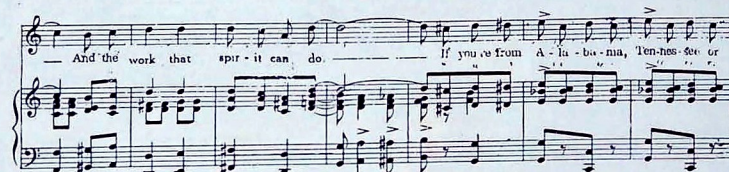
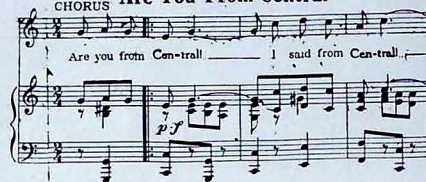
There are smiles from out at Cen-tral They're the gang
 — that's got the Pep, And we here to take you to the
 grave yard poor old — bet-ter watch your step If our
 heft-y bunch of foot-ball warrior's Ev-er show the world what they can
 do There will be — an-oth-er smile at Cen-tral Are you
 the smile that we take from you There are you

Paula 2

THE CHAMPION

1922

CHORUS Are You From Central



M. & S. O. S. 13119-A

THE CHAMPION

1922

SONGS

Tune—Rings on the Fingers.

Our team has rings on their fingers,
And bells on their toes;
They're the best in Chattanooga,
As every body knows,
So pile up the score, boys
While we yell for Central High.
For Central, Central, Central High,
Oh, my!

CHEER BOYS, CHEER

Cheer Boys, Cheer
Old Central's got the ball.
Cheer Boys, Cheer
Old City's going to fall
And when we hit that line,
There'll be no line at all.
There'll be a hot time
In the old town tonight
Oh—Cen—tral
(Repeat)

SEE THE BALL

See the ball come round the end,
Good-bye old City, good-bye,
It's in the hands of Central men,
Good-bye old City good-bye.

Chorus

Bye-bye old City, bye-bye old City,
Bye-bye old City, good bye old City,
Good-bye.

THE CHAMPION

1922

A CANNIBAL KING

A Cannibal King, with a big nose ring,
 Got stuck on a Zoo-loo maid
 And every night, when the moon shone bright,
 Across the canal he'd wade
 To hug and kiss, this dusky miss
 Out under the green-wood tree
 And when they met, they sang a duet,
 That sounded like this to me—
 Yakety, Yakety, Yakety, Yack!
 Brackety, Brackety, Brackety, Brack!
 Yackety! Brackety! Sis! Boom! Ba!
 Central, Central, Rah! Rah! Rah!

WE HAVE A TEAM

We have a team,
 We have a team,
 We have a team at Central High School.
 And they all know how to play the game
 They also know how to win the same.
 You ought to see (you ought to see)
 You ought to see (you ought to see)
 You ought to see our team play foot ball
 You can tell the world we're going to
 (W—I—N) win, they know how to spell it
 So we'll win, we're sure to win
 In the game with "City" High.

THE CHAMPION

1922

YELLS

EAT 'EM UP

Eat 'em up Central!
 Eat 'em up Central!
 Eat 'em up Central!
 Fight! Fight! Fight!

BEAR GROWL

Rrr—Aaa—hhh
 Rrr—Aaa—hhh
 Central, Central, Fight! Fight! Fight!

OH, CENTRAL!

Oh, Central, Central,
 The hills send back the cry,
 We're here to do or die.
 Oh, Central, Central,
 We'll beat old City
 Or know the reason why.

YACK-E-TY-YAKS

Yack-a-ty, Yack-e-ty, Yack-a-ty, Yack,
 Brack-e-ty, Brack-e-ty, Brack-e-ty, Brack,
 Yack-a-ty, Brack-a-ty,
 Sis, Boom, bah; Central, Central; Rah, Rah, Rah.

ZIPS

One zip, two zip, three zip, zam
 We're from Central and don't give a
 Hoop-ji-ki-y, Hoop-ji-ki-y
 Hot, Cold, Wet, or Dry.
 Get there Central, Central High.

15 RAHS

Rah, Rah, Rah, Rah, Rah,
 Rah, Rah, Rah, Rah, Rah,
 Rah, Rah, Rah, Rah, Rah,
 Central, Central, Central.

WHISTLE BOOM!

Whistle, Boom! Central!!
 Fight! Fight! Fight!

THE CHAMPION

1922

YEA CENTRAL

Yea Central, Yea Central, Yea Central!
Fight! Fight! Fight!

HORSE LAUGH

Riff, riff, raff; Chiff, chiff, chaff;
Riff, Raff; Chiff, Chaff; let's give
'Em a horse laugh. Hee-Haw.

GIVE 'EM THE AX

Give 'em the ax, the ax, the ax,
Give 'em the ax, the ax, the ax,
Give 'em the ax; Give 'em the ax.
Where?
Right in the neck, the neck, the neck.
Right in the neck, the neck, the neck.
Right in the neck; Right in the neck.
There?

Central Rah!
Central, rah! Central, rah!
Rah! Rah! Central.

CENTRAL

Central, Central, is our cry.
V—I—C—T—O—R—Y!
Are we it? Well, I guess!
Central, Central, Yes, Yes, Yes!

PUT 'EM IN THE SOUP

Hoop la Hoop, Hoop la Hoop,
City High is in the Soup.
S-O-U-P—C-O-U-P.
Soup, Soup, Soup.

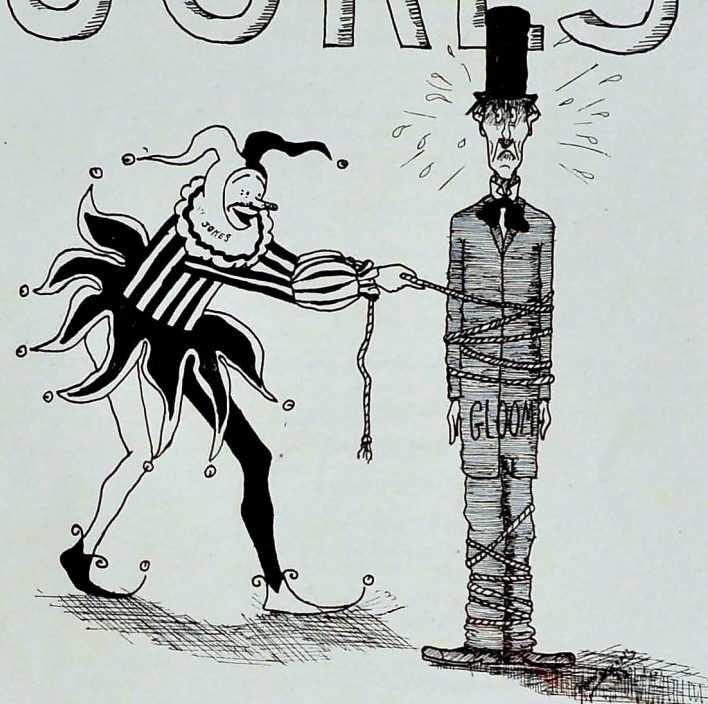
LOCOMOTIVE

Rah-rah-rah-rah, Central High,
Central High.
Rah-rah-rah-rah, Central High,
Central High.
Rah-rah-rah-rah, Central High,
Central High.
Rah-rah-rah-rah, Central High,
Central High. Who.

THE CHAMPION

1922

JOKES



THE CHAMPION

1922

Jokes

WOULDN'T IT BE WONDERFUL?

If Sherrill gained the Peak of his ambition.
 If Louesa looked for anything but Hale.
 If Edna ever got Frank.
 If William kept his Barnes.
 If Francis quit liking Rice.
 If Edwin quit liking Staple groceries.
 If Madge wasn't at the door to meet Herman.
 If Mabel quit liking Waldorf.
 If Wanaka Sang—her a song.
 If Dorothy didn't Polk.
 If Lillian wasn't a Swan.
 If Marjorie wasn't a Tower.
 If Minnie Lou was a Penny.
 If Bertrice wasn't Akin.
 If Raymond couldn't Gamble.
 If Fred didn't know How.

Mr. Kerr, of the Y. M. C. A., was talking to the boys on Life's work: "What is to be done next?"

Freshman: "Go to my fifth period English class."

WHO SAYS?

"O my goodness."
 "Sit down!"
 "Now, the point is just this."
 "Now, look out I'm warning you."
 "O, shut up!"
 "All right now! Play ball!"
 "Hurry up girls!"

Mrs. Shelton in English class: "What English word do we get from the Latin word 'gubernates' meaning leadership?"

Francis Peak, before anyone could stop her: "Gubbers". (She must have had P-nut on the brain.)

THE CHAMPION

1922

Mrs. Longley: "And where did Lady Macbeth die?"

Lois Keith: "She died on Page 127, line 502."

Mr. Setliffe in Latin class: "If I were to say nihil, what would it mean to you Gordon?"

Gordon: "Nothing."

Ruth Watson talking to Dixie Lee Lewis when she had heard that Ernest had his arm hurt: "Oh Dixie, pucker up and whistle Till the Clouds Roll By."

Dixie Lee: "I can't it's already started raining."

WE HEAR THEM EVERY DAY

Frank Lewis: Great Day in the morning.

"Weesa": Don't—I'm all excited.

Prof. Rankin: Now turn to page two-te-too.

Mr. Setliffe: Now we'll all meet below.

Lillian J.: O, Say, there's a McCallie fellow.

Andrew C.: Of course, if that's the way you feel about it.

Frances P.: O, where is P-Nut?

Coach: All the football boys meet me promptly after school.

Mr. Martin: Now Students.

Miss Waples: The point is just this.

Miss Campbell: So much for that.

Mr. Nelson, telling the students the order in which to leave the school: "First, I will pass away, then the faculty will pass away and then we will all meet below."

C. Watson: "I burned myself with an iron, what shall I do?"

Geo. Simmons: "Read Carlyle's, 'Essay on Burns.' "

Mr. Martin: "Beck, name the four seasons."

E. Beck: "Football, Basket ball, Track, and Baseball."

A PROBLEM

A girl is quite queer with her beaux,
 What will she do next no one neaux.
 Sometimes she will smile,
 Most all of the while,
 And other times turn up her neaux.

Wry Neck

Woman: "A big strong man like you begging! You ought to look around for work."

Tramp: "Excuse me, lady, but I've got such a stiff neck, I simply can't look around."

THE CHAMPION

1922

NO GAME

Henry Kistler: "Say Rusty, do you suppose they played baseball in Noah's time?"

Rusty: "No, I believe not."

Henry Kistler: "Why didn't they?"

Rusty: "Wet grounds I guess, Henry."

Mr. Rankin: "What is ratio?"

Louesa Ellis: "Ratio is proportion."

Mr. Rankin: "What is proportion?"

Louesa Ellis: "Proportion is ratio."

Mr. Rankin: "But what are ratio and proportion?"

Louesa Ellis: "I can only answer one question at a time."

Long, Long Gale

Dudley Hale: "I'm fearfully tired."

Louesa Ellis: "What's the matter?"

Dudley Hale: "Why, this is April."

Louesa Ellis: "What has that to do with it?"

Dudley Hale: "Didn't I endure a March of 31 days?"

Sherrill M.: "A picnic is a wonderful thing!"

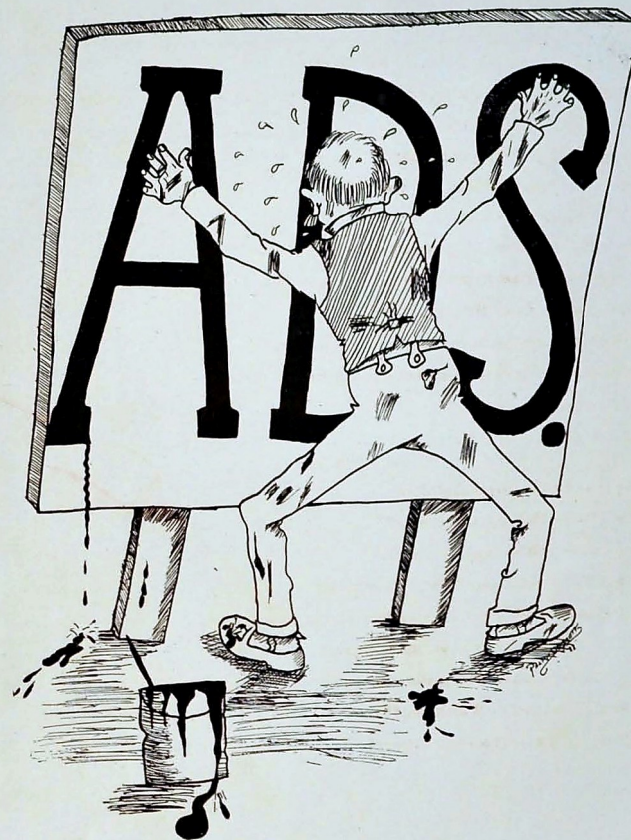
Dickens wrote a whole novel about it."

Frances P.: "Indeed? Which one?"

Sherrill M.: "Why, 'The Picnic Papers.' "

THE CHAMPION

1922



THE CHAMPION

1922

CONTRIBUTORS

We are printing here a list of the contributors to our annual. These are the fine men in our city who, through their interest in Central High school, have contributed in a large measure to the financial success of the Champion.

Please look this list over carefully and when opportunity presents itself trade with them and recommend them to any of your friends as being reliable and trustworthy.

| | |
|---|---------------------------|
| Atlantic Ice & Coal Corp., | 37 W. 13th St. |
| Archer Paper Co. | 1124 Market St. |
| Geo. K. Brown | 700 Market St. |
| Bennett Hubbard | 234 E. 11th St. |
| Buck-Krebs Co. | Louisville, Ky. |
| Chaney Scott & Co. | 1272 Market St. |
| Crisman Hdw. Co. | 511 Market St. |
| Compliments of a Friend | |
| Chattanooga Button and Badge Mfg. Co. | 730 Georgia Ave. |
| Chattanooga Lumber Co. | 2101 Whiteside St. |
| Cochran Furniture Co. | 613 Market St. |
| S. T. & W. A. Dewees Company | 810 Market St. |
| Davidson Clothing Co. | 811 Market St. |
| Compliments of a Friend | (Dixie Merceryizing Co.) |
| Edwards & LeBron | 805 Market St. |
| Compliments of a Friend | (Chattanooga Wagon Works) |
| Hardie & Caudle | 809 Market St. |
| Huff-Jones Co. | Indianapolis, Ind. |
| Globe Book Co. | 810 Chestnut St. |
| Harris & Hogshead | 13 E. 8th St. |
| Chas. w. Loftin | 512 Market St. |
| LeBron Engraving Co. | 813½ Market St. |
| D. B. Loveman & Co. | 8th and Market Sts. |
| Joys | 817 Market St. |
| Joe S. Mitchell Co. | 17 E. 8th St. |
| Prater Palmer Hardware Co. | 621 Market St. |
| Park Hotel | E. 7th St. |
| T. H. Payne Co. | 823 Market St. |
| Thompson & Hays Shoe Co. | 820 Market St. |
| Patten Hotel | 11th and Georgia Ave. |
| Meyer-Leach Jewelry Co. | 822 Market St. |
| Roger Bailey Hdw. Co. | 617 Market St. |
| Stovall Hdw. Co. | 906 Market St. |
| James M. Shaw Company | Market and 9th |
| Thos. B. Stapp | Cor. 7th and Cherry |
| Star Laundry | 815 Chestnut St. |
| Will H. Stokes, Commercial Photographer | 515 Cherry St. |
| Scholze Grocery Co. | Dodds and Chamberlain |
| Stagmaier & Co. | 1130 Market St. |
| A. G. Stivers Lumber Co. | 345 E. Main St. |
| Tennessee Lumber Mfg. Co. | 36th and Ave., "C" G |
| Watts' Studio | 711½ Market St. |
| C. S. Wilkins & Co. | Carter and 13th. |

defunct

flour

more

Walt Jr

Walt Jr

X/R

