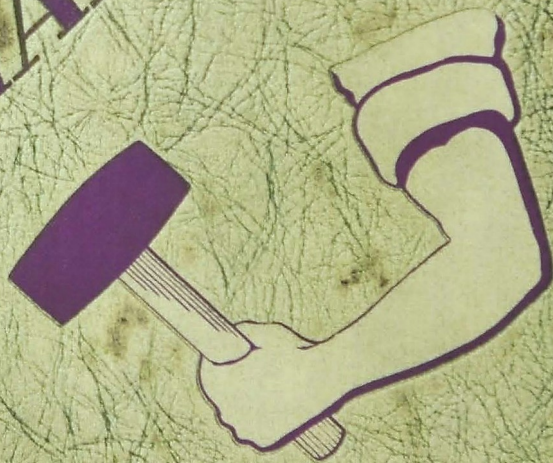


CHAMPION

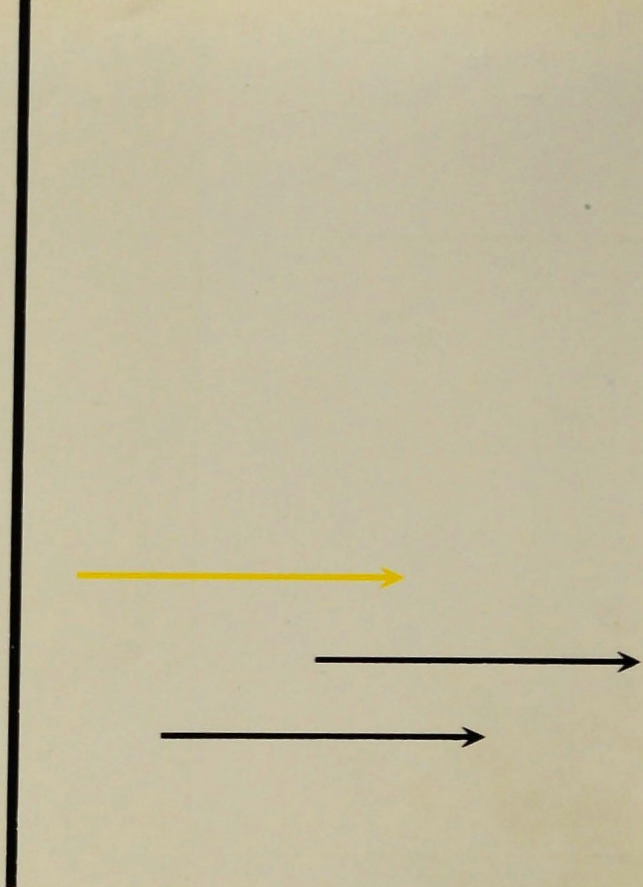
1955











*THE 1955*

# *CHAMPION*

*CENTRAL HIGH SCHOOL, CHATTANOOGA*

■ EDITOR: FRENCH TRIPP

■ BUSINESS MANAGER: SARANELL DAVIS

CENTRAL HIGH SCHOOL LIBRARY  
CHATTANOOGA, TENN.

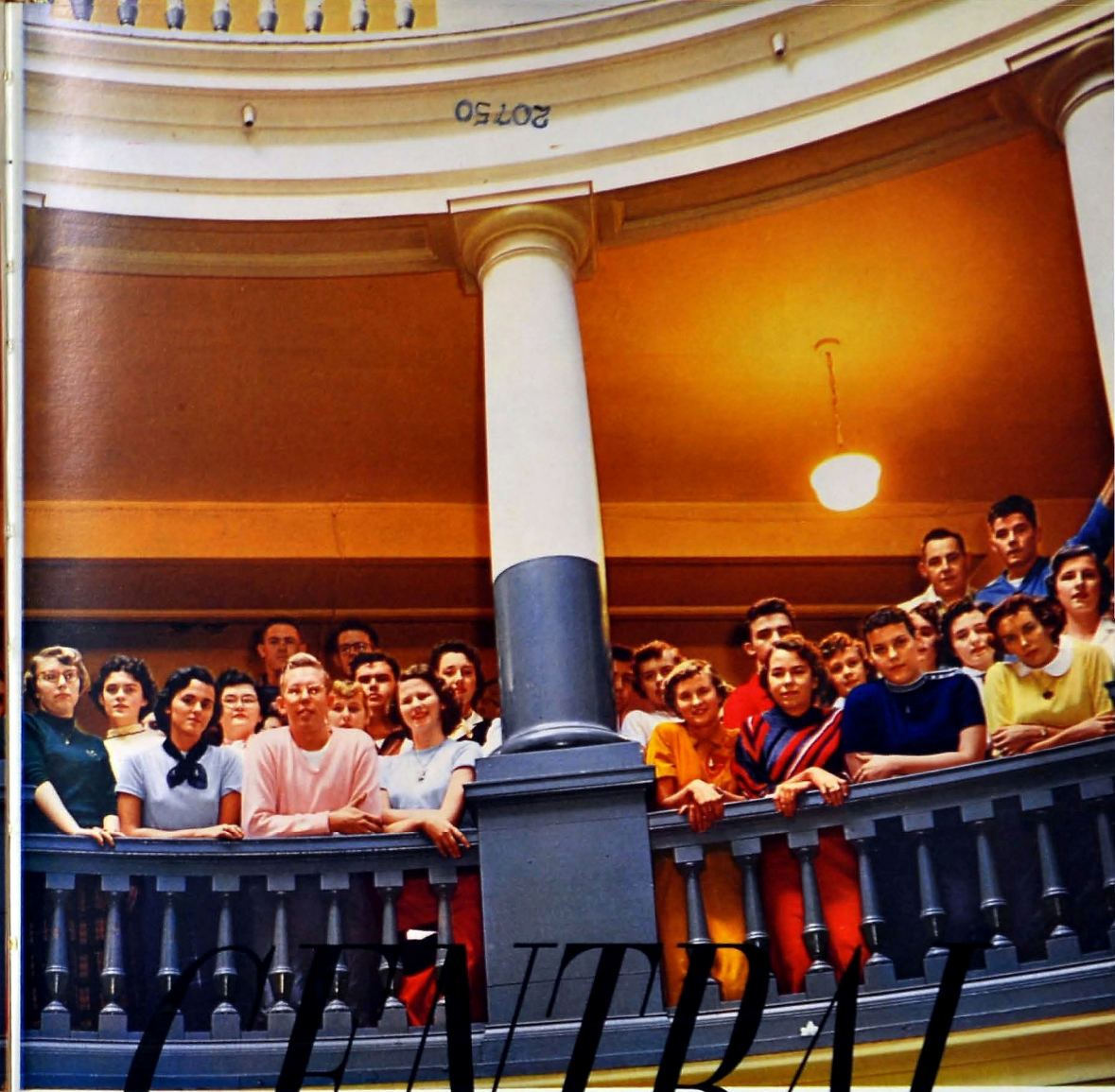


R  
378.14  
C



***T*** HIS IS

Only a few brief years ago, we crowded into Central as mere underclassmen feeling that there was a long road ahead. Now as we approach the journey's end and come face to face with a new and different life, we realize our sojourn has been all too short.



***CENTRAL***

Wherever we may go, our experiences at Central will always hold a special place in our hearts; particularly our senior year with all its pleasures, excitement, and happiness. So to the class of 1955 "This is Central." We hope these pages will thrill you as they recall memories of the sheer joy of your high school days.



COURTEOUS TO  
EVERYONE



ENTHUSIASTIC TOWARD  
STUDIES







**T**RYING TO  
PROGRESS  
UPWARD IN LIFE

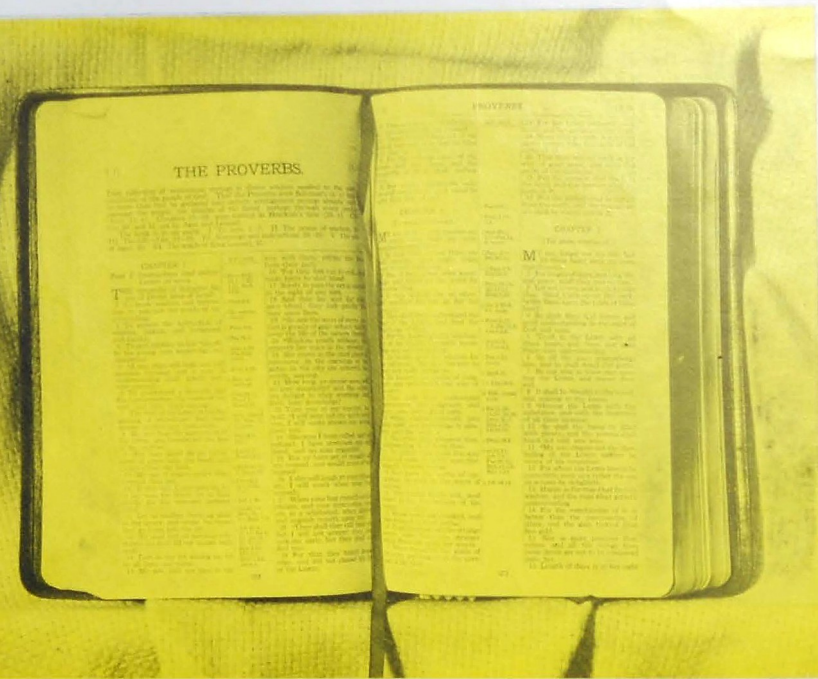


**N**EAT IN  
DRESS AND  
APPEARANCE

CHS Library







A

*ALWAYS A CREDIT  
TO CENTRAL*



R

*EVERENCING  
GOD AT ALL  
TIMES*







## *To Eugene B. "Red" Etter*

Whose life has been closely interwoven with the life of Central for the past seventeen years, as student, as Head of the Athletic Department, head coach of football and baseball, and a friend of every Central student;

Who by his life and every day example has instilled into his students high ideals and principles of better living;

Who by his thoroughness and ability to evaluate situations has led his teams to many victories and won for himself the merited honor of "Coach of the Year of 1954" in the Tri-State Association;

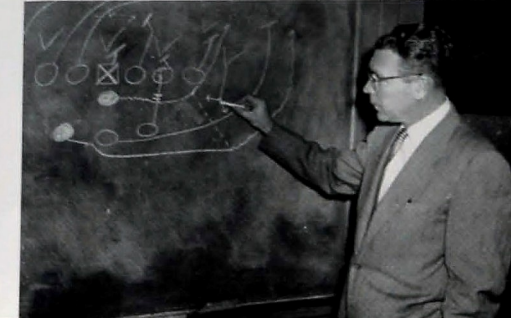
The Senior Class takes great pleasure in dedicating this the 1955 volume of *THE CHAMPION*.



*COACH  
EUGENE B. ETTER*

**L** OYALTY TO SCHOOL,  
FRIENDS AND SELF

**DEDICATION**





*THE SCHOOL*





## IN MEMORIAM

### RONALD COOK

We, the Class of 1955, pay tribute to one whose brief days at Central were abruptly cut short in his freshman year on March 11, 1952, by an automobile accident which still leaves in the class and in hearts of his friends a vacancy that can never be filled.

Ronald was a young man of unusual promise and ability. Had he lived, he would, no doubt, today be among the leaders of his class. By his kindness, sin-

cerity, and pleasing personality, he endeared himself to all whom he met. As expressed by a friend who knew him intimately, "He loved the Central spirit and was a living example of one who put into everyday practice the Golden Rule."

The Class of '55 will ever cherish the memory of Ronnie Cook—treasurer of his Freshman Class and captain of his Freshman Basketball team.



## THE PRINCIPAL

### Message to Seniors in 1955

*Dear Seniors:*

Our nation has a noble history, and we can well be proud of our national strength. Primarily, our strength has not come from our size, as large as we are, or from our natural resources, although God has generously endowed us with a vast supply. The strength of our nation, as it always has come and always must

come, is from the character of the people who make up our nation.

Let us strive to develop our moral and intellectual integrity to its fullest extent because no nation has risen or ever will rise above the character of the people who constitute its citizenry.

Sincerely yours,  
W. H. MILLSAPS.







## DEPARTMENTS OF ART, ENGLISH, FOREIGN LANGUAGES AND DIVERSIFIED OCCUPATIONS

### First Row:

MISS MARY LOU DERRYBERRY ..... Head of the Art Department  
 MRS. ANNIE C. SHELTON ..... Head of the English Department  
 MRS. LENNIE BARGER ..... English  
 MISS RUTH FAIR ..... English  
 MISS BOBBIE RUTH HODGES ..... English  
 MISS EDMUND HOOSER ..... English  
 MISS EARL R. JONES ..... English  
 MRS. BLANCHE KALB ..... English  
 MISS SALLY MAY KING ..... English

### Second Row:

MISS ANNE MOFFITT ..... English  
 MISS MINNIE LEE MORGAN ..... English  
 MRS. AUGUSTA J. PEOPLES ..... English  
 MRS. ELIZABETH ROBINSON ..... English  
 MISS MARY ELLEN RICE ..... Head of the Foreign Language Department and Spanish  
 MISS LILLIE SCHWARTZ ..... Latin  
 MR. GORDON W. SMITH ..... Head of Diversified Occupations Department  
 MRS. DEWEY McCRARY ..... School Nurse

Top: Etching and Sketching  
 Bottom: El español

Top: This is Hamlet?  
 Bottom: This is studying?



## DEPARTMENTS OF BUSINESS EDUCATION, HISTORY, HOME ECONOMICS, SPEECH AND LIBRARY

### First Row:

MISS RUBY NIPPER ..... Head of Business Education Department  
 MRS. HAZEL BARTON ..... Bookkeeping  
 MRS. LOUISE CAUDLE ..... Typing and Shorthand  
 MISS RUTH CLARK ..... Typing  
 MISS PAULINE SHEARER ..... Shorthand and Typing  
 MISS DOROTHY WALKER ..... Office Training and Typing  
 MR. W. P. BALES ..... Head of the History Department  
 MISS EDNA CROSS ..... History  
 MISS RACHEL McALLISTER ..... History and Bible

### Second Row:

MRS. VIRGINIA M. SKATES ..... History  
 MR. SAM T. STONER ..... History  
 MRS. JANIE L. SHROPSHIRE ..... Head of the Home Economics Department  
 MRS. BERNICE CLEMENTSON ..... Home Economics  
 MISS MARGARET S. TAYLOR ..... Home Economics  
 MISS ETHEL YORK ..... Home Economics  
 MRS. LORA D. FLENNIKEN ..... Head of the Speech Department  
 MISS ELLEN MULLENIX ..... Library  
 MRS. MARY R. SANDERS ..... Library

### Not Pictured

MRS. GERALD CASTLE ..... Cafeteria

Top: Busy Typists  
 Bottom: On the straight of the material

Top: Where is Washington, D.C.?  
 Bottom: Beautifying the impossible







Top: Grease Monkeys  
Bottom: Yo Ho Yo Ho



Top: 2X 11 (a<sup>2</sup> x) What?  
Bottom: Big Athletes

#### First Row:

MR. W. H. TEMPLETON .....Head of the Mathematics Department  
MR. ED BROWN .....Mathematics  
MISS BONNIE EICHORN .....Algebra  
MRS. EDNA C. JACOWAY .....Mathematics  
MR. DAVID G. LITZ .....Algebra  
MR. WILLARD MILLSAPS .....Algebra  
MR. A. B. ROBERTSON .....Geometry  
MRS. FLORA B. WARE .....Algebra  
MR. LUTHER V. YOUNG .....Arithmetic  
MR. J. J. FLETCHER .....Head of the Industrial Arts Department

#### Second Row:

MR. ARCHIE A. BIBBEY .....Printing  
MR. J. M. SEATON .....Mechanical Drawing and Athletics  
MR. R. S. WHARTON .....Mechanical Drawing  
MR. K. W. JOHN .....Head of the Music Department  
MR. W. MORRIS BALES .....Band  
MR. EUGENE B. ETTER .....Head of Physical Education Department and Mathematics  
MISS SARAH B. HUBBARD .....Head of the Girls' Physical Education Department  
MR. STANLEY J. FARMER .....Physical Education  
MRS. MARGARET T. HAMMACK .....Physical Education

### DEPARTMENTS OF INDUSTRIAL ARTS, MUSIC, MATHEMATICS AND PHYSICAL EDUCATION



Top: Now Hear This!  
Bottom: Hard at work



Top: Careful! I might explode!  
Bottom: My, aren't they distinguished

#### First Row:

MAJ. G. J. KRONENBERGER .....Head of the R.O.T.C. Department  
SGT. EUGENE GROOMS .....Military  
SGT. ROBERT HALL .....Military  
SGT. W. J. REED .....Military  
MR. J. ARLIE HOODENPYL .....Head of the Science Department  
MISS ELSA DENNISON .....General Science  
MISS FULPE GILBERT .....Science  
MR. RALPH E. OLINGER .....Physics  
MR. J. LESTER NEWTON .....General Science and Athletics  
MISS JOE ORE .....Biology

#### Second Row:

MR. C. G. TOWRY .....Biology  
MR. J. POPE DYER .....Head of the Social Science Department  
MR. E. N. FIELDS .....Economics  
MRS. REBA LOU FULTS .....Economics  
MRS. HELEN H. PARNELL .....Civics  
MISS FRANCES TIERNAN .....Economics and Sociology  
MISS CHRISTINA COPPINGER .....Secretary  
MRS. ANNA DYER .....Secretary  
MRS. PAULINE ELLIS .....Registrar  
MR. EVERETT O'NEAL .....Assistant Principal  
MR. MARION PERKINS .....Science

### DEPARTMENTS OF R. O. T. C., SCIENCE, SOCIAL SCIENCE AND OFFICE





# SENIOR CLASS



Class Officers

## First Row:

**BETTY M. ADAMS**, Entered from Calhoun High School in 1952; Spinstertette, '53, '54, '55; R.O.T.C. Sponsor, '55; CHAMPION Night Cast, '54, '55.  
**JAMES W. ADAMS**, Entered from North Side Jr. High School in 1952.  
**CAROLYN EFFE AKERS**, "Kakie," Entered from Lookout Jr. High School in 1952; Pirates Club, '53, '54; R.O.T.C. Sponsor, '55.  
**SANDRA FAYE ALDRIDGE**, "Sandy," Entered from Brainerd Jr. High School in 1952; Nite Owls, '52, '53, '54.

## Second Row:

**WILLIAM LAKE ALONSO**, "Willie," Entered from Brainerd Jr. High School in 1952.  
**YVONNE ANDERSON**, Entered from East Lake Jr. High School in 1952; Girls' Battalion, '53, '54, '55; Twelve Club, '53, '54; Publicist, '54.  
**MARY ELIZABETH ARMSTRONG**, "Liz," Entered from Lookout Jr. High School in 1950; National Honor Society, '54, '55; Girls' Hi-Y, '53, '54, '55; Vagabonds, '53, '54, '55; Bank and Bookstore Staff, '53, '54, Secretary-Treasurer, '55.  
**VALERIE CHRISTINA AYE**, "Val," Entered from Graham High School in 1952; Art Club, '52; Teens Social Club, '52; Swimming Club, '54; Bible Club, '53, '54; Library Staff, '54; Digest Staff, '53; Junior Pay Cal, '54; Girls' Battalion, '53, '54, '55; National Honor Society, '54, '55; Senior Play Cast, '55.

## Third Row:

**CHARLES EUGENE BAKER**, "Bud," Entered from Lookout Jr. High School in 1952; Camera Club, Vice-President, '54, '55.  
**YVONNE LEE BALES**, Entered from Hardy Jr. High School in 1951; Usher, '55.  
**CARL MARCES BARKER**, Entered from Chattanooga High School in 1954; Sergeant First Class, R.O.T.C.  
**D. JIMMY BARKLEY**, "Jim," Entered from Dickinson Jr. High School in 1950; Treasurer of the Freshman Class, '52; Junior Basketball Team, '51, '52.

## Fourth Row:

**MARY ELEANOR BARNES**, "Mabel," Entered from Dickinson Jr. High School in 1952; Girls' Tri-Hi-Y, '53, '54, '55; Nite Owls, '54, Secretary, '55; Girls' Battalion, '53, '54, '55; R.O.T.C. Sponsor, '55.  
**NINA MAE BARROWS**, "Nina," Entered from East Side Jr. High School in 1952; Usher, '55; Swimming Club, '55; Digest Staff, '55.  
**ROBERT STANLEY BARRY**, Entered from Lookout Jr. High School in 1950.  
**ANDREA BERNICE BATTLE**, "Little Battle," Entered from Nathan Bachman Jr. High School in 1952; Library Staff, '52.

## Fifth Row:

**WANDA BLANCHE BENNETT**, Entered from Rome High School in 1954; Anchors Aweigh Club, Chaplain, '54, '55; R.O.T.C. Sponsor, '55; Office Force, '54, '55; Girls' Battalion, '54, '55.  
**JEANNE MARIE BERRY**, "Freck," Entered from East Side Jr. High School in 1953; Pirates Club, '53, '54, Vice-President, '55.  
**SHEILA ANN BETTS**, Entered from East Side Jr. High School in 1950; Twelve Club, '55.  
**PEGGY JOAN BLALOCK**, "Peg," Entered from East Side Jr. High School in 1952; Glee Club, '52, '53, '54, '55; Girls' Battalion, '52, '53, '54, '55.

## Sixth Row:

**BARBARA JEAN BLAYLOCK**, "Barb," Entered from Rixon High School in 1953; Ace Club, '54, '55; Swimming Club, '54, '55.  
**JOYCE ANN BLEVINS**, "Punk," Entered from Red Bank High School in 1955; Nite Owls, '55.  
**JANET DELORES BOLDEN**, "Jan," Entered from East Side Jr. High School in 1952; Varsity Glee Club, '52, '53, Senate, '53, '54, '55; Senate Cabinet, '54, '55; Senior Play Cast, '55; "I Speak for Democracy" contest winner, '54; Junior Play Cast, '54; Swimming Club, '53, '54, '55; Ushers, '54, '55; CHAMPION Staff, '54, '55; Digest Representative, '53, '54; Interscholastic Leadership Council, '54, '55; Digest Associate Advertising Manager, '54, '55; Senior Play Cast, '55; CHAMPION Night Cast, '55; National Honor Society, '54, '55; Senior Play Committee, '55.  
**MARY NELL BOWMAN**, "Tootsie," Entered from Men's Jr. High School in 1950; Merry-Macs, '54; Ace Club, '54.

# OF CENTRAL HIGH

## First Row:

**CHARLES EUGENE BRADSHAW**, "Gene," Entered from East Lake Jr. High School in 1952.  
**LINDA CLAIRE BRAGG**, Entered from Bristol High School in 1953; Digest Staff, '53, '54; Gym Staff, '53, '54, '55; Ace Club, '53, '54, '55; Swimming Club, President, '54, '55; Interscholastic Leadership Council, '54, '55; National Honor Society, '54, '55; Los Picaros Club, '54, President, '55; Nominee for "Miss Teenager," '55; Girls' Battalion, '53, Captain, '55; Senate, '54, Secretary, '55; Allied Youth, '54; Senior Play Committee, '55.  
**BARBARA ANN BUCKELL**, "Bricks," Entered from East Side Jr. High School in 1950; Girls' Battalion, '53, '54; Gad-a-bouts Club, '52, '53.  
**DONALD GENE BRIDGEMAN**, "Dorky," Entered from Red Bank High School in 1951; Football Team, '51, '52, '53, '54, '55; Baseball Team, '52, '53, '54, '55.

## Second Row:

**VIVIAN ARLENE BROWNLOW**, "Yankee," Entered from Gloucester Public High School in 1954.  
**SYLVIA ANN BROYLES**, Entered from Hardy Jr. High School in 1952; Shove-Offs Club, '52, '53, Secretary, '54, '55; Girls' Battalion, '52, '53, '54, '55; Girls' Tri-Hi-Y, '53, '54, '55; Interscholastic Leadership Council, '53, '54, '55; Digest Staff, '53, '54, '55; CHAMPION Staff, '54, '55; Reporter for city-wide Tri-Hi-Y Council, '53, '54, '55; National Honor Society, '54, '55.  
**WILLIAM HOWARD BRYSON**, "Bill," Entered from Hardy Jr. High School in 1952; T and I Club, '55.  
**FRED NORMAN CAMP**, Entered from Brainerd Jr. High School in 1952; Hi-Y, '53, '54, '55; Chairman of Hi-Y, '55; Honor Platoon, '53, '54, '55; "Los Picaros," '55; Sgt.-at-Arms of "Los Picaros"; Bible Club, '55.

## Third Row:

**PAUL ALLEN CAMPBELL**, Entered from Northside Jr. High.  
**JAMES LEBRON CARDEN**, Entered from East Lake Jr. High in 1952; Key Club, '53, '54, '55; Disc and Diamond, '53, '54, '55; Football, '52; First Sgt. R.O.T.C., '53, '54; Lt. Col. R.O.T.C., '54, '55.  
**HARRIETTA CARLTON**, Entered from East Lake Jr. High in 1952.  
**ROBERT WAYNE CARLTON**, Entered from Brainerd Jr. High School in 1951; Football Team, '54, '55; Baseball Team, '52, '53; Basketball Team, '52.

## Fourth Row:

**THOMAS EDWARD CARMICHAEL**, "Tommy," Entered from Brainerd Jr. High School in 1953; Major-R.O.T.C., Disc and Diamond Club.  
**DAVID GARDNER CARPENTER**, Entered from Dickinson Jr. High School in 1954; Lt. Col., '54, '55; Glee Club, '54, '55; Hibbilly Band, '53, '54, '55.  
**CHARLES CARTER**, Entered from Rockwood High School in 1952.  
**JO ANN CASEY**, "Casey," Entered from Brainerd Jr. High School in 1951; Vagabonds, '52, '54, '55; Gym Staff, '53; Ace Club, '53, '54, '55; "Y" Club, '52, '53, '54, '55; Basketball Team, '51, '52, '53, '54, '55; Captain, '55.

## Fifth Row:

**LEILLA RUTH CASTEEL**, Entered from Lookout Jr. High School in 1952; Usher, '54, '55.  
**GEORGE RICHARD CHAMPION**, "Doc," Entered from East Side Jr. High School in 1951; Junior Boys' Hi-Y, '50, '51, Chaplain, '52; Digest Staff, '51, '52, '53; Senate, '51, '52, '53; Assistant Chaplain, '54; Treasurer, '55; Allied Youth Reporter, '52; Interscholastic Leadership Council, '54, '55; Boys' Hi-Y, '52, '53, '54, President, '55; Junior Play Production Staff, '54; Key Club, '52, '53, Reporter, '54, Vice-President, '55; Delegate to District Convention at Louisville and International Convention at Philadelphia, '55; Disc and Diamond Society, '53, '54, Second Lieutenant, '55; Delegate to Volunteer Boys' State, '54; Cadet Major in R.O.T.C., '55; Military Escort for Homecoming, Senior Play Cast, '55; Sports Editor of CHAMPION, '55; National Honor Society, '55.  
**NELLIE JOYCE CHILDRESS**, "Jo," Entered from East Side Jr. High School in 1951; Battalion, '54; Swimming Club, '55.  
**LARRY EDWARD CLINGAN**, Entered from East Side Jr. High School in 1950; "Y" Club, '52, '53, '54; Key Club, '53, '54; Disc and Diamond, '52, '53, '54; Vice-President, '55; Football, '50, '51, '52, '53, '54, '55; Captain, '53; Col., '54; Volunteer Boys' State, '54; Secretary of Sonhamper Class, '53; Treasurer of Junior Class, '54; Sergeant-at-Arms Senior Class, '55.

## Sixth Row:

**DANIEL RONALD CLOUGH**, "Ronnie," Entered from Douglas High School, Douglas, Georgia, in 1954.  
**LOYD RAY COLLINS**, "Raynor," Entered from Hardy Jr. High School in 1951; four years in Band; Swim Band, '52, '53, '54, '55.  
**DANES ANNETTE COLQUITT**, "Neenie," Entered from Dickinson Jr. High School in 1952; Pirates Club, '51, '52, '53, '54, '55; President, '55; Senate, '52, '53, '54, '55; Ushers, '55; L.L.C., '54, '55; Digest Staff, '55; Junior Play Cast, '54; Delegate to Girls' State, '53, '54; Battalion, '52, '53, '54, '55; R.O.T.C. Sponsor, '55.  
**TOMMY COLWELL**, "Turtle," Entered from Brainerd Jr. High School in 1952; Football Team, '53.





# THE SENIOR CLASS OF

# CENTRAL HIGH



## First Row:

**JO ANN CONDRY**, "Jody," Entered from Dickinson in 1952; Nite Owls, '52, '53, '54, President, '52; T-H-Y, '53, '54, '55; Ushers, '54, '55; Digest Staff, '54, '55; Battalion, '52, '53, '54, '55; R.O.T.C., Sponsor, '55.  
**NINA JOY CORNELISON**, Entered from East Side Jr. High School in 1950; Allied Youth, '53; Digest Representative, '54.  
**JAMES CORRELL**, "Shorty," Entered from Falm Pank High School in 1954; H-Y, '54.  
**NORMA JEAN COULTE**, Entered from Brainerd Jr. High School in 1953; Anchors Awe Go, '53, '54, President, '55; Office Force, '53, '54, Vice-President, '55; Cheerleader, '53, '54, '55; Youth Council, '53, '54, '55; Battalion, '53, '54, Lieutenant, '55; Swimming Club, '54; Ace Club, '53; Homeseeking Queen, '54; R.O.T.C., Sponsor, '55.

## Second Row:

**ALVIN THOMAS COX, JR.**, "Tommy," Entered from East Side Jr. High School in 1952; Allied Youth President; Lieutenant in Military Band, '53; Digest Staff, '55; Vocalist in Swing Band, '55; Junior Play Cast, '54; Senior Play Cast, '55; CHAMPION Night, '54, '55; H Team Football, '55.  
**KENNETH COX**, Entered from Dickinson Jr. High School in 1952; Baseball Team, '54; Basketball Team, '54, '55.  
**NANCY ALLEN COWE**, Entered from East Side Jr. High School in 1951; Girls' Battalion, '52, '53, '54, '55; Pirates Club, '53, '54, '55; Treasurer, '55; Swimming Club, '54, '55.

## Third Row:

**MARGE ELLA CUNNINGHAM**, "Little Bit," Entered from Dickinson Jr. High School in 1952; Usher, '55; Pirates Club, '54, '55; Girls' Battalion, '54, '55; Varsity Glee Club, '55.  
**BARBARA JEAN CUPP**, Bobbie, Entered from East Side Jr. High School in 1952; Red Cross, '53, '54; Publicity Chairman, '54, '55.  
**ANN DANIEL**, Entered from East Lake Jr. High School in 1953; Ushers, '55; Orchestra, '55, '54, Vice-President, '55; Les Picaros, President, '55.  
**JAMES PERRY DAVENPORT**, "Jim," Entered from East Side High School in 1952.

## Fourth Row:

**BARBARA EVA DAVIS**, "Babs," Entered from East Side Jr. High School in 1951; Spanish Club, '52, '53, '54; Girls' Battalion, '51, '52; Gad-a-bouts' Club, '52, '53.  
**SARANELL DAVIS**, Entered from Lookout Jr. High School in 1950; Ace Club, '54, '55; Announcers' Club, '53, '54, Vice-President, '55; Bank and Bookstore Staff, '52, '53, '54, President, '55; CHAMPION Staff, Business Manager, '55; National Honor Society, '54, '55; Red Cross Club, '53; Delegate to Red Cross Camp, '53; Senate, '52, '53, '54, Vice-President, '55; Senate Cabinet, '55; Tri-Hi-Y, '55; Delegate from Girls' H-Y to Blue Ridge Assembly, Blue Ridge, North Carolina, '54; Vagabond Club, '53, '54, President, '55.  
**WANDA DEARR**, "Windy," Entered from Tyner High School in 1954.  
**CHARLES HOWARD DELANEY**, Entered from East Lake Jr. High School in 1952; Disc and Diamond, '53, '54, '55; T and I Club, '54, '55; Military Company Commander, '54, '55.

## Fifth Row:

**PATRICIA LOUISE DICKSON**, "Patsy," Entered from Dickinson Jr. High School in 1952; Anchors Aweigh, '53, '54, Treasurer, '55; Office Force, '54, President, '55; Girls' Battalion, '53, '54, '55; Senior Party Committee, '55.  
**CAROLYN EDNA DILLEY**, Entered from Dickinson Jr. High School in 1951; Tri-Hi-Y, '53, '54, '55; Interscholastic Leadership Council, '53, '54, Secretary, '55; National Honor Society, '53, Secretary, '54, '55; Girls' Drill Squad, '52, '53; Allied Youth, '53, '54, Secretary, '55; Senate, '53, '54, '55; Senate Cabinet, '54, '55; Senate Play, '54, '55; Digest Staff, Club Editor, '53, '54, Editor-in-Chief, '54, '55; CHAMPION Staff, Freshman Editor, '51, '52, Feature Editor, '54, '55; Junior Delegate to City-wide I.L.C., '54; Senior Party Committee, '54; "Miss Teen-Ager" Nominee, '55.  
**KENNETH ERNEST DODD**, "Ken," Entered from Boyton Jr. High School in 1950; M.P. Club, '52, '53, '54, '55; Honor Platoon, '52, '53, '54, '55.

## Sixth Row:

**FRANK KENNETH DYE**, "Ken," Entered from Brainerd Jr. High School in 1951; Bank, '51, '52; Disc and Diamond Club, '51, '54; Captain in R.O.T.C., '54, '55; Second Lieutenant, R.O.T.C., '53.  
**MARY JO EAVES**, "Jody," Entered from Hardy Jr. High School in 1952; Spanish Club, '52, '53; Twentieth Club, '53, '54, Secretary, '55; Allied Youth, '53, '54, '55; Battalion, '53, '54, '55; National Honor Society, '54, '55; Ushers, '54, '55.  
**BRYON WILEY ELKINS**, "Belle," Entered from Brainerd Jr. High School in 1950; H-Y Sergeant-at-Arms, '54, '55; Honor Platoon, '54, '55, '54, '55.  
**GEORGE EUGENE ELMORE**, Entered from Northside Jr. High School in 1953.



## Senior Party Servers

## First Row:

**RAY DEAN EVANS**, "Dean," Entered from Bachman Jr. High School in 1951; Usher, '55.  
**BARBARA JEAN EVERETT**, "Babs," Entered from Northside Jr. High School in 1952.  
**NAOMA CAROLYN EVERTON**, Entered from Nathan I. Bachman Jr. High School in 1952; Allied Youth, '54.  
**ROBERT GLENN FERRISS**, "Bob," Entered from East Side Jr. High School in 1952; Bible Club, '52.

## Second Row:

**ALICE WADENE FISHER**, "Dene," Entered from East Side Jr. High School in 1952; Vagabond Club, '52, '53, '54, Secretary, '55; Swimming Club, '54; Girls' Battalion on, '52, '53, '54.  
**SHELBY JEAN FOX**, "Shag," Entered from Northside Jr. High School in 1953; Basketball Team, '53; Ace Club, '55.  
**DOROTHY MARIE FRANK**, "Dot," Entered from North Chattahoochee Jr. High School in 1951; Digest Staff, '52, News Editor, '52; Assistant to the Editor, '54, '55; Bible Club, '54, '55.  
**JOHN DEVOISE FRENCH**, "French," Entered from Williamsburg High School, Kentucky, in 1952; Honor Platoon, '54, '55; Color Guard, '55.

## Third Row:

**MARGE ANN FRYAR**, "Little Bit," Entered from Brainerd Jr. High School in 1952; Ushers, '55; Interscholastic Leadership Council, '55; Spinetesteres, '53, '54, '55; Girls' Battalion, '53, '54, '55.  
**VIRGINIA KAY FRYAR**, "Gunny," Entered from East Lake Jr. High School in 1952; R.O.T.C. Sponsor, '53; Silhouettes, '55.  
**DAVID RUSSELL GARRETT**, "Snuff," Entered from San Marcos Academy in 1952.  
**KAREN FAYE GARY**, Entered from Parkersburg, West Virginia, in 1954.

## Fourth Row:

**BETTY ANN GASS**, Entered from East Side Jr. High School in 1951; Merry Macs, '51, '52, '53, '54, Secretary, '55; Bible Club, '55.  
**W. R. GEIGAN**, "Rachie," Entered from Hardy Jr. High School in 1952; Ace Club, '53, '54; Key Club, '55, '54; Lt. Col. in Military, '55; Disc and Diamond, '52, '53, '54, President, '55; Boys' State, '54; Sergeant-at-Arms, '55; Football Team, '52, '53, '54, '55.  
**PEGGY JOYCE GIFFORD**, "Yoho," Entered from East Side Jr. High School in 1953; Vagabonds, '53; Ace Club, '54, '55; Honor Society, '54, '55.  
**TED MONROE GILREATH**, Entered from Northside Jr. High School in 1951; Ace Club, Disc and Diamond; Key Club, Senate; Football Team, '51, '52, '53, '54; Captain in Military, Vice-President of Class, '51, '52, '53, '54; Neatest Cadet; Basketball; Baseball.

## Fifth Row:

**BONNIE JEAN GOBER**, "Gosher," Entered from Ebert Jr. High School in 1951; Allied Youth, '51, '52; Girls' Battalion, '51, '52, '53, '54, '55; CHAMPION Night, '55; Ushers, '55; Senior Play Cast, '55.  
**ROBERT MONROE GOBER**, "Bobby," Entered from East Side Jr. High School in 1950.  
**HELEN GOFORTH**, Entered from Blodgett County High School in 1953; Ushers, '55.  
**CHARLOTTE OLENE GOGGIN**, "Dimples," Entered from Dickinson Jr. High School in 1952; Silhouette Club, '53, '54, '55; Majorette Club, '54, '55; Treasurer, '55; Majorette, '55.

## Sixth Row:

**FRANCES LOUISE GOINS**, "Frankie James," Entered from John A. Patten in 1950.  
**NELLIE JOSEPHINE GOSSITT**, "Jodie," Entered from Lookout Jr. High School in 1951; Merry Macs, '52, '53, '54, '55, Vice-President, '55.  
**GEORGE HENRY GRAY**, Entered from East Side Jr. High School in 1952; Announcers' Club, '51, '52; Cheerleaders' Club, '53, '54, '55, Co-Head Cheerleader, '55; Boys' H-Y, '54, '55; Allied Youth, '53, '54; Best Drilled Platoon, '53, '54.  
**GILBERT WADE GREEN**, Entered from East Side Jr. High School in 1951; Cheerleader, '52, '53, '54, '55, President, '55; Key Club, '52, '53, '54, '55, President, '55; Disc and Diamond Society, '53, '54, '55, Secretary, '55; H-Y, '53, '54, '55, Vice-President, '55; Band, '51, '52, '53, '54, '55; Swing Band, '52, '53, '54, '55; Delegate to International Key Club Convention, '54; Vocalist, '53, '54, '55; Division Secretary of Key Club, '55.





# SENIOR CLASS



Posing at the Party

## First Row:

**MARY LORENA GREEN**, "Rosebud." Entered from East Side Jr. High School in 1952.  
**CHARLOTTE LUCILLE GROUF**, Entered from East Side Jr. High School in 1953; National Honor Society, '54, '55; Ushers, '54, '55; Basketball Team, '54, '55.  
**ROBERT GORDON HACKER**, Entered from East Side Jr. High School in 1952; Senior Play Cast, '55; Band Officer, '55; Swing Band, '55; Military Band Officer, '55.  
**MARY ANNE HARDING**, Entered from Meridian Senior High School in 1953; Spinsternettes, '54, '55; Ushers, '54, '55; Senior Play Cast, '55.

## Second Row:

**JO ANN HARDYMAN**, "Jo-Jo." Entered from Nathan L. Bachman Jr. High School in 1952; Allied Youth, '54.  
**REBECCA HARGISS**, Entered from South Pittsburgh High School in 1953; Bible Club, '54.  
**NORMAN HARRISON**, Entered from Northside Jr. High School in 1952.  
**A. D. HARTLINE**, Entered from Lookout Jr. High School in 1953.

## Third Row:

**ROBERT JACOB HARTMAN**, "Bobby." Entered from Lookout Jr. High School in 1950; Stage Crew, '54, '55.  
**WILLIE RUTH HARTMAN**, Entered from Red Bank High School in 1953; Y-Teens, '53; 4-H Club, '53, '54, '55; Red Cross, '55.  
**JOSEPH FRANKLIN HAWKINS**, "Buddy." Entered from Signal Mountain Grammar School in 1951; 4-H Club, '53.  
**JAMES RAY HAYNES**, Entered from Red Bank High School in 1953; Band, '54, '55; Military Band, '53, '54, '55; Orchestra, '54; R.O.T.C., '55; Band Captain, '55; Senior Party Committee, '55; Football Band Lieutenant, '55; Hamilton County Band Concert, '54; Middle Tennessee State Teachers College Band Contest, '55; R.O.T.C. Marksmanship Medal, '54, '55; Best Drilled Squad in R.O.T.C. Band Medal, '54.

## Fourth Row:

**BENNY LAMAR HELTON**, Entered from Brainerd Jr. High School in 1953.  
**CHRISTINE HELTON**, "Chris." Entered from East Side Jr. High School in 1953; Red Cross, '53; Vagabond Club, '53, '54, '55; Tri-Hi-Y Club, '53, '54, '55; Girls' Battalion, '53, '54; Swimming Club, '54.  
**EULA MAE HELTON**, Entered from Brainerd Jr. High School in 1953; Pirates, '53, '54; Tri-Hi-Y, '53, '54, '55; Band, '53, '54; Band sponsor, '55; Band Officers Club, '54, '55; Usher, '54, '55.  
**SARA JONIE HEMBRIDGE**, "Josie." Entered from East Side Jr. High School in 1952; Ace Club, '54, '55; Usher, '54, '55.

## Fifth Row:

**PEGGY LOUISE HILL**, "Shorty." Entered from East Side Jr. High School in 1953; Usher, '54, '55; Allied Youth, '53, '54; Band, '53, '54, '55; Band Officers Club, '54, '55; First Lieutenant in Band, '54, '55.  
**JAMES FRANKLIN HILLIARD**, "John." Entered from Northside Jr. High School in 1951.  
**EDWARD LAMAR HIXON**, "Buddy." Entered from East Lake Jr. High School in 1952; Honor Platoon, '54, '55; Second Lieutenant, '55; Neatest Cadet three times in '52.  
**NORMA JEAN HIXON**, Entered from East Side Jr. High School in 1951; Secretary of Announcers' Club, '53, '54, '55; President of Honor Society, '54, '55; Ace Club, '53, '54, '55; Gym Staff, '52, '53, '54, '55; Allied Youth, '53, '54; Girls' Hi-Y, '53, '54, '55; Library Staff, '51; Red Cross, '51, '52.

## Sixth Row:

**FREDDIE JEAN HODGES**, "Jean." Entered from Fort Payne, Alabama in 1952; Ace Club, '53, '54.  
**ERNESTINE FRANK HOLDAM**, "Earnie." Entered from Brainerd Jr. High School in 1953; Pirates Club, '53, '54, '55; Publicity Chairman, '55; Red Cross, '54, '55.  
**SANDRA JOAN HOLLEFIELD**, "Cookie." Entered from Brainerd Jr. High School in 1951; Pirates, '54, '55; Silhouettes, '53, '54, '55; Vice-President, '55; Major, '54, '55; Vice-President, '55; Major, '54, '55; Head Major, '55; CHAMPION Night Cast, '52, '53, '54; Band Varieties, '53, '54, '55; member, '54, '55; Sponsor for Military Band, '55; Allied Youth, '52-53.  
**RICHARD LEON HOUTS**, "Hot Rod." Entered from East Side Jr. High School in 1951.

# OF CENTRAL HIGH

## First Row:

**BEVERLY SUELE HOWARD**, Entered from East Side Jr. High School in 1952; Twixteen, '52, '53, '54, '55; Red Cross, '54.  
**JOSEPH EDWARD HOWARD**, "Red." Entered from Brainerd Jr. High School in 1951; Basketball Team, '51, '52.  
**SUE HOWINGTON**, "Sue." Entered from Hardy Jr. High School in 1953; Red Cross Club, '53, '54; Bible Club, '54, '55.  
**ALICE CAROLYN HUEY**, "Sis." Entered from Ft. Oglethorpe in 1951; Silhouettes, '53, '54; Social Chairman, '55; Art Club, '52, '53, '54, '55; Art Director for Junior Play Stage, '54; Girls' Hi-Y, '52, '53, '54, '55; Red Cross, '53, '54; Varsity Glee Club, '53, '54, '55; CHAMPION Night Cast, '53, '54; Ace Club, '52, '53, '54.

## Second Row:

**MARIE ANN HUGHES**, "Tee Wee." Entered from Lakeview High School in 1954; Silhouette Club, '54. Telephone Chairman, '55.  
**LOLA MAE HUMBLE**, "Bumble." Entered from Bachman Jr. High School in 1952.  
**JAMES MELVIN HUSKEY**, "Jimmy." Entered from Brainerd Jr. High School in 1951; President of Bible Club, '51; Track Team, '51; Best Drilled Company, '52, '54; Sergeant in R. O. T. C., '53, '54; First Lieutenant in R.O.T.C., '55.  
**DOIS ANN HYDE**, "Dontee." Entered from East Lake Jr. High School in 1951.

## Third Row:

**MARY CAROLYN INGLE**, "Kaken." Entered from East Side Jr. High School in 1952.  
**JIMMY ISON**, Entered from Dickinson Jr. High School in 1952; Dice and Diamond Society, '54, '55; First Lieutenant in R.O.T.C., '55.  
**CECIL WARD JACKSON**, "Stonewall." Entered from East Side Jr. High School in 1951; R.O.T.C. Captain, '55; Dice and Diamond Society, '55; Second Battalion Operations Officer, '55.  
**VELMA RUTH JACKSON**, "Punkin." Entered from Ahrens High School in 1954.

## Fourth Row:

**ARNOLD RICHARD JANEWAY**, Entered from Lookout Jr. High School in 1950; Projectionist Club, '54, '55.  
**HAROLD CARLTON JANEWAY**, Entered from Lookout Jr. High School in 1950; Projectionist Club, '54, '55.  
**MARTHA SUE JENKINS**, "Bugs." Entered from Hardy Jr. High School in 1952; Red Cross Club, '52, '54, '55; Bible Club, '54, '55.  
**BARBARA JOHNSON**, "Bolo." Entered from Brainerd Jr. High School in 1951; Varsity Glee Club, '53, '54, '55.

## Fifth Row:

**WILLIAM JAMES JOHNSTON**, "Bill." Entered from Hardy Jr. High School in 1951; T. and I. Club, '55; Medal in R.O.T.C., '54.  
**TOMMY BRYANT KELLY**, Entered from East Side Jr. High School in 1952.  
**MARGARET JO KELSAAY**, "Margie." Entered from East Side Jr. High School in 1952; Ushers, '54, '55; Purple and Gold Band, '53, '54, '55; First Lieutenant, '54, '55; Band Officers Club, '54, '55.  
**EZEKIEL S. KENNEDY**, "Zeke." Entered from East Side Jr. High School in 1951; Digest Staff, '54, '55.

## Sixth Row:

**JOHN ARNOLD KIMBROUGH**, "Johnny." Entered from Brainerd Jr. High School in 1953; Varsity Football Team, '53, '54, '55; Dice and Diamond, '53, '54, '55; "C" Club, '54, '55; Cadet Captain R.O.T.C., '55.  
**JEANETTE MARIE KRESS**, "Net." Entered from Hardy Jr. High School in 1952; Bible Club, '54, '55; Red Cross Club, '53, '54, '55.  
**EDWARD EUGENE LAWSON**, Entered from Brainerd Jr. High School in 1953; Junior Play, '54; Band, '53, '54, '55; Military Band, '53, '54, '55; Hamilton County Band Concert, '54; East Tennessee Band Clinic, '54; Middle Tennessee State Band Contest, '54; Second Lieutenant in Military Band, '55; Second Lieutenant in Purple and Gold Band, '55; Swing Band, '55.  
**VIRGINIA JO LAWSON**, Entered from East Lake Jr. High School in 1952.



# THE SENIOR CLASS OF

# CENTRAL HIGH



## First Row:

**JOHN WINSTON LEAVITT**, Entered from Brainerd Jr. High School in 1953.  
**JANE RUTH LEE**, "Shortie," Entered from Dickinson Jr. High School in 1952; Ace Club, '53, '54; Digest Staff, '55.  
**JOYCE LEE**, "Jo," Entered from Lookout Jr. High School in 1953; Ace Club, '53, '54; Secretary-Treasurer, '55; L.L.C., '54, '55; Anchors Aweigh, '53, '54; Telephone Chairman, '55; Gym Staff, '53, '54, '55; Girls' Varsity Basketball Team, '53; Girls' "C" Club, '53, '54, '55; Allied Youth, '53, '54, '55; Digest Representative, '53.  
**CHARLES EDWARD LERCH**, "Eddie," Entered from Brainerd Jr. High School in 1953; Varsity Football, '53, '54, '55; Disc and Diamond, '53, '54, '55; Key Club, '54, '55; "C" Club, '54, '55; Youth Council, '54, '55; Cadet Lt. Col. R.O.T.C., '54, '55; Sergeant-at-Arms of Senior Class, '54, '55; Best Drill Company, '54; First Sergeant, '54.

## Second Row:

**MARY RUTH LEWIS**, Entered from East Side Jr. High School in 1950; Honor Society, '54, '55; L.L.C., '53, '54, '55; Ushers, '54, '55; Girls' Tri-Hi-Y, '52, '54, '55; Digest Staff, '54, '55; Vagabond Club, '51, '52; Battalion, '53, '54, '55; Silhouette Club, '53, '54, '55; Publicity Chairman, '55; Library Staff, '51; Senate, '52, '53.  
**PHYLLIS ANNE LEWIS**, "Phyll," Entered from Nathan Bachman Jr. High School in 1951; 4-H Club, '52, '53, '54; Bible Club, '54, '55.  
**BEVERLY ANN LINK**, "Stinkie," Entered from Hardy Jr. High School in 1953; Spanish Club, Secretary, '53; Allied Youth, '54; Physical Education Staff, '53, '54, '55; Shove-Off Club, '53, '54, '55; Vice-President, '55; Ace Club, '53, '54, '55; President, '55; Military Sponsor, '55; Member Junior Play Cast, '54; Candidate Homecoming Queen, '54; Honor Society, '54, '55; Swimming Club, Vice-President, '54, '55; Fall Festival Queen Candidate; Girls' Battalion, '54, '55; Captain, '55; Badminton Club, Vice-President, '54; L.L.C., '55.  
**MORTIKA JUNE LONG**, "Juna Bug," Entered from East Side Jr. High School in 1953; Shove-Off Club, '52, '53; Pirate Club, '54, '55.

## Third Row:

**JOHNNY ALBERT LONG**, "Johnny Guitar," Entered from Carlock Grammar School in 1950; Member of Hillbilly Band, '54, '55.  
**MARY ANN LOVE**, "Sherry," Entered from East Side Jr. High School in 1952; Library Staff, '52; Allied Youth, '52, '53; Senate, '53, '54; Shove-Off Club, '52, '53, '54, '55; Social Chairman, '55; Ushers, '55.  
**JOY ANN LOVVOIRN**, "Brendie," Entered from East Lake Jr. High School in 1951.  
**CAROLYN JOYCE LOWE**, "Dod," Entered from Hardy Jr. High School in 1953; Treasurer Sophomore Class, '53; Secretary Junior Class, '54; Secretary Senior Class, '55; L.L.C., '54, Treasurer, '55; Tri-Hi-Y, '53, '54, Secretary, '55; Shove-Off Club, '53, '54, President, '55; Ace Club, '53, '54, Vice-President, '55; Honor Society, '54, '55; Senate, '55; Swimming Club, '54, '55; Girls' Battalion, Lieutenant, '55; Captain, '54, Mayor, '55; Homecoming Queen candidate, '55; Fall Festival Queen, '54; Miss Teenage, '55; Cheerleader, '53, '54, '55; Youth Council, '54, '55; Gym Staff, '55, '54, '55; Military Sponsor, '55; Badminton Club, '53, '54.

## Fourth Row:

**REBECCA PATSY LUNSFORD**, "Pat," Entered from East Side Jr. High School in 1953; Bible Club, '53; Varsity Glee Club, '53, '54, '55.  
**JAMES HARVEY MCALISTER**, "Jim," Entered from Brainerd Jr. High School in 1951; Spanish Club, '54, '55; Football Team, '51, '52, '53.  
**OLA NADINE MCGONATHY**, "Naden," Entered from Lookout Jr. High School in 1951.  
**THEADA V. MCCORKLE**, Entered from Hardy Jr. High School in 1951; Pirate Club, '51.

## Fifth Row:

**ROBERT J. MCCUTCHEON**, "Ovicious," Entered from North Side Jr. High School in 1951; Football Team, '51, '52, '53, '54, '55; Varsity Football, '53, '54, '55.  
**RAY PERRY McDANIEL**, Entered from Brainerd Jr. High School in 1952; T and I Club, '55.  
**CAROLE LYNN McDOWELL**, "Karo," Entered from Brainerd Jr. High School in 1952; Basketball Team, '52, '53, '54; Co-Captain, '55; Circulation Manager, Digest Staff, '55.  
**LARRY DEAN McDOWELL**, "Dad," Entered from Brainerd Jr. High School in 1952; Senior Class Treasurer, '55.

## Sixth Row:

**MARY JO MCGEE**, "Jo," Entered from East Lake Jr. High School in 1952.  
**YVONNE JEAN MCGLOHON**, "Von," Entered from Brainerd Jr. High School in 1951; Business Staff of Digest, '52, '54, Business Manager, '55; Ushers, '54, '55; Varsity Glee Club, '53, '54, '55; Secretary, '55; Bible Club, '52, '55; Girls' Battalion, '52, '53, '54, '55; Allied Youth, '53, '54, '55; National Honor Society, '54, '55; Vagabond Club, '52, '53, '54.  
**MARY LYNN MCGUFFEY**, "Snarky," Entered from Brainerd Jr. High School in 1952.  
**BEVERLY ANN MCINTYRE**, "Mac," Entered from International Falls High School in 1954.



Crazy Music

## First Row:

**VIRGINIA RUTH MCKAMEY**, "Gin," Entered from Red Bank Jr. High School in 1951; Anchors Aweigh Club, '51, '52, '53, '54; Publicity Chairman, '55; R.O.T.C. Sponsor, '55; Office Staff, Treasurer, '55; Girls' Battalion, '52, '53, '54, '55.  
**NORA LOUISE McMAHAN**, "Red," Entered from Lookout High School in 1952; Allied Youth, '52, '53; Twixteen Club, '54, '55.  
**EDWARD LEROY MACLIN**, "Ed," Entered from East Side Jr. High School in 1953; Disc and Diamond, '52, '54, '55; Second Lieutenant, '54, '55; Captain in R.O.T.C., '54, '55; Neatest Cadet, '54; Key Club, '53, '54; Treasurer, '55; Football Manager, '54, '55; Boys' Hi-Y, '53, '54; Junior Play Cast, '54.  
**JAMES FRANKLIN MACLIN**, "Jim," Entered from East Side Jr. High School in 1952; Football, '53, '54, '55; Disc and Diamond, '53, '54, '55; Key Club, '54, '55; "C" Club, '53, '54; Hi-Y, '53, '54; R.O.T.C., First Sergeant, '54, Captain, '55; Hi-Y President, '55.

## Second Row:

**PEGGY ANN MALONE**, Entered from East Side Jr. High School in 1952; Ace Club, '54, '55; Pirates Club, '54, '55; Ushers, '54, '55.  
**ROBERT THOMAS MALONE**, "Tommy," Entered from East Side Jr. High School in 1953.  
**MYRA JUNE MALSTROM**, Entered from Brainerd Jr. High School in 1951; Digest Staff, '51, '52, '53; Girls' Battalion, '52, '53, '54.  
**BUDDY NATHAN LEE MARTIN**, "Buddy," Entered from East Side Jr. High School in 1952; Band, '52, '53, '54; Disc and Diamond, '54, '55; Glee Club, '53; Junior Play Cast, '54; Announcers' Club, '54, '55; Military Band; Swing Band; First Lieutenant in Military, Drum Major in Military Band.

## Third Row:

**HELEN JEANETTE MASSEY**, "Slipper," Entered from Northside Jr. High School in 1953; Varsity Glee Club, '53, '54, '55; Ushers, '55.  
**MARY LOU MASTERS**, "Lou-Lou," Entered from East Side Jr. High School in 1951.  
**HOWARD EDWARD MEADOR**, "Pete," Entered from Brainerd Jr. High School in 1952; Disc and Diamond, '54, '55.  
**MARGARET LESSIE MEADOWS**, "Sweet Pea," Entered from East Lake Jr. High School in 1953; Silhouette Club, '54, '55; Treasurer of Silhouette Club, '55.

## Fourth Row:

**GWENDOLYN PUTH MELTON**, "Gwen," Entered from East Side Jr. High School in 1952; Spinneterette Club, '53, '54, '55; Band, '52, '54, '55.  
**TRAVIS MILES**, "Red," Entered from Tawwer High School, 1951; T and I, '55.  
**FRANCES HELEN MOONEY**, "Dimples," Entered from Hardy Jr. High School in 1953; Library Staff, '53, '54; Vice-President, '54; Red Cross Club, '54, '55; Treasurer; Secretary, Red Cross Club, '54, '55; Ace Club, '55.  
**IANNA DELORES MORGAN**, "Ann," Entered from Lookout Jr. High School, 1953; Ushers, '55; Ace Club, '53, '54, '55.

## Fifth Row:

**JOE HAMPTON MORGAN**, Entered from Southside High, Memphis, Tenn. in 1952; Key Club, '52, '53, '54, '55; Senate, '52, '53, '54, President, '54, Boys' Hi-Y, Secretary, '52, '53, '54, '55; Disc and Diamond Society, '55; Interscholastic Leadership Council, '54, '55; CHAMPION Staff, Military Editor, '55; Cadet Major, R.O.T.C., '55; Homecoming Escort, '55; CHAMPION Night, '54, '55; Junior Play, '54; National Honor Society, '54, '55; Junior Play, '54; Senior Play, '55; Orchestra, '54.  
**SUE MORGAN**, Entered from East Side Jr. High School in 1951.  
**JOSEPH H. MORTON**, "Joe," Entered from Brainerd Jr. High School in 1951; T and I Club.  
**RAYMOND EARL MOSS**, "Brother," Entered from Tyrner in 1950; Disc and Diamond Club, Captain in Military, '55; Co-Captain of Football Team, '55; "C" Club; President of Senior Class, '55; Junior Class, '54; Sophomore Class, '53; Senior Personality, '55; Thom McAnn Football Award, '55.

## Sixth Row:

**EDNA LOUISE MULLIS**, Entered from East Lake Jr. High School in 1952.  
**LORETTA JEAN MUSE**, Entered from Northside Jr. High School in 1951; Red Cross, '51, '52; Pirates Club, '52, '53.  
**CATHERINE NAPIER**, Entered from Morris Community High in 1953; Twixteen Club, '53, '55, Treasurer.  
**BETTY JEAN NELSON**, "Betsy Boo," Entered from McIntire's School in 1952.





# SENIOR CLASS



A Wild Bunch

## First Row:

**WILLIAM GUS NEWELL**, Entered from Hardy Jr. High School in 1953.

**BEVERLY JOYCE NOLAN**, Entered from East Side Jr. High in 1951; Allied Youth, '51, '52; Spangierette Club, '54, '55; Interscholastic Leadership Council, '54, '55; Girls' H-Y, '54, '55; Usher Club, '54, '55; Swimming Club, '54, '55; Senior Play Cast, '55.

**WILLIAM DOUGLAS NOLAN**, "Doug," Entered from East Side Jr. High School in '51; Disc and Diamond Club, '53, '54, '55; Sergeant-at-Arms, Disc and Diamond, '54, '55; Football Manager, '53, '54, '55; Captain, R.O.T.C., '54, '55; Best Drilled Company, '52, '53.

**MARY ANITA NOWELL**, "Nee," Entered from Northside Jr. High School in 1953; Ace Club, '53, '54; Ushers, '55.

## Second Row:

**A. MARVIN NOWLIN**, Entered from Brainerd Jr. High School in 1953.

**HAROLD EDDIE OGLE**, "Eddie," Entered from Roseville High School in 1951; Bible Club, '54, '55; R.O.T.C., Officer, '54, '55.

**FRANK D. OLIVER**, Entered from Hardy Jr. High School in 1951; Co. Exc. Officer in R.O.T.C.; Rifle Team; Basketball Team, '53; Baseball Team, '53.

**CURTIS HOLLY O'NEAL**, "Slick," Entered from East Side Jr. High in 1953; Honor Platoon, '53, '54, '55; Stage Crew, '53, '54, '55; Secretary and Treasurer, CHAMPS Night, '54, '55; Band Color Guard, '54, '55; Cadet First Lieutenant in R.O.T.C., '55; Los Pecos, '53; Projection Crew, '53, '55; Band Concert, '54.

## Third Row:

**JUANITA PHYLLIS OWENS**, "Nina," Entered from Tarpon Springs High School in 1954; Majorette Club, '55; Head Ping Twirler, '55.

**GENEVA PARKER**, Entered from Brainerd Jr. High School in 1950; Twixteen Club, '53, '54, '55; Allied Youth, '52, '53.

**WADNA LEE PAYNE**, "Dodie," Entered from Lookout Jr. High School in 1951; Nite Owls, '53, '54.

**CHARLOTTE JO PIEDEN**, "Jo," Entered from East Side Jr. High School in 1952; Usher, '55; Ace Club, '53, '54, '55.

## Fourth Row:

**SHIRLEY ANNE PERKINSON**, "Blondie," Entered from Chattanooga High School in 1954; R.O.T.C. Sponsor, '55; Usher Senior Day, '54; Orchestra, '54.

**MARTHA LEE PHILLIPS**, "Marty," Entered from Hardy Jr. High School in 1951; Ushers, '54, '55; Vagabonds, '54, '55; Treasurer, '55.

**MYRNA GAIL PHILLIPS**, "Peppi," Entered from Kettering High School in 1953; Anchors Aweigh, '53, '54, '55; Vice-President, '55; Ace Club, '53, '54, '55; Allied Youth, '53, '54, '55; Recreation Chairman, '53; Swimming Club, '54, '55; Military Sponsor, '55; Girls' Battalion, '54, '55; Lieutenant, '55; Badminton Club, '53, '54; Digest Circulation Business Staff, '55; Gym Staff, '53, '54, '55.

**WILLIAM E. PICKETT**, "Bill," Entered from Lutheran School in 1951.

## Fifth Row:

**PATSY SUE PLANO**, "Pat," Entered from East Lake Jr. High School in 1951; Anchors Aweigh, '52, '53, '54, '55; Office Staff, '53, '54, '55; Senate, '52, '53; Youth Council, '53, '54, '55; Military Sponsor, '55; Girls' Battalion, '52, '53, '54, '55.

**CAROLYN FAYE PLEMONS**, Entered from Dickinson Jr. High School in 1952; Ace Club, '54; Swimming Club, '54; Girls' Battalion, '54.

**CLAIRE POLLARD**, "Blondie," Entered from Brainerd Jr. High School in 1952; Orchestra, '52, '53, '54, '55; President, '55; Senate, '54, '55; Senate Cabinet, '55; Library Staff, '53, '54, '55; Treasurer, '54; Badminton Club, '53, '54; Red Cross Club, '55; Business Staff of the Digest, '55.

**RONALD LOWELL POOLE**, "Jerky," Entered from East Lake Jr. High School in 1951.

## Sixth Row:

**CURTIS POST, JR.**, "Bill," Entered from Dickinson Jr. High School in 1952.

**PATSY RUTH POWELL**, Entered from Lookout Jr. High School in 1950; Merry Mace, '53, '54, President, '55; Girls' Battalion, '52, '53, '54, Twixteen, '52.

**POLLY ANNETTE POWELL**, "Bug," Entered from Hardy Jr. High School in 1951; Shove-Offs, '51, '52, '53, '54, Girls' Battalion, '52, '53, '54, '55; Allied Youth, '51, '52.

**FRED MILTON PRATE**, Entered from Brainerd Jr. High School in 1952; Band, '52, '53, '54, '55.

# OF CENTRAL HIGH

## First Row:

**HUGH PRICE**, "Jerry," Entered from Tyner High School in 1953.

**DORIS JUNE PRICHARD**, "Prich," Entered from East Side Jr. High School in 1951; Shove-Offs, '52; Gnd-a-bouts, '53; Girls' Battalion, '53, '54.

**CECELIA JANE PUCKETT**, "Jane," Entered from East Side Jr. High School in 1953; Twixteen Club, '53, '54, '55; Tri-Hi-Y Club, '53, '54, '55; Girls' Battalion, '55; National Honor Society, '55; Library Staff, '53.

**SHELBY JEAN PURDY**, "Spider," Entered from Lambert High School in 1953; R.O.T.C. Sponsor, '54, '55.

## Second Row:

**BARBARA ALLEN PYBURN**, "Peanut," Entered from Lookout Jr. High School in 1952.

**JANET YVONNE RAGLE**, "Vonnie," Entered from East Side Jr. High School in 1953; Pirates Club, '53, '54; Telephone Chairman, '55.

**FRED LYNN RANDALL**, "Freddy," Entered from Hardy Jr. High School in 1952; Band, '52, '53, '54, '55.

**PEGGY SUE RANSOM**, "Peg," Entered from East Lake Jr. High School in 1953; National Honor Society, '54, '55; L.I.C., '54, '55; Usher, '54, '55; Girls' Battalion, '54, '55; Swimming Club, '53; Allied Youth, '53, '54; Art Club, '53, '54; Merry Mace, '53, '54.

## Third Row:

**CHARLOTTE ANN REEVES**, "Chink," Entered from North Chattanooga Jr. High School in 1953; Girls' Tri-Hi-Y, '53, '54, '55; Vice-President, '55; Spangierettes, '53, '54, '55; Vice-President, '55; Ushers, '55; Announcers' Club, '54, '55; CHAMPION Night, '54, '55; Junior Play Cast, '54; Senior Play Cast, '55; Military Sponsor, '55; Candidate for Homecoming Queen, '55; Girls' Battalion, '53, '54, '55; City-wide Council, '54, '55.

**FREDRICK ANDREW REEVES**, "Fred," Entered from Lookout Jr. High School in 1951; Stage Crew, Vice-President, '55; Honor Platoon, '53, '54, '55.

**JAMES DOYLE RENEGAR**, "Jim," Entered from East Side Jr. High School in 1952; Captain, Purple and Gold Band; Swing Band; Orchestra; Second Lieutenant, R.O.T.C.

**JIMMY LEE RENFRO**, Entered from East Side Jr. High School in 1952.

## Fourth Row:

**FIEDRA RUTH RHEAR**, Entered from City High School in 1953; Nite Owls, '53, '54; Vice-President, '54, '55; Majorette, '54, '55; Pounderettes, '54, '55; Secretary, '54, '55; Military Sponsor, '54, '55.

**ELIZABETH ANN RICE**, "Liz," Entered from Hardy Jr. High School in 1953; Shove-Off Club, '53, '54, '55; Treasurer, '55; Office Staff, '54, '55; Social Chairman, '55; Battalion, '54; Swimming Club, '54; Military Sponsor, '55.

**MATTISON WILLENE RICHBOURG**, "Willie," Entered from East Side Jr. High School in 1953; Ushers, '55.

**RUSSELL DOYLE RIDLEY**, "Brown," Entered from East Side Jr. High School in 1953.

## Fifth Row:

**PAUL DOUGLAS RIGGS**, "Doug," Entered from East Lake Jr. High School in 1951; Varsity Glee Club, '52, '53, '54; Football Manager, '52, '53; Weight Lifting Team, '51; Boxing, '51; Disc and Diamond, '54, '55; Junor Play Cast, '54.

**MARGUERITE MARIE RIGHTMIRE**, "Blondie," Entered from East Side Jr. High School in 1951.

**ROBERT AARON RIGHTMIRE**, "Robby," Entered from Anna B. Lacy School in 1949; Honor Platoon.

**FRANKLIN DELANO ROBERTS**, Entered from Lookout Jr. High School in 1953.

## Sixth Row:

**BETTY ROGERS**, Entered from East Lake Jr. High School in 1953; Secretary-Treasurer, Orchestra, '54; Treasurer, Orchestra, '55; Vice-President, Spanish Club, '54; Battalion, '55; Ace Club, '54, '55.

**STEWART ROGERS**, Entered from East Lake Jr. High School in 1953; Spanish Club, '53, '54.

**WANDA IRLINE ROGERS**, "Dutch," Entered from Brainerd Jr. High School in 1951.

**NORMA JEAN ROSSER**, "Jean," Entered from Bradley High School in 1953; Girls' H-Y, '53, '54, '55; Vagabonds, '53, '54, '55; Chaplain, '55; Ushers, '55; L.I.C., '55.



# THE SENIOR CLASS OF



## First Row:

**JOHN CHARLES ROWDEN**, "Big John," Entered from Hardy Jr. High School in 1952; B Team Basketball, '52, '53; T and I Club, '53, '54; Treasurer, T and I Club, '54, '55; "C" Club, '54, '55; Baseball Team, '53, '54, '55.  
**WILLIAM TAYLOR RUTIONS**, "Bill," Entered from Hardy Jr. High School in 1952; Basketball Team, '52, '53, '54, '55, Captain '53, '54, '55; Baseball Team, '53, '54.  
**ALICE LOUISE SANDS**, "Lou," Entered from Hardy Jr. High School in 1953; Shove-Off Club, '53, '54, '55; Publicity Chairman, '55; Office Staff, '55; Battalion, '54; Ave Club, '54, '55.  
**SUE SCAELE**, "Sue," Entered from Dickinson Jr. High School in 1952.

## Second Row:

**LEON SCHMITT**, "Bud," Entered from Dickinson Jr. High School in 1952.  
**PATRICIA ANN SCHROTH**, "Pat," Entered from East Side Jr. High School in 1950; Ave Club, '53, '54, '55; Office Force, '53, '54, '55; Anchors Aweigh, '52, '53, '54, '55; Secretary, '54, '55; Military Sponsor, '55; Senate, '52, '53; Battalion, '51, '52, '53, '54, '55; Youth Council, '54, '55.  
**JANET MARIE SCHECKLER**, "Yankee," Entered from Mt. St. Joseph, Buffalo, New York, in 1954.  
**MARY SUE SEWELL**, "Suzie Q," Entered from Arkansas Senior High School in 1951; Silhouette Club, '52, '53; Chaplain in '55; Military Sponsor, '55; Senate, '54, '55; Allied Youth, '52, '53; Battalion, '54, '55.

## Third Row:

**JAMES WARREN SHARP**, Entered from Rome High School in 1954; Senior Play Cast, '55; Library Staff, '54, '55.  
**JEAN CAROLYN SHULL**, "Priss," Entered from East Side Jr. High School in 1952; Junior Play Cast, '54.  
**JOE DENTON SIMMONS**, "Jody," Entered from Redwood County High School in 1954; Key Club, '54, '55; Senate, '55.  
**JANE KARR SITTON**, "Sitton-Priddy," Entered from East Side Jr. High School in 1951; Band, '52, '53, '54, '55; First Lieutenant in Band, '53; Band Ensemble, '53, '55; Twicken Club, '54, President, '55.

## Fourth Row:

**EVA JANE SMITH**, "Smitty," Entered from Bachman Jr. High School in 1953; Allied Youth, '54; Ushers, '54, '55.  
**HELEN SMITH**, Entered from Signal Mountain Jr. High School in 1951.  
**LELAND EUGENE SMITH**, "Gene," Entered from Dickinson Jr. High School in 1952; Band.  
**T. W. STANDERFER**, Entered from Northside Jr. High School in 1952.

## Fifth Row:

**BOBBY EUGENE STANDIFER**, Entered from Lookout Jr. High School in 1950; Camera Club, '52, '53, President, '54; Bible Club, '52, '53, '54, President, '55; Key Club, '54, '55; Digest Staff, '53, '54, '55; Photographer; CHAMPION, '54, '55; Photographer; President of Morning Devotional.  
**CHARLOTTE ANNE STANSBERRY**, "Anne," Entered from Hardy Jr. High School in 1950; Merry Mac's Club, '51, '52, '53, '54, Treasurer, '55; Bible Club, '54, '55.  
**SARAH NELL STEELE**, "Darcie," Entered from East Lake Jr. High School in 1953; Shove-Offs, '54, '55; Allied Youth, '53, '54, '55; Ave Club, '53, '54, '55; Physical Education Staff, '53, '54, '55; L.L.C., '55; Swimming Club, '53, President, '54; Sponsor in R.O.T.C., '55; Battalion, '54, Lieutenant, '55; Junior Play cast, '54; Senior Play Cast, '55; Art Club, '54, president; Badminton Club, '53.  
**JAMES ROBERT STERCH**, "Bobby," Entered from Elbert Long Jr. High School in 1952; Football, '52, '53, '54, '55, "C" Club, '55; Captain in R.O.T.C.; Disc and Diamond, '55.

## Sixth Row:

**ANNA CAROLIE STORK**, "Sue," Entered from Tyner High School in 1951; Shove-Offs Club, '52, '53, '54, '55; Battalion, '52, '53, '54; Allied Youth, '52, '53; Ushers, '54, '55.  
**JAMES MARVIN STRICKLAND**, Entered from Brainerd Jr. High School in 1951; Stage Crew, '52, '53, '54, '55; Band Color Guard, '54, '55.  
**BETTY JEAN STROUD**, "Buddie," Entered from Lakeview High School in 1952; Girls' H-Y, '53, '54, '55, President, '55; Spinsters, '52, '53, '54, '55; Secretary, '55; L.L.C., '54, '55; National Honor Society, '54, '55; Senate, '53, '54, '55; Senate Ushers, '55; Alternate Delegate to Volunteer Girls' State; H-Y de c. '54; Basketball, '52; CHAMPION Staff, '54, '55; Editor, '54, Feature Editor, '55; Digest Staff, '53, '54, '55; Club Editor, '54, '55; Junior Play, '54; Girls' Drill Squad, '53, '54, '55; CHAMPION N. A. '54, '55; City-wide H-Y County Staff, '53, '54, '55; Senator, '55; Senior Party Committee, '55; Assistant Program Chairman for Senate.  
**ELIZABETH RUTH SUDDETH**, "Betty," Entered from Dickinson Jr. High School in 1952; Pirates Club, '53, '54; Spanish Club, '53; Office Staff, '55; Swimming Club, '55.



A Mixed Group

## First Row:

**ANNA LAURA SUGGS**, "Ann," Elbert L. Long, Jr. High School in 1952; Digest representative, '52.  
**GEORGE HENRY SWANSON**, Entered from Dickinson Jr. High School in 1952; Love and Diamond, '53, '54, '55, "C" Club, '54, '55; L.L.C., '54, '55; Honor Society, '54, '55; Major in Military; Boys' State Delegate, '54; Basketball, '53, '54; Mr. Teen-Ager Candidate, '54; President, L.L.C., '54, '55; Vice-President, Honor Society, '54.  
**DON WILLIAM TAYLOR**, Entered from Reagan High School in 1954.  
**JEAN TAYLOR**, Entered from East Side Jr. High School in 1951; Ushers, '54, President, '55; Associate Editor of CHAMPION, '55; Digest, '53, Feature Editor, '54, Associate Editor, '55; L.L.C., '54, Vice-President, '55; Spinsters, '54, Treasurer, '55; Girls' Battalion, '53, '54, '55; Spanish Club, '53.

## Second Row:

**BETTY JUNE TEAS**, Entered from East Side Jr. High School in 1952; Red Cross Club, '53, '54; Treasurer, '54, '55.  
**J. B. TIEMS**, Entered from East Side Jr. High School in 1953.  
**GEORGE FRANK THOMAS**, Entered from East Lake Jr. High School in 1952.  
**J. B. THOMAS**, "Jake," Entered from Collegedale Academy in 1952.

## Third Row:

**JACK LAMAR THOMAS**, "Tom," Entered from Ringgold High in 1954.  
**JAMES LEE THOMAS**, "Jimmy," Entered from Daisy High in 1951.  
**MARY FRANCES THOMAS**, "Fran," Entered from Dickinson Jr. High School in 1953; Merry Macs, '53, '54.  
**CHARLES THOMPSON**, Entered from City High School in 1954.

## Fourth Row:

**FRANCES ELINOR THOMPSON**, "El-no-ha," Entered from East Side Jr. High School in 1952; Merry Macs, '53, '54; Swimming Club, '54; Battalion, '55.  
**HENRY FELIX THOMPSON**, "Hen," Entered from East Side Jr. High School in 1952; Allied Youth; Band; Swing Band.  
**MAIDA JUNE THOMPSON**, Entered from Dickinson Jr. High School in 1952; Majorette, '53, '54; Head Majorette, '54, '55; Crown Dance on Senior Day, '53, '54; President of Majorette Club, '54; Ponderettes, '54, '55; CHAMPION Night, '52, '53, '54, '55; Band Varieties, '52, '54, '55; Silhouette Club, '53, '54, '55; Secretary, Silhouette Club, '54, '55.  
**NORMA JEAN TIPTON**, Entered from East Lake Jr. High School in 1952.

## Fifth Row:

**FRENCH WALTER TRIPP**, Entered from East Side Jr. High School in 1950; Announcers' Club, '54, '55; Boys' H-Y, '54, '55; Treasurer, H-Y, '55; Senate, '53, '54, '55; Senate Cabinet, '55; Key Club, '53, '54, '55; Board of Directors of Key Club, '55; Rifle Team, '53, '54; Rifle Team Letterman, '53, '54; Top Ten Media, '53, '54; Disc and Diamond, '55; Editor-in-Chief of CHAMPION, '54; Homecoming Escort, '55; Candidate for Mr. Teen-Ager, '55; Military Editor for Digest, '55; Major in Military, '55; Volunteer Boys' State Alternate; Senate Play, '55; Junior Play, '54, Senior Play, '55.  
**ELSIE GREY TUCKER**, Entered from Dickinson Jr. High School in 1952.  
**JARY R. TURNER**, Entered from North Side Jr. High School in 1952.  
**JEAN TURNER**, "Twin," Entered from East Side Jr. High School in 1950; Swimming Club, '53; Bible Club, '54, '55; Allied Youth, '52; Digest Representative, '52; Merry Macs, '54, '55; CHAMPION Night, '55; Senior Play, Make-up, '54.

## Sixth Row:

**JOAN TURNER**, "Twin," Entered from East Side Jr. High School in 1950; Bible Club, '54, '55; Swimming Club, '53; Red Cross, '52; Allied Youth, '52; CHAMPION Night, '55; Merry Mac Club, '53; Senior Play Committee, '54.  
**NANCY MARIE UPTON**, Entered from East Lake Jr. High School in 1952.  
**BARBARA JEAN VINES**, Entered from Hardy Jr. High School in 1953; Red Cross, '53, '54.  
**NANCY ANN WADE**, Entered from East Side Jr. High School in 1951; Senior Party Committee, '55; Spinsters, '51, '52, '53, '54, President, '55; Girls' H-Y, '52, '53, '54, Treasurer, '55; Allied Youth, '51, '52; President of County-wide H-Y and Tri-H-Y Council; Bank and Bookies, '53, '54, '55; L.L.C., '53, '54, '55; Senate, '51, '52, '53, Senate Cabinet, '54, '55; National Honor Society, '54, Treasurer's Aid, '55; Delegate to Volunteer Girls' State; Junior Play Cast, '54; Senior Play Cast, '55; CHAMPION Staff, '55; CHAMPION Night, '55.

# CENTRAL HIGH





# SENIOR CLASS



What next?

## First Row:

**MARY JO WALDRON**, "Jody." Entered from Brainerd Jr. High School in 1952; Silhouette Club '52, '53, President, '54, '55; Office Staff, '54, '55; Girls' Battalion, '54, '55; Junior Play, '54; Allied Youth, '52, '53; Social Chairman of Office Staff, '54, '55.  
**BARBARA JEAN WALDROP**, "Coughdrop." Entered from Whitwell High School in 1951; Vagabond Club, '54, '55; Girls' Club, '52, '54, '55.  
**WILMA JEAN WALKER**, "Jeanie." Entered from St. Mary's School in 1954; Bible Club, '54, Social Chairman, '55; Red Cross, '55; 4-H Club, '54; Bible Club Queen Candidate, '54; Spanish Club Queen Candidate, '54.  
**CLARICE MARIE WALLACE**, Entered from East Side Jr. High School in 1950; Senior Play Cast, '55; CHAMPION Staff, '55; Library Staff, '51, '52; Swimming Club, '53.

## Second Row:

**MAX WALLACE**, Entered from East Side Jr. High School in 1952.  
**GERALDINE LOUISE WALSTON**, "Jerry." Entered from East Lake Jr. High School in 1952; Twixteen Club, '53, '54, Vice-President, '55; Girls' Battalion, '54, '55.  
**JO ANNE WATRINS**, "Little Gant." Entered from Hardy Jr. High School in 1952; Girls' Battalion, '53, '54, '55; Nite Owls, '54, '55; Madorette Club, '54; Publicity Chairman, '54; Senior Play Committee, '54; CHAMPION Night, '55.  
**MAUDINE WEBB**, "Deanie." Entered from Hardy Jr. High School in 1953; Library Staff, Secretary, '54, Vice-President, '54, President, '55; Red Cross Club, Secretary, '54, President, '55.

## Third Row:

**MARY LOIS WELBORN**, Entered from Hardy Jr. High School in 1953; Bible Club, '55.  
**WANDA WESTBROOK**, Entered from Dickinson Jr. High School in 1952; Twixteen Club, '53, '54, '55; Red Cross Club, '53, Vice-President, '54, '55; Senate, '54, '55.  
**LILLIE GERALDINE WHALEY**, "Gerry." Entered from East Side Jr. High School in 1949.  
**JAMES SHANNON WHITEAKER**, "Shane." Entered from East Side Jr. High School in '51; Color Guard, Second Lieutenant, R.O.T.C.

## Fourth Row:

**JAMES L. WHITTEN**, "Red." Entered from Brainerd Jr. High School in 1951; Hillbilly Band, '53, '54, '55.  
**GLENDA FAYE WIGLEY**, Entered from Lookout Jr. High School in 1953; Ushers, '55.  
**WILLIAM SILAS WILCOX**, "Bill." Entered from Lookout Jr. High School in 1950.  
**BARBARA RUTH WILLIAMS**, "Babs." Entered from Hardy Jr. High School in 1953; Spanish Club, '53; Red Cross, '55; Ushers, '55; Bible Club, '54, Vice-President, '55; Bible Club Queen, '54; Morning Devotions, '54, Vice-president, '55.

## Fifth Row:

**GEORGE EDGAR WILLIAMSON, JR.**, "Ed." Entered from Schoolfield High School in 1952; Major in R.O.T.C., '55; Rifle Team, '53, '54, '55; Disc and Diamond, '54, '55.  
**MARTHA MARIE WILLIAMSON**, "Red." Entered from Chattanooga High School in 1954.  
**ELSIE SUE WILSON**, "Lucy." Entered from East Side Jr. High School in 1951; Library Staff, '52, '53, '54; Ushers, '54, '55.  
**JUDY MARIE WILSON**, "Little Bit." Entered from Brainerd Jr. High School in 1951.

## Sixth Row:

**MICKEY LEE WILSON**, Entered from Northside Jr. High School in 1951.  
**PATRICIA JANE WILSON**, "Patsy." Entered from Hardy Jr. High School in 1953; Twixteen Club, '54, '55; Swimming Club, '54, '55; Girls' Battalion, '54, '55.  
**HARRIETT ANN WITT**, "Red." Entered from East Side Jr. High School in 1952; Girls' Battalion, '53, '54, '55; Swimming Club, '55; Ushers, '55; Discant, '55.  
**THEODORE RICHARD WYTT**, "Ted." Entered from Big Stone Gap High School in 1952; Stace Crew, '52, '53, '54, President, '55.

# OF CENTRAL HIGH

## First Row:

**GLORIA JEAN WOOD**, "Blondie." Entered from Dickinson Jr. High School in 1951; Silhouette, '52, '53; Gym Staff, '52; Girls' Battalion, '52, '53.  
**JAMES WALLACE WOODS**, "Jimmy." Entered from Plant High School, Tampa, Florida, in 1953; "C" Club, '55; Disc and Diamond Society, '55; Football Team, '54, '55; Sergeant-at-Arms of Senior Class, '55; Captain in Military, '55.  
**DORIS JUNE WORKMAN**, Entered from Northside Jr. High School in 1953; Night Owls, '53.  
**JIMMIE SUE WORKMAN**, "Suze." Entered from Dickinson Jr. High School in 1953; Anchors Aweigh, '52, '53, '54; Ace Club, '52, '53, '54, '55; Girls' Battalion, '53, '54.

## Second Row:

**KELSO MACK YARNELL**, Entered from Red Bank High School in 1952; Military Club, '52, '53, '54; Junior Play Cast, '54; Band, '52, '53, '54, '55.  
**DIXIE YOUNG**, Entered from Columbia High School in 1955; L.L.C., '55; Night Owls, '55.  
**LINDA LEE YOUNG**, "Pug." Entered from Bristol High School in 1954; Night Owls, '54, '55.  
**EARL ZIEGLER**, "Zeke." Entered from Brainerd Jr. High School in 1952; Baseball Team, '53, '54, '55; Football Team, '53, '54, '55.



## CAMERA SHY

Bobbie Cope, David Gray, Gerald Skidmore, Garen Jackson, Marie Wilson





**First Row:**

CHARLES ADAMS  
ERNESTINE ADAMS  
JUDY ADAMS  
BILL ALLEN  
DON ALLISON  
DONNA ANDERSON  
TOMMY ARLEDGE  
JANE ARMSTRONG

**Second Row:**

DEE ARNOLD  
JIMMY ARNOLD  
DONALD BAIN  
JIM BAIRD  
CHARLOTTE BAKER  
EVELYN BAKER  
HOLLIS BALL  
WILLIE BARFIELD

**Third Row:**

BOBBY BASKETTE  
JERRY BEARD  
JAMES BELT  
JACKIE BETTIS  
TOMMY BLANKENSHIP  
LARRY BOHANNON  
JERRY BOOLS  
CHARLES BORIN

**Fourth Row:**

ESTHER BOWDEN  
LAWASSA BRACKETT  
PHYLLIS BRANDON  
LEONARD BRANNON  
MARCIA BRANNAN  
TERRY BRIDGMAN  
JUANITA BROCK  
LARRY BROCK

**Fifth Row:**

DAPHNE BROWN  
RAYMOND BROWN  
BILL BROYLES  
DAVID BROYLES  
DOROTHY BURROW  
SUSAN BUSBIN  
PATSY BUTLER  
PAT BYRD

**Sixth Row:**

MONEEN CAMP  
ERNEST CAMPBELL  
WANDA CARGILE  
PATSY CARR  
DOROTHY CARTER  
ROGER CASEY  
JEAN CASTEEL  
RICHARD CHAPMAN

**First Row:**

WILBURN CHAUNCEY  
ANN CHILDERS  
ALICE CLINGAN  
BILL CLINGAN  
CHARLES COBB  
JIM COFFEE  
BETTY COFIELD  
JAMES COOKE

**Second Row:**

ARLENE COOPER  
EDWARD COPE  
NANCY CORNES  
JAMES CROW  
MARY KATHERINE CROWE  
ROGER CROWNOVER  
MATHON CULPEPPER  
BOB CUMMINGS

**Third Row:**

CHARLES CURTIS  
DOROTHY CUTTEN  
WYLENE DABBY  
DEWARD DAVES  
BARBARA DAVIDSON  
DOT DAVIS  
BERTIE DAY  
SHIRLEY DAY

**Fourth Row:**

ERNEST DREW  
LYDIA DUCKER  
BARBARA DUGAN  
SHIRLEY DUGAN  
JIMMY DUGGAN  
JOY DUGGAN  
EARL DURHAM  
MAZIE DURHAM

**Fifth Row:**

MARY EDDINGS  
GLADYS EDDINGTON  
DAVID ESTES  
RICHARD EUSTACE  
MERRIE LYNN EVANS  
ROSALIND EVERHART  
SARA EWTON  
NANCY EZELLE

**Sixth Row:**

BILLIE JO FARMER  
CHARLES FAULKNER  
PEGGY FORDHAM  
REBA FOSSETT  
ERNA FREUDENBERG  
DENNIS FRALEY  
DAVID FRY  
JERRY FRY

**Class Officers**

Left to right: Bobby Baskette, Jane Armstrong, Patsy Butler, Bobby Rudesil.



# **JUNIOR CLASS**



# JUNIOR CLASS

## First Row:

SHIRLEY FULTS  
WANDA GADDIS  
NEAL GARMANY  
PATSY CENTER  
BOBBY GILBERT  
HAZEL GOFORTH  
CAROL GOMES  
JEAN GOODNER

## Second Row:

BARBARA GRAY  
TOM GRAY  
BETTY GRAYSON  
CHARLOTTE GREEN  
LE BRON GRIFFETH  
MARY GUICE  
MARILYN HALES  
DON HALL

## Third Row:

GAYLE HALL  
JOHN HANCOCK  
SHIRLEY HARPER  
JO ANN HARVEY  
STANLEY HAYS  
DORIS HENDERSON  
MARGARET HENDRICKS  
BOBBY HICKS

## Fourth Row:

MARTHA HINDS  
JO ANN HOLLAND  
DORMA HOLLOWAY  
ALBERT HOLT  
LELA HOPE  
FRANK HORNER  
JOYCE HOWARD  
LORETTA HOWARD

## Fifth Row:

JAMES HUDSON  
JEAN HUDSON  
JUNE HUDSON  
DUANE HUGHES  
MARGARET HUGHES  
DAVID HUMBLE  
MARTHA HUMBLE  
GARY HURT

## Sixth Row:

PAUL HUTCHESON  
LARRY HUTSON  
BILLY INGLE  
ALFRED INGRAM  
SUE IRWIN  
BETTY JACKSON  
CHARLES JACKSON  
GLORIA JACKSON

## First Row:

JO ANN JACKSON  
NORMA JOBE  
BETTY JOHNSON  
JOAN JOHNSON  
CAROL JONES  
JUNE JONES  
JOHN KAZY  
GARY KEITH

## Second Row:

REBA KEITH  
JOYCE KELLEY  
DOROTHY KELSAY  
ANN KENNEDY  
PAT KEOWN  
GAYNELL KILGORE  
JAMES KILGORE  
LARRY KING

## Third Row:

LEE LACEY  
CAROLYN LANSFORD  
LARRY LAWRENCE  
BETTY LEE  
CHARLOTTE LILES  
DAVID LITTON  
BARBARA LONG  
SONJA LONG

## Fourth Row:

MARY McARTHUR  
CHARLES McBRYAR  
GLEN McBRYAR  
WILLIE JEAN McBRYAR  
BONNIE McCALLIE  
PATSY McCALLIE  
PAT McCARSON  
EVELYN McCORMICK

## Fifth Row:

DON McCROSKEY  
PEGGY McCROSKEY  
STANLEY McCURDY  
JANE McDONOUGH  
ASONIA McDOWELL  
GEILDA McDOWELL  
BILL McELHANEY  
PAT McGREGOR

## Sixth Row:

BETTY McKENZIE  
FRANCES McVEIGH  
CAROL McWHORTER  
NANCY McGETTE  
MARY MAHAN  
DOROTHY MALONE  
JOYCE MALONE  
MARY MASINGILL



Junior Day







**First Row:**

BARBARA MASSEY  
RHYMA MATTHEWS  
BETTY MAXWELL  
CARL MELTON  
BETTY MILLER  
NANCY MOORE  
BOBBY JEAN MOOREMAN  
MARY MORGAN

**Second Row:**

CAROL JEAN MOSTELLER  
JEAN NABORS  
JUDY NATION  
BILLY NESBITT  
CHARLOTTE OAKS  
LEE OLDHAM  
EVERETT O'NEAL  
RONALD O'NEAL

**Third Row:**

EFFIE OTT  
LAMAR OWENS  
MORRIS OWENS  
FRANCES PARHAM  
DOTTIE PARKER  
HAROLD PARRISH  
ROBERT PARSONS  
GILBERT PARTON

**Fourth Row:**

ALTA PATTERSON  
ALVIN SLATTON  
JAYNE PATTERSON  
PEGGY PAYNE  
EDDIE PERKINS  
MARTHA PERKINS  
SUE PERKINS  
BARBARA PFITZER

**Fifth Row:**

ELEANOR PFITZER  
BILL PIERCE  
BARBARA PINKERTON  
KITTEE PITCOCK  
ANN PITSINGER  
VIRGINIA POOLE  
ELIZABETH POPE  
CAROLYN PORTER

**Sixth Row:**

BARBARA POSEY  
DOUGLAS POTTER  
ROYCE POWELL  
DAN POWER  
RAYMOND POWERS  
VIRGINIA POWERS  
FRED PRATER  
JEANNINE PRATT



**First Row:**

PAT PROCTER  
NANCY PYLE  
MARY RAINES  
JOE RAMIREZ  
PATTIE RAMSEY  
LAVONA RAULSTON  
JOHN RAY  
PATTY RECTOR

**Second Row:**

ALMA REED  
EVA RICE  
RAYMOND RICH  
VIRGINIA RICH  
PEGGY RICHARDSON  
EDWARD RICHEY  
MARY RIDGE  
PATSY RIDGE

**Third Row:**

CHARLES ROBERTS  
JAMES ROBERTS  
QUINETH ROBERTS  
HELEN ROBERTSON  
DON ROCKHOLT  
DONALD ROELOFFS  
LAYFIELD ROUS  
TOMMY ROWLAND

**Fourth Row:**

BOBBY RUDESILL  
TED RYAN  
CAROLYN SAULS  
JOYCE SAXON  
CARL SCEALF  
SHARON SCHERER  
WAYNE SCOTT  
BILL SEARSWRIGHT

**Fifth Row:**

SHIRLEY SHADWICK  
YVONNE SHERRILL  
PATRICIA SILVER  
HERBY SIMPSON  
ANN SIVLEY  
BOB SKILLINGTON  
BONNIE SLATTON  
BILLY SMITH

**Sixth Row:**

DALE SMITH  
EDITH SMITH  
JOE SMITH  
PATSY SMITH  
PAUL SMITH  
BRUCE SPEER  
SANDRA SPENCE  
GENE SPRIGGS

# **JUNIOR CLASS**

Juniors a la Pinafores





# JUNIOR CLASS

## First Row:

MARY LOU STALYON  
WAYNE STANDIFER  
PAT STANFORD  
DONALD STARNES  
DELORES STEELE  
ELAINE STEPHENS  
SANDRA STEWART  
PEGGY STRICKLAND

## Second Row:

MARTHA STRONGMAN  
CARL STUTZ  
DAVID STUTZ  
JAMES SUTHERLAND  
KENNETH SYLVESTER  
PAULINE TEAS  
BARBARA TEMPLETON  
CORDELL TERRELL

## Third Row:

PAUL THOMAS  
SHIRLEY THOMASON  
DALLAS THOMPSON  
FAITH THOMPSON  
SCOTT THOMPSON  
ELEANOR THWEATT  
JOHN TINKER  
MADELINE TUCKER

## Fifth Row:

HOUSTON WADE  
SYLVIA WALLER  
SHIRLEY WARD  
MARY ANN WATT  
BETTY WEBSTER  
DIANE WELCH  
DON WELCH  
JOHN WERNER

## Sixth Row:

RALPH WETZEL  
JEAN WHISENANT  
WILMA WHITAKER  
DAVID WHITE  
PAUL WHITE  
RONNIE WHITE  
BILL WHITTEMORE  
FRANCES WIGGINS



## First Row:

HAROLD WILCOX  
SHARON WILLIAMS  
WALTER WILLIAMS  
WILMA WILLIAMSON  
JEWELL WILLINGHAM  
BARBARA WIRICK  
JOHN WOOD  
LINDA WOOTEN

## Second Row:

JOE WOY  
FAYE WRIGHT  
JEANILLA YATES  
DORIE JEAN YOUNG



8:15 A.M. "Waitin' at the bar"

## NOT PICTURED

CLARINE ABBOTT  
CARL ATKINS  
DEWEY AUSMUS  
JIMMY AVERY  
DON BARNES  
PAUL BLACK  
AUBREY BOATWRIGHT  
LARRY BROCK  
EDDIE BROWN  
TOMMY BROWN  
SUE CARMICHAEL  
GARY CLARK  
HOUSTON CLARK  
MARTHA CLINE  
JIMMY COPE  
JACKIE COWAN  
BILL CROSS  
BILL DANIELS  
SHIRLEY DOUGLAS  
ANITA EIDSON  
CHARLOTTE ELLISON  
SUE ERVIN  
DORIS EVANS

DELORIS EVITT  
JOE EZELL  
NAOMI FERGUSON  
DELORIS FOWLER  
CHARLES GOINS  
RAYMOND GOODNER  
MORRIS HOLDER  
HARRY JOHNSON  
MOZELLA JONES  
CAROLYN KELLY  
DONALD KIDWELL  
ELBERT KING  
SHIRLEY LAYMON  
JO ANN LAYNE  
PHYLLIS LEIGH  
RONALD MARSHALL  
LEBRON MILLER  
NICK MILLER  
MARION MORGAN  
WILLIAM MORRISON  
BUD MURRAY  
BARBARA NEFF  
CHARLES PAYNE

BRADY PREWITT  
BILLIE REED  
CARL REX  
JUDY RICHARDSON  
WILLIAM RODGERS  
O'NEAL ROSS  
DONNA SHARP  
CLYDE STANCIL  
BOBBY STEPHENSON  
DAVID STRAHLEY  
SAMMY TATE  
MARVIN TAYLOR  
PHIL VAUGHAN  
CHARLES VAUGHN  
MARTHA WALKER  
ROBERT WATERS  
MARY WILEMAN  
BARBARA WILKINS  
JOE WILLIAMS  
JIMMY WOLFE  
EDDIE YARNELL





#### SOPHOMORE CLASS OFFICERS

GENE ETTER ..... *President*  
 JAMES REECE ..... *Vice-President*  
 JANETTE SEATON ..... *Secretary*  
 BENNY PARKS ..... *Treasurer*

Johnny Abbott, Clifford Ackerson, Clayton Adkins, Bobby Alexander, Jeffrey Allen, Owen Allen, David Alverson, Wayne Anderson, J. C. Arnold, Eric Arp, Bill Babb, Jack Baker, Joe Bales, Arvel Bently, J. D. Blacklock, Wayne Brackett, Bill Braden, James Bradshaw, Don Bragg, Don Brock, Tony Brock, Tommy Brown, Eugene Burden, Kendall Burrell, Charles Cantrell, Kenneth Carr, Donald Castled, Douglas Cate, David Caywood, Bill Champion, Tommy Champion, Willburn Chauncey, Charles Clark, Bill Coleman, Paul Conley, Lamar Cooper, Richard Cooper, Richard Cope, Ireland Cornett, Bobby Covington, Larry Crawley, Paul Crowe, Robert Cummings, George Cunningham, John Davis, Philip Davis, Russell Davis, Jr., John Deanes, Floyd Denney, Fred Edwards, Paul Elliott, Vernon K. Ellison, Gene Etter, Richard Eastace, Rex Evans, Bert Fant, Johnny Fletcher, Bill Forney, Charles Lamar Fowler, Billy Fox, David Fry, Allen Fryar, Robert Fussell, Grady Gant, Donnie Geren, James Giddens, Frank Goss, Charles Gosset, Lonnie Green, Roy Lee Grifley, Dean Gross, Jimmy Guider, Donald Hale, James Hall, Jimmy Hammonree, Oliver Beryl Hardley, E. C. Haskell, Jr., Jack Hayes, Gordon Haynes, Jr., Robert Hayes, Thomas Head, Carlton Hembree, Lee Hicks, Gary Hodges, Lawrence Hoge, Frank Horner, Harris Housley, Don Howard, Gary Hugeland, Jerry Hurt, Wayne Hutchison, Larry Hutson, Frederick Ingle, Frank W. Irwin, Ernest Jackson, Don Jennings, Howard Jewell, Larry Johns, Albert Harry Johnson, Jr., Charles Johnson, Gary Jones, Mike Jones, Robert Kelley, Joe Kendrick, Jimmy Kent, Eugene Kimbrell, Ronnie Kincer, Larry Lawrence, Charles Leavitt, Robert Lee, Howard Levi, Edward Lillard, Bill Love, Tommy Lowery, Larry Luther, Lance Lyons, Jackie Manis, Jimmy Manis, Donald Manning, William Manning, Ronald Marshall, Donald Mathis, Lloyd Matthews, Roy McBrayer, David McConnell, Dan McCroskey, James McCullough, Gary McGee, George McGhee, Lebron McGuffey, Donald McNutt, Andrew McPeters, Gene Meador, Charles

Miller, Curtis Lee Miller, Jr., Harry Miller, Jerry Mitchell, Franklin Moore, John Moore, Lemuel Moore, Doyle Moreland, Lawrence Morgan, Troy Morrison, Jimmy Myers, David Newell, John Noll, Robin O'Brien, Larry O'Dell, Richard O'Rear, David Owens, Robert Owens, Tommy Pack, Benny Parks, Gilbert Parton, Frank Payne, Kenneth Pearson, Willard Pence, Eugene Penny, John Perry, Richard Pickett, James Potter, James Puller, Joe Ramiry, Robert Glynn Ramsey, James Reese, Donald Reed, John Renick, Jimmy Rich, Bobby Riches, Elbert Don Rider, Sammy Robinson, William Rodgers, David Rollins, Larry Rose, Robert Rosenthal, Jim Sawrie, Carl Sealf, Paul Shelton, Floyd Lee Shepherd, Tommy Sims, Jerry Sittan, Dean Sively, Dale Smith, Gene Smith, Harold Smith, James Smith, Marwyn Smith, Norman Smith, Roy Smith, Larry Speer, Joseph Stafford, Charles Stakely, Ray Stegall, Bob Stiles, Mike Stroud, Lonnie Styles, Fred Sullivan, Johnny Sutton, Kenneth Sylvester, Gary Tallent, Kenneth Talley, Gene Thompson, David Tinnon, Dallas Thompson, Douglas Tansburg, Glenn Tyrrell, Charles Vandergriff, David Vaughn, Allen Waldrop, Jack Walker, Robert Waters, Colbert Whitaker, Jerry White, Carroll Whitman, Warwick Wichman, Raymond Williams, Tommy Willis, Allen Wilson, Paul Wolford, Jimmy Woods, William Works, Charles Wright, Gerald York.

#### Class Officers



Azalia Abston, Jeanette Akins, Betty Allen, Brenda Allen, Julia Allinder, Donna Anderson, Lila Anderson, Lula Belle Anderson, Barbara Arnold, Judy Ashley, Betty Marie Athearn, Barbara Bailiff, Janice Baker, Sandra Baker, Marva Bankstoh, Bonnie Baker, Marian Bashford, Mozelle Batson, Carolyn Beene, Wanda Beene, Patsy Bethine, Estelle Boatwright, Ruby Boatwright, Roxine Bond, Shirley Bradley, Joan Brandon, Mary Bridges, Ann Brooks, Judy Brown, Linda Broyles, Patricia Bryant, Mary Alice Burke, Faye Burnette, Charlotte Burns, Sandra Busbin, Desma Butcher, Doris Butler, Nancy Callison, Patricia Campbell, Ruth Campbell, Jolene Caplinger, Joyce Carter, Ollie Carter, Aileen Cavin, Carolyn Chambers, Judy Charlesworth, June Cook, Carole Ann Corey, Dorothy Crabtree, Rebecca Ann Crawford, Nancy Croft, Judy Curtis, Dot Davis, Jane Davis, Marlene Davis, Norma Jean Davis, Peggy Davis, Dorothy Dearing, Gladys Dearing, Sandra Dabbs, Olivia Dodd, Carolyn Dudley, Wilma Eaves, Wanda Eckman, Yvonne Edson, Edith Eller, Patricia Erb, Margaret Evans, June Farris, Betty Finn, Jane Fitzgerald, June Flinn, Joan Foster, Margaret Frank, Peggy Freeman, Gloria Frill, Sara Fryer, Shirley Fultz, Elaine Gary, Shirley Gass, Anita Goldstein, Loduaka Goodner, Sadie Green, Shirley Green, Anita Hale, Shirley Haley, Barbara Hamilton, Sandra Harmon, Jo Ann Harris, Patsie Harris, Patsy Harris, Nancy Hayes, Barbara Hearn, Kathleen Helton, Doris Henry, Lorene Heyer, Kathy Hickman, Gayle Hicks, Retha Hill, Sandra Hill, Barbara Hilton, Nancy Hixon, Dee Hoffmeyer, Billie Holcomb, Gaylor Holder, Barbara Houston, Catherine Howard, Janet Hulsan, Barbara Hullander, Connie Hunt, Genevieve Hyde, Doris Ingram, Pat Jackson, Julia Patricia Janey, Pat Jenkins, Barbara John, Charlene Jones, Iris Kellingsworth, Betty Kendall, Betty Kirkpatrick, Laura Layne, Sue Laxson,

Betty Lee, Nancy Liebo, Peggy Lively, Linda Long, Fay Longley, Joan MacPherson, Pat May, Wanda May, Mary Ellen McCammon, Glenda McDavis, Cynthia McDowell, Barbara McElveen, Melva McGovern, Shirley McKibben, Eva Lee McNabb, Brenda Melton, Loreta Melton, Mary Evelyn Mizell, Aileen Moore, Martha Morgan, Jacqueline Moss, Mary Jo Mount, Joan Nelson, Roberts Nelson, Doris Newman, Mary Newman, Ruth Nixon, Glenda Norman, Jeanette Norwood, Wanda Overton, Carolyn Owens, Linda Parker, Sandra Parnan, Lyane Parnell, Monte Patterson, Carolyn Payne, Pezzie Payne, Judy Pease, Gail Pedigo, Jane Perry, Patricia Perry, Judy Pitzer, Phyllis Phillips, Sheila Phillips, Helen Poole, Shirley Pope, Sammie R. Porter, Delores Powers, Jessie Powers, Judith Prewett, Jo Ann Ramsey, Vivian Randolph, Margaret Reese, Barbara Reynolds, Anetta Rich, Helen Rightmire, Carolyn Riley, Pat Rogers, Vera Rogers, Carolyn Roy, Jean Saffles, Patricia Sanders, Janette Seaton, Eva Shaw, Jane Shaw, Freddie Shirley, Jean Shoemaker, Barbara Sims, Martha Simpson, Frankie Smith, Marion Smith, Mildred Smith, Pollie Smith, Jackie Spurlin, Charlotte Stapp, Phyllis Sutherland, Ruth Sylvester, Vida Talley, Maxine Thomas, Mona Thomas, Sandra Thompson, Hilda Tippens, Judy Tompkins, Shirley Tripp, Pat Underwood, Rebecca Umiller, Mary Kay Varrell, La Verne Vest, Ernestine Vickery, Gail Walker, Reba Jo Walker, Rebecca Wallace, Charlotte Ward, Charlotte Watson, Cherie Watson, Sheila Watts, Jo Ann West, Va Nova Whitmire, Sandra Wichman, Sheila Wigley, Carolyn Wilburn, Nancy Williamson, Fran Willoughby, Phyllis Winkler, Wilrene Wood, Jo Ann Woody, Dorothy Wrinkle, Annette Wright, Faye Wright, Barbara Young, Doris Young.



## SOPHOMORE CLASS





# FRESHMAN CLASS OFFICERS

DON WHITMIRE .....President  
JIMMY CHEEK .....Vice-President  
LINDA POWELL .....Secretary  
BRENDA LA FERRY .....Treasurer

Kenneth Adkins, Billy Alford, Kenneth Alverson, John Anderson, John Autry, Wayne Babl, Tommy Baker, Frankie Betts, Eddie Burnette, Gene Bevil, Buck Biggs, Danny Blevins, Jon Blevins, William Bolus, David Bowling, James Bowman, Johnny Brackett, Freddy Branum, Carl Brockett, Eddie Brown, Kenneth Burnette, Larry Burnette, Bob Burroughs, Donald Burrow, Larry Camp, Ray Campton, Thomas Carroll, Jimmie Cheek, David Clark, J. C. Cooper, Jerry Cope, Leon Cooper, Ronnie Cruise, Walter Curtis, Luther Daniel, Jack Daniels, Dick Davis, Emmette Davis, R. A. Davis, Sammy Davis, Jack Dempsey, Ivan Dietch, Carl Dilley, Erwin Dinsmore, Rodger Direge, Conrad Dover, Billy Dotson, Buddy Dotson, Ted Doyal, Charles Durham, Mack Edwards, William Edwards, David Farley, Charles Foster, Dannie Franklin, Tommy Frazier, Luke Freeman, Jon Freeman, George French, Lewis Fuller, Bobby Fry, Raymond Fryor, J. C. George, Joe Gilliland, Wayne Goddis, Jimmy Goins, Richard Green, W. R. Green, Albert Guth, James Gwinn, Jimmy Hardin, Marvin Howard, Paul Haxey, Troy Harris, Leon Hartman, Jerry Lee Haynes, Paul Henze, Jimmy Henley, Richard Henley, Sammie Hill, Eddie Holbuck, Harold Hughes, Richard Hunter, Donald Huskey, Joe Hutcherson, Hugh Irwin, Elbert Johnson, Bill Kelsay, Johnny Kelton, Ernest Kirchmeyer, Tommie La Favor, LeBron Laffy, Bobby Lane, Jerry Lane, Dicky Lawson, Saul

Leoman, Charles Liner, Johnny Lively, Charles Long, Harry Longworth, Ralph Malcolm, Denny Malone, J. W. McRay, Lewis Meadows, Tommy Meyers, Tommy Monell, Owen Moon, Thomas Morgan, Billy Morrison, Bobby Myers, Joe Nance, Sten Nation, Alfred O'Dell, Leon Ogle, Jimmy Owen, Joe Palmer, Larry Patter, Tom Posey, Bill Petit, Gene Postins, Jackie Prichard, Jimmy Putman, Wallace Ramy, Clyde Reeves, Joe Renner, Jerry Reynolds, Tom Richardville, Jerry Riordan, Ronnie Robbs, Harold Rogers, Richie Rogers, Ronnie Rogers, Roy Ross, J. K. Rungan, Gary Scott, Michael Scherer, Marian Shull, John Shuster, James Sibley, Otis Smith, Thomas Springfield, Michael Sterchi, Bill Stiles, Kelly Swafford, Troy Tallent, Larry Tate, Frank Tatum, Eddie Test, John Thompson, Richard Turner, Jackie Vandergriff, Ed Vaughn, Carlton Vick, William Wallen, Roy Westmoreland, Frank White, Donald Whitmire, Douglas Williams, Jerry Williams, Rhynes Williams, Kenneth Winkler, Frank Yarber.

## FRESHMAN OFFICERS

Jimmy Cheek, Brenda La Ferry, Don Whitmire, Linda Powell



Inogene Abbott, Jeanie Allen, Jessie Allen, Evelyn Anderson, Martha Armstrong, Sandra Asmacher, Bobbie Babl, Darla Bailey, Marguerite Barnette, Marietta Baskerville, Nancy Berne, Judy Belt, Peggy Berry, June Black, Betty Blaylock, Deloria Blevins, Anna Bowers, Dolores Brackett, Rosalin Bradford, Shirley Brewer, Wanda Britton, Joy Broadway, Athana Brown, Judy Broyles, Sheila Burkhalter, Gwen Callendar, Joyce Cameron, Barbara Campbell, Hilda Campbell, June Carter, Myrna Cash, Sylvia Cass, Janella Cates, Barbara Caylor, Marilyn Chamberlain, Jerry Ann Chastain, Charlotte Clark, Jennelle Clark, Peggy Clark, Beverly Clinton, Alice Copenhaven, Charlotte Crisp, Patty Crowe, Dolores Dacus, Frances Davis, Barbara De Galleford, Sue Derker, Nancy Dodd, Pat Donham, Wanda Eaves, Fay Edwards, Jo Ann Elses, Joyce Easley, Maggie Evans, Sheila Fairbanks, Martha Foster, Gail Frank, Betty Frizzell, Charlene Frizzell, Pat Fuller, Carol Gardner, Alice Geis, Linda Gilreath, Mary Golorth, Pat Gravitt, Jo Ann Gray, Jessie Green, Barbara Gross, Karlene Gross, Janet Guffy, Susan Hackett, Peggy Hardin, Claudine Harris, Evelyn Harris, Shirley Harris, Tina Harrison, Jean Hazelwood, Vivian Hendrix, Ira Henegar, Phyllis Hoyer, Fay Holder, Helen Homes, Marguerite Huston, Sue Holder, Mary Jo Hullander, Betty Indermill, Joyce Ireland, Charlotte Jacks, Gloria Jackson, Jean Jackson, Sharon Jackson, Wilma Janeway, Martha Jett, Ann Johnson, Marie Johnson, Carroll Kean, Patricia Kegan, Jo Ann Kilgore, Linda Killingsworth, Carolyn Kimbell, Betty King, Betty Klein, Rita Koger, Brenda La Ferry, Mary

Joyce Lamb, Clara Lambert, Genevieve Lansford, Tookie Lee, Peggy Lees, Nancy Leonard, Sigrid Linderman, Bell Long, Betty Long, Linda Lowry, Myrna Manning, Rose Manning, Wanda Manning, Delores Marsh, Heles McBryon, Jill McCane, Gale McCurry, Martha McEachers, Patricia McGowan, Peggy McLaughlin, Linda McKel, Patricia McNutt, Charlotte McRain, Louise Meyer, Margie Meyers, Jeannette Miller, Nancy Miller, Sue Miller, Gail Mize, Joan Moore, Sue Mose, Martha Neal, Charlotte North, Charlotte Oglevie, Dolores Ott, Brenda Parker, Margie Pell, Betty Phillips, Wanda Pierry, Linda Powell, Janet Price, Sandra Ramsey, Jean Richey, Connie Robinson, Nelda Rogers, Christina Rosenthal, Kathy Russell, Jo Ann Schlousian, Lynette Seagle, Joyce Silver, Deana Sims, Linda Sizemore, Judy Sliger, Ann Smith, Barbara Smith, Julia Smith, Peggy Smith, Mary Stephenson, Mary Stewart, Yvonne Stewart, Gilda Stone, Marie Suddeth, Ruth Suggs, Harriett Sunny, Gail Thompson, Inez Thompson, Barbara Tullman, Audrey Tucker, Sarah Tucker, Linda Turner, Linda Tyrrell, Mary Underwood, Mary Jo Wade, Nancy Waldrop, Carlene Walker, Gloria Walters, Patsy Warren, Ruby Whittermore, Joyce Wilbanks, Alice Williams, Faye Williams, Mary Helen Williams, Sandra Williams, Dorothy Wilson, Margaret Wilson, Wanda Wilson, Dale Chadd, Judy Wood, Mary Worley, Iva Wright, Louise Yarber, Bobbie Ronell, Barbara Varnes.



## FRESHMAN CLASS



*FEATURES*







*Bobby Standifer*

MR. CENTRAL

MISS CENTRAL  
*Carolyn Lowe*



Brenda La Ferry, the crown dancer



Above: The best part of the day!  
Below: Almost time to go

Left to right: French Tripp, Saranell Davis, Bobby Standifer, Carolyn Lowe, George Sweeney, Carolyn Dilley, David Carpenter, Bettye Stroud, Crown bearer, Maxwell McConnell; Flower girl, Susan Smith.



CHS LIBRARY





*Torchbearers*  
GEORGE SWEENEY  
CAROLYN LOWE



*Dependability*  
FRENCH TRIPP  
SARANELL DAVIS



*Scholarship*  
RICHARD CHAMPION  
CAROLYN DILLEY

*Service*  
WADE GREEN  
NANCY WADE

*Best-All-Around*  
LARRY CLINGAN  
NORMA JEAN COULTER

*Leadership*  
RAY MOSS  
BETTIE STROUD

## PERSONALITIES

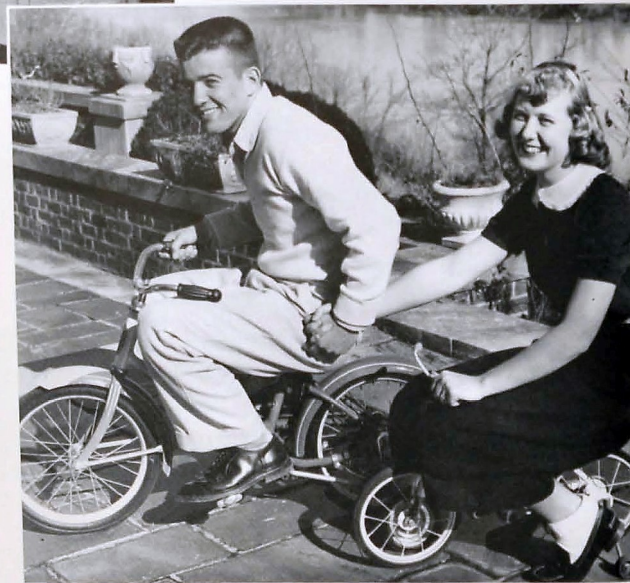






*Most Athletic*  
EARL ZIEGLER  
JO ANN CASEY

*Wittiest*  
TED GILREATH  
CHARLOTTE REEVES



*Most Talented*  
JOE MORGAN  
SANDRA HOLLIFIELD



*Neatest in Appearance*  
BOBBY STANDIFER  
DIXIE YOUNG



## PERSONALITIES

*Most Handsome and Most Attractive*  
LARRY McDOWELL  
VIRGINIA McKAMEY



*Most Likely to Succeed*  
JIMMY RENEGAR  
PEGGY RANSOM



*Friendliest*  
ED MACLIN  
LIZ RICE





#### FOUR YEAR HONOR STUDENTS

Left to right, first row: Sylvia Broyles, Valerie Ayre, Peggy Gifford, Ruth Lewis, Margie Fryar. Second row: Janet Bolden, Peggy Ransom, Carolyn Lowe, Helen Goforth. Third row: Norma Hixson, Beverly Link, Charlotte Groul, Linda Bragg, Carolyn Dilley. Fourth row: Saranell Davis, George Sweeney, Joe Simmons, Yvonne McGilohon.

## HONOR SENIORS

#### CLASS DAY SPEAKERS

John Kimbrough, Prophet; Jimmy Woods, Poet; Peggy Ransom, Historian; Ted Gilreath, Reader of the Will.



#### COMMENCEMENT SPEAKERS

Saranell Davis, Valedictorian; Carolyn Dilley, Salutatorian; George Sweeney, Class Representative; Carolyn Lowe, Faculty Representative.



#### MILITARY QUEEN COURT

Queen Freda Rhear; Virginia Fryar, Gail Phillips, Carolyn Akers, Court.



#### HOMECOMING QUEEN COURT

Norma Jean Coulter, Queen; Carolyn Lowe, Beverly Link, Charlotte Reeves, Court; Joy Mosteller Schroeder, Queen of 1953.

## BIG EVENTS OF 1955

CHS Library

#### MAY QUEEN CANDIDATES

Charlotte Reeves, Beverly Link, Nell Steele, Carolyn Lowe.



The Cheerleaders Celebrate at Their Annual Banquet.







# Senior



# Day



CHS Library







YUM! YUM!

# Senior Party



BEST PART OF THE PARTY



THE MOST TO SAY THE LEAST

THREE

BLIND

MICE



JAILBIRDS



SHOTGUN WEDDING



THESE ARE STUDENTS(?)



WHAT'CHA GONNA DO NOW?







SENIOR PLAY CAST, "MY FRIEND IRMA"

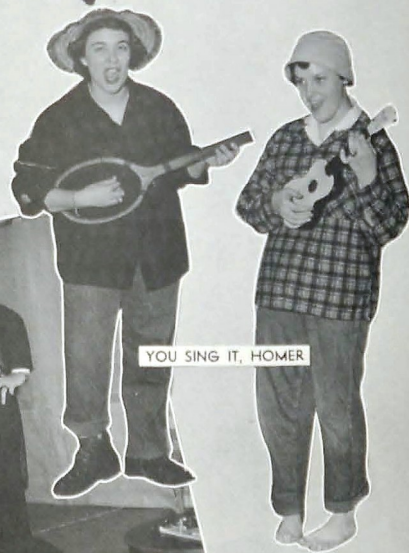


JUNIOR PLAY CAST "STAGLINE"



MYRNA AND BILLY RAY SHOW 'EM HOW!

# This and That



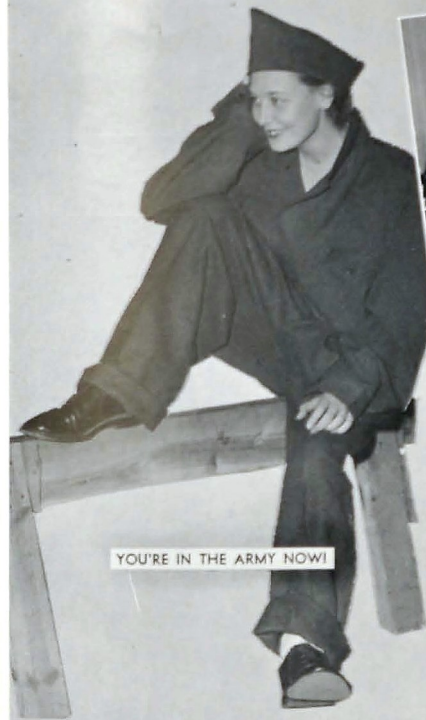
YOU SING IT, HOMER



APACHE-FOOTBALL STYLE



MADAME MAGDA SHOWS HER FLEAS



YOU'RE IN THE ARMY NOW!



THE SWINGBAND PLAYS



JUST BUMMIN' AROUND

# Champion Night



CHAMPION NIGHT COMMITTEES



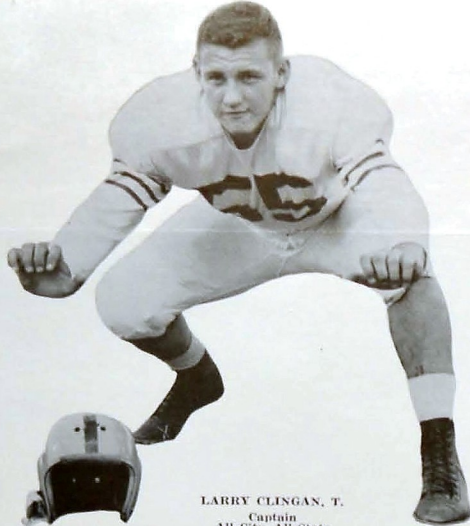
JOE AND ALVIN, THE M.C.'S



*ATHLETICS*







LARRY CLINGAN, T.  
Captain  
All-City, All-State



The right way to start a game



RAY MOSS, C.  
Alternate Captain  
All-City, All-State, All-Southern, All-American

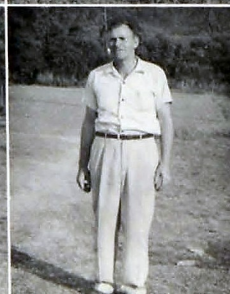
## POUNDERS CAPTURE 4th STRAIGHT

With a total of 43 continuous years of coaching, Central's football coaching staff has a record equaled by few, if by any other high school of the South.

Coach Red Etter, who is in his twelfth year as head coach of Central, has enjoyed since 1943 a record of ninety-seven victories, with only thirty-one defeats and eight ties. His interest in playing football took form in his freshman year at University of Chattanooga under Coach Harold Drew. His career as a coach began at Fruitland Institute of Hendersonville, N. C. In 1942 he came to Central as assistant to Dean Petersen and in 1943 was promoted to head coach which position he has held continuously since.

Top:  
E. B. ETTER  
STANLEY FARMER

Bottom:  
LESTER NEWTON  
JAKE SEATON



Able assisted by Coaches Stanley Farmer, Les Newton, and Jake Seaton, Coach Etter and his Purple Pounders have gone forward from victory to victory. The versatility of this group is shown by the fact that each of them has had experience in coaching basketball, track or baseball as well as football.

During Coach Farmer's eight years at Central, he has observed that sports teach a boy to take care of himself and live the right kind of life. His outside interests include membership in the Wesley Memorial Methodist Church, the American Legion, Elks. He is a Lieutenant Commander in the Naval Reserves.

Coach Newton, who came to Central in the fall of 1941, states that he especially enjoys working with the boys and watching them develop. Aside from coaching, he serves as Sunday School Superintendent at Wesley Memorial Methodist Church and Knot-Hole Director for Rookie Baseball.

Nine of Coach Jake Seaton's fourteen years of coaching have been spent at Central. As a football player at East Tennessee State College, he developed an interest in coaching, and states that his greatest joy is association with the boys. His church affiliation is with Wesley Memorial Methodist.

The 1954 football season can be remembered by Central followers as one of thrills, suspense, moments of elation, and little disappointment. It had everything a football season could have, even an almost perfect record. Though the Pounders suffered an early season loss to Memphis Central, they quickly recovered from their defeat which served as an incentive to their fourth consecutive state football championship.

Coach and Lineman of the year in Tri-State area



CHS Library

## STATE CROWN

The state crown was not the only honor won by the big Purple team; several members of the squad received individual awards. A number of boys were selected on All-City teams. Larry Clingan, captain and Ray Moss, alternate captain, were both placed on the All-State first string team. Charles Cantrell received a second team berth, while Paul Hutcheson, Paul Elliot, W. H. Geren, and Bob McCutcheon were named on the honorable mention list. Ray Moss added to his laurels such honors as All-Southern, Best Tri-State Lineman, and the Thom McAnn Trophy for the best high

school gridders in the Chattanooga area, and All-American. Several of the team members received football scholarships to outstanding universities; among these were Jimmy Woods, W. H. Geren, and Larry Clingan to Georgia Tech, and Ray Moss to the University of Tennessee.

### STATE CHAMPIONS

First Row: Roy Griffey, Nick Miller, James Hudson, Gene Etter, James Reece, Raymond Rich, Richard Enslace, Joe Renner, Billy Smith, Don Vaughn, Carol Whitmire, and Richard Henley. Second Row: John Kimbrough, Bob McCutcheon, Earl Ziegler, Wayne Carlton, Larry Clingan, Bob Sterchi, Jimmy Woods, Ray Moss, Eddie Lerch, James Martin, Ted Gilreath, Don Taylor, W. H. Geren, and Donald Bridgeman. Third Row: Bruce Speer, Joe Kendrick, Ronnie White, Lonnie Styles, Benny Parks, John Davis, Paul Hutcheson, Wayne Fry, Ronnie Kinser, Layfield Ross, Paul Elliott, Charles Curtis, and Bobby Baskett. Fourth Row: Gene Kimball, Larry Crawley, Jack Manis, Jimmy Rich, Gary Magel, Gene Spriggs, Bobby Rudessill, James Henley, Ronnie Robbs, Frank Payne, Charles Cobb, and Tommy Champion.







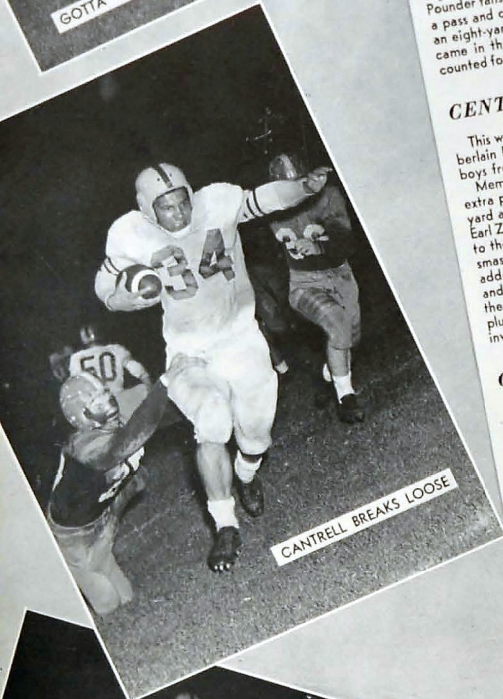
# 1954



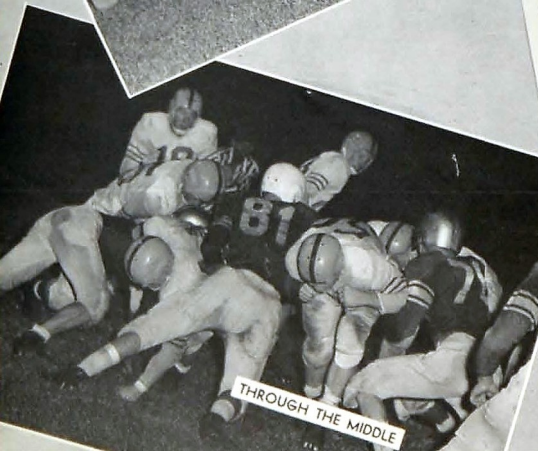




GOTTA' HAVE THE BAD WITH THE GOOD



CANTRELL BREAKS LOOSE



THROUGH THE MIDDLE

### CENTRAL 28 • CHARLOTTE 6

The Pounders opened with a big burst of offensive power with a win over Charlotte High, but most of the Central followers were unable to see this game as the team with a small number of supporters took to the Carolina hills. Paul Elliot captured the scoring honors with three big T.D.'s. In the first quarter Charles Cantrell jarred the ball from the Charlotte carrier and Central took over on the home team's 37. On the next play Elliott raced over for the score; Gene Etter added a 72-yard march with a 22-yard scoring jaunt; Etter's aim again proved true. Jimmy Woods thrilled all the Pounder fans, hanging to their radios at home, by scoring after intercepting a pass and carrying 55 yards; Gene made his point again. The lone Charlotte tally came in the fourth quarter against many reserves. "Bachie" Geren accounted for several of Central's nine first downs.

### CENTRAL 13 • MEMPHIS CENTRAL 14

This was the only heartbreaker of the season as the Pounders took Cham-berlain Field for the first time this year. For the second straight year the boys from the Bluff City handed Central an early season setback. Memphis started off the scoring with a 57-yard pass play and a good extra point, but Central was undaunted and came back to score on a 28-yard aerial play with Charles Cantrell gathering in the pigskin unloaded by Earl Ziegler. The extra point attempt by Etter was wide. The next score was to the favor of the Pounders; as it was again the big Indian Cantrell who smashed through 14 yards of defenders for a big 6 points with another added point by Gene Etter. The half found Central ahead 13 to 7. The third and fourth quarters were those "almost but not quite times" which found the Purples stopped short more than once. The last score came as Griggs plunged one yard for the tie and Leake kicked the deciding point for the invaders.

### CENTRAL 20 • ATLANTA GRADY 0

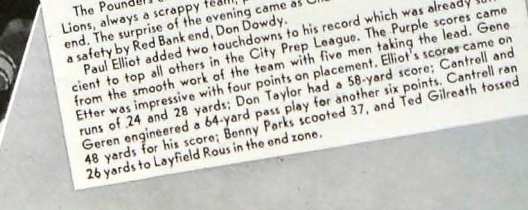
Central, the giant killer, proved to be topdog again as they easily rolled over the 1954 Georgia State Football Champions. After the Pounders had scored in each of the first three quarters, many substitutes were used during the final period. Paul Elliot again came out as the number one boy in the scoring department with two terrific T.D.'s. The Central offense really clicked with 391 yards on the ground. Elliot made his scores on 65-yard and 3-yard runs. Ronnie Robbs, who had a 71-yard touchdown, called back for clipping conversions. Charles Cantrell pounded out 60 yards in 9 carries, and Larry Clingan and Ray Moss proved rugged on both offense and defense.

### CENTRAL 27 • KINGSPOORT 0

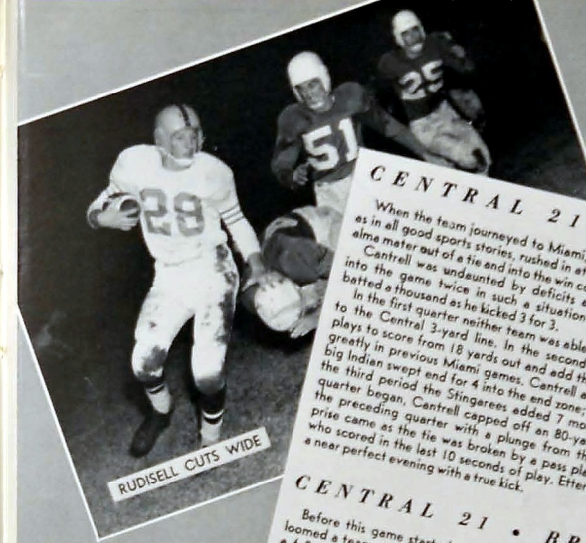
Four backs scored the same number of touchdowns to out-class completely these East Tennessee rivals, Dobyns-Bennett. Central received the opening kickoff and revealed what Kismet held for them later in the winning as they marched 61 yards to a score by Ronnie Robbs on a 17-yard trip. Gene Etter missed the point. The old standby, Paul Elliot, came through in the next quarter to cap off a 48-yard drive with a 6-yard score; Gene's kick was true. Cantrell and Geren carried the load on the next T.D. as Geren scored on a 2-yard plunge, Etter added one to this, as he did to the final six points in the third period racked up easily by Don Taylor on a 3-yard drive. Neither team pushed over a point in the last quarter.

### CENTRAL 46 • RED BANK 2

The Pounders entered this game as a favorite without a challenge. The Lions, always a scrappy team, proved to have a fighting spirit to the very end. The surprise of the evening came as Charles Cantrell was trapped for a safety by Red Bank end, Don Dowdy. Paul Elliot added two touchdowns to his record which was already sufficient to top all others in the City Prep League. The Purple scores came on the smooth work of the team with five men taking the lead. Gene Etter was impressive with four points on placement. Elliot's scores came on runs of 24 and 28 yards; Don Taylor had a 58-yard score; Cantrell ran 48 yards for his score; Bonny Perks scooted 37, and Ted Gilreath tossed 26 yards to Layfield Rous in the end zone.



THE SIDELINE SLANT



RUDISELL CUTS WIDE

### CENTRAL 21 • MIAMI 14

When the team journeyed to Miami, Charles Cantrell was the boy who, as in all good sports stories, rushed in at the close of the game to bring the alma mater out of a tie and into the win column. Cantrell was undaunted by deficits as he brought the Pounders back into the game twice in such a situation with a touchdown. Gene Etter batted a thousand as he kicked 3 for 3. In the first quarter neither team was able to score but the Stingers got to the Central 3-yard line. In the second quarter, it took Miami seven plays to score from 18 yards out and add that extra point that has figured greatly in previous Miami games. Cantrell and Etter tied the score as the big Indian swept and for 4 into the end zone; Gene's kick was true. Early in the third period the Stingers added 7 more to their total. As the quarter began, Cantrell capped off an 80-yard drive that had started in the preceding quarter with a plunge from the 1-yard line. The big surprise came as the tie was broken by a pass play from Ziegler to Cantrell who scored in the last 10 seconds of play. Etter put the finishing touch to a near perfect evening with a true kick.

### CENTRAL 21 • BRADLEY 6

Before this game started, one of our perennial rivals, Bradley County, loomed a team on the horizon who had thrown a tie at us last year and had a 6-0 record for the season thus far. The game proved a surprise to the visiting Bears as the Pounders led by 21 to 0 before the second quarter was 30 seconds old. Again, as in Miami, Charles Cantrell carried the bulk of scoring, going over those all important stripes twice. The Bradley score came midway of the second quarter, and from then on no one scored. On the ground Central pounded out 276 yards to only 29 by the Bears. Paul Elliot stopped the scoring efforts of Harry Elmore after a 51-yard pass play to climax the longest gain of the game. Cantrell's scores came on runs of 33 and 10 yards, while Elliot scored on a 10-yard sprint. Gene Etter had a perfect evening, and Larry Clingan was a defensive demon.

### CENTRAL 32 • JACKSONVILLE LANDON 13

W. H. Geren, hard-driving Pounder fullback, joined Charles Cantrell in the scoring spotlight as each made two touchdowns. Ted Gilreath scored the other Central six and Gene Etter collected two placements. In the first period Cantrell bottled up a 73-yard drive with a 25-yard gallop around right end; Etter converted. With the second quarter but 4 minutes old, it was again Cantrell in the role of galloping ghost as he smashed over from the one; the point was good. To put a fitting climax on the first half, Geren made it 20 to 0 on a 19-yard run. The next thirteen points went up on the board for Landon as they capitalized on a fumble by Don Taylor. Central's only touchdown of this quarter came as Ted Gilreath smashed over from the one-yard line. In the last quarter the point making belonged only to Geren as he went over left tackle for the final tally of the evening. Ray Moss and Ronnie Robbs were defensive standouts.

### CENTRAL 27 • NASHVILLE LITTON 7

Central, who had been reputed to be a first half team, came through with a last half rally to run completely away from high-ranked Litton. At the half the visitors led 7-8. Seventy-five hundred watched as Norma Jean Coulter was crowned Homecoming Queen during halftime ceremonies. The Pounder scoring was divided among four very capable backs. With the first period scoreless until only 3 seconds remained, Central made a miraculous 92 yards in only 3 seconds. Cantrell capped the march with the T.D.; the point was missed. In the second period, Central was held scoreless. In the third, the Pounders were in complete control as Litton had the ball for only five plays. Cantrell carried 11 yards and fumbled; Paul Elliot then picked up the ball and scored 14 yards for the score. Etter's kick was good. In the last quarter Elliot again carried over for the score from 3 yards out. The extra point was good. When it seemed that all of the scoring was finished, Litton fumbled and over two quickies, W. H. Geren bulled through from the 15 for a T.D. and Gene Etter finished up the evening with a perfect boot. Bachie scored with only 3 seconds left.

### CENTRAL 20 • BAYLOR 7

This game was believed by many to carry more tension than any other game of the season. Two Pounder favorites, Paul Elliot and Jim Maclin, were both injured in freak accidents a day before the game. Paul Elliot, despite his injury, played a glorious game. The Purple scored to score, with Gene Etter making the conversion. Then Baylor, in a desperate drive, made their solitary seven points by a 15-yard drive from the smooth work of the team with five men taking the lead. Gene Etter was impressive with four points on placement. Elliot's scores came on runs of 24 and 28 yards; Don Taylor had a 58-yard score; Cantrell ran 48 yards for his score; Bonny Perks scooted 37, and Ted Gilreath tossed 26 yards to Layfield Rous in the end zone.



DON'T FAINT, EDDIE, YOU'VE GOT IT



A VACANT PLACE ON THE FIELD



TAYLOR TAKES A TROT





1955 BASKETBALL TEAM

First Row: Jon Freeman, Mgr.; Bill McElhaney, Jimmy Hammon, Larry Hutson, Bill Runions, Gene Etter, Tommy Cox, Mgr. Second Row: Royce Powell, Wayne Hutcheson, John Kazy, Wayne Standifer, David Vaughn, Gary Clark, and Coach Smith.

## POUNDERS MAKE BEST RECORD SINCE 1943

Co-Captain Larry Hutson and Captain Bill Runions



Smith outlines the scheme



Kazy on top



## BOYS' BASKETBALL SCHEDULE 1955

### REGULAR SEASON

| Opponent        | Score | Central Score | Date        | Place       | Opponent       | Score | Central Score | Date        | Place      |
|-----------------|-------|---------------|-------------|-------------|----------------|-------|---------------|-------------|------------|
| 1. Alumni       | .53   | Central .56   | November 23 | Central     | 12. Lake City  | .50   | Central .56   | January 14  | Lake City  |
| 2. Soddy-Daisy  | .47   | Central .59   | November 26 | Soddy-Daisy | 13. Bradley    | .44   | Central .77   | January 19  | Bradley    |
| 3. Tyner        | .33   | Central .52   | November 30 | Central     | 14. Oak Ridge  | .33   | Central .67   | January 21  | Central    |
| 4. Red Bank     | .46   | Central .66   | December 3  | Central     | 15. Red Bank   | .53   | Central .65   | January 25  | Red Bank   |
| 5. Tyner        | .42   | Central .51   | December 14 | Tyner       | 16. Lake City  | .49   | Central .68   | January 28  | Central    |
| 6. LaFollette   | .57   | Central .51   | December 17 | Central     | 17. Norris     | .45   | Central .60   | January 31  | Central    |
| 7. Oak Ridge    | .42   | Central .60   | December 21 | Oak Ridge   | 18. LaFollette | .49   | Central .62   | February 4  | LaFollette |
| 8. Norris       | .50   | Central .70   | December 23 | Norris      | 19. Rossville  | .45   | Central .48   | February 8  | Rossville  |
| 9. Clinton      | .55   | Central .50   | December 23 | Clinton     | 20. Clinton    | .48   | Central .54   | February 14 | Central    |
| 10. Soddy-Daisy | .41   | Central .52   | January 7   | Central     | 21. Bradley    | .50   | Central .77   | February 17 | Central    |
| 11. Rossville   | .48   | Central .76   | January 10  | Central     |                |       |               |             |            |

### TIMES CUP SERIES

1. Tyner .26; Central .48; December 6 .Mem. Audit.
2. Lakeview .31; Central .69; December 8 .Mem. Audit.
3. Soddy-Daisy .44; Central .37; December 10 .Mem. Audit.

### CLINTON INVITATIONAL TOURNAMENT

1. Powell .66; Central .63; December 28 .Clinton

### DISTRICT NINE TOURNAMENT

1. Kirkman .40; Central .68; February 23 City High Gym
2. Soddy-Daisy .46; Central .61; February 25 City High Gym
3. Red Bank .36; Central .52; February 26 City High Gym

### REGION III TOURNAMENT

1. McMinn .56; Central .46; March 1 .Bradley



Coach Smith checks the score



Standifer drops in two

Central's Purple Pounder basketball squad completed their best season since 1943 with a record of 24 victories and only 5 losses against some of the state's top teams.

After compiling a 19-2 regular season record and a 2-2 tournament mark, the Pounders took the Ninth District Crown with three straight victories and then went to the Region III playoffs to be beaten by McMinn High.

Some of the highlights of this long-to-be-remembered season are: the 52-49 victory over LaFollette to justify Central's high ranking in the state, the number one ranking in the last edition of the Littenhouse ratings, and the high point of the season, the selection of Wayne Standifer as an All-State player. Wayne was selected from about 3,500 players throughout the state for his season long all-round fine shooting, rebounding, and point making.

The Pounders were a threat this year, and should be even better next year, as they have only one player, Bill Runions, grad-

uating. Next year's Pounders will be tree top tall, and knee deep in experience, and with all their fine record of this year to maintain, should go all the way to victory.

### COACH GORDON SMITH

Coach Gordon Smith, who has been at Central for seven years, began his coaching career in 1935 at Patton High of Bledsoe County. In 1946 his Norris High team won the Seventh District tournament. Although he has never coached an undefeated team, Coach Smith has worked with many teams of high caliber; he feels that the Central team of 1955 has the finest material of any team he has ever coached.

Mr. Smith is a graduate of Middle Tennessee State Teachers College where he played running guard on the freshman team. He has taken work at Carson-Newman College and Texas College of Mines. At present he is working toward his master's degree at the University of Tennessee.

JOHN RAY, '56.





Ser-e-e-ech!



Which way did it go, boy?

## CENTRAL BASEBALL

The 1954 Central High baseball team, headed by outfielder Bill Sylvester, wound up the regular season with a 5-4 record or a percentage of .800.

Outstanding hitters of the team, all with an average over .300, were Ken Baker, Bill Sylvester, Earl Ziegler, and Royce Powell. Righthander Billy Parton led the Central mound men. Bill Watkins, now with the Chattanooga Lookouts, turned in a brilliant one-hitter against Hixon for one of the seasons high points.

Bill Sylvester and Earl Ziegler were both placed on the all-city team for their fine all-round play.

Other members of the team were lettermen James Reece, Frank Payne, Ray Powell, Bob Baskette, John Rowden, Charlie Jackson, Ray Leamon, Bill Runions, Neil Barnes, Charles Cobb. Other members were John Werner, Gene Etter, Ray Moss, Lebron Griffith, Lonnie Green, Gary Hunt, Bob Rudisill, and John Ray '56.

First Row: Earl Ziegler, Royce Powell, Charles Jackson, Bill Sylvester, Bill Runions, James Reece, Ken Baker. Second Row: Ray Leamon, Ray Powell, Charles Cobb, Bill Watkins, Neil Barnes, Bob Baskette, Bill Parton. Third Row: Robert Jones, Manager; Lee Griffith, Gene Etter, David Fry, Bobby Rudisill, Lonnie Green, and Tommy Cox, Manager.



The Central Penneys, composed mainly of Central students, won the Tennessee State Championships and advanced to the National Regional Meet at Gastonia, N.C., where they beat Kentucky but were eliminated by Virginia.

Central's players on the team were David Fry, Wayne Standifer, Bob Baskette, John Rowden, Royce



Let's cheer the cheerleaders



A rebound!

Powell, Bill Runions, Charles Cobb, and Gene Etter. Benny Parke and Phil Vaughn are now Central students but were not at that time.

David Floyd and Bucky Gilliland of McCallie and Herbert Hooper of Ooltewah were the team's other members.

### SCHEDULE OF THE SEASON

|                    |                             |
|--------------------|-----------------------------|
| Soddy-Daisy ... 9; | Central.. 7—April 5, 1954   |
| Hixon ..... 5;     | Central.. 6—April 14, 1954  |
| Tyner ..... 5;     | Central.. 12—April 19, 1954 |
| Red Bank ..... 4;  | Central.. 2—April 22, 1954  |
| Red Bank ..... 3;  | Central.. 4—April 27, 1954  |
| Rossville ..... 3; | Central.. 1—April 30, 1954  |
| Soddy-Daisy ... 2; | Central.. 3—May 5, 1954     |
| Hixon ..... 1;     | Central.. 5—May 6, 1954     |
| Oak Ridge .... 2;  | Central.. 10—May 7, 1954    |

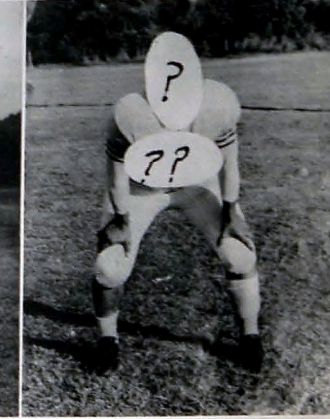
## ALL AMERICAN POUNDERS



Robby Hoppe 1953-1954



Ray Moss 1954-1955



?? 1955-1956





GIRLS' BASKETBALL TEAM, 1955

Reading from left to right: Joann Casey (Captain), Guard; Charlotte Grouf, Guard; Carole McDowell (Co-Captain), Forward; Barbara Waldrop, Forward. Standing: Sarah Leamon, Forward; Nancy Williamson, Guard; Bonnie Slatton, Forward; Lorraine Hyer, Forward; Lavona Raulston, Forward; Norma Jobe, Guard; Barbara Davidson, Guard; Hazel Vanoer, Guard; Wanda Piercy, Guard; Wanda Eckman, Guard; Anita Rich, Guard.

## POUNDERETTES BASKETBALL SEASON CHS Library

Central Pounderettes had a successful season in spite of the fact that the losses somewhat overbalanced the wins.

Probably their outstanding game was the victory over Birchwood 44-30, February 22, in tournament series at Chattanooga High gym. Later the Pounderettes were closed out of the tournament by the City Dinali's in a 48-29 victory. Another highlight of the season was the game with Red Bank when, in the opinion of basketball fans, the team was a credit to Central in their fine playing and good sportsmanship.

This group of sixteen cagettes, led by captains Jo Ann Casey and Carole McDowell, have practiced hard and played well. Some of the outstanding players of the season were Carole McDowell at forward; Barbara Waldrop, guard; Barbara Davidson, guard, and Bonnie Slatton, forward. Carole McDowell was high scorer of the season while Bonnie Slatton led in both tournament games.

A record of four wins to fourteen losses compares favorably with the record of five wins and ten losses of 1954.

Four seniors, Barbara Waldrop and Jo Ann Casey, who have been on the team four years; Carole McDowell and Charlotte Grouf, with three years of playing, will leave vacancies this year which will be hard to fill. Members expected back next year are Bonnie Slatton, La Vona Raulston, Hazel Vanoer, Barbara Davidson, Bonnie McCallie, Wanda Eckman, Anita Rich, Lorene Heyer, Wanda Piercy, Sarah Leamon, and Norma Jobe. Nancy Williamson, guard, is moving from Chattanooga to Atlanta, Georgia.

### COACH MARGARET HAMMACK

Mrs. Margaret Hammack, coach of the Central girls for four years, has a basketball record dating back to her high school days at Orlando High School and varsity experience on the Florida State University Women's team. Mrs. Hammack stated that the Pounderettes improved consistently throughout the season.

Coach Hammack, Captains Casey and McDowell pose before Lakeview victory



A tense moment



The season opener with Bledsoe High



Your guess is as good as mine—who will get the ball?



Girls "C" Club

Waldrop goes up for the ball



McDowell and Raulston Hold Out Against Bledsoe High



Alumna Drinnon on the rebound







### GYM STAFF

FIRST ROW: Dee Hoffmeyer, Norma Hixon, Carolyn Lowe, Beverly Link, Gail Phillips, Miss Sarah Hubbard, Linda Bragg, Joyce Lee, Nell Steele, Mary Helen Masingale, Bonnie Slatton, Shirley Ward, Eleanor Pitzer.

SECOND ROW: Charlotte Green, Carol Jones, Jane Armstrong, Sharon Scherer, Jeannine Pratt.



### BATTALION OFFICERS

Carolyn Lowe, Beverly Link, Linda Bragg, Alice Clingan, Gail Phillips, Carol Jones, Nell Steele, Norma Jean Coulter.



### ACE CLUB

#### OFFICERS

BEVERLY LINK ..... President  
CAROLYN LOWE ..... Vice-President  
JOYCE LEE ..... Secretary-Treasurer

#### MEMBERS

Jean Davis, Bonnie Slatton, Iris Killingsworth, Pat Schorth, Fran Mooney, Charlotte Peden, Anita Rich, Gail Poligo, Alice Clingan, Dorothy Burrows, Doris Henderson, Bertie Day, Joyce Saxon, Pat Proctor, Liz Pope, Janie Lee, Dotie Parker, Lorene Heyer, Marsha Brannon, Peggy Gifford, Gail Phillips, Barbara Templeton, Sharon Scherer, Carol McWhorter, Jane Armstrong, Norma Hixon, Jeannine Pratt, Dee Hoffmeyer, Charlotte Green, Barbara Long, Eleanor Pitzer, Laverne Vest, Peggy Fordham, Judy Prescott, Carol Jones, Carolyn Plemons, Yvonne Anderson, Sara Hemblott, Peggy Malone. NOT PICTURED: Carolyn Lowe, Alice Huey, Saranell Davis, Nell Steele, Linda Bragg, Dorothy Cutten, LaVona Raulston.

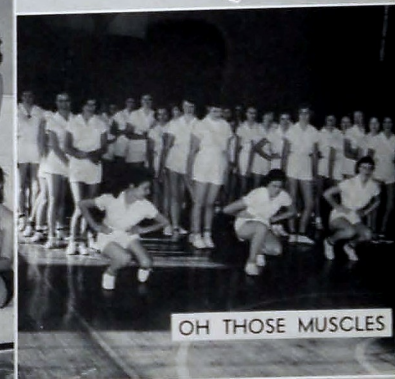
### BADMINTON CLUB

#### OFFICERS

BONNIE SLATON ..... President  
ROBERT HACKER ..... Vice-President  
JANE ARMSTRONG ..... Secretary  
JANE ARMSTRONG ..... Treasurer  
MISS SARAH HUBBARD ..... Sponsor

#### MEMBERS

Tommy Sims, Judy Prewett, Laura Layne, Dorothy Burrows, Bonnie Slaton, Robert Hacker, Jane Armstrong, Joyce Howard, Jean Davis, Patty Ramsey, Alfred Ingram, Lawassa Brackett, Carol Jones, Claire Pollard, Patsy Butler, Bobby Gohert, Eleanor Pitzer, Jeannine Pratt, Charlotte Green, Betty Athearn, Ann Pitsinger, Nancy Ezelle, Shirley Harper, Nancy Leonard, Virginia Powers, Shirley Ward, Gaylor Holder, Martha Walker, Beverly Link, Jeanie Walker, Sharon Sahier, Sue Carmichael.







# ROTC



MAJOR GEORGE J. KRONENBERGER  
P.M.S. and T.



M/SGT. E. H. GROOMS  
Instructor

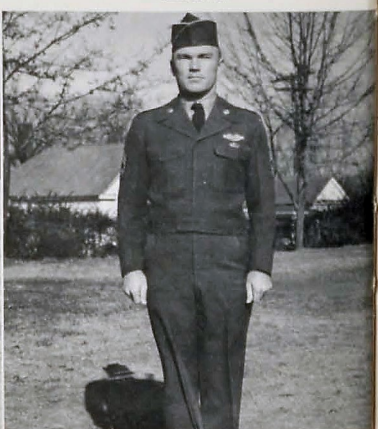
The Reserve Officers Training Corps Unit of Central High School was established December 29, 1919, by order of the President of the United States of America. Since that time a two year compulsory course has been given to every able-bodied boy that has attended Central through sophomore and junior year. Senior military, although optional, gives the cadet a more thorough knowledge of military science and tactics. The Central High regiment has maintained an A-1 honor rating every year since its organization. This rating is decided by the Federal Inspection which is conducted during the latter part of the year.

Many socials are held throughout the year in the R.O.T.C. Department, the most notable of which is the Military Ball occurring in late February.

M/SGT. W. REED  
Instructor



M/SGT. ROBERT HALL  
Instructor



## REGIMENTAL STAFF

|                       |  |
|-----------------------|--|
| COL. LARRY CLINGAN    | Regimental Commander                         |
| VIRGINIA McKAMEY      | Sponsor                                      |
| LT. COL. W. H. GEREN  | Regimental Executive Officer                 |
| PAT PLAXCO            | Sponsor                                      |
| MAJ. ED WILLIAMSON    | Regimental Adjutant (S-1)                    |
| SHELBY PURDY          | Sponsor                                      |
| MAJ. FRENCH TRIPP     | Regimental Public Informations Officer (S-2) |
| BEVERLY LINK          | Sponsor                                      |
| MAJ. RICHARD CHAMPION | Regimental Operations Officer (S-3)          |
| JO ANN CONDRA         | Sponsor                                      |
| MAJ. TOMMY CARMICHAEL | Regimental Supply Officer (S-4)              |
| ELEANOR BARNES        | Sponsor                                      |

## FIRST BATTALION STAFF

|                      |                              |
|----------------------|------------------------------|
| LT. COL. EDDIE LERCH | Battalion Commander          |
| NORMA JEAN COULTER   | Sponsor                      |
| MAJ. JOE H. MORGAN   | Battalion Executive Officer  |
| DANEEN COLQUITT      | Sponsor                      |
| CAPT. JIM MACLIN     | Battalion Adjutant           |
| GAIL PHILLIPS        | Sponsor                      |
| CAPT. DOUGLAS NOLAN  | Battalion Operations Officer |
| ELIZABETH RICE       | Sponsor                      |

## SECOND BATTALION STAFF

|                        |                              |
|------------------------|------------------------------|
| LT. COL. LEBRON CARDEN | Battalion Commander          |
| BETTY STRAID           | Sponsor                      |
| MAJ. GEORGE SWEENEY    | Battalion Executive Officer  |
| BETTY ADAMS            | Sponsor                      |
| CAPT. KENNETH DYE      | Battalion Adjutant           |
| SUE SEWELL             | Sponsor                      |
| CAPT. WARD JACKSON     | Battalion Operations Officer |
| SHIRLEY PERKINSON      | Sponsor                      |







COL. LARRY CLINGAN

VIRGINIA MCKAMEY

LT. COL. W. H. GEREN

PAT FLAXCO

LT. COL. EDDIE LERCH

NORMA JEAN COULTER

LT. COL. LEBRON CARDEN

BETTY STROUD

CHS Library



MAJ. ED WILLIAMSON

SHELBY PURDY

MAJ. FRENCH TRIPP

BEVERLY LINK

MAJ. RICHARD CHAMPION

JO ANN CONDRA

MAJ. CARMICHAEL

ELEANOR BARNES

MAJ. JOE H. MORGAN

DANEEN COLQUITT

MAJ. GEORGE SWEENEY

BETTY ADAMS

## MILITARY OFFICERS AND SPONSORS



CAPT. JAMES MACLIN GAIL PHILLIPS



CAPT. DOUGLAS NOLAN

ELIZABETH RICE



CAPT. KENNETH DYE

SUE SEWELL



CAPT. WARD JACKSON

SHIRLEY FERRINSSON



CAPT. HOWARD DELANEY

VIRGINIA FRYAR

CAPT. BOBBY STERCH

CHARLOTTE REEVES

CAPT. ED MACLIN

CAROLYN LOWE

CAPT. JIMMY WOODS

PAT SCHROTH

CAPT. JOHN KIMBROUGH

NELL STEELE

CAPT. TED GILBREATH

FREDA RHEAR

CAPT. RAY MOSS

CAROLYN AKERS

CAPT. HERBY SIMPSON

WANDA BENNETT

CAPT. JAMES HAYNES

SANDRA HOLLIFIELD







### COMPANY A

HOWARD DELANEY .....Commander  
 VIRGINIA FRYAR .....Sponsor  
 JAMES McCULLOUGH .....Executive Officer  
 FREDDY REEVES .....First Platoon Leader  
 GAREN JACKSON .....Second Platoon Leader

### COMPANY B

BOBBY STERCHI .....Commander  
 CHARLOTTE REEVES .....Sponsor  
 BILLY INGLE .....Executive Officer  
 GERALD SKIDMORE .....First Platoon Leader  
 EDWARD HIXON .....Second Platoon Leader

### COMPANY C

ED MACLIN .....Commander  
 CAROLYN LOWE .....Sponsor  
 JAMES HUSKEY .....Executive Officer  
 DOUG RIGGS .....First Platoon Leader  
 JAMES BAIRD .....Second Platoon Leader

### COMPANY D

JIMMY WOODS .....Commander  
 PAT SCHROTH .....Sponsor  
 HOWARD MEADOR .....Executive Officer  
 HAROLD OGLE .....First Platoon Leader  
 BRYON ELKINS .....Second Platoon Leader

## R. O. T. C. COMPANIES

CHS Library

### COMPANY E

JOHN KIMBROUGH .....Commander  
 NELL STEELE .....Sponsor  
 BILL RUNIONS .....Executive Officer  
 BOB McCUTCHEON .....First Platoon Leader  
 SHAN WHITEAKER .....Second Platoon Leader

### COMPANY F

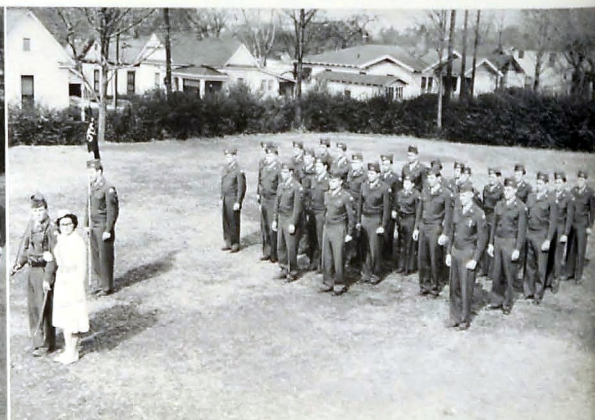
TED GILREATH .....Commander  
 FRED RHEAR .....Sponsor  
 JIMMY ISON .....Executive Officer  
 J. B. THOMAS .....First Platoon Officer  
 WADE GREEN .....Second Platoon Officer

### COMPANY G

RAY MOSS .....Commander  
 CAROLYN AKERS .....Sponsor  
 CURTIS O'NEAL .....Executive Officer  
 JOHN HILLIARD .....First Platoon Leader  
 DAVID BROYLES .....Second Platoon Leader

### COMPANY H

HERBY SIMPSON .....Commander  
 WANDA BENNETT .....Sponsor  
 FRANK OLIVER .....Executive Officer  
 ERNEST CAMPBELL .....First Platoon Leader  
 DANNY FRALEY .....Second Platoon Leader







INSTRUCTORS, '54 AND '55



COLOR GUARD



DISC AND DIAMOND INITIATION



MILITARY BALL



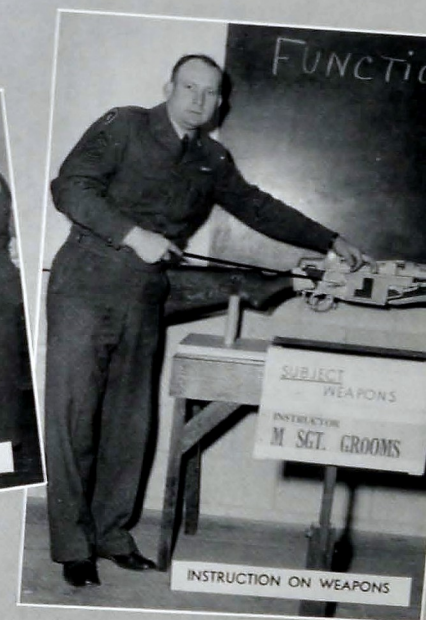
NEATEST CADET



THE LEADERS



CLASSROOM INSTRUCTION



SUBJECT WEAPONS  
INSTRUCTOR  
M. SGT. GROOMS

INSTRUCTION ON WEAPONS



MILITARY BAND



MILITARY QUEEN

MISS FREDA RHEAR



OFFICERS' AND SPONSORS' PARTY SPONSORS' NIGHT



COMPANY DRILL



## ACTIVITIES



86



87





Thinking for a change

## 1955 CHAMPION

"Of making books there is no end" is now more than a mere adage to the CHAMPION Staff of 1955. Our respect for books and book makers has increased greatly.

Once the staff is named, ideas soon resolve themselves into actual work such as picture taking, theme selection, color scheme, cover choice, writing up activities, and getting in material. Little items such as correct spelling of a name, special picture for a special page, two inches of space, and even a paper clip suddenly become very important.

That is only one side of the story. Combined with the hard and detailed work are the honor and privilege that have been ours in making this CHAMPION. Undoubtedly our patience, perseverance and long suffering, along with our sense of humor, have grown considerably.

Finally there is the joy of suspense—waiting to see

what this product of ours is going to look like. And, at last, here is it! All these joys, spills, thrills, and headaches have come to one grand conclusion when the book comes out, and you and we actually have our copy of *This is Central*.

We hope you like it.

JANET BOLDEN.

### STAFF

|                     |                     |
|---------------------|---------------------|
| FRENCH TRIPP        | Editor-in-Chief     |
| JEAN TAYLOR         | Associate Editor    |
| DAVID CARPENTER     | Associate Editor    |
| SARANELL DAVIS      | Business Manager    |
| CAROLYN DILLEY      | Feature Editor      |
| BETTYE STROUD       | Feature Editor      |
| SYLVIA BROYLES      | Senior Editor       |
| NANCY WADE          | Departmental Editor |
| JOE MORGAN          | Military Editor     |
| RICHARD CHAMPION    | Sports Editor       |
| JANET BOLDEN        | Club Editor         |
| CHARLES BAKER       | Photographer        |
| BOBBY STANDIFER     | Photographer        |
| CLARICE WALLACE     | Typist              |
| CHARLOTTE LILES     | Junior Editor       |
| CAROLYN RILEY       | Sophomore Editor    |
| ANNA BOWERS         | Freshman Editor     |
| MR. C. E. TOWERY    | Sponsor             |
| MISS SALLY MAY KING | Sponsor             |
| MISS RUBY NIPPER    | Sponsor             |



### EDITORIAL STAFF

|   |                               |
|---|-------------------------------|
| CAROLYN DILLEY  | Editor-in-Chief               |
| JEAN TAYLOR   | Associate Editor              |
| BETTYE STROUD   | Feature Editor                |
| SYLVIA BROYLES  | Sports Editor                 |
| DOROTHY FRANK   | Assistant to the Editors      |
| REBA FOSSETT  | News Editor                   |
| ERNESTINE ADAMS   | Associate Feature Editor      |
| JOHN RAY  | Associate Boys' Sports Editor |
| MARTHA WALKER   | Exchange Editor               |
| TIM WINKLER   | Art Editor                    |
| FRENCH TRIPP  | Military Editor               |
| ALVIN COX, EVELYN MIZELL, DOTTIE PARKER, PAT MAY, PAT JANEY, VERA ROGERS, JEAN GOODNER, SANDRA BAKER, JESSIE POWERS, CAROLYN PAYNE, LEBRON MCGUFFEY, ROSALYN BRADFORD, DON MATHIS | Reporters                     |
| RUTH LEWIS, HARRIET WITT  | Typists                       |
| MISS SALLY MAY KING   | Sponsor                       |

### BUSINESS STAFF

|                  |                               |
|------------------|-------------------------------|
| YVONNE MCGLOHON  | Business Manager              |
| LAWASSA BRACKETT | Associate Business Manager    |
| CAROL McDOWELL   | Circulation Manager           |
| CHARLOTTE GREEN  | Associate Circulation Manager |
| WILMA WILLIAMSON | Advertising Manager           |
| JANET BOLDEN     | Associate Advertising Manager |
| BARBARA NEFF     | Bookkeeper                    |

## THE DIGEST, 1955

|  |                      |
|--|----------------------|
| JO ANN WOODY   | Associate Bookkeeper |
| JO ANN CONDR, DANEEN COLQUITT, GAIL PHILLIPS, LINDA BRAGG, CLAIRE POLLARD, JANE ARMSTRONG, ALICE CLINGAN, CAROL JONES, FAITH THOMPSON, CAROLYN LANSFORD, PATSY McCALLIE, WILLENE WOOD, JUDY THOMPSON, VANOVA WHITMIRE, CAROLYN WILBURN | Circulation Staff    |
| BOBBY STANDIFER, CHARLES BAKER   | Photographers        |
| MR. SAM STONER   | Sponsor              |

### PRINTING STAFF

|   |             |
|---|-------------|
| EDDIE PERKINS   | Foreman     |
| DONALD ALLISON, CHARLES BORIN, BRADY PREWITT, ALBERT HOLT, JOSEPH HAWKINS | Compositors |
| SAMMY COOKE   | Pressman    |
| WALTER WILLIAMS   | Pressman    |
| EZEKIEL KENNEDY   | Foreman     |
| CORDELL TERRELL, GILBERT PARTON   | Make-Up Men |
| NINA BARROWS, LELAH HOPE, JOYCE KELLY, JANIE LEE                          | Folders     |
| JIMMY ROBERTS   | Copy Boy    |
| MR. ARCHIE BIBBEY   | Sponsor     |

The four wheels



Time out



Checking material



Business Staff



Editorial Staff



Printing Staff







FIRST Row: Mary Armstrong, Valerie Ayre, Janet Bolden, Linda Bragg, Sylvia Broyles, David Carpenter, Richard Champion, Saranell Davis.

SECOND Row: Carolyn Dilley, Mary Jo Eaves, Margie Fryar, Peggy Gifford, Robert Gober, Helen Goforth, Charlotte Groul, Sara Hembree.

THIRD Row: Norma Hixon, Alice Huey, Carolyn Ingle, Arnold Janeway, Tommy Kelly, Joyce Lee, Ruth Lewis, Beverly Link.

#### MEMBERS

FOURTH Row: Carolyn Lowe, James McAllister, Yvonne McGlohon, Joe Morgan, Beverly Nolan, Anita Nowell, Jane Puckett, Peggy Ransom, Norma Jean Rosser.

FIFTH Row: Bettye Stroud, George Sweeney, Jean Taylor, Jean Turner, Joan Turner, Nancy Wade, Geraldine Walston, Maudine Webb, Barbara Williams.

## NATIONAL HONOR SOCIETY

CHS Library

#### First Semester

NORMA HIXON ..... President  
GEORGE SWEENEY ..... Vice-President  
CAROLYN DILLEY ..... Secretary  
NANCY WADE ..... Treasurer's Aid  
MRS. ANNIE C. SHELTON ..... Sponsor  
MISS EARL JONES ..... Secretary

#### Second Semester

PEGGY RANSOM ..... President  
YVONNE MCGLOHON ..... Vice-President  
SYLVIA BROYLES ..... Secretary  
RUTH LEWIS ..... Treasurer's Aid  
MRS. ANNIE C. SHELTON ..... Sponsor  
MISS EARL JONES ..... Secretary

MRS. ANNIE C. SHELTON

MISS EARL JONES



What? Officers?



Our most thriving business

## BANK AND BOOKSTORE STAFF

#### OFFICERS

SARANELL DAVIS ..... President  
NANCY WADE ..... Vice-President  
MARY ARMSTRONG ..... Secretary-Treasurer  
MISS RUBY NIPPER ..... Sponsor

#### Bankers a La Supreme



#### MEMBERS

Nancy MaGette, Reba Keith, Moonen Camp,  
Carol McWhorter, Bobby Lee, Saranell Davis,  
Nancy Wade, Mary Armstrong, Harry Johnson.





Band Officers



Band Sponsor Eula Mae Helton and Band Captain Jimmy Renegar

# THE CENTRAL BAND

## OFFICERS

|                        |                      |                     |            |
|------------------------|----------------------|---------------------|------------|
| JIMMY RENEGAR .....    | Captain              | PEGGY HILL .....    | Lieutenant |
| EULA MAE HELTON .....  | Sponsor              | MAGGIE KELSAY ..... | Lieutenant |
| JAMES HAYNES .....     | Military Captain     | JANE SITTON .....   | Lieutenant |
| ALVIN COX .....        | Drum Major           | ROBERT HACKER ..... | Lieutenant |
| BUDDY MARTIN .....     | Assistant Drum Major | GENE LAWSON .....   | Lieutenant |
| MR. MORRIS BALES ..... | Sponsor              |                     |            |

## MAJORETTE OFFICERS

|                      |                |                         |                |
|----------------------|----------------|-------------------------|----------------|
| WANDA THOMPSON ..... | Head Majorette | SANDRA HOLLIFIELD ..... | Head Majorette |
|----------------------|----------------|-------------------------|----------------|

Color Guard Whitaker, O'Neal, Strickland, Thomas, and Broyles



Head Majorettes Wanda Thompson and Sandra Hollifield with Drum Major Alvin Cox

Loading for Miami







## ALLIED YOUTH

### OFFICERS

PEGGY STRICKLAND ..... *President*  
 CAROLYN RILEY ..... *Vice-President*  
 JUDY ASHLEY ..... *Secretary*  
 MARY McCOMMON ..... *Treasurer*  
 MISS EUPLE GILBERT ..... *Sponsor*  
 MR. D. G. LITZ .....

### MEMBERS

Doris Bather, Peggy Strickland, Carolyn Riley, Judy Ashley, Lawassa Brackett, Mary McCommon, Charlene Jones, Betty Grayson, Phyllis Sutherland, Marguerite Rightmire, Gail Phillips, Dixie Varnes, Pat McGregor, Pat Fuller, Iris Killingsworth, Jane Shaw, Loretta Melton, Alta Patterson, Pat Underwood, Vera Rogers, Jeanette Miller, Nancy Dodd, Norma Nixon, Barbara Gross, Susan Hackett, Joe Ramirez, Freddie Shirley.



## ANNOUNCER'S CLUB

### OFFICERS

FRENCH TRIPP ..... *President*  
 SARANELL DAVIS ..... *Vice-President*  
 NORMA HIXON ..... *Secretary*  
 CAROLYN LANSFORD ..... *Treasurer*  
 MRS. KEN FLENNIKEN ..... *Sponsor*

### MEMBERS

Carolyn Lansford, Saranell Davis, French Tripp, Norma Hixon, Jack Baker, Charlotte Reeves, Alfred Ingram, Reba Keith, Buddy Martin, Harris Housley, Nancy Hixon, Wilbur Chauncey.



## ANCHORS AWEIGH

### OFFICERS

NORMA JEAN COULTER ..... *President*  
 GAIL PHILLIPS ..... *Vice-President*  
 PAT SCHROTH ..... *Secretary*  
 PATSY DICKSON ..... *Treasurer*  
 MRS. REBA FULTS ..... *Sponsor*

### MEMBERS

Patty Rector, Jeanette Seaton, Alice Clingan, Rosalind Everheart, Lynn Parnell, Judy Curtis, Nancy Plye, Sandra Bashing, Joyce Lee, Pat Plaxco, Wanda Bennett, Virginia McCamey, Jane Perry, Joan Elson, Lee Sue Duke, Margaret Reece, Peggy Fordham, Linda Powell, Gail McCurry, Joyce Ireland, Barbara Arnold.  
 NOT PICTURED: Carol Jean Mosteller, Linda Long.



## BIBLE CLUB

### OFFICERS

BOBBY STANDIFER ..... *President*  
 BARBARA WILLIAMS ..... *Vice-President*  
 MARCIA BRANNAN ..... *Secretary*  
 CAROLYN LANSFORD ..... *Treasurer*  
 MISS RACHEL McALLISTER ..... *Sponsor*

## BOYS' HLY

### OFFICERS

JAMES MACLIN ..... *President*  
 WADE GREEN ..... *Vice-President*  
 JOE MORGAN ..... *Secretary*  
 FRENCH TRIPP ..... *Treasurer*  
 J. POPE DYER .....

### MEMBERS

Joe Morgan, James Maclin, French Tripp, Lebron McCaffey, Alfred Ingram, Wade Green, John Werner, Tommy Rowland, David Broyles, Richard Champion, John Ray, Jack Backer, Buddy Parsons, George Gray, Harry Johnson, Byron Elkins, Dallas Thompson, Mathon Culpepper, Edward Ritchey, Bill Allen.



## "C" CLUB

### MEMBERS

Larry Hutson, George Sweeney, Bill McElhaney, Bill Smith, James Reece, Jim Maclin, Ted Gilreath, Paul Hutchesson, Terry Bridgman, Gene Etter, Johnny Rowden, Gary Clark, Bob Baskette, Bobby Rudesill, Eddie Lerch, Ray Moss, Larry Clingan, W. H. Geren, Houston Clark, Royce Powell, Bill Runions, Johnny Kazy, Wayne Standifer, John Kimbrough, Charles Cobb, Gene Spriggs. NOT PICTURED: Charles Cantrell, Paul Elliott.



## CAMERA CLUB

### OFFICERS

BOBBY STANDIFER ..... *President*  
 CHARLES BAKER ..... *Vice-President*  
 JUANITA BROCK ..... *Secretary*  
 LOLA HUMBLE ..... *Treasurer*  
 MR. C. G. TOWERY .....

### MEMBERS

Juanita Brock, Bobby Standifer, Charles Baker, Martha Humble, Larry Burnette, Doug Tunshberg, Daniel Power, Charlene Jones, Iris Killingsworth, Franklin Moore, Gene Rudesill.



## DISC AND DIAMOND

### OFFICERS

W. H. GEREN ..... *Captain*  
 M/SGT. W. J. REED ..... *Sponsor*

### MEMBERS

Doug Nolan, Eddie Lerch, Ed Maclin, Ted Gilreath, Larry Clingan, Wade Green, Jim Maclin, Richard Champion, Ed Williamson, Jimmy Woods, Lee Oldham, George Sweeney, James Hudson, Tommy Rowland, Howard Delaney, Bill Smith, Gary Hart, Kenneth Dye, Paul Hutchesson, Bob Storch, Bob Baskette, Terry Bridgman, Buddy Parsons, Bob Rudesill, John Werner, David Broyles, Mathon Culpepper, John Kimbrough, Tommy Carmichael, French Tripp, Joe Morgan, Ward Jackson, Ed Ritchey, Doug Riggs, Howard Meador, Lebron Carden. NOT PICTURED: Captain W. H. Geren, Herby Simpson, Ray Moss, Buddy Martin, Jim Baird.







## KEY CLUB

### OFFICERS

|                        |                |
|------------------------|----------------|
| WADE GREEN .....       | President      |
| RICHARD CHAMPION ..... | Vice-President |
| JOHN RAY .....         | Secretary      |
| ED MACLIN .....        | Treasurer      |
| MR. E. N. FIELDS ..... | Sponsor        |

### MEMBERS

David Broyles, Ed Maclin, Wade Green, Richard Champion, John Ray, Mr. E. N. Fields, Jim Maclin, Larry Clingan, Eddy Lerch, John Werner, Bobby Lee, W. H. Goren, Don Rockholt, LeBron Griffith, O'Neal Ross, Don Casey, Daniel Power, Gene Etter, John Abbott, Harry Johnson, Bobby Standifer, Joe Simmons, Joe Morgan, French Tripp, Lebron Carden.

## HI-STEPPERS

### OFFICERS

|                         |                |
|-------------------------|----------------|
| WANDA THOMPSON .....    | President      |
| SANDRA HOLLIFIELD ..... | Vice-President |
| FREDA RHEAR .....       | Secretary      |
| CHARLOTTE GOGGIN .....  | Treasurer      |
| MR. MORRIS BALES .....  | Sponsor        |

### MEMBERS

Wanda Eaves, Wilma Eaves, Becky Crawford, Sheila Watts, Gaylor Holder, Reba Walker, Erna Freudenberg, Lynette Seag's, Aline Van Zant, Margaret Reece, Judy Nation, Charlotte Ward, Rosalind Everhart, Shirley Ward, Patsie Harris, Cathy Howard, Myrna Manning, Brenda La Ferry, Julia Allender, Becky Ballinger, Barbara Hullender, NOT PICTURED: Mary Ruth Neymon, Carolyn Ball, Claudine Harris.

## GIRLS' TRI HI-Y

### OFFICERS

|                               |                |
|-------------------------------|----------------|
| BETTY STROUD .....            | President      |
| CHARLOTTE REEVES .....        | Vice-President |
| CAROLYN LOWE .....            | Secretary      |
| NANCY WADE .....              | Treasurer      |
| SARANELL DAVIS .....          | Chaplain       |
| MISS BOBBIE RUTH HODGES ..... | Sponsor        |
| MISS HARDIE CAUDLE .....      | Sponsor        |

### MEMBERS

Sylvia Broyles, Ruth Lewis, Carolyn Sauls, Alice Clingan, Patsy Butler, Golda McDowell, Carolyn Owens, Norma Hixon, Beverly Hales, Reba Keith, Nancy Magette, JoAnn Condra, Eleanor Barnes, Marilyn Nales, Wylene Darby, Sharon Scherer, Mary Armstrong, Erna Freudenberg, Doe Hoffmeyer, Wilene Wood, Barbara John, Eula Mae Helton, Norma Rosser, Christine Helton, Jane Puckett, Shirley Ward, Reba Fossett, Jane Armstrong, Susan Bishop, Patsy Smith, Jewell Willingham, Carolyn Dilley, Toddy Liles, Jeannine Pratt, NOT PICTURED: Alice Huey.

## INTER-SCHOOL LEADERSHIP COUNCIL

### OFFICERS

|                            |                |
|----------------------------|----------------|
| GEORGE SWEENEY .....       | President      |
| JEAN TAYLOR .....          | Vice-President |
| CAROLYN DILLEY .....       | Secretary      |
| CAROLYN LOWE .....         | Treasurer      |
| MISS FRANCIS TIERNAN ..... | Sponsor        |

### MEMBERS

George Sweeney, Jean Taylor, Carolyn Dilley, Carolyn Lowe, David Carpenter, Margie Fryar, Bettye Stroud, Shirley Ward, Ruth Lewis, Nancy Wade, Sylvia Broyles, Patsy Butler, Golda McDowell, Peggy Ransom, Janet Bolden, Yvonne McGlohen, Beverly Nolan, Norma Rosser, Dixie Young, Beverly Link, Linda Bragg, Nell Steele, Joyce Lee, Daneen Colquitt, Bill McElhane, Tommy Rowland, Joe Morgan, Richard Champion, David Broyles, NOT PICTURED: Reba Fossett.

## LIBRARY STAFF

### OFFICERS

|                            |                |
|----------------------------|----------------|
| MAUDINE WEBB .....         | President      |
| REBA FOSSETT .....         | Vice-President |
| ALICE WILLIAMS .....       | Secretary      |
| BARBARA VARNES .....       | Treasurer      |
| MRS. MARY SANDERS .....    | Sponsor        |
| MISS ELLEN MULLENNIS ..... | Sponsor        |

### MEMBERS

Jean Whisenant, Barbara Varnes, Maudine Webb, Alice Williams, Claire Pollard, Gary Miller, Patsy McCallie, Louise Meyer, Bobbie Gabb, Russell Davis, Connie Layman, Betty Grayson, Woody Oliphant, James Sharp, Freddie Braum, NOT PICTURED: Reba Fossett.

## MILITARY HONOR PLATOON

### OFFICERS

|                            |                     |
|----------------------------|---------------------|
| JOE SMITH .....            | President           |
| GAREN JACKSON .....        | Vice-President      |
| DALLAS THOMPSON .....      | Secretary-Treasurer |
| M/SGT. EUGENE GROOMS ..... | Sponsor             |

### MEMBERS

Don Howard, Lebron McGuffey, Lee Miller, Joe Bales, Robert Ritemire, Dallas Thompson, Bill Dotson, Alfred O'Dell, Harold Smith, Carlton Hemmres, Lebron Loft, Lamar Fowler, J. D. Blalock, Charles Wright, David Litton, David Cayward, George McGhee, Buddy Dotson, Charles Stahely, Gary Jones, Garen Jackson, Fred Reeves, Fred Edwards, Paul Smith, Edward Hixon, Robin O'Brien, James Potter, Billy Ingle, Dennis Fraley, Bill Broyles, James McCollough, Harold Panish, Don Bragg, Fred Camp, David Timmon, Gilbert Parton, Charles Borin, Joe Smith, Curtis O'Neal, Floyd Lee Sheppard, Raymond Powers, NOT PICTURED: Bryon Elkins, James Bowman, Tommy Willis, John D. French.

## MERRY MACS

### OFFICERS

|                        |                |
|------------------------|----------------|
| PATSY POWELL .....     | President      |
| BETTY GASS .....       | Vice-President |
| CAROLYN KELLY .....    | Secretary      |
| PAT McCARSON .....     | Treasurer      |
| MR. LUTHER YOUNG ..... | Sponsor        |

### MEMBERS

Carol Kean, Joyce Cameron, Jane McDonough, Yvonne Steward, Jean Turner, Wanda May, JoAnn Holland, Dot Davis, Willie Jean McBrayer, Joan Turner, Loretta Howard, Patricia Erle, Shirley Gass, JoAnn Layne, Jacqueline Moss, NOT PICTURED: Eva Joyce Wright, Pat Proctor.

## NITE OWLS

### OFFICERS

|                           |                |
|---------------------------|----------------|
| JO ANN CONDRRA .....      | President      |
| FREDA RHEAR .....         | Vice-President |
| ELEANOR BARNES .....      | Secretary      |
| DIXIE VARNES .....        | Treasurer      |
| MISS BONNIE EICHORN ..... | Sponsor        |

### MEMBERS

Jean Davis, Martha Strongman, Sandra Axmacher, Barbara Jo Cambell, Pat McGregor, Kathy Howard, Jo Ann Watkins, Joyce Blevins, Patsy Butler, Judy Nation, Gail Pedigo, Sammie Ruth Porter, Jeannine Pratt, Dixie Young, Mary Clark Rains, Novella Jones, Linda Young, Kathy Hickman, Tookie Lee, Nancy Hayes.





**OFFICE FORCE****OFFICERS**

PATSY DICKSON ..... *President*  
 NORMA JEAN COULTER ..... *Vice-President*  
 PAT PLAXCO ..... *Secretary*  
 VIRGINIA McKAMEY ..... *Treasurer*  
 MISS CHRISTINA COPPINGER ..... *Sponsor*

**MEMBERS**

Mary Jo Waldron, Virginia McKamey, Patsy Dickson, Norma Jean Coulter, Pat Plaxco, Elizabeth Rice, Pat Schroth, Dixie Varnes, Joyce Kelley, Toddy Libe, Alice Clingan, Jane Perry, Betty Sudderth, Barbara Arnold, Louise Sands, Wanda Bennett, Patsy Butler, Jeanette Seaton, Peggy Fordham, NOT PICTURED: Carol Mosteller.

**RIFLE TEAM****OFFICERS**

M/SGT. HALL ..... *Sponsor*

**MEMBERS**

Dallas Thompson, Clifford Ackerson, Herby Simpson, Jim Coffee, Charles Baker, Harold Parrish, Bill Allen, George Williamson, Donnie Geren, Don Howard, Buddy Dotson, Fred Edwards, Charles Wright, Bill Pierce, Don Bragg, Lee Hicks, Sonny Shepard, Paul Smith, NOT PICTURED: Charles Bozin, Harold Wilcox, John Fletcher, Owen Allen, Dean Gross, Doyle Moreland.

**ORCHESTRA****OFFICERS**

CLAIRE POLLARD ..... *President*  
 ANN DANIEL ..... *Vice-President*  
 ALICE COPENHAVER ..... *Secretary*  
 BETTY ROGERS ..... *Treasurer*  
 K. W. JOHN ..... *Sponsor*

**MEMBERS**

Carl Melton, Alice Copenhaver, Ann Daniel, Diane Welch, Betty Rogers, James Sharp, Claire Pollard, Paul Smith, Nancy Hayes, Doris Hayes, Ronald Starnes, Patsy Bethune, Martha Simpson, Tom Posey, Patsy Butler, Joan Nelson, Betty Athearn, Robert Hacker, John Renick, Richard Vickery, Tommy Sims, Larry Lawrence, Richard Hunter, Eugene Burden, Judy Thompson, Gary Hogeland, Larry Luther, Gary Keith, Gene Lawson.

**SENATE CABINET****OFFICERS**

JOE MORGAN ..... *President*  
 SARANELL DAVIS ..... *Vice-President*  
 LINDA BRAGG ..... *Secretary*  
 RICHARD CHAMPION ..... *Treasurer*  
 MR. J. A. HOODENPYL ..... *Sponsor*

**MEMBERS**

Linda Bragg, French Tripp, Saranell Davis, Joe Morgan, Nancy Wade, Carolyn Dilley, Richard Champion, Janet Bolden, Claire Pollard.

**PIRATES****OFFICERS**

DANEEN COLQUITT ..... *President*  
 JEANNE BERRY ..... *Vice-President*  
 MARGIE CUNNINGHAM ..... *Secretary*  
 NANCYE CROWE ..... *Treasurer*  
 MRS. HELEN PARNELL ..... *Sponsor*

**MEMBERS**

Mary Catherine Crow, Nancy Miller, Barbara Hullander, Peggy Malone, Joyce Ensley, Teena Harrison, Jeanie Walker, Dottie Malone, Peggy Berry, Yvonne Ragle, June Long, Pat Rogers, Lydia Ducker, Sadie Green, Gail Frank, Charlotte Ellison, Sandy Ramsey, Carol Gardiner, Delores Marsh, NOT PICTURED: Marlene Evans.

**SENATE****OFFICERS**

JOE MORGAN ..... *President*  
 SARANELL DAVIS ..... *Vice-President*  
 LINDA BRAGG ..... *Secretary*  
 RICHARD CHAMPION ..... *Treasurer*  
 MR. J. A. HOODENPYL ..... *Sponsor*

**MEMBERS**

Janet Bolden, Nancy Wade, Richard Champion, Claire Pollard, Joe Morgan, Saranell Davis, French Tripp, Linda Bragg, Carolyn Dilley, Barbara John, Willene Wood, Effie Ott, Marilyn Hales, Jane Armstrong, Dee Hoffmeyer, Sandra Hollifield, Patsy Butler, Sharon Scherer, Betty Maxwell, Carol McWhorter, Jean Davis, Wanda Westbrook, Lynn Parnell, Tommy Rowland, James Hudson, Mary Sue Sewell, Bobby Rudesill, Dixie Varnes, Johnny Fletcher, Wayne Anderson, Howard Jewell, Alfred Ingram, Houston Wade, Pat McGregor, Bobby Baskette, Owen Allen, Jessie Powers, Doris Henry, John Ray, Joe Simmons, John Werner, Don Bragg, David Broyles.

**RED CROSS****OFFICERS**

MAUDINE WEBB ..... *President*  
 WANDA WESTBROOK ..... *Vice-President*  
 FRAN MOONEY ..... *Secretary*  
 BETTY JUNE TEAS ..... *Treasurer*  
 DR. H. B. ROBINSON ..... *Sponsor*

**MEMBERS**

Judy Walker, Ada Crane, Sue Howington, Martha Sue Jenkins, Jeannette Kress, Judy Hilliard, Ernestine Holdom, Betty Smith, Linda Taylor, Wanda Wilson, Alice Huey, Jean Whisenant, Barbara Cupp, Barbara Williams, Genevieve Hyde, Claire Pollard.

**SHOVE-OFFS****OFFICERS**

CAROLYN LOWE ..... *President*  
 BEVERLY LINK ..... *Vice-President*  
 SYLVIA BROYLES ..... *Secretary*  
 ELIZABETH RICE ..... *Treasurer*  
 MRS. FLORA WARE ..... *Sponsor*

**MEMBERS**

Faith Thompson, Nancy Calhoun, Dottie Parker, Joyce Kelly, Ann Love, Brenda Allen, Mary Helen Massingill, Jackie Bettis, Carol Jones, Charlotte McLain, Sue Carmichael, Carolyn Payne, Louise Sands, Sharon Scherer, Sandra Wichman, Peggy Richardson, Sasie York, Nell Steele, Asonia McDowell, Charlotte Liles, Charlotte Ward, Joan Johnson.







## SILHOUETTE CLUB

### OFFICERS

MARY JO WALDRON ..... *President*  
 SANDRA HOLLIFIELD ..... *Vice-President*  
 WANDA THOMPSON ..... *Secretary*  
 MARGARET MEADOWS ..... *Treasurer*  
 MISS DOROTHY WALKER ..... *Sponsor*

### MEMBERS

Shirley Haley, Mary Ruth Neyman, Mary Worley, Wilma Eaves, Charlotte Goggins, Phyllis Phillips, Mary Sue Sewell, Betty Jo McKenzie, Gaynell Kilgore, Marie Wilson, Ruth Lewis, June Hudson, Jeanette Norwood, Patsy Jo Harris. NOT PICTURED: Wanda Thompson, Cheri Watson, Brenda Laferry, Gaylor Holder.



## SPINSTERETTES

### OFFICERS

NANCY WADE ..... *President*  
 CHARLOTTE REEVES ..... *Vice-President*  
 MARY HARDING ..... *Secretary*  
 JEAN TAYLOR ..... *Treasurer*  
 MR. K. W. JOHN ..... *Sponsor*

### MEMBERS

Jewel Willingham, Phyllis Hoyer, Barbara Ann John, Jeanette Akins, Erna Freudenberg, Geilda McDowell, Dee Hoffmeyer, Polly Smith, Beverly Nolan, Carolyn Owens, Jane Armstrong, Patsy Smith, Willene Wood, Shirley Pope, Judy Tompkins, Linda Wooten, Nancy MaGette, Reba Keith, Reba Fossett, Susan Busbin, Shirley Ward, Jill McCune. NOT PICTURED: Margie Fryar.

## TWIXTEENS

### OFFICERS

JANE SITTON ..... *President*  
 JERRY WALSTON ..... *Vice-President*  
 MARY JO EAVES ..... *Secretary*  
 CATHERINE NAPIER ..... *Treasurer*  
 MISS RUTH CLARK ..... *Sponsor*

### MEMBERS

Jane Puckett, Neemie Tipton, Charlotte Oaks, Billie Jane Davis, Harriet Witt, Sheila Betts, Nora McMahon, Nancy Boone, Betty Indermill, Frances Parham, Phyllis Southerland, Beverly Howard, Shirley Green, Sharon Williams, Dorothy Burrow, Peggy Blalock, Patsy Wilson, Wanda Westbrook. NOT PICTURED: Jane Fitzgerald, Patsy Bethune, Sandra Parman, Geneva Parker, Vivian Brownlow, Janet Scherkler, Patty Hale, Linda Parker, Pat Keown, Maudine Webb.



## STAGE CREW

### OFFICERS

TED WITT ..... *President*  
 FREDDY REEVES ..... *Vice-President*  
 CURTIS O'NEAL ..... *Secretary-Treasurer*  
 MR. RALPH OLINGER ..... *Sponsor*

### MEMBERS

Curtis O'Neal, Bobby Hartman, Ted Witt, Freddy Reeves, Jack Walker, Gilbert Parton, Bill Babb, Carl Stutz, Houston Wade, Dean Gross, John Deanes, Owen Allen, Richard O'Neal.



## THE USHERS

### OFFICERS

JEAN TAYLOR ..... *President*  
 JO ANN CONDR ..... *Vice-President*  
 DANEEN COLQUITT ..... *Secretary-Treasurer*  
 MISS EDNA CROSS ..... *Sponsor*

### MEMBERS

Ann Love, Margie Fryar, Harriet Witt, Peggy Hill, Leila Casted, Anna Morgan, Glenda Wigley, Barbara Williams, Sara Henderson, Peggy Malone, Mary Jo Eaves, Peggy Ransom, Margie Cunningham, Ruth Lewis, Lela Mae Helton, Maggie Kelsay, Helen Goforth, Anita Nowell, Helen Massey, Norma Rosser, Martha Phillips, Carole Stork, Elsie Wilson, Ann Daniel, Eva Jane Smith, Janet Bolden, Yvonne McGlohon, Charlotte Reeves, Mary Harding, Bettye Adams, Beverly Nolan, Bobby Cohor, Charlotte Peden, Nina Barrows, Charlotte Groul, Ray Dean Evans, Yvonne Bales, Carolyn Diller. NOT PICTURED: Willene Richbourg, Betty Stroud.

## VARSITY GLEE CLUB

### OFFICERS

RICHARD CHAPMAN ..... *President*  
 PATSY BUTLER ..... *Vice-President*  
 YVONNE MCGLOHON ..... *Secretary*  
 LAMAR OWENS ..... *Treasurer*  
 MR. K. W. JOHN ..... *Sponsor*

### MEMBERS

Everett O'Neal, Joyce Howard, Jeannette Akins, Gene Etter, Patsy Butler, Yvonne McGlohon, Lamar Owens, Richard Chapman, David Strakley, Margie Cunningham, Patty Rector, Genevieve Lunsford, Carolyn Sauls, Russell Davis, Michael Sterchi, Sammie Ruth Porter, Geilda McDowell, Dee Hoffmeyer, Pat Underwood, Jeannine Pratt, Ann Kennedy, Peggy Blalock, Rhyma Matthews, Doris Ingram, Eva Shaw, Helen Massey, Anita Hale, Carolyn Owens, Gaynell Kilgore, Dale Chadd, Martha Jett, Betty Rogers, Barbara Wrick, Martha Strongman, Shelia Wigley, Nancy Pyle, Genevieve Hyde, Barbara Johnson, Pat Lunsford, Laura Layne, Jo Ann Harvey, Billy Champion, James Hall, Rhyne Williams, Alfred Ingram, James Giddens, Dave Rollins, David Carpenter, Don Jennings, David Gray, Larry King, Wayne Curtis. NOT PICTURED: Alice Huey, Charlotte Oaks.



## VAGABONDS

### OFFICERS

SARANELL DAVIS ..... *President*  
 MARY ARMSTRONG ..... *Vice-President*  
 ALICE FISHER ..... *Secretary*  
 CHRISTINE HELTON ..... *Treasurer*  
 MRS. MARGARET HAMMACK ..... *Sponsor*  
 MISS ETHEL YORK ..... *Sponsor*

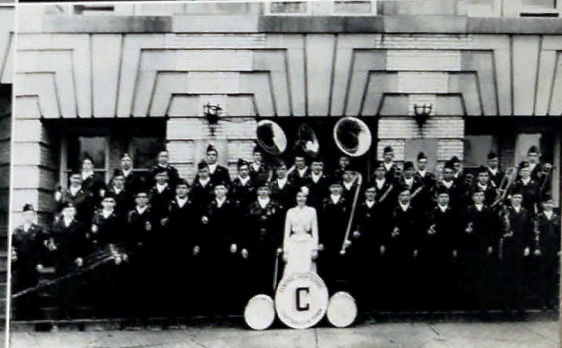
### MEMBERS

Saranell Davis, Mary Armstrong, Alice Fisher, Martha Phillips, Jo Ann Casey, Rose Manning, June Flinn, Christine Helton, Glenda McDaris, Yvonne McGlohon, Sue Laxon, Phyllis Winkler, Doris Newman, Helen Robertson, Judy Charlesworth, Karlene Gross, Barbara Waldrop, Wanda Eckman, Faye Edwards, Marilyn Hales, Charlotte Green. NOT PICTURED: Sandra Hill, LaVona Rauslein.

## MILITARY BAND

### OFFICERS

JAMES HAYNES ..... *Captain*  
 SANDRA HOLLIFIELD ..... *Sponsor*  
 BUDDY MARTIN ..... *Drum Major*  
 MR. MORRIS BALES ..... *Sponsor*



CHS Library





TRUTH OR CONSEQUENCES



AD GETTERS



DYER'S PROTEGES



M-M-M—GOOD



A GOOFY GROUP



GUARDS—OF A SORT



THE INAUGURATION PARADE



OH! THOSE CLOTHING DRIVES



TOUCHDOWN!



FLORIDA FUN



WOT HOPPEN



LIGHTS! CAMERA! ACTION!





"CAN'T HARDLY GET THEM NO MORE"—  
GEORGE GOBEL



OUR PAINTERS



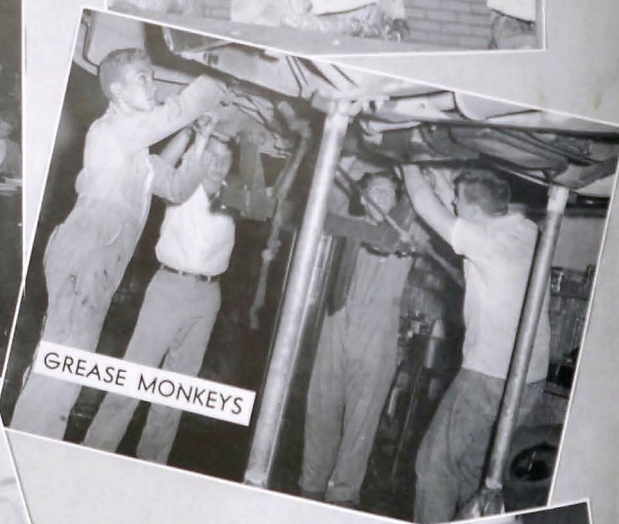
CHRISTMAS GUESTS



THE LIFE OF A BAND MEMBER



DEPARTURE FOR CLASSES



GREASE MONKEYS



SING IT PRETTY, BOYS



MORNING DEVOTION OFFICERS



CHRISTMAS—SPANISH STYLE



OUR FAVORITE PERIOD



NOW, AIN'T THAT TENDER?



ITTY, BITTY BUDDIES





### OBJECTS OF THE P.T.A.

To promote the welfare of children and youth in home, school, church, and community.

To raise the standards of home life.

To secure adequate laws for the care and protection of children and youth.

To bring into closer relation the home and the school, that parents and teachers may cooperate intelligently in the training of the child.

To develop between educators and the general public such united efforts as will secure for every child the highest advantages in physical, mental, social, and spiritual education.

There's a "one and only"  
in refreshment, too





## 11TH ST. TRUCK STOP

439 East Eleventh Street

CHATTANOOGA, TENNESSEE

Phone 6-6617

## BLESSING WATERHOUSE & COMPANY

WHOLESALE GROCERS

520-530 East Tenth St.

CHATTANOOGA, TENNESSEE

## RAY MOSS FARMS

DAIRY PRODUCTS

Bonnie Oaks Drive

Phone 2-7247

Phone 7-5117

Home 2-6185

## COX & MOORE

KNOCKING AT YOUR DOOR

## FURNITURE CO.

45 East Main Street

MRS. A. T. COX, Mgr.

CHATTANOOGA, TENNESSEE

COMPLIMENTS

OF

## EASTDALE DRUG COMPANY

GEORGE BURROWS

Phone 2-9572

Free Estimates

## JOE B. THOMAS PLUMBING

New Installations  
Repairs—Remodeling  
Fixtures

Satisfaction Guaranteed  
Reasonable Rates

703 Dodds Ave.  
Chattanooga, Tenn.

COMPLIMENTS

OF

## A FRIEND

## LOOKOUT VALLEY DRUG CO.

SAM STEFFNER, Grad. Pharm.

Serving Tiftonia

Phone TA 1-1541

Store of Friendly Service

COMPLIMENTS

OF

## COLONIAL BAKING COMPANY

2220 East Fourth Street

## ALLEN MUSIC COMPANY

"Chattanooga's Guitar Headquarters"

1510 Dodds Ave.

Chattanooga, Tenn.

Phone 9-3843

LESSONS—SHEET MUSIC—SUPPLIES

NOW 2 GREAT STORES TO SERVE

YOU BETTER . . .

**Miller's Downtown**

7th and Market Streets

**Miller's Brainerd**

Brainerd Road—Germantown



## THE TEXAN RESTAURANT

511 Dodds

A Delightful Place to Eat





COMPLIMENTS  
OF  
BILL PENNEY



BAKER & WILSON, INC.

315 Dodds Avenue

Electrical Appliances

Television—Furniture

Phone 4-2636

*Compliments*  
*of*  
DUNCAN ELECTRIC CO., INC.

CHATTANOOGA, TENNESSEE

BILL LINDSAY

BOB DUNCAN

BUD MORELAND

GURNEY CONNALLY

*Announces the purchase of the*

RIDGE DRUG COMPANY

418 Dodds Avenue

PRESCRIPTIONS... BIOLOGICALS... AMPULES

Telephone 2-1171

Delivery Service

"Across from Central High School"

COMPLIMENTS  
OF  
DODDS AVENUE  
PHARMACY

CONGRATULATIONS  
FROM  
WILLIAMS TYPESETTING  
COMPANY

1414 McCallie

Phone 4-8539

COMPLIMENTS  
OF  
WALLY'S  
DRIVE IN

1606 McCallie Avenue



CHATTANOOGA BAKERY, INC.



CHATTANOOGA GAS  
COMPANY

CHATTANOOGA, TENNESSEE

COMPLIMENTS  
OF  
FARMERS MARKET

Owned and Operated  
by

CLAUDE DELANEY

713 East Eleventh Street Phone 7-0656

*Congratulations*

CLASS OF 1955

DODDS AVENUE  
HARDWARE

BOB RICHEY'S

Delicious Donuts

and

Fried Pies

TASTE THE DIFFERENCE

2212 McCallie Ave

CHATTANOOGA, TENNESSEE

Phone 2-9241

OSCAR'S  
SANDWICH SHOP

2522 McCallie Avenue

*Floormaster*

RUG CLEANERS

1911 Dodds Avenue

CHATTANOOGA 4, TENNESSEE

TURNER FUNERAL HOME

Ambulance Service

EUGENE TURNER

Owner

1101 Dodds Avenue

Telephone 2-3171

SOUTHERN WHOLESALERS, INC.

Chattanooga Branch:

1700 Dodds Avenue

Phones 9-5470 - 2-5665

418-22 S. Glenwood Ave.,

DALTON, GEORGIA

Phones 1583 - 1584

ALLISON'S  
SHELL SERVICE

Open 24 Hours

Pick Up and Delivery

4617 Brainerd Road

Phone 9-4820

BRAINERD-VARNELL  
HARDWARE

3114 Brainerd Road

Phones 2-1173—2-1174

McDonough's

INCLINE DRUG STORES

3914-15 St. Elmo Avenue

Phones 5-3631—5-1688

CHATTANOOGA, TENNESSEE

M. F. McDONOUGH, SR.

M. F. McDONOUGH, JR.

CHATTANOOGA  
ARMATURE WORKS

ELECTRIC MOTOR REPAIRS

Phone 2-2124

COMPLIMENTS  
OF  
OAK GROVE BARBER  
SHOP

2010 East Main Street

SAMUEL STAMPING  
AND  
ENAMELING COMPANY

"SAMCO PRODUCTS"

Manufacturers Road





# *Congratulations* *from your friends* *in the Telephone Company*

Many of your  
friends of earlier classes  
are now members of  
the telephone family

We join with  
them in wishing you every  
success and good fortune  
for the future



SOUTHERN BELL TELEPHONE AND TELEGRAPH COMPANY

COMPLIMENTS OF



**AMERICAN LAVA  
CORPORATION**

## TENNESSEE TEMPLE SCHOOLS

- BIBLE SCHOOL
- COLLEGE
- SEMINARY
- GRAMMAR SCHOOL

"Distinctively Christian"

CHATTANOOGA, TENNESSEE

**HOLLAND'S**



**APPLIANCE**



**RCA**

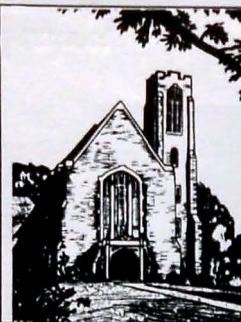
**VICTOR**

2010 East Main

Phone 4-7678



COMPLIMENTS  
OF  
HAJOCA  
CORPORATION



UNIVERSITY  
OF  
CHATTANOOGA

DODDS AVENUE  
CLEANERS

"Courteous and Quality Service"

|              |                      |
|--------------|----------------------|
| Plant        | Branch Office        |
| 1910 Dodds   | 2209 Rossville Blvd. |
| Phone 2-4415 | Phone 7-5970         |

VIOLET CAMERA SHOP

9 East Seventh Street

CHATTANOOGA, TENNESSEE

SIGNAL ROOFING  
& SUPPLY COMPANY

509 Dodds Avenue Phone 2-4926

Roofing, Siding, Remodeling

Free Estimates F.H.A. Terms

FULLER

TELEVISION SALES and SERVICE

3736 Ringgold Road

FULLER TELEVISION SERVICE, INC.

Office 9-1491

COMPLIMENTS  
OF



SIMMONS MILLING CO.

3401 North Hawthorne Street

Phone 4-0346

Distributors of

LOG CABIN CORN MEAL

DAVE ELDRIDGE

SYE SIMMONS

# ECKERD'S DRUG STORE

CREATORS OF REASONABLE DRUG PRICES

## PATRONS

|  |                     |                            |
|--|---------------------|----------------------------|
| Agnew Hardware Company . . . . .       | 7-2186 . . . . .    | 30 Frazier Avenue          |
| Allen's Pharmacy . . . . .             | 2-1127 . . . . .    | 2100 McCallie Avenue       |
| Beasley's Service Station . . . . .    | 4-9208 . . . . .    | 1507 Tunnel Boulevard      |
| Brainerd Drug Company . . . . .        | 2-3101 . . . . .    | 3240 Brainerd Road         |
| Buck's Cafe . . . . .                  | TA 1-9131 . . . . . | Cummings Highway           |
| Buck's Truck Stop . . . . .            | TA 1-9100 . . . . . | Cummings Highway           |
| Chattanooga Button and Badge . . . . . | 6-6934 . . . . .    | 205 East Eighth Street     |
| Check-R-Board . . . . .                | 6-7189 . . . . .    | 727 East Eleventh Street   |
| Craig's . . . . .                      | 2-2615 . . . . .    | 3216 Brainerd Road         |
| Crisman Hardware Company . . . . .     | 7-1114 . . . . .    | 511 Market Street          |
| East Chattanooga Drug . . . . .        | 2-2191 . . . . .    | 3100 Dodson Avenue         |
| East Ridge Bootery . . . . .           | 9-7112 . . . . .    | 3710 Ringgold Road         |
| Easy Way Grocery . . . . .             | 2-4632 . . . . .    | 2310 McCallie Avenue       |
| Effron's, Inc. . . . .                 | 7-0451 . . . . .    | 607 Market Street          |
| "Ernie" . . . . .                      |                     |                            |
| Flower Box . . . . .                   | 2-0114 . . . . .    | 401 Dodds Avenue           |
| Fowler Brothers . . . . .              | 7-4556 . . . . .    | 701 Broad Street           |
| M. C. Gross Food Store . . . . .       | 9-1798 . . . . .    | 6720 East Brainerd Road NE |
| Hale and Wallace, Inc. . . . .         | 4-2613 . . . . .    | 1077 Duncan Avenue         |
| Hannah-Adams, Inc. . . . .             | 2-2952 . . . . .    | 3629 Brainerd Road         |
| Hardie and Caudle . . . . .            | 6-4129 . . . . .    | 809 Market Street          |
| Haskin's Pharmacy . . . . .            | 2-1175 . . . . .    | 1430 Dodds Avenue          |
| Lansford Piano Company . . . . .       | 6-7185 . . . . .    | 730 Cherry Street          |
| L. C. Leach and Co. . . . .            | 7-2841 . . . . .    | 738 Cherry Street          |
| LeGrand Jewelry Company . . . . .      | 7-6648 . . . . .    | 604 Market Street          |
| Liles Drug Company . . . . .           | 4-1381 . . . . .    | 8049 East Brainerd Road NE |
| Lookout Valley Grocery . . . . .       | TA 1-1581 . . . . . | Cummings Highway           |
| Lovemans . . . . .                     | 5-3511 . . . . .    | 800 Market Street          |
| "Luther" . . . . .                     |                     |                            |
| Martin-Thompson Co. . . . .            | 7-3373 . . . . .    | 706 Cherry Street          |
| Mary Ann Bake Shop . . . . .           | 4-7641 . . . . .    | 3478 Brainerd Road         |
| Matthew's Pharmacy . . . . .           | 2-3168 . . . . .    | 1400 Dodds Avenue          |
| Tom McGhee, Jeweler . . . . .          | 6-0751 . . . . .    | 732 Cherry Street          |
| National Funeral Home . . . . .        | 2-8366 . . . . .    | 1800 McCallie Avenue       |
| Rexall-Rhyme Pharmacy . . . . .        | 84-1547 . . . . .   | 117 Chickamauga Avenue     |
| Rhodes-Pryor Decorating Co. . . . .    | 2-8383 . . . . .    | 2107 McCallie Avenue       |
| Riverview Pharmacy . . . . .           | 7-2113 . . . . .    | 1101 Hixson Pike           |
| R. K. Scholze . . . . .                | 2-2131 . . . . .    | 415 Dodds Avenue           |
| Templeton's Jewelers . . . . .         | 6-7628 . . . . .    | 12 West Eighth Street      |
| Three Sisters, Inc. . . . .            | 6-2719 . . . . .    | 702 Market Street          |
| The Vogue . . . . .                    | 4-2676 . . . . .    | 3617 Brainerd Road         |
| Williams Flower Shop . . . . .         | 5-3237 . . . . .    | 1042 McCallie Avenue       |
| Willow Pharmacy . . . . .              | 2-2171 . . . . .    | 2015 Chamberlain Avenue    |



*Autographs*

*Autographs*



*Autographs*

?







