



1939

Champion

PROPERTY OF
CENTRAL HIGH SCHOOL

PRESENTING
PRESENTING

Snodgrass House



CHS Library.

The 1939 Champion

C O P Y R I G H T E D , 1 9 3 9

William A. Elrod, Editor-in-Chief

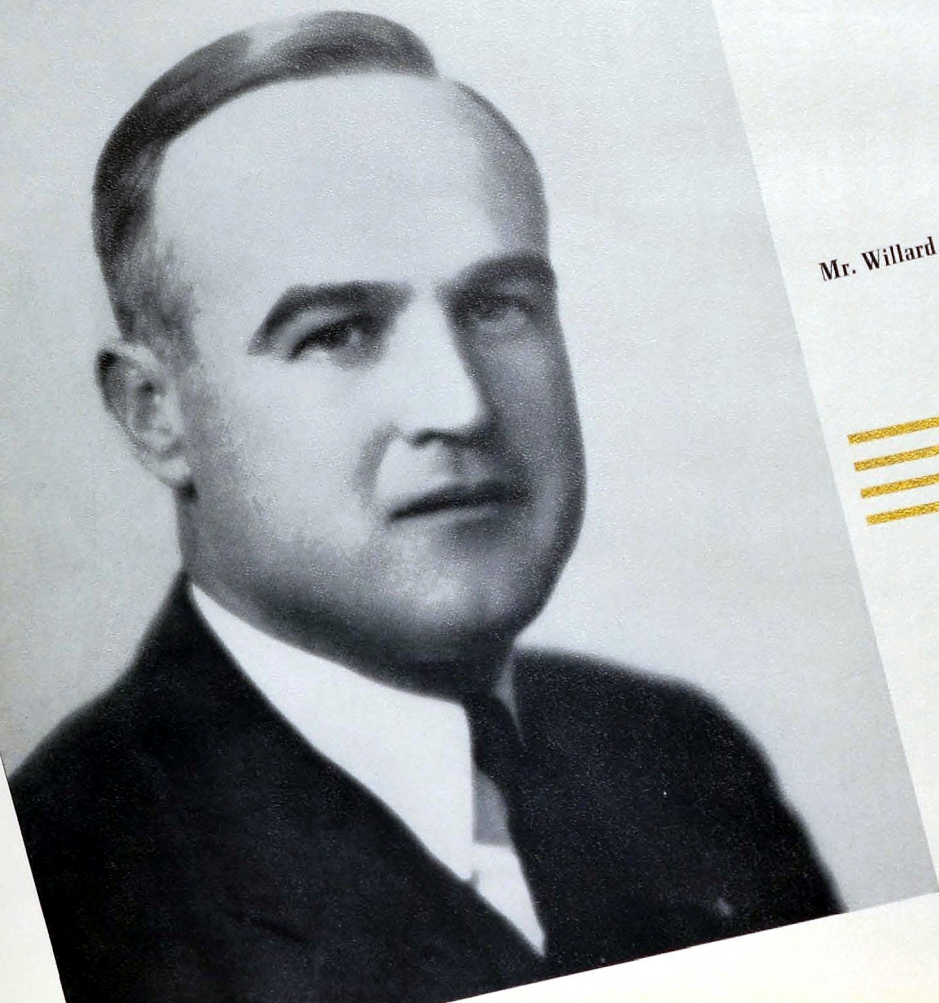
Roden Davisworth, Business Manager

Annual Publication of
The Senior Class of
Central High School
Chattanooga, Tennessee

We dedicate

This the 1939 Champion
to Mr. Willard Millsaps
who through his sincerity
of purpose, through his
kindly understanding and
unfailing loyalty has won
the admiration of Central.

Mr. Willard Millsaps



Market
Street



FOREWORD

As time moves on in its steady round of the constantly changing years, may this the twenty-ninth volume of The Champion help you recall happy days of '39 spent within the walls of Central High in that city famous for its historic battles and its dynamic industrialism; its southern hospitality and its scenic wonders—Chattanooga.

CONTENTS

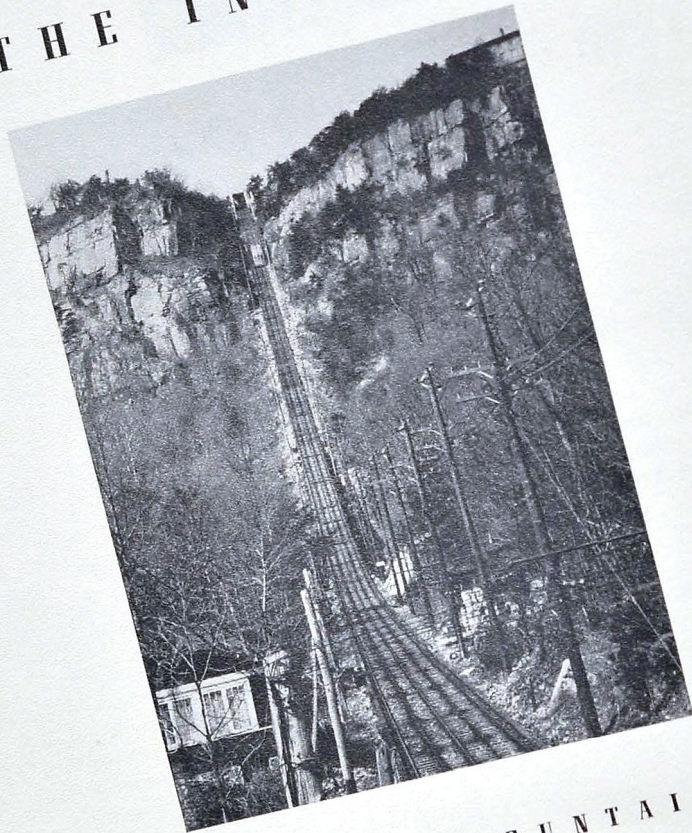
THE SCHOOL
ATHLETICS
FEATURES
MILITARY
ORGANIZATIONS

Moccasin Bend



THE SCHOOL

THE INCLINE



LOOKOUT MOUNTAIN

OUR PRINCIPAL



MR. S. E. NELSON



FACULTY

Mr. Milton Allen
Mr. C. J. Anderson
Mr. W. P. Bales
Mrs. Hazel Barton
Miss Martha Bean
Miss Flora E. Beck
Mrs. Mildred G. Betts
Mrs. C. H. Boyd
Mrs. Harry Brown

Mrs. Mary D. Callis
Mrs. G. M. Clementson
Miss Ruby Cochran
Mrs. D. S. Coughlin
Miss Virginia Harrell
Miss Mary Lou Derryberry
Mr. J. Pope Dyer
Miss Ruth Fain

Mr. J. J. Fletcher
Miss Dorothy C. French
Mr. J. L. Hair
Mrs. George Harding
Miss Edna K. Cross
Miss Mary Lou Derryberry
Mr. J. Pope Dyer
Miss Margaret Hays

Mrs. Freda L. Hill
Mr. Arlie Hoodenpyl
Miss Edmund Hooser
Mr. J. Stegar Hunt
Miss Sarah B. Hubbard
Mrs. Edna C. Jacoway
Mr. Kenneth John
Mrs. Lila K. Johnson

Miss Earl R. Jones
Miss Elizabeth Jones
Miss Martha Jones
Miss Sally May King
Mrs. Clarence Kolwyck
Miss Grace Lasater
Miss Marguerite Lehmann
Miss Caroline Lillard
Mrs. Ida M. Longley



FACULTY

Miss Josephine W. Love
Miss Rachel McAllister
Mr. George W. McCoy
Major D. N. McMillin
Mr. James L. Millburn
Mr. Willard Millsaps
Miss Ann Moffitt
Miss Minnie Lee Morgan
Miss Ellen Mullennix

Mr. S. E. Nelson
Miss Vesta Nelson
Miss Ida Nickel
Mr. R. E. Olinger
Miss Joe Ore
Miss Beulah Parker
Mr. G. C. Patterson
Mr. S. Dean Petersen

Mrs. J. Frank Price
Miss Helen G. Pryor
Mrs. George Rice
Miss Mary Ellen Rice
Miss Imogene Robertson
Mrs. H. B. Robinson
Mr. Jack R. Rodman
Mr. W. R. Rollins

Mrs. A. B. Rogers
Miss Lillie Schwartz
Mrs. John A. Shelton
Mrs. Janie L. Shropshire
Mrs. A. G. Skates
Mr. Harmon Smith
Mr. A. P. Stewart
Mr. G. M. Swingley

Mr. S. O. Tallant
Miss Margaret S. Taylor
Mr. W. H. Templeton
Mr. Edward S. Vanover
Miss Dorothy Walker
Miss Margaret Waples
Mr. Robert S. Wharton
Miss Bessylee Wiggs

BOARD OF EDUCATION

MRS. HARRY R. LACEY
CHAIRMAN

MR. MARSHALL CLARK
SUPERINTENDENT

MR. E. Y. CHAPIN

MR. J. P. BROWN

MR. JOHN H. ALLEN

DR. E. S. BLAIR

MRS. WILL SHEPHERD

MR. GEORGE FORBES

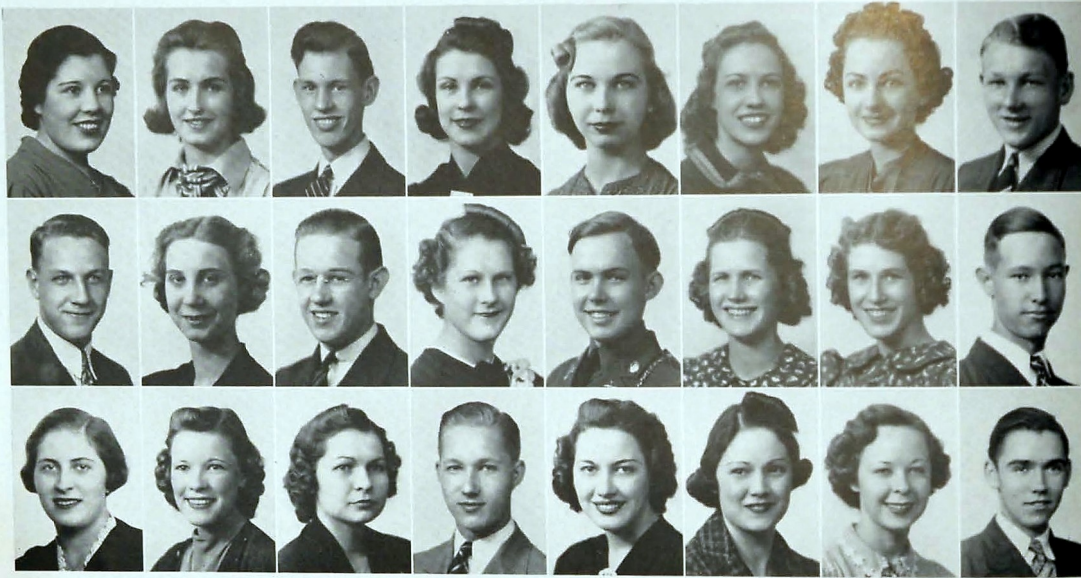


Edwards, Foxworth, Wheeler, Watson, Hennessee, DeFriesse

OFFICERS

HARRY EDWARDS	President
JAMES FOXWORTH	Vice-President
DOROTHY HENNESSEE	Secretary
RUTH WHEELER	Treasurer
JIMMIE DeFRIESE	Sergeant-at-Arms
HAROLD WATKINS	Sergeant-at-Arms

SENIOR CLASS



SENIOR CLASS

DOROTHY CARLEEN ADAMS "Dimples"
Entered from Brainerd Junior High, '36; Girl's Hi-Y, '37; Library Club, '39; Bible Club, '39.

ANN AIKEN
Entered from Notre Dame, '38; Ace Club, '38.

WARREN THEODORE ALLEN
Entered from Brainerd Junior High, '36.

DOROTHY ELIZABETH AMERSON "Betty"
Entered from East Side, '37; Red Cross, '37, '38, '39; Digest Sponsor, '38, '39; Song Leader, '37, '38, '39.

EVELYN CAROLYN ASHLEY
Entered from East Side Junior High, '36; Varsity Glee Club, '37, '38, '39; May Day, '36, '38; Usher, '39; Southeastern Teachers Concert, '38, '39.

MARTHA PHYLLIS AUERSWALD "Felix"
Entered from Lutheran School, '36; May Day, '36, '37; Circus, '36.

MARY KATHERINE AULT
Entered from Brainerd Junior High, '36; Glee Club, '38; Home Economics Club, '37; National Honor Society, '39.

ALVIN BROOME BAKER "Droopy"
Entered from East Lake Junior High, '36; Band Club, '38, '39; Camera Club, '37, '38, '39; Depression Club, '38, '39; Stamp Club, '36; Varsity Glee Club, '38, '39; Senior Play, '39; Southeastern Teachers Association, '38; Operetta, '39.

J. C. BAKER "Jeptha"
Entered from East Lake Junior High, '36; Camera Club, '38; Officers Club, '38; Red Cross, '38; Lieutenant R. O. T. C., '38; Stamp Club, '36, '38.

LOLA BELLE BAKER
Entered from East Side Junior High, '36; Home Economics, '36, '37, '38; Girl's Hi-Y, '38; Etiquette, '38.

I. LEO BALDWIN, JR.
Entered from East Side Junior High, '34; Digest Staff, '36, '37, '38.

SARA ANNETTE BARCLAY "Boots"
Entered from Brainerd Junior High, '36; Physical Education Club, '37; Athletic Club, '37; Ace Club, '38, '39; Biology Club, '36; Ice Cream Crew, '38, '39; Circus, '36, '37, '38, '39; May Day, '37, '38, '39.

RAY S. BASHAM "Heel"
Entered from East Side Junior High, '36; Harmonica Club, '36, '37; Radio Club, '36, '37; Grady Literary Society, '36, '37, '38; Boll Weevils, '37, '38, '39; Officer's Club, '38, '39; National Honor Society, '37, '38, '39; Football, '36; Extra Curricular, '36.

LUCILLE BEENE
Entered from East Side Junior High, '37; National Honor Society, '39; Usher, '39; Hi-Y, '37, '38, '39; Bible Club, '38, '39; Red Cross, '38, '39.

VIRGINIA YERA BEENE "Jennie"
Entered from East Side Junior High, '37.

WILLIAM C. BELVIN, JR. "Snake"
Entered from Annicola Grammar School, '36.

MARTHA CLARA BINGERMAN
Entered from East Side Junior High, '36; Home Economics Club, '36, '37, '38; Etiquette Club, '36, '37, '38; Hi-Y, '36, '37, '38, '39; Athletic Club, '38; Usher, '39.

EDNA EMOGENE BIRD "Gene"
Entered from Lookout Junior High, '37; Girl's Hi-Y, '39; May Day, '37.

EVELYN GERTRUDE BLACKWELL
Entered from Tyner High School, '37; Glee Club, '36, '37; Usher, '39.

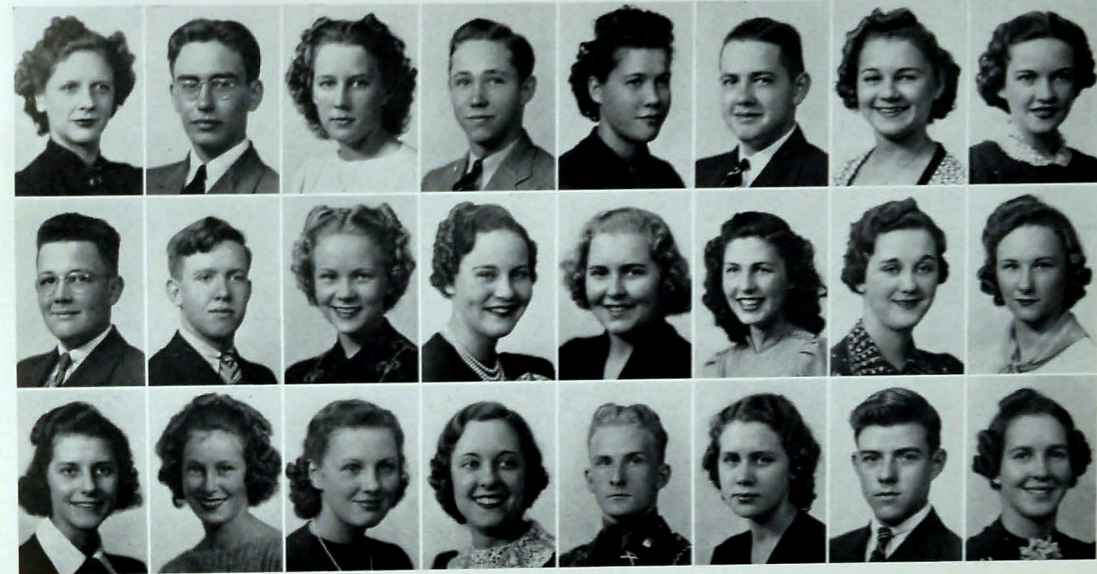
CHARLES F. BLAIR "Charlie"
Entered from East Side Junior High, '36; Depression Club, '38, '39.

ALICE MATTIE BLANTON "Patty"
Entered from Lookout Junior High, '37; May Day, '37.

MARGARET JUNE BLAYLOCK
Entered from East Side Junior High.

LORINE BLEVINS "Fay"
Entered from Mountain Creek, '36.

RAYMOND BOONE
Entered from East Side Junior High, '37; Stamp Club, '37, '38, '39; Radio Club, '38.



CHS Library.

SENIOR CLASS

JANE LUCILLE BASS "Janey"
Entered from Mountain Creek, '36.

JOSEPH EUGENE BOULDIN "Bo-Bo"
Entered from North Chattanooga Junior High, '36; Extra Curricular Award, '36; Spanish Play, '36; Junior Red Cross, '38; Sergeant's Club, '37, '38; Junior Play, '38; Etiquette Club, '38, '39; Officer's Club, '39; Boy's Hi-Y, '38, '39; Dramatic Club, '37; Senior Play, '39; Lieutenant R. O. T. C., '39; Digest Staff, '39; Senate, '39; Star Fourteen, '39.

JOYCE KATHERINE BOWLING
Entered from Brainerd Junior High, '36.

EDWARD L. BOWMAN "Ed"
Entered from East Side Junior High, '36; Printing Club, '37, '38, '39; Tennis Club, '37.

ROBBIE ELIZABETH BOWMAN
Entered from North Chattanooga Junior High, '36; Ace Club, '36; Physical Education, '38.

ROBERT JOHN BRADSHAW, JR. "Bob"
Entered from Dickinson Junior High, '37; Boll Weevils, '38, '39.

FREDA ALINE BRANNAN
Entered from Lookout Junior High, '36.

MARGARET LOUISE BRAY
Entered from First Lutheran, '35; Home Economics Club, '36, '37, '38; Candy Crew, '37.

LYOYD BRITTON
Entered from Dickinson Junior High, '36.

PERRY BROCK
Entered from East Lake Junior High, '36.

ALYCE RUTH BROOKS
Entered from East Side Junior High, '36; Senate, '36, '37, '38, '39; Cabinet, '38, '39; Digest Staff, '37, '38, '39; Champion Staff, '39; Red Cross, '38; Etiquette, '38, '39; Hi-Y, '39; National Honor Society, '38, '39; Usher, '38, '39; Orchestra, '38, '39; Girl Reserves, '38; May Day, '36; Senior Invitation Committee, '39; Etiquette Club Play, '38.

JEAN DAY BROOKS
Entered from Rome High School, '38; Girl's Hi-Y, '38, '39; Camera Club, '38, '39; Girl Reserves, '39, '38, '39; Property Committee for Senior Play, Vice-President, '39; Senate, '39.

NINA ALINE BROOKS "Pickles"
Entered from East Side Junior High, '37; Girl's Hi-Y, '38, '39; Ice Cream Force, '38, '39; Bible Club, '38; Girl Reserves, '38, '39.

EULALA BROWN
Entered from Red Bank Jr. High, '36; Girl Reserves, '38, '39; Red Cross, '38, '39; Nite Owls, '39; Girl's Physical Education Club, '37, '38; Circus, '36, '38; May Day, '36, '38; Captain Gym Class, '37; Drum Major, '39; Song Leader in Gym, '38.

ANNA GEARLEAN BROWN
Entered from Tyner High School, '37; Ace Club, '38, '39; May Day, '37; Circus, '37.

LILLIAN BROWN "Brownie"
Entered from Dickinson Junior High, '36; Ace Club, '38, '37, '38; Tennis Club, '36; Scouts, '37, '38; Badminton, '38; Circus, '36, '37; May Day, '36.

MILDRED VIRGINIA BROWN
Entered from Hardy Junior High, '37.

NANCY JEANETTE BROWN "Peggy"
Entered from Tyner Junior High, '38; Library Club, '37; Bible Club, '37; May Day, '38; Circus, '37; Digest Sponsor, '37.

MARY FRANCES BROYLES
Entered from Dickinson Junior High, '36, '37; S. P. O. R., '38, '39; Program Chairman, Checkers, '38; Sub-deb, '39; Hiking, '38, '39; Red Cross, '36, '37; Mythology, '37, '38.

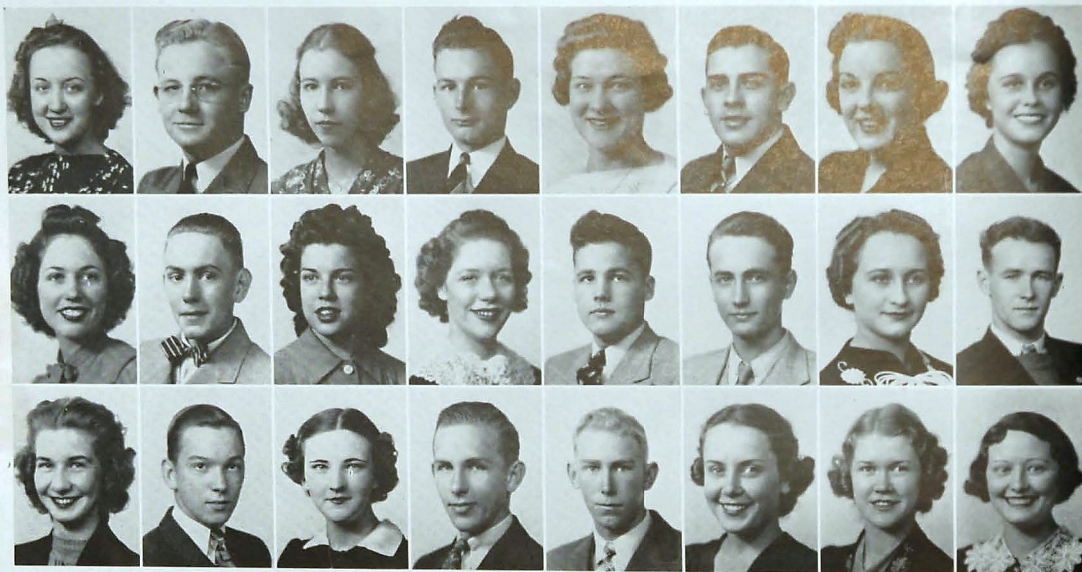
JUANITA MILDRED BRYANT "Nita"
Entered from North Chattanooga Junior High, '36; Hiking Club, '36; Physical Education Club, '36; Physical Education Club, '38, '39; Red Cross, '38, '39; Handicraft, '38, '39; Etiquette Club Play, '38; May Day, '37.

NORMAN HOLMES BRYANT "Rosebud"
Entered from Rutsville High, '36; Airplane Club, '36; Sergeant's Club, '37; Red Cross, '38; Officer's Club, '38; Biology Club, '38; Dramatic Club, '38; Senior Play, '37; Senate, '38.

VIVIAN BUCHNER
Entered from Dickinson Junior High, '36.

RAYMOND K. BUFFET
Hardy Junior High, '36; Printing Club, '37, '38; Digest Staff.

MARY ELIZABETH BUTLER
Entered from Judson Vocational High School, Columbus, Ga., '38.



SENIOR CLASS

MARTHA FRANCES BYNUM "Peanut Butter"
Entered from Lookout Junior High School, '36; Hiking Club, '36, '37, '38, '39; Circus, '37, '38; May Day, '38; Junior Red Cross, '38, '39.

HENRY WARD BYRD "Tweet-Tweet"
Entered from Brainerd Junior High, '36.

DOROTHY MARGARET CAHOUN "Dot"
Entered from Hardy Junior High, '35; Bible Club, '37, '38; Red Cross, '38, '39; Girl Reserves, '38, '39; Band Club, '38, '39; Stamp Club, '39.

HARVEY A. CAMP "H. A."
Entered from East Side Junior High, '36; Tennis Club, '38; Officers Club, '39; Red Cross, '38, '39; Dramatic Club, '39.

IYA DEAN CAMP "Idine"
Entered from Tyner Junior High, '36; Ace Club, '37, '38, '39; Camera Club, Secretary, '38, '39; National Honor Society, '39; Usher, '39; Digest, Business Manager, '39; Glee Club, '34; Circus, '36.

JOHN F. CAMP "Bean Cot"
Entered from East Side Junior High, '36; Red Cross, '36, '37; Operetta, '36; Minstrel, '36; Boxing Team, '37.

HARRIET EVELYN CAMPBELL
Lookout Junior High, '36.

CATHERINE ALDEANA CARDEN "Kitty"
Entered from Hardy Junior High, '37; Ace Club, '37, '38, '39; Home Economics Club, '38, '39; Candy Crew, '39; May Day, '37.

ERMA RUTH CARSON
Entered from Bass High School, Atlanta, Ga., '36; Girl Reserves, '38, '39; May Day, '36; Chorus Class, '38.

DAN SHANNON CATES "Oscar"
Entered from East Side Junior High, '36; Camera Club, '37, '38, '39; Officer's Club, '38, '39; Depression Club, '38, '39; Band Club, '36, '37, '38, '39; Orchestra, '37, '38, '39; Orchestra for Operetta, '37, '38, '39; Orchestra Southeastern Teachers Meeting, '38; Band East Tennessee Teachers Meeting, '38; Band, '36, '37, '38, '39.

SUE CAYCE
Entered from Mansfeld Junior High, Tucson, Arizona, '36; Sub-Deb, '38, '39.

MILDRED CHAPMAN
Entered from East Side Junior High, '36; Girl Reserves, '38, '39; Sub-Deb, '39; Physical Education, '38; Red Cross, '38.

ROBERT EARL CHAPMAN
Entered from Jordan Lee High, '38.

JAMES HERSCHEL CHASE
Entered from East Side Junior High, '36.

IDA MADGESTIC CHESTER "Madge"
Entered from Martin Institute, Jefferson, Ga., '38; Red Cross, '38, '39; Candy Crew, '39; Fashion Show, '39.

JEWEL CHILDRESS "Shorty"
Entered from Rossville High, '37; Boxing Team, '38.

VIRGINIA FRANCES CLARK "Bobby"
Entered from Dickinson Junior High, '36; Girl's Hi-Y, '39; Usher, '39; Red Cross, '36, '39; Sub-Deb, '37, '38, President, '39; Orchestra, '36, '37, '38, '39; E. T. E. A. Orchestra, '36, '37; S. E. T. A., '37, '38.

CLARENCE HENRY COBLEIGH
Entered from Brainerd Junior High, '36; Biology Club, '36, '37.

GRACE MARIE COBLEIGH "Gracie"
Entered from Brainerd Junior High, '36; Girl's Hi-Y, '39.

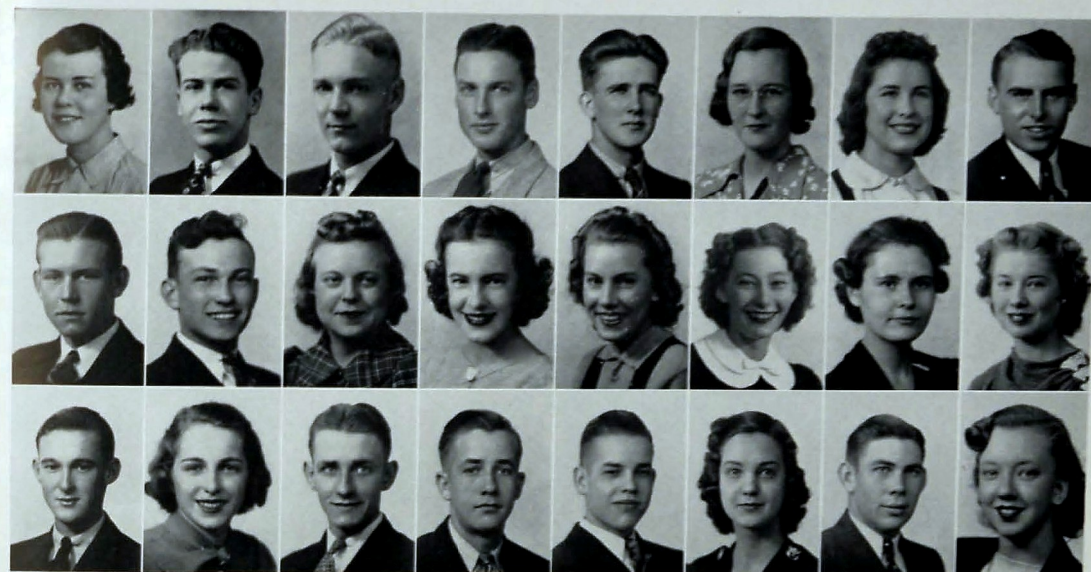
ALBERT P. COE, JR.
Entered from Annisson High, '36; Officer's Club, '38, '39; Football, '38, '39.

BILLY COLEMAN "Cotton"
Entered from East Lake Junior High, '36.

DORA COLLIER
Entered from East Side Junior High, '36.

WILMA COLLIER
Entered from East Side Junior High, '36.

THELMA EVELYN COLLINS
Entered from Chattanooga High, '36; Biology Club, '36; Girl Reserves, '36; National Honor Society, '39; Senior Council '39; Usher, '39; Costume Committee for Senior Play, '39.



SENIOR CLASS

AVICE PAULINE COLSTON "Happy"
Entered from Brainerd Junior High, '37; Home Economics Club, '37; Art Club, '38; S. P. Q. R. Club, '38, '39; Mythology Club, '38; Dramatics Club, '39; Sub-Deb, President, '39; Usher, '39; Winner in Serving Contest, '38.

FRED DOW COLSTON, JR. "Freddie"
Entered from Brainerd Junior High, '36; Red Cross, '36, '37; Business Manager, '38, '39; Sergeant-at-Arms, '37; Delegate to Washington, D. C., '37; San Francisco, California, '38; Digest Circulation Manager, '37; Advertising Manager, '38, '39; Camera Club, '38; Spanish Club, '37; Depression Club, '39; Business Manager Sea Scout Club, '39; Chairman Speech Class, '39; Membership Committee Consumer's Research Club, '39; Advertising Committee for Senior Play, '39.

LEONARD RICHARD COLVILLE "Cool"
Entered from Red Bank Junior High, '35; Science Club, '35; Stage Crew, '36, '37, '38, '39; Etiquette Club, '38, '39.

WILLIAM CONNER "Willie"
Entered from Rhea High, '37; Sports Club, '38, '39; Airplane Club, Secretary, '37, '38.

OSCAR E. COOK, JR. "Cookie"
Entered from North Chattanooga Junior High, '36; Scout Club, '36; Library Club, '37, '38; Camera Club, '38, '39; Stamp Club, '36, President, '39.

VIOLET MARY COOLE "Vi"
Entered from Dickinson Junior High, '36; Biology Club, '36; May Day, '36; S. P. Q. R. Club, '37; Digest Sponsor, '38.

EDNA NAOMI COOPER
Entered from Tyner High, '39; Hiking Club, '39.

NORMAN WILSON COOPER
Entered from East Side Junior High, '36.

PAUL WILSON COOPER
Entered from Chattanooga High School, '38.

WILLIAM GIBSON COOPER, JR. "Billy"
Entered from Dickinson Junior High, '36; Science Club, '36; Tennis Club, '37; Sea Scouts, '38; Art Club, '37; Band Club, '39; Committee for Junior Party, '38.

LILLIAN LUCILLE CRAVEN "Folly"
Entered from Lookout Junior High, '37; Bible Club, '37, '38, '39.

DOROTHY ELLEN CREIGHTON "Dot"
Entered from Red Bank Junior High, '35; Secretary, Anchors Aweigh, '39; Digest Reporter, '39; Sub-Deb, '39; Sponsor Company F, '39.

JUNE EVELYN CRESSMAN "Little Bit"
Entered from East Lake Junior High, '37; Physical Education Club, '37, '38; Circus, '37, '38; May Day, '37, '38.

HELEN LOUISE CRUMLEY "Helern"
Entered from East Side Junior High, '36; Physical education, Treasurer, '37; Athletic Club, '37; Ace Club, '37, '38; Tumblers, '36, '37, '38, '39; Circus, '37, '38; Gym Captain, '38, '39; May Day, '38.

MARY ELLEN PATRICIA CRUMLEY
Entered from East Side Junior High, '36; Handicraft, '36; Hispanofilia, '38; Usher, '39; National Honor Society, '39; Candy Crew, '38.

LEONA LUCILLE CUNNINGHAM "Toots"
Entered from Lookout Junior High, '36; Hi-Y, '38; Bible Club, '37, '38.

GERALDE WILLARD CUZZORT
Entered from Brainerd Junior High, '36; Digest Staff, '39.

BETTY DAVIS "B. D."
Entered from Brainerd Junior High, '36; Etiquette Club, '36; Treasurer, '38; Vice-President, '39; Red Cross, '37; Girl Reserves, '37; Girl's Hi-Y, '38, '39; Home Economics Club, '37.

CLIFFORD VIRGIL DAVIS
Entered from East Lake Junior High, '36.

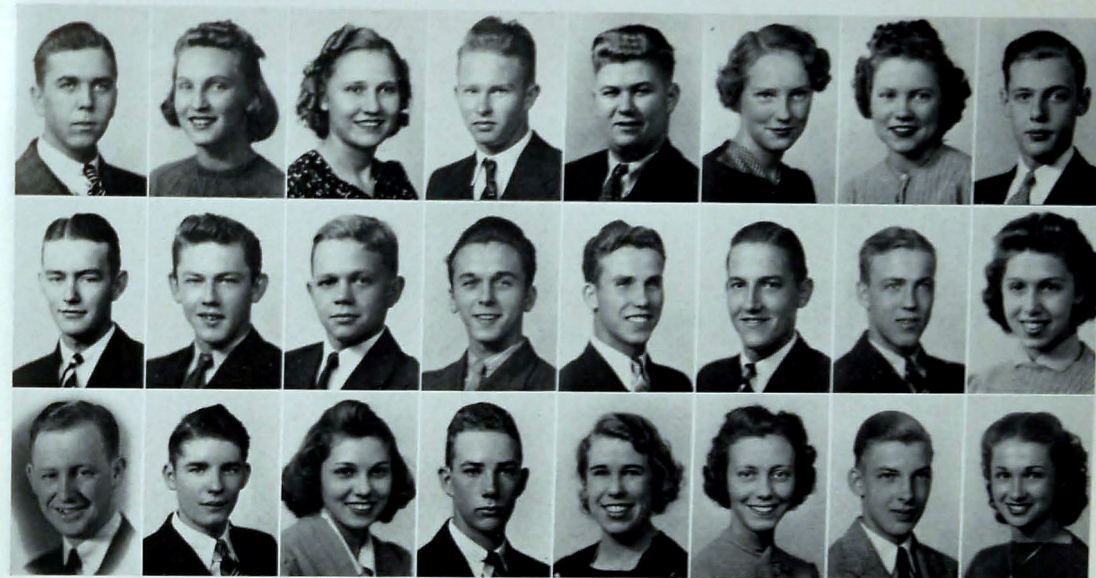
BENARD EDWIN DAVIS
Entered from East Side Junior High, '36; Biology Club, '36, '37.

JULIUS HORTON DAVIS "Hooper"
Entered from Knoxville High, '37; Orchestra, '37.

WINNIE LOUISE DAVIS
Entered from Hixson High, '37; Bible Club, '39; Red Cross, '38.

RODEN PERCY DAVISWORTH
Entered from Chattanooga High School, '37; Business Manager of Champion, '39.

REBECCA DEAKINS "Beckie"
Entered from Brainerd Junior High, '36; Art Club, Secretary, '36, '37; Red Cross, '36, '37, '38, '39; Chorus, '36, '37; Girl's Hi-Y, '37, '38, '39; Nite Owls, '37, '38, '39; Digest Staff, '38, '39.



SENIOR CLASS

ELSIE LOUISE DEARING

Entered from Brainerd Junior High, '36; Art Club, '36, '37; Nite Owls, '37; Treasurer, '38; Hi-Y, '38, President, '39; Home Economics Club, '39; Usher, '39; Senior Council, '39.

JIMMIE DeFRIESE

Entered from Brainerd Junior High, '36; Sergeant's Club, '37, President, '39; Officer's Club, President, '39; Etiquette Club, '39; R. O. T. C. Cadet Major, '39; Sergeant-at-Arms, Senior Class, '39; Senior Council, '39; Champion Staff, '39.

MARTHA ELIZABETH DeFRIESE "Marthy"
Entered from Brainerd Junior High, '36; Home Economics, '36; Biology, '38; Spanish Club, '38; National Honor Society, '39; Usher, '39.

FRANK ROBERT DENT, JR.

Entered from Dickinson Junior High, '36; Airplane Club, Vice-President, '37.

MARGARET KATHRINE D'ERIEUX

Entered from East Side Junior High, '37; Bible and Prayer Club, '37, '38, '39; Candy Crew, '38, '39.

BERTIE RUTH DeSHA

Entered from Annicola Grammar, '36; Bible Club, '38.

LOUISE DOUGLAS

Entered from North Chattanooga Junior High, '36.

AMIE MELVA DOWNEY

Entered from Red Bank Junior High, '37; Girl Reserves, '37, '38, '39.

ANNA LEE DRAKE

Entered from Chattanooga High, '37.

O. L. DRAKE, JR.

Entered from East Lake Junior High, '36; Biology Club, '37; Airplane Club, '37; Automobile Club, '37; Camera Club, '37, '38, '39; Vice-President; Camera Club, '39; Sport Club, '39.

CORRINNE DUDLEY

Entered from Vocational, '39.

BETTY DUNCAN

Entered from Lakeview School, '36; Band Club, '36, '37, '38; Art Club, '37; May Day, '36; Orchestra, '37.

MARY ELIZABETH DUNCAN

Entered from Brainerd Junior High, '36.

EDGAR EADS

Entered from East Side Junior High, '36; Boll Weevils, '37, Manager, '38, '39.

GENIA MAE EAKER

Entered from Brainerd Junior High, '36; Red Cross, '36, '37, '38.

JEWELL EDGE

Entered from Red Bank Junior High, '36; Ace Club, '36, '37, '38; Physical Education Club, '36; Girl Reserves, '36, '37; May Day, '36, '37.

HARLEY MERRITT EDMONDSON

Entered from East Side Junior High, '36; Airplane Club, '37; Sergeant's Club, '38; Officer's Club, '39.

HARRY L. EDWARDS

Entered from Brainerd Junior High, '36; Senior Class President, '39; Honor Society, President, '39; Boy's Hi-Y, President, '39; Science Club, President, '36; Bank Force, '38, '39; Digest, '37, '38; Dramatic Club, '39; Etiquette, '39; Science Debating Team, '36; Red Cross, '38; Spanish, '37; Junior Play, '38; Business Manager of Senior Play, '39.

HIXSON B. ELDRIDGE

Entered from North Chattanooga Junior High, '36; Band Club, '36, '37, '38, '39; Sergeant's Club, '38; Drum Major, '39; Eastern Teachers Education Association, '38.

WILLIAM A. ELROD

Entered from Brainerd Junior High, '36; Boy's Hi-Y, '39; Editor of Champion, '39; Digest Staff, '37, '38; News Editor, '39; Senate, '39; National Honor Society, '39; Extra Curricula Award, '38.

JOSEPHINE MINNIE EVANS

Entered from Lookout Junior High, '37; Physical Education Club, '37, '38; Ace Club, '37; Tennis Club, '37; Circus, '37.

FRANCES ELOISE EVATT

Entered from East Lake Junior High, '36; Red Cross, '36, '37, '38, '39; Etiquette Club, President, '38; Secretary of Freshman Class, '36; Senate, '37, '38, '39; Freshman Representative to Champion, '36; Digest Staff, '36, '37, '38; Nite Owl, '38; Anchors Aweigh, '39; Usher, '39; Ice Cream Crew, '38, '39.

MAUDE FRANCES EVATT

Entered from Brainerd Junior High, '36; Library Club, '36; Bible Club, '39.

MARTHA EVELYN EVERET

Entered from City High, '37; Girl Reserves, '39.

CHS Library.

SENIOR CLASS

FRANK RANDLE FARR

Entered from Hardy Junior High, '36; Printers Club, '37, '38, '39; Digest Staff, '39.

MARY ALINE FARRAR

Entered from East Side Junior High, '36; Red Cross, '37, '38; Home Economics, '36, '37, '38, '39; May Day, '36, '37; Two-Sevens, '37.

WILLIE JEAN FINCANNON

Entered from Dickinson Junior High, '36; Library Club, '36, '37, '38, President, '39; Red Cross, '36, '37; Sports Club, '38, '39; Usher, '39.

WILLIAM E. FINLEY

Entered from Dickinson Junior High, '36.

DOUGLASS FLETCHER

Entered from Aniston High School, '36.

HARRIET ELIZABETH FLEWELLEN

Entered from East Side Junior High, '36; Home Economics Club, '36; Red Cross, '36; Office, '36, '37, '38, '39.

VIRGINIA ELEANOR FORD

Entered from North Chattanooga High, '36; Chorus, '37; Mythology Club, '38; S. P. Q. R., Secretary, '36, '37, '38; Physical Education, '37; Hiking Club, '38; National Honor Society, '39; Future Teachers of America, Secretary, '39.

JAMES FOXWORTH

Entered from Schook Grammar School, Tracy City, '36; Senate, '38, President, '39; Dramatic Club, '38, President, '39; Grady Literary Society, '38, '39, Vice-President; Red Cross, '37, '38, '39; Junior Play, '38; Senior Play, '39; Vice-President, Junior Class, '38; Vice-President, Senior Class, '39; Senior Council, '39.

RICHARD FRYAR

Entered from Lookout Junior High, '35; Military, '36, '37.

EMMITT FULTZ

Entered from East Side Junior High, '37.

WALTER A. FUNDINGER, JR.

Entered from Lanier Boys High School, '38; "C" Club, '39; Junior Basketball, Manager, '38; Football, Manager, '39; "C" Club Minstrel.

RALPH GADD

Entered from Lakeview, '36; Art Club, '37; Sea Scouts, '37; Variety Glee Club, '38; Science Club, '36; Tennis Club, '36; Etiquette Club, '36; "C" Club Minstrel, '37.

GORDON LEWIS GANN

Entered from Chattanooga High, '37.

PAUL B. GARNER, JR.

Entered from Chattanooga High, '37; Junior Play, '38.

WILLIAM DOWLING GARDENHIRE

Entered from East Side Junior High, '36.

SARAH ANN GARDNER

Entered from Rossville High School, '36; Champion Staff, '38; Usher, '39; Hi-Y, '39; Senior Council, '37; Library, '37, '38; National Honor Society, '39; Business Staff Senior Play, '39; Student Forum, Secretary, '37; German Club, Vice-President, '39.

WALLACE BOYD GARNER

Entered from Chattanooga High, '36; Red Cross, '36, '37, '38.

WILLARD L. GASTON

Entered from East Side Junior High, '37.

GRACE ELIZABETH GENUNG

Entered from Brainerd Junior High, '36; Physical Education Club, '37; S. P. Q. R., '38.

J. C. GIBSON

Entered from Ooltewah, '36; 4-H Club for ten years.

ROSA EDITH GILREATH

Entered from Mountain Creek Grammar School, '36; Physical Education Club, '37, '38.

AUDREY ELIZABETH GOODLET

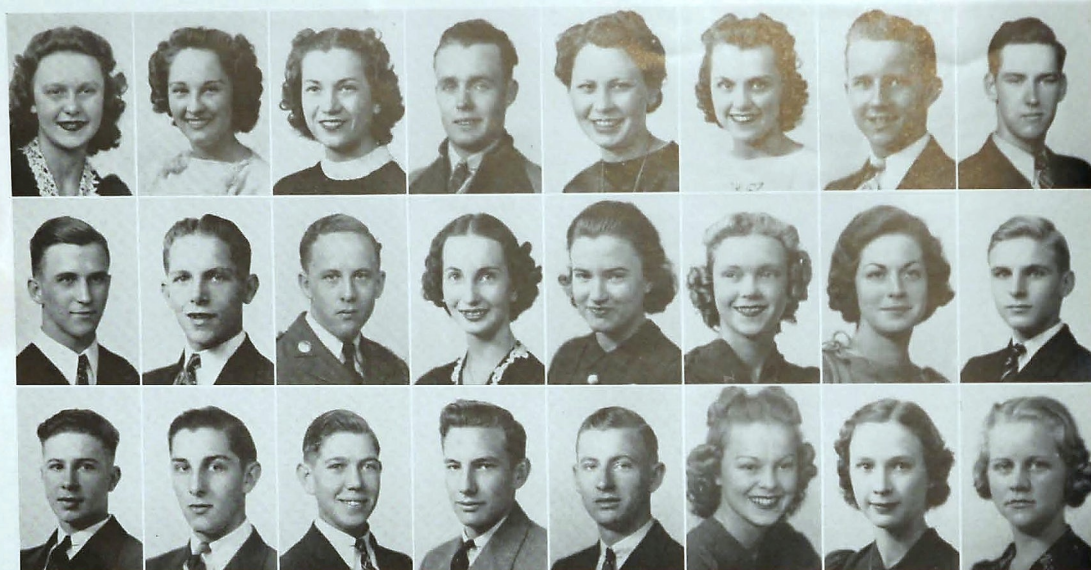
Entered from East Lake Junior High, '37; Ace Club, '37, '38, '39; Biology Club, '37; Usher, '39; May Day, '37; Circus, '37, '38.

MASSEY LEE GORDON

Entered from Northside Junior High, '36; Band Club, '36, '37, '38, '39; Spanish Club, '38; Band, '36, '37, '38, '39; Science Club, '38; Sergeant's Club, '39.

JEAN GRAY

Entered from East Side Junior High, '36; Senate, '36, '37; Cabinet, '38; Vice-President, '39; Etiquette, '38, President, '39; Dramatic, '38, Vice-President, '39; Digest Staff, '36, '37; Alumni Editor, '38; Editor-in-Chief, '39; Hi-Y, '39; Usher, Vice-President, '39; Junior Play, '38; Senior Play, '39; National Honor Society, '39; Class Invitation Committee, '39; Extra Curricula Award, '38; Science Club, '36; Star Fourteen, '39.



SENIOR CLASS

MARJORIE GREEN "Margie"
Entered from North Chattanooga Junior High, '36; Red Cross, '36, '39; Physical Education, '36, '37; Etiquette Club, '38, '39; Nite Owls '38, '39, Vice-President; Circus, '37; May Day, '37; Bachelorettes, '39.

ROSETTA MACE GREENE "Rosie"
Entered from Fairmount Grammar School, '36; Bible Club, '39; Red Cross, '38.

GLORIA GREER
Entered from East Side Junior High, '36; Checker's Club, '38; Red Cross, '37, '38; Circus, '38.

HOMER H. GRIFFIN, JR. "Big Foot"
Entered from Chattanooga High, '33.

MARY LOU GUTHRIE "Mary"
Entered from Cedartown, Georgia, Junior High School, '37.

MARY ELEANOR HAINES "Mernelmar"
Entered from Brainerd Junior High, '36; Varsity Glee Club, '36, '37, '38, '39; Girls Hi-Y, '38, '39; Home Economics Club, '38; Treasurer, '39; Girl Reserves, '37; Sub-Deb, '38; Operetta, '36, '37, '38; Junior Play, '38; Senior Play, '39; Drum Major, '37; Southeastern Chorus, '38, '39.

BILL HALE "Willie"
Entered from Hardy Junior High, '36; Printing Club, '38, '39.

JAMES LAMONT HALL "Red"
Entered from Brainerd Junior High, '36.

LEWIS WILLIAM HALL
Entered from Red Bank Junior High, '37.

JOSEPH EDWARD HAMMACK "Joe"
Entered from East Side Junior High, '36; Boy's Glee Club, '36; Varsity Glee Club, '37, '38; Cheer Leader, '37, '38, '39; Operetta, '38; Tennis Team, '37, '38; Times Five-Mile Race, '37, '38; Junior Basketball, '38.

WALLACE W. HAMMEL "Wally"
Entered from Jellico High School, '37; Band Club, '37, '38, '39; Spanish Club, '37; Band, '37, '38, '39; Orchestra, '37, '38, '39; Sergeant's Club, '39; Operetta, '37, '38, '39.

EDITH ELLEN HAMMONTREE "Speedy"
Entered from Lakeview High School, '36; Red Cross, '38, '39.

ANNIE SUE HANNAH "Shorty"
Entered from East Side Junior High, '36; Spanish Club, '38; Physical Education, '38, '39.

IVA ELLEN HARDIN "Ellie"
Entered from East Lake Junior High, '36; Biology Club, '36, '37; Bible Club, '38.

ANGELLA HARRIS "Jellie Bean"
Entered from Northside Junior High, '36; Chorus, '36, '37; Civics Club, '38, President.

JOHN EDWIN HARSCH
Entered from Boyd Junior High, Knoxville, '37; National Honor Society, '39; Biology Club, '36, '37, Vice-President, '38, '39; Senate, '37; Cabinet, '38, '39; Student Forum, Vice-President, '36, '37; Digest Staff, Times Page Editor, '38; Associate Editor, '39.

THOMAS J. HARWOOD
Entered from Chattanooga High School, '37; Orchestra, '37, '38, '39.

WILLARD REECE HAWK
Entered from North Side, '36.

HAROLD T. HAYES "Tubbs"
Entered from Dickinson Junior High, '36.

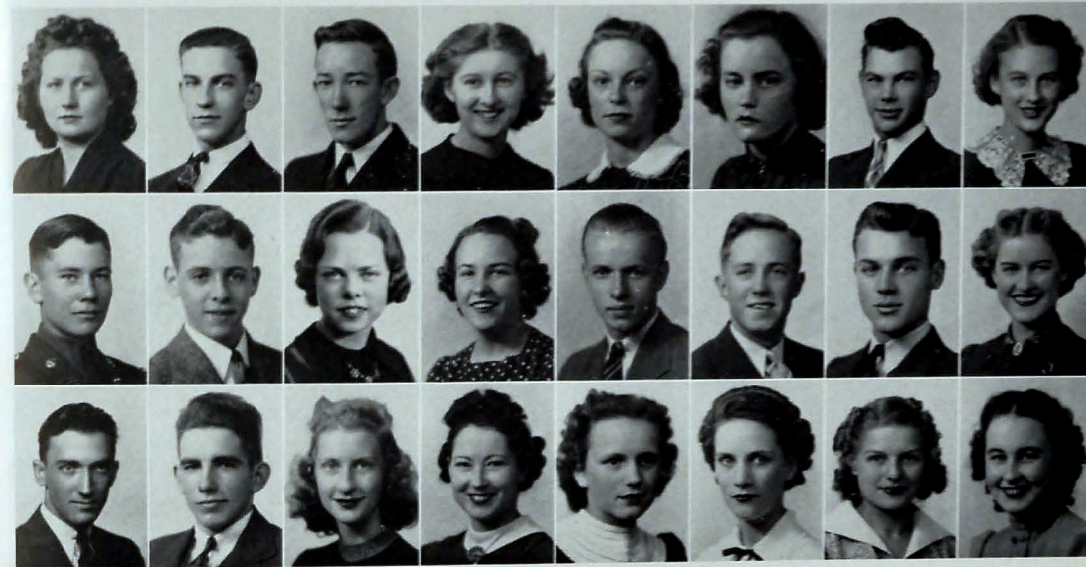
WINFRED N. HAYNES
Entered from Red Bank Junior High, '37; Officer's Club, '39; Lieutenant in R. O. T. C., '39.

BERNARD HEAPS "Strawberry"
Entered from Brainerd Junior High, '36.

DOROTHY HENNESSEE "Dot"
Entered from Brainerd Junior High, '36; Girl's Hi-Y, Treasurer, '37, '38, '39; Anchors Aweigh, '38, '39; National Honor Society, '39; Usher, '39; Varsity Glee Club, '36, Secretary and Treasurer, '37, '38, '39; Dramatic Club, '37, '38, '39; Senate, '37, '38, '39; Red Cross, '36, '37; Candy Crew, '36, '37; Sponsor of Band, '39; Southeastern Chorus, '37, '38, '39; Operetta, '36, '37; Senior Play, '39; Treasurer of Freshman Class, '36; Secretary of Sophomore, Junior and Senior Classes, '37, '38, '39; Champion Staff, '39; Etiquette Club, '36, '37; Officer's Club, '39.

MINNIE LEE HENNESSEE "Mickey"
Entered from East Side Junior High, '36; Red Cross, '37, '38; Home Economics, '36, '37, '38, '39; Two-Sevens, '37; May Day, '36, '37.

RUBY HENRY "Wooby"
Entered from Hardy Junior High, '37; Home Economics, '38, '39; Biology Club, '38, '39; Physical Education, '38, '39.



SENIOR CLASS

SARA ROBERTINE HENRY "Tweet"
Entered from East Lake Junior High, '36; Mythology Club, '37; Red Cross Club, '37, '38; Girl Reserves, '37, '38; Girl's Hi-Y, '37; Etiquette, '38, '39; Etiquette Club Play, '38; S. P. Q. R., '38, '39.

TALMADGE HAYDEN HENRY "Buster"
Entered from East Side Junior High, '36; Junior Red Cross, '37, '38, President, '39; Bible Club, '37; Sea Scout Club, Vice-President, '39; Tennis Club, '37, '38; Lieutenant of R. O. T. C., '39; Officer's Club, '39; Sergeant's Club, '38; Red Cross Delegate to Convention in San Francisco, California, '38.

J. B. HENSEN
Entered from East Lake Junior High, '37.

MARJORIE MARIE HICKS
Entered from Red Bank Junior High, '37; Girl's Hi-Y, '39; Usher, '39; Girl Reserves, '39; Physical Education, '38; Handicraft, '37; May Day, '38.

TEENIE BEATRICE HIGDON
Entered from Jasper High School, '37.

VELMA ALINE HIGDON "Fido"
Entered from Hardy Junior High, '37; Bible Club, '37, '38.

EDWARD HILL "Happy-go-Lucky"
Entered from Northside Junior High, '36; Central Football, '37.

MARGARET ELIZABETH HIPP
Entered from North Chattanooga Junior High, '36; Junior Red Cross, '37; Tennis Club, '37.

HENRY HOSBAY, JR. "Heel"
Entered from East Side Junior High, '36; Senate, '36, '37, '38, '39; Membership Chairman, '39; Grady, '37, '38; Camera Club, '36, '37, '38; Band Club, '36, '37, '38; Sergeant's Club, '37, '38; Officer's Club, '38, '39; National Honor Society, '38, '39; Soil Weevils, '37, '38, '39; Captain Band, '39; Drum Major, '38.

MILTON HODGES "Presy"
Entered from Hardy Junior High, '36; Camera Club, '37, '38; Etiquette Club, '37, '38; Depression Club, '38, '39; Secretary, Red Cross, '38, '39; "C" Club Minstrel, '38.

NANCY MARY HODGES "Nan"
Entered from Hardy Junior High, '36; Bible Club, '38.

MILDRED KATHERINE HOOPER "Pete"
Entered from Hardy Junior High, '37; Bible Club, '37; Physical Education, '38; Usher, '39.

BILL BURKE HOTALEN
Entered from Brainerd Junior High, '36; Band Club, '36, '37, '38; Boy's Hi-Y, '36, Chaplain, '37, '38; Bible Club, '36, President, '37; Varsity Glee Club, '38, '39; Dramatic Club, '39; Sergeant's Club, '37, '38; Orchestra, '36, '37; Depression Club, Vice-President, '38; Operetta, '37, '38; Junior Play, '38; Southeastern Chorus, '38, '39; East Tennessee Chorus and Band, '38, '39.

RAY ANDERSON HOUSER
Entered from North Chattanooga Junior High, '37.

CHARLTON HOWARD
Entered from Tyner High, '38; "C" Club, '39; Football, '39.

DOROTHY ELAINE HOWARD "Dot"
Entered from East Side Junior High, '37; Bachelorettes, '39.

CHARLES D. HUBBARD "Hub"
Entered from Tyner High School, '35.

DONALD E. HUDDLESTON
Entered from Hardy Junior High, '35.

ROSE MARIE HUDSON
Entered from Chattanooga High, '37; Bachelorettes, '37, '38; Ace Club, '38, '39; Hiking Club, '38, '39; Red Cross, '38, '39.

WILLIE HUMBARDE "Bill"
Entered from Hardy Junior High, '38; S. P. Q. R., '37; Home Economics, '37; Honor Society, '39; Future Teachers of America, '39; Program Chairman.

ANN HUNERWADEL "Homesick"
Entered from Red Bank Junior High, '36; Red Cross Club, '36, '37, '38; Etiquette Club, '37, '38; Circus, '38; May Day, '38; Handicraft, '38.

JUANITA ELIZABETH HURLEY "Nita"
Entered from East Side Junior High, '36; Tumbler's Club, '36; May Day, '36, '37, '38.

EDITH LUCILLE IRELAND
Entered from Lookout Junior High, '37; Physical Education Club, '37; Home Economics Club, '39; Girl Reserves, '39.

ETHEL BERT JACKSON
Entered from Brainerd Junior High, '36; Hi-Y, '37.



SENIOR CLASS

JOE B. JACKSON

Entered from Tyner High, '37; Football, '39.

ROY JACKSON

Entered from East Lake Junior High, '36; Biology Club, '36; Camera Club, '36; Officers Club, '39.

HUGH WILLIAM JACKSON

Entered from Lakeview High, '36.

JOHN JONES

Entered from Gadsden High School, '37; Printers Club, '38; Manager of Baseball Team, '38, '39.

JOHN WILLIAM JONES

Entered from Classen High School, Oklahoma City, '38. "Bill"

RUBY LEE JONES

Entered from Brainerd Junior High, '36; Etiquette, '36, '37, '38, '39. "Jones Girl"

MARY JORDON

Entered from East Side Junior High, '38.

MARGARET IDA JORGES

Entered from Brainerd Junior High, '36; Usher, President, '39; Orchestra, '36, '37, '38, '39; Circus, '37.

BEN THOMAS KESSLER

Entered from North Chattanooga Junior High, '36; S. P. Q. R., '37, '38, '39; R. O. T. C., '37; Hiking Club, '38, '39; Mythology Club, '37; Digest Sponsor, '37; Senate, '39.

EUGENE C. KIGER, JR.

Entered from Brainerd Junior High, '36; Grady Literary Society, '36, Secretary, '37, '38, President, '39; Senate, '36, '37, '38, Chairman of Regulation Committee, '39; Boy's Hi-Y, '36, '37, '38, Vice-President, '39; Sergeant's Club, '38; Officer's Club, '39; Band Club, '38, '37, '38, Sergeant-at-Arms, '39; Band, '36, '37, '38, '39; Orchestra, '36, '37, '38, '39; Dramatic Club, '37; E. T. A. Orchestra, '37; E. T. A. Band, '39; Southeastern Orchestra, '39.

HOYT EUGENE KILGORE

Entered from East Lake Junior High, '36; "C" Club, '37, '38, '39, Vice-President, '39; Captain Football Team, '39; Champion, '39.

IRA KING, JR.

Entered from East Lake Junior High, '36; Varsity Glee Club, '38, '39; Sergeant's Club, '39; Dramatic Club, '39; Cadet Captain R. O. T. C., '39; Operetta "H. M. S. Pinafore," '38; Southeastern Concert, '39; Operetta "Patience," '39; Spring Concert, '38.

MARGARET KINGTON

Entered from East Lake Junior High, '36; S. P. Q. R., '37, '38; Mythology, '38.

NELL EMOGENE KRICHBAUM

Entered from Chattanooga High, '37; Varsity Glee Club, '37, '38; Girl's Hi-Y, '39. "Giggles"

EDWARD DENTON KROEGER

Entered from Lakeview Junior High, '36; Orchestra, '37, '38, '39.

BETTY JEAN LAMB

Entered from East Side Junior High, '36; Red Cross, '38, '39; Anchors Aweigh, '39, Vice-President; Etiquette Club, '39. "Ugly"

JOHN SMITH LANHAM

Entered from East Nashville High School, '36; Depression Club, '38.

MILDRED FRANCES LANHAM

Entered from East Nashville High School, '37; Physical Education Club, '37, '38, '39. "Stuff"

VIRGINIA LAWRENCE

Entered from East Side Junior High, '36; Physical Education Club, '38, '39; May Day, '36, '38. "Ginger"

HELEN MAXINE LAWSON

Entered from Central High, Knoxville, '35; Girl Reserves, President, '36, '37, '38, Sub-Deb, '37; Treasurer, '38; Anchors Aweigh, '38; Biology, '36, '37; Red Cross, '36, '37, '38.

NANCY LAY

Entered from Dickinson High School, '36; May Day, '37, '38; Circus, '37, '38; Senior Day Program, '37; S. P. Q. R., '37, '38; Hiking Club, '37, '38; Mythology Club, '37, '38, Secretary; Vice-President of Physical Education Club. "Littleton"

ELLEN LEE

Entered from Norris School, '38.

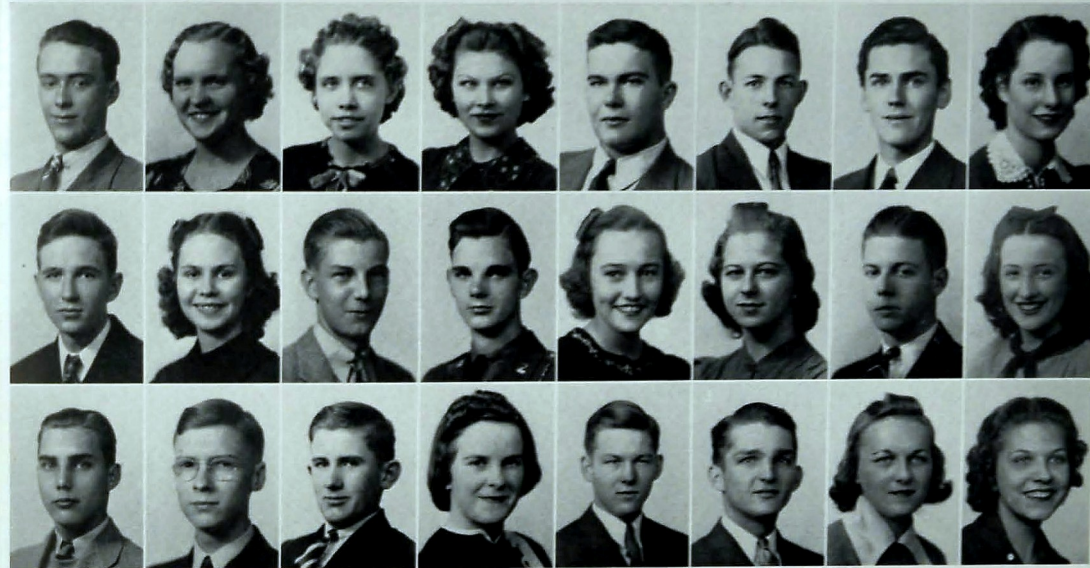
MARY ELIZABETH LEE

Entered from Norris School, '38. "Beth"

VIRGINIA LEE

Entered from East Side Junior High, '37; May Day, '37. "Doe"

CHS Library.



SENIOR CLASS

HALSTEAD A. LEHMAN

Entered from Lutheran School, '34.

KATHERINE LAVETA LEONARD

Entered from East Side Junior High, '36; Physical Education Club, '37, '38, '39. "Kewpie"

ANNE LEWIS

Entered from Lookout Junior High, '36; Bible Club, '36, Treasurer, '37, President, '38, '39; Usher, '39; National Honor Society, '39; Hi-Y, '37; Library Club, '39.

DOROTHY REBECCA LEWIS

Entered from East Side Junior High, '37; Bible Club, '39; May Day, '38. "Dot"

JOE LIGHT

Entered from Chattanooga High, '36. "Rudge"

J. R. LIGON

Entered from East Side Junior High, '36; "C" Club, '39; Baseball, '37; Basketball, '38, '39; Football, '38, '39; National Honor Society, '39.

JACK LEONARD LINDSEY

Entered from East Side Junior High, '36; Hi-Y, '37, '38, Chaplain, '39; Grady Literary Society, '36, '37, '38, Program Chairman, '39; Senate, '36, '37, '38, Finance Chairman, '39; Band Club, '36, '37, '38, '39; National Honor Society, Chaplain, '39; Extra Curricular, '36; Junior Play, '38; Senior Play, '39.

MARGARET LINN

Entered from East Side Junior High, '35; Anchors Aweigh, '39; Ace Club, '38, '39; Digest Staff, '39; Usher, '39; May Day, '37; Red Cross, '38; Sub-Deb, '39.

ALBERT LITTLE

Entered from Sheffield, Alabama, '38; S. P. Q. R., '38; Tennis Team, '38.

MARGARET ELLEN LITTLE

Entered from Lakeview High, N. C., '37. "Dreamy"

WILLIAM LOVAS

Entered from Brainerd Junior High, '36. "Bill"

W. EARL LONG

Entered from Tyner Junior High, '36; Physical Education Club, '36; Bick Club, '37, '38; Chaplain; Girl Reserves, '38, '39; Varsity Glee Club, '38, '39; Officer's Club, '39; Hiking Club, '39. "Shorty"

REBA MARIAN LOWRY

Entered from Northside Junior High, '36; Physical Education Club, '36; Bick Club, '37, '38; Chaplain; Girl Reserves, '38, '39; Varsity Glee Club, '38, '37, '38, '39; Operetta, '37, '38; Circus, '38. "Dimples"

MARGARET RUTH LYLE

Entered from East Lake Junior High, '36; Girl Reserves, '36, '37, '38, Secretary, '39; National Honor Society, '39; Senior Council, '38; Ring and Pin Committee, '39. "Maggie"

JAMES MARTIN LYONS

Entered from Notre Dame, '35; Red Cross, '38, '39.

FRANCES JEANETTE McARTHUR

Entered from East Side Junior High, '36; Las Mucha Club, '37; Bachelorettes Club, '39; Glee Club, '37, '38. "Janet"

HOWARD I. McBRIDE, JR.

Entered from Brainerd Junior High, '37; Camera Club, '38, '39; Harmonica Club, '37, '38; Depression Club, '38, '39; Grady Literary Society, '38, '39; Boy's Hi-Y, '39. "Yankee"

CLARENCE E. McCASHIN

Entered from North Chattanooga Junior High, '36; Biology Club, '38, '39; Hiking Club, '38, '39; Co-Chairman of Publicity for Senior Play, '39; Wan Snapshot Contest, '37.

DEWEY WALLACE McCURE

Entered from Lookout Junior High, '36.

KATHRYN MAXINE MCCOY

Entered from Lookout Junior High, '36; Varsity Glee Club, '36, '37, Checker Club, '37, Secretary, Hi-Y, '39; Sports Club, '39. "Mac"

EARL McDARIS

Entered from Brainerd Junior High, '36.

HOYT McDARIS

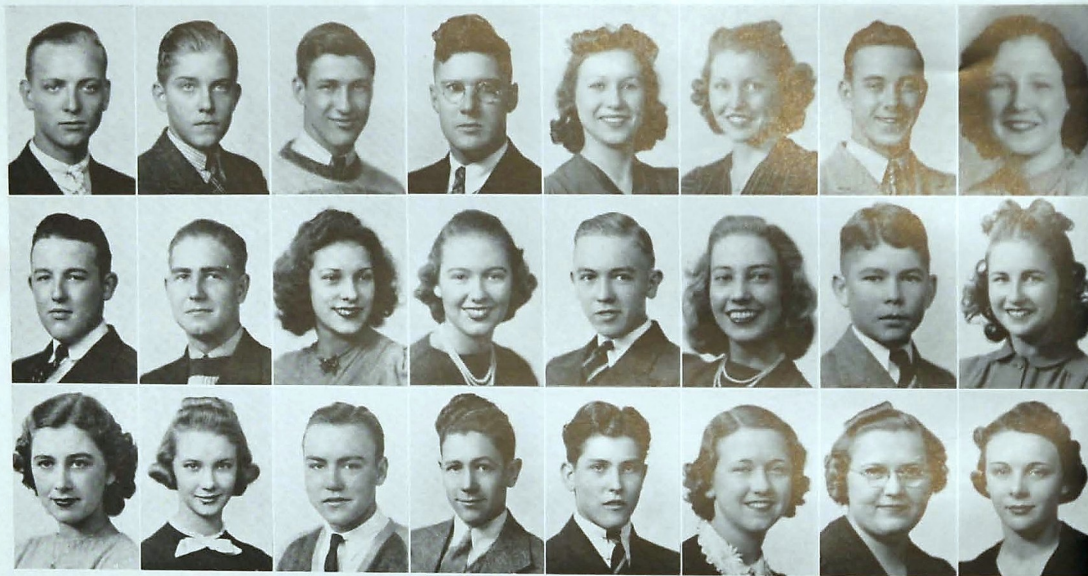
Entered from Brainerd Junior High, '36; Band Club, '36, '37, '38, President, '39; Grady Literary Society, '36, '37; Membership Chairman, '38, '39; Boy's Hi-Y, '36, '37, '38, '39; Dramatic Club, '39; Varsity Glee Club, '38, President, '37, '38, '39; Operetta, '38; Southeastern Chorus, '38, '39; Southeastern Tennessee Association, '38, '39.

PEGGY McELHILL

Entered from Brooklyn Academy, Brooklyn, New York, '38; Junior Red Cross, '38, '39.

HELEN ELIZABETH MCGEE

Entered from East Side Junior High, '37; Ace Club, '37, President, '38, '39; Spanish Club, '38; Anchors Aweigh, '39; Sub-Deb, '39; Usher, '39; National Honor Society, '39; Circus, '37, '38; May Day Attendance, '38; Junior Play, '38; Co-business Manager of Senior Play, '39.



SENIOR CLASS

WILLIAM FRANK MCKIBBEAN "Sad Eyes"
Entered from Lookout Junior High, '36; Library Club, '37.

JAMES McPHERSON "Mac"
Entered from Dickinson Junior High, '35; Science Club, '35; Camera Club, '37, '38, '39; Airplane, '36, '37; Bank and Bookstore, '37, '38, '39.

FRANK NORMAN MAGETTE
Entered from Brainerd Junior High, '36.

JAMES BAILEY MAHONEY "Jim"
Entered from North Chattanooga Junior High, '36; Red Cross, '36, '37, '38, '39; Hi-Y, '38, '39; Bible Club, '38, '39.

DIXIE ONA LEE MANNING "Pu-Pu"
Entered from Hardy Junior High, '37; Ace Club, '36, '37, '38, '39; Red Cross, '37, '38; May Day, '37.

AUDREY DEAN MARLER "Tid"
Entered from Mountain Creek Grammar, '36; Hi-Y, '37, '38, '39; Glee Club, '35; Varsity Glee Club, '36, '37; Bible Club, '37, '38; Girl Reserves, '39; May Day, '36.

MELVIN MARSH "Mickey"
Entered from East Side Junior High, '36; Varsity Glee Club, '36, '37; Sports Club, Vice-President, '37; Treasurer, '38.

DOROTHY JO MARTIN "Dotty"
Entered from Brainerd Junior High, '36; Biology, '37, '38, '39; Band, '37, '38, '39; S. P. O. R., '37, '38, '39.

JOHN FRED MARTIN "Buddy"
Entered from Hardy Junior High; Digest Staff, '39.

WILLIAM MAX MATHEWS
Entered from Dickinson Junior High, '36; Officer's Club, '39; Hi-Y.

MARGARET AILEEN MATTESON "Penney"
Entered from Hardy Junior High, '37; Red Cross, '38, '39; Circus, '37; May Day, '37.

DOROTHY MAUPIN "Dot"
Entered from Signal Mountain Grammar, '36; Science Club, Secretary, '36, '37; Hiking Club, '36, '37; Senate, '36, '37, '38, Secretary, '39; Red Cross, '36, '37, '39; Girl's Hi-Y, '38, '39; Etiquette, '38, '39; Senior Council, '39; Usher, '39.

JAMES FLOYD MAVITY "Skeeter"
Entered from East Lake Junior High, '36.

MARY JANE MAY

Entered from Brainerd Junior High, '36; Handicraft Club, '36, '37; May Day, '37; Red Cross, '36, '37; Delegate to San Francisco, '38, Secretary, '38, '39; Hi-Y, '37, '38; Chorus, '36, '37; Sub-Deb, '38, '39; Etiquette, '37, '38, Play, '38.

WILLIAM T. MEACHAM, JR. "Billy"
Entered from Lakeview High School, '36; Stamp Club, '36, '37, '38; Biology Club, '37, '38; Dramatic Club, '36, '37; Junior Play, '38; Senior Play, '36; Vice-President of Sophomore Class, '37; President of Junior Class, '38.

VIRGINIA LEE MEADOR "Peaches"
Entered from San Jacinto High School, Houston, Texas, '37; Orchestra, '38, '39; S. E. T. A., '37; Bachelorettes, '38, '39; Nite Owls, '39.

MARTHA MILES

Entered from Brainerd Junior High, '36; Home Economics Club, President, '36, '37; Red Cross, Treasurer, '37, '38, '39; Girl Reserves, '36, '37; Officer's Club, '39; Band Club, '36, '37; Drum Major of Band, '39; Sponsor of Co. H, '39.

HELEN ALBERTA MILLER

Entered from Brainerd Junior High, '36; Red Cross, '36, '37, '38, '39; Camera Club, '37; Varsity Glee Club, '36, '37, '38; Etiquette Club, Secretary, '37, '38, '39; Sub-Deb, Secretary, '37, '38, '39; Honor Society, '39; Operetta, '37; Candy Crew, '37, '38; Etiquette Club Play, '38.

WILLIAM DAVID MILLER

Entered from Mountain Creek School, '36.

EDWIN CHAPMAN MILLIGAN "Buddy"

Entered from Highland Park High School, Dallas, Texas, '37; Red Cross, '37, '38; Cheerleader, '39.

CHARLES DOUGLAS MILLS

Entered from East Side Junior High, '36.

BETTY LEORAINNE MITCHELL "Beth"

Entered from North Chattanooga Junior High, '36; Hiking Club, '36, '37; Physical Education Club, '38, '39; Red Cross, '38, '39; Handicraft, '38, '39; May Day, '37.

MARY HELEN MIXSON "Mayra"

Tyner High School, '37; Bible Club, '38; Glee Club, '38; Girl Reserves, '39; Program Committee.

BETTY MOODY

Entered from East Side Junior High, '36; Honor Society, '39.

CHS Library.



SENIOR CLASS

CLARENCE MOONEYHAM, JR. "C. J. Senator"
Entered from East Side Junior High, '36; Camera Club, '39.

FORREST MOORE
Entered from Coal Creek High, '36; Printer's Club, '39; Digest Staff, '39.

HERMAN MORRIS "Grandma"
Entered from Red Bank Junior High, '37; "C" Club; Football, '38, '39; National Honor Society, '39.

PAUL MOUNT, JR. "Nig"
Entered from Brainerd High School, '36.

JULIA MULLINAX "Juky"
Entered from Hardy Junior High, '36; Ace Club, '36, '37, '38; Biology Club, '38, Secretary-Treasurer, '39; Mythology, '38; Hi-Y, '39; National Honor Society, '39; Digest, '37, '38, Copy-Reader, '39; Senior Council, '39; Usher, '39; Champion Staff, '39; Senior Play, '39; Chairman of Senior Luncheon, '39; May Day, '36, '37; Dramatics Club, '39; Extra Curricular Award, '36; Invitation Committee, '39; Future Teachers of America, President, '39.

JOHNNIE NABORS
Entered from Lookout Junior High, '36.

EDNA EARL NATION "Squirrel"
Entered from Dickinson Junior High, '37; Biology Club, '39; Bible Club, '39; Ace Club, '38, '39.

CHARLES ORLANDO NEAL "Napoleon"
Entered from Tyner Junior High, '36.

EARL E. O'BARR, JR.
Entered from Lookout Junior High, '36; Boll Weevils, '37, '38.

CLARA ORRELL
Entered from Dickinson Junior High, '36; Bible Club, '36, '37, '38; Girl Reserves, '39; Red Cross, '38.

DOROTHY ORTON "Dot"
Entered from Dickinson Junior High, '36; Red Cross, '37; Library Club, '37, '38, '39; Vice-President; Sports Club, '38, '39.

FRANCES MERLE OWENS "Fanny"
Entered from Enslay High, '37; Ace Club, '37, '38; Stamp Club, '38.

MARTHA EVELYN PARDEE
Entered from Brainerd Junior High, '36; National Honor Society, '39; Usher, '39; Digest Bookkeeper, '39.

ANNA KATHERINE PARK "Kitty"
Entered from East Side Junior High, '36; Hi-Y, '38, '39; Girl Reserves, '38, '39; Senate, '36, '37, '38, '39; Cabinet; Usher, '39; National Honor Society, '39; Digest Staff, '37, '38, '39; May Day, '38, '38.

FRED PARK
Entered from East Side Junior High, '36; Boy Scout Club, '37.

LUTHER PARKER "Luke"
Entered from Red Bank Junior High, '35; Red Cross Club.

EVELYN PARKER "Red"
Entered from Marion High School, '36; Girl Reserves, '37, Reporter, '38; Red Cross, '37, '38; Bible Club, '37; Library Club, '37; Secretary-Treasurer, '38; Ice Cream Crew, '37, '38.

MARJORIE PARKER "Margie"
Entered from East Side Junior High, '36; Digest Staff, '36, '37, '38; Officer's Club, '37, '38; Hi-Y, '39; Anchors Aweigh, '38, President, '39; Candy Crew, '37; Sub-Deb, '37; Usher, '39; Physical Education Club, '37; Drum Major of Drill, '39; National Honor Society, '39; May Day Attendant, '38.

GENEVA L. PATTERSON "Shorty"
Entered from Hardy Junior High, '37; Biology Club, '37, '38, '39; Ace Club, '37, '38, '39; Home Economist, '38, '39; Dramatics Club, '39; Candy Crew, '38; Digest Staff, '38, '39; Circus, '38; Senior Play, '39; Usher, '39; National Honor Society, '39; Star 14, '39; Future Teachers of America, '39; Vice-President; May Day, '37.

THELMA LOUISE PATTY "Tommie"
Entered from Tyner High School, '37; Girl Reserves, '39; Program Chairman.

STUART MELTON PEACE, JR. "Stew"
Entered from Immanuel Lutheran, '36.

ELEANOR RUTH PENLEY "Smoolie"
Entered from Lookout Mountain, '36; Physical Education Club, '36.

DON PETERS "Dizzy"
Entered from Dickinson Junior High, '36; Science Club, '36; Stamp Club, Secretary, '35; R. O. T. C., '37.

DORA ELEANOR PFITZER
Entered from Immanuel Lutheran, '36; Mythology Club, '37, '38; S. P. O. R., '36; Program Chairman, '37, '38; Home Economics, '36, '37, '38, '39; Program Chairman; Dramatic, '38, Secretary, '39; National Honor Society, Program Chairman, '39; Usher, '39; Digest, '38, Times Page Editor, '39; Program Chairman of Junior Play, '38; Property Manager of Senior Play, '39; Future Teachers of America, '39; Star 14, '39.



SENIOR CLASS

MARTHA LOU PHILLIPS

Entered from Red Bank High, '36; Biology Club, '37, '38, '39; Hi-Y, '38, '39; Bible Club, '38, '39; Circus, '37.

MILDRED PICKETT

Entered from East Lake Junior High, '35; May Day, '35, '36, '37; Circus, '35, '36, '37; Ace Club, '35, '36, '37, '38; Athletic Club, '38; Amateur Athletics, '35, '36, '37, '38.

ADELINE ELIZABETH PITTS

Entered from Red Bank Junior High, '36; Hi-Y, '36, '37, '38, '39; Spanish Club, '38; Usher, '39; Sub-Deb, '38, '39; Extra Curricular Award, '36.

HILL PLESS

Entered from East Lake Junior High, '36; Orchestra, '36, '37, '38; Red Cross, '37; Operetta, '37; S. E. T. A., Knoxville, '37.

DORIS VIRGINIA POINDEXTER "Dot"

Entered from Lookout Junior High, '37; Tennis Club, '37; Physical Education Club, '37.

ESTELLE JOSEPHINE POINDEXTER "Bill"

Entered from Lookout Junior High, '37; Physical Education Club, '37; Ace Club, '37; Tennis Club, '37.

BRYANT POPE "Roosevelt"

Entered from Brainerd Junior High, '36.

DAVID PORTER

Entered from Hixson High School, '36; "C" Club, '38, '39; Art Club, '36, '37; Operetta, '36; "C" Club Minstrel, '38.

FLORENCE EVELYN PRATT "Flossie"

Entered from Brainerd Junior High, '37; Girl Reserves, '37, '38, '39; Physical Education, '37, '38; Red Cross, '38, '39; Circus, '37.

BESSIE EDITH REDMOND "Toots"

Entered from East Side Junior High, '36.

JAMES ELLIS RHODES

Entered from Tyner Junior High, '36.

THELMA IONE RICHARDS

Entered from Walling, Tennessee, '36; Girl Reserves.

EDITH MAE RICHARDSON

Entered from Brainerd Junior High, '36; Girl's Hi-Y, '39; Bible Club, '39; Usher, '39; Orchestra, '36, '37, '38, '39; Member of E. T. E. A. Orchestra in Knoxville, '36, '37; Member of S. E. T. A. Orchestra, '37, '38; Operetta, '36, '37, '38.

DOROTHEA EVELYN RICHESON "Dot"

Entered from North Chattanooga Junior High, '36; Etiquette Club, '36; Art Club, '37; Girl Reserves, '37, President, '38, '39; Girl's Hi-Y, Vice-President, '38, '39; Bible Club, '38; Red Cross, '37; May Day, '36.

LELA MAE RICHESON

Entered from Red Bank Junior High, '36; Sub-Deb, '39; Drill Squad, '39.

DOROTHY RICHEY "Dot"

Entered from Harrison Grammar School, '36; Usher, '39; Home Economics Club, '39; Future Teachers of America, '39.

MILDRED RUTH RICHEY

Entered from Rhea Central High, '37; Home Economics Club, '37, '38; Girl's Hi-Y, '38, '39; Anchors Aweigh, '38, '39; Sub-Deb, '38, '39; May Day, '39.

ELIZABETH RILEY

Entered from Hardy Junior High, '37.

GLADYS ROBERTS ROBERTS

Entered from Fairmount Grammar School, '36; Bible Club, '39.

SARAH HELEN ROBINSON "Boots"

Entered from Brainerd Junior High, '36; May Day, '36, '37; Circus, '37.

JANNIE ELIZABETH RODGERS

Entered from Hardy Junior High, '36.

DARWIN RODGERS

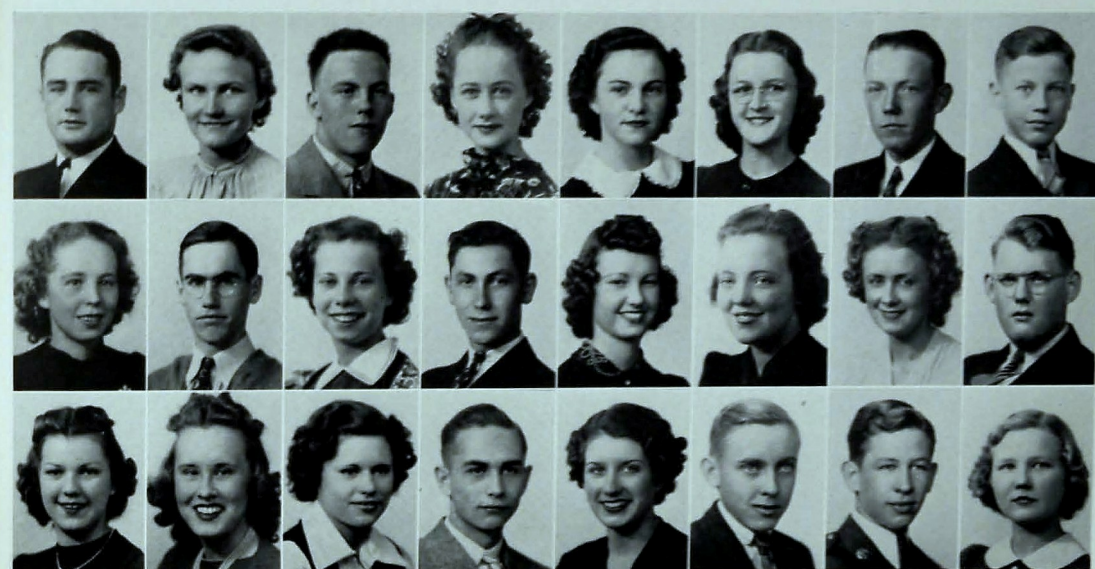
Entered from Central High, Winchester, '37; Glee Club, '38; Boxing Team, '38.

J. C. ROGERS "Sleepy"

Entered from Mountain Creek, '36; Science Club, '36; Airplane Club, '36; Red Cross, '38, '39.

PAUL ROGERS

Entered from Dickinson Junior High, '35; Central Digest Printing Staff, '39; Officer's Club, '37; Sergeant's Club, '38; Lieutenant R. O. T. C., '39.



SENIOR CLASS

RONALD JAMES ROGERS "Rawmeat"

Entered from East Lake Junior High, '36; "C" Club, '38, '39; Etiquette Club, '37; Football, '37, '38, '39; Basketball, '38; Depression Club, '39.

DOROTHY ARLENE ROTH "Dot"

Entered from Lookout Junior High, '36; Red Cross, '37, '38; Bible Club, '37, '38, '39; Stamp Club, '38, '39; Girl Scouts, '38, '39.

MARLIN MANKER RUFFNER

Entered from North Chattanooga Junior High, '38.

SARAH CATHRINE RUSH

Entered from Brainerd Junior High, '36; Home Economics Club, '36, '37; Gym Circus, '36; Bible Club, '38, '39; Sub-Deb, '38, '39; Chorus, '36, '37, '38, '39; Senior Play, '39; Digest Sponsor, '37, '38.

NANCY S. RUTLEDGE

Entered from East Side Junior High, '36; Camera Club, '36, '37; Red Cross, '36, '37; Etiquette Club, '38, '39; Nite Owls, '37, '38, President, '39; Sponsor Company G, '39; Officer's Club, '39; Band Drum Major, '38; May Day, '36.

ADRIN NINA RYERSON

Entered from East Side Junior High, '36; Red Cross, '39; Girl Reserves, '38, President, '39; Hi-Y, '39; Sub-Deb, '39; Usher, '39.

BUFORD PHILLIPS RYMER "Red"

Entered from Brainerd Junior High, '39; Bible Club, '39; Bachelors Club, '39.

WILLIAM W. RYMER, JR. "Billy"

Entered from Brainerd Junior High, '37; Biology Club, '37, '38, President, '39; National Honor Society, '39; Senate, '37, '38, '39; Philatelic Society, '38, President; Digest, Exchange Editor, '38.

ALMA JEAN SAYLOR

Entered from East Side Junior High, '36; Bible Club, '37, Hiking Club, '36, '39; Physical Education, '38, '39; Usher, '39; May Day, '36; Orchestra, '38, '37, '38, '39.

EDWARD SCHAEFER

Entered from Brainerd Junior High, '36.

FRANCES ELOISE SCHMITT "Schmitty"

Entered from East Lake Junior High, '36.

DAVID OTIS SCHOOCRAFT

Entered from East Side Junior High, '36; Airplane, '36, '37; Camera Club, '38; Officer's Club, '38; Lieutenant R. O. T. C., '38; Sports Club, Vice-President, '38.

MARION RUTH SCRUGGS "Red"

Entered from Red Bank Junior High, '36; Girl's Hi-Y, '37, '38, '39; Girl Reserves, '37, '38, '39; Home Economics Club, '37, '38, '39; May Day, '36.

MAYNE ELIZABETH SCAY

Entered from Pickwick Dam, Tennessee, '38.

LOUISE SELLS

Entered from Lookout Junior High, '37; Red Cross, '39; Nite Owls, '39; Battalion Sponsor, '39.

HAROLD EUGENE SHRADER "Einstein"

Entered from Brainerd Junior High, '37; Airplane Club, Secretary, '37, President, '39; Biology Club, '37, '38, '39; Sergeant's Club, '37; Senate, '39; Sea Scouts, '39; Consumers Record, Secretary, '39.

BETTY JEAN SIMPSON

Entered from Nathan Bachman School, '35; Red Cross, '35, '36, '37; Home Economics Club, '35, '36, '37; Circus, '36; Physical Education, '35, '36; Extra Curricular Award, '38.

HATTYE RUTH SIMS

Entered from Meigs County High, '38; Red Cross, '38; Band, '38.

MARGARET ANN SISK "Susie Ann"

Entered from Badin High School, '36; Red Cross, '37, '38, '39.

HARRY ALMAS SIVILEY, JR. "Kid Simoleum"

Entered from Dickinson Junior High, '36; Red Cross, '37, '38.

VIRGINIA LEE SIVILEY "Jena"

Entered from Mountain Creek, '36; Girl Reserves, '37, '38; Camera Club, '37, '38; Varsity Glee Club, '36, '37, '38; Red Cross, '36, '37, '38, '39; Digest Staff, '39; Ice Cream Crew, '37, '38; Exclusive Club, '39; Operetta, '39.

ERNEST SKATES "Skeeter"

Entered from Brainerd Junior High, '36.

WILLIAM FREDERICK SLIGER

Entered from East Side Junior High, '38; Officer's Club, '39; Camera Club, '38, '39; Sergeant's Club, '38; Lieutenant, '39; Bachelor Club, '39; Sports Club, '39; Airplane Club, '37, '39.

ELIZABETH JEAN SMITH "Buffy"

Entered from North Chattanooga Junior High, '37; Mythology Club, '37; May Day, '37.



SENIOR CLASS

ETTA ELOISE SMITH "Dimples"
Entered from Red Bank Junior High, '37; Girl Reserves, '38; Handicraft, '37; Physical Education Club, '37, '38; Circus, '37; May Day, '37.

HELEN MARGARET SMITH
Entered from Red Bank Junior High, '36.

JEAN RIVERS SMITH "Tootie"
Entered from Chattanooga High School, '37; Nite Owl Club, '37; Treasurer, '38; Etiquette Club, '37, '38; Bachelorettes Club, '37; Vice-President, '39; May Day Attendant, '37.

J. C. SMITH "Smitty"
Entered from Watertown High, '36; Biology, '36; Bible Club, '37.

LORETTA O'DELL SMITH "Smitty"
Entered from East Side Junior High, '37; Bible Club, '38, '39; Circus, '37; May Day, '37.

MARY LOUISE SMITH "Shorty"
Entered from Red Bank Junior High, '36; Biology Club, '37, '38, '39; Girl's Hi-Y, '38, '39; Bible Club, '38, '39; Usher, '39; Library Club, '38, '39; Circus, '37.

MARTHA BETTY SNODGRASS
Entered from Lookout Junior High, '36; Home Economics, '38; Girl Reserves, '38.

LOUISE KATHRYN STANFIELD
Entered from East Lake Junior High, '37.

MARY JANE STEAKLEY
Entered from Dickinson Junior High, '37; Biology Club, '37, '38; May Day, '37.

PAUL WILLIAM STEINMANN
Entered from Brainerd Junior High, '36; "C" Club, '37, '38, '39; Depression Club, Treasurer, '39; Football, '37, '38, '39; Baseball, '36, '37, '38, '39.

NORMA ELIZABETH STEWART
Entered from Hardy Junior High, '37; Girl Reserves, '37.

BOYD LEE STRICKLAND
Entered from East Lake Junior High, '36.

EDWIN STRICKLAND
Entered from Brainerd Junior High, '36; Grady Literary Society, '38, '39; Stamp Club, '38; Boy's Hi-Y, '39; S. P. Q. R., '36, '37, '38, '39; Digest, '38, '39; Hiking Club, '37, '38, '39; National Honor Society, '39; Vice-President of Freshman Class.

ROBERT MURRAY STROTHER "Flash"
Entered from Dickinson Junior High, '36; Depression Club, '38, '39; Spanish Club, '38, '39; Biology Club, '37; Camera Club, '38; Harmonica Club, '36.

KATHERINE LADEMA SUGGS "Kat"
Entered from Rossville High, '36; Girl Reserves, '38; Red Cross, '38, '39.

BLANCHE ETHEL SUTHERLAND
Entered from East Side Junior High, '36.

RUTH ELIZABETH SWAFFORD
Entered from East Side Junior High, '36.

JAMES ISAAC SWEETEN "Bull"
Entered from Grundy County High School, '37; Football, '38, '39.

KENNETH TALLANT "Ken"
Entered from Brainerd Junior High, '34; Basketball, '36.

LELA MAE TATE
Entered from Red Bank Junior High, '36; Glee Club, '37; Red Cross, '38.

MABLE OLAVENE TATE
Entered from Lookout Junior High, '37; Red Cross, '38.

VERNA MAE THACH "Vernie"
Entered from Brainerd Junior High, '36; Girl Reserves, '36; Vice-President, '37; Social Chairman, '38; Library Club, '37, '38; Hi-Y, '38; Ice Cream Crew, '37, '38.

ELLEN BLANCHE THOMAS
Entered from East Side Junior High, '37; S. P. Q. R., '37, '38, '39; Mythology Club, President, '38; Bible Club, '38, '39; Sub-Deb, '39; Physical Education Club, '38, President, '39; Usher, '39; May Day, '38, '39; Circus, '38, '39; Pianist for Glee Club, '38, '39; Hiking Club, '37, '38; German Club, Secretary, '38.

HERVEY ALLEN THOMAS "Webster"
Entered from Lakeview Junior High, '36; Hiking Club, '36, '37, '38, '39; Spanish Club, '38; Sergeant's Club, '36; Vice-President, '38; Officer's Club, '39; Lieutenant, '39; Operetta, '37, '38, '39; Varsity Glee Club, '37, '38.

BETTIE KATHERINE THOMPSON "Tontsy"
Entered from Red Bank Junior High, '36; Girl Reserves, '37, '38, '39; Chorus, '35, '36; Girl Reserves, '38, '39.

MILDRED VIRGINIA THOMPSON
Entered from Brainerd Junior High, '37; Bible Club, '37, '38, '39; Secretary, '39.

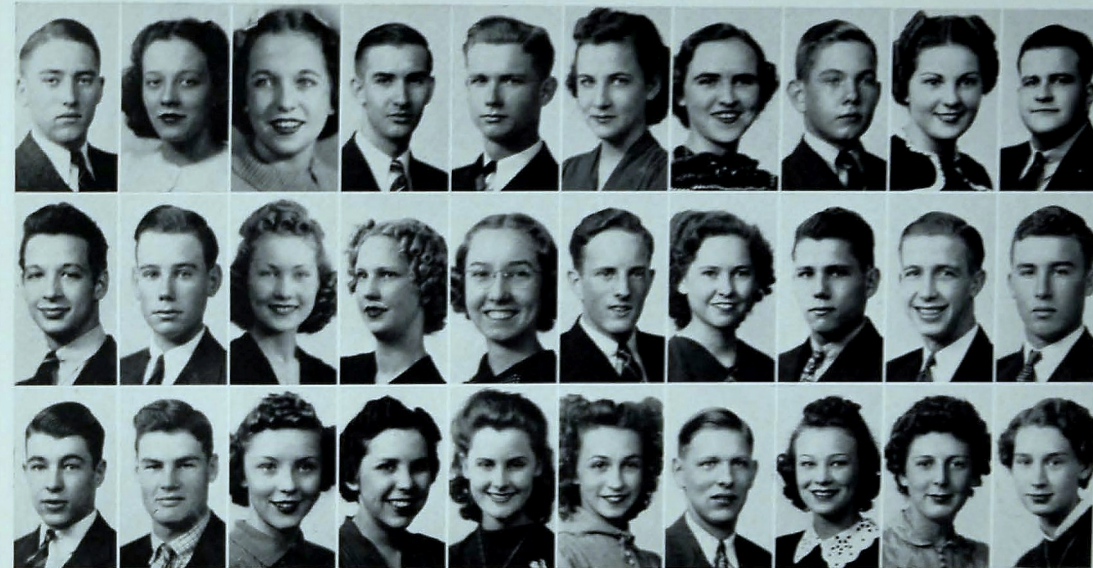
BEATRICE LAVERNE THRAILKILL "Bee"
Entered from Sweetwater High School, '36; Bible Club, '37, '38, '39; Vice-President, '39; Prayer Club, '37, '38, '39.

OSCAR TORBET
Entered from Brainerd Junior High, '37; Philatelic Society, '37, '38; Hi-Y, '38; Secretary, '39; Grady Literary Society, '38, Vice-President, '39; Digest Staff, '37, Sports Editor, '38, Associate Editor, '39; Senate, '38, '39; Champion Staff, '39.

ODESSA MAE TOTTON "Lulabell"
Entered from East Side Junior High, '36; Home Economics Club, '37, '38; Candy Crew, '38; Exclusive Club, '39.

WILMA RUTH TREDWAY "Rufie"
Entered from North Chattanooga Junior High, '36; Usher, '39; Red Cross, '38; Bible Club, '38; May Day, '37.

CHS Library.



SENIOR CLASS

WILLIAM LLOYD TRUEX "Dynamite"
Entered from East Side Junior High, '36; Depression Club, '39.

DORIS WADE
Entered from Red Bank Junior High, '36; Sub-Deb, '39.

DIXIE JUNE WALLER "Aunt Dixie"
Entered from Somerset High, Kentucky, '37; Varsity Glee Club, '37, '38, '39; Red Cross, '37, '38, '39; Southeastern Chorus, '37, '38, '39; Sub-Deb, '38, '39; Treasurer, '39; Anchors Aweigh Club, '38, '39; Usher, '39; Operetta, '38, '39.

C. A. WATERHOUSE
Entered from Brainerd Junior High, '36; Science Club, Program Chairman, '36; Biology Club, '37, '39; Extra-Curricular, '36.

HAROLD WATKINS "Hal"
Entered from Central High School, Decatur, Alabama, '36; Grady Literary Society, '38; Sergeant's Club, '38; Secretary, Sergeant in R. O. T. C., '38; Officer's Club, '39; Secretary-Treasurer; Dramatic Club, '39; Etiquette Club, '39; Red Cross, '38, '39; Boll Weevils, '38, '39; Sergeant-at-Arms of Senior Class, '39; Secretary of Digest, '38; Circulation Manager of Digest, '39; National Honor Society, '39; Committee for Senior Luncheon, '39.

BETTY JANE WATSON
Entered from Girl's High School, Atlanta, Georgia, '37; Hiking Club, '38; Usher, '39; National Honor Society, '39; Senior Council, '39; Senate, '39.

BESSIE BEATRICE WATTS "Bee"
Entered from Homestead, Florida, '36; Bible Club, '39.

HENRY BELVIN WEBB
Entered from Tyner High, '36.

YVONNE WEBB
Entered from East Side Junior High, '37.

JOHN THOMAS WEESE "Toat"
Entered from Lutheran School, '36; Red Cross, '38, '37, '38, '39; Varsity Glee Club, '36, '37, '38, '39; Science Club, '38; Operetta, '38.

PAUL KRUESI WESTBROOK "Lil Abner"
Entered from Brainerd Junior High, '36; Boll Weevils, '38, '39; Operetta, H. M. S. Pinafore, '38; Polience, '39; Senior Play, '38; Southeastern Chorus, '38; Extra-Curricular Award, '37; Varsity Glee Club, '37, '38, '39.

RALPH M. WESTBROOK "Freckles"
Entered from East Side Junior High, '35; Red Cross, '36, '38, '39; Bible Club, '39; Stamp Club, '36, '37, '38, '39.

RUTH WHEELER
Entered from East Side Junior High, '36; Digest Sponsor, '36; Red Cross, '36, '37, '38; Biology Club, '36, '37; Varsity Glee Club, '36, '37; Senate, '36, '37, '38, '39; Nite Owls, '36; Anchors Aweigh, Vice-President, '38, '39; Hi-Y, Secretary, '38, '39; National Honor Society, Secretary, '39; Usher, '39; Physical Education Club, '37, '38; "C" Club Mingle, '36; Operetta, '36; Circus, '38; Operetta, '37; Senior Council, '39; May Day, '36; May Queen, '38; Central Queen, Sawdust and Sparkles, '39; Senior Play, '39; Extra Curricular Award, '36, '37, '38; S. P. Q. R. Club, '36, '37; Song Leader, '37, '38; Treasurer of Sophomore, Junior and Senior Classes, '37, '38, '39.

EVELYN CLAUDETTE WHITE "Blondie"
Entered from Berry High School, '36; Library Club, '38, '39; Bible Club, '38, '39; S. P. Q. R., '36, '37.

NINA JO WHITTEN
Entered from East Lake Junior High, '36; S. P. Q. R., '37; Library Club, '39; National Honor Society, '39; May Day, '38.

BERT WIGGS
Entered from Brainerd Junior High, '36; Biology Club, '36; German Club, '38.

MARY LEE WILBANKS "Willie Lee"
Entered from Lookout Junior High, '37; Hi-Y, '37; Vice-President, '38, '39; Physical Education Staff, President, '37, '38; Girl Reserves, '38, '39; Bible Club, '37, '38; Sports Club, '38, '39; Exclusive Club, '39.

HAROLD C. WILHOITE
Entered from East Side Junior High, '36; Grady Literary Society, '38, '39; Boy's Hi-Y, '38, '39; Digest Staff, Sports Editor, '39.

BILLY CHRISTIAN WILLIAMS
Entered from Brainerd, '36.

JAMES WILLIAMS
Entered from Mountain Creek School, '36; Science Club, '36; Biology Club, '37, '39; Grady Literary Society, '39; Sergeant's Club, '38; Officer's Club, '39.

WILLARD WILLIAMSON
Entered from Hardy Junior High, '36; Printing Club, '38, '39.

THOMAS H. WILSON "Two-Gun"
Entered from Brainerd Junior High, '36; Printing Club, '36, '37.

VIRGINIA B. WILSON "Jake"
Entered from Red Bank Junior High, '37; Girl's Hi-Y, '38, '39; Home Economics Club, '38, '39.

KATHERINE ALENE WOODALL "Kitten"
Entered from East Side Junior High, '36; Physical Education Club, '36; Extra Curricular Award, '37.

MARJORIE TENNY WOODEN
Entered from East Side Junior High, '36; Home Economics Club, '36.

NORMA WOODFIN
Entered from Brainerd Junior High, '36; Varsity Glee Club, '36, '37, '38, '39; Nite Owls, '39; Red Cross, '36, '37, '38, '39; Band Club, '39; Drum Major, '39; Southeastern Chorus, '37, '38; Operetta, '36, '37; Junior Play, '37, '38; Senior Play, '39.

CHARLES LYERLY WORLEY
Entered from Tyner High, '36.

FRANCES JEWELL WRIGHT
Entered from Brainerd Junior High, '36; Ace Club, '36; Red Cross, '38, '37, '38; Glee Club, '36, '37, '38; Anchors Aweigh, '38, '39; Corresponding Secretary, '38.

EDNA LORRAINE WYNN "Winnie"
Entered from Mountain Creek School, '36; Glee Club, '36.

PAULINE SUE WYRICK "Susie"
Entered from East Lake Junior High, '37; Library Club, '38; Bible Club, '38.

Senior Class History

Time marches on! And the class of '39 is now a senior class ready to take its place in the Chattanooga of today. Just as Chattanooga has emerged from the village of 1863 so the group of frightened, dismayed students has become the organized, purposeful senior class that it is today.

Let us turn back the calendar to September, 1936, and to this group which made its first appearance at Central. Even though we were "freshies" we knew that we could never make progress unless we had leaders, so we got together and selected David Masingill as our president. The other officers were Edwin Strickland as vice-president; Eloise Evatt as secretary; and Dorothy Hennessee as treasurer.

It is now September, 1937, and an eager sophomore class returns to Central to become an essential, if unrecognized, cog in the progress of Central.

David Masingill was again selected to be our leader. Other officers elected were Billy Meacham, vice-president; Dorothy Hennessee, secretary; and Ruth Wheeler, treasurer. Betty Amerson was chosen song leader and Jack Bowen cheer leader.

Among this group there turned out to be quite a lot of literary talent. Marjorie Parker, Dotty Sudarth, Eloise Evatt, Jean Gray, Julia Mullinax, Harry Edwards, William Elrod, Billy Rymer, John Harsch, and Oscar Torbett began work on the Digest staff. Eloise Evatt was the sophomore representative on the Champion staff.

Those outstanding on the gridiron were Hoyt Kilgore, Fred Moudy, and Ronald Rogers. Fred Butcher and James Brown shone in basketball.

Again the finger moves and writes and it is now a junior class which returns to Central—a class well developed in mind and experience as well as stature. The freshmen of '36 are now upper classmen. From this group the new leaders are to emerge.

Billy Meacham, sophomore vice-president, was elected to be the leader. James Foxworth, Dorothy Hennessee and Ruth Wheeler were again elected as vice-president, secretary and treasurer, respectively.

Jean Gray, Norma Woodfin, J. L. Lindsey, Gene Bouldin, and Mary Eleanor Haines had the leads in the junior play which climaxed the day known as "Junior Day." Sarah Gardner was junior representative on the Champion staff.

Outstanding stars on the gridiron were Fred Butcher, Bill Carden, Hoyt Kilgore, Herman Morris, Paul Steinman, James Brown, Ronald Rogers, J. R. Ligon, Lee Benson, and David Porter. Glenn White, Fred Butcher, J. R. Ligon, Bill Carden, James Brown, and Ronald Rogers were outstanding on the basketball team.

Development and progress have brought about the day of which we have so long dreamed—the first day of our senior year. This is the year in which so many fond hopes are to be realized or defeated. This is the year of reward for those "fittest" who have survived. From the very beginning we are made to realize that we are essential figures in the new Central which we have helped make. From the very beginning the ushers are made to feel the responsibility.

Throughout the class there were undertones and whispers of future officers. The outcome of the election gave Harry Edwards the honor of being our last president while we are at Central. James Foxworth again was vice-president and Dorothy Hennessee and Ruth Wheeler were again elected as secretary and treasurer, respectively. Jimmie DeFrieze and Harold Watkins were selected to act as sergeants-at-arms.

Jean Gray took over the editorship of the Digest with John Harsch and Oscar Torbett as her associates and William Elrod as the news editor. Dora Pfitzer assumed responsibility of Times page editor.

William Elrod, who was an essay winner during his sophomore year, was elected to serve as editor-in-chief of the Champion with Roden Davisworth as business manager.

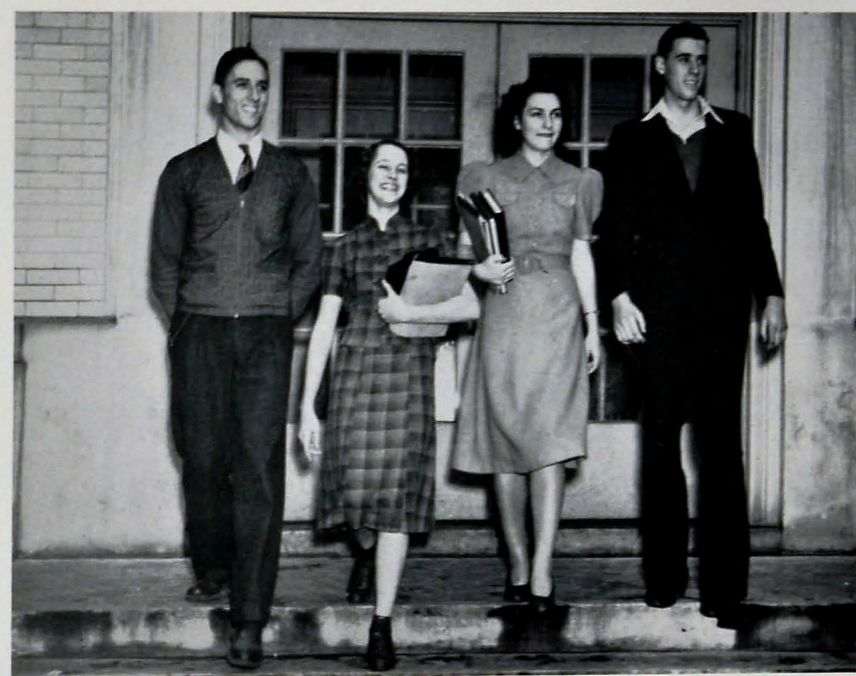
Each year one of the most exciting events is the senior play. This year's play, "Seven Sisters," was an unusual success. Those taking leading roles were J. L. Lindsey, Norma Woodfin, Ruth Wheeler, Kruesi Westbrook, Jean Gray, Norman Bryant, and Julia Mullinax.

"Patience," with Eva Anderson, Billy Burke Hotalen and Kruesi Westbrook in the leads was a great success.

Jimmie DeFrieze, the cadet major, and his captains, Norman Bryant, Ira King, Lee Benson, Jimmy Williams, Harold Watkins, and Henry Hobday, had, it seems, the pick of the pretty girls at Central for their sponsors. They were Louise Sells, Martha Miles, Nancy Rutledge, Dorothy Creighton, Evelyn Parker, and Dorothy Hennessee.

Stars on the gridiron of '39 were Hoyt Kilgore, captain; J. R. Ligon, Ronald Rogers, Fred Butcher, David Porter, Lee Benson, "Red" Cullum, James Brown, Herman Morris, and Charleton Howard. And in basketball were Fred Butcher, captain; J. R. Ligon, James Brown, Tom Simpson, and Joe Jackson.

So at last we have arrived. We have reached that goal of progress toward which we have so long striven. Just as the Dynamo of Dixie has developed into a progressive, modern city, so have we attained the mark toward which we strove—graduation.



Norvell, Crawley, Archie, Marlowe

OFFICERS

WILSON NORVELL	President
JAMES MARLOWE	Vice-President
ROBERTA CRAWLEY	Secretary
RUBY ARCHIE	Treasurer

J U N I O R C L A S S

Junior Class

BOYS

Warren Adair
Wilbur Allen
Zack Allman
Z. T. Alloway
Thomas Anderson
Theodore Atchley
Frank Atchley
Joe D. Baker
Jo. M. Baker
George Ballew
Chris Barnes
J. H. Baskett
Brown Beard
Eugene Bennett
J. R. Billingsley
C. J. Bivens
Earl Boles
Rex Bolton
Clifton Bramlett
Fred B. Band
Charles Braneman
Francis Bronski
Frederick Brooks
Jack Brooks
Albert Brown
Alfred Brown
John Brown
Thomas Buck
Paul Burkner
Billy Bunch
George Burkhardt
William Burns
James Byerly
Alver Cameron
A. L. Camp
Denton Camp
William Carden
Jimmy Carpenter
James Cartwright
J. O. Cason
Norman Castell
Edward Chambers
Lawrence Chester
Howard Githy
William Clark
Ralph Clevenger
Tommy Close
Alvin Goffman
Raymond Collins
Thomas Colston
William Combs
Paul Comstock
Frank Cooke
Bill Cooper

De Willis Coppinger
Jack Cornelison
Luke Cox
Finley Craddock
Lawrence Cunningham
Everett Dabbs
Carl Dantler
John Davidson
Fred Dawn
Joe Deakins
Glenn Dean
Raymond Dadmon
Eugene De Sha
James Dickson
Charles Dobbs
Chesley Donahoe
Wayne Early
Jimmie Elb
Clarence Ellis
Morris Ellis
Neil Epperson
Curly Evans
Roy Ethridge
James Evans
Bud Evans
Raymond Faerber
Mike Farmer
Hulbert Ferger
Robert Finley
Ralph Flegel
Billy Fulkner
Elmer Foster
Ben Foworth
Bill Frazier
Noel Frizzell
Archie Fryar
Raymond Fuller
Shirley Gardenhire
Julian Garner
Lester Garrett
Lee Gibson
Bert Godfrey
Lawrence Goehard
Robert Gray
Norman Griffin
Tom Griffin
Warren Hale
Eugene Hall
Wayne Hammel
Bill Hammontree
Henry Hankins
Jimmie Hardy
Elbert Hartman
Nathan Hartman
Harold Harwood

Jack Heard
Fred Helms
Donald Henneker
Sam Henry
Bill Herren
Billy Hicks
Olla Hill
Maulton Holladay
Boyd Hollis
Jack Howard
Preston Huddleston
James Hudlow
Hubert Hudson
Raughton Hudson
Paul Huff
Carl Hunter
Samuel Hunter
Bill Inrie
George Jennings
David Jolly
Belmont Jolly
Bobbie Jones
Clarence Jones
James Jones
J. R. Jones
Sam Jones
John Kalleen
Ned Kelley
Ernest Kelley
Carter Kerns
Ruddy Kimbrough
Maurice King
Gladwin Kirk
William Kirk
Edward Kraeger
George Lavender
Dick Layton
Jimmy Ledbetter
R. E. Lee
William Lehman
William Linder
Charles Lindsey
Jack McBee
Walter McHard
Arthur McBryar
J. T. McCormick
Fred McKenney
Clarence Manning
Garnett Mandfield
Jack Marlin
James Marlow
Donald Martin
James Martin
Joel Mason
Ray Mayfield
Earl Mayo

Harold Mays
Carlless Meredith
Richard Miles
Alan Mitchell
Barnett Morgan
Joe Morris
Ralph Morton
Charles Moss
George Musgraves
George Neale
Robert Nicholas
Joe Nicholson
Sam Norman
Wilson Norvell
George Oakey
Clifford O'Neal
Joseph O'Hara
George Owens
Albert Page
David Paroley
William Parker
Vernon Pearson
Ed Pierce
Tom Polvogt
Thomas Price
Bobbie Proctor
Morris Quave
Creed Quinn
Alfred Quinton
William Raggsdale
Billy Rope
Norman Ratchford
Gilbert Raulston
James Reese
Earl Reed
Leon Reaves
Vernon Rhodes
Dean Richeson
Edwin Roberts
James Roberts
Lawrence Rodgers
Wannell Rogers
Arthur Rollins
Waymon Rose
Robert Sales
William Schaefer
Clifford Scott
Gordon Seibold
Billy Shelton
Harold Shrader
Edwin Siddall
Bobby Simms
Tommy Simpson
Walter Simpson
William Skiles

Lemar Sloan
Lester Smith
Charles Smith
Lee Smith
Vernon Smith
Wendell Smith
Willard Smith
Charles Spangler
Grant Spencer
Bryan Standifer
Freddie Stansell
M. C. Stephens
Sidney Stevens
Thomas Stewart
E. J. Stone
Kenneth Stribling
Fred Stutz
William Swearingen
David Tarpley
Milton Taylor
Gordon Teal
Eugene Thomas
Dan Thomas
Ben Thompson
Charles Thompson
Joe Thompson
Mitchell Thompson
Robert Thornburg
Milton Tindell
Sam Tinker
Roy Towns
Houston Turner
Max Turner
James Valentine
Albert Van Zandt
Dick Walden
J. C. Walker
Tommy Walker
Albert Wallace
L. A. Ware
Charles Waterhouse
Edward Watkins
Charles Watson
James Westbrooker
Thayer Westbrook
John White
Warren White
Lewis Wilkins
Rufus Williamson
Fred Womack
J. L. Womack
Wiley Woods
Vance Young

Junior Class

GIRLS

Ruth Acuff
Lois Akers
Mary Allan
Eva Anderson
Melba Anderson
Ruby Archie
Zelda Baker
Wanda Babs
Florence Barber
Carolyn Barlach
Mozell Barnton
Geraldine Barry
Mary Lou Beck
Rose Elma Beene
Nelda Belcher
Virginia Bellis
Betty Benedict
Allene Black
Lillian Blair
Alice Blanton
Doris Blaylock
Betty Bowman
Lucille Bowman
Clara Boyd
Edith Boyd
Carolyn Brackner
Charlotte Bracken
Eileen Bradshaw
Barbara Brandt
Jean Brooks
Grace Brooks
Evelyn Broome
Helen Brown
Billie Burdette
Martha Burger
Flora Bush
Betty Jean Cade
Carrie Bell Camp
Edna Mae Carden
Hazel Carnes
Anne Carter
Margaret Carver
Betty Gayce
Ruth Charlesworth
Mozelle Childers
Ruth Clark
Margaret Clark
Alice Cobb
Doris Cooke
Agnes Cooper
Helen Coats
Jeraldine Couch
Leddell Cox
Martha Cox

Roberta Crawley
Mary Lee Cummings
Elizabeth Cunningham
Nethia Cuzzort
Mary Elizabeth Dale
Martha Jean Davis
Josephine Davis
Ruth Davis
Naomi Deakins
Dorthea Deale
Helen Dean
Virginia Delazier
Josephine Doremus
Margaret Dunn
Peggy Durham
Lovella Eaves
Ruth Echols
Ruby Lee Ellington
Margaret Epperson
Winona Evans
Bertha Fields
Doris Fisher
Emma Fisher
Mary Helen Fitzgerald
Edna Mary Ford
Priscilla Foreman
Mary Frank
Ruth Fuller
Bernice Funk
Mary Gailman
Anita Gonnaway
Martha Jane Gates
Marie Gober
Evelyn Goodlet
Lesley Goodson
Mary Ellen Greene
Evelyn Griesman
Elizabeth Green
Marion Groves
Bertha Guthrie
Helen Haggard
Lena Mae Hale
Ruth Hamble
Sarah Hanks
Jimmy Hardwick
Juanita Hargiss
Bessie Harrington
Angella Harris
Helen Harris
Ladema Hatcher
Jean Hawkins
Marie Heaps
Neil Henegar
Mary Henry
Nette Hicks

Edna Higdon
Violet Higdon
Evelyn Hill
Juanita Hill
Marie Holloway
Alice Hooper
Mary Hopson
Bettye Housley
Sera Howard
Dorthea Hyde
Patricia Ingram
Aline Jensen
Doris Johnson
Dorothy Johnson
Ruby Johnson
Betty Jolly
Athala Jones
Barbara Jones
Clatice Jones
Ruth Jones
Anne Jones
Ann Kelly
Mary Keown
Ida Kerr
Lydia Kiger
Alice Killingsworth
Nadine King
Ruth Land
Lucille Lane
Lorraine Larimore
Mary Jo Lamb
Louise Lawton
Louise Layne
Anna Marie Lehman
Mildred Lehman
Blanche Leonard
Alice Lindeman
Nell Little
Esther Little
Muriel Lloyd
Cora Long
Dorothy Long
Lorena Lynch
Emona Lou McBryar
Jimmie McClure
Laura McCullough
Glynden McDonald
Lois McDonald
Virginia McDonald
Anna McGinnis
Lucille McGowan
Cleo McMurray
Peggy McNichols
Norma McSpadden
Muriel Majure

Violet Masler
Melba Marshall
Faye Mason
Melba Maxwell
Genevieve May
Alberta Morgan
Pauline Meyer
Rosemary Miles
Frances Miller
Ruth Mitchell
Mildred Morton
Willie MacNale
Frances Nelson
Frankie Niles
Ruby Norris
Dorothy O'Brien
Frances Owens
Naomi Park
Marian Parker
June Parks
Louise Payne
Betty Peace
Norma Pedigo
Ruth Pemberton
Kathryn Planzer
Dorothy Porter
Alice Powell
Nadine King
Louise Prystup
Gladys Turner
Jeanette Ragle
Georgia Rhea
Margaret Rhodes
Margaret Riggs
Edna Earle Robinson
Lillian Robinson
Eva Rogers
Frances Rogers
Louise Roth
Elizabeth Rudd
Elizabeth Sadler
Daisy St. Clair
Eugenia Sanders
Vivian Sargent
Geneva Schindler
Geneva Scoggins
Bertha Scott
Betty Shearer
Dorothy Shedd
Betty Jane Sherman
Floy Sherman
Beulah Simpson
Evelyn Simpson
Dorthea Slivley
Barbara Smith

Betty Jean Smith
Billy Ray Smith
Ladema Smith
Lucy Smith
Genevieve May
Kerby Sparks
Virginia Squibb
Evelyn Stamps
Martha Steakley
Billie Stern
Valeria Stewart
Martha Stokes
Henrietta Strubbling
Louise Sullivan
Betty Swafford
Sara Swafford
Martha Swearingen
Betty Syler
Jennie Tallent
Betty Tapp
Martha Taylor
Dorothy Templeton
Helen Thomas
Tressa Thomas
Dorothy Thompson
Myrtle Thompson
Katherine Tinker
Frances Tinkle
Harriett Turner
Phoebe Turner
Virginia Van Der Cameron
Evelyn Van Hoosier
Mary Varner
Reta Vaughn
Sara Neile Vaughn
Amelia Walker
Dottie Walker
Ernestine Walker
Clara Wells
Mary Katherine West
Mary Wheeler
Willie Blanche Wheeler
Geneva White
Mary Lou Whitmore
Doris Willbanks
Hazel Williams
Hilda Williams
Mabel Williams
Pearl Wilson
Betty Lu Wolff
Margarette Womack
Johnnie Woodlee
Mary Worley
Celeste Wright
Doris Skillington
Charlyne Wyrick



Junior Class History

A wave of bright green swept into the halls of Central in the fall of 1936, or so it seemed to many; but on second glance it turned out to be only freshmen, the future class of 1940!

The long corridors, the dark classrooms, the bespectacled professors, and the stares of the upper classmen were almost too much for us, but with the aid of a strong backbone, class leaders, and kind teachers, we were soon able to overcome this awe. We elected our capable leaders of this year as Belmont Jolly, president; Alberta Morgan, vice-president; Ruth Echols, secretary; and Wilson Norvell, treasurer.

At the end of the first term we were well established and the following took part in the various affairs: Virginia Scoggins, Charles Edwards, and Aline Jensen were chosen as members of the Digest staff; J. R. Billingsley and Curtis Erwin were given extracurricula awards at the end of the year; and Aline Jensen was elected freshman representative of the Champion.

After having a taste of this life, we started looking forward to the next year with joy, as we were to be sophomores, thereby accomplishing one milestone of our life at our school home, Central.

As the second year progressed, we were beginning to feel like somebody, and the green tint had almost faded away. We were taking part in more school activities and many members of our class were prominent in the programs and projects which were presented. Eight members of our class were in the varsity Glee Club; fifteen were in the orchestra; and ten were in the band.

A great event in the eyes of sophomores that year was the Sophomore Party. Gloria Clinton was chosen queen and the president and vice-president of the class, Glenn Dean and Wilson Norvell, were her escorts. The secretary, Mildred Richey, and the treasurer, James Marlow, were on committees for entertainment.

Fred McKenney and Milton Tindell were on the football squad and showed great possibilities for the coming year. The second year ended when the proud and happy sophomores became full-fledged juniors.

As we entered into this new field of work, everything seemed different. We were no longer the poor, oppressed, insignificant sophomores or freshmen, but we were now prominent juniors, who could look down at the freshies and look forward to our goal of 1940, just one short year off. We grasped every opportunity that offered itself and delved into our books with a new vigor. "New" did I say? Well, maybe just vigor. We elected our officers at once, and those who were to have the honor of presiding over the up-and-coming junior class were Wilson Norvell, president; James Marlow, vice-president; Roberta Crawley, secretary; and Ruby Archie, treasurer. Edna Ford and Lillian Blair were elected song leaders, and Helen Haggard was elected junior song leader for the school.

Helen Dean wrote an essay on Fire Prevention and won first prize over all schools making entries. Helen Thomae in the contest of theme writing was awarded the place of representative of the junior class for the Champion.

The new members of the band were Allan Hail, Edward Pierce, and Amelia Walker. The Digest members were Roberta Crawley, Robert Thornburg, Jean Hawkins, Harriet Turner, Ida Kerr, George Owen, Curtis Erwin, Anne Carter, and Ben Thomas.

We have now passed the third milestone in our life at Central. We are looking forward to the senior year full of thrills of making the Honor Society, Ushers, and various other awards awaiting outstanding students.

With past years as a beginning at Central, we have an excellent outlook for the greatest year of all—senior year.

May we realize our hopes—to excell all previous seniors, and be a class that the future classes of Central will hold as a standard and remember as the class of 1940!



Johnston, Jordan, Peeler, Wick

OFFICERS

MACK JORDAN	President
MELBA VICK	Vice-President
JOCELYN PEELER	Secretary
EMILY JOHNSTON	Treasurer

SOPHOMORE CLASS

Sophomore Class

BOYS

Stanley Abel
Jack Agnew
Grover Alexander
William Allen
Billy Alverson
Hayes Alverson
Ralph Anderson
Victor Anderson
John Arnold
John Avans
Russell Baker
Charles Barnes
Rufus Barry
Hudson Bayne
Tommy Bayston
Mack Beaver
Morgan Beaver
Willard Bell
Rome Benedict
Samuel Benton
Bill Birchfield
Joe Birchfield
Eugene Bird
Herbert Bivens
Jesse Blackman
Frank Blair
Grover Bledsoe
Marion Block
Paul Bonds
Winifred Bowman
Billy Bradley
Walter Brooks
Hamilton Broome
Jack Brown
John Brown
Herschel Broyles
Earl Buchele
Joseph Burch
Robert Burnette
Cecil Byrd
Orville Cain
John Callender
Tommy Camp
Grover Campbell
James Carroll
John Carroll
David Carter
Jesse Carter
James Cartwright
Earl Case
Ralph Casey
William Castlett
Roderick Carver
Johnny Chandler
John Christenburgh
Robert Christenburgh
Arthur Clark
Paul Clark
George Clinton
Ernest Coffelt

Paul Cifer
W. C. Colwell
Willard Conn
Bob Conner
Dennis Coole
Don Cooper
Earl Crabtree
John Crabtree
Leonard Gribbsby
Nick Grubbs
Ralph Guider
Jack Haddock
Bill Hale
Gus Hall
Pat Hall
Frank Hallas
Jimmy Halloran
Robert Hamilton
Dewitt Hamilton
Rene Lawrence
Donald Hancock
George Hanks
John Hardin
Robert Harris
Richard Hastings
Chester Hatfield
James Helton
Frank Hendrix
J. C. Hennessey
William Henry
Jim Hicks
Fred Higgins
Vernon Hill
Thomas Hixon
Clyde Holder
Harold Holliday
Fred Horne
Lavoy Howard
Ben Huddleston
Harold Huddleston
William Huddleston
Charles Hudson
Don Hudson
Louis Hudson
W. A. Hullander
Granville Humphries
Pot Hunerwadel
John Hurst
Ross Huskey
William Hutson
Robert Ingle
William Ingram
Luther Ireland
Albert Jackson
Grady Jacoway
Arthur Jenkins
Claude Johnson
Robert Johnson
Robert Thurston Jones
Tom Jones
Mack Jordan
James Goldston
Joseph Keith

Horace Goodwin
Ralph Gorman
Foster Graham
Jack Grant
Richard Grant
Arthur Gray
James Green
John Keown
Nick Grubbs
Ralph Guider
Jack Haddock
Bill Hale
Gus Hall
Pat Hall
Frank Hallas
Jimmy Halloran
Robert Hamilton
Dewitt Hamilton
Rene Lawrence
Donald Hancock
George Hanks
John Hardin
Robert Harris
Richard Hastings
Chester Hatfield
James Helton
Frank Hendrix
J. C. Hennessey
William Henry
Jim Hicks
Fred Higgins
Vernon Hill
Thomas Hixon
Clyde Holder
Harold Holliday
Fred Horne
Lavoy Howard
Ben Huddleston
Harold Huddleston
William Huddleston
Charles Hudson
Don Hudson
Louis Hudson
W. A. Hullander
Granville Humphries
Pot Hunerwadel
John Hurst
Ross Huskey
William Hutson
Robert Ingle
William Ingram
Luther Ireland
Albert Jackson
Grady Jacoway
Arthur Jenkins
Claude Johnson
Robert Johnson
Robert Thurston Jones
Tom Jones
Mack Jordan
James Goldston
Joseph Keith

U. D. Keith
Thomas Keller
Bob Kelley
Truitt Kendrick
Donald Kennedy
Harris Kenyon
Palmer Kenyon
John Keown
Carl Kyle
William Kimsley
John Kirby
John Klein
Gus Hall
Pat Hall
Frank Hallas
Jimmy Halloran
Robert Hamilton
Dewitt Hamilton
Rene Lawrence
Donald Hancock
George Hanks
John Hardin
Robert Harris
Richard Hastings
Chester Hatfield
James Helton
Frank Hendrix
J. C. Hennessey
William Henry
Jim Hicks
Fred Higgins
Vernon Hill
Thomas Hixon
Clyde Holder
Harold Holliday
Fred Horne
Lavoy Howard
Ben Huddleston
Harold Huddleston
William Huddleston
Charles Hudson
Don Hudson
Louis Hudson
W. A. Hullander
Granville Humphries
Pot Hunerwadel
John Hurst
Ross Huskey
William Hutson
Robert Ingle
William Ingram
Luther Ireland
Albert Jackson
Grady Jacoway
Arthur Jenkins
Claude Johnson
Robert Johnson
Robert Thurston Jones
Tom Jones
Mack Jordan
James Goldston
Joseph Keith

Gordon Nerren
Robert Nicholson
Henry Oliver
George O'Neal
George O'Neal
Willard O'Rear
James Owens
Ford Painter
Carl Kyle
William Kimsley
John Kirby
John Klein
Gus Hall
Pat Hall
Frank Hallas
Jimmy Halloran
Robert Hamilton
Dewitt Hamilton
Rene Lawrence
Donald Hancock
George Hanks
John Hardin
Robert Harris
Richard Hastings
Chester Hatfield
James Helton
Frank Hendrix
J. C. Hennessey
William Henry
Jim Hicks
Fred Higgins
Vernon Hill
Thomas Hixon
Clyde Holder
Harold Holliday
Fred Horne
Lavoy Howard
Ben Huddleston
Harold Huddleston
William Huddleston
Charles Hudson
Don Hudson
Louis Hudson
W. A. Hullander
Granville Humphries
Pot Hunerwadel
John Hurst
Ross Huskey
William Hutson
Robert Ingle
William Ingram
Luther Ireland
Albert Jackson
Grady Jacoway
Arthur Jenkins
Claude Johnson
Robert Johnson
Robert Thurston Jones
Tom Jones
Mack Jordan
James Goldston
Joseph Keith

George Smith
Julian Smith
Wiley Smith
Frank Snyder
David Sparks
Joe Spearman
Harold Spurlock
Marian Stacy
Wales Standifer
William Standifer
John Stargel
J. L. Steele
Fred Sterchi
Samuel Stripe
Charles Pearson
James Perry
James Pery
August Pfizer
Donald Pfizer
Edward Phillips
Jack Phillips
Herbert Poindexter
Bill Pope
Carl Price
Herschel Prichard
Harry Pruett
James Pyle
Charles Reed
Fred Reed
David Reynolds
Richard Rivers
William Robb
David Roberts
George Robertson
Robert Robinson
William Robinson
Steve Roddy
J. W. Roder
Maurice Rogers
Grady Rozzell
Bert Ruef
Charles Rymer
George Sabine
John McCoy
Paul Sartain
Arnold Satterfield
Robert Schubert
Albert Scott
Arch Sedman
Clyde Sedman
Mervil Seibold
Tom Selvidge
Leslie Shackelford
Lester Shelton
Morton Shelton
Joe Shipley
Royce Shorter
Justen Short
J. R. Shrader
Alexander Simpson
Edwin Siniard
Edward Sivey
Gilbert Slathon
C. J. Smith

Sophomore Class

GIRLS

Lillian Acuff
Mildred Adams
Dorothy Alexander
Virginia Alexander
Edna Earle Cooke
Madge Cooper
Dorothy Cooper
Catherine Cope
Catherine Coulson
Marjorie Coulson
Elizabeth Cowley
Martha Louise Cox
Myrtice Coy
Evelyn Crabtree
Pauline Craig
Gaynell Crawford
Patricia Criswell
Mamie Crowder
Dorothy Crowe
Juanita Crowe
Nell Crowe
Helen Crumley
Betty June Cummings
Marie Cunningham
Teddy Cushman
Geraldine Davis
Betty Lou Day
Billie De Friesse
Lela Catherine Bond
Charisie Boss
Margaret Bouldin
Betty Jo Bowen
Lois DuBois
Doris Marable
Betty Dudderar
Ora Dugan
Maxine Duncan
Mary Katherine Durham
Rosalie Dutto
Virginia Elkins
Bobbie Lee Elrod
Katherine Ely
Ruth Espy
Juanita Fambrough
Katherine Ferguson
Mary Evelyn Fisher
Louise Ford
Elizabeth Freeman
Barbara Freudenburg
Frances Fuller
Alma Ruth Gant
Ellen Gardenhire
Nadine Garrett
Louise Geer
Louise Gerald
Mary Katherine Giddens
Bonnie Gill
Gladys Gilliland
Katherine Gilreath
Elizabeth Glaze
Dorothy Golston
Charlotte Gonio
Alice Green

Joyce Coletta
Billie Colston
Martha Connor
Edna Earle Cooke
Madge Cooper
Dorothy Cooper
Catherine Cope
Catherine Coulson
Marjorie Coulson
Elizabeth Cowley
Martha Louise Cox
Myrtice Coy
Evelyn Crabtree
Pauline Craig
Gaynell Crawford
Patricia Criswell
Mamie Crowder
Dorothy Crowe
Juanita Crowe
Nell Crowe
Helen Crumley
Betty June Cummings
Marie Cunningham
Teddy Cushman
Geraldine Davis
Betty Lou Day
Billie De Friesse
Lela Catherine Bond
Charisie Boss
Margaret Bouldin
Betty Jo Bowen
Lois DuBois
Doris Marable
Betty Dudderar
Ora Dugan
Maxine Duncan
Mary Katherine Durham
Rosalie Dutto
Virginia Elkins
Bobbie Lee Elrod
Katherine Ely
Ruth Espy
Juanita Fambrough
Katherine Ferguson
Mary Evelyn Fisher
Louise Ford
Elizabeth Freeman
Barbara Freudenburg
Frances Fuller
Alma Ruth Gant
Ellen Gardenhire
Nadine Garrett
Louise Geer
Louise Gerald
Mary Katherine Giddens
Bonnie Gill
Gladys Gilliland
Katherine Gilreath
Elizabeth Glaze
Dorothy Golston
Charlotte Gonio
Alice Green

Marie Griffey
Margean Griffith
Marie Grimmig
Betty Guthrie
Juanita Hall
Mildred Hall
Virginia Kirkpatrick
Opal Kiziah
Betty Jo Lamb
Katherine Lenkford
Eva Lawrence
Martha Lawson
Mary Jane Lawson
Mary Ruth Lawson
Mildred Lee
Margaret Leonard
Martha Leonard
Virginia Leonard
Kathleen Hilliard
Ruthie Hinds
Winnie Hinds
Margaret Hobday
Anne Hodges
Bobbie Hodges
Hilda Hodges
Dorothy Holder
Dorothy Holley
Sara Holliman
Clara Hollis
Daisy Holloway
Marian Holloway
Betty Houston
Margaret Howard
Polly Howard
Dorothy Howell
Martha Matthews
Virginia Hudgens
Nancy Igou
Alleen Incore
Katherine Ireland
Amy Jenkins
Rosemary Jepson
Joy Jernigan
Ernestine Jobe
Martha Johnson
Emily Johnston
Dorothy Jolley
Bettie Jones
Frankie Jones
Leona Jones
Margaret Jones
Mary Frances Jones
Norma Jones
Helen Kammer
Cleo Keith
Elizabeth Kell
Clara Kellerhals
Bobby Jean Kelley
Kathryn Kennedy
Faye Keown

Thelma Keown
Margaret Kersey
Mildred Mae Killingsworth
Mildred Louise Killingsworth
Frances Kilgore
Ruth King
Virginia Kirkpatrick
Opal Kiziah
Betty Jo Lamb
Katherine Lenkford
Eva Lawrence
Martha Lawson
Mary Jane Lawson
Mary Ruth Lawson
Mildred Lee
Margaret Leonard
Martha Leonard
Virginia Leonard
Kathleen Hilliard
Ruthie Hinds
Winnie Hinds
Margaret Hobday
Anne Hodges
Bobbie Hodges
Hilda Hodges
Dorothy Holder
Dorothy Holley
Sara Holliman
Clara Hollis
Daisy Holloway
Marian Holloway
Betty Houston
Margaret Howard
Polly Howard
Dorothy Howell
Martha Matthews
Virginia Hudgens
Nancy Igou
Alleen Incore
Katherine Ireland
Amy Jenkins
Rosemary Jepson
Joy Jernigan
Ernestine Jobe
Martha Johnson
Emily Johnston
Dorothy Jolley
Bettie Jones
Frankie Jones
Leona Jones
Margaret Jones
Mary Frances Jones
Norma Jones
Helen Kammer
Cleo Keith
Elizabeth Kell
Clara Kellerhals
Bobby Jean Kelley
Kathryn Kennedy
Faye Keown

Mary Elizabeth Owen
Dorothea Owens
Helen Owens
Ruby Page
Ruth Page
Beulah Pardue
Helen Parker
Alice Parker
Frances Parks
Dorothy Payne
Bobbie Peace
Jocelyn Peeler
Aubrey Pendergrass
Helen Pendergrass
Thelma Pickett
Mary Elizabeth Pless
Betty Poston
Neil Potts
Vivian Potts
Florence Price
Ivanora Queen
Kathleen Rackley
Capitola Ragle
Helen Ragle
Jean Rankin
Betty Evelyn Ray
Elizabeth Reid
Laura Reynolds
Ernestine Richbourg
Marion Vann
Valda Vaughn
Melba Vick
Elizabeth Von Schaaf
Evelyn Weatherford
Rebecca Webb
Elizabeth Weige
Mary West
Frances Westbrook
Betty Wilcox
Naomi Wilhoite
Ethel Williams
Frances Williams
Mary Louise Williams
Avalon Wilson
Frances Wilson
Juanita Wilson
Madge Wilson
Martha Wilson
Mary Lee Wilson
Louise Wimpee
Maniha Will
Dorothy Womack
Pioneer Wood
Theresa Woodfin
Emily Workman
Irene Workman
Lillian Wright
Sarah Wright
Doris Yarbrough
Dorothy Zelinsky
Juanita Zimmerman
Rosanna Zimmerman

Sophomore Class History

Early in September, 1937, a large group of jolly freshmen arrived on the scene at Central High School. After the first few weeks of getting lost and wandering hopelessly around, these freshmen settled down and elected their leaders. These officers for this freshman class were as follows: David Reynolds, president; Charlsie Boss, vice-president; Betty Childers, secretary; and Joe Shipley, treasurer. All of these proved to be able officers for this large group of freshmen.

Some of these who were honor students at their respective schools were entertained by the Lookout Chapter of the National Honor Society, along with honor students of the sophomore class.

These freshmen enjoyed many happy days of good times and hard study. As there must sometime be an end to all things, this freshmen year at Central High came to an end. With love for Central and loyalty to her in their hearts, they completed their first year and began looking forward to the next.

After their summer vacation, they returned to Central as busy sophomores, joined by a large number from the junior high schools. After a few weeks they elected the following as their officers for their sophomore year: Mack Jordan, president; Melba Vick, vice-president; Betty Childers, secretary; Emily Johnston, treasurer; and Betty Jo Bowen, song leader.

Several of this group exhibited ability in different activities and were honored accordingly. Those who were especially talented in singing were chosen as members of the Varsity Glee Club. These included Rome Benedict, Madge Cooper, Lorene Hays, Charles Hudson, Joy Jernigan, Claude Johnson, Judy McCarson, Virginia McCormack, Jocelyn Peeler, Richard Rivers,

Sam Stipe, Carl Thompson, Mary Frances Thraillkill, Melba Vick, Alene Rogers, Theresa Woodfin, and Desma McDaniel.

Those who possess ability for playing musical instruments secured for themselves places in the band or orchestra. Those in the orchestra include Virginia Hudgens, Harris Kenyon, Margaret Sprigel, Howard Thompson, Betty Zimmons, and Marion Venable. Those placed in the band were Bill Allen, Betty Baugh, Mack Beaver, Herhall Broyles, Howard Buchele, Johnnie Crockett, George Clinton, Howard Cox, Johnnie Caplan, Maxine Duncan, Hollis Eldridge, Jimmie Foster, Bill Gates, Tommie Gilliland, Pat Hall, Vernon Hill, Ben Huddleston, Rosemary Jepson, Joe Keith, Ethel Lewis, Betty Littleton, Joe Mansfield, Willard O'Rear, Bill Pope, Harry Pruett, Mary Jane Sands, Betty Sparrow, Sam Tallent, Nancy Timmons, Douglas Troughber, Glenn Westbrook, and Ethel Williams.

Mack Jordan, Bill Robinson, Joe Spearman, and Jack Trimble were honored by being elected members of the Senate. Charles Rymer and Betty Jo Bowen were chosen cheer leader and song leader, respectively, for the school.

Of course in such a large class there would naturally be some outstanding scholars. The sophomore class ranked second only to the seniors in the number of the honor roll for the first quarter with four of these making the star roll. The class is well represented in the clubs of the school and on the Digest staff. Some of the sophomore girls were in the group of Centralettes who marched between halves at the City-Central game this year.

This group has had many good times at Central and they look forward to their next two years here. They have all learned to be proud of Central as their school.



Atwood, Jackson, Seibold, Bales

OFFICERS

BILL JACKSON	President
CHARLOTTE BALES	Vice-President
DOROTHY SEIBOLD	Secretary
MARTHA ATWOOD	Treasurer

FRESHMAN CLASS

Freshman Class

BOYS

George Ackley
Howard Adamson
James Airheart
Paul Alexander
Jack Allinder
Jarvis Anderson
Ernest Andrews
Allir Avakian
James Bacon
Kenneth Barry
Ernest Baugh
Billy Beene
James Bell
Bob Blackwell
John Henry Bohannon
Stanley Born
Henry Bowen
Clifford Boyd
Harold Bracken
Bobby Brewer
Floyd Britton
Charles Brock
Clyde Brooks
Jack Brooks
John Brouhard
Raymond Brothers
Billy Broyles
Carter Broyles
Joe Bryson
Charles Burkhardt
Bobbie Burris
Ray Calloway
Glen Carmichael
Clifford Carroll, Jr.
Lawrence Carter
John Cash
Jack Cassell
Charles Cates
Lawrence Citty
James Leland Coleman
Henry Colston
Samuel Conner

Kenneth Cook
Alfred Cooper
Jimmy Couch
Howard Cox
Mick Crabtree
Roy Craven
James Cross
Albert DeShazo
Fred Dial
James Charles Dobbins
Brounlos Dyer
Carl Evans
Jack Faerber
Pat Farmer
William Flagae
Robert Fletcher
Billy Folkner
Buford Follis
Bob Freeman
Eugene Fuls
Floyd Britton
Charles Brock
Clyde Brooks
Jack Brooks
John Brouhard
Raymond Brothers
Billy Broyles
Carter Broyles
Joe Bryson
Charles Burkhardt
Bobbie Burris
Ray Calloway
Glen Carmichael
Clifford Carroll, Jr.
Lawrence Carter
John Cash
Jack Cassell
Charles Cates
Lawrence Citty
James Leland Coleman
Henry Colston
Samuel Conner

Walton Hodge
John Hill
James Hollahan
James Howard
Don Howell
Roy Hudelston
Harry Hudson
Gilbert Humphreys
Roy Hyatt
James Igo
Wilburn Irwin
Carl Evans
Jack Faerber
Pat Farmer
William Flagae
Robert Fletcher
Billy Folkner
Buford Follis
Bob Freeman
Eugene Fuls
Floyd Britton
Charles Brock
Clyde Brooks
Jack Brooks
John Brouhard
Raymond Brothers
Billy Broyles
Carter Broyles
Joe Bryson
Charles Burkhardt
Bobbie Burris
Ray Calloway
Glen Carmichael
Clifford Carroll, Jr.
Lawrence Carter
John Cash
Jack Cassell
Charles Cates
Lawrence Citty
James Leland Coleman
Henry Colston
Samuel Conner

Francis Myers
Harold Nale
Stewart Nolan
Samuel Osborn
Rhea Owen
Carl Owens
Francis Painter
Bill Page
William Parham
Allen Park
L. H. Park
Charles Payne
Roy Pickett
Robert Pickett
James Potter
Stanley Prestwood
Joe Quinoner
Sam Ray
Travis Reed
Wilburn Rhinehart
Hamilton Richey
James Richey
Charles Robinson
Earl Robinson
Hugh Robinson
Kenneth Rogers
Eugene Sabine
Bill Scheerer
Billy Schoecraft
Frank Sells
Glen Sells
Fillmore Sessions
Earl Sharp
Marvin Shelley
Earl Shipley
Harold Sively
George Smith
Taylor Smith
Ronald Smith
Ed Eugene Spann
Gelon Sparger
Roy Speer

Bill Stapelton
J. R. Starnes
Dwayne Stewart
Leonard Straker
Cabe Strons
Marvin Tallent
Walter Tate
Robert Teague
Ira Templeton
Buddy Thomas
Grover Thomas
Jack Thomas
Dennis Thompson
William Thurman
Allen Tittle
James Travis
Bill Trimble
Archie Trundle
Fred Underwood
Vance Usher
Landis Vetter
S. M. Wade
John Walker
John Wallace
Maurice Waller
James Wallis
Johnnie Washburn
Arthur Wells
Roy Whitmire
Bobby Wilcox
James Wilcoxson
Clyde Willhoit
Ervin Williams
Milton Williamson
J. E. Wilson
J. T. Wilson
Ralph Witt
William Young
William Younger
Joe Zeige
Walter Zorn

Freshman Class

GIRLS

Helen Adams
Juanita Adams
Dorothy Anderson
Marjorie Atchley
Rebecca Atchley
Martha Atwood
Charlotte Beles
Dorothy Best
Mary Louise Bigley
Mary Loraine Billingsley
Rosalea Blake
Johnny Clyde Blevins
Vivian Blevins
Louise Bowling
Mildred Boydston
Mary Virginia Brown
Sarah Ruth Brown
Myra Bryan
Alma Buckner
Isabel Bunch
Mary Helen Bruke
Catherine Caldwell
Virginia Caldwell
Alice Camp
Dorthea Caplan
Daisey Case
Irene Coffelt
Opal Colston
Virginia Colwell
Betty Ann Cook
Peggy Cooke
Minnie Croft
Viola Cross
Betty Cutton
Katherine Cuzzort
Dorothy Davis

Mary Louise Davis
Doris Dean
Marion Delaney
Mildred Dempsey
Della Faye DeSha
Evelyn DeShazo
Madeline Doak
Dorothy Dodd
Mary Kathryn Dunn
Jane Dupuis
Betty Eaker
Dorothy Echols
Louise Eidson
Lona Kate Ellis
Edna Earle Evans
Lila Rose Evans
Betty Evatt
Genevieve Farley
Bett Farrell
Marjorie Ferger
Mary Evelyn Finch
Margaret Fullam
Mary Fulmer
Marion Garner
Betty Jane Greene
Dorothy Green
Dorothy Hale
Billie Ruth Hall
Maelynn Hall
Bobbie June Haney
Louise Harden
Charlene Harris
Mary Frances Harris
Mary Catherine Hartline
Helen Harwood
Frances Virginia Hayes
Nedra Ann Heintz
Mary Elizabeth Henderson
Dorothy Herron
Marie Higdon

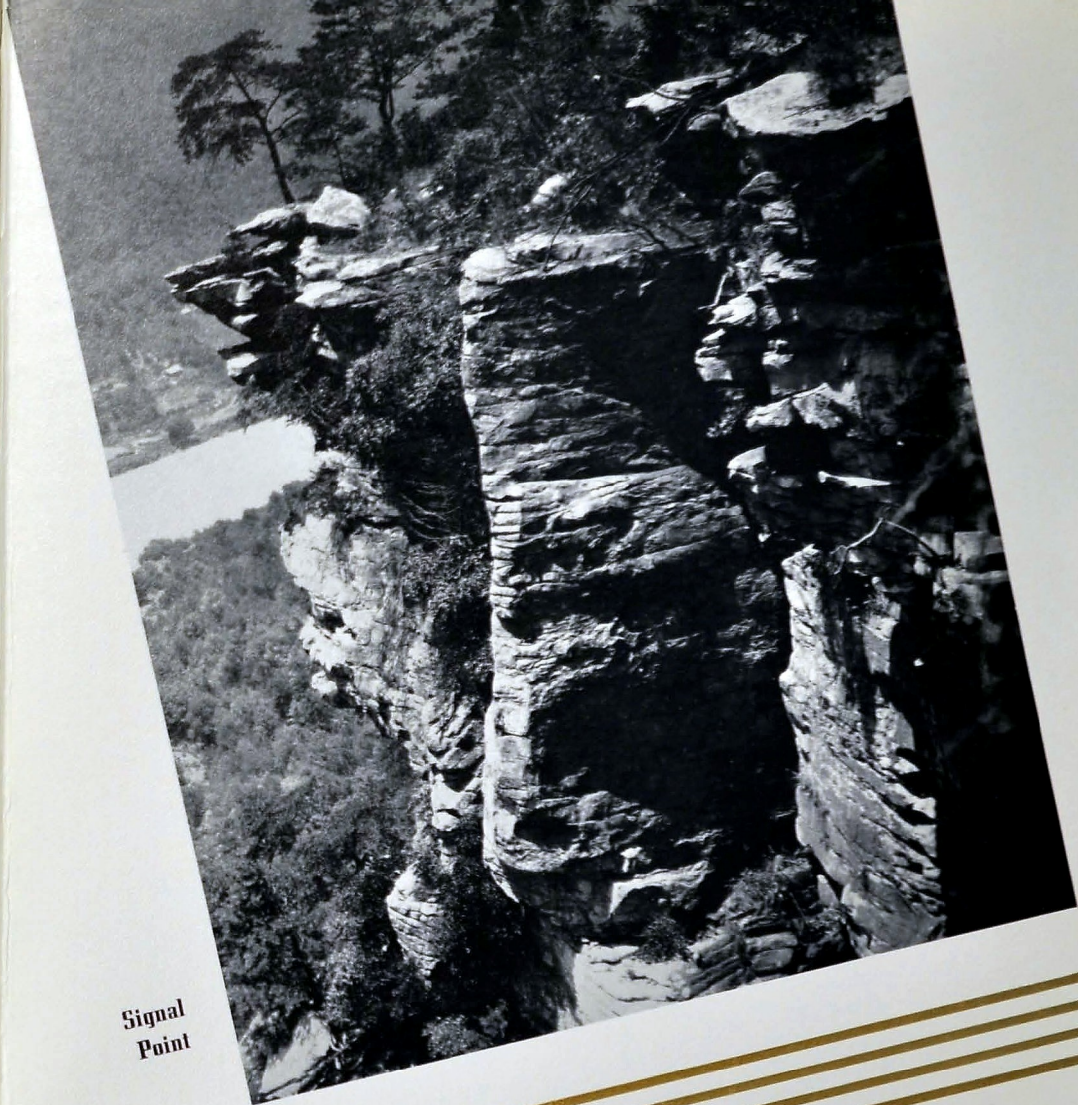
Mary Catherine Higdon
Charlotte Hill
Ruthie Jane Hinds
Doris Virginia Hope
Mary Elizabeth Horne
Anna Margaret Hudson
Mary Louise Hunt
Doris Hyer
Betty Jean Ingle
Geraldine Ivey
Louise Jackson
Charlene Jacoway
Alma Johns
Anna Ruth Jones
Geraldine Jones
Mary Elizabeth Jones
Cletta Mae Jordan
Mary Elizabeth Jordan
Betty Jo Kendrick
Frances Virginia Keown
Hilda Kimbrough
Helen Kimzalow
Marionelle Kirkpatrick
Dorothy Knapp
Evelyn Lamb
Betty Jo Landenberger
Lorene Landrum
Helen Lankford
Mary Finely Lawrence
Avinelle Lawrence
Jeanne Leavitt
Ethel Lewis
Betty Lindeman
Jeanne Leavitt
Ethel Lewis
Betty Lindeman
Jeanne Lockwood
Carolyn Lloyd
Anita McBrayer
Shirley McBroom

Mary Frances McConkey
Lorraine McDonald
Thelma McDowell
Wanda McKinney
Frances McMillan
Betty Marlow
Hilda Miller
Iris Miller
LeVerne Mitchell
Bernice Morgan
Helen Morton
Frances O'Rear
Genevieve O'Roar
Josephine Owenby
Dorothy Parker
Frances Parsons
Helen Parton
Audrey Perry
Martha Lou Phillips
Sara Prince
Bessie Ramsey
Imogene Ray
Virginia Rhea
Eudora Riddick
Sue L. Roark
Olene Rogers
Lorene Rothwell
Frances Roy
Anita Russell
Dorthea Russell
Esther Rymer
Pauline Schoofield
Dorothy Seibold
Elizabeth Sertel
Laura Shadoun
Doris Sharpe
Evelyn Shaw
Betty Steen
Miriam Skiles
Imogene Sledge

Merle Sledge
Eva Katherine Smith
Inda Mae Smith
Mary Stella Smith
Mary Frances Southerland
Dorothy Sparks
Mary Guy Springer
Ursa Lou Stafford
Margaret Stewart
Betty Ann Stimpson
Tommy Lou Strickland
Mildred Tallant
Roberta Teague
Virginia Thach
Dorothy Thomas
Joanne Thompson
Mary Jane Thompson
Hilda Louise Tillet
Ellie Katherine Tittle
Margurite Tucker
Etta Varner
Patty Sue Vaught
Vivian Wade
Ruth Walker
Martha Anne Walker
Dorothy Wallace
Dora Lee Walters
Areal Warren
Janet Waterhouse
Mary Frances Watkins
Dorothy Whatley
Julia Wheeler
Jeanne Wilkerson
Betty Williams
Dorothy Williamson
Margurite Wilson
Helen Wilson
Myrtle Wilson
Juanita Wooten
Edna Mae Worley
Katherine Young



Signal
Point



ATHLETICS



OFFICERS

JAMES BROWN President	S. DEAN PETERSEN Sponsor
HOYT KILGORE Vice-President	GEO. M. McCOY Sponsor
BILL CARDEN Secretary	W. P. BALES Sponsor
JOHN CULLOM Treasurer	RALPH OLINGER Sponsor

James Baskette
Lee Benson
Charles Bonine
James Brown
Fred Butcher
Billy Carden
Bill Conner
John Cullom
Charles Fridell
Walter Fundinger
Shirley Gardenhire

James Hardie
Charleton Howard
Bill Kelley
Hoyt Kilgore
J. R. Ligon
Fred McKinney
Billy Meacham
Herman Morris
Robert Nicholas
Wilson Norvell
David Porter
Sam Ray

Mac Rhinehart
Ronald Rogers
Robert Sales
Everette Scarborough
Tom Simpson
Paul Steinmann
M. C. Stenens
Joe Thompson
Milton Tindell
Tom Walker
Glenn White

WEARERS OF THE

C



COACHES

S. D. PETERSEN

Head Coach

GEO. MCCOY

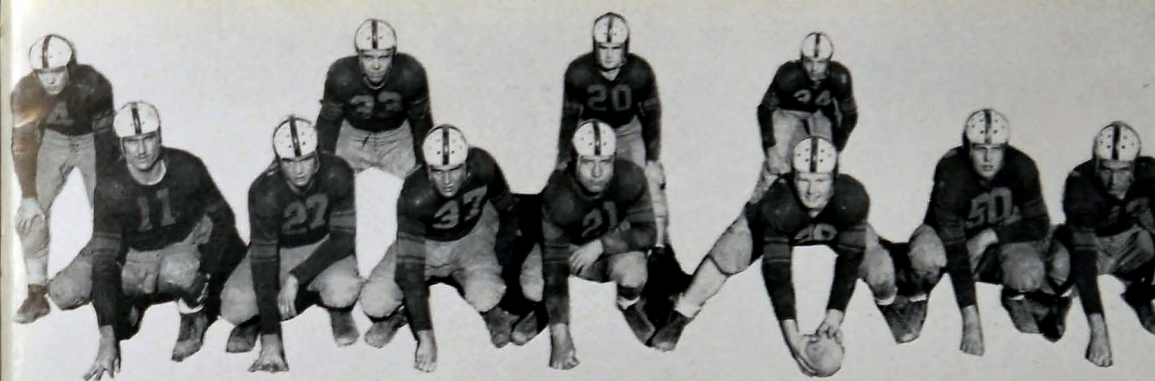
Line Coach

RALPH OLINGER

Assistant

W. P. BALES

Assistant



City Prep League Football Champions

In the fall of 1938, Coach S. D. Petersen together with thirty young grid hopefuls opened practice on Central's new athletic grounds, which were later named Frawley Field.

Through team spirit, fight, and determination this team soon became one of the best teams in town as well as one of the best in recent football history. At the end of the season they had compiled a record of three losses and one tie in the toughest Central football season on record.

CENTRAL, 24—SODDY-DAISY, 0

Central opened her schedule with Soddy-Daisy, a light but well-coached and stubborn team that made many good plays. But Central, greatly aided by the fine play of Robert Sales and Charlton Howard, emerged with a twenty-four to nothing score.

CENTRAL, 20—NOTRE DAME, 0

The second game on our schedule, against Notre Dame, was the first step toward the City Championship. The performance of Bill Kelly and Wilson Norvell helped win by a score of twenty to nothing and proved them to be capable gridmen.

CENTRAL, 13—MORRISTOWN, 0

Early in this second game of the season Morristown drove to the Pounders' seventeen-yard line, but at this point the Central team stiffened and held for four downs, and afterwards drove over for a touchdown. The Pounders scored again later in the game, while Morristown did not threaten our goal again.

First Row: J. H. Baskett, Lee Benson, James Brown, Fred Butcher, Jimmy Hardy, Charlton Howard, Bill Kelley.

Second Row: J. R. Ligon, Fred McKinney, Herman Morris, Wilson Norvell, David Porter, Ronald Rogers, Robert Sales.

Third Row: Everett Scarborough, Paul Steinman, M. C. Stevens, Tommy Walker, Walter Fundinger, Billy Meacham, Joe Hammack.



CENTRAL, 0—KINGSPORT, 0

Holding Bob Cifers and the Kingsport High team to a scoreless tie was the first real proof of Central's defensive ability. Led by Fred Butcher and Alternate Captain Billy Carden, the Chattanooga boys stopped play after play for no gain.

It was a kicking duel in which the educated toe of J. R. Ligon placed the Purple Pounders out of the danger zone time and again.

CENTRAL, 7—NASHVILLE CENTRAL, 0

Meeting Nashville Central next, the home boys won a hard-fought game by only one touchdown. The Purples with perfect defense allowed no first downs, and the Nashvillians did not cross their own thirty-yard line.

Under the leadership of Captain Hoyt Kilgore and the superb blocking of Herman Morris, the Centralites drove down the field for their only marker early in the first quarter of the game.

CENTRAL, 7—BRADLEY, 0

One of our oldest rivals, the Bradley Bears, were next trounced by the Pounders for a seven to nothing victory which brought us to Baylor with a clean record. The vicious tackling of Fred McKinney and Milton Tindall aided greatly in keeping our defensive record thus far unmarred.

CENTRAL, 14—BAYLOR, 7

The game with Baylor started slowly with neither team making much headway, until a glaring misplay, by Central, near the middle

STARTING LINEUP

Linemen: Fred Butcher, End; Billy Carden, Tackle; Milton Tindall, Guard; Hoyt Kilgore, Guard; Paul Steinman, Center; Fred McKinney, Tackle; James Brown, End
Backfield: John Cullum, Quarterback; Herman Morris, Halfback; Ronald Roger, Fullback; J. R. Ligon, Halfback

of the first period, gave Baylor a scoring opportunity. The Reds quickly capitalized on their good fortune and a touchdown and point afterwards resulted quickly.

Neither team scored in the third quarter, but in the last quarter through the ground gaining jaunts of Little Red Cullum and J. R. Ligon the Purples' offense started clicking. Little Red bounded over the goal line after a twenty-yard sprint. McKinney's kick, James Brown and Wimpy Stephens' slashing tackles, Paul Steinman's and Ronald Rogers' demon-like backing tied the score seven to seven. In the closing minutes of the game Central started her second touchdown drive. Again Ligon and Cullum carried the ball and aided by the blocking of Ronald Rogers and Herman Morris, as well as the entire line, soon crashed over the goal for the winning marker. There was never a game with a more thrilling finish.

CENTRAL, 7—LOUISVILLE MALE, 13

The eighth game on Central's schedule was again Male High, one of the toughest teams on the schedule. Captain Kilgore and his mates playing under a tremendous handicap, fought the Purple and Gold team of Louisville on even terms until the final quarter, when they yielded a second touchdown. This thirteen to seven defeat was the first of the year for the Central Pounders.

CENTRAL, 32—ETOWAH, 6

The Etowah Piledrivers, a light, inexperienced, but hard-playing team, received a thorough beating from Petersen's proteges in the ninth game with the score of thirty-two to six.

CENTRAL, 34—ROME HIGH, 6

Journeying to Rome, Central's fast-improving team overcame the Hilltoppers in a one-sided game, the score being thirty-four to six. John Baskette and Tommy Walker, underclassmen, contributed much to this victory.

CENTRAL, 7—ENSLEY, 13

Ensley High's Yellow Jackets, Alabama state champions, undefeated to this time, retained their perfect record by defeating the fighting Pounders in what proved to be one of the best games of the season. Following elaborate dedicatory services, Ronald Rogers dedicated in truth Frawley Field by running seventy-five yards for a touchdown on the opening kickoff.

CENTRAL, 32—CITY, 0

A chance at the city championship came the next week in the game with Chattanooga High School.

The Maroons kicked off to Central and the Pounders returned to their twenty-eight yard line. On the first play Central fumbled and the Maroons pounced on the ball. Central's misplay gave the

Maroons a scoring opportunity, but the calm Purple machine quickly repelled the Maroons' only threat. Taking the ball on downs, Central started her first touchdown drive. The Purple line, from end to end, opened enormous holes in the weaker Maroon forewall; while the Pounders hard-running backs made numerous first downs. Four more times the Purple and Golds unleashed savage attacks against the Maroons to score four touchdowns. It was in this game that James Hardy proved he would be a valuable man the following season.

CENTRAL, 12—KINGSPORT, 13

After winning from City High Central remained undefeated in Tennessee and was eligible for the state playoff. We had played our opponent, Kingsport, to a scoreless tie in the fourth game of our season.

In the eight weeks that had elapsed between these two games the Pounders had gained much needed experience, but the Indians had also improved their team.

In the first half of the game the brilliant Bobby Cifers, the nation's leading scorer, was unable to score. The Purples had stopped every play of the Indians and by J. R. Ligon's beautiful seventy-six yard run held a six point lead at the half.

The last half held even more thrills than the first. Central's Purple Pounders and the Kingsport Indians both scored, and Central led by a score of twelve to seven. Then with about two minutes to play, Oliver Hawk, Kingsport's All-Southern tackle broke through Central's line, blocked Ligon's kick, scooped up the ball and ran to the Purple's sixteen-yard line, where he was stopped by Milton Tindall. In the next few plays Cifers scored and beat a hard-fighting Central team by the very close score of thirteen to twelve. Thus a successful Central season ended; with nine wins, three losses and one tie.

The success of this team might well be judged by the honors received by individual players as well as the team. This team won the city championship, represented Chattanooga in the state playoff and allowed no team to score more than two touchdowns against them. The performance of several players won places for themselves on the various all-city teams. Those making these teams were Fred Butcher, end, a good defensive man and an excellent pass receiver; Alternate Captain Billy Carden, end, and Fred McKinney, tackle. These men were Central's key men on defense and were fine blockers on offense. Captain Hoyt Kilgore, guard, the Purples' capable leader, was one of Chattanooga's best gridmen. Paul Steinman, center, made good his passes from center and specialized in intercepting passes on defense. Ronald Rogers, fullback, was a hard runner and blocker with an uncanny ability to diagnose plays on defense.

Kilgore and Rogers were also unanimous choices on the Tennessee all-state team.

CAPTAINS

KILGORE

Captain

CARDEN

Alternate Captain

CULLUM

Captain-Elect

TYNDALL

Alternate Captain-Elect



Top to Bottom: Ligon On Off-Tackle Play Scoring Against City. Action in the Line During the Baylor Game. Mac Bruce, of Baylor, On an Attempted End Run

REMINERS OF THE SEASON

Top to Bottom: Song and Cheerleaders Helen Haggard, Ed Milligan, Betty Ameron, Joe Hammack, Betty Bowen, Bill Frazier. Rogers Hits the City Forewall for a T. D. Ligon Skirts Nashville Central's End for Six Points.



ELEVENTH DISTRICT BASKETBALL CHAMPIONS

The 1938-39 basketball season of Central, in spite of a rather unfavorable beginning, ended three months later in one of the most successful hardwood records of any team ever to represent the Purple and Gold.

These cagers were somewhat handicapped early in the season by the absence of Captain Butcher, who had been one of the outstanding men in last year's team and who had suffered a previous injury earlier this year. He soon returned with renewed strength for the season's fray.

The addition of Mac Rhinehart and Charles Fridell, who became eligible at the beginning of the second semester, gave added strength to the already powerful team.

In the brilliant record of this year Central came out third in the city prep championship, with five wins and three losses; and won six and lost four in the East Tennessee Prep League.

The Balesmen entered the Eleventh District Tournament which was held at Cleveland, March 2, 3, and 4. In this

contest Central, led by the accurate shooting of Fridell and Carden, won four straight games to take the championship.

By winning this tournament Central's quintet made basketball history and placed in the trophy case another beautiful trophy, presented to the team by the state. This trophy of a large gold basketball player mounted on a six-inch ivory base and standing about eighteen inches high was presented by Captain Butcher and his team to Mr. Nelson in the chapel exercises of Monday, March 6.

Individual honors for the season were placed on Captain Butcher, who made all-city center and all-tournament guard. Butcher, an excellent pivot man, used his height to an advantage both under the basket and at his center position. This unusually able leader strongly supported by Carden, Fridell, Ligon, and Rhinehart, together with the second team, Brown, Ray, White, Jackson, Simpson, Thompson, and Gardenhire, made a basketball record of which Central may be justly proud.

Back Row: Jackson, Rhinehart, Thompson, Butcher, Fridell, Ray, Cornelianson
Front Row: Gardenhire, Simpson, Ligon, Brown, Carden, White



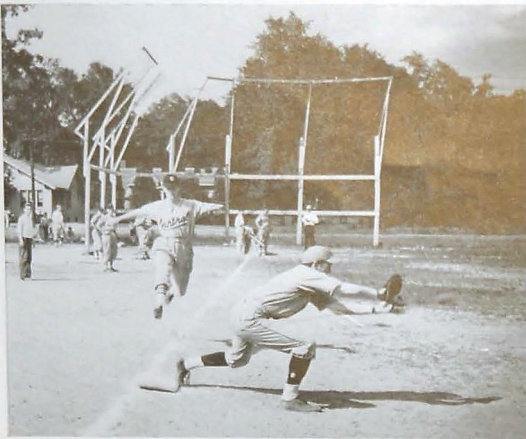
BILL CONNER
Manager



Joe Thompson Handling Ball in City Game

BASKETBALL SCORES

Central	21; Bradley	27	Here	Dec. 16
Central	27; Dunlap	15	There	Dec. 23
Central	28; Soddy-Daisy	26	Here	Dec. 29
Central	28; Englewood	26	There	Dec. 30
Central	27; Kingsport	22	Here	Jan. 3
Central	10; Charleston	6	There	Jan. 5
Central	22; Morristown	14	Here	Jan. 12
Central	26; City	30	There	Jan. 13
Central	23; McCallie	29	There	Jan. 24
Central	20; Morristown	16	There	Jan. 25
Central	34; Kingsport	30	There	Jan. 26
Central	25; Erwin	36	There	Jan. 27
Central	13; Bristol	31	There	Jan. 28
Central	31; Gate City, Va.	25	There	Jan. 28
Central	26; Charleston	16	Here	Feb. 3
Central	19; Knoxville City	37	Here	Feb. 8
Central	31; Soddy-Daisy	30	There	Feb. 9
Central	29; Baylor	10	There	Feb. 10
Central	26; Knoxville City	23	There	Feb. 13
Central	22; Notre Dame	21	There	Feb. 15
Central	29; Erwin	19	Here	Feb. 17
Central	32; Bristol	25	Here	Feb. 18
Central	22; Bradley	35	There	Feb. 21
Central	25; Baylor	4	Here	Feb. 22
Central	32; McCallie	27	Here	Feb. 24
Central	33; Notre Dame	22	Here	Feb. 27
Central	33; Whitwell	13	Eleventh District	Tournament
Central	28; Etowah	17	Eleventh District	Tournament
Central	32; Soddy-Daisy	30	Eleventh District	Tournament
Central	45; City	32	Eleventh District	Tournament
Central	38; Kingsport	27	East Tennessee	Tournament
Central	31; LaFollette	28	East Tennessee	Tournament
Central	46; Elizabethton	29	East Tennessee	Tournament
Central	31; Knoxville City	35	East Tennessee	Tournament



Capt. Bo Johnson Beats Out a Bunt in the Bradley Game

The 1938 Central High Baseball team, defending champions of the city prep league, received the crown for the third consecutive year.

The starting team was composed of Neal Anderson and Eugene Hunt, catchers, both strong defensive men and heavy hitters on offense; Glen White, first base, James Demos, second base, who was a substitute on last year's championship combine, came through in great style

Prep League Baseball Champions

this year; Robert McCabe, shortstop, who was the best big league prospect in Chattanooga, and worked out with the New York Yankees in 1937; Oscar McClure, third base, a real team man who was more interested in a good team than in individual stars; J. R. Ligon, left field, a reliable man with exceptional ability both in fielding and hitting; Captain Paul Johnson, center field, Central's fastest man and one of the best fielders in the prep league; Allison Nichols, right field, a good base runner and Central's steadiest hitter. The pitching staff of this year, Steinmann, Orr, Parker, and Scarbrough, will be remembered as outstanding by Central rooters.

Six of Central's nine starters were all-city picks. Those making the all-city team were Anderson, Steinmann, McClure, White, Captain Johnson, and McCabe.

BASEBALL SQUAD

Back Row: Wilson, Coach Bales, Hunt, Nichols, Ligon, Demos, Scarborough, Anderson, Coach Millsaps
Front Row: Parker, Johnson, McClure, Orr, McCabe, Bonine, Steinman, White

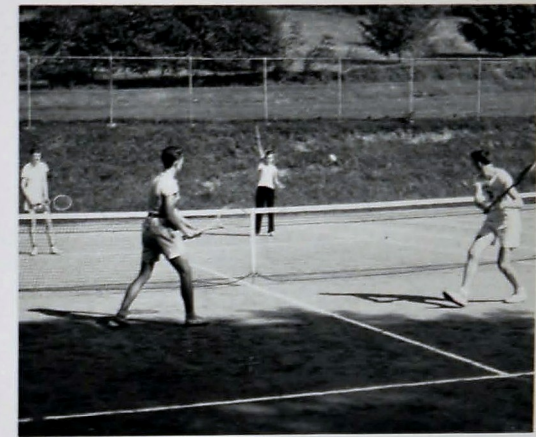


The Tennis Racquet

Minor sports have come into the limelight at Central in recent years. In 1937 a tennis club was formed under the leadership of Mr. Jack Rodman. The club held a tournament, open to all students, for the purpose of choosing players to represent Central in competition with other Chattanooga teams.

Last year the tennis club again sponsored the tournament and Lawrence Westcott, captain, Roy Towns, Joe Hammock, Albert Little, and Warnell Rogers won places on the team. This inexperienced team practiced consistently, gained experience through competition, and faced the veterans of schools which had supported tennis teams for years.

This year with all members back except Captain Westcott the outlook for a good season is bright. Fred Sliger, Luther Parker, Henry Hobday, Charles Lindsey, reserves from last year, will add strength to this year's team.



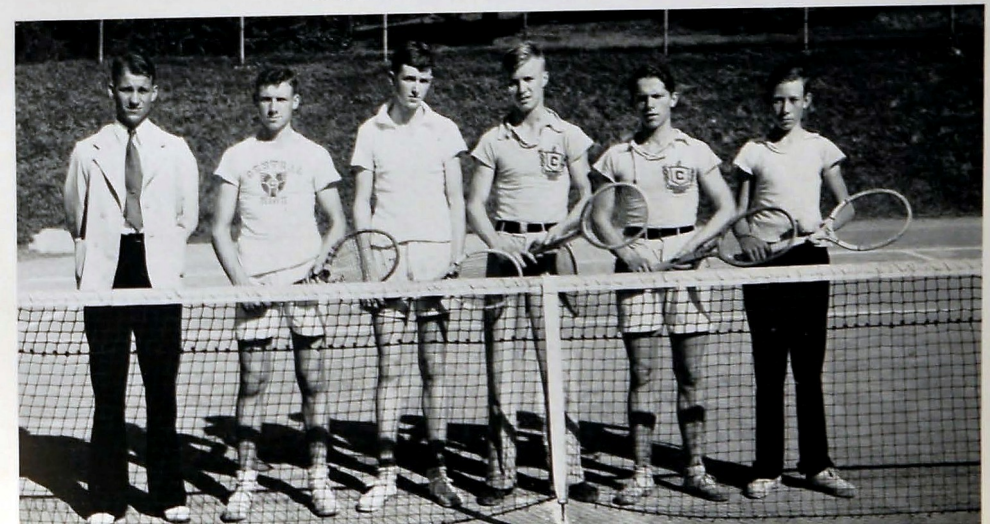
Capt. Westcott (Front Left) and Joe Hammock (Front Right) in Action

In previous years Central's schedule consisted of two matches each with McCallie, Baylor, City, Notre Dame, and T. M. I. The tennis squad hopes to compete with several out-of-town teams this season.

The recent city tournament clearly indicates the interest in this game, and though the team may not be a champion, it is promoting interest in tennis, advancing minor sports, and increasing school spirit.

TENNIS SQUAD

Coach Rodman, Towns, Little, Westcott, Hammock, Rogers



CITY PREP SWIMMING CHAMPIONS



Percy Walters, Southern Prep Diving Champion, Doing the Swan Dive

Central's first swimming team was organized in the spring of 1938 by Mr. Jack Rodman, who became coach. In its first meet the squad was nosed out by the McCallie Mid-South prep champions. Later the Central mermen handily sank the Blues and defeated Tech High 38 to 27 and 34-32.

The new squad won its first honors at the Tennessee Invitational Meet, tying McCallie in a field of the best teams in East Tennessee. In the middle of April, the team made its crowning achievement, winning the city prep title, and the first swimming trophy for Central. The season summary: Seven meets, four won, two lost, one tie, one city championship.

The mainstays of the team were Dick Bates, Percy Walters, and Bill Carden. Other members of the squad were Jack Bowen, John Harsch, Fred Sylvester, Jimmie Demos, Allen Tittle, J. D. Manning, and Ernest Coffelt.



THE SWIMMING SQUAD

Back Row

Demos, Sylvester, Carden, Bates, Roach,
Coach Rodman

Front Row

Coffelt, Walters, Freeman, Tittle,
Allison

GOLF AT CENTRAL HIGH

A new sport was inaugurated at Central in 1937-38. This time it was golf, and Mr. Kenneth John, versatile music teacher, coached the team during the spring of 1938.

Despite their handicap of lack of experience, the Central golfers practiced steadily and in the latter part of April engaged the McCallie team. McCallie's more experienced golfers copped the match.

The Purple team, made up of Harold Mays, Harry Sively, W. A. Miller, Kendall Martin, and Vernon Smith, entered the annual Southern Prep Golf Tournament which was held at the Riverview Golf and Country Club on May 5 and 6.

At the tournament banquet, held after the close of the meet, Vernon Smith, ace of the Purple golfers, was awarded a prize for showing the greatest improvement of any golfer in the tourney.



Harold Mays Putting



GOLF SQUAD

Henry Hobday, Harold Mays,
Bob Land, W. A. Miller

IN THE GIRLS'

BASKETBALL



ACES



PHYS. ED. DEPT



OFFICE WORKERS



GYMNASIUM

BADMINTON



INDOOR BASEBALL

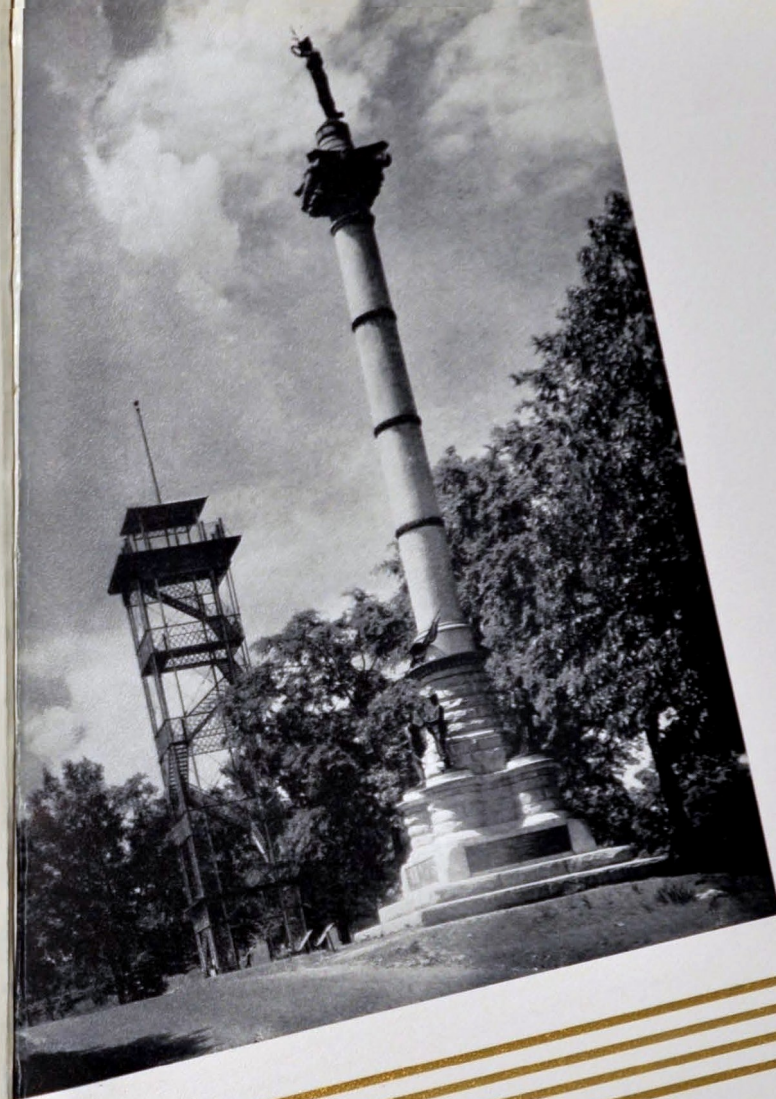


TUMBLERS



CAGE BALL





Bragg Tower and
Illinois Monument

FEATURES

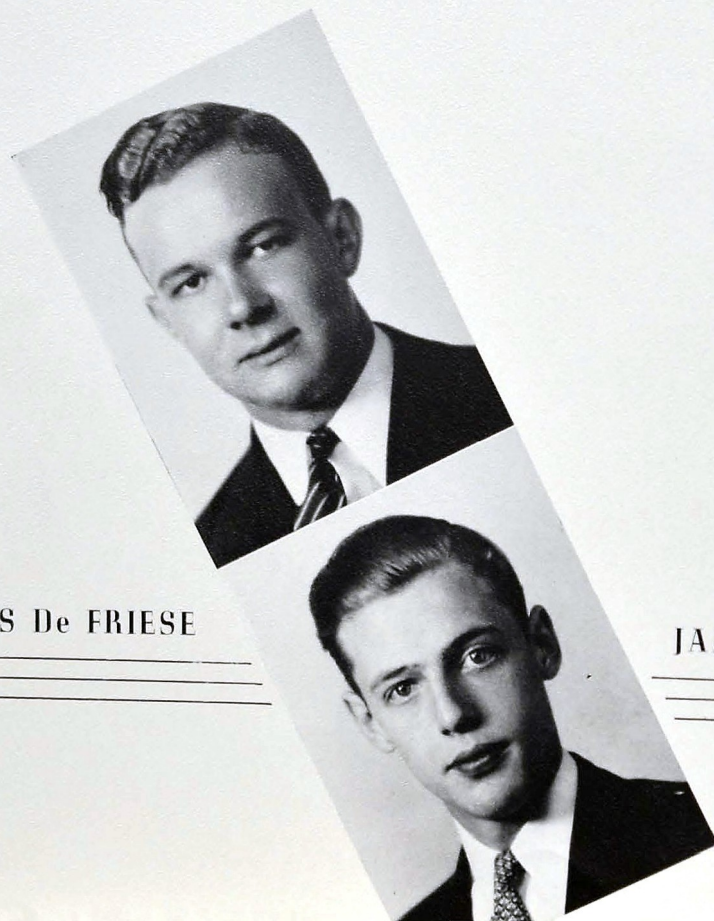
Presenting

SENIOR CLASS

SELECTIONS

of

INTERESTING SENIORS



JAMES De FRIESE

JAMES FOXWORTH



HARRY EDWARDS



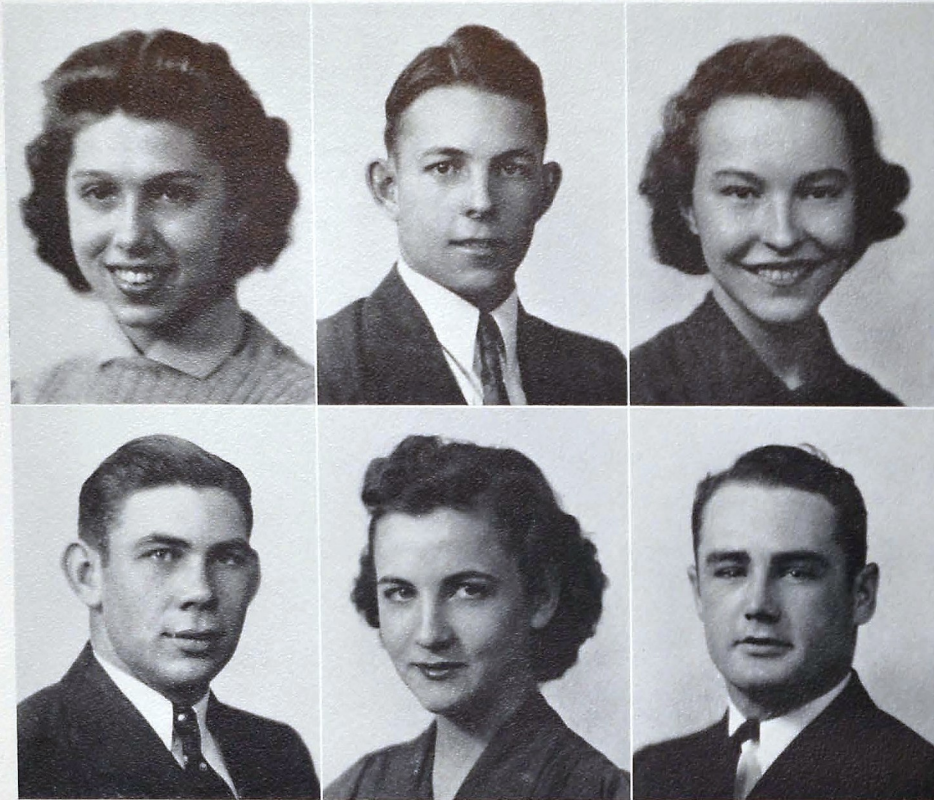
JEAN GRAY



HELEN MCGEE



RUTH WHEELER



W E W I S H

Sarah Gardner

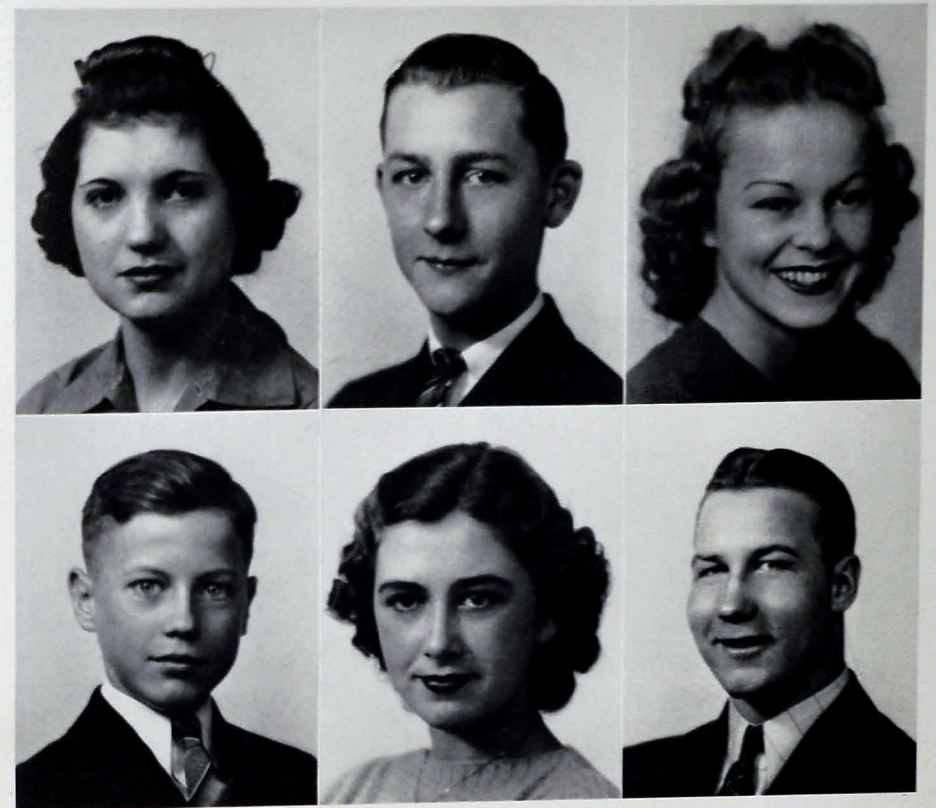
J. R. Ligon

Dora Pfitzer

Roden Davisworth

Betty Watson

Ronald Rogers



T O H O N O R

Julia Mullinax

Edwin Strickland

Dorothy Hennessee

William Rymer

Martha Miles

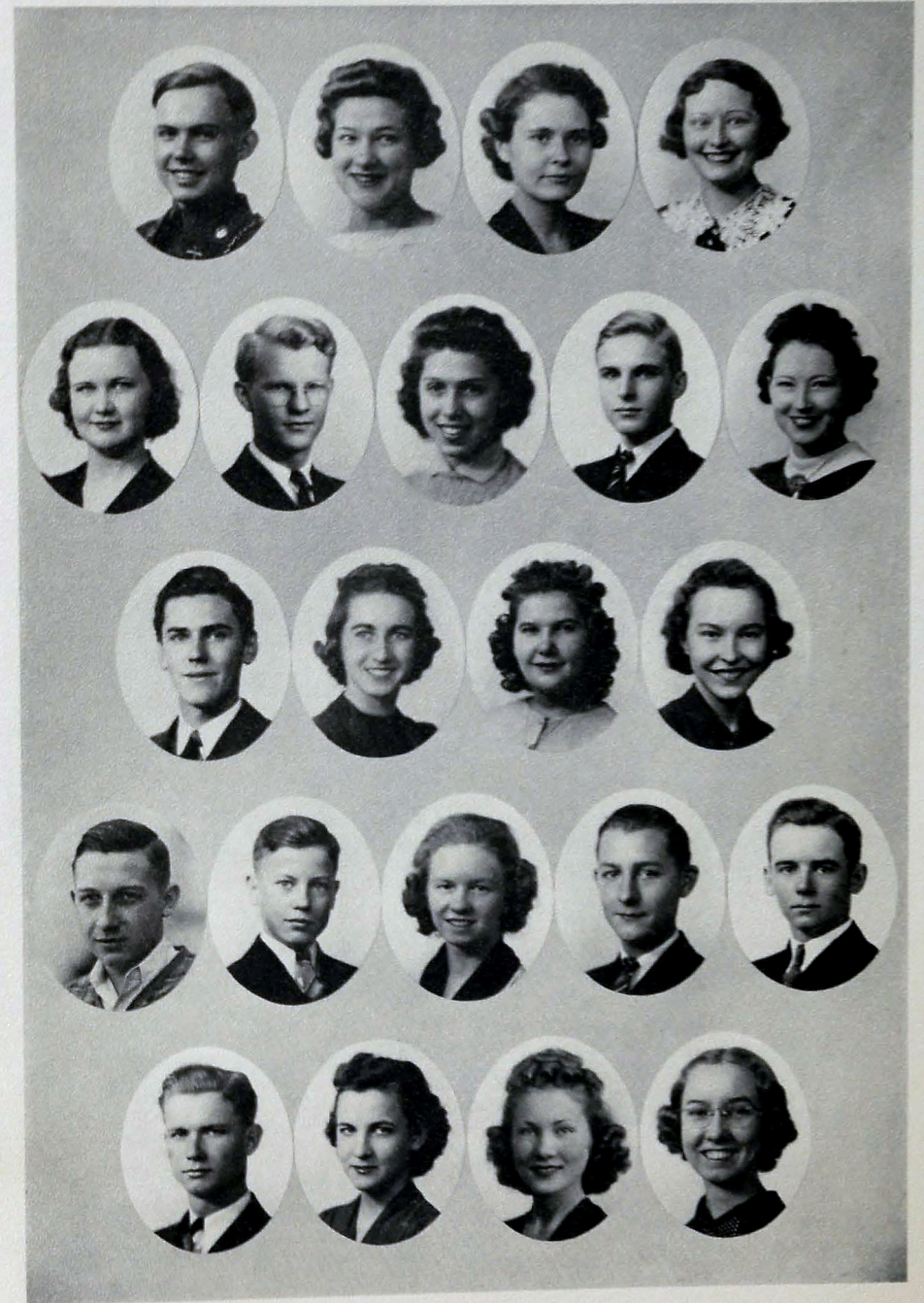
Hoyt Kilgore

Three Year Honor Students

and

COMMENCEMENT SPEAKERS

RAY BASHAM	Class Poet
IVA DEAN CAMP	Three year honor student
MARY ELLEN CRUMLEY	Three year honor student
THELMA COLLINS	Three year honor student
MARTHA DeFRIESE	Three year honor student
HARRY EDWARDS	Class Representative
SARAH GARDNER	Three year honor student
JOHN HARSCH	Three year honor student and Salutatorian
WILLIE HUMBARO	Three year honor student
J. L. LINDSEY	Three year honor student and Valedictorian
MARTHA PARDUE	Three year honor student
ANNA PARK	Three year honor student
DORA PFITZER	Three year honor student
JAMES ROBERTS	Three year honor student
WILLIAM RYMER	Three year honor student
NORMA STEWART	Three year honor student
EDWIN STRICKLAND	Three year honor student
OSCAR TORBETT	Reader of the Will
HAROLD WATKINS	Three year honor student and Class Prophet
BETTY WATSON	Three year honor student and Historian
RUTH WHEELER	Three year honor student and Historian
NINA JO WHITTEN	Three year honor student



Point Park



M I L I T A R Y



LELAND THURMAN

SGT. GLADWIN KIRK

SGT. RALPH CASEY

BILLY STANDIFER

THE COLOR GUARD



MAJOR JIMMY DeFRIESE

LOUISE SELLS

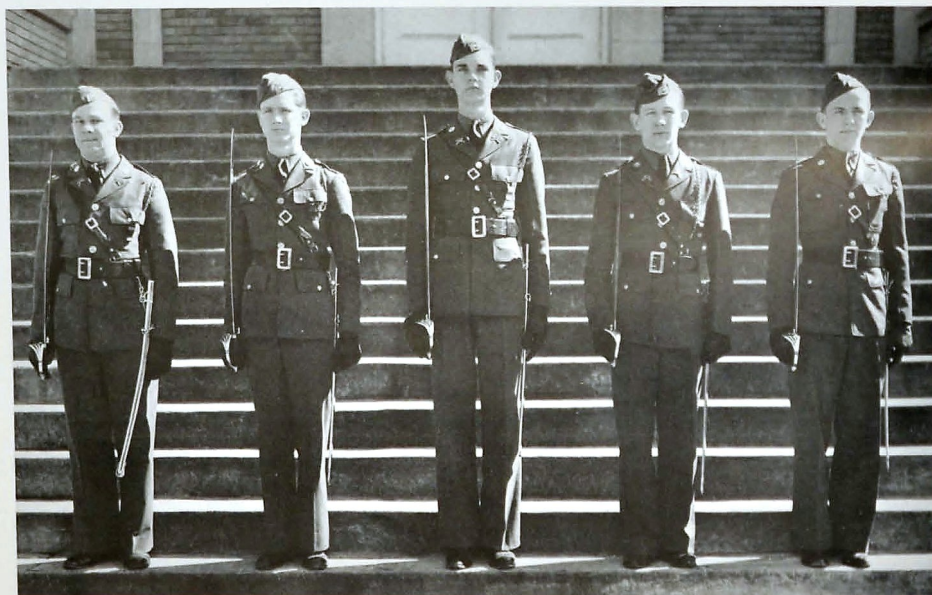
The Battalion Staff

STAFF OFFICERS

MAJOR JIMMY DeFRIESE . . . Battalion Commander
 LIEUTENANT FRED SLIGER Publicity Officer
 RONALD ROGERS Lieutenant
 LOUISE SELLS Battalion Sponsor

CAPTAIN HAROLD WATKINS . . . Battalion Adjutant
 LIEUTENANT EARL LONG Personnel Adjutant
 ALBERT COE Lieutenant

DeFRIESE, WATKINS, LONG, SLIGER, COE



The R. O. T. C. Band



DOROTHY HENNESSEE

CAPTAIN HENRY HOBDAY

CAPTAIN HENRY HOBDAY Band Commander
 EUGENE KIGER First Lieutenant
 DOROTHY HENNESSEE Sponsor

MAX MATHEWS Second Lieutenant
 DAN CATES Second Lieutenant

SERGEANTS

Z. Allman B. Burke J. Billingsley L. Kingston
 W. Hammel A. Hale

CORPORALS

V. Hill G. Seibold E. Pierce F. Helms

PRIVATES

B. Allen J. Couch B. Hart J. Mansfield A. Rollins S. Tallent
 M. Beaver H. Eldridge F. Helms J. McCormick W. Smith
 W. Bell G. Fenger B. Huddelston H. Parkham C. Spangler
 H. Buchele J. Foster R. Hyatt B. Pope R. Stone B. Watson
 G. Clinton T. Gilliland D. Layton H. Pruett B. Schoocraft G. Westbrook
 C. Wilhoite



JAMES WILLIAMS, Company Commander Captain
 RAY BASHAM, Executive Officer Lieutenant
 HAYDEN STANSBERRY Lieutenant

HERVEY THOMAS Lieutenant
 B. THOMPSON First Sergeant
 EVELYN PARKER Sponsor

SERGEANTS

J. Avans
 G. Dean

W. Miller
 N. Castell

R. Kimbrough
 R. Thornburg

CORPORALS

J. Baker
 A. Brown
 H. Merlin

F. Higgins
 J. McBes
 F. Stansell

PRIVATES

W. Acuff
 J. Agnew
 H. Berry
 W. Catlett
 H. Dixon
 E. Donahoo
 R. Duttel
 B. Edging
 T. Evans

D. Hudson
 W. Hughes
 P. Kenyon
 B. Landers
 G. Lavander
 P. Mannis
 J. McCoy
 H. Oliver

G. O'Neal
 A. Page
 C. Payne
 C. Rymer
 T. Selvidge
 J. Stargel
 L. Thurman
 A. Wilt

H. Yates
 B. Blackwell
 J. Browhard
 J. Brown
 P. DeShazo
 H. Gardenhire
 J. Gardner
 W. Gentry

R. Gorrell
 F. Hendrix
 G. Humphries
 P. Hunerwadel
 F. Mathes
 A. Pendergrass
 H. Poindexter
 F. Reed

S. Roddy
 F. Schubert
 F. Sessions
 J. Spearman
 J. Terrell
 J. Trimble
 C. Tucker
 R. Wright
 J. Miller

COMPANY COMPANY

E

JIMMIE WILLIAMS
 EVELYN PARKER

G

IRA KING
 NANCY RUTLEDGE



LEE BENSON
 DOROTHY CREIGHTON

COMPANY COMPANY

F

H

LEE BENSON, Company Commander Captain
 HARVEY CAMP, Executive Officer Lieutenant
 HARLEY EDMONDSON Lieutenant

J. C. BAKER Lieutenant
 N. RATCHFORD First Sergeant
 DOROTHY CREIGHTON Sponsor

SERGEANTS

J. Cornielson
 G. Raulston

W. White

CORPORALS

W. Carden
 R. Finley
 R. Gorman

W. Hale
 R. Mayfield
 E. Siniard

PRIVATES

J. Carroll
 D. Cooper
 E. Crabtree
 E. Ellis
 H. Elmore
 W. Finley
 M. Garner
 L. Gibson
 R. Grey

J. Harding
 R. Hastings
 C. Johnson
 A. Lawton
 E. McClain
 W. Miller
 E. Moffitt
 J. Nicholson
 R. Nicholson

F. Painter
 R. Pars
 D. Roberts
 W. Robinson
 J. Saylor
 A. Smith
 W. Standifer
 C. Strong
 L. Dicks

E. Davis
 H. Alverson
 J. Arnold
 A. Clark
 E. Coffelt
 E. Fitzgerald
 C. Foster
 A. Gray
 C. Hall

D. Hancock
 J. Helton
 W. Henry
 J. Hill
 T. Hixon
 B. Hudson
 K. Kelley
 C. Pearson
 J. Phillips

C. Price
 J. Quinones
 B. Ruef
 C. Sedmon
 L. Shackelford
 C. Tallant
 B. Thomas
 W. Whitecolton

IRA KING, Company Commander Captain
 ROY JACKSON, Executive Officer Lieutenant
 EUGENE BOULDIN Lieutenant

OTTIS SCHOOCRAFT Lieutenant
 A. BROYLES First Sergeant
 NANCY RUTLEDGE Sponsor

SERGEANTS

J. Carpenter
 G. Oakley

H. Mays
 H. Hankins

J. Marlow
 J. O'Hara

CORPORALS

A. Jackson
 E. Sidall
 B. Foxworth

A. Wendle
 J. Reese
 C. Davis

PRIVATES

S. Abel
 U. Anderson
 S. Benton
 C. Blackmon
 J. Bryson
 E. Carter
 J. Christenberg
 J. Cofer
 C. Davis

J. Deakins
 J. Fann
 A. Foster
 F. Fryer
 J. Genung
 J. Hicks
 R. Harris
 R. Engle
 W. Ingram

J. Lawrence
 H. Nappier
 A. Pitzer
 W. Robinson
 R. Smith
 K. Tritt
 K. Westbrook
 R. Willmot

B. Alverson
 H. Bracken
 S. Bradley
 D. Coole
 W. Cressman
 J. Crowe
 J. Grant
 J. Green
 G. Hanks

L. Ireland
 M. Jordan
 H. Kenyon
 E. McGuffey
 T. Moore
 J. O'Neal
 P. Pelton
 D. Reynolds
 G. Rozzell

M. Seibold
 L. Shelton
 L. Sloan
 W. Standifer
 W. Swesinger
 M. Treadway
 M. Williamson
 J. Dickert



NORMAN BRYANT
 MARTHA MILES

NORMAN BRYANT, Company Commander Captain
 TALMADGE HENRY, Executive Officer Lieutenant
 WINFERD HAYNES Lieutenant

PAUL ROGERS Lieutenant
 W. NORVEL First Sergeant
 MARTHA MILES Sponsor

SERGEANTS

T. Coldston
 E. Hartman

J. Morris
 B. Falkner

D. Martin
 M. Taylor

CORPORALS

F. Brand
 T. Bledsoe
 C. Fox

R. Hudson
 W. Smith
 L. Wilkins

PRIVATES

R. Anderson
 T. Bayston
 G. Carter
 E. Case
 C. Duda
 C. Fox
 H. Gibson
 J. Haddock

B. Hale
 L. Hudson
 B. Jones
 G. Jacoway
 H. Mitchell
 E. Moore
 C. O'Neal

R. Rivers
 P. Sartin
 C. Smith
 S. Thatcher
 W. Smith
 M. Tallant
 R. Benedict

F. Blair
 W. Bowman
 C. Carol
 T. Jones
 J. Klein
 B. Land
 J. Malone

C. Hatfield
 J. Hennessey
 S. Johnston
 T. Jones
 J. Klein
 B. Land
 J. Malone

H. McDaniel
 A. Scott
 R. Shalmer
 D. Sparks
 B. Tucker
 C. Williamson
 E. Worthis

Chickamauga Dam



ORGANIZATIONS

The Champion Staff

WILLIAM ELROD
Editor-in-Chief

RODEN DAVISWORTH
Business Manager

JULIA MULLINAX
Senior Editor

HOYT KILGORE
Sports Editor

DOT HENNESSEE
Feature Editor

JAMES DE FRIESE
Military Editor

OSCAR TORBETT
Club Editor

ALYCE BROOKS
Typist

HENRY HOBDAV
Photographic Editor

THELMA KEOWN
Sophomore Editor

HELEN THOMAE
Junior Editor

MARY LOUISE BIGLEY
Freshman Editor

MISS SALLY MAY KING, Sponsor
MR. A. PIERCE STEWART, Sponsor





ANCHORS AWEIGH

MARJORIE PARKER President
 BETTY LAMB Vice-President
 DOT CREIGHTON Secretary
 ELOISE EVATT Treasurer
 MISS MARY ELLEN RICE Sponsor



BACHELORS' CLUB

TOM POLVOGT President
 ALVIN BAKER Vice-President
 ALBERT LITTLE Secretary
 JOHN HARSCH Treasurer
 MR. J. ARLIE HOODENPYL Sponsor



BACHELORETTES

BILLY WILLIAMS President
 JEAN SMITH Vice-President
 NELL LITTLE Secretary-Treasurer
 MR. R. E. OLINGER Sponsor



BAND CLUB

HOYT McDARIS President
 BILL HOTALEN Vice-President
 ROSEMARY JEPSON Secretary-Treasurer
 MR. S. E. VANOVER Sponsor

BANK FORCE

HARRY EDWARDS JAMES McPHERSON
 LILLIAN BLAIR ROBERT BURNETTE
 LAWRENCE CHIFTER MRS. GEORGE RICE
 Sponsor



BETTEY CO-EDS

MARIE HOLLOWAY President
 JUNE PARKER Vice-President
 PAT HOLLOWAY Secretary
 HELEN HARRIS Treasurer
 MISS MINNIE LEE MORGAN Sponsor



BIBLE CLUB

ANNE LEWIS President
 BEATRICE THRAILKILL Vice-President
 MILDRED THOMPSON Secretary
 ED CHAMBERS Treasurer
 MISS RACHEL McALLISTER Sponsor



BIOLOGY CLUB

BILLY RYMER President
 JOHN HARSCH Vice-President
 JULIA MULLINAX Secretary-Treasurer
 MR. J. STEGER HUNT Sponsor





BOOK STORE

TEDDY CUSHMAN HARRIET TURNER
JAMES ROBERTS
MRS. GEORGE RICE, Sponsor



BOYS' HI-Y

HARRY EDWARDS President
EUGENE KIGER Vice-President
OSCAR TORBETT Secretary
GLENN DEAN Treasurer
MR. J. POPE DYER Sponsor



CAMERA CLUB

FRED SLIGER President
O. L. DRAKE Vice-President
IVA DEAN CAMP Secretary
HENRY HOBDAV Treasurer
MISS VIRGINIA HARREL Sponsor



CANDY CREW

MRS. W. H. TEMPLETON Sponsor
MR. W. H. TEMPLETON Sponsor

DEPRESSION CLUB

JOHN CULLOM President
BILL HOTALEN Vice-President
MILTON HODGES Secretary
PAUL STEINMAN Treasurer
MRS. H. B. ROBINSON Sponsor



DIGEST STAFF

JEAN GRAY Editor-in-Chief
OSCAR TORBETT Associate Editor
JOHN HARSCH Associate Editor
IVA DEAN CAMP Business Manager
HOWARD EVANS Press Foreman
MISS SALLY MAY KING Sponsor
MR. JAMES L. MILBURN Sponsor



DRAMATIC CLUB

JAMES FOXWORTH President
JEAN GRAY Vice-President
DORA PFITZER Secretary
PEGGY SPARKS Treasurer
MR. JACK RODMAN Sponsor



ETIQUETTE CLUB

JEAN GRAY President
BETTE DAVIS Vice-President
HELEN MILLER Secretary-Treasurer
MISS DOROTHY FRENCH Sponsor





EXCLUSIVE CLUB

EVELYN PARKER President
 MARGARET BRAY Vice-President
 ALINE BROOKS Secretary
 ODESSA TOTTON Treasurer
 MRS. D. S. COUGHLIN Sponsor



GIRLS' HI-Y

ELSIE DEARING President
 MARY LEE WILBANKS Vice-President
 RUTH WHEELER Secretary
 DOT HENNESSEE Treasurer
 MRS. MARY D. CALLIS Sponsor
 MRS. JOHN A. SHELTON Sponsor



SENIOR GIRL RESERVES

THELMA COLLINS President
 AUDREY MARLER Vice-President
 MARY LEE WILBANKS Secretary-Treasurer
 MRS. HARRY BROWN Sponsor



JUNIOR GIRL RESERVES

MARGARET CLARKE President
 LILLIAN BLAIR Vice-President
 ROSEMARY MILES Secretary
 BETTY SYLAR Treasurer
 MISS FLORA BECK Sponsor

SOPHOMORE GIRL RESERVES

SARA HOLLEMAN President
 BETTY DAY Vice-President
 HELEN KEMNER Secretary
 CHARLSIE BOSS Treasurer
 MRS. W. D. JACOWAY Sponsor



FRESHMAN GIRL RESERVES

GENEVIEVE COBLEIGH President
 IRIS MILLER Vice-President
 DOT ECHOLS Secretary
 BETTY EVATT Treasurer
 MISS ANN MOFFITT Sponsor



GRADY LITERARY SOCIETY

OSCAR TORBETT President
 J. L. LINDSEY Vice-President
 EUGENE KIGER Secretary
 GLEN DEAN Treasurer
 MR. C. J. ANDERSON Sponsor



HOME-EC. CLUB

AVICE COLSTON President
 LOUISE PARKER Secretary
 MARY ELEANOR HAINES Treasurer
 MRS. MERCER CLEMENTSON Sponsor
 MRS. JANIE SHROPSHIRE Sponsor





ICE CREAM CREW

MR. C. J. ANDERSON Sponsor



LIBRARY CLUB

JEAN FINCANNON President
 DOT ORTON Vice-President
 EVELYN PARKER Secretary-Treasurer
 MRS. CLARENCE KOLWYCK Sponsor
 MISS MARTHA JONES Sponsor



NITE OWLS

NANCY RUTLEDGE President
 MARJORIE GREEN Vice-President
 FRANCIS ROGERS Secretary
 VIRGINIA MEADOR Treasurer
 MRS. BLANCHE ROGERS Sponsor



OFFICERS' CLUB

JAMES DEFRIESE President
 IRA KING Vice-President
 HAROLD WATKINS Secretary-Treasurer
 MISS EDNA K. CROSS Sponsor

ORCHESTRA

WALLACE HAMMEL President
 EUGENE KIGER Assistant Director
 VIRGINIA MEADOR Vice-President
 EDITH RICHARDSON Secretary-Treasurer
 MR. K. W. JOHN Sponsor



PRINTING STAFF

HOWARD EVANS Foreman
 JACK HEARD Foreman
 WILLIARD CUZZORT FRANK FARR
 HOYT KILGORE PAUL ROGERS
 LEO BALDWIN JOHN MARTIN
 MR. JAMES L. MILBURN Sponsor



RED CROSS

TALMAGE HENRY President
 WILLIAM LAYCOCK Vice-President
 MARY MAY Secretary
 MARTHA MILES Treasurer
 MRS. IDA M. LONGLEY Sponsor
 MRS. GEORGE BARTON Sponsor
 MISS MARTHA BEAN Sponsor
 MRS. W. D. JACOWAY Sponsor
 MISS LILLIE SCHWARTZ Sponsor



SENATE

JAMES FOXWORTH President
 JEAN GRAY Vice-President
 DOT MAUPIN Secretary
 J. L. LINDSEY Treasurer
 MRS. GEORGE HARDING Sponsor
 MR. J. ARLIE HOODENPYL Sponsor





SERGEANTS' CLUB

NORMAN RATCHFORD President
 BEN THOMPSON Vice-President
 WARREN WHITE Secretary-Treasurer
 MISS VESTA NELSON Sponsor



S. P. Q. R.

MARY FRANCIS BROYLES President
 DORA PFITZER Vice-President
 EDWIN STRICKLAND Secretary
 RUTH WHEELER Treasurer
 MISS MARY LOU DERRYBERRY Sponsor



SPORTS CLUB

RUBY ARCHIE President
 OTIS SCHOOLCRAFT Vice-President
 BILLY RAY SMITH Secretary
 MICKEY MARSCH Treasurer
 MISS MINNIE LEE MORGAN Sponsor



STAGE CREW

EDGAR EADES Manager
 LEONARD COLVILLE Assistant Manager
 MR. JACK RODMAN Sponsor

STAR "14" CLUB

MORRIS QUAVE President
 NORMAN BRYANT Vice-President
 DOT O'BRIEN Secretary
 ALINE JENSEN Treasurer
 MR. HARMON SMITH Sponsor



SUB DEBS

BOBBY CLARK President
 DOT CREIGHTON Vice-President
 HELEN MILLER Secretary
 DIXIE WALLER Treasurer
 MISS VESTA NELSON Sponsor



USHERS

MARGARET JORGES President
 DOT MAUPIN Vice-President
 JEAN GRAY Vice-President
 MISS MARGARET WAPLES Sponsor



VARSITY GLEE CLUB

BILL HOTALEN President
 HOYT McDARIS Vice-President
 DOT HENNESSEE Secretary-Treasurer
 JAMES MARLOWE Librarian
 MR. K. W. JOHN Sponsor





National Honor Society

OFFICERS First Semester

HARRY EDWARDS President
HELEN MCGEE Vice-President
RUTH WHEELER Secretary
EDWIN STRICKLAND Treasurer's Aide

Evelyn Ashley
Mary Katherine Ault
Ray Basham
Lucille Beene
William Belvin
Evelyn Blackwell
Robbie Bowman
Alyce Brooks
Iva D. Camp
Albert Coe
Thelma Collins
Mary Evelyn Crumley
Martha DeFries
Harry Edwards
William Elrod

Eloise Evatt
Virginia Ford
Sarah Gardner
Audrey Goodlet
Jean Gray
John Harsch
Dorothy Hennessee
Ruby Henry
Henry Hobday
Willie Hubbard
Margaret Jorges
Beth Lee
Ann Lewis
J. R. Ligon
J. L. Lindsey

MRS. JOHN A. SHELTON Sponsor
MR. J. STEGER HUNT Treasurer

OFFICERS Second Semester

HAROLD WATKINS President
BETTY WATSON Vice-President
SARAH GARDNER Secretary
JULIA MULLINAX Treasurer's Aide

Albert Little
William Lones
Margaret Lyle
Helen McGee
Ona Lee Manning
Helen Miller
Betty Moody
Herman Morris
Julia Mullinax
Martha Pardue
Anna Park
Marjorie Parker
Geneva Patterson
Dora Pfitzer
Adeline Pitts

Edith Richardson
Dorothy Richey
William Rymen
Hayden Stensbury
Norma Stewart
Edwin Strickland
Ellen Thomas
Beatrice Thrallkill
C. A. Watthehouse
Harold Watkins
Betty Watson
Ruth Wheeler
Josephine Whitten
Harold Wilhoite
James Williams

MISS GRACE LASATER Secretary

NOT IN PICTURE

J. C. Baker

Louise Parker

Geraldine Ramsey

James Roberts

Eileen Scarborough

A Tribute TO OUR PATRONS

NATURE WITH HER HIGH MOUNTAINS, ROLLING VALLEYS AND WINDING STREAMS HAS RICHLY ENDOWED THIS SECTION OF EAST TENNESSEE. IN THE MIDST OF THIS BEAUTY SPOT LIES CHATTANOOGA WITH HER THRIVING BUSINESS ENTERPRISES WHOSE SPIRIT IS ALWAYS THAT OF CO-OPERATION WITH ANYTHING THAT PROMOTES THE BEST INTEREST OF THIS GREAT CITY.

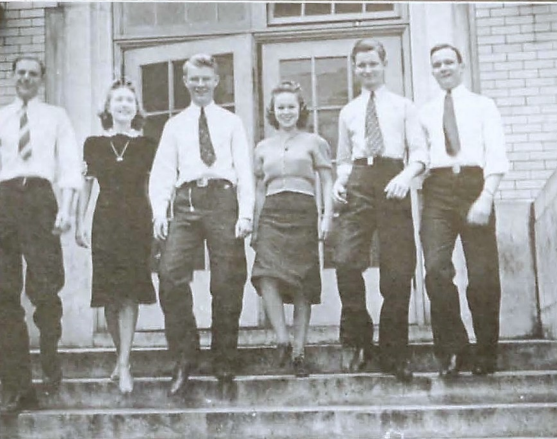
TO YOU, OUR PATRONS, WE ARE VERY GRATEFUL FOR YOUR PART IN HELPING THE CHAMPION EDITORS PAY THIS TRIBUTE TO YOUR CITY AND OURS—CHATTANOOGA THE BEAUTIFUL.

Patrons

AMCO FEED STORE, 6-2343	1230 Market Street
ARCHER PAPER COMPANY, 6-3189	1124-1126 Market Street
ASPHALT ROOFING & SIDING CO., 2-8121	1108 McCallie Avenue
ATHLETIC HOUSE	Knoxville, Tennessee
BAKER & TOWNSEND, Attorneys, 6-4102	Chattanooga Bank Bldg.
L. G. BALFOUR COMPANY, Jewelers	Athleboro, Massachusetts
JOE S. BEAN, Attorney, 6-4134	Commercial National Bank Building
BENSON PRINTING COMPANY	Nashville, Tennessee
BIG "4" BIKE SHOP, 6-9158	14 East 8th Street
BRADLEY AND BANDY DRUG CO., 6-4145	601 Market Street
BRAINERD BEAUTY SHOP, 2-1615	3235 Brainerd Road
J. P. BROWN, School Board Member	Red Bank, Tennessee
J. AVERY BRYAN COMPANY, Inc., Undertakers, 6-2131	747 McCallie Avenue
CAMERON AND BARR BAKING COMPANY, 6-8176	1615 Cowart
C. E. CAMP, Esq., 7-2652	1516 Market Street
DR. EARL CAMPBELL, 6-2240	Medical Arts Building
CHATTANOOGA BUTTON AND BADGE MFG. CO., 6-6934	109 East Seventh
CHATTANOOGA COCA-COLA BOTTLING CO., Inc., 6-5334	201 Broad Street
CHATTANOOGA GAS COMPANY, 6-0191	811 Broad Street
CHATTANOOGA MEDICINE COMPANY, 3-0030	3803 St. Elmo Avenue
CLEMONS BROS. CO., Furniture, 6-7151	119 West 8th Street
COMMERCIAL STATIONERY & SUPPLY CO., 6-1241	737 Cherry Street
CONTOR BROS. COMPANY, Men's Clothing, 6-3828	529 Market Street
CRISMAN HARDWARE COMPANY, 7-1115	511 Market Street
DAVIDSON CLOTHING COMPANY, 6-1218	811 Market Street
ALEX DeFLOREIO, Ice Cream	Corner Willow and 14th Street
S. T. AND W. A. DEWEES COMPANY, Grocers, 7-1121	810 Market Street
M. B. EAVES, Grocer, 6-7131	831 Georgia Avenue
ECKERD'S, Drugs	732 Market Street
EDMONDSON SCHOOL OF BUSINESS, 6-1259	Edmondson Building
EDWARDS AND LEBRON, Ltd., Jewelers, 6-7175	805 Market Street
FENN TIRE COMPANY, Inc., 6-1178	521 Broad Street
THE FISCHER COMPANY, Jewelers, 6-0923	801 Market Street
FLEETWOOD COFFEE CO., 6-1251	246 East 11th Street
A. L. FLEGAL & SON, House Moving, 3-0045-J	2810 East 46th Street
FOWLER BROTHERS COMPANY, Furniture, 7-2174	633 Broad Street
FOX BROTHERS, Wholesale Grocers, 6-3139	1215 King
A. FRIEND	
GORDON GAMBILL & CO., Insurance, 7-1482	116 East 7th Street
GANNAWAY-RILEY CO., 5c and 10c Stores	2441 Glass Street, 2522 Broad Street
GILMAN POINT AND VARNISH COMPANY, 6-5181	216 West 8th Street
EDITH GOETZ, Florist, 7-3345	James Building
S. G. GOODNER, Plaster and Stucco Contractor, 2-7302	2313 Duncan Avenue
H. W. GRANERT, Photographer, 6-7335	813 1-2 Market Street
GRANT-PATTEN MILK CO., 6-1294	1220 King
N. L. HACKNEY, Underwood Typewriters, 7-3424	8th and Georgia Avenue
HAMILTON COUNTY HERALD, Newspaper, 6-4033	617 Cherry Street
HARDIE & CAUDLE, Clothiers, 6-7032	809 Market Street
HARRIS & HOGSHEAD, Optometrists, 6-7545	13 East Eighth Street
T. H. HARWOOD FURNITURE CO., 6-2856	35 East Main Street
HUB FURNITURE CO., 6-6010	621 Market Street
INDEPENDENT PAINT & GLASS COMPANY, 6-8103	506 Market Street
IVORY SYSTEM, Cleaners	Salem, Massachusetts
JACOBS CANDY COMPANY, 6-4314	925 Market Street
JOURNAL ENGRAVING COMPANY	Atlanta, Georgia
C. D. KENNEY CO., Wholesale Grocers, 6-5104	1302 Market Street
KIMBALL, HOME OF FLOWERS, Inc., 2-4771	2409 McCallie Avenue

Patrons

KING-DOBBS & COMPANY, Wholesale Grocers, 6-1251	416 East Eleventh Street
KINGSFORD PRESS	Kingsport, Tennessee
KOBLENTZ MEN'S STORE, 6-2764	812 Market Street
S. H. KRESS & COMPANY, Ten-Cent Stores, 6-5631	706 Market Street
LANSFORD PIANO CO., 6-0923	730 Cherry Street
L. C. LEACH & COMPANY, Jewelers, 7-2841	738 Cherry Street
LeGRAND JEWELRY CO., 6-6816	604 Market Street
LOVEMAN'S, Inc., Department Store, 6-0161	800 Market Street
McDONALD GROCERY CO., 2-3125	2602 East Main Street
ROY McDONALD, Publisher, 6-0171	Free Press Bldg.
McKENZIE SCHOOL, 6-7157	401 Oak Street
McWHORTER'S PHARMACY, 2-1125	1312 Willow Street
MARTIN-THOMPSON COMPANY, Sporting Goods, 6-2433	706 Cherry Street
MILLER BROS. COMPANY, Department Store, 7-1251	629 Market Street
DR. NATHAN MORRIS, Optometrist and Optician, 6-8913	628 Market Street
MOUNTAIN CITY STOVE COMPANY, 6-0211	1240 Market Street
NEWTON CHEVROLET, 6-0181	329 Market Street
OSCAR'S SANDWICH SHOP	Dobbs and McCallie
PALACE MEAT MARKET, 6-5115	210 East Main Street
PALMER CLOTHES, 6-3834	825 Market Street
PARAMOUNT CLEANERS, 2-1129	2511 East Main Street
T. H. PAYNE COMPANY, Office Supplies, 6-0139	821 Market Street
PEOPLES STUDIO, Photographs, 6-9480	10 East Ninth Street
JESS PHILLIPS, Lunches	Chamberlain and Dobbs
POLLOCKS SLIPPER SALON, 6-8862	722 Market Street
POWELL MATTRESS COMPANY, 6-8062	615 East Main Street
QUINN DRUG CO., 2-3168	1400 Dobbs Avenue
RAY-WALKER HARDWARE & COAL CO., 2-6522	2455 Glass Street
RHYNE PHARMACY, 3-0069	117 Chickamauga Avenue
RIDGE DRUG COMPANY, 2-1171	Corner Dobbs and Chamberlain
RIDGE MOTOR SERVICE, 2-9161	909 Dodds Avenue
RIDGE SHOE SHOP, 2-9165	413 Dobbs Avenue
R. K. SCHOLZE, Groceries, 2-2131	415 Dobbs Avenue
SEARS, ROEBUCK & CO., 7-1274	539 Market Street
ZELMA F. SHERRILL, Circuit Court Clerk	Courthouse
SHERWIN-WILLIAMS CO., 6-1267	828 Broad Street
SOMMERS-CHEVROLET, Inc., 6-3854	3933 Dayton Blvd.
J. M. STEAKLEY, Plumbing, Heating, 2-6788	2412 McCallie Avenue
A. F. STEINHOFFEL, Jeweler, 6-6249	14 West 8th Street
STERCHI BROS. STORES, Furniture, 7-2151	532 Market Street
A. G. STIVERS LUMBER COMPANY, 6-7179	345 East Main Street
STOVALL HARDWARE COMPANY, 6-7101	711 Cherry Street
TEMPLETON'S, Jewelers, 6-7628	12 West Eighth Street
THE TENNESSEE ELECTRIC POWER COMPANY, 6-1121	540 Market Street
TURNER-WILLIAMS FUNERAL HOME, 2-3171	1009 Dodds Avenue
UNIVERSITY OF CHATTANOOGA, 6-8431	McCallie Avenue
VAUGHT-TITTLE AUTO CO., 6-0127	341 Chestnut Street
VIOLET STUDIO CAMERA SHOP, 6-1553	11 East Seventh Street
THE VOGUE, Women's Apparel, 6-5123	719 Market Street
WEE MODERNS, Women's Apparel, 6-0263	630 Market Street
WHITE SWAN LAUNDRY, 6-2103	227 East Eleventh Street
WILEY SCHOOL OF BUSINESS, 6-2231	Fifth Floor, Times Building
WILKINS CANDY COMPANY, 6-1151	1273 Market Street
R. C. WILLIAMS, Gulf Station, 2-9358	Dobbs and McCallie
WILLIAMS & VORIS LUMBER CO., 2-3141	2501 South Dobbs
WALTER A. WOOD SUPPLY CO., Hardware, 3-0012	4517 Rossville Blvd.
F. W. WOOLWORTH COMPANY, Ten-Cent Store, 6-7036	710 Market Street

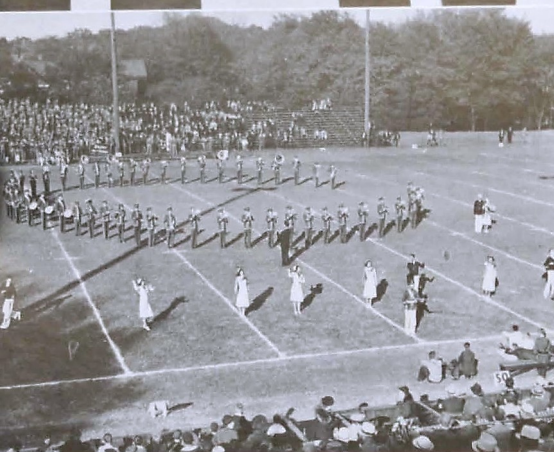
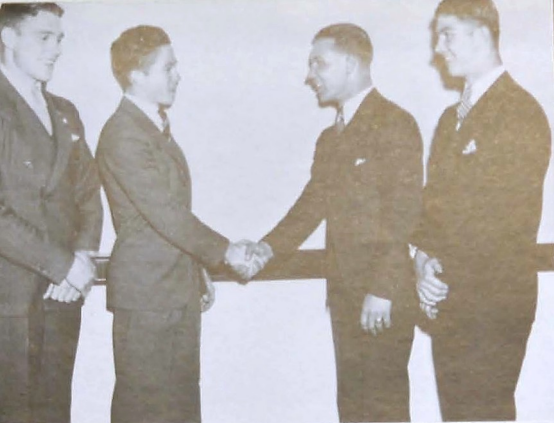


Scene in E. Y. Chapin Library.
Mrs. Harding During a Rehearsal.
Seniors on Parade.
Parents Day at Central.
On the Stairway Between Classes.
"Seven Sisters"—Senior Play Cast.

C A N D I D

C A M E R A

Enjoying the Sunshine.
Watching the Mail Plane Pass.
Waiting for the Bell.
Just Resting.
In Front of Main Building During Lunch Period.
Ready to Go Home.



Tyndall, Cullom, Kilgore and Carden at Football Banquet.
Military Sponsors Peeping in Camera.
Central's Band, Cheerleaders and Drill Squad.
Wo-Wo Brown Goes After a Forward Pass.
P.-T. A. Officers and Leaders.
Centralites—All, at City Game.

VIEWS and

REVIEWS

Nite-Owl Initiates.
Eulala Brown, Martha Miles, Norma Woodfin.
In the Print Shop.
Walter Fundinger and Coach Petersen.
R. O. T. C. Officers During Off Hours.
The Presentation of Military Sponsors at Frawley Field.

Autographs

Autographs

TO CHATTANOOGA

Loveliest of cities in this fair State;
Nestled 'mong mountains majestic and great,
Which gently o'ershadow as if to hide
And protect thy people from life's bleaker side—
Chattanooga, we praise thee.

We love thy trees and clear pure air,
Thy green fields dotted with flowers fair,
Warmed by glad sunshine where soldiers once trod;
Blessed beyond measure by an all-loving God—
Chattanooga, we esteem thee.

With silver streams winding through valleys and hills,
Generating power for factories and mills;
Known for thy heart so generous and kind
Helping and lifting with hope sublime—
Chattanooga, we love thee.

Mildred Lanham, '39.

