

Champion

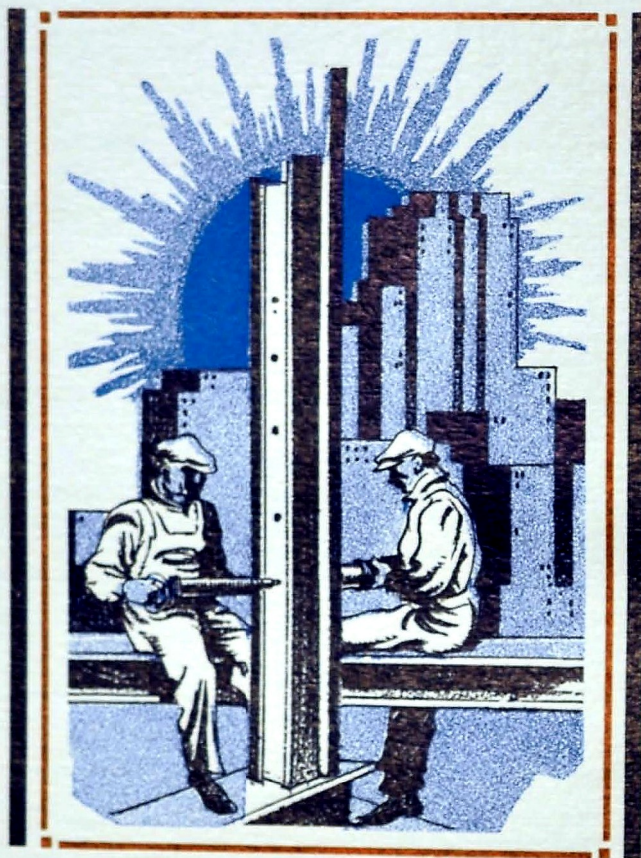
NINETEEN THIRTY SEVEN



THE CHAMPION

OF PROGRESS

PROPERTY OF
CENTRAL HIGH SCHOOL



THE SENIOR CLASS OF
CENTRAL HIGH SCHOOL

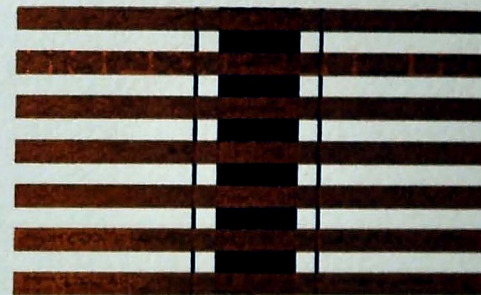
C H A T T A N O O G A , T E N N .

Presents

THROUGH THE MEDIUM OF

THE

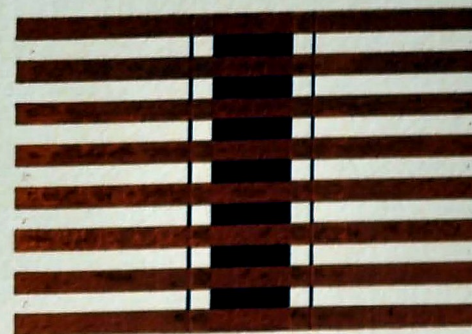
COPYRIGHTED
ELIZABETH REDFORD • EDITOR
F. B. TAYLOR • BUSINESS MANAGER



CHAMPION

FOR

NINETEEN
THIRTY
SEVEN





THE

MARCH OF TIME

CENTRAL, IN THE LAST
FEW DECADES, HAS FELT
PULSATING THROUGH
HER LIFE, INFLUENCES
OF GROWTH AND
PROGRESS EVIDENT IN
ART, SCIENCE AND
EVERY FIELD OF HU-
MAN ENDEAVOR. » »
FITTING IT IS THAT THE
MOTIF OF THIS BOOK
REFLECT THIS THEME.



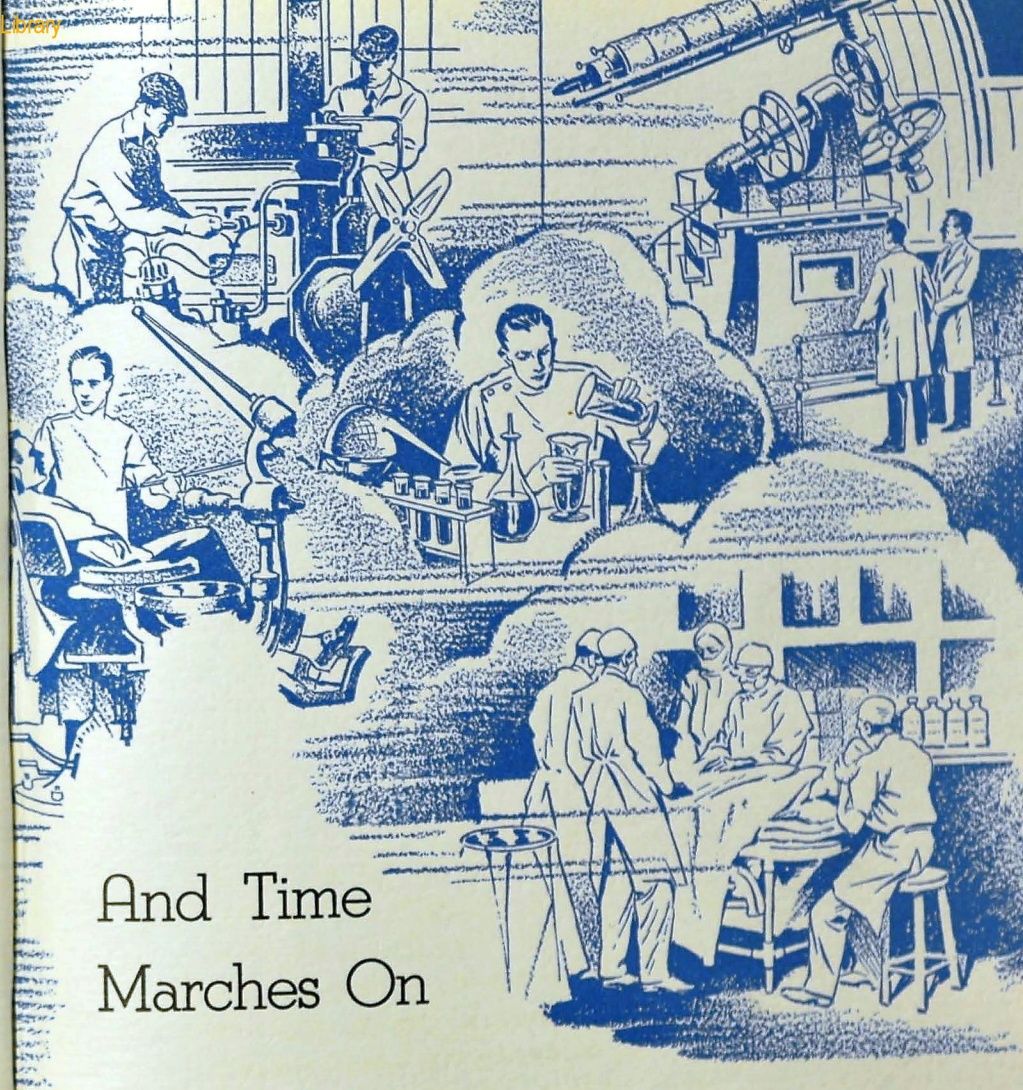


MISS EDNA CROSS
TEACHER, FRIEND AND
COUNSELOR—WHO
THROUGH HER PLEAS-
ING PERSONALITY,
GENIAL NATURE, AND
NEVER FAILING INTER-
EST IN THE ADVANCE-
MENT OF EVERY PHASE
OF LIFE AT OUR ALMA
MATER, HAS ENDEARED
HERSELF TO CENTRAL
STUDENTS.

DEDICATED TO



PROGRESS IS FOUNDED ON TRUTH. SCIENCE OF THE PAST CENTURY HAS BEEN A GREAT INTERNATIONAL ACHIEVEMENT, UNFOLDING A UNIFIED BODY OF TRUTH AND EXPLAINING THE MYSTERIES OF NATURE. THROUGH THIS KNOWLEDGE, MAN OF THE PRESENT IS ENABLED TO LIVE A RICHER, FULLER, AND MORE WHOLESOME LIFE. • OUR ALMA MATER HAS WISELY GUIDED US IN OUR SEARCH FOR TRUTH.



And Time
Marches On

Alma Mater





MR. S. E. NELSON, PRINCIPAL

THE ADVANCEMENT OF ANY INSTITUTION DEPENDS LARGELY ON ITS LEADERSHIP. THE MOTIVE POWER BEHIND CENTRAL'S STEADY PROGRESS FOR MORE THAN FIFTEEN YEARS HAS BEEN THIS MAN WHO IS ADMIRED AND RESPECTED BY ALL FOR HIS HIGH IDEALS AND STANDARDS, FOR HIS LOYALTY AND UNTIRING EFFORTS IN BEHALF OF OUR ALMA MATER.



THE FACULTY

MR. C. J. ANDERSON
MR. W. P. BALES
MRS. HAZEL BARTON
MISS FLORA E. BECK
MRS. MILDRED G. BETTS
MRS. C. H. BOYD

MRS. HARRY BROWN
MRS. MARY D. CALLIS
MRS. G. M. CLEMENTSON
MISS RUBY COCHRAN
MRS. D. S. COUGHLIN
MISS EDNA K. CROSS

MISS MARY LOU DERRYBERRY
MR. J. POPE DYER
MISS LAVETA EPPERSON
MISS RUTH FAIR
MR. J. J. FLETCHER
MISS DOROTHY C. FRENCH



THE FACULTY

MR. J. L. HAIR
MISS VIRGINIA HARRELL
SERGT. G. M. HARRIS
MR. CLEBOURNE HATFIELD
MISS MARGARET HAYS
MRS. FRED A. HILL

MR. ARLE HOODENPYL
MISS EDMUND HOOSER
MISS SARAH B. HUBBARD
MR. J. STEGER HUNT
MRS. EDNA C. JACOWAY
MR. KENNETH JOHN

MRS. LILA K. JOHNSON
MISS EARL R. JONES
MISS ELIZABETH JONES
MISS SALLY MAY KING
MRS. AUGUSTA R. KOLWYCK
MISS GRACE LASATER



THE FACULTY

MISS MARGUERITE LEHMANN
MISS CAROLINE LILLARD
MRS. IDA M. LONGLEY
MISS JOSEPHINE WARFIELD LOVE
COL. BALLARD LYERLY
MISS RACHEL McALLISTER
MR. GEORGE W. MCCOY

MRS. MADGE P. MCCOY
MR. JAMES L. MILBURN
MR. WILLARD MILLSAPS
MISS ELLEN MULLENNIX
MISS VESTA NELSON
MISS IDA NICKEL
MR. R. E. OLINGER

MISS JOE ORE
MISS BEULAH PARKER
MR. S. DEAN PETERSEN
MRS. J. FRANK PRICE
MISS HELEN G. PRYOR
MRS. GEORGE RICE
MISS MARY ELLEN RICE



THE FACULTY

MISS IMOGENE ROBERTSON
MRS. H. B. ROBINSON
MR. JACK R. RODMAN
MRS. A. B. ROGERS
MR. W. RATHMELL ROLLINS
MISS LILLIE SCHWARTZ
MR. J. A. SETLIFFE

MRS. JOHN A. SHELTON
MRS. JANIE L. SHROPSHIRE
MRS. A. G. SKATES
MISS EMILY SPENCER
MR. A. P. STEWART
MR. DENNIS SWIHART
MR. G. M. SWINGLEY

MR. S. Q. TALLANT
MISS MARGARET S. TAYLOR
MR. W. H. TEMPLETON
MRS. W. H. TEMPLETON
MISS MARGARET WAPLES
MR. R. S. WHARTON
MISS BESSYLEE WIGGS

BOARD OF EDUCATION

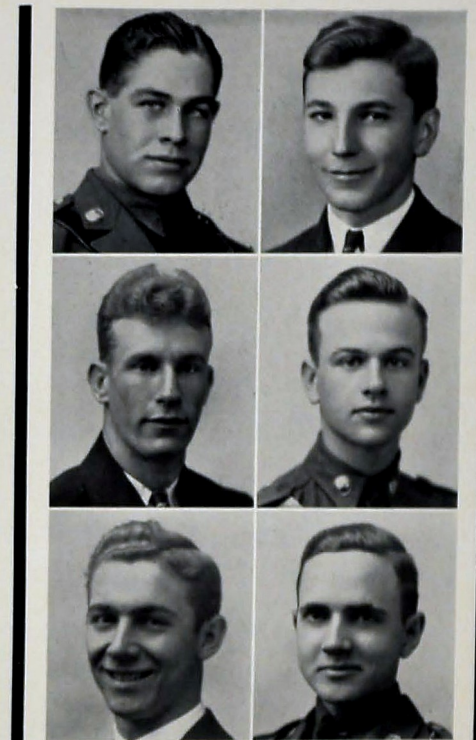
MRS. HARRY R. LACEY
Chairman

MR. ARTHUR L. RANKIN
Superintendent

MR. JOHN H. ALLEN
MR. J. P. BROWN

DR. E. S. BLAIR
MR. E. Y. CHAPIN

MR. GEORGE FORBES
MRS. WILL SHEPHERD



OFFICERS

ROY SCRUGGS	President
FRED HETZLER	Vice-President
BILLY O'BRIEN	Secretary
HAROLD ROBINSON	Treasurer
CARL JOHNSTON	Sergeant-at-Arms
CARL WEST	Sergeant-at-Arms



SENIOR CLASS

SENIOR CLASS

SARA ESTHER ABEL

Entered from Dickinson Jr. High in '33; Girls' Glee Club, '34, '35, '36;
Junior Red Cross, '36; Girl Reserves, '36.

SARAH ACUFF

Entered from North Chattanooga Jr. High in '32; Ace Club, '34, '35;
Tennis, '34; Girls' Glee Club, '35; Red Cross, '35, '36.

MARY ADAMS

Entered from Grundy County High, Tracy City, Tenn., in '34; Tennis, '35;
Red Cross, '36, '37.

DORIS ADAMSON

Entered from Eastdale Grammar School in '33; Junto Club, '34; Girls' Glee
Club, '34; Pirates of Penzance, '34; Operetta, '36.

RAYMOND ADCOX

Entered from Lookout Jr. High in '34; Stage Crew, '36, '37.

JULIA LOUISE ALEXANDER

Entered from Red Bank Jr. High in '34; S. P. Q. R., '34, '35; Home
Ec. Club, '36, '37.

ROSCOE BRYANT ALLEN

Entered from East Lake Jr. High in '34.

ATWELL ALTSMAN, JR.

Entered from Beasner Jr. High in '33; Football, '33, '34; Track, '35, '36;
Letterman Club.

WILLIAM F. ASHWORTH

Entered from East Side Jr. High in '33; Corporal Band, '34, '35; Orchestra,
'34, '35; Science Club, '34; Stamp Club, '34, '35; Camera Club, '33, '34.

VIVIAN LORRAINE ATWOOD

Entered from Beasner Jr. High in '33; Glee Club, '37; Camera Club, '37;
S. P. Q. R., '35; Home Economics Club, '34.

DORIS AUCOTT

Entered from Signal Mountain in '33; Science Club, Secretary, '33, '34;
Senate, '33-'36; Usher; Make-up Committee Senior Play, "Once in a
Palace;" May Day Program, '33.

FRANKIE BEATRICE AUCOTT

Entered from Signal Mountain in '33; Watt Science Club, '33, '34; Red
Cross, '35; Senate, '33-'36; National Honor Society; Usher; Property Man-
ager Junior Play, '36; Senior Play, "Once in a Palace;" May Day Pro-
gram, '33.

LILLIAN LUCILE BAILEY

Entered from East Lake Jr. High in '34; Drill Squad, '36; Girl Reserve,
'35, '36, '37; Army, '36; Handicraft, '36, '37.

MARY VIRGINIA BAKER

Entered from Rogersville High School, Rogersville, Tenn., in '36; Ace
Club, '36, '37; Red Cross, '36, '37.

SENIOR CLASS

J. EUGENE BANKSTON

Entered from Jenkinsburg, Ga., in '36; Red Cross, '36, '37.

NORA ALLISON BARKER

Entered from Red Bank Jr. High in '33; Physical Ed., '33, '34; Army, '35,
'36; Senate, Vice-President, '36, '37; Hi-Y, '36, '37; S. P. Q. R., '34,
'35; Usher; Etiquette Club, '36, '37; National Honor Society, '36, '37;
Digest Reporter, '35, '36; Exchange Editor Digest, '36, '37; Hiking Club,
'35, '36; Etiquette Club Play, '37.

ANTOINETTE FLAGG BARLACH

Entered from East Side Jr. High in '33; Art Club, '34, '35, '36, '37;
S. P. Q. R., '36, '37; Hiking Club, '36, '37; Extra Curricular Award, '36;
Representative Art Department, '36, '37.

MARTHA LOIS BARROW

Entered from Dickinson Jr. High in '33; Girl Reserves, '33, '34; Red
Cross, '34-'37; Extra Curricular Award, '33, '34.

NORMA NELL BARROW

Entered from Dickinson Jr. High in '33; Girl Reserves, '33, '34; Red
Cross, '35, '36, '37; Letterman Minstrel, '34.

CHARLES LEE BATEY

Entered from Red Bank Jr. High in '33; Vice-President, Band Club, '36,
'37; Red Cross, '36, '37; Depression Club, '36, '37; Stamp Club, '35, '36;
Drum Major of Band, '36, '37.

ELIZABETH ANN BEASLEY

Entered from Dickinson Jr. High in '34; Usher; French Club, '37; May
Day, '36; Physical Education, '35; Senior Council, '37.

PEYTON BEASLEY

Entered from Lanier High School, Macon, Ga., in '33; Red Cross, '35, '36;
Senate, '35, '36.

EMILY ANN BECK

Entered from North Chattanooga Jr. High in '33; Science Club, '33, '34;
Red Cross, '36, '37; Usher; Letterman Minstrel, '34; Property Manager
Senior Play, "Once in a Palace;" May Day Program, '33, '34.

FRANCES BEENE

Entered from East Side Jr. High in '35; Home Economics Club; Bible
Prayer Band; French Club.

MONTYNE LA VERNE BENTLEY

Entered from Lakeview High School in '35; Art Club, '36, '37; Red
Cross, '36, '37; Knitting Club, '36, '37.

JEWELL BILBREY

Entered from Lookout Jr. High in '34; Red Cross, '34, '36, '37; Library,
'34; Minstrel, '36; May Day, '34, '35; Ace Club, '34; Knitting Club,
'36, '37.

ALLAN BISPLINGHOFF

Entered from Dickinson Jr. High in '35; Bank-Bookstore; Camera Club;
Grady Literary Society.

GWENDOLYN BLACK

Entered from Lakeview Jr. High School in '35; Red Cross, '36; French
Club, '36; Circus, '35; May Day, '35; Knitting Club, '36.

SENIOR CLASS

MARIE BLACKBURN....."Ree"
Entered from Dickinson Jr. High in '33; Girls' Glee Club, '34, '37; Red Cross, '36, '37; S. P. Q. R., '35; Home Economics Club, '34.

CHARLOTTE BLAIR....."Baskette"
Entered from North Chattanooga Jr. High in '34; Girls' Glee Club, '34, '35; Physical Ed. Club, '34; Army, '34; Aces, '34, '37; Ice Cream Force, '36, '37; May Day, '34, '35; Circus, '34, '35, '36; Sports Club, '36; President, Handicraft Club, '36; Usher, Senior Council; Home Ec. Club, '36, '37; Gym Captain, '35, '36, '37; May Queen Attendant, '36; Extra Curricular Award, '35, '36; National Honor Society.

EDNA ANNETTE BLAIR....."Blondie"
Entered from East Side Jr. High in '34; Physical Ed. Club, '34, '35; Girl Scout, '34, '35; *Digest* Staff, '36, '37; May Day, '34, '35, '36; Ukelele Club, '34, '35.

FRANCES ADELAIDE BLAIR
Entered from East Side Jr. High in '34; Library Assistant, '36, '37.

RAY CHARLES BOSWELL
Entered from East Side Jr. High in '34; Airplane Club.

DOROTHY ELIZABETH BOWEN....."Dot"
Entered from East Side Jr. High in '34; Secretary and Treasurer, Varsity Glee Club, '34, '37; Orchestra, '34, '35; Nite Owls, '36, '37; Hi-Y, '35, '36, '37; "Pirates of Penzance", '34; "Olonita", '35; Senate, '34; East Tennessee Orchestra, '34, East Tennessee Glee Club, '35.

NORRIS BRAGG
Entered from Red Bank Jr. High in '32.

VIRGINIA BRESSLER....."Giggie"
Entered from Dickinson Jr. High in '34; Secretary, Biology Club, '36; Girl Reserves, '35, '36.

GEORGE BRIDGERS....."Snapper"
Entered from Brainerd Jr. High in '34; Football, '34, '35, '36; "C" Club, '35, '36, '37; First Lieutenant, R. O. T. C., '36, '37; Sergeant Club, '35, '36; Vice-President, Officers' Club, '36, '37; Junior Play, '36; Senior Play, '37.

JASON RAPHAEL BRONG....."Kay"
Entered from East Side Jr. High in '33.

JOHN BROOKS
Entered from Hardy Jr. High in '33; Science Club, '33, '34; Latin Club, '34; Depression Club, '35, '36; Senior Play, '37; Sponsor Club Basketball Tournament, '36, '37.

HARRY HALE BROWN....."Pig"
Entered from Tyner Jr. High in '34.

JOHN RICHARD BROWN....."Dick"
Entered from North Chattanooga Jr. High in '33.

MARY ANNE BUCK
Entered from Brainerd Jr. High in '34; President, Girl Reserves, '34, '35; S. P. Q. R., '34, '35; Etiquette Club, '35, '36, '37; Camera Club, '35, '36; Senate, '35, '36, '37; Red Cross, '36, '37; National Honor Society, '36, '37; Usher, Feature Editor, *CHAMPION*; Office Force, '36, '37; Candy Crew, '34, '35, '36; Soccer Team, '36, '37; Circus, '34, '35; May Day Festival, '34, '35; Girls' Vocational Guidance Club, '36, '37.

SENIOR CLASS

WILLIAM THOMAS BURGESS....."Tom"
Entered from Lookout Jr. High in '33; Boll Weevils, '35, '36, '37; Grady Literary Society, '35, '36, '37; Senate, '35, '36, '37; S. P. Q. R., '34, '35.

ELLIS BUTLER....."Rubinoff"
Entered from Brainerd Jr. High in '34; Orchestra, '34, '35; Minstrel, '35; Operetta, '35; Grady Literary Society, '37; Extra Curricular Award, '34; Science Club, '34, '35; National Honor Society, '36, '37; Scout Club, '35, '36.

S. C. CAGLE, JR....."Lon"
Entered from Pickens County High School, Jasper, Ga., in '37.

FRANCES CAROLYN CAMP....."Frank"
Entered from Seabreeze High School, Daytona Beach, Florida, in '34; Editor-in-Chief, *Digest*, '37; President, Vocational Guidance Club, '37; Usher; Anchors Aweigh, '37; Junior Play, '36; Secretary, Dramatic Club, '36, '37; Etiquette Club, '36; National Honor Society, '37.

JOHN LAFAYETTE CARMICHAEL....."Red Robin"
Entered from East Side Jr. High in '33; Military, '33, '37; Library Club, '33; Operetta, '34; Junior Play, '34; Senior Play, '37; Depression Club, '36, '37; Red Cross, '34, '37; "C" Club Minstrel, '34, '37; Sergeants Club, '36, '37; Boys' Glee Club, '35; Office Force, '35, '37.

ELI BRYANT CARTER
Entered from North Chattanooga Jr. High in '34; Depression Club, '36, '37; Red Cross, '36, '37; Military, '35.

WILLIAM AUSTIN CASTINGS....."Bill"
Entered from East Lake Jr. High in '34; Airplane, '34, '35; Red Cross, '36, '37; Sergeants, '36, '37; Depression Club, '36, '37; R. O. T. C., '34, '37.

WILLIE SUE ISABELLE CATE....."Sue"
Entered from Brainerd Jr. High in '35; Tennis Club, '35; Spanish Club, '35, '36; Home Economics Club, '36, '37; Red Cross, '36, '37; Girl Reserves, '36, '37.

ROBERT CHALK....."Bob"
Entered from Dickinson Jr. High in '33; Depression Club, '35, '37; Boys' Hi-Y, '35, '36, '37; President, Sergeants Club, '36, '37; Camera Club, '36, '37; Grady Literary Society, '35, '36; Chairman Ring and Pin Committee; *Digest* Staff.

CHARLES CHROSNIK....."Charlie"
Entered from Brainerd Jr. High in '34; Depression Club, '34, '35; Jr. Basketball, '34, '35, '36.

FLORENCE MAE CHUMLEY....."Verbie"
Entered from North Chattanooga Jr. High in '35; Girls' Hi-Y, '36, '37; Red Cross, '37.

JACK CLARK
Entered from Brainerd Jr. High in '34; Boys' Hi-Y, '35, '36, '37; Grady Literary Society, '35, '36, '37; Dramatic Club, '35, '36, '37; Scout Club, '35, '36, '37; *Digest* Staff, '37; Business Staff Senior Play, '37; S. P. Q. R., '35; Red Cross, '34, '37.

MARY RUTH COCHRAN
Entered from East Lake Jr. High in '35; Library Club, '36, '37; Home Economics, '37.

JUANITA MAE COE....."Squash"
Entered from Anniston High School, Anniston, Alabama, in '36; Girls' Hi-Y, '37; Etiquette Club, '37.

SENIOR CLASS

CHRISTINE ELANE COKER....."Coker"
Entered from East Side Jr. High in '34; Physical Education, '34, '35; Army, '35, '36; Aces, '35, '36, '37; Digest Representative, '36, '37; Gym Circus, '35, '36; May Day Program, '36.

MARY JUNE COLETTA....."Blackie"
Entered from Breckenridge Jr. High, Breckenridge, Texas, in '34; Girls' Glee Club, '34, '35.

THELMA IRENE COMSTOCK....."Jackie"
Entered from East Lake Jr. High in '35.

ELMER CONNALLY
Entered from East Lake Jr. High in '34; Printing, '33, '37.

W. D. CONNER, JR....."Dub"
Entered from Lyner High in '35; Baseball, '35, '36; Depression Club, '35, '36; Prayer Band, '35, '36.

BERNICE COOPER....."Bern"
Entered from Dickinson Jr. High in '32; Reentered, '35; Treasurer, Freshman Class, '32; Red Cross, '32, '33, '36; Varsity Glee Club, '32, '33, '35; Ukelele Club, '32, '33; Ice Cream Force, '33; Candy Force, '33; Letterman's Minstrel, '32; Nite Owls, '35, '36; Chairman, Costume Committee for "Lucky Jade," '35.

ROBERT COOPER....."Bob"
Entered from Dickinson in '34; Reentered from Webb in '35; Treasurer, Red Cross, '34, '37; Varsity Glee Club, '34, '35, '36; Manager, '35; Letterman's Minstrel, '34, '35, '36; Red Cross Pageant, '34, '35.

BAXTER RALPH CARL....."Baxter"
Entered from East Side Jr. High in '34.

HOWARD COUCH
Entered from North Chattanooga Junior High in '33.

P. ROGERS CRAIG....."Piggy"
Entered from East Side Jr. High in '33; Band Club, '34, '37; Sergeants Club, '36, '37.

J. B. CRANE
Entered from Dickinson Jr. High in '35.

REGINA GRAVEN....."Queenie"
Entered from East Side Jr. High in '34; Girl Reserves, '34, '35, '36; Art Club, '34; S. P. Q. R., '34; Office Force, '34; Red Cross, '35; Ushers; Senior Council; Extra Curricular Award, '35.

MYRTLE LAURINE CRAWLEY
Entered from Brainerd Jr. High in '34; Girl Reserve, '34; Senate, '35, '36; Usher, Red Cross, '36; Girls' Hi-Y, '36, '37; National Honor Society, '36, '37.

FRANCES CRISWELL
Entered from North Chattanooga Jr. High in '34; Biology Club, '35, '36; Nite Owls, '35, '36, '37; Red Cross, '36, '37.

SENIOR CLASS

VERNA LOUISE CULBERSON....."Lou"
Entered from Meridian Jr. High, Meridian, Miss., in '34; Library Assistant, '36, '37; Science Club, '36, '37.

DENTON DABBS
Entered from East Side Jr. High in '34; Science Club; R. O. T. C.; Vice-President, Stamp Club; Jr. Red Cross.

MARY LOUISE DAVENPORT....."Lou"
Entered from Daisy High School in '34; Girl Reserves.

ROY DAVENPORT
Entered from East Lake Jr. High in '34; Officers Club, Lieutenant, R. O. T. C.

BILLIE ANITA DAVIS....."Red"
Entered from Rhea Central High School, Dayton, Tenn., in '35.

MARION DAVIS....."Dee Dee"
Entered from East Side Jr. High in '35; Red Cross; Camera Club.

DOROTHY VIVIAN DAVIS....."Dot"
Entered from Brainerd Jr. High in '34; Vice-President, Honor Society, '36, '37; President, Dramatic Club, '36, '37; Usher, Girls' Hi-Y, '36, '37; Business Manager, Junior Play, '36; Associate Editor, Digest, '36, '37; News Editor, Digest, '36; Winner of State Award in International Business Machine Corporation Essay Contest, '35; Vice-President, Anchors Aweigh; Business Manager, Senior Play; Candy Force, '35, '36; May Day Festival, '35; Drill Squad, '34; Chorus, '36, '37.

ALLIE BELLE DEAN....."Ditty"
Entered from Tyner High in '35; P. T. A. Representative; Digest Representative.

VIRGINIA FRANCES DEARING....."Toots"
Entered from Dickinson Jr. High in '35; Secretary of Class, '35; Red Cross, '35, '36, '37; Nite Owls, '36, '37; Hi-Y, '37; French Club, '37; Usher, Band Club, '37; Varsity Glee Club, '37; Band Sponsor, '37; Vice-President, Nite Owls, '37.

ROBERT GEORGE DEMOS....."Admiral"
Entered from Brainerd Jr. High in '34; Football, '34, '35, '36; "C" Club, '36, '37; Officers' Club, '36, '37; Grady Literary Society, '36, '37; Captain Company E, '37; Camera Club, '36, '37; National Honor Society, '37; Minstrel, '35, '36, '37.

SARAH ALMA DE VANEY....."Nickie"
Entered from East Side Jr. High in '33; Girl Reserve, '33; Dramatic Club, '35; Red Cross, '36.

VIRGINIA RUTH DE VAULT....."Ruthie"
Entered from East Side Jr. High in '33; Girls' Glee Club, '35; Girl Reserves, '34, '36.

BETTYE DICKS
Entered from Boynton Jr. High in '35.

ROBERT DICKS....."Bobby"
Entered from Brainerd Jr. High in '34; Depression Club, '34, '35; Boys' Hi-Y, '34, '35; Letterman Club, '34, '35; "C" Club, '35, '36, '37; Varsity Basketball, '34, '37.

SENIOR CLASS

JEWELL JEANETTE DICKSON....."Jimmie"
Entered from Lookout Jr. High in '34; Physical Ed. '34, '35; Circus, '34, '35; Ice Cream Force, '36, '37; Red Cross, '36, '37; Knitting Club, '36, '37; Hiking Club, '36, '37.

FRANK G. DOBBS
Entered from East Lake Jr. High in '35; Printing Club, '35, '36, '37; Digest, '37.

WILLIAM E. DORSEY
Entered from East Side Jr. High in '31; Digest Staff, '34, '35; Printers, '33, '34, '35.

MARY LOU DORSEY
Entered from Brainerd Jr. High in '33; S. P. Q. R., '35; Girls' Hi-Y, '37; Girls' Glee Club, '37.

CARL A. DRAKE....."Strawry"
Entered from Brainerd Jr. High in '33; Depression Club, '35, '36, '37; Red Cross, '36, '37; R. O. T. C., '33, '34.

ADRIENNE DUCLOS....."Adie"
Entered from Brainerd Jr. High in '35; President, French Club, '36, '37; Dramatic Club, '36, '37; Junior Representative of CHAMPION Staff, '36; Feature Editor, Digest, '37; Usher.

KATHERINE LUCILLE DUNAGAN
Entered from East Lake Jr. High in '35.

MARY JO DUNCAN
Entered from Lakeview Jr. High in '34; Band Club, '35, '36, '37; Red Cross, '36, '37; Band, '35, '36, '37; Circus, '35; May Day Program, '35; Knitting Club, '36.

J. R. EAVES
Entered from Brainerd Jr. High in '34.

VERNON N. EDGE
Entered from Red Bank Jr. High in '34; Sergeants Club, '36, '37; R. O. T. C., '34, '37.

CONSTANCE ENGRAM....."Connie"
Entered from North Chattanooga Jr. High in '33; Tumblers Club; Red Cross.

MYRTIE MAE ERWIN....."Deedee"
Entered from Dickinson Jr. High in '33; Red Cross, '33, '36; Senate, '33, '36; Lettermen, Minstrel, '33, '34; National Honor Society; Usher; Circus, '33, '34; May Day, '33, '34, '35; Secretary, French Club, '36; Property Manager, Junior Play, '36; Property Manager, Senior Play, '37; Represented Central with the humorous reading, "The Impertinence of the Creature," at Knoxville, '35; Lead in the One-Act Play, "The Impertinence of the Creature," '35; Physical Ed. Club, '33.

EDITH FARMER....."Peanut"
Entered from Brainerd Jr. High in '34; Dramatic Club, '36, '37; Etiquette Club, '36; Usher; Senior Play, '36; National Honor Society, '37; Anchors Aweigh, '37.

ELEANOR JEAN FARRAR....."Pat"
Entered from East Side Jr. High in '34; Girl Reserve, '35; Art Club, '35, '36.

RICHARD FERRILL
Entered from Brainerd, '33; Grady Literary Society, '34, '35, '36; Dramatic Club, '36; French Club; National Honor Society, '36.

WILBURN GARNETT FIELDS
Entered from Dickinson Jr. High in '33; Science Club, '35, '36; Boys' Glee Club, '35, '36.

SENIOR CLASS

ELIZABETH FINCANNON
Entered from Dickinson Jr. High in '34; Art Club, '34, '36; Bible Sponsor, '36; Library Assistant, '34, '36; May Day, '34, '36; Circus, '34, '35.

OPAL LOUISE FLOYD
Entered from East Side Jr. High in '33; Science Club, '33, '34; Gym Circus, '33, '34; Red Cross, '33; May Day Program, '34, '35; Camera Club, '36, '37; Office Force, '36, '37.

BARBARA ALMA FROST....."Bobby"
Entered from Chattanooga High School in '35; Red Cross; French Club; Girl Reserve.

BILL FROST....."Ollie"
Entered from Lookout Jr. High in '34; R. O. T. C., '34, '35; Baseball, '36, '37.

ROBERT FULLER
Entered from East Lake Jr. High in '33; Treasurer, Sergeants Club, '36.

LOVELL N. GANNAWAY....."Chink"
Entered from North Side Jr. High in '33; Science Club, '33, '34; Etiquette Club, '35, '36; Varsity Glee Club, '35, '36; Orchestra Officer, '36, '37; Pirates of Penzance, '33; "Lucky Jade," '35.

DOROTHY GARREN....."Dot"
Entered from Rosalie Jr. High, Rosalie, Alabama, in '33; Girls' Hi-Y, '36, '37; Camera Club, '36, '37; Knitting Club, '36, '37; Girl Reserves, '36, '37.

ELIZABETH GARRIGUS....."Bebe"
Entered from Northside Jr. High in '32; Red Cross, '33, '34; Bookstore, '33, '37; Etiquette Club, '33, '34; Dramatic Club, '33, '34; Senior Council, '37.

HENRY LEHARDY GAUNTT....."Lee"
Entered from Brainerd Jr. High in '34; French Club, '35, '36; Airplane Club, '36, '37; Red Cross, '36, '37; Sergeants Club, '37.

MARGARET LOUISE GILLILAND....."Aima"
Entered from Brainerd Jr. High in '34; Junior Play, '36; Usher; Red Cross, '35, '36; Drill Squad, '34, '35; Library, '36, '37.

RALPH BRUCE GODSEY....."Mickey"
Entered from Red Bank Jr. High in '33; Lieutenant, '36, '37; Sergeant's Club, '35, '36; Officers' Club, '36, '37; Printers' Club, '34, '37; Digest Staff, '35, '36, '37; Baseball, '35, '36, '37.

EARL P. GOOD....."Percy"
Entered from Hardy Jr. High in '34; Scout Club, '35, '36, '37; Spanish Club, '36; Band, '35, '36; Band Club, '35, '36.

RALPH C. GOODLET....."Rolfe"
Entered from Lafayette High School in '35.

SARAH GOODNER
Entered from Bradley High School in '36; Treasurer, Home Economics Club, '37.

MARY MARGUERITE GRANERT....."Raw Meat"
Entered from Dickinson Jr. High in '35; Camera Club, '35, '36; Red Cross, '37; Usher; Girl Reserves, '37; CHAMPION Staff, '37; Digest Representative, '37; National Honor Society, '37.

WILLIAM A. GREENE....."Bill"
Entered from East Side Jr. High in '34; Red Cross, '35, '36; Sergeant, R. O. T. C., '37.

SENIOR CLASS

LILLIE MAE GRIFFIN

Entered from East Lake Jr. High in '34; French Club, '36; Red Cross, '35; Girl Reserve, '35.

LOUVENA GAYNE GRIFFITH

Entered from Hardy Jr. High in '34; Aces, '34, '35, '36; Girls' Glee Club, '36; Home Economics, '37; French Club, '37; Tennis Club, '35, '36; Girls' Drill Squad, '34, '35.

OLIVIA GRISHAM

Entered from Woods Jr. College, Mathiston, Miss., in '36.

JACK HALE

Entered from Hardy, Jr. High in '34.

THURMAN ROBERT HALL

Entered from Woodlawn High School, Birmingham, Ala., in '35; Boys' Hi-Y, '36, '37; President, Senate, '37; Grady Literary Society, '35, '36, '37; Dramatic Club, '36, '37; Junior Play, '36; Senior Play, '37; S. P. Q. R., '35; District Declamatory Winner, '36; National Honor Society, '37.

DOROTHY VIRGINIA HOLLAHAN

Entered from East Side Jr. High in '33; Minstrel, '34; S. P. Q. R., '34, '35; Girl Reserves, '35, '36, '37; Red Cross, '35, '36, '37; Handicraft Club, '36, '37.

MORGAN HAMILL

Entered from Lookout Jr. High in '34; R. O. T. C., '34, '35.

J. D. HARDEN

Entered from Brainerd Jr. High in '32; Grady Literary Society, '31, '32; Depression Club, '31, '36; Minstrel, '32, '35; Junior Play, '32; Assistant Business Manager, Junior Play, '35; Dramatic Club, '31, '32, '33.

MARY BELL HARDWICK

Entered from Decatur Girls' High, Decatur, Ga., in '35; Red Cross, '36, '37; Knitting Club, '36, '37.

MILDRED HARGISS

Entered from Lookout Jr. High in '34; Red Cross, '35, '36, '37; Etiquette Club, '34, '37.

GLENNIS HARMAN

Entered from Hixon High School in '36; Red Cross, '37; Prayer Club, '36, '37; School Bag Gospel League, '37.

DARWIN HAROLD

Entered from North Chattahoochee Jr. High in '34; Etiquette Club, '34, '37; Girls' Glee Club, '36; Girls' Hi-Y, '37; National Honor Society, '37; Usher.

JOHN B. HARRIS

Entered from Grundy County High School in '36; R. O. T. C.

MARY HUGH HAYNES

Entered from Red Bank Jr. High in '34; Usher; National Honor Society, '36, '37; Girls' Hi-Y, '36, '37; Craft Club, '36, '37; Library, '34, '37; S. P. Q. R., '34, '35.

BERYL LUCRETIA HEALY

Entered from Bloomfield High School, New Jersey, in '34; President, Ace Club, '35, '36; Senate, '35, '36, '37; Usher; Secretary, '36; National Honor Society, '37; Dramatics Club, '36, '37.

HARRY M. HEISKELL

Entered from North Chattahoochee Jr. High in '32.

SENIOR CLASS

DOROTHY ELOISE HEMPHILL

Entered from East Lake Jr. High in '32; Girl Reserves, '32, '37; Girls' Glee Club, '35, '36; Red Cross, '32, '33; S. P. Q. R., '32, '33.

VIRGINIA M. HENNESSEE

Entered from Brainerd Jr. High in '34; Girls' Hi-Y, '36, '37; Red Cross, '36, '37; Etiquette Club, '35, '36, '37; Senate, '35, '36, '37; Sponsor of E Company, '36, '37; National Honor Society, '36, '37; Usher; English Chairman, '35, '36, '37.

NEWELL HENRY

Entered from Dickinson Jr. High in '32; Letterman Club, '33, '34; Vice-President, "C" Club, '36; Captain, Football, '36; Biology Club, '34; Golf Club, '34.

RUTH HENSON

Entered from East Side Jr. High in '34; Glee Club, '34, '37; Las Muchachas, '35, '36.

FRED HETZLER

Entered from Northside Jr. High in '34; Boys' Hi-Y, '36, '37; Cabinet Member Senate, '35, '36, '37; President, Grady Literary Society, '36, '37; Scout Club, '35, '36, '37; Dramatic Club, '37; S. P. Q. R., '35; Treasurer, Freshman Class, '34; Treasurer, Junior Class, '36; Vice-President, Senior Class, '37; Operetta, "Chonita," '35; Senior Play, '37; National Honor Society, '37.

ALBERT B. HICKS

Entered from Lookout Jr. High in '33.

DOROTHY MAE HICKS

Entered from East Lake Jr. High in '34; Girls' Hi-Y, '36, '37; Girl Reserve, '35, '36, '37; Physical Education, '35, '36, '37; Digest Staff, '35, '36, '37.

HILDRED E. HICKS

Entered from East Lake Jr. High in '34; Red Cross, '35, '36; Girl Reserve, '36, '37; Girls' Hi-Y, '37; Home Economics, '37; Usher; Gym Captain, '36, '37; Physical Education, '36, '37.

KENNETH HICKS

Entered from East Lake Jr. High in '33; R. O. T. C., '34, '35; Science Club, '33, '34; Printing Club, '35, '36, '37; Digest Printing Staff, '37; Red Cross, '36.

WILLIAM HICKSON, JR.

Entered from East Lake Jr. High in '34.

FLORA HILL

Entered from East Lake Jr. High in '34; Glee Club, '34, '35; Tennis Club, '34; Ukulele Club, '35; Red Cross, '35.

IONE HINDMAN

Entered from North Chattahoochee Jr. High in '34; Girls' Glee Club, '34, '35; Physical Education, '34; Army, '34; Aces, '34, '37; Ice Cream Force, '35, '36, '37; May Day, '35; Circus, '34, '35, '36; Usher; Tumblers, '35, '36; Gym Captain, '35, '36; May Queen Attendant, '36; Extra Curricular Award, '36.

AGNES JUNE HIXON

Entered from East Side Jr. High in '35; Aces, '35, '36, '37; Girl Reserves, '36; Tumblers, '35, '36.

VIVIAN HOPKINS

Entered from East Side Jr. High in '34; Bank, '35, '36, '37; Bookstore, '35, '36, '37.

HOWARD HUDDLESTON

Entered from Hardy Jr. High in '32; Art Club, '37.

J. ALBERT HUDSON

Entered from Brainerd Jr. High in '33; Harmonica Band, '37.

SENIOR CLASS

GEORGE HUFF

Entered from Red Bank Jr. High in '33; Lieutenant, R. O. T. C.; Officers' Club; Camera Club.

KATHERYN HUFF

Entered from Tynes High in '34; Girls' Hi-Y, '37; Prayer Club, '37.

MONTA RAE HUMAN

"Speedy"
Entered from Dickinson Jr. High in '33; Library Assistant, '35, '36.

DELLA HUMPHRIES

"Dee"
Entered from East Side Jr. High in '34; Girl Reserves, '34; Glee Club, '34, '35, '36; Soccer Team, '34; Cage Ball, '35, '36; Baseball, '34, '35; Physical Education Club, '36; P. T. A. Committee.

PAUL F. INGLE

"Shadow"
Entered from Fairland School in '34; Watt Science Club, '34; Red Cross, '34, '35, '36; Home Room Sponsor, '37; Boys' Glee Club, '35; President, Varsity Glee Club, '36, '37; Etiquette Club, '35.

FELIX INGLIS

Entered from Rhea High School in '35; Printing Club, '36, '37; Football, '36; *Digest*, '37.

DOROTHY KATHLEEN IVESTER

"Dot"
Entered from Dickinson Jr. High in '34; Girl Scout, '34, '35; Red Cross, '36; May Day, '34, '35, '36; Handicraft Club, '37; Girls Drill Squad, '34, '35.

CLIFFORD JACKSON

"Cliff"
Entered from Brainerd Jr. High in '34; Red Cross, '35; Sergeants' Club, '37; Scout Club, '35.

MARY FRANCES JERNIGAN

"Bobo"
Entered from Dickinson Jr. High in '34; Red Cross, '34, '37; May Day, '34, '35, '36; Gym Circus, '35; Girls' Drill Squad, '35; Girl Reserves, '37.

CARL JOHNSTON

"Jaki"
Entered from Red Bank Jr. High in '33; Boys' Hi-Y, '34, '37; Camera Club, '34, '37; Senate, '35, '36, '37; Grady Literary Society, '34, '35; Sergeants' Club, '36; R. O. T. C., '34, '35, '36; Watt Science Club, '34; Varsity Glee Club, '36, '37; Boys' Glee Club, '36; Operetta, "Lucky Jade," '36; President, Freshman Class, '34; President, Sophomore Class, '35; Vice-President, Junior Class, '36.

FLETCHER JOLLY, JR.

"Smead"
Entered from Dickinson Jr. High in '32; Watt Science Club, '32; Lettermen's Club, '33, '35; Lettermen's Minutrel, '34; Captain Basketball, '36; Football, '33, '36; Baseball, '34, '36; Club Tournament, '32; "C" Club, '35, '36; Sports Editor, *Digest*, '36; Red Cross, '32.

DOTTY JONES

"Woman"
Entered from North Chattanooga Jr. High in '35; Ace, '35.

ELDER JONES

"Nick"
Entered from East Lake Jr. High in '34; Military; Glee Club.

ALICE GERTRUDE KEELS

Entered from Red Bank Jr. High in '34; S. P. Q. R., '34, '35; Library, '35, '36, '37; Junior Play, '36; Usher; Hiking Club, '36, '37.

LOUISE KELL

"Topsy"
Entered from Fairmount in '33.

MARGERY KELLY

"Marg"
Entered from East Side Jr. High in '34; Girls' Glee Club, '34; Bible Club, '36; Chorus, '36; Girl Reserve, '34.

SENIOR CLASS

WILLIAM KENNEDY

Entered from East Side Jr. High in '35; Depression Club, '35; Jr. Basketball, '35, '37.

GWENDOLYN KERNON

"Gwen"
Entered from DeKalb High, Alabama, '36; Senior Play; Physical Education Club, '36; French Club, '36; Dramatic Club, '36.

EDITH MILVERN KILLINGSWORTH

"Chubby"
Entered from East Lake Jr. High in '34; Vice-President, Bible Club, '37; Girls' Hi-Y, '37; Usher.

JOHN KNIGHT

Entered from Rossville High School in '35.

HAROLD ALLEN LAFERRY

"Flit"
Entered from North Side Jr. High in '32; Etiquette Club, '35.

HAL LAMB

"Sheep"
Entered from East Side Jr. High in '34; Football, '34, '35, '36; Military, '34, '35, '36; "C" Club, '35, '36, '37; Sports Editor of CRAMPION, '37; Red Cross, '35, '36, '37; Minutrel, '36, '37.

ARCHIE T. LAWRENCE

Reentered from LaFayette High in '36; *Digest*, '36, '37; President, Bible Prayer Club, '36, '37; Vice-President, Boys' Hi-Y, '36, '37; Treasurer, Bible Sponsors Club, '36.

LOUISE LAWRENCE

"Tutty"
Entered from East Side Jr. High in '34; Girl Reserves, '34, '37; Dramatics, '35, '36; Art Club, '34, '35; Red Cross, '34.

VERLIN LAWSON

"Sambo"
Entered from Lookout Jr. High in '32; Etiquette Club, '34, '36, '37; Sergeants' Club, '36; Officers' Club, '37.

MARTHA E. LAYCOCK

"Martha"
Entered from Brainerd Jr. High in '34; Las Muchachas, '36; French Club, '37; Glee Club, '37.

JOHN C. LAYSON

Entered from Brainerd Jr. High in '33; Airplane Club, '34, '37; First Lieutenant, R. O. T. C., '36, '37; Camera Club, '36, '37; Sergeants' Club, '36; Officers' Club, '37; Red Cross, '37; Boys' Hi-Y, '37.

DOROTHY MARIE LEDFORD

"Polly"
Entered from Brainerd Jr. High in '34; Knitting Club; Ace, '35, '36.

EDITH LEDFORD

"Toot"
Entered from Brainerd Jr. High in '32; Bank, '33; *Digest*, '36, '37; Knitting Club.

ELIZABETH LOUISE LEMONS

"Lemon"
Entered from East Lake Jr. High in '34; Vice-President, Biology Club, '37; Vice-President, Home Economics Club, '37; Girl Reserves, '36; Extra Curricular Award, '36.

BYRDIE NELL LEVI

"Nel"
Entered from East Side Jr. High in '32; French Club.

ROBERT PAUL LEVINSON

"Bobby"
Entered from Dickinson Jr. High in '34; President, Biology Club, '36; Vice-President, Stamp Club, '36; Junior Basketball, '35; Camera Club, '36; Extra Curricular Award, '35.

SENIOR CLASS

EMMA IMOGENE LEWIS....."Boots"
Entered from Lookout Jr. High in '34; Girls' Hi-Y, '36, '37; Usher;
Physical Education Club.

BETTY MARIE HARRIETT L'HEUREUX....."Politician"
Entered from Dickinson Jr. High in '33; Aces, '33, '34, '35; Tumblers,
'33, '34, '35; S. P. Q. R., '34, '35; Glee Club, '35, '36, '37; Girls'
Hi-Y, '37; Usher; Camera Club, '36, '37; Etiquette Club, '36, '37; French
Club, '36, '37.

JAMES LINN....."Jimmy"
Entered from East Side Jr. High in '33; Band Club, '33-'37; "C" Club,
'36, '37; Football, '35, '36, '37; Band, '33-'37; Cheer Leader, Senior
Class.

HOBSON LOARD....."Hoppy"
Entered from Dickinson Jr. High in '35; Red Cross, '35-'37; Sports
Editor, *Digest*, '37.

LOUISE LONG
Entered from East Side Jr. High in '33; Girls' Hi-Y, '36, '37; Senate,
'36, '37; Red Cross, '35, '36, '37; Girl Reserves, '36, '37; Usher;
Library Assistant, '34.

GRACIE GERALDINE LUNDY....."Jary"
Entered from City in '36; Glee Club, '36, '37; Spanish Club, '36.

ED LYNCH
Entered from Red Bank Jr. High in '33; Boll Weevils, '33-'37; *Digest*
Staff, '36, '37.

MAYBELLE McABEE....."Sookie"
Entered from East Lake Jr. High in '34; Girls' Glee Club; Biology Club;
Girl Reserves; *Digest* Staff; Candy Force; Knitting Club, '37; National
Honor Society, '37.

HELEN CHARLYNE McARTHUR....."Charlie"
Entered from East Side Jr. High in '34; Girl Reserves, '34, '35; Dramatic
Club, '35; Girls' Hi-Y, '37; French Club, '37; *Digest*, '37; Drill
Squad, '34.

WILLIAM ALVIN McBROOM....."Mac"
Entered from East Side Jr. High in '33; R. O. T. C., '33-'37; Crack
Platoon, '33, '34; Sergeant's Club, '35, '36; Officers' Club, '36, '37;
Camera Club, '34-'37; Minstrel, '35, '36, '37; *Digest* Staff, '36, '37;
Baseball, '35, '36, '37; Rifle Team, '34-'37; Operetta, '36, '37; Chorus,
'35, '36, '37; Musketeers, '36, '37.

KEITH McClURE....."Slim"
Entered from Lookout Jr. High in '34; Military, '34, '35.

GORDON McCOLLUM....."Mac"
Entered from East Side Jr. High in '33; Football, '35, '36.

VIRGINIA PAULINE McCOY....."Polly"
Entered from East Side Jr. High in '34; Girl Reserves, '34, '35; S. P.
Q. R., '34, '35; Red Cross, '35, '36, '37; May Day Festival, '35, '36;
Girls' Glee Club, '35, '36.

ROBERT FRANKLIN McDANIEL....."Bobbie"
Entered from East Side Jr. High in '34; Band Club, '35; Band and
Orchestra, '35; Military, '35.

IVA ANN MACDONALD....."Potion"
Entered from East Side Jr. High in '34; Girls' Hi-Y, '36, '37; Usher;
National Honor Society; Candy Force; Watt Science Club; Ace Club;
Army; Physical Education Club.

VELMA RUTH McGUFFEY....."Punkin"
Entered from East Lake Jr. High in '34; Central Bible Prayer Band,
'36, '37.

SENIOR CLASS

CHARLES EVERETT MABRY....."Red"
Entered from North Chattanooga Jr. High in '34; Stamp Club, '34, '35, '36.

EUGENE E. MAGETTE....."Doc"
Entered from Brainerd Jr. High in '34; Sergeants' Club.

ROBERT EMMETT MALLETT....."Monk"
Entered from East Side Jr. High in '34; Club Tournament, '35, '36;
Minstrel, '35, '36; Captain, Baseball, '37; "C" Club, '35, '36; Football,
'34, '35, '36; President, Boys' Glee Club, '35, '36.

EDNA MAE MANNING....."Sutie"
Entered from Lookout Jr. High in '33; Girls' Glee Club, '36, '37.

HANNAH MARLOWE....."Hanny"
Entered from East Side Jr. High in '34; Girls' Glee Club, '36; Usher;
Digest Staff, '37; National Honor Society, '36, '37; Vocational Guid-
ance Club, '37.

WILLIAM HENRY MARSH....."Bill"
Entered from East Side Jr. High in '33; Hiking Club.

MILDRED MARTIN....."Snooky"
Entered from East Lake Jr. High in '34; Vice-President Girl Reserves,
'35, '36.

MARY JANE MAUPIN....."Cornilke"
Entered from Signal Mountain Grammar School in '33; Phy. Ed., '33, '34;
Army, '34, '35; Ace, '35, '36, '37; President, Etiquette, '34, '35; Vice-
President, Girls' Hi-Y, '36, '37; Senate, '35, '36, '37; President, Usher;
Hiking Club, '34-'37; Copy Reader, *Digest*, '36, '37; Reserved Seats,
Junior Play; Watt Science Club, '33, '34; S. P. Q. R., '34, '35;
National Honor Society, '36, '37.

ALFRED F. MILLER
Entered from Brainerd Jr. High in '33; Officers' Club, '36; Sergeants'
Club, '35; Lieutenant, R. O. T. C., '35, '36, '37.

ARLES A. MILLER....."Run"
Entered from East Side Jr. High in '33; Printing Club, '34-'37; Har-
monica Club, '35-'37; *Digest* Staff, '36, '37.

MARY MIMMS....."Annie"
Entered from East Side Jr. High in '33; Physical Ed., '33, '34; Red
Cross, '35, '36; Girls' Scout, '33, '34; Library Assistant, '35, '36, '37;
May Day Festival, '34; Girls' Drill Squad, '34.

JOHN R. MINK, JR....."Johnnie"
Entered from East Side Jr. High in '33.

MARTHA ELIZABETH MINOR....."Littie"
Entered from North Chattanooga Jr. High in '33; Girls' Glee Club, '33,
'34; Girls' Drill Squad, '34; Phy. Ed., '35, '36; Girl Reserves, '36, '37;
Home Economics, '36, '37; Ace Club, '36, '37.

BETTYE JO MONTGOMERY....."Pee Wee"
Entered from Dickinson Jr. High in '33; Scouts, '33, '34, '35; Ace,
'34-'37; President, Handicraft, '36, '37; Minstrel, '34; Phy. Ed., '33, '34;
May Day Festival, '34, '35, '36; Girls' Drill Squad, '34; Tumblers, '34,
'35; President, Anchors Aweigh, '37; Red Cross, '36.

TRAVIS MOORE
Entered from East Side Jr. High in '34, Reentered '37; Biology Club, '34;
Red Cross, '35, '36.

LINEAL MOSS....."Lefty"
Entered from East Lake Jr. High in '33; Manager, Baseball Team, '36,
'37; Depression Club, '36; Operetta, '36; Minstrel, '35; Boys' Glee
Club, '35; Biology Club, '35.

SENIOR CLASS

THOMAS M. AVAKIAN

Entered from East Lake Jr. High in '31.

ALMA JOYCE MULKEY

Entered from North Chattanooga Jr. High in '33; Girls' Glee Club, '33, '34; Circus, '34, '35; Girls' Drill Squad, '34; Phy. Ed. Club, '36; Bookstore, '36; May Day Festival, '36; Handicraft, '36, '37.

JUANITA NABORS

Entered from Lookout Jr. High in '34; Girls' Glee Club, '35, '36; Girls' Hi-Y, '35, '36, '37; Usher; Senior Section Editor, CHAMPION, '36; French Club, '36; National Honor Society, '37.

RAYMOND NEAL

Entered from Cleveland High, Mississippi, in '33; Dramatic Club, '35.

GENE ALLEN NELSON

Entered from Dickinson Jr. High in '34; Sophomore Representative of CHAMPION, '35; *Digest* Staff, '35, '36; Depression Club, '36, '37; Vice-President, Etiquette Club, '37; Junior Play, '36; Extra Curricular Award, '36; S. P. Q. R., '37; Red Cross, '37; Senior Play, '37.

HERMAN NETSEL

Entered from Signal Mountain Grammar in '33; Harmonica Club, '36; Camera Club, '37; Baseball, '37.

JUANITA NICHOLAS

Entered from Brainerd Jr. High in '34; Orchestra, '35, '36, '37; Las Muthachas, '35; Operetta, '35; Minstrel, '35, '36.

LAURA NORWOOD

Entered from Palmer Academy, Florida, in '36.

WILLIAM O'BRIEN

Entered from East Side Jr. High in '33; Secretary, "C" Club, '34, '37; Secretary, Senior Class, Vice-President, Music Club, '35; Football, '33, '36; Captain, Basketball, '34, '37; Baseball, '35, '36, '37; Minstrel, '35, '36.

KATHLEEN OGDEN

Entered from Chattanooga High in '37; Red Cross; Girl Reserves.

FRANKIE OLIVER

Entered from Thomas High School in '35; Orchestra; Library Staff, '35.

FLOYD OSBORNE

Entered from East Side Jr. High in '35.

DOROTHY ELIZABETH PAGE

Entered from Brainerd Jr. High in '33; Girl Reserves, '34, '37; Girls' Glee Club, '35, '36; May Day Festival, '34, '35; Knitting Club, '36, '37.

HATTIE LEE PAINTER

Entered from East Side Jr. High in '34; Ace Club, '34, '37; May Day, '34; Circus, '35; Girls Drill Squad, '35.

DONALD PAINTER

Entered from Monroe County Central High in '35.

LUTHUR PARRIS

Entered from Coalfield High School in '34.

SENIOR CLASS

ROBERT PARSONS

Entered from Brainerd Jr. High in '35; Football, '35, '36; Basketball, '34, '37; Baseball, '35, '36, '37.

RUTH PARTON

Entered from North Chattanooga Jr. High in '35; Physical Education Club, '35.

ANNA MARIE PECKINPAUGH

Entered from East Side Jr. High in '33; Physical Education Club, '34; Army, '34, '35; Ace, '34, '37; Art Club, '33; Red Cross, '33, '37; Girl Reserves, '34; Girls' Glee Club, '34, '35; Varsity Glee Club, '35, '36, '37; Secretary, Senate, '34, '37; Usher; Etiquette Club, '36, '37; Battalion Sponsor, '37; Officers' Club, '37; Junior Play; Senior Play; Tennis Club, '34; National Honor Society, '36, '37; P. T. A. Play, '34; Extra Curricular Award, '35, '36; Secretary, Junior Class; Dramatic Club, '36, '37; French Club, '36, '37; Chairman Invitation Committee, '37; Girls' Hi-Y, '36, '37.

PORTER CRAIG PEELER

Entered from Brainerd Jr. High in '34; Basketball, '35; Junior Red Cross.

THELMA PENDERGRASS

Entered from Lookout Jr. High in '34; Usher; Girls' Glee Club, '36, '37; French Club, '37.

BRUNISE PEOPLES

Entered from Alabama High School in '36; Red Cross.

RUTH JUANITA PERKINSON

Entered from East Side Jr. High in '33; Science Club, '33, '34; Gym Circus, '33, '34; May Day Program, '34; Girl Reserves, '36, '37.

WILEY C. PEYER

Entered from East Lake Jr. High in '35; Red Cross; Stamp Club; Latin Club, '35.

DOROTHY PHILLIPS

Entered from East Lake Jr. High in '34; S. P. Q. R., '35; Girl Reserves, '36, '37; Candy Force, '37.

WILLIAM RALPH PLANK

Entered from Lookout Jr. High in '35; Military, '35, '36.

NELL PLEDGER

Entered from East Side Jr. High in '34; Girls' Glee Club, '34; Varsity Glee Club, '35; Bible Club, '36; Chorus, '36; Girl Reserves, '34.

FRANCES ELIZABETH POINDEXTER

Entered from Lookout Jr. High in '34; Girl Scouts, '34.

CAROLYN LEE POINDEXTER

Entered from Lookout Jr. High in '35; Ice Cream Force, '36, '37; Circus, '34, '35; Hiking Club, '36, '37; Red Cross, '36, '37.

CHARLES PORTER

Entered from East Side Jr. High in '33; Band, '35, '36, '37; Band Club, '35, '36, '37; Depression Club, '36, '37; Orchestra, '36, '37.

HOWARD NORTON PRATT

Entered from Daisy Grammar School in '33; Senate, '35, '36, '37; S. P. Q. R., '35; Scout Club, '36, '37; Senior Council, '37; National Honor Society, '37.

JOHN PRICE

Entered from Brainerd Jr. High in '34.

SENIOR CLASS

T. J. QUARLES....."Telam"
Entered from Hardy Jr. High in '33; National Honor Society; Boys' Hi-Y;
Club Editor, CHAMPION.

ELEANOR J. QUINN....."Patsy"
Entered from Red Bank Jr. High in '34; Art Masque, '34; Drill Squad,
'34; Army Club, '34, '35; Home Economics, '36, '37; S. P. Q. R.,
'36, '37.

GERALDINE RAGON....."Gerry"
Entered from Hardy Jr. High in '34; Girl Reserves, '34; Red Cross, '34-'37.

MARY RUTH RAMSEY....."Little Bit"
Entered from Lookout Jr. High in '35; May Day Festival, '35, '36;
Circus, '35; Drill Squad, '35; Girls' Hi-Y, '36, '37; Ice Cream Force '37;
Knitting Club, '37; Girl Scout, '35; Speech Play, '35.

WILLIAM J. RANKIN....."Billy"
Entered from Red Bank Jr. High in '33; Camera Club, '34, '35; Band,
'33, '34; Boys' Glee Club, '33, '34; Band Club, '33-'36; Etiquette Club,
'36; Orchestra, '34, '35.

JULIA MARGARET RAWLINGS....."Julie"
Entered from Mountain Creek Grammar School in '33; May Queen At-
tendant, '34, '35, '36; Secretary, Camera Club, '33, '35, '36; Vice-
President, Etiquette Club, '35, '36, '37; Girl Reserves, '36, '37; Girls'
Hi-Y, '36, '37; Ace Club, '36, '37; Usher, R. O. T. C. Sponsor of
Company F, '37.

DELLA RAY....."Secretary"
Entered from East Side Jr. High in '34; Girl Reserve, '33, '34; Treasurer,
Art Club, '36; S. P. Q. R., '35.

DOROTHY RAY....."Chip"
Entered from Brainerd Jr. High in '33; Girl Reserves, '33-'36; Girls' Glee
Club, '34, '35; Dramatic Club, '35, '36; Bible Prayer Band, '35-'37.

ELIZABETH REDFORD....."Libby"
Entered from Chattanooga High School in '35; Vice-President, Dramatic
Club, '36, '37; Junior Play, '36; Etiquette Club, '36; Editor-in-Chief,
CHAMPION Staff, '37; Club Editor, Digest Staff, '36, '37; Usher;
Anchors Aweigh, '37; Vocational Guidance Club; National Honor So-
ciety, '37.

DOROTHY DIMPLE REEVES....."Dollie Dimple"
Entered from Red Bank Jr. High in '33; Treasurer Girls' Hi-Y, '34-'37;
Treasurer, Etiquette Club, '34-'37; President, Etiquette Club, '37; Usher;
Watt Science Club, '33, '34, '35; S. P. Q. R., '34, '35; Phy. Ed. Club,
'33, '34.

EVELYN REYNOLDS....."Eppie"
Entered from East Side Jr. High in '33; Girls' Hi-Y, '34-'37; Band, '35,
'36, '37; Band Club, '35, '36, '37; Girls' Glee Club, '35, '36;
Chorus, '36, '37.

JEAN REYNOLDS....."Jeanie"
Entered from North Chattanooga Jr. High in '34; Bank, '35, '36, '37;
Bookstore, '35, '36, '37; National Honor Society, '36, '37.

MILLARD REYNOLDS....."Reddy"
Entered from North Chattanooga Jr. High in '35; Bank; Camera Club; Na-
tional Honor Society.

WESLEY EUGENE RHODES....."Dough-Belly"
Entered from East Brainerd in '32; Boys' Glee Club.

JOHN HAMILTON ROBERTS....."Jack"
Entered from East Lake Jr. High in '35; Latin Club; Hiking Club; Red
Cross.

LA VERNE ROBERTS.....
Entered from Dickinson Jr. High in '34; National Honor Society; Usher;
French Club, '36, '37; S. P. Q. R., '34-'37; Library Assistant, '36.

SENIOR CLASS

VIRGINIA ROBERTS.....
Entered from East Side Jr. High in '34.

ALMA ELIZABETH ROBINSON....."Coaty"
Entered from East Lake Jr. High in '34; S. P. Q. R., '35, '36; Red
Cross, '34, '35; Biology, '34, '35; Girl Reserves, '36, '37; Orchestra,
'34, '35; Public Speaking, '34, '35; Girl Scout, '34; Circus, '35, '36;
May Day, '35, '36; Handicraft, '36, '37.

BILLY ROBINSON....."Hauptman"
Entered from Dickinson Jr. High in '33; Depression Club, '33-'37; Cap-
tain, Tennis Team, '33, '34; Red Cross, '33-'37; M. K. O. C., '34;
Ukelele Club, '33, '34; Camera Club, '33; Minstrel, '33-'36; Operetta, '34.

HAROLD ROBINSON....."Buddy"
Entered from Dickinson Jr. High in '34; Captain, R. O. T. C., '37;
Band Club, '33-'37; Digest Staff; Depression Club; Tennis Team, '34, '35;
Treasurer, Senior Class, '37; President and Assistant Director, Orchestra;
Printers' Club; Officers' Club.

JACK R. RODGERS....."Toughy"
Entered from East Side Jr. High in '34.

BETTY MARIE ROGERS.....
Entered from Chattanooga High in '36; Treasurer, Red Cross, '37; Nite
Owls, '37.

MARY PHYLLIS ROLLINS....."Phil"
Entered from Chattanooga High in '35; French Club, '35, '36; Red Cross,
'35, '36, '37; Girls' Hi-Y, '36, '37; P. T. A. Sponsor.

RUBY LEE ROSE....."Gully"
Entered from East Side Jr. High in '34; School Song Leader, '34-'37;
Senior Class Song Leader, '37; Girls' Glee Club, '35, '36; Red Cross,
'34-'37; Nite Owls, '36, '37; Band Drum Major, '36, '37.

MARY AILEEN ROWLAND....."Blondie"
Entered from Lookout Jr. High in '33; Reentered from Chattanooga High
in '35; French Club, '35, '36, '37; Red Cross, '36, '37; Girls' Drill
Squad, '34; Lettermen Minstrel, '34; Girl Scout, '33, '34; Girl Reserves,
'35, '36; Gym Circus, '33, '34, '35; Phy. Ed. Club, '33, '34; P. T. A.
Sponsor, '37.

EDWIN RUBY.....
Entered from Knoxville High in '34; Biology Club, '34, '35, '36;
Sergeants' Club, '36, '37.

RALPH SAGESER....."Ignorant"
Entered from Dickinson Jr. High in '33; Boys' Glee Club, '33; Military,
'33-'36; Secretary, Sergeants' Club, '36, '37; Football, '36, '37; De-
pression Club, '35, '36, '37; Camera Club, '36, '37; Invitation Commit-
tee, '36, '37; Radio Club, '33, '34.

JEAN SANDERS.....
Entered from East Lake Jr. High in '34; President, Boys' Hi-Y, '37;
Grady Literary Society; Dramatic Club, '36, '37; Executive Officer, R. O.
T. C., '37.

GERALDINE MARIE SCHMITT....."Jerry"
Entered from East Lake Jr. High in '34; Red Cross, '35, '36; Girl Re-
serve, '35, '36; Phy. Ed., '36, '37; Girls' Glee Club, '35, '36; Army,
'34, '35.

ROY A. SCRUGGS....."General"
Entered from East Lake Jr. High in '34; Sergeants' Club, '35, '36; Offi-
cers' Club, '37; Lettermen Club, '35; "C" Club, '36, '37; National
Honor Society, '35, '36, '37; Football, '34-'37; Major, R. O. T. C., '37;
Digest Staff, '36; President, Senior Class, '37.

JULIA ELIZABETH SEAMAN....."Betty Boop"
Entered from Hardy Jr. High in '34; Dramatic Club, '34-'37; Girls' Glee
Club, '34, '35; Girls' Drill Squad, '34; Senior Play, "Once in a
Palace," '37.

MALINDA OPHELIA SETLIFFE....."Tookie"
Entered from Brainerd Jr. High in '34; Secretary, Girls' Hi-Y, '37; Girl
Reserves, '33-'37; Orchestra, '33-'37; Red Cross, '36, '37; Citizenship Club,
'36, '37; May Day, '34, '35; Circus, '34; Bible Club, '36, '37; Watt
Science Club, '34, '35; Vice-President, S. P. Q. R., '34, '35; Girls' Drill
Squad, '34; Army, '34; Ice Cream Force, '34, '35; Candy Force, '35, '36;
Usher, '37; President, Home Room, '33, '34; National Honor Society, '37.

SENIOR CLASS

ROBERT MELVIN SHANNON....."Mel"
Entered from Signal Mountain Grammar in '33; R. O. T. C., '34, '35;
Printers' Club, '34-'37; Foreman, Printing Staff, '37.

DOROTHY EDWARDS SHELLEY....."Dink"
Entered from Ooltewah High in '36; Red Cross, '36, '37; Girls' Glee
Club, '36, '37.

CECIL SHERWOOD....."Judge"
Entered from North Chattanooga Jr. High in '34; Football, '34, '35, '36;
Military, '34, '35, '36; Red Cross, '36, '37; Depression Club, '36, '37.

MARJORIE SLOAN....."Lee Lee"
Entered from Mountain Creek Grammar in '33; Girls' Glee Club, '34-'37;
Etiquette Club, '34, '35.

FRANCES LILLIAN SLOWE....."Frank"
Entered from East Lake Jr. High in '34; Bible Prayer Band, '35, '36, '37.

MARY ALINE SMITH
Entered from East Lake Jr. High in '34; Digest Staff, '35, '36, '37;
Cabinet Member Senate, '37; Vice-President, Girls' Hi-Y, '36; President,
Girls' Hi-Y, '37; Girl Reserves, '36, '37; Ring and Pin Committee; Senior
Council; Usher; CHAMPION Staff, '37; National Honor Society, '37.

HAZEL CORINNE SMITH....."Connie"
Entered from Brainerd Jr. High in '34; Phy. Ed., '34-'37; Army, '34-'37;
Acas, '34-'37; Girl Reserves, '34-'37; Captain, Gym Class, '36, '37.

ESTHER LILLIAN SMITH....."Eddie"
Entered from Chattanooga High in '36; Girls' Glee Club, '36; Etiquette,
'36, '37; Library Assistant, '37.

WILLIAM HOWARD SMITH....."Jeepie"
Entered from Hardy Jr. High in '33; Printer, '34, '35, '36.

JUNE SMITH....."Pinky"
Entered from Brainerd Jr. High in '34; Etiquette Club, '36; Dramatic
Club, '36, '37; Senate, '36, '37; Junior Play, '36; Senior Play, '37;
Usher; Digest Staff, '36, '37; Anchors Aweigh, '37; National Honor
Society, '37; Vocational Guidance Club, '37.

LAMAR A. SMITH....."Smitty"
Entered from East Jr. High in '34; R. O. T. C., '34-'37; Sergeants' Club,
'36, '37.

WILLIE MAE SMITH....."Billie"
Entered from East Side Jr. High in '33; Girls' Glee Club, '34, '35; Girl
Reserves, '34, '35, '36.

LEGRAND McIVER SPARKS....."Mac"
Entered from Brainerd Jr. High in '34; Biology Club, '34; Scout Club, '35,
'36, '37; Hiking Club, '37; Serjants' Club, '37; Digest Representative,
'37; Vice-President, Secretary and Treasurer, Scout Club, '37.

JERRY SPRAYBERRY
Entered from East Lake Jr. High in '33; Grady Literary Society, '34-'37;
Scout Club, '35, '36, '37; Sergeant-at-Arms, Grady Literary Society, '36,
'37; President, Scout Club, '37; Boys' Glee Club, '34, '35; Operetta,
'36, '37; "Gnomits," '35.

EVA STAMPS
Entered from East Lake Jr. High in '34.

VIRGINIA KATHERINE STARGEL....."Coory"
Entered from East Lake Jr. High in '34; Usher, Girl Reserve, '34-'37;
Handicraft, '35, '37; S. P. Q. R., '34, '35.

SENIOR CLASS

JAMES STEPHENS....."Carly"
Entered from Hardy Jr. High in '34; Band, '34-'37; Sergeants' Club, '36,
'37; Band Club, '34-'37.

THOMAS A. STEPHENS
Entered from North Chattanooga Junior High in '33.

CHARLES STEWART
Entered from East Side Jr. High in '31; Manager Basketball, '35.

BOB STIVERS....."Shot-gun"
Entered from Brainerd Jr. High in '34; Boys' Hi-Y, '35, '36, '37; Secre-
tary, '37; Camera Club, '34-'37; Treasurer, '36; Treasurer, Grady Literary
Society, '34-'37; Dramatic Club, '36, '37; Treasurer, Senate, '37; Varsity
Glee Club, '35, '36, '37; Librarian, '37; Junior Play, '36; Senior Play, '37;
Operetta, '36; S. P. Q. R., '34, '35.

DORRIS STONE....."Dot"
Entered from East Lake Jr. High in '33; Girls' Glee Club, '34, '35; Girl
Reserves, '36, '37.

KENNETH STOREY
Entered from Dickinson Jr. High in '34; Scout Club, '35, '36; Boll
Weevils, '36, '37; Treasurer, Boll Weevils, '37.

THOMAS SUDDATH....."Tommy"
Entered from Red Bank Jr. High in '33; President, Band Club, '36; Var-
sity Glee Club, '36, '37; Boys' Hi-Y, '36, '37; Etiquette Club, '36;
Football, '35; Operetta, '36; Top Sergeant Band, '36; Baseball, '36, '37;
Alternate Captain, '37.

JESSE WILLARD SUTTON
Entered from Hardy Jr. High in '34.

MARTHA ALMEDA SWOPE
Entered from East Side Jr. High in '34; Spanish Club.

JUANITA TABOR....."Pete"
Entered from Cumberland County High School in '36.

HAROLD CLINTON TALLANT
Entered from Brainerd Jr. High in '34.

DOROTHY ANN TALLEY....."Dot"
Entered from Brainerd Jr. High in '33; Scouts, '34, '35; Phy. Ed., '34,
'37; Sports Club, '35, '36; Red Cross, '35, '36; Vice-President, Handi-
craft Club, '36, '37; May Day, '34, '35, '36; Circus, '34, '35, '36;
Ace, '36; Anchors Aweigh, '36.

RUSSELL IRWIN TARVER....."Rutty"
Entered from Lakeview in '34; Senate, '35; National Honor Society, '37.

ARTHUR EUGENE TATE....."Coach"
Entered from East Lake Jr. High in '34.

FRANK B. TAYLOR....."Panty Waist"
Entered from Fairmount Grammar School in '30; Boys' Hi-Y, '30; Boll
Weevils, '34-'37; Camera Club, '35, '36; Red Cross, '35, '36; Senate,
'30-'37; Dramatic Club, '36, '37; President, National Honor Society, '36;
Business Manager, CHAMPION, '37; Junior Play, '36; Senior Play, '37.

ILEY M. THOMPSON
Entered from Mountain Creek Grammar in '33; Officers' Club, '37; Eti-
quette, '35; Sergeants' Club, '36; Military Editor, CHAMPION, '37; Cap-
tain, Company F.

SENIOR CLASS

CHARLES WALTER TIMMONS....."Duck"
Entered from Hardy Jr. High in '34; Etiquette Club, '35, '36, '37; Red Cross, '36, '37; Boys' Hi-Y, '36, '37; Digest Representative, '34, '35.

BERTHA TITTLE....."Bernie"
Entered from Lookout Jr. High in '33; Bible Club, '36, '37.

DORRIS TODD....."Dot"
Entered from North Chattanooga Jr. High in '34; Girls' Glee Club, '34, '35; Varsity Glee Club, '36, '37; Phy. Ed. Club, '34; Army, '34; Aces, '34-'37; Ice Cream Force, '35, '36; May Day, '35; Circus, '34, '35, '36; Operetta, '35, '36; Handicraft Club, '36, '37; Usher; May Queen Attendant, '36.

MILDRED EMMA URBAN....."Mild"
Entered from East Side Jr. High in '34; Digest, '36, '37; Bible Sponsor's Club, '36; Vocational Guidance Club, '37.

WALTER VALENTINE....."Teaberry"
Entered from Red Bank Jr. High in '33; Officers' Club; Sergeants' Club; Band Club, '34-'37; Camera Club, '35, '36, '37; First Lieutenant, Band; Boys' Glee Club; Varsity Glee Club.

ROSA JANE VERHEY....."Rose"
Entered from Brainerd Jr. High in '33; Band, '34-'37; Band Club, '33-'37; Girls' Glee Club, '35, '36; Orchestra, '33, '34, '35; Aces, '33-'36.

HERBERT WAITE
Entered from City High in '36; Band, '33-'37; Stamp Club, '34, '35, '36; Kodak Club, '33, '34; Hiking Club, '36, '37; Red Cross, '33-'37; Band Club, '36, '37; Boys' Hi-Y, '33, '34, '35; Ping Pong Club, '34, '35, '36.

MARGARET MAE WALKER
Entered from East Side Jr. High in '35; Ace, '35, '36; Hiking, '35, '36, '37; Knitting Club, '37.

FRANCES WILLARD WALLIS....."Ditty"
Entered from Lookout Jr. High in '34; Home Ec. Club, '37; Etiquette, '36; Biology, '36.

LUCILLE WEBB....."Lucy"
Entered from Model High School, Shannon, Ga., in '33; Girl Reserves, '36, '37.

GURNEY WEIDNER
Entered from Dickinson Jr. High in '34; Usher; Red Cross, '36, '37; Girl Reserves, '36, '37; Extra Curricular Award, '35, '36.

MYLDRED WELER
Entered from Brainerd Jr. High in '32; Varsity Glee Club, '34, '35, '36; Girl Reserves, '35, '36, '37; Operetta, '35, '36; Circus, '36; Red Cross, '36, '37; S. P. Q. R., '33, '34; Art Masque, '36; Tumblers, '34, '35, '36; French Club, '34, '35.

CARL RAYMOND WEST....."Sea-Dog"
Entered from East Side Jr. High in '33; Boys' Hi-Y, '34-'37; Sergeant-at-Arms, Senior Class, '37; Sergeants' Club, '35, '36; Invitation Committee, '37; Boys' Glee Club, '36; Senior Play, '37; Officers' Club, '36, '37; Sergeant, R. O. T. C., '35, '36; First Lieutenant, R. O. T. C., '36, '37.

THOMAS WESTBROOK....."Smiley"
Entered from East Side Jr. High in '34; Varsity Glee Club, '36, '37; Bell Weevils, '37; Red Cross, '35; Military, '35.

JOSEPH ROBERT WHEAT....."Bob"
Entered from Brainerd Jr. High in '34; Model Airplane Club, '34, '35; Ukulele Club, '34, '35; Library Assistant, '34, '35; Red Cross, '36, '37.

WILLIAM C. WHEAT, JR....."Bill"
Entered from Brainerd Jr. High in '33; Etiquette Club, '33; Alternate Captain, Basketball, '36; Football, '34, '35, '36; Letterman Club, '34; Club, '35, '36; Baseball, '35, '36, '37; Glee Club, '34, '35; Club Tournament, '33.

SENIOR CLASS

LEWIS WHITTEN
Entered from East Lake Jr. High in '33; Scout Club, '35, '36; Hiking Club, '33-'37; R. O. T. C., '33-'37; Sergeant's Club, '34, '35; Officers' Club, '36, '37.

BEATRICE EVELYN WILBANKS
Entered from Lookout Jr. High in '35; Girls' Hi-Y, '36, '37; Library Assistant, '36.

THELMA LOUISE WILHOITE....."Tommy"
Entered from East Lake Jr. High in '34; Reentered from Lee High in '36; Glee Club, '36; Orchestra, '36; Public Speaking, '35; Spanish Club, '35; Knitting Club, '37; French Club, '37; Red Cross, '37.

FRANCIS EDWARD WILLIAMS....."Woosy"
Entered from Brainerd Jr. High in '34; Secretary, Depression Club, '34-'37; Bank, '34, '35; Red Cross, '34-'37; Cheer Leader, '35, '36; Etiquette Club, '36, '37; Junior Cheer Leader, '36; R. O. T. C., '35.

LUTHER WILLIAMS
Entered from Demopolis High School, Demopolis, Alabama, in '34.

BERNICE KATHERINE WILSON
Entered from East Lake Jr. High in '35.

EDWARD WILSON....."Fegie Bert"
Entered from East Side Jr. High in '34; Grasscutters, '35.

ELIZABETH WILSON....."Libby"
Entered from East Side, '33; Girl Reserves, President, '36, '37; Varsity Glee Club, '35, '37; Camera Club, '37; Etiquette Club, '37; Anchors Aweigh, '37.

FRANCES EMMA WILSON....."Lefty"
Entered from City High in '36; Glee Club, '37; Red Cross, '37; Knitting Club, '37.

HARRY WITT....."Buster"
Entered from East Side Jr. High in '30; Reentered in '34; Operetta, '30; Biology Club, S. P. Q. R.; Senior Council, '37.

CHARLES WAFFORD....."Doc"
Entered from Marion County High, Jasper, Tenn., in '35.

FANA WOODLEE....."Fay"
Entered from East Side Jr. High in '34; Drill Squad, '34; Girls' Glee Club, '35, '36, '37; Red Cross, '36, '37; Camera Club, '36, '37; Secretary and Treasurer Girl Reserves, '37.

CATHERINE WOOTEN....."Petie"
Entered from Hardy Jr. High in '34; Dramatic Club, '36, '37.

MARY NELL WRIGHT....."Jeepie"
Entered from Brainerd Jr. High in '34; Red Cross, '34-'37.

OPAL YARBROUGH
Entered from East Lake Jr. High in '35; Biology Club, '35.

FRANCIS N. YOUNG....."Frank"
Entered from City High in '34; Boys' Glee Club, '34, '35, '36.

SENIOR CLASS HISTORY

On a never-to-be-forgotten day in the fall of 1933, a stream of inexperienced little travellers, high with hopes and full of prophetic dreams of future glory and honor, approached what seemed to them a dark, dense forest.

To those familiar with Scott's "Lady of the Lake," we could well have been,

"A narrow inlet, still and deep,

Despite our inexperience and shyness, we were not entirely lost, for we soon organized and chose these excellent leaders to force our passage: Carl Johnston, president; Billy Daggett, vice-president; Kathryn Brown, secretary; and Fred Hetzler, treasurer.

When we again appeared 'twas autumn, 1934; then,

"Tall rocks and tufted knolls their face
Could on the dark-blue mirror trace."

Those who looked therein saw our leaders: Carl Johnston, president; Billy Daggett, vice-president; Virginia Dearing, secretary; and Roy Baskett, treasurer.

Others rising from the stream and reflecting their images therein were our outstanding athletes: Jack Pinion, Dick Bates and Emmett Mallett.

By September, 1935, this stream of ours;

"Still broader sweep its channels made.

The shaggy mounds no longer stood,

Emerging from entangled wood,

But, wave-encircled seemed to float,

Like castle girded with its moat."

In keeping with Scott's picture of the growth of this stream, more and more of our number became strong, clear-cut personalities, embracing larger activities in a more ambitious way.

Among those thus distinguished were: Roy Scruggs, president; Carl Johnston, vice-president; Anna Marie Peckinpugh, secretary; and Fred Hetzler, treasurer.

Others were June Smith and F. B. Taylor who insured the success of our play, "Girl Shy."

Lords of the Dominion of Athletics were: Billie O'Brien, Roy Scruggs, Dick Bates, George Bridgers, Bob Demos and Fletcher Jolly.

The autumnal rays of 1936 gleamed upon the yet broader floods of this once narrow stream, and floating thereupon as "burnished sheets of living gold" were such leaders in offices as: Roy Scruggs, class president; Fred Hetzler, vice-president; Billie O'Brien, secretary; Harold Robinson, treasurer; Carl Johnston and Jean Sanders, sergeants-at-arms; Aline Smith, president of the "Girl's Hi-Y"; Jean Sanders and Archie Lawrence, president and vice-president, respectively, of the "Boy's Hi-Y"; Thurman Hall, president of the "Senate"; and Newell Henry, captain of the football team. Floating "amid the livelier light" were such athletic giants as: George Bridgers, Dexter Hodges, Hal Lamb, Billy O'Brien, Roy Scruggs, Albert Muerth, Emmett Mallett, W. C. Wheat, Dick Bates and Fletcher Jolly.

A stranger might have exclaimed: "What a scene were here, for princely pomp!" as he watched June Smith, Thurman Hall, George Bridgers, Gwendolyn Kernon and others, as they displayed their dramatic ability in "Once in a Palace."

A band of hardy nobility guarded each his castle for the school publication, the *Digest*. Among these were: Frances Camp, editor-in-chief; Vivian Davis, associate editor; Elizabeth Redford, club editor; Adrienne Duclos, feature editor; Nora Allison Barker, exchange editor; Archie Lawrence, military editor; June Smith, departmental editor; and Mary Jane Maupin, copy reader.

A stroller along our stream might exclaim: "How sweet at eve the lover's lute chimes," or "How solemn on the ear come yonder holy matins' distant hum." Chief among our musicians were: Dorothy Bowen, Robert Cooper, Paul Ingle and Harry Witt.

For the period of one week had this stroller gazed into our stream when the sun was high, he would have found groups of seniors assembled at "Friendly feast and lighted hall" where they enjoyed stories faculty travelers told. "With bugle, lute, and bell, and all," the makers of THE CHAMPION regale the weary traveler. Those who stood in this capacity were: Elizabeth Redford, editor-in-chief; F. B. Taylor, business manager; Juanita Nabors, senior section editor; Harold Lamb, sports editor; T. J. Quarles, club editor; Marguerite Granert, photographic editor; Mary Anne Buck, feature editor; Iley Thompson, military editor; and Aline Smith, typist.

Among us, hermits in cloister gray who established a lasting record of merit are these three-year honor students: Nora Allison Barker, Mary Anne Buck, Elis Butler, Frances Camp, Regina Craven, Vivian Davis, Adrienne Duclos, Myrtie Mae Erwin, Darwin Harold, Mary Hugh Haines, Beryl Healy, Virginia Hennessee, Betty L'Heureux, Iva McDonald, Hannah Marlowe, Mary Jane Maupin, Anna Marie Peckinpugh, Howard Norton Pratt, T. J. Quarles, Elizabeth Redford, Jean Reynolds, La Verne Roberts, Russell Tarver, Frank Taylor.

Other hermits were: Ophelia Setliffe who won the city-wide essay contest on Charles Dickens; Antoinette Barlach who was awarded the grand prize in the statewide essay contest on "What Conservation Means to Me," and Jean Reynolds who won first place at Central in the essay contest which was sponsored by the Gorgas Foundation.

So broad were the sweeps the channels of our stream had made, "shaggy mounds were now divided from their parent hill till each retiring claimed to be an inlet in an island sea"; these were our Class Day representatives and Commencement speakers chosen as follows: Frank Taylor, Beryl Healy, Thurman Hall, Anna Marie Peckinpugh, Nora Allison Barker, Frances Camp, Billy O'Brien, and Adrienne Duclos.

And now in May of the year 1937 we who were once a narrow inlet, still and deep, in broad stream flow into Loch Katrine, where islands empurpled bright,

Float "amid the livelier light,"

And mountains like giants stand

To sentinel to enchanted land"—

Our new fields of life's endeavor.

—JUANITA NABORS.



OFFICERS

JOHN MEYER	President
MADLINE OWEN	Vice-President
BULA DELL HAGAMAN	Secretary
LEILA GAMBLE	Treasurer
NEAL ANDERSON	Sergeant-at-Arms
FRED SYLVESTER	Sergeant-at-Arms



JUNIOR CLASS

JUNIOR CLASS HISTORY

A group of amazed, bewildered young students were welcomed into Central High School in September of 1934. As Freshmen they were the objects of jest. They resolved, even if they do not admit it, to get even, but for the present they must prove that they were worthy to enter and remain within Central's portals. The credit for achieving that end goes largely to the officers: William Zimmerman, president; Valgene Kelly, vice-president; Peggy Mabry, secretary, and J. T. Rose, treasurer.

With the march of time Freshmen became Sophomores. They had now overcome the ridicule and self-consciousness characteristic of the first year. To aid in their struggle and keep their flag flying for Central, they chose John Meyer as president, Peggy Mabry as vice-president, Madeline Owens as secretary, and Bula Dell Hagaman as treasurer.

Time marched on into 1936 when 456 Sophomores began a distinguished career as Juniors. The task became harder, but John Meyer, having proved his ability as Sophomore president, was selected to lead the class again as Junior president. Madeline Owens was elected vice-president. Bula Dell Hagaman as secretary and Leila Gamble as treasurer aided in the advancement of the Junior class.

"Venì, Vidi, Vici," which well expresses the spirit which has developed in this class, during their three years at Central, was made their motto as Juniors. Their class colors were green and white. They gave a party in which the Junior class sponsors, Mrs. Ida Longley, Miss Edna Cross, Miss Ellen Mullennix, Miss Vesta Nelson, Miss Mary Ellen Rice, and Miss Elizabeth Jones, assisted. This social function, which featured the "Grand March" in which all Juniors participated, was a great success.

On December 18, the class presented a Christmas play, "A Visit to the North Pole." John Steffner and Betty Addington in the roles of Mr. and Mrs. Santa Claus, as well as George Connor, the master of ceremonies, who directed the drama, made this program a great success.

An added victory for the Junior class was the excellent support given in the ticket selling contest between City and Central for their annual football game.

Juniors were well represented in every phase of school activities. They have participated in many forum discussions. Bula Dell Hagaman was editor of the weekly Times School page. On the *Digest* staff were John Meyer as Associate Editor, Floretta Keown, George Connor, Marjorie Stanford, Fred Colston, Stokley King, Georgie Tatum, Margaret Johnston, and Leila Gamble. John Steffner, a Junior, was president of the Junior Red Cross in 1936.

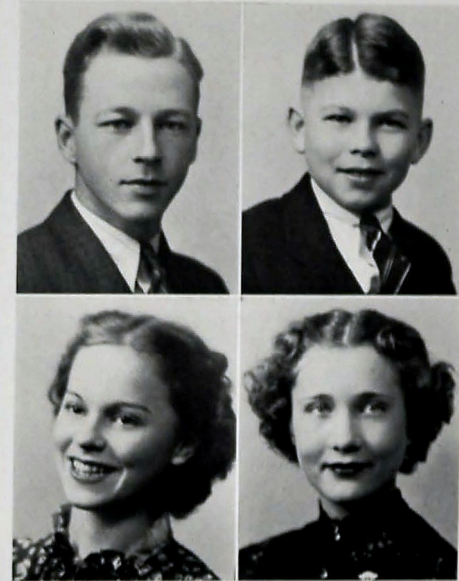
The Junior class sponsored successfully the football game with Notre Dame and established a ticket selling record in 1936.

In sports Robert McCabe was considered in 1936 the best baseball player on a high school team in the city. He also played on the basketball team of 1937 with William Baker, Atlee Parker, Fred Butcher, and Paul Johnson.

In football, lettermen are Charles Crabtree, "Pepper" Brown, Eugene Hunt, Clyde Kilgore, and Manager Matthew Carter.

With such a background on which to build, the Senior Class of '38 has prospect for an enviable record.

INEZ SULLIVAN.



OFFICERS

DAVID MASINGILL	<i>President</i>
BILLY MEACHAM	<i>Vice-President</i>
DOROTHY HENNESSEE	<i>Secretary</i>
RUTH WHEELER	<i>Treasurer</i>



SOPHOMORE CLASS

Jones, Milton	Chumley, David	Gadd, John	Jennings, George	Maynard, Dennis	Scott, Clifford
Alford, Vernal	Clark, Vernon	Gardenshire, William	Jennings, Mason	Meacham, Thomas	Shields, James
Allen, Warren	Cleve, Roy	Gaines, Wallace	Jones, Buster	Meek, W. D.	Simpson, Marvin
Anderson, Joe Barn	Cobleigh, Clarence	Gaston, Willard	Miller, J. R.	Mille, Chester	Sivley, Harry
Andrews, Bennet	Coe, Albert	Gibson, J. C.	Jordan, Ralph	Miller, C. C.	Slaton, Johnny
Andrews, Le Bon	Coleman, William	Gilwath, Bobby	Kelley, Walter	Miller, William	Smith, J. C.
Angstrom, Raymond	Cook, Kenneth	Goodill, Horace	Kelly, William	Mills, Charles	Smith, Wendell
Arnold, Alvin	Cooms, William	Granger, Ben	Kennedy, Clarence	Mooney, Clarence	Sparks, James
Arnold, Omar	Cornstock, Paul	Granger, Massey	Kiper, Eugene	Moore, Forrest	Stansbury, Hayden
Atwood, Albert	Cornier, Thomas	Granner, Glauert	Kile, David	Moore, James	Stansell, Freddie
Ayman, Leonard	Cook, Oscar	Greene, James	Kilgore, Hoyt	Morgan, Charles	Stansifer, Joe
Baker, Alvin	Cropper, Billy	Gringle, Clarence	Kinsley, Warren	Morris, Herman	Staples, James
Baker, J. C.	Cropper, Norman	Gunn, George	Kirt, Ira	Morris, Ollie	Steech, Fred
Ballaw, George	Cull, Allan	Hall, Allan	Krueger, Edward	Mundy, Fred	Strickland, John
Barger, William	Crawley, Bill	Hale, Bill	Kryder, Fred	Mount, Paul	Strickland, Boyd
Barham, Ray	Cunningham, Porter	Hall, Ben	Klaud, Claud	Nichols, Denton	Sweeten, James
Barlor, Edward	Curry, Sharber	Hall, Lamont	Lambam, John	O'Barr, Earl	Swope, Howard
Bell, Lewis	Cuzzott, Willard	Hall, Lewis	Laycock, William	Oliver, David	Tallent, Kenneth
Belvis, William	Daguer, William	Hall, Robert	Leavitt, L. D.	O'Rear, Paul	Thomas, Eugene
Benson, Lee	Davis, Clifford	Hammack, Joseph	Lehmann, Helene	O'Rear, George	Thomas, Harvey
Benton, Tommy	Davis, Edwin	Hammel, Wayne	Le Van, Kenneth	Orrell, Edward	Tolson, John
Bivens, Clarence	Davis, Horton	Hammel, Wallace	Lewis, F. V., Jr.	Oswney, Murphy	Torbett, Oscar
Blair, Frederick	Davis, James	Harden, Lee	Lindsey, Jesse	Parker, William	Torons, Roy
Bone, Raymond	Davis, William	Hayden, James	Lonar, William	Peace, Stuart	Tripp, Henry
Bonnie, Joseph	De Freese, James	Hayden, H. T.	Long, Earl	Pendergagh, Sam	Trues, Loyd
Bowen, Jack	Dennel, James	James, John	Long, James	Pendergagh, Samuel	Tucker, M. T.
Bowen, Richard	Dent, Frank	Heapy, Thers	Lord, Earl	Perry, Don	Tucker, Gordon
Bowman, Edward	Dewald, Charles	Henley, Lester	Luttrell, Foster	Plank, Clarence	Underwood, Edgar
Boyd, Glenn	Dickinson, Rowland	Henneker, Donald	Lytle, Billy	Pless, Hill	Vance, Dan
Bradshaw, Robert	Drake, Oscar Lee	Henry, J. B.	McAmis, James	Pope, Eugene	Varnell, Forrest
Brady, Clifton	Drayton, Emile	Henry, Talmadge	McBee, Jack	Porter, Harley	Vaught, Frank
Brannon, Bernard	Dyer, Robert	Hennsen, J. B.	McBee, Howard	Powell, Jack	Vester, Edwin
Brittton, Lloyd	Eads, Warren	Higdon, Herbert	McBryar, Arthur	Prince, H. C., Jr.	Vetter, Kenneth
Brook, Perry	Eaker, Glenn	Hill, Floyd	McCashin, Clarence	Quinn, Robert	Walken, Bill
Brown, Frank	Edens, Raymond	Hill, James	McClure, Dewey	Rachley, Z. W.	Walker, Hayward
Brown, James	Edmondson, Harley	Hobbs, Henry	McCollough, Daze	Redmond, Sidney	Warmack, Victor
Bryant, Norman	Evans, Hixson	Holmes, Milton	McDavis, Earl	Rhinehart, Wilbur	Ward, Charles
Buffett, Raymond	Ezell, William	Holman, Ernest	McEas, Ellis	Rhodes, C. A.	Warehouse, C. A.
Burch, Joseph	Elkins, Lee	Holeman, Sam	McGhee, Clarence	Roberts, James	Watkins, Harold
Butcher, Fred	Eliot, William	Hotalin, Billy	McKibben, Bill	Rodgers, Lawrence	Webb, Henry
Beverly, James	Farr, Frank	Houser, Ray	McNichols, Ralph	Rogers, J. C.	Wese, John
Dryd, Henry	Farr, John	Hubbard, Preston	Mayerette, Frank	Rogers, Paul	Westbrook, Paul
Duncan, Omer	Faulkner, William	Huddleston, Charles	Mahoney, James	Rogers, Rhonnal	Westbrook, Ralph
Camp, Harvey	Finley, William	Hudall, Delmonte	Rowe, Bernard	Ross, Glenn	White, Glenn
Camp, John	Finney, Charles	Huff, Edward	Ross, Jack	Wiese, Bert	Wilhoite, Harold
Camp, Leonard	Fiegal, Ralph	Irvine, Bill	Rouse, Clarence	Williamson, Willard	Wilson, J. A.
Carsen, Bill	Foster, Roy	Ingram, Bill	Ruffner, Mankier	Winston, Paul	Worley, Charles
Cates, Dan	Foxworth, James	Jackson, Alton	Rye, William	Worley, Marvin	
Chandler, Johnny	Fry, G. C.	Jackson, Hugh	Ryman, William		
Chase, James	Fryar, Richard	Jackson, Louis	Seaton, Bill		
Childress, Jewell	Fundingers, Albert	Jackson, Roy	Matthews, Bill		
			Mavity, Floyd		



Acuff, Marie	Clemens, Ruby	Green, Deema	Lamb, Betty	Park, Anna	Stanfield, Louise
Acuff, Ruth	Cobleigh, Grace	Lane, Georgia	Lane, Catherine	Seakles, Evelyn	Stearns, Ruth
Adams, Dorothy	Coker, Ione	Green, Rosetta	Langdale, Miriam	Parker, Katherine	Stevens, Dorothy
Addison, Mildred	Collom, Margaret	Greer, Gloria	Lanham, Mildred	Parker, Majorie	Stewart, Norma
Allen, Virginia	Collier, Dora	Greason, Lillie Mae	Lawrence, Virginia	Patterson, Geneva	Stewart, Valina
Allison, Thelma	Collier, Wilma	Griffith, Gladys	Lawson, Helen	Patty, Thelma	Stribling, Henrietta
Aldred, Juanita	Collins, Thelma	Guest, Juanita	Lay, Nancy	Penley, Eleanor	Stucky, Doty
Amen, Bettye	Colman, Alice	Gray, Virginia	Leonard, Katherine	Phillips, Martha	Suggs, Katherine
Angle, Edna	Colle, Violet	Hammontree, Edith	Lewis, Dora	Pitts, Adeline	Summer, Carolyn
Ashley, Evelyn	Cope, Marie	Hannah, Annie	Lewis, Dorothy	Pointdexter, Doris	Sutherland, Ethel
Auerswald, Martha	Cornett, Louise	Hardin, Ione	Linn, Margaret	Pointdexter, Iatelle	Swafford, Ruth
Ault, Mary	Covey, Pansy	Harris, Angelia	Long, Dorothy	Poorman, Carmel	Tallent, Ann
Baker, Lola Bell	Craven, Lillian	Harvey, Constance	Lowden, Charles	Porter, Louise	Tate, Dorothy
Baker, Ruth	Craigton, Dorothy	Lawson, Emily	Lowery, Mariam	Porto, Juanita	Tate, Mabel
Bailey, Nellie Mae	Cressman, June	Hawkins, Margaret	Lyle, Margaret	Pratt, Florence	Thach, Verna
Barclay, Sarah	Crumley, Mary Ellen	Haynes, Winfred	McArthur, Janet	Reed, Willa Mae	Thomas, Ellen
Bass, Lucille	Cunningham, Ella E.	Heaps, Marie	McCoy, Barbara	Richards, Thelma	Thomas, Mildred
Beene, Mary Lucille	Daniel, Louise	Hennessee, Dorothy	McGoy, Kathryn	Richardson, Edith	Thompson, Bettie
Bell, Charlotte	Davis, Bettye	Henny, Mary	McHenry, Robertine	Richey, Doris	Thompson, Dorothy
Bennett, Edith	De Haas, Ruby	Henny, Ruby	McGee, Helen	Richey, Dorothy	Thompson, Elaine
Bingham, Martha	Davis, Winnie L.	Hensley, Melba	McGowan, Dorris	Roberts, Gladys	Thompson, Mildred
Bird, Emogene	Deakins, Jane	Herold, Louise	McGuire, Phyllis	Robinson, Sarah	Tinker, Marian
Blackwell, Evelyn	Deating, Elsie	Hicks, Billie	McLaughlin, Laura	Rogers, Bessie	Tornton, Mae
Blanton, Alice	De Friest, Martha	Hicks, Marie	McLemore, Maude	Rothe, Dorothy	Trotter, Wilma
Blevins, Lorene	De Hruska, Katherine	Higdon, Leslie	McPherson, Jimmie	Roth, Sara	Turner, Annie
Borders, Helen	De Sta, Bertie	Higdon, Velma	Manning, Dixie	Rutledge, Nancy	Van Hooser, Evel
Boning, Joyce	Downey, Annie	Hipp, Marguerite	Marler, Audrey	Ryerson, Nina	Vawter, Thelma
Bowman, Elizabeth	Dugan, Goldie	Hirst, Margaret	Marsh, Mickey	Sadler, Mary	Wade, Doris
Brannon, Freda	Dunagan, Thelma	Hixon, Elsie	Marshall, June	Saylor, Alma	Waggoner, Glyndon
Brav, Margaret	Duncan, Betty	Hodges, Margaret	Martin, Dorothy	Scarbrough, Eileen	Watts, Bessie
Brewer, Mary Frances	Dunham, Elizabeth	Hodges, Nancy	Mathews, Ruby	Schmitt, Frances	Webb, Yvonne
Brock, Thelma	Edge, Evelyn	Holladay, Winell	Maupin, Dorothy	Schneider, Margaret	Westbrook, Marion
Brooks, Dlyce	Edge, Wilma	Holt, Fannie Mae	May, June	Scott, Grace	Whelan, Ruth
Brooks, Christine	Epperson, Louise	Hooper, Mildred	McIlburn, Ann	Scruggs, Ruth	White, Evelyn Mae
Brooks, Nina Alaine	Evans, Janieve	Hooper, Bessie	Miles, Elizabeth	Sedman, Nancy	Whitner, Dorothy
Brown, Eulala	Evans, Josephine	Howard, Dorothy	Miller, C. Gladys	Sells, Mary	Whitten, Nina Jo
Brown, Gearlean	Evatt, Elsie	Humenwald, Willie E.	Miller, Helen	Sherrill, Sarah	Wilfong, Elizabeth
Brown, Lillian	Evatt, Elsie	Humenwald, Juanita	Minnick, Lorene	Simpson, Betty	Wilkey, Martha
Brown, Mildred	Evatt, Elsie	Ireland, Edith	Mitchell, Betty	Sivley, Virginia	Wilbanks, Mary Lee
Brown, Mildred	Evatt, Elsie	Jackson, Ethel	Mixon, Helen	Shelton, Hazel	Williams, Jimmie
Brown, Nancy M. Frances	Fennell, Catherine	Jennings, Jewel	Moody, Betty	Snow, Juanita	Wilson, Madeline
Broyles, Mary Frances	Finnancorn, Jean	Johnson, Ella Boyd	Moss, Laura	Smith, Betty	Wilson, Pearl
Buckner, Vivian	Fine, Ruth	Jones, Ruby	Moss, Edna	Smith, Etta	Wilson, Virginia
Burnette, Alice	Fitzgerald, Mary	Jordan, Roberta	Mullins, Julia	Smith, Helen E.	Woodall, Kathryn
Burnette, Fannie Mae	Flawell, Harriet	Jones, Ruby	Nabors, Johnnie	Smith, Helen M.	Woodall, Marjorie
Bynum, Martha	Fowler, Virginia	Kelly, Doris	Nixon, Edna Estle	Smith, Louise	Woodine, Norma
Cahoon, Dorothy	Gamble, Leila	Kelley, Doris	Nixon, Mae	Smith, Mary	Wright, Annice
Camp, Iva Dean	Gardner, Sarah	Kelown, June	Orrell, Clara	Smith, Opal	Wrinkle, Virginia
Campbell, Harriet	Garris, Elizabeth	Kelown, June	Orton, Dorothy	Smith, Sallie	Wynn, Edna
Carden, Catherine	Genung, Babs	Kilgore, Jonnie	Osborne, Ruby	Snodgrass, Betty	Wyrick, Pauline
Carroll, Dorothy	Grilland, Martha	Killingsworth, Wanda	Pardue, Martha		
Cason, Erma	Griffard, Rosa	Kington, Louise			
Chapman, Virginia	Goodlet, Audrey				
Gray, Jean					

SOPHOMORE CLASS HISTORY

In the fall of 1935 a large group of students entered Central High School for the first time. They were freshmen, and perhaps it was this fact that made them feel inconspicuous and "green." However, it was not long until they found their places and felt at home. It was with great enthusiasm that this group awaited their first election of class officers, when David Masingill was chosen as president; Edwin Strickland as vice-president; Eloise Evatt as secretary, and Dorothy Hennessee as treasurer. These young officers served their class well throughout the ensuing year.

When the Freshmen became Sophomores in 1936, they again elected David Masingill to pilot them through the school year. Billy Meacham was chosen vice-president; Dorothy Hennessee, secretary, and Ruth Wheeler, treasurer. Betty Amerson, song-leader, and Jack Bowen, cheer-leader, have helped them to keep the "Central spirit" predominant.

In the highlights of sports we find many classmates. Hoyt Kilgore has been an outstanding man on the gridiron, and we expect as excellent a record of Rhonnal Rogers, a substitute during the past season. On the basketball floor we find Fred Moudy, Rhonnal Rogers, Fred Butcher, and James Brown. Let us hope they will all continue to hold the banner high in the field of athletics.

Outstanding ability of several members of the class has been recognized by appointment to membership on the *Digest* Staff. These include Marjorie Parker, Julia Mullinax, Doris Wilbanks, Dotty Suddarth, Eloise Evatt, Jean Gray, Harry Edwards, William Elrod, Billy Rymer, John Harsch, and Oscar Torbitt. Eloise Evatt and Buster Jolly have had the honor of being included in the CHAMPION staff, Eloise as Freshman representative in 1935-1936, and Buster as Sophomore representative in 1936-1937. Billy Elrod brought exceptional honors to his class by winning the City Award in the essay contest on the "Life of Charles Dickens." His essay was judged best not only among those entered by sophomores but also among all essays submitted. As a result of his writing ability the Central library received a twenty volume de-luxe set of Dickens' works.

In addition to literary talent Sophomores have added much by their musical ability. In the glee club are Wanda Fambrough, Mary Eleanor Haines, Dorothy Hennessee, Reba Lowery, Audrey Marler, Melvin March, Maxine McCoy, Murphy Owenby, Boyd Rhea, Virginia Sivley, Ruth Stevens, John Weese, Kreusie Westbrook, Ruth Wheeler, and Norma Woodpine. Eugene Kiger, Hoyt McDarris, Edith Richardson, Bobby Clark, Margaret Linn, and Billy Hotalin are those who make up the Sophomore representation in the orchestra; J. L. Lindsey, Hixson Eldridge, Henry Hobday, Eugene Kiger, Billy Ezell, Hoyt McDarris, Martha Miles, Betty Jean Duncan, and Betty Jo Martin are band members.

It is important that those be mentioned who through their scholastic records have already won honor roll recognition. These are James Roberts, Willie Humbard, Martha De Freise, J. L. Lindsey, Edwin Strickland, Ruby Clemons, Sarah Gardner, Eloise Evatt, Dora Phitzer, Albert Coe, Pansy Coorey, Julia Mullinax, Louise Parker, Adeline Pills, Jimmie Williams, Juanita Smartt, Harry Edwards, C. A. Waterhouse, Robert Hall, Henry Hobday, Alyce Brooks, Jean Gray, Mary Crumly, William Elrod, Anna Park, Isabelle Allen, Rebecca Cayse, Bill Ezell, Thomas Bowers, Martha Pardue, Marjorie Parker, Frank Sandford, John Harsch, William Lyles, Buster Jolley, Thelma Collins, Harold Watkins, Annie Lee Turner, Norma Stewart, Wanda Fambrough, Ruth Wheeler, Billy Rymer, Mary Katherine Ault, Dotty Suddarth, Reba Lowery, Nina Joe Whitten, Eileen Scarbrough, Ann Lewis, Mary Ellen Crumbley, Willie Hubbard, Margaret Jorges, and J. C. Baker. Alyce Brooks, James Roberts, Dotty Suddarth, and John Harsch, are the ones who have held this honor throughout the year. John Harsch alone has remained on the star roll by his excellent record.

Jean Gray, Anna Park, Henry Hobday, Alyce Brooks, Eugene Kiger, J. L. Lindsey, James Foxworth, Eloise Evatt, Dorothy Hennessee, Dorothy Maupin, and Ruth Wheeler are the Sophomore members of the Senate, a high-merit club.

May the spirit of progress be the spirit of this class as they march on toward the goal of graduation,

BUSTER JOLLEY,
DOTTY SUDDARTH.



OFFICERS

BELMONT JOLLY	President
ALBERTA MORGAN	Vice-President
RUTH ECHOLS	Secretary
WILSON NORVELL	Treasurer



FRESHMAN CLASS



FRESHMAN CLASS--BOYS

Adair, Warren	Danzler, Carl	Hegie, Emerson	Moore, Arthur	Sloan, Harley
Adams, Charles	Davis, Edward	Henry, Wendell	Moates, Lawrence	Smith, Ellis
Allan, Wilbur	Dickson, James	Herron, Bill	Morgan, Barney	Smith, Lee
Allman, Jack	Dillard, James	Hilton, Lewis	Morgan, Robert	Smith, Vernon
Applewhite, Martin	Dodd, Edward	McIsaac, Benjamin	Morton, Ralph	Spencer, Franklin
Atchley, Theodore	Donelson, Manuel	Mcoper, Ralph	Moss, Charles	Strandier, Byron
Avana, John	Drake, Eugene	Hudlow, James	Neal, Charles	Steinmann, Paul
Bailey, Grover	Eaves, Alvin	Hudson, William	Neal, George	Scribbling, Kenneth
Barnes, Charles	Eddings, Lewis	Huff, Paul	Nicholson, Robert	Sullivan, Trester
Barnes, Otis	Edwards, Charles	Hundley, Marvin	Nicholson, Joe, Jr.	Tallent, William
Baskette, John	Elkins, Hugh	Hunter, Carl	Norman, Sam	Taylor, Milton
Beatty, Paul	Emerson, Franklin	Hunter, Samuel	Noewell, Wilson	Taylor, Thomas
Billingley, J. R.	Epperson, Neil	Jennings, Norce	Parson, Gloy	Thompson, Benjamin
Billingley, Raymond	Erwin, Curtis	Jolly, Belmont	Peary, O. D., Jr.	Thompson, Carl
Black, Elbert	Estes, Earl	Jolly, Paul	Phillips, Frank	Thompson, Joe
Blackwell, Charles	Evans, Herbert	Jones, John	Pittchett, Claude	Thurman, John
Bolton, Rex	Falls, Willard	Keener, Hubert	Proctor, Bobbie	Tindall, Frank
Bowd, Glenn	Farber, Raymond	Kaith, U. D.	Ralley, Robert	Tinker, James
Bradford, Jack	Farr, Roy	Kelley, Ernest	Rape, Billy	Turner, Luther, Jr.
Brooks, Frederick	Farrer, Mike	King, Joseph	Raulston, Gilbert	Valentine, James
Brooks, Jack	Ferguson, Hubert	Kink, Louis	Rheas, O. Boyd	Vanzant, Albert
Brown, Albert	Ferrill, Alec	Lawson, George	Rivers, Billy	Vaughn, Frank
Brown, Claude	Findley, Robert	Layton, Richard	Roberts, Donald	Vincoli, Vincent
Brown, Herman	Frapart, Dalton	Lehman, William	Robertson, Virgil	Warner, Taylor
Bryan, Edward	Fraxier, Bill	Llewellyn, Grady	Robinson, Hugh	Walker, J. C.
Burkhard, George	Freeman, G. L., Jr.	Lutz, William	Robinson, George	Waterhouse, Charles
Burt, Buel	Frizzell, Noel	Marlin, Jack	Rogers, Bill	Wells, Morgan
Cannon, Leonard	Fryar, Archie	Marlow, James	Satterfield, Arnold	White, John
Cannon, Gerald	Fulham, Raymond	Martin, Earl	Schaefer, William	White, Warren
Carden, William	Fuller, Hugh	Martin, Glenn	Selvidge, Lewis	Williams, Frank
Carrwright, James	Garnier, Julian	Martin, Joe	Semmes, Hugh	Williams, Stanley
Childers, Frederick	Godbey, Crawford	Martin, Thomas	Shelton, Billy	Wilson, Eugene
Citr, David	Goode, James	Mason, J. C.	Shipley, Raymond	Wilson, Raymond
Clark, Bobby	Gothard, Walter	Mayo, Earl	Siddall, Edwin	Witt, Ralph
Clark, Thomas	Gray, James Robert	Mays, Harold	Skiles, William, Jr.	Wolfe, Denton
Coleston, Thomas	Griffin, Thomas	Meacham, Billy	Skipper, R. G.	Wootter, Lawrence
Cook, Frank, Jr.	Hali, Eugene	Miles, Richard	Sloan, Edgbert	
Cook, William	Hall, Walter	Miner, Grover		
Crowell, Howard	Hart, Arthur	Mitchell, Allan		
Dabbs, Everett				



FRESHMAN CLASS--GIRLS

Acuff, Lillian	Doremus, Sylvia	Jones, Athala	Robinson, Edna
Anderson, Eva	Douglas, Charlsie Dean	Jones, Bettye	Robinson, Ruth
Arnold, Dorothy	Durham, Peggy	King, Nadine	Roper, Mary Anne
Baker, Zelda	Echols, Ruth	Lane, Lucille	Sanders, Eugenia
Bales, Wanda	English, Mary	Larrimore, Lorraine	Scoggins, Virginia
Barber, Florence	Epperson, Margarette	Lehman, Anna Marie	Scott, Bertha
Barlach, Caroline	Evans, Louise	Lehman, Mildred	Sheaver, Betty Frances
Beane, Helen	Evans, Winona	Levi, Ruth	Shedd, Dorothy
Beck, Mary Lou	Farrar, Mary	Ligon, Mildred	Sivley, Dorothy
Beene, Virginia	Fields, Minnielou	Lindeman, Alice	Smith, Barbara
Beverly, Martha	Finnell, Lillian	Little, Nell	Smith, Mary Nell
Black, Frances	Fisher, Emma	Lloyd, Muriel	Squibb, Virginia Lee
Blair, Lillian	Frank, Mary	Logan, Louise	Stanfill, Juanita
Bowman, Betty	Gallman, Mary Frances	Loyd, Imogene	Steady, Martha Ann
Bowman, Lucile	Gannaway, Anita	Lusk, Clara	Stephens, Mabel
Brandt, Barbara	Gatis, Martha Jane	McSpadden, Norma	Swafford, Betty Fay
Brooks, Grace	Gentry, Katherine	Mason, Faye Laws	Sylar, Betty
Brown, Monica	Gilstrap, Mildred	Meyer, Pauline	Thompson, Myrtle
Bryden, Laura	Gober, Marie	Miles, Melba	Tinker, Katherine
Burt, Beatrice	Goodson, Lesley	Mitchell, Zona	Tobin, Dorothy May
Bush, Flora	Guthrie, Mary	Morgan, Alberta	Turner, Harriett Sue
Byrd, Majorie	Haggard, Helen	Miles, Frankie	Turner, Phoebe
Cade, Betty Jean	Hale, Lena Mae	Nolan, Frances	Usher, Dorothy
Camp, Carrie Belle	Carlton, Betty	Norman, Bernice	Van Der Cammen, Virginia
Clark, Ruth	Hargis, Martha	Oliver, Mildred	Vaughn, Sara Nelle
Coffey, Ruby	Harrison, Virginia	Parks, June	Walker, Louise
Combs, Emma	Hart, Joyce	Park, Naomi	Wells, Clara
Cooke, Doris	Hatcher, Lodema	Parker, Marion	West, Mary
Cooley, Lois	Henegar, Nell	Pass, Betty Ruth	White, Geneva
Cooper, Agnes	Hennessee, Minnie Lee	Peace, Betty Louise	Whitmore, Mary Lou
Coots, Helen	Hill, Evelyn	Porter, Dorothy May	Willbanks, Doris Lee
Cope, Catherine	Hill, Juanita	Powell, Aline	Williams, Hilda
Crawley, Roberta	Hilliard, Sara	Pryor, Muriel	Williams, Winona
Cunningham, Leona	Halloway, Elizabeth	Prystrip, Louise	Wilson, Theda
Cuzzort, Nethia	Hoopes, Alice	Rhodes, Rebecca	Wootter, Juanita
Dale, Mary Elizabeth	Hopson, Mary	Rice, Virginia	Worley, Mary
Davis, Ruth	Howard, Sara	Ridger, Mildred	Wysock, Irene
Deakins, Naomi	Hudson, Bonnie	Riordan, Sarah	
Delazier, Virginia Lee	Jacoway, Ruth		
Doremus, Josephine	Jensen, Aline		
	Johnson, Dorothy		

PEACE ENCOURAGES COMMERCE; WAR PARALYZES TRADE. FOR THE RIGHT TO BUY AND SELL, MEN HAVE BRAVED THE WILDS OF NATURE AND VENTURED ON UNKNOWN SEAS. SEEKING A ROUTE TO THE SILKS AND SPICES OF THE EAST, COLUMBUS ENDURED UNTOLD HARDSHIPS. THE TIES OF TRADE HAVE SO UNITED THE WORLD THAT GREAT COMMERCIAL NATIONS ENCOURAGE PEACE AND FONDLY DREAM OF "THE PARLIAMENT OF MAN, AND THE FEDERATION OF THE WORLD."



And Time
Marches On

Military





CHARLES RAULSTON
RALPH SAGESER
EDWIN RUBY
EARL LONG

The COLOR GUARD



ANNA MARIE PECKINPAUGH
Sponsor



COLONEL BALLARD LIVERLY
U. S. Army



SERGEANT G. M. HARRIS
U. S. Army

THE CADET STAFF AND U. S. ARMY OFFICERS

ROY SCRUGGS
Major

CARL WEST
Adjutant

VERLIN LAWSON
Personnel Officer

LEWIS WHITTEN
Plans and Training Officer

ROBERT CHALK CLIFFORD JACKSON
Public Relations Officer Staff Sergeant

EUGENE THOMAS
Staff Sergeant

J. W. McMAHAN
Corporal

The Band

OFFICERS

HAROLD ROBINSON *Captain*
WALTER VALENTINE *First Lieutenant*
BILLY RANKIN *Second Lieutenant*



VIRGINIA DEARING
Sponsor

SERGEANTS

CHARLES BATEY TOMMY SUDDATH
ROGERS CRAIG CHARLES PORTER
 EDWARD ELDRIDGE JAMES STEVENS
 JAMES LINN

CORPORALS

CLARENCE ROUSE BILLY HOTALIN

PRIVATES

OSCAR SHELLEY	ALVIN ARNOLD	PERRY BELL	ROSA JANE VERHEY
JIMMIE CYPHERS	JAMES MOORE	MARTHA MILES	EVELYN REYNOLDS
HERCHEL WALKER	ZACK ALLMAN	DOROTHY JO MARTIN	J. L. LINDSEY
HULBERT FERGUSON	HIXON ELDRIDGE	WARREN GREEN	ERSKINE BELK
MASSEY GORDON	FINLEY COXEY	FRANK SMITH	HENRY HOBDAV, JR.
HOYT MCDARIS	DAN CATES	SAMUEL HUNTER	HORACE JONES
WILLARD O'REAR	J. R. BILLINGSLEY	WALLACE HAMMEL	CHARLES WARD
EUGENE KIGER	BETTY DUNCAN	DICK LAYTON	LORIN KINGTON
MAX MATHEWS	RALPH WITT	MARY DUNCAN	ALLAN HAIL
		BETTY KELLEY	





VIRGINIA HENDERSON
Sponsor

Company E

OFFICERS

ROBERT DEMOS Captain
JOHN LAYSON First Lieutenant
ALVIN MCBROOM First Lieutenant
GEORGE HUFF Second Lieutenant

SERGEANTS

WALTER BROTHERS
JOHN CARMICHAEL
JAMES DEFRIESE

VERNON EDGE
LEHARDY GAUNTY
EUGENE PEDEN

EARLE SILVER
MAC SPARKS
ROBERT STANDIFER

CORPORALS

OLLIE DAVENPORT
ERNEST FEAGANS
BILL GRISBY

TALMADGE HENRY
PAUL MCGREGOR
C. C. MILLER
JESSE MITCHELL

HARRY POTTS
THOMAS TRAVIS
MARVIN WORLEY

PRIVATES

Shelby Akers
Alvin Baker
Dewey Bowers
George Ballow
Ray Basham
William Blewin
George Bonner
Thomas Bowers
Claude Brown
Robert Bradshaw
Lloyd Britton
Raymond Buffett
A. L. Camp
Harvey Camp
Fred Childers

Jewell Childers
Albert Gue
Billy Coleman
William Condon
Willard Conant
Robert Davis
Frank Dent
Eugene Drake
Emile Dacles
Harry Edwards
William Finley
Charles Finney
Ralph Flegal
Richard Fryar
Wallace Garner
James Goode

George Goss
Lamont Hall
Robert Hall
Wayne Hanson
Herbert Higdon
Bill Higdon
Ernest Holdman
Mason Johnson
I. R. Jones
Ralph Jordan
Walter Kelly
Clyde Kilgore
Ira King
William Lonas
John Lanham
Earl Long

Frederick McAmis
Howard McBride
Dewey McClure
Frank Magette
Marshall Mallet
Harold Martin
W. D. Meek
Douglas Mills
Forrest Moore
Ollie Morris
Denton Nichols
Fred Oliver
Paul O'Rear
William Parker
Sam Pendergrass
Hill Pless

Sidney Redmon
Z. W. Rackley
J. C. Rogers
Mankie Ruffner
Marvin Simpson
Wendell Smith
Hayden Scansbury
James Staples
Boyd Strickland
Charles Tucker
Vance Young
William Watts
Thayer Westbrook
Harold Wilhoite
Thomas Wilson



Company F

OFFICERS

ILEY THOMPSON Captain
ALFRED MILLER First Lieutenant
GEORGE BRIDGERS First Lieutenant
RALPH GODSEY Second Lieutenant
ROY DAVENPORT Second Lieutenant

SERGEANTS

WILLIAM GREENE
ROBERT GRISWOLD
JACOB GROVES

EUGENE MAGETTE
GAINS MILLIGAN
HERVEY THOMAS

HARRY THORNTON
PAUL ROGERS
LESTER RITCHIE

CORPORALS

PEYTON BEASLEY
JAMES DELZELL
MARSHALL HATCH

BUSTER JOLLEY
HOWARD KESLEY
BILLY MAYO

FRED SYLVESTER
CHARLES WILLIAMS
J. W. SUGGS

WILLIAM RAULSTON

RHONNAL ROGERS

PRIVATES

Warren Allen
Lebron Andrews
Omar Arnold
J. C. Baker
Charles Barnes
Eugene Bauldin
Clifton Bramlet
Perry Brock
Joe Burch
William Byerly
James Chase
David Chumley
Paul Comstock

Clifford Davis
Charles Edens
Harley Edmondson
William Elrod
Hubert Fisher
Bobby Gilreath
Flaurt Grammer
Lewis Hall
Joe Hammack
John Harsh
Winfred Haynes
J. B. Henson
Floyd Hill
Lewis Hilton
Sam Holeman

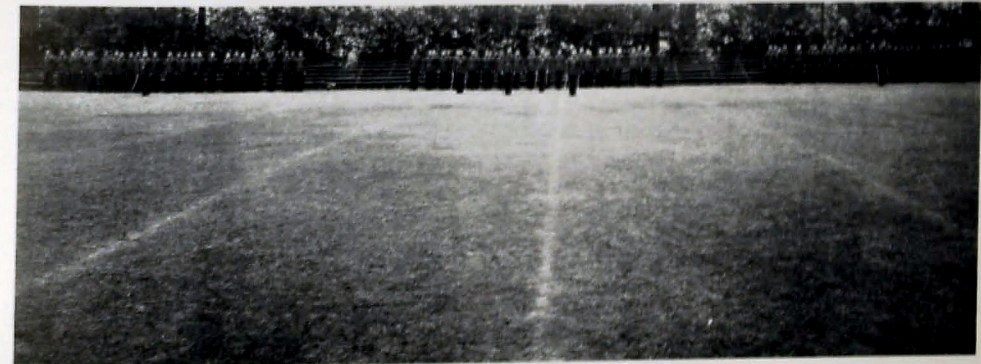
James Hunt
Roy Jackson
Ben Keebler
Hoyt Kilgore
C. E. Land
William Laycock
Billy Lyles
Clarence McCashin
Earl McDarris
Ralph McNichols
James Mahoney
Clarence Manning
Glenn Martin
Bill Mason
Floyd Mavity

Henry Tripp
Lloyd Truex
Victor Womack
Bert Wigg
Jimmie Williams
Carl Thompson
Chester Miller
Charles Morgan
Herman Morris
George Neale
Richard Oliver
Edward Orrell
Donald Painter
Stewart Peace
Jack Powell

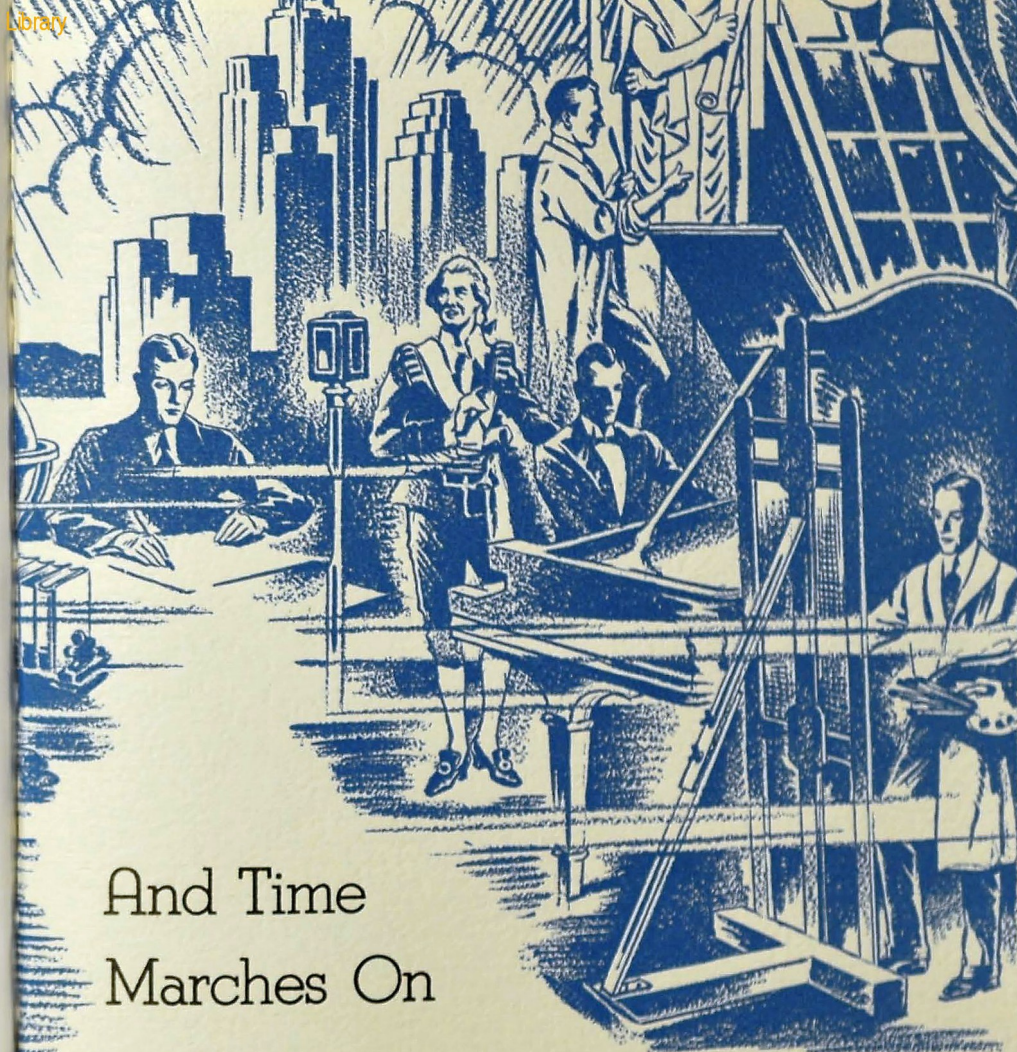
Ellis Rhodes
William Robinson
M. C. Ryan
Otis Schoecraft
Phil Shafner
William Shelton
James Shields
John Slaton
Fred Sliger
Fred Stansell
Oscar Torbett
Luther Turner
Harold Watkins
Doyal Wilson



JULIA RAWLINGS
Sponsor



ART HAS EVER BEEN THE
HANDWRITING OF THE HUMAN
RACE. IT WAS THE GREEKS WHO
PRODUCED AN ART WHICH IS
STILL MAN'S GREATEST INSPIRA-
TION IN THE WORLD OF BEAUTY.
ASPIRATIONS TOO ELOQUENT
FOR WORDS HAVE LEFT THEIR
MONUMENTS IN GREAT MUSICAL
COMPOSITIONS, GREAT PAINT-
INGS, AND GREAT BUILDINGS.
PROGRESS HAS DEMANDED THE
DEVELOPMENT OF THE ART OF
LIVING TOGETHER HAPPILY AND
HARMONIOUSLY.



And Time
Marches On

Features



O U R C H O I C E

*We place no trust in empty idols smiling from their
pagan shrines.*

*Take away their gold and jewels—there's naught
beneath that richly shines.*

*Pluck away the staring diamond eyes on which the
moonbeams play.*

*Eyes of Truth see farther—they reflect the coming
of the day.*

*Unto ears of listening Wisdom, in the silences of
night,*

*Deepest secrets are unfolded—those which Buddha
from his height*

*Has not captured by his power, midst the incensed
candle's glow.*

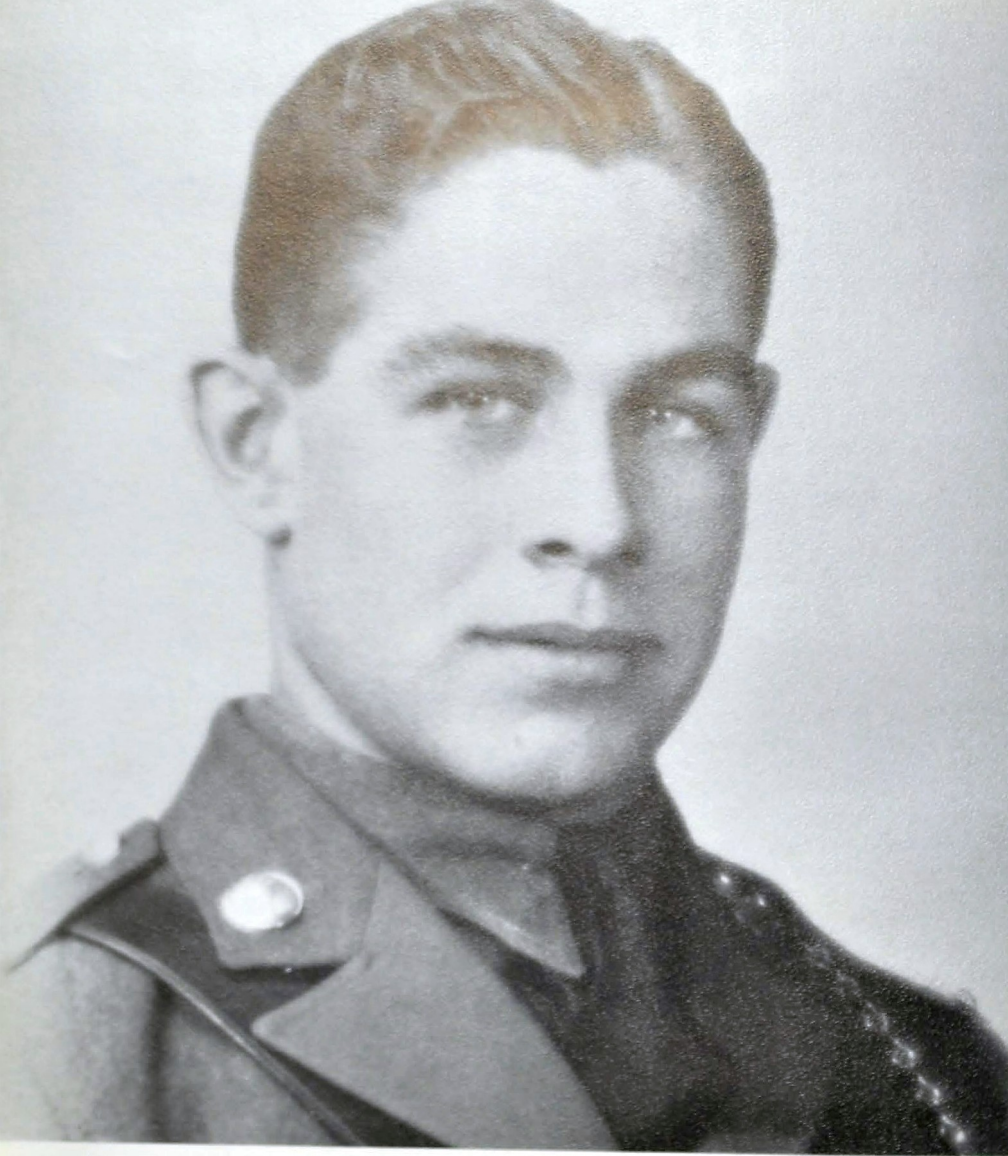
*We, our vision lifted starward, gain new strength
for toil below;*

*So the past, with outgrown idols, here we gently lay
to rest,*

*Living hearts that love to serve best our kings and
queens the best.*

—ANTOINETTE FLAGG BARLACH.





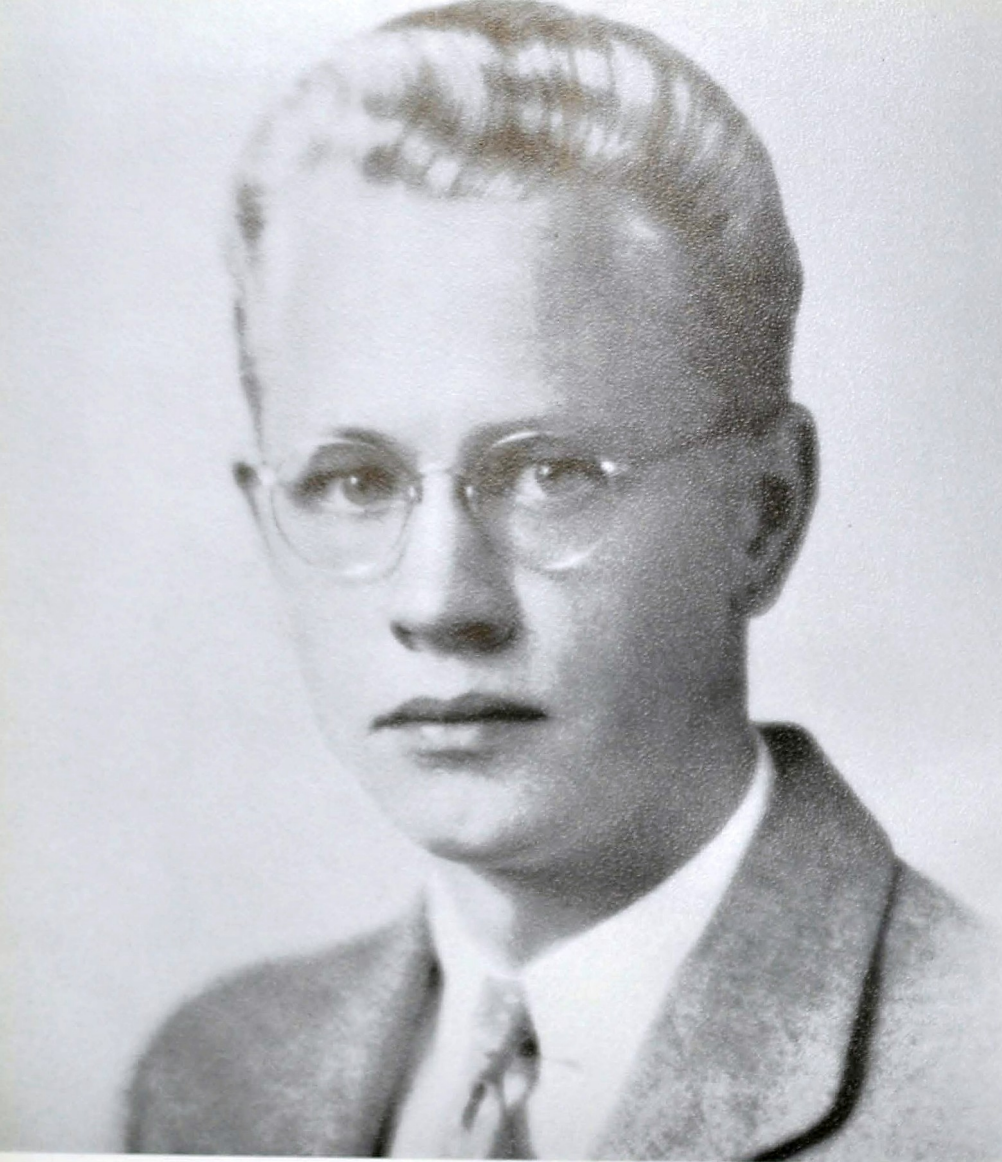
Roy Scruggs

LEADERSHIP



Aline Smith

LEADERSHIP



Frank B. Taylor

SCHOLARSHIP



Mary Anne Buck

SCHOLARSHIP



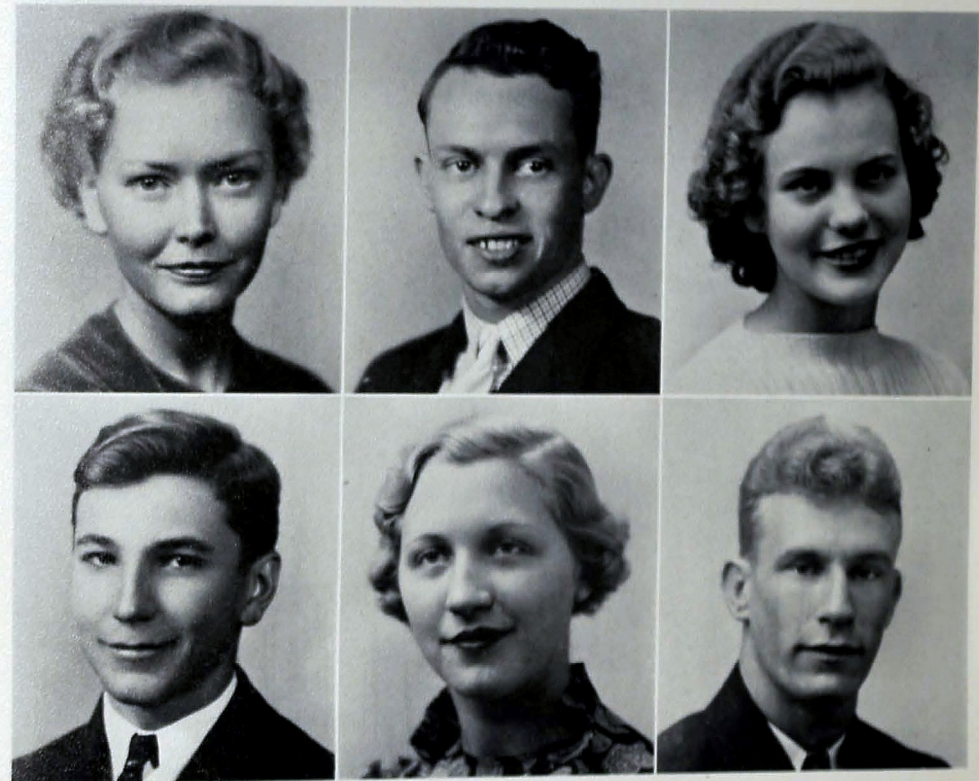
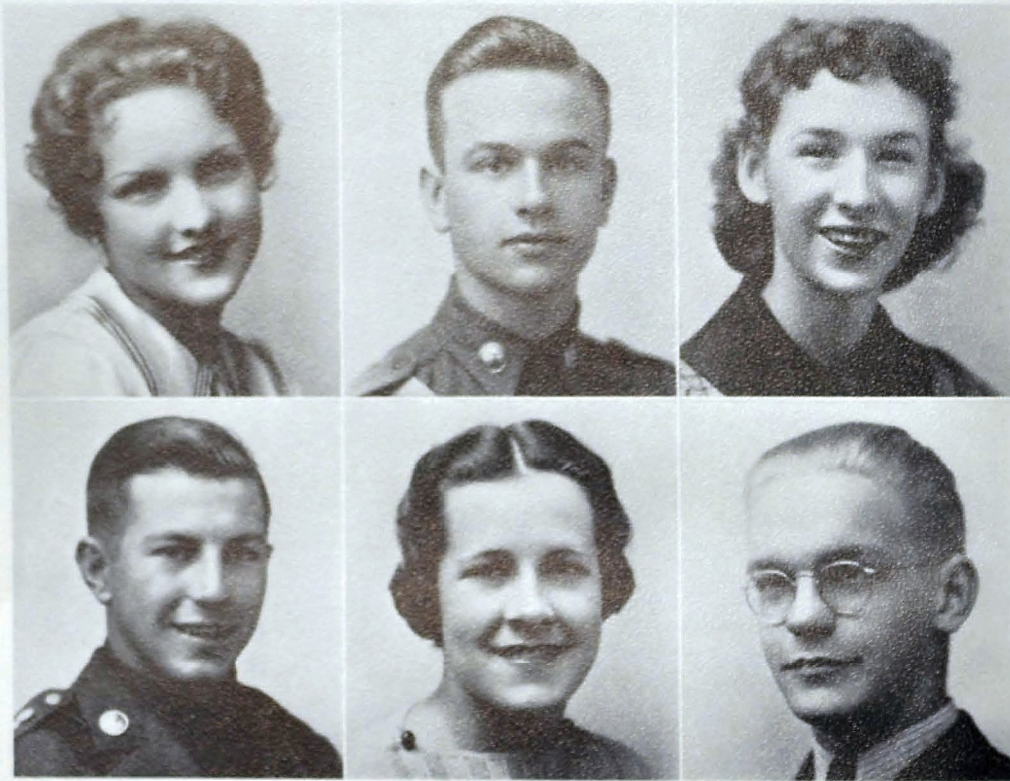
Thurman R. Hall

SERVICE



Mary Jane Maupin

SERVICE



WE PROPOSE TOASTS to ~

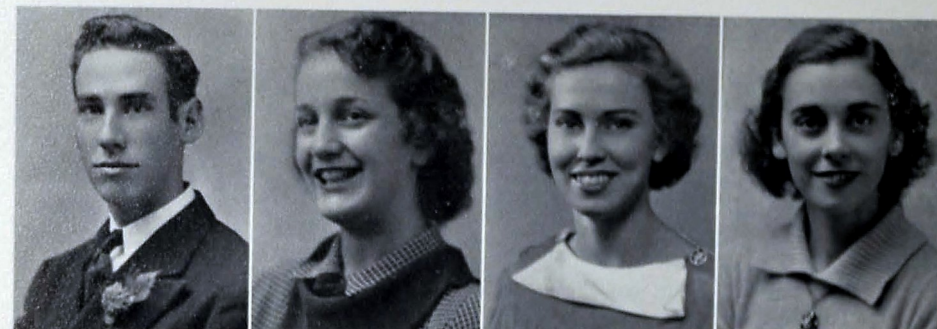
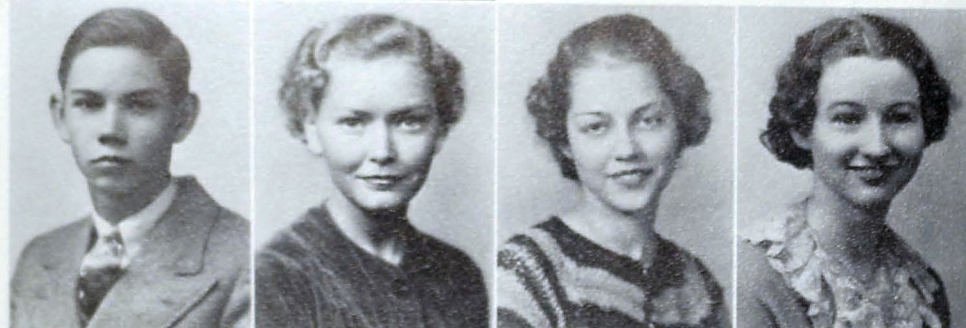
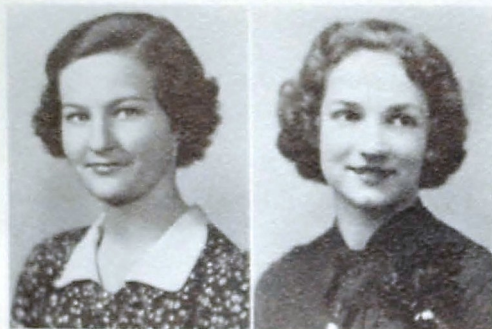
VIRGINIA DEARING	Personality
BUDDY ROBINSON	Personality
JUNE SMITH	Friendliness
BOB DEMOS	Friendliness

JULIA RAWLINGS	Naturalness	ANNA MARIE PECKINPAUGH	Courtesy
BOB STIVERS	Naturalness	FRED HETZLER	Courtesy
FRANCES CAMP	Reliability	CHARLOTTE BLAIR	Athletic Ability
ARCHIE LAWRENCE	Reliability	BILLY O'BRIEN	Athletic Ability

THREE YEAR HONOR STUDENTS and COMMENCEMENT SPEAKERS

NORA ALLISON BARKER . . . Three Year Honor Student
Reader of Class Will
MARY ANNE BUCK . . . Three Year Honor Student
ELLIS BUTLER . . . Three Year Honor Student
FRANCES CAMP . . . Three Year Honor Student
Class Historian
REGINA CRAVEN . . . Three Year Honor Student

VIVIAN DAVIS . . . Three Year Honor Student
ADRIENNE DUCLOS . . . Three Year Honor Student
Class Poet
MYRTIE MAE ERWIN . . . Three Year Honor Student
DARWIN HAROLD . . . Three Year Honor Student
MARY HUGH HAINES . . . Three Year Honor Student
THURMAN HALL . . . Class Representative
BERYL HEALY . . . Three Year Honor Student
Salutatorian
VIRGINIA HENNESSEE . . . Three Year Honor Student
BETTY L'HEUREUX . . . Three Year Honor Student
IVA McDONALD . . . Three Year Honor Student
HANNAH MARLOWE . . . Three Year Honor Student
MARY JANE MAUPIN . . . Three Year Honor Student
BILLY O'BRIEN . . . Class Prophet
ANNA MARIE PECKINPAUGH . . . Three Year Honor Student
Faculty Representative
HOWARD NORTON PRATT . . . Three Year Honor Student
T. J. QUARLES . . . Three Year Honor Student
ELIZABETH REDFORD . . . Three Year Honor Student
JEAN REYNOLDS . . . Three Year Honor Student
LAVERNE ROBERTS . . . Three Year Honor Student
RUSSELL TARVER . . . Three Year Honor Student
FRANK TAYLOR . . . Three Year Honor Student
Valedictorian



School Calendar

- SEPTEMBER 4
Central's doors opened for registration.
- SEPTEMBER 9
Miss Margaret Waples at home to the forty-five Ushers.
- SEPTEMBER 15
Senior Class elects officers for the year.
- SEPTEMBER 21
Work on new building begun.
- SEPTEMBER 28
Digest and Times page staff presented in chapel.
- OCTOBER 6
CHAMPION staff selected.
- OCTOBER 8
Student Forum organized by Dr. Paul Sheats.
- OCTOBER 9
Dr. Eugene Turner addressed pupils on Oriental topics.
- OCTOBER 21
"The Merchant of Venice" presented by The Avon Players.
- NOVEMBER 6
Band Concert given for Mothers.
- NOVEMBER 9-14
National Education Week observed.
- NOVEMBER 9-14
Senior Get-Acquainted Luncheons held.
- NOVEMBER 12
Parents' Day and Presentation of Sponsors.
- NOVEMBER 20
Seniors present "Once In A Palace."
- NOVEMBER 24
Class of '34 holds reunion.
- NOVEMBER 25
Trophy presented to 1936 CHAMPION Staff.
- NOVEMBER 26
Thanksgiving Holidays observed.
- NOVEMBER 27
Annual Pep Meeting.
- NOVEMBER 28
Central spirit reaches its height for annual fray with City.
- DECEMBER 3
Twenty-seven new members taken into National Honor Society.
- DECEMBER 3
Tea given in honor of the new members of the Society.
- DECEMBER 9
Parent-Teacher Association entertained at tea.
- DECEMBER 10
Banquet for football team.
- DECEMBER 14
Red Cross honors faculty with tea.
- DECEMBER 16
Dramatic Club presents "The Lucky Fool."
- DECEMBER 17
Display of Red Cross Christmas baskets.
- DECEMBER 18
School closed for Christmas Holidays.



Snapshots of STUDENT LIFE

Central Is Growing ✧ ✧ ✧ *A Tense Moment at the Central-City Game* ✧ ✧ ✧ *Jones, Castings, and Peeler—Quite a Heated Argument* ✧ ✧ ✧ *M. P.'s* ✧ ✧ ✧ *Foxworth and Gardner* ✧ ✧ ✧ *The Band on Parade* ✧ ✧ ✧ *Now, Katherine!* ✧ ✧ ✧ *Mr. Templeton and Mr. Hair Inspecting* ✧ ✧ ✧ *Before the Bell* ✧ ✧ ✧ *Elizabeth Clark* ✧ ✧ ✧ *Superintendent and Mrs. Rankin* ✧ ✧ ✧ *Lunchtime Seance* ✧ ✧ ✧



MAY 26
Central's doors close.



Snapshots of STUDENT LIFE

*A Bleacher Scene! And the Band
Plays On! At Ease Between
Halves As Seen From a Box More Fun!
Incomplete Pass After Presentation Preacher Rollins
Meditating On the Spot Lieu-
tenant Bridgers—Much Attended!
Mary Belle Hardwick and Dot. Bowen*



THE STORY OF TRANSPORTATION IS ONE OF STRIKING CONTRASTS FROM THE SLOWLY MOVING COVERED WAGON AND STAGE COACH TO THE HIGH SPEED VEHICLES OF TODAY—THE TRAIN, THE STEAMBOAT, THE AUTOMOBILE AND THE AIRPLANE. GIRDLED BY A VAST NETWORK OF RAPID TRANSIT AND QUICK COMMUNICATION, THE WORLD TODAY IS SCARCELY MORE THAN A SINGLE NEIGHBORHOOD PLAYING THE GAME OF LIFE.



And Time
Marches On

Athletics



T H E C CLUB

ROY SCRUGGS *President*
 NEWELL HENRY *Vice-President*
 BILLY O'BRIEN *Secretary*
 DEXTER HODGES *Treasurer*
 COACH S. DEAN PETERSEN *Sponsor*
 COACH GEORGE MCCOY *Sponsor*

WILBURN BAKER	HAL LAMB
RICHARD BATES	EMMETT MALLETT
GEORGE BRIDGERS	ROBERT MCCABE
HAROLD BROWN	ALBERT MEURTH
MATT CARTER	FRED MOUDY
BOBBY DICKS	BILLY O'BRIEN
CAMP HAMILTON	JACK PINION
NEWELL HENRY	ROY SCRUGGS
DEXTER HODGES	DUKE STALCUP
PAUL JOHNSON	PAUL STEINMAN
FLETCHER JOLLY	TOMMY SUDDATH

BILL C. WHEAT





A Resume of the Football Season

Dick Bates, a player who made his opponents wish he were not in the game, passed, punted, ran, blocked the line, and played quarterback in a competent way.

George Bridgers, center on this year's team, played good ball up to the Kingsport game, in which he was injured. On his recovery, he played hard and finished his stay at Central in a way of which he may well be proud.

Harold Brown, a great ball player with a great spirit, is a boy whom you can rely on as

fighting his heart out, and getting better as the game becomes tougher.

Charles Crabtree, a first year man, came through in fine style, despite a sprained ankle which prevented his playing in the City game. Much will be expected of Charles next year.

Bobby Demos, a boy so small that you can hardly find him, much less get your hands on him, possesses a fighting spirit which won the admiration of his opponents as well as his teammates.

A Resume of the Football Season

Newell Henry, captain of this year's team, was a hard-fighting, goodnatured football man who played a game at tackle that made his opponents want to run the other way. Newell left with the deep gratitude and friendship of his teammates.

Dexter Hodges, a great fighter, playing a consistent game that won the respect and admiration of his teammates, was elected captain of the '37 team.

Eugene Hunt, a first year man, proved a

surprise to all. Although being naturally quiet, he is very powerful, and will be one of the most dependable men on next year's team.

Fletcher Jolly, a versatile player who could perform in the backfield as well as at end, rounded out three years on the varsity, giving his best effort, and making for himself the name of an all-round athlete.

Hoyt Kilgore, a player who, even in his first year possessed an exceptional defensive ability, will add much to the strength of next year's team.

CHS Library

JAMES LINN TACKLING



S. D. PETERSEN
HEAD COACH



COACH GEORGE MCCOY

FLETCHER JOLLY CATCHES A PASS





A Resume of the Football Season

Hal Lamb, better known as "Sheep" by his mates, played consistent ball at guard throughout a hard ten-game schedule, improved steadily, and is expected to back the line in fine shape next year.

James Linn, possessing a knack of blocking a man when it looked as if it were impossible, finished three years of football at Central in a way that demands respect from all true lovers of the game.

Gordon McCollum, for whom nothing has ever seemed quite right in a football way, for four long years plugged along as a scrub, giv-

ing his best effort all the time but never impressing the coaches as being good enough for the first string. We all honor and respect the boy who refuses to quit; such a boy is Gordon McCollum.

Emmett Mallett, a player that made his opponents lie awake at night trying to figure out a way to stop him, was a man hard to down once he was in the open.

Albert Muerth, a bulwark on defense, a man about whom none had to worry, will be back next year, at which time he will have a heavy load to carry.

A Resume of the Football Season

Matt Carter, who served as basketball manager last year and football manager this year, bore the responsibility of caring for equipment and rendering first aid to injured players. He was one of the best managers Central has ever had.

Billy O'Brien, a player that must be watched by his opponents on every play, could catch passes that looked impossible. He scored the winning points in more than one game by this method.

Roy Scruggs, with his unfailing enthusiasm and determination, is a great man on offense

and one to beware on defense. Roy was given a position on the *Times* All-City Team. This showed the high esteem in which he was held by the coaches.

W. C. Wheat, a boy who was not thought to have a chance at the first of the year, by his determination and grit, won a regular position at center.

Jack Bowen, Central's cheerleader of pleasing personality and unusual enthusiasm, inspired the student body to show their appreciation, and to support the team which represented the school.

CHS Library

THE LINE HOLDS



COACH RALPH WINTER



A. P. STEWART

READY TO STOP THEM





CHEER LEADERS
AND
SONG LEADERS

MARIAN KALLEEN
JOE HAMMOCK
RUBY LEE ROSE
JACK BOWEN
BETTY AMERSON
JAMES GREY

FOOTBALL SCORES

	<i>September 11</i>	
Central	32; Copperhill	0
	<i>September 18</i>	
Central	12; Etowah	0
	<i>September 26</i>	
Central	0; Kingsport	27
	<i>October 2</i>	
Central	6; Rome	0
	<i>October 9</i>	
Central	12; Nashville	6
	<i>October 16</i>	
Central	12; Bradley	7
	<i>October 23</i>	
Central	0; Baylor	6
	<i>October 31</i>	
Central	0; Knoxville City	14
	<i>November 12</i>	
Central	25; Notre Dame	0
	<i>November 28</i>	
Central	12; City	13

Interest at
the GAMES

A City Championship in BASEBALL . . .

<i>April 7</i>	Central	6; McCallie	4
<i>April 13</i>	Central	9; Notre Dame	3
<i>April 15</i>	Central	16; Bradley	11
<i>April 17</i>	Central	22; City	7
<i>April 21</i>	Central	15; Notre Dame	14
<i>April 24</i>	Central	16; McCallie	4
<i>April 30</i>	Central	1; Bradley	6
<i>May 5</i>	Central	11; City	7

LETTERMEN

EMMETT MALLETT	Left Field
ROBERT McCABE	Third Base
BILLY O'BRIEN	Second Base
PAUL JOHNSON	Center Field
FLETCHER JOLLY	Catcher
J. R. LIGON	Right Field
J. A. MORRIS	Shortstop, Captain
TOMMY SUDDATH	First Base
PAUL STEINMAN	Pitcher
ATLEE PARKER	Pitcher
CARL MANNING	Catcher
JAMES SKIPPER	Pitcher
J. C. ANDERSON	Outfield
EVERETT HUDSON	Manager



COACH BILL BALES



COACH WILLARD MILLSAPS



★ CITY PREP BASKET



BILLY O'BRIEN, Captain and Forward W. C. WHEAT, Center JAMES BROWN, Guard FRED BUTCHER, Guard

RESULTS OF THE SEASON

December 12	There	Central, 54	Lee High, 6
December 15	Here	Central, 30	Charleston, 21
December 17	There	Central, 28	Bradley, 20
December 22	There	Central, 25	Charleston, 27
December 27	Here	Central, 34	Daisy, 20
December 29	There	Central, 21	Daisy, 23
January 5	Here	Central, 28	Bradley, 22
January 8	Here	Central, 18	Washington, 17
January 13	There	Central, 33	McCallie, 12
January 15	There	Central, 23	City, 12
January 16	There	Central, 30	Notre Dame, 17
January 21	There	Central, 25	Washington, 35
January 22	There	Central, 30	Kingsport, 23
January 23	There	Central, 15	Johnson City, 14
January 29	Here	Central, 25	Johnson City, 26
February 1	Here	Central, 13	Kingsport, 29
February 8	Here	Central, 27	Notre Dame, 22
February 9	There	Central, 22	City, 20
February 15	There	Central, 32	Baylor, 28
February 16	Here	Central, 34	City, 17
February 18	There	Central, 22	McMinn, 21
February 23	Here	Central, 16	McMinn, 22
February 26	Here	Central, 26	Baylor, 20
March 1	Here	Central, 27	McCallie, 20
March 4	U. C. Tournament	Central, 29	Decatur, 14
March 5	U. C. Tournament	Central, 22	McMinn, 24
March 11	U. T. Tournament	Central, 12	Knoxville City, 20

JOHN BROOKS, Manager



ORGANIZATIONS



ACES

ALWILDA PURSLEY President EDNA RUTH WHEELER, Secretary-Treasurer
IONE HINDMAN Vice-President MISS SARAH HUBBARD Sponsor



S. P. O. R. CLUB

JEAN BOURGES President VIRGINIA FORD Secretary
GEORGE CONNOR Vice-President CHARLES EDWARDS Treasurer
MISS MARY LOU DERRYBERRY Sponsor
MISS HELEN PRYOR Sponsor

ORGANIZATIONS



CAMERA CLUB

WALTER VALENTINE	<i>President</i>	JOHN LAYSON	<i>Treasurer</i>
JULIA RAWLINGS	<i>Vice-President</i>	MR. WILLIAM R. ROLLINS	<i>Sponsor</i>
BETTY L'HEUREUX	<i>Secretary</i>	MR. ARLIE HOODENPYL	<i>Sponsor</i>



ETIQUETTE CLUB

DOROTHY REEVES	<i>President</i>	DARWIN HAROLD	<i>Secretary</i>
GENE NELSON	<i>Vice-President</i>	POWELLEN WALKER	<i>Treasurer</i>
MISS DOROTHY FRENCH	<i>Sponsor</i>		

ORGANIZATIONS



ICE CREAM CREW

CAROLYN POINDEXTER	CHARLOTTE BLAIR	AMY LOU LEWIS
JEWEL DICKSON	EDITH HUMBAR	ANITA JENKINS
	MARY RUTH RAMSEY	
	MR. J. A. ANDERSON, <i>Sponsor</i>	



ANCHORS AWEIGH

BETTY JO MONTGOMERY	<i>President</i>	BERYL HEALY	<i>Sec. and Treas.</i>
VIVIAN DAVIS	<i>Vice-President</i>	MISS MARY ELLEN RICE	<i>Sponsor</i>

ORGANIZATIONS



COMMERCIAL TEACHERS

MRS. HAZEL BARTON
MISS IDA NICKEL

MRS. GEORGE RICE
MISS RUBY COCHRAN

MISS IMOGENE ROBERTSON
MRS. MADGE MCCOY



BANK AND BOOKSTORE GROUP

BETTY THURMAN, BETTY DAVIS Tellers	JEAN REYNOLDS, VIVIAN HOPKINS Asst. Sup.
MILLARD REYNOLDS Bookkeeper	ELIZABETH GARRIGUS Supervisor
ALLAN BISPLINGHOFF Secretary	MARGARET CUSHMAN Cashier
MRS. GEORGE RICE Sponsor	

ORGANIZATIONS



JUNIOR RED CROSS OFFICERS

BETTY ROGERS Treasurer
FRANCIS WILLIAMS Entertainment Chairman
DAVID MASINGILL Publicity Chairman

JOHN STEFFNER President
SAM STEFFNER Asst. Business Manager
FRANCES JUSTICE Secretary



CENTRAL JUNIOR RED CROSS UNIT

MRS. IDA LONGLEY Sponsor	MISS VESTA NELSON Sponsor
MISS MARY ELLEN RICE Sponsor	MRS. HAZEL BARTON Sponsor
MR. ARLIE HOODENPYL Sponsor	

ORGANIZATIONS



SECOND PERIOD CHORUS

DEXTER HODGES	<i>President</i>	WILLIE MAE REED	<i>Sec. and Treas.</i>
JANETTE McARTHUR	<i>Vice-President</i>	JACK RAY	<i>Librarian</i>
MR. KENNETH W. JOHN		<i>Sponsor</i>	



SEVENTH PERIOD CHORUS

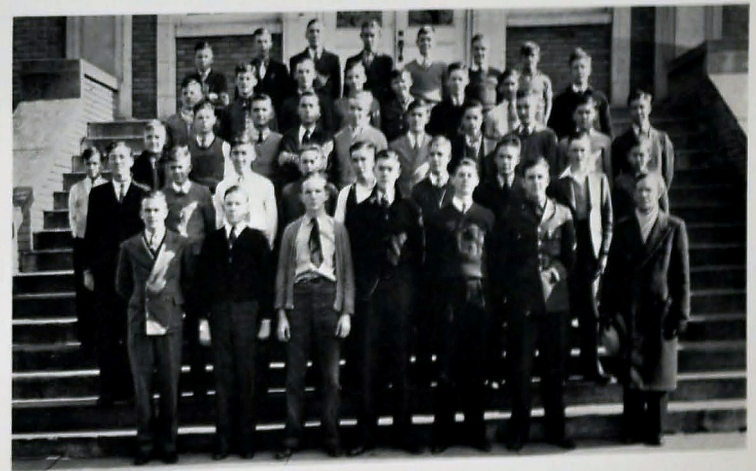
ELDER JONES	<i>President</i>	HARRY WITT	<i>Sec. and Treas.</i>
BETTY L'HEUREUX	<i>Vice-President</i>	ALVIN McBROOM	<i>Librarian</i>
MR. KENNETH W. JOHN		<i>Sponsor</i>	

ORGANIZATIONS



ORCHESTRA

HAROLD ROBINSON	<i>President</i>	LOVELL GANNAWAY	<i>Sec. and Treas.</i>
JAMES LINN	<i>Vice-President</i>	MR. KENNETH W. JOHN	<i>Sponsor</i>



BAND CLUB

TOMMY SUDDATH	<i>President</i>	ROSA JANE VERHEY	<i>Sec. and Treas.</i>
CHARLES BATEY	<i>Vice-President</i>	MR. D. T. SWIHART	<i>Sponsor</i>

ORGANIZATIONS



NATIONAL HONOR SOCIETY

F. B. TAYLOR *President*
 VIVIAN DAVIS *Vice-President*
 BERYL HEALY *Secretary*

TWO YEAR MEMBERS

FRANKIE AUCOTT	MYRTIE MAE ERWIN	MARY JANE MAUPIN
NORA ALLISON BARKER	MARY HUGH HAINES	ANNA MARIE PECKINPAUGH
MARY ANNE BUCK	DARWIN HAROLD	T. J. QUARLES
ELLIS BUTLER	VIRGINIA HENNESSEE	JEAN REYNOLDS
FRANCES CAMP	IVA McDONALD	LA VERNE ROBERTS
REGINA CRAVEN	HANNAH MARLOWE	RUSSELL TARVER

ONE YEAR MEMBERS

DORIS AUCOTT	EDITH FARMER	MAYBELLE McABEE
ANTOINETTE BARLACH	MARGUERITE GRANERT	JUANITA NABORS
ALLAN BRISPLINGHOFF	ELIZABETH GARRIGUS	HOWARD PRATT
CHARLOTTE BLAIR	THURMAN HALL	ELIZABETH REDFORD
GEORGE BRIDGERS	FRED HETZLER	MILLARD REYNOLDS
LAURINE CRAWLEY	VIVIAN HOPKINS	OPHELIA SETLIFFE
ROBERT DEMOS	ARCHIE LAWRENCE	ALINE SMITH
ADRIENNE DUCLOS	JOHN LAYSON	JUNE SMITH BOB STIVERS
	ROBERT LEVINSON	
	BETTY L'HEUREUX	

MRS. JOHN A. SHELTON *Sponsor* Mr. J. S. HUNT *Treasurer*

A TRIBUTE TO OUR PATRONS

★
 PROGRESS IS OF A COOPERATIVE NATURE. MAN LEADS A LIFE INTERDEPENDENT WITH THAT OF HIS FELLOW MEN. WE HELP OTHERS AND THEY IN TURN ASSIST US ON THE UPWARD GRADE.

CENTRAL'S PROGRESS MAY BE MEASURED NOT ONLY BY HER SERVICE TO OTHERS BUT BY THE ASSISTANCE RENDERED HER.

FOR MANY YEARS THE "CHAMPION" HAS BEEN ABLY SUPPORTED BY A NUMBER OF PATRONS AND FRIENDS. WE ARE DEEPLY GRATEFUL FOR THIS AID. IN THANKING THEM FOR THEIR GENEROSITY TO US, MAY WE THROUGH OUR PATRONAGE DO OUR PART IN PROMOTING THEIR PROGRESS.

OUR PATRONS

2

ARCHER PAPER COMPANY, 6-3189	1124-1126 Market Street
THE ATHLETIC HOUSE	Knoxville, Tennessee
L. G. BALFOUR COMPANY, JEWELERS	Attleboro, Massachusetts
BENNETT-HUBBARD CANDY COMPANY, 6-0015	234 East Eleventh
BENSON PRINTING COMPANY	Nashville, Tennessee
BOERGER SERVICE STATION, 2-9156	1415 McCallie Avenue
BROOME SERVICE STATION, 2-5345	McCallie and Dodds
J. P. BROWN, SCHOOL BOARD MEMBER	Red Bank, Tennessee
J. AVERY BRYAN COMPANY, INC., UNDERTAKERS, 6-2131	747 McCallie Avenue
CAMERON AND BARR BAKING COMPANY, 6-8176	1615 Cowart
C. E. CAMP, J. P., 7-2652	1516 Market Street
DR. EARLE CAMPBELL, 6-2240	Medical Arts Building
E. Y. CHAPIN, SCHOOL BOARD MEMBER	American Trust & Banking Company
CHAPMAN FUNERAL HOME, 6-4136	400 McCallie Avenue
CHATTANOOGA BUTTON AND BADGE MFG. COMPANY, 6-6934	109 East Seventh Street
CHATTANOOGA COCA-COLA BOTTLING COMPANY, INC., 6-5334	201 Broad Street
CHATTANOOGA GAS COMPANY, 6-0191	811 Broad Street
CHATTANOOGA MEDICINE COMPANY, 3-0030	3803 St. Elmo Avenue
COMMERCIAL STATIONERY AND SUPPLY COMPANY, 6-1241	737 Cherry Street
CONSOLIDATED BARBER SHOP No. 2	Ridge Junction
CONTOR'S, CLOTHIERS, 6-3828	529 Market Street
R. J. COULTER COMPANY, MORTICIANS, 6-6114	801 Vine Street
CRISMAN HARDWARE COMPANY, 7-1115	511 Market Street
JUDGE WILL CUMMINGS	Court House
DAVIDSON CLOTHING COMPANY, 6-1218	811 Market Street
ALEX DE FLORED, ICE CREAM	Corner Willow and Fourteenth
S. T. AND W. A. DEWEES COMPANY, GROCERS, 7-1121	810 Market Street
DIXIE OPERATING COMPANY, INC., THEATERS, 6-5923	423 High Street
ECKERDS, DRUGS	732 Market Street
EDMUNDSON SCHOOL OF BUSINESS, 6-1259	Edmundson Building
EDWARDS AND LE BRON, INC., JEWELERS, 6-7175	805 Market Street
THE FISCHER COMPANY, JEWELERS, 6-0923	801 Market Street
FOSTER ART GLASS COMPANY, 6-2081	2365 Rossville Boulevard
FOWLER BROTHERS COMPANY, FURNITURE, 7-2174	633 Broad Street
FOX BROS. COMPANY, WHOLESALE GROCERS, 6-3139	1215 King
GEORGE'S PLACE, BARBECUE STAND, 6-9531	129 East Eighth
GILMAN PAINT AND VARNISH COMPANY, 6-5181	615 Market Street
GORDON'S PHARMACY, 6-3912	422 West Ninth Street
H. W. GRANERT, PHOTOGRAPHER, 6-7335	813 1-2 Market Street
GREEN LANTERN GARDEN, 2-4021	3503 Brainerd Road
HAMILTON COUNTY HERALD, NEWSPAPER, 6-4033	617 Cherry Street
HARDIE AND CAUDLE, CLOTHIERS, 6-7032	809 Market Street
HARRIS AND HOGSHEAD, OPTOMETRISTS, 6-7545	13 East Eighth Street
HOWARD, CLEANERS, 2-1116	1631 McCallie Avenue
PEABODY HOWARD, ATTORNEY-GENERAL, 6-6969	Courthouse
IVORY SYSTEM, CLEANERS	Salem, Massachusetts
JACOBS WHOLESALE CANDY COMPANY, 6-4314	925 Market Street
JO-ANN FASHION SHOPPE, 3-2028	201 Chickamauga Avenue
JOURNAL ENGRAVING COMPANY	Atlanta, Georgia
JOY'S, FLORIST, 6-7168	817 Market Street

OUR PATRONS

2

J. KASET AND GLADSTONE COMPANY, CANDIES, ETC., 6-8711	1415 Carter Street
KING-DOBBS AND COMPANY, WHOLESALE GROCERS, 6-1251	416 East Eleventh Street
KINGSFORD PRESS	Kingsport, Tennessee
S. H. KRESS AND COMPANY, TEN-CENT STORES, 6-5631	706 Market Street
LANSFORD PIANO COMPANY, 6-0923	730 Cherry Street
NELSON D. LAWING, PLUMBER, 2-5425	418 Dodds Avenue
L. C. LEACH AND COMPANY, JEWELERS, 7-2841	738 Cherry Street
LOVEMAN'S, INC., DEPARTMENT STORE, 6-0161	800 Market Street
McKENZIE SCHOOL, 6-7157	401 Oak Street
MARTIN-THOMPSON COMPANY, SPORTING GOODS, 6-2433	706 Cherry Street
MILLER BROS. COMPANY, DEPARTMENT STORE, 7-1251	629 Market Street
MOUNTAIN CITY STOVE COMPANY, 6-0211	1240 Market Street
NEWTON, CHEVROLET, 6-0181	329 Market Street
PALMER CLOTHES, 6-3834	825 Market Street
T. H. PAYNE COMPANY, OFFICE SUPPLIES, 6-0139	821 Market Street
PEOPLES STUDIO, PHOTOGRAPHS, 6-9480	10 East Ninth Street
PHILLIP'S PLACE, LUNCHES, 2-9198	511 Dodds Avenue
POWELL MATTRESS COMPANY, 6-8062	310 East Main Street
REDFORD STORES COMPANY	2230 Brainerd Road
RHYNE PHARMACY, 3-0069	117 Chickamauga Avenue
RIDGE DRUG COMPANY, 2-1171	Corner Dodds and Chamberlain
RIDGE MOTOR SERVICE, 2-3523	909 Dodds Avenue
RIDGE SHOE SHOP	Ridge Junction
R. K. SCHOLZE, GROCERIES, 2-2131	415 Dodds Avenue
SHARP BROS., MEATS, 6-6625	402 West Ninth Street
ZELMA F. SHERILL, CIRCUIT COURT CLERK	Court House
JAS. M. SHAW COMPANY, CLOTHIERS, 6-3431	Market at Ninth
SOUTHERN DAIRIES, INC., 2-3116	457 Dodson Avenue
STATE THEATRE, 6-5535	620 Market Street
STERCHI BROS. STORES, FURNITURE, 7-2151	703 Broad Street
A. G. STIVERS LUMBER COMPANY, 6-7179	345 East Main Street
STOKES-FORSTNER PHOTO. COMPANY, 6-7243	809 Pine Street
STOVALL HARDWARE COMPANY, 6-7101	711 Cherry Street
LYLE STOVALL, INSURANCE, 6-0552	Hamilton National Bank Bldg.
TEMPLETON'S, JEWELERS, 6-7628	12 West Eighth Street
THE TENNESSEE ELECTRIC POWER COMPANY, 6-1121	540 Market Street
TIVOLI THEATRE, 6-7753	709 Broad Street
TOMLINSON'S DRUG STORE, 3-1141	Rossville, Georgia
UNITED DAIRIES, 6-5744	1027 East 23rd.
U. S. FIVE- AND TEN-CENT STORES	Rossville, Georgia
UNIVERSITY OF CHATTANOOGA, 6-8431	McCallie Avenue
VIOLET STUDIO, PHOTOGRAPHS, 6-1553	11 East Seventh Street
THE VOGUE, LADIES READY-TO-WEAR, 6-5114	719 Market Street
J. H. WANN AND SONS, MORTICIANS, 6-2112	660 Georgia Avenue
WHITE SWAN LAUNDRY, 6-2103	227 East Eleventh Street
WIGGINS TIRE STORE, 2-9268	2527 East Main Street
WILEY SCHOOL OF BUSINESS	Fifth Floor, Times Bldg.
WILKINS CANDY COMPANY, 6-1151	1273 Market Street
WILLIAMS GLASS AND FRAME COMPANY, 6-8353	814 Lindsay
F. W. WOOLWORTH COMPANY, TEN-CENT STORES, 6-7036	710 Market Street

Central . . .

MARCHES ON

Central has ever kept step with progress in the march of time. During the thirty years of her life she has grown from a school with a faculty of ten to an institution enlisting the services of seventy-nine teachers; from a student body of 200 to one of 2,033; from a frame building of four rooms to a modernly equipped brick building of approximately eighty-five rooms. From a beginning of six departments she has steadily advanced to a curriculum which offers twelve complete courses of study.

Today thousands, who loyally hail her as Alma Mater, may be found throughout the country successfully engaged in various professions or otherwise worthily discharging their duties as good citizens.

Finally, from a small school, established in 1907, Central High School in 1937 has grown into an institution of highest rank among high schools in the country.



THE CHAMPION

OF PROGRESS

