



the
1936 CHAMPION

James S. Milburn



PUBLISHED ANNUALLY
BY THE SENIOR CLASS OF
CENTRAL
HIGH SCHOOL
CHATTANOOGA, TENNESSEE

COPYRIGHTED, 1936

MILDRED WILHOITE, EDITOR-IN-CHIEF
EDWARD BOWER, BUSINESS MANAGER

The Champion



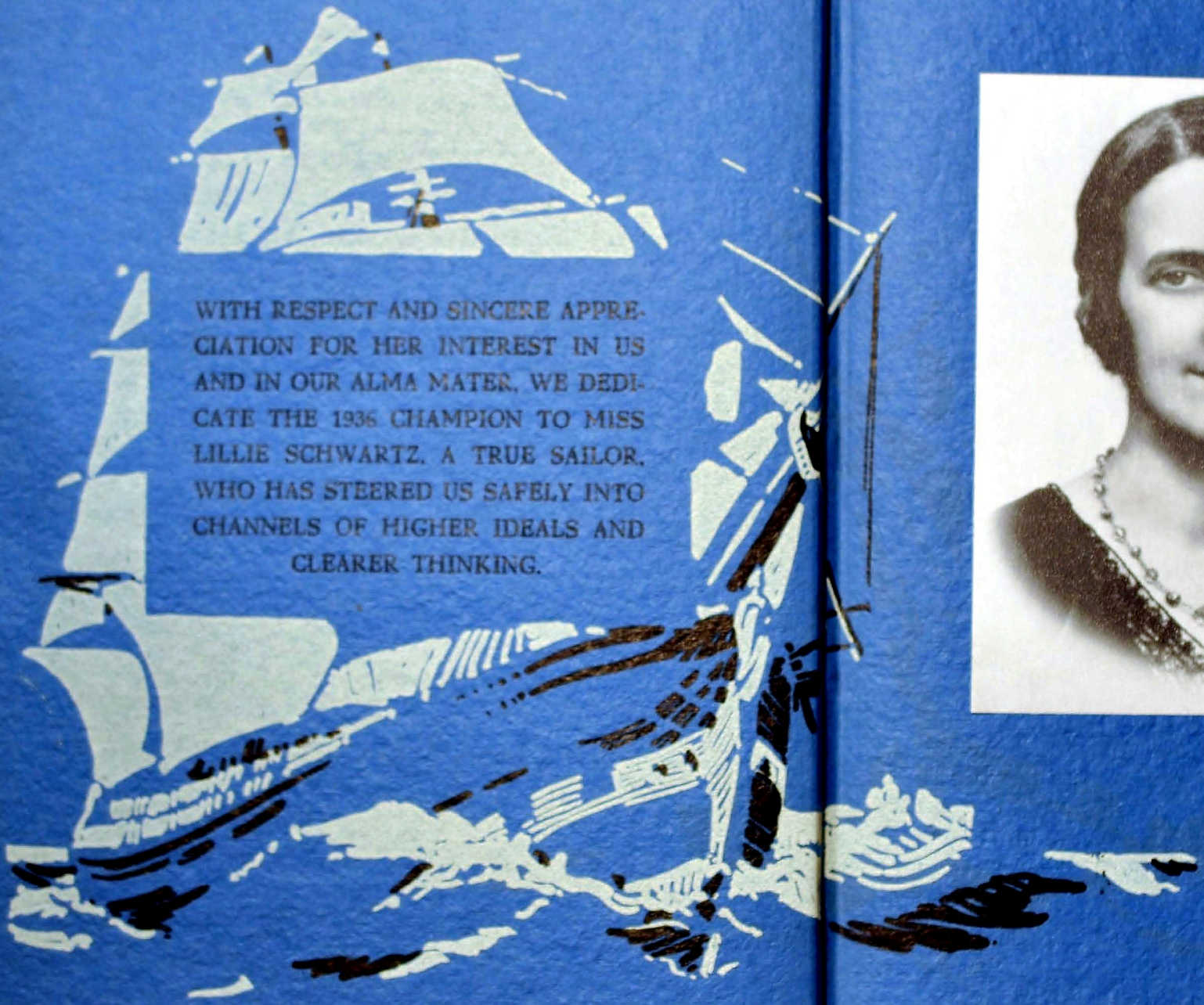
Foreword

AS YOU SAIL THROUGH THE
PORT OF GRADUATION ON
THE S. S. CENTRAL '36, MAY
THIS LOG OF THE CHAMPION
MAKE YOUR VOYAGE MORE
PLEASANT BY REMINDING
YOU OF THE HAPPY HOURS
SPENT IN PREPARATION FOR
YOUR VENTURE UPON
LIFE'S SEA.



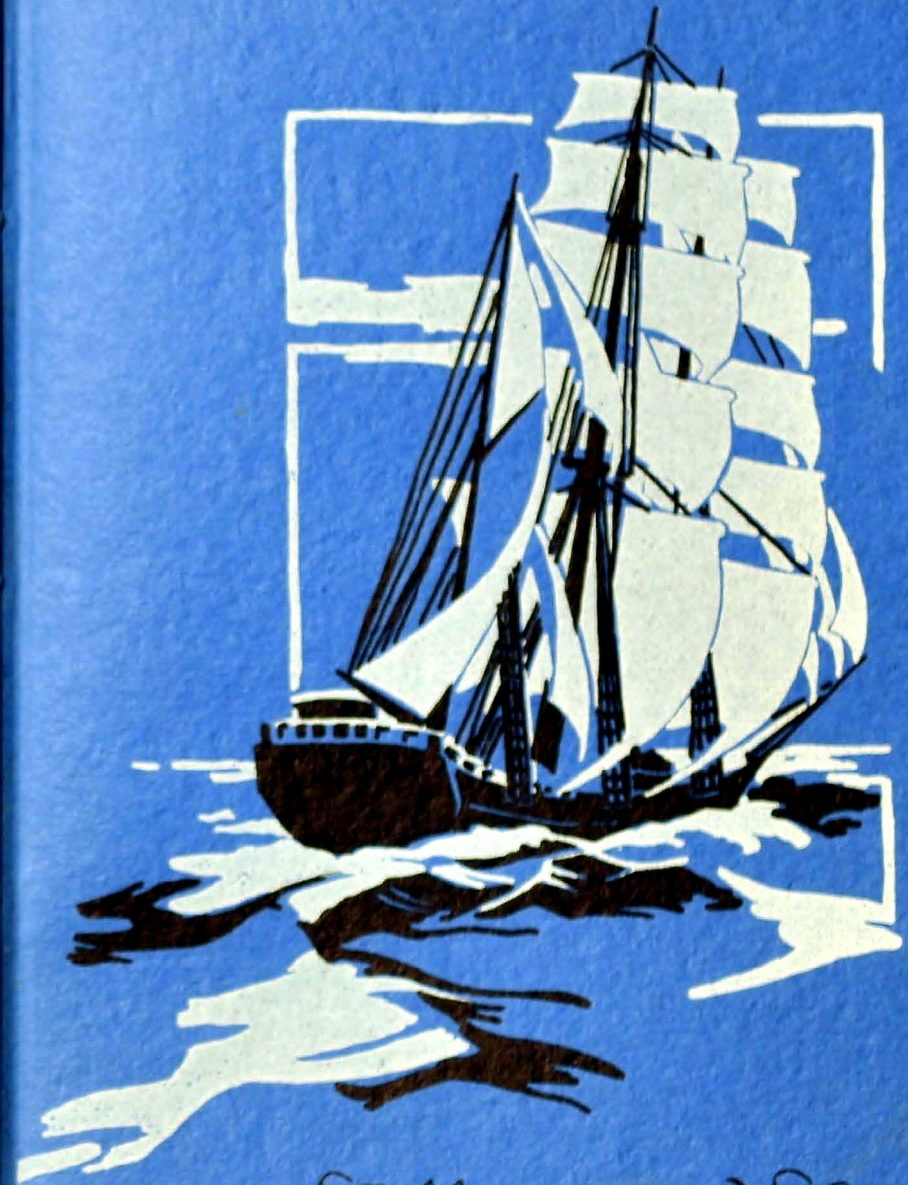
Contents

OFFICERS AND CREW
TREASURE TROVE
MEN OF BRAWN
BOARDERS AWAY
SHIPMATES ALL!



WITH RESPECT AND SINCERE APPRECIATION FOR HER INTEREST IN US AND IN OUR ALMA MATER, WE DEDICATE THE 1936 CHAMPION TO MISS LILLIE SCHWARTZ, A TRUE SAILOR, WHO HAS STEERED US SAFELY INTO CHANNELS OF HIGHER IDEALS AND CLEARER THINKING.





Officers and Crew



MR. S. E. NELSON

*A
"Skipper"
Respected
by All*

IN THE FIFTEEN YEARS OF HIS WHOLE-HEARTED SERVICE FOR OUR ALMA MATER, MR. NELSON HAS PROVED THROUGH HIS SINCERITY, UNDERSTANDING, AND GOOD JUDGMENT TO BE A CAPABLE AND BELOVED "SKIPPER" OF THE GOOD SHIP CENTRAL.

The Faculty

MR. C. J. ANDERSON
MR. W. P. BALES
MRS. HAZEL BARTON
MISS FLORA BECK
MRS. MILDRED BETTS

MRS. HARRY L. BROWN
MRS. MARY D. CALLIS
MRS. G. M. CLEMENTSON
MRS. D. S. COUGHLIN

MISS EDNA CROSS
MISS MARY LOU DERRYBERRY
MR. J. POPE DYER
MISS LAVETA EPPERSON
MISS RUTH FAIN

MISS ELSIE JANE FLEMING
MR. J. J. FLETCHER
MR. J. L. HAIR
SGT. G. M. HARRIS

MR. CLEBURNE HATFIELD
MISS MARGARET HAYS
MR. ARLIE HOODENPYL
MISS EDMUND HOOPER
MISS SARAH HUBBARD

MR. J. SYDGER HUNT
MRS. EDNA C. JACOWAY
MR. KENNETH JOHN
MRS. LILA K. JOHNSON

MISS EDNA EARL JONES
MISS ELIZABETH JONES
MISS SALLY MAY KING
MRS. CLARENCE KOLWYCK
MISS GRACE LASATER

MISS CAROLINE LILLARD
MRS. IDA M. LONGLEY
MISS JOSEPHINE W. LOVE
COL. BALLARD LYERLY



The Faculty

MISS RACHEL McALLISTER
MR. GEORGE MCCOY
MR. THOMAS E. McPHERSON
MR. JAMES MILBURN
MR. WILLARD MILLSAPS

MISS ELLEN MULLENNIX
MISS VESTA NELSON
MISS IDA NICKEL
MR. R. E. OLINGER

MISS JOE ORE
MISS BEULAH PARKER
MR. S. DEAN PETERSEN
MRS. J. FRANK PRICE
MISS HELEN G. PRYOR

MRS. GEORGE RICE
MISS MARY ELLEN RICE
MISS IMOGENE ROBERTSON
MRS. H. B. ROBINSON

MISS MARY ROBINSON
MRS. BLANCHE ROGERS
MR. WILLIAM ROLLINS
MISS LILLIE SCHWARTZ
MR. J. A. SETLIFE

MRS. JOHN A. SHELTON
MRS. JANIE SHROPSHIRE
MRS. A. G. SKATES
MR. A. P. STEWART

MR. DENNIS SWIHART
MR. G. M. SWINGLEY
MR. S. Q. TALLENT
MISS MARGARET TAYLOR
MR. W. H. TEMPLETON

MRS. W. H. TEMPLETON
MISS MARGARET WAPLES
MR. R. S. WHARTON
MISS OLGA WITTENBERG
MISS EMILY SPENCER (not in picture)



Board of Education

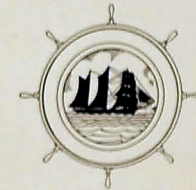
MRS. HARRY R. LACEY
Chairman

MR. ARTHUR L. RANKIN
Superintendent

MR. JOHN H. ALLEN
MR. J. P. BROWN

MR. GEORGE FORBES
MRS. WILL SHEPHERD

DR. E. S. BLAIR
MR. E. Y. CHAPIN



Senior Class

OFFICERS

DESMOND VANDIVER	<i>President</i>
EDWARD BOWER	<i>Vice-President</i>
HELEN GROSS	<i>Secretary</i>
DOROTHY SPARKMAN	<i>Treasurer</i>
LEROY GLASSCOCK	<i>Sergeant-at-Arms</i>
RALPH MILLER	<i>Sergeant-at-Arms</i>

• Seniors •

ARNOLD ADAMS "OSSIE"
Entered from Lookout Junior, '32; Boys' Glee Club, '35, '36.

THOMAS ADAMS "MUSSOLINI"
Entered from Lookout Junior, '31; Boys' Glee Club, '35.

MARY FRANCES ALLEN "BLUE-EYES"
Entered from East Side Junior, '32; Varsity Glee Club, '33, '34; Camera Club, '33, '34, '35; Girls' Hi-Y, '33, '34, '35.

ESTHER ANDERSON
Entered from Dickinson Junior, '33; Physical Ed. Club, '34; Band, '33, '34, '35, '36; Band Club, '33, '34, '35, '36; Army Club, '36; Girls' Drill Squad, '35; Red Cross, '36; Varsity Glee Club, '36; National Honor Society, '36.

EVELYNE ELIZABETH ANDERSON
Entered from Central High, Syracuse, New York, '34; Art Club, '34, '35, '36; Biology Club, '34, '35, '36.

J. C. ANDERSON
Entered from East Side Junior, '33; Military, '33, '34, '35, '36; Sergeants' Club, '36.

EDWARD L. ARMS "ED"
Entered from East Lake Junior, '33; Military, '33, '34, '35, '36; Sergeants' Club, '36.

JAMES M. ARMSTRONG "JIMMY"
Entered from Bradley High, Cleveland, Tennessee, '33; Hiking Club, '33, '34, '35, '36; Sergeants' Club, '36; Tennis Club, '34; Scout Club, '35, '36.

DEFOREST ARNOLD "DEE"
Entered from East Lake Junior, '33.

SARAH FRANCES ARNOLD "BLACKIE"
Entered from East Lake Junior, '33.

FREDERICK W. ARNOLD
Entered from East Side Junior, '33; Band, '33, '34; Band Club, '33, '34; Radio Club, '34, '35, '36.

JOE ARNOLD
Entered from Lookout Junior, '32; Boys' Glee Club, '34, '35; Operetta, '35.

RUSSELL ARNOLD
Entered from North Side Junior, '33; Military, '33, '34, '35.

TED ARNOLD
Entered from East Side Junior, '32; Red Cross, '33, '34; Office Force, '36.

• Seniors •

THELMA ARRANT "THEL"
Entered from Lookout Junior, '35.

MILDRED CORREN ASHLEY "MILLIE"
Entered from Mountain Creek Junior, '32; Etiquette Club, '33, '34, '35, '36; Girls' Hi-Y, '36.

LESTER A. AUERSWALD
Entered from Immanuel Lutheran, '32; Science Club, '32, '33, '34; Stamp Club, '35.

THOMAS MEHRAN AVAKIAN
Entered from East Lake Junior, '31.

ALBERT BAKER "CANNONBALL"
Entered from Sunny Side Junior, '30; Boys' Glee Club, '34, '35, '36; Dramatic Club, '30, '31; Lettermen's Club, '33, '34, '35; Etiquette Club, '33; Baseball, '33, '34, '35; Basketball, '33, '34; Football, '34, '35.

MARY EDYTHE BAKER
Entered from East Lake Junior, '33; S. P. O. R., '34; Girl Reserves, '34, '35, '36; Girls' Hi-Y, '36; Usher, '36; National Honor Society, '36.

FRANK STEWART BARKER, JR.
Entered from Red Bank Junior, '33.

SIEGFRIED BARLACH "SIO"
Entered from Marcy-State Grade School, March, Wisconsin, '33; Boy Scout Club, '36; Hiking Club, '35, '36.

RICHARD A. BIDWELL "DICK"
Entered from Chattanooga High, '34; Orchestra, '34, '35, '36; Band, '34, '35, '36; Band Club, '34, '35, '36; Lieutenant of Band, '36.

FRANCES LOUISE BERKEMEIER
Entered from North Chattanooga Junior, '33; Etiquette Club, '33, '34, '35, '36; Red Cross, '34; Spanish Club, '35; Camera Club, '36.

EDWARD BEENE
Entered from North Chattanooga Junior, '33; Spanish Club, '35; Red Cross, '35; Camera Club, '35, '36.

EUGENE FRANKLIN BLAIR "GENE"
Entered from Rome High, Rome, Georgia, '33; Sergeants' Club, '35; Officers' Club, '36; Boys' Hi-Y, '36; Lieutenant R. O. T. C., '36; Grady Literary Society, '36; Orchestra, '36.

TAYLOR L. BLAIR "BLOWDIE"
Entered from East Side Junior, '32; Depression Club, '34, '35; Airplane Club, '34; Radio Club, '34; Boys' Glee Club, '36; Boys' Hi-Y, '36; Digest Staff, '35, '36; Boll Weevils, '36.

WEBSTER TAYLOR BALLINGER
Entered from Fairmount Grammar, '32; Military, '33, '34, '35.

Seniors

EDWARD BOWER "Ed"
Entered from Maury High, Norfolk, Virginia, '33; Boys' Hi-Y, '34, '35, '36; Grady Literary Society, '34, '35, '36; Senate, '34, '35, '36; Boys Scout Club, '34, '35, '36; Sergeants' Club, '34, '35; Lieutenant R. O. T. C., '36; CHAMPION Staff, '36; Digest Staff, '35, '36; National Honor Society, '35, '36.

DOROTHY GERALDINE BOWLING "Dot"
Entered from Brainerd Junior, '33; Usher, '36; Digest Staff, '36; National Honor Society, '35, '36.

ANNA LOUISE BOYD
Entered from Brainerd Junior, '33; Etiquette Club, '34; Girls' Hi-Y, '36.

EMMA MAE BRADFORD "EMMY"
Entered from Fairmont Grammar, '33; National Honor Society, '36.

GILLEY TERRELL BRAND
Entered from North Chattanooga Junior, '33; Biology Club, '33, '34, '35, '36; R. O. T. C., '33, '34, '35, '36; Sergeants' Club, '36.

ELIZABETH ALICE BRANDON "Libby"
Entered from East Side Junior, '31; Red Cross, '34, '35, '36; Girl Reserves, '35.

ROBERT BROOKS "Bob"
Entered from East Lake Junior, '33; R. O. T. C., '33, '34, '35, '36; Sergeants' Club, '36; Scout Club, '34, '35, '36; Digest Staff, '36.

AGNES ELIZABETH BROWN "TOBIN"
Entered from North Chattanooga Junior, '32; Library Staff, '34, '35; Bookstore, '33, '34, '35, '36; National Honor Society, '36.

ANNA GERTRUDE BROWN "ANN"
Entered from Boynton High, '33; Art Club, '34, '35, '36; Biology Club, '34.

HELEN BROWN
Entered from East Side Junior, '33; French Club, '36; Red Cross, '36; Digest Staff, '36; Orchestra, '33, '34, '35, '36; Band Sponsor, '36.

J. P. BROWN "RED"
Entered from Red Bank Junior, '33; Sergeants' Club, '34; Lieutenant R. O. T. C., '36; Officers' Club, '36; Camera Club, '35; Depression Club, '36; CHAMPION Staff, '35; Red Cross, '34, '35, '36; National Honor Society, '36.

LEO HAMILTON BROWN
Entered from Lookout Junior, '33; Digest Staff, '35, '36.

RUBY EDWARD BUCKNER
Entered from Dickinson Junior, '33; Band, '33, '34, '35, '36; Printing Club, '33, '34, '35, '36; Digest Staff, '36; Sergeants' Club, '36.

HENRY M. BUHRMAN
Entered from Ashland High, Ashland, Virginia, '34; Camera Club, '34, '35, '36; Airplane Club, '36.

Seniors

EDNA MAE BURGER "BRAT"
Entered from East Lake Junior, '33.

CLAUDE EDWARD BUTLER, JR. "Ed"
Entered from Brainerd Junior, '32; Red Cross, '33, '34, '35; Depression Club, '33, '34, '35, '36; Varsity Glee Club, '34, '35, '36.

MARCUS WALTER CARANISS, JR. "TEXAS"
Entered from Dallas Technical High, Dallas, Texas, '35.

OVA MAZEL CAMPBELL "MICKEY"
Entered from East Side Junior, '33; Red Cross, '34; Spanish Club, '34; Girls' Drill Squad, '34; Gym Circus, '35; Army Club, '36.

MARY GRACE CARD "PEANUT"
Entered from East Side Junior, '33; Science Club, '33; Candy Crew, '35; Digest Staff, '35, '36; French Club, '35, '36; CHAMPION Staff, '36; Red Cross, '33, '34, '35, '36; Battalion Sponsor, '36; Honorary Member of Officers' Club, '36.

KATHRYN VIRGINIA CARLTON "GINGER"
Entered from East Side Junior, '33; Girls' Hi-Y, '36; Dramatic Club, '36; Usher, '36; Senate, '35, '36; French Club, '36; Varsity Glee Club, '36.

GENE CARR
Entered from Brainerd Junior, '33; Girls' Hi-Y, '34, '35, '36; S. P. Q. R., '34; Digest Staff, '35, '36; French Club, '36; Tumblers, '34, '35, '36; Aces Club, '36; Senate, '35; Dramatic Club, '34; Usher, '36; Physical Ed. Club, '34; National Honor Society, '35, '36.

MARTHA KATHERINE CASE "KITTY"
Entered from Dickinson Junior, '32; Etiquette Club, '32; Girl Reserves, '35; Gym Circus, '34.

EUGENE CLEVINGER "GENE"
Entered from East Side Junior, '33; Stamp Club, '34, '35, '36; National Honor Society, '36.

FRANCES COBLEIGH "SHANGHAI"
Entered from Dickinson Junior, '33; French Club, '34, '35, '36; Dramatic Club, '34, '35, '36; Red Cross, '35; Etiquette Club, '35; Girls' Hi-Y, '34, '35, '36.

BEVERLY COLLINS "SUSIE"
Entered from Red Bank Junior, '33; Hiking Club, '33, '34, '35; Girl Reserves, '36.

NANCY COOK "COOKIE"
Entered from Brainerd Junior, '33; Tumblers, '35; Hiking Club, '34, '35, '36; Girls' Hi-Y, '36; Girls' Glee Club, '36; Art Club, '36; Latin Club, '34; National Honor Society, '36.

JOHN COTTEN
Entered from East Lake Junior, '33; Boys' Glee Club, '35.

LUCY ANN COWART
Entered from Fairmont Grammar, '32; National Honor Society, '36.

Seniors

MARGARET E. CRAWFORD

Entered from East Side Junior, '33; Senate, '34, '35, '36; Usher, '36; Girls' Hi-Y, '36; French Club, '34, '35, '36; Spanish Club, '34; National Honor Society, '35, '36.

PERRY CRUMLEY

Entered from East Side Junior, '32; Science Club, '33; Baseball, '33, '34, '35; Football, '34, '35, '36; "C" Club, '36; Knickerbocker's Club, '36; Boys' Glee Club, '36.

JACK CALVIN CRUTCHFIELD

Entered from Dickinson Junior, '33; Radio Club, '34; Red Cross, '36; Sergeants' Club, '36.

JAMES R. CYPHERS

Entered from East Side Junior, '32; Airplane Club, '33; Band, '33, '34, '35, '36; Band Club, '33, '34, '35, '36; Sergeants' Club, '36.

R. T. DABBS

Entered from East Side Junior, '33; Boll Weevils, '34, '35, '36; Science Club, '33; R. O. T. C., '35.

MARGARET L. DAILEY

Entered from Lakeview Grammar, '32; Science Club, '32, '33, '34; Red Cross, '34; Biology Club, '33, '34, '35, '36; French Club, '34, '35, '36; Physical Ed. Club, '34, '35, '36; Usher, '36; National Honor Society, '35, '36.

HERBERT C. DAVIS

Entered from East Side Junior, '33; Boys' Hi-Y, '33, '34, '35, '36; Science Club, '33; Dramatic Club, '36; Etiquette Club, '36.

ADABELLE DECKER

Entered from East Side Junior, '33; Girl Reserves, '34; Aces Club, '33, '34, '35, '36; Girl Scout Club, '34.

BERTHA DEERING

Entered from Chickamauga Grammar, Chickamauga, Georgia, '32; Girl Reserves, '33, '34, '35, '36; Hiking Club, '34, '35, '36; Red Cross, '35.

ETNA DEERING

Entered from Lee High in '34; Girl Reserves, '34, '35, '36; Hiking Club, '35, '36; S. P. Q. R., '34, '35; Tennis Club, '35.

BOBBIE LOU DEFRIESE

Entered from Brainerd Junior, '33; Girl Reserves, '34, '35; Usher, '36; National Honor Society, '36.

CARL A. DRAKE, JR.

Entered from Brainerd Junior, '33.

GENEVIEVE EDELSTEIN

Entered from Dickinson Junior, '33.

LOUIS ELDRIDGE

Entered from East Lake Junior, '33; Senate, '33, '34, '35, '36; Boys' Hi-Y, '33, '34, '35, '36; Dramatic Club, '36; Grady Literary Society, '36; Digest Staff, '35, '36; Spanish Club, '34.

Seniors

EDNA ELLIS

Entered from East Side Junior, '33; Bookstore, '34; Girls' Hi-Y, '35, '36; Girls' Glee Club, '35, '36; Senate, '33, '34, '35, '36; Digest Staff, '33; Tennis Club, '35; Usher, '36; National Honor Society, '35, '36.

CHARLES S. ELMORE

Entered from Boyd Junior, Knoxville, Tennessee, '33; Biology Club, '35; Sergeants' Club, '36; Scout Club, '36; Hiking Club, '36; R. O. T. C., '33, '34, '35, '36.

FLEMING McCLENDON EMPSON

Entered from East Side Junior, '32; Biology Club, '34, '35, '36; National Honor Society, '35, '36.

HERMAN E. ERNST

Entered from North Chattanooga Junior, '33; Band, '33, '34, '35, '36; Science Club, '34; Airplane Club, '35; Band Club, '33, '34, '35, '36; Red Cross, '36; Orchestra, '34, '35, '36.

DUFFY ISABELL EZELL

Entered from Berry School, Rome, Ga., '35.

CHARLES F. FALK

Entered from East Side Junior, '31; Boys' Glee Club, '36; Operetta, '35.

HOMER EDWARD FANSLER

Entered from East Side Junior, '32; Band, '32, '33, '34, '35, '36; Band Club, '32, '33, '34, '35, '36; Senate, '32, '33, '34; Airplane Club, '32, '33, '34, '35; Science Club, '33.

RICHARD FERRILL

Entered from Brainerd Junior, '33; Grady Literary Society, '34, '35, '36; Dramatic Club, '36; French Club, '35, '36; National Honor Society, '36.

BENJAMIN WEAVER FLETCHER, JR.

Entered from Anniston High, Anniston, Alabama, '34; Lieutenant R. O. T. C., '36; Grady Literary Society, '36; Biology Club, '35; Officers' Club, '36; French Club, '36; CHAMPION Staff, '36.

MARGARET JEWELL FLINN

Entered from East Lake Junior, '33; Red Cross, '36.

GORDON FORT

Entered from Lookout Junior, '33.

JACK FOSTER

Entered from Brainerd Junior, '33; Depression Club, '35, '36; Spanish Club, '34, '35.

MARTHA FRENCH

Entered from East Lake Junior, '33; Girl Reserves, '35, '36.

LEONA GERTRUDE FRYAR

Entered from Lookout Junior, '32.

Seniors



MARGUERITE DOROTHY FULLER "Peggy"
Entered from Johnson City Junior, Johnson City, Tennessee, '33; Dramatic Club, '35; Biology Club, '34, '35; Band, '35, '36; Band Club, '35, '36; Tennis Club, '34; Gym Circus, '34; Digest Staff, '34, '35, '36.



DOROTHY BETTY GANN "Dot"
Entered from East Side Junior, '33; Red Cross, '35, '36.



ALICE ELIZABETH GILBERT
Entered from Red Bank Junior, '33; Red Cross, '35; Girl Reserves, '35; Usher, '36; Varsity Glee Club, '36; Tennis Club, '35; National Honor Society, '36.



LEROY GLASSCOCK
Entered from East Side Junior, '33; Airplane Club, '33, '34, '35; Camera Club, '35, '36; Boys' Hi-Y, '35, '36; Captain R. O. T. C., '36; Officers' Club, '36; CHAMPION Staff, '36; National Honor Society, '36.



JANIE LOUISE GLENN "Rid"
Entered from East Lake Junior, '33; Girl Reserves, '35; Red Cross, '35; Usher, '36.



RUBY KATHRYN GODSEY "Kass"
Entered from Signal Mountain Grammar, '33; Dramatic Club, '33, '34, '35; Girls' Hi-Y, '36; Usher, '36; National Honor Society, '36.



BERTHA INEZ GOINS "Nez"
Entered from East Lake Junior, '33; Girl Scouts, '35; Spanish Club, '35; Girl Reserves, '36.



GUS GOTHARD
Entered from East Side Junior, '33; Sergeants' Club, '36; Boll Weevils, '33, '34, '35, '36; Orchestra, '34; Science Club, '34.

MARSHALL GRAY
Entered from Chattanooga High, '34; Depression Club, '35, '36.

MYRA GRAY "Sim"
Entered from East Side Junior, '33; Girl Reserves, '34, '35, '36; Girls' Glee Club, '35, '36.

HELEN RUTH GROSS
Entered from Red Bank Junior, '33; Aces Club, '33, '34, '35, '36; Army Club, '33, '34, '35, '36; Senate, '35; Usher, '36; Tumblers, '33, '34, '35, '36; Bookstore, '35; Physical Ed. Club, '33, '34, '35, '36; Class Secretary, '36; National Honor Society, '35, '36.

RUTH ELIZABETH GUESS "Lizzie"
Entered from Red Bank Junior, '33; Digest Staff, '36; Bank, '35, '36; Tennis Club, '34; Etiquette Club, '34, '35, '36.

CLYDE EDWIN GWIN
Entered from Brainerd Junior, '33; Depression Club, '34, '35, '36.

J. FLOYD HAGER, JR. "Doc"
Entered from Lookout Junior, '32.

Seniors



JUANITA MAE HAHN "Half Pint"
Entered from Hardy Junior, '33; Girls' Glee Club, '34, '35.



D. C. HALL "Mothur"
Entered from East Side Junior, '32.



RUTH JEQUITA HAMILTON "Boots"
Entered from East Side Junior, '33; Physical Ed. Club, '34; Girl Scout Club, '34.



ROBERT E. HANCOCK "Bob"
Entered from East Lake Junior, '33; Military, '34, '35.



CHARLES ROBERT HANKINS "Hank"
Entered from East Lake Junior, '33; Sergeants' Club, '35; Dramatic Club, '36; Boys' Hi-Y, '36; Lieutenant R. O. T. C., '36; Officers' Club, '36; Cheer Leader of Class, '36.



GEORGE K. HARRISON
Entered from Hardy Junior, '33; Rifle Team, '35, '36; Sergeants Club, '36.



WILLIAM D. HATCHETT "Bill"
Entered from Lookout Junior, '33; Football, '34; Sergeants' Club, '35; Lieutenant R. O. T. C., '36; Officers' Club, '36.



KATHERINE HAWKINS
Entered from Dickinson Junior, '32; Stage Steppers, '33; French Club, '33, '34, '35; Dramatic Club, '36; Nite Owl, '36; Digest Staff, '35, '36; Usher, '36; National Honor Society, '36.

JACK HEARD "LUCKY"
Entered from North Chattanooga Junior, '32; Sergeants' Club, '33; Science Club, '33; Biology Club, '34; Boll Weevils, '34; Printers' Club, '35, '36; Boys' Glee Club, '36.

WILLIAM T. HELM "Bill"
Entered from North Chattanooga Junior, '33.

LUCIUS HENSON "LITTLE HENSE"
Entered from Calhoun High, Calhoun, Georgia, '31; Football, '34, '35, '36; Basketball, '35, '36; Baseball, '35; Panic Club, '33; Lettermen's Club, '35; "C" Club, '36; Knickerbocker's Club, '36.

N. L. HESS
Entered from Brainerd Junior, '33; Sergeants' Club, '36; Biology Club, '35; Radio Club, '34, '35.

MARY LENICE HICKS "SHOOKY"
Entered from Rockwood High, '33; S. P. Q. R., '34; Girl Reserves, '34, '35, '36; Tennis Club, '35.

MARTHA LANE HIGH "MARTY"
Entered from East Lake Junior, '33.

Seniors



MARY DORCAS HILL "Sis"
Entered from Hume-Fogg High, Nashville, Tennessee, '35; Camera Club,
'36; Red Cross, '35, '36.

ERNESTINE HINDS "ERNIE"
Entered from Dickinson Junior, '33; Gym Circus, '35; May Day Festival,
'35; Physical Ed. Club, '36; Purple Club, '35, '36.

MINNIE MARGARET HODGES "MARGE"
Entered from Hardy Junior, '32; Girls' Glee Club, '34; Digest Staff, '34;
Red Cross, '35; Girl Reserves, '36.

ELEANOR PATRICIA HOLLOWAY
Entered from Dickinson Junior, '33; Spanish Club, '35; Girls' Glee
Club, '35.

CHARLOTTE HOLMAN
Entered from Hardy Junior, '33.

JOHN O. HOUSE "JOHNNY"
Entered from Silverdale Grammar, '33; Digest Staff, '35, '36; Stamp Club,
'36; Grady Literary Society, '36; Spanish Club, '35; Science Club, '34;
S. P. Q. R., '35; National Honor Society, '35, '36.

SARAH ELIZABETH HUDSON "LITTLE BIT"
Entered from East Lake Junior, '33; Girl Reserves, '35; Hiking Club, '36.

PAULINE ARA HUNDLEY "PAL"
Entered from Hardy Junior, '33; Spanish Club, '34; Panic Club, '34;
Etiquette Club, '35, '36.

ROBERT ALEXANDER HUNERWADEL "Bon"
Entered from North Chattanooga Junior, '33; Spanish Club, '34; R. O.
T. C., '34, '35; Stamp Club, '35; Biology Club, '34; Etiquette Club, '36;
Red Cross, '33, '36.

ERNEST IGOU "FISTY"
Entered from East Side Junior, '33; Grady Literary Society, '34; Scout
Club, '34, '35, '36; Art Club, '34, '35, '36; Boys' Glee Club, '36.

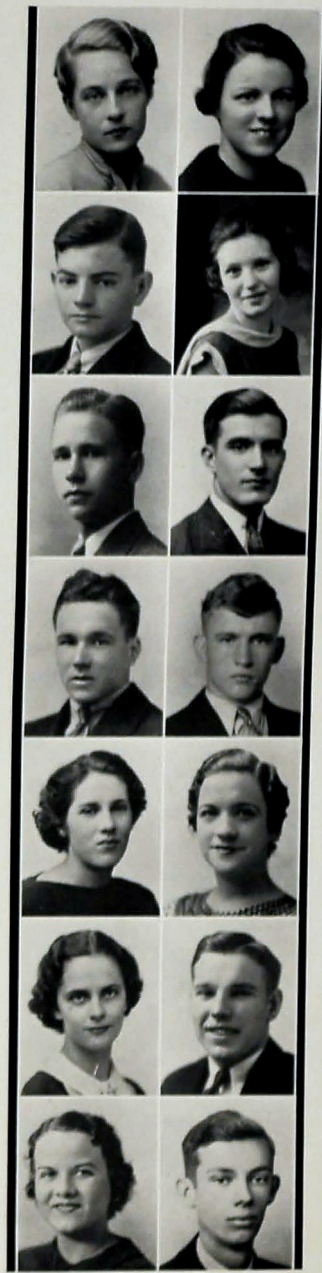
MARGIE MARIE IGOU "MARGE"
Entered from Brainerd Junior, '33; Biology Club, '33, '34, '35, '36;
Library Club, '34, '35, '36; Usher, '36; National Honor Society, '35, '36.

RALPH PATRICK ERWIN "PAT"
Entered from East Side Junior, '33; Grady Literary Society, '34, '35, '36;
Red Cross, '34, '35, '36; Camera Club, '35; Boys' Hi-Y, '35, '36.

DELSIE JENNINGS
Entered from East Side Junior, '32.

ARTHUR T. JOHNSON
Entered from East Side Junior, '33; Printers' Club, '35, '36; Digest Staff,
'34, '35, '36.

Seniors



HAZEL JOHNSON
Entered from Brainerd Junior, '32.

JEANNE JOHNSTON "HYGIENE"
Entered from Brainerd Junior, '33; Biology Club, '34, '35, '36; Army
Club, '33, '34; Girls' Drill Squad, '34, '35; Digest Staff, '35, '36;
CHAMPION Staff, '36; Usher, '36; National Honor Society, '35, '36.

ARNOLD F. JONES
Entered from Lookout Junior, '33.

RENA JUDGE "RENIE"
Entered from Decatur High, Decatur, Texas, '34; Candy Crew, '35; Girl
Reserves, '36; Digest Staff, '36.

MELVIN J. KEITH, JR.
Entered from East Side Junior, '31; Boys' Hi-Y, '31, '32, '33; Sergeants'
Club, '32; Lieutenant R. O. T. C., '33; Officers' Club, '33; Depression
Club, '33, '34, '35, '36; Red Cross, '33, '34, '35, '36; Boys' Glee Club,
'33, '34, '35, '36.

CHARLES KELLY "GENERAL"
Entered from Battle Ground Military Academy, Franklin, Tennessee, '33;
R. O. T. C., '33, '34; Depression Club, '35, '36; Basketball, '35; Grady
Literary Society, '36; Boys' Glee Club, '36.

HOWARD KELLY
Entered from East Side Junior, '31; Science Club, '32; Airplane Club,
'33, '34, '35, '36; Biology Club, '32, '33, '34; Camera Club, '34, '35,
'36; Etiquette Club, '36.

C. N. KELLY "Jon"
Entered from Brainerd Junior, '33; National Honor Society, '36.

ANNA KEMPER "FRESH"
Entered from East Side Junior, '32; Girl Scout Club, '33; Science Club,
'34; Senate, '33, '34, '35, '36; Girls' Hi-Y, '36; Usher, '36; National
Honor Society, '36.

ELLA MARIE KENDRICK "WEE-WEE"
Entered from East Side Junior, '33; Spanish Club, '34; Baby Parade, '34.

ROSABELLE KEOWN
Entered from East Side Junior, '33; Digest Staff, '34, '35, '36; Spanish
Club, '35; Girls' Hi-Y, '34, '35, '36; Senate, '34, '35, '36; Usher, '36;
National Honor Society, '35, '36.

DEFOREST A. KILLINGSWORTH "DOMINECKER"
Entered from East Lake Junior, '32; Lettermen's Club, '34; "C" Club,
'36; Football, '33, '34, '35.

GLADYS KIMBROUGH "G. K."
Entered from Lakeview High, '34.

STANLEY KIRKPATRICK
Entered from Dickinson Junior, '33; R. O. T. C., '34, '35; Tennis
Club, '35.

Seniors

LEILA MAE LAWRENCE "SNOOKS"
Entered from East Side Junior, '33; Spanish Club, '35; Digest Staff, '36.

WILSON L. LAWRENCE "PUDDIN' HEAD"
Entered from East Side Junior, '32; Red Cross, '34; Collectors' Club, '35.

ALICE ROBERTA LEE "GRANDMA"
Entered from Dickinson Junior, '33; Army Club, '34; Aces Club, '36;
Gym Circus, '34; Girls' Drill Squad, '35; Girls' Glee Club, '33, '34, '35;
Tennis Club, '34, '35, '36; Tumblers, '34, '35, '36.

LLOYD LEWIS "CURLY"
Entered from Williamsburg High, Williamsburg, Iowa, '31; Sergeants' Club,
'32; Boys' Hi-Y, '32.

MARY JUNE LIVINGSTON
Entered from Granville High, Granville, Ohio, '34; Red Cross, '34, '35,
'36; Girl Reserves, '36; Tennis Club, '35; Usher, '36; National Honor
Society, '36.

HAROLD LOGAN "BOLIVER"
Entered from Dickinson Junior, '33; Boys' Hi-Y, '34, '35, '36; Grady
Literary Society, '34, '35, '36; Depression Club, '34, '35, '36; Digest
Staff, '36.

JOAN LOWRY "DUDE"
Entered from East Side Junior, '33; Girls' Glee Club, '34; Varsity Glee
Club, '36; Girl Reserves, '33, '34, '35, '36; Red Cross, '36.

WOODROW LOWRY
Entered from East Side Junior, '33; Baseball, '35; Military, '34.

ED. LYNCH
Entered from East Side Junior, '33; R. O. T. C., '34; Boll Weevils,
'34, '35, '36.

CLARA MAE McALLISTER "CLARE"
Entered from East Side Junior, '33; Girls' Hi-Y, '36; Girl Reserves,
'33, '34, '35, '36.

THERESA LEE McBRIEN
Entered from Brainerd Junior, '33; La Tertulia, '34; Varsity Glee Club,
'34, '35, '36; Girls' Glee Club, '34.

SARA ELIZABETH McCAY "SARIE"
Entered from Dickinson Junior, '33; Etiquette Club, '34; Panic Club, '34;
Dramatic Club, '34; Red Cross, '34, '35, '36; Nite Owl, '34, '35, '36;
Song Leader, '33, '34, '35, '36; Girls' Glee Club, '33, '34; Junto Club,
'33, '34; Varsity Glee Club, '34, '35, '36.

DORIS McCLURE
Entered from East Lake Junior, '33; Girls' Hi-Y, '34, '35, '36; S. P.
Q. R., '34; Aces Club, '34, '35, '36; Tumblers, '34, '35, '36; Physical
Ed. Club, '34; Girl Scouts' Club, '34; Usher, '36; National Honor
Society, '36.

VIRGINIA LEE McCOY "TOMMIE"
Entered from Lookout Junior, '33; Varsity Glee Club, '34, '35, '36;
Senate, '35, '36; Class Secretary, '35; Girls' Hi-Y, '35, '36; Usher, '36.

Seniors

JOHN HARRISON McCROSKEY
Entered from Lookout Junior, '33; Military, '33, '34.

BEULAH McCULLEY "JESSIE BEULAH"
Entered from East Lake Junior, '33; Girls' Glee Club, '36; Tennis Club,
'35; Art Club, '35, '36.

LLOYD THOMAS McEACHERN "FAT"
Entered from East Side Junior, '35; Military, '33, '34, '35.

DORA McGEE "DORIE"
Entered from Dickinson Junior, '33; Physical Ed. Club, '34; S. P. Q. R.,
'34; Girl Reserves, '35; Girls' Hi-Y, '35, '36; Army Club, '35; Usher,
'36; National Honor Society, '36.

SARAH McGILL
Entered from East Side Junior, '32; Girls' Glee Club, '35, '36.

SAMUEL W. McGRUFF, JR. "RED"
Entered from East Lake Junior, '33; Biology Club, '33, '34, '35, '36;
Military, '33, '34.

GEORGE THOMAS McINTURFF "TOM"
Entered from Hardy Junior, '33; Spanish Club, '33, '34.

MADELEINE McKINNEY
Entered from Brainerd Junior, '33; Aces Club, '33, '34, '35; Girls' Glee
Club, '35; Gym Circus, '35; Girls' Drill Squad, '35.

D. B. McLAIN
Entered from East Lake Junior, '33; Wrestling Team, '34, '35.

FLOREE ELIZABETH McNAIR "BETTY"
Entered from Savannah High, Savannah, Georgia, '35; French Club, '36.

BERTHA MALSTROM "BERT"
Entered from East Side Junior, '33; S. P. Q. R., '34; Girls' Athletic
Club, '34, '35, '36; Senate, '33, '34, '35, '36; Hiking Club, '34, '35, '36;
Usher, '36; National Honor Society, '35, '36.

JOHN BROADUS MARLOW
Entered from Murphy Junior, Atlanta, Georgia, '32; Science Club, '33;
Sergeants' Club, '35; Spanish Club, '35; Boys' Glee Club, '35; Varsity
Glee Club, '36; Lieutenant R. O. T. C., '36; Officers' Club, '36; Grady
Literary Society, '36; Champion Staff, '36; Dramatic Club, '36; National
Honor Society, '36.

DOROTHY MATLOCK "DOTY"
Entered from East Side Junior, '33; Band, '34; Orchestra, '33, '34,
'35, '36; Varsity Glee Club, '34, '35, '36; Girls' Hi-Y, '35, '36;
Usher, '36.

ROBERT MATUSEK, JR. "TONY"
Entered from Bellaire High, Bellaire, Ohio, '34; Football, '34, '35, '36;
Military, '34; Lettermen's Club, '35; "C" Club, '36.

Seniors

BILLY MEADOWS

Entered from Lockout Junior, '33; French Club, '36.

EDGAR A. MILES, JR. "Ed"

Entered from Brainerd Junior, '32.

RALPH M. MILLER

Entered from Chattanooga High, '33; Sergeants' Club, '35; Captain R. O. T. C., '36; Officers' Club, '36; Camera Club, '36; Depression Club, '34, '35, '36.

SARAH FRANCES MILLER "Sooky"

Entered from Brainerd Junior, '33; La Tertulia, '35.

BLANCHE MILLSAPS "Sappo"

Entered from Mowbray High, '34; Red Cross, '36; Army Club, '35; Spanish Club, '35, '36; Physical Ed. Club, '34, '35; Usher, '36; National Honor Society, '36.

MARY WINIFRED MITTS "PENNY"

Entered from North Chattanooga Junior, '33; Ice Cream Force, '34; Etiquette Club, '33, '34, '35, '36; Girls' Hi-Y, '33, '34, '35, '36; S. O. S. Club, '35; Camera Club, '36; Spanish Club, '35; R. O. T. C. Sponsor, '36; Honorary Member of Officers' Club, '36.

BILL MOORE

Entered from Chattanooga High, '33; Biology Club, '33, '34, '35; Stamp Club, '34, '35, '36; Radio Club, '34, '35, '36.

HELEN LOUISE MORGAN "TOOTSIE"

Entered from Rossville High, '33; Girls' Glee Club, '35.

VIRGINIA INEZ MORGAN "GINGER"

Entered from East Side Junior, '32; CHAMPION Staff, '34; S. O. S. Club, '34; Etiquette Club, '32, '33, '34; S. P. Q. R., '34; Digest Staff, '34, '35, '36; Girls' Hi-Y, '34, '35, '36; Usher, '36.

ALLAN MCKINNEY MORRIS

Entered from Dickinson Junior, '33; Bow Scout Club, '36; Ping Pong Team, '34; Latin Club, '34.

JOHN A. MORRIS "SWEETPEA"

Entered from Red Bank Junior, '33; Baseball, '34, '35; Military, '33, '34; "C" Club, '36.

BENJAMIN L. MOSER "BEN"

Entered from Red Bank Junior, '33; R. O. T. C., '33, '34; Science Club, '34; Camera Club, '35; Boys' Glee Club, '36.

ALMA MOSS "CURLY-TOP"

Entered from East Side Junior, '33; Physical Ed. Club, '34; Army Club, '36; Biology Club, '34, '35, '36; Library Club, '34, '35, '36; Girls' Hi-Y, '36; Red Cross, '36; Girl Reserves, '36; National Honor Society, '36.

RUTH MUELLER

Entered from East Side Junior, '32; Tennis Club, '33, '34.

Seniors

TOMMIE NELMS "Tom"

Entered from Red Bank Junior, '33; Biology Club, '34.

BETTY ANNE NEWTON "Bin"

Entered from Dillwyn High, '34; S. P. Q. R., '33, '34, '35; Hiking Club, '33, '34, '35, '36; Girls' Drill Squad, '35.

JAMES FRANK NIPPER "BUDDY"

Entered from East Side Junior, '33; Band, '33, '34, '35, '36; Band Club, '33, '34, '35, '36; Airplane Club, '34; Sergeants' Club, '36; Orchestra, '35, '36.

ERNEST D. O'NEAL

Entered from Copperhill Junior, Copperhill, Tennessee, '32.

VICTOR M. O'NEAL "Vic"

Entered from Copperhill Junior, Copperhill, Tennessee, '35; Football, '35, '36; Basketball, '35, '36; Minstrel, '35, '36; Lettermen's Club, '35; "C" Club, '36.

EDITH MYRA PACE

Entered from Chattanooga Valley High, '33; Orchestra, '33, '34, '35, '36; Library Staff, '35, '36; Girls' Hi-Y, '35, '36; Usher, '36; National Honor Society, '36.

DOROTHA PAINTER "Dot"

Entered from Monroe High, '35; French Club, '35, '36; Physical Ed. Club, '35, '36.

HAMPTON B. PARKER "HAMP"

Entered from Red Bank Junior, '33; Biology Club, '34; Tennis Club, '34; Grady Literary Society, '35, '36.

MILDRED KATHLEEN PARRISH "BABE"

Entered from Dickinson Junior, '32.

GLAYDEN B. PARSON "BUSTER"

Entered from Mountain Creek Junior, '33; Science Club, '33, '34; Spanish Club, '34, '35, '36; Military, '34, '35.

DARYL ELIZABETH PATTERSON "CAROL"

Entered from Hardy Junior, '33; Ice Cream Force, '34, '35, '36.

JOE PATTY

Entered from Tyner High, Tyner, Tennessee, '34.

PAUL PAYNE

Entered from Hardy Junior, '32; Football, '34, '35, '36; "C" Club, '36; CHAMPION Staff, '36.

MARY JANE PEELER "JANIE"

Entered from Brainerd Junior, '33; Latin Club, '34; French Club, '35, '36; Usher, '36.

Seniors



MARTHA MAE PENLEY "SNOOKEM"
Entered from Fairland Junior, '33; Girl Reserves, '34, '35, '36.



THOMAS EAVES PIERCE "Tom"
Entered from Boys' High, Atlanta, Georgia, '33; Sergeants' Club, '35;
French Club, '36; Lieutenant R. O. T. C., '36; Officers' Club, '36;
Bank, '35, '36.



KATHERINE RANKIN "KITTY"
Entered from East Side Junior, '32; Dramatic Club, '33, '34, '35, '36;
Red Cross, '32, '33, '34, '35; Girls' Glee Club, '34; Variety Glee Club,
'34, '35, '36; Spanish Club, '34, '35; Science Club, '33; Girls' Hi-Y, '36.



MARIAN VIRGINIA RAY "PINKIE"
Entered from Central High, Muskogee, Oklahoma, '35; Red Cross, '35, '36.



WILLIAM M. REESE "KALO"
Entered from Dickinson Junior, '31.



ANN ISABELLA RICE "FUZZY"
Entered from Wartburg High, Wartburg, Tennessee, '34.



EDGAR RICE "EODIE"
Entered from Lookout Junior, '33; Senate, '33, '34, '35, '36; Boys' Hi-Y,
'33, '34, '35, '36; Red Cross, '35, '36; Camera Club, '35; Grady Lit-
erary Society, '33, '34, '35, '36; National Honor Society, '35, '36.

LEONTINE RAYMUR RICE "PIG ANKLES"
Entered from Brainerd Junior, '33; Girls' Hi-Y, '34, '35, '36; Library
Staff, '35, '36; Girls' Drill Squad, '34; S. P. Q. R., '35; Tennis Club,
'34; Etiquette Club, '36.

LILLIAN FLORENCE RICE "LILL"
Entered from East Side Junior, '32; Tennis Club, '34; Usher, '36; Library,
'33, '34, '35; Spanish Club, '34; Red Cross, '36; National Honor So-
ciety, '36.

JAMES C. ROBBINS
Entered from Chattanooga High, '34; Military, '34; Red Cross, '34,
'35, '36.

J. T. ROBERTSON "DARKROOM"
Entered from Brainerd Junior, '32; Radio Club, '34; Camera Club, '34,
'35, '36; Captain R. O. T. C., '35; Sergeants' Club, '34; Officers' Club,
'35; Depression Club, '34, '35, '36; Boys' Hi-Y, '33; Tinkers' Club, '33.

BORUM ROBINSON
Entered from East Lake Junior, '33; Red Cross, '33, '34, '35, '36; Mil-
itary, '34, '35.

WILLIAM WALTER ROBINSON "WALT"
Entered from Brainerd Junior, '33; Boys' Glee Club, '34, '35; Sergeants'
Club, '36.

MAGDALEN ROGERS
Entered from Lookout Junior, '33; Red Cross, '34; Girl Reserves, '34, '35,
'36; Girls' Glee Club, '34, '35; Girls' Hi-Y, '34, '35, '36; Usher, '36.

Seniors



GEORGE STERLING ROTH
Entered from Brainerd Junior, '33; Football, '34, '35; Basketball, '35;
Depression Club, '33, '34, '35, '36.



MARTHA LUCILLE RUTLEDGE "Lucy"
Entered from Dickinson Junior, '33; Red Cross, '34, '35, '36; S. P.
Q. R., '33, '34; Nite Owl, '34, '35, '36; Honorary Member of Officers'
Club, '36; R. O. T. C. Sponsor, '36; National Honor Society, '36.



WILLIAM ROBERT RUTLEDGE "Bon"
Entered from East Side Junior, '32; Major R. O. T. C., '36; Officers'
Club, '36; Sergeants' Club, '35; Rifle Team, '33, '34, '35, '36; Boll
Weevils, '33, '34, '35, '36.



MARY ELIZABETH SCHAEFER "Beth"
Entered from Brainerd Junior, '33.



RALPH JULIAN SCHMITT "SCHMITTY"
Entered from Lee High, Chickamauga, Georgia, '34; Red Cross, '35, '36.



MARY GERTRUDE SCOGGINS
Entered from East Lake Junior, '33; Red Cross, '36; Usher, '36.



ALTA MAE SCOTT "TRIGGER"
Entered from Brainerd Junior, '33.

WILLARD MASON SCRUGGS "BILL"
Entered from Brainerd Junior, '31; Band, '31, '32, '33; Bank Club, '31,
'32, '33; Airplane Club, '35.

JEWEL R. SHELTON
Entered from North Chattanooga Junior, '33; Ukelele Club, '32, '33, '34;
Spanish Club, '35; Tennis Club, '33, '34, '35; Girls' Drill Squad, '35;
Girl Reserves, '36.

CHARLES WESLEY SHUTT
Entered from Lookout Junior, '32; Band, '33, '34, '35, '36; Band Club,
'33, '34, '35, '36; Orchestra, '34, '35, '36.

BERNICE SIMPSON "BUNNY"
Entered from East Side Junior, '33; Girl Reserves, '33, '34, '35; Art Club,
'35; Dramatic Club, '35; Hiking Club, '36; Girls' Glee Club, '36; National
Honor Society, '36.

JOHN H. SIVELY, JR.
Entered from Dickinson Junior, '32; Band, '33, '34, '35; Band Club,
'33, '34, '35; Red Cross, '33, '34, '35, '36; Boys' Hi-Y, '35, '36;
Boy Scout Club, '34, '35, '36.

REVA SIVELY
Entered from Dickinson Junior, '33; Biology Club, '34; Physical Ed. Club,
'34; Gym Circus, '35; Army Club, '35; Purple Club, '35; Girl Scout
Club, '34, '35; Usher, '36.

W. B. SLOAN "DUB"
Entered from Mountain Creek Grammar, '32; Dramatic Club, '35, '36.

Seniors

ELIZABETH SMARTT "SMARTY"
Entered from Brainerd Junior, '33; Physical Ed. Club, '36.

JAMES E. SMITH "JIMMIE"
Entered from East Side Junior, '33; Airplane Club, '34, '35, '36; Lieutenant R. O. T. C., '36; Officers' Club, '36; Camera Club, '35, '36.

JAMES P. SMITH "JIMMIE"
Entered from East Side Junior, '33; Airplane Club, '36; Sergeants' Club, '36; Science Club, '34; Etiquette Club, '36; Camera Club, '34, '35, '36.

J. T. SMITH "JAY-BIRD"
Entered from Chattanooga High, '33; Football, '33, '34; Lettermen's Club, '33, '34; "C" Club, '36.

DEWITT SMITH "SMITTY"
Entered from Hardy Junior, '33.

NATHAN SMITH "JZZY"
Entered from East Side Junior, '32; Science Club, '33; Basketball, '34, '35, '36; Manager Football Team, '36; "C" Club, '36; Lettermen's Club, '35; Boys' Glee Club, '36.

DOROTHY LOUISE SPARKMAN "DOT"
Entered from Red Bank Junior, '33; Camera Club, '34, '35, '36; Red Cross, '35; Girl Reserves, '34, '35, '36; Girls' Glee Club, '34; Varsity Glee Club, '36; Tennis Club, '35; Girls' Hi-Y, '36.

DUKE T. STALCUP "TAD"
Entered from Brainerd Junior, '33; Military, '33, '34.

T. EARL STEINMAN
Entered from Brainerd Junior, '32; Boys' Glee Club, '33, '34, '35; Baseball Team, '34, '35.

DELLAPHINE INEZ STEPHENS "GRACIE"
Entered from East Lake Junior, '33; Depression Club, '34; Girl Scouts, '35; Girls' Glee Club, '35; Girl Reserves, '36.

ANNA ROSE STERCHI "ANNE"
Entered from Hardy Junior, '33; Girls' Glee Club, '36.

CHARLES W. STEWART "PAPA"
Entered from East Side Junior, '31; Manager of Basketball, '35.

RUTH EDWARD STONE "RUTHIE"
Entered from East Lake Junior, '33; Girl Reserves, '36; Girls' Glee Club, '36.

MILDRED LORINE STURDIVANT "BLONDY"
Entered from East Lake Junior, '33; Red Cross Club, '36.

Seniors

THELMA STYLES "THEL"
Entered from Lookout Junior, '33; Girl Reserves, '35; Girls' Glee Club, '35; Digest Staff, '36; Hiking Club, '36; Usher, '36; National Honor Society, '35, '36.

GENEVA LORRAINE SUTTON "GEE"
Entered from Lakeview High, Lakeview, Georgia, '34; Spanish Club, '35; Red Cross, '35; Girl Reserves, '36.

ETHELWYN MARIE SYLAR "SPIDER"
Entered from Dickinson Junior, '32; Physical Ed. Club, '34; Ace Club, '34, '35, '36; Army Club, '32, '33, '34; Girl Scouts, '32, '33, '34; Girls' Drill Squad, '33, '34; Gold Club, '33, '34, '35, '36; Gym Circus, '33, '34, '35; Ice Cream Force, '34, '35, '36.

RICHARD A. TALLENT "KID"
Entered from Lookout Junior, '32.

HELEN ELIZABETH THOMAS "HON"
Entered from North Chattanooga Junior, '32; Girls' Glee Club, '36.

DORIS ELOYCE THOMPSON "BABS"
Entered from Red Bank Junior, '33; Red Cross, '34, '35, '36; Camera Club, '34, '35; Varsity Glee Club, '34, '35, '36; Etiquette Club, '35; Dramatic Club, '35; Music Club, '35; Spanish Club, '34; Tennis Club, '34, '35; Senate, '34, '35; Nite Owl, '34, '35, '36.

VIVIAN FAYE THRASHER
Entered from Red Bank Junior, '33; Etiquette Club, '35, '36.

KELSEY TOWNS "ROSIE"
Entered from Lookout Junior, '33.

NANCY ELIZABETH TRAMEL "LIBBY"
Entered from East Side Junior, '33; Red Cross, '33, '34, '35; Girl Reserves, '34, '35, '36; Spanish Club, '34, '35.

BUFORD TUCKER "TUCK"
Entered from East Side Junior, '31; Ukelele Club, '33, '34.

MONA ETHEL TUCKER
Entered from Grandy County High, Tracy City, Tennessee, '35.

JAMES E. TURNER "BOOKIE"
Entered from Brainerd Junior, '32; Ukelele Club, '32; Red Cross, '33, '34, '35, '36; Depression Club, '34, '35, '36; Spanish Club, '34, '35; Boys' Hi-Y, '36.

DELORES OPAL UNDERWOOD "BABB"
Entered from Hiwassee College, Madisonville, Tennessee, '33; Red Cross, '34, '35, '36; Camera Club, '34, '35; Girls' Glee Club, '34, '35, '36; Nite Owl, '34, '35, '36.

DESMOND VANDIVER "DEB"
Entered from East Side Junior, '33; Football, '33, '34, '35, '36; Lieutenant R. O. T. C., '36; Lettermen's Club, '35; "C" Club, '36.

Seniors



GEORGE MARION VERHEY "GEORGIUS ALTISSIMUS"
Entered from Brainerd Junior, '32; Band, '33, '34, '35, '36; Band Club, '33, '34, '35, '36; Captain of Band, '36.



JACK WADE
Entered from Dickinson Junior, '32; Science Club, '32, '33, '34.



CLARENCE WALLACE "J. C."
Entered from East Side Junior, '33; Red Cross, '36.



PRESCOTT GLENWOOD WARD "GLEN"
Entered from North Chattanooga Junior, '32; Rifle Team, '32, '34, '35, '36; Sergeants' Club, '34, '35; Captain of R. O. T. C., '36; Officers' Club, '36; Scout Club, '35, '36; Camera Club, '36.



GALE WASHINGTON "SPROUT"
Entered from Dickinson Junior, '31; Boys' Hi-Y, '32, '33, '34; Red Cross, '33, '34; Sergeants Club, '33.



NANCY LORENA WESTBROOK "SIS"
Entered from East Side Junior, '31; Red Cross, '34, '35; Girls' Glee Club, '34; Varsity Glee Club, '35, '36.

MARIAN WHARTON
Entered from East Lake Junior, '33; Girl Reserves, '34; Hiking Club, '35; Candy Crew, '34; Ice Cream Force, '35; French Club, '36; Dramatic Club, '36; Tennis Club, '34; S. P. Q. R., '34; Usher, '36; National Honor Society, '36.

CECIL WHEELER "SCRUBY"
Entered from East Side Junior, '33; Science Club, '34; Boys' Glee Club, '36; Basketball, '34.

JACOB A. WHITT "JAKE"
Entered from East Lake Junior, '33; Band, '33, '34, '35, '36; Band Club, '33, '34, '35, '36; Latin Club, '34, '35.

LEWIS WHITTEN
Entered from East Lake Junior, '33; Hiking Club, '34, '35, '36; Boy Scout Club, '34, '35, '36.

MARION WIGGS
Entered from Dickinson Junior, '33; Girls' Glee Club, '34, '35.

MILDRED LYDIA WILHOITE "MILLIE"
Entered from Cuyahoga Falls High, Cuyahoga Falls, Ohio, '33; S. P. Q. R., '34; Physical Ed. Club, '34; Tennis Club, '34; Candy Crew, '34, '35; Girl Scouts, '35; Girls' Drill Squad, '35; Digest Staff, '35, '36; Army Club, '35; Girls' Hi-Y, '36; CHAMPION Staff, '36; Usher, '36; National Honor Society, '35, '36.

Seniors



ELIZABETH WILKES "BETTY BOOP"
Entered from Southern Junior College, '35; Varsity Glee Club, '36.



MARY FRANCES WILLBANKS "LADY"
Entered from East Side Junior, '32; Tennis Club, '34; Spanish Club, '35; Digest Staff, '35, '36; Usher, '36; May Festival, '35; CHAMPION Staff, '36; Senate, '34, '35, '36; National Honor Society, '36.



VIRGINIA MAE WILLBANKS "JENNY"
Entered from Brainerd Junior, '32; Girl Reserves, '33, '34, '35, '36; Girls' Glee Club, '33, '34; Varsity Glee Club, '35, '36; Camera Club, '34, '35, '36.



MARGARET ELEANOR WILLIAMS "PEG"
Entered from East Side Junior, '32; Girls' Glee Club, '33; Girl Reserves, '33, '34; Digest Staff, '35.



MARVIN L. WILLIAMS "BILLIE"
Entered from Brainerd Junior, '32.



ALICE WILSON "ALLIE"
Entered from East Side Junior, '33; Art Club, '35, '36.

BETTY WILSON
Entered from Dickinson Junior, '33; Spanish Club, '35; Girls' Glee Club, '35.

LENA MAE WILSON "MAE-MAY"
Entered from Dickinson Junior, '32; Red Cross, '34; Book Store, '33, '34, '35.

LUCILLE WOLFE "BRIGHT-EYES"
Entered from Red Bank Junior, '33; Red Cross, '34; Girls' Glee Club, '34; Varsity Glee Club, '35, '36.

MARTHA ELIZABETH WOOD "MOLLIE"
Entered from Red Bank Junior, '33; Girl Reserves, '33, '34; Hiking Club, '34, '35; Tennis Club, '34; Girls' Hi-Y, '35, '36; Candy Crew, '34; Ice Cream Force, '35; French Club, '35, '36; Dramatic Club, '35, '36; S. P. Q. R., '34; Usher, '36; National Honor Society, '36.

HARRY WOODFIN "BOZO"
Entered from Brainerd Junior, '33; Band, '33, '34, '35, '36; Band Club, '33, '34, '35, '36.

CARL WHEELER "DRUM MAJOR"
Entered from East Side Junior, '31; Art Club, '31, '32, '33, '34; Spanish Club, '32, '33, '34; Band Club, '31, '32, '33, '34, '35; Camera Club, '33, '34, '35.



THE AURORA BOREALIS OF THE YEAR

SENIOR CLASS HISTORY

As the gangplank is lowered, we, the class of '36, prepare to disembark from the good ship Central, some to continue on in a higher vessel of learning while others, deeming the education received here sufficient, are ready to continue without further ado on the great journey of Life. At the top of the gangplank stands our captain, Professor S. E. Nelson, who has ever remained loyal and true, has guided us safely through all the storms and rough seas, and has at last brought us securely into port on scheduled time. As we pass Mr. Nelson, we receive our certificates of sailing, a firm handclasp, and hearty wishes for a brilliant future. Then, smiling through a mist of tears, we continue down the gangplank and, with congratulations of friends and goodbyes from the crew that we have learned to love so well ringing in our ears, we stand and reflect on the journey that has brought us to this strange new land.

When we entered, somewhat bewildered, four years ago, we were given a hearty welcome by Mr. Nelson. With the help of the charming and courteous Ushers we began to learn our way about the decks and staterooms of our new vessel. Then, after no little thought and contemplation, we decided that Ed Rice, although small in stature, would make a great president for the first lap of our journey. To assist Ed and to take his place during absence or emergency we elected Ed Black to the office of vice-president. For the writer of our log and other secretarial work we chose Mary Grace Card; to handle our finances we selected Jack Heard; and to lead us in our songs we elected Katherine Rankin. Just before midterm we were entertained royally at a party given in the ship's stateroom by the Ushers.

After a vacation that seemed all too long, we were glad to embark once more, this time on the second year of our journey and with Sophomore blazing forth from our ensign—a name of which we were very proud. Before weighing anchor we took on a number of new passengers, swelling our total to the staggering sum of four hundred and twenty-eight, in view of which we decided to choose a combination of colors to represent us. After much discussion and debate we decided that blue and white, representing truth and purity, would serve the purpose. In view of his hard work and great accomplishments the year before, we again selected Ed Rice for our president, this time choosing Paul Bowen for vice-president, Bobbie Jean Routt for secretary, and Doris Thompson for treasurer. Later Virginia Morgan was chosen to represent us on the CHAMPION staff. After a year of comparatively smooth sailing we were again granted a three months' vacation.

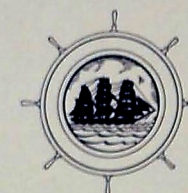
When we entered in the fall of 1934 as Juniors, our number had decreased to three hundred and fifty-eight. To lead us this year we elected J. T. Cry, president; Doris Thompson, vice-president; Virginia McCoy, secretary; and Agnes Brown, treasurer. The chief social event of the voyage was the Junior party, given early in the fall. When we reached the end of our Junior year and realized that at last we had earned the coveted name of Seniors, a feeling of triumph and pride entered our hearts.

At last vacation was over and we entered for our last trip on our faithful ship. Desmond Vandiver was elected to guide us on this last trip. Ed Bower was elected vice-president; Helen Gross, secretary; Dorothy Sparkman, treasurer; and, at Mr. Nelson's suggestion, two sergeants-at-arms, Ralph Miller and Leroy Glasscock, were elected.

Obtaining a look into the ship's log we find that the following are a few of the most outstanding in their various lines; heading the football list is Captain Des Vandiver who, with the aid of Lucius Henson, Billy Killian, Tony Matusek, Paul Payne, Perry Crumley, DeForest Killingsworth, Bob King, Victor O'Neal, Frank Hamilton, Harry Maffett, and Nathan Smith, lead us to a 19-6 victory over City, our ancient rival; first among our pen-pushers and ink-slingers are Mildred Wilhoite, editor of the *Times* page and the *CHAMPION*; Rosabelle Keown, editor of the *Digest*; and Elizabeth Gilbert, winner in the D. A. R. essay contest; Margaret Crawford heads our list of competent Ushers. Among our leaders are Louis Eldridge, president of the Boys' Hi-Y; Ed Rice, president of the Grady Literary Society; and Ed Bower, president of the Senate and of the National Honor Society. The sponsors who strive so willingly to keep pace with their military escorts are Mary Grace Card, Winifred Mitts, Lucille Rutledge, and Helen Brown. Our best bets for the stage or movies include Herbert Davis, Dora McGee, Katherine Hawkins, Richard Ferrill, Geneva Sutton, and Ernest Igou, who, with the aid of Gus Gothard and R. T. Dabbs from the Boll Weevils, furnished us with delightful diversion from the daily routine of work.

Of the many honors which may be won at Central, perhaps the greatest tribute is paid to the honor students, Class Day speakers, and Commencement speakers. The members of the class of '36 who have risen to these heights of attainment are: Commencement speakers—W. L. Miller, Mildred Wilhoite, Desmond Vandiver, and Edward Bower; honor students—Edward Bower, Dorothy Bowling, Margaret Crawford, Margaret Dailey, Fleming Empson, Helen Gross, John House, Jeanne Johnston, Bertha Malstrom, W. L. Miller, and Mildred Wilhoite; Class Day speakers—Leroy Glasscock, Harold Logan, Dora McGee, and Thelma Styles.

The memories of the Senior Valentine banquet, the Senior picnic, Class Day, Baccalaureate Sermon, and other recent activities being still fresh in our minds, we end our reflections of the past and awaken again to our present surroundings. Smiling once more, still through a mist of tears, we wave a last farewell to the good ship Central and set our faces to wider seas.



OFFICERS

ROY SCRUGGS	President
CARL JOHNSTON	Vice-President
ANNA MARIE PECKINPAUGH	Secretary
FRED HETZLER	Treasurer

JUNIOR CLASS



JUNIOR CLASS--BOYS

Adcock, Raymond
Allen, Bryant
Altman, Arwell
Armer, James
Arnold, Ty
Ashworth, William

Bachman, Robert
Bailey, Ed
Baskette, Roy
Bates, Richard
Bailey, Charles
Beasley, Albert
Beloin, William
Bisplinghoff, Allan

Booth, William
Bowen, Orville
Boyd, Glen
Bowell, Ray
Bowen, William
Bowen, Eugene
Bowman, Ernest
Bragg, Henry
Brudgers, George
Brooks, John
Brown, Carlos
Brown, Harry
Burgess, Tom
Burke, Allan
Burns, J. B.
Burton, Ralph
Butler, Ellis

Carmichael, John
Carmichael, Victor
Carter, Eli
Cottrings, William
Chalk, Robert
Chroniak, Charles
Clark, Jack
Connally, Elmer
Conner, William
Cooper, Robert

Carl, Baxter
Craig, Rogers
Craze, J. B.
Cruiser, William
Dabbs, Denton
Davenport, Ray
Davis, Kenneth
Deane, Allie
Demon, Robert
Dicks, Robert
Dobbs, Frank
Dosev, Bill
Drummond, John

Edgar, Vernon
Earle, Robert
Farley, Edward
Farriss, Ellsworth
Fields, Wilburn
Fletcher, Douglas
Foxworth, Bob
Frost, Bill
Fullen, Owen
Fuller, Robert

Gannaway, Lowell
Gardner, Frank
Gauntt, LeHardy
Godsey, Bruce
Good, Earl
Green, Allen
Greene, William
Griffin, Howard
Grissold, Robert
Groves, Jacob

Haines, Donald
Hale, Jack
Hall, Harold
Hall, Thurman
Hamill, Morgan
Hamilton, Frank
Hancock, Emory
Hancock, Walter

Hanley, H. H.
Hannah, Dennis
Harden, J. D.
Harmon, Glennis
Heiskell, Harry
Herzler, Fred
Hicks, Albert
Hicks, Kenneth
Hickson, William
Hodges, Dexter
Hooper, Hilton
Hudson, Albert
Huff, George
Hughes, R. C.
Hunter, Howard

Inglis, Felix
Isbell, Arnold

Jackson, Clifford
Jernigan, Carl
Jones, Elder
Johnston, Carl

Kelly, Charles
Kennedy, Abe
Kennedy, William
King, Robert
Knight, John
Kubelman, James

Lamb, Hal
Lawrence, Archie
Levi, William
Lewison, Robert
Linn, James
Loud, Hobson
Loveless, James

McBroom, Alvin
McClure, Keith
McCollum, Gordon
Malay, Charles
Magette, Eugene

Mallett, Emmett
Marsh, William
Martenson, Ralph
Metz, James
Miller, Vernon
Mink, John
Moore, Travis
Moss, Lineal
Muerth, Albert
Nelson, Gene
Netsel, Herman
O'Brien, Billy
Osborne, Floyd

Pariss, Luther
Parsons, Robert
Peeler, Porter
Perkinson, J. M.
Peyer, Wiley
Phillips, Bill
Pinson, Jack
Plank, Ralph
Porter, Charles
Pratt, Howard

Quarles, T. J.
Ragle, Ivan
Raines, Clyde
Ravi, Jack
Randles, Howard
Reynolds, Millard
Rhodes, Wesley
Rivley, Vermont
Roberts, Jack
Robinson, Billy
Robinson, Harold
Rodgers, Jack
Ruby, Edwin

Sagener, Ralph
Scruggs, Roy
Sanders, Alvin
Schman, John
Shannon, Robert

Sherrill, T. H.
Sherwood, Cecil
Skates, Marvin
Smith, Lamar
Snyder, Charles
Sparky, Mac
Sprayberry, Jerry
Standifer, Robert
Stephens, James
Stivers, Robert
Stover, Kenneth
Suddoth, Tommy
Sutton, Jesse

Tarver, Russell
Tate, Arthur
Taylor, Frank
Thomas, G. C.
Thompson, James
Timmons, Charles
Tipton, Theodore
Valentine, Walter

Walker, Paul
Wall, Earle
Watt, W. A.
West, Carl
Westbrook, Thomas
What, Joseph
Whit, Robert
Wheat, W. C.
White, H. C.
White, Howard
Whittle, William
Whitbanks, Barney
Williams, Francis
Wilson, Ed
Wofford, Charles
Wolfe, Joe
Womack, Virgil
Wood, Richard
Wrinkle, Hager
Wrinkle, Paul
Young, Frank



JUNIOR CLASS--GIRLS

Abel, Esther
Acuff, Sara
Alexander, Louise
Anderson, Evelyn
Anderson, Virginia
Atwood, Vivian
Aucott, Doris
Aucott, Frankie

Bailey, Lillian
Barker, Nora Allison
Barlock, Antoinette
Barrow, Martha
Barrow, Norma
Beasley, Elizabeth
Beck, Emily Ann
Beene, Frances
Bentley, Mantyne
Biggs, Josephine
Bird, Polly
Black, Gwendolyn
Blackburn, Marie
Blair, Charlotte
Blair, Edna
Blair, Frances
Bolton, Helen
Bowen, Dorothy
Bresler, Virginia
Brown, Geneva
Buck, Mary Ann
Buffett, Gussie

Card, Billie
Camp, Frances
Chumley, Florence
Clementson, Frances
Cochran, Mary
Col, Juanita
Coker, Christine
Colletta, Mary

Comstock, Thelma
Craven, Regina
Crawley, Laurine
Criswell, Frances
Culberson, Louise
Daniels, Mary
Davenport, Mary
Davis, Billie
Davis, Vivian
Davis, Marian
Deakins, Frances
Deering, Virginia
DeVane, Sarah
Devault, Ruth
Dicks, Betty
Dickson, Jewel
Dorsey, Mary Lou
Duclos, Adrienne
Dunagan, Katherine
Duncan, Mary Joe
Erwin, Myrtle Mae
Farmer, Edith
Farrar, Jean
Farrington, Elizabeth
Floyd, Opal
Frost, Barbara
Garner, Thurla
Garren, Dorothy
Garrigus, Elizabeth
Geeler, Louise
Gennoe, Florence
Gilliland, Margaret
Granett, Marguerite
Griffin, Lillie Mae
Griffith, Lauvina
Grizzell, Imelda
Lewis, Imogene
L'Heureux, Betty
Long, Louise
Long, Margaret
McArthur, Charlyne

Healy, Beryl
Hemphill, Dorothy
Hennessee, Virginia
Henson, Ruth
Hicks, Dorothy
Hicks, Mildred
Higdon, Billie
Hill, Flora
Hindman, Ione
Hixon, Agnes
Holder, Evelyn
Hollahan, Dorothy
Hopkins, Vivian
Huff, Katherine
Human, Monnie
Humphries, Della
Hunter, Ruby Lee
Ivester, Dorothy
Jackson, Alberta
Jernigan, Mary
Justice, Frances
Kels, Alice
Kell, Louise
Kelly, Margee
Kilgore, Marisue
Killingsworth, Edith
Kitchens, Marion
Lambden, Margaret
Land, Bertha
Lawrence, Louise
Laycock, Martha
Ledford, Dorothy
Ledford, Edith
Lemons, Elizabeth
Le Van, Reba
Lewis, Imogene
L'Heureux, Betty
Long, Louise
Long, Margaret
McArthur, Charlyne

McAbee, Maybelle
McDonald, Ira
McGuffey, Velma
Manning, Edna Mae
Marlow, Hannah
Martin, Mildred
Mauhin, Mary Jane
Mimms, Mary
Minor, Elizabeth
Montgomery, Betty
Mulkey, Joyce
Nabors, Juanita
Nicholas, Juanita
Oliver, Frankie
Page, Dorothy
Painter, Hattie Lee
Palmer, Jean
Pascale, Virginia
Peckinpaugh, Anna Marie
Pendergrass, Thelma
Perkinson, Juanita
Phillips, Dorothy
Poindexter, Betty
Quinn, Eleanor
Ramsey, Mary
Rawlings, Julia
Ray, Della
Ray, Dorothy
Redford, Elizabeth
Reeves, Dorothy
Regan, Geraldine
Reynolds, Evelyn
Reynolds, Jean
Ridge, Mary Jay
Roberts, La Verne
Roberts, Virginia
Robinson, Alma
Rollins, Mary
Rose, Ruby Lee
Roland, Aileen

Sanders, Jean
Schmitt, Geraldine
Scott, Desie
Seaman, Juanita
Settelle, Ophelia
Shelley, Dorothy
Sloan, Marjorie
Slame, Frances
Smith, Aline
Smith, Corinne
Smith, June
Smith, Margaret
Snyder, Eva
Snyder, Pauline
Stamps, Eva
Stargel, Virginia
Stone, Dorris
Swope, Martha
Tabor, Juanita
Talley, Dorothy
Taylor, Jewell
Titte, Bertha
Todd, Doris
Urban, Mildred
Verhey, Rosa Jane
Walker, Margaret
Wallace, Sara
Wallis, Willard
Widt, Lucile
Weidner, Gurney
Weller, Mildred
Whitmore, Kirta
Whitbanks, Evelyn
Williams, Margaret
Wilson, Bernice
Wilson, Elizabeth
Woodlee, Fana
Wooten, Catherine
Wright, Mary Nell
Yarbrough, Opal

JUNIOR CLASS HISTORY

On a warm September day in the year 1933, several hundred small and very green little Freshmen entered the imposing portals of Central High, filled with high hopes and lofty ambition, characteristic of those who are first entering into a field about which they know little.

As time progressed, these inexperienced students caused a great deal of amusement among the upper classes by the bold and sophisticated air which they assumed. Incensed and indignant at the "jests" of others, these little Freshmen resolved to prove their ability as students and citizens. Of course, many obstacles appeared, but slowly and surely they worked for the high achievement which they hoped to attain, and which, they trusted, would permanently quell the amusement of others forcing them to acknowledge the high standards of intelligence and character possessed by the Freshman class in general.

The outcome of the resolution is a well known story. Realization of the value of this class suddenly forced itself upon the upper classes, and the following events had a great deal to do with the rapid development of this class in later years. Much credit goes to Carl Johnston, president of the class, and Billy Daggett, vice-president, for their untiring efforts in putting the class before the school.

As Sophomores these students gained much acclaim for their scholastic achievements and were envied throughout the school when the honor rolls boasted more Sophomores than Freshmen, Juniors, or Seniors. It was during this year that Vivian Davis won the state prize in an essay contest, "The Value of Time in Education," for which the school received an athletic time-keeper for the gymnasium this year. This timer was presented at a program when the entire school gathered in the gymnasium. Another honor was received by Gene Nelson, who was chosen Sophomore representative for the CHAMPION.

As the history of the first three years of the Class of '37 draws to a close, the Junior Class feel that the brightest and best year is just ahead, for each member cherishes a desire to accomplish great things in the next year. According to the present Junior class officers, Roy Scruggs, president; Carl Johnston, vice-president; Anna Marie Peckinpaugh, secretary; and Fred Hetzler, treasurer, this class has bright prospects for a great senior year. Ample proof of this fact is found in the large number of Juniors appearing on the honor roll first quarter: La Verne Roberts, Beryl Healey, Mary Ann Buck, Virginia Hennessee, Frances Camp, Darwin Harrold, T. J. Quarles, Jean Reynolds and Vivian Davis.

An event worthy of special mention is the success of the party, which was given by the Junior Class during the month of November. The cooperation of the students had a great deal to do with the encouraging outcome of this party and the fine work of the various committees composed of Virginia Hennessee, Mildred Martin, Laurine Crawley, Virginia Deering, Ruby Lee Rose, Bob Cooper, Paul Ingle, Maybelle McAbee, Jean Sanders, Gene Nelson, Mary Daniels, Carl Johnston, Fred Hetzler and Anna Marie Peckinpaugh is to be remembered for some time to come.

Anticipation of further honors keeps hard study and honest effort foremost in the minds of Junior students and let us hope that their youthful ambition, to attain success, may some day be realized, through possession of the coveted cup of wisdom.

"They hope through study to arise
In glory to the peaks on high,
Where Wisdom flames, a brilliant light,
And knowledge is the fruit of Life."



OFFICERS

JOHN MEYER	President
PEGGY MABRY	Vice-President
MADALINE OWENS	Secretary
BULA DELL HAGAMAN	Treasurer

SOPHOMORE CLASS



SOPHOMORE CLASS--BOYS

Adams, Milton	Cooper, Norman	Hatcher, Theo	Meyer, John	Rogers, David
Alison, Robert	Cornett, Dewey	Harris, Alvin	Miller, Arles	Rogers, Ernest
Anderson, J. T.	Couch, Howard	Hawk, Frank	Miller, Billy	Rogers, Joe
Austin, Neal	Cowden, Frank	Hawk, Gid	Miller, Sterling	Rogers, Raymond
Austin, Wilmer	Cox, Desmond	Hawk, Willard	Milligan, Gaines	Rowland, Bill
Bachman, Arthur	Coxey, Finley	Hannah, Jack	Moates, R. L.	Rhyme, Bill
Baker, Wilborn	Crabtree, Charles	Hick, Kenneth	Moore, Eugene	Riverson, Lee
Baldwin, Leo	Cunningham, Porter	Higdon, Leslie	Moser, Paul	Shelley, Oscar
Barge, Robert	Daggett, Billy	Higdon, Willard	Moss, Farrow	Shipley, Harold
Barker, Orlie	Dalton, Howell	Hill, Joe	Murray, Herbert	Shrader, Kenneth
Bausing, Cecil	Davis, Bill	Hillard, Oscar	McBee, Jack	Austin, Pauline
Beasley, Peyton	Davis, Carlton	Hughes, R. C.	McClure, Oscar	Dobbs, Louise
Beck, Frank	Davis, James	Hodge, J. K.	McGee, Raymond	Dorsey, Jean
Belle, Irskine	Davis, Robert	Hodgins, Roy	McDaniel, Robert	Jarrett, Dorothy
Bell, Perry	DeLay, Jimmie	Hoppe, Rudolph	McGhee, Clarence	Jenkins, Anita
Bell, Sterling	Demon, James	Huddleston, Donald	McGregor, Paul	Johnson, Elizabeth
Benton, Ralph	Dyer, Elmer	Hudson, Everett	McKenzie, Robert	Johnson, Louise
Berkmeier, Edward	Dent, Herbert	Hullander, Ed	McKinney, Ray	Johnson, Margaret
Black, John	Dougherty, Harvey	Hummel, Keith	McCabe, Robert	Jones, Dory
Blackwell, Gun	Dugger, R. J.	Hunt, Eugene	McMahon, J. W.	Jones, Marion
Blackwell, Jack	Dunbar, Eugene	Hunt, Horace	Mote, Doyal	Justice, Frances
Borchers, Spencer	East, Everett	Ingle, Paul	Neely, Ira	Kallen, Marion
Bonner, George	Eaves, Edmund	Irwin, Luther	Nichols, Allison	Kayler, Evelyn
Booth, Everett	Eaves, J. R.	Johnson, Eugene	Norris, Harold	Keith, Elveta
Brown, Dewey	Ellis, Henry	Johnson, Paul	Oliver, Richard	Kelly, Valgene
Brown, Jack	Epps, Scott	Jones, Alton	Orr, Thomas	Kelly, Betty
Brown, Robbie	Epps, Joe	Jones, Bill	Osborne, Floyd	Kelly, Geraldine
Breneman, Charles	Eust, Duffy	Jones, Horace	Oswenby, Floyd	Kemp, Dorothy
Bright, Ray	Farr, John	Jones, Robert	Parham, Broughton	Keown, Floretta
Brock, Ernest	Feagans, Ernest	Karr, John	Parham, Roma	Kilgore, Johnnie
Brown, Jason	Finley, William	Kelly, Gerald	Park, Fred	King, Margaret
Brown, Wally	Fisher, Hubert	Kelly, James	Parker, Atlee	Kroeger, Geraldine
Brown, Harold	Foster, Donald	Kilgore, Clyde	Park, Luther	Katherine, Lenox
Brown, Howard	Foster, Roy	King, William C.	Parsons, Billy	Levi, Nell
Brown, James F.	Fryar, G. C.	King, Stokely	Parsons, Billy	Lewis, Amy Lou
Brown, James L.	Gallant, Harold	Lawing, Wendell	Peden, Eugene	Lang, Anna Marie
Brothers, Walter	Gazaway, Ohio	Lawrence, J. C.	Peters, Don	Little, Elizabeth
Butler, George	Gibson, Benton	Lawson, Joe	Planck, Clarence	Long, Dorothy
Burnette, J. T.	Gilbert, C. L.	Lee, Jimmie	Porter, David	Long, Catherine
Butcher, Fred	Gilbreath, Paul	Lech, Frank	Porter, Harry	Longly, Gladys
Cad, Billie	Gladhill, Horace	Light, Floyd	Powell, Conrad	Low, Edna
Carson, William	Goodner, Fred	Ligon, J. R.	Price, Howard	Lowery, Mary Betsy
Carmack, Fred	Grant, Oris	Livingston, Eroy	Price, John	McAllister, Rosa Lee
Cason, Melvin	Gray, Billie	Locklear, W. C.	Pursley, Robert	McArthur, Doris
Carter, Mat	Gray, James	Locklear, W. C.	Ragle, Raymond	McCall, Janet
Quaid, Jim	Green, Desma	London, Bill	Raulston, William	McGee, Elton
Childress, J. D.	Green, Warren	Lord, Earl	Rawlings, Robert	McCullough, Ila
Clark, Vernon	Grigsby, Billy	Luttrell, Foster	Ray, Clyde	McCullough, Lila
Cline, Alfred	Groves, Jacobs	Lyons, James	Richardson, James	McDaniels, Virginia
Collins, Billie	Gunter, Doanman	Manner, Joseph	Richie, Lester	McDonald, Irene
Collins, Kenneth	Gupton, Edwin	Manning, Clyde	Roach, Warren	McDowell, Ruth
Colston, Fred	Haddock, Grady	Martin, John Jr.	Robbins, Wallace	McGhee, Mildred
Colville, Leonard	Hale, Edmund	Matheson, Ralph	Roberts, Jack	Harbin, Doris
Condon, Calvin	Hall, C. B.	Matthews, Robert	Robertson, George	Harbuck, Dorothy
Connelly, Charles	Hatch, Marshall	Mayo, Billy	Robinson, William	Maley, Peggy
Conner, George				



SOPHOMORE CLASS--GIRLS

Acuff, Annie Laurie	Chapman, Mary	Haynes, Dorothy	Mann, Mary Beth	Scott, Opal
Acuff, Willie Ruth	Darnell, Frances	Henry, Helen	Martin, Elizabeth	Sedman, Nellie Jean
Adams, Mary	Davenport, Ollie	Hicks, Willie	Martin, Hester Sue	Sedman, Nancy
Adams, Ruth	Davis, Betty	Hill, Mabel	Massingale, Elizabeth	Sellers, Juana
Akin, Mildred	Davis, Florence	Hill, Virginia	Massingale, Nora	Shamblin, Louise
Alexander, Mildred	Davis, Marguerite	Holmes, Lillie Mae	Mathes, Frances	Simpson, Marian
Arms, Frances	Delaney, Frances	Holland, Frances	Meador, Mary E.	Sisson, Helen
Armstrong, Virginia	Dickerson, Ruby J.	Hope, Dorothy	Miller, Ann	Smith, Eleanor
Arnold, Lucille	Dixon, Maudie	Howard, Mary	Miller, Edna	Smith, Lena
Austin, Pauline	Dobbs, Louise	Huston, Evelyn	Miller, Eva	Smith, Marie
Baker, Nelree	Dorsey, Jean	Jackson, Nell	Miller, Gladys	Smith, Mary Frances
Barger, Jennie Ruth	Douglas, Louise	Jarrett, Dorothy	Moore, Alene	Smith, Pauline
Barnett, Edith	Douglas, Pauline	Jenkins, Anita	Moore, Rosel	Sparkman, Virginia
Barringer, Alice	Dowlen, Laverne	Johnson, Elizabeth	Moore, Nell	Spearmen, Pary
Beene, Charlotte	Drinnon, Margaret	Johnson, Louise	Morlock, Willadeen	Spencer, Christine
Beverly, Rachel	Dukan, Galdia	Johnston, Margaret	Morgan, Ruth	Spier, Elizabeth
Blackwell, Frances	Duke, Marie	Jones, Dory	Morris, Lovell	Staffler, Margaret
Blanks, Kathryn	Elkins, Myrtle	Jones, Marion	Murphy, Alice Jean	Stanford, Majorie
Blaylock, June	Edgington, Frances	Justice, Frances	Murphy, Lucy	Stoner, Evelyn
Boatwright, Frances	Ellington, Dorothy	Kallen, Marion	Murray, Eleanor	Storie, Maxine
Bond, Rosaline	Event, Ernestine	Kayler, Evelyn	Napier, Willie Lee	Tate, Dora
Bradshaw, Katherine	Ewing, Helen	Keith, Elveta	Owens, Madaline	Tate, Dorothy
Breneman, Frances	Fanning, Juanita	Kelly, Valgene	Painter, Katrinka	Tate, Lela Mae
Brock, Inez	Ferguson, Beatrice	Kelly, Betty	Parton, Ruth	Tatum, Georgia
Brogden, Betty	Kelly, Geraldine	Kemp, Dorothy	Payne, Virginia	Taylor, Christine
Brown, Elizabeth	Fitzgerald, Mary Anna	Keown, Floretta	Peden, Pauline	Templeton, Thelma
Brown, Ione	Foster, Elsie	Kilgore, Johnnie	Pendergrass, Juanita	Thomas, Christine
Broom, Madaline	Frazier, Lorraine	King, Margaret	Pitzer, Mary	Thomas, Mildred L.
Burgess, Gladys	Fridell, Frances	Kroeger, Geraldine	Pickett, Mildred	Thomas, Vera
Bynum, Martha	Frizzell, Kathleen	Katherine, Lenox	Porter, Anne Ruth	Thompson, Reva
Cahoun, Dorothy	Fryar, LaFerna	Levi, Nell	Price, Anna Auth	Thuman, Betty
Campbell, Kathryn	Fulks, Joyce	Lewis, Amy Lou	Price, Kathleen	Tucker, Freds
Campbell, Maudie	Fuller, Martha	Lang, Anna Marie	Pridard, Frances	Turner, Evelyn
Carmon, Aline	Gamble, Leila	Little, Elizabeth	Pursley, Alwida	Turner, Evelyn
Cate, Willy Sue	Gibson, Helen	Long, Dorothy	Ragsdale, Dorothy	Underwood, Alene
Choate, Mary Don	Gilbert, Mary E.	Long, Catherine	Ramsey, Charlotte	Venable, Helen
Clark, Elizabeth	Goins, Billie	Longly, Gladys	Reece, Anna	Van Zandt, Anna Laura
Clemens, Margie	Goins, Ruth	Low, Edna	Renegar, Mary Louise	Walker, Powellene
Clinton, Nancy	Griffin, Marie	Lowery, Mary Betsy	Reno, Virginia	Wells, Frances
Coffey, Eloise	Gross, Blanche	McAllister, Rosa Lee	Reynolds, Mae	Wheeler, Edna Ruth
Cookston, Ruth	Gross, Martha	McArthur, Doris	Rich, Sarah Faye	Whitover, Kathleen
Corley, Evelyn	Gues, Martha	McCall, Janet	Richardson, Eugene	Willong, Elizabeth
Crabtree, Betty R.	Guzder, Faynette	McGee, Elton	Richardson, Margie	Williams, Katherine
Crawford, Alma Ruth	Gazzaway, Opal	McCullough, Ila	Richardson, Molly	Winzinger, Naomi
Crawford, Jean	Hagaman, Beulah	McCullough, Lila	Rouse, Margaret	Witt, Dot
Crawley, Katherine	Hallfield, Evelyn	McDaniels, Virginia	Robertson, Spyl	Woodlee, Fana
Critchell, Betty	Hamberd, Edythe	McDonald, Irene	Robinson, Spyl	Workman, Sarah
Culpepper, Wilma	Hardin, Doris	McDowell, Ruth	Rogers, Juana	Young, Frances
Cushman, Margaret	Harbuck, Dorothy	McGhee, Mildred	Rogers, Leona	Young, Euna

SOPHOMORE CLASS HISTORY

On September 4, 1934, three hundred and twenty-four ambitious recruits, having signed for a four-year cruise on the good ship "Central," set sail on the first voyage across Freshman Bay.

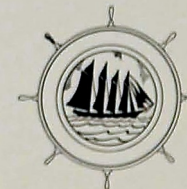
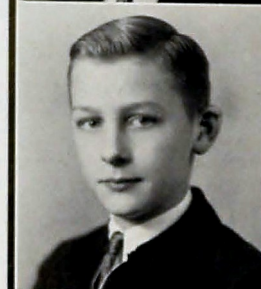
The officers on this voyage were: Captain William Zimmerman, president; First Mate Valgene Kelley, vice-president; Second Mate Peggy Mabry, secretary; Purser J. T. Rose, treasurer. Second Mate Mabry was also the able and efficient representative on the CHAMPION staff.

In spite of several cases of seasickness in the form of "algebraphobia," "Latinitis," and other common ailments, they found their "sea legs" early, and very few failed to survive. Seven of them became such good sailors that they were put on the honor roll as Able Seamen. They were: Valgene Kelley, Peggy Mabry, John Meyer, William Zimmerman, Elizabeth Usmiller, Anna Laura Van Zandt, and Powellene Walker.

This voyage was so successful that after the regular three months' summer shore-leave the ranks were swelled by the addition of many recruits for the second voyage, across Sophomore Sea.

The officers for the second season's cruise are: Captain John Meyer, president; First Mate Peggy Mabry, vice-president; Second Mate Madaline Owens, secretary; Purser Beulah Hagaman, treasurer. The representative on the CHAMPION staff is Chief Engineer Opal E. Scott. The leaders have been such good ones that the number on the honor roll has been increased to fifteen. They are: Mary E. Gilbert, Mary F. Smith, Peggy Mabry, Alice Jean Murphy, Margaret Stanford, William Zimmerman, Nancy Cushman, Alice Barringer, Elizabeth Clark, Nell Jackson, Floretta Keown, Georgie Tatum, Margaret Drinnon, Rudolph Hoppse, and Pauline Austin.

The trip through Sophomore Sea has been made with few desertions, and before casting anchor for another shore-leave very little bad weather is expected. Soon these sturdy sailors will be sailing the Junior Ocean.



OFFICERS

DAVID MASINGILL	President
EDWIN STRICKLAND	Vice-President
ELOISE EVATT	Secretary
DOROTHY HENNESSEE	Treasurer

FRESHMAN CLASS



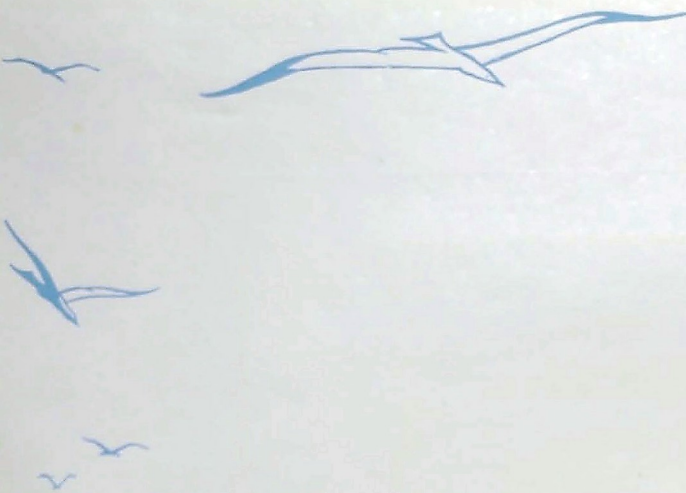
FRESHMAN CLASS-BOYS

Adams, Charles Edward
Allen, Warren Theodore
Anderson, Robert McCall
Arnold, Alvin Joe
Arnold, Oscar Wright
Arman, Harold Edward
Armon, Leonard Charles
Bacon, Morris Taylor
Bailey, George Cleveland
Balfew, George Hult
Ballinger, Nick
Bama, Charles Franklin
Baldman, Ray Scott
Beatty, Paul E.
Beene, James Edward
Bell, Andrew Frank
Belvin, William Earl
Bever, Clarence Jarvis
Blair, Charles Frederick
Blacklock, Robert Howard
Bleivin, Rex Lorenz
Bolton, Jim Thomas
Bouldin, Joseph Eugene
Bowers, Thomas Newton
Bowman, Edward Lawrence
Bord, Clarence Williams
Brooks, Frederick Stonewall
Brown, Claud Frank
Burdick, Erwin Maxwell
Byrd, Henry Ward Beecher
Caldwell, Roy E.
Camp, A. L.
Camp, Harvey Austin
Carmichael, Barkedale Wayne
Cass, James Heribal
Chick, Robert Glenn
Ciss, Jimmy Walter
Cleri, Ray Michel
Cobleigh, C. Henry
Conner, Thomas Charles
Cook, William Aubrey
Cooper, Billie Gibson
Crawley, Bill Garrett
Coney, Sharker Fancher
Curtort, Willard Gerald
Davis, Edwin Benard
Davis, James Milton
DeFord, Glen Rogers
DeFrid, James Theodore
Dezell, James William
Deke, Olin Eugene
Dugan, Robert Lee
Dyer, Horace
Edwards, Harry Leon
Eldridge, Edward Anderson
Eldridge, Hinson Buck
Elkins, Lee Argo
Elrod, William Alexander
Eppert, Thomas Aden
Ezell, William Otis
Falk, Charles F.
Fan, Frank Randle
Farr, Roy Edwin
Finley, William E.
Fiskner, Floyd Homer
Ford, James Ray
Foster, Sam Pinn
Forsworth, James Barker
Fryar, Richard
Fuller, Hugh Dorsey
Gadd, John Ralph
Gibson, Calvin John
Gordon, Mamey Lee
Green, James
Guen, George Henry
Hall, Robert Louis
Hardwick, James
Hart, Arthur Edison
Haskins, Otto William
Hess, Bernard Thaur
Henry, Thomas Harden
Henry, Wendell Sandford
Hill, George Floyd
Hill, James Edward
Hobday, Henry Clark
Hodges, Milton Alfred
Holman, Earnest Ray
Holeman, Samuel Costello
Holladay, Winnell Mauston
Holmes, John David
Hooper, Ralph Edward
Horslin, Billy Bucke
Hubbard, Charles D. n.d.
Hughes, James Mid Deon
Hudlow, Ralph Porter
Hudson, Glenn Alfred
Hudson, Ralph Lee
Hundley, Paul Willard
Hunt, Joe
Hutchison, Eugene Gullfroy
Hyde, Haywood Leon
Jackson, William Hugh
James, Leamon White
Johnson, Mason Mack
Jolley, Paul Eugene
Kaler, Roy
Kiger, Eugene Chester
Kilgus, Hoyt Eugene
King, Milton Newton
Kington, Lorin Clark
Knaben, Edward
Kroeger, Edward Dinton
Kyer, William Frederick
Lackey, Bert Joe
Land, Earnest Hunter
Lawson, George Thomas
Lawson, Thomas Milton
Laylock, William Alexander
Leavitt, L. D.
Leahman, Halstead Albert
LeVan, Kenneth
Lewis, F. V.
Lewis, Marvin
Lindsey, Jess Lee
Llewellyn, Henry Grady
Logan, William Reid
Long, Earl Washington
Lyles, Billy
McClure, Dewey Wallace
McGandy, Charles William
McDerm, Earl Morris
McDerm, Hart
McKibben, William Frank
McNickols, Ralph
McPherson, James Owsley
Mahoney, James Bailey
Mahoney, James Herschell
Manier, David Seffner
Mann, Earl Fred
Mansfield, Joseph Earl
Marsden, John Francis
Marsden, James Henry
Martin, Earl Morgan
Martin, Glen
Martin, Joe Howard
Martin, John Fred
Mauser, Carlyle
Maungill, David Irvin
Mason, Harold Leroy
Mason, J. C.
Mathews, William Max
Meacham, Billy Nelson
Meacham, William Thomas
Mills, Cecil Ray
Mills, Charles Douglas
Miller, Chester Wiley
Miller, William Amos
Miller, William David
Minor, Roy Banks
Minton, Gene Hubert
Mooney, Clarence
Moore, James Edward
Morgan, Barnett
Moody, Fred Spivey
Mount, Paul
Nabors, Johnnie Whitefield
Neal, Charles Orlando
Nickelson, William H. n.d.
O'Hair, Earl Emory
Oliver, Ferdinand Daniel
Owensley, Murphy Walter
Pace, Gary Arnold
Payne, S. Robert
Peace, Stuart Milton
Peters, William Reid
Pendergrass, Samuel Rex
Phillips, Frank Joseph
Pierce, John
Pinkerton, John Judson
Pope, Bryan E.
Powell, H. Kenneth
Prince, Hoyt, Jr.
Rackley, I. W.
Redmond, S. A. n.d.
Rhinehart, Wilbur Mack
Ricks, James Ellis
Ricks, Charles Louis
Roberts, James Franklin
Rogers, Samuel James
Ross, John Callan
Rous, Clarence Vernon
Sanford, Thomas Franklin
Satterfield, John
Schaefer, Edward
Selvidge, Roy Edmund
Serrel, Granville
Shaw, Earl Teach
Silvey, Harry Almas
Skates, Ernest James
Slaughter, Ed Kenneth
Smith, Ellis
Smith, Grover Francis
Smith, I. T.
Smith, John Lee
Smith, Ulys
Standley, Bennett Louis
Standfield, Earl
Stansel, Freddie Almerine
Steinmann, Paul Witham
Sterchi, Fred Jay
Stribling, Kenneth Becker
Strickland, John Edwin
Tallant, Kenneth Eblen
Talley, Robert Dud
Tarvin, Frank DeForest
Thompson, Clifford Hahn
Thompson, Moses Beaton
Thompson, Tommy
Tinker, Wiley
Tolmie, John Howel
Trues, William Lloyd
Tucker, Gordon Lee
Vance, Dan Brevard
Varnell, Neil Franklin
Waldin, William Tom
Walters, Boyd Bower
Ward, Charles Allen
Waterhouse, C. A.
Watt, Billy Garner
Webb, Henry Melvin
Weese, John Thomas
Westbrook, Paul Kruee
Westbrook, Ralph Meroun
Wilhoite, Forrest McKinley
Wilhoite, Harold Clarence
Williams, Charles Edward
Williams, Jimmie Lee
Wilson, E. P.
Wirt, Ralph Eckel
Worrick, Harold Franklin
Worley, Marvin Franklin
Young, Junior Vance
Youngker, Cromer Leonard



FRESHMAN CLASS-GIRLS

Acuff, Marie
Acuff, Ruth Jewell
Adams, Dana Foster
Adams, Dorothy Carlean
Allen, Isabelle Louise
Allison, Thelma Louise
Allred, Follie Juanita
Armour, Wilma Ann
Ashley, Evelyn Carolyn
Auerwald, Martha Phyllis
Ault, Mary Katherine
Baker, Lola Belle
Bass, Lucile Jane
Bingerman, Martha Clara
Bordres, Helen Lois
Bowling, Joyce Katherine
Brannon, Freda Aline
Bray, Margaret Louise
Brewer, Mary Frances
Brooks, Alice Ruth
Brooks, Christine
Brown, Eulala
Brown, Nancy Jeanette
Burnette, Fannie Mae
Burton, Edna Cornelia
Campbell, Harriet Evelyn
Carson, Erma Ruth
Cayce, Rebecca Sue
Chapman, Mildred Virginia
Clark, Bobbie Frances
Clemens, Ruby Lena
Cobleigh, Grace Marie
Collins, Margaret
Conly, Pansy Corretta
Cope, Marie Maggie
Copp, Quee E.
Cox, Juanita
Crawford, Mary Louise
Crighton, Dorothy Ellen
Crumley, Helen Louise
Crumley, Mary Ellen
Cunningham, Ella Elizabeth
Davis, Betty
Davis, Doris
Deakin, Rebecca Jane
Dearing, Elsie Louise
DeFries, Martha Elizabeth
Jones, Ruby Lea
DeSha, Bertie Ruth
Duncan, Betty Jean
Duncan, Mary Elizabeth
Eaker, Geneva Mae
Earp, Audrey Ellen
Ellington, Margaret
Epperson, Nellie Louise
Evans, Janette Ernestine
Evatt, Frances Eloise
Evatt, Maude Frances
Fincannon, Willie Jean
Fine, Ruth Henrietta
Finale, Lillian Nadine
Frazier, Frances Elizabeth
Gannaway, Agnes Leona
Gardner, Sara Ann
Gattis, Mary Elizabeth
Genung, Grace Elizabeth
George, Charlotte Elizabeth
Gilreath, Rosa Edith
Goins, Billie Frances
Gray, Jean
Green, Georgia Mae
Green, Rosetta Mae
Greer, Gloria Louise
Griffith, Martha Rebecca
Haines, Mary Eleanor
Harvey, Emma Frances
Hawkins, Margaret
Heggie, Martha Emerson
Hennessee, Dorothy Louise
Hennessee, Lillie Mae
Hicks, Billie Jean
Hicks, Mildred Elizabeth
Hill, Henrietta
Hill, Virginia
Hirst, Marguerite Elizabeth
Hodge, Margaret Elizabeth
Hoge, Mary Jane
Humbard, Ethel Willie Belle
Hunerswadel, Juanita Ann
Hunley, Milbury Sue
Hurley, Juanita Elizabeth
Jennings, Jewel Frances
Johnson, Dorothy Elizabeth
Johnson, Mary Katherine
Jones, Ruby Lea
Jordan, Mary Roberta
Jorges, Margaret Ida
Kell, Alice Metria
Kuhlman, Lucile Margaret
Lamb, Betty Jean
Lancaster, Jean Helen
Lawrence, Virginia Dora
Layne, Katherine Phleistine
Ligon, Mildred Katherine
Linn, Margaret Combs
Love, Lillian Ruth
McArthur, Janet Frances
McLaughlin, Lura Bevel
Marler, Audrey Dean
Marshall, Doris June
Maupin, Dorothy Raines
May, Mary Jane
Metcalfe, Helen Margaret
Miles, Mella Cornelia
Miller, Helen Alberta
Miller, Ruby Elizabeth
Moody, Betty Katherine
Moorefield, Mary Frank
Moses, Edna Ruth
Mullinax, Julia Mae
Newell, Katherine Ann
Nixon, Ericile Mae
Orrell, Clara Hazel
Orton, Dorothy Ann
Page, Constance Jean
Pardue, Martha Evelyn
Park, Anna Katherine
Parker, Katherine Louise
Parker, Marjorie Tennessee
Penley, Eleanor Ruth
Plitzer, Dora Eleonora
Pitts, Adeline Elizabeth
Poorman, Carmel Nellie
Potts, Juanita Emma
Pratt, Florence Evelyn
Radmond, Beatie Edith
Rice, Katherine Virginia
Richards, Thelma Loue
Richardson, Edith Mae
Richardson, Irene Elizabeth
Richeson, Dorothea Evelyn
Richeson, Lela Mae
Rickey, Dorothy Lee
Roberts, Gladys Louise
Robinson, Sara Helen
Ruh, Sara Katherine
Rutledge, Nancy Shodner
Ryerson, Nina Adrin
Schneider, Margaret Marie
Scruggs, Marian Ruth
Sells, Christine Townsend
Shaw, Ruby Lee
Sherrill, Sara Louise
Simpson, Betty Jean
Sivley, Virginia Lee
Skilton, Hazel Margaret
Sledge, Aileen
Smart, Juanita
Smith, Louise Elizabeth
Smith, Opal Marie
Snodgrass, Betty Martha
Stanford, Doris Alvin
Stevenson, Dorothy Virginia
Suggs, Kathryn Lodina
Summer, Carolyn Stratton
Sutherland, Blanche Ethel
Swafford, Ruth Elizabeth
Tate, Cleta Esther
Teague, Dorothy Beatrice
Thatch, Verna Mae
Thompson, Betty Katherine
Thompson, Dorothy Ann
Thompson, Kiska Elaine
Thornton, Lila Katherine
Torton, Odessa Mae
Turner, Annie Lee
Wade, Doris Virginia
Walters, Ruby Louise
Ward, Margaret Louise
Wilson, Pearl Elizabeth
Wilson, Virginia Belle
Woodley, Mildred Edwina
Wooten, Johnnie Juanita
Wright, Frances Jewel
Wynn, Edna Lorene
Yarbrough, Gwendolyn Sarahbeth



*Fame is what you have taken,
Character's what you give;
When to this truth you awaken,
Then you begin to live.*

—TAYLOR.



Treasure Trove

Senior ~ PERSONALITIES

Central Treasures

*Fancied things are bright and gay,
Dreams are glamorous, alluring;
But our treasures, all stripped bare,
Still are lovely and enduring.*

*We have cleverness and wit,
We have scholars seeking, yearning;
As a guide for stumbling feet
Character's steady light is burning.*

*As the first star breaks the gloom,
When the day is softly dying,
Friendliness will rout despair
When the lonely heart is crying.*

*In the darkened days ahead,
Weak, unsteady hearts may stray,
But such leadership as ours
Surely will not lose the way.*

*In their quest for loveliness,
Vagabonds and dreamers roam;
We have looked into our hearts
We have found our dreams at home.*

—THELMA STYLES.
CENTRAL, '36.

Senior Selections

SERVICE

LOUIS ELDRIDGE



ROSABELLE KEOWN



RELIABILITY

EDGAR RICE



JEANNE JOHNSTON



SCHOLARSHIP

Mildred Wilhoite

Senior Selections

PERSONALITY

ROBERT MATUSEK



DORA McGEE

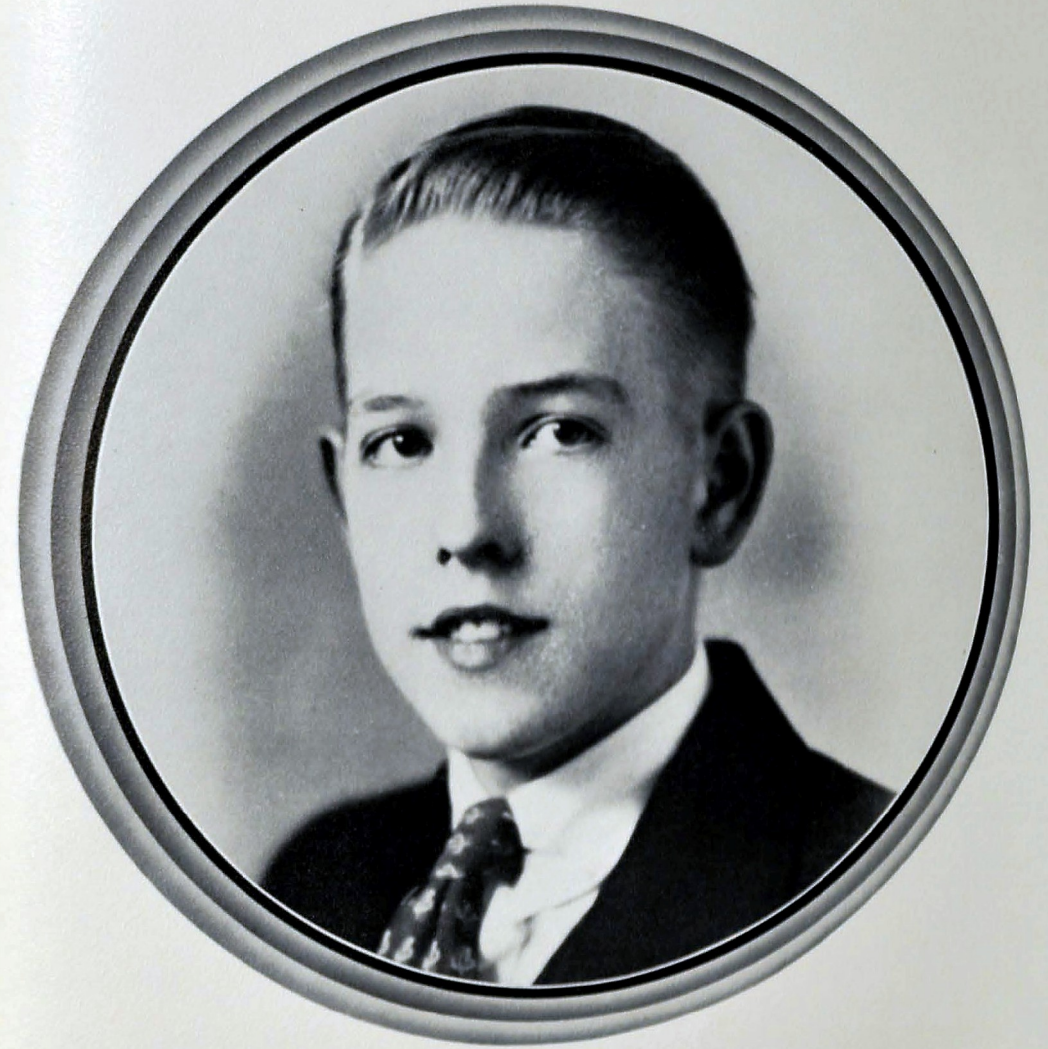


COURTESY

LEROY GLASSCOCK



EDNA ELLIS



SCHOLARSHIP

John House

Senior Selections

FRIENDLINESS

BEST ATHLETE

BROADUS MARLOW

MARY GRACE CARD

DESMOND VANDIVER

HELEN GROSS



LEADERSHIP

Virginia McCoy

Senior Selections

NATURALNESS

ROBERT HANKINS



JUNE LIVINGSTON

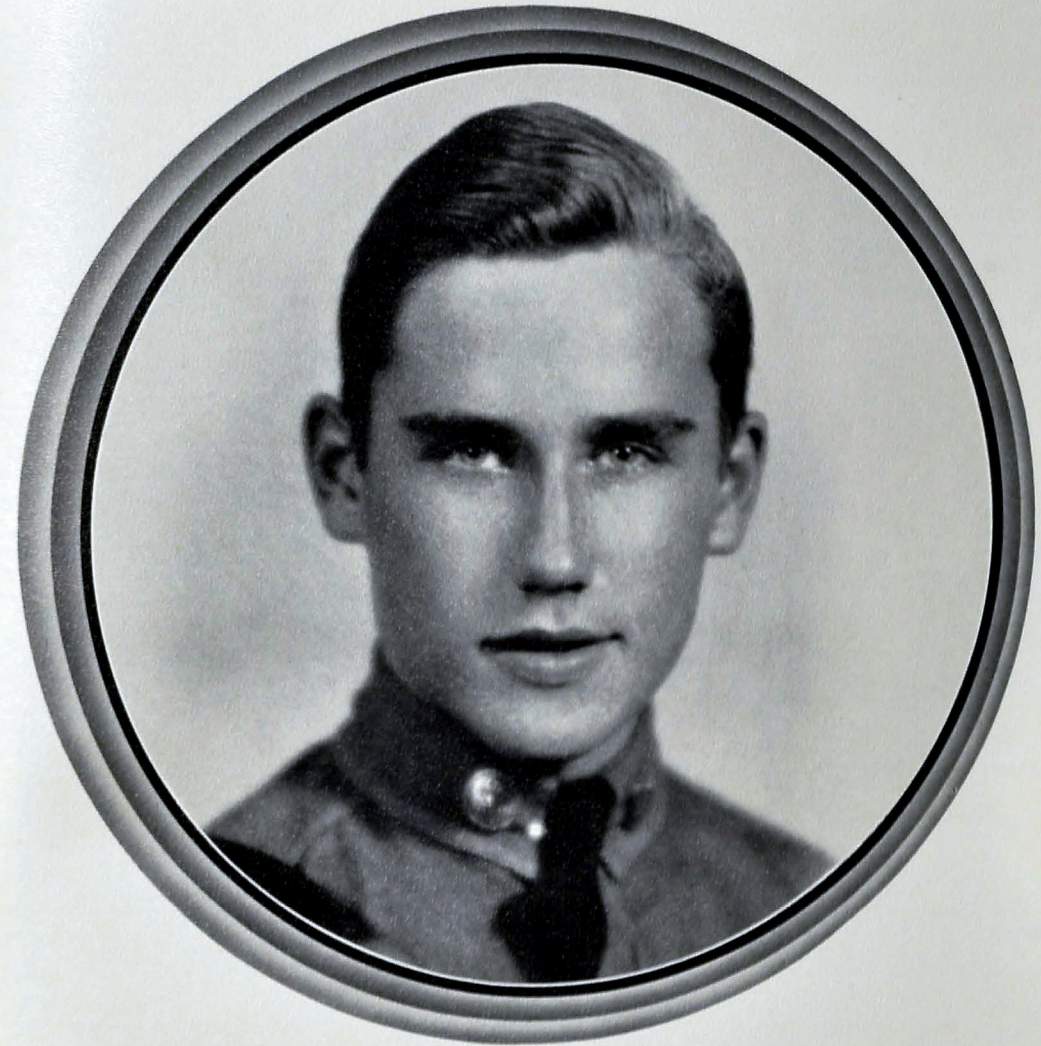


CLEVERNESS

HAROLD LOGAN

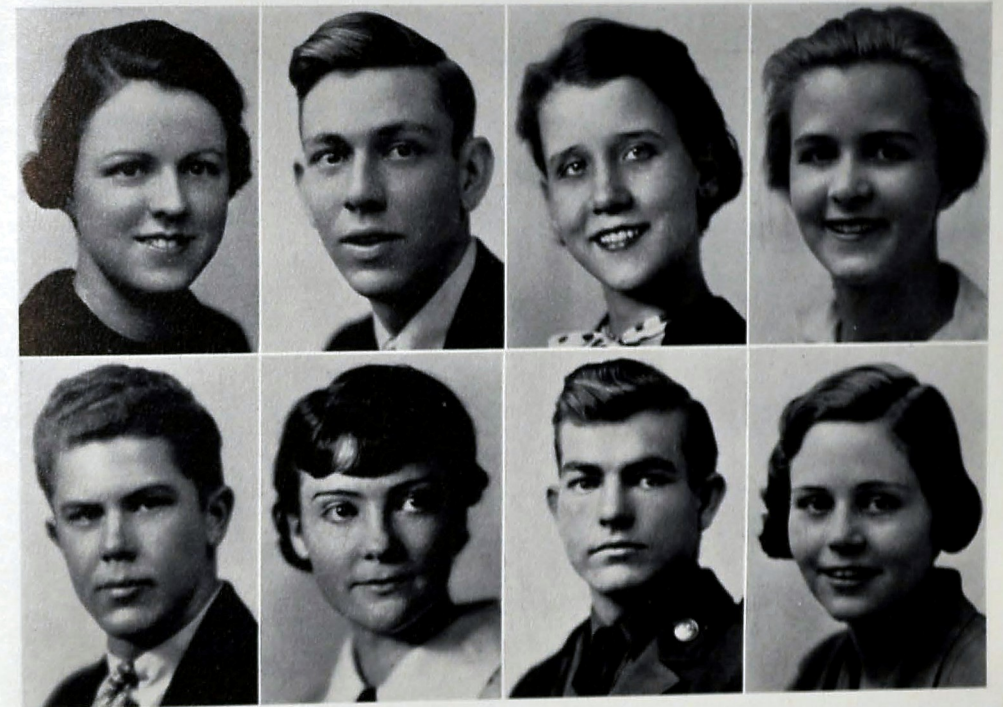
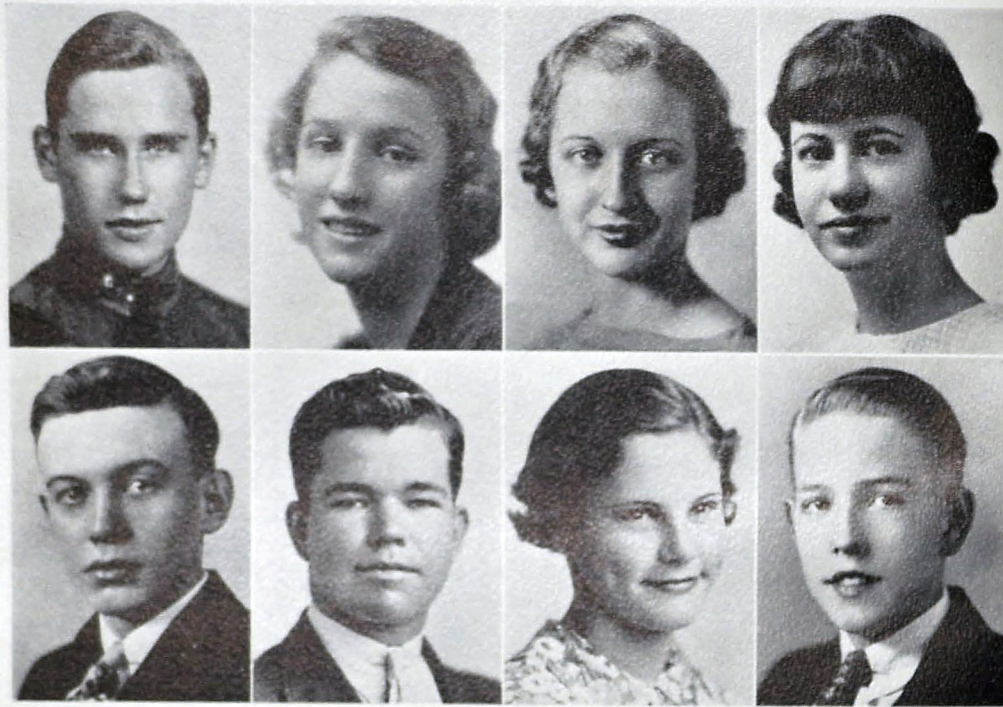


LUCILLE RUTLEDGE



LEADERSHIP

Edward Bower



And their Ships

ED BOWER *Honor Student and Faculty Representative*
 DOROTHY BOWLING *Honor Student*
 MARGARET CRAWFORD *Honor Student*
 MARGARET DAILEY *Honor Student*

Came In . .

FLEMING EMPSON *Honor Student*
 LEROY GLASSCOCK *Historian*
 HELEN GROSS *Honor Student*
 JOHN HOUSE *Honor Student*

JEANNE JOHNSTON *Honor Student*
 HAROLD LOGAN *Prophet*
 BERTHA MALSTROM *Honor Student*
 DORA MCGEE *Reader of the Will*
 W. L. MILLER *Honor Student and Valedictorian*
 THELMA STYLES *Poet*
 DESMOND VANDIVER *Class Representative*
 MILDRED WILHOITE *Honor Student and Salutatorian*

*Iron jointed, supple sinewed, they
shall dive and they shall run,
Catch the wild goat by the hair and
hurl their lances in the sun.*

—TENNYSON.



Men of Brawn

T H E C CLUB

OFFICERS

DESMOND VANDIVER *President*
 BILLY KILLIAN *Vice-President*
 ROY SCRUGGS *Secretary*
 NEWELL HENRY *Treasurer*

ROBERT ANDERSON
 WILBURN BAKER
 ROY BASKETTE
 DICK BATES
 GEORGE BRIDGERS
 HAROLD BROWN
 MATTHEW CARTER
 PERRY CRUMLEY
 BOBBY DICKS
 NEWELL HENRY
 LUCIUS HENSON

DEXTER HODGES
 PAUL JOHNSON
 FLETCHER JOLLY
 BILLY KILLIAN
 DEFOREST KILLINGSWORTH
 BOB KING
 HAL LAMB
 ROBERT MCCABE
 EMMETT MALLETT
 BOB MATUSEK
 J. A. MORRIS
 FRED MONDY

ALBERT MUERTH
 BILLY O'BRIEN
 VICTOR O'NEAL
 PAUL PAYNE
 JACK PINION
 ROY SCRUGGS
 J. T. SMITH
 NATHAN SMITH
 DUKE STALCUP
 DESMOND VANDIVER
 W. C. WHEAT

S. DEAN PETERSEN, *Sponsor*
 GEO. MCCOY, *Sponsor*
 RALPH OLINGER, *Sponsor*
 BILL BALES, *Sponsor*



1935 CITY

CHAMPIONS

Varsity

P L A Y E R S

ROY BASKETTE
DICK BATES
GEORGE BRIDGERS
HAROLD BROWN
PERRY CRUMLEY
CAMP HAMILTON

With thirteen lettermen back, one for every position except left end, Central closed the season of 1935 with one of the most brilliant records in her history of football.

The first game proved a splendid starter for the season, for in a night conflict at Cleveland Central defeated the Bradley Bears, 17 to 7. The Bears scored first. In the game Alternate Captain Bob Matusek kicked his first field goal.

The next game was Central's opener at home, and before a good crowd Central licked the "Etowah Jinx" which has spoiled many good Central teams in the past, 12 to 0.

Against the strong Kingsport combine Central seemed to be outclassed, but in the second half, behind the leadership of Captain Vandiver in the line, Central scored two touchdowns to win, 13 to 0.



S. D. PETERSEN, Head Coach

Varsity

P L A Y E R S

DeFOREST KILLINGSWORTH
BILLY KILLIAN
FLETCHER JOLLY
DEXTER HODGES
LUCIUS HENSON
NEWELL HENRY

The next victim was Rome High School, who was downed 38 to 0, every man on the squad playing except Henson, who received rib injuries in the Bradley game.

At Nashville the team played good ball but let down for a minute, and Nashville scored once, which was their share in a 24 to 6 victory for Central.

In the third of a series of night games on Patten Field, more resistance was offered by Stevenson than was expected. However, Central scored two touchdowns and added a third in the closing minutes when Maffett intercepted a pass and ran 75 yards for a touchdown, making the score 18 to 0.

On October 25, Central's 1935 football team met its "Waterloo" in the form of the strong Knoxville City eleven, which piled up a total of 26 points against the Purples.



GEORGE MCCOY, Coach

1935

CITY

CHAMPIONS

Varsity

PLAYERS

"Starting over" the following week the team avenged the previous year's 12 to 0 defeat at the hands of Baylor with a 32 to 0 victory over the Rikemen.

Playing in Anniston the following week, Central evened the score at 6 all in the fourth quarter, and then forged ahead by the margin of a field goal, making the score 7 to 6.

The next game, against the Irish of Notre Dame, was really the climax of the 1935 season for Central. On November 15, the opponents had things their way a large part of the game, scoring first and presenting a serious threat in the fourth quarter when a Notre Dame star ran 45 yards to be caught from behind on Central's 16-yard line. For the second time during the season Matussek added the margin of victory—score 7 to 6 in Central's favor.

BOB KING
HAL LAMB
HARRY MAFFETT
EMMETT MALLETT
ROBERT MATUSEK
ALBERT MUERTH



RALPH OLINGER, Coach

Varsity

PLAYERS

The last game was the traditional City-Central fray, which was played on Chamberlain field before the largest football crowd of the season in Chattanooga. Both teams played hard, fast ball, Central winning by a score of 19 to 6 in a game which was the last for Captain Vandiver, Alternate Captain Matussek, Killian, Crumley, and King, who had played outstanding ball all year, receiving able assistance from Henson, Killingsworth, Hamilton, Maffett, O'Neal, Payne, and members of the underclasses.

From this outstanding team four players were given places on the mythical all-city eleven. These boys were Captain Desmond Vandiver, Roy Scruggs, Dick Bates, and Billy Killian. Captain Vandiver made the all-state team.

In the selection of leaders for 1936 the lettermen chose Newell Henry, captain, and Roy Scruggs, alternate captain.

DESMOND VANDIVER
ROY SCRUGGS
JACK PINION
PAUL PAYNE
VICTOR O'NEAL
BILLY O'BRIEN



A. P. STEWART, Business Manager



NATHAN SMITH,
Student Manager



MARION KALLEEN, JAMES GRAY, RUBY L. ROSE, FRANCIS WILLIAMS, SARA McCAY
Cheer and Song Leaders

A REVIEW OF THE FOOTBALL SEASON

SEPTEMBER 13—

	Central	Opps.
Bradley	17	7

SEPTEMBER 19—

Etowah	12	0
------------------	----	---

SEPTEMBER 26—

Kingsport	13	0
---------------------	----	---

OCTOBER 4—

Rome	38	0
----------------	----	---

OCTOBER 11—

Nashville Central . .	24	6
-----------------------	----	---

OCTOBER 17—

Stevenson	18	0
---------------------	----	---

OCTOBER 24—

	Central	Opps.
Knoxville City . . .	0	26

OCTOBER 31—

Baylor	32	0
------------------	----	---

NOVEMBER 8—

Anniston	7	6
--------------------	---	---

NOVEMBER 15—

Notre Dame	7	6
--------------------	---	---

NOVEMBER 30—

City	19	6
----------------	----	---

BASEBALL AT CENTRAL

SCORES

	Central	Opps.
Notre Dame	10	7
Bradley	8	7
McCallie	8	3
City	9	6
McCallie	4	8
Bradley	4	10
City	1	1
Notre Dame	18	3
City	0	4



BILL BALES, Coach



Pitchers: Lucius Henson, Leon Standifer, Albert Baker; infielders: Billy O'Brien, Winston Lee, J. A. Morris, Paul Gannaway, Fletcher Jolly; outfielders: Emmett Mallett, Boone Denny, Wayne Hatcher; catchers: Perry Crumley, Jack Pinson; manager: Collins.



WILLARD MILLSAPS, Coach

ON THE COURT

BILLY O'BRIEN

FORWARD

Billy is one of Central's best men, both on offense and defense. He is fast, and his level head and clear eye made him one of the team's leading scorers.

PAUL JOHNSON

CENTER

"Bo" is one of a trio of men who made their letters during their first year at Central. He is tall, fast, and no doubt will be an asset to Central teams in the future.

ROBERT McCABE

GUARD

Bob, the second of this trio of first year men, shows promise of being one of Central's future stars, as he is well rounded in all departments of the game, lacking only in experience.



FRED MOUDY

FORWARD

Fred is the smallest man on the team but makes up for his lack of height in his ability to deliver the goods when needed. As he is a sophomore, he has prospects of a brilliant career at Central.

NATHAN SMITH

GUARD

Izzy is little but loud and has made noticeable progress throughout the year, starting several games during the latter part of the season. Izzy will be sorely missed next year.

VICTOR O'NEAL

GUARD

"Vic" makes up for his lack of stature with his speed and determination to win. Although not a regular, as a substitute he is among the best, and the team is sorry to lose him.

FLETCHER JOLLY

CAPTAIN
CENTER AND GUARD

As captain of the Purple quintet Fletcher has exhibited genuine ability at hitting the hoops, which largely accounted for his making the Eleventh District tournament team at Athens during the '35 season. "Snead" has led his team in many brilliant playing exhibitions throughout the year.



WILBURN BAKER

CENTER

The tall, lanky center of the Purple basketballers has rapidly improved throughout the season. Combining the characteristics of a hard, fast, rough player, he has been called by his teammates "Battlin'."

BOBBY DICKS

ALTERNATE CAPTAIN
FORWARD

Bobby proved beyond all doubt to be one of the smoothest, most deliberate men on this year's team. Bobby is small but fast, and he possesses courage and determination equal to any foe.

W. C. WHEAT

GUARD

W. C., playing at the guard position, was one of the mainstays on this year's hardwood combine. W. C. has both size and ability and likes the game. He has one more year to play.

DUKE STALCUP

CENTER
Not in Picture



RESULTS OF '36

Opps.	Cen.
Bradley	31 26
Charleston	32 28
Daisy	31 35
Ringgold	25 22
Ringgold	31 46
Charleston	33 30
Kingsport	24 22
Bradley	40 21
McCallie	24 46
U. C. Freshmen	14 41
City	23 22
City	30 26
Johnson City	12 43
Notre Dame	15 11
Johnson City	25 37
Kingsport	31 30
McCallie	28 34
City	13 16
Notre Dame	18 34
Baylor	29 27
Baylor	17 41
McMinn	15 36
Copperhill	19 16

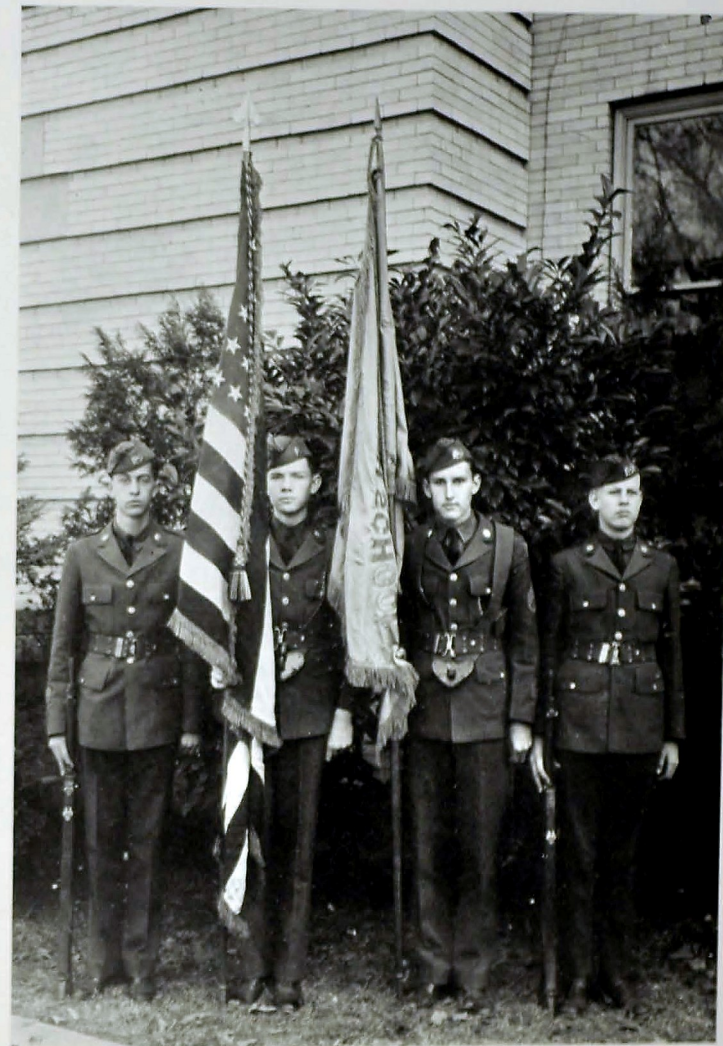


*Comrades leave me here a little
while as yet 'tis early morn.
Leave me here and when you want me,
sound upon the bugle-horn.*

—TENNYSON.



Boarders Away



SERGEANT GEORGE HARRISON
SERGEANT TERRELL BRAND
PRIVATE LEMAR SMITH
PRIVATE GAINES MILLIGAN

THE COLOR GUARD

THE CADET STAFF



MARY GRACE CARD
Sponsor

Major Robert Rutledge, Captain Leroy Glascock, First Lieutenant J. P. Brown, First Lieutenant Ben Fletcher, Second Lieutenant Desmond Vandiver, Staff Sergeant Charles Elmore.

AND THE U. S. ARMY OFFICERS

The Reserve Officers' Training Corps of Central played an important part in the cruise of 1936. The battalion started off a successful record by being rated as one of the best battalions in the Fourth Corps Area Inspection, and thus enabling the cadets to wear the red honor stars.

The success and achievements of the battalion for the year 1936 are due primarily to the officers in command, Colonel Ballard Lyerly, Sergeant George M. Harris, and Cadet Major Robert Rutledge.

Among the many events outstanding in the memory of each cadet are these: The presentation of sponsors on Parents' Day, the Armistice Day program presented in chapel with the R. O. T. C. in charge and with Colonel Ben T. Nicklin as guest speaker, the brilliant display of the band on the field between halves at the City-Central game, the Fourth Corps Area Inspection, for which every cadet carefully prepares. The presentation of commissions at Central Field is the last major event of the year for the battalion. It is on this memorable day that the boys who graduate say farewell to their military activities at Central, and the incoming officers look forward to another year of attainment.



COLONEL BALLARD LYERLY



SERGEANT G. M. HARRIS



HELEN BROWN, *Sponsor*

The Band

OFFICERS IN COMMAND

GEORGE VERHEY	<i>Captain</i>
HERMAN ERNST	<i>First Lieutenant</i>
DICK BIDWELL	<i>First Lieutenant</i>
HAROLD ROBINSON	<i>First Sergeant</i>
CARL WHEELER	<i>Drum Major</i>

SERGEANTS

R. BUCKNER
J. CYPHERS
H. FANSLER

J. LINN
W. MILLER
F. NIPPER

T. SUDDATH
W. VALENTINE
H. WOODFIN

CORPORALS

W. ASHWORTH
C. BATEY

E. BERKMIER

E. GOOD
R. CRAIG

PRIVATES

E. ANDERSON
A. ARNOLD
E. BELK
P. BELLE
M. COXEY
M. DUNCAN
E. ELDRIDGE
H. ELDRIDGE
B. EZELL

M. FULLER
M. GORDON
D. HAINES
H. HOBDA
R. HOOPER
W. HOTALEN
H. JONES
B. KELLY
E. KIGER

L. KINGTON
J. KNIGHT
F. LOUIS
R. MCDANIEL
H. MCDARIS
W. MATHEWS
C. MOORE
C. PORTER
B. RANKIN

E. REYNOLDS
C. RICKS
C. ROUSE
C. SHUTT
J. STEPHENS
R. VERHEY
H. WALKER
H. WHITE



Company E

OFFICERS IN COMMAND

GLENWOOD WARD Captain
 ROBERT HANKINS First Lieutenant
 THOMAS PIERCE First Lieutenant
 EUGENE BLAIR Second Lieutenant
 JAMES SMITH Second Lieutenant
 ROY SCRUGGS First Sergeant



WINIFRED MITTS, Sponsor

SERGEANTS

J. ANDERSON	R. FULLER	J. SANDERS
R. BROOKS	N. HESS	J. SMITH
J. CRUTCHFIELD	A. MCBROOM	C. WEST
	A. MILLER	

CORPORALS

W. BROTHERS	R. DEMOS	H. HALL	T. TIPTON
J. CARMICHAEL	J. EAVES	C. JACKSON	E. PEDEN
B. CASTINGS	W. FIELDS	J. RICHARDSON	F. WHITE

PRIVATES

J. ANDERSON	H. DENT	R. HUDLOW	G. MILLIGAN	L. SMITH
P. BEASLEY	E. FARLEY	R. HUGHES	S. MILLER	J. STEFFNER
G. BLACKWELL	J. FARR	L. IRWIN	E. MORTON	J. SUGGS
W. BOLLINGER	W. FINLEY	A. JONES	R. MOSIER	F. SYLVESTER
R. BOSWELL	D. FLETCHER	J. KELLEY	B. PARSONS	M. SIMPSON
M. BRAGG	O. GAZAWAY	H. KESLEY	D. PETERS	K. TALLENT
C. BROOKING	C. GILBERT	D. KILLINGSWORTH	R. PLANK	E. THOMAS
C. BROWN	H. GLEDHILL	J. LAWRENCE	H. POTTS	J. THOMPSON
F. CAHDON	F. GOODNER	L. LEAVITT	G. ROBERTSON	H. TOLMIE
J. CHADD	B. GRIGSBY	W. LOCKLEAR	D. ROGERS	T. TRAVIS
L. COLVILLE	C. HALL	B. LOGAN	P. ROGERS	F. VARNELL
R. COWDEN	A. HARRIS	E. LORD	E. RUBY	W. WATTS
R. DAVIS	F. HAWK	F. LUTTRELL	R. SAGESER	B. WILLIAM
J. DEMOS	B. HIGDON	P. MCGREGOR	R. SHERRILL	C. WILLIAMS
	J. HODGE		L. SMITH	



Company F

OFFICERS IN COMMAND

RALPH MILLER Captain
 WILLIAM HATCHETT First Lieutenant
 BROADUS MARLOW First Lieutenant
 EDWARD BOWER Second Lieutenant
 ED PHILLIPS Second Lieutenant
 CARL JOHNSON First Sergeant



LUCILLE RUTLEDGE, Sponsor

SERGEANTS

I. ARMSTRONG	R. CHALK	L. RICHIE
E. ARMS	B. GODSEY	W. ROBINSON
G. BRIDGES	G. GOTHARD	I. THOMPSON

CORPORALS

R. DAVENPORT	G. HUFF	M. SPARK
V. EDGE	J. LAYSON	B. PHILLIPS
L. GAUNT	E. MAGETTE	L. WHITTEN
	C. SHERWOOD	

PRIVATES

N. ANDERSON	J. DILZELL	H. HIGDON	C. MANNING	C. ROY
J. ARMER	L. DOWLEN	G. HUDSON	R. MATHEWS	L. RYERSON
W. AUSTIN	E. PEAGANS	D. HUMMEL	B. MAYO	E. SILVER
R. BARGER	H. FISHER	E. HUTCHESON	D. MOATES	J. SKIPPER
J. BLACK	F. FOLKNER	M. JOHNSON	H. MURRAY	J. SMITH
S. BOETTCHER	R. FOXWORTH	C. KILGORE	A. NICHOLS	D. SPARKS
G. BONNER	H. FULLER	B. KING	L. PARKER	R. STANDIFER
W. BROOKS	D. GAUNT	S. KING	H. PAYNE	J. STUTZ
H. BROWN	W. GREENE	E. KITCHEN	C. PLANK	H. SWOPE
J. BURNETTE	J. GROOVES	H. LAMB	C. POWELL	H. THOMAS
F. BUTCHER	E. HALE	V. LAWSON	R. PURSLEY	W. WALDEN
R. CHEEK	C. HARMON	F. LERCH	W. RAULSTON	V. WOMACK
N. COOPER	M. HATCH	B. LEWIS	J. ROACH	W. WHITTLE
O. DAVENPORT	T. HENRY	B. LONDON	J. MCBEE	M. WORLEY
J. DEFRIESE	K. HICKS	R. MCKINNEY	J. ROGERS	H. YOUNG

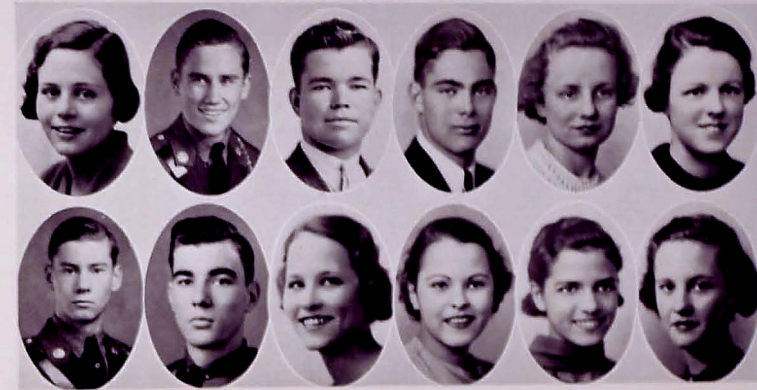


*"O sweeter than the marriage feast,
'Tis sweeter far to me,
To walk together to the kirk,
With a goodly company!"*

—COLERIDGE.



Shipmates All



THE CHAMPION STAFF

MILDRED WILHOITE	Editor-in-Chief
EDWARD BOWER	Business Manager
LEROY GLASSCOCK	Senior Section Editor
PAUL PAYNE	Athletic Editor
MARY GRACE CARD	Club Editor
JEANNE JOHNSTON	Feature Editor
BEN FLETCHER	Military Editor
BROADUS MARLOW	Photographic Editor
MARY FRANCES WILLBANKS	Typist
ADRIENNE DUCLOS	Junior Editor
OPAL SCOTT	Sophomore Editor
ELOISE EVATT	Freshman Editor
MR. A. P. STEWART	Sponsor
MISS SALLY MAY KING	Sponsor



LIBRARY STAFF

MRS. CLARENCE KOLWYCK *Librarian*
 MISS EMILY SPENCER *Assistant Librarian*

STUDENT ASSISTANTS

NORA ALLISON BARKER
 BETTY CRITCHELL
 HELEN EWING
 JEAN FINCANNON
 MARY HUGH HAYNES
 NORMA HUDSON

MONNIE HUMAN
 MARGIE IGOU
 NELL JACKSON
 ALICE KEELS
 ALICE LEE
 MARY JANE MAUPIN
 BILLY MEACHAM
 ALMA MOSS
 FRANKIE OLIVER

MYRA PACE
 LEONTINE RICE
 LILLIAN RICE
 LAVERNE ROBERTS
 MARIAN WHARTON
 MARTHA WOOD



GIRL RESERVES

DOROTHY SPARKMAN *President*
 DORA MCGEE *Vice-President*
 MAGDALEN RODGERS *Secretary*
 JOAN LOWRY *Treasurer*

MRS. HARRY BROWN, *Sponsor*

ESTHER ANDERSON
 VIRGINIA BRUSSLER
 MARY EDITH BAKER
 JEWELL BOYD
 BEVERLY COLLINS
 REGINA CRAVEN
 VIRGINIA COOTS
 ETNA DEERING
 BERTHA DEERING
 SARAH DEVANEY
 MARTHA FRENCH
 BARBARA FROST
 MYRA GRAY
 LENA MAE GRIFFIN
 INEZ GOINS
 DOROTHY HICKS
 MARGARET HODGES
 LILLIAN HICKS

DOROTHY HEMPHILL
 AGNES HIXON
 DOROTHY HOLLAHAN
 MILDRED HICKS
 MARY LENICE HICKS
 SARAH HUDSON
 ELMOR HOLLOWAY
 RENA JUDGE
 ELIZABETH LEMONS
 JOAN LOWRY
 LOUISE LAWRENCE
 CLARA MAE MCALLISTER
 MAYBELLE MCALEE
 DORA MCGEE
 MILDRED MARTIN
 ALMA MOSS
 MARTHA PENLEY
 DOROTHY PHYLLIS

DOROTHY PAGE
 MAGDALEN ROGERS
 DELLA RAY
 DOROTHY RAY
 ALINE SMITH
 VIRGINIA STARGEL
 GERALDINE SCHRUETT
 GENEVA SUTTON
 FRANCES SHANRE
 RUTH STONE
 BERNICE SIMPSON
 DELAPHINE STEVENS
 DOROTHY SPARKMAN
 ELIZABETH TRAMEL
 MYLDRED WELLER
 MARGARET WILLIAMS
 ELIZABETH WILSON
 VIRGINIA WILLBANKS



THE CENTRAL DIGEST STAFF

ROSABELLE KEOWN	<i>Editor-in-Chief</i>	LOUIS ELDRIDGE	<i>Feature Editor</i>
JOHN HOUSE	<i>Associate Editor</i>	GENE NELSON	<i>Exchange Editor</i>
MILDRED WILHOITE	<i>Times Page Editor</i>	ROY SCRUGGS	<i>Military Editor</i>
MAYRELLE McABEE	<i>News Editor</i>	VIRGINIA MORGAN	<i>Departmental Editor</i>
FLETCHER JOLLY	<i>Sports Editor</i>	FLORETTA KEOWN	<i>Alumni Editor</i>
HOBSON LOARD	<i>Associate Sports Editor</i>	THELMA STYLES	<i>Copy Reader</i>
MARY GRACE CARD	<i>Club Editor</i>	JEANNE JOHNSTON	<i>Librarian</i>

REPORTERS

VIVIAN DAVIS
EDITH LEDFORD

BULA DELL HAGAMAN

ADRIENNE DUCLOS
THURLA GARNER

TYPISTS

ALINE SMITH
MARY FRANCES WILLBANKS

ELIZABETH GUESS
DOROTHY HICKS

LELA MAE LAWRENCE
DOROTHY BOWLING

BUSINESS STAFF

ED BOWER *Manager*
ROBERT BROOKS *Assistant Manager*
HAROLD LOGAN *Circulation Manager*

FRANCES DEAKINS *Advertising Manager*
HELEN BROWN *Secretary*
FREDERICK ARNOLD *Assistant Secretary*
RENA JUDGE *Bookkeeper*

PRINTING STAFF

ARTHUR JOHNSON *Foreman*
BILL DORSEY *Compositor*
CHARLES DANNER *Compositor*
HAROLD LOGAN *Compositor*
WILLIAM GROOVER *Make-Up Man*

HAROLD ROBINSON *Make-Up Man*
BRUCE GODSEY *Make-Up Man*
RUBY BUCKNER *Pressman*
LEO BROWN *Pressman*
GLENN FULLER *Pressman*
JOE FLETCHER *Pressman*
MR. JAMES L. MILBURN *Sponsor*
MISS SALLY MAY KING *Sponsor*



PRINTERS' CLUB

ARTHUR JOHNSON *Foreman*
MR. J. A. MILBURN *Sponsor*

DANA ADAMS
TY ARNOLD
LEO BALDWIN
CLARENCE BIVENS
ERNEST BOWMAN
FREDERICK BROOKS
LEO BROWN
RICHARD BROWN
RUBY BUCKNER
ROBERT CHALK
ELMER CONNALLY
JACK CRUTCHFIELD
CHARLES DANNER
JIMMY DELOY
FRANK DOBBS

BILL DORSEY
JOE FLETCHER
GLENN FULLER
BRUCE GODSEY
ALLEN GREENE
WILLIAM GROOVER
HAROLD HALL
CHARLES HARMON
JACK HEARD
WILLIAM HELM
NEWELL HENRY
KENNETH HICKS
BILLY HIGDON
FELIX INGLES
ARNOLD ISBELL

BOB KING
HAROLD LOGAN
EDWIN LYNCH
GEORGE MCINTURFF
ARLES MILLER
R. L. MOATES
PAUL PAYNE
JACK PINION
LESTER RICHIE
HAROLD ROBINSON
ROBERT SHANNON
HOWARD SMITH
CLINTON TALLENT
J. E. THOMPSON
CHARLES WILLIAMS



JUNIOR RED CROSS

J. P. BROWN	<i>President</i>	FRANCES DEAKINS	<i>Assistant Secretary</i>
MELVIN KEITH	<i>Vice-President</i>	BOB COOPER	<i>Treasurer</i>
JAMES TURNER	<i>Vice-President</i>	BORUM ROBINSON	<i>Assistant Treasurer</i>
FRANCES JUSTICE	<i>Secretary</i>	J. H. SIVELY	<i>Assistant Treasurer</i>
MISS VESTA NELSON	<i>Sponsor</i>	MRS. IDA M. LONGLEY	<i>Sponsor</i>
MISS MARY E. RICE	<i>Sponsor</i>		

ESTHER ANDERSON	LILLIE MAE HOLMES	LILLIAN RICE	JEWELL FLINN
FRANKIE AUCOTT	BULA DELL HAGAMAN	ELLIS SMITH	LEILA GAMBLE
FRANCES BREENAMAN	HILDRED HICKS	DOROTHY SHELLY	MARGARET GILLILAND
FRANCES BLACKWELL	JACK HEARD	BILL SMITH	THURLA GARNER
KATHERINE BLANKS	ROBERT HUNERWADEL	BETTY SIMPSON	ELIZABETH GATTIS
JUNE BLALOCK	MILDRED HARGISS	VIRGINIA SIVELY	PAULINE MCCOY
NORMA BARROW	J. D. HARDEN	PATY SPEARMAN	ELTON MCCAY
MARTHA BARROW	DOROTHY HAYNES	RALPH SCHMITT	SARAH MCCAY
ROBERT BROOKS	RALPH IRWIN	CHRISTINE SELLS	JEANETTE MCCOY
ELIZABETH BRANDON	HORACE JONES	MILDRED STURDIVANT	HELEN METCALF
MADLIN BROWN	MARION KITCHENS	FRANK TAYLOR	MARY MIMMS
BOBBY CLARK	JOE KELLY	DOROTHY ANN TALLEY	ALMA MOSS
JACK CRUTCHFIELD	HAROLD LAMB	LORAIN CRAWLEY	CONSTANCE PAGE
REGINA CRAVEN	JUNE LIVINGSTON	J. D. CARVER	ANNA MARIE PECKINPAUGH
JACK CLARK	LOUISE LONG	NANCY CLINTON	THOMAS ROUS
MARY GRACE CARD	LILLIAN LOVE	MARY DON CHOATE	MARGERY RICHARDSON
ELOISE COFFEY	WILLIAM ROBINSON	JOHN CARMICHAEL	VIRGINIA RAY
MARGIE CLEMONS	LUCILLE RUTLEDGE	VIRGINIA DEARING	LOU ROBERTSON
LEILA MAE GRIFFON	ED RICE	JIMMIE DEFRIESE	FRANCES WELLS
DOROTHY GANN	LOU ROBERTSON	ELOISE EVATT	MARY NELL WRIGHT
WILLIAM GREEN	GERALDINE RAGAN	HERMAN ERNST	WILLIAM ZIMMERMAN
HAROLD HALL	LEONA ROBERTS	MYRTIE MAE ERWIN	



VARSITY GLEE CLUB

PAUL INGLE	<i>President</i>
VIRGINIA MCCOY	<i>Vice-President</i>
DOROTHY SPARKMAN	<i>Secretary-Treasurer</i>
DOROTHY HARDEN	<i>Pianist</i>
H. P. DAVIS	<i>Librarian</i>
DORIS THOMPSON	<i>Digest Reporter</i>
MR. KENNETH JOHN	<i>Director</i>

The Varsity Glee Club of Central, under the direction of Mr. Kenneth John, is one of the outstanding organizations of the music department of the school. To become a member one must stand a test and be voted on by all active club members.

The Varsity is the background for all musical activities and performances given by Central and plays an important part in the light operas given in the early spring of each year. This year's production was the "Lucky Jade."

The East Tennessee Music Festival held each year in Knoxville by the music departments of the various high schools of East Tennessee holds an important place in the Varsity schedule. Many outstanding awards have been taken by the students of Central at these meetings.

Several members of the chorus went to Knoxville during the East Tennessee Teachers' meeting to join with other choruses from this part of the state to study with an accomplished musician and to take part in the regular program.

The only practice made by these students is a forty-five-minute session every day at the third period and after school, if additional practice is necessary for a better performance.

Through a pleasant schedule including short chapel programs, participation in various community activities and on programs of other schools and church choirs, the Varsity mingles work with play, thus adding life and song to Central.



GIRLS' GLEE CLUB

Mr. K. W. JOHN, *Director*

OPAL UNDERWOOD	<i>President</i>	THURLA GARNER	<i>Digest Reporter</i>
VALGENE KELLY	<i>Vice-President</i>	EDNA ELLIS	<i>Secretary</i>
JULIA ROLLINS	<i>Assistant Director</i>	DARWIN HARROLD	<i>Pianist</i>



BOYS' GLEE CLUB

Mr. K. W. JOHN, *Director*

EMMETT MALLETT	<i>President</i>	CAMP HAMILTON	<i>Secretary</i>
BILLY O'BRIEN	<i>Vice-President</i>	DOROTHY SPARKMAN	<i>Pianist</i>
ALBERT BAKER	<i>Reporter</i>	NATHAN SMITH	<i>Librarian</i>



ORCHESTRA

HELEN BROWN	<i>President</i>	GEORGE VERHEY	<i>Librarian</i>
DOROTHY MATLOCK	<i>Vice-President</i>	W. L. MILLER	<i>Reporter</i>
MYRA PACE	<i>Secretary</i>	MR. KENNETH JOHN	<i>Director</i>



BAND CLUB

CHARLES SHUTT	<i>President</i>	ROSA JANE VERHEY	<i>Secretary</i>
EDWARD BERKMIER	<i>Vice-President</i>	MARGARET FULLER	<i>Reporter</i>
MR. DENNIS T. SWIHART, <i>Sponsor</i>			



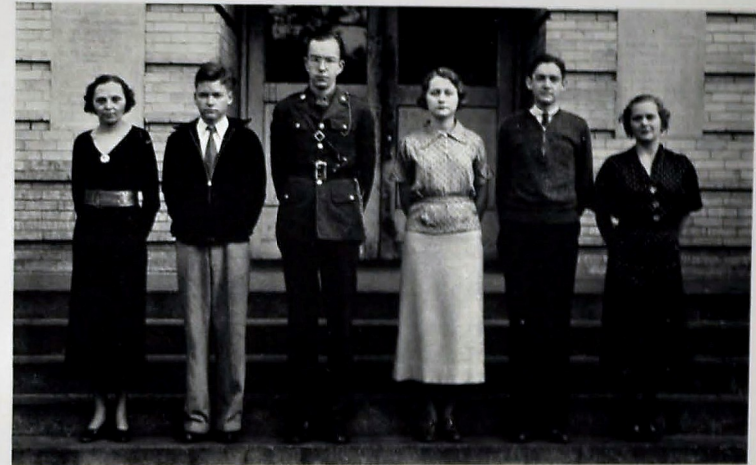
OFFICERS' CLUB

LEROY GLASSCOCK *President* GLENWOOD WARD *Secretary*
 ROBERT RUTLEDGE *Vice-President* MRS. IDA M. LONGLEY *Sponsor*



SERGEANTS' CLUB

ROY SCRUGGS *President* J. C. ANDERSON *Secretary*
 GUS GOTHARD *Vice-President* MISS EDNA CROSS *Sponsor*



BANK

MRS. GEORGE RICE *Supervisor* VIVIAN HOPKINS *Teller*
 MILLARD REYNOLDS *Bookkeeper* ALLAN BISPLINGHOFF *Secretary*
 THOMAS PIERCE *Record Clerk* JEAN REYNOLDS *Teller*



BOOKSTORE

MRS. GEORGE RICE *Sponsor* JANE HOGE *Manager*
 AGNES BROWN *Supervisor* ELIZABETH GARRIGUS *Cashier*



ETIQUETTE CLUB

WINIFRED MITTS	<i>President</i>	DOROTHY REEVES	<i>Treasurer</i>
LOUISE BERKEMEIER	<i>Vice-President</i>	MILDRED ASHLEY	<i>Secretary</i>
MRS. FRANK PRICE	<i>Sponsor</i>		



FRENCH CLUB

ADRIENNE DUCLOS	<i>President</i>	MARGARET CRAWFORD	<i>Secretary</i>
THOMAS PIERCE	<i>Vice-President</i>	MARTHA WOOD	<i>Treasurer</i>
MISS MARGARET WAPLES, <i>Sponsor</i>			



BIOLOGY CLUB

MARGARET DAILEY	<i>President</i>	MARGIE IGOU	<i>Secretary</i>
FLEMING EMPSON	<i>Vice-President</i>	ELIZABETH LEMONS	<i>Reporter</i>
MISS JOE ORR	<i>Sponsor</i>	MR. J. STEGER HUNT	<i>Sponsor</i>



BOLL WEEVILS

BILL KILLIAN	Manager	RALPH NICKOLS	Carpenter
ROBERT RUTLEDGE	Painter	BOB ANDERSON	Electrician
	MR. WILLIAM	ROLLINS, Sponsor	



GRADY LITERARY SOCIETY

EDGAR RICE	<i>President</i>	RICHARD FERRIL	<i>Secretary</i>
EDWARD BOWER	<i>Vice-President</i>	BOB STIVERS	<i>Treasurer</i>
MR. C. J. ANDERSON, <i>Sponsor</i>			



DRAMATIC CLUB

LOUIS ELDRIDGE	<i>President</i>	FRANCES COBLEIGH	<i>Secretary</i>
KATHERINE HAWKINS	<i>Vice-President</i>	MISS ELIZABETH JONES	<i>Sponsor</i>



DEPRESSION CLUB

MELVIN KEITH	<i>President</i>	CLYDE GWIN	<i>Treasurer</i>
BILLY ROBINSON	<i>Vice-President</i>	TOMMY THOMPSON	<i>Director</i>
JAMES TURNER	<i>Secretary</i>	CHARLES KELLEY	<i>Director</i>
MRS. HENRY ROBINSON, <i>Sponsor</i>			



LAS MUCHACHAS

DORIS McARTHUR	<i>President</i>	KATHRYN BESSERT	<i>Secretary</i>
JOYCE FULKS	<i>Vice-President</i>	DOROTHY JERRET	<i>Treasurer</i>
MISS FLORA BECK, <i>Sponsor</i>			



SCOUT CLUB

EDWARD BOWER *Senior Patrol Leader* JIMMIE ARMSTRONG *Scribe*
 MR. WILLIAM ROLLINS, *Sponsor*



NITE OWLS

MAEVERNE BENNETT *President* LUCILLE RUTLEDGE *Secretary*
 SARA McCAY *Vice-President* EVELYN LOWRY *Treasurer*
 MRS. BLANCHE ROGERS, *Sponsor*



SENATE

EDWARD BOWER *President* BOB STIVERS *Treasurer*
 EDNA ELLIS *Vice-President* MISS LAVETA EPPERSON *Sponsor*
 MARGARET CRAWFORD *Secretary* MR. J. ARLIE HOODENPYL *Sponsor*



ART CLUB

ERNEST IGOU *President* NANCY COOK *Secretary*
 NOEL LOFTIS *Vice-President* DELLA RAY *Treasurer*
 MISS MARGARET HAYS, *Sponsor*



USHERS

MARGARET CRAWFORD *President* GENE CARR *Secretary*
 MISS MARGARET WAPLES, *Sponsor*



CAMERA CLUB

J. T. ROBERTSON *President* BOB STIVERS *Treasurer*
 DOROTHY SPARKMAN *Vice-President* MRS. M. CLEMENTSON *Sponsor*
 JULIA ROLLINS *Secretary* MR. J. A. HOODENPYL *Sponsor*
 VALGENE KELLY *Digest Reporter* MR. W. ROLLINS *Sponsor*



BOYS' HI-Y

LOUIS ELDRIDGE *President* EDGAR RICE *Secretary*
 EDWARD BOWER *Vice-President* HAROLD LOGAN *Treasurer*
 MR. J. POPE DYER, *Sponsor*



GIRLS' HI-Y

VIRGINIA MCCOY *President* MAGDALEN ROGERS *Secretary*
 ALINE SMITH *Vice-President* VIRGINIA CARLTON *Treasurer*
 MRS. JOHN SHELTON *Sponsor* MRS. MARY CALLIS *Sponsor*



NATIONAL HONOR SOCIETY

EDWARD EOWER	<i>President</i>	MR. J. SIEGER HUNT	<i>Treasurer</i>
BERTHA MALSTROM	<i>Vice-President</i>	FLEMING EMPSON	<i>Student Treasurer</i>
DOROTHY BOWLING	<i>Secretary</i>	MRS. JOHN A. SHELTON	<i>Sponsor</i>

TWO-YEAR MEMBERS

EDWARD BOWER	MARGARET DAILEY	JOHN HOUSE	BERTHA MALSTROM
DOROTHY BOWLING	EDNA ELLIS	MARGIE IGOU	ED RICE
GENE CARR	FLEMING EMPSON	JEANNE JOHNSTON	ROY SCRUGGS
MARGARET CRAWFORD	HELEN GROSS	ROSABELLE KEOWN	THELMA STYLES
	MILDRED WILHOITE		

ONE-YEAR MEMBERS

ESTHER ANDERSON	BOBBIE DEFRIESE	W. L. MILLER	RUBY GODSEY
MARY EDDITH BAKER	RICHARD FERRILL	BLANCHE MILLSAPS	KATHERINE HAWKINS
EMMA BRADFORD	ANNA KEMPER	ALMA MOSS	JOE KELLY
AGNES BROWN	JUNE LIVINGSTON	MYRA PACE	LUCILLE RUTLEDGE
J. P. BROWN	DORIS MCCLURE	LILLIAN RICE	BERNICE SIMPSON
EUGENE CLEVINGER	DORA MCGEE	ELIZABETH GILBERT	MARIAN WHARTON
NANCY COOK	BROADUS MARLOW	LEROY GLASSCOCK	MARY FRANCES WILLBANKS
LUCY ANN COWART			MARTHA WOOD

MRS. JOHN A. SHELTON, *Sponsor*

A TRIBUTE TO OUR PATRONS



No venture is successful unless properly financed.

From year to year our patrons have lent their support to the publication of the CHAMPION, and as the S.S. Central '36 finds this log completed, our thoughts turn gratefully to those who have so generously sponsored its publication.

To our patrons we wish to express our appreciation for their aid, and of every Centralite we ask the patronage of these friends that their sailing may each year be smooth and prosperous.

THE EDITORS.

OUR PATRONS

ARCHER PAPER CO., 6-3189	1124-1126 Market Street
THE ATHLETIC HOUSE	Knoxville, Tennessee
L. G. BALFOUR COMPANY, JEWELERS	Attleboro, Massachusetts
BENSON PRINTING COMPANY	Nashville, Tennessee
BOERGER SERVICE STATION, 2-9156	1415 McCallie Avenue
BROWN DRUG COMPANY, 2-1144	3013 Dodson Avenue
J. P. BROWN, SCHOOL BOARD MEMBER	Red Bank, Tennessee
CAMERON AND BARR BAKING COMPANY, 6-8176	1615 Cowart
C. E. CAMP, J. P., 7-2652	1516 Market Street
EARL R. CAMPBELL, M.D., 6-2240	Medical Arts Building
E. Y. CHAPIN, BANKER	Chattanooga, Tennessee
CHAPMAN FUNERAL HOME, 6-4136	400 McCallie Avenue
CHATTANOOGA BUTTON AND BADGE MFG. CO., 6-6934	109 East Seventh Street
CHATTANOOGA COCA-COLA BOTTLING CO., 6-5334	201 Broad Street
CHATTANOOGA GAS COMPANY, 6-0191	811 Broad Street
CHATTANOOGA MEDICINE CO., 3-0030	3803 St. Elmo Ave.
COMMERCIAL STATIONERY AND SUPPLY CO., 6-1241	737 Cherry Street
CONTOR BROTHERS, CLOTHIERS, 6-3828	529 Market Street
CRISMAN HARDWARE COMPANY, 7-1115	511 Market Street
DAVIDSON CLOTHING COMPANY, 6-1218	811 Market Street
S. T. AND W. A. DEWEES CO., GROCERS, 7-1121	810 Market Street
DIXIE OPERATING CO., INC., THEATERS, 6-5923	423 High Street
ECKERD'S DRUG STORE	732 Market Street
EDMUNDSON SCHOOL OF BUSINESS, 6-1259	Edmundson Building
EDWARDS AND LEBRON, JEWELERS, 6-7175	805 Market Street
THE FISCHER COMPANY, JEWELERS, 6-0923	801 Market Street
FOSTER AND COMPANY, AUTO PARTS, 6-2081	Rossville Boulevard
FOWLER BROS. CO., FURNITURE, 7-2174	633 Broad Street
FOX BROS., WHOLESALE GROCERS, 6-3139	1215 King
GORDON'S PHARMACY, 6-3912	422 West Ninth
H. W. GRANERT, PHOTOGRAPHER, 6-7335	813½ Market Street
GRANT-PATTEN MILK COMPANY, 6-1294	1220 King
HAMILTON CIGAR STAND	Hamilton National Bank Bldg.
HARDIE AND CAUDLE, CLOTHIERS, 6-7032	809 Market Street
HARRIS AND HOGSHEAD, OPTOMETRISTS, 6-7545	13 East Eighth St.
HOME ICE CREAM CO., 2-9136	Thirteen and Watkins
IVORY SYSTEM, CLEANERS	Salem, Massachusetts
JACOBS WHOLESALE CANDY CO., 6-4314	925 Market Street
JOURNAL ENGRAVING COMPANY	Atlanta, Georgia
JOY'S, FLORIST, 6-7168	817 Market Street
J. KASST WHOLESALE CO., CANDIES, CIGARS, ETC., 6-8711	1415 Carter Street
KING-DOBBS COMPANY, WHOLESALE GROCERS, 6-1251	416 E. Eleventh St.
KOBLENTZ, DEPARTMENT STORE, 2-3211	2438 Glass St.

OUR PATRONS

S. H. KRESS AND COMPANY, 6-5631	706 Market Street
LANSFORD PIANO COMPANY, 6-0923	730 Cherry Street
L. C. LEACH AND COMPANY, JEWELERS, 7-2841	738 Cherry Street
LING PRINTING CO., 7-3414	823-825 Chestnut Street
LOVEMAN BEAUTY SHOP, 6-0161	Loveman Building
LOVEMAN'S, INC., DEPARTMENT STORE, 6-0161	800 Market Street
MCKENZIE SCHOOL, 6-7157	401 Oak Street
"DUTCH" McGRATH, SERVICE STATION, 6-6731	600 McCallie Ave.
MARTIN-THOMPSON COMPANY, SPORTING GOODS, 6-2433	706 Cherry Street
MILLER BROS. CO., DEPARTMENT STORE, 7-1251	629 Market Street
MOUNTAIN CITY STOVE COMPANY, 6-0211	1240 Market Street
M. L. MULKEY, J. P., 7-3228	609 Cherry Street
NEWTON, CHEVROLET, 6-0181	329 Market Street
PALMER, CLOTHES, 6-3834	825 Market Street
T. H. PAYNE COMPANY, OFFICE SUPPLIES, 6-0139	821 Market Street
PEOPLES' STUDIO, 6-9480	10 East Ninth
POWELL MATTRESS COMPANY, 6-8062	310 East Main
MODEL SHOE REBUILDERS, 6-3568	19 East Eighth
RHYNE PHARMACY, 3-0069	117 Chickamauga Avenue
RIDGE DRUG COMPANY, 2-1171	Corner Dodds and Chamberlain
RIDGE MOTOR SERVICE, 2-3523	909 Dodds Avenue
R. K. SCHOLZE, GROCER, 2-2131	415 Dodds Avenue
SHARP BROS., MEAT MARKET, 6-6625	402 West Ninth
JAS. M. SHAW COMPANY, CLOTHIERS, 6-3431	Market at Ninth
ZELMA F. SHERRILL, CIRCUIT COURT CLERK	Courthouse
STATE THEATRE, 6-5535	620 Market Street
STERCHI BROS. STORES, FURNITURE, 7-2151	703 Broad Street
A. G. STIVERS LUMBER COMPANY, 6-7179	345 East Main Street
STOKES-FORSTNER STUDIOS, PHOTOGRAPHS, 6-7243	809 Pine Street
STOVALL HARDWARE COMPANY, 6-7101	711 Cherry Street
TEMPLETON'S, JEWELERS, 6-7628	12 West Eighth Street
THE TENNESSEE ELECTRIC POWER CO., 6-1121	540 Market Street
TIVOLI THEATRE, 6-7753	709 Broad Street
UNITED DAIRIES, 6-5744	1017 East Twenty-third
UNIVERSITY OF CHATTANOOGA, 6-8431	McCallie Avenue
THE VOGUE, LADIES' READY-TO-WEAR, 6-5114	719 Market Street
VIOLET STUDIO, 6-1553	11 East Seventh
J. H. WANN AND SONS, MORTICIANS, 6-2112	660 Georgia Avenue
WHITE SWAN LAUNDRY, 6-2103	227 East Eleventh Street
WILEY SCHOOL OF BUSINESS, 6-2231	Fifth Floor, Times Building
WILKINS CANDY COMPANY, 6-1151	1273 Market Street
WILLIAMS GLASS AND FRAME COMPANY, 6-8353	814 Lindsay
F. W. WOOLWORTH COMPANY, 6-7036	710 Market Street



SHIPMATES
FAREWELL!

*Not of the sunlight,
Not of the moonlight,
Not of the starlight!
O young Mariner,
Down to the haven,
Call your companions,
Launch your vessel,
And crowd your canvas,
And, ere it vanishes
Over the margin,
After it, follow it,
Follow The Gleam.*

—TENNYSON.

