



The Champion of 1933



A YEAR BOOK
PUBLISHED BY
THE SENIOR CLASS

OF

Central High School

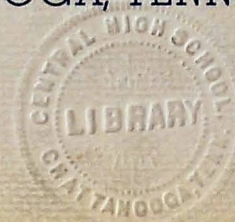


CHATTANOOGA, TENNESSEE

Copyrighted, 1933

BENJAMIN M. TARVER, JR.
Editor-in-Chief

WILLIAM S. ANDERSON
Business Manager



R378.14

C

1933

The Dedication

To

MR. J. STEGER HUNT

HEAD OF
SCIENCE DEPARTMENT

• Who, through his good nature, exceptional scholarship, and fine sense of humor, has made more enjoyable the school days for the students of Central High; who has served on important faculty committees and in every instance has upheld the standards of right and fairplay; and who, in 1924 and in 1925, was a faithful sponsor of the Champion, we, the Senior Class of Nineteen Hundred and Thirty-Three, dedicate this volume of the Champion.



Awake! for Morning in the Bowl of Night
Has flung the Stone that puts the Stars to Flight:
And lo! the Hunter of the East has caught
The Sultan's Turret in a Noose of Light.

—Rubaiyat of Omar Khayyam.



J. STEGER HUNT

6036

Foreword

"The Moving Finger writes;
and having writ,
Moves on."

• The history of another class has been written in the annals of Central High School. As Schoolmates disperse and memories fade, the Central spirit remains ever essentially the same. 🍪 🍪 🍪 🍪

• May this volume, through its familiar likenesses and accounts of the activities of 1933, preserve for you that spirit by bringing back pleasant recollections of happy school days and cherished companionships. 🍪 🍪

Contents

A Chronicle of

• The Classes •

Military Department

• Athletics •

Organizations

• Features

ALMA MATER

What a wonderful school 'tis ours
to love,
With its ups and downs and its joys;
What a wonderful banner the Purple
and Gold
As it floats o'er our girls and boys.

And this wonderful school that I love
the best
Has a wonderful "rep" so high.
So you've heard of the school that's true
as blue—
Oh, that wonderful school, Central High.



Stacey E. Nelson
PRINCIPAL



THE FACULTY

MR. C. J. ANDERSON
MR. W. P. BALES
MRS. HAZEL BARTON
MISS FLORA BECK
MRS. FAY BLANKS
MRS. HARRY L. BROWN
MISS KATHERINE BYNUM
MRS. MARY D. CALLIS
MISS MABEL CONN
MISS EDNA CROSS

MISS MARY LOU DERRYBERRY
MISS LAVETA EPPERSON
MISS RUTH FAIN
MISS ELSIE JANE FLEMING
MR. J. J. FLETCHER
MISS DOROTHY FRENCH
MR. J. L. HAIR
SERGEANT G. M. HARRIS
MR. CLEBURNE HATFIELD
MISS MARGARET HAYS
MR. ARLIE HOODENPYLE
MISS EDMUND HOOSER
MISS SARAH HUBBARD
MR. J. STEGER HUNT
MR. KENNETH W. JOHN

MISS EDNA EARLE JONES
MISS ELIZABETH JONES
MISS SALLY MAY KING
MISS LILA KIRKMAN
MRS. CLARENCE KOLWYCK
MISS GRACE LASATER
MISS CAROLINE LILLARD
MRS. IDA M. LONGLEY
MISS MARGARET LOWENTHAL
LIEUT.-COL. BALLAD B. LYERLY



THE FACULTY

MR. GEORGE MCCOY
MR. JAMES MILBURN
MR. WILLARD MILLSAPS
MISS MARY MORGAN
MISS ELLEN MULLENNIX
MISS FREIDA MYLIUS
MISS VESTA NELSON
MISS IDA NICKEL
MISS JOE ORE
MISS BEULAH PARKER

MR. S. DEAN PETERSON
MR. W. A. PRICE
MRS. MATTIE PRICE
MISS SARA KEITH RAULSTON
MRS. GEORGE RICE
MISS MARY ELLEN RICE
MRS. HENRY ROBINSON
MISS MARY ROBINSON
MRS. BLANCHE ROGERS
MR. WILLIAM ROLLINS
MISS LILLIE SCHWARTZ
MR. J. A. SETLIFFE
MRS. JOHN A. SHELTON
MRS. JANIE SHROPSHIRE
MRS. ALFRED A. SKATES

MRS. MAMIE LOUISE STEPHENSON
MR. A. P. STEWART
MAJOR DENNIS T. SWIHART
MR. G. M. SWINGLEY
MR. S. Q. TALLENT
MISS MARGARET TAYLOR
MR. W. H. TEMPLETON
MRS. W. H. TEMPLETON
MISS MOZELLE VANDERGRIFF
MISS MARGARET WAPLES

BOARD OF EDUCATION OF
HAMILTON COUNTY



MRS. ANNA B. LACEY *Chairman*
MR. ARTHUR L. RANKIN *Superintendent*

E. Y. CHAPIN
D. M. RAULSTON
B. MIFFLIN HOOD
J. H. ALLEN
MRS. WILL SHEPHERD
DR. E. S. BLAIR



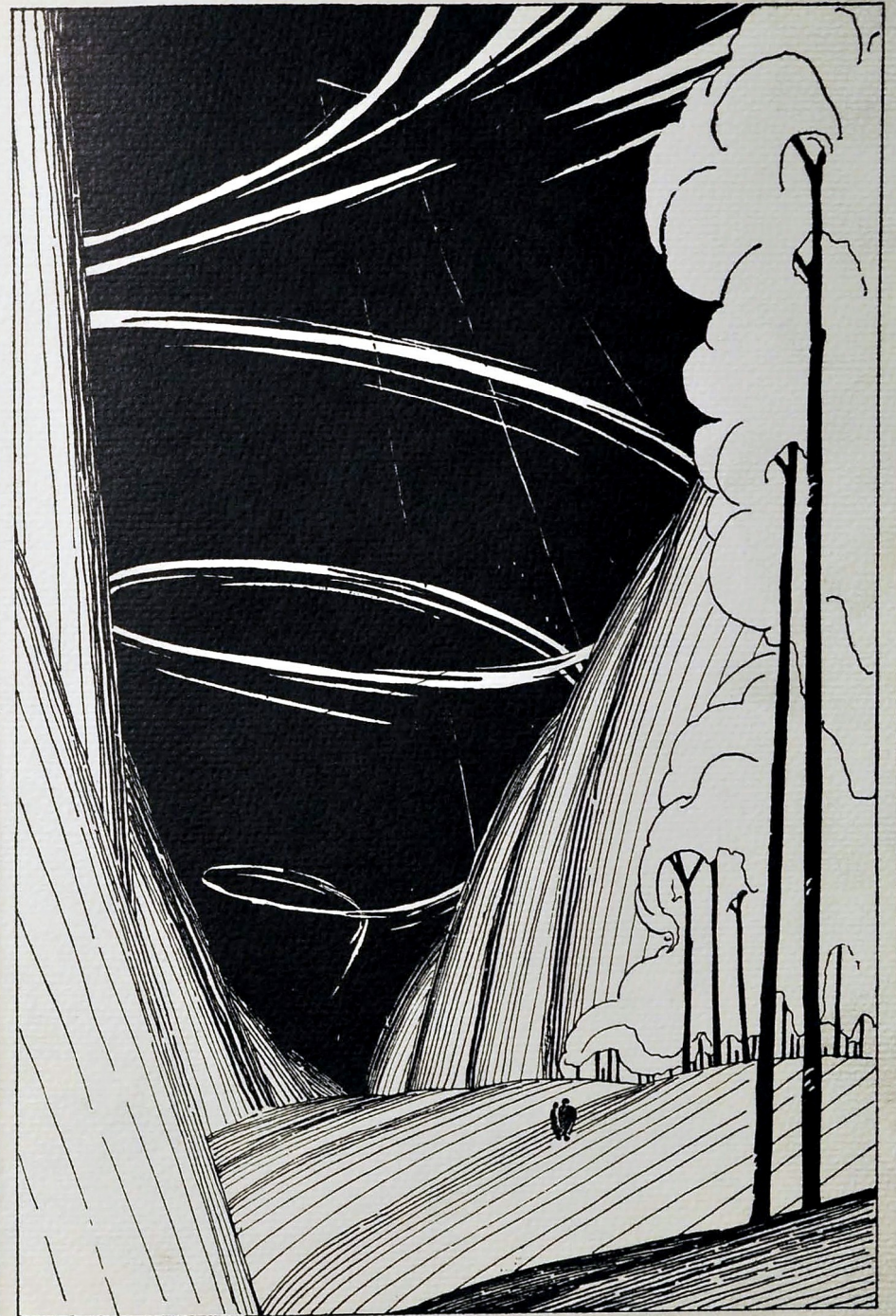
BOARD OF EDUCATION OF
HAMILTON COUNTY



MRS. ANNA B. LACEY *Chairman*
MR. ARTHUR L. RANKIN *Superintendent*

E. Y. CHAPIN
D. M. RAULSTON
B. MIFFLIN HOOD
J. H. ALLEN
MRS. WILL SHEPHERD
DR. E. S. BLAIR

The Glasser





KATHLEEN OLINGER
Vice-President

MARY MARSHALL
Secretary

MILLARD LOWRY
President

NATHANIEL HYDEN
Treasurer



THE SENIORS





HERMAN ADAMS

"Pretty Boy"

"Woman delights not me."

Entered from East Ridge, '30; Varsity Football, '30, '31, '32; Lettermen's Club, '30, '31, '32; Secretary-Treasurer, '33; "Digest" Staff, '30.

W. F. ALFORD

"Preacher"

"The mildest manners and the gentlest heart."

Entered from Mission Ridge, '30; "Digest" Staff, '33; Commercial Club, '33; Three Blue Coats, '33.

EDITH MARIE ANDERSON

"Ede"

"She is of a young and modest nature."

Entered from Central Junior High, '29; National Honor Society, '33; Spanish Club, '33; May Festival, '31, '32; Gym Exhibition, '32.

WILLIAM S. ANDERSON

"Bill"

"Men of few words are the best men."

Entered from Hume-Fogg, Nashville, '31; Hi-Y, '32, '33; Vice-President, '33; "Haunted House," '32; President S. P. Q. R., '33; Property Manager of "Tweedles," '33; Business Manager of "Champion," '33.

McGEE AULT

"Sinig"

"The gods delight to see a man."

Entered from City High, '32.

SAMUEL W. AULT, JR.

"Sam"

"The light heart brings sunshine into the darkest day."

Entered from North Chattanooga Junior High, '28; Art Club, '33.

MARGUERITE MARIE BACHMAN

"Peggy"

"Silence is better than empty chatter."

Entered from East Side Junior High, '29; Biology Club, '31; S. P. Q. R., '31; Library Club, '32, '33.

WILLIAM ALLEN BARBER

"Bill"

"There's honesty, manhood, and good fellowship in thee."

Entered from East Side Junior High, '29; Senate, '31, '32; Lettermen's Club, '32, '33; Football Manager, '32; Basketball, '33.

EVELYN M. BATES

"Inflexible in purpose, ever striving for high accomplishments."

Entered from West Kentucky State Training School, '31; Wat Science Club, '32.

JOHN EISON BATES

"One of those who upholds our reputation for learning."

Entered from West Kentucky State Teachers College, Bowling Green, Kentucky, '30; National Honor Society, '33; Biology Club, '33.

DOROTHY NELL BENTON

"Dot"

"Everything comes to those who work."

Entered from Hardy Junior High, '30.

WILLIAM ROY BLACK

"Izzy"

"Through arguments, he will win his fame."

Entered from Lakeview Junior High, '30; Grady Literary Society, '31, '32; President of Dramatic Club, '31; Camera Club, '32; Public Speaking, '31, '32; Freshman Representative, '30; "Haunted House," '32; Public Speaking Club, '31; "Tweedles," '33.

VIRGINIA ELIZABETH BLAIR

"Be ready for opportunity when it comes."

Entered from East Side Junior High, '31; S. P. Q. R., '33.

MILDRED JUANITA BLAKE

"Nita"

"The fair, the chaste, and unexpressive she."

Entered from Hardy Junior High, '30; Bank, '30-'33; Commercial Club, '32; National Honor Society, '33; Four Year Honor Student.

EVELYN LOUISE BLESSING

"Pudd'nhead"

"For blessings' ever wait on virtuous deeds,
And though a late, a sure reward succeeds."

Entered from Conner Junior High, '29; Girls' Hi-Y, '31, '32, '33; Secretary, '33; Camera Club, '31, '32, '33; Secretary, '33; President S. P. Q. R., '31; Battalion Sponsor, '31; Red Cross, '31; Senate, '33; National Honor Society, '32, '33; President of Ushers, '33; Club Editor of "Digest," '33; Major Band Sponsor, '33; Chairman of Ring and Pin Committee, '33; Public Speaking, '32, '33; Chairman, '33; Officers' Club, '33; Society Editor of "Champion," '33.

BEVERLY BAYNE BOHANNON

"Boots"

"To be happy is better than to be wise."

Entered from City High, '30; Girls' Glee Club, '30, '31; Operetta, '30; Spanish Play, '31; Public Speaking, '32; Red Cross, '32.

MARGARET ALYCE BOWEN

"Marg"

"A light heart lives long, and her laugh is contagious."

Entered from City High, '31; Red Cross Representative, '32, '33. Vice-President, '33; Band, '32, '33; Honorary Captain, '33; National Honor Society, '33; Candy Force, '32; Central Quintet, '32.

BINA E. BOWERS

"She was a scholar and a ripe and good one."

Entered from Hardy Junior High, '30; Usher, '33; National Honor Society, '33; Red Cross, '32, '33; Salutatorian of Class, '33; Four Year Honor Student.

BOBBIE BOYD

"Bob"

"Here's to the girl with a heart and smile
That makes the bubble of life worth while."

Entered from East Side Junior High, '30; S. P. Q. R., '30; Girls' Hi-Y, '30, '31, '32; Usher, '33; National Honor Society, '33; Costume Manager of "Haunted House," '32.

SARAH JANE BOYD

"Sally"

"Seldom heard, but always doing."

Entered from East Side Junior High, '30.

CHARLES E. BROOKS

"Mismo"

"Worry and I have never met."

Entered from Hardy Junior High, '29; Military, '29, '30, '31; Red Cross, '31, '32, '33; School Letter, '32; "Digest," '31.

ELIZABETH BROWN

"E"

"A friend, the masterpiece of nature."

Entered from Rossville High, '30.

MARTHA ELIZABETH BROWNING

"Betty"

"Nature made her and then broke the mould."

Entered from Sunnyside, '29; S. P. Q. R., '31; Program Chairman Girls' Hi-Y, '33; Senate, '33; National Honor Society, '33; Secretary, '33; Program Chairman Library, '33; Exchange Editor of "Digest," '33; Usher, '33; La Tertulia, '33; Four Year Honor Student.

MARGARET EVELINA BYNUM

"Chopple"

"'Tis deeds that must win the prize."

Entered from Lookout Junior High, '30; Varsity Glee Club, '30, '31, '32; Bank Force, '30, '31, '32, '33; Commercial Club, '30, '31, '32, '33; Operetta, '31; "Tweedles," '33; National Honor Society, '32, '33.

EDNA IMOGENE CAMPBELL

"Ed"

"A cheerful smile and carefree ways
Will keep others happy all their days."

Entered from East Side Junior High, '29; Girl Reserves, '30; Usher, '33.

EDITH CLARE CARSON

"An earnest girl with a cheery smile and a good heart."

Entered from East Side Junior High, '29; Junior Red Cross, '30; S. P. Q. R., '31; Camera Club, '33; R. O. T. C., Sponsor, '33; Officers' Club, '33.

ALBERT VANDER CARTER

"I would rather talk than eat."

Entered from East Side Junior High, '29; Junior Red Cross, '30.

ROBERT BERNARD CASSELL

"Bob"

"Why are little fellows so brainy?"

Entered from Paul Hayne Junior High, Birmingham, Ala., '30; Senate, '31, '32, '33; National Honor Society, '33; Grady Literary Society, '33; Dramatic Club, '31, '32; Secretary-Treasurer, '32; "Digest," '32, '33; Copy Editor, '33; La Tertulia, '33; Four Year Honor Student.



MERRY LEILIA CHANDLER
"Oklahoma"

"As merry as the day is long."

Entered from Classen High School, Oklahoma City, '32; "Digest," '33; Public Speaking, '33; Four Year Honor Student.

VADA JOE CHILDERS
"Jo"

"The only way to have a friend is to be one."

Entered from Sunnyside, '29; S. P. Q. R., '31; Girl Reserves, '32, '33; La Tertulla, '33; Public Speaking, '33.

GEORGE MORGAN COBB

"A studious gentleman and a gentle student."

Entered from Sunnyside Grammar School, '30; R. O. T. C., '30, '31; "Christina of Greenland," '30; Band, '32; First Lieutenant, '33; "Sergeants' Club," '32; Band Club, '32, '33; Band Drum Major, '33; Orchestra, '32, '33; East Tennessee Orchestra Officers' Club, '33; S. P. Q. R., '31.

EDWARD EUGENE COBLEIGH
"Big Ox"

"A man of many manly virtues."

Entered from Mission Ridge, '29; Lettermen's Club, '32, '33; Football, '32, '33; "Tweedles," '33.

SARAH LINDSEY COOKE
"Cookie"

*"Quiet, but we suspect quite gay,
This, it seems, is just her way."*

Entered from East Side Junior High, '30.

EVELYN JOSEPHINE CORBLY
"Jo"

To her task addressed her earnest care."

Entered from Sunnyside, '29; S. P. Q. R., '31, '32; Girl Reserves, '30, '31, '32, '33; Reporter, '32, '33; Girls' Hi-Y, '32, '33; Usher, '33; Sophomore Representative in Reading Contest, '30; Public Speaking, '30, '31, '32; "The Vanishing Princess," '32; Costume Manager of "Tweedles," '33.

LOIS ELIZABETH COWAN
"Lo"

"Her ways are ways of pleasantness and all her paths are peace."
Entered from Dickinson Junior High, '29; Biology Club, '32.

MARTHA ELLEN COX

"An essential of the true woman is common sense."

Entered from East Side Junior High, '30; Red Cross, '31, Secretary, '32, President, '33.

CLARA RUTH COXEY
"Coxey"

"She was a scholar and a good and wise one."

Entered from Red Bank, '29; S. P. Q. R., '31; Sodality Latina, '32, '33; Print Pal, '32; Usher, '33; Library Club, '32, '33; National Honor Society, '33.

FLORENCE GRAHAM CRABTREE
"Flossie"

"Nowhere so busy a lass as she, there was."

Entered from Sunnyside, '30; Girls' Hi-Y, '32; Treasurer, '33; Library Club, '32; Secretary-Treasurer, '33; Sodality Latina, '32, President, '33; Senate, '32, Secretary, '33; Orchestra, '33; Feature Editor of "Digest," '33; National Honor Society, '32, '33; Usher, '33.

VIRGINIA NELLE CRABTREE
"Gin"

*"To be liked by all in this age and day
Is the highest compliment we can pay."*

Entered from East Side Junior High, '30; May Day Pageant, '30; Library Club, '32; Spanish Club, '33; Girls' Hi-Y, '32, '33; Usher, '33; Red Cross, '32, '33.

JESSIE CRANE
"Crane"

"Nothing is more useful than silence."
Entered from Dickinson Junior High, '30.

PEARL ELIZABETH CROSBY
"Snooks"

"No gloom could darken the countenance of so happy a soul."
Entered from East Side Junior High, '29.

ALVILDA CYPHERS
"Willie"

"In her tongue was the law of kindness."
Entered from East Side Junior High, '29; Sodality Latina, '32, '33; Biology Club, '32, '33; Conversational Latin Club, '31, '32; Candy Force, '31, '32.

FRANK E. DABBS

"Quiet, unassuming, a friend to every man."

Entered from East Side Junior High, '30.

BAXTER CLAY DAVIS
"A versatile character."

Entered from Dickinson Junior High, '29; Military, '30, '31, '32, '33; Officers' Club, '33; Sergeant, '31; R. O. T. C. Lieutenant, '33; Junior Class Annual Representative, '32.

EDITH ELIZABETH DAVIS
"Lizzy"

*"To gain my end, I pull many strings,
I keep them all guessing, how I do many things."*

Entered from East Side Junior High, '29; Bank Force, '32, '33; Candy Force, '32, '33; Business Staff of "Digest," '32, '33; National Honor Society, '32, '33; Treasurer of Junior Class, '32; "Tweedles," '33; Commercial Club, '32, '33; Red Cross, '29, '31, '32; Public Speaking, '32; Associate Editor of "Champion," '33; Red Dragon, '33.

NORMAN L. DECKER

"Ability runs in the esteem of true men."

Entered from East Side Junior High, '30; Football, '30, '31.

THOMAS HENRY DICKS
"Hank"

"Dashing was he, and becoming to the fair sex."
Entered from McCallie, '30; Boll Weevils, '31, '32, '33; Property Manager of "Haunted House," '32; Property Manager of "Tweedles," '33.

RUBY DIXON

"The heart of honor, the tongue of truth."
Entered from Hills View High, '30.

HELEN FRANCES DONALDSON
"Troy"

*"Her care was never to offend,
And every creature was her friend."*

Entered from Washington High School, Washington, N. C., '31; Girls' Hi-Y, '32, '33; Usher, '33; National Honor Society, '33; "Digest" Staff, '33; Chairman Junior Ticket Selling Committee, '32; Senior Section Editor of "Champion," '33; Class Historian; Four Year Honor Student.

ROWLAND HARTLEY DUNBAR, JR.
"Bright Eyes"

"To be rather than to seem."

Entered from Lookout Junior High, '31; Band, '32, '33; Lieutenant, '33; Band Club, '32, '33; Officers' Club, '33.

CATHRYN SUE DUTTON
"Sudie"

"She smiles whether happy or sad."

Entered from Central Grammar, '30; Junior Red Cross, '30; Girls' Glee Club, '32, '33; Camera Club, '33; "Digest" Staff, '33; Print Pal Club, '32.

MARY ELIZABETH EDGE

"She looks only for the bright side of everything."

Entered from Mission Ridge, '29; Girls' Athletic Club, '30, '31, '32; Girls' Glee Club, '31, '32, '33; Girls' Varsity Basketball Team, '30, '31, '32; Girl Scouts, '31, '32, '33; Red Cross; Captain Girls' Drill Squad, '32.

WILLIAM ELLIOTT
"Carideo"

"A boy of hope and forward looking mind."

Entered from Lookout Junior High, '31; R. O. T. C., '31, '32, Corporal, '32.

VIRGINIA A. ELLIS
"Gin"

"Smile and your load seems lighter."

Entered from Dickinson Junior High, '30; Biology Club, '31, '32; May Festival, '31; Minstrel, '32; Chairman Decoration Committee for Junior Party, '32; Usher, '33; Prator of S. P. Q. R. Club, '33; Public Speaking, '33; Cap and Gown Committee, '33; Costume Committee of "Haunted House," '32.

LE ROY ELLIS

*"Gay, happy, and kind,
A better friend you'll never find."*

Entered from Dickinson Junior High, '30; National Honor Society, '32, '33; Biology Club, '31; May Festival, '31; Minstrel, '32; Public Speaking, '33; Usher, '33.

SPOFFORD ENGLISH
"Spot"

"One can always be a man."

Entered from Ridge Grammar School, '29; Boll Weevils, '31, '32, '33; Painter, '32, '33; National Honor Society, '32, '33; Four Year Honor Student.

HELEN LENORA ERNST

"Lolly"

"Here was a gentle nature, kind and forbearing."
Entered from Central Junior High, '29; Camera Club, '30, '31, '32; Commercial Club, '32, '33; Bank, '31, '32, '33; National Honor Society, '33.

JOE CLIFFORD ERWIN

"Work is the keynote of success."

Entered from Hardy Junior High, '30; R. O. T. C., '30.

BOYCE ESPY, JR.

"Mutt"

"Nothing great was ever achieved without enthusiasm."
Entered from Hardy Junior High, '31; Biology Club, '31, '32; Collectors' Club, '32; Hi-Y, '33.

EVELYN ESPY

"Buck"

"Just as lovely as she can be in all she does and says."
Entered from East Side Junior High, '29; Girls' Athletic Association, '29, '30; "Digest" Secretary, '32; Business Manager, '33; Commercial Club, '31, '32; Red Cross Program, '32.

MARY ELIZABETH ESPY

"Mary E."

"Her generosity makes her well liked."
Entered from Hardy Junior High, '30; Girls' Athletic Association, '31, '32; Biology Club, '31, '32; Vice-President of S. P. Q. R., '33; Usher, '33; Library Club, '33; "Digest" Sponsor, '32.

LOIS LUCILLE ESTILL

"Lo"

"If silence were golden, I'd be a millionaire."
Entered from Fairmont, '29.

JOHN E. EVANS

"Desire not to live long, but to live well."
Entered from City High, '32; Biology Club, '33; Grady Literary Society, '33.

MARGARET MARIE FALLS

"Littlebit"

*"A smile for all, a greeting glad
An amiable jolly way she had."*
Entered from East Side Junior High, '30; Girls' Athletic Club, '31, '32; Bookstore, '32, '33.

CHARLES WALDEN FARROW

"Buddy"

"He was a man taking him all in all."
Entered from Lookout Junior High, '29; R. O. T. C., '29, '30, '31; Sergeants' Club, '30, '31; Boll Weevils, Assistant Electrician, '31, '32; Chief Electrician, '33.

MILDRED FIGGINS

"Mickey"

*"A smile every day
Takes you a long way."*
Entered from Central Junior High, '29; Girl Scouts, '30; Wall Science Club, '32.

GAIL W. FLEMING

"Firm of purpose, strong of heart."
Entered from City High, '31; National Honor Society, '33; Senate, '32, '33; La Tertulia, '32; Girls' Athletic Club, '31; Red Cross, '31, '32; "Digest," '32.

JOHN FRANCIS FLEWELLEN

"Flew"

"A merry heart goes all the day."
Entered from East Side Junior High, '30; "Digest" Staff, '31, '32, '33.

GRACE AMANDA FORSTNER

"Gracie"

*"When once our 'grace' we have forgot
Nothing goes right."*
Entered from Sunnyside, '30; Senate, '31, '32, '33; Vice-President, '33; Library Club, '32, '33; President, '33; Girls' Hi-Y, '31, '32, '33; Program Chairman, '32; Dalton Farraday Science Club, '31, '32; Girls' Glee Club, '33; Secretary, '33; "Digest," '32, '33; Assistant Feature Editor, '33; National Honor Society, '32, '33; Public Speaking, '32; Advertising Manager of "Haunted House," '32; "Tweedles," '33; Usher, '33; Ticket Selling Committee, '32, '33.

EDWARD LOWELL FOSTER

"Kid"

"In him alone 'twas natural to please."
Entered Central, '30; R. O. T. C., '30.

LILA IRENE GANT

"'Tis well to be merry and wise."
Entered from Lookout Junior High, '31; Biology Club, '31; Girls' Glee Club, '32, '33; "Digest" Sponsor, '32.

DOROTHY VIRGINIA GIBBS

"Dot"

"And who that knows her could forget her?"
Entered from Central Grammar, '29; Camera Club, '32, '33; Secretary, '33; S. P. Q. R., '31, '32; Secretary, Girls' Hi-Y, '31, '32, '33; Operetta, '30, '31, '32; Committee Senior Play, '33; Girls' Glee Club, '30, '32, '33; Varsity Glee Club, '31, '32; Public Speaking, '32, '33; "Digest" Staff, '33; Girl Reserves, '30, '31; Color Committee, '33; Girl Scouts, '30, '31.

CHARLES CALVIN GIBSON

"Hoot"

"I count my life just something to try my strength on."
Entered from Central Junior High, '31; Football, '31; Spanish Club, '32, '33.

JOE HOWARD GODESEY

"Shick"

"Thus he bore, the grand old name of gentleman."
Entered from Red Bank, '30; Hi-Y, '33; Military, '30-33; Airways Club, '33; Secretary of Officers' Club, '33; "Digest" Sponsor, '32.

LILLIAN MAE GOOD

"Lill"

"A heart that's 'good,' a heart that's kind, a heart that's sound and true."
Entered from East Lake Junior High, '30; Girls' Glee Club, '32, '33; Physical Education Club, '32, '33; Basketball, '33; First Prize in Sewing Contest, '32.

JAMES SAMUEL GOODLET

"Jim"

"Nothing is gained without ambition."
Entered from East Lake Junior High, '31.

MARGARET L. GRAHAM

"Trixie"

"Her hair was her glory."
Entered from Conner Junior High, '29; Girls' Glee Club, '33.

CHESTER WOODROW GRAY

"Check"

"A youth light hearted and content, I wander through the world."
Entered from Hixon High, '30; Officers' Club, '33; Airway Club, '32, '33; Hi-Y, '31, '32, '33; R. O. T. C., '31, '32, '33.

JOHN MARVIN GRAY

"A laugh is worth a thousand tears in any market."
Entered from East Lake, '24; Military, '24, '25, '26.

J. D. GUYTON

"Runt"

*"Wise, except when otherwise;
Good, except when bad;
Stodious once in a while,
But never, never sad."*
Entered from Notre Dame, '29; "Digest" Sponsor, '29.

J. MARTIN HACKNEY

"Hack"

*"His heart's honest, as his deeds are true—
His every action speaking of a man."*
Entered from East Side Junior High, '29; Hi-Y, '31, '32, '33; Grady Literary Society, '31, '32, '33; President, '32; Spanish Club, '33; Treasurer of Freshman Class, '30; Red Cross, '30; Treasurer of S. P. Q. R., '31; Ring and Pin Committee, '33; House Manager of "Haunted House," '32; House Manager of "Tweedles," '33; Associate Sports Editor of "Digest," '33; Boll Weevils, '32, '33; Camera Club, '31, '32, '33; Vice-President, '33; Officers' Club, '33; President, '33; Rifle Team, '31, '32, '33; Military, '30, '31, '32, '33, Major, '33; Military Editor of "Champion," '33.

RUTH LUCILE HADDOCK

"Ruthie"

"Gentle in personage, conduct, equipage."
Entered from Hardy Junior High, '29; Girls' Athletic Club, '32, '33; Girls' Glee Club, '32, '33.

CARL DEAN HAGAMAN

"Runt"

"Limburger cheese, sir, hath its virtues."
Entered from East Lake Junior High, '30; Military, '30-33; Sergeants' Club, '33; Airway Club, '32, '33.

CLIFFORD H. HAGER

"Doc"

"Thy modesty's a candle to thy merit."
Entered from Lookout Junior High, '31.



SARAH BLANCHE HALE
"Little Bit"

"A smile that lights the whole world round."
Entered from Lookout Junior High, '29; Latin Club, '32; Hiking Club, '33.

VIRGIL CLARENCE HALE
"One vast substantial smile."

Entered from East Dale, '29; R. O. T. C., '30; Bank, '30, '31; Commercial Club, '30, '31.

MARJORIE HALL
"Buddie"

"An amiable soul wears well."
Entered from Red Bank, '29; S. P. Q. R., '31; Library Club, '33; Red Cross Council, '33.

CORA MAE HAMMONTREE
"Cogie"

"Modesty is a priceless gem."
Entered from East Side Junior High, '30.

WILLIE SUE HAMRICK
"Billie"

"Who could be neater, brighter or sweeter."
Entered from Red Bank, '30; S. P. Q. R., '31; Treasurer Sodallitas, '31; National Honor Society, '33; Latina, '32, '33; Girls' Hi-Y, '33; Camera Club, '30, '31, '32; Usher, '33; Girls' Glee Club, '32; Operetta, '31; May Day, '30, '31, '32.

RUSSELL M. HART
"Russ"

"Nothing is difficult to a willing mind."
Entered from East Side Junior High, '30; Orchestra, '31, '32, '33; Band Club, '32, '33; President, '32; Officers' Club, '33; Band, '31, '32, '33; Major, '33; Assistant Director, '33.

JOHN S. HAWKINS
"Sam"

"To do all things well."
Entered from Dickinson Junior High, '30.

JAMES M. HAYES
"Chink"

"He is a man who acts like a man."
Entered from Dickinson Junior High, '30; Biology Club, '30; R. O. T. C., '31-'33; Hi-Y, '32, '33; Senate, '33; Officers' Club, '33; School Letter, '32; National Honor Society, '33.

HARRY ALBERT HEARD

*"There is a gift beyond the reach of art—
Of being eloquently silent."*
Entered from Dickinson Junior High, '29; Junior Carnival, '32; Bol Weevils, '32, '33.

JOHN HENDERSON
"Jack"

"He is well qualified for any task assigned him."
Entered from Sunnyside, '30; Band, '32, '33; Lieutenant, '33.

SAMUEL CHARLES HENNESSEE
"S. C."

"Nothing can cover his high flame but heaven."
Entered from East Lake Junior High, '30; Band, '30, '31, '32, '33; Officer, '32, '33; Officers' Club, '32; Band Club, '32, '33; Orchestra, '33; Quintet, '32; Operetta, '32; Lettermen's Minstrel, '32; Senate, '33; '33; National Honor Society, '33.

VIRGINIA HENRY
"Jinks"

*"To see her was to love her,
And to love but her forever."*
Entered from Central Junior High, '29; Girls' Glee Club, '30; Varsity Glee Club, '31; Vice-President, '32, '33; Operetta, '32; Minstrel City Glee Club, '31; Camera Club, '31, '32, '33; Usher, '33; Ring and P Committee, '33; Girls' Hi-Y, '32, '33; May Day Program, '30; National Honor Society, '32, '33; Battalion Sponsor, '33; Officers' Club, '33.

ELLA LOUISE HESS
"Bunnie"

"Such an air, such a grace, such a form, such a face."
Entered from Dickinson Junior High, '30; Girls' Glee Club, '31, '33; Varsity Glee Club, '33; Biology Club, '31, '32, '33; Secretary-Treasurer, '33; Operetta, '31, '32; Captain Gym Class, '31.

DAVID ALVIN HIGDON
"Hig"

"Diligence is the mother of good luck."
Entered from Lookout Junior High, '29; Officers' Club, '33.

SHELLEY ROSE HIGGINS
"Rose"

"A merry heart prompts laughter."
Entered from Hardy Junior High, '30; Girls' Glee Club, '31; Varsity Glee Club, '32; Library Club, '32; Red Cross, '33; Usher, '33.

FLORA MILDRED HIGH

"Quiet, reserved, and studious, was she."
Entered from East Lake Junior High, '29; Girls' Glee Club, '33.

MARY LOUISE HILL
"Little Girl"

"What does she live for, if not to make the world more pleasant?"
Entered from East Side Junior High, '29; Junior Red Cross, '30; Girls' Hi-Y, '29-'33; Spanish Club, '32.

MARY KATHERINE HINDS
"Kat"

"Learning by study must be won."
Entered from Dickinson Junior High, '28; Girls' Athletic Club, '29.

HERBERT THOMAS HOLDER
"Little Herbie"

"As idle as a painted ship upon a painted sea."
Entered from Hardy Junior High, '29; Military, '30, '31, '32.

MARGARET ANN HOLLAND

"She that brings sunshine to others cannot keep it from herself."
Entered from Conner Junior High, '29; Girls' Glee Club, '30, '31; Varsity Glee Club, '32, '33; Librarian, '33; Camera Club, '30, '31, '32, '33; S. P. Q. R., '31, '32; Treasurer, '33; Girls' Hi-Y, '32, '33; Candy Force, '32, '33; Public Speaking, '32, '33; Operetta, '31; "Tweedles," '33; Color Committee, '33.

JAMES HOWARD
"Sugar"

*"The mildest manners, the bravest mind,
The best example you can find."*
Entered from East Side Junior High, '29; Camera Club, '31, '32; President, '33; Depression Club, '32; President, '33; "Digest" Printing Staff, '31, '32; Foreman, '32, '33; Photographic Editor of "Champion," '33.

T. KELDON HUDDLESTON

"Skill and endurance are an invincible couple."
Entered from Hardy Junior High, '29.

MARGARET FLEGAL HUDGENS
"Dutch"

"A smile like sunshine, and eyes like heaven's own blue."
Entered from East Lake Junior High, '30; Girl Reserves, '31, '32.

LAVADNA HUGHES
"Spud"

"True ease in action comes from art, not chance."
Entered from City High, '31; Girl Scouts, '32, '33; Girls' Athletic Club, '32, '33; Physical Education Club, '32, '33; Captain of Girls' Drill Squad, '33; President of Blue Jay Club, '33.

HAZEL HUMBERD
"Ruth"

"Her hair but reflects the gold of her heart."
Entered from Red Bank, '29; Usher, '33; Library Club, '33; National Honor Society, '33; S. P. Q. R., '31; Red Cross, '32.

FRANK HUNTER
"Drumpy"

"Honor lies in honest toil."
Entered from Dickinson Junior High, '29; Sergeant, '33.

NATHANIEL HYDEN
"Nat"

*"His friends there are many,
His foes, are there any?"*
Entered from Conner Junior High, '28; Sergeants' Club, '29; Officers' Club, '30; Band, '29-'33; Orchestra, '29-'33; Treasurer of Senior Class, '33.

ALBERT B. JOHNSON
"Al"

"A model of industry."
Entered from East Side Junior High, '30.



CATHERINE BETTY JOHNSON

"Her heart is like the moon, ever changing but always a man in it."

Entered from Mission Ridge, '29; "Digest" Sponsor, '30; Secretary of S. P. Q. R., '31; Public Speaking, '32, '33; Library Club, '32, '33; Red Cross, '33; Senate, '33; Girls' Hi-Y, '33; Camera Club, '32, '33; Secretary of Ushers, '33; School Representative in Declamation Contest, '32; "Haunted House," '32; "Tweedles," '33; Candy Fore, '32; "Digest" Staff, '33; National Honor Society, '32, '33; Color Committee, '33; Class Poet, '33.

JAMES WOODROW JOHNSON

"Woodie"

"True in word and true in deed."

Entered from East Lake Junior High, '30; Bank, '32, '33.

LILLIE M. JOHNSON

"Sweetie"

"She hath a heart as sound as a bell."

Entered from East Dale School, '29.

MORRIS A. JOHNSON

"Tosh"

"The actions of men are the best interpretations of their thoughts."

Entered from East Side Junior High, '28.

ANNE CHRISTINE JONES

"Tine"

"She enters into all things with zeal and zest."

Entered from Dickinson Junior High, '31; Uke Club.

MARIE JONES

"Cotton"

"She's all my fancy painted her;

She's lovely; she's divine."

Entered from East Side Junior High, '30.

MARTHA EVELINE JONES

"Beauty of mind endureth forever."

Entered from Dickinson Junior High, '30; Girls' Hi-Y, '30, '31; Treasurer, '32, Vice-President, '33; Library Club, '31, '32; Vice-President S. P. Q. R., '31; Dalton Faraday Science Club, '30, '31; '32; Senate, '32, '33; National Honor Society, '32, '33; Usher, '33; Associate Editor of "Digest," '33.

SARAH RUTH KEITH

"Her voice was ever soft, gentle, and low: an excellent thing in a woman."

Entered from City High, '31; Commercial Club, '32; Bookstore, '32, '33; National Honor Society, '33; S. P. Q. R., '32, '33.

GORDON CARLYLE KELLY

"Carl"

"Be silent and safe for silence never betrays you."

Entered from Lookout Junior High, '31.

MILDRED HOPKINS KELLY

"Milly"

"A youth, light hearted, and content, I wander through the world."

Entered from Paul Hayne High, Birmingham, Alabama, '30.

VIOLA KELLY

"Ish"

"A girl with a gentle and courteous heart."

Entered from East Side Junior High, '29; National Honor Society, '33; S. P. Q. R., '30, '31.

LIDA MADGE KEMMERLEE

"Beanie"

"A noble character is the most precious crown."

Entered from Hardy Junior High, '29; Physical Education Club, '32, '33; Varsity Soccer Team, '32; May Festival, '32; Drill Team, '32; Spanish Club, '32, '33.

BEULAH KENT

"Shorty"

"A good friend is forever a good friend."

Entered from Sparta High School, '31; Athletic Club, '33; Basketball, '32.

JOE E. KERR

"Davie"

"The kindest man, the best conditioned, and unwearrying spirit in doing courtesies."

Entered from Dunlap High, '30; Lettermen's Club, '31, '32, '33; National Honor Society, '33, Vice-President, '33; Basketball, '31, '32, '33, Captain, '33; Athletic Editor of "Champion," '33.

DESSIE PAULINE KIMSEY

"Penny"

"A good disposition is more valuable than gold."

Entered from East Lake Junior High, '31; Girls' Glee Club.

LE ROY KINGTON

"Dick"

"Worry never made a great man, so why worry?"

Entered from East Side Junior High, '30; Boys' Glee Club, '31, '32; Camera Club, '30; Athletic Association, '30; R. O. T. C., '30.

THERESA MARIE KIPP

"Resa"

"When shall we look upon her like again?"

Entered from Lutheran School, '29; S. P. Q. R., '32.

RAYMOND KNIGHT

"Ray"

"Yond Crassus has a lean and hungry look;

He thinks too much."

Entered from Lookout Junior High, '30; Band Club, '32, '33; Orchestra, '33; Military, '30, '31.

GEORGE CONDR A KNOX

"Goldy"

"Strong in will and honest in endeavor."

Entered from Central Junior High, '30; Hi-Y, '30-'33; Biology Club, '31, '32; S. P. Q. R., '31; Grady Literary Society, '33; Senate, '33; "Digest" Staff, '32, '33; Sports Editor, '33; National Honor Society, '32, '33; President, '33; Business Manager of Athletics, '33; Business Manager of "Haunted House," '32; "Tweedles," '33; Cap and Gown Committee, '33; Ticket Selling Committee, '31, '32, '33, Chairman, '32; Class Prophet.

W. D. LA FERRY

"Dub"

"I am content only with the best."

Entered from Conner Junior High, '28; Art Club, '31, '32, '33.

WILLIAM N. LAND, JR.

"Dub"

"Sorrow and care and I were never made to be friends."

Entered from McCallie, '31; Depression Club, '31, '32, '33; Camera Club, '32, '33; Minstrel, '32.

RAYMOND HAYDEN LANDERS

"Buck"

"He is a shark—enough said."

Entered from Red Bank, '29; Athletic Association, '30, '31, '32, '33; Baseball, '32, '33.

VERA THELMA LAWRENCE

"V"

"Peaceful, studious, quiet."

Entered from East Side Junior High, '30.

IRENE LAWSON

"Bootsie"

"Laugh and the world laughs with you."

Entered from Sheffield Junior High, Sheffield, Alabama, '29.

SHIRLEY RUTH LEE

"Lee"

"Do your best, your very best, and do it day by day."

Entered from East Ridge, '30; Public Speaking, '32; Usher, '33; Girls' Hi-Y, '33.

JAMES DONALD LONDON

"Don"

"Not too serious, not too gay,

But always a jolly good fellow."

Entered from Signal Mountain, '29; S. P. Q. R., '32; Band Club, '32, '33; Staff of Junior Play, '32.

HAROLD A. LONG

"Slim"

"A friend may be reckoned the masterpiece of nature."

Entered from Marion County, '29; Boys' Glee Club; Basketball, '30.

RICHARD F. LOWE

"Dickie"

"Hang sorrow! Care will kill a cat, and therefore let's be merry."

Entered from Hardy Junior High, '30; Varsity Glee Club, '30, '31; Camera Club, '31, '32, '33; Depression Club, '32, '33; Grady Literary Society, '32, '33; Senate, '32, '33; Vice-President of Junior Class, '32; Operetta, '30; "Haunted House," '32; "Tweedles," '33; Boys' Quartet, '30; Public Speaking, '32, '33; Lettermen's Minstrel, '31, '32; Ring and Pin Committee, '33.

MILLARD MARTIN LOWRY

"Leo"

"He entered into all things with zeal and zest."

Entered from Dickinson Junior High, '29; Senate, '30, '31, '32, '33; President, '33; Boll Weevils, '31, '32, '33; Hi-Y, '30, '31, '32; Millitary, '30, '31; Band, '32, '33; Band Club, '32, '33; Public Speaking, '32, '33; Junior Representative in Declamation Contest, '32; Junior Representative for D. A. R. Medal, '32; Grady Literary Society, '30, '31, '32, '33; President, '33; Lettermen's Club, '31, '32, '33; President of Freshman Class, '30; Vice-President of Sophomore Class, '31; President of Junior Class, '32; President of Senior Class, '33; President of "Haunted House," '32; Senate Play, '30, '31; School Cheer Leader, '33; Ring and Pin Committee, '33; Invitation Committee, '33.

MARTHA NELLE McCAY

"Marty"

"Her qualities are such that we can speak well of her."

Entered from City High, '31; "Digest" Staff, '32; May Day Festival, '32; Biology Club, '32; Camera Club, '32, '33; Spanish Club, '32.

CHARLES ROBERT McCLAIN, JR.

"Bob"

"Let come what may—I will do my best."

Entered from Boys' High, Atlanta, '31; Scribblers' Club Red Cross; Operetta; Scholarship Letter, '31, '32; Sodalitas Latina, Varsity Glee Club, '32, '33.

MARGARET E. McCLURE

"Reggie"

"She finds happiness in youthful sports."

Entered from East Lake Junior High, '30; Basketball, '31, '32; Athletic Club, '32; Physical Education Club, '33; Girls' Glee Club, '33.

WILLIE SUE McCONNELL

"Billie"

"She lived in peace with all mankind, In friendship she was true."

Entered from Sequatchie County High, '30; Usher, '33; National Honor Society, '33; Red Cross, '33; May Day, '32; Drill Squad, '31.

FRANCES ARLINE McCool

"Pat"

"A face with happiness overspread."

Entered from Dickinson Junior High, '29.

GLADYS ETHEL McCRARY

"Sister"

"A merry heart maketh a cheerful countenance."

Entered from Fairmont Grammar School, '29.

ROBERT McKENZIE

"Bob"

"Courage is the mark of man."

Entered Central, '29.

LUCILE ROBERTS McMAHAN

"Chie"

"Her capacity is unlimited."

Entered from East Side Junior High, '29; La Tertulia, '32; National Honor Society, '32, '33; May Day Festival, '30.

JOHN MILTON MABRY

"Bud"

Entered from Sunnyside, '29; Biology Club, '30, '31, '32; Band Club, '30, '31, '32, '33; Officers' Club, '32, '33; Captain of Band, '33.

DOROTHY LOUISE MANSFIELD

"Mans"

"A smile that captures every heart."

Entered from Lakeview Junior High, '30; Girls' Athletic Club, '31, '32, '33; Physical Education, '32, '33; Girl Scouts, '31, '32, '33; Digest Sponsor, '33; Woodpeckers, '31, '32; Tumbling Team, '31, '32.

MILDRED MAE MARLER

"Milly"

"A versatile character."

Entered from Conner Junior High, '31; Spanish Club, '32, '33.

VIRGINIA MAE MARLOWE

"Micky"

"Here's a dear, true, and industrious friend."

Entered from East Lake Junior High, '31; May Day Festival, '32; "Digest" Sponsor, '31; Biology Club, '33; Spanish Club, '33.

MARY ELIZABETH MARSHALL

"Libby"

"Her graceful ease and sweetness void of pride, Might hide her faults if faults she had to hide."

Entered from Conner Junior High, '30; Camera Club, '31, '32; Treasurer, '32, '33; Senate, '32, '33; Cabinet Member, '33; Girls' Club, '31; Varsity Glee Club, '32, '33; President, '32, '33; Secretary of S. P. Q. R., '32; Secretary of Junior Class, '32; Chairman Public Speaking Senior Class, '33; "Haunted House," '32; Chairman National Honor Society, '33; Invitation Committee, '33; Usher, '33; Ticket Selling Committee, '33.

HELEN LOUISE MARTIN

"Helena"

"Lived there a Helen not winsome and fair?"

Entered from Conner Junior High, '29; S. P. Q. R., '32.

JEWEL MARTIN

"Judy"

"A kinder friend has no one."

Entered from Hardy Junior High, '30.

PAULINE BARBARA MATTHEWS

"Polly"

*"Here is a woman, good without pretence,**Blest with plain reason, and with sober sense."*

Entered from East Side Junior High, '30.

BLANCHE MEADOWS

"Happy am I. From care I am free."

Entered from East Lake Junior High, '29; Girls' Glee Club, '33.

AMOS WILBURN MILLER

"Walt"

"A heart filled with joy and friendship."

Entered from East Side Junior High, '29; Letterman; Baseball, '32.

HUGH L. MILLICAN

"Mike"

"The world always has a place for the man who can be depended on."

Entered from Lookout Junior High, '31; "Digest," '32, '33; Commercial Club, '33; Three Blue Coats, '33.

SARA MILLIGAN

"Susie"

"A good character shines in its own light."

Entered from Dickinson Junior High, '30; Girls' Hi-Y, '30, '31; Secretary, '32; President, '33; Library Club, '31; President, '32; S. P. Q. R., '31; Dalton Farraday Science Club, '30, '31, '32; Senate, '32; Chaplain, '33; National Honor Society, '32, '33; Usher, '33; Departmental Editor of "Digest," '33; Feature Editor of "Champion," '33; Reader of Class Will.

WARREN H. MITCHELL

"Kid"

"Ability runs in the esteem of true men."

Entered from Central Junior High, '30; Military, '30, '31, '32, '33; Corporal, '31; Sergeant, '32; First Lieutenant, '33; Officers' Club, '33.

MARY FRANCES MOORE

"Bobbie"

"Her jolly disposition made her loved by everyone."

Entered from East Side Junior High, '31; Junior Red Cross, '32, '33; Spanish Club, '33; May Day Pageant, '31; Library Club, '32; "Digest" Sponsor, '33.

EUNICE MORGAN

"Wisdom and modesty combined."

Entered from East Dale, '30; Varsity Glee Club, '32; Watt Science Club, '31, '32; Girls' Glee Club, '33; Spanish Club, '32.

MINNIE LEE MORGAN

"Smiles"

"She is a friend to all and an enemy to none."

Entered from East Dale, '29; Watt Science Club, '30, '31; Program Chairman; S. P. Q. R., '30, '31; Girl Reserves, '31, '32, '33; Girls' Glee Club, '32, '33.

EVELYN MORRIS

"She smiles and smiles and will not sigh."

Entered from Red Bank, '29; S. P. Q. R., '30, '31; Bank, '31, '32; "Digest" Staff, '33; National Honor Society, '33; Red Cross, '30, '31.

EUNICE MOSS

"Elson"

"Success comes to those who will be successful."

Entered from East Lake Junior High, '31; May Day Festival, '31.

MENA MERLE MUELLER

"Whence is thy learning? Hath thy toil over books consumed the midnight oil?"

Entered from East Side Junior High, '30; Bank Force, '32, '33.



L. RATHMEL MULLENIX

"An honest man is the noblest work of God."

Entered from Dickinson Junior High, '29; Football, '31, '32.

JOSEPH A. NEAL

*"Joe"**"His part has not been words but deeds."*

Entered from East Lake Junior High, '30; Military, '30-'33; Officers' Club, '33; Airway Club, '33.

R. H. NELMS, JR.

*"H"**"Knowledge comes, but wisdom lingers."*

Entered from Central Junior High, '30; Freshman Council, '30; Hi-Y, '30-'33; Secretary, '32, '33; Biology Club, '31-'33; President, '33; Sodality Latina, '32, '33; Vice-President, '33; Senate, '32, '33; Senate Cabinet, '33; Novi Romani, '32; S. P. Q. R., '31; "Digest" Staff, '32, '33; New Editor, '33; National Honor Society, '33; Invitation Committee, '33; Ticket Selling Committee, '31, '32, '33; "Times" Page Staff, '32.

HELEN VIRGINIA NIPPER

*"Boots"**"A noble character is the most precious crown."*

Entered from East Side Junior High, '29; Bookstore, '32, '33; Latin Club, '31; Commercial Club, '33; "Digest" Sponsor, '30; May Festival, '30.

KATHLEEN RUTH OLINGER

*"Jack"**"The very pattern, girl of girls."*

Entered from Conner Junior High, '29; Girl Scouts, '30, '31, '32; Girls' Athletic Association, '30, '31; Girl Reserves, '31, '32; Senate, '32, '33; National Honor Society, '32, '33; Secretary, '33; Usher, '33; Spanish Club, '31; Secretary of Freshman Class, '30; President of Sophomore Class, '31; Vice-President of Senior Class, '33; Invitation Committee, '33; May Day Festival, '30, '31, '32.

AUDREY ELIZABETH ORR

*"Auder"**"The only way to have a friend is to be one."*

Entered from East Side Junior High, '31; Red Cross, '31, '32; Library Club, '32; Girls' Hi-Y, '32, '33; Usher, '33; Red Cross, '33; May Day Pageant, '31; Red Cross Play, '32; "Digest" Sponsor, '31; Spanish Club, '33.

EVELYN LUCILLE OWENS

*"Cutie"**"The heavens such grace did not lend her,
That she might admired be."*

Entered from Central Junior High, '29; Varsity Soccer Team, '33; May Day, '32; Drill Squad, '32; Basketball; Baseball.

JOHN L. PARK

*"Hod"**"O, he sits high in all the girls' hearts."*

Entered from East Side Junior High, '29; Military, '30, '31, '32, '33; Personnel Adjutant, '33; Boys' Glee Club, '32; Varsity Glee Club, '33; Operetta, '31, '32; Rifle Team, '31, '32, '33; Officers' Club, '33.

LUDWIG JOHNSON PEARSON

*"Swedie"**"Seeing much, hearing much, and studying more are the pillars of learning."*

Entered from East Side Junior High, '31; Military, '31.

HAZEL ANITA PEASE

*"She is always ready to do a good turn,
Maybe from her we could a lesson learn."*

Entered from Hardy Junior High, '30; Usher, '33; National Honor Society, '33.

GEORGIE PECKINPAUGH

"A blithe companion and a sticking friend."

Entered from Sale Creek School, '30.

W. BURNELL PEDEN

*"Pete"**"I hasten to laugh at everything."*

Entered from Central High, McMinnville, '29; Hi-Y, '30, '31, '32, '33; Band Club, '31; Military, '30.

LURENA PEMBERTON

*"Sister"**"If aught of prophecy be true, thou wilt not live in vain."*

Entered from East Lake Junior High, '30; Girl Reserves, '31, '32, '33; Secretary, '32, '33; Spanish Club, '31, '32.

MELBA PEMBERTON

*"Billie"**"Secure what'er she gives, she gives the best."*

Entered from East Lake Junior High, '30; Girls' Glee Club, '33; Spanish Club, '33; Basketball, '32, '33.

NINA VANCE PENDERGRASS

*"Penny"**"A girl with a gentle and courteous heart."*

Entered from Lookout Junior High, '31; Girls' Glee Club, '32, '33; Spanish Club, '33.

HERMINE PEPER

*"Meanie"**"Work is the keynote of success."*

Entered from East Lake Junior High, '30; May Festival, '32; Spanish Club, '33.

JOSEPH EUGENE PERRY

*"Goots"**"An affable and courteous gentleman."*

Entered from Rossville High, '30; Officers' Club, '33; Military, '30, '31, '32, '33.

MARGARET VIVIAN PLUMLEE

*"Bill"**"What I promise to do, I'll do."*

Entered from Red Bank, '29; May Festival, '30, '31, '32; S. P. Q. R., '30, '31.

MARTHA REBECCA POTTER

*"Becky"**"True as a needle to the pole, or as a dial to the sun."*

Entered Central, '29; Girls' Glee Club, '33; Spanish Club, '33.

ELIZABETH ANNE PROPER

*"Betty"**"I am content only with the best."*

Entered from East Side Junior High, '29; Red Cross, '30; Senate, '31, '32, '33; Senate Cabinet, '33; Girls' Hi-Y, '31, '32, '33; Program Chairman, '33; Dalton Farraday Science Club, '31, '32, '33; Library Club, '31, '32; Secretary, '32; Public Speaking, '32; Orchestra, '31, '32, '33; Secretary, '32; E. T. State Orchestra, '33; Concert Master, '33; Ticket Selling Committee, '33; National Honor Society, '32, '33; Program Committee, '33; Librarian; "Digest" Staff, '33; Usher, '33.

MARIE REYNOLDS

"Gentle and pleasing in every movement."

Entered from Lookout Junior High, '31; Girls' Glee Club, '32.

ELIZABETH RHODES

*"E"**"She was a scholar and a good one."*

Entered from East Brainerd, '29; Usher, '33.

THAYER E. ROBERTS

"He loved his friends, forgave his foes."

Entered from McIntire Private School, '30; Band, '33; Band Club, '33; Music Department, '31, '32.

MARY A. ROGERS

*"Little Mary"**"What is she but a means of happiness?"*

Entered from East Side Junior High, '29; Bank Force, '31, '32, '33.

MARION ROBERTS ROGILLIO

"A woman of genius."

Entered from Tunica Junior High, '30.

JAMES DILLARD SANDERS

"A ready smile often lifts a world of sorrow."

Entered from Red Bank Grammar School, '29.

MILLIE ELIZABETH SCHAEER

*"Mimi"**"Success follows faithful service."*

Entered from East Lake Junior High, '30; Bookstore, '32.

WILLIAM LEE SHANKLE

"One can always be a gentleman."

Entered from Lookout Junior High, '29; Football, '30-'33; Hi-Y, '32, '33; Airway Club, '33.





BERTHA MAE SHIPLEY
"In friendship she was true."
 Entered from East Lake Junior High, '30.

EVELYN CATHERINE SIMS
"It's the little things that count."
 Entered from East Lake Junior High, '31.



ANNIE LOU SKELTON
"I am wealthy in my friends."
 Entered from Pineville, '30; Junior Red Cross, '30; Spanish Club, '31; Girls' Glee Club, '32; Print Pal, '32; Camera Club, '33; "Digest" Staff, '33.

DARTHA JO SLAUGHTER
"In unity there is strength."
 Entered from Bradley High, '32; Camera Club, '33; Girls' Glee Club, '32, '33; Lettermen's Minstrel, '32; Operetta, '32; Public Speaking, '33; Junior Class Program, '32.



MARTHA ANN SLAUGHTER
"United we stand; divided we fall."
 Entered from Bradley High, '32; Camera Club, '33; Girls' Glee Club, '32, '33; Lettermen's Minstrel, '32; Operetta, '32; Public Speaking, '33; Junior Class Program, '32.

GERALDINE SMITH
"True worth is in being, not seeming."
 Entered from A. L. Miller High, Macon, Georgia, '32.



MARY JOSEPHINE SMITH
"A smile for everyone, a frozen for none."
 Entered from East Dale, '29; Bank Force, '31; Library Club, '32; Business staff of "Digest," '33; National Honor Society, '33.

RACHEL LOUISE SMITH
"She is an excellent, sweet lady."
 Entered from Boynton, '30; Girls' Glee Club, '30, '31; Red Cross, '30, '31, '32; National Honor Society, '33; S. P. Q. R., '30, '31.



VIRGINIA MAE SMITH
"A smile for everyone."
 Entered from East Side Junior High, '30; Camera Club, '30, '31; Commercial Club, '32, '33; Bank, '30, '31, '32, '33.

VIRGINIA SNYDER
"Ah, she was worthy of all love."
 Entered from City High, '30; Junior Red Cross, '32; Spanish Club, '32; Usher, '33; National Honor Society, '33; School Letter, '31; Faculty Representative of Class of '33; Four Year Honor Student.



HILLIARD SNYDER
"His life has many a hope and aim."
 Entered from Central Junior High, '30; "Digest," '32; Commercial Club, '32; Three Blue Coats, '33.

VIOLA STANDIFER
"A capable lady, athletically inclined."
 Entered from Dickinson Junior High, '30; Operetta, '31; May Queen, '32; Girl Scouts, '31, '32, '33; Girl Reserves, '31, '32, '33; Girls' Athletic Association, '31, '32, '33; Secretary, '32; Varsity Basketball, '31, '32; Red Cross, '33; Drill Squad, '32, '33; National Honor Society, '33; President of Green Peppers, '33; Captain Junior Basketball, '32.



WILLIAM J. STARNES
"The world knows nothing of its greatest men."
 Entered from East Lake Junior High, '30.

HARLEY STEELMAN
"Little in body, but, oh, what a mind!"
 Entered from East Side Junior High, '29; National Honor Society, '33.



JAMES WOODROW STEINMAN
"Wisdom is the principal thing; therefore get wisdom."
 Entered from Mission Ridge, '29; Lettermen's Club, '32, '33; Football, '32, '33; Baseball, '32, '33; National Honor Society, '33.

ALLEN FORREST STURDIVANT
"Ability wins the esteem of true men."
 Entered Central, '30; S. P. Q. R., '30, '31; Military, '30, '31.

MARGARET ELIZABETH SULLIVAN
"A sweeter woman ne'er drew breath."
 Entered from East Side Junior High, '29; Bookstore, '32, '33; Girls' Hi-Y, '33; Latin Club, '31; Commercial Club, '33; Girls' Glee Club, '32; "Digest" Sponsor, '30, '31; May Festival, '30; Candy Force, '32; Invitation Committee, '33.

JAY NORMAN SYLAR
"In him alone 'twas natural to please."
 Entered from Mission Ridge, '30; Hi-Y, '33; "Digest" Sponsor, '32; Music Department, '30-'33; Public Speaking, '33; Operetta, '31.

BENJAMIN M. TARVER, JR.
"The mind is the standard of the man."
 Entered from East Side Junior High, '29; Grady Literary Society, '31; Secretary, '32; President, '33; Military, '30, '31, '32; Captain, '33; Boys' Hi-Y, '33; Senate, '33; Officers' Club, '33; Depression Club, '32, '33; Haunted House, '32; National Honor Society, '32, '33; President, '33; Spanish Club, '33; "Times" Page Staff, '32; Editor, '33; Associate News Editor "Digest," '33; Editor-in-Chief of "Champion," '33; Ticket Selling Committee, '32, '33; Cap and Gown Committee, '33; Four Year Honor Student; Class Representative.

FRANCES CHRISTINE TAYLOR
"Friends I have made."
 Entered from Dickinson Junior High, '30; "Digest" Sponsor, '30, '31, '33; Girls' Glee Club, '31; Red Cross, '31.

WILLIAM W. TAYLOR
"A friend among friends."
 Entered from Mission Ridge, '30; "Haunted House," '32; "Tweedles," '33; Senate Play, '32; Senate, '33; Hi-Y, '33; Grady Literary Society, '33; Camera Club, '33; Depression Club, '33.

HOWARD CLAYTON THACH
"His zeal none exceeded."
 Entered Central, '31; Varsity Glee Club, '32; Hi-Y, '32; Boys' Glee Club, '33.

BLANCHE N. THOMAE
"Happy am I. From care I am free."
 Entered from East Side Junior High, '30; Girls' Hi-Y, '30-'33; Dalton Farraday Science Club, '31, '32, '33; Secretary, '32; Biology Club, '31; Spanish Club, '32, '33; Operetta, '30, '31; Minstrel, '31, '32; Band Sponsor, '33; School Song Leader, '33; Officers' Club, '33.

C. S. TURNER
"Few sorrows hath he of his own."
 Entered from East Side Junior High, '30; Secretary Freshman Class, '31; Vice-President Science Club, '31; Spanish Club, '32; Camera Club, '32, '33; Senate, '32, '33; Cabinet Member, '33; Grady Literary Society, '32; Vice-President, '33; National Honor Society, '33.

RUTH ELAINE TURNER
"Here's a dear, true, and industrious friend."
 Entered Central, '29; Bank, '31, '32; Commercial Club, '31, '32.

MARY HELLEN USHER
"A smile that captures every heart."
 Entered from Dickinson, '30; Usher, '33; Biology Club, '31, '32; Secretary-Treasurer; Girls' Glee Club, '31, '32, '33; Treasurer, '31.

HELEN MAE VALENTINE
"A woman of genius."
 Entered from Red Bank, '29; Junior Red Cross, '32; Orchestra, '32; Gym Exhibition, '29, '30, '31; May Festival, '29, '30, '32; Drill Squad, '31; Spanish Club, '32.

JACK MALCOLM VANDERGRIFF
"A man does his duty as he sees it."
 Entered from East Side Junior High, '29.

N. DERWOOD VANN
"The world always has a place for a man."
 Entered from East Lake Junior High, '30; Military, '31, '32, '33; Sergeants' Club, '32; First Lieutenant, '33; Officers' Club, '33; Spanish Club, '32; Red Cross, '32; "Digest," '31; Biology Club.

FRANK C. WAGONER
"Modesty is a great asset."
 Entered from East Ridge Grammar School, '30.

JOHN WARD WAITE
"A versatile character."
 Entered from McCallie, '29; Military, '29; "Digest" Sponsor, '30, '33; Bank, '31; Bookstore, '32; Commercial Club, '31, '32.

LEONA WALKER
"Wisdom is better than rubies."
 Entered from Marion County High, '30; Latin Club, '32; Sodalitas Latina, '32, '33; Red Cross, '32; National Honor Society, '33.





IMOGENE THOMAS WALL
"Her heart is ever at your service."
 Entered from Central Junior High, '31.

CATHERINE MARGARET WELCH
"For learning hath she in abundance."
 Entered from Red Bank, '29; S. P. Q. R., '31, '32; Usher, '33; National Honor Society, '33; May Day, '30; Drill Squad, '32; Four Year Honor Student.

BENJAMIN CECIL WEST
"Give your friend a smile. It costs nothing."
 Entered from East Side Junior High, '30; Football Reserves, '31; Hi-Y.

MARY ELIZABETH WHEELER
"Her jolly disposition made her loved by everyone."
 Entered from East Side, '29; R. O. T. C. Sponsor, '33; Girls' Glee Club, '32, '33; President, '33; Girls' Hi-Y, '33; Usher, '33; Camera Club, '30-'32; Business Staff "Digest," '33; Secretary Sophomore Class, '31; Operetta, '32; Red Cross, '29, '30; Officers' Club, '33.

WILLARD WILHOITE
"Be not simply good—be good for something."
 Entered from East Lake Junior High, '28; R. O. T. C., '30, '31, '33, '33; Rifle Team, '30; Aviation Club, '31, '32; Officers' Club, '33.

CLIFFORD L. WILLIAMS
"Some have silver tongues, he has silence—silence is golden."
 Entered from East Side Junior High, '29; Football, '30, '31, '32.

RICHARD VICTOR WILLIAMSON
"Laugh and the world laughs with you."
 Entered from City High, '31; Secretary of Band Club, '33; Lieutenant, '33; Senate, '33; S. P. Q. R., '33.

GEORGE WILLIS
"Give me sports or give me nothing."
 Entered from East Side Junior High, '30; Football, '30, '31, '32; Lettermen's Club, '31, '32; Football Minstrel, '32.

LERON CHRISTINE WITT
"She scatters sunshine wherever she goes."
 Entered from East Side Junior High, '30.

RAYMOND B. WITT, JR.
"I'd rather be right than president."
 Entered from Mission Ridge, '29; Football, '30, '31, '32, '33; Champion Representative, '30, '31; Senate Play, '30, '31; Business Manager and Student Director, '32; Assistant Basketball Manager, '31; Camera Club, '31; Senate, '30, '31, '32; Cabinet, '32, '33; Hi-Y, '30, '31, '32, '33; Treasurer, '32; President, '33; Lettermen's Club, '32, '33; Societas Latina, '32; Sophomore Declaration Representative, '31; "Haunted House," '32; "Tweddles," Lettermen's Minstrel, '32; Baseball, '30, '31; "Digest," '31, '32, '33; News Editor, '32; Editor-in-Chief, '33; Public Speaking Play, '32; Delegate Hi-Y Camp, '32; Invitation Committee, '33; D. L. P. A. Convention, '31; La Tertulia, '32, '33; National Honor Society, '32, '33; Vice-President, '33; Depression Club, '32, '33; Vice-President, '33; Valedictorian; Four Year Honor Student.

KENDALL WOOD
"Modesty is a good trait."
 Entered from Mission Ridge, '30; National Honor Society, '33; Officers' Club, '33; S. P. Q. R., '31, '32; Band, '31, '32, '33; Band Club, '31, '32, '33; Hiking Club, '32, '33.

MARY ELIZABETH WOOTEN
"Timid youth makes reckless old age."
 Entered from Hardy, '29; Gym Exhibition, '32; May Festival, '32; Drill Squad, '31, '32; Physical Education Club, '33; Spanish Club, '33.

BONNIE ELIZABETH WORLEY
"For she's 'bonnie' and brave, well favored withal."
 Entered from Lookout Junior High, '30; Usher, '33; May Festival, '31, '32; Gym Exhibition, '32; Girl Reserves, '39.

WILLIAM DAN WRIGHT
"Right was right."
 Entered from East Side, '29; Military, '30, '31, '32, '33; Captain, '33; Vice-President Officers' Club, '32, '33; Rifle Team, '31, '32, '33.

AURORA MAUDE ZEIGLER
"Her capacity is unlimited."
 Entered from Lakeview Junior High, '30; Girls' Athletic Club, Treasurer, '31, '32; President, '33; Physical Education Club, '32; Treasurer, '33; Girl Scouts, '31, '32, '33; Tumbling Team, '31, '32; Girls' Drill Squad, '32.

HARRY ZELINSKY
"A youth there was of quiet ways."
 Entered from City High, '31.



JUANITA BLAKE

BINA BOWERS

MARTHA BROWNING

ROBERT CASSELL

MERRY CHANDLER

HELEN DONALDSON

HELEN DONALDSON

HELEN DONALDSON

HELEN DONALDSON

HELEN DONALDSON

HELEN DONALDSON

AUGUSTA SMITH

VIRGINIA SNYDER

BEN TARVER

CATHERINE WELCH

RAYMOND WITT

VIRGINIA SNYDER
 FACULTY. REP.

BINA BOWERS
 SALUTATORIAN

RAYMOND WITT
 VALEDICTORIAN

BEN TARVER
 CLASS REP.

HELEN DONALDSON
 HISTORIAN

GEORGE KNOX
 PROPHET

SARA MILLIGAN
 READER OF WILL

BETTY JOHNSON
 POET

SENIOR CLASS HISTORY

At best a class history can hope to be little more than a bare pretense, a mere suggestion of the real thing. Not even a skilled artist with all his delicacy of touch, variety of colors and pastel shades could recall by a painting the beautiful memories, delightful associations and varied contacts of one class in its four years of high school life. To each individual much must come through the inner eye and much must be supplied between the lines.

Was there ever a more verdant freshman class than that which made its way into Central in 1929? But verdant is suggestive of life, growth, and enthusiasm, all of which soon became identifying characteristics of this Class of '33.

September 5, 1929, a memorable date! Who could forget the excitement and general confusion that reigned before order was called at that first class meeting in the gymnasium when the following officers were chosen: Millard Lowry, president; Frances Harris, vice-president; Kathleen Olinger, secretary; and Martin Hackney, treasurer.

When the doors of Central swung open in the fall of '30, one of the largest groups to enter was the Class of '33, now a much wiser and more sophisticated class, for they were sophomores. One thing that they had learned was that Central offered many opportunities for improvement and enjoyment beyond that of the class room. Various organizations and teams listed sophomores. The officers chosen for this year were: Kathleen Olinger, president; Millard Lowry, vice-president; Mary Elizabeth Wheeler, secretary-treasurer.

After the storm must come the inevitable calm, and in the fall of '32 we returned, having passed through the freshman and sophomore years to settle down to our junior year. The officers chosen to lead us this year were: Millard Lowry, president; Richard Lowe, vice-president; Mary Marshall, secretary; and Edith Davis, treasurer. One of our achievements of the early part of the year was the winning of the ticket selling contest in the Central-City game. The juniors furnished valuable material on the football squad in the following: Settles, Adams, Bradford, Mann, French, Billings and Trew. Betty Johnson brought another honor to her class as a representative for Central in the city declamatory contest. Later she represented Central in Knoxville, where she won third place. Long will the Junior party linger in our memories, and long will we recall with pleasure the imaginary trips we took to various cities as the program was carried out to give us a unique travel party. A little later came "The Haunted House," the Junior play, with leading roles taken by Mary Marshall, Richard Lowe, Raymond Witt, Billy Taylor, Betty Johnson, and Millard Lowry.

In spite of valuable recruits from the Junior high schools and schools outside the city, the Junior Class suffered a severe loss in the tragic deaths of two of its members, Pearl Cannon, who was drowned, and Velma Finney, who met her death in an automobile accident.

A brief vacation! September 5, 1932, marked the beginning of the year of all years, for now we were seniors. We had now come to realize what we had anticipated for three long years. From the very first it was a busy year, for on the shoulders of the Seniors rested the responsibility of leadership in all school activities. The year began with class organization in the election of Millard Lowry, president; Kathleen Olinger, vice-president; Mary Marshall, secretary; and Nathaniel Hyden, treasurer. Each year we have had representatives on the various athletic teams, and this year our members have predominated the team. Finley Bradford was captain of the football team, and other members of the team from our class were Lester Trew, Lee Settles, C. L. Billings, J. C. French, John Slack, Herman Adams, Ed Cobleigh, Thomas Pledger, Raymond Witt, James Steinman, and George Willis. Joe Kerr was captain of the basketball team. Lee Settles and Lester Trew were members of this team. Raymond Witt was editor-in-chief of the *Digest*, our student publication. December 13, the senior play, "Tweedles," was given. Those taking part were Richard Lowe, Billy Taylor, Margaret Holland, Betty Johnson, Margaret Bynum, Raymond Witt, Edward Cobleigh, Roy Black, and Edith Davis. Edith Manning brought further honor to her class by winning first place in the biography essay contest and second place in the Savings Club Essay Contest. Betty Johnson and Raymond Witt represented Central in the City Declamatory Contest. Betty won first place. In the Gorgas Memorial Essay contest Imogene Wall won first place.

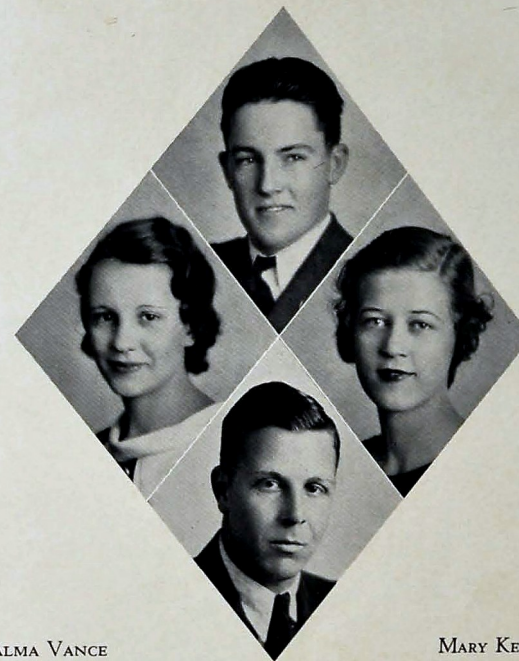
Truly we felt the end had come when our last examinations were finished and plans for the picnic were announced.

The Commencement Exercises began on Sunday, May 21, when the Baccalaureate sermon was preached. Next came Class Day, Monday, May 22, with the girls dressed in their pretty summer frocks. The Class Day representatives were: class historian, Helen Donaldson; class prophet, George Knox; reader of the will, Sara Milligan; and class poet, Betty Johnson.

On Wednesday, May 24, came Commencement evening with its impressive procession, with all the seniors in caps and gowns. The Commencement speakers were: Raymond Witt, valedictorian; Bina Bowers, salutatorian; Ben Tarver, class representative; and Virginia Snyder, faculty representative. With this final event ended the history of another class and with Omar Khayyam we might say:

"The Moving Finger writes; and, having writ,
Moves on; nor all your Piety and Wit
Shall lure it back to cancel half a line,
Nor all your Tears wash out a word of it."

HELEN DONALDSON.



ALMA VANCE
Vice-President

MARY KELLY
Secretary

CHARLES HIGDON
President

ARBIE JOHNSON
Treasurer



THE JUNIORS



JUNIOR CLASS ROLL

Able, Dorothy	Card, Marjorie	Dorsey, David	Harwin, Richard
Acuff, Ruby	Cargile, Fern	Doughty, Barbara	Hart, Louie
Adams, Robert	Carmichael, Fielding	Dudley, Virginia	Hartman, Clarence
Allen, Elise	Carroll, Ruth	Dunn, G. R.	Hatcher, W. S.
Altsman, Alex	Carroll, Wilfred	Dunn, Mabel	Hatcher, Bill
Alverson, Ed	Cart, N. C.	Durham, Carlton	Hatfield, Melvin
Anderson, Annette	Carson, Elizabeth	Durham, Donal	Haupt, James
Anderson, Herbert	Carson, Evelyn	East, Jack	Haynes, Charles
Anderson, Robert	Carson, Irma Lee	Echols, James	Hays, Bert
Arnold, DeForest	Cash, Joe	Edge, Mary Elizabeth	Hayes, Christine
Arwood, Helen	Cash, Marlon	Edwards, George	Heaton, Ruth
Ashby, Catherine	Catron, Walter	Edwards, Mamie	Helms, Elizabeth
Atkins, Edna	Chamberlain, Harry	Edgington, Marion	Henderson, Roberta
Austin, Hazel	Chapman, Pauline	Ellis, Sara	Hennessee, Edith
Austin, Jean	Clemons, Ruby	Elmore, Evelyn	Henson, James
Barger, Margaret	Clift, Joe	Epperson, Newell	Henson, Lucius
Barkam, Lona	Cloninger, Howard	Evatt, Lillian	Hetzler, Elizabeth
Beane, Paul	Cloche, Frank	Erwin, Thomas	Hickerson, Clyde
Belcher, Mary	Cobbie, Dortha	Farrow, Charles	Hicks, Alma
Bendura, Willie Mae	Coggin, Ralph	Ford, Margaret	Hinkins, Ruth
Bilbrey, Jeanelle	Collier, Rose	Fox, Levi	Higdon, Charles
Bivens, Preston	Conley, Sara	Fox, Stella	Higdon, Ola Mae
Black, Frances	Cooper, Altote	Fraizer, Jennie Ruth	Higgins, Bobbie
Blackburn, Hoyt	Cooper, Jack	Fussell, Glen	Hodges, Genevieve
Blevins, Clifton	Corfitt, Raymond	Gamble, Ciel	Hodges, Wilbur
Boling, Martha	Corl, Ruth	Gamble, Kenneth	Hodges, James
Bonine, Frances	Cornett, Elmer	Gannaway, Eula	Hollis, Martin
Boss, Annie Mae	Cotton, Frances	Gentry, Mary	Hope, Raphael
Boss, Richard	Cox, Frances	Good, Selma	Housley, Frank
Boyd, Charles	Crabtree, Mack	Goodner, Jeanette	Huff, Roddy
Bragg, Julia	Goodner, Lesley	Gothard, Mary	Hughes, Florence
Brandon, Pauline	Craxford, Margaret	Grant, Carolyn	Humphries, Samuel
Brantley, Faith	Crawley, Joe	Gray, James	Hunt, Charles
Bridges, Annie	Crawley, Geneva	Grayson, Dorothy	Inglis, Veda
Brooks, Frank	Craft, Ila	Green, Kathleen	Irving, Lucy
Brooks, Truman	Cremmer, Jack	Gregory, Blanche	Isabel, Leon
Brown, Hazel	Cunningham, Allan	Gribble, Mary	McLaughlin, Charles
Brown, E. B.	Curtis, Janice	Gross, Edward	Jenkins, Joe
Brown, James	Daffron, Howard	Gross, Mildred	Jennings, Dwight
Brown, Emmet	Danner, Ed	Gross, Raymond	Johnson, Alma
Brobeck, John	Darr, Edward	Guess, Virgil	Johnson, Arbie
Broyles, Herman	Davis, Odell	Guinn, Irene	Johnson, Bill
Bryant, Jene	Davis, Bill	Gwin, Arma	Johnston, French
Bunn, James	Davis, Clifford	Haddox, Euthema	Joiner, Henry
Burger, Mary	Davis, Naomi	Hale, Ernest	Jones, Doyle
Burgess, Susie	Davis, Russell	Hall, Lillian	Jordan, Estelle
Burnette, Eloise	Dawson, Sanford	Harlin, J. D.	Keith, Melvin
Burnette, Margaret	Denny, John	Kelley, Ruth	Kelley, Mary
Rush, Bill	DeShea, Ernest	Kelley, Woodie	Kelley, Barney
Rynum, Ed		Keller, Charles	
Cameron, Lucille			
Cantrell, Bruce			



JUNIOR CLASS ROLL

Keown, Haydn	Mercer, Bob	Reason, Roy	Stephenson, Ray
Kerr, Bill	Miller, Katherine	Reece, Sarah	Stimpson, Virginia
Kerr, Clyde	Miller, Ralph	Reynolds, Arma	Strange, James
Kerr, Lawrence	Millican, Carl	Rhodes, Grace	Swafford, Alfred
Key, John	Mitchell, Dorothy	Rice, Kels	Swafford, William
Kibler, Charles	Mitchell, Geraldine	Riggan, Marjorie	Taggart, Dorothy
Killingsworth, Willard	Mitts, Arma	Ridley, James	Talferro, Alma
Kimsey, Allen	Monday, Eleanor	Richardson, Alfred	Tawzer, Vera
Kittrell, Jack	Monroe, Harold	Roberts, Bill	Taylor, Ester
Lamphere, John	Moore, Mary	Rodgers, John	Taylor, Sarah
Headrick, Louise	Moore, Royce	Rogers, Prater	Thompson, Harold
Lawrence, Bill	Moore, Wayland	Rodric, Dortha	Thompson, Ruby
Lawrence, Melba	Moorefield, Margaret	Roetke, Virginia	Thornton, Billie
Lawson, Catherine	Moorman, Taylor	Roper, Joe	Timberlake, Katherine
Lawson, Irene	Morgan, Martha	Ross, Dorothy	Timmons, Erskine
Layne, Helen	Morgan, Mary	Royer, Ruth	Tinker, Mary
Ledford, Arthur	Morris, Ethel	Ross, C. B.	Tripp, Marjorie
Lee, Bessie	Moser, Hugh	Roy, Sanford	Tyrell, Bertice
LeRich, Mary	Mullican, Dorothy	Russell, Jesse	Trotter, Allen
Lewis, Maeola	Nabors, Carol	Sanders, Earl	Tucker, Ed
Levin, Fred	Nelson, Catherine	Scholz, Elma	Tucker, Toby
Light, Alma Ruth	Norvill, Frances	Schoize, Helen	Underwood, Russell
Lockmiller, Jessie	O'Daniel, Clyde	Schoocraft, Mary	Vance, Alma
London, Mary	O'Dell, Gladys	Schroots, Montie	Vandergriff, Howard
Longley, L. C	Orton, Fred	Scott, Louise	Vandergriff, Ed
Lucas, George	Osborn, Thad	Scruggs, Lillian	Wall, Imogene
Luther, Howard	Owen, Lucy	Schubert, John	Watts, Emma
Lynch, Scott	Painter, Charles	Scott, John	Watts, Cathie
McClure, Della	Palmer, Leonard	Shenwell, Victor	Washington, Gale
McCardell, Gordon	Parks, Homer	Shell, Creed	Watson, Bill
McCarson, Mary	Parker, Frank	Sherrer, Fred	Waxson, Frank
McConnell, Dorothy	Payne, Charles	Welsor, Lella	Verley, Helen
McCoy, Edith	Pease, Ruth	Verley, Helen	Weeks, Odas
McDaris, James	Perkins, Martiey	Westbrook, John	Whitaker, Monroe
McKenzie, Bob	Pfizer, Ed	Willbanks, V. E.	Willis, James
McKenzie, Sue	Pfizer, Richard	Willson, Delmont	Willson, Donald
McLaughlin, Leroy	Plank, Margaret	Willson, Gale	Willson, Wilhoite
MacDonald, Daniel	Poindester, Eleanor	Wolgamott, C. O.	Wood, Sammie
Magill, Herman	Potter, L. J.	Wood, Sammie	Yankay, Donald
Malstrom, Herbert	Powell, Thelma	Yankay, Donald	Yarbrunck, Mary
Mann, Lawrence	Pratt, Billie	Young, Alma	Young, Glenn
Martin, Elizabeth	Price, Frank		
Martin, Jesse	Price, James		
Martin, Kendall	Pruitt, Joe		
Martin, Loretta	Puckett, Frances		
Martin, Louis	Pyie, Arthur		
Massey, James	Quinn, Fannie		
Maupin, Henry	Ragle, Newton		
Meadows, Blanche	Rankin, Marea		
Meador, Webb	Ray, Mabel		

JUNIOR CLASS HISTORY

THE Class of 1934, four hundred strong, started its history by electing Clarence Hartman, president; R. L. Bowen, vice-president, and Frank Tipton, secretary of the Freshman Class. During the fall, W. C. Murphy was with the best of them on the football field. Those who took an active part in Glee Club work were: Catherine Conley, Francis Lambert, Georgia Davis, Katherine Scott, Sarah Florence Taylor, and Frances Spriggs. Many outstanding in scholarship were: Marede Camat, Marjorie Card, Genevra Crawley, Georgia Davis, Eula Dickert, Sarah Ellis, Margaret Ford, Clarence Hartman, Charles Haynes, Joseph Hill, James Huff, Loretta Martin, Webb Meador, Hugh Moser, Florence Taylor, Herbert Anderson, William Bush, Frank Grey, Dorothy Grayson, Elizabeth Helms, Frances Lambert, Leroy McLaughen, Virginia Mitchell, Katherine Patillo, Richard Pfitzer, and Lucy Spriggs.

The class started its second year by making Ed Vandergriff, president; Mary Kelly, vice-president; Charles Higdon, secretary, and Mildred Gross, treasurer. The members of our class were a little more prominent that year. Among the lettermen we placed Johnson, Murphy, Bunn, Mann, Grady Miller, Akers and Denny in football. Johnson was our only basketball letterman. "Red" Richardson took his place with the baseball lettermen.

Mildred Gross took the leading part in the Senate play, and Martha Morgan, Gertrude Witt, Leroy McLaughen, and Carl Millican took part in many dramatic sketches and debates.

The members excelling in scholarship were: Marjorie Card, Fern Cargile, Florence Taylor, Genevra Crawley, Leroy McLaughen, Joe Roper, Anna May Boss, Bertice Tyrell, Frances Black, Mary London, Carl Millican, and Sarah Ellis.

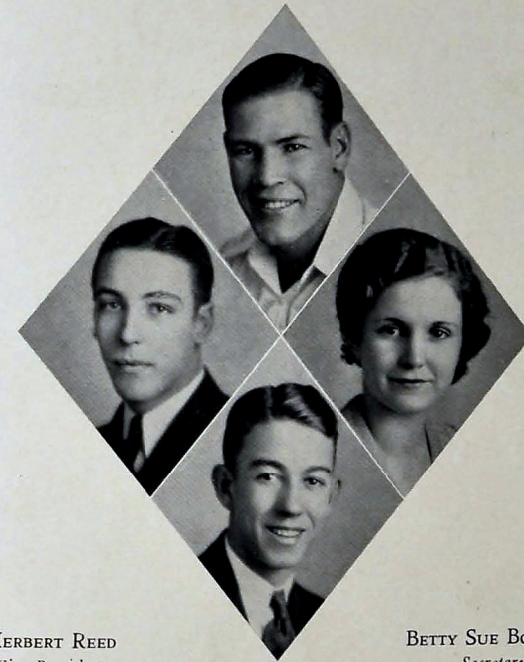
When we started our Junior year we thought ourselves above the average. But we finally resumed business and at the Junior Class meeting, Charles Higdon was elected president; Alma Vance, vice-president; Mary Kelly, secretary; and Arbie Johnson, treasurer.

In football, Juniors making letters were "Schoolfield" Henson, a newcomer, Mann, Johnson, Denny and Massey. Those fighting for Central among the basketballers were Carson Smith, Davis, Hodges, "Red" Whitaker, Arbie Johnson, and Edwards.

One of the big events of the Junior Year was the Junior Party. This party was restricted to the Juniors and was given for the purpose of getting acquainted. Judging from the attitude of those who took part the purpose was accomplished.

We look forward to our Senior Year with high hopes and a new determination. We dare to prophesy that our accomplishments shall be even greater, and that our record for service to the school shall stand unexcelled by any group which has previously passed this way.

CLARENCE HARTMAN.



HERBERT REED
Vice-President

BETTY SUE BOWMAN
Secretary

JERRY PERRY
President

WALTER PANKEY
Treasurer



SOPHOMORES



SOPHOMORE CLASS ROLL

Abell, Dorothy	Buckner, Willie	Dunbar, Robert	Harley, Frances
Acuff, James	Bullock, Wilbur	Durhan, William	Harris, Charles
Acuff, Lucian	Burt, Billie	Edge, John	Harris, James
Adams, H. E.	Callahan, Agnes	Edgington, Glenn	Harris, Virginia
Adams, Thomas	Campbell, Ernest	Edwards, Ann	Hassler, Mary
Adamson, Doris	Campbell, Walter	Ellis, Basil	Haswell, Edith
Akers, Oza	Carey, James	Ellis, John	Hateler, James
Allen, Howard	Carlton, Christine	Ellis, Vespew	Hatfield, Myra
Alloway, C. H.	Carmack, Harold	Emery, Edna	Haynes, Charles
Anderson, Emma	Carroll, Harry	Epperson, Anna	Haynes, William
Angle, Emma	Carter, Robert	Evans, Robert	Henderson, Mary
Arlidge, Elizabeth	Cates, Louis	Evans, Ruth	Hendrix, Charles
Arlidge, Emily	Cayce, Katherine	Ezelle, Robert	Hendricks, Evelyn
Atkins, Carlton	Chadd, Stanley	Falk, Charles	Hennessee, Frances
Avukian, Thomas	Chambers, Winfred	Fisher, Grace	Hennessee, Mary
Bacon, Ellis	Chase, Edna	Fleming, James	Hickman, Frank
Baker, Edward	Chatwell, Carson	Foster, Dorothy	Hicks, Duke
Bales, William	Chilcutt, Clarence	Friley, Edith	Hicks, Lucile
Baskette, Robert	Childs, Louise	Francis, James	Higdon, Inez
Bedolt, Natalie	Chann, James	Francis, Velma	Hilley, Bill
Beene, James	Clarke, Andre	French, Edgar	Hogan, Geraldine
Beene, William	Clinton, Anna Ruth	Freking, Clarence	Holder, Charles
Bell, John	Clinton, Roy	Fricks, Mildred	Holland, Eleanor
Bell, Robert	Collins, Evelyn	Fridell, Louise	Holland, Eural
Bell, William	Collins, J. B.	Frost, Katherine	Holmes, Mary
Bennett, Maevern	Collison, Raymond	Fullen, Charles	Holt-Camp, Louise
Blackwell, Leon	Condra, Vivian	Fuller, Glenn	Horton, Harold
Blair, Charles	Conley, Alma	Fuller, Jimmie	House, Charline
Blair, Taylor	Conley, Christine	Gray, Union	Howard, Thomas
Blalock, James	Conally, Martha	Grayson, Dorothy	Hudson, Catherine
Blalock, Roy	Cooke, B. M.	Green, George	Hudson, Lige
Blessing, Kenneth	Cooke, Charles	Greene, William	Huff, Martha
Blevins, Winford	Cooke, Milton	Groover, William	Hullander, Winston
Boring, Howard	Cooper, Bernice	Guthrie, Jean	Hunt, Robbie
Bowen, Curtis	Coritison, Robert	Guthrie, Margaret	Hunt, Virginia
Bowman, Bettye Sue	Cox, Holland	Gather, Roy	Hunter, Margaret
Bowman, Francis	Coyne, Frances	Gannaway, Paul	Hurn, Foster
Bowman, Roy	Crabtree, Alfred	Gardner, Mary	Hurst, Marie
Boyd, Clyde	Crabtree, Frank	Gattis, Herman	Hyde, Elmer
Bracken, Lewis	Cry, J. T.	Gayne, Madge	Igon, Earl
Bradley, Jimmie	Crumley, James	George, Anthony	Igon, Willie Lee
Bragg, William	Cushman, Mary	Geren, Spencer	Jackson, Margaret
Brannan, Lora	Dalley, Merrill	Gilley, Virginia	Jackson, Murray
Brannan, John	Daniel, Norman	Godfrey, Sally	Jenkins, Albin
Brewer, Mable	Dantzer, Kathleen	Godsey, Estelle	Jenkins, Pauline
Bridges, Mary Frances	Davis, Charles	Goodner, Junior	Jewell, Belle
Britt, Catherine	Deakins, Kathleen	Goodner, Paul	Johnson, Cornella
Brooking, Frank	Deering, J. E.	Gordan, Herbert	Johnson, Harry
Brooks, Donald	De Fries, Betty	Graham, J. R.	Johnson, Lillian
Broomie, Garnett	De Fries, Frank	Graham, Scotty	Johnston, Russell
Brown, Albert	Delashmitt, Clyde	Hagaman, Virginia	Jones, Elizabeth
Brown, Dorothy	Dickson, Clarice	Hagan, Marion	Jones, Roy
Brown, Gordon	Donigan, Mary	Hall, J. D.	Jordan, Burton
Brown, Jane	Dove, Margaret	Hall, Rowland	Karr, Peggy
Brown, Leo	Drake, Audline	Hamilton, Frank	Keeney, Reba
Brown, Louise	Duggan, Sarah	Hansberger, Betty	Keisling, Evelyn
Brown, William		Hanssard, Sam	Keith, Leona



SOPHOMORE CLASS ROLL

Kell, William	Magill, Peggy	Rawlings, Emily	Spencer, Marguerite
Kelly, Howard	Mallette, Joe	Reed, Herbert	Spiva, Hazel
Kelly, Frances	Malstrom, Alice	Reenan, Evelyn	Spiva, Mildred
Kelly, James	Marler, Grace	Renegar, Mary	Stamps, Ester
Kelly, William	Marler, Ruby	Renner, Gladys	Stancel, David
Kennedy, Martha	Marler, Ruth	Ritchie, Pies	Standifer, Leonard
Kerr, Evelyn	Martin, Lawson	Robline, Norma	Stephens, J. C.
Kessler, Frank	Martin, Mary	Roberts, Bernard	Stevenson, Billy
Killian, Billie	Martin, Pansy	Roberts, Mary	Straut, Orvil
King, Lillian	Mason, Billie	Robertson, John	Stribling, Mildred
Kingston, Joe	Mason, Marguerite	Rodric, Robert	Swanson, Eva
Knowles, Barbara	Matthews, Margaret	Rodric, Walter	Swanson, Robert
Koonce, Avine	May, Lucile	Rogers, Ralph	Tapp, Roland
Lankford, Margaret	Meadows, Lewis	Rogers, Robbie	Tarver, Henry
Lawsen, Keesee	Miles, Edgar	Rogers, Willena	Taylor, Frank
Ledford, Edith	Miller, Lesley	Ross, John	Testers, L. C.
Lee, Katherine	Miller, Pauline	Ross, Marjorie	Teppenaw, Charles
Lennon, Martha	Minor, Louie	Rutledge, Robert	Thornton, Katherine
Lesley, Otis	Moates, Mildred	Saylor, Mary	Tindell, Charles
Levi, Earl	Moore, Sue	Secrest, Irene	Tipton, Jack
Lewis, R. C.	Neighbors, Edna	Scarborough, Charles	Tipton, Kenneth
Ligon, Margaret	Neyman, Justus	Scoggins, William	Trew, Iler
Lively, Frank	Nichols, Ralph	Scott, Valeriah	Trotter, William
Llewellyn, Lester	Nixon, Phyllis	Scott, Winifred	Trundle, Orel
Loard, Wesley	Norcross, Patricia	Scruggs, Willard	Tucker, Cecil
Logsdon, William	Ogden, Antoinette	Scells, J. R.	Tucker, Joseph
Long, Alton	Ogle, Fay	Shaw, Earl	Tucker, William
Long, Richard	O'Neal, Claude	Sheffield, Elise	Underwood, Earl
Lowell, William	Orrell, James	Shell, Pauline	Vance, Dorothy
Lowery, Bob	Osborne, Thomas	Shelton, Shep	Van Gorder, Mary
Lutz, Virginia	Owens, Lester	Sherwood, Vera	Walker, Thelma
Lynn, Hubert	Oneal, Ruth	Shipley, William	Walker, Walter
McAlister, Annie	O'Kear, Frank	Shropshire, John	Wallace, Horace
McArthur, Evelyn	Poolson, Mary	Simpson, Mae	Wallace, Louise
McCampbell, Ellen	Page, Russell	Sims, Parks	Wallis, John
McClure, Bob	Pankey, Geraldine	Sims, Walter	Ward, Opal
McClure, C. K.	Pankey, Walter	Sims, Josephine	Wasson, Hope
McCollister, J. D.	Parker, Doris	Sledge, Edith	Webster, Margaret
McConnell, Virginia	Parker, Lallie	Slayton, Alice	Welch, Lella
McCay, Sarah	Parker, T. W.	Slicer, Woodrow	Wheeler, Carl
McCrooke, Richard	Patrick, Nelson	Sloan, Walter	Wheeler, Gordon
McDaniel, John	Patty, Elbert	Smith, Bart	White, Robert
McElbaney, Elwood	Payne, Paul	Smith, Betty	Whittle, Lawrence
McElhoney, Frances	Peper, John	Smith, Charlton	Whitloe, James
McGhee, June	Perry, Jerry	Smith, Curtis	Williams, Jack
McIntur, Jack	McGhee, Martha	Smith, Edith	Williams, Jeral
McLain, Grover	Pickett, Lawrence	Smith, Jessie	Williams, Margaret
McMahan, Mary	Pledger, Frances	Smith, L. B.	Williams, Robert
McQueen, John	Pope, Ellis	Smith, Mildred	Williams, Blanche
McPherson, Ellis	Potter, Henry	Smith, Roger	Witt, Emily
McPherson, Robert	Powell, William	Sneed, J. C.	Wolfe, James
Moss, J. B.	Powers, Raymond	Snyder, Howard	Wolmatt, Billie Ann
Mulkey, Nina	Price, Marjorie	Snyder, Mary	Worley, William
Mullins, Raymond	Price, Ruth	Snyder, Nina	Wright, Zella
Murphy, W. C.	Proctor, Elizabeth	Snyder, Robert	Yankey, Joyce
Murray, D. L.	Quinn, Sadie	Spangler, Clai	Young, Bruce, Jr.
Myers, Lois	Rains, Ralph	Spangler, Hazel	Ziler, George

SOPHOMORE CLASS HISTORY

As we are now Sophomores, we feel more a part of Central High School. We are showing our spirit by upholding the name, ideals, and reputation of our school and by giving our best to her.

Already many members of the class have made their mark upon the life of the school. Among those who rank in scholarship are Ruth Evans, Lollie Parker, Katherine Rawlings, Hope Wasson, Leila Welch, and Estelle Godsey

In athletics the Sophomore Class stands out. We point with pride to such football players as Jerry Perry and Park Sims, who have made the first team, and others, such as Bob Lowry, W. C. Murphy, Lester Owens, Bart Smith, Clifford Davis, Herbert Lynn, J. T. Smith, and Frank Brooking. Oza Akers is an outstanding ball player; he goes in for all sports, baseball, basketball, and football.

As for class officers, we liked our freshman president, Jerry Perry, so well that we elected him president for a second term. The other freshman officers were: Martha Kennedy, vice-president; Evelyn Collins, secretary; and Bernice Cooper, treasurer. We elected to work with our president this year Herbert Reed as vice-president, Betty Sue Bowman as secretary, and Walter Pankey as treasurer. A class song leader, Catherine Britt, was also elected.

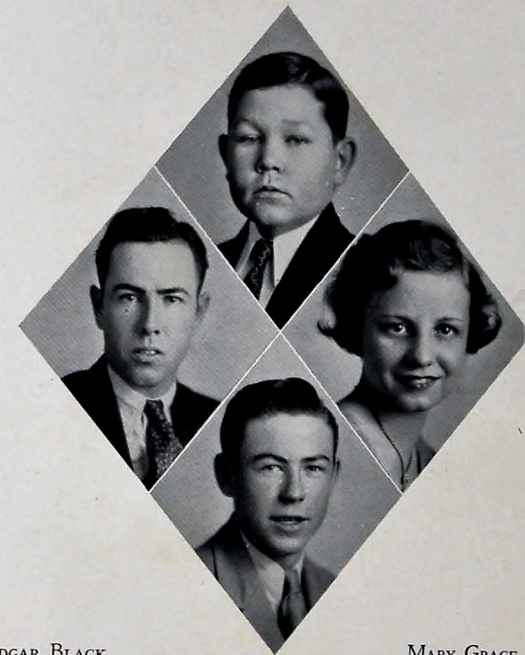
Central is very proud of her cheer leaders and song leaders, of whom two are from the Sophomore class: Ella Margaret Ligon and Walter Pankey, who are song leader and cheer leader respectively.

The Sophomore Class is very fortunate in having a great variety of talent. We have four members in the Varsity Glee Club: Margaret Ligon, Maeverne Bennett, Paul Gannaway, and Bazil Ellis. There are also nine sophomore members of the band and orchestra: C. W. Whitaker, Spencer Green, Morris Bales, Earl Igou, Melville Kelly, Roy Clinton, Charles Haynes, Carl Wheeler, and Gordon Wheeler.

Last year we had two fine representatives in the declamatory contest: Louise Wallace and Clarence Frerking. In dramatics Margaret Jackson shows ability.

The Freshman Class last year elected as their representative to the CHAMPION Staff, Esther Stamps. This year Evelyn Collins was elected as representative.

EVELYN COLLINS.



EDGAR BLACK
Vice-President

MARY GRACE CARD
Secretary

EDGAR T. RICE
President

JACK HEARD
Treasurer



THE FRESHMEN



FRESHMAN CLASS ROLL

ABERCROMBIE, DORIS LARUE	BRANNON, JOHN GAMBLIN	DUNCAN, ELIZABETH ANN	HICKS, IRENE MILDRED
ACUFF, SARA BILL	BROWN, AGNES	DUNCAN, JOY EVELYNE	HILL, J. D.
ADAMS, ERNEST ARNOLD	BROWN, WALTER H.	EARP, FRANK BLAINE	HODGES, JAMES BROOKS
ADAMSON, NORMAN MERRITT	BUNCH, BILL ALBERT	ELLIOTT, HELEN LUCY	HODGES, MINNIE MARGARET
ALLEN, MARY FRANCES	BURRIL, WILLIE BERT	ELLIS, EDNA LOUISE	HOUSE, JOHN ORMAN
ANDERSON, GARNET ELOISE	BURTON, RALPH ORIVELL	EMPSON, FLEMING	HOWARD, MARY EYUE
ANDERSON, MATTIE PEARL	BUTLER, EDWARD	ERNST, HERMAN ELLIOTT	HUDDLESTON, HOWARD
ANDERSON, VIVIAN MARIE	CALDWELL, HORACE BUDDY	FANSLER, JR., EDWARD	HUMPHRAY, MARGIE L.
ARRANT, THELMA LUCILE	CAMPBELL, JAMES	FLEGAL, JOSEPH MARK	IGOU, HAROLD
ASHLEY, MILDRED	CANTRELL, GRACE LORENE	FOGO, ROBERT BYRON	JENKINS, EDWIN LLOYD
AUERSWALD, LESTER ALVIN	CARD, MARY GRACE	FORD, JAMES HENRY	JERNIGAN, CHARLES ED
BARKER, WINNIE GAY	CARVER, MARSHAL HERBERT	FOXTER, HAROLD T.	JOHNSON, HAZEL
BAKER, DOROTHY NOVELLA	CASH, HAZEL GLENN	FOUTS, EDWIN G.	JOHNSON, JAMES EDWARD
BALLARD, NELSON	CATE, JOE RICHARD	FRUNNS, THOMAS	JOHNSON, SARAH ELIZABETH
BARLACH, SEIGFRIED	CLEMENTSON, FRANCES	FRENCH, NELSON JONES	JOHNSTON, JULIAN
BASS, ZONA	COLEMAN, MARY ETHEL	FRY, RUFUS	JOLLEY, HARRIS LANK
BATES, ELBERT WALLACE	COOK, NANCY MARIE	FRYAR, GERTRUDE LEONA	JONES, CLYDE
BECKER, WILSON WOODROW	COPPINGER, GLENN	GAMBLE, ALERA FLOYD	JUSTICE, ELIZABETH E.
BECKMANN, EDWARD H.	COOKE, ANNA BELL	GAMBLE, J. D.	KALLEEN, DOROTHY MAY
BEDOIT, EDWARD W.	CUNNINGHAM, WEYMON	GANNAWAY, DOROTHY	KEESE, MARY ELLAN
BENTLEY, CHARLES HOLDAN	CYPHERS, JAMES ROBERT	GARDNER, LESLIE OREN	KELIE, JACK
BIVENS, JAMES	DAILEY, MARGARET L.	GENNOE, FLORENCE IRENE	KELLEY, COLEMAN
BLACK, EDGAR	DANNER, CHARLES AUGUST	GODSEY, CATHERINE	KELLOGG, FRED LEE
BLAIR, EUGENE FRANKLIN	DAVIS, HERBERT	GOTTHARD, GUS	KEMPER, ANNA INES
BLEVINS, WILLIE DUKE	DAVIS, HOWARD NELSON	GRAY, MYRA	KILLINGSWORTH, DE FOREST
BOLLINGER, WEBSTER	DAVIT, JOE	GUESS, MARY RUTH	KING, ROBERT WILKINS
BOONE, LYNN	DEIDMON, NOAH WILLIAM	GUESS, ROBERT R.	KIRK, ORLANDO JAMES
BORN, ORVILLE BILLY	DEERING, ETNA	HAGER, JOSEPH FLOYD	LAMBDIN, JOHN
BOSWELL, SYLVAN	DELZELL, MARY LOUISE	HAINES, DONALD WARD	LAWRENCE, LILA MAE
BRADFORD, EMMA MAE	DESHA, MARY ELIZABETH	HALL, D. C.	LAWSON, GERTRUDE
BRANDON, ELIZABETH	DABBS, R. T.	HARRISON, T. P.	LAWSON, JOHN RILEY
	DONALDSON, FRED S.	HASSLER, OTTO WILLIAM	
	DONALDSON, NAOME P.	HATCHETT, WILLIAM	
	DONALDSON, RUFUS GRANT	HEAPS, KENNETH	
	DORSEY, BILL	HEARD, JACK MARLIN	
	DOYLE, MARY LOUISE	HEMPHILL, PEGGY	
	DUNBAR, FREDERICK E.	HENRY, NEWELL ROBERT	



FRESHMAN CLASS ROLL

LOMENICK, CLARA VIRGINIA	O'DANIEL, LEON	SHANKLES, CLARENCE G.	WADE, JACK
LONG, MARY KATHERYN	O'NEAL, ERNEST O'REAR	SHELTON, JEWEL	WALKER, ALLEY
LORRETT, EARL CLIFTON	O'REAR, ELIZABETH	SHERMAN, PAUL DANIEL	WALLACE, SARA KATHERINE
LOWRY, JOAN HUBERTA	OWEN, SHERMAN	SHUTT, CHARLES WESLEY	WARD, VIRGINIA CATHERINE
McAfee, WILLIAM HARVEY	OWNBEY, ERNEST	SILVER, L. C.	WARD, CHARLES FRANKLIN
McCOSKEY, LAWRENCE M.	PALMER, JEAN RUTH	SIMPSON, CARL	WARD, PRESCOTT G.
McCULLEY, BEULAH P.	PARKER, GEORGE	SIVLEY, J. H.	WELLER, MARJORIE BELLE
McCrary, JAMES ROBERT	PARKER, MARY VIRGINIA	SKIPPER, JOHN GILBERT	WELLER, MILDRED H.
McDOWELL, CLARENCE L.	PARSON, BUSTER	SMART, MARY ELIZABETH	WESTBROOK, NANCY L.
McEachern, LLOYD T.	PARTON, CORALIE	SMITH, JAMES PERSHING	WHARTON, MARIAN HOPE
McGUFFEY, JIMMIE R.	PATTERSON, KATHERINE	SMITH, NATHAN A.	WHEELER, CECIL SMITH
Malstrom, BERTHA P.	PATTERSON, LEON	SMITH, ROBERT NAPOLEON	WHITE, LYNN HASS
Marlow, JOHN BROADUS	PAYNE, ROY BARNETT	SMITH, VIRGIL PARKS	WHITE, ORLENA
MARTIN, FRANCES	PECK, CECIL CONNOR	SOLOMON, YUELL	WHITT, JACOB ALEXANDER
MARTIN, MARY	PHILLIPS, EDWARD	SPARKMAN, DOROTHY	WILHOITE, MILDRED LYDIA
MILLER, ALICE FRANKIE	POE, EMMETT	STANFIELD, EARL	WILSON, LENA MAE
MILLER, BROUGHTON	POOL, W. L.	STANSELL, BLANCHE	WILLBANKS, MARY F.
MILLER, CURTIS LEE	PRESTWOOD, VERNON	STEINMANN, THOMAS	WILLBANKS, VIRGINIA MAE
MILLER, ROY LEE	PROCTOR, JIMMIE	STEWART, CHARLES	WILLIAMS, HELEN LOUISE
MILLSAPS, BLANCHE	PURCELL, LAVENIA	STONE, RUTH EDWARD	WILLIAMS, HERMAN G.
MIMMS, VERNON	PYDE, DOROTHY	STURDIVANT, JAMES	WILLIAMS, MARGARET
MOORE, GLADYS BELLE	RANDOLPH, JAMES	SWAFFORD, PAUL	WILLIAMSON, HOWARD E.
MOORE, JACK	RANKIN, KATHERINE	SYLAR, ETHELWYN MARIE	WILLIAMSON, JIMMIE
MORGAN, VIRGINIA INEZ	RHODES, WESLEY	TALLENT, RICHARD	WILSON, FRANK DUFF
MORRIS, ROLLIE THOMPSON	RICE, EDGAR	TATE, ROBERT E. LEE	WILSON, THELMA
MORTON, MARGARET V.	RICE, LILLIAN FLORENCE	TAWZER, EDNA PEARL	WOODIN, J. P.
MORTON, MILFORD H.	RICHEY, KATHERINE	TEST, EUGENE	WOOD, MARTHA ELIZABETH
NORRIS, RICHARD EDWARD	RIGSBY, JOHN	THOMAS, BESSIE	WRIGHT, ARTHUR
NORTON, HOWELL JAMES	RIVERS, CHARLIE THOMAS	THOMAS, HELEN	WRIGHT, FRANCIS
	ROBERTS, BILL JAMES	THOMAS, JOHN DEAN	YOUNG, MELBA ELIZABETH
	ROBERTS, ORMOND JOE	THOMPSON, DOROTHY	
	RODDEY, RUTH HARLOWE	TRAMEL, ELIZABETH	
	ROIS, THOMAS MCGOWEN	TROTTER, CLYDE TED	
	SATTERFIELD, CARL E.	TUCKER, BUFORD	
	SCALLIA, JEANETTE M. A.	TURNER, LEILA	
	SCHNURR, HERMON FRANK	VANDIVER, DESMOND PAULO	
	SCOTT, LEONA PEARL	VERSHEY, GEORGE MARION	

FRESHMAN CLASS HISTORY

September Second. At last the great day had arrived! Central High swung wide its doors to welcome the Class of '36. With what eagerness and anticipation we entered! We were heartily welcomed by Mr. Nelson. Then we were allowed to select not only our courses, but, greatly to our surprise, our teachers also. We were led hither and yon by a bevy of beautiful young ladies to "sign up." Who are these young ladies? There must be something wrong. Surely we don't have to have nursemaids now. Soon we discovered our mistake. These young ladies (three cheers for the Ushers!) proved their worth to us. How on earth could we have gone from 101M to 304 without them? Soon we were properly registered and ready to do our work.

Our class has taken part in all the school activities. We subscribed for the *Digest*; we attended the Red Cross; we enlisted in the "Rookies"; we joined the clubs; we went to the athletic games, and we were well represented on the scholastic honor roll. We participated in all the school life when we were allowed to and looked on in awe and admiration at the activities where we were excluded.

About the middle of the year those "guardian-angel" ushers gave us a party. And that was a party, with plenty of fun and plenty to eat.

We selected a splendid corps of officers. For president, we chose Ed Rice. Ed is small in stature, but for every inch he lacks in size, he makes up for it in capability. One Ed wasn't enough for us, so we took his big brother, Edgar Black, for vice-president. The other officers were Mary Grace Card, secretary; Jack Heard, treasurer; and Katherine Rankin, song leader.

As this year draws to a close, we feel ourselves a real part of the school. We challenge those, who will come after and those who have gone before to find a better group of Freshmen than we have been.



FRESHMAN CLASS HISTORY

September Second. At last the great day had arrived! Central High swung wide its doors to welcome the Class of '36. With what eagerness and anticipation we entered! We were heartily welcomed by Mr. Nelson. Then we were allowed to select not only our courses, but, greatly to our surprise, our teachers also. We were led hither and yon by a bevy of beautiful young ladies to "sign up." Who are these young ladies? There must be something wrong. Surely we don't have to have nursemaids now. Soon we discovered our mistake. These young ladies (three cheers for the Ushers!) proved their worth to us. How on earth could we have gone from 101M to 304 without them? Soon we were properly registered and ready to do our work.

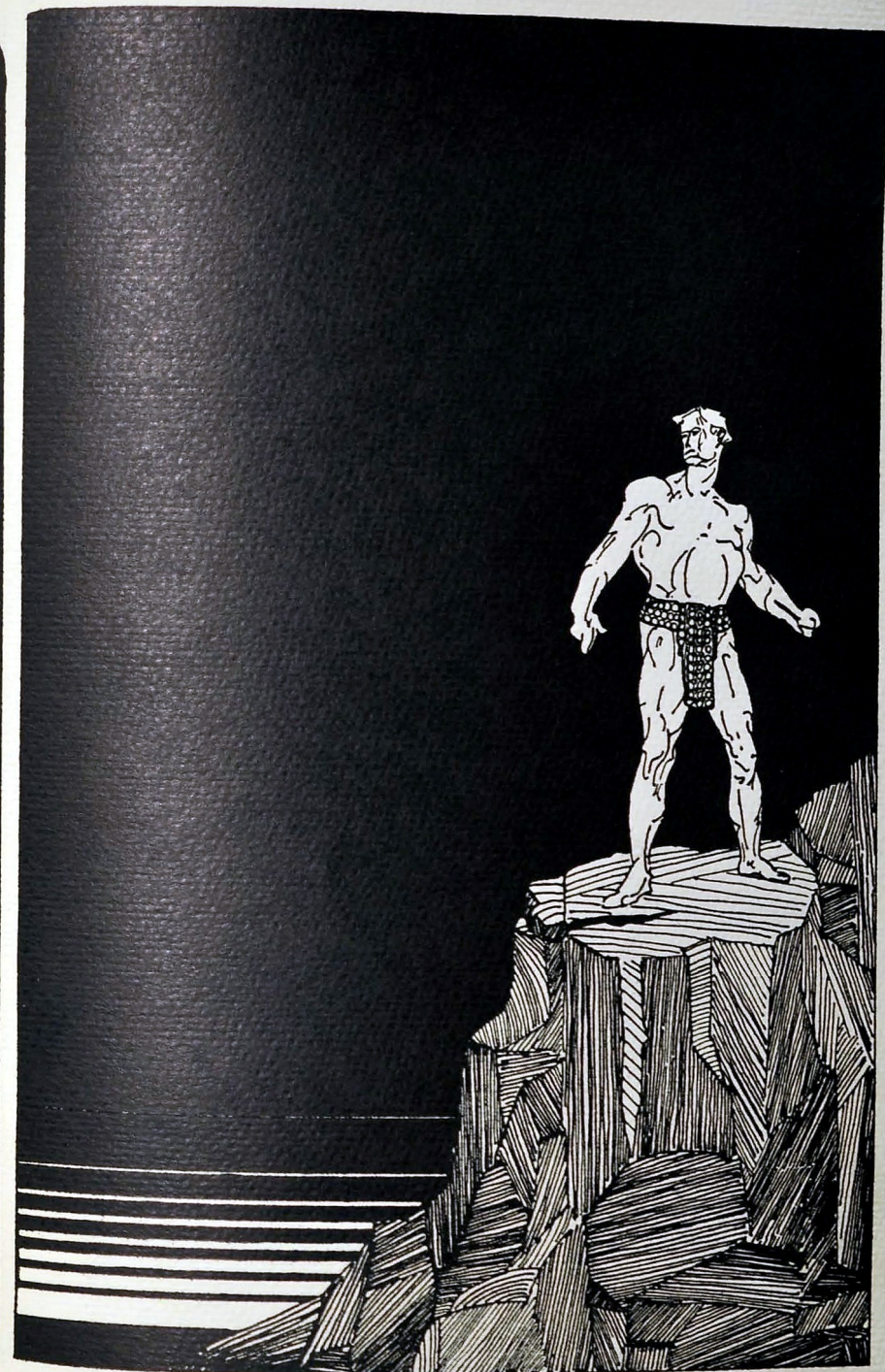
Our class has taken part in all the school activities. We subscribed for the *Digest*; we attended the Red Cross; we enlisted in the "Rookies"; we joined the clubs; we went to the athletic games, and we were well represented on the scholastic honor roll. We participated in all the school life when we were allowed to and looked on in awe and admiration at the activities where we were excluded.

About the middle of the year those "guardian angel" ushers gave us a party. And that was a party, with plenty of fun and plenty to eat.

We selected a splendid corps of officers. For president, we chose Ed Rice. Ed is small in stature, but for every inch he lacks in size, he makes up for it in capability. One Ed wasn't enough for us, so we took his big brother, Edgar Black, for vice-president. The other officers were Mary Grace Card, secretary; Jack Heard, treasurer; and Katherine Rankin, song leader.

As this year draws to a close, we feel ourselves a real part of the school. We challenge those, who will come after and those who have gone before to find a better group of Freshmen than we have been.

Millitary Department



LIEUTENANT-COLONEL BALLARD B. LYERLY, formerly stationed at Alcatraz Island, San Francisco Bay, California, assumed his duties as Professor of Military Science and Tactics at Central on November 3, 1932. He succeeded Lieutenant-Colonel James E. Ware, who retired in the summer of 1932.

Colonel Lyerly, enlisting in the army in 1907, has had twenty-six years of military experience. He has served in various garrisons throughout the United States and Foreign Possessions, as well as in France during the World War.



MILITARY HISTORY

With the capable assistance of Captain Howard Godsey of "E" Company and Captain Dan Wright of "F" Company, Major Martin Hackney led the Central battalion through a very successful year.

The unit is composed of two companies and the band this year; it made a creditable showing in the Armistice Day parade. The outstanding feature in the year's calendar was the Corps area inspection on January 27. According to Col. William L. Reed, the inspector, the entire battalion showed marked improvement over that of former years.

The presentation of sponsors, which usually takes place in the fall, was this year postponed on account of weather conditions. Near the end of the year, on McCallie Field, the following were presented as sponsors: Virginia Henry, Battalion sponsor; Edith Carson, "E" Company; Elizabeth Wheeler, "F" Company; Evelyn Blessing, Major band, and Blanche Thomae, Band sponsor.

The latter part of the year was devoted to drill and preparation for the Washington Birthday parade and for the last ceremony of the year in which the officers received their commissions.

SERGEANT GEORGE M. HARRIS, military instructor at Central, has had a colorful military career. He has had fourteen years of military service, enlisting in the army in 1919. His military experience has taken him to the Mexican border, the Philippine Islands and China.

In 1927 Sergeant Harris graduated from the N. C. O. school at Fort Benning, Georgia, with honors. He was then transferred to recruiting duty in the Chattanooga district. In the summer of 1929 he was assigned to the post of instructor of Military Science and Tactics at Central and has held that position since.



The Champion



STAFF

MARTIN HACKNEY Major
 ELMER DELOZIER Captain
 PRATER ROGERS Captain, Provost Marshal
 BEN TARVER Captain, Personnel-Adjutant
 CHESTER GRAY Second Lieutenant
 GEORGE SMITH Second Lieutenant
 EDWIN ELDER Second Lieutenant
 WILLARD WILHOITE Second Lieutenant
 MELVIN KEITH Sergeant
 FRANK BROOKING Sergeant
 Miss VIRGINIA HENRY, Battalion Sponsor

The Champion



CENTRAL HIGH SCHOOL BAND

RUSSELL HART Major	HARRY SNYDER Second Lieutenant
MILTON MABRY Captain	JOHN HENDERSON Second Lieutenant
KENDALL WOOD First Lieutenant	ROBERT DUNBAR Second Lieutenant
MORGAN COBB First Lieutenant	SAMUEL HENNESSEE Second Lieutenant
DONALD LONDON First Lieutenant	MORGAN COBB Drum Major
NATHANIEL HYDEN First Lieutenant	MARGARET ALYCE BOWEN Honorary Captain

SPONSORS

MISS EVELYN BLESSING MISS BLANCHE THOMAE

SERGEANTS

V. E. WILLBANKS, First Sergeant	
CHARLTON SMITH	JOHN WESTBROOK
L. C. LONGLEY	JOE CROWLEY
HOWARD LUTHER	
FRENCH JOHNSON	
A. E. SWAFFORD	

CORPORALS

MORRIS BALES	WILLARD SCRUGGS	CARL WHEELER	JAMES BROWN
SPENCER GEREN	FRANK WARD	GORDON WHEELER	ROLAND HALL
CARROLL MABRY	FRED SHERRER	GORDON BROWN	

ROSTER

MORRIS BALES	HERMAN ERNST	CY BROWN	EDGAR MILES
EARL SHAW	THAYER ROBERTS	ORLANDO KIRK	MILLARD LOWRY
EDWIN JENKINS	HOWARD DAVIS	CHARLES HENDRIX	NORMAN DANIEL
BILLY PRATT	COLEMAN KELLY	SPENCER GEREN	DAVID STANCEL
JOE JENKINS	CARL WHEELER	ORMAND ROBERTS	JAMES BROWN
DONALD HAINES	GORDON WHEELER	RAYMOND KNIGHT	MARVIN WILLIAMS
ROY CLINTON	EUGENE DUNBAR	ROLAND HALL	IRA SMOTHERMAN
HESPAW ELLIS	CHARLES BOYD	JAMES CYPHERS	WILLARD SCRUGGS
GEORGE VERHIA	CHARLES SHUTT	RUTH PEASE	VERNON BRESTRON
BASIL ELLIS	WALTER WALKER	RICHARD LONG	RUSSELL PAGE
CARL MILLICAN	HOMER FANSLER	FRED SHERRER	EDGAR PAGE
	RALPH ROGERS	CARROL MABRY	



The Champion



COMPANY "E"

HOWARD GODSEY Captain
 JAMES HAYES First Lieutenant
 WARREN MITCHELL First Lieutenant
 JAMES BALLEW Second Lieutenant

RAYMOND SPARKMAN, *First Sergeant*

SERGEANTS

TRUMAN BROOKS RODDY HUFF
 CARL GAINES FLAY SIMS

CORPORALS

B. CARTER J. COOPER B. JOHNSON
 M. CASH J. HAUPT H. VANDERGRIFF
 O. WEEKS J. ROGER

PRIVATES

R. ADAMS	L. GARDENER	H. MALSTROM
W. BLEVINS	W. GREEN	H. MONROE
J. BIVINS	W. GROOVER	R. MOORE
G. BROOME	R. GUESS	M. PAINTER
J. CAMPBELL	J. HARDEN	L. PICKERT
W. CAMPBELL	C. HAYNES	J. ROBERTSON
C. CARROLL	J. HEARD	K. ROSE
H. CARVER	C. HICKERSON	E. SANDERS
W. CHAMBERS	J. JOHNSON	C. SCARBOROUGH
J. COPPINGER	F. KELLIS	L. SHIPLEY
R. CORFITZSON	B. KERR	R. SMITH
B. DANNER	B. KILLIAN	H. SNYDER
C. DELASHMIT	J. LAMBEN	R. SWANSON
D. DORSEY	E. LEVI	W. TUCKER
J. EVANS	J. MALLETT	D. YANKEY

Miss EDITH CARSON, *Sponsor*

The Champion



COMPANY "F"

DAN WRIGHT Captain
 JOSEPH NEAL First Lieutenant
 DERWOOD VANN First Lieutenant
 BAXTER DAVIS Second Lieutenant

CHARLES HIGDON, *First Sergeant*

SERGEANTS

CARL HAGAMON CLYDE KERR HUGH MOSS JAMES MOSS

CORPORALS

R. DAVIS A. SLAGLE ✓ J. ROPER
 L. LLEWELLIN S. HUMPHRIES A. TAPP

PRIVATES

J. ACUFF	H. JOHNSON	J. ELROD
R. BLAYLOCK	B. JORDON	F. GRAY
K. BLESSING	C. KERR	G. GREEN
C. BOWEN	R. LAWN	E. GROSS
F. BOWMAN	R. RUTLEDGE	D. McDONALD
R. BOWMEN	S. SHELTON	W. MOORE
R. CORFITZSON	A. SIMPSON	H. MORTON
J. CRY	J. SKIPPER	J. ORELL
M. DAILEY	R. SMITH	E. PHILLIPS
A. DRAKE	K. TIPTON	R. RAINS
F. HAYS	W. TROTTER	R. RICHIE
L. HENSON	J. TUCKER	G. WILLIAMS
M. HOLLIS	G. WARD	F. WRIGHT
T. HOWARD	D. DURHAM	L. HENSON
H. HUDDLESTON	W. DURHAM	R. GREEN
R. JANETT	J. ECHOLS	A. WRIGHT

R. TALLENT E. POE

Miss MARY ELIZABETH WHEELER, *Sponsor*

The Champion



OFFICERS' CLUB

MARTIN HACKNEY President
 DAN WRIGHT Vice-President
 JOE HOWARD GODSEY Secretary
 JOHN PARK Treasurer

MISS SARAH KEITH RAULSTON, *Sponsor*

JAMES BALLEW
 EVELYN BLESSING
 EDITH CARSON
 BAXTER DAVIS
 ELMER DELOZIER
 EDWIN ELDER
 CHESTER GREY
 RUSSELL HART
 JAMES HAYES
 VIRGINIA HENRY
 DAVID HIGDON

MILTON MABRY
 WARREN MITCHELL
 JOE NEAL
 JOSEPH E. PERRY
 PRATER ROGERS
 GEORGE SMITH
 BENJAMIN TARVER
 BLANCHE THOMAE
 MARY E. WHEELER
 WILLARD WILHOITE
 DURWOOD VANN

The Champion



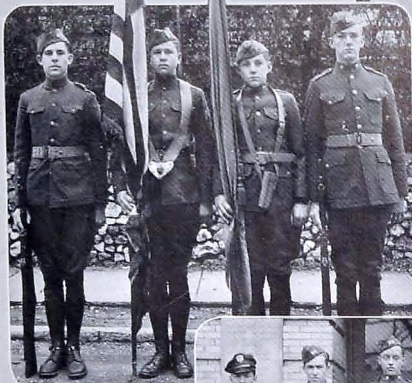
SERGEANTS' CLUB

CHARLES HIGDON President
 RAMOND SPARKMAN Vice-President
 TRUMAN BROOKS Secretary
 EMMET BROWN Treasurer

MISS VESTA NELSON, *Sponsor*

FRANK BROOKING
 JACK COOPER
 JOE CROWLEY
 CARL GAINES
 CARL HAGAMAN
 RODDY HUFF
 SAM HUMPHRIES
 FRANK HUNTER
 EDWIN HUSKEY
 HARDY HYDE

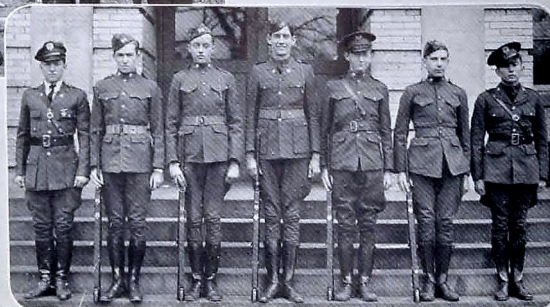
MELVIN KEITH
 CLYDE KERR
 L. C. LANGLEY
 HUGH MOSIER
 J. B. MOSS
 JOE ROPER
 A. E. SWAFFORD
 HOWARD VANDERGRIFF
 JOHN WESTBROOK
 V. E. WILLBANKS



THE COLORS



MILITARY SPONSORS



RIFLE TEAM



BATTALION

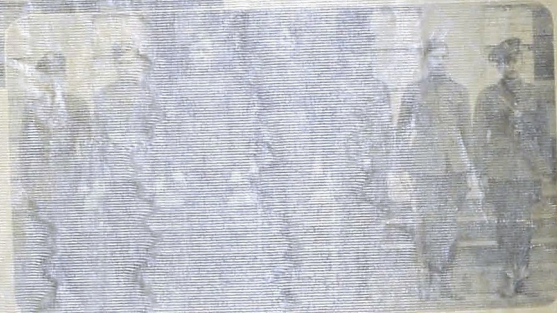




MILITARY SPONSORS



THE COLOPS



WOLF TEAM



BATTALION

Athletics





LETTERMEN'S CLUB

LEK TREW *President*
 JERRY PERRY *Vice-President*
 HERMAN ADAMS *Secretary and Treasurer*

OZA AKERS	ARTHUR LEDFORD
WILLIAM BARBER	MILLARD LOWRY
C. L. BILLINGS	LAWRENCE MANN
FINLEY BRADFORD	JAMES MASSEY
JIMMIE BUNN	AMOS MILLER
EDWARD COBLEIGH	COTTON MURPHY
CHARLES DAVIS	TOM PLEDGER
JOHN DENNEY	RED RICHARDSON
"BIRDLEGS" EDWARDS	LEE SETTLES
J. C. FRENCH	PARK SIMS
JAMES HENSON	JOHN SLACK
BENNETT HODGES	CARSON SMITH
ARBIE JOHNSON	JAMES STEINMAN
JOE KERR	MONROE WHITAKER
GEORGE KNOX	GEORGE WILLIS

RAYMOND WITT



COACH PETERSEN

Football

FINLEY BRADFORD Captain, End

Bradford proved himself to be a good, cool-headed captain for the Central warriors this year. He helped the others to get that fighting spirit and found time to stop several end runs.

JOHN SLACK Guard

Slack entered each game with one determination—to bear his part of the burden. Although he was a substitute, Coach Peterson saw fit to use him about half the time.

LEE SETTLES End

"Japie" was a scrapper from East Lake Junior High. He was noted for his hard tackling and unusual ability in catching passes.

JAMES HENSON Halfback

Henson was a good yard-gainer this year and as he will be back next year great things are expected of him.

ARBIE JOHNSON Tackle

Johnson found great pleasure in crooning to his opponents as he shoved them right and left. Arbie is another man that we will welcome next year.

J. C. FRENCH Fullback

French was a valuable man because of his ability to play either in the line or in the back field. He is expected back next year.

FINLEY BRADFORD
JOHN SLACK
LEE SETTLES
JAMES HENSON
ARBIE JOHNSON



The Varsity

1 9 3 2

Football

HERMAN ADAMS Guard

Adams played a good brand of football at tackle until a mid-season injury kept him out of the remaining games.

LESTER TREW Quarterback

Trew was a triple threat to any team. His passing was superior. He was one of the best quarterbacks we have had.

JERRY PERRY Fullback

Perry was best on line plunges. He was good in backing our line and blocking for our backfield men. We will have Perry again next year.

C. L. BILLINGS Halfback

Billings was best at gaining ground and side-stepping. Many a would-be tackler grabbed where he had been. He was also good in catching passes. He will be back with us next year.

LAWRENCE MANN Halfback

Mann was an expert in giving the opponents the slip and weaving through the forward wall for much needed gains. He is another one to be back one more year.

THOMAS PLEDGER Center

Pledger was a good substitute for the center position. He rendered invaluable service this year.

J. C. FRENCH
HERMAN ADAMS
LESTER TREW
JERRY PERRY
C. L. BILLINGS



COACH MCCOY

The Varsity

1 9 3 2



COACH BALES

Football

JAMES MASSEY *Guard*

Massey made them live hard while he was in the game. He had plenty of fight and will make us a valuable man next season.

EDWARD COBLEIGH *Tackle*

Cobleigh was found ready to enter the game at all times no matter what the case might be or how large the opponent.

JAMES STEINMAN *Tackle*

When Steinman threw his weight into the game, it was hard luck for the opponent, for they didn't have a chance.

RAYMOND WITT *Quarter*

Witt was a good substitute for Trew. He was noted for his cool head and quick thinking.

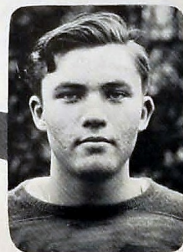
GEORGE WILLIS *Tackle*

Willis was full of that fighting spirit which enabled him to get into most all of our games.

PARK SIMS *Tackle*

Sims has a good future before him at Central. He played good football the whole season for us.

LAWRENCE MANN
THOMAS PLEDGER
JAMES MASSEY
EDWARD COBLEIGH
JAMES STEINMAN



Football

JAMES BUNN *Guard*

Bunn many times plowed through the line leaving yawning gaps for our backs to breeze through.

WILLIAM BARBER *Manager*

Barber was a faithful worker with the football boys. He went about his job with a zeal and determination which contributed much to the success of the season.

JOHN DENNY *Center*

Denny was perhaps the lightest, but every bit of him was just that much fight. He was absent when the pictures were taken.

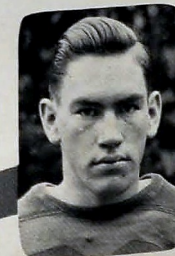


COACH MILLSAPS

RESULTS

Central 6;	Winchester 6
Central 0;	Etowah 13
Central 25;	Bradley 0
Central 16;	Nashville Central 0
Central 25;	Decherd 0
Central 19;	McMinn 0
Central 12;	Knoxville City 0
Central 12;	Notre Dame 0
Central 19;	City 0

RAYMOND WITT
GEORGE WILLIS
PARK SIMS
JAMES BUNN
WILLIAM BARBER



The Varsity

1 9 3 2

« « Review of The Season » »

Coach Bale's basketball team made a good start this year by winning the first eight games from some of the strongest teams Central met during the entire year. The season was started by handing Notre Dame a 39-38 defeat, with "Cap" Smith, forward, and "Birdlegs" Edwards, guard, pouring in on the Green defense for one crisp shot after the other. After taking five games from teams in this territory, we journeyed to Nashville and chalked up two more victories; then bagged the eighth consecutive one as we breezed through Tracy City. Smith, Johnson and Captain Kerr led the scoring on the trip, while Edwards and Trew did brilliant guard work.

Our winning streak was broken by City High. They defeated us 29-24, at the auditorium in February. Morristown gave us another defeat, making it two in a row. But Central couldn't be stopped in this manner. The next game was a different story, with Etowah on the small end of a 28-21 count. Hodges, Perry, and Henson made good as substitutes. After this game, Englewood gave Central their third defeat. This was a hard-fought game from start to finish. Edwards, Trew, and Akers worked hard on defense, while the scoring was divided. We beat Nash-

ville Central for the second time this season. Charlie Davis, along with Akers, worked well together in this game and proved to be a big threat to our opponents. "Jappy" Settles, who was injured early in the season at Bradley, played in this game for about five minutes. He was a great help to the team from that point to the end of the season.

Next for the Central boys was another defeat of 27-25 from City. In this game, each team gave their best. Central showed some power again in defeating Isaac Litton from Nashville for the second time this season. Johnson, Kerr, and Settles were the main offensive men. Trew did good guard work, and Smith held their star player under control.

Notre Dame defeated us and therefore they won the city championship of the T. S. S. A. A. Next we swamped Bradley, 40-29. Both Perry and Johnson, besides doing excellent guarding the entire game, found time to donate their portion of tallies. Settles took care of all scoring laurels. The last three games were played in the Eleventh District Tournament. Henson and Johnson made basketball letters but their pictures were made too late to appear in this group.

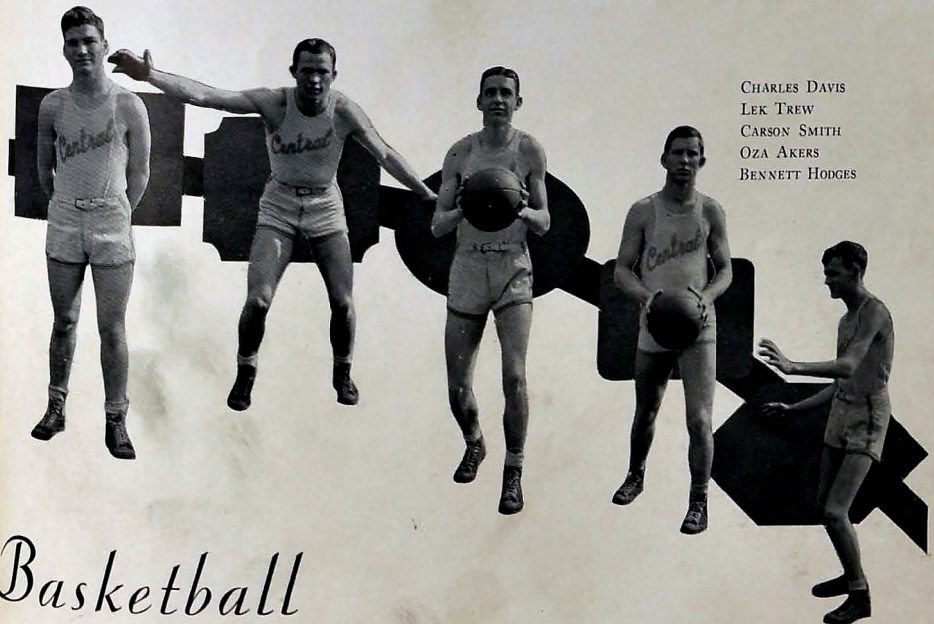
RESULTS

Central	39;	Notre Dame	38
Central	41;	Etowah	34
Central	48;	Daisy	17
Central	39;	Daisy	38
Central	41;	Bradley	30
Central	21;	Nashville Central	20
Central	29;	Isaac Litton	26
Central	43;	Tracy City	24
Central	24;	City High	29
Central	27;	Morristown	36
Central	28;	Etowah	21
Central	29;	Notre Dame	36
Central	34;	Englewood	39
Central	26;	Nashville Central	21
Central	25;	City	27
Central	28;	Isaac Litton	26
Central	40;	Bradley	29
Central	34;	Soddy	23
Central	37;	Charleston	24
Central	31;	Copperhill	34

JERRY PERRY
"BIRDLEGS" EDWARDS
MONROE WHITAKER
LEE SETTLES
JOE KERR



CHARLES DAVIS
LEK TREW
CARSON SMITH
OZA AKERS
BENNETT HODGES



1933 Varsity Basketball



BASEBALL

PAUL ROY	<i>Catcher</i>	JAMES GUINN	<i>Third Base</i>
ALFRED RICHARDSON	<i>Catcher</i>	C. L. BILLINGS	<i>Short Stop</i>
ALBERT BAKER	<i>Pitcher</i>	CARTER BENNETT	<i>Left Field</i>
AMOS MILLER	<i>Pitcher</i>	FINLEY BRADFORD	<i>Center Field</i>
JAMES STEINMAN	<i>Pitcher</i>	GRADY MILLER	<i>Right Field</i>
GARLIN BROLES	<i>Pitcher</i>	BYRON FOGO	<i>Utility</i>
DELMAS MCGHEE	<i>Pitcher</i>	FLETCHER SPENCE	<i>Utility</i>
LEE SETTLES	<i>First Base</i>	JACK GOODE	<i>Utility</i>
DAVID QUARRLES	<i>Second Base</i>	JOE KERR	<i>Utility</i>
WILLIAM BARBER		<i>Manager</i>	

Central has won the league championship for two consecutive seasons under the leadership of Coach W. P. Bales.





BASEBALL

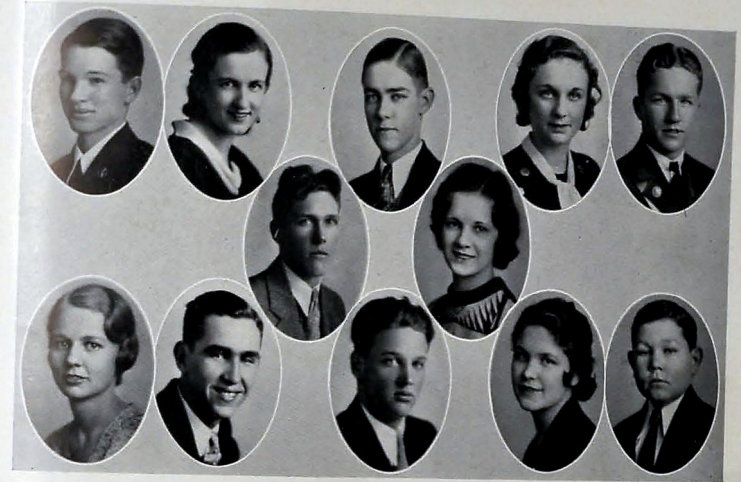
PAUL ROY	Catcher	JAMES GUINN	Third Base
ALFRED RICHARDSON	Catcher	C. L. BILLINGS	Short Stop
ALBERT BAKER	Pitcher	CARL BENNETT	Left Field
AMOS MILLER	Fitcher	FINLEY BRADFORD	Center Field
JAMES STEINMAN	Pitcher	GRAHY MILLER	Right Field
CARLIN BROOKS	Pitcher	BYRON FOGG	Utility
DELMAS MCGHEE	Pitcher	FLETCHER SPENCE	Utility
LEE SETTLES	First Base	JACK LODGE	Utility
DAVID QUARRLES	Second Base	JOE KERR	Utility
WILLIAM BARBER	Manager		

Central has won the league championship for two consecutive seasons under the leadership of Coach W. P. Bales.

Organizations



The Champion



CHAMPION STAFF

BENJAMIN TARVER	<i>Editor-in-Chief</i>
EDITH DAVIS	<i>Associate Editor</i>
WILLIAM ANDERSON	<i>Business Manager</i>
HELEN DONALDSON	<i>Senior Section Editor</i>
MARTIN HACKNEY	<i>Military Editor</i>
JOSEPH KERR	<i>Athletic Editor</i>
EVELYN BLESSING	<i>Club Editor</i>
SARA MILLIGAN	<i>Feature Editor</i>
JAMES HOWARD	<i>Photographic Editor</i>
CLARENCE HARTMAN	<i>Junior Representative</i>
EVELYN COLLINS	<i>Sophomore Representative</i>
EDGAR T. RICE	<i>Freshman Representative</i>

The Champion



DIGEST STAFF

Raymond Witt, Editor-in-Chief; Martha Jones, Associate Editor; R. H. Nelms, News Editor; George Knox, Sports Editor; Evelyn Blessing, Club Editor; Martha Browning, Exchange Editor; Sara Milligan, Departmental Editor; Graham Crabtree, Feature Editor; Betty Proper, Librarian; Robert Cassell, Copy Editor; Evelyn Espy, Business Manager; Kathleen Green, Circulation Manager; Hugh Millican, Bookkeeper; Mary Elizabeth Wheeler, Secretary; Edith Davis, Supervisor of Sponsors; James Howard, Printing Foreman.



BOYS' HI-Y

RAYMOND WITT President	R. H. NELMS, JR. Secretary
BILLY ANDERSON Vice-President	GEORGE C. KNOX Treasurer
MR. J. L. MILBURN Sponsor	

The Champion



USHERS

EVELYN BLESSING President	BETTY JOHNSON Secretary
MISS MARGARET WAPLES Sponsor	



GIRLS' HI-Y

SARA MILLIGAN President	GRAHAM CRABTREE Treasurer
MARTHA JONES Vice-President	MRS. MARY D. CALLIS Sponsor
EVELYN BLESSING Secretary	MRS. JOHN A. SHELTON Sponsor



DEPRESSION CLUB

JAMES HOWARD President EDDIE VANDERGRIFF Sec'y-Treasurer
RAYMOND WITT Vice-President MR. ARLIE HOODYNPYLE Sponsor



BAND CLUB

V. E. WILLBANKS President HOWARD LUTHER Sec'y-Treasurer
L. C. LONGLEY Vice-President MAJOR D. T. SWIHARDT Sponsor



CAMERA CLUB

JAMES HOWARD President EVELYN BLESSING Secretary
MARTIN HACKNEY Vice-President MARY MARSHALL Treasurer
MR. WILLIAM ROLLINS Sponsor



AIRWAYS CLUB

HOWARD DAFFRON President RODDY HUFF Treasurer
HUGH MOSIER Vice-President HOMER FANSLER Sergeant-at-Arms
JOE ROPEK Secretary MISS ELSIE J. FLEMMING Sponsor

The Champion



GIRL SCOUTS

LAVADNA HUGHES	<i>Captain of Hobos</i>	LOUISE WALLACE	<i>Captain of Bandits</i>
VIOLA STANDIFER	<i>Captain of Pirates</i>	LAVADNA HUGHES	<i>Troop Scribe</i>
ROBERTA ROSS	<i>Captain of Gypsies</i>	VIOLA STANDIFER	<i>Treasurer</i>
MISS SARAH HUBBARD	<i>Sponsor</i>		



GIRLS' ATHLETIC CLUB

AURORA ZIEGLER	<i>President</i>	THELMA SETTLES	<i>Secretary</i>
LAVADNA HUGHES	<i>Vice-President</i>	RUBY ACUFF	<i>Treasurer</i>
MISS SARAH HUBBARD	<i>Sponsor</i>		

The Champion



ART CLUB

DOROTHY GRAYSON	<i>President</i>	CHRISTINE HAYES	<i>Treasurer</i>
GLENN FUSSELL	<i>Vice-President</i>	MISS MARGARET HAYS	<i>Sponsor</i>
MYRTICE PERKINS	<i>Secretary</i>	MISS FREDIA MYLIUS	<i>Sponsor</i>



LA TERTULIA

RAYMOND SPARKMAN	<i>President</i>	EDITH ANDERSON	<i>Secretary</i>
KENDALL WOOD	<i>Vice-President</i>	HELEN VALENTINE	<i>Treasurer</i>
MISS MARY ELLEN RICE, <i>Sponsor</i> ; MISS RUTH FAIN, <i>Sponsor</i> .			

The Champion



BOLL WEEVILS

HENRY MCGUFFIN <i>Manager</i>	TAYLOR MOORMAN <i>Chief Carpenter</i>
WALTER COOKE <i>Assistant Manager</i>	SPAFFORD ENGLISH <i>Painter</i>
CHARLES FARROW <i>Chief Electrician</i>	MISS MARGARET WAPLES <i>Sponsor</i>



GIRL RESERVES

FRANCES PUCKETT <i>President</i>	LURENA PEMBERTON <i>Sec'y-Treasurer</i>
LUCY SPRIGGS <i>Vice-President</i>	MISS MARGARET HAYS <i>Sponsor</i>

The Champion



CENTRAL RED CROSS UNIT

MARTHA ELLEN COX <i>President</i>	VEDA INGLIS <i>Treasurer</i>
MARGARET ALYCE BOWEN <i>Vice-President</i>	MISS VESTA NELSON <i>Sponsor</i>
MARIA RANKIN <i>Secretary</i>	MRS. IDA LONGELY <i>Sponsor</i>
MISS ELIZABETH JONES <i>Sponsor</i>	



LIBRARY CLUB

GRACE FORSTNER <i>President</i>	GRAHAM CHABTREE <i>Sec'y-Treasurer</i>
CLARA RUTH COXEY <i>Vice-President</i>	MRS. CLARENCE KOIWYCK <i>Sponsor</i>
MISS MARY ROBINSON <i>Sponsor</i>	



PUBLIC SPEAKING CLASSES

MILLARD LOWRY	<i>Ch. First Period</i>	THELMA SETTLES	<i>Ch. Sixth Period</i>
DICKIE LOWE	<i>Ch. Third Period</i>	DOROTHY GRAYSON	<i>Ch. Seventh Period</i>
MILDRED GROSS	<i>Ch. Fourth Period</i>	MISS LAVETA EPPERSON	<i>Sponsor</i>



STAGE STEPPERS

MARTHA MORGAN	<i>President</i>	MISS KATHERINE BYNUM	<i>Sponsor</i>
BARBARA DOUGHTY	<i>Vice-President</i>	MISS MARY MORGAN	<i>Sponsor</i>
ROBERT CASSELL	<i>Sec'y-Treasurer</i>	MISS VESTA NELSON	<i>Sponsor</i>



SENATE

MILLARD LOWRY	<i>President</i>	SARA MILLIGAN	<i>Chaplain</i>
GRACE FORSTNER	<i>Vice-President</i>	MISS LAVETA EPPERSON	<i>Sponsor</i>
GRAHAM CRABTREE	<i>Secretary</i>	MR. ARLIE HOODYNPYLE	<i>Sponsor</i>



GRADY LITERARY SOCIETY

MILLARD LOWRY	<i>President</i>	LAMAR BOYD	<i>Secretary</i>
BENJAMIN TARVER	<i>Vice-President</i>	C. S. TURNER	<i>Treasurer</i>
C. J. ANDERSON	<i>Sponsor</i>		

The Champion



GIRLS' GLEE CLUB

MARY ELIZABETH WHEELER . . . *President* GRACE FORSTNER . . . *Secretary*
 BARBARA DOUGHTY . . . *Vice-President* HELEN USHER . . . *Treasurer*
 MR. K. W. JOHN . . . *Sponsor*



BOYS' GLEE CLUB

WAYLAND MOORE . . . *President* LAWRENCE MANN . . . *Sec'y-Treasurer*
 HAROLD LONG . . . *Vice-President* MR. K. W. JOHN . . . *Sponsor*

The Champion



VARSITY GLEE CLUB

MARY MARSHALL . . . *President* MARIA RANKIN . . . *Sec'y-Treasurer*
 VIRGINIA HENRY . . . *Vice-President* MR. K. W. JOHN . . . *Sponsor*



ORCHESTRA

NAT HYDEN . . . *President* MARGARET ALYCE BOWEN . . . *Sec'y-Treasurer*
 BOBBIE HIGGINS . . . *Vice-President* MR. K. W. JOHN . . . *Sponsor*

The Champion



S. P. Q. R.

BILLY ANDERSON	<i>Pontifex Maximus</i>	VIRGINIA ELLIS	<i>Practor</i>
LELIA WELCH	<i>Consul</i>	MARGARET JACKSON	<i>Quactar</i>
MARY E. EPSY	<i>Tribune</i>	CHRISTINE HAYES	<i>Aedile</i>
TROPHENE HUFF	<i>Censor</i>	MISS MARY LOU DERRYBERRY	<i>Sponsor</i>



SODALITAS LATINA

GRAHAM CRABTREE	<i>President</i>	CLARA RUTH COXEY	<i>Secretary</i>
R. H. NELMS	<i>Vice-President</i>	WILLIE SUE HAMRICK	<i>Treasurer</i>
MISS LILLIE SCHWARTZ		<i>Sponsor</i>	

The Champion



BIOLOGY CLUB

R. H. NELMS	<i>President</i>	ELLA LOUISE HESS	<i>Sec'y-Treasurer</i>
AVILDA CYPHERS	<i>Vice-President</i>	MR. J. S. HUNT	<i>Sponsor</i>
MISS JOE ORE		<i>Sponsor</i>	



WATT SCIENCE CLUB

ROLAND HALL	<i>President</i>	MARY C. CUSHMAN	<i>Sec'y-Treasurer</i>
FRANKLIN WARD	<i>Vice-President</i>	MISS ELSIE JANE FLEMING	<i>Sponsor</i>

The Champion



BANK AND BOOKSTORE

MARGARET BYNUM *President of Bank* SARA RUTH KEITH . *Supervisor of Bookstore*
 MR. W. A. PRICE *Sponsor*



UKELELE CLUB

LUCY EVELYN OWEN *President* SARA MARGARET HUTCHISON . . . *Secretary*
 SARA REECE *Vice-President* FRANCES COTTON *Treasurer*
 MISS VESTA NELSON *Sponsor*

The Champion



JUNTO CLUB

WALTER PANKEY *President* ERNEST OWENBY *Sec'y-Treasurer*
 MADGE GAINES *Vice-President* MISS VESTA NELSON *Sponsor*



ETIQUETTE CLUB

WALTER PANKEY *President* MARTHA MORGAN *Sec'y-Treasurer*
 EDWARD DARR *Vice-President* MISS DOROTHY FRENCH *Sponsor*

The Champion

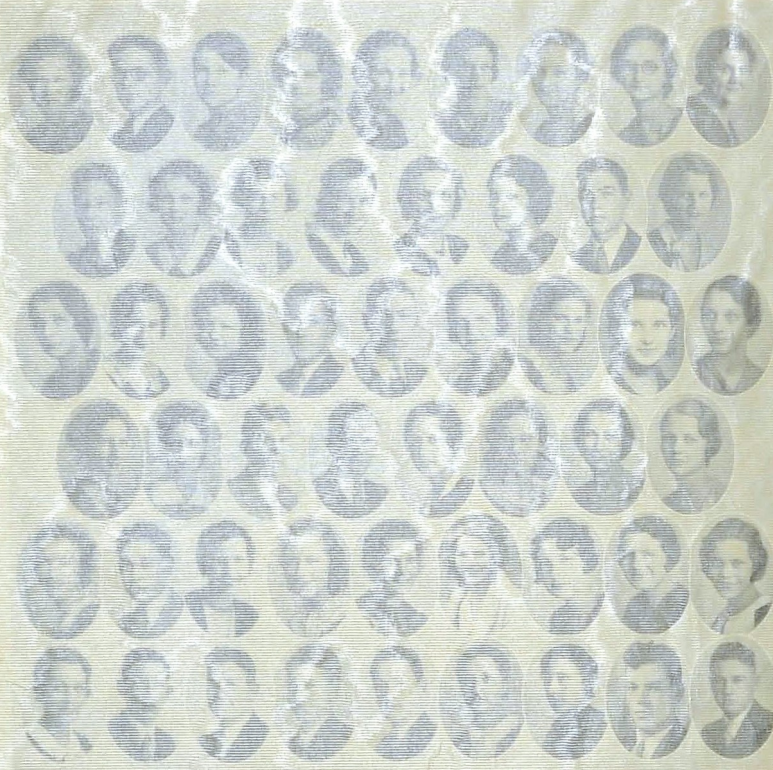


THE NATIONAL HONOR SOCIETY

EDITH ANDERSON	HELEN DONALDSON	VIOLA KELLY	RACHEL SMITH
EISON BATES	LEROY ELLIS	JOE KERR	JOSEPHINE SMITH
JUANITA BLAKE	SPOFFORD ENGLISH	GEORGE KNOX, <i>President</i>	VIRGINIA SNYDER
EVELYN BLESSING	HELEN ERNST	LUCILLE MCMAHAN	VIOLA STANDIFER
MARGARET ALYCE BOWEN	GAIL FLEMING	WILLIE SUE MCCONNEL	HARLEY STEELMAN
BINA BOWERS	GRACE FORSTNER	MARY MARSHALL	JAMES STIENMAN
BOBBIE BOYD	WILLIE SUE HAMERICK	SARA MILLIGAN	BENJAMIN TARVER
MARTHA BROWNING	JAMES HAYS	EVELYN MORRIS	C. S. TURNER
MARGARET BYNUM	S. C. HENNESSEE	R. H. NELMS	LEONA WALKER
ROBERT CASSELL	VIRGINIA HENRY	KATHLEEN OLINGER,	CATHERINE WELCH
CLARA RUTH COXEY	HAZEL HUMBERD	<i>Secretary</i>	RAYMOND WITT,
GRAHAM CRABTREE	BETTY JOHNSON	HAZEL PEASE	<i>Vice-President</i>
EDITH DAVIS	MARTHA JONES	BETTY PROPER	KENDALL WOOD
	SARA RUTH KEITH	THELMA SETTLES	



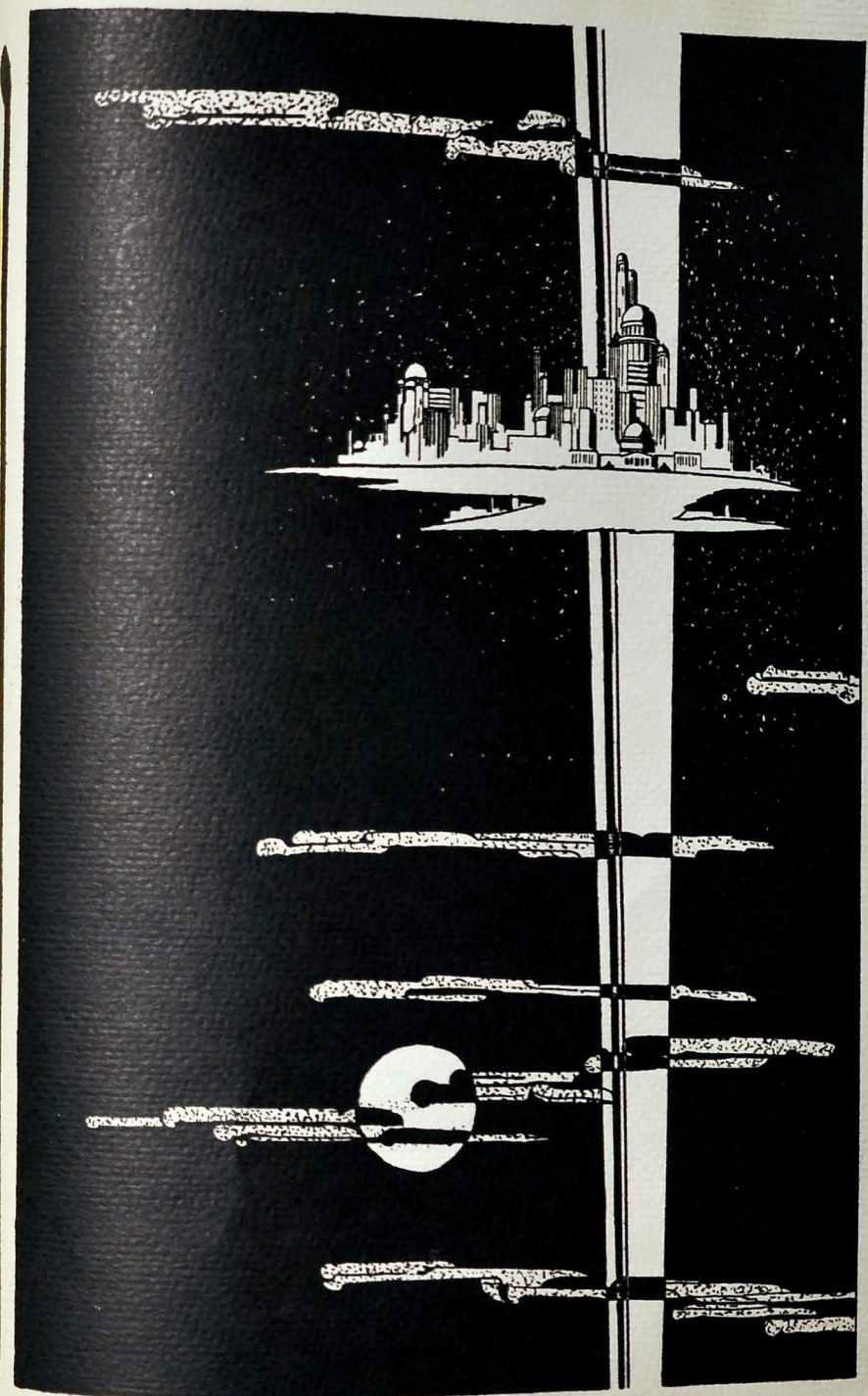
The Champion



THE NATIONAL HONOR SOCIETY

EDITH ANDERSON	HELEN DONALDSON	VIOGA KELLY	RACHEL SMITH
ERIN BATES	LEROY ELLIS	JOB KERR	JOSEPHINE SMITH
JUANITA BLAKE	STEFFORD ENGLISH	GEORGE KNOX, <i>President</i>	VIRGINIA SNYDER
EVELYN BLESSING	HELEN BRIST	LUCILLE McMAHAN	VIOLA STANDIFER
MARGARET ALICE BOWEN	GAIL FLEMING	WILLIE SUE McCONNEL	HARLEY STEELMAN
BINA BOWERS	GRACE FOESINGER	MARY MARSHALL	JAMES STENMAN
BONNIE BOYD	WILLIE SUE HAMERICK	SARA MILLIGAN	BENJAMIN TARVER
MARTHA BROOKING	JAMES HAYS	EVELYN MORRIS	C. S. TURNER
MARGARET BYNUM	S. C. HENKESSEE	R. H. NEIMS	LEONA WALKER
ROBERT CANNELL	VIRGINIA HEARY	KATHLEEN OLINGER,	CATHERINE WELCH
CLARA RUTH COXBY	HAZEL HUMPHRED	<i>Secretary</i>	RAYMOND WITT,
GRAHAM CHARTER	BETTY JOHNSON	HAZEL PERSE	<i>Vice-President</i>
EDITH DAVIS	MARTHA JONES	BETTY PROPER	KENDALL WOOD
	SARA RUTH KEITH	THELMA SEITLES	

Features



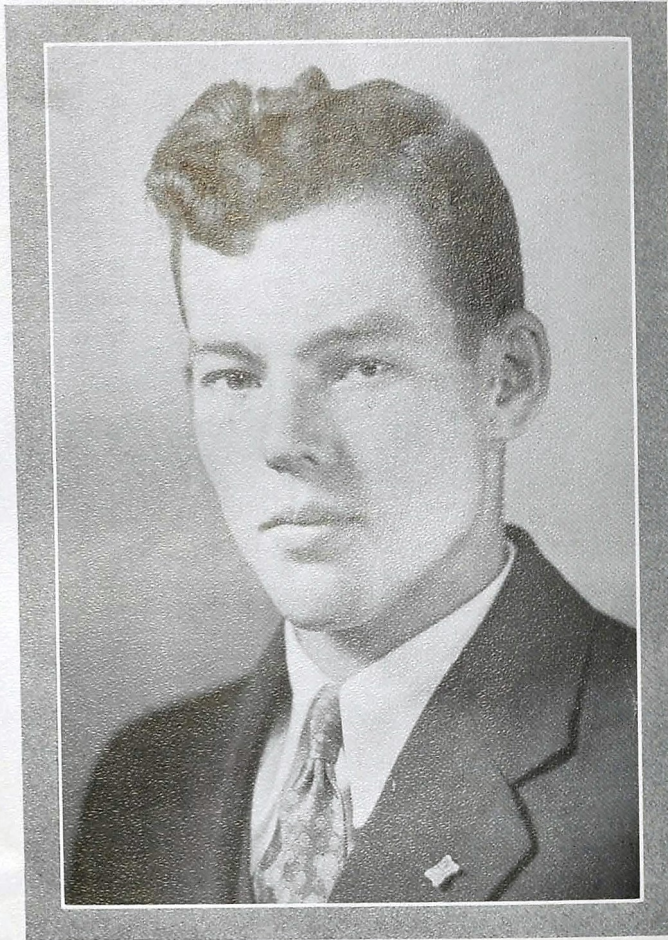
the

CHAMPION

OF 1933

presents





CAPABILITY

Raymond Witt

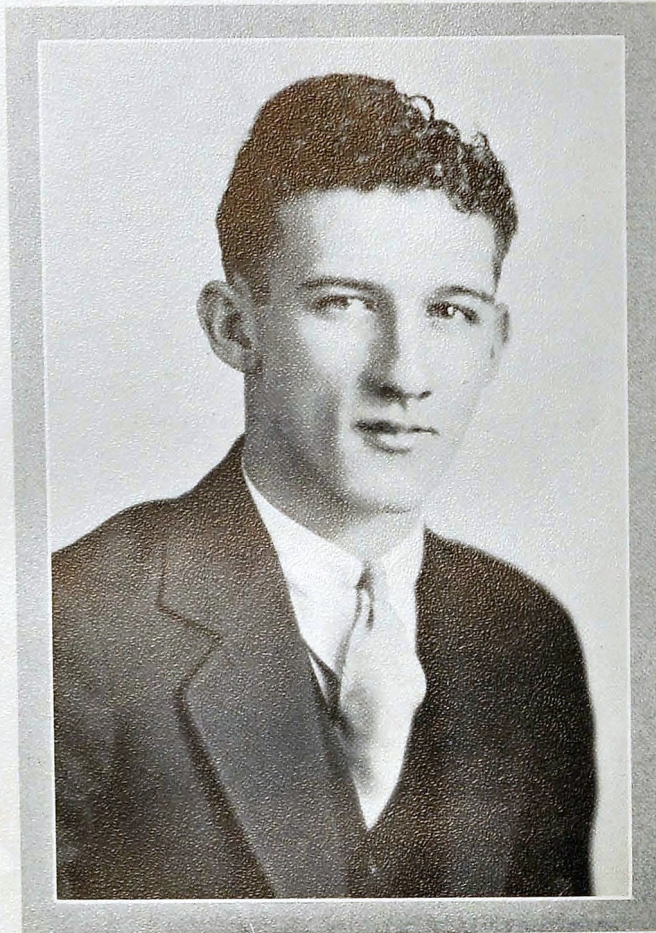
*"A man completely finished and
rounded off in himself."*
HORACE.



CAPABILITY

Martha Jones

*"For what purpose is life given
if it is not for me to use it."*
HORACE.



PERSONALITY

Richard Lowe

"There was manhood in his look."

HOOD.

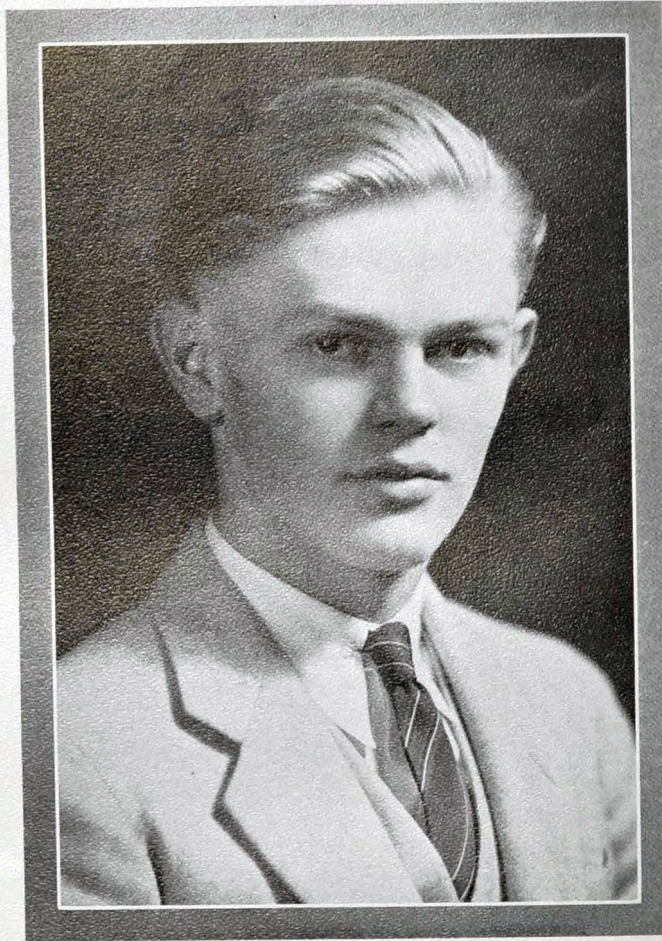


PERSONALITY

Mary Elizabeth Marshall

"Rarely do great beauty and virtuous disposition dwell under one roof."

PETRARCH.



SERVICE

Millard Lowry

"Happy is he that serveth."
FULLER.



SERVICE

Sara Milligan

*"The good you do is not lost,
though you forget it."*
FULLER.



CHEER LEADERS



ARBIE JOHNSON
BASKET BALL



LAVANDA HUGHES
ATHLETIC



LER TREW
ATHLETIC



BETTY JOHNSON
DEPENDABLE



BEN TRAVER
DEPENDABLE



DOROTHY GIBBS
ATTRACTIVE



C.S. TURNER
ATTRACTIVE



CANDY CREW



SONG LEADERS



GEORGE KNOX
BUSINESS MANAGER OF ATHLETICS



EVELYN BLESSING
POPULAR



HERMAN ADAMS
POPULAR



KATHLENE OLINGER
COURTEOUS



JOE KERR
COURTEOUS



BILLY TAYLOR
WITTY



GRAHAM CRABTREE
WITTY



ICE CREAM FORCE

Patrons

ATTORNEY-GENERAL'S OFFICE	County Court House
L. G. BALFOUR, Jewelers	Attleboro, Mass.
BENNETT-HUBBARD CANDY CO., 6-0015	234 E. 11th Street
BENSON PRINTING COMPANY	Nashville, Tenn.
BOERGER SERVICE STATION, 2-9504	1415 McCallie Avenue
J. AVERY BRYAN CO., INC., Funeral Directors, 6-2131	747 McCallie Avenue
CAMERON AND BARR BAKING COMPANY, 6-8176	1615 Cowart Street
E. Y. CHAPIN	Chattanooga, Tenn.
HARRY E. CHAPMAN COMPANY, Morticians, 6-4136	400 McCallie Avenue
CHATTANOOGA BUTTON AND BADGE MFG. CO., 6-6934	720 Walnut Street
CHATTANOOGA COCA-COLA BOTTLING CO., 6-5334	Broad at Second
CHATTANOOGA GAS CO., 6-0191	811 Broad Street
CHATTANOOGA MEDICINE COMPANY, 3-0030	3803 St. Elmo Avenue
R. J. COULTER UNDERTAKING CO., 6-6114	801 Vine Street
CRISMAN HARDWARE COMPANY, 7-1115	511 Market Street
JUDGE WILL CUMMINGS	County Court House
DAVIDSON CLOTHING COMPANY, 6-1218	811 Market Street
DIXIE LAUNDRY, 2-1912	2312 McCallie Avenue
ECKERD'S, Creators of reasonable Drug prices	732 Market Street
EDMONDSON SCHOOL OF BUSINESS, 6-3263	Tennessee Power Building
EDWARDS AND LEBRON, Jewelers, 6-7175	805 Market Street
DR. J. C. ELDRIDGE, 6-2482	Chattanooga, Tenn.
W. F. FISCHER AND BRO. CO., Jewelers, 6-0922	801 Market Street
FOX BROS., Wholesale Grocers, 6-3139	1215 King Street
GEORGE'S PLACE, Sandwiches, 6-9531	129 E. Eighth Street
H. W. GRANERT STUDIO, 6-7335	711½ Market Street
GRANT PATTEN MILK CO., 6-1294	1220 King Street
HARDIE AND CAUDLE, Clothiers, 6-7032	809 Market Street
HARRIS AND HOGSHEAD, Opticians, 6-7545	113 East Eighth Street
THE JOURNAL ENGRAVING COMPANY	Atlanta, Ga.
JOY'S, Florists, 6-7168	817 Market Street
KIMBALL ENGRAVING CO., INC., 7-3346	730 Broad Street
KING-DOBBS AND CO., Wholesale Grocers, 6-1251	416 E. Eleventh Street
KOBLENTZ DEPARTMENT STORE, 2-3211	2438 Glass Street
S. H. KRESS AND COMPANY, 6-7448	706 Market Street
LING PRINTING CO., 7-3414	825 Chestnut Street
M. F. McDONALD GROCERY CO., 2-3125	2602 East Main Street
McKENZIE SCHOOL, 6-7157	401 Oak Street
MARTIN-THOMPSON CO., Sporting Goods, 6-2433	706 Cherry Street
MILLER BROS. CO., Department Store, 7-1251	629 Market Street
MOUNTAIN CITY STOVE AND RFG. CO., 6-0211	1240 Market Street
MUTUAL DRUG CO., 2-1127	2100 McCallie Avenue
PARRENTS PAINT STORE, 6-0524	614 Market Street
T. H. PAYNE CO., Books and Office Supplies, 6-9818	821 Market Street
PERRY'S KORNER, Auto Repair and Service, 2-3138	2600 McCallie Avenue
PHILLIPS PLACE, Restaurant, 2-0109	511 Dodds Avenue
RHODES, INC., Decorators, 6-3194	809 Cherry Street
RIDGE DRUG CO., 2-1171	Dodds and Chamberlain
R. K. SCHOLZE, Grocer, 2-2131	415 Dodds Avenue
JAMES M. SHAW CO., Men's Clothing, 6-7149	Market at Ninth
SOUTHERN DAIRIES, INC., 2-3116	457 Dodson Avenue
THOS B. STAPP, Bookstore	624½ Market Street
STATE THEATRE, 6-5535	620 Market Street
A. B. STIVERS LUMBER CO., 6-7179	345 East Main
STOVALL HARDWARE CO., 6-7101	711 Cherry Street
TEMPLETON'S, INC., Jewelers, 6-7628	12 West Eighth Street
TENNESSEE ELECTRIC POWER CO., 6-1121	540 Market Street
UNITED DAIRIES, INC., 6-5744	1017 E. Twenty-third Street
UNIVERSITY OF CHATTANOOGA, 6-1215	McCallie Avenue
THE VOGUE, Ladies' Ready-to-Wear, 6-5124	719 Market Street
C. WALKER'S KORNER SERVICE STATION, 2-4014	2446 Glass
WHITE SWAN LAUNDRY, 6-2103	227 E. Eleventh Street
WILKINS CANDY CO., 6-1151	1233 Carter Street
WILLIAMS GLASS CO., 6-8353	814 Lindsay
F. W. WOOLWORTH CO., 6-7036	710 Market Street

11-9664

MAY 10 1948

APR 1 1952