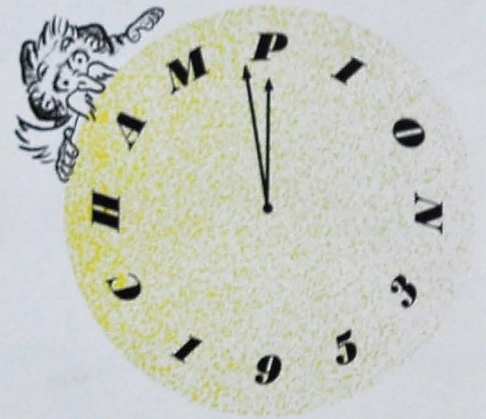




PROPERTY OF
CENTRAL HIGH SCHOOL

CHS Library



*In life's treasure store of memo-
ries, like a jewel of many facets,
will ever gleam our days at Cen-
tral High.*

The Sands of Time Flow Swiftly





*Time in Study and
in Fun*





*Time at Work and
at Play*





The
1953
Champion

THE ANNUAL PUBLICATION
OF CENTRAL HIGH SCHOOL
CHATTANOOGA, TENNESSEE



KAY HOFFMEYER • EDITOR
ANNIE CAROL DAVIS • BUS. MGR.



Miss Minnie Lee Morgan



THAT WICKED WINK!



"WHERE'S THAT HOMEWORK?"

In appreciation of her unfailing sympathy and guidance along the steps of the up-hill climb to Knowledge, and in recognition of her unswerving loyalty to the spirit of Central High, we dedicate this CHAMPION of 1953 to Miss Minnie Lee Morgan, whom we admire as a scholar and love as a teacher and friend.

Dedication

1 9 5 3



The School

A Message From Our Principal Mr. W. H. Millsaps



Dear Seniors:

I believe that the great struggle in the world today is for the minds of men. Let us try to create understanding and sympathy among all peoples of the world so that the forces of tyranny will not prevail. Let us accept the problems of our time with the firm conviction that just as much good can be done today as at any time in the past, provided we have the will and the way to do it.

May I wish for you happy and successful lives.

Sincerely yours,

W. H. Millsaps



First row:

W. P. BALES History
Mrs. Linnie M. Barger English
Mrs. Hazel L. Barton Commercial
Edwin Bohr Science
Ed Brown Mathematics
Mrs. Bernice Clementson Home Economics
SGT. Ollie Cochran Military

Second row:

Mrs. Mary Cooper Nurse
Miss Christine Copping Secretary
Miss Edna Cross History
Miss Elsa Dennison Science
Miss Mary Lou Derryberry Art
Mrs. Anna A. Dyer Secretary
Mr. J. Pope Dyer Social Science

Third row:

Miss Bonnie Mary Eichorn Mathematics
E. B. Etter Mathematics, Athletics
Miss Ruth Fain English
Stanley J. Farmer Physical Education
E. N. Fields Economics
Mrs. Lora D. Flenniken Speech
J. J. Fletcher Industrial Arts

Fourth row:

Mrs. Rea Lou Fuels Economics
SFC. William H. Green Military

SGT. Robert L. Hall Military
Mrs. Margaret T. Hammack Physical Education
Miss Bobbie Ruth Hodges English
Mrs. June Holland Secretary
J. Arlie Hodenpyl Chemistry

Faculty-Staff

'MM, 'MM, Good!!





First row:
 MISS EDMUND HOOSEREnglish
 MISS SARAH HUBBARDPhysical Education
 MRS. EDNA C. JACOWAYMathematics
 KENNETH JOHNMusic
 MISS EARL JONESHistory
 MISS SALLY MAY KINGEnglish
 CAPT. THOMAS KNIGHTMilitary

Second row:
 DAVID G. LITZMathematics
 MRS. VIRGINIA W. LOGANSchool Mother
 MISS RACHEL McALLISTERBible
 WILLARD MILLSAPSMathematics
 MISS ANNE MOFFITTEnglish
 MISS MINNIE LEE MORGANEnglish
 MISS ELLEN MULLENIXLibrarian

Third row:
 MRS. E. M. NAGELCafeteria
 LESTER NEWTONGeneral Science
 MISS RUBY NIPPERCommercial
 RALPH E. OLINGERScience
 EVERETT O'NEALAssistant Principal
 MISS JOE OREBiology
 MRS. HELEN H. PARNELLCivics

Fourth row:
 MRS. AGUSTA J. PEOPLESEnglish
 MISS HELEN PRYOREnglish
 MISS MARY ELLEN RICESpanish
 A. B. ROBERTSONMathematics
 MRS. ELIZABETH ROBINSONEnglish
 MRS. BLANCHE ROGERSEnglish
 MRS. MARY R. SANDERSLibrarian

Let's Have a Party!



First row:
 J. M. SEATONIndustrial Art
 MISS PAULINE SHEARERCommercial
 MRS. ANNIE C. SHELTONEnglish
 MRS. JANE SHROPSHIREHome Economics
 MRS. VIRGINIA SKATESHistory
 GORDON W. SMITHDiversified Occupation
 SAM T. STONERHistory

Second row:
 MISS EDITH TAYLORCommercial
 MISS MARGARET TAYLORHome Economics
 MRS. ETHEL TEMPLETONHome Economics
 W. H. TEMPLETONMathematics
 MISS FRANCIS TIERNANSocial Science
 G. H. TOWERYBiology
 MISS DOROTHY WALKERCommercial

Third row:
 MRS. FLORA B. WAREMathematics
 R. S. WHARTONIndustrial Arts
 MISS ETHEL YORKEnglish
 LUTHER YOUNGMathematics

Members of the faculty not pictured are:
 MORRIS BALESMusic
 ARCHIE BIBBEYPrinting
 MISS LILLIE SCHWARTZLatin and French

All Set for Dictation



The Fraternal Order of Coke (?) Drinkers



Faculty-Staff

Senior Class



Senior Class officers as pictured are: Jimmy Pack, president; Don Duncan, secretary; Jerry Perry, Jerry McKenzie, Bill Hale, Bill Breneman, sergeants-at-arms; Ivy Bishop, treasurer.

First Row:

HEISHIEL EUGENE ADAMS, "Choo-Choo," entered from Calhoun High School, Calhoun, Ga. in 1952-53.
JOAN ELIZABETH ADAMSON, entered from Dickinson Jr. High School in 1949-50; Shove Off Club, '50, '51, '52; Ace Club; Art Chairman, '52, '53; Physical Education, '52, '53; Senate, '49, '50, '51; Battalion, '49, '50, '51, '52.
PATRICIA JEAN AKERS, "Pat," entered from Lookout Jr. High School in 1951; Officer of Pirates Club, '52, '53.
RAYMOND COE ALBRIGHT, "Ray," entered from Hardy Jr. High School in 1949-50; M. P. Club, '49, '50; Boxing team, '49, '50, '51; "C" Club, '50, '51, '52, '53; T & I Club, '52, '53.

Second Row:

BARBARA SUE ARMOUR, "Barbara Sue," entered from Hardy Jr. High School in 1950-51; Twixteen Club, '51, '52.
PATRICIA JO ARMSTRONG, "Pat," entered from Brainerd Jr. High School in 1949-50; Vice-President of the Freshman Class, '49-50; Library Staff, '49, '50; Spellerettes, '51, '52; President, '53; Tri-Hi-Y, '51, '52, '53; Announcers Club, '51, '52; Treasurer, '53; Spanish Club, '52; Senate, '51, '52, '53; Senate Cabinet, '52; Library, '52, '53; "Digest" Staff, '51, '52; Associate Editor, '53; Candidate for Home Coming Queen.
VERLACE DAVID ARNOLD, entered from Hughes Kirkman in 1948; T & I Club, '52.
JO ANN ARNOLD, "Jo," entered from Hardy Jr. High School in 1951.

Third Row:

JO ANN AUSTIN, "Charlie-Lover," entered from East Side Jr. High School in 1949; Girls Battalion, '50, '52.
ANNA GALE AXMACHER, "Gabbie Gale," entered from Dickinson Jr. High School in 1950; Shove Off Club, '51, '52, '53; Majorette, '52, '53; Band, '51, '52.
PEGGY JOYCE AXMACHER, entered from Brainerd Jr. High School in 1949; Varsity Glee Club, '50, '51, '52, '53; Girls Battalion, '53.
STANLEY J. BAKER, "Shutter Bug," entered from East Lake Jr. High School in 1950; Camera Club, '51, '52, '53; President, '53; Boys Hi-Y, '53; CHAMPTON Staff, '53; Central "Digest," '53; Disc & Diamond, '51, '52, '53; Military Photographer, '53; National Scholastic Awards in Photography; awarded certificate on photography by Saturday Evening Post; First place award on Times Photo Contest; Science Club; Junior Play; Senior Play.

Fourth Row:

MAYA ELLIS BARKER, entered from Nathan L. Bachman Jr. High School in 1949-50; Ushers, '52, '53.
MARY ELIZABETH BECKER, "Red," entered from Lookout Jr. High School in 1951; Bank and Bookstore Staff, '51, '52; President, '53; National Honor Society, '52, '53; Inter-school Leadership Council, '52, '53; Tri-Hi-Y, '51, '52; Treasurer, '53; Senate, '51, '52, '53; Senate Cabinet, '52; Senate Play Cast, '51; Announcers Club, '51, '52, '53; Vagabonds, '51, '52; Secretary, '53; Varsity Glee Club, '51, '52; Orchestra, '52; Girls Battalion, '51, '52, '53; Junior Play Cast, '52.
BARBARA GENE BEETS, "Beets," entered from Hardy Jr. High School in 1951; Orchestra, '51, '52, '53; Glee Club, '52, '53; Bible Club, '52, '53; Senate, '52, '53; Allied Youth, '52.
CLYDE HEIMAN BELL, entered from East Side Jr. High School in 1950-51.

Fifth Row:

SHIRLEY JO BELL, "Shilly," entered from Dunlap High School in 1952.
VIVIAN JOAN BETTIS, "Shortie," entered from Chattanooga High School in 1951; Shove Off Club, '51, '52, '53.
DONALD ELMER BIRD, entered from Lookout Jr. High School in 1950-51; T & I Club, '51, '52, '53.
IVY HURRO, entered from East Side Jr. High School in 1950; "C" Club, '52, '53; Treasurer of the Senior Class, '53.

Sixth Row:

FRANCES ESTELLE BLACKWELL, "Stel," entered from Brainerd Jr. High School in 1950-51; Shove Off Club, '50, '51, '52; President, '53; Camera Club, '51, '52, '53; Swimming Club, '52, '53; Allied Youth, '52, '53; CHAMPTON Staff, '52; Battalion, '50, '51, '52, '53; Vice-President of Camera Club, '52, '53.
WILLIAM PAUL BRAKEBILL, "Bill," entered from Brainerd Jr. High School in 1950; Sergeants Club; Program Chairman of French Club; Manager of French Club; Manager of baseball team, '52, '53; Key Club, '52, '53.
DELORES ANN BRANHAM, entered from East Side Jr. High School in 1950; Merry Maes Club, '51; Twix Teens, '52; Brainerd Jr. High School in 1949; Officers Club, '53; Best Drill Platoon, '52; Cadet Captain, '52.

First Row:

WILLIAM EDWIN BRENNEMAN, "Bull," entered from East Side Jr. High School in 1949; Football Squad, '49, '51, '52, '53; "C" Club, '51, '52, '53; Sergeant of Arms of Senior Class, '52; Disc & Diamond Society, '50, '51, '52, '53.
CHARLES EDWARD BROCK, "Chuck," entered from East Side Jr. High in 1950; M. P. Club, '51, '52; Sergeants Club, '51, '52; 2nd Lieutenant in Military, '52, '53.
GEORGE LOUIS BROOM, entered from Lebanon High School, Lebanon, Mo., in 1951; Band, '51, '52, '53; Glee Club, '52, '53; Band Ensemble, '51, '52, '53; State Superior Trombone Solo, '51, '52; Band Officer's Club, '52, '53; Swing Band, '51, '52, '53; Magna Cum Laude Spanish Award, '52; Spanish Club, '51, '52.
BILL EUGENE BROWN, "Spider," entered from Hardy Jr. High School in 1950-51; M. P. Club, '50, '51.

Second Row:

ELAINE BROWN, "Roosh," entered from Knoxville Central High School, Knoxville, Tenn., in 1951; Varsity Glee Club, '51, '52, '53; Gad-A-Bout Club, '51, '52.
DELORES ANN BRYSON, "Dorsie," entered from Hardy Jr. High School in 1951; Girls Battalion, '51, '52, '53.
KENNETH SHERRILL BYRNS, "Chicken," entered from Hardy Jr. High School in 1950; Honor Society, '52, President, '53; Boys Hi-Y, '52; Treasurer, '53; Announcer's Club, '51, '52, Vice-President, '53; Second Lt., ROTC, '52, '53; I.L.C., '51, '52, '53; Science Club, '52, '53; CHAMPTON Staff, '53; Key Club, '52, '53.
JIMMY KENNETH CALDWELL, "Burr," entered from East Side Jr. High School in 1949-50.

Third Row:

VIRGINIA JO CALDWELL, "Josephine," entered from East Side Jr. High School in 1950; Twix Teen Club, '50, '51; Gad-A-Bout Club, '52; Vice-President, '53; Allied Youth, '52.
BETTY JUNE CAMERON, entered from Lookout Jr. High School in 1950.
ANITA CHRISTINE CAMPBELL, "Chris," entered from North Chattanooga Jr. High School in 1950; Senate, '51, '52; Silhouette Club, '52, '53; Ushers, '52, '53; Allied Youth, '51, '52, '53; Varsity Glee Club, '51, '52, '53.
JAMES W. CAMPBELL, "Humpty," entered from East Side Jr. High School in 1950-51; "Digest" Printing staff.

Fourth Row:

JO VIVIAN CAMPBELL, "Dimple," entered from Memphis Central High School in 1952; Gad-A-Bout Club, '52; swimming Club, '53.
TOMMY RANDY CAMPBELL, "Will," entered from East Lake Jr. High School in 1951; T & I Club, '52, '53, President, '53.
CHARLES KENNETH CARTER, "Buddy," entered from East Side Jr. High School in 1951.
ELIZABETH DEWEY CATTLEBERY, "Judy," entered from Davis High School, Avans, Ga. in 1950-51; Vagabond Club, '51, '52; Treasurer, '53; Ace Club, '51, '52.

Fifth Row:

ROBERT DEWEY CHILDERS, "Childers," entered from Ballins High School in '52.
BARBARA JEAN CLARK, "Barb," entered from Hardy Jr. High School in 1950; Vagabond Club, '50.
THOMAS PERRY CONNALLY, "Sonny," entered from East Side Jr. High School in 1950; T & I Club.
CHARLES A. COOPER, "Charlie," entered from East Side Jr. High School in 1951; Boys Hi-Y, '51, '52; President, '53; Key Club, '51, '52, '53; Hi-Y & Tri-Hi-Y Council, President, '53; Senate, '51, '52, President, '53; Bank and Bookstore Staff, '51, '52, '53; Disc & Diamond Society, '51, '52, '53; Key Club Delegate to Chicago, '52; Purple and Gold Band, '51; I.L.C., '52.

Sixth Row:

ELIZABETH ANN COHENBAVER, "Betty," entered from Brainerd Jr. High School in 1949; "Digest" Staff, '51, '52, '53; Silhouette Club, '52, '53; Ushers, '52, '53; Bible Club, '50, '51; Home Economics Club, '50; Girls Battalion, '50, '51, '52; National Honor Society, '53.
HEBA MARLENE COULTER, entered from East Side Jr. High School in 1950; Tri-Hi-Y, '51, '52, President, '53; Senate, '50, '51, '52, Vice-President, '53; Senate Cabinet, '52, '53; Senate Play, '50, '51; Bank and Bookstore Staff, '51, '52, '53; Vagabond Club, '51, '52, '53; Vice-President, '53; Junior Play Cast, '52; I.L.C., '52, Treasurer, '53; National Honor Society, '53; Delegate from Hi-Y to Convention, Blue Ridge, N. C. '52; Girls Battalion, '52, '53.
BILLIE ANN CIANE, entered from Lookout Jr. High School in 1950; Ushers, '52.
JO ANN CROSS, "Judy," entered from East Lake Jr. High School in 1950; Battalion, '51, '52, '53.

Seventh Row:

PAUL STEPHENS CROWNOVER, entered from Brainerd Jr. High School in 1949; Gold Team, '50, '51, '52, '53.
CAROLYN ANN DAVIDSON, "Carlin," entered from East Side Jr. High School in 1951.
ANNIE CAROL DAVIS, entered from Lookout Jr. High School in 1951; Girls Tri-Hi-Y, '53; Bank and Bookstore Staff, '52; Vice-President, '53; Red Cross Club, '52, President, '53; National Honor Society, Secretary, '53; CHAMPTON Staff, '52; Varsity Glee Club, '52, '53; Delegate to Red Cross Camp, '53; Vagabond Club, '52, Vice-President, '53; Organist, '53; I.L.C., '53.
DONALD GENE DAVIS, "Blackie," entered from East Side Jr. High School in 1951; Physics and Chemistry Club, '52, '53.



Senior Class



Let There Be Music

First Row:

HOMER EUGENE DAVIS, "Arab," entered from Kirkman Vocational School in 1959; Key Club, '52, '53; Football Team, '52, '53.
JAMES O. DAVIS, "Jimmy," entered from East Lake High School in 1949-51; Military Police Club, '50, '51, '52, '53; Honor Platoon, '52, '53; Officers Club, '52, '53.
LORENE ANNA DAY, entered from Hardy Jr. High School in 1951.
JERRY CHARLES DICKSON, entered from Chattanooga Valley Jr. High School in 1950; "C" Club, '51, '52, '53; Manager of Football Team, '51, '52, '53.

Second Row:

CLAYDE ELLIS DILLARD, "Big Dillard," entered from Hardy Jr. High School in 1950.
HELEN EUGENIA DIXON, "Pag," entered from Hardy Jr. High School in 1951; Ave Club, '52, '53.
MAXINE LAYRNE DIXON, "Mackie," entered from Hardy Jr. High School in 1950; "C" Club, '52, '53; Alternate Captain of Basketball Team, '52, '53.
SHIRLEY ANN DOBBS, "Shirley," entered from Brainerd Jr. High School in 1949-51.

Third Row:

BOBBIE ANN DODD, entered from Ringgold High School, Ringgold, Ga. in 1950; Pirates Club, '52; Band, '50, '51, '52; Band officer, '52.
DOROTHY RUTH DRAKE, entered from East Lake Jr. High School in 1951; Ushers Club, '53.
JAMES FREDRICK DRENNON, "Jimmy," entered from Lookout Jr. High School in 1949; Stage Crew, '50, '51, President, '53.
LESTER DON DUNCAN, "Dunk," entered from Lookout Jr. High School in 1950; "C" Club, '51, '52, '53; Varsity Football Team, '50, '51, '52, Captain, '53; Lt. Colonel in R.O.T.C.; Vice-President of Senior Class.

Fourth Row:

JOSEPH CALVIN EAKER, "J. C.," entered from East Side Jr. High School in 1949; Stage Crew, '50, '51.
JOYCE R. EAKES, "Joy Jo," entered from Dickinson Jr. High School in 1951; Varsity Glee Club, '52, '53; Girls Battalion, '51, '52, '53; Twix Teen Club, '53.
BARBARA JEAN ELLER, entered from Fairland High School in 1953.
BETTY JEAN ELLIOTT, "Red," entered from East Lake Jr. High School in 1949; Library Staff, '49, '50, '51, '52; Office Staff, '52, '53; Ave Club, '49, '50, '51; Twix Teens, '50, '51; L.L.C., '52, '53; Girls Battalion, '50, '51, '52, '53; R.O.T.C. sponsor, '52, '53; Assistant "Digest" Representative, '52, '53.

Fifth Row:

BARBARA MARIE ELLIS, "Baba," entered from Herminston High School in 1952; Twix Teen Club.
JOSEPH PORTER ELLIOT, "Joe," entered from East Lake Jr. High School in 1950; Key Club, '51, '52, '53; M. P. Club, '51, '52; Officers Club, '52, '53; Varsity Glee Club, '52, '53; Band Boosters Club, '51, '52.
DON ROY ERWIN, "Red-Bah," entered from East Side Jr. High School in 1949; Band, '49, '50, '51; Cheerleader, '51, '52; Head Cheerleader, '53; T & I Club, '52, '53.
BEVERLY JOAN EVANS, "Babs," entered from Dickinson Jr. High School in 1949; Twix Teen Club, '51, '52, President, '53; Ushers, '52, '53; Varsity Glee Club, '50, '51, '52; Library Staff, '50, '51.

Sixth Row:

ALBERT LEROY EVATT, "A. L.," entered from Brainerd Jr. High School in 1951; Disc & Diamond Society, '51, '52; Sergeants Club, '52; Candidate for President of Senior Class, '52; Treasurer of Senate, '52; Treasurer of Key Club, '52; L.L.C., '52, '53; President of French Club, '52; Alternate to Key Club Convention, '52; Senior Play, '52.
ONDINE EVERTON, entered from Nathan L. Bachman Jr. High School in 1950; Band, '51, '52, '53; Hi-Y, '51, '52.
BARBARA ANN EYTON, "Barb," entered from East Lake Jr. High School in 1950; Twix Teen Club, '52; Vice-President, '52; Ave Club, '52, '53; Girls Battalion, '52, '53.
LOYD LINCOLN KEZELL, "Sonny," entered from Dickinson Jr. High School in 1951; Sergeants Club, '51, '52, '53; Staff, '51, '52; T & I Club, '52, '53.

First Row:

IRIS ELIZABETH FISHER, "Shortie," entered from East Side Jr. High School in 1951; Vagabond Club, '52; Secretary, '53; Swimming Club, '53; Girls Battalion, '51, '52, '53.
JOHN WILLIAM FISHER, "Bill," entered from East Side Jr. High School in 1950; Physics & Chemistry Club, '52, '53; Captain of Bowling Team, '50, '51.
ALLAN ROSELL FORDMAN, entered from East Side Jr. High School in 1950; Anchors Aweigh Club, '50, '51, '52, '53; Library Staff, '50; Girls Battalion, '51, '52, '53; Varsity Glee Club, '51, '52, '53; CHAMPION Night Staff, '52.
ROBERT RAY FOSTER, "Bobby," entered from Brainerd Jr. High School in 1951.

Second Row:

MARY HELEN FOWLER, entered from Lookout Jr. High School in 1951; Ushers Club, '53.
JOHN MORGAN FREULER, entered from Brainerd Jr. High School in 1950.
VERNON JACKSON FRY, entered from Lookout Jr. High School in 1950; Senior Play Cast, '52; Junior Play Cast, '52; "Digest" Staff, '53.
JOANN GAMBLE, "Watermelon," entered from Hardy Jr. High School in 1951; Cheerleader, '51, '52, '53; Anchors Aweigh Club, '51, '52; Secretary, '52; Ave Club, '52; Vice-President, '53; Youth Council, '52; Secretary, '53; Junior Play Cast, '52; Senior Play Cast, '53; Girls Hi-Y, '52, '53; Allied Youth, '52, '53; Red Cross, '51, '52.

Third Row:

JAMES EDWARD GARNER, "Jimmy," entered from East Side Jr. High School in 1950.
CARL DAVID GASTON, "Pete," entered from East Side Jr. High School in 1950; "Digest" Staff, '52, '53; Physics and Chemistry Club, '52, '53; Rifle Team, '51, '52.
CAROLYN DAPHNE GILLIAM, "Shorty," entered from Dickinson Jr. High School in 1951; Silhouette Club, '51, '52, Social Chairman, '53; Girls Battalion, '52, '53.
PHYLIS JEAN GILKREATH, "Jeanie," entered from East Side Jr. High School in 1949; Library Staff, '50, '51; Senate, '50, '51, '52; Senate Cabinet, '53; Senate Play Cast, '52; L.L.C., '52, '53; National Honor Society, '52, '53; Junior Play Cast, '52; Senior Play Cast, '53; Vagabonds, '52, '53; Treasurer, '52; Ushers, '52, '53; Girls Battalion, '51, '52, '53.

Fourth Row:

REBECCA JOYCE GLENN, "Becky," entered from Brainerd Jr. High School in 1950; Senate, '51, '52, '53; Allied Youth, '51, '52; Publicity Chairman, '53; Varsity Glee Club, '50, '51, '52, '53; French Club, Secretary, '52, '53; Ushers, '52, '53; Bible Club, '50, '51.
PATRICIA ANN GOOD, "Pat," entered from Hardy Jr. High School in 1951; Vagabond Club, '52; Secretary, '53; Ave Club, '52, '53; Ushers Club, '52, '53; National Honor Society, '52, '53; Junior Play Cast, '52; Girls Battalion, '53; Band, '53.
HERBERT EUGENE GOODNER, "Gene," entered from East Lake Jr. High School in 1950; 1st Lt. Disc & Diamond Society, '50, '51, '52, '53; Announcers Club, '50, '51, '52; President, '52, '53; M.C., '52, '53; Boys Hi-Y, '51, '52, '53; L.L.C., '52, '53; Captain in R.O.T.C., '52, '53; Junior Play Cast, '52; Baseball Team, '52, '53; Delegate to Volunteer Boy's State, '52; Key Club, '52, '53; CHAMPION Staff, '52, '53; "Digest" Staff, '52, '53; American Legion Award, '50.
MARILYN FAY GRAHAM, entered from Lookout Jr. High School in 1951.

Fifth Row:

NINA GRAVITT, entered from Lookout Jr. High School in 1949; Majorette, '50, '51, '52; Head Majorette, '53; Anchors Aweigh Club, '53; Gym Staff, R.O.T.C.; Sponsor, Senate, '53.
PAUL GREENBERG, entered from Cincinnati, Ohio in 1951; Boys Hi-Y, '52, '53; Sergeants Club, '52; Cadet Captain, '53; Physics & Science Club, '53; L.L.C., '52, '53; Bowling Team, '51, '52, '53; Football Team, '51; "Digest" Staff, '52, '53; CHAMPION Staff, '53; Library, '52; Honor Platoon, '52, '53.
MARY VIRGINIA GRESHAM, "Genny," entered from Tyler High School in 1950; Glee Club, '50; Library Staff, '53; Library Staff, '50; Bible Club, '52.
HINIE AUNE GRIFFIN, "Grif," entered from Hardy Jr. High School in 1951; Anchors Aweigh Club, '51, '52; Publicity Chairman, '53; Treasurer of Jr. Red Cross, '51, '52; R.O.T.C. Sponsor; Girls Battalion, '52, '53.

Sixth Row:

PEGGY ANN GRIFFIN, "Blondie," entered from Rossville High School in 1952; Nite Owls, '52; Social Chairman, '53; R.O.T.C. Sponsor; Majorette, '52, '53.
DORA RUTH GRIFFITH, entered from Lookout Jr. High School in 1951; Varsity Glee Club, '51, '52; Girls Battalion, '53; Ushers, '52; R.O.T.C. Sponsor, '52.
THEODORE R. GRIFFITH, "T. R.," entered from Hardy Jr. High School in 1950.
BETTY RUTH GROSS, entered from Lookout Mtn. Jr. High School in 1950; Ushers, '52; Girls Hi-Y, '52, '53; National Honor Society, '53; CHAMPION Staff, '52; Pirates Club, '51, '52.

Seventh Row:

MARCIA DIANNE GROSS, "Di," entered from Brainerd Jr. High School in 1950; Varsity Glee Club Accompanist, '51, '52; Vice-President, '52; Senate, '52, '53; Senate Cabinet, '53; Girls Hi-Y, '52, '53; Allied Youth, '52; Social Chairman, '53; Gym Staff, '52, '53; Spiritmaster, '52, '53; Organist, '53.
BILLY MORRIS HALE, "Fire Ball," entered from Lookout Jr. High School in 1949; "C" Club, '50, '51, '52, '53; Sgt.-At-Arms for Senior Class, '52, '53; Secretary of "C" Club, '53; Football Team, '49, '50, '51, '52, '53; Track Team, '49, '50, '51, '52, '53; Treasurer of Sophomore Class, '50; Secretary of Freshman Class, '49.
CHARLES DORCEY HAMMONTREE, "Bud," entered from Brainerd Jr. High School in 1950; "C" Club, '50, '51, '52, '53.
DOROTHY BEATRICE HAMMONTREE, "Dot," entered from Tyler High School in 1950; Band, '50, '51, '52, '53; Pirates Club, '52, '53; 1st Lt. in Band, '52.



Senior Class



The Prize Winners

First Row:
EVA CATHERINE HANNAH, "Cathy," entered from Covina Union High School, Covina, Calif. in 1952; Merry Mac Club, '52; President of Ushers Club, '53.
VIRGINIA ANN HARRIS, entered from East Side Jr. High School in 1950; Senate, '52, '53; Girls H-Y, '52, '53; Spinsters, '52; Social Chairman, '53; Girls Battalion, '51, '52, '53; Ushers, '52, '53.
CARL HERBERT HARVEY, "Herby," entered from Hardy Jr. High School in 1949; Sergeant's Club, '51, '52; Varsity Glee Club, '51, '52, '53; Lt. in R.O.T.C.; Stage Crew, '50; M. P. Club, '51; Best Drill Sgt., '52.
GRADY LIONEL HAYEN, entered from East Side Jr. High School in 1950; President of the Future Teachers, '51; Rifle Team, '51, '52; Varsity Glee Club, '52; Sergeant's Club, '52; Honor Platoon, '52; M. P. Club, '52; Firing Squad, '52.

Second Row:
HENRY GREER HAWK, JR., "Buddy," entered from Hardy Jr. High School in 1950; Spanish Club, '50; 2nd Lieutenant in R.O.T.C.; Honorable mention Art Award.
PATSY SUE HEDGECOCK, "Pat," entered from East Lake Jr. High School in 1950.
ALLINE MARIE HILTON, "Al," entered from East Side Jr. High School in '51; Girls H-Y, '51; Social Chairman, '52; Vagabonds, '51; President, '52, '53; Girls Gym Staff, '52, '53; Swimming Club, President, '53; Girls Battalion, '51, '52, '53.
JANET FRANCES HENEGAR, "Tommy," entered from Hardy Jr. High School in 1950.

Third Row:
ROBERT E. HENEGAR, "Bohdy," entered from East Side Jr. High School in 1950; T & I Club, '53; Glee Club, '52; Swing Band, '52, '53.
THOMAS OSBOURNE HENRY, "Ozie," entered from Brainerd Jr. High School in 1950.
LARRY JOE HICKMAN, "Joe Boy," entered from East Side Jr. High School in 1951; Key Club, '51, '52, '53.
BIRDIE DOROTHY HILL, "Deb," entered from East Side Jr. High School in 1950; Ushers, '52, '53; L.C., '53; Band, '50, '51, '52, '53; Bible Club, '50, '51.

Fourth Row:
JOY LUCENE HILL, "Passum," entered from East Side Jr. High School in 1951; Digest Staff, '52, '53.
RONALD AGGER HILLIS, "Runt," entered from Brainerd Jr. High School in 1950.
MARTHA LUTCHCOCK, entered from Roseville Jr. High School in 1949; Nite Owls, '50, '51, '52; President, '52; H-Y, '51, '52, '53; Gym Staff, '50, '51, '52, '53; Ace Club, '52, '53; Captain in Battalion, '53; R.O.T.C. Sponsor, '53; CHAMPION Nite Owl, '52; Varsity Glee Club, '51, '52.
DORIS JANE HINSON, "Doc," entered from Chattanooga Valley High School in '51.

Fifth Row:
STELLA FRANCES HOBBS, "Jinx," entered from Brainerd Jr. High School in '50; Ace Club, '51, '52, '53; Swimming Club, '53.
KAY HOFFMEYER, "Doc," entered from East Side Jr. High School in 1949; Editor of CHAMPION, '52; Secretary in Class of '49; Treasurer of Class, '50; Secretary of Class, '51; "Digest" Staff, '49, '50, '51, '52, '53; Senate, '49, '50, '51, '52, '53; Secretary, '51; H-Y, '51, '52; Secretary, '52; Ushers, '52; Vice-President, '52; L.C., '51, '52; President, '52; Treasurer of Citywide L.C., '53; La Circle Francaise, '52; Treasurer, '53; Honor Society, '52; President, '53; Delegate to Volunteer Girls State, '52; County Judge, County Day, '52; Javelin in 1950; Vagabond Club, '51, '52, '53; Swimming Club, '52, '53.
SHIRLEY PATRICIA HOLMES, entered from Lookout Jr. High School in 1949; Ushers, '53; Band, '50, '51, '52, '53; Band Sponsor, '52; Band Officers Club, '52; Ace Club, '52; Band Ensemble, '52.

Sixth Row:
RICHARD DAVID HOOPER, "Dick," entered from Dickinson Jr. High School in 1949.
EMMIT EGENE HOTALEN, "Hot Rod," entered from East Side Jr. High School in 1950; Red Cross Representative, '52, '53.
BETTY BERNICE HOSELY, entered from Brainerd Jr. High School in 1949; Ushers, '52, '53; Pirates Club, '51, '52, Treasurer, '52.
ELIZABETH ANN HUSTON, entered from Brainerd Jr. High School in 1949; Ushers, '52; President, '52; Honor Society, '52; Vice-President, '53; Spinsters, '51, '52; Vice-President, '53; Girls H-Y, '51, '52; Vice-President, '53; Senate, '51, '52, '53; Senate Cabinet, '53; L.C., '52; Secretary, '53; "Digest" Staff, '51, '52; Associate Editor, '53; Delegate to Blue Ridge, N. C., '52.

First Row:

WANDA JEANNE HOWARD, "Jeannie," entered from Brainerd Jr. High School in 1949; Ushers, '52, '53; Honor Society, '52, '53; "Digest" Staff, '50, '51, '52; News Editor, '53.
JAMES LOYD HUFFINE, entered from Lookout Jr. High School in 1949; T & I Club, '52.
BARBARA JOAN HUGHES, "Joanie," entered from North Side Jr. High School in 1950.
CAROL ANN HUMPHREY, "Ann," entered from Hardy Jr. High School in 1950; Twixteen Club, '50, '51, '52; Devotional Chairman, '53.

Second Row:

SAMMY HOUSTON HUTSON, entered from Roseville Jr. High School in 1949.
MARTHA JANE HYDE, "Mickie," entered from Dickinson Jr. High School in 1950; Allied Youth, '52, '53; Science Club, '53.
TOMMY NELSON INGLE, entered from East Side Jr. High School in 1950; Physics & Chemistry Club, '53; Rifle Team, '51, '52; Disc & Diamond Society, '52; Sergeants Club, '51, '52; Honor Platoon, '51, '52; Firing Squad, '51, '52.
ALTON THOMAS INGRAM, entered from Chattanooga High School in 1952.

Third Row:

BARBARA SUE IRVIN, "Susie," entered from East Side Jr. High School in 1949.
TOMMY FLETCHER JETT, "Fletch," entered from East Side Jr. High School in 1949; "Digest" Staff, '50, '51, '52; Disc & Diamond Society, '51, '52, 1st Lieutenant, '53; R.O.T.C. Captain.
ANNA JEAN JOHNSON, "Wink," entered from Roseville High School in 1952.
BILLIE GERALDINE JOHNSON, "Jerry," entered from Hardy Jr. High School in 1950; Silhouette Club, '51, '52, '53.

Fourth Row:

JAMES ALVIN JOHNSON, "Lover," entered from Soildy Daley High School in 1950.
MARY JOYCE JOHNSON, "Corky," entered from East Side Jr. High School in 1949; Library Staff, '49, '50; Girls H-Y, '51, '52, '53; Senate, '51, '52, '53; "Digest" Staff, '51, Society Editor, '52; Associate Editor, '53; Silhouette Club, '51, '52; Publicity Chairman, '53; Allied Youth, Secretary, '52; President, '53; CHAMPION Staff, Senior Editor, '53; Senate Play Cast, '51; Junior Play Cast, '52; Senior Play Cast, '53; National Honor Society, '52, '53; Ushers, '52, '53; L.C., '52, R.O.T.C. Sponsor, '53; "Voice of Central" News Broadcaster, '52, '53.
AUBREY EUGENE JOHNSON, entered from McCallie School in 1951; M. P. Club, '51, '52, '53; Bible Club, '51, '52; Honor Platoon, '52, '53; Firing Squad, '52, '53.
EDDIE LEE JONES, entered from East Side Jr. High School in 1951; Baseball Team, '51, '52.

Fifth Row:

SHIRLEY LOUISE JONES, "Joanie," entered from East Side Jr. High School in 1951; Senate, '50; Charn Club, '50; Shave Off Club, '52, '53; Girls Battalion, '51, '52, '53; Swimming Club, '52, '53; Allied Youth, '52, '53.
WILLIAM STANLEY JONES, "Bunk," entered from Brainerd Jr. High School in 1950; Sergeants Club, '51, '52.
PATRICK WHITE KELLY, "P," entered from Brainerd Jr. High School in 1950; Rifle Team, '51, '52; M. P. Club, '51; 2nd Lieutenant in R.O.T.C.
EDDIE FRANCIS KEMPER, "Cuddles," entered from East Side Jr. High School in 1951; Sergeants Club, '51, '52; Rifle Team, '51, '52; Officers Club, '52, '53; 1st Sergeant in Disc & Diamond Society, '52, '53.

Sixth Row:

JOYCE DEAN KENDALL, "Jo," entered from Hardy Jr. High School in 1949.
ROBERT JAMES KENDALL, "Goose," entered from Brainerd Jr. High School in 1949.
JAMES RONALD KILLINGSWORTH, "Killer," entered from East Lake Jr. High School in 1951; Key Club, '51, '52, '53; Varsity Football Team, '51, '52, '53; Golf Team, '52.
PAUL ROBERT KITTLE, entered from Chattanooga High School in 1951; T & I Club, '51, '52, '53; Treasurer, '53.

Seventh Row:

BARBARA C. LACEY, "Babe," entered from Dickinson Jr. High School in 1949.
CHARLES G. LAMB, entered from Red Bank Jr. High School in 1949; Purple and Gold Band, '49, '50; Football, '50; Sergeants Club, '51, '52; Key Club, '51, '52; President, '53; Disc & Diamond Society, '51, '52; Treasurer, '53; Boy's H-Y, '52, '53; Secretary, '53; City Wide H-Y Council, '52, '53; Delegate to Chicago for Key Club, '52.
MARY HILDEGARDE LANDERS, "Hilde," entered from Brainerd Jr. High School in 1950; Nite Owls, '51, '52; Secretary, '52; Major Girls Battalion, '52, '53; Lieutenant of Girls Battalion, '51, '52; Senate, '51, '52; Gym Staff, '51, '52, '53; Ace Club, President, '53; R.O.T.C. Sponsor, '53.
RABONNE LANG, "Bonnie," entered from East Side Jr. High School in 1949; Ushers, '52, '53; Pirates Club, '51, '52.



Senior Class



Those Dignified Seniors

First Row:

BARBARA ANN LAYCOCK, "Bob," entered from Hardy Jr. High School in 1951.
GERALDINE AMANDA LEE, "Gerry," entered from Dickinson Jr. High School in 1949; Ace Club, '50, '51, '52, '53; Girls Club, '51, '52, '53; Girls Basketball Team, '51, '52, '53.
DOLORES ANN LEMONS, "Dolores," entered from East Lake Jr. High School in 1950; Girls Battalion, '51, '52.
JACK DEAN LEWIS, "Sugar Daddy," entered from Dickinson Jr. High School in 1950; Basketball Team, '51, '52, '53; Club, '51, '52, '53.

Second Row:

SHIRLEY LEWIS, entered from East Side Jr. High School in 1949; Glee Club, '51, '52.
SHIRLEY GRACE LINDSAY, "Grace," entered from East Side Jr. High School in 1951; Bible Club, '52.
ROBERT HENRY LOCKLEAR, "Bobby," entered from East Side Jr. High School in 1951.
RONALD LEFAGE LOGAN, entered from Dickinson Jr. High School in 1950; M. P. Club, '51, '52.

Third Row:

JAMES ALBERT LONG, "Jimmy," entered from Brainerd Jr. High School in 1951.
SHIRLEY ELAINE LORD, "Pudgie," entered from Dickinson Jr. High School in 1951; Anchors Aweigh Club, '51, '52, '53; Varsity Glee Club, '51, '52; Secretary, '52; Junior Play Cast, '52; Senior Play Cast, '53; CHAMPION Night Cast, '52.
PEGGY JOYCE LOWRY, "Peg," entered from East Lake Jr. High School in 1950; Girls Battalion, '51, '52, '53; Ushers, '52, '53.
JEANNE LYNCH, entered from Bradley High School in 1953.

Fourth Row:

NANCY PAULINE McALLISTER, "Little Bill," entered from Tyler High School in 1949.
BARBARA JEAN McCOMMON, "Mac," entered from Hardy Jr. High School in 1951; Swimming Club, '53; All-Red Youth, '52, '53.
DONALD EDWARD McCUSTON, entered from North Chattanooga Jr. High School in 1950; Sergeants Club, '51, '52; Disc & Diamond Society, '51, '52, '53.
CHARLENE McCULLOUGH, entered from Rockwood High School in 1950; Ushers '53; Bible Club '51.

Fifth Row:

DORIS JEANETTE McDONALD, "Mac," entered from Brainerd Jr. High School in 1949; Charn Club, '49, '50, '51; President, '51; Girls Battalion, '50, '51, '52.
SHIRLEY JEAN McELHANEY, "Mac," entered from Hardy Jr. High School in 1950; Shove-Off Club, '50, '51, '52.
EDNA EARLE McGRIFW, "Eddie," entered from East Side Jr. High School in 1951; Bible Club, '52.
JERRY MICHAEL MCKENZIE, "Georgia Pine," entered from Brainerd Jr. High School in 1950; Club; Sergeant-at-Arms, Senior Class, '52; Captain in Military, '52; Football Team, '51, '52, '53.

Sixth Row:

WYNNE SUE McMILLEN, entered from Chattanooga High School in 1950.
BARBARA DEANE MABEE, entered from Dickinson Jr. High School in 1949; Silhouette Club, '52; Vice-President, '52; R.O.T.C. Sponsor, '52; Girls Battalion, '52, '53; Red Cross Chairman, '51, '52; Co-Captain of "Pounders" football team, '51, '52, '53.
JIMMY ANDERSON MANSEL, "Pip-Squeak," entered from Hardy Jr. High School in 1951; Sgt. Club, '52.
JOYCE MARIE MARKUM, "Tiny," entered from East Lake Jr. High School in 1950; Girls Hi-Y, '51, '52, '53; Girls Battalion, '51, '52; Ushers, '52, '53.

First Row:

WAYNE NORRIS MARTIN, "Long John," entered from South Harrison Jr. High School in 1951.
EDWIN JACK MASON, "Hunks," entered from East Side Jr. High School in 1950; "C" Club, '52, '53; Varsity Football Team, '52, '53.
JUDITH ANN MASON, "Judy," entered from Dickinson Jr. High School in 1951; Twix Teen Club, '52, '53; Red Cross, '52.
BARBARA JO MEADOWS, "Biondie," entered from Brainerd Jr. High School in 1949; Charn Club, '49, Secretary and Treasurer, '51; Library Staff, '54, Treasurer, '51; Office Staff, '49, '51, '52, '53; L.L.C., '51, '52, '53; Twix Teen Club, '51, '52; Girls Battalion, '50, '51, '52, '53.

Second Row:

CLIFFORD A. MEYER, "Cliff," entered from Lutheran School in 1949; Sergeants Club, '51, '52; Boxing Team, '51, '52; Library Staff, '51, '52; Science Club, '52, '53.
EDGAR ALBERT MEYER, "Precious," entered from 1st Lutheran School in 1949; Swing Band, '51, '52, '53; Glee Club, '51, '52; President, '52; Orchestra, '52, '53.
GENE MEYER, entered from Brainerd Jr. High School in 1949; T & I Club, '53; Sergeants Club, '52.
BARBARA NEIL MILLER, "Toogie," entered from Brainerd Jr. High School in 1951; Shove-Off Club, '52, '53; Girls Battalion, '51, '52, '53.

Third Row:

ELEANOR ROSALIE MILLER, "Eadie," entered from Brainerd Jr. High School in 1951; Pirates Club, '52, '53; Secretary and Treasurer, '53.
SUE EVELYN MITCHELL, "Suzie," entered from East Side Jr. High School in 1950.
WALTER EDWARD MOONEY, entered from Brainerd Jr. High School in 1949; M.P. Club, '50, '51; Rifle Team, '51; Ushers Club, '50, '51, '52; Boxing Team, '51, '52; Physics and Chemistry Club, '52, '53; Honor Platoon, '50, '51.
MARY JOYCE MOORE, entered from Hardy Jr. High School in 1950; Senate, '50, '51; T & I Club, '53.

Fourth Row:

NELL ANN MORIGAN, entered from East Lake Jr. High School in 1950; Orchestra, '51, '52, '53; Ushers Club, '53.
S. BOSS MORGAN, entered from Lookout Jr. High School in 1949; Football Team, '49, '50, '51, '52, '53; Major in R.O.T.C., '53; "C" Club.
WILLIAM PUGHMAN MORIGAN, "Bill," entered from East Side Jr. High School in 1949; Key Club, '51, '52, '53; CHAMPION Staff, '50, '51; Club, '52, '53; M.P. Club, '50, '51; 1st Lt. in R.O.T.C.; Spanish Club, '50; "B" Team Basketball, '49, '50; Manager of Baseball Team, '51.
DIANA JANE MOSS, "D.J.," entered from East Side Jr. High School in 1951.

Fifth Row:

CAROLYN JEANETTE MULLIS, entered from Brainerd Jr. High School in 1950; L.L.C., '52, '53; Honor Society, '52, '53; Junior Play Cast, '52; Ushers, '52, '53; Library Staff, '50, '51, President, '52.
JOAN FRANCES MURRAY, entered from South Pittsburgh High School, Digest Staff, '51, '52; Glee Club, '52.
SHIRLEY A. MURRAY, "Shirley," entered from South Pittsburgh High School in 1951; L.L.C., '52, '53.
CHARLES WILLIAM MYERS, "Charlie Gra," entered from East Lake Jr. High School in 1950; Key Club, '51, '52; L.L.C., '51, '52.

Sixth Row:

DOROTHY CHRISTINE NETTLES, entered from East Lake Jr. High School in 1951.
JACKIE MERLE NOLES, "Jick," entered from Dickinson Jr. High School in 1949; Silhouette Club, '52, '53; Allied Youth, '52, '53; Senior Play Cast, '52; Senate, '52, '53; Art Club, '52, '53; Spanish Club, '51, '52.
CAROLE JEANE NORRILL, entered from Brainerd Jr. High School in 1951; Anchors Aweigh Club, '51, '52, President, '51; Announcers Club, '51, '52; Secretary, '51; Girls Battalion, '52; Lieutenant, '53; Gym Staff, '51, '52, '53; Ace Club, '52; Home Coming Queen Candidate, '53; Senate, '52, '53; Miss Central, '52.
WINSTON LEE NORTH, "Wink," entered from Lookout Jr. High School in 1951; M.P. Club, '50, '51, '52, '53; Chemistry & Physics Club, '52, '53; 1st Lt. in R.O.T.C., '52, '53.

Seventh Row:

CONRAD BOOTH NORWOOD, "Buddy," entered from East Lake Jr. High School in 1951.
BETTY ANN OLDMAN, "Bet," entered from Nashville Linton in 1951; Anchors Aweigh Club, '51, '52; Vice-President, '53; Girls Battalion, '53; R.O.T.C. Sponsor, '53.
JOSEPH ALBERT OLIVERI, "Joey," entered from Brainerd Jr. High School in 1949; Disc & Diamond, '52, '53; Sergeants Club, '52; Vice-President of Honor Platoon, '53; Rifle Team, '52, '53; Officers Club, '52; Honor Platoon, '52, '53; M.P. Club, '51, '52, '53; 1st Lt. in M.P. Club, '53.
TOMMY WILLARD ORTON, "Sonny," entered from Lookout Jr. High School in 1950; Key Club, '51, '52, '53; Boys Hi-Y, '51, '52, '53; City Wide Hi-Y Council, '51, '52; Vice-President, '53.



Senior Class



Students??

First Row:

ALICE MARIE ORTWEIN, entered from East Side Jr. High School in 1949; Spanish Club, '51, '52, '53; T.I. Club, '51, '52, '53; Chaplain, '53; Girls Battalion, '51, '52, '53; L.L.C., '52, '53; Honor Society, '52, '53; Ushers, '52, '53.
JIMMY MARSHALL OWEN, "Jimmy," entered from East Lake Jr. High School in 1949; Disc & Diamond Society, '50, '51, '52, '53; M.P. Club, '49, '50.
JAMES ANDERSON PACK, "Jimmy," entered from East Side Jr. High School in 1949; Freshman Class President, '50; Sophomore Class President, '51; Junior Class President, '52; Senior Class President, '53; Honor Society, '52, '53; Disc & Diamond Society, '51, '52, '53; Colonel of R.O.T.C., '53; Four Year Letterman in Football, '50, '51, '52, '53; Allstate Football in '52; President of "C" Club, '52; Captain of Basketball Team, '52; Baseball Team, '50, '51, '52, '53; Allstate Football in '52; Vocalist with Swing Band, '52; American Legion Award, '53; Mr. Central, '53.
PATSY RUTH PACK, "Pat," entered from Bridgeport High School, Bridgeport, Ala., in 1952.

Second Row:

WALTER EDGAR PACK entered from Dickinson Jr. High School in 1952.
NANCY LYNN PAGE entered from Convent of Mercy in 1951; Ushers, '52, '53; Spanish Club, Secretary, '53.
JIMMY ARNOLD PAGLENO, "Pag," entered from East Lake Jr. High School in 1951.
ALMA JEAN PARKER, "Jeanie," entered from East Side Jr. High School in 1950; Library Staff, '50, '51.

Third Row:

PHYLLIS ANN PARKER, "Phil," entered from Chattanooga High School in 1952.
JOHN LEWIS PARKS, "Johnny," entered from East Side Jr. High School in 1949; Disc & Diamond, '51, '52, '53; Key Club, '52, '53; Band, '49, '50, '51; Major in R.O.T.C., '52; Swing Band, '52, '53; Orchestra, '52.
BETTY JOYCE PATTERSON, "Betty," entered from North Side Jr. High School in 1950.
GEORGE T. PATTERSON, "Georgie-boy," entered from Lookout Jr. High School in 1950; Disc & Diamond, '51, '52, '53; President of M.P. Club, '52; Senate, '52, '53; Senate Cabinet, '53; Major of R.O.T.C., '52, '53.

Fourth Row:

GEORGIA MARGARET PAYNE, "Pat," entered from Lookout Jr. High School in 1950; Merry Mac Club, '52, '53; Bible Club, '52, '53.
GERALD ERSKINE PAYNE, "Jerry," entered from Brainerd Jr. High School in 1950; Band, '50, '51, '52; Band Ensemble, '51, '52; Junior Play Cast, '52; Boy's H.T. Club, '52; Disc & Diamond, '52; Sergeant's Club, '51, '52; Senate, '52, '53; Senior Play Cast, '53; La Cielre Francals Club, Vice-President, '53; Digest Staff, '52, '53; CHAMPION Staff Associate Editor, '52, '53; Delegate to Volunteer Boy's State, '52; Key Club, '52, '53; L.L.C., '52, '53.
CECIL DOUGLAS PEARCE entered from McCallie School in 1950.
JERRY PAUL PERRY, "Bilvitt," entered from Dickinson Jr. High School in 1949; Disc & Diamond, '51, '52, 2nd Lt., '53; Junior Play Cast; Treasurer of Freshman Class, '49; CHAMPION Staff, '53; La Cielre Francals Club, '52; Varsity Football, '50, '51, '52, '53; "C" Club, '52, '53; Major in R.O.T.C., '53; Sergeant at Arms of Senior Class; Crandall Art Award.

Fifth Row:

HILLIE JO PILFER entered from Dickinson Jr. High School in 1951; Spanish Club, Vice-President, '51; Ushers, '52.
HUBERT LELAND PICKETT entered from Brainerd Jr. Club, '51; Charm Club, '49, '50.
MARY ALLEN POFF entered from East Side Jr. High School in 1949; Ushers, '52; R.O.T.C. Sponsor, '53; Pirate Club, '51, '52; Charm Club, '49, '50.
ALLAN LEWIS POWELL entered from Dade High School in 1951; Central "Digest" Printing Staff, '52, '53.

Sixth Row:

MARY JOYCE POWELL entered from East Lake Jr. High School in 1950; Battalion, '51, '52; L.L.C., '52, '53; Ushers, '52, '53.
BARBARA ANN POWERS entered from Lookout Jr. High School in 1950; Honor Society, '52, '53; Ushers, '53; Ace Club, '51, '52; Secretary and Treasurer, '53; Merry Macs Club, '52; Library Staff, '52.
BARBARA JEAN QUINN, "Babs," entered from East Side Jr. High School in 1951; "Digest" Representative, '51.
VERNA ANNE RAY entered from Brainerd Jr. High School in 1950; Varsity Glee Club, '51, '52, '53; Girls' Battalion, '51, '52, '53; Gad-A-Bout Club, '52; Pirates Club, '51; Ushers, '52, '53; Spanish Club, '51, Secretary, '52.

First Row:

SARA PATRICIA RECTOR, "Pat," entered from East Side Jr. High School in 1951; Anchors Aweigh Club, '51, '52, '53; Gym Staff, '51, '52, '53; Senate, '51, '52, '53; Junior Play Cast, '53; Honor Society, '52, '53.
STANLEY HOWARD REED, "Babe," entered from East Side Jr. High School in 1950; Library Staff, '50, '51, '52; Sergeant's Club, '51, '52.
GARLAND EDWARD REICHEL entered from Brainerd Jr. High School in 1950; Spanish Club, '50; Physics & Chemistry Club, '52, '53.
MARILYN DIANA RICE entered from Bachman School, Signal Mountain in 1950; Band, '50; Varsity Glee Club, '52, '53; Ace Club, '51, '52.

Second Row:

KENNETH ELDON RIGGS, "Kenny," entered from East Lake Jr. High School in 1950; "C" Club, '52, '53; Disc & Diamond Society, '50, '51, '52, '53; Varsity Glee Club, '51, '52.
WILLIAM RUSH ROBERSON, "Bill," entered from Brainerd Jr. High School in 1951; Spanish Club, '50; Sergeant's Club, '51, '52.
DON HILL ROBERTS, "Don," entered from Brainerd Jr. High School in 1948; Disc & Diamond, '52; T. & L. Club, '53.
VELMA WILDA ROBERTS entered from Lookout Jr. High School in 1951; Varsity Glee Club, '51, '52; Ushers, '52, '53.

Third Row:

DON EDWARD ROBINSON, "Donnie," entered from Lutheran Elementary School in 1950; "C" Club, '51, '52, '53; Key Club, '51, '52; Disc & Diamond Society, '51, '52, '53; Sergeant's Club, '51, '52; Boxing Team, '50, '51, '52, '53; R.O.T.C. Major, '53.
EMMETT OWEN ROBINSON, "Hermit," entered from East Side Jr. High School in 1951; Printing Staff, '52, '53.
ROBBIE LOU RODEN, "Lucie," entered from Tyler High School in 1952.
JOAN ROGERS, "Joni," entered from East Side Jr. High School in 1950; Ace Club, '52, '53; "Digest" Representative, '50, '51.

Fourth Row:

PEGGY ANN ROSE, "Rosebud," entered from Dickinson Jr. High School in 1949; Silhouette Club, '51, '52, President, '53; Senate, '51, '52; CHAMPION Staff, '53; Allied Youth, '53; Girls' Battalion, '50, '51, '52, '53; "Digest" Staff, '52, '53.
DOREIS MARIE RUNYAN, "Dodie," entered from Dickinson Jr. High School in 1951.
DIANNE JOSEPHINE RYMER, "Dinky-Tink," entered from Chattanooga High School in 1952; Merry Mac's Club, '52, '53; Vice-President, '53; Red Cross, '52, '53.
PERRY RUCKE ST. JOHN, "Guinea Pig," entered from East Lake Jr. High School in 1951.

Fifth Row:

BILLIE JEAN SCHMITT, "Willie," entered from Rossville High School in 1951; Twix Teen Club, '51, '52, '53; Varsity Glee Club, '51, '52, '53; Battalion, '52; Allied Youth, '52.
STANLEY SCHMITT, "Smitty," entered from East Side Jr. High School in 1949; Band, '50, '51, '52.
FRAN THOMAS SELBY entered from Southwest DeKalb School, Decatur, Georgia, in 1952.
JAMES WAYNE SEWELL, "Jim," entered from East Side Jr. High School in 1949.

Sixth Row:

KENNETH EDWARD SHARP entered from Section Alabama High School in 1950.
ROBERT SHELTON, "Bobby," entered from Lookout Jr. High School in 1950.
ALICE SUE SHIPLEY, "Pat," entered from Hardy Jr. High School in 1951.
DELOUIS EYADINE SIMMONS entered from Chattanooga High School in 1952; Glee Club, '52, '53.

Seventh Row:

MALVIN GENE SIMMONS, "Bottles," entered from Lookout Jr. High School in 1950.
MILDRED SMONS, "Micky," entered from Signal Mountain Elementary School in 1949; Bible Club, '52.
HEATHERIE THELMA SMITH, "Bea," entered from Lanier School in 1952; Pirates Club, '52, '53.
ESTALENE SMITH, "Tootsie," entered from East Side Jr. High School in 1951.



Senior Class



Second Childhood



First Row:

MAGGIE VIRGINIA SMITH, "Ginger," entered from East Side Jr. High School in 1951.
NANNIE LEE SMITH, "Nan," entered from Brainerd Jr. High School in 1951; Allied Youth, '52, '53; Varsity Club, '53; R.O.T.C. Sponsor, '53; Senate Play Cast, '52; Senate, '52, '53; "Digest" Representative, '53; Usher, '52.
PAUL NELSON SMITH entered from East Lake High School in 1949; M.P. Club, '51, '52; Sergeant's Club, '52; Honor Platoon, '52; Rifle Team, '53; Piring Squad, '52.
CLYDE MELBOURNE SNEED, JR. entered from Brainerd Jr. High School in 1949; Disc & Diamond Society, '50, '51, '52, '53; Boys Hi-Y, '51, '52, '53; Key Club, '51, '52, '53; Sergeant's Club, '51, '52; R.O.T.C., 2nd Lieutenant, '52; Officers' Club, '52, '53; Physics & Chemistry Club, '52, '53; Spanish Club, '50, '51.

Second Row:

ALLEN HANKIN SNYDER entered from Hardy Jr. High School in 1951.
BOBBY JO SPAULDING, "Bobby," entered from Brainerd Jr. High School in 1950; Spinsters Club, '50, '51, '52, '53; Senate, '50, '51, '52, '53; Varsity Club, '50, '51, '52; Girls Hi-Y, '52, '53; L.L.C., '52, '53; Delegate to Volunteer Girls' State, '52; National Honor Society, '52, '53; "Digest" Representative, '53; Junior Play Cast, '52; Senior Play Cast, '51; Senate Play Cast, '51.
WILLIAM THOMAS SPENCER, "Billy," entered from East Side Jr. High School in 1949; Disc & Diamond Society, '51; Band, '49, '50; Orchestra, '51; Cheerleader, '52.
HARILEY LOUISE SPRUELS entered from Brainerd Jr. High School in 1949; G.A.A. Bout Club, '49, Secretary, '50, President, '51, '52; Girl's Battalion, '52, '53.

Third Row:

WILMA EVELYN STALLINGS entered from Lookout Jr. High School in 1949; Library Staff, '49; Treasurer, '50, Secretary, '51, '52; Ushers, '52, '53; National Honor Society, '52.
JAMES WENDELL STANSBERRY entered from Hardy Jr. High School in 1951; M.P. Club, '51, '52.
PAUL MALVINE STARNES, "Pat," entered from East Lake Jr. High School in 1951.
CHARLOTTE JUNE STEELE, "Cha-Cha," entered from Lookout Jr. High School in 1951.

Fourth Row:

JAMES GREGORY STEWART, "Jimmy," entered from Hardy Jr. High School in 1951; Boys Hi-Y, '52, '53; Physics & Chemistry Club, '52, '53; M.P. Club, '51, '52.
RICHARD ROY STINE entered from Brainerd Jr. High School in 1951; Rifle Team, '52, '53; Military Sergeant, '53.
THELMA JEAN STOCKTON, "Jeanie," entered from Hardy Jr. High School in 1951; Ushers' Club, '51, '52, '53; Senate, '53; Battalion, '51, '52, '53; Swimming Club, '52; Allied Youth, '52, '53.
BARBARA ANN STOKES, "Bobbie," entered from Hardy Jr. High School in 1951; T. & I. Club, Secretary, '52, '53.

Fifth Row:

JOHN BERNARD STONER, "Stony," entered from East Side Jr. High School in 1949.
PATRICIA ANNE STRICKLAND, "Tish," entered from Brainerd Jr. High School in 1950; Girl's Battalion, '52.
REBA ANN SUGGS entered from East Lake Jr. High School in 1950; Twin Teen Club, '50; Pirates Club, '52.
JACQUELINE SULLENBERGER, "Jackie," entered from Knoxville Young High School in 1951; Ace Club, '52, '53.

Sixth Row:

WINIFRED JUNE SULLIVAN entered from East Side Jr. High School in 1949; Senate, '51, '52, '53; Honor Society, '52, '53; Girl's Hi-Y, '51, '52, '53; Ushers, '52, Secretary and Treasurer, '53; Girl's Battalion, '51, '52, '53; L.L.C., '52, '53; Spanish Club, '50, '51; "Digest" Staff, '50, '51.
VALIEE JANE SWEEDE entered from Dickinson Jr. High School in 1949; Nile Owls, '51, '52; Publicity Chair, '51, '52; Senate, '50, '51, '52, '53; Girl's Battalion, '51, '52, '53; Senior Play Cast, '53; Red Cross Club, '52, '53; L.L.C., '53; National Honor Society, '53.
ANN TALINGTON entered from Brainerd Jr. High School in 1951; Ushers, '53; Pirates Club, '52; Charn Club, '51.
ELIZABETH JOANN TATE, "Jody," entered from East Side Jr. High School in 1950.

First Row:

XADINE TATE, "Shortie," entered from East Side Jr. High School in 1950; Shave-Off Club, '50, '51, '52, Secretary, '52; Battalion, '50, '51, '52, '53; Red Cross, '51, '52; L.L.C., '52, '53; Swimming Club, '52; Secretary, '53; R.O.T.C. Sponsor, '53; "Digest" Staff, '53.
JANICE MYRNA TEAGUE, "Jan," entered from Brainerd Jr. High School in 1951.
BILL POWELL TERRY, "Little Man," entered from Deatur High School in 1952.
CAROLAN JANE THOMAS entered from Red Bank High School in 1949; Charn Club, '49, '50, '51; Band, '49, '50, '51.

Second Row:

GARY LEON THOMAS, "Gig," entered from Hardy Jr. High School in 1951.
OPAL DELOIS THURMAN, "De," entered from Brainerd Jr. High School in 1949; National Honor Society, '52, '53; Pirates Club, '52, '53, Vice-President, '53; Orchestra, '51, '52, '53.
TOMMY LEROY TILLMAN, "Tiny Terrible Tom," entered from Brainerd Jr. High School in 1950; Vice-President of Class of '51; "C" Club, '50, '51, '52, Vice-President, '53; Track Team, '50, '51, '52, '53; Varsity Football Team, '50, '51, '52, '53; Alternate Captain of Football Team, '52.
CHARLES WOODROW TINNON, "Monty," entered from East Side Jr. High School in 1950; Disc & Diamond Society, '51; Honor Platoon, '51, '52; M.P. Club, '52, President, '53; Sergeant's Club, Vice-President, '53; Rifle Team; Senior Play Cast, '53; Capt. of R.O.T.C., '53; Boxing Team, '51; Library Staff, '51.

Third Row:

SHIRLEY FRANCES TOMPKINS entered from Memorial Jr. High School, Tampa, Florida, in 1952; R.O.T.C. Sponsor, '52.
SARA JANE TRAIL entered from Manchester High School, Manchester, Tennessee, in 1949; Spinsters, '51, '52, Secretary, '52; Senate, '51, '52, '53; Girls Hi-Y, '52, '53; Ushers, '52, '53; Library Staff, '51, '52; Club Editor, '53; Senior Play Cast, '53; Girl's Battalion, '51, '52, '53; Senate Play Cast, '52; L.L.C., '53.
BEN FRANK TROTTER entered from Lookout Jr. High School in 1949; T. & I. Club, '52, '53.
HARRY POPE TROUTMAN, "Fish," entered from Brainerd Jr. High School in 1950.

Fourth Row:

PEGGY ANNE TUCKER, "Peg," entered from Brainerd Jr. High School in 1951; Honor Society, '52, '53; Ace Club, Publicity Chairman, '52, '53; Spinsters, '51, '52, Treasurer, '52; Girl's Hi-Y, '52, '53; Ushers, '52, '53; L.L.C., Publicity Chairman, '52, '53; "Digest" Staff, '52, Business Manager, '53.
SHIRLEY JUNE TUCKER, "Shirley," entered from Lookout Jr. High School in 1950; Spanish Club, '51; Bible Club, '52, '53.
BILLY GENE TURNER, "Bill," entered from Hardy Jr. High School in 1951; Boys Hi-Y, '53; Physics & Science Club, '51; M.P. Club, '51, '52.
MARVIN ALLEN TURNER, "Turner," entered from Northside Jr. High School in 1950; Disc & Diamond Society, '52, '53; Swing Band, '52, '53; Physics & Chemistry Club, Treasurer, '53; Military Band, '50; 1st Lieutenant in R.O.T.C., '53; Purple & Gold Band, '51; Sergeant's Club, '52, Treasurer, '53.

Fifth Row:

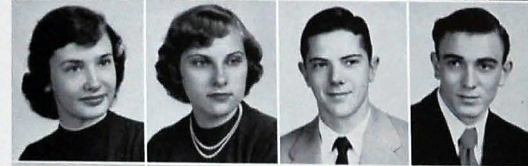
JOAN KATHLEEN UNDERWOOD, "Joanie," entered from Signal Mountain in 1950; Varsity Glee Club, '52, '53; Ace Club, '53; Pirates Club, '52; G.A.A. Bout Club, '52; Office Staff, '53; Library Staff, '50.
WILLIAM MAURICE BARK, "Van Allen," entered from Chattanooga Chee High School in 1952; Band, '52, '53; Swing Band, '52, '53; Senior Play Cast, '53.
ELMER ADDISON VAN VOGHER entered from Dickinson Jr. High School in 1950.
JAMES M. VAUGHN, "Jimmy," entered from Brainerd Jr. High School in 1950; Honor Platoon, '51; Sergeant's Club, '52; M.P. Club, '52; Disc & Diamond Society, '52; 2nd Lieutenant in R.O.T.C., '52.

Sixth Row:

EDWARD RAY VICKERY, "Vickery," entered from East Side Jr. High School in 1950; Band, '50, '51, '52, '53; 1st Lieutenant, '52, '53; Band Officers Club, '52, '53.
JOE MARVIN VICKERY entered from Brainerd Jr. High School in 1949.
DAN WADE, "Whitney," entered from East Side Jr. High School in 1950; Varsity Football Team, '52; Baseball Team, '52, '53; "C" Club, '52, '53; Disc & Diamond, '51, '52, '53; Delegate to Volunteer Boys' State, '52; R.O.T.C., Captain, '52; "Digest" Staff, '51, '52; Senate, '51, '52; Boys Hi-Y, '51, '52; Key Club, '51, '52.
LETTY LOU WADE, "Let," entered from Brainerd Jr. High School in 1950; Shave-Off Club, '50, '51, '52; Treasurer, '53; Ace Club, '53.

Seventh Row:

PAT ANN WAGNER, "BaBee," entered from Lutheran School in 1949; Nile Owl Club, '51, '52; Secretary, '53.
FRANCES LURE WALDRUP, "Pat," entered from White Hall School in 1951; Spanish Club, '52, '53.
CHESTER LURE WALKER, "Cherry," entered from Red Bank High School in 1949; M.P. Club, '49, '50.
JO ANN WALKER, "Jo," entered from Brainerd Jr. High School in 1950; Pirates Club, '51, '52, President, '53; Ace Club, '52, '53.



Senior Class



You Name It!

First Row:

NORMA JEAN WALKER, "Jeanie," entered from Nathan L. Buchanan School in 1949.
SHIRLEY MAX WALL, entered from Hardy Jr. High School in 1950.
DAPHNE ROSEANNE WALLS, "Pudgy," entered from Davis High School, Avana, Georgia in 1951; Vagabond Club, '51, '52, '53; Physics & Chemistry Club, '52, '53; Sports, '52, '53.
SYLVIA ANNE WASHAM, entered from John Marshall High School in 1950; Bible Club, '51, '52, President, '53; Ushers, '52, '53.

Second Row:

DOROTHY WEAVER, "Dotzy," entered from Brainerd Jr. High School in 1951; Ace Club, '51, '52; Gym Staff, '51, '52, '53; Junior Play Cast, '52; Silhouette Club, '52; Varsity Glee Club, '51, '52, '53; Senate, '52, '53; L.L.C., '53.
VIRGINIA JOYCE WELBORN, "Joy," entered from Hardy Jr. High School in 1951.
ELIZABETH LOUISE WELCH, "Boots," entered from East Side Jr. High School in 1951; Varsity Glee Club, '51, '52, '53.
PEGGY KATHERINE WELCH, "Peg," entered from Hardy Jr. High School in 1950; Allied Youth; Silhouette Club, '50, '51.

Third Row:

BOB WELLS, entered from Brainerd Jr. High School in 1949; Honor Platoon; M.P. Club, '52, Secretary, '53; Boy's Hi-Y, '52, '53; Disc & Diamond, '51, '52; Key Club, '52, '53.
RALPH MCKINLEY WEST, "R. M.," entered from East Side Jr. High School in 1949; Bank Captain, '52, '53; Sergeant's Club, '51, '52; Officers Club, '51, '52, '53; H.O.T.C. Captain, '52; Band, '49, '50, '51, '52, '53; Band Officers Club, '52, '53; Glee Club, '51, '52; Swing Band, '50, '51, '52, '53.
GEORGE WILEY WESTBROOK, "Willie," entered from East Side Jr. High School in 1950; Disc & Diamond, '51, '52, Captain, '52; Sergeant's Club, '52; Science Club, '52; M.P. Club, '51; Honor Platoon, '51, '52; Rifle Team, '52, '53; Firing Squad, '51, '52; L.L.C., '52, '53; R.O.T.C. Major, '53; Track Team, '50; Stage Crew, '50; Junior Hi-Y, '50.
CAIRY NEIL WHIGHAM, entered from Rossville High School in 1952; Science Club, '53; Organist, '52, '53.

Fourth Row:

BARBARA ANNE WHITE, entered from Brainerd Jr. High School in 1950.
RALEIGH WILLIAM WHITEMAN, entered from North Side Jr. High School in 1951; M.P. Club, '51, '52; Honor Platoon, '52, '53; Disc & Diamond, '52, '53; Rifle Team, '53; Junior Play Cast; 1st Lieutenant of R.O.T.C., '53.
WILADINE WILEMAN, "Dean," entered from South Pittsburgh High School in 1951; Ushers Club, '52, '53.
JO ANNE WILLIAMS, "Jody," entered from Dickinson Jr. High School in 1950; Library Staff, '50, '51; Senate, '50, '51, '52, '53; Red Cross, '52, Secretary, '53; Silhouette Club, '52, Treasurer, '53; L.L.C., '53; National Honor Society, '52.

Fifth Row:

MASON LLOYD WILLIAMS, "Lifty," entered from Lakeview High School in 1950.
NOIRVEL RAY WILLIAMS, "Red," entered from Brainerd Jr. High School in 1950; T & I Club, '52.
WALTER ALVIN WILLIAMS, "Sweet Willie," entered from North Nashville High School in 1949; Band, '50, '51, '52, '53; Orchestra, '52; "Digest" Staff, '52, '53.
ANNIE KATHERINE WILSON, "Kitty," entered from Knoxville Central High School in 1951; Anchors Aweigh Club, '51, '52, Treasurer, '53; Girl's Battalion, '52; R.O.T.C. Sponsor, '52.

Sixth Row:

BOBBY RAY WILSON, "Willie," entered from Hardy Jr. High School in 1950; M.P. Club, '50, '51.
EDNA ELIZABETH WILSON, "Blue Eyes," entered from East Side Jr. High School in 1951.
MARTHA JEAN WILSON, "Marty," entered from Dickinson Jr. High School in 1949; Y-Teens Club, '49; Spanish Club, '50; Senate, '50, '51, '52, '53; Girl's Battalion, '50, '51, '52; Badminton Club, '49.
MARY ELIZABETH WILSON, "Butch," entered from Hardy Jr. High School in 1950; "Digest" Staff, '51, '52; Sports editor, '53; CHAMPION Staff, Club Editor, '52, '53; Ushers, '52, '53; Girl's Battalion, '52, '53; Senate, '52, '53.

Senior Class

First Row:

NORMA JEAN WILSON, entered from Hardy Jr. High School in 1950; Silhouette Club, '51, '52, '53; Majorette, '51, '52, '53; Majorette Club, '51; Swimming Club, '52, '53.
PEGGY JO WILSON, entered from Brainerd Jr. High School in 1951.
JANE WINFREY, "Janie," entered from East Side Jr. High School in 1949; Nite Owls Club, '50, '51, '52; Vice-President, '53; Gym Staff, '51, '52, '53; Y-Teens, '49, '50; Twix Teen Club, '49, '50; Delegate to Girls' State, '52; Red Cross Chairman, '51.
LEBRON R. WINTON, "Lebron," entered from East Lake Jr. High School in 1950; Disc & Diamond Society, '52; R.O.T.C. Captain, '53; Honor Platoon, '50, '51, '52; Rifle Team, '50, '51, '52; M.P. Club, '50, '51, '52; Sergeant's Club, '50, '51, '52; Firing Squad, '50, '51, '52; Hearst Rifle Team Award, '50, '51, '52.

Second Row:

CAROLYN WISLER, "Chris," entered from Hampton High School, Hampton, Virginia, in 1952; Physics & Chemistry Club, '52, '53; "Digest" Staff, '52, '53; Senior Play Cast, '52, '53; L.L.C., '52, '53; Swimming Club, '52, '53; Honor Society, '52, '53.
ANDREW WITT, "Andy," entered from East Side Jr. High School in 1951; Sergeant's Club, '51, '52; Science Club, '53; 2nd Lieutenant, '53.
BOB GLENN WOOD, "Packy," entered from Lookout Jr. High School in 1950; T & I Club, '51, '52, '53.
DOROTHY MAE WOOD, "Dot," entered from East Side Jr. High School in 1950; Shove-Off Club, '50, '51, '52; Vice-President, '53; Cheerleader, '51, '52, '53; Treasurer of Class of '52; Secretary of Class of '53; Home Coming Queen, '53.

Third Row:

GLORIA DEAN WOODY, "Blue Eyes," entered from Franklin High School, Franklin, Tennessee, in 1950; Varsity Glee Club, '51, '52, '53; Twix Teen Club, Treasurer, '53.
BETTYE JOYCE WOOLLEY, "Betts," entered from Lookout Jr. High School in 1951; Ace Club, '51, '52, '53.
MARGARET LORAYNE VOY, "Lorry," entered from Brainerd Jr. High School in 1949; Girl's Battalion, '50; Junior Y-Teens, Treasurer, '50; Anchors Aweigh Club, '51, '52, '53; Publicity Chairman, '52; Girl's Hi-Y, '51, '52, '53; L.L.C., '52, '53; National Honor Society, '53; Treasurer, '53; "Digest" Staff, '51; Feature Editor, '52; Editor-in-Chief, '53; Girl's Basketball Team, '50, '51, '52, Captain, '53; CHAMPION Staff, Feature Editor, '53; Ace Club, '52, '53.
BILLY JACK WRIGHT, "Bill," entered from East Lake Jr. High School in 1950; "C" Club, '51, '52, '53; Boxing Team, '50, '51, '52, '53; Disc & Diamond, '51, '52, '53; Sergeant's Club, '52; Officers Club, '53; Honor Platoon, '52; M.P. Club, '51, '52; 1st Lieutenant, '53.

Fourth Row:

JACQUELINE DIXIE WYLLICK, "Jackie," entered from Chattanooga High School in 1952; Bible Club, '52, '53.
THOMAS JACKSON YORK, "Jack," entered from Brainerd Jr. High School in 1949; Rifle Team, '51, '52.



The Junior Girls and

Fally Allen, Patsy Alloway, Jeannette Andrews, Patsy Arnold, Frances Atchley, Isabella Baird, Althea Baker, Carolyn Barnes, Joan Barry, Mary Jo Barham, Mary Alice Baum, Shirley Bensfield, Carolyn Bishop, Frances Black, Vivian Blackburn, Gail Bonds, Daria Bowling, Imogene Bowman, Charlotte Bradford, Sue Ann Brady, Linda Brannon, Gail Britt, Sue Broadway, Charolotta Brown, Gae Burgess, Sue Ellen Burnett, Martha Burton, Elaine Cagle, Elaine Campbell, Sarah Carlisle, Barbara Casey, Ellen Cavin, Ruby Cavitt, Peggy Chamberlain, Mary Chesser, Elizabeth Clark, Marie Clayton, Wanda Clingan, Mary Ann Coffey, Martha Collins, Joyce Conely, Mona Conley, Barbara Cooper, Peggy Jean Cooper, Mabelith Corbett, Dorothy Cusack, Bertha Dafton, Louise Darby, Edythe Daugherty, Nancy DeLay, Freida Dietzen, Lois Donovan, Wilma Ducker, Mary Duke, Barbara DeArmond, Elizabeth Duncan, Helen Dutney, Donna Eakes, Lois Evans, Rose Englund, Jean Erwin, Phyllis Evans, Louise Farr, Ione Fitts, Billie Ford, Edna Mae Forrest, Indores Fosselt, Barbara Foster, Barbara Frydell, Betty Fuller, Sherry Gann, Carolyn Gant, Patricia Gay, Tereasa Gilbreath, Shirley Graham, Barbara Green, Marilyn Green, Joyce Gulon, Bobbie Jean Hand, Charlyne Harris, Elsie Harris, Jacqueline Harris, Jean Hatchett, Juliana Head, Justa Henry, Peggy Hicks, Barbara Hill, Myra Hobbs, Nancy Hodges, Barbara Holden, Marilyn Holden, Jo Ann Holman, Barbara Hooper, Edna Horner, Mable Hudson, Tommie Lee Huey, Ann Humble, Gladys Huskey, Vivian Huskey, Patricia Jablonsky, Patricia Jacks, Charolotte Jackson, Mary Jackson, Dorothy Jewell, Myrna Jones, Jo Anne Johnson, Marilyn Johnson, Mayra Jones, Carolyn Keith, Diane Killingsworth, Jacqueline Kittle, Nancy Lawson, Bobbie Dean Lee, Martha Leeper, Sallye Liche, Margaret Loner, Eva Lively, Carolyn Lowry,

Nancy Lucas, Louise Lumpkin, Nina Mabse, Phyllis McCarron, Nadine McConthy, Dale McCard, Gale McCard, Theda McCormick, Dorene McCullough, Francis McDearse, Fern McDowell, Sara McDowell, Billie McElhenny, Shirley McEles, Joyce McGuffey, Frances McKerley, Jo Ann McKinney, Frances Madewell, Juanita Malcolm, Patricia Manning, Patricia Martin, Shirley Maxwell, Marilyn May, Joanne Maynard, Francis Nichols, Carol Milligan, Gwendolyn Moon, Mariel Mooney, Juanita Moore, Julia Moore, Joy Mosteller, Rosella Moyers, Betty Mulliken, Billie Mulliken, Teresa Murray, Jo Ann Nabors, Emily Napier, Nora Nichols, Jo Nell, Virginia O'Dell, Shirley O'Hear, Katherine Osenby, Janet Parker, Barbara Peters, Duris Petty, Pat Pickens, Helen Pitto, Lorene Pickett, Evelyn Powell, Pat Ramsey, Virginia Reeves, Barbara Reich, Carol Reiche, Jo Ann Reid, Maureen Reid, Shirley Rower, Joyce Reynolds, Carolyn Rice, Lenda Ridge, Lucille Ritchey, Bebe Rogers, Charlotte Marion Rowell, Betty Royal, Gwen Rucks, Elizabeth Runyan, Barbara Sanders, Dottie Sanders, Barbara Saxon, Barbara Sewell, Jo Shannon, Joyce Sharp, Mary Sherrod, Patricia Shope, Barbara Shrader, Carolyn Shatton, Billie Smartt, Adella Smith, Barbara Smith, Barbara Smith, Beverly Smith, Carolyn Smith, Pat Smith, Sandra Smith, Ann Sneed, Marilyn Sparks, Barbara Springfield, Jo Ann Statton, Christina Stegall, Yvonne Stewart, Jean Stout, Marilyn Talley, Bobbie Tate, Sue Templeton, Alice Thach, Hazel Thomas, Dorothy Torritt, Wanda Trimble, June Underhill, Shirley Vendur, Jo Ann Walker, Juanita Walker, Jo Walton, Carolyn Watkins, Barbara Weeks, Joyce Welch, Joyce Westbrook, Tommy White, Edita Williams, Naomi Wilkey, Jane Wilson, Charlotte Wings, June Wings, Pat Winkler, Patricia Witt, Gerry Strickland.

Junior Boys

Ray Adams, Karl Albright, Sherwin Anderson, Johnny Arnold, Fred Ashby, Phil Ashby, Charles Bailey, Kenneth Baker, Donald Ball, Harold Ball, Neil Barnes, Bill Black, Bill Blacklock, Henry Bookout, Ray Bradford, Darvin Branan, Bill Brennan, Hal Bridges, John Brown, Richard Buque, Delbert Butler, Jim Caldwell, Willard Camp, James Cannon, Jack Carter, Robbie Carlton, Fred Chambers, Charles Champion, Charles Chapman, Ronald Clarkson, Richard Clinton, Bell Clyde, Douglas Coffey, George Collins, Marion Conner, Bobby Cops, Richard Cowart, Edward Cowin, Bobby Craig, Archie Currence, Lee Davenport, Roy Davenport, Billy Davis, Doyle Dickson, Heway Dooley, Bill Doremus, Bruce Dover, John Dyer, Lamar Eaton, Ronald Edson, Jimmy Ellison, Bobby Erwin, Frankie Evans, Fred Fowler, Ronald Fletcher, Jimmy Frazier, Vance Fry, Lamar Fusan, James Garner, Jerry Garner, Ronald Grant, Frank Guetter, Bill Harold, Johnny Hayes, Billy Heaton, Claude Hemphill, Bill Henderson, Billy Higgins, Wyndol Holmset, Charles Holmes, Robert Hoppe, Richard Hooper, J. N. Howard, Stanley Howard, Jerry Huie, Jimmy Hunter, Harry Huxton, Wayne Hutcherson, Bernard Jackson, Charles Jettton, Benny Johnson, Robert Jones, Billy Kelley, Johnny Kellis, Darwan Kennedy, Raymond Kerley, Larry Koyt, Bill King, Bobby Kingston, Charles LaFever, Devere Lawrence, Dodson Lawrence, Ray Leamon, Bill Long, Richard McAfee, Bill McCallie, Derrell McCray, Bobby McCurry, John McLaughlin, Bob McNabb, Meyer, Dan Miller, Tommy Miller, Ralph Monds, Jimmy Moorman, Eddy Newell, Frank Neyman, Larry North, Jack O'Dell, Sidney O'Kelley, Fred Osborne, Harvey Palmer, Max Parris, William Parton, Mae Pendley, J. L. Phillips, Paul Phillips, Bill Pickett, Bradley



Junior Class officers are as follows: Robert Hoppe, president; Max Parris, vice president; Vance Fry, secretary; Joy Mosteller, treasurer.

Piercy, Waymon Pools, Raymond Powell, David Power, George Prentiss, Larry Putnam, Charles Riley, Richard Russell, James Rudler, Tommy Rymer, John Sargent, Johnny Sebach, Richard Souter, Avery Senter, Ray Sharp, David Shear, Thomas Shutes, Hubert Shuprine, David Silver, Malvin Simmons, Edward Skelton, James Skidman, Chester Stailey, Jimmy Standill, Roy Stokes, Harry Strongman, Arthur Suite, Bill Sylvester, Norman Tallferro, Robert Tate, Donald Templeton, Lewis Templeton, Robert Thomas, Tommy Thompson, Don Trotter, Gus Unger, Leroy Varnell, Billy Vice, Charles Vick, Ray Warren, Lamar Watkins, Will Watkins, Howard Westbrook, Tommy Wilkins, James Wilson, Lloyd Wolfe, Wayne Wolfe, James Wood, Jon Young.



The Sophomore Girls and

Mildred Abbott, Betty Adams, Carolyn Akers, Sandra Aldridge, Yvonne Anderson, Mary Armstrong, Valeria Ayres, Eleanor Barnes, Kathleen Barnett, Nina Barrows, Sandra Battle, Jo Ann Beaver, Cynthia Beck, Joanne Berry, Sheila Betts, Helen Birkhof, Katherine Bohannon, Janet Bolden, Mary Bowen, Pat Boyd, Linda Bragg, Patsy Brewster, Barbara Britzell, Charlotte Brown, Dorothy Brown, Katherine Brown, Jazmine Brown, Sylvia Broyles, Martha Brownlow, Barbara Burton, Irene Callaway, Lorene Callaway, Harriette Carlton, Jo Ann Casey, Lella Castelli, Carolyn Chandler, Charlotte Childress, Jean Childress, Nellie Childress, Shirley Childress, Doreen Childress, Jo Ann Coady, Nina Combs, Jean Coulter, Dorothy Cox, Mary Frances Crane, Patsy Crawford, Noel Crawley, Nancy Croom, Margie Cunningham, Barbara Cupp, Ann Daniel, Ann Davis, Susanell Davis, Patsy Dickson, Peggy Dilford, Patricia Edmon, Charlotte Ellison, Dean Evans, Marlene Evans, Barbara Everett, Naomi Evertson, Alice Fisher, Billie Jo Ford, Shelly Fox, Dorothy Frank, Robbie Freeman, Sue Freeman, Barbara Fricks, Margie Fryar, Virginia Fryar, Ollie Jean Fulton, Betty Groom, Eva Gentry, Peggy Gifford, Geneva Gill, Bobby Guber, Charlotte Guggen, Ruth Gains, Carol Gandy, Jody Gannett, Ann Gray, Marilyn Gray, Lorene Greene, Mariel Greene, Frances Griffith, Charlotte Groat, Patsy Guthrie, Jane Hamrick, Henny Lee Hannah, Barbara Hardeman, Jo Ann Hardyman, Shirley Harzer, Barbara Harris, Sue Haxington, Jo Ann Haynes, Christine Helton, Ruth Helton, Sara Hembree, Janet Henderson, Barbara Hendricks, Peggy Hill, Norma Hixon, Freddie Hodges, Ernestine Holham, Bettye Holland, Sandra Hollifield, Ann Holloman, Margie Holloway, Beverly Howard, Alice Huey, Duane Hughes, Patricia Hughes, Lela Humble, Doris Hyde, Carolyn Ingle, Martha Jenkins, Marilyn Johnson, Maggie Keyser, Jackie Kittle, Jeanette

Kress, Fay Lawson, Martha Leader, Janie Lee, Joyce Lee, Judy Lee, Nola Lewis, Phyllis Lewis, Ruth Lewis, Cynthia Liles, Beverly Link, Pat Lockner, Jane Long, Pat Long, Ann Love, Jay Lavvord, Carolyn Lowe, Patsy Lunford, Faith Lyle, Doris Mabae, Peggy Mahone, June Malstrom, Delores Mammel, Helen Massey, Mary Masters, Jo Ann McDonough, Velma McDonough, Carole McDowell, Mary Jo McElhee, Yvonne McElhahan, Lynn McGuffey, Martha McKamey, Gail McLemore, Nora McMahon, Margaret Meadows, Gwen Melton, Barbara Munday, Jackie Monteth, Betty Moon, Fran Mosley, Inma Morgan, Sue Morgan, Jane Mowatt, Edna Mullis, Loretta Muse, Anita Namell, Betty Nelson, Mary Newby, Beverly Nolan, Annette Owens, Claire Pollard, Geneva Parker, Ruth Parker, Charlotte Peden, Ann Petty, Gail Phillips, Martha Phillips, Pat Plaxco, Carolyn Plomson, Robbie Potter, Patsy Powell, Polly Powell, Helen Pruitt, Jane Puckett, Donnie Purley, Martha Purley, Barbara Pyburn, Yvonne Ragle, Ann Ramage, Peggy Ransome, Charlotte Reever, Elaine Reid, Barbara Revis, Elizabeth Rice, Wilrene Richmond, Marguerite Rightaire, Norma Robinson, Betty Rogers, Norma Rosser, Sylvia Salup, Alice Sands, Lilly Saraito, Sue Scheall, Pat Schreth, Betty Seregaine, Betty Sharp, Gladys Shavers, Annette Shearer, Sandra Shepherd, Carolyn Shull, Jane Sutton, Abby Smith, Eva Jane Smith, Helen Smith, Joyce Smith, Joyce Smith, Nell Smith, Valeria Snyder, Charlotte Stashbury, Neil Stow, Carole Stock, Martha Stone, Maureen Strickland, Betty Jane Stroud, Betty Sudderth, Ann Suggs, Jean Taylor, June Teas, Frances Thomas, Elmer Thompson, Wanda Thompson, Norma Tipton, French Tilly, Elsie Tucker, Jean Turner, Joan Turner, Nancy Upton, Barbara Viner, Nancy Wade, Barbara Waldron, Melva Walters, Selma Washam, Jo Ann Watkins, Shirley Watts, Maudine Webb, Juanita Wells, Wanda Westbrook, Shan Whiteaker, Glenda Wiegler, Barbara Williams, Elsie Wilson, Judy Wilson, Marie Wilson, Patricia Wilson, Harriet Witt, Gloria Wood, Jean Woodward, Wilma Wooden, Doris Workman, Barbara Wright, Marian Wood, Dorothy Young.



Sophomore Boys

Frank Abston, Jimmy Adams, Wallace Allison, Bill Albens, Charles Anderson, Gene Aubry, Charles Baker, John Balas, Buddy Ball, Jimmy Barkley, Stanley Barry, Ray Bishop, Paul Black, Thomas Boyles, Charles Bradshaw, Don Bridgman, Odell Broden, William Burch, William Byers, Fred Camp, Lyman Campbell, Paul Campbell, Lebron Corden, Wayne Carlton, Tommy Caronchall, David Carpenter, Charles Carter, Sam Case, Glen Chamberlain, Richard Champion, Richard Chapman, Tommy Chase, Houston Clark, Larry Tingen, Ray Collins, Tommy Colwell, Jimmy Coogler, Jimmy Cope, David Corn, Alvin Cox, Kenneth Cox, Tommy Cox, Donald Crane, Wayne Dachs, James Davenport, Bill Davis, Howard Delaney, Frank Dobbin, Kenneth Dodd, William Dugger, Kenneth Dye, Mac Eagle, Byron Elkins, Bill Ellis, Jimmy Ellison, George Elmore, Joe Faulkner, Robert Ferris, Sonny Fiskell, John Fuller, W. H. Geren, Arthur Gifford, Ted Gilbreath, Sonny Goins, Hershel Goldberg, Everett Gossett, George Gray, Wade Green, Leslie Greenberg, Arthur Gregory, Robert Hacker, Jimmy Hardy, Norman Harrison, A. D. Hartline, Willie Hartman, Joel Hawkins, James Haynes, Benny Helton, John Hilliard, Edward Hixon, Bill Hodges, Robert Holland, Richard House, Edward Howard, Harvey Hunt, Jimmy Huskey, Bernard Ingle, J. W. Irwin, Jimmy Isen, Ward Jackson, Arnold Janeway, Harold Janeway, Terry Jerutiga, Billy Johnston, Bud Jones, Charles Keith, Tommy Kelley, Zackell Kennedy, Bill Kerley, John Kimbrough, Billy King, Larry King, David Kinley, Buddy Knowles, Gene Lawson, Winston Lenoist, Eddie Lerch, David Lengerfelt, Melvin Lofly, Bobby Logsdon, Johnny Long, Winford Long, George Lynch, Ed Macklin, James Macklin, Robert Malone, Billy Manning, Buddy Martin, Joe Mohrle, Troy Matthews, Jimmy McAllister, James McConathy, Bobby McCutcheon, Eugene McCutcheon, James McCutcheon, Roy McDaniel, Garrett McDowell, Larry McDowell, Robert McLaughlin, Bobby McNettie, Howard Meador, Previs Miles, Denny Miller, Tommy Miller, Joe Morgan, Ruben Morse, Ray



Sophomore Class officers are as follows: Ray Moss, president; Ted Gilbreath, vice-president; Larry Clingan, secretary; and Carolyn Lowe, treasurer.

Moss, Bud Murray, Bill Newell, Nickey Nichols, Douglas Nolan, Marvin Nowlin, Harold Ogle, Frank Oliver, Curtis O'Neal, Don Parker, J. T. Pache, Eddie Payne, Ronald Parkinson, Billy Pickett, Billy Post, Fred Pratt, Frederick Randall, Russell Reddy, Freddy Reeves, Jimmy Renegar, Jimmy Renfro, Raymond Rich, Eugene Richardson, Doug Riggs, Kenny Riggs, Franklin Roberts, Linkus Rogers, Stewart Rogers, John Lowbrey, Bill Rumble, Leon Schmitt, Perry Shipley, John Shubert, Herbie Simpson, Gerald Skidmore, Clyde Stanch, Bobby Standifler, T. W. Standifler, Terry Reil, Bobby Storch, Fred Storch, Clayton Stewart, Robert Swarthout, George Sweeney, James Tate, Paul Tatum, Don Taylor, J. B. Teas, Charles Teppenpaw, George Thomas, Jimmy Thomas, J. B. Thomas, Frank Thompson, Henry Thompson, Sam Tipton, Buddy Tucker, Gary Turner, Sherill Vandegriff, Max Wallace, Jimmy Whitten, Stas Wilcox, James Williams, Kenneth Williams, Ed Williamson, Jerry Wilard, Mickey Wilson, Ted With, Jimmy Woods, Jimmy Workman, Rudy Worley, Kehon Yarnell, Earl Legler.



The Freshman Girls and

Charles Abbott, Virginia Abbott, Brunette Adams, Judy Adams, Sarah Adams, Jane Armstrong, Faye Austin, Beth Axmacher, Dolores Aycock, Jackie Beale, Mary Bowden, Lawson Brackett, Joyce Brinkley, Phyllis Brandon, Joanne Brick, Barbara Callaway, Barbara Cantrell, Betty Carpenter, Mary Carpenter, Patsy Carr, Jean Carter, Martha Ann Cline, Alice Clingan, Arlene Cooper, Nancy Corson, Nancy Couch, Jeanette Cox, Jacqueline Craft, Wylene Dabney, Barbara Davidson, Barbara Davis, Betty Davis, Bertie Day, Shirley Day, Barbara Debbins, Lydia Duckert, Barbara Dugan, Joy Duggan, Margaret Jane Duggan, Gladys Eddington, Anita Eldon, Betty Engel, Sue Erwin, Barbara Evans, Merrie Evans, Peggy Fordham, Beka Fosselt, Deloris Fowler, Erna Freudenberg, Wanda Gaddis, Phyllis Gates, Yvonne Glascock, Jimmie Roth Guber, Frances Gubin, Joan Goodner, Betty Grayson, Charlotte Green, Patsy Greene, Mary Guice, Billie Guhrke, Marilyn Hale, Shirley Harper, Barbara Harris, Nona Haven, Betty Hawkins, Margaret Hendricks, Joyce Ann Hill, Dornia Holloway, Lella Hope, Loretta Howard, Jane Hudson, Jacqueline Hulst, Jean Humble, Nancy Jackson, Sammie Jarman, Dixie Jones, Marcelle Jones, Nancy Jones, Reba Keith, Loretta Keltner, Shirley Kilian, Jo Ann Kinsie, Carolyn Lanford,

Barbara Long, Gail Long, Bobby Longly, Mary Mahon, Mary Maxwell, Rhyme Matthews, Betty Maxwell, Willie Jean McBrayer, Bonnie McCallie, Patsy McCallie, Wilma McConathy, Pat McCord, Evelyn McCormick, Barbara McDowell, Patsy McGregor, Jeanette McNeese, Betty Lou McRay, Judith Merriman, Betty Miller, Jo Anne Moore, Nancy Moore, Jo Ann Morgan, Mary Frances Morgan, Carol Moutzler, Marion Morgan, Barbara Neff, Shirley Nichols, Elsie Ott, Barbara Owens, Dottie Parker, Margaret Parker, Virginia Payne, Wanda Payne, Martha Perkins, Barbara Joyce Pfitzer, Eleanor Pfitzer, Virginia Powers, Mary Prater, Romanna Price, Doris Prichard, Barbara Prichard, Jane Ramsay, Billie Reed, Judy Richardson, Mary Ridge, Patsy Ridge, Martha Rockholt, Joyce Robbs, Helen Robertson, Joyce Saxon, Sharon Scherer, Maend Schmidt, Barbara Sharp, Donna Sharp, Yvonne Sherrill, Ilean Simmons, Florine Sims, Pauline Sims, Ann Smith, Marquette Smith, Roberta Smith, Thera Smith, Pat Stanford, Peggy Strickland, Martha Ann Strongman, Helen Teal, Madeline Tucker, Patsy Varnell, Dixie Varnes, Martha Walker, Sylvia Walker, Betty Webster, Carol Whitmire, Joyce Whitson, Janet Willard, Sharon Williams, Wilma Williamson, Barbara Wilson, Sue Wood, Linda Wooten, Yennila Yates, Doris Young, Shirley Young.

Freshman Boys

Billy Adair, Charles Adams, Victor Adams, Don Allen, Carl Atkins, Donald Bain, Jimmy Babel, Billy Badgley, Don Barnes, Bobby Basket, Jerry Beard, Virgil Bell, Robert Black, James Breneman, Terry Bridgman, Don Broome, Tommy Brown, Billy Bryales, Ernest Campbell, Tommy Champion, Clark Chester, Houston Clark, Austin Cline, Billy Clinckan, Jimmy Coffee, Don Collins, Raymond Compston, J. L. Conner, Sandy Cook, Thomas Cross, Donald Curtis, Bill Denney, Jesse Duckert, Ernest Duggan, Jimmy Duggan, Edward Duke, Johnny Dunbar, Johnnie Eddington, David Estes, Victor Estill, George Evans, Harold Evans, Talmadge Flemming, Billy Fletcher, Billy Fox, Dennis Fraley, David Fry, Jerry Fry, Bobby Garner, David Garrett, Fred Gibson, Bobby Gilbert, Charles Gains, Lee Goodner, Tom Gray, Billy Green, Joe Gregory, Lebron Griffith, John Hall, Stanley Hayes, Lorenz Henegar, Bobby Henson, Bob Hickey, Bobby Hixon, Tommy Hixon, Buddy Holland, James Holland, Lebron Hollingworth, Albert Holt, Harold Hughes, David Humble, Paul Hutchison, Larry Hutson, Willard Hutson, Billy Ingle, Charles Jackson, John Jones, Bobby Jordan, Jack Kinor, Lee Lacey, Larry Lawrence, Dewey Layne, John Lee, Jimmy Link, Michael Longworth, Davey Lowry, Walter MacPherson, McCoy Masters, Delbert McBrien, Charles McBrayer, Glenn McBrayer, James McConnon, Bonnie McCrokey, James McCallough, Harry Miller, Lebron Miller, Paul Miss, Kenneth Moon, Billy Morgan, Joe Morton, Jack Murray, Billy Joe Nesbit, Everett O'Neal, Walter Park, Gilbert Parton, Bill Payne, Frank Payne, Karl Payne, Larry Payne, Ralph Peck, David Pehring, Stephen Phillips, Richard Pickett, Bill Pomeroy, Raymond Powers, Ronald Poole, Daniel Powers, John



Freshman Class officers are as follows: Tommy Rowland, president; Jane Armstrong, vice-president; Robert Black, secretary; and Charles Jackson, treasurer.

Ray, Donald Richie, Robert Rightmire, Jimmy S. Roberts, Charles Roberts, Jimmy Roberts, Donnie Rockholt, Frank Rodin, Tommy Rowland, Teddy Ryan, Bill Seagriff, Wayne Scott, Hugh Shavers, Jerry Sherin, Alvin Shotton, Eugene Smith, Jimmy Sneed, Jimmy Snyder, James Southerland, Gene Spriggs, Bobby Stephenson, Roy Stewart, Edith Stork, Bill Stutz, David Stutz, Edith Sundstrom, Johnny Sutton, Sammy Tate, Marvin Taylor, Cordell Terrell, Paul Thomas, John Thompson, John Tinker, John Tittle, Holly Tivoney, Ralph Tudor, Kenneth Vandergoff, Clifford Varnes, Huston Wade, Richard Walker, Gene Ward, Robert Waters, John Werner, Ralph Wetzel, David White, Paul White, Billy Whitmire, Harold Wilcox, Donald Wilson, Walter Williams, Bobby Willman, Donald Wood, John Wood, Steve Woodward, Joe Woy, Ed Yarnell.





The Features

Mr. Central, Miss Central

■ *Mr. Jimmy Pack • Miss Carole Norrell*



Senior Day Court



Left to right: Michael Green, crownbearer; Rose Amelia Hayes, flower girl; Jerry McKenzie and Pat Armstrong; Jimmy Pack and Carole Norrell, Mr. Central and Miss Central; Marlene Coulter and Jerry Perry; Dot Wood and Ken Burns.

Is everyone ready?





Torchbearers

KAY HOFFMEYER
JIMMY PACK

42

Leadership

ANN HOUSTON
DON DUNCAN



Scholarship

MARY BECKER
KEN BURNS



Personalities

Service

MARLENE COULTER
CHARLES COOPER



Dependability

JOYCE JOHNSON
JERRY PAYNE





Best-All-Round

DOT WOOD
DAN WADE

Personality

CAROLE NORRELL
JERRY PERRY



Most Talented

DIANNE GROSS
ED MEYERS



Most Athletic

LORAYNE WOY
TOMMY TILLMAN



Personalities

Friendliness

PAT ARMSTRONG
KENNY RIGGS



Courtesy

ANNIE CAROL DAVIS
BOB WELLS



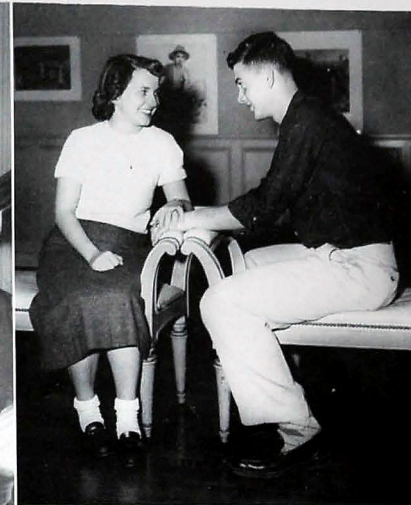
Wittiest

JANE WINFREY
CHARLES TINNON



Cutest Couple

NADINE TATE
CHARLES LAMB



Personalities



May Queen Candidates and

Commencement and Class Day Speakers

Each year thirteen seniors are chosen for the traditional honors of Commencement and Class Day Speakers and May Queen Candidates. Pictured above, on the left are the 1953 May Queen Candidates. From left to right, they are: Pat Armstrong, Marthaola Hitchcock, Hildegard Landers, Carole Norrell, and Dotsy Weaver. On the right are pictured the Commencement and Class Day



Speakers. They are, from left to right: Kay Hoffmeyer, Salutatorian; Joyce Johnson, Faculty Representative; Bobbie Jo Spaulding, Valedictorian; Kitty Wilson, Prophet; Herbert Cagle, Historian; and Betty Elliott, Class Representative. Not pictured are Jerry Perry, Reader of the Will; and Lorayne Woy, poet.

May Day Court of 1952

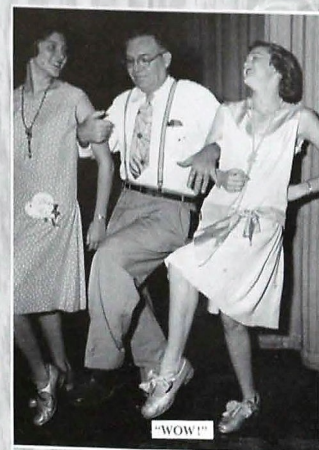


GREASE PAINT ALA SUPREME

Dramatis Personae



OUR TALENTED FACULTY?



"WOW!"



SPIRIT OF 1620



VOTE FOR WENDY!



COLLEGE DAY RECEPTION



UP IN THE AIR, JUNIOR BIRDSMEN!



MISS DOT WOOD
HOMECOMING QUEEN SUPERB



"AH... COME ON COIN!"



OH HAPPY DAY!



Big Operators

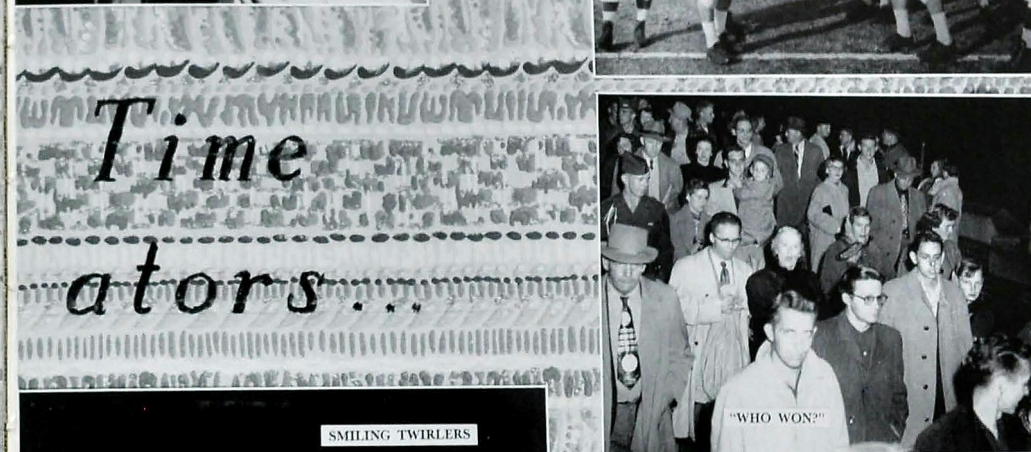
THAT "SATISFIED" LOOK



THE DEMOCRATS DIDN'T
LOSE EVERYTHING



FUTURE COLLEGIATES



Time ators...

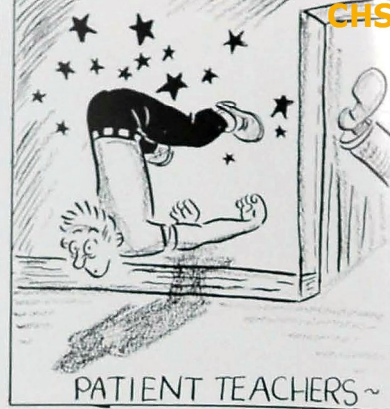
"WHO WON?"



SMILING TWIRLERS



ALUMNI TOP BRASS



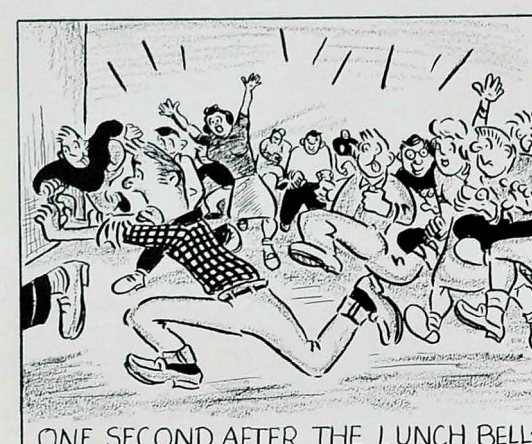
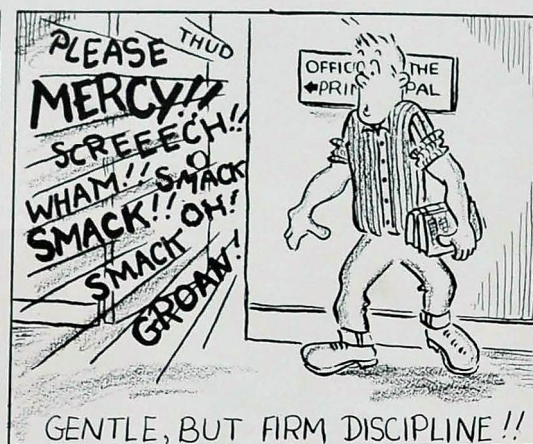
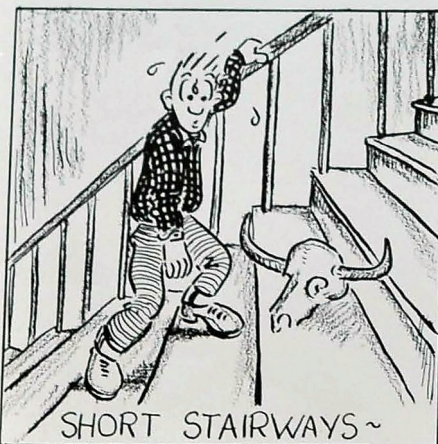
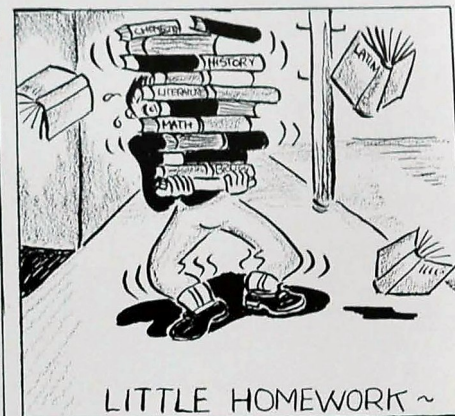
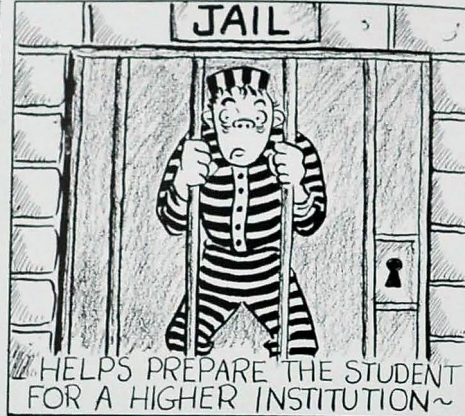
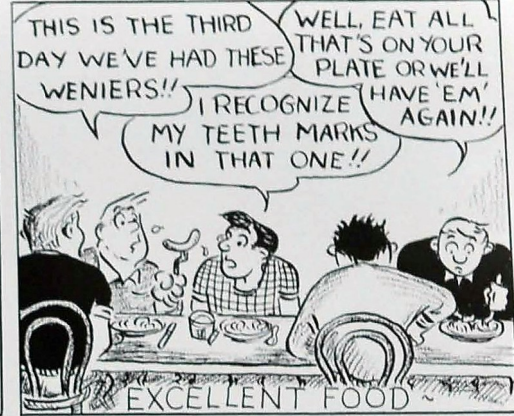
CHS Library

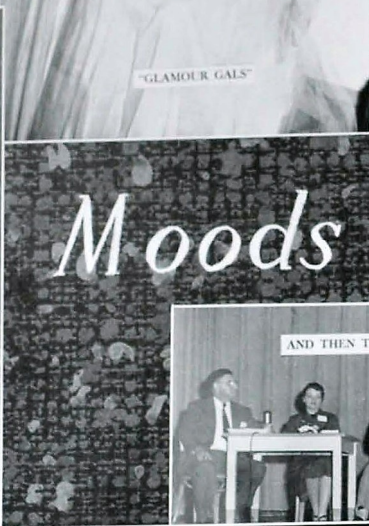
TIRED OF LIFE? WANT TO END IT ALL? WHY COMMIT SUICIDE?

COME TO CENTRAL

- LET US KILL YOU!!

by JERRY PERRY



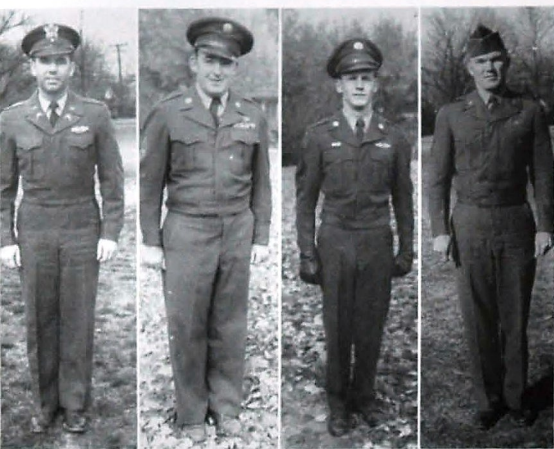


Moods and Moments to Remember...





The Military



United States R. O. T. C.

The military staff, as pictured, is: Captain Thomas G. Knight, Jr.; Master Sgt. Ollie M. Cochran; Sgt. First Class William H. Green; Sgt. First Class Robert L. Hall.

CAPTAIN THOMAS G. KNIGHT JR.

Captain Knight entered the Army in 1944 and received his basic training at Camp Hood, Texas. In May, 1945, he graduated from Officers' Candidate School and was commissioned a second lieutenant in the infantry. Later he served with the Seventy-seventh Infantry Division in Japan with the Army of Occupation. During the years 1946-1948 he served as manager of two resort hotels in Japan.

In 1946 Captain Knight married Miss Dot Dickerson of Tampa, and she returned to Japan with him. While in the Far East they visited many places of interest—Mikimoto Pearl Farm, city of Kyoto, and witnessed the Blackship Festival in honor of the landing of Admiral Perry.

In January, 1951, Captain Knight was sent to Korea to serve as a platoon leader with the Sixty-fifth Puerto Rican Regiment. It was during this period that he was promoted to the rank of captain. While in Korea he received four campaign stars with the Korean Campaign ribbon.

In February, 1952, he was assigned to the R.O.T.C. detachment at Chattanooga High and Central and later replaced Colonel Bone as Professor of Military Science and Tactics.

Captain and Mrs. Knight reside in Brainerd and have one son.

MASTER SGT. OLLIE M. COCHRAN

Sgt. Cochran entered the Army in 1942. He completed his basic training at Camp Callen, California, and from there was shipped overseas with the One Hundred and Fourth Infantry Division. During World War II he served in Belgium, France, Holland, and Germany. After the war, he was with the Army of Occupation in England and Germany.

Then coming to the states, he was an Organized Reserve Corps instructor and a National Guard instructor in the Alabama National Guard.

In 1952 Sgt. Cochran was assigned to serve as Sgt. Major for the schools, Central and Chattanooga High. Later he was assigned as Assistant Professor of Military Science and Tactics and senior cadet instructor at Central High School.

Sgt. Cochran was the sponsor for the Disc and Diamond Society and performed extra duties in administration and supply.

In February, 1953, Sgt. Cochran was transferred to Detachment One, Organized Reserved Corps, in Knoxville, Tennessee.

REGIMENTAL STAFF

Regimental Commander JIMMY PACK

Reg. Exec. Officer BOBBY WELLS

Regimental Staff Officers

S-1 GEORGE PATTERSON

S-2 GEORGE WESTBROOK

S-3 DON ROBINSON

S-4 JOHN PARKS

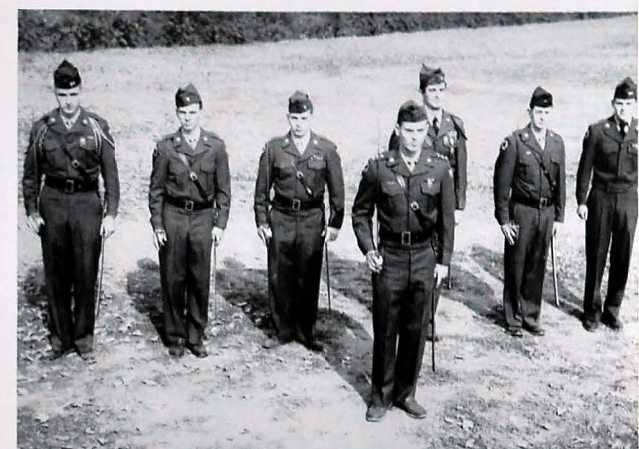
Reg. Photographer STANLEY BAKER

Reg. Sgt. Major JOHN DYER

Reg. Operators Sgt. CLAUDE HEMPHILL

Reg. Supply Sgt. MAX PARRIS

Reg. Color Guard HAL BRIDGES



SGT. FIRST CLASS ROBERT L. HALL

Sgt. Robert Hall entered the army in 1943. He completed his basic training at Fort Custer, Michigan, and was assigned to the Twelfth Air Force in Italy. During the war he served in Italy and France against enemy hostilities. Sgt. Hall was discharged in December of 1945, but re-enlisted in December of 1946. He was then assigned to Occupation duty in Japan. In 1949 he returned to the United States with the eleventh Airborne Division and served at Fort Campbell, Kentucky.

In March, 1950, Sgt. Hall was assigned to R.O.T.C. duty and since he has instructed at both Central and Chattanooga High School. During his stay here, he has spent most of his time working with juniors, in order to prepare them in military for their senior year. Sgt. Hall is a capable instructor, but it is likely that this will be his last year in R.O.T.C. duty.

SGT. FIRST CLASS WILLIAM H. GREEN

Sgt. Green took his basic training at Camp J. T. Robinson, Arkansas, in early 1945. After finishing basic training, he was shipped to Europe in 1946 where he served with the Army of Occupation until 1948. While in Europe he served as an infantry platoon sergeant. In late 1948 he was sent to Fort Knox, Kentucky, as an instructor in the Armored Force School. In July, 1950 he was sent to Korea and served with the Twenty-fifth Infantry Division. On September 9 "Willie" was wounded in action and returned to a hospital in Japan. He was then shipped to a hospital in Jacksonville. In December, 1950, he was assigned to R.O.T.C. duty at Central High School, where he has served well for the past two years.

Sergeant Green, a former Central High School student, is married and has three children. He now resides in Rossville, Georgia.

FIRST BATTALION STAFF

Battalion Commander KENNY RIGGS

Battalion Executive ROSS MORGAN

Battalion Staff Officers

S-1 TOMMY JETT

S-2 WINSTON NORTH

S-3 JOEY OLIVERI

S-4 MARVIN TURNER

Sergeant Major JIM CALDWALLEDER



SECOND BATTALION STAFF

Battalion Commander DON DUNCAN

Battalion Executive Officer JERRY PERRY

Battalion Staff Officers

S-1 PAUL GREENBERG

S-2 RALEIGH WHITEMAN

S-3 PAUL CROWNOVER

S-4 BILL MORGAN

Sergeant Major HOWARD WESTBROOK



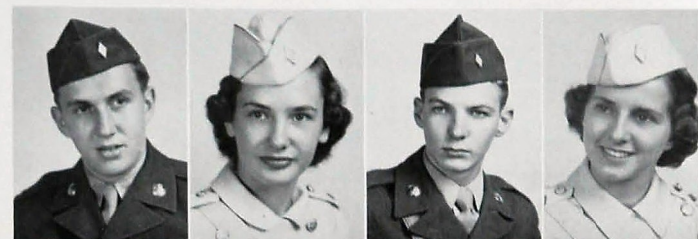
MAJ. GEORGE PATTERSON HILDEGARDE LANDERS MAJ. JOHNNY PARKS NINA GRAYITT



LT. COL. DON DUNCAN



BARBARA MARIE



MAJ. ROSS MORGAN SHIRLEY TOMPKINS MAJ. DON ROBINSON NADINE TATE

Military Officers



MAJ. GEORGE WESTBROOK JOYCE JOHNSON



COL. JIMMY PACK



BETTYE OLDHAM

CAPT. CHARLES TINNON
CAPT. PAUL GREENBERG
BAND CAPT. R. M. WEST

NANNIE LEE SMITH
DIXIE GRIFFIN
SHIRLEY HOLMES

CAPT. JERRY MCKENZIE
CAPT. GENE GOODNER
CAPT. MICKEY BREAKER

PEGGY GRIFFIN
MARY POFF
BETTY ELLIOTT



LT. COL. BOBBY WELLS



DORA GRIFFITH



LT. COL. KENNY RIGGS



MARTHA HITCHCOCK

and Sponsors



MAJ. JERRY PERRY DOT WOOD

CAPT. TOMMY JETT KITTY WILSON CAPT. LEBRON WINTON CAPT. DAN WADE PAT ARMSTRONG CAROLE NORRELL



R. O. T. C.

COMPANY A

GENE GOODNER *Commander*
 JIMMY OWENBY *Executive Officer*
 HERBERT HARVEY *1st. Platoon Leader*
 ELMER VAN WAGNER *2nd Platoon Ldr.*
 VERNON FRY *3rd Platoon Leader*



COMPANY B

MICKEY BREAKER *Commander*
 BILL WRIGHT *Executive Officer*
 RONALD LOGAN *1st Platoon Leader*
 GREER HAWK *2nd Platoon Leader*
 MAX THOMAS *3rd Platoon Leader*



COMPANY C

CHARLES TINNON *Commander*
 EDDIE KEMPER *Executive Officer*
 CLAUDE DILLARD *1st Platoon Leader*
 ANDREW WITT *2nd Platoon Leader*



COMPANY E

JERRY MCKENZIE *Commander*
 JIMMY DAVIS *Executive Officer*
 KEN BURNS *1st Platoon Leader*
 CHARLES COOPER *2nd Platoon Leader*



COMPANY F

DAN WADE *Commander*
 ARTHUR SUITS *Executive Officer*
 BOBBY LOCKLEAR *1st Platoon Leader*
 JIMMY STEWART *2nd Platoon Leader*



COMPANY G

LEBRON WINTON *Commander*
 JOE ELROD *Executive Officer*
 PAT KELLY *1st Platoon Leader*
 RAYMOND ALBRIGHT *2nd Platoon Ldr.*
 JIMMY VAUGHN *3rd Platoon Leader*



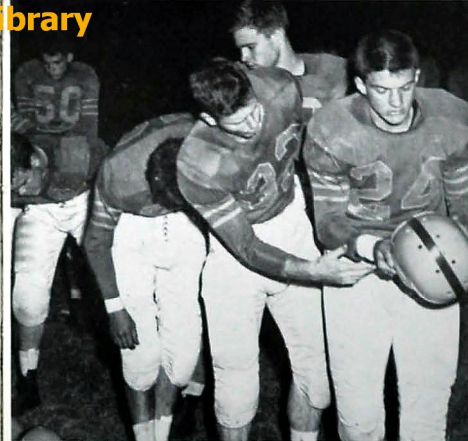
The Athletics



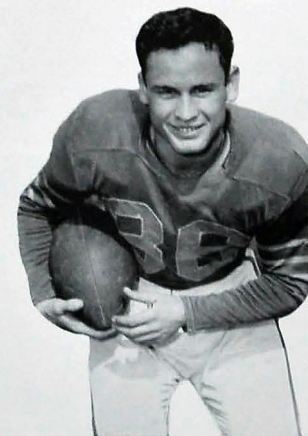
DON DUNCAN
Captain



Pre-Game



Decision



TOMMY TILLMAN
Alternate Captain

Pounders Are A. P.

COACH E. B. (RED) ETTER

Coach E. B. "Red" Etter, leading the Purple Pounders to another, hard fought, well deserved State Championship, has ended his tenth successful season as head coach at Central High.

Not only has Coach Etter excelled as football and boxing coach, but, with the retirement of W. P. Bales as baseball coach, he has taken over as mentor of this springtime sport.

His first season as head football coach dates back to 1942 when he succeeded Dean Petersen.

Coach Etter was graduated from Central in 1929. From there he went to the University of Chattanooga, where he received his B. A. degree. He coached at Morgan school, Petersburg, Tennessee, and Hendersonville, North Carolina. He was coach of Brainerd Junior High from 1936 to 1942 when he became assistant coach to Dean Petersen.

Since that time Coach Etter has successfully trained many winning teams.

Coach E. B. Etter, Coach Stanley Farmer, Coach Les Newton, Coach Jake Seaton



COACH STANLEY FARMER

Coach Stanley Farmer, through his way with boys and his understanding manner, has shown himself to be a loyal, dependable coach of the Purple Pounders.

Farmer was graduated from Chattanooga High School, where he was a member of the Dynamos' football team, and from there he went to Emory and Henry College in Virginia. Then he returned to City as a coach for a short time before going into the Navy. After leaving the service in 1947, he joined Central's coaching staff, and has served successfully for five years. Farmer now is assistant to Coach Etter.

The student body and faculty, as well as the football boys, have come to love and respect Coach Farmer as a true Centralite.

J. L. NEWTON

Head Line coach J. L. "Les" Newton completed his eleventh year of coaching at Central this year, 1952.

This year Newton gave a prime example of what he is capable of doing by taking what many thought would be a green line, and developing it into a top-notch unit which was almost immovable.

Coach Newton joined the coaching ranks at Central in 1942, after graduating from Carson-Newman College in 1926. He then went to Falling Water Grammar School, and from there came to Central.

Aside from his football duties, Newton also teaches science, and works with the Knot-hole Gang Baseball Team.

Because of his great interest both in the football team and the school, Coach Newton has become one of the most popular and best liked men on the coaching staff.

COACH JAKE SEATON

Jake "Boots" Seaton is one of Central's very well liked teachers as well as a top-notch coach. He has a way with boys which cannot be surpassed.

His job is building the groundwork for future Purple Pounder teams. From the many successful seasons we can readily see that Seaton had done his job well. This year his "B" team had a very successful season bringing out many varsity prospects for seasons to come.

Before coming to Central in 1945, Coach Seaton was employed at the Ing. Pont Company. He received his education at East Tennessee State Teachers College. His first teaching position was at Soddy Daisy where he was assistant coach.

Coach Seaton is a teacher of Industrial Arts and Coach of the Central "B" team.

State Champions

THE FOOTBALL SEASON OF 1952-53

The Purple Pounders were overwhelmingly chosen Tennessee State Champions by the A.P. sports writers group and well did they deserve it. With only one loss and one tie to mar an otherwise perfect record, Central showed a fighting spirit on defense and a classy T offense.

Playing the toughest schedule in years, Central compiled a total of 261 points as compared with their opponents' 80.

Their only loss was a one point defeat at the hands of powerful Miami team.

A tie came at the hands of the Kentucky State Champions, Louisville Flaget.

The biggest factor in the team's success was their will to win and their fine team work. There was no individual star; all the

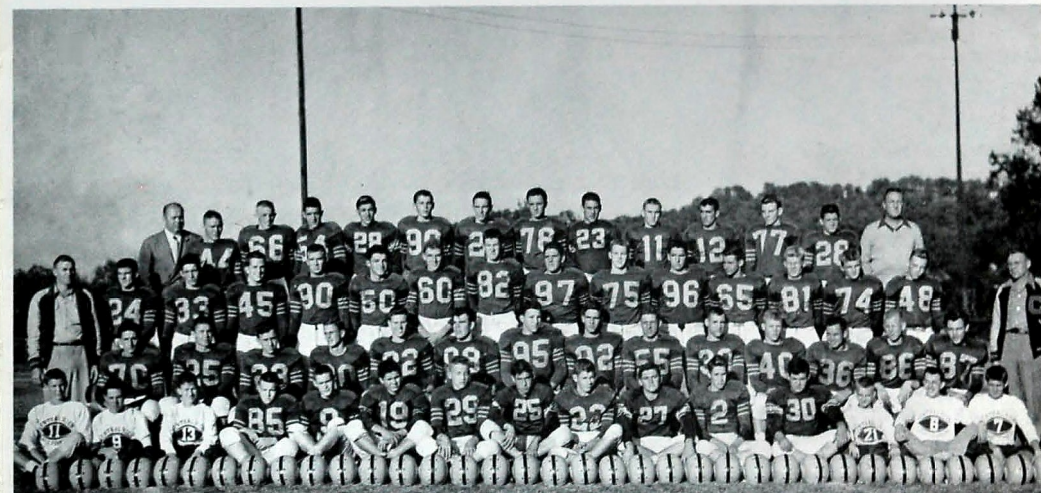
boys stood out as Champions, each supporting the others.

On defense the Pounders were a hard hitting, hard charging organization.

On offense the Purple's classy T offense showed plenty of speed and passing ability in the tossing of Pack and Hoppe and the pass catching of Wade and Cannon.

Jimmy Pack, hampered this year by a bad leg, nevertheless played well enough to be chosen on the All Southern team. Also there were three Purple Pounders chosen for the All State team—Don Duncan, Jimmy Pack, Bobby Hoppe; Dan Wade, second team.

Central High can be justly proud of the 1953 edition of the Purple Pounders.



Pounders Open Season With



Hoppe Goes Over the Top

Win Over Fayetteville

CENTRAL 31; FAYETTEVILLE 0

August 29

On a warm rainy August night, the 1952 edition of the Purple Pounders launched their campaign at Chamberlain Field. Central, showing much of that power which made them last year's Tennessee Champions, rolled over a hard fighting Fayetteville Tiger aggregation thirty-one to nothing.

The Pounders opened up fast with nineteen points in the first quarter. This was in direct contrast to last year's game in which Central was held scoreless for the entire first half.

The first home tally came by air as a Pack to Hoppe heave was good for fourteen yards and a score. Three minutes later Tillman sprinted twenty yards for the second score of the first quarter. Their third one came a few seconds later. It was "Terrible Tommy" taking a Pack pitch-out and going fifty yards.

In the second half Billy Hale took over with first a fifteen yard trip and six points; then with only two seconds left in the game, Pack faded back and let fly to Hale on the 25 for the final score.

Central showed a lot of reserve power as they used a total of fifty-five players.

This game was a hint to Central fans of things to come. Central took to the road the following week for their annual game with Knoxville Young.

CENTRAL 26; KNOX YOUNG 6

September 12

Two long passes from Pack to Hoppe led the way as the Pounders defeated their first road foe twenty-six to six.

After a scoreless first half, highlighted by fine punting by Tillman, the victory spark was set off by a Pack to Hoppe pass three minutes after the second half started. Still in the third quarter, Hale took a reverse and scampered 45 yards for the second score.

Then in the final period, Tillman scored on a twelve yard plunge after a twenty-five yard sprint by Hale to set it up. With fifteen seconds left in

the game Pack faded deep and buried to Hoppe for Central's final score. Young High's lone score came late in the fourth quarter on a pass from Cross to Clapp.

On defense for Central, Mahaffey and Richard Cowart were individual stars. This was the first of two road games in as many weeks.

CENTRAL 20; LOUISVILLE MANUAL 0

September 18

For the second week in a row Central took to the road, this time to the Blue Grass state for their duel with Manual High of Louisville.

Three quick explosions gave Central a twenty to nothing win over the tough Big Red team from Louisville.

The Purple's first came on their second play from scrimmage after a Manual fumble deep in their own territory. Hale on a quick cracked off right guard for twenty-five yards and the first 5 points of the night.

The second score came late in the second quarter. Manual, forced to punt, booted deep to Hale on the Pounder thirty-five. He reversed to Tillman and "Terrible Tommy" went sixty-five yards for the score.

The last scoring play of the night came as a sensational kickoff return by Hoppe. Manual's kick to start the second half was taken by Bobby Hoppe on his own thirty-five. He gathered it in and slugging his way through most of the Manual team, went on to score standing up.

The defensive team then settled down to stop three Red-shirted drives—one down to the thirty, another to the sixteen, and the final one was ended on the seventeen yard line.

This win gave Central a perfect record of three wins and no defeats before their annual battle with the Kingsport Indians.

CENTRAL 33; KINGSFORT 0

September 25

After a successful two game road trip, the Pounders returned to Chamberlain Field where they unleashed their fury on the Kingsport Indians to the tune of 33 to 0. Central scored in every way possible and in every period.

HAL BRIDGES



ROBERT TATE



KENNY RIGGS



TOMMY TILLMAN



RAY MOSS



JERRY MCKENZIE



LAMAR FUSON



LARRY CLINGAN



NEAL BARNES



RICHARD COWART



LAMAR EATON



IVEY BISHOP



SHERWIN ANDERSON



WAYNE HUTCHESON



ALBERT MHAFFEY



Clear the Deck



JIM PACK



MAX PARRIS



ROSS MORGAN



JACK MASON



TOMMY THOMPSON



JERRY PERRY

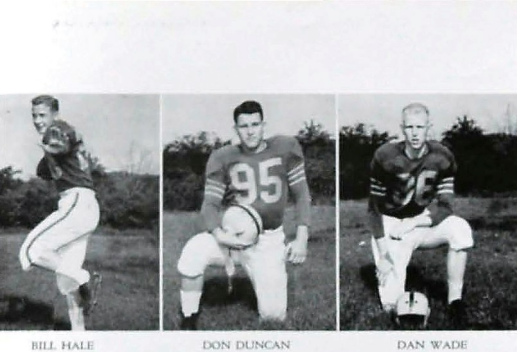


RONNIE KILLINGSWORTH



BILL BRENNEMEN





BILL HALE

DON DUNCAN

DAN WADE

The first score came early in the first quarter. Kingsport was forced to punt from their own ten. The pass from center sailed over the head of the kicker, out of the end zone and onto the cinder track. Thus the Purples led two to nothing. A few moments later, Tillman went over from the nine for the first authentic Central tally.

In the second quarter Central made it 14 to 0, combining a safety and a 17 yard field goal. Trying to pass, an Indian was hit in the end zone for the second two point safety in the game. Then with only 25 seconds left in the half, Riggs took aim and booted a beautiful 17 yard, 45° angle field goal.

The Pounders got thirteen more points in the third frame, one by Pack and another by Hale. Midway in the quarter, Pack heaved a 28 yard pass to Hale, who made a beautiful over-the-shoulder catch. On the next play, Pack bootlegged his way across from the eight to give him his first touchdown of the season. Then, after a 15 yard penalty drove the Pounders down to the Indian one yard line, Hale plunged over on a quickie. Mason scored the final Pounder Tally in the fourth quarter. On the Indian five, Paris handed off to Mason who went over standing up. This made it four in a row for the high flying Purple Pounders.

CENTRAL 42; RED BANK 7 October 4

For the fifth straight week the Purple Pounders showed why they are tops in Tennessee High School football. Individually, Billy Hale was the standout offensive star, collecting three six pointers. Kenny Riggs batted 1.000 for the night, getting six extra points out of six tries, one of which had to be kicked over because of a backfield in motion play.

The Pounders' first score came as a result of four plays for 48 yards, and a score with Tillman over from the thirteen. On the next series of plays the Purple hit pay dirt again. The kickoff was fumbled by Red Bank, and Tate pounced upon it on the 25. Two plays later Hale scored a quickie. In the second quarter, after a Lion punt, Hoppe got 55 yards in two plays. On the next play he went over on a jump pass from Pack. Another Lion punt was downed on the Central 3. Nine plays and 97 yards farther, Hale scored again making it 24 to 0.

The second half kickoff was run back to the thirty-five. Hoppe and Tillman got 12 and 14 yards, respectively. On the next play Tillman scored from the 26 yard line. The lone Red Bank touchdown was the next scoring in the game. The Lions drove down to the Purple thirty, where Bub Quayle took it over. On the next Red Bank kickoff, Hale scored after an 82 yard run, kicking through the whole Lion team.

MIAMI 19; CENTRAL 18 October 10

The Miami-extra point line went out again, as Central's undefeated Pounders were edged by Miami's mighty single wing offense in a 19 to 18 heartbreaker for the Central fans.

This was the fourth Miami win over Central in five years. Two years ago the Purples managed a 7-7 tie. Three times in the game the Stingers moved ahead, and three times the Purple Pounders bounced quickly back

Interception?



Terrible Tommy Goes Through

with scores, only to be thrown back by the ever present extra point line.

The first Stinger score came midway in the second frame. After a 23 yard pass to set it up, Miller hit Moore on the 4 and he was across. The extra point try which won the game was perfect. Five minutes later, Hale set up a Purple score with a 34 yard punt return to the Miami 40. After quickies by Hale and Tillman, Hoppe took a pitch out from Pack and heaved down field to Cannon in the end zone.

Miami got their second one suddenly late in the third quarter. Miller got through the line into the secondary and behind brilliant blocking went over for 55 yards and a score. Again Central roared back. After recovering a fumble on the middle strip, Hale picked up four, and Hoppe dropped a long pass. Pack faded deep and fired to Tillman on the Miami 46, and Tommy went all the way.

The final Miami tally came by a pass interception on the Central 4 yard line. After two penalties, Pritch swept around end to score.

In the final minutes of play Pack fired six times and connected on four of them in the 46 yard drive. The touchdown play was a surprise sleeper. Hale lay out unscathed by the Miami team. On the next play, he easily gathered Pack's toss in and scampered across the goal line into pay dirt. The all important extra point try went wide.

CENTRAL 33; JACKSONVILLE 13 October 16

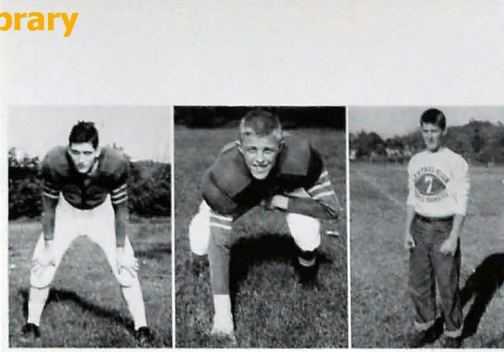
With Jimmy Pack completing eleven out of fourteen passes and two for touchdowns, the Mighty Pounders trounced Jacksonville Landon's powerful Lions 33-13.

Central took the lead in the opening minutes of the game when they recovered a fumble a few plays after the kickoff. Six plays later Hoppe was in the end zone for the first Purple score. Jack Mason's kickoff was fumbled by Jacksonville and recovered by Central. After a five yard penalty a Pack to Wade aerial was good for 25 yards and score. Riggs' kick was good, and Central led 13-0.

Landon tightened, and then about midway in the second period, aided by penalties, they scored and kicked the extra point. In the closing seconds of the first half Pack hit Wade for 22 yards and another Central touchdown, the second accounted for by this duo. Riggs' second kick of the night made it 26-7 at half-time.

Central took the second-half kickoff and marched 39 yards for a touchdown, the final 47 covered by Hoppe's longest run of the night. Another Riggs' kick made it 33-7. Landon took Mason's kickoff and marched to a score making it 37-13. Central's final marker came with Pack hitting Cannon for 23 yards to the one, and from there Tillman accounted for the score. It was the sixth win of the year for the Powerful Pounders.

"Easy Does It"



BOBBY HOPPE

J. O. CANNON

BILL BLAYLOCK

HERBERT CAGLE

JERRY GARNER

JERRY DIXON



Hoppe on the Move

CENTRAL 32; BRADLEY 7 October 23

Showing a brilliant second half offense that swept their opponents off their feet, the Pounders steamrolled Bradley High's Braves, 32-7. Trailing 7-6 at half-time Central seemed to be outclassed the entire first half.

The Pounders returned from intermission with fire in their eyes. On the kickoff Hale returned to the 19 and then on the first scrimmage play of the second half Hoppe ran through Bradley's defense 61 yards for a touchdown. The kick by Riggs was good, and Central led 13-7, with only 24 seconds gone in the second half. After a Central fumble and a Bear punt, the ball was in Central's possession on the 27. Hale made the score, and Riggs' kick was good for a 20-7 score at the third period start.

Early in the fourth period a Bradley fumble on the Bear 32 line was picked up by Wayne Hutchison and run to the Bradley one where Pack scored the second touchdown of his career. The kick was no good and the score remained 26-7.

Bradley then gathered forces and, aided by penalties, marched to the Central one. A Bradley pass was then intercepted in the end zone and brought out to the 5 yard line by Billy Hale. Three plays put Central on the 21, where Tillman ran 79 yards for the final score. The kick was no good and the score 32-7. The loss was the first of the season for Bradley and the second coaching loss in three years by Billy Frank Smith.

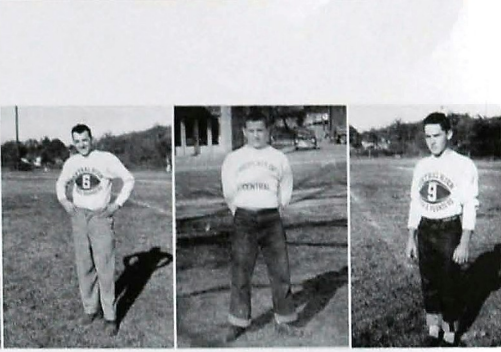
LOUISVILLE FLAGET 7; CENTRAL 7 October 30

In a homecoming game featuring at the half time the crowning of Det Wood as homecoming queen, Central battled Flaget to a 7-7 tie. The game was clearly a defensive struggle between two state champions. It was a game having overwhelmed their past opponents, were surprisingly held to a touchdown each.

After a first quarter full of bad breaks for both clubs, the Braves began to roll early in the second frame. After an exchange of fumbles, Tillman punted to the 35 where it was returned to the 24 by Flaget's Leveaux. After several short gains Ogles carried on fourth down to the Central eight. After two more tries at the line, Central's play clocked over. The extra point try was good and at the half it was 7-0.

The second half was a little different for the Purple Pounders. Flaget's first three tries at the Central defense yielded them a minus seven yards. After several punt exchanges Hale took a kick on the Braves' 47, returning it to the Flaget 18. Two plays later Hale scored the 7-7 tie.

After a ten yard loss and an incomplete pass, Pack, using Wade as a decoy, bulletted to Hoppe in the left slot to score. Riggs' extra point kick was good with 15 seconds remaining in the third quarter.



In the fourth quarter neither team could get up enough steam to score. Both teams, however, were fighting right to the end of the game.

CENTRAL 28; BAYLOR 12 November 21

It was Bobby Hoppe and 28 points which gave Central its second win in two years from their arch enemy from across the river.

Central's first points came with 7 minutes left in the first quarter. Hoppe caught his way into the secondary and 24 yards for the score. In the second quarter Baylor came storming back. Kelley went 44 yards on an end sweep. The point after the touchdown try was not good.

Late in the second quarter Hale streaked around end to the Baylor 16; Hoppe scoring his second touchdown, added the needed yardage. In the second half it was Hoppe's show again. In the first play he made it 21-6 with a 67 yard spinner.

On the next kickoff Tate recovered the kick on the Baylor 36 yard line. Two plays later he scored on a wide end sweep for the final Purple Pounder tally.

In the last quarter two long penalties gave Baylor their final score. McKenzie's throw to Crenshaw was incomplete, but a pass interference penalty gave Baylor the ball on Central's 5 yard line. On the next play, Central was penalized half the distance of the goal line and Butler barely crossed the line into a pile of white jerseys for Baylor's final score.

CENTRAL 24; OAK RIDGE 18 November 27

In what proved to be the most controversial game in many a season, the Wildcats of Oak Ridge battled the Purple Pounders to an 18-18 tie. The game went down in the record books as tied another tie game. Central High scored the winning touchdown which was taken away because of a penalty called by the referee. Weeks later it was said by the officials after seeing the movie of the game, that there was no violation and that the touchdown should have been accepted. This gave Central only a moral victory in what should have been an outstanding win.

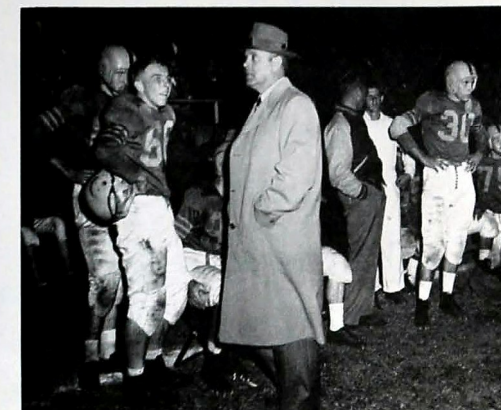
Oak Ridge scored within the first two minutes of play when Billy Hale fumbled on the Central 29 where the Wildcat Ace Peanut Hall picked up the ball to score. It was a sudden, unexpected blow to the Central fans. That was the story of the first half. Twice more the Wildcats went deep into Pounder territory only to have their drive halted by a desperate stand on the 6 yard line and then by an interception by Hoppe. In the second half the Purple came back strong. On his own 11 yard line Hoppe passed to Wade on the 25. On the next play he went 67 yards on a beautiful run to score the first Central 7-18.

In the first play after the kickoff the Wildcats came storming back. Shelton went for 35 yards to the Central 39 dragging Purple shirted tacklers with him. Clayton picked up 2 yards; then Shelton again went right end to make it 12-6.

As the fourth frame started, Pack began a passing drive. The key play in the series was a long pass to the 2 yard line caught by Wade. In the next play Pack sneaked over to tie the score again. In return Oak Ridge came back three minutes after the previous Central tally. Clayton scored from the 8 yard line for the final Ridge points. Hale scored the final Purple touchdown as he went over on the 9 to climb to 18 points.

With minutes to go Hoppe intercepted a pass. On the next play came the controversial screen pass which should have won the game for Central.

A Tense Moment! What's Happening?





Coach Smith give his boys a pep talk

Basketball

The '53 edition of the Pounder basketball team proved that it doesn't take a state championship to make a success of the season.

The team which started out as five boys playing an individual game ended the season playing together as only a good team can.

Gordon Smith, his first year as boys' basketball coach, showed that Central fans can expect much more from future teams. He deserves much of the credit for the rapid improvement of the team. Last year he was the coach of the girls' team. When Coach Bales retired Coach Smith succeeded as varsity coach. Along with coaching he teaches Diversified Occupations.

This might have been a better year for the team had not numerous injuries kept key players out for two or three games. In fact, Jimmy Pack, captain of this year's team, was unable to play until late in the season.

Even though having only a fair won-and-loss record, the team, when they played together, bore marks of championship material. In the latter part of the season the team looked hard to beat in the tournaments, and hard they were. To everyone's surprise, they won the district championship, going away by beating such favored teams as Hixson and Soddy-Daisy. Paul Potter, Jimmy Pack, and Paul Kincer made the Ninth District All-Tournament Team at Bradley in the regional tournament the team got to the semi-finals where they lost a heart-breaker to Oliver Springs.

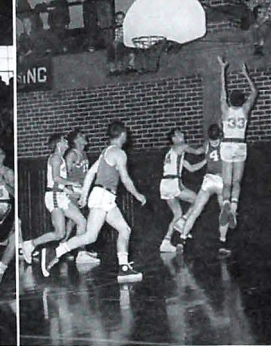
Every member of the team can feel truly proud of a job well done.

CHS Library

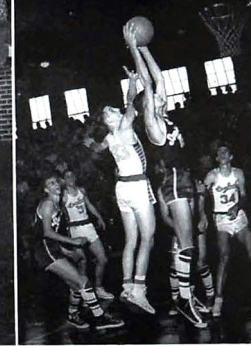
First row: Jimmy Pack, Bill Sylvester, J. D. Lewis, Sammy Hanson, Billy Bunjen, and Houston Clark. Second row: Herbert Cagle, Manager; Raymond Powell, Dan Wade, Walter McPherson, Paul Kincer, Ray Leamon, Paul Potter, and Billy Blaylock.



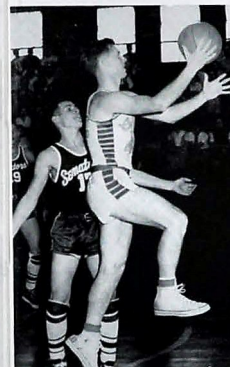
A Score?



Roughing it against the wall



Potter goes high



Two points for Pack



High Flying Wade

Purple Pounders

Free Throw Expert



BASKETBALL SCHEDULE OF 1953

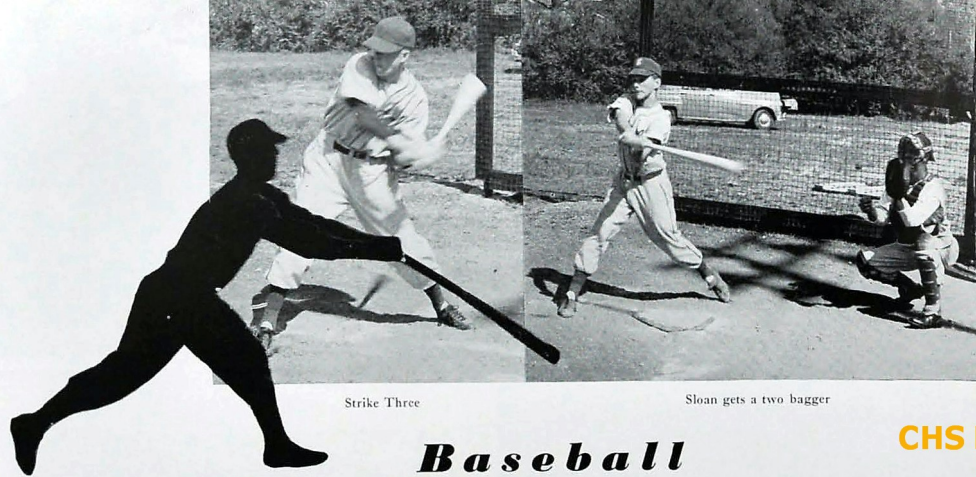
Alumni78;	Central75—December 2
Oltewah47;	Central51—December 4
Murray48;	Central55—December 9
Soddy Daisy60;	Central55—December 10
Tyner45;	Central51—December 15
Johnson City56;	Central43—December 18
Lake City60;	Central49—December 22
Oak Ridge52;	Central57—December 23
Norris65;	Central78—December 24
Marist34;	Central58—January 2
Russell39;	Central53—January 3
Tyner47;	Central52—January 5
Rossville64;	Central63—January 9
Oltewah63;	Central57—January 13
Red Bank55;	Central38—January 16
Bradley65;	Central52—January 20
Oak Ridge47;	Central42—January 23
Lake City55;	Central50—January 27
Red Bank50;	Central59—January 30
Norris60;	Central69—February 3
Rossville58;	Central60—February 6
McCallie62;	Central60—February 10
McCallie54;	Central56—February 17

DISTRICT TOURNAMENT

Birchwood32;	Central92—February 23
Sale Creek48;	Central69—February 25
Hixson62;	Central89—February 27
Soddy Daisy67;	Central79—February 28

REGIONAL TOURNAMENT

McMinn44;	Central64—March 3
Oliver Springs77;	Central64—March 6



Strike Three

Sloan gets a two bagger

Baseball

The end of the 1952 school year found Central with another successful baseball season, losing only two games. Their only regular season loss was a 4-3 heartbreaker to the Red Bank Lions in the closing days of the season.

In the regional tournament Central suffered the second loss of the year, this time at the hands of the King-sport Indians by a score of 10-0. This mighty Indian team, which showed plenty of hitting power and superb pitching, went on to win the state championship.

Coach "Bang Bang" Bales retired after the final game of the season, as baseball coach of Central. In his years of service, he has led many successful seasons. This year was no exception. The loss of Coach Bales to Central High Baseball was regarded by players and students alike

as a loss to the school itself. However, he was succeeded very capably by Coach Red Etter.

The team of 1952 was led by outstanding stars as Dan Wade, Jimmy Sloan, and Ken Baker. Jimmy Pack and Bill McBrayer, mainstays of the pitching staff, had few bad starts and were a real asset to the team.

Jimmy Sloan, snappy third baseman for the Pounders, was signed to a Chattanooga Lookout contract in the early part of this year.

As practice was announced for the 1953 season, from the team of '52 nine men reported—Ray Powell, Dan Wade, Bill Sylvesters, Paul Potter, Bill Watkins, Jim Pack, Ken Baker, and Larry Hickman. Ray Leamon of basketball fame was added to the list.

First row: Ken Hudgins, Eddie Jones, Jimmy Hale, Larry Hickman, Bill McBrayer, Jimmy Pack. Second Row: Manager Paul Brakebill, Ralph Creswell, Jimmy Sloan, Dan Wade, Paul Potter, Kenny Baker, Raymond Powell, and Coach Bales.



Central "B" Team



Future Prospects—8th Grade Team

CHS Library "B" Team and Eighth Grade

"C" CLUB BOYS

First row: Jerry Dixon, Kenny Riggs, Billy Hale, James Pack, Tommy Tillman, Bobby Black, Jack Mason, J. D. Lewis, Bill Morgan, Don Robinson, Herbert Cagle. Second row: Don Duncan, Ronald Killingsworth, Jerry Garner, Jerry McKenzie, Dan Wade, Bill Blaylock, Lamar Fuson, Ray Powell, Paul Kincer, Paul Potter, Wayne Hutcheson, Ivey Bishop. Third row: Dicky Buchs, Bill Sylvesters, Lamar Eston, James Cannon, Gene Spriggs, Billy Joe King, Bobby Tate.



The future success of basketball at Central looks brighter after the fine showing of two teams, the "B" Team and the Eighth Grade Team.

Coached by Stanley Farmer, the "B" Team looked very impressive as it rolled up a fine record of eleven wins against only eight losses. Captained by Bobby Holland, the team racked up wins over such highly regarded foes as Red Bank, Rossville, and Ooltewah.

There are a number of boys on the team who are expected to advance to the varsity next year—George Sweeney, David Carpenter, and Eddie Blaylock. These boys have consistently been high scorers throughout the year.

Coach Les Newton's eighth grade team, playing for only the second year and out to defend their tournament championship of last year, compiled a fine won-lost record of six wins and four defeats. The victories came over such powerful teams as Mowbray, Baylor, and McCallie. The purpose of this club is to train junior high boys for future varsity action.

The team is composed of: Gene Etter, James Reece, Lonny Green, LeVan Ogle, Douglas Williams, Johnny Fletcher, Gary Tallant, Douglas Tomlinson, Donald Broom, Bill Ling, Jerry Bridgeman, Joe Woy, David Estes, and Billy Champion.

Boxing

Although Central did not sponsor a boxing team this year, several Central boxers entered the Golden Gloves independently. As a whole these boys did well, and, although small in number, they took their part of the honors. Championships were won by Bill Kerly, Richard Slaten, Bud Hammontree and J. L. Conner.

The other boxers who entered were Gene Spriggs, Paul Greenberg, Bob Farmer, Lance Lions, and Walter Mooney.

Richard Slaten and Bud Hammontree won the 112 and 118 pound open Golden Gloves Championship respectively. Because of illness, Bud was unable to make the Nashville trip. Richard was beaten in the Nashville semi-finals.



Boys from Central who boxed



1952-53 PURPLETTES

First row: Annette Owens, Patsy Smith, Jeanette Andrews, Gerry Lee, Joann McKinny, Betty Scroggins, Ilene Simmons and Shelby Fox. Second row: Barbara Davidson, Valeria Snyder, Barbara Waldrop, Co-captain Maxine Dixon, Captain Loryane Woy, Joyce Lee, and Jo Casey.

Girls' Basketball

The '52-'53 Purplettes ended a hard fought season losing to Hixson in the district semi-finals. They played probably their best game in four years, leading all the way until Hixson began to hit from the foul line for a narrow win.

The team as a whole was a well balanced machine. Barbara Waldrop and Ilene Simmons played constantly good ball, and with this year's experience may look forward to a good season next year. The team was led by Loryane Woy and Maxine Dixon, captain and alternate captain. Woy was placed on the all tournament first team along with Geraldene Lee, an outstanding senior guard.

The fair record of eight wins and ten losses tells only part of the story. There were only a few teams which outclassed the Purplettes. Most of their losses came in the closing seconds of the games.

The Purplettes are sponsored by Mrs. Margaret Hammack, who, in her first year as girls' head coach, proved to be an outstanding and able leader. Mrs. Hammack teaches eighth and ninth grade girls' gym classes.



Coach Margaret Hammack instructs her captains



2 more for the Purple

Dixon racks up two

Loryane lays one up

CHS Library

Girls' "B" Basketball

The Girls "B" team was organized to give the Varsity more experienced material and at the same time afford more girls as opportunity to play basketball.

The team consists of basketball-minded freshman and sophomore girls. They have played 3 games and have

won them all. Those showing great promise in these games are May Nell Schmidt, Carol McDowell, Barbara Davidson, Betty Scroggins, and Shelby Fox. These girls will probably be on the Varsity team in the years to come.

First Row: Jimmie Ruth Gober, Mary Guice, Jane Armstrong, Patsy McGregor, Charlotte Green, Charlotte Grouf. Second Row: Carol McDowell, Bonnie McCallie, Barbara Long, Mae Nell Schmitt.

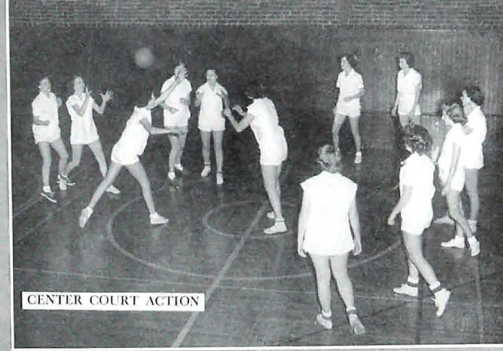




GIRLS' BATTALION OFFICERS



HEY BOSS!



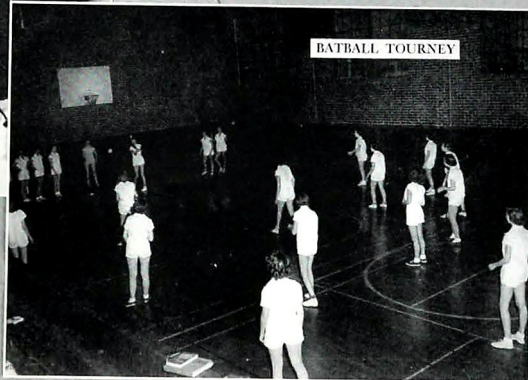
CENTER COURT ACTION



GYM STAFF



HELLO SWEETHEART



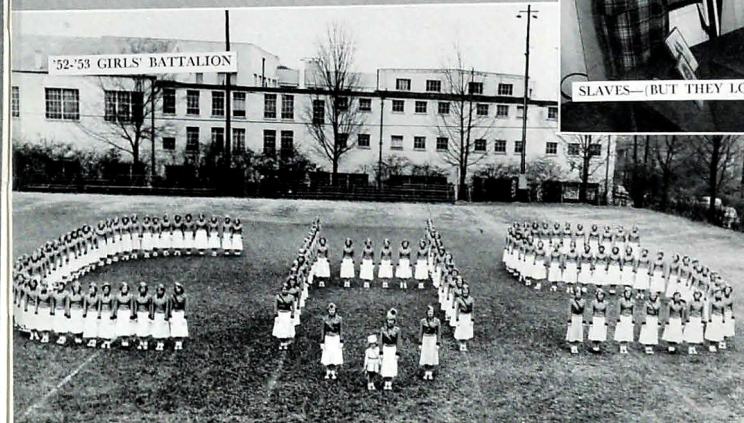
BATBALL TOURNEY

GAMBLE SHOOT



Phys Ed

Snaps



'52-'53 GIRLS' BATTALION



SLAVES—(BUT THEY LOVE IT)



The Activities



Pictured above are: Paul Greenberg, Sports Editor; Joyce Johnson, Senior Editor; Lorraine Woy, Feature Editor; Carolyn Lanford, Freshman Editor; Gene Goodner, Military Editor; Kay Hoffmeyer, Editor-in-Chief; Stanley Baker, Photographic Editor; Estelle Blackwell, Associate Editor; Ken Burns, Associate Editor; Annie Carol Davis, Business Editor; and Mary Wilsen, Club Editor. Not pictured are: Jerry Perry, Art Editor; Valoria Snider, Sophomore Editor; Peggy Rose, Typist; and Jean Stout, Junior Editor. Miss Sally May King, Miss Ruby Nipper, and Mr. C. G. Towry are the sponsors of THE CHAMPION.

The 1953 Champion

The members of the Champion Staff are chosen for their ability to write, work, cooperate, and keep their school scholastic standing above average.

It is an honor to be chosen as a member of the Staff. And, as with most honors, there comes responsibility. This responsibility is far reaching, for the member must not only prove that he is capable of the confidence placed in him, but he must also strive to help compile a book of which the entire senior class will be proud.

It is not all work, nor is it all play. First comes the planning of the book with a representative of the printing company. In a few weeks an odd-looking package arrives and the staff members wonder if those blank pages will ever materialize into their intended purpose.

Then the work begins in earnest. Pictures are taken, discarded, and taken again; write-ups are written, corrected, and rewritten.

In December and January, the work of selecting snaps begins. Hundreds are gone through; some selected, some discarded; from these probably a second selection is made.

As the deadline draws near, tempers grow less patient and the after-school working hours grow longer.

At last... at long last... the entire book has been sent to press. Then comes the waiting... the endless waiting... for the proof copy to arrive, to be corrected, and to be returned. Then there is another period of waiting for the finished copy.

The book so long looked for finally arrives! As the staff hovers over and takes a peek at their "brain child," the silent, inexpressible comment on every face is "At long last! Let's celebrate!"

The Champion Staff Takes Its Turn at Posing!



Typical Afternoon in 301!



ACE CLUB

OFFICERS

HILDEGARDE LANDERS *President*
JO ANN GAMBLE *Vice-President*
BARBARA POWERS *Secretary-Treasurer*

This Ace Club is a sports club composed of girls who make Varsity teams in gym. The purpose of the club is to promote sports interest among the girls. The sponsor is Miss Sarah Hubbard, Physical Education Director.



ALLIED YOUTH

OFFICERS

JOYCE JOHNSON *President*
CHRISTINE CAMPBELL *Vice-President*
DOTSY WEAVER *Secretary*
ALVIN COX *Treasurer*

The Allied Youth is a service club of Central organized in 1951. The purpose is the liberation, through education, of the individual and society from the evils of beverage alcohol. The faculty sponsors are Mrs. Mercer Clementson and Mrs. Hazel Barton.



ANCHORS AWEIGH

OFFICERS

CAROLE NORRELL *President*
BETTY OLDFHAM *Vice-President*
JO ANN GAMBLE *Secretary*
KITTY WILSON *Treasurer*

The Anchors Aweigh, as one of Central's social clubs, has sponsored various social functions during the year, most outstanding of which was their work for Parents' Night in October, 1952. The club is under the leadership of Mrs. Reba Fults, teacher of economics.



ANNOUNCER'S CLUB

OFFICERS

GENE GOODNER *President*
KEN BURNS *Vice-President*
CAROLE NORRELL *Secretary*
PAT ARMSTRONG *Treasurer*

The Announcers' Club has as its specific service the making of daily announcements in the assembly. The announcements are placed in a special box just inside the door of Mrs. Ken Flenniken's speech room. Mrs. Flenniken is director of the club.



BAND OFFICERS

R. M. WEST	<i>Captain</i>
SHIRLEY HOLMES	<i>Sponsor</i>
GEORGE LEWIS BROOME	<i>Lieutenant</i>
DOROTHY HILL	<i>Lieutenant</i>
BOBBY ANN DODD	<i>Lieutenant</i>
DOROTHY HAMMOTREE	<i>Lieutenant</i>

The Central High Band accomplishes many things in a year. They play for pep meetings and join the Battalion in marching exhibitions during halftime shows of football games. They represent Central in various band clinics and concerts, and give concerts for the students, and appear in parades on various occasions. Mr. Morris Bales is sponsor and director.

BANK AND BOOKSTORE OFFICERS

MARY BECKER	<i>President</i>
ANNIE CAROL DAVIS	<i>Vice-President</i>
LESLIE GREENBERG	<i>Secretary-Treasurer</i>

The Bank and Bookstore Staff serves the school by operating the Bookstore and by taking care of all financial transactions through the Bank for the various departments during the school year. This service provides excellent training and business experience for the staff. Miss Ruby Nipper is director.

BIBLE CLUB OFFICERS

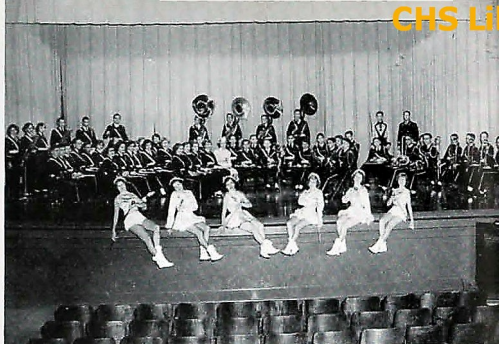
EVERETT GOSSETT	<i>President</i>
ANN WASHAM	<i>Vice-President</i>
BARBARA SAXON	<i>Secretary</i>
EFFIE OTT	<i>Treasurer</i>

The Bible Club is sponsored by Central to promote interest in the study of Bible among students and faculty. Membership is not confined to students who take Bible, but anyone interested may join. Miss Rachael McAllister is sponsor.

BOYS' HI-Y OFFICERS

CHARLES COOPER	<i>President</i>
GENE GOODNER	<i>Vice-President</i>
CHARLES LAMB	<i>Secretary</i>
KEN BURNS	<i>Treasurer</i>

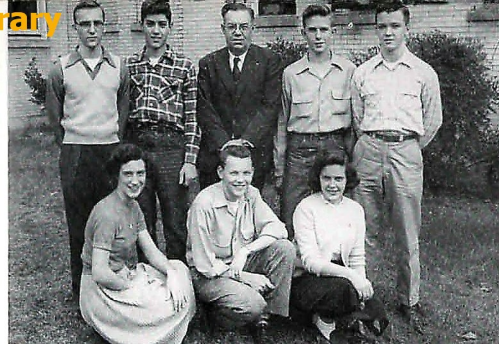
The Boys' Hi-Y is a Christian organization sponsored through Central by the Y.M.C.A. The purpose is to train boys in Christian conduct, both in theory and in practice and to equip its members for participation in society. Mr. J. Pope Dyer is faculty sponsor.



THE CAMERA CLUB OFFICERS

STANLEY BAKER	<i>President</i>
ESTELLE BLACKWELL	<i>Vice-President</i>
DORIS RUNYAN	<i>Secretary</i>
JUNE SULLIVAN	<i>Treasurer</i>

To cultivate an interest in photography and to instruct its members in the fundamentals of picture-making are two of the aims of the Camera Club. The members learn by doing. They take pictures of activities around school and develop and enlarge these pictures in their own dark room. Their special project is the photography for the CHAMPION. Mr. C. G. Towry is sponsor of the club.



CHEERLEADERS

DON ERWIN	<i>Head Cheerleader</i>
-----------------	-------------------------

Cheerleaders and Song Leaders: Don Erwin, Bill Spencer, Dot Wood, and Jo Ann Gamble, seniors; Richard Slaten, Vance Fry, Jane Wilson and Joy Mosteller, juniors; Wade Green, George Gray, Carolyn Lowe, and Norma Jean Coulter, sophomores.

The Cheerleaders are much in evidence during the football season. The members of this club are the "pepper-uppers" leading cheers at pep meetings and football games. The sponsor is Mrs. Margaret Hammack.

DIGEST STAFF OFFICERS

LORAYNE WOY	<i>Editor-in-Chief</i>
JOYCE JOHNSON	<i>Associate Editor</i>
ANN HOUSTON	<i>Associate Editor</i>
PAT ARMSTRONG	<i>Associate Editor</i>
PEGGY TUCKER	<i>Business Manager</i>
BETTY COPEHAEVER	<i>Associate Business Manager</i>
VERNON FRY	<i>Printing Foreman</i>

The Digest Staffs are three groups of busy people. The Editorial Staff writes the stories; the Printing Staff prints the papers, and the Business Staff distributes the papers and makes collections on Thursday mornings. Miss Sally May King sponsors the Editorial Staff; Mr. Archie Bibbey sponsors the Printing Staff, and Mr. Sam Stoner, the Business Staff.



DISC AND DIAMOND OFFICERS

GEORGE WESTBROOK	<i>Captain</i>
TOMMY JETT	<i>First Lieutenant</i>
GEORGE PATTERSON	<i>First Lieutenant</i>
GENE GOODNER	<i>First Lieutenant</i>
JERRY PERRY	<i>Second Lieutenant</i>
DAN WADE	<i>Second Lieutenant</i>
STANLEY BAKER	<i>Second Lieutenant</i>
CHARLES LAMB	<i>Second Lieutenant</i>
EDDIE KEMPER	<i>First Sergeant</i>

The Disc and Diamond Society is a military club designed to bring together military, school, and social life in such a way as to make each more enjoyable and profitable, and to instill into each member the qualities of leadership, character, service and honesty.





GIRLS' HI Y

OFFICERS

MARLENE COULTERPresident
ANN HOUSTONVice-President
KAY HOFFMEYERSecretary
MARY BECKERTreasurer
ALICE MARIE ORTWEINChaplain

The Girls' Hi Y is a Christian organization sponsored through Central by the Y.M.C.A. The purpose of this club is to promote religious interest and Christian fellowship among girls. The faculty sponsors are Miss Bobby Hodges and Mrs. R. N. Logan.



INTERSCHOOL LEADERSHIP COUNCIL

OFFICERS

KAY HOFFMEYERPresident
MARY BECKERVice-President
ANN HOUSTONSecretary
MARLENE COULTERTreasurer

The Interschool Leadership Council assists in encouraging a wholesome student life of Central and among other schools of the area. Its members are leaders of the other clubs of Central. Miss Frances Tiernan sponsors the I. L. C.



THE KEY CLUB

OFFICERS

CHARLES LAMBPresident
RICHARD SLATENVice-President
CHARLES COOPERSecretary
A. L. EVATTTreasurer

The Key Club, sponsored through Central by the Kiwanis Club, is a boys' service organization. New members are chosen from the boys of all grades by their fellow members. Mr. Everett Fields, economic teacher, is sponsor.

LIBRARY STAFF

OFFICERS

MYRA HOBBSPresident
MARY ANN COFFEYVice-President
BARBARA SANDERSSecretary
CHRISTINE STEGALLTreasurer

The Library Staff assists librarians in handling books in the library and in beautifying the library with posters and displays. Mrs. Mary Sanders, and Miss Ellen Mullenix are co-sponsors.

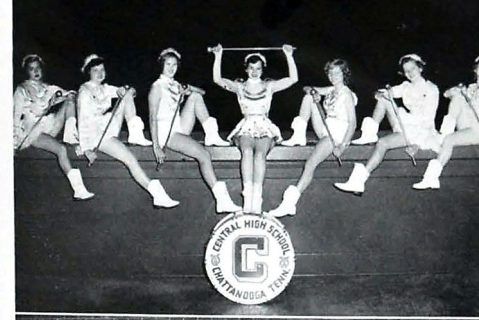


MAJORETTES

NINA GRAVITTHead Majorette

Other members are: Peggy Griffin, Anna Gail Axmacker, Bebe Rogers, Mary Ann White, Norma Wilson, and Barbara De Armond.

The Central High Hi Steppers add much life to the pep meetings and football half time shows. These expert baton twirlers march with the band and perform in chapel with the band. Mr. Morris Bales is sponsor.



MERRY MACS CLUB

OFFICERS

KATHERINE HANNAHPresident
DIANE RYMERVice-President
CAROL MILLICANSecretary
ELIZABETH RUNYANTreasurer

The Merry Macs Club is another socially-minded organization purpose of which is to promote better social activities in school life and to learn parliamentary procedure, and to encourage a high type of social activities in school life. They were one of the clubs who helped in the promotion of the Magazine Drive. Mr. Luther Young, is faculty adviser.

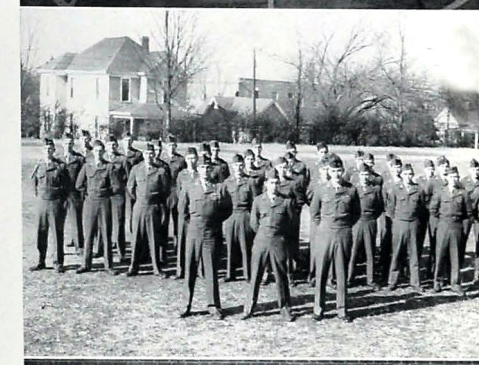


MILITARY POLICE CLUB

OFFICERS

CHARLES TINNONPresident
JOEY OLIVERIVice-President
BOBBY WELLSSecretary
JIMMY VAUGHNTreasurer

The new M. P. Club is the combined groups of Firing Squad, the Honor Platoon, and original M. P. Club. Their functions are firing at military funerals, participating in fancy drill exhibitions, and ushering at football games.



NITE OWLS

OFFICERS

MARTHOLA HITCHCOCKPresident
JANIE WINFREYVice-President
PAT WAGNERSecretary
HILDEGARDE LANDERSTreasurer

The Nite Owl is a social Club for the promotion of friendship and the development of the members' social qualities. They were one of the sponsors of the Valentine Formal given at the Country Club on February 13. They also assisted with the Magazine Drive. Miss Bonnie Eichorn is sponsor of the club.



OFFICE STAFF

OFFICERS

JO ANN GAMBLE *President*
 BETTY ELLIOTT *Vice-President*
 JANE WILSON *Secretary*
 JOY MOSTELLER *Treasurer*

The Office Staff is a busy group of girls who donate one period a day to helping in the office, answering the phone and running errands. Miss Christine Coppinger is their sponsor.



PIRATE CLUB

OFFICERS

JO ANN WALKER *President*
 DELOIS THURMAN *Vice-President*
 ROSALIE MILLER *Secretary-Treasurer*

The Pirate Club was organized in the year 1951-52 with Jean Bonds as the first president. The Pirates are another of the sponsors of the Magazine Drive in the early part of this school year. Mrs. Helen Parnell is club sponsor.

ORCHESTRA

OFFICERS

NELL MORGAN *President*
 J. W. IRWIN *Vice-President*
 ARTHUR SUITS *Secretary*
 J. N. HOWARD *Treasurer*

The Central High Orchestra is a busy musical group. They give concerts during the year along with the Glee Club. The purpose of the orchestra is to train students in the correct use of musical instruments. Mr. K. W. John is sponsor of the group.



JUNIOR RED CROSS

OFFICERS

ANNIE CAROL DAVIS *President*
 CHARLOTTE ARMSTRONG *Vice-President*
 JODY WILLIAMS *Secretary-Treasurer*

The Junior Red Cross is the youth branch of the American Red Cross and has its purpose helping people in need no matter where they may be—home or overseas. This is also the purpose and aim of the American Red Cross, co-sponsor of the Central Club. Miss Edith Taylor and Mrs. H. B. Robinson, faculty sponsors, supervised the filling of Red Cross boxes to be sent to foreign countries in the fall of 1952.

RIFLE TEAM

OFFICERS

LEBRON WINTON *Captain*

The Rifle Team is a competitive organization consisting of boys who have shown superior ability in rifle marksmanship. Not only do the boys gain knowledge in the use of fire arms but they also have the opportunity of representing their school in matches with other teams.



SENATE CABINET

OFFICERS

CHARLES COOPER *President*
 MARLENE COULTER *Vice-President*
 KAY HOFFMEYER *Secretary*
 A. L. EVATT, JR. *Treasurer*

The Senate Cabinet is the executive division of the Senate. The responsibility of the Cabinet is to plan and propose matters of business concerning the Senate. Mr. J. Arlie Hoodenpyl is faculty sponsor.

SENATE

OFFICERS

CHARLES COOPER *President*
 MARLENE COULTER *Vice-President*
 KAY HOFFMEYER *Secretary*
 A. L. EVATT, JR. *Treasurer*

The Senate is an organization for the study and practice of Parliamentary procedure patterned after the old Roman Senate. Membership is based on a test, given twice yearly, and on recommendation of the Senators. Mr. J. Arlie Hoodenpyl is faculty sponsor.



SHOVE OFFS

OFFICERS

ESTELLE BLACKWELL *President*
 DOT WOOD *Vice-President*
 NADINE TATE *Secretary*
 LETTY LOU WADE *Treasurer*

The Shove Offs were organized to create a better social attitude among the members and to furnish social activities for the club and friends. They were one of the sponsors of the P. T. A. Drive in the fall and of the Valentine Formal in late winter. Mrs. Flora B. Ware is their club adviser.

SILHOUETTE CLUB

OFFICERS

PEGGY ROSE *President*
 BARBARA MABEE *Vice-President*
 JEAN STOCKTON *Secretary*
 JODY WILLIAMS *Treasurer*

The Silhouette Club is to promote good-fellowship and social life for the girls of Central. The club is noted for their willingness to help when needed. They assisted with the Magazine Drive and with the Chili Supper this year. Miss Dorothy Walker, typing teacher, is sponsor.



TWIX TEEN CLUB

OFFICERS

BEVERLY EVANS *President*
 BARBARA EWTON *Vice-President*
 BILLIE SCHMITT *Secretary*
 GLORIA WOODY *Treasurer*

The Twix Teens Club is one of the social clubs for the promotion of friendship and good will among the girls of Central. Their special project for the year was the Polo drive in January. The drive netted four hundred and sixty eight dollars. Mr. David Litz is faculty sponsor of the club.

SPINSTERETTE CLUB

OFFICERS

PAT ARMSTRONG *President*
 ANN HOUSTON *Vice-President*
 SARA TRAIL *Secretary*
 PEGGY TUCKER *Treasurer*

The Spinsterette Club holds before its members high scholarship as one of its specific aims. They were one of the clubs who assisted in the Magazine Drive in December of 1952. Mr. K. W. Johns serves as sponsor of the Spinsterettes.



USHERS

OFFICERS

ANN HOUSTON *Head Usher*
 KAY HOFFMEYER *Vice President*
 JUNE SULLIVAN *Secretary-Treasurer*

The Ushers, day by day, render an invaluable service to Central faculty and students. They help direct students in the halls, assist with the registration of students, and usher at many public occasions. Miss Edna Cross is sponsor of this club.

STAGE CREW

OFFICERS

JIMMY DRINNON *President*
 JOHN McLAUGHLIN *Vice-President*
 DOBSON LAWRENCE *Secretary*
 TOMMY MILLER *Treasurer*

The "Boll Weevils" is the crew of boys who render Central service by working on the stage. These boys take care of the stage furniture, lights, public address system, projectors and screen, and have various other responsibilities connected with the smooth working of chapel programs. They have rendered a valuable service in the audio-visual program of the year. Mr. Ralph Olenger is Stage Crew sponsor.



VARSITY GLEE CLUB

OFFICERS

EDGAR MEYER *President*
 DIANNE GROSS *Vice-President*
 SHIRLEY LORD *Secretary-Treasurer*

The Varsity Glee Club adds joy and life to the routine of school with songs and concerts throughout the year. They accept many invitations to give programs in churches and before civic organizations. Mr. K. W. John is sponsor.

SWIMMING CLUB

OFFICERS

ALLINE HELTON *President*
 NADINE TATE *Secretary-Treasurer*

The Swimming Club was organized in the fall of 1952. Its members are Central girls who are in the swimming class of Miss Sarah Hubbard at the Y.W.C.A. Its purpose is to provide healthful recreation and helpful instruction in swimming.



VAGABOND CLUB

OFFICERS

ALLINE HELTON *President*
 ANNIE CAROL DAVIS *Vice-President*
 IRIS FISHER *Secretary*
 JUDY CASTLEBERRY *Treasurer*

The Vagabond club is a social club organized in 1947 with Lois Peace as president. The purpose of the club is to encourage proper attitudes of friendliness among the students of Central. Miss Ethel York and Mrs. Margaret Hammack are co-faculty sponsors.

National Honor Society

First Semester OFFICERS

KAY HOFFMEYER *President*
 ANN HOUSTON *Vice-President*
 ANNIE CAROL DAVIS *Secretary*
 LORAYNE WOY *Treasurer's Aide*

Second Semester OFFICERS

KEN BURNS *President*
 MARLENE COULTER *Vice-President*
 PEGGY TUCKER *Secretary*
 JERRY PERRY *Treasurer's Aide*

MEMBERS

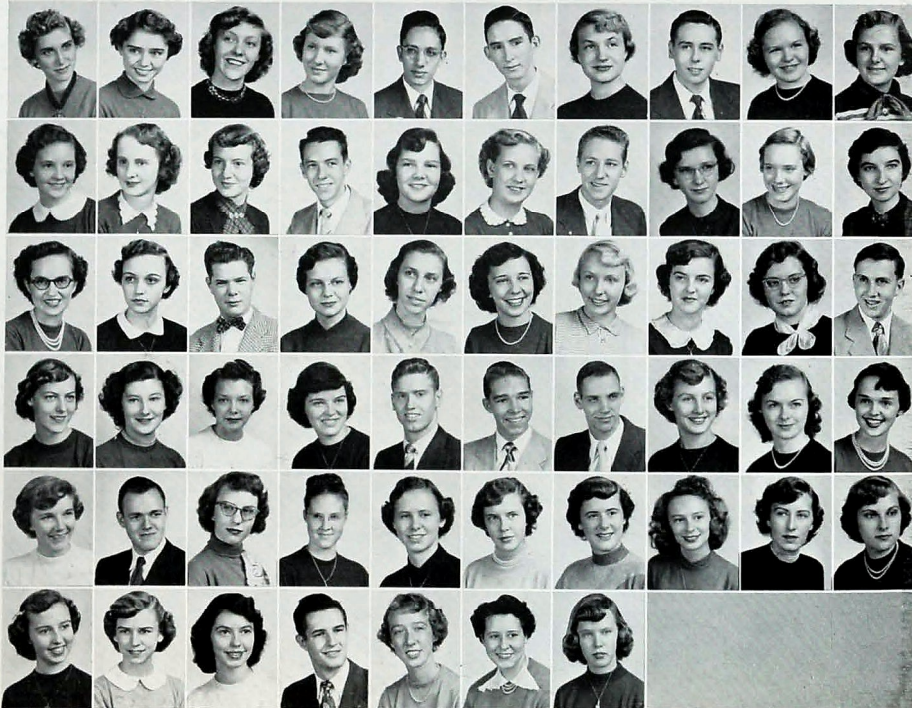
Joan Adamson
 Pat Armstrong
 Mava Barker
 Mary Becker
 George Lewis Broom
 Ken Burns
 Jo Caldwell
 Charles Cooper
 Betty Copenhaver
 Marlene Coulter
 Annie Carol Davis
 Dorothy Drake
 Betty Elliott
 A. L. Evatt

Jeannie Gilreath
 Pat Good
 Gene Goodner
 Betty Gross
 Kay Hoffmeyer
 Ann Houston
 Wanda Howard
 Joyce Johnson
 Paul Kittle
 Rabonne Lang
 Peggy Lowery
 Joyce Markum
 Barbara Meadows
 Rosalie Miller

Nell Morgan
 Ross Morgan
 Joyce Moore
 Jeanette Mullis
 Joan Murray
 Alice Marie Ortwein
 Jimmy Pack
 Jerry Payne
 Jerry Perry
 Billie Phifer
 Barbara Powers
 Verna Ray
 Pat Rector
 Howard Reed
 Bobby Jo Spaulding

Wilma Stallings
 Jean Stockton
 June Sullivan
 Jane Sweeney
 Ann Talkington
 DeLois Thurman
 Sara Trail
 Peggy Tucker
 Norma Walker
 Dotsy Weaver
 George Westbrook
 Jody Williams
 Mary Wilson
 Lorraine Woy

First Row: Joan Adamson, Pat Armstrong, Mava Barker, Mary Becker, George Lewis Broom, Ken Burns, Jo Caldwell, Charles Cooper, Betty Copenhaver, Marlene Coulter, Second Row: Annie Carol Davis, Dorothy Drake, Betty Elliott, A. L. Evatt, Jeannie Gilreath, Pat Good, Gene Goodner, Betty Gross, Kay Hoffmeyer, Ann Houston, Third Row: Wanda Howard, Joyce Johnson, Paul Kittle, Rabonne Lang, Peggy Lowery, Joyce Markum, Barbara Meadows, Rosalie Miller, Nell Morgan, Ross Morgan, Fourth Row: Joyce Moore, Jeanette Mullis, Joan Murray, Alice Marie Ortwein, Jimmy Pack, Jerry Payne, Billie Phifer, Barbara Powers, Verna Ray, Fifth Row: Pat Rector, Howard Reed, Bobby Jo Spaulding, Wilma Stallings, Jean Stockton, June Sullivan, Jane Sweeney, Ann Talkington, DeLois Thurman, Sara Trail, Sixth Row: Peggy Tucker, Norma Walker, Dotsy Weaver, George Westbrook, Jody Williams, Mary Wilson, Lorraine Woy.



*This
and
That..*



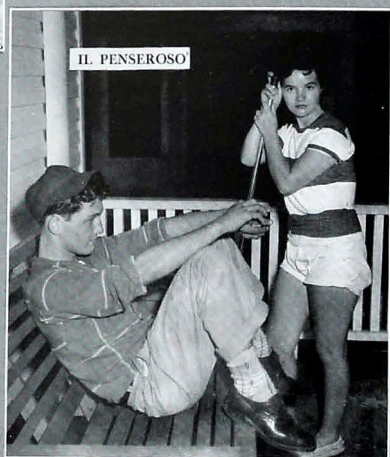


L'ALLEGRO



BASS DRUM

Scrambles and Jam bles



IL PENSEROSO



HIGH STEPPERS



OH! THOSE SLUMBER PARTIES!



EASY DOES IT, SALLY



CHEESE!



IN THIS CORNER . . . THE SHOVE OFFS!



WOES OF INITIATION



NITE OWLS . . . AT 2:30 A.M.



WOOF! WOOF! AND WOW!



FOOD FOR THANKSGIVING



CENTRAL CHAMP, "DICKY" SLATEN

Things and Stuff...



CAN-CAN 1920 STYLE



LEISURE? HOURS



YOU CAN HELP BY GIVING
AS THE DIMES COME ROLLING IN



A TRUE CENTRAL PRODUCT—SPORTSMANSHIP

This page compliments of the Central High School P.T.A.

Advertisements

TRADEWINDS

5501 Brainerd Road

Phone 9-8885

STOCKS AND BONDS

Inquiries Solicited

CHATTANOOGA SECURITIES COMPANY

513 James Bldg.

Ph. 6-1274, 6-1275

CHATTANOOGA PHOTO SUPPLY CO.

923 Market Street

CHATTANOOGA 2, TENNESSEE

BELVOIR PHARMACY

4501 Brainerd Road

Phone 2-3184

BLESSING WATERHOUSE & COMPANY

CHATTANOOGA, TENNESSEE

STRINGER'S

GROCERIES, FRESH MEATS



2300 Bailey Ave.

Phones 2-2161, 2-2162

CITY CYCLE COMPANY

BOB RIGGSBY, Proprietor

INDIAN MOTORCYCLES
SCHWINN & DAYTON BICYCLES
Sales-Service

Phone 9-7979

1412 E. Main Street

RAY MOSS FARMS

DAIRY PRODUCTS

Bonnie Oaks Drive

Phone 2-7247

COMPLIMENTS

OF

COOPER'S FOOD STORE



COMPLIMENTS
OF
CAMPBELL'S CLINIC

**OSCAR'S
SANDWICH SHOP**

2522 McCallie Avenue

COMPLIMENTS
OF
**COLONIAL BAKING
COMPANY**

2220 East Fourth Street

CHATTANOOGA 4, TENNESSEE

**THE
KRYSTAL COMPANY
HAMBURGERS**

Our New Brainerd Location is
Convenient for Central
Students

COMPLIMENTS
OF
**DODDS AVENUE
PHARMACY**

**PERFECTION LAUNDRY
AND
DRY CLEANERS**

"Bundles of Satisfaction"

CHATTANOOGA, TENNESSEE

Phone 2-1177

2312-14-16 McCallie Ave.

DAYLE MAY

JEWELER

Reed Barton-Gorham-Towle-
International-Heirloom
Sterling

Rossville, Ga.

Dial 84-1514

COMPLIMENTS

OF

A FRIEND

COMPLIMENTS

OF

FLEETWOOD COFFEE

**HENDERSON &
COLEMAN**

Market at Tenth

CHATTANOOGA, TENNESSEE

*Compliments
of*
FOWLER BROTHERS

DEPENDABLE FURNITURE

Seventh and Broad Streets



Apologies to Poetess Stein.
A rose may be endlessly a rose; a job
is more than just a job.

A job is a living.

So when you look for a job, you want
security, good pay, assurance of raises
and opportunity to advance.

Telephone girls find all these things
and more in interesting and important
jobs in a growing industry.

Why not come in and talk with us about
a position at the Telephone Company?

THE TELEPHONE COMPANY IS A GOOD PLACE TO WORK

COMPLIMENTS
OF
MOSTELLER'S GARAGE

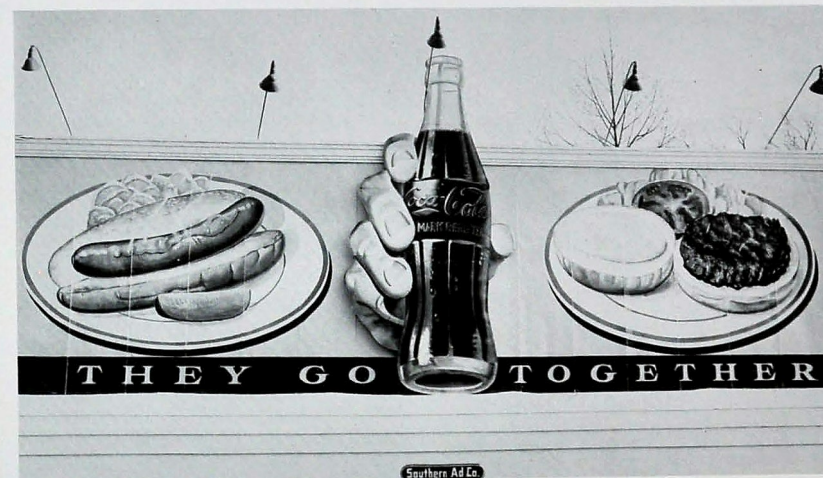
MOORE & KING

836 Market Street
Phone 6-4194

MEDICAL ARTS PHARMACY
544 McCallie Avenue
Phone 6-1297

COMPLIMENTS
OF
THE READ HOUSE

COMPLIMENTS
OF
BILL PENNEY



DRINK COCA-COLA

COMPLIMENTS
OF
THE UNIVERSITY
OF CHATTANOOGA

COMPLIMENTS
OF
CHATTANOOGA GAS
COMPANY

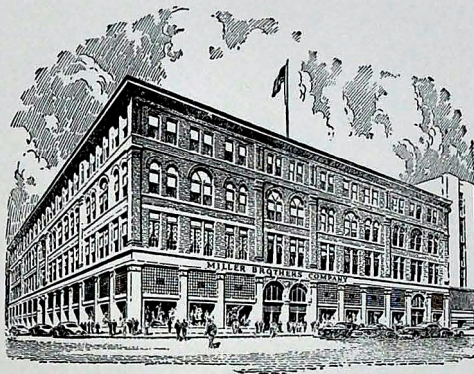
CLIFT-SMITH
COMPANY
INTERNATIONAL HARVESTER
PRODUCTS

9 East Seventh 3625 Brainerd Road

VIOLET CAMERA SHOP

Photographic Dealers
Kodaks-Films-Supplies
Quality Photo Finishing

LESTER D. COHN, Owner CHATTANOOGA, TENN.



Miller Bros. Co.

Patrons

Compliments of a Friend		
Allen's Pharmacy	2-1127	Corner McCallie and Willow
American Lava Corporation	5-3411	Manufacturers Road
Archer Paper Company	6-3184	1224 Market Street
Bob's Do-Nut Shop	2-9241	2212 McCallie Avenue
Chattanooga Armature Works	2-2124	1215 Duncan Avenue
Chattanooga Bakery Company	7-3351	1126 King Street
Chattanooga Button and Badge	6-6934	205 East Eighth Street
Chattanooga Venetian Blind Co.	2-1187	1400 McCallie Avenue
C and N Service Station	5-9916	1501 South Broad
Chrisman Hardware	7-1114	511 Market Street
Dodd's Avenue Cleaners	2-4415	1910 Dodds Avenue
Duncan Electric Company	9-1418	2605 East Main Street
Easy Way Grocery	2-4632	2310 McCallie Avenue
Eaves Badge and Emblem Company	6-6114	823 Cherry Street
Edmundson's School of Business	6-1259	110 West Eighth Street
Edwards and Lebron Jewelers	7-0188	805 Market Street
Effron's	7-0451	706 Market Street
Epperson's Ambulance Service	4-3321	1900 McCallie Avenue
"Ernie"		
Faulkner Sign Company	7-1639	526 Broad Street
Hardie and Caudle	6-4129	809 Market Street
Jacobs Wholesale Candy Company	6-2728	219 East Tenth Street
Koblentz	6-2764	812 Market Street
S. H. Kress Company	6-5631	708 Market Street
Lansford Piano Company	6-7185	731 Cherry Street
L. C. Leach, Jewelers	7-2841	738 Cherry Street
LeGrand Jewelry Company	7-6648	604 Market Street
Lookout Valley Drug Company	3-1083	Cummings Highway
Lookout Valley Grocery	3-2460	Cummings Highway
Lookout Valley Food Market	3-2470	Cummings Highway
Loveman's, Incorporated	6-1061	800 Market Street
"Luther"		
Marlin and Derryberry Service	2-9216	2101 East Main Street
Matthews Pharmacy	2-3168	1400 Dodds Avenue
Tom McGee, Jeweler	6-0751	732 Cherry Street
Al Miller Music Store	7-5853	512 McCallie Avenue
National Funeral Company	2-8366	1800 McCallie Avenue
T. H. Payne Company	6-0138	821 Market Street
Peoples Studio	7-2340	6 East Ninth Street
Pickett's	6-3121	814 Market Street
Read More Book Company	6-6546	22 East Ninth Street
Rhyme Pharmacy	4-1547	117 Chickamauga Avenue
E. C. Roach Food Market	4-9217	2336 McCallie Avenue
R. K. Scholtz Grocery	2-0153	415 Dodds Avenue
Stovall Hardware Company	6-7101	711 Cherry Street
Tarvin Hotel Supply	6-6112	108 East Main Street
Martin Thompson Company	7-3373	706 Cherry Street
Three Sisters	6-2719	702 Market Street
Vogue	4-2676	3617 Brainerd Road
H. W. Waldorf	6-5662	804 Cherry Street
F. M. Wilhoit Texaco Station	9-3822	2600 McCallie Avenue
H. T. Wilhoit Gulf Station	2-8214	2524 McCallie Avenue
Williams Flowers	5-3237	1042 McCallie Avenue
Willow Pharmacy	2-2171	Willow and Chamberlain Avenue

Autographs

Autographs

