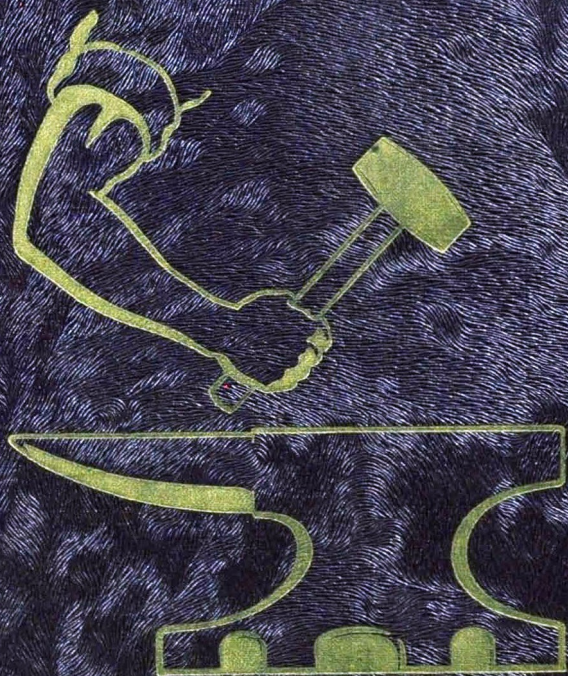
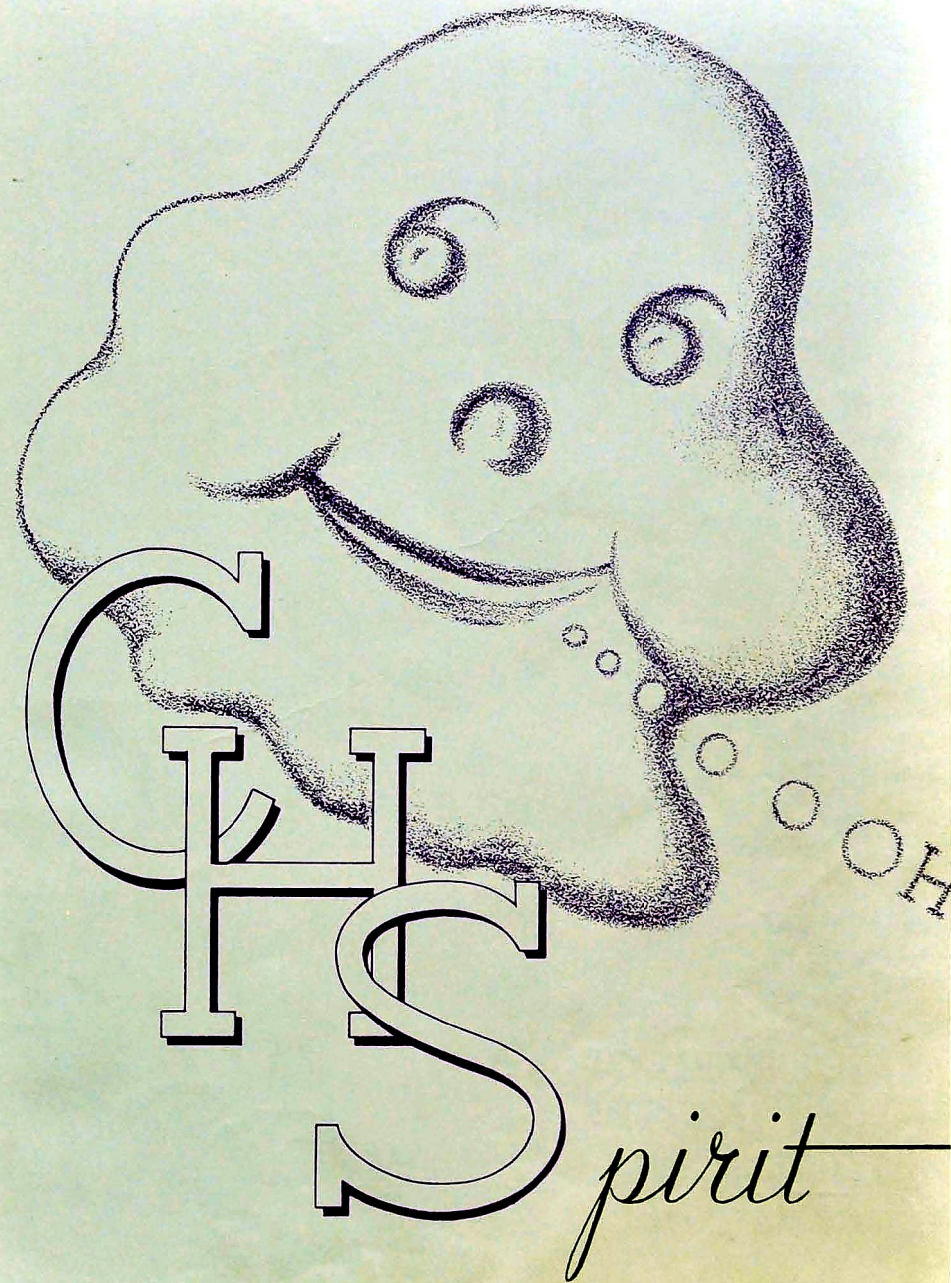
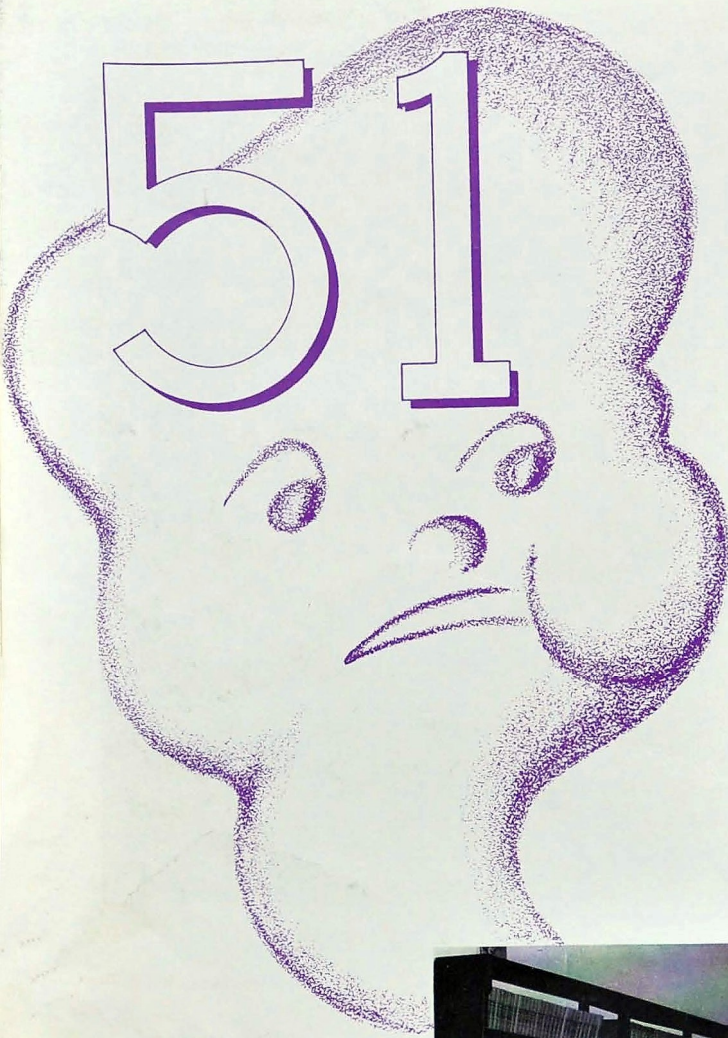


1951 CHAMPION



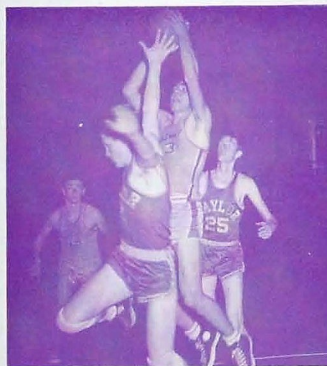
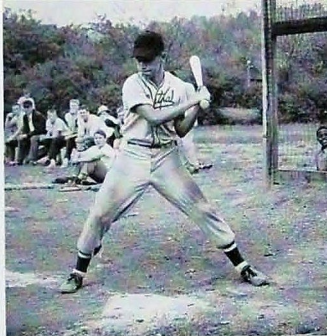




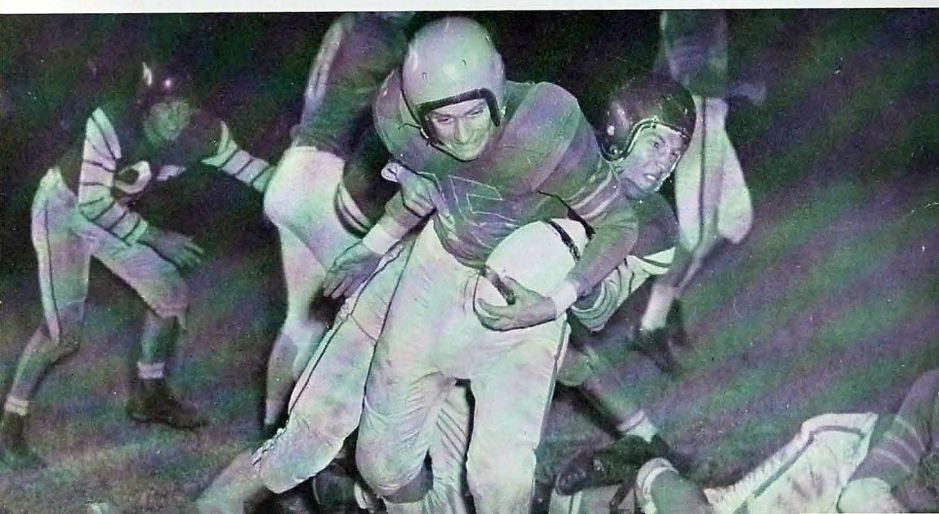
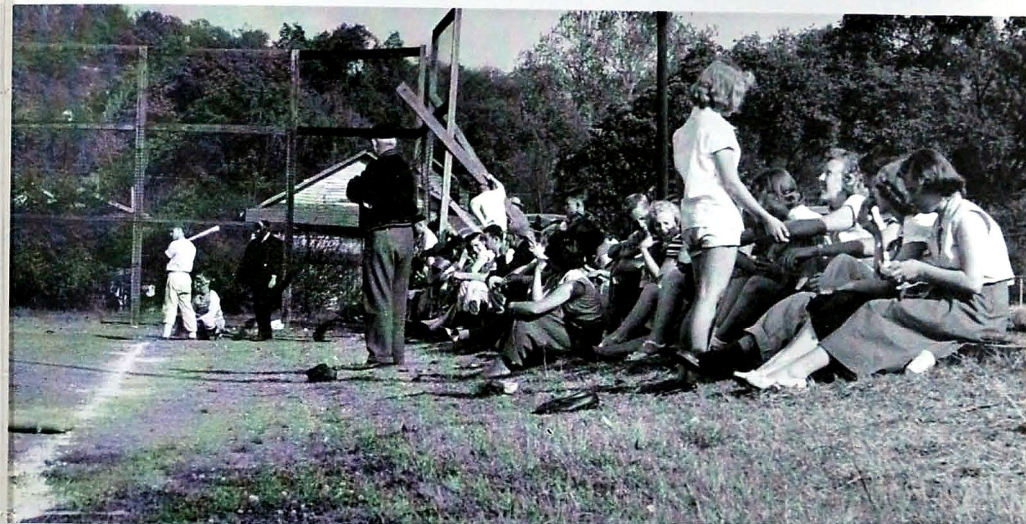
THE SPIRIT OF
1951 INVITES
YOU...



TO ACCOMPANY HIM TO CLASSES
THERE TO MEET THE LADS AND LASSES...



TO TREK ALONG FROM GAME TO GAME



AND SEE IN



ACTION MEN
OF FAME . . .



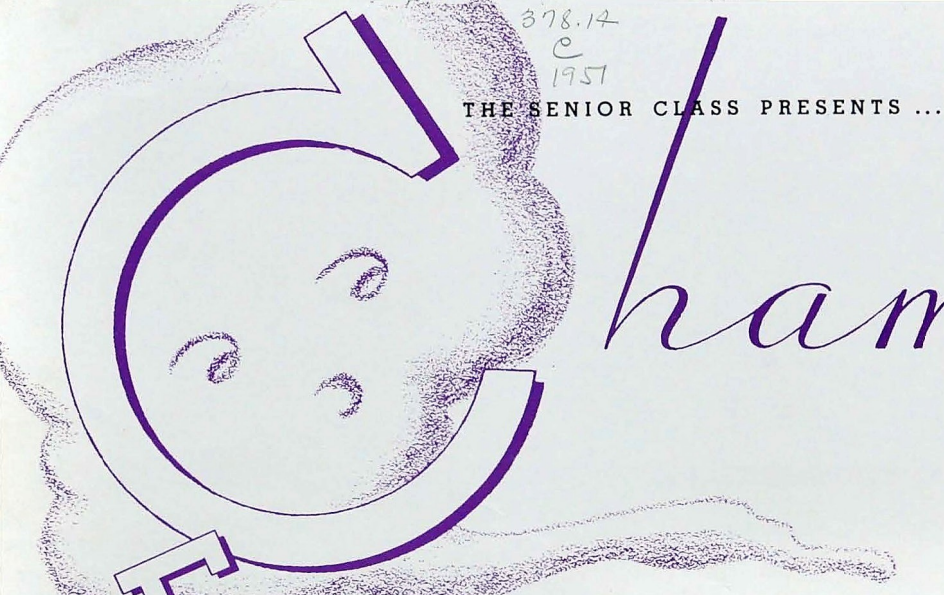
TO GRACE A PARTY MERRY AND GAY,

OR GO ON "A



BUMPITY RIDE IN
A WAGON OF HAY"





578.14
C
1957

THE SENIOR CLASS PRESENTS ...

Champion

ENTRANCE

high school

THE ANNUAL PUBLICATION OF THE STUDENT BODY OF
CENTRAL HIGH SCHOOL, CHATTANOOGA, TENNESSEE

CENTRAL HIGH SCHOOL LIBRARY
CHATTANOOGA, TENN.

CHS Library

18688

- | | | |
|-----------------|---|------------------|
| ROBERT KEOWN | • | EDITOR-IN-CHIEF |
| PEGGY KISTLER | • | ASSOCIATE EDITOR |
| MARIAN FOLLETTE | • | BUSINESS MANAGER |



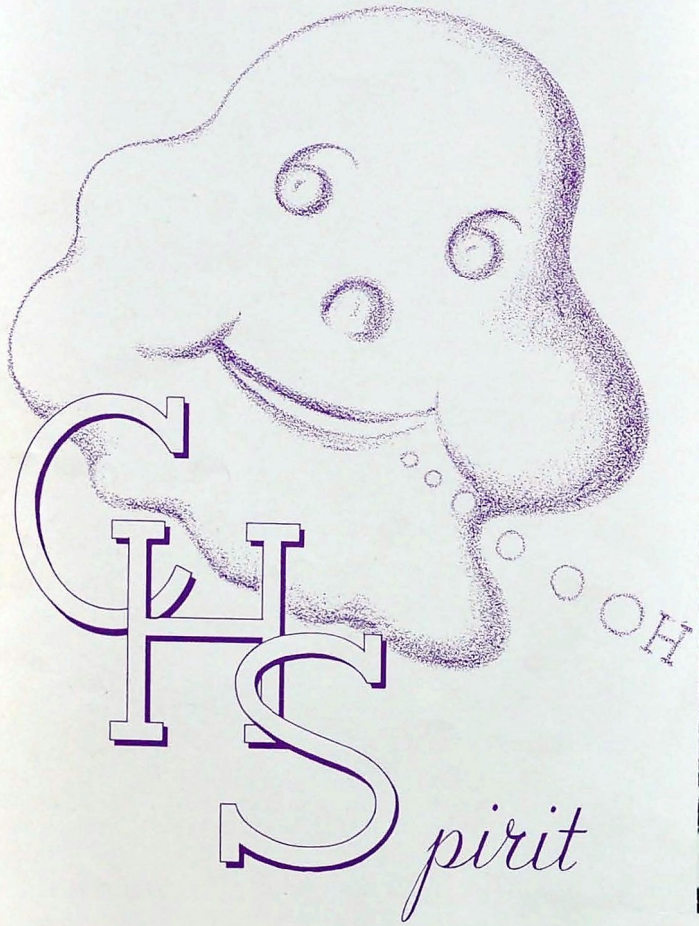
DEDICATION

TO

MRS. KEN FLENNIKEN who through her friendly manner and high standards; through her evenness of temper, charm of personality, and wholesome sense of humor as teacher, director, and friend, has endeared herself alike to faculty and student, the Senior Class dedicates this the CHAMPION of 1951.



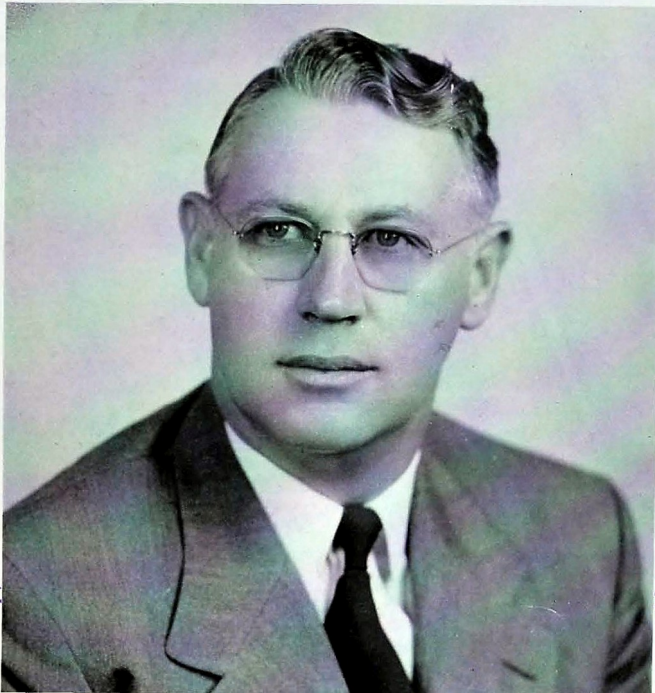
Mrs. Ken Flenniken



IN THE SCHOOL

ALMA MATER

What a wonderful school is ours to love,
 With its ups and its downs and its joys!
 What a wonderful banner of purple and gold
 As it floats o'er our girls and boys!
 What a wonderful school that I love so well,
 With its wonderful rep so high!
 So you've heard of the school that's true as blue,
 Of that wonderful school, Central High.



OUR NEW PRINCIPAL

To the Senior Class of 1951

Dear Friends,

It is a privilege to have the opportunity of giving this brief message to you, my first graduating class at Central High School.

One of our early political writers stated near the beginning of the American Revolution that "These are times that try men's souls." Most eras or generations contain crises of varying types. Our generation presents its own problems which we think are most important in the preservation of our democratic society.

We should not forget, however, that even though today seems to be a time of crisis, it is also a day of great opportunity in many areas, both old and new. Our nation is known as a land of opportunity. We shall continue to need great leadership in all phases of our national and international life. You have a great heritage; and I firmly believe that we shall not only survive but also lead in the world of tomorrow, because you will be capable and willing to do whatever is needed.

Realizing your possibilities and limitations, may you face the future with a vision and a firm determination that you will do your part to make the world a better place in which to live.

Too often in the quest for material success, many of the lasting attributes of life are neglected. "And what doth the Lord require of thee, but to do justly, and to love mercy, and to walk humbly with thy God." (Micah 6:8.)

May his blessings be upon you in your many endeavors throughout life.

Sincerely,

W. H. MILLSAPS

THE FACULTY

First Row
W. P. BALES History
MRS. H. L. BARGER English
MRS. GEORGE BARTON Commercial
LT. COL. GEORGE A. BONE Military
ED BROWN Mathematics

Second Row
CARL CHAPMAN English
MRS. MERCER CLEMENTS Home Economics
MRS. MARY COOPER, R.N. Nurse
MISS CHRISTINA COPPINGER Office
MISS EDNA CROSS History

Third Row
MISS ELSA DENNISON General Science
MRS. MARY LOU DERRYBERRY Art
MISS ANNA A. DYER Office
J. POPE DYER Social Science
MISS BONNIE MARY EICHORN Mathematics

Fourth Row
E. B. ETTER Mathematics, Athletics
MRS. LOUISE A. FACHILLA Office
MISS RUTH FAIN English
STANLEY FARMER Physical Education
E. N. FIELDS Economics

Fifth Row
MRS. LORA FLENNIKEN Speech
J. I. FLETCHER Industrial Arts
MRS. REBA FULTS Economics
SFC. WILLIAM GREEN Military
SFC. ROBERT L. HALL Military

Sixth Row
MRS. MARGARET T. HAMMACK Physical Education
SFC. L. H. HOGELAND Military
J. ARLIE HOODENPYLE Chemistry
MISS EDMUND HOOSER English
MISS SARAH HUBBARD Physical Education

Seventh Row
MRS. WILLIAM D. JACOWAY Mathematics
MISS EARL JONES History
K. W. JOHN Music
MISS SALLY MAY KING English
DAVID LITZ Mathematics

Eighth Row
MRS. R. N. LOGAN School Mother
MISS RACHEL McALLISTER Bible
JAMES L. McBURN Printing
LT. SPENCER E. MILLARD Military
WILLARD MILLSAPS Mathematics



at CENTRAL HIGH

First Row
MISS ANNE MOFFITT English
MISS MINNIE LEE MORGAN English
MISS ELLEN MULLENNIX Librarian
MRS. E. M. NAGEL Cafeteria
J. LESTER NEWTON General Science

Second Row
MISS RUBY NIPPER Commercial
RALPH E. OLINGER General Science
W. EVERETT O'NEAL Assistant Principal
MISS JOE ORE Biology
MRS. HELEN H. PARNELL Civics

Third Row
MRS. AUGUSTA PEOPLES English
SFC. ALVIN PERRY Military
MRS. J. FRANK PRICE History
MISS HELEN PRYOR English
SFC. DANIEL H. REVILL Military

Fourth Row
MISS MARY ELLEN RICE Spanish
A. B. ROBERTSON Mathematics
MRS. ROSEMARY ROBERTSON Music
MRS. ELIZABETH N. ROBINSON English
MRS. BLANCHE ROGERS English

Fifth Row
MRS. MARY SANDERS Librarian
J. M. SEATON Industrial Arts
MISS PAULINE SHEARER Commercial
MRS. JOHN A. SHELTON English
MRS. JAMES E. SHROPSHIRE Home Economics

Sixth Row
MRS. VIRGINIA M. SKATES History
GORDON W. SMITH Diversified Occupation
SAM STONER History
S. Q. TALLANT Mathematics
MISS EDITH TAYLOR Commercial

Seventh Row
MRS. MARGARET TAYLOR Home Economics
MRS. W. H. TEMPLETON Home Economics
W. H. TEMPLETON Mathematics
MISS FRANCES TIERNAN Social Science
C. G. TOWERY Biology

Eighth Row
B. H. WALKER Music
MISS DOROTHY WALKER Commercial
MRS. HENRY WARE Mathematics
ROBERT S. WHARTON Industrial Arts
MISS ETHEL YORK English
LUTHER V. YOUNG Mathematics

THE SENIOR CLASS

- **FRANKLIN ADKINS**, "Curly," Entered from West End, Birmingham, Alabama, '51; Swing Band, '51; Purple and Gold Band, '51.
- **CYNTHIA LANE ALEXANDER**, "Cindy," Entered from Brainerd Junior High, '49; **CHAMPION**, '49.
- **ERNEST CLYDE ALLEN**, "Kid," Entered from Brainerd Junior High, '48; Disc and Diamond Society, '49; Officers Club; Company Commander of "C" Company.
- **MARY ANNA ALLISON**, "Little Newt," Entered from Brainerd Junior High, '49; Shove-Off Club, '49, '50, '51; Y-Teens, '49.
- **DOROTHY JEAN ANDERSON**, "Jeannie, Dimples," Entered from Hardy Junior High, '49; Merry Mac Club, '49, '50, '51; Treasurer, '51; Acrobatic Majorette, '51.
- **JERRY VERNON ANDERSON**, "Rock," Entered from East Side Junior High, '49; Christmas Pageant, '50.
- **EDWARD WAYNE ANDREWS**, Entered from Lookout Junior High, '48.
- **BARBARA FAYE ASA**, Entered from East Side Junior High, '48; Merry Mac Club, Social Chairman, '51.
- **BENNY ATCHLEY**, "Bennyburger," Entered from Brainerd Junior High, '48; Disc and Diamond, '49, '50, '51; Officers Club, '51; Honor Platoon, '51; Sergeants Club, '50; Second Lieutenant.
- **ROBBIE EVELYN ATHEARN**, "Irma," Entered from Northside Junior High, '48; Girls Hi-Y, Orchestra, '48, '49, '50, '51; Band, '48, '49, '50, '51; National Honor Society, '51.
- **MILDRED LOVELEEN AYERS**, "Lovey," Entered from Northside Junior High, '48; Merry Mac Club, President, '51.
- **VIRGINIA LOUISE BAGGETT**, "Baggett," Entered from Hixson High, '49; **Digest** Staff.
- **TED RAY BAKER**, Entered from Dickerson, '48.
- **GLORIA LEE BALDWIN**, "Doll," Entered from East Lake Junior High, '48; Ushers, '51; Announcers Club, '50, '51; **Digest** Staff, '50, '51; National Honor Society, '51.
- **BETTY JO BALL**, Entered from Brainerd Junior High, '48; Charm Club, '50, '51; Band, '50, '51.
- **MARGARET EDITH BARROWS**, "Margie," Entered from Lookout Mountain, '48; Twixteen Club, '50, '51; Hi-Y, '50, '51; Y-Teens, '48, '49; Bible Club, '51; Battalion, '50, '51; Won 1st place in essay contest on Teachers Contribution to Better Society, '50; Main Office Force, '51; National Honor Society, '51.
- **ANN GRACE BECKER**, "Gracie," Entered from Lookout Junior High, '49; Senate, '49, '50, '51; Senate Cabinet, '51; Vagabonds, '50, '51; Honor Society, '50, '51; Variety Glee Club, '49, '50, '51; Orchestra, '49, '50; Hi-Y, '50; Interscholastic Leadership Council, '50, '51; Candy Crew, '49; Ushers, '50, '51; Secretary, '51; Library Staff, '49, '51; Treasurer, Badminton Club, '49; Senate Play, '50; Battalion, '50, '51; Senior Party Committee Chairman, '51; **Digest** Representative, '50.
- **BETTY ANN BELL**, "Smoky, Bet," Entered from East Side Junior High, '49.

SENIOR CLASS OFFICERS

Bobby Clark, President; Earl Tatum, Vice President; Peggy Kistler, Secretary; Bucky Shamburger, Treasurer; Norman Hofferman, Sergeant-at-Arms; Bobby Salley, Sergeant-at-Arms.

- **BARBARA ANN BETHUNE**, "Bob," Entered from East Side Junior High, '48.
- **BARBARA JANE BISHOP**, Entered from East Side Junior High, '49; Ushers, '51.
- **JAMES EUGENE BISHOP**, Entered from East Side Junior High, '48.
- **WANDA AL BISHOP**, "Irma, Schelle," Entered from Polk County, '49; Bible Club, '50, '51; Received a P. E., '50.
- **PATRICIA LEE BLACK**, "Pat," Entered from Brainerd Junior High, '48; Silhouette Club, '49, '50, '51; **Champion** Night, '50; **Digest** Staff, '48, '49; Library Staff, '48; I. L. C., '49; National Honor Society, '51.
- **ALMA JO BLAKE**, Entered from Coffee High School, '51; F.H.A., '49; Home Economics Club, '49.
- **LARRY CHESTER BLALOCK**, "Snake," Entered from East Side Junior High, '49; Christmas Pageant, '50.
- **DORIS ANN BOERGER**, "Dab," Entered from Lutheran school, '48; Physical Ed. Staff, '48, '50, '51; Vagabond Club, '49, '50, '51; Vice President, '51; Ace Club, '50, '51; Honor Society, '50, '51; Y-Teens, '51; Battalion, '49, '50, '51; Lieutenant, '51; Y-Teens, '48; Girls Hi-Y, '49, '50, '51; Treasurer, '51; Badminton Club, '49; Swimming Club, '49, '50; Latin Club, '49.
- **BOBBY SUE BOHANNON**, "Bobo," Entered from Dickinson Junior High, '48; Twixteen Club, '48, '49; Merry Mac, '50; F.T.A., '49; **Digest** Editor, '51; Staff; Feature Editor; Ushers, '51; **CHAMPION** Staff, '51; Club Editor; National Honor Society, '51.
- **BARBARA CATHEEN BOLES**, "Cookie," Entered from Chattanooga Junior Academy, '48; National Honor Society, '50, '51; Ushers, '50, '51; Bible Club, Secretary, '51; Ace Club, '50, '51; Y-Teens, '48; Junior Editor, **CHAMPION**, '50; Senior Editor, **CHAMPION**, '51.
- **JACK WILBURN BOOKOUT**, Entered from East Lake Junior High, '49; President of V. G. C., '50, '51; Disc and Diamond, '49.
- **JUNIOR RICHARD BOYD**, "Shorty," Entered from Lookout Junior High, '48; Sergeants Club, '50, '51.
- **WILLIE RUTH BOYD**, Entered from East Lake Junior High, '48; Ace Club, '49, '50; Battalion, '49, '50.
- **WILLIAM CLYDE BRADFORD**, "Bill," Entered from East Side Junior High, '48; Sergeant's Club, '50, '51.
- **DORIS ANN BRAMLETT**, "Shortie," Entered from Ringgold High, '49; Girls Glee Club, '48, '49; Bible Club, '50, '51.
- **HAZEL LEE BREWER**, Entered from Hardy Junior High, '49; Merry Mac Club, '49; Battalion, '49.
- **GRADY L. BROTHERS**, Entered from Dickinson, '46; Disc and Diamond Society; Sergeants Club.
- **BETTY LOU BROWDER**, Entered from East Side Junior High, '49; Silhouette Club, '49; Girls Hi-Y, '50, '51; I. L. C., '50, '51; Ushers, '51; Twixteen Club, '51; National Honor Society, '51.
- **DAN WAYNE BROWN**, "Red," Entered from Hardy Junior High, '48; Officers Club, '50, '51; Disc and Diamond, '50, '51; Sergeants Club, '49, '50.
- **GLADYS LOUISE BROYLES**, "Smoky," Entered from Hardy Junior High, '48; Shove-Off Club, '49, '50, '51; Vice President, '51; Girls Hi-Y, '50, '51; R. O. T. C. Sponsor, '51; Girls Battalion, '50, '51.
- **LENA KATHERINE BRUMLOW**, Entered from Richard Hardy Junior High, '48; Vice President of Ushers, '50, '51; National Honor Society, '50, '51; Girls Hi-Y, '50, '51; Bible Club, '49, '50, President, '51.
- **ELIZABETH MARIE BUCHANAN**, "Shorter," Entered from Dickinson Junior High, '48; Shove-Off Club, '50; Treasurer, '51; Crown Dance, '50; **Champion** Night, '50; Girls Battalion, '50, '51; Y-Teens, '49, '50.
- **BARBARA SUE BURNETTE**, "Bob," Entered from Lutheran School, '48; Y-Teens, '48; Junior Play, '50; Make-up Committee, Senior Play, '51.
- **MILDRED ERLINE BURROW**, "Bruddy," Entered from Lookout Junior High, '48; Ace Club, '49; Twixteen Club, '50; Girls Battalion, '50; 2 P. E. in Gym, '49, '50.
- **PATSY RUTH CALDWELL**, "Pat," Entered from East Side, '48; Twixteen Club, '48, '49, '50, '51; Vice President, '51; Ushers, '50; R. O. T. C. Sponsor, '51; National Honor Society, '51.
- **EDITH GRACE CAMPBELL**, Entered from Chattanooga High, '50; T. and I. Club, '50, '51.
- **FRED OSBORNE CAMPBELL, JR.**, "Ossie," Entered from North Chattanooga Junior High, '48.
- **SUE CAMPBELL**, Entered from East Side Junior High, '48; T. and I. Club, '50, '51.
- **PEGGY ANN CARDEN**, "Peg," Entered from East Side Junior High, '48; Twixteen Club, '49, '50, '51; Badminton Club, '48; Y-Teens, '48, '49.
- **HAL DANIEL CAREY**, "Duck," Entered from North Side Junior High, '48; Golf Club, '49, '50, '51; Disc and Diamond, '50, '51; Sergeants Club, '49, '50.



Franklin Adkins
Cynthia Alexander
Clyde Allen

Edward Andrews
Barbara Asa
Benny Atchley

Ted Baker
Gloria Baldwin
Betty Ball

Barbara Bethune
Barbara Bishop
James Bishop

Chester Blalock
Doris Boerger
Bobby Bohannon

Willie Boyd
William Bradford
Doris Bramlett

Dan Brown
Louise Broyles
Lena Brumlow

Patsy Caldwell
Edith Campbell
Fred Campbell, Jr.

Mary Allison
Jeannie Anderson
Jerry Anderson

Robbie Athearn
Loveleen Ayers
Virginia Baggett

Margaret Barrows
Ann Becker
Betty Bell

Wanda Bishop
Patricia Black
Alma Blake

Barbara Boles
Jack Bookout
Junior Boyd

Hazel Brewer
Grady Brothers
Betty Browder

Marie Buchanan
Barbara Burnette
Mildred Burrow

Sue Campbell
Peggy Carden
Hal Carey

THE SENIOR CLASS

- **MARTHA ANN CARLOCK**, "Fat." Entered from East Lake Junior High, '48; Orchestra, '48, '49, '50; Ushers, '50, '51; Shove-Off Club, '48; Hi-Y, '50, '51; National Honor Society, '51.
- **BETTY JEAN CARTER**, "Irma." Entered from East Side Junior High, '48; Bible Club, Social Chairman, '48, '49, '50; Ushers, '50.
- **GEORGE WILLIAM CARVER**, "Colonel." Entered from Dickinson Junior High, '49; Sergeants Club, '49, '50.
- **MARGARET JANETTE CASTLE**, "Jenny." Entered from Dickinson, '48; Nite Owls, '48, '49, '50; Vice President, '51; Senate, '48, '49, '50; Assistant Treasurer, '51; Y-Teens, '48, '49; President, '50; All City Y-Teens, President, '49; F. T. A. Historian, '49; Candidate for Miss P. T. A., '49; Battalion, '49, '50, '51; Girls Hi-Y, '50, '51; R. O. T. C. Sponsor, '51; Youth Center Council, '50, '51; National Honor Society, '51.
- **EDNA IRIS CASTLEBERRY**, "Dimples." Entered from Lookout Junior High, '48; Physical Education Staff.
- **MARTHA BELLE CASTLEBERRY**, "Bell." Entered from Lookout Junior High, '48.
- **THOMAS LAWSON CATES**, "Tommy." Entered from Sugar Hill, '48.
- **JUNE ELIZABETH CHAPMAN**, Entered from East Side Junior High, '48; Badminton Club, '48; Twixteen Club, '50, '51; Bible Club, '50, '51; Y-Teen Club, '49, '50.
- **EARLINE WILLIE CHAUNCEY**, "Bobee." Entered from Nathan L. Bachman, '48; Bible Club, '48, '49, '50; Future Teachers of America, '49, '50, '51; Secretary and Treasurer, '49; Library Staff, '49, '50, '51.
- **WRIGHT LATIMER CHILDERS**, "Wrong." Entered from Dickinson Junior High, '48; Varsity Football, '49, '50, '51; C Club, '49, '50; B Team, Basketball, '48.
- **RUBY DIANE CHILDRESS**, "Kate." Entered from Dickinson Junior High, '48; Glee Club, '50, '51.
- **BOBBY CLARK**, Entered from Brainerd Junior High, '48; Hi-Y, '49, '50, President, '51; C Club, '49, '50, '51; Bank and Bookstore Staff, '48, '49, '50, '51; Senate, '50, '51; Disc and Diamond Society, '48, '49, '50, '51; I. L. C., '49, '50, President, '51; Major in R. O. T. C., '51; Honor Society, '50, '51; Sergeants Club, '49, '50; Officers Club, '50, '51.
- **ALICE JANETTE CLINGAN**, "Al." Entered from East Side Junior High, '48; Twixteen, '49, '50, '51; National Honor Society, '50, '51; Ushers, '50, '51; Y-Teens, '48, '49.
- **KENNETH ROSS COFFEY**, Entered from Nathan Bachman, '48; Senate: Hi-Y.
- **FRANCES ELIZABETH COLLINS**, Entered from Bradley High, '50; Latin Club; Gad-A-Bouts.
- **DOV RAYMOND COMBS**, Entered from North Chitaucooga Junior High, '47.
- **GRADEANA JOYCE CONNER**, "Deana." Entered from Brainerd Junior High, '48; Silhouette Club, '50; Treasurer, '51; R. O. T. C. Sponsor, '51; Treasurer of Band Boosters' Club, '51; National Honor Society, '51.
- **WANDA JUNE COOPER**, Entered from East Side Junior High, '49; Charm Club, '49; Tumblers, '49.
- **PEGGY JOYCE COPE**, Entered from East Side Junior High, '48; Spinsterette Club, '48, '49.

- **VIRGINIA JO COUCH**, "Jo." Entered from Hardy Junior High, '48; Merry Mac Club.
- **EDWARD ARMSTEAD COULTER**, "Eddie." Entered from Brainerd Junior High, '49; Camera Club, '49, '50, '51; Officers Club, '51; C Club, '50, '51; Sergeants Club; Football Manager, '49, '50, '51; R. O. T. C. Captain, '51.
- **JAMES COULTER**, "Jim." Entered from East Side Junior High, '48; Purple and Gold Band, '48, '49; Orchestra, '49; Vice President, Boys Hi-Y, '50, '51; I. L. C., '50, '51; Treasurer; Bank Staff, '49; Vice President, '50, President, '51; Cheerleaders, '50, '51; Senate, '50, '51; Program Chairman; Sergeants Club, '49; Secretary; Disc and Diamond Club, '49, '50, '51; Secretary; Officers Club, '51; Social Chairman; Junior Class Officer, '50; Regimental Major, '51; County Tax Assessor on "County Boy's Day," '50; Junior Play Cast, '50; Senior Play Cast, '51; Senate Play Cast, '50; Swing Band, '48, '49; Champion Night, '51; Service Award, '51; Military Band, '48, '49; Senate Cabinet, '51; President, Key Club, '51.
- **CHARLES CLARENCE CRABTREE**, "George." Entered from Hardy Junior High, '48; Band, '49; Firing Squad, '48, '49.
- **LAURA ELIZABETH CRAIG**, Entered from Brainerd Junior High, '49; Inkspot Club, '50; Ushers, '51.
- **PHILA LEE CRANE**, "Fe Fe." Entered from Brainerd Junior High, '49; Varsity Glee Club, '49, '50; Library Staff, '50; Senate, '49, '50, '51; Ushers, '51; National Honor Society, '51.
- **BOBBIE DELARISE CRAWFORD**, Entered from East Side Junior High, '49; Charm Club, '49; Tumblers, '49.
- **DOROTHY JEAN CRAWFORD**, "Babe." Entered from East Lake Junior High, '48; Merry Mac Club, '49, '50; Vice President, '51; 3-Year Art Student.
- **MACK SHELTON CRAWLEY**, "Noodles." Entered from Rhea Central High, '51; Football.
- **RONALD B. CREEK**, "Ronnie." Entered from Dickinson Junior High, '48.
- **ELSIE CORNELIA CUNNINGHAM**, "Neechie." Entered from Lookout Junior High, '49.
- **WILLIAM ARNOLD CUPP**, "Squirt, Short." Entered from East Side Junior High, '48; Sergeants Club; Band.
- **JAMES EDWARD DANIEL**, Entered from East Lake Junior High, '49; Disc and Diamond Society; Officers Club, Sergeants Club; 1st Lieutenant in R. O. T. C.
- **CONRAD PHILIP DARR**, "Hot Rod." Entered from Dickinson Junior High, '49; Band, '49; Officers Club; Sergeants Club, '51.
- **TOMMY DAUGHERTY**, "Hot Rod." Entered from East Lake Junior High, '49.
- **RONALD E. DAVIDSON**, "Ronnie." Entered from East Side Junior High, '48.
- **JACKIE REESE DAVIS**, "Jack." Entered from Brainerd Junior High, '48; C Club, '50, '51; Disc and Diamond, '50, '51; Football Manager, '49, '51; Varsity; Sergeants Club, '51; Boys Glee Club, '49.
- **WANDA SUE DAVIS**, "Susie." Entered from Hardy Junior High, '49; Merry Mac Club, '49.
- **CHARLES LAWAYNE DAY**, "Shorty." Entered from East Lake Junior High, '49.
- **ERNEST FRANKLIN DEAKINS**, "Hot Rod." Entered from Hardy Junior High, '48; Sergeants Club, '49, '50; Band, '48, '49; Firing Squad, '48, '49.
- **GENE DEMONTREVILLE**, "De Mont." Entered from Knoxville Central High, '49; Disc and Diamond, '50, '51; Senate, '50, '51; I. L. C., '49, '50, '51; Hi-Y, '50, '51; President; Spanish Club, '51; Senior Play, '51; Officer on Boy's County Day, '50; Sports Editor, CHAMPION, '51; Senate Play, '50; Champion Night, '51; Key Club, '51; Digest Representative.
- **THOMAS DOWNEY**, Entered from Northside Junior High, '49.
- **JUNIOR LEE DOWNS**, "Sonny." Entered from East Side Junior High, '49; Depression Club, '49, '50; Art Club, '49; Sergeants Club, '50.
- **BARBARA JEAN DRINNON**, "Barb." Entered from Lookout Junior High, '49; Physical Education Staff, '49, '50, '51; Ace Club, '49, '50; President, '51; I. L. C., '50; Honor Society, '50, '51; Vagabonds, '50, '51; Hi-Y, '50, '51; Girls Basketball Team, '50, Captain, '51; Battalion, '49; Lieutenant, '50, Captain, '51.
- **MARY JANE DUNCAN**, Entered from Hardy Junior High, '49; R. O. T. C. Sponsor, '51; Merry Mac Club, '49.
- **EDWYN DYE**, "Ed." Entered from Brainerd Junior High, '48.
- **BETTY JANE EAVES**, "Squirt." Entered from East Side Junior High, '49; Library Staff, '48, '49, '50, '51; Senate, '49, '50, '51.
- **BOBBY EAVES**, Entered from Hardy Junior High, '48; Senate, '48, '49; Junior Boy's Hi-Y, '48; M. P. Club, '50, Sergeants Club, '50; Disc and Diamond, '50, '51; Officers Club, '51.
- **CARL MICHAEL EDMONDSON**, "Curly." Entered from East Side Junior High, '48.

Prize winning couple at Senior party, Hazel and Joe.



Martha Carlock
Betty Carter
George Carver



Janette Castle
Iris Castleberry
Martha Castleberry

Thomas Cates
June Chapman
Earline Chauncey



Wright Childers
Diane Childress
Bobby Clark

Alice Clingan
Kenneth Coffey
Frances Collins



Don Combs
Gradeana Conner
Wanda Cooper

Peggy Cope
Virginia Couch
Edward Coulter



James Coulter
Charles Crabtree
Laura Craig

Phila Crane
Bobbie Crawford
Jean Crawford



Mack Crawley
Ronald Creek
Cornelia Cunningham

Arnold Cupp
James Daniel
Phillip Darr



Tommy Daugherty
Ronald Davidson
Jackie Davis

Wanda Davis
Charles Day
Ernest Deakins



Gene DeMontreville
Thomas Downey
Lee Downs, Jr.

Barbara Drinnon
Mary Duncan
Edwyn Dye



Betty Eaves
Bobby Eaves
Carl Edmondson

THE SENIOR CLASS

- **MARY RUTH ELLIS.** Entered from East Side Junior High, '48.
- **BILL P. ELSEA.** "Archie Bull." Entered from Hardy Junior High, '49; M. P. Club, '48; Sergeants Club, '49; Officers Club, '50, '51.
- **ANN ELIZABETH ENGLAND.** "Squirt." Entered from East Side Junior High, '48; Twixteen Club, '48, '49, '50; President, '51; Girls Battalion, '48, '49, '50, '51; Digest Staff, '51; Office Force, '50, '51; National Honor Society, '51.
- **BARBARA JUNE FAERBER.** "Shorty." Entered from City High, '50.
- **GRACE ELLENE FARLEY.** Entered from East Side Junior High, '48.
- **SARAH FRANCES FLOYD.** "Pete." Entered from East Side Junior High, '49; Shove-Off Club, '49, '50; Ace Club, '50, '51; Battalion, '50, '51; Girls Hi-Y, '50, '51; Vagabonds, '50, '51.
- **MARIAN FOLLETTE.** "Curves." Entered from Brainerd Junior High, '48; Girls Hi-Y, '48, '49, '50, '51; Senate Cabinet, '49, '50, '51; Spinsters, '49, '50, '51; Bank Staff, '48, '49, '50; Secretary, '51; National Honor Society, '50, '51; CHAMPION Staff, '50, '51; R. O. T. C. Sponsor, '51; Varsity Glee Club, '48, '49, '51; Y-Teens, '48, '49, '50.
- **BARBARA ANN FORD.** "Barby." Entered from Brainerd Junior High, '48; Charm Club, '48; Ink Spots, '48, '49, '50, '51; Hi-Y, '50, '51; Y-Teens, '48, '49, '50, '51; R. O. T. C. Sponsor, '51; Junior Play, '50; Candidate for Home-Coming Queen, '51; Candidate for Christmas Queen, '51; Majorette, '49, '50; Head Majorette, '51; Secretary for Band Boosters Club, '51; Senate, '50, '51; National Honor Society, '51.
- **FRANCES EVELYN FORESTER.** "Stupid." Entered from East Side Junior High, '48; Bank and Bookstore Staff, '49, '50, '51; Social Chairman, '50, '51; Shove-Off Club, '49, '50; Girls Hi-Y, '49, '50; President, '51; I. L. C., '49, '50, '51; Announcers Club, '50, '51; Honor Society, '50, '51; Senate, '49, '50, '51; Secretary, City Tri Hi-Y; Library Staff, '48, '49; Girls' State, Vagabond Club, '49, '50, '51; Glee Club, '48, '49, '50; R. O. T. C. Sponsor, '51; Battalion, '48, '49, '50; Candidate for Miss P. T. A.
- **ANNA MAE FOSTER.** "Anna." Entered from Kirkman Vocational, '49; T. and I. Club.
- **DICK FOWLER.** "Shorty." Entered from Brainerd Junior High, '48; Senate, '49; Band, '50; Sergeants Club, '50; "B" Team Basketball, '49, '50; Officers Club; Executive Officer; Junior Play Cast, '51.
- **ROBERT LEE FRANKLIN.** "Nose." Entered from East Side Junior High, '49; Disc and Diamond Society, '49, '50, '51; M. P. Club, '49; Sergeants Club, '49; Officers Club, '50, '51; Honor Platoon, '50, '51.
- **BETTY ANN GAMBLE.** "BeGo." Entered from Brainerd Junior High, '48; Vice President, Silhouettes, '49, '50, '51; Champion Night, '50; Library Staff, '48.
- **MABEL LEE GANDY.** Entered from East Lake Junior High, '48; Ushers, '51.
- **VERA JOSEPHINE GASS.** "Joia." Entered from Tyner, '48; National Honor Society, '50, '51; Battalion, '49, '50, '51.
- **BETTY ANN GENNOE.** "Suzie." Entered from East Side Junior High, '48.
- **MYRA FAYE GINN.** Entered from Dickinson Junior High, '49; Shove-Off Club, '49, '50; President, '51; National Honor Society, '50, '51; Bank and Bookstore Staff, '49, '50; Treasurer, '51; Battalion, '49, '50, '51; Y-Teens, '49, '50; Sponsor for Regimental Commander, '51; Youth Center Council, '50, '51.

- **LELAND GOLDSTON.** "Crow." Entered from South Knoxville Junior High, '47; Sergeants, '50; Disc and Diamond Society; Digest Staff; Stage Crew; Officers Club, President, '51; R. O. T. C. Company "F"; Executive Officer; Boxing Team, '49; "B" Team Football, '47, '48; "B" Team Basketball, '47.
- **BETTY GOSSETT.** Entered from East Side Junior High, '49; Trail Troiters, '50; Secretary; Silhouette Club, '51; Varsity Glee Club, '48, '50, '51; Twixteen, '49.
- **DELORES GRAYSON.** "Marge." Entered from Sweetwater, Tennessee, '50; Bible Club, '51; Ushers, '51.
- **GLADYS JANET GREEN.** "Purple." Entered from Brainerd Junior High, '49; Ink Spot, Vice President, '51.
- **HAZEL LOUISE GREEN.** "Haldie." Entered from East Lake Junior High, '48; Ushers, '50, '51; Ace Club, '49, '50, '51; Twixteen Club, '50.
- **PAMELLA GRIFFITH.** "Pam." Entered from Brainerd Junior High, '49; Spinsters, '50, '51; Ushers, '51; Y-Teens, '49; National Honor Society, '51.
- **JOHN BENTON GUINN.** "Lover." Entered from East Side Junior High, '49; Sergeants Club, '50, '51.
- **MARY ALICE HAFLEY.** Entered from Brainerd Junior High, '48; Bible Club, '49, '50; Assistant Treasurer, '51; Library Staff, '48; Girls Battalion, '48, '49; Digest Staff, '48, '49, '50; Manager, '51.
- **JIMMY EARL HALE.** "Squirrel." Entered from Hardy Junior High, '49; "C" Club, '50, '51; Disc and Diamond Society, '50, '51; Football Team, '49, '50, '51; Captain, Baseball Team, '51; Track, '49, '50, '51; R. O. T. C. Captain, '51; Officers Club, Treasurer.
- **JOYCE VIRGINIA HALL.** "Joy." Entered from Soddy Daisy, '49; Bible Club.
- **JUANITA INEZ HALL.** "Nita." Entered from Lookout Junior High, '48; Ushers, '51; Varsity Glee Club, '51; Battalion, '50, '51.
- **BETTY JUNE HANEY.** "PeeWee." Entered from East Lake Junior High, '48; Ushers, '50, '51; Basketball Team, '50, '51.
- **ANN ELIZABETH HARDING.** "Snookie." Entered from East Side Junior High, '48; Ace Club, '48, '49, '50, '51; Badminton Club, '48, '49; Spinsters Club, '49, '50, '51; Gym Office Force, '49, '50, '51; National Honor Society, '50, '51; R. O. T. C. Sponsor, '50, '51; I. L. C., '49, '50, '51.
- **GAY ANGELA HARRIS.** "Red." Entered from East Side Junior High, '46; Library Staff, Secretary, '47; Vice President, '48.
- **CHARLES ALBERT HARVEY.** Entered from Nathan L. Bachman, '46; Neatest Cadet.
- **RICHARD HENRY HARVEY.** "Bulch." Entered from Hardy Junior High, '48; M. P. Club, '48, '49, '50, '51; T. I., '50, '51.
- **PEGGY ANN HASKELL.** "Peg." Entered from Brainerd Junior High, '49; Varsity Glee Club, '49; Orchestra, '49, '50, '51; Hi-Y, '49, '50; Chaplain, '51; Vagabonds, '49, '50, '51; Chaplain, '51; Ushers, '51; National Honor Society, '51.
- **BARBARA ANN HASTON.** "Weasle." Entered from East Side Junior High, '48; Shove-Off Club, '48, '49, '50; Secretary, '51; Hi-Y Club, '50, '51; Senate, '48, '49; Battalion, '51.
- **NANCY SUE HENDRIX.** "Suzie." Entered from Brainerd Junior High, '48; Hi-Y, '49, '50, '51; Secretary, '51; Ace Club, '50, '51; Vagabonds, '49, '50, '51; President, '51; Varsity Glee Club, '49; Senate, '50; Assistant Secretary, '51; National Honor Society, '50, '51; Youth Center Council, '50, '51; Ushers, '51; Junior Play, '50; Senate Play, '50; Senior Play, '51.
- **LEON HENRY.** "Lightning Leon." Entered from Brainerd Junior High, '49; "C" Club, '49, '50, '51; Officers Club; Secretary of Junior Class, '50; Varsity Football, '49, '50, '51; Track, '49, '50, '51; I. L. C., '50, '51; R. O. T. C. Major, '51; Baseball, '49, '50, '51.
- **GAIL HILL.** "Slim." Entered from Northside Junior High, '48; Spinsters, '48, '49, '50, '51; Vice President, '51; Varsity Glee Club, '48, '49, '50; Pianist for Glee Club, '50, '51.
- **PEGGY ANN HODGES.** "Peg." Entered from Hardy Junior High, '47; Battalion for 3 years.
- **WALTER HODGES.** "Cotton." Entered from East Side Junior High, '49.
- **NORMAN HOFFERMAN.** Entered from Dickinson, '49; "C" Club; National Honor Society; Sergeant-at-Arms of Senior Class, '51; Football Team, '49, '50, '51; Basketball, '49, '50; Captain, '51; Baseball team, '49, '50, '51; Track.
- **CHARLES D. HODGES.** Brainerd Junior High, '46; "C" Club.
- **CHARLES R. HOLCOMBE.** "Charlie." Entered from Brainerd Junior High, '48; Disc and Diamond Society; Officers Club; Honor Platoon; M. P. Club; First Lieutenant in R. O. T. C.; Firing Squad.
- **ROSENE VIOLET HOLDEN.** Entered from Tyner High, '49.
- **WILLIAM O. HOLDER.** "Willy." Entered from Dickinson Junior High, '49; I. L. C., '50, '51; Disc and Diamond Society, '50, '51; Senior Play, '51; Varsity Glee Club, '50, '51.
- **GEORGE RANDALL HOODENPYLE.** Entered from Lone Oak School, '48; Sergeants Club, '49, '50; Officers Club, '50, '51; National Honor Society, '51; Hi-Y, '50, '51.
- **HENRY J. HOPSON.** Entered from Middleboro High, Middleboro, Kentucky, '48; Sergeants Club; Band Color Guard, '49.
- **JAMES ROBERT HORTON.** Entered from Chattanooga High School, '50.

All kinds of characters appear at the party



Mary Ellis
Bill Elsea
Ann England

Marian Follette
Barbra Ford
Frances Forester

Betty Gamble
Mable Gandy
Josephine Gass

Betty Gossett
Delores Grayson
Gladys Green

Mary Hatley
Jimmy Hale
Joyce Hall

Gay Harris
Charles Harvey
Richard Harvey

Leon Henry
Gail Hill
Peggy Hodges

Charles Holcombe
Rosenne Holden
William Holder

Barbara Faerber
Grace Farley
Frances Floyd

Anna Foster
Dick Fowler
Robert Franklin

Betty Gennoe
Myra Ginn
Leland Goldston

Hazel Green
Pamella Griffith
John Guinn

Juanita Hall
Bettye Haney
Ann Harding

Peggy Haskell
Barbara Haston
Nancy Hendrix

Walter Hodges
Norman Hofferman
Charles Hoge

Randall Hoodenpyle
Henry Hopson
James Horton

THE SENIOR CLASS

- **EDWARD CARL HOTALEN**, "Toby." Entered from Northside Junior High, '48; Varsity Glee Club, '50, '51; Bible Club, '49, '50, '51.
- **BETTY ANN HOUSTON**, "Junior." Entered from East Lake Junior High, '49.
- **BARBARA JEAN HUGHES**, "Bobbie." Entered from Hardy Junior High, '48; Merry Mac Club, '48, '49; T. and I. Club, '50, '51.
- **KENNETH EUGENE HUGHES**, "Butch." Entered from Brainerd Junior High, '46.
- **BETTY JEAN HULING**, "Lula." Entered from East Side Junior High, '48; Ace Club, '49, '50, '51; Y-Teens, '48.
- **JOEL RAY HUMBLE**, Entered from Nathan S. Bachman, '48; Sergeants Club; Honor Platoon; Disc and Diamond Society.
- **MERRELL E. HUNDLEY**, "Mert." Entered from Davis High School, Avans, Georgia, '51.
- **SARA JOAN HURT**, "Tillie." Entered from East Side Junior High, '48.
- **BILLY R. HUSKEY**, "Sweet William." Entered from Dalton High, '48; Sergeants Club, '49, '50; Honor Platoon, '50, '51; Officers Club, '50, '51.
- **EVELYN HUSKEY**, Entered from Brainerd Junior High, '49; Girls Glee Club, '49.
- **AUDREY JEAN INGLE**, "Dopey." Entered from East Side Junior High, '49; Selected to Ushers.
- **SUE INGRAM**
- **DORIS ANN IRELAND**, "Dee." Entered from Brainerd Junior High, '49; Varsity Glee Club, '49; Hi-Y, '49, '50, '51; Senate, '50, '51; National Honor Society, '50, '51; Ushers, '51.
- **BETTY GRAY IRVIN**, "Trolley." Entered from Dickinson Junior High, '48; Ushers, '51; Junior Play Cast, '50; National Honor Society, '51.
- **BETTY JOYCE JACKSON**, Entered from East Lake Junior High, '49; R. O. T. C., Sponsor, '51.
- **BETTYE RUTH JACKSON**, "Be Be." Entered from East Side Junior High, '47; Senior Play Cast, '51.
- **DAVID LYNN JOHNSON**, Entered from Dickinson Junior High, '49; Varsity Glee Club, '49, '50, '51; Hi-Y, '49, '50; Chaplain, '51; Disc and Diamond Society, '49, '50, '51; Military Band, '49, '50; Drum Major; Officers Club, '49, '50; Purple and Gold Band, '49, '50; Color Guard Captain, '50; Honor Platoon, '50, '51; Sergeants Club, '50, '51; Library Staff, '51.
- **JOYCE ELOISE JOHNSON**, Entered from East Lake Junior High, '49; Ushers, '51.
- **DAVID B. JONES**, Entered from Hardy Junior High, '49; Disc and Diamond Society; Treasurer; Officers Club; Depression Club, '49; Football Team, '49, '50; R. O. T. C. Major, '51.

- **HELEN FRANCES JONES**, Entered from Ringgold High, '49; Anchors Aweigh Club.
- **LARRY JONES**, "Slick." Entered from Middletown, Tennessee High, '49; Disc and Diamond Society, '49, '50, '51; Camera Club, '49, '50, '51; Sergeants Club, '50, '51.
- **ALLEN BERNARD JORDAN**, Entered from Brainerd Junior High, '49; Sergeants Club, '50; Disc and Diamond Society, '49, '50, '51; Officers Club, '51; R. O. T. C. Major, '51; Football, '49, '50, '51; National Honor Society, '51.
- **DAISY MARIE JORDAN**, "Daisy Mae." Entered from Lookout Junior High, '48.
- **GLORIA JOAN JOYNER**, "Joanie." Entered from Lookout Junior High, '49.
- **PEGGY FRANCES KELLY**, "Squirt." Entered from Dickinson Junior High, '49; Hi-Y, '50, '51; Bible Club, '50; Y-Teens, '50.
- **ROBERT RAY KELLEY**, "Bob." Entered from Hardy Junior High, '48; Officers Club, '50, '51; Second Lieutenant, '51.
- **WILLIAM JACK KELLIS**, "Guigleamo." Entered from Brainerd Junior High, '48; Junior Play Cast, '50; Senior Play Cast, '51; Hi-Y, '50, '51; Disc and Diamond Society, '50, '51; Sergeants Club, '50; Announcers Club, '50, '51; Varsity Glee Club, '50; Secretary, '51; Firing Squad; Senate.
- **ROBERT THEODORE KEOWN**, "Bob." Entered from East Lake Junior High, '48; Senate, '48, '49, '50; Cabinet Member, '51; Digest, Editorial Staff, '49, '50; Sports Editor, '51; Boys Hi-Y, '50; Sergeant-at-Arms, '51; Interscholarship Leadership Council, '50, '51; National Honor Society, '50, '51; CHAMPION Staff, Editor-in-Chief, '51; Disc and Diamond Society, '49, '50, '51; Sergeants Club, '50; Officers Club, '51; Senate Play, '48, '50; Junior Play, '50; Senior Play, '51; Stage Crew, President, '51.
- **DOYAL RAYMOND KERNEA, JR.**, "Ray." Entered from Lookout Junior High, '48.
- **JACK B. KIMSEY**, "Columbo." Entered from Baylor, '48; "C" Club, '50, '51; Disc and Diamond, '49, '50, '51; Officers Club, '50, '51; Vice President, '51; Senate, '50, '51; Sergeants Club, '49, '50, '51; T. and I. Club, '48, '49; Varsity Basketball, '49, '50, '51; R. O. T. C. Captain, '51.
- **JOHN JESSE KING**, Entered from North Chattanooga Junior High, '49; Disc and Diamond Society, '49, '50, '51; Officers Club, '51; Boxing Team, '49, '50, '51; Track Team, '50, '51; Sergeants Club, '49.
- **PEGGY JOYCE KISTLER**, "Shorty." Entered from Lakeview, '48; Nite Owls, '48, '49, '50; President, '51; Physical Education Staff, '49, '50, '51; Girls Hi-Y, '49, '50, '51; National Honor Society, '50, '51; Homecoming Queen, '50; Secretary of Senior Class, '51; R. O. T. C. Sponsor, '51; CHAMPION, '51.
- **FRANK RICHARD KITTE**, "Tex." Entered from Nashville Central, '50; T. and I. Club.
- **JIMMIE MAE KNOWLES**, "Jimmie." Entered from East Side Junior High, '48; Digest Editorial Staff, '49, '50; Ushers, '50, '51; National Honor Society, '51.
- **DENNIS CLAYTON LANE**, Entered from East Side Junior High, '48.
- **PATRICK CARLETON LARKIN**, "Short Stuff." Entered from East Side Junior High, '49; Vice Commander of Honor Platoon, '49, '50, '51; Vice President of Library Staff, '49, '50, '51; Rifle Team, '49, '50, '51; Varsity Glee Club, '50, '51; Officers Club, '50, '51; Sergeants Club, '49, '50; Senior Play Cast, '50, '51; Band, '48, '49.
- **BETTY RUTH LAWSON**, "Junior." Entered from Hardy Junior High, '48; Merry Mac's Club, '49, '50; Secretary, '51.
- **MARY MARGARET LEFFEW**, "Maggie." Entered from Lookout Junior High, '49.
- **EMILY LOUISE LENOIR**, "Emy." Entered from Dickinson Junior High, '49; Varsity Glee Club, '49; Y-Teens, '49, '50; Senate, '50, '51; Shove-Ch Club, '50, '51; Office Force, '51.
- **LONNIE CARL LEONARD**, Entered from East Side Junior High, '48.
- **ANN MARIE LERCH**, "Hank." Entered from Brainerd Junior High, '49.
- **ROBERT DANIEL LIVELY**, "Lively." Entered in '48.
- **NADINE MARTHA LOCKE**, "Nonnie." Entered from East Side Junior High, '48; Main Office Force, '51; Gad-A-Bouts, '48, '49; Silhouettes, '50, '51.
- **PEGGY JOYCE LOWRY**, "Peg." Entered from Northside Junior High, '48; Ushers, '51; Hi-Y, '51; Varsity Glee Club, '49.
- **ROBERT EUGENE LOWRY**, "Bob." Entered from East Side, '48.
- **THELMA INEZ LUMPKIN**, "Lump." Entered from East Side Junior High, '49; Y-Teens Club.
- **MONNA LEE LUSK**, Entered from Northside Junior High, '48; Interscholarship Leadership Council, '50; Sergeant-at-Arms, '51; Varsity Glee Club, '50, '51; Vagabond Club, '50; Secretary, '51; Hi-Y, '51; Gym Office Force, '50, '51; Junior Play Cast, '50; National Honor Society, '51.
- **WILBURN E. MCBRYAR**, Entered from Lookout Junior High, '48; Officers Club.

Carl Hotalen
Betty Houston
Barbara Hughes

Merrell Hundley
Sara Hurt
Billy Huskey

Doris Ireland
Betty Irvin
Betty Jackson

David Jones
Helen Jones
Larry Jones

Peggy Kelly
Robert Kelley
Jack Kellis

Jesse King
Peggy Kistler
Frank Kittle

Betty Lawson
Margaret Leffew
Emy Lenoir

Nadine Locke
Peggy Lowry
Robert Lowry

Kenneth Hughes
Betty Huling
Ray Humble

Evelyn Huskey
Audrey Ingle
Sue Ingram

Betty Jackson
David Johnson
Eloise Johnson

Allen Jordan
Daisy Jordan
Joan Joyner

Robert Keown
Ray Kernea
Jack Kimsey

Jimmie Knowles
Dennis Lane
Patrick Larkin

Carl Leonard
Ann Lerch
Robert Lively

Thelma Lumpkin
Monna Lusk
Wilburn McBryar

Bathing Beauties!



THE SENIOR CLASS

• **RONALD MCCLURE**, "Clue." Entered from Brainerd Junior High, '48; Varsity Glee Club, '50, '51; Officers Club, '50, '51; Honor Platoon, '50, '51; Sergeants Club, '49, '50.

• **PAUL RAY MCUISTON**, Entered from Northside Junior High, '48; Disc and Diamond Society, Honor Platoon; Officers Club; Sergeants Club; 2nd Lt., R. O. T. C.

• **JAMES HERBERT McDANIEL**, "Jimmy." Entered from Brainerd Junior High, '48; T. and I. Club.

• **JAMES HENRY McDARIS**, "Jimmy Mac." Entered from McMinn County High School, '49; Disc and Diamond Club, '49, '50, '51; Glee Club, '49, '50, '51; Officers Club, '51; R. O. T. C. Cadet Captain; "C" Club, '50; Junior Varsity, '50; "B" Team, '49.

• **FRANCES LYNETTE MCKEENH**, "Francie." Entered from Richard Hardy, '48; Shore OH Club.

• **KATHRYN VIOLA MCKENZIE**, "Bebe." Entered from Brainerd Junior High, '47.

• **SAMMY TATUM McMURRAY**, Entered from East Side Junior High, '48; Sergeants Club, '50; Officers Club, '51; Disc and Diamond Society, '50, '51; Boxing Team, '49, '50, '51.

• **JEANETTE HYDE McSPADDEN**, Entered from Ooltewah, '49.

• **JAMES FRANKLIN MADEWELL**, "Bones." Entered from East Side Junior High, '48; Varsity Glee Club, '49, '50, '51; Librarian, '50, '51; Sergeants Club, '50; Disc and Diamond Society, '50, '51; Officers Club, '51; Secretary, '51; Digest Staff, '50; R. O. T. C. Cadet Captain, '51; Staff Sergeant, '50.

• **FRANKLIN DWIGHT MANN**, Entered from New Hope High, '47.

• **MARY ELIZABETH MARLER**, Entered from East Side Junior High, '48; Shore OH Club, '48; Merry Macs, '49, '50.

• **STELLA JEAN MARTIN**, Entered from Hardy Junior High, '49; Ushers, '50, '51; Girls Glee Club, '50; National Honor Society, '51.

• **GENE MASENGALE**, "Moose." Entered from Northside Junior High, '50; "C" Club, '50, '51; Varsity Football, '49, '50, '51; Baseball, '50, '51; Track, '50, '51.

• **JAMES ROONEY MATHENEY**, "Huckle-buck." Entered from Dickinson Junior High, '48; "B" Team Football, '49; Freshman Basketball, '49; Sophomore Class President; Varsity Football Team, '49, '50, '51; "C" Club, '49, '50, '51; Sergeants Club, '50; Officers Club, '51; Varsity Glee Club, '49, '50, '51; Vice President, '51; Boys State, '50; Baseball Team, '50, '51; Lt. Colonel in R. O. T. C., '51; Hi-Y, '49, '50, '51; Disc and Diamond Society, '50, '51; I. L. C., '50, '51; National Honor Society, '51.

• **HELEN KATHLEEN MATTHEWS**, Entered from Brainerd Junior High, '49; Gym Office Staff, '49, '50, '51; Silhouette Club, '49.

• **SHIRLEY MAXINE MELONCON**, "Mackie." Entered from East Side Junior High, '48; Gad-A-Bouts, '48; Nite Owls, '49, '50, '51; Ace Club, '49, '50, '51.

• **JIMMY MEYER**, "Jim." Entered from First Lutheran, '48; Senate, Assistant cabinet member 4 years; Varsity Glee Club, '50, '51.

• **MARY MARGARET MEYER**, Entered from First Lutheran, '47; Hi-Y, '48, '49, '50, '51; Senate, '48, '49; Y-Teens, '48, '49; Digest Editorial Staff, '49, '50, Club Editor, '50, '51; Ushers, '50, '51; National Honor Society, '51.

• **CAROLYN LEW MILBURN**, Entered from Brainerd Junior High, '48; Hi-Y, '49, '50, Vice President, '51; Announcers Club, '49, '50, Secretary, '51; Spinstertettes, '49, '50; President, '51; Senate, '49, '50, Vice President, '51.

• **I. L. C.**, '50, '51; National Honor Society, '50, Secretary, '51; **CHAMPION** Staff, '48, Freshman Editor, Feature Editor, '51; Girls State, '50; Junior and Senior Play Casts; **Digest** Staff, '49, '50, Associate Editor, '51; Ushers, '50, President, '51; D. A. R. Medal, '51.

• **JIMMY WILLIAM MILES**, Entered from East Side Junior High, '48.

• **DOTTIE MILLER**.

• **HERMAN MILLER**, Entered from Brainerd Junior High, '49; Disc and Diamond Society, '50, '51; Officers Club, '50, '51; Football Squad, '49, '50, '51; Boxing Team, '49, '50, '51.

• **MADELINE MILLER**, "Sweet Pea." Entered from East Side Junior High, '48; Cad-A-Bouts, '48; Nite Owls, '49, '50, '51; Physical Education Staff, '49, '50, '51; Ace Club, '49, '50, '51; Majorette, '49, '50, '51; Basketball Team, '50, Co-Captain, '51; R. O. T. C. Sponsor, '51; Girls "C" Club.

• **HELEN JANICE MILLICAN**, "Jan." Entered from East Side Junior High, '47; Battalion, '48, '49, '50, '51; Spinstertettes, '48, '49, '50, Treasurer, '51; Junior Play Cast, '50; Senior Play Cast, '51; Varsity Glee Club; Library Staff.

• **FAY ETNA MILLS**, Entered from Tyner, '48.

• **FRANCES MOORE**, "Fran." Entered from Hardy Junior High, '48; Ushers; National Honor Society, '50, '51; Senate, '50, '51; Assistant Cabinet Member; Senate Play Cast, '50; Digest Editorial Staff, '49, '50, '51; News Editor, '49, '50; Editor-in-Chief, '51; Spanish I award for excellence.

• **GEORGE MOORE**, Entered from Brainerd Junior High, '47.

• **BARBARA DEAN MORGAN**, "Baba." Entered from Brainerd Junior High, '47.

• **BILL HAYES MOYERS**, "Hotrod." Entered from Amurchee High, '49; T. and I. Club, '50, '51.

• **RONALD GARY NASH**, "Flash." Entered from Pennsgrove High, Pennsylvania, '49; Junior Play, '50; Disc and Diamond, '50, '51; Officers Club, '50, '51; Sergeants Club, '49, Chaplain, '49, '50; Hi-Y Club, '49, '50, '51; M. P. Club, '48, '49, '50, '51.

• **GERALDINE EVELYN NATION**, "Jerry." Entered from East Side Junior High, '49; Battalion, '49, '50, '51.

• **BETTY DEAN NERREN**, Entered from Red Bank High, '50; Glee Club, '51.

• **EDITH WINNOLLA NEYMAN**, "Tege." Entered from Soddy-Daisy, '48; Ace Club, "C" Club.

• **BARBARA JEAN NORRIS**, Entered from Hardy Junior High, '48; Orchestra, '48, '49, '50; Senate, '49, '50, '51; Senate Play Cast, '50; Assistant Cabinet Member, '50, '51; Junior Play Cast; Senior Play Cast; Digest Editorial Staff, '49, '50, '51; Exchange Editor, Librarian, '49, '50, Associate Editor, '50, '51; Interschol Leadership Council, '50, '51; Spanish I award for excellence; Ushers; National Honor Society, '50, '51.

• **MARIAN FAYE NORRIS**, "Snake." Entered from East Side Junior High, '48; Twixteen Club, '50, '51; Home Economics Club, '48, '49, Secretary, '50.

• **NANCY LORETTA O'NEAL**, "Red." Entered from East Side Junior High, '48; Twixteen Club, '50, '51; Home Economics Club, '48, '49, Treasurer, '50.

• **FRANK PARKER**, "Cotton Picker." Entered from Pre-Vocational, '47; "B" Basketball, '47; "B" Team Football, '47; Manager, Football Team, '48, '49, '50, '51; "C" Club, '47, '48, '49, '50, '51; Track, '49; Boys Glee Club, '50.

• **ROBERT MACK PARKER**, Entered from Brainerd Junior High, '48; Football Manager, '48, '49, '50, '51; "C" Club, '49, '50, '51; Sergeants Club, '51; Varsity Glee Club, '48.

• **PRENTICE LAMARR PARKER**, "Nose." Entered from Maryville High, '50; Sergeants Club; Spanish Club.

• **BETTY LEE PARKS**, Entered from East Side Junior High, '49; Cheerleader, '49, '50, Head Songleader, '51; Nite Owls, '49, '50, Treasurer, '51; Main Office Force, '49, '50, President, '51; Senate, '49, '50, Secretary, '51; Battalion, '50; Hi-Y, '50, '51; Library Staff, '49, '50; Publicity Chairman, '51; Y-Teens, '49, '50; National Honor Society, '50, '51; R. O. T. C. Regimental Staff Sponsor, '51; Junior Play, '50; Senior Play, '51; Youth Center Council, '49, '50, '51.

• **ERNEST HAMILTON PARKS**, "Buddy." Entered from East Lake Junior High, '48; Officers Club.

• **TOMMY N. PARRIS**, Entered from Lookout Junior High, '47.

• **PATRICIA ANN PARSONS**, "Pat." Entered from Brainerd Junior High, '46; Varsity Glee Club, '48, '49.

• **JUNIOR O. M. PARTON**, "Jack." Entered from Hardy Junior High, '49.

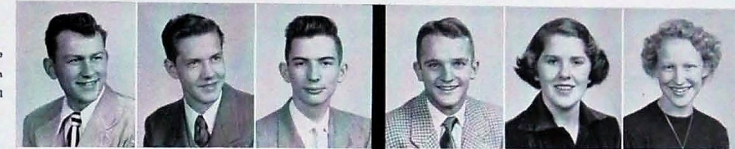
• **MARY ETNA PATTERSON**, Entered from Northside Junior High, '48.

• **SYLVIA RHEA PAYNE**, Entered from Dickinson Junior High, '48; Silhouette Basketball Team, "C" Club.

• **MARY JULIA PEOPLES**, "Julie." Entered from Tyner, '47; National Honor Society, '50, '51; Varsity Glee Club, '47, '48, '49, '50, '51; Ushers, '50, '51; Spanish Club, '50, Chaplain, '51; Library Staff, '48, '49, '50.

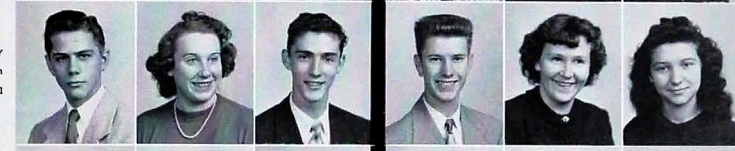
• **CAROLE SUE PERKINSON**, Entered from Dickinson Junior High, '48; Battalion, '49, '50, '51; Varsity Glee Club, '51; Spinstertettes Club, '49, '50, '51; Y-Teens, '49.

Ronald McClure
Paul McQuiston
James McDaniel



James McDaris
Lynette McKeehen
Kathryn McKenzie

Sammy McMurray
Jeanette McSpadden
James Madewell



Franklin Mann
Mary Marler
Stella Martin

Gene Massengale
James Mathenev
Helen Matthews



Maxine Meloncon
Jimmy Meyer
Mary Meyer

Carolyn Milburn
Jimmy Miles
Dottie Miller



Herman Miller
Madeline Miller
Janice Millican

Fay Mills
Frances Moore
George Moore



Barbara Morgan
Bill Moyers
Gary Nash

Geraldine Nation
Betty Nerren
Edith Neyman



Barbara Norris
Faye Norris
Nancy O'Neal

Frank Parker
Mack Parker
Lamar Parker



Betty Parks
Buddy Parks
Tommy Parris

Patricia Parsons
Junior Parton
Mary Patterson



Sylvia Payne
Mary Peoples
Carole Perkinson

Eats line! Square dancing made us hungry.



THE SENIOR CLASS

• **JOE HARLAN PETTY**, "Jo-Jo." Entered from Brainerd Junior High, '49; Camera Club, '49, '50, '51; Sergeants Club, '50; Officers Club, '51.

• **CAROLYN ANNE PHILLIPS**, Entered from Hardy Junior High, '48; Charm Club, '48, '49.

• **PATSY RUTH PHILLIPS**, "Little Bit." Entered from LaGrange High, '48; Christmas Play, '49; Make-Up for Senior Play, '51; Make-Up for P-T-A. Play.

• **RUSSELL NATHANIEL PITTS**, "Nat." Entered from Delray Beach High, '48; Hi-Y, '49, '50, '51; Disc and Diamond Society, '49, '50, '51; Camera Club, President, '51; Officers Club, '50, '51; Guide of Honor Platoon, '51; Co-Captain of Rifle Team, '50, '51; Photographer on CHAM-PION Staff, '50, '51; Major in R. O. T. C., '51; National Honor Society, '51.

• **FRANK SMITH PLUMMER**, "Smittie." Entered from Tyner, '49.

• **PHYLIS NELL POTTER**, "Phil." Entered from Brainerd Junior High, '47.

• **THOMAS DAVID PRATER**, Entered from Brainerd Junior High, '47.

• **NANCY MAY PURCELL**, "Nan." Entered from Brainerd Junior High, '48; Ushers, '50, '51.

• **ARTHUR WILSON RADLEIN**, "A. W." Entered from McCallie, '49; Disc and Diamond Society, '50; Honor Platoon, '51; Sergeants Club, '50; Officers Club, '51.

• **CHARLES RALEY**, "Buddy." Entered from Brainerd Junior High, '48; Football Manager, '49, '50; Depression Club, '49; Sergeants Club, '50; Boys Glee Club, '50.

• **CONNIE RAE RAMSEY**, "Little Bit." Entered from Dickinson Junior High, '48; Nite Owl Club; Girls Hi-Y Club; Y-Teens; Sponsor in R. O. T. C.; Senior Play Cast; Varsity Glee Club, '48.

• **PEGGY JOYCE RANDOLPH**, "Peg." Entered from Hardy Junior High, '50; Varsity Glee Club, '51.

• **BASIL H. RATLIFF**, "Here, Ratliff, Here." Entered from Brainerd Junior High, '47; M. P. Club; Honor Platoon, President; Rifle Team, President; Disc and Diamond; Officers Club.

• **JOHNNY RAY REED**, Entered from East Side Junior High, '48.

• **MARY ANN REED**, "Lula." Entered from East Lake Junior High, '48.

• **BOBBIE MARY ELLEN RENFRO**, "Babs." Entered from East Side Junior High, '49; Bible Club, '50, '51.

• **DONALD LEE RHEA**, "Horse." Entered from East Side Junior High, '49.

• **BARBARA JEAN RICE**, "Six." Entered from East Side Junior High, '48.

• **PEGGY RUTH RICHARDS**, Entered from East Side Junior High, '48; Library Staff, '48, '49; Ushers, '50, '51.

• **JOE TAYLOR RICHESON**, "Jody." Entered from Hardy Junior High, '47.

• **ELIZABETH ANN RITCHIE**, Entered from East Side Junior High, '49; Library Staff, Secretary, '50; Y-Teens, '49, '50; Secretary, '51; Battalion, '49, '50; Senior Play, '51; Hi-Y, '50, '51; Digest Staff, '51; Ushers, '50, '51; National Honor Society, '51.

• **BILLIE JEAN RODEN**, "Mousey." Entered from Tyner Junior High, '48; Band, '48, '49.

• **JAMES THOMAS ROGERS**, Entered from East Side Junior High, '48.

• **PEGGY ANN ROGERS**, "Peg." Entered from East Lake Junior High, '49; T and L Club; Secretary and Treasurer, '50, '51; Merry Mac, '49; Treasurer, '50; Interscholastic Leadership Council, '50.

• **RUBY JO ROMINGER**, Entered from Hardy Junior High, '48.

• **PATSY ANN ROOS**, "Red." Entered from LaFollette High, '49.

• **DOYLE B. ROY, JR.**, "Squirt." Entered from Northside Junior High, '49; Honor Platoon, '51; Sergeants Club, '50, '51.

• **JEAN ROYAL**, "Shorty." Entered from Tyner, '49.

• **FRED LEE RUNNION**, "Play-boy Casanova." Entered from Brainerd Junior High, '49; Classroom Reporter, '49; Social Chairman, '49; Red Cross Chairman, '49.

• **LEBRON RUSSELL**, Entered from East Lake Junior High, '48; Varsity Glee Club; Trade and Industrial Club, President.

• **RICHARD THOMAS SALLEY**, "Dickie." Entered from Brainerd Junior High, '49; C Club, '50, '51; Football; Basketball; Fencing.

• **ROBERT LIVINGSTON SALLEY**, "Bobby." Entered from Brainerd Junior High, '49; President of "C" Club; Captain of Football Team, '51; Football; Basketball; Baseball, '49, '50, '51; Sergeant-at-Arms of Senior Class, '51.

• **BARBARA ALLEN SARVIS**, "Bobbie." Entered from East Side Junior High, '47; Spanish Club.

• **JIMMY LAWRENCE SCOGGINS**, "Scotty." Entered from Lakeview Grammar, '48; Senate, '48, '49, '50; Senate Cabinet Member, '51; Digest, '49, '50; Assistant Sports Editor, '50; Hi-Y, '49, '50; Secretary, '51; Sergeants Club, '50; Disc and Diamond Society, '50, '51; Sergeant-at-Arms, '51; Officers Club, '51; I. L. C., '50, '51.

• **SARAH ELIZABETH SEAGLE**, Entered from Landon High, Jacksonville, Florida, '50.

• **BUCKY SHAMBURGER**, Entered from Meridian, Mississippi, '49; "C" Club, '49, '50; Vice President, '51; Vice President of Junior Class, '50; Treasurer of Senior Class, '51; Officers Club; Football Team, '49, '50; Alternate Captain, '51; Basketball, '50, '51; Baseball, '49, '50, '51; I. L. C., '50, '51; National Honor Society, '50, '51; Disc and Diamond Society, '50, '51; Lt. Colonel in R. O. T. C., '51.

• **CHARLES LAYTON SHAW, JR.**, "Charlie." Entered from Brainerd Junior High, '48; T and L Club; Christmas Pageant, '49.

• **BETTY FAYE SHELL**, "Dimples." Entered from Hixson, '48; Charm Club, Treasurer, '48; Secretary, '49; Vice-President, '50, '51; Battalion, '49, '50, '51; Office Staff, '51.

• **WILLO SUE SHELL**, Entered from Dickinson Junior High, '49; Ushers, '51.

• **DAVID H. SHIPLEY**, "Speed." Entered from Hardy Junior High, '47; M. P. Club, '48, '49; President, '50; Sergeants Club, '49; Secretary; Honor Platoon, '48, '49; Treasurer, '50; Fencing Squad, '50; Officers Club, '50.

• **BILL SHIPLEY**, Entered from Northside Junior High, '49; Honor Platoon; Cadet Master Sergeant in R. O. T. C.; "B" Golf Team, '49, '50.

• **MARGARET LOUISE SHIRLEY**, Entered from Brainerd Junior High, '49; Ace Club, '49; Battalion, '50, '51.

• **VIVIAN CHARLOTTE SHUSTER**, Entered from East Side Junior High, '49; Library Staff, '49, '50; Senate, '50, '51; Ushers, '50, '51; National Honor Society, '51.

• **FRANK O. SIMMONS**, "Nigger." Entered from East Side Junior Hi, '48.

• **CAROL CHRISTINE SIMPSON**, "Chris." Entered from Brainerd Junior High, '49; Y-Teens, '49; Physical Education Staff, '49, '50, '51; Home Economics Club, '49, '50; Spinaettes Club, '50, '51; R. O. T. C. Sponsor; Ace Club, '50, '51; National Honor Society, '51.

• **JOHNNY LEE SIMS**, Entered from White Oak, '47; Junior Boys Hi-Y; Boys Glee Club, '48, '49, '50.

• **ELIZABETH LORRAINE SKATES**, Entered from East Lake Junior High, '49; Badminton Club, '48, '49; Tumblers, '48, '49.

• **RICHARD W. SKIPPER**, "Skip." Entered from Hardy Junior High, '48.

Joe Petty
Carolyn Phillips
Patsy Phillips



Nathaniel Pitts
Frank Plummer
Phyllis Potter

David Prater
Nancy Purcell
Arthur Radlein



Buddy Raley
Connie Ramsey
Peggy Randolph

Basil Ratliff
Johnny Reed
Mary Reed



Bobbie Renfro
Donald Rhea
Barbara Rice

Peggy Richards
Joe Richeson
Ann Ritchie



Billie Roden
James Rogers
Peggy Rogers

Ruby Rominger
Patsy Rous
Doyle Roy



Jean Royal
Fred Runnion
Lebron Russell

Richard Salley
Robert Salley
Barbara Sarvis



Jimmy Scoggins
Sarah Seagle
Bucky Shamburger

Charles Shaw
Betty Shell
Willo Shell



David Shipley
Bill Shipley
Margaret Shirley

Vivian Shuster
Frank Simmons
Carol Simpson



Johnny Sims
Lorraine Skates
Richard Skipper

Swing your partner! Left hand around!



THE SENIOR CLASS

- **MARY ALICE SLATTON**, Entered from East Side Junior High, '49; Ushers, '50, '51.
- **BARBARA SMARTT**, "Bobbie," Entered from Brainerd Junior High, '48; Hi-Y, '48, '49, '50, '51; Ushers, '50, '51; National Honor Society, '51.
- **DORIS SMITH**, "Dorrie," Entered from Science Hill, '50; Ushers, '51; Treasurer, '51; National Honor Society, '51.
- **CHARLEY SMITH**, Entered from Nathan L. Bachman, '48.
- **HELEN RUTH SMITH**, Entered from East Lake Junior High, '47.
- **JAMES ATLEE SMITH**, "Jimmy," Entered from Dickinson Junior High, '48; M. P. Club, '48; Disc and Diamond Club, '51.
- **JOAN KATHRYN SMITH**, "Joaney," Entered from Hardy Junior High, '47; Rifle Club, '48, '49, '50, '51; Secretary, '51; Y-Teens, '49, '50; Senate, '48, '49, '50, '51; All City Y-Teens, '48, '49; Office Force, '51; Regimental Staff Sponsor, '51; Cheerleaders, '49, '50, Head Songleader, '51; Home-Coming Queen Candidate, '51.
- **JOE WESLEY SMITH**, "Pat," Entered from East Side Junior High, '48; Disc and Diamond Society; Officers Club; Band Captain, '51; Purple and Gold Band; Military Band.
- **EFFIE ALINE SNYDER**, "Allie," Entered from East Lake Junior High, '49; Varsity Glee Club, '49, '50, '51; I. L. C., '50, '51.
- **EVELYN ROSE SPRINGFIELD**, "Lula," Entered from Pre-Vocational, '47; Ace Club.
- **IMA JUNE STAILEY**, "Little-bit, Bug," Entered from Lookout Junior High, '48; Tumblers, '48, '49; Art, First Prize, Still Life, '51.
- **TED LEROY STALVEY**, "Theodore," Entered from East Side Junior High, '49; T. and I. Club.
- **ROBERT STANLEY STEPHENS**, "Hot Lips," Entered from Brainerd Junior High, '48; Orchestra, '48, '49, '50, '51; Swing Band, '48, '49, '50, '51; All-Southern Orchestra, Tampa, Florida, '49; Richmond, Virginia, '51; All-East Tennessee Orchestra, '48, '49, '50; All-State Orchestra, '49.
- **CHARLES MERVYN STRAWN**, "Hot Rod," Entered from Hardy Junior High, '49; Senior Play, '51; Junior Play, '50; M. P. Club, '51; Sergeants Club, '51; Honor Platoon, Secretary, '51; Firing Squad, '51.
- **EDNA EARLE SULLIVAN**, "Edna," Entered from Signal Mountain Grammar, '48; Y-Teens, '49; Battalion, '48, '49, '50.
- **WILMA JOYCE SULLIVAN**, Entered from Hardy Junior High, '48; Charm Club, '48, '49; Varsity Glee Club, '48, '49, '50, '51; Digest Staff, '50, '51; Interschol Leadership Council, '49, '50, '51; National Honor Society, '51.
- **CARRIE EVELYN SWEARINGEN**, "Chicken," Entered from Signal Mountain, '47; Varsity Glee Club, '48, '49, '50, '51; Purple and Gold Band, '48.
- **DOROTHY SUE SYLVESTER**, "Sue-Baby," Entered from East Side Junior High, '48; Shove Off Club, '49.
- **EARL TATUM**, "Tate," Entered from East Side Junior High, '48; Hi-Y, '49, '50; Vice President, '51; Senate, '48, '49, '50, President, '51; National Honor Society, '50, President, '51; Announcers Club, '48, '49, '50, President, '51; I. L. C., '48, '49, '50; Vice President, '51; Sergeants Club, '49, '50, President, '50; Disc and Diamond Society, '49, '50; Captain, '51; Vice President Senior Class '51; Lt. Colonel in R. O. T. C., '51; Boy's State, '50.
- **JOE D. TAYLOR**, "Joe D.," Entered from East Side Junior High, '48; Senate, '50, '49, '50, '51; Announcers Club, '48, '49, '50; Vice President, '51; Boys Hi-Y, '48, '50; Treasurer, '51; Digest Staff, '49, Military Editor, '50; News Editor, '51; Disc and Diamond, '47, '50; Lieutenant, '51; Sergeant, '51; Chairman, Secretary of Tennessee Scholastic Press Association, '50, '51; National Honor Society, '50, Treasurer, '51; Youth Center Council, '48, '49, '50, Secretary, '51; Senate Play Cast, '49; Junior Play Cast, '50; Senior Play Cast, '51; Officers Club, '51; Delegate to Volunteer Boys State, '50; Cheerleader, '49, '50, Head Cheerleader, '51; Captain, R. O. T. C., '51.
- **JOSEPH W. TAYLOR**, Entered from Brainerd Junior High, '49; "C" Club, '50, '51; Disc and Diamond Society, '49, '50; Officers Club, '50; Sergeants Club, '49, Cadet Colonel of R. O. T. C., '51; I. L. C., '49, '50, '51; National Honor Society, '50, '51; Baseball, '49, '50, '51; Track, '49; "B" Team Basketball, '49; "B" Team Football, '49.
- **DOROTHY MARCILLE THOMAS**, "Cille," Entered from Dickinson Junior High, '49; Trail Trotter Club, '49; Silhouette Club, '50, President, '51.
- **RACHAEL MYRA TITTLE**, "Brown Eyes," Entered from Lookout Junior High, '49.
- **DOROTHY CAROL VANDIVER**, "Dot," Entered from East Side Junior High, '48; Gad-A-Bouts, '48, '49; Silhouettes, '50, '51.
- **PATRICIA ANN VANOVER**, "Pat," Entered from Dickinson Junior High, '48; Twixteen Club, '50, '51; Y-Teens, '48, '49, '50; Home Economics Club, '49, '50.
- **WALLACE ALDEN VARNELL**, "Wally," Entered from Hardy Junior High, '47.
- **ALFRED EUGENE VAUGHN**, "Gene," Entered from Brainerd Junior High, '47.
- **BOBBIE LEE VICK**, "Bob," Entered from Brainerd Junior High, '49.
- **NORMA MAXINE VITATOE**, "Stumpy," Entered from Hardy Junior High, '49.
- **SHIRLEY MAE WADDLE**, Entered from Hardy Junior High, '48; Ushers, '51; National Honor Society, '51.
- **ELSIE MAE WADE**, "Little Bit," Entered from Northside Junior Hi, '49.
- **JOHN WILLIAM WALL**, "Be-Bo," Entered from Brainerd Junior High, '48; M. P. Club, '48, '49, '50, '51; Rifle Team, '49, '50, '51; Disc and Diamond Society, '49, '50, '51; Honor Platoon, '49, '50, '51; Sergeants Club, '49, '50, '51; Firing Squad, '50, '51; Officers Club, '51.
- **BETTY JEAN WALLACE**, Entered from East Side Junior High, '48; Library Staff, Treasurer, '49; Vice President, '50; Y-Teens, '49; Shove Off Club, '49; Vagabond Club, '50, '51; Battalion, '50, '51; Senior Play Cast, '51; CHAMPION Staff, '51.
- **ELIZABETH LAVERN WALLACE**, "Shortie," Entered from Lookout Junior High, '48; Office Force, '50.
- **CHRISTINE WALLEN**, "Teen," Entered from Lookout Junior High, '49; Ace Club, '49, '50; Vice President, '51; Battalion, '50, '51; Varsity Glee Club, '51.
- **KATHERINE WAMACK**, "Katy," Entered from East Side Junior High, '48; Library Staff, '48, '49; Secretary, '50; Hi-Y, '48, '50, '51; Merry Mac Club, '49, '50; Band Booster's Club, '50, '51; Purple and Gold Band, '48, '49, '50, '51; First Lieutenant, '50; National Honor Society, '51.
- **BILL DEE WEAR**, Entered from Brainerd Junior High, '47; I. L. C.
- **JOYCE FRANCES WEBB**, Entered from Hardy Junior High, '48; Ushers, '51.
- **SAMMY WELCH**.
- **BONNIE SUE WHITAKER**, Entered from East Lake Junior High, '49; Ushers, '50, '51; Winner of lamp in essay contest in '49.
- **ERNEST EDWARD WHITE**, "Ernest," Entered from Hardy Junior Hi, '48.
- **JOAN WHITMIRE**, "Jo," Entered from East Side Junior High, '48.
- **ZONA ANN WILEY**, Entered from East Side Junior High, '49; Senate, '49, '50, '51; Ushers, '50, '51; Bible, '50; Vice President, '51; R. O. T. C. Sponsor, '51; Chaplain of Senate, '51; Y-Teens, '49; Essay on Handicapped, '51; National Honor Society, '51.
- **KENNETH NELSON WILLINGHAM**, "Willie," Entered from East Side Junior High, '49.
- **WANDA SUE WITT**, "Nitt-Witt," Entered from East Side Junior High, '48; Silhouette Club, '48, '49; Senate, '48, '49; Y-Teens, '48, '49; Treasurer of Freshman Class, '48; Shove Off Club, '49, '50, '51; Hi-Y, '50, '51; Vagabonds, '50, '51; R. O. T. C. Sponsor, '51; Junior Play Cast, '50; Senior Play Cast, '51; Battalion, '50, '51.
- **MILDRED JEAN WOODY**, "Brains," Entered from East Side Junior High, '49.
- **CHARLES WALTER WRIGHT**, "Smiley," Entered from Bledsoe County, '49; Band, '50, Won Lys Medal, '49.
- **WENDELL WRIGHT**, "Wendy," Entered from Jackson County, '48; Sergeants Club, '50, '51.
- **DORA MAE WRINKLE**, "Dodie," Entered from Brainerd Junior High, '49; Vice President of Ink Spot, '50; President of Ink Spot, '51.
- **PATRICIA CAROLYN WRINKLE**, "Pat," Entered from Dalton High, '51; T. and I. Club, Reporter.

Have some candy, Betty!



Mary Slatton
Barbara Smartt
Doris Smith



Charley Smith
Helen Smith
James Smith

Joan Smith
Joe Smith
Aline Snyder



Evelyn Springfield
Ima Stailey
Ted Stalvey

Robert Stephens
Charles Strawn
Edna Sullivan



Joyce Sullivan
Evelyn Swearingen
Sue Sylvester

Earl Tatum
Joe Taylor
Joseph Taylor



Marcille Thomas
Rachel Tittle
Dorothy Vandiver

Patricia Vanover
Wallace Varnell
Gene Vaughn



Bobbie Vick
Norma Vitatoe
Shirley Waddle

Elsie Wade
Bill Wall
Betty Wallace



Lavern Wallace
Christine Wallen
Katherine Wamack

Bill Wear
Joyce Webb
Sammy Welch



Bonnie Whitaker
Ernest White
Joan Whitmire

Ann Wiley
Kenneth Willingham
Wanda Witt
Mildred Woody



Charles Wright
Wendell Wright
Dora Wrinkle
Patricia Wrinkle

THE SENIOR CLASS

TOO LITTLE • TOO LATE

• BETTY JO BEVIS. Entered from Brainerd Junior High, '48.

• FRED MURR CRUMLEY. "Wright." Entered from East Lake Junior High, '48.

• JOHN GILBERT. Entered from Lookout Junior High, '47.

• JACK HAMMEL. Entered from East Side Junior High, '48.

• CLYDE FRANCE HULLANDER. "Buck." Entered from Brainerd Junior High, '47.

• JODY NEAL. Entered from Park Place Vocational, '47; "C" Club, '48, '49, '50, '51; Varsity Football, '48, '49, '50; Secretary of Sophomore Class, '49.

• THOMAS EARL REED. "Tommy." Entered from East Lake Junior High, '48.

• JOHNNY SPRAGUE. Entered from Lutheran, '48; Hi-Y, '48; M. P. Club, '49.

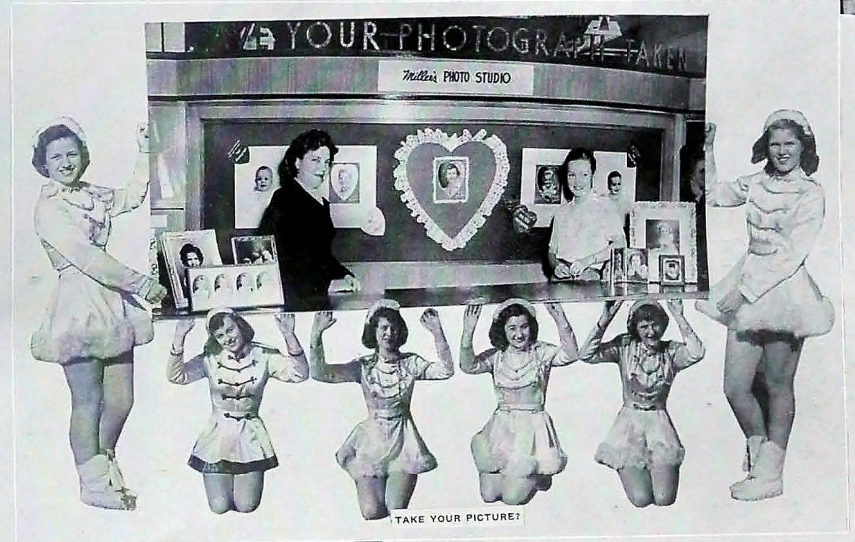
• KENNETH LEON STANCIL. "B-B Brain." Entered from East Lake Junior High, '48.

• ANNA MAE CUMMINS GREEN.

• PATSY JO PILTCHER.

• JOSEPH VANDELL TIPTON.

Summer School Graduates





Dan Acosta, Shirley Allen, Jack Allison, Nancy Argenbright, Jack Arnold, Bill Aithead, Woodrow Atherton, W. L. Back, Bob Bailey, David Bain, Barbara Baker, Bobby Balfew, Doris Bankston, Virginia Barbee, Betsy Barlow, Ann Barrows, Betty Baskette, John Bayless, Robert Bearden, Barbara Bell, Ellen Bell, Robert Benson, Barbara Bice, Mack

OFFICERS

Kenneth Hudgins, President; Frank Fuller, Vice President; Kay Fry, Secretary; Richard Buflington, Treasurer.



Bishop, Billy Black, Howard Blaine, Gary Blasingame, Donna Faye Blessing, Jean Bonds, Helen Bowers, Betty Bowling, Robert Bowman, James Boyd, Louise Boyd, Bobbie Braddy, Joe Bradford, John Bradley, Sylvia Britt, Gretchen Britton, Herman Britton, Barbara Brock, Martha Brown, Thomas Brumlow, Loretta Byant, Richard Buflington, Nancy Burnett, Ronald Burrell, Jeane Burrows, Gloria Cain, Rita Caldwell, Joe Cameron, Edith Campbell, Peggy Campbell, Starr Canfield, Donald Cannon, Roy Copehart, Buddy Case, Allen Casey, Mary Castoel, Doris Castle, Darrell Cates, Nellie Cavin, T. W. Cawood, Frances Chastain, Patsy Christie, Betty Cline, Patty Cobble, Y. L. Coker, Jr., Pat Coleman, Sara Collins, Bill Colquitt, Betty Compton, Wayne Cooper, Joe Connor, Glenn Copeland, Jackie Corn, Peggy Corn, Edwin Cornes, Joyce Craig, Darrell Crawford, George Crawford, Edward Crittendon, Pete Crownover, Mary Ann Cryz, Clifford Curt, Virginia Davis, Richard Dean, Bennie Deanes, Thomas Denton, Eugene Dillard, George Dixon, Leona Dobbins, Mary Dobbins, Judy Donaghy, Sammy Dorsey, Lucille Dunnagan, Barbara Dutton, J. C. Eaker, Wyatt Earp, Paul Ellis, James English, Barbara Estes, Norma Evans, Jimmy Everhart, Ronald Farria, Mary Alice Fletcher, Martha Ann Ford, Rex Ford, Louise Forrest, Emily Ann Fortison, Betty Foster, Gene Fouts, Joe Frank, Carter Franks, Kay Fry, Jack Fryar, Frank Fuller, Peggy Fuller, Jerry Fundinger, Douglas Gay, Danny Gentry, Thomas Gibson, Bobby Giles, JoAnn Gilliland, Robert Gladden, E. F. Glenn, Irvin Goggins, Charlotte Goodner, Bill Goodner, Pat Gossett, Peggy Gossett, Polly Gossett, Paul Gray, Warren Gray, Beverly Grayson, Wesley Green, Mildred Griffith, Elmer Groth, Mercedes Gullaine, Gene Hall, Shirley Hall, Raymond Hamilton, Sue Marie Hampton, De-Jones Harp, Charles Harris, Edwin Harris, Wert Franklin Harris, Norma Harrison, Carolyn Hatch, Lester Hawkins, Robert Headrick, Tom Heaps, Barbara Hill, James Hill, Arlene Hillis, Mary Hixon, Pat Holdam, Byron

THE JUNIOR CLASS

Holder, Herbert Holder, Noreen Horton, Kenneth Hudgens, Lawrence Hudson, Robert Hughes, Maymie Hullett, Jeannette Hulliard, Betty Louise Hyde, Barbara Ireland, Anita Irvin, Joan Ivesater, Earl Jackson, Nellie James, Margaret Jarrett, Nelson Jenkins, Charles Johnston, Wayne Johnson, Barbara Jones, Carolyn Jones, Dorothy Jones, Bobbie Joyner, JoAnn Kelley, Nancy Kelley, Mary Ardeana Kellus, Doris Kendall, Mary Katherine Kennedy, Robert Kile, Louise King, Bobbie Kolwyck, Billy Knowles, Billy Krause, Dottie Kubley, Lowry Lackey, Bill Lane, Peggy Langford, William Langford, Clyde Lasater, Earline Laxon, Ira Lee, Bettie Lerch, Linda Leslie, Robert Lewis, Raymond Ling, Sue Ann Link, Ronnie Locke, Edwin Long, Mary Long, Raymond Long, Pledge Longwith, Barbara Loyd, Ann Lumpkin, Katherine McArthur, Bill McBrayer, Bobbie McClure, Billy McCormick, Mabel McCrary, Violet McClintock, Fred McDaniel, Joyce McDonald, Martha McDowell, Patsy McDowell, Lynette McKeehan, Malheem McKraig, Martha McKown, Winifred McLaughlin, Paul McNabb, Patsy McNeal, Charles McNuli, Carrie McPherson, Morene McWilliam, Flora Madden, Wayne Malstrom, Hobart Manning, Bobbie Martin, Pat May, Jeannette Meador, Dewitt Miller, Wanda Miller, JoAnn Milton, John Moore, Peggy Moore, Geneva Monday, Amos Morgan, Doris Morgan, James Morgan, Pruitt Morrison, Ann Myers, Jane Napier, Charles Nave, Louise Nicholson, Betty O'Neil, Claudette Pack, Rosalie Padgett, Charlotte Parker, Joy Parker, Patricia Parsons, David Patton, Billie Ruth Payne, Tom Peckinpah, Imogene Pedigo, Raymond Pendley, Virgil Perkinson, Gloria Peters, Mary Ann Pickett, Bernice Pitts, Alice Pledger, Mary Frances Poe, Thomas Poe, L. D. Poole, David Prator, Jack Pratt,

Barbara Prichard, Margaret Priddy, Juanita Plitchard, Jo Anne Proctor, Joan Putno, Richard Quinn, Louise Rader, Barbara Reed, Patsy Reed, Neil Reeves, Mary Katherine Reno, Donald Rice, Dorothy Rich, Terry Richardson, Betty Riggs, John Riley, Don Robinson, Jo Ann Rockhold, Bobbie Rogers, Linda Rogers, Joe Rogers, Gay Rulman, Howard Runyan, Joan Runyan, Betty Rush, James Samples, Don Sanland, Charles Scoggins, Juanita Scott, Edward Scroyer, Peggy Sells, Madge Shambin, Norma Sharks, Ruth Shellen, Jack Sherrill, Lorraine Shipley, Pat Shipley, Bill Shull, Juanita Simon, Christine Simmons, Margaret Sifton, Robert Siveley, Minnie Lee Skates, James Sloan, Betty Smith, Charles Smith, Christine Smith, Donald Smith, Florence Smith, Jimmie Lee Smith, Joe Smith, Margaret Smith, Martha Smith, Evelyn Snyder, Norman Sparks, Ann Spaulding, Elvira Stafford, Charlotte Staley, Robert Stakely, Ted Stalvey, Robert Stephens, Yvonne Stone, L. M. Stringfield, Tom Stroud, Martin Stutz, Peggy Sullivan, Lucille Sully, Bobby Styles, Pat Taber, Nina Tallant, Leifron Tanner, Janette Tate, Louis Taylor, Wilma Taylor, Carolyn Thomas, Charlotte Thomas, Kay Thomas, Charlotte Thompson, Grace Thompson, Peggy Throneberry, Jack Travis, Jo Ann Trew, Ray Turner, Carol Underwood, Starr Vance, Wayne Vandegriff, Roy Vael, Betty Waits, Glenn Waits, Charles Wallen, Howard Waller, Thelma Walker, Leslie Waterhouse, Peggy Jean Watkins, Joe Weaver, Jack Welch, Jo Ann Welch, Sam Webb, Dorothy Wessel, Pat Westbrook, Ralph White, Betty Whitmore, Faye Lou Wilhoite, Gail Wilhoite, Bud Williams, Ray Williams, George Williams, Jimmy Williams, Pat Williams, Paul Winfrey, Richard Witt, Kern Wolford, Martha Womack, Margaret York, Virginia Zott,





THE SOPHOMORE CLASS

Bobby Adams, Lester Adams, Joan Adamson, Kenneth Addison, Pat Akers, Raymond Albright, E. B. Alloway, Ruby Argo, Barbara Armons, Pat Armstrong, Horace Arnold, Don Ashby, Gerald Ashley, Carolyn Austin, Evelyn Austin, Jo Anne Ausla, Barbara Avans, Anna Gale Axmacher, Peggy Axmacher, Herbert Baggett, Lebron Bailey, Lois Bailey, Stanley Baker, Jo Baldwin, Hershel Bankston, Winston Barber, Maya Barker, David Barrows, Glenn Bass, Patsy Battle, Mary Becker, Bertha Bell, Herman Bell, Jack Bibbey, Ronnie Rice, Donald Bird, Ivey Bishop, Bobby Black, Estelle Blacknell, Beverly Bland, Merline Blensit, Bill Blacklock, Richard Boyd, Roy Bradford, Paul Brakebill, Dolores Branham, Mickey Brecher, William Breneman, Charles Brock, Hoyt Brooks, Bill Brotherton, Bill Brown, Elaine Brown, Irene Brown, Bobbie Burkett, Fred Burns, Ken Burns, Joe Cagle, Jimmy Caldwell, Joe Caldwell, Patricia Callahan, Charles Cameron, June Cameron, Christine Campbell, James Campbell, Tommy Campbell, Catherine Capehart, Leon Carr, Charles Carter, Ed Carver, Judy Castleberry, Ala Fay Cavitt, Morton Caster, C. A. Chunn, Barbara Clark, Bobby Clay, Bobby Cobb, Eddie Cobb, Jo Ann Colquitt, Jo Anne Colwell, Jimmy Condra, Jimmy Conley, John Conley, Thomas Connolly, Roddie Cooke, Sally Cooke, Faye Cookman, Mary Cooley, Charles Cooper, JoAnn Cooper, Nancy Cope, Betty Copenhaver, Marlene Coulter, Richard Cowart, Ralph Craft, Billie Ann Crane, Bobby Creighton, Ralph Croswell, Betty Crisp, Jo Ann Cross, Paul Crownover, Bud Crowe, Norma Crutchfield, Martha Cummins, Bill Darrow, Truman Daugherty, Carolyn Davidson, Annie Davis, Donald Davis, Jimmie Davis, John Day, Loraine Day, Lily Dean, Buddy DeSha, Helene Dickey, Jerry Dickson, Claude Dillard, Shirley Dobbin, Bernice Dobbs, Larry Dobson, Bobbie Ann Dodd, Ray Downey, Ed Downs, Dorothy Drake, Jimmy Drinnon, Don Duncan, Dan Dunn, Julia Durham, Norma Durham, Joyce Eakes, Virginia Eckstein, Evan Eldridge, Raymond Eldridge, Betty Elliott, Joe Elrod, Connie Emery, Bernard Esperson, Barbara Euton, Beverly Evans, A. L. Exatt, Billie Everhart, Ondine Everton, Lloyd Ezeld, Shirley Faerber, Rosa Lee Farmer, Barbara

Fenn, Barbara Fike, Bill Fisher, Iris Fisher, Robert Foster, Mary Fowler, Laterna Fox, Eugene Fraley, Morgan Frauler, Harold Freeman, Vernon Fry, Earl Gaddis, Jo Ann Gamble, Carl Gaston, Patsy Geer, Frank Gibson, Carolyn Gillan, Jean Gilreath, Rebecca Glenn, Patricia Good, Gene Goodner, Bill Goodwin, Marilyn Graham, Nina Gravit, Faye Green, Juanita Green, William Green, Paul Greenberg, Dora Griffith, Marie Griffith, Theodore Griffith, Donald Grimes, Betty Grose, Jean Gross, Charlotte Hackler, Jean Hadaway, Bill Hale, Rena Hambrigh, Charles Hammonree, Dot Hammonree, Jimmy Hammonree, Jack Harmon, Pat Harris, Virginia Harris, Roy Hartman, Herbert Harvey, Billy Hatfield, Johnny Haupt, Grady Haven, Greer Hawk, Herman Hawkins, Pat Hedgcock, Alline Helton, Janet Henegar, Bobby Henegar, Sammy Henley, Wanda Henley, Thomas Henry, Larry Hickman, Paul Hicks, Arquilla Higgins, Dorothy Hill, Jack Hill, Jimmy Hill, Ronald Hillis, Marthola Hitchcock, Sylvia Hixon, Kay Hoffmeyer, Charles Hoque, Helen Holloway, Morris Holloway, Shirley Holmes, Gloria Holsberg, Richard Hooper, Gene Houten, Buddy Hourigan, Betty Housley, Ann Houston, Wanda Howard, Rita Hudson, James Huffine, Bobbie Hulleander, Carolyn Hullett, Carolyn Humphrey, Miriam Hunt, Ted Hunt, Richard Huskey, Sammy Hutson, Nickie Hyre, Larry Hyler, Frank Igou, Tommy Ingle, Barbara Ingram, Don Irvin, Sue Irvin, James Ivey, Tommy Iett, Alvin Johnson, Geraldine Johnson, Joyce Johnson, James Johnson, Edmin Jones, Ernestine Jones, Henry Jones, Shirley Jones, William Jones, Barbara Joyner, Edward Kadingo, Marquette Keeble, Billy Kelley, Pat Kelly, Yvonne Kemmler, Eddie Kemper, Bobby Kendall, Joyce Kendall, Frances Kennedy, Rebecca Kile, Ronald Killingsworth, Paul Kincer, Raymond Kneapp, Kenneth Krumb, Charles Lamb, Lonnie Lamb, Hildegard Landers, Jerry Lane, Anne Langley, C. L. Lankford, Vernon Lappin, J. W. Lawson, Barbara Laycock, Geraldine Lee, Dolores Lemons, Sue Lerch, J. D. Lewis, Shirley Lewis, Bonnie Lieber, Shirley Lindsay, Bobby Locklear, Ronald Logan, James Long, Jimmy Howell Long, Robonne Long, Wallace Long, Peggy Looney, Shirley Lord, Peggy Lowery, George Lynch,



Barbara Maboe, Nancy McAllister, Bill McAma, Bill McArthur, Phyllis McCallie, Barbara McConnon, Alice McCarty, Donald McCuiston, Jeanette McDonald, Shirley McElhaney, James MacGahery, Larry McGee, Edna McGrew, Martha McKamy, Jerry McKenzie, Patricia McKenzie, Bobby McMurray, Hoyt McNabb, Wanda McWilliams, Betty Madden, Thomas Mance, Jimmy Mansel, Joyce Markum, George Martin, Kathleen Martin, Ralph Martin, Jack Mason, Judy Mason, Charlotte Matthews, Paul Mavitt, Barbara Meadows, Clifford Meyer, Edgar Meyer, Gene Meyer, Alyns Miller, Barbara Miller, Christine Miller, Herman Miller, Rosalie Miller, Sue Mitchell, Walter Mooney, Mary Joyce Moore, Bill Morgan, Nellie Morgan, Patricia Morgan, Ross Morgan, Jane Morris, Diana Moss, Gerry Moyers, Elizabeth Mulkey, Jeanette Mullis, Joan Murray, Charles Myers, Juanita Nave, Louise Neely, Naomi Nelson, Dorothy Nettles, Melvin Nix, Jackie Noles, Louise Noll, Catole Norrell, Winston North, Buddy Norwood, John Odum, Betty Oldham, Joey Oliver, Tommy O'Neal, Charles Orin, Louella Orr, Tommy Orton, Marie Ottwein, Mary Alice Overard, Jimmy Owsbey, Jimmy Pack, Jimmy Pagleno, Sydney Parham, Jeanie Parker, John Parks, Fred Parsons, Betty Patterson, George Patterson, Georgia Payne, Gerald Payne, Tommy Payne, Cecil Pearce, Marjorie Pence, Jerry Petry, Billie Philter, Gene Phillips, Yvonne Phillips, Helen Pickett, Hubert Pickett, Jessie Pinion, Joe Pinion, Mary Poff, Allan Powell, Mary Joyce Powell, Barbara Powers, Jo Prystat, Helen Pyburn, Marie Rains, Mary Rapier, Jack Rawlings, Pat Reclor, Howard Reed, Garland Reichle, Franklin Rice, Marilyn Rice, Joe Richardson, Bobby Ridge, Sally Ridge, Charles Riley, Jane Ringor, Bill Robertson, Don Roberts, Wayne Roberts, Wilda Roberts, Charles Robinson, Don Robinson, Dottie Robinson, Emmett Robinson, Joan Rogers, Phyllis Rogers, Linhons Requa, Peggy Rose, Doris Ruyman, Jack Rush, Betty Sansing, Pat Scarborough, Stanley Schmitt, Reba Scuggs, Avery Senter, Jimmie Sewell, Johnny Sewell, Kenneth Sharp, Robert Shelton, Darrel Shepard, Alice Shipley, Peggy Shipley, Harry Shoemaker, William Shourd, Doris Shuster, Freda Simmons, Melvin Simmons, Mildred Simons, Melton Slaton, Billy Smith, Estalene Smith, Marie Smith, Nannie Lee Smith, Paul N. Smith, Sammy Smith, Virginia Smith, Melbourns Sneed, Allen Snyder, Bobby Jo Spaulding, Ray Spack, Billy Sancer, Marilyn Strings, Wilma Stillers, Ruth Stencil, Gene Stanfield, Wendell Stranbury, Paul Starnes, Charlotte Steele, Jimmy Stewart, Perry St. John, Jean Stockton, Barbara Stokes, Billy Stokes, John Stoner, Patricia Strickland, Fred Sullivan, June Sullivan, Robert Swafford, Jane Sweeney, Ann Tackington, Jo Anne

Tate, Nadine Tate, George Thomas, Max Thomas, Barbara Thompson, Hazel Thrasher, Freddy Throneberry, Deloris Thurman, Tommy Tillman, Charles Tinnon, Shirley Tompkins, Sara Trail, Ben Trotter, Harry Troutman, Alice Tucker, Charles Tucker, Elmer Tucker, Peggy Tucker, Shirley Tucker, Billy Turner, Martha Turner, Marvin Turner, Joan Underwood, Elms Van Wagner, Jimmy Vaughn, Edward Vickery, Joe Vickery, Ed Vinson, Ina Vines, Dan Wade, Inoceno Wade, Leaty Wade, Roy Waddle, Harold Watford, Pat Wagner, Chester Walker, Jimmie Walker, Jo Ann Walker, Norma Walker, Richard Walker, Joan Wall, Shirley Wall, Jean Ware, Anne Washam, Charles Watts, Dorothy Watts, Barbara Webb, William Webster, Louise Welch, Peggy Welch, Bobby Wells, Joyce Wells, R. M. West, George Westbrook, Bernard Wheeler, Barbara White, Billy White, Bonnie White, Raleigh Whitman, Virginia Wilborn, Almeda Wilkey, Tommy Wilkins, Barbara Williams, Betty Williams, Bill Williams, Joely Williams, Mason Williams, Norel Williams, Walter Williams, Marjorie Williamson, Bobby Wilson, Edna Wilson, Kitty Wilson, Mary Wilson, Martha Jean Wilson, Norma Jean Wilson, Pat Wilson, Peggy Wilson, Jane Winfrey, Lebron Winton, Robert Wise, William Wise, Andrew Wilt, Patricia Witt, Bobby Wood, Dorothy Wood, Hugh Woodin, Gloria Woody, Betty Worley, Patricia Worley, Lorayne Woy, Bill Wright, Margaret Wunderlick, Jack Yerck, Delia You, Glen Young, T. I. Youngblood.

Jimmy Pack, President; Tommy Tillman, Vice President; Bill Hale, Secretary; Kay Hoffmeyer, Treasurer.

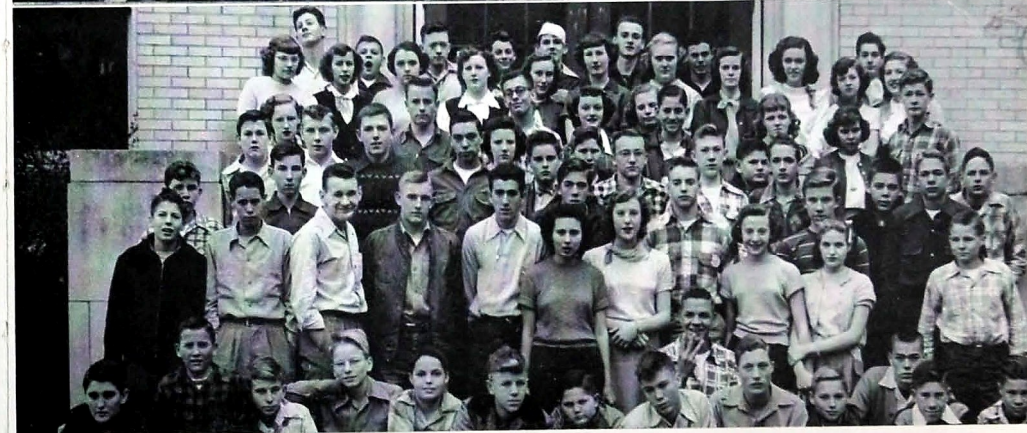


THE FRESHMEN CLASS



Lyle, Gayle McBrayer, Imogene McBrayer, Juanita McBrayer, Barbara McCollum, Derrell McCrary, Charlene McCullough, Darlene McCullough, Fern McDowell, Sarah McDowell, Billie Ruth McElhaney, Ioe McGarvey, Joyce McGuire, Jo Ann McKinney, Carol McKinnis, John McLaughlin, Robert McLaughlin, Juanita Malcom, Patricia Manning, Chuck Martin, Dan Martin, Bill Mason, David Mason, Mary Masera, Shirley Maxwell, Marilyn May, George Edwin Meyer, Tommy Miller, Wilma Miller, Carol Millican, L. D. Mohottery, Leonard Morris, Joy Mosteller, Bob Mowery, Peggy Jo Moyers, Vernon Moyers, Billy Mullican, Gloria Ann Newton, Frances Nicholas, Nora Nichols, Ellen Nixon, Sandra Noll, Jack O'Dell, Virginia Odell, Junior Osborne, Eunice Outlaw, Ernest Owens, Mary Katharine Ownbey, Walter Pack, Mac Pendley, Paul Phillips, Billy Pickett, Bradley Pierce, Roberta Poole, Paul Potter, Mary Evelyn Powell, Irma Prater, Barbara Quinn, Verna Ray, Scott Rehring, Renee Reichle, Maurena Reid, Joyce Reynolds, Gene Ridge, Leola Ridge, Kenny Riggs, Raymond Robbins, Babe Rogers, John Rogers, Marlin Rowell, Elizabeth Runyan, Johnny Sargent, Barbara Seaton, Ellie Schmitt, Patricia Scoggins, Johnny Shaick, Jo Shannon, Joyce Sharp,

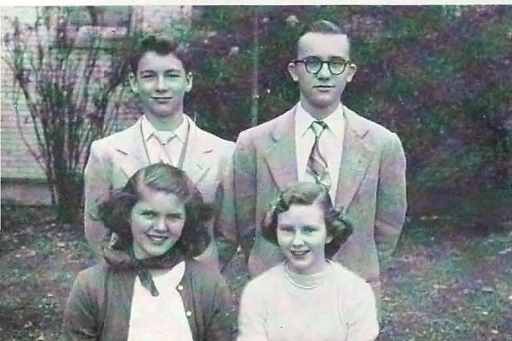
Ray Sharp, Berwin Shell, Mary Sherrord, Jack Shipley, Hubert Shuptrine, David Silver, Billie Jane Smart, Adella Smith, Barbara Smith, Martin, Dan Martin, Bill Mason, David Mason, Mary Masera, Shirley Beverly Smith, Billy Smith, Carolyn Sue Smith, Dolores Smith, Jeannette Smith, Joe Smith, Rebecca Smith, Roger Smith, Sandra Smith, James Southerland, Marilyn Sparks, Laverne Stafford, Chester Stalley, Martha Standridge, Jimmy Stanfield, Mary Ann Steele, Christina Stegall, Terry Steel, Clayton Stewart, Yvonne Stewart, Ray Stokes, Eddie Stork, Harry Strongman, Arthur Suits, Marilyn Talley, Jeannette Tate, Jimmy Terry, Alice Thach, Hazel Thomas, Tommy Thompson, Dorothy Torbett, Wanda Trimble, Alene Tucker, Joyce Tucker, Bobby Turner, Maxine Turpin, Gus Unger, Robert Vance, Leroy Varnell, Charles Vick, Juanita Walker, Gene Wallace, Eugene Ward, Margie Ann Wate, Virginia Washburn, Carolyn Watkins, Ernest Webb, Joyce Webb, Frank Webster, Joyce Welch, Bertin White, Eugene Whittemore, Jane Wilson, Jimmy Wilson, John Wilson, Charlotte Wingo, Pat Winkler, Jimmy Wood, Norma Woodall, Buddy Woody, Betty Jo Worley, Jack Wright, Fred Wrinkle, Wilma Wrinkle, Ann Yeargan.

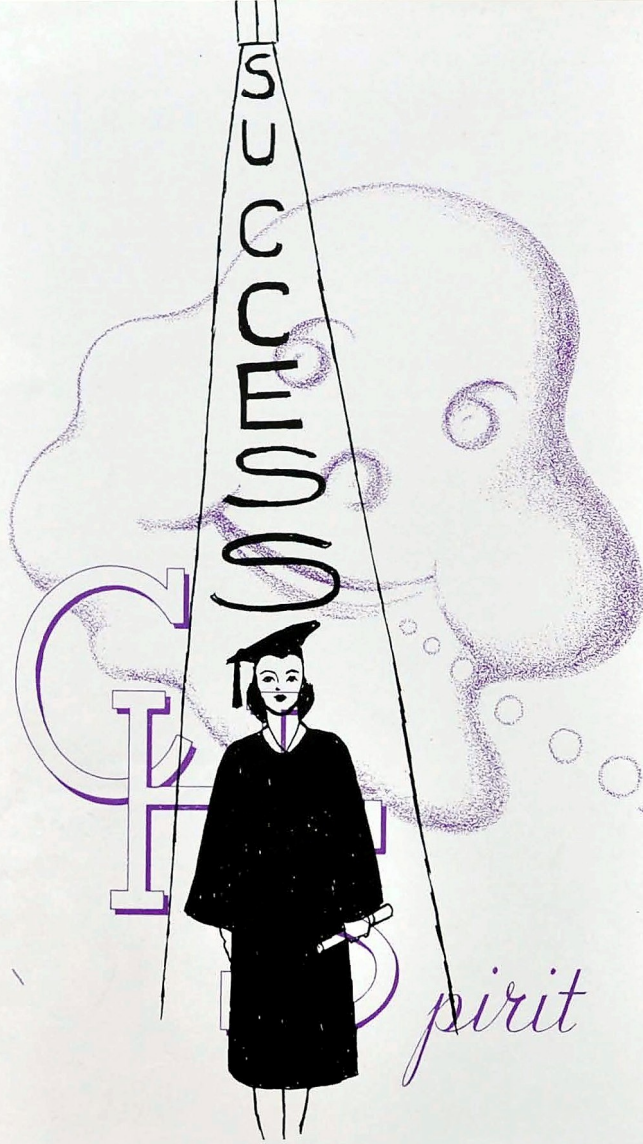


Janie Abbott, Mildred Abbott, Frank Abston, Mary Achey, Barbara Adams, Robert Albright, Charles Allen, Patsy Alloway, Sherwin Anderson, Jeanette Andrews, Jerry Arnold, Johnny Arnold, Fred Ashby, Phil Ashley, Jimmy Askins, Peggy Atchley, Delores Aycock, Doris Baggett, Charles Bailey, Robert Bailey, Harold Ball, Bill Bankston, Carolyn Barnes, Neil Barnes, Joan Barry, Bobby Bedwell, Charles Bidwell, Doris Bowling, Joyce Boyd,

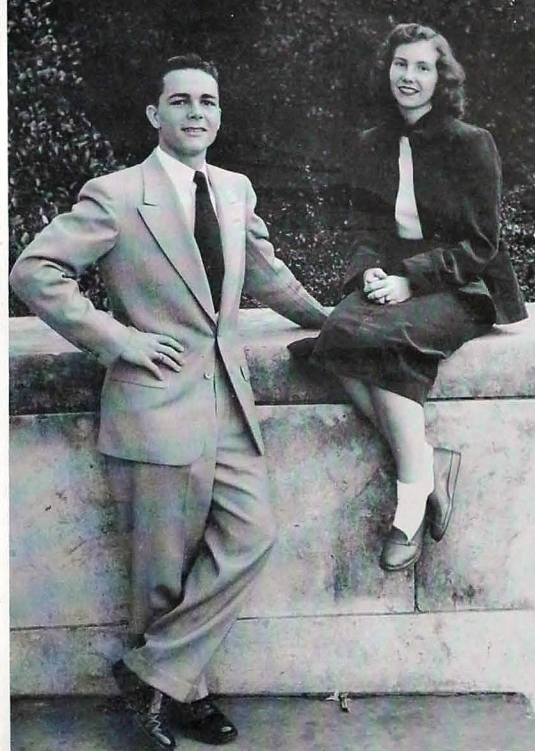
Charlotte Bradford, Gail Britt, Carl W. Britton, Sue Broadway, Charlotte Brown, Mildred Brown, Jimmy Broyles, Martha Brumlow, Ella Mae Burns, Joel Burris, Medford Byars, Rube Cagle, James Cannon, Elizabeth Carroll, Edna Cavin, Eubie Cavin, Fred Chambers, Charles Champion, Eugene Chitwood, Ronald Clarkon, Wanda Clayton, Wanda Clinton, Richard Clinton, Douglas Coffey, Mary Coffey, Esther Collins, Mona Conley, Marion Connor, Peggy Cooper, Betty Cordwell, Robert Cox, Bobby Craig, Billy Curtis, Bertha Daffron, Edith Daugherty, Barbara DeArmond, Doyle Dickson, Mary Alice Dickson, Maxine Dixon, Gloria Dobbs, Ed Dockery, Wilma Ducker, Johnny Dunbar, John Dyer, Lois Dyer, Lois Eaves, Ronald Eldon, Rose England, Jimmy Ellison, Jean Ervin, Joe Espacio, Phyllis Evans, Louise Farr, Rachel Farr, Joe Faulkner, Ronald Fletcher, Winford Foote, Rosell Fordham, Delores Fossati, Barbara Foster, Josephine Foster, Rosemary Fry, Vance Fry, Betty Faye Fuller, Lamar Fuson, Carolyn Anne Gant, James Garner, Jerry Gentry, Billy Gase, Charles Gaston, Quinton Gibson, Tevonia Gilbreath, Shirley Goforth, Bobby Gersauch, Marilyn Green, Dixie Griffin, Sharon Griffin, Faye Griffith, Raymond Griffith, Joyce Guinn, Elmer Gurley, Bernice Hampton, Jacquelyn Harris, Joe Billy Harris, Harold Haven, Barbys Hawkins, Edwin Hayes, Johnny Hays, Joetta Henry, Donal Hickey, Mary Ann Higgins, Billy Higgins, James Highfield, Barbara Hill, Jay Hill, Myra Lee Hobbs, Stella Hobbs, Wyndol Hodnett, Barbara Holden, Marilyn Holder, Buddy Holder, Buddy Holland, Barbara Holley, Janis Holley, Charles Holmes, Barbara Hooper, Robert Hoppe, Doris Houk, I. N. Howard, Jo Ann Humble, Harry Huntoon, Vivian Huskey, Wayne Hutcheson, J. W. Irwin, Jack Jackson, Mary Jackson, Peggy James, Dorothy Jewell, Jo Ann Johnson, Marian Jo Johnson, Bobby Jones, John Jones, Joyce Jones, Myra Jones, Robert Jones, Jimmy Kelle, Robert Kingston, Barbara Lacey, Tommy Larkin, Devere Lawrence, Bob Layton, Bobbie Dean Lee, Martha Leeper, Dorothy Llewallen, Louise Lumpkin, Melvin

Bebe Rogers, President; Joe Faulkner, Vice President; Carolyn Barnes, Secretary; Charles Champion, Treasurer.





F E A T U R E S



Torchbearer

MYRA FAYE GINN
EARL TATUM

Leadership

FRANCES FORESTER
BOBBY CLARK

Scholarship

CAROLYN MILBURN
ROBERT KEOWN

SENIOR

Service

MARIAN FOLLETTE
JAMES COULTER

Best All-round

PEGGY KISTLER
BUCKY SHAMBURGER

Most Dependable

LENA BRUMLOW
JOE W. TAYLOR

PERSON-
ALITIES





SENIOR PERSONALITIES

Friendliness

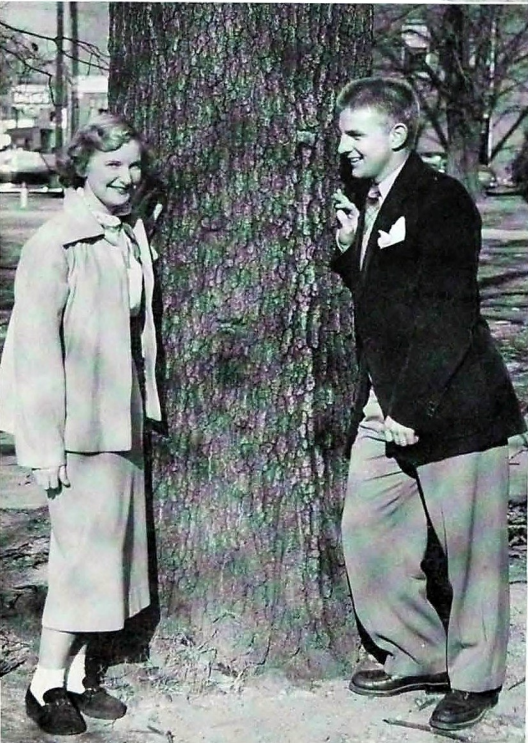
BARBRA FORD
JOE D. TAYLOR

Personality

BETTY PARKS
JIMMY MATHENEY

Courtesy

CAROL SIMPSON
NORMAN HOFFERMAN

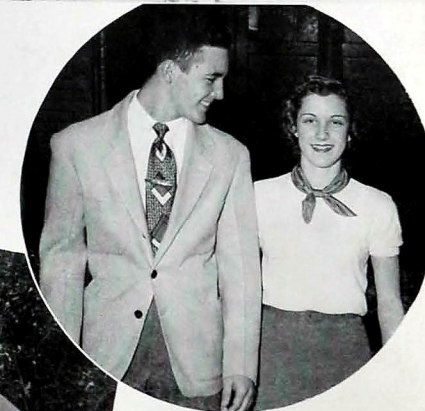
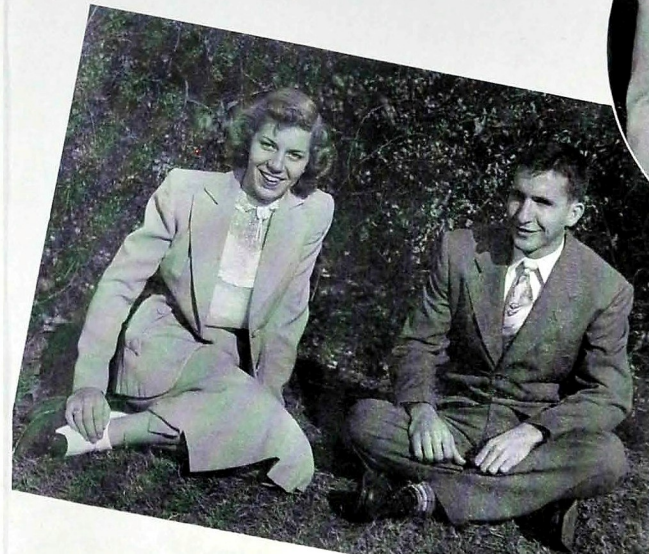


Most Talented

GAIL HILL
JACK BOOKOUT

Wittiest

JANETTE CASTLE
JACK KIMSEY

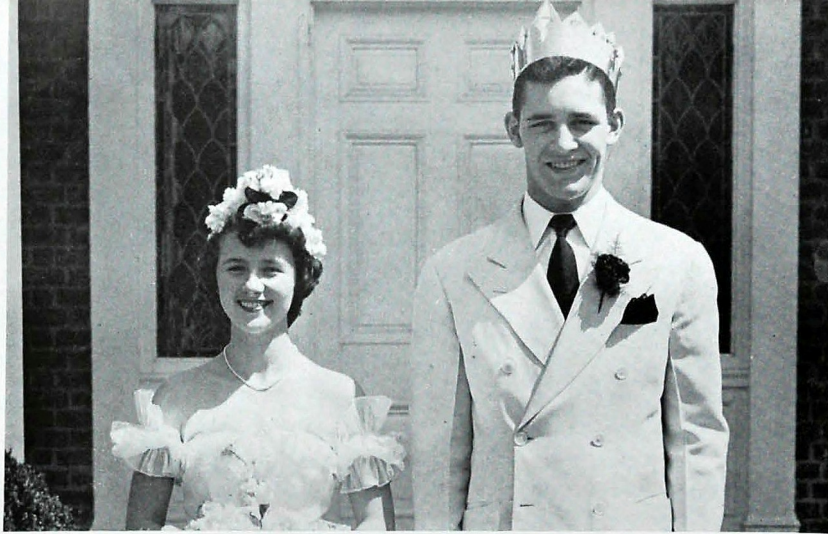


Most Attractive Couple

JOAN SMITH
BOBBY CLARK

Most Athletic

BARBARA DRINNON
LEON HENRY



MISS CENTRAL—PEGGY KISTLER

MR. CENTRAL—BOBBY CLARK

MR. AND MISS CENTRAL

SENIOR DAY COURT



THE CHAMPION STAFF

ROBERT KEOWN	Editor-in-Chief	NATHANIEL PITTS	Photographic Editor
PEGGY KISTLER	Associate Editor	MONNA LUSK	Art Editor
MARIAN FOLLETTE	Business Manager	BETTY WALLACE	Typist
BARBARA BOLES	Senior Section Editor	GRETCHEN BRITTON	Junior Editor
CAROLYN MILBURN	Feature Editor	BILL MORGAN	Sophomore Editor
GENE DeMONTREVILLE	Athletic Editor	BETTY FAYE FULLER	Freshman Editor
JOE W. TAYLOR	Military Editor	SALLY MAY KING	Sponsor
BOBBY BOHANNON	Club Editor	C. G. TOWERY	Sponsor



WHAT'S UP, DOC?



CAMERA SHY



AFTER WE EAT, THEN —



BANKING OR BORROWING?



PAUSE...DRINK

Coca-Cola

DRINK UP, KID!



IT SOMETIMES MEANS A LIFE



RADIO FOR A REWARD



CHOOSE YOUR CHARACTER



FUN MAKERS, ERNIE AND LUTHER



CAR CARE



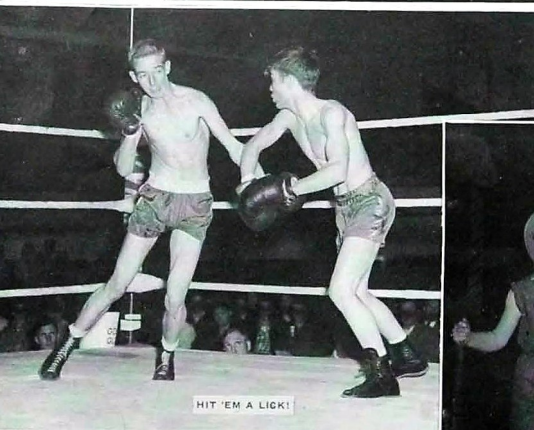
TUNEFUL TEACHERS



A BONUS FOR THE "BIG BOYS"



CAMERA CASE KEEPERS



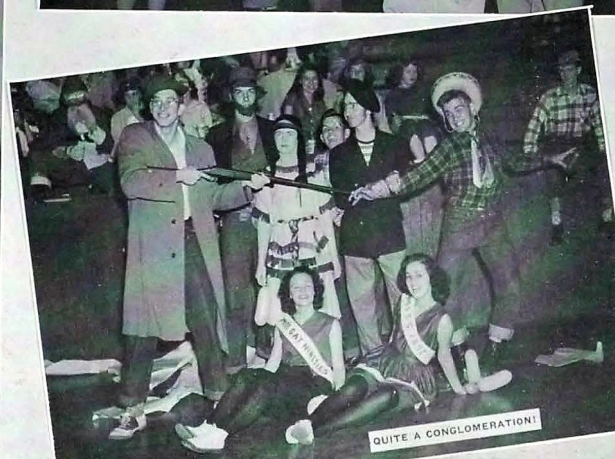
HIT 'EM A LICK!



PARTY PRIZE WINNERS

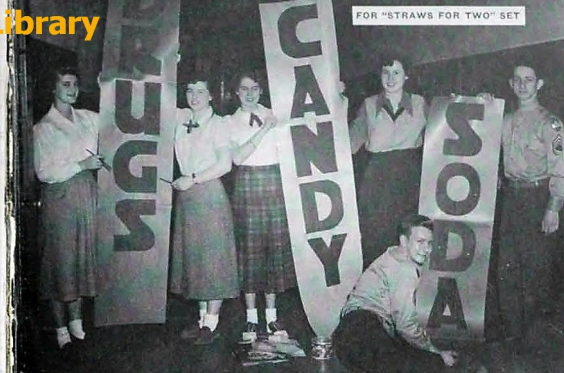


FINE WORK, FELLOWS



QUITE A CONGLOMERATION!

CHS Library



FOR "STRAWS FOR TWO" SET



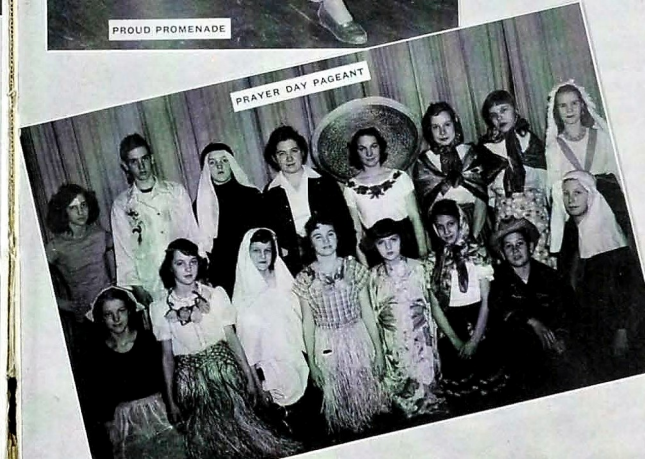
—AND THEY'RE IN HIGH SCHOOL



PROUD PROMENADE



PIE-PICTUR PATTES



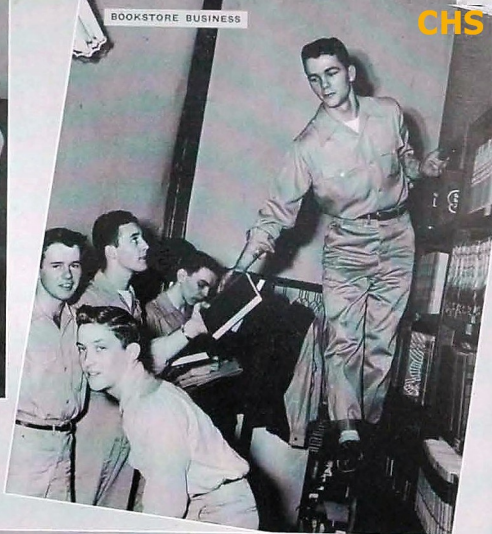
PRAYER DAY PAGEANT



KUTE KIDS



WHAT THAT WAIST LINE!



BOOKSTORE BUSINESS

CHS Library



CAMERA WISE



HAPPY DOZEN



DRAMATIC'S DOINGS



MAFFITT HOMEROOM



LIKE BEING STUDENTS?



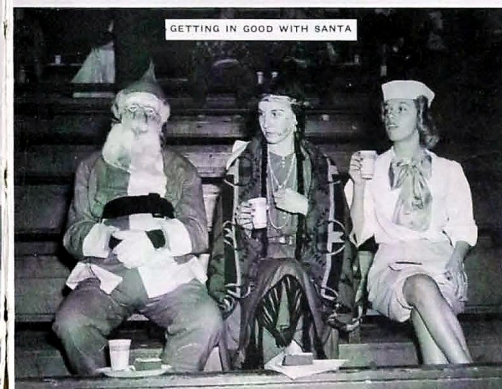
PHY. ED. SWEETHEART



MUSIC BY KINGSPORT'S BAND



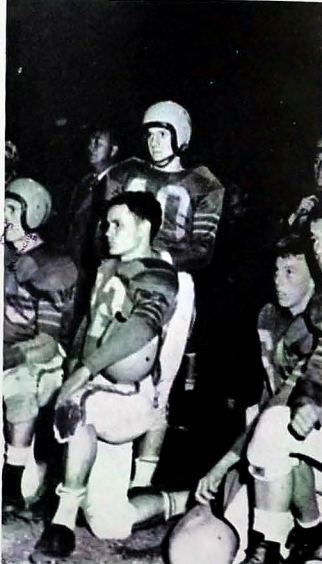
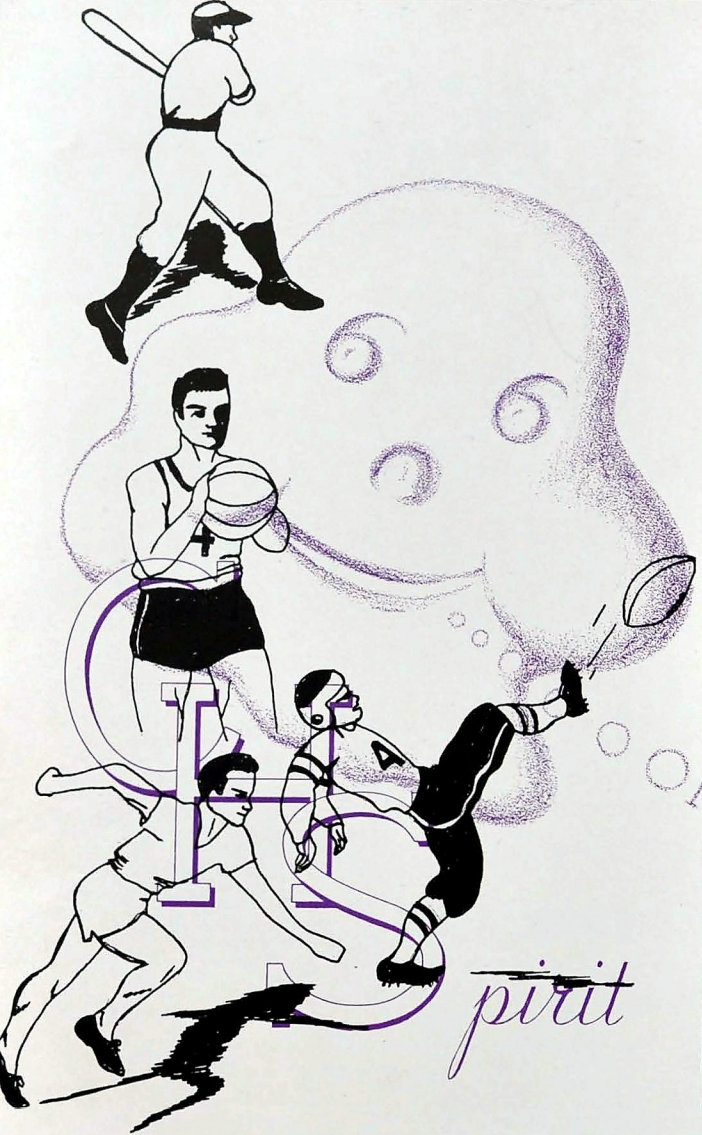
CHILI COMES LATER



GETTING IN GOOD WITH SANTA



A KISS FOR THE QUEEN



A T H L E T I C S

FOOTBALL REVIEW, 1950



Homecoming Queen

E. B. ETTER

Surely no one deserves more credit for Central's excellent athletic record of 1950-'51 than does Coach E. B. "Red" Etter. Through his relentless efforts he has led the Central eleven onward to victory many times.

Coach Etter, an alumnus of Central in 1930, received his B.A. Degree at the University of Chattanooga. He gathered his experience as coach at Morgan School, Petersburg, Tennessee, and at Hendersonville, North Carolina. In 1936 he came to Brainerd Junior High where he coached until he became assistant to Coach Dean Petersen at Central in 1942. In 1943 he succeeded Petersen as head coach.

Coach Etter has been greatly admired by the student body and faculty during his years at Central.

STANLEY FARMER

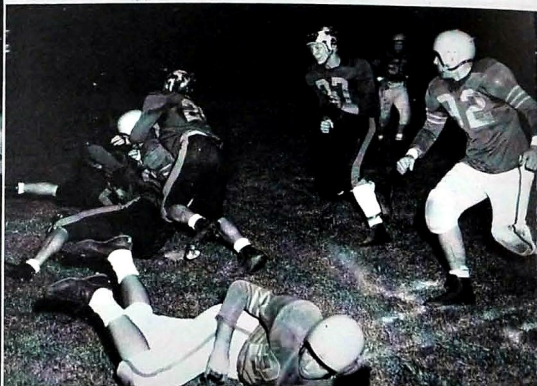
A former player for an across-the-town rival, Chattanooga High, is an important cog in the Central coaching machine, Coach Stanley Farmer.

"The Boomer," as he is known far and wide, has won the hearty friendship of all true Centralites by his genial manner and pleasing personality.

Coach Farmer is an alumnus of Chattanooga High School and Emory and Henry College, Virginia. He served as a coach at Chattanooga High prior to army service in World War II. He joined the Central coaching ranks in 1947.

J. LESTER NEWTON

The man who has proved to be one of Central's greatest line coaches is J. L. "Les" Newton, who is largely responsible for molding the mighty Central line.



He takes a tumble

Before coming to Central in 1942 to join the coaching staff and to teach general science, Coach Newton graduated from Carson-Newman College in 1930, and was later principal at Falling Water Grammar School.

Because of his great devotion to the team and his love of the game, he has helped develop one of Central's great football teams.

J. M. SEATON

Serving in the valuable capacity as coach of the "B" team is Coach J. M. "Boots" Seaton, a great favorite of all the football boys.

Mr. Seaton graduated from East Tennessee State Teachers College in 1934 and from there went to Soddy-Daisy where he was assistant basketball and football coach. In 1942 he went to the Du Pont Company where he remained till he came to Central in the fall of 1945 as an instructor in the industrial arts department.

Mr. Seaton's job as "B" team coach is to make varsity material out of the freshmen and sophomores who want to play football at Central.

GORDON ATCHLEY

A product of another rival high school is Coach Gordon Atchley of Red Bank High where he was an outstanding end. He is a graduate of the University of Chattanooga on which team he continued as an end star.

Through his enthusiasm and cooperative spirit, Coach Atchley has won many friends at Central during his first year as a teacher and as a coach. The Central ends prospered greatly under the coaching of Gordon Atchley.

This youngest and most recent addition to the Central coaching staff is a teacher of biology and general science.

CENTRAL, 33; TYNER, 0

September 8

After several weeks of hard training the Central High Purple Pounders opened their 1951 football season with a triumphant victory over the Tyner High Hilltoppers, defeating them 33-0.

This successful victory over Tyner was due to the touchdown makers: Henry, who ran for a 70 and 44 yard TD, while Henley ran 19 and 40 yards. Another great runner was Tillman, who made a 71-yard dash for pay dirt. Placekicks for the game were made by Matheney and Pack.

Other outstanding players in Central's opening game were B. Salley, Childers, Hudgins, and Jones.

CENTRAL, 12; YOUNG, 19

September 15

The Pounders suffered their first defeat of the season against the Knoxville Young High Yellow Jackets on Duff Field in Knoxville.

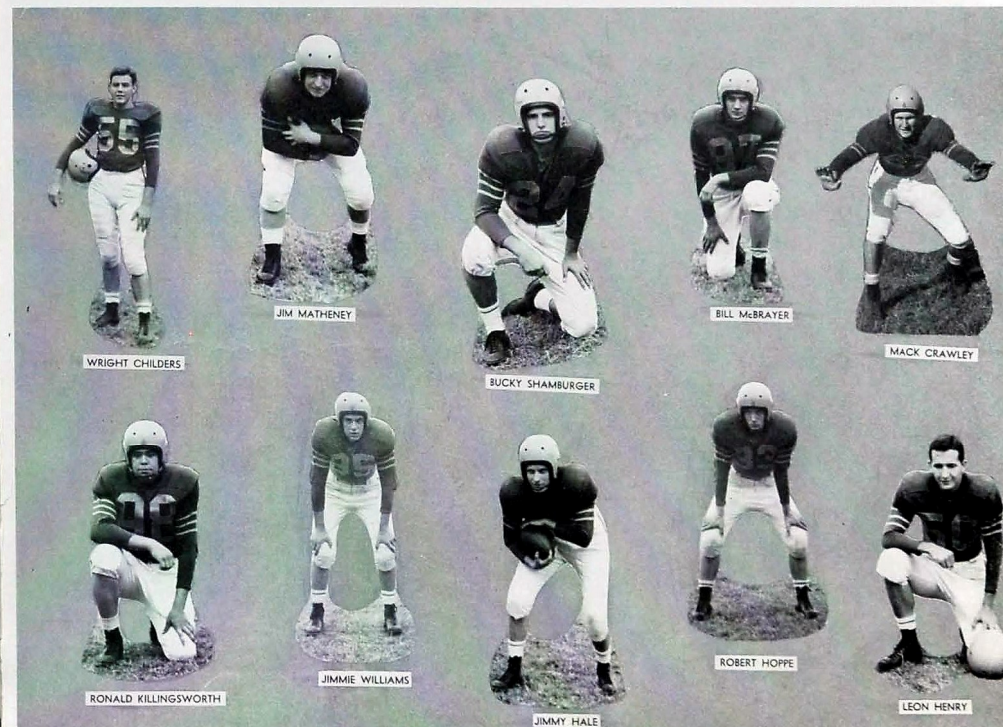
Running up 15 first downs, 14 on the ground, to five for Young, Central outgained their foes 260 yards to 134, but defensive lapses at three different stages cost the Purples the game.

These statistics show that the Pounders played a better game on the whole, but breaks accounted for the Young High victory. Central's TD's were made by Hoppe and Hofferman.

The final touchdown was made on a desperation play when a Shamburger pass hit Hofferman for a score. Pack, along with Shamburger, had been passing short throughout the game.



Eddie Coulter, Frank Parker, Mack Parker
Jerry Dixon, Jackie Davis, Jerry Garner



CENTRAL, 27: O'KEEFE, 0

September 21

Before an enthusiastic crowd including Purple Pounder fans who followed the Central eleven to Atlanta's Grady Stadium, the Pounder team defeated the Fighting Irish of O'Keefe 27-0.

The Pounders were invincible in this game, sweeping and amassing 277 yards along the ground and in the air, scoring one touchdown in every quarter.

The showing of the defensive team was a bright spot among many improvements.

The only serious threat to Central was on the Central 4-yard line when "Lightning" Leon Henry ran 96 yards for a touchdown.

Central's scores were two by Hofferman and one each by Hoppe and Henry. Outstanding players in the game were D. Salley, Hofferman, and Crawley, who was injured.

CENTRAL, 53: KINGSPORT, 0

September 30

The Central High Purple Pounders turned the tables on the Kingsport Indians by giving them their second defeat since 1941. The Pounders averaged two touchdowns every quarter. Early in the first quarter the Indians gained two first downs which were not too encouraging for Central.

Henry was the big wheel on Central's first drive going 21 and 12 yards in two tries, and bursting over right guard from the 17 for a score. Next came a recovered Kingsport fumble by B. Salley and

in three minutes the Pounders had scored again. At the end of the half Central was leading 34-0.

Central's touchdowns were made by Henry with 17 and 8 yard runs; 78-yard punt return, and a 27-yard Shamburger pass; J. Hale with an 81-yard punt return; B. Hale with a 28-yard Shamburger pass; and Henley with a 15-yard Pack pass, and a 48-yard Shamburger pass.

This was a great victory for Central over the Indians who have been state champions in previous years.

CENTRAL, 20: RED BANK, 0

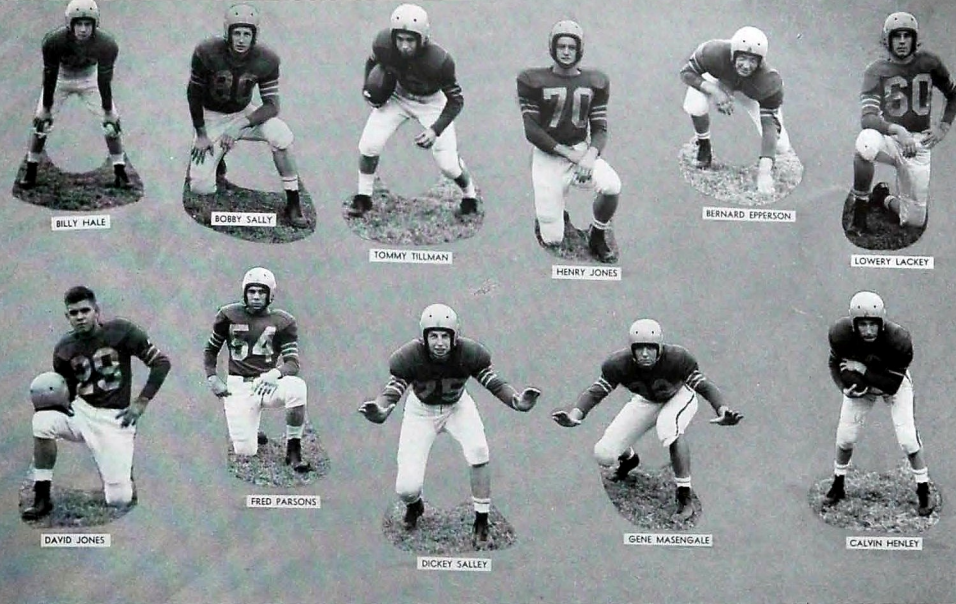
October 7

The Purple Pounders pounced over the Red Bank Lions with a score of 20-0. "Lightning" Leon Henry personally carried the pig-skin over the goal three times with a 1-yard plunge, a 5-yard run, and a 15-yard pass from Shamburger. The two placements were also made by Henry.

Leon's first score was set up by Jimmy Williams when he carried the ball back to the Red Bank 1-yard line.

In the second quarter both sides were held scoreless, but Central was in control of the ball throughout most of the entire quarter. Central's air attack was launched towards the end of the game when Shamburger threw three straight passes to spearhead a touchdown drive.

The Pounders made 21 first downs to Red Bank's 3. Central's stick movements came 12 times in the first half, all by rushing and nine times in the second when two were end passes and the rest reeled off in the crushing attack spear-headed by Henry.



BILLY HALE

BOBBY SALLEY

TOMMY TILLMAN

HENRY JONES

BERNARD EPPERSON

LOWERY LACKEY

DAVID JONES

FRED PARSONS

DICKEY SALLEY

GENE MASSENGALE

CALVIN HENLEY

CENTRAL, 7: MIAMI, 7

October 13

The Miami High Stingerees made their first trip to Chattanooga to be held to a 7 to 7 deadlock by the Chattanooga Central High Pounders before 10,000 cheering fans at Chamberlain Field.

The peppy Floridians struck hard in the first quarter by driving 57 yards for a touchdown. But the Pounders' strong defense came into action to score on the second play of the second quarter when a completed 31-yard Shamburger to Hofferman pass gave the Pounders their break.

Leon Henry, who suffered a bruised hip in the second quarter, watched the second half from a stretcher. Gene Massengale, although hampered by being knocked out of action three times in the game, played one of the best defensive games of the year.

CENTRAL, 32: HOKE SMITH, 8

October 19

Before not more than 300 rain-soaked fans the Pounders captured the Hoke Smith Atlantans 32-8 on a very wet Chamberlain Field.

Making their first and only touchdown of the first quarter, the Centralites rolled up 251 yards on the ground, after tackle Don Duncan recovered four Smith fumbles on the Georgians 13-yard line. Bucky Shamburger made the score with a quarterback sneak.

Central kept up the good work in the second quarter when Hofferman ran 45 yards on an end around play to put Central out in front 13-0. Henry's kick was good giving the Pounders a 14-0 lead.

With 6 minutes and 41 seconds remaining in the first half, Central scored twice. The other two scores came in the second half.

CENTRAL, 32: BRADLEY, 6

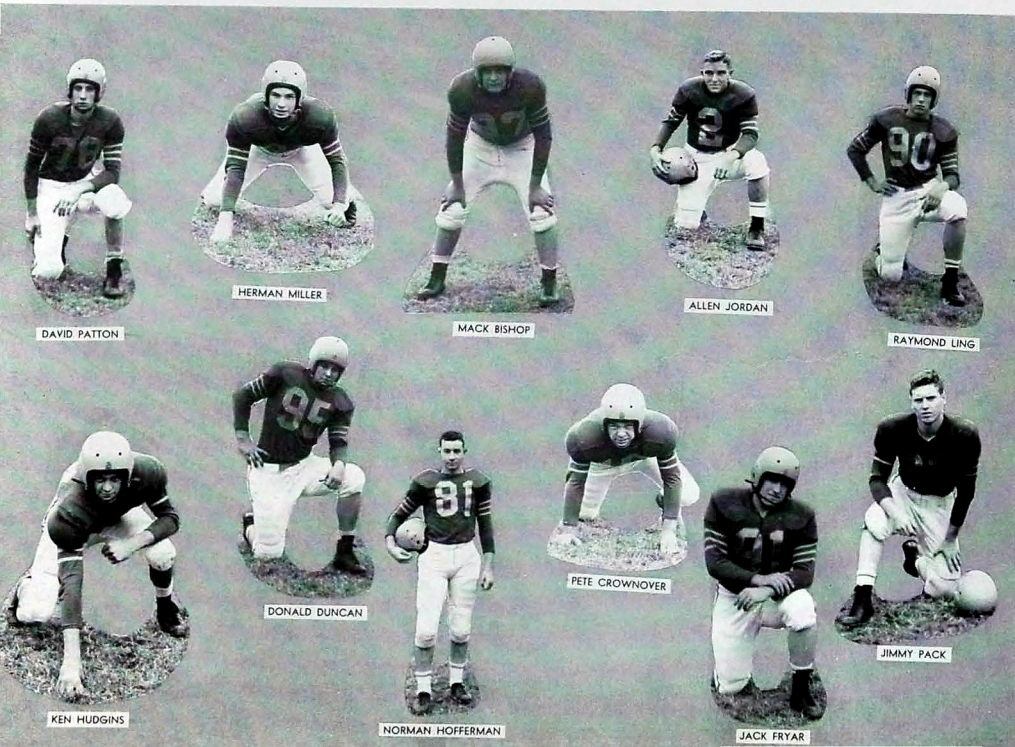
October 26

The Purple Pounders gained 308 yards over the Bradley High Bears by taking advantage of all breaks that came to them and defeating the Bradley eleven 32-6. The Purples rolled up 207 yards rushing, with Leon Henry being responsible for 152 yards which he gained in five tries.

In the first quarter no scores were made, but the second quarter started with a bang when Bradley made the first touchdown. Then Henry came back with two touchdowns for Central—the first, on a 17-yard deceptive handoff from Shamburger; the second, in the first 10 seconds of the half.

On a 72-yard dash in the second half Henry chalked up Central's third touchdown. Hofferman scored two touchdowns, one on an end-around; the other on a Pack pass. Matheny also scored on a 2-yard plunge.

Breaking Through



DAVID PATTON

HERMAN MILLER

MACK BISHOP

ALLEN JORDAN

RAYMOND LING

DONALD DUNCAN

PETE CROWNOVER

JIMMY PACK

KEN HUDGINS

NORMAN HOFFERMAN

JACK FRYAR



Watching the hall?

CENTRAL 27: ST. ALOYSIUS, 7

November 3

The Central High Purple Pounders ventured down to New Orleans to defeat the St. Aloysius Crusaders 27-7, in one of the most colorful games of the season.

The Pounders seemed to be off to a good start the first time they had the ball, but missed scoring on a fumble by Henry.

Following a fumble recovered by Henry Jones, Norman Hofferman scored the first touchdown, with a 12-yard end around play. The score was quickly tied when Reppel recovered a fumble on Central's 15-yard line. The tally came three plays later with a Louis drive.

Central speedily broke the tie when Jimmy Hale got away a 70-yard kick from the Central end zone, the ball going to the 28-yard line. The score came several plays later with a Shamburger to Hofferman pass.

The game was later clinched when another Shamburger to Hofferman pass was completed. Hoppe intercepted a Blount pass on the St. Aloysius 18-yard line and sent the pig-skin back to the 10. The final touchdown came in one play when Jimmy Hale carried the ball across.

CENTRAL 51: CITY, 12

November 18

When the Purple Pounders met the Chatanooga High Maroons on the night of November 18, they showed themselves to be in perfect

Sloshing Through



condition by their brilliant offensive and defensive plays during the entire game.

Hale and Henry demonstrated to the City High Dynamos how to run from the T as they continually smashed gains through City's line. Immovable objects on the line in defense were Bernard Epperson, Gene Massengale, Don Duncan, and Henry Jones. Bobby Hoppe, Freshman fullback, was the star defensive back of the night.

With Central receiving the kickoff, Shamburger completed an 18-yard pass to Henry, and Hale galloped 17-yards for the score.

Trying to kick on the fourth down, the first time they had the ball, City fumbled and Central recovered on the City 27. A unique play scored Central's second touchdown. Shamburger passed to Dick Salley who in turn lateraled to Hofferman who carried across for the score.

The third and final TD of the first quarter came when Henry returned a punt 58-yards to pay dirt. Five minutes later Henry scored his second touchdown which completed the first half scoring.

More Shamburger passes led to the next score which Jimmy Hale tallied from the 3-yard line. Calvin Henley scored on the last play of the third quarter, and Henry converted the last of his three good placements.

Then it was that Dicky Salley came up with another play which few ever expect to see again. His kickoff at the beginning of the fourth period went to Dearing on about the City 5. Dicky continued at a dead run downfield after kicking the ball, met Dearing at the City 25, stole the ball from him and went on to score the touchdown.

City made their only two touchdowns in the fourth quarter. Epperson ended the scoring on an intercepted pass runback as the game ended.

CENTRAL 6: BAYLOR 21

December 1

Bill Teas, Fob James, Dave Bristol and company from the Cherokee Trail School proved to be too hot a package of dynamite as they exploded with power to win 21 to 6 before 12,500 fans on Chamberlain Field. The Pounders did not seem to get started through the Baylor line.

This game was the thirty-third in the long rivalry between the two schools. The record as it stands now is 20 games for Baylor, 10 games for Central and three in a deadlock.

Central's one and only touchdown came in the third quarter when Bob Salley hauled in a Bristol pass on the Central 46, ran it to the Baylor 45 and then overshot Hoppe on a lateral, but Hoppe recovered and went the rest of the way for a touchdown.

Hold That Ball



CHS Library



THE ONE TIME CITY CAUGHT HENRY



HENRY FLUNGES ACROSS



THE INDIANS LOST THEIR WAR WHOOPS

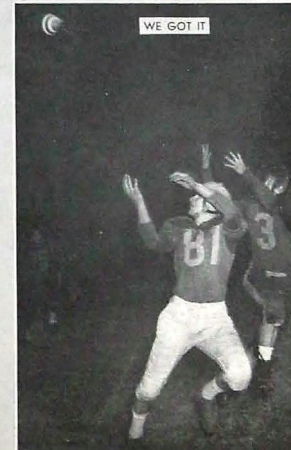


HOFFERMAN AWAY FOR A LONG GAIN

HENRY FOR SIX POINTS



WHO HAS THE BALL?



WE GOT IT

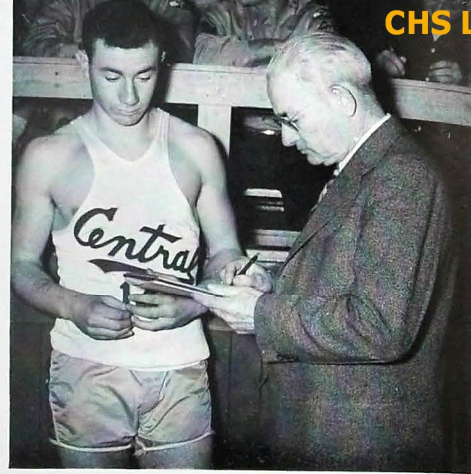
BASKETBALL

SCHEDULE

Central	56: Tyner	43
Central	39: Tyner	27
Central	92: Kirkman	19
Central	61: Hixson	31
Central	43: Tyner	33
Central	33: City	22
Central	47: Baylor	21
Central	70: Ooltewah	35
Central	46: Oak Ridge	43
Central	42: Andrew Jackson	50
Central	54: Knoxville City	50
Central	49: Ooltewah	24
Central	45: Soddy-Daisy	42
Central	56: Morristown	53
Central	54: City	44
Central	56: Red Bank	34
Central	57: Morristown	45
Central	47: Knoxville City	60
Central	56: McMinn	43
Central	50: Rossville	44
Central	52: City	34
Central	62: Rossville	50
Central	76: Bradley	40
Central	63: Red Bank	40
Central	61: Soddy-Daisy	53
Central	56: Bradley	49

Tournament Games

Central	83: Red Bank	36
Central	50: South Pittsburgh	30
Central	56: City	41
Central	65: Rhea County	63
Central	50: Bradley	52



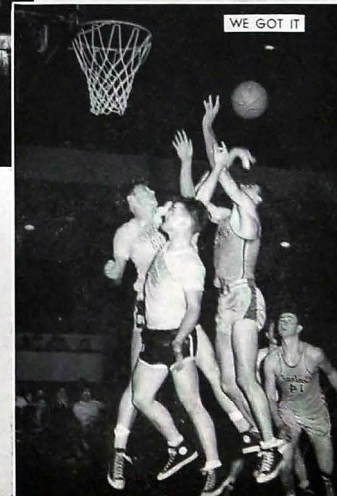
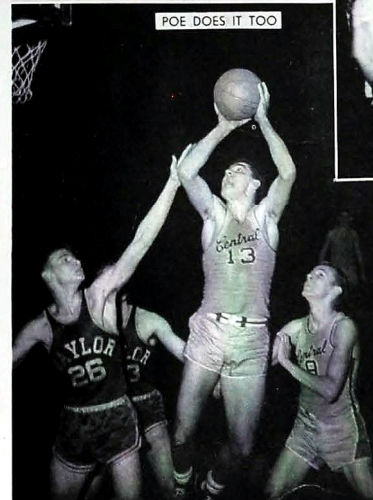
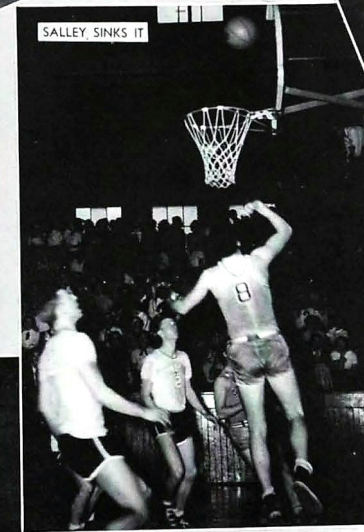
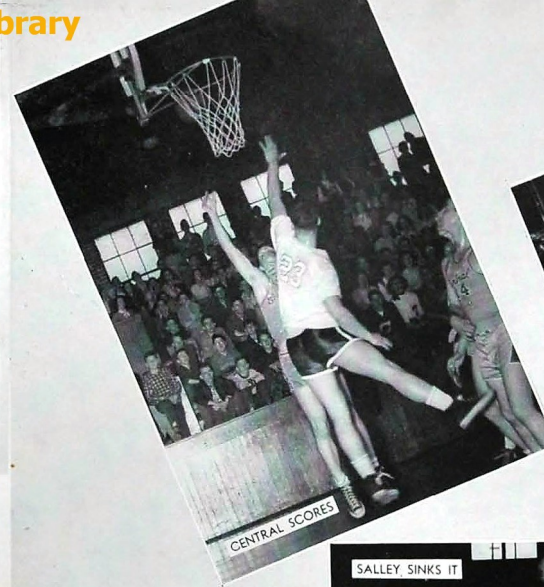
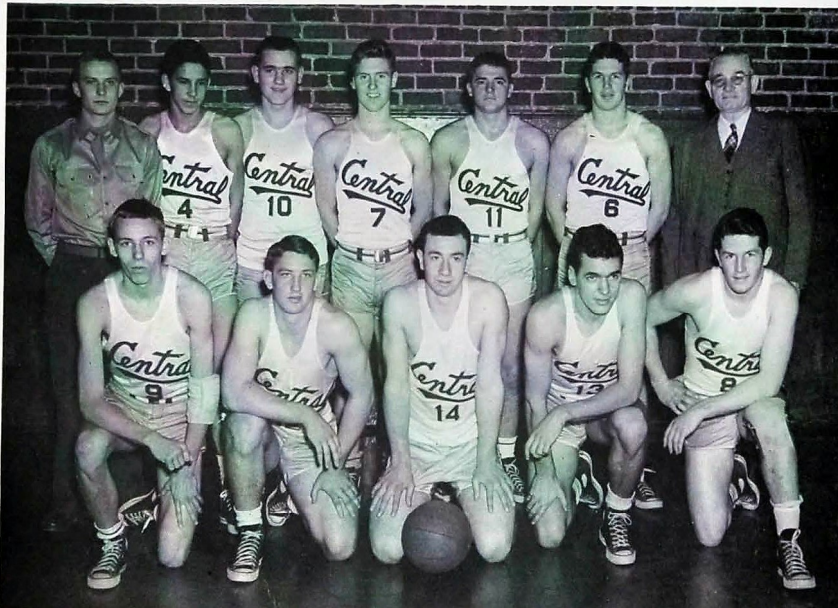
Captain and Coach

The Boys Basketball team climaxed a very successful season in the Bradley High School gym in Cleveland, Tennessee. Central won the district tournament and was placed in the Regional.

Several varsity players won honors in state, region, and district. Tom Poe was chosen all-state center; Norman Hofferman, Bernard Epperson, and Tom Poe were selected all-tournament team members in the district; and Hofferman and Poe won all-tournament in the region.

BASKETBALL TEAM OF 1951

Jack Kimsey, Bernard Epperson, Norman Hofferman, Tom Poe, Bobby Salley, Jimmy Hale, Bill Goodner, Bill McBreyer, Jim Peck, Bucky Shamburger, Dickey Salley, coach Sales.





Black leads with a right

A good blow

Mixing it up

BOXING

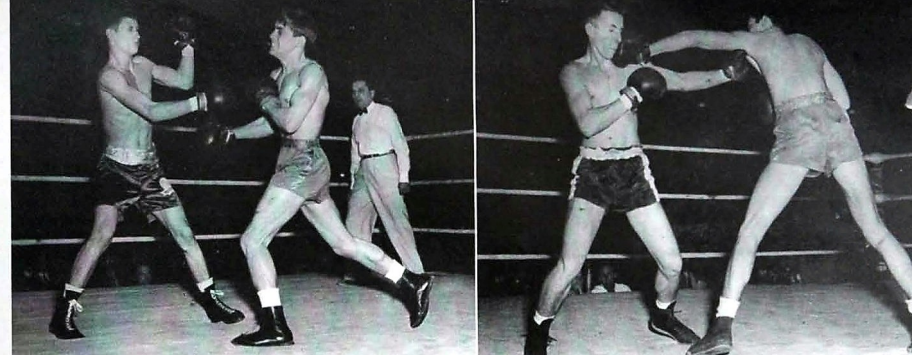
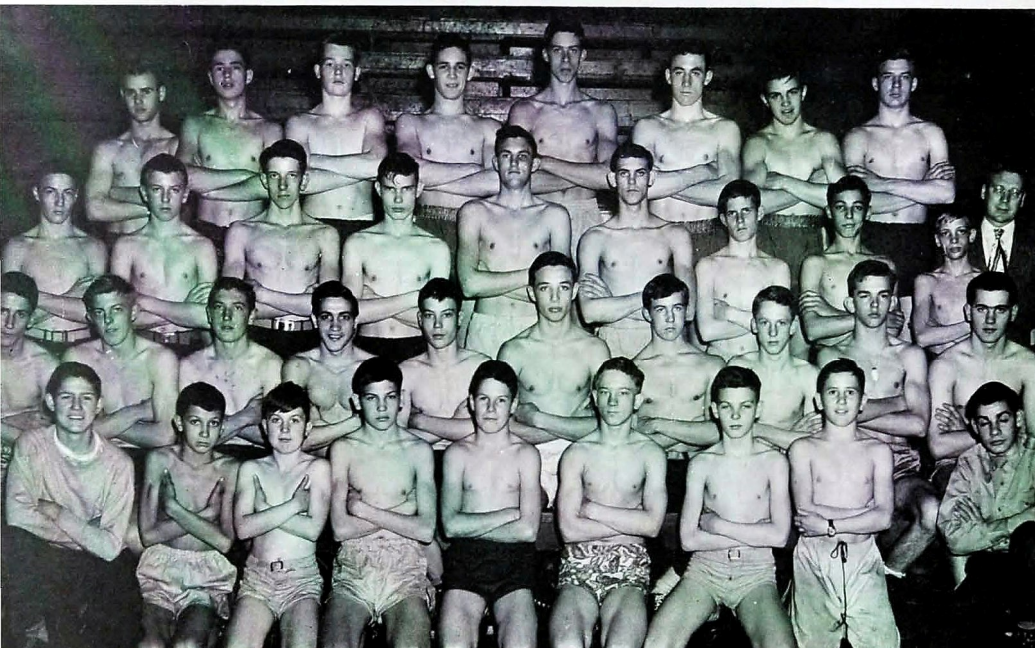
Central's glove slingers walked away with five different trophies in the 1951 Golden Gloves and Frye Meet. To start the roll of victory, in the many bouts fought at Memorial Auditorium, Central gained the Novice Trophy and the Junior High Division Trophy. One scrapper, Gene Hall, received the trophy

for being the most improved boxer. Ken Hudgins, winning the Championship of his division, gained the privilege of attending the finals which were held in Chicago, but was unable to make the trip.

At the Frye Meet, held in the Central gym, Central won the open Championship Trophy and Gene Hall again brought honors to the Central team with his award of the most outstanding boxer of the year trophy.

CHS Library

First row, left to right, Bill Wright, Charles McBryar, Glen McBryar, Charles Hammontree, Gene Spriggs, Lebron Houk, Don Robinson, Gerry Garner, T. W. Caywood; second row, Bill Breneman, James Cannon, Glen Young, Ira Lee, Robert Albright, Billy Black, Jesse King, Jack Allison, Fred Chambers, Bill McBrayer; third row, Gene Hall, Glen Bass, Max Thomas, Ray Albright, Ralph Crowell, Ken Hudgins, Bill Blaylock, Bobby Black, Johnny Arnold; fourth row, Howard Blain, Paul Greenberg, Ray Moss, Bobby Clark, Ed Long, David Patton, Jimmy English, Richard Cowart.



Top: Put 'em up
Above: Black misses



Top: One to the jaw
Above: A haymaker

GOLF



GOLF TEAM

Roy Veal, Hal Carey, Paul Crownover, Morton Center, Coach Smith, Ray Downer.



Baseball Team

BASEBALL

COACH W. P. BALES

Of the many coaching interests and abilities which Coach "Bang" Bales possesses, basketball and baseball are his favorites.

Coach Bales is a graduate of Mosheim High School, Mosheim, Tennessee, where he excelled in sports. Afterwards he attended Tennessee Wesleyan College, Athens, where he was a member of the football, baseball, track, and basketball teams.

In addition to a life long interest in sports as a player and long years as coach, Mr. Bales has had wide experience in the professional field of baseball. In 1912 while playing with Memphis he won the Southern league batting title.

Coach Bales is without a peer in this section as a basketball and baseball coach.

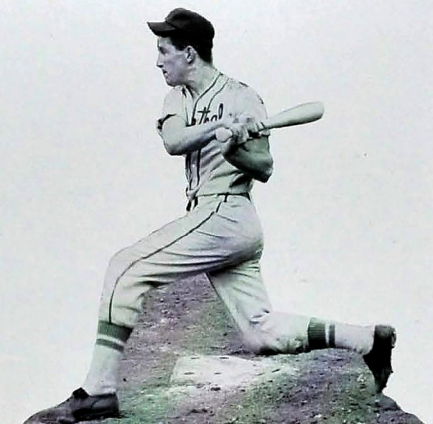
RESULTS OF THE BASEBALL SEASON OF 1950

Central	15;	Hixon	6	March 29
Central	4;	Ooltewah	2	March 30
Central	14;	McCallie	6	March 31
Central	11;	Bradley	0	April 6
Central	22;	Tyner	12	April 10
Central	5;	City	10	April 13
Central	15;	Red Bank	5	April 17
Central	8;	McCallie	5	April 20
Central	5;	Bradley	2	April 24
Central	4;	Soddy Daisy	3	April 27
Central	6;	City	11	May 1
Central	7;	Soddy Daisy	0	May 2
Central	2;	Red Bank	11	May 4
Central	7;	Hixon	0	May 8
Central	3;	City	4	May 10

Of the total of fifteen games played during the season, Central won eleven and lost four.

RIGHT:

Top: Salley Slams. Bottom: Allison and Thornbury.



CHS Library

GIRL'S ACTIVITIES

RESULTS OF THE SEASON 1950-51

November 21	Central	41;	Sweetwater	48
November 22	Central	42;	Dunlap	24
November 28	Central	36;	Sweetwater	37
December 1	Central	22;	Dunlap	42
December 8	Central	42;	Tyner	30
December 12	Central	44;	Lakeview	32
December 18	Central	37;	Ooltewah	18
December 22	Central	26;	Spring City	28
December 30	Central	51;	Ooltewah	13
January 2	Central	40;	Soddy Daisy	45
January 4	Central	40;	Tyner	25
January 9	Central	30;	Soddy Daisy	31
January 15	Central	35;	City	31
January 19	Central	42;	Red Bank	28
January 23	Central	60;	City	46
January 30	Central	32;	McMinn	46
February 3	Central	35;	McMinn	43
February 6	Central	32;	Lakeview	31
February 13	Central	41;	Bradley	46
February 18	Central	33;	Red Bank	20
February 19	Central	35;	Soddy Daisy	47
February 23	Central	22;	Bradley	40

TOURNAMENT GAMES

February 28	Central	45;	Whitwell	43
March 3	Central	25;	Red Bank	32
March 4	Central	55;	City	18

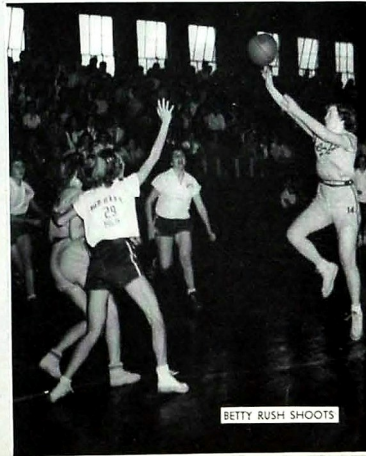
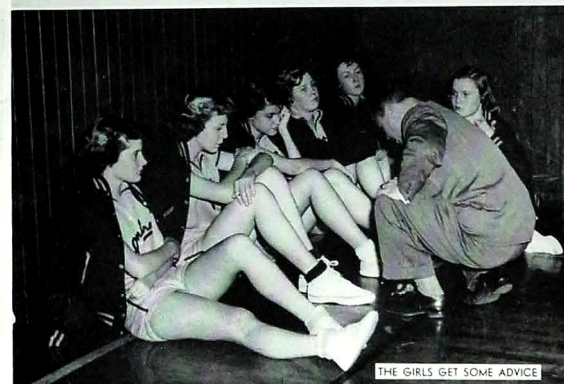
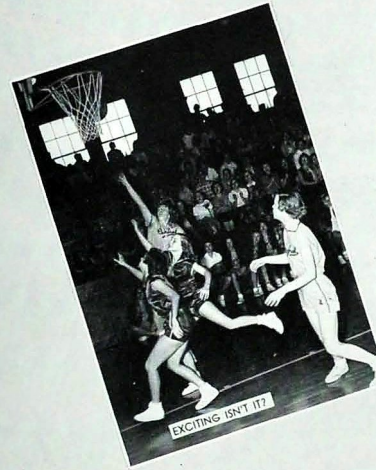


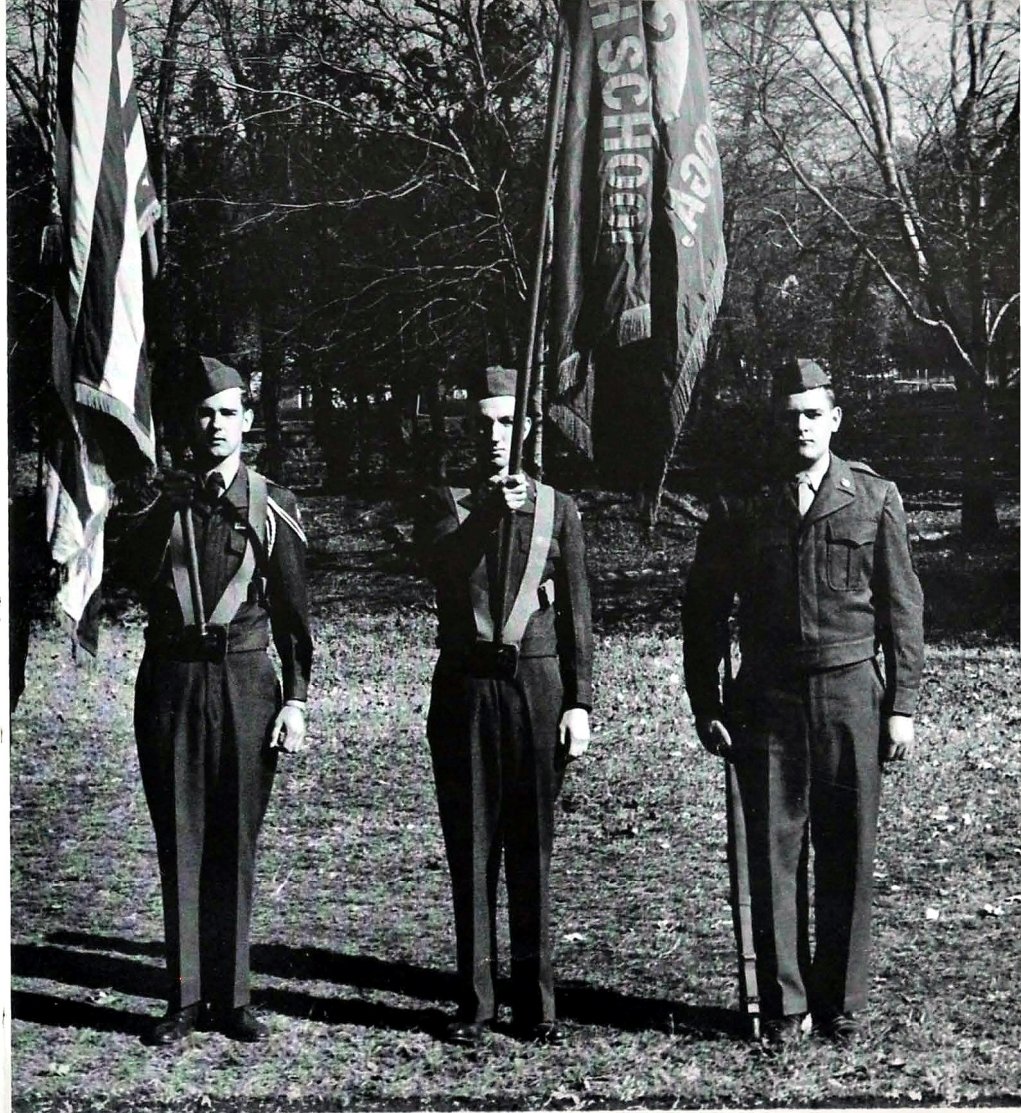
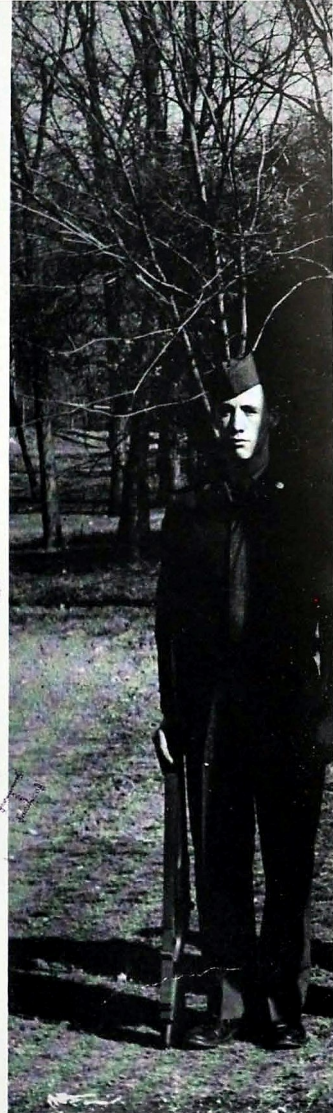
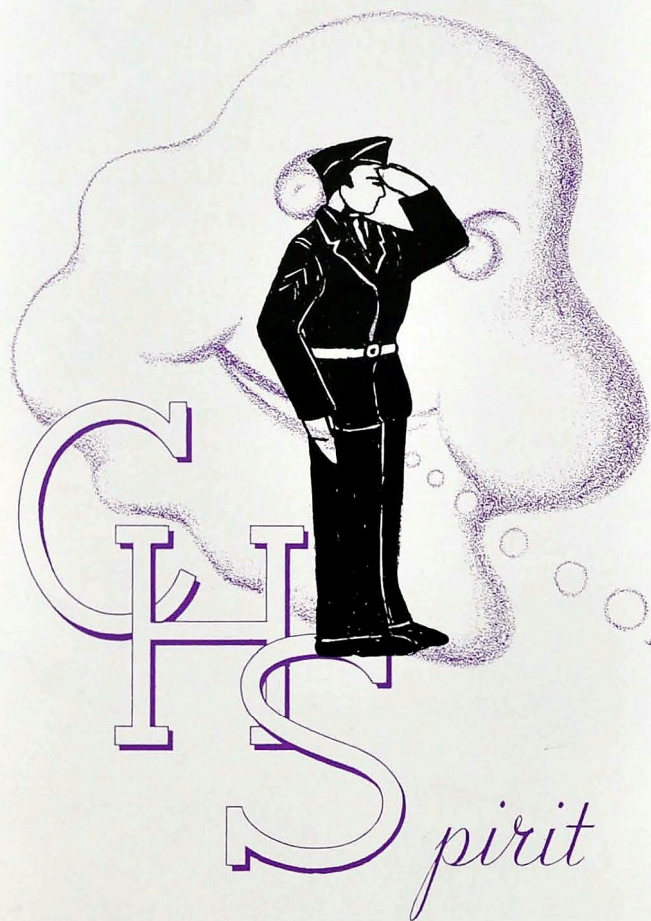
Carol and Doris

Central's Purplettes ended their season with a total of 11 games won and 11 games lost. In the final tournament the Girls won third place consolation trophy and thus ended a very exciting basketball season.

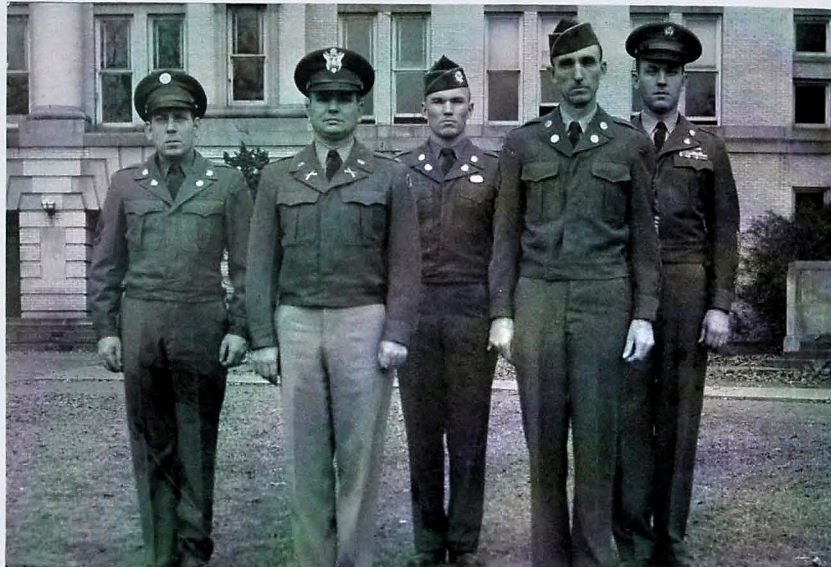
Girls Basketball Team







M I L I T A R Y



LIEUTENANT COLONEL GEORGE A. BONE

Lieutenant Colonel George A. Bone is one of the outstanding leaders in the military field. He is the P.M.S.G.T. of the Chattanooga high schools, succeeding Colonel Henry O. Swindler. Before coming to Central in the fall of 1948, as an Assistant P.M.S.G.T., he was on occupation duty in Hokkaido, Japan, where he and his family lived for three years.

Colonel Bone is a graduate of Western Kentucky University. He entered the service in 1938 as an enlisted man. In 1941, with the declaration of World War II, he was called into active service and commissioned a second lieutenant.

The confidence and devotion which he is able to inculcate into boys are among the many fine attributes found in the R. O. T. C. unit.

MASTER SERGEANT LEONARD H. HOGE LAND

Since August 24, 1947, Sergeant Hoge land has handled superbly the job of supply sergeant. He holds a place of seniority among the R.O.T.C. Staff of Instructors of Central.

Sergeant Hoge land was born in Anniston, Alabama, and entered the army in March of 1923. He served in the Pacific Theater, with the Military Police Corps. Before coming to Central, Sergeant Hoge land served with the guided missile on the V-2 rocket project in New Mexico.

Sergeant Hoge land is also connected with City High School in the military department.

SERGEANT 1/C ALVIN B. PERRY

The military unit of Central has been greatly enriched by the services of Sergeant Perry in the past two years. Known by many of the boys as "GIZMO", Sergeant Perry is a home town boy from nearby Lakeview, Georgia, and a graduate from Lakeview High School.

Sergeant Perry entered the army in November of 1939. After completing his basic training at Pensacola, Florida, he served throughout many foreign lands around the world. He was with the Eighty-second Coast Artillery in Panama, the Seventeenth Airborne in Germany, and the Twenty-fifth Infantry in Japan.

SERGEANT 1/C ROBERT L. HALL

A valuable addition to the R.O.T.C. Instructors Staff of 1950-51 was Sergeant Hall, who came to Central from the Northwest.

He is a graduate of Walla Walla High School of Walla Walla, Washington. He was called into the army in March of 1943. After taking his basic training at Miami Beach, he was sent overseas, where he spent twenty-six months in the Mediterranean Theater of Operations. Later he was sent to Japan, where he served twenty-seven months in the Army of Occupation.

Sergeant Hall played football with the Eleventh Airborne Division at the Second Army before joining the Central military staff this year.

SERGEANT 1/C DANIEL H. REVILL

Hailing from the neighboring State of North Carolina is Sergeant Daniel Revill who calls Durham home. He is a graduate of Mangum High School at Bahama, North Carolina.

Sergeant Revill entered the army in 1939 and took his basic training at Fort Bragg, North Carolina. After completing his training, he served in the European Theater of Operations for thirty-six months. During his overseas duty he saw one hundred and twenty-three days of front line combat service in such battle as: the Battle of France; the Battle of the Bulge; and the Battle of Germany. He later served in the Army of Occupation in Germany.

SERGEANT WILLIAM HAYES GREEN

Sergeant William Green is a former Centralite, attending his last year in 1945. He hails from Fort McPherson, Georgia.

Enlisting in the Army in 1945, Sergeant Green took his basic training at Camp Robinson, Arkansas. He later was sent to Europe where he served thirty-six months in the Army of Occupation.

In July 1950, Sergeant Green entered the Korean Theater of Operating where he was wounded on the following September 3. He returned to the United States in the same month.

Sergeant Green came to the R.O.T.C. Instructors Staff of Central in December 1950, after having recovered from the wound received in front-line action.

FIRST LIEUTENANT SPENCER E. MILLARD

Lieutenant Spencer Millard came to Central at the mid-term as the head professor of military science and tactics. Lt. Millard filled the place left vacant by Col. George Bone when he succeeded Col. Henry O. Swindler who retired in the fall of 1950.

Lieutenant Millard, who hails from Union City, Tennessee, is a graduate of the University of Tennessee. He was a combat infantryman with the 81st Division during World War II in the Pacific Theater of Operations and was with the occupational forces in Japan. He left the army in 1946, but was recalled to active duty in January, 1951.

During the war he was awarded the Bronze Star medal and the Purple Heart.

REGIMENTAL STAFF

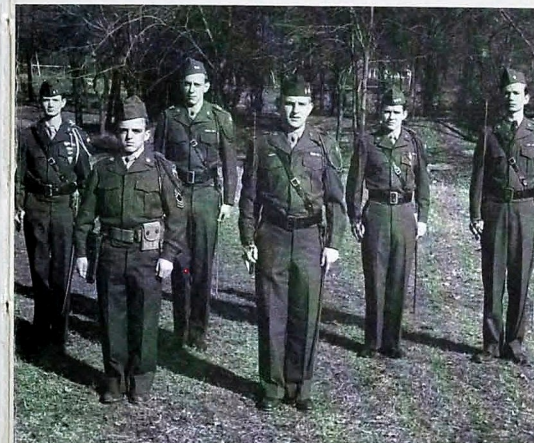
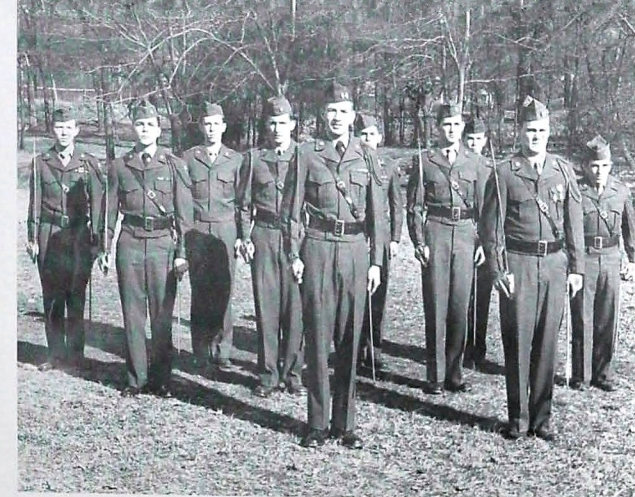
Colonel	JOE TAYLOR
Lieutenant Colonel	EARL TATUM
S-1	ALLEN JORDAN
S-2	BOBBY CLARK
S-3	LEON HENRY
S-4	JAMES COULTER
First Lieutenant	SAMMY McMURRAY
First Lieutenant	CHARLES HOLCOMBE
Sergeant Major	FRANK FULLER
Public Relations NCO	BILLY KNOWLES

FIRST BATTALION STAFF

Lieutenant Colonel	JIM MATHENEY
Major	NATHANIEL PITTS
Captain	JOE D. TAYLOR
First Lieutenant	RANDALL HOODENPYL
First Lieutenant	ROBERT KEOWN
First Lieutenant	PAT LARKIN
Sergeant Major	JACKIE DAVIS

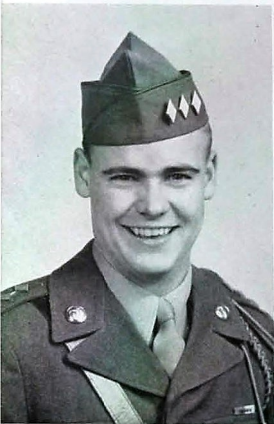
SECOND BATTALION STAFF

Lieutenant Colonel	BUCK SHAMBURGER
Major	DAVID JONES
Captain	EDDIE COULTER
First Lieutenant	BILL HUSKEY
First Lieutenant	JAMES DANIELS
First Lieutenant	A. W. RADLEIN
Sergeant Major	REX FORD



MILITARY

OFFICERS AND STAFF



COL. JOE W. TAYLOR



MYRA FAYE GINN



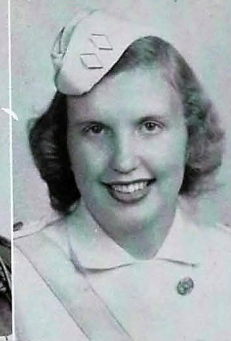
LT. COL. EARL TATUM



PATSY CALDWELL



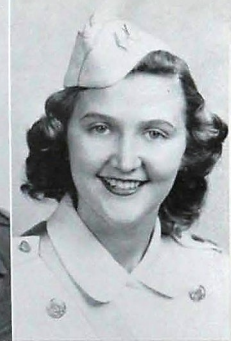
LT. COL. JIMMY MATHENEY



JANETTE CASTLE



LT. COL. BUCKY SHAMBURGER



FRANCES FORESTER

MILITARY OFFICERS AND SPONSORS . . .



CAPT. JOE D. TAYLOR



CONNIE RAMSEY



CAPT. EDDIE COULTER



PEGGY KISTLER



CAPT. JIMMY McDARIS



ANN WILEY



MAJ. ALLEN JORDAN



BETTY PARKS



MAJ. BOBBY CLARK



JOAN SMITH



MAJ. LEON HENRY



ANN HARDING



CAPT. JACK KIMSEY



WANDA WITT



CAPT. CLYDE ALLEN



MARIAN FOLLETTE



CAPT. JAMES MADEWELL



LOUISE BROYLES



MAJ. JAMES COULTER



CAROL SIMPSON



MAJ. NATHANIEL PITTS



MADELINE MILLER



MAJ. DAVID JONES



BETTY JACKSON



CAPT. JIMMY HALE



MARY JANE DUNCAN



CAPT. BASIL RATLIFF



BARBRA FORD



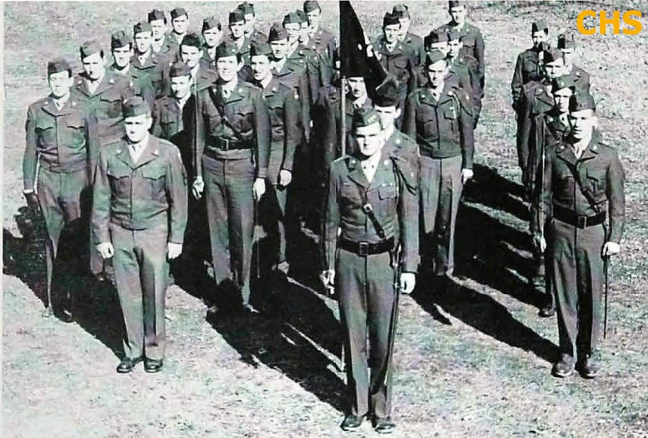
CAPT. JOE SMITH



GRADEANA CONN

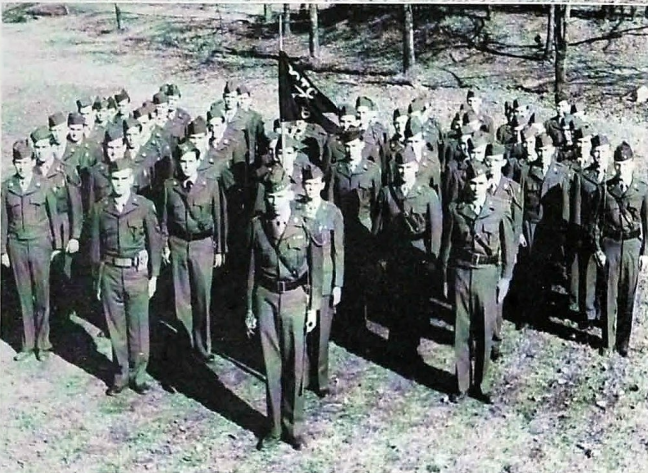
COMPANY A

Captain JIMMY McDARIS
 First Lieutenant HERMAN MILLER
 Second Lieutenant JOE PETTY
 Second Lieutenant BOBBY EAVES
 First Sergeant JACK FRYAR



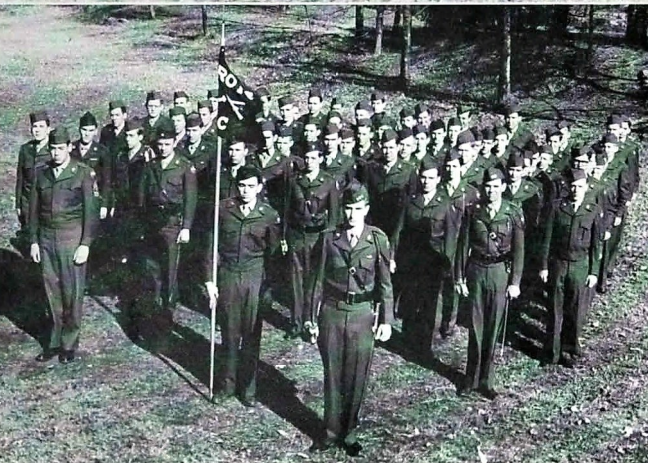
COMPANY B

Captain JACK KIMSEY
 First Lieutenant JIMMY SCOGGINS
 Second Lieutenant BENNY ATCHLEY
 Second Lieutenant CHARLES HARVEY
 Second Lieutenant DAN BROWN
 First Sergeant LOWERY LACKEY



COMPANY C

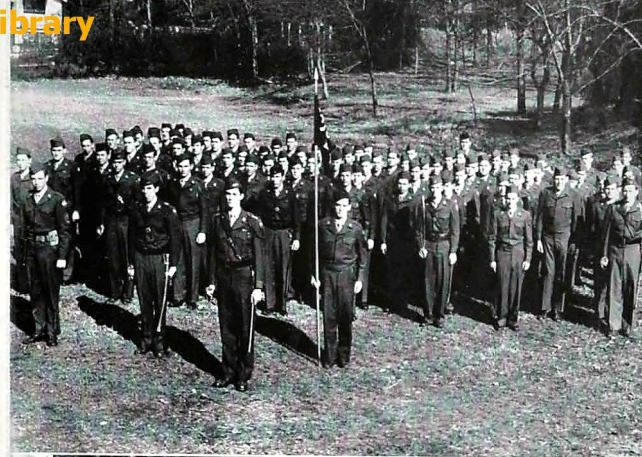
Captain CLYDE ALLEN
 First Lieutenant JACK KELLIS
 Second Lieutenant ROBERT KELLEY
 Second Lieutenant TOMMY CATES
 Second Lieutenant HAROLD CAREY
 First Sergeant RAYMOND LING



TRAINING

COMPANY E

Captain JAMES MADEWELL
 First Lieutenant LELAND GOLDSTON
 Second Lieutenant BUDDY PARKS
 Second Lieutenant DAVID SHIPLEY
 Second Lieutenant CARL EDMONDSON
 Second Lieutenant ROBERT FRANKLIN
 First Sergeant BILLY BLACK



COMPANY F

Captain JIMMY HALE
 First Lieutenant DICK FOWLER
 Second Lieutenant WILBURN McBRAYAR
 Second Lieutenant RAY HUMBLE
 Second Lieutenant GARY NASH
 First Sergeant KENNETH HUDGINS

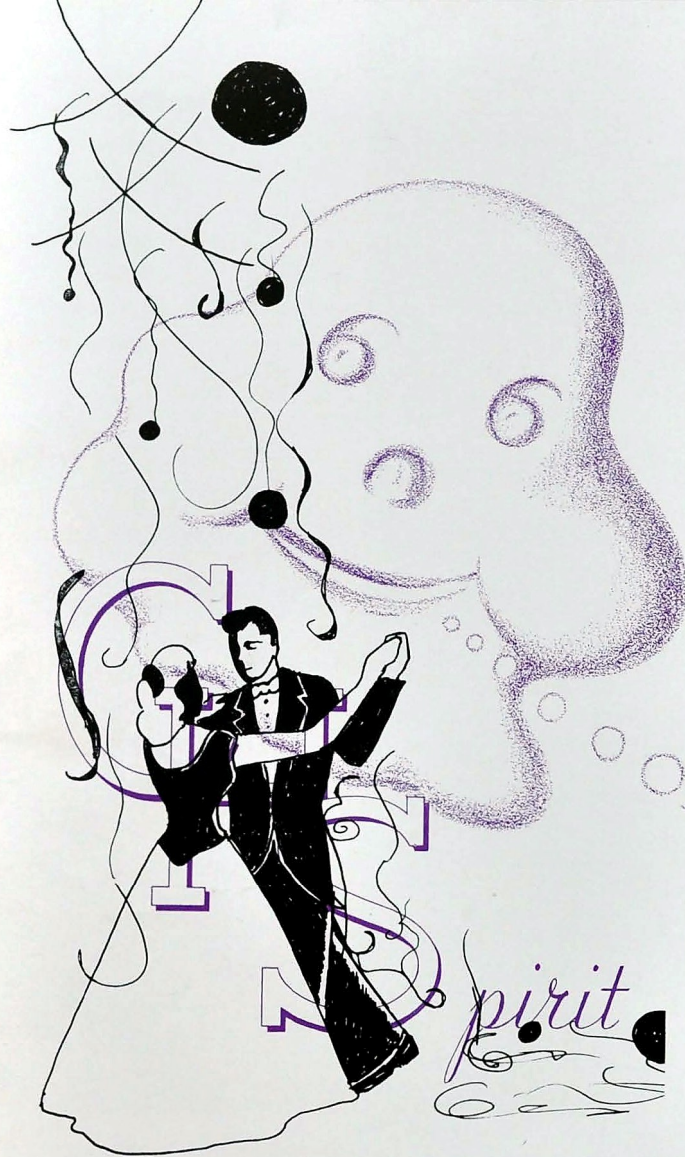


COMPANY G

Captain BASIL RATLIFF
 First Lieutenant RONALD McCLURE
 Second Lieutenant PAUL McCUISTON
 Second Lieutenant BILLY WALL
 Second Lieutenant JESSE KING
 First Sergeant RONALD BURRELL



MILITARY



ORGANIZATIONS



ANCHORS AWEIGH CLUB

PAT WILLIAMS	President
GAIL WILHOITE	Vice President
KAY FRY	Secretary
JEAN TITTSWORTH	Treasurer
MRS. REBA LOU FULTS	Sponsor



ANNOUNCERS CLUB

EARL TATUM	President
JOE D. TAYLOR	Vice President
CAROLYN MILBURN	Secretary
PAT WILLIAMS	Treasurer
MRS. KEN FLENNIKEN	Sponsor



BAND

JOE SMITH	Captain
KATHERINE WAMACK	First Lieutenant
ELMER GROTH	Drum Major
BARBRA FORD	Head Majorette
LARRY HYSLER	Color Guard
GRADEANA CONNER	Sponsor
MR. B. H. WALKER	Director



BAND BOOSTERS

ELMER GROTH	President
BETTY SMITH	Vice President
BARBRA FORD	Secretary
GRADEANA CONNER	Treasurer
B. H. WALKER	Sponsor

BANK AND BOOKSTORE

JAMES COULTER	President
BOBBY CLARK	Vice President
MARIAN FOLLETTE	Secretary
MYRA GINN	Treasurer
MISS RUBY NIPPER	Sponsor



BIBLE CLUB

LENA BRUMLOW	President
ANN WILEY	Vice President
BARBARA BOLES	Secretary
NINA TALLANT	Treasurer
MISS RACHEL McALLISTER	Sponsor



CAMERA CLUB

NATHANIEL PITTS	President
LARRY JONES	Vice President
GORDON PETERS	Secretary-Treasurer
MR. C. G. TOWERY	Sponsor



CHEERLEADERS CLUB

JOE D. TAYLOR	Head Cheerleader
JOAN SMITH	Head Song Leader
BETTY PARKS	Head Song Leader
MRS. JOE HAMMACK	Sponsor





'DIGEST' STAFF

FRANCES MOORE	Editor
BARBARA NORRIS	Associate Editor
CAROLYN MILBURN	Associate Editor
MARY HAFLEY	Business Manager
BARBARA DRINNON	Associate Business Manager
RAY KERNEA	Foreman
MISS SALLY MAY KING	Sponsor
MR. JAMES L. MILBURN	Sponsor



DISC AND DIAMOND SOCIETY

EARL TATUM	Captain
ALLEN JORDON	First Lieutenant H
JACK KIMSEY	First Lieutenant L
BUCKY SHAMBURGER	First Lieutenant V
BOBBY CLARK	Second Lieutenant S
JOE D. TAYLOR	Second Lieutenant F
JAMES COULTER	Second Lieutenant L
DAVID JONES	Second Lieutenant T
JIMMY SCOGGINS	Sergeant-at-Arms
SERGEANT ALVIN PERRY	Sponsor



GAD-A-BOUTS

FRANCES KENNEDY	President
JUANITA PRICHARD	Vice President
MARENE McWILLIAMS	Secretary
MARY PATTERSON	Treasurer
MR. GORDON ATCHLEY	Sponsor



GIRLS' HI-Y

FRANCES FORESTER	President
CAROLYN MILBURN	Vice President
NANCY HENDRIX	Secretary
DORIS BOERGER	Treasurer
PEGGY HASKELL	Chaplain
MRS. NEWT LOGAN	Sponsor
MRS. JOHN A. SHELTON	Sponsor

LIBRARY STAFF

PAULINE SHAW	President
PAT LARKIN	Vice President
JEANETTE MULLIS	Secretary
WILMA STALLINGS	Treasurer
MRS. MARY SANDERS	Sponsor
MISS ELLEN MULLENNIX	Sponsor



MERRY MACS CLUB

LOVELEEN AYERS	President
JEAN CRAWFORD	Vice President
BETTY LAWSON	Secretary
JEANNIE ANDERSON	Treasurer
MR. LUTHER YOUNG	Sponsor



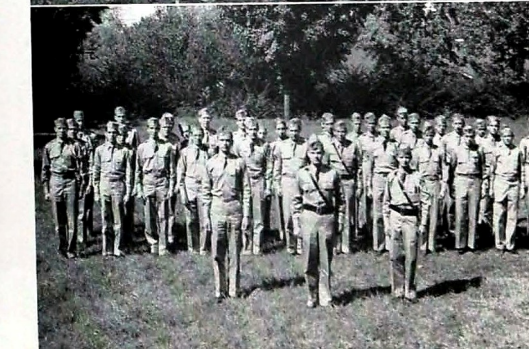
MILITARY BAND

JOE SMITH	Captain
LEBRON TANNER	First Lieutenant
REGINALD LASATER	First Sergeant
DON CANNON	Master Sergeant
ELMER GROTH	Drum Major
B. H. WALKER	Director



MILITARY HONOR PLATOON

BASIL RATLIFF	Commander
PAT LARKIN	Vice Commander
CHARLES STRAWN	Secretary and Treasurer
BENNY ATCHLEY	Guide
SERGEANT ALVIN PERRY	Sponsor





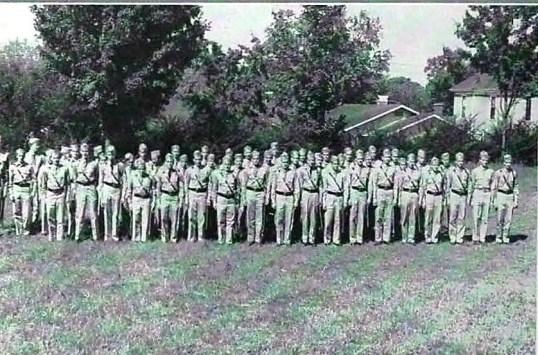
M. P. CLUB

DAVID SHIPLEY	President
CHARLES STRAWN	Vice President
BILL COLQUITT	Secretary
DAVID BAIN	Treasurer
HERMAN BRITTON	Sergeant-at-Arms
SERGEANT ROBERT HALL	Sponsor



NITE OWLS

PEGGY KISTLER	President
JANETTE CASTLE	Vice President
JOAN SMITH	Secretary
BETTY PARKS	Treasurer
MISS BONNIE EICHORN	Sponsor



OFFICERS CLUB

LELAND GOLDSTON	President
JACK KIMSEY	Vice President
JAMES MADEWELL	Secretary
JIMMY HALE	Treasurer
SERGEANT ROBERT HALL	Sponsor



OFFICE FORCE

BETTY PARKS	President
JOAN SMITH	Vice President
NADINE LOCKE	Secretary
ANN ENGLAND	Treasurer
MISS CHRISTINA COPPINGER	Sponsor

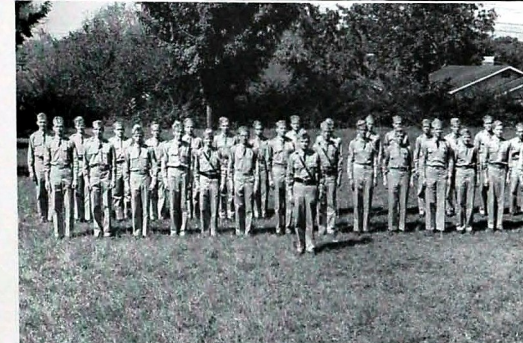
ORCHESTRA

BOB STEPHENS	President
ANN HARDING	Vice President
SAM McMURRAY	Secretary and Treasurer
MR. KENNETH JOHN	Director



THE RIFLE TEAM

BASIL RATLIFF	Captain
NATHANIEL PITTS	Co-Captain
BUD WILLIAMS	Secretary
E. T. GLENN	Treasurer
SERGEANT HOGELAND	Sponsor
SERGEANT ALVIN PERRY	Sponsor



SENATE

EARL TATUM	President
CAROLYN MILBURN	Vice President
BETTY PARKS	Secretary
JOE D. TAYLOR	Treasurer
MRS. KEN FLENNIKEN	Sponsor
MR. ARLIE HOODENPYL	Sponsor



SENATE CABINET

EARL TATUM	President
CAROLYN MILBURN	Vice President
BETTY PARKS	Secretary
JOE D. TAYLOR	Treasurer
MRS. KEN FLENNIKEN	Sponsor
MR. ARLIE HOODENPYL	Sponsor





SERGEANTS CLUB

RICHARD BUFFINGTON	President
BILLY BLACK	Vice President
HOWARD BLAIN	Secretary
BILLY KNOWLES	Treasurer
SERGEANT DANIEL REVILL	Sponsor



SHOVE OFF CLUB

MYRA GINN	President
LOUISE BROYLES	Vice President
BARBARA HASTON	Secretary
MARIE BUCHANAN	Treasurer
MRS. HENRY WARE	Sponsor



SILHOUETTE CLUB

MARCILLE THOMAS	President
BETTY GAMBLE	Vice President
BETTY GOSSETT	Secretary
GRADEANA CONNER	Treasurer
MR. EDWIN BOHR	Sponsor



SPINSTERETTES

CAROLYN MILBURN	President
GAIL HILL	Vice President
MARIAN FOLLETTE	Secretary
JANICE MILLICAN	Treasurer
K. W. JOHN	Sponsor

STAGE CREW

ROBERT KEOWN	President
J. C. EAKER	Vice President
CHARLES NAVE	Treasurer
MR. R. S. WHARTON	Sponsor
MR. RALPH OLINGER	Sponsor



TWIXTEEN CLUB

ANN ENGLAND	President
PATSY CALDWELL	Vice President
ANN RITCHIE	Secretary and Treasurer
MRS. ROSEMARY ROBERTSON	Sponsor



USHERS

CAROLYN MILBURN	Head Usher
MISS EDNA CROSS	Sponsor



VAGABONDS

NANCY HENDRIX	President
DORIS ANN BOERGER	Vice President
MONNA LUSK	Secretary
ANN BECKER	Treasurer
PEGGY HASKELL	Chaplain
MRS. MARGARET HAMMACK	Sponsor





VARSITY GLEE CLUB

JACK BOOKOUT President
JIMMY MATHENEY Vice President
JIMMY McDARIS Secretary and Treasurer
MR. K. W. JOHN Sponsor



"C" CLUB

BOBBY SALLEY President
BUCKY SHAMBURGER Vice President
NORMAN HOFFERMAN Secretary
FRANK PARKER Treasurer
"RED" ETTER Sponsor



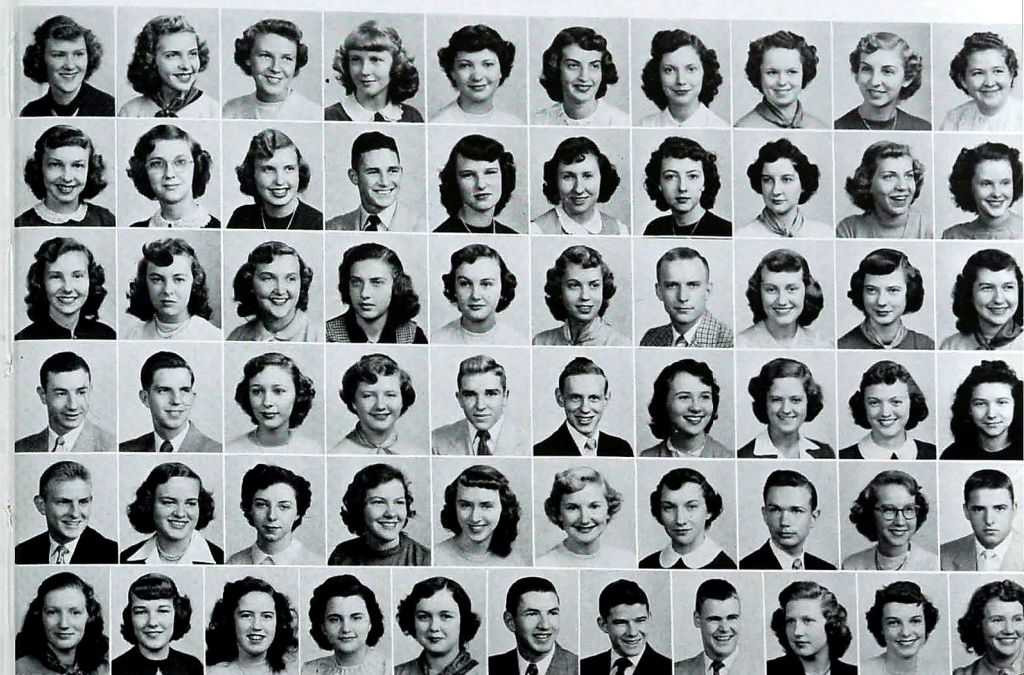
BOYS' HI-Y

BOBBY CLARK President
EARL TATUM Vice President
JIMMY SCOGGINS Secretary
JOE D. TAYLOR Treasurer
DAVID JONES Chaplain
ROBERT KEOWN Sergeant-at-Arms
MR. J. POPE DYER Sponsor



SENIOR PLAY CAST

"SHIRT SLEEVES"
MRS. KEN FLENNIKEN Director



FIRST SEMESTER

EARL TATUM President
DORIS BOERGER Vice-President
CAROLYN MILBURN Secretary
JOE D. TAYLOR Treasurer

SECOND SEMESTER

ANN BECKER President
LENA BRUMLOW Vice-President
BOBBY BOHANNON Secretary
NANCY HENDRIX Treasurer

MEMBERS

Robbie Athearn	Gradeana Connor	Randall Hoodenpyl	Mary Julia Peoples
Gloria Baldwin	Laura Craig	Doris Ireland	Nathaniel Pitts
Margaret Barrows	Phila Crane	Betty Irvin	Ann Ritchie
Ann Becker	Barbara Drinnon	Allen Jordan	Bucky Shamburger
Pat Black	Ann England	Robert Keown	Vivian Shuster
Doris Boerger	Marian Follette	Peggy Kisler	Carol Simpson
Bobby Bohannon	Barbra Ford	Jimmie Knowles	Barbara Smartt
Barbara Boles	Frances Forester	Monna Lusk	Doris Smith
Betty Browder	Josephine Gass	Stella Martin	Joyce Sullivan
Lena Brumlow	Myra Faye Ginn	Jimmy Matheney	Earl Tatum
Pat Caldwell	Pamella Griffith	Mary Meyer	Joe D. Taylor
Martha Carlock	Jimmy Hale	Carolyn Milburn	Joe W. Taylor
Janette Castle	Ann Harding	Frances Moore	Shirley Waddle
Bobby Clark	Peggy Haskell	Barbara Norris	Ann Wiley
Alice Clingan	Norman Hofferman	Betty Parks	Katherine Wamak

NATIONAL HONOR SOCIETY



Party Pretties



To My Honey I'll Croon—



"Sounds from the Hudson"

with Bob Stephens

and Ann Harding



"Rosie" and Maggie" Sing



Commencement Speakers:

Carolyn Milburn, Class Representative; Doris Ireland, Valedictorian; Frances Moore, Salutatorian; Robert Keown, Faculty Representative.



Henry Gains Against Miami



Checking Accounts in Bank



Teachers or Students?



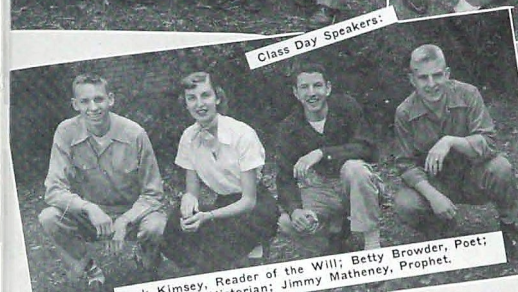
Mr. Hooderpyl Celebrates Anniversary



"Yipe! Hot Seat!"



Hit That Low Note—Boy's Quartet



Class Day Speakers:

Jack Kimsey, Reader of the Will; Betty Browder, Poet; Earl Tatum, Historian; Jimmy Matheny, Prophet.



Students and Teachers Pitch In To Give Mr. Nelson Car



Mr. Nelson receives Car Keys from Mr. Penny; Major Whitaker, Mr. Millsaps look on.



Hofferman Receives Times Cup Trophy



Mite Basketball Team

The Spirit of '51—

Wise and Otherwise

OUR PATRONS

RALPH ABELMAN, 6-9245
 AGNEW HARDWARE COMPANY, 7-2186
 AMERICAN LAVA CORPORATION, 6-8114
 ANDERSON COAL COMPANY, 9-4521
 ANNEX DRUG COMPANY, 2-3182
 ARCHER PAPER COMPANY, 6-3189
 ARCTIC CIRCLE, 4-9227
 ART'S JEWELERS, INCORPORATED, 2-5301
 AVONDALE UPHOLSTERY COMPANY, 2-0847
 BLESSING, WATERHOUSE and COMPANY, 6-1251
 BOB'S DO-NUT SHOP, 2-9241
 BOERGER'S SERVICE STATION, 2-9156
 BONDS DRUG COMPANY, 7-3356
 JACK BOWEN ESSO SERVICECENTER, 6-5576
 BOWEN'S TEXACO SERVICE STATION, 2-0713
 BRAINERD DRUG STORE, 2-3101
 BRAINERD'S MEN'S SHOP, 2-4390
 BRAINERD STYLE SHOP, 4-5518
 BRAINERD VARNELL HARDWARE CO., 2-1173
 BRYAN COAL COMPANY, 6-2161
 C & S JEWELERS, 6-6054
 EARL CAMPBELL CLINIC, 7-4515
 CENTRAL HIGH PARENT-TEACHER ASSOCIATION
 E. Y. CHAPIN, JR., 3-1539
 CHATTANOOGA BUTTON BADGE MFG. COMPANY, 6-6934
 CHATTA CHIPS COMPANY, 9-9148
 CHATTANOOGA COCA-COLA BOTTLING COMPANY, 6-7358
 CHATTANOOGA GAS COMPANY, 6-7341
 CHATTANOOGA VENETIAN BLIND COMPANY, 2-1187
 E. D. CHESTNUTT GULF SERVICE, 6-9558
 CHILDRENS SHOP, 7-1876
 CRISMAN HARDWARE, 7-1114
 COBBLE BROS. MACHINERY COMPANY, 7-2039
 COKERS STORES, 2-4122
 COLONIAL BAKERY, 2-3148
 COLONIAL CAFETERIA, 9-9124
 COX and MOORE FURNITURE COMPANY, 7-5117
 CRAIG'S, 2-2615
 DAIRY GOLD, INCORPORATED, 9-9177
 DAYLE MAY, 84-1514
 DEE SHOE SHOP, 2-9121
 DIXIE ROOFING and SIDING COMPANY, 4-3990
 JOHN R. DOBBINS, ELECTRICAL CONTRACTOR, 4-7112
 DODDS AVENUE CLEANERS, 2-4415
 DUNCAN ELECTRIC COMPANY, 9-1418
 EASY WASHATERIA, 4-6941
 EAVE'S BADGE EMBLEM COMPANY, 6-1614
 EDMONDSON'S SCHOOL OF BUSINESS, 6-1259
 EDWARDS and LEFRON, 6-7175
 "ERNE"
 EVANS JEWELERS, 6-3673
 FASHION CLEANERS, 84-2193
 FAULKNER SIGN COMPANY, 7-1639
 GORDON GAMBILL and COMPANY, 7-1482
 GENERAL APPLIANCE CORPORATION, 5-3617
 GILBERT BROTHERS FLOOR COVERINGS, 5-3747
 GLOBE CLOTHING COMPANY, 7-2646
 HARDIE and CAUDLE, CLOTHIERS, 6-4129
 HASKINS PHARMACY, 2-1175
 HAJOCA CORPORATION, 7-1151
 HOLLAND FURNACE COMPANY, 6-6418
 THE HOME STORES, 7-1541
 HOTEL PATTEN, 6-2141
 HOWARD CLEANERS, 2-1116
 32 East Main Street
 30 Frazier Avenue
 Manufacturers' Road
 220 Ivy Street
 1718 Bailey Avenue
 1124 Market Street
 3468 Brainerd Road
 3217 Brainerd Road
 2915 Dodson Avenue
 520 East Tenth Street
 2215 McCallie Avenue
 1415 McCallie Avenue
 34 Frazier Avenue
 Broad at Main
 1600 McCallie Avenue
 3240 Brainerd Road
 3116 Brainerd Road
 3609 Brainerd Road
 3114 Brainerd Road
 32 West 13th Street
 925 Market Street
 525 McCallie Avenue
 Central High School
 120 Fairy Trail
 205 E. 8th Street
 2503 East 12th Street
 201 Broad Street
 811 Broad Street
 1400 McCallie Avenue
 1200 East Main Street
 608 Market Street
 511 Market Street
 313 West Main Street
 3248 Brainerd Road
 2220 East 4th Street
 1410 McCallie Avenue
 45 East Main Street
 3204 Brainerd Road
 3600 Brainerd Road
 Rossville Boulevard
 414 Willow Street
 3301 Brainerd Road
 2202 McCallie Avenue
 1910 Dodds Avenue
 2605 East Main Street
 504 South Willow Street
 823 Cherry Street
 110 West Eighth Street
 805 Market Street
 15 East Seventh Street
 1203 McFarland Avenue
 526 Broad Street
 702 Cherry Street
 716 Cherry Street
 1040 McCallie Avenue
 910 Market Street
 809 Market Street
 Main and Dodds
 515 East Eleventh Street
 225 East Eleventh Street
 1214 Broad Street
 Market at Eleventh
 1631 McCallie Avenue

OUR PATRONS

JACOBS WHOLESALE CANDY COMPANY, 6-2728
 KAY'S BEAUTY and GIFT SHOPS, 2-0174
 KAY'S ICE CREAM, 2-3032
 KELLEY'S RESTAURANT, 3-9127
 KELLEY and POWELL, 6-1118
 KIMBALL'S FLORIST, 9-4324
 KNITTING CENTER, 9-5346
 S. H. KRESS and COMPANY, 6-5631
 KOBLINTZ, INCORPORATED, 2-4771
 LANSFORD PIANO COMPANY, 6-7185
 L. C. LEACH COMPANY, JEWELERS, 7-2941
 LAGRANDE JEWELRY COMPANY, 7-6648
 LENNON FURNACE COMPANY, 9-4321
 LOVEMAN, INCORPORATED, 6-0161
 "LUTHER"
 MARLIN-DERRYERRY SERVICE STATION, 2-9216
 MARTIN-TROMPSON COMPANY, 7-3273
 MARY ANN BART SHOP, 4-7641
 MATTHEWS PHARMACY, 2-3168
 McALESTER HOSIERY MILLS, 3-0306
 TOM McGHEE JEWELERS, 6-0141
 THE MCKENZIE SCHOOL, 6-7157
 MERTIN'S DRY CLEANING, 7-5241
 HELEN MICHEL, FLORIST, 6-2646
 MID-SOUTH MERCHANDISERS and DECORATORS
 MID-SOUTH SUPPLY COMPANY, 6-4111
 MILLER BROTHERS COMPANY, 7-1251
 RAY MOSS DAIRY, 2-7247
 MOSTELLER'S GARAGE, 2-5313
 MOUNTAIN CITY STOVE COMPANY, 6-2167
 MUTUAL DRUG COMPANY, 2-1127
 NATIONAL PRODUCTS, 6-0323
 T. H. PAYNE, 6-0138
 PARAMOUNT CLEANERS INCORPORATED, 2-1128
 CECIL D. PEARCE GULF SERVICE, 4-9177
 BILL PENNEY TIRE SERVICE, 2-1112
 RHODES-PRYOR DECORATING COMPANY, 2-8383
 E. C. ROACH FOOD MARKET, 4-9712
 SARVIS BUSINESS MACHINE SERVICE, 2-0741
 ELBERT K. SCHOLZE, 2-0153
 SOUTHERN BELL TELEPHONE COMPANY, 6-9011
 SPORTS SHOP, 6-8532
 STANDARD MUSIC COMPANY, 7-2054
 STAR LOAN OFFICE, 6-9344
 STAR SALES COMPANY, 6-2020
 STERCHI BROS. STORES, INC., 7-2151
 STOVALL HARDWARE COMPANY, 6-7101
 TEMPLETON'S, JEWELERS, 6-7628
 TENNESSEE EGG COMPANY, 6-5168
 THREE SISTERS, 6-2719
 UNIVERSITY OF CHATTANOOGA, 6-7363
 VANDERGRIFF'S SHOE SHOP, 9-1231
 VIOLET CAMERA SHOP, 5-2512
 WADE AUTO PARTS, 2-3139
 H. W. WALLDORF, 6-5662
 WALLY'S GRILL, 2-3108
 WILLIAMS' AUTO PARTS, 4-3812
 WHITE SWAN LAUNDRY, 6-2103
 HARRY T. WILHOIT SERVICE STATION, 2-8214
 WILLIAMS FLOWERS, 5-3237
 WILLIE'S SUPER MARKET, 2-4643
 WILLOW PHARMACY, 2-2171
 YARBROUGH'S CLEANERS, 2-2197
 219 East Tenth Street
 1522 Dodds Avenue
 3744 Brainerd Road
 Cummings Highway
 715 Central Avenue
 2409 McCallie Avenue
 3231 Brainerd Road
 708 Market Street
 812 Market Street
 730 Cherry Street
 728 Cherry Street
 604 Market Street
 1516 Main Street
 800 Market Street
 2101 East Main Street
 705 Cherry Street
 3478 Brainerd Road
 1400 Dodds Avenue
 Forty-fifth Street
 732 Cherry Street
 401 Oak Street
 120 Market Street
 719 Georgia Avenue
 2163 McCallie Avenue
 102 East Eleventh Street
 Seventh and Market Street
 Bonny Oaks Drive
 2417 Main Street
 1240 Market Street
 2100 McCallie Street
 1253 Market Street
 821 Market Street
 2511 East Main Street
 3101 Brainerd Road
 1401 North Dodson Avenue
 2107 McCallie Avenue
 2386 McCallie Avenue
 2209 McCallie Avenue
 415 Dodds Avenue
 919 Lindsay Street
 831 Broad Street
 708 Cherry Street
 13 East Ninth Street
 1285 Market Street
 532 Market Street
 711 Cherry Street
 12 West Eighth Street
 414 West Sixteenth Street
 702 Market Street
 McCallie Avenue
 1402 Dodds Avenue
 9 East Seventh Street
 2200 McCallie Avenue
 804 Cherry Street
 1606 McCallie Avenue
 4906 Rossville Boulevard
 227-231 East Eleventh Street
 2524 McCallie Avenue
 1042 McCallie Avenue
 5013 Rossville Boulevard
 Willow and Chamberlain Avenue
 2125 McCallie Avenue

*It Doesn't Take a
Crystal Ball to See*



YOUR FUTURE IN TELEPHONE WORK

If you choose a Telephone career you may be sure of:

- Good pay from the start
- Friendly co-workers
- Frequent scheduled raises
- Helpful supervisors
- Interesting, important work
- Plenty of opportunity for advancement
- One of the best sickness-benefit pension plans in all industry

*One visit to our employment supervisor will show you
definitely how the advantages of telephone work can add
up to a real future for YOU.*

SOUTHERN BELL TELEPHONE AND TELEGRAPH COMPANY

