



THE 1950 CHAMPION



at

Central High

CHATTANOOGA, TENNESSEE

IN THE

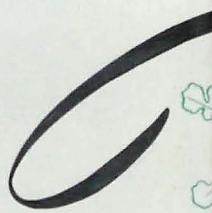
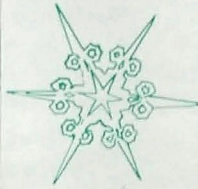


CHS Library



Fall...





Winter





as shown in the 1950

Champion

ANNUAL PUBLICATION
OF THE STUDENTS OF
CENTRAL HIGH SCHOOL
CHATTANOOGA, TENN.

DON NORRIS • EDITOR

ALFREIDA JOYCE • BUS. MGR.

JEANNINE WATSON • BUS. MGR.

Dedication

It is with a deep sense of appreciation and respect that the Senior Class dedicate the 1950 CHAMPION to Mrs. Hazel Barton, teacher of bookkeeping in the Business Department.

Pleasing in personality, agreeable in manner but firm and persevering in the right, Mrs. Barton is known for her affable disposition. With an understanding of the students' point of view and with a genuine concern for their welfare, she gives generously of her time to help and serve them. Her sincere interest in Central and her willingness to work for both the school and students have made for her an individual place in the hearts of students and faculty alike.

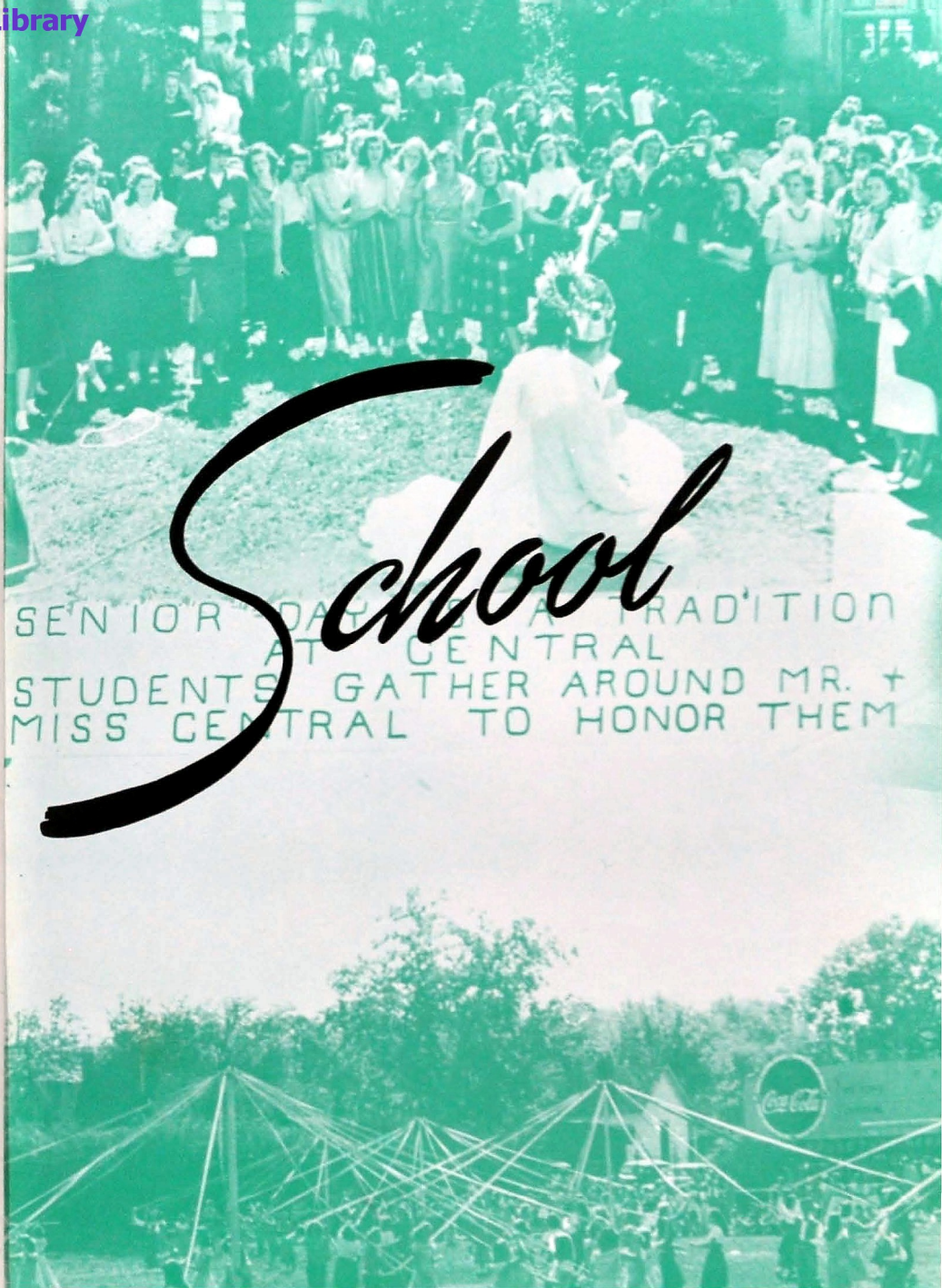
To Mrs. Barton, on this the occasion of her twenty-third year of loyal service to Central, we dedicate this book.

The Class of 1950





the



School



THE PRINCIPAL

Seniors of the Class of 1950

My Dear Boys and Girls:

In this my final message to you I would like to leave with you for repeated reference that it may be deeply instilled in your minds and hearts the following quotation from Emerson's essay on Self-Reliance: "There is a time in every man's education when he arrives at the conviction that envy is ignorance; that imitation is suicide; that he must take himself for better, for worse, as his portion; that though the wide universe is full of good, no kernel of nourishing corn can come to him but through his toil bestowed on that plot of ground which is given him to till. The power which resides in him is new in nature, and none but he knows what that is which he can do, nor does he know until he has tried."

Be yourself but be prepared. Honest conclusions honestly arrived at must be preceded by possession of the facts. Your greatest guarantee of success will be determined by how diligently and how sincerely you seek the truth.

"I said to a man who stood at the gate of the years, 'Give me a light that I may tread safely into the unknown,' and he replied, 'Go out into the darkness and put your hand into the hand of God. That shall be to you better than a light and safer than a known way.'"

S. E. NELSON





THE FACULTY *at*

FIRST ROW

Mrs. Nicholas Fachilla
W. P. Balos

Mrs. Hazel Barton
Sergeant Vernon Bass

Major George A. Bone
Mrs. C. H. Boyd

Ed Brown
Mrs. Bernyce Clementson

SECOND ROW

Mrs. Mary Cooper
Miss Christina Coppinger

Miss Edna Cross
Miss Elsa Dennison

Miss Mary Lou Derryberry
Mrs. J. P. Dyer

J. P. Dyer
E. B. Etter

THIRD ROW

Miss Ruth Fain
Stanley Farmer

E. N. Fields
Mrs. Ken Flenniken

J. J. Fletcher
Mrs. Reba Lou Fults

Edwin D. Gupton
Mrs. Margaret Hammack

FOURTH ROW

Mrs. Frieda Hill
Sergeant L. H. Hogeland

J. Arlie Hoodenpyl
Miss Edmund Hooser

Miss Sarah B. Hubbard
Mrs. Edna C. Jacoway

K. W. John
Miss Earl Jones

FIFTH ROW

Miss Sally May King
Mrs. Harriet F. Kiser

Mrs. R. N. Logan
Mrs. Ida Longley

Miss Rachel McAllister
James L. Milburn

Willard Millsaps
Miss Anne Moffitt



CENTRAL HIGH

FIRST ROW

Miss Minnie Lee Morgan
Miss Ellen Mullenix

J. Lester Newton
Miss Ruby Nipper

Everett O'Neal
Miss Joe Ore

Mrs. Helen H. Parnell
Mrs. Augusta J. Peoples

SECOND ROW

Mrs. Mattie S. Price
Miss Helen Pryor

Miss Mary Ellen Rice
A. B. Robertson

Mrs. Rosemary Robertson
Mrs. Elizabeth N. Robinson

Mrs. Blanche Rogers
Mrs. Mary R. Sanders

THIRD ROW

Miss Lillie Schwartz
J. M. Seaton

Miss Pauline Shearer
Mrs. John Shelton

Mrs. Janie L. Shropshire
Mrs. Virginia M. Skates

Gordon Smith
Colonel Henry O. Swindler

FOURTH ROW

S. Q. Tallant
Miss Edith Taylor

Miss Margaret Taylor
Mrs. W. H. Templeton

W. H. Templeton
Miss Francis Tiernan

C. G. Towry
B. H. Walker

FIFTH ROW

Miss Dorothy Walker
Mrs. Henry Ware

R. S. Wharton

Miss Ethel York

Luther V. Young

Sergeant Alva R. Easterling

Not in the Picture
Sergeant Alvin Perry

Sergeant Daniel H. Revill

SENIORS

PAUL FULLER
President

JOHNNY BACK
Vice-President

RALPH ALLISON
Secretary

RALPH FICKLE
Treasurer

BILL MCKENZIE
Sergeant-at-Arms

JIM ALLISON
Sergeant-at-Arms



SOPHOMORES

FRANK FULLER
President

JACK ALLISON
Vice-President

PAT WILLIAMS
Secretary

KENNETH HUDGINS
Treasurer



C L A S S

O F F I C E R S

JUNIORS

BOBBY CLARK
President

BUCKY SHAMBURGER
Vice-President

LEON HENRY
Secretary

JAMES COULTER
Treasurer



FRESHMEN

JIMMY PACK
President

KAY HOFFMEYER
Vice-President

PAT ARMSTRONG
Secretary

JERRY PERRY
Treasurer



THE SENIORS

JOAN ABERCROMBIE

JOE ABSTON, "Gus." Entered from Berry School, Rome, Georgia, '49.

VERNON ADAMS. Entered from Brainerd Jr. High, '48; Varsity Glee Club, '48, '49, '50.

MARY LUCILLE AKINS, "Shortie." Entered from East Lake Junior High, '48; Bible Club, '48.

JOHN ALEXANDER, "Colonel." Entered from Rossville High, '47; Band, '48, '49; Drum Major, '50; "B" team basketball, '48; Sergeants Club, Sergeant at Arms, '49; Grady Literary Society, '49, '50; MP Club, '49; Boy's Hi-Y, '50; Disc and Diamond Society, Vice-President, '50; Lt. Colonel in ROTC, '50.

MARTHA JANE ALEXANDER, "Mart." Entered from Lookout Junior High, '48; Y-Teens, '48; Charm Club, '49, Secretary, '50; Home Economics Club, '50; Bible Club, '50.

JIM ALLISON. Entered from East Side Junior High, '47; Varsity Football Team, '48, '49, '50; C Club, '48, '49, Vice-President, '50; Captain in ROTC, '50; Sergeant at Arms of Senior Class, '50.

RALPH ALLISON, "Lucky." Entered from East Side Junior High, '48; C Club, '49, '50; Disc and Diamond Society, '49, '50; Grady Literary Society, '48, '49, '50; Officers Club, '49, '50; Sergeants Club, '48, '49, '50; Secretary of Senior Class, '50; Lt. Colonel in ROTC, '50; Football Team, '48, '49, '50; Basketball Team, '48, '49, '50; Baseball Team, '49, '50.

BETTY ALRED. Entered from Dickinson Junior High, '47; Senate, '47; Merry-Macs, '47; Library Staff, '47, '48, '49, '50; Y-Teens, '48; Future Teachers of America, Secretary, '49, '50; Shove Off Club, '49, '50; Digest Staff, '50.

CHARLES LYNN ALVERSON, "Pee Wee." Entered from East Lake Junior High, '47; Bowling Team, '48, '49, '50.

CHARLES ANDERSON, "Charlie." Entered from Bradley Central High, '48.

EVALYNN ANDERSON. Entered from Brainerd Junior High, '48; City-Wide Hi-Y Council, Secretary, '50; Swimming Club, '49; Orchestra, '48, '49; Home Coming Queen Candidate, '50; Candidate for PTA Queen, '50; Nite Owls, '48; Gym Office Force, '48, '49, '50; Digest Staff, '48; Business Staff, '50; Twixteen Club, '49; Y-Teens, '48; Treasurer, Girls' Hi-Y, '48, '49; Vice-President, '50; Battalion, '48, '49, Captain, '50; Senate, '47, '48; Senate Cabinet, '50; Ace Club, '50; ROTC Sponsor, '50; Vagabonds, '49; Secretary, '50; Basketball Team, '50.

MARY ELIZABETH ANDERSON, "Shorty." Entered from Dalton High, '48.

BETTY MAE ARGO, "Boots." Entered from Nathan L. Bachman, '47; Bible Club, '48; Girls Glee Club, '48; Y-Teens, '50.

CHARLES ARMSTRONG, "Charlie." Entered from North Chattahoochee Junior High, '47; Depression Club, '50; Disc and Diamond Society, '50; Officers Club, '50; Band, '47, '48, '49, '50; Band Ensemble, '48, '49, '50; Swing Band, '50; Military Band, '47, '48, '49, '50.

VIRGINIA ASKEW, "Ginny." Entered from Brainerd Junior High, '48; Ushers, '50; Battalion, '47, '48, '49; Charm Club, '49; Y-Teens, '48, '49, '50; Junior Play Cast, '49; National Honor Society, '50.

DORIS AUSTIN. Entered from East Side Junior High, '48; Office Staff, '50; National Honor Society, '50.

JOHNNT LEE BACK. Entered from East Side Junior High, '48; Varsity Football Team, '48, '49, Alternate Captain, '50; C Club, '48, '49, '50; Treasurer, '49; National Honor Society, '49, '50; Disc and Diamond Society, '49, '50; Interscholastic Leadership Council, '50; Spanish Club, '49; Sergeants Club, '49; Officers Club, '50; Major in ROTC, '50; Vice President of Senior Class, '50.

JON DALE BAGBY, "Buz." Entered from Dickinson Junior High, '47; Senate, '47; Junior Boys Hi-Y, '47, '48; Senior Boys Hi-Y, '50; Sergeants Club, '50.

DOROTHY MARIE BAILEY, "Dot." Entered from Brainerd Junior High, '48; Library Staff, '48; Twixteen Club, '48; Vagabonds, '49, '50; Ushers, '50; Junior Play Cast, '49; Y-Teens, '48; Battalion, '49, '50; National Honor Society, '50.

BETTY SUE BAKER, "Red." Entered from East Side Junior High, '47; Physical Education Staff, '47.

LENORA BARBER. Entered from Signal Mountain Grammar, '47; Ushers, Second Vice-President, '50; Future Teachers of America, '48, '49, Treasurer, '50; Spinsters Club, '50; National Honor Society, '49, '50.

DORIS BARKER, "Dot." Entered from East Lake Junior High, '48; Ushers, '50; National Honor Society, '50.

JUANITA BARNETTE, "Nita." Entered from East Side Junior High, '47; Spinsters Club, '48, '49, '50.

CECILE LORRAINE BARROWS, "Cecil." Entered from East Side Junior High, '47; Library Staff, '47; Future Teachers of America, '48; Ushers, '50.

LILLIAN BARRY.

KENNETH BARTON, "Sparky." Entered from McCallie, '48; Announcers Club, '48, '49, President, '50; Weightlifting Team, '49, '50; Disc and Diamond Society, '48, '49, Secretary, '50; Swing Band, '48, '49, '50; Officers Club, '50; Boy's State, '49.

WANDA JOSEPHINE BEASON, "Jo." Entered from Nathan L. Bachman, '47; Trade and Industry Club, '50.

ALMA BEENE. Entered from East Side Junior High, '48.

ROBERT BEENE.

MARILYN BEETS, "Carrots." Entered from Hardy Junior High, '48; Badminton Club, '47, President, '48; Library Staff, '48, '49; Interscholastic Leadership Council, '50; Ushers, '50; Merry Macs, President, '50.

JEAN BENNINGTON, "Jeannie." Entered from City High, '50; Girls Glee Club, '50; Charm Club, '50; Y-Teens, '50.

PEGGY BILBRA, "Pegs." Entered from Rossville High, '48; Spinsters Club, '48; Twixteen Club, '48.

JOAN BILBREY, "Joanie." Entered from Lakeview High, '49; Charm Club, '49, Treasurer, '50; Battalion, '49, '50.

BARBARA BIRGE, "Bobbie." Entered from Capital Hill High School, Oklahoma City, Oklahoma, '47; Varsity Glee Club, '48, '49, '50; Ushers, '50; National Honor Society, '50.

FRANCES BISHOP. Entered from East Side Junior High, '48; Badminton Club, '49; Ushers, '50; National Honor Society, '49, '50.

TEMPLE BLAYLOCK, "Pete." Entered from Hardy Junior High, '48; Depression Club, '49, '50; Disc and Diamond Society, '50; Band, '48, '49, '50.

CHARLES BLEVINS, "Doc." Entered from Lookout Junior High, '47; Trade and Industry Club, '49, '50.

LYMAN BOLEMAN, "Lemon." Entered from Dickinson Junior High, '48; Disc and Diamond Society, '49, '50; Officers Club, '50; Honor Platoon, '49, '50; Rifle Team, '49, '50; Firing Squad, '49, '50.

WILLIAM BONINE, "Billy." Entered from East Side Junior High, '47; National Honor Society, '50; Disc and Diamond Society, '48, '49, '50; Officers Club, President, '50; Rifle Team, '48, '49, Captain, '50; Sergeants Club, '49; Honor Platoon, '49, '50; Club Editor of CHAMPION, '50; Individual champion of Third Army Area in Hearse Rifle Match.

ANITA BONNER.

NICKEY BOWMAN. Entered from East Side Junior High, '47; Digest Staff, '48, '49; Disc and Diamond Society, '49; Vice-President, '50; Officers Club, '49; Grady Literary Society, '49, Vice-President, '50; Major in ROTC, '50; Print Shop Foreman, '50.

CHARLOTTE BOYD. Entered from East Lake Junior High, '48; Bible Club, '49; Ace Club, '49, '50.

NAOMI ANN BOYD, "Nome." Entered from East Side Junior High, '47; Trade and Industry Club, Secretary, '50.

LEON BRANNON. Entered from East Side Junior High, '47; Band, '47, '48, '50; MP Club, '48; Sergeants Club, '49.

MARGARET BRATTON, "Tuff." Entered from Brainerd Junior High, '47; Girls Band Club, '47; Trail Trotters, '47, Twixteen, '48, '49; Silhouettes, '48, '49, Secretary, '50; Majorette, '47, '48, '49, Head, '50.

BETTY BRIDGES. Entered from Brainerd Junior High, '47; Honor Society, '50; Ushers, '50; Senate; Interscholastic Leadership Council, '50; Vagabonds; Girls State, '49; Junior Play Cast, '49; Senior Play Cast, '50; ROTC Sponsor, '50.

JEAN BROADWAY. Entered from Brainerd Junior High, '46; Band, '47, '48, '49; Twixteen Club, '47, '48; Ink Spots, '49, '50; Orchestra, '48, '49, Secretary, Treasurer, '50; Military Band Sponsor, '50; Purple and Gold Sponsor, '50.

MARY BROOKS, "Blondie." Entered from East Side Junior High, '47; Library Staff, '47, '48; Spanish Club, '47, '48; Glee Club, '48, '49, '50; Charm Club, '49, '50; Home Economics Club, '49, '50, Treasurer, '50.

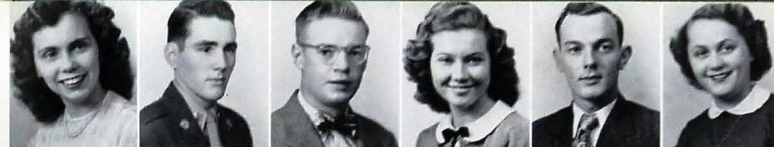
GRACE BROOM, "Snooks." Entered from East Lake Junior High, '48; Twixteen Club, '49, Secretary, '50.

JIMMY BROWN, "Crowbar." Entered from East Side Junior High, '48; B Team football team, '49; Varsity Football, '50.

THOMAS BOWEN.

JACK BUCKNER, "Red." Entered from Brainerd Junior High, '48; MP Club, '48, '49.

THOMAS BUFF, "Blondy." Entered from Rossville High, '49; Disc and Diamond Society, '50; MP Club, '49, '50; Honor Platoon, '50; Sergeants Club, '50; Library Staff, '49, '50; CHAMPION Staff, '50.



FIRST ROW:

Joan Abercrombie
Joe Abston
Vernon Adams
Mary Adkins
John Alexander
Martha Jane Alexander

SECOND ROW:

Jim Allison
Ralph Allison
Betty Allred
Charles Lynn Alverson
Charles Anderson
Evalynne Anderson

THIRD ROW:

Mary Anderson
Betty Argo
Charles Armstrong
Virginia Askew
Doris Austin
Johnny Back

FOURTH ROW:

Dale Bagby
Dorothy Bailey
Betty Baker
Lenora Barber
Doris Barker
Juanita Barnette

FIFTH ROW:

Cecile Barrows
Lillian Barry
Kenneth Barton
Wanda Beason
Alma Beene
Robert Beene

SIXTH ROW:

Marilyn Beets
Jean Bennington
Peggy Bilbra
Joan Bilbreay
Barbara Birge
Frances Bishop

SEVENTH ROW:

Temple Blaylock
Charles Blevins
Lyman Boleman
William Bonine
Anita Bonner
Nicky Bowman

EIGHTH ROW:

Charlotte Boyd
Naomi Ann Boyd
Leon Brannon
Margaret Bratton
Betty Bridges
Jean Broadway

NINTH ROW:

Mary Brooks
Grace Broom
Jimmy Brown
Thomas Bowen
Jack Buckner
Thomas Buff

THE SENIORS

FIRST ROW:
Eugene Buffington
Joyce Burnette
Carol Burns
Alton Byars
Martha Byles
Claude Byous



SECOND ROW:
Janice Camp
Bobby Campbell
Betty Carden
Margaret Carden
Martha Carpenter
Yvonne Carter



THIRD ROW:
Jimmy Case
Clyde Chaucey
Dana Childress
Barbara Childs
Shirley Chitwood
Bethune Clark



FOURTH ROW:
Helen Coffelt
Barbara Collins
Peggy Faye Combs
Don Connell
Joretta Cooper
Janet Corey



FIFTH ROW:
Hubert Cottingham
Jenene Cox
John Crane
James Crawford
Margaret Craze
Gloria Criswell



SIXTH ROW:
George Croft
Virginia Curi
Dorothy Custer
Aretta Davis
Joseph Davis
Paul Davis



SEVENTH ROW:
Sue Davis
Harold Derryberry
Don DeSha
Samuel Dobbins
Vance Dobbins
Frances Donahue



EIGHTH ROW:
Beatrice Dover
Robert Downs
Betty Ann Drinnon
Robert Duncan
June Dunlap
Jimmy Eaves



NINTH ROW:
Joyce Eaves
Thomas Eaves
Loretta Eddings
Joy Elliott
Sue Elliott
Barbara Elrod



● EUGENE BUFFINGTON, "Buff." Entered from North Chattahoochee Junior High, '48; Boys Hi-Y, '49, '50; Officers Club, '50; National Honor Society, '50.

● JOYCE JEAN BURNETTE, "Jeanie." Entered from East Side Junior High, '47; Girls Hi-Y, '49, '50; Twixteen, '48, '49, President, '50; Home Economics, '48, '49, Vice-President, '50; Y-Teens, '47, '48, '49, '50; Ushers, '50; Digest Staff, '49, '50; Swimming Club, '48, '49; Battalion, '47, '48, '49, '50; Circulation Manager of Digest Staff, '50.

● CAROL BURNS, Entered from Hardy Junior High, '48; Swing Band, '48, '49, '50; Interscholastic Leadership Council, '50.

● ALTON BYARS, "Slick." Entered from East Side Junior High, '47; Sergeants Club, '49; Officers Club, '50; Rifle Team, '49, '50; Band, '48, '49; Orchestra, '49, '50.

● MARTHA LOUISE BYLES, "Marty." Entered from Brainerd Junior High, '48; Candidate for Volunteer Girls State, '49; Library Staff, '48, President, '49, Treasurer, '50; Varsity Glee Club, '48, pianist, '49, '50; Secretary-Treasurer, '50; Interscholastic Leadership Council, '50; National Honor Society, '49, '50; Ushers, '50.

● CLAUDE BYOUS, JR., "Bob Feller." Entered from Hardy Junior High, '48; Baseball Team, '48, '49; Orchestra, '50; Band, '48, '49, '50.

● JANICE GWENDOLYN CAMP, "Jan." Entered from East Side Junior High, '47; Battalion, '47, '48, '49, '50; Girls Hi-Y, '49, '50; Twixteen Club, '49, Vice-President, '50; Home Economics Club, '48, '49, President, '50; Swimming Club, '48, '49; Y-Teens, '47, '48, '49, '50; Digest Staff, '49, Associate Business Manager, '50; Ushers, '50.

● BOBBY CAMPBELL, "Jeff." Entered from East Lake Junior High, '48; Trade and Industry Club, '50.

● BETTY CARDEN, "Garden." Entered from East Side Junior High, '48; Charm Club, '48, '49; Badminton Club, '48, '49.

● MARGARET CARDEN, "Margie." Entered from Lookout Junior High, '48.

● MARTHA ANN CARPENTER, Entered from East Lake Junior High, '47; Library Staff, '47, '48, '49, '50; Y-Teens, '48, '49, '50; Battalion, '49, '50; Charm Club, '50; Girls Glee Club, pianist, '50; National Honor Society, '50.

● YVONNE CARTER, "Inkie." Entered from Dickinson Junior High, '47; Y-Teens, '47; Gad-a-Bout Club, '49, '50.

● JIMMY CASE.

● CLYDE W. CHAUNCEY, Entered from Nathan L. Bachman, '47; Purple and Gold Band, '47, '48, '49, Captain, '50; Military Band, Captain, '50; Band Ensemble, '48, '49, '50; Orchestra, '50; Disc and Diamond Society, '50; Sergeants Club, '49; Officers Club, '50.

● DANA WYNELL CHILDRESS, "Shorty." Entered from Tyner, '48; Battalion, '49, '50; Varsity Glee Club, '48, '49, '50; Ushers, '50; National Honor Society, '50; Y-Teens, '48; Spinsters, '49; Digest Staff, '48.

● BARBARA CHILD, "Bobbie." Entered from Brainerd Junior High, '48; Twixteen Club, '48; Gad-a-Bout, '49.

● SHIRLEY LYONNE CHITWOOD, "Shorty." Entered from Crossville High, Alabama, '49; Spinsters, '49, '50; Ushers, '50; Bible Award on "Life of Christ," '49; National Honor Society, '50.

● BETHUNE CLARK, Entered from East Side Junior High, '48.

● HELEN COFFELT, Entered from Hixon High School, '48; Shore Offs, '48; Vagabonds, '49, '50; Girls Hi-Y, '49, '50.

● BARBARA COLLINS, "Six." Entered from East Lake Junior High, '47; Ushers, '50; National Honor Society, '49, '50; Varsity Glee Club, '48, '49, '50; Y-Teens, '49, '50; Battalion, '50.

● PEGGY FAYE COMBS, "Oggie." Entered from LaFayette High School, Georgia, '49.

● DON CONNELL, Entered from Brainerd Junior High, '47.

● JORETTA COOPER, "Jo." Entered from East Side Junior High, '48; Charm Club, '48, '49; Badminton Club, '48, '49.

● JANET COREY, "Janie." Entered from Dickinson, '47; Y-Teens, '47, '48, '49, '50; Gad-a-Bout Club, '48, '49, '50; Library Staff, '47, '48; Senate, '46, '47; Merry Macs, '47, '48.

● HUBERT COTTINGHAM, "Cot." Entered from Hardy Junior High, '48; Band, '48, '49, '50; Swing Band, '50; Band Ensemble, '49, '50.

● JENENE COX.

● JOHN HENRY CRANE, Entered from Lookout Junior High, '48.

● JAMES CRAWFORD, "Jim." Entered from East Lake Junior High, '48; MP Club, '49, '50; Officers Club, '50.

● MARGARET CRAZE, "Shorty." Entered from East Lake Junior High, '49; Varsity Glee Club, '49, '50.

● GLORIA CRISWELL, "Janie." Entered from Lookout Junior High, '47; Ace Club, '47, '48, '49, '50; Ushers, '50; Y-Teens, '50; Battalion, '48, '49; National Honor Society, '50.

● GEORGE CROFT, "Junior." Entered from Hardy Junior High, '48.

● VIRGINIA RUTH CURL, "Boo." Entered from East Side Junior High, '48; Spinsters, '48, '49; Ushers, '50; Feature Editor of "Digest", '49, '50.

● DOROTHY DELANCY CUSTER, "Dot." Entered from Hardy Junior High, '48; Merry Mac Club, '48, '49, '50.

● ARETTA DAVIS, "Reta." Entered from Hardy Junior High, '48; Trade and Industry Club, '50.

● JOSEPH A. DAVIS, "Joe." Entered from East Side Junior High, '47; Band, '47, '48, '49; Band Ensemble, '47; Sergeants Club, '48, '49.

● PAUL W. DAVIS, Entered from The Academy of Richmond County, '49; The Rifle Team, '50; Disc and Diamond Society, '50; Officers Club, '50; Honor Platoon, '50; Sergeants Club, '49.

● SUE DAVIS.

● WILLIAM HAROLD DERRYBERRY, "Duke." Entered from East Side Junior High, '47; Swing Band, '48, '49, '50; Purple and Gold Band, '47, '48; Orchestra, '49, President, '50; Boys Hi-Y, '49, '50; Senior Play, '50.

● DON H. DESHA, "Dee." Entered from Hardy Junior High, '48; Stage Crew, '48, '49; Secretary-Treasurer, '50.

● SAMUEL DOBBINS, "Twin." Entered from East Lake Junior High, '48; Trade and Industry Club, '49, '50.

● VANCE ALEXANDER DOBBINS, Entered from East Lake Junior High, '48; Trade and Industry Club, '48.

● FRANCES DONAHUE, "Donnie." Entered from Hardy Junior High, '47; Badminton Club, '47, '48, '49, '50; Ace Club, '47, '48, '49, '50; Library Staff, '48, '49, '50.

● BEATRICE DOYER, "Beaky." Entered from Lookout Junior High, '48; Bible Club, '49, '50.

● ROBERT DOWNS, "Bob." Entered from East Lake Junior High, '47; Boys Hi-Y, '47; MP Club, '47, '48.

● BETTY ANN DRINNON, "Bet." Entered from Lookout Junior High, '48; Gym Office Force, '48, '49, '50; Tumblers, '48; Ace Club, '48, Vice-President, '49, President, '50; Swimming Club, '49; Interscholastic Leadership Council, '49, '50; National Honor Society, '49, '50; Twixteen, '49; Battalion, '48, Lieutenant, '49, Major, '50; CHAMPION Staff, '50; Y-Teens, '49, '50; Badminton Club, '48, '50; "Digest" Staff, '49, Advertising Manager, '50; Basketball Team, Captain, '50.

● ROBERT DUNCAN, "Bobby." Entered from McCallie, '46; Stage Crew, '46, '47, '48; Projection Room Crew, '46, '47, '48; Disc and Diamond Society, '48; Officers Club, '48; Bank and Bookstore Staff, '47, '48.

● JUNE DUNLAP, Entered from Dickinson Junior High, '48; Band.

● JIMMY EAVES, Entered from Dickinson Junior High, '47.

● JOYCE GRAHAM EAVES, "Squirt." Entered from East Side Junior High, '48; Library Staff, '48, '49; La Tertulia, '48; Los Picaros, '49.

● THOMAS EAVES, "Tommy." Entered from Hardy Junior High, '47; MP Club, '47, '48, '49, '50; Rifle Team, '48, '49, '50; Honor Platoon, '48, '49, '50; Sergeant's Club, '48, '49; Officers Club, '49, '50; Firing Squad, '48, '49, '50.

● LORETTA EDDINGS.

● JOY DEAN ELLIOTT, Entered from East Lake Junior High, '48; Ace Club, '48; Shore Off Club, '49, '50.

● LAVILLA SUE ELLIOTT, "Susie." Entered from East Lake Junior High, '48; Varsity Glee Club, '48, '49, '50; Ushers, '50; Girls Hi-Y, '50; Sophomore Representative on CHAMPION Staff, '48; Shore Offs, '48.

● BARBARA JEAN ELROD, "Shorty." Entered from Hardy Junior High, '47; Merry Macs, '47, '48, '49, '50; Varsity Glee Club, '47, '48, '49, '50.

THE SENIORS

- JAMES HARRY ESPY. Entered from Hardy Junior High, '48; C Club, '49, '50; Football Team, '48, '49, '50; Baseball Team, '48, '49, '50; Interschol Leadership Council, '50.
- SYBIL EVANS. "Sybil." Entered from Jackson County High, '47; Trade and Industry Club, '50.
- BARBARA EVERTON. "Little Bit." Entered from Nathan L. Bachman, '47; Ushers, '50.
- DONALD FAIRES. "Don." Entered from Dickinson Junior High, '48; Camera Club, '48, '49, '50; Band, '48, '49, '50.
- MARGARET MARIE FERGUSON. "Fergie." Entered from Hardy Junior High, '48; Ink Spots Club, '49; Treasurer, '50.
- RALPH FICKLE. "Marvin." Entered from East Side Junior High, '47; Purple and Gold Band, '47; C Club, '48, '49; Review of '47; Disc and Diamond Society, '49; Basketball Team, '48, '49, '50; Football Team, '49, '50; Junior Play Cast, '49; Treasurer of Senior Class, '50.
- AYNIE FINCH. "Kittens." Entered from Dickinson Junior High, '48; Y-Teens, '48; Trail Trotters, '49; Silhouettes, '50.
- MARGARET ALICE FITZGERALD. "Fitz." Entered from East Side Junior High, '47; Ace Club, '47, '48, '49; Vice-President, '50; Ushers, '50; Varsity Glee Club, '47; Band, '47, '48, '49; Y-Teens, '49, '50; Tumblers, '48; National Honor Society, '50.
- PEGGYE MONELL FORD. Entered from East Lake Junior High, '47; Ushers, President, '50; Varsity Glee Club, '49, '50; CHAMPION Staff, '50; Candidate for Volunteer Girls' State, '49; Girls' Hi-Y, '47, '48, '49; Treasurer, '50; Announcers Club, '48; Secretary-Treasurer, '49; Vice-President, '50; Y-Teens, '47, '48; Library Staff, '47, '48; National Honor Society, '49, '50; Spinsters Club, '49, President, '50; Interschol Leadership Council, '50; City-wide Hi-Y Council, '50.
- JOYCE ANN FRANK. "Ninnie." Entered from North Chattanooga Junior High, '48; Junior Play Cast, '49; Home Economics Club, '49, '50.
- DAISY MAY FRAZIER. "Dizzy." Entered from Dickinson Junior High, '48; Star Lighters, '49, '50; Varsity Glee Club, '48, '49, '50.
- WILLIAM FREE. "Bill." Entered from Lakeview, '47; Camera Club, '47, '48.
- BARNEY FRYAR.
- PAUL FULLER. "Flip." Entered from Notre Dame, '47; National Honor Society, '49, President, '50; C Club, '48, '49, '50; Grady Literary Society, '48, '49, President, '50; Disc and Diamond Society, '50; Interschol Leadership Council, '49, City wide president, '50; Football Team, '48, '49, '50; Sophomore Class President, '48; Junior Class President, '49; Senior Class President, '50.
- DORMA GALLANT. "Dige." Entered from Soddy-Daisy, '49; Y-Teens, '49, Secretary, '50; Merry Macs, '50.
- JAMES E. GALLOWAY. "Jim." Entered from North Chattanooga Junior High, '48.
- LUCY GARDNER. Entered from Rossville Grammar, '47; Vagabonds, '48, '49; Senete, '47, '48, '49, '50; Y-Teens, '48, '49; Battalion, '49, '50; National Honor Society, '50; Library Staff, '47, '48; Basketball Team, '50.
- POLLY GARDNER. Entered from Rossville Grammar, '46; Senette, '50; Interschol Leadership Council, '50; National Honor Society, Secretary, '50; Vagabonds, '48, '49; Camera Club, '48; Library Staff, '49; Battalion, '49, '50.
- SAM GARRETT. Entered from Northside Junior High, '47; Trade and Industry Club, '50.
- MARY ELA GOGGIN. "Tudie." Entered from City High, '48; Ink Spots, '48, '49, '50.
- BOYD GOODNER. "Nigger." Entered from Hardy Junior High, '47; "Digest" Staff, '48, '49; Trade and Industry Club, '49, '50.
- GLORIA JEAN GOODNER. "Jeanie." Entered from Brainerd Junior High, '47; Trail Trotters, '48, '49; Shove Offs, '49.
- CAROLYN GRANT. "Red." Entered from Brainerd Junior High, '48.
- LAYERN GRAVES. Entered from East Side Junior High, '48; Stage Crew, '49, '50; Sergeants Club, '50; Band, '49, '50; Orchestra, '50.
- ELIZABETH ALBERTA GRAYSON. "Shorty." Entered from Nathan L. Bachman, '47; Trade and Industry Club, '50.

- MANILLA GREESON. "Nilly." Entered from East Side Junior High, '47; Library Staff, '47, '48, '49; Home Economics Club, '48; Spanish Club, '48.
- EMMA JO GRIFFIN. "Griff." Entered from Brainerd Junior High, '48; Ink Spots, '49, Secretary, '50.
- LOURINE GRIMES. "Sis." Entered from East Side Junior High, '47; Bible Club, '50.
- WILLIAM EDGAR GUNN. "Shotgun." Entered from East Lake Junior High, '47; MP Club, '47.
- CAROLE D. GUTHRIE. Entered from Brainerd Junior High, '48; Gad-a-bouts, '48, '49, President, '50; National Honor Society, '50; Sponsor in ROTC, '50.
- FRED W. HAFLEY. Entered from Brainerd Junior High, '47; MP Club, '47; Disc and Diamond Society, '47; Grady Literary Society, '48.
- FRED HALL. "Fearless." Entered from Brainerd Junior High, '47; C Club, '48, '49, '50; Boxing Team, '48, '49, '50.
- MARY SUE HALL. "Suzie." Entered from Miami High, Miami, Florida, '48; Y-Teens, '48, '49, '50; Charm Club, '50; Home Economics Club, '50; Battalion, '49.
- GENEVA HAMBRICK. "Navie." Entered from East Side Junior High, '47; Twisten Club, '47; Nite Owls, '49, Treasurer, '50; Gym Office Force, '48, '49; Camera Club, '49, '50; National Honor Society, '50; Girls' Hi-Y, '50; Majorette, '47, acrobatic, '49, '50; Junior Play Cast, '49; Senior Play Cast, '50.
- HAROLD HAMBY. "Hambone." Entered from East Lake Junior High, '47; Trade and Industry Club, '50.
- SARAH LOUISE HAMMONTREE. Entered from Tyner High, '50; Ink Spots, '50.
- RAY HARMON. Entered from Hardy Junior High, '47; Varsity Glee Club, '48, '49; Depression Club, '48, '49.
- MARTHA FRANCES HARRIS. "Frank." Entered from East Lake Junior High, '48.
- LOREN HART. "Buddy." Entered from Red Bank High, '48; American Legion Military Award, '49; National Honor Society, '50; MP Club, '49, President, '50; Sergeants' Club, President, '49; Grady Literary Society, '49, '50; Officers Club, '50; Disc and Diamond Society, '50; Interschol Leadership Council, '50; Honor Platoon, '49, '50; CHAMPION Staff, '50; Colonel in ROTC, '50; Boys' State, '49.
- ARLVIA HARTLINE. Entered from Lookout Junior High, '48; Bible Club, '49.
- BILL HASH. "Jake." Entered from East Side Junior High, '48.
- DIANE HAYNES. "Bozo." Entered from Tyner High School, '47; Battalion, Lieutenant, '48, Captain, '49, '50; Nite Owls, '49, Secretary, '50; Gym Office Force, '47, '48, '49, '50; Swimming Club, '50; "Digest" Staff, Business Manager, '50; Y-Teens, '48, '49, '50; Sponsor in ROTC, '50; Ace Club, '47, '48, '49.
- JO ANN HELTON. "Jo." Entered from East Side Junior High, '48; Shove Offs, '49, '50; Badminton, '48; Trailtrotters, '49; Y-Teens, '48; Girls' Hi-Y, '48, '49, '50; Battalion, '49, '50; ROTC Sponsor, '50.
- JUNE HENDERSON. "Hendy." Entered from East Lake Junior High, '47; Office Force, '50; Ace Club, '49, '50; Y-Teens, '50; Shove Offs Club, '48, '49.
- BILL HENRY. Entered from Tyner High, '50; Band, '50; Orchestra, '50.
- JOHNNY HICKEY. "Hickey." Entered from East Side Junior High, '48; Varsity Glee Club, '49, '50; Cheerleader, '49, '50; Junior Play Cast, '49; Treasurer of Junior Class, '49.
- CAROL HICKS. Entered from Monte Sano, Rome, Georgia, '48; Varsity Glee Club, '50.
- LEOMA HICKS. "Twin." Entered from Hardy Junior High, '48.
- NEOMA HICKS. "Twin." Entered from Hardy Junior High, '48.
- VETTA HIGHT. "Red." Entered from East Side Junior High, '47.
- MARJORIE DEAN HILL. Entered from Hardy Junior High, '47; "Digest" Staff, '48, '49, '50; Ushers, '50.
- PATRICIA HLAS. "Pat." Entered from East Side Junior High, '48; National Honor Society, '49, '50; Ushers, '50.
- LEROY HOBBS. Entered from Nathan L. Bachman, '47; Band, '48, '49.
- HELEN HODNETT.



FIRST ROW:
Harry Espy
Sybil Evans
Barbara Everton
Donald Faires
Margaret Ferguson
Ralph Fickle

SECOND ROW:
Aynie Finch
Margaret Fitzgerald
Peggye Monell Ford
Joyce Frank
Daisy Frazier
William Free

THIRD ROW:
Barney Fryer
Paul Fuller
Dorma Gallant
Lucy Galloway
Polly Gardner

FOURTH ROW:
Sam Garrett
Mary Ella Goggin
Boyd Goodner
Jean Goodner
Carolyn Grant
LeVern Graves

FIFTH ROW:
Elizabeth Grayson
Manilla Greeson
Emma Jo Griffin
Lourine Grimes
William Gun
Carole Guthrie

SIXTH ROW:
Fred Haffley
Fred Hall
Sue Hall
Geneva Hambrick
Harold Hamby
Sarah Hammontree

SEVENTH ROW:
Ray Harmon
Frances Harris
Loren Hart
Arlivia Hartline
Bill Hash
Diane Haynes

EIGHTH ROW:
Jo Ann Helton
June Henderson
Bill Henry
Johnny Hickey
Carol Hicks
Leoma Hicks

NINTH ROW:
Neoma Hicks
Vetta Hight
Dean Hill
Patricia Hlas
LeRoy Hobbs
Helen Hodnett

THE SENIORS

FIRST ROW:
Eva Holladay
Lyle Holland
William Holloway
Shirley Hotalen
Joyce Howard
Jerry Hubbard



SECOND ROW:
Thomas Huey
Hulene Huff
Imogene Hundley
Tom Hunt
Dorothy Huskey
Maxine Ingle



THIRD ROW:
Jackie Jackson
Jack Jenkins
Jasper Jenkins
Joanna Jett
Norma Johnson
Peggie Jo Johnson



FOURTH ROW:
Glenn Jones
Irene Jones
Lillian Jones
Sam Jones
Alfreida Joyce
Clara Jo Kidwell



FIFTH ROW:
Freda Kilgore
Phyllis Kilgore
Gilbert King
Joe King
Layniere King
Jacqueline Lavender



SIXTH ROW:
Maureen Lawson
Ann Laxson
George Leavitt
Richard Leeper
Martha Lerch
Charles Linder



SEVENTH ROW:
Neil Lindsay
Barbara Locklear
Elizabeth Logan
Ann Long
James Lowe
Dick Lusk



EIGHTH ROW:
Robert Lynes
Tommy McAlister
Troy McClure
Patsy McCluskey
Fred McCuiston
Harold McDaniel



NINTH ROW:
Barbara McDowell
Jack McDowell
Mildred McElhane
Joy McGee
Forrest McGee
Kenneth McIntosh



- EVA HOLLADAY, "Pug." Entered from Brainerd Junior High, '47; Shove Offs, '48; Vagabonds, '49, '50.
- LYLE HOLLAND, "Smiley." Entered from Lookout Junior High, '47.
- WILLIAM E. HOLLOWAY, "Wild Bill." Entered from Signal Mountain, '48; Hillbilly Band, '49, '50.
- SHIRLEY GENE HOTALEN, Entered from Northside Junior High, '48; Girls Hi-Y, '49, '50; Bible Club, '49, '50; Home Economics, '48, '49, '50.
- JOYCE ANN HOWARD, Entered from East Lake Junior High, '47; Vagabonds, '49, '50; Ushers, '50; National Honor Society, '50.
- JERRY LAMAR HUBBARD, "Colonel." Entered from Brainerd Junior High, '48; Band, '48, '49, '50; Band Ensemble, '48, '49, '50; Military Band, '48, '49; Rifle Team, '48, '49; Sergeants Club, '49; Disc and Diamond Society, '48, '49, '50; Officers Club, '50; Captain in ROTC, '50; National Honor Society, '50; CHAMPION Staff, '50.
- THOMAS JONES HUEY, "Huey." Entered from West End Junior High, '47; Officers Club, '48, '49, '50; Disc and Diamond Society, '48, '49, '50; Honor Platoon, '48, '49, '50.
- HULENE HUFF, "Baby-doll." Entered from Dickinson Junior High, '47; Cheerleader, '47, '48, '49, Head Songleader, '50; Shove Offs, '47; Nite Owls, '47, '48, '49, Vice-President, '50; Girls Hi-Y, '48, '49, '50; Y-Teens, '47, '48, '49, Vice-President, '50; Library Staff, '48, '49, '50; Office Force, '48, '49, President, '50; Junior Play Cast, '49; Review of '47 ROTC Sponsor, '50; Homecoming Queen Candidate, '50; PTA Queen Candidate, '50.
- IMOGENE HUNDLEY, "Jean." Entered from East Side Junior High, '48.
- TOM HUNT.
- DOROTHY ANN HUSKEY, "Dot." Entered from Brainerd Junior High, '48.
- MAXINE INGLE, "Max's." Entered from East Side Junior High, '48.
- JACKIE JACKSON, Entered from Hardy Junior High, '47.
- JACK JENKINS, "Smiley." Entered from Hardy Junior High, '47; Trade and Industry Club, '50.
- JASPER CALVIN JENKINS, Entered from Hardy Junior High, '48; Spanish Club, '49.
- JOANNA JETT, "Jo." Entered from East Side Junior High, '47; National Honor Society, '49, '50; Ushers, First Vice-President, '50; Girls Hi-Y, '49, '50.
- NORMA JOHNSON, "Bib." Entered from Nathan L. Bachman, '47.
- PEGGIE JO JOHNSON, "Jo Jo." Entered from Hardy Junior High, '48; Varsity Glee Club, '48, '49, '50; Ushers, '50; Merry Macs, '48.
- GLENN H. JONES, Entered from East Side Junior High, '48; Sergeants Club, '49; Honor Platoon, '49; Rifle Team, '49; Bible Club, '49; Boys Hi-Y, '49, Vice-President, '50.
- IRENE JONES, "Snake." Entered from East Side Junior High, '47.
- LILLIAN JONES, "Peggy." Entered from Coalmont Grammar, '47; Home Economics Club, '48, '49, '50.
- SAM JONES, "Sad Sam." Entered from Signal Mountain Grammar, '47; Swing Band, '49, '50; Hillbilly Band, '49, '50.
- ALFREIDA JOYCE, "Freda." Entered from Dickinson Junior High, '48; Shove Offs, '48, '49, Treasurer, '50; Bank and Bookstore Staff, '48; Secretary, '49, '50; Girls Hi-Y, '48, '49, '50; Junior Play Cast, '49; Y-Teens, '48, '49, President, '50; Twixteens, '48; Gadabouts, '48; Battalion, '48, '49, '50; National Honor Society, '49, Treasurer, '50; ROTC Sponsor for Regimental Staff Officer, '50; CHAMPION Staff, Business Manager, '50; Candidate for Girls State, '49; City-wide Y-Teens President, '50; PTA Queen Candidate, '50.
- CLARA JO KIDWELL, "Shorty." Entered from Hardy Junior High, '48; Merry Macs, '48, '49, '50.
- FREDA KILGORE, Entered from East Side Junior High, '48.
- PHYLLIS KILGORE, Entered from East Side Junior High, '48.
- GILBERT KING, "Gib." Entered from East Lake Junior High, '48; Art Club, Treasurer, '49.

- JOE KING, Entered from East Lake Junior High, '48; Trade and Industry Club, '50; Boxing Team, '48, '49, '50.
- LAYNIERE KING, Entered from East Lake Junior High, '47; Vagabonds, '48, '49, President, '50; Gym Office Force, '48, '49, '50; Senate, '47, '48, '49, Vice-President, '50; Girls Hi-Y, '49, '50; Shove Offs, '47, '48; Interscholastic Leadership Council, Publicity Chairman, '50.
- JACQUELINE LAVENDER, "Jackie." Entered from East Lake Junior High, '48; Y-Teens, '49, '50; Ushers, '50.
- MAUREEN LAWSON, "Mac." Entered from Hardy Junior High, '48; Merry Macs, '49, '50; Y-Teens, '50.
- ANN LAXSON, "Liz." Entered from Brainerd Junior High, '47; Cherm Club, '47, '48; Ink Spots, '48, '49, '50; Girls Hi-Y, '49, '50; Battalion, '49, '50; Girls Glee Club, '48, '49.
- GEORGE LEAVITT.
- RICHARD LEEPER, Entered from Brainerd Junior High, '48; Camera Club, '48, '49, President, '50; CHAMPION Staff, '50.
- MARTHA LERCH, "Shortie." Entered from Brainerd Junior High, '47; Cherm Club, '47, '48; Girls Hi-Y, '49, '50; Battalion, '49, '50; Ink Spots, '49, '50; Shove Offs, '48, '49; Girls Glee Club, '48, '49.
- CHARLES LINDER.
- NELL LINDSAY, "Snookie." Entered from East Side Junior High, '48; Library Staff, '48; Home Economics Club, '49, '50; Ushers, '50; Girls State, '49.
- BARBARA JEANNE LOCKLEAR, "Babs." Entered from East Side Junior High, '48; Silhouettes Club, '50; Battalion, '50.
- ELIZABETH LOGAN, "Liz." Entered from East Side Junior High, '48; Spanish, '49; Bible Club, '50; Silhouettes, '50; Ushers, '50.
- ANN LONG, Entered from Brainerd Junior High, '48; Band, '48, '49; Orchestra, '49; Library, '48; Candy Staff, '48.
- JAMES R. LOWE, "Curly." Entered from Dickinson Junior High, '47; Major in ROTC, '50; Disc and Diamond Society, '48, '49, '50; Grady Literary Society, '49, '50; Sergeants Club, '49; President of Freshman Class, '47; Officers Club, '50; Boys Hi-Y, '47, '48; Boxing Team, '48, '49; Weightlifting Team, '48, '49; National Honor Society, '49, '50; Boys' State, '49.
- DICK LUSK, Entered from Brainerd Junior High, '48; Officers Club, '50; Varsity Glee Club, '48, '49, '50; Band, Color Bearer, '49, '50; Disc and Diamond Society, '49, '50.
- ROBERT LYNES, Entered from Brainerd Junior High, '47.
- TOMMY McALISTER, "Mac." Entered from East Side Junior High, '48; B Team Football, '48; B Team Basketball, '48; Varsity Basketball, '47, '48, '50; C Club, '49.
- TROY McCLURE.
- PATSY FAYE McCLUSKEY, "Pat." Entered from Hardy Junior High, '47; Library Staff, '48; Badminton Club, '47; Merry Macs, '48, '49, '50; Ushers, '50; Bible Club, '49, '50; National Honor Society, '50.
- FRED McCUISTON, Entered from Hardy Junior High, '48; Trade and Industry Club, '50.
- HAROLD MCDANIEL, "Mc." Entered from Lookout Junior High, '47; Baseball Team, '48, '49.
- BARBARA MCDOWELL, "Bab." Entered from Nathan L. Bachman, '47; Trade and Industry Club, '50.
- JACK H. MCDOWELL, Entered from Brainerd Junior High, '48; Senate, '49; Publicity Chairman, '50; M.P. Club, '48, '49, '50; Honor Platoon, '49; Guide, '50; Captain in ROTC, '50; Art Club, '49; Officers Club, '50; Disc and Diamond Society, '49, '50; Sergeants Club, '49.
- MILDRED McELHANEY, "Mackie." Entered from Hardy Junior High, '48; Shove Offs, '48, '49, Vice-President, '50; Y-Teens, '50; ROTC Sponsor, '50.
- JOY MCGEE, Entered from McMinnville, Tennessee, '49; Y-Teens, '50.
- FORREST MCGEE, JR., "Fibber." Entered from Knoxville High, '49.
- KENNETH W. MCINTOSH, "Mac." Entered from Brainerd Junior High, '47.

THE SENIORS

● KATHLEEN MCKAIG, "Cathy." Entered from East Lake Junior High, '48; Girls Hi-Y, '48, '49, '50; Ace Club, '48, '49, '50; Bible Club, '48, '49, Secretary, '50.

● WILLIAM MCKENZIE, "Bill." Entered from Brainerd Junior High, '47; C Club, '48, '49, Sergeant at Arms, '50; Football Team, '48, '49, '50; Captain in ROTC, '50; Sergeant at Arms of Senior Class, '50.

● ALMA JOSEPHINE MCKINNEY, "Jo Mac." Entered from East Side Junior High, '48; "Digest" Staff, '48, Librarian, '49, Associate Editor, '50; Bible Club, '48, Vice-President, '49, President, '50; Ushers, Secretary-Treasurer, '50; National Honor Society, '50.

● JEAN MCWHORTER. Entered from Leeds High, '48; Art Club, '48, Crandel Art Club Award, '49.

● DELORES MARABLE. Entered from Lookout Junior High, '48; Starlighters Club, '49.

● HELEN MARLENE MARTIN, "Tillie." Entered from East Side Junior High, '47; Gadabouts, '49, Secretary, '50; Office Force, '50; ROTC Sponsor, '50.

● JANE MARTIN. Entered from Northside Junior High, '48; Office Force, '49, '50; Announcers Club, '48, '49, Secretary-Treasurer, '50; Senate, '48, '49, Secretary, '50; Girls Hi-Y, '48, '49, Chaplain, '50; Hi-Y Council, '50; Interschol Leadership Council, Secretary, '50; Ushers, '50; Shove Offs, '49; Library Staff, '48, Secretary, '49; Merry Macs, '48; Junior Play Cast, '49; Girls Battalion, '48, '49, '50.

● NORMA JEAN MARTIN. Entered from East Side Junior High, '48; Ushers, '50.

● TOM MARTIN.

● GENE MASON, "Good Looking." Entered from East Side Junior High, '47; Disc and Diamond Society, '49, '50.

● GRADY MASSINGILL. Entered from Brainerd Junior High, '47; Junior Hi-Y, '47, Vice-President, '48, Senate, '47, '48, '49, President, '50; Senior Hi-Y, '49, '50; Hillbilly Band, '49, '50; Disc and Diamond Society, '50; Officers Club, '50; Interschol Leadership Council, '50.

● ALTA MAE MASTERS. Entered from Brainerd Junior High, '48.

● GERALDINE CECILE MAXEY, "Jerry." Entered from Chester High, Chester, Pennsylvania, '47; Interschol Leadership Council, '50; Spanish Club, '47, '48; Gym Staff, '47, '48, '49, '50; Nita Owis, '47, '48, '49, President, '50; Swimming Club, '47, '48, '49, '50; Band Officers Club, '50; Majorette, '47, '48, '49, Head, '50; Candidate for Homecoming Queen, '50; Basketball Team, '50; Honor Society, '50.

● MARY MAXWELL. Entered from East Side Junior High, '48.

● MAJORIE ANN MAY, "Mutt." Entered from Brainerd Junior High, '48.

● BARBARA MAYO. Entered from Henry Grady High, Atlanta, Georgia, '49; Shove Offs, '49, Secretary, '50; Y-Teens, '49, Social Chairman, '50; Battalion, '49, '50; Sponsor in ROTC, '50.

● CARL MEYER. Entered from Lutheran Elementary, '47; Boys Hi-Y, '47; Disc and Diamond Society, '49, '50.

● CHARLOTTE ANN MILES, "Dee Dee." Entered from Hardy Junior High, '48; Merry Macs, '48, '49, '50; Bible Club, '49, '50.

● DORIS JUANITA MILLER, "Neto." Entered from Brainerd Junior High, '47; Silhouettes, '47; Girls Hi-Y, '48, '49, '50; Twistsies, '48, '49; Yagabonds, '49, '50; Y-Teens, '48, '49; Battalion, '49, '50.

● MARTHA MILLER, "Marty." Entered from East Lake Junior High, '48; Ushers, '50; National Honor Society, '50; Junior Play Cast, '49; Senior Play Cast, '50.

● NADINE MILLER.

● PATSY RUTH MILLER, "Pat." Entered from Hardy Junior High, '47; Merry Macs, '48, '49, '50; Varsity Glee Club, '48, '49, '50.

● RALPH C. MILLER. Entered from East Side Junior High, '47; Disc and Diamond Club, '48, '49, '50; C Club, '48, '49, '50; Officers Club, '50; Sergeants Club, '49; Sports Editor of CHAMPION, '50.

● ROBERT DONEY MILLER, "Whitie." Entered from East Side Junior High, '48; Bible Club, '50.

● MARIE MINTON, "Vicki." Entered from Northside Junior High, '47; Spanish Club, '48, '49.

● J. R. MOATS.

● JACK MORGAN, "Mogie." Entered from East Denver High, '49; Officers Club, '50; National Honor Society, '50.

● MARILYN LORRAINE MONROE, "Fib." Entered from Northside Junior High, '48; Girls Hi-Y, '49, '50; Vagabonds, '48, '49, Treasurer, '50; Band, '48, '49; Ushers, '50; Ace Club, '48; Basketball Team, '50.

● CHARLOTTE MOORE, "See Moore." Entered from East Side Junior High, '47; Y-Teens, '48, '49; Shove Offs, '48, '49, Social Chairman, '50.

● WILLIAM MOORE, "Allegra." Entered from East Lake Junior High, '47; Band, '47, '48, '49, '50; Orchestra, '47, '48, '49, '50.

● BARBARA JEAN MORGAN, "Babs." Entered from Notre Dame, '47; Trail Troopers, '47, '48, '49, President, '50.

● BILLIE RUTH MORGAN, "Red." Entered from Hardy Junior High, '47.

● JOHNNY MORRIS. Entered from East Side Junior High, '47.

● FRANCES MOUMBLO, "Fran." Entered from Dickinson Junior High, '47; Silhouette Club; ROTC Sponsor, '50.

● OLEN MULLIS, "Jim." Entered from Brainerd Junior High, '47; Band, '47.

● BARBARA VONDL MURRAY, "Bobbie." Entered from East Lake Junior High, '48.

● YVONNA MUSE, "June." Entered from Loyall High, '48; Varsity Glee Club, '48, '49, '50; Battalion, '49, '50.

● JOYCE MARIE MYHAN, "Joy." Entered from Dresher High School, Tusculum, Alabama, '48; Bible Club, '48, '49, Vice-President, '50; "Digest" Editorial Staff, '48, '49, Editor-in-Chief, '50; Senate, '49, '50; Ushers, '49, '50; National Honor Society, '50.

● JANE NEWTON. Entered from Dickinson Junior High, '47; Silhouette Club, '47; Y-Teens, '47.

● DON NORRIS, "Humphrey." Entered from South Pittsburg High, '47; President City-Wide Hi-Y Council, '50; Boys Hi-Y, '48, '49, President, '50; Disc and Diamond Society, '48, '49, First Lt., '50; Grady Literary Society, '48, '49, Secretary, '50; Officers Club, '50; Sergeant-at-Arms, '50; Sergeants Club, '49; Latin Club, '48; Editor of CHAMPION, '50; "Digest" Staff, '48; ROTC Editor, '49; Associate Editor, '50; Maj. in Military, '50; Jr. Hi-Y, '47, '48; Review of '48 Boys' State, '49, State Treasurer, Pres. East Tenn. Dist. Hi-Y, '50; Vice-President State Hi-Y, '50.

● JOHNNIE SUE O'BARR, "Crow-Bar." Entered from Hardy Junior High, '48; Merry Macs, '48, '49, '50.

● OLA O'DELL, "Digger." Entered from Lookout Junior High, '48; Starlighters, President, '49.

● JAMES OGLE, "Oglestein." Entered from East Side Junior High, '46.

● JOE O'REAR. Entered from Hardy Junior High, '47; Sergeants Club, '48, '49; Disc and Diamond Society, '49; Boys Hi-Y, '48, '49, '50; National Honor Society, '49, '50.

● HUBERT PAIR. Entered from Sylvania High, Sylvania, Alabama, '48; Bible Club, '48.

● ROBERT EARL PARKER. Entered from Nathan L. Bachman, '47; Boys Hi-Y, '50; Bible Club, '49.

● PAT PARSONS.

● WILLIAM LARRY PATRICK, "Gus." Entered from East Side Junior High, '47; Interschol Leadership Council, '50; Officers Club, '49; Sergeants Club, '49; Spanish Club, '49, '50; Honor Platoon, '48.

● ELEANOR PAUL, "Giggles." Entered from Lookout Junior High, '48; Girls Hi-Y, Silhouettes; Future Teachers America; Majorette, '49, '50.

● DOUGLAS PAYNE, "Doug." Entered from Brainerd Junior High, '48; Disc and Diamond Society, '48, '49, '50; Sergeants Club, '49, Honor Platoon, '49.

● SARAH ANN PAYNE. Entered from Pisgah High, Pisgah, Alabama, '50.

● DORIS MONTEREE PETTY, "Dot." Entered from Dickinson Junior High, '48; National Honor Society, '50.

● MARY ETTA PETTY. Entered from Brainerd Junior High, '47.

● TOMMY PHIFER, "Tom." Entered from Dickinson Junior High, '47; C Club, '47, '50; Basketball Team, '49, '50; All Times Cup Series, '48, '49.



FIRST ROW:
Kathleen McKaig
William McKenzie
Alma Jo McKinney
Jean McWhorter
Delores Marable
Marlene Martin

SECOND ROW:
Jane Martin
Norma Jean Martin
Tom Martin
Gene Mason
Grady Massingill
Alta Masters

THIRD ROW:
Geraldine Massey
Mary Maxwell
Marjorie May
Barbara Mayo
Carl Meyer
Charlotte Miles

FOURTH ROW:
Juanita Miller
Martha Miller
Nadine Miller
Patsy Miller
Ralph Miller
Robert Miller

FIFTH ROW:
Marie Minton
J. R. Moats
Jack Morgan
Marilyn Monroe
Charlotte Moore
William Moore

SIXTH ROW:
Barbara Morgan
Billie Morgan
Johnny Morris
Frances Moublo
Olen Mullis
Barbara Murray

SEVENTH ROW:
Yvonna Muse
Joyce Myhan
Jane Newton
Don Norris
Sue O'Barr
Ola O'Dell

EIGHTH ROW:
James Ogle
Joe O'Rear
Hubert Pair
Earl Parker
Pat Parsons
William Patrick

NINTH ROW:
Eleanor Paul
Douglas Payne
Sarah Payne
Doris Petty
Mary Petty
Tommy Phifer

THE SENIORS

FIRST ROW:
Charles Phillips
Elmer Phillips
Jimmie Pipes
Barbara Ann Pledger
Frances Plummer
Mary Pope

SECOND ROW:
Donald Prey
Wanda Prystup
William Ramsey
Marion Rawlston
Joan Ray
Jimmy Reed

THIRD ROW:
Bobby Rhodes
John Riley
Frances Ringer
Georgia Robertson
Joan Roberts
Jack Robertson

FOURTH ROW:
Dick Robinson
Faye Robinson
Traylor Robinson
Bryan Rose
Nickie Roth
Nancy Rudd

FIFTH ROW:
Alma Runyan
James Sadler
Barbara Sammons
Dick Sanders
Dorothy Schelker
Oneida Scruggs

SIXTH ROW:
Ambrose Secor
Hoyt Sewell
Shirley Sewell
Gene Sexton
Virginia Shepard
Jane Shetter

SEVENTH ROW:
Ronald Shoemaker
Anita Silas
Lily Simmons
Helen Sims
Frances Sisk
Frank Sifton

EIGHTH ROW:
Gloria Slack
Joanne Smartt
Don Smith
Claude Stancil
Jo Ann Stansberry
Frank Stanton

NINTH ROW:
Marilyn Starke
Jack Ronald Stevens
James Donald Stevens
Barbara St. John
R. O. Stone
Conrad Stout

● CHARLES PHILLIPS, "Lucky." Entered from Dickinson Junior High, '47; Varsity Glee Club, '47, '48, '49, '50; Boxing Team, '48, '49; Basketball Manager, '48, '49, '50.

● ELINOR ADAIR PHILLIPS. Entered from Northside Junior High, '47.

● JIMMIE PIPES, "Pea Wea." Entered from Dickinson Junior High, '48; Trail Trotters, '48.

● BARBARA ANN PLEDGER. Entered from Nathan L. Bachman, '48.

● FRANCES PLUMMER, "Fran." Entered from Tyner High, '48; Y-Teens, '48, '49, '50; Battalion, '49, '50.

● MARY JO POPE, "Jo Jo." Entered from East Side Junior High, '48.

● DONALD PREY, "Be Bop." Entered from Mount Pleasant High, Wilmington, Delaware, '48; Disc and Diamond Society, '48, '49, '50; Sergeants Club, '49; Officers Club, '50; Grady Literary Society, '49; Major in ROTC, '50.

● WANDA PRYSTUP. Entered from Brainerd Junior High, '48; Twisteens, '48; Ushers, '50; ROTC Sponsor, '50.

● WILLIAM RAMSEY, "Bill." Entered from East Side Junior High, '48; Disc and Diamond Society, '49; President, '50; Officers Club, '50; Swing Band, '49, '50; Captain in ROTC, '50.

● MARION RAWLSTON. Entered from Brainerd Junior High, '48; Library Staff, '48, '49; Home Economic Club, '48, '49; Social and Program Chairman, '50; Spinsters Club, '49, '50; Spanish Club, '48; Varsity Glee Club, '49, '50.

● SYLVIA JEAN RAY, "Dizzy." Entered from North Chattanooga Junior High, '47; Ink Spots, '48, Vice-President, '49, President, '50.

● JIMMY REED, "Rod." Entered from East Side Junior High, '48; Disc and Diamond Society, '48, '49.

● BOBBY RHODES, "Bob." Entered from McIntire, '46; MP Club, '48, '49; Honor Platoon, '48, '49; Officers Club, '50; Sergeants Club, '49.

● JOHN SAMUEL RILEY, "Buddy." Entered from First Lutheran, '47; Junior Boys Hi-Y, '48, '49; Library Staff, '48, '49; Senate, '49, '50; Latin Club, '49; Grady Literary Society, '50; Sergeants Club, '50.

● FRANCES RINGER. Entered from Red Bank Junior High, '49; Y-Teens, '49, '50.

● GEORGIA ROBERSON, "Giglio." Entered from East Side Junior High, '48.

● JOAN EDWINA ROBERTS. Entered from East Side Junior High, '48; Ushers, '50; National Honor Society, '49, '50; Badminton Club, '48.

● JACK ROBERTSON, "Lopy." Entered from East Side Junior High, '48.

● DICK ROBINSON. Entered from First Lutheran, '47; Depression, '47, '48, '49, President, '50; Interscholastic Leadership Council, President, '50; C Club, '49, '50; Disc and Diamond Society, '50; Captain in ROTC, '50.

● FAYE ROBINSON, "Lefty." Entered from East Lake Junior High, '48; Shove Offs, '48; Nite Owls, '48, '49, '50; Varsity Glee Club, '48, '49; Battalion, '48, '49, '50; Digest Staff, '48, '49, '50; Y-Teens, '48, '49, '50; Office Staff, Treasurer, '50; Vice-President of Sophomore Class, '48.

● TRAYLOR ROBINSON, "Alpha." Entered from Baylor, '49; Disc and Diamond Society, '49, '50; Sergeants Club, '49; Officers Club, '50; Honor Platoon, '50; PTA King, '50; Lieutenant in ROTC, '50; PTA King, '49.

● BRYAN ROSE, "Rascal." Entered from East Side Junior High, '47; Disc and Diamond Society, '48, '49, '50; Announcers Club, '47, '48, '49, '50; Grady Literary Society, '48, '49, '50; Senate Cabinet, '48, '49, '50; Sergeants Club, '49; Officers Club, '50.

● NICKIE ROTH. Entered from Brainerd Junior High, '47; Disc and Diamond Society, '49, Treasurer, '50; Officers Club, '50; Football Team, '48, '49, '50; Second Lieutenant in ROTC, '50.

● NANCY DEAN RUDD. Entered from Brainerd Junior High, '47; Varsity Glee Club, '48, '49, '50.

● ALMA LOIS RUNYAN. Entered from Lookout Junior High, '47.

● JAMES SADLER, "Jim." Entered from North Chattanooga Junior High, '48; Sergeants Club, '49, '50.

● BARBARA SAMMONS, "Sammy." Entered from East Lake Junior High, '48; Digest Staff, '50; Ushers, '50; Battalion, '49.

● DICK SANDERS, "Chiffa." Entered from Chattanooga Valley High, '47; C Club, '49, Secretary, '50; Football Team, '47, '48, '49, '50.

● DOROTHY SCHELKER, "Dot." Entered from East Side Junior High, '48; Spanish Club, '49; Bible Club, '50; Silhouettes Club, '50; Ushers, '50; National Honor Society, '50.

● ONEIDA SCRUGGS, "Nite." Entered from Hardy Junior High, '47; Trail Trotters, '47, '48, '49, Secretary, '50; ROTC Sponsor, '50.

● AMBROSE SECOR. Entered from Brainerd Junior High, '48.

● HOYT SEWELL. Entered from East Side Junior High, '44.

● SHIRLEY SEWELL. Entered from East Side Junior High, '47; Silhouette Club, '47, '48, '49, President, '50; Home Coming Queen, '50.

● GENE SEXTON. Entered from Brainerd Junior High, '48; C Club, '48, '49, '50; Secretary of Junior Class, '49; Football Team, '48, '49, '50; Basketball Team, '49; Alternate Captain, '50.

● VIRGINIA FAYE SHEPARD, "Horsey." Entered from East Lake Junior High, '48.

● JANE SHETTER, "Janie." Entered from Wilson Junior High, Tampa, Florida, '47; Ace Club, '47, '48, '49, '50; Ushers, '50; Interscholastic Leadership Council, '50; Basketball Team, '50.

● RONALD SHOEMAKE.

● ANITA SILAS, "Shortie." Entered from City High, '49; God-a-bout, '49; Treasurer, '50.

● LILY MAE SIMMONS. Entered from East Side Junior High, '47; Charm Club, '47; Y-Teens, '47, '48; Shove Offs, '47, '48.

● HELEN DELORES SIMS, "Red." Entered from Rockwood High, '48; Spinsters, '49, '50; Varsity Glee Club, '50.

● FRANCES SISK, "Frankie." Entered from East Side Junior High, '48; Spanish Club, '49.

● FRANK SITTON, "Frank." Entered from Signal Mountain Grammar; Junior Boys Hi-Y, Chaplain; Bible Club.

● GLORIA DEAN SLACK. Entered from North Chattanooga Junior High, '47; Girls Glee Club, '50; National Honor Society, '50; Girls Hi-Y, '49, '50; Ushers, '50; Orchestra, '47, '48, '49, '50; Junior Play Cast, '49; Senior Play Cast, '50; Spanish I Award for Excellence, '49.

● JOANNE SMARTT, "Jo." Entered from Brainerd Junior High, '47; Girls Hi-Y, '48, '49, '50; Gym Office Force, '48, '49, '50; Ace Club, '48, '49, '50; Shove Offs, '49, '50; Y-Teens, '48, '49, '50; Twisteens, '48, '49.

● DON SMITH, "Hool." Entered from East Side Junior High, '47.

● JO ANN STANSBERRY, "Josie." Entered from Brainerd Junior High, '48; Charm Club, '48; Library Staff, '50; Spinsters, '49, '50.

● FRANK STANTON. Entered from Atkins Porter School, Paris, Tennessee.

● MARILYN STARKE, "Vicky." Entered from Dupont High School, '47; Glee Club, '47, '48; Y-Teens, '47, '48, '49; Camera Club, '47, '48, '49, '50; Orchestra, '49, '50.

● JACK RONALD STEVENS. Entered from Dickinson Junior High, '47; Swing Band, '48, '49, '50; Disc and Diamond Society, '49, '50; Grady Literary Society, '49, '50; National Honor Society, '50.

● JAMES DONALD STEVENS, "Steve." Entered from Dickinson Junior High, '47; Grady Literary Society, '49, Treasurer, '50; Disc and Diamond Society, '49, '50; National Honor Society, '50.

● BARBARA ST. JOHN. Entered from East Lake Junior High, '48.

● ROBERT OTIS STONE, "R.O." Entered from East Side Junior High, '48; Varsity Glee Club, '48, '49, President, '50; Boys Hi-Y, '49; Chaplain, '50; Swing Band, '49, '50; Vice-President of Sophomore Class, '48; Vice-President of Junior Class, '49.

● CONRAD STOUT, "Connie." Entered from Isaac Litton High, Nashville, Tennessee, '49; MP Club, '49, '50; Rifle Team, '49, '50; Honor Platoon, '49, '50; Disc and Diamond Society, '49, '50; Sergeants Club, '49.

THE SENIORS

- CHARLES SULLY, "Buzzy." Entered from Brainerd Junior High, '48; Band, '48, '49.
- SAMMY SUTHERLAND, Entered from Central High, Shelbyville, Tennessee, '47; Rifle Team, '48, '49, '50.
- MARTHA SWANSON, "Battie." Entered from East Lake Junior High, '48; Y-Teens, '49, Spanish Club, '49.
- GRACE SWEARINGEN, "Meanness." Entered from Bachman Junior High, '47; Twisten Club, '47, '48; Varsity Glee Club, '47, '48, '49, '50.
- BILL F. TATE, Entered from Dickinson Junior High, '45; C Club, '48, '49, '50; Football Team, '45, '46, '47, '48, '49, Captain, '50.
- MARION LOUISE TATE, "Bug." Entered from Lookout Junior High, '47; Tumblers, '48; Badminton Club, '47; Ink Spots, '49; Twisten Club, '50.
- DELORYS JUNE TAWZER, "De De." Entered from East Side Junior High, '47; Bible Club, '47, '48, '49; Varsity Glee Club, '47, '48, '49; Purple and Gold Band, '48, '49.
- ELSIE TETERS, Entered from Dickinson Junior High, '48; Senate, '50; Sophomore Talent Program, '48; Silhouettes, '48, '49; Vice-President, '50; Girls Hi-Y, '48, '49; Secretary, '50; Junior Play Cast, '49; Battalion, '50; Varsity Glee Club, '48, '49; Social Chairman, '50; Inter school Leadership Council, '50; Ushers, '50; Office Force, '48, '49, '50; Digest Staff, '48, '49; Feature Editor, '50.
- BILLIE JANE THOMAS, "Ben." Entered from White Oak, '47; Badminton Club, '47, '48; Y-Teens, '47, '48; Trade and Industry Club, '49, '50.
- DON THOMAS, "Cotton." Entered from Brainerd Junior High, '48; MP Club, '48; Sergeants Club, '48.
- BILL THORNBURG, "Cornbread." Entered from Hardy Junior High, '48; Spanish Club, Sergeant-at-Arms, '49; Baseball Team, '48, '49, Captain, '50.
- PAGE THURSTON, JR., "Phineas." Entered from East Side Junior High, '47; Rifle Team, '47, '48, '49, '50; Honor Platoon, '48, '49, '50; Sergeants Club, '47, '48; Disc and Diamond Society, '49, '50; Art Club, '47, '48; Officers Club, '49, '50.
- WANDA LOUISE TREVENA, "Pud." Entered from Northside Junior High, '48; Girls Hi-Y, '49, '50; Varsity Glee Club, '49, '50; Spinsternettes, '50; Silhouettes, '49; Office Force, '50; Ushers, '50; Badminton Club, '48; Y-Teens, '48.
- LOY TUCKER, "Boots." Entered from East Side Junior High, '47; Varsity Glee Club, '49, '50; Sergeants Club, '49; Officers Club, '50.
- HENSON UNDERWOOD, "Son." Entered from Dickinson Junior High, '49; Major in ROTC, '50; Boys Hi-Y, '48, '49; Treasurer, '50; Bible Club, '48, '49; Treasurer, '50; Senate, '48, '49, '50; Honor Platoon, '48, '49, '50; Sergeants Club, Secretary-Treasurer, '49; Announcers Club, '48, '49, '50; Interschol Leadership Council, '50; Officers Club, '50; Firing Squad, '48, '49, '50.
- BETTY GENE VARNELL, Entered from Hardy Junior High, '47.
- BARBARA VARNER, "Babs." Entered from Brainerd Junior High, '48; Orchestra, '48, '49; Librarian, '50; Library Staff, '50; Band, '49; Spinsternettes Club, '49; Secretary, '50; Office Force, '50.
- MARY NELL VICARS, "Nellie." Entered from Marion County High, '47; Y-Teens, '50.
- MARY ELIZABETH VINCENT, "Blondie." Entered from Notre Dame High, '48; Y-Teens, '50; Band, '49, '50; Orchestra, '50; F.F.A., Vice-President; Y-Teens, Program Chairman, '50.
- MAGALENE VINES, "Maggie." Entered from Hardy Junior High, '48; Merry Macs, '48.
- JOHN WILLIAM WAGES, "Bill." Entered from Dickinson Junior High, '47; Grady Literary Society, '49, '50; Sergeants Club, '49; Disc and Diamond Society, '50; Junior Hi-Y, '47; Manager of Football Team, '47, '48; Freshman Basketball, '47; B Team Basketball, '48; Vice-President of Freshman Class, '47; Secretary of Sophomore Class, '48.
- MARY WAGES, "Murry." Entered from Dickinson Junior High, '47; Silhouette Club, Treasurer.
- VIRGILIE WALDRON, "Virgie." Entered from Dickinson Junior High, '48.
- EDWINA WALKER, "Eddie." Entered from Lookout Junior High, '48.
- ELISE WALKER, "Boots." Entered from Lookout Junior High, '48; Ace Club, '47, '48; Badminton Club, '47; Charm Club, '47, '48; Girls Glee Club, '48.
- NAOMI WALKER, "Dutchess." Entered from East Side Junior High, '48.
- EUGENE WALLACE, "Gene." Entered from Red Bank High, '48.

- MARGARET WATERHOUSE, "Peggie." Entered from Brainerd Junior High, '47; Twisten Club, '48; Shove Offs, '49, '50; Y-Teens, '48, '49, '50; Girls Basketball, '48, '49, '50.
- JEANNINE WATSON, "Jay-nine." Entered from North Chattanooga Junior High, '48; Ace Club, '48; Spinsternettes, '48; Battalion, '50; Sophomore Talent Program, '48; Badminton Club, '48; Bank and Bookstore Staff, '48, '49, President, '50; Volunteer Girls State, '48; Girls Hi-Y, '48, '49, President, '50; Vagabonds, '48, '49, Vice-President, '50; Latin Club, '48; Interschol Leadership Council, Treasurer, '50; Champion Staff, '50; Varsity Glee Club, '48, '49, '50; Hi-Y Council, '50; Regimental Staff, Sponsor, '50; Homecoming Queen Candidate, '50; National Honor Society, Vice-President, '50.
- JERRY WAYNE, Entered from Tyler High, '48; Disc and Diamond Society, '49, '50; MP Club, '48, '49, '50; Honor Platoon, '49, '50; Sergeants Club, '49; Officers Club, '50; Rifle Team, '49, '50.
- BETTY WEAVER, Entered from Brainerd Junior High, '47; Badminton Club, '48, '49; Library Staff, '48; Spanish Club, '48; Ace Club, '49, '50; Spinsternettes, '49, Vice-President, '50; Varsity Glee Club, '49, '50; Bible Club, '49.
- DOLORES ANN WESSEL, "Dodo." Entered from Tyler High, '48; Y-Teens, '48, '49, '50; Senate, '49, '50; Trail Trotters, '48; Swimming Club, '49; Ushers, '50; Battalion, '49, '50.
- PHYLLIS DIANE WHEELER, "Phyl." Entered from School No. 35, Indianapolis, Indiana, '47; Battalion, '49, '50; Silhouettes, '49; Interschol Leadership Council, '50; Library Club, '47, '48, '49; Y-Teens, '48, '49, Treasurer, '50; Future Teachers of America, '49, '50, President, '49; Cheerleader, '50; Regimental Sponsor, '50; Office Staff, '48, '49, '50; Digest Staff, '48, '49, Feature Editor, '50; CHAMPION Staff, '50; Shove Offs, '50; Trail Trotters, '48; National Honor Society, '50.
- A. SANFORD WHITE, Entered from East Side Junior High, '48; Sergeants Club, '48; Disc and Diamond Society, '48, '49; Officers Club, '49, '50; Honor Platoon, '48, '49; Varsity Glee Club, '49, '50; Rifle Team, '48, '49, '50.
- DAVID L. WHITE, "Pete." Entered from East Lake Junior High, '47; Band, '47, '48, '49, '50; Sergeants Club, '49, '50.
- SYLVIA WHITE, "Shorty." Entered from Lookout Junior High, '48; Ace Club, '48; Charm Club, '48; Y-Teens, '48; Battalion, '49; Basketball Team, '50.
- PAUL WHITEHEAD, Entered from East Side Junior High, '48; Sergeants Club, '49; Trade and Industry Club, '50; Swing Band, '48, '49, '50; Band, '48, '49, '50.
- CHARLES A. WILLIAMS, Entered from Brainerd Junior High, '48; MP Club, Secretary, '48; Disc and Diamond Society, '49; Officers Club, '50; Firing Squad, '49; Honor Platoon, '49.
- EVELYN WILLIAMS, "Evey." Entered from Summerville High, '48; Y-Teens, '48, '49, '50; Battalion, '49, '50.
- L. C. WILLIAMS, "Huck." Entered from Hardy Junior High, '47; "Digest" Staff, '48, '49; Boxing Team, '48, '49, '50.
- MARY WILLIAMS, Entered from West Side Grammar, '47; Girls Hi-Y, '47, '48, '49, '50; Ushers, '50.
- ROBERT WILLIAMSON, "Moon." Entered from Brainerd Junior High, '49.
- ANN WILLIS, "Annie Bly." Entered from East Lake Junior High, '48; Shove Offs, '48, '49; Camera Club, '49, '50.
- BILLY WILSON, "Willie." Entered from Hardy Junior High, '47.
- HAZEN W. WITT, Entered from Brainerd Junior High, '48; Football Team, '48, '49, '50.
- NORMA WOLFF, "Kitten." Entered from Hardy Junior High, '48; Shove Offs, '48, '49, President, '50; Battalion, '49, '50.
- DELORES WORLEY, "Dee." Entered from North Chattanooga Junior High, '48; Y-Teens, '48, '49, '50.
- PHYLLIS JOAN WORTZ, "Phil." Entered from Dickinson Junior High, '48; Bible Club, '48, '49, '50; Y-Teens, '48, '49, '50; Home Economics Club, '49, '50.
- RUSSELL DEAN WOY, "Rusty." Entered from Brainerd Junior High, '48; C Club, '49, '50; Interschol Leadership Council, Vice-President, '50; Camera Club, '50; Basketball Team, '48, '49, Captain, '50; Baseball Team, '48, '49, '50.
- BETTYE RUTH WRIGHT, "Betsy." Entered from Hardy Junior High, '48; Ink Spots Club, '48.



FIRST ROW:
Charles Sully
Sammy Sutherland
Martha Swanson
Grace Swearingen
Bill Tate
Marion Tate

SECOND ROW:
Delorys Tawzer
Elsie Teters
Don Thomas
Bill Thornburg
Page Thurston

THIRD ROW:
Wanda Trevena
Loy Tucker
Henson Underwood
Betty Varnell
Barbara Varner
Mary Vicars

FOURTH ROW:
Mary Vincent
Magaleene Vines
William Wages
Mary Wages
Virgie Waldron
Edwina Walker

FIFTH ROW:
Elise Walker
Naomi Walker
Eugene Wallace
Margaret Waterhouse
Jeannine Watson
Jerry Wayne

SIXTH ROW:
Betty Weaver
Dolores Wessel
Phyllis Wheeler
A. Sanford White
David White
Sylvia White

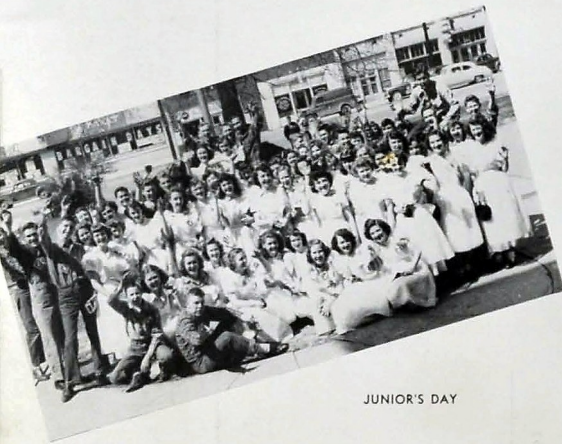
SEVENTH ROW:
Paul Whitehead
Charles Williams
Evelyn Williams
L. C. Williams
Mary Williams
Robert Williamson

EIGHTH ROW:
Ann Willis
Billy Wilson
Hazen Witt
Norma Wolff
Delores Worley
Phyllis Worts

NINTH ROW:
Russell Dean Woy
Betty Wright

NAMES OF SENIORS NOT PICTURED

Harlan Avakian	Fletchen Lee England	Bobby Lee Head	Joe Plemons
Thomas Bowen	Ivan Everett	Bettye Jean Houlk	Roddy Rankin
C. W. Burnette	Robert Lee Fansler	Myron Llewelyn Hughes	James Frank Shell
Richard Carver	William Jackson Farabee	William Edward Kirby	Robert Shull
James Lee Case, Jr.	John Gill	Paul McKinney	Anna Louise Smith
Mary Agnew Clark	Gilford Ray Griffith	Jack A. Meyer	John Kenneth Spain
Randall Leo Colvard	William Edward Hammer	Bobby L. Miller	Charles Alfred Thomas
Jesse Ervin Compton	Thomas Edward Harmon	Mary Lavada Mulkey	Frank Nelson White, Jr.
James Kenneth Crick	Charles Malcolm Harris	Alvin Overturf	John Miller Wilkins, Jr.
James Reuben Dean	Wayne Lowell Hawkins	Naomi Cobb Pemberton	Bobby Ray Wood



JUNIOR'S DAY



WHAT'S GOING ON?



MAY I HAVE YOUR AUTOGRAPH?



SOUTH AMERICAN STYLE



GROUP DISCUSSION



FUTURE SENIORS



SIGN HERE PLEASE



PRETTY PINAFORES



JUNIOR MAKEUP



THE JUNIOR BOYS

Herbert Abercrombie
Clyde Allen
Jerry Anderson
Wayne Andrews
Benny Atchley
Don Autry
Ted Baser
James Bishop
Howard Blain
Chester Blaylock
Willard Bledsoe
Jack Bookout
Troy Bowman
Richard Boyd
Billy Briggs
Arlan Brooks
Don Brooks
Eugene Burkhardt
Ronald Davidson
Jack Davis
James Davis
Charles Day
Ernest Deakins
Richard Dean
Gene DeMontreville
Larry Dobbins

Wright Childers
Bobby Clark
Paul Clark
Kenneth Coffey
Randall Colvard
Don Combs
Charles Cornahan
William Costello
Edward Coulter
James Coulter
Charles Crabtree
Ronald Creek
Calvin Crutchfield
Arnold Cupp
James Daniel
Phillip Darr
Thomas Daugherty
Ronald Davidson
Jack Davis
James Davis
Charles Day
Ernest Deakins
Richard Dean
Gene DeMontreville
Larry Dobbins

Thomas Downey
Lee Downe
Edward Dutto
Edwin Dye
Bobby Eaves
Carl Edmondson
Herbert Eller
Buddy Ellis
Bill Elise
Jimmy English
Alvin Follis
Dick Fowler
Joe Fox
Jimmy Fraley
Robert Franklin
Joseph Gais
Tommy Gibson
John Gilbert
Leland Goldston
John Guinn
Jimmy Hale
John Hale
Jack Hammel
Edwin Harris
Charles Harvey

Richard Harvey
Bob Headrick
Bill Hendrix
Leon Henry
Walter Hodges
Norman Hofferman
Charles Hope
Charles Holcombe
Bill Holder
Randall Hoodenpyl
Edward Hooks
Henry Hopson
Edward Hotalen
Kenneth Hughes
Clyde Hullander
Ray Humble
Billy Huskey
David Johnson
David Jones
Larry Jones
Allen Jordan
Robert Kelley
William Kellis
Robert Kewen
Ray Kernea

Jack Kimsey
John King
Frank Kittle
Bill Kountz
Dennis Lane
Pat Larkin
Ira Lee
Carl Leonard
William Roland Lewis
Robert Lively
Billy Love
Robert Luck
Wilburn McBryar
Ronald McClure
Ray McGuintz
James McDaniel
Jimmy McDaniels
Larry McGregor
Max McKenzie
Sammy McMurray
James McDowell
Franklin Mann
Bob Martin
Gene Masengale
Jimmy Matheny

Jimmy Meyer
Jimmy Miles
Hermion Miller
Stewart Moody
Shermon Morris
Gary Nash
Charles Nave
Jody Neal
James Page
Lamar Parker
Ernest Paris
Tommy Parix
Jack Parton
Bill Payne
Alton Peary
Carl Peckinpaugh
Joe Petty
Nathaniel Pitts
Thomas Poe
Thomas Prater
Frank Prestwood
Eddie Pruett
A. W. Radlein
Charles Riley
Basil Ratliff

Johnny Reed
Tommy Reed
Donald Rhea
Donald Rice
Lillard Rice
Eugene Richardson
Joe Richison
Charles Robinson
Jimmy Robinson
Doyle Roy
Jack Rush
Lebron Russell
Robert Russell
Bobby Salley
Dickie Salley
Jimmy Scoggins
Charles Shaw
Sucky Schumberger
Bill Shipley
David Shipley
Frank Simmons
Johnny Sims
Richard Slipper
George Smith
James Smith

Jimmy Smith
Joseph Smith
Wilburn Smith
Jimmy Sprick
Johnny Sprague
Ted Stavelly
Kenneth Stencil
John Stephens
Bob Stevens
Charles Strawn
Thomas Swearingen
Lebron Tanner
Earl Tatum
Joe D. Taylor
Joe W. Taylor
Bert Vance
Gene Vaughn
Wallace Varnell
Bill Wall
Sammy Welch
Kenneth Williams
Kenneth Williamson
Charles Wright
Wendell Wright

CHS Library



THE JUNIOR GIRLS

Barbara Adams
Cynthia Alexander
Lanoue Allen
Mary Allison
Jean Anderson
Mary Anderson
Robbie Aikman
Virginia Baggett
Gloria Baldwin
Betty Jo Ball
Margaret Barrios
Jo Ann Baumgartner
Ann Becker
Jean Beicher
Betty Bell
Tate Bell
Betty Bevil
Barbara Bishop
Patricia Black
Helen Blackmon
Doris Boenger
Robbie Bohannon
Barbara Boles
Willie Boyd
Robbie Bradley
Hazel Brainer
Betty Brainer
Louise Brines

Lena Bromlow
Marie Buchanan
Mary Jane Bull
Barbara Burnett
Patsy Caldwell
Sue Campbell
Peggy Carden
Martha Carlock
Betty Carter
Jeanette Castle
Peggy Chambers
June Chapman
Earline Chaucery
Diane Childress
Dorothy Childress
Ivonne Childwood
Alice Clingan
Frances Collins
Gradene Connor
Wanda Cooper
Peggy Cope
Virginia Cough
Jenae Cox
Laura Craig
Phila Crane
Robbie Crawford
Jean Crawford

Joann Crusselle
Ellie Cunningham
Wanda Sue Davis
Barbara Driscoll
Christine Duckett
Lucille Dunagan
Mary Jane Duncan
Betty Jane Eaves
Loretta Eddings
Mary Ellis
Ann England
Frances Farley
Marion Follente
Barbara Ford
Frances Forester
Mary Louise Forest
Anna Mae Foster
Betty Gamba
Kathleen Gandy
Nadene Gann
Joan Geier
Betty Gennoss
Pat Gibson
Myra Gaye Ginn
Betty Gossett

Delores Grayson
Gladys Green
Hazel Green
Pamella Griffith
Mary Hatley
Joyce Hagler
Juanita Hall
Betty Haney
Ann Harding
Malina Harmon
Gay Harris
Peggy Haskell
Barbara Haston
Nancy Hendrix
Betty Higgins
Gail Hill
Beula Hodges
Peggy Hodges
Rose Hudson
Betty Houston
Barbara Hughes
Nancy Huggins
Sara Hurt
Nina Huskey
Audrey Ingles
Doris Ireland
Betty Irwin
Betty Jackson

Betty Ruth Jackson
Jewell Jackson
Eloise Johnson
Heleen Jones
Daisy Jordan
Billie Joan Kelley
Peggy Kelley
Aileen Kilgore
Pauline Kilgore
Jimmie Knowles
Maxine Land
Betty Lawson
Wanda Lawton
Margaret Leffew
Emy Lenior
Ann Lerch
Nadine Locke
Peggy Lowry
Monna Lust
Katharine McKenzie
Jeanette McSpadden
Mary Maier
Stella Martin
Helen Matthews
Maxine Meloncon
Ann Meredith

Mary Meyer
Carolyn Milburn
Dorrie Miller
Masteline Miller
Nadine Miller
Peggy Miller
Eveline Millican
Janice Millican
Faye Mills
Frances Moore
Barbara Morgan
Patricia Murray
Jerry Nation
Bilkie Neyman
Barbara Norris
Marion Norris
Nancy O'Neal
Betty Lee Parks
Mary Patterson
Sylvia Payne
Betty Pearson
Mary Peoples
Carole Perkins
Carolyn Phillips
Phyllis Pinner
Sara Price

Nancy Purcell
Mary Ann Reed
Bobbie Reiter
Barbara Rice
Peggy Richards
Elizabeth Ritchie
Peggy Rogers
Kuby Rominger
Patricia Ross
Joyce Salmons
Barbara Sarvis
Betty Shall
Margaret Shirley
Vivian Slaughter
Sara Simmons
Carol Simpson
Mary Slatton
Barbara Smartt
Corona Smith
Doris Smith
Helen Smith
Joan Smith
Aline Snyder
Iris June Staley
Marion Stanfield
Louise Steele

Edna Sullivan
Mary Sullivan
Wilma Sullivan
Carrie Swearingen
Dorothy Sylvester
Marion Tate
Kathleen Tittle
Norma Tollet
Dorothy Vandover
Betty Varnell
Robbie Vick
Norma Vittoe
Shirley Waddie
Elise Wade
Betty Wallace
Lavern Wallace
Christine Wallen
Joyce Walby
Kims Ward
Bonnie Whitaker
Joan Whitmore
Ann Wiley
Wanda Witt
Mildred Woody
June Wooden
Dora Mae Wriable
Ida Mae York



THE SOPHOMORE BOYS

Fred Abiton
Dan Acosta
Jack Allison
Jack Arnold
Bill Ahearn
Woodrow Atherton
W. L. Back
Bob Bailey
David Bain
Bobby Ballaw
Alan Barker
Bobby Bearden
Edward Beene
Tommy Bennett
Billy Benson
Mack Bishop
Billy Black
Howard Blain
Leon Blackwell
Gary Blasingame
Bob Bowman
James Bowman
Jimmy Boyd
Bill Bradley
John Bradley
Herman Britton
Bill Brotherton

Harold Browner
Thomas Brumlow
Richard Buffington
Bobby Cagle
Don Cannon
Eugene Dickson
George Dixon
Allen Casey
Darrel Cafes
T. W. Caswood
Wright Childers
James Chisholm
T. L. Coker
Jessie Collier
Bill Colquhitt
Joe Conner
David Cook
Billy Coon
Wayne Cooper
Ray Copehart
Glenn Copeland
Jackie Corn
Ed Cornes
George Crawford
Ronald Creek
Pete Crownover
Clifford Curt
Truman Daugherty

Richard Dean
Ben Deenes
Henry Dickerson
Allen Dickson
Sydney Dickson
Eugene Dillard
George Dixon
Larry Dobbins
Sammy Dorsey
Ed Duckette
Charlie Dunn
Edward Dutto
J. C. Eaker
Wyatt Earg
Robert Elliott
Jimmy Euenhart
Ronald Farris
Rex Ford
Gene Fouts
Joe Fox
Jimmy Fraley
Joe Frank
Carter Franks
Jack Fryer
Frank Fuller
Eugene Galloway
Paul Gary
Roger Garner

Douglas Gay
Vick Genter
Charles Gentry
E. F. Glenn
Bobby Giles
Robert Gladden
Irvin Goggin
O. J. Gold
Bill Goodner
William Green
Warren Gray
Elmer Grath
John Hale
Bob Hall
Gene Hall
Ralph Handeman
Charles M. Harris
Charles N. Harris
Lester Hawkins
Harold Head
Tom Heaps
Jimmy Hill
Barney Holder
Herbert Holder
Harold Holland
Roland Howard
Kenneth Hudgins
Lawrence Hudson

Herbert Hughes
Carl Hyde
Frank Igou
Earl Jackson
Tommy Jatter
Nelson Jenkins
Wendell Johnson
Wendell Jones
Billy Knowles
Bobby Kile
Billy Krause
Lowery Lackey
Gary Lang
William Lankford
Reginald Latster
William Lillard
Raymond Ling
Ronnie Locke
Edwin Long
Pledger Longwith
Billy McBrayer
James McCallie
Jinicy McCarroll
Buddy McClure
Billy McCormick
Fred McDaniel
Larry McCreep
Paul McNabb

Charles McNutt
Jimmy Macker
Albert Mahoney
Hobart Manning
Dale Marson
DeWitt Miller
Glenn Moore
John Moore
Amos Morgan
Pruett Morrison
Wayne Maltrom
Charles Nave
Charles O'Rear
Gwen Owenby
Frank Parker
Johnny Padgett
Clarence Patterson
David Patton
Gordon Peters
Sam Pierce
Frank Plummer
Tom Poe
Larry Pope
Jack Pratt
Richard Quinn
David Raulston
Neil Reeves
Raymond Pendley

James Richardson
John Riley
Don Robinson
Cleveland Rogers
Joe Rogers
Fred Rummion
Howard Runyan
Jack Rush
Jimmy Samples
Don Sanland
Ed Schroyer
Charles Scoggins
Jackie Sherill
Johnny Shields
Pat Shipley
Harry Shoemaker
Billy Shull
Bobby Sively
Jimmy Sloan
Bob Smith
Charley Smith
Donald Smith
Elton Smith
Jackie Smith
Joe Allen Smith
Robert Stabley
Ted Stavey
Earl Shapp

Richard St. Clair
Robert Stephens
L. M. Springfield
Tom Stroud
Martin Stutz
Bobby Styles
Lonis Taylor
Ray Turner
Wayne Vandergriff
Gene Vaughn
Roy Veal
Clarence Waite
Richard Walker
Charles Wallen
Joe Weaver
Jackie Welch
Ralph White
Bud Williams
Earl Williams
George Williams
Jimmy Williams
Hewell Wind
Paul Winfrey
Richard Witt
Howard Woller
Alan Wooten
Jack Worley

CHS Library



THE SOPHOMORE GIRLS

Nancy Arzenbright
Jack Arnold
Barbara Ann
Jean Baggett
Barbara Bayer
Betty Ballitt
Virginia Barlowe
Betty Barlow
Ann Barrows
Betty Baskette
Magell Beard
Jean Belcher
Barbara Bell
Barbara Bellhorne
Carol Batts
Vivian Biddy
Barbara Bill
Wanda Bishop
Mary Evelyn Black
Donna Faye Blessing
Betty Bowling
Louise Boyd
Bobbie Bradley
Ann Bramlett
Gratchen Britton
Barbara Brock
Martha Brown
Loretta Bryant
Jean Burroughs
Joan Calkins
Ella Caldwell
Peggy Campbell
Doris Carroll

Dorothy Carwright
Iris Castleberry
Martha Castleberry
Mary Katherine Carlton
Barbara Casey
Doris Castle
Betty Cline
Hattie Cavin
Norell Chambers
Jo Ann Chase
Frances Chastain
Betty Cline
Pat Coleman
Sarah Collins
Betty Compton
Billie Jane Cook
Wanda Cooper
Peggy Coss
Mary Ann Craft
Carolyn Cunningham
Helen Daniel
Peggy Daniel
Mary Dean
Patsy Degett
Delores Desha
Leona Dobbins
Mary Dobbins
Judy Donaghy
Lucille Dugan
Barbara Duffon
Oral Edmonds
Barbara Estes
Norma Evans

Patsy Evans
Mary Alice Fletcher
Emily Fortson
Betty Jean Foster
Betty Fraley
Jo Ann Frank
Kay Fry
Peggy Fuller
Gerry Funderling
Joan Gier
Jo Gilliland
Marjorie Gray
Charlotte Goodner
Patsy Gosselt
Peggy Gosselt
Patsy Gosselt
Patsy Gosselt
Beverly Grayson
Charlotte Hasker
Martha Hall
Shirley Hall
Sue Marie Hampton
Delores Harp
Emily Harris
Annie Ruth Hartley
O'Dell Hartline
Caroline Hatch
Georgia Hatley
Barbara Lake
Jeanette Hilliard
Arlene Hills
Mary Hixon
PAT Holdam
Joyce Hulley

Barbara Hudson
Marjorie Hullett
Evelyn Huxley
Frank Igou
Virginia Jo Ingle
Sue Ingram
Barbara Ireland
Anita Irwin
Mellie James
Joan Joyner
Margaret Jarrel
Clare Johnson
Barbara Jones
Carolyn Jones
Charlene Jones
Dorothy Jones
Marie Jordan
Bobbie Joyner
Carolyn Keith
Jo Ann Kelley
Nancy Kelley
Mary Arlene Kellie
Doris Kendall
Mary Katherine Kennedy
Louise King
Robbie Kulewicz
Dorrie Kuley
Barbara Lake
Bessie Lawstreth
Virginia Lawson
Lorne Lawton
Betty Larch
Linda Leslie

Delores Lewis
Sue Ann Link
Edna Lively
Annalya Loyd
Thelma Lumpkin
Katherine McArthur
Mable McGary
Joyce McDonald
Martha McDowell
Patsy McDowell
Martha McKaig
Lynette McKeehan
Martha McKown
Winifred McLaughlin
Patsy McNeal
Carrie McPherson
Marian McWilliams
Helen Martin
Pat May
Jeanette Meador
Dorrie Miller
Vanda Miller
Payette Mills
Jo Ann Milton
Glenna Mitchell
Genessa Monday
Doris Morgan
Barbara Morris
Mary Don Morrison
Jesse Napier
Leona Nason
Betty Harris
Louise Nicholson

Betty O'Neal
Rosalene Padgett
Joy Panken
Anna Parker
Charlotte Parker
Mary Parker
Billette Passman
Billie Ruth Payne
Mary Alice Payne
Betty Pearson
Inogene Padigo
Gloria Peters
Mary Ann Pickett
Alice Plachter
Bernice Pitts
Mary Poe
Nancy Powers
Barbara Prichard
Margaret Priddy
Janina Rinchard
Jo Ann Proctor
Connie Ramsey
Peggy Randolph
Barbara Reed
Betty Jo Reind
Katherine Reno
Dorothy Rich
Betty Ring
Lillian Ritchie
Bobbie Rogers
Nancy Rogers
Jo Ann Rockhall
Catharine Ruhlman

Jean Runyan
Betty Rush
Lois Saxton
Juanita Scott
Peggy Sells
Sue Sewell
Jean Shadrick
Pauline Shaw
Ruth Shelton
Lourine Shipley
Carol Sheemaker
Christine Simmons
Juanita Simon
Mildred Sifton
Nancy Stinger
Minnie Lee Stokes
Christine Smith
Edith Smith
Florence Smith
Ganavey Smith
Jo Ann Smith
Jimmie Lee Smith
Julia Smith
Margaret Smith
Barbara Seed
Betty Jo Seind
Norma Sparks
Ann Spaulding
Evelyn Springfield
Evelyn Stafford
Charlotte Stalley
Vance Starr
Yvonne Stone
Peggy Sullivan

Lucille Sully
Patsy Taber
Mina Tallant
Jeanette Tate
Wilma Taylor
Carolyn Thomas
Charlotte Thomas
Kay Thomas
Charlotte Thompson
Grace Thompson
Peggy Thorneberry
Jean Thurnworth
Mary Alice Underwood
Carolyn Upton
Grace Walter
Katharine Wamack
Dottie Wakehouse
Jean Watkins
Shirley Wear
Barbara Welch
Jo Ann Welch
Dorothy Wessal
Pat Westbrook
Geraldine Whaley
Betty Jo Whitline
Ray Lou Whitolt
Gail Whitolt
Pat Williams
Martha Womack
Rhyne Wood
Joyce Woyles
Margaret York
Katherine Young
Virginia Zott



THE FRESHMAN BOYS

Raymond Alexander
E. B. Alloway
Raymond Allright
Jerry Arnold
Don Ashby
Herbert Baggett
Bill Bankston
Hershel Bankston
Winston Barber
E. B. Barrett
David Barrows
Nicky Bell
Jack Bibey
Bobby Black
Billy Blacklock
William Breneman
Paul Brakebill
Charles Brock
Donald Brock

Hoyt Brooks
Robert Browner
Willard Camp
Jimmy Caldwell
Bill Carter
Buddy Castleberry
Morton Center
Jimmy Cheston
Bobby Cobb
Eddie Cobb
Daryl Crawford
Ralph Creswell
Paul Crownover
John Day
Jerry Dickson
Richard Downey
Jimmy Drinnon
Charles Brock
Donald Brock

Bill Elliott
Don Erwin
Loyd Etzell
Gene Farley
Harold Finch
Lamar Flinn
Charles Gaston
Billy Hale
Jack Harmon
Herbert Harvey
Eugene Hatalen
Grady Haven
Herman Hawkins
Robert Holton
Donald Hickey
Billy Hodge
Kenneth Holloway
Richard Hooper
Sammy Hutson
Tommy Jett

Charles Johnson
Bobby Johnston
Henry Jones
William Jones
Edward Kadings
Gilbert Kelley
Robert Kelley
Bobby Kendall
Charles Lamo
Jerry Lane
Charles Lappen
Bill Lawrence
Wallace Long
Bill McArthur
Bill McCann
Carl McDade
Jerry McKenzie
Wayne McMurray
Don Martin
Jack Mason

Paul Mavly
Larry Mayfield
Clifford Meyer
Edgar Meyer
Bill Morgan
Ross Morgan
Walter Mooney
Bill Newson
John Odone
Joey Oliver
Sammie Owen
Jimmy Ownbey
Jimmy Pack
Tommy Parker
John Parks
Ed Perkey
Jerry Perry
Jack Rawlings
Billy Ridge
Charles Riley

Don Roberts
Wayne Roberts
Don Robinson
John Rogers
Tommy Russell
Avery Senters
Jimmy Sewell
Johnny Sewell
Milton Slotton
Billy Smith
Paul Smith
Robert Smith
Sammie Smith
Melbourne Sneed
Billy Spencer
Gene Stanfield
Fred Sullivan
Don Thaxton
Freddie Throneberry

Tommy Tillman
Charles Tinnon
John Tribble
Benjamin Trotter
William Usher
Jimmy Vaughn
Don Wade
Richard Walker
Delbert Watkins
R. M. West
Bernard Wheeler
Tommy Wilkins
Mason Williams
Walter Williams
Tommy Withrow
Hugh Wooden
Harold Woffard
Billy Wright
Jack York

CHS Library



THE FRESHMAN GIRLS

Pat Harris
Virginia Harris
Rena Hambricht
Loretta Hawkins
Audrey Heartly
Wanda Hanley
Aquila Higgins
Marjorie Hirschcock
Kay Hoffmeyer
Shirley Holmes
Doris Houk
Betty Housley
Ann Houston
Wanda Howard
Carolyn Hullett
Jane Hyre
Barbara Ingram
Sue Irvin
Joyce Johnson
Ernestine Jones
Lorene Kaeble

Hazel Keen
Pat Kelly
Corita Kendrick
Frances Kennedy
Rebecca Kile
Rabonne Lang
Anne Langley
Wilma Lawson
Geraldine Lee
Sue Lerch
Shirley Lewis
Peggy Looney
Barbara Lowe
Betty McClanahan
Alice McGraw
Jeanette McDonald
Shirley McElhany
Joyce McGregor
Barbara Mabey
Violet Maddox
Charlotte Matthews

Bobbie Marvery
Barbara Meadows
Jean Meyers
Alyne Miller
Jane Morris
Jeanette Mullis
Juanita Nave
Jackie Noles
Joan Adamson
Ruby Argo
Pat Armstrong
Jo Ann Austin
Barbara Avans
Peggy Aymacher
Lois Bailey
Mava Barker
Bertha Bell
Ivory Bishop
Beverly Bland
Dolores Branham
Mary Brendley

Irene Brown
Nadine Brown
Hilda Brumley
Bobbie Burnett
Lucille Burnette
Virginia Caldwell
Jo Ann Calquitt
Jo Anne Calwell
Starr Canfield
Catherine Capaheart
Ala Fay Cavitt
Barbara Jean Clark
Sally Cooke
Margaret Cooper
Mary Cooper
Betty Copenhaver
Marlene Coulter
Carolyn Davidson
Helen Davis
Lily Dean
Bobbie Ann Dodd

Diane Dulton
Betty Elliott
Connie Emery
Beverly Evans
Andine Evertson
Barbara Fike
Jean Gilreath
Mary Gilreath
Nina Gravitt
Faye Green
Juanita Green
Virginia Greeson
Dot Griffith
Marie Griffith
Betty Ruth Gross
Joan Hadaway
Helen Pickett
Mary Poff
Sara Price
Jo Pryetup
Mary Rapier

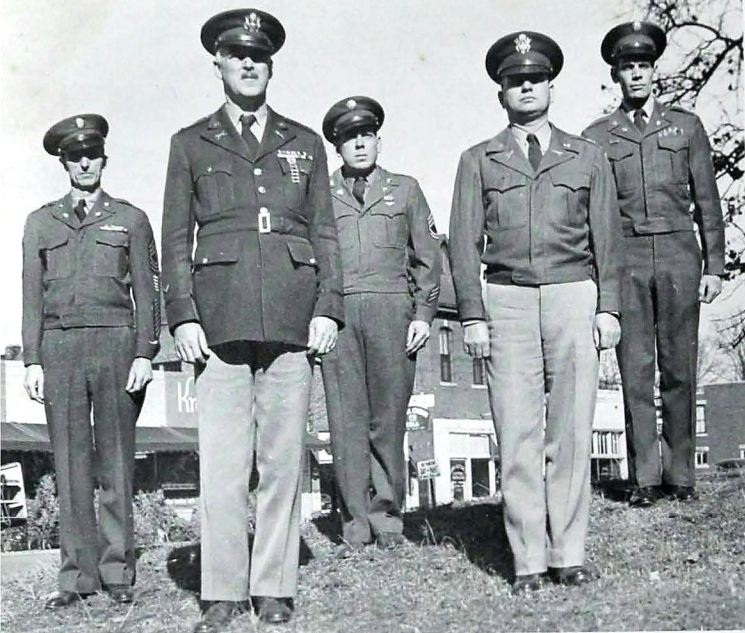
Marilyn Rice
Sally Ridge
Peggy Ross
Betty Sausing
Peggy Shipley
Marilyn Shriggs
Mildred Simons
Dolores Smith
Earleen Smith
Bobby Jo Spaulding
Wilma Stallings
Pat Strickland
Rabe Suggs
June Sullivan
Jane Sweeney
Jane Teague
Barbara Thompson
Josephine Thompson
Hazel Thrasher
Deloris Thurman
Sara Trail

Jo Ann Traw
Joan Underwood
Nancy Underwood
Helen Vanzant
Ira Vines
Pat Wagner
Jo Ann Walker
Norma Walker
Shirley Wall
Lorayne Woy
Rosie Weller
Barbara White
Jo Ann Williams
Marjorie Williamson
Jean Wilson
Dot Wood
Norma Woodell
Gloria Woody
Bettye Wooten
Margaret Wunderlich
Betty Young



Military





MILITARY OFFICERS

COLONEL HENRY O. SWINDLER

Central has been honored this year with the presence of one of the outstanding educators in the military field, Colonel Henry O. Swindler, as P.M.S. and T. of Chattanooga high schools.

Commissioned from the first officers training camp, Fort Sheridan, Illinois, August 15, 1917, Colonel Swindler served throughout the first world war with the Sixty-first Infantry, Fifth Division, at St. Mihiel, Meuse-Argonne, in the defensive sector, where he was wounded in action. After the armistice he served with the army of occupation in Germany until 1921, when he was transferred to the Twenty-seventh Infantry at Fort Benning, Georgia, where he graduated from infantry school in 1926. Later he went to Fort Moultrie, South Carolina, with the Eighth Infantry, and from there to Washington, D. C., where he served as executive officer of the historical section at the Army War College.

From 1935 until 1945 Colonel Swindler served on the American Battle Monument Commission, aiding General John J. Pershing in the preparation of twenty-nine historical works.

Ordered to occupied Japan in 1946, while a member of Historical Section, War Department Special Staff, Colonel Swindler served in charge of Historical Section, Far East Command until 1947. During the years 1948-49 he acted as President of War Crimes Commission, Eighth Army, and Troop Information and Education Officer, Eighth Army.

The Chattanooga high schools should be proud to be associated with this outstanding officer.

MAJOR GEORGE A. BONE

Never in the history of the R.O.T.C. at Central has there been an officer who has taken a greater interest in the varied activities of the school or identified himself more completely with the school life than has Major George A. Bone who is now in his second year of service as P.M.S. & T. at Central.

Major Bone, who graduated from Western Kentucky in 1924, entered the service in 1928 as an enlisted man. In 1941, with the World War II, he was called to active service and commissioned as a second lieutenant.

Prior to his coming to Central in the fall of 1948, Major Bone was on occupation duty in Hokkaido, Japan, where he and his family lived for three years.

As teacher and leader Major Bone has been outstanding and is greatly admired by both students and faculty. The trustworthiness and loyalty which he is able to instill into R.O.T.C. men are but a few of the fine qualities found in this "Builder of Men."

SERGEANT LEONARD H. HOGELAND

This year Master Sergeant Leonard H. Hogeland is the old timer on the Central High School R.O.T.C. instructional staff. Since August 24, 1947, Sergeant Hogeland has handled superbly the job of supply sergeant for approximately five hundred cadets each year.

Hailing from Anniston, Alabama, he entered the regular army March 10, 1923, and served in the Pacific theater, December 16, 1943 to April 2, 1947, with the Military Police Corps. Previous to his coming to Central, Sergeant Hogeland served with the guided missile and V2 rocket project in New Mexico.

We sincerely hope that Sergeant Hogeland will remain at Central for many years to come and will continue his excellent service in the R.O.T.C. unit.

SERGEANT VERNON BASS

A newcomer to our midst, Sergeant Bass has quickly shown that he is a very capable instructor.

A graduate of Central High of Charlotte, North Carolina, Sergeant Bass entered the Army in 1942. He served throughout the European Theater with the First and Seventh Armored Divisions. With the Ninth Infantry, in connection with the Second British Infantry, Sergeant Bass fought in the Battle of the Bulge and the Roer River.

With this background of rich experience, he is well fitted for the instruction of new cadets.

SERGEANT I/C ALVIN B. PERRY

Another addition to the Central High School R.O.T.C. Staff this year is Sergeant Alvin Perry. A home town boy, Sergeant Perry graduated from Lakeview High School. Entering the Army in 1939, he has served in foreign lands around the world. He was with the Seventeenth Airborne in Germany, the Eighty-second Coast Artillery in Panama, and the Twenty-fifth Infantry in Japan. "Gismo," as he is affectionately known to the boys, was an immediate hit upon his arrival at Central. Our military unit has been greatly enriched by his genial personality.

SERGEANT ALVA R. EASTERLING

Joining the P.M.S. and T. staff January, 1950, Sergeant Alva R. Easterling soon became a valuable addition to the R.O.T.C. corps of instructors. Born in Bowman, South Carolina, Sergeant Easterling attended Bowman High School until his entrance into the Army in 1941. He has served in all corners of the world, Nova Scotia, Iceland, The British Isles, France, Luxembourg, Germany, Guam, and Japan. Previous to his coming to Central, Sergeant Easterling served at Fort Sill and Fort Jackson, training troops for combat.



REGIMENTAL STAFF

Colonel
Lt. Colonel
Major S-1
Major S-2
Major S-3

LOREN HART
PAUL FULLER
JAMES LOWE
DON PREY
HENSON UNDERWOOD
Public Relations' NCO

Major S-4
First Lieutenant
First Lieutenant
First Lieutenant Public Relations Officer
Sergeant Major
JOE D. TAYLOR

DON NORRIS
WILLIAM BONINE
THOMAS HUEY
RICHARD LEEPER
EARL TATUM

AND STAFF . . .



FIRST BATTALION STAFF

Lt. Colonel
Major
Captain
First Lieutenant
First Lieutenant
First Lieutenant
First Lieutenant
Sergeant Major

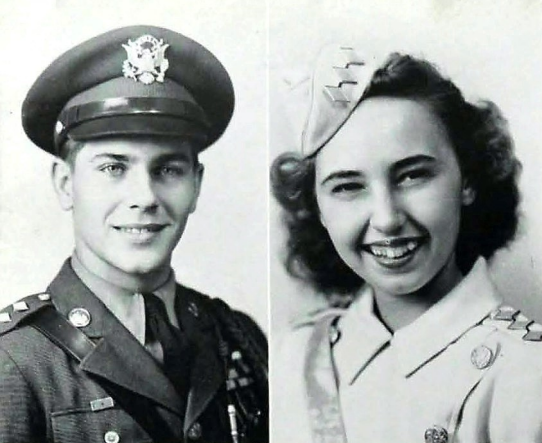
RALPH ALLISON
JOHNNY BACK
GLENN JONES
BOBBY RHODES
CHARLES ARMSTRONG
RONALD STEVENS
DONALD STEVENS
JACK BOOKOUT

SECOND BATTALION STAFF

Lt. Colonel
Major
Captain
First Lieutenant
First Lieutenant
First Lieutenant
Sergeant Major

JOHN ALEXANDER
NICKY BOWMAN
JACK McDOWELL
JOHNNY WILKINS
LARRY PATRICK
BRYAN ROSE
NATHANIEL PITTS





COL. LOREN HART

PHYLLIS WHEELER



LT. COL. PAUL FULLER

JEANNINE WATSON



LT. COL. RALPH ALLISON

BETTY BRIDGES



LT. COL. JOHN ALEXANDER

HULENE HUFF

CHS Library



MAJ. JAMES LOWE

FRANCIS MOUMBLO



MAJ. DONALD PREY

ALFRIEDA JOYCE



MAJ. HENSON
UNDERWOOD

WANDA PRYSTUP



MAJ. DON NORRIS

EVALYNN ANDERSON



MAJ. JOHNNY BACK

ELLEN PAUL



MAJ. NICKY BOWMAN

JO ANN HELTON

MILITARY OFFICERS AND SPONSORS



CAPT. JIM ALLISON

CAROLE GUTHERIE



MARLENE MARTIN

CAPT. BILL McKENZIE



CAPT. RALPH MILLER

DIANE HAYNES



CAPT. DICK ROBINSON

MARGARET BRATTON



CAPT. JERRY HUBBARD

DOT SCHELKER

CAPT. BILL RAMSEY ONEIDA SCRUGGS CAPT. GLENN JONES MILDRED McELHANEY



CAPT. JACK McDOWELL BARBARA MAYO



CAPT. CLYDE CHAUNCEY JEAN BROADWAY





MILITARY

COMPANY A

Captain JIM ALLISON
 First Lieutenant LOY TUCKER
 Second Lieutenant LYMAN BOLEMAN
 Second Lieutenant CHARLES WILLIAMS
 Second Lieutenant NICKEY ROTH
 First Sergeant JOE W. TAYLOR



COMPANY B

Captain BILL MCKENZIE
 First Lieutenant PAGE THURSTON
 Second Lieutenant RONALD SHOEMAKE
 Second Lieutenant PAUL DAVIS
 Second Lieutenant GENE MASON
 First Sergeant JAMES COULTER



COMPANY C

Captain RALPH MILLER
 First Lieutenant KENNETH BARTON
 Second Lieutenant JAMES CRAWFORD
 Second Lieutenant GRADY MASSINGILL
 Second Lieutenant DOUGLAS PAYNE
 First Sergeant BUCKY SHAMBURGER



TRAINING

COMPANY E

Captain DICK ROBINSON
 First Lieutenant ALTON BYARS
 Second Lieutenant BILL WAGES
 Second Lieutenant PAUL MCKINNEY
 Second Lieutenant TOM EAVES
 First Sergeant GENE MASSENGALE



COMPANY F

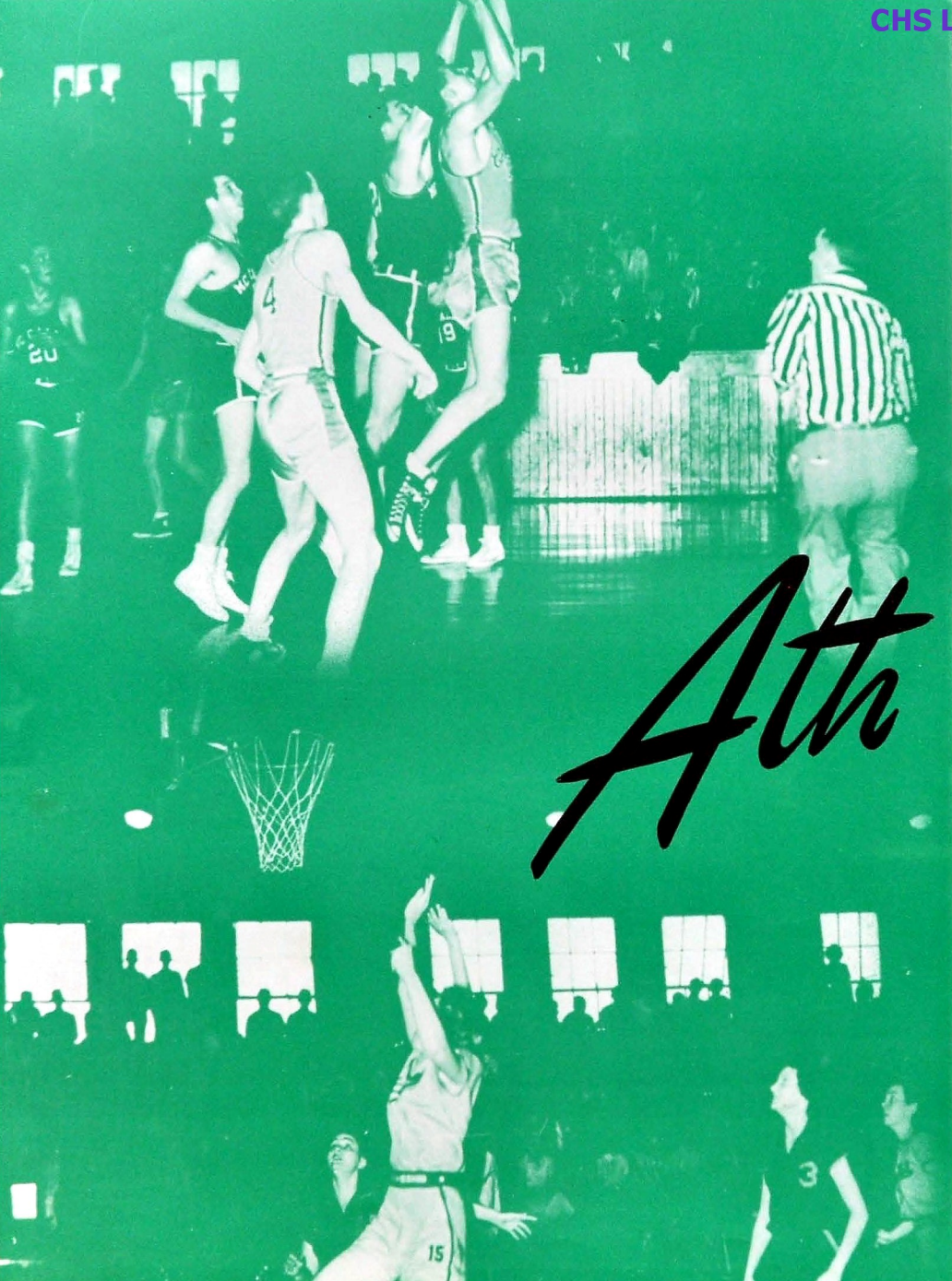
Captain JERRY HUBBARD
 First Lieutenant SANFORD WHITE
 Second Lieutenant LeROY HOBBS
 Second Lieutenant EUGENE BUFFINGTON
 Second Lieutenant DICK LUSK
 First Sergeant ALLAN JORDAN



COMPANY G

Captain BILL RAMSEY
 First Lieutenant SAMMY SOUTHERLAND
 Second Lieutenant RALPH FICKLE
 Second Lieutenant LaVERNE DEDMON
 Second Lieutenant TRAYLOR ROBINSON
 First Sergeant JIMMY MATHENEY





Atth



letics

COACHES

E. B. (RED) ETTER

Central climaxed another successful season on the gridiron under the direction of Coach Red Etter. He assumed duties eight years ago as head coach and has continuously turned out excellent teams.

An alumnus of Central of the class of 1930, Coach Etter received his B.A. degree at the University of Chattanooga. Part of his coaching experience was acquired at Morgan School, Petersburg, Tennessee, and at Hendersonville, North Carolina, where he remained until 1936. Prior to his coming to Central he coached at Brainerd Junior High School, where he produced fine track and basketball teams.

During his years at Central, Coach Etter has proved his sincere interest, knowledge, and skill in football. His enthusiastic spirit in all athletic activities and his friendly personality make him greatly admired by both the faculty and the student body.



COACHES

E. B. Etter, Stanley Farmer, James L. Newton, J. M. Seaton

STANLEY FARMER

Coach Stanley Farmer, the latest addition to Central's coaching staff, came to Central from City High School.

Coach Farmer graduated from Chattanooga High in 1933, where he was an All City center on their football team for three years. In his senior year he was elected to the All-Southern team. At Emory and Henry College in Virginia he received his B.S. with a major in Social Science. Later, he received his M.A. degree from Columbia University. He coached at Chattanooga High before entering the service. Upon his release from the service the Board of Education added him to Central's coaching staff.

His understanding manner and his pleasing personality have made him a popular member of the Central Athletic Department.

JAMES L. NEWTON

One of the finest line coaches Central has ever had is J. L. Newton. Coach Newton likes good, hard, rough, clean football and is largely responsible for whipping into shape the mighty Central line.

A graduate from Carson-Newman in 1930, Coach Newton was principal at Falling-Water Grammar School before coming to Central. As a teacher of General Science he is popular with the students.

Coach Newton's keen sense of humor and enthusiasm for the game make him well liked by the football team.

J. M. SEATON

The "B" team, under the direction of "Boots" Seaton, ended another successful season.

A graduate from East Tennessee State Teachers College in 1934, Mr. Seaton went to Soddy-Daisy where he served as assistant basketball and football coach. In 1942, he joined the Du Pont Company as a member of the personnel department. He came to Central in the fall of 1945 as an instructor in the industrial arts department.

Mr. Seaton's job is to develop into future stars the varsity freshmen and sophomores who want to play football.

1949 SEASON

CENTRAL, 46; TYNER, 7

September 9

Central opened their 1949 season with a blockbuster by romping over Tyner 46-7. The Pounders at last got into action after weeks of strenuous training under the direction of capable Coaches E. B. "Red" Etter, Stanley Farmer, "Boots" Seaton, and "Les" Newton.

Much credit goes to ex-Tynerite, Calvin Henley, who figured in three fallies by gaining 54 yards on his lightning junks.

Leon Henry scored two touchdowns in the first period—

the first a 22 yard run on a pitch out, the other on a 5 yard spurt around the end.

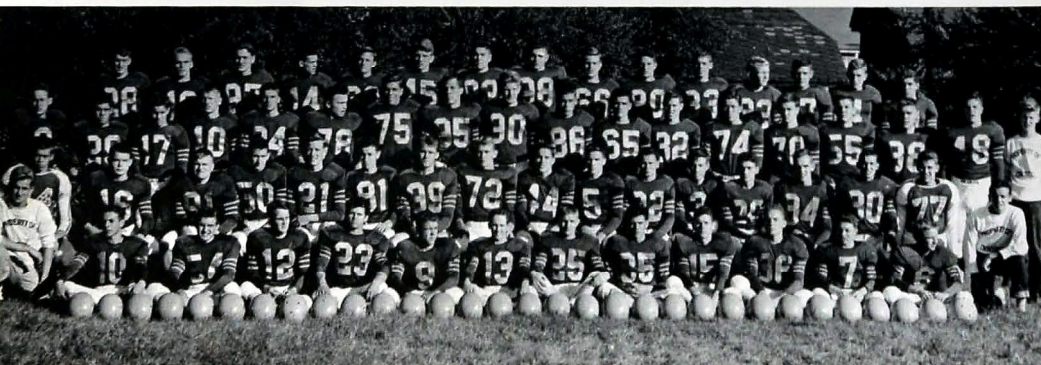
Captain Bill Tate, shared in the flurry by racing 50 yards on a well executed end around. Halfback Jim Allison, Jim Matheny, Tommy Tillman, and Rock Browner scored the others.

Jim Matheny booted 4 out of 6 extra points.

Ends, Tate and Sexton; guards, Sanders and Jones, and tackles, McKenzie and Wilkins were particularly impressive.

FOOTBALL SQUAD

First Row, left to right: F. Parker, Mgr., Robinson, English, McDaris, Sanders, Grownover, Henley, Matheny, Williams, R. Miller, Bowman, Roth, Hale. Second Row: Long, Fuller, Fryar, Henry, R. Allison, Hoffmann, Gilt, B. Tate (C.), H. Miller, Tillman, Black, Breneman, Espy, Neal, Vandenberg, M. Parker (Mgr.). Third Row: Johnson, Jones, Maroon, J. Allison, Shamburger, Wilt, Sexton, Wilkins, Newsum, Ling, Pruitt, Pack, Thomas, Jones, Childers, McKenzie, D. Salley, Coulter (Mgr.). Fourth Row: Epperson, Lackey, McBryar, Hudgins, Creswell, Rush, Masengill, Stapp, Lankford, B. Salley, Fickle, Richardson, Bishop, Lawrence, Parson.



Henry scores T.D. against City

CHS Library FOOTBALL



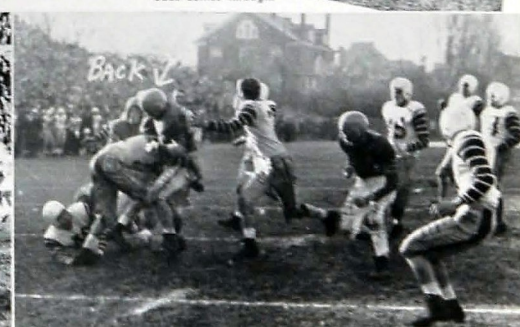
Allison carries for long gain



It's Henry again.

Back comes through.

Jim Allison breaks through to score





BILL TATE



JOHNNY BACK



BILL MCKENZIE



GENE SEXTON



JIM ALLISON



DICK SANDERS



RALPH MILLER



JODY NEAL



JOHN WILKENS



JOHN GILL



HARRY ESPY



RALPH FICKLE

CENTRAL, 7; YOUNG, 14

September 17

Young High, the number three team of the state, invaded the Purples' lair and emerged victorious after a hard fought battle with a score of 14-7.

Looking every bit the way a B. McCoy should, Bill McCoy, Young's full-back went 16 yards in five tries at the line. He went over from the 3 yard line in his last attempt. In the second period Johnny Back and John Gill, teaming with fleet-footed Leon Henry, went to the twelve under a determined line of McKenzie, Wilkins, Salley, Sanders, Fuller, Tate and Sexton.

Early in the third quarter Balbo skirted left end for another Jacket score, making it 14-0.

Shamburger caught Gill in the open for a pass play which carried him 34 yards and a tally. Jim Matheny's placement was good.

Central lost the ball a few plays after gaining it in the fourth period, but held the Jackets almost to a standstill.



RALPH ALLISON



PAUL FULLER



JIM MATHENY

DICKY ROBINSON



ALFRED THOMAS



NICKEY BOWMAN



NICKY ROTH



BUCK SHAMBURGER



LEON HENRY



NORMAN HOFFERMAN



BOBBY SALLEY

CENTRAL, 2; KINGSPORT, 20

September 23

Central made a gallant fight before yielding three touchdowns in the second half and bowing to the Tennessee Champs, the Kingsport Indians, 20-2.

A puzzling defense kept Kingsport bottled up during the first half while the Pounders slipped into a 2-0 lead when Julian King, Kingsport half-back, was downed in the end zone after intercepting a Central pass.

R. Duncan accounted for two of the Indians' tallies—one from a pass by King, the other scooting around end for 13 yards. King scored one from the Central 3 yard stripe.

Captain Bill Tate was as usual breaking up the opponents' play-ground. Henry and Gill along with Johnny Back did the dirty work for the Pounders. Ralph Allison and Bill McKenzie held up the forward wall assisted by able Johnny Wilkins, Dick Sanders, Nickey Bowman, Bobby Salley, and Bill Tate.

CENTRAL, 6; RED BANK, 0

October 1

With four minutes, thirty-two seconds remaining in the game, Central pounded out a late touchdown to shade the traditional Red Bank rivals 6-0.

The Purples opened the touchdown gates for swift Johnny Back from seven yards out. Two out of three completed passes of a 73 yard drive moved them to the seven yard stripe.

Until the last quarter the Lions' wall gave no quarter. Both teams played stubborn ball, neither yielding to the other. Offensive set-backs seemed to slow the proceedings.

Those who composed the Purples' impenetrable wall were ends, Sexton and Tate; guards, Sanders and Jones; center, B. Salley and tackles, McKenzie and Wilkins.

Jim Allison and "Joggin" Jody Neal teamed with punt-returning Calvin Henley and Jim Matheny in sparking Central's ground attack.

Red Bank's defense was excellent and their offense was always on the move with Potter's passing and running ever furnishing a threat.

CENTRAL, 51; OAK RIDGE, 13

October 7

With Jim Allison doing a lion's share, the Pounders romped over the Oak Ridge Wildcats, 51-13.

Central trailed only one time; this was in the first quarter. The Pounders gained more than 400 yards on the ground.

Gainers were Bucky Shamburger, Jody Neal, Johnny Back, Ralph Allison, Calvin Henley, Leon Henry, John Gill, Jim Matheny, and Jim Allison.

Jim Allison, playing his best game of the season, scored three times. Other touchdowns were made by Hoffermand, Gill, Henry, Matheny, and Shamburger.

Captain Bill Tate and Gene Sexton covered their flank slots in a veteran manner while McKenzie, and Richardson showed up well at tackle. Guards were Dick Sanders, Nickey Bowman, Henry Jones and Epperson. Salley and Miller played their usual superb game at center.

CENTRAL, 18; MIAMI, 19

October 14

Stanley Mark's successful placement provided the victory margin as the Miami Stingarees eked out a 19-18 victory over the Purple Pounders.

Fleetfooted Leon Henry scored from the 3 yard line after a long drive of 70 yards. Galloping Jim Allison crossed the twin stripes just three formations after the second period started.

L. D. Brison hit right tackle to score for the Miamians; Marks went over from the 7 yard line in the second period and converted the extra point.

Again Jim Allison drove over for the Pounder's third score.

In the fourth frame, Marks scored from the 1 yard line but failed in the conversion. Jim Matheny missed two extra point attempts with Ralph Allison failing on the third.



HENRY JONES



WRIGHT CHILDERS



DICKY SALLEY



BURNELL PRUITT



GENE MASENGALE



JIMMY MCDARIS



SAM HENLEY



JIMMY HALE



BERNARD EPPERSON



JACK FRYAR



KEN HUDGENS



LOWERY LACKEY



TOMMY TILLMAN



HAZEN WITT



FRANK PARKER
MANAGER

Hofferman snaring a Bucky Shamburger pass had galloped over the twin stripes.

In the fourth quarter Norman Hofferman again, on a well executed end around, plunged 22 yards to pay dirt. Allison kicked the two extra points making the score 14-7 for Central. Teas caught a pass from Milton and was pay dirt bound when lightfooted Leon Henry hauled him down on the four yard line after a 65 yard gain. Bill McKenzie halted Turner on the 3 yard line. Captain Bill Tate batted down a pass in the end zone as the siren sounded, ending the game.

CENTRAL, 41; CITY, 6

November 26

Before a record breaking crowd of approximately 15,000, Purple Pounders drubbed their ancient rival City Maroons by a score of 41-6 in the annual post Thanksgiving game.

"Lightening" Leon Henry carried the glory of half the game, gaining almost as much alone as City did altogether. Henry was first to score on a ten yard run. The second score came a few minutes later when guard Dick Sanders covered a fumble by City and Bucky Shamburger plunked the ball in John Gill's breadbasket, who carried it 41 yards to glory land—13 to 0 for Central. City's touchdown came on a pass from Henson to Evans. Jim Allison accounted for the third tally. Johnny Back went over from the 10 after 3:14 of the fourth frame.

Much credit must go to Captain Bill Tate, who caught an 18 yard pass from Shamburger and fell over the goal line for a tally. Jim Matheny scored the other from the 1 yard line.

This great victory brought to a conclusion one of Central's best football seasons climaxing in an unquestioned City Championship with the placement of Bill McKenzie, Jim Allison, and Johnny Back on the News Free Press and Bill McKenzie, Bucky Shamburger, and Dick Sanders on the Times All City.

In addition to the above, Bill McKenzie's record placed him on All Southern, All East with honorable mention on All American.

Central's gains were constant, but as fate would have it, she could not make the extra points so badly needed to win. Bill McKenzie, Johnny Wilkins, and Dick Sanders batted heads more than once to stop the running of Miami backs at the line of scrimmage.

CENTRAL, 40; ROSSVILLE, 12

October 22

Central's homecoming game with Rossville, expected to be close, was a runaway.

Paperweight Calvin Henley, who wears the number 13, teamed with "Sparkie" Jim Allison to share four T.D.'s in the Pounders' 40-12 victory over Rossville.

Central constantly opened holes in Rossville's line and her backs plowed through. Jim Allison bullied through the light Rossville line 44 yards to score. Early in the second, Jim repeated his spectacular performance by going over from the 20 yard line. Norman Hofferman gathered in a long pass from Shamburger and went all the way. Johnny Back slipped over from the 2 yard line for an additional score.

Central made it 34-0 on the kickoff when Jim Allison criss-crossed the ball to Henley, who tightroped the right sideline 88 yards. He repeated this for a 60 yard touchdown. The Bulldogs pushed over two touchdowns in the last quarter; the first on a pass from Case to Herman Beagles for 20 yards; the other was a quick end spurt by Gene Wright. Both extra point attempts failed. Central collected four extra points with Allison kicking.

CENTRAL, 14; BRADLEY, 0

October 28

Reliable Leon Henry pulled the fat from the fire by scoring twice to hamper the Bradley Bears 14-0.

A methodical Central offense kept plugging away at an inspired Bradley defense. The first score came when Henry took a punt on his 30 yard line and went all the way. The second came in the last quarter when Bucky Shamburger flipped one to Henry on the 20 yard line and Henry was away.

Ralph Allison displayed his educated toe and proved it to be so by adding two extra points.

Jim Allison and Captain Bill Tate fared well on ground gaining. Other outstanding players were McKenzie, Epperson, Wilkins, Miller, and Sanders.

Claude Climer, Bradley's star fullback, was the only injury. The accident resulted in the amputation of his right leg.

CENTRAL, 14; BAYLOR, 7

November 12

Suffering their sixth defeat in ten years, Baylor returned home beaten by a score of 14-7 by the Purple Pounders.

From beginning to end the game had the excited spectators constantly on their feet. Great football was played by the whole team, sparked by Norman Hofferman and Bucky Shamburger.

No score in the first half increased the intensity of the game, but the second half was far different. Milton took Allison's kick and with the help of a penalty paraded over the Purples' goal, 7-0 Baylor. From that time only two minutes forty-six seconds had elapsed until Norman

Jackie Davis, Herbert Cagle, Frank Parker, Eddie Coulter, Max Parker.





First Row, from left to right: R. Allison, T. Phifer, R. Woy (Capt.), B. Salley, R. Fickle. Second Row: T. McAllister (Mgr.), T. Poe, J. Kimsey, C. Phillips, N. Hofferman, B. Shamburger, R. Stone, J. Galloway, Coach Bales.

CENTRAL HIGH'S BASKETBALL

SCHEDULE 1949-1950

Central	34: Murray County	36	Central	37: Knox City	50	Central	66: Rossville	60
Central	51: Murray County	22	Central	64: Morristown	26	Central	65: Bradley	33
Central	43: Rossville	33	Central	55: City	36	Central	53: Knox City	61
Central	40: City	31	Central	45: McCallie	38	Central	55: Morristown	52
Central	38: Soddy Daisy	48	Central	45: Baylor	35	Central	55: Johnson City	34
Central	55: Hixson	36	Central	63: McMinn	26	Central	65: McCallie	45
Central	31: Baylor	30	Central	49: Soddy Daisy	38	Central	54: City	50
Central	48: Oak Ridge	42	Central	63: Bradley	45	Central	69: Red Bank	49
Central	44: Rule High	36	Central	44: Soddy Daisy	41	Central	57: Red Bank	41

TOURNAMENTS

Central	First District		Central	III Region		Central	State Tournament	
Central	97: Whitwell	29	Central	46: Etowah	31	Central	60: Humbolt	41
Central	73: Hixson	47	Central	73: Oliver Springs	38	Central	46: Knox City	50
Central	69: City	45	Central	56: Soddy Daisy	48	Central	47: Lawrenceburg	32
Central	45: Soddy Daisy	38						

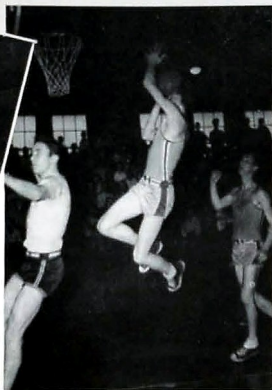
Poe scores against City

Coach W. P. Bales

Woy scores against City

Central has every reason to be proud of the Basketball team of 1949 who came through with the best record of a Central team since 1945.

This very successful season closed with the following round up: First District Champions, III Regional Champions, and a rating of Third Team in the State Tournament.



Hofferman gets two from City.



Allison lays up two against S. D.



Poe puts away two for the Pounders.



Allison slips under for two against City.



Allison again with two for Central.

CHS Library TEAM



Front Row: Byous, Manager, Boyd, Bobby Black, Bagby, F. Hall, Captain, Cawood, Giles, Lee, Back, Riley, Manager. Second Row: Tinnon, Hooper, Blalock, Lawrence, Hudgins, Creswell, Bill Black, McMurray, Buffington, Martin, Etter, Coach. Third Row: Shull, Arnold, G. Hall, H. Shoemaker, Williams, King, Headrick, Ogle, Croft, McKinney, Blain, Miller. Fourth Row: Wright, Allison, Blasingame, Hoge, Earp, R. Shoemaker, English, Harris, Copeland, Hickey, Groth, Overturn, White, Albright.

B O X I N G

CHS Library

Central's 1950 boxing squad boasted a fine record including the Sub-Novice Championship in the Golden Gloves, plus Open and Novice Championships in the Frye-Prep meet. The team, coached by E. B. "Red" Etter and captained by Fred Hall, upheld Central's tradition of fine sportsmanship.

In the Golden Gloves Tournament, Central won Sub-Novice Championship; in the Golden Gloves Open division Frank White won 118 pound division, Fred Hall, 135 pounds; in the High School Open, Gene Hall, 100 pound division; Joe King, 132 pound; Buddy Denton, 156 pound division; in the High School Novice division Jimmy Boyd, 100 pound; Kenneth Hudgins, 124 pound; John Martin, 156 pound; Harry Shoemaker, 132 pound division; High School Sub-Novice division, T. W. Cawood, 90 pound; Alvin Overturn, 108 pound; Ralph Creswell, 140 pound division.

In the Frye meet Central won honors in two divisions, Novice and Open. The Novice Champions were Bill Blaylock, 100 pound; Ira Lee, 110 pound; Charles Hoge, 120 pound; Kenneth Hudgins, 127 pound; Ralph

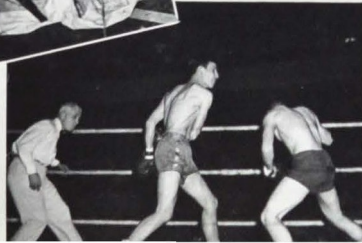


Happy Coach

Headrick connects with a right

Little but rough

Give me air



Top: Everett throws a left
Above: Croft gets set to close in



Top: William's K.O.
Above: Martin's triumph



Top: King shows his reach
Above: Hudgins and Zachary mix it up

Creswell, 135 pound; Dickie Salley, 155 pound; Bernard Epperson, 165 pound; Bill McBrayer, 175 pound division.

The Open division Champions were Gene Hall, 100 pound; Frank White, 120 pound; Fred Hall, 127 pound; Joe King, 135 pound; Jimmy English, 165 pound division.

Nine boys represented Central in the National High School Meet at Charlottesville, Virginia, March 10 and 11. Six boys reached the finals with Elmer Groth, 85 pound division, and Charles Hoge, 120 pound division, bringing back National Championships.

B O W L I N G

James Dickson, Don Prey, Alvin Follis, Herbert Cagle, Charles Harris, Lynn Alverson, Lester Newton, Coach.





Front Row: Ralph Allison, Prince Kendall, Buck Shamburger, Bill Thornburg, Joe W. Taylor, Carl Edmonson, Back Row: Coach W. P. Bales, Kenneth Goodner, Bobby Delaney, Harold McDaniel, Jack Rush, Edgar Woy, Emert Brown, Harry Epy, Alfred Thomas, Eugene McGowan.

BASEBALL

The 1949 Central Baseball Season backed by powerful sluggers and expert pitchers came to a close with a record of ten games won and six lost.

In the face of some handicaps, Coach W. P. Bales worked hard with his diamond men and proved to ardent fans that Central could still produce good games and a fine team, though this year hardly of championship caliber.

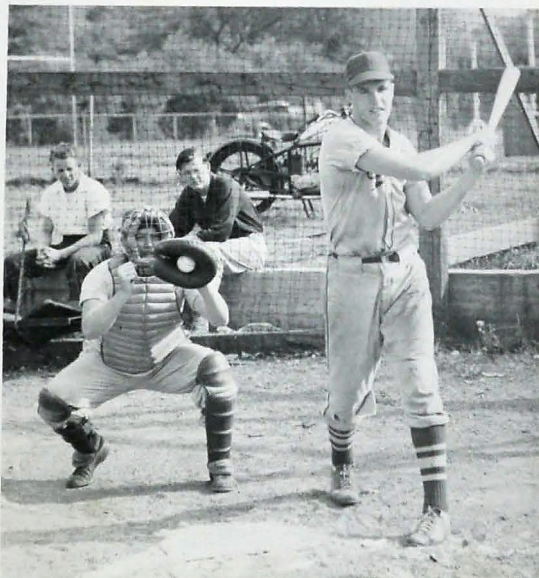
The attack on the wall was led by power hitters such as Ed Woy, Ralph Allison, Alfred Thomas, Buck Shamburger, Joe W. Taylor, and Emert Brown. Pitchers who did credit to the season were Emert Brown and Bobby Delaney.

Central won against such teams as Soddy-Daisy, Kirkman, and Brad-

ley but came out victor once out of three games with their strong competitor Chattanooga High. The team as a whole played good baseball, showed fine cooperation, and came through with no record at any time of poor sportsmanship. Much credit goes to both team and coach for a good season of baseball in the spring of 1949.

The outlook for the season of 1950 is one of the most promising of several years. With Bill Thornburg as captain and Ralph Allison as alternate and with the strong support of such men as Tom Poe, Joe W. Taylor, Buck Shamburger, Norman Hofferma, Leon Henry, Harold McDaniels, Hubert Cottingham, Alfred Thomas, Russell Woy—all players of experience—the team should go forward to another championship.

Edgar Woy takes a hefty swing.
Alfred Thomas at receiving end.



COACH W. P. BALES

Versatile Coach "Bang Bang" Bales tries his hand at almost every type of athletics, but basketball and baseball are his specialties.

Coach Bales graduated from Mosheim High School, Mosheim, Tennessee, where he excelled in sports. Later, he attended Tennessee Wesleyan College where he was a member of the football, baseball, track, and basketball teams. In the professional field, he won the Southern league batting title in 1922 while playing with Memphis. His work at Central began in 1922.

Coach Bales' splendid record of championship teams in baseball and basketball through the years speaks eloquently of the very fine work that he has done in both fields of athletics. With a background as a professional baseball player, Coach Bales knows the game from the ground up and with his long experience and splendid record in this game, he is considered an authority, second to none.

SCHEDULE FOR 1949

Central	2: McCallie	5
Central	5: Hixson	4
Central	6: Soddy-Daisy	5
Central	5: Red Bank	9
Central	4: City	5
Central	1: McCallie	8
Central	10: Bradley	11
Central	8: Tyner	7
Central	10: Tyner	11
Central	12: Hixson	8
Central	6: Tyner	0
Central	4: City	3
Central	6: Bradley	5
Central	9: Soddy-Daisy	1
Central	5: Red Bank	2
Central	9: Kirkman	2
Central	5: City	6



First Row: Betty Rush, Louise King, Wilma Taylor, Sylvia Payne, Gerry Masey, Second Row: Lucy Gardner, Lorette Woy, Barbara Drinnon, Marilyn Monroe, Jane Shetter, Third Row: Mr. Smith, Evelynne Anderson, Sylvia White, Betty Ann Drinnon, Madeline Miller, Charlotte Treadway, Miss Sarah Hubbard.

Central Purplettes were winners of the Consolation Trophy. Betty Drinnon, forward, made first team of the All Tournament. Barbara Drinnon, guard, made second team of the All Tournament.

Below: Betty Drinnon scores against City.
Bottom: Betty Rush lays up two for Central.

Below: Sylvia White scores two against Hixson.
Bottom: Sylvia White puts two aside against Soddy-Daisy.

GIRLS' BASKETBALL

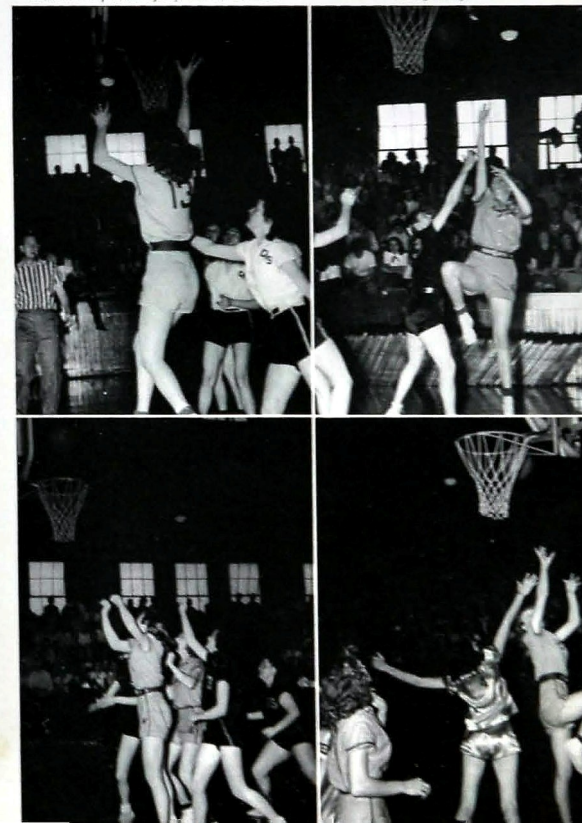
THE PURPLETTES' SCHEDULE

1949-1950

Central	58: G. P. S.	32—December 7
Central	23: Lakeview	32—December 12
Central	26: Ooltewah	21—December 23
Central	43: Tyner	44—December 30
Central	29: Soddy-Daisy	29—January 9
Central	45: City	24—January 13
Central	20: Soddy-Daisy	35—January 17
Central	31: Bradley	56—January 20
Central	23: Soddy-Daisy	29—January 21
Central	32: Soddy-Daisy	39—January 28
Central	45: Bradley	54—February 9
Central	34: Hixson	37—February 10
Central	49: Red Bank	28—February 14
Central	46: City	21—February 17
Central	34: Tyner	35—February 20
Central	44: Ooltewah	38—February 23
Central	30: Hixson	43—February 24
Central	29: Red Bank	22—February 27

FIRST DISTRICT REGIONAL THREE TOURNAMENT

Central	48: South Pittsburg	18—March 1
Central	53: Hixson	63—March 3
Central	57: Tyner	37—March 4





The Physical Education
Staff



The Y-Teen Volley Ball Team

T H E G I R L S ' A

The Ace Club



A T H L E T I C S

A Soccer Game





Feat

wres...



SENIOR PER

Torchbearer

JEANNINE WATSON
PAUL FULLER



Best All-Round

PHYLLIS WHEELER
JOHNNY BACK



Leadership

JANE MARTIN
DICK ROBINSON

SONALITIES

Scholarship

PEGGYE FORD
LOREN HART



Service

ALFREIDA JOYCE
DON NORRIS



Most Likely to Succeed

DON PREY
BETTY BRIDGES





Friendliness
JO ANN HELTON
RALPH ALLISON



Courtesy
LAYNIERE KING
RALPH MILLER



SENIOR PERSONALITIES

Most Athletic
BETTY ANN DRINNON
JIM ALLISON



Wittiest
DOT BAILEY
PAUL McKINNEY



Most Talented
NORMA WOLFF
R. O. STONE



Most Attractive Couple
PEGGY WATERHOUSE
RALPH FICKLE



PAUL FULLER • MR. CENTRAL OF 1950
JEANNINE WATSON • MISS CENTRAL OF 1950

THE CHAMPION STAFF

DON NORRIS	Editor	BETTYE BRIDGES	Feature Editor
ALFREIDA JOYCE	Business Manager	PHYLLIS WHEELER	Feature Editor
JEANNINE WATSON	Business Manager	BILL BONINE	Club Editor
JERRY HUBBARD	Assistant to Business Manager	RICHARD LEEPER	Photographer
PEGGYE FORD	Senior Editor	BETTY ANN DRINNON	Typist
TOMMY BUFF	Sports Editor	BARBARA BOLES	Junior Editor
RALPH MILLER	Sports Editor	BETTY JO RENFRO	Sophomore Editor
LOREN HART	Military Editor	ANN LANGLEY	Freshman Editor
G. C. TOWERY	Sponsor	SALLY MAYKING	Sponsor





HANGING AROUND



LITTLE SISTERS OF GYM STAFF



PTA KING AND QUEEN



ATHLETIC SUPPORT



WARM WEATHER'S HERE AGAIN



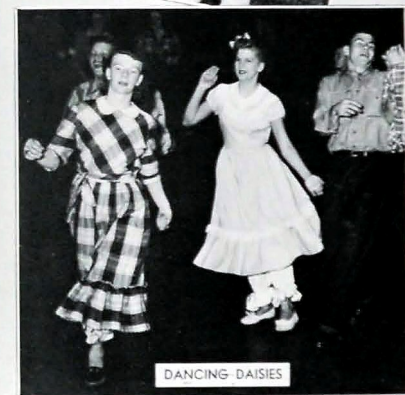
INK SPOTS



REET ROOTERS



ALL-AMERICANS MCKENZIE AND CLIMER



DANCING DAISIES



THEY GOT OUR ADS



JUNIOR PLAY CAST



PROUD COACHES



MIGHTY MOUTHS



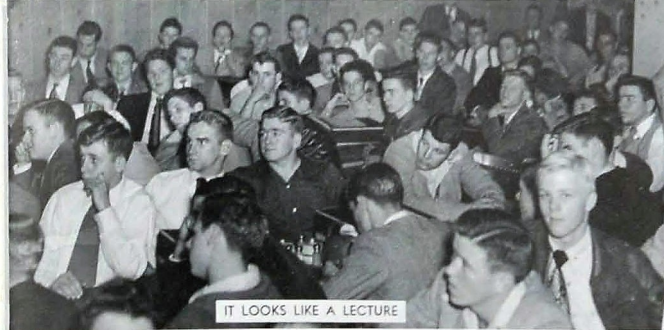
VICTORIOUS ETTER



CAFETERIA STAFF



ERNIE, EDDIE, AND ROY



IT LOOKS LIKE A LECTURE



PICTURE BUG



CHAMPION NIGHT COMMITTEE



HIGH STEPPERS



PURPLE SKATERETTES



PERFECT BASKETBALL FORM



DANCING MERRY MACS



CORNERED



SHEAR NONSENSE



PARTY FUN



IS EVERYBODY HAPPY?



CASH CUSTOMERS



HIS CUP RUNNETH OVER



THE BEST PART OF THE PARTY



FOOTBALL WIDOWS



ENTHUSIASTIC AUDIENCE



TELLING ETTER HOW TO COACH HIS TEAM



STAMPEDE



LATEST STYLE



MAY KING AND QUEEN OF 1949

CHS Library



FAMOUS FIDDLER VISITS CENTRAL



HOME-COMING QUEEN CROWNED



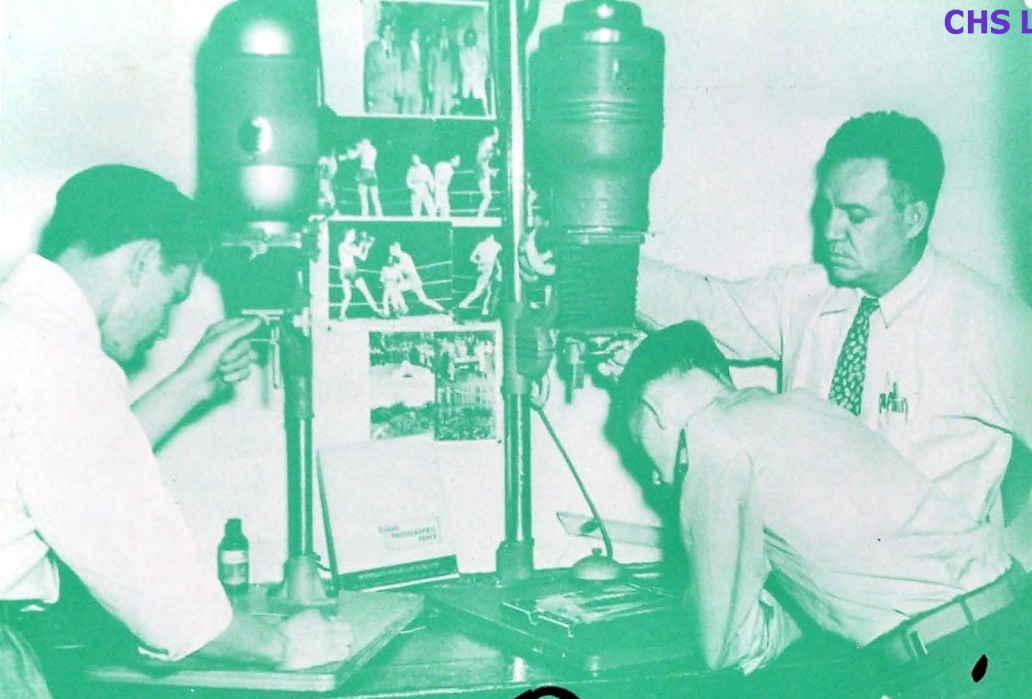
MUM GOOD!



CHARM CLUB, THEY SAY?



SLOPPY FLOPPIES



Organizations



zations



ANNOUNCERS CLUB

KENNETH BARTON President
 PEGGYE FORD Vice President
 JANE MARTIN Secretary-Treasurer
 MRS. KEN FLENNIKEN Sponsor



BAND OFFICERS' CLUB

CLYDE CHAUNCEY Captain
 JOHN ALEXANDER Drum Major
 DAVID JOHNSON Colorguard
 GERALDINE MAXEY Head Majorette
 MARGARET BRATTON Head Majorette
 JEAN BROADWAY Sponsor

BANK AND BOOKSTORE STAFF

JEANNINE WATSON President
 JAMES COULTER Vice-President
 ALFRIEDA JOYCE Secretary
 MARIAN FOLLETT Treasurer
 MISS RUBY NIPPER Sponsor



THE BAND

CLYDE CHAUNCEY Captain
 JOHN ALEXANDER Drum Major
 MARGARET BRATTON Head Majorette
 GERALDINE MAXEY Head Majorette
 B. H. WALKER Conductor
 EULA JEAN BROADWAY Sponsor

BIBLE CLUB

ALMA JO MCKINNEY President
 JOYCE MYHAN Vice-President
 KATHLEEN MCKAIG Secretary
 HENSON UNDERWOOD Treasurer
 GLENN JONES Chaplain
 MISS RACHEL McALLISTER Sponsor



CAMERA CLUB

RICHARD LEEPER President
 NATHANIEL PITTS Vice-President
 EDDIE COULTER Secretary
 JOE PETTY Treasurer
 MR. C. G. TOWERY Sponsor

C CLUB

BILL TATE President
 RALPH ALLISON Vice-President
 DICK SANDERS Secretary
 JOHNNY BACK Treasurer
 GENE SEXTON Sergeant-at-Arms
 RED ETTER Sponsor



CHARM CLUB

PATTY GOSSETT President
 BETTY SHELL Vice-President
 MARTHA ALEXANDER Secretary
 JOAN BILBREY Treasurer
 MRS. HELEN PARNELL Sponsor

CHEERLEADERS

PAUL McKINNEY Head Cheer Leader
HULENE HUFF Head Song Leader
MRS. JOHN KISER Sponsor

DIGEST STAFF

JOYCE MYHAN Editor
ALMA JO McKINNEY Associate Editor
DIANE HAYNES Business Manager
JANICE CAMP Associate Business Manager
NICKEY BOWMAN Foreman
MISS SALLY MAY KING Sponsor
MR. JAMES L. MILBURN Sponsor



DISC AND DIAMOND SOCIETY

BILL RAMSEY Captain
JOHN ALEXANDER First Lieutenant H
DON NORRIS First Lieutenant L
NICKY BOWMAN Second Lieutenant V
KENNETH BARTON Second Lieutenant S
RALPH ALLISON Second Lieutenant F
JIMMY LOWE Second Lieutenant L
NICKY ROTH Second Lieutenant T
DONALD PREY Sergeant-at-Arms
MAJOR BONE Sponsor

GAD-A-BOOTS

CAROLE GUTHRIE President
YVONNE CARTER Vice-President
MARLENE MARTIN Secretary
ANITA SILAS Treasurer
MRS. REBA FULTS Sponsor

BOYS' HI-Y

DON NORRIS President
GLENN JONES Vice-President
JOE O'REAR Secretary
HENSON UNDERWOOD Treasurer
R. O. STONE Chaplain
MR. J. POPE DYER Sponsor



GIRLS' HI-Y

JEANNINE WATSON President
EVALYNN ANDERSON Vice-President
ELSIE TETERS Secretary
PEGGYE FORD Treasurer
JANE MARTIN Chaplain
MRS. NEWTON LOGAN Sponsor
MRS. JOHN A. SHELTON Sponsor



HOME ECONOMICS CLUB

JANICE CAMP President
JOYCE BURNETTE Vice-President
NELL LINDSAY Secretary
MARY EMMA BROOKS Treasurer
MRS. JANIE SHROPSHIRE Sponsor
MRS. BERNYCE CLEMENTSON Sponsor

MILITARY HONOR PLATOON

LaVERNE DEDMON President
JERRY WAYNE Vice-President
JACK McDOWELL Platoon Guide
SERGEANT ALVIN PERRY Sponsor

INTERSCHOOL LEADERSHIP COUNCIL

DICK ROBINSON	President
RUSSELL WOY	Vice-President
JANE MARTIN	Secretary
JEANNINE WATSON	Treasurer
MISS FRANCES TIERNAN	Sponsor
MR. ED GUPTON	Sponsor

INK SPOTS CLUB

JEAN RAY	President
JO GRIFFIN	Vice-President
MARGARET FERGUSON	Secretary
DORA MAE WRINKLE	Treasurer
MRS. ELIZABETH ROBINSON	Sponsor



LIBRARY STAFF

PAT WILLIAMS	President
KATHERINE WOMACK	Vice-President
ANN RITCHIE	Secretary
BETTY WALLACE	Treasurer
MRS. MARY SANDERS	Sponsor
MISS ELLEN MULLENNIX	Sponsor

MAJORETTES

MARGARET BRATTON	Head Majorette
GERALDINE MAXEY	Head Majorette
GENEVA HAMBRICK MADELINE MILLER	BARBARA FORD
ELLEN PAUL	NINA GRAVITT
DOTTIE GROSS	Mascot
MR. B. H. WALKER	Sponsor

MERRY MACS

MARILYN BEETS	President
CLARA JO KIDWELL	Vice-President
DOROTHY CUSTER	Secretary
PEGGY ROGERS	Treasurer
MR. LUTHER YOUNG	Sponsor



M. P. CLUB

CHARLES WILLIAMS	President
DICK LUSK	Vice-President
CHARLES HOLCOMBE	Secretary-Treasurer
SERGEANT BASS	Sponsor



MILITARY BAND

CLYDE CHAUNCEY	Captain
DAVID WHITE	First Lieutenant
DAVID JOHNSTON	Second Lieutenant & Drum Major
RAY HUMBLE	First Sergeant

NITE OWLS

GERALDINE MAXEY	President
HULENE HUFF	Vice-President
DIANE HAYNES	Secretary
GENEVA HAMBRICK	Treasurer
MRS. JOHN KISER	Sponsor

OFFICERS' CLUB

BILL BONINE President
LARRY PATRICK Vice-President
BILL RAMSEY Secretary-Treasurer
DON NORRIS, Laverne DEDMON Sergeants-at-Arms
SERGEANT L. H. HOGELAND Sponsor

THE ORCHESTRA

HAROLD DERRYBERRY President
ROBBIE ATHEARN Vice-President
JEAN BROADWAY Secretary-Treasurer
MR. KENNETH JOHN Director



THE RIFLE TEAM

BILL BONINE Captain
LAVERNE DEDMON Co-Captain
M/SGT. LEONARD HOGELAND Coach
MAJOR GEORGE BONE Sponsor

SERGEANTS CLUB

EARL TATUM President
BASIL RATLIFF Vice-President
JAMES COULTER Secretary
JOE W. TAYLOR Treasurer
SERGEANT ALVIN PERRY Sponsor

SENATE

GRADY MASSINGILL President
LAYNIERE KING Vice-President
JANE MARTIN Secretary
EVALYNN ANDERSON Chaplain
MR. ARLIE HOODENPYL Sponsor
MRS. KEN FLENNIKEN Sponsor

SENATE CABINET

GRADY MASSINGILL President
LAYNIERE KING Vice-President
EVALYNN ANDERSON Chaplain
BUDDY RILEY Finance
LUCY GARDNER Points
HENSON UNDERWOOD Program
DOLORES WESSEL Membership
JACK McDOWELL Publicity
JANE MARTIN Secretary
BRYAN ROSE Rules and Regulations



SHOVE-OFF CLUB

NORMA WOLFF President
MILDRED McELHANEY Vice-President
BARBARA MAYO Secretary
ALFRIEDA JOYCE Treasurer
MRS. HENRY WARE Sponsor

SILHOUETTE CLUB

SHIRLEY SEWELL President
ELSIE TETERS Vice-President
MARGARET BRATTON Secretary
MARY WAGES Treasurer
MISS ELSA DENNISON Sponsor

SPINSTERETTES

PEGGYE FORD President
 BETTY WEAVER Vice-President
 BARBARA VARNER Secretary
 MARTHA BYLES Treasurer
 K. W. JOHN Sponsor



TWIXTEEN CLUB

JOYCE BURNETTE President
 JANICE CAMP Vice-President
 GRACE BROOME Secretary-Treasurer
 PATSY CALDWELL Chaplain
 MRS. ROSEMARY ROBERTSON Sponsor

T. & I. CLUB OF TENNESSEE

JACK W. JENKINS President
 FRED McCUISTON Vice-President
 ANN BOYD Secretary
 ARETTA DAVIS Treasurer
 MR. GORDON SMITH Sponsor



USHERS

PEGGYE FORD Head Usher
 MISS EDNA CROSS Sponsor

VAGABONDS

LAYNIERE KING President
 JEANNINE WATSON Vice-President
 EVALYNNE ANDERSON Secretary
 MARILYN MONROE Treasurer
 MRS. MARGARET HAMMACK Sponsor



JUNIOR Y-TEENS

PEGGY THRONEBERRY President
 DORIS CASTLE Vice-President
 MARY ARDEENA KELLIS Secretary
 LORAYNE WOY Treasurer
 MISS MINNIE LEE MORGAN Sponsor

VARSITY GLEE CLUB

R. O. STONE President
 RAY HARMON Vice-President
 MARTHA BYLES Secretary-Treasurer



SENIOR Y-TEENS

ALFREIDA JOYCE President
 HULENE HUFF Vice-President
 DORMA GALLANT Secretary
 PHYLLIS WHEELER Treasurer
 MISS MINNIE LEE MORGAN Sponsor



First Row:

Doris Marie Austin
Dorothy Marie Bailey
Doris Jean Barker
Lenora Barber
Barbara Birge
Frances Edna Bishop
Bill Bonine

Second Row:

Eugene Buffington
Martha Louise Byles
Janice Camp
Martha Carpenter
Dana Childress
Shirley Chitwood
Barbara Collins

Third Row:

Gloria Criswell
Virginia Curl
Betty Ann Drinnon
Sue Elliott
Harry Espy
Barbara Jane Everton
Margaret Fitzgerald

Fourth Row:

Peggy Ford
Paul Fuller
Jean Goodner
Carole Guthrie
Geneva Hambrick
Loren Hart
Patricia Hlas

Fifth Row:

Eva Holladay
Joyce Howard
Jerry Hubbard
Joanna Jett
Alfreida Joyce
Neil Lindsay
Norma Jean Martin

Sixth Row:

Geraldine Maxey
Patsy McCluskey
Alma Jo McKinney
Jean McWhorter
Martha Miller
Jack Morgan
Joyce Myhan

Seventh Row:

Joe O'Rear
Doris Petty
Donald Prey
Joan Roberts
Faye Robinson
Barbara Sammons
Dorothy Schelker
Alice Jane Shetter

Eighth Row:

Gloria Slack
Donald Stevens
Ronald Stevens
Phyllis Wheeler
Mary Evelyn Williams
Virginia Askew
Johnny Back
Marilyn Beets

THE HONOR SOCIETY

Virginia Jo Askew
Doris Marie Austin
Johnnie Lee Back
Dorothy Marie Bailey
Lenora Elizabeth Barber
Doris Jean Barker
Marilyn Jane Beets
Barbara Birge
Frances Edna Bishop
Billy Jacob Bonine
Betty Bridges
Martha Louise Byles
Ernest Eugene Buffington

Janice Gwendolyn Camp
Martha Ann Carpenter
Dana Childress
Shirley Chitwood
Barbara Jean Collins
Gloria Criswell
Virginia Curl
Betty Ann Drinnon
Sue Elliott
Harry Espy
Barbara Jane Everton
Margaret Alice Fitzgerald
Peggy Ford

Paul Eugene Fuller
Lucy Gardner
Gloria Goodner
Jewell Gray
Carole Guthrie
Geneva Hambrick
Loren Hart
Geraldine Holladay
Eva Gertrude Holladay
Joyce Howard
Jerry Hubbard
Joanna Jett
Alfreida Joyce

Neil Lindsay
James Lowe
Patsy McCluskey
Jack McDowell
Alma Jo McKinney
Elsie Jean McWhorter
Norma Jean Martin
Patricia Hlas
Eva Gertrude Holladay
Jack Morgan
Joyce Myhan
Joe O'Rear
Doris Petty

Donald Prey
Joan Roberts
Faye Robinson
Barbara Sammons
Dorothy Schelker
Alice Jane Shetter
Gloria Slack
Donald Stevens
Ronald Stevens
Phyllis Wheeler
Jeannine Watson
Phyllis Wheeler
Mary Evelyn Williams

ALMA MATER

What a wonderful school is ours to love,

With its ups and its downs and its joys!

What a wonderful banner of purple and gold

As it floats o'er our girls and boys!

What a wonderful school that I love so well,

With its wonderful rep so high!

So you've heard of the school that's true as blue,

Of that wonderful school, Central High.

OUR PATRONS

The Senior Class are indeed grateful to these patrons who through their contributions have done much toward making this publication possible

A. FRIEND
RALPH ABELMAN, 6-9245
AGNEW HARDWARE COMPANY, 7-2186
ALTON PARK HARDWARE COMPANY, 3-1444
AMERICAN LAVA CORPORATION, 6-8114
ANDERSON COAL COMPANY, 9-4321
ANDY'S PLACE, 2-9197
ANNEX DRUG COMPANY, 2-3182
ARCHER PAPER COMPANY, 6-3189
LUPTON AVERY
AVONDALE PHARMACY, 4-1504
BAKER & WILSON APPLIANCES, 4-2636
BELVOIR PHARMACY, 2-3184
BLAKE'S, 6-8746
BLESSING, WATERHOUSE & COMPANY, 6-1251
BONDS DRUG CO., 7-3354
JACK BOWEN ESSO SERVICENTER, 6-5576
THE BOYS' SHOP, 7-3248
BRAINERD DRUG CO., 2-3101
BRAINERD GROCERIA, 4-0946
BRAINERD VARNELL HARDWARE & PAINT CO., 2-1173
EARL CAMPBELL CLINIC, 7-4515
CASH & CARRY LUMBER COMPANY, 2-2121
CENTRAL HIGH SCHOOL, P.T.A.
CHATTANOOGA ARMATURE WORKS, 2-2124
CHATTANOOGA BUTTON BADGE MFG. COMPANY, 6-6934
CHATTANOOGA FLORIST, 7-4445
CHATTANOOGA GAS COMPANY, 6-0191
CHATTANOOGA MEDICINE COMPANY, 5-4521
CHATTANOOGA VENETIAN BLIND COMPANY, 2-1187
COBBLE BRO'S MACHINERY COMPANY, 7-2039
COCA COLA BOTTLING CO., INC., 6-4106
COKER STORES, 2-4122
COX & MOORE FURNITURE COMPANY, 7-5117
CRISMAN HARDWARE COMPANY, 7-1114
WILL CUMMINGS, 3-0360
DODDS AVENUE CLEANERS, 2-4415
DUNCAN ELECTRIC COMPANY, 9-1418
EASTDALE DRUG COMPANY, 2-9139
EAVES BADGE AND EMBLEM COMPANY, 6-1614
ECKERD'S DRUG STORE, 7-1226
EDMONDSON SCHOOL OF BUSINESS, 6-1259
EDWARDS & LEBRON LTD., 7-0188
EDWARDS SHOE COMPANY, 7-7138
FAULKNER SIGN COMPANY, 7-1639
FEHN'S RESTAURANTS
THE FISCHER COMPANY, 6-5235
FOWLER BROTHERS, 7-4556
FOX BROTHERS COMPANY, 6-3139
FULMER, REEVES, & WARE, 6-4522
GORDON GAMBILL & COMPANY, 7-1482
GENERAL APPLIANCE CORPORATION, 5-3617
EDITH GOETZ FLORIST, 7-3345
H. W. GRANERT PHOTOGRAPHER, 6-7335
GRANT PATTEN MILK COMPANY, 6-1294
GRIZZELL DRUG COMPANY, 6-1512
HAJOCA CORPORATION, 7-1151
HARDIE AND CAUDLE, 6-7032
HEMLOCK PHARMACY, 2-3151
HIGHLAND PARK LUMBER COMPANY, 4-2661
HODGE FURNITURE COMPANY, 9-2521
HOLSUM BREAD COMPANY, 6-8176
THE HOME STORES INC., 7-1214
HOWARD CLEANERS, 2-1116
HULSEY CONCRETE PRODUCTS, INC., 7-9595
IDEAL CREDIT JEWELERS CORPORATION, 6-1783
JACOBS WHOLESALE COMPANY, 6-2728
THE JO-ANN, 84-4601
JOHNNY'S TEXACO SERVICENTER, 6-9878
JOYS, INC., FLORISTS, 6-7168
32 East Main Street
30 Frazier Avenue
302 West 45th Street
Manufacturers' Road
2202 Ivy Avenue
2512 McCallie Avenue
1718 Bailey Avenue
1124 Market Street
1626 Edgewood Circle
Monroe at Dodson
2508 McCallie Avenue
4501 Brainerd Road
708 McCallie Avenue
520 East 10th Street
34 Frazier Avenue
Broad at Main
622 Market Street
3240 Brainerd Road
3924 Brainerd Road
3114 Brainerd Road
525 McCallie Avenue
1203 Greenwood Avenue
Central High School
1215 Duncan Avenue
Dome Building
1004 Market Street
811 Broad Street
1715 West 38th Street
1400 McCallie Avenue
313 West Main Street
201 Broad Street
3248 Brainerd Road
45 East Main Street
511 Market Street
Wauhatchie
1910 Dodds Avenue
2605 East Main Street
615 Tunnel Boulevard
823 Cherry Street
732 Market Street
110 West Eighth Street
805 Market Street
712 Market Street
615 Cherry Street
Hixson Pike at Tremont; Ga. Ave. at Fountain Square
8 West Eighth Street
701 Broad Street
1215 King Street
829 Market Street
702 Cherry Street
716 Cherry Street
Broad at Eighth
616 1/2 Market Street
1220 King Street
Corner Main and Rossville
515 East 11th Street
809 Market Street
2104 East Main Street
137 North Greenwood Avenue
3601 Brainerd Road
1615 Cowart Street
1214 Broad Street
1631 McCallie Avenue
625 Hulsey Street
910-A Market Street
219 East 10th Street
201 Chickamauga Avenue
224 Frazier Avenue
1000 Georgia Avenue

OUR PATRONS

KAY'S ICE CREAM, INC., 2-3032
KELLEY'S RESTAURANT
R. N. (BOB) KELLEY SERVICE STATION
KIMBALL'S FLOWERS, 9-4324
KING'S BAKERY, 4-4641
KOBLENTZ, MEN'S FURNISHINGS, 6-2764
S. H. KRESS AND COMPANY, 6-5631
LAMP POST RESTAURANT, 2-9360
LANSFORD PIANO COMPANY, 6-7185
L. C. LEACH AND COMPANY, JEWELERS, 7-2941
LEGRAID JEWELRY COMPANY, 7-5648
LOOKOUT OIL & REFINING COMPANY, 3-0183
LOVEMAN'S, INC., DEPARTMENT STORE, 6-0161
MCALLISTER HOSIERY MILLS, 3-0306
MCALLIE AVENUE AUTO COMPANY, 2-1014
TOM MCGHEE, JEWELER, 6-0751
MCKENZIE SCHOOL, 6-7157
MARLIN & DERRYBERRY, 2-9216
MARTIN-THOMPSON, SPORTING GOODS, 7-3373
H. L. MATTHEWS, 2-0924
DAYLE MAY, JEWELER, 84-1514
HELEN MICHEL, FLORIST, 6-2648
MILLER BROTHERS CO., DEPARTMENT STORE, 7-1251
MILLS & LUPTON SUPPLY COMPANY, 6-6171
MOCCASIN SALES & SUPPLY COMPANY, 6-5866
MOORE AND KING DRUGS, 6-4194
WILLARD P. MOORE, TEXACO STATION, 6-6374
MOUNTAIN CITY STOVE COMPANY, 6-2167
ARTHUR MURRAY SCHOOL OF DANCING, 9-3212
MUTUAL DRUG COMPANY, 2-1127
NATIONAL FUNERAL HOME, 2-8366
OSCAR'S SANDWICH SHOP, 2-9369
J. H. OVERBY ELECTRIC APPLIANCE CO., 7-4471
PARAMOUNT CLEANERS, INC., 2-1128
HOTEL PATTEN, 6-2141
T. H. PAYNE CO., OFFICE SUPPLIES, 6-0138
PEERLESS, INC., 84-2624
BILL PENNEY TIRE SERVICE, 2-1112
PICKLER'S DRY GOODS STORE, 6-5577
PRYOR PHARMACY, 2-1148
RED FOOD STORE, 7-4326
RHODES-PRYOR DECORATING COMPANY, 2-8383
ROSSVILLE DINER, 84-8266
BOB RICHEY'S DO-NUT SHOP, 2-9241
RIDGEDALE REALTY CO., 2-0013
ROSSVILLE HARDWARE, 4-2015
SARAH JANE'S FEATHERLITE DO-NUTS, 4-5333
SARVIS BUSINESS MACHINE SERVICE, 2-0741
R. K. SCHOLZ GROCERY, 2-2131
SOUTHERN BELL TELEPHONE CO., 6-9011
SOUTHERN BLOW PIPE & ROOFING CO., 9-1441
SOUTHLAND ROLLER RINK
SPORTS SHOP, 6-8532
STERCHI BROTHERS STORES, INC., 7-2151
STOVALL HARDWARE COMPANY, 6-7101
STUTZ BROTHERS, 2-4033
W. C. TEAS COMPANY, 7-1246
TEMPLETONS, INC., JEWELERS, 6-7628
TENNESSEE AWNING & TENT, 2-0729
TENNESSEE EGG COMPANY, 6-5168
THEDFORD HARDWARE COMPANY, 2-7510
UNIVERSITY OF CHATTANOOGA, 6-7363
E. VANDERGRIF, 2-3403
VIBET CAMERA SHOP, 5-2512
WAGC BROADCASTING STATION, 7-1128
WAPO BROADCASTING STATION, 6-6141
WYUN FM 98.1
H. W. WALLDORF, 6-4526
WALLY'S GRILL, 2-9108
HARRY T. WILHOIT, GULF SERVICE STATION, 2-8214
WILLIAM'S FLOWERS, 5-3237
WILLIAMS & VORIS LUMBER COMPANY, 2-3141
WILLIE'S SUPER MARKETS, 2-4643
M. H. WILSON HARDWARE COMPANY, 7-0032
3744 Brainerd Road
1416 McCallie Avenue
Spruce & McCallie Avenue
2409 McCallie Avenue
3502 Dodds Avenue
812 Market Street
708 Market Street
3201 Brainerd Road
730 Cherry Street
739 Cherry Street
604 Market Street
4608 Kirkland Avenue
800 Market Street
45th Street
2219 McCallie Avenue
732 Cherry Street
401 Oak Street
2101 East Main Street
706 Cherry Street
210 Bass Road
101 Chickamauga Avenue
719 Georgia Avenue
629 Market Street
1152 Market Street
Hoghead Apartments
836 Market Street
910 East Main Street
1240 Market Street
3264 Brainerd Road
McCallie and Willow
1800 McCallie Avenue
2522 McCallie Avenue
1117 Hixson Road
2511 East Main Street
1 East Eleventh Avenue
821 Market Street
313 McFarland Avenue
1401-9 Dodson Avenue
201 Frazier Avenue
1422 McCallie Avenue
608 Broad Street
2107 McCallie Avenue
103 Chickamauga Avenue
2212 McCallie Avenue
1500 Dodds Avenue
5000 Rossville Boulevard
2000 McCallie Avenue
2301 Bailey Avenue
414 Dodds Avenue
919 Lindsay Street
109 N. Highland Park Avenue
Brainerd Road
831 Broad Street
532 Market Street
711 Cherry Street
1701 McCallie Avenue
11 East 8th
12 West Eighth Street
1601 McCallie Avenue
414 West 16th
3228 Brainerd Road
McCallie Avenue
1402 Dodds Avenue
2 East 7th
Hotel Patten
New Road House
Dome Building
512 Graham
1606 McCallie Avenue
2524 McCallie Avenue
East McCallie Avenue
2501 South Dodds Avenue
5013 Rossville Boulevard
417 Market Street

Autographs

