



Champion

1949

R
378.14
C

CHS Library

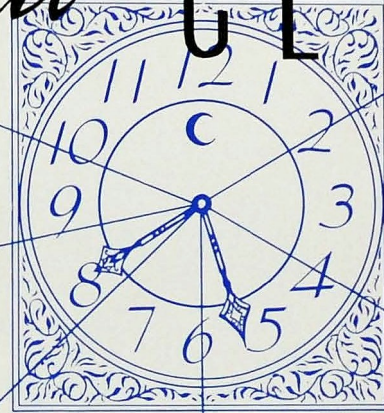
5828



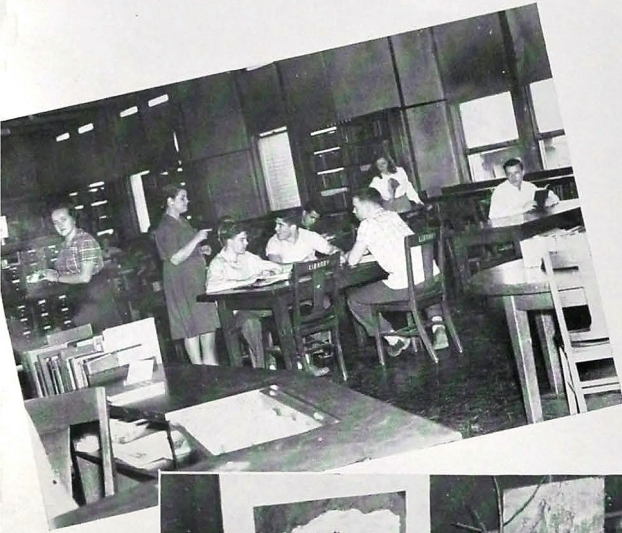
THIS IS OUR STORY



of a day at CENTRAL



THERE ARE



In the years to come as you turn the pages of this book in the quietness of thought of days gone by, we hope that you may be refreshed and inspired by happy memories of friends, of work, and of play which made 1948-1949 at Central one of the most pleasant and profitable years of your life.

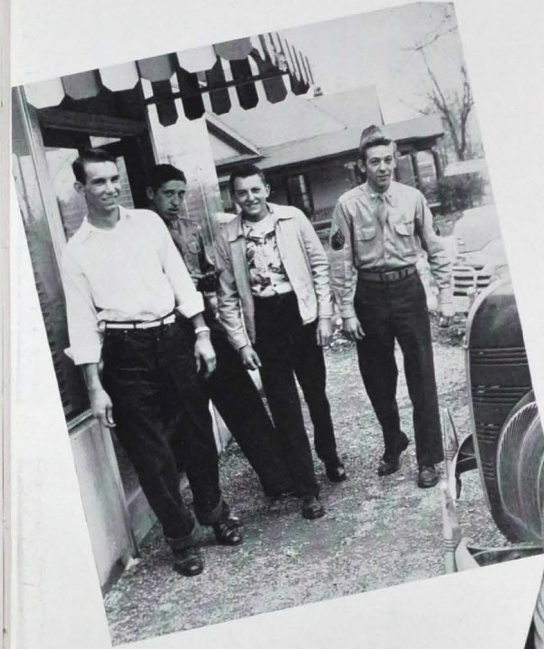
—STAFF

hours FOR work..





seconds for HAPPINESS



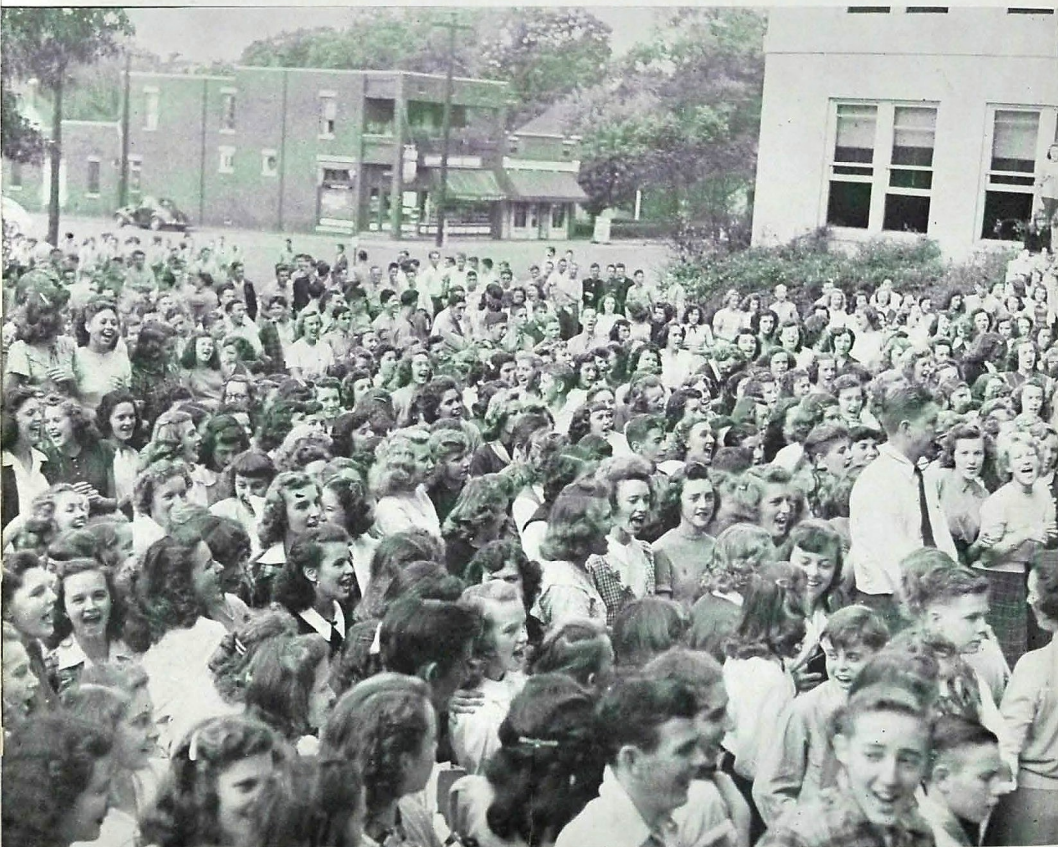
minutes for PLAY ..



JUNE HUNT, Editor • FRANKLIN ASHLEY, Business Manager • JACK EDWARDS, Business Manager

RECORDED IN THE PAGES OF THE

1949 *Champion*



THE ANNUAL PUBLICATION OF THE

STUDENTS OF CENTRAL HIGH SCHOOL

DEDICATION . . .

*W*ITH A DEEP SENSE OF APPRECIATION
FOR HIS YEARS OF FAITHFUL SERVICE TO
CENTRAL, THE SENIOR CLASS DEDICATES THIS,
THE 1949 VOLUME OF THE CHAMPION, TO AN
ESTEEMED FRIEND AND TEACHER OF MATHE-
MATICS, MR. S. Q. TALLANT, WHO BY HIS KINDLI-
NESS, FAIRNESS, AND READINESS TO HELP HAS
ENDEARED HIMSELF TO CENTRAL STUDENTS.



MR. S. Q. TALLANT



STACY E. NELSON

A Message to the Class of 1949

Dear Seniors and Fellow Students:

"Let Us Live By The Way"

Socrates says, "You cannot buy the wares of knowledge and carry them away in another vessel; when you have paid for them you must receive them into the soul and go your way, either greatly harmed or greatly benefited."

Life is always worth the living, if we have responsive sensibilities. We must all take our chances in the big, outside worldly wilderness, with its sins and its sufferings. There are the heights and the depths, the precipices, and the steep ideals, and the gleams of the awful and the infinite; and there is more hope and help, a thousand times, than in the dead level of a self-centered and selfish soul.

To have ideals and reach toward them, we must make sacrifices. How often are we too busy to care for those about us, yet by giving a little we reap a thousand-fold. We see in the world about us cause for a little more humility on our part, and tolerance and reverence and love for others; and we gain a certain inner joyfulness at the increased importance of our common life.

The spirit, whose office in life is not to see how much it can get out of others so much as to give all it can to assure their prosperity, is as sure of success in associated lives as is possible in this world. To everyone this is sure to bring something of the finer associations of prosperity of both body and soul.

Sincerely,
S. E. NELSON



The FACULTY



The FACULTY

- | | | | |
|--|--|--|--|
| Miss Louise Agee
W. P. Bales | Mrs. Hazel Barton
Major George A. Bone | FIRST ROW
Ed Brown
Mrs. Mary Cooper | Miss Christina Coppinger
Mrs. Bernyce Clementson |
| Miss Florence Costello
Miss Edna Cross | Miss Elsa Dennison
Miss Mary Lou Derryberry | SECOND ROW
Colonel Albert H. Dumas
Mrs. J. P. Dyer | J. P. Dyer
E. B. Etter |
| Miss Ruth Fain
Stanley Farmer | E. N. Fields
Mrs. Lora Flenniken | THIRD ROW
J. J. Fletcher
Miss Harriet Foster | Mrs. Reba Lou Fuhs
Edwin D. Gupton |
| Mrs. Margaret Hammack
Sergeant L. H. Hogeland | Arlie Hoodenpyl
Miss Edmund Hooser | FOURTH ROW
Miss Sarah B. Hubbard
Sergeant D. J. Hudnall | Mrs. Ophelia Hughes
Sergeant Joseph C. Hurt |
| Mrs. Edna C. Jacoway
K. W. John | Miss Earl Jones
Miss Sally May King | FIFTH ROW
Mrs. R. N. Logan
Mrs. Ida Longley | Miss Rachel McAllister
Captain Philip A. McDaniel |

- | | | | |
|---|--|--|---|
| James L. Milburn
Willard Millsaps | Miss Anne Moffitt
Miss Minnie Lee Morgan | FIRST ROW
Miss Ellen Mullenix
J. Lester Newton | Miss Ruby Nipper
Everett O'Neal |
| Miss Joe Ore
Miss Beulah Parker | Mrs. Helen H. Parnell
Mrs. Augusta J. Peoples | SECOND ROW
Mrs. Mattie S. Price
Miss Helen Pryor | Miss Mary Ellen Rice
A. B. Robertson |
| Mrs. Rosemary Robertson
Mrs. Elizabeth N. Robinson | Mrs. Blanche Rogers
Mrs. Mary R. Sanders | THIRD ROW
Miss Lillie Schwartz
J. M. Seaton | Miss Pauline Shearer
Mrs. John Shelton |
| Mrs. Janie L. Shropshire
Mrs. Virginia M. Skates | Gordon Smith
S. Q. Tallant | FOURTH ROW
Miss Edith Taylor
Miss Margaret Taylor | Mrs. W. H. Templeton
W. H. Templeton |
| Miss Frances Tiernan
C. G. Towery | B. H. Walker
Miss Dorothy Walker | FIFTH ROW
Mrs. Henry Ware
R. S. Wharton | Miss Ethel York
Luther V. Young |
| | Mrs. Frieda Hill | (NOT IN PICTURE)
Mrs. C. H. Boyd | |



MR. CENTRAL,
MISS CENTRAL
of 1949



ALMA MATER

What a wonderful school is ours to love,
With its ups and its downs and its joys!
What a wonderful banner of purple and gold
As it floats o'er our girls and boys!

What a wonderful school that I love so well,
With its wonderful rep so high!
So you've heard of the school that true as blue,
Of that wonderful school, Central High.

15





Class

SENIORS

J. T. VICK
President

PRINCE KENDALL
Vice-President

DORSEY GARDNER
Secretary

ED WOY
Treasurer

FRANKLIN ASHLEY
KENNETH SMITH
Sergeants-at-arms

JUNIORS



PAUL FULLER
President

R. O. STONE
Vice-President

GENE SEXTON
Secretary

JOHNNY HICKEY
Treasurer

OFFICERS

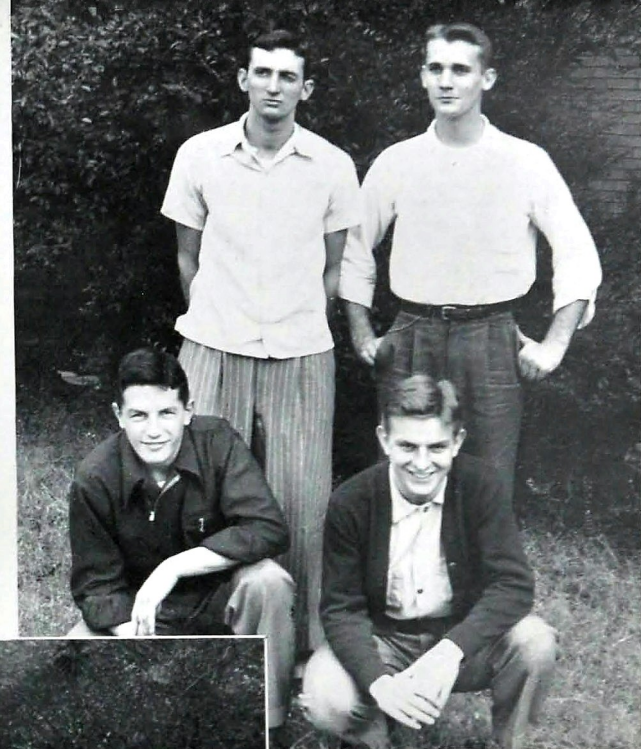
SOPHOMORES

JIMMY MATHENEY
President

JODY NEAL
Vice-President

JOHN GILL
Secretary

BOBBY SALLEY
Treasurer



FRESHMEN

BRYON HOLDER
President

JACK ALLISON
Vice-President

DONNA FAYE BLESSING
Secretary

MARY KATHERINE KENNEDY
Treasurer

The SENIOR CLASSES

FIRST ROW:

Alice Marie Adams
Charles Alexander
John Edward Alexander
William Alford
Imogene Anderson
John William Anderson



SECOND ROW:

Lloyd D. Anderson
Ina Lou Arnold
Billie Faye Ashley
Franklin Ashley
Martha Sue Atchley
Bernard Bailey



THIRD ROW:

Sue Baker
Barbara Colleen Baldwin
James Bankston
Floyd Barker
Kelley A. Barnes
Nelda Faye Barnes



FOURTH ROW:

Norman E. Barnes
William Ross Barnett
Richard Russell Beam
Betty Beasley
Ina Beavers
Robert D. Beene



FIFTH ROW:

Sarah Frances Belcher
David Belvin
Warren Frederick Bilbey
Larry Billingsley
Frances Blackman
Earl Blackwell



SIXTH ROW:

Barbara Blakey
Lester Bland
Barbara Jean Bookout
Bobby Lee Bowden
Betty Bradford
David William Bradford



SEVENTH ROW:

Martha Jean Bradford
Eleanor Ruth Breneman
Charles Bailey Bridges
Jeane Brooks
Willard F. Brooks
Clark Broom



EIGHTH ROW:

Charles David Brown
Emert Brown
Clara Lou Brown
Martha Ann Brown
Gene Tilman Broyles
Delores Bryant



ALICE MARIE ADAMS, "Shorty." Entered from Lookout Junior High School, '46; Badminton, '47; Battalion, '48, '49; Y-Teens, '48; Trailblazers, '49; Ramblers, '49.

CHARLES ALEXANDER. Entered from Chautauque Valley High School, '47; M.P.; Sergeants' Club, '48; Boys' H-Y, '49; Grady Literary Society, '49.

JOHN EDWARD ALEXANDER, "Jack." Entered from East Side Junior High, '46.

WILLIAM ALFORD, "Bill." Entered from Hardy Junior High, '47; Band, '47, '48, '49; Red Cross Committee; Band Ensemble.

IMOGENE ANDERSON, "Gene." Entered from Brainerd Junior High, '47; National Honor Society, '48, '49; Twixteen Club, '47, '48, '49; President, '49; Gym Office Force, '47, '48, '49; Library Staff, '47; Badminton Club, '47, '48; Swimming Club, '49; Battalion, '47, '48, '49; Lieutenant, '49; Girls' H-Y, '48, '49; Senior Play Cast, '49.

JOHN WILLIAM ANDERSON, "Bill." Entered from Dickinson, '46; "C" Club, '48, '49; Depression Club, '47, '48, '49; Manager Football Team, '46, '47, '48, '49; Boxing Team, '48, '49; Baseball, '49.

LLOYD D. ANDERSON. Entered from East Side Junior High, '46; Announcers' Club, '46, '47, '48, '49; Boys' H-Y, '48, '49; Chaplain, '49; Disc and Diamond Society, '48, '49; Officers' Club, '49; Sergeants' Club, '48; Grady Literary Society, '46, '47, '48, '49; Chaplain, '49; Senate, '47, '48, '49; Student Council, '47; 2nd Lieut. R.O.T.C., Senate Play, '48; National Honor Society, '48, '49.

INA LOU ARNOLD, "Lulu." Entered from Rossville North Elementary School, '46; Shave-Off, '48, '49; H-Y, '48, '49; Y-Teens, '47, '48; Swimming Club, '47, '48; Purple and Gold Band, '47, '48, '49; Band Ensemble, '47, '48, '49; Band Girls' Club, '47, '48, '49; Digest Bookkeeper, '48, '49; Spanish Club, '46, '47; Honor Society, '49.

BILLIE FAYE ASHLEY, "Billie." Entered from East Side Junior High, '47; Girls' Battalion, '48.

FRANKLIN ASHLEY. Entered from Brainerd Junior High, '46; Secretary, Junior Boys' H-Y, '47; Grady Literary Society, '47, '48; Disc and Diamond Society, '47, '48; President, '49; Boys' H-Y, '48; Secretary, '49; Sergeants' Club, Vice-President, '47; Officers' Club, '49; National Honor Society, '48, '49; President, '49; Bank and Bookstore Staff, '47, '48, '49; President, '49; President of Junior Class, '48; R.O.T.C., Lt. Col. Regimental Executive; CHAMPION Staff, Business Manager, '49; Junior Play Cast, '48; Senior Play Cast, '49; Sergeant-at-Arms, Senior Class, '49; Bachelor's Club, Chaplain, '49.

MARTHA SUE ATCHLEY, "Chigger." Entered from East Lake Junior High, '47; Silhouette Club, '47, '48, '49.

BERNARD BAILEY, "Bonehead." Entered from Hardy Junior High, '46; TAI Club, '48, '49.

SUE BAKER, "Sussie." Entered from East Side Junior High, '47; Y-Teens; Twixteen.

BARBARA COLLEEN BALDWIN, "Coke." Entered from East Lake Junior High, '47; Bible Club, Treasurer.

JAMES BANKSTON, "Bank." Entered from Mountain Creek Junior High, '46; Camera Club; Disc and Diamond Society; Sergeants' Club; Officers' Club; Rifle Team; Grady Literary Society; Science Club; Delegate to Tennessee Junior Academy of Science; Photographic Editor of CHAMPION Staff; Junior Play Cast, '48; Senior Play Cast, '49; Honor Society, '49.

FLOYD BARKER. Entered from Bachman School, '46.

KEILEY A. BARNES. Entered from Lookout Junior High, '47; Disc and Diamond Society, 2nd Lt., '47, '48, '49; Sergeants' Club, '48; Officers' Club, Social Chairman, '49; Grady Literary Society, '48, '49; H-Y, '48, '49; R.O.T.C., Captain Regimental Staff; Football Team, '47, '48; Boxing Team, '47; Cadets' Club, Vice-President, '49; Honor Society, '49.

NELDA FAYE BARNES. Entered from Oak Ridge High, '49; Bowling Club, '47; Latin Club, '47; Student Council, '47; Hiking Club, '47; Service Club, '47; Usher Committee, '47.

NORMAN E. BARNES. Entered from Dickinson Junior High, '47.

WILLIAM ROSS BARNETT. Entered from East Lake Junior High, '47; M.P. Club, '47; Sergeants' Club, '47; Officers' Club, '49; Firing Squad, '48, '49; Captain of Color Guards in Band.

RICHARD RUSSELL BEAM. Entered from Red Bank High, '46; Grady Literary Society, '48; Junior Boys H-Y, '47; Officers' Club, '48.

BETTY BEASLEY. Entered from East Side Junior High, '47; Trailblazers, '47; Secretary, '47; Cadabons, '48; Treasurer, '49; Y-Teens, '48, '49; Physical Ed. Staff, '48, '49.

INA BEAVERS, "Merry." Entered from East Side Junior High, '47.

ROBERT D. BEENE, "Bobby." Entered from Brainerd Junior High, '47.

SARAH FRANCES BELCHER, "Bobbie." Entered from East Side Junior High, '47.

DAVID BELVIN, "Tuck." Entered from Hardy Junior High, '47; Varsity Football, '48, '49.

WARREN FREDERICK BIBEY. Entered from East Side Junior High, '46; Swing Band, '46, '47, '48, '49; Digest Staff, '47, '48; Purple and Gold Band, '46, '47, '48, '49; Orchestra, '48, '49; President, '49; Military Band, '46, '47, '48, '49.

LARRY BILLINGSLEY, "Handsome." Entered from East Side Junior High, '46; Depression Club; Stage Crew.

FRANCES BLACKMAN, "Frankie." Entered from East Lake Junior High, '46; Battalion, '47; Splinterettes, '48, '49; Ushers, '48, '49.

EARL BLACKWELL, "Bugs." Entered from East Side Junior High, '46; Disc and Diamond, '47; Grady Literary Society, '47; Science Club, '47.

BARBARA BLAKEY, "Bobbie." Entered from First Lutheran School; Senate, '46, '47, '48, '49; Ace Club, '46; Library Staff, '47, '48; Vagabonds, '47; Secretary, '48, '49; Girls' H-Y, '48, '49; Ushers, '48, '49; Badminton Club, '47, '48; Battalion, '48, '49; Digest Sponsor, '47, '48; Tumblers, '47, '48; Chairman of Properties Senate Play, '48; Honor Society, '49.

LESTER BLAND, "Minnow." Entered from East Side Junior High, '46; Spanish Club, '47, '48; Depression Club, '48, '49; Basketball, B Team, '47, '48.

BARBARA JEAN BOOKOUT, "Bookout." Entered from East Lake Junior High, '47; Girls' H-Y, '48, '49; Home Economics Club, '48, '49; Devotional Chairman, Y-Teens, '48, '49; Ushers, '48, '49; Varsity Glee Club, '47, '48, '49; R.O.T.C. Sponsor, '48, '49; Battalion, '47, '48; Honor Society, '49; Ramblers, '49.

BOBBY LEE BOWDEN. Entered from East Side Junior High, '47.

BETTY BRADFORD, "Bebe." Entered from Alexander High School, Portsmouth, Va., '47; Orchestra, '47, '48, '49; Spanish Club, '47, '48; Devotional Chairman, Y-Teens, '48, '49; Ushers, '48, '49; Varsity Glee Club, '47, '48, '49; R.O.T.C. Sponsor, '48, '49; Battalion, '47, '48; Honor Society, '49; Ramblers, '49.

DAVID WILLIAM BRADFORD, "Bill." Entered from Lookout Junior High, '46; "C" Club; Football, '46, '47, '48, '49; Boxing Team, '46.

MARTHA JEAN BRADFORD, "Marty." Entered from Nathan Bachman School, '46; Vagabonds, '47, '48, '49; Y-Teens, '49; Ace Club, '49; Senate, '46.

ELEANOR RUTH BRENEMAN. Entered from Chautauque High, '47; Charn Club, '47, '48, '49; President.

CHARLES BAILEY BRIDGES, "Check." Entered from Dickinson Junior High, '47; Sergeants' Club, '48; Officers' Club, '49; Firing Squad, '48, '49; R.O.T.C. 2nd Lt.

JEANE BROOKS. Entered from East Side Junior High, '46; Library Staff, '48.

WILLARD F. BROOKS. Entered from Kirkman Vocational, '48.

CLARK BROOM, "Shorty." Entered from East Lake Junior High, '47; Boys' H-Y, '48; Treasurer, '49; Sergeants' Club, '48; Officers' Club, '49; Disc and Diamond Society, '47, '48; Secretary, '48; Grady Literary Society, '48; Vice-President, '49; Senate, '48; Cabinet, '49; Cheerleader, '48, '49; Swing Band, '47, '48, '49; Bank Staff, '47, '48, '49; Varsity Glee Club, '47, '48, '49; Attendance Committee, '47; Rifle Team Manager, '48; Digest Staff, '47; All State Chorus, '47, '48; Revue of '47, Director, '48; Junior Play Cast, '48; Sports Editor CHAMPION, '49; National Honor Society, Vice-President, '48, '49.

CHARLES DAVID BROWN, "Charlie." Entered from East Side Junior High, '47; Bible Club, '48.

EMERT BROWN, "Jungle Bunn." Entered from Brainerd Junior High, '47; Depression Club, '49; Baseball, '48; Basketball, B Team, '48.

CLARA LOU BROWN, "Larrie." Entered from East Lake Junior High, '47; Trailblazers, '47; Y-Teens, '47, '48, '49; Band Girls' Club, '47, '48, '49; Band, '47, '48, '49; Shave-Offs, '47, '48, '49.

MARTHA ANN BROWN, "Marty." Entered from Dalton High School, '48; Home Economics Club, '49; Y-Teens, '48, '49.

GENE TILMAN BROYLES. Entered from Lakeview High, '47; Spanish Club, '47; Red Cross Committee; M.P. Club, '48; Disc and Diamond Society, '48, '49; Honor Platoon, '48; Digest Staff, '48, '49; Firing Squad, '49; Grady Literary Society, '49; 1st Lt. in R.O.T.C., '49; Foreman of Digest Staff, '49; Honor Society, '48.

DELORES BRYANT. Entered from Lookout Junior High, '47; Battalion, '48; Trailblazers, '48; Secretary and Treasurer, '48.

The SENIOR CLASSES

EDDIE MADELINE CAIN, "Tiddy Biddy," Entered from Hardy Junior High, '47; Latin Club, '48; Treasurer, Candy Crew, '47; Y-Teens, '48, '49; Varsity Glee Club, '47, '48, '49; Digest Staff, '47, '48, Exchange Editor; Digest Representative, '48; Bank and Bookstore Staff, '47, '48, '49; Revue of '48; National Honor Society, '48, '49; CHAMPION Staff, Sophomore Representative, '47, '48; Senior Section Editor, '49; Girls' Hi-Y, '48, '49; Chairman of English and Latin Classes.

DOROTHY JEAN CALDWELL, "Stinky," Entered from East Side Junior High, '46; Trailblazers, '47, '48; Secretary of Freshman Class, '46.

CHARLES CAMPBELL, "Chubba," Entered from Hardy Junior High, '47; Sergeants' Club, '48; Grady Literary Society, '49; Officers' Club, '49; Merit Badge in R.O.T.C.; Senior Play Cast, '49.

FRANK CAMPBELL, Entered from Brainerd Junior High, '47.

VIRGINIA CAMPBELL, "Gluhy," Entered from East Lake Junior High, '47.

RUTH ELIZABETH CARDEN, "Ruthie," Entered from East Side Junior High, '46; Girls' Hi-Y, '46, '47, '48, '49; Library Staff, '46; Nite Owls, '46, '47, '48; Treasurer, '49; Battalion, '46, '47, '48; Major, '49; Senate, '46; Student Council, '46, '47; Tumblers, '46, '47, '48, '49; Seventeeners, '46; Ace Club, '47, '48; Physical Education Staff, '46, '47, '48, '49; Y-Teens, '46, President, '47, '48, '49; Cheerleader, '46, '47, '48, '49; Main Office Force, '47, '48; National Honor Society, '48, '49; Stage Crew Revue, '46, '47; Production Staff, '48, '49; Swimming Club, '46, '47, '48, '49; Freshman Case President; Volunteer Girls' State, '48; Mayor of Altom; City-wide Y-Teen President, '47, '48; Sponsor of Company E, '48; CHAMPION Staff, '49; Senior Play Cast, '49; Orchid Queen, '48.

MARVIN EZEKIAL CARROLL, "Zeke," Entered from Brainerd Junior High, '47; "C" Club, '48, '49; Varsity Football Team, '47, '48, '49.

RICHARD MELVIN CARTER, Entered from East Side Junior High, '47; Spanish Club, '47, '48; Depression Club.

WILMA ERNESTINE CARTWRIGHT, "Teen," Entered from Hardy Junior High, '47; Home Economics Club, '48, '49; Y-Teens Club, '48, '49; Battalion, '48, '49.

DAVID CASEY, Entered from East Lake Junior High, '47; M.P. Club; Officers' Club; Grady Literary Society; Honor Guard; Rifle Team; Firing Squad; R.O.T.C. 1st Lt.; President of M.P. Club; President of Honor Guard; Commander of Firing Squad No. 2.

WESLEY WALLACE CASH, JR., "Wes," Entered from Baylor, '48; Boys' Hi-Y; Depression Club.

BETTY JOYCE CHAMBERS, Entered from Lookout Junior High, '47; Sponsor for R.O.T.C., '49.

BETTY ROSE CHAMBERS, "Rosie," Entered from Tyner High, '48.

PEGGY CHANDLER, "Peggy," Entered from Brainerd Junior High, '47; Y-Teens.

BARBARA CHAPPIN, "Barb," Entered from East Side Junior High, '47; Trailblazers, '47; Gadabouts, '48, '49; Secretary, '49; Y-Teens, '49.

JOHNNIE LEONA CHASTAIN, Entered from Lookout Junior High School, '47.

JOHN H. CHILDERS, JR., "Doc," Entered from East Side Junior High, '46; "C" Club, '47, '48, '49; Varsity Football Team, '46, '47, '48, '49; B Team Basketball, '48; Boxing Team, '46, '48, '49; Depression Club.

PEGGY CHARLOTTE CHILDERS, "Peg," Entered from East Side Junior High, '47; Library Staff, '47, '48; Senate Cabinet, '47, '48, '49; Spinsterettes, '47, '48, '49; Varsity Glee Club, '47, '48, '49; Y-Teens, '47, '48, '49; Anchors Aweigh, '48, '49; Girls' Battalion, '47, '48, '49; Ushers, '48, '49; Revue of '48; Honor Society, '49.

MARGARET JANE CHILDRESS, "Skeefoot," Entered from Dickinson Junior High, '47; Twixteen Club, '47, '48; Digest Staff, '47, '48, '49; Art Club, '48, '49; Crandall Art Award, '47, '48; Chattanooga County Fair Art Award, '48; Youth Center Art Award, '48.

BILL CHOATE, Entered from East Lake Junior High.

GERALD DAVID CLAY, "Jerry," Entered from Lakeview High, '47; Officers' Club, '49; Grady Literary Society, '49; Sergeants' Club, '48; Honor Platoon Club, '49.

JO COBB, Entered from East Side Junior High, '46; Ink Spots Treasurer, '48.

MARCELLA H. COBB, "Celia," Entered from East Side Junior High, '47; Trailblazers, '49.

MARGARET ANNA COFER, "Mag," Entered from Hardy Junior High, '47; Battalion; Ramblers, '49.

JESSE ERVIN COMPTON, "Red," Entered from Brainerd Junior High, '46; Spanish Club, '47.

MARTHA ANN COOKE, "Cookie," Entered from Lakeview High, '46.

STANLEY COOKE, Entered from Brainerd Junior High, '45; Sergeants' Club; Disc and Diamond Society; Varsity Basketball Team.

JOYCE ANN COOPER, "Joy," Entered from Hardy Junior High, '47; Battalion, '48, '49; Y-Teens.

MARY MYLES COOPER, "Mac," Entered from First Lutheran School, '46; Library Staff, '46, '47; Senate, '46, '47, '48, '49; Secretary, '48, '49; Physical Ed. Staff, '47, '48, '49; Senate Play Cast, '48; Battalion, '49; Vagabonds, '48, '49; Digest Staff, '47, '48, '49; Circulation Mgr., '48, '49; Girls' Hi-Y, '48, '49; National Honor Society, '48, '49; Student Council, '46, '47; Tumblers, '46, '47, '48, '49; Sponsor of Company B, '48, '49; Junior Play Cast, '48; Senior Play Cast, '49.

TROY L. COPE, "Shorty," Entered from Lookout Junior High, '47.

JOANNE CORNELIUS, "Corney," Entered from East Side Junior High, '47.

PEGGY COVINGTON, "Peg," Entered from East Side Junior High, '46; Camera Club, '46, '47, '48, '49; Secretary-Treasurer, '48, '49; Physical Ed. Staff, '46, '47, '48; Twixteen, '47; Digest Staff, '47, '48, '49; Assistant Bookkeeper, '48; Business Manager, '49; Ace Club, '47, '48; Secretary-Treasurer, '48; Girls' Hi-Y, '47, '48, '49; Vice-President, '49; National Honor Society, '48, '49; Secretary, '49; Battalion, '46, '47, '48, '49; Lieutenant, '48; Captain, '49; Tumblers, '46, '47; Main Office Force, '46, '47, '48, '49; Y-Teens, '46, '47, '48, '49; Ushers, '48, '49; Vice-President, '48, '49.

CONNIE MACK CRAWLEY, Entered from Sale Creek; M.P. Club; Honor Platoon.

JAMES CRAZE, "Red," Entered from East Lake Junior High, '46; M.P. Club, '47, '48.

BOBBY D. CRICK, "Captain," Entered from Dickinson, '47; Sergeants' Club, '48.

PATSY ELOUISE CRYTZ, "Pat," Entered from Piedmont High, '47; Trailblazers, '47; Gadabouts, '48, '49; Y-Teens, '49; Glee Club, '48; Vice-President, Gadabouts, '49.

FRANCES KATHLEEN CULLUM, "Kitty," Entered from Brainerd Junior High, '46; Silhouettes, '47; Gadabouts, '48, '49; Social Chairman, '49.

BESS JIMMY CULPEPPER, "Cullie," Entered in '47; Band, '48, '49; Camera Club, '48, '49.

ANNA MAE CUMMINS, Entered from Lookout Junior High, '47; Y-Teens.

FERRELL JEANETTE DALTON, "Brownie," Entered from Russell High, Atlanta, Ga., '46; Spinsterettes Club, '48; Secretary and Program Chairman; Glee Club, '47.

CLYDE DAVENPORT, Entered from East Side Junior, '46; T&I Club.

FRANK D. DAVIS, "Dave," Entered from Dickinson Junior High, '47; Sergeants' Club; Bible Club.

JAMES DAVIS, "Bootie," Entered from North Side Junior High, '46.

BENJAMIN BENNETT DAWN, JR., "Ben," Entered from Ringgold High, '49; Bible Club.

BOBBIE AILEEN DAWN, Entered from Ringgold High, '48; Badminton Club; Bible Club.

BETTY DAWSON, Entered from Brainerd Junior High, '47; Ushers, '49; Spinsterettes, '48, '49; Y-Teens, '48; Science Club, '47; Honor Society, '49.

ANNA VILENE DAY, "Vie," Entered from Brainerd Junior High, '47.

JACQUELINE DAY, "Jackie Day," Entered from Signal Mountain Grammar; Home Economics Club, '49.



FIRST ROW:

Eddie Madeline Cain
Dorothy Jean Caldwell
Charles Campbell
Frank Campbell
Virginia Campbell
Ruth Elizabeth Carden



SECOND ROW:

Marvin Ezekial Carroll
Richard Melvin Carter
Wilma E. Cartwright
David Casey
Wesley Wallace Cash, Jr.
Betty Joyce Chambers



THIRD ROW:

Betty Rose Chambers
Peggy Chandler
Barbara Chappin
Johnnie Leona Chastain
John H. Childers, Jr.
Peggy Charlotte Childers



FOURTH ROW:

Margaret Jane Childress
Bill Choate
Jerald David Clay
Jo Cobb
Marcella H. Cobb
Margaret Anna Cofer



FIFTH ROW:

Jesse Ervin Compton
Martha Ann Cooke
Stanley Cooke
Joyce Ann Cooper
Mary Myles Cooper
Troy L. Cope



SIXTH ROW:

Joanne Cornelius
Peggy Covington
Connie Mack Crawley
James Craze
Bobby D. Crick
Patsy Eloise Crytz



SEVENTH ROW:

Frances Kathleen Cullum
Bess Jimmy Culpepper
Anna Mae Cummins
Ferrell Jeanette Dalton
Clyde Davenport
Frank D. Davis



EIGHTH ROW:

James Davis
Benjamin B. Dawn, Jr.
Bobbie Aileen Dawn
Betty Dawson
Anna Vylene Day
Jacqueline Day

The SENIOR CLASSES

FIRST ROW:

Frances Leona Day
Bob Deyo
Barbara Ann Dickert
James Dickson
Dorothy Jean Dix
Peggy Dobbins



SECOND ROW:

Mary Trigg Dohbs
Willene Ruby Donahoo
Dorothy Faye Dyer
Jack Vernon Edwards
Barbara Jean Elliott
Bettye Joyce Ellis



THIRD ROW:

Billy Elrod
Audrey Emery
Bobbie Cile Englund
Peggy Carlene Erb
Catherine Estes
Billie Jean Evans



FOURTH ROW:

Joyce Jacquelyn Evans
Judson Everton
Donald Lewis Ferris
Zenade Finley
Elizabeth Ann Fletcher
Laurel Ford



FIFTH ROW:

Wanda Lorretta Forrest
Mary Frances Foster
Richard W. Foster
Barbara Ann French
Bettye Freudenberg
Mary Ann Frye



SIXTH ROW:

Terrell Fugate
Sibyl Ann Fuller
Paul Gaither
Phyllis Lane Gaither
Billie Jean Gann
Dorsey Gardner



SEVENTH ROW:

Mildred Annice Garrett
Burton Thomas Gaston
Fae Gilham
Marvin S. Glidden
James Kenneth Goodner
Barbara Lee Gothard



EIGHTH ROW:

Bobbie Grant
Betty Ruth Griffin
Mable Jean Griffin
Ray Griffith
Nancy Griffith
Joyce Lynn Groth



FRANCES LEONA DAY, "Entered from Signal Mountain Grammar, '46.

BOB DEYO, "Yankee." Entered from W. A. J., '47; M.P. Club, '48.

BARBARA ANN DICKERT, "Bobbie." Entered from East Lake Junior High, '47; Y-Teens, '48.

JAMES DICKSON, "Red." Entered from Kirkman Vocational High; M.P. Club.

DOROTHY JEAN DIX, "Dottie." Entered from Red Bank Junior High, '46.

PEGGY DOBBINS, "Peg." Entered from Chattanooga Valley Junior High, '46; Bible Club, '46, '47, '48, '49; Home Economics Club, '48, '49; Library Staff, '48.

MARY TRIGG DOBBS, "Trigger." Entered from Nathan L. Bachman, '46; Nite Owls, '47, '48, '49; Y-Teens, '48, '49.

WILLENE RUBY DONAHOO, "Willie." Entered from East Side Junior High, '47; Girls' Hi-Y, Y-Teens.

DOROTHY FAYE DYER, "Dootie Bo Bo." Entered from East Lake Junior High, '47; Girls' Hi-Y, Y-Teens.

JACK VERNON EDWARDS, "Lum." Entered from Brainerd Junior High, '46; Bank and Bookstore, '46, '47, '48, '49; Junior Hi-Y, '46, '47; President, '47; Grady Literary Society, '47, '48; Senate, '47, '48, '49; President, '49; Boys' Hi-Y, '48, '49; President, '49; Announcers' Club, '47; Disc and Diamond Society, '47, '48, '49; Vice-President, '49; Sergeants' Club, '48; Officers' Club, '49; National Honor Society, '49; Delegate to Fifth National Hi-Y Congress Miami University; President Tennessee State Hi-Y; Tri Hi-Y Conference; Lieutenant Colonel in R.O.T.C.; Junior Play Cast, '49; Senate Play, '47, '48; Business Manager of CHAMPION, '49; Senior Play Cast, '49.

BARBARA JEAN ELLIOTT, "Babs." Entered from East Lake Junior High, '46; Girls' Hi-Y, '46, '47, '48, '49; Spanish Club, '46, '47; Shove-Offs, '47, '48, '49; Y-Teens, '47, '48, '49; Ushers, '48, '49; Charm Club, '47, '48; Battalion, '47, '48; Glee Club, '46; Digest Staff, '47, '48, '49; Assistant Business Manager, Digest, '48, '49; Scholastic Club, '46, '47, '48.

BETTYE JOYCE ELLIS, "Sinky Priss." Entered from Brainerd Junior High, '46; Home Economics Club, '46, '47, '48; Shove-Offs Club, '48, '49.

BILLY ELROD, "Bud." Entered from Hardy Junior High, '44; Varsity Glee Club, '44, '48, '49; T&I Club, '49; Secretary, '49.

AUDREY EMERY, Entered from East Lake Junior High, '46; Varsity Glee Club, '46, '47, '48, '49; Trailrosters, '46; Silhouette, '47.

BOBBIE CILE ENGLAND, "Chillie." Entered from East Side Junior High, '47; Library Staff, '47; Varsity Basketball and Numb; Trailrosters, '47; Physical Education Office Force, '47, '48, '49; Arc Club, '47, '48, '49; Twixteen Club, '48, '49; Battalion, '47, '48, '49; Y-Teens, '48, '49; Badminton, '49; Honor Society, '49.

PEGGY CARLENE ERB, Entered from Chattanooga High, '47; Charm Club, Treasurer, '48, '49.

CATHERINE ESTES, "Pat." Entered from Lookout Junior High, '47; Charm Club, '48; T&I Club, '48; Merry Macs, '47.

BILLIE JEAN EVANS, "Bill." Entered from Jackson County High, '47; Battalion, '48, '49; Honor Society, '49.

JOYCE JACQUELYN EVANS, "Joy." Entered from Red Bank High, '47; Boys' Hi-Y.

JUDSON EVERTON, "Judson." Entered from Nathaniel L. Bachman, '47; Boys' Hi-Y.

DONALD LEWIS FERRIS, "Pat." Entered from East Side Junior High, '47; Boys' Hi-Y; Bible Club; M.P. Club.

ZENADE FINLEY, "Nade." Entered from Brainerd Junior High, '47; Battalion, '49; Arc Club, '47, '48, '49; Twixteen Club, '48, '49; Treasurer, Ushers, '49.

ELIZABETH ANN FLETCHER, "Libby." Entered from Brainerd Junior High, '46; Vagabond Club, '48, '49; Vice-President, '49; Girls' Hi-Y, '48, '49; Ushers, President, '49; Digest Staff, '48, '49; Sports Editor, '49; National Honor Society, '48, '49; Junior Play Cast; Senior Play Cast, '49.

LAUREL FORD, Entered from East Lake Junior High, '47; Science Club, '47.

WANDA LORRETTA FORREST, "Blondie." Entered from Hardy Junior High, '47; Ushers, '49.

MARY FRANCES FOSTER, "Shorty." Entered from Hardy Junior High, '47; Battalion, '49; Ushers, '49; Honor Society, '49.

RICHARD W. FOSTER, "Dick." Entered from Brainerd Junior High, '47; Bible Club, '48, '49; Vice-President; R.O.T.C. Honor Guard, '47, '48; Varsity Glee Club, '48, '49; Digest Representative.

BARBARA ANNE FRENCH, "Frenchie." Entered from Hardy Junior High, '46; Varsity Glee Club, '46, '47; Home-Ec. Club, '46; Senate, '46, '47, '48, '49; Vice-President, '49; Announcers' Club, '46, '47, '48; President, '49; Ushers, '48; Vice-President, '49; National Honor Society, '48, '49; Junior Representative of CHAMPION Staff, '48; President of Spinsterettes, '49; Girls' Hi-Y, '48, '49; Chaplain, '49; Digest, '47, '48, '49; Editor-in-Chief, '49.

BETTY FREUDENBERG, "Pug." Entered from Nathan Bachman School, '46; Nite Owls, '47, '48; Varsity Glee Club, '48, '49; Vagabonds, '48; Y-Teens, '49; Honor Society, '49.

MARY ANN FRYE, "Chick." Entered from East Side Junior High, '46; Student Council, '46; Library Staff, '46; Bible Club, '48, '49; Home Economics Club, '47, '48, '49; President, '49; Battalion, '46, '47; Spanish Club, '46, '47; Shove-Off Club, '48, '49; Program Chairman for Senior Play; Digest Editorial Staff, '48, '49; Typist; Ushers, '48, '49; Honor Society, '48, '49.

TERRELL FUGATE, "Butch." Entered from Dickinson Junior High, '46; Disc and Diamond Society; Officers Club; Bible Club.

SIBYL ANN FULLER, "Sig." Entered from Brainerd Junior High, '46; Girls' Chorus, '47.

PAUL GAITHER, "Phil." Entered from East Side Junior High, '46; Sergeants' Club, '49.

PHYLLIS LANE GAITHER, "Phil." Entered from Hardy Junior High, '47; Battalion, '48, '49; Y-Teens, '48, '49; Honor Society, '49.

BILLIE JEAN GANN, "Bill." Entered from Dickinson Junior High, '47; Vagabond, '48, '49; Varsity Glee Club, '47, '48, '49; Girls' Hi-Y, '48, '49; R.O.T.C. Sponsor, '49; Honor Society, '49.

DORSEY GARDNER, "Willie." Entered from East Lake Junior High, '45; "C" Club; Secretary, Junior Class; Vice-President, Senior Class.

MILDRED ANNICE GARRETT, "Nig." Entered from Lookout Junior High, '46; Bible Club, '46; Library Staff, '46; Treasurer, '48; Spanish Club, '47; Vice-President; Orchestra, '46, '47; Tumblers, '48; Aces, '48, '49; Ushers, '48; Honor Society, '49.

BURTON THOMAS GASTON, Entered from East Side Junior High, '46.

FAE GILHAM, "Chicken." Entered from North Side Junior High, '47; T&I Club.

MARVIN S. GLIDDEN, "Marvinsten." Entered from Springfield High, Springfield, Vermont, '48; Sergeants' Club.

JAMES KENNETH GOODNER, Entered from Hardy Junior High, '47; Digest, '47, '48, '49.

BARBARA LEE GOTHARD, "Babs." Entered from Lookout Junior High, '46; Spanish Club.

BOBBIE GRANT, "Ginger." Entered from Brainerd Junior High, '47; Science Club, '47; Vagabonds, '48; Latin Club, '48, '49.

BETTY RUTH GRIFFIN, "Bett." Entered from Hardy Junior High, '47; Arc Club, '47; Twixteen Club, '47; Battalion, '47, '48, '49; Ramblers, '49.

MABLE JEAN GRIFFIN, Entered from East Side Junior High, '47; Charm Club, '47, '48; Social Chairman; Badminton Club, '47, '48; T&I Club, '49; Reporter.

RAY GRIFFITH, Entered from East Side Junior High, '47; Disc and Diamond Society, '47, '48, '49; Sergeants' Club, '48; Grady Literary Society, '48, '49; Honor Guard, '49; Officers, '49.

NANCY GRIFFITH, Entered from Nathan L. Bachman, '46; Bible Club.

JOYCE LYNN GROTH, "Jo." Entered from John McDonough High, New Orleans, La., '49.

The SENIOR CLASS

BILL GUTHRIE, "Stud." Entered from East Side Junior High, '43; Depression Club, '45, '46, '49.

MARVIN HAISTEN, "Muscles." Entered from East Side Junior High, '46; Stage Crew, '46, '47, '48, '49; Manager, '49.

NANCY HALE, "Shorty." Entered from Lookout Junior High, '46; Spinstrettes Club, '49; Program Chairman; R.O.T.C. Sponsor, '49; Tumblers, '48.

THELMA HALE, "Shorty." Entered from Lookout Junior High, '47; Y-Teens, '49; Ace Club, '49; Senate, '47.

JEAN HALL, "Wild." Entered from Dickinson Junior High, '47.

MARGARET ANN HAMILL, "Sunshine." Entered from East Side Junior High, '46; Girls' Hi-Y, '46, '47, '48, '49; Vagabonds, '46, '47, '48, '49; Varsity Glee Club, '47, '48, '49; National Honor Society, '48, '49; Digest Staff, '46, '47, '48, '49.

KAY ELAINE HAMPTON, "Kitty." Entered from East Side Junior High, '47; Senate, '47, '49; Vagabonds, '47, '48; Trailtrotters, '49.

CHARLOTTE AMELIA HARRIS, "Shorty." Entered from LaFayette High, '49; Bible Club, '49.

CLARENCE HARRIS, "Red." Entered from Hardy Junior High, '47; Stage Crew; M.P. Club; Honor Platoon; Neatest Cadet.

EDNA LEE HARRIS, "Ed." Entered from Lakeview High, '46; La Tertulia, '47; Y-Teens, '48.

EVELYN HASTON, "Evey." Entered from East Side Junior High, '47; Library Staff, '47; Girls' Hi-Y, '48, '49; Ushers, '48, '49; Shove-Off Club, '48, '49; Battalion, '48, '49; Honor Society, '49; Ramblers, '49.

SARAH ELIZABETH HAYES, "Blondie." Entered from East Lake Junior High, '47; Y-Teens, '48, '49; Candy Crew, '48.

DONALD EUGENE HEAD, "Don." Entered from Lookout Junior High, '47.

ARTHUR ELLEN HEDGECOATH, "Squirrel." Entered from East Lake Junior High, '47; Shove-Off Club, '47, '48, '49; Band, '47, '48; Trailtrotters, '46, '47; Y-Teens, '47, '48.

JOE HENDERSON, "Red." Entered from East Side Junior High, '46.

SHIRLEY HENDERSON, "Shirl." Entered from East Lake Junior High, '47.

MARILYN JOE HENSON, "Jo." Entered from W. A. Blaunt Junior High School, Pensacola, Florida, '46; Trailtrotters, '46, '47; Cadabants, '47, '48, '49; Girls State, '48; Second Prize, District Essay Award, '47.

MARY LAVADA HICKMAN, "Vada." Entered from Hardy Junior High, '46; Merry Macs, '48, '49.

ELOUISE HIGGINS, Entered from Red Bank High, '49; Badminton Club, '49; Tumblers, '49.

WILLIAM E. HIGHFIELD, "Blondie." Entered from Lookout Junior High, '47; Sergeants' Club, '47, '48; Officers' Club, '48; Military Conduct Medal.

BETTY HINKLE, Entered from Brainerd Junior High, '46; Hi-Y, '47, '48, '49; Anchors Aweigh, '48, '49; R.O.T.C. Sponsor, '49; Ushers, '49; Honor Society, '49; Ramblers, '49.

EDWIN HIXSON, "Doc." Entered from East Side Junior High, '46.

JAMES W. HIXSON, "Bashful." Entered from East Lake Junior High, '47; Senior Boys' Hi-Y, '48, '49; Grady Literary Society, '48, '49; Disc and Diamond Society, '48, '49; Officers' Club, '49; M.P. Club, '47, '48; Varsity Glee Club, '47, '48, '49; Sergeants' Club, '48; Junior Play Cast, '48; Senior Play Cast, '49; Tennessee State Chorus, '47, '48; Honor Society, '49.

DONALD HOLDER, Entered from East Side Junior High, '47.

BILL HOLDEMAN, Entered from East Side Junior High, '46; Stage Crew, '47; Latin Club, '48; Sergeants' Club, '48; Officers' Club, '49.

ANTONIO A. HOLLAND, "Tony." Entered from East Side Junior High, '46; Purple and Gold Band, '46, '47, '48, '49; Military Band, '46, '47, '48; Disc and Diamond Society, '48, '49; Sergeants' Club, '48; Officers' Club, '49; Band Ensemble, '46, '47, '48, '49; Swing Band, '48, '49; Vice-President of Freshman Class, '46; All-State Band, '46, '47, '48; Soloist, '48.

JAMES D. HOLLIDAY, "Jim." Entered from Hardy Junior High, '46; Glee Club, '46, '47, '48, '49; Saddle Bouncers, '46, '47; Depression Club, '48, '49.

ALBERT EDWIN HOPSON, Entered from East Lake Junior High, '47; Glee Club, '48, '49; Bible Club, '49; M.P. Club, '49.

GLADYS JEAN HOWARD, "Jennie." Entered from Chattanooga High, '47; Charn Club, '48; Badminton Club, '48; Spinstrettes, '49; Home Economics Club, '49.

NELLA RAE HOWELL, Entered from East Side Junior High, '47; Badminton, '48.

BARBARA HUGHES, "Bobbie." Entered from Red Bank High, '47; Bible Club, '49.

JO HUGHES, "Josephus." Entered from East Side Junior High, '46; Library Staff, '46, '47; Silhouette Club, '46, '47; Treasurer, '48, '49; President, Digest Editorial Staff, '47, '48, '49; National Honor Society, '48, '49; Y-Teens, '48, '49; R.O.T.C. Sponsor, '49; Junior Play Cast, '48; Senior Play Cast, '49; Badminton Club, '47; Seventeeners, '48, '49.

WANDA SUE HUMPHREYS, Entered from Hardy Junior High, '46; Twixteen Club, '46, '47, '48, '49; Battalion, '47, '48; Merry Macs, '47, '48; Ushers, '48, '49; National Honor Society, '48, '49; Sponsor of A Company, '48, '49; Silhouette, '48, '49; Library Staff, '47, '48; Ramblers, '49.

JUNE HUNT, Entered from Savannah High School, '48; Silhouettes, '48, '49; Library Staff, '48; Y-Teens, '48, '49; Ushers, '49; Digest Staff, '48, '49; CHAMPION Staff, '49; National Honor Society, '49; Hi-Y, '49; Ramblers, '49.

THURSTON HUNTOON, Entered from East Side Junior High, '46; National Honor Society, '49.

BOBBIE JO HUSKEY, Entered from East Lake Junior High, '47.

DORIS ANN HUTSELL, "Skip." Entered from East Side Junior High, '46; Trailtrotters, '47, '48, '49; Vice-President, '49.

ROSE MARY HUTSON, "Red." Entered from Brainerd Junior High, '47; Ushers, '49; Charn Club, '48; Honor Society, '49.

PEGGY ANN HYATT, "Snake." Entered from McMinn County High, Athens, Tennessee, '46; Trailtrotters, '47, '48, '49.

THOMAS W. JACKSON, "Tommy." Entered from Phillips High School, Birmingham, Ala., '49; Varsity Football.

EDWARD S. JAMES, Entered from East Side Junior High; Won Art Course from Art Association of America.

DAVID JANEY, "Skipper." Entered from Brainerd Junior High, '44; Band, '44, '45, '46; R.O.T.C., '45.

BOBBIE JEAN JENKINS, "Spice." Entered from Hardy Junior High, '47; Merry Mac Club, '47, '48; Treasurer.

JAMES JENKINS, "Jimmy." Entered from East Side Junior High, '47.

CYNTHIA JANE JENNINGS, "Cynthy." Entered from Brainerd Junior High, '47.

ELOISE JOHNSON, Entered from Brainerd Junior High, '46.

JOE C. JOHNSON, "Joe." Entered from East Lake Junior High, '47.

WILBUR JOHNSON, Entered from East Lake Junior High, '47; Band, '49.

DOROTHY JONES, "Dot." Entered from East Side, '46; Bible Club, '47, '48, '49; Home Economics Club, '48, '49; Library Staff, '48, '49; Badminton Club, '48.

GEORGIA CAROLYN JONES, "Gippy." Entered from Ringgold High, '46; Y-Teens, '48, '49; Tumblers, '48, '49; Ace Club, '48, '49; Silhouettes, '48; Badminton Club, '49; Girls' Battalion, '48, '49; Varsity Volley Ball Team, '48; Spanish Club, '47, '48; Crandall Art Club Award, '47.

LORETTA ELLEN JONES, "Loret." Entered from Marion High, Marion, North Carolina, '46; Art Club, '49.

J. W. JORDAN, "Tadpole." Entered from Signal Mountain Junior High, '46; Hi-Y Club, '46.

JO ANN KACHADURIAN, Entered from East Side Junior High, '46; Six Owls, '46, '47, '48; Tumblers, '48, '49; Senate, '48, '49; Y-Teens, '48, '49; Badminton Club, '48; Vagabonds, '49; Ushers, '49; CHAMPION Staff, '49; Crown Dance, Mr. and Miss Central, '47, '48; National Honor Society, '49; Junior Play; Band Properties, Chorus; Ushers; Senior Play, Revue of '47, '48; Girls' Hi-Y, '47, '48, '49.

KAROLYN KAYLOR, "K. K." Entered from Brainerd Junior High, '46; Girls' Hi-Y, '48, '49; Ushers, '49; Ink Spots, '48; Ramblers, '48.



FIRST ROW:
Bill Guthrie
Marvin Haisten
Nancy Hale
Thelma Hale
Jenn Hall
Margaret Ann Hamill



SECOND ROW:
Kay Elaine Hampton
Charlotte Amelia Harris
Clarence Harris
Edna Lee Harris
Evelyn Haston
Sarah Elizabeth Hayes



THIRD ROW:
Donald Eugene Head
Martha Ellen Hedgecoth
Joe Henderson
Shirley Henderson
Marilyn Joe Henson
Mary Lavada Hickman



FOURTH ROW:
Elouise Higgins
William E. Highfield
Betty Hinkle
Edwin Hixson
James W. Hixson
Donald Holder



FIFTH ROW:
Bill Holderman
Antonio A. Holland
James D. Holliday
Albert Edwin Hopson
Gladys Jean Howell
Nella Rae Howell



SIXTH ROW:
Barbara Hughes
Jo Hughes
Wanda Sue Humphreys
June Hunt
Thurston Huntoon
Bobbie Jo Huskey



SEVENTH ROW:
Doris Ann Hutsell
Rose Mary Hutson
Peggy Ann Hyatt
Thomas W. Jackson
Edward S. James
David Janey



EIGHTH ROW:
Bobbie Jean Jenkins
James Jenkins
Cynthia Jane Jennings
Eloise Johnson
Joe C. Johnson
Wilbur Johnson



NINTH ROW:
Dorothy Jones
Georgia Carolyn Jones
Loretta Ellen Jones
J. W. Jordan
Jo Ann Kachadurian
Karolyn Kaylor

The SENIOR CLASSES

FIRST ROW:

Joyce Lavern Keeney
James W. Keenum
Wanda Keller
Betty Kelley
J. E. Kelley
Virgil Ervin Kelsey

SECOND ROW:

William Orman Kelsay
Prince Kendall
Earl M. Kennedy, Jr.
Robinette Kesley
Lloyd Kile
J. D. Killingsworth

THIRD ROW:

Earl Kinsey
Frances King
Eleanor Kirkpatrick
Barbara Lancaster
Starlena Land
Betty June Laxon

FOURTH ROW:

Billie June LeCroy
Bobbie Leonard
Dranda Lewis
Bob Lewis
Gloria Limehouse
Addie Elizabeth Little

FIFTH ROW:

Betty Lou Little
Marion J. Lockman
Thomas Lomenick
Saralyn Sue Long
Charles Loveday
Edith Lorraine Lumpkin

SIXTH ROW:

Helen Frances Lumpkin
Barbara Sue McAfee
Oliver McBride
Kenneth McBryar
Mary Lou McCallie
Nancy Joan McCormick

SEVENTH ROW:

Marilyn McCuiston
Wendell D. McCurdy, Jr.
Geraldine McDaris
Lois Jean McGarvey
Dorothy Inez McGhee
Eugene McGowan

EIGHTH ROW:

Robert McKinley
Barbara McKown
Elsie Louise McLaughlin
Elizabeth McLaughlin
Johnny Edwin McMurray
Lindy McNabb

NINTH ROW:

Eva Elizabeth McSpadden
Bonnie Annetta Malcolm
Joseph O. Manis
Betty June Mansfield
Jo Ann Mansfield
William Haskell Matheney

JOYCE LAVERN KEENEY, "Joy," Entered from East Side Junior High, '46; Varsity Glee Club, '49; Ushers, '49.

JAMES W. KEENUM, "Jimmy," Entered from East Side Junior High, '45; T&I Club.

WANDA KELLER, Entered from Brainerd Junior High, '47; Twixteen Club, '48; Vice-President, '49.

BETTY KELLEY, "Blinky," Entered from East Side Junior High, '46; Ink Spots, '46, '47; Trailblazers, '47, '48; Gadabouts, '48, '49.

J. E. KELLEY, Entered from East Lake Junior High, '46; Digest Staff, '48, '49.

VIRGIL ERVIN KELSEY, "Baldy Fields," Entered from East Side Junior High, '47; "C" Club, '48, '49.

WILLIAM ORMAN KELSAY, Entered from East Lake Junior High, '47.

PRINCE KENDALL, "Machair," Entered from Hardy Junior High, '47; "C" Club; Boxing Team; Treasurer of Senior Class.

EARL MONTGOMERY KENNEDY, JR., "Junior," Entered from East Side Junior High, '46; Spanish Club, '48; Sergeants' Club, '48; Officers' Club, '49; Depression Club, '49; Boxing Team, '46, '47, '48; Silver Glove for Boxing; Lieutenant in R.O.T.C.; Sergeants' Club Football Team, '48.

ROBINETTE KESLEY, "Bobbie," Entered from East Side Junior High, '46; Senate, '48, '49; Spinsters, '48, '49; Girls' Hi-Y, '48, '49; Digest Editorial Staff, '47, '48, '49; Senior Play, '49; Honor Society, '49.

LYDD KILE, Entered from Hardy Junior High, '46; Grady Literary Society.

J. D. KILLINGSWORTH, "Meat Head," Entered from East Lake Junior High, '47; Sergeants' Club; Boxing Team.

EARL KINSEY, "Greely," Entered from Brainerd Junior High, '46; T&I Club, '46, '48, '49.

FRANCES KING, Entered from East Lake Junior High, '47; Bible Club.

ELEANOR KIRKPATRICK, "Kirk," Entered from East Lake Junior High, '47; Ace Club, '48, '49; Badminton Club, '49.

BARBARA LANCASTER, "Bobbie," Entered from North Chattanooga Junior High, '47.

STARLENA LAND, "Star," Entered from Apsom, '45; Varsity Glee Club; Ink Spots.

BETTY JUNE LAXON, "Dimples," Entered from Brainerd Junior High, '46; Badminton Club, '49.

BILLIE JUNE LECROY, "Bill," Entered from East Side Junior High, '47.

BOBBIE LEONARD

DRANDA LEWIS, "Little Bit," Entered from Dickinson Junior High, '46; Candy Crew; Battalion, '47.

BOB LEWIS, Entered from Savannah High, '45; T&I Club.

GLORIA LIMEHOUSE, "Dutchess," Entered from Brainerd Junior High, '46; Digest Business Staff, '46, '47, '48; Advertising Manager, '49; Girls' Hi-Y, '47; Library Staff, '47; Nite Owls, '47, '48, '49; Majorettes, '47, '48; Band; Girls' Hi-Notes, '48; Y-Teens, '48, '49; Ushers, '48, '49; Junior Play Cast, '48; Honor Society, '49.

ADDIE ELIZABETH LITTLE, "Peasant," Entered from Orlando Senior High, '48; Ushers, '48, '49; Merry Macs, '48, '49; Social Chairman.

BETTY LOU LITTLE, "Doodittle," Entered from Hardy Junior High, '47; National Honor Society, '48, '49; Ushers, '48, '49; Digest Staff, '47, '48, '49; Associate Editor; Merry Macs, '48, '49; Vice-President; Latin Club, '46.

MARION J. LOCKMAN, Entered from Whitwell, '45; M.P. Club; Officers' Club; Stage Crew; Firing Squad; Bowling Team.

THOMAS LOMENICK, "Tom," Entered from Brainerd Junior High, '45; Band, '46, '47; Orchestra '49; Digest Staff, '48.

SARALYN SUE LONG, "Susie," Entered from Chattanooga Valley High, '47; La Tetulia, '48; Y-Teens, '49.

CHARLES LOVEDAY, "Charlie," Entered from Hardy Junior High, '46; Printing Staff, Digest, '48; M.P. Club.

EDITH LORRAINE LUMPKIN, Entered from Lookout Junior High, '46.

HELEN FRANCES LUMPKIN, "Fran," Entered from Lookout Junior High, '47.

BARBARA SUE MCAFEE, Entered from East Lake Junior High, '47; Spinsters Club.

OLIVER MCBRIDE, "Meathread," Entered from East Lake Junior High, '47; Sergeants' Club.

KENNETH MCBRYAR, "Mack," Entered from Lookout Junior High, '47.

MARY LOU MCCALLIE, Entered from Tyner High, '48.

NANCY JOAN MCCORMICK, "Bugs," Entered from Brainerd Junior High, '47; Gadabouts, Vice-President, '48; Y-Teens; Regimental Sponsor.

MARILYN MCCUSTON, "Lynn," Entered from Northside Junior High, '47; Ushers, '48, '49.

WENDELL D. MCCURDY, JR., "Homer," Entered from Brainerd Junior High, '47; Depression Club, '49.

GERALDINE MCDARIS, "Gerry," Entered from Brainerd Junior High, '46; Girls' Hi-Y, '48, '49; Ushers, '49; Digest Staff, '49; Typist; Ramblers, '49; Honor Society, '49.

LOIS JEAN MCGARVEY, "Loisie," Entered from East Lake Junior High, '46; Charm Club, '48; Vice-President.

DOROTHY INEZ MCGHEE, "Dot," Entered from Lookout Junior High, '46; Ushers, '49; National Honor Society, '48, '49.

EUGENE MCGOWAN, "Mack," Entered from Hardy Junior High, '47; Swing Band, '47, '48, '49; Band, '47; Orchestra, '48; Science Club, '47.

ROBERT MCKINNEY, "Bob," Entered from Hewitt High School, '47.

BARBARA MCKOWN, "Bobbie," Entered from Brainerd Junior High, '47.

ELSIE LOUISE MCLAUGHLIN, "Tracy," Entered from Hardy Junior High, '47; Merry Macs Club; Badminton Club.

ELIZABETH MCLAUGHLIN, "Libby," Entered from East Side Junior High, '46; Ushers, '49; Home Economics Club, '47, '48, '49; Secretary, '49; Honor Society, '49.

JOHNNY EDWIN McMURRAY, "Cork," Entered from Red Bank, '46.

LINDY MCNABB, Entered in '47; Band; Spanish Club.

EVA ELIZABETH McSPADDEN, "Lefty," Entered from Hardy Junior High, '47; Varsity Glee Club, '47, '49; Digest Staff, '48, '49; Physical Education Staff, '47, '48, '49; Honorary member of Silhouette Club, '48; Ace Club, '48, '49; Badminton Club, '49; Battalion, '48, '49; National Honor Society, '48.

BONNIE ANNETTA MALCOLM, "Immy," Entered from Lookout Junior High, '46; Tumblers, '46, '47, '48, '49; Y-Teens; Candy Crew.

JOSEPH O. MANIS, "Joe," Entered from Hardy Junior High, '47; Swing Band.

BETTY JUNE MANSFIELD, Entered from Dickinson Junior High, '46; Nite Owls, '46, '47; President, '48, '49; Girls' Hi-Y, '48, '47, '48, '49; Physical Education Staff, '46, '47, '48, '49; Senate, '46, '47; Senate Cabinet, '48, '49; Cheer Leader, '46, '47, '48, '49; National Honor Society, '48, '49; Student Council, '46, '47; Library Staff, '46; Battalion, '46, '47; Main Office Force, '48, '49; Tumblers, '46; Stage Crew Review, '46; Senate Play, '48; Senior Play, '48.

JO ANN MANSFIELD, "Slim," Entered from Lakeview School, '48; Spanish Club; Home Economics Club; Library Staff; Y-Teens; Ramblers, '48.

WILLIAM HASKELL MATHENEY, "Les," Entered from East Side Junior High, '46; Boys' Hi-Y; Honor Society, "C" Club; Officers' Club; Disc and Diamond; Grady Literary Society; Football Team; Colonel in R.O.T.C.

The SENIOR CLASS

Bobbie Joyce Melton, "Joy," Entered from East Side Junior High, '46; Battalion, '46, '47, '48, '49; Girls' Hi-Y, '48, '49; Ushers, '48, '49; Bible Club, '47, '48, '49; Secretary.

Raymond Miles, Jr., "Buddy," Entered from Signal Mountain, '46.

Betty Ruth Miller, "Bett," Entered from Marion County High, '49; Battalion, '49.

Bobby L. Miller, Entered from Brainerd Junior High, '47; T&I Club, '48, '49.

L. V. Miller, "V," Entered from Hardy Junior High, '47; Digest Printing Staff, '49; Science Club, '48.

Barbara Moore, "Beb," Entered from Hardy Junior High, '47; Ushers, '49; Merry Maes, '48, '49; Secretary; Honor Society, '49.

Donald C. Moore, "Don," Entered from Madison Junior High, '46; Disc and Diamond Society; Officers' Club; M.P. Club; Honor Platoon; Grady Literary Society.

Marilyn Moore, "Lynn," Entered from Woonsocket High School, '49.

Marjorie Morgan, Entered from Dade High School, '46; Spanish Club, '48, '49; Secretary.

Thomas Morgan, Entered from Lookout Junior High, '47.

Joyce Morris, "Cling," Entered from Hardy Junior High, '47; Merry Maes Club; Badminton Club.

Bill R. Moss, Entered from East Side Junior High, '46.

Ralph Mowery, "Cotton," Entered from Hardy Junior High, '47.

Greta Myers, Entered from East Lake Junior High, '47; T&I Club.

Jewell Faye Nabors, "Judy," Entered from Hixson High, '49; Future Homemakers of America (Hixson); Bible Club, '49; Art Club, '49.

Loran Nation, Entered from East Side, '47.

Martha Lee Needham, "Monk," Entered from Shelbyville High School, '47.

Martha Newsom, "Martha," Entered from Oak Ridge High, '47.

Gene Charles Normandy, "Yankee," Entered from Calvin Coolidge High, Washington, D. C., '48; Courier Staff; "C" Club; Boys' Hi-Y; Digest Printing Staff.

Patricia Ann Olinger, "Blondie," Entered from Hardy Junior High, '46; Girls' Hi-Y, '47, '48, '49; Band, '46, '47, '48, '49; Girls' Band Club, '47, '48, '49.

Barbara Ann Ott, "B. O. Plenty," Entered from East Lake Junior High, '46; Varsity Glee Club, '47, '48, '49; Future Teachers of America Club, '47.

Margaret Parker, "Grandma," Entered from Martin High School, '49; Y-Teens, '49; Badminton Club, '49.

Norman Lee Parker, "Buz," Entered from North Chattanooga Junior High School, '47.

Roberta Parsons, "Berl," Entered from Lakeview Junior High, '46; Battalion, '47, '48, '49; Spinneterettes, '49; Home Economics Club, '48, '49; Girls' Hi-Y, '46, '47, '48, '49; Treasurer, '49.

Betty Joyce Patterson, "Squeaky," Entered from East Lake Junior High, '47; Digest Representative, '47, '48; First-Aid Force, '48, '49.

Emalyne Payne, Entered from Hardy Junior High, '47; Honor Society, '49; Ushers, '49; Battalion, '47, '48, '49.

Mary Pedigo, "Peanut," Entered from East Side Junior High, '47; Gadabouts; Hi-Y; Y-Teens; Treasurer of Sophomore and Junior Classes; Gadabout Club, President, '49; R.O.T.C. Sponsor, '49.

Crocker Peoples, "Crick," Entered from Tyner High, '47; Science Club, '48; Honor Society, '48, '49.

Charles Vaden Perry, "Charlie," Entered from Red Bank, '46; Band, '46; Orchestra, '47, '48, '49; Sergeants' Club, '48; Officers' Club, '49; Grady Literary Society, '47, '48; Disc and Diamond, '47, '48; Sergeant-at-Arms; Junior Boys' Hi-Y, '47; Senior Boys' Hi-Y, '48, '49; Junior Play, '48; Latin Club, '48.

Elizabeth Roberta Perry, Entered from Hixson, '48; Honor Society, '49.

Geraldine Phillips, "Shorty," Entered from East Lake Junior High, '48.

Grace Phillips, Entered from Broad Creek Village, '46; Bible Club, '48, '49.

Bryan Allen Pirkle, Entered from Union City High in Union City, Indiana, '47; Spanish Club; M.P. Club; Honor Platoon; Firing Squad; won English Essay Contest.

Joseph Lawrence Powell, "Joe," Entered from East Lake Junior High, '47; Firing Squad.

June Powell, "June Bug," Entered from Red Bank Junior High, '46; Trailblazers, '46; Y-Teens, '47, '48.

Mary Frances Powell, "Mort," Entered from Oak Ridge High, '48; Ace Club, '48; Digest Representative, '48.

Mary Ann Powers, Entered from Hardy Junior High, '47; Vice-President Merry Maes, '48.

Walter P. Prichard, Jr., "Toogie," Entered from East Side Junior High, '46; Boxing Team, '49.

Margaret Pryor, "Maggie," Entered from Notre Dame, '47; Battalion, '48; Treasurer, Trailblazers, '48; President, Trailblazers, '49; Junior Play, '48.

Ann Elizabeth Ramsey, "Oschie," Entered from Ringgold High, '47; Ushers, '49; R.O.T.C. Sponsor, '49; Y-Teens, '48, '49; Silhouettes, '47, '48; Treasurer, '49; Battalion, '49; National Honor Society, '49; Ramblers, '49.

Don Redding, "Semmon Head," Entered from East Side, '46; "C" Club, '47, '48, '49; Pioneer Club, '46; Pioneer Union Club, '46, '47, '48, '49; Football, '46, '47, '48, '49; Boxing, '46, '48, '49.

Elmer Redwine, "Elmo," Entered from Kirkman Vocational, '47; "C" Club, '47, '48.

Betty Earle Reed, Entered from Hardy Junior High, '47; President Merry Maes; Spanish Club.

Marilyn Reed, "Kitten," Entered from Dickinson Junior High, '46; Bible Club; Spinneterettes; Spanish Club; Ushers.

Bette Joan Reeves, "Jo," Entered from Lookout Junior High, '47.

Betty C. Reeves, Entered from Dickinson Junior High, '47; Silhouette, '49; Battalion, '49.

Virginia Richardson, "Gloxy," Entered from East Lake Junior High, '47.

Sue Richey, "Susie," Entered from Tyner, '46; Gym Office Force, '46, '47; Bank Staff, '46, '47, '48, '49; Senate, '46, '47, '48, '49; Hi-Y, '46, '47, '48, '49; Nile Oaks, '46, '47, '48, '49; Secretary, '49; Y-Teens Secretary, '48, Vice-President, '49; National Honor Society, '48, '49; Student Council, '46; CHAMPION Staff, '49; Swimming Club, '49; Secretary Freshman Class, '46; President Sophomore Class, '47.

Mary Jane Roark, "M. J.," Entered from Hardy Junior High, '47; Ushers, '49; National Honor Society, '49; Merry Maes, '48, '49.

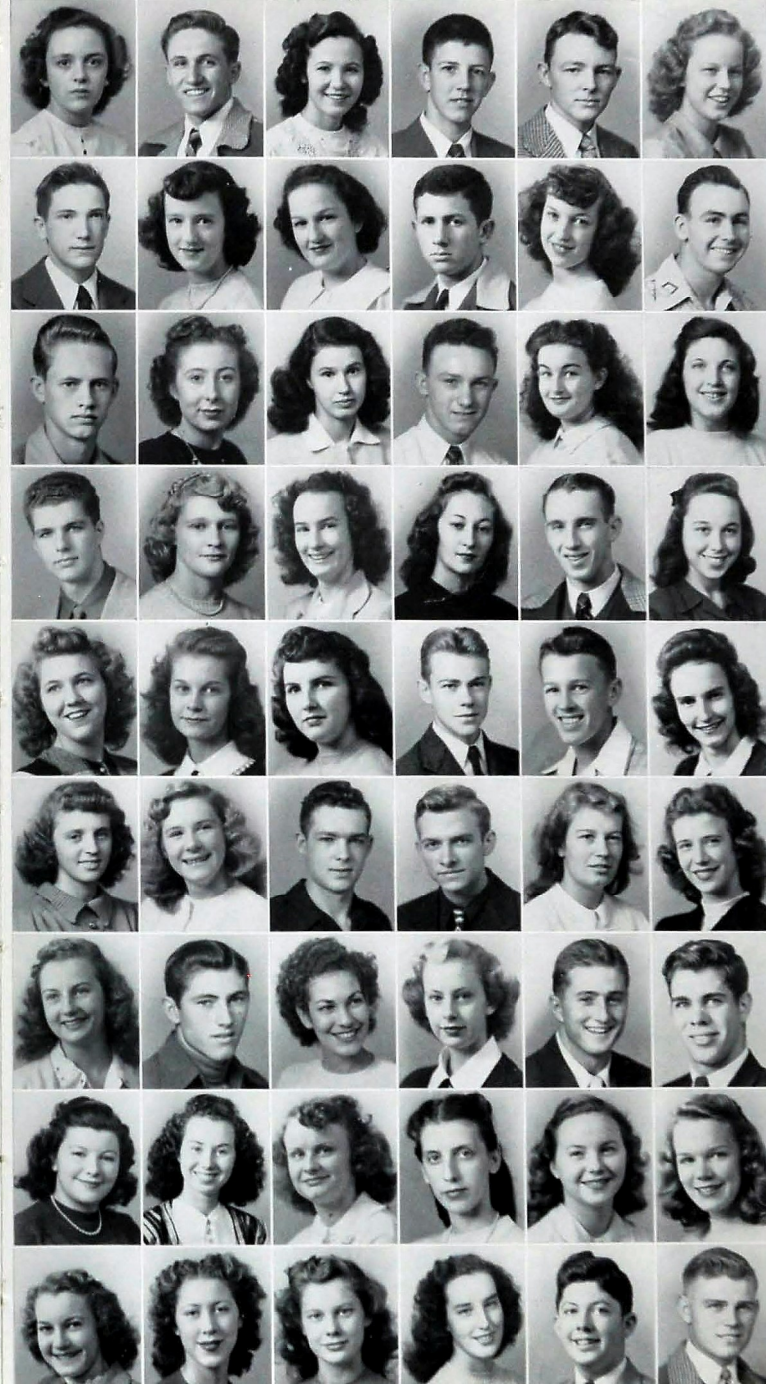
Norma Drucille Roberts, "Susie Q," Entered from Lookout Junior High, '47.

Dorothy Rogers, "Dottie," Entered from East Side Junior High, '46; Y-Teens, '48, '49.

Rana Rogers, "Terry," Entered from North Chattanooga Junior High, '46; T&I Club.

Billy F. Roy, "Bill," Entered from Lenoir City High, '47; Disc and Diamond Society.

John Rushing, Entered from McCarver Junior High, Tacoma, Washington, '47; Band, '47, '48, '49.



FIRST ROW:

Bobbie Joyce Melton
Raymond Miles, Jr.
Betty Ruth Miller
Bobby L. Miller
L. V. Miller
Barbara Moore

SECOND ROW:

Donald C. Moore
Marilyn Moore
Marjorie Morgan
Thomas Morgan
Joyce Morris
Bill R. Moss

THIRD ROW:

Ralph Mowery
Greta Myers
Jewell Faye Nabors
Loran Nation
Martha Lee Needham
Martha Newsom

FOURTH ROW:

Gene Charles Normandy
Patricia Ann Olinger
Barbara Ann Ott
Margaret Parker
Norman Lee Parker
Roberta Parsons

FIFTH ROW:

Betty Joyce Patterson
Emalyne Payne
Mary Pedigo
Crocker Peoples
Charles Vaden Perry
Elizabeth Roberta Perry

SIXTH ROW:

Geraldine Phillips
Grace Phillips
Bryan Allen Pirkle
Joseph Lawrence Powell
June Powell
Mary Frances Powell

SEVENTH ROW:

Mary Ann Powers
Walter P. Prichard, Jr.
Margaret Pryor
Ann Elizabeth Ramsey
Don Redding
Elmer Redwine

EIGHTH ROW:

Betty Earle Reed
Marilyn Reed
Bette Joan Reeves
Betty C. Reeves
Virginia Richardson
Sue Richey

NINTH ROW:

Mary Jane Roark
Norma Drucille Roberts
Dorothy Rogers
Rana Rogers
Billy F. Roy
John Rushing

The SENIOR CLASSES

FIRST ROW:

Harold L. Russell
Marcus Rye
Windeff Saffles
Sue Saxon
Janet Scheidt
Joyce Scheidt

SECOND ROW:

Barbara Alyce Schoolfield
Cecil Scott
Dorothy June Sexton
Robert McKinlock Sharp
Mary Shaw
Kathryn Margaret Shearer

THIRD ROW:

Jeannette Shields
Betty Jewell Shipley
Harry Wendell Shipley
Paul Shirley
James H. Short
Samuel T. Silver, Jr.

FOURTH ROW:

Sarah Simmons
Fania Simpson
Margaret Simpson
Martha Charlene Simpson
Leland Sisemore
Kathryn Sivley

FIFTH ROW:

Archie Slaten
Barbara Slayton
Jack D. Smartt
Pauline Smartt
Benny Smith
Billie Corinne Smith

SIXTH ROW:

Charles C. Smith, Jr.
David Byrd Smith
George Donald Smith
Harold Eugene Smith
Kenneth J. Smith
Lillie Mae Smith

SEVENTH ROW:

Bill Smith
Dorothy Carolyn Snow
Samuel Hurst Sotherland
Patricia Ann Spiegler
Margaret Stancil
Betty Jean Stanley

EIGHTH ROW:

Betty Ann St. Clair
Bill St. Clair
Bobby G. Stephens
Margaret Stephens
Joe M. Stokes
DeWayne Stoner, Jr.

NINTH ROW:

Robert Thomas Strahley
Dan A. Stroud
Virginia Jo Suggs
Robert F. Sutton
Reba F. Swanson
Charles Loren Tait

HAROLD L. RUSSELL, "Rusty." Entered from East Side, '46; T&I Club, '47, '48, '49; Vice-President of T&I, '48, '49.

MARCUS RYE, "Mark." Entered from East Side Junior High, '46; T&I Club.

WINDELL SAFFLES, Entered from East Side Junior High, '47; Disc and Diamond Society, '47; Grady Literary Society, '48; Sergeants Club, '47; Officers Club, '49.

SEE SAXON, "Sudy." Entered from Gadsden High, '48.

JANET SCHEIDT, Entered from First Lutheran School, '46; Senate, '46, '47, '48, '49; Library Staff, '46, '47, '48; Vagabonds, '48, '49; Ushers, '48, '49; Badminton Club, '47, '48; Girls' Hi-Y, '48, '49; Junior Play Cast, '48; Senate Play, '48; Battalion, '49; Digest Sponsor, '49; Tumblers, '48; Honor Society, '49; Senior Play Cast, '49.

JOYCE SCHEIDT, Entered from First Lutheran School, '46; Senate, '46, '47, '48, '49; Student Council, '46; Library Staff, '46, '47; Badminton Club, '48; Vagabonds, '48, '49; Hi-Y, '48, '49; Battalion, '49; Ushers, '48, '49; Junior Play, '48; Honor Society, '49.

BARBARA ALYCE SCHOOLFIELD, "Bobby." Entered from Notre Dame, '47; Science Club, '47; Home Economics Club, '48, '49; Spinsterettes, '48, '49; Ace Club, '48, '49; Tumbling, '48.

CECIL SCOTT, "Scottie." Entered from Hardy Junior High, '47; Baseball Team.

DOROTHY JUNE SEXTON, "June Bug." Entered from Brainerd Junior High, '46; Badminton Club, Vice-President, '49; Y-Teens, '48.

ROBERT MCKINLOCK SHARP, "Bob." Entered from Knoxville Central High, '48; Disc and Diamond Society, '48, '49; Boys' Hi-Y, '49; Grady Literary Society, '49; Basketball "B" Team, '48; Basketball, '49; Honor Society, '49.

MARY SHAW, Entered from Brainerd Junior High, '47; Ushers, '49; Badminton Club, '49; Honor Society, '49.

KATHRYN MARGARET SHEARER, "Kathrina." Entered from Brainerd Junior High, '46; Y-Teens; Ace Club; Battalion.

JEANETTE SHIELDS, "Nettie." Entered from East Side Junior High, '47.

BETTY JEWELL SHIPLEY, "Peannu." Entered from Hardy Junior High, '47; La Tertula, '48, '49; Ace Club, '48, '49; Varsity Glee Club, '47.

HARRY WENDELL SHIPLEY, Entered from Hardy Junior High, '47.

PAUL SHIRLEY, "Cowboy." Entered from St. Andrews Grammar School, '46.

JAMES H. SHORT, "Jim." Entered from East Side Junior High, '46.

SAMUEL T. SILVER, JR., "S. T." Entered from Brainerd Junior High, '46; Mechanical Arts Club, '46; Sergeants Club, '46; Officers' Club, '49; Varsity Glee Club, '48, '49; Disc and Diamond Society, '48, '49; Boys' Hi-Y, '48, '49; R.O.T.C. Major; Honor Society, '49.

SARAH SIMMONS.

ENITA SIMPSON, "Tookie." Entered from East Side Junior High, '46; Bible Club, '46; Library Staff, '46; Spanish Club, '47; Girls Band Club, '48, '49; Majorettes, '46, '47, '48, '49; Head Majorette, '49; Band Officers' Club, '49.

MARGARET SIMPSON, "Margie." Entered from Brainerd Junior High, '47; Spanish Club; Ushers; Honor Society, '49.

MARTHA CHARLENE SIMPSON, "Shorty." Entered from East Side Junior High, '47; Y-Teens, '47, '48, '49; Charm Club, Vice-President, '48; Shove-Off Club, '47, Secretary, '48, '49.

LELAND SISEMORE, "Leaky." Entered from East Side Junior High, '47; Military Band, '47, '48, '49; Swing Band, '47, '48, '49; Purple and Gold Band, '47, '48, '49; Sergeants' Club, '48; Disc and Diamond Society, '48, '49; Band Ensemble, '47, '48; Officers' Club, '49; Captain of Military Band, '49; Captain Regimental Staff, '49; All-State Band, '48; Honor Society, '49.

KATHRYN SIVLEY, "Kitty." Entered from East Lake Junior High, '47; Ace Club, '47, '48, '49; Gadsden Club, '48; Silhouette Club, '47, '49; Battalion, '48; Y-Teens, '48.

ARCHIE SLATES, Entered from East Side, '46; Cheer Leader; Officers' Club; Sergeants' Club; Boxing Team; Vice-President of Sophomore Class, '47; Captain in R.O.T.C.; Alternate Captain of Boxing Team; Honor Society, '49.

BARBARA SLAYTON, "Joker." Entered from Dickinson Junior High, '47; Gym Office Force, '47, '48; Spinsterettes, '48, '49; Y-Teens, '49; Battalion, '47, '48; Ramblers, '49.

JACK D. SMARTT, "Sovereign." Entered from Brainerd Junior High, '46; "C" Club, '47, '48; Treasurer, '49; Football, '46, '47, '48, '49.

PAULINE SMARTT, "Dott." Entered from Hardy Junior High, '47; Battalion, '48, '49; Red Cross, '46, '47.

BENNY SMITH, "Lightning." Entered from East Side Junior High, '46; Grady Literary Society, '48; M.P. Club; Officers' Club; Rifle Team; Honor Platoon; Bowling Club; Firing Squad; Disc and Diamond Society.

BILLIE CORINNE SMITH, "Bill." Entered from East Lake Junior High, '46; Girls' Hi-Y, '46, '47, '48; President, '49; Announcers Club, '46, '47; Secretary-Treasurer, '48, Vice-President, '49; Varsity Glee Club, '46, '47, '48, '49; Digest Editorial Staff, '47, '48; Club Editor, '49; Vagabonds, '48, '49; Junior Play Cast, '48; Library Staff, '47; National Honor Society, '48, '49; Ushers, '48, '49; Secretary of Tennessee State Hi-Y, '48, '49; Senior Play Cast.

CHARLES C. SMITH, JR., "Red." Entered from Brainerd Junior High, '47; Honor Platoon.

DAVID BYRD SMITH, "Spider." Entered from Columbia High, '46; Football, '47, '48.

GEORGE DONALD SMITH, "Slick." Entered from Lookout Junior High, '46; Science Club.

HAROLD EUGENE SMITH, "Half-Pint." Entered from Lookout Junior High, '47.

KENNETH J. SMITH, Entered from East Lake Junior High, '46; Officers Club; Disc and Diamond Society; Grady Literary Society; Bachelors Club; Boxing; Captain in R.O.T.C.; Sergeant-at-Arms.

LILLIE MAE SMITH, Entered from East Side Junior High, '47.

BILL SMITH, "Willie." Entered from East Side Junior High, '46; Grady Literary Society, '48, '49; Band Ensemble, '47, '48, '49; Captain, Purple and Gold Band.

DOROTHY CAROLYN SNOW, "Dottie." Entered from East Side Junior High, '47; Varsity Glee Club, '47, '48, '49; Spinsterettes; Ace Club; R.O.T.C. Sponsor.

SAMUEL HURST SOUTHERLAND, "Sam." Entered from East Side Junior High, '46; Boys' Junior Hi-Y, '47; Chaplain; Boys' Hi-Y, '47, '48, '49; Grady Literary Society, '47, '48, '49; M.P. Club, '46, '47, '48, '49; Secretary; Officers' Club, '49; Honor Platoon, '47, '48, '49; Secretary-Treasurer.

PATRICIA ANN SPEGLER, "Pat." Entered from East Side Junior High, '46; Library Staff, '46, '47; Student Council, '46, '47; Senate, '46; Physical Education Staff, '46, '47, '48, '49; Lieutenant, '49; Twixton Club, '46, '47, '49; Shove-Offs, '48, '49; Y-Teens, '47, '48, '49; Stage Crew, '46, '47, '48; Ace Club, '48, '49; Tumblers, '47, '48; Junior Play, '48; Regimental Staff Sponsor, '49; Senior Play, '49; Honor Society, '49.

MARGARET STANCIL, Entered from Mounca High, Pa., '47; Ace Club, '48; Badminton Club, '48; Home Economics Club, '47; Ramblers, '48.

BETTY JEAN STANLEY, "Jean." Entered from East Lake Junior High, '46; Varsity Glee Club, '47, '48, '49; Y-Teens, '48; Spanish Club, '48.

BETTY ANN ST. CLAIR, "Saint." Entered from East Lake Junior High, '46; Library Staff, '46, '47; Girls' Battalion, '46, '47; Y-Teens, '48, '49; Shove-Offs Club, '46, '47, '48, President, '48, '49; Main Office Force, '47, '48, '49; Senate, '46, '47.

BILL ST. CLAIR, "Saint." Entered from Hardy Junior High, '47; Basketball Team.

BOBBY G. STEPHENS, Entered from East Side Junior High, '47; M.P. Club, '47, '48; T&I, '48, '49.

MARGARET STEPHENS, Entered from Siler City High, North Carolina, '49.

JOE M. STOKES, Entered from Dickinson Junior High; Honor Guard; Officers Club; M.P. Club; Firing Squad.

DEWAYNE STONER, JR., "Junior." Entered from Henry High, '45.

ROBERT THOMAS STRAHLEY, "Robin." Entered from Brainerd Junior High, '46; Football Team, '47.

DAN A. STROUD, Entered from Lutheran School, '46; Senior Boys' Hi-Y; Senate; Officers Club; Sergeants Club; Captain in R.O.T.C.; Honor Society, '49.

VIRGINIA JO SUGGS, "Suggie." Entered from East Side Junior High, '46; Honorary Member of Site Owls Club, '46, '47; Shove-Offs Club, '47, '48; Y-Teen Club, '47, '48.

ROBERT F. SUTTON, Entered from East Side Junior High, '46; T&I Club, '48, '49.

REBA F. SWANSON, "Red." Entered from East Lake Junior High, '46; T&I Club.

CHARLES LOREN TAIT, "Taiter." Entered from Dickinson Junior High, '47; Senate, '47, '48; Grady Literary Society, '47, '48; Sergeants' Club, '48.

The SENIOR CLASS

WAYNE R. TALLEY, "Talley Ho." Entered from Brainerd Junior High, '46; Sergeants Club; Disc and Diamond Society; Honor Guard; Grady Literary Society; Officers Club.

GRADY TATE, "Onion." Entered from Lookout Junior High, '47; Football Team, '47, '48.

RALPH AARON TATE, "Rat." Entered from Brainerd Junior High, '46; Varsity Glee Club, '49.

MARY JEANNETTE TAYLOR, "Blondie." Entered from East Side Junior High, '46; Girls' Hi-Y, '48, '49; Ushers, '49.

WILLODEAN TEMPLETON, Entered from Hardy Junior High, '47.

CHARLES TERRY, Entered from Kirkman Vocational, '48.

BETTY JEAN TETERS, "Sister." Entered from Dickinson Junior High, '47; Girls' Hi-Y; Silhouette Club; Home Ec Club; Battalion.

ALFRED EARL THOMAS, "Willie." Entered from Brainerd Junior High, '46; Science Club, '46; Depression Club.

AUDREY THOMAS, "Shorty." Entered from Sweetwater, '46; Y-Teens, '48, '49; Band Girls Club, '48, '49; Southern Regional Champion in Skating, '48.

DORIS THOMAS, "Dot." Entered from Red Bank High, '47; Battalion, '48; Badminton Club, '48; Y-Teens, '48, '49; Bible Club, '48, '49.

EVANGELINE THOMAS, "Pigeon." Entered from Oak Ridge High, '48; Bible Club; Spanish Club, Vice-President; Honor Society, '49.

JEAN MARIE THOMAS, "Tommie." Entered from Lookout Junior High, '47; Y-Teens, '49.

LAURA MADLINE THOMAS, Entered from Red Bank High, '46; Battalion, '47, '48, '49; Home Ec Club, '48, '49.

HOMER RAY THOMPSON, "Sonny." Entered from East Side Junior High, '47.

PEGGY JOYCE THOMPSON, "Puddin." Entered from East Side Junior High, '46; Girls' Hi-Y, '48, '49; Twixteen, '48, '49; Home Ec Club, '47, '48, '49; Bible Club, '46, '47, '48, '49; President, '49; Ushers, '48, '49; Digest Staff, '49; Typist; Junior Play, '48; Honor Society, '49; Senior Play Cast, '49.

EDWIN ERNEST TRIMBLE, "Soc." Entered from Signal Mountain Grammar School, '46; Bank and Bookstore, '46, '47, '48, '49; Junior Boys' Hi-Y, '46, '47, Vice-President; Golf Team, '46, '47, '48, '49; Grady Literary Society, '47, '48, '49; Vice-President; Disc and Diamond Society, '47, '48, '49; Sergeant's Club, '48; President; Officers Club, '49; President; National Honor Society, '48, '49; Treasurer; Delegate to Boys' State, '48; Lieutenant Colonel in R.O.T.C.

BARBARA JO TROTTER, "Jody." Entered from East Lake Junior High, '47.

PEGGY TROTTER, "Pat." Entered from Lookout Junior High, '47; Charm Club, '47, '48; Treasurer; Merry Macs, '47; T&I Club, '48; Treasurer.

BETTY JUNE TUCKER, Entered from Lookout Junior High, '47.

JANET TUCKER, "Blondie." Entered from East Lake Junior High, '47; Ace Club, '47, '48, '49; Varsity Club, '47, '48.

WILLIAM TURNER, Entered from East Side Junior High, '47.

BILL TURPIN, Entered from East Side, '46; Science Club, '47, President, '49; President of Red Cross, '48; Honor Society, '49.

MARTHA JEAN TWYMAN, "Stumpy." Entered from Dickinson Junior High, '46; Badminton Club, '47; Battalion, '47, '48, '49; Twixteen Club, '47, '48; Y-Teens, '48, '49; Ramblers, '49.

JOHN H. VANDAGRIF, "Johnny." Entered from East Lake Junior High, '48.

JESSE T. VICK, "J. T." Entered from Baylor, '46; "C" Club, '47, '48, President, '49; Depression Club, '46, '47; Varsity Glee Club, '49; Varsity Football, '46, '47, '48, Captain, '49; All-City, '48; Second Team, All-State, '48; President of Senior Class, '49.

JACK DRENNEN VINCENT, "Lightning." Entered from Notre Dame, '46; Band, '46, '47, '48, '49; Orchestra, '48, '49; Trailblazers, '47; Central Sextet in East Tenn. and All-State Festivals, '47, '48; 1st Chair in Tenn. Clinic Band, '48; Military Band, '47, '48; East Tenn. Orchestra, '49.

SAM WADE, JR., "Pete." Entered from Dickinson Junior High, '46.

VALERIA WALDROP, Entered from Brainerd Junior High, '46; Girls' Hi-Y, '49; Ushers, '49; Honor Society, '49.

EUGENE WALKER, Entered from Winchester Public School, '45.

EVELYN RUTH WALKER, Entered from Hardy Junior High, '47; Bible Club, '49; Future Teachers of America, '48, '49; Ushers, '49; 2nd Vice-President of Future Teachers of America.

ARTHUR WALLACE, "Mo Wallie." Entered from East Side Junior High, '46; Sergeants Club; Disc and Diamond Society; Grady Literary Society; Officers Club.

BARBARA JEAN WAMACK, "Bobbie." Entered from East Side Junior High, '47; Library Staff, '47, '48; Twixteen Club, '48, '49; Girls' Hi-Y, '48, '49; National Honor Society, '48, '49; Ushers, '48, '49; R.O.T.C. Sponsor, '49.

TAYLOR WEATHERS, Entered from East Side Junior High, '46; T&I Club, '48, '49; Treasurer, '48, President, '49.

AUDREY JEAN WEBB, Entered from Brainerd Junior High, '46.

CATHERINE WEBSTER.

HARRY LEE WEDDLE, "Buster." Entered from Ashville, N. C., '48; Football, "C" Club; Boys' Hi-Y.

DURA WHITE, "White." Entered from Hardy Junior High, '47; Digest Staff; Library Staff; Varsity Glee Club, '47, '49; Honor Society, '49.

EDWIN WHITTENBURG, Entered from East Side Junior High, '46; M.P. Club, '47, '48.

DORIS WILHOITE, "Pat." Entered from Hardy Junior High, '47; Home Ec Club, '48, '49; Y-Teens, '48, '49; Battalion, '48, '49.

RUTH ANN WILKES, "Ruthie." Entered from Hardy Junior High, '47; Battalion, '49.

MARY ANN WILLIAMS, "Little Bit." Entered from City High, '49; Ink Spots, '49; Tumblers, '49.

CHARLES RICHARD WITT, "Bugs." Entered from East Side Junior High, '46; Depression Club, '46, '47, '48, '49; Disc and Diamond Society, '48.

CHARLES ALLEN WOLFE, Entered from Hardy Junior High, '46; Bible Club.

SAM WOMACK, "Shorty." Entered from East Lake Junior High, '47; Varsity Glee Club, '47, '48, '49; Sergeants Club, '48; Grady Literary Society, '49; Disc and Diamond Society, '48, '49; Dramatics Club, '49.

BARBARA ANN WOODS, "Bobbie." Entered from Hardy Junior High, '46; Ushers, '48, '49; Home Ec Club, '49; Treasurer; Latin Club, '48; Band, '47; Tumblers, '48, '49; Y-Teens, '48.

DORIS WOODWARD, "Dot." Entered from East Lake Junior High, '47.

MARTHA JO WORLEY, "Jo." Entered from Lookout Junior High, '46; Ushers, '48, '49; Ace Club, '49; Y-Teens, '49; Badminton Club, '49.

EDGAR WOY, "Ed." Entered from Northside Junior High, '46; "C" Club, '47, '48, '49; Football, '47, '48, '49; Alternate Captain, '49; Basketball, '47; Co-Captain, '48, '49; Captain; Student Council, '46; Baseball, '49; Secretary of Senior Class.

EMILY YARBROUGH, "Yardbird." Entered from East Side, '47; Ace Club, '46, '47, '48, '49; Gadabout Club, '48; Silhouette Club, '49; Badminton Club, '48; Battalion, '48, '49; Y-Teens, '48.

PEGGY JOYCE YOUNGER, "Tumpy." Entered from Dickinson Junior High, '46; Trailblazers, '46; Hi-Notes, '47, '48, '49; Latin Club, '48; Y-Teens, '48, '49; Badminton Club, '49; Ushers; Orchestra; R.O.T.C. Sponsor; Sponsor of Purple and Gold Band; Honor Society, '49; Ramblers, '49.



FIRST ROW:

Wayne R. Talley
Grady Tate
Ralph Aaron Tate
Mary Jeannette Taylor
Wilodean Templeton
Charles Terry



SECOND ROW:

Betty Jean Teters
Alfred Earl Thomas
Audrey Thomas
Doris Thomas
Evangeline Thomas
Jean Marie Thomas



THIRD ROW:

Laura Madeline Thomas
Homer Ray Thompson
Peggy Joyce Thompson
Edwin Ernest Trimble
Barbara Jo Trotter
Peggy Trotter



FOURTH ROW:

Betty June Tucker
Janet Tucker
William Turner
Bill Turpin
Martha Jean Twyman
John H. Vandagriff



FIFTH ROW:

Jesse T. Vick
Jack Drennen Vincent
Sam Wade, Jr.
Valeria Waldrop
Eugene Walker
Evelyn Ruth Walker



SIXTH ROW:

Arthur Wallace
Barbara Jean Wamack
Taylor Weathers
Audrey Jean Webb
Catherine Webster
Harry Lee Weddle



SEVENTH ROW:

Dura White
Edwin Whittenburg
Doris Wilhoite
Ruth Ann Wilkes
Mary Ann Williams
Charles Richard Witt



EIGHTH ROW:

Charles Allen Wolfe
Sam Womack
Barbara Ann Woods
Doris Woodward
Martha Jo Worley
Edgar Woy



NINTH ROW:

Emily Yarbrough
Peggy Joyce Younger



The JUNIOR BOYS

Frank Acuff
Vernon Adams
John Alexander
James Allison
Ralph Allison
Lynn Alverson
Jimmie Anderson
Melvin Ashley
Fred Autry
Harlan Avakian
Johnnie Back
Kenneth Barton
Robert Beene
Temple Blacklock
Charlie Blewins
Lymon Boleman
Bill Bonine
Thomas Bowen
Nickle Bowman
Leon Brannan
Milton Brock
Grady Brothers
Thomas Brown
Jack Buckner
Tommy Huff
Eugene Hufington
C. W. Burnett
Alton Byars, Jr.
Claude Byars, Jr.
Bobby Campbell

Charles Carnahan
Bob Carter
Richard Carver
James Case
Clyde Chauncey
Bethune Clark
Bill Cooke
Robert Cottingham
Melvin Ashley
Ben Crawford
Connie Crawley
James Craze
Kenneth Crick
Fred Crumblay
Thomas Daryl
James Davis
Joe Davis
Paul Davis
Reubin Dean
Robert Delaney
Harold Derryberry
Don DeSha
Samuel Dobbins
Vance Dobbins
Richard Dobs
Wilson Donahue
Robert Downs
Robert Duncan
Jimmy Eaves
Thomas Eaves

Herbert Eller
Jack England
Harry Espy
Ivan Everett
Donald Fairies
Jack Farabee
Ralph Fickle
James Finch
Bill Free
Barney Fryar
Paul Fuller
James Galloway
Sam Garrett
Dewey Goggins
Leland Goldstan
Boyd Goodner
Charles Gray
Billy Gunn
Fred Haffey
Marvin Haiston
Fred Hall
Harold Hamby
Edward Hammer
Ray Harmon
Loren Hart
Jack Haurington
Wayne Hawkins
Bobby Head
Johnny Hickey
O. D. Hilliard

Lyle Holland
Bill Holloway
Jerry Hubbard
Myron Hughes
Raymond Huss
Robert Ingraham
Jack Jenkins
Barry Jones
Glen Jones
Sam Jones
Edward Kerby
J. C. Keziah
Gilbert King
Joe King
Herbert Krumm
George Lawlitt
Richard Leeper
Kenneth Lerch
Jack Lewis
Carl Little
James Laws
Richard Lusk
Robert Lyner
James Manning
Stewart Mardy
Gene Marler
Gene Mason
Grady Massingill
Charles Mathis

William Metcalf
Carl Meyer
Jack Meyer
Robert Millard
Ralph Miller
Robert Miller
William Moore
Jack Morgan
John Morris
Tommy McAllister
Charles McArthur
James McClure
Troy McClure
Harold McDaniell
Jack McDowell
Kenneth McIntosh
Bill McKenzie
Bill McKinney
Paul McKinney
Loran Nation
Don Norris
James Ogle
Pat O'Hear
Alvin Overturn
Wilburn Padgett
Herbert Pair
William Patrick
Douglas Payne
Walter Pennington
Tommy Phifer

Charles Phillips
William Posey
Donald Prey
Bill Ramsey
Roddy Raubsen
Jimmie Reed
Bobby Rhodes
Eugene Richardson
Buddy Riley
Jack Robertson
Richard Robinson
Traylor Robinson
Bryan Rose
Dick Sanders
Ambrose Secor
Gene Sexton
Tommy Sexton
Wendell Shipley
Ronald Shoemaker
Bobby Shull
Franklin Sittin
Don Smith
John Spain
Claude Stancil
Franklin Stanton
Donald Stevens
Ronald Stevens
R. O. Stone
DeWayne Stoner, Jr.

Conrad Straught
Charles Sully
Ray Summerall
Sammy Sutherland
Esten Tanner
Alfred Thomas
Donald Thomas
Mickey Thomas
Billy Thornburg
Page Thurston
Loy Tucker
Henson Underwood
Fred Vekery
Bill Wages
Virgil Waldren
Clifford Walker
Eugene Wallace
Jerry Wayne
Gene West
Bill White
Dave White
Sanford White
Johnny Wilkins
Charles Williams
Gene Williams
Billy Wilson
Hazen Witt
Bobby Wood
Russell Woy

CHS Library



The JUNIOR GIRLS

Martha Abercrombie
Mary Akins
Martha Alexander
Bettye Alred
Evelyn Anderson
Mary Anderson
Betty Argo
Virginia Askew
Doris Austin
Dorothy Bailey
Betty Baker
Lenora Barber
Doris Barker
Joanly Barnett
Cecile Barrows
Lillian Barry
Wanda Benson
Alma Berne
Marilyn Beris
Peggy Bilbra
Joan Bilbrey
Barbara Birge
Frances Bishop
Anita Bonner
Charlotte Boyd
Evelyn Bradford
Margaret Bratton
Bettye Bridges
Joan Broadway
Mary Brooks
Grace Brown
Joyce Brunette

Carol Burns
Martha Byles
Janice Camp
Betty Carlen
Margaret Carden
Martha Carpenter
Yvonne Carter
Jo Ruth Cawthorne
Barbara Childs
Dana Childress
Dorothy Childress
Shirley Chiffwood
Barbara Cochran
Helen Coffelt
Barbara Collins
Joretta Cooper
Janet Corey
Gloria Criswell
Virginia Curt
Aretta Davis
Sue Davis
Frances Donahue
Beatrice Dover
Betty Drinnon
Catherine Dunbar
Joyce Eaves
Joy Elliott
Sue Elliott
Barbara Elnor
Myrl Evans
Barbara Everton

Margaret Ferguson
Ann Finch
Margaret Fitzgerald
Peggy Ford
Daisy Frazier
Peggy Fryar
Barney Jones
Lillian Jones
Alfreda Joyce
Chara Jo Kilwell
Freda Kilgore
Phyllis Kilgore
Layniere King
Jackie Layendar
Maureen Lawson
Ann Layton
Martha Lerch
Neil Lindsay
Barbara Luckless
Elizabeth Logan
Ann Long
Delores Marable
Alta Martin
Joan Martin
Marlene Martin
Norma Martin
Mary Maxwell
Geraldine Mayes
Marjorie May
Joan Miller
Martha Miller
Patsy Miller

Betty Houk
Hulene Huff
Dorothy Huskey
Jo Ann Jeff
Peggy Johnson
Norma Johnson
Irene Jones
Lillian Jones
Alfreda Joyce
Chara Jo Kilwell
Freda Kilgore
Phyllis Kilgore
Layniere King
Jackie Layendar
Maureen Lawson
Ann Layton
Martha Lerch
Neil Lindsay
Barbara Luckless
Elizabeth Logan
Ann Long
Delores Marable
Alta Martin
Joan Martin
Marlene Martin
Norma Martin
Mary Maxwell
Geraldine Mayes
Marjorie May
Joan Miller
Martha Miller
Patsy Miller

Marie Minton
Charlotte Moore
Dorothy Moore
Barbara Morgan
Billie Morgan
Barbara Morris
Layla Mulkey
Frances Mumdo
Barbara Murray
Joyce Mues
Joyce Myhan
Patsy McCluskey
Evelyn McCurdy
Barbara McDowell
Mildred McElbany
Anthea McKaig
Alma Jo McKinney
Joan McWhorter
Thelma Nettles
Ola O'Hell
Pat Parson
Ellen Paul
Doris Petty
Mary Petty
Jean Phillips
Elinor Phillips
Jimmie Pipes
Barbara Pledger
Frances Plummer
Patricia Poyer
Aileen Poe

Mary Pope
Wanda Prystep
Wanda Trevena
Jean Ray
Frances Ringer
Mary Romiger
Georgia Roberson
Joan Roberts
Nancy Radd
Alma Rossan
Barbara Sammons
Dorothy Schelker
Ouelia Scrings
Joanne Shaw
Virginia Shepherd
Jane Shetter
Anita Sias
Lily Siummons
Jo Ann Smitt
Anna Smith
Betty Skillington
Gloria Slack
Jo Ann Smitt
Mary Petty
Marilyn Starks
Barbara St. John
Dorothy Stover
Martha Swanson
Grace Swearington
Delores Tawler
Elsie Teters

Billie Thomas
Dot Thomas
Wanda Trevena
Betty Jean Yarnell
Barbara Varner
Mary Vixers
Magaline Vines
Mary Vines
Mary Vincent
Mary Vixers
Edwina Walker
Mary Walker
Naomi Walker
Peggy Waterhouse
Jeannine Watson
Doris Watts
Betty Weaver
Catherine Webster
Sue Webster
Delores Wessel
Phyllis Wheeler
Sylvia White
Betty Wilkey
Evelyn Williams
Mary William
Ann Willis
Jean Wimberly
Norma Wolfe
June Wooden
Delores Worley
Phyllis Wortz



The SOPHOMORE BOYS

Herbert Abercrombie
Earl Acuff
Clyde Allen
Tommy Allison
Jerry Anderson
Edward Andrews
Buck Ashmore
Bendi Atchley
Ted Baker
James Bishop
Chester Blacklock
Don Bowen
Richard Boyd
Billy Briggs
Arlian Brooks
Don Brown
Ronald Burrell
Charles Burton
Gene Burton
Lamar Burton
Herbert Cagle
Conroy Campbell
Fred Campbell
Hal Carey
Bill Carr
Robert Carter
G. W. Carver
Ben Castleberry
Tommy Cates
Bobby Clark
George Clark
Paul Clark
James Cliff

William Chambers
Bill Chapman
Wright Childers
Charles Cockrell
Kenneth Coffey
Randall Colvord
Don Combs
Larry Cooper
James Couch
Edward Coulter
James Coulter
Bill Costello
Charles Crabtree
John Crane
Ronald Creek
August Cross
Arnold Cupp
James Daniel
Thomas Daugherty
Paul Davis
Perry Davis
Ronald Davidson
Phillip Darr
Charles Day
Ernest Deakins
Richard Dean
La Verne Dedmon
Larry Dobbins
Sonny Downs
Thomas Downey
Edwyn Dye
Bobby Eaves

Bill Elsen
Jimmy English
Alvin Falls
Tommy Fisher
Dick Fowler
Joe Fox
Robert Franklin
Tom Gardenhire
Sam Garrett
Tommy Gibson
John Gilbert
John Gill
Jeff Gilreath
Jerry Goodner
John Graves
John Gwinn
Jimmy Hale
Marion Hale
Jack Hammett
Edwin Harris
Norman Harris
Charles Harvey
Richard Harvey
Bill Hash
Benny Heiskell
Leon Henry
Leroy Hobbs
Walter Hodge
Norman Hofferman
Sonny Holcomb
Bill Holden
Randall Hootendy
Henry Hopson

Carl Holsten
Kenneth Hughes
Billy Hudson
Clyde Hultender
Roy Humble
Billy Huskey
Jack Jackson
Jimmy Jeton
David Johnson
David Jones
Allen Jordan
Bill Kautz
Jack Kellis
Robert Keown
Roy Kernea
Jack Kinsey
John King
Pat Larkin
William Lankford
Ira Lee
Carl Leonard
Robert Lively
James Madewell
Donald Malone
Kenneth Malone
Franklin Mann
Pyrone W. Mansell
Gene Mascagnle
Bob Martin
Jimmy Matheny
Jimmy Meyer
Jimmy Mills
Herman Miller

Hewitt Moore
Bill Moreland
Bobby Morgan
Leon Morgan
Sherman Morris
Olen Mullis
William McBryer
Ronald McClure
Fred McCulston
Paul McCulston
James McDaniel
Jimmy McDaniel
Max McKenzie
Sammy McMurray
Gary Nash
Gerry Nation
Jody Neal
Johnny Padgett
James Page
Johnny Parker
Mac Parker
Earl Parker
Buddy Parks
Tommy Parris
Jack Parton
Clarence Patterson
Billy Payne
Bobby Peace
Carl Peckingshough
Joe Petty
Donald Phom
Nathaniel Plitts
Irby Powell

William Powell
Thomas Prater
Raymond Pressley
Donald Prey
Eddie Pruett
Ed Pulsey
Arthur Radlien
Buddy Riley
Teddy Randles
Basil Ratliff
Robert Ray
Clarence Rodgers
Johnny Reed
Bill Rich
Joe Richeson
Le Bron Russell
Robert Russell
Jim Sadler
Earl Parker
Bobby Shaw
Dickie Salley
Joe Samples
Jimmy Seagins
Buck Shambarger
James Shell
Charles Shaw
Bill Shipley
David Shipley
John Sims
Frank Simmons
Norman Simmons
Richard Skipper
George Smith
James Smith

Joe Smith
John Stephens
Lee Stephens
Bob Stevens
Johnny Sprague
Charles Strawn
Bill Steve
Tommy Swearingen
Le Bron Turner
Earl Tutum
Joe Taylor
Joe Taylor
Joe Tipton
Wallace Varnell
Gene Vaughn
Ted Vaughn
James Van Camp
Bert Vanoer
Bill Wall
Robert Watson
Bill Wear
Sammie Welch
Eric Whaley
Ernest White
Joseph White
Stanley White
Kenneth Williams
Kenneth Williamson
Jacqueline Teal
Olean Wooten
Wendall Wright
Garland Yarbrough

CHS Library



The SOPHOMORE GIRLS

Barbara Adams
Cynthia L. Alexander
Levene Allen
Mary Allison
Betty Anderson
Jean Anderson
Bobbie Athern
Gloria Baldwin
Betty Jo Ball
Margaret Barrows
Ann Becker
Betty Bell
Betty Bevis
Barbara Bishop
Patricia Black
Joan Blackburn
Helen Blackmore
Doris Bonger
Barbara Bolen
Jackie Bookout
Bobbie Bradley
Lorine Broyles
Hazel Brewer
Betty Browder
Lena Brownlow
Marie Buchanan
Barbara Burnett
Mildred Burton
Patsy Caldwell
Sue Campbell
Peggy Cannon
Martha Carlock
Betty Carter
Janette Castin

Peggy Chambers
June Chapman
Earline Chauncey
Evelene Chittwood
Alice Clinean
Grandena Conner
Bobbie Cooper
Peggy Cope
Peggy Corden
Sue Couch
Virginia Couch
Jenene Cox
Laura Craig
Phyllis Crane
Bobbie Crawford
Jean Crawford
Margaret Crane
Jo Ann Crusselle
Virginia Cummings
Cornelia Cunningham
Dorothy Custer
Jackie Davis
Wanda Sue Davis
Betty Delaney
Barbara Delmon
Mary Jane Duncan
Barbara Duckett
June Dunlap
Betty Jane Eaves
Loretta Edlings
Ann England
Frances Floyd
Neema Floyd
Marion Follet

Barbara Ford
Frances Forester
Mary Louise Forrester
Joyce Frank
Alice Gilling
Grandena Ginner
Bobbie Ginn
Peggy Ginn
Myra Ginn
Mary Goggin
Hazel Green
Janet Green
Emma Jo Griffin
Pamella Griffith
Mary Halley
Janetta Hall
Mary Faye Hall
Betty June Hancey
Betty Hartlin
Ann Harding
Gay Harless
Faye Harper
Peggy Haskell
Barbara Haston
Benelita Helton
Nancy Hendrick
Betty Higgins
Verna Hight
Gail Hill
Beida Hodges
Frances Hodges
Eva Holladay
Betty Ann Houston
Joyce Howard

Imogene Hundley
Bobbie Hunt
Betty Huling
Margie Hultette
Barbara Hughes
Sara Hurt
Nina Huskey
Audrey Ingles
Maxine Ingles
Doris Ann Ireland
Betty Irwin
Betty Jackson
Betty Jackson
Jewell Jackson
Delores Jennings
Rube Johnson
Daisy Jordan
Pat Kallien
Barbara Kelley
Peggy Kelley
Albert Kilgore
Pauline Kilgore
Peggy Klaton
Dixie Kiziah
Elizabeth Land
Maxine Land
Betty Lawson
Wanda Lawson
Margaret Lefm
Amy Lenoir
Ann Leach
Nadine Locke
Peggy Jo Lowery

Monna Luck
Stella Martin
Mary Marler
Helen Matthews
Peggy Mayo
Helen Melonson
Mary Meyer
Carolyn Milburn
Madeline Miller
Peggy Miller
Rene Roden
Evelene Milligan
Marilyn Monroe
Joyce Salmons
Barbara Morgan
Betty Mullins
Patricia Murney
Jo Ann McDermid
Katherine McKenzie
Edna McNabb
Luella McPherson
June Newby
Barbara Norris
Patsy Norris
Sue O'Hare
Suzanne O'Neal
Sue Padgett
Maxine Patter
Phyllis Patter
Mary Patterson
Sylvia Payne
Mary Julia Peoples
Carole Perkins
Carolyn Phillips

Jean Phillips
Patsy Phillips
Sarah Price
Nancy Purcell
Mary Ann Reed
Bobbie Renfro
Barbara Rice
Peggy Richards
Faye Robinson
Rene Roden
Peggy Rodgers
Ruby Rominger
Joyce Salmons
Shirley Sewell
Shirley Sexton
Margaret Shirley
Betty Shell
Sue Shell
Vivian Shuster
Patricia Simms
Helen Sims
Barbara Norris
June Newby
Sue O'Hare
Suzanne O'Neal
Sue Padgett
Maxine Patter
Phyllis Patter
Mary Patterson
Sylvia Payne
Mary Julia Peoples
Carole Perkins
Carolyn Phillips

Sally Stotts
Edna Sullivan
Joyce Sullivan
Nancy Sullivan
Evelyn Swearingen
Joanne Tallet
Marfan Tate
Bobbie Turley
Jacqueline Teal
Billy Joe Terry
Rachel Tittle
Bobbie Turner
Dorothy Vandiver
Bobbie Vick
Norma Vintato
Shirley Voadie
Nancy Walden
Elsie Walker
Betty Wallace
La Verne Wallace
Christine Wallen
Lila Watts
Joyce Webb
Geneva West
Kerna West
Bonnie Sue Whitaker
Joan Whitmore
Ann Wiley
Wanda Witt
Barbara Wood
Mildred Woody
Anna Wright
Dora Mae Wriokle
Dora York



The FRESHMAN BOYS

James Anderson
Jack Allison
Jack Arnold
Donald Autry
Bob Bailey
David Bain
Allen Barker
Billy Black
Howard Blain
Mack Bishop
Tommy Blevins
Ruddy Boydston
Bobby Bowman
James Bowman
Bill Bradford
Maxwell Brazile
Ita'ph Brown
Richard Buffington
Don Cameron
Roger Campbell
Blevins Castleberry

Johnny Carruth
Darrell Cates
J. W. Cawood
Barden Coker
Billy Colquitt
Jessie Collier
Jay Collins
Joe Conner
David Cooke
Glenn Copeland
Edwin Cornes
George Crawford
Kaye Crawley
A. J. Crosswhite
Bill Crizort
Thom Davis
Jack Danielson
Allen Denton
George Dixon
Roy Doyle
Don Duncan

Charles Dunn
Edward Dutto
John Eaker
Darden Coker
Wyatt Earp
Sam Eldon
Jimmy Eller
Ronald Farris
Rex Ford
Charles Foust
Jimmy Fraley
Jack Fryar
Frank Fuller
Kenneth Gamble
E. E. Glenn
Warren Gray
Elmer Groth
Gene Hall
Ralph Hardeman
Paul Harris
Harold Head
Richard Heaps

Tommy Heaps
Franklin Hedgepeth
Calvin Henley
Thomas Hickman
Edwin Higgins
Bryon Holder
Rowland Howard
Herbert Hughes
Nelson Jenkins
Richard Jenkins
Ronald Johnson
Henry Jones
Gilbert Kelly
Webb Kimble
Billy Krause
Ronnie Locke
Lowery Lackey
Bill Lane
Charles Lappin
Reginald Lasater
David Legg

Bill Lillard
Billy Love
Don Martin
Marvin McAllister
Herman McClure
Bill McCormick
Herbert McElroy
Larry McGregor
Winifred McLaughlin
DeWitt Miller
Pruitt Morris
Charles Nave
Bobby Nixon
Gene Nowell
Charles O'Hear
David Puce
Mickey Park
Frank Parker
Fred Parsons
David Patton
Sonny Payne

Edward Perkey
Gordon Peters
Tom Poe
Homer Potts
Frank Plummer
Neil Reeves
Dewey Reynolds
Donald Rice
Robert Rice
John Riley
Don Roblson
William Rowell
Howard Runyan
Billy Rucks
Curtis Rush
Jack Rush
John Rushing
Billy Sanders
Herschel Schroeder
Johnny Sewell
Lamar Sharp

Charles Smith
Charley Smith
Elton Smith
Jimmy Smith
Gene Stanfield
Eddie Stork
Tom Strand
Martin Stutz
Leon Sutton
Robert Svanford
Raymond Teems
Frank Thomas
William Usher
Roy Waddle
Joe Weavers
L. C. Williams
Paul Winfrey
Kern Wofford
Bobby Wright
Jimmy Wright

CHS Library



The FRESHMAN GIRLS

Barbara Arrant
Barbara Asa
Loveleen Ayers
Betsey Barlow
Ann Barrows
Jean Belcher
Donna Faye Blessing
Louise Boyd
Betty Bowling
Virginia Bradshaw
Gretchen Britton
Betty Brown
Loretta Bryant
Elizabeth Jean Burrows
Betty Caldwell
Hita Caldwell
Mary Katherine Carlson
Doris Castle

Martha Castleberry
Iris Castleberry
Stella Cavin
Betty Cline
Pat Coleman
Sara Collins
Patsy Christin
Virginia Davis
Eva Day
Lily Dean
Opal Edmunds
Barbara Estes
Patsy Evans
Wilma Fisher
Naomie Floyd
Emily Fortson
Betty Joyce Fraley
Jo Ann Frank

Frances Freeman
Kay Fry
Jean Fuller
Peggy Jean Fuller
Patty Gossett
Peggy Gossett
Beverly Grayson
Mildred Griffith
Charlotte Hackler
Martha Hall
Sue Hampton
Dolores Harp
Gloria Hatley
Virginia Hendrick
Audrey Hearty
Patricia Hudson
Noreen Horton
Barbara Hudson

Evelyn Husley
Sue Ingram
Jean Ireland
Anita Irwin
Ida Jean Jackson
Margaret Jarrett
Charlton Jones
Marie Jordan
Joan Joyner
Carolyn Keith
Ardena Kells
Jo Ann Kelly
Frances Kennedy
Mary Katherine Kennedy
Dottie Kabley
Iva Lawson
Earling Laxon
Frances Mahaffey

Helen Martin
Mabel McCrary
Joyce McDonald
Patsy McDowell
Peggy Miller
Jo Anne Milon
Doris Morgan
Barbara Morris
Rosalee Padgett
Imogene Pedigo
Mary Pickett
Alice Piskies
Mary Pressnell
Barbara Priehard
Margaret Priddy
Juanita Pritchard
Connie Ramsey
Chae Sanders

Lola Saxon
Peggy Sells
Pauline Shaw
Mildred Silton
Dobbie Smart
Edith Smith
Virginia Solt
Evelyn Springfield
Charlotte Stalley
Peggy Sullivan
Patsy Taber
Jannette Tate
Barbara Thomas
Charlotte Thomas
Peggy Thronberry
Jean Tiltworth
Mary Allen Underwood

Jean Unger
Betty Lou Van Winkle
Hazel Vonberg
Dorothy Waterhouse
Norma Jean Watts
Shirley Wear
Rosemary Welter
Patricia Westbrook
Betty Jo Whitmore
Pauline Whitmore
Patricia Williams
Betty Wilson
Lola Wilson
Katherine Womack
Blythe Wood
Joyce Worley
Katherine Wood



Didn't we have fun!



The SENIOR BUTTONS AND BOWS DAY

42





The CHAMPION STAFF

JUNE HUNT	Editor	CLARK BROOM	Sports Editor
FRANKLIN ASHLEY, JACK EDWARDS	Business Managers	JO ANN KACHADURIAN	Typist
SUE RICHEY	Club Editor	GRACE BROOM	Junior Editor
RUTH CARDEN	Feature Editor	CYNTHIA ALEXANDER	Sophomore Editor
LEO MATHENY	Military Editor	MARY KATHERINE CARLTON	Freshman Editor
JAMES BANKSTON	Photography	MISS SALLY MAY KING	Sponsor
MADLINE GAIN	Senior Editor	MR. C. G. TOWERY	Sponsor



FIRST ROW:
 Imogene Anderson
 Lloyd Anderson
 Ina Lou Arnold
 Franklin Ashley
 Jimmy Bankston
 Kelly Barnes
 Barbara Blakey
 Barbara Bookout
 Betty Bradford

SECOND ROW:
 Clark Broom
 Gene Broyles
 Madeline Cain
 Ruth Carden
 Peggy Childers
 Mary Myles Cooper
 Peggy Covington
 Betty Dawson
 Jack Edwards

THIRD ROW:
 Bobby Ole Englund
 Billie Jean Evans
 Elizabeth Fletcher
 Mary Foster
 Barbara French
 Betty Freudenberg
 Mary Ann Frye
 Phyllis Gaither
 Billie Jean Gann

FOURTH ROW:
 Polly Gardner
 Mildred Garrett
 Margaret Ann Hamill
 Evelyn Haston
 Betty Hinkle
 Jim Hixon
 Jo Hughes
 Wanda Sue Humphreys
 June Hunt

FIFTH ROW:
 Thurston Huntoon
 Rose Mary Hutson
 Bobbinette Kesley
 Betty Lou Little
 Gloria Limehouse
 Geraldine McFaris
 Dorothy McGhee
 Elizabeth McLaughlin
 Eva McSpadden

SIXTH ROW:
 Betty Mansfield
 Leo Matheny
 Barbara Moore
 Emaline Payne
 Crocker Peoples
 Elizabeth Perry
 Ann Ransey
 Sue Richey
 Mary Jane Roark

SEVENTH ROW:
 Janet Scheidt
 Joyce Seheldt
 Robert Sharp
 Mary Shaw
 S. T. Silver
 Margaret Simpson
 Archie Slaten
 Billie Smith
 Pat Spengle

EIGHTH ROW:
 Dan Strood
 Evangeline Thomas
 Peggy Thompson
 Bill Turpin
 Valeria Waldrop
 Barbara Wamack
 Dora White
 Peggy Younger

The HONOR SOCIETY

Imogene Anderson	Peggy Covington	Evelyn Haston	Leo Matheny	Billie Smith
Betty Dawson	Jack Edwards	Betty Hinkle	Barbara Moore	Dan Strood
Bobbie Ole Englund	Billie Jean Evans	Jim Hixon	Emaline Payne	Evangeline Thomas
Elizabeth Fletcher	Elizabeth Perry	Jo Hughes	Crocker Peoples	Peggy Thompson
Mary Foster	Ann Ransey	Wanda Sue Humphreys	Elizabeth Perry	Bill Turpin
Barbara French	Sue Richey	June Hunt	Mary Jane Roark	Valeria Waldrop
Betty Freudenberg	Mary Jane Roark	Thurston Huntoon	Janet Scheidt	Barbara Wamack
Mary Ann Frye	Joyce Seheldt	Rose Mary Hutson	Robert Sharp	Dora White
Phyllis Gaither	Robert Sharp	Bobbinette Kesley	Mary Shaw	Peggy Younger
Billie Jean Gann	S. T. Silver	Betty Lou Little	Margaret Simpson	No Pictures:
Gloria Limehouse	Archie Slaten	Geraldine McFaris	Pat Spengle	Jo Ann Kachadurian
Dorothy McGhee	Billie Smith	Elizabeth McLaughlin		Christine Powers
Eva McSpadden		Betty Mansfield		Leland Siemore
				Edwin Trimble

ANNOUNCER'S CLUB

BARBARA FRENCHPresident
 BILLIE SMITHVice-President
 PEGGY FORDSecretary and Treasurer
 MRS. KEN FLENNIKEN.....Sponsor

ART CLUB

MARGARET CHILDRESSPresident
 CAROLYN JONESVice-President
 LORETTA JONESSecretary
 JAMES KINGTreasurer
 MISS MARY LOU DERRYBERRYSponsor

PURPLE AND GOLD BAND

BILL SMITH.....Captain
 PEGGY YOUNGERSponsor
 WILBUR JOHNSON.....Drum Major
 EUNITA SIMPSON.....Head Majorette
 WILLIAM BARNETTEHead Color Guard
 MR. B. H. WALKER.....Sponsor

BAND OFFICERS' CLUB

BILL SMITHCaptain
 PEGGY YOUNGERSponsor
 WILBUR JOHNSONDrum Major
 EUNITA SIMPSONHead Majorette
 WILLIAM BARNETTEHead Color Guard
 MR. B. H. WALKERSponsor

BANK AND BOOKSTORE STAFF

FRANKLIN ASHLEYPresident
 JACK EDWARDSVice-President
 EDWIN TRIMBLESecretary and Treasurer
 MISS RUBY NIPPERSponsor

BIBLE CLUB

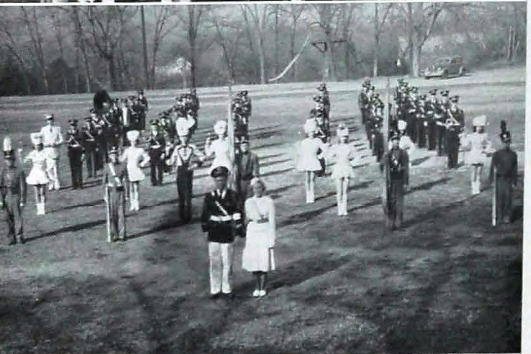
PEGGY THOMPSONPresident
 ALMA JO McKINNEYVice-President
 JOYCE MELTONSecretary
 COLLEEN BALDWINTreasurer
 MISS RACHEL McALLISTERSponsor

"C" CLUB

J. T. VICKPresident
 J. C. PARHAMVice-President
 BILL EMERYSecretary
 JACK SMARTTTreasurer
 BOBBY ALLENSergeant-at-Arms
 DICKIE ALLENSergeant-at-Arms
 E. B. ETTERSponsor

CHARM CLUB

RUTH BRENEMANPresident
 LOIS McGARNEYVice-President
 PEGGY ERBSecretary
 PEGGY TROTTERTreasurer
 MRS. HELEN PARNELLSponsor



CHEERLEADERS AND SONG LEADERS

SENIOR: Archie Slaten, Clark Brom, Ruth Carden, and Betty Mansfield.

JUNIOR: Hulene Huff, Evelyn McGurdy, Johnny Hickey, and Paul McKinney.

SOPHOMORE: Joe Taylor, Ronald Johnson, Joan Smith, and Betty Parks.

MISS HARRIET FOSTER Sponsor

DEPRESSION CLUB

LARRY BILLINGSLEY President

J. C. KAZZIAH Vice-President

CHARLES WITT Secretary

WAYNE HAWKINS Treasurer

MRS. H. B. ROBINSON Sponsor

DIGEST STAFF

BARBARA FRENCH Editor

BETTY LOU LITTLE Associate Editor

JUNE HUNT Associate Editor

ROBINETTE KESLEY Associate Editor

PEGGY COVINGTON Business Manager

BARBARA ELLIOT Assistant Business Manager

GENE BROYLES Foreman

MISS SALLY MAY KING Sponsor

JAMES L. MILBURN Sponsor

DISC AND DIAMOND SOCIETY

FRANKLIN ASHLEY Captain

JACK EDWARDS First Lieutenant H

LEO MATHENEY First Lieutenant L

EDWIN TRIMBLE First Lieutenant V

KELLEY BARNES Second Lieutenant L

ARTHUR WALLACE Second Lieutenant F

CLARK BROOM Second Lieutenant S

DON MOORE Second Lieutenant T

KENNETH SMITH First Sergeant

MAJOR G. A. BONE Sponsor

GADABOUTS' CLUB

MARY PEDIGO President

PAT CRYTZ Vice-President

BARBARA CHAPPIN Secretary

BETTY BEASLEY Treasurer

MR. C. G. TOWERY Sponsor

GIRLS' HI-Y CLUB

BILLIE SMITH President

PEGGY COVINGTON Vice-President

BETTY HINKLE Secretary

ROBERTA PARSONS Treasurer

MRS. NEWT LOGAN Sponsor

MRS. JOHN A. SHELTON Sponsor

GRADY LITERARY SOCIETY

ARTHUR WALLACE President

CLARK BROOM Vice-President

ED TRIMBLE Secretary

JIMMY BANKSTON Treasurer

SAM SOUTHERLAND Sergeant-at-Arms

EVERETT O'NEAL Sponsor

HOME ECONOMICS CLUB

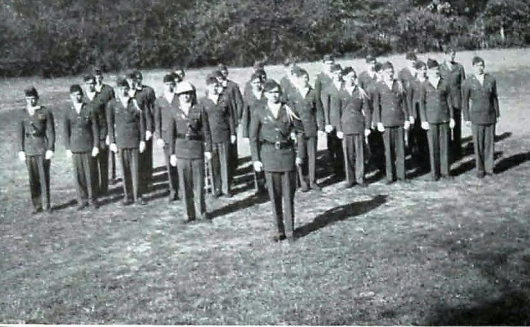
MARY ANN FRYE President

DORIS WILHOITE Vice-President

ELIZABETH McLAUGHLIN Secretary

BARBARA WOODS Treasurer

MRS. JANIE SHOPSHIRE Sponsor



HONOR GUARD

DAVID CASEYPresident
 GENE BROYLESVice-President
 SAM SOUTHERLANDSecretary and Treasurer
 MAJOR G. A. BONESponsor
 SERGEANT L. H. HUDNALLSponsor



INK SPOTS CLUB

KATHERINE WEBSTERPresident
 JEAN RAYVice-President
 MARY ANN WILLIAMSSecretary
 JO COBBTreasurer
 MR. A. B. ROBERTSONSponsor



JUNIOR Y-TEENS

JANETTE CASTLEPresident
 DORIS CASTLEVice-President
 JOAN SMITHSecretary
 PEGGY SULLIVANTreasurer
 MISS MINNIE LEE MORGAN.....Sponsor



LIBRARY STAFF

PHYLLIS WHEELERPresident
 JEWELL GRAYVice-President
 DOT JONESSecretary
 GAY HARRISTreasurer
 MRS. MARY SANDERS.....Sponsor

LOS PICAROS

DOROTHY SCHECKLERPresident
 LARRY PATRICVice-President
 EVANGELINE THOMASSecretary
 MARJORIE MORGANTreasurer
 BRYON PIRKLETreasurer
 MISS MARY ELLEN RICESponsor



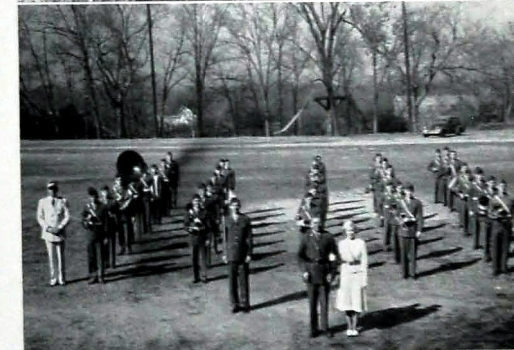
MERRY MACS

BETTY REEDPresident
 BETTY LITTLEVice-President
 BARBARA MOORESecretary
 JOYCE MORRISTreasurer
 MR. L. V. YOUNGSponsor



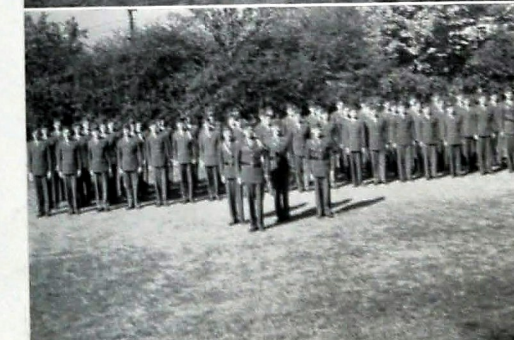
MILITARY BAND

BILL SMITHCaptain
 PEGGY YOUNGERSponsor
 WILBUR JOHNSONFirst Lieutenant
 WARREN BIBBYSecond Lieutenant
 MR. B. H. WALKERSponsor



M. P. CLUB

DAVID CASEYPresident
 DONALD MOOREVice-President
 SAM SOUTHERLANDSecretary
 GENE BROYLESTreasurer
 MAJOR G. A. BONESponsor
 SERGEANT L. H. HOGELANDSponsor





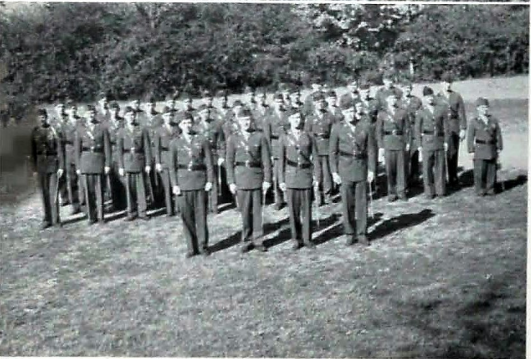
NITE OWLS CLUB

BETTY MANSFIELDPresident
 MARY TRIGG DOBBSVice-President
 SUE RICHEYSecretary
 RUTH CARDENTreasurer
 MISS HARRIET FOSTERSponsor



OFFICE FORCE

BETTY ANN ST. CLAIRPresident
 JO SUGGSVice-President
 PEGGY COVINGTONSecretary
 MARY TRIGG DOBBSTreasurer
 MISS CHRISTINA COPPINGERSponsor



OFFICERS' CLUB

EDWIN TRIMBLEPresident
 KENNETH SMITHVice-President
 ARCHIE SLATENSecretary
 KELLEY BARNESTreasurer
 CAPTAIN P. A. McDANIELSponsor

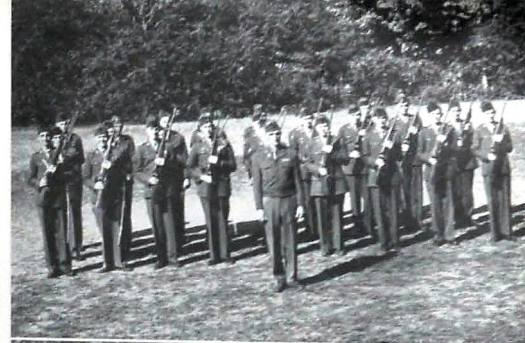


ORCHESTRA

WARREN BIBBYPresident
 PEGGY YOUNGERVice-President
 WANDA KELLERSecretary and Treasurer
 MR. K. W. JOHNSponsor

RIFLE TEAM

BENNY SMITHCaptain
 SAM SOUTHERLANDAlternate-Captain
 SERGEANT L. H. HOGELANDCoach



SENATE CABINET

JACK EDWARDSPresident
 BARBARA FRENCHVice-President
 MARY MYLES COOPERSecretary
 CLARK BROOMFinance
 MRS. KEN FLENNIKENSponsor
 MR. J. A. HOODENPYLSponsor



SENATE

JACK EDWARDSPresident
 BARBARA FRENCHVice-President
 MARY MYLES COOPERSecretary
 MRS. KEN FLENNIKENSponsor
 MR. J. A. HOODENPYLSponsor



SENIOR BOYS' HI-Y CLUB

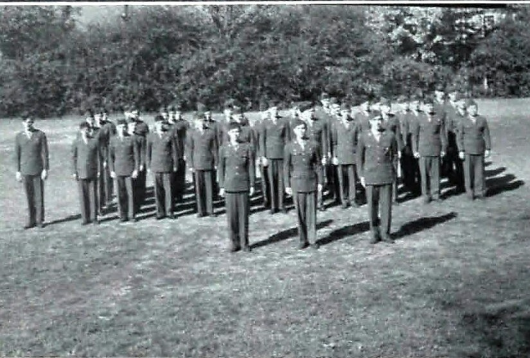
JACK EDWARDSPresident
 EDWIN TRIMBLEVice-President
 FRANKLIN ASHLEYSecretary
 CLARK BROOMTreasurer
 J. POPE DYERSponsor





SENIOR Y-TEENS

RUTH GARDENPresident
 SUE RICHEYVice-President
 BETTY MANSFIELDSecretary
 EVALYNNE ANDERSONTreasurer
 MISS MINNIE LEE MORGANSponsor



SERGEANTS' CLUB

LOREN HARTPresident
 JERRY WAYNEVice-President
 HENSON UNDERWOODSecretary and Treasurer
 SERGEANT J. C. HURTSponsor



SHOVE-OFF CLUB

BETTY ANN ST. CLAIRPresident
 INOU LOU ARNOLD.....Vice-President
 MARTHA SIMPSONSecretary
 CLARA LOU BROWN.....Treasurer
 MRS. HENRY WARESponsor



SILHOUETTE CLUB

JO HUGHESPresident
 KATHRYN SIVLEYVice-President
 JUNE HUNTSecretary
 ANNE RAMSEYTreasurer
 MISS ELSA DENNISON.....Sponsor

SPINSTERETTES

ROBINETTE KESLEYPresident
 MARTHA BYLESVice-President
 FERRAL DALTONSecretary
 BETTY DAWSONTreasurer
 MR. K. W. JOHNSponsor



STARLIGHTER'S CLUB

OLA ODELLPresident
 JO ANN REEVES.....Vice-President
 NORMA ROBERTSSecretary
 DOLORES MARABLETreasurer
 MR. GORDON SMITHSponsor



T AND I CLUB

TAYLOR WEATHERSPresident
 HAROLD RUSSELLVice-President
 BILY ELRODSecretary
 PEGGY TROTTERTreasurer
 MR. GORDON SMITHSponsor



TRAIL TROTTERS

MARGARET PRYORPresident
 ANN HUTSELLVice-President
 DOLORES BRYANTSecretary
 MR. STANLEY FARMERSponsor





TWIXTEEN CLUB

IMOGENE ANDERSON President
 WANDA KELLER Vice-President
 BOBBIE ENGLAND Secretary
 ZENADE FINLEY Treasurer
 MRS. OPHELIA HUGHES Sponsor



USHERS

ELIZABETH FLETCHER President
 BARBARA FRENCH First Vice-President
 PEGGY COVINGTON Second Vice-President
 BETTY HINKLE Secretary and Treasurer
 MISS EDNA CROSS Sponsor



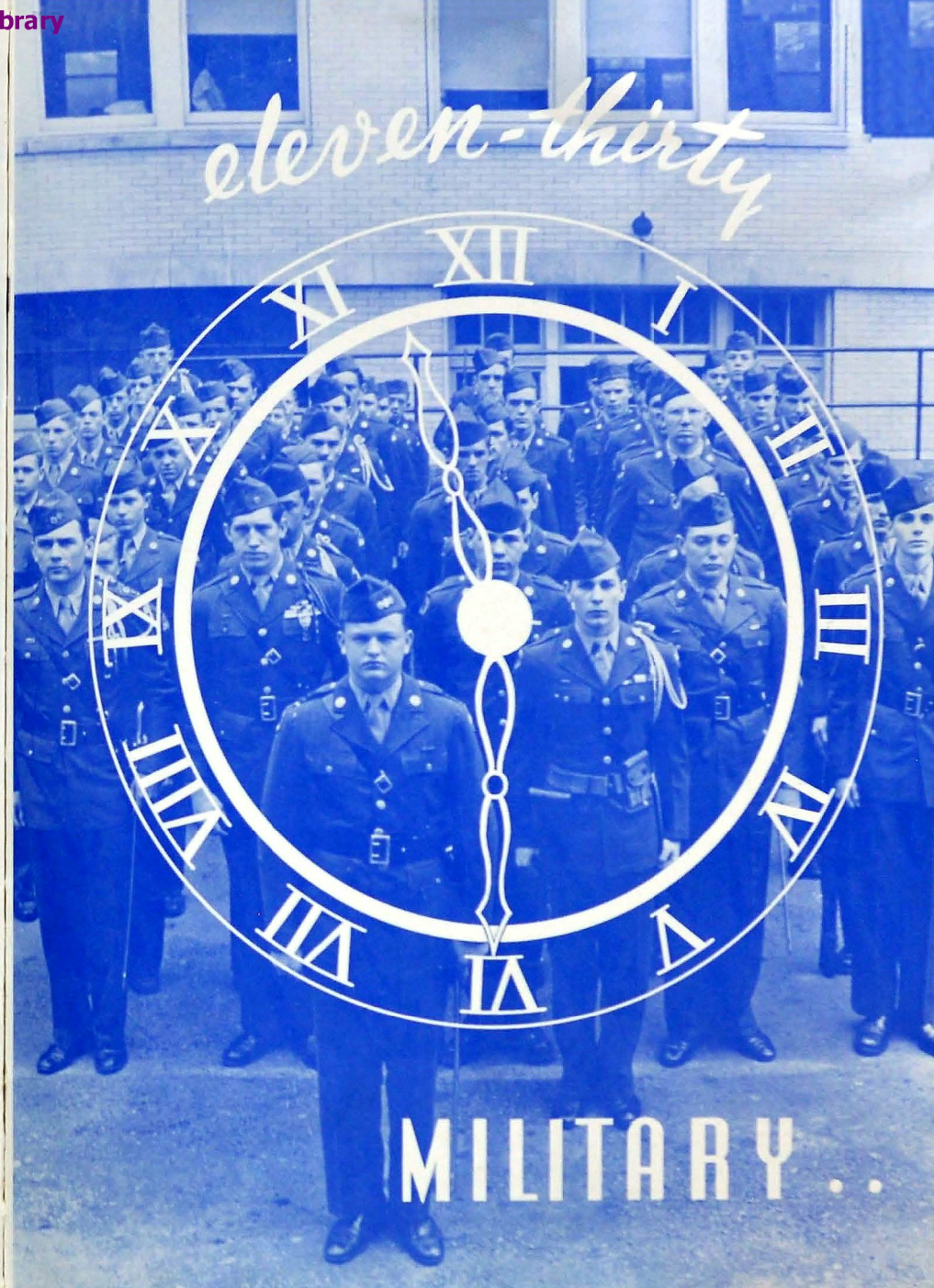
VARSITY GLEE CLUB

JIMMY HIXSON President
 R. O. STONE Vice-President
 JEANINE WATSON Secretary
 MADELINE GAIN Librarian
 S. T. SILVERS Librarian
 K. W. JOHN Sponsor



VAGABONDS

MARY MYLES COOPER President
 ELIZABETH FLETCHER Vice-President
 BARBARA BLAKEY Secretary
 BILLIE JEAN GANN Treasurer
 MRS. MARGARET HAMMACK Sponsor





MILITARY OFFICERS *and* STAFF

COLONEL ALBERT H. DUMAS

Colonel Albert H. Dumas, the greatly beloved and efficient P.M.S.&T. of Chattanooga since 1947, was graduated from the Alabama Polytechnic Institute in 1917, where he was commissioned second lieutenant. He has been a commissioned officer in the United States Army for thirty years. He had R.O.T.C. experience at Emory University and Clemson College before coming to Central. During his thirty years of colorful service, Colonel Dumas was located at many stations in the U. S., Philippines, and Hawaii. In World War II he was captured and spent three years and four months as a prisoner in the hands of the Japanese.

Central High has been enriched by the genial personality of Colonel Dumas and lost a faithful worker when he retired from active duty in the spring of 1949.

MASTER SERGEANT JOSEPH C. HURT, SR.

Another addition to the Central High R.O.T.C. Staff this year is Master Sergeant Joseph C. Hurt, Sr. He was born in McEwen, Tennessee, and feels rather at home in Chattanooga since it was at Fort Oglethorpe that he entered the service at eighteen years of age and served for a period of eleven years. He participated in maneuvers in Georgia, Louisiana, Mississippi, North Carolina, and Tennessee, and sailed for overseas duty in Europe with the sixth Cavalry October 12, 1943. He was in the Battle of St. Lo and was with the occupational forces in Germany in 1947. On returning to the U. S. he re-enlisted and was assigned to the Central High R.O.T.C. Unit. This highly decorated instructor has been, while in the army, a blacksmith, radio technician, radio operator, and communication sergeant.

MAJOR GEORGE A. BONE

Central has been indeed fortunate in enlisting the services of such an efficient and well-liked officer as Major George A. Bone who graduated from Western Kentucky in 1934. He entered the Army as an enlisted man in 1933 and was called to active duty as a second lieutenant in 1941. This "friend of the men," prior to his coming to Central as the P.M.S. and T. in the fall of 1948, was on occupation duty in Hokkaido, Japan, where he spent nearly three years, accompanied by his family.

Under Major Bone's guidance the Central High R.O.T.C. Regiment has done a wonderful job this year. His knowledge of military affairs and genial nature have made him beloved by the regiment.

FIRST SERGEANT DEL MONTE J. HUDNALL

On the R.O.T.C. Staff this year is an alumnus of whom Central is indeed proud—First Sergeant Del Monte J. Hudnall. Born and reared in Chattanooga, Sergeant Hudnall attended Lookout Junior High before coming to Central in 1936, where he is now a much honored and greatly respected instructor. He entered the service in 1941 in the National Guard and was stationed in some twenty military camps across the country. This capable master sergeant gave advanced training to men going overseas. He attended instructor schools at Camp Howze, Texas; Camp Hood, Texas; and Fort Benning, Georgia, then taught military at Castle Heights Military Academy, Lebanon, Tennessee, for the school year 1946-47, prior to his coming to Central.

CAPTAIN PHILLIP A. McDANIEL III

A fine product of a fine school is Captain Phillip A. McDaniel III, who is a graduate of Citadel of Charleston, South Carolina. This highly respected Captain is from Albuville, Alabama, where he received his high school training. After graduating from Citadel in 1942 as Second Lieutenant in the U. S. Army, he was promoted to First Lieutenant and then to Captain. He has served in many camps and was overseas two years in Trinidad, Puerto Rico, and the British West Indies. He was P.M.S. and T. at Central in 1947 and 48. This talented military officer is a valuable asset to our military staff.

SERGEANT LEONARD H. HOGELAND

In number of years of military service Master Sergeant Leonard H. Hogeland heads the list of military instructors at Central this year. He comes from Anniston, Alabama. He entered the regular army March 10, 1923 and served overseas in the Pacific Theater, December 15, 1942 to April 2, 1947, with the corps of Military Police. He instructed military police forces for overseas duty. He served with the Guided Missile and the V-2 Rocket project in New Mexico.

Master Sergeant Hogeland was assigned to Central on August 24, 1947. This past year as supply sergeant he has done a very fine piece of work. With his background of experience he is well fitted for the instructing of new cadets.

REGIMENTAL STAFF

Colonel LEO MATHENEY

Lt. Colonel FRANKLIN ASHLEY

Major SAM SILVER

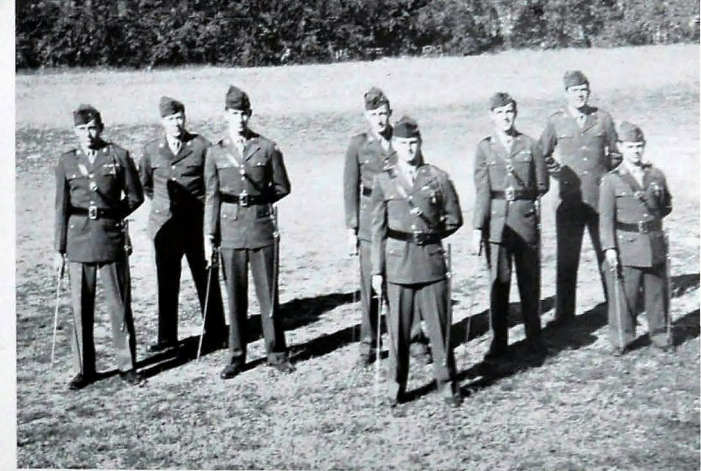
Captain S-3 KELLEY BARNES

Captain S-4 CLARK BROOM

Captain S-2 LELAND SISEMORE

Sergeant Major DONALD PREY

Public Relations T./Sgt. DONALD NORRIS



FIRST BATTALION STAFF

Lt. Colonel EDWIN TRIMBLE

Captain WAYNE TALLEY

First Lieutenant ARTHUR WALLACE

Sergeant Major JIMMY LOWE

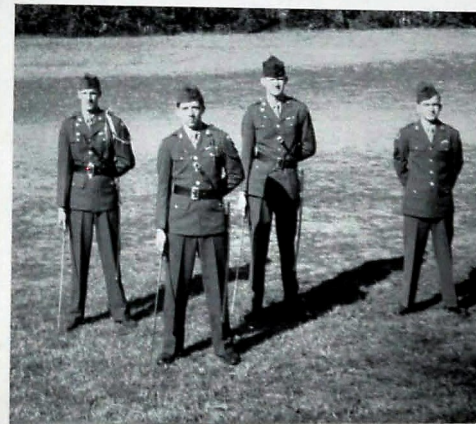
SECOND BATTALION STAFF

Lt. Colonel JACK EDWARDS

Captain TERRELL FUGATE

First Lieutenant GENE BROYLES

Sergeant Major PAUL FULLER

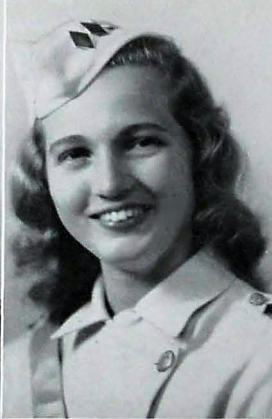


MILITARY

OFFICERS *and* SPONSORS



COLONEL LEO MATHENEY



NANCE McCORMICK



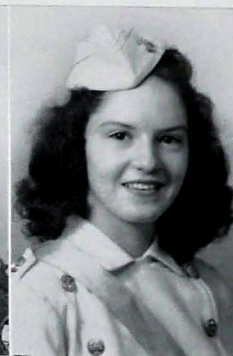
LT. COL. FRANKLIN ASHLEY



PAT SPEEGLE



LT. COL. EDWIN TRIMBLE



BETTY HINKLE



LT. COL. JACK EDWARDS



BILLIE JEAN GANN



MAJOR SAM SILVER



DOT SNOW



CAPT. KELLEY BARNES



BARBARA BOOKOUT



CAPT. CLARK BROOM



ANN RAMSEY



CAPT. LELAND SISEMORE



PEGGY YOUNGER



CAPT. WAYNE TALLEY



JO HUGHES



CAPT. TERRELL FUGATE



NANCY HALE

CAPT. CHARLES CAMPBELL

WANDA HUMPHREYS

CAPT. DAN STROUD

MARY MYLES COOPER

CAPT. KENNETH SMITH

MARY PEDIGO

CAPT. ARCHIE SLATEN

RUTH CARDEN

CAPT. WENDELL SAFFLES BARBARA WAMACK

CAPT. DON WESTBROOK

BETTY CHAMBER



COMPANY A

Captain CHARLES CAMPBELL

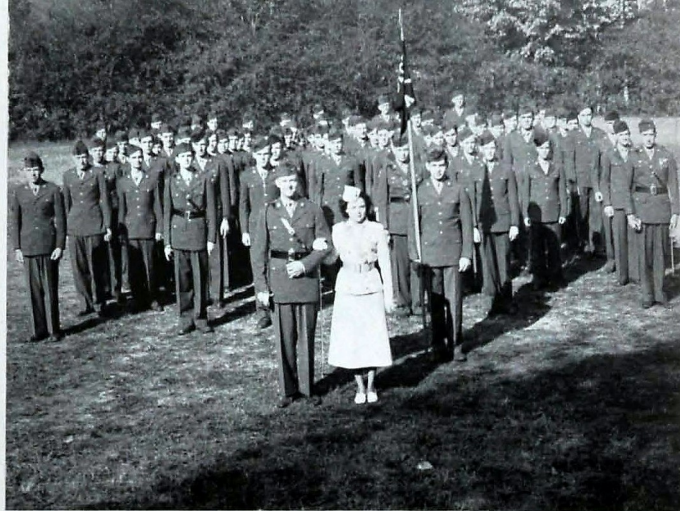
First Lt. DAVID CASEY

Second Lt. BENNY SMITH

Second Lt. CHARLES BRIDGES

Second Lt. RICHARD BEAM

First Sgt. LOREN HART



COMPANY C

Captain KENNETH SMITH

First Lt. JIMMY BANKSTON

Second Lt. LLOYD ANDERSON

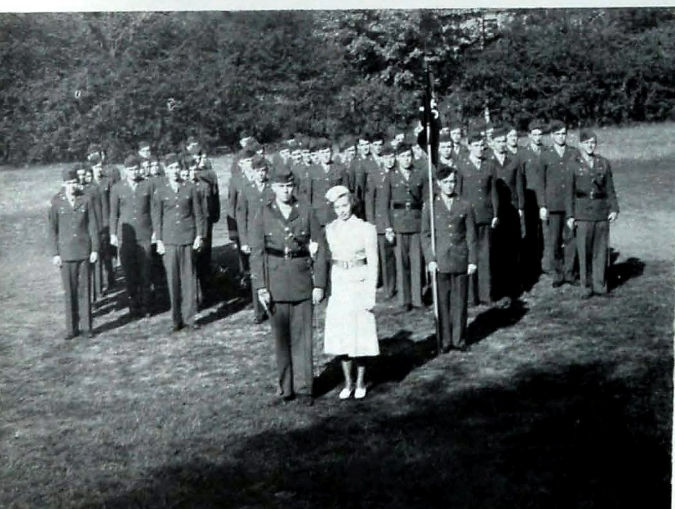
Second Lt. TONY HOLLAND

Second Lt. WILLIAM BARNETT

First Sgt. MARVIN GLIDDEN

MILITARY

TRAINING



COMPANY B

Captain DAN STROUD

First Lt. JOE STOKES

Second Lt. SAM SOUTHERLAND

Second Lt. BILL ROY

Second Lt. JIMMY ROBINSON

First Sgt. ELMER REDWINE

COMPANY E

Captain ARCHIE SLATEN

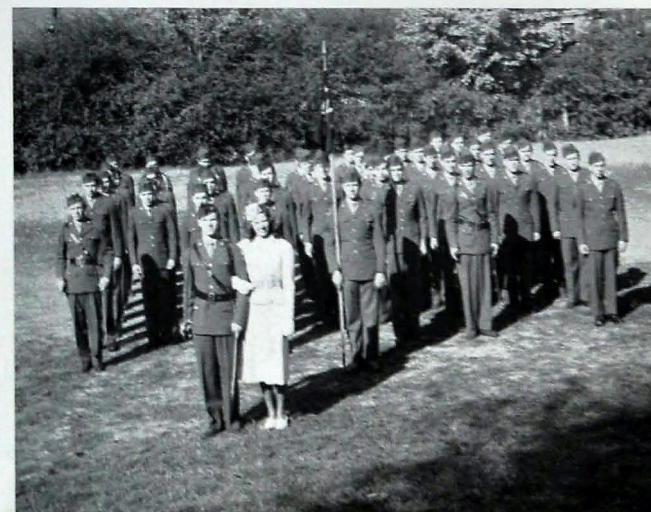
First Lt. DONALD MOORE

Second Lt. WILLIAM HIGHFIELD

Second Lt. MARION LOCKMAN

Second Lt. CHARLES PERRY

First Sgt. HENSON UNDERWOOD



COMPANY F

Captain WENDELL SAFFLES

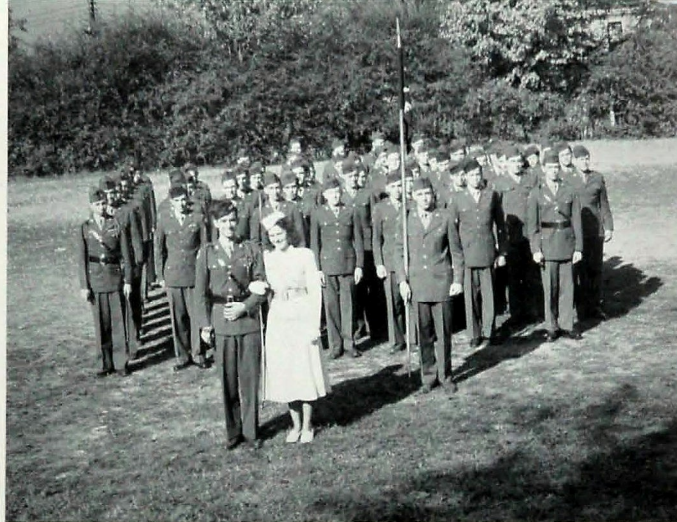
First Lt. BILL HOLDERMAN

Second Lt. JIMMY HIXON

Second Lt. JERRY CLAY

Second Lt. GILFORD GRIFFITH

First Sgt. RALPH ALLISON



MILITARY TRAINING



COMPANY G

Captain DON WESTBROOK

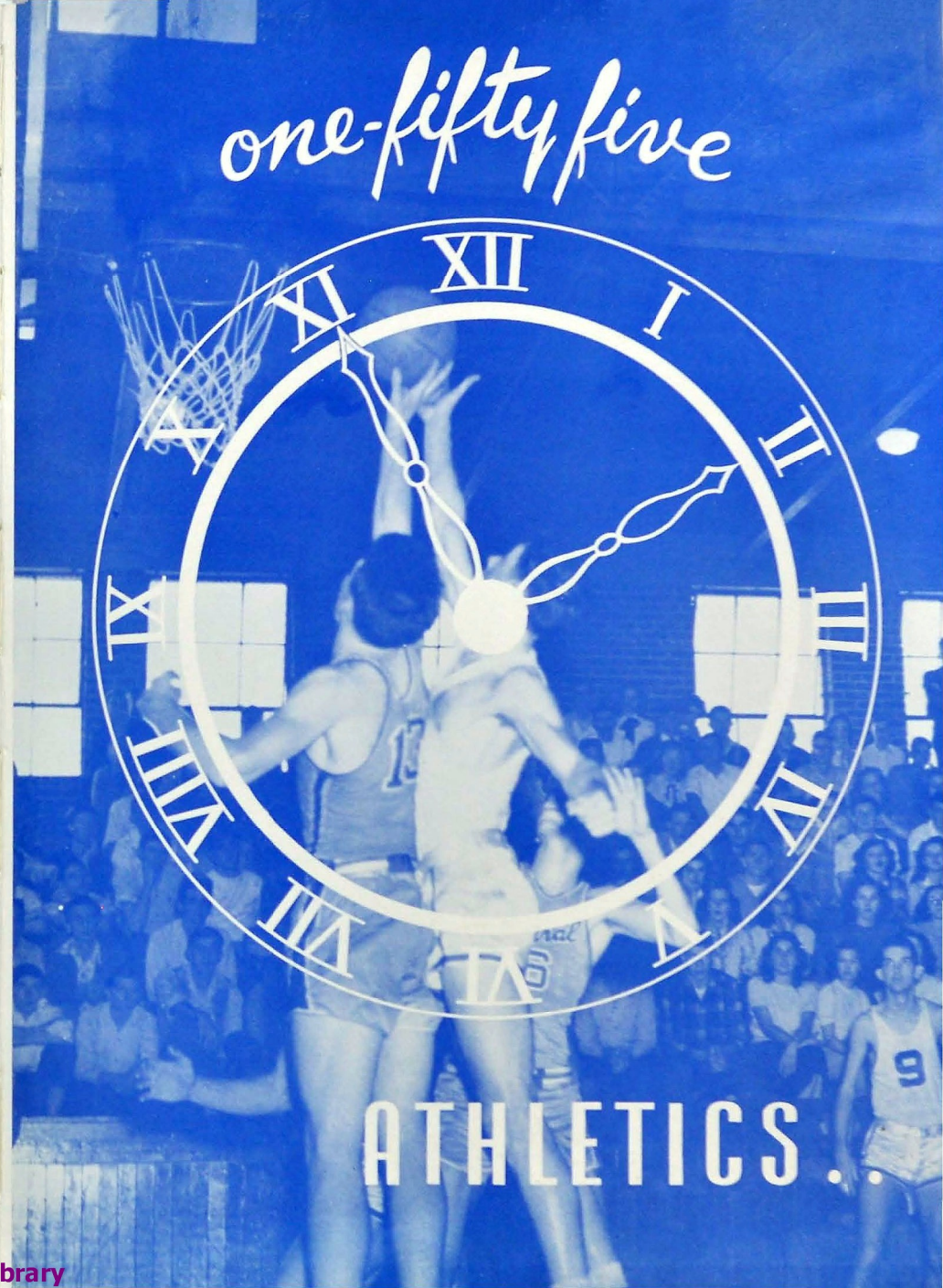
First Lt. THOM HUEY

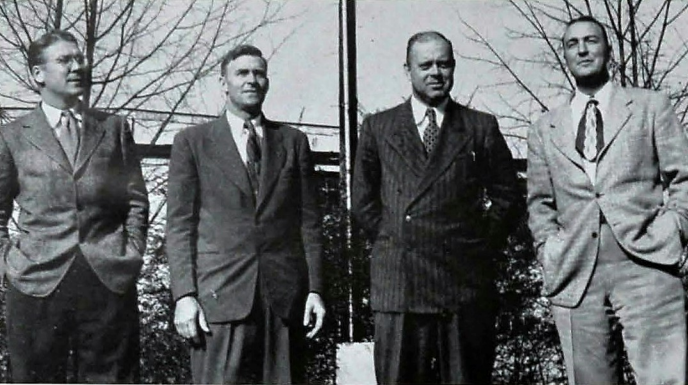
Second Lt. MELVIN ASHLEY

Second Lt. JAMES FINCH

Second Lt. EARL KENNEDY

First Sgt. JOHN ALEXANDER





COACHES

E. B. ETTER

In view of a very difficult schedule and a great climaxed Thanksgiving victory over Chattanooga High School, Coach E. B. Etter may count his seventh year of coaching at Central among his best football years.

After graduating from Central in 1929, "Red" Etter later received his B.A. degree from the University of Chattanooga, where he was a member of the varsity squad. He has coached at Morgan School in Petersburg, Tennessee, and at Hendersonville, North Carolina. Prior to his coming to Central, he coached at Brainerd Junior High School.

Coach Etter's knowledge of the game, his fairness in dealing with the football boys, and his friendly personality make him greatly admired by both the faculty and the student body.

Water Grammar School. During the summers, "Les" is active working with the Knoxville Baseball League. He is one of Central's popular general science teachers. His enthusiasm for the game and his dry sense of humor have made Coach Newton well-liked by the students as well as by the football team.

STANLEY FARMER

Stanley "Boomer" Farmer, who came to Central in the season of 1948, has proved again his worth as a line coach.

Coach Farmer graduated in 1923 from Chattanooga High School. For three years he was an All-City center, and in his senior year was elected to the All-Southern team. He received a B.A. degree in social science from Emory and Henry College in Virginia in 1927. Later, he received his M.A. degree from Columbia University. Before entering the service, he coached at Chattanooga High. He was a Lieutenant Commander in the Navy attached to the Marine Corps. Upon his discharge, the Board of Education succeeded in adding him to the Central coaching staff.

His genial manner and pleasing personality have won for him the admiration of the Central faculty and student body.

J. M. SEATON

The "B" team's record of five wins, one loss and one tie speaks the worth of its coach, "Boots" Seaton.

"Boots" received his degree of B.S. in Industrial Arts from East Tennessee State Teachers' College, Class of '24. While there he participated in football, basketball, and baseball. From college he went to Daley High School where he served as assistant coach to a highly successful basketball team. When Saddy-Daisy High was founded, he became assistant football and basketball coach there. In 1942, he joined the Du Pont Company as a member of the personnel department. In 1945, he came to Central to teach industrial arts and to coach the "B" team. Central has never regretted this wise choice.

His friendliness and sense of humor make him an outstanding member of the faculty and coaching staff.

JAMES L. NEWTON

J. L. "Les" Newton, another responsible for whipping into shape the Central line, has proved to be one of Central's finest line coaches.

Coach Newton graduated from Carson-Newman in 1936. Before resigning in 1941 to come to Central, he was principal at Falling

FOOTBALL SEASON

CENTRAL, 39; LAFAYETTE, 19

September 3

Central started the season with a bang by drubbing Lafayette by a score of 39-19. Coach "Red" Etter used fifty-three men against the nineteen men from Lafayette. Lafayette was led by Leon Hardeman and Jack Nelson. John Childers led the Pounders in their hour of glory.

Central scored one in the first quarter when Childers cut off tackle for 23 yards and six points. On the first play of the second quarter Leon Henry raced 48 yards for six points. Again in the second quarter, Jim Allison raced 59 yards for a touchdown. Henry scored again in

the third quarter. In the fourth quarter Henry crossed again from the 3 yard line. Central's final touchdown was in the last five minutes by Jody Neal. Jim Matheny kicked three extra pointers. Lafayette scored twice in the third period and once in the fourth.

CENTRAL, 20; TYNER, 0

September 11

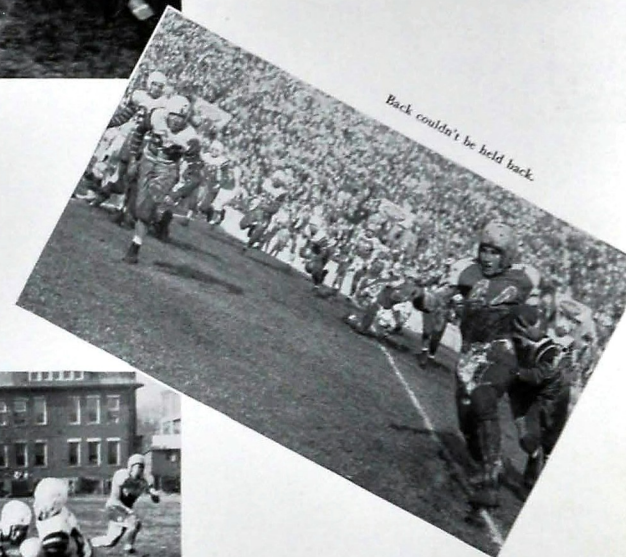
Tyner's scrappy little team with a lighter line gave Central quite a fight and played bang-up ball during the whole game.

Central's first touchdown came in the first quarter. After a drive downfield, Don Westbrook took the ball into

Front Row, Left to right: Bradford, Morgan, Kelsey, Gardner, J. Childers, Woy, Vick, Weddle, Smith, Smartt, Redwine, L. Matheny, Westbrook, Jennings, "Top" Lawler. Second Row: Miller, Carroll, Wick, B. Salley, W. B. Salley, H. Childers, Tate, Jackson, Hoffmann, Henry, R. Allison, Thomas. Third Row: Esby, Robinson, J. Matheny, Gibson, McKinney, Hughes, Pruitt, Bentley, Hale, Hish, Ebel, Jones. Fourth Row: Gil, Dobbs, Fuller, Gardinere, Richardson, Wilkins, Shamburger, J. Allison, McKenzie, Sexton, Neal, Fickle. Fifth Row: Trainer, "Reuben"; Managers, Davis, M. Parker, D. Salley; Coaches, E. B. Etter, Farmer, Newton; Managers, F. Parker, Anderson.



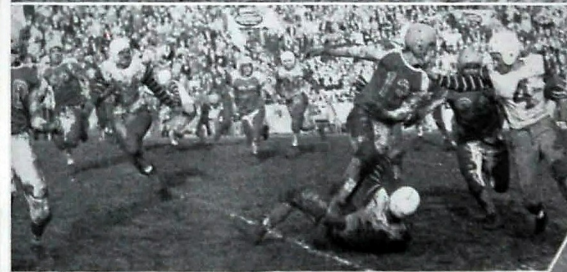
Henry away for a T.D.



Back couldn't be held back.



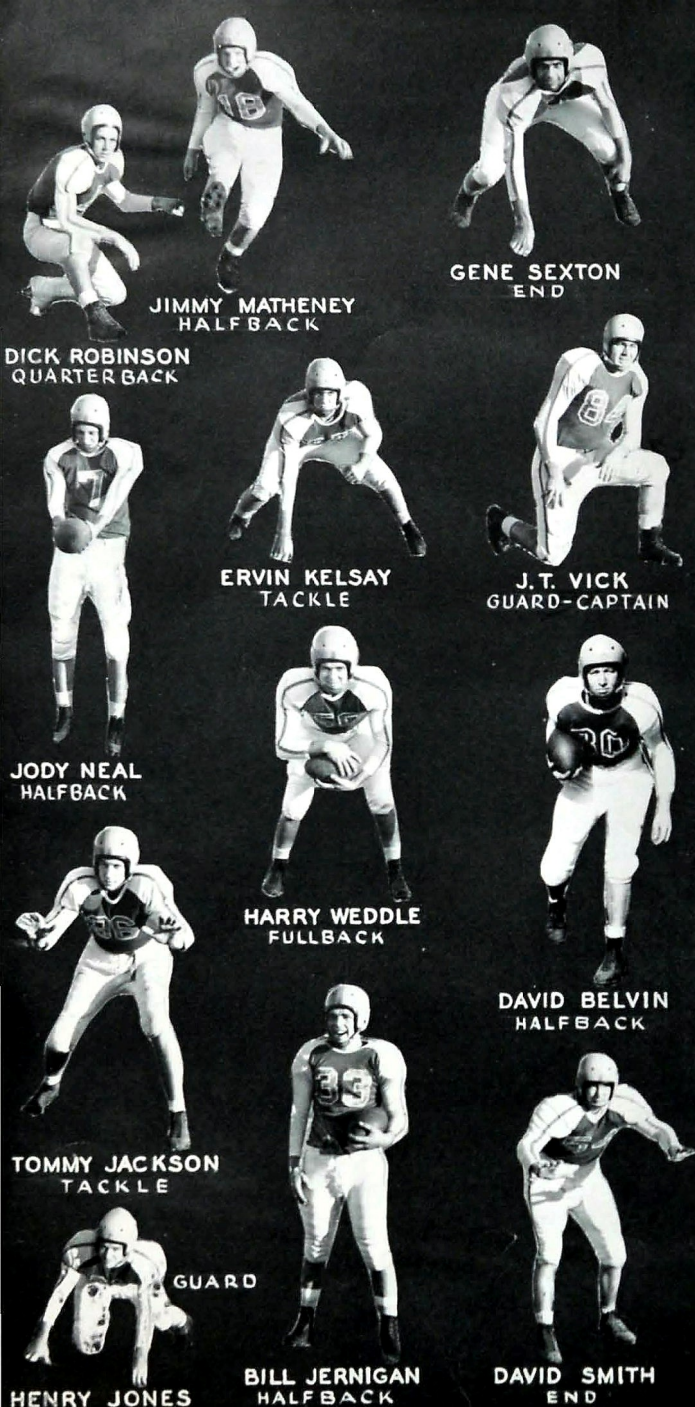
Childers shocks The Dynamos with "6 volts"



Harper couldn't "Harp"



Childers "bombs" the "Atomic Bombers"



JIMMY MATHENEY
HALFBACK

GENE SEXTON
END

DICK ROBINSON
QUARTERBACK

ERVIN KELSAY
TACKLE

J.T. VICK
GUARD-CAPTAIN

JODY NEAL
HALFBACK

HARRY WEDDLE
FULLBACK

DAVID BELVIN
HALFBACK

TOMMY JACKSON
TACKLE

GUARD

BILL JERNIGAN
HALFBACK

DAVID SMITH
END

pay dirt on a short line plunge. Early in the second quarter, Ed Woy passed to Jim Allison for a play which netted 55 yards and a touchdown. Jim Matheny kicked both extra points. For the remainder of the second quarter and the third quarter, Tyner practically played Central to a standstill, but in the fourth quarter, Central got the ball on our own 15 and drove 85 yards with John Gill climaxing the drive with a 15 yard touchdown run.

The line play of Donald Brown, Claude Quarles, Jesse Commer and Norris Ingle was extra good for the Hilltoppers.

KNOXVILLE YOUNG, 21; CENTRAL, 6 September 17

Although Central outplayed the Yellow Jackets in the first half, Knoxville won a hard fought game by a score of 21-6.

Knoxville scored first in the first quarter. Then, in the last quarter, they scored twice. Central did not score until the fourth quarter when Jim Allison took a "Statue-of-Liberty" hand off from Quarterback Edgar Woy. Both lines played rugged ball with Knoxville's bigger, faster charging line having the edge over the Pounder's smaller line.

KINGSPORT, 20; CENTRAL, 0 September 24

Although Central was on the small end of the score, the team played brilliant ball. A crowd of 9,000 turned out to see the 1947 State Champions. The Indians of Kingsport with machine-like precision played almost perfect ball while Central, with odds against them, played one of their best games of the season.

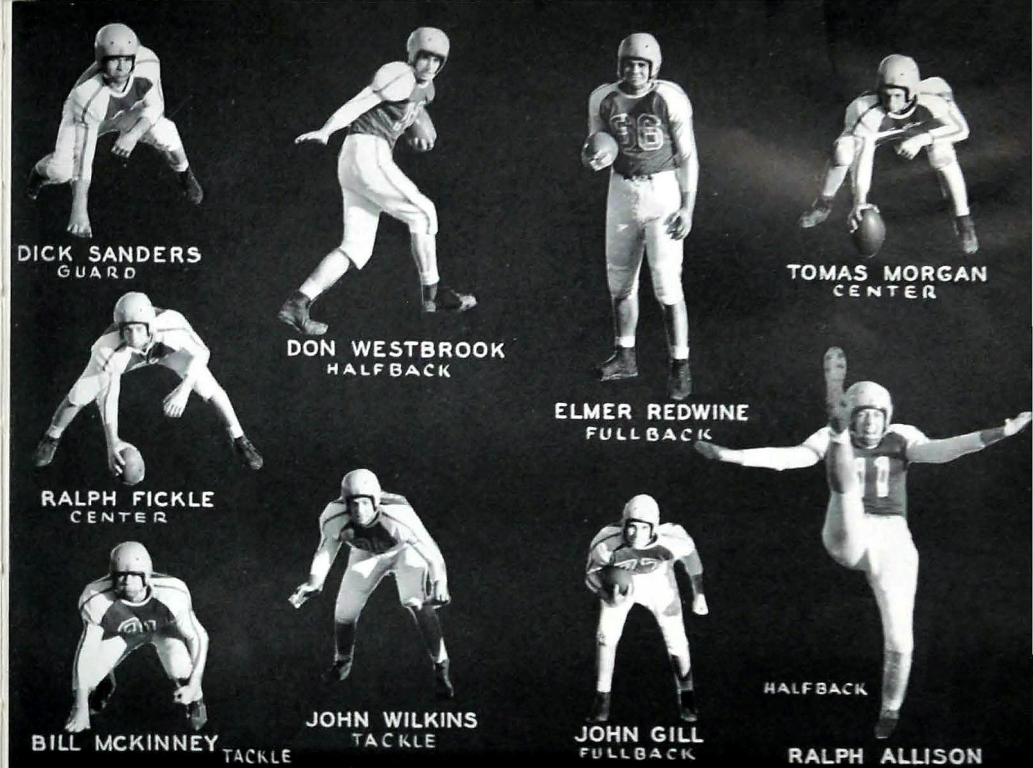
The Indians did not score until late in the second quarter when Harry Wright, the fastest man on the field, raced 27 yards for a touchdown. In the second half, King passed to Hale for a perfect touchdown. The third tally came on a 12 yard pass from Wright to Payne.

Allison, Childers, Back, Gill, and Woy played good ball in the backfield. Vick, Gardner, and Sanders were outstanding in line play.

CENTRAL, 20; RED BANK, 13 October 2

Leading at the half by a score of 13-0 by virtue of touchdowns by Paul Daniels and Pete Potter, Red Bank fought hard but Central finally conquered them.

In the second half, the rejuvenated Central line stopped Paul Daniels cold. Central scored on a 63 yard drive, a 70 yard drive and a 27 yard drive. A trio of John's—Childers, Back, and



DICK SANDERS
GUARD

DON WESTBROOK
HALFBACK

TOMAS MORGAN
CENTER

ELMER REDWINE
FULLBACK

RALPH FICKLE
CENTER

JOHN WILKINS
TACKLE

JOHN GILL
FULLBACK

HALFBACK
RALPH ALLISON

BILL MCKINNEY
TACKLE

Gill did some very fancy running. Central's touchdowns were made by Jim Allison, Johnny Back and Leon Henry. Jim Matheny kicked two extra points.

KNOXVILLE, 27; CENTRAL, 13 October 8

The fifth best team in the state, the Knoxville Trojans, beat Central 27-13 at U. C. Stadium; however, Central was in there scrapping all the way.

Central scored first in the first quarter by recovering a Trojan fumble deep in the Trojans' territory. John Childers scored a touchdown from the one-foot line. Knoxville scored twice in the second quarter and added the extra points both times. Again in the third quarter the Trojans gained one to make the score 20-6. After several passes from Woy to Childers, Smartt, and Allison, Don Redding made 9 yds. to the Trojans 24 for a first down. Gill gathered in a Woy pass on the 10 and bounced over. Jim Matheny added the extra point. The Trojans weren't through. They scored in the fourth quarter to make the final score 27-13.

MIAMI, 28; CENTRAL, 7 October 15

Playing before a huge crowd, Miami's heavier, faster charging line played Central's "T" to a standstill in the first quarter. Central was able to make only a few short gains.

However, in the second half, Central came to life and showed that they were still in the ball game. In the fourth quarter, John Childers, John Back, John Gill, and Leon Henry, with Leo Matheny at quarterback, moved the ball to Miami's 24 yard line. Woy took over there and rifled a pass to Johnny Back, who scored. Jim Matheny added the extra point. Miami's star of the night was Brewling.

BRADLEY, 14; CENTRAL, 7 October 21

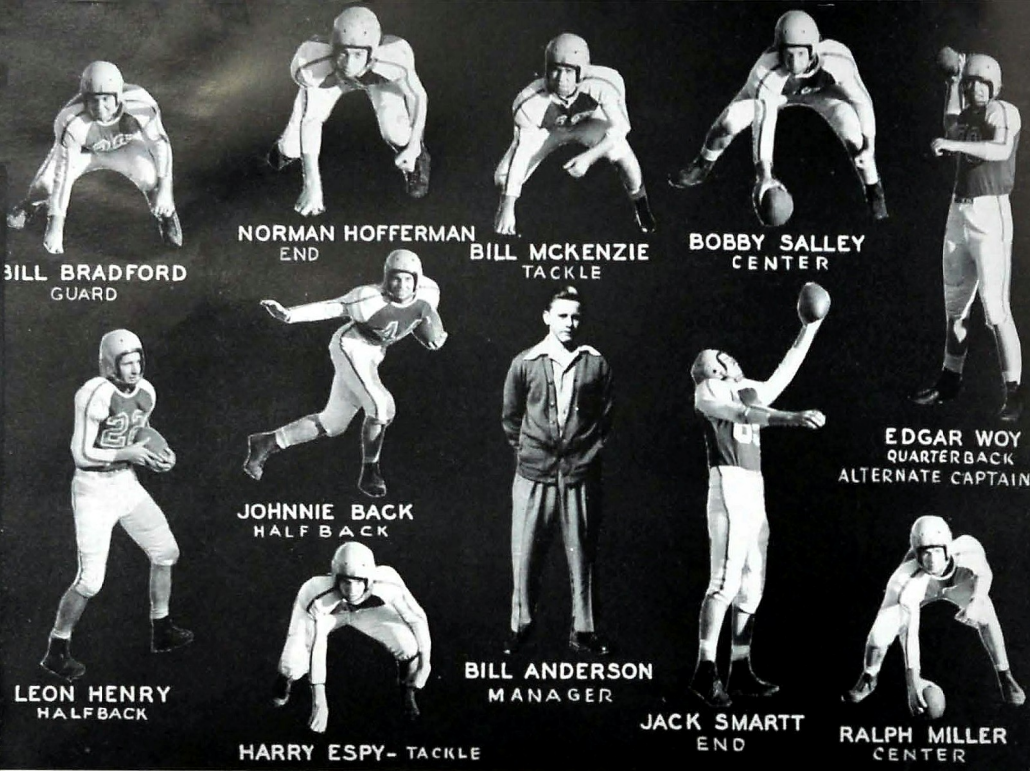
Coach Etter used for the first time separate offensive and defensive teams, but Bradley would not yield, and they beat Central by a score of 14-7. It was a hard fought game with outstanding line play on the part of both teams.

On receiving the kick-off, Bradley immediately began to move. On a roaring 51 yard drive Bradley scored in the first quarter. Again in the second quarter, the rampaging Bears from Cleveland scored and added the extra point.

But, in the third quarter, a Bradley fumble was recovered in the Bears' end zone for a Central score. Jim Matheny kicked the extra point. Several threats were made, but the score remained 14-7.

NOTRE DAME, 7; CENTRAL, 7 October 30

In a renewal of hostilities between Notre Dame and



Central, they battled to a draw. It was their first meeting since 1943.

Central's score came in the first quarter. Childers returned a punt from his own 38 to the Irish 45. With Gill and Childers alternating in a running attack, the ball finally wound up on the 8 yard line. From there, Childers banged over, and Jim Matheny kicked the extra point.

In the second quarter, the Irish recovered a fumble on the Central 21. Two plays later, Kovacevich scored from the one.

During the second half neither team took advantage of scoring opportunities and the game ended 7-7.

CENTRAL, 13; LOUISVILLE MANUAL, 32 November 6

The Manual eleven proved to be too fast and too powerful for the Purple Pounders. Their win over the Pounders was the ninth in a row without a loss. The Crimson had too much speed and power for the Pounders.

Manual scored one touchdown in each of the first two periods, two in the third period, and then added another touchdown in the fourth quarter to make up their 32 points. Central's first touchdown came in the second quarter on an 80 yard drive with Woy throwing the ball most of the way. Then, John Childers scored from the 6 yard line and then rushed across the extra point. Central's other tally came on a 68 yard drive with Henry

and Childers alternating running assignments. The payoff was a 3 yard drive by Childers. Although the score was 32-13, Central constantly threatened to score and, with a few breaks, it might have been a different story.

CENTRAL, 37; BRIDGEPORT, 7 November 11

With about 2,000 people in the stands, Central scored practically at will. John Childers ran three touchdowns. The others came by way of Leon Henry and Harry Weddle.

"Doc", playing some of his best ball, scored first on a 26 yard run. His second came on an 8 yard jaunt and his third on a 19 yard trip. Henry rolled off tackle for 32 yards and six points. Harry Weddle made a brilliant 58 yard run for the other Central six-pointer. Jim Matheny had a perfect night with five extra-pointers in five attempts. Central scored two more points on a safety.

Central opened the game with Ralph Allison kicking off. Robert Cox, the Tigers' star, took the ball behind his own goal and raced 100 yards for a T. D. only to have it called back. He later scored the Tigers' only touchdown.

CENTRAL, 44; OAK RIDGE, 21 November 20

Playing almost perfect football, the Pounders pounded away at the Atoms' goal line and beat them 44-21. John

Childers and Leon Henry led the Purples all the way.

Central scored first in the first period, failed the extra point and led 6-0. But Oak Ridge came right back and scored to make the period end 7-6. Childers scored his first touchdown on a 60 yard run through tackle. Rush's pass to Smartt was good for 42 yards and six points. Another drive of 82 yards brought a touchdown. Besides the scoring of Childers, Henry, Smartt, and Back, there was that of Miller, who scored when no one knew who had the ball. Jim Matheny kicked two extra points.

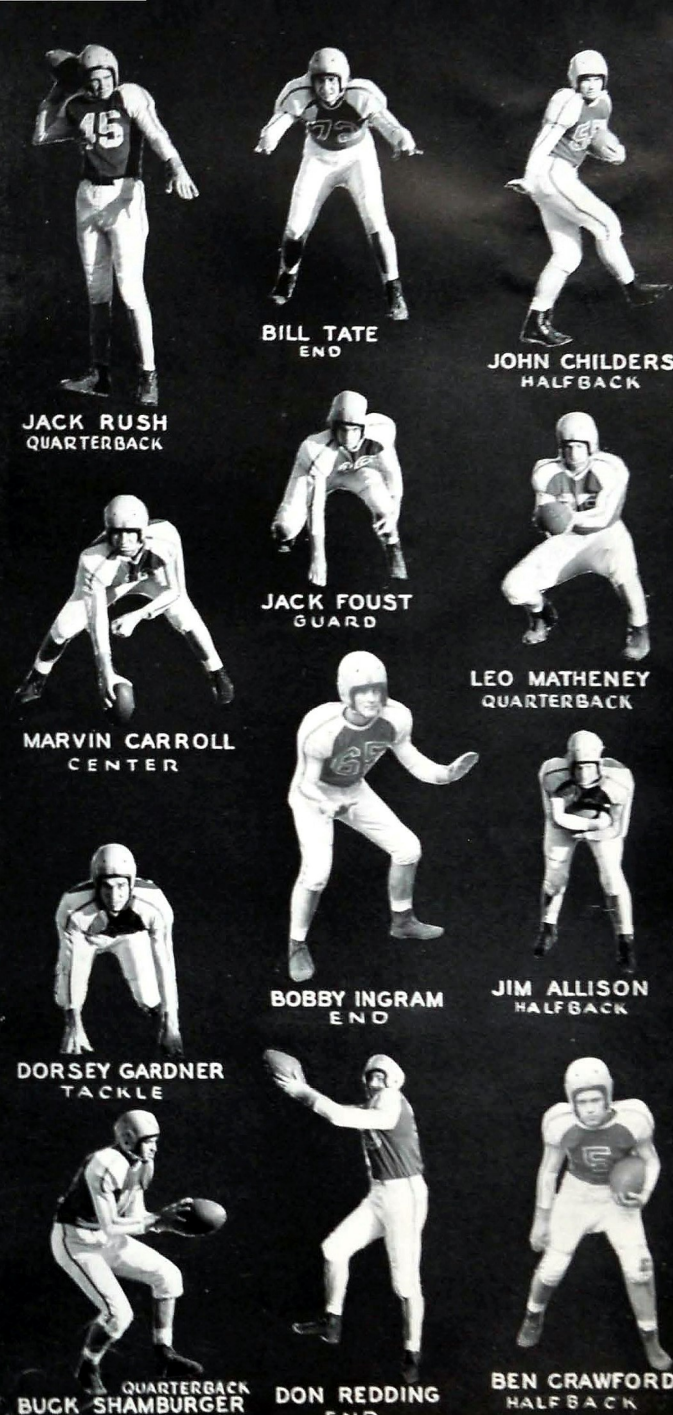
CENTRAL, 25; CITY, 9 November 27

We did it again! We beat City for the eighth consecutive year, this time by a score of 25-9. John Childers was the hero of the afternoon, and rightly so, for he scored all of Central's four touchdowns.

Central scored in the first quarter. John Childers climaxed a 65 yard drive by scoring from City's 5. Again in the first quarter, Childers got away for 67 yards and a touchdown. His attempt at running the extra point was unsuccessful. With time for one play left in the first half, John Childers against burst over from the one foot line where Leon Henry had been knocked out of bounds. At halftime the score was 18-0. During the third period neither team could get enough steam to score, but John Childers carried the goods once more. This time, however, Jim Matheny added the extra point. City scored by tackling John Gill behind his own goal line. Finally City scored and added the extra point to make the final score 25-9.

With this resounding victory over our traditional rivals, Central closed out a very successful season. Central can rightly be proud of its '48-'49 football team. Captain J. T. Vick and Alt. Captain Ed Woy did a splendid job of running the team.

Central should also be proud of John Childers and Dorsey Gardner who won the coveted honor of being named to the All-City team. J. T. Vick, Leon Henry, and Johnny Back made the second team with Dick Sanders making the third team.





Left to Right: E. Woy, Brown, Sexton, Sharp, Cooke, McAllister, Phifer, Allison, D. Salley, B. Salley, Fickie, R. Woy.

B A S K E T B A L L

Coach "Bang Bang" Bales' '49 edition of Central High basketball was a team of which Central is justly proud. This group did something no other local school did; the Purple Pounders beat Rossville High's fine winning team by a score of 50-48. Another much prized feather in the Pounders' cap is the victory over Soddy-Daisy's oft victorious Trojans by a score of 61-51. The final won-lost record, not including tournaments, was an "even stephen"—16 won, 16 lost. An interesting sidelight is the fact that during the playing season, Central amassed 1413 points while opponents mustered only 1381 points.

Starting the season this year were Russell Woy and Emert Brown at forwards, Ed Woy at center, Ralph Allison and Tommy Phifer at the guard slots. Supporting these were John Gill and Ralph Fickie at forwards, Gene Sexton at center, and Bob Sharp and Dickie Salley at guards. Other players who figured in most of the games were Stanley Cooke and Tommy McAllister.

In the tournaments, Central did not fare so well as in regular games. In the Times Cup Tournament the Pounders were eli-

minated in the quarter-finals by Sale Creek; in the first District Tournament the team failed to get started well and in the quarter finals was eliminated by Chattanooga High School.

Among the higher scoring contests was one in which the Purple Pounders trounced Morristown by a score of 79-45. In this game it seemed that every player was at his best.

Of the total 1413 points scored by Central's team, a senior boy and two junior boys racked up more than half of the entire number. Ralph Allison led the three—and the team—with a total of 291 points. The other two are brothers—members of the ever-popular Woy family. Russell Woy, the junior of the two, scored 207 points while big brother, Ed, scored 277 points.

Both players and coach of the 1949 quintet have been well liked and have proved to be one of the most popular teams Central has ever produced.

The entire school is indebted to them for their exciting games with their "thrills and spills" which have added fun and frolic and have broken the monotony of many a dull school day.

COACH W. P. BALES

As an authority on basketball and baseball, the opinion of few if any, in the Chattanooga area is more highly respected than that of Coach "Bang-Bang" Bales. Although baseball is his first love, basketball stands high among his favorite sports. Coach Bales not only teaches his boys to excel in sports, but he also teaches them to be upright young men with a very high regard for what is fair and honest.

Coach "Bang-Bang" graduated from Mosheim High School, Mosheim, Tennessee, where he played basketball and baseball. Later he attended Tennessee Wesleyan College where he was a member of the track, baseball, basketball, and football teams. He played professional baseball for eight years and while playing with Memphis in 1912 won the Southern League batting title. During World War I he served as physical director at Fort Oglethorpe. In 1922, he received his B.A. degree from the University of Chattanooga. Later, in 1927, he received his M.A. degree from Columbia University.

Coach Bales' first year at Central was 1922. Besides coaching basketball and baseball, he also teaches American history and, during the summer, serves as the director of summer school. His friendliness, willingness to help, and his fairness in dealing with students all add up to make him one of the more popular members of the faculty.



Central-City

In ACTION



Central-McCallie



Central-Soddy-Daisy





Boxing Team

B O X I N G

Coach Worried?



The '49 Boxing Team of the Purple Pounders was one of the best ever to be at Central. The team, coached by "Red" Etter and captained by Archie Slaten and Prince Kendall, won two open Championships—the Frye and the Golden Gloves.

In the Frye Boxing Tournament Central won a total of six championships. Bill Holderman in the 135 pound division won the championship in the novice group. In the open division the five championships won were: Fred Hall, 120 pound division; Archie Slaten, 127 pound; Kenneth Smith, 155 pound; Elmer Redwine, 165 pound; John Childers, 175 pound division.

In the novice division of the Golden Gloves there were five

Captain Slaten gets ready to blast City's Kendall.

Prince Kendall ducks a right by Frye's James Hall.



Bland jabs City's Wayne Fullam.



Holderman beats City's Runger.

Central champions. These were "Barney" Holder, 55 pound, unopposed; Gene Hall, 80 pound division; John King, 108 pound; Lester Bland, 116 pound; Bill Holderman, 135 pound. In the open division, the winners were: Bill White, 124 pound; Archie Slaten, 132 pound; John Childers, 175 pound; Don Redding, heavyweight. In the Golden Gloves open, Prince Kendall and Fred Hall won the featherweight and bantamweight, respectively. These two fine boxers went on to win the Southern championships in their weight classes.

Under T.S.S.A.A. rules, no member school may enter the National Interscholastic Meet. However, the city of Chattanooga

entered a team of which several Central boys were members. Four of them won championships. The winners were Gene Hall, 85 pound division; Fred Hall, 120 pound; Dickie Allen, 125 pound; Archie Slaten, 130 pound. Co-captain Archie Slaten won the honor of being named the outstanding boxer in the meet which was held at the University of Virginia.

This year's squad of 40 has been a splendid team. It has proved, along with past teams, that Central is a boxing power in the state as well as in the city and county. Next year's edition should, from all indications, be as good, if not better, than this year's team.

W E I G H T - L I F T I N G

Loren Nation is a real He-man.

Weightlifting Team

And Blackwell says "Ugh".





Front Row, left to right: Mgr. Stiles, K. Goodner, Dixon, Tarpley, Morgan, Dunn, Holmes, Wrinkle; Scorer, Thompson. Second Row: Adams, Powell, Gardner, West, J. Goodner, Coach Bales, Espy, Brown, Perry, Leonard.

BASEBALL

Coach "Bang-Bang" Bales' 1948 edition of Central baseball was fairly successful. Every man on the team played hard in every game, and each deserves his share of praise. While winning five and losing four, this team was never beaten by Chattanooga High School. The consistent hitting of Bobby Holmes, Jim Perry, Bob Wrinkle, Herman Tarpley, Dorsey Gardner, and "Doggie" Dunn was the impressive factor in the 1948 season. Holmes was the outstanding pitcher, but Emerit Brown also made a good record in this position. The starting line-up was: Tarpley, 3B; Percy, 2B; Dunn, CF; Wrinkle, LF; Gardner, 1B; Goodner, RF; Leonard, SS; West, C; with Holmes and Brown alternating between pitching assignments. Of the starting line-up, eight graduated, but the '49 edition has the promise of a good season.



BOBBY HOLMES
Pitcher

SCHEDULE

	R	H	E		R	H	E
Central	10	6	1	McCallie	1	1	1
Central	1	1	0	Baylor	3	4	1
Central	8	9	2	Red Bank	9	8	3
Central	4	6	2	City	1	1	2
Central	6	8	1	Baylor	5	7	2
Central	6	9	3	McCallie	7	11	3
Central	1	4	5	Red Bank	7	6	2
Central	4	4	0	City	0	3	1
Central	8	9	1	McCallie	7	12	1

THE PITCHER'S RECORD

	W	L
Holmes	3	2
Brown	2	0
Dixon	0	1
Goodner	0	1



Left to right: Alver-
son, Lockman, Smith,
Cagle, Briggs; Farabee
was not present when
the picture was made.

SCORE

February 19—Central	2	City	1
February 26—Central	0	Notre Dame	3
March 3—Central	3	Red Bank	0
March 10—Central	3	Kirkman	0
March 17—Central	1	McCallie	2
March 24—Central	3	Baylor	0
March 31—Central	3	City	0
April 7—Central	2	Notre Dame	1
April 14—Central	2	Red Bank	1

BOWLING

GOLF

SCORE

March 22—Central 6; City	0
March 24—Central 5; Kirkman	1
March 29—Central 1; McCallie	5
March 31—Central 2; Baylor	4
April 7—Central 6; Notre Dame	0
April 12—Central 6; Red Bank	0
April 14—Central 6; City	0
April 19—Central 5; Kirkman	1
April 21—Central 2; McCallie	4
April 26—Central 3; Baylor	3
May 5—Central 6; Red Bank	0



Left to right: B. Allen, D. Allen,
Carey, Trimble, Mr. Smith, sponsor,
and Weathers.



Eadminton Club



"Swing your partner,
do-ccc-do"

G I R L S ' A T H L E T I C S



Ace Club



One for all, and all
for one?

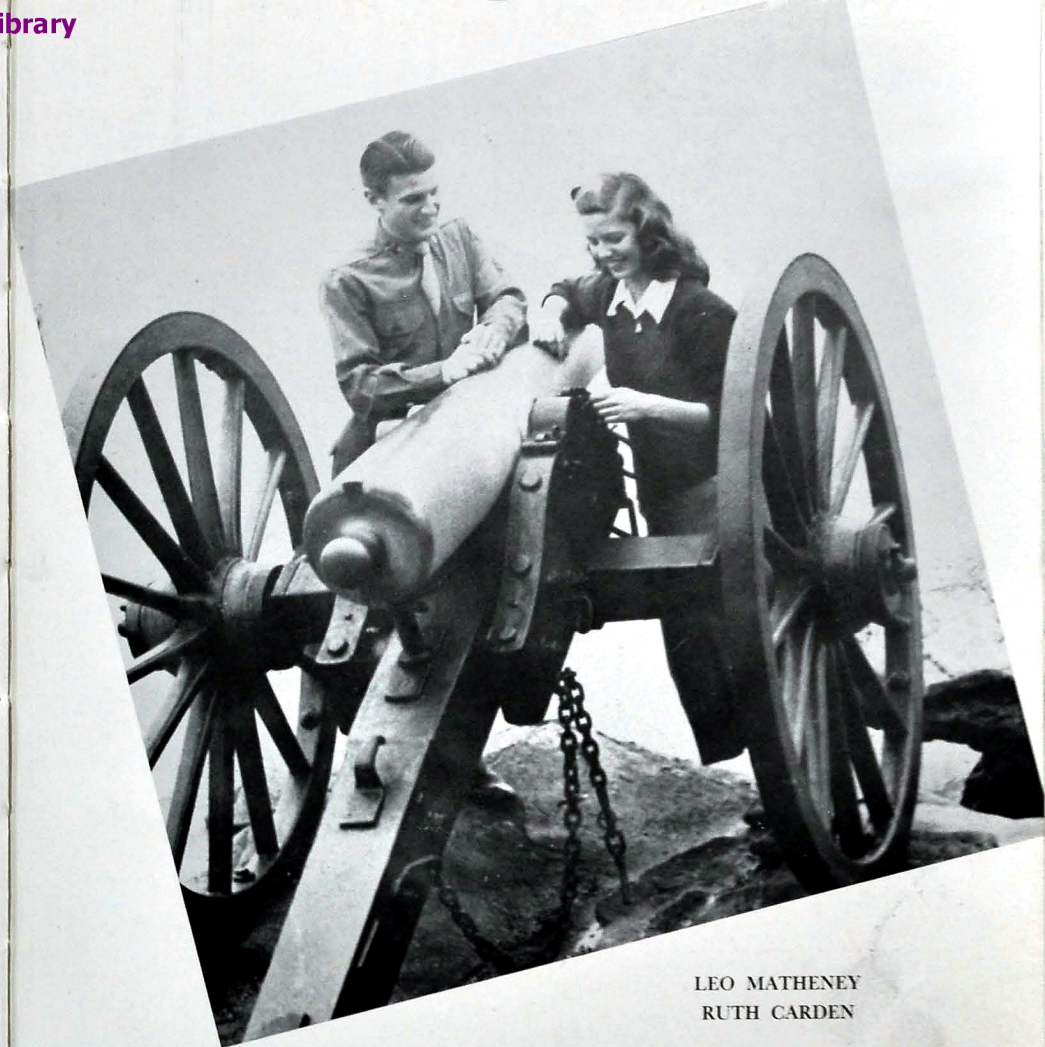




FRANKLIN ASHLEY

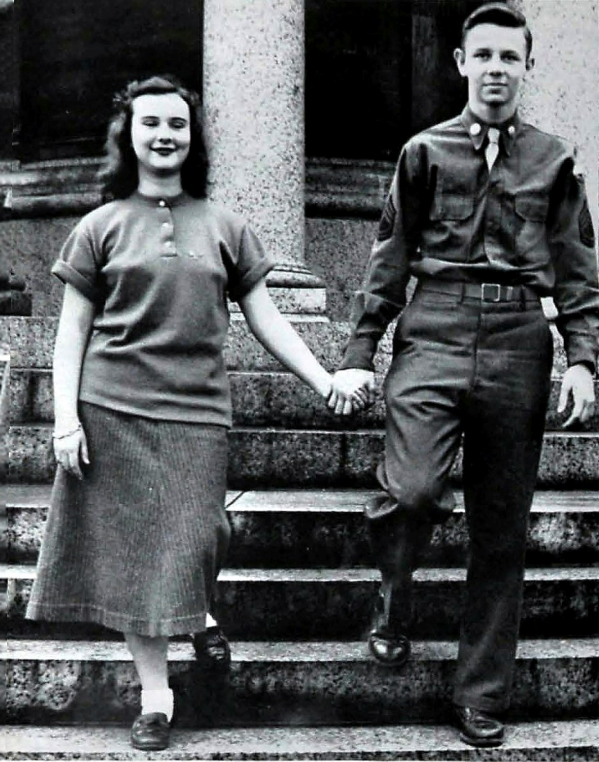
BARBARA FRENCH

TORCHBEARERS



LEO MATHENEY
RUTH CARDEN

BEST ALL-ROUND



SCHOLARSHIP

BOB SHARP
BILLIE SMITH



SERVICE

CLARK BROOM
SUE RICHEY

LEADERSHIP

JACK EDWARDS
ELIZABETH FLETCHER



DEPENDABILITY

EDWIN TRIMBLE
PEGGY COVINGTON



COURTESY

ED WOY
MADELINE CAIN



TALENT

TONY HOLLAND
BILLIE JEAN GANN



FRIENDLINESS

KENNETH SMITH
BETTY HINKLE



ATHLETIC ABILITY

JOHN CHILDERS
BOBBIE CILE ENGLAND





J. T. VICK
BETTYE BEASLEY

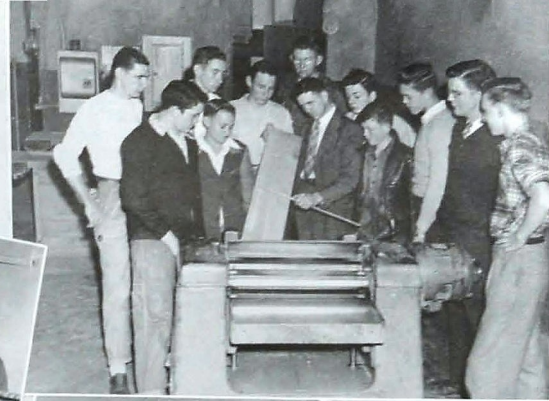
PERSONALITY

WITTIEST

PRINCE KENDALL
PAT SPEEGLE



Anytime . .



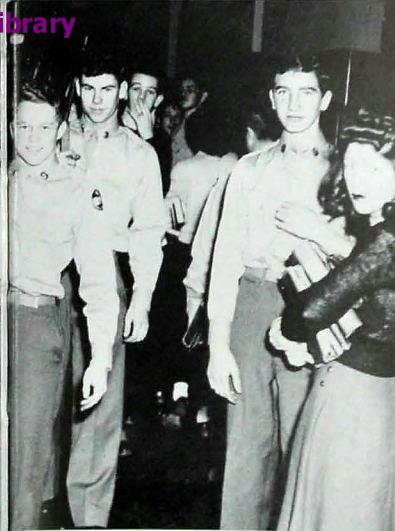
"Behind the Scenes"





"Sugar 'n Spice"





"Fun and Fancy Free"





"Just Snap's"



Our Patrons

A FRIEND	
ALABAMA ENGRAVING COMPANY	Birmingham, Alabama
ALLEN BROTHERS BARBER SHOP, 4-0521	3222 Brainerd Road
ANNEX DRUG COMPANY, 2-3182	1718 Bailey Avenue
ARCHER PAPER COMPANY, 6-3189	1124 Market Street
L. B. BALFOUR COMPANY, JEWELERS	Attleboro, Massachusetts
BELVOIR PHARMACY, 2-3184	4501 Brainerd Road
BENSON PRINTING COMPANY	Nashville, Tennessee
BLESSING WATERHOUSE AND COMPANY, 6-1251	520 East Tenth Street
THE BOYS SHOP, 7-3248	622 Market Street
BRAINERD CLEANERS, 2-2167	3105 Brainerd Road
BRAINERD DRUG COMPANY, 2-3101	3240 Brainerd Road
BRAINERD VARNELL HARDWARE AND PAINT CO., 2-1173	3114 Brainerd Road
EARL CAMPBELL CLINIC, 7-4515	525 McCallie Avenue
CENTRAL HIGH SCHOOL P.T.A.	Central High School
CHATTANOOGA ARMATURE WORKS, 2-2124	1215 Duncan Avenue
CHATTANOOGA BUTTON AND BADGE MFG. CO., 6-6934	109 E. 7th St.
CHATTANOOGA CHIPS COMPANY, 4-2347	2501 East Twelfth St.
CHATTANOOGA COCO-COLA BOTTLING COMPANY, 6-4788	201 Broad Street
CHATTANOOGA GAS COMPANY, 6-0191	811 Broad Street
CHATTANOOGA MEDICINE COMPANY, 5-4521	1715 West 38th. Street
CHATTANOOGA VENETIAN BLIND CO., 2-1187	1400 McCallie Ave.
CLEMONS BROTHERS COMPANY, 6-7151	119 West Eighth Street
COMMERCIAL STATIONERY AND SUPPLY CO., 6-1241	109 East Market Street
COMPLIMENTS OF JACK W. ASKEW	
COMPLIMENTS OF MAYOR HUGH WASSON	
COMPLIMENTS OF JACK TRIMBLE, Alumnus	
CRISMAN HARDWARE COMPANY, 7-1114	511 Market Street
DAYLE MAY JEWELERS, 3-0195	Rossville, Georgia
DIX & FAIRES, 6-6813	Eighth and Broad Street
DIXIE SHOPS, WOMEN'S APPAREL, 7-2708	610 Market Street
EASTERLY-WOODHEAD FLOWERS, INC., 6-4721	1000 E. Eighth St.
EAVES BADGE AND EMBLEM COMPANY, 6-1614	823 Cherry Street
EDGERTON'S DUTCH MANOR, 9-1421	3975 Brainerd Road
EDWARDS AND LEBRON LTD., JEWELERS, 6-7175	805 Market Street
THE FISCHER COMPANY, JEWELERS, 6-5235	8 West Eighth St.
FOWLER BROTHERS FURNITURE COMPANY, 7-4556	710 Broad Street
FOX BROTHERS COMPANY, 6-3139	1215 King Street
GORDAN GAMBILL INSURANCE COMPANY, 7-1482	702 Cherry Street
GENERAL APPLIANCE CORPORATION, 5-3617	716 Cherry Street
H. W. GRANERT, PHOTOGRAPHER, 6-7335	616½ Market Street
GRANT-PATTEN MILK COMPANY, 6-1294	1202 King Street
HAJOCA CORPORATION, MILL SUPPLIES, 7-1151	515 E. Eleventh St.
HARDIE AND CAUDLE, CLOTHIERS, 6-7032	809 Market Street
HEMLOCK PHARMACY, 2-3151	2104 East Main Street
HOLLAND FURANCE COMPANY, 6-6418	225 East Eleventh Street
HOLSUM BREAD COMPANY, 6-8176	1615 Cowart Street
HOME ICE CREAM COMPANY, 5-9119	2306 Dodds Avenue
HOTEL PATTEN, 6-2141	1 East Eleventh Street

Our Patrons

HOWARD CLEANERS, 2-1116	1631 McCallie Avenue
INTERTYPE COMPOSING COMPANY, 7-2620	310-A West Eighth Street
JACOBS WHOLESALE CANDY COMPANY, 6-2718	219 East Tenth Street
JOYS INC., FLORISTS, 6-7168	1000 Georgia Avenue
C. T. KEENER PLUMBING AND HEATING COMPANY, 7-6536	121 Market St.
KIMBALL'S FLOWERS, 2-4771	2409 McCallie Avenue
KOBLENTZ, MEN'S FURNISHINGS, 6-2764	812 Market Street
H. S. KRESS AND COMPANY, 6-5631	708 Market Street
LANSFORD PIANO COMPANY, 6-7185	730 Cherry Street
L. C. LEACH AND COMPANY, JEWELERS, 7-2941	738 Cherry St.
LeGRAND JEWELRY COMPANY, 7-6648	604 Market Street
LOVEMANS, INC., DEPARTMENT STORE, 6-0161	800 Market St.
MAC'S DRY CLEANING COMPANY, 2-1143	3217 Brainerd Road
MARTIN-THOMPSON, SPORTING GOODS, 7-3373	706 Cherry Street
McCALLIE AVENUE PHARMACY, 6-1712	932 McCallie Avenue
TOM McGHEE, JEWELER, 6-0751	732 Cherry Street
McKENZIE SCHOOL OF BUSINESS, 6-7157	401 Oak Street
HELEN MICHEL, FLORIST, 6-2648	719 Georgia Avenue
MILES CANDY AND CIGAR COMPANY, 7-0551	3 West Thirteenth Street
MILLER BROTHERS COMPANY, DEPARTMENT STORE, 7-1251	629 Market St.
MILLS AND LUPTON SUPPLY COMPANY, 6-6171	1152 Market Street
MOCCASIN SALES AND SUPPLY, 6-5866	Hoghead Apartments
V. A. MOORE, CURTIS CANDY COMPANY, 2-7679	2514 Olive Street
MOUNTAIN CITY STOVE COMPANY, 6-2167	1240 Market Street
MUTUAL CANDY COMPANY, 7-3375	1269 Market Street
MUTUAL DRUG COMPANY, 2-1127	2100 McCallie Avenue
NOLAND PLUMBING COMPANY, 7-1284	115 Market Street
PALMER CLOTHES, 6-3834	825 Market Street
T. H. PAYNE COMPANY, OFFICE SUPPLIES, 6-0138	821 Market Street
BILL PENNY TIRE SERVICE, 2-1112	1401 North Dodson Avenue
PERFECTION LAUNDRY DRY CLEANERS, 2-1177	2312 McCallie Avenue
PICKETT'S WOMEN'S APPAREL, 6-3121	814 Market Street
PRYOR PHARMACY, 2-1148	1422 McCallie Avenue
RHYNE PHARMACY, 84-1547	117 Chickamauga Avenue
RIDGE DRUG COMPANY, 2-1171	418 Dodds Avenue
SARAH JANE DONUT SHOP, 4-5333	2000 McCallie Avenue
R. K. SCHOLZE, GROCERS, 2-2131	414 Dodds Avenue
SOUTHERN BELL TELEPHONE AND TELEGRAPH CO., 6-9011	129 East Tenth
SOUTHERN BLOW PIPE AND ROOFING CO. 9-1441	109 N. Highland Park Ave.
STUTZ BROTHERS, ROOFING, 2-6033	1701 McCallie Avenue
TALLEY-HO RESTAURANT, 4-9143	5003 Brainerd Road
TEMPLETON'S INC. JEWELERS, 6-7628	12 West Eighth Street
TENNESSEE AWNING AND TENT COMPANY, 2-0729	1601 McCallie Ave.
THREE SISTERS INC., WOMEN'S APPAREL, 6-2719	702 Market St.
UNIVERSITY OF CHATTANOOGA, 6-7363	McCallie Avenue
VIOLET CAMERA SHOP, 5-2512	9 East Seventh Street
WAGG, BROADCASTING STATION, 7-1128	Hotel Patten
HERMAN WALLDORF AND COMPANY, 7-2702	930 Cherry Street

The Last Tick



As the clock ticks off the final seconds of the school year of 1949, and as we look forward with eager anticipation to graduation, diplomas, and new experiences ahead, we take a last fleeting glimpse backward.

In one swift sweep we recall happy associations with friends through the daily routine of school, night games on a lighted field, moonlit rides on river and lake, wiener roasts, parties, hamburger fries, dances, and a thousand and one other unforgettable occasions.

On such a background of pleasure and fun, even hours of hard work and struggles over lessons in the glimmering light of the midnight oil, now fade away and become a part of the fond affection which we shall always hold for Central—our Alma Mater.

Printed and Bound by BENSON PRINTING CO., Nashville, Tenn.

Engravings by ALABAMA ENGRAVING CO., Birmingham, Ala.

