

CHE Library

The
CAMPION
1947

James L. Milburn

CHS Library



Strictly
Ok

Come Rain



or Shine

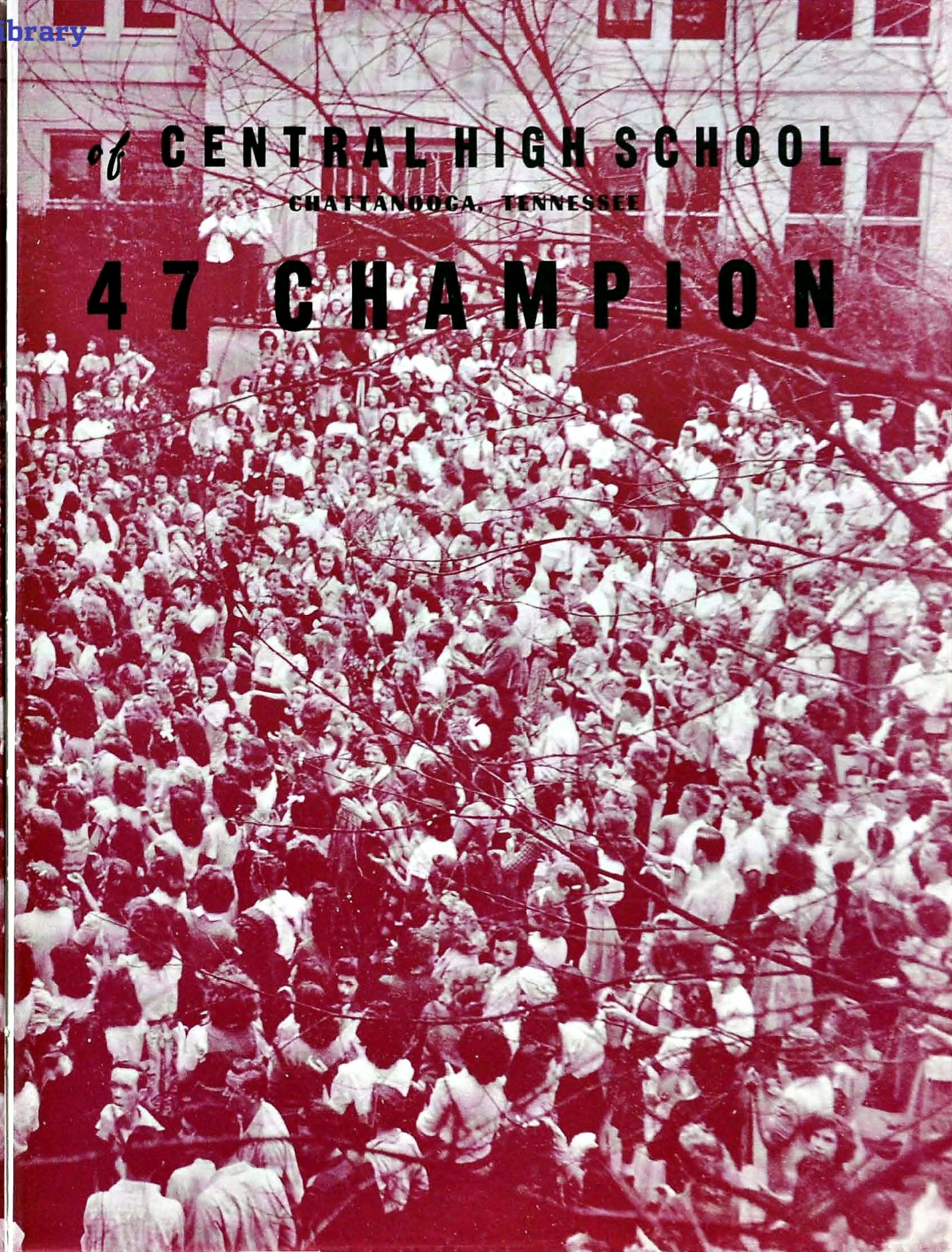
The STUDENT BODY

Presents THE 19

of CENTRAL HIGH SCHOOL

CHATTANOOGA, TENNESSEE

47 CHAMPION



Dedication

The staff of 1947 takes great pride in dedicating this volume of the Champion to Mrs. Blanche Rogers who, through her unending patience, her kind understanding, and her tireless efforts during her long years of service at Central, has made for herself a special place in the hearts of the great host of students whom she has taught.



ALMA MATER

What a wonderful school is ours to love,

With its ups and its downs and its joys!

What a wonderful Banner of Purple and Gold

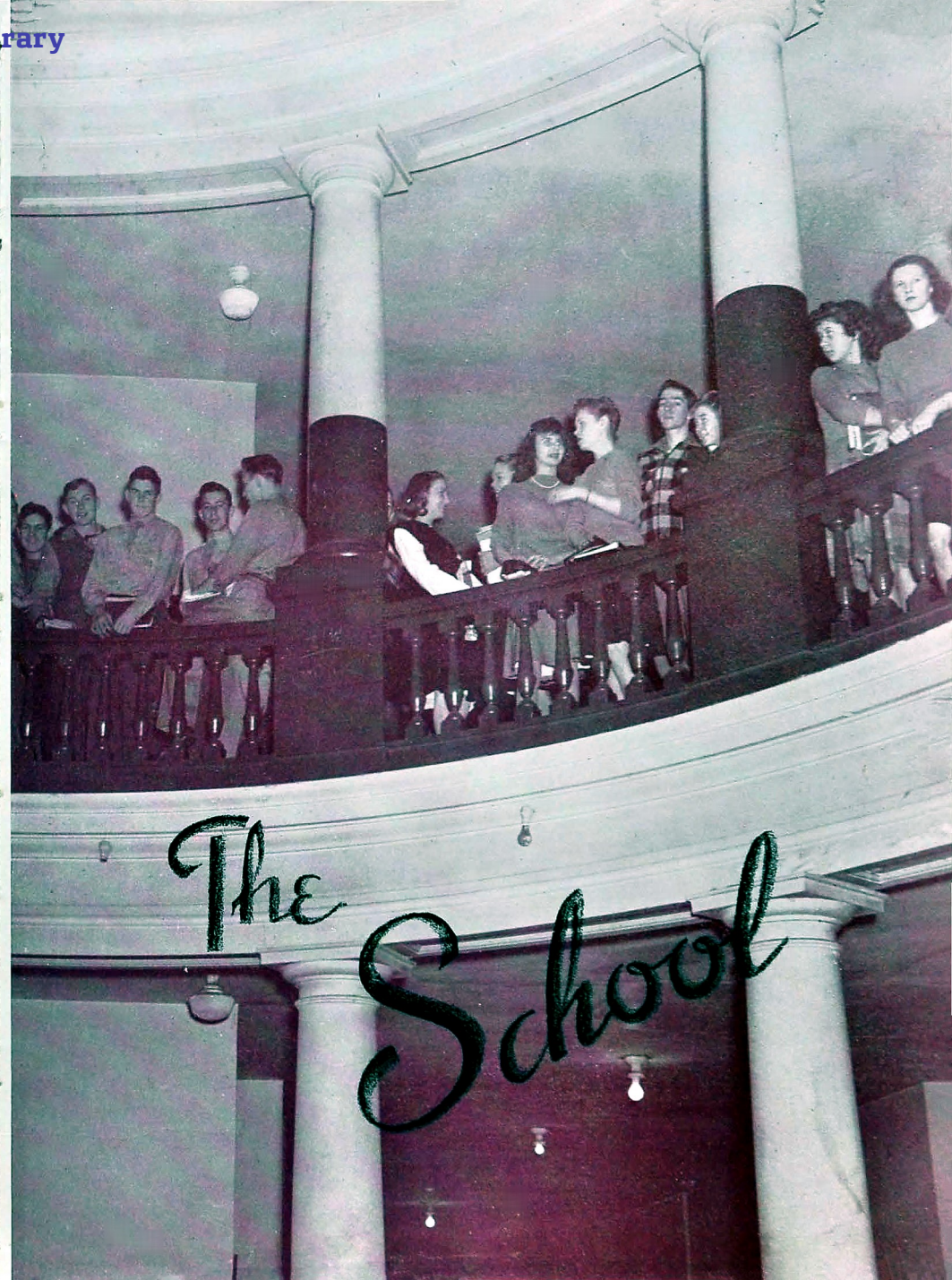
As it floats o'er our girls and boys!

What a wonderful school that I love so well,

With its wonderful rep so high!

So you've heard of the school that's true as blue,

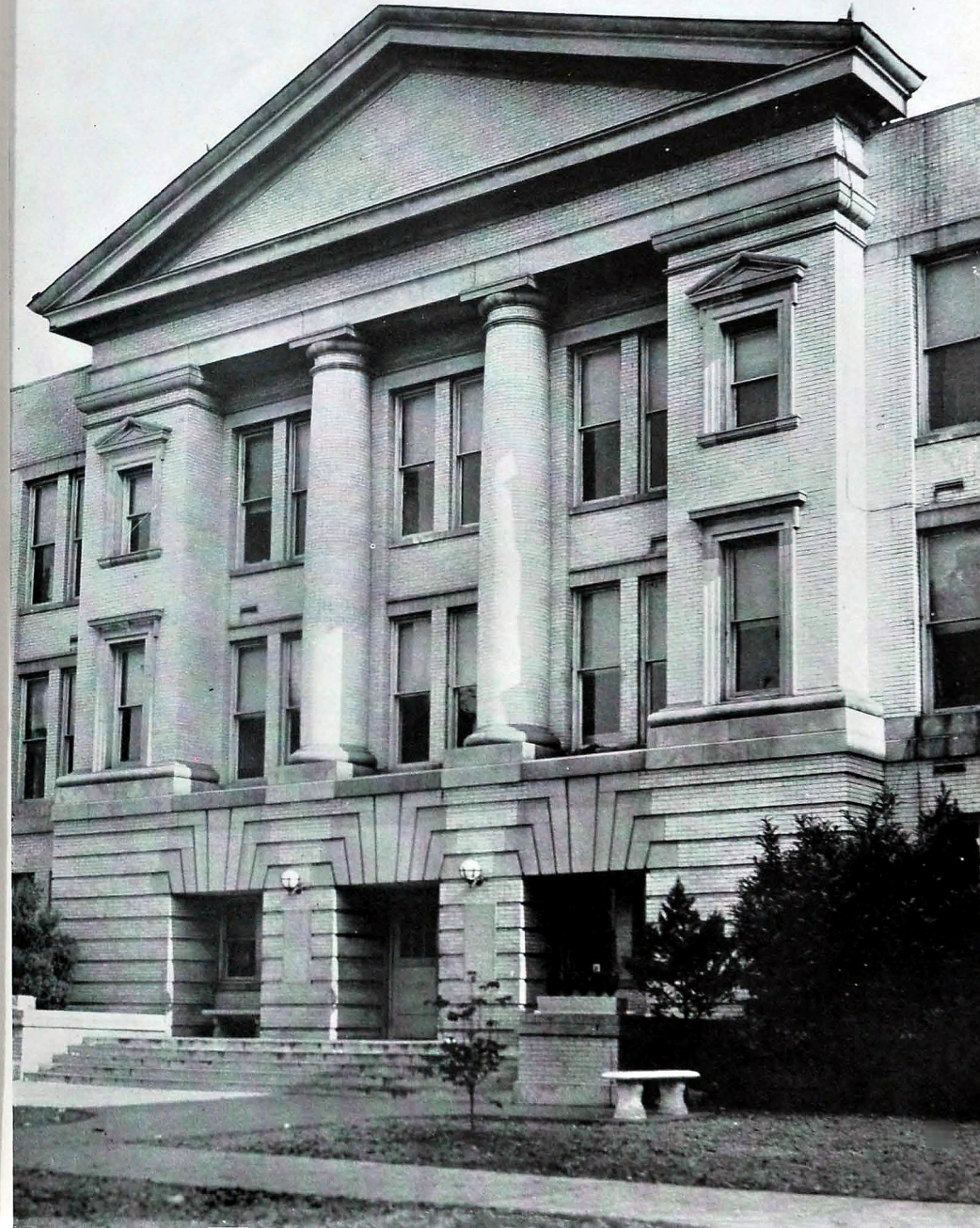
Of that wonderful school, Central High.





OUR PRINCIPAL

MR. STACEY E. NELSON





W. P. BALES
MRS. HAZEL BARTON
MISS FLORA BECK
MRS. C. H. BOYD



ED BROWN
MRS. BERNICE CLEMENTSON
MRS. MARY COOPER
MISS CHRISTINA COPPINGER



MISS EDNA CROSS
MISS ESTHER DAVIS
MISS ELSA DENNISON
MISS MARY LOU DERRYBERRY



SGT. DRAKE
J. POPE DYER
E. B. ETTER
MISS RUTH FAIR



E. N. FIELDS
MRS. LORA FLENNIKEN
J. J. FLETCHER
MISS MARY EVELYN FOLKNER
MISS HARRIET FOSTER
MRS. REBA LOU FULTS
MRS. DOROTHY D. GORDON
MRS. MARGARET T. HAMMACK



The

First Row

Second Row

Third Row

Fourth Row

Fifth Row

Faculty

at

CENTRAL HIGH

OPPOSITE PAGE

Sixth Row

Seventh Row

Eighth Row

Ninth Row

LEFT

First Row

Second Row

Third Row

Fourth Row

Fifth Row

MRS. FREIDA HILL
ARLIE HOOPENY
MISS EDMUND HOOSER
MISS SARAH HUBBARD
MRS. OPHELIA S. HUGHES
EDNA C. JACOWAY
K. W. JOHN
MISS EARL JONES

Cafeteria
Science
English
Physical Education
English
Mathematics
Music
History

MISS SALLY MAY KING
MISS GRACE LASATER
MISS CAROLINE LILLARD
MRS. R. N. LOGAN
MRS. IDA M. LONGLEY
MISS RACHEL McALLISTER
COL. W. R. McMASTER
JAMES L. MILBURN

English
Registrar
Mathematics
Dean of Girls
English
History and Bible
M. S. & T.
Printing

W. H. MILLAPS
MISS ANNE MOFFITT
MISS MINNIE LEE MORGAN
MISS ELLEN MULLENIX
J. LESTER NEWTON
EVERETT O'NEAL
MISS JOE ORE
SGT. WARREN E. OSBOURNE

Diversified Occupation
English
English and Librarian
Science
Mathematics
Science
M. S. & T.

MISS EVELYN PARKER
MRS. HELEN H. PARNELL
MRS. MATTIE S. PRICE
MISS HELEN PRYOR
SGT. D. K. RACHLES
MRS. LYDA GORE RICE
MISS MARY ELLEN RICE
A. E. ROBERTSON

Mathematics and Commerce
Social Science
History
M. S. & T.
Commerce
Spanish
Mathematics and Commerce

MISS IMOGENE ROBERTSON
MRS. ELIZABETH N. ROBINSON
MRS. BLANCHE ROGERS
MRS. MARY R. SANDERS

Commerce
English
English
Librarian

MISS LILLIE SCHWARTZ
J. M. SEATON
MISS PAULINE SHEARER
MRS. ANNIE MAY SHELTON

Latin and German
Manual Training
Commerce
English

MRS. JANIE SHROPSHIRE
MRS. VIRGINIA SKATES
MRS. A. P. STEWART
MR. S. Q. TALLANT
MISS EDITH TAYLOR

Home Economics
History
English
Mathematics
Commerce

MISS MARGARET TAYLOR
MRS. W. H. (ETHEL) TEMPLETON
W. H. TEMPLETON
MISS FRANCES TIERNAN
C. G. TOWRY

Home Economics
Assistant Principal
English and Social Science
Science

MISS DOROTHY WALKER
B. H. WALKER
R. S. WHARTON
MISS ETHEL YORK
LUTHER V. YOUNG

Commerce
Band Director
Manual Training
Home Economics
Mathematics

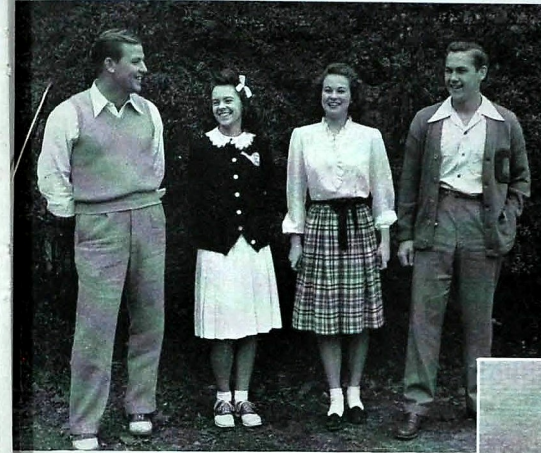
The CLASS

OFFICERS



SENIOR CLASS OFFICERS

PAUL CONNOR	President
FLOYD FULLER	Vice-President
BOB McCOY	Secretary
CORKY COOKE	Treasurer
CARLTON RATCHFORD and FRANKLIN MARTIN	Sergeants-at-Arms

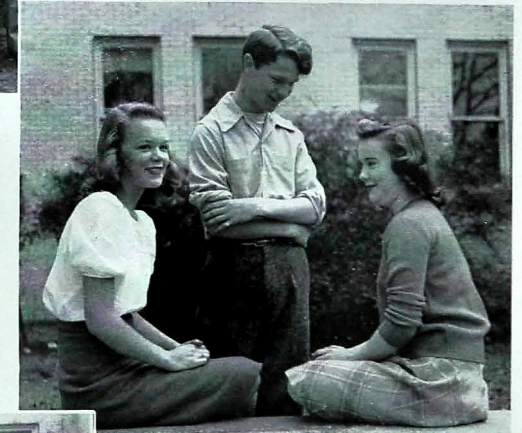


JUNIOR CLASS OFFICERS

LAMAR WHEAT	President
JEAN COFIELD	Vice-President
STANLEY BOLING	Secretary
IMOGENE BAKER	Treasurer

SOPHOMORE CLASS OFFICERS

SUE RICHEY	President
ARCHIE SLATEN	Vice-President
BILLIE SMITH	Secretary
MARY PEDIGO	Treasurer



FRESHMAN CLASS OFFICERS

JIMMY LOWE	President
BILL WAGES	Vice-President
DICK ROBINSON	Secretary
DEAN ABRAHAM	Treasurer



The SENIOR Class

First Row:

Anita Alexander
Emma Nell Alexander
Margaret Alexander
Charlotte Allison
Mary Laura Allison
Thayer Allison

Second Row:

Sue Anderson
Walter Glendon Anderson
Betty Frances Ashley
J. L. Ayers
Oha William Ayers
George L. Bacon

Third Row:

Hortense Bagwell
Bobby Baker
Earline Baker
Evelyn Baker
William D. Baker
Daniel Mayo Barger

Fourth Row:

Norvelle Bankston
Evelyn Elizabeth Barnes
William Karl Barnes, Jr.
Leslie A. Barrows, Jr.
Gene Edward Baskette
Bill Bass

Fifth Row:

Sarah Bayston
James A. Beene, Jr.
Roy Belk
Arthur Bertram Bennett
Marilyn June Bennett
Mildred Bennett

Sixth Row:

Reuben Bennett
Harold James Blake
David Lawrence Blancett
Louise Boles
Anne Bowman
Herchel Livingston Boyd

Seventh Row:

Patricia Lucille Boyd
William Robert Brakebill
Bettye Jean Branum
Dorothy Mae Bratton
Kenneth Brewer
William Ross Broadway

Eighth Row:

Jane Louise Brong
Marion Virginia Brooks
Floyd Eugene Brown
Virginia Elizabeth Cade
Joyce Camp
Ann Campbell

Ninth Row:

Dorothy June Campbell
Sue Canfield
Virginia Canfield
Selma Card
Agnes Lee Cargile
Thomas Harold Carrell

• ANITA ALEXANDER, "Kitty," Entered from Chattanooga Valley, Flintstone, Georgia, '45; Spanish Club; Announcers' Club.

• EMMA NELL ALEXANDER, "Shorty" and "Emmie," Entered from East Side Junior High, '44; Ace Club, '46; Science Research Club, '47; Trail Trotters, '47.

• MARGARET ALEXANDER, Entered from Kingsport High School, '45.

• CHARLOTTE ALLISON, "Charlie," Entered from East Side Junior High, '44; Gadabouts, '45, '46, '47.

• MARY LAURA ALLISON, Entered from East Side Junior High, '44; Library Staff, '44, '45, '46; Girls' Hi-Y, '46, '47; Ushers, '47; Vagabonds, '47.

• THAYER ALLISON, "Tim," Entered from Brainerd Junior High School.

• SUE ANDERSON, "Susie," Entered from Brainerd Junior High, '44; Battalion, '45.

• WALTER GLENDON ANDERSON, Entered from Cookeville Junior High, '44; "C" Club, '46, '47; Officers' Club, '47; Sergeants' Club, '46; Disc and Diamond Society, '47; Grady Literary Society, '47.

• BETTY FRANCES ASHLEY, "Proxy," Entered from East Side Junior High, '44.

• J. L. AYERS, Entered from Brainerd Junior High, '44; Rifle Team, '45, '46, '47; Officers' Club, '47; Disc and Diamond Society, '46, '47; Regimental Staff Officers, '47.

• OBA WILLIAM AYERS, "Bill," Entered from Northside Junior High, '44; "21" Club, '46; Sergeants' Club, '46.

• GEORGE L. BACON, Entered from Hardy Junior High School, '45.

• HORTENSE BAGWELL, "Baggy," Entered from East Side Junior High, '44; Gadabouts, '45, '46, '47.

• BOBBY BAKER, "Snooks," Entered from Red Bank, '44; Radio Club, '45, '46; Depression Club, '47.

• EARLINE BAKER, "Bo-Zo," Entered from Nixon High School, '45.

• EVELYN BAKER, Entered from East Side Junior High, '45; Physical Education Staff, '45, '46, '47; Girls' Hi-Y, '47; Vagabonds, '47; Ace Club, '46, '47.

• WILLIAM D. BAKER, "Billy," Entered from Hardy Junior High, '43.

• DANIEL MAYO BARGER, Entered from Brainerd Junior High, '44; Varsity Glee Club, Officers' Club.

• NORVELLE BANKSTON, Entered from Hardy Junior High, '44; Spanish Club, '46; T and I Club, '47.

• EVELYN ELIZABETH BARNES, Entered from Dickinson Junior High, '44; National Honor Society, '45, '47; Ushers, '47; Library Club, '45, '46, '47; Anchors Aweigh, '47; Student Council, '46, '47.

• WILLIAM KARL BARNES, JR., "Durante," Entered from Rising Fawn, Ga., Junior High, '45; Sergeants' Club, Officers' Club.

• LESLIE A. BARROWS, Entered from Bladensburg High School, Bladensburg, Maryland, '44; Grady Literary Society; Sergeants' Club.

• GENE EDWARD BASKETTE, Entered from East Lake Junior High, '44; Military Band, '44, '45, '47; Orchestra, '46, '47; Swing Band, '46, '47; Purple and Gold Band, '44, '45, '47; Grady Literary Society, '47.

• BILL BASS, Entered from Kirkman Vocational, '46; Digest Staff, '47.

• SARAH BAYSTON, "Twedye," Entered from Brainerd Junior High, '44; National Honor Society, '47; Student Council, '46, '47; Ushers, '47; CHAMPION Staff, Senior Editor, '47; Science Research Club, '46, '47; Chemistry Club, Secretary-Treasurer, '46; Varsity Glee Club, '45, '46, '47; "Nite Owls," '47; Band, '44; Digest Staff, '45; Red Cross, '44, '47; Girl Reserves, '44; Tumblers, '44; Junior Representative, '45; Senior Play Cast, '47.

• JAMES A. BEENE, JR., Entered from Hardy Junior High, '44; Swing Band, '45, '46, '47; Disc and Diamond Society, '47.

• ROY BELK, "Pholog," Entered from Hardy Junior High, '44; Football, '44; Digest Staff, '45; Weight Lifting, '44; Boxing, '44; Camera Club, '47; Depression Club, '46, '47; T. and I Club, '46, '47.

• ARTHUR BERTRAM BENNETT, "Bert," Entered from East Side Junior High, '45; Cheerleader, '45, '47; Stage Crew, '45, '47; Swing Band, '47; Glee Club, '45; M. P. Club, '45; Senior Play Cast, '47.

• MARILYN JUNE BENNETT, Entered from Lakeview High School, '45; Purple and Gold Band; Band Girls' Club Treasurer; Y-Teens.

• MILDRED BENNETT, "Penny," Entered from Ooltewah High, '47; Varsity Glee Club, '47; Trail Trotters, '47.

• REUBEN BENNETT, Entered from Northside Junior High, '44; Cheerleader, '47; "21" Club, '47; Depression Club, '46.

• HAROLD JAMES BLAKE, "Nookie," Entered from East Lake Junior High, '45; M. P. Club, '45, '46.

• DAVID LAWRENCE BLANCETT, Entered from East Lake Junior High, '44; "21" Club, '46.

• LOUISE BOLES, Entered from Hardy Junior High, '45; T. and I. Club, '47.

• ANNE BOWMAN, "Genius," Entered from East Side Junior High, '44; Varsity Glee Club, '46; La Tertulia, '46; Magna Cum Laude in Spanish, '46.

• HERCHEL LIVINGSTON BOYD, "Pete," Entered from Brainerd Junior High, '44; Industrial Arts Club, Vice-President, '44, President, '45; Sergeants' Club, Vice-President, '45, '47; Disc and Diamond Society, '46; L. Valor, '47; Grady Literary Society, '47; National Honor Society, '46; Treasurer, '47; Officers' Club, '47.

• PATRICIA LUCILLE BOYD, "Rabbit," Entered from Grundy High School, '45; Ushers, '47; Spinsterettes, '47; National Honor Society, '47.

• WILLIAM ROBERT BRAKEBILL, Entered from Whitwell High School, '45; M. P. Club, '46, '47; Hi-Y, '47; "21" Club, '47.

• BETTYE JEAN BRANUM, "Pinky," Entered from Fontana High School, '45; Senate, '45, '46, '47; La Tuella, '45, '46; Nite Owls, '45, Secretary, '47; 1st Battalion Sponsor, '46, '47; National Honor Society, '47.

• DOROTHY MAE BRATTON, "Dottie," Entered from Hardy Junior High School, '44; Spinsterettes, '46; Battalion, '44, '45, '46, '47.

• KENNETH BREWER, "Brew," Entered from East Side Junior High, '44.

• WILLIAM ROSS BROADWAY, Entered from Brainerd Junior High, '44.

• JANE LOUISE BRONG, Entered from East Side, '44; T. and I. Club, '47.

• MARION VIRGINIA BROOKS, "Bootsie," Entered from Rockmart, Georgia, '47.

• FLOYD EUGENE BROWN, "Gene," Entered from East Side Junior High, '44; Purple and Gold Band, '44, '45, '46, '47; Military Band, '44, '45, '46, Captain, '47; Orchestra, '46, '47; Officers' Club, '47; Grady Literary Society, '47.

• VIRGINIA ELIZABETH CADE, "Ginger," Entered from North Chattanooga Junior High School, '43; Girls' Hi-Y, '46, '47; Physical Education Staff, '45, '46, '47; Ace Club, '47; Nite Owl Club, '46, '47.

• JOYCE CAMP, "Dossy," Entered from Brainerd Junior High, '45; Shove Ohs, '46, Vice-President, '47; Spinsterettes, '46; Ushers, '47; National Honor Society, '47.

• ANN CAMPBELL, Entered from Brainerd Junior High, '45; Home Economics Club, '47; Spinsterettes, '47.

• DOROTHY JUNE CAMPBELL, "Dot," Entered from Scottsboro, Ala., '46; Varsity Glee Club, '46; Camera Club, '46; Spanish Club, '46.

• SUE CANFIELD, "Sloux City Sue," Entered from East Side Junior High School, '45; Library Club, '44; Bank and Bookstore, '45, '46, '47; Merry Macs; Orchestra, '43.

• VIRGINIA CANFIELD, "Jenny," Entered from East Side Junior High School, '44; Digest Circulation Staff, '45, Assistant Business Manager, '47; Merry Macs, '46; Office Force, '47.

• SELMA CARD, Entered from Hardy Junior High, '45; Ace Club, '45; Spinsterettes, '47.

• AGNES LEE CARGILE, "Konnie," Entered from Lookout Junior High, '45; Ace Club, '47.

• THOMAS HAROLD CARRELL, Entered from East Side Junior High, '45; ROTC, Second Lieutenant.

The SENIOR Class

First Row:

Mary Jewell Carroll
Don E. Carter
Martha Sue Carter
Willis Ruth Cartwright
Darrell Case
Berta Sue Chandler

Second Row:

Eleanor Sue Childress
Joyce Imogene Childress
June Malone Cochran
Betty Sue Collins
Jo Ann Collins
Bettye Connally

Third Row:

Edward Morgan Connell
Paul Connor
James Dale Cooke
Mary Ann Cope
Carol Covington
Robert Craft

Fourth Row:

Joseph Craze
Ralph Lee Crosby
Elmira Cunningham
Walter Vernon Dantzier
Peggy Davis
Wiley Reed Dayton

Fifth Row:

Ann Dixon
Vivian Dobbs
Gay Nell Dobbins
Hilda Marcene Doran
Catherine Drinnon
Jimmy Durham

Sixth Row:

Joe Dyer
Betty Ray Eason
Bonnie Sue Eaves
Marion G. Elrod
Betty Cornelia Espy
Peggy Sue Espy

Seventh Row:

Arnold E. Farmer
Geraldine Farrell
Edwin Eugene Faulkner
Virginia Helen Filer
Lorraine Finnell
Dolores Fischer

Eighth Row:

Caroline Flanders
Gordon C. Follett
Lillie Lou Ford
Dorothy Inez Forester
Aaron Leon Forrest
Robert William Foster

Ninth Row:

Clarence M. Frank
Johnny M. Frank
Eleanor Frier
Floyd Lee Fuller
Bill Fulmer
Margaret Fundinger

● MARY JEWELL CARROLL, "Do Do," Entered from East Lake Junior High, '45; Trail Trotters, '47.

● DON E. CARTER, "Franklin," Entered from East Side Junior High, '44; Library Staff, '46.

● MARTHA SUE CARTER, "Suzie Q," Entered from Dickinson Junior High, '44; Junior Play Cast, '46; Gadabouts, '46, '47; ROTC Military Sponsor, '47.

● WILLIE RUTH CARTWRIGHT, Entered from Hardy Junior High, '45; Bible Club, '45; Seniorettes, '47; Varsity Glee Club, '47.

● DARRELL CASE.

● BERTA SUE CHANDLER, "Peggy," Entered from East Side Junior High, '45; Library Staff, '46; Band Girls' Club, Secretary, '46, President, '47; Shove Offs, '47; Ushers, '47; Sponsor of Purple and Gold Band, '47; Sponsor of Military Band, '47; Band Officers' Club, '47; Band Ensemble, '47; Orchestra, '45, '46.

● ELEANOR SUE CHILDRESS, "Susie," Entered from East Side Junior High School, '44; Girl Reserves, '44; Home Economics Club, '46, Secretary, '47.

● JOYCE IMOGENE CHILDRESS, "Jean," Entered from Northside Junior High School, '44; Girls' Battalion, '47.

● JUNE MALONE COCHRAN, "June Bug," Entered from Brainerd Junior High, '44.

● BETTY SUE COLLINS, "Pug," Entered from East Side Junior High, '45; Library Club, '45, '46; Honor Society, '47.

● JO ANN COLLINS, "Josie," Entered from Lookout Junior High, '45.

● BETTYE CONNALLY, Entered from East Lake Junior High, '45.

● EDWARD MORGAN CONNELL, "Proxy," Entered from East Side Junior High, '45; Varsity Baseball, '47; Varsity Basketball, '47; "C" Club, '47.

● PAUL CONNOR, Entered from Red Bank, '44; "C" Club, '44, '45, '46, '47; Senior Class President, '47.

● JAMES DALE COOKE, "Corkey," Entered from East Side Junior High, '44; Varsity Basketball, '45, '46, '47; Varsity Baseball, '45, '46, '47; "C" Club, '46, '47; Student Council, '46, '47.

● MARY ANN COPE, "Mac," Entered from Brainerd Junior High, '46; Varsity Glee Club, '46; Gadabouts, '47.

● CAROL COVINGTON, Entered from Brainerd Junior High School, '44; National Honor Society, '47; Girls' Hi-Y, '45, '46; Physical Education Staff, '44; Business Manager of Digest, '46; Ace Club, '44, '45, '46; First Aid Detachment, '44; Officer of Battalion, '46.

● ROBERT CRAFT, "Bob," Entered from Brainerd Junior High, '44.

● JOSEPH CRAZE, "Joe," Entered from East Lake Junior High, '43; Officers' Club; Varsity Glee Club.

● RALPH LEE CROSBY, Entered from Springfield High School, '47.

● ELMORA CUNNINGHAM, "Boots," Entered from Lookout Junior High, '44; Ace Club, '44; Digest Editorial Staff, '45; Tumblers, '45, '46; Anchors Aweigh, '47; T. and I Club, '47.

● WALTER VERNON DANTZLER, Entered from Lookout Junior High, '44; Red Cross Representative, '44; Trail Trotters, '45.

● PEGGY DAVIS, "Shorty," Entered from Brainerd Junior High, '44.

● WILEY REED DAYTON, Entered from Bradley High School, '47.

● ANN DIXON, "Littleun," Entered from East Side Junior High, '44; Library Club, '44; Girl Reserves, '44; Song Leader, '45, '46, '47; Dog Patchers, '45; Nite Owls, '45, '46, '47; President; Gym Office Force, '46; Vagabonds, '45, '46; Shove Offs, '45, '46; Student Council, '46, '47; Girls' Hi-Y, '46, '47; Seventeeners, '46; Ramblers, '46; Honor Society, '46, '47; Junior Play Cast, '46; Ushers, '47; Senior Play Cast, '47.

● VIVIAN DOBBS, "Viv," Entered from Hardy Junior High, '47; T. and I. Club.

● GAY NELL DOBBINS.

● HILDA MARCENE DORAN, "Monk," Entered from Lookout Junior High, '45; Girls' Hi-Y, '47; Home Economics Club, '47.

● CATHERINE DRINNON, "Cat," Entered from Lookout Junior High, '44; Ushers, '47; Anchors Aweigh, '47.

● JIMMY DURHAM, "Jim," Entered from Brainerd Junior High, '44; Band, '44, '45; Band Letter, '46.

● JOE DYER, "Porky," Entered from Signal Mountain Grammar School, '44; Junior Boys' Hi-Y, '44, '45; Sergeants' Club, '46; Disc and Diamond Club, '47; Student Council, '46, '47; Officers' Club, '46, '47; National Honor Society, '47; Senior Boys' Hi-Y, '45, '46, '47; Bank and Bookstore, '45, '46, '47; Captain of "C" Company, '47.

● BETTY RAY EASON, Entered from Dickinson Junior High, '45; Merry Mads, '47.

● BONNIE SUE EAVES, "Stubley," Entered from Hardy Junior High, '44; Varsity Glee Club, '45, '46, '47; Ushers, '47; Seniorettes, '47.

● MARIANN ELROD, Entered from Dickinson Junior High, '44; T. and I. Club.

● MARION G. ELROD.

● BETTY CORNELIA ESPY, Entered from East Side Junior High, '45.

● PEGGY SUE ESPY, Entered from East Lake Junior High, '44; National Honor Society, '46, '47; Ushers, '47; Senate, '46, Secretary, '47; Hi-Y, '46, Treasurer, '47; Spinsterettes, '46, President, '47; Orchestra, '45, '46; Concert Master, '47; Bible Club, '46, Treasurer, '47; Student Council '46, '47; Junior Play Cast, '46; Senior Play Cast, '47.

● ARNOLD E. FARMER.

● GERALDINE FARRELL, "Gerrie," Entered from East Side Junior High, '44; Home Economics Club, '44, '45, '46.

● EDWIN EUGENE FAULKNER, "Faulk," Entered from East Side Junior High, '45; Manager of Football team, '47.

● VIRGINIA HELEN FILER, "Tootsie," Entered from Dickinson Junior High, '45; Orchestra, '46; Band, '46; Trail Trotters, '47.

● LORRAINE FINNELL, "Idie," Entered from East Side Junior High, '44; Gadabouts, '45, Vice-President, '46, President, '47; T. and I Club, '47.

● DOLORES FISCHER, "Curley," Entered from Ooltewah, '46.

● CAROLINE FLANDERS, "Bill," Entered from Brainerd Junior High, '44; Ramblers, '44; Gadabouts, '45; Seventeeners, '46; Dogpatchers, '46.

● GORDON C. FOLLETT, Entered from Brainerd Junior High, '44; Sergeants' Club, '46; Officers' Club, '47.

● LILLIE LOU FORD, Entered from East Lake Junior High, '45; Digest Editorial Staff, '45, '46, Editor-in-Chief, '47; Senate, '45, '46, Vice-President, '47; Girls' Hi-Y, '45, '46, Vice-President, '47; Ushers, '47; Anchors Aweigh, '47; Spinsterettes, Vice-President, '46; National Honor Society, '47; Student Council, '46, '47.

● DOROTHY INEZ FORESTER, "Dot," Entered from East Side Junior High, '44; Bible Club, Treasurer, '44; Girls' Battalion, '45; Varsity Glee Club, '46; Ushers, '47; Spinsterettes, '47; National Honor Society, '47.

● AARON LEON FORREST, "Red," Entered from Hardy Junior High, '45; Trail Trotters, '47.

● ROBERT WILLIAM FOSTER, Entered from Brainerd Junior High, '45.

● CLARENCE M. FRANK, "Buddy," Entered from North Chattanooga Junior High, '44; Swimming Team, '44; Weight Lifting, '45; Boxing Team, '46, '47; Senate, '45, '46, '47; Sergeants' Club, '46; Officers' Club, Vice-President, '47; Cheerleader, '45, '46, '47; Grady Literary Society, '47; "C" Club, '47; Purple and Gold Band, '44, '47; Swing Band, '45, '46, '47; Orchestra, '45, '46; Disc and Diamond Society, '45, '46; Captain of Company A, '47; Senior Play Cast, '47.

● JOHNNY M. FRANK, Entered from Lookout Junior High, '45.

● ELEANOR FRIER, "Notis," Entered from Chattanooga High, '46; Seniorettes, '45; Spinsterettes, '47.

● FLOYD LEE FULLER, "Flo," Entered from Lookout Junior High, '44; Basketball, '45, Alternate Captain, '46; Baseball, '46, Alternate Captain, '47; "C" Club, '46; Sergeants' Club, '46; Officers' Club, President, '47; Grady Literary Society, '46, '47; Disc and Diamond Society, '45, '46, Vice-President of Senior Class, '47; Lieutenant Colonel of Regiment, '47.

● BILL FULLER, "Feel," Entered from East Side Junior High, '44; "C" Club, '46, '47; Sergeants' Club, '46.

● MARGARET FUNDINGER, "Margie," Entered from Brainerd Junior High, '44; Swimming Club, '44, '45; Safety Council, '44, '45; Student Council, '46, '47; Ushers, '47; Anchors Aweigh, '47.

The SENIOR Class



First Row:
William Gaddis
Maxine Galloway
Harold Dean Gilbert
John D. Goode
Hazel Marie Goodner
Ila Faye Green



Second Row:
Howard Green
Howard Greene
Malcom Grier
Betty Ann Griffith
Louise Griffith
Joe Elbert Grimsley



Third Row:
David Halley
Hale Emogene
Wilma Dean Haley
Helen Marie Hall
Reba Hall
Myrl Hallock



Fourth Row:
Margaret Hannah
Edward Harper
Anna Haritte Harrison
Dorris Eloise Harrison
Gilbert Harvey
Imogene Harvy



Fifth Row:
Billy Hawk
Juanita Virginia Hayes
Doris Ann Haynes
Dorothy Elizabeth Haynes
Richard Wilton Head
Betty June Held



Sixth Row:
Peggy Jean Held
Peggy M. Henderson
Walter Henderson
Richard Lee Henson
Ralph Hixson
Patty Gene Hogue



Seventh Row:
Bettye Raye Holdam
Clara Jean Hollahan
Betty Clyde Holland
Laura Holland
Wendell Holliday
William Turner Hollis



Eighth Row:
Dorothy Elizabeth Holt
William Norwood Hotalen
Mary Haroline House
Billie Joyce Howard
Roy L. Howard
Mary Carolyn Hughes



Ninth Row:
Dorothy Jean Humphrey
Charles E. Hunt
June Huskey
Joe Hutson
Gene Igou
Kenneth Dall Irwin

- WILLIAM GADDIS, "Buck." Entered from Hardy Junior High, '44.
- MAXINE GALLOWAY "Ba." Entered from Hardy Junior High, '44; Candy Crew, '44, '45.
- HAROLD DEAN GILBERT. Entered from East Lake Junior High, '44; ROTC Officer, '47; Drum Major in Purple and Gold Band, '47; Drum Major in Military Band, '47; Band Ensemble, '45, '46, '47; Officers' Club, '47; Band Officers' Club, '47.
- JOHN D. GOODE, "Goober." Entered from Chattanooga High, '46.
- HAZEL MARIE GOODNER. Entered from Hardy Junior High, '44; Purple and Gold Band, Band Letter, Band Ensemble, Secretary-Treasurer; Band Girls' Club, Vice-President.
- HOWARD GREENE, "Blackie." Entered from Brainerd Junior High, '44; "C" Club, '47; Football Team, '44, '45, '46; Boxing Team, '46, '47.
- HOWARD GREEN.
- ILA FAYE GREEN. Entered from Brainerd Junior High, '46; Twixteen Club, '46, '47; Orchestra, '46, '47; Varsity Glee Club, '47; Bible Club, '47.
- MALCOM GRIER, "Heavyweight." Entered from Brainerd Junior High, '44; ROTC Second Lieutenant, '47; Disc and Diamond Society, '46, '47; Officers' Club, '47; Sergeants' Club, '46; Camera Club, '47; Boxing Team '47.
- BETTY ANN GRIFFITH. Entered from East Lake Junior High, '44; Girl Reserves, '44; Junior Representative, '45; National Honor Society, '47; Girls' Hi-Y, '47; Student Council, '46, President, '47; Anchors Aweigh, Vice-President, '47; Digest Staff, '45, '46, Associate Editor, '47; Ushers, Vice-President, '47; Spanish Club, Second Vice-President, '46.
- LOUISE GRIFFITH. Entered from Whitwell High, '45.
- JOE ELBERT GRIMSLEY, "Grimlin." Entered from Sidney Lanier, Houston, Texas, '44; Savannah High, Savannah, Ga., '46; Hi-Y, '44; Officers' Club, '47; "21" Club, '47; De Moly, '47; Science Club, '45.
- DAVID HAFLEY. Entered from Brainerd Junior High, '45; Senior Play Cast, '47; Junior Play Cast, '46; Disc and Diamond Society, '46; Second Lieutenant, '47; Sergeants' Club, '46; Officers' Club, '47; M. P. Club, '45, '46, Captain, '47; Boys' Hi-Y, '46, '47; Student Council, '46, '47; Chemistry Club, '45; Science Research Club, '46, '47; Captain, Company E, '47; Grady Literary Society, '47; Announcers' Club, '47.
- EMOGENE HALE, "Jeanie." Entered from Lookout Junior High, '44.
- WILMA DEAN HALEY. Entered from Notre Dame, '45; Girl Reserves, '45; Red Cross, '46.
- HELEN MARIE HALL, "Stinky." Entered from Dickinson Junior High, '45.
- REBA HALL. Entered from East Side Junior High, '45; D. O. Club, '46, '47.
- MYRL HALLOCK. Entered from Brainerd Junior High, '46; National Honor Society, '47; Girls' Hi-Y, '45; Student Council, '46, '47; Ace Club, '44; Physical Education Staff, '44; First Aid Detachment, '45, '46; Battalion Officers, '45, '46 Vagabonds, '46.
- MARGARET HANNAH. Entered from Lookout Junior High, '44; T. and I. Club, '47.
- EDWARD HARPER.
- ANNA HARTTE HARRISON, "Tubby." Entered from East Lake Junior High, '44; Girls' Hi-Y, '46, '47; National Honor Society, '47; Student Council, '46, '47; Shove Offs, '46, '47; Cheerleader, '45, '46, '47; Ushers, '47; Company A Sponsor, '47; Gadabouts, '45, '46; Girls' Band Club, '45, '46, '47; Ace Club; Band Officers' Club, '47; Head Majorette, '47; Bank Staff; Nite Owls, '46, '47; Orchestra, '45, '46.
- DORIS ELOISE HARRISON, "E-Se." Entered from East Side Junior High, '44; Library Staff; Spanish Club.
- GILBERT HARVEY, "Gib" and "Harv." Entered from Dickinson Junior High, '44.
- IMOGENE HARVY. Entered from Hardy Junior High, '45; Ace Club, '46; Home Economics Club, '46; T. and I. Club, '47.
- BILLY HAWK, "Spud." Entered from Tyner High School, '44; "C" Club, '46, '47; Sergeants' Club, '46, '47; Disc and Diamond Society, '46, '47; Officers' Club, '47.

- JUANITA VIRGINIA HAYES, "Nia." Entered from East Side Junior High, '45.
- DORIS ANN HAYNES. Entered from East Lake Junior High, '45.
- DOROTHY ELIZABETH HAYNES, "Dot." Entered from East Lake Junior High, '45.
- RICHARD WILTON HEAD. Entered from Tyner Junior High, '45; Sergeants' Club, '46; Officers' Club, '47.
- BETTYE JUNE HELD. Entered from Brainerd Junior High, '45.
- PEGGY JEAN HELD. Entered from Brainerd Junior High, '45.
- PEGGY M. HENDERSON, "Peg." Entered from East Side Junior High, '44; Treasurer of Freshman Class, '44; Gadabouts, '45, '46, Vice-President, '47; T. and I. Club, '47.
- WALTER HENDERSON, "Walt." Entered from East Side Junior High, '44; "C" Club, '46, '47; Football, '44, '45, '46; Boxing, '45, '46, '47.
- RICHARD LEE HENSON. Entered from East Side Junior High, '43; Stage Crew; Swing Band; Veterans' Club.
- RALPH HIXSON. Entered from Brainerd Junior High, '44; Varsity Glee Club; Disc and Diamond Society; Officers' Club; Neatest Non-Com. in Company C.
- PATTY GENE HOGUE, "Pat." Entered from Brainerd Junior High, '44; Bible Club, '47; National Honor Society, '47.
- BETTYE RAYE HOLDAM, "Bunny." Entered from East Side Junior High, '44; Library Staff, '44, '45; Red Cross, '44; Girl Reserves, '44; Shove Offs, '45, '46, '47; Girls' Battalion, '46; Spinsterettes, '46; Ushers, '47.
- CLARA JEAN HOLLAHAN. Entered from Tyner High in '45; Ushers, '47; Varsity Glee Club, '45, '46, '47; Senioettes, '47.
- BETTY CLYDE HOLLAND, "Bet." Entered from Dickinson Junior High, '44; Gadabouts, '44, '45, Treasurer, '46, '47; Dogpatters, '45, '46; Ramblers, '45, '46.
- LAURA HOLLAND. Entered from Hardy Junior High, '45; Ushers, '47; National Honor Society, '47.
- WENDELL HOLLIDAY.
- WILLIAM TURNER HOLLIS, "Bill." Entered from East Lake Junior High, '44; Purple and Gold Band, '44, '45, '46, '47; Officers' Club, '47; Sergeants' Club, '46.
- DOROTHY ELIZABETH HOLT, "Dot." Entered from East Side Junior High in '45; Library Staff, '46; Vagabonds, '46; Ushers, '47; Shove Offs, '47; Battalion, '45, '46, '47; Senior Play Cast, '47.
- WILLIAM NORWOOD HOTALEN. Entered from North Chattanooga Junior High, '44.
- MARY HAROLINE HOUSE. Entered from East Side Junior High, '44; Elbie Club, '45, '46; Ushers, '47; Senioettes, '47.
- BILLIE JOYCE HOWARD. Entered from Hardy Junior High, '44; Orchestra, '44, '45, '46, '47; Varsity Glee Club, '44, '45, '46, Pianist, '47; Anchors Aweigh, '46, '47.
- ROY L. HOWARD. Entered from Brainerd Junior High '45; Varsity Glee Club, '45, '46, '47; Swing Band, '46; Orchestra, '47; Senior Boys' Hi-Y.
- MARY CAROLYN HUGHES, "Carolina." Entered from East Side Junior High, '45; Digest Staff, National Honor Society, '47.
- DOROTHY JEAN HUMPHREY, "Dot." Entered from Hardy Junior High, '45; Digest Staff, '46; Student Council, '46, '47; National Honor Society, '46, '47; Ushers, '47; Senioettes, President, '47.
- CHARLES E. HUNT. Entered from East Lake Junior High, '45; T. and I. Club, President, State Treasurer.
- JUNE HUSKEY. Entered from Dickinson Junior High, '45; Merry Macs.
- JOE HUTSON. Entered from Daddridge County High School, West Virginia, '46; Boxing Team, '47.
- GENE IGOU, "Iggle." Entered from East Side Junior High, '44.
- KENNETH DALL IRWIN, "Ken." Entered from Brainerd Junior High, '44; Football Squad, '44, '45, '46, '47.

The SENIOR Class



First Row:

Nancy Dolores Jeffery
Bill Jennings
Raymond Jensen
Bill Jernigan
Robert Johnson
Sidney Johnson



Second Row:

Wanda Johnson
Robert Jolley
Alfreda Jones
Paul J. Jones
Eleanor Lucile Kays
Jenny Ellen Kelly



Third Row:

Carl David Kennedy
Jack R. Kennedy
Mary Nell Keown
Barbara Jean Kilgore
Ruth Killingsworth
Jane Kimball



Fourth Row:

Barbara Jean Koger
Jack Kreis
Margaret Loreine Langston
Marjorie Sue Lanham
Billie June Lawson
Faye Lawson



Fifth Row:

Joe Lindsay Laycock
Betty Joe Lee
Raymond Glen Leonard
Elizabeth Marcilla Levann
Horace Van Lewis
Stuart Lynch



Sixth Row:

Jacqueline Lewis
Willene Long
Joseph David Love
Lorene Croft Lowe
James Lundford
Gaynelle McAllister



Seventh Row:

Jean McClain
Mildred McClure
James Robert McCormack
Dorothy McCormick
Bob McCoy
Helen McCroskey



Eighth Row:

James Edward McCroskey
Bobbi McCurdy
Betty Sue McDaris
Robert R. McElhane, Jr.
Doris Elizabeth McGuffey
Donald Guinn McIntyre



Ninth Row:

James W. Magette
Willie Lee Malcom
Mildred Ruth Mansel
Barbara Marlow
Clifton Louis Maroone
Clara Mae Marshall

• NANCY DOLORES JEFFERY, "Dee" and "Shorty." Entered from East Side Junior High, '44; Band, '44, '45, '46, '47; Orchestra, '44, '45, '46, '47; Band Girls' Club, '45, '46; Library Staff, '44, '45, '46.

• BILL JENNINGS, "Poopy." Entered from East Side Junior High, '45; Baseball, '47; Boxing, '45.

• RAYMOND JENSEN, Entered from Oak Ridge High School in '45; Chemistry Club, '46; Science Research Club, '46, President, '47; Student Council, '46, '47; Camera Club, '47; Swing Band, '46, '47; Purple and Gold Band, '45, '46, Captain, '47.

• BILL JERNIGAN, Entered from Tyner High, '45; Manual Arts, '45; "21" Club, '46.

• ROBERT JOHNSON, "Little John." Entered from Boynton Junior High, '45; Varsity Glee Club, '46, '47; Library Staff; Announcers' Club.

• SIDNEY JOHNSON, "Sid." Entered from Brainerd Junior High, '44; M. P. Club.

• WANDA JOHNSON, "Wannie." Entered from Red Bank High, '46.

• ROBERT JOLLEY, "Seed." Entered from Hardy Junior High in '45; T. and I. Club, '46, '47; Color Guard, '45.

• ALFREDA JONES, Entered from East Lake Junior High, '44; Shove Offs, '44, '45, '46; Battalion, '45.

• J. PAUL JONES, Entered from Brainerd Junior High, '44; "21" Club; Disc and Diamond Society; Officers' Club; Sergeants' Club; Junior Representative; Manager of Football Squad, '45, '46, '47.

• ELEANOR LUCILE KAYS, "Lu." Entered from Brainerd Junior High, '44; Band, '45, '46, '47; Orchestra, '45, '46, '47; Band Ensemble, '46, '47; Band Girls' Club, '46, '47.

• JENNY ELLEN KELLY, "Jen" or "Jense." Entered from East Side Junior High, '44; Camera Club, '44, '45, '46.

• CARL DAVIS KENNEDY, "Mouse." Entered from East Side Junior High, '44; Weight Lifting, '46, '47; Baseball, '47.

• JACK R. KENNEDY, Entered from Blawett High School, St. Louis, Mo., '45; Band Ensemble, '45; Grady Literary Society, '46.

• MARY NELL KEOWN, "Dead Eyes." Entered from La Fayette High, '44.

• BARBARA JEAN KILGORE, "Bobbie." Entered from Rhea High, Dayton, Tenn., '45.

• RUTH KILLINGSWORTH, Entered from East Lake Junior High, '44; Trail Trotters, '46; Ace Club, '45, '46, '47; Ushers, '47; Vagabonds, '47; Girls' Battalion, '46, '47.

• JANE KIMBALL, Entered from Brainerd Junior High, '45; Ice Cream Crew; Home Room Representative; Digest Representative.
• BARBARA JEAN KOGER, "Bobby." Entered from East Side Junior High, '45.

• JACK KREIS, Entered from Dickinson Junior High, '44; Radio Club, '44.

• MARGARET LOREINE LANGSTON, "Margie" and "Caldonia." Entered from Sweetwater Union High School, California, '46; Ace Club, '47.

• MARJORIE SUE LANHAM, "Marg." Entered from Brainerd Junior High School, '44; Candy Crew, '45; T. and I. Club, '47.

• BILLIE JUNE LAWSON, Entered from Lookout Junior High School, '44.

• FAYE LAWSON, Entered from Brainerd Junior High School, '44; Trail Trotters, '45; Vagabonds, '46, '47.

• JOE LINDSAY LAYCOCK, "Joe Baby." Entered from East Side Junior High, '44; Varsity Glee Club, '44, '45, '46, President, '47; Camera Club, '44; Red Cross, '44, '45, '46, '47; Announcers' Club, '46, President, '47; Boys' Hi-Y, '46, '47; Senior Play Cast, '47.

• BETTY JOE LEE, Entered from Dickinson, '45; Candy Crew; Home Room Representative; Junior Play Cast; Ace Club; Spinsters; Announcers' Club; Student Council; Tumblers; Company E Sponsor; Senior Play Cast.

• RAYMOND GLEN LEONARD, Entered from East Side Junior High, '44; Stage Crew, '44.

• ELIZABETH MARCILLA LEVANN, "Marcy." Entered from East Side Junior High School, '44.

• HORACE VAN LEWIS, "Bug." Entered from Hardy Junior High, '44.

• JACQUELINE LEWIS, "Jackie." Entered from East Side Junior High, '44; Spinsters, '47.

• WILLENE LONG, "Snooks." Entered from East Lake Junior High School, '45; Camera Club, President, '45, '46, '47; Y-Teens, '45.

• JOSEPH DAVID LOVE, "Joe." Entered from Red Bank, '43; "C" Club, '45, '46, '47; Veterans' Club, '46; Football, '43, '44, '45, '46; Boxing, '44, '45; Basketball, '43, '44; Swimming Team, '44.

• LORENE CROFT LOWE, "Sleepy." Entered from East Side Junior High, '44; Honor Society, '47.

• JAMES LUNDSFORD, "J. W." Entered from East Lake Junior High, '45; Officers' Club, '47; "21" Club, '46, '47; Disc and Diamond Society.

• STUART LYNCH, Entered from East Lake Junior High, '44; Industrial Arts Club, '44, Secretary and Treasurer, '45; Sergeants' Club, '45; Disc and Diamond Society, '45, Sergeant-at-Arms, '46; Grady Literary Society, '46; Officers' Club, '46; Chemistry Club, '45.

• GAYNELLE McALLISTER, "Gay." Entered from Brainerd Junior High, '45; Ushers, '47; Shove Offs, '47; Spinsters, Treasurer, '46.

• JEAN McCLAIN, "Jeannie." Entered from Brainerd Junior High, '44; Girls' Hi-Y, '46, '47; Nite Owls, '46; Ace Club, '45; Shove Offs, '45.

• MILDRED McCLURE, "Milla." Entered from East Side Junior High, '44; Digest Reporter, '45; Feature Editor, '47; Merry Macs, '47; Office Force, '47.

• JAMES ROBERT MCCORMACK, "Mac." Entered from East Lake Junior High, '44; Sergeants' Club, '47; Grady Literary Society, '47.

• DOROTHY MCCORMICK, "Dot" and "Rabbit." Entered from Brainerd Junior High, '44; Seniors, '47.

• BOB MCCOY, "Poncho." Entered from Lookout Junior High, '44; "C" Club, '44, '45, '46; Varsity Football Squad, '44, '45, '46, '47; Basketball Team, '44, '45; All-City Football, '44, '45, Letter, '44, '45, '46.

• HELEN MCCROSKEY, "Mac." Entered from East Lake Junior High, '45; Home Economics Club, '45; Camera Club, '47; Trail Trotters, '47.

• JAMES EDWARD MCCROSKEY, "Crock." Entered from East Side Junior High, '45; Football, '45, '46, '47; Basketball, '45, '46, '47; Baseball, '46, '47.

• BOBBIE McCURDY, Entered from Brainerd Junior High, '45; Girls' Hi-Y, '47; Gadabouts, '47; Spanish Club, '46; Safety Council, '45.

• BETTY SUE McDARIS, "Suzie." Entered from Brainerd Junior High, '44; Girls' Hi-Y, '47; Anchors Aweigh, '47; Spinsters, '46.

• ROBERT RAYMOND McELHANEY, JR., "Bob." Entered from Hardy Junior High, '45; Officers' Club, '47; Sergeants' Club, '46; Digest Staff, '47.

• DORIS ELIZABETH MCGUFFEY, "Dottie." Entered from East Lake Junior High, '44; Varsity Glee Club, '46.

• DONALD GUINN MCINTYRE, "Mac." Entered from Lookout Junior High, '43.

• JAMES W. MAGETTE, "Jim." Entered from East Side Junior High, '44; M. P. Club, '45; Varsity Glee Club, '44, '45, '46; Spanish Club, '46; Sergeants' Club, '47.

• WILLIE LEE MALCOM, Entered from Lookout Junior High, '44.

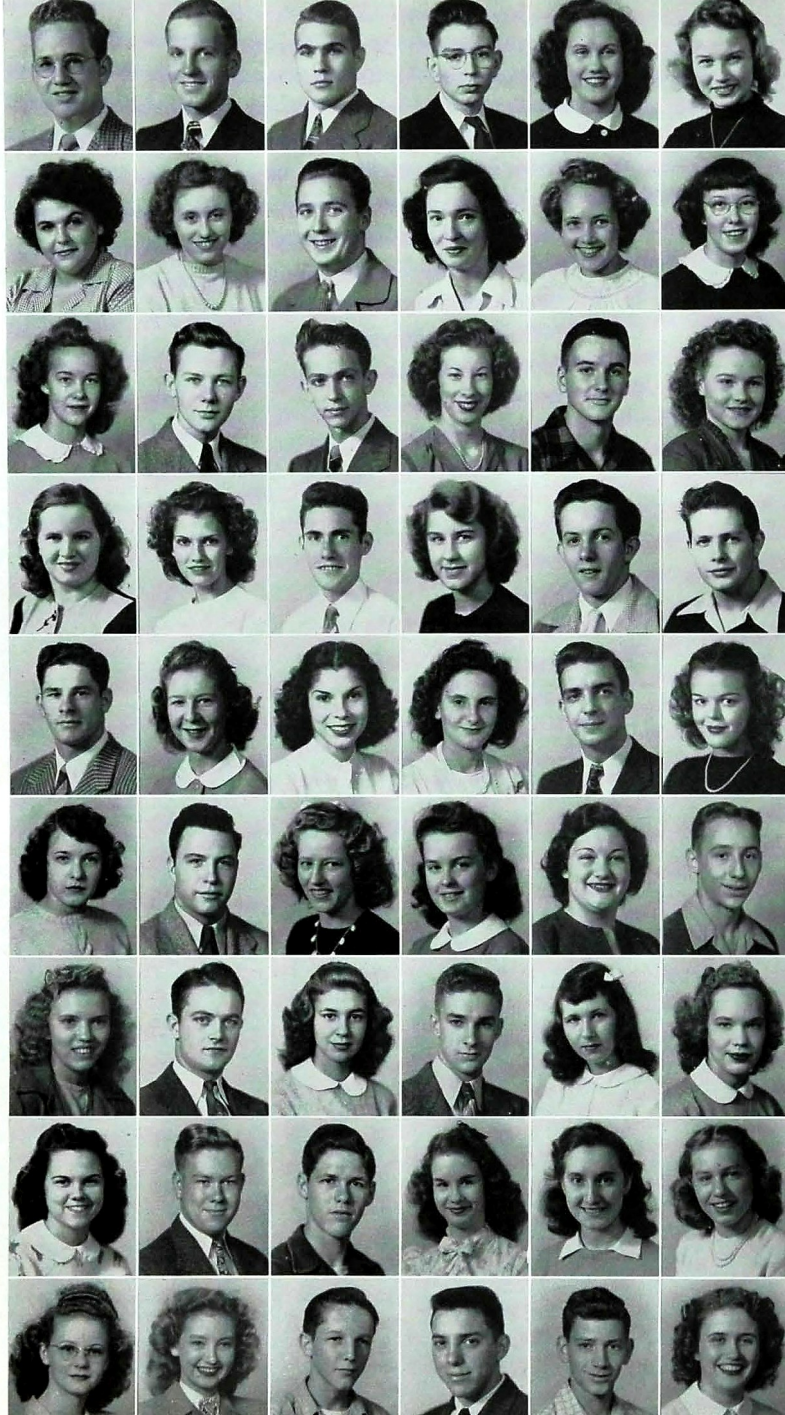
• MILDRED RUTH MANSEL, "Ruthie." Entered from Hardy Junior High, '45; T. and I. Club, '47.

• BARBARA MARLOW, "Bobby." Entered from East Side Junior High, '44; Ace Club, '46; Girls' Battalion, '44; Senior Play Cast, '47.

• CLIFTON LOUIS MAROONE, "C. L." Entered from East Lake Junior High, '44; T. and I. Club, '46.

• CLARA MAE MARSHALL, Entered from Lookout Junior High School, '45; Home Economics Club, Secretary, '46, '47.

The SENIOR Class



First Row:

James Franklin Martin
Bob Martain Mason
Grover Allen Masterson
George A. Mattil
Rosemary Matthews
Betty Mavity

Second Row:

Norma Jeanette Maxey
Frances Louise Meadows
James Edward Meredith, Jr.
Augusta Rose Meyer
Margaret Catherine Miles
Alma Jean Miller

Third Row:

Charlotte Pauline Miller
Glenn Miller
John Willies Miller
Mary Miller
Steve Mize
Maxine Moore

Fourth Row:

Willie Frances Moore
Irene Elizabeth Mosteller
James Alexander Murr
Pauline Nave
Robert Neal
Daniel Irven Nix, Jr.

Fifth Row:

E. Nobles
Joan Nordin
Betty Sue Norwood
Margaret Evelyn Nuckolls
Paul Nuckolls
Laura Olivis Oakley

Sixth Row:

Mary Katherine Ogle
James Henry O'Rear
Mildred Irene Ortwien
Elizabeth Ott
Annette Padgett
Roy Parham

Seventh Row:

Mary Frances Park
Carl Lonus Patterson
Ann Payne
Herbert Payne
Betty Jo Pearson
Martha Jeanne Perkinson

Eighth Row:

Reba Perry
William Perry
Nat Phillips
Dorothy Donna Pirtle
Josephine Plemmons
Carol Joyce Pyler

Ninth Row:

Marie Pope
Martha Joe Potts
Herbert V. Powell
J. D. Price
Ernest Prince
Naudine Pruette

• JAMES FRANKLIN MARTIN, "Curly." Entered from East Lake Junior High, '44; Industrial Arts Club, '44; President, '45; Sergeants' Club, '45; Officers' Club, Sergeant-at-Arms, '47; Grady Literary Society, '47; Disc and Diamond Society, '46, '47; Digest, '46; Sergeant-at-Arms of Senior Class, '47.

• BOB MARTAIN MASON. Entered from Allen School, '44; Senior Boys' Hi-Y, '47; Disc and Diamond Society, '47; National Honor Society, '47; Purple and Gold Band, '44, '45, '46, '47; ROTC Captain, '47; Officers' Club, '47; Student Council, '47.

• GROVER ALLEN MASTERSON. Entered from Hardy Junior High in '45; Honor Society, '47; Officers' Club, '46, '47; Sergeants' Club, '46, '47; Student Council, '46, '47; Boxing Team, '45, '46, '47; ROTC Captain, '47; Won Distinguished Cadet Medal in ROTC, Neatest Cadet Ribbon; Letter in Boxing.

• GEORGE A. MATTIL, "Yankee." Entered from First Lutheran Elementary School, '44; Senate, '44, '45, '46, '47.

• ROSEMARY MATTHEWS, "Roe." Entered from Brainerd, '45; T. and I. Club, '47.

• BETTIE MAVITY, "Shortchance." Entered from Brainerd Junior High, '44; Ramblers, '44; Gadabouts, '45; Seventeeners, '46; Dogpatters, '46.

• NORMA JEANETTE MAXEY, "Jew" or "Stupid." Entered from East Side Junior High, '44.

• FRANCES LOUISE MEADOWS, "Lucy." Entered from East Lake Junior High, '44.

• JAMES EDWARD MEREDITH, JR., "Jimmy." Entered from East Side Junior High, '44.

• AUGUSTA ROSE MEYER, "Gusta." Entered from First Lutheran, '44; Red Cross, '44, '45, '46; Orchestra, '44, '45; Latin Club, '44; Girls' Hi-Y, '44, '45, '46, '47; Senate, '45, '46, '47; Recreation, '44; Science Research Club, '46, '47; Home Economics Club, '46, '47; Battalion, '46, '47; Y-Teens, '46, '47; City-Wide President; Ushers, '47; National Honor Society, '47.

• MARGARET CATHERINE MILES, "Kitty." Entered from Signal Mountain, '44; Vagabonds, '47; Physical Education Staff, '44, '45, '46; President, '47.

• ALMA JEAN MILLER, "Jean." Entered from Brainerd Junior High, '44; Girls' Hi-Y, '47; Ushers, '47; Seniorettes, '47; National Honor Society, '47.

• CHARLOTTE PAULINE MILLER, "Chubby." Entered from Brainerd Junior High, '44; Girls' Hi-Y, '46, '47; Seniorettes, '46, '47.

• GLENN MILLER, "Clem." Entered from Brainerd Junior High, '44; Chaplain of Senior Class, '47; Vice-President of Junior Class, '46; Boys' Hi-Y, Secretary, '45, '46, President, '47; Senate, '46, President, '47; Bible Club, '45, Secretary, '46, President, '47; Honor Society, '46; Color Bearers, '47; Student Council, '46; Judiciary Council, '47; Digest Editorial Staff, '45, '46, '47; Science Research Club, Chaplain, '47; Disc and Diamond Society, '46, '47; Officers' Club, '47; M. P. Club, '45; Rifle Team, '45; Trail Trotters, '46; Band, '44; Varsity Glee Club, '47; Orchestra, '44; Librarian, '45, President, '46, '47; Swing Band, '44, '45, '46, '47; Senate Play Cast, '45, '46; Junior Play Cast, '46; Senior Play Cast, '47.

• JOHN WILLIES MILLER, "Sinky." Entered from East Lake Junior High, '44; T. and I. Club, "21" Club.

• MARY MILLER, "Muri." Entered from Lookout Junior High, '45.

• STEVE MIZE, "Mousey." Entered from Chattanooga Valley High School, '45; Sergeants' Club, '47.

• MAXINE MOORE, "Red." Entered from Rossville High, '45.

• WILLIE FRANCES MOORE. Entered from New Hope, Alabama, '46.

• IRENE ELIZABETH MOSTELLER, "Doodle." Entered from East Side Junior High, '44; National Honor Society, '47.

• JAMES ALEXANDER MURR, "Jim." Entered from East Lake Junior High, '45; Boys' Hi-Y, '47.

• PAULINE NAVE, "Polley." Entered from Lookout Junior High School, '45.

• ROBERT NEAL. Entered from East Lake Junior High, '44; Industrial Auto Club, '45; Sergeants' Club, '46; Grady Literary Society, '47.

• DANIEL IRVEN NIX, JR. Entered from East Side Junior High, '44; "C" Club; Football Letterman; Boxing Letter; Crandell Art Award.

• ED NOBLES, "Racehorse." Entered from Dickinson Junior High, '44; "C" Club, '44, '45, '46, '47; Played Football, Basketball, Baseball; All-City in '45 in Football.

• JOAN NORDIN. Entered from Hardy Junior High in '45; Girls Hi-Y, '46; T. and I. Club, '47; Home Economics Club, '46; Spanish Club, '45.

• BETTIE YUE NORWOOD, "Bugs." Entered from East Side Junior High in '44; Spinsterettes, '47.

• MARGARET EVELYN NUCKOLLS, "Margie." Entered from East Side Junior High, '44; Ushers, '47.

• PAUL NUCKOLLS, "Junior." Entered from Vocational in '46.

• LAURA OLIVIA OAKLEY, "Livvy." Entered from North Side Junior High, '44; Band, '45, '46, '47; Orchestra, '45, '46, '47; Band Girls' Club, '46, '47.

• MARY KATHERINE OGLE, "KaKi." Entered from Sherwood Grammar School, '44; Red Cross Representative, '44; Chemistry Club, '46; Home Economics Club, '46; Bible Club, '46.

• JAMES HENRY O'REAR, Big Jim." Entered from Hardy Junior High in '43; Baseball Team; Football Squad; Weight Lifting; Veterans' Club, '46, '47; Depression Club, '46, President, '47; Trail Trotters, '43, '44, '46, '47.

• MILDRED IRENE ORTWIEN, "Milly." Entered from East Lake Junior High, '45.

• ELIZABETH OTT, "Idiot." Entered from East Lake Junior High, '44.

• ANNETTE PADGETT. Entered from Model High School, Rome, Ga., in '45; Ushers, '47; Varsity Glee Club, '47.

• ROY PARHAM, "Half Pint." Entered from Lookout Junior High.

• MARY FRANCES PARK, "Mimi." Entered from Brainerd Junior High, '44; Trail Trotters, '44, '45; Spanish Club, '45, '46; Vagabonds, '46, '47; Office Force, '45, '46, '47; Swimming Club, '44, '45; Announcers' Club, '44, '45, '46, Vice-President, '47.

• CARL LONUS PATTERSON, "Pat." Entered from South Pittsburg High School, '42; Radio Club, '42, '43, '44.

• ANN PAYNE, "Jemie" and "Muscles." Entered from Dickinson Junior High, '44; Camera Club, '47.

• HERBERT PAYNE, "Herby." Entered from Red Bank, '44; Radio Club, '45, '46; Depression Club, '47.

• BETTY JO PEARSON, "Jo." Entered from East Side Junior High, '45.

• MARTHA JEANNE PERKINSON, "Perky." Entered from Brainerd Junior High, '45; Ace Club, '45; Senate, '45; Spanish Club, '45; Office Force, '46; Trail Trotters, '46; Ink Spots, '46; Battalion, '45, '46.

• REBA PERRY, "Shorty." Entered from Trevecha High School in '46; Varsity Glee Club, '45, '46; Merry Macs, '46; Bible Club, '46.

• WILLIAM PERRY, "Bill." Entered from Brainerd Junior High in '44.

• NAT PHILLIPS, "Nut." Entered from East Side Junior High, '45; Junior Boys' Hi-Y, '46; Senior Boys' Hi-Y, '47.

• DOROTHY DONNA PIRTLE, "Dottie." Entered from East Side Junior High, '45; Ushers, '47; Seniorettes Club, '47; Home Economics Club, Vice-President; Battalion.

• JOSEPHINE PLEMONS. Entered from East Lake Junior High, '44.

• CAROL JOYCE PYLER, "Joy." Entered from Central High School Jackson, Miss., '46.

• MARIE POPE. Entered from Fyffe High School, '46; T. and I. Club.

• MARTHA JOE POTTS, "Puguely." Entered from Dickinson Junior High, '44; Merry Macs, '45, '46; Gadabouts, '45, '46; Senior Play Cast, '47.

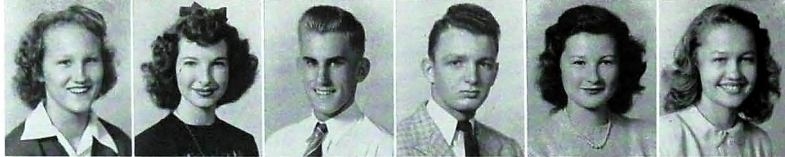
• HERBERT V. POWELL, "Herby." Entered from Brainerd Junior High, '44; Association of Southern Colonels, '46.

• J. D. PRICE. Entered from East Side, '45.

• ERNEST PRINCE. Entered from Lakeview Junior High, '44; Sergeants' Club, '46, '47; Rifle Team, '46, '47.

• NAUDINE SHEFFIELD PRUETTE, "Dee Dee." Entered from Andrew Jackson High School, Jacksonville, Fla., '46.

The SENIOR Class



First Row:

Jane Margaret Ragdale
Marjorie Ramey
Melvin Ranson
Carlton Ratford
Jean Alma Reid
Barbara Jean Ritchie



Second Row:

Edna Burke Roark
Leon Harry Roberts, Jr.
Elizabeth Robinson
Helen Beryl Roddy
Bert Rogers
Betty Jean Rogers



Third Row:

Jimmy Rogers
Jo Anna Rogers
Virginia Rogers
Mary Ellen Rowe
Dora Runyan
Helen Ruppe



Fourth Row:

Dan St. Clair
Joe Salmon
Claude Sears
Jean Sears
Margaret Seriel
Talmadge E. Sewell



Fifth Row:

Marguerite Shanks
Gilbert L. Sharp
Ruben Shields
Billie Shipley
Mary Frances Shirley
Georgette Short



Sixth Row:

Judy Simmons
Tommy Simmons
Claude S. Simpson
Raymond Nelson Sizemore
Imogene Skillington
Anna Louise Smith



Seventh Row:

Billy Ray Smith
Fay Smith
George Harold Smith
Gloria May Smith
Mary Helen Smith
Melvin E. Smith



Eighth Row:

Patricia Lee Smith
Robert Clifford Smith
Velma Smith
William Cyrus Smith
Carolynn Joyce Spivey
Shirley Anne Sprague



Ninth Row:

John Thomas Stanfield
Virginia Stanfield
Donald Lee Starkey
Johnnie Statom
Brown Cline Stephens
Mary Ann Stevens

● JANE MARGARET RAGDALE, "Johnnie." Entered from East Side Junior High, '44; Ace Club, '44, '45, '46, '47; Vagabonds, '47; Physical Education Staff, '44, '45, '46, '47.

● MARJORIE RAMEY, "Barge." Entered from Lafayette High School, LaFayette, Ga., '45.

● MELVIN RANSON. Entered from East Lake Junior High, '45.

● CARLTON RATCHFORD, "Pat." Entered from Brainerd, Junior High, 43; Sergeants' Club, Secretary, '45; Officers' Club, Treasurer, '46; Sergeant-at-Arms of Senior Class, '47; Lieutenant Colonel in ROTC, '47.

● JEAN ALMA REID, "Red." Entered from Woodrow Wilson High School, Portsmouth, Va., '47; Merry Macs, '47; Ace Club, '47.

● BARBARA JEAN RITCHIE, "Bob." Entered from East Side Junior High, '44.

● EDNA BURKE ROARK, "E. B." Entered from Winchester, Tenn., '46; Spinsterettes, '47.

● LEON HARRY ROBERTS, JR., "Frog." Sergeants' Club, '46.

● ELIZABETH ROBINSON, "Lib." Entered from East Lake Junior High, '44; Ushers, '47; Girls' Hi-Y, '44, '45, '46, '47; Digest Staff, '46; Exchange Editor, '47; Merry Macs, '45, '46, '47; Vagabonds, '47; National Society, '47.

● HELEN BERYL RODDY. Entered from East Side Junior High, '44; Girl Reserves, '44; Purple and Gold Band, '44, '45, '46, '47; Orchestra, '44, '45, '46, '47; Band Girls' Club, '45, '46, '47; Band Ensemble, '46, '47; Fible Club, '45, '46; Home Economics Club, '46.

● BERT ROGERS. Entered from North Side Junior High in '44; President of Honor Society, '47; Vice-President of Nite Owls, '47; Student Council, Senior Representative, '47; Ushers, '47; Girls' Hi-Y, '46, '47; Library Staff, '45, '46; Vagabonds, '46.

● BETTY JEAN ROGERS, "Blackie." Entered from Washington High School, Indianapolis, Ind., '46; Vice-President of Spinsterettes Club.

● JIMMY ROGERS. Entered from Knoxville High School, '46; Grady Literary Society.

● JO ANN ROGERS, "Jodie." Entered from East Side Junior High, '45; Spinsterettes Club, Treasurer; Library Staff; National Honor Society, '47.

● VIRGINIA ROGERS, "Ginny." Entered from Lookout Junior High, '45; Fible Club, '45, '46.

● MARY ELLEN ROWE. Entered from Brainerd Junior High, '44; Girls' Hi-Y, '44, '45, '46, President, '47; Ushers, Secretary, '47; Digest Staff, '46, Club Editor, '47; ROTC Regimental Staff, Sponsor, '47; Anchors Aweigh, '46, '47; Spanish Club, '45, '46; Spinsterettes, '44, '45; Band, '44, '45, '46, Second Lieutenant, '47; Band Officers' Club, '47; Band Girls Club, '45, '46, '47; Band Ensemble, '45, '46, '47; National Honor Society, '47.

● DORA RUNYAN. Entered from Lookout Junior High, '45; Home Economics Club, '47.

● HELEN RUPPE, "Droopy." Entered from Brainerd Junior High, '45; Spinsterettes, '46; Shove Ofs, '47; Ushers, '47.

● DAN ST. CLAIR, "Dickie." Entered from East Lake Junior High, '44; Boxing Team, '45; T. and I. Club, '46; "21" Club, '46.

● JOE SALMON.

● CLAUDE SEARS. Entered from Hardy Junior High, '45.

● JEAN SEARS. Entered from Chattanooga High School, '45; Digest Editorial Staff, '45; Gadabouts, '45, '46, '47; Ramblers, '45; Seventeeners, '45; Dogpatters, '45; Hi-Y, '45; Ushers, Vice-President, '47; National Honor Society, '46, '47; Military Sponsor, '46, '47; Student Council, '46, '47.

● MARGARET SERIEL, "Mag." Entered from Brainerd Junior High, '44; Dogpatters, '45, '46, '47; Gadabouts, '45, '46, '47; Regimental Sponsor, '47.

● TALMADGE E. SEWELL. Entered from East Side Junior High, '45; Depression Club, '47.

● MARGUERITE SHANKLES. Entered from Lookout Junior High, '44; Spinsterettes, President, '46; Seventeeners, '46; Anchors Aweigh, '46, President, '47; Military Sponsor, '46; Student Council, '47.

● GILBERT L. SHARP, "Gube." Entered from Red Bank High School, '46; Senior Boys' Hi-Y, '46, '47; Fible Club, '47.

● RUBEN SHIELDS. Entered from East Side Junior High School, '45.

● BILLIE SHIPLEY, "Bill." Entered from Dickinson Junior High, '44; Physical Education Staff, '45; Spinsterettes, '46; Anchors Aweigh, '47; Swimming Club, '45.

● MARY FRANCES SHIRLEY. Entered from East Side Junior High, '44; Library Club, '44; Spinsterettes, '45, '46.

● GEORGETTE SHORT, "Shorty." Entered from Lookout Junior High, '44; Girls' Hi-Y, '46; Ace Club, '44; Student Council, '45, '46, '47; Girls' Battalion; Office, '45; Physical Education Staff, '46; Vagabonds, '46; First Aid Detachment, '44.

● JUDY SIMMONS, "Ossee." Entered from Tyner High School, '45.

● TOMMY SIMMONS, "Red." Entered from East Side Junior High, '44; Safety Council, President, '45.

● CLAUDE S. SIMPSON. Entered from Dreher High School, Columbia, S. C., '46; M. P. Club.

● RAYMOND NELSON SIZEMORE, "Shorty." Entered from East Side Junior High, '45; Football Squad, '45, '46, '47; Baseball Team, '45, '46, '47.

● IMOGENE SKILLINGTON.

● ANNA LOUISE SMITH, "Dempy." Entered from Brainerd Junior High, '44; Trail Troopers, '44, '45, President, '46; Ushers, '47; National Honor Society, '45, '47; Digest Staff, '45, '46, News Editor, '47; Girls' Battalion, '44, '45, '46, '47; Shove Ofs, '46, '47.

● BILLY RAY SMITH, "Sleepy." Entered from East Side Junior High, '45; Sergeants' Club, '45; Officers' Club, '47; Student Council, '46, '47.

● FAY SMITH, "Boots." Entered from East Lake Junior High, '44; Ace Club, '44.

● GEORGE HAROLD SMITH, "Stick." Entered from Brainerd Junior High, '44.

● GLORIA MAY SMITH. Entered from Brainerd Junior High, '45; La Tortilla, '46; Ushers, President, '47; Champion Staff, Editor-in-Chief, '47; Digest Staff, Feature Editor, '47; Student Council, '46, '47; Anchors Aweigh, Treasurer, '47; Honor Society, Secretary, '47; Senior Play Cast, '47; Girls' Hi-Y, '47.

● MARY HELEN SMITH, "Susie." Entered from East Side Junior High, '44; Library Club, '44; Girls' Battalion, '45, '46, '47; Spinsterettes, '47; Varsity Glee Club, '46, '47.

● MELVIN E. SMITH. Entered from Dickinson Junior High, '44; Veterans' Club, '47.

● PATRICIA LEE SMITH, "Pa." Entered from Tyner, '46.

● ROBERT CLIFFORD SMITH. Entered from Kirkman Vocational, '46; Sergeants' Club, '47.

● VELMA SMITH.

● WILLIAM CYRUS SMITH. Entered from Brainerd Junior High School, '44; Grady Literary Society, Vice-President, '47.

● CAROLYNN JOYCE SPIVEY, "Lynn." Entered from Manistee High, Michigan, '46; Merry Macs, '47.

● SHIRLE ANNE SPRAGUE, "Shirl." Entered from Brainerd Junior High, '45; Spanish Club, '45; Hi-Y, '46, '47; Office Force, '45, '47.

● JOHN THOMAS STANFIELD, "Stan." Entered from East Side Junior High, '44; Lieutenant Colonel in ROTC; Junior Boys' Hi-Y, '44, '45; Senior Boys' Hi-Y, '46, Treasurer, '47; Senate, '44, '45; Disc and Diamond Society, '45, '46, '47; President; Sergeants' Club, '45, '46; Officers' Club, '46, '47.

● VIRGINIA STANFIELD, "Ginger." Entered from Hardy Junior High, '44; Ushers, '47; Seniors, '47; Military Sponsor, '47.

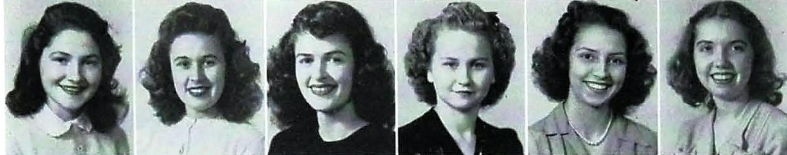
● DONALD LEE STARKEY. Entered from Lookout Junior High, '44; Sergeants' Club, '45.

● JOHNNIE LEWIS STATOM, "Mechanic." Entered from Sequatchie County High School, '45; Varsity Glee Club, '45, '47.

● BROWN CLINE STEPHENS, "Brown." Entered from Brainerd Junior High, '44; Senate, '45, '46, Treasurer, '47; Boys' Hi-Y, '46, Secretary, '47; Grady Literary Society, '46, President, '47; Disc and Diamond, '46, '47; Student Council, '46, '47; Officers' Club, '47; Band, '44, '45.

● MARY ANN STEVENS, "Curley." Entered from Dickinson Junior High School, '41; Ushers, '47; T. and I. Club, '47.

The SENIOR Class



First Row:

Mary Jo Stewart
Roberta Lane Stulce
Jane Sutton
Margaret Imogene Tallent
Rachel Gradena Tate
Elizabeth Taylor



Second Row:

Jimmie Lynnelton Thomas
Samuel Johnson Thomas
James Oliver Thompkins
Dan Tinker
Peggy Louise Tittsworth
Ella Mae Travis



Third Row:

Georgia Bell Travis
Margaret Louise Tredway
Charles Eugene Trotter
Jean Tucker
Julia Anne Turner
Nelson Turpin



Fourth Row:

Mary Ellen Urban
Forest Vandergriff
Ruth Varner
Marian Vaughn
Lamar Vetter
Richard Walkey



Fifth Row:

Atheleen Wallace
Patsy Jean Wattenbarger
Emily Ann Weaver
Billie Jean Welch
Harold Dean Welch
Henry M. Weller



Sixth Row:

Martha Ann Wendli
Frances West
Rose Marie Whitehead
Kenneth Whittemore
Charles Marion Willard
Rhoten William Willhoit



Seventh Row:

Roy Aner Willhoit
Lewis Williams
Lois Irene Williams
John Williams
Mickey Williams
Nellie Williams



Eighth Row:

Wenora E. Williamson
Dorothy Wilson
Lamar Wilson
Douglas Lamar Witt
Alvin Wofford
Eddie Wood



Ninth Row:

Charlotte Woody
Billy James Wooten
Betty Workman
Charles Woy
Richard Yarbrough
Mildred Allene Yoder
John Zimelman

• MARY JO STEWART. Entered from East Side Junior High, '44; Girls' Hi-Y; Student Council, '46; Secretary, '47; Anchors Aweigh, '46; Secretary, '47; Ushers, '47; Junior Play Cast, '46; Military Sponsor, '47; Nite Owls, '46; La Tertulia, '46; Senior Play Cast, '47.

• ROBERTA LANE STULCE, "Berta." Entered from Dickinson Junior High, '44; Gadabouts, '45, '46, '47; Digest Staff, '46.

• JANE SUTTON. Entered from Dickinson Junior High, '44; Safety Council, '44; Student Council, '46; Gadabouts, '46, '47; Ushers, '47; National Honor Society, '47; CHAMPION Staff, '47.

MARGARET IMOGENE TALLENT, "Geney." Entered from Brainerd Junior High, '45.

• RACHEL GRADENA TATE, "Gertie." Entered from Lookout Junior High School, '45; Merry Macs, '46, President, '47.

• ELIZABETH TAYLOR, "Libby." Entered from Dickinson Junior High, '44; Ushers, '47; Spinsterettes, '47; Home Economics Club, '46.

• JIMMIE LYNNELTON THOMAS, "Little Jim." Entered from Brainerd Junior High, '44; Ushers, '47; Seniorettes, '47; Digest Staff, '47; National Honor Society, '47.

• SAMUEL JOHNSON THOMAS, "Sam." Entered from Brainerd Junior High, '44; 4-H Club, '44; Association of Southern Colonels, '45.

• JAMES OLIVER THOMPSON, "Ollie." Entered from East Lake Junior High, '45; M. P. Club, '45.

• DAN TINKER, "Danny." Entered from Lookout Junior High, '44; Lieutenant Colonel in ROTC, '46; Officers' Club, '46; Sergeants' Club, '45; Boxing Team, '46, '47; Spanish Club, '45.

• PEGGY LOUISE TITTSWORTH, "Peg." Entered from Dickinson Junior High, '44; Varsity Glee Club, '47; Spinsterettes, Treasurer, '47; Digest Representative, '47.

• ELLA MAE TRAVIS. Entered from Dickinson Junior High, '45.

• GEORGIA BELL TRAVIS. Entered from Lookout Junior High, '44; Ushers, '47; Vagabonds, '47; First Aid Detachment, '47.

• MARGARET LOUISE TREDWAY. Entered from North Chattanooga Junior High, '44; ROTC Sponsor; Girls' Battalion, '47.

• CHARLES EUGENE TROTTER, "Fishes." Entered from Chattanooga Junior High, '45.

• JEAN TUCKER, "Ginger." Entered from East Lake Junior High, '44; Trail Trotters, '46; Spinsterettes, '47.

• JULIA ANNE TURNER. Entered from Lookout Junior High, '44.

• NELSON TURPIN. Science Research Club, '46, '47; Chemistry Club, '46.

• MARY ELLEN URBAN. Entered from Ringgold High School, '46.

• FOREST VANDERGRUFF, "Vandy." Entered from Tech High School, Atlanta, Ga., '46; Varsity Football Squad, '46, '47; "C" Club, '46, '47.

• RUTH VARNER, "Ruthie." Entered from Brainerd Junior High School, '45; Orchestra, '45, '46, '47; Bible Club, '46; Spinsterettes, '47; Senior Play Cast, '47.

• MARIAN VAUGHN. Entered from East Side Junior High, '45; Shove Offs, '47; Military Sponsor, '47.

• LAMAR VETTER, "Laymer." Entered from Hardy Junior High, '44.

• ATHELEEN WALLACE, "Abigail." Entered from East Side Junior High, '44; Shove Offs, '46, '47; Ace Club, Vice-President, '46; Battalion, '47; Student Council, '46; Library Staff, '46; National Honor Society, '47.

• Patsy Jean WATTENBARGER, "Pat." Entered from Brainerd Junior High, '44; Girls' Hi-Y, '46, '47; Varsity Glee Club, '46, '47; Ushers, '47; Senate, '47.

• EMILY ANN WEAVER. Entered from East Side Junior High, '44; Varsity Glee Club, '45, '46, '47.

• BILLIE JEAN WELCH, "Crisp." Entered from East Side, '45.

• HAROLD DEAN WELCH. Entered from Red Bank High School, '46; Band, '47; Orchestra, '47.

• HENRY M. WELLER. Entered from Morristown Junior High School, Morristown, Tenn., '43; ROTC, '43, '44; Balboa High School, Panama, '44, '45; U. S. Navy, '45, '46, SLC; Participated in both atomic bomb tests off Bikini, Pacific Islands, while aboard carrier U. S. S. Shangri-La.

• MARTHA ANN WENDLI, "Marty." Entered from East Lake Junior High, '45; Ushers, '47; National Honor Society, '47; Bible Club; Spinsterettes, '47.

• FRANCES WEST, "Dubbie" and "Blondie." Entered from East Side Junior High, '44; Majorette, '46, '47; Girls' Band Club, Social Chairman, '47; Camera Club, '44, '47; Trail Trotters, '47.

• ROSE MARIE WHITEHEAD, "Rosie." Entered from East Side Junior High, '44; Usher, '47; Student Council, '46, '47; Varsity Glee Club, '46, '47; National Honor Society, '47.

• KENNETH WHITTEMORE. Entered from Dalton High School, '43; Rifle Team, '46; M. P. Club, '46, '47; Sergeants' Club, '47.

• CHARLES MARION WILLARD, "Junior." Entered from Dickinson Junior High, '44; Digest Staff, '45, '46; Sergeants' Club, '46.

• RHOTEN WILLIAM WILLHOIT. Entered from Brainerd Junior High, '40; Veterans' Club, '47.

• ROY ANER WILLHOIT. Entered from Brainerd Junior High, '41; Veterans' Club, '47.

• LEWIS WILLIAMS. Entered from Dade High School in '44; Sergeants' Club; Rifle Team.

• LOIS IRENE WILLIAMS. Entered from West Side Grammar School, '44; Senate, Program Chairman, '45, '46, '47; Home Economics Club, '44, '45, '46, President, '47; Girls' Hi-Y, '44, '45, '46, Secretary, '47; Ushers, '47; National Honor Society, '47; Girl Reserves, '44.

• JOHN WILLIAMS.

• MICKEY WILLIAMS. Entered from East Side Junior High, '44; T. and I. Club, treasurer; National Honor Society.

• NELLIE WILLIAMS, "Blondie" and "Jitterbug II." Entered from North Side Junior High, '45; Home Economics Club; Ace Club.

• WENORAH ELIZABETH WILLIAMSON. Entered from East Side Junior High, '44.

• DOROTHY WILSON.

• LAMAR WILSON. Entered from East Side Junior High, '44; Officers' Club, '47; Purple and Gold Band, '44, '45, '46, Second Lieutenant, '47; Military Band, '44, '45, '46, First Lieutenant, '47.

• DOUGLAS LAMAR WITT, "Doug." Entered from East Side Junior High, '45; Purple and Gold Band, '45, '46; ROTC Sergeant, '46; Sergeants' Club, '46.

• ALVIN WOFFORD. Entered from Dickinson Junior High, '44; Veterans' Club, '47.

• EDDIE WOOD, "Smokey." Entered from Brainerd Junior High School, '44; "B" team football, '46; Sergeants' Club, '46; "21" Club, '46, '47; T. and I. Club, '47.

• CHARLOTTE WOOD. Entered from Hardy Junior High, '45; Seniorettes, '47; Ushers, '47; Military Sponsor, '47; National Honor Society, '47.

• BILLY JAMES WOOTEN. Entered from Hardy Junior High, '45.

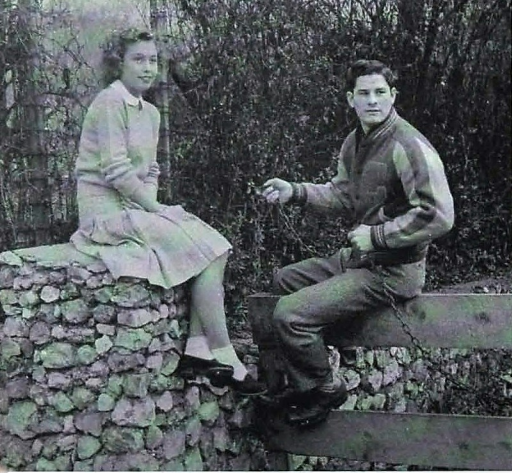
• BETTY WORKMAN, "Worky." Entered from East Side Junior High, '44; Shove Offs, '45, Treasurer, '46, President, '47; Vagabonds, '48; Ace Club, '45, Secretary, '46; Girls' Battalion, '44, '45, '46, '47; Student Council, '46; Physical Education Staff, '44, '45, '46.

• CHARLES WOY, "Chli." Entered from North Chattanooga Junior High, '44; Sergeants' Club, '46; "21" Club, '46; Treasurer of Disc and Diamond Society, '46; Student Council, '47.

• RICHARD YARBROUGH. Entered from Malakoff, Texas, '46.

• MILDRED ALLENE YODER, "Dimples." Entered from East Lake Junior High, '44.

• JOHN ZIMELMAN, "Porky." Entered from Signal Mountain Grammar School, '44; Band, '44, '45, '46, First Lieutenant, '47; Band Officers' Club, '47; "21" Club, '46, '47.



CHAMPION

PAIRS...





CHS Library

The JUNIOR CLASS BOYS

Don Adair
Steve Adams
Richard Allen
Robert Allen
Dale Anderson
Ormand Anderson
Harry Arnold
Sammy Asker
Eugene Baker
Walter Barger
Robert Barringer
Eddie Barringer
Willard Boyles
Charles Beavers
Jerry Bell
Albert Bennett
Wallace Blaylock
Bill Boling
Carl Boswell
Dan Bowden
Stanley Bowling
Bill Bowman
Burton Boyd
James Boyd
Bill Brannon
Louie Brannon
James Brooks
Donald Brown
Douglas Brown
Joe Brown
Garvin Bryant
Robert Burger
Bill Burnette
Robert Burrell
Leo Byars
Clifford Campbell
Jack Campbell

Wert Campbell
Roy Card
Donald Carden
Pat Carlock
Walter Carson
Grover Churchill
Harold Clark
Bud Cobble
James Cobble
Robert Combs
Charles Cook
Fred Cook
Fred Cooper
David Copeland
Leland Cornelius
Robert Cornelius
Austin Couch
Clyde Craft
Billy Crisp
Curtis Crowe
Jimmy Culpepper
Lowe Curtis
Donald Daugherty
Garnette Davis
Justin DeFriesse
Melvin Derryberry
C. L. Dickert
Don Downey
Sanford Dover
Bobby Drinnon
Donald Duke
James Dunn
Bill Emery
Gene Ernst
Billy Falls
Paul Fancher
Bobby Farmer

Eugene Faulkner
John Faulkner
Jimmy Fickle
Lewis Fincher
Walter Jones
James Fisher
Robert Fortson
Howard Fossett
Hugh Freeman
Dan Fulk
James Geiger
Bob Gilbert
Hamilton Glenn
Joe Goodner
Edward Gothard
Jay Grant
George Gray
Rhea Gray
James Hale
Claude Hall
Sewell Hall
John Hancock
Eldridge Harris
Kenneth Harris
Gilbert Harvey
Dowey Hawkins
Curtis Headrick
Jimmy Heathcoat
Joe Henderson
James Henry
Jack Hinds
Grady Holley
Bobby Holmes
Robin Houghton
Joe Humphreys
Gene Igou
David Janney

G. B. Janow
Carl Johnson
Johnny Johnson
Jack Jolley
Paul Jones
Ted Jones
Bobby Jordan
Bill Judoe
Bill Keenan
James Keener
Joe Kelly
John Kemmler
Elmer Kennedy
Marshall Killingsworth
J. W. Knott
Jack Kris
Floyd Ladd
Alfred Lamprecht
C. V. Land
Mack Langford
Gordon Ledford
Jerry Ledford
Thomas Lee
Jack Leonard
Bobby Lerch
Richard Leslie
Billy Lewis
John Lewis
Homer Levers
Raymond Lunsford
Bill Lusk
Lonnie Macon
Edward Magette
James Magette
Tom Martin
Darwin Mathis
Carroll Maxwell

Foy Maxwell
David Renaker
Harry McAllister
Charlie McArthur
Billy McCool
Jimmy McCluskey
Charles McCurdy
James McDonald
James McKinney
Roy McKenzie
Hade Merritt
Ervin Meyer
Walter Meyer
Jack Mitchell
Edwin Moore
John Morgan
Tommy Morris
Isaac Morrow
Billy Nesbitt
Todd Nye
James O'Rear
James Oric
Charles Patterson
James Payton
Walter Peoples
Jim Perry
Bill Phillips
Ralph Phillips
Paul Pierce
Joe Plemons
Albert Poston
Ray Powell
Charles Price
Norman Prince
Walter Pritchard
Robert Puckett
Earl Radlein
Paul Ramey

Don Redding
David Renaker
Robert Richardson
James Rowell
Roy Rudder
Everett Russell
Joe Salmon
Gene Samsing
Donald Sargent
Billie Sartin
Dewey Scott
G. L. Sharp
Donald Shull
Charles Sivley
George Skillington
A. J. Smith
Don Smith
Donald Smith
Jack Smith
Kenneth Smith
Wilburn Smith
Bill Snapp
Cecil Snyder
James Snyder
John Stegal
Bobby Stephens
Ray Stevens
Jimmy Stone
Richard Stott
Edward Strawn
Robert Sullivan
Grady Sweeten
Cecil Tankersley
Herman Tarpley
Arthur Tatum
M. R. Tewzer
Billy Tompleton

Charles Thompson
James Thompson
John Thorne
Herbert Thurman
Lamar Timmons
Albert Tittle
Floyd Trais
William Trogen
Jack Trotter
Charlie Turner
Donald Turner
James Vail
Robert Vickery
Charles Sivley
Melvin Warren
Neilson Warren
Bill West
George Westmoreland
Fred Wheat
Lamar Wheat
Curtis White
Richard Wilburn
Paul Wilkerson
Joe Willard
Coward Williams
Ronald Williams
Richard Williamson
Vernon Willingham
Ted Winkler
Charles Wood
John Woodall
Buddy Woodson
Robert Wooten
Bob Wrinkle
Bill Wyatt
Luther Young
Dennis Zeigler



The JUNIOR CLASS GIRLS

Sue Adams
Marilyn Alexander
Mary Alexander
Betty Alloway
Edith Anderson
Oustine Arnold
Aileen Athorne
Delores Aucutt
Betty Avans
Carol Bailey
Helen Bailey
Imogene Baker
Bobby Bell
Geneva Bell
Jewell Bennett
Louise Benton
Betty Blevins
Jane Boyd
Mary Bradford
Joyce Brooks
Barbara Brown
Gloria Brown
Lois Burns
Mary Burnette
Rieta Camp
Barbara Campbell
Faye Campbell
Betty Canaday
Delores Carlton
Barbara Carpenter
Nancy Carpenter

Nancy Carruth
Sarah Carver
Kathryn Castleberry
Audra Coter
Joan Colfield
Barbara Compton
Hazel Cordell
Barbara Crain
Vivian Crisp
Margaret Crowe
Dot Cullum
Marjorie Curl
Marjorie Daverson
Anna Lee Delaney
Margaret Dixon
Gaynelle Dobbins
Neoma Dodd
Margaret Donalino
Flora Downe
Martha Durham
Katherine Echols
Ann Edwards
Nancy Edwards
Betty Elrod
Mollie England
Betty Evans
Katie Evans
Sue Ezell
Betty Lou Ewton
Nancy Fraker
Sue Gardner

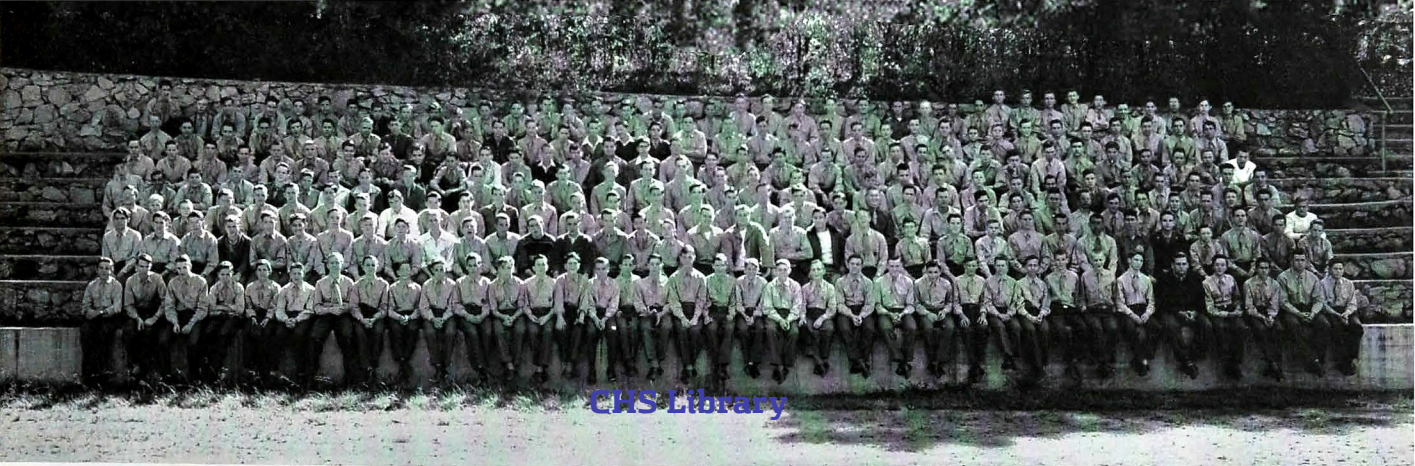
Jackie Garrett
Josephine Garrett
Nan Glascock
Marcella Goolaby
Joan Goffard
Jo Hambrick
Martha Hamby
Edna Hummett
Eloise Hardeman
Helen Harris
Barbara Harper
Mary Sue Harvey
Bobby Hawk
Betty Hayes
Sarah Hayes
Betty Head
Dot Hearrell
Joyce Helton
Peggy Helton
Eleanor Herman
Charlotte Higgins
Bonnie Hill
Dorothy Hill
Vera Hindman
Joan Hixson
Anna Mae Hobbs
Bobbie Holderman
Virginia Horner
Ebel Hudgens
Janice Huff
Bettye Hughes

Loraine Humble
Dorothy Johnson
Betty Jones
Doris Jones
Onita Jones
Virginia Lee Jones
Mary Ella Kelloog
Mickey Keener
Iva Lee Keown
Kathleen Key
Cynthia Kidwell
Frances Kinnannon
Beverly Kinsler
Dorothy Kistler
Carlene Klein
Martilyn Krause
Katherine Lake
Marie Lake
Bettye Lawson
Betty Lou Lea
Myra Lewis
Dorothy Locklear
Peggy Long
Lillian Luttrell
Margaret McCain
Barbara McDonald
Lillian McGhee
Faith McGhee
Delores McKenzie
Bernice McWhorter
Aima Martin

Charlotte Massey
Mary Moore
Billie Morgan
Loth Morris
Frances Morris
Eloise Nowell
Eugenia Norris
Connie Olson
Mary Pack
Carolyn Padgett
Jane Parker
Johnnie Partin
Virginia Patterson
Louella Patton
Lois Peace
Mary Pearson
Martha Peavy
Emily Pepper
Ann Petty
Kathleen Potter
Lila Powers
Mary Prather
Margaret Preacott
Billie Spencer
Genene Reed
Joan Reid
Frankie Ridge
Betty Roach
Charlotte Robertson
Dorothy Roberts
Mildred Roberts

Gladys Robertson
Nadia Robinson
June Rogers
Dora Runigan
Hildreth Sanders
Imogene Segars
Georgia Schraeder
Coburn Scott
Willadean Segars
Betty Sella
Betty Shaw
Patty Sheats
Martha Shephard
Mary Ann Shropshire
Edna Sizemore
Betty Jo Smith
Bobbie Smith
Donna Smith
Crisa Smith
Evelyn Smith
Pauline Smith
Mary Prather
Virginia Smith
Joyce Spencer
Doris Spurlock
Joan Stephens
Beverly Stephenson
Dorothy Stierchi
Juanita Stewart
Joyce Stone
Myra Jo Strickland

Wilma Stroud
Mildred Sullivan
Rose Marie Sullivan
Mildred Swearingen
JoAnn Tatum
Claire Thomas
Beatrice Thompson
Coburn Thomas
Anny Lou Tinker
Wilma Tomlin
Betty Jo Totton
Frances Travis
Frances Treadway
Martha Toisman
Louise Underwood
Aima Ruth Varnell
Betty Varnell
Peggy Von Shaot
Joyce Wallace
Betty Webb
Georgia Webb
Juanita Wheeler
Gloria Williams
Mollie Williams
Dorothy Wilson
Geraldine Witt
Lillian Witt
Louise Wolfe
Dorothy Workman
Bobbie Yarbrough



CHS Library

The SOPHOMORE CLASS BOYS

Charles Alexander
Jack Alexander
Billy Allord
Clarence Allison
Bill Anderson
Lloyd Anderson
Charles Armour
Jerry Arnold
Franklin Ashley
Fred Autry
Bernard Bally
Jimmie Bankston
Floyd Barker
Kelley Barnes
Norman Barnes
William Barnett
Richard Beam
Bobby Beene
Leon Beene
David Beene
Reuben Bennet
Robert Bewdoo
Warren Bibe
Larry Billingsley
Earl Blackwell
Lester Bland
Ben Bradley
Jack Bohler
Bobby Bowden
Bill Boyd
Bally Bridges
Bill Bradford
Jimmy Brooks
Robert Brooks

Clark Broom
Charles Brown
Ernest Brown
Gene Broyles
Glen Buckner
Eugene Burkhart
Charles Campbell
Frank Campbell
William Carmichael
Nevin Carr
Marvin Carroll
Richard Carter
David Casey
Roy Cavett
Bill Christian
Clarence Christian
Jerry Clay
Danny Clippenger
Kenneth Clouses
J. B. Collins
Bill Cooke
Stanley Cooke
Robert Cooper
Robert Cooper
Troy Coyle
Ben Crawford
Beverly Crawford
La Marr Cummings
Clyde Davenport
Bobby Crick
Frank Davis
Bill Dixon
Johnston Dodd
Robert Duncan

Jack Edwards
Louis Everett
Justin Everton
Bobby Fernald
Dick Farrell
Clyde Faxon
Donald Ferris
James Finch
Richard Foster
Jack Foust
Terrell Fugate
Paul Gaither
Dorsey Gardner
Mary Gass
Burton Gaston
Joe Gibson
Earl Grant
C. F. Griffin
Gilford Griffin
Clarence Guzzie
Kenneth Goodner
Charles Guiney
Marion Hambright
Donald Head
Edward Helton
B. M. Hendrex
Jack Henson
Alan Higdon
William Highfield
C. D. Hillard
James Hixon
Donald Holder
Bill Holderman

Tony Holland
Jimmy Holliday
Jerry Holmes
Arthur Holling
Thurston Huntoon
Albert Hupson
Peggy Hyatt
Ralph Jackson
Edward James
Jimmy Jenkins
Joe Johnson
Wilbur Johnson
J. W. Jordan
Conrad Jordan
Kenneth Keoble
Eddie Kelley
I. E. Kelley
Ervin Kelsay
Orman Kelsay
Prince Kendall
Earl Kennedy
Lloyd Kile
J. D. Killingsworth
Earl Kinsey
Isaac Kooper
Lawrence Elwood
Albert Layne
Delmer Layne
Pat Ledford
Terry Lee
Thomas Levan
Bobby Lewis
Charles Linder

Marion Lockman
Thomas Lomenick
Bill Long
Charles Loney
Charles Loveday
Deen Lawrence
Ed Luttrell
Joe Manis
Gene Marler
Tom Massingill
Leo Mathoney
Fred Matthews
Don McAllister
Oliver McBride
Kenneth McBryan
Wendell McCurdy
Eugene McGowan
Johnny McMurray
Joe Miles
Raymond Miles
Bobby Miller
Glen Miller
L. V. Miller
Fred Miller
James Moates
William Monds
Donald Moore
James Moore
John Morgan
Thomas Morgan
Bill Moss
Ralph Mowery
Ralph Murphy

Loran Nation
Bill Osborn
J. C. Patham
Dogle Parker
Norman Parker
Robert Parsons
George Paul
Crockett Peoples
Charles Perry
Freddie Pevehouse
Billy Pharr
James Phillip
Joe Powell
Joe Price
Milton Quarles
Harold Rauston
Charles Remington
Jimmy Robinson
Raymond Rockholt
Jack Rolston
Norma Roberts
Randall Rogers
Clarence Robbins
Douglas Rowman
Billy Roy
John Rushing
Harold Russell
Lucille Parkin
Wendell Saffles
James Sage
James Smith
Kenneth Smith
Bruce Spencer

Claude Springfield
Billy St. Clair
Junior Stoser
Sam Southerland
Marcus Sparks
Bobby Stephens
Joe Stokes
Bob Strahley
Don Stroud
Robert Sutton
Loren Tall
Wayne Talley
Buddy Tant
George Tate
Grady Tate
John Sanders
E. R. Sanders
Cecil Scott
Bobby Seagle
Ronald Seagle
Charlie Shotters
Paul Shirley
Jimmy Short
Buddy Shroyer
Harry Shroyer
S. T. Silver
Bobby Smith
Leland Sisamore
Archie Slaten
Jack Smart
Benny Smith
Bill Smith
Bobby Joe Smith
Charles Smith

Eugene Smith
George William Smith
Ralph Tate
Alfred Thomas
Hugh Tomlin
Hamer Thompson
Edwin Trimble
William Tryner
Bill Turpin
Jack Vincent
Leon Vonberg
Sam Wade
Audrey Weil
William Wade
Aubrey Walker
Eugene Walker
Arthur Wallaca
J. W. Walters
Joe Watson
Taylor Weathers
Don Westbrook
Frank White
Jack Whitten
Edwin Whittenburg
Don Wilkins
Stanley Williams
Lester Wilson
Paul Wilson
Billy Wolfe
Leonard Wolfe
Sammy Womack
Jack Worley
J. T. Yick
Paul Young



The SOPHOMORE CLASS GIRLS

Marie Adams
Imogene Anderson
Ina Lou Arnold
Mary Arnold
Billie Faye Ashley
Doris Autry
Sue Baker
Evelyn Barisch
Ina Beavers
Betty Beasley
Donna Belinger
Frances Blackmon
Sarah Belcher
Barbara Blakey
Barbara Bookout
Betty Bradford
Martha Bradford
Jean Brooks
Phyllis Brooks
Clara Lou Brown
Nora Brown
Betty Bryan
Dolores Bryant
Mary Bryant
Doris Jean Butler
Madeline Cain
Dot Caldwell
Virginia Campbell
Ruth Carden
Ernestine Cartwright
Betty Chambers
Peggy Chambers
Peggy Chandler
Barbara Chaplin
Zenaida Finley
Nancy Finnell
Johnnie Chastain

Peggy Childers
Margaret Childers
Joan Clarke
Jo Cobb
Marcella Cobb
Betty Fruendberg
Mary Ann Fry
Sybil Fuller
Phyllis Gaither
Betty Jo Galloway
Phyllis Gann
Polly Gardner
Mildred Garrett
Hattie Gay
Fae Gilham
Joyce Gordon
Barbara Gohard
Bobby Joyce Grant
Pearl Grant
Pearlita Gray
Jean Green
Betty Griffin
Mable Griffin
Mary Tiggs Dobbs
Willene Donahoe
Jewell Dye
Dorothy Dyer
Norma Edwards
Barbara Elliot
Betty Ellis
Audrey Emery
Bobbie Cile England
Joyce Evans
Zenaida Finley
Nancy Finnell
Joan Fisher

Elizabeth Fletcher
Laurel Ford
Loretta Forrest
Mary Foster
Barbara French
Betty Fruendberg
Mary Ann Fry
Sybil Fuller
Phyllis Gaither
Betty Jo Galloway
Phyllis Gann
Polly Gardner
Mildred Garrett
Hattie Gay
Fae Gilham
Joyce Gordon
Barbara Gohard
Bobby Joyce Grant
Pearl Grant
Pearlita Gray
Jean Green
Betty Griffin
Mable Griffin
Mary Tiggs Dobbs
Willene Donahoe
Jewell Dye
Dorothy Dyer
Norma Edwards
Barbara Elliot
Betty Ellis
Audrey Emery
Bobbie Cile England
Joyce Evans
Zenaida Finley
Nancy Finnell
Joan Fisher

Betty Hinkle
Charmie Holcomb
Barbara Holder
Anne Holloway
Doris Hooper
Nella Howell
Jo Hughes
Ruth Hughes
Wanda Humphreys
Bobbie Hunkley
Ann Hutsell
Rose Mary Hutson
Leola Ireland
Bobbie Jean Jenkins
Cynthia Jennings
Freda Jennings
Eloise Johnson
Carolyn Jones
Dorothy Jones
Loretta Jones
Jo Ann Kachadurian
Carolyn Kaylor
Joyce Keeney
Wanda Keller
Betty Kelley
Robinette Kealey
Jean Hall
Margaret Ann Hamil
Edna Harris
Joyce Kirby
Frances King
Marilyn Keaton
Eleanor Kirkpatrick
Charlotte Knauft
Vanda Lamb
Jane Lamon
Barbara Lancaster
Starlene Land

Billie Lankford
Betty Jane LeCroy
Datherine Levi
Alice Lewis
Drand Lewis
Gloria Limehouse
Betty Lou Little
Ruth Logston
Edith Lumpkin
Frances Lumpkin
Annetta Malcom
Betty Mansfield
Jo Ann Mansfield
Ellen Martin
Billie Mason
Sara Mason
Mary Mayfield
Sue McAfee
Ann McArthur
Olga McBride
Barbara McKown
Nancie McCormack
Marilyn McCutlan
Frances McDaniel
Geraldine McDaniel
Betty McDowell
Dorothy McChie
Pat McLean
Elizabeth McLaughlin
Elaine McLaughlin
Mary McLaughlin
Eva McSpaden
Evelyn McWhorter
Joyce Melton
Barbara Milhorn
Valerie Miller
Carla Mitchell

Barbara Moore
Dorothy Rogers
Joyce Morris
Greta Myers
Joann Myers
Dorothy Osmont
Barbara Ott
Lucille Parkin
Jackie Parks
Jean Passy
Mildred Patrick
Bobbie Patterson
Emalyn Payne
Nancy Payne
Mary Podigo
Willietta Perkinson
Grace Phillips
June Powell
Christine Powers
Mary Ann Powers
Mary Ann Priddy
Marilyn Reed
Betty Reeves
Betty Reeves
Virginia Richardson
Sue Richey
Mary Jane Roark
Jusita Robinson

Betty Jean Roe
Dorothy Rogers
Roxa Rogers
Ruth Rogers
Nancy Rossell
Joyce Scheidt
Barbara Schoolfield
June Sexton
Mary Shaw
Kathryn Shearer
Jeanette Shields
Betty Shipley
Betty Simmons
Sara Simmons
Eunice Simpson
Margaret Simpson
Martha Simpson
Kathryn Sivley
Barbara Slayton
Pauline Smartt
Billie Smith
Mary Smith
Lillie Mae Smith
Peggy Smith
Dot Snow
Leanne Snyder
Patny Speagle
Margaret Speer
Betty Jean Stanley
Joyce Stansberry
Betty St. Clair
Virginia Sugus
Reba Swanson
Bobbie Sykes
Virginia Talent

Jeannette Taylor
Barbara Templeton
Betty Teters
Audrey Thomas
Doris Thomas
Madeline Thomas
Marie Thomas
Mary Thomas
Peggy Thompson
Norma Thompson
Barbara Trotter
Ruth Trundie
Betty Tucker
Janet Tucker
Martha Twynam
Doris Ulrich
Virginia Von Shoaf
Valeria Waldrop
Barbara Walker
Ruth Walker
Barbara Wamack
Catherine Webster
Joan Smith
Lillie Mae Smith
Peggy Smith
Dot Snow
Leanne Snyder
Patny Speagle
Margaret Speer
Betty Jean Stanley
Joyce Stansberry
Betty St. Clair
Virginia Sugus
Reba Swanson
Bobbie Sykes
Virginia Talent



The FRESHMEN CLASS BOYS

Dean Abraham
John Alexander
Robert Alexander
Jim Allison
Charlie Armstrong
Melvin Ashley
Harlan Avakian
Dale Bagby
Bobby Bell
George Benolken
Hugo Black
Robert Blaylock
Billy Bonine
Kenneth Bowers
Joe Boyd
Nickie Bowman
Leon Branam
Hal Brinkley
Eugene Broome
Grady Brothers
James Broyles
C. W. Burnette
Alton Byars

Darrell Case
Alvin Castleberry
Ben Castleberry
Charles Cavins
Gerald Chasteen
Clyde Chauncey
John Childers
Bill Choate
Bethune Clark
Lee Cockrell
Ervin Compton
Ernest Crane
James Craze
Kenneth Crick
Noble Daniel
Eugene Davis
James Davis
Joe Davis
Harold Derryberry
Robert Dodd
Jimmy Dodds
Robert Downs

Milton Dunn
Willie Dunn
Spencer Eason
Bill Edwards
Wallace Ealinger
Ivan Everett
David Fernea
Ralph Fickle
Tommy Fisher
George Flynn
William Fraker
Bill Free
Arvil Freeman
Paul Fuller
Sam Garrett
John Gill
Harry Gilliland
James Goldston
Leland Goldston
Jimmy Gossett
Jack Guffee
Marvin Haisten
Jack Hale
Charles Hall

Fred Hall
John Hambley
Edward Hammer
Bill Hampton
Wert Harris
Everett Harvey
Charles Haun
Gene Helton
William Hendrix
Robert Henson
Edwin Hixon
Le Roy Hobbs
Bill Holloway
Morgan Howard
Myron Hughes
Donald Hullander
Sam Jones
Edward Kerby
Richard Kerley
Robert Kidwell
James Langston
George Leavitt

Bodie Lee
Earl Lewis
William Lillard
Jim Long
Charles Looney
Jimmy Lowe
Grady Massingill
Kenneth McIntosh
Bill McKenzie
Bill McKinney
Carl Meyer
Frank Meyer
Jack Meyer
Baynard Miller
C. L. Miller
Charles Minnick
Jimmy Moore
George Morgan
Johnny Morris
Olean Mullis
Billy Murray
Marshall Myers
Jamca Ogle

Richard Overturf
Joe Pace
Frank Parker
Jimmy Parker
Douglas Payne
Don Pendergrass
Frank Peckinpaugh
W. C. Plemons
Raymond Prather
Eugene Richardson
Buddy Riley
Bobby Rhodes
Charles Robinson
Dick Robinson
Bill Rogers
Nickie Roth
Pat Rowe
Morris Russell
Joe Samples
Ambrose Secor
Hoyt Sowell
Wendell Shipley

Ronald Shoemake
Franklin Sitten
Douglas Slagle
Donald Smith
Eugene Smith
Timmy Smith
Bobby Spurlock
Frank Stanton
Donald Stevens
Ronald Stevens
Bill Tate
George Torbett
Ted Vaughn
Freddy Vickery
Bill Wages
Jack Walston
Johnny Wilkins
Charles Williams
L. C. Williams
Wendell Williams
Charles Witt
Bill White
Billy Yerbey



The FRESHMEN CLASS GIRLS

Martha Abercrombie
Jackie Adams
Betty Alred
Betty Argo
Barbara Ball
Lenora Barber
Cecile Barrows
Lillian Barry
Wanda Beason
Eleanor Boyd
Naomi Boyd
Margaret Bratton
Eula Broadway
Faye Brock
Dorothy Burnette
Joyce Burnette
Marveygene Bush
Lela Cagle
Janice Camp

Martha Carpenter
Dorothy Childress
Dorothy Christenberry
Barbara Cochran
Helen Coleman
Janet Corey
Betty Criswell
Gloria Criswell
Fertrell Dalton
Charlotte Davis
Sue Davis
Margaret Dutton
Doris Day
Leona Day
Peggy Dobbins
Florence Dumas
Catherine Dunbar
Doris Ellard
Virginia Eller

Catherine Estes
Jessie Evans
Barbara Everton
Gail Fisher
Margaret Fitzgerald
Peggy Ford
Jo Ann Gaines
Lucy Gardner
Jean Goodner
Joyce Goolsby
Mary Ann Goolsby
Elizabeth Grayson
Manila Gresson
Mary Haddock
Mary Hall
Mary Sue Hall
Kay Hampton
Doris Hatley

Sarah Hayes
Diane Haynes
Theresa Hennessee
Carol Hicks
Dean Hill
Doris Hooper
Betty Houk
Joyce Howard
Barbara Hughes
Joanna Jett
Norma Johnson
Peggy Johnson
Lillian Jones
Rosemary Jones
Virginia Jones
Layniere King
Ann Laxson
Betty Laxson

Martha Lorch
Virginia Lewis
Betty Lively
Marlene Martin
Norma Jean Martin
Evelyn McCurdy
Barbara McDowell
Charlotte Miles
Juanita Miller
June Miller
Druella Mimms
Charlotte Moore
Barbara Morgan
Frances Moulton
Jo Ann Nipper
Pat Parsons
Doris Petty

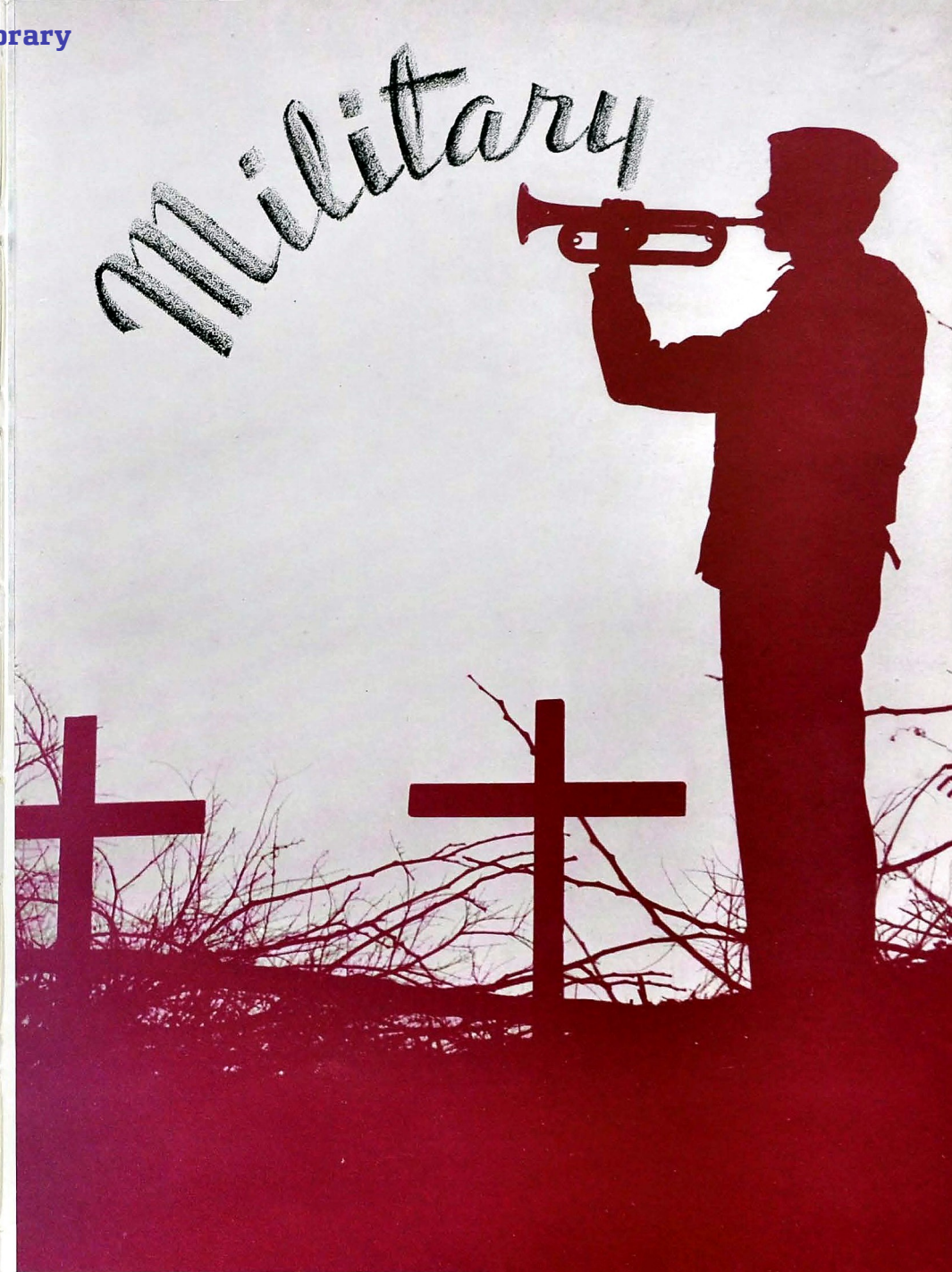
Mary Ella Petty
Elinor Phillips
Jean Pinion
Barbara Ann Plegger
Jennie Powell
Jean Preston
Jean Ray
Barbara Riley
Vanetta Robinson
Nancy Rudd
Merrian Russell
Lois Sampley
Barbara Schuch
Onaida Scruggs
Mary Seay
Caroline Sertel
Shirley Sexton
Jane Shetter

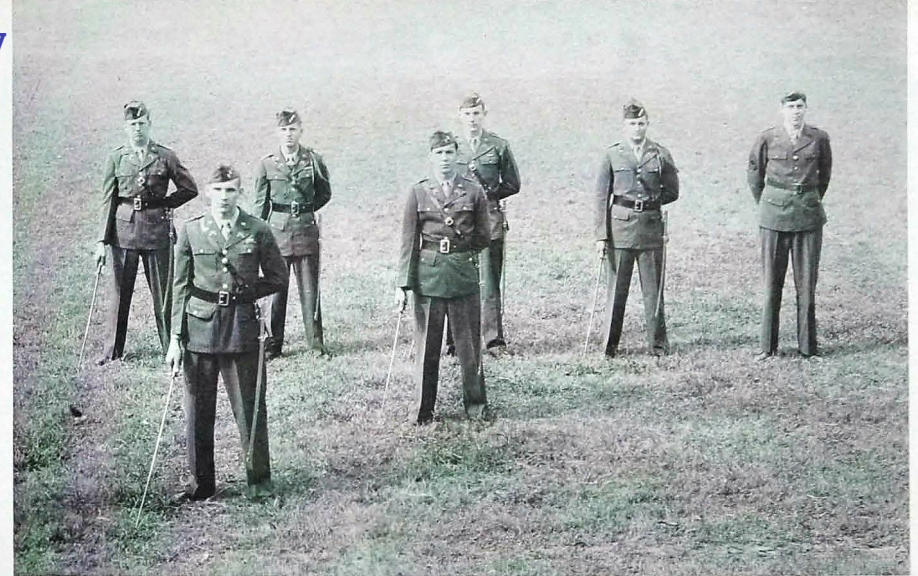
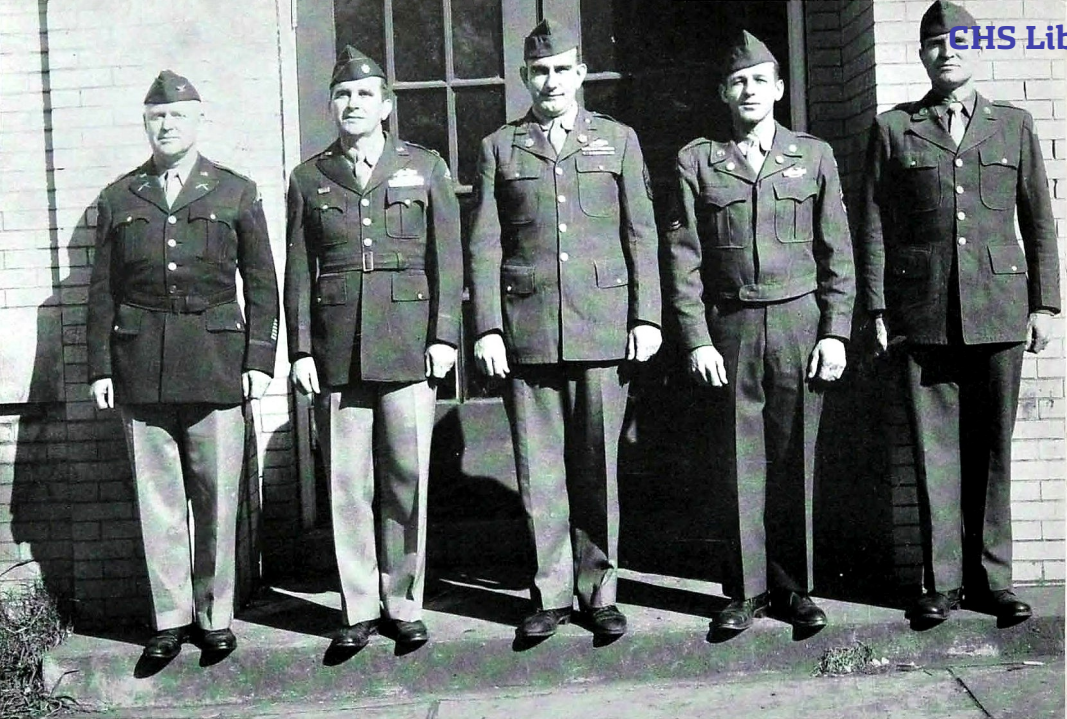
Lily Simmons
Joanne Smart
Helen Stulce
Martha Swanson
Grace Swearingner
Geraldine Tate
Billy Jane Thomas
Peggy Trotter
Mary Ann Turk
Mary Wages
Rose Marie Walters
Margaret Waterhouse
Phyllis Wheeler
Jennie Williams
Mary Williams
June Wooten
Dolores Worley
Dima Yeargan
Vivian Young



CHAMPION STAFF

GLORIA SMITH	Editor-in-Chief	RAYMOND JENSEN	Club Editor
JOE DYER	Business Manager	JANE SUTTON	Feature Editor
SARAH BAYSTON	Senior Editor	DOROTHY HUMPHREY	Typist
CHARLES WOY	Athletic Editor	SEWELL HALL	Junior Editor
GROVER MASTERSON	Military Editor	MADELINE CAIN	Sophomore Editor
EVELYN McCURDY		Freshman Editor	





MILITARY OFFICERS

COLONEL McMASTERS

Colonel William Robert McMaster, who hails from sunny California, was assigned P. M. S. and T. of the Chattanooga R. O. T. C. units from Brussels, Belgium. On the United States Military Academy's graduating list of 1918 will be found the name of this P. M. S. and T. During World War II, Colonel McMaster served thirty-eight months overseas and has credit for the Tunisian and European campaigns in which he won the Bronze Star, the Czech War Medal, and the Croix de Guerre with palm. He was a distinguished marksman on the Infantry Rifle Squad in 1931, and consequently he has given many pointers on rifle marksmanship to the members of our rifle team. At Central his aim has been to keep the honor rating and carry out the army training schedule for R. O. T. C. Units.

COLONEL SMOAK

The assistant P. M. S. and T., Lieutenant Colonel John R. SMOAK, was assigned to Chattanooga high schools June 19, 1946, from Fort McClellan, Alabama. Hailing from neighboring South Carolina, Colonel SMOAK feels at home in Chattanooga. In 1933 he graduated from Clemson College and later in 1941 joined the United States Army. Up to this time Colonel SMOAK has six years' active duty to his record, including service overseas where he took part in the Rhineland and Central Europe Campaigns. Some of the decorations he received for his service include the Combat Infantry Badge, Bronze Star with first and second Oak leaf clusters, Silver Star, and the Presidential Unit Citation. Colonel SMOAK divides his time between Central and City, and at Central he is company instructor for Companies "B" and "F".

SERGEANT DOCK K. RACHELS

Master Sergeant Dock K. Rachels, who comes from nearby Georgia, has been a member of Uncle Sam's Army for nine years. September 1946 he was assigned to the Chattanooga

R. O. T. C. Units; at Central he is the company instructor for Companies "C" and "G". During his army life he has taken the special non-commissioned officers course, the radio course, and attended the Officers' Candidate School at Fort Benning, Georgia. Sergeant Rachels received the Silver Star, Purple Heart, and Combat Infantry Badge for his services in the battle of Northern France, Ardennes, and the Rhineland.

SERGEANT WARREN E. OSBOURNE

Technical Sergeant Warren E. Osbourne was assigned directly to Central November 1945, but did not assume his duties until the second semester. At Central Sergeant Osbourne is in charge of the supplies and upkeep of the armory. He is coach of the rifle team and is company instructor for Companies "A" and "E". Since entering the army in 1933 from his native state, Pennsylvania, Sergeant Osbourne has thirteen years of active duty to his record. During the past war he served a year overseas where he participated in the battles of Southern France, the Rhineland, and Central Europe. For his services in World War II, he received the Silver and Bronze Stars and the Purple Heart.

SERGEANT COATS BROWN

The third position on the military teaching staff of Chattanooga is filled by Staff Sergeant Coats Brown. Coming to Chattanooga in the fall of 1943, Sergeant Brown has now been teaching military classes for four years. Sergeant Brown, who has distinguished himself by his excellent record in the use of the rifle, holds the championship medal for the National Individual Rifle Match of 1939. Besides this he has thirty-five other medals in this field of competition.

Sergeant Brown enlisted in the United States Army, July 12, 1935. He served as instructor of R. O. T. C. at the University of Tennessee before he came to Chattanooga. While there he coached the rifle team to the championship spot in the National Intercollegiate Rifle Match.

REGIMENTAL STAFF

HERSCHEL BOYD	Colonel	BOB MASON	Captain S-2
FLOYD FULLER	Lieutenant Colonel	J. L. AYERS	Captain S-3
FRANK MARTIN	Captain S-1	BILL HAWK	Captain S-4
LESLIE BARROWS	M/Sgt.		

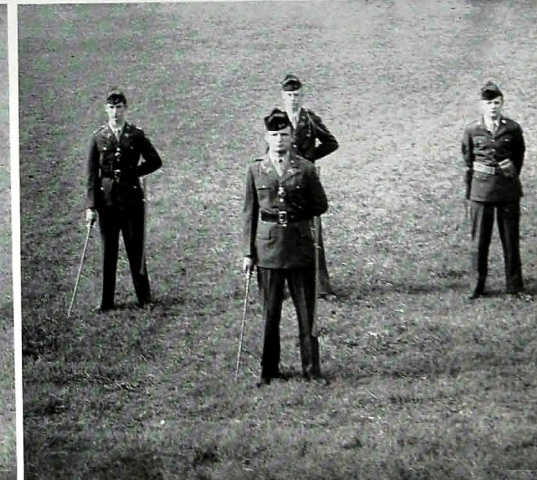
and STAFF...

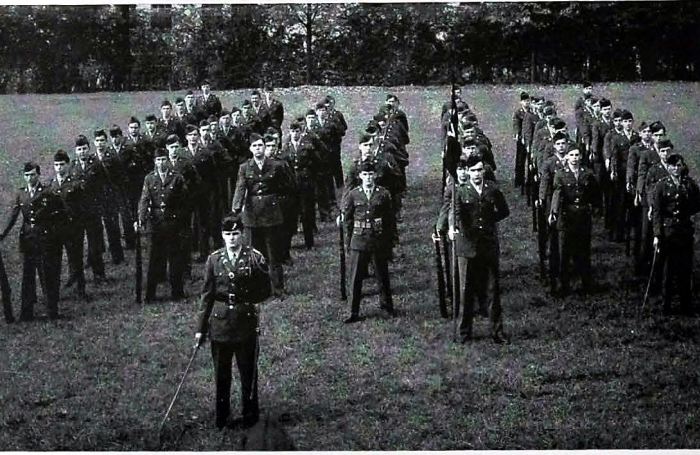
FIRST BATTALION STAFF

JOHN STANFIELD	Lieutenant Colonel
KARL BARNES	First Lieutenant
GORDEN FOLLETT	Second Lieutenant
DON SMITH	T/Sgt.

SECOND BATTALION STAFF

CARLTON RATCHFORD	Lieutenant Colonel
J. W. LUNSFORD	First Lieutenant
MALCOLM GRIER	Second Lieutenant
EUGENE BAKER	T/Sgt.



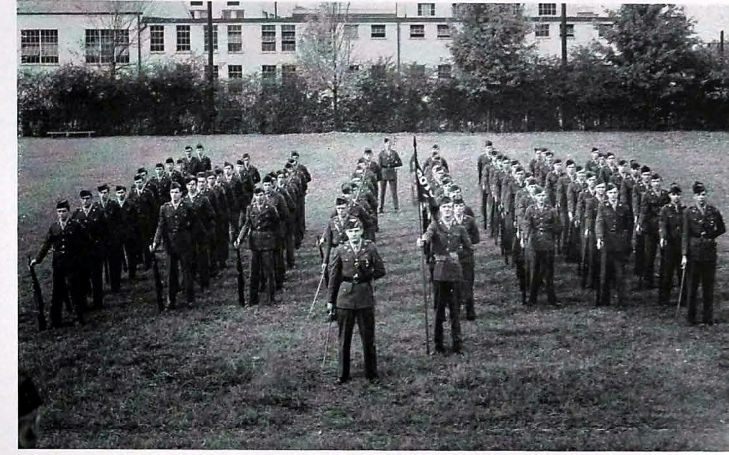


COMPANY A

Captain	Clarence Frank
1st Lt.	Stuart Lynch
2nd Lt.	Dan Tinker
2nd Lt.	Joe Salmon
1st Sgt.	David Renaker
T/Sgt.	Oba Ayers
T/Sgt.	William Brakebill
S/Sgt.	Grover Churchill
S/Sgt.	Ted Jones
S/Sgt.	Ronald Williams
S/Sgt.	Walter Carson
S/Sgt.	Jay Grant
S/Sgt.	James Fisher
S/Sgt.	Joe Goodner
S/Sgt.	James Brooks
S/Sgt.	Robert Fortson
Sgt.	Douglas Witt
Sgt.	Carl Johnson
Sgt.	Richard Williamson
Sgt.	Marion Hambright
Sgt.	Robert Johnson

COMPANY C

Captain	Joe Dyer
1st Lt.	Billy Ray Smith
2nd Lt.	Walter Ballinger
2nd Lt.	Richard Head
1st Sgt.	Walter Meyer
T/Sgt.	James Meredith
T/Sgt.	James McCormic
S/Sgt.	J. C. Parham
S/Sgt.	Austin Couch
S/Sgt.	John Carden
S/Sgt.	Edgar Woy
S/Sgt.	Vibert Kitts
S/Sgt.	Bill Troglen
S/Sgt.	Louis Brandon
S/Sgt.	Glen Buckner
S/Sgt.	Tommy Simmons
S/Sgt.	Richard Leslie
Sgt.	Ervin Meyer
Sgt.	Cecil Tankersly
Sgt.	Jimmy McLuskie

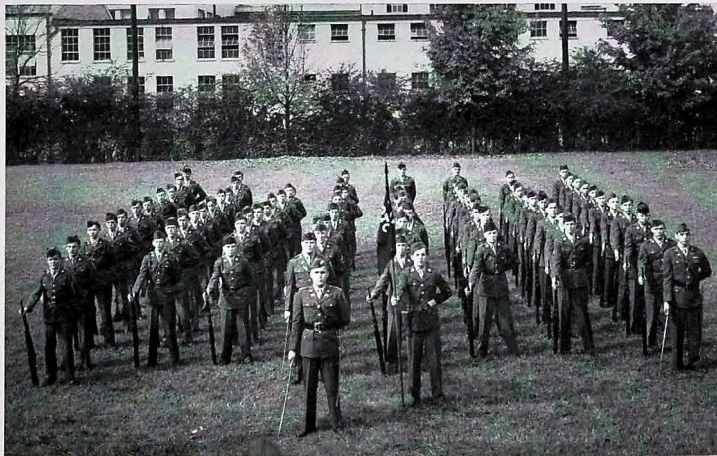


M I L I T A R Y

T R A I N I N G

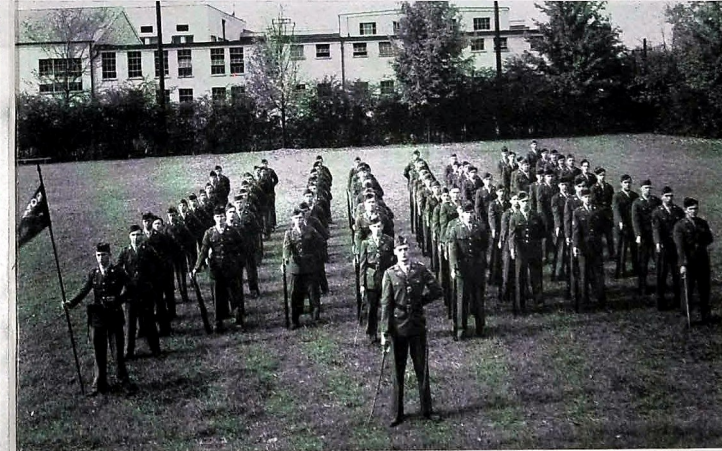
COMPANY B

Captain	Grover Masterson
1st Lt.	William Hollis
2nd Lt.	Daniel Barger
2nd Lt.	Harold Carrell
1st Sgt.	Ormand Anderson
T/Sgt.	Roy Howard
T/Sgt.	Steven Mize
S/Sgt.	Albert Poston
S/Sgt.	Charles Thompson
S/Sgt.	J. W. Walters
S/Sgt.	Fred Cooke
S/Sgt.	Fred Cooper
S/Sgt.	James McDonald
S/Sgt.	Lewis Fincher
S/Sgt.	Richard Allen
Sgt.	Floyd Travis
Sgt.	Carroll Maxwell
Sgt.	Cecil Snyder
Sgt.	George Gray
Sgt.	Charles Looney
Sgt.	Herman Tarpley



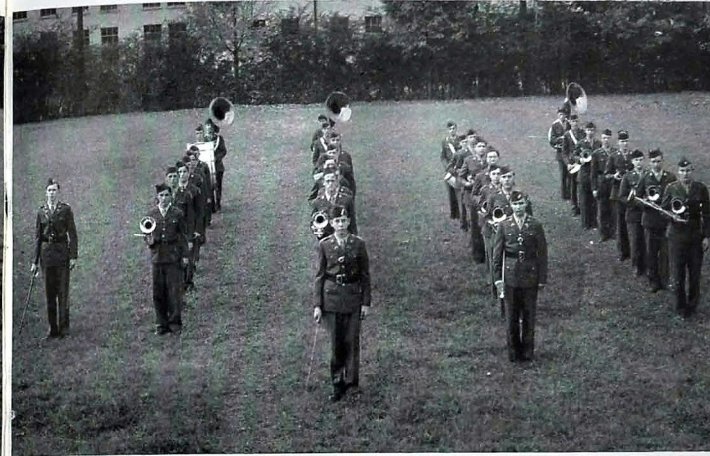
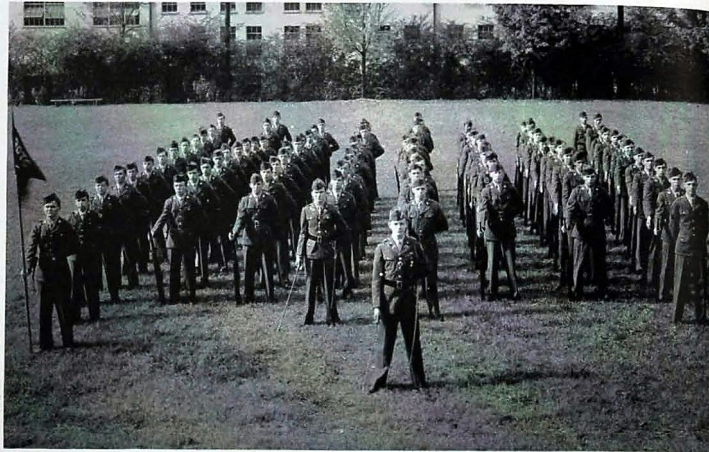
COMPANY E

Captain	David Halley
1st Lt.	Ralph Hixon
2nd Lt.	Robert McElhane
2nd Lt.	Joe Grimsley
1st Sgt.	Floyd Ladd
T/Sgt.	Ernest Prince
T/Sgt.	Tom Masingill
T/Sgt.	Nelson Turpin
S/Sgt.	John Woodall
S/Sgt.	Kenneth Whitmore
S/Sgt.	Vernon Willingham
S/Sgt.	Kenneth Smith
S/Sgt.	Johnnie Stanton
Sgt.	Bob Burger
Sgt.	Melvin Warren
Sgt.	John Sergeant
Sgt.	John Faulkner
Sgt.	Donald Keerner
Sgt.	Jimmy Fickle



COMPANY F

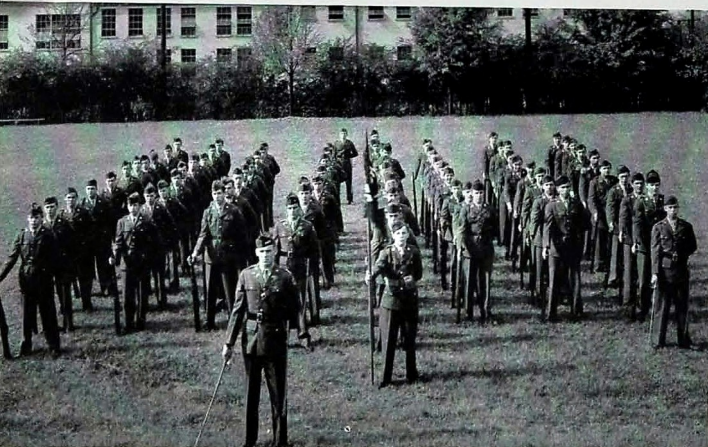
Captain Glenn Miller
1st Lt. Roy Paraham
2nd Lt. Joe Craze
1st Sgt. John Morgan
T/Sgt. James Magette
T/Sgt. James Beene
S/Sgt. Bill Lusk
S/Sgt. Luther Young
S/Sgt. Donald Brown
S/Sgt. George Skillington
S/Sgt. Walter Peoples
S/Sgt. Marshall Killingsworth
S/Sgt. Charles McCurdy
S/Sgt. Bert Bennett
S/Sgt. Wilbur Smith
S/Sgt. Robert Allen
S/Sgt. Nat Phillips
Sgt. Homer Lovern
Sgt. James Orie
Sgt. Jack Lenord



MILITARY BAND

Captain Gene Brown
Sponsor, Peggy Chandler
Drum Major, First Lt. Harold Gilbert
Second Lieutenant George Spencer
First Lieutenant Lamar Wilson
Second Lieutenant Jack Kennedy

M I L I T A R Y



COMPANY G

Captain Glendon Anderson
1st Lt. Browney Stephens
2nd Lt. Bill Richardson
2nd Lt. Jean P. Jones
1st Sgt. Sewel Hall
T/Sgt. Cyrus Smith
T/Sgt. Bill Fulmer
T/Sgt. Billy Foster
S/Sgt. Rhea Gray
S/Sgt. Ross Walker
S/Sgt. Ralph Phillips
S/Sgt. Burton Boyd
S/Sgt. Clifford Smith
S/Sgt. Jim Tompson
S/Sgt. Bill Snapp
S/Sgt. Paul Pierce
Sgt. Gene Savasing
Sgt. Curtis Crowe
Sgt. Don Duke
Sgt. Don Bowden
Sgt. Richard Willburr
Sgt. Bill Wyatt

PURPLE AND GOLD

Captain Raymond Jensen
Sponsor, Peggy Chandler
First Lieutenant John Zimbelman
First Lieutenant Bill Hollis
Second Lieutenant Lamar Wilson
Second Lieutenant Mary Ellen Rowe
Drum Major, Harold Gilbert





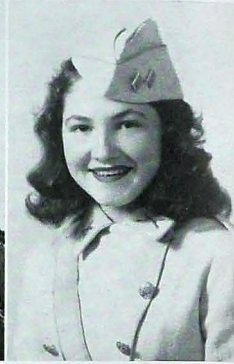
COL. HERSCHEL BOYD



MISS MARGARET SERTEL



LT. COL. FLOYD FULLER



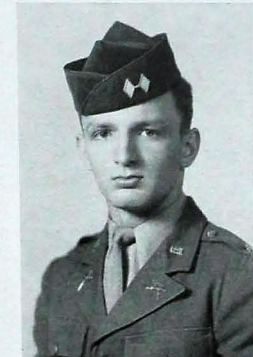
MISS MARY JO STEWART



LT. COL. JOHN STANFIELD



MISS BETTY BRANUM



LT. COL. CARLTON HATCHFORD



MISS MARGUERITE SHANKS

MILITARY OFFICERS

and SPONSORS



CAPT. FRANKLIN MARTIN



MISS MARY E. ROWE



CAPT. BOB MASON



MISS MARION VAUGHN



CAPT. J. L. AYERS



MISS LOUISE TREDWAY



CAPT. CLARENCE FRANK



MISS ANNA HARTE HARRISON



CAPT. BILLY HAWK



MISS JEAN SEARS



CAPT. GROVER MASTERSON



MISS CHARLOTTE WOODY



CAPT. JOE DYER



MISS MARTHA CARTER



CAPT. DAVID HOFLEY



MISS BETTY LEE



CAPT. GLENN MILLER



MISS VIRGINIA STANFIELD



CAPT. GLENDON ANDERSON



MISS BETTY SUE COLLINS



CAPT. GENE BROWN



MISS PEGGY CHANDLER



R. O. T. C. OFFICERS *and* SPONSORS

COLONEL HERSHEL BOYD	MARGARET SERTEL	CAPTAIN CLARENCE FRANK (A Company)	ANNA HARTE HARRISON
LIEUTENANT COLONEL JOHN STANFIELD	BETTY BRANNUM	CAPTAIN GROVER MASTERSON (B Company)	CHARLOTTE WOODY
LIEUTENANT COLONEL FLOYD FULLER	MARY JO STEWART	CAPTAIN JOE DYER (C Company)	MARTHA SUE CARTER
LIEUTENANT COLONEL CARLTON RATCHFORD	MARGARET SHANKLES	CAPTAIN DAVID HAFLEY (E Company)	BETTY LEE
CAPTAIN FRANKLIN MARTIN (Staff)	MARY ELLEN ROWE	CAPTAIN GLENN MILLER (F COMPANY)	VIRGINIA STANFIEL
CAPTAIN BOB MASON (Staff)	MARION VAUGHN	CAPTAIN GLENDON ANDERSON (G Company)	BETTY SUE COLLINS
CAPTAIN J. L. AYERS (Staff)	LOUISE TREADWAY	CAPTAIN GENE BROWN (Band)	PEGGY CHANDLER
CAPTAIN BILL HAWK (Staff)	JEAN SEARS		





CNS Library

THE TORCH

ANNA HARTE HARRISON



BEARER

★ ★ ★

JOE DYER

LEADERSHIP

PAUL CONNOR • MARY ELLEN ROWE



GLENN MILLER

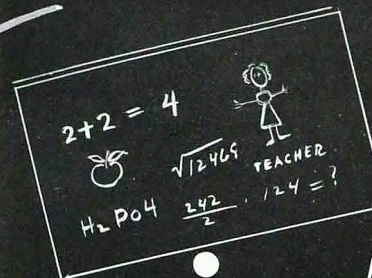


SARAH BAYSTON

SCHOLARSHIP

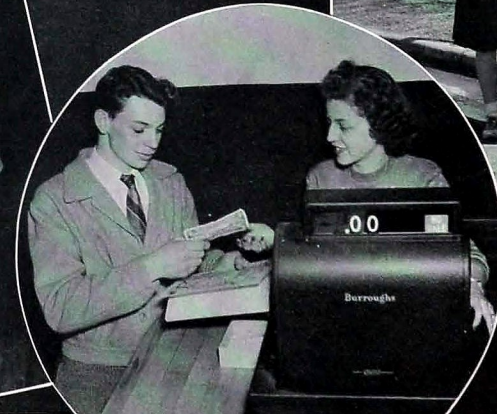


Purely Academic

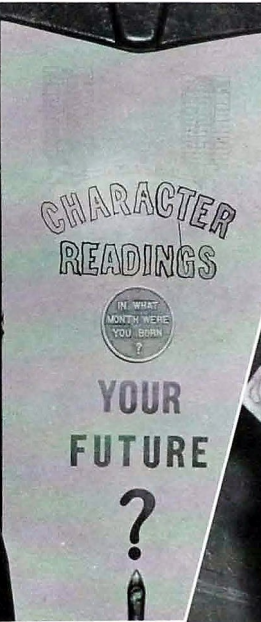
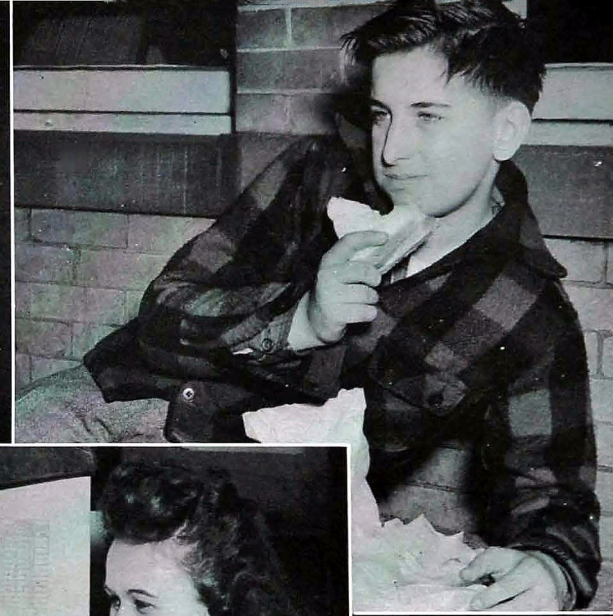
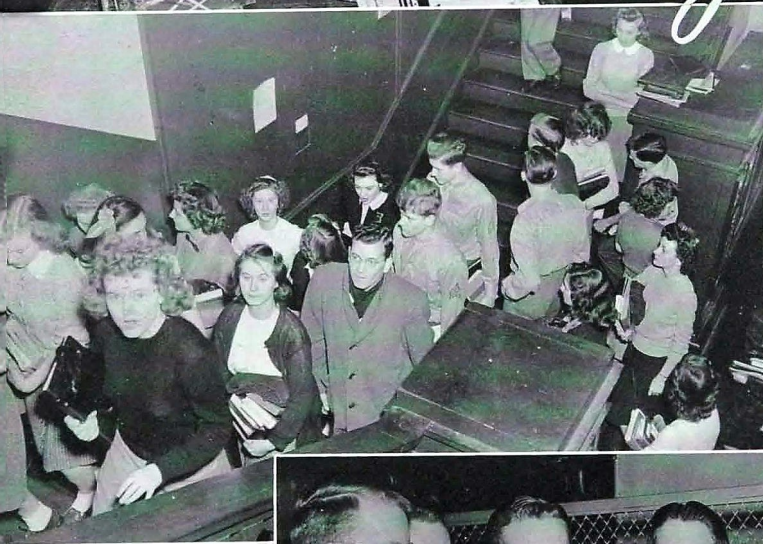




Centralized activity



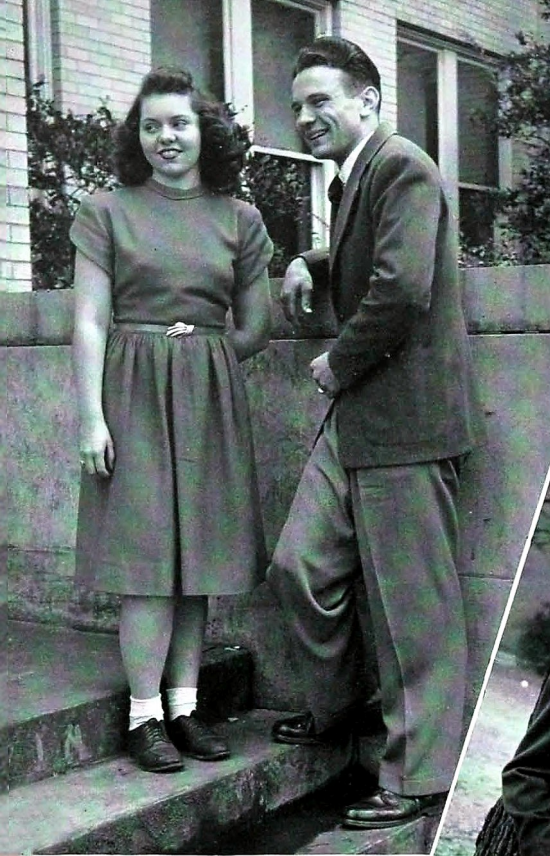
and what have you?



P R O M

Service

LILLIE LOU FORD
JOE DYER



Dependability

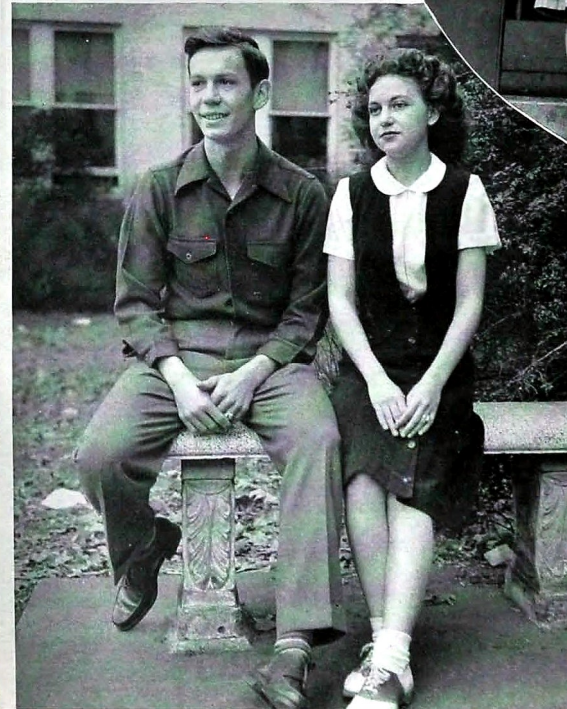
DAVID HAFLEY
GLORIA SMITH



I N E N T S T U D E N T S

Courtesy

MARY JO STEWART
HERSCHEL BOYD



Friendliness

JEAN SEARS
FLOYD FULLER



Personality

JIMMY COOKE
VIRGINIA ANNE DIXON

Talent

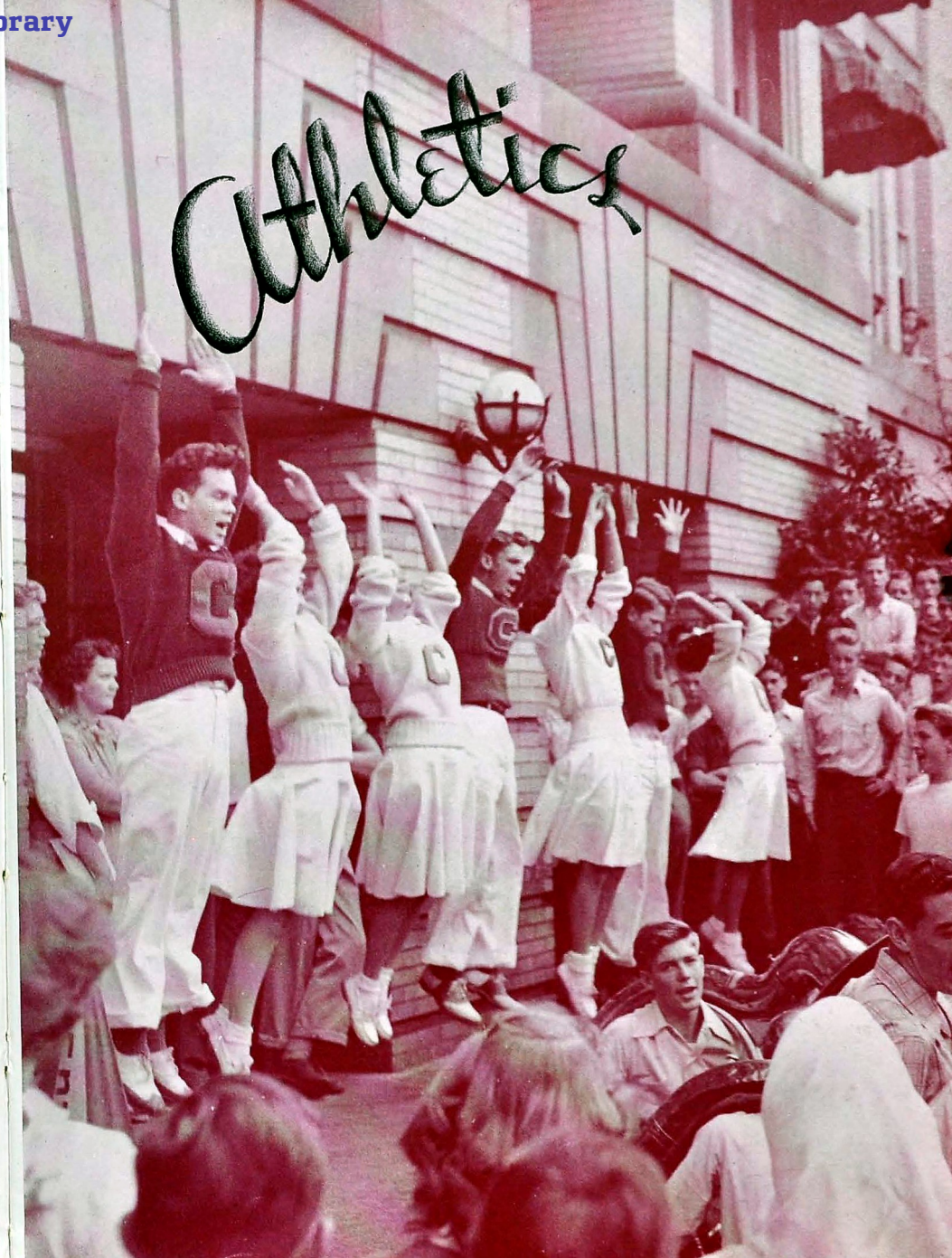
ANNA HARTTE HARRISON
RAYMOND JENSEN

Athletic Ability

SELMA MAE CARD
BOB McCOY

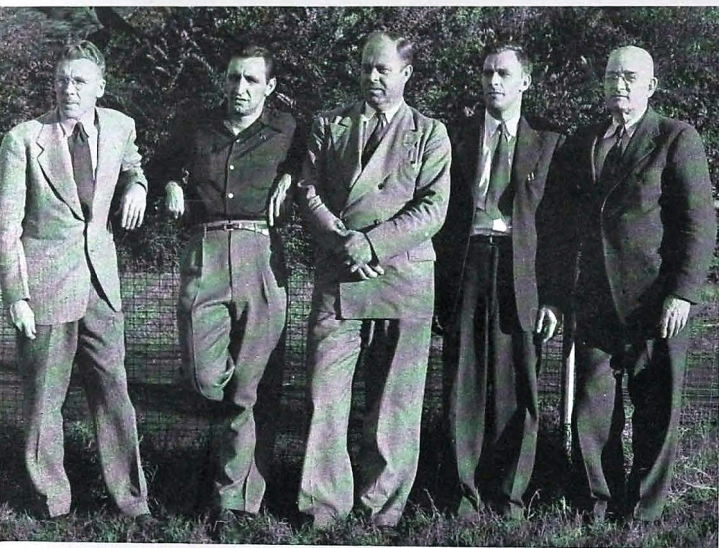


PROMINENT STUDENTS



FOOTBALL

at CENTRAL



E. B. ETTER

It must be Coach E. B. "Red" Etter's policy to have nothing but good football teams, because since he took over the job as number one coach at Central, that has been just the case—a winning team such as we have had this season.

Coach Etter, an alumnus of Central in 1930, received his B.A. Degree at the University of Chattanooga. He gained his coaching experience at Morgan School, Petersburg, Tennessee, and at Hendersonville, North Carolina. In 1936 he came to Brainerd Junior High where he coached until he soon became assistant to Petersen at Central.

During his time at Central, he has been greatly admired by the student body and by the faculty.

With one of the greatest football squads in Central's long history of brilliant teams, the Purple Pounders entered the 1946-47 season with prospects bright and hopes high.

Through a tough schedule, beginning with the tilt with Asheville and closing with the traditional fracas with Chattanooga High, the Pounders chalked up a record of nine victories and two upsets, thus adding up a total of 100.9 points, placing them in the lead as Champions of the State of Tennessee.

COACHES

JOHN K. KARWOSKI

The latest addition to the Central coaching staff is John N. Karwoski, who came to Central from the University of Chattanooga in the fall of 1946. His hard work with the football boys helped greatly in their successful season.

Mr. Karwoski, the 1945 U. C. football captain, is from Stamford, Connecticut. Although his term at the university was interrupted by the war, he came back to finish his school work and to play football. He is now working for his B.B.A. Degree.

JAMES L. NEWTON

The man responsible for molding the mighty Central line into shape is J. L. "Les" Newton, who has proved to be one of Central's greatest line coaches.

Coach Newton, an alumnus of Carson-Newman in 1930, was principal at Falling Water Grammar School before resigning to come to Central in 1941 to join the coaching staff and to teach general science.

He has put his heart and soul into his work and has helped develop one of Central's great teams.

J. M. SEATON

Serving as "B" team coach for the second time in his two years at Central is J. M. Seaton.

Mr. Seaton graduated from East Tennessee State Teachers College in 1934 and from there went to Soddy-Datay where he was assistant basketball and football coach. In 1942 he worked for the DuPont Company, where he remained until he came to Central in the fall of 1945 as an instructor in the industrial arts department.

Mr. Seaton's job as grass cutter coach is making varsity material out of the freshmen and sophomores who want to play football at Central.

The nineteen graduating lettermen will leave wide rifts in the line for another year but with reinforcements from the B team, next fall should find another great Central eleven on the field.

CENTRAL, 26: ASHEVILLE, 0

September 7

The Central High Purple Pounders opened another triumphant football season with a 26-0 victory over the Asheville Marcons.

Sparking the Purples' scoring were Bob McCoy, Ed Nobles, and Forest Vandergriff. McCoy crossed for two markers while the others tallied once.

Vandergriff's 60-yard dash through left tackle on the first play of the second half provided for Central's last touchdown and the longest run of the game.

CENTRAL, 40: SPRING CITY, 6

September 13

Playing on rain-swept Frawley Field, the Pounders won their homecoming game easily over the Spring City team.

For McCoy it was a big night despite the rain. His touchdown gallops of 4, 40, 45, 52, and 80 yards totaled 221 yards. The Spring City score came in the late minutes of the game after a long march against the Central third-stringers. Nobles scored the only other Central touchdown.

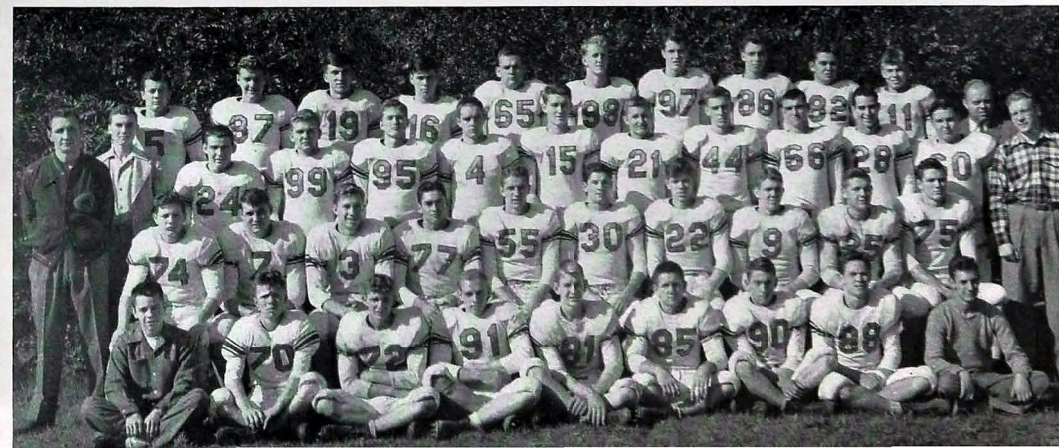


with George Gilbreath, Forrest Vandergriff, Ed Nobles, and Bob McCoy scoring them in that order.

CENTRAL, 12: KINGSPORT, 13

September 27

This tilt of the Purple Pounders with the Kingsport Indians proved to be one of the toughest and most exciting of the season. The stands at Frawley Field were packed with excited fans. Everyone had turned out to see this close contest.





Central's first score came when George Gilbreath got behind the Indian secondary in the first quarter and brought down Paul Connor's beautiful 35-yard pass. The second score came in the third period when Gordon Ratchford took the ball on an end around from the Kingsport two for a touchdown.

Cecil Puckett was the outstanding player for the Indians. He ran one touchdown over, passed for another, and converted an extra point which proved to be the victory margin over the Pounders.

Central's main weakness in this game came as the result of injuries received by her star backs. Bob McCoy was forced out of the game in the first quarter

because of a rib injury. Ed Nobles and Forrest Vandergriff also received slight injuries.

CENTRAL, 44; RED BANK, 0

October 5

Before an enthusiastic crowd of football fans with Chamberlain Field packed to the limit of its seating capacity and many standing, Central rolled over Red Bank to the tune of 44 to 0.

Ed Nobles and Forrest Vandergriff led in the scoring department for Central with two touchdowns each.

The Red Bank Lions had great trouble in making any gain whatsoever through the strong Central forward wall.



First Row: Glendon Anderson, Halfback; Ormond Anderson, Quarterback; Bill Bradford, Guard; Marvin Carroll, Center; Darrell Case, End; John Childers, Halfback. Second Row: Paul Connor, Captain, Quarterback; Howard Greene, End; Walt Henderson, Center; Kenneth Irwin, Guard; James McCroskey, Center; Charles McCurdy, Guard. Third Row: Carl Mills, End; Richard Overturf, Tackle; Jack Smartt, End; Forrest Vandergriff, Fullback; Edgar Woy, Quarterback; Ross Walker, Guard.

CENTRAL, 32; C. M. A., 0

October 11

"Central brewed and served bitter 'T' to their guests from Columbia while Ed Nobles poured," described in a nutshell the 32-0 outcome of Central's victory over Columbia Military Academy gridders on Frawles Field.

Leading in the scoring for Central was Ed "Racehorse" Nobles who had three touchdowns to his credit. Joe Love, Lamar Wheat, and Ross Walker played stand-out ball in the Purple line.

The C. M. A. eleven put up a brilliant fight, but never threatened to score.

CENTRAL, 27; M. B. A., 7

October 18

Captain Paul Connor's pitching arm was good for

three touchdowns to George Gilbreath, Central's right end, in this well won victory over the M. B. A. eleven of Nashville.

Although M. B. A. used four different formations against the Pounders, they managed to push across only one touchdown. Fumbles were very costly for the players from Montgomery Bell Academy.

CENTRAL, 64; SODDY-DAISY, 0

October 26

The Central Pounders pushed the Soddy-Daisy boys over the field and piled up a total of 64 points in this run-away game. The Trojan team failed to stop the Central backfield. Nobles scored four times, McCoy twice, and Vandergriff twice. Gordon Ratchford, left end, accounted for the other two scores.

CENTRAL, 13; ENSLEY 6

November 2

Although outplaying the Ensley team all the way, Central waited until the third quarter to break a 6-6 tie which had existed since the first quarter.

The winning touchdown came when Captain Paul Connor threw Ed Nobles a short pass on a screen pass play. Ed raced 46 yards for the score.

Central's first touchdown came on a long push after the opening kick-off. McCoy carried the ball over into "glory ground."

CENTRAL, 6; BAYLOR, 13

November 16

Before a crowd of fans drenched with a downpour which started soon before the game opened, the Baylor

"Red Raiders" outscrapped and upset the favored Central High Purple Pounders.

Central started off with a bang. Nobles took the ball on the second play of the game and, with the help of wonderful blocking, sprinted 72 yards for Central's lone score.

After this play Central failed to get back in the ball game, and from this point it was Baylor's game until the final whistle.

For Baylor it was Roddam and Snow who starred. Roddam was the leading yardage gainer while Snow scored both of Baylor's touchdowns.

CENTRAL, 58; CITY, 6

November 30

Central renewed the rivalry of long standing with the City High Maroons by downing them 58 to 6 on Saturday, November 30 on Chamberlain Field. This twenty-

First Row: Don Carden, Center; Dorsey Gardner, Tackle; George Gilbreath, End; Leon Grizzle, Halfback; Claude Hall, Halfback; Billy Hawk, Tackle. Second Row: Dewey Hawkins, Tackle; Joe Love, Tackle; Bob McCoy, Halfback; James McKinney, Fullback; Joe Morris, Guard; Ed Nobles, Alternate Captain, Halfback. Third Row: Dan Six, Guard; Gordon Ratchford, Halfback; Don Redding, End; Ray Sizemore, Fullback; A. J. Smith, Halfback; J. T. Vick, Guard; Lamar Wheat, Tackle.



fifth victory over the Third Streeters gave the Central High Purple Pounders the title of State Champions for the season of 46-47.

The City High team was far outclassed and overpowered. City's rushing completely failed because of the strong Central forward wall. Their total yardage for the day was a minus of twenty-three yards.

Central scored in every period with Nobles leading the attack. His five touchdown gallops averaged over thirty-six yards a run.

The best play of the game came just before the half when Connor took the ball from the center and passed

to George Gilbreath. He in turn lateraled to Ed Nobles who faked a run and passed the Gordon Ratchford for a score. This play received a great applause from the 6,500 excited fans who had packed Chamberlain Field to see this colorful tilt.

City's only score came after a pass attack in which Richard Royal did some fine tossing. He ended the attack by a pass to Catlett for the score.

Another thrill of the game occurred when Lamar Wheat blocked a City punt, picked it up, and went over for a touchdown.

Each Central player performed brilliantly in the game.





Front Row, Left to Right: Gene Igou, Manager, Joe Goodner, Floyd Fuller, James Cooke, Jim Perry, Harry Arnold, Eddie Connell, W. P. Baker, Coach. Back Row: Charles Woy, Edgar Woy, James McKinney, Milo Lusk, Bill Palmer, Dewey Hawkins, Earl Pickering.

B A S K E T B A L L



SEASON RECORD

*Central	Central—December 11, 1946	12
	41; Tyner	
*Central	Central—December 11, 1946	22
	39; City	
*Central	Central—December 12, 1946	31
	38; Hixson	
*Central	Central—December 13, 1946	32
	20; Soddy-Daisy	
*Central	Central—December 14, 1946	36
	33; McCallie	
Central	Rossville—December 19, 1946	48
	35; Rossville	
Central	Peerless—December 21, 1946	16
	38; Lakeview	
Central	Central—December 26, 1946	39
	35; Kingsport	
Central	Central—December 27, 1946	25
	36; Ooltewah	
Central	Hixson—December 28, 1946	38
	30; Hixson	
Central	Ooltewah—December 31, 1946	39
	35; Ooltewah	
Central	Central—January 1, 1947	34
	37; Hixson	
Central	Central—January 3, 1947	48
	53; Rossville	
Central	Central—January 7, 1947	54
	19; Soddy-Daisy	
Central	Central—January 10, 1947	38
	40; City	
Central	Soddy-Daisy—January 11, 1947	47
	40; Soddy-Daisy	

*Times Cup Series (Fourth Place).
**First District Tournament (Second Place).



Central	Bradley—January 13, 1947	40
	36; Bradley	
Central	Central—January 15, 1947	43
	47; Knox City	
Central	Memorial Auditorium—January 17, 1947	37
	34; City	
Central	Red Bank—January 18, 1947	29
	35; Red Bank	
Central	City—January 20, 1947	33
	36; City	
Central	Central—January 24, 1947	37
	47; Bradley	
Central	McCallie—January 28, 1947	45
	43; McCallie	
Central	Central—January 30, 1947	43
	50; Johnson City	
Central	Baylot—February 3, 1947	54
	30; Baylor	
Central	Knox City—February 6, 1947	57
	43; Knox City	
Central	Sullivan—February 7, 1947	52
	32; Sullivan	
Central	Johnson City—February 8, 1947	40
	48; Johnson City	
Central	Central—February 12, 1947	46
	39; McCallie	
Central	Central—February 14, 1947	31
	40; Red Bank	
Central	Central—February 24, 1947	51
	39; Baylor	
*Central	Red Bank—February 25, 1947	41
	57; Sale Creek	
**Central	Red Bank—February 27, 1947	20
	54; Kirkman	
**Central	Red Bank—February 28, 1947	38
	42; Hixson	
**Central	Red Bank—March 1, 1947	61
	37; Soddy-Daisy	

*Times Cup Series (Fourth Place).
**First District Tournament (Second Place).





Front Row: Dickie Allen, Malcolm Grier, Frank White, Bobby Allen, George Gray, Bruce Spencer, George Spencer, Bill Foster, Archie Slaten, Prince Kendall, Bill White, Fred Hall. Second Row: James Ogle, Richard Overturf, Ed Magette, Douglas Slagle, A. J. Smith, Ted Winkler, Grover Masterson, Dan Tinker, Don Westbrook, Wallace Blaylock, Jack Faust. Back Row: Ray Sizemore, Joe Hutson, Howard Green, Don Redding, Cowart Williams, James Helton, Jim McKinney, J. L. Ayers, Joe Dyer, David Hatley, Don Smith, Ernest Prince, Claude Gist, Coach.

B O X I N G

The winning of the National Inter-Scholastic Boxing Crown, one of the most important trophies ever won by a Central Boxing team, marked the grand climax of the boxing season of 1947. This was the third year for boxing as a major sport at Central. Although Central entered the meet in Charlottesville, Virginia, as an underdog with only nine men, five boys won and one placed to give Central boxers the crown. The winners were Prince Kendall, Archie Slaten, Grover Masterson, J. C. Parham, and Howard Green; Ed Nobles was runner-up in his weight. The other members of the team were Frank White, Raymond Sisemore, and Walter Henderson.

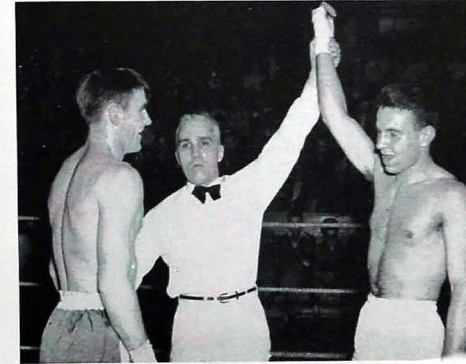
Other championships that the Central boxing team won were the Golden Gloves High School Open, Golden Gloves High School Novice, Golden Gloves Open, and the Frye Institute Meet. Central boys also won honors in the Southern Golden Gloves Meet at Nashville and Grover Masterson and

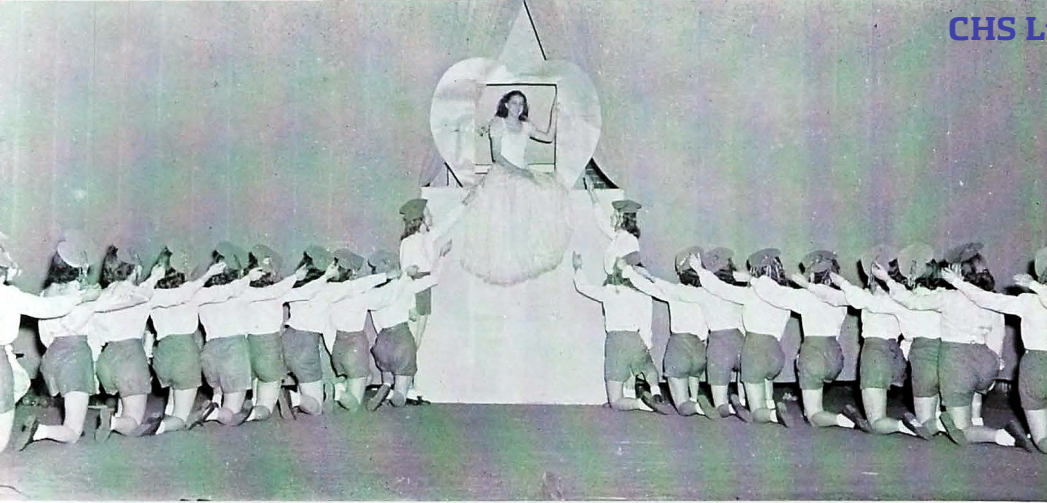
Dickie Allen were sent to the National Golden Gloves Meet at Chicago and made a good record for themselves, although they did not win.

The leader of the Central boxing team was Grover Masterson, two-year Chattanooga Golden Glove featherweight champion. He was Southeastern A. A. U. featherweight champion, two time Southern Golden Gloves featherweight champion, National Inter-Scholastic High School champion, and a member of the Southern team in the Golden Gloves Meet in Chicago. He won the most-improved-boxer trophy in 1946, and in 1947 he won in Nashville the Blinky-Horne Sportsmanship trophy for outstanding sportsmanship throughout the tournament.

After such a successful year of boxing, Central has decided to back the team and make it a permanent sport.

The members of the boxing team who made letters are: George Gray, Fred Hall, Bruce Spencer, Ed Magette, Joe Dyer, Raymond Sisemore, James Ogle, Dickie Allen, Prince Kendall, Robert Allen, Archie Slaten, Grover Masterson, J. C. Parham, Howard Green, Jimmy McKinney, Don Redding, Billy Foster, A. J. Smith, Frank White, and Manager, Gilbert Harvey.





"QUEEN OF HEARTS"
GEORGETTE SHORT

GIRLS' ATHLETICS



Sitting-Up
Exercises



Physical
Education
Staff



Daily Merry-Go-Round



STUDENT NOTICES



Darrill Case, Eddie Connell, Jimmy Cooke, Floyd Fuller, Bill Fulmer, William Gaddis, Dorsey Gardner, Joe Goodner, Howard Greene, Bobby Holmes, Bill Jennings, James Robert Jolley, Robert McCoy, Ed Nobles, James Henry O'Rear, Jim Perry, Raymond Sisemore, Herman Tarpley, John Cowart Williams, Charles Lee Woy, Bob Wrinkle, W. P. Bales, Coach, Jim Adams, Manager.

BASEBALL

The Winning
Pitch



NOTICE

NO MORE 9:45 CLASSES
OR FACULTY AT THE
DRUG STORE

THE CLEANING HOUSE
THIS WEEK!

PERSONS CAUGHT BREAKING
THIS RULE WILL BE KEPT
AFTER SCHOOL

Signed - [illegible]

MENU TODAY
CAT FISH! - SWEET MILK!
LOBSTER - PRUNES!
FISH (ASSORTED) - LIMA BEANS!
CORN BREAD! - TURNIP TOPS!
MEALS SERVED ALMOST ANY TIME!
Signed - THE COOK

PEP MEETING!
TODAY'S PEP MEET
WILL BE HELD IN THE
GYM FRIDAY - EVERY STUDENT
M-U-S-T ATTEND --- OR

President

NOTE!

THERE WILL BE NO SCHOOL TWO DAYS
NEXT WEEK --- SATURDAY + SUN

FINAL EXAMS WILL BE HELD IN THE BOILER
ROOM TODAY AT 4 P.M. - NO SMOKING PLEASE

M-U-S-T

NOBLES and MCCOY SEE ME

"Professor Bales"

PEP NOTICES!
NUTS!
JUST CALL ME
SQUARED!

5. NESCO, Principal

MA'S LATE GYM

THREE ACT FAKE -- THREE HOURS LONG...
PRESENTED TO THE PUBLIC FOR THE
FIRST TIME IN THE SCHOOL GYM FRIDAY
EIGHT AT 8 --- AND IS IT SHARP!

MA WON'T BE THERE UNTIL 10 P.M.
ADVANCE TICKETS NOW ON SALE!

Organizations

THIS IS ONE PLACE
KILROY MISSED

BALL ROOM
DANCING

CLASSES 9 A.M. 11 A.M.
ART --- CLASSES
CLOSED TO REMODEL

RUSSELL
NEXT FRIDAY

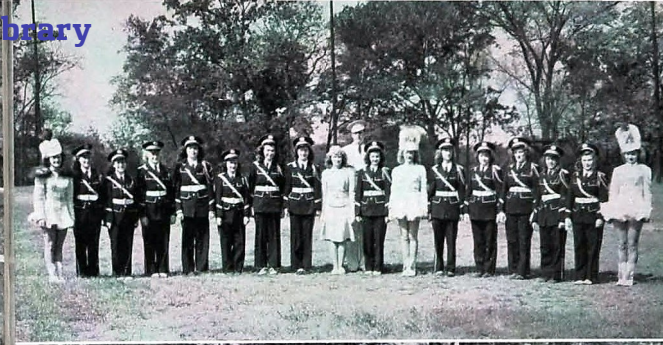
THE END

ACE CLUB

GEORGETTE SHORT President
MYRL HALLOCK Vice-President
ANNA HARTTE HARRISON Secretary-Treasurer
MISS SARAH B. HUBBARD Sponsor



CHS Library



BAND GIRLS' CLUB

PEGGY CHANDLER President
HAZEL GOODNER Vice-President
LUCILLE KAY Secretary
JUNE BENNETT Treasurer
MARY ELLEN ROWE Reporter
MR. B. H. WALKER Sponsor

ANCHORS AWEIGH

MARGUERITE SHANKLES President
BETTY GRIFFITH Vice-President
MARY JO STEWART Secretary
GLORIA SMITH Treasurer
MRS. REBA FULTS Sponsor



BAND OFFICERS' CLUB

RAYMOND JENSEN Captain
PEGGY CHANDLER Sponsor
HAROLD GILBERT Drum Major
ANNA HARTTE HARRISON Head Majorette
MR. B. H. WALKER Sponsor

ANNOUNCERS' CLUB

JOE LAYCOCK President
MIMI PARKS Vice-President
BETTY LEE Secretary-Treasurer
MRS. KEN FLENNIKEN Sponsor



CAMERA CLUB

WILENE LONG President
EUGENE BAKER Vice-President
DOROTHY BURNETTE Secretary-Treasurer
MR. C. G. TOWRY Sponsor

BAND ENSEMBLE

RAYMOND JENSEN President
SUE ADAMS Secretary
PEGGY YOUNGER Treasurer
MARY ELLEN ROWE Reporter
MR. B. H. WALKER Sponsor



DEPRESSION CLUB

JAMES O'REAR President
BUDDY COBELE Vice-President
CHARLES WITT Treasurer
MRS. H. B. ROBINSON Sponsor

DIGEST STAFF

LILLIE LOU FORD Editor
 BETTY GRIFFITH Assistant Editor
 CAROL COVINGTON Business Manager
 MISS SALLY MAY KING Sponsor
 MR. J. L. MILBURN Sponsor



DISC AND DIAMOND SOCIETY

JOHN STANFIELD President
 HERSHEL BOYD Vice-President
 BOB MASON Vice-President
 BROWNIE STEPHENS Vice-President
 FRANK MARTIN Sergeant-at-Arms
 STUART LYNCH Sergeant-at-Arms
 CLARENCE FRANK Treasurer
 SERGEANT W. E. OSBOURNE Sponsor



GADABOUTS

LORRAINE FINNELL President
 PEGGY HENDERSON Vice-President
 HORTENSE BAGWELL Secretary
 BETTY HOLLAND Treasurer
 MR. C. G. TOWRY Sponsor



GIRLS' HI-Y

MARY ELLEN ROWE President
 LILLIE LOU FORD Vice-President
 LOIS WILLIAMS Secretary
 PEGGY SUE ESPY Treasurer
 MRS. JOHN A. SHELTON Sponsor
 MRS. NEWTON LOGAN Sponsor



CHS Library



GRADY LITERARY SOCIETY

BROWNIE STEPHENS President
 CYRUS SMITH Vice-President
 DAVID HAFLEY Secretary
 HERSHEL BOYD Treasurer
 SEWELL HALL Chaplain
 MR. W. EVERETT O'NEAL Sponsor



GYM OFFICE FORCE

CATHERINE MILES Head
 IMOGENE BAKER Secretary-Treasurer
 MISS SARAH B. HUBBARD Sponsor



HOME ECONOMICS CLUB

LOIS WILLIAMS President
 DOROTHY PIRTLE Vice-President
 SUE CHILDRESS Secretary
 CLARA MAE MARSHAL Treasurer
 MRS. JANIE SHROPSHIRE Sponsor
 MRS. MERCER CLEMENTSON Sponsor



JUNIOR BOYS' HI-Y

JACK EDWARDS President
 EDWIN TRIMBLE Vice-President
 FRANKLIN ASHLEY Secretary-Treasurer
 SAM SOUTHERLAND Chaplain
 MR. W. H. MILLSAPS Sponsor

LIBRARY STAFF

SUE GARDNER President
 IMOGENE BAKER Vice-President
 JANE PARKER Secretary
 FAY CAMPBELL Treasurer
 MRS. M. R. SANDERS Sponsor



MERRY MACS

GRADENA TATE President
 JOE POTTS Vice-President
 VIRGINIA CANFIELD Secretary-Treasurer
 MR. LUTHER V. YOUNG Sponsor



NATIONAL HONOR SOCIETY

BERT ROGERS President
 MARTHA WERNDLI Vice-President
 GLORIA SMITH Secretary
 HERSCHEL BOYD Treasurer
 MRS. JOHN A. SHELTON Sponsor



NITE OWLS

ANN DIXON President
 BERT ROGERS Vice-President
 PINKY BRANNUM Secretary-Treasurer
 MRS. BLANCHE ROGERS Sponsor



ORCHESTRA

GEORGE SPENCER President
 JOYCE HOWARD Vice-President
 PEGGY SUE ESPY Secretary-Treasurer
 MR. K. W. JOHN Sponsor



SENATE

GLENN MILLER President
 LILLIE LOU FORD Vice-President
 PEGGY SUE ESPY Secretary
 BROWNIE STEPHENS Treasurer
 MRS. KEN FLENNIKEN Sponsor
 MR. J. A. HOODENPYL Sponsor



SENIOR BOYS' HI-Y

GLENN MILLER President
 JOE DYER Vice-President
 BROWNIE STEPHENS Secretary
 JOHN STANFIELD Treasurer
 JOHNNY MORGAN Chaplain
 MR. J. P. DYER Sponsor

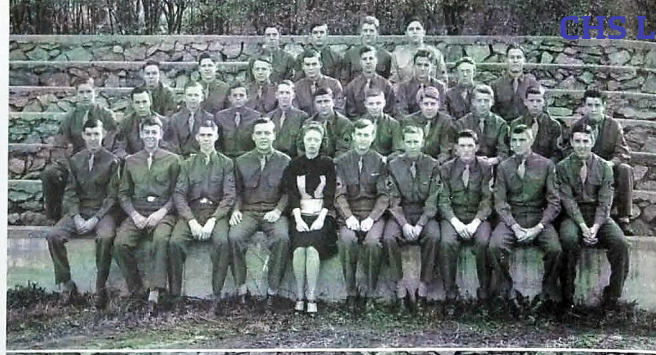


SENIORETTES

DOROTHY HUMPHREY President
 ANN CAMPBELL Vice-President
 JIMMIE THOMAS Secretary
 JOANNA ROGERS Treasurer
 MISS FRANCES TIERNAN Sponsor

SERGEANTS' CLUB

WALTER MEYER President
DON SMITH Vice-President
DAVID RENAKER Secretary
JOHNNY MORGAN Treasurer
SERGEANT DOCK RACHELS Sponsor



SHOVE-OFFS

BETTY WORKMAN President
JOYCE CAMP Vice-President
NADIA ROBINSON Secretary
BETTY HOLDAM Treasurer
MISS FLORA E. BECK Sponsor



SPINSTERETTES

PEGGY SUE ESPY President
BETTY JEAN ROGERS Vice-President
MARY FRANCES SHIRLEY Secretary
PEGGY TITTSWORTH Treasurer
MRS. LAMAR GORDON Sponsor



STAGE CREW

WALTER BALLINGER Manager
JOE SALMON Assistant Manager
BERT BENNETT Secretary-Treasurer
DON SMITH Projection Room Manager
MR. LEO BRITT Sponsor



STUDENT COUNCIL

BETTY GRIFFITH President
CORKY COOK Vice-President
MARY JO STEWART Secretary-Treasurer
JOE DYER Chaplain
MR. W. H. TEMPLETON Sponsor



T. AND I.

CHARLES HUNT President
BOB JOLLEY Vice-President
JOAN NORDIN Secretary
MICKEY WILLIAMS Treasurer
ALBERT BENNETT Sergeant-at-Arms



TRAIL TROTTERS

FRANKIE RIDGE President
FRANCES QUARLES Vice-President
BETTY BEASLEY Secretary
BOBBIE LERCH Treasurer
MR. J. LESTER NEWTON Sponsor



"21" CLUB

J. W. LUNSFORD Chairman
EDDIE WOOD Secretary
MISS ESTHER LEE DAVIS Sponsor



TWIXTEEN CLUB

NAN GLASSCOCK President
 BETTY LOU LEE Vice-President
 JOE HAMBRICK Secretary
 DOT HARRELL Treasurer
 MRS. OPHELIA HUGHES Sponsor



USHERS

GLORIA SMITH President
 BETTY GRIFFITH Vice-President
 JEAN SEARS Vice-President
 MARY ELLEN ROWE Secretary-Treasurer
 MISS EDNA CROSS Sponsor



VETERANS' CLUB

TOM MASSENGILL President
 DARRELL CASE Vice-President
 JOE STEVENSON Secretary-Treasurer
 VANCE WELLS Sergeant-at-Arms
 MR. J. L. MILBURN Sponsor



VARSITY GLEE CLUB

JOE LAYCOCK President
 WALTER MEYER Vice-President
 JOYCE HOWARD Secretary-Treasurer
 MR. K. W. JOHN Sponsor



CHS Library



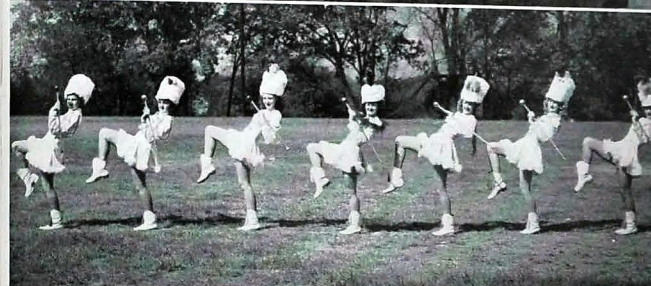
INK SPOTS

JILL HINKLE President
 BOBBIE JORDAN Vice-President
 KEITH BLACK Secretary-Treasurer
 MR. A. B. ROBERTSON Sponsor



OFFICERS' CLUB

CLARENCE FRANK President
 JOHN STANFIELD Vice-President
 FRANK MARTIN Secretary
 J. PAUL JONES Treasurer
 J. L. AYERS Chaplain
 BOB MASON Chaplain
 MISS MARY E. FOLKNER Sponsor



MAJORETTES

ANNA HARTE HARRISON
 FRANCES WEST NANCY FINNELL
 BOBBIE JEAN HAWK GLORIA LIMEHOUSE
 EUNITA SIMPSON MARGARET BRATTON



BANK AND BOOKSTORE

SUE RICHEY JOE DYER
 JEAN COFIELD JACK EDWARDS
 ANNA HARTE HARRISON SEWELL HALL
 MARILYN KRAUSE EDWIN TRIMBLE
 SUE CANFIELD FRANKLIN ASHLEY
 MRS. LYDA GORE RICE, Sponsor



RIFLE TEAM

JAMES L. AYERS, Team Captain
 FRED R. COOPER BILL H. TURPIN
 BILLY J. WYATT CECIL TANKERSLY
 JIMMY H. FICKLE JOSEPH CRAZE
 HAROLD CARRELL WILLIAM STANLEY
 BILL R. LUSK BENNY SMITH

Patrons

ALABAMA ENGRAVING COMPANY	Birmingham, Alabama
ARCHER PAPER COMPANY, 6-3189	1124 Market Street
ATHLETIC HOUSE	Knoxville, Tennessee
L. G. BALFOUR COMPANY, JEWELERS	Attleboro, Massachusetts
BENSON PRINTING COMPANY	Nashville, Tennessee
G. W. BAGWELL PRESERVING COMPANY	1500 Chestnut Street
THE BOYS SHOP, 7-3248	622 Market Street
BRAINERD DRUG COMPANY, 2-3101	3240 Brainerd Road
BRAINERD VARNELL HARDWARE AND PAINT COMPANY, 2-1173	3114 Brainerd Road
CENTRAL HIGH SCHOOL P. T. A.	Central High School
CHATTANOOGA ARMATURE WORKS, 2-2124	1215 Duncan Avenue
CHATTANOOGA BUTTON BADGE MFG. COMPANY, 6-6934	109 East Seventh Street
CHATTANOOGA COCA-COLA BOTTLING COMPANY, 6-4788	201 Broad Street
CHATTANOOGA GAS COMPANY, 6-0191	811 Broad Street
CHATTANOOGA MEDICINE COMPANY, 3-0030	3803 St. Elmo Avenue
COMMERCIAL STATIONERY AND SUPPLY COMPANY, 6-1241	109 East Seventh Street
COMMUNITY DRUG COMPANY, 6-2000	Lupton City, Tennessee
DAYLE MAY JEWELERS, 3-0195	Rossville, Georgia
THE DIXIE SHOPS, WOMEN'S APPAREL, 7-2708	601 Market Street
GEORGE H. DIXON PHARMACY, 7-2101	339 Market Street
EASTERLY-WOODHEAD FLOWERS Inc., 6-4721	4 East Seventh Street
EDMONDSON SCHOOL OF BUSINESS, 6-1259	Edmondson Building
EDWARDS AND LeBRON Ltd., JEWELERS, 6-7175	805 Market Street
EFFRON'S DEPARTMENT STORE, 6-5645	607 Market Street
THE FISCHER COMPANY, JEWELERS, 6-5235	8 West Eighth Street
FLEETWOOD COFFEE COMPANY, 7-5531	246 East Eleventh Street
FOWLER BROTHERS FURNITURE COMPANY, 7-4556	701 Broad Street
FOX BROTHERS COMPANY, WHOLESALE GROCERS, 6-3139	1215 King Street
GORDON GAMBILL INSURANCE COMPANY, 7-1482	702 Cherry Street
GILMAN PAINT AND VARNISH COMPANY, 6-5181	216 West Eighth Street
GOETZ, PERRY, AND McDADE, FLORISTS, 7-3345	James Building
H. W. GRANERT, PHOTOGRAPHER, 6-7335	616½ Market Street
GRANT-PATTEN MILK COMPANY, 6-1294	1202 King Street
HAIJOCA CORPORATION, MILL SUPPLIES, 7-1151	515 East Eleventh Street
HARDIE AND CAUDLE, CLOTHIERS, 6-7032	809 Market Street
HOLLAND FURNACE COMPANY, 6-6418	225 East Eleventh Street
HOTEL PATTEN, 6-2141	Market at Eleventh
HOWARD CLEANERS, 2-1116	1631 McCallie Avenue
INDEPENDENT PAINT AND GLASS COMPANY, 6-8112	506 Market Street
JACOBS WHOLESALE CANDY COMPANY, 6-2728	219 East Tenth Street
THE JO-ANN, 4-4601	201 Chickamauga Avenue
JOYS INC., FLORISTS, 6-7168	Georgia at Tenth

Patrons

C. T. KEENER PLUMBING COMPANY, 7-6536	121 Market Street
KIMBALLS FLOWERS, 2-4771	2409 McCallie Avenue
KINGSPORE PRESS	Kingsport, Tennessee
KOBLINTZ, MEN'S FURNISHINGS, 6-2764	811 Market Street
S. H. KRESS AND COMPANY, TEN CENT STORE, 6-5631	708 Market Street
LANSFORD PIANO COMPANY, 6-7185	730 Cherry Street
L. C. LEACH COMPANY, JEWELERS, 7-2841	738 Cherry Street
LeGRAND JEWELRY COMPANY, 6-6816	604 Market Street
LOVEMANS INC., DEPARTMENT STORES, 6-0161	800 Market Street
MANGEL'S OF TENNESSEE INC., 7-1626	634 Market Street
MARTIN-THOMPSON, SPORTING GOODS, 7-3373	705 Cherry Street
MATTHEW'S PHARMACY, 2-3168	1400 Dodds Avenue
McCALLIE AVENUE PHARMACY, 6-1712	732 McCallie Avenue
TOM McGHEE, JEWELER, 6-0751	732 Cherry Street
MILLS AND LUPTON SUPPLY COMPANY, 6-5171	1152 Market Street
MILLER BROTHERS COMPANY, DEPARTMENT STORE, 7-1251	629 Market Street
MOUNTAIN CITY STOVE COMPANY, 6-2167	1240 Market Street
NEWTON CHEVROLET, 6-0181	329 Market Street
NOLAND PLUMBING COMPANY, 7-1284	115 Market Street
NOLES BARBER SHOP	In Ridgedale
PALMER CLOTHES, 6-3834	825 Market Street
T. H. PAYNE COMPANY, OFFICE SUPPLIES, 6-0138	821 Market Street
PICKETTS INC., WOMEN'S APPAREL, 6-3121	814 Market Street
PRYOR PHARMACY, 2-1148	1422 McCallie Avenue
RHYNE PHARMACY, 4-1547	117 Chickamauga Avenue
RIDGE DRUG COMPANY, 2-1171	418 Dodds Avenue
R. K. SCHOLZE, GROCERS, 2-2131	415 Dodds Avenue
SEARS-ROEBUCK AND COMPANY, 6-7344	539 Market Street
SHERWIN-WILLIAMS PAINT COMPANY, 6-5971	828 Broad Street
THE SPORTS SHOP, 6-8532	Read House
A. F. STEINHOEFEL, JEWELERS, 6-6249	14 West Eighth Street
SWEET ELECTRIC COMPANY, 6-2412	921 Market Street
TEMPLETON'S INC., JEWELERS, 6-7628	12 West Eighth Street
TUNNEL DRUG COMPANY, 2-2156	3110 Brainerd Road
UNIVERSITY OF CHATTANOOGA, 6-7363	McCallie Avenue
VIOLET STUDIO, CAMERA SHOP, 6-1553	11 East Seventh Street
THE VOGUE, WOMEN'S APPAREL, 6-5123	719 Market Street
WATERHOUSE GARAGE, 7-5968	527 Broad Street
WAGC BROADCASTING COMPANY, 7-1128	Hotel Patten
WDEF BROADCASTING COMPANY, 6-5664	Volunteer Building
WDOO BROADCASTING CORPORATION, 6-5117	Hamilton National Bank Bldg.
SHEENY WHITE, COMMERCIAL PHOTOGRAPHERS, 6-3668	12 East Eleventh Street



The Curtain

As the curtain falls with graduation and this book closes on the year 1947, more than four hundred Central seniors will have passed another outstanding milestone in life.

A wonderful year it has been with its high points and its hurdles, its times of testing and its days of victory, its fun and frolic, its parties, banquets, hayrides, plays, and football games. All these add up to an unforgettable year.

In the days ahead with their kaleidoscopic changes, if this CHAMPION of '47 helps you recall happy associations and high accomplishments, and to keep the memory of the many familiar scenes and faces bright, the staff has not labored in vain.



CHS Library

