

CHS Library



Champion



1944

Sally May King
Room 310



PRESENTING
The Champion
1944

CENTRAL

HIGH SCHOOL, CHATTANOOGA, TENNESSEE



Where we Work



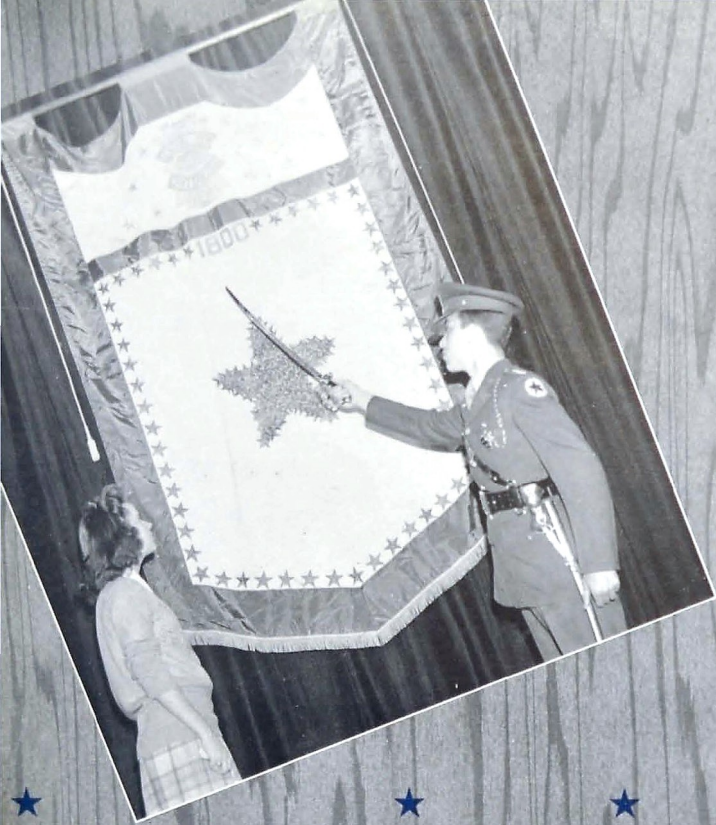
G. C. Robinson
Editor

Ann Mavity
Business Manager



And Play





And Participate in the War Effort



Our Principal

S. E. NELSON



Dedication

As an expression of our appreciation for her loyalty and her fine spirit of cooperation; for her frankness and sincerity with the student's best interest at heart; for her quiet, yet keen

sense of humor; for her efficiency and faithfulness through years of service to Central, the Staff of 1944 dedicates this volume of the Champion as a well deserved tribute to Miss Beulah Parker.



The FACULTY

WILLIAM P. BALES History
 MRS. HAZEL BARTON Commerce
 MRS. ELIZABETH PARKS BEAMGUARD Librarian
 MISS FLORA E. BECK Mathematics
 W. V. BEENE Mathematics
 MRS. C. H. BOYD Cafeteria Manager
 MRS. K. E. BRUECKNER English
 MAJOR W. H. BYINGTON Military Tactics
 MRS. MERCER CLEMENTSON Home Economics
 MRS. MARY COOKE COOPER Nurse
 MISS EDNA KING CROSS History
 MISS CHRISTINA COPPINGER Secretary
 MISS DOROTHY DAVIS Secretary
 MISS ELSA DENNISON Mathematics
 MISS MARY LOU DERRYBERRY Art
 J. POPE DYER Social Science
 E. B. ETTER Mathematics, Athletics
 MISS RUTH FAIN Spanish
 E. N. FIELDS Social Science
 MRS. KEN FLINNICKEN Speech
 J. J. FLETCHER Auto Mechanics

MISS HARRIET FOSTER English
 MRS. REBA L. FULTS Social Science
 MRS. FRIEDA HILL Cafeteria Manager
 J. ARLIE HOODENPYL Chemistry
 MISS EDMUND HOOSER English
 MISS SARA BANKSTON HUBBARD Physical Education
 J. STEGER HUNT Biology
 MRS. J. STEGER HUNT History
 MRS. EDNA C. JACOWAY Mathematics
 KENNETH W. JOHN Music
 MISS MARIE JOHNSON History
 MISS EARL R. JONES History
 SERGEANT C. J. KERSCHER Military Tactics
 MISS SALLY MAY KING English
 MISS GRACE LASATER Registrar
 MISS CAROLINE LILLARD Mathematics
 MRS. R. N. LOGAN Dean of Girls
 MRS. IDA MOORE LONGLEY English
 MISS RACHEL McALLISTER Bible
 JAMES L. MILBURN Printing

CHARLES MILLSAPS Physical Education
 W. H. MILLSAPS Diversified Occupations
 MISS ANNE MOFFITT English
 MISS MINNIE LEE MORGAN English
 MISS ELLEN MULLENNIX English
 MRS. HARRY NELSON English
 LESTER NEWTON General Science
 W. EVERETT O'NEAL Mathematics
 MISS JOE ORE Biology
 ERNEST A. OWENS Mechanical Drawing
 MISS BEULAH B. PARKER Mathematics
 MRS. J. FRANK PRICE History
 MISS HELEN G. PRYOR Latin
 MRS. LYDA GORE RICE Commerce
 MISS MARY ELLEN RICE Spanish
 A. B. ROBERTSON Mathematics
 MISS IMOGENE ROBERTSON Commerce
 MRS. H. B. ROBINSON English
 MRS. A. B. ROGERS English
 MRS. MARY SANDERS Librarian

MISS LILLIE SCHWARTZ Latin
 JAMES W. SHAW Physics
 MISS PAULINE SHEARER Commerce
 MRS. JOHN A. SHELTON English
 MISS VIRGINIA SHELTON Distributive Education
 MRS. JANIE L. SHROPSHIRE Home Economics
 MRS. ALFRED G. SKATES History
 MRS. A. PIERCE STEWART English
 S. Q. TALLANT Mathematics
 MISS EDITH TAYLOR Commerce
 MISS MARGARET TAYLOR Home Economics
 W. H. TEMPLETON Assistant Principal
 MRS. W. H. TEMPLETON Home Economics
 MISS RUTH TIETZE General Science
 CLARENCE G. TOWRY General Science
 B. H. WALKER Band
 MISS DOROTHY WALKER Commerce
 ROBERT S. WHARTON Manual Arts
 MRS. J. K. WITHERSPOON Civics
 MISS ETHEL YORK Home Economics

★ ★ *In Memory of*



M R. C. J. A N D E R S O N



When the faculty of Central met for the beginning of a new year on September 2, 1943, the members were keenly conscious of an empty chair—a vacant seat.

This was probably the first faculty meeting that Mr. C. J. Anderson had missed in more than 25 years, for he was a man, active, alert, and punctual in his faithfulness to the every day duties of life. Not only was his absence keenly felt at that time, but from day to day in hall and classroom his conferees and students have been reminded that one of Central's most loyal friends and one of the profession's most valuable members was lost on June 26, 1943. The announcement of his death came as a shock to all who knew him, for he had continued regular in his round of daily duties until a few days before the end.

Teaching was more than a means of livelihood to Mr. Anderson; it was his life. Leaving the state of South Dakota about 28 years ago, he came to Tennessee and soon thereafter to Chattanooga where he became affiliated with Central High School as Head of the Industrial Arts Department.

Mr. Anderson was a creator of beautiful things. He taught his boys not only how to design and make beautiful pieces with hammer, saw, and plane; but by his own exemplary life he also taught them how to build character and fashion lives on an upright, honest foundation. For his kindly understanding, sincerity of purpose, and high moral standards, he was honored and respected by all who knew him.

In her treasure house of precious memories, Central will ever cherish the unselfish service, the undivided loyalty, and the high ideals of this fine Christian gentleman—Charles J. Anderson.

TORCHBEARERS

LELA T. MANLY
HUBERT DAWSON COLLUM



T H E C L A S S E S



OFFICERS OF THE

SENIORS



BASIL IRWIN	President
FRANK SMITH	Vice-President
VERNON COX	Secretary
BILLY CARTER	Treasurer
O. K. McCULLOUGH	Sergeant-at-Arms
GENE PAYNE	Sergeant-at-Arms



JUNIORS

LOUIS ROWLAND	President
ELMER CROSBY	Vice-President
MARTHA KEENER	Secretary
STEPHEN BROTHERS	Treasurer



SOPHOMORES

ROY CROWE	President
PIERRE ANDRAE	Vice-President
BETTY TURNER	Secretary
BETTY TEMPLETON	Treasurer

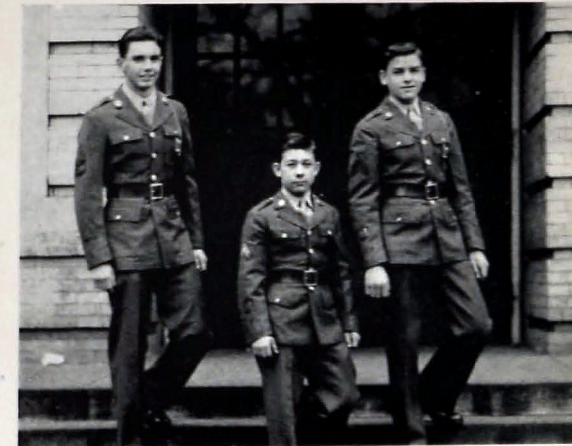


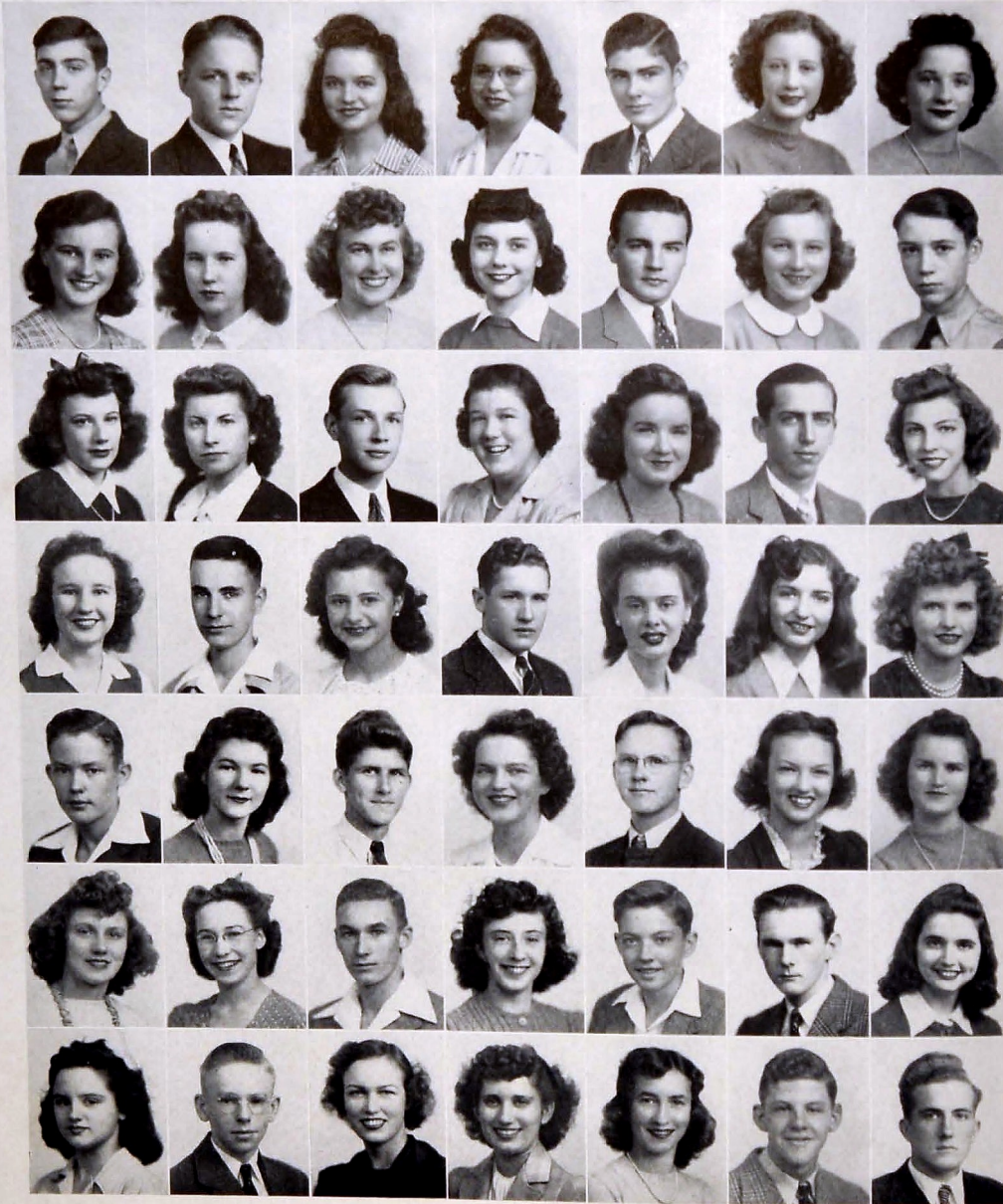
FRESHMEN

BOB McCOY	President
LENORA HENSON	Vice-President
DOROTHY CASEY	Secretary
PEGGY HENDERSON	Treasurer



CLASSES





S E N I O R S

THE CLASS OF FORTY-FOUR

First Row:

- ARCHIE ADAMS, "Archibald." Entered from Brainerd Junior High in '42; Hi-Y, '43; Bachelors' Club, '42, '43; Sergeants' Club, '43; Officers' Club, '44.
- ROBERT T. ADKINS, "Bob." Entered from Mount Lebanon High School, Pittsburgh, Pennsylvania, in '41; Sergeants' Club, '43; Officers' Club, '44; Literary Society, '44.
- ALMA JEAN ALDER. Entered from Guild Grammar School in '41. Library Club, '41; Girl Reserves, '42; Red Cross, '43.
- VERA MAE ALDER. Entered from Guild Grammar School in '41; Red Cross, '42, '43.
- BEN ALFORD, JR. Entered from Brainerd Junior High in '42; Sergeants' Club, '43; Camera Club, '44; Officers' Club, '44.
- PEGGY JO ALLEN, "Peg." Entered from East Lake Junior High in '42; Exclusive Club, '44; Red Cross, '44; Bible Club, '44.
- ROSE ELIZABETH ALLISON, "Betty." Entered from Dickinson, '41; Girl Reserves, '42; Vice-President Ushers, '44; Vice-President Hi-Y, '44; Spinsters, '44; Ace Club, '42.
- JOHN ANDERSON, "Hoehandle." Entered from East Lake Junior High in '42; Bachelors' Club.

Second Row:

- LORNA ELIZABETH ANDRAE. Entered from East Side, '42; Announcers' Club, '42, '43, '44; Ushers, '44; President of N. H. S., '43, '44; Senate, '43, '44; Hi-Y, '44.
- WILLA ANDREWS, "Willie," "Pee-Wee." Entered from Lookout, '42; Battalion, '42; Library Club, '42; Bookstore, '42, '43, '44; Hi-Y, '44; Ushers, '44.
- GRACE WILLENE ASHLEY, "Gracie." Entered from Tyffe High School, Alabama; Bible Club, '43, '44; Red Cross, '44.
- BETTY SUE BAKER, "Susie." Entered from Lookout Junior High in '42; Betty Maids' Club, '43.
- LEWIS W. BAKER. Entered from East Side Junior High in '41; Depression Club, '43; Sergeants' Club, '43.
- PAMELA RUTH BAKER. Entered from East Lake, '41; Girls' Hi-Y, '44; Secretary Spinsters, '44; Ushers, '44; Vice-President Checkers, '44; Band, '43.
- BILLY GENE BARLEW, "Superman." Entered from Hardy Junior High in '42; Home Room Red Cross Representative, '44.

Third Row:

- MARY LUCILLE BARNES, "Lucy." Entered from East Side Junior High in '42.
- MILDRED BEATRICE BARNES, "Bee." Entered from Brainerd Junior High in '41.
- HAROLD L. BARROWS, "Bo." Entered from Lookout Mountain Grammar, '41; Boys' Hi-Y, '43, '44; Grady Literary Society, '43, '44; Officers' Club, '44.
- MARY CATHERINE BARROWS, "M. C." Entered from Lookout Junior High in '42; Homeroom chairman, '42; Digest Sponsor, '44.
- ELIZABETH BARRY, "Liz." Entered from Lookout Junior High in '41; Girl Reserves, '41, '42; Exclusive Club, '43.
- LELAND BAUGH. Entered from Hardy Junior High in '40.
- MARY ELIZABETH BAYSDEN. Entered from Lookout Junior High in '41.

Fourth Row:

- EDNA BEARD. Entered from East Side Junior High in '42; Junior Retailers' Club, '44.
- BILL BECK, "Beaver." Entered from North Chattanooga Junior High in '41.
- EDITH PEARL BEENE, "Edie." Entered from Signal Mountain Grammar, '41; President Girls' Hi-Y; Chaplain Senate; Treasurer Junior Class; N. H. S.; Ushers; Sr. Editor Champion Staff; Digest Staff.
- HARRISON BEENE, "Hack." Entered from East Side Junior High in '41; T. and I. Club, '44.
- CHARLOTTE BERNICE BENEDICT. Entered from Brainerd Junior High in '41; Freshman Girl Reserves, '41.
- ILENE BENNETT. Entered from East Side Junior High in '42.
- MARY SUE BETTIS. Entered from Hardy Junior High in '42.

Fifth Row:

- MELVIN BIGGS. Entered from Hardy Junior High; T. and I. Club.
- ALICE KATHERINE BLAND, "Katie" or "Cat." Entered from East Side Junior High in '42; S. P. O. R., '42, '43, '44.
- MARK BLAYLOCK, "Bud." Entered from Lookout Junior High in '42; Safety Council.
- MILDRED MYRTLE BLEDSOE, "Pinkie." Entered from East Side, '42; Secretary of Girls' Hi-Y, '44; Senate, '43, '44; Ushers, '44; Trail Trotters, '43.
- WILLIAM MARION BOOKOUT, "Bill." Entered from East Lake, '42; Band, '42, '43, '44; Band Captain, '44; Glee Club, '42, '43; Band Officers' Club, '42, '43, '44.
- ANN BOWEN. Entered from Brainerd Junior High in '41; Inkspots, '43, '44; Dogcatchers, '44; Ramblers, '44.
- CLARICE ANN BOWLING, "Cricket." Entered from Blanche High in '43; Gymn, '43, '44.

Sixth Row:

- WANDA BOYD, "Blondie." Entered from East Lake Junior High in '42; Bible Club, '42, '43; Girls' Glee Club, '42, '43; Girl Reserves, '43, '44.
- BARBARA ELAINE BRACKEN, "Tootsie." Entered from Whitwell High in '39; Red Cross, '44; Junior Retailers' Club, '44.
- GEORGE BRADFORD, "Wack." Entered from Nathan Backman in '41.
- RUTH BRANDT. Entered from Red Bank High in '42.
- EDWARD BRAY. Entered from First Lutheran School in '41; Junior Hi-Y, '42; C of C, '43, '44; T & I, '44.
- RAYMOND BRAZIER. Entered from Pershing High, Detroit, Michigan, in '44.
- BILLIE BREWER, "Bill." Entered from Dickinson Junior High in '42.

Seventh Row:

- MILDRED BROCK. Entered from East Side Junior High in '42.
- CHARLES BROOKS, "Scrappy." Entered from East Side Junior High in '41; Trail Trotters, '42, '43, '44.
- THEATUS ELIZABETH BROOKS, "Brooksie." Entered from Hardy, '41; Girl Reserves, '41; Glee Club, '43, '44; Band, '41, '42, '43; Band Sergeant, '43.
- MAE ELIZABETH BROOME, "Patie." Entered from Red Bank, '42; Exclusive Club, '42; Secretary of Baton Club, '44; Majorettes, '42, '43, '44.
- BETTY JEAN BROWN, "Brownie." Entered from Signal Mountain Grammar, '41; Girls' Hi-Y; Vice-President, Ace Club, '44; Seventeeners, '44; Anchors Aweigh, '44.
- HAROLD BROWN, "Buddy." Entered from East Lake Junior High in '42.
- TERRELL BROWN, "Brownie." Entered from Lookout Junior High in '41; Safety Council, '44.



CAMPUS CONVERSATION



SENIORS

THE CLASS OF FORTY-FOUR

First Row:

- VIRGINIA CAROLYN BROYLES, "Red." Entered from Dickinson, '41; President of Girl Reserves, '41; Senate, '41-'44; Ushers, '44; Hi-Y, '44; Gadabouts, '44; N. H. S., '43, '44.
- LUCY REBECCA BUFFETT. Entered from Hardy, '41. Battalion, '41, '42; Bible Club, '42; Checkers, '42; Candy Crew, '43.
- GRACE BULLOCK, "Grace-Shorty." Entered from East Side, '42; Homersom Red Cross Representative, '44; Battalion, '43, '44; Dogpatchers, '43, '44.
- LEROY BURROWS, "Red," "Leroy." Entered from East Side, '42; Industrial Arts Club, '43.
- BEN A. BYRD, JR., "Admiral." Entered from Northside Junior High in '42; R. O. T. C., '42, '43, '44.
- LEROY CAMERON. Entered from Lookout Junior High in '41.
- ELAINE CAMPBELL. Entered from East Side Junior High in '41; Safety Council, '42.

Second Row:

- VERLIE CAMPBELL. Entered from East Side, '42; Camera Club, '43, '44; R. P. H. Club, '42; Officers' Club, '44; Senate, '44.
- BETTY JUNE CARD, "Bett." Entered from DeKalb High; Glee Club, '41, '42.
- JACK DEWITT CARD, "Alligator." Entered from Red Bank High in '41.
- DOROTHEA GEANNE CARLTON, "Geannie." Entered from East Side, '41; Varsity Glee Club, '42; Treasurer of Anchors Aweigh, '44; Girls' Hi-Y, '44; Ushers, '44.
- ELINOR JAYNE CARMICHAEL, "Shorty." Entered from Tyner High in '41; Girl Reserves, '41, '42; Biology Club, '42, '43; Battalion, '43, '44.
- GENE CARROLL, "Col." Entered from Brainerd, '42; Boys' Hi-Y, '42; President, Sergeants' Club, '43; Dogpatchers, '44; N. H. S., '43, '44; Officers' Club, '44; Colonel, R. O. T. C., '44.
- MARY CARSON. Entered from East Side Junior High in '42; Candy Crew, '42.

Third Row:

- DON CARTER. Entered from North Chattanooga Junior High; Radio Club, '42; Stage Crew, '42, '43, '44; T and I Club, '44.
- MELVIN CARTER. Entered from Brainerd Junior High in '41; Latin Club, '43; Sergeants' Club, '43; Officers' Club, '44.
- JUNE CARTER, "Dizzy." Entered from North Chattanooga Junior High in '42; Victorettes, '42; Battalion, '42, '43.
- WILLIAM C. CARTER, JR., "L'il Bill." Entered from Dickinson in '41; Secretary, "C" Club, '44; Alternate Captain of Football Team; Basketball; Captain of Tennis Team; Scholastic Softball Champion; Treasurer of Senior Class; Depression Club; Officers' Club; Dogpatchers; Sergeants' Club; Bachelors' Club.
- EARL WOOD CASEY. Entered from Brainerd Junior High in '41; Basketball, '43, '44; Captain of Basketball team, '44.
- HELEN MARIE CASEY, "Wee." Entered from Brainerd Junior High in '41; Junior Retailers' Club, '43, '44.
- GEORGE O. CATE, "Oscar." Entered from East Side Junior High in '41; Radio Club, '41; Trade & Industrial Club, '42, '43, '44.

Fourth Row:

- A. B. CHAMBERLAIN. Entered from East Side, '42; Sergeants' Club, '43; Officers' Club, '44; Grady Literary Society, '44; "C" Club, '44; Senate, '44; Captain R. O. T. C., '44.
- KATHRYN CHAPMAN, "Chappy." Entered from Lookout, '41; Ace Club, '42; Digest, '42, '43, '44; Associate Editor, '44; Ushers, '44; Treasurer, N. H. S., '44; Senate, '42, '43, '44; Girls' Hi-Y, '43, '44.
- JUANITA JAYNE CHILDERS. Entered from East Side, '41; Hi-Y, '44; Seventeeners, '42, '43, '44; Digest Staff; Anchors Aweigh, '44; Cheerleader, '42, '43, '44; Dogpatcher; Glee Club.
- MARGARET CHILDERS. Entered from Rome High, '42; Nite Owls, '42, '43, '44; Treasurer of Seventeeners, '44; Hi-Hats, '42; Varsity Glee Club, '42, '43, '44.
- MOLLY CHILDRESS. Entered from Brainerd, '42; Ace Club, '43; Girl Reserves, '42; Rec Club, '42; Spinsterettes, '44.
- ADELLA JEAN COLEMAN. Entered from Grundy County in '41.
- NELDA JOY COLEMAN. Entered from Grundy County High in '41.

Fifth Row:

- RICHARD O'DELL COLLIER, "Rick." Entered from East Side Junior High in '42.
- BETTYE MARGARET COLLINS, "Honey." Entered from East Side, '42; Girl Reserves, '42, '43, '44; Ushers, '44; Spinsterettes, '44; Girls' Hi-Y, '44; Badminton Club, '43.
- HUBERT D. COLLUM. Entered from Osburn High, '42; All-States Club, '42; Sergeants' Club, '43; Officers' Club, '44.
- JOHN CONNELL. Entered from Hixson Dam, North Carolina, in '43.
- GEORGE W. COUCH, "Bill." Entered from East Side, '41; Boys' Hi-Y, '43, '44; Senate, '43, '44; Vice-President of Grady Literary Society, '43, '44; Announcers' Club, '43.
- NELLIE FAULINE COX, "Polly." Entered from North Chattanooga, '42; Victorettes, '42, '43; Ace Club, '42, '43; Band, '43; Camera Club, '44.
- WALTER EARL COX, "Bud." Entered from Brainerd Junior High in '41; Orchestra, '41, '42, '43; Band, '42, '43.

Sixth Row:

- MARY HELEN CREEK. Entered from Dickinson Junior High in '42; Biology Club, '42, '43; Bible Club, '43; Junior Red Cross, '43.
- J. A. CRUMLEY, JR. Entered from East Side Junior High in '40; Stage Crew, '41; Vice-President of Trade and Industrial Club, '44.
- DOROTHY ANN CUMMINGS, "Dot." Entered from Brainerd, '41; Seventeeners, '41, '42; Junioresettes, '43; Wee Moderns, '42, '43; President of D. Gamma, '42; Ink Spots, '43, '44; Girls' Hi-Y, '43, '44.
- AURELIAN O. CURREY, JR., "A. O." Entered from Brainerd Junior High; Stage Crew, '41, '42, '43, '44.
- OLIVE KATHRYN DAILEY, "Kat." Entered from Central High, Knoxville, Tennessee, in '44; Junior Honor Society; Monitors.
- DENZIL LEE DABRY, "Smokey Joe." Entered from East Lake Junior High in '41.
- CLEO KATHRYN DAVIS. Entered from Soddy-Daisy High in '44.

Seventh Row:

- ERNST SLATER DAVIES. Entered from Dickinson Junior High in '41; Airplane Club, '42; Trade and Industrial Club, '43, '44.
- J. R. DAVIS. Entered Central in '40; Depression Club, '42, '43.
- VIRGINIA IRENE DeFRIESE. Entered from Hardy Junior High in '41.
- BILL DEMPSEY, "Demp." Entered from Lookout Junior High in '41; Sergeants' Club, '43; Officers' Club, '44.
- EVELYN DENNEY, "Denney" or "Red." Entered from Hardy Junior High in '41; Ace Club, '43; Battalion, '42, '43, '44.
- CLAUDE LOCKLAN DOWNS, "Lockee." Entered from Tyner High in '41; Sergeants' Club, '43; Officers' Club, '44.
- AGNES MARIE DUCKER, "Blondie." Entered from Nathan Backman, '41; Distributive Education, '44; Junior Retailers' Club, '44; Freshman Girl Reserves, '41; Ice Cream Crew, '42, '43, '44.



A "WORD SIGN TEST"



S E N I O R S

THE CLASS OF FORTY-FOUR

First Row:

- MIKIE DUDLEY, "Red, Mike." Entered from East Side Junior High in '41; Spinsters, '42, '43, '44.
- BETTY LEE DUGGAN, Entered from Brainerd, '41; Girl Reserves; Red Cross; Hi-Y, '43, '44; Announcers' Club, '43, '44; Les Cheries, '44; Ushers, '44; Drill Squad; Senate, '43, '44; Orchestra, '43.
- JOHN DUNN, Entered from East Lake Junior High in '41; Officers' Club, '44.
- MARGUERITE DYKE, "Billie Dyke." Entered from Northside Junior High in '41; Baton Club, '43.
- ROBERT W. EDENS, "Whizz." Entered from East Lake Junior High in '42; Officers' Club, '44.
- MAMIE JO EDMONDSON, "Flamie Mamie." Entered from East Side, '42; Ace Club, '42, '43, '44; Girl Reserves; Bible Club, '43, '44; Announcers' Club, '43, '44; Home Economics Club, '43, '44; Battalion.
- MARTHA ELLIS, Entered from De Kalb High School in '44; Bible Club, '44.

Second Row:

- ELLA FAYE ELSEA, Entered from Hardy Junior High in '42; Candy Crew, '43, '44.
- AMY JEAN ERWIN, Entered from Brainerd, '41; Biology Club, '42; Spinsters, '43, '44; Ushers, '44; Candy Crew, '43; Orchestra, '41, '42, '43, '44; N. H. S., '44.
- GRADY ERWIN, Entered from Brainerd Junior High in '41.
- DORIS EVELYN ESPY, Entered from Hardy Junior High in '41; Red Cross, '41; Biology Club, '41, '42; Betty Maids, '42.
- MARY ANN ETHRIDGE, "Shorty." Entered from East Side Junior High in '42.
- BETTY LOU EVANS, Entered from Lookout Junior High in '41. Home Economics Club, '43; Bible Club, '43.
- VIOLET ELIZABETH EVANS, "Shorty." Entered from Hardy Junior High in '42.

Third Row:

- PHYLLIS FALLS, Entered from East Side, '42; President, Ink Spots, '44; Dogpatters, '43, '44; Checkers, '43; Betty Maids, '43; Red Cross, '43.
- MARTHA I. FARLEY, "Marty." Entered from East Side Junior High in '42.
- BILL FARMER, Entered from Red Bank High in '41; Industrial Arts' Club, '42, '43.
- ROBERT S. FERRILL, "Bob." Entered from Brainerd Junior High in '41; Boys' Hi-Y, '41, '42; Grady Literary Society, '43, '44.
- ROBERTA FRANCES FIGGINS, Entered from Ooltewah High, '42; N. H. S., '43, '44; Girls' Hi-Y, '42, '43, '44; Orchestra, '42, '43, '44; Girl Reserves; S. P. O. R.; Ushers.
- HOYT HOUSTON FITZSIMMONS, "Fitzy." Entered from Bradley Central High, '43; Junior Retailers' Club, '44.
- HELEN FLIPPO, Entered from Chattanooga High School in '43.

Fourth Row:

- TOMMY FOLEY, "Shorty." Entered from Park Junior High, Knoxville, Tennessee, '41; Alternate Captain Weight Lifting Team; Tennis Team, '41; Boxing Team, '42.
- RUTH FORESTER, "Turkey." Entered from East Side, '41; Red Cross, '41, '42, '43; Bible Club, '41, '43; Home Economics Club, '42, '43; Safety Council, '43; Biology Club, '41.
- LAURA LOUISE FOSTER, "Louie." Entered from Hardy, '42; Red Cross, '42, '43, '44; Battalion, '42, '43.
- FLORA LEE FRANCISCO, "Foodie." Entered from East Lake Junior High in '41.
- DOROTHY FRANCES JOYCE FRIZZELL, "Dot." Entered from Northside Junior High in '42; Safety Council, '43.
- JOSEPH BRYAN FRYAR, Entered from Lookout Junior High in '41.
- CHRISTINE FRYAR, "Teen." Entered from Lookout Junior High in '41.

Fifth Row:

- ED FULKS, "Von-Rothe." Entered from East Side, '41; Football, '41, '42, '43, '44; Basketball, '42; Tennis, '42, '43; Track, '41; "C" Club, '44; Depression Club, '43; Glee Club, '43.

- BILL GAITHER, "William." Entered from West Side in '41; Junior Red Cross, '43; R. P. H., '42.
- ELIZABETH GARRETT, Entered from East Side Junior High in '42; Bible Club, '43; Victorettas, '44.
- MARGARET JUNE GATTIS, "Juney." Entered from East Lake, '41. Girl Reserves, '41; Red Cross, '43; Junior Retailers' Club, '44.
- H. OPAL GAZAWAY, "Maggie." Entered from East Lake Junior High in '42; Home Economics Club, '43, '44.
- LOIS GENTRY, Entered from East Lake Junior High in '42; Bible Club, '42, '43, '44.
- VIRGINIA RHEA GILBREATH, "V. A." Entered from Brainerd Junior High in '41; Victorettas, '42, '43, '44; Ice Cream Crew.

Sixth Row:

- MARGARET GILES, "Porky." Entered from Dickinson, '41; Blue Jackets, '42; Camera Club, '42; Dogpatters, '42, '43, '44; Ink Spots, '43, '44.
- RUTH JOYCE GILLESPIE, "Jay." Entered from Brainerd, '42; Girls' Hi-Y, '43, '44; Spinsters, '44; Checkers, '43, '44; President, Trail Trotters, '44; Digest Staff; Ushers, '44; Recs; Turf and Tambari.
- MILDRED GINN, "Tootsie." Entered from Blodsoe County High in '42.
- ELEANOR BROOKS GOODGAME, "Brooksie." Entered from South Pittsburgh High, '41; Ushers, '44; Girls' Hi-Y, '44; Ramblers, '44; D. Gamma, '43; Gadebouts, '44; Spinsters, '43.
- EVERETT LEE GOODNER, "Sleepy." Entered from East Lake, '42; Senate, '42, '43, '44; Safety Club, '42, '43; Boys' Hi-Y, '43, '44; Grady Literary Society, '43, '44.
- VIRGINIA LEE GRAHAM, "Blondie." Entered from Northside Junior High; Victorettas, '42, '43, '44.
- EDNA MARIE GREENE, Entered from Brainerd Junior High in '41; Home Economics Club, '43.

Seventh Row:

- WAYNE GRIFFITH, "Greif." Entered from East Side Junior High in '40; Airplane Club, '40.
- THOMAS EDWARD GROOVER, "Legs," "Fuzzy," "Burr." Entered from Red Bank High in '42; Boys' Hi-Y, '44; Officers' Club, '44; Grady Literary Society, '44; R. P. H., '42.
- JAMES VENABLE GUESS, "FLA." Entered from Nathan Beckman in '41; Sergeants' Club, '43; Officers' Club, '44; M. P., '43.
- GENE GUHNE, "Junebug." Entered from Dickinson, '41; Depression Club; Sergeants' Club, '43; Dogpatters; Officers' Club, '44; Captain, R. O. T. C., '44; Bachelors' Club.
- MILDRED GUNN, "Mill." Entered from East Lake Junior High in '42; Betty Maids, '43.
- KATHERINE HALL, "Kat." Entered from East Side, '41; Band; Girls' Band Club; Victorettas, '42, '43; R. P. H. Club, '41, '42; T. and J. Club, '43, '44.
- VIRGINIA EVELYNN HALL, "Jeen." Entered from Chattanooga High in '42; Red Cross, '42, '43; Safety Council, '42, '43.



PISTOL PACKING MAMA



S E N I O R S

THE CLASS OF FORTY-FOUR

First Row:

- PAUL HAMMEL. Entered from East Side Junior High in '41; Secretary and Treasurer of T. & L. Club, '43; Corporals' Club, '42.
- CUTIS JUNE HARDIN, "Cutie." Entered from East Side, '42; Digest Representative, '43; Tuesday Girl Reserves, '43; Red Cross, '42.
- DANA HARDIN, "Diddy." Entered from Jacksonville, Florida, '42; Ushers, '44; N. H. S., '43, '44; Vagabonds, '43, '44; President of Library Club, '43.
- JUNE HARDY, "Juney." Entered from Lookout, '41; Girl Reserves, '41; Drum Majorettes, '42, '43; High Hats, '41; Battalion, '41; Baton Club, '42, '43.
- ROBERT HARRELL, "Rabbit" or "Roberto." Entered from East Side Junior High in '42; Sergeants' Club, '43; Officers' Club, '44.
- CORA LEE HARRIS, "Prissy." Entered from East Side Junior High in '42.
- GEORGE W. HARVEY, "Lefty." Entered from Dickinson Junior High in '42; Football, '42, '43, '44.

Second Row:

- TED C. HAYS, "Magee." Entered from East Side, '42; Vice-President N. H. S., '44; Band, '42, '43, '44; Orchestra, '44; Football, '42, '43, '44; Photographic Editor "Champion," "C" Club, '44.
- LILA HELTON. Entered from East Side, '42; Girl Reserves, '42, '43, '44; Battalion, '42, '43, '44.
- MARY FRANCES HENDERSON, "Shug." Entered from East Lake Junior High in '42; Latin Club, '42.
- DORIS M. HENDRIX. Entered from Lookout Junior High in '42.
- LEON HICKS. Entered from Hardy Junior High in '41.
- NANCY RUTH HIGDON, "Chicken." Entered from Lookout Junior High in '40.
- ALVA MORTON HILL, JR., "Morty." Entered from East Side, '42; Safety Council, '42; Depression Club, '43, '44; Dogpatchers, '44; Boys' Hi-Y, '44.

Third Row:

- WILLIAM CLYDE HILL, "BILLY." Entered from Brainerd Junior High in '42; Radio Club, '42, '43.
- ANN HILTON, "Skeeter." Entered from Somerset High School in '41; Home Economics Club, '41, '42.
- BOBBIE LEE HITE, "Bobbie." Entered from Northside Junior High in '42; R. P. H., '42; Girls' Hi-Y, '44.
- CHARLOTTE ANNE HODGE. Entered from Lookout, '41; Vanity Glee Club, '41, '42, '43; Ushers, '44; Library Club, '41.
- NANCY JO HOGUE. Entered from Brainerd, '41; Girls' Band Club, '42, '43; Band, '41, '42, '43; Girl Reserves, '41; Latin Club, '43; Home Economics Club, '44; Ushers, '44.
- HENRY G. HOWARD, "Huck." Entered from East Side, '41; Junior Retail Association, '43, '44; Basketball Manager, '42, '43.
- W. BURL HOWARD, JR., "W. B." Entered from East Lake Junior High in '41.

Fourth Row:

- EDNA MAE HOWELL. Entered from East Side, '41; Spinsterettes, '42, '43, '44; Tumblers, '42, '43.
- ERNEST HUDLOW, "Fat." Entered from Brainerd Junior High in '40.
- LEON HUDSON, "Slow Joe." Entered from East Side, '42; Boys' Hi-Y; Sergeants' Club; President, Junior Class; President, Officers' Club, '44; Major, R. O. T. C.; Feature Editor, "Champion," '44.
- JAMES A. HUSKEY, "Jim." Entered from Lookout, '41; Senate Cabinet; President, Grady Literary Society, '44; Band, '42, '43, '44; President, Turf and Tambark, '44; President, Safety Council, '44; Boys' Hi-Y.
- BETTY CAROLYN HUTCHESON, "Sippy." Entered from Lookout, '41; Ace Club, '41, '42, '43, '44; Home Economics Club, '43, '44; Biology Club, '42, '43; Checkers, '42, '43.
- FRANK INGRAM, "Inkie." Entered from Lookout Mountain Junior High in '42; Printing Staff.
- BASIL IRWIN, "Red." Entered from Brainerd, '41; Sergeants' Club, '43; Officers' Club, '44; "C" Club, '43, '44; President, Sophomore Class, '42; President, Senior Class, '44; N. H. S., '43, '44; Lieutenant Colonel, R. O. T. C., '44; Football, '41, '42, '43, '44; Track, '41, '42; Swimming, '43, '44; Depression Club, '44.

Fifth Row:

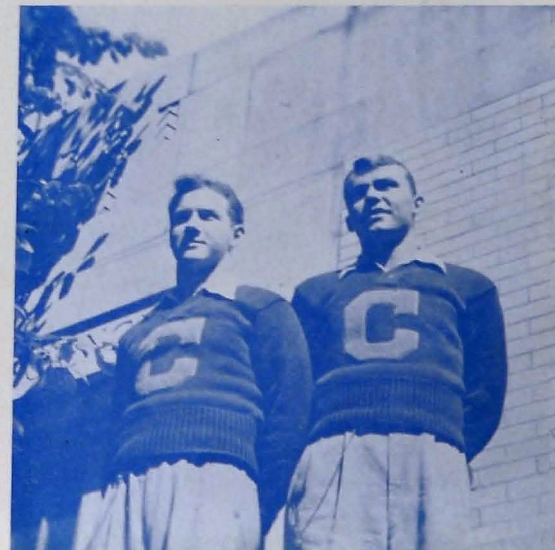
- BETTY CRAIG JACKSON, "Betty." Entered from East Side Junior High in '41; Girl Reserves, '41; May Day, '41, '42, '43.
- BETTIE IRENE JACKSON. Entered from Lookout Junior High in '41; Checkers, '43, '44.
- CHARLES LEONARD JACKSON. Entered from Sysqualea High School, Meridian, Mississippi, in '43.
- ELBERT JACKSON, JR., "Stonewall." Entered from East Side Junior High in '41; Sergeants' Club, '43.
- VIRGINIA LEE JACKSON, "Ginny." Entered from Notre Dame, '42; Girl Reserves, '42; Red Cross, '42, '43; Girls' Hi-Y, '44; President, Spinsterettes, '44.
- RUTH JACOWAY. Entered from Brainerd Junior High.
- BETTY JOHNSON, "Johnnie." Entered from Signal Mountain Grammar, '41; Ushers, '44; Girls' Hi-Y, '43, '44; Seventeeners, '43, '44; Anchors Aweigh; Junioresettes, '43, '44; Ace Club; Checkers.

Sixth Row:

- BETTY JANE JOHNSON, "Cookie Johnson." Entered from East Side, '42; Girl Reserves, '42, '43, '44; Girls' Battalion, '42, '43, '44.
- HERSCHEL JONES, "Pee Wee." Entered from Lookout Junior High in '42; R. O. T. C., '42, '43; Printing Staff of "Digest," '43.
- MARVIN JONES, "Mama." Entered from East Lake Junior High in '41; Stage Crew, '42, '43, '44.
- REBECCA JEAN JONES, "Becky." Entered from Hardy Junior High in '41; Band, '42, '43; Glee Club, '41.
- ANNE JORDAN, "Jerden." Entered from Chattanooga High School, '43; Treasurer, Band Girls' Club, '44; Junioresettes, '43, '44; Anchors Aweigh, '44; Band Officers' Club, '44.
- BETTIE JUNE KEENEY, "June Bug." Entered from East Side, '41; Safety Council, '42, '43; Band, '42, '43, '44; Band Girls' Club, '43, '44.
- CLARENCE KELLY, "Cootie." Entered from East Side Junior High in '41.

Seventh Row:

- JAMES BURTON KELLY, "Jimmy." Entered from Lakeview School, '41; Boys' Hi-Y, '43, '44; Vice-President, Biology Club, '44; Grady Literary Society, '43, '44.
- MELVA KELLY, "Button." Entered from Signal Mountain Grammar, '41; Hi-Y; Digest; Seventeeners, '43, '44; Anchors Aweigh; Ace Club; Spinsterettes; Vice-President, Junioresettes, '43.
- DENNIS KERLEY, "Curly." Entered from East Lake Junior High in '42.
- ANN KILGORE, "Corky." Entered from Knoxville High School in '43.
- BETTY ANN KINDER. Entered from East Side, '41; Treasurer of Ink Spots, '43, '44; Red Cross, '43; Betty Maids, '43; Dogpatchers, '44; Victorettes, '44.
- BETTY JO KINGTON, "Jo." Entered from Dickinson Junior High in '42.
- JUANITA KIRLEY, "Nita." Entered from East Side Junior High in '42; R. P. H. Club, '42.



BILLY AND FRANK
Football Stars



SENIORS

THE CLASS OF FORTY-FOUR

First Row:

- ROSEMARY KIRK, "Rose." Entered from East Side, '41; Baton Club, '42, '43; Girl Reserves, '41, '42; Red Cross, '42, '43; Junior Retailers, '44.
- EDWARD H. KNIGHT, "Eddie," "Speedy," "Lightning." Entered from York Beach, Maine, in '41.
- ELIZABETH ANNE KRIES, "Betty." Entered from Dickinson, '42; Secretary, Band Girls' Club, '44; Band, '42, '43; President, Announcers' Club, '44; Spinsterettes, '43, '44; Band Officers' Club, '44.
- KITTIE LOUISE KREISCHER, "Lou." Entered from East Side Junior High in '41; Digest Staff, '43, '44.
- DAN LAMB, "Sheepy." Entered from East Side, '41; Depression Club, '43, '44; "C" Club, '44; Football, '41, '42, '43, '44; Wrestling, '43, '44; Weight Lifting, '43, '44.
- DAVID M. LAWSON, "Tra La." Entered from Brainerd, '41; "C" Club, '43, '44; Football; Depression Club, '43; Basketball, Weight Lifting Team, '43; Glee Club.
- GLORIA STELLA LOUISE LAYMAN, "Herby." Entered from North Chatham Junior High in '42; Ushers, '44; Girls' Hi-Y, '44.

Second Row:

- MABLE LAYNE. Entered from East Side Junior High in '41; Battalion, '41, '42.
- W. CARR LEAVITT, "Buddy." Entered from East Side Junior High in '41; Stamp Collectors, '41; Mechanical Arts, '43.
- MARY LOUISE LEE, "Hattie." Entered from East Side Junior High in '42; Bible Club, '42, '43, '44; S. P. O. R., '43, '44.
- PAUL EUGENE LEE, "Pee-Wee." Entered from East Side Junior High in '42; Sergeants' Club, '43; Safety Council; T. & I. Club.
- ERMA CHRISTINE LEHMAN, "Speedy." Entered from the First Lutheran School in '41; Junior Retailers' Club, '43, '44.
- WILLIAM LUCK LENTZ, "Bill." Entered from East Side Junior High in '42; Camera Club, '43, '44.
- MARION LEONARD, "Shorty." Entered from East Side Junior High in '41; Checkers' Club, '43.

Third Row:

- WILLIAM LEVERICH, "Bill." Entered from Brainerd Junior High in '41; Camera Club, '43, '44.
- RUBY E. LEWIS. Entered from East Side Junior High in '42.
- WILMA ALEEN LINER. Entered from East Lake Junior High; Red Cross, '42, '44.
- R. L. LINK. Entered from Hardy Junior High in '42; R. O. T. C., '42, '43; Corporal of R. O. T. C., '43; Private of R. O. T. C., '42.
- FRANCES LOGGINS, "Fran." Entered from Brainerd Junior High in '41; Victorettes, '43, '44; Secretary of Victorettes, '44; Tennis Club, '42.
- BILL LOMENICK, "Lem." Entered from East Side, '41; Stamp Club, '41; Sergeants' Club, '43; Vice-President of Officers' Club, '44.
- STANLEY LOMENICK. Entered from Brainerd Junior High in '40; Band Officers' Club, '43, '44.

Fourth Row:

- KENNETH LONAS. Entered from Brainerd Junior High in '41; Digest Staff, '44.
- FRANK A. LOWE, JR., "Stinkie." Entered from Brainerd, '41; Manager Stage Crew, '44; Officers' Club, '44; Sergeants' Club, '43; Hi-Y; Trail Trotters, '43.
- IMOGENE LUNS福德, "Jeanie." Entered from Lakeview High in '42; Biology Club.
- OSCAR WILLIAM LYLE, "Lilly." Entered from East Lake, '42; Sergeants' Club, '43; Depression Club, '43, '44; Bachelors' Club, '43; Officers' Club, '44.
- BERTIE LOU McALISTER. Entered from East Side, '41; Betty Maids, '42, '43; Ink Spots, '42, '43; Red Cross, '42.
- JULIET McBROOM, "Judy." Entered from Dickinson, '42; Girls' Hi-Y, '43, '44; Senate, '43, '44; President, Biology Club, '44; N. H. S., '43, '44; Sponsor of Company C; President, Ushers, '44.
- STANLEY McBROOM. Entered from Brainerd Junior High in '41; Boys' Hi-Y, '41, '42; Sergeants' Club, '43; Officers' Club, '44.

Fifth Row:

- BETTIE McCLELLAN, "Bebe." Entered from Brainerd, '41; Girls' Hi-Y, '44; Anchors Aweigh, '44; Seventeeners, '44; Ramblers, '44; Gadabouts, '44; Ushers, '44; Digest; Alumni Editor, '44; Senate.

- ROY EUGENE McCOLLUM, "Babe." Entered from Jackson High, Jackson, Tennessee, '41; Secretary, Boys' Hi-Y, '44; Red Cross, '44; Grady Literary Society, '44; Band Officers' Club, '44.
- HELEN LOUISE McCUSTON. Entered from East Lake Junior High in '42; Girls' Hi-Y, '44; Bible Club, '43, '44.
- O. K. McCULLOUGH, "Bub." Entered from East Side, '42; Depression Club, '43, '44; Sergeants' Club, '43; Captain, R. O. T. C., '44; Sergeant-at-Arms, Officers' Club, '44; Sergeant-at-Arms, Senior Class, '44.
- IMOGENE McDANIEL, "Shorty." Entered from Ringgold in '44.
- MARTHA LOUISE McDANIEL, "Mart." Entered from Red Bank High, '42; Bible Club, '42, '43, '44; Missionary Reporter, '44; Girl Reserves, '42.
- EUGENE McDAVIS, "Zoot." Entered from Brainerd, '42; Red Cross, '42, '43; President, Boys' Ushers, '43; Treasurer, Announcers' Club, '44; Band; Lieutenant in Band, '44; President, Glee Club, '44.

Sixth Row:

- JIMMY THORNE McKNIGHT, "Macnite." Entered from Central High School, Rutherfordton, North Carolina in '42.
- GLADYS JEWELL McKINNEY, "Glad." Entered from Brainerd, '41; Red Cross, '43; Checkers, '43; Betty Maids, '43; Ink Spots, '43, '44; Tumblers, '41; Ace Club, '41.
- LOUISE McMAHON, "Spike." Entered from Chattenoope High, '44; Girl Reserves, '42; Checkers, '42; Personality, '42, '43.
- SARAH CHARLOTTE McNICHOLS, "Tubby." Entered from First Lutheran School in '41.
- HELEN MACHEN. Entered from East Side, '42. Red Cross, '42, '43; Bible Club, '42; Red Cross Representative, '42.
- EDWARD MADEWELL, "Ed." Entered from East Lake Junior High in '42.
- LELA MANLY. Entered from Dickinson, '42; Editor, Digest, '44; N. H. S., '43, '44; Ushers, '44; S. P. O. R., '42, '43, '44; Girl Reserves, '44; Senate, '44.

Seventh Row:

- BILLY MARTIN. Entered from Brainerd Junior High in '41; Junior Boys' Hi-Y, '41, '42; Sergeants' Club, '43; Officers' Club, '44.
- ELDRIDGE MARTIN, "Red" or "Redrick." Entered from East Lake Junior High in '42; Camera Club, '43, '44; Band, '42, '43, '44.
- JUNE MASSEY, "Washatchie." Entered from Lookout Junior High in '42; Bible Club, '43; Color Team, '42, '43.
- DORIS MAVITY, "Shorty." Entered from Brainerd, '41; Girl Reserves, '42, '43; Baton Club, '42, '43; Library Club, '41, '42, '43; Vagabonds, '44; Victorettes, '44.
- MARGARET ANN MAVITY. Entered from East Lake, '42; Bank; Band; President, Juniores, '43; Vice-President, Band Girls' Club, '44; Girls' Hi-Y, '44; Ushers; N. H. S., '43, '44; Sponsor; Business Manager, Champion.
- JACKIE EDD MEADOWS, "Senator." Entered from East Lake, '42; Safety Council, '43, '44; Bachelors' Club, '43; Digest Staff, '44.
- MARY EVELYN MERTINS. Entered from First Lutheran School, '41; Girl Reserves, '42; Badminton Club, '42, '43, '44; Girls' Hi-Y, '43, '44; Girls' Band Club, '44; Home Economics Club, '44.





SENIORS

THE CLASS OF FORTY-FOUR

First Row:

- ROBERT C. MEYER, "Bob." Entered from First Lutheran School, '41; President, Hi-Y, '42; President, Senate, '44; Vice-President, Announcers' Club, '44; Grady Literary Society; Officers' Club, '44; Varsity Glee Club; Club Editor, "Champion."
- VIRGINIA MEYER. Entered from First Lutheran School, '41; Ushers; Secretary Senate; Secretary, Tuff and Tambark; N. H. S.; President, S. P. Q. R.; Digest; Associate Editor, Digest; President, Les Cheries.
- MANYON MILLIGAN. Entered from Brainerd Junior High in '41.
- MARY ELIZABETH MINNICK, "Dib." Entered from Nathan Bachman in '41; Girl Reserves, '41; Exclusive Club, '42, '43, '44; Victorettes, '42.
- EVELYN JUSTINE MOATES, "Blondie." Entered from Brainerd Junior High in '41; Girl Reserves, '41; Junior Retailers' Club, '43, '44; Exclusive Club, '42.
- BESSIE LOUISE MOON, "Sock-eye." Entered from East Lake Junior High in '42; Betty Maids, '43.
- ANNIE LAURA MOORE. Entered from Hardy, '42; Ace Club; Battalion; Girls' Hi-Y; Badminton Club, '43; Checkers, '43, '44; Tumblers, '43, '44; Bible Club.

Second Row:

- MARJORIE ELIZABETH MOORE. Entered from Hardy, '41; Vice-President, Camera Club; Digest; News Editor, '44; Freshman Editor, "Champion," '41; Ink Spots Club, '42; Senate Cabinet; Girls' Hi-Y; Secretary, Ushers; N. H. S.
- RUTH JEAN MOORE. Entered from Moore County High School in '43.
- ELIZABETH MORTON, "Saltie." Entered from Brainerd, '41; Exclusive Club, '41, '42, '43; Head Drum Majorette, '43; President, Baton Club, '42, '43; Girl Reserves, '41; Cheer Leader, '42, '43, '44.
- MARTHA GENE MULLIS, "Gene." Entered from East Lake Junior High in '42; Junior Retailers' Club; President of Junior Retailers' Club, '44.
- JANIE MURRAY. Entered from Dickinson, '42; Varsity Glee Club, '42, '43; Bible Club, '43; Red Cross, '43; Ushers, '44.
- BARBARA NARRAMORE, "Bobby." Entered from Brainerd, '42; Seventeeners, '44; Ramblers, '44; Vice-President of Victorettes, '44; Juniores, '43.
- LOUISE H. NELSON, "Pee Wee." Entered from Normandy High, St. Louis, Missouri, '42; Band Sergeants' Club, '43; Band Officers' Club, '44; Hi-Y.

Third Row:

- SUE NYE, "Susie." Entered from Dickinson Junior High in '41; Red Cross, '42; Majorette Club, '43, '44.
- HELEN O'DELL, "Wauhatchie." Entered from East Lake Junior High in '41.
- HAZEL MAE OGLE, "Tildie." Entered from McDonald Grammar School in '41; Ace Club, '43, '44; President of Bible Club, '44.
- ERMA GENE OWENS. Entered from Brainerd Junior High in '41; Spinsterettes, '42, '43; Home Economics Club, '43.
- FLORA ELIZABETH OWENS, "Libby." Entered from East Lake Junior High in '42.
- MARY KATHLEEN PADGETT, "Kaky." Entered from East Side Junior High in '42; Girls' Battalion, '43, '44.
- RUBY JEAN PAGE, "Chick." Entered from Hardy Junior High in '41; Glee Club, '41.

Fourth Row:

- WILLIAM MORAN PARKER, "Bill." Entered from East Lake, '42; Officers' Club, '44; Corporals' Club, '43; Printing Staff, '42; Biology Club, '42.
- CLYDE AUBREY PARKS, "Red." Entered from Brainerd Junior High in '41; Junior Red Cross, '41, '42, '43, '44.
- VIRGINIA PARKS, "Gennie." Entered from Red Bank High in '42; Exclusive Club.
- EUGENE TERRY PAYNE, "Long Boy." Entered from East Lake, '42. Football, '42, '43, '44; Sergeant-at-Arms of the Senior Class, '44.
- RAYMOND D. PAYNE, "Ray." Entered from Brainerd Junior High in '42. Airplane Club, '42.
- VERA JANE PAYNE. Entered from Hardy, '42; Bible Club, '42, '43; Candy Crew, '42, '43; Junior Retailers' Club, '43, '44.
- BARBARA JOAN PEARSE. Entered from Lookout, '42; Blue Jackets, '42; Juniores, '42, '43, '44; Seventeeners, '44; Anchors Aweigh, '44; Nite Owls, '43.

Fifth Row:

- CAMERON PECK, "Peck." Entered from Northside, '42; Officers' Club, '44; Second Lieutenant, R. O. T. C., '44.
- GRACE MARGARET PFITZER, "Red." Entered from First Lutheran School, '41; Senate; Membership Chairman, Senate, '44; Girls' Hi-Y; Ushers; N. H. S.; Secretary Digest; Business Manager, Digest.

- MARY ELIZABETH PFITZER, "Fitzie." Entered from First Lutheran School, '41; Senate; President of Girl Reserves, '42; President, Ace Club, '44; Lieutenant in Battalion; Spinsterettes, '43; Vagabonds, '43; Ramblers, '44; Gadabouts, '44; Girls' Hi-Y; Secretary, N. H. S.; Tumblers.

- BETTY SUE PHILLIPS, "Susie." "Penny." Entered from Brainerd, '42; Girl Reserves, '42; Senate; Bookstore Staff, '43, '44; Library Club, '42; T. and I. Club, '44; Candy Crew, '42; Band, '43; Red Cross, '43; Airplane Club, '42.

- FORREST PLEMONS, "Cowboy." Entered from East Side Junior High in '42; R. O. T. C., '42, '43; Safety Council.

- WILLIE MAE PLEMONS. Entered from Hardy Junior High in '42; Battalion, '42, '43, '44.

- BILLIE REBECCA POORMAN. Entered from Dickinson Junior High in '41; Ace Club; Tumblers; Checkers.

Sixth Row:

- MARTHA KATHRYN PRICE, "Chubby." Entered from East Side Junior High in '41.

- DOROTHY E. PRICHARD, "Dottie." Entered from East Side Junior High in '42; Betty Maids, '42, '43; Junior Retailers' Club, '44.

- THERESA MYRLE PRIVETTE, "Fe." Entered from East Side Junior High in '41; Girl Reserves, '41; Red Cross, '42; Bible Club, '42.

- RAYMOND PROCTOR. Entered from Brainerd, '41; Airplane Club, '41, '42; Military Police, '42, '43; Sergeants' Club, '43; Officers' Club, '44; Depression Club, '44.

- MEREDITH QUARLES, "See." Entered from Boynton High School in '42; Victorettes, '43, '44.

- GENETTA RAGON, "Gene." Entered from East Side, '42; Secretary, Juniores, '43; Victorettes, '44; R. O. T. C. Sponsor, Staff S-2, '44.

- JOHN E. RAMSEY. Entered from East Side Junior High in '41; Stage Crew, '42, '43; Assistant Manager of Stage Crew, '43.

Seventh Row:

- EVELYN RAY. Entered from Tyner in '41; Red Cross, '42, '43, '44; Bible Club, '43, '44; Girl Reserves, '42.

- PAUL HENRY REECE. Entered from North Chattanooga Junior High in '42; Officers' Club, '44.

- GLADYS REED, "Susie." Entered from East Side Junior High in '42; Bible Club, '44.

- WILDA MAE REED, "Bill." Entered from East Side Junior High in '42; Ace Club, '43, '44; Digest Staff, '44; Bible Club, '44.

- MARY JO RHINEHART, "Jo." Entered from Brainerd, '41; Girls' Hi-Y; Rockettes; Seventeeners; Ace Club; President, Blue Jackets; Wee Moderns; Ink Spots; Ramblers; Lieutenant, Battalion, '42, '43; Major, Girls' Battalion, '44.

- SARAH EMILY RICHESON, "Sevah." Entered from East Side Junior High in '42; Girls' Battalion, '43, '44.

- SARAH HELEN RIDGE, "Hudey." Entered from Nathan L. Bachman in '41; Tumblers' Club, '41, '42, '43, '44; Ace Club, '43, '44; Checkers, '44.





S E N I O R S

THE CLASS OF FORTY-FOUR

First Row:

- WILLIAM HAROLD RIDGE, "Grandpa." Entered from Brainerd Junior High in '42; Band Officers' Club, '44; Digest, '43, '44; Red Cross, '44.
- WALLACE ROARK, "Wally." Entered from Brainerd Junior High in '41; Industrial Arts, '41; T. and I. Club, '43.
- MARY ROBERTSON. Entered from East Side Junior High in '42; Red Cross, '43; Bible Club, '43.
- ALICE RUTH ROBINSON. Entered from Red Bank, '43; Girl Reserves; Red Cross; Announcers' Club, '44; Girls' Battalion; Varsity Glee Club; Red Cross Representative, '44.
- G. C. ROBINSON, "Jinx." Entered from East Side, '41; Vice-President, Safety Council; Grady Literary Society; President H-Y; Editor-in-Chief of "Champion;" Sergeants' Club; Officers' Club; R. O. T. C. Captain.
- MARY MARGARET ROBINSON. Entered from Baxter Seminary in '43.
- RUTH ROBINSON. Entered from East Side Junior High in '42; 4-H Club, '44; Girl Reserves, '43.

Second Row:

- EVELYN ROGERS, "Choo-Choo." Entered from Benedictine Academy, Elizabeth, New Jersey, in '44.
- MARTINA ELYRIA ROGERS, "Tina." Entered from Rossville, '41; Girl Reserves, '41, '42, '44; Band, '41, '42; Orchestra, '41, '42, '43, '44; Victrolettes, '42, '43; Red Cross, '44.
- BETTE ROWE, "Red." Entered from Dickinson, '41; President, Nite Owls, '44; Treasurer, Seventeeners, '43; Secretary, Seventeeners, '44; Dogpetchers, '44.
- WILLIAM THOMAS ROWLES, "Bill." Entered from Hixson High in '43; T. and I. Club, '43, '44.
- KATHLEEN ROYSE, "Skipper." Entered from East Side Junior High in '42; Home Economics Club, '44.
- VERNON DARRELL RUTHERFORD, "Blackout." Entered from East Side Junior High in '41; President of R. P. H., '42; Depression Club, '42, '43, '44.
- CONROY RYAN, "Connie." Entered from East Side Junior High in '41; Radio Club, '41, '42, '43, '44.

Third Row:

- MARY CATHERINE RYMER. Entered from Brainerd Junior High in '42; Girl Reserves, '42, '43; Spinstertettes, '44.
- MARIAN SAPPER, "Toody." Entered from Lincoln School, Portsmouth, Ohio, '41; Ushers; N. H. S.; Digest; Feature Editor, '44; Anchors Aweigh, '44; Senate; Girls' H-Y; Ink Spots; Varsity Glee Club; Wee Moderns; Secretary, Camera Club.
- ROBERT E. SCARBROUGH, "Bob." Entered from East Lake, '42; Senate, '42; Sergeants' Club, '43; Officers' Club, '44; Secretary of Officers' Club, '44.
- VIVIAN JEAN SCHILD. Entered from Brainerd Junior High in '41; Girl Reserves, '41; Announcers' Club, '43, '44; Digest Staff, '44.
- BETTIE SCOGGINS. Entered from Northside, '42; Nite Owls, '43, '44; Secretary and Treasurer, Gadabouts, '44; Seventeeners, '44; Sponsor, Company F, '44.
- NADINE SEARS, "Ig." Entered from Hardy Junior High in '42; Safety Council, '43; Ushers, '44; Red Cross, '43.
- DORIS VIRGINIA SETLIFFE. Entered from Signal Mountain Grammar, '41; Girl Reserves, '41, '42; Bible Club, '42, '43, '44; Ace Club, '42, '43; Junior Retailers, '44.

Fourth Row:

- MARILYN JUNE SHRADER, "Tex." Entered from Brainerd, '41; Red Cross, '42; R. P. H., '42; Trail Trotters, '43; Turf and Tambark, '44; 4-H, '44.
- EVELYN LOUISE SIMPSON, "Simp." Entered from Lookout, '41; Junorettes; Wee Moderns; Blue Jackets; Ink Spots; Red Cross; Safety Council.
- DAPHNE SIMS, "Daph." Entered from Tyner High in '43; Junior Red Cross, '43, '44; Bible Club, '44.
- JACK A. SISEMORE, "Sic." Entered from Chattanooga High in '43.
- BETTY SUE SMITH, "Susie." Entered from East Lake, '42; Lieutenant in Battalion, '44; Home Economics Club, '43, '44; Vagabonds, '43; Checkers, '43, '44; Tumblers, '43, '44; Ace Club.
- ELIZABETH ANN SMITH. Entered from Lookout Junior High in '42.
- FRANK M. SMITH, JR., "Smitty." Entered from East Side, '41; President, "C" Club, '44; Football Team; Captain, Football Team, '43; Vice-President, Senior Class, '44; Boys' Glee Club.

Fifth Row:

- H. L. SMITH, "Snake." Entered from Tennessee Military Institute in '43.
- JACK SMITH, "Jackie Boy." Entered from East Lake Junior High in '42; Sergeants' Club, '43; Junior Boys' H-Y, '42; Officers' Club, '44.
- JOHN ROBERT SMITH, "Peck." Entered from East Side Junior High in '42; Industrial Arts Club, '42, '43, '44; Safety Council, '43.
- JOYCE SMITH. Entered from Brainerd, '42; Girl Reserves, '42; R. P. H., '42; Checkers, '43, '44; Latin Club, '43; Recs, '43; Junior Editor, Annual, '43; Vice-President, Home Economics Club, '44; Ushers.
- LEON RICHARD SMITH, "Low." Entered from Brainerd Junior High in '41.
- LUTHER ELGIN SMITH, "Smitty." Entered from East Lake Junior High in '42; Officers' Club, '44.
- MARGIE BELLE SMITH, "Fris." Entered from Lookout, '41; Home Economics Club, '43, '44; Red Cross, '42; Checkers, '43; Bible Club, '44; Candy Crew, '43; President, Girl Reserves, '44.

Sixth Row:

- OTIS SMITH. Entered from Collins Dale High, Pennsylvania, in '43; "C" Club, '43, '44.
- ROBERT SMITH, JR. Entered from East Side Junior High in '41; Officers' Club, '44.
- MARVIN E. SNOW, "Snowball." Entered from Loudon High, Loudon, Tennessee, in '42; Sergeants' Club, '43; Officers' Club, '44.
- EARL SNYDER. Entered from Chattanooga High School in '43.
- VIRGINIA RUTH SPENCER, "Ginger." Entered from East Side Junior High in '42.
- MILDRED LOUISE STEELE, "Dickie." Entered from Hardy Junior High in '42; Varsity Glee Club, '42, '43, '44.
- MALVINA JANE STEGALL. Entered from Brainerd, '42; Tumblers; Home Economics Club, '43, '44; Safety Council; Red Cross; Ace Club; Bible Club, '44; Checkers.

Seventh Row:

- DOROTHY JANE STEPHENS, "Dot." Entered from Osburn High, '42; Girl Reserves, '41; Red Cross, '41; Sponsor, '44; All-States Club, '42; Candy Crew, '42.
- GRADY STEPHENS, "Wimpy." Entered from East Lake Junior High in '41; Football, '41, '42, '43; "C" Club, '43.
- CHARLOTTE STEPHENSON, "Charlie." Entered from East Lake Junior High in '43; Girl Reserves, '43, '44; Ace Club, '43, '44; Red Cross, '44.
- JACQUELYN STONE, "Jackie." Entered from East Side, '41; Varsity Glee Club; Marjorette, '41, '42; Red Cross, '43, '44; Bible Club, '43, '44; Treasurer of Victrolettes, '44; Ushers.
- BETTY CAROLYN STONE, "Bet." Entered from Brainerd, '41; Band; President Girls' Band Club, '44; First Lieutenant in Band; Band Officers' Club; Victrolettes; Trail Trotters; Typist for "Champion."
- HANNAH ELIZABETH STRICKLAND. Entered from Brainerd, '41; Girl Reserves, '41, '42; Battalion, '41, '42; Senate, '41, '42; Red Cross, '42, '43; Victrolettes, '42, '43; Safety Council, '44; Candy Crew, '42; Girl Reserves, '44; Bookstore, '43, '44; Ushers; N. H. S.
- JIMMY SUTTON, "Red." Entered from Dickinson Junior High in '41; Stage Crew, '43, '44.



"LOAFERS"



S E N I O R S

THE CLASS OF FORTY-FOUR

First Row:

- THACH SWINGLE. Entered from Red Bank Junior High in '41; Boys' Hi-Y, '44.
- CASWELL TALLANT, "Cass." Entered from East Lake Junior High in '41; Stage Crew.
- WILLIAM H. TALLANT, JR., "Bill." Entered from West High, Waterloo, Iowa, in '43.
- JAMES LESLIE TATE, "Lesk." Entered from Lookout Junior High in '40; T. and I. Club.
- RUBY TATE, "Little Ruby." Entered from Dickinson, '42; Victorettes, '42, '43; Hi-Y; Anchors Aweigh; Ramblers; Spinstrettes; Gadabouts; Gym; Office Force.
- GLENDA ROSE TAYLOR, "Gis." Entered from Brainerd, '41; Safety Council, '41, '42; Victorettes, '42, '43; Juniores, '43, '44; Remember Pearl Harbor, '42.
- MILLARD TEAL, JR., "Tommy." Entered from Northside Junior High in '42; Century Club, '44.

Second Row:

- JACK PEAK TEMPLETON, "Pete." Entered from Brainerd Junior High in '41; T. and I. Club; Manager of Football Team, '41, '42, '43; "C" Club, '43, '44.
- THELMA LEE TERRY. Entered from East Side Junior High in '42; Girl Reserves, '43; Home Economics Club, '43, '44.
- HAROLD THOMAS. Entered from Brainerd Junior High in '42; Camera Club, '43, '44; Digest Staff, '44.
- JO ANNA THOMPSON, "Jan." Entered from Lookout Junior High in '41; Bible Club, '42, '43; Latin Club, '42, '43.
- BILLE THORNTON, "William." Entered from F. C. A. H. S., Gulfport, Mississippi, in '43; Digest Representative, '44.
- MARTHA TILLERY, "Tillery." Entered from First Lutheran School, '41; Girl Reserves, '41, '42; Hy Hats, '42; Treasurer, Red Cross, '44; Dogpatchers; Gadabouts, '43.
- WILLIAM D. TOWERS, "Legs." "Long Distance." Entered from Hoffman, Cincinnati, Ohio, '41; Dogpatchers, '42, '43; Depression Club; Senate; Stagecrafters; Football.

Third Row:

- ELIZABETH TRAVIS, "Lizzie." Entered from East Lake, '42; Home Economics Club, '42, '43, '44; Vagabonds, '43; Battalion, '44; Girl Reserves, '43.
- JAMES EDWARD TURNER, "Jimmy." Entered from Hardy Junior High in '41; Band, '41; Red Cross, '41.
- JOHN LEWIS TURNER, "Jumpy." Entered from Lookout Junior High in '41; Biology Club, '42, '43; Officers' Club, '44.
- VIOLETTA TYLER, "Blondie." Entered from Brainerd Junior High in '41; Girl Reserves, '41, '42; Red Cross, '42, '43, '44; Girls' Battalion, '42, '43.
- MARY RUTH ULRICKSON. Entered from Chattanooga High, '42; President, Seventeeners; Vice-President, Anchors Aweigh; Secretary Ramblers.
- DORIS ELLEN UNDERWOOD. Entered from Nathan L. Bachman Grammar, '41; Girl Reserves; Senate; Treasurer, Girls' Hi-Y; Seventeeners, '44; Anchors Aweigh; Ramblers, '44; Gadabouts, '44; Ushers.
- JAMES UPTON, "Uppy." Entered from East Lake Junior High in '41; Stage Crew, '42, '43, '44.

Fourth Row:

- ROY SUE VANCE, "Susie." Entered from East Side Junior High in '41; Biology Club, '41; Distributive Education, '43; Safety Council, '43.
- EDWARD VAUGHN, "Ed." Entered from Dalton High in '42; Officers' Club, '44.
- ELSIE L. VICK, "Dimple." Entered from Brainerd Junior High in '41; Bible Club, '41; T. and I., '44.
- IMOGENE WALKER, "Blondie." Entered from East Side Junior High in '41.
- JULIA ANN WARE, "Rudge." Entered from Lookout, '42; Varsity Glee Club; Girl Reserves, '42; Exclusive Club, '43; Home Economics Club, '43, '44; Ushers.
- MARY LOUISE WARLICK. Entered from Northside Junior High in '42; Girl Reserves.
- LAURA ELIZABETH WEATHERFORD. Entered from East Chattanooga, Hardy, '42; National Honor Society, '43, '44.

Fifth Row:

- BERNARR FRED WELCH. Entered from Dickinson Junior High in '42; Junior Retailers' Club, '44.
- GWENDOLYN E. WESTBROOK, "Gwen." Entered from Brainerd, '41; Ushers; N. H. S., '44; Red Cross, '43, '44; Girl Reserves, '41, '42; Varsity Glee Club, '43, '44.

- MARCUS A. WESTBROOK, "Pete." "Weasel." Entered from East Side Junior High in '40; Model Plane Club, '40; Radio Club, '41, '42.
- GLORIA ANN WHEELER, "Glo." Entered from Lookout, '41; Varsity Glee Club; Girl Reserves; Battalion; Digest; Juniores, '43, '44; Gadabouts, '44; Girls' Hi-Y; Ushers.
- DOROTHY SUE WHITAKER, "Susie." Entered from Brainerd, '41; Girls' Hi-Y; Secretary, Anchors Aweigh; Seventeeners; President, Ramblers; Gadabouts; Ushers; Digest; Juniores.
- MARGARET WHITE, "Freshman." Entered from East Side Junior High in '42; Digest, '43, '44; Girl Reserves, '42; Safety Council, '43.
- RUBY LEA WHITCOTTON, "Rube." Entered from East Side Junior High in '42; Red Cross, '43; Baton Club, '44.

Sixth Row:

- ANNA MAY WHITEHEAD, "Ann." Entered from Brainerd Junior High in '41; Vice-President of Bible Club, '44.
- BARBARA JEAN WHITMIRE, "Bobby." Entered from East Side Junior High in '42; S. P. O. R., '42, '43; Bible Club, '43, '44; Victorettes, '43, '44.
- CARL HENRY WIGGS, "Wiggins." Entered from Brainerd Junior High in '42; Sergeant's Club, '43; Officers' Club, '44; Military Police, '42, '43.
- HELEN MYRTIS WILKES, "Myrtle." Entered from Brainerd Junior High in '41; R. P. H. Club, '42.
- BETTY JUNE WILLIAMS. Entered from Northside, '41; Ushers; Girls' Hi-Y; Announcers' Club, '44; Red Cross, '44; Safety Council, '44.
- MARGARET ELIZABETH WILLIAMS. Entered from Lakeview High School in '42; Home Economics Club, '43, '44; Ushers, '44.
- RUTH ANGELINE WILLIAMS, "Blondie." Entered from Lakeview, '41; Girls' Hi-Y; President, Home Economics Club; Ushers; Spinstrettes; Safety Council, '43.

Seventh Row:

- HAL HASKINS WILLIAMSON, "Butch." Entered from Hardy, '41; Football; Boxing; Wrestling; Swimming; Weight Lifting; Track; Band; Orchestra.
- CORNELIA WITT, "Cornie." Entered from East Side Junior High in '40; High-Hats, '41; Girl Reserves, '42; Tennis Club, '42.
- EDITH RUTH WITT, "Shortie." Entered from Van Buren High, Spencer, Tennessee, in '43; Junior Retailers' Club, '44.
- DONALD EDWARD WOMACK, "Don." Entered from East Lake Junior High in '42; Varsity Glee Club, '42, '43.
- NANCILU WOOD, "Gus." Entered from Brainerd, '41; Ushers; Digest Staff; N. H. S., '44; Girls' Hi-Y; Band; Girls' Band Club; Girl Reserves; Band Officers' Club.
- CLARA EUNICE WORLEY, "Tootie." Entered from Lookout Junior High in '41; Girl Reserves, '42; Bible Club, '44.
- PAUL E. WRIGHT, "Heine." Entered from Hardy, '42; Boys' Hi-Y, '42; Band Officers' Club, '44; Band, '42, '43, '44.
- JAMES CARTER ZORN. Entered from Lookout Junior High in '42; Biology Club, '42, '43, '44.



HEAVY HOME WORK

THREE YEAR HONOR STUDENTS AND COMMENCEMENT SPEAKERS

LORNA ANDREAE Three Year Honor Student
EDITH BEENE Salutatorian and Three Year Honor Student
VERLIE PHILLIPS CAMPBELL Three Year Honor Student
GENE CARROLL Three Year Honor Student
MELVIN P. CARTER Valedictorian and Three Year Honor Student
KATHRYN CHAPMAN Three Year Honor Student
HUBERT DAWSON COLLUM Three Year Honor Student
ROBERTA FRANCES FIGGINS Three Year Honor Student
EVERETT LEE GOODNER Three Year Honor Student
DANA HARDIN Three Year Honor Student
ALVA MORTON HILL Three Year Honor Student
BASIL L. IRWIN, Class Representative and Three Year Honor Student
JULIET MCBROOM Three Year Honor Student
BETTIE RUTH MCCLELLAN Three Year Honor Student
O. K. McCULLOUGH Prophet
LELA T. MANLY Three Year Honor Student

MARGARET ANN MAVITY Three Year Honor Student
VIRGINIA RUTH MEYER Three Year Honor Student
MARJORIE MOORE Three Year Honor Student
GRACE MARGARET PFITZER Three Year Honor Student
and Faculty Representative
BETTY SUE PHILLIPS Three Year Honor Student
G. C. ROBINSON, JR. Poet and Three Year Honor Student
MARIAN SAPPER Three Year Honor Student
ROBERT E. SCARBROUGH Three Year Honor Student
FRANK SMITH Historian
JOYCE VIRGINIA SMITH Three Year Honor Student
HANNAH ELIZABETH STRICKLAND Three Year Honor Student
JACK PETE TEMPLETON Reader of the Will
DORIS ELLEN UNDERWOOD Three Year Honor Student
LAURA ELIZABETH WEATHERFORD Three Year Honor Student
NANCILU EDITH WOOD Three Year Honor Student



THE CENTRAL BAND

Cornet: Roy McCollum, Ted Hays, Paul Wright, Jimmie Beene, Harold Ridge, Richard Nelson, Ernest Kelley, Bob Mason, Ray Bradley, Charles Bryan, Mary Ann Potter, Bernard Boss, Lamar Wilson, Buddie English, Joe Smith, Kenneth Bell, Joe Lanham, Jack Pursley, Clarence Frank, Johnny Stanfield, Eugene McKinney, Brownie Stephens, Charlotte Sprague, Oliver Jeffers, Mary Emma Garner, Ralph Jones.

Trombone: Stanley Lomenick, Alfred Miller, J. C. Miller, Joe Erwin, Gene McDonald, Eldridge Martin, Jack Beaton, Ed Ruth Vaughn, Jimmie Turner, Harry McCool.

Baritone: Bill Bookout, Eugene Conley, Clifffie Mertins.

Bass: Larry Hill, Jimmie Hurst, Bobby Riggsby, Willard Bethune, Gene Slayton.

French Horn: Virginia Granert, Delores Jeffery, Elsie Orr, Walter Massey, Bill Wilson.

Alto Saxophone: Betty Stone, Anna Harte Harrison, Frank Holland, Jesse Bagwell, Roberta Sears, Helen Roddy.

Tenor Saxophone: Joe Laycock.

Baritone Saxophone: Eugene McDaris.

Bell Lyre: Mary Mertins, Florence Carroll.

Oboe: Dorothy Prince, Phyllis Park.

Clarinet: Louis Nelson, Glenn Miller, Joanne Adkins, Nancilu Wood, Robert Nix, Grady Downs, Betty Kreis, Ann Mavity, Elsie Keown, Nick Haynes, Betty Adkins, Glenn Olinger, Oren Cummings, Mildred Smith, Mary Ellen Rowe, John Zimelman, Betty Brazier, Juanita Holley, Dolly Johnson, Lamar Cook, Frances Johnson, Rose Whitehead, Betty Ann Swearingen, Willette Perkinson.

Drum: Sims Allen, Tom Fowler, Gene Baskette, Gene Brown, Clyde Parks, Jay Conley, Harry Austin, Jackie Myers, Bettie Ruth Love.

Majorettes: Sue Nye, Mary Ruth Gillette, Lorence Lane, Frances Miller, Mildred Tucker, Pauline Brooks, Peggy Gibson, Delores Bagby, Betty Ann Myers, Willette Jones, Kathleen Suggs, Evelyn Holder, Ruby Whitecotton, Mae Elizabeth Broome, Maxine Robinson, Paulette Brawshaw, Dorothy Renshaw, Dot Griffin.

Color Guard: Caswell Tallant, Buddy Childress, Bobby Shedd, Robert Westbrook, Marvin St. Clair, Bill Kinsey, Porter Murray.

Drum Major: Bobby Riggsby.

Head Majorette: Sue Nye.

Band Sponsor: Betty Kreis.

Band Officers: Bill Bookout, captain; Stanley Lomenick, Paul Wright, Harold Ridge, Betty Stone, Ann Mavity, Nancilu Wood, Eugene McDaris, Louis Nelson, first lieutenants.

Director: B. H. Walker.



CHS Library

JUNIOR CLASS BOYS

Wayne Adams
Denton Albertson
Clarence Albright
Harold Alexander
John Allen
Sims Allen
Bill Andrew
Jimmy Askford
Charles Bailiff
George Baker
Hugh Baker
George Barker
Khomeer Beatty
Melvin Biggs
Hugh Bivins
Jack Bonds
Jack Bowen
Bob Bower
Houston Braddock
Jackie Bradley
Ray Bradley
Billy Bridge
Rody Broome
Raymond Brotbeck
Stephen Brothers
Dick Brown
Francis Brown
Jack Brown
Bert Broyles
Bill Bryan
Charles Burt

Ted Burtess
Lamar Busby
Charles Byles
Lloyd Campbell
C. S. Canfield
Noah Carden
Donald Carlock
Maurice Carroll
Albert Carter
Floyd Chamberlain
Harry Chapman
Buddy Christiansen
Alvin Clitty
Lester Cobble
Ray Coleman
Roy Collins
Eugene Conley
Thurston Cooke
Kenneth Courtney
Eugene Cox
Elmer Crosby
Charles Culbertson
James Daniel
Dennis Daugherty
Alfred Davis
Dick Davis
Tom Davis
Bill Deakins
Laddie Dean
Garland Dodd

Eugene Donahoo
Byron Donahue
Charles Dover
Harlie Dyer
Melvin Elliot
Tommy Elrod
Buddy English
Bob Ford
Dan Fowler
Charles Frick
Frank Fricks
Bill Gahne
Larry Gains
Bill Gamble
John Garner
James Gass
Walker Graham
Raymond Grant
Billy Greene
Calvin Greene
Kenneth Green
James Griffin
H. S. Groover
Maren Gwin
Robert Hall
Charles Hampton
Ray Hancock
Charles Hanson
Don Hanson
Ralph Harmon

Richard Harney
Ed Harris
LeRoy Harris
Charles Harrison
Edsel Hartman
Horace Haston
Elwood Haynes
David Hedges
Jack Henderson
Kenneth Hemphill
Dean Henderson
Ronald Hickerson
Charles Hicks
Larry Hill
Harold Hilt
Herbert Hollifield
Wilburn Hope
Howard Hofalen
Bob Houts
J. N. Houts
Bill Huddleston
Raymond Hynley
Robert Jolley
Joe Kelley
Eddie Kimsey
Charles Kinamon
Philip Krug
Julian Lane
Elmer Lawrence
Orville Lawrence
LaVerne Lea

Herschel Legg
Roy Leir
Walter Lerch
W. H. Lewin
Herschel Love
Talmadge Luttrell
Bob McDonald
Robert McBride
Fred McCullough
Glenn McCullough
Robert McDaris
Bob McDonald
Gene McGraw
Lloyd McGraw
Roy McGregor
Curtis McKinney
John Mantel
J. L. Marlow
Jack Mason
Walter Massey
Bill Meadows
Bill Meyer
Jackie Meyers
Alfred Miller
Thomas Miller
Eugene Mulligan
M. L. Mulligan
William Neighbors
William Newman
Carlin Newton

John Nicholas
George Niel
George Nye
Gilbert O'Rear
James Ortwein
Author Pack
J. P. Padgett
Raymond Park
Charles Parker
Gene Parker
Jack Parker
Clay Parton
Joel Patrick
Pat Perry
Ernest Petty
H. T. Petty
Roy Poston
Arthur Powell
William Rankin
Val Reich
Harold Ridge
Bobby Riggsby
Bobby Ritchey
Jack Robinson
Melvin Rogers
John Rose
Lewis Rowland
Conroy Ryan
Charles Saylor
Donald Schneitman

Clifford Shelton
Steven Short
John Simpson
Buell Sniard
Frank Smallon
Billy Smith
Garnet Smith
James Smith
Wayne Smith
Melvin St. Clair
Jack Stotts
Perry Strickland
John Sweton
Bill Taylor
Millard Teal
Jack Templeton
Austin Tiftworth
Robert Trimble
Charles Veneable
James Vitaeo
J. D. Walls
Nathan Welch
William Whaley
Wade Wheeler
Claude Whitehead
Elbert Whittenburg
Robert Wilbanks
Andrew Witt
Buddy Wooten
Jack Young
Bob Zimelman



JUNIOR CLASS GIRLS

Virginia Abel
Dorothy Adair
Joanne Adkins
Irene Allison
Billie Alloway
Bettie Fay Anderson
Virginia Atkins
Agnes Ayres
Royal Bailey
Sara Baker
Bettye Barfield
Virginia Barnes
Elizabeth Barronten
Marcia Basenach
Ruth Bass
Carolyn Baughn
Betty Bell
Donnie Belvin
Dixie Bennet
Betty Beville
Ella Jeanne Bilbrey
Ethel Blackburn
Sara Lou Blackman
June Blankenship
Laura Bivins
Geneva Bowling
Gwendolyn Boydston
Betty Brooks
Dorothy Brooks
Mary Lois Broom
Betty Brown
Elizabeth Brown
Frances Brown
Jean Brown
Kathleen Brown
Loran Brown
Kathryn Bull
Berberlee Bunch
Dorothy Butler

Jeannette Campbell
Lillian Canada
Florence Carroll
Mildred Carter
Jellie Casey
Jessie Casey
Inez Chunn
Carolyn Clark
Betty Colbaugh
Virginia Cobligh
Jean Coleman
Betty Colliway
Cora Mae Conn
Kathleen Cooper
Kathryn Couch
Vivian Coulter
Mildred Cottingham
Frances Cowley
Jimmy Crabtree
Betty Crane
Kathryn Crane
Barbara Crawford
Doris Crawford
Geneva Crosswhite
Bernice Cunningham
Ellowien Cyree
Norma Davenport
Sara Deakins
Dorothy Dean
Martha Derryberry
Barbara Dickert
Dorothy Dixon
Billy Joyce Dobbins
Mary Doremus
Joe Duggan
Jean Durham
Jean Dyer
Nancy Earp

Helen Eaves
Roberta Edens
Vivian Elliott
Marguerite Erby
Lou Eskew
Ruth Evans
Catherine Everett
Nina Farren
Louise Ferguson
Dorothy Fennell
Ruth Fisher
Claire Fletcher
Virginia Flewellan
Grace Foley
Lucile Ford
Louise Foster
Henrietta Foust
Jean Foreman
Rosalie Fraker
Jean Gaither
Kathryn Gardner
Penny Gibbs
Jean Gibson
Peggie Gibson
Mary Gillette
Ollie Joe Gilley
Betty Gilrath
Dorothy Golden
Virginia Goldston
Lois Green
Dorothy Griffin
Shirley Gwin
Hazel Hallander
Bobbie Hamilton
Bette Harris
Margaret Harris
Helen Hargraves

Geraldine Hartman
Jerry Hartman
Jessie Haston
Anetta Hatcher
Betty Hendricks
Doris Hendrix
Aline Hickerson
Gladys Hickman
Eileen Hixon
Evelyn Holder
Jeanne Holderman
Juanita Holley
Frances Holt
Frankie Holalen
Steve Hotalen
Dorothy Houston
Dorothy Humble
Dorothy Humphreys
Virginia Huskey
Louise Ireland
Betty Ivey
Erma Jackson
Mollie John
Betty Jean Johnston
Betty Sue Johnson
Elizabeth Johnson
Margaret Johnson
Dorothy Jolley
Betty Jones
Frances Jones
Louise Jones
Ruth Jones
Winetta Jones
Virginia Keel
Martha Keener
Virginia Keener
Josephine Keller
Mary Kelley
Katherine Kelly

Elsie Keown
Jeanne Kile
Kesta Kile
Betty Kimsey
Betty Kindred
Sarah King
Alice Sue Kirk
Alice Lane
Lorene Lane
Ethel Langston
Mae Langford
Doris Lawton
Nina Lawson
Virginia Lawson
Bessie Sue Lawrence
Mary Lesper
Lois Lines
Wilma Lines
Joyce Long
Betty Longley
Rethy Lowry
Lois Lusk
Ava Lyons
Elizabeth McAllister
Emily McClain
Katherine McClure
Frances McElroy
Charlotte McGhee
Enid McGregor
Dorothy McVeigh
Nancy Magrath
Alice Martin
Elizabeth Martin
Frances Martin
Billie Mathis
Willadean Maynard
Cliffie Merling
Mary Lee Meyer
Carmen Michaels
Frances Miller

Jane Moore
Agnes Morgan
Neil Morgan
Mary Nellie Murphree
Anna Myatt
Tassie Norris
Marjorie Ogile
Elsie Orr
Phyllis Park
Emma Jo Parks
Jessie Patton
Bobbie Payne
Elizabeth Peace
Ethelyn Peace
Emily Peoples
Jeannette Phipps
Kathleen Plamons
Joyce Poe
Joyce Porter
Martha Powell
Evelyn Preston
June Prestridge
Jane Ragudale
Peggy Ramsey
Doris Rankin
Dorothy Ranshaw
Mary Lee Richards
Erma Roberts
Juanita Robertson
Mary Robertson
Evelyn Rogers
Dorothy Rogers
Lila Beth Rogers
Patricia Rogers
Hester Romines
Selvia Russell
Betty Sheels
Mary Ellen Sherrill
Dorothy Shields

Rachel Shipman
Doris Shuby
Martine Skipper
Johnnie Smith
Margaret Sparks
Bette Stanley
Charlotte Stephenson
Evelyn Storch
Ethel Stewart
Martha Stewart
Juanita Stines
Mary Stone
Rosalie Stone
Edan Stroud
Ruth Stroud
Freda Stump
Helen Sunland
Betty Sully
Agnes Sutton
Rolena Tatem
Brulak Thompson
Mary Thompson
Virginia Thomas
Jean Thorn
Joan Thurman
Mildred Tucker
Pauline Tucker
Doria Vance
Ruth Vaughn
Marquette Ward
Martha Weaver
Anna Mae Whitehead
Jo Ann White
Mary Whittenburg
Erline William
Jean Witt
Mildred Womack
Frankie Wooden
Jean Zeliger



CHS Library

SOPHOMORE CLASS BOYS

Clarence Albright
David Allen
Alfred William Anderson
Billy Joe Anderson
Pierre Valkmar
Robert Thomas Andrews
Harry Newton Angle
Alvin Elding Arnold
Bobby Joe Arnold
Jerry Bill Arnold
Robert Bobby Asa
Bennie Andrew Atchley
Ralph Atkins
Harry Eugene Austin
Jesse Greenberry Bagwell
Chester Bernard Baker
Johnnie Lee Baldwin
Bobby Rufus Barfield
Bill Barham
Robert K. Barrows
Sam Beard
Jack Franklin Beaton
Clive Brook Beatty
Henry Clarke Beck
Herbert Avery Beck
Charles Lee Beene
Kenneth Carroll Beene
Woodie Melvin Beene
Kenneth Don Bell
Franklin Owens Bennett
John Barton Berg
Willard Eugene Bethune
Tom Mark Black
Albert Blain
Edgar Thayer Blair
Herbert Theodore Boerger
William Glen Bowling
Bailor Banard Bracken
Oscar Brooks
Thomas Houston Brooks

Alvin Earl Broom
James K. Brown
Kenneth Aster Brown
Ralph Robert Brown
John Nelson Bryan
Herbert Campbell
Robert Carroll
Darrle Dee Case
Roy Case
Fred Childers
Jefferson Lyle Claiborne
Robert L. Clark
Jack Cleveland
Lawrence Thomas Coggins
Charles Cooker
Audrey Lynn Colston
Jack Combs
Paul Connor
Earl Cooke
Joseph W. Cook, Jr.
Lamar H. Cook
Neal L. Cooper
Leland Cornelius
Richard Cornish
Robert Cotter
Clyde L. Craft
Johnny Crowe
Roy Thomas Crowe
William Jackson Cummings
Oren F. Cummings
Jack Kenneth Davis
James DeFord
Harold M. Devine
Charles R. Dickson, Jr.
Jack Dunlap Dickson
Billie Jo Downer
Grady Downs
Barney Joe Elkins
Billy Elrod
S. Daniel Erwin
Joe O. Erwin

Preston Ewton
Wymon Dee Farley
Arnold Farmer
Charles Farris
John Ford
Tommy Eugene Fowler
Johnny Marvin Frank
Billy Hoyt Frazier
Billy Calvin Fricks
Graydon Earl Ganaway
Billy Warren Garner
Kenneth Bishop Garner
J. Gletcher Garrett
William Carr George
George C. Gilbreath
Lawrence Allen Gordon
Arthur K. Gorman
Jack Lambert Gossett
Willie Paul Graham
Claude W. Griffith
Joe Bert Grove
Ernie A. Gullledge
Ralph H. Guherne
James F. Hale
Howard Gordon Hall
James Alexander Hall
Lee Franklin Hambright
Robert Hamilton
Walter B. Hammer, Jr.
James Harmon
Charles Harris
Robert Eugene Harris
Travis Edwin Hass
Bill Eugene Haynes
Nick Martin Hayes
Patricia L. Haynes
Creed Heidrick
Thomas Gilbert Hendrix
Richard Henton
Joe Herman
Thomas Elmer Hight

Samuel Orville Hill
Byron Hixon
George Hobbs
Wilburn Clyde Holmes
William Austin House
Elbert Howard
J. D. Hudson
William Edgar Huff
George B. Humphrey, Jr.
Sheridan Warren Hutsell
Jack Donald Hyde
Harry Igou
Lester Lewis Ingram
Kenneth G. Janow
Robert Lee Janell
Oliver Albert Jeffers
William Edward Jenkins
Billy Vance Jernigan
Albert Gilbert Johnson
Roy Garland Johnson
Edgar M. Jolley
James V. Jones
Richard Jones
Donald Keith
Roland E. Keith
Ernest J. Kelley
Raymond Edward Kenall
Peter Kennedy
Roland Martin
Donald Earl King
J. V. King
Bill Edward Kinsey
Eugene Kirby
Tommy H. Kreis
Tommy H. Kropff
Phyllis Mae Hendrix
Glenn Ledford
Joe Lanham
Edwin N. Lawton
Joe Herman
Merrill Leonard

Billy Gene Lewis
Don Lee Lewis
Howard Lewis
Nathan Lewis
Jack Lonas
Mack Lonas
Charles W. Loney
Joseph David Love
Joseph Roy Lovvorn
Robert E. Lowery
Bobby Tate Lusk
Albert Lutz
Vernon McAllister
Lawrence McBrayer
Charles McCallie
Lawrence McDaniel
Richard McDaniel
Clyde McKaig
Robert McKenzie
Eugene McKenney
Kenneth McKibben
George McLaughlin
Billy Gene McNish
Arden McWilliams
Mark Mabey
Marvin Malone
Wiley Markum
Roy Marshall
Roland Martin
Tommy E. Martin
Jon Willard Massey
Billy Joe May
Billy Joe Miller
Harry Miller
Judson Miller
Stanley Miller
Thomas Miller
Sidney Millican
Floyd Moaten
Lawrence Moore
Joe Morris

Alfred Marton
James Moss
Alouzo Porter Munay
Billy Newton Narramore
Harry Gibson Nelson, Jr.
Richard Nelson
Dwight Ogle
Glenn Olinger
James O'Rear
Marvin Osmont
William Lester Owens
Roy Barker Paden
Evangelos Pappas
Andrew Parker
Roy Pastors
William Passons
Carl Patterson
Thurman E. Patton
Frank Patty, Jr.
Robert P. Perry, Jr.
Emil Phitz
Charles Phillips
John Phillips
Paul Phillips
James Donald Smith
Hugh Pickle
Jack Pitkin
Lawrence David Smith
Leon McCallie Smith
Melvin E. Smith, Jr.
Richard Smith
Charles Smock
Gordon Ratchford
Harold Raulston
Sune Reed
William L. Reeves
Don Ritchey
James Roberts
Wallace Roberts
James E. Robertson

Robert Robinson
Bill Roddy
Garrett Rodgers
Norman Rodgers
Fred Roth
Jimmy Royal
Charles Rudi
Joseph Runge
William Roy Russell
Theodore Calvin Schlack
Pascall Owen Segars
Albert Sells
Ernest Sells
Aroni Sertel
Gordon Shamblin
Stanley Shuf
George Shehee
Walter Shehee
Eugene Shetter
Jerald Shall
Deward Staten
Frank Slayton
Jack Sledge
Jack Leon Smith
James Donald Smith
Joe Franklin Smith
John Donald Smith
Lawrence David Smith
Leon McCallie Smith
Melvin E. Smith, Jr.
Richard Smith
Charles Smock
Henry T. Sneed
Nelson Snyder
James H. Spaulding
Jimmy Spencer
Donald Stallings
Alan Charles Stanfield
Ernest Stanley
Gene Carlson Stevens
Thomas Edwin Stevenson

Bobby Reece Stone
Tommy Stott
Charles Suggs
Herbert Suter
Al Swingle
Marshall Swope
Clarence Tate
Billy Taylor
Kenneth B. Thompson
Laman Winston Timmons
Herbert Towers
Robert Troutman
Robert Upton
John H. Uney
Randolph Veazey
Harold Wallis
Jack E. Ward
James Watkins
Vance T. Wells
James West
Roy William Wheeler
Harvey Whitaker
Bernard Paul White
Byron White
Willie White
Carl Whitsett
Calvin Whitten
Robert Wiley
Willie White
Carl Whitsett
Calvin Whitten
Lawrence David Smith
Leon McCallie Smith
Melvin E. Smith, Jr.
Richard Smith
Charles Smock
Henry T. Sneed
Nelson Snyder
James H. Spaulding
Jimmy Spencer
Donald Stallings
Alan Charles Stanfield
Ernest Stanley
Gene Carlson Stevens
Thomas Edwin Stevenson



SOPHOMORE CLASS GIRLS

Betty Adams
Virginia Adams
Betty Adkins
Joyce Akers
Carmen Allison
Martha Allison
Mattie Lou Arnold
Mary Lanore Arnold
Hazel Atkins
Dolores Marie Bagby
Betty Ruth Baker
Betty Pauline Barnes
Florida Jo Barnes
Verna Margaret Barrett
Mildred Louise Barrows
Jeffra Batensch
Lorena Bates
Peggie Sue Bell
Olive Benton
Winona Lee Benton
Ruby Bettes
Betty Jean Bevins
Eve Christine Biggs
Joan Blackford
Betty Fay Blanchett
Delphia Blevins
Joyce Blevins
Gordie Armenta Boggs
Glady Lucile Bowen
Virginia Jo Boyd
Mary Helen Bradford
Paulette Bradshaw
Patricia Brandon
Mary Brannon
Katherine Brannon
Barbara Brower
Margaret Broadway
Rebecca June Broome
Jeanette Brouhard
Betty Brown
Thelma Faye Brown

Winifred Jean Brown
Geraldine Bruton
Mable Louise Buckner
Frankie Nadine Burgess
Martha Cain
Bernice Dee Calvert
Hattie Carter
Wanda Carter
Elizabeth Cavin
Geneva Louise Chambers
Billie Marie Chandler
Vivian Chaney
Jo Ann Chapman
Hazel Cherry
Virginia Lee Churchill
Gloria Ann Clark
Betty Jo Clementson
Imogene Cliff
Louise Cloninger
Bobbie Louise Collins
Mary Elizabeth Collins
Betty Davis
Mary Edna Connelly
Catherine Cordell
Vivian Coulter
Beverly Jean Craig
Marion Ruth Craig
Mildred Cranfill
Gordie Armenta Boggs
Betty Jean Cretton
Pattie Rose Cotten
Whonola Deal
Linnie Davis
Martha Davis
Whonola Deal
Johnnie Ruth DeFord
Mary Helen DeLashmitt
Margaret Demore
Betty Carolyn Demsey
Barbara DeShazo
Boots Juana Dickerson

Gwenie Lee Dover
Virginia Anne Duggan
Rosa Nell Dyer
Betty East
Ruth Edwards
Katie Lee Eller
Dorothy Ervin
Patricia Louise Erwin
Louise Eby
Loretta Evans
Virginia Ewart
Johnnie Sue Farmer
Rostella Fervin
Joyce Eloise Ford
Ruth Foster
Martha Fowler
Billie Marie Frank
Ethel Margaret Fuller
Kathleen Gallant
Rebecca Sue Garner
Jewel Beatrice Gheant
Gertrude Gilley
Doris June Gilreath
Edna Earle Gilreath
Juanita Ruth Golden
Margaret Goldston
Ruth Goode
Marilyn Frances Goodner
Frances Gordon
Virginia Connie Graner
Lorraine Marjorie Grier
Martha Ann Groner
Mary Louise Gross
Dorothy Lee Hale
Gloria Ann Hammond
John Hildegarde Hampton
Irene Hargraves
Dorothy June Harper
Nancy Joe Hawk

Virginia Hayes
Ragney Brooks Hays
Gladys Haggie
Bernice Halden
Harriet Henderson
Katie Lee Eller
Dorothy Ervin
Patricia Louise Erwin
Louise Eby
Loretta Evans
Virginia Ewart
Johnnie Sue Farmer
Rostella Fervin
Joyce Eloise Ford
Ruth Foster
Martha Fowler
Billie Marie Frank
Ethel Margaret Fuller
Kathleen Gallant
Rebecca Sue Garner
Jewel Beatrice Gheant
Gertrude Gilley
Doris June Gilreath
Edna Earle Gilreath
Juanita Ruth Golden
Margaret Goldston
Ruth Goode
Marilyn Frances Goodner
Frances Gordon
Virginia Connie Graner
Lorraine Marjorie Grier
Martha Ann Groner
Mary Louise Gross
Dorothy Lee Hale
Gloria Ann Hammond
John Hildegarde Hampton
Irene Hargraves
Dorothy June Harper
Nancy Joe Hawk

Billie Jo Kilgore
La Voy Kilgore
Jewell Dolores Kinsey
Marie Kinamon
Helen King
Phyllis Mae Hendrix
Mary Knapp
Nellie Knight
Betty Jean Higdon
Jeanette Lee
Billie Carleen Leach
Marjorie Louise Leslie
Sarah Leslie
Mary Levi
Elizabeth Ling
Irene Linkins
Mary Lomenick
Juanita Long
Joyce Longley
Betty Love
Marjorie McBrayer
Della McDaniel
Johnnie Joyce McDonald
Maxine McDowell
Mary McDunkins
Christine McNish
Mary Mabey
Margaret Mackie
Ruby Manning
Sarah Frances Manning
Barbara Mansfield
Laura Lee Marsh
Evelyn Martin
Lois Kae
Iris Elizabeth Keeney
Janette Matthews
Francis Marie Kelley
Virginia Ora Kelley
Jean Carolyn Kelley

Betty Jo Moat
Billie Joyce Mobley
Elynor Marie Moore
Jewell Elizabeth Morgan
Geraldine Morring
Betty Jo Kirby
Betty Ann Myers
Loretta Newport
Hellen Lavan Olsen
Peggy Osborne
Doris Painter
Beatrice Parker
Lela Parker
Ida Mae Patrick
Lela Paulsen
Carolyn June Phillips
Lora Pickett
Juanita Poff
Edna Porter
Mary Potter
Mildred Potts
Emilyn Powell
Mary Joan Price
Anna Lois Richard
Dorothy Prince
Rebecca Prince
Charlotte Prokop
Peggy Prophater
Aimee Pruett
Bernice Purcell
Thelma Ramba
Ida Randa
Carolyn Reynolds
Betty Rudy
Thelma Richards
Virginia Ritchey
Geraldene Rivley
Barbara Ann Riggs
Doris Runk
Jessie Ruth Robertson

Bettie Joe Robinson
Doris Robinson
Naomi Robinson
Vivian Robinson
Katherine Rodgers
Patricia Ann Roughton
Kathleen Rowland
Betty Ruth Roy
Anita Roberts
Annie Roberts
Betty Shattuck
Thelma Shelby
Evelyn Shieley
Dorothy Simmons
Betty Louise Skates
Imogene Skillington
Anna LaVerne Smith
Anna Ruth Smith
Frances Smith
Lillian Smith
Martha Smith
Mary Elizabeth Smith
Mildred Smith
Betty Spear
Charlotte Sprague
Mary Squibb
Ruth Staley
Betty Stanley
Dorothy Steele
Pearl Stone
Betty June Stringfield
Kathleen Suggs
Carolyn Sullivan
Sarah Sutton
Ordelia Mae Swainford
Reba Tallant
Rosa Tallant
Kathleen Tanner
Betty Tate
Evelyn Tate

Mary Tatum
Betty Templeton
Erma Thomas
Frankie Lee Thomas
Sarah Thomas
Letha Thompson
Betty Timmons
Carolyn Tipton
Margaret Tomlin
Doris Towers
Loela Travis
Elizabeth Trewitt
Dolly Tucker
Betty Jo Turk
Betty Turner
Frances Turner
Janet Turner
Betty Tyson
Betty Jean Varnell
Betty Vaughn
Peggy Vineyard
Sessie Walker
Brookline Lee Walker
June Walker
Aime Walker
Betty Wardell
Mary West
Mary Westbrook
Emma Westfall
Carolyn Sullivan
Fanny Womac
Mary Womack
Shirley Ann Wood
Dorothy Woodin
Thelma Worley
Majorie Wyrick
Betty Yarbrough
Dorothy Young



FRESHMAN CLASS BOYS

Jim Adams
Thayer Allison
Billy Allman
Max Anacker
Walter Anderson
Billy Ayers
J. L. Ayers
Roy Bailey
Billy Baker
Nowelle Bankston
Gene Baskette
Roy Belk
Charles Boone
Jimmy Boone
Tommy Boles
Herschel Boyd
David Bradford
Charles Bradford
Charles Brewer
Ross Broadway
Bill Brotbeck
Edward Brown
Eugene Brown
James Broyles
Joe Burns
Jack Busby
Lloyd Camp
Roy Campbell
Wayne Carden
Dale Carter
Darrel Case
John Cathcart

Charles Childers
Charles Christenberry
Zack Coker
Jay Conley
Jimmy Cooke
William Cooper
Joseph Craze
Billy Crowley
George Culver
Vernon Dantzer
Allen Davidson
Arnold Davis
Billy Deuker
Glendon De Lashmitt
George Doyle
Joseph Dyer
Bill Early
J. R. Earg
Wiley Epperson
Earl Farrow
J. L. Flippo
Clyde Follett
Clarence Frank
Floyd Fuller
Bill Fulmer
Charles Gilbreath
George Gilbreath
M. J. Graham
Eddie Green
Howard Greene
Malcolm Grier
Curtis Griffin

Billy Grimmig
Jack Gryder
Billy Guthrie
Ralph Guthrie
Norman Hannah
Doyle Harden
James Harmon
Charles Harris
Edward Harris
Edward Harper
Johnny Hoge
Frank Holland
Wendell Holliday
Jimmie Hurst
Gene Igou
Kenneth Irwin
Billy Jernigan
Douglas Johnson
Johnny Johnson
Norma Johnson
Bob Jolley
Gene Jones
J. Paul Jones
John Jones
Ralph Jones
Harry Kellog
Jones Kelsoy
David Kennedy
Billy Kidwell
Bill Kinsey
Thomas Kirk
Jack Kreis
Joe Lanham

Joe Laycock
Roland Lewis
Pat Light
Jack Lonas
Mack Lonas
Stuart Lynch
James Magette
Franklin Martin
Bob Mason
Claude Mason
Buford Mason
Leroy Mathis
George Mathis
Joe McArthur
Harry McCool
Bob McCoy
Kenneth McGee
Donald McIntyre
Kenneth McKibben
George McLaughlin
Jimmy Meredith
Haskell Merritt
Baynard Miller
Glenn Miller
Thomas Miller
Floyd Moates
Charles Morrell
Howard Moore
James Moss
William Nelson
J. B. Nichols
Dan Nix

Robert Nix
Ed Nobles
James O'Rear
Wilburn Poole
Lawrence Porter
Evanglas Poppas
Herbert Powell
Jack Purley
Carlton Ratchford
Gordon Ratchford
Billy Richardson
Norman Rogers
George Roth
Walter Rymer
Jo Scharer
George Scheidt
Jack Scoggins
Hascal Segars
Charles Seibold
Billy Jo Shaver
Bobby Shedd
Charles Sivley
Gene Slayton
Jack Sledge
A. J. Smith
Benjamin Smith
Wallace Smith
Cyrus Smith
Harold Smith
Henry Sneed
George Spencer
Johnny Stanfield

Harvey Steele
Henry Stephens
John Swope
Clifford Taylor
George Taylor
Sam Thomas
Daniel Tucker
Johnny Vail
Dick Walkley
Gilbert Ward
Henry Weller
Vance Wells
Robert Westbrook
Harvey Whitaker
Floyd White
Jack White
Lloyd White
Charles Willard
Coward Williams
Donald Williams
Bobby Williamson
Bill Wilson
Lamar Wilson
William Wilson
Olan Winkler
Kenneth Wood
Thomas Wood
Jack Woods
Jerrie Woods
Billy Wright
Buck Wright
John Zimbleman



FRESHMAN CLASS GIRLS

Emma Nell Alexander
Charlotte Allison
Hortense Bagwell
Evelyn Barnes
Sarah Bayston
Olive Benton
Annabelle Biddy
Martha Blackburn
Nila Boyd
Mary Ann Bradford
Patricia Brandon
Dorothy Bratton
Betty Brazier
Mary Jo Brazier
Andrey Broome
Heraldine Bullock
Norma Burkette
Rita Bush
Martha Buttner
Virginia Cade
Betty Cagle
Virginia Canfield
Mary Carmichael
Martha Sue Carter
Sue Carter
Dorothy Casey

Mildred Chandler
Sue Childress
Elizabeth Chunn
Mary Clark
Rena Clark
Sarah Cobb
June Cochran
Glenda Cooper
Carol Covington
Betty Crane
Ethel Crump
Elnora Cunningham
Boots Dickerson
Ann Dixon
Beverly Eddings
Carolyn Flanders
Dorothy Forester
Mary Garner
Arlita Goodner
Betty Gorman
Dorothy Green
Betty Griffith
Emo Jean Hale
Agnes Hall
Myrl Halleck

Clara Hambrick
Imogene Harden
Anna Kate Harrison
Juanita Hassler
Sue Hatfield
Nancy Jo Hawk
Evelyn Healy
Willodean Healy
Patricia Heaton
Stella Hendrix
Lenora Henson
Phyllis Hill
Ruby Hicks
Doris Higdon
Patty Hogue
Charlotte Holcombe
Betty Holloman
Virginia Houdenspyl
Martha Hoppe
Caroline House
Dolores Jeffery
Barbara Lee Jenkins
Norma Johnson

Mary Sue Karron
Lucille Kays
Ginny Kelley
Gloria Keown
Mary Nell Keown
Jane Kimball
Evelyn Lake
Gene Lane
Marjorie Lanham
Faye Lawson
June Lawson
Carmen Lewis
Hazel Lignon
Lura Lumpkin
Willie Lee Malcolm
Barbara Marlow
Eloise Masingill
Martha Mason
Jeannette Matthews
Betty Mavity
Virginia McCulston
Ann McDonald
Johnnie McDonald
Jean McLain
Augusta Meyer

Katherine Miles
Dorothy Mills
Virginia Mullican
Olivia Oakley
Mary Katherine Ogale
Louise Peace
Jean Peak
Willette Perkinson
Billie Pickett
Edna Porter
Martha Potts
Rebecca Prince
Jane Ragdsdale
Barbara Ritchie
Elizabeth Robinson
Helen Roddy
Mary Ellen Rowe
Sylvia Sarvis
Margaret Sertal
Georgette Short
Anna Louise Smith
Fay Smith
Mary Helen Smith
Wilhelmina Snyder
Ida Mae Spears

Betty Speer
Mary Ann Stephens
Eileen Stephens
Barbara Sutton
Jane Sutton
Betty Ann Swearingen
John Swope
Peggy Tallent
Tennie Tate
Elizabeth Taylor
Mary Elizabeth Tidwell
Amy Lou Tinker
Jimmy Underwood
Mary Kate Venable
Jo Ann Wardell
Emily Ann Weaver
Billy Jo Wehunt
Frances West
Carmen White
Louise Whitfield
Rose Whitehead
Lois Williams
Wenonah Williamson
Jerrie Woods
Betty Jo Wright



T H E F E A T U R E S

LEADERSHIP

Leon Hudson

Kathryn Chapman



SCHOLARSHIP

G. C. Robinson

Edith Beene

P R O M I N E N T S T U D E N T S



PERSONALITY

O. K. McCULLOUGH
DOROTHY SUE WHITAKER

FRIENDLINESS

BETTY STONE
VERNON COX

DEPENDABILITY

GENE PAYNE
VIRGINIA MEYER



T A L E N T

EUGENE McDARIS
ANN MAVITY



ATHLETIC ABILITY
FRANK SMITH
MARY PFITZER



COURTESY

HAROLD BARROWS
JACKIE STONE



SERVICE
ROBERT MEYER
JULIET MCBROOM

THE CHAMPION STAFF



G. C. ROBINSON Editor-In-Chief
 ANN MAVITY Business Manager
 EDITH BEENE Senior Editor
 LEON HUDSON Feature Editor
 ROBERT MEYER Club Editor
 GENE CARROL Military Editor
 BASIL IRWIN Sports Editor
 TED HAYS Photographic Editor
 BETTY JOHNSON Typist
 MARGIE SMITH Typist
 BETTY STONE Typist
 BETTY CRANE Junior Editor
 JIMMY WILSON Sophomore Editor
 MILDRED CHANDLER Freshman Editor
 MISS SALLY MAY KING Editorial Sponsor
 MRS. LYDA GORE RICE Business Sponsor



ORGAN

IZATIONS



NATIONAL HONOR SOCIETY

LORNA ANDRAE President
 TED HAYS Vice President
 MARY PFITZER Secretary
 KATHRYN CHAPMAN Treasurer
 MRS. JOHN A. SHELTON Sponsor



SENATE

ROBERT MEYER President
 KATHRYN CHAPMAN Vice President
 VIRGINIA MEYER Secretary
 JULIET McBROOM Treasurer
 MR. J. ARLIE HOODENPYL Sponsor
 MRS. KEN FLENNIKEN Sponsor



SENIOR BOYS HI-Y

G. C. ROBINSON President
 HAROLD BARROWS Vice President
 ROY McCULLUM Secretary
 ROBERT MEYER Treasurer

WEDNESDAY GIRL RESERVES

MARJORIE SMITH President
 RUTH BASS Vice President
 RACHEL SHIPMAN Secretary
 EVELYN STERCHI Treasurer
 MISS ANN MOFFITT Sponsor



TUESDAY GIRL RESERVES

MARTHA KEENER President
 MARY DENA LEEPER Vice President
 BETTY SUE JOHNSON Secretary
 BILLIE JANE MATHIS Treasurer
 MISS HARRIET FOSTER Sponsor



BANK AND BOOKSTORE

LYDA GORE RICE Sponsor





GIRLS' HI-Y

EDITH BEENE President
 BETTY ALLISON Vice President
 MILDRED BLEDSOE Secretary
 DORIS UNDERWOOD Treasurer
 MRS. J. A. SHELTON Sponsor
 MRS. NEWTON LOGAN Sponsor



BAND GIRLS CLUB

BETTY STONE President
 ANN MAVITY Vice President
 BETTY KREIS Secretary
 ANNE JORDAN Treasurer
 MR. B. H. WALKER Sponsor



SAFETY COUNCIL

JAMES HUSKEY President
 G. C. ROBINSON Vice President
 JULIET McBROOM Secretary
 FRED McCUISTON Treasurer
 MR. W. H. MILLSAPS Sponsor



JUNIOR RED CROSS

CLYDE PARKS President
 MARTINA ROGERS Vice President
 LORNA BROWN Secretary
 MARTHA TILLERY Treasurer
 MISS LILLIE SCHWARTZ Sponsor
 MRS. IDA LONGLEY Sponsor
 MRS. HAZEL BARTON Sponsor
 MRS. EDNA JACOWAY Sponsor

GLEE CLUB

EUGENE McDARIS President
 MORTON HILL Vice President
 GWENDOLYN WESTBROOK Secretary and Treasurer
 K. W. JOHN Sponsor



USHERS

JULIET McBROOM President
 BETTY ALLISON Vice President
 ELEANOR GOODGAME Vice President
 MARJORIE MOORE Secretary
 MISS EDNA CROSS Sponsor



OFFICERS' CLUB

LEON HUDSON President
 BILL LOMENICK Vice President
 G. C. ROBINSON Secretary
 RAYMOND PROCTOR Treasurer
 MISS RUTH FAIN Sponsor



SERGEANTS' CLUB

LOUIS ROWLAND President
 ROBERT McDARIS Vice President
 FRED McCUISTON Secretary
 JACK STOTTS Treasurer
 MR. J. ARLIE HOODENPYL Sponsor





PRESS

STANLEY LOMENICK Foreman
JAMES L. MILBURN Sponsor



DIGEST

LELA MANLY Editor
STANLEY LOMENICK Printing Foreman
GRACE PFITZER Business Manager



CANDY AND ICE CREAM

MR. AND MRS. W. H. TEMPLETON Sponsors
LYDA GORE RICE Sponsor



STAGE

FRANK LOWE Stage Manager
JOHN RAMSEY Assistant Manager
JAMES UPTON Projection Room Manager

T. AND I. CLUB

HORACE HASTON President
J. A. CRUMLEY Vice President
HERBY LAYMAN Secretary
JACK TEMPLETON Treasurer
MR. W. H. MILLSAPS Sponsor



HOME ECONOMICS CLUB

RUTH WILLIAMS President
JOYCE SMITH Vice President
ELIZABETH TRAVIS Secretary
MARGARET WILLIAMS Treasurer
MRS. JANIE SHROPSHIRE Sponsor
MRS. MERCER CLEMENTSON Sponsor



JUNIOR RETAILERS' CLUB

BERNARR WELCH President
JOAN PEARCE Vice President
JANICE LEE Secretary
GENE MULLIS Treasurer
MISS VIRGINIA SHELTON Sponsor



ANNOUNCERS

ELIZABETH KREIS President
ROBERT MEYER Vice President
BETTY DUGGAN Secretary
EUGENE McDARIS Treasurer
MRS. KEN FLENNIKEN Sponsor





BIBLE CLUB

HAZEL OGLE President
ANNIE LAURIE MOORE Vice President
ANNETTE HATCHER Secretary
ELIZABETH McALLISTER Treasurer
MISS RACHEL McALLISTER Sponsor



DEPRESSION CLUB

MORTON HILL President
ARCHIE ADAMS Vice President
LAMARR EAKER Secretary
WALTER WENCH Treasurer
MRS. H. B. ROBINSON Sponsor



CAMERA CLUB

JACK R. RODMAN Sponsor



NITE OWLS

BETTY ROWE President
FRANCES BROWN Vice President
BETTY SCOGGINS Secretary-Treasurer

GADABOUTS

DORIS UNDERWOOD President
BETTY ALLISON Vice President
DOROTHY SUE WHITAKER Secretary
MARY E. PFITZER Treasurer
MISS FOFO ELLIS Sponsor



DOGPATCHERS

BOB HENDERSON President
HERBERT TOWERS Vice President
LAMARR EAKER Secretary
WALTER WENCH Treasurer
MR. A. B. ROBERTSON Sponsor



TURF AND TAMBARK

JAMES HUSKEY President
MARILYN SHRADER Vice President
VIRGINIA MEYER Secretary
MARJORIE JAHN Treasurer
MRS. HARRY NELSON Sponsor



VICTORETTES

VIRGINIA GILBREATH President
BARBARA NARRAMORE Vice President
FRANCES LOGGINS Secretary
JACQUELYN STONE Treasurer
MISS CAROLINE L. LILLARD Sponsor





EXCLUSIVE CLUB

MARJORIE OGLE President
FRANCES MILLER Vice President
BESSIE SUE LAWRENCE Secretary
ALICE LANE Treasurer
MISS ELSA DENNISON Sponsor

RAMBLERS

DOROTHY SUE WHITAKER . . . President
NANCE MAGRATH Vice President
MARY RUTH ULRICKSON Secretary
MARY E. PFITZER Treasurer
MISS DOROTHY DAVIS Sponsor

SPINSTERETTES

VIRGINIA JACKSON President
AMY JEAN ERWIN Vice President
RUTH BAKER Secretary
EDNA MAE HOWELL Treasurer
MRS. J. FRANK PRICE Sponsor

LIBRARY CLUB

EMILY PEOPLES President
NINA LAWSON Vice President
MARY LEE RICHARDS Secretary
TED SCHLACK Treasurer
MRS. ELIZABETH BEAMGUARD . . . Sponsor
MRS. JOHN P. SANDERS Sponsor

ANCHORS AWEIGH

JUANATA CHILDERS President
MARY RUTH ULRICKSON Vice President
DOROTHY SUE WHITAKER Secretary
GEANNE CARLTON Treasurer
MRS. REBA FULTS Sponsor

INK SPOTS

PHYLLIS FALLS President
BERTIE LOU McALLISTER Vice President
JERRY HARTMAN Secretary
BETTY KINDER Treasurer
MR. LESTER NEWTON Sponsor

CADETTES

FRANCES MILLER President
PAT ROGERS Vice President
ALICE LANE Secretary
PEGGY WOODS Treasurer
MISS RUTH TIETZE Sponsor

TRAIL TROTTERS

JOYCE GILLESPIE President
JOEL PATRICK Vice President
NANCY MAGRATH Secretary
JERRY ARNOLD Treasurer
SGT. C. J. KERSCHER Sponsor





BAND OFFICERS' CLUB

BILL BOOKOUT President
 STANLY LOMENICK Vice President
 ANN MAVITY Secretary
 PAUL ERIGHT Treasurer



BATON CLUB

MARY RUTH GILLETTE President
 SUE NYE Vice President
 DOROTHY RENSHAW Secretary-Treasurer
 B. H. WALKER Sponsor



C CLUB

FRANK SMITH President
 BASIL IRWIN Vice President
 GENE PAYNE Secretary



JUNIOR BOYS' HI-Y

WALTER HAMMER President
 HERBERT BOERGER, JR. Vice President
 JOE DYER Secretary
 GENE MEALOR Treasurer
 MR. E. N. FIELDS Sponsor

ORCHESTRA

AMY JEAN ERWIN President
 ROY McCOLLUM Vice President
 JOANNE ADKINS Secretary-Treasurer
 ELIZABETH McALLISTER Librarian
 GLENN MILLER Librarian



GRADY LITERARY SOCIETY

JAMES HUSKEY President
 BILLY COUCH Vice President
 FRED McCUISTON Secretary
 ROBERT FERRELL Treasurer
 EVERETTE O'NEAL Sponsor



SEVENTEENERS

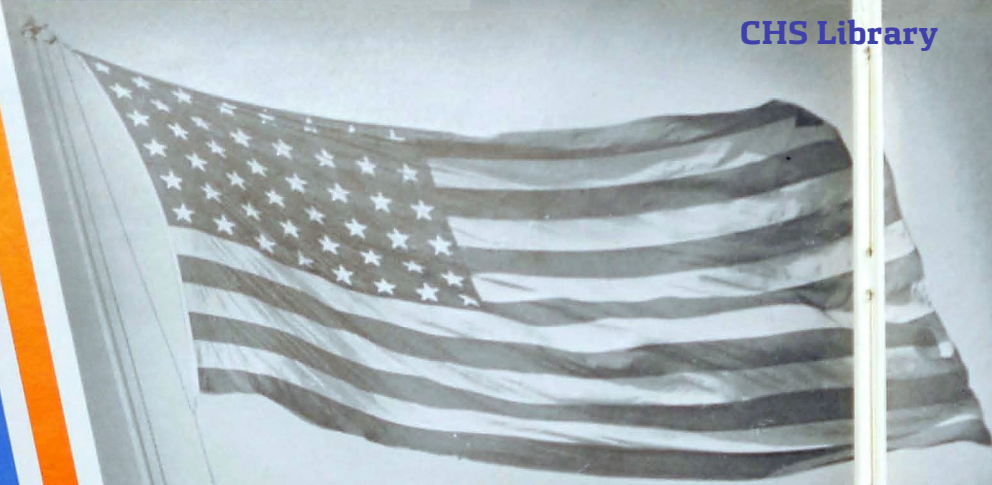
MARY RUTH ULRICKSON President
 NANCY MAGRATH Vice President
 BETTY ROWE Secretary
 MARGARET CHILDERS Treasurer
 MISS MINNIE LEE MORGAN Sponsor



VAGABONDS

BETTY SUE SMITH President
 DANA HARDIN Vice President
 MILDRED JOHN Secretary
 JEAN FOREMAN Treasurer
 MR. E. N. FIELDS Sponsor





MILITARY



MILITARY OFFICERS

LT. COL. JOHN E. SELBY

PROFESSOR OF MILITARY SCIENCE AND TACTICS

Lieutenant-Colonel Selby, who has been in charge of the R. O. T. C. units in Chattanooga since the spring of '43, hails from the state of Maryland where he graduated from St. Johns College with an A.B. degree. Colonel Selby also holds an A.B. degree from Norwich University, and is a graduate of the Cavalry School, Ft. Riley, Kansas. For twenty-six years he has been on R. O. T. C. duty in the following places: California, Oregon State, Norwich University, and the New Mexico Military Institute. Colonel Selby has to his credit more years on R. O. T. C. duty than any other officer in the army. This experience has given him the ability to train men to a high degree in close-order drill and in the fundamentals of actual combat.



MAJOR WARREN HUNTER BYINGTON

Assistant Professor of Military Science and Tactics

For the past four years Major Byington has served as assistant P. M. S. and T. with the R. O. T. C. units in the public schools of Chattanooga. An alumnus and loyal supporter of Central, Major Byington received his first Military training at Fort Oglethorpe and was graduated from the First Officers Training camp in 1917. Since that time he has served with the Thirty-first Division at Camp Wheeler, Georgia, and in the Eighty-second Division in France during the First World War.

Under his leadership, Major Byington has had the satisfaction of seeing the Central R. O. T. C. grow in strength and performance.

The training received under his guidance is proving of inestimable value to many of the cadets now in the armed forces.



SERGEANT CHARLES J. KERSCHER

Sergeant Instructor

Sergeant C. J. Kerschler was transferred to the Central High R. O. T. C. unit from the Reception Center at Fort McPherson, Georgia, in June, 1943. He served as a drill sergeant, instructing the new recruits entering the reception center there. Sergeant Kerschler came originally from Omaha, Nebraska, but received his schooling at Tech High School in Atlanta, Georgia, and was a student at Georgia Tech before entering the Army in March, 1941.

His devotion to duty and interest in his work have won him the respect and admiration of all the cadets; his honest, straight-forward manner and keen insight have been conducive to the development of the best characteristics of the men in the regiment.



REGIMENTAL STAFF

GENE CARROLL
Colonel

BAXIL IRWIN
Lieutenant Colonel

ARCHIE ADAMS
S-1 Captain

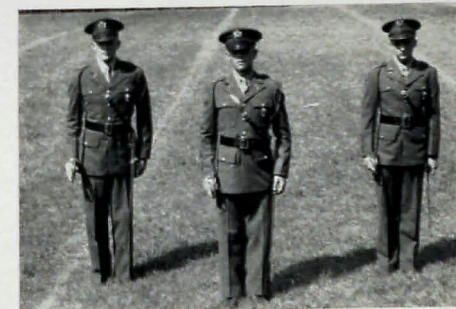
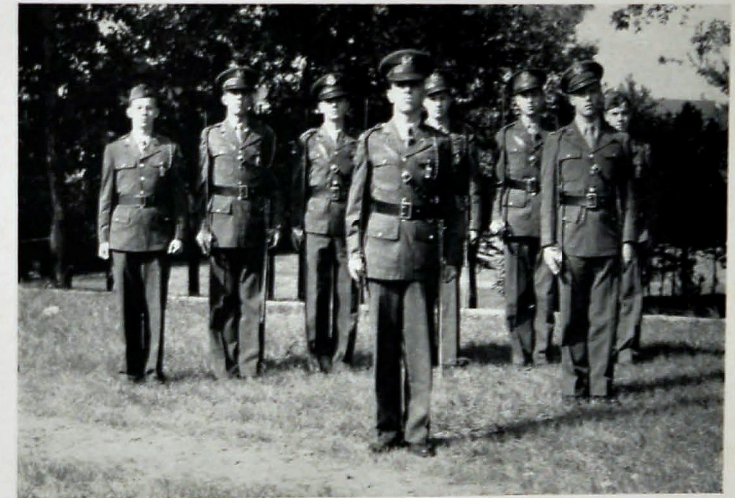
A. B. CHAMBERLAIN
S-3 Captain

BILL DEMPSEY
S-2 Captain

GENE GUNNE
S-4 Captain

HUGH BAKER
Master Sergeant

FRED McCUSTON
Master Sergeant



FIRST BATTALION STAFF

MAJOR OSCAR LYLE
LIEUTENANT CARL WIGGS
LIEUTENANT LEON HICKS



SECOND BATTALION STAFF

MAJOR LEON HUDSON
LIEUTENANT FRANK LOWE
LIEUTENANT VERLIE CAMPBELL

MILITARY OFFICERS

AND SPONSORS



Colonel Gene Carroll



Mary Ulrickson



Major Oscar Lyle



Joanne Pierce



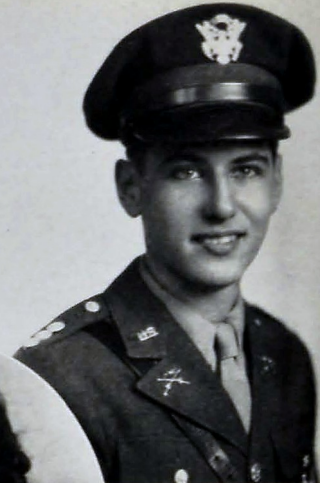
Ann Mavity



Major Leon Hudson



Jacquelyn Stone



Captain O. K. McCullough



Captain Ed Norris



Doris Mavity



Captain Robert Scarbrough



Juliet McBroom



Captain Marvin Snow



Betty Sue Phillips



Captain Raymond Proctor



Betty Baker



Captain G. C. Robinson



Bettye Scoggins



Captain Bill Lomenick



Barbara Narramore



Captain Bill Campbell



Betty Allison



Captain Archie Adams



Mary Jo Rhinehart



Captain Billy Dempsey



Gennetta Ragon



Captain A. B. Chamberlain



Dorothy Stevens



Captain Gene Gunne



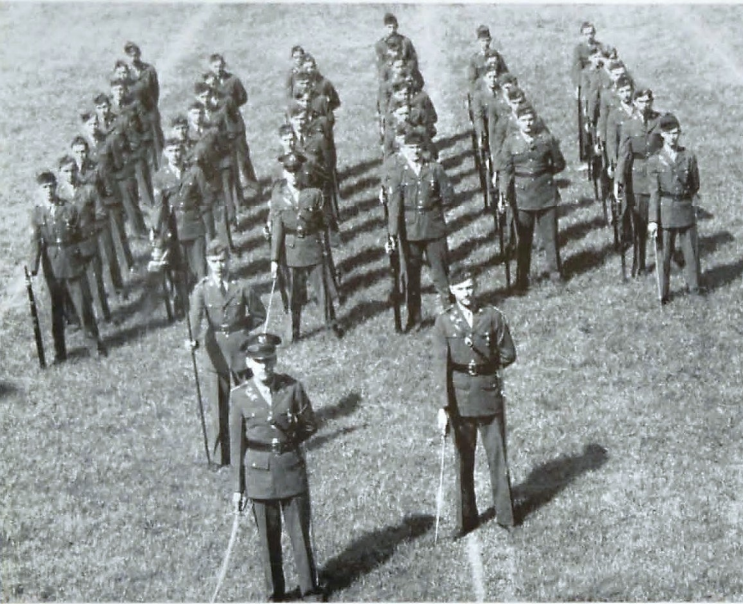
Ruby Tate



Captain Harold Williamson



Elizabeth Kreis

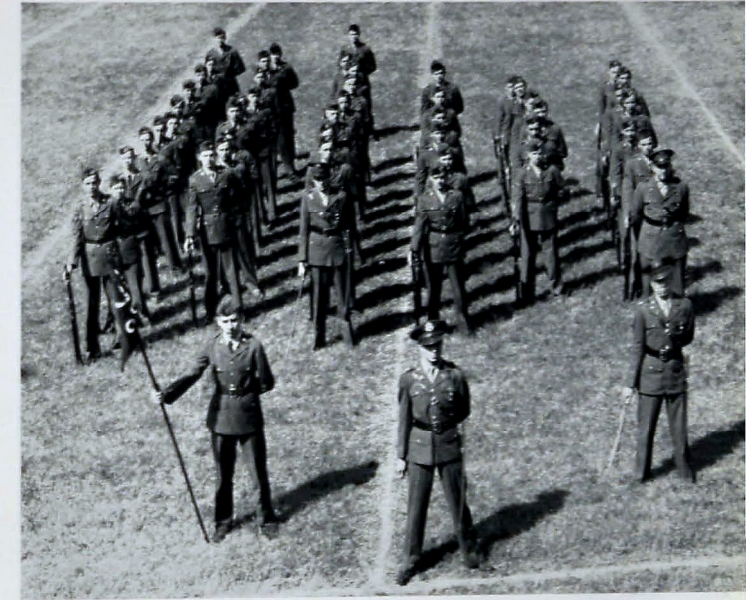


COMPANY A

O. K. McCULLOUGH
Captain
HERBERT COLLUM
First Lieutenant
JACK SMITH
Second Lieutenant
ROBERT ADKINS
Second Lieutenant
ROBERT McDARIS
First Sergeant
LARRY HILL
Sergeant
CHARLES HUNT
Sergeant
JOEL PATRICK
Sergeant
ROY McGREGOR
Sergeant
BILL GUHNE
Corporal
ELMER CROSBY
Corporal
HARLIS DYER
Corporal
JACK BROWN
Corporal
M. L. MULLIGAN
Corporal
EUGENE CONLEY
Corporal

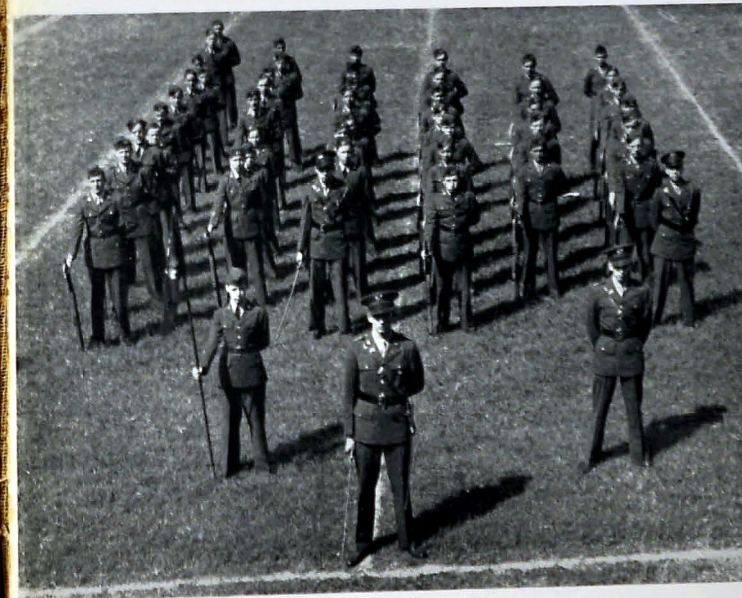
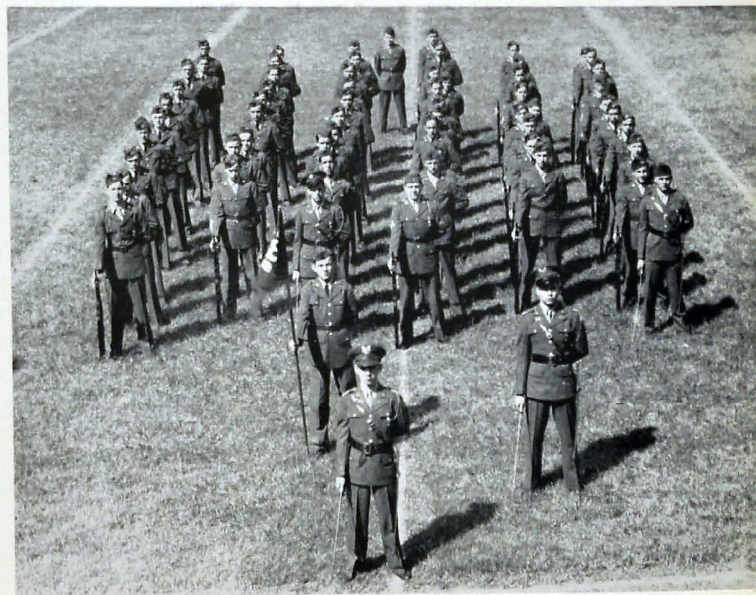
COMPANY C

ROBERT SCARBROUGH
Captain
VENABLE GUESS
First Lieutenant
EDWARD VAUGHN
Second Lieutenant
BEN ALFORD
Second Lieutenant
JACK STOTTS
First Sergeant
GARLAND COFIELD
Sergeant
BOB FORD
Sergeant
STEPHEN BROTHERS
Sergeant
J. D. PADGETT
Sergeant
ERNEST PETTY
Corporal
ANDREW WITT
Corporal
CHARLES HICKS
Corporal
ROBERT WILBANKS
Corporal
ROY POSTON
Corporal
W. D. NEWMAN
Corporal



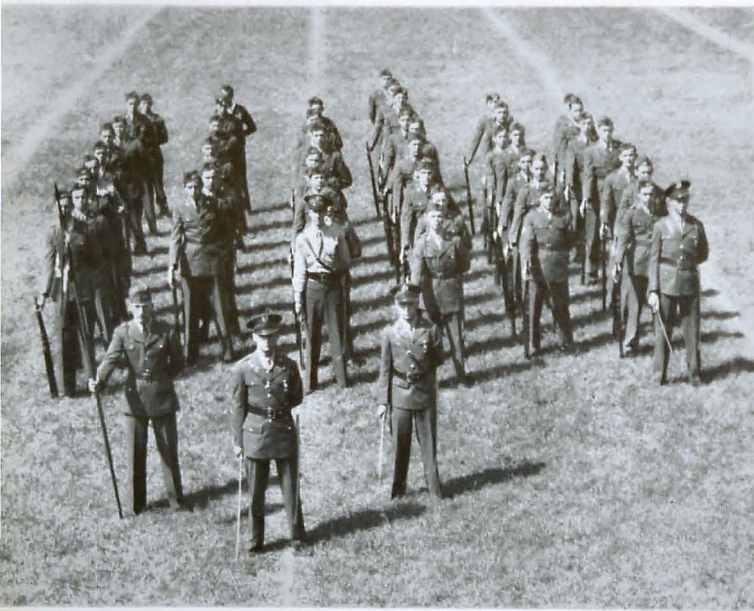
COMPANY B

EDWARD NORRIS
Captain
MELVIN CARTER
First Lieutenant
ROBERT MEYER
Second Lieutenant
ELGIN SMITH
Second Lieutenant
WILMER CRAIG
First Sergeant
BYRON DONEHUE
Sergeant
ROBERT McDONALD
Sergeant
WAYNE ADAMS
Sergeant
BILL DEAKINS
Sergeant
ALVIN CITY
Corporal
GEORGE BAKER
Corporal
KELLY WILSON
Corporal
TOMMY ELROD
Corporal
HERSHEL LEGG
Corporal
LEROY HARRIS
Corporal



COMPANY D

MARVIN SNOW
Captain
PAUL REECE
First Lieutenant
JOHN TURNER
Second Lieutenant
ROBERT SMITH
Second Lieutenant
BILL MEADOWS
First Sergeant
CHARLES HAMPTON
Sergeant
JOHNNY CROWE
Sergeant
JULIAN LANE
Sergeant
CHARLES BYLES
Sergeant
JACK YOUNG
Corporal
KENNETH GREEN
Corporal
THOMAS MILLER
Corporal
CHARLES McCALLIE
Corporal
CLARANCE TATE
Corporal
BILL BARLEW
Corporal

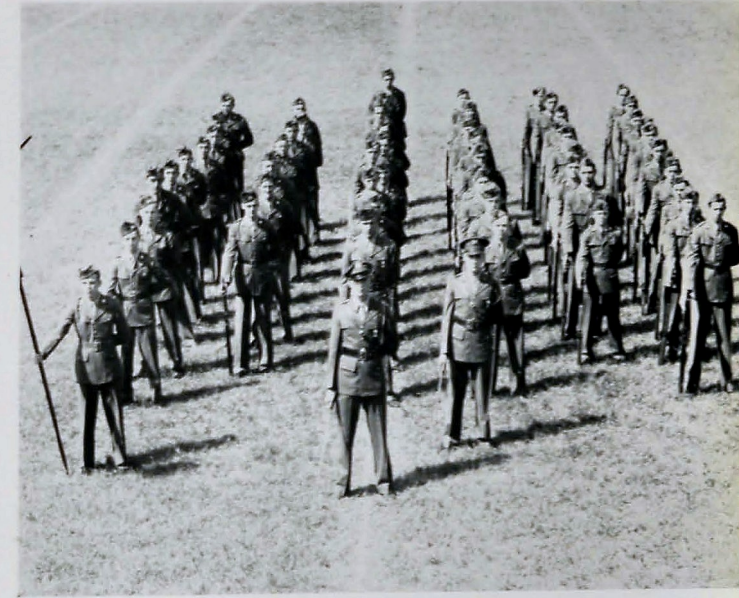


COMPANY E

RAYMOND PROCTOR
Captain
JOHN SNEED
First Lieutenant
TOMMY GROOVER
Second Lieutenant
ROBERT HARRELL
Second Lieutenant
BILL GAMBLE
First Sergeant
RAYMOND BROTBEC
Sergeant
HERBERT HOLLIFIELD
Sergeant
LLOYD McGRAW
Sergeant
BILL NEIL
Sergeant
CHARLES CULBERSON
Corporal
JACK MASON
Corporal
GLENN McCULLOUGH
Corporal
CARLIN NEWTON
Corporal
GARNETT SMITH
Corporal
BOB McDONALD
Corporal

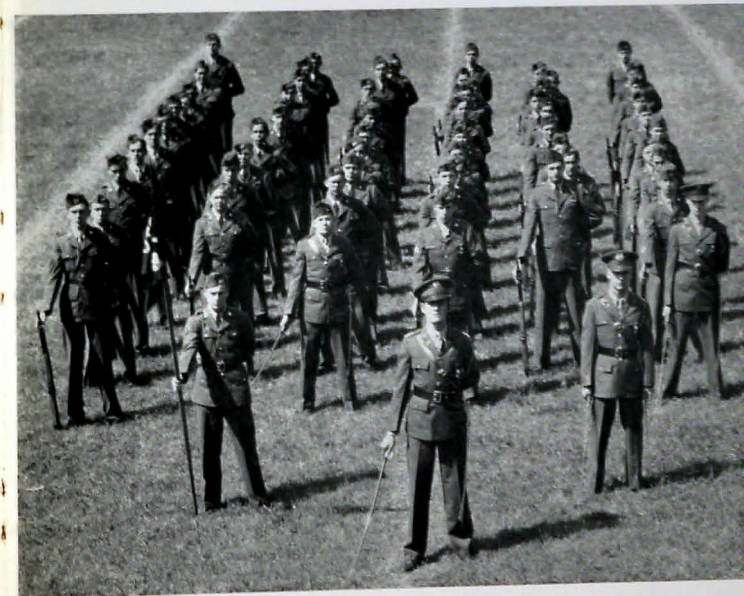
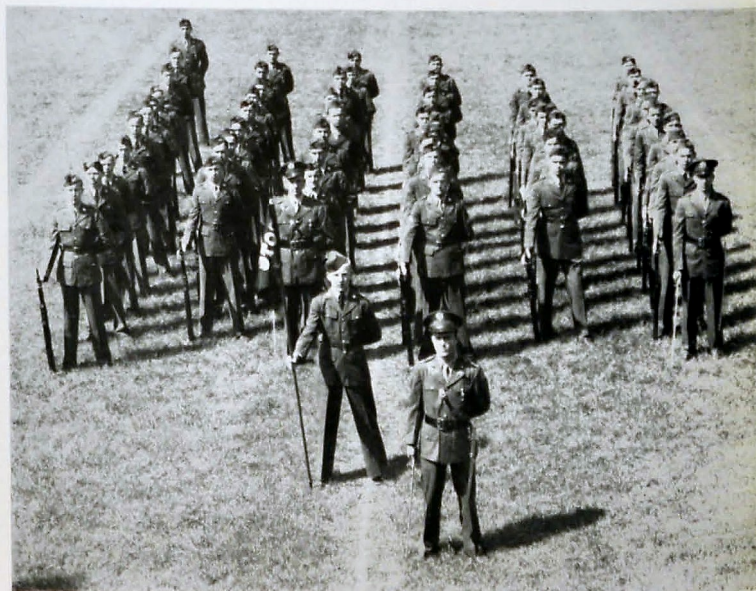
COMPANY G

BILL LOMENICK
Captain
HAROLD BARROWS
First Lieutenant
BILLY CARTER
Second Lieutenant
ROBERT EDENS
Second Lieutenant
RAY COLEMAN
First Sergeant
DAVID GRAY
Sergeant
BILL SHIRLEY
Sergeant
WALTER LERCH
Sergeant
THURSTON COOKE
Sergeant
EUGENE MULLICAN
Corporal
WAYNE ADAMS
Corporal
WILLIAM RANKIN
Corporal
J. L. MARLOW
Corporal
RAYMOND GRANT
Corporal



COMPANY F

G. C. ROBINSON
Captain
LOCHLAN DOWNS
First Lieutenant
STANLEY McBROOM
Second Lieutenant
CAMERON PECK
Second Lieutenant
LOUIS ROWLAND
First Sergeant
WALTER WENCK
Sergeant
GEORGE NYE
Sergeant
WALTER MASSEY
Sergeant
J. D. PADGETT
Sergeant
BILL MEYER
Corporal
FLOYD CHAMBERLAIN
Corporal
GEORGE BARKER
Corporal
R. L. MIDDLETON
Corporal
NORMAN ROGERS
Corporal



COMPANY H

BILL CAMPBELL
Captain
ROBERT GOZA
First Lieutenant
BILLY MARTIN
Second Lieutenant
BILLY BRIDGE
First Sergeant
WALTER MASSEY
Sergeant
GILBERT O'REAR
Sergeant
JACK PARKER
Sergeant
ROBERT TRIMBLE
Sergeant
MELVIN ROGERS
Corporal
BILL TOWERS
Corporal
J. D. WALLS
Corporal
EDDIE KIMSEY
Corporal
ELWOOD HAYNES
Corporal



A T H L E T I C S



To the Left, Left to Right: Ralph Brown, Tackle; John Bryan, End; Charles Burt, Back; Bill Carter, Alternate Captain, Back; Ray Coleman, Center; Roy Crowe, Tackle; Ed Fults, Back; George Gilbreath, End; George Harvey, Back; Ted Hays, Tackle; Basil Irwin, End; Dan Lamb, Guard; David Lawson, Back.

COACH E. B. "RED" ETTER

A keen sense of humor, a kindly understanding, and an interest in each player as an individual are a few of the leading characteristics of Coach E. B. "Red" Etter, which have made outstanding his leadership of Central's team this year. When he assumed the position of head coach last spring, in spite of the loss of many leading players to the Army, Coach Etter organized and trained a remarkable team under extreme difficulties. He has not only endeared himself to the players, but, by becoming one of them, he has raised their ideals to higher levels and has encouraged initiative.

A 1930 alumnus of Central, Etter received his B.A. degree from the University of Chattanooga and has coached at Morgan School, at Hendersonville, North Carolina, and at Brainerd Junior High.

While at Central, he played under Dean Peterson, and through the years has continued to hold a sincere interest in the school's athletic activities.

COACH JAMES LESTER NEWTON

Serving as line coach this year was James L. Newton, who resigned his position as principal of Falling Water Grammar School to come to Central in the fall of 1941 to join the coaching staff and to teach General Science.

Coach Newton has proved to be one of the best line coaches in the history of Central. He has put his heart and soul into his work and developed a rugged and tangled line which neither asked nor gave any quarter of any game.

While at college, Mr. Newton received twelve letters in athletics. This fact, along with his renowned enthusiasm shown at the football games, speaks for his deep interest in sports. Mr. Newton has attended both Carson Newman and South Georgia Teachers Colleges.

FOOTBALL LETTERMEN

The outlook for the 1943 edition of the Purple Pounders was far from bright at the beginning of the season. With the loss of the coach and several boys from the team of last year, the situation looked hopeless.

With Coach E. B. "Red" Etter filling Coach Dean Petersen's shoes and Coach Lester Newton taking over the assistant's position, the Pounders began the building of a team. With only nine lettermen returning, this was a difficult job. Captain Frank Smith proved to be of great assistance in these early stages. Billy Carter, flash tailback, was selected as Alternate Captain to fill the vacancy created by Howard Derrick's induction into the Marines.

The coaches looked to "Lefty" George Harvey to handle the passing for the Pounders. Harvey, Carter, Lawson, and O. Smith were to be the mainstays of the backfield. Payne, Smith, Williamson, Irwin, and Love were the returning lettermen for the line. Lamb, Levi, and Park were expected to carry much of the heavy work.

After weeks of hard training the Pounders looked forward to the first game of the season with the much-heralded Red Bank Lions.

The Purple Pounders led by Capt. Frank Smith opened the season on September 10 at Frawley Field with a 13 to 0 triumph over a scrappy Red Bank Team. The game was played before an overflow crowd of 4,000. Otis Smith plunged over from the one-foot line for the first score. The other touchdown was made by Basil Irwin on an end-around. The Purple forward wall, led by Capt. Frank Smith and Hal Williamson, was one of the few to halt Red Bank's All-City, Bobby Jumper.

On September 16 the Purples next rolled over a light and inexperienced team from Tyner High with a final score of 47 to 0 in favor of the Purples. Jack Robinson paced the Pounders by scoring

three markers. George Harvey passed to Basil Irwin after scoring two on the ground.

Central shattered the "Fighting Irish" of Notre Dame on Friday, September 24, by a score of 68 to 0. This is the highest score ever made by a prep school of Chattanooga. Billy Carter was the standout for the Purples scoring three touchdowns. The twin stripes of the Pounders still remained uncrossed. Otis Smith, rangy fullback, kicked nine out of ten extra points, thus making another prep record for the Pounders.

Central traveled to Kingsport October 1 where she defeated a tough aggregation, 28 to 7. Otis Smith scored twice for the Pounders. Gene Payne, versatile center, passed to Basil Irwin who ran 50 yards for the second touchdown of the evening. Captain Frank Smith and Hal Williamson led the line in its defense. Bob McCoy, freshman star, furnished the thrill of the evening by returning a punt 70 yards for a score in the last few seconds.

Returning to Frawley Field on October 8 the Pounders downed Gadsden 19 to 6.

Billy Carter, Otis Smith, and George Harvey were the offensive standouts. Pat Roberson, all-state fullback, was dangerous at all times to the Pounders. Accompanying the Gadsden team was the school band who gave a fine show.

Central suffered her first defeat at the hands of C.M.A. in Columbia, Tennessee. The Cadets played very good ball to beat the Pounders 26 to 19. Billy Carter made a beautiful 65-yard punt return for a touchdown. The game was played under adverse weather conditions, on a rainsoaked C.M.A. gridiron. Gish, Captain of C.M.A., led the defense. A layout pass from Gene Payne to "Junior Love" was good for 60 yards and the second Central tally.

The Purples defeated the Rome Hilltoppers at Frawley Field on October 22 by a score of 46 to 0. Many enthusiastic fans from Rome supported their team. Billy Carter scored three touchdowns for the Pounders. Harvey also gained consistently

COACH CHARLES MILLSAPS

From East Side Junior High School in September, 1943, came Coach Charles Millsaps to work with Central's football heroes of tomorrow—the B team. Besides his work with the Baby Pounders, Coach Millsaps has proved his worth in his fine leadership in intra-mural activities—boxing, wrestling, ping-pong, and weight lifting.

After receiving his degree from Murfreesboro State Teachers College, Mr. Millsaps taught at Dickinson Junior High, Chattanooga Vocational School, and East Side Junior High School. His many years in working with boys and his well balanced athletic background have made Coach Millsaps a valuable addition to Central's coaching staff.

COACH ERNEST A. OWENS

One of the new additions to the teaching staff of Central, and yet not a stranger this year, is alumnus of the class of '32, Ernest A. Owens, who came to Central from Chattanooga Vocational High.

In keeping with the true Central spirit, Mr. Owens volunteered to give his time in helping to coach the Baby Pounders. He understands the game thoroughly, having played halfback on the football team while attending Central. His success in coaching the Baby Pounders was demonstrated by the fact that they lost only one game this year.

Mr. Owens attended the State Teachers College at Murfreesboro and received his coaching experience at East Lake Junior High.

COACH E. B. "RED" ETTER

COACH JAMES LESTER NEWTON



COACH CHARLES MILLSAPS

COACH ERNEST A. OWENS





To the Left, Left to Right: Carr Leavitt, End; Roy Levi, Tackle; Herschel Love, End; Bob Lusk, Back; Bob McCoy, Back; Bill Meadows, Guard; Ed Nobles, Back; Raymond Park, Guard; Gene Payne, Center; Earl Pickering, Center; Jack Robinson, Back; Frank Smith, Captain-Guard; Otis Smith, Back; Hal Williamson, Tackle.

T H E F O O T B A L L

for the Purples. The fancy ball-carrying was too much for the Hilltoppers.

A record-breaking crowd of nearly 5,000 fans on the evening of October 29 saw the Baylor Red Raiders down the Purples 12 to 0 in what proved to be the hardest-fought prep contest of the year. Both of Baylor's scores came as a result of fumbles. Mallory scored both touchdowns for the Raiders. It was, as expected, a battle between the two captains—Frank Smith and Joe Steffy. Smith was, in the opinion of many, victor of this battle of personalities. Otis Smith was also very effective on defense.

Undaunted by the defeat of the Baylor game, the Purple Pounders came back in great fashion to down Ensley 7 to 2 on Friday evening, November 2. The Birmingham team proved to be truly a power-house on the gridiron. Fieselman, one of the best backs encountered by the Purples all year, was the standout for Ensley. The lone touchdown of the

evening came on a running pass from George Harvey to "Junior Love". Gene Payne reached high in the air on two occasions to capture Fieselman's passes. Freshman Ed Nobles gave the fans a treat and Ensley a setback when he quick-kicked 60 yards.

The Tech High Smithies handed the Pounders their worst defeat of the year on November 12. This powerful machine beat the Purples 34 to 6 on their own field in Atlanta. Peek's tackle smashes and end runs were very effective. He led Tech who had one of the season's best teams in Georgia. McCoy made the lone Purple tally from the 15-yard line where it had been moved after a 23-yard layout pass from Gene Payne to Basil Irwin.

The Pounders on November 19 traveled to Erwin where they were battled to a 0-to-0 deadlock. It was a defensive game from the start with neither team able to penetrate very deeply the territory of the other. Roy Levi was the defensive standout for Central.

The Pounders met their traditional foe from Third Street on Thanksgiving Day, November 25, at Engel Stadium. A crowd of approximately 10,000 fans, one of the largest ever to attend a football game in Chattanooga, came out on that balmy Thanksgiving afternoon to see the game.

The Maroons gained very little through the Pounder line led by Captain Frank Smith. Billy Carter scored twice for the Pounders, once on a beautiful pass-play from a spread formation. David Lawson's fine blocking was felt in this game as it was in all of the others. Otis Smith made good all his attempts for extra points. The game ended in another victory for Central with a score of 28 to 0.

Under their new coaches the boys worked very hard. The results are obvious. Having won eight games, lost three, and tied one, the Pounders have had a very successful season. Coaches Etter and Newton are to be congratulated on their fine piece of work. The boys are as proud of their coaches as the coaches are of the boys.

The Captain, Frank Smith, and Alternate Captain Billy Carter proved to be worthy of their selection. Frank Smith was the most outstanding lineman in all games and was one of the two unanimous selections for All-City. Gene Payne and Hal Williamson also were honored by placing on the first team All-City, with Billy Carter and Otis Smith making the second

T E A M

All-Star team. Alternate Captain Billy Carter was the chief ground gainer for the Purples. He was tied with Central's Otis Smith at fourth place in the City.

In spite of the handicaps in the beginning, the fine cooperation and teamwork of all the boys, together with the determination and hard work of the coaches, have made this season the great success that it has been.



RODY BROOME AND HOUSTON BRADDOCK
Managers



PURPLE POUNDERS



Top Picture: Otis sails over for a touchdown.
Bottom Picture: Carter under convoy.



	Score	Opponent	Score	Date	Place
Central	24;	Tynar	11;	Dec. 11, 1943;	Tynar
Central	24;	Soddy Daisy	28;	Dec. 14, 1943;	Central
Central	29;	Rossville	23;	Dec. 16, 1943;	Central
Central	24;	Soddy Daisy	31;	Dec. 17, 1943;	Soddy Daisy
Central	35;	Rossville	27;	Dec. 27, 1943;	Rossville
Central	27;	Notre Dame	15;	Jan. 4, 1944;	Notre Dame
Central	23;	Hixson High	16;	Jan. 7, 1944;	Central
Central	37;	Chatt. High	25;	Jan. 10, 1944;	City
Central	32;	Bradley	34;	Jan. 13, 1944;	Central
Central	29;	*Hixson	16;	Jan. 14, 1944;	Central
Central	31;	*Red Bank	22;	Jan. 15, 1944;	Central
Central	25;	*Baylor	28;	Jan. 17, 1944;	Central
Central	26;	*Soddy Daisy	33;	Jan. 18, 1944;	Central
Central	25;	McCallie	18;	Jan. 21, 1944;	Central
Central	34;	Rud Bank	26;	Jan. 24, 1944;	Red Bank
Central	24;	McCallie	34;	Jan. 26, 1944;	Central

	Score	Opponent	Score	Date	Place
Central	26	†City High	31	Jan. 28, 1944	Auditorium
Central	22	McCallie	26	Feb. 1, 1944	McCallie
Central	33	Red Bank	30	Feb. 3, 1944	Central
Central	38	Alcoa High	27	Feb. 5, 1944	Central
Central	40	Tyner	23	Feb. 7, 1944	Central
Central	25	Rossville	21	Feb. 8, 1944	Rossville
Central	41	Bradley High	37	Feb. 9, 1944	Bradley
Central	25	City High	24	Feb. 11, 1944	Central

*Times Tournament
†Jamboree

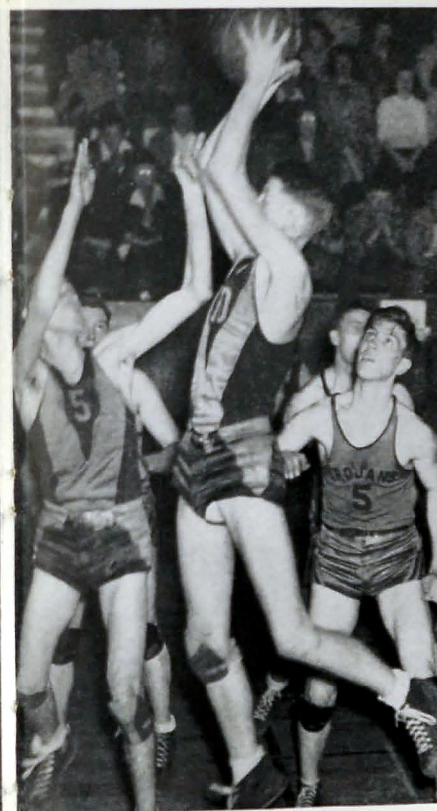
Central . . . 41; Baylor 29; Feb. 14, 1944; Baylor
Central . . . 19; Etowah 26; Feb. 22, 1944; Central
Central . . . 46; Sale Creek 27. Mar. 1, 1944; Red Bank
<hr/>
Total . . . 826 722

Bottom Row: Left to Right: Mark Blaylock, Charles Burt, Herschel Love, Wood Casey, Manyon Millican.
Top Row: Coach W. P. Bales, Bill Deakins, Harold Brown, Charles Saylor, John Connell, Houston Braddock, Kenneth Lonas.



Central High School

Saylor taking a rebound from Backboard in Soddy-Daisy game.



Love, Smith and Hollis jumping for loose ball in McCallie game.



Blaylock shooting for goal in Hixson game. Casey, Love, Gooden and Baker in back-ground.



Left to Right, Back Row: W. P. Bales, Coach, John Hendricks, Ira Templeton, Ned Thaxton, Wallace Miller, Melvin Rogers, Robert Goaz, Earl Bland, A. B. Chamberlain, Billy Neal. Bottom Row: Herbert Gilreath, Louis Duffo, D. L. Haley, Hardeman Stonestreet, Frank Trundle, Bill Schulte, Lon Smith, Leon Haley, Jimmy Black, Eugene Shrader.

B A S E B A L L

In the opening game of the season on Friday, April 9, Central's baseball nine started on a round of victories by defeating the McCallie Tornadoes on their own field to the tune of 5 to 1. In this all-star line-up were: Leon Haley, second base; D. L. Haley, shortstop; Black, center field; Schulte, left field; Trundle, right field; Smith, third base; Gilreath, first base; Stonestreet, catcher and Ned Thaxton on the mound.

This first victory was followed on April 14 by an overwhelming score of 20 to 3 in Central's favor over the Red Raiders of Baylor. The highlight of this game came in the third inning when Bill Schulte, guardian of the left field, stepped to the plate. Ned Thaxton was, as ever, the dependable pitcher. D. L. Haley shone for the Purples by getting three hits for four times at the bat and scoring four of the runs.

A real struggle and a close score of 1 to 0 in favor of Central was the result of the game with Red Bank. With Central's Jug Thaxton pitted against Red Bank's Wayne Morris, the game proceeded into the third and decisive inning when Haley crossed the home plate for the only run of the game.

It was Friday, April 23, that Central suffered a defeat, bowing to Chattanooga High to the score of 6 to 3. Gene Shrader pitched an excellent game.

With another victory of 9 to 7 over McCallie Tornadoes, Central marched on to top position in the City Prep league. In revenge for a previous defeat, the Purples now chalked up a victory of 3 to 0 over the City Maroons.

By virtue of their splendid team work and excellent record, the Central nine by this time held undisputed claim to the top spot in the Prep League.

Ned Thaxton in the act of breezing his high hard fast one by the batter.



The Goal

Graduation holds a meaning sometimes hidden
by the frills
Of the gala celebrations and commencement
practice drills,
And we're likely not to think of it as something
we've attained,
As the first tangible evidence of knowledge
we have gained.

Graduation holds a challenge spurring many
to go on
And achieve success and honor by the merit
of its brawn,
It's a true and noble challenge that's directed
to us all,
Whether we accept and meet it or neglect to
heed its call.

Graduation is the climax to a task that's ended
now
And the prelude to another when we'll all
be learning how
To employ all our talents in a useful
worthwhile way,
That our gifts to others can grow larger
day by day.

Graduation is a symbol of a goal we've
reached at last,
It's the symbol of a milestone we triumphantly
have passed.
Graduation's an incentive to pursuit of
other things:
It assures us of our powers to face
what our lifetime brings.

KATHRYN CHAPMAN

Patrons

ALABAMA ENGRAVING COMPANY Birmingham, Alabama
 ARCHER PAPER COMPANY, 6-3189 1124 Market Street
 ATHLETIC HOUSE Knoxville, Tennessee
 L. G. BALFOUR COMPANY, Jewelers Attleboro, Massachusetts
 BENSON PRINTING COMPANY Nashville, Tennessee
 BOYCE COAL COMPANY, 2-7853 North First Street
 BRAINERD VARNELL HARDWARE AND PAINT COMPANY, 2-1173 3114 Brainerd Road
 DR. EARL R. CAMPBELL, 7-3354 525 McCallie Avenue
 CENTRAL CAFE, 2-9198 511 Dodds Avenue
 CENTRAL HIGH SCHOOL P.-T. A. Central High
 CHATTANOOGA ARMATURE WORKS, 2-2124 1215 Duncan Avenue
 CHATTANOOGA GAS COMPANY, 6-0191 811 Broad Street
 THE CHATTANOOGA MEDICINE COMPANY 3803 St. Elmo Avenue
 COCA-COLA BOTTLING COMPANY, 6-4788 201 Broad Street
 CRISMAN HARDWARE COMPANY, 7-1114 511 Market Street
 ALEX DE FLOREO, Ice Cream and Lunches 511 Dodds Avenue
 DAYLE MAY, Jewelers, 3-0195 Rossville, Georgia
 EDMONDSON SCHOOL OF BUSINESS, 6-1259 Edmondson Building
 EDWARDS AND LeBRON, LTD., Jewelers, 6-7175 805 Market Street
 THE FISCHER COMPANY, Jewelers, 6-0922 8 West Eighth Street
 GILMAN PAINT AND VARNISH COMPANY, 6-5181 216 West Eighth Street
 EDITH GOETZ, Florist, 7-3345 James Building
 H. W. GRANERT, Photographer, 6-7335 813½ Market Street
 GRANT PATTEN MILK COMPANY, 6-1294 1202 King Street
 HARDIE AND CAUDLE, Clothiers, 6-7032 809 Market Street
 HOTEL PATTEN, 6-2141 Market at Eleventh
 HOWARD CLEANERS, 2-1116 1631 McCallie Avenue
 JACOBS WHOLESALE CANDY COMPANY, 6-2728 925 Market Street
 JAMES SUPPLY COMPANY, 7-1151 515 East Eleventh Street
 JOYS, INC., Florist, 6-7168 Georgia at Tenth

Patrons

INEZ KIMBALL, Florist, 2-4771 2409 McCallie Avenue
 KING-DOBBS AND COMPANY, Wholesale Grocers, 6-1251 246 East Eleventh Street
 KINGSPORT PRESS Kingsport, Tennessee
 KOBLENTZ, Men's Store, 6-2764 812 Market Street
 S. H. KRESS AND COMPANY, Ten Cent Store, 6-5631 708 Market Street
 LANSFORD PIANO COMPANY, 6-7185 730 Cherry Street
 L. C. LEACH AND COMPANY, Jewelers, 7-2841 738 Cherry Street
 LeGRAND JEWELRY COMPANY, 6-6816 604 Market Street
 MARTIN-THOMPSON, Sporting Goods, 7-3373 706 Cherry Street
 MILLS AND LUPTON SUPPLY COMPANY, 6-6171 1152 Market Street
 MOUNTAIN CITY STOVE COMPANY, 6-0211 1240 Market Street
 PALMER CLOTHES, 6-3834 825 Market Street
 T. H. PAYNE COMPANY, Office Supplies, 6-0138 821 Market Street
 PERSONALITY SHOP, 4-2013 Rossville, Georgia
 PICKETTS INC., Women's Apparel, 6-3121 814 Market Street
 PRYOR PHARMACY, 2-1148 1422 McCallie Avenue
 ROSSVILLE HARDWARE COMPANY, 4-2015 Rossville, Georgia
 R. K. SCHOLZE, Grocers, 2-2131 415 Dodds Avenue
 SEARS, ROEBUCK AND COMPANY, 6-7344 539 Market Street
 THREE SISTERS, Women's Apparel, 6-2719 702-04 Market Street
 A. G. STIVERS LUMBER COMPANY, 6-7179 345 East Main Street
 TEMPLETON'S INC., Jewelers, 6-7628 12 West Eighth Street
 TUNNEL DRUG STORE, 2-2156 3110 Brainerd Road
 UNIVERSITY OF CHATTANOOGA, 6-7363 McCallie Avenue
 U. S. FIVE AND TEN CENT STORE Rossville, Georgia
 VIOLET STUDIO, Camera Shop, 6-1553 11 East Seventh Street
 WOOD BROADCASTING CORPORATION, 6-5117 Hamilton National Bank Building
 WILEY SCHOOL OF BUSINESS, 6-2231 Times Building
 WILKINS CANDY COMPANY, 6-1151 1273 Market Street

Autographs

CHS Library

