



Champion

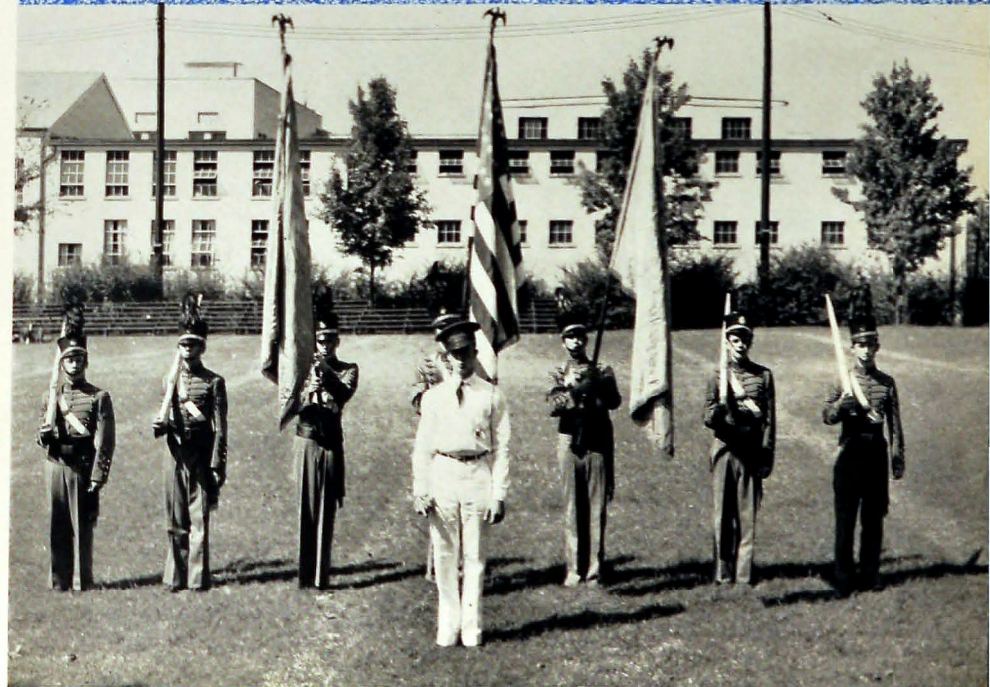
1 9 4 3

PROPERTY OF
CENTRAL HIGH SCHOOL

THE 1943

THE ANNUAL PUBLICATION
OF THE STUDENTS OF
CENTRAL HIGH SCHOOL
CHATTANOOGA, TENNESSEE

Champion

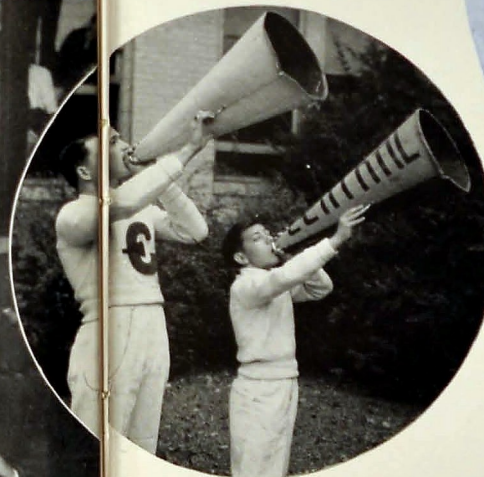
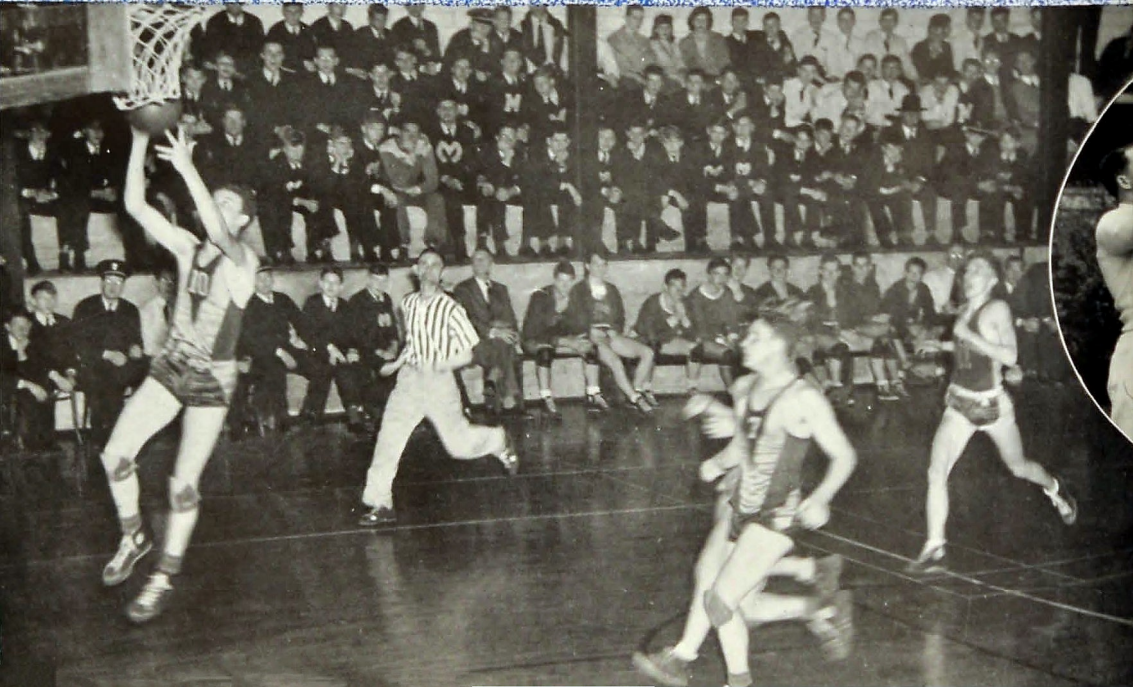


our record

OF THE YEAR
AT CENTRAL HI

The American youth of today face a situation peculiar to their generation, for never before has our country been involved in total war. In this day, when "What we all want is victory and beyond victory a world in which free men may fulfil their aspirations," Central has devoted herself wholeheartedly to the promotion of the war effort whenever the call has come.

As you scan these pages, may your mind turn pleasantly to those happy days of '43 when even in a confused and war-torn world, life had its bright and joyous experiences.

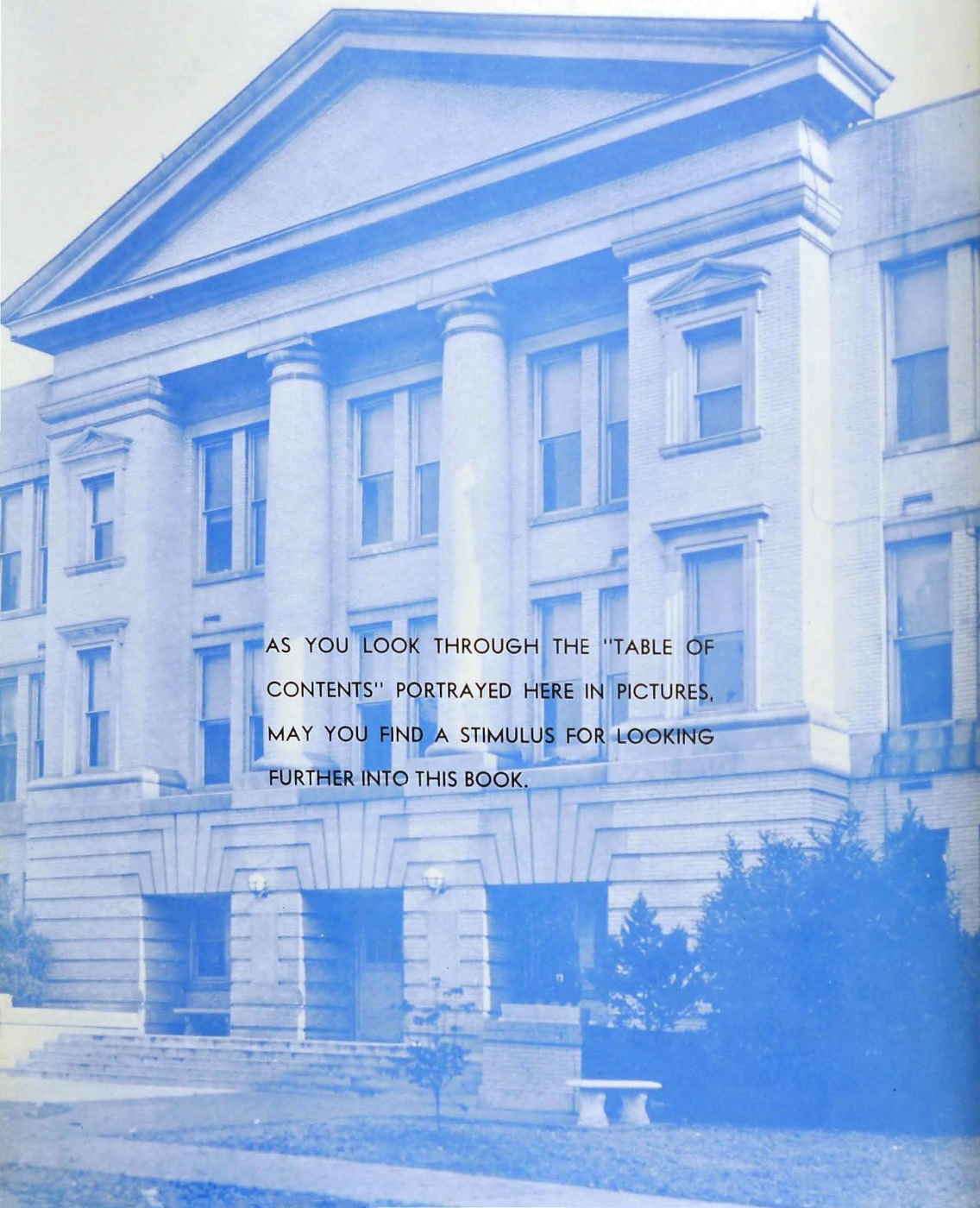


COPYRIGHTED 1943

H. D. GANG

Editor in Chief
WILLARD EDWARDS
Business Manager





AS YOU LOOK THROUGH THE "TABLE OF CONTENTS" PORTRAYED HERE IN PICTURES, MAY YOU FIND A STIMULUS FOR LOOKING FURTHER INTO THIS BOOK.

ADMINISTRATION



THE CLASSES



THE FEATURES



ORGANIZATIONS



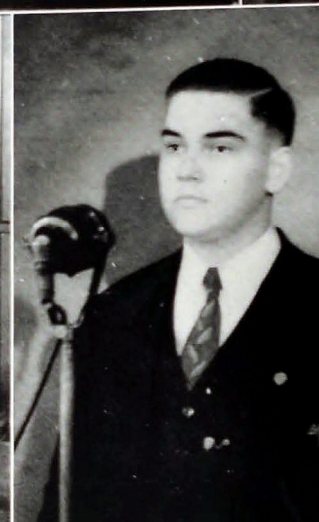
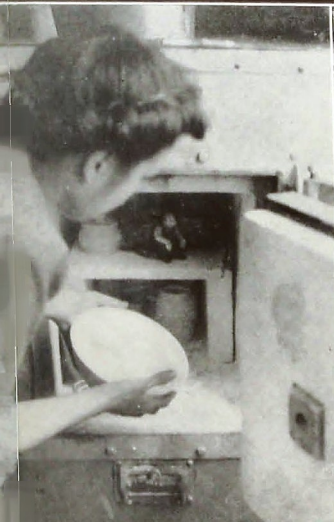
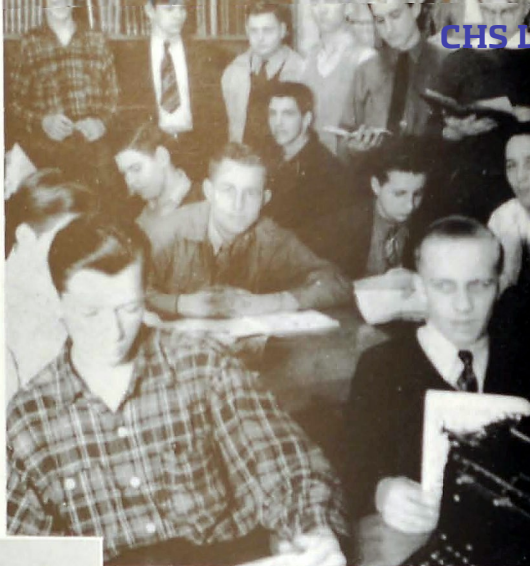
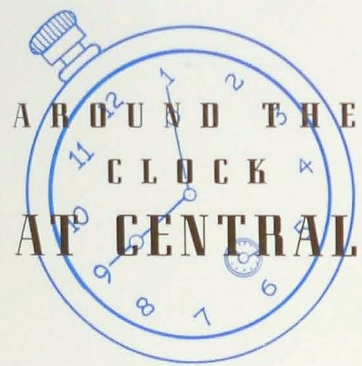
ATHLETICS



THREE CHEERS FOR MISS RUTH FAIN

who has been identified with the Spanish Department of Central for a number of years and who has left grateful and pleasant recollections in the hearts of Central students because of her sterling character, her wholesome enthusiasm, and her cooperative spirit in the promotion of those things that have been for the betterment of Central and for the pleasure and profit of the student body. In recognition, the staff dedicate the 1943 "Champion" to her.





A LETTER FROM OUR PRINCIPAL



Dear Students:

Champion! How significant, how meaningful is the word. For many years now THE CHAMPION has been our color bearer out in front—an exponent of what we are and what we stand for. Champion of the things that are best in life. Champion for right living. Champion for intellectual achievement. Champion for high ideals. Champion for correct attitudes toward life and life situations. Champion for service to our fellows, to our community, to our state and to our country. Champion—that is Central High, and never before in her history has the word been more significant than in this day and this year. Thousands of her sons and daughters are serving on the home front and on far flung fields. Wherever they are serving they are giving their best. Some we know have made the supreme sacrifice. Many others are ready and will.

The class going out this year finds a world torn from center to circumference, bleeding from many wounds. They will face the situation with courage and determination. They will, in their own rights, be champions.

Those of us who remain here will count it our privilege and obligation to keep alive and to enrich the traditions of Central. We will be diligent in doing our best with a full realization that here we can and we shall serve our country by preparing ourselves for the best service within our capacities. Central High! CHAMPION!

S. E. NELSON, Principal.



FACULTY



MILTON ALLEN Music
 CHARLES J. ANDERSON Manual Arts
 WILLIAM P. BALES History
 MRS. GEORGE BARTON Commerce
 MRS. ELIZABETH PARKS BEAMGUARD Librarian
 MISS FLORA BECK Mathematics
 W. V. BEENE History
 MISS REBECCA BIGGERS Mathematics
 MRS. C. H. BOYD Cafeteria Manager
 MRS. K. E. BRUECKNER English
 MAJOR WARREN H. BYINGTON Military Tactics
 MRS. MERCER CLEMENTSON Home Economics
 L. M. COOP History
 MRS. MARY COOKE COOPER Nurse
 MISS EDNA KING CROSS History
 MISS DOROTHY DAVIS Secretary
 MISS ELSA DENNISON Mathematics
 MISS MARY LOU DERRYBERRY Art
 J. POPE DYER Social Science
 E. B. ETTER Mathematics, Athletics
 MISS RUTH FAIN Spanish
 E. N. FIELDS Social Science

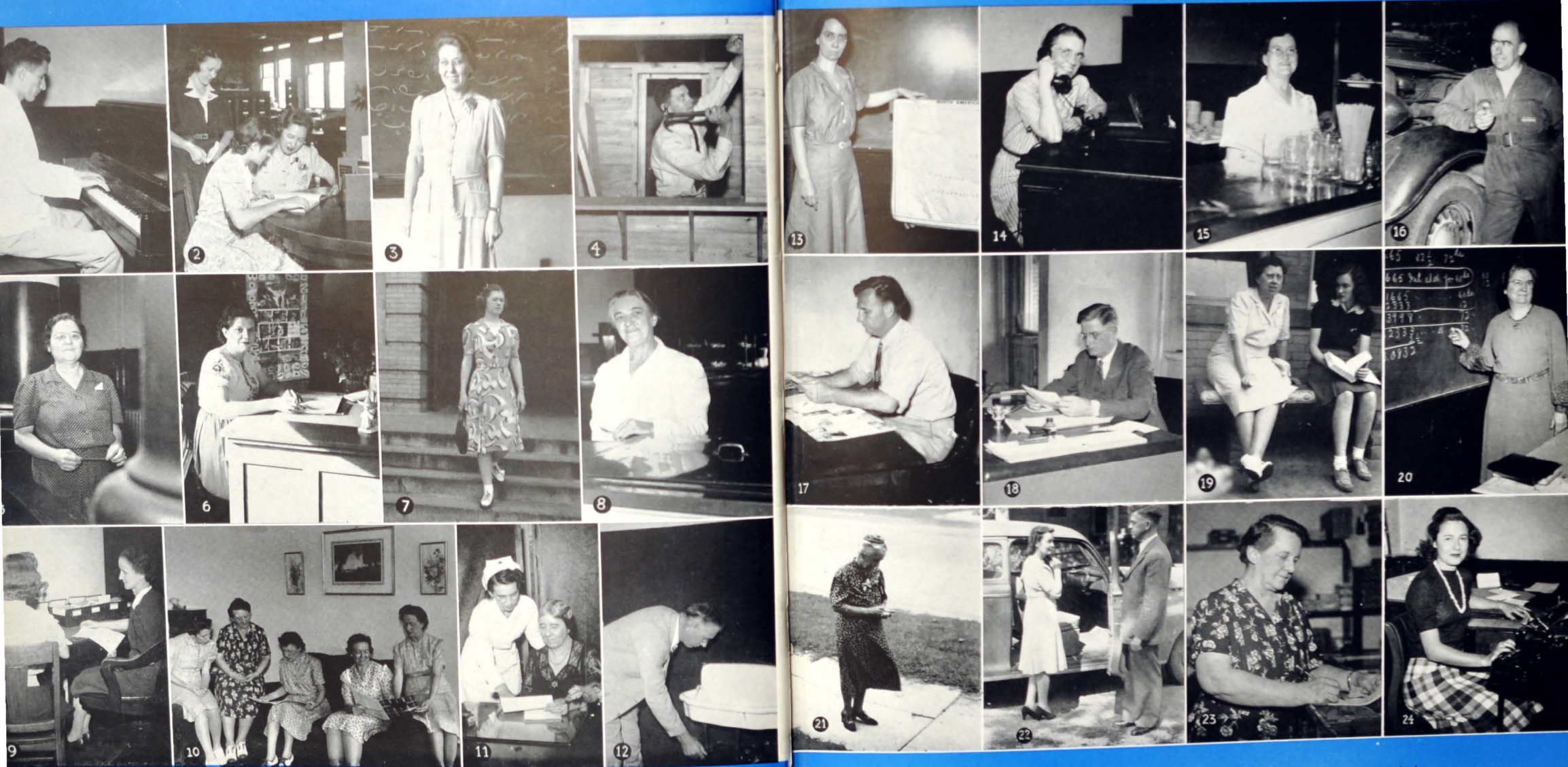
J. J. FLETCHER Auto Mechanics
 MRS. REBA L. FULTS Social Science
 J. L. HAIR Mathematics
 MRS. GEORGE HARDING Speech
 MRS. FRIEDA HILL Cafeteria Manager
 J. ARLIE HOODENPYL Chemistry
 MISS EDMUND HOOSER English
 MISS SARAH BANKSTON HUBBARD Physical Education
 J. STEGER HUNT Biology
 MRS. J. STEGER HUNT History
 MRS. WYNELLE JACKS Commerce
 MRS. EDNA C. JACOWAY Mathematics
 KENNETH W. JOHN Music
 MISS MARIE JOHNSON History
 MISS EARL R. JONES History
 SERGEANT J. B. KESLER Military Tactics
 MISS SALLY MAY KING English
 MRS. CLARENCE KOLWYCK Librarian
 MISS GRACE LASATER Registrar
 MISS CAROLINE LILLARD Mathematics
 MRS. R. N. LOGAN Dean of Girls

MRS. IDA MOORE LONGLEY English
 MISS RACHEL McALLISTER Bible
 LIEUT. COL. D. N. McMILLIN Military Tactics
 JAMES L. MILBURN Printing
 W. H. MILLSAPS Diversified Occupations
 MISS ANN MOFFITT English
 MISS MINNIE LEE MORGAN English
 MISS ELLEN MULLENNIX English
 MRS. HARRY NELSON English
 JAMES LESTER NEWTON General Science
 MISS IDA NICKEL Commerce
 MISS JOE ORE Biology
 ERNEST A. OWENS Mechanical Drawing
 MISS BEULAH B. PARKER Mathematics
 S. D. PETERSEN Athletics
 MRS. J. FRANK PRICE History
 MISS HELEN G. PRYOR Latin
 MRS. LYDA GORE RICE Commerce
 MISS MARY ELLEN RICE Spanish
 A. B. ROBERTSON Mathematics
 MISS IMOGENE ROBERTSON Commerce
 MRS. H. B. ROBINSON English
 JACK RODMAN Science
 MRS. A. B. ROGERS English
 MISS LILLIE SCHWARTZ Latin
 JAMES W. SHAW Physics
 MRS. JOHN A. SHELTON English
 MISS VIRGINIA SHELTON Distributive Education
 MRS. JANIE L. SHROPSHIRE Home Economics
 MRS. ALFRED G. SKATES History
 MISS MARY ELIZABETH SMITH History
 MRS. A. PIERCE STEWART English
 G. M. SWINGLEY Mathematics
 S. O. TALLANT Mathematics
 MISS MARGARET TAYLOR Home Economics
 W. H. TEMPLETON Assistant Principal
 MRS. W. H. TEMPLETON Home Economics
 CLARENCE G. TOWRY General Science
 EDWARD S. TOWRY Band
 MISS DOROTHY WALKER Commerce
 MISS MARGARET WAPLES French
 ROBERT S. WHARTON Manual Arts
 MISS ETHEL YORK Home Economics



FACULTY

The Faculty Relaxes



1. Milton Allen.
2. Mrs. Clarence Kolwyck, Mrs. Elizabeth Parks Beamguard, Mrs. Mary K. Mitchell.
3. Miss Ida Nickel.
4. Robert S. Wharton.

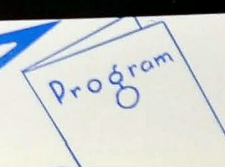
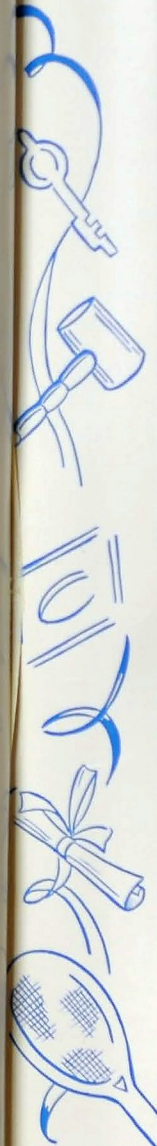
5. Mrs. Edna C. Jacoway.
6. Miss Mary Ellen Rice.
7. Miss Mary Alice Howell.
8. Mrs. Frieda Hill.
9. Miss Grace Lasater, Miss Dorothy Davis.

10. Mrs. Janie L. Shropshire, Mrs. W. H. Templeton, Miss Ethel York, Mrs. Mercer Clementson, Miss Margaret Taylor.
11. Mrs. R. N. Logan, Mrs. Mary Cooke Cooper.
12. S. Q. Tallant.

13. Miss Earl Jones.
14. Imogene Robertson.
15. Mrs. C. H. Boyd.
16. J. J. Fletcher.

17. S. Dean Petersen
18. S. E. Nelson.
19. Miss Edna K. Cross.
20. Miss Beulah B. Parker.

21. Miss Margaret Waples.
22. Mr. and Mrs. J. Steger Hunt.
23. Mrs. W. H. Templeton.
24. Mrs. S. J. McAllester.



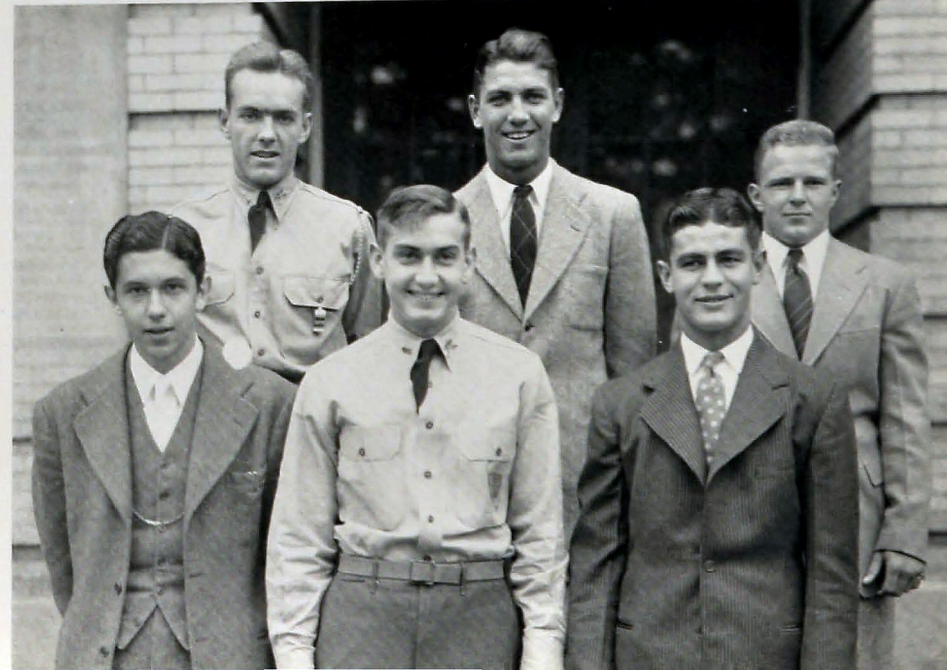
Classes

Senior Class

OFFICERS

H. D. GANG
HARDEMAN STONESTREET
GEORGE POSTON
RICHARD COLEMAN
GEORGE CARDEN
EUGENE SHRADER

President
Vice President
Secretary
Treasurer
Sergeant at Arms
Surgeon of Arms





ALICE ADAMS "Lefty"
Entered from Lakeview High School in '43.

ALMA ADAMS "Cookie"
Entered from Lakeview High School in '43.

LYDIA JO ALLEY "Lyd"
Entered from East Side Junior High School in '41; R. O. T. C. Sponsor, '43; Senate, '41, '42, '43; Girl Reserves, '41, '42, '43; Bible Club, '41, '42; Biology Club, '41, '42, '43; Hy-Hats, '41, '42; Gadabouts, '41, '42, '43; Girls' Battalion, '41, '42, '43; May Day, '41, '42, '43; Parents' Day, '42, '43; Recognition Day, '42.



ESTHER JANE ALTON "Jerry"
Entered from Central High, Evansville, Indiana, in '41.

KENNETH ALVERSON "Al"
Entered from East Lake Junior High in '40; Industrial Arts Club, '40, '41; Corporals' Club, '41, '42; Safety Council, '42, '43; Officers' Club, '42, '43.

ERNEST A. ANDREWS "Andy"
Entered from Signal Mountain Junior High in '38; Bible Club, '41, '42; Boys' Hi-Y, '41, '42; Bookkeepers' Club, '42.



BETIE ARNOLD
Entered from Tyner Junior High, '40; R. P. H., '42; Trail Trotters, '43.

EDNA ASHWORTH "Pee-Wee"
Entered from City High School, '41; Safety Council Club, '42, '43; Red Cross, '41, '42.

ELLA ANNE AUCOTT
Entered from DeKalb High School, '41; Ushers, '43; Riding Club, '43; Bible Club, '42.

RUTH BAILEY
Entered from City High School, '41; Library Club, '41; Home Economics Club, '42.



DOLORES BAKER "Dodie"
Entered from East Lake Junior High, '40; Girl Reserves, '40, '41, '42, '43; Senate, '41, '42, '43; Varsity Glee Club, '41, '42, '43; Orchestra, '41, '42, '43; Bible Club, '41; Secretary and Treasurer, Varsity Glee Club, '42; Speller and Treasurer, Orchestra, '43; Girls' Hi-Y, '43; National Honor Society, '43; Secretary, Honor Society, '43; Ushers, '43; Latin Club, '42, '43.

JOHN JOE BAKER "Tee"
Entered from East Lake Junior High, '40; Bond Officers' Club, '43; Second Lieutenant, '42, '43.

JAMES DANIEL BALES "Jimmy"
Entered from McCallie in '39; Boys' Hi-Y, '42, '43; Bible Club, '41, '42, '43; Orchestra, '41, '42, '43; American Legion, '43.

MARJORIE DAPHNE BALES "Margie"
Entered from Brainerd Junior High in '40; Girl Reserves, '40, '41, '42, '43; Home Economics Club, '41, '42; Ace Club, '40, '41, '42, '43; Honor Society, '42, '43; Varsity Glee Club, '41, '42, '43; Spellerettes, '41, '42, '43; Hi-Y, '42, '43; President, Ushers, '43; May Day, '40, '41, '42, '43; Digest, '42, '43; Gym Checker, '41, '42.

LOUISE BALLEW
Entered from East Side Junior High in '41; Girl Reserves Club, '41, '42, '43; Bible Club, '42, '43.



BETTY SUE BARKER "Suzy"
Entered from Brainerd Junior High in '40; Varsity Glee Club, '40, '41, '42, '43; Soprano Soloist in '41, '42, '43; Girl Reserves, '40, '41, '42, '43; Vice-President, Girl Reserves, '42; Girls' Hi-Y, '42, '43; Gadabouts, '42, '43; Home Economics Club, '41, '42; Spellerettes, '42, '43; Ace Club, '43; Battalion, '40, '41, '42, '43; Lieutenant and Major, '43; Ushers, '43; Vice-President, Ushers, '43; National Honor Society, '42, '43.

KATHERINE MARGARET BARKER "Kitty"
Entered from Brainerd Junior High in '40; Band, '40, '41, '42, '43; Simon Concert, '40, '41; Staff Sergeant, Band, '42; First Lieutenant, Band, '43; Officers' Club, '43; Girls' Band Club, '40, '41, '42; President, Girls' Band Club, '43; Gym Circus, '40; Badminton Club, '40; Wee Moderns, '40; Digest Typist, '43; Treasurer, Freshman Class, '40.

SARAH LOVINA BARNES "Vinnie"
Entered from East Side Junior High in '40; Bible Club, '43; Office Force, '41, '42, '43.

DOROTHY BARR "Dot"
Entered from City High School, '42; Remember Pearl Harbor, '42; Fencing Club, '41; Girl Reserves, '42; Chess Club, '41; Home Economics Club, '41.



IRENE BARRETT "Freckles"
Entered from Lookout Junior High, '41; Home Room Representative of Red Cross, '42; Sub-Deb, '42, '43; Tumblers, '41; Battalion, '41.

ROY BARROWS
Entered from Lookout Junior High in '41; R. P. H., '42; Corporals' Club, '42; Officers' Club, '43.

KENNETH BARRY "Dead Eye"
Entered from Lookout Junior High in '41; A. M. A., '42; Sergeants' Club, '42; Model Airplane Club, '42, '43; Officers' Club, '43.

AVIS MARIE BASS "Boogie"
Entered from McIntire School in '40; Girl Reserves, '41, '42, '43; R. P. H., '42, '43; Spellerettes, '43; Anchors Aweigh, '43; Riding Club, '42; May Day, '40, '41, '42, '43; Senior Day Program, '42; Senior Party Program, '43; Vaudeville, '43; Recognition Day, '42; Junior Play, Chairman, House Committee, '42; National Honor Society, '43.

CAROLYN WILLODEAN BASS "Dean," "Squirrel"
Entered from Hardy Junior High in '40; Sailorettes, '42; Safety Council, '43.

MARY JANE BAYSTON "Toppie"
Entered from Brainerd Junior High in '40; Girl Reserves, '40, '41; Hy-Hats, '41, '42; Black Kats, '41, '42; Seventeeners, '42, '43; Trail Trotters, '43; Red Cross, '42, '43; Vice-President, '42.



JAKE BEARD "McMiff"
Entered from East Side Junior High, '39; Track Manager, '39, '40.

JAMES WALLACE BEARD "Wa Wa"
Entered from East Side Junior High in '40; Manager, Baseball Team, '41, '42, '43; "Digest" Representative in '40, '41, '42; Safety Council, '42.



HELEN BEASLEY
Entered from East Side Junior High in '40.

ROBERT THAYER BELL
Entered from Tyner High School in '42; Red Cross, '42, '43; Bible Club, '43.

HOWARD BETTIS
Entered from Hardy Junior High in '40.

L. J. BIGGS
Entered from Hardy Junior High in '40.

KENNETH A. BILDERBACK "Einstein"
Entered from Brainerd Junior High in '40; Senate, '40, '41, '42, '43; Senior Boys' Hi-Y, '42, '43; Grady Literary Society, '41, '42, '43; Sergeants' Club, '42; Officers' Club, '43; Digest, '41, '42; National Honor Society, '42, '43; First Lieutenant, '43.

JIMMY BLACK "Jim"
Entered from Hardy Junior High in '41; "C" Club, '42, '43; Baseball Team, '41, '42, '43; Football Team, '41, '42, '43.

WILLIAM BLAND "Lefty"
Entered from Norris High School in '41; "C" Club, '41, '42, '43; Industrial Arts Club, '42, '43; Corporals' Club, '42.

CLYDE ALLEN BLAYLOCK "Skinny"
Entered from Hardy Junior High in '41; Camera Club, '43; Archery Club, '41.

JOHN HENRY BOHANNON, JR. "Bo," "Squad Follow Bohannon"
Entered from Hardy Junior High in '38; Chairman, English Class, '41.

IRENE BORDERS
Entered from Chattanooga High School in '41.

JOHN BOWEN "Johnny"
Entered from Lookout Junior High in '38.

BEULAH BRADFORD "B. B."
Entered from Nathan Backman High School in '40; Red Cross, '40, '41, '42; Girl Reserves, '40; Literary Club, '40; Treasurer, Home Economics Club, '42, '43; Exclusive Club, '42; Biology Club, '41, '42, '43.

DOROTHY LILLIAN BROWER "Dot"
Entered from Brainerd Junior High in '40; Girl Reserves, '40, '41, '42, '43; Ushers, '43; Girls' Hi-Y, '43; Varsity Glee Club, '41, '42, '43; Central Digest, '41, '42, '43.

EDNA LUCILLE BRIDGES "Shorty"
Entered from Pikeville High School in '42.

CHARLES BROCK
Entered from Brainerd Junior High School in '39; Assistant Treasurer, R. P. H. Club, '39.

MARY LOUISE BROOKS
Entered from Hardy Junior High in '40; Betty Maids, '42, '43; R. P. H., '42; Trail Trotters, '43; Girls' Battalion, '40; Chairman of Homeroom, '43.

CHARLES BOURBON BROCK "Bro," "Brobeck," "Beck"
Entered from Brainerd Junior High in '40; Band, '40, '41, '42, '43; Band, Simon Concert, '40, '41; Military, '41; Captain, Military Band, '43; President, Band Officers' Club, '43; Officers' Club, '43; First Lieutenant, Purple and Gold Band, '43.

DORIS ANN BROWN
Entered from Lookout Junior High in '41; R. P. H., '42; Corporals' Club, '42, '43.

LOYD LEE BROWN, JR. "Thirteen"
Entered from Lakeview High in '42; Industrial Arts Club, '42, '43.

LOULA BROWN "Dink"
Entered from Pikeville Junior High in '40; R. P. H. Club, '42; Trail Trotters, '42, '43; Girl Reserves, '43; Betty Maids, '43.

BETTIE SUE BROYLES "Susie"
Entered from East Side Junior High in '40; Girl Reserves, '40, '41; Band, '42, '43; Battalion, '40, '41.

PRINCE BROYLES "Photo Dob"
Entered from McCallie in '41; Camera Club, '41, '42, '43; President, Camera Club, '43; Depression Club, '41, '42, '43; Bachelor Club, '41, '42, '43; Biology Club, '42, '43; Orchestra, '42; Staff Photographer for Annual, '43.

VIRGINIA LEE BRYAN "Ginny"
Entered from Clifton Forge High School in '43.

CHRISTINE BUCHELE "Chris"
Entered from Red Bank Junior High in '41; Discussion Club, '41; Band Girls, '41, '42; Sailorettes, '42, '43; Secretary, Sailorettes, '43; Hi-Y, '43; Wee Moderns, '43; Betty Maids, '42, '43; Gadabouts, '42; President of Gadabouts, '43; National Honor Society, '43.

MABLE CARMAN BURKHALTER
Entered from East Side Junior High in '40; Bible Club, '42; Office Force, '41, '43.

LAVINA BURNETTE "Lovie"
Entered from East Side Junior High in '40; Girl Reserves, '40, '41, '42; Trail Trotters, '42; Maid Club, '42, '43; Candy Crew, '42; Announcers' Club, '42, '43; Red Cross, '42, '43; Recreation Chairman, Girl Reserves, '40.

DOROTHY NELSON BUTCHER "Butch"
Entered from Lookout Junior High in '41; Girls' Battalion, '41, '42, '43; Digest, '41, '42; News Editor, "Digest," '43; Announcing Staff, '42; Chief of Staff, '43; Sports Club, '42; Vagabond Club, Reporter, '43; Senate, '42; Program Chairman, '43; Recognized for Winning District Extemporaneous Speaking, '42; Senate Play, '42; Girl Reserves, '41, '42; Gadabout Club, '42, '43; Girls' Hi-Y, '43; Hy-Hat Club, '42; School Commentation, '42, '43.





IRENE BUTLER
Entered from Lookout Junior High in '40; Discussion Club, '41; Sailorettes, '42; Ice Cream Crew, '43.



JAMES CARLTON CALDWELL
Entered from Brainerd Junior High in '40; National Honor Society, '43; Boys' Hi-Y, '40, '41, '42, '43; Captain of the Band, '43; Orchestra, '41, '42, '43; Finance Chairman, Senate, '40, '41, '42, '43; Track Team, '41, '42, '43; Sergeant's Club, '42; Band, '40, '41, '42, '43; Band Officers' Club, '43; Military Officers' Club, '43; Depression Club, '43.



MIRIAM CAMPBELL
Entered from City High in '42; Camera Club, '43; Theory Class, '43.



VIRGINIA LEE CARD
Entered from Red Bank High in '41; Trail Busters, Home Economics Club, Sailorettes, Outcasts, Red Cross.



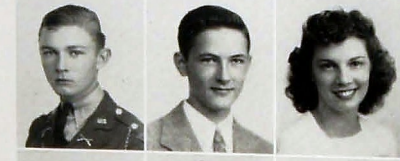
GEORGE COPE GARDEN
Entered from East Side Junior High in '39; President, Sophomore Class, '40; Football, '40, '41, '42, '43; Basketball, '40, '41, '42, '43; "C" Club, '40, '41, '42, '43; Sergeant-at-Arms of Senior Class, '43; All-City Basketball, '40, '41; Escort, May Day, '40, '41, '42.



DICK EUGENE CARMACK
Entered from East Side Junior High in '40; Junior Boys' Hi-Y, '41.



MARY JO CARMICHAEL
Entered from Junior High School in '40.



BETTY OVALINE CARR
Entered from East Side Junior High in '41; Ubers, '43; Digest Sponsor, '42.



PAUL CARSON
Entered from East Side Junior High in '40; Disfranchisement Class, '42, '43; "C" Club, '40, '41, '42, '43.

MARJORIE VARINE CARTER
Entered from Chattanooga High in '41; Digest Representative, '42, '43; May Day, '41.

MARYE WELLS CARTER
Entered from Lanier High in '40; Hy-Hat Club, '41, '42.

CLYDE CASEY
Entered from Brainerd Junior High in '40; Team Basketball, '40, '41; Digest Staff, '43.

MELVIN CLARENCE CASH
Entered from East Lake Junior High in '41; Biology Club, '41; Stage Crew, '41, '42, '43.

WALTER CASTINGS
Entered from East Lake Junior High in '40; Officers' Club, '43; Bachelor Club, '42, '43; Radio Club, '43.

ROBERT CHAMBERLAIN
Entered from East Side Junior High in '41; Sea Scouts, Mechanical Arts, Corporals' Club, Officers' Club.

ALBERT EUGENE CLARK
Entered from East Lake Junior High in '41; Stage Crew, '41, '42, '43; Manager, Stage Crew, '43.

OLIVER ISAIAH CLINE, JR.
Entered from Rossville High School in '42; Radio Club, '42; Junior Play, '42; Color Guard, '43; Grady Literary Society, '43; Riding Club, '43.

LORENA COBB
Entered from Dickinson Junior High in '39; Rambler Club, '43; Wee Moderns, '42, '43.

CYNTHIA ANNE COCHRAN
Entered from Hardy Junior High in '41; Biology Club, '41, '42; Betty Maids, '42, '43; Safety Council, '42, '43; Red Cross, '42, '43; May Day, '41.

VIRGINIA ESTELLE COFLIN
Entered from Signal Mountain in '40; R. P. H., '42; Girl Reserves, '42; Ushers, '43; Trail Trotters, '43; Checkers Club, '43; Bible Club, '43.

RICHARD COLEMAN
Entered from East Side Junior High in '39; Football Team, '40, '41, '42, '43; Wrestling, '40, '41, '42, '43; "C" Club, '41, '42, '43; President, "C" Club, '43; Captain, Football Team, '43; Treasurer, Senior Class, '43; Sports Editor, Annual, '43.

OPAL COLSTON
Entered from Signal Mountain in '40; R. P. H., '42; Girl Reserves, '42; Ushers, '43; Trail Trotters, '43; Checkers Club, '43; Bible Club, '43.

KENNETH ALVIN CONLEY
Entered from Jenkins High School in '43.

VIRGINIA COOPER
Entered from East Lake Junior High in '41; Sponsor, Company "A"; Honorary Member, Officers' Club, '43; Girl Reserves, '42, '43.

LUTHER MARVIN COPE
Entered from McMinnville Central High, '40; Senior Hi-Y, '41, '42, '43; Biology Club, '40, '41, '42, '43; President, Biology Club, '43; Grady Literary Society, '42, '43; Treasurer, Grady Literary Society, '43; National Honor Society, '42, '43; Vice-President, Honor Society, '43; Junior Play, '42.

BETTE RAY COULSON
Entered from Dickinson Junior High in '41; Red Cross, '41, '42, '43; Bible Club, '42, '43; Battalion, '42, '43; Biology Club, '42, '43; Dogpatters Club, '43.

EDWIN COVINGTON
Entered from Brainerd Junior High in '39; Sergeant's Club, '40; Depression Club, '40, '41; Bachelors' Club, '40, '41, '42, '43; Dogpatters Club, '40, '41; Football, Manager, '39; Treasurer, Depression Club, '42, '43; Radio Club, '39; Officers' Club, '43; First Lieutenant, '43; Central Golden Gloves, '42.

HAROLD ERVIN COX
Entered from Brainerd Junior High in '41.

LUCILLE COX
Entered from Cumberland County High in '41.

VERNON WEAVER COX
Entered from East Side Junior High in '41; Sergeant's Club, '42; Vice-President, Sergeant's Club, '42; Senate, '42, '43; Grady Literary Society, '42, '43; Vice-President, Officers' Club, '43; Bachelor Club, '43; Depression Club, '43; Major in R. O. T. C., '43; Senate Play, '42; Dogpatters Club, '43; Treasurer, Dogpatters Club, '43.

FERRY CRAFT
Entered from Brainerd Junior High in '41; Radio Club, '41, '42; Secretary, Radio Club, '42; Depression Club, '43; Safety Council Club, '43; Bachelor Club, '43; Corporals' Club, '42.

MARTHA JO CRAIGHEAD
Entered from Red Bank in '42; Betty Maids, '42; Camera Club, '43; Badminton Club, '43; May Day, '42.

CAREY CRANTFORD
Entered from East Lake Junior High in '41; President of Grady Literary Society, '42, '43; National Honor Society, '42, '43; Bank and Bookstore, '42, '43; Biology Club, '42, '43; Red Cross, '42, '43; Senate, '42, '43; Boys' Hi-Y, '42, '43; Sergeant-at-Arms, '43; Senior Section Editor, Champion, '43; Senior Play, '43; Recognition Program, '42.

WILLIE JUANITA CRAWLEY
Entered from Red Bank High in '41; Dramatic Club, '41; Girls' Hi-Y, '41, '42, '43; Treasurer, Hi-Y, '43; Black Kats, '41; Senate, '41, '42, '43; Vice-President, Senate, '43; Discussion Club, '41; National Honor Society, '42, '43; Feature Editor, "Champion," '41; R. O. T. C. Sponsor, Company "A"; Ushers, '43; E. S. L. A., '42, '43; President, F. S. L. A., '43; Honorary Member, Officers' Club, '43; Dogpatters Club, '42, '43; Seventeeners, '42, '43.

MABEL CRISWELL
Entered from Lookout Junior High in '40; Spinstettes Club, '42, '43; Treasurer, Spinstettes, '43; Trail Trotters Club, '43; Glee Battalion, '40, '41.

HELEN DEAN CROWNOVER
Entered from East Side Junior High in '41; Gadabout Club, '41, '42, '43.

GENEVA VIRGINIA CUNNINGHAM
Entered from Lookout Junior High in '40.

BETTY HOPE DAIL
Entered from Dickinson Junior High in '41; Bachelor Club, '43; Home Economics Club, '43; Riding Club, '43; Girl Reserves, '42; Safety Council, '43; Digest Representative, '43; Outcasts, '43; Girls' Battalion, '43; Drum Major, '42, '43.

WILLIAM D. DANIEL
Entered from East Lake Junior High in '40.

MAJORIE DAUGHERTY
Entered from East Side Junior High in '40; Orchestra, '40, '41, '42; Girl Reserves, '40, '41, '42.

JOSEPHINE DAVIS
Entered from Red Bank High School in '42; Betty Maids Club, '42; Red Cross, '42; Trail Busters, '43; Safety Council Representative, '43.

KATHLEEN DAVIS
Entered from Red Bank High School in '42; R. P. H. Club, '42; Betty Maids Club, '42; Exclusive Club, '43; Girl Reserves, '43; Secretary, Betty Maids; Publicity Committee, Junior Party, '42; Ticket Committee, Junior Play, '42; Digest, '42; Red Cross, '42.

WILLIAM DAVIS
Entered from Annecora in '40; Junior Boys' Hi-Y, '41, '42; Bee Hivers' Club, '43.

NELLIE DEAL
Entered from East Side Junior High in '41; Glee Battalion, '41, '42; Ace Club, '41, '42; Tumbler, '41; May Day, '41, '42.

JERRY BOBBY DEAN
Entered from Red Bank High in '40; Dramatic Club, '40; Treasurer of Dramatic Club, '40; Grady Literary, '40, '41; Boys' Hi-Y, '40, '41, '42, '43; Treasurer, Hi-Y, '42; Depression Club, '41, '42, '43; Secretary, Depression Club, '43; Bachelor Club, '41, '42, '43; Secretary, Bachelors' Club, '42; President, Bachelors' Club, '43; Sergeant's Club, '42; President, Officers' Club, '43; Major in R. O. T. C., '42.

ROMA NELL DICKERT
Entered from Lookout Junior High School in '40; S. P. H. Club, '40; Girl Reserves, '40, '41, '42; Girl Scouts, '40, '41, '42; Dramatic Club, '40; Riding Club, '40; Senate, '41, '42, '43; Secretary, Senate, '43; Secretary, Riding Club, '42, '43; Girls' Hi-Y, '42, '43; Digest Staff, '42, '43; Recreation Club, '42, '43; Girls' Battalion, '41, '42, '43.

MARGARET ALICE DIVINE
Entered from G. P. S. in '40; Girl Reserves, '41; Hy-Hats, '41, '42; Varsity Glee Club, '41, '42, '43; Red Cross, '42; Battalion, '43; Digest, '42, '43; Champion Staff, '42; Anchors Aweigh, '43; Girls' Hi-Y, '43; Gadabouts, '42; Digest Sponsor, '41, '42.

ORVILLE DONAHOO
Entered from East Side Junior High in '41; Trade and Industry Club, '42.

GERTRUDE EVELYN DRINNON
Entered from Lookout Junior High in '41; Ace Club, '41, '42; Secretary, Ace Club, '42; Vagabond Club, '42; Secretary, Vagabond Club, '43; Gadabouts, '42; Girls' Battalion, '41, '42; Lieutenant, '43; Usher, '43; Girl Reserves, '41; Safety Council, '43.

VERNON DUCKETT
Entered from East Lake Junior High in '39.

MARTHA SUE DUDDERAR
Entered from Brainerd Junior High School in '39; Nite Owls, '40, '41, '42, '43; Treasurer, Nite Owls, '40, '41; President, Nite Owls, '42, '43; Seventeeners, '41, '42, '43; Secretary, Seventeeners, '43; Girls' Hi-Y, '42, '43; Hy-Hats, '40, '41, '42; Rockettes, '40, '41, '42.

MARY FRANCES DURHAM
Entered from Dickinson Junior High in '41; Girl Reserves, '41, '42; R. P. H. Club, '42; Home Economics Club, '43.

ALICE ELIZABETH EAVES
Entered from Hardy Junior High in '41; Bible Club, '42, '43; Christmas Pageant, '40, '41; Digest Representative, '43.

VIRGINIA LOUISE ECKERT
Entered from Brainerd Junior High in '40; Library Club, '42; Secretary, Library Club, '43; Girl Reserves, '42, '43; Program Chairman, Girl Reserves, '42.





WILLARD AUSTIN EDWARDS "Cotton"
Entered from Brainerd Junior High in '40; Bank and Bookstore, '40, '41, '42, '43; Boys' Hi-Y, '39, '40; Junior Play, '42; Grady Literary Society, '39, '40; Business Manager, Champion, '43; Senior Play, '43.

BILLY FRANK ELDRIDGE "Mystro"
Entered from North Side Junior High in '40; Hi-Y, '40; Sports Club, '41; Printing, '41.

BETTY JUNE ELLIOTT
Entered from East Lake Junior High in '41; Girls' Hi-Y, '41, '42, '43; Girl Reserves, '42, '43; Betty Maid Club, '42, '43; Girls' Battalion, '42.

ROBERT ARVIN ELMORE
Entered from East Side Junior High in '40; Sergeants' Club, '42; Officers' Club, '43.

OLLIE MAE ELSEA
Entered from Hardy Junior High in '40; Girls' Battalion, '40, '41; R. P. H. Club, '42.

DAMON DUANE ENDICOTT "Willie"
Entered from Brainerd Junior High in '41; Secretary, Model Airplane Club, '42.

MELL JEAN ENNIS "Jeanie"
Entered from Brainerd Junior High in '40; Girl Reserves, '40; Girls' Battalion, '40, '41; Nile Owls, '42, '43; Ramblers, '42, '43; Seventeeners, '43; Wee Moderns, '43; Digest sponsor, '42, '43.

JOHN MCNEAL ERWIN "Mac"
Entered from Brainerd Junior High in '40; Boys' Hi-Y, '40, '41; Grady Literary Society, '41, '42; Depression Club, '41; Bookstore, '40, '41, '42, '43; Junior Play, '42; National Society, '43; Sergeants' Club, '42; Officers' Club, '43.

ELSIE LEE EWTON
Entered from Dickinson Junior High in '41; Girl Reserves, '41; R. P. H. Club, '42.

EVELYN DAWN EXUM
Entered from City High School in '40; Girl Reserves, '40, '41; Glee Club, '40, '41; Nile Owls, '41, '42, '43; Hy-Hats, '41; Ramblers, '42; Badminton Club, '41, '42; Tumblers, '41, '42.

MARY ELIZABETH FAIN "Betty"
Entered from Dickinson Junior High in '41; Seventeeners, '41, '42, '43; Hy-Hats, '41, '42; Nile Owls, '42, '43; Red Cross, '43; Digest Representative, '41.

JAMES MELVIN FARMER
Entered from East Side Junior High in '40.

CHARLES EMERY FARRAR "Umey"
Entered from East Side Junior High in '40; Depression Club, '42; Bachelors' Club, '42; Sergeants' Club, '42; Red Cross Club, '41; Officers' Club, '43.

MARY KATHERINE FERRIS "Dinkie," "Curly"
Entered from East Side Junior High in '40; Hi-Y, '41, '42, '43; Red Cross, '40, '41; Girl Reserves, '41, '42, '43; Outcasts, '43; R. P. H. Club, '42; Candy Crew, '41, '42; Ushers, '43; May Day, '41, '42; Vagabonds, '42, '43; Glee Club Chorus, '42; Checkers Club, '43; Gym Circuit, '41, '42; Junior Party Refreshment Committee, '42.

LILY JO FILER
Entered from Brainerd Junior High in '40; National Honor Society, '42; Candy Crew, '42, '43; Home Economics Club, '43; Outcasts Club, '43.

GERTRUDE EVELYN FINLEY "Gerl"
Entered from East Side Junior High in '40.

RUTH FORESTER
Entered from Kirby Smith in '41; All States Club, '41.

ELMER G. FRANK "Sonny"
Entered from Kirby Smith in '41; All States Club, '41.

BETTY FULLER "Pat"
Entered from East Side Junior High in '40; Ace Club, '40, '41; Red Cross, '40, '41, '42, '43; Hy-Hats, '42.

EDNA FULLER "Shorty"
Entered from Brainerd Junior High in '40; Red Cross Club, '40, '41, '42, '43; Battalion, '42; Girl Reserves, '41.

MARGARET FULLER "Chicken"
Entered from East Lake Junior High in '41.

BEN FUSSELL "Fuzy"
Entered from East Side Junior High in '40.

VIRGINIA SUE GAARDER "Snookie"
Entered from Hardy Junior High in '40; Safety Council, '42; Secretary, Latin Club, '42.

LEON GAMBLE
Entered from East Lake Junior High in '41.

O. L. GAMBLE
Entered from East Lake Junior High in '41.

H. D. GANG "Reverend"
Entered from East Side Junior High in '39; Junior Boys' Hi-Y, '40, '41; Chaplain, Senior Boys' Hi-Y, '42; President, Senior Boys' Hi-Y, '43; President, Junior Class, '42; President, Senior Class, '43; Dogpatcher, '42, '43; Editor-in-Chief of "Champion"; President, Tennessee State Hi-Y, '43.

GLADYS IRENE GARDENHIRE "Beanie"
Entered from Hardy Junior High in '40.

LOIS VIRGINIA GAZAWAY "Virgie"
Entered from East Lake Junior High in '41.

ROBERT P. GEORGE "Rabbit"
Entered from Norris High School in '40; Depression Club, '43.

WILLIAM GEORGE
Entered from Lawrence County High School in '42; Baton Club, '43.

DOROTHY ELIZABETH GIBSON "Dot"
Entered from Lawrence County High School in '42; Baton Club, '43.

BARBARA GILL "Bob"
Entered from Lookout Junior High in '40; National Honor Society, '43; Art Editor of "Digest," '41, '42, '43; Senate, '40, '41, '42, '43; Secretary, Stamp Club, '40; Vice-President, Riding Club, '42; Ushers, '43; Crandall Art Award, '41, '42.

HELEN LOUISE GILREATH
Entered from East Side Junior High in '41.

HERBERT JACK GILREATH
Entered from East Lake Junior High in '41; Sergeants' Club, '42; Depression Club, '42, '43; Officers' Club, '43; Bachelors' Club, '42, '43.

MARY HARVEY GILREATH
Entered from East Lake Junior High in '40; Girl Reserves, '40, '41, '42; Home Economics Club, '41, '42; Ushers, '42; Secretary, Home Room, '40, '41; President, Home Room, '42; Battalion, '42; May Day, '41, '42, '43; Safety Council, '43; Gadsborts, '42, '43; Parents' Day, '42; Recognition Day, '42; National Honor Society, '43.

DAN CHEDISTER GIRON
Entered from Dickinson Junior High in '40; Red Cross, '42; Vice-President, Red Cross, '43; Band Officers' Club, '43; Band, '40, '41, '42, '43; Orchestra, '40, '41.

EUGENE GLENN "Jeep"
Entered from East Side Junior High in '40.

KATHLEEN LANGLEY GOLDSTON
Entered from Dickinson Junior High in '40; Girls' Battalion, '40, '41, '42; Girl Reserves, '40, '41, '42, '43; Riding Club, '42, '43; Library Club, '42.

MYRTLE JEAN GOOD
Entered from East Lake Junior High in '41; Girl Reserves, '42, '43; Exclusive Club, '42, '43; Treasure, Sophomore Class, '41.

LAMAR GORDON "Curly," "Flash"
Entered from Dickinson Junior High in '41; Track Team, '41, '42, '43; Captain, Track Team, '43; All-City Track, '42; Sergeants' Club, '42; Archery Club, '41; Officers' Club, '43; Glee Club, '43; Depression, '43; Bachelors' Club, '43; "C" Club, '41, '42, '43; R. O. T. C. Major, '43; East Tennessee Track Team, '41, '42; Interscholastic Track Champion, '41, '42; State runner-up, Track Champion, '42.

ROBERT E. GRANT, JR. "Bobby"
Entered from East Side Junior High in '40; Camera Club, '42, '43.

BYRON D. GREEN
Entered from East Side Junior High in '40; Band, '41, '42, '43; Orchestra, '41, '42, '43; Hi-Y, '40, '41; Second Lieutenant, R. O. T. C., '43.

DORIS GREEN "Porky"
Entered from Murphy High in '42.

HARRY GREEN "Fuzzy"
Entered from Hardy Junior High in '40; Band, '40, '41, '42, '43; Band Club, '42, '43; Officers' Club, '42, '43; First Lieutenant, Purple and Gold Band, '42, '43; First Sergeant, Military Band, '43, '44.

VICTOR ADAIR GREENE
Entered from East Side Junior High in '39; Band, '41, '42, '43; Band Officer, '43; Military Band Officer, '43; Vice-President, Band Officers' Club, '43.

MARGARET GREGORY
Entered from City High in '42; Betty Maid Club, '42; Treasurer, Betty Maid Club, '43; Girl Reserves, '42, '43; Outcasts, '42, '43.

MARY ELIZABETH GRISWOLD "Griz"
Entered from Red Bank High in '40; Girls' Hi-Y, '41, '42, '43; Anchors Aweigh, '42, '43; Girls' Band Club, '41, '42, '43; Band Sponsor, '43; Sailorettes, '42, '43; Discussion Club, '41; Home Economics Club, '41, '42, '43; Band, '41, '42, '43; Orchestra, '41, '42, '43; Concert Band, '41, '42, '43.

MARGARET ELIZABETH GROSS
Entered from Lookout Mountain School in '40; Junior Red Cross, '40; Badminton Club, '42; Junior Safety Council, '42, '43; National Honor Society, '42, '43; Ushers, '43; Physical Education Checkers, '43; May Day, '40, '41, '42, '43.

MELVIN DONELSON GRUBB "Curley," "Doc," "Red"
Entered from Meigs County High in '42; T. & I. Club, '43; Red Cross, '42, '43; Diversified Occupation Class, '42, '43; Junior Safety Council, '43.

JACK GRYDER "Hen"
Entered from Dickinson Junior High in '40; Dogpatcher Club, '42, '43; "C" Club, '42, '43; Bachelors' Club, '41, '42, '43; Depression Club, '41, '42, '43.

MARTHA JANE GUINN
Entered from East Side Junior High in '41; Girl Reserves, '41, '42, '43; Recognition Day, '42; May Day, '42; Home Economics Club, '42, '43; Secretary, Home Economics Club, '43; Ushers, '43; National Honor Society, '42, '43.

ROSALIE GUINN "Rosie"
Entered from Brainerd Junior High in '40; Art Recognition, '41, '42, '43; Ace Club, '41.

CLAY GUPTON "JR."
Entered from North Side Junior High in '40; Officers' Club, '42; Military Chaplain, '42; Sergeants' Club, '41; Military Police, Captain, '42.

MARTHA FRANCES HALE "Little Bit"
Entered from Lookout Junior High in '40; Home Room Representative, Safety Council, '42; Bible Club, '40; Red Cross, '41.

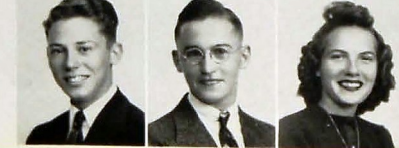




- WILLIAM ROBERT HALE** "Bill"
Entered from Hardy Junior High in '40; Depression Club, '41, '42; Boys' Hi-Y, '40; Sergeants' Club, '41, '42; Officers' Club, '42, '43; Treasurer, Safety Council, '42, '43; Junior Play, '41; Sergeant, R. O. T. C., '41, '42; Captain, R. O. T. C., '43; Digest, '41, '42, '43; Military Editor, '42, '43.
- LEON HALEY** "Slick"
Entered from East Lake Junior High in '41; Sergeants' Club, '42; Boys' Hi-Y, '42, '43; Depression Club, '42, '43; Officers' Club, '43.
- STANLEY LEE HALL**
Entered from Brainerd Junior High in '40; Band, '40, '41, '42, '43; Band Officers' Club, '43; Announcers' Club, '43; Lieutenant in Band, '43; Glee Club, '43.
- DIMPLE HARDEN** "Dimp"
Entered from Brainerd Junior High in '39; Hi-Y, '42, '43; Anchors Aweigh, '42, '43; Wee Moderns, '42, '43; May Day, '40, '41, '42; Girls' Battalion, '39, '40; Varsity Glee Club, '41, '42, '43; Sponsor, R. O. T. C., '42; Office Force, '42, '43.
- HENRY HARDEN** "Newton"
Entered from East Lake Junior High in '41; Officers' Club, '43; Corporals' Club, '42.
- ARNOLD HARRIS**
Entered from East Lake Junior High in '41; Vice-President, Sergeants' Club, '42; Printing Staff, "Digest," '42; Boys' Hi-Y, '43; Depression Club, '43; Officers' Club, '43; Foreman, Central Digest, '43; Captain, Company "A," R. O. T. C., '43.
- CLARINE HARRIS** "Chicken"
Entered from East Side Junior High in '41; Red Cross, '42, '43; Distributive Education Club, '42, '43.
- EDNA EARL HARRIS**
- MYRTLE MAE HARRIS**
Entered from DeKalb County High in '41; Outcast Club, '43.
- JUDY LOUISE HELTON**
Entered from East Side Junior High in '40; Girl's Battalion, '40, '41, '42, '43; Ace Club, '41, '42, '43; Tumblers, '41, '42, '43; Red Cross, '40, '41; Spinsterettes, '43.
- TOMMIE HEMPHILL**
Entered from Angelo High in '43; Patrol and Band, '42, '43; Red Cross, '42, '43.
- JOHN FRIERSON HENDRICKS**
Entered from Ramsay High in '42; Baseball Team, '42, '43; "C" Club, '43.
- DOROTHY REED HENLEY** "Dot"
Entered from Loudon High School in '43.
- CHARLES A. HENRY**
Entered from Brainerd Junior High in '40; Treasurer, R. P. H. Club, '42; Corporals' Club, '42.
- CHRISTINE HENRY** "Cricket"
Entered from East Side Junior High in '41; Betty Maid Club, '43.
- DORIS BROOKS HENRY** "Pud"
Entered from East Lake Junior High in '41; Spinsterettes, '42, '43; Secretary, Spinsterettes, '43; Girls' Hi-Y, '42, '43; Girl's Reserves, '41, '42, '43; May Day, '42.
- JAMES WINFORD HENRY** "Wimpy"
Entered from North Side Junior High in '41; Depression Club, '42; R. O. T. C., '42, '43.
- JOE MOORE HENRY**
- BETTY GLENN HENSON** "Baby"
Entered from Brainerd Junior High in '40; Betty Maid Club, '42, '43; Red Cross, '40, '41; Girls' Battalion, '40, '41, '42.
- DOROTHY ANN HERMAN** "Dottie"
Entered from Corinth High in '42; Central Digest Staff, '43; Student Safety Council, '43; Outcasts, '43.
- ODELL HIGDON** "Deedle"
Entered from Lookout Junior High in '41; Orchestra, '41, '42, '43; Digest Staff, '41, '42; Hiking Club, '41.
- EMORY BENTON HILBURN** "Bennie"
Entered from East Lake Junior High in '40.
- NANCY SUE HILL** "Little Bit"
Entered from Lookout Junior High in '41; Girls' Battalion, '41; Lieutenant, '42; Major, '43; Girl's Reserves, '41; Ushers, '43; Vagabond Club, '42, '43; President, Vagabond Club, '43; Gadabouts, '42; Secretary, Gadabouts, '43; Announcers' Club, '42, '43; Secretary, Announcers' Club, '43; Hy-Hats, '42; Sports Club, '42; Ace Club, '42, '43; May Day, '41, '42.
- WALTER HILL** "Sub"
Entered from East Side Junior High in '40; "C" Club, '41, '42, '43.
- VIVIAN HOLDAM** "Willie"
Entered from City High in '43.
- JAMES HERBERT HOLLADAY**
Entered from Brainerd Junior High in '40; Radio Club, '41, '42, '43; Camera Club, '43; Trade and Industries, '43.
- VENICE LOUISE HOLLIS** "Vee"
Entered from East Lake Junior High in '41; Safety Council, '42; Checkers, '42.

- COOPER HOLT** "Killer Diller"
Entered from East Side Junior High in '40.
- MARGUERITE HOOD**
Entered from East Side Junior High in '41; Girl's Reserves, '42, '43; Red Cross, '42, '43.
- ANN HOWARD**
Entered from City High in '41; Nite Owls, '41; Vice-President, Nite Owls, '42, '43; Seventeeners, '42, '43; Hy-Hats, '41, '42, '43; Red Cross, '41, '42.
- EDWIN EUGENE HOWARD** "Eddy"
Entered from Brainerd Junior High in '40; Industrial Arts Club, '42, '43; Second Lieutenant, R. O. T. C., '43; Depression Club, '43; Trail Trotters Club, '43; Officers' Club, '43; Safety Club, '43; Corporals' Club, '42; Boys' Ushers Club, '43; R. O. T. C., '41, '42, '43; Boys' Glee Club, '42.
- GLORIA HOPE HOWELL** "Glo"
Entered from East Side Junior High in '40; Girl's Reserves, '40, '41, '43; Red Cross, '40, '41, '43; Library Club, '41; May Day, '41, '43.
- ROBERT M. HUFF**
Entered from Red Bank Junior High in '40; Junior Boys' Hi-Y, '40, '41; Bee-Hivers, '42, '43; Officers' Club, '43; Sergeant-at-Arms, Trail Trotters, '43.
- JACK HUGHES**
Entered from Hardy Junior High in '41; Announcers' Club, '42, '43; Senior Boys' Hi-Y, '43.
- WILLIAM S. HUMPHREYS JR.** "Bill"
Entered from Hardy Junior High in '40; Grady Literary Society, '40, '42; Trade and Industrial Club, '42.
- JOSEPH EMBRY HURN** "Joe"
Entered from East Side Junior High in '41; Varsity Glee Club, '41, '42, '43; Vice-President, Announcers' Club, '42, '43; Sergeant-at-Arms of Grady Literary Society, '41, '42, '43; Junior Boys' Hi-Y, '41, '42; Senior Boys' Hi-Y, '42, '43; Officers' Club, '41, '43; Color Guard, '42, '43; Lieutenant, R. O. T. C., '43; Junior Play, '42; Essay, '42; Color Guard, '42, '43; Delegate, Hi-Y Convention, '42.
- LORRAINE VIRGINIA IMBIE** "M"
Entered from Brainerd Junior High in '40; Girl's Reserves, '40, '41, '42; Nite Owls, '41, '42, '43; Camera Club, '40, '41; Tumblers Club, '40, '41; Amblers Club, '40, '41; Office Force, '40, '41; Band, '39, '40; Riding Club, '42, '43.
- JAMES ADAM MEY, JR.** "Jimmie"
Entered from Park Junior High in '40; Junior Boys' Hi-Y, '40; President, Junior Boys' Hi-Y, '40; Sergeant, Sergeants' Club, '42; Senior Boys' Hi-Y, '42; National Honor Society, '42, '43; Grady Literary Society, '41, '42, '43; Military Editor, Champion, '43; Digest Staff, '43.
- EVA RUBY JAMES**
Entered from Petersburg in '43; Red Cross, '43.
- JACQUELYN JAMESON** "Jackie"
Entered from Brainerd Junior High in '40; Seventeeners, '42, '43; President, Wee Moderns, '42, '43; Girls' Battalion, '40, '41; May Day, '40.
- DORRIS LOUISE JEWELL** "Intermediate Commando"
Entered from Brainerd Junior High in '41; Ushers, '43; Varsity Glee Club, '41, '42, '43; Girls' Battalion, '41, '42; Major, '43; Ace Club, '43; Girl's Reserves, '41, '42; National Honor Society, '43.
- ALICE CATHERINE JOHNSON** "Boots"
Entered from Brainerd Junior High in '40; Girl's Reserves, '41, '42, '43; Spinsterettes, '42, '43; Checkers Club, '43; Junior Play, '42.
- AMOS JOHNSON**
Entered from Dickinson Junior High in '40; Hi-Y, '43; Officers' Club, '43; Grady Literary Society, '40, '41, '42, '43; Trail Trotters, '43; Digest, '41, '42; Second Lieutenant, R. O. T. C., '43.
- ERNEST EDWIN JOHNSON** "King"
Entered from East Side Junior High in '40; Orchestra, '40, '41, '42; Band, '41, '42, '43; Band, Sergeant, '43; Red Cross, '42, '43; President, Red Cross, '43; Digest Representative, '40, '41, '42.
- JANICE AUDREY JOHNSON** "Bill Audrey"
Entered from North Chattanooga Junior High in '40; Girl Scouts, '40; Battalion, '40, '41; Orchestra, '43; Trail Trotters, '43; Spinsterettes, '43; R. P. H. Club, '42.
- J. ERNEST JOHNSON, JR.**
Entered from Brainerd Junior High in '41; Cheerleader, '41, '42, '43; "C" Club, '43; Varsity Glee Club, '41, '42, '43; Red Cross, '41, '42, '43; Sergeants' Club, '42; Officers' Club, '43; Depression Club, '43; Bachelors' Club, '43; Orchestra, '41; Captain, Company "E," R. O. T. C., '43.
- JUNE JOHNSON** "Sissy"
Entered from Brainerd Junior High in '40; Ace Club, '40, '41, '42, '43; Girls' Battalion, '41, '42, '43.
- EDWARD JOLLEY** "Ed"
Entered from Brainerd Junior High in '39; Diversified Occupation Class, '40, '41, '42, '43; Biology Club, '39, '40; Corporals' Club, '42.
- DENNY JONES**
Entered from East Lake Junior High in '39; Sergeants' Club, '41, '42; Depression Club, '42, '43; Officers' Club, '43; Bachelors' Club, '42, '43; Lieutenant in R. O. T. C., '43.
- RUTH EVELYN JONES**
- WILLIE LOIS JONES** "Nookie"
Entered from Red Bank Junior High in '40; Treasurer, Riding Club, '43; Home Economics Club, '43; Girl's Reserves, '42; Red Cross, '42.
- DARLE Q. JORDAN**
Entered from Sale Creek High in '43; Varsity Glee Club, '43.
- REXINE JUANITA KELLEY** "Josie"
Entered from Hardy Junior High in '39; Betty Maid Club, '41, '42; Riders' Club, '41.
- HARVEY KELLOGG**
Entered from Central High, Cookeville, in '42; Industrial Arts Club, '42, '43; R. O. T. C., '43.





- FAYE KENNEDY
Entered from East Side Junior High in '39; Safety Council Club, '42.
- FERN KENNEDY
Entered from East Side Junior High in '39; Betty Maid Club, '42.
- FLORA KERBY
Entered from North Side Junior High in '41; Bible Club, '42, '43.
- ORPHA JUANITA KESLEY
Entered from East Side Junior High in '40; Girl Reserves, '40, '41; Betty Maid, '42, '43; Red Cross, '43; Digest Representative, '42, '43.
- SYBLE KEY
Entered from Englewood High in '43; Home Economics Club, '43; Safety Council, '43; Girl Reserves, '43.
- JOYCE KILGORE
Entered from East Side Junior High in '38; Red Cross, '42.
- DORIS KILLINGSWORTH
Entered from East Lake Junior High in '40.
- CLIFFORD GRANT KIMBRELL
Entered from North Side Junior High in '40; Depression Club, '42, '43; Corporals' Club, '41, '42.
- BERTIE LENORA KIMSEY
Entered from Lookout Junior High in '41.
- EVELYN DORIS KIZZIAH
Entered from East Lake Junior High in '41.
- MARY RUTH KLEIN
Entered from East Side Junior High in '41.
- RICHARD D. LANDIS
Entered from Brainerd Junior High in '40; Boys' Hi-Y, '42; Officers' Club, '43; Senate, '42; National Honor Society, '43.
- PAUL ALAN LAYTON
Entered from East Side Junior High in '39; Band, '39, '40, '41, '42, '43; Orchestra, '40, '41; Varsity Glee Club, '42, '43; Band Officers' Club, '42, '43; Lieutenant, '42, '43.
- ROY LEE
Entered from Lookout Junior High in '38; Sergeants' Club, '41, '42; Officers' Club, '43.
- MIRIAM EVANS LEEPER
Entered from Brainerd Junior High in '40; President, Freshman Class, '40; President, Sophomore Class, '41; Hi-Y, '40, '41, '42, '43; Girl Reserves, '42, '43; Club Editor, Champion, '43; Business Manager, Digest, '43; Usher, '43.
- EDWIN LEHMAN
Entered from First Lutheran School in '40; Red Cross, '42, '43; Bachelors' Club, '43; Band Officers' Club, '43.
- DICK LEIPER
Entered from North Chattahoochee Junior High in '39; Sports Club, '41, '42; "C" Club, '42, '43; Football, '40, '41, '42, '43.
- BEVERLY JUANITA LEWIS
Entered from East Side Junior High in '40; Archery Club, '40, '41; Bible Club, '42; Usher, '42; Recognition Day, '42; Outcasts, '42; Girl Reserves, '43.
- NELLIE RUTH LING
Entered from Brainerd Junior High in '40; Orchestra, '40, '41, '42, '43; Spintorettes, '42; President, Spintorettes, '43; Girls' Hi-Y, '41, '42, '43; Girl Reserves, '40, '41, '42; Sponsor, First Battalion, R. O. T. C., '43; Typist for Champion, '43; Digest, '40, '41, '42; Assistant Business Manager, Digest, '43; Usher, '43; Dogpatchers, '42; Secretary, Dogpatchers, '43; National Honor Society, '43.
- CHARLES DAVID LIVINGSTON, JR.
Entered from Red Bank, '38.
- HIRAM PETER LLEWELLYN
Entered from Dickinson Junior High in '39; Hiking Club, '39, '40; S. P. O. R. Club, '40, '41; Senate, '41, '42, '43; Band, '41, '42, '43; Boys' Hi-Y, '42; Senate Play, '42; Digest, '42; Associate Editor, Digest, '43.
- STEVE LONAS
Entered from Brainerd Junior High in '39; Football, '40, '41, '42; "C" Club, '41.
- BETTY LOUISE LONG
Entered from Dickinson Junior High in '40; Library Club, '40, '41, '42; Usher, '43; Girls' Battalion, '41, '42, '43.
- BARBARA JEAN LOVE
Entered from Young High, '41; Varsity Glee Club, '41, '42, '43.
- JACK LOWERY
Entered from Red Bank in '39; Sergeants' Club, '41, '42; Depression Club, '43; Bachelors' Club, '43; Officers' Club, '43; First Lieutenant, R. O. T. C., '43.
- WILLIAM ROBERT LUNDY
Entered from Dickinson Junior High in '39.
- BETTYE VESTA LUTHER
Entered from Brainerd Junior High in '40; Battalion, '42, '43.

- MARGARET FRANCES LYONS
Entered from Notre Dame Academy in '41; Hy-Hats Club, '42; Yeagabonds, '42; Red Cross, '42, '43.
- BETTY FERN MCBRYANT
Entered from East Side Junior High in '40; Girl Reserves, '41, '42, '43; Betty Maids, '42, '43; Usher, '43.
- BETTY FRANCES MCCLUSKY
Entered from Mountain View High in '43.
- EVELYN MCCORMICK
Entered from East Lake Junior High in '41.
- WILLA DEAN MCCORMICK
Entered from East Lake Junior High in '39; Girl Reserves, '39, '40; Girls' Battalion, '39, '40; Ace Club, '40, '41, '42; Red Cross, '40, '41; Song Leader, '40, '41, '42; Anchors Aweigh, '42, '43; Digest Staff, '40, '41, '42; Tumblers, '41, '42; R. O. T. C. Sponsor, Second Battalion, '43.
- MARGARET MCCURDY
Entered from Dickinson Junior High in '40; Girl Reserves, '40, '41, '42; Home Economics Club, '41, '42.
- NORMA MCDANIEL
Entered from City High School in '42; Betty Maids, '43; Outcast Club, '43; Candy Crew, '43.
- GRACE ALICE McDONALD
Entered from East Side Junior High in '40; Battalion, '42.
- THELMA LOUISE McDOWELL
Entered from Brainerd Junior High in '39; Varsity Glee Club, '39; Sub-Deb Club, '41; Girls' Glee Club, '42; Drum Major, '41.
- LORRAINE MCENTIRE
Entered from East Side Junior High in '41; Band Girls' Club, '42, '43; Band, '42, '43; Girl Reserves, '42; Announcers' Club, '43; Typist for Digest, '43.
- CATHERINE MARIE MCINNIS
Entered from Hardy Junior High in '41; Girls' Battalion, '41, '42; Announcers' Club, '42.
- JACK DAVID MCGREGOR
Entered from East Lake Junior High in '41; Varsity Glee Club, '41, '42, '43; Sergeants' Club, '42; Officers' Club, '43; Red Cross, '43.
- SARAH CLEMENTINE MCWILLIEN
Entered from Fairland Junior High in '42; Betty Maid Club, '42.
- NANCY JEANNE MCPADDEN
Entered from Ooltewah Junior High in '40; Girl Reserves, '40; Trail Trotters, '43.
- BETTY MADEWELL
Entered from East Side Junior High in '40; Girl Reserves, '41; Biology Club, '41, '42, '43; May Day, '41; Announcers' Club, '42, '43; Betty Maids, '42, '43.
- CATHERINE LOUISE MARLER
Entered from East Side Junior High in '41; Girls' Drill Squad, '42, '43.
- BILL MARLER
Entered from North Chattahoochee Junior High in '41; Officers' Club, '43.
- SALLY JO MARTIN
Entered from Wayland High in '42; Ace Club, '42.
- THOMAS ERNEST MARTIN
Entered from East Side Junior High in '39; Boys' Hi-Y, '40, '41, '42, '43; Sergeants' Club, '42; Bachelors' Club, '43; Officers' Club, '43; Depression Club, '43; Industrial Arts Club, '42, '43; National Honor Society, '42, '43; Bank, '41, '42, '43; Captain in R. O. T. C., '43; Basketball, '43; Track, '42.
- MILTON MATILL
Entered from First Lutheran School in '40; Depression Club, '43; Red Cross, '42, '43; Bachelors' Club, '43.
- WILLIAM MAYES
Entered from Brainerd Junior High in '40; Stage Crew, '40, '41, '42, '43; Sergeants' Club, '42.
- ROBERT EDWARD MEADOR
Entered from Tyner High in '43.
- ALBERT BENJAMIN MILLER
Entered from Brainerd Junior High in '40; Hi-Y, '40, '41, '42, '43; Grady Literary Society, '41, '42; Sergeants' Club, '42; Officers' Club, '43; Secretary, Sergeants' Club, '42; Captain in R. O. T. C., '43; Depression Club, '43; Bachelors' Club, '43; Vice-President, Junior Class, '42; S. P. O. R., '41.
- BEN MILLER
Entered from East Lake Junior High in '39; Football, '40, '41, '42, '43; "C" Club, '40, '41, '42, '43; Basketball, '39, '40, '41; Co-Captain, All-City Basketball, '39; Volley Ball, '40, '41; Sports Club, '41; All-City Football, '41, '42.
- EVELYN MILLER
Entered from Lookout Junior High in '40; Exclusive Club, '42, '43; Digest Sponsor, '43.
- WALLACE MILLER
Entered from Brainerd Junior High in '39; Track Team, '41.
- MILDRED MISHKIND
Entered from North Side Junior High in '40; Bible Club, '42, '43; Music Chairman, Girl Reserves, '42, '43.





BETTY JEANNE MOORE "Little Bit"
Entered from Handley High in '42.

CHRISTINE MOORE "Cricket"
Entered from Dickinson Junior High in '40; Girl Reserves, '41, '42; Home Economics Club, '41, '42.

FRANCIS MOORE
Entered from East Lake Junior High in '38; Airplane Club, '38, '39; President, Radio Club, '40.



OPAL MOORE "Op"
Entered from City High in '42; Bible Club, '42; Girl Reserves, '42, '43.

GERTRUDE ANN MORGAN "Trudie"
Entered from Brainerd Junior High in '40; Girl Reserves, '40; Spinsters, '41, '42; Riding Club, '41, '42; Exchange Editor, Digest, '43; Exclusive Club, '43; Majorettes, '40, '41; Usher, '43; Baton Club, '41; Red Cross, '40.

CARL MORGAN "Doc" Morgan
Entered from Riceville High in '41; Glee Club, '43.

ROBERT V. MORGAN "Buster"
Entered from Brainerd Junior High in '41; Industrial Arts Club, '41, '42; Vice-President, Industrial Arts Club, '41; Orchestra, '41.

ERLENE VIRGINIA MORRIS
Entered from Mansfield Senior High in '42; Trail Trotters, '43.



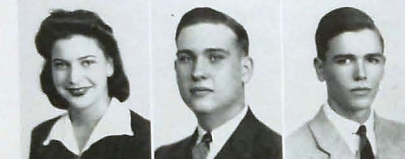
BILLY MAXINE MORTON "Bill"
Entered from Brainerd Junior High in '40; Girl Reserves, '40, '41; Exclusive Club, '41, '42, '43; Baton Club, '41, '42, '43; Orchestra, '42, '43; Orchestra, '40; Red Cross, '40, '41.

MABLE MUELLER "Squirrel"
Entered from East Side Junior High in '40; Betty Maid Club, '41; President, Betty Maid Club, '41.

CHARLES FRANKLIN MUEKEY "Charlie"
Entered from City High in '43; Varsity Glee Club, '43; Bible Club, '43; Biology Club, '43; R. O. T. C., '43.

HERSCHEL WALLACE NATION
Entered from Lookout Junior High in '39; Grady Literary Society, '42, '43; Safety Council, '43; President, Safety Council, '43; National Honor Society, '42; President, National Honor Society, '43; Boys' Hi-Y, '43; Digest, '42; Associate Editor, Digest, '43; Color Guard, '43; Boys' State, '42.

MARY NESBITT "Lefty"
Entered from Ponce de Leon High in '41; Bowling Team, '41; Tumblers, '41, '42; Badminton Club, '41, '42; Ace Club, '42, '43; Battalion, '43; President, Ace Club, '43.



JUANITA NOLAN "Nita"
Entered from Tyner High in '43.

KATHERINE NORRIS "Kat"
Entered from Hardy Junior High in '41; Band Girls' Club, '42, '43; Band, '41, '42, '43.

ERCEEL O'BRIEN
Entered from Tyner High in '41; Girl Reserves, '40, '41; Majorettes, '40, '41; Riding Club, '42, '43.

JOHN GORDON O'BRIEN, JR. "J. G."
Entered from Tyner High School in '42; R. P. H. Club, '43.

MARLYS JEAN OLSEN "Sparky"
Entered from First Lutheran School in '40; Vice-President, Yagabond Club, '43; National Honor Society, '43.



JOE PARKS
Entered from Amnicola in '40; Secretary, Junior Boys' Hi-Y, '40, '41; Secretary, Bee-Hivers, '42, '43; Pianist, Boys' Glee Club, '40, '41, '42, '43; Bank, '41, '42, '43; Program Committee, Junior Party, '42; Grady Literary Society, '43.

BESONA PASSONS "Pocahontas"
Entered from Western High in '43; Digest Typist, '43.

EDWARD BENTON PATTERSON "Pat"
Entered from East Side Junior High in '39; Sergeants' Club, '40, '41; "C" Club, '41, '42, '43; Football Team, '40, '41, '42, '43; Basketball Team, '42; May Day, '42; Captain, Junior Basketball Champs, '40.

ROBERT PEACE "Dick"
Entered from Brainerd Junior High in '40; Red Cross, '41, '42, '43.

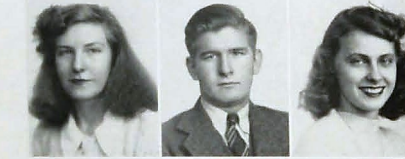
NINA RUTH PENDERGRASS "Sugar"
Entered from Red Bank High in '42; Girls' Hi-Y, '42, '43; Badminton Club, '42, '43; May Day, '42.

JEAN PECK PEOPLES "Peck"
Entered from Tyner High in '41; Model Airplane Club, '41, '42; Grady Literary Society, '42; Boys' Hi-Y, '42; National Honor Society, '42, '43.

JAMES PHILLIPS "Tank"
Entered from Hardy Junior High in '40; Band, '40, '41, '42; Track Team, '42, '43; Boys' Band Club, '40, '41, '42; Band Officers' Club, '42.

VIRGINIA JUNE PHILLIPS
Entered from East Lake Junior High in '41; Bible Club, '41, '42; Girls' Glee Club, '42.

FRANCES PICKETT "Honey"
Entered from Tyner High in '42.



LAYTON PIPPIN
Entered from East Lake Junior High in '41.

HERMAN POOLE
Entered from Brainerd Junior High in '38.

JAMES POPE
Entered from Brainerd Junior High in '41; Football Team, '43.

GEORGE PRESTON POSTON
Entered from East Lake Junior High in '40; Football, '40, '41, '42, '43; "C" Club, '41, '42, '43; Vice-President, Sophomore Class, '40; Secretary, Senior Class, '43.

FLORA ALICE PRICE "Flo"
Entered from East Side Junior High in '40; Battalion, '40, '41, '42; Girl Reserves, '41; Sports Club, '42.

RUTH PRICE
Entered from East Side Junior High in '40; Ace Club, '41; Girls' Battalion, '40, '41.

LURA JEAN PRINCE "Tubby"
Entered from Brainerd Junior High in '40; Girl Reserves, '40; R. P. H. Club, '42.

MAURICE RATHFORD "Pete"
Entered from East Lake Junior High in '40; Secretary, Bachelors' Club, '43; Depression Club, '43; Lieutenant, Colonel, R. O. T. C., '43; Sergeants' Club, '42.

JACK RAULSTON
Entered from Dade County High in '41; Biology Club, '41, '42, '43; Senate, '41, '42, '43; Grady Literary Society, '42, '43; Antropics Club, '42, '43; All-State Club, '42, '43; National Honor Society, '43; Captain, R. O. T. C., '43; Sergeants' Club, '42; Officers' Club, '43; Track Team, '41, '42, '43; Wrestling Team, '42.

MARJORIE DELL RAY "Margie"
Entered from East Lake Junior High in '41; Red Cross, '42, '43.

WILLARD REEL
Entered from Marion County High in '42.

ROBERT LINDSAY RHODES
Entered from Brainerd Junior High in '40; Band, '40, '41, '42.

BETTY RAE RICHY
Entered from East Side Junior High in '40; Girl Reserves, '40, '41; Home Economics Club, '41, '42; "C" Club, '41, '42; National Honor Society, '42, '43; President, Home Economics Club, '42.

ED RIDGE "Junior," "Shorty"
Entered from Brainerd Junior High in '40; Depression Club, '40, '41, '42, '43; Bachelors' Club, '41, '42; Sergeants' Club, '42; Officers' Club, '43; First Lieutenant, R. O. T. C., '43.

CLYDE RIGGS, JR.
Entered from East Side Junior High in '39; Depression Club, '43; Bachelors' Club, '43; Dogpatchers Club, '42, '43.

BOB ROGERS "Bashful"
Entered from East Side Junior High in '40; Bachelors' Club, '40, '41, '43; Depression Club, '40, '41, '43.

BETTE ROWE "Becky"
Entered from City High in '42; Nite Owls, '43.

ANNA SUE RUDD "Jackie"
Entered from Brainerd Junior High in '40; Betty Good Club, '42.

VIRGINIA GAY RUSSELL "Ginger"
Entered from East Side Junior High in '40; Girl Reserves, '40, '41, '42; Bible Club, '42.

DONALD RUTEMAYER "Rudy"
Entered from Arshal Technical High in '40; Boys' Hi-Y, '40, '41.

BETSY RYERSON "Bet"
Entered from Brainerd Junior High in '40; Girls' Hi-Y, '40, '41, '42, '43; Assistant Secretary, '43; Girl Reserves, '42; Wee Moderns, '43; Ushers, '43; National Honor Society, '43.

MARGARET ANN SANDER "Peggy"
Entered from Girls' Preparatory School in '41; Seventeeners, '42, '43; Wee Moderns, '43; Ramblers, '43.

MARY EVELYNE SARGENT "Sarge"
Entered from Fairland School, '42; Bible Club, '43; Candy Crew, '43; Checkers Club, '43; R. P. H. Club, '42.

ALMA MARIE SCHLACK
Entered from Brainerd Junior High in '40; Girl Reserves, '40, '41, '42; National Honor Society, '42; Girls' Battalion, '42, '43; Ushers, '43.

BILL SCHULTE "Shootie"
Entered from East Side Junior High in '40; Baseball, '40, '41, '42; Basketball, '41, '42; All-City Baseball, '40, '41, '42; All-City Basketball, '40.

FRANK SCOGGINS "Peanut"
Entered from North Chattanooga Junior High in '40; Biology Club, '40, '41; Sergeants' Club, '42, '43; Depression Club, '42, '43; Officers' Club, '43; Bachelors' Club, '42, '43; First Lieutenant, R. O. T. C., '43.

CLARENCE SCOTT "Scotty"
Entered from East Lake Junior High in '41.





MILDRED ALICE SCOTT
Entered from Brainerd Junior High in '40; Seventeeners, '41, '42; Home Economics Club, '42.



FRANK SELLS
Entered from Lookout Junior High in '39; Sergeants' Club, '41.



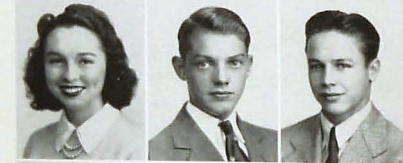
GERALDINE HAZEL SELLS
Entered from Lookout Junior High in '40; Home Economics Club, '42, '43; Outcasts, '43.



FRANCES LOUISE SHEDD
Entered from Brainerd Junior High in '40; Seventeeners, '42, '43; Nite Owls, '41, '42, '43; Ramblers, '41, '42, '43; Hi-Y, '40, '41, '42, '43; Girl Reserves, '40, '41; Majorettes, '41, '42; Girls' Battalion, '40, '41; May Day, '40, '41.



BEATRICE SHIRLEY
Entered from East Side Junior High in '41; Bible Club, '42, '43; Latin Club, '42, '43; Ushers, '43.



JOHNNIE RUTH SHIRLEY
Entered from East Side Junior High in '41; Red Cross, '42.



EUGENE NILES SHRADER
Entered from Brainerd Junior High in '40; Baseball, '41, '42, '43; Basketball, '41, '42, '43; Football, '41, '42, '43; All-City Baseball, '41, '42, '43; C. Club, '41, '42, '43; Sergeants' Club, '42; Officers' Club, '43; Major, R. O. T. C., '43; Sergeant-at-Arms, Senior Class, '43.



LUCILLE SIMPSON
Entered from Hardy Junior High in '40; Girls' Battalion, '40, '41.



O. C. SIMPSON
Entered from Lookout Junior High in '40.

JAMES EDWARD SKEEN
Entered from Lakeview High in '40; Staff Sergeant, '41, '42; Captain, '43; Officers' Club, '43; Industrial Arts Club, '41, '42, '43; Sergeants' Club, '42.

IMOGENE SLEDGE
Entered from Brainerd Junior High in '39.

KENNETH SLIGER
Entered from East Side Junior High in '40; First Lieutenant, Band, '43; Band, '40, '41, '42.

CATHERINE SMITH
Entered from East Side Junior High in '40; Girl Reserves, '40, '41, '42; Treasurer, Wee Moderns, '42, '43; Treasurer, Sallottettes, '42, '43; Hi-Y, '40, '43; Usher, '43; Digest Representative, '43.

DEXTER SMITH
Entered from City High in '42; Depression Club, '43; Bachelors' Club, '43.

FRANCES ELIZABETH SMITH
Entered from Hardy Junior High in '40; Girls' Battalion, '43; Checkers Club, '43.

FRANCES JEAN SMITH
Entered from East Side Junior High in '41; Secretary, Girl Reserves, '41, '42; Secretary, Sophomore Class, '41; Secretary, Junior Class, '42; Senate, '41, '42; Hi-Y, '43; Vice-President, Ushers, '43; National Honor Society, '42, '43; Regimental Sponsor, R. O. T. C., '43; Honorary Member, Officers' Club, '43.

HORACE LEE SMITH
Entered from East Lake Junior High in '41; Trail Trotters, '42, '43.

JAMES EDWARD SMITH
Entered from East Side Junior High in '40; Sergeant-at-Arms, Depression Club, '42, '43.

J. H. SMITH
Entered from East Lake Junior High in '41; Riding Club, '43.

KATHRYN EUNICE SMITH
Entered from Ringgold High in '42.

MARY JO SMITH
Entered from Dickinson Junior High in '40; Ace Club, '40, '41; Exclusive Club, '41, '42.

MARY RUTH SMITH
Entered from Brainerd Junior High in '41; Girl Reserves, '41, '42; Riding Club, '42; Dutch Recreation Club, '43; Checkers Club, '43.

ROBERTA SMITH
Entered from East Side Junior High in '41; Baton Club, '43; Girl Reserves, '42; Majorettes, '42, '43; Vagabonds, '43.

SARA SMITH
Entered from Marion County High in '42.

VERLIN LEE SMITH
Entered from Hardy Junior High in '41; Archery Club, '41; Band, '41, '42, '43.

GENELL SMOTHERMAN
Entered from East Lake Junior High in '41.

DOROTHY SNODGRASS
Entered from City High in '41.

BRYAN SOUDERS
Entered from East Side Junior High in '40; Depression Club, '43; Officers' Club, '43.

MILDRED STEPHENS
Entered from East Side Junior High in '39; Girl Reserves, '42, '43; Home Economics Club, '42, '43; Battalion, '39, '40; Red Cross, '40, '41.

HAROLD STEPHENSON
Entered from East Lake Junior High in '40.

HARDEMAN L. STONESTREET
Entered from Brainerd Junior High in '40; Basketball, '41, '42, '43; Baseball, '42, '43; C. Club, '42, '43; Captain, R. O. T. C., '43; First Sergeant, R. O. T. C., '42; Captain, Basketball, '43; Treasurer, Junior Class, '42; Vice-President, Senior Class, '43.

PEGGY LOU STOTT
Entered from North Chattanooga Junior High in '40; Secretary, Sports Club, '42, '43; Ramblers Club, '42, '43; Riding Club, '42, '43.

BETTY STRICKLAND
Entered from Brainerd Junior High in '40; Girl Reserves, '40, '41, '42; Wee Moderns, '42, '43; Vice-President, Sallottettes, '42, '43; Hi-Y, '43; Library Club, '40; Digest Sponsor, '42.

GLENN STURDIVANT
Entered from East Side Junior High in '41.

ERNEST GRADY SUTTON
Entered from Ooltewah High in '42; Hi-Y, '43; Glee Club, '43.

FRANKIE JO SWANSON
Entered from East Side Junior High in '40; Girl Reserves, '41, '42, '43.

FRANCIS SWOPE
Entered from Brainerd Junior High in '40; Seventeeners, '41, '42, '43; Ramblers' Club, '41, '42, '43.

LAURA JANE TALLANT
Entered from Brainerd Junior High in '40; Pianist, Varsity Glee Club, '41, '42, '43; President, Girls' Hi-Y, '43; Editor, Digest, '43; Ushers, '43; National Honor Society, '42, '43; Junior May, '42; Anchors Aweigh, '43; Reporter, Checkers Club, '43; Girl Reserves, '40, '41.

JANE CAROLINE TALLEY
Entered from Brainerd Junior High in '40; Black Kats, '40, '41; Drum Majorettes, '40; Hy-Hats, '40, '41, '42, '43; Archers Aweigh, '41, '42; President, Anchors Aweigh, '43; Seventeeners, '41, '42, '43.

IRA TEMPLETON
Entered from Baylor in '40; Football, '40, '41, '42, '43; C. Club, '42.

NED WALTON THAXTON
Entered from Dickinson Junior High in '39; Baseball, '39, '40, '41, '42; Basketball, '39, '40, '41, '42; All-City Football, '41; All-City Baseball, '39, '40, '41, '42; C. Club, '40, '41, '42.

ANNA BERNICE THOMAS
Entered from Dickinson Junior High in '41; President, Exclusive Club, '42, '43; Bible Club, '43; Trail Trotters, '43.

BOBBIE THOMAS
Entered from Brainerd Junior High in '40; Girl Reserves, '40; Baton Club, '41; Majorettes, '40, '41.

MINNIE ANNETTE THOMAS
Entered from East Side Junior High in '41; Girl Reserves, '41, '42; Bible Club, '41, '42, '43; Bible Club Reporter, '42; May Day, '42; Checkers Club, '43; Girls Hi-Y, '43; Ushers, '43; Digest Representative, '42, '43; Senate, '43; Safety Council Club, '43; National Honor Society, '43.

NANCY THOMAS
Entered from Annicola Grammar in '40; Safety Council, '42; Candy Crew, '41.

C. L. THOMAS
Entered from East Lake Junior High in '40; Sergeants' Club, '42; R. P. H. Club, '42; First Lieutenant, R. O. T. C., '43.

GILFORD THURMAN
Entered from Coffee High in '42.

MYRA ELIZABETH TRIMBLE
Entered from Nathan Bachman in '40; Girl Reserves, '40; Red Cross, '40, '41, '42; Literary Club, '40; Secretary, Home Economics Club, '43; Junior Play, '42.

JEAN TROTTER
Entered from East Lake Junior High in '41; Girl Reserves, '42, '43; Hi-Y, '42, '43; Exclusive Club, '41, '42.

DAVID FRANK TRUNDLE
Entered from East Side Junior High in '39; Football Team, '40, '41, '42, '43; Basketball, '41, '42, '43; Baseball, '40, '41, '42, '43; Escort, May Day, '40, '41, '42, '43; All-City Baseball, '41; All-City Basketball, '41.

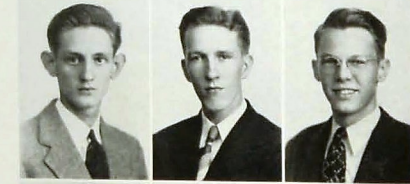
WILLIAM DEVURNE TUCKER
Entered from Brainerd Junior High in '39; Band, '39, '40, '41, '42, '43.

DORIS JUNE TURNER
Entered from Brainerd Junior High in '40; Girl Reserves, President, '40, '41, '42; Ace Club, '40, '41, '42, '43; Hi-Y, '41, '42; Secretary, Hi-Y, '43; Bank-Bookstore, '40, '41, '42, '43; Glee Club, '41, '42; Anchors Aweigh, Secretary, '43; Home Economics Club, '41, '42; R. O. T. C. Sponsor, '43; National Honor Society, Treasurer Aid, '43; Checkers Club, '40, '41, '42; President, Checkers Club, '43; Tumblers, '41, '42, '43; Ushers, '43; Gadabouts, '42, '43.

BETTY VANCE
Entered from Dickinson Junior High in '40; Wee Moderns, '40; Candy Crew, '41; Red Cross, '43.

NONA VANDERGRIFF





DEWARD YARNELL "Do It"
Entered from Hardy Junior High in '39; Red Cross, '43; Biology Club, '42, '43;
Corporals' Club, '40.

MARY FRANK WALDROP "Frankie"
Entered from City High in '42; Wee Moderns, '42, '43; President, Sailorettes, '43.

ROBERT KIRK WALKER
Entered from East Side Junior High in '40; Grady Literary Society, '42, '43; Officers' Club, '42; Safety Council, Vice-President, '42, '43; National Honor Society, '42, '43; President, Senate, '41, '42, '43; Secretary, H.Y., '41, '42, '43; Editor, Digest, '41, '42, '43; First Lieutenant, Band, '43; Band Officers' Club, '43; Senate Play, '42.

GLADYS ALMA WALLS "Sis"
Entered from Training School in '42.

VERNA ALICIA WARE "Lish"
Entered from Brainerd Junior High in '41; Seventeeners, '41, '42; Secretary, Seventeeners, '43; Nite Owls, '41, '42, '43; Ace Club, '43; Ramblers, '42, '43; President, Ramblers, '43; Varsity Glee Club, Vice-President, '42, '43; Home Economics Club, '42; Gadabouts, '42, '43; Wee Moderns, '42, '43; Hy-Hats, '41, '42; Battalion, '41, '42; Lieutenant, '43; Major, '43; R. O. T. C. Sponsor, '43.

KATHERINE LUCILLE WARREN "Tootsie"
Entered from Lookout Junior High in '40; Bible Club, Sergeant-at-Arms, '42, '43; R. P. H. Club, '42, '43; Secretary, R. P. H. Club, '43; Vagabonds Club, '42, '43; Riding Club, '42; Recognition Day, '42; May Day, '41, '42; Girls' Battalion, '42, '43; Canda Crew, '41, '42, '43.

EVA MAE WATKINS
Entered from Shepherd High in '42; Usher, '43; Katen Club, '43; Outcasts, '43; Girl Reserves, '42; Dram. Major, '42, '43.

JOHNNY WEICH "Red"
Entered from East Side Junior High in '41; Girl Reserves, '41, '42, '43.

ERNEST PATRICK WEST, JR. "Pat"
Entered from Brainerd Junior High in '40; Boys' Junior H.Y., '41; Stamp Club, '41; Grady Literary Society, '41, '42, '43; Vice-President, Grady Literary Society, '43; Band, '41, '42, '43; Volunteer Boys' State, '42; Boys' Senior H.Y., '43.

RILEY WESTBROOK "Doghouse"
Entered from Brainerd Junior High in '40; Band, '40, '41, '42, '43; Varsity Glee Club, '40, '41, '42, '43; Lieutenant, Band, '42; East Tennessee Concert, '42, '43.

MARY DOVE WHALEY "Dovey"
Entered from Brainerd Junior High in '41; Usher, '42, '43; Varsity Glee Club, '41, '42, '43; Vagabonds, '42, '43; Hy-Hats, '41, '42; Gadabouts, '41, '42, '43; Girl Reserves, '40, '41, '42, '43; Girls' Battalion, '41, '42, '43; Parents' Day, '42, '43.

MARVIN WHATLEY "Jug," "Dug"
Entered from East Lake Junior High in '40.

YVONNE JUNE WHEELER
Entered from Lookout Junior High in '40; Red Cross, '40, '41, '42; Biology Club, '41, '42, '43; Ushers, '43.

SARAH FRANCES WHITE
Entered from Brainerd Junior High in '41; Ushers, '43; Home Economics Club, '42, '43; Dramatics Club, '41; Girl Reserves, '41; Riding Club, '42.

DOROTHY GERTRUDE WILLIAMS "Dot"
Entered from City High in '42; Ramblers Club, '42, '43; Vagabonds, '43; Tennis Club, '42, '43; President, Riding Club, '42.

HUGH BASS WINFRE "Murph"
Entered from Bowling Green High in '42; Industrial Arts Club, '43; Model Airplane Club, '42, '43; R. O. T. C., '42.

ELMER HARRY WISE
Entered from Dickinson Junior High in '41; Library Club, '41; Red Cross, '42.

MILTON WOODEN "Don"
Entered from Brainerd Junior High in '40; President, Trail Trotters Club, '43; Treasurer, Industrial Arts Club, '42, '43; Grady Literary Society, '42, '43; Depression Club, '43; Camera Club, '40, '43; Sergeants' Club, '42; Military, '41, '42, '43.

DORIS KATHERINE WOODFIN
Entered from East High in '42; Home Economics Club, '42, '43.

WILLIAM BUTTRAM WOODS "Bill"
Entered from Hardy Junior High in '40; Junior Play, '41; Digest, '41, '42, '43; Sports Editor, Digest, '43.

RALPH WOOTEN "Sandy"
Entered from East Side Junior High in '40.

REBA JEAN WORTZ "Jeannie"
Entered from Brainerd Junior High in '39; Girl Reserves, '40, '41, '42, '43; Girls' Band Club, '42, '43; Girls' Battalion, '39, '40, '41; Band, '41, '42, '43; Concert Band, '42, '43.

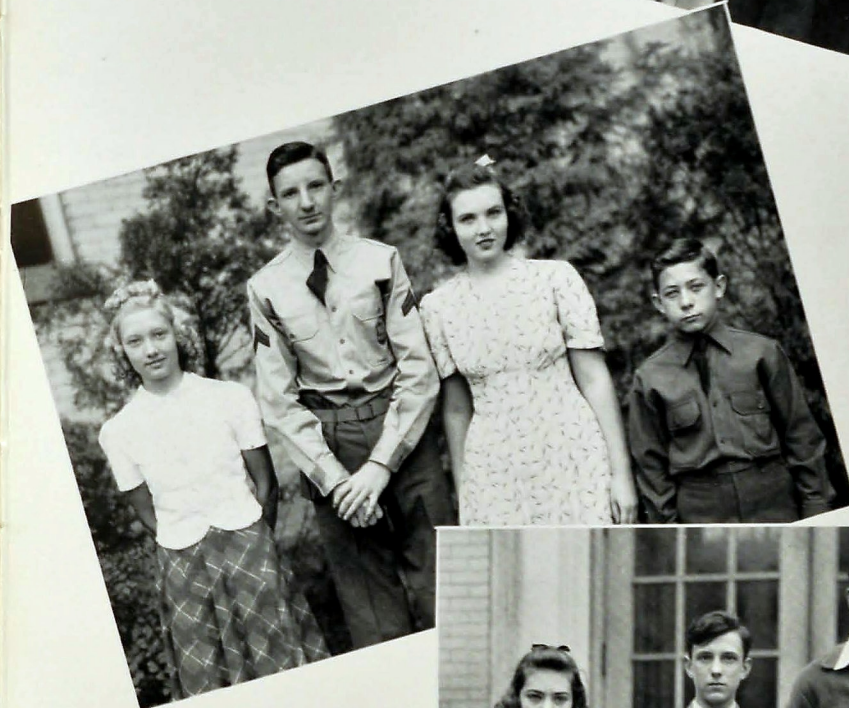
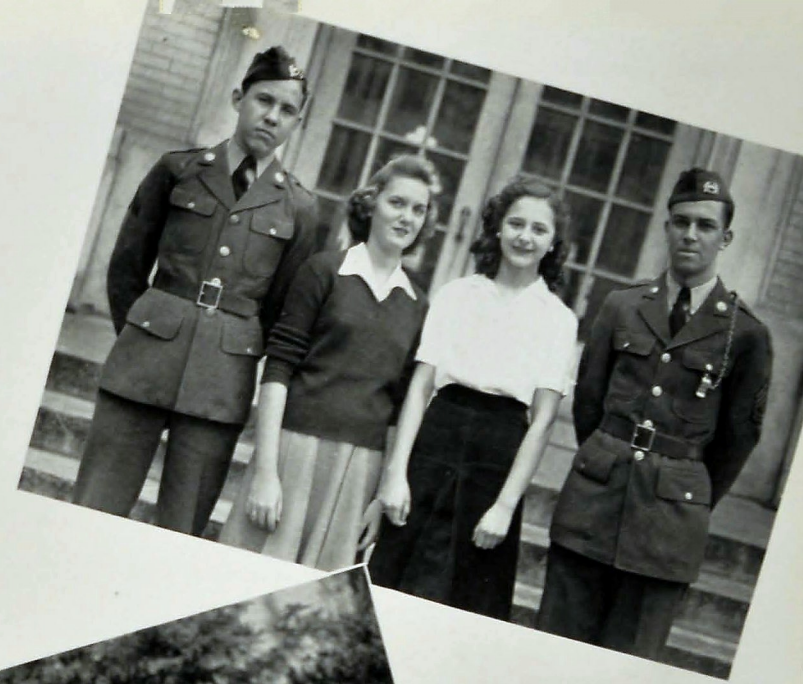
INEZ FLORENCE WYATT "Iney"
Entered from East Side Junior High in '41; Girl Reserves, '41, '42; Bible Club, '43; Ushers, '43; Digest Sponsor, '42, '43.

LOIS RUTH WYRICK
Entered from East Lake Junior High in '41; Betty Maid Club, '43; Safety Council, '42; May Day, '41.

JUNIORS

OFFICERS

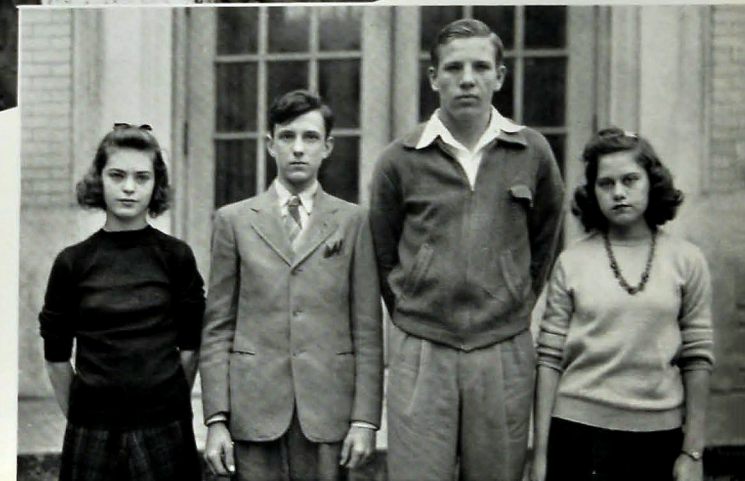
LEON HUDSON President
EVERETT GOODNER Vice-President
MARY JO RHINEHART Secretary
EDITH BEENE Treasurer



SOPHOMORES

OFFICERS

BETTY LOU COBLEIGH President
SIMS ALLEN Vice-President
MARTHA POWELL Secretary
ELMER CROSBY Treasurer



FRESHMEN

OFFICERS

ROY CROWE President
TED SCHLACK Vice-President
BETTY BIVENS Secretary
CHARLENE BAGGETT Treasurer



JUNIOR CLASS BOYS

Archie Adams
Robert Adkins
Ben Alfred
John Anderson
Ernest Andrews
Lewis Baker
Billy Barlow
Harold Barrows
Leland Baughn
William Beane
Malvin Briggs
John Billingsley
Mark Blalock
Wesley Blaylock
Marion Bolden
Bill Bookout
James Bowen
Harold Bracken
George Bradford
Bert Branhan
Edward Bray
George Brewer
Paul Broadway
William Brock
Charles Brooks
Giles Brooks
Theatus Brooks
Harold Brown
William Brown
Leroy Burrows
Ben Byrd
Leroy Cameron
Bill Campbell

Bruce Campbell
Verlie Campbell
Jack Card
Gene Carrol
Melvin Carter
Raymond Carter
Earl Casey
George Cate
Albert Chamberlain
Hubert Callum
Robert Connally
Frank Cook
George Couch
Walter Cox
Billy Crockett
Julius Cumley
Billy Cummings
A. O. Curry
William Dalton
Denzil Darby
Sam Davis
Billy Dempsie
Howard Derrick
Claude Downs
John Dunn
William Clyde Hill
Buddy Durham
William Dutto
Billy Eaves
Robert Edens
Billy Farmer
Murray Farrar
Bob Ferrill
Hoyt Fitzsimmons
Tommy Foley

Herbert Ford
Dan Fowler
Joseph Fryar
Larry Gaines
William George
Baskin Gilliland
Everett Goodner
Thomas Green
William Griffey
Farris Griffith
Callie Griffin
Tommy Grover
James Guess
Gene Guhne
George Harvey
James Haughton
Ted Hays
Fred Heard
Robert Henderson
Charles Henderson
Joe Hensley
Ronald Hickson
James Hicks
Luther Hicks
William Clyde Hill
William Herbert Hill
Kenton Hixon
Albert Hollingsworth
Henry Grady Howard
Henry Rice Howard
William Burl Howard
Ernest Russell Hudlow
Leon Hudson
James Huskey

James Ingle
Frank Ingram
Basil Irwin
Albert Jackson
Elbert Jackson
Charles Jackson
Joe Jenkins
Charles Jones
Cochen Jones
Hershall Jones
Robert Jones
Willis Jones
Robert Koska
Clarence Kelly
Jimmy Kelly
Dennis Kerley
Charles Kilgore
L. M. Kirby
Melvin Knight
Dan Lamb
Julian Lane
Pat Larkin
Arthur Lawson
David Lawson
Carr Leavitt
James Ledford
Paul Lee
William Lentz
George Lerch
Harold Lewis
Leon Lewis
Leon Smith Lewis
R. L. Link
Bill Lomenick

Stanley Lomenick
Kenneth Lonas
Frank Lowe
Jack Lusk
Oscar Lyle
Stanley McBroom
Roy McCollum
Orestus McCullough
Donald McGuire
Curtis McKinney
Jimmie McKinney
Raymond McMahan
Roy McNabb
Edward Madewell
Paul Manning
Allen Martin
Billy Martin
Eldridge Martin
Warner Mathis
Fred May
Jack Meadow
Robert Meyer
Charles Miller
Thomas Miller
Willard Miller
Manyon Millican
Bertie Mills
James Myers
Louis Nelson
Harry Nettie
Edward Norris
Billy Parker
Clayde Parks
Lester Patten

Charles Payne
Eugene Payne
Raymond Payne
Cameron Pack
Thomas Perkinson
Forrest Plemons
Raymond Procter
John Ramsey
Paul Reese
William Ridge
Wallace Roark
G. C. Robinson
Paul Robinson
Conroy Ryan
Charles St. Clair
Robert Scarbrough
Billy Shadden
David Simpson
Jack Sizemore
Frank Smith
Jack Smith
John Smith
Leon Smith
Luther Smith
Oris Smith
Richard Smith
Robert Smith
John Sneed
Marvin Snow
Earl Snyder
Sophie Spanlopis
Grady Stephens
Joseph Stewart
Herbert Sully

Jimmy Sifton
Everett Swingle
Caswell Tallant
Charles Talley
Bud Taylor
James Tate
Donald Taylor
Jack Taylor
Millard Teal
Harold Thomas
James Turner
John Turner
Harrel Ulrich
Earl Underhill
James Upton
Roy Vance
Edward Vaughn
William Vines
Cecil Walker
Edward Warren
Jack Watkins
Bernarr Welch
Marcus Westbrook
Andrew Wheeler
Carl Wiggs
Don Williams
Paul Williams
Hal Williams
Donald Womack
Buddy Wooten
Paul Wright
Willard Wright
James Young



JUNIOR CLASS GIRLS

Alma Alder
Vera Alder
Peggy Allen
Betty Allison
Lorna Andrews
Vilia Andrews
Grace Ashley
Betty Asmacher
Louise Bailey
Betty Baker
Pamela Baker
Beatrice Barnes
Mary Lillian Barnes
Mary Lucille Barnes
Mary Ruth Barnes
Mary Barrows
Julia Barry
Audrey Bayne
Mary Bayden
Mary Beane
Edna Beard
Billy Beck
Edith Beene
Charlotte Benedict
Irene Bennett
Alice Bland
Mildred Bledsoe
Margaret Blevins
Alma Bowen
Emilie Bowen
Wanda Boyd
Barbara Bracker
Alice Bradshaw
Ruth Branett
Billie Brewer
Mildred Brock
Mae Broome
Betty Brown
Betty Brown

Frances Brown
Mary Ellen Brown
Virginia Broyles
Lucy Buffett
Grace Bullock
Mary Butler
Marion Caldwell
Mildred Campbell
Dorothea Geanne Carlton
Elinor Carmichael
Mary Carson
Patricia Carter
Helen Casey
Betty Chapman
Juanita Childers
Margaret Childers
Evelyn Coker
Adelle Coleman
Nelda Coleman
Virginia Cooper
Angeline Corey
Polly Cox
Mary Creek
Betty Cummings
Dorothy Cummings
Anna Daniel
Doris Davis
Virginia DeFries
Martha Denney
Thelma Dixon
Anna Dougherty
Agnes Ducker
Alice Duddy
Betty Duggan
Marilyn Dunne
Marguerite Dyke
Martha Ellis
Amy Jean Erwin
Doris Esby
Mary Ann Eldridge

Violet Evans
Mildred Ewton
Ollie Mae Faires
Phyllis Falls
Martha Farley
Robertta Figgins
Daisy Finner
Flora Francisco
Dorothy Frizzell
Lillian Fryar
Elizabeth Garrett
Dorothy Gattis
Helen Gazaway
Lois Gentry
Margaret Gibbs
Virginia Gilbreath
Ruth Joyce Gillespie
Mary Gillette
Mildred Ginn
Eleanor Goodgame
Loretta Gossett
Virginia Graham
Ina Granin
Edna Greene
Bettye Griffith
Zoanne Grove
Mildred Gunn
Joan Hall
Katherine Hall
Evelyn Haney
Olga Harden
Gutis Jan Hardin
June Hardy
Cora Lee Harris
Katherine Hart
Peggy Hatcher
Mary Lou Hatfield
Lottie Hatten
Mary Henderson

Kitty Henry
Mary Hill
Anna Hilton
Betty Hinds
Bobbie Lee Hite
Mary Hixon
Charlotte Hodge
Nancy Jo Hogue
Alvis Holland
Betty Hutcheson
Betty Jackson
Bettye Johnson
Evelyn Johnson
Willadean Johnson
Rebecca Jones
Betty Jones
Anne Jordan
Betty June Keeney
Melva Kelly
Mary Kelley
Ann Kilgore
Patricia Kimball
Betty Kinder
Betty Kingston
Juanita Kirby
Rosemary Kirk
Elizabeth Kreis
Kirtie Kreisler
Shirley Langdon
Mable Layne
Gloria Layman
Janice Lee
Mary Louise Lee
Erma Lehman
Marion Leonard
Ruby Lewis
Wilma Liner
Imogene Lunford
Juliet McBroom

Bettie McClellan
Helen McCuiston
Anna McCulloch
Martha McDaniel
Gladys McKenney
Sarah McNichols
Helen Machen
Lela Maney
Katherine Massey
Doris Mavity
Margaret Mavity
Mary Mathis
Virginia Meyer
Alice Miller
Mary Minnick
Evelyn Moates
Annie Moore
Marjorie Moore
Kathleen Morton
Betty Mullis
Martha Mullins
Mary Murphy
Janie Murry
Barbara Narramore
Sue Nye
Helen O'Dell
Hazel Ogil
Mary Jane O'Hara
Flora Owens
Mary Padgett
Ruby Page
Bettye Parker
Virginia Parks
Vera Payne
Barbara Pearce
Edna Pearson
Sarah Pearson
Virginia Perkins

Grace Pfitzer
Mary Pfitzer
Willie Plamons
Georgia Plyer
Meredith Quaverl
Joyce Randall
Genetta Ragon
Frances Ray
Dimplex Raybon
Gladys Reed
Wilda Reed
Mary Jo Rhinehart
Sarah Richerson
Sarah Ridge
Alice Robinson
Ruth Robinson
Charline Rogers
Martina Rogers
Betty Rose
Kathleen Royce
Mary Catherine Rymer
Marion Sapper
Jean Schild
Betty Scoggins
Violet Sears
Doris Settle
Mary Sharrill
Evelyn Shirley
Marilyn Shrader
Louise Simpson
Mary Simmons
Daphne Sims
Miriam Skiles
Juanita Skipper
Juanita Smalley
Betty Sue Smith
Irene Smith
Joyce Smith
Margie Smith

Nona Spriggs
Edna Stanford
Mildred Steele
Malvina Stegall
Dorothy Stephens
Ada Stone
Betty Stone
Hannah Strickland
Ruby Tate
Doris Taylor
Glenda Taylor
Thelma Terry
Jo Thompson
Martha Tillery
Ollie Travis
Violetta Tyler
Doris Underwood
Nora Vandergriff
Margaret Veazey
Elia Vici
Imogene Walker
Mary Warlick
Julia Ware
Willnia Warren
Laura Weatherford
Montie Webster
Gwendolyn Westbrook
Gloria Wheeler
Dorothy Whitaker
Margaret White
Barbara Whitmire
Helen Wilkes
Betty Williams
Margaret Williams
Ruth Williams
Edith Witt
Nancilla Wood
Clara Worley
Anita Young



CHS Library

SOPHOMORE CLASS GIRLS

Dotty Jo Adair
Joanne Adkins
Mary Agee
Bertie Fay Anderson
Betty Argo
Joyce Ashley
Agnes Ayers
Viola Bailey
Royal Baker
Katherine Baker
Sara Baker
Alma Baldum
Betty Barfield
Elva Barfield
Dixie Barger
Isabelle Barnes
Frances Barrington
Marcia Basenach
Doris Bass
Carolyn Baughn
Marion Baughn
Virginia Beagles
Dixie Bennett
Dorthea Berg
Mary Sue Bettis
Elizabeth Beville
Ella Jean Bilbrey
Ethel Blackburn
Sara Blackum
Joanne Blankenship
Laura Blivins
Geneva Bowling
Gwendolyn Boydston
Betty Jo Bridgwell
Frances Briskley
Jewel Brogton
Betty Jo Brooks
Dorothy Brooks
Mary Lois Broom
Betty Jean Brown
Elizabeth Brown
Kathleen Brown

Lorna Brown
Barbara Brownsey
Mable Buckner
Emma Bull
Berballe Bunch
Betty Jo Burdette
Betty Sue Burrell
Dorothy Butler
Gertrude Campbell
Jeanette Campbell
Frances Carlton
Ann Louise Carr
Mary Florence Carroll
Mildred Carter
Jessie Casey
Inez Chum
Carolyn Clark
Louise Clonts
Doris Bass
Betty Lou Cogleigh
Virginia Cogleigh
Doris Sue Colwell
Frankie Combes
Betty Costello
Mildred Cottleham
Kathryn Couch
Frances Cowley
Jimmye Ruth Crabtree
Bettye Crane
Helen Crane
Millie Crane
Barbara Ann Crawford
Doris Marie Crawford
Doris June Croissant
Geneva Louise Crosswhite
Edna Cummings
Bernice Cunningham
Mary Cunningham
Ellowene Cyree
Jane Danielson
Norma Davenport
Dorothy Helen Dean
Emma Delaney

Martha Derryberry
Barbara Dickert
Dorothy Dixon
Billie Joyce Dobbins
Mary Ann Doremus
Virginia Drake
Laurine Duggan
Jean Dyer
Helen Eaves
Gladys Eaves
Roberta Edene
Ruth Epperson
Marguerite Erby
Willie Lou Eskew
Ruth Evans
Katherine Everett
Nina Farren
Kathryn Farris
Dorothy Finnell
Claire Fletcher
Virginia Flewellen
Grace Foley
Bobbie Jean Ford
Lucy Ford
Jean Foreman
Laura Foster
Ruth Foster
Henrietta Foust
Rosalie Fraker
Betty Mae Fryar
Frances Fuller
Jean Galtner
Barbara Garber
Carolyn Gardner
Margaret Gibson
Jean Gizon
Elizabeth Hotelin
Margaret Giles
Joyce Gillespie
Ollie Jo Gilley
Betty Gilreath
Louise Givens
Dorthe Golden

Margaret Goldston
Virginia Goldston
Ruth Goode
Nina Gossett
Lois Green
Betty Gregg
Dorothy Griffin
Margaret Gross
Shirley Gwin
Bobbie Jean Hamilton
Katherine Haney
Helen Hargraves
Margaret Harris
Jerry Hartman
Jessie Ruth Haston
Annetta Hatcher
Lila Helton
Doris Hendrix
Robbie Hickerson
Margie Hill
Evelyn Holder
Martha Holderman
Grace Foley
Virginia Holland
Lucy Holley
Frances Holt
Elizabeth Hotelin
Frankie Hotelin
Dorothy Houston
Edna Howell
Hazel Hufferd
Dorothy Humphreys
Virginia Huskey
Betty Ivey
Louise Ireland
Erma Jackson
Helen Lyons
Elizabeth Jamieson
Patsy Janney
Betty Johnson
Betty Jean Johnson
Betty Sue Johnson
Julia Johnson

Margaret Johnson
Nola Johnson
Betty Jones
Louise Jones
Nell Jones
Willette Jones
Martha Keener
Virginia Keener
Josephine Keller
Kathryn Kelley
Martha Kelley
Mary Kelley
Sybil Kidwell
Betty Jo Kimsey
Bettye Kindred
Sarah King
Alice Kirk
Jeannie Lamb
Lorene Lane
Lucy Lanford
Ethel Langston
Alice Law
Bessie Sue Lawrence
Alice Lawson
Aimee Lawson
Doris Lawson
Nina Lawson
La Verne Lea
Jeanette Lea
Mary Dena Leeper
Wilma Limer
Mary Long
Bettye Longley
Lois Lusk
Helen Lyons
Elizabeth McAllester
Emily McClain
Katherine McClure
Dorothy McDermatt
Frances McElroy
Charlotte McGhee

Enid McGregor
Barbara McNish
Dorothy McVeigh
Nance Margrath
Alice Martin
Bobbie Martin
Frances Martin
Billye Jane Mathis
Margaret May
Willadean Maynard
Martha Medley
Josephine Mertins
Mary Lee Meyers
Frances Miller
Peggy Jean Miller
Jane Moore
Agnes Morgan
Nell Ruth Morgan
Anna Louise Myatt
Ruby Nash
Laura Neighbors
Robbie May Nelson
Christine Neyman
Viola Norris
Marjorie Ogle
Ella Orr
Erma Owens
Jeanette Pace
Phyllis Park
Emma Jo Parks
Imogene Parker
Dorothy Patton
Jessie Ruth Patton
Bobbie Jo Payne
Ethelyn Peace
Elizabeth Peace
Mary Pendell
Emily Peoples
Patricia Perry
Betty Phillips
Sue Phillips
Jeanette Pippin

Katherine Plemons
Betty Jean Poe
Joyce Poe
Eleanor Potts
Martha Powell
Evelyn Preston
June Prestidge
Jane Price
Evelyn Priddy
Mary Jane Ragsdale
Peggy Ramsey
Virginia Ramsey
Doris Rankin
Hazel Reece
Dorothy Renshaw
Mary Lee Richards
Ruth Stroud
Erma Roberts
Virginia Roberts
Juanita Robertson
Mary Robertson
Bettye Robinson
Annie Fay Rogers
Evelyn Rogers
Lila Beth Rogers
Patricia Rogers
Hester Romms
Sylvia Russell
Betty Jo Ryal
Helen Sanland
Betty Sheets
Jewell Shelton
Jo Anna Shepard
Dorothy Shields
Rachel Shipman
Dorthea Simmons
Katherine Smith
Bobbie Smith
Dorothy Smith
Dorothy Louise Smith
Johnnie Ruth Smith
Marjorie Smith
Marie Smith

Margaret Sparks
Virginia Spears
Virginia Spencer
Claire Spurling
Dixie Stamney
Bette Stanley
Charlotte Stephenson
Evelyn Sterchi
Ethel Stewart
Martha Stewart
Juanita Stines
Mary Stone
Nadine Stone
Rosaline Stone
Edna Stone
Freda Stump
Betty Jo Sully
Doris Tallent
Robena Tatem
Virginia Thomas
Beulah Thompson
Mary Alice Thompson
Ella Jean Thron
Betty June Thron
Betty June Thron
Pauline Tucker
Mildred Tucker
Marguerite Ward
Frances Waldrup
Dorothy West
Ruby Whitcotton
Mary Whittenburg
Margaret Wilson
Arma Jean Witt
Mildred Womack
Elizabeth Woods
Peggie Ann Woods
Dorcas Ann Wooten
Jewell Young
Betty Jean Ziegler



SOPHOMORE CLASS BOYS

Robert Abel
Robert Adams
Carl Akers
Isaac Albertson
Harold Alexander
Sims Allen
Billie Alloway
Bill Andrews
Albert Ashford
Charles Bailitt
George Baker
Hugh Baker
Bill Barham
George Barker
Belton Barnes
Sam Beard
Donald Beatty
Donnie Blevin
Gordon Bennett
Hugh Bonds
John Bonds
Jack Bowen
Robert Bower
Houston Braddock
Henry Ralph Bratton
Billy Frank Bridge
Rody Broome
Raymond Brobeck
Stephen Brothers
Dick Brown
Jack Brown
Jack Leon Brown
Jon Sidney Brown
Hubert Broyles
Bill Bryan
Tommy Bryan

William Bryant
Charles Burt
Theodore Burthess
Jimmy Burton
Lamar Busley
Roy Bush
Charles Byles
Lloyd Campbell
Charles Canfield
Dwain Carden
John Carroll
Albert Carter
Bill Carter
Floyd Chamberlain
Basil Chase
Herschel Childress
Alvin City
Lester Cobble
Garland Colfield
Charles Collins
Robert Collins
Eugene Conley
Thurston Cooke
James Corser
Joseph Courtney
Thomas Coyle
Harold Crabtree
Elmer Crosby
Joseph Crowley
Charles Culbertson
James Daniel
Dennis Daugherty
Thomas Davies
Alfred Davis
Alvin Davis
Jack Davis

John Davis
William Davis
Carl Deakins
John Dickerson
Garland Dodd
Harold Donahoo
Charles Donahue
Jerry Doughty
Charles Dover
John Driver
Charles Duncan
Bill Durand
Lamar Eaker
William Ellington
James Elliott
Thomas Elrod
James Elsea
Ernest English
Bobby Evans
James Farris
Albert Finney
Charles Ford
Charles Fricks
Frank Fricks
Ed Fikes
Richard Fullington
Bill Gamble
Melvin Garner
James Gass
William Gohse
Walker Graham
Raymond Grant
David Gray
Billy Green
Calvin Greene
Kenneth Green

William Gribble
James Griffith
Oswitt Griswold
Horace Groover
John Gwin
Robert Hall
Charles Hampton
Charles Karnas
Ray Hancock
Robert Harrell
Charles Harris
LaRoy Harris
Charles Harrison
Henry Hartman
Billy Harvey
Jimmy Harvey
Richard Harvey
Horace Haston
Elwood Haynes
Roland Haynes
Milton Heaps
David Hedges
Kenneth Hemphill
Dean Henderson
Jack Henderson
Charles Hicks
William Higdon
Larry Hill
Harold Hite
Herbert Hollifield
Wilburn Hope
Clarence Hotelin
Robert Houts
John Houts
Pleas Huddleston
Joseph Hudson

William Humphrey
Raymond Hunley
Carl Hunt
Harvey Johnson
Jimmy Johnson
Robert Jolly
Ralph Jones
Charles Karnas
Joe Kelley
Eddie Kimsey
Charles Kinamon
Edward Klein
Wade Laffery
Dewey Lewis
Elmer Lawrence
Herschel Legg
William Lerch
Roy Levi
William Lewis
William Hancey Lewis
Clemox Lillard
Herschel Love
Joe Lovell
Talmadge Luttrell
Robert McBride
Claude McCauston
Glenn McCullough
Robert McDaris
Gene McDonald
Robert McDonald
Robert John McDonald
Lloyd McGraw
Charles McGregor
John Mansel
Paul Mansel
John Marlow

Jack Mason
John Massey
Jack Mathis
Charles Maxey
Tommy May
William Meadow
Charles Meredith
William Meyer
R. L. Middleton
Alfred Miller
Morty Lee Mulligan
Ross Mosely
Eugene Mullican
Rit Nykuba
Charles Murphy
Walter Murphree
Jack Myers
William Naighbors
Billy Neil
Gilbert Newton
William Newman
Carl Newton
George New
Gilbert O'Rear
James Orwin
Arthur Pack
James Padgett
Raymond Park
Charles Parker
Jack Parker
Thomas Parker
Harry Parrie
Raymond Parrie
Joel Patrick
Ernest Petty
Homer Petty

Paul Phillips
Earl Pickering
Peter Plemons
Roy Poston
Arthur Powell
Ralph Pritchett
Bill Rankin
James Ratchford
Frank Reid
Norman Reed
J. W. Rice
Robert Riggsby
Bobby Ritchey
James Robertson
Edward Robinson
Jack Robinson
Burge Roddy
Charles Rogers
Melvin Rogers
Raymond Rogers
John Rose
Ernest Ross
Jack Rowland
Lewis Rowland
Roy Rudder
Grady Saffles
Marvin St. Clair
Johnnie Standifer
Charles Saylor
Richard Sessions
Bill Shields
Billy Shirley
Charles Smallen
Garnett Smith
Luther Smith
Wayne Smith

Nelson Snyder
Milligan Spence
Leslie Steele
Joe Stevenson
Billy Stewart
David Strickland
James Stuts
Warren Sullivan
John Sweeten
Clyde Tanner
Billy Taylor
Marvin Thompson
Murphy Thompson
Austin Tittsworth
Bill Towers
Robert Trimble
Jack Varnell
Charles Venable
John Waddell
J. D. Walls
Leak Ware
Walter Wanck
William Whately
Wade Wheeler
Charles White
Claude Whitehead
Carl Whitelaw
Robert Whitbanks
Luther Williams
Norman Williams
Richard Williams
Kelley Wilson
Walter Witt
Fredric Wright
Robert Wright
Jack Young



FRESHMAN CLASS BOYS

Wallace Ray Alexander
Adam Aaron Anderson
Alvin Elden Arnold
Jerry Bill Arnold
James Edward Arrant
Harry Eugene Austin
Jesse Greenberry Bagwell
Don Lawrence Bailey
David Mack Bayles
Clive Brook Beatty
Henry Clark Beck
Herbert Avery Beck, Jr.
Charles Lee Beene
Kenneth Carroll Beene
Kenneth Don Ball
Calvin Monroe Blackwell
Albert Auston Blain
Edgar Thayer Blair
Ralph Edwin Blevins
Herbert Theodore Boerger
Bailor Banard Bracken
William Paul Brenton, Jr.
Cecil Byron Brooks
Oscar Stephenson Brooks
John Nelson Bryan
Frank Burgess
Clyde Bark Bush
Aaron Fredrick Buttner
Eugene Robert Carroll
Roy Miller Cason
John Ernest Cathcart

Cullen Eugene Cavin
Charles Fred Childres
Jefferson Lyle Claiborne
Lamar Jack Cleveland
William Henry Cliver
Paul Blacker Connor
Zack Taylor Cofer
Charles Lynn Coker
Earl Malory Cooke
Charles Louis Cooley, Jr.
Neal Lamar Cooper
Fay Jessie Cordell
Roy Lamar Couser
Roy Thomas Crowe
James Roy Daniel
Jimmy Terry Day
Charles Earl Dixon
Grady Downs
Herman Magee Ducker
Bill Earl Durand
Harlis Melvin Dyer
Joseph Otis Erwin
Lewis Dubois Erwin
Mynatt Preston Ewton
Everitte Charles Farris
Bill Calvin Fricks
William Thomas Fryar
William Carr George
Clyde Goren
John Frank Gibson
George C. Gilbreath

Isaac Barksdale Gonias, Jr.
Leslie Gryder
Ralph Hawk Guthrie
James Finley Hale
James Alexander Hall
Walter Brownlow Hammer
Frank Haskell
Oscar James Headrick
Robert Benjamin Headrick
William Estes Helton
Jack Alton Hensley
Joe Clayton Herman
William Joseph Herriott
Samuel Orville Hill
Byron Williams Hixon
William Austin House
Roy Clady Hudson, Jr.
Lester Lewis Ingram
Johnnie Eugene Jenkins
William Theodore Jenkins
Robert Eugene Jocoy
Roy Giron Johnson
James Vivan Jones
Richard Jones
Russ Milton Kell
Peter Paton Kennedy
William Edward Kinsey
William Holland Klein
Joe William Kreis
John Lalama
Joe Howard Lanham

Howard Lewis
Jack Lonas
Mack Lonas
John Robert Lumpkin
Van Lynch
Charles David McCallie
Richard Rove McDaniel
George Reece McLaughlin
Kenneth McKibben
Ardin Hughes McWilliam
James Hoyt Mackey
William Lawrence Manning
Ronald Allen Martin
Thomas Edward Martin
John Wabber Mason
Dolph Miller
Judson Carlisle Miller
Stanley Harold Miller
Thomas Wiley Miller
Floyd Kenneth Moates
Samuel Bernard Moore
James Andrew Moss
Billy Newton Nanamore
Harry Gibson Nelson
Richard Wainwright Nelson
John Davis Nichols
Glenn Slocum Olinger, Jr.
Roy Austin Passons
William Erby Passons
Robert Perry, Jr.
Bill William Peterson

Emil Alvin Pfitzer
Charles Howard Phillips
Hugh Ralph Pickle, Jr.
Jack Lenard Pitkin
William C. Polley
Melvin Romlis Poole
Robert Jack Pursley
Albert Eugene Ragsdale
Sammy Posey Ramsey
Gordon Louis Ratchford
James Edward Ray
Dick Gilman Rhines
Wallace Walden Roberts
Robert Clyde Robinson
William Russell Robinson
Bill Caudle Roddy
Norman Austin Rogers
Charles Emmons Rudd
Joseph Patton Runge
Joseph Pompeo Salvatore
Theodore Calvin Schlack
William Grant Sedman
Albert Sells
Horace Gordon Shamblyn
Charles Shaver
Clifford Edward Shelton
Joe Bill Sherrill
Eugene Jackson Shetter
Jack Robert Sledge
Hugh James Smith
Joe Franklin Smith

Kenneth Walton Smith
Lawrence David Smith
Richard Winifred Smith
Henry Sneed
Paul Somick
Kenneth Lyle Speegle
Jimmy Hoyte Spencer
Vernon Sandfort Stacy
Dan Charles Standfield
Gene Carlson Stevens
Thomas Edward Stevenson
Thomas Calvin Stott
Charles Nelson Suggs
Clarence Lee Tate
Billy Richard Taylor
Herbert Horace Towers
Vance Thomas Wells
Ray William Wheeler
Harvey Cannon Whitaker
Donald Maslin Williams
Elbert Lewis Williams
Sam Edward Williams, Jr.
Frank David Williamson
Jimmy Paul Wilson
J. T. Wilson
Paul Murphy Wilson
Kenneth Earl Winn
Sam Clesswell Wolfe
Wayne Dewey Woodard
Hugh William Wyrick
Charles Burch Young



FRESHMAN CLASS GIRLS

Margaret Virginia Abel
Betty Jean Adams
Betty Pearl Adkins
Carmen June Allison
Martha June Allison
Mary Leonow Ashley
Margy Lee Ashworth
Dolores Marie Bagby
Charlene Owen Baggett
Flora Margaret Barrett
Mildred Louise Barrows
Frances Lee Bennett
Olive Benton
Ruby Lea Bettis
Betty Jean Bivens
Barbara Jo Blackburn
Joan Blackford
Delphia Lee Blevins
Joyce Cathrine Blevins
Billie Ruth Bradley
Paulette Jane Bradshaw
Betty Colleen Cagle
Jeffie Jeanne Casey
Maxine Elizabeth Cavin
Jo Ann Chapman

Martha Marie Cox
Ruth Marion Craig
Clara Belle Crump
Zula Mae Davis
Mary Helen DeLashmitt
Betty Carolyn Dempsey
Virginia Anne Duggan
Ruth Edwards
Katie Lee Eller
Johnnie Sue Farmer
Joyce Eloise Ford
Betty Opal Freeman
Dolores Joyce Fritts
Jewel Beatrice Gheant
Gertrude Irene Gilley
Edna Earle Gilreath
Marilyn Frances Goodner
Virginia Connie Granert
Mary Louise Gross
Mary Ellen Hallock
Edna Earle Harrison
Mary Elizabeth Haswell
Nancy Joe Hawk
Bettye Lucille Henderson

Phyllis Mae Hendrix
Lois Ethelyn Henley
Katherine Louise Herman
Mary Evelyn Hicks
Betty Jean Higdon
Beverly Jean Higdon
Dolores Bobby Hill
Helen Louise Hipp
Peggy Lenior Holdam
Joyce Holland
Helen Bardena Hughes
Betty June Jackson
Marjorie Mae Jahn
Maxine Stan Jarrell
Peggy Jarriett
Dolly Irene Johnson
Mary Frances Johnson
Norma Fayne Johnson
Ann Elizabeth Jones
Lorine Patricia Jones
Virginia Kay Jones
Dorothy La Vern Jordan
Lois Colleen Keef
Martha Jeanne Kell
Frances Marie Kelley

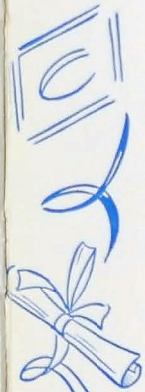
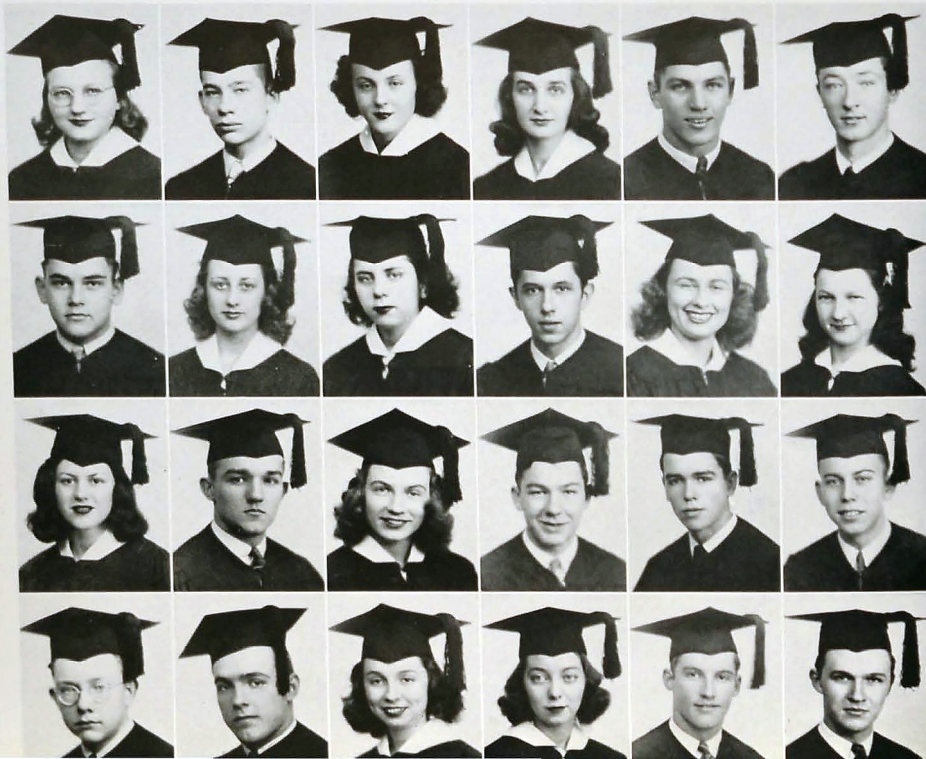
Jean Carolyn Kelley
Christine Sara Kendrick
Tommy June Kendrick
Elsie Evelyn Keown
Mary Jeanette Levi
Elizabeth Willena Ling
Irene Virginia Linkans
Jacqueline Mary Lomenick
Martelis Jo McBrayer
Maxine Dolores McDowell
Katherine Grace McLaughlin
June Marshall
Evelyn Martin
Mary Martin
Norma Lee Martin
Mary Eloise Massingill
Jeanette Ruth Matthews
Elynor Marie Moore
Jewel Elizabeth Morgan
Billie Geraldine Morring
Elizabeth Ann Myers
Mary Elizabeth O'Dell
Hellen Lavan Olsen
Peggy Jo Osborne

Doris Mae Painter
Lela Parker
Lela Juanita Paulsen
Emelynn Gayle Powell
Rebecca Marquerte Prince
Dora Catherine Quarles
Mary Martha Ray
Virginia Jo Riddle
Geraldine Mildred Rievely
Barbara Ann Riggs
Doris Deane Roark
Dorthea Jean Roberts
Bette Jo Robinson
Maxine Robinson
Vivian Marie Robinson
Patricia Ann Roughton
Frances E. Russell
Dorothy Margaret Salchenberger
Betty Jean Shattuck
Alberta Rose Simpson
Frances Alon Slatton
Dorothy Louise Smith
Frances Cordellia Smith
Lola Elizabeth Smith
Martha Ann Smith

Mary Elizabeth Smith
Violet Jean Smith
Reah Jo Spanlapis
Betty Virginia Speer
Mary Madeline Squibb
Bettye Jo Stanley
Kathleen Fay Suggs
Carolyn Marguitta Sullivan
Sarah Sutton
Beverly Allison Swingle
Charlie Edwina Tatum
Betty Lou Templeton
Gloria Lee Thomas
Letha Ellen Thompson
Dolly Delight Tucker
Betty Louise Turner
Janet Turner
Betty Idella Typson
Peggy Joyce Vineyard
June Walker
Fanny Rhen Womack
Mary Evelyn Womack
Shirley Ann Wood
Dorthea Mae Zygello

THREE YEAR HONOR STUDENTS and Commencement Speakers

DOLORES JOE BAKER	Three Year Honor Student
KENNETH ADAMS BILDERBACK	Three Year Honor Student
VIRGINIA LEE BRYAN	Three Year Honor Student
DOROTHY NELL BUTCHER	Three Year Honor Student
GEORGE CARDEN	Reader of the Will
LUTHER MARVIN COPE	Valedictorian and Three Year Honor Student
CAREY CRANTFORD	Historian and Three Year Honor Student
JUANITA CRAWLEY	Three Year Honor Student
KATHLEEN DAVIS	Three Year Honor Student
H. D. GANG	Three Year Honor Student
BARBARA GILL	Three Year Honor Student
MARGARET ELIZABETH GROSS	Three Year Honor Student
DOROTHY ANN HERMAN	Three Year Honor Student
JAMES ADAM IVEY	Faculty Representative and Three Year Honor Student
MIRIAM LEEPER	Three Year Honor Student
PETE LLEWELLYN	Three Year Honor Student
HERSCHEL NATION	Class Representative
JOE PARKS	Salutatorian and Three Year Honor Student
JEAN PEOPLES	Three Year Honor Student
EUGENE SHRADER	Prophet
FRANCES JEAN SMITH	Three Year Honor Student
MINNIE ANNETTE THOMAS	Three Year Honor Student
FRANK TRUNDLE	Poet
ROBERT KIRK WALKER	Three Year Honor Student



Features

SCHOLARSHIP

Luther Cope

Miriam Leeper



TORCHBEARERS

Joe Parks

Dolores Baker



LEADERSHIP

Laura Jane Tallan

James Ivey

SERVICE

H. D. Gang

Jean Smith



PERSONALITY

DORIS JUNE TURNER
CAREY CRANTFORD



FRIENDLINESS

MARJORIE BALES
GEORGE POSTON



DEPENDABILITY

JUANITA CRAWLEY
ROBERT WALKER

COURTESY

ALICIA WARE
VERNON COX



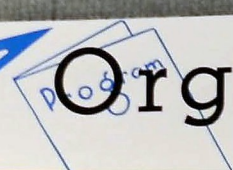
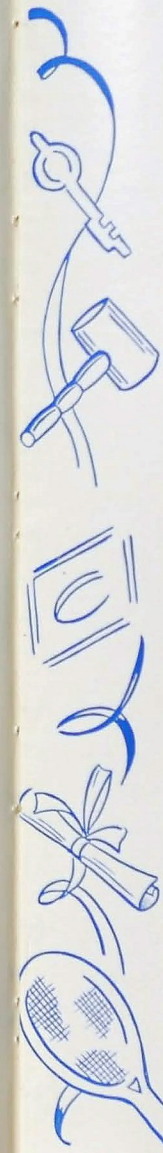
TALENT

BETTY SUE BARKER
JIMMY CALDWELL



ATHLETIC ABILITY

MARY NESBITT
GEORGE GARDEN



Organizations



CHAMPION STAFF



H. D. GANG	Editor-in-Chief	PRINCE BROYLES	Photographic Editor
WILLARD EDWARDS	Business Manager	RUTH LING	Typist
CAREY CRANTFORD	Senior Editor	JOYCE SMITH	Junior Editor
JUANITA CRAWLEY	Feature Editor	EMILY PEOPLES	Sophomore Editor
JAMES IVEY	Military Editor	EMIL PFITZER	Freshman Editor
RICHARD COLEMAN	Sports Editor	MISS SALLY MAY KING	Sponsor
MIRIAM LEEPER	Club Editor	MRS. LYDA GORE RICE	Sponsor



ANCHORS AWEIGH

MRS. REBA FULTS	Sponsor
JANE TALLEY	President
WILLA DEAN McCORMICK	Vice-President
DORIS JUNE TURNER	Secretary
BETTY SUE BARKER	Treasurer



NATIONAL HONOR SOCIETY

MRS. JOHN A. SHELTON Sponsor
HERSCHEL NATION President
LUTHER COPE Vice-President
DOLORES BAKER Secretary
DORIS JUNE TURNER Treasurer



GRADY LITERARY SOCIETY

MR. C. J. ANDERSON Sponsor
CAREY CRANTFORD President
ERNEST WEST Vice-President
KENNETH BILDERBACK Secretary
LUTHER COPE Treasurer



SENATE

MR. J. ARLIE HOODENPYL Sponsor
MRS. GEORGE HARDING Sponsor
ROBERT K. WALKER President
JUANITA CRAWLEY Vice-President
ROMA NELL DICKERT Secretary



BOYS HI-Y SENIOR

MR. J. POPE DYER Sponsor
H. D. GANG President
JAMES IVEY Vice-President
ROBERT WALKER Secretary
JERRY DEAN Treasurer

GIRL RESERVES

MISS FLORA BECK Sponsor
NINA LAWSON President
ELIZABETH BARRY Vice-President
DORIS SUE CALWELL Secretary
LAURINE DUGGSN Treasurer



GIRL RESERVES

MISS MARY ALICE HOWELL Sponsor
JERRY HARTMAN President
BOBBIE JEAN HAMILTON Vice-President
JUANITA ROBERTSON Secretary
MARGARET HARRIS Treasurer



GIRLS HI-Y

MRS. R. N. LOGAN Sponsor
MRS. JOHN A. SHELTON Sponsor
LAURA JANE TALLANT President
MIRIAM LEEPER Vice-President
DORIS JUNE TURNER Secretary
JUANITA CRAWLEY Treasurer

BAND GIRLS CLUB

E. S. VANOVER Sponsor





JUNIOR RED CROSS

MRS. IDA M. LONGLEY Sponsor
 MRS. HAZEL BARTON Sponsor
 ERNEST JOHNSON President
 DAN GIRTON Vice-President
 MARGARET LYONS Secretary
 MILTON MATILL Treasurer



ORCHESTRA

K. W. JOHN Sponsor
 AMY JEAN ERWIN President
 RUTH LING Vice-President
 DOLORES BAKER Secy-Treas.

OFFICERS CLUB

MISS EDNA K. CROSS Sponsor
 JERRY DEAN President
 VERNON COX Vice President
 HERBERT GILREATH Secretary
 MAC ERWIN Treasurer



SERGEANTS CLUB

MR. ERNEST A. OWENS Sponsor
 GENE CARROLL President
 MARVIN CALDWELL Vice-President
 ALBERT JACKSON Secretary
 ARCHIE ADAMS Treasurer



SAFETY COUNCIL

MR. W. H. MILLSAPS Sponsor
 HERSHEL NATION President
 ROBERT WALKER Vice-President
 LUTHER COPE Secretary
 BILL HALE Treasurer

PRINTING DEPARTMENT

JAMES L. MILBURN Instructor
 ARNOLD HARRIS Foreman

BANK AND BOOKSTORE

MRS. LYDA GORE RICE Supervisor



USHERS

MISS MARGARET WAPLES Sponsor
 MARJORIE BALES President
 JEAN SMITH Vice-President
 BETTY SUE BARKER Vice-President





VARSITY GLEE CLUB

K. W. JOHN Sponsor
 LAURA JANE TALLANT President
 ALICIA WARE Vice-President
 DOLORES BAKER Secy.-Treas.



DIGEST

MR. JAMES L. MILBURN Sponsor
 MISS SALLY MAY KING Sponsor
 ROBERT K. WALKER Editor
 MIRIAM LEEPER Business Mgr.



ICE CREAM CREW

MR. C. J. ANDERSON Sponsor



STAGE CREW

MR. J. R. RODMAN Sponsor
 ALBERT CLARK Manager
 FRANK LOWE Electrician
 MELVIN CASH Projectionist

INDUSTRIAL ARTS CLUB

MR. R. S. WHARTON Sponsor
 EDWIN HOWARD President
 ROBERT MORGAN Vice-President
 HARVEY KELLOGG Secretary
 MILTON WOODEN Treasurer

CANDY CREW

MR. W. H. TEMPLETON Sponsor
 MRS. W. H. TEMPLETON Sponsor

T AND I CLUB

MR. W. H. MILLSAPS Sponsor
 CARL MORGAN President
 L. E. SMITH Vice-President
 PRINCE BROYLES Secretary
 PAUL HAMMEL Treasurer



HOME ECONOMICS CLUB

MRS. MERCER CLEMENTSON Sponsor
 MRS. JANIE L. SHROPSHIRE Sponsor
 BETTY H. RICHEY President
 MYRA TRIMBLE Vice-President
 BEULAH BRADFORD Secy.-Treas.





JUNIOR RETAILERS' CLUB

MISS VIRGINIA SHELTON Sponsor
CLARINE HARRIS President
RUTH PRICE Vice-President
WILMA TALLENT Secretary
VIRGINIA GERALD Treasurer



ANNOUNCERS CLUB

MRS. GEORGE HARDING Sponsor
DOROTHY BUTCHER President
JOE HURN Vice-President
NANCY SUE HILL Secretary
JACK RAULSTON Treasurer



BIBLE CLUB

MISS RACHEL McALLISTER Sponsor
ERNEST ANDREWS President
H. D. GANG Vice-President
DORIS SETLIFFE Secretary
ELISABETH McALLISTER Treasurer



LIBRARY CLUB

MRS. CLARENCE KOLWYCK Sponsor
MRS. ELIZABETH BEAMGUARD Sponsor
MRS. JOHN P. SANDERS Sponsor
DANA HARDIN President
WILLIAM CUMMINGS Vice-President
VIRGINIA ECKERT Secretary
GENEVA BOWLING Treasurer

BIOLOGY CLUB

MR. J. STEGER HUNT Sponsor
MISS JOE ORE Sponsor
LUTHER COPE President
JACK RAULSTON Vice-President
KATHERINE CHAPMAN Secy.-Treas.



DEPRESSION CLUB

MRS. H. B. ROBINSON Sponsor
H. D. GANG President
JACK GRYDER Vice-President
JERRY DEAN Secretary
EDWIN COVINGTON Treasurer



CAMERA CLUB

MR. J. R. RODMAN Sponsor
PRINCE BROYLES President
MARJORIE MOORE Vice-President
MARIAN SAPPER Secy.-Treas.



RADIO CLUB

MR. JAMES W. SHAW Sponsor
HERBERT HOLLADAY President
BILLY HILL Vice-President
FRANCIS MOORE Secy.-Treas.





NITE OWLS CLUB

MRS. A. B. ROGERS Sponsor
 MARTHA DUDDERAR President
 ANN HOWARD Vice-President
 ALICIA WARE Secy.-Treas.



BETTY MAIDS

MISS MARY ELIZABETH SMITH Sponsor
 MABLE MUELLER President
 NORMA McDANIEL Vice-President
 LOIS WYRICK Secretary
 MARGARET GREGORY Treasurer

GADABOUTS

SERGEANT KESLER Sponsor
 CHRISTINE BUCHELE President
 BETTY SUE BARKER Vice-President
 DORIS JUNE TURNER Secy.-Treas.



VICTORETTES

MISS CAROLINE LILLARD Sponsor
 VIRGINIA GILREATH President
 CHARLINE ROGERS Vice-President
 VIRGINIA GRAHAM Secretary
 MARTINA ROGERS Treasurer



DOGPATCHERS CLUB

MR. A. B. ROBERTSON Sponsor
 MARGARET GILES President
 H. D. GANG Vice-President
 RUTH LING Secretary
 VERNON COX Treasurer



TRAIL TROTTERS

MRS. HARRY NELSON Sponsor
 MILTON WOODEN President
 BARBARA GILL Vice-President
 ROMA NELL DICKERT Secretary
 WILLIE LOIS JONES Treasurer

VAGABONDS

MR. E. N. FIELDS Sponsor
 NANCY SUE HILL President
 MARLYS OLSEN Vice-President
 EVELYN DRINNON Secy.-Treas.



EXCLUSIVE CLUB

MISS ELSA DENNISON Sponsor
 BERNICE THOMAS President
 EVELYN MILLER Vice-President
 BERBALEE BUNCH Secy.-Treas.





WEE MODERNS

MR. L. M. COOP Sponsor
 JACQUELYN JAMESON President
 JANICE LEE Vice-President
 PEGGY SANDER Secretary
 CATHERINE SMITH Treasurer



SEVENTEENERS

MISS MINNIE LEE MORGAN Sponsor
 JACQUELYN JAMESON President
 JANE TALLEY Vice-President
 MARTHA DUDDERAR Secretary
 BETTY ROWE Treasurer

RAMBLERS

MR. L. M. COOP Sponsor
 ALICIA WARE President
 FRANCES SHEDD Vice-President
 LORRAINE IMRIE Secretary
 MELL JEAN ENNIS Treasurer

SPINSTERETTS

MRS. J. FRANK PRICE Sponsor
 RUTH LING President
 JANICE JOHNSON Vice-President
 DORIS HENRY Secretary
 ALICE CATHERINE JOHNSON Treasurer



MILITARY OFFICERS

LIEUTENANT COLONEL D. N. McMILLIN

Professor of Military Science and Tactics

Colonel D. N. McMillin's military career is one of long standing, dating from his graduation from Virginia Military Institute, Lexington, Virginia, in 1909.

During the first World War, Colonel McMillin saw service in France in command of "B" Troop, which served as a part of the British Army.

Included in his more than twenty-five years of active service are seven years spent in Puerto Rico and Hawaii, where he was stationed from 1926 to 1933, when he was transferred to Minnesota.

In 1937 Colonel McMillin came from Minnesota to take charge of the R. O. T. C. Units as P. M., S. and T. in the schools of Chattanooga, his native city, where he has been a most efficient leader in his field.



MAJOR W. H. BYINGTON

Assistant Professor of Military Science and Tactics

Major Byington, better known to Central students as Captain Byington, for only recently did he get the most deserved promotion to major, is an alumnus of Central who began his military training at Fort Oglethorpe. Following his graduation from the First Officers Training Camp in 1917, Major Byington served in the Thirty-first Division at Camp Wheeler, Georgia, and during the World War in the Eighty-second Division in France. After this war he joined the Reserves.

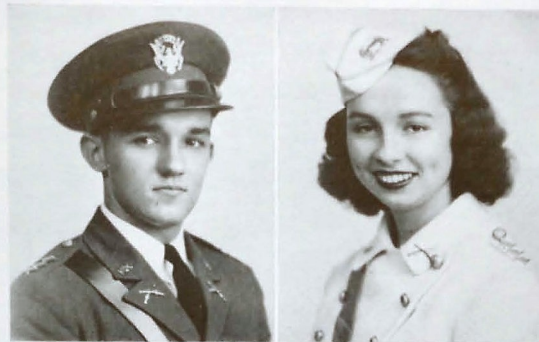


SERGEANT F. B. KESLER

Sergeant Instructor

Sergeant Kesler, who is originally from Alabama, began his schooling here in Chattanooga. He is a graduate of Chattanooga High School, Chattanooga, Tennessee. He comes here from Fort McPherson in Atlanta, Georgia. Sergeant Kesler has been in the service for two and one-half years. In his short time here he has become the friend of the whole regiment, and is looking forward to a long, happy career at Central.

MILITARY OFFICERS AND SPONSORS . .

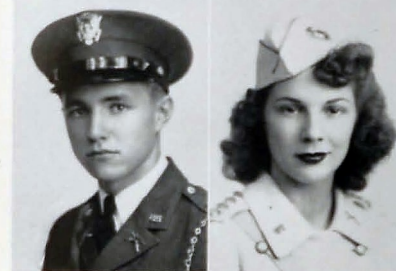
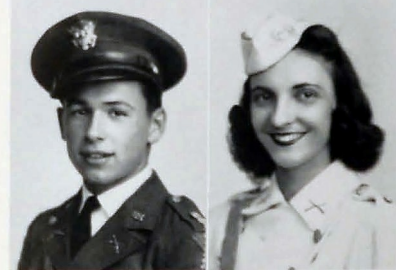
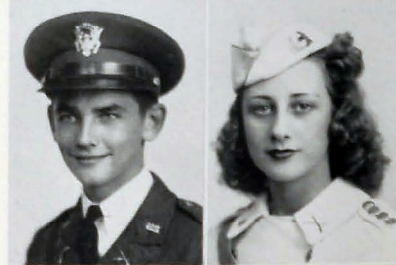
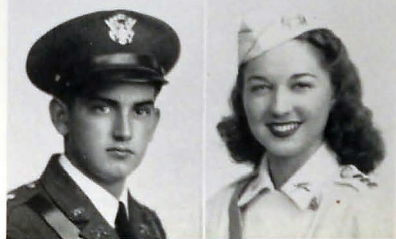
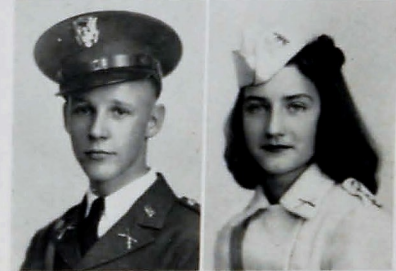


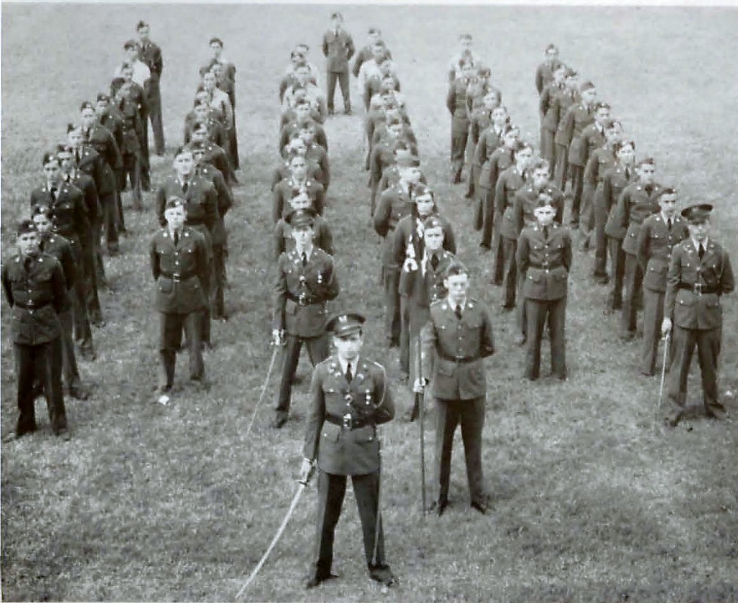
Colonel James Ivey

Jean Smith



MILITARY BAND CAPTAIN AND SPONSOR

CHARLES BROTBECK
Military Band CaptainMARY ELIZABETH GRISWOLD
Military Band SponsorMajor Vernon Cox
Ruth LingMajor Lamar Gordon
Willie Dean McCormickMajor Gene Shrader
Alicia WareMajor Jerry Dean
Lydia Jo AlleyCaptain Arnold Harris
Virginia CooperCaptain Herbert Gilreath
Doris June TurnerCaptain J. E. Johnson
Dorris JewellCaptain Jack McGregor
Mary Jane BaystonCaptain Albert Miller
Juanita CrawleyCaptain Leon Haley
Dimple HardenCaptain Hardeman Stonestreet
Ann HowardCaptain Jim Skeen
Jane Talley



COMPANY E

J. E. JOHNSON
Captain
EDWIN HOWARD
Second Lieutenant
JOE HURN
Second Lieutenant
EDWARD NORRIS
First Sergeant
J. G. O'BRIEN
Sergeant
HERBERT SULLY
Sergeant
HURBERT COLLUM
Sergeant
G. C. ROBINSON
Sergeant
BOB ADKINS
Corporal
SAMUEL ERWIN
Corporal
EVERETTE GOODNER
Corporal

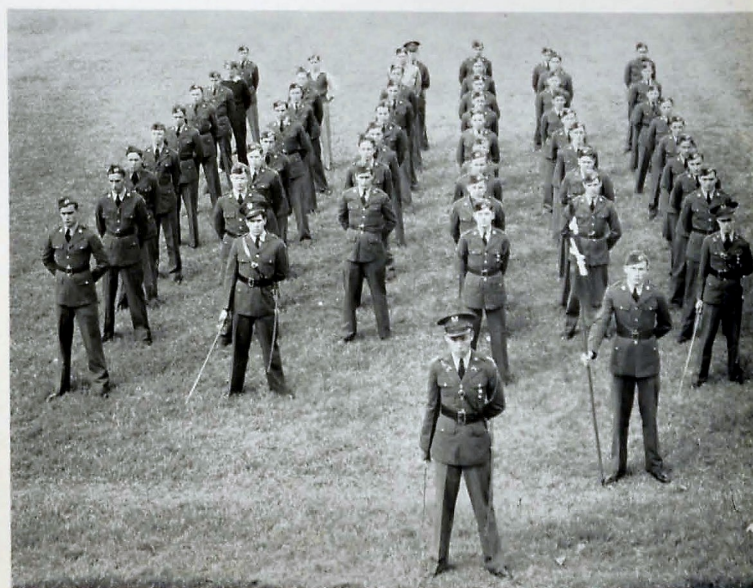


COMPANY I

ALBERT MILLER
Captain
JACK LOWERY
First Lieutenant
JOHN LANDIS
Second Lieutenant
WALTER CASTINGS
Second Lieutenant
ALBERT JACKSON
First Sergeant
LEWIS BAKER
Sergeant
OSCAR LYLE
Sergeant
JACK SMITH
Sergeant
MARVIN SNOW
Sergeant
DON CARTER
Corporal
J. A. CRUMLEY
Corporal
HAROLD INGLE
Corporal
WAYNE GRIFFITH
Corporal
ROBERT MEYER
Corporal
JIMMIE SUTTON
Corporal

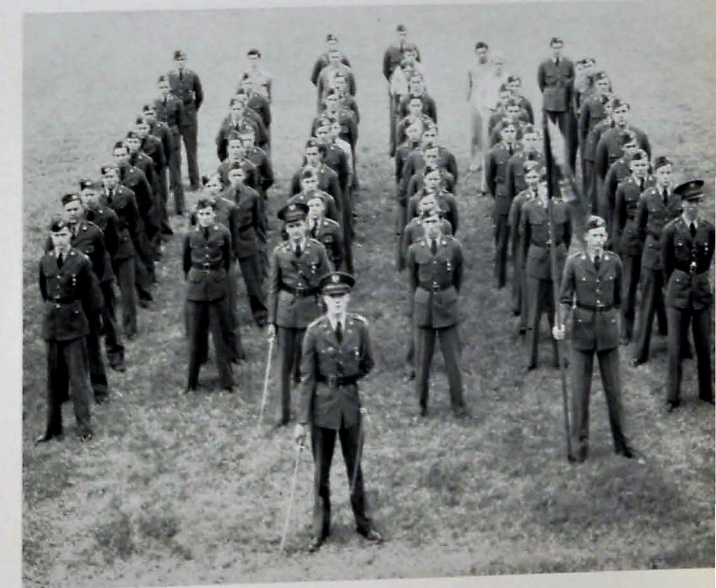
COMPANY F

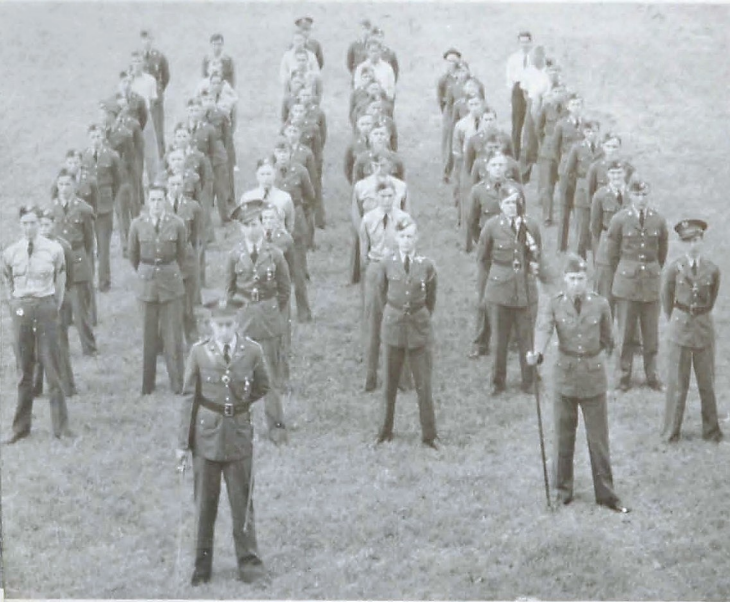
JACK MCGREGOR
Captain
KENNETH BILDERBACK
First Lieutenant
OPAL COLSTON
Second Lieutenant
LAYTON PIPPIN
Second Lieutenant
RAYMOND PROCTOR
First Sergeant
BILL DEMPSEY
Sergeant
ROBERT SCARBROUGH
Sergeant
PAUL LEE
Sergeant
LOUIS DUTTO
Corporal
BILL IRVIN
Corporal
THOMAS MILLER
Corporal
CHARLES PAYNE
Corporal
GILFORD THURMAN
Corporal
EDWARD VAUGHN
Corporal



COMPANY K

LEON HALEY
Captain
ROY BURROWS
First Lieutenant
HENRY HARDEN
Second Lieutenant
DENNY JONES
Second Lieutenant
MARVIN CALDWELL
First Sergeant
BILL CAMPBELL
Sergeant
BILL CARTER
Sergeant
LOCKLAN DOWNS
Sergeant
BILLY MARTIN
Sergeant
BOMMY GROOVER
Corporal
R. L. LINK
Corporal
MANYON MILLICAN
Corporal
BILL PARKER
Corporal
PAUL REECE
Corporal



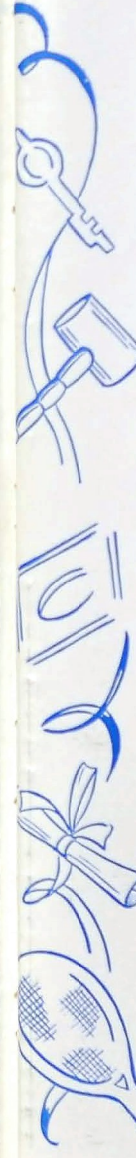


COMPANY D

HARDEMAN STONESTREET
Captain
ROBERT CHAMBERLAIN
First Lieutenant
ARVIN ELMORE
Second Lieutenant
CHARLES FARRAR
Second Lieutenant
GENE CARROLL
First Sergeant
ALBERT CHAMBERLAIN
Sergeant
BILL LOMENICK
Sergeant
STANLEY McBROOM
Sergeant
HAROLD BARROWS
Sergeant
BILLY BARLEW
Corporal
ROBERT EDENS
Corporal
JOHN DUNN
Corporal
HERSCHELL JONES
Corporal
ALLEN MARLIN
Corporal
BUD TAYLOR
Corporal

COMPANY M

JIM SKEEN
Captain
FRANK SCOGGINS
First Lieutenant
AMOS JOHNSON
Second Lieutenant
EARL BLAND
Second Lieutenant
MARION BOLDEN
First Sergeant
ROBERT GOZA
Sergeant
FRANK LOWE
Sergeant
VENEABLE GUEST
Sergeant
VERLIE CAMPBELL
Corporal
WILLIAM LENTZ
Corporal
RAY PAYNE
Corporal
ROBERT HARRELL
Corporal



Athletics

CITY PREP LEAGUE FOOTBALL CO-CHAMPION

In the fall of 1942, Coach S. D. Petersen called together about sixty young grid hopefuls, to begin practice for one of the longest and hardest schedules in Central's football history.

Though the war had taken Line Coach Walter Newland, Central's outlook was very promising with the return of eighteen lettermen. Fifteen of these boys were seniors. Coach Newland was ably replaced by Coach E. B. "Red" Etter.

During the season, Central scored 432 points setting an all-time scoring record in Chattanooga. Through team spirit, fight, and determination Central won eleven games and lost only one to Knoxville High, the State Champions.



POSTON GETS HIS MAN—CARDEN MAKES NICE GAIN

F O O T B A L L

"THE PURPLE POUNDERS OF 1942"



JIMMY BLACK
EndGEORGE GARDEN
BackBILLY CARTER
BackRICHARD COLEMAN
Captain—GuardHOWARD DERRICK
BackJACK GRYDER
GuardGEORGE HARVEY
BackWALTER HILL
GuardBASIL IRWIN
EndDAVID LAWSON
BackDICK LEIPER
CenterSTEVE LONAS
TackleHERSCHEL LOVE
EndBEN MILLER
CenterED PATTERSON
BackGENE PAYNE
CenterJIMMY POPE
CenterGEORGE POSTON
Alternate Captain—BackCHARLES ROGERS
EndGENE SHRADER
End

FOOTBALL

S. DEAN PETERSEN
Coach

SIDNEY DEAN PETERSEN

S. Dean Petersen, head coach and athletic director at Central for sixteen years, first came as a player in 1917. As a member of the Purple squad he held down one of the end positions. After graduating from Central with a splendid record as a high school player, he entered Alabama Polytechnic Institute, better known as Auburn. There he quarterbacked one of the best teams ever turned out at that school.

After graduating from Auburn, Petersen came back to Central as coach in 1925. Five years later, he accepted a coaching position at Roanoke College in Virginia. After staying there two years, he returned to Central where he has been for the last eleven years.

Having an understanding of boys, Coach Petersen has helped many to reach their goal in life, first as a player then later as a valuable citizen to his community. Many of his rules and mottoes apply to the game of life as well as football. He has taught his boys to play the game as it should be—clean, with sportsmanship and determination. The teams that he has turned out at Central have given their very best, putting their school first, team second, and themselves always last. Both on and off the field Coach Petersen has encouraged the youth of America to a new and better way of life.

LETTERMEN

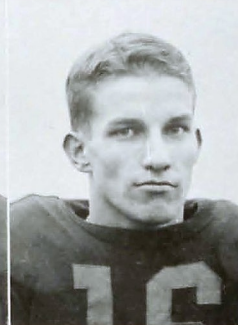
LESTER NEWTON

A graduate of Carson-Newman College in 1930, Coach Newton began his coaching career at Reidsville Georgia High School. After coaching there two years, he went to Daisy High School for one year, from which school he was transferred to Falling Water Grammar School as principal. He remained there for seven years. Coming to Central in 1941, Coach Newton coached an undefeated grasscutter team to a successful and glorious season. Noted for his pleasing personality and cooperative spirit, he has won many friends at Central. Through his coaching, he has helped in making possible the success of many boys on the varsity.

J. LESTER NEWTON
8-Team CoachE. B. ETTER
Line Coach

E. B. "RED" ETTER

Coach Etter graduated from Central in 1930. He attended the University of Chattanooga and received his B.A. degree in 1934. Later he coached at Morgan School, and Hendersonville, North Carolina. In 1936 he returned to Chattanooga as Coach of Brainerd Junior High where for five years he was very successful in turning out championship basketball and track teams. At the beginning of the season Coach Etter came to Central as line coach. He succeeded former Line Coach Walter Newland, who is now serving in the United States Marines. As a player under Coach Petersen, Coach Etter came well qualified, and with his skillful knowledge of the game he has helped Central win over many of her opponents.

FRANK SMITH
GuardOTIS SMITH
TackleIRA TEMPLETON
BackNED THAXTON
TackleFRANK TRUNDLE
EndHAL WILLIAMS
Tackle

MR. LAUTER

A loyal Purple booster for thirty years.

PETE TEMPLETON
ManagerLEO MILLS
Assistant Manager

City's Gregg stopped cold at scrimmage line by Frank Trundle and Company.



HONOR TO THE TEAM

The success of this team is largely due to the hard work of the entire squad and its fine coaches, S. Dean Petersen, E. B. "Red" Etter, and J. Lester Newton. These men, who love the game of football just as much as the boys who play it, have contributed much toward making this a great season.

This team won state honors by finishing the season in third place. Central was also co-champion of the Chattanooga Prep League by scoring 432 points, thus setting a scoring record for prep football in Chattanooga.

The performance of several players won places for themselves on various all-city teams. Those making these teams were: Ben Miller, one of the best centers in the state, who stood out on his brilliant defensive play; George Carden, Central's running star, who scored in all twelve games, won All-State and All-South honors; Howard Derrick, a junior, whose passing ability won him a place at halfback; Gene Shrader, end, whose pass-snatching was deluxe, was a sure bet for All-City; Captain "Stumpy" Coleman, a guard, also won All-City honors; George Poston, well known for his blocking ability; Frank Trundle, end, noted for his defensive play; Ned Thaxton, tackle, whose rough and rugged play in the line was superb; Steve Lonas, tackle, famous for his aggressiveness, and fine team work; and guard, Frank Smith, whose ability to pull out of the line and block won for him All-City honors.

Central lost fifteen seniors: Shrader, Patterson, Templeton, Lonas, Trundle, Carden, Thaxton, Black, Miller, Leiper, Pope, Poston, Coleman, Hill, and Gryder. The shoes of the boys will be hard to fill.

GEORGE CARDEN
Central Back
All-State—All-Southern

ALMOST A T. D.—BILLY CARTER RETURNS PUNT 35 YARDS TO CITY'S 5-YARD LINE



S U M M A R Y O F S E A S O N

Central.....53; Red Bank 0

Central opened her schedule with Red Bank, a light and inexperienced team, before 3,500 fans. The Pounders scored in the first minute of play when Frank Trundle recovered a fumble over the Red Bank goal line. After that Central scored almost at will. The thrill of the evening came when George Carden ran sixty-seven yards for a touchdown. The line play stood out from end to end. Thirty-seven Central Pounders participated in this game.

Central.....33; South Pittsburg ... 6

The second game on the schedule was with South Pittsburg. Central scored in early minutes of play; then South Pittsburg returned on a long pass making the score 7 to 6. In the second quarter Central started rolling. The final score was 33-6.

Central.....60; Valley Head 0

Holding a light and inexperienced team scoreless, Central won their third game 60-0. Everybody played good ball. Coach Petersen used his whole squad.

Central.....41; Kingsport 0

This game marked the 100th victory for the Pounders under Coach Petersen. Central showed the finest football seen here in a long time. Everything was done according to plans. The blocking of George Poston was excellent, often getting two and three men on a single play. The passing of Howard Derrick was superb. The running of George Carden has never been more devastating. The line, led by Ben Miller, stopped the Indians cold. Central scored the first three minutes when Derrick crossed standing up, putting the game "on ice."

Central.....14; Louisville Male12

Central's fifth game was played at Louisville, Kentucky, against Male High, one of the leading teams of

the nation. Male scored twice in the first period on an end run and pass. Central battled all the way, scoring when Derrick sliced off tackle from the five-yard line. An eighty-one yard run by George Carden in the third period enabled Central to defeat Male 14 to 12. Ed Patterson's extra points proved to be the margin of victory for the Purple Pounders.

Central.....33; Ensley 6

Central traveled to Birmingham, Alabama, to meet Ensley's Yellow Jackets on Legion Field. Central scored in the first period on a long pass and again in the second quarter on runs by Carden and Ira Templeton. Ensley scored on a blocked punt which was scooped up and carried sixty-five yards for a touchdown. The final score was Central 33, Ensley 6.

Central.....38; Notre Dame 0

Central, playing her first City Prep game, beat Notre Dame 38 to 0 on Frawley Field. George Poston pushed over the first two scores on a quick-opening from the three-yard line, and a drive through the middle of the line from the ten. The whole Central line turned in a swell performance. Jimmy Black and Basil Irwin played a fine game at ends. Irwin leaped high in the air to take a sixty-yard pass from Derrick out of the hands of three Greenies. Miller, Captain Coleman, Frank and Otis Smith, Williamson, Thaxton, Lonas and "Submarine" Hill also played well in the line.

Central.....21; Rome 6

The third road trip took the Central gridders to Rome, Georgia. There Central's powerful Purple Pounders defeated the Hilltoppers 21 to 6 in an outstanding game. Rome, led by Captain Cooke, scored in the first quarter and it seemed for a while that the Pounders were in "hot water." But Central came back later to score on an eighteen-yard quick opening play by George Carden.

Patterson converted the extra point to make the score 7 to 6. From here on it was Central all the way in spite of Rome's stubbornness. Again our line stood out. In the closing minutes of the first half, Rome was on our four-yard line. She tried to punch the middle but was stopped by Miller, Smith, and Coleman. Tackle Steve Lonas's defensive play was also outstanding, throwing the Hilltoppers for several losses.

Central.....20; Knoxville41

Knoxville, led by Buster Stephens, ruined Central's chance for state championship and ended her victory streak by defeating the Pounders 41 to 20. The game started off as though it were going to be a close one. First the Trojans scored when a punt was blocked and Stephens carried it over for a touchdown. Central came back on the kick off and scored on a pass from Derrick to Carden. Patterson's placement was wide. The score was then 7 to 6. Knoxville scored once more when end, Gene Shrader, leaped high into the air to catch Derrick's pass in the end zone. The score at the half was Knoxville 20, Central 13. Breaking loose in the second half, Buster Stephens and company came back to make the Trojans the number one team of the state. Stephens scored two more touchdowns to make his total for the evening five. Poston plunged over from the one-yard line in the final minutes of play to make the final score 41 to 20.

Central.....32; Atlanta Tech13

The Pounders came back after their defeat by Knoxville to beat Tech High of Atlanta, 32 to 13, at Frawley Field in one of the most exciting games seen on a local field this year. The second play of the game gave the Pounders their first touchdown, when Shrader caught a pass from Derrick on a hide-out play, which was good for 70 yards. The passing of Derrick was beautiful to behold. On two occasions he passed into the waiting arms of Carden, who scored both times untouched. The defensive play of Ben Miller and Captain "Stumpy" Coleman also stood out.

Central.....33; Erwin 6

Meeting Erwin next, the Pounders won a hard-fought game by a score 33 to 6. Billy Carter made the first marker on an eight-yard jaunt around right end. After the following kick-off, Erwin scored in six plays making things look rather dubious for Central. The tide soon turned, however, and Erwin was unable to cope with the Pounding Purples the rest of the way. Central's ends turned in bang-up performances, both on offense and defense. Ned Thaxton, Steve Lonas, Frank Smith and Captain Coleman also played well in the line. All of our backs ran hard, gaining much yardage.

Central.....54; City 0

The Battling Purples of Central High put a glorious finish to a great season by winning the thirty-fourth annual City-Central game 54 to 0. Central scored on the fifth play after gaining possession of the ball in the first quarter when Carden went over from the ten-yard line. Three more touchdowns were made in the second quarter on runs by Derrick, Carter, and Carden. The score at the half was 27 to 0.

In the second half Trundle, Love, and Derrick accounted for four more touchdowns, thus making the score 54 to 0. All eight touchdowns resulted from the hard charging of the line and blocking by the whole team. Everyone of the twenty-five Central boys, who played, gave a good account of himself.

Ed Patterson established a record for the City-Central series when he kicked six extra points. These points along with twenty-two others collected throughout the season broke the all-time extra point record of Central. To say the least, Pat's educated toe meant a great deal to the team this year.

Jimmy Black, Ira Templeton, Jimmy Pope, Dick Leiper, and "Spider" Gryder, all seniors closed their careers in a blaze of glory. This great Central victory was the twenty-first over our arch rivals, who have beaten us only nine times. The fifty-four points score was the highest ever run up by a Ridge Junction eleven over the Third Streeters.



Left to Right, Back Row: John Hendricks, Manager, Wood Casey, Jo Smith, Ned Thaxton, Herschel Love, Ernest Martin, W. P. Bales, Coach.
Front Row, Left to Right: Hardeman Stonestreet, George Carden, Bill Schulte, Frank Trundle, Eugene Shrader.

TENNESSEE STATE BASKETBALL

Score	Opponent	Score	Date	Place
Central . . . 29;	Soddy Daisy . . .	25;	Dec. 11, 1942;	Central
Central . . . 42;	Soddy Daisy . . .	20;	Dec. 11, 1942;	Soddy Daisy
Central . . . 55;	Rossville . . .	23;	Dec. 15, 1942;	Central
Central . . . 46;	Rossville . . .	21;	Jan. 1, 1943;	Rossville
Central . . . 43;	Chatt. High . . .	25;	Jan. 5, 1943;	Central
Central . . . 48;	Notre Dame . . .	34;	Jan. 8, 1943;	Notre Dame
Central . . . 40;	Friendsville . . .	30;	Jan. 15, 1943;	Central
Central . . . 46;	McCallie . . .	32;	Jan. 18, 1943;	McCallie
Central . . . 45;	Baylor . . .	21;	Jan. 25, 1943;	Central
Central . . . 40;	Chatt. High . . .	21;	Jan. 29, 1943;	Auditorium
Central . . . 35;	McCallie . . .	29;	Feb. 2, 1943;	Central
Central . . . 34;	Everett . . .	26;	Feb. 4, 1943;	Maryville, Tenn.
Central . . . 38;	Friendsville . . .	33;	Feb. 4, 1943;	Friendsville, Tenn.
Central . . . 41;	Norris . . .	36;	Feb. 5, 1943;	Norris, Tenn.
Central . . . 40;	U. T. "B" Team . . .	30;	Feb. 6, 1943;	Knoxville, Tenn.
Central . . . 42;	Red Bank . . .	19;	Feb. 9, 1943;	Red Bank
Central . . . 65;	Notre Dame . . .	15;	Feb. 12, 1943;	Central
Central . . . 42;	Chatt. High . . .	36;	Feb. 16, 1943;	Chattanooga High
Central . . . 70;	Murray County . . .	30;	Feb. 17, 1943;	Central
Central . . . 48;	McCallie . . .	39;	Feb. 19, 1943;	Auditorium
Central . . . 50;	Baylor . . .	25;	Feb. 23, 1943;	Baylor
Central . . . 41;	Etowah . . .	28;	Mar. 1, 1943;	Central

FIRST DISTRICT TOURNAMENT

Score	Opponent	Score	Date	Place
Central . . . 72;	Sale Creek . . .	23;	Mar. 3, 1943;	Red Bank
Central . . . 68;	South Pittsburg . . .	24;	Mar. 4, 1943;	Red Bank
Central . . . 61;	Soddy Daisy . . .	40;	Mar. 5, 1943;	Red Bank
Central . . . 61;	Chatt. High . . .	36;	Mar. 6, 1943;	Red Bank

EAST TENNESSEE REGIONAL

Score	Opponent	Score	Date	Place
Central . . . 57;	Ottway . . .	15;	Mar. 11, 1943;	Maryville, Tenn.
Central . . . 37;	Knox Central . . .	33;	Mar. 12, 1943;	Maryville, Tenn.
Central . . . 48;	Kingsport . . .	30;	Mar. 13, 1943;	Maryville, Tenn.
Central . . . 47;	Friendsville . . .	42;	Mar. 13, 1943;	Maryville, Tenn.

STATE TOURNAMENT

Score	Opponent	Score	Date	Place
Central . . . 49;	Hampshire . . .	29;	Mar. 18, 1943;	Nashville, Tenn.
Central . . . 31;	Nashville West . . .	29;	Mar. 19, 1943;	Nashville, Tenn.
Central . . . 48;	Friendsville . . .	30;	Mar. 20, 1943;	Nashville, Tenn.



Schulte on floor with ball—covering ball to keep Payne of McCallie from getting possession of ball.

CHAMPIONS OF 1943 ★ ★ ★



Schulte swinging right to shoot, guarded closely by Payne, Welms, and Williams of McCallie.



MORTON PACE,
Captain

TRACK

With three lettermen, Pace, Gordon and Pogue, returning, the Purple cinder men developed into one of the best track teams ever to be turned out at Central. Coach Lester Newton worked hard and patiently with the squad composed of fifteen inexperienced boys.

This team met such teams as: Baylor, McCallie, Darlington, Knoxville City and Knoxville Central.

After traveling to Johnson City, Tennessee, to participate in the East Tennessee Track meet, Central won many honors. Morton Pace, Captain of the team, won the 440 yard dash. Gordon took first in the one-half mile. W. L. Smith, weight-man, tossed the javelin 157 feet 7 inches to win first place. With a team made up of Pace, Gordon, Ireland, and Camp, Central won first in the sprint medley relays.

At the High School Day at the University of Tennessee, Central won the mile relay. The team was made up of Pace, Gordon, Poston, and Abercrombie.

Coach Newton took his team to Memphis, Tennessee, to take part in the state meet. Captain Pace placed third in the 440 yard dash; Gordon won third place in the one-half mile. W. L. Smith, weight man, also took third place in the javelin. In the sprint medley relay the Pounders won second place. The quartet was composed of: Pace, Gordon, Ireland, and Camp.

Lettermen for 1942 were: Pace, Gordon, Smith, Camp, Ireland, Pogue, Childers and Manager Farrar.

Front Row, left to right—Tommy Groover, Ernest Sutton, John Makin, Jack Raulston, James Phillips, Jimmy Caldwell. Second Row, left to right—Jack Ireland, Richard Camp, Captain Morton Pace, McKinley Childers, Wallace Miller. Third Row, left to right—Coach J. Lester Newton, Basil Irwin, Edward Pogue, W. L. Smith, Ernest Martin, Manager Charles Farrar.



AND BASEBALL



Bottom Row, left to right—Hardeman Stonestreet, Bobby Sherrill, Ned Thaxton, D. L. Haley, Bill Schulte. Top Row, left to right—Jimmie Black, Eugene Shrader, Frank Trundle, J. W. Whitmire, Eugene Williams, Bill Young, John Hendricks, Coach W. P. Bales.

The 1942 Central High Baseball team, defending champion of the city prep league, not only secured the crown for the third consecutive year but added to their laurels that of Champion of Hamilton County.

The starting team was composed of: J. W. Whitmire and Hardeman Stonestreet catchers, both were strong behind the plate and good hitters; Captain Bob Sherrill, first base, who headed his team in great style, a real leader and team man; Bill Young, second base, Central's fastest man and a good infielder; Ed Morris, short stop, the youngest boy on the squad whose fielding was superb; D. L. Haley and L. E. Smith, third base, both of these boys shared the starting honors; Bill Schulte, left field, a

reliable man with exceptional ability both in fielding and in hitting; Jimmie Black, center field, a heavy hitter with terrific power; Frank Trundle, right field, a good base runner and Central's steadiest man. The pitching staff was composed of: Ned Thaxton, Gene Shrader, Lew Dutton and Earl Bland. Other members of the team who saw much service were John Hendricks and Gene Williams, both were outfielders.

The seven members of this team who made all city were: Bill Young, second base; D. L. Haley, third base; Bill Schulte, left field; Frank Trundle, right field; J. W. Whitmire, catcher; Ned Thaxton, pitcher; Gene Shrader, pitcher.

PATRONS

*ALABAMA ENGRAVING COMPANY	Birmingham, Alabama	19
ARCHER PAPER COMPANY, 6-3189	1124 Market Street	18
*ATHLETIC HOUSE	Knoxville, Tennessee	20
*L. G. BALFOUR COMPANY, Jewelers	Attleboro, Massachusetts	24
*BENSON PRINTING COMPANY	Nashville, Tennessee	20
BRAINERD VARNELL HARDWARE & PAINT COMPANY, 2-1173	3114 Brainerd Road	18
DR. EARL R. CAMPBELL, 7-3354	525 McCallie Avenue	18
*CENTRAL CAFE, 2-9198	511 Dodds Avenue	19
CENTRAL HIGH SCHOOL P.T. A.	Central High	12
CHATTANOOGA ARMATURE WORKS, 2-2124	1215 Duncan Avenue	18
CHATTANOOGA BUTTON & BADGE MFG. COMPANY	109 East Seventh Street	
CHATTANOOGA GAS COMPANY, 6-0191	811 Broad Street	16
THE CHATTANOOGA MEDICINE COMPANY	3803 St. Elmo Avenue	20
✓ CLOVERLEAF DRUG COMPANY, 6-4145	601 Market Street	17
COCA-COLA BOTTLING COMPANY, 6-4788	201 Broad Street	16
✓ CRISMAN HARDWARE COMPANY, 7-1114	511 Market Street	17
ALEX DE FLOREO, Ice Cream and Lunches	511 Dodds Avenue	16
✓ DAYLE MAY, Jewelers, 3-0195	Rossville, Georgia	18
DIXIE AUTO SUPPLY COMPANY, 3-1658	4915 Rossville Boulevard	24
EDMONDSON SCHOOL OF BUSINESS, 6-1259	Edmondson Building	18
✓ EDWARDS & LeBRON, LTD., Jewelers, 6-7175	805 Market Street	17
✓ THE FISHER COMPANY, Jewelers, 6-0922	8 West Eighth Street	20
* FOWLER BROTHERS, Furniture, 7-2174	701 Broad Street	16
* CHATTANOOGA NEWS FREE PRESS, 6-0171	117 East Tenth Street	21
GILMAN PAINT & VARNISH COMPANY, 6-5181	216 West Eighth Street	22
EDITH GOETZ, Florist, 7-3345	James Building	14
* H. W. GRANERT, Photographer, 6-7335	813 1/2 Market Street	18
GRANT PATTEN MILK COMPANY, 6-1294	1202 King Street	16
HARDIE & CAUDLE, Clothiers, 6-7032	809 Market Street	17
* HARRIS & HOGSHEAD, Optometrists, 6-7545	13 East Eighth Street	
HOLSUM BREAD, 6-8176	1615 Cowart Street	18
* HOTEL PATTEN, 6-2141	Market at Eleventh	18
HOWARD CLEANERS, 2-1116	1631 McCallie Avenue	20
JACOBS WHOLESALE CANDY COMPANY, 6-2728	925 Market Street	17
JAMES SUPPLY COMPANY, 7-1151	515 East Eleventh Street	24

PATRONS

* ✓ JOYS, Florist, 6-7168	Georgia at Tenth	16
✓ INEZ KIMBALL, Florist, 2-4771	2409 McCallie Avenue	20
KING-DOBBS & COMPANY, Wholesale Grocers, 6-1251	246 East Eleventh Street	24
* KINGSPORT PRESS	Kingsport, Tennessee	22
✓ KOBLENTZ, Men's Store, 6-2764	812 Market Street	17
S. H. KRESS & COMPANY, Ten Cent Store, 6-5631	708 Market Street	17
✓ LANSFORD PIANO COMPANY, 6-7185	730 Cherry Street	17
✓ L. C. LEACH & COMPANY, Jewelers, 7-2841	738 Cherry Street	17
* LeGRAND JEWELRY COMPANY, 6-6816	604 Market Street	17
MAIN STREET TRANSFER & STORAGE COMPANY, 6-4946	1512-14 Market Street	21
✓ MARTIN-THOMPSON COMPANY, Sporting Goods, 7-3373	706 Cherry Street	17
* MILLER BROTHERS, Department Store, 7-1251	629 Market Street	17
MILLS & LUPTON SUPPLY COMPANY, 6-6171	1152 Market Street	18
MOUNTAIN CITY STOVE COMPANY, 6-0211	1240 Market Street	18
NATIONAL SHIRT SHOP, 6-9216	735 Market Street	17
✓ PALMER CLOTHES, 6-3834	825 Market Street	17
✓ T. H. PAYNE COMPANY, Office Supplies, 6-0138	821 Market Street	17
✓ PICKETT'S INC., Women's Apparel, 6-3121	814 Market Street	17
PRYOR PHARMACY, 2-1148	1422 McCallie Avenue	20
* QUINN DRUG COMPANY, 2-3168	1400 Dodds Avenue	17
RIDGE DRUG COMPANY, 2-1171	418 Dodds Avenue	16
R. K. SCHOLZE, Grocers, 2-2131	415 Dodds Avenue	16
✓ SEARS, ROEBUCK & COMPANY, 6-7344	539 Market Street	17
✓ THREE SISTERS, Women's Apparel, 6-2719	702-04 Market Street	20
STAMP'S-BAXTER MUSIC, 6-3643	Main Street	11
A. F. STEINHOEFEL, Jewelers, 6-6249	14 West Eighth Street	21
A. G. STIVERS LUMBER COMPANY, 6-7179	345 East Main Street	20
✓ TEMPLETON'S INC., Jewelers, 6-7628	12 West Eighth Street	21
TUNNEL DRUG STORE, 2-2156	3110 Brainerd Road	18
UNIVERSITY OF CHATTANOOGA, 6-7363	McCallie Avenue	15
U. S. FIVE AND TEN CENT STORE	113 Chickamauga Avenue, Rossville, Georgia	22
✓ VIOLET STUDIO, Camera Shop, 6-1553	11 East Seventh Street	22
* WOOD BROADCASTING CORPORATION, 6-5117	Hamilton National Bank Building	31
WILEY SCHOOL OF BUSINESS, 6-2231	Times Building	14
WILKINS CANDY COMPANY, 6-1151	1273 Market Street	18

4-2013

CHS Library

