



CHAMPION



Sally May King.

CHS Library



ALICE CAMP  
Editor-in-Chief

R. P. GOODNER  
Business Manager



**PRESENTING**





# The 1942 Champion



PUBLISHED BY THE STUDENTS  
OF CENTRAL HIGH SCHOOL  
CHATTANOOGA, TENNESSEE



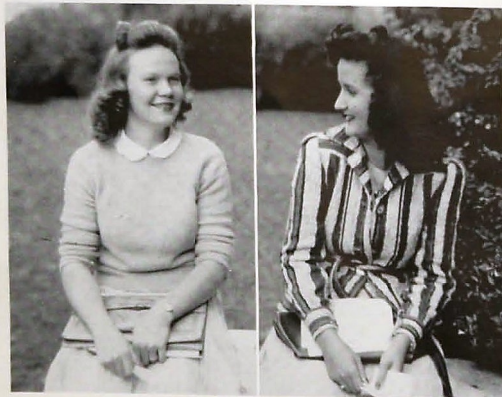


# FOREWORD

IN A WORLD TORN BY STRIFE AND CONFLICT, NOT KNOWING WHAT A DAY MAY BRING FORTH, STUDENTS OF CENTRAL CONSIDER THEMSELVES VERY FORTUNATE IN BEING ABLE TO PURSUE THEIR HIGH SCHOOL CAREER, FOLLOWING THE ROUTINE OF A NORMAL LIFE IN SO FAR AS EXISTING CIRCUMSTANCES HAVE PERMITTED.

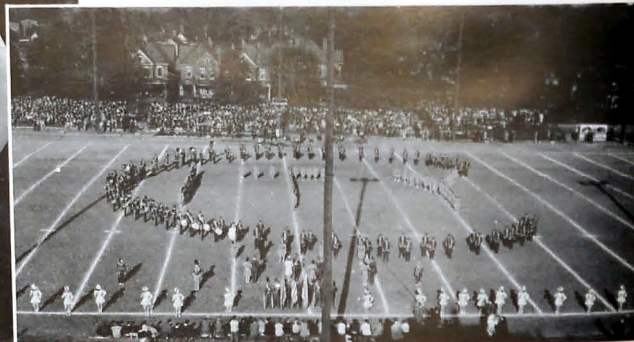
BELIEVING THAT THE HIGH SCHOOL STUDENT CAN BEST TAKE HIS PLACE IN THE CIVILIAN DEFENSE PROGRAM OF HIS COUNTRY BY APPLYING HIMSELF DILIGENTLY TO HIS DAILY TASK AND BY ENJOYING KEENLY THE PLEASURES OF LIFE AS THEY COME, THE EDITORS HOPE THAT THIS BOOK WILL HELP

EACH ONE OF YOU RECALL ONE OF THE HAPPIEST AND MOST PROFITABLE YEARS OF YOUR LIFE—"CENTRAL OF '42 AT WORK AND PLAY."





T H E



School



Year







## *In Tribute To* JAMES L. MILBURN

It is with great pleasure, and a deep feeling of gratitude and respect that we, the Staff of the Champion of 1942, dedicate this volume to our friend and counsellor, James L. Milburn, who during the twelve years as head of the Printing Department, has made himself a very vital part of the life of Central. . . . His keen sense of humor, his genial, friendly manner, his consideration for the student's point of view, and his willingness, whenever the occasion arises, to work for the very best interest of Central have endeared him to the students of Central High.

# O U R P R I N C I P A L

At the very heart of the work, play, and progress of Central High is a man whose deepest interest covers every phase of school activities and includes the personal welfare of every student.

No problem of a Central student is too insignificant to be out of the bounds of the earnest attention and fair and just consideration of Mr. S. E. Nelson, principal of Central High.





## OUR FACULTY

MILTON ALLEN ..... Music  
 CHARLES J. ANDERSON ..... Manual Arts  
 WILLIAM P. BALES ..... History  
 MRS. H. L. BARGER ..... English  
 MRS. GEORGE BARTON ..... Commerce

MRS. ELIZABETH PARKS BEAMGUARD ..... Librarian  
 MISS FLORA BECK ..... Mathematics  
 W. V. BEENE ..... History  
 MISS REBECCA BIGGERS ..... Mathematics  
 MRS. C. H. BOYD ..... Cafeteria Manager

MRS. K. E. BREUCKNER ..... English  
 MAJOR WARREN BYINGTON ..... Military Tactics  
 MISS EDNA CLARK ..... Secretary  
 MRS. MERCER CLEMENTSON ..... Home Economics  
 MISS BETTY MAE COLLINS ..... Speech

MRS. MARY COOPER ..... Nurse  
 MISS EDNA KING CROSS ..... History  
 SERGEANT A. B. C. DAVIS ..... Military Tactics  
 MISS MARY LOU DERRYBERRY ..... Art  
 MISS BERNICE DURHAM ..... Mathematics

J. POPE DYER ..... Social Science  
 MISS RUTH FAIN ..... Spanish  
 J. J. FLETCHER ..... Auto Mechanics  
 J. L. HAIR ..... Mathematics  
 MRS. GEORGE HARDING ..... Speech

C. B. HATFIELD ..... Mechanical Drawing  
 MRS. FRED A. HILL ..... Cafeteria Manager  
 J. ARLIE HOODENPYLE ..... Chemistry  
 MISS EDMUND HOOSER ..... English  
 MISS SARA BANKSTON HUBBARD ..... Physical Education

R. K. HUDGINS ..... Agriculture  
 J. STEGAR HUNT ..... Biology  
 MRS. WYNELLE JACKS ..... Commerce  
 MRS. WILLIAM DUNLAP JACOWAY ..... Mathematics  
 KENNETH W. JOHN ..... Music

MISS EARL R. JONES ..... History  
 MISS ELIZABETH JONES ..... History  
 MISS SALLY MAY KING ..... English  
 MRS. CLARENCE KOLWYCK ..... Librarian  
 MISS GRACE LASATER ..... Registrar

MISS MARGUERITE LEHMANN ..... Mathematics  
 MISS CAROLINE LILLARD ..... Mathematics  
 MRS. R. N. LOGAN ..... Dean of Girls  
 MRS. IDA MOORE LONGLEY ..... English  
 MRS. S. J. McALLESTER, JR. .... Secretary  
 MISS RACHEL McALLISTER ..... Bible

## OUR FACULTY

LIEUT. COLONEL D. N. McMILLIN ..... Military Tactics  
 JAMES L. MILBURN ..... Printing  
 WILLARD MILLSAPS ..... Diversified Occupations  
 W. H. MILLSAPS ..... General Science  
 MRS. MARY K. MITCHELL ..... Librarian

MISS ANNE MOFFITT ..... English  
 MISS MINNIE LEE MORGAN ..... English  
 MISS ELLEN MULLENNIX ..... English  
 MRS. HARRY NELSON ..... English  
 MISS VESTA NELSON ..... English

W. M. NEWLAND ..... Social Science  
 JAMES LESTER NEWTON ..... General Science  
 MISS IDA NICKEL ..... Commerce  
 MISS JO ORE ..... Biology  
 MISS BEULAH B. PARKER ..... Mathematics

S. DEAN PETERSEN ..... Athletics  
 MRS. J. FRANK PRICE ..... History  
 MISS HELEN G. PRYOR ..... Latin  
 MRS. LYDA GORE RICE ..... Commerce  
 MISS MARY ELLEN RICE ..... Spanish

MISS JULIA RUTH RICHARDSON ..... Social Science  
 MISS IMOGENE ROBERTSON ..... Commerce  
 MR. A. B. ROBERTSON ..... Mathematics  
 MRS. H. B. ROBINSON ..... English  
 MRS. A. B. ROGERS ..... English

MISS LILLIE SCHWARTZ ..... Latin  
 J. W. SHAW ..... Physics  
 MRS. JOHN A. SHELTON ..... English  
 MISS VIRGINIA SHELTON ..... Diversified Occupations  
 MRS. J. E. SHROPSHIRE ..... Home Economics

MRS. ALFRED G. SKATES ..... History  
 HARMON M. SMITH ..... General Science  
 MRS. A. PIERCE STEWART ..... English  
 MISS LOUISE SUTTON ..... Social Science  
 G. M. SWINGLEY ..... Mathematics

S. Q. TALLANT ..... Mathematics  
 MISS MARGARET TAYLOR ..... Home Economics  
 MRS. W. H. TEMPLETON ..... Home Economics  
 W. H. TEMPLETON ..... Assistant Principal  
 C. G. TOWRY ..... General Science

EDWARD S. VANOVER ..... Music  
 MISS DOROTHY WALKER ..... Commerce  
 MISS MARGARET WAPLES ..... French  
 ROBERT S. WHARTON ..... Manual Arts  
 U. K. WILSON ..... History  
 MISS ETHEL YORK ..... Home Economics



# FACULTY

## At Work and Play

MAJOR W. H. BYINGTON  
MISS GRACE LASATER  
LIEUT. COL. D. N. McMILLIN

JAMES L. MILBURN  
MISS DOROTHY WALKER  
MISS MARY LOU DERRYBERRY

MISS ELLEN MULLENNIX  
J. STEGAR HUNT  
MISS SALLY MAY KING  
MRS. ELIZABETH ROBINSON  
J. ARLIE HOODENPYL  
MRS. VIRGINIA SKATES

J. ARLIE HOODENPYL  
CLARENCE TOWRY  
J. L. HAIR  
MISS RUTH FAIN

# FACULTY

## At Work and Play

MISS EDMUND HOOSER  
MR. WILLARD MILLSAPS  
MRS. BLANCHE ROGERS

MRS. JOHN A. SHELTON  
MR. W. H. TEMPLETON  
MRS. J. FRANK PRICE

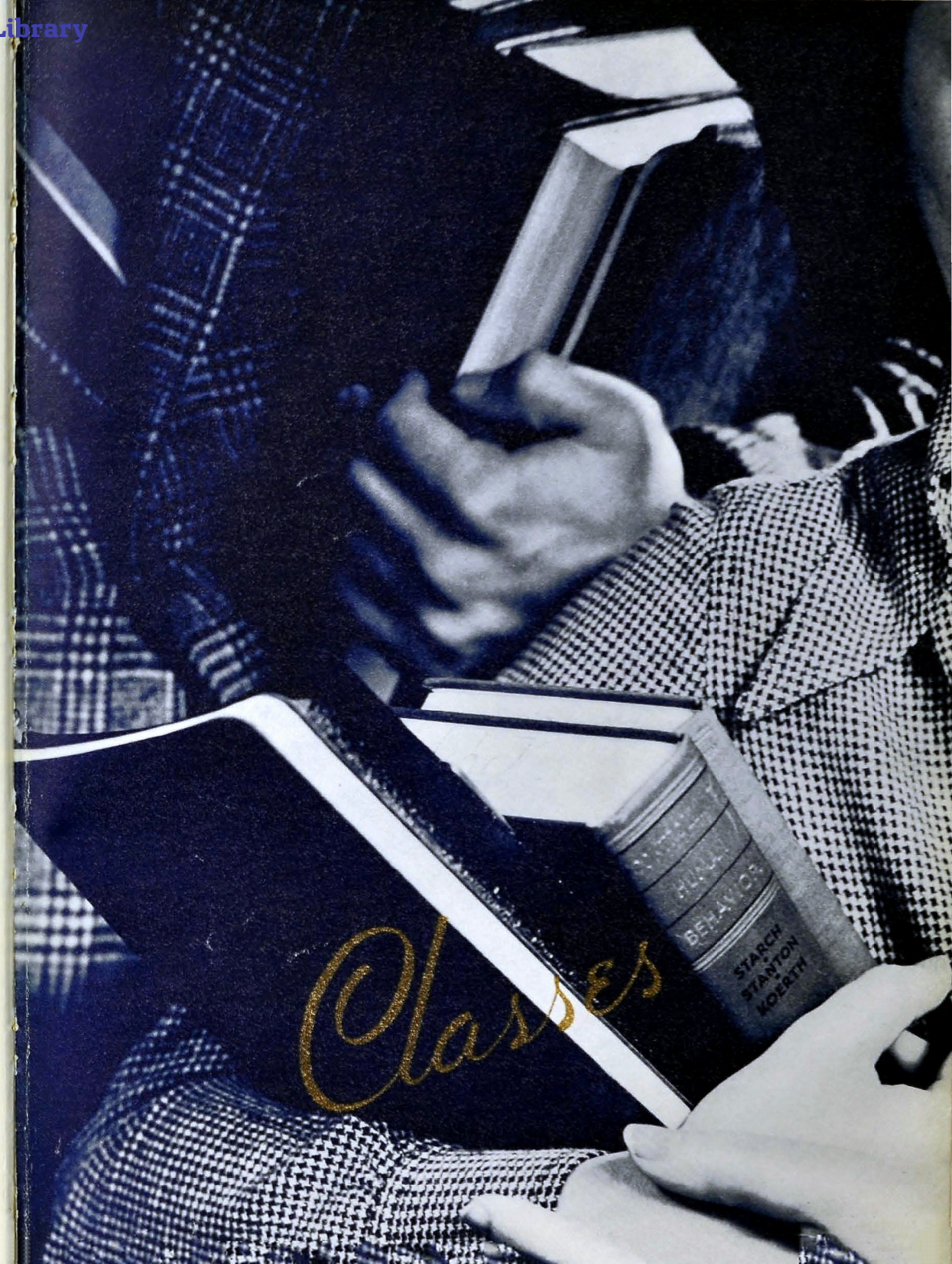
MR. W. H. MILLSAPS  
MR. K. W. JOHN  
MR. "BILLY" BALES

MISS RACHEL McALLISTER  
MISS VESTA NELSON  
MISS HELEN PRYOR



# CHAMPION STAFF

ALICE CAMP ..... Editor-in-Chief  
 R. P. GOODNER ..... Business Manager  
 MARY FRANCES GROSS ..... Senior Section Editor  
 MARCHETA COCHRAN ..... Feature Editor  
 WALLACE TURNER ..... Club Editor  
 FRED DIAL ..... Sports Editor  
 JOE GRAHAM ..... Military Editor  
 R. C. CRAVEN ..... Photographic Editor  
 MARY HELEN PATTON ..... Typist  
 MARGARET DIVINE ..... Junior Representative  
 JIMMY HUSKEY ..... Sophomore Representative  
 ELIZABETH McALLISTER ..... Freshman Representative  
 MISS SALLY MAY KING ..... Sponsor  
 MRS. LYDA GORE RICE ..... Sponsor







## SENIOR CLASS OFFICERS



National Honor Society

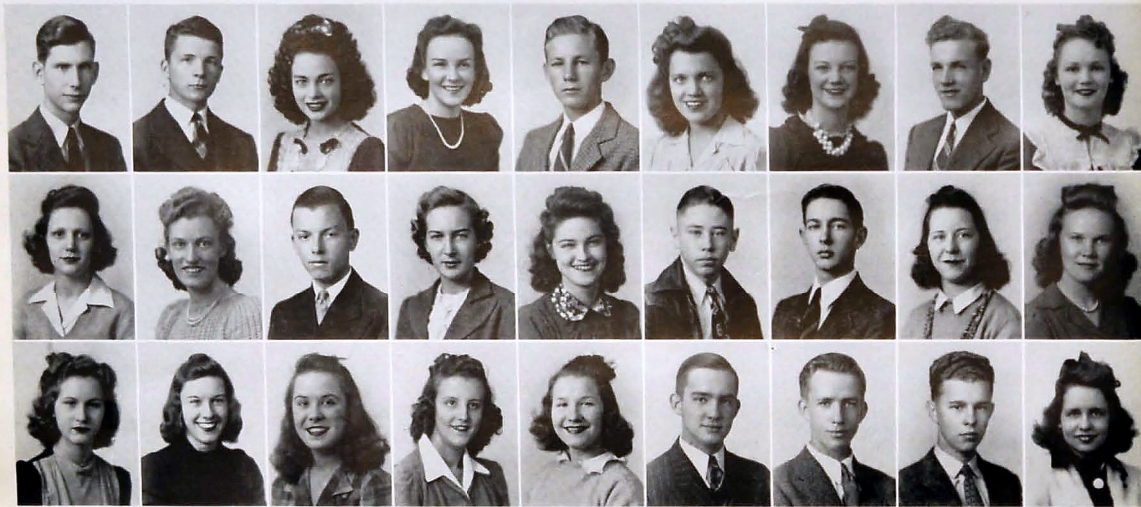
C. D. BROYLES . . . . . President  
JOE GRAHAM . . . . . Vice-President  
BETTY MARLOW . . . . . Secretary  
BEN HUDDLESTON . . . . . Treasurer  
C. A. JAY . . . . . Sergeant-at-Arms  
ED WILCOXSON . . . . . Sergeant-at-Arms



## FIRST ROW

● AGNEW,  
ALLISON, ANGEL, B. ARNOLD, R. ARNOLD,  
ATCHLEY, ATWOOD, BAKER, BALES.

● JACK R. AGNEW, JR., Bible Club, '39, '40, '41; Boys' Hi-Y, '40; Library Club, '42; Senior Council, '42. ● CALVIN DALE ALLISON, "Buddy," Football, '40, '41; Sergeant's Club, '40, '41; Officers' Club, '42; Depression Club, '41, '42; Bachelors' Club, '41, '42; Colonel Central R. O. T. C. Regiment, '42. ● BLANCHE CORA ANGEL, "Angel," Program Chairman Exclusive Club, '41; Vice-President, Exclusive Club, '42; Vice-President, Sub-Deb Club, '42; Bible Club, '41, '42; Red Cross, '41, '42; Girls' Battalion, '40, '41, '42. ● BETTY JOYCE ARNOLD, "Beth," Biology Club, '40; President, Juniors Club, '41; Senior Girl Reserves, '42; Vice-President, Orchestra, '42; Archery Club, '41; Homeroom Representative for Digest, '42; Honor Society, '42. ● RAY WARREN ARNOLD, "Benedict," MARJORIE INEZ ATCHLEY, "Snooks," May Day, '39; Red Cross, '39, '40, '41, '42; Betty Maid Club, '42; Girl Reserves, '42; Girls' Band Club, '40, '41, '42; Band, '40, '41, '42. ● MARTHA CATE ATWOOD, "Punk," Treasurer, Freshman Class, '39; Varsity Glee Club, '39, '40, '41, '42; Digest, '42; Usher, '42; Hi-Y, '42; Juniors Club, '41, '42; Girl Reserves, '39. ● WILLIAM PAUL



## SECOND ROW

● BALLOU  
BARRONTON, BASS, D. BELL, F. BELL,  
J. BELL, R. BELL, BELLIS, BENNER.

BAKER, "Bill," Orchestra-Glee Club Concert, '41; Junior Play Cast, '41; Varsity Glee Club, '40, '41, '42; Safety Council, '42. ● CHARLOTTE BALES, "Polly," Vice-President, Freshman Class, '39; Blue Jackets, '40; Girl Reserves, '40, '41, '42; Girls' Hi-Y, '41, '42; Ushers, '42; Chairman, History Class, '42; Honor Society, '42. ● BOBBY ALINE BALLOU, "Shorty," We Moderns, '40, '41, '42; Bowling Club, '41, '42; Gym Team, '39, '40, '41; Battalion, '39, '40; Girl Reserves, '40; Biology Club, '39. ● RUBY ONEZMA BARRONTON, "Toots," Office Force, '40, '41, '42. ● DEWEY WADE BASS, "Abner," DOROTHY LEE BELL, "Dot," FRANCES LUCILE BELL, "Lucy," entered from Red Bank High, '41. ● JAMES WALLACE BELL, "Ding Dong," Band, '39; Stamp Club, '39, '40, '41; Biology Club, '39; Red Cross Club, '41. ● ROBERT THAYER BELL, Red Cross, '42. ● DORA ELIZABETH BELLIS, "Libba," Girl Reserves, '41, '42; Red Cross, '42; Digest, '42; Secretary Homeroom, '42. ● MARGARET ALICE BENNER, "Red," Majorette, '39, '40, '41; Baton Club, '41; High Hat Club, '42; Spring Concert, '41; We Moderns, '42; Exclusive Club, '42. ● MABEL ELIZABETH BENNETT, RACHEL YOLANDA BENNETT, "Brat," Girl Reserves, '40, '41, '42; Red Cross, '40, '41; We Moderns, '41, '42; Baton, '42; Drum Majorette, '41. ● MARY LOUISE BIGLEY, "Biggie," Freshman Editor, Champion, '39; Vice-President, Blue Jackets, '40, '41, '42; Secretary, Anchors Aweigh, '41, '42; Juniors Club, '40, '41, '42; Girls' Hi-Y, '41, '42. ● MARY LORRAINE BILLINGSLEY, "Sunshine," Ace Club, '41; Blue Jackets, '41, '42; Juniors Club, '42; Hi-Y, '42; Usher, '42; Bank-Bookstore, '40, '41, '42; Honor Society, '41, '42; Sponsor of Company B, '42. ● BETTY JOAN BINKS, "Binks," Majorette, '41, '42; Song Leader, '42; Vice-President, Anchors Aweigh Club, '42; Baton Club, '41; Seventeeners, '42; High Hats, '42; Rockettes, '42; Spring Concert, '40, '41. ● EDWYN BERNARD BISPLINGHOFF, "Buck," Senate, '42; President, Grady Literary Society, '42; Digest, '41, '42; Officers' Club, '42; Honor Society, '41, '42; Basketball Team, '41, '42; R. O. T. C. Regimental Captain. ● WAYNE MARCEL BLANCETT, Grady Literary Society, '42; Model Airplane Club, '40, '41, '42; Band Club, '40, '41; Band Officers' Club, '42; Orchestra Club, '41, '42. ● GAINES EDWARD BLEVINS, "Red," Sergeant's Club, '40; Officers' Club, '41; Grady Literary Society, '41. ● JOHNNY CLYDE BLEVINS, "John," We Moderns, '41, '42; Girl Reserves, '42; Red Cross, '41, '42; Biology Club, '40; Prayer Meeting Club, '41.

## THIRD ROW

● M. BENNETT,  
R. BENNETT, BIGLEY, BILLINGSLEY, BINKS,  
BISPLINGHOFF, BLANCETT, G. BLEVINS,  
J. BLEVINS.

● VIVIAN FAYE BLEVINS, "Visions," Red Cross, '39, '40, '41; Spinsterettes, '42; Library, '42; Spanish Play, '41; Digest Sponsor, '37, '40, '41; May Day Program, '39. ● HENRY ERVIN BOWEN, JR., "Hank," LOUISE BOWLING, "Lucy," Bible Club, '42. ● BETTY JANE BRADLEY, "Bip," Service Chairman, Girl Reserves, '41, '42; Program Chairman, Junior Retailers, '42; Red Cross, '42; We Moderns, '42. ● PAULINE BRANNAN, "Polly," May Day; Soccer Team, '40. ● ED BRINKLEY, entered Central in fall, '41. ● EARL BRITTON, "Britt," Band, '39; Southeastern Concert, '41; East Tennessee Concert, '42; Safety Council, '42; Vice-President, Varsity Glee Club, '42. ● CLYDE REBER BROOKS, "Buckshot," DORIS VIRGINIA BROOKS, Varsity Glee Club, '41, '42; Ace Club, '40, '41, '42; Juniors Club, '41, '42; Hi-Y, '42; Girl Reserves, '40, '41, '42; Gym Office Staff, '42; Gym Captain, '41. ● RAYMOND LESTER BROTHERS, Sergeant's Club, '41; Library Club, '41; Officers' Club, '42; Depression Club, '42; Safety Council Club, '42. ● HELEN EUGENIA



BROWN, Girl Reserves, '41, '42; Literary Club, '41; Sports Club, Treasurer, '42. ● MARGARET LOIS BROWN, "Kitty," Candy Crew, '41; Digest Reporter, '41; Times Page Editor, '42; All States Club, '42; Usher, '42; Senate, '42; National Honor Society, '42; Latin Tournament Finals, '41. ● OLYA LEE BROWN, "Dimples," May Day, '40; Exclusive Club, '40, '41, '42; Bible Club, '42; Dogpatchers, '42; Chairman, Home Room, '42; Digest Representative, '42. ● SARAH RUTH BROWN, Girl Reserves, '41, '42. ● CARTER DAVID BROYLES, Boys' Hi-Y, '40; President, Sergeant's Club, '41; Grady Literary Society, '41; President, Senior Class, '42; President, Honor Society, '42; Officers' Club, '42; Senate, '41. ● WILLIAM THEODORE BROYLES, "Bill," Vice-President, Junior Red Cross, '39, '40, '41, '42; Industrial Arts Club, '41, '42; Officers' Club, '42. ● MYRA ANNE BRYAN, ISABEL OLIVE BUNCH, "Isy," Girl Reserves, '39, '40, '41, '42; Red Cross, '41, '42; Sub-Deb, '42; Digest Sponsor, '42; May Day Program; Vagabond Club, '42. ● BOBBIE BURRIS, Red Cross, '40; Library Club, '40; Sub-Deb Club, '41; Bible Club, '41; Christmas Program, '40. ● ALICE LOUISE CAMP, "Bobbie," Class Secretary, '40; Varsity Glee Club, '39, '42; Digest, '39, '42; Band Sponsor, '42; Champion Editor, '42; Usher, '42; Honor Society, '41, '42; Hi-Y, '42; Anchors Aweigh, '42. ● CAROLINE ELIZABETH CAMP, "Squire," Band, '39, '42; Band Concert, '40, '41; Honor Society, '41, '42; President, Band Girls' Club, '41, '42; Girl Reserves, '41, '42; We Moderns, '40, '42. ● CHARLES RICHARD CAMP, Cheer Leader, '39, '42; "C" Club, '41, '42; Grady Literary Society, '40, '41, '42; Senate, '41, '42; Junior Play, '41; Basketball Team, '39, '40; Track Team, '41, '42. ● DOROTHEA ANN CAPLAN, "Topsy," Sports Club, '40; Gym Circus, '40; Band Girls' Club, '41, '42; Band, '39, '42; Simon Concert, '39, '40; Band Concert, '39, '40, '41. ● AGNES LORRAINE CARDEN, "Aq," May Day, '40, '41; Safety Council, '41, '42; Red Cross, '41, '42. ● ANNA LEE CARPENTER, "Ann," ROBERT CARL CARPENTER, "Roscoe," Glee Club. ● SARA EVELYN CARROLL, Red Cross, '42; We Moderns, '42; Stylette, '42; Bible Club, '42; Recognition Day, '41; Newcomb Team, '40; Soccer Team, '40; Girl Reserves, '42.

## FIRST ROW

● V. BLEVINS,  
BOWEN, BOWLING, BRADLEY, BRANNAN,  
BRINKLEY, BRITTON, C. BROOKS,  
D. BROOKS.

## SECOND ROW

● BROTHERS,  
H. BROWN, M. BROWN, O. BROWN,  
S. BROWN, C. BROYLES, W. BROYLES,  
BRYAN, BUNCH.

## THIRD ROW

● BURRIS,  
A. CAMP, C. E. CAMP, C. R. CAMP,  
CAPLAN, CARDEN, A. CARPENTER,  
R. CARPENTER, CARROLL.



## FIRST ROW

● CASSELL,  
CATE, CATES, CHAPMAN, CHARLESWORTH,  
CHERRY, CHILDERS, CLARKE, CLARK.

● JACK CASSELL, President, Red Cross, '39-'42; Grady Literary Society, '41, '42; Cabinet Member, Senate, '40, '41, '42; Safety Council, '41, '42; Camera Club, '41, '42. ● SHIRLEY CATE, Bible Club. ● CHARLES EMMETT CATES, JR., "Charlie;" Depression Club, '39, '40, '41; Football Manager, '39-'42; "C" Club, '41, '42. ● DORIS LORINE CHAPMAN, "Chappie;" Ace Club, '40; Girl Scouts, '40; Usher, '42; Digest Reporter, '42; Winner of Essay Contest, '41. ● WILBUR KEITH CHARLESWORTH, "Wib." ● EMILY RUTH CHERRY, "Cherrie;" Ace Club, '41, '42; Girls' Battalion, '42; May Day, '40, '41, '42; Tumblers, '40, '41. ● BONNIE DELORES CHILDERS, "Crip;" Band, '39-'42; Usher, '42; Treasurer, Band Girls' Club, '41, '42; Sponsor, Company K, '42; Girl Reserves, '39, '40. ● MARTHA JANE CLARKE, Honor Society, '41, '42; Ushers, '42; Girl



## SECOND ROW

● CLEMENT,  
B. COBB, S. COBB, COBLEIGH,  
M. COCHRAN, T. COCHRAN, COFFMAN,  
COLLUM, COLSTON.

Reserves, '39-'42; Junior Play, '41; Band, '41; Girls' Battalion, '39; Junior Counselors, '40; S. P. Q. R. Club, '40; Girls' Band Club, '41. ● PEGGY ELIZABETH CLARK, "Peg;" Bible Club, '40; Candy Crew, '41, '42. ● MATTIE HAZEL CLEMENT, Girl Reserves, '40; Safety Council Representative, '42; Home Room Chaplain, '42. ● BETTY DORRIS COBB, "Dot;" Bible Club, '40; Office Force, '40, '41. ● SAMMIE FRANCES COBB. ● ALICE GENEVIEVE COBLEIGH, Girl Reserves, '40, '41, '42; Girls' Hi-Y, '42; Senate, '41, '42; Associate Editor, Digest, '41, '42; Junior Representative on Champion, '41; Usher, '42; Honor Society, '42. ● MARCHETA ROSE COCHRAN, "Skeeter;" Varsity Glee Club; Aces, '41, '42; Hi-Y, '42; Juniors, '42; Usher, '42; Feature Editor, Champion; Treasurer, Honor Society, '42; Girl Reserves, '41, '42. ● TENNIE ARLENE COCHRAN, "Arlie;" Bible Club, '41; Red Cross Club, '41; Prize Winner at Fair, '41. ● DOROTHY AILEEN COFFMAN, "Dot." ● THOMAS EUGENE COLLUM, Sergeant's Club, '41, '42; All States Club, '41, '42. ● HENRY CHAPMAN COLSTON, "Buddy;" 4-H Club; Sergeant's Club, '41; Captain in R. O. T. C., '42; Vice-President in Officers' Club, '42; Dogpatters Club, '42; Bible Club, '42. ● VIRGINIA ROSE COLWELL, "Doodle;" Library Club, '38; Girl Reserves, '42; Typing Award, '41; Discussion Club, '41; Usher, '42; President, Home Economics Club, '42; Vice-President, Sailorettes Club, '42. DELIA SUE CONNALLY, "Susie;" Red Cross, '42. ● SAMUEL ALLEN CONNER, Boys' Hi-Y, '41, '42; Cabinet Member of Senate, '40, '41, '42. ● BETTY BLANCHE COOK, Usher, '42; Girls' Battalion, '41, '42. ● ALFRED HARRISON COOPER, "Cowboy." ● ORVILLE RAY CORRELL, JR., "Ray;" entered from Spring City Grammar School. ● EARL COSBY, "Yankee;" Officers' Club. ● JAMES EDWARD COUCH, "Jimmy;" Band Officers' Club; Orchestra; Camera Club; Senior Play, '42; Varsity Glee Club, '42; Radio Club, '39; Junior Play, '40. ● NICK B. CRABTREE, "Mack."

## THIRD ROW

● COLWELL,  
CONNALLY, CONNER, COOK, COOPER,  
CORRELL, COSBY, COUCH, CRABTREE.

## FIRST ROW

● CRAIGHEAD,  
CRAVEN, CRAWFORD, CROSS, CROWE,  
CULLUM, CULVER, CUTTEN, CYREE.

● WILLIAM GILLESPIE CRAIGHEAD, "Bill;" Camera Club, '40, '41, '42; Band Club, '39-'42; Grady Literary Society, '41, '42; Band Officers' Club, '41, '42. ● ROY CURTIS CRAVEN, JR., President, Camera Club; Photographic Editor, Champion. ● ELOISE CRAWFORD, Betty Maid Club. ● VIOLA RUTH CROSS, Reporter, Sub-Deb Club; President, Exclusive Club. ● MICKEY LOU CROWE, "Cutie;" Girl Reserves, '40; Band Club, '40, '41; Juniors, '41; Band Girls' Club, '41; Digest Sponsor, '42; Home Room Representative, '42. ● MARY ANNE CULLUM. ● MARGARET LA FAYE CULVER, "Mac;" Digest Staff, '42; Bible Club, '40. ● BETTY FRANCES CUTTEN, "Bet;" Hiking Club, '39; We Moderns, '42; Girl Reserves, '39; May Day, '40. ● MARY ELAINE CYREE, "Toots;" Betty Maid Club, '42. ● FRANCES CORANNE DANIEL, "Cokie;" Red Cross; Girl Reserves, '41, '42; Hiking Club, '41; Juniors, '40, '41, '42; Digest Sponsor, '41;



Safety Council, '41, '42; Girls' Battalion, '39, '40, '41. ● DOROTHY HESTER DAVIS, "Dot;" Senate, '39-'42; Hi-Y, '42; Usher, '42; Honor Society, '41, '42; Sponsor, Company C; Bank and Bookstore, '40-'42; Honorary Member, Officers' Club, '42. ● ELLA JUNE DAVIS, "Beana;" Home Economics Club, '42; Girl Reserves, '41, '42; Sailorettes, '42. ● MARY LOUISE DAVIS, "Suzy;" Girl Reserves, '39, '40; Home Economics Club, '42. ● DORIS DIMPLE DEAN, Girls' Hi-Y, '41, '42; Ushers, '42; Digest, '42; Vice-President, Girl Reserves, '40-'42; Dramatic Club, '42; Safety Council, '42; We Moderns, '42; Girls' Battalion. ● DORIS MERLE DEAN, "Dunkey;" Senate, '40-'42; Honor Society, '41, '42; Usher, '42; Secretary, Blue Jackets, '40-'42; Girls' Hi-Y, '41, '42; Girl Reserves, '39-'42; Announcers Club, '42. ● LEOLA DELZELL, "Six;" Ace Club, '39; May Day, '39; Parents Day, '39-'41; Discussion Club, '40; Baton Club, '40, '41; Drum Major, '39-'41; Hi Hats, '41; Vagabonds, '41. ● CHRIS WILLIAM DEMOS, JR., "Doc;" Stage Crew, '41, '42; Grady Literary Society, '42; National Honor Society, '42; Duke of the Realm, '42; Projection Room Manager, '42; Senior Play Cast, '42. ● IRVING COOPER DENNIS. ● FREDERICK DONALD DIAL, "Fred;" Boys' Hi-Y, '41, '42; Officers' Club, '42; Grady Literary Society, '40, '41, '42; Band Club, '39-'42; Sports Editor, Champion, '42; Volunteer Boys' State Representative, '41. ● MADELINE STARR DOAK, "Oak;" Oak Club, '41; Girl Reserves, '40, '42; Sailorette, '42. ● DOROTHY AILEEN DODD, "Dot;" We Moderns, '40. ● PATRICIA ANN DOUGHTY, "Pat;" Girl Reserves Club, '42; Sub-Deb Club, '42; Junior Play, '41. ● EILLIE LOUISE DRAPER, "Bill;" Girl Reserves Club, '39-'42; High Hat, '39-'42. ● GEORGIA MAYE DUDLEY, "George;" Sub-Deb, '41, '42; Betty Maids, '41, '42. ● BARBARA DORRANCE DUNCUM, "Red;" Girl Reserves, '40, '41, '42; Girls' Battalion, '40, '41; Ushers, '42; Red Cross, '39, '40. ● BEATRICE LOUISE DUNN, "Floogie;" Red Cross, '40, '41; Class Chairman, '39, '40. ● ROBERT LOVE DUNN, "Dirty;" Officers' Club; Second Lieutenant in R. O. T. C.; Golden Gloves Tournament, '41.

## SECOND ROW

● DANIEL,  
D. DAVIS, E. DAVIS, M. DAVIS, D. DEAN,  
D. M. DEAN, DELZELL, DEMOS, DENNIS.

## THIRD ROW

● DIAL,  
DOAK, DODD, DOUGHTY, DRAPER,  
DUDLEY, DUNCUM, B. DUNN, R. DUNN.



## FIRST ROW

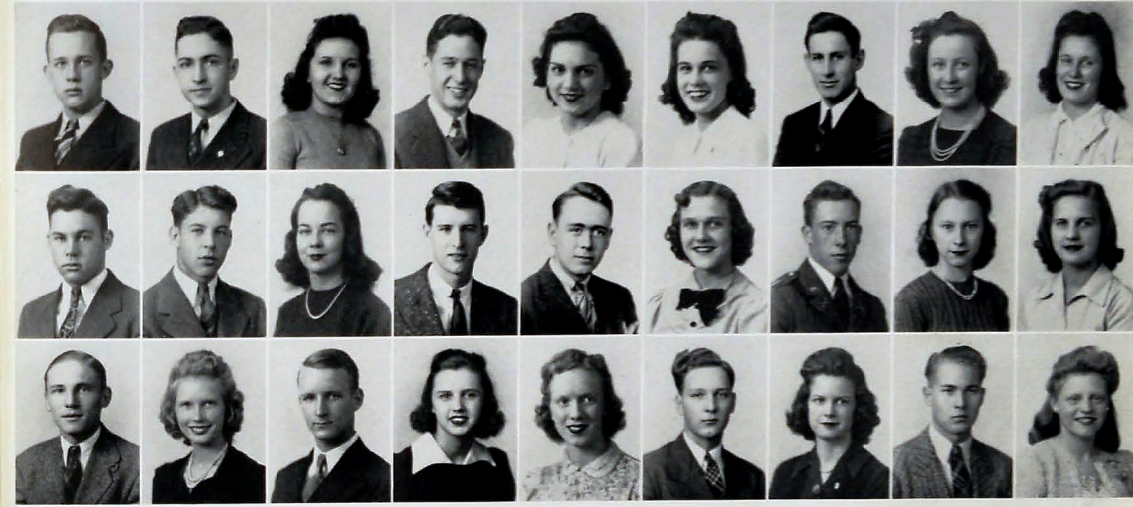
• EAKER,  
ECHOLS, EDMONDSON, EDWARDS,  
ELLIOTT, EVANS, EVATT, EXUM, FAERBER.

• BETTY THEOLA EAKER, "Bet;" Junioresettes, '42; Spinstersettes, '42; Digest Representative, '41, '42. • DOROTHY FRANCES ECHOLS, "Dot;" Secretary, Girl Reserves, '39; May Day, '39, '41; Blue Jackets, '39, '42; Junioresettes, '40, '42; Anchors Aweigh, '41, '42. • LOUVAIN LEWIS EDMONDSON, "Shadow;" Archery Club, '40; Bachelors' Club, '41; Color Guards, '40. • VIRGINIA ISABELLE EDWARDS, "Jenny;" Red Cross Club, '40; We Moderns, '40, '41; Baton Club, '41; Drum Majorettes, '41. • MARTHA ANN ELLIOTT, Junioresette Club, '41, '42; Red Cross Club, '41, '42; Girl Reserves, '42. • EDNA EARLE EVANS, "Polo;" We Moderns, '40, '42; Sub-Debs, '41; Spinstersettes, '42; Ushers, '42; Girls' Band Club, '41, '42; Sailorettes, '40, '42; Band Concert, '40, '42; Red Cross, '40, '42. • BETTY JUNE EVATT, Girl Reserves, '39; May Day,

## FIRST ROW

• GLEAVES,  
GOODNER, GOOLSBY, GRAHAM, GREEN,  
B. GREENE, W. GREENE, GREENING,  
GREGORY.

• CHARLES GLEAVES, "Charlie;" Band, '39, '40, '41, '42; Orchestra; Honor Society; Band Captain, '41, '42; Vice-President, Junior Class, '40, '41; Band Club President; Solo Cornet in Band. • RUFUS FLEDGER GOODNER, JR., Junior, Senior Hi-Y Club, '39, '40, '41; Sergeant-at-Arms, Hi-Y Club; Grady Literary Society, '40, '41, '42; Senate, '40, '41, '42; Business Manager, Champion; Honor Society, '42. • AGNES TOBICE GOOLSBY, "Addie;" Red Cross Club, '40, '41, '42; Prayer Meeting Club, '40, '41. • JOSEPH A. GRAHAM, JR., "Joe Dee;" Football Squad, '39, '40, '41; Military Editor, Champion; Depression Club, '41, '42; Bachelors' Club, '42; Officers' Club, '42; Dogpetchers' Club, '42; Vice-President, Senior Class. • DOROTHY GREEN, "Dot;" Ace Club, '41; Discussion, '41; Home Economics Club, '41; Sailorette Club, '42. • BETTY JANE GREENE, "Dimples;" Red Cross, '39, '40; Battalion, '39, '40. • WILLIAM KIMBERO GREENE, JR., "Bill;" Band, '39, '40, '41, '42; Corporal in R. O. T. C. Band. • SARA ANN GREENING,



## SECOND ROW

• FALLS,  
F. FARLEY, R. FARLEY, FARMER, FERGER,  
FINE, FINLEY, FLETCHER, FLOYD.

'39, '41; Blue Jackets, '39, '42; Junioresettes, '40, '42; Anchors Aweigh, '41, '42; Hi-Y, '41, '42; Usher, '41, '42. • EVALYN DAWN EXUM, Nite Owl Club, '41; Girl Reserves, '39; May Day, '39, '39; Badminton Club, '39, '40; Girls' Drill Squad, '38, '39; Home Ec. Club, '38, '39, '40. • JACK FAERBER, "Monkey;" • DEAN FALLS, "Dent;" Officers' Club; Lieutenant in R. O. T. C. • FOY E. FARLEY. • ROBERT RANSON FARLEY, "Doc;" Biology Club; entered from East Side in '39; Color Guard, '42; Red Cross Club. • JACKSON FARMER, "Jack;" • MARJORIE KNIGHT FERGER, "Margie;" We Moderns, '41, '42; Exclusive, '41, '42; Red Cross, '40, '41, '42; Battalion, '39, '40, '41; Hiking Club, '39, '41, '42; Stamp Club, '41. • ANNA LOU FINE, "Ann;" Exclusive Club, '40, '41, '42; Red Cross Club, '40, '41, '42; Sub-Deb Club, '41, '42; Secretary, Exclusive Club, '42. • THELMA FINLEY, Red Cross, '40, '41; Sub-Deb Club, '41, '42; Exclusive Club, '42. • ROBERT GLEAVES FLETCHER, "Sap;" Sergeant's Club, '40, '41; Officers' Club, '41, '42. • MALCOLM FLOYD, "Jack Packard;" entered Central in Senior Year. • CLARA JEAN FOLEY, "Jeannie;" entered from Knoxville High, '42; Red Cross Club, '42; Girls' Battalion, '42. • CHARLES ALVIN FORD, "Speedy;" • WINIFRED FRANCIS, Junior Girl Reserves, '41; Senior Girl Reserves, '42; Spinstersette, Treasurer, '42. • FLOYD HENRY FORREST, "Blossom;" Press Club, '39, '40, '41; Digest Staff. • BETTY JEAN FRENCH, "Jeannie;" Scouts, '40; Badminton Club, '40; Biology Club, '41, '42; Honor Society, '41, '42; Usher, '41, '42; May Day, '40, '41; Digest Staff, '41, News Editor, '41. • IMOGENE GASS, "Gene;" Battalion, '40, '41; Red Cross, '40, '41; Sub-Deb, '41, '42; Exclusive, '42. • GEORGE CARL GENTRY, Airplane Club, '40, '41, '42. • MARY WILL GIBBS, "Judy;" Red Cross, '40, '41; Betty Maid, '41; Yagabonds, '41. • ELIZABETH GILREATH, "Shorty;" Varsity Glee Club, '41; Senior Girl Reserves, '41.

## THIRD ROW

• FOLEY,  
FORD, FRANCIS, FORREST, FRENCH, GASS,  
GENTRY, GIBBS, GILREATH.

"Annie;" Junior Girl Reserves, '40, '41; Black Kats, '41, '42. • NORMA EVELYN GREGORY, "Shorty;" • LOUIS LYNN GROSS, Officers' Club, '41, '42; Varsity Glee Club, '41, '42. • LUTHER GLYNN GROSS, "Ginn;" Sergeants' Club, '40, '41; Senior Boys' Hi-Y, '40, '41, '42; Varsity Glee Club, '41, '42; Officers' Club, '41, '42. • MARY FRANCES GROSS, Varsity Glee Club, '40, '41; Secretary, Junior Class, '41; National Honor Society, '41, '42; Girls' Hi-Y, '42; Vice-President, Ushers, '42; Senior Section Editor, Champion, '42; Digest. • JAMES CALVIN GUINN, "Jimmy;" Airplane Club. • REGINALD GWIN, Band, '40, '41, '42; Orchestra. • JUANITA ELIZABETH HACKLER, "Pete;" Betty Maids, '41, '42; Sub-Deb, '41, '42; Stylettes, '40, '41; Spinstersettes, '41, '42; May Day, '39, '40. • BILL SMITH HAGAMAN, "Hootie;" Boys' Hi-Y, '39, '40; 4-H Club, '39, '40, '41; Sergeants' Club, '40, '41; Red Cross, '39; Model Airplane Club, '39, '40; Grady Literary Society, '40, '41. • DOROTHY BROWN HALE, "Dot;" Girls' Hi-Y, '41, '42; Home Economics Club, '41, '42; Girl Reserves, '40, '41; Red Cross, '40, '41; Home Economics Recognition, '40, '41, '42. • MILDRED HALE, "Sister;" Orchestra, '41, '42; Band, '40, '41, '42; Red Cross Club, '41, '42; Girl Reserves Club, '41; Black Kats, '41, '42; Bible Club, '41, '42; Camera Club, '41, '42. • DANIEL L. HALEY, "Bud;" Model Airplane Club, '41, '42; Sergeants' Club, '40, '41; Officers' Club, '42; Bachelors' Club, '41, '42; Depression Club, '41, '42; Major, Third Battalion in R. O. T. C., '41, '42. • BILLIE RUTH HALL, Girl Reserves, '40, '41; Red Cross, '40, '41. • GEORGE WILLIAM HALL, Library Club, '40; Sergeants' Club, '41; Officers' Club, '42; Sergeant in R. O. T. C., '41; Lieutenant in R. O. T. C., '42; Depression Club, '41, '42. • GWENDOLYN HALL, "Gwen;" Red Cross, '42; Girl Reserves, '42; Bowling Club, '42. • JEANETTE MAURINE HALL, All-States Club, '41, '42. • ROBERT THOMAS HALL, "Bob;" Junior Red Cross, '40, '41, '42. • SARAH JANE HAMMONTREE, "Little Bit;" Sophomore Girl Reserves, '42. • DENNIS ROY HAMRICK, "Gertrude;" Katherine Hanke, "Trudie;" Senior Girl Reserves, '41, '42; German Club, '40, '41, '42; Girls' Battalion, '41, '42; Red Cross Club, '41.

## SECOND ROW

• L. L. GROSS,  
L. G. GROSS, M. GROSS, GUINN, GWIN,  
HACKLER, HAGAMAN, D. HALE, M. HALE.

## THIRD ROW

• HALEY,  
B. HALL, G. W. HALL, G. HALL, J. HALL,  
R. HALL, HAMMONTREE, HAMRICK,  
HANKE.



## FIRST ROW

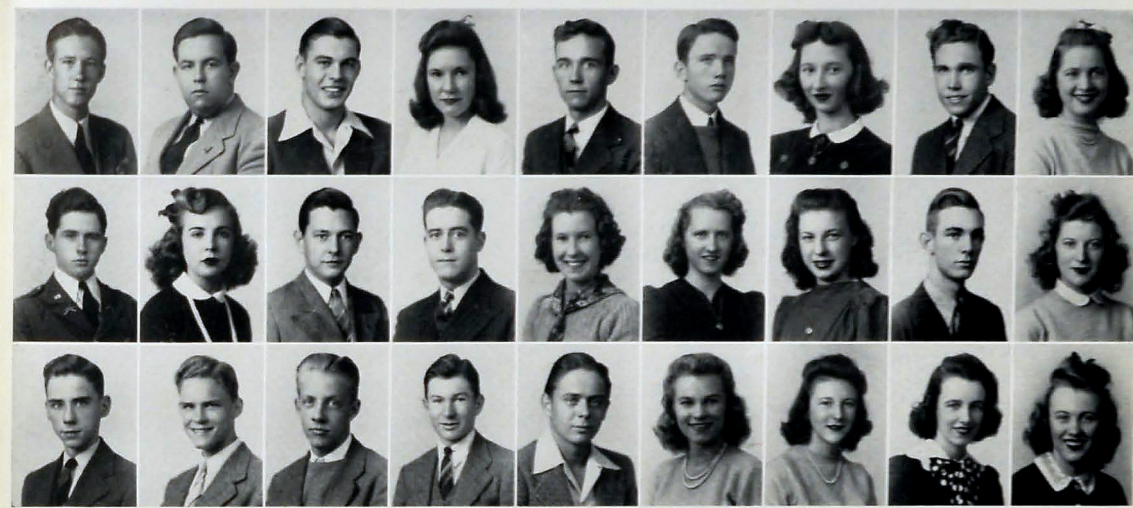
• HARDEN,  
HARDIN, HARDING, HARPER,  
C. HARRIS, E. HARRIS, M. HARRIS,  
L. HARRIS, HARRISON.

• SUSIE LOUISE HARDEN, "Blondie;" President, Library Club, '41, '42; Girl Reserves, '38, '39, '40; Won Place in Ill Latin Tournament, '41; Taught Bible at Orange Grove as representative from Central. • MARY ALICE HARDIN, "Pudgy;" Girl Reserves, '39, '40, '42; Red Cross, '42; Badminton Club, '42. • BETTIE JEANNE HARDING, "Bejje;" Student Safety Council, '42; All-States Club, '42; Senior High Girl Reserves, '42; Home Economics Club, '42. • AVIS TYREA HARPER, "Ty;" Exclusive Club, '40, '41, '42; Red Cross Club, '41, '42. • CHARLENE HARRIS, "Pug;" We Moderns, '41, '42; Betty Maids, '42; Hi-Y, '42; Girl Reserves, '41; May Day, '39, '41; Girls' Battalion, '41; Hiking Club, '39. • EUGENE HARRIS, "Gene;" Corporal of R. O. T. C., '40; Sergeant of R. O. T. C., '41. • MARY FRANCES HARRIS, "Blondie;" Red Cross, '40, '41.

## FIRST ROW

• J. HOWARD,  
H. HOWARD, HUDDLESON, A. HUDSON,  
L. HUDSON, R. HUDSON, HUFF,  
HULLENDER, HULSEY.

• JAMES MARION HOWARD, Boys' Hi-Y, '40, '41, '42; Delegate to State Hi-Y Conference, '41; Senate; Officers' Club, '42; Sergeants' Club, '41; Captain, Company E, '42; Digest Staff; Honor Society, '42. • HAROLD HOWARD, "Boogie Woogie;" Band, '42; Orchestra, '42; Bachelors' Club, '42; Depression Club, '42. • BEN HUDDLESTON, "Big Ben;" Treasurer, Senior Class; Football, '41, '42; Alternate Captain, Football Team, '42; Vice-President, "C" Club, '42; Baseball, '39, '40; Band, '39, '40; Publication in "Echo." • ANNA MARGARET HUDSON, "Annie;" Girl Battalion, '39; May Day, '41; Girls' Glee Club, '41, '42. • LOUIS HENDRIX HUDSON, "Hootie;" Model Airplane Club, '40, '41, '42; Depression Club, '41, '42; Bachelors' Club, '42; Track Team, '41; Officers' Club, '42; Corporal, '41; Lieutenant, '42; Home Room President, '42. • RAYMOND WARREN HUDSON, "Bud;" Boxing Team, '40. • DOROTHY LOUISE HUFF, "Dot;" Red Cross Club, '40, '41. • RICHARD HULLENDER, "Punchy;" Boxing Team, '40, '41, '42; Wrest-



## SECOND ROW

• HART,  
HARTLINE, HARTMAN, HARWOOD,  
HAYGOOD, HEINATZ, HELPHINGSTINE,  
HENDERSON, HENRY.

• LOUISE HARRIS, Band, '39, '40, '41; Band Concert, '39, '40, '41; Band Girls' Club, '40, '41. • DOROTHY ELIZABETH HARRISON, "Penny;" Library Assistant, '41, '42; Library Club, '41, '42; Girl Reserves, '41, '42; Basketball Team, '41; Betty Maid, '41, '42; Red Cross, '41, '42. • BILLY HART, "Willie;" Band and Orchestra, '40, '41, '42; Airplane Club, '40; President, Orchestra, '41; Band Officers' Club, '40. • MARY KATHERINE HARTLINE, "Katy;" Girl Reserves, '39, '40, '41; Hiking Club, '39; Hi-Y, '42; Blue Jackets, '40, '41, '42; Usher, '42; Black Kats, '41, '42. • PAULINE MATTIE HARTMAN, "Polly;" entered from East Side Junior High, '39. • HELEN RUTH HARWOOD, Girl Reserves Club, '41, '42. • LUCILLE HAYGOOD, "Lucy;" Girl Reserves, '40, '41; Library Club, '41, '42; Camera Club, '42; Usher, '42; Distributive Education Club, '42; Honor Society, '42. • NEDRA ANNE HEINATZ, "Doodle Bug;" Orchestra, '40; Junorette Club, '40, '41; Sailorette Club, '41. • JACQUELYN HELPHINGSTINE, "Jackie;" Varsity Glee Club, '42; All-States Club, '42. • MARY ELIZABETH HENDERSON, "Maydie;" Digest, '39, '40, '41, '42; Betty Co-Ed Club, '39, '40; Home Economics Club, '40, '41; Rockettes, '40, '41; Anchors Aweigh, '41, '42; Varsity Glee Club, '39, '40, '41, '42. • HELEN ELIZABETH HENRY, "Skeeter;" Second Prize in Poster Contest, '40, '41; Exclusive Club. • THOMAS HENSON, "Tom;" Boys' Hi-Y Club, '39, '40; Sergeants' Club, '40, '41. • GEORGE WALTER HICKS, JR. • PAUL MARK HICKS, Biology Club, '40, '41, '42. • GLORIA ELIZABETH HIGDON, "Libby;" • MARIE HIGDON, "Tootie;" Red Cross, '40; Exclusive Club, '40, '41, '42; Digest, '41, '42. • BILLY HIGDON, "Sparky;" Band; French Club, '39. • CHARLOTTE ELIZABETH HILL, "Lottie;" Hiking Club, '39; S. P. Q. R., '39; Girls' Hi-Y, '42; Usher Secretary, '42; Girl Reserves, '39, '40, '41, '42; Bible Club Secretary, '42. • WALTON C. HODGE, Safety Council, '41; Poster Award in Art. • BERTHA VIRGINIA HOTALEN, "Gina;" Girl Reserves, '41; Digest Staff, '42; We Moderns, '41, '42.

## THIRD ROW

• HENSON,  
G. HICKS, P. HICKS, G. HIGDON,  
M. HIGDON, B. HIGDON, HILL, HODGE,  
HOTALEN.

## SECOND ROW

• HYATT,  
HYER, J. IGOU, B. IGOU, B. INGLE,  
M. INGLE, J. JACKSON, W. JACKSON,  
JACOWAY.

ling Team, '40, '41, '42; Baseball Team, '41, '42; Grasscutters, '40; Announcers Club, '42. • JEANNE HULSEY, Girl Reserves, '41; Treasurer, '42; Digest Staff, '42; We Moderns, '41, '42; Battalion, '41. • WILLIAM ROY HYATT, JR., "Saluting Demon;" Secretary, Band Officers, '39, '40; Non-commissioned Officers' Club, '41; Officers' Club, '42; Captain, R. O. T. C., '42. • DORIS HYER, "Snookie;" Girl Reserves, '39, '41; Ace Club, '40, '41; Red Cross, '39; Blue Jackets, '41, '42; Office Force, '40, '41; Major Girls' Battalion, '40, '41, '42; R. O. T. C. Sponsor, '42. • JAMES MINOR IGOU, Non-commissioned Officers' Club, '41; Industrial Arts Club, '41; President, Student Safety Council, '42; First Lieutenant, Company B. • BILL IGOU, "Whaley;" • BETTYE EUGENIA INGLE, "Tot;" Senate, '39, '40, '41, '42; Girl Reserves, '42; Winner of Essay Contest on Conservation, '41; Girl Scouts, '39. • MARY KATHERINE INGLE, Girl Reserves, '42; Red Cross, '42; Bible Club, '42; Assistant Typist for Champion, '42. • JUANITA JACKSON, Girl Reserves, '39, '40, '41, '42; Biology Club, '39, '42; Safety Council, '42. • WILLIAM PATTON JACKSON, "Bill;" Boys' Hi-Y, '39, '40; Grady Literary Society, '40; President, Freshman Class, '39. • CHARLENE JACOWAY, "Jacie;" Varsity Glee Club, '39, '40, '41, '42; Anchors Aweigh, '42; Blue Jacket Club, '40, '41, '42; Girl Reserves, '39, '40; Honor Society, '42; President, Ushers, '42. • HENRY McCULLOUGH JARRETT, "Hank;" Sergeants' Club, '41. • C. A. JAY, "Curly;" Sergeants' Club, '41; Officers' Club, '42; Bachelors' Club, '42; Depression Club, '42; Dogpatters Club, '42; Student Safety Council, '42; Cadet Captain, '42. • TOMMY JEWELL, "Bone-head;" National Honor Society, '41. • GEORGE E. JOHNSON, President, Biology Club; Badminton Club. • WILLIAM D. JOHNSON, "Frisky;" Manager, Baseball Team, '41; Band, '40, '41. • ANNA RUTH JONES, "Blondie;" Girls' Hi-Y, '41; Secretary, Aces, '39, '42; Senate, '40, '41; Tumblers, '39, '41; Safety Council, '41; Girl Reserves, '40, '41; Girls' Battalion, '39; S. P. Q. R., '39. • EVELYN JOYCE JONES. • GERALDINE JONES, "Jerry;" Anchors Aweigh, '41, '42; Blue Jackets, '40, '41, '42; Usher, '42; Girls' Hi-Y, '41, '42; Digest, '40, '41, '42; Honor Society, '42; Girl Reserves, '40, '41, '42. • CLETTA MAE JORDAN, "Priss;" May Day, '39; Red Cross, '39, '40, '41, '42; Girl Reserves, '40, '41, '42; Betty Maid Club, '41, '42; President, Home Room, '42.

## THIRD ROW

• JARRETT,  
JAY, JEWELL, G. JOHNSON,  
W. JOHNSON, A. JONES, E. JONES,  
G. JONES, C. JORDAN.



## FIRST ROW

• M. JORDAN,  
KELSO, KEOWN, KILLINGSWORTH,  
KIMBROUGH, KIMSEY, B. KING, J. KING,

• MARY ELIZABETH JORDAN, "Diddle;" Ace Club, '39; Red Cross, '39, '42; Betty Maid Club, '41, '42; Girl Reserves, '42; May Day, '39; Tumblers, '40. • O. B. KELSO, "Birdie;" Band, '39, '40, '41, '42; Drum Major, Band, '40, '41; Varsity Glee Club; Boys' Hi-Y Club; Bachelors' Club, '42; Band Officers' Club, '40, '41, '42. • VIRGINIA KEOWN, "Vert;" Hiking Club, '39; S. P. Q. R., '39; Hi-Y, '39; Girl Reserves, '39, '42. • LUCILLE KILLINGSWORTH, Girl Reserves, '41, '42; Red Cross, '41; Junior Retailer, '42. • HILDA RUTH KIMBROUGH, "Ruthie;" • FRANK SULLIVAN KIMSEY, "Fireball;" Band, '39, '42; Baseball, '40, '41, '42; Band Football Team, '40, '41; Sergeant R. O. T. C., '40, '41; Korn Kobbers' Swing Band, '41; Band Officers' Club, '40, '41, '42. • BILLY LEE KING, Safety Council, '41. • JOE KING, "Joseph;" Bachelors' Club, '41, '42; Depression Club, '41, '42; Dogpatters Club, '42; Sergeants' Club, '41; Safety Council, '42; Officers'



## SECOND ROW

• KIRBY,  
M. KIRKPATRICK, W. KIRKPATRICK,  
KITRELL, KNAPP, LAMB, LAMBERT, LANE,  
LANGSTON.

Club, '42; Red Cross, '41. • LELA AUDREY KIRBY, "Lil' Audrey;" Girl Reserves, '42; Junior Retailer, '42. • MARINELLE KIRKPATRICK, Girls' Battalion, '39, '40; Biology Club, '40, '41, '42; Badminton Club, '42; Gym Circus, '41; Ace Club, '42. • WILLIAM KIRKPATRICK, R. O. T. C., '38, '39; Biology Club, '39, '40, '41, '42; Badminton Club, '41, '42. • EVELYN ELIZABETH KITRELL, "Kitty;" Girl Reserves, '40, '41; Blue Jackels, '41, '42. • DOROTHY DON KNAPP, "Dottie;" Red Cross, '39; Girl Reserves, '40; Library Club, '41; Betty Maid Club, '42. • EVELYN LAMB, "Sheepie;" Bank and Bookstore Staff, '41, '42; Sailorette Club, '42; Junior Councilors, '39; Home Room Representative, Digest, '40; Home Economics Club, '42; Discussion Club, '41. • EUNICE AILLEEN LAMBERT, "Useless;" Ice Cream Force, '42; All-States Club, '42; Archery Club, '41, '42. • FRANCIS DAVID LANE. • BETTY MAE LANGSTON, "Betsy;" Betty Maid Club, '41, '42; May Day, '39, '40; Gym Honor Roll, '39, '40. • EDWIN GAINES LANSFORD, "Ed;" Secretary, Boys' Junior Hi-Y, '39, '40; Senate, '39, '40, '41, '42; Digest, '39, '40; Boys' Senior Hi-Y, '42; Grady Literary Society, '42. • DOYLE LARKIN. • AVINELLE LAWRENCE, "Blondie;" Girl Reserves, '41, '42; Betty Maid Club, '40, '41; Home Economics Club, '41, '42; Home Economics Recognition, '41, '42. • MARY FINLEY LAWRENCE, "Finley;" Orchestra, '39, '41, '42; Red Cross, '41, '42; Badminton, '39, '40, '41, '42; Bowling Team, '41, '42; Bible Club, '41, '42; Ace Club, '39, '40, '41, '42; Band, '41, '42. • IMOGENE LAWSON, "Red;" Ace Club, '40; Girls' Battalion, '41, '42; R. O. T. C. Sponsor, '42; President, Home Room, '42; Red Cross, '42. • MARGUERITE LAWSON, Red Cross Club, '40, '42; Betty Maid Club, '41, '42; May Day, '41. • BETTY JANE LAYNE, "Bet;" Safety Council, '42; Girl Reserves, '42; Red Cross, '42. • JEANNE IRIS LEAVITT, "Comanche;" Editor, Central Digest; Honor Society; Chairman, Handbook Committee; Girls' Battalion, '39, '40, '41; Ace Club; Girl Scouts; Hiking Club; Hi-Hat; Senate; May Day. • FRANCES EVELYN LeCROY, Girl Reserves, '40.

## THIRD ROW

• LANSFORD,  
LARKIN, A. LAWRENCE, M. LAWRENCE,  
J. LAWSON, M. LAWSON, LAYNE,  
LEAVITT, LeCROY.

• SARAH ELIZABETH LEDFORD, "Snookie;" Discussion Club, '41; Sailorettes, '42. • BETTY JEAN LINDEMAN, "Sally;" Usher, '41; Dramatic Club, '38, '39; Senate, '40, '41; Girl Reserves, '40, '41; Red Cross, '40; S. P. Q. R., '38; May Day, '38, '40. • WILLODEEN B. LINDSEY, "Snookie;" Ace Club, '40, '41; Girl Reserves, '40, '41; Home Economics Club, '41, '42; May Day, '39, '40, '41. • BETTY JEANNE LITTLE, "Nicky;" Girl Reserves, '42; Camera Club, '42; Exclusive Club, '42; Band, '42. • BRUCE ATKINS LIVENGOOD, Pianist for Varsity Glee Club, '41, '42; All-States Club, '40, '41, '42; Announcers Club, '41, '42. • CAROLYN PATRICIA LLOYD, "Blondie;" Girl Reserves, '39; Battalion, '39, '40; Camera Club, '42; Girls' Hi-Y, '41, '42; Art Club, '39. • BILL LLOYD, "The Nut;" Hiking Club, '39; Junior Hi-Y, '40; Senate, '39.



## FIRST ROW

• LEDFORD,  
LINDEMAN, LINDSEY, LITTLE,  
LIVENGOOD, C. LLOYD, B. LLOYD,  
LOCKWOOD, LOWRY.

'40, '41, '42; Radio Club, '41, '42; Senate Play, '39, '40; Band, '39, '40, '41, '42; Orchestra, '41, '42. • DOROTHY JEANNE LOCKWOOD, "Keybush;" Girl Reserves, '39; Rockettes, '39, '40; Hi-Hats, '41, '42; Vagabonds, '42; Red Cross, '39, '40, '41; Baton Club, '42; Majorettes, '41, '42. • HENRY LOWRY, "Junior;" • JEANETTE LOWE, "Jeany;" DANNY McBROOM, entered from Dickinson Junior High School. • SHIRLEY McBROOM, "Peggy;" Varsity Glee Club, '40, '41, '42; Seventeeners' Club, '42; Usher, '42; Digest Staff, '41, '42; Sponsor, Company E, '42; Sponsor's Club, '42; Officers' Club, '42. • ANNETTE McCANN, "Annie Annette;" Girl Reserves, '41, '42; Safety Council, '41, '42. • PAUL WILLIAM McCAY, "Blackie;" Archery Club, '40; Bachelors' Club, '41. • STEWART WILBURN McCORMICK. • HAROLD CLAUDE McCOY, "Mac;" Stage Crew, '40, '41, '42. • BETTY KATHERINE McDONALD, "Margie;" entered from Livingston Academy, '41. • LORRAINE MARIE McDONALD, Sub-Deb Club, '42; May Day, '38, '39. • MILTON McDONALD, "Mac;" Senior Boys' Hi-Y Club, '42; Officers' Club, '42; Cadet Lieutenant, R. O. T. C., '42. • THELMA McDOWELL, "Angel;" • VIRGINIA ELIZABETH McGUIRE, Badminton Club, '39; Red Cross, '39; Girls' Battalion, '39; We Moderns, '40, '41, '42; Girl Reserves, '41; Sailorettes, '42; May Day, '39, '41, '42. • MARY EVELYN McKINNEY, "Kinney;" Girl Reserves, '40, '41, '42; Biology Club, '41; Home Economics Club, '42; Winner Art Prizes, '41, '42. • WANDA FAY McKINNEY, Secretary, Dogpatters Club, '42; Vagabond Club, '42; Digest, '40; Student Safety Council, '42; Candy Crew, '39, '41, '42; Senior Play Cast, '42. ROBERT MURPHY McKNIGHT, "Sleepy;" Color Guard, '41, '42. • FRANCES MARIE McMILLAN, "Skippy;" Girls' Hi-Y, '41, '42; Digest Staff, '41, '42; May Day, '40; Tumblers, '40; Red Cross, '42; Girl Reserves, '42; Betty Maids, '42. • ELIZABETH MADEWELL, Girls' Battalion; Honor Society, '42. • EMERY MANLY, "Emma;" Bible Club, '41, '42.

## SECOND ROW

• LOWE,  
D. McBROOM, M. McBROOM, McCANN,  
McCAY, McCORMICK, McCOY,  
B. McDONALD, L. McDONALD.

## THIRD ROW

• M. McDONALD,  
McDOWELL, McGUIRE, M. McKINNEY,  
W. McKINNEY, McKNIGHT, McMILLAN,  
MADEWELL, MANLY.



## FIRST ROW

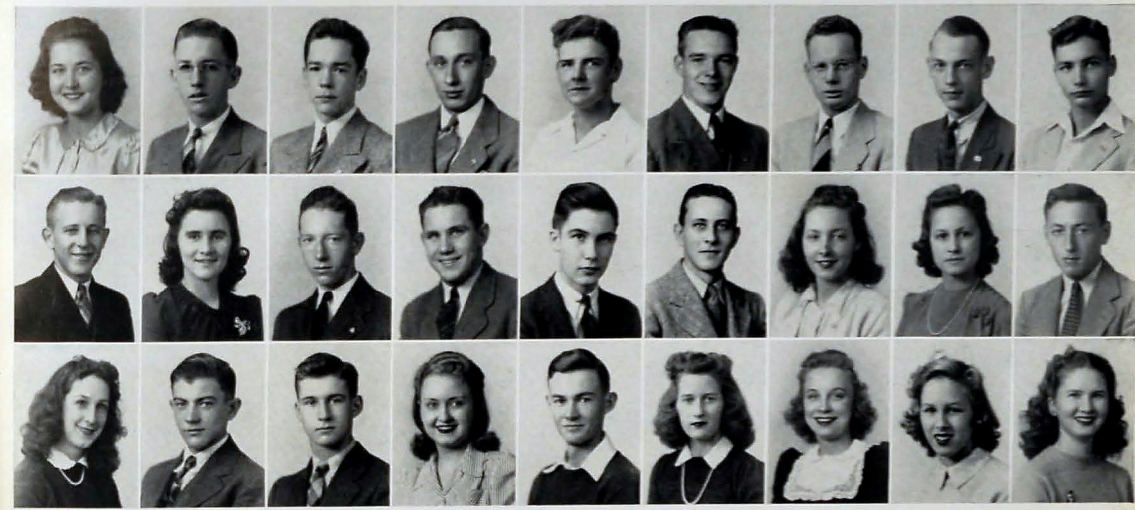
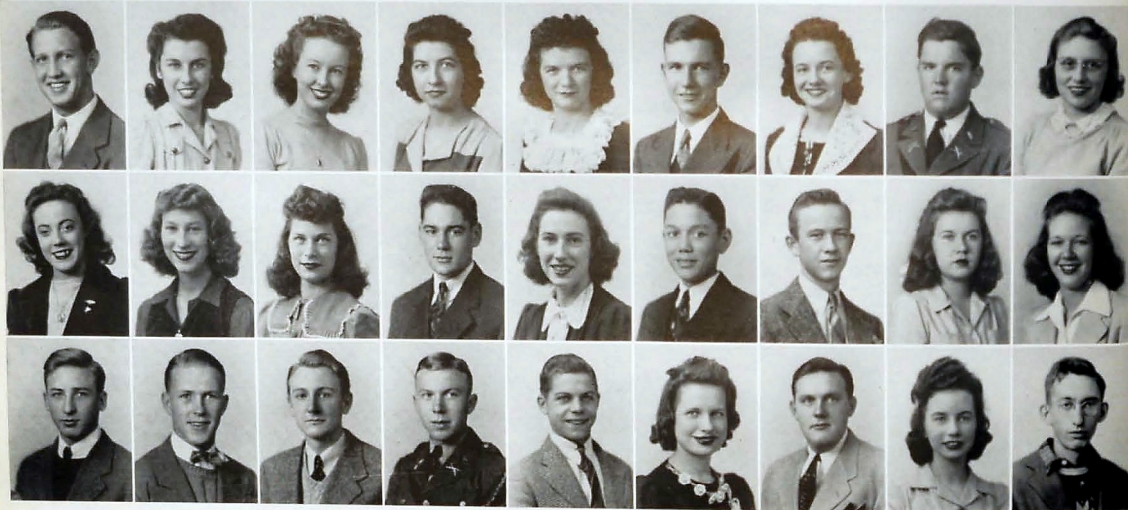
• MARLIN,  
MARLOW, MARONA, J. MARTIN,  
T. MARTIN W. MARTIN, MASSEY,  
MAXWELL, MEADOWS.

• BILLY B. MARLIN, "Bill;" Boll Weevils, '40, '41, '42; Sergeants' Club, '41, '42; Officers' Club, '42; Second Lieutenant in R. O. T. C. • BETTY MARLOW, Girl Reserves; Blue Jackets, '41; Major Girls' Battalion, '40, Ace, '41; Treasurer, Junior Class; Junior and Senior Plays; Senior Secretary; Usher, '42; Senate, '42; Hi-Y, '42; Honor Society, '41, '42; EVELYN MARONA, "Ebb;" May Day, '39, '40; Dogpatchers' Club, '42; Yagabond Club, '41, '42. • JIMMYE LOU MARTIN, Red Cross Club, '42. • TOMMYE SUE MARTIN, "Tubby;" Sailorettes, '41, '42; Red Cross, '42. • WILLIAM THOMAS MARTIN, "Fuzz;" entered from Tyner High School, '41. • LOIS KATHLEEN MASSEY, "Kitty." • CLAUDE MAXWELL, "Fat;" Home Economics

## FIRST ROW

• ORR,  
C. OWENS, L. OWENS, PACE, PAINTER,  
PARHAM, PARK, PARS, PARTIN.

• WINIFRED SCOTT ORR, "Wink;" Girl Reserves, '40, '41; We Moderns, '40, '41; Band, '41, '42; Band Girls' Club, '41, '42. • CARL HARRISON OWENS, "Oss;" Foreman, Digest, '42. • LESTER J. OWENS, Band; Junior Hi-Y, '39, '40; Grady Literary Society, '41, '42. • MORTON PACE, "Bean;" "C" Club, '41, '42; Track Team, '40, '41, '42; Industrial Arts Club, '42. • FRANCIS PAINTER, "Frank;" entered, '41. • HOYLE PARHAM, "Buddy;" Band, '39, '40, '41, '42; Orchestra, '40, '41; Korn Kobbers Swing Orchestra, '40, '41; Band Officers' Club, '41, '42; Senior Play. • ALLEN JOE PARK, "Red;" Archery Club, '39, '40; Sports Club, '41, '42; Spanish Play, '41; Junior Play, '41; Winner of Digest Chapel Program, '41. • ROBERT



## SECOND ROW

• MEREDITH,  
MEYERS, E. MILLER, G. MILLER, H. MILLER,  
C. MILLER, MITCHELL, J. MOLSDALE,  
S. MOLSDALE.

Club, '38; Sergeants' Club, '40; Officers' Club, '41. • MARY ELIZABETH MEADOWS, "Betty;" Girls' Battalion, '40, '41; Safety Council, '42. • EUNETTA WILLENE MEREDITH, "Billie;" Candy Crew, '41; Sub-Deb Club, '42; Home Economics Club, '42. • ANNA JEAN MEYERS, Varsity Glee Club, '41; We Moderns Club, '41, '42; Gym Team, '41, '42; Girl Reserves, '41; Red Cross, '41, '42. • EVELYN ELIZABETH MILLER, • GEORGE EDWARD MILLER, "Junior." • HILDA MILLER, Girl Reserves, '41, '42. • CLYDE MILLER, Airplane Club, '41. • JOE MITCHELL, "Toby;" Corporals' Club. • JANE MOLSDALE, "Janie;" Ushers, '41, '42; We Moderns, '40, '41, '42; Library Club, '41, '42; Bowling Club, '41, '42; Girls' Battalion, '40. • SARAH MOLSDALE, We Moderns, '41, '42; Gym Captain, '40, '41, '42; Badminton Club, '40, '41, '42; Ace Club, '40, '41, '42; Bowling Team, '41, '42. • GENE CARTER MONTGOMERY, "Monty;" Corporals' Club, '40, '41; Manager Basketball, '40, '41, '42. • AUGUSTUS MOORE, "Robert Val Crest;" Central All-State Club, '42; Red Cross, '42. • VOSS ALEXANDER MOORE, JR., Camera Club, '41, '42; Senate, '41, '42; Grady Literary Society, '41, '42; Band, '40, '41, '42; Band Officers' Club; Home Room Secretary. • EDWIN MORRIS, "Ed;" Sergeants' Club, '41; Officers' Club, '42; Baseball, '42. • JACK NEALE, "Flash;" Basketball, '37; Member Championship Volley Ball Team, '41. • MARY KATHLEEN NEWPORT, Won Typing Contest in '41; Perfect Attendance Four Years. • ED DICK NORRIS, "Worm;" Airplane Club, '41. • RODELLA OLIVER, Red Cross, '42; Girl Reserves, '40, '41. • GEORGE O'NEAL, "Red;" Camera Club, '39, '40, '41, '42.

## THIRD ROW

• MONTGOMERY,  
A. MOORE, V. MOORE, MORRIS, NEALE,  
NEWPORT, NORRIS, OLIVER, O'NEAL.

PARS, "Bob." • GROOVER PARTIN, "Texas;" All-States Club, '42; Officers' Club, '42; Safety Council, '42. • W. L. PATTERSON, "Pat;" Band, '39, '41, '42; Band, Football, '41; Sergeant, R. O. T. C., '41; Red Cross, '41; Band Officers' Club, '41, '42. • MARY HELEN PATTON, Champion Staff, '42; Red Cross, '40, '41; Honor Society, '42. • LEBRON PAYNE, Officers' Club, '42; Boll Weevils, '42; Second Lieutenant R. O. T. C. • WILLIAM EDWARD PEACE, "C. G.;" Red Cross Club, '40, '41, '42. • JACK PEPPER. • CHARLES PERKINSON, "Perk;" Home Room Representative for Digest, '40; Corporal in R. O. T. C., '41. • JERRY AUDREY PERRY, Red Cross, '37, '40, '41; Girl Reserves, '40, '41; May Day, '39, '40; Girls' Glee Club, '41. • VELMA RUTH PERRY, Hi-Y Club, '41, '42; Library Club, '42. • WALTER R. PETTYJOHN. • MARTHA LOU PHILLIPS, "Marty;" Usher, '42; Girl Reserves, '42; Junioresettes, '42; Battalion, '38, '39, '40; We Moderns, '39, '40; Red Cross, '41, '42; May Day, '39, '40. • JOSEPH FLOYD POE. • EDWARD FRANKLIN FOGUE, "Pogie;" Orchestra, '40, '41, '42; Band, '40; Basketball Team, '40, '41; "C" Club, '42; Football, '40. • SARAH KATHLEEN PRINCE, "Sadie;" Home Economics Club, '41, '42; May Day, '39, '40. • BILLY PRITCHETT. • BETTY PRIVETTE, "Privette;" Majorette, '38, '39; Parents' Day, '38; Spring Concert, '37; May Day, '37; Discussion Club, '39, '40; Christmas Pageant, '37; Sailorettes, '40, '41. • KATHERINE MARIE QUINN, "Katrina;" Discussion Club, '40, '41; Red Cross Club, '40, '41; Digest Representative, '42. • BETTY RAND, "Little Bit;" Sub-Deb Club, '40, '41, '42. • MARGARET IMOGENE RAY, "Red."

## SECOND ROW

• PATTERSON,  
PATTON, PAYNE, PEACE, PEPPER,  
PERKINSON, J. PERRY, V. PERRY,  
PETTYJOHN.

## THIRD ROW

• PHILLIPS,  
POE, FOGUE, PRINCE, PRITCHETT,  
PRIVETTE, QUINN, RAND, RAY.



## FIRST ROW

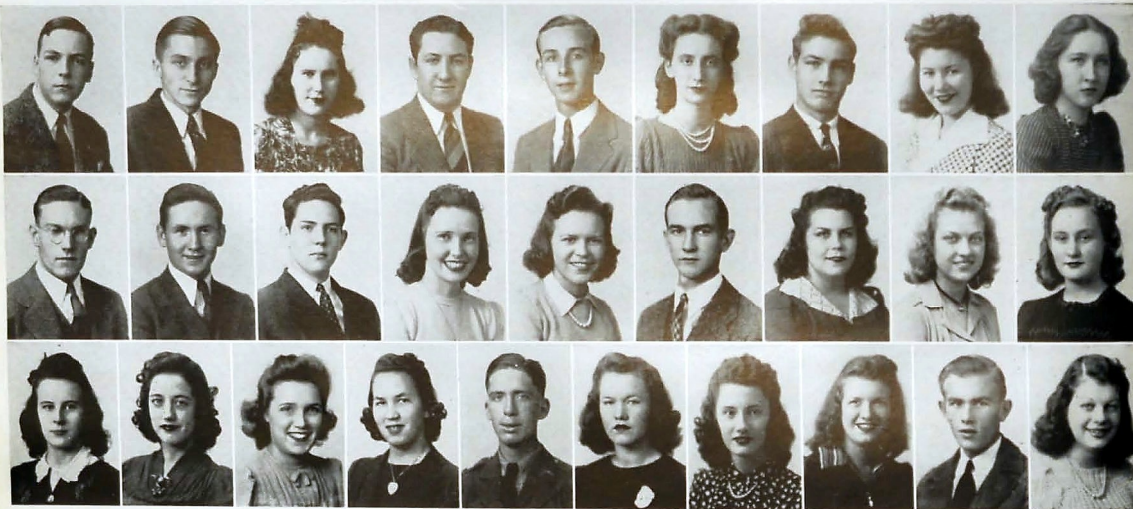
● REAMS,  
REED, REEVES, RICHBOURG, RICHEY,  
RIDDICK, RILEY, ROARK, A. ROBERTS.

● BENTON EDGINGTON REAMS, Stamp Club, '40, '41; Camera Club, '40, '41; Honorable Mention for State Mechanical Drawing Competition and American Legion Essay Contest, '41. ● TRAVIS STANLEY REED, "Trucky Ira;" Officers' Club, '41. ● KATHRYN HELEN REEVES, "Kitty;" ● LELAND EDWARD RICHBOURG, "Richie;" "C" Club, '41; Baseball Team, '40, '41; B Football Team, '39; Varsity Glee Club, '40, '41. ● HAMILTON RICHEY, "Shorty;" ● MARY EUDORA RIDDICK, Band Girls' Club, '41, '42; Usher, '42; Glee Club, '39, '40; Band, '40, '41, '42; Simon Band Concert, '40. ● WILLIAM EDWARD RILEY, "Willie;" Band, '41, '42; Orchestra, '42; Radio Club, '40; Digest Sponsor, '42. ● SUE ROARK, Sub-Deb; Exclusive

## FIRST ROW

● P. SHELTON,  
R. SHELTON, SHERRILL, SHIPMAN,  
SHIRLEY, B. SKEEN, J. SKEEN, B. J. SMITH,  
B. R. SMITH, C. SMITH.

● PAUL SHELTON, "Shorty;" Sergeants' Club, '40, '41; First Sergeant R. O. T. C., '41; Officers' Club, '42; Safety Representative for Home Room, '42; Captain in R. O. T. C., '42. ● ROBERT SHELTON, "Bob;" Digest Representative, '42; Corporal in R. O. T. C., '41; S. P. Q. R. Latin Club, '40. ● BOBBY SHERRILL, "C" Club, '42; Baseball, '41, '42. ● WILLIAM CHARLES SHIPMAN, "Billy;" entered from East Side Junior High, '39. ● ROBERT E. LEE SHIRLEY, "Red;" ● BETTYE JO SKEEN, "Josie;" Orchestra, '39; Drum Major, '39, '40, '41; Red Cross, '40; Digest, '40, '42; Safety Council, '42; Vagabonds, '41, '42; Battalion, '39; Baton Club, '41, '42. ● JAMES EDWARD SKEEN, "Jim;" Home Room Vice-President, '42; Industrial Arts Club, '42; R. O. T. C., '41, '42. ● BETTY JANE SMITH, "Smitty;" Sub-Deb Club, '40, '41, '42. ● BETTY RUTH SMITH, Orchestra, '40, '41, '42; We Moderns, '40, '41, '42; Girl Reserves, '40, '41, '42; Blue Jackets, '42;



## SECOND ROW

● B. ROBERTS,  
C. ROBERTS, ROBINSON, RODGERS,  
ROGERS, ROSE, ROTHWELL, ROY, ROYAL.

Club; Red Cross Club. ● ADELIA ANNE ROBERTS, Biology Club, '40, '41; Girl Reserves, '42; Red Cross, '42; Ushers, '42; Honor Society, '42. ● BUFORD ROBERTS, "C" Club, '41, '42; Football, '40, '41, '42. ● CHARLES ROBERTS. ● JAMES A. ROBINSON, "Jimmie;" Band, '42. ● MARSENA RODGERS, entered from Lookout Junior High, '39. ● DORIS RUTH ROGERS, "Dot;" Red Cross, '40, '41, '42; Hi-Hats, '41, '42. ● RICHARD ROSE, "Dick;" Swimming Team, '40, '41, '42; Sergeants' Club, '41; Bachelors' Club, '41, '42; Depression Club, '41, '42; Officers' Club, '42; Dogpatchers Club, '42. ● LORENE ROTHWELL, Exclusive Club, '41, '42; Sub-Deb, '41, '42. ● FRANCES ELOISE ROY, "Fran;" May Day, '39; Orchestra, '40, '41; Misdemeanor Club, '40, '41; Red Cross, '41, '42; Candy Crew, '40, '41. ● JUANITA E. ROYAL, "Blondie;" May Day, '39, '40; Bible Club, '42; Exclusive Club, '42. ● NORMA H. RUFFNER, "Doody;" Library Club, '41; Orchestra, '40, '41. ● ESTHER RYMER. ● EDNA JANE RYMER, Band, '40, '41, '42; Band Girls' Club, '40, '42. ● SARAH FRANCES SADLER, "Frankie;" Bible Club, '41, '42. ● WILLIAM SAULTER, R. O. T. C. Officers' Club, '41, '42. ● BETTYE FRANCES SCOGGINS, Red Cross, '39, '40, '41; Rockettes, '39, '40; Baton, '42; Vagabonds, '42; Hi-Hats, '41, '42; Majorettes, '41, '42. ● HAZEL MARIE SEDMAN, "Jackie;" entered from Lookout Junior High, '39. ● DOROTHY ANN SEIBOLD, "Dot;" Secretary, Freshman Class, '39; Home Economics Club, '41, '42; Red Cross Club, '39. ● FRANK SELLS. ● GRACE ELIZABETH SERTEL, "Beth;" Red Cross, '41, '42; Girl Reserves, '39; Ice Cream Crew, '41, '42.

## THIRD ROW

● RUFFNER,  
RYMER, RYNER, SADLER, SAULTER,  
SCOGGINS, SEDMAN, SEIBOLD, SELLS,  
SERTEL.

Badminton Club, '42; Regimental Sponsor; Usher, '42. ● CLAUDE SMITH. ● EDNA CHRISTINE SMITH, "Cricket;" May Day, '40, '41; Sub-Deb Club, '40, '41, '42. ● EVA KATHERINE SMITH, Central Literary Society, '40; Library Club, '40, '41, '42. ● EVELYN SMITH, May Day, '40; Dogpatchers Club, '42; Bible Club, '42; Exclusive Club, '42. ● FRANCES EVELYN SMITH, "Shorty;" Girls Glee Club, '42. ● INDA MAE SMITH, Ace, '41, '42; Senate, '41, '42; Girl Reserves, '39, '40; Hiking Club, '41; Battalion, '41; May Day, '39, '40, '41; Tumblers, '39, '40, '41; Girl Scouts, '41. ● J. G. SMITH, "Smitty;" R. O. T. C., '40, '41, '42. ● MARY STELLA SMITH. ● ROBERT L. SMITH, "Buster;" May Day, '40; Red Cross, '40. ● SHIRLEY JEAN SOUDERS, "Shorty;" Red Cross, '41. ● MARY FRANCES SOUTHERLAND, Girl Reserves, '40; Sub-Deb Club, '42; Betty Maid Club, '42; Poem in "Echo," '41. ● EDD SPANN. ● DOROTHY SPARKS, "Sparky;" Honor Society; Usher, '42; Library Club, '41; Girls' Battalion; S. P. Q. R. Club; Girl Reserves; Tumblers; Ace, '39-42; Senate, Bowling Club; Circus; Digest Sponsor; May Day; Latin Tournament. ● MARY GUY SPRINGER, "Blondie;" Girl Reserves, '39-42; Red Cross, '39; Usher, '42; Home Economics, '41, '42; May Day, '39, '40; R. O. T. C. Sponsor; Blue Jackets, '40; Girls' Hi-Y, '42. ● MARY STAFFLER, Nite Owl Club, '39, '40, '41, '42; Red Cross, '39, '40, '41; Hi-Hat, '40, '41; Home Economics, '41. ● BETTY JANE STANDIFER, Ace Club, '40, '41, '42; Girls' Battalion, '41, '42; Spinsterettes, '42; Honor Society, '42; Girl Scouts, '41, '42; Badminton Club, '40-42; We Moderns, '40, '41. ● WILLIAM MCGAIN STEPHENS, JR., "Bill;" Boys' Hi-Y, '40, '41, '42; Senate, '40, '41, '42; Corporals' Club, '41; Grady Literary Society, '41, '42; Bulletin Board Chairman, '42; Count of the Realm, '42; Radio Club, '41, '42. ● MAYNARD C. STEVENS, JR., "Shipwreck;" Radio Club; Color Guards. ● MILES G. STEVENS, "Wee Wee;" "C" Club, '39, '40, '41; Football Team, '39, '40, '41; Wrestling Team, '41. ● BETTYE STEWART, "Betty;" May Day, '39, '40; Vice-President, Vagabond, '41; President, Dogpatch, '42; Home Room Chairman, '42; Red Cross Representative, '41. ● ELSIE VIRGINIA STEWART, Girl Reserve, '40, '41, '42; Bible Club, '40, '41, '42.

## SECOND ROW

● E. C. SMITH,  
E. K. SMITH, E. SMITH, F. SMITH,  
I. SMITH, J. SMITH, M. SMITH, R. SMITH,  
SOUDERS, SOUTHERLAND.

## THIRD ROW

● SPANN,  
SPARKS, SPRINGER, STAFFLER, STANDIFER,  
STEPHENS, M. C. STEVENS, M. G. STEVENS,  
B. STEWART, E. STEWART.



## FIRST ROW

• M. J. STEWART,

M. R. STEWART, STIMPSON, STROUD,  
SWANSON, M. TALLANT, N. TALLANT,  
TAPLEY, TAYLOR, TEEM.

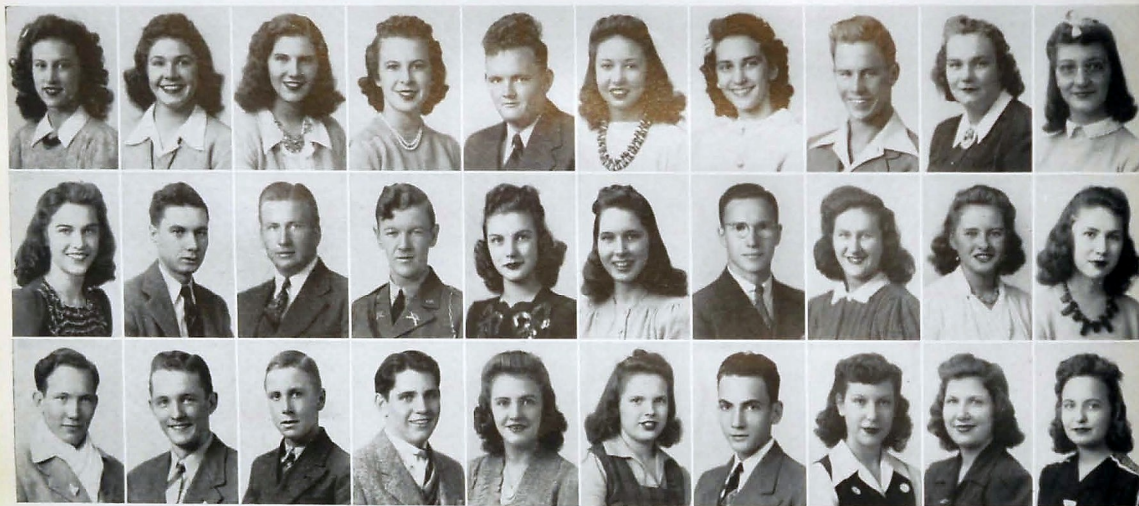
• MARGARET JUNE STEWART, "Snooks;" Red Cross, '39, '40; Battalion, '39, '40. • MYRTIE REE STEWART, Girl Reserves, '39, '40; Digest Representative for Home Room, '42. • BETTY ANN STIMPSON, Girl Reserves, '41, '42; Betty Maid, '41; Home Economics Club, '42; Home Economics Recognition, '42. • RUTH STROUD, "Budgie;" Girl Reserves, '41, '42; Ace Club, '41; Spintirettes, '42. • JAMES SWANSON, "Curly;" Football, '40; Basketball, '40, '42. • MILDRED ERNESTINE TALLANT, Battalion, '39; Ice Cream Crew, '39, '40, '41. • NELLIE RUTH TALLANT, Honor Society, '41, '42; Girl Reserves, '39, '40, '41; Home Economics Club, '40, '41, '42; Orchestra, '40, '41, '42; Prize Winner at Fair, '42; Usher, '42; Hi-Y, '41, '42. • KENNETH TAPLEY, "Ken." • NORMA KATHLEEN TAYLOR, Girl Reserves, '40, '41, '42; Girls' Hi-Y, '41, '42; Library Club, '41; Girl Reserves Hospital Chairman, '42. • BERNICE OVALINE TEEM, "Niece."

• GLADYS RUTH WALKER, Red Cross, '39, '40; Girl Reserves, '41, '42; Candy Crew, '40; Ushers, '41, '42; Battalion, '39; May Day, '39, '40. • JO EDITH WALKER, "Jo;" Twixteen Club, '40; Red Cross, '40, '41, '42; Girls' Hi-Y, '39, '40, '41, '42; Vagabond Club, '40, '41, '42; Hiking Club, '40, '41, '42; Exclusive Club, '42. • DOROTHY MARIE WALLACE, "Dot;" Girls' Battalion, '39; Betty Co-Ed, '40; Nite Owls, '40, '41, '42; Home Economics, '42; Seventeeners, '42; Girls' Hi-Y, '42; Sponsor, First Battalion, '42; Honorary Member Officers' Club, '42. • MAURICE WALLER, Hi-Y, '40; Orchestra, '39, '40; Band, '39, '42; Boll Weevils, '39, '42. • SARAH ELIZABETH WARD, "Betty;" Girl Reserves, '40, '42; Usher, '41, '42; Honor Society, '41, '42; May Day, '40, '42; Treasurer of Class, '40; Junior Play Stage Properties Committee, '41. • JANET WATERHOUSE, Red Cross Club, '39; Home Economics Club, '39, '40, '41. • MARY FRANCES WATKINS, Speed Typing

## FIRST ROW

• G. R. WALKER,

J. WALKER, WALLACE, WALLER, WARD,  
WATERHOUSE, WATKINS, WESTCOTT,  
WESTON, J. I. WHEELER.



## SECOND ROW

• THACH,

THOMAS, THOMPSON, THORNTON,  
TILLET, TITTLE, TRAVIS, TRIBBLE, TROTTER,  
B. D. TURNER.

• VIRGINIA JUNE THACH, "Jenny;" Girls Hi-Y, '40, '41, '42; Digest Sponsor, '42; Girl Reserves, '39, '41; Girls' Battalion, '39. • ELWARD THOMAS, "Elmer Lee;" French Club, '39; Basketball "B" Team, '39; Digest Staff, '39; Essay Contest on Fire Prevention, '39. • ALVIN DOUGLAS THOMPSON, "Square Pants;" Weightlifting Team, '41; Band, '40, '42; Orchestra, '40, '42. • HERBERT THORNTON, "Huck;" Sergeants' Club, '41; Officers' Club, '42; Lieutenant in R. O. T. C. • LOUISE TILLET, Girl Reserves, '40, '41; Ushers, '42; Girls' Hi-Y, '42; Betty Maids, '42; S. P. Q. R., '39. • JOHNNIE RUTH TITTLE, "John;" Girl Reserves, '40, '41, '42; We Moderns, '40; Girls' Hi-Y, '41, '42; Anchors Aweigh, '41, '42; Varsity Glee Club, '40, '41, '42; Southeastern Concert, '40. • JAMES EDWARD TRAVIS, "Jimmy;" Sports Club, '41, '42; Camera Club, '40, '41; Hiking Club, '39. • ELIZABETH TRIBBLE, "Betty;" Junior Retailer, '42. • BETTY FAY TROTTER, Archery, '40, '41, '42; Girl Scouts, '40, '41, '42; Ushers, '42; National Honor Society, '42. • BESSIE DORIS TURNER, "Dot;" Girl Reserves, '39, '40. • BILL TURNER, "Boopy;" Red Cross; Band. • WALLACE L. TURNER, "Wally;" Depression, '41, '42; Bachelors' Club, '41, '42; Red Cross, '41; Grady Literary Society, '40, '41; Dogpatchers, '42; Representative to Volunteer Boys' State, '40; Club Editor, Champion, '42; Home Room Chairman, '42. • FRED UNDERWOOD, "Speedy;" • H. L. UNDERWOOD, entered from Lookout Junior High, '39. • LABAN ETNA YARNER, entered from Nathan L. Bachman School, '39. • PATTY SUE VAUGHT, "Shorty;" Girl Reserves, '42; Drum Majorette, '39, '40, '41; Baton Club, '40; S. P. Q. R., '39; May Day, '39, '40; Circus, '39, '40; Tumblers, '39, '40. • S. M. WADE, "Saxie;" Boys' Hi-Y, '39, '40; Grady Literary Society, '41, '42; Band Club, '39, '40, '41, '42; Band Officers' Club, '42; Officers' Club, '42. • VIVIAN WADE, "Red;" May Day, '39, '40; Girl Reserves, '41; Red Cross, '41, '42; Ice Cream Crew, '41, '42; Exclusive Club, '42; Sub-Deb, '42; Bible Club, '42. • BETTE LOUISE WAGNER, "Prissy;" Red Cross, '39, '42; Hi-Hats, '41, '42; Nite Owls, '40, '41, '42; Betty Co-Ed, '39, '40; Archery, '39, '40; Etiquette Club, '39, '40. • GENEVA LUCILLE WALKER, "Gee Gee."

Medal, '40; Typist Digest, '41; Red Cross Club, '42; Digest Representative for Home Room, '42. • NELSON WESTCOTT, "Westy;" Biology Club, '40; Safety Council, '41. • DONALD ARTHUR WESTON, "Mohawk;" Band Club, '40, '41; Orchestra Club, '40, '41; Model Airplane Club, '40, '41. • JULIA IRENE WHEELER, "Flossie;" Treasurer, Betty Maid Club, '41, '42; Honorary Member, Officers' Club; Sponsor, Company I, Second Battalion. • ROY WHITMIRE, "Whih;" Safety Council, '41. • GORDON WHITTENBARGER, "Mayor of Rossville;" • KARLYN FRANCES WIETZEL, Bowling Team. • JAMES EDWARD WILCOXSON, "Stinky;" Sergeants' Club, '41; Officers' Club, '42; Sports Club, '42; Announcers Club, '42; Junior Play Cast, '41; Senior Play Cast, '42. • EUGENE WILLIAMS, "Gene;" • LUKE ERVIN WILLIAMS, JR., "Pee Wee;" '42. • CHARLES F. WILSON, Digest Pressman, '41. • MARGUERITE WILSON, "Wawee;" Bible Club, '41; Junior Retailers, '42. • MYRTLE VIRGINIA WILSON. • DOROTHY WOMACK, "Dot;" • ANNA LAURA WOMACK, "Annie;" Bank and Bookstore Staff, '40, '42; Junior Councilors, '40; Discussion, '40; Sailorettes, '42; National Honor Society, '41, '42; Exclusive, '41; Ushers, '42; Digest Representative, '40. • EDNA EARL WOOTEN, entered from DeKalb High. • EARLA MAE WORLEY, "Squirt;" May Day, '40; Red Cross, '41; Junorettes, '41, '42; Baton Club, '42; Betty Maids, '42; Drum Majorette, '42. • EDNA MAE WORLEY, "Eddie;" Safety Council. • JOHN MAX WORLEY, "Possum;" Library Club, '39, '40. • DOROTHY JANE YANTIS, "Blondie;" Badminton Club, '39, '40, '41; Hiking Club, '39; S. P. Q. R., '39, '40; We Moderns, '40, '41, '42. • BILL YOUNG, "Slugger;" Sergeants' Club, '41; Officers' Club, '42; Baseball Team, '41, '42. • WILLIAM EDWARD YOUNGER, "Bill;" Boys' Hi-Y, '41, '42; Stamp Club, '41; Sergeants' Club, '41; Officers' Club, '42; Cadet Lieutenant in R. O. T. C., '42.

## SECOND ROW

• J. L. WHEELER,

WHITECOTTON, WHITMIRE,  
WHITTENBARGER, WIETZEL, WILCOXSON,  
E. WILLIAMS, L. WILLIAMS, C. WILSON,  
M. WILSON.

## THIRD ROW

• B. TURNER,

W. TURNER, F. UNDERWOOD,  
H. UNDERWOOD, VARNER, VAUGHT,  
S. WADE, V. WADE, WAGNER,  
G. L. WALKER.

## THIRD ROW

• M. V. WILSON,

WOMAC, WOMACK, WOOTEN,  
E. M. WORLEY, E. WORLEY, J. WORLEY,  
YANTIS, YOUNG, YOUNGER.



# THREE YEAR HONOR STUDENTS and Commencement Speakers

MARCELL BLANCETT	Three Year Honor Student
LOIS BROWN	Three Year Honor Student and Faculty Representative
C. D. BROYLES	Three Year Honor Student and Salutatorian
DORIS CHAPMAN	Three Year Honor Student
MARTHA JANE CLARKE	Three Year Honor Student
MARCHETA ROSE COCHRAN	Three Year Honor Student
THOMAS COLLUM	Three Year Honor Student
HENRY COLSTON	Class Representative
JOSEPH GRAHAM	Reader of the Will
TOMMY JEWELL	Historian
AVINELLE LAWRENCE	Three Year Honor Student
JEANNE LEAVITT	Three Year Honor Student
BETTY MARLOW	Prophet
MARY HELEN PATTON	Three Year Honor Student
EDWARD POGUE	Poet
BENTON REAMS	Three Year Honor Student
ANN ROBERTS	Three Year Honor Student
DOROTHY SPARKS	Three Year Honor Student and Valedictorian
BETTY FAY TROTTER	Three Year Honor Student
NELLIE RUTH TALLANT	Three Year Honor Student



## JUNIOR CLASS

### OFFICERS

H. D. GANG	President
ALBERT MILLER	Vice-President
JEANNE SMITH	Secretary
HARDEMAN STONESTREET	Treasurer



## SOPHOMORE CLASS

### OFFICERS

BASIL IRWIN	President
JACK IRELAND	Vice-President
MARY JO RHINEHART	Secretary
DONALD WOMACK	Treasurer
JUANATA CHILDERS	Song Leader



## FRESHMAN CLASS

### OFFICERS

MARY DENA LEEPER	President
ELSIE ORR	Vice-President
BETTY LOU COBLEIGH	Secretary
BILLY JANE MATHIS	Treasurer





## JUNIOR CLASS GIRLS

Patricia Adair  
Ava Jane Allen  
Nelda Ruth Allen  
Lydia Joanna Alley  
Esther Jane Alton  
Betty Arnold  
Willadeen Arrant  
Edna Sue Ashworth  
Ella Anne Aucott  
Betty Jean Axmacher  
Martha Lu Bagwell  
Doris Hughlett Bailey  
Ruth Louise Bailey  
Delores Jo Baker  
Marjorie Daphne Bates  
Louise L. Ballaw  
Betty Sue Barker  
Sarah Lovina Barnes

Josephine Davis  
Kathleen Davis  
Nellie Deal  
Evelyn DeShazo  
Roma Nell Dickert  
Margaret Alice Divine  
Evelyn Gertrude Drinnon  
Mary Frances Durham  
Alice Elizabeth Eaves  
Alma Ruth Edgema  
Betty June Elliot  
Ollie Mae Elsea  
Mell Jean Ennis  
Elsie Lee Ewton  
Betty Jean Ezell  
Marjorie Daphne Bates  
Mary Elizabeth Fain  
Mary Katherine Ferris  
Lily Jo Filer

Ruth Evelyn Jones  
Ellie Lois Jones  
Frances La Bae Kayler  
Lillian Victoria Keebler  
Juanita Lexine Kelley  
Fay Lois Kennedy  
Fern Marie Kennedy  
Flora Ophia Kerby  
Orpha Juanita Kesley  
Leatrice Jayce Kilgore  
Doris Killingsworth  
Berlie Lenora Kimsey  
Evelyn Doris Kizziah  
Mary Ruth Klein  
Meriam Evans Loeper  
Beverly Juanita Lewis  
Nellie Ruth Ling  
Mary Elizabeth Lingerfelt

Cleo Ollie Rowland  
Anna Sue Rudd  
Virginia Gay Russell  
Betsy Ryerson  
Peggy Ann Sander  
Mary Evelyn Sargent  
Alma Marie Schlack  
Mildred Alice Scott  
Geraldine Hazel Sells  
Frances Louise Shedd  
Gertrude Beatrice Shirley  
Johnnie Ruth Shirley  
Frances Lucille Simpson  
Imogene Laura Sledge  
Catherine Beverly Smith  
Christine Anita Smith  
Frances Elizabeth Smith  
Frances Jean Smith



Dol Barr  
Mabel Irene Barrett  
Avis Marie Bass  
Willodean Bass  
Audrey Eloise Bayne  
Mary Jane Bayton  
Ida Helen Beasley  
Cora Irene Borders  
Beulah Bradford  
Alice Bradshaw  
Dorothy Lillian Brewer  
Dorothy Olivia Brooks  
Mary Louise Brooks  
Charlotte Ann Brown  
Doris Ann Brown  
Loula Eudora Brown  
Betty Sue Broyles  
Roberta Imogene Bruce  
Christine Marie Buchele  
Mabel Carmion Burkhalter  
Ethel Lavina Burnett  
Dorothy Lillian Burnett  
Irene Butler  
Peggy Elizabeth Carlton  
Betty Ovaline Carr  
Marjorie Varine Carter  
Mary Jo Chambers  
Lorene Mae Champion  
Lorena Adair Cobb  
Cynthia Ann Cochran  
Virginia Estelle Coffin  
Evelyn Ruth Coker  
Billie Katherine Collins  
Beatrice Collins  
Opal Vince Colston  
Betty Ann Cook  
Virginia Estelle Cooper  
Lucille Anna Cox  
Martha Jo Craighead  
Willie Juanita Crowley  
Mabel Anne Criswell  
Nina Lou Crowe  
Marjorie Aletha Daugherty  
Betty Daverson

Evelyn Finley  
Betty Fuller  
Edna Willie Fuller  
Virginia Sue Gaarder  
Gladys Irene Gardenhire  
Lois Virginia Gatzaway  
Virginia Gerald  
Barbara Gill  
Mary Harvey Gilreath  
Myrtle Jean Good  
Ina Ho Grandin  
Catherine Ora Gray  
Mary Elizabeth Griswold  
Margaret Elizabeth Gross  
Martha Jane Guinn  
Rossie Della Guinn  
Margaret Ann Guth  
Martha Frances Hale  
Dimple Beatrice Harden  
Clarine Harris  
Edna Earle Harris  
Dorothy Lillian Burnett  
Lottie Louise Helton  
Christine Henry  
Doris Brooks Henry  
Betty Glenn Henson  
Nancy Sue Hill  
Kathleen Janette Hollingsworth  
Venice Louise Hollis  
Bee Holmes  
Marguerite Hood  
Margie Horton  
Ann Howard  
Lola Jacqueline Howard  
Gloria Hope Howell  
Marilyn Winifred Hurn  
Lorraine Virginia Imrie  
Helen Ileen Ireland  
Elizabeth Craig Jackson  
Jacquelyn Jean Price  
Barbara Lucille Jensen  
Nina Lou Crowe  
Marjorie Aletha Daugherty  
Betty Daverson

Betty Louise Long  
Bobbie Jean Love  
Bettie Vesta Luther  
Mary Lou Lyles  
Grace Alice McDonald  
Jeritta Gwendolyn McBride  
Betty Fern McBryant  
Viola McBryant  
Mary Evelyn McCormick  
Anna Lou McCollough  
Margaret Alice McCurdy  
Norma Evelyn McDaniel  
Katherine Marie McGinnis  
Sarah Clementine McMillen  
Margaret Wilma McMillen  
Nancy Jeanne McSpaddin  
Betty Madewell  
Evelyn Meriam Manning  
Catherine Louise Marler  
Louise Miles  
Evelyn Gertrude Miller  
Iris LaVern Miller  
Mildred Janice Mishkind  
Bertie Ann Moore  
Christine Moore  
Maxine Moore  
Gertrude Ann Morgan  
Lillian Augustus Morrow  
Billy Maxine Morton  
Mable Elizabeth Mueller  
Mary Lillian Nesbitt  
Katherine Zelaz Norris  
Ercel Inez O'Brien  
Morley Jean Olsen  
Nina Ruth Pendergrass  
Jean Peck Peoples  
Virginia June Phillips  
Flora Alice Price  
Martha Kathryn Price  
Ruth Cagle Price  
Laura Jean Price  
Mary Anetta Pryor  
Marjorie Dell Ray  
Betty Rae Richey  
June Johnson  
Elsie Lou Roper

Mary Jo Smith  
Mary Ruth Smith  
Sara Elizabeth Smith  
Genell Irene Smotherman  
Dorothy Ann Snodgrass  
Norma Jean Spriggs  
Mildred May Stephens  
Peggy Lou Stott  
Betty Louise Strickland  
Geraldine Ethel Suggs  
Elwell Dean Summers  
Gene Elizabeth Summers  
Frankie Jo Swanson  
Frances Lorraine Swope  
Margaret Jane Tallant  
Jane Carolyn Talley  
Wilma Louise Tallant  
Betty Jean Tarpley  
Anna Bernice Thomas  
Bobbie Thomas  
Minnie Annette Thomas  
Nancy Loretta Thomas  
Constance Omega Thompson  
Helen Louise Thompson  
Dotty Jean Thurman  
Mym Elizabeth Trimble  
Jean Trotter  
Lillian June Turner  
Mary Ruth Ulrickson  
Betty Jean Vance  
Nova Mae Vandergriff  
Katherine Lucille Warren  
Eva Mae Watkins  
Johnaye Welch  
Betty Jeanne Wells  
Mary Dove Whaley  
Yvonne June Wheeler  
Sara Frances White  
Katie Marie Whitmire  
Jeanne Madolyn Wilkerson  
Dorothy Gertrude Williams  
Mildred Carolyn Winfrey  
Doris Katherine Woodfin  
Reba Jean Wartz  
Inez Florence Wyatt  
Demma Maurine Zachry

## JUNIOR CLASS BOYS

Rufus Abercrombie  
Harris Reeve Alexander  
Raleigh Hamilton Alexander  
Herman Kenneth Alverson  
William Boyd Anderson  
Charles Burnner Armacher  
Joe Baker  
James Daniel Bales  
Roy Martin Barrows  
Kenneth McCallie Barry  
Luther Columbus Baughn  
Jake Beard  
James Wallace Beard  
Howard Eugene Bettis

Edwin Wallace Covington  
Vernon Weaver Cox  
Charles Coyle  
Ferry William Craft  
Carey Shephard Cranford  
Julius Albert Crumley  
Bill Daniel  
William Davis  
Jerry Dean  
John C. Delashmitt  
Howard Austin Derrick  
William Orville Donahan  
William Anderson Ducker  
Charles Vernon Duckett

John Hendricks  
Charles A. Henry  
Winford Henry  
Odell Higdon  
Walter Hill  
James Herbert Halladay  
Cooper Thurman Holt  
Harry Edward Ivester  
James Adam Ivey  
Edwin Eugene Howard  
Robert McNabb Huff  
George Jackson Hughes  
Hubert Paul Humbard  
Bob Mercer Humphreys

Clifford Baxter O'Neal  
Harold Julius Owenby  
Joe E. Parks  
Ralph Patrick  
Robert Davis Peace  
James Arthur Phillips  
Layton W. Pippin  
Herman Levon Poole  
James Pope  
Bill Powell  
William James Purcell  
Dillon Elmer Quen  
Maurice Lee Ratchford  
Jack Hunter Raulston



L. J. Biggs  
Kenneth Adams Bilderback  
Jimmy Thomas Black  
Earl William Bland  
Clyde Allen Blaylock  
Donald Blevins  
John Henry Bohannon  
James Alexander Bowen  
John Charles Bowen  
William Bayles  
Harold Leonard Brecken  
Bert Branhan  
Bobby Larrimore Brewer  
William Henry Brewer  
Charles L. Brock  
Giles Robert Brooks  
Charlie Bourbon Brotbeck  
Lloyd Lee Brown  
Wallace Eugene Brown  
Franklin Prince Broyles  
Ray Louk Calloway  
Paul Laurence Carson  
Arthur Clyde Casey  
Melvin Clarence Cash  
Walter Washington Castings  
Robert William Chamberlain  
Albert Eugene Clark  
James Thomas Cobble  
Richard Coleman  
Franklin Homer Cook  
Kenneth Cook  
Luther Marvin Cape

William Austin Edwards  
Billy F. Eldridge  
Robert Arvin Elmore  
Mac Erwin  
Haskell Robert Everett  
James Melvin Farmer  
Charles Emory Farrar  
Glenn Davis Fischer  
William Lee Foster  
Ben Fussell  
Herman Lion Gamble  
H. D. Gang  
George Robert Pritchett  
Herbert Jack Gilreath  
Don Chedister Girtan  
Lawrence Eugene Glenn  
Lamar Raymond Gordon  
Robert Emmett Grant  
Byron Greer  
Thomas Charles Green  
Victor Adair Green  
Melvin Donaldson Grubb  
Charles Edward Gryder  
Harry Covington Gwinn  
Marshall Clay Gupton  
Billy Robert Hale  
Aubrey Leon Haley  
Stanley Lee Hall  
Paul Jonathan Hommel  
Henry Newton Harden  
Robert Denton Harrell  
Hughie Arnold Harris

William Humphreys  
Walter Ross Huskey  
John P. Hutchinson  
J. T. Jackson  
Claude Siler Jernigan  
John Paul Jernigan  
Amos Johnson  
J. Ernest Johnson  
Ernest Edwin Johnson  
Edward Dewitt Jolly  
Charles Edward Jones  
Denny Wilbur Jones  
Winfred Calvin Jones  
Edward William Jorges  
Joseph N. Keith  
Harvey Ellsworth Kellogg  
L. K. Laceywell  
William Bernard Lackey  
Robert E. Lambdin  
Richard D. Landis  
Ted Sanford Lefstead  
Edwin Marion Lehman  
Dick Hudson Leiper  
George Gilbert Lewis  
Charles D. Livingston  
Pete Llewellyn  
Steve Lonas  
Jack Matthew Lowry  
William Robert Lundy  
John Pincus Moss  
Carl Muans  
Herschel Wallace Nation

Charles Smith Riddle  
Ed Ridge  
Clyde Alvin Riggs  
Charles Marvin Robinson  
Bob Rogers  
Fred Salmon  
James Leslie Tate  
Bob Lee Taylor  
Ira Franklin Templeton  
Ned Walton Thaxton  
Thomas Lloyd  
John Kelly Thompson  
Claude Leon Timmons  
Deward Varnell  
Robert Williams Walker  
George Dewey Walls  
Joe Gilbert Wallace  
James Kenneth Watkins  
Earnest Patrick West  
Riley Westbrook  
Marvin Walter Whatley  
Frank Andrew Wheeler  
Glenn Frank White  
James Wilburn Whitmire  
Clyde L. Wilhoit  
Hugh Bass Winfrey  
Harry Elmer Wise  
Milton Wooden  
William Buttram Woods  
Buddy Garrett Wooten  
Ralph Campbell Wooten



# SOPHOMORE CLASS GIRLS

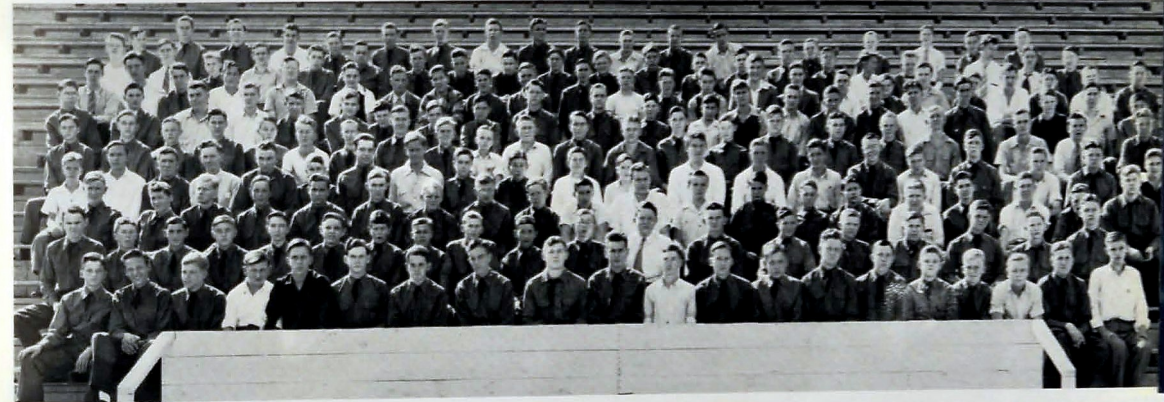
Alma Alder Vera Alder Peggie Allen Rose Allison Lucy Anderson Lorna Andrews Willie Andrews Irene Bailey Betty Baker Pamela Baker Beatrice Barnes Mary Ruth Barnes Mary Barrows Julia Barry Mary Bayden Mary Beane Edna Beard	Anna Daniel Doris Daniels Jane Danielle Doris Davis Irene De Friece Martha Doney Thelma Dixon Wilhelmina Doran Agnes Ducker Martha Dudderar Mittie Dudley Betty Duggan Sue Dunne Mable Durham Betty Eaves Virginia Eckert	Kitty Henry Nancy Higdon Anna Higgins Charlotte Hodges Nancy Jo Hoque Martha Holland Virginia Holland Magbelle Hood Juanita Hope Edna Howell Edsel Hudson Betty Hughes Elois Hurst Betty Hutcheson Betty Jackson Virginia Jackson Helen Jenkins	Wanda Miller Betty Minnick Evelyn Moates Bessie Moon Annie Moore Marjorie Moore Ruth Morris Elizabeth Morton Betty Mullins Martha Millis Lorene Mundy Mary Murphy Dorothy Murphy Sue Murray Barbara Narramore Agatha Nunley Sue Nye	Doris Selfie Betty Shelly Mary Sherill Evelyn Shirley Marlyn Shrader Mary Siddall Virginia Sims Anna Simmons Mary Simmons Louise Simpson Juanita Skipper Betty Slayton Betty Smith Irene Smith Joyce Smith Margie Smith Sybil Smith
--	--	---	---	---



Doris Beene Elizabeth Beene Charlotte Benedict Ileen Bennett Marion Blackwell Alice Blund Mildred Bledsoe Margaret Blevins Marion Bolden Emilie Boen Alma Bowen Wanda Boyd Barbara Bracken Ruth Brandt Betty Bridwell Mildred Brock Elizabeth Brooks Mae Broome Charlotte Brown Frances Brown Mary Brown Virginia Broyles Lucy Buffett Grace Bullock Mary Butler Verlie Campbell Virginia Card Mary Carmichael Margaret Carol Mary Carson Patricia Carter Helen Casey Betty Chapman Kathryn Chapman Juanita Childers Margaret Childers Molly Childers Peggy Cobb Adella Coleman Betty Collins Leola Colman Hazel Colman Marilyn Conner Mary Conner Betty Coulston Nellie Cox Verna Creamer Kathryn Hart Betty Harwood Helen Crownmover Betty Cummings Genieve Cunningham Betty Dail	Amy Jean Erwin Doris Esby Mary Ethridge Betty Evans Violet Evans Mildred Ewton Phyllis Falls Martha Farley Ivle Farrar Roberta Figgens Betty Fine Doris Finner Ruth Foster Jewell Fowler Flora Francisco Dorothy Frizzle Christine Frijar Agnes Gamble Addie Garrett Dorothy Gattis Helen Gatzaway Lois Gentry Penny Gibbs Virginia Gilbreath Juanita Gill Ruth Gillespie Iona Gillette Margaret Ginn Kathleen Goldston Eleanor Goodgame Loretta Gossett Virginia Graham Helen Graham Dorothy Gray Edna Greene Ruby Gregg Zoanne Grove Mildred Gunn Katherine Hall Olga Hardin Dana Hardin Betty Hardy Betty Harlow Cora Harris Peggy Harris Kathryn Hart Betty Harwood Peggy Hatcher Mary Hatfield Nancy Henderson Doris Hendrix	Barboia Johns Betty Johnson Evelyn Johnson Janice Johnson Ruth Johnson Betty Jones Coelelin Jones Rebecca Jones Peggy Keef Betty Keen Melva Kelly Betty Kinder Edna Kington Sarah Pearson Betty Perkins Virginia Kolywick Elizabeth Kreis Kittie Kreischer Addie Lawton Mable Layne Janice Lee Erma Lehman Evelyn Leonard Helen Lester Wilma Liner Evelyn Lockleer Ruth Loney Christine Long Margaret Lyons Berrie Lon McAlister Elizabeth McAlister Mary McAmis Juliet McBrown Betty McClellan Helen McCuiston Martha McDaniel Lorraine McEntire Gladys McKinney Sarah McNichal Helen Macdon Sela Manly Julia Martin Kathryn Massey Doris Mavity Ann Mavity Mary Morlan Virginia Meyer Tressa Miles Alice Imogene Miller Virginia Miller	Helen O'Dell Lois Overurf Flora Owens Dorothy Owens Mary Padget Ruby Page Dorothy Paige Betty Parker Mary Parker Imogene Parks Joan Pearce Edna Pearson Sarah Pearson Betty Perkins Virginia Kolywick Elizabeth Kreis Kittie Kreischer Addie Lawton Mable Layne Janice Lee Erma Lehman Evelyn Leonard Helen Lester Wilma Liner Evelyn Lockleer Ruth Loney Christine Long Margaret Lyons Berrie Lon McAlister Elizabeth McAlister Mary McAmis Juliet McBrown Betty McClellan Helen McCuiston Martha McDaniel Lorraine McEntire Gladys McKinney Sarah McNichal Helen Macdon Sela Manly Julia Martin Kathryn Massey Doris Mavity Ann Mavity Mary Morlan Virginia Meyer Tressa Miles Alice Imogene Miller Virginia Miller	Edna Stanford Mildred Steele Malvina Stegall Dorothy Stephens Ada Stone Steward Betty Stone Hannah Strickland Bubye Tate Doris Taylor Glenda Taylor Anna Teague Thelma Terry Virginia Thomas Dorothy Thompson Jo Anna Thompson Martha Tillery Elizabeth Travis Violeta Tyler Harriet Ulrich Doris Underwood Dollace Usher Doris Venable Elsie Vick Frances Waldrup Dorothy Walker Imogene Walker Mary Walker Marguerite Ward Frances Ware Verna Ware Bettie Watson Laura Weatherford Gwendolyn Westbrook Anita Wheeler Gloria Wheeler Dorothy Whiteaker Barbara White Margaret White Ruby Whitecraft Ann Whitehead Barbara Whitmire Mary Whitten Jane Wilhoite Helen Wilkes Richard Collier Hubert Collum Robert Cormally George Couch Billy Couser Harold Cox Walter Cox
---	---	--	---	---

# SOPHOMORE CLASS BOYS

Archie Adams Carlton Adams Sam Agee Bobby Agnew Russell Aiken John Anderson Ernest Andrews James Atheran Jim Bacon Glenn Baker James Baker Lewis Baker Billy Barlen Barbara Barnes Leland Barrows Leland Bough Billy Beck	William Cox Wymon Dunn Samuel Durham Joe Dutto Duke Selver Miracle Eston Billy Eaves Robert Edens W. L. Ellington Damon Edicott Herman Evans Billy Farmer Thomas Farrell Bob Ferrell Tommy Foley Glenn Foster Dan Fowler Elmer Frank Joseph Fravor William Gether Ralph Garrett Howard Garrett Robert Gentry Robert Gentry William Gentry William George Homer Geron Alton Gillilan Gerald Gledhill Everett Goodner Kenneth Goodwin Robert Goza Forrest Griffith De Witt Griswold Ralph Guffey Tommy Groover Denable Guess Clyde Hamby George Hamack Wayne Hammond William Hammond Curtis Hardin Carl Harris George Hewey, Jr. James Haghton William Hayes Ted Gays George Held	Charles Henderson Jimmie Hicks Stephen Hicks Alva Hill William Hill Bobbie Hite Kenton Hixon A. W. Holland Henry H. Howard Henry R. Howard William Howard Leon Hudson Orville Hunsucker Wesley Hunt Joe Hum Jimmy Huskey	Stanley Lomenick Kenneth Lonas William Long Charles St. Clair Lee Lunford Oscar Lyle Stanley McBroome Roy McCallum Oustrs McCulling Clarence McDavis Ernest McElhane Donald McGuire Curtis McKinney Raymond McMacan Roy McMalib Edward Madewell Richard Mahaffey	Donald Rutmeyer Vernon Rutherford Conroy Ryan Charles St. Clair Harold St. Clair Johnny Standler Robert Scarbrough William Schoecraft Richard Sessions Douglas Sisemore Clifford Smith Frank Smith Jack Smith John Smith Leon Smith Luther Smith Robert Smith
---	--	---	--	---



William Beene George Bell Melvin Bogg John Billingsley Jack Blaylock Mark Blaylock Wesley Blaylock Bill Bookout Rex Bowman George Bolus George Bradford Carl Bray Edward Bray Billie Brewer George Brewer Paul Broadway Donald Brock Alston Brooks Harold Brown Robert Brown William Brown Elmer Burns Leroy Burrows Ben Byrd James Caldwell Marvin Caldwell Bill Campbell Bruce Campbell Jack Card Stephen Coaden Dick Carmack Harold Carpenter John Carroll Albert Carter Billy Carter Melvin Carter Earl Casey James Cash George Carter Robert Chadwick Charles Childers Richard Collier Hubert Collum Robert Cormally George Couch Billy Couser Harold Cox Walter Cox	John Dunn Wymon Dunn Samuel Durham Joe Dutto Duke Selver Miracle Eston Billy Eaves Robert Edens W. L. Ellington Damon Edicott Herman Evans Billy Farmer Thomas Farrell Bob Ferrell Tommy Foley Glenn Foster Dan Fowler Elmer Frank Joseph Fravor William Gether Ralph Garrett Howard Garrett Robert Gentry Robert Gentry William Gentry William George Homer Geron Alton Gillilan Gerald Gledhill Everett Goodner Kenneth Goodwin Robert Goza Forrest Griffith De Witt Griswold Ralph Guffey Tommy Groover Denable Guess Clyde Hamby George Hamack Wayne Hammond William Hammond Curtis Hardin Carl Harris George Hewey, Jr. James Haghton William Hayes Ted Gays George Held	William Igou Wymon Dunn Samuel Durham Joe Dutto Duke Selver Miracle Eston Billy Eaves Robert Edens W. L. Ellington Damon Edicott Herman Evans Billy Farmer Thomas Farrell Bob Ferrell Tommy Foley Glenn Foster Dan Fowler Elmer Frank Joseph Fravor William Gether Ralph Garrett Howard Garrett Robert Gentry Robert Gentry William Gentry William George Homer Geron Alton Gillilan Gerald Gledhill Everett Goodner Kenneth Goodwin Robert Goza Forrest Griffith De Witt Griswold Ralph Guffey Tommy Groover Denable Guess Clyde Hamby George Hamack Wayne Hammond William Hammond Curtis Hardin Carl Harris George Hewey, Jr. James Haghton William Hayes Ted Gays George Held	Allen Marlen Billy Marlen Eldridge Martin Warner Mathis Frank May Robert May Robert Meyer Charles Miller Thomas Miller Mayon Milligan Edward Milligan Leo Mills John Mitchell Wesley Moses James Myeves John Neal Louis Nelson Bill Nicely Martin Niles Edward Norris J. G. O'Brien Clarence Orr Kenneth Orrell Edwin Parke Billy Parker Clyde Parks Kenneth Patton Thomas Patton, Jr. Kenneth Payne Eugene Payne Ray Payne Cameron Peck David Lawson Herby Layman Paul Layton Carr Leavitt James Leadford John Lee Paul Lee Roy Lee William Lenz Marion Leonard George Lerck Billy Leverich Roy Levi Grady Lewis Clemmon Lillard Roy Link Jack Little Bill Lomenick	John Sneed Marvin Snow Milligan Spence Paul Stancil Charles Stephens Grady Stephens Winthrop Steward Herbert Sully Jimmy Sutton John Sweeten Everett Swingle William Tallant Charles Tally Jack Taylor Millard Teal Elmer Templeton Jack Templeton Harold Thomas Edward Turner Earl Underhill James Upton Dallas Usher Roy Vance Edward Vaughn William Vines Joe Waggoner Robert Walker Lewis Ware Edward Warren Charles Watkins Montie Webster Berman Welch Marcel Westbrock Russell Wheeler Allen Wheeler Carl Wigot Dan Wilhoite Don Williams Hal Williamson James Willis Lloyd Wilson Ralph Wilson Donald Womack Keith Wood Paul Wright Willard Wright Charles Young
--	--	---	---	--



# FRESHMAN CLASS BOYS

Robert Lare Abel  
Maurice James Agnew  
Harold Leon Alexander  
Joseph Edwin Alexander  
Adam Anderson  
Billy Zell Andrews  
Halbert Eugene Baker  
Hugh Harold Baker  
George Eldon Barker  
Harold Fremont Beatty  
Donnie Franklin Belvin  
Joe Harold Bennett

John Edward Dickerson  
Garland Dodd  
John Lillard Driver  
Charles Andrew Flinn  
Wallace Mitchell Ford  
Frank Samuel Fricks  
Ed Fulkles  
Billy Shepard Gamble  
Graydon Earl Gannaway  
Nelvin Austin Garner  
John Frank Gibson  
David Franklin Gray

Joe Gordon Kelley  
Joe Marsh Kelley  
Tommy Fitzberg Kerns  
Eddie Kimsey  
Charles Jack Karnas  
Wade Hampton La Ferry  
Jimmy Robert Landers  
Dewey Walter Lawing  
Elma Eugene Lawrence  
Carl Lee Lawson  
Ralph Windfield Lawson  
Walter Allis Lerch

William Allen Rankin  
James Warren Ratchford  
James Edward Ray  
Norman Talmadge Reed  
Alvin Robinson  
Charles Edward Rogers  
Charles Wayne Rogers  
Melvin Earl Rogers  
John Christy Rose  
Wade Milton Samples  
Charles Raymond Schruder  
William Fred Scruggs



Hugh Warren Bivens  
James Bill Brackett  
Henry Ralph Bratton  
Rody Broome  
Raymond Daniel Bratbeck  
Stephen Lee Brothers  
Jack Harmon Brown  
Bert Broyles  
Charles Milton Bryan  
Alvin Monroe Burns  
Theodore Nils Burtness  
Aaron Fredrick Buttner  
Carson Call  
Lloyd Conley Camp  
Bill Richard Capehart  
Marion Don Carter  
Romer Alvin City  
William Henry Cliver  
Zack Taylor Cofer  
Henry Garland Coefield  
Charles Henry Collins  
Robert Earl Collins  
John Thurston Cooke  
Billy Carl Cornelius  
Joseph Kenneth Courtenary  
Robert Louis Cowden  
Charles Lois Culbarson  
Louis Dean Daggett  
James Francis Daniel  
Dames Huston Daugherty  
Alfred Wilcey Davis  
Tommy Floyd Davis  
James Terry Day  
James Milton DeShazo

Billy Russell Greene  
Calvin Tyler Greene  
William Paul Guhne  
Donald Hanson  
Robert Louis Hall  
Henry Edsel Hartman  
Jerry Lee Hartman  
Harold Edward Harvey  
Richard Edwin Harvey  
Horace Harold Haston  
Milton Bruce Heaps  
Fred Henry Heard  
William Estes Helton  
Dean Henderson  
Jack Bryant Henderson  
William Joseph Herriott  
George Hess  
Charles William Hicks  
Harry Edwin Hicks  
Luther Leon Hicks  
Herbert Richard Hollifield  
Edward Charles Hollingsworth  
Eugene Melvin Holmes  
John Newton Houts  
Joseph David Hudson  
Ray Gladys Hudson  
Jack Jackson Humphreys  
Oscar Nelson Hunter  
Carl Charles Hurst  
Lloyd Charles Huskey  
William Donald Irvin  
Bill Charles Jennings  
J. R. Jennings  
Robert Francis Jones

Herschel Kelley Love, Jr.  
Van Dillion Lynch  
Glenn Richard McCullough  
Robert Warren McCavis  
Gene Boyd McDonald  
Lloyd Herman McGraw  
Robert Ivey Magette  
John Gaines Makin  
John Leonard Marlow  
Jack Edmond Mason  
Jon Willard Massey  
Walter Lamor Massey  
Jack Shannon Mathis  
Frederick Arthur Mattil  
Tommy Charles May  
Bill Ernest Meadows  
James Edward Meadows  
William Don Middleton  
William Henry Myer  
Alfred Emanuel Miller  
Thomas Wiley Miller  
James Russell Mitts  
Billy Tom Neil  
Harry Eirren Nettly  
John David Nicholas  
Raymond Madaion Park  
Charles Herbert Parker  
James Henry Parrott  
Ernest L. Petty  
Homer Thomas Petty  
Robert Peter Plemons  
Arthur Lee Powell  
Joe Joseph Powell  
John Wesley Pruitt

Waden Sharp  
Billy Clyde Shudden  
James Luther Smith  
Kenneth Walton Smith  
Wayne Smith  
Nelson Eugene Snyder  
Paul William Somick  
Warren Eugene Sullivan  
Bobbie Leon Sutton  
Edwin McCog Tate  
Billy Richard Taylor  
Bud Taylor  
George Washington Taylor  
Howard Hamilton Taylor  
Howard William Teal  
Marvin Randall Thompson  
James Ivey Tittle  
William Davel Towers  
Robert Daniel Trimble  
John Edward Underwood  
David Ernest Wallom  
Joe Dave Walls  
Billy Weaver  
Walter William Wenck  
Claude Winsett Whitehead  
Carl Dean Whitesel  
Rhoten William Willhoit  
Roy Aner Willhoit  
Luther Manning Williams  
Richard Wilson Williams  
Paul Murphy Wilson  
Walter Andrew Witt  
Robert Samuel Wright  
James Carter Zarn

# FRESHMAN CLASS GIRLS

Margaret Virginia Abel  
Betty Anderson  
Johnny Marion Anderson  
Margery Lee Ashworth  
Aline Kate Avans  
Agnes Ruth Ayers  
Viola Vandora Bailey  
Dixie June Barger  
Isabelle Barnes  
Carolyn Louise Baughn

Barbara Sue Dickert  
Mary Anne Doremus  
Laurine Jo Duggan  
Eunice Dunn  
Jean Durham  
Sarah Jean Dyer  
Kathryn Lula Farris  
Virginia Louise Faughender  
Marion Claire Fletcher  
Grace Louise Foley

Milly Ann John  
Helen Elizabeth Janow  
Maxine Star Jarrell  
Betty Jean Johnson  
Betty Sue Johnson  
Virginia Lee Johnson  
Virginia Keener  
Effie Virginia Keith  
Frances Marie Kelley  
Patricia Ann Kimball

Elsie Marian Orr  
Erma Gene Owens  
Betty Joe Ownbey  
Dorothy Pearl Patton  
Eleanor Patton  
Jessie Ruth Patton  
Ethelyn Matilda Peace  
Emily Earl Peoples  
Betty Sue Phillips  
Virginia Ruth Phillips



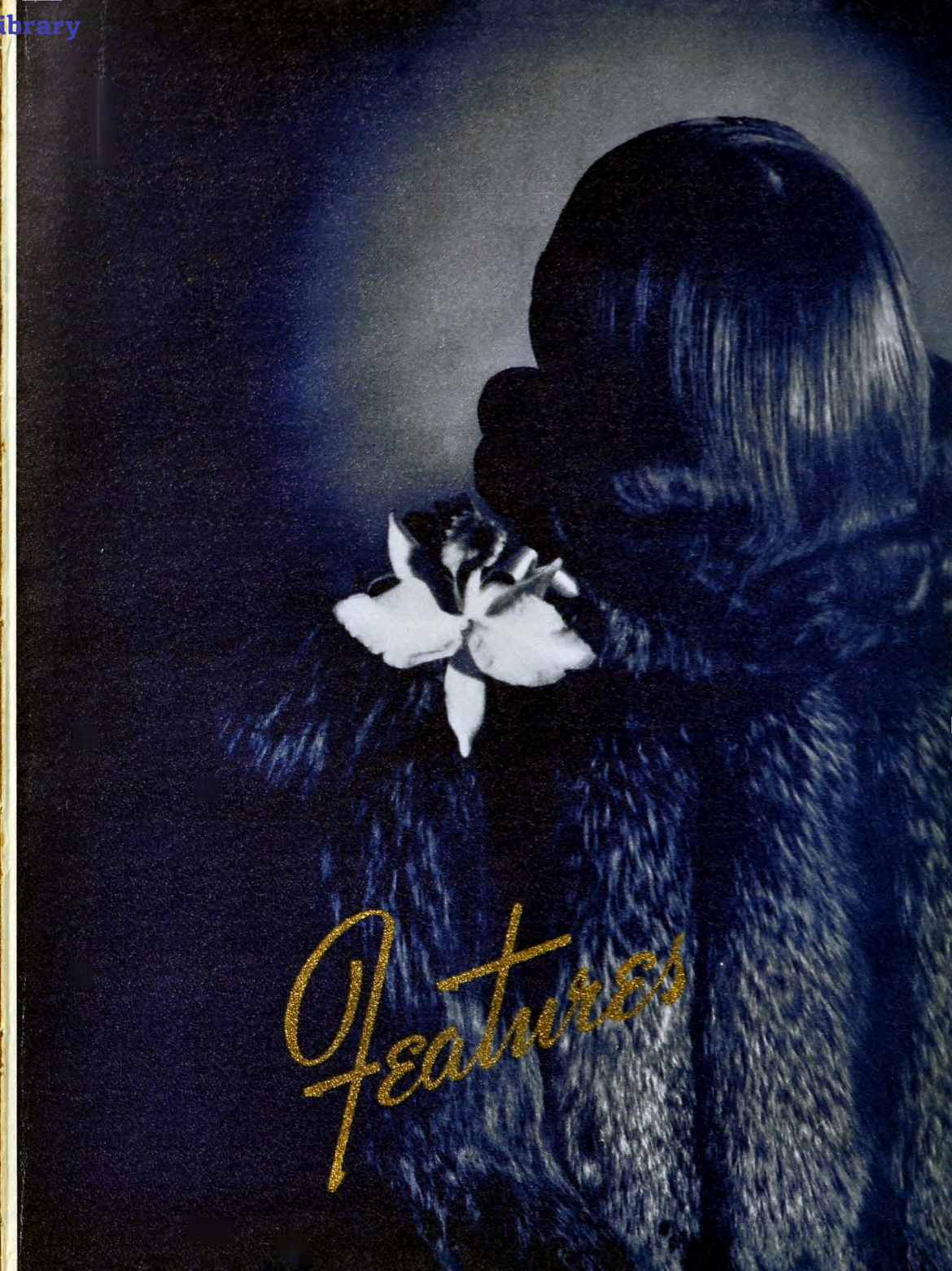
Ethel Lorene Blackburn  
Sara Lou Blackman  
Bessie Geneva Bowling  
Gwendolyn Ruth Boydston  
Betty Lou Broome  
Betty Jean Brown  
Bettye Brown  
Lorna Belle Brown  
Barbara Tonya Brownsey  
Burbalee Lucender Bunch  
Willadean Dian Burns  
Doris Sue Caldwell  
Mildred Elsin Campbell  
Dorothea Geanne Carlton  
Elinor Jane Carmichael  
Virginia Louise Clants  
Betty Lou Cobleigh  
Flora Gertrude Colston  
Betty Rose Costello  
Kathryn Louise Couch  
Millie Catherine Crane  
Clara Belle Crump  
Edna Earl Cummings  
Dorothy Helen Dean

Bobbie Jean Ford  
Ruth Foster  
Henrietta Estelle Foust  
Betty Mae Fryer  
Jean Isabel Gaither  
Betty Lou Gann  
Margaret Marie Gibson  
Margaret Athelene Giles  
Mary Ruth Gillette  
Marian Louise Goins  
Ruth Evelyn Goode  
Nina Lucile Gessett  
Imogene Griffith  
Shirley Ann Gwin  
Edith Haig  
Annetta Maude Hatcher  
Alma Louise Henderson  
Martha Jeanne Holderman  
Frankie May Hotalin  
Helen Rachelle Hudson  
Royaldine Ruth Hughes  
Wanda Janet Humphrey  
Louise Ellen Hyde  
Erma Lee Jackson

Betty Jo Kimsey  
Bettye Jane Kindred  
Jannie Christine Ladd  
Alice Virginia Lawson  
Alma Ruth Lawson  
Javota Jean Layne  
Jeanette Lee  
Mary Dena Leeper  
Lois Evelyn Lush  
Sarah Juanita Luttrell  
Elizabeth Ney McAllister  
Emily Sue McClain  
Minnie Winola McMahan  
Dorothy Monelle McVeigh  
Billye Jane Mathis  
Martha Frances Medley  
Cliffie Josephine Mertins  
Peggy Jean Miller  
Ames Marie Morgan  
Nell Ruth Morgan  
Lodema Alice Narrimore  
Ruby Aileen Nash  
Mary Elisabeth O'Dell  
Hazel Mae Ogle

Joyce Arlette Poe  
Sarah Jane Price  
Evelyn Gertrude Priddy  
Marion Earl Richie  
Evelyn Cellmme Rogers  
Patricia Pearl Rogers  
Frances Elara Russell  
Kathleen Seymore  
Pauline Seymore  
Nola Manives Shipley  
Marjorie Louise Smith  
Dixie Jaunita Stamey  
Frances Joyce Stapp  
Evelyn Marie Sterchi  
Freda May Stump  
Betty Jo Sully  
Beulah Jean Tompson  
Mary Louise Warlick  
Wilma Sue Warren  
Marjorie Marie Washburn  
Dorothy Lou West  
Annie Ruth Whittle  
Peggy Ann Woods  
Jewell Aleene Young









C. D. BROYLES



JEANNE LEAVITT

# SCHOLARSHIP





CHARLES GLEAVES

LOIS BROWN

# T O R C H B E A R E R S

## LEADERSHIP

ALICE CAMP  
JOE GRAHAM



## SERVICE

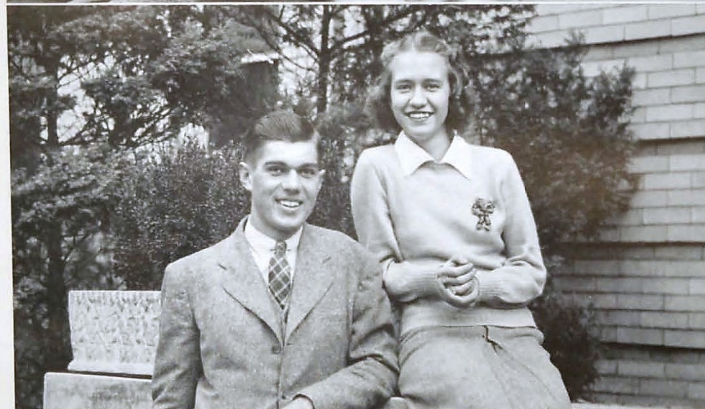
MARY BILLINGSLEY  
JAMES HOWARD





# PERSONALITY

CHARLENE JACOWAY  
ED WILCOXSON



# FRIENDLINESS

MARCHETA COCHRAN  
HENRY C. COLSTON



# DEPENDABILITY

BETTY MARLOW  
WALLACE TURNER

# COURTESY

MARTHA ATWOOD  
C. A. JAY



# T A L E N T

MARY FRANCES GROSS  
CHARLES GLEAVES



# ATHLETIC A B I L I T Y

BETTY STANDIFER  
BEN HUDDLESTON







# MILITARY OFFICERS AND SPONSORS



COLONEL DALE ALLISON



BETTY RUTH SMITH

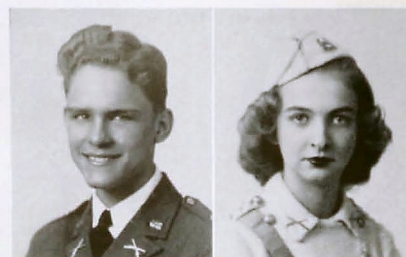


MAJOR C. D. BROYLES

DOROTHY WALLACE

MAJOR GEORGE CARDEN

MARY FRANCES GROSS



MAJOR D. L. HALEY

MARY GUY SPRINGER

CAPTAIN EARL COSBY

DORIS HYER

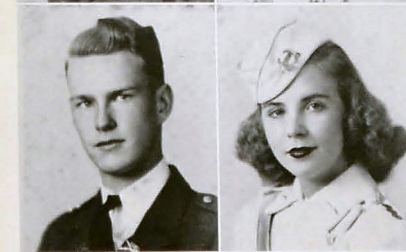


CAPTAIN HENRY COLSTON

MARY L. BILLINGSLEY

CAPTAIN C. A. JAY

DOROTHY DAVIS



CAPTAIN JAMES HOWARD

SHIRLEY McBROOM

CAPTAIN GLYNN GROSS

IMOGENE LAWSON

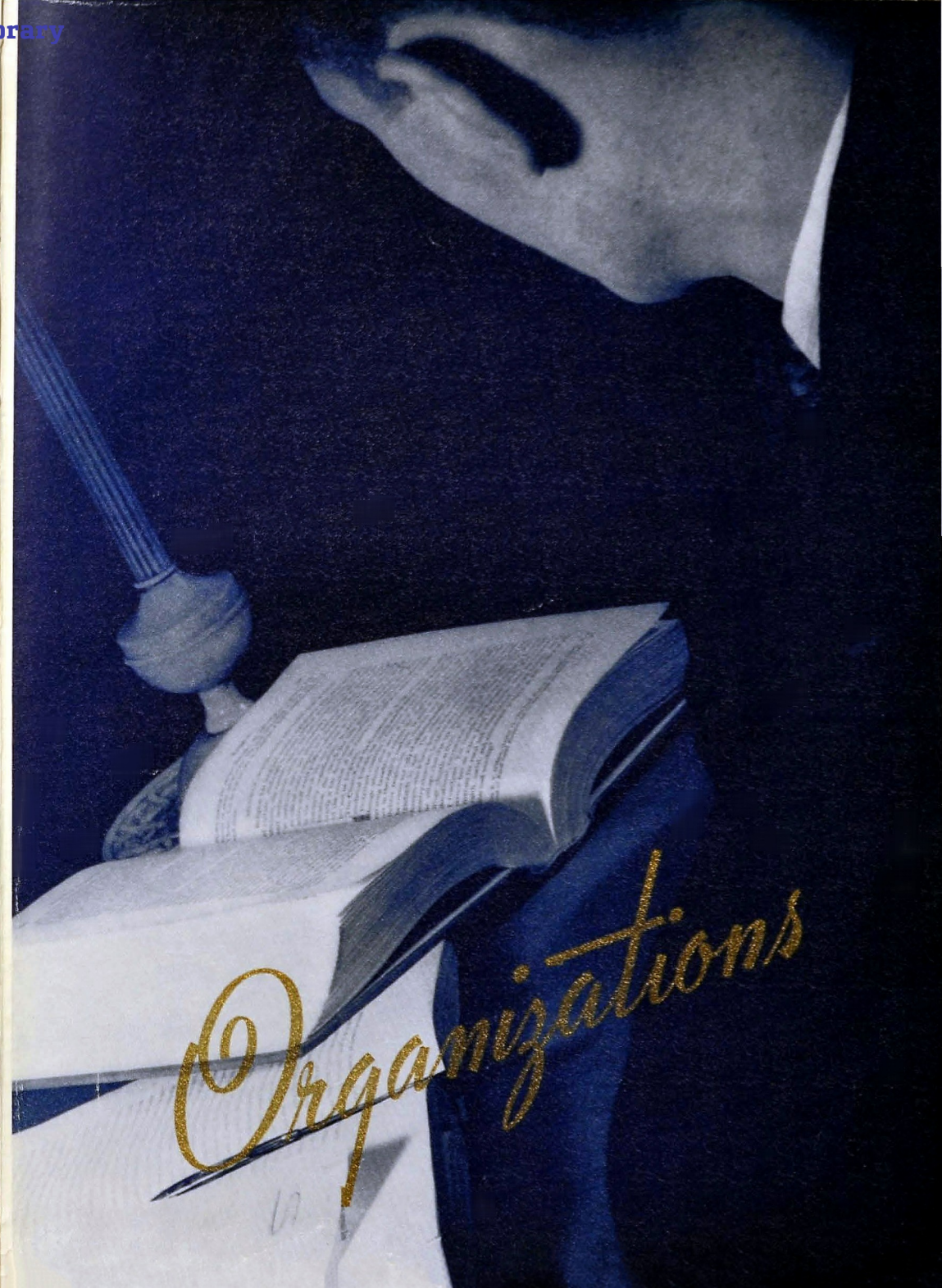


CAPTAIN PAUL SHELTON

FLORENCE WHITECOTTON

CAPTAIN BILL HAGAMAN

BONNIE CHILDRESS





# MILITARY OFFICERS

## LIEUTENANT COLONEL D. N. McMILLIN

*Professor of Military Science and Tactics*

Colonel D. N. McMillin's military career is one of long standing, dating from his graduation from Virginia Military Institute, Lexington, Virginia, in 1909.

During the first World War, Colonel McMillin saw service in France in command of "B" Troop, which served as a part of the British Army.

Included in his more than twenty-five years of active service are seven years spent in Puerto Rico and Hawaii, where he was stationed from 1926 to 1933, when he was transferred to Minnesota.

In 1937 Colonel McMillin came from Minnesota to take charge of the R. O. T. C. Units as P, M, S. and T, in the schools of Chattanooga, his native city, where he has been a most efficient leader in his field.



## MAJOR W. H. BYINGTON

*Assistant Professor of Military Science and Tactics*

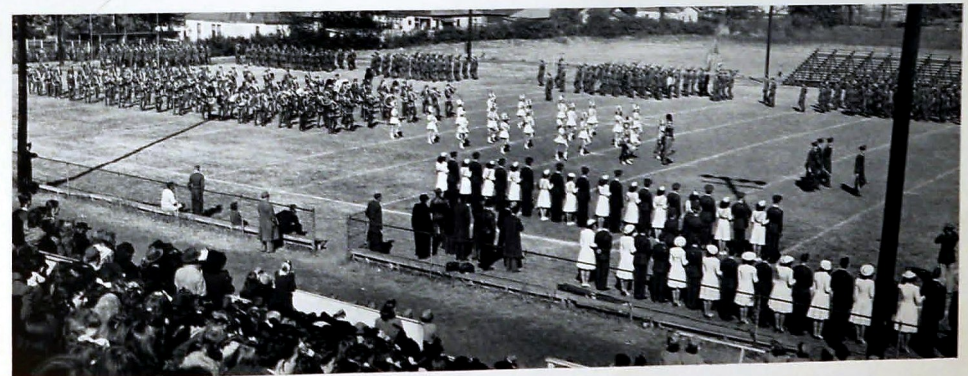
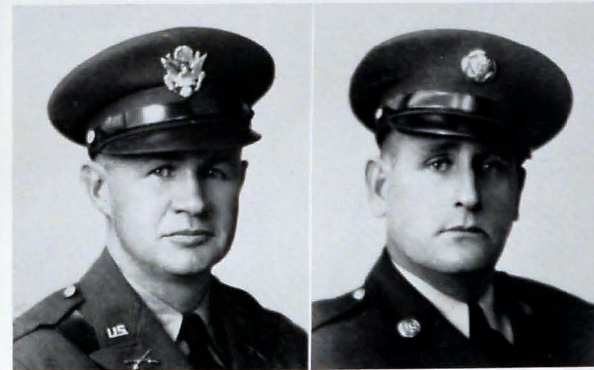
Major Byington, better known to Central students as Captain Byington, for only recently did he get the much deserved promotion to major, is an alumnus of Central who began his military training at Fort Oglethorpe. Following his graduation from the First Officers Training Camp in 1917, Major Byington served in the Thirty-first Division at Camp Wheeler, Georgia, and during the World War in the Eighty-second Division in France. After this war he joined the reserves.

## SERGEANT A. B. C. DAVIS

*Sergeant Instructor*

Sergeant Davis, who hails from the state of Louisiana, began his schooling in New Orleans. With twelve years of service in the United States Army, Sergeant Davis has been on D. E. M. L. since 1931 as instructor of the R. O. T. C. at City College, New York City, and Georgia School of Technology, Atlanta. In 1940 he was transferred as instructor at Central.

During his years of service Sergeant Davis has traveled widely, having been in France, England, Germany, India, Australia, Hawaiian Island and Panama.





## REGIMENTAL STAFF

DALE ALLISON, Commanding Officer . . . . . Colonel  
 JOE GRAHAM, Executive Officer . . . . . Lieutenant Colonel  
 EDWIN BISPLINGHOFF, Regimental Adjutant . . . . . Captain  
 ROY HYATT, Plans and Training Officer . . . . . Captain  
 RICHARD ROSE, Publicity Officer . . . . . Captain  
 CLAY GUPTON, Supply Officer . . . . . Captain

## FIRST BATTALION STAFF

C. D. BROYLES . . . . . Major  
 ED WILCOXSON . . . . . First Lieutenant  
 WILLIAM SAULTERS . . . . . Second Lieutenant  
 BILL MORRISON . . . . . Sergeant Major

## SECOND BATTALION STAFF

GEORGE CARDEN . . . . . Major  
 ROBERT FLETCHER . . . . . First Lieutenant  
 ED BLEVINS . . . . . Second Lieutenant  
 BILL SCHOOCRAFT . . . . . Sergeant Major

## THIRD BATTALION STAFF

D. L. HALEY . . . . . Major  
 ERVIN WILLIAMS . . . . . First Lieutenant  
 BILL BROYLES . . . . . Second Lieutenant  
 CHARLES AXMACHER . . . . . Sergeant Major



## COMPANY "A"

EARL COSBY . . . . . Captain  
 GROOVER PARTIN . . . . . First Lieutenant  
 LEBRON PAYNE . . . . . Second Lieutenant  
 CLAUDE MAXWELL . . . . . Second Lieutenant

### SERGEANTS

ARNOLD HARRIS . . . . . JAMES IVEY . . . . . First Sergeant  
 ROY LEE . . . . . FRED MAY . . . . . LAYTON PIPPEN

### CORPORALS

KENNETH ALVERSON . . . . . ROBERT HUFF . . . . . CHARLES FARROR . . . . . JAMES SMITH  
 CHARLES HENRY . . . . . EDWARD JOLLY

## COMPANY "B"

HENRY COLSTON . . . . . Captain  
 JAMES IGOU . . . . . First Lieutenant  
 MILTON McDONALD . . . . . Second Lieutenant  
 GENE ANDREWS . . . . . Second Lieutenant

### SERGEANTS

DONALD BLEVINS . . . . . VERNON COX . . . . . First Sergeant  
 HERBERT GILREATH . . . . . JACK RAULSTON . . . . . LLOYD THOMAS

### CORPORALS

ROY BARROWS . . . . . HERMAN POOL . . . . . BYRON SAUNDERS . . . . . LESLIE TATE







### COMPANY "C"

C. A. JAY ..... Captain      HERBERT THORNTON ..... Second Lieutenant  
 RAYMOND BROTHERS ..... First Lieutenant      ED MORRIS ..... Second Lieutenant

#### SERGEANTS

BOBBY AGNEW      ALBERT MILLER ..... First Sergeant      W. B. MOORE  
                                  MAC ERWIN      L. R. GORDON

#### CORPORALS

OPAL COLSTON      CLYDE CASEY      ERNEST MARTIN      BOBBY POSTON  
                                  DEWARD VARNELL

### COMPANY "E"

JAMES HOWARD ..... Captain      LYNN GROSS ..... Second Lieutenant  
 JOE KING ..... First Lieutenant      DEAN FALLS ..... Second Lieutenant

#### SERGEANTS

JERRY DEAN ..... First Sergeant  
                                  JACK LOWERY      THOMAS COLLUM

#### CORPORALS

JAMES ATHERAN      DICK BARRY      ROBERT MARLAND      ALBERT WATKINS



### COMPANY "F"

GLYNN GROSS ..... Captain      HAMPTON JACKSON ..... Second Lieutenant  
 LOUIS HUDSON ..... First Lieutenant      GEORGE HALL ..... Second Lieutenant

#### SERGEANTS

ELMORE ARVIN      MAURICE RATCHFORD ..... First Sergeant      BILL MAYS  
                                  LEON HALEY      JACK MCGREGOR

#### CORPORALS

EARL BLAND      LEN CARDEN      JAMES HARDEN      FRED HAMMEL  
                                  A. C. WILLIAMS

### COMPANY "I"

PAUL SHELTON ..... Captain      TRAVIS REED ..... Second Lieutenant  
 BILL YOUNGER ..... First Lieutenant      JACK FARBER ..... Second Lieutenant

#### SERGEANTS

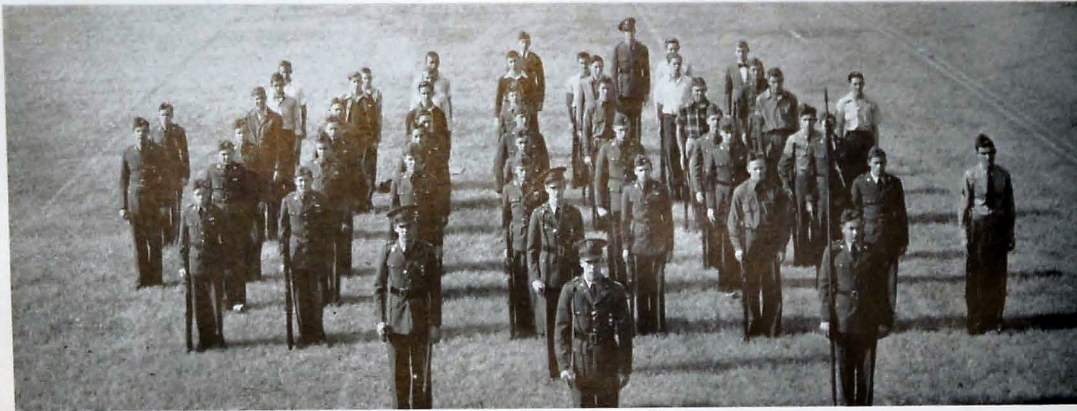
KENNETH BILDERBACK      HARDEMAN STONESTREET ..... First Sergeant      FRANK SCOGGINS  
                                  BILL HALE      EUGENE SHRADER

#### CORPORALS

JACK BEARD      HARRY GUINN      JAMES HICKS      EDWIN HOWARD  
                                  BILL MARLER







## COMPANY "K"

BILL HAGAMAN . . . . .	Captain	BOB DUNN . . . . .	Second Lieutenant
BILL YOUNG . . . . .	First Lieutenant	BILL MARLER . . . . .	Second Lieutenant

### SERGEANTS

J. E. JOHNSON . . . . .	First Sergeant	KENNETH BARRY . . . . .	M. WOODEN
BILL POWELL . . . . .	ED RIDGE		

### CORPORALS

BILL BEARD . . . . .	ALBERT HESS	STEVE LONAS	JOE WALLACE
	ORVILLE DONAHOO	ROY CHAMBERLAIN	

## PRESENTATION OF SPONSORS

Left to Right

BETTY RUTH SMITH . . . . .	Regimental	MARY LORAIN BILLINGSLEY . . . . .	Company "B"
DOROTHY WALLACE . . . . .	First Battalion	DOROTHY DAVIS . . . . .	Company "C"
MARY FRANCES GROSS . . . . .	Second Battalion	SHIRLEY McBROOM . . . . .	Company "E"
MARY GUY SPRINGER . . . . .	Third Battalion	IMOGENE LAWSON . . . . .	Company "F"
ALICE CAMP . . . . .	Band	FLORENCE WHITECOTTON . . . . .	Company "I"
DORIS HYER . . . . .	Company "A"	BONNIE CHILDRESS . . . . .	Company "K"



# CLUBS





## CLUBS

### ANNOUNCERS' CLUB

ED WILCOXSON ..... President  
 BRUCE LIVENGOD ..... Vice-President  
 DORIS MERLE DEAN ..... Secretary  
 NANCY SUE HILL ..... Treasurer  
 MISS BETTY MAE COLLINS ..... Sponsor

### ANCHORS AWEIGH

GERALDINE JONES ..... President  
 BETTY BINKS ..... Vice-President  
 MARY LOUISE BIGLEY ..... Secretary  
 CHARLENE JACOWAY ..... Treasurer  
 MISS LOUISE SUTTON ..... Sponsor

### ALL STATES CLUB

PHILLIP HICKEY ..... President  
 BRUCE LIVENGOD ..... Vice-President  
 RUTH WILLIAMS ..... Secretary  
 DORIS BUTLEY ..... Treasurer  
 MISS BETTY MAE COLLINS ..... Sponsor

### BACHELORS' CLUB

MARVIN BARNES ..... President  
 JACK SPENCE ..... Vice-President  
 JOE KING ..... Secretary  
 C. D. BROYLES ..... Treasurer  
 MRS. ELIZABETH BEAMGUARD ..... Sponsor

## CLUBS

### GIRLS' BAND CLUB

CAROLYN CAMP ..... President  
 EUDORA RIDDICK ..... Vice-President  
 EDNA EARLE EVANS ..... Secretary  
 TOPSY CAPLAN ..... Treasurer  
 MR. E. S. VANOVER ..... Sponsor

### BETTY MAIDS

BETTY LANGSTON ..... President  
 MABLE MEULLER ..... Vice-President  
 KATHLEEN DAVIS ..... Secretary  
 FLORENCE WHITECOTTON ..... Treasurer  
 MISS IDA NICKEL ..... Sponsor

### BIBLE CLUB

AVA JANE ALLEN ..... President  
 H. D. GANG ..... Vice-President  
 CHARLOTTE HILL ..... Secretary  
 JIMMY BALES ..... Treasurer  
 MISS RACHEL McALLISTER ..... Sponsor

### BIOLOGY CLUB

GEORGE JOHNSON ..... President  
 PAUL HICKS ..... Vice-President  
 BETTY FRENCH ..... Secretary-Treasurer  
 MISS JO ORR ..... Sponsor  
 MR. J. STEGAR HUNT ..... Sponsor







## CLUBS

### BLUE JACKETS

GERALDINE JONES . . . . . President  
 MARY LOUISE BIGLEY . . . . . Vice-President  
 DORIS MERLE DEAN . . . . . Secretary  
 MARY L. BILLINGSLEY . . . . . Treasurer  
 MISS VESTA NELSON . . . . . Sponsor

### CANDY CREW

MR. AND MRS. W. H. TEMPLETON . . . . . Sponsors

### CAMERA CLUB

R. C. CRAVEN . . . . . President  
 BILL CRAIGHEAD . . . . . Vice-President  
 BENTON REAMS . . . . . Secretary  
 GEORGE O'NEAL . . . . . Treasurer  
 MR. HARMON SMITH . . . . . Sponsor

### DEPRESSION CLUB

WALLACE TURNER . . . . . President  
 DALE ALLISON . . . . . Vice-President  
 JOE KING . . . . . Secretary  
 DICK ROSE . . . . . Treasurer  
 MRS. H. B. ROBINSON . . . . . Sponsor

## CLUBS

### DIGEST STAFF

JEANNE LEAVITT . . . . . Editor  
 LOIS BROWN . . . . . Times Page Editor  
 ALICE CAMP . . . . . Business Manager  
 CARL OWENS . . . . . Printing Foremen  
 MISS SALLY MAY KING . . . . . Adviser  
 MR. J. L. MILBURN . . . . . Adviser

### EXCLUSIVE CLUB

VIOLA CROSS . . . . . President  
 BLANCHE ANGEL . . . . . Vice-President  
 ANNA LOU FINE . . . . . Secretary  
 MARIE HIGDON . . . . . Treasurer  
 MR. ULREY K. WILSON . . . . . Sponsor

### DOGPATCHERS CLUB

BETTY STEWART . . . . . President  
 C. A. JAY . . . . . Vice-President  
 WANDA MCKINNEY . . . . . Secretary  
 WALLACE TURNER . . . . . Treasurer  
 MR. A. B. ROBERTSON . . . . . Sponsor

### FRESHMAN GIRL RESERVES CLUB

MARY DENA LEEPER . . . . . President  
 BILLYE JANE MATHIS . . . . . Vice-President  
 ELIZABETH McALLISTER . . . . . Secretary  
 EVELYN STERCHI . . . . . Treasurer  
 MISS JULIA RUTH RICHARDSON . . . . . Sponsor







## CLUBS

### ICE CREAM CREW

MR. C. J. ANDERSON ..... Sponsor

### INDUSTRIAL ARTS CLUB

JAMES IGOU ..... President

MORTON PACE ..... Vice-President

ERVIN WILLIAMS ..... Secretary

ERNEST MARTIN ..... Treasurer

MR. ROBERT WHARTON ..... Sponsor

### JUNIOR BOYS HI-Y CLUB

ROBERT MEYER ..... President

FRANK LOWE ..... Vice-President

ROBERT FERRILL ..... Secretary-Treasurer

MR. MILTON ALLEN ..... Sponsor

### JUNIOR GIRL RESERVES CLUB

DORIS JUNE TURNER ..... President

MIRIAM LEEPER ..... Vice-President

JEAN SMITH ..... Secretary

ALMA SCHLACK ..... Treasurer

MISS FLORA BECK ..... Sponsor

## CLUBS

### GIRLS HI-Y

ALICE CAMP ..... President

GERALDINE JONES ..... Vice-President

CHARLOTTE BALES ..... Secretary

NORMA TAYLOR ..... Treasurer

MRS. JOHN A. SHELTON ..... Sponsor

MRS. R. N. LOGAN ..... Sponsor

### GRADY LITERARY SOCIETY

EDWIN BISPLINGHOFF ..... President

RICHARD CAMP ..... Vice-President

JAMES IVEY ..... Secretary

FRED DIAL ..... Treasurer

MR. C. J. ANDERSON ..... Sponsor

### HOME ECONOMICS CLUB

VIRGINIA COLWELL ..... President

MARY GUY SPRINGER ..... Vice-President

NELLIE TALLANT ..... Secretary

SARAH PRINCE ..... Treasurer

MRS. SHROPSHIRE ..... Sponsor

MRS. CLEMENTSON ..... Sponsor

### HY-HATS

JEANNE WILKERSON ..... President

JEANNE LOCKWOOD ..... Vice-President

JANE DANIELSON ..... Secretary-Treasurer

MR. WALTER NEWLAND ..... Sponsor







## CLUBS

### JUNIORETTES

DOROTHY ECHOLS . . . . . President  
 MARTHA ATWOOD . . . . . Vice-President  
 DORIS BROOKS . . . . . Secretary  
 MARY LORRAINE BILLINGSLEY . . . . . Treasurer  
 MISS MARGUERITE LEHMANN . . . . . Sponsor

### NATIONAL HONOR SOCIETY

C. D. BROYLES . . . . . President  
 BETTY FRENCH . . . . . Vice-President  
 DORIS MERLE DEAN . . . . . Secretary  
 MR. J. STEGAR HUNT . . . . . Treasurer  
 MARCHETA COCHRAN . . . . . Treasurer's Aid  
 MRS. JOHN A. SHELTON . . . . . Sponsor

### LIBRARY CLUB

LOUISE HARDEN . . . . . President  
 BETTY LONG . . . . . Vice-President  
 DOROTHY SPARKS . . . . . Secretary-Treasurer  
 MRS. CLARENCE KOLWYCK . . . . . Sponsor  
 MRS. ELIZABETH BEAMGUARD . . . . . Sponsor  
 MRS. J. W. MITCHELL . . . . . Sponsor

### NITE OWLS CLUB

DOT WALLACE . . . . . President  
 MARY STAFFLER . . . . . Vice-President  
 BETTY WAGNER . . . . . Secretary  
 MARTHA DUDDERAR . . . . . Treasurer  
 MRS. A. B. ROGERS . . . . . Sponsor

## CLUBS

### OFFICERS' CLUB

C. D. BROYLES . . . . . President  
 HENRY COLSTON . . . . . Vice-President  
 C. A. JAY . . . . . Secretary  
 BILL HAGAMAN . . . . . Treasurer  
 MISS VESTA NELSON . . . . . Sponsor

### ORCHESTRA

REGINALD GWIN . . . . . President  
 BETTY ARNOLD . . . . . Vice-President  
 MILDRED HALE . . . . . Secretary-Treasurer  
 AVA JANE ALLEN . . . . . Librarian  
 MR. K. W. JOHNS . . . . . Sponsor

### SAILORETTES

DOROTHY GREEN . . . . . President  
 VIRGINIA COLWELL . . . . . Vice-President  
 MARYANNE CULLUM . . . . . Secretary  
 EVELYN LAMB . . . . . Treasurer  
 MRS. WYNELLE JACKS . . . . . Sponsor

### PRINTING DEPARTMENT

CARL OWENS . . . . . Foreman  
 J. L. MILBURN . . . . . Instructor







## CLUBS

### SENATE

LOUIS GOODNER ..... President  
 DORIS DEAN ..... Vice-President  
 BETTY INGLE ..... Secretary  
 JAMES HOWARD ..... Treasurer  
 ARLIE HOODENPYL ..... Sponsor  
 MISS BETTY MAE COLLINS ..... Sponsor  
 MRS. GEORGE HARDING ..... Sponsor

### SENIOR GIRL RESERVES

MARCHETA COCHRAN ..... President  
 MARTHA JANE CLARK ..... Vice-President  
 BETTY RUTH SMITH ..... Secretary  
 CHARLOTTE HILL ..... Treasurer  
 MISS ELLEN MULLENNIX ..... Sponsor  
 MRS. H. M. BARGER ..... Sponsor

### SENIOR BOYS' HI-Y CLUB

JAMES HOWARD ..... President  
 FRED DIAL ..... Vice-President  
 LOUIE GOODNER ..... Secretary  
 SAM CONNER ..... Treasurer  
 MR. J. POPE DYER ..... Sponsor

### SERGEANTS' CLUB

JAMES IVEY ..... President  
 VERNON COX ..... Vice-President  
 ALBERT MILLER ..... Secretary  
 DONALD BLEVINS ..... Treasurer  
 MISS RUTH FAIN ..... Sponsor

## CLUBS

### SEVENTEENERS CLUB

MARY FRANCES GROSS ..... President  
 DOROTHY WALLACE ..... Vice-President  
 ALICIA WARE ..... Secretary  
 SHIRLEY McBROOM ..... Treasurer  
 MISS MINNIE LEE MORGAN ..... Sponsor

### SOPHOMORE GIRL RESERVES

MARY PFITZER ..... President  
 BETTY BROWN ..... Vice-President  
 GWENDOLYN WESTBROOK ..... Secretary  
 GLORIA WHEELER ..... Treasurer  
 MRS. W. D. JACOWAY ..... Sponsor

### SPINSTERETTES

BETTY STANDIFER ..... President  
 SARAH JANE HAMMONTREE ..... Vice-President  
 VIVIAN BLEVINS ..... Secretary  
 WINIFRED FRANCIS ..... Treasurer  
 MRS. J. FRANK PRICE ..... Sponsor

### SPORTS CLUB

ALLAN PARK ..... President  
 ED WILCOXSON ..... Vice-President  
 PEGGY STATT ..... Secretary  
 HELEN BROWN ..... Treasurer  
 MISS BERNICE DURHAM ..... Sponsor







## CLUBS

### STAGE CREW

BILLY MARLIN . . . . . Manager  
 MAURICE WALLER . . . . . Assistant Manager  
 CHRIS DEMOS . . . . . Projection Room Manager  
 MR. C. G. TOWRY . . . . . Sponsor

### USHERS

CHARLENE JACOWAY . . . . . President  
 MARTHA JANE CLARK . . . . . Vice-President  
 MARY FRANCES GROSS . . . . . Vice-President  
 CHARLOTTE HILL . . . . . Secretary  
 MARY GUY SPRINGER . . . . . Treasurer  
 MISS MARGARET WAPLES . . . . . Sponsor

### SUB-DEB CLUB

CHRISTINE SMITH . . . . . President  
 BLANCHE ANGEL . . . . . Vice-President  
 BETTY JANE SMITH . . . . . Secretary  
 IMOGENE GASS . . . . . Treasurer  
 MISS REBECCA BIGGERS . . . . . Sponsor

### VAGABOND CLUB

JEAN LOCKWOOD . . . . . President  
 BETTY STEWART . . . . . Vice-President  
 EVELYN MARONA . . . . . Secretary  
 MARLYS OLSEN . . . . . Treasurer  
 MRS. A. G. SKATES . . . . . Sponsor

## CLUBS

### BAND CLUB

CHARLES GLEAVES . . . . . Captain  
 MR. EDWARD S. VANOVER . . . . . Director

### WEE MODERNS

SARAH MOLESDALE . . . . . President  
 JANE MOLESDALE . . . . . Vice-President  
 JEANNE HULSEY . . . . . Secretary  
 JOHNNIE RUTH TITTLE . . . . . Treasurer  
 MRS. MARK K. MITCHELL . . . . . Sponsor

### VARSITY GLEE CLUB

MARY FRANCES GROSS . . . . . President  
 JOE HEARN . . . . . Vice-President  
 MARCHETA COCHRAN . . . . . Secretary-Treasurer  
 MR. K. W. JOHN . . . . . Sponsor

### SAFETY COUNCIL

JAMES IGOU . . . . . President  
 ROBERT WALKER . . . . . Vice-President  
 WINIFRED FRANCIS . . . . . Secretary-Treasurer  
 MR. W. H. MILLSAPS . . . . . Sponsor





# COACHES AND SQUAD

## COACH DEAN PETERSEN

Coach S. Dean Petersen, an alumnus of Central and athletic director for fifteen years, has rendered invaluable service to his high school alma mater. During his years of service he has led the Purple Pounders to many victories. Through his sense of fair play and his wholesome leadership, Coach Petersen has instilled into both team and student body respect for the highest type of sportsmanship.

After graduating from Central in 1921, Mr. Petersen attended the Alabama Polytechnic Institute for four years where he received his B.S. Degree. During his years both at Central and at the Alabama Polytechnic Institute, he took an outstanding part in athletics. In addition to his fifteen years of coaching at Central, he was employed for two years as coach at Roanoke College, Salem, Virginia.



S. DEAN PETERSEN  
Coach

## COACH JAMES LESTER NEWTON

After resigning his position as principal of Falling Water Grammar School, James L. Newton came to Central in the fall of 1941 to join the coaching staff and to teach general science. During the past season, Coach Newton was given charge of training the grass cutters, who made for Central an exceptionally good record, losing only once to the opponent. While in college, Mr. Newton received twelve letters in athletics; this fact, together with ten years of coaching experience, speaks for his deep interest in sports which is important in the making of a good coach. Mr. Newton has attended both Carson-Newman and South Georgia Teachers College.

## COACH WALTER M. NEWLAND

Serving as line coach this year was Walter M. Newland, who came to Central from Live Oak, Florida. Mr. Newland holds an A.B. Degree from Emporia Teachers College in Kansas and an M.A. Degree from George Peabody College, Nashville, Tennessee.

In addition to doing a splendid piece of work as line coach in the football season, Mr. Newland made with the B Basketball team an unusual record, losing only one game.

On Tuesday, February 17, Coach Newland left Central for Montgomery, Alabama, where he entered the air corps as junior physical training officer. His absence was keenly felt as the spring football season opened.



LESTER NEWTON, WALTER NEWLAND  
Assistant Coaches

Front Row: Left to Right: Coach Newton, Coach Petersen, Gryder, Derrick, Strader, Poston, Captain Stevens, Alt-Captain Huddleston, Trundle, Carden, Coach Newland. Second Row: Manager Mills, Thaxton, Leizer, Abercrombie, Carter, Agnew, Lonas, F. Smith, Miller, Manager Cates. Third Row: Black, Williamson, Short, Spurlock, Patterson, Coleman, Hill. Fourth Row: Billingsley, Katchford, Rogers, W. L. Smith, Stewart, Lawson.







STEVENS, Captain

# F O O T B A L L

Central . . . . . 40; Morristown . . . . . 0

September 26—Morristown

The football season opened with a bang for the Central Pounders. In their first game of the season they defeated the Morristown Eagles 40-0. This kind of playing should and did bring home the bacon—a tie for the city championship.

This game, which does not need any play by play account, made an excellent starter for the season. The whole team played a wonderful game with special honors going to Huddleston for bagging two passes and an extra point, to Shrader for that ninety-five yard run, and to Spurlock and Carden for fine team work.

Central . . . . . 0; Male High . . . . . 7

October 3—Louisville, Kentucky

On a soggy field at Louisville, Central's Purple Pounder's met their first defeat. The final score was 7-0. In the third quarter Central threatened to score, but this chance was lost by a fumble. In the final period of the fourth quarter the Pounders tried again with a pass from Trundle to Poston, which faded in Central's territory.

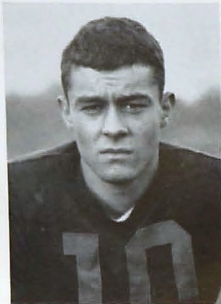
Spurlock, fullback, proved himself a dependable man in a pinch when he kept the Male High Bulldogs, with his fine kicking, from coming too close. Both Huddleston and Trundle, along with the rest of the team, played a hard-fought game.

Central . . . . . 6; Bradley . . . . . 7

October 10—Frawley Field

What promised to be a victory turned into a defeat for Central at the Bradley-Central game.

After outplaying the Bears for three-fourths of the game, the Bears in the last quarter scored a touchdown and an extra point, while the Pounders made their touchdown in the first period. Early in the first quarter the Purples began a 56-yard drive which ended in a touchdown for Central. Approximately midway in the last quarter a fumble gave Bradley the pigskin. This proved the turning point for Bradley. The following five plays gave Bradley a touchdown. As fans sat anxiously waiting to see if Bradley's extra point would be good, the two teams lined up for the kick. After a few more anxious seconds, the ball was snapped back and Manis, with a burly kick, made the score 7-6 in Bradley's favor.



ABERCROMBIE



BLACK



CARTER



"Looks mighty good to us."



Patterson kicks another extra point against City.

Central . . . . . 12; Ensley . . . . . 0

October 17—Frawley Field

Central won her second game of the season, by a great triumph over Ensley's Yellow Jackets of Birmingham, with a score of 12-0.

The Yellow Jackets kept the Purple Pounders on their toes and sometimes a little worried. The first three periods of the game were spent by each team trying to break through the other's defense. Finally in the fourth and last quarter Central with renewed determination scored two touchdowns. In the fourth quarter an Ensley player fumbled the ball, which was recovered by Central on her own 45-yard line. Then in a spectacular 55-yard drive down the field, the Pounders carried the ball across the line. The second score was made by George Carden, who intercepted an Ensley pass and ran 55 yards for a touchdown.

Central . . . . . 26; Notre Dame . . . . . 7

October 24—Frawley Field

Another victory was added to the Purple Pounder's list when Notre Dame lost to Central 26-7.

This game was not won without a hard fight for Central. Although Notre Dame's team was rated as not so strong as the Purples, the Irish played a hard, stubborn and courageous game. No score was made in the first period but in the second, Harold Spurlock carried the ball over the goal line for the first touchdown. Before the second quarter was ended, Frank Trundle had added another in Central's favor, while in the third quarter both teams scored. The last point was made by Central in the fourth quarter, making the final score 26-7.

This game placed Central on top of the City Prep League.

GARDEN



COLEMAN



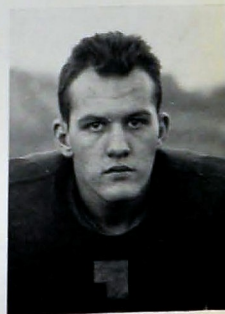
DERRICK



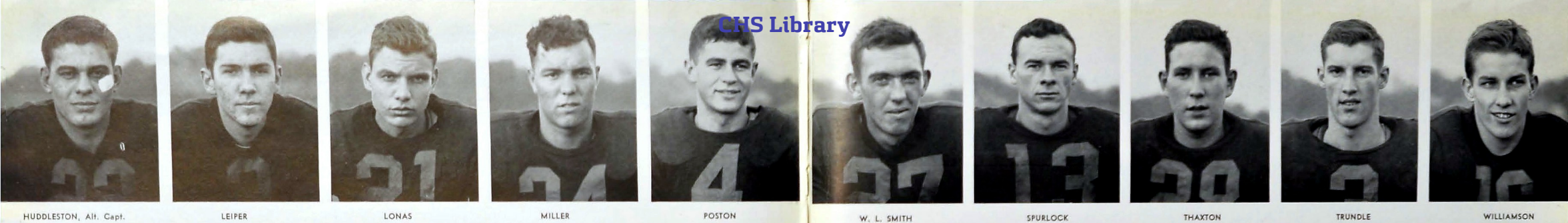
GRYDER



HILL







Trundle carries against City.

# FOOTBALL

Central . . . . . 13; Rome . . . . . 0

October 30—Rome, Georgia

117 The opposition put up by the Hilltoppers was not strong enough to keep back the powerful Purple Pounders. On that chilly night of October 30, Central swept over Rome to the tune of 13-0 before a crowd of approximately 3,000 fans.

Two minutes before the end of the first quarter of the game Spurlock plunged over the goal line for the first score, followed by Pat Patterson's converting the extra point from placement. During the second period no points were made by either side. In the third quarter Ben Huddleston recovered a free ball on Rome's one-yard line for Central's second touchdown.

Central's band of about 170 members accompanied the team on this trip.

Central . . . . . 13; Knoxville . . . . . 33

November 8—Frawley Field

108 The undefeated and untied Knoxville Trojans trounced the Purples 33-13, dealing Central her third defeat of the season. The Pounders put up a hard fight, giving no ground without a struggle. Central scored in the second quarter when George Poston went over for six points and Patterson kicked for the extra point. Again in the last quarter Central made another touchdown, Spurlock carrying the ball.

Throughout the game Howard Derrick's passes to George Carden and Ben Huddleston gave the Trojans plenty of worry. The Pounders were in good form and fought for every inch of ground. Although opposed by a heavier team, the Purples held out valiantly to the last.

Central . . . . . 0; Kingsport . . . . . 7

November 14—Kingsport, Tennessee

Before a crowd of 5,000 fans, at Kingsport, Tennessee, the Kingsport Indians used their famed aerial attacks and passed their way to a 7-0 victory over the Purple Pounders.

# FOOTBALL

100 Each team failed to score in the first half, but in the third quarter the Indians forged ahead for 6 points. Central held for three downs, but the Indians drove the ball over the last down and booted the extra point. Although Central threatened to score time after time, the Indians blocked each attempt.

Central . . . . . 27; City . . . . . 9

November 29—Chamberlain Field

337 Approximately 7,000 fans saw the Purple Pounders end their season with a glorious triumph over the Maroons. This victory also tied Central with Baylor for the City Championship.

At the end of the third quarter the score was 7-9 in favor of City. With only eleven minutes to play the Pounders bounded back with three touchdowns, changing the score to 27-9.

Catching the Maroons off guard in the second quarter, Howard Derrick passed to Carden, who ran the ball for the first touchdown of the game. Patterson put the pigskin through the goal posts for the extra point. Recovering a fumble deep in Central's territory, Lee Walker carried the ball over for a touchdown for City, while Sam Ray kicked the extra point. In the third period City chalked up her last two points by making a safety.

160 All the hopes that the Maroons might have had faded in the fourth quarter, as the Purple Pounders started a campaign which the City boys could not stop. George Carden opened the drive by running 60 yards for a touchdown, and Pat Patterson converted the extra point. Harold Short, who played a wonderful game, recovered a fumble on the Maroons' eleven-yard line; the ball was then carried over for the third touchdown, and again Patterson came through with the extra point. With only six minutes to play, Ben Miller intercepted a pass giving Central the ball on City's 30-yard line, and in the next four plays the ball was carried over to an overwhelming victory for Central with a score of 27-9.

203 In this season where Central won five and lost four games on a difficult schedule and was victorious in all city games, thus tying with Baylor for the City Championship, certain names have been



Incomplete pass in victory over City.

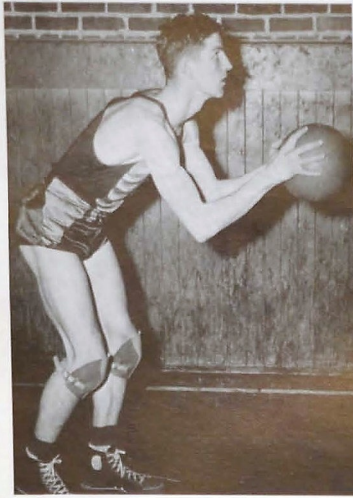
outstanding from time to time. To these much praise is due, but credit must be given to the entire group for their strong support and splendid team work throughout the season, which is one of which every Centralite is proud.

## SCHEDULE

Sept. 26—Central . . . . .	40; Morristown . . . . .	0 . . . . .	There
Oct. 3—Central . . . . .	0; Male High . . . . .	7 . . . . .	There
Oct. 10—Central . . . . .	6; Bradley . . . . .	7 . . . . .	Here
Oct. 17—Central . . . . .	12; Ensley . . . . .	0 . . . . .	Here
Oct. 24—Central . . . . .	26; Notre Dame . . . . .	7 . . . . .	Here
Oct. 30—Central . . . . .	13; Rome High . . . . .	0 . . . . .	There
Nov. 8—Central . . . . .	13; Knoxville . . . . .	33 . . . . .	Here
Nov. 14—Central . . . . .	0; Kingsport . . . . .	7 . . . . .	There
Nov. 29—Central . . . . .	27; City . . . . .	9 . . . . .	Here







Captain Carden, high score man for Central.



Front Row: Patterson, Stonestreet, Carden, Trundle, Thomas. Second Row: Manager Montgomery, Bisplinghoff, Swanson, Schulte, Thaxton, Pogue, Coach Bales.

# B A S K E T B A L L

## RESULTS

Central	33: Red Bank	17	Dec. 16, 1941	Red Bank
Central	36: Kingsport	21	Dec. 18, 1941	Central
Central	30: Soddy-Daisy	20	Dec. 30, 1941	Soddy-Daisy
Central	29: Soddy-Daisy	27	Jan. 2, 1942	Central
Central	42: Morristown	11	Jan. 5, 1942	Central
Central	44: Red Bank	21	Jan. 10, 1942	John A. Patton
Central	34: Notre Dame	33	Jan. 12, 1942	Central
Central	36: Morristown	21	Jan. 14, 1942	Morristown
Central	29: Johnson City	27	Jan. 15, 1942	Johnson City
Central	33: Erwin	26	Jan. 16, 1942	Erwin
Central	22: Kingsport High	24	Jan. 16, 1942	Kingsport
Central	36: Bristol H. S.	21	Jan. 17, 1942	Bristol
Central	31: McCallie	21	Jan. 20, 1942	McCallie
Central	31: Johnson City	28	Jan. 23, 1942	Central
Central	20: City High	25	Jan. 23, 1942	Memorial Aud.
Central	24: City High	27	Jan. 27, 1942	Central
Central	22: Baylor	13	Jan. 30, 1942	Memorial Aud.
Central	40: Knoxville High	41	Feb. 5, 1942	Central
Central	40: Notre Dame	39	Feb. 9, 1942	Notre Dame
Central	42: Erwin	39	Feb. 13, 1942	Central
Central	43: Baylor	30	Feb. 16, 1942	Baylor
Central	25: City High	17	Feb. 19, 1942	City
Central	45: Bristol	35	Feb. 20, 1942	Central
Central	31: Knoxville High	38	Feb. 25, 1942	Knoxville
Central	39: McCallie	23	Feb. 27, 1942	Central
Central	35: Baylor	19	March 2, 1942	Central
Central	49: Hixson	28	March 5, 1942	Red Bank
Central	40: Salecreek	28	March 6, 1942	Red Bank
Central	30: City	26	March 7, 1942	Red Bank
Central	56: Erwin	23	March 12, 1942	Maryville
Central	24: Norris	31	March 13, 1942	Maryville

# at Central High School

Central tied for City Championship with Chattanooga High School. Central was declared First District Champions at the final meet held at Red Bank March 3 through March 7, finally defeating Chattanooga High School, 30-26.

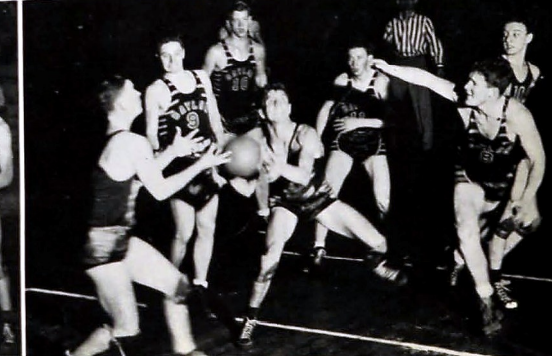


To the right: Central scored field goal.



Schulte swinging right for side shot.  
Carden swinging to right for shot.

Uhlman of Knoxville and Swenson jumping on tip off.  
Carden shooting basket against Baylor.







1941 Track Team.



Tucker, winner Times Five Mile Race.

## TRACK AND BASEBALL

Although as a whole the year's record of the track team of '41 was not the most brilliant, individual feats were decidedly outstanding.

The Purple and Gold track team climaxed the season of 1941 by winning fourth place in the state track meet, two of the members of the team taking first places. Morton Pace won the 440-yard dash and Fred McKenney was winner of the discus and shot put. In the half-mile run Lamar Gordon placed second, while in the high jump David Hamilton captured third place.

At the annual High School Day of the University of Tennessee, the track team performed splendidly. The fast 440 relay team of Gordon, Garvey, Pace, and Tucker, together with Fred McKenney, weight man, made a fine showing.

Abercrombie, Gilliland, Crockett, and Pfitzer are names which must not be overlooked. When not participating themselves they were encouraging and boosting their track mates in action. Rozzell and Pfitzer did the pole vaulting for Central. Floyd Gillie, Edward Pogue, and Bob Brown were relay men who performed well. The ones who did the shotput, discus, and javelin throwing for the Purple and Gold were Miles Stevens and Fred McKenney.

First to break the tape in the Times' annual five-mile race, thus winning another victory for Central, was Charlie Tucker. Tucker covered the distance in 29:15 minutes, setting a new record at Chamberlain Field.

• • •

The Purple and Gold closed the 1941 season with one of the best records ever made by a Central team, winning the titles of City Champions and East Tennessee Regional Champions. The team's evenings of practice and tireless workout had not proved fruitless. McCallie, City, Bradley, and Kingsport all bowed before the splendid performance of Central's baseball team.

First to meet defeat before Central's fine line-up was McCallie, who managed to get only six points against Central's fifteen. In the Bradley game, which was closer, Bradley scored seven runs to the Purple and Gold's ten. When McCallie battled with Central they were again submerged 14 to 5.

Clicking with precision and teamwork, Central's baseball team subdued the City Maroons 5 to 4. This game was won by the narrowest margin that Central had had all year.

Before the baseball season ended, Central met both Bradley and City High School again with the resulting scores of 32 to 8 and 14 to 8 respectively in favor of the Purple and Gold.

Victory was Central's again when the team defeated Kingsport 6 to 2.

Coach W. P. Bales did a magnificent job in the training of this championship team. His efforts speak for themselves in terms of unprecedented victory.

The players and the positions they played are as follows:

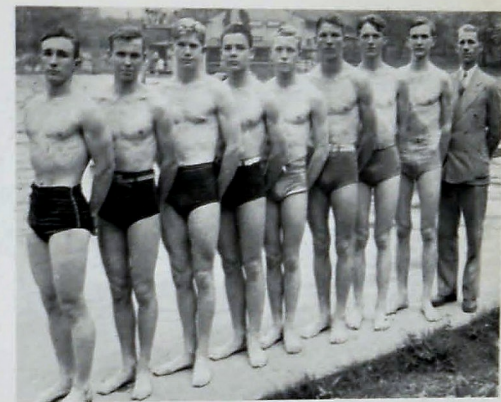
BOB SHERRILL	First Base
AUBREY PENDERGRASS	Second Base
DE WILLIS COPPINGER	Third Base
BILL YOUNG	Third Base
SHIRLEY GARDENHIRE	Catcher
J. W. WHITMIRE	Catcher
NED THAXTON	Pitcher
EUGENE SHRADER	Pitcher
LELAND RICHBOURG	Pitcher
ORVILLE McCLURE	Pitcher
LESLIE SHACKLEFORD	Shortstop
ROY ETHERIDGE	Left Field
BILL SCHULTE	Left Field
FRANK TRUNDLE	Right Field
ROBERT DAVIS	Right Field

## SWIMMING

In its first meet of the 1941 season, the Central High Swimming Team submerged the McCallie Blues 52 to 14. This event marked the beginning of what promised to be a very successful year for the Purple and Gold.

Under the able leadership of Mr. Jack Rodman, the well balanced team went through the whole season without losing a single meet. Although stiff opposition was encountered, the swimmers' determination and teamwork won for them the city championship.

The winning of the city championship not only brought glory to Central, but automatically placed the team in the state meet where the best swimming teams from the secondary schools of Tennessee were represented. Although Central did not win first place at this meet, the fact that they were able to take second place was much to their credit.



Left to Right: Bonds, Schubert, Coffelt, Powell, Hendrix, Carden, Oliver, Rose, Jack Rodman, sponsor.

## GOLF

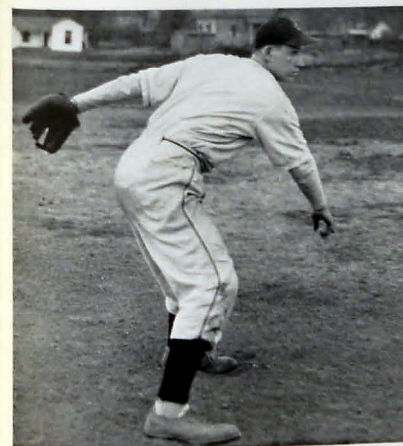
Although the 1941 golf season held no great victories for Central, the fine showing the team made is one of which golf fans may be justly proud.

In the Southern Annual Golf Prep Meet, the Purple and Gold took fourth place. At this colorful gathering, golf teams from many states in the South were present, representing the best in prep golf material.

Willard Miller, a member of Central's golf team, deserves special mention for his outstanding playing. He won not only the Chattanooga prep championship but in addition to this he captured both State Prep championship and the Southern High School championship. He was presented a trophy by the W. D. O. D. radio station as the outstanding amateur athlete of the year.



Left to Right: John Michael, sponsor; Land, Simmons, Casey, Deakins, Miller, Miller.

NED THAXTON  
Pitcher



## PATRONS

ALABAMA ENGRAVING COMPANY	Birmingham, Alabama
ARCHER PAPER COMPANY, 6-3189	1124 Market Street
ATHLETIC HOUSE	Knoxville, Tennessee
L. G. BALFOUR COMPANY, Jewelers	Attleboro, Massachusetts
BENNETT-HUBBARD CANDY COMPANY, 6-0015	234 East Eleventh Street
BENSON PRINTING COMPANY	Nashville, Tennessee
BRAINERD VARNELL HARDWARE & PAINT COMPANY, 2-1173	3114 Brainerd Road
DR. EARL R. CAMPBELL, 7-3354	525 McCallie Avenue
E. Y. CHAPIN, Esq., 6-8131	American Trust & Banking Co.
CENTRAL CAFE, 2-9198	511 Dodds Avenue
CHATTANOOGA ARMATURE WORKS, 2-2124	1215 Duncan Avenue
CHATTANOOGA BUTTON & BADGE MFG. CO., 6-6934	109 East Seventh Street
CHATTANOOGA GAS COMPANY, 6-0191	811 Broad Street
THE CHATTANOOGA MEDICINE COMPANY, 3-0030	3803 St. Elmo Avenue
CLEMONS BROTHERS COMPANY, Furniture, 6-7151	West 8th Street at Chestnut
CLOVERLEAF DRUG COMPANY, 6-4145	601 Market Street
COCA-COLA BOTTLING COMPANY, 6-4788	201 Broad Street
COLONIAL COFFEE & TRAY SHOP, 2-9285	1410 McCallie Avenue
COMMERCIAL STATIONERY & SUPPLY COMPANY, 6-1241	737 Cherry Street
CRISMAN HARDWARE COMPANY, 7-1114	511 Market Street
DAVIDSON CLOTHING COMPANY, 6-1218	811 Market Street
ALEX DE FLOREO, Ice Cream and Lunches	511 Dodds Avenue
DAYLE MAY, Jewelers, 3-0195	Rossville, Georgia
S. T. & W. A. DEWEES COMPANY, Grocers, 7-1121	810 Market Street
DIXIE AUTO SUPPLY COMPANY, 3-1658	4915 Rossville Blvd.
EDMONDSON SCHOOL OF BUSINESS, 6-1259	Edmondson Building
EDWARDS & LeBRON, Ltd., Jewelers, 6-7175	805 Market Street
ELESAY JEWELRY COMPANY, Inc., 6-3173	616 Market Street
THE FISHER COMPANY, Jewelers, 6-0922	8 West Eighth Street
FOSTER ART GLASS COMPANY, 6-2081	2365 Rossville Blvd.
FOWLER BROTHERS, Furniture, 7-2174	701 Broad Street
FOX BROTHERS COMPANY, Grocers, 6-3139	1215 King Street
CHATTANOOGA NEWS FREE PRESS, 6-0171	117 East Tenth Street
GILMAN PAINT & VARNISH COMPANY, 6-5181	216 West Eighth Street
EDITH GOETZ, Florist, 7-3345	James Building
H. W. GRANERT, Photographer, 6-7335	813 1-2 Market Street
GRANT-PATTEN MILK COMPANY, Inc., 6-1294	1220 King Street
N. L. HACKNEY AGENCY, Typewriters, 6-4765	122 East Eighth Street
HAMILTON COUNTY HERALD, 6-4033	617 Cherry Street
HARDIE & CAUDLE, Clothiers, 6-7032	809 Market Street
HARRIS & HOGSHEAD, Optometrists, 6-7545	13 East Eighth Street
HOLSUM BREAD, 6-8176	1615 Cowart Street
HOTEL PATTEN, 6-2141	Market at Eleventh
JACOBS WHOLESALE CANDY COMPANY, 6-2728	925 Market Street

## PATRONS

JOYS, Florist, 6-7168	Georgia at Tenth
J. KASET, Wholesale Candy Company, 6-8711	1409 Carter Street
INEZ KIMBALL, Florist, 2-4771	2409 McCallie Avenue
KING-DOBBS & COMPANY, Wholesale Grocers, 6-1251	246 East Eleventh Street
KINGSFORT PRESS	Kingsport, Tennessee
KOBLENTZ, MEN'S STORE, 6-2764	812 Market Street
S. H. KRESS & COMPANY, 10c Store, 6-5631	708 Market Street
LANSFORD PIANO COMPANY, 6-7185	730 Cherry Street
L. C. LEACH & COMPANY, Jewelers, 7-2041	738 Cherry Street
LeGRAND JEWELRY COMPANY, 6-6816	604 Market Street
LOVEMAN'S, Inc., Department Store, 6-0161	800 Market Street
MAIN STREET TRANSFER AND STORAGE CO., 6-4946	1512-14 Market Street
MANNING FOOD PRODUCTS COMPANY, 2-5167	2915 Dodson Avenue
MARTIN-THOMPSON COMPANY, Sporting Goods, 7-3373	706 Cherry Street
MILLER BROTHERS, Department Store, 7-1251	629 Market Street
MILLS & LUTON SUPPLY COMPANY, 6-6171	1152 Market Street
MOUNTAIN CITY STOVE COMPANY, 6-0211	1240 Market Street
MUTUAL CANDY COMPANY, 7-3375	1269 Market Street
NATIONAL SHIRT SHOP, 6-9716	735 Market Street
PALMER CLOTHES, 6-3834	825 Market Street
T. H. PAYNE COMPANY, Office Supplies, 6-0138	821 Market Street
PEOPLES STUDIO AND CAMERA SHOP, 6-9480	6 East Ninth Street
PICKETT'S INC., Women's Apparel, 6-3121	814 Market Street
POWELL MATTRESS COMPANY, 6-8062	615 East Main Street
QUINN DRUG COMPANY, 2-3168	1400 Dodds Avenue
RIDGE DRUG COMPANY, 2-1171	418 Dodds Avenue
R. K. SCHOLZE, Grocers, 2-2131	415 Dodds Avenue
W. F. SCHROEDER, Service Station, 2-8214	2524 McCallie Avenue
SEARS, ROEBUCK & COMPANY, 6-7344	539 Market Street
THREE SISTERS, Women's Apparel, 6-2719	702-04 Market Street
STAPP'S BOOKSHOP	720 Walnut Street
A. F. STEINHOEFEL, Jewelers, 6-6249	14 West Eighth Street
A. G. STIVERS LUMBER COMPANY, 6-7179	345 East Main Street
TEMPLETON'S, Inc., Jewelers, 6-7628	12 West Eighth Street
TUNNEL DRUG STORE, 2-2156	3110 Brainerd Road
TURNER BROTHERS FUNERAL HOME, 2-2116	1805 McCallie Avenue
UNIVERSITY OF CHATTANOOGA, 6-7363	McCallie Avenue
U. S. 5c and 10c STORE	113 Chickamauga Avenue, Rossville
VIOLET STUDIO, Camera Shop, 6-1553	11 East Seventh Street
THE VOGUE, Junior Misses, Women's Fashions	719 Market Street
WILEY SCHOOL OF BUSINESS, 6-2231	Times Building
WILKINS CANDY COMPANY, 6-1151	1273 Market Street
A FRIEND	



## THE CLASS OF '42 AT WORK AND PLAY



Through these years that have passed on the swiftest of feet  
We have loved all the moments, the bitter, the sweet.  
All our teachers have taught us our lessons each day,  
And we've learned how to work with our comrades and play.

We have laughed, we have lived in this school that we love;  
We have studied from Frosh-hood through three years above.  
All our time has been crowded with days that are dear;  
We recall now at parting the things we would hear.

Just remember the games where we yelled out so free  
When we cheered on our team to a big victory,  
When we thrilled to the drama our seniors portrayed,  
All of these are our memories that never shall fade.

When the news of the war had invaded our land,  
Then we calmly proceeded as was our command,  
For the services here were the best we could do  
And we sang at our party of red, white, and blue.

Then our Mister and Miss Central ruled Senior Day,  
And we next placed the crown on our Queen of the May,  
And we recognized seniors for outstanding merit,  
Though we've joy or we've troubles, we've learned how to share it.

Through these years that have passed on the swiftest of feet,  
We have loved every moment, the bitter, the sweet.  
They have given us courage to hope and to sing  
No matter what trials our lifetime may bring.

—JEANNE LEAVITT.



*Autographs*

---







