

CHS Library

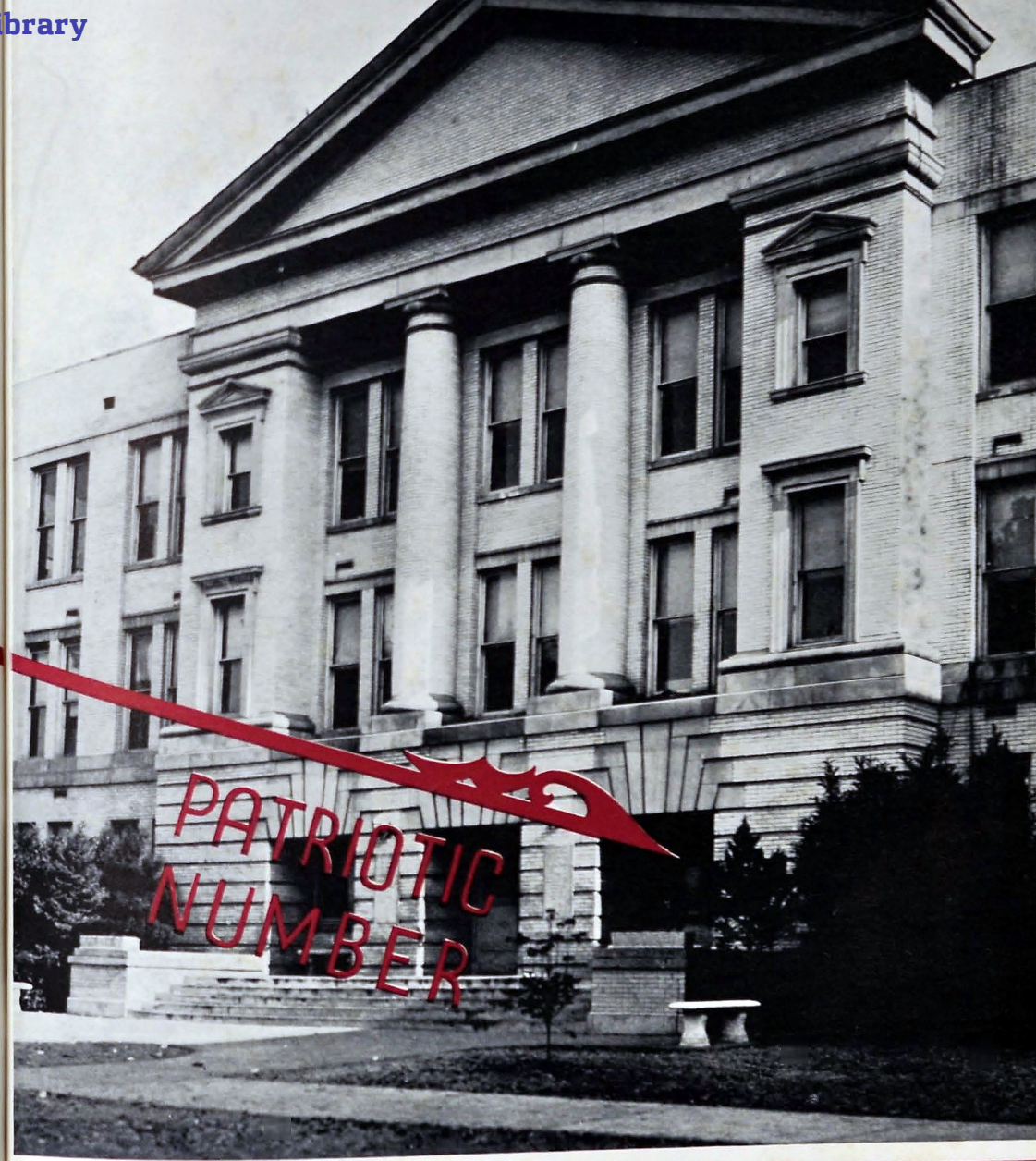


1941 Champion

CHS Library

UNCLE SAM
PREPARES





PUBLISHED BY THE SENIOR
CENTRAL HIGH

CLASS OF . . .
SCHOOL, CHATTANOOGA, TENNESSEE

FOREWORD

World conditions make it an increasingly apparent fact that the American Way of life is in danger. Even in our own day we have seen many ideals, which we held sacred, disregarded and trampled in the dust. Such conditions are facts which should not cause a panic of fear but rather should lead to the sanest and most thoughtful planning. More than in any other of the one hundred and fifty years of our life as a nation, conditions both outside and in our country make it necessary that America be prepared to protect herself and to defend those principles for which our forefathers fought. In this widespread effort to promote defense activities, Chattanooga and the Tennessee Valley, through active and cooperative citizens, are making a liberal contribution.





*Best wishes,
Ellen Mullennix*

Miss Ellen Mullennix

DEDICATION

Sincerity, loyalty, dependableness are gems more precious than diamonds and more to be desired in our associates than gold. We rejoice to find these jewels in people we contact from day to day, and to discover their brilliance in conditions that test and try. We value them as a part of life's priceless treasures without which friendship is but an empty vaunt. ¶ In recognition of her helpful council and unfailing friendship to Central students, of her willingness to assist and to do her full duty in all undertakings of the school, of her firmness in the right tempered by understanding and kindness, of her untiring effort and unselfish service to our Alma Mater, we, the Staff, dedicate this, The Champion of 1941

To
MISS ELLEN MULLENNIX

FINANCE

Nowhere else has so large a population lived in one union on so vast a territory with such security and freedom as in America. Upon this continent within close reach is every material resource. Yet America's financial or economic status can be no stronger than the different sections make it. With her strong banking system, with her thriving industries, with her efficient wholesale and retail service, Chattanooga and the surrounding Tennessee Valley section are serving well in fostering the best business interests and thus promoting the defense program of the country. With many citizens in the upper strata of the financial levels, nowhere is there to be found a finer public spirit or a more wholehearted support of worthy causes than that demonstrated by generous citizens of Chattanooga in their liberal contributions to great humanitarian causes like the Salvation Army, the Community Chest and the American Red Cross.

Alma Mater





MR. STACEY E. NELSON

PRINCIPAL

By your keen insight into student problems and by your sympathetic understanding of the solutions, you have won our deepest respect as a gentleman and our highest esteem as a friend.

FACULTY



MILTON ALLEN
Music

CHARLES J. ANDERSON
Manual Arts

WILLIAM P. BALES
History

MRS. H. L. BARGER
English

MRS. GEORGE BARTON
Commerce

MISS MARTHA BEAN
Social Science

MRS. ELIZABETH PARKS BEAMGUARD
Librarian

MISS FLORA E. BECK
Mathematics

W. V. BEENE
History

MRS. C. H. BOYD
Cafeteria Manager

MRS. HARRY L. BROWN
English

SERGEANT JERRY BRIGHT
Military Tactics

MRS. K. E. BRUCECKNER
Latin and English

CAPTAIN WARREN BYINGTON
Military Tactics

MRS. MERCER CLEMENTSON
Home Economics

MISS BETTY MAE COLLINS
Speech

MISS EDNA KING CROSS
History

MISS MARY LOU DERRYBERRY
Art

MRS. HAROLD S. DUNCAN
Librarian

J. POPE DYER
Social Science

MISS RUTH FAIN
Spanish

J. J. FLETCHER
Auto Mechanics

MISS DOROTHY C. FRENCH
English

J. L. HAIR
Mathematics

FACULTY



C. B. HATFIELD
Mechanical Drawing

MISS MARGARET HAYS
Art

MRS. FRED A. HILL
Cafeteria Manager

J. ARLIE HOODENPYL
Chemistry

MISS EDMUND HOOSER
English

MARSHALL G. HOWELL
Guidance

MISS SARA BANKSTON HUBBARD
Physical Education

R. K. HUDGINS
Agriculture

JOHN STEGER HUNT
Biology

MRS. WILLIAM DUNLAP JACOWAY
Mathematics

KENNETH W. JOHN
Music

S. W. JOHNSON
Diversified Occupations

MISS EARL R. JONES
History

MISS ELIZABETH JONES
History

MISS MARIAN JONES
Speech

MISS SALLY MAY KING
English

MRS. CLARENCE KOLWYCK
Librarian

MRS. ANNA B. LACEY
Dean of Girls

MISS GRACE LASATER
Registrar

MISS MARGUERITE LEHMAN
Mathematics

MISS CAROLINE LILLARD
Mathematics

MRS. IDA MOORE LONGLEY
English

MISS JOSEPHINE LOVE
Secretary

MISS MARGARET LYLE
Secretary

FACULTY



MISS RACHEL McALLISTER
Bible

MRS. S. J. McALLISTER, JR.
Secretary

GEORGE W. McCOY
Physical Education

MAJOR D. M. McMILLAN
Military Tactics

MISS JO MASTERSON
Social Science

MR. W. J. MAYS
Physics

JOHN B. MICHAEL
Commerce

JAMES S. MILBURN
Printing

WILLARD MILLSAPS
Mathematics

W. H. MILLSAPS
General Science

MISS ANNE MOFFITT
English

MISS MINNIE LEE MORGAN
English

MISS ELLEN MULLENNIX
English

MRS. HARRY NELSON
English

S. E. NELSON
Principal

MISS VESTA NELSON
English

MISS IDA NICKEL
Commerce

R. E. OLINGER
Mathematics

MISS JO ORE
Biology

MISS BEULAH B. PARKER
Mathematics

GEORGE C. PATTERSON
Physics

S. DEAN PETERSEN
Athletics

MRS. J. FRANK PRICE
History

MISS HELEN G. PRYOR
Latin

FACULTY



MRS. LYDA GORE RICE
Commerce

MISS MARY ELLEN RICE
Spanish

MISS IMOGENE ROBERTSON
Commerce

MRS. H. B. ROBINSON
English

JACK R. RODMAN
General Science

MRS. A. B. ROGERS
English

MISS LILLIE SCHWARTZ
German

MRS. JOHN A. SHELTON
English

MRS. J. E. SHROPSHIRE
Home Economics

MRS. ALFRED G. SKATES
History

HARMON M. SMITH
General Science

A. PIERCE STEWART
Mathematics

MISS LOUISE SUTTON
Social Science

G. M. SWINGLEY
Mathematics

S. O. TALLANT
Mathematics

W. H. TEMPLETON
Assistant Principal

MRS. W. H. TEMPLETON
Home Economics

MISS MARGARET TAYLOR
Home Economics

EDWARD S. VANOVER
Music

MISS DOROTHY WALKER
Commerce

MISS MARGARET WAPLES
French

ROBERT S. WHARTON
Manual Arts

MISS BESSYLEE WIGGS
English

MISS ETHEL YORK
Home Economics



Pendergrass, McKenney, Kenyon, Helms, Reynolds, Minor

SENIORS

CHARLES GLEAVES
Vice-President
MARY FRANCES GROSS
Secretary
GEORGE POSTON
President
BETTY MARLOWE
Treasurer

JUNIORS

MYRTLE GOOD
Treasurer
MIRIAM LEEPER
President
ALLEN GILLILAND
Vice-President
JEAN SMITH
Secretary

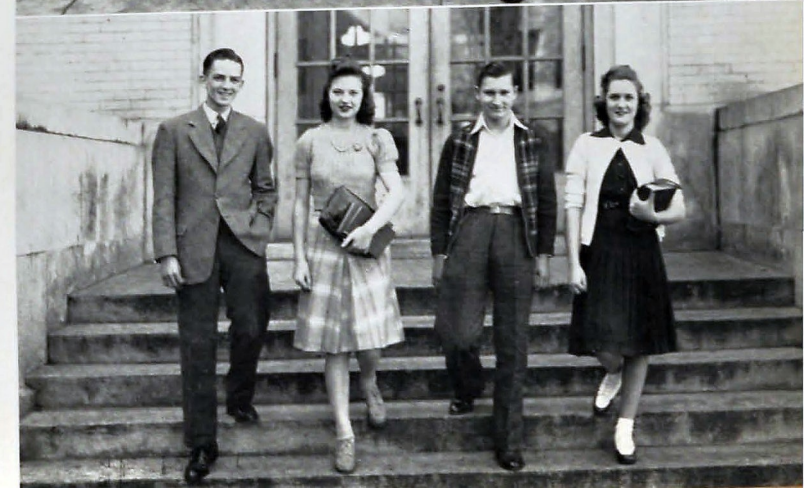
SOPHOMORES

JACK SPENCE
President
MARGARET FINNELL
Treasurer
JACK IRELAND
Vice-President
MARY JO RHINEHART
Secretary

FRESHMEN

THE CLASS OFFICERS

FRED HELMS President
DAVID JOSEPH REYNOLDS Vice-President
DAVID THOMAS MINOR Secretary
LOUI AUBREY PENDERGRASS Treasurer
FRED YAIKOW McKENNEY, JR. Sergeant-at-Arms
DAVID PALMER KENYON Sergeant-at-Arms



CHS Library



JUANITA ADAMS "Nita"
Entered from Brainerd Junior High, '38; Battalion, '37, '38; Home Ec. Club, '41; May Day, '39, '40.

VIRGINIA ANN ALEXANDER "Ginger"
Entered from Red Bank Junior High, '38; Girl Reserves, '38, '39; Seventeeners, Vice-President, '38, '39, '40, '41; Library Club, '38, '39; Dramatic Club, '41; Girls' Hi-Y, '41; Red Cross, '41; Rockettes, '40, '41; Betty Co-Ed, '39; Delegate, '38; Girl Reserve Hi-Y Conference, Junior Play, '40; Chorut, '37, '38; Digest Staff, '38, '39, '40, '41; District Tennessee Interscholastic Speech Contest, First Place Humorous Reading '39, Second Place Humorous Reading '40.

WILLIAM BROOKS ALLEN "Willy"
Stage Crew, '40; Sergeant Club, '40; Band, '39, '40, '41; Lieutenant in Band, '41; Assistant Manager Stage, '41; Band Club, '40, '41; Manager Projection Room, '41; Industrial Arts Club, '41; Vice-President Industrial Arts Club, '41; Sergeant in Band, '40; Band Officers Club, '40, '41.

MARILDA SUE ALLEN "LaLa"
Entered from Valley Head, Cleveland, '38; Red Cross, '40, '41.

DOROTHY NELLE ALLMAN "Dottie"
Entered from Red Bank Junior High, '38; Girl Reserves, '38, '39; Seventeeners, Secretary, '38, '40, '41; Junior Red Cross, '39; Junior Play, '40; Digest Representative, '41; Rockettes, '40, '41; Drum Major, '39, '40, '41; Band Club, '41; Girls' Hi-Y, '41.

BILLY JOE ALVERSON
Entered from Brainerd Junior High, '38.

HAYES BRUMMETT ALVERSON "Giggy"
Entered from Dickinson Junior High School, '38; S. P. O. R., '38; Hiking Club, '38; Corporal in R. O. T. C., '39; Sergeant in R. O. T. C., '40; First Lieutenant in R. O. T. C., '41; Bachelor's Club, '40, '41; Depression Club, '40, '41; Treasurer and Social Chairman of Sergeants Club, '40; Officers Club, '41; Football, '38, '39; Boxing Team, '40, '41; President's Home Room, '41.

MAY E. ANDERSON "Shorty"
Entered from Hardy Junior High, '39; Girls' Battalion, '40; Ace Club, '39.

RALPH M. ANDERSON "Andy"
Entered from East Side Junior High, '37; R. O. T. C., '37, '38; Red Cross, '40, '41.

ALICE VIRGINIA ANDERSON "Kitten"
Entered from East Side Junior High, '38; Sports Club; Library Club; Girl Reserves, '38, '40; Girls' Hi-Y, '40, '41; Vice-President of Black Kats, '39, '40; Black Kats, '41; Sergeant, '41; President of Home Room, '41; Digest Sponsor, '41; Archery Club, '40; Hiking Club, '38, '39, '40; S. P. O. R., '38, '39, '40, '41; Junior Play, '40; Badminton Club, '40; Battalion, '39, '40; May Day, '38, '39, '40, '41; Assistant Secretary of Senate, '41.

JOHN ALBERT ARNOLD "Bert"
Entered from Brainerd Junior High, '38; 4-H Club.

DORIS JEAN ARNOLD
Entered from Brainerd Junior High, '39.

ELIZABETH LOUISE BAKER "Betty"
Entered from East Lake Junior High, '39; Girls' Hi-Y, '39, '40, '41; Home Ec. Club, '39, '40, '41; Junior Red Cross, '39, '40; Betty Co-Ed, '39, '40.

PATRICIA LOIS BAKER "Pat"
Entered from East Side Junior High, '38; Red Cross, '38; Senate, '39, '40, '41; Black Kats, '40, '41; Drum Major, '39, '40, '41; Rockettes, '41.

R. JACKSON BAKER "Bake"
Entered from Brainerd Junior High, '39; Honor Society; Alternate, Captain Track Team, '39; Archery Club, '40; G Club, '39, '40, '41; Track Team, '39, '40.

LUCILE BALLOU "Lucy"
Entered from Dickinson Junior High, '39; Bible Club, '39; Hubbard Helpers, '39, '40; Varsity Tumbler, '39, '40, '41; May Day, '39, '40, '41; Circus, '39, '40; Junior Girl Reserves, '40; Ace Club, '40, '41; Badminton Club, '39, '40, '41; Archery Club, '40; President of Aces, '41; Secretary of Badminton Club, '40; Gym Office Force, '39, '40, '41; Lieutenant in Girls' Battalion, '40, '41; Major of Girls' Battalion, '41; Tennis Club, '40; Girls' Battalion, '39, '40, '41.

SARA BARHAM
Entered from Brainerd Junior High, '37; Girls' Hi-Y, '37, '41; Girls' Battalion, '38, '41; Archery Club, '40; Freshman Girls Reserves.

EMILY ROBERTA BARRY "Shorty"
Entered from Lookout Junior High, '39; Girl Reserves, '40, '41; Red Cross, '41; Miss Demeanor, '41; May Day, '39, '40.

THOMAS E. BAYSTON "Ealtmore"
Entered from Brainerd Junior High, '38; Manager Stage Crew.

HENRIETTE BATTIE
Entered from Athens High School, Athens, Ala., '41.

MACK D. BEAVER, JR. "Angel"
Entered from Lakeview High School, '38; S. P. O. R.; Camera Club; Band Club.

MORGAN JACK BEAVER "Satan"
Entered from McCallie Preparatory School, '38; Bachelors Club; Depression Club; C Club; Basketball Team, '40, '41; Track, '41.

ELEN S. BEENE "Pinto"
Entered from East Side Junior High, '38; Circus, '38; Train Bearer to May Queen, '38; Physical Education Club, '38; Ace Club, '38, '39, '40; Girls' Reserve, '38, '39; Usher, '40, '41; Girls' Hi-Y, '39, '40, '41.

DOROTHY LUCILE BELL
Entered from Dickinson Junior High, '39; May Day, '39; Red Cross, '39.

MARY ELIZABETH BELVIN
Entered from Annicola Grammar, '38; National Honor Society, '40, '41.

SAMUEL T. BENTON
Entered from Brainerd Junior High, '38; Model Airplane Club, '39, '40, '41.

RUTH EILEEN BILLINGSLEY
Entered from Lookout Junior High, '38; Hi-Y, '40, '41; Girl Reserves, '39, '40, '41; Stylette, '41.

GROVER BLEDSOE "Wildman"
Entered from East Side Junior High, '38; President Junior Red Cross, '41; Captain R. O. T. C., '41; Sergeant's Club, '40; Red Cross Club, '38, '41; Officers Club, '41; Glee Club, '40, '41; Baseball, '39.

MARION WILLIS BLOK
Entered from Dickenson, '38; National Honor Society, '41.

KATHRYNE LOUISE BOATWRIGHT "Katy"
Entered from Lookout Junior High, '39; Bible Club, '41; President Betty Maids, '41; Typist for Digest, '41.

LELA CATHERINE BOND "Sis"
Entered from East Lake Junior High, '39; Girls' Hi-Y, '40, '41; Betty Co-Ed, '39, '40; Miss Demeanor, '40, '41; Home Economics Club, '39, '40, '41; Red Cross, '39.

PAUL HOYT BONDS, II "Bones"
Entered from Brainerd Junior High, '37, '38; Midgut Basketball, '37, '38, '39; Central Digest, '40; Hunting and Fishing Club, '39; Swimming Team, '40, '41; Honor Society, '41; Senate, '40, '41; Junior Class Council, '40.

CHARLIS MAE BOSS "Shorty"
Entered from Brainerd Junior High, '38; Girl Reserves, '38, '39, '40, '41; Vice-President of Freshman Class, '38; Red Cross, '38, '39, '40, '41; S. P. O. R., '38, '39; Hiking Club, '39, '40; Library Club, '38, '39; Sports Club, '39; Attendee to Queen's Court of Sophomore Class, '39; Central Literary Club, '40, '41; National Honor Society, '40, '41; Sub-Deb Club, '38; Digest Representative, '40, '41; "Champion" Typist, '41; Archery Club, '40; Vice-President of Ushers, '41.

MARGARET BOULDIN "Peggie"
Entered from Signal Mountain, '38; Candy Crew, '38, '39; Red Cross, '40, '41.

BETTY JOE BOWEN "Jo"
Entered from East Side Junior High, '39; Song Leader, '39, '40, '41; Red Cross, '39, '40, '41; Night Owls, '40, '41; Betty Co-Ed, '40; Etiquette Club, '40; Treasurer of Red Cross, '41; Girl Reserves, '39; Drum Major, '39, '40; K. O. T. C. Sponsor, '41.

MARY ALLENE BOWER "Al"
Entered from Brainerd Junior High, '39; Miracle Book Club, '39, '41; Vice-President of Betty Maids, '40, '41; National Honor Society, '40, '41; Usher, '41.

WINFRED BOWMAN "Wink"
Entered from East Side Junior High, '38; Basketball, '38, '39.

MARY RUTH BRADSHAW
Entered from Dickinson Junior High, '39; Physical Education Club, '39; Badminton Club, '39, '40; French Club, '40; Senate, '40, '41; National Honor Society, '40, '41; School Pianist, '41; Senate Play Cast, '40; May Day, '39, '40; Girls' Battalion, '40; Spinsters Club, '40.

ELVEDA JANE BREAKER "Janie"
Entered from Brainerd Junior High, '38; Girls' Hi-Y, '41; National Honor Society, '41; Usher, '41; Home Economics Club, '40, '41; First Battalion Sponsor, '41; Honorary Member of Officers Club, '41; Rockettes, '41.

J. KENNETH BREWER
Entered from East Lake Junior High, '38; Radio Club, '41; 4-H Club, '40.

ELANOR BRIEN "Blondie"
Entered from East Lake Junior High, '39; Twix Teen, '40; Band, '40, '41; Orchestra, '41; May Day, '40; Girls' Band Club, '41.

MARGARET LOUISE BROWDER
Entered from Hardy Junior High, '38; Girl Reserves, '38, '39; Red Cross, '38, '39, '40; Digest Reporter, '38, '39; President of Miss Demeanors, '40, '41; Vice-President, '39; Home Economics Club, '39, '41; Camera Club, '40, '41; Sponsor of Company E, '41; Honorary Member of Officers Club, '41; Digest Business Staff, Secretary, '41.

ROBERT GLENN BROWN, JR. "Bob"
Entered from Chattanooga High School, '38; Senate, '39, '40, '41; Hiking Club, '41; Officers Club, '41.

JO ANN BROWN "Jo"
Entered from Red Bank High School, '39; Digest, '39, '40, '41; Girl Reserves, '39, '40, '41; Black Kats Club, '40, '41; President, '40, '41; Secretary of Red Cross, '40, '41; National Honor Society, '40, '41; Usher, '41; Girls' Hi-Y, '41; Home Ec. Club, '40; Treasurer, '41; May Day, '39; Circus, '39; Girl Battalion, '39, '40; Rockettes, '41; Candy Crew, '40.

JOHN JENNINGS BROWN
Entered from Red Bank Junior High, '39; Literary Club, '40, '41.

HERSCHEL H. BROYLES "Beefbone"
Entered from Brainerd Junior High, '38.

MARY ELIZABETH BRYANT "Betty"
Entered from Brainerd Junior High, '39.

EARL HOWARD BUCHELE
Entered from Red Bank Junior High, '38; Band Concert, '38, '39, '40; Band Club, '38, '39; Officers Club, '41; First Lieutenant in R. O. T. C., '41.

WILLIAM DURRELL BUNCH "Billy"
Entered from Ridge Farm, Illinois, '39.

MARY HELEN BURKE
Entered from Brainerd Junior High, '38; Girl Reserves, '38; Candy Crew, '39; Home Room Digest Sponsor, '40.

ROBERT BRILEY BURNETTE "Hambone"
Entered from East Side Junior High, '38; S. P. O. R., '38, '39; Hiking Club, '38, '39, '40, '41; Grady Literary Society, '39, '40, '41; Bible Club, '39; Boys' Hi-Y Club, '39, '40, '41; Chaplain in '39; Program Chairman, '40; President, '41; President of Eastern Tennessee Hi-Y Clubs, '40, '41; Delegate to State Hi-Y Convention, '40, '41; Vice-President of National Hi-Y Clubs, '40, '41; Band, '39, '40, '41; Bookstore, '39, '40, '41; Digest Reporter, '39; President of Junior Class, '40; Dramatic Club, '40, '41; Editor-in-Chief of Champion, '41; National Honor Society, '40, '41; Program Chairman of Honor Society, '41; Secretary of State at Volunteer Boys' State, '40; Junior Play Cast, '40; Member of Southern Interscholastic Press Association, '41; Band Color Guard, '40; Senior King and Pin Committee, '41.

LLOYD BUSBY
Entered from San Jacinto High School, Houston, Texas, '40.

DOROTHY MARIAN BUSBY "Pudge"
Entered from San Jacinto High School, Houston, Texas, '40; Exclusive Club, '40, '41.

GROVER CAMPBELL
Entered from Hardy Junior High, '38; Digest Staff, '39, '40; Exchange Editor on Digest Staff, '40, '41; Honor Society, '40, '41.

HAZEL RUTH CARMACK
Entered from East Side Junior High, '38; Red Cross, '38; Orchestra, '38; Spinsters Club, '38, '39; Treasurer, '41; Play, '40; Girl Reserves, '38, '39, '40, '41; May Day, '39, '40; Physical Education Club, '38; Spinsters, '39, '40; Digest, '41.

NELL CARMICHAEL "Cutie"
Entered from Brainerd Junior High, '38; Biology Club, '39, '40; Vice-President of Girl Reserves, '38, '39; Archery Club, '40; National Honor Society, '41; May Day, '38, '39.

DOROTHY CARROLL "Bobbie"
Entered from East Lake Junior High, '39; Girls' Battalion, '39; May Day, '39; Red Cross, '40, '41.

JULIA PEARL CASEY "Judy"
Entered from Brainerd Junior High, '39; Girls' Battalion, '39; Candy Crew, '39; Bible Club, '40.

RALPH DANIEL CASEY "General"
Entered from Brainerd Junior High, '37; Vice-President of Sergeants Club, '39; Treasurer of Officers Club, '41; Basketball Team, '39, '40, '41; Vice-President of Industrial Arts Club, '40, '41; C Club, '39, '40, '41; Captain in R. O. T. C., '41.

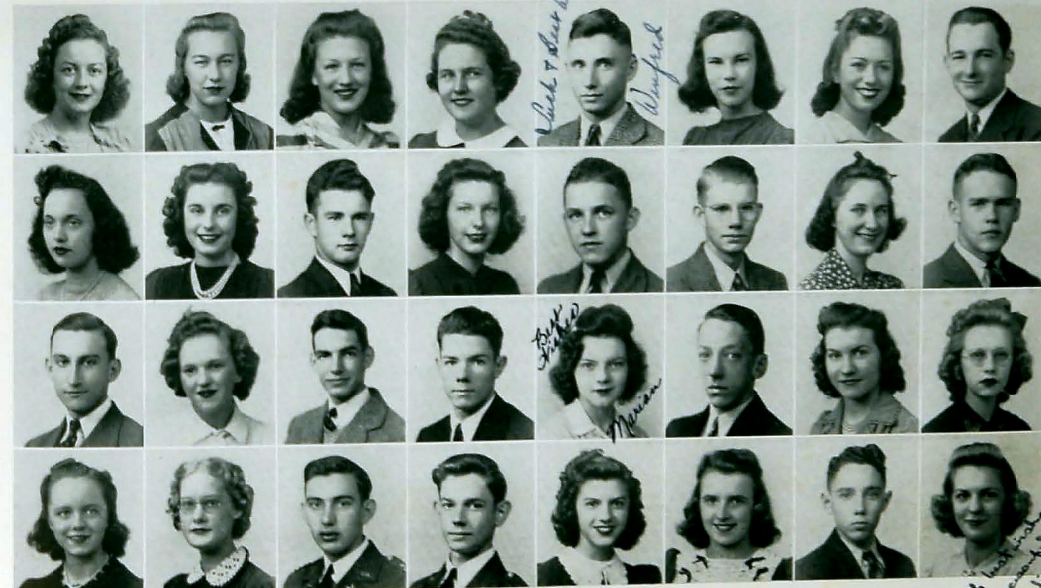
WILLIAM ALLEN CATLETT "Bill"
Entered from East Side Junior High, '39; Officers Club, '41; Sergeant's Club, '40; Lieutenant in R. O. T. C., '41.

BETTY MAC CHILDERS
Entered from Brainerd Junior High, '38; Secretary of Freshman Class, '38; Girl Reserves, '38, '39; S. P. O. R., '39; Hiking Club, '38; Band, '38, '39, '40, '41; Band Club, '41; Vice-President, '41; Candy Crew, '39; National Honor Society, '40, '41.

TOMMIE LU CHILDERS
Entered from Dickinson Junior High, '38; Bible Club, '41.

ROBERT E. CHRISTENBERY "Bob"
Entered from McMinnville, McMinnville, Tennessee, '38.

EDNA ANNA CLARK "Eddie"
Entered from St. Mary's School, Sewanee, Tennessee, '40; Girl Reserves, '40, '41; President of Girl Reserves, '41; Bank, '40, '41; Bookstore, '40, '41; Interclub Council President of Girl Reserves in Chattanooga, '41; Junior Council, '40.





PAUL CLARK "Fuzzy"
Entered from East Lake Junior High, '39; R. O. T. C., '39, '40, Corporal; '40; Depression Club; Bachelors Club.

LUCILLE CLEMONS
Entered from Brainerd Junior High, '38; Bible Club, '40; Honor Society, '40, '41; Digest Sponsor for Home Room, '38.

GEORGE CLINTON "Flatfoot"
Entered from East Side Junior High, '38; Band; Military Staff Sergeant; Band Club; Sergeants Club; Frank Simons Concert Band here for two years.

PAUL W. COFER, JR.
Entered from Hardy Junior High, '38; Officers Club, '40.

ERNEST ROWE COFFETT "Ernie"
Entered from Dickinson Junior High, '37; "C" Club, '40; Bachelors Club, '39, '40; Depression Club, '39; Sports Club, '40; Swimming Team, '38, '39, '40, '41; Wrestling Team, '38, '39, '40, '41; Manager of Football Team, '38, '39, '40; Football "B" Team, '41; Basketball, '40, '41; Vice-President of Junior Class, '40; Vice-President of the Bachelors Club; Vice-President of Sports Club, "C" Club, Minstrel, '39, '40; Manager of Track Team, '39, '40; Escort in May Day, '40.

AGNES BERTHA COFFMAN "Buttercup"
Entered from Hardy Junior High, '39; Stylette, '40; Miss Demeanor, '40, '41; Battalion, '40, '41; May Day, '39, '40; Color Team, '39, '40; Varsity Volleyball, '39, '40; Varsity Basketball, '39, '40; Varsity Soccer, '39, '40; Varsity Baseball, '39, '40.

SHIRLEY WELLES COLE "Rusty"
Entered from City High School, '40; Girl Reserves Club, '40, '41; Archery Club, '40; Badminton Club, '40, '41; Red Cross Club, '41; May Day, '40; Class Basketball Team, '40; Class Soccer Team, '41.

GLORIA COLETTA

JOYCE COLETTA

BILLIE STEPHENSON COLSTON "Shorty"
Entered from Brainerd Junior High, '39; Girl Reserves, '39; Tennis, '39; Seventeeners, '39, '40; Girls Battalion, '39, '40, '41; Twentieners, '39, '40, '41; President, '40; Red Cross, '39, '40; Vice-President, '40, '41; Exclusive, '40, '41; Girls Hi-Y, '39, '40, '41; Secretary, '40; Home Economics, '39, '40, '41; President, '41; Black Kats, '40, '41; Vice-President of Rockettes, '41; Sponsor Company A, R. O. T. C., '41; Honorary Member of Officers Club, '41; Gym Teams, Newcomb, '39, '40, '41; Soccer, '40, '41; Basketball, '40; Volleyball, '39, '41; Softball, '40, S. P. Q. R., '40.

W. C. COLWELL, JR. "Bill"
Entered from Brainerd Junior High, '37; Program Chairman of 4-H Club of '40, '41.

MARTHA ELIZABETH CONNOR "Marthy"
Entered from Red Bank Junior High, '39; Hiking Club, '39; S. P. Q. R., '39; Candy Crew, '39; Digest Representative, '39; Ace Club, '39, '40, '41; Girl Reserves, '39, '40, '41; Girls Battalion, '39, '40, '41; May Day, '39, '40, '41; Publicity Committee for Junior Play, '40; Gym Teams, Newcomb, '39, '40, '41; Soccer, '40, '41; Basketball, '39, '40; Volleyball, '39, '40; Softball, '40; Varsity Volleyball, '39.

EDNA EARLE COOKE "Cookie"
Entered from East Side Junior High, '38; Hiking Club, '40, '41; Badminton Club, '40, '41.

DENNIS CHARLES COOLE "General"
Entered from Dickinson Junior High, '37; Stamp Club, '37, R. O. T. C., '38, '39, '40, '41; Corporal, '39; Sergeant, '39; Sergeants Club, '39; First Lieutenant, '40; Officers Club, '40; Boys Hi-Y, '39, '40; Grady Literary Society, '40; Radio Club, '39, '40; Junior Council, '39; Industrial Arts Club, '40; Class Chairman, '39.

MADGE MARIE COOPER
Entered from Brainerd Junior High, '38; Red Cross, '38, '39; Girl Reserves, '38, '39; Varsity Glee Club, '38, '39, '40, '41; Dramatic Club, '39, '40, '41; Seventeeners Club, '38; President, '39; Program Chairman, '40; Girls Hi-Y, '41; Usher, '41; Vice-President, '41; Junior Play, '39; Rockettes, '41; Southeastern Teachers Association, '37, '38, '39, '40; East Tennessee Teachers Association, '39; Operetta, '37, '38, '39; Varsity Glee Club and Orchestra Concert, '40.

DEWILLIS COPPINGER "Dee"
Entered from Hardy, '38; two years Football; three years Baseball.

CATHERINE IRENE COULSON "Kitten"
Entered from Dickinson Junior High, '38; Book Club, '38; Baton Club, '41; Betty Maid Club, '41; Stylette Club, '41; Drum Major, '41.

MARJORIE LOUISE COULSTON "Marry"
Entered from Red Bank Junior High, '40; Girls Battalion, '40.

MARY ELIZABETH COWLEY
Entered from East Lake Junior High, '39; Circus, '39; Battalion, '40; Stylette Club.

MARTHA LOUISE COX
Entered from Pineville, '38; Exclusive Club, '40; Rockette, '40; Spinsters, '40; Ice Cream Crew, '40.

EVELYN ANN CRABTREE "Brown Eyes"
Entered from Brainerd Junior, '38; Band, '38, '39; Home Economics Club, '40.

EARL CRABTREE "Friend"
Entered from McCallie School, '39; First President and Founder of the 4-H Club of Central High School, '39.

JOHN ALBERT CRABTREE "Jack"
Entered from Allied Academy of Berea College, Berea, Ky.; Varsity Glee Club, '38, '39; Fight Opera, H. M. S. Pinelore, '40; "Patience", Track Team, '39, '40; Camera Club, '40.

PATRICIA ELIZABETH CRISWELL "Patty"
Entered from Brainerd Junior High, '39; National Honor Society, '40; Spinsters, '39; Treasurer, '40; Anchors Aweigh, '40; Girls Battalion, '40.

JAMES RAST CROCKETT "Mike"
Entered from Brainerd Junior High, '37; Band, '37, '38, '39, '40, '41; Band Officers Club, '39, '40, '41; Bachelors Club, '40, '41; Sergeants Club, '39, '40; R. O. T. C., Sergeant, '39, '40; Digest Reporter, '38; Digest Sports Editor, '39; Digest Associate Editor, '40; Corn Cobblers, '40.

HELEN ANNE CRUMLEY
Entered from East Side Junior High, '38; National Honor Society, '40; Hiking Club, '38, '39, '40; Ace Club, '40; Girl Reserves, '38, '39, '40; Treasurer Girl Reserves, '40; Badminton Club, '39, '40; Secretary and Treasurer of Badminton Club, '40; German Club, '41; Athletic Club, '39; Junior Councilors, '40; Student Council, '40; S. P. Q. R., '38, '39, '40; Usher, '40, '41; Times Page Editor, '41; Digest Reporter, '40.

RANDALL CULLOM
Entered from Lanier High, Macon, Ga., '36; Football, '36.

BETTY JUNE CUMMINGS "Bet"
Entered from East Lake Junior High, '38; Red Cross, '38, '39, '40; Social Reporter, '40; Girl Reserves, '38, '39, '40; S. P. Q. R., '38, '39, '40; National Honor Society, '40; Spinsters, '39, '40; Secretary, '40; Reporter, '40; Usher, '40; Sponsor Company B, '41; Rockette, '41; Junior Council, '40; Junior Play, '40; Checkers, '38; May Day, '40; Digest Sponsor, '40; Honorary Member of Officers Club, '41; German Club, '41.

SANFORD CUNNINGHAM
Entered from Lookout Junior High, '38.

TEDDY ELIZABETH CUSHMAN "Cushy-Wushy"
Entered from Dickinson, '37; Bank, '38, '40; Drum Major, '39; Secretary-Treasurer, Band Club, '39, '40; Ace Club, '38; Bank and Bookstore, '37, '38, '39.

GERALDINE DAVIS "Jerry Doan"
Entered from East Lake Junior High, '39; Battalion, '38, '39; We Modern Club, '40; Ace Club, '39, '40; May Day, '39, '40; Physical Education Club, '39.

LUCILLE PEARL DAVIS
Entered from City High School, '40; Exclusive Club, '40.

I. L. DAVIS "Teedom"
Entered from Annicola, '37; National Honor Society; Makeup Man on Digest Staff.

BETTY LOU DAY "Bo"
Entered from Jackson High School, '38; Usher, '41; National Honor Society, '40, '41; Digest Staff, '40, '41; Feature Editor, '41; Seventeeners, '38, '39, '40, '41; President, '40; Vice-President, '39; Hiking Club, '38, '39, '40; Girl Reserves, '38, '39, '40; Vice-President, '38; Red Cross, '40, '41; Dramatic Club, '41; Ace, '38; Varsity Soccer Team, '38; Betty Co-Ed, '39; Etiquette, '40, '41; S. P. Q. R., '38, '39.

JACK DEAKINS
Entered from Brainerd Junior High, '39; Member of Depression Club, '41; Member of "C" Club, '41; R. O. T. C., '39, '40; Member of Sergeants, '40; Member of Basketball Team, '40, '41.

MARY ESTELLE DeFRIESE "Billie"
Entered from Brainerd Junior High, '38; Girl Reserves, '38, '39, '40; Treasurer, '41; Spinsters, '39, '40, '41; Hi-Y, '41; Usher, '41; Honor Society, '41; Orchestra, '41; May Day, '39.

MARY ELIZABETH DERRICK
Entered from Lookout Junior High, '39; National Honor Society, '41; Spinsters, '39; Vice-President, '40, '41; Girls Battalion, '40.

LUTHER DICK "Slimy"
Entered from Brainerd Junior High, '38; Member of Hiking Club, '38, '39; Second Mate, Sea Scout Club, '40, '41.

ARY DONALD DICKERT "Ern"
Entered from Lakeview Junior High, '38; S. P. Q. R., '38, '39; Hiking Club, '39, '40; Senate, '39, '40, '41; Camera, '39, '40, '41; Dramatic, '40, '41; Hi-Y, '40, '41; Grady, '41; Sergeant, '40; Officers Club, '40; President of Senate, '41; President of Camera Club, '41; Vice-President of Dramatic Club, '41; Senate Play, '40; Senior Play, '41.

EDWIN DONAHOO "Ebb"

WILLIAM CHESTER DRINNON "Wee Wee"
Entered from Lookout Junior High, '39; Publicity Manager of Industrial Arts Club, '41; Tennis Team, '40, '41; Industrial Arts Club, '41.

RALPH DUCKETT
Entered from East Lake Junior High, '39.

BETTY RAE DUDDER
Entered from East Side Junior High, '39; Ace Club, '39, '40, '41; Anchors Aweigh, President, '40, '41; Home Economics, '40, '41; Secretary in Hi-Y, '41; Girls Hi-Y, '41; Sports Club, '39, '40, '41; Rockettes, '40, '41; Maid of Honor to May Queen, '40; Gym Captain, '40, '41; Drum Major, '39, '41.

FRANCES IRENE ELLINGTON
Entered from Chattanooga High, '39; Anchors Aweigh, '39, '40, '41; Treasurer, '39, '40; Vice-President, '40, '41; Camera Club, '39, '40, '41; Secretary, '39, '40, '41; Seventeeners, '40, '41; Sports Club, '39, '40, '41; Rockettes, '40, '41; Maid of Honor to May Queen, '40; Gym Captain, '40, '41; Drum Major, '39, '41.



ORA LOUISE DUGAN "Lucy"
Entered from East Side Junior High, '39; Library Club, '40, '41; Stylette Club, '41; Betty Maid Club, '41.

MARY KATHERINE DURHAM "Kat"
Entered from Brainerd Junior High, '37; Red Cross, '39; Seventeeners, '38, '39, '40; Spinsters, '39, '40, '41; Spinsters Play, '40; Girl Reserves, '38, '39, '40, '41; Spinsters, '38, '39, '40, '41.

ROCHESTER Z. DU TEIL "Rocky"
Entered from Dickinson Junior High, '39; French Club, '40; Digest, '40; Sergeants Club, '40; Dramatic Club, '40; Etiquette Club, '40; Senate Club, '40; Sergeant in R. O. T. C., '41; Officers Club, '41; National Honor Society, '40; Lieutenant in R. O. T. C.; Rockette Club, '40, '41.

ROSALIE DUTTS "Rosie"
Entered from Lookout Junior High, '39; May Day, '39, '40, '41; Girls Battalion, '39, '40; Junior Girl Reserves, '40; Red Cross, '40; Physical Education Club.

EDNA RUTH EAVES "Speck"
Entered from Tyner High School, '41; Betty Maid Club, '40.

MARTIN L. EAVES "Marty"
Entered from Tyner Junior High, '37; Junior Red Cross, '41; Printing Staff of Digest, '40, '41; Won Middleweight Boxing Championship in Golden Gloves for Central High, '40.

BOYD R. EDGING "Lily"
Entered from East Side Junior High, '39; Captain Company B, R. O. T. C.; Girls Battalion Senior Sponsor; Director of Dramatic Club; participated in all School Plays; Member of Red Cross; Grady Literary Society; Varsity Glee Club.

HOLLIS LAMAR ELDRIDGE "Choclat"
Entered from North Side Junior High, '37; Band, '37, '38, '39, '40, '41; Orchestra, '38, '39, '40, '41; Sergeants Club, '40, '41; Archers Club, '39, '40; E. T. E. A. Orchestra, '39, '40; French Club, '39, '40; Southeastern Orchestra, '39, '40.

CHARLOTTE ANNA FOWLER "Pod"
Entered from Brainerd Junior High, '39; Vice-President Nine Club, '39, '40; President of Nine Club, '40, '41; Betty Co-Ed Club, '39, '40, '41; Red Cross, '40, '41; Etiquette Club, '39, '40, '41; May Day, '39, '40.

CHARLES FRASSRAND

HAROLD ELMORE
Entered from Christberry Junior High, Knoxville, Tenn., '38; First Lieutenant in R. O. T. C., '40, '41; Officers Club, '40, '41; First Mate Sea Scout Club, '40, '41.

BOBBIE LEE ELROD "Bob"
Entered from East Side Junior High, '38; Physical Education Club, '38, '39, '40; May Day, '38, '39, '40; Betty Maids, '41; Hiking Club, '40; Badminton Club, '41.

RUTH ESPY "Rufus"
Entered from Hardy Junior High, '39; Red Cross, '39, '40.

ROY EMERSON ETHRIDGE "Rosie"
Entered from East Side Junior High, '37; Baseball, '39, '40, '41; Alternate Captain Baseball, '41; Basketball, '40, '41; "C" Club, '40, '41.

TED EVANS "Teddums"
Entered from Red Bank Junior High, '38; First Sergeant, President of Sergeants Club, '40; Lieutenant Colonel, '41; Sergeant-at-Arms in Officers Club; Pitcher on American Legion Baseball Club, '38.

JUANITA FAYE FAMBROUGH "Neel"
Entered from East Side Junior High, '39; May Day, '40; Candy Crew, '39, '40, '41; Red Cross, '41; Stylette Club, '41; Home Economics, '41.

CLARENCE JACK FERRISS, JR.
Entered from East Side Junior High, '38.

EUGENE E. FINLEY "Gene"
Entered from Dickinson Junior High, '38; Class Chairman of '40.

WINNIE RUTH FITZSIMMONS "Fitzy"
Entered from Bradley High of Cleveland, Tenn., '40; Home Economics Club, '40.

JIMMIE FOSTER "Jenny," "Roundie," "Gabby"
Entered from Hardy Junior High, '39; School Band and Orchestra, '40; Korn Kobblers, '41; Brass Quartette, '41; Band Officer, '41.

CHARLOTTE ANNA FOWLER "Pod"
Entered from Brainerd Junior High, '39; Vice-President Nine Club, '39, '40; President of Nine Club, '40, '41; Betty Co-Ed Club, '39, '40, '41; Red Cross, '40, '41; Etiquette Club, '39, '40, '41; May Day, '39, '40.

CHARLES FRASSRAND





CHS Library

ANNA BARBARA FREUDENBERG "Rob Roy"
Entered from Dickinson Junior High, '38; Girls Hi-Y, '39, '40, '41; Senior Girls Reserve, '40, '41; Candy Crew, '39, '40; National Honor Society, '40, '41; S. P. O. R., '38, '39, '40; Central Literary Society, '38, '39; President, '40, '41; Usher, '40, '41; Digest Sponsor, '38, '39.

A. G. FULLER "Jay Bird"
Entered from East Lake Junior High, '37; Sports, '38, '39; R. O. T. C., '38; Business Math Class Chairman, '40.

FRANCES ELIZABETH FULLER "Fran"
Entered from East Lake Junior High, '39; Bible Club, '39, '40, '41; Secretary Bible Club, '40, '41; Library Club; Dramatic Club; Red Cross; May Day, '40.

RUTH GANT "Ruthie"
Entered from Lookout Junior High, '39; Physical Education, '39; May Day, '39; Athletic Club, '39; Girl Reserves, '39; Betty Co-Ed Club, '39, '40; Vagabonds, '41; Vice-President High Hat, '41.

ELLEN FRANCES GARDENHIRE
Entered from East Side Junior High, '39; Nite Owls, '40, '41.

HENRY T. GARDENHIRE "Junior"
Entered from Red Bank High, '38, '39; Central Literary Club; Boys Junior Hi-Y; Senior Hi-Y; Officers Club; Boxing Team.

SHIRLEY ELDRIDGE GARDENHIRE "Tod"
Entered from East Side Junior High, '39; Basketball, '38, '39, '40, '41; Football, '39, '40; Grasscutter, '38, '39, '40, '41; "C" Club, '39, '40.

JIM FOREST GARDNER, JR. "Ace," "Rip"
Entered from Rossville High, '39; Boys Hi-Y; Corporal, R. O. T. C.

WALTER GARVEY
Entered from Columbia S. C., '40; "C" Club; Football, '40; Bachelors Club.

BILL GATES "Dopey"
Entered from Brainerd Junior High, '39; Football Manager, '39, '40, '41; "C" Club, '41; Class Representative in Student Council, '40; Hiking Club, '39.

LOUISE KATHLEEN GEER
Entered from South Pittsburgh Grammar School, '38; Digest, '38, '39; Editor-in-Chief, '40, '41; National Honor Society, '41; Girls Hi-Y, '40, '41; Treasurer's Aide, '40; Usher, '40, '41; Girl Reserves, '39, '40, '41; Secretary, '39, '40; S. P. O. R., '39, '40; Biology Club, '39, '40; Secretary-Treasurer, '40, '41; Library Club, '39, '40; Vice-President, '40, '41.

GRANT GENUNG, JR.
Entered from East Side Junior High, '38; Champion Staff, '38; Band Officers Club, '41; Manager Basketball, '39, '40, '41; Lettermen's Club, '41; Band, '40, '41.

JIMMY GENUNG
Entered from Hardy Junior High, '38; Digest Sponsor, '38, '39; R. O. T. C., '38, '39, '40.

FANNIE LOUISE GERALD "Sis"
Entered from Lookout Junior High, '39; Stylette Club; Hiking Club, '40, '41.

DORIS LOUISE GILES
Entered from Chattanooga High School, '40; Girls Battalion, '40, '41; Secretary of Stylette Club, '41; Vagabond Club, '41; Red Cross, '41; Bible Club, '41.

GLADYS GERTRUDE GILLILAND "Doodle"
Entered from Brainerd Junior High, '38; Girl Reserves, '38, '39; Seventeeners, '38, '39, '40, '41; Secretary Seventeeners, '39; Anchors Aweigh, '41; Rockettes, '41; Spintertettes, '40.

TOMMY GILLILAND "Egghead"
Entered from East Side Junior High, '39; Stage Crew, '39, '40, '41; Bachelors Club, '41; Depression Club, '41; Officers Club, '41; Vice-President, '41; Sergeant's Club, '40; Captain of Band, '41; Band Officers Club, '40, '41; Junior Play Cast, '40.

MARY KATHERINE GILREATH "Kat"
Entered from East Lake Junior High, '39; We Modern Club, '41.

MARGARET ELIZABETH GLAZE "Libby"
Entered from Signal Mountain, '38; National Honor Society, '40, '41; Usher, '40, '41; Senate, '38, '39, '40, '41; Cabinet Member, '40, '41; Secretary, '41; Minister of Records Populist Party, '40; Girls Hi-Y, '39, '40, '41; Treasurer, '41; Digest Reporter, '38, '39, '40, '41; News Editor, '41; Anchors Aweigh, '41; Black Kat Program Chairman, '40, '41; Dramatic Club, '40, '41; Etiquette Club Program Chairman, '40; S. P. O. R., '38, '39, '40, '41; Hiking Club, '38, '39, '40, '41; Digest Sponsor, '38, '39, '40, '41; Senate Play, 'Spring Fever, '40; Girl Reserves, '39; Regional Speech Contest, '40; American School of Air Broadcasts, '40, '41; Chairman Decoration Committee for Junior Party, '40; Direct Play, 'Putting Up a Prosperous Front, '40; Student Forum Secretary, '40.

CHARLOTTE WAURENA GONIA
Entered from City High School, '39; Exclusive, '39, '40; Girls Hi-Y, '40, '41; Home Room Representative.

RAYMOND BEECHER GORRELL
Entered from Dickinson Junior High, '38; Airplane Club, '39, '40.

RICHARD GRANT "Go-Go"
Entered from Brainerd Junior High, '38; Grasscutters Football, '38, '39; First Team, '40.

KATHRYN GREEN "Cat"
Entered from Red Bank Junior High, '39; Library Club, '39; Girl Reserves, '39, '40, '41; Orchestra, '40, '41.

NORMAN MAXWELL GRIFFIN "Doodle Dum"
Entered from East Lake Junior High, '37.

MARGEAN GRIFFITH
Entered from East Side Junior High, '38; Spintertettes Club, '39, '40, '41; Exclusive Club, '39, '40, '41; Ice Cream Crew, '40, '41; Battalion, '40; May Day, '38, '39.

LEONARD GRIGSBY "Barney and Buddie"
Entered from East Lake Junior High, '39; R. O. T. C., Corporal, '39, '40; President of Depression Club, '41; Treasurer of Bachelors Club, '41; Red Cross Representative, '40, '41; Representative of Central for Red Cross Convention at Washington, '40, '41.

BETTY SUE GUTHRIE "Spazzle"
Entered from East Lake Junior High, '38.

JOHN B. HADDOCK "Johnnie"
Entered from Brainerd Junior High, '38; Color Guard, '40, '41; R. O. T. C., '39; on Program of Senior Party, '40.

BILL HALE "Wild Bill"
Entered from North Chattanooga, '39.

JUANITA IRENE HALL "Nita"
Entered from Hardy Junior High, '38; May Day, '39; Recognition, '40, '41; Red Cross, '40, '41; Library, '40, '41.

WILLIAM PATRICK HALL "Red"
Entered from Brainerd, '38; Airplane Club, '38; Swimming Team, '39; Band Club, '39, '40, '41.

FRANK BROWN HALLAS
Entered from Brainerd Junior High, '39; Radio Club, '40.

SENIOR CLASS

ADAM MAUDE HAMBLEN "Maudie"
Entered from Dickinson Junior High, '38; Girls Hi-Y, '40; President of Girls Hi-Y, '40, '41; Regimental Sponsor, '40; Honor Society, '40, '41; Treasurer of Anchors Aweigh, '40, '41; S. P. O. R., '38, '39; Hiking Club, '38, '39; Girl Reserves, '38, '39, '40; Rockettes, '41; Secretary of Sports Club, '40; Usher, '40, '41; Honorary Member of Officers Club, '40, '41; Girls Battalion, '39; May Day, '39; Physical Education Club, '38, '39; Gym Teams, '38, '39.

DONALD HANCOCK "Dan"
Entered from East Lake Junior High, '39.

GEORGE HANKS
Entered from East Lake Junior High, '39; Industrial Arts, '41.

JUNNIE LEE HARDEN
Entered from Brainerd Junior High, '38; Home Economics Club, '41; May Day, '39, '40.

JOHN HARDIN "Bud"
Entered from East Lake Junior High, '39; Industrial Arts, '41.

BEULAH NORMA HARRIS "Boots"
Entered from East Side Junior High, '39; Spintertettes, '39; Red Cross, '41; May Day, '39, '40; Newcomb Team, '40; Home Economics Style Show, '40; Secretary of Bookkeeping Class, '40, '41.

ROBERT HARRIS "Bob"
Entered from East Lake Junior High, '39; Secretary of Sergeants Club, '40; Officers Club, '41; Captain in R. O. T. C., '41.

ELIZABETH HARVEY
Entered from East Side Junior High, '39; Candy Crew, '40; Pianist for Gym, '40.

RICHARD OWEN HASTINGS "Dick"
Entered from Dickinson Junior High, '39; Boys Hi-Y; Honor Society.

FLORA NELL HAWKINS "Sadie"
Entered from Red Bank Junior High, '39; Girl Reserves, '39, '40; Central Literary Club, '39, '40; Home Economics, '40, '41; Girls Hi-Y, '40, '41; Black Kats, '40, '41; Rockettes, '41; Red Cross, '40, '41; May Day, '39, '40; Girls Battalion, '39.

JIM HICKS "Jimmy"
Entered from Lookout Junior High, '39.

MARGEAN GRIFFITH
Entered from East Side Junior High, '38; Spintertettes Club, '39, '40, '41; Exclusive Club, '39, '40, '41; Ice Cream Crew, '40, '41; Battalion, '40; May Day, '38, '39.

LEONARD GRIGSBY "Barney and Buddie"
Entered from East Lake Junior High, '39; R. O. T. C., Corporal, '39, '40; President of Depression Club, '41; Treasurer of Bachelors Club, '41; Red Cross Representative, '40, '41; Representative of Central for Red Cross Convention at Washington, '40, '41.

BETTY SUE GUTHRIE "Spazzle"
Entered from East Lake Junior High, '38.

JOHN B. HADDOCK "Johnnie"
Entered from Brainerd Junior High, '38; Color Guard, '40, '41; R. O. T. C., '39; on Program of Senior Party, '40.

BILL HALE "Wild Bill"
Entered from North Chattanooga, '39.

JUANITA IRENE HALL "Nita"
Entered from Hardy Junior High, '38; May Day, '39; Recognition, '40, '41; Red Cross, '40, '41; Library, '40, '41.

WILLIAM PATRICK HALL "Red"
Entered from Brainerd, '38; Airplane Club, '38; Swimming Team, '39; Band Club, '39, '40, '41.

FRANK BROWN HALLAS
Entered from Brainerd Junior High, '39; Radio Club, '40.

ALICE ELIZABETH HAYNES "Pete"
Entered from Hardy Junior High, '39; Girls Battalion, '39, '40, '41; May Day, '39, '40, '41; Parents Day, '39, '40, '41.

FRED HELMS "Preacher"
Entered from Red Bank Junior High, '39; Hi-Y, '40, '41; Band, '39, '40, '41; "C" Club, '40, '41; President, '41; Honor Society, '40, '41; President, '41; Officers Club, '41; Sergeants Club, '40; Digest, '40, '41; Associate Sports Editor, '41; Football, '40, '41; Alternate Captain, '41; Lieutenant in R. O. T. C., '41; Master Sergeant, '40; President of Senior Class, '41.

JAMES T. HELTON, JR. "Tatum"
Entered from East Side Junior High, '39.

ALNITA HENDERSON "Nita"
Entered from East Lake Junior High, '39; May Day, '39, '40; Archery Club, '40; Vaudeville, '40.

FRANK HENDRIX "Pete"
Entered from Hardy Junior High, '39; Library Club, '39, '40; President in '40, '41; Biology Club, '39.

J. C. HENNESSEY "Jay Jeter"
Entered from East Side Junior High, '38; Model Airplane.

FRANCES OPHELIA HENRY "Phoebe"
Entered from East Lake Junior High, '38; Girl Reserves, '38, '39, '40, '41; Spintertettes, '39, '40, '41; President in '41; Red Cross, '38, '39, '40, '41; Hi-Y, '40, '41; French Club, '40; Usher, '41.

JAMES BRUCE HENRY "Red"
Entered from East Side Junior High, '38.

SARA ANN HENSON "Sary"
Entered from East Side Junior High, '38; Vice-President of Aces, '41; President of Badminton Club, '41; Honor Society, '41; S. P. O. R., '38, '39, '40, '41; Girl Reserves, '38; Girls Battalion; Ace Club, '39, '40, '41; Badminton Club, '40, '41.

DOROTHY MURIEL HERRON "Dot"
Entered from Lookout Junior High, '39; Red Cross, '40; May Day, '39.

JIM HICKS "Jimmy"
Entered from Lookout Junior High, '39.

MARGEAN GRIFFITH
Entered from East Side Junior High, '38; Spintertettes Club, '39, '40, '41; Exclusive Club, '39, '40, '41; Ice Cream Crew, '40, '41; Battalion, '40; May Day, '38, '39.

LEONARD GRIGSBY "Barney and Buddie"
Entered from East Lake Junior High, '39; R. O. T. C., Corporal, '39, '40; President of Depression Club, '41; Treasurer of Bachelors Club, '41; Red Cross Representative, '40, '41; Representative of Central for Red Cross Convention at Washington, '40, '41.

BETTY SUE GUTHRIE "Spazzle"
Entered from East Lake Junior High, '38.

JOHN B. HADDOCK "Johnnie"
Entered from Brainerd Junior High, '38; Color Guard, '40, '41; R. O. T. C., '39; on Program of Senior Party, '40.

BILL HALE "Wild Bill"
Entered from North Chattanooga, '39.

JUANITA IRENE HALL "Nita"
Entered from Hardy Junior High, '38; May Day, '39; Recognition, '40, '41; Red Cross, '40, '41; Library, '40, '41.

WILLIAM PATRICK HALL "Red"
Entered from Brainerd, '38; Airplane Club, '38; Swimming Team, '39; Band Club, '39, '40, '41.

FRANK BROWN HALLAS
Entered from Brainerd Junior High, '39; Radio Club, '40.

ALEXANDER GORDON HOBBS, JR. "Silver"
Entered from Chattanooga High School, '40; Member of the Varsity Glee Club, '40, '41; Bachelors Club, '41.

MARGARET ELIZABETH HODDAY "Cricket"
Entered from Brainerd Junior High, '38; Girl Reserves, '38, '39, '40, '41; S. P. O. R., '38, '39, '40, '41; National Honor Society, '40, '41; Usher, '41.

ANNE HODGES
Entered from Brainerd Junior High, '39; Girl Reserves, '39, '40, '41; Digest, '39, '40, '41; Black Kats, '40, '41; S. P. O. R., '40; Honor Society, '41; Champion, '41; Usher, '41.

BOBBIE RUTH HODGES "Bob"
Entered from Brainerd Junior High, '38; Girls Hi-Y, '40, '41; Usher, '41; Home Ec. Club, '39, '40; S. P. O. R., '38, '39, '40; Girl Reserves, '38, '39, '40.

HILDA MAY HODGES "Blondie"
Entered from Hardy Junior High, '38; Girls Battalion, '39; Varsity Glee Club, '38; Red Cross, '40; "H. M. S. Pinetone, '38.

TOMMIE WADE HOLLAND
Entered from Red Bank High, '40.

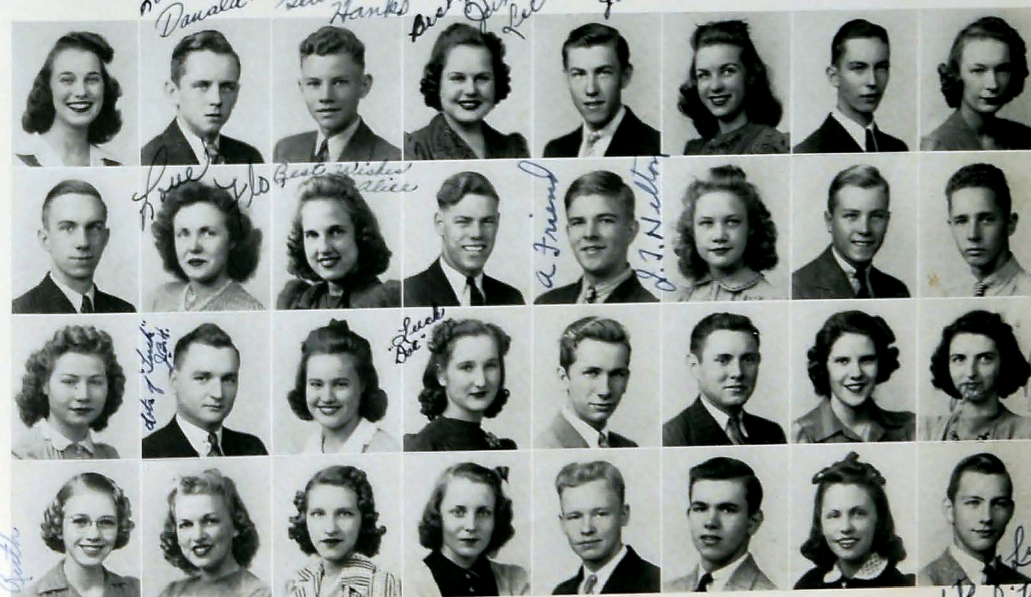
SARA FRANCES HOLLEMAN "Bitty"
Entered from Brainerd Junior High, '38; Red Cross, '38, '39; President of Girl Reserves, '38, '39; Seventeeners, '39, '40, '41; President, '41; Nite Owls, '40; Anchors Aweigh, '41; Usher, '41; Vice-President of Rockettes, '41; Honorary Member of Officers Club, '41; Second Battalion Sponsor, '41; Drum Major, '40, '41; Girls Battalion, '39.

HAROLD LAMAR HOLLIDAY
Entered from Brainerd Junior High, '39; Band, '40, '41; Industrial Arts Club, '41.

BILL HOLLINGSWORTH
Entered from Chattanooga High School, '40; Literary Club, '41.

BILLIE HOUSER
Entered from Chattanooga High School, '40; High Hats Club, '41.

MITCHELL HOWARD, JR. "Squirtblossom"
Entered from Brainerd Junior High, '38; Orchestra, '41.





HAROLD K. HUDDLESTON

Entered from Hardy, '37; Model Airplane Club, '40.

BERNICE HUDSON

Entered from Huntsville High School, Huntsville, Ala., '41; Glee Club, '38, '39 (Huntsville); High Hat Club, '41; Baton Club, '41; Majorette at Huntsville High, Majorette at Central; All-States Club, '41; Home Economics Club, '41; Dramatic Club, '38; Rockette Club, '41.

CHARLES HUDSON

Entered from Brainerd Junior High, '38; Hiking Club, '39; Varsity Glee Club, '39, '40; Southeastern Concert, '39, '40; Knoxville Concert, '39; Opera "Patience," '39; Boys' Hi-Y, '39.

DON EDWARD HUDSON

Entered from East Side Junior High, '39; Honor Society, '40; Sergeants Club; Officers Club; Photographic Editor of the Champion; Junior Council; Major of First Battalion, '41.

VIRGINIA WOODS HUDGENS

Entered from East Lake Junior High, '39; Girls Battalion, '39; Orchestra, '39, '40; Home Room Digest Representative, '41.

ROUGHTON HUDSON

Entered from Petros Grammar School, '38.

DOROTHY HUFFT

Entered from Hardy Junior High, '39; Miss Demeanors Club, '40, '41.

HUGH PAT HUNERWADEL

Entered from Red Bank Junior High, '38; Captain in R. O. T. C., '41; Vice-President of Literary Society, '40; Stamp Club, '38, '39, '40; Etiquette Club, '39, '40; Dramatic Club, '39, '40; Senate, '40, '41; Sergeants Club, '40; Officers Club, '41; Red Cross, '38, '39, '40, '41; Vice-President and General Manager, '41; Bachelors Club, '41; Depression Club, '41; Sponsor of Girls Battalion, '41; Vice-President of Home Room, '40; Cheerleader, '39; Dramatic Club Play, '39; Junior Play, '40; Red Cross Delegate to Washington, '40.

NANCY VIRGINIA IGOU

Entered from McIntire School, '38; May Day, '38, '39, '40, '41; Girls Battalion, '41; Girl Reserves, '40, '41; Red Cross, '41.

WILLIAM AUSTIN INGRAM

Entered from Winona High, Mississippi, '38.

AILEEN INSCORE

Entered from Tyler High, Red Cross, '39, '40, '41; Digest Sponsor, '39, '40, '41; Girls Battalion, '39, '40, '41; Vice-President of Red Cross, '40, '41; Senior Play.

MARY CATHERINE IRELAND

Entered from Dickinson Junior High, '39.

LUTHER IRELAND

Entered from Brainerd Junior High, '38; Digest Printing Staff; 4-H Club.

CLAYTON IRWIN, JR.

Entered from Coffee, Florence, Ala., '39.

ALBERT MEDERIES JACKSON

Entered from Brainerd Junior High, '37; Sergeants Club, '39; Captain in R. O. T. C., '41; Officers Club, '41; Bachelors Club, '40; Depression Club, '40; Archery Club, '39, '40.

H. GRADY JACOWAY, JR.

Entered from Brainerd Junior High, '38; Boys' Hi-Y, '38, '39, '40, '41; Grady Literary Society, '38, '39, '40, '41; S. P. Q. R., '38; Officers Club, '41; Red Cross, '38; Digest Sponsor, '39; Stamp Club, '41.

ARTHUR JENKINS

Entered from Hardy Junior High, '39; May Day, '39; Exclusive Club, '40, '41; Miss Demeanors, '40, '41; High Hat Club, '40, '41; Seventeeners, '39, '40, '41.

JOY ELIZABETH JERNIGAN

Entered from Dickinson, '37; Varsity Glee Club, '37, '38; Red Cross, '37, '38; President of Baton Club, '40; Nite Owls, '40; Drum Majorette, '38, '39, '40; Spring Concert, '37, '38; Bank Concert (Frank Simon), '38, '39; Girls Battalion, '37.

ERNESTINE JOBE

Entered from Hardy Junior High, '39; Francis E. Willard Award, '39; Betty Co-Ed Club, '39, '40; Digest Representative of Exclusive Club, '40, '41; High Hat Club, '40, '41; Stylette Club, '40, '41.

CLAUDE IGOU JOHNSON

Entered from Brainerd Junior High, '38; R. O. T. C., '39, '40, '41; Second Lieutenant, '40; Digest Staff, '39, '40; Officers Club, '40; Varsity Glee Club, '39; Class Representative in '40 of Student Council.

EVELYN JOHNSON

Entered from Brainerd Junior High, '38; Nite Owl Club, '37, '38, '40; Red Cross, '37, '40; Betty Co-Ed, '39; Girl Reserves, '38; Treasurer of Nite Owls, '38, '40; Assistant Treasurer of Red Cross, '40.

WILLIAM DANIEL JOHNSON, JR.

Entered from Brainerd Junior High, '38; S. P. Q. R., '38; Stamp Club, '39; President of Stamp Club, '40; Grady Literary Society, '40; Boys' Hi-Y, '39, '40, '41; Officers Club, '40; Second Lieutenant in R. O. T. C.

EMILY JOHNSTON

Entered from Brainerd Junior High, '38; President of Ushers, '40; Secretary of Digest, '39; Circulation Manager of Digest, '40; Business Manager of Digest, '41; Treasurer of Sophomore and Junior Classes for '39, '40; Vice-President of Girls' Hi-Y, '40; Hi-Y, '39; Varsity Glee Club, '40, '41; East Tennessee Chorus, '40, '41; Southeastern Chorus, '40, '41; Secretary of Black Kats, '40, '41; Dramatic Club, '40; Rockettes; Sponsor of Third Battalion in R. O. T. C.; Lieutenant in Girls Battalion, '40, '41; Red Cross, '38; May Day, '39, '40; Junior Council, '40; Gym Captain, '40; Maid of Honor to Sophomore Queen, '39; Feature Editor of Annual, '41; Physical Education Officer Force; National Honor Society, '40, '41; Honorary Member of Officers Club.

SARA BETTIE JONES

Entered from Hardy Junior High, '38; Betty Maid Club, '40, '41.

ROBERT BURCHARD JONES

Entered from Brainerd Junior High, '39; Stamp Club, '41; Chaplain.

JAMES JONES

Entered from Ducktown, Tenn., '38.

FRANKIE RUTH JONES

Entered from Winter Haven, Florida, '39; Varsity Glee Club, '40, '41; Spring Concert, '40; S. E. T. A. Chorus, '40; Betty Maids Club, '41.

AMANDA LEONA JONES

Entered from Hardy Junior High, '39; Red Cross, '39, '40; Varsity Glee Club, '39, '40; Southeastern Concert, '39, '40; Central Concert, '40; Miss Demeanors, '40; Battalion, '39, '40; May Day, '39, '40; Miss Demeanors Social Chairman, '41.

MARY FRANCES JONES

Entered from East Side Junior High, '39; Red Cross, '39; Seventeeners, '40; Exclusive, '40, '41; Miss Demeanors, '41; Hi-Hatters, '41.

NORMA GRACE JONES

Entered from North Side Junior High, '38; Girl Reserve and Assistant Home Room Representative for Red Cross; Miracle Book Club; Girls Battalion; Gym Teams; Pennies, '39; Home Economics Club; Crackers Jacks, '40; Girls' Hi-Y Club; Girls' Reserve Club; Social Chairman in Home Economics Club; Corresponding Secretary and Pianist in Miracle Book Club; Fire Balls, '41; Honor Strip and a Physical Education Emblem in '39.

THOMAS HOBSON JONES

Entered from McCallie School, '39.

MACK JORDAN, JR. "Herkey"
Entered from First Lutheran School, '38; Boys' Hi-Y, '38, '39, '40, '41; Grady Literary Society, '38, '39, '40, '41; Senate, '39, '40, '41; Sergeants Club, '40; Officers Club, '41; President Sophomore Class, '39; Stan-14, '39; Cadet Captain, R. O. T. C., '41; President Junior Boys' Hi-Y, '39; Assistant Business Manager Digest, '41; Business Manager Champion, '41; Hiking Club, '38, '39, '40, '41; S. P. Q. R., '38, '39, '40, '41; Business Staff Digest, '40, '41; Vice-President National Honor Society, '40.

ELIZABETH KEITH KELL
Entered from Fairmount Grammar, '38; Central Literary Society, '39, '40, '41; Vice-President, '40; Junior Girl Reserves, '40; Girls Battalion, '40, '41; designed part of scenery for Senior Play, '40.

CLARA MARIE KELLERHALS "Rhody"
Entered from Brainerd Junior High, '38; Betty Co-Ed, '39, '40; Exclusive Club, '40, '41; Troubadours, '40; May Day, '38, '39; Battalion, '39, '40.

BOBBIE JEAN KELLEY
Entered from Dickinson Junior High, '38.

HELEN LOUISE KAMMER "Lucky"
Entered from First Lutheran School, '38; Girl Reserves, '39; Seventeeners, '38; Treasurer of Seventeeners, '39; Member, '40, '41; Spinsters, '40; Library Club, '40; Betty Co-Eds, '39; Troubadours Club, '40; Rockettes Club, '41; Red Cross, '40; Hiking Club, '39; Member of Girls Battalion, '39.

HARRIS KENYON
Entered from East Lake Junior High, '37; R. O. T. C., '37, '38, '39; Lieutenant, R. O. T. C., '40; Officers Club, '40.

JOHN KEOWN
Entered from East Lake Junior High, '38.

THELMA KEOWN "Boots"
Entered from East Lake Junior High, '39; Sophomore Editor of the Champion, '39; Winner of an Award in Chattanooga District of Latin Tournament, '39, '40; Girl Reserve Club, '40, '41; S. P. Q. R., '40; Spinsters Club, '40, '41; Secretary, '41; Honor Society, '40, '41; Vice-President of Ushers, '40, '41; Digest Staff, '40; Copy Reader, '41.

FRANCES ANITA KILGORE "Frankie"
Entered from East Side Junior High, '39; Betty Maid Club, '41.

MILDRED LOUISE KILLINGSWORTH "Millie"
Entered from Lookout Junior High, '38; Betty Maids, '41; Program and Social Chairman; Bible Club, '41.

MILDRED MAE KILLINGSWORTH "Toots"
Entered from East Lake Junior High, '39; Sophomore Girl Reserve, '39; American Red Cross, '41; May Day, '40.

ZALA KIMBALL "Kim"
Entered from East Side Junior High, '40.

RUTH EVELYN KING "Blackie"
Entered from East Side Junior High, '38; S. P. Q. R., '38, '39, '40, '41; Girl Reserve, '38, '39, '40; Twin Teen Club, '40; Circus, '38; Seventeeners Club, '39, '40, '41; Red Cross, '39, '40; Digest Sponsor, '39, '40, '41; Rockettes Club, '40, '41; Anchors Aweigh, '41.

REED KIRK
Entered from Washington College High School, '39; Band; Officers Club; Junior Red Cross, '39, '40.

HILTON KROEGER "Bobs"
Entered from Brainerd Junior High, '38.

BETTY JO LAMB "Sheepie," "Jo"
Entered from Brainerd Junior High, '38; Sports Club, '38, '39; Black Kats, '40, '41; Senate, '40, '41; National Honor Society, '41; S. P. Q. R., '38, '39, '40, '41; Hiking Club, '40; Archery Club, '40, '41; Camera, '41; Badminton, '40; Twin Teen, '40; May Day, '38; Home Room Program Chairman, '40.

BOB NEWELL LAND "Pro"
Entered from Brainerd Junior High, '39; Golf Team, '39, '40, '41.

WILLIAM GARMON LANDERS
Entered from East Side Junior High, '39.

ARTHUR LESTER LAWSON, JR. "Hank," "Oswald," "Hankie"
Entered from East Side Junior High, '38; Officers Club; Corporal, Second Lieutenant, R. O. T. C.

MARTHA FRANCES LAWSON
Entered from Brainerd Junior High, '38; S. P. Q. R., '38, '39, '40, '41; Spinsters, '38, '39; Hiking Club, '38, '39; Stylette Club, '40, '41.

MARY JANE LAWSON "Squirt"
Entered from Red Bank High, '41; Red Cross Club, '41.

MARGARETTE IRENE LEONARD "Gite"
Entered from Hardy Junior High, '39; May Day, '39; Red Cross, '39; Miss Demeanors, '40; Program Chairman, '41.

MARTHA ANN LEONARD
Entered from East Side Junior High, '39; Battalion, '39, '40, '41; Tumblers, '41; Ace, '41; May Day, '39, '40, '41; Parents Day, '39, '40, '41.

ETHEL LOUISE LEWIS "Little Bit," "Shorly"
Entered from Lookout Junior High, '39; Usher, '41; Girls' Hi-Y, '40, '41; Sponsor Company E, '41; National Honor Society, '41; Anchors Aweigh, Secretary, '41; Rockettes, '41; Spinsters, '39; Secretary, '40; Member, '41; Band, '39, '40.

ETHEL VIRGINIA LEWIS "Gin"
Entered from Lookout Junior High, '39; May Day, '39; Junior Red Cross.

LILLIAN VIRGINIA LING
Entered from Brainerd Junior High, '38; Physical Education Club, '38; Girl Reserves, '38, '39, '40, '41; Digest Staff, '38, '39, '40, '41; Spinsters, '40; Vice-President, '41; National Honor Society, '41; Usher, '41; May Day, '38; Girls' Hi-Y, '41.

BETTY GREY LITTLETON "Beaver"
Entered from Dickinson Junior High, '38; May Day, '39; Red Cross, '39; Simon Concert, '39, '40; Band, '39, '40, '41; Sports Club, '40, '41; Band Girls Club, '41.

RAY LONG "Shorly"
Entered from East Side Junior High, '38; Bible Club, '38, '39.

THELMA RUTH MABRY
Entered from Bartin High School, '41; Social Chairman of Stamp Club.

GEORGE B. MAGIN, JR.
Entered from East Side Junior High, '39; Typing Award, '40; The Grady, '40, '41; The Stamp Club, '39, '41; Boys' Hi-Y, '39, '40, '41; Grady Literary, '40.

DOROTHY MAHONEY "Dot"
Entered from East Side Junior High, '38; Program Chairman Stylette Club.

JACK N. MALONE
Entered from East Side Junior High, '38; Boys' Hi-Y, '39, '40, '41; Central Literary Club; Hiking Club, '38, '39, '40, '41; Spinsters, '38, '39; S. P. Q. R., '38, '39, '40, '41; Printing Club, '39, '40, '41; Digest, '40, '41; Sergeants Club; Officers Club; Lieutenant in R. O. T. C. and Print Shop Foreman.



CNS Library



EULA MONETTE MANNING

Entered from Hardy Junior High, '39; Miss Demeanors Club, '40; Vice-President '40, '41.

RILEY GARNETT MANSFIELD

Entered from Hardy Junior High School, '37; Red Cross Club, '40, '41.

JOSEPH T. MANSFIELD

Entered from Brainerd Junior High, '39; Bachelors, '41; Depression, '41; Officers, '41; Sergeants, '40; Band Officers and Non-Commissioned Officers, '40; Archery, '40, '41; Grady Library Club, '41; Lieutenant Band, '41; Vice-President Archery Club, '41; Sergeant in Band, '40.

DOVIE LEE MARLER

Hardy Junior High, '39; Miss Demeanor Club, '40, '41.

NELL JO MARONA

Entered from Dickinson, '39; Girls Battalion, '39; Varsity Glee Club, '39, '40, '41; Operetta '39; Concert, '40, '41; May Day, '40; Red Cross, '41; Vagabond, '41.

KATHLEEN LORRAINE MARTIN Entered from Crystal City High School, Central City, Mo., '38; Seventeeners; Rockettes; Hi-Hats.

MARY NANCY MARTIN

Entered from East Lake Junior High, '38; Junior Red Cross, '40, '41.

LUTHER MASINGILL

Entered from Hardy Junior High, '38; Secretary Junior Class, '40; Junior Play, '40; M. C. of C. Club Programs, '39, '40, '41; Depression Club, '40, '41; Treasurer of Bachelor Club, '41; Senior Section Editor of Champion, '41; Senior Play, '41.

JOE T. MASON, JR.

Entered from Amarillo High School, Amarillo, Texas, '40; Officers' Club, '41; Depression Club, '41; Second Lieutenant R. O. T. C., '41; Rifle Team; R. O. T. C., Amarillo, Texas, '39.

JAMES RICHARD MASSENGALE

Entered from Red Bank High School, '39; 4-H Club, '39.

WILEY MASSEY

Lookout Junior High, '38; Boys' 4-H Club, '38; Boll Weevils, '39, '40; Manager Chapel Exercises, '40, '41.

FOSTER MATHES

Entered from East Side Junior High, '39.

MARTHA KATHERINE MATHEWS

Entered from Dickinson Junior High, '38; Junior Councilors, '40; Junior Girl Reserves, '40; Girls' Hi-Y, '40, '41.

KATHERINE MAYER

Entered from Ooltewah High, '39; Nite Owls, '39, '40, '41; Vice-President '41; Rockettes, '40, '41; High Hats, '40, '41.

VIOLA McALISTER

Entered from East Side Junior High, '39; Girl Reserves, '39; Home Economics, '41; Red Cross, '41.

BETTY McCLAIN

Entered from Brainerd Junior High, '38; Red Cross, '38, '39, '40, '41; Girl Reserves, '40; Library Club, '40, '41; May Day Festival, '38; Vagabonds, '41.

ORVILLE MONROE McCLURE

Entered from Lookout Junior High, '39; Publicity Editor; 4-H Club, '40, '41; Honor Society, '40, '41.

VIRGINIA DEAN McCORMACK

Entered from East Lake Junior High, '39; Varsity Glee Club, '39; Betty Maids, '41; Music Department Pianist, '41.

HARRY McDANIEL

Entered from Brainerd, '38; Student Council; Chairman of English Class, '40, '41; Bachelors Club, '39, '40, '41; Depression Club, '39, '40; Sea Scout Club, '40, '41; Basketball, '38, '39.

PEGGY McDANIEL

Entered from Red Bank High, '38; Red Cross, '38, '39; Secretary-Treasurer of Betty Maid Club, '40, '41.

BENJAMIN LEWIS McDONALD, JR.

Entered from Cohn High School, Nashville, '39.

HAZEL ALICE McGEE

Entered from East Side Junior High, '39; Physical Education Club, '39; May Day, '40; Spinsters Club, '40, '41.

FRED McKENNEY, JR.

Entered from Red Bank Junior High, '37; Football, '38, '39, '40, '41; Captain '41; Track, '39, '40, '41; Alternate Captain '41; R. O. T. C., '40; R. O. T. C. Cadet Colonel, '40, '41; 'C' Club, '38, '39, '40, '41; Sergeants Club, '39, '40; Officer Club, '41; President '41; National Honor Society, '40, '41; Sergeant of Arms, Senior Class, '41.

MARY ELIZABETH McMILLAN

Entered from East Lake Junior High, '38; Girls' Hi-Y, '41; Lookout Chapter of National Honor Society, '41.

ALICE CHRISTINE MEYER

Entered from First Lutheran, '38; Girl Scout '38; Candy Crew, '38, '39; Central Literary Club, '38, '39; Digest Sponsor, '39, '40; Junior Girl Reserves, '39, '40; Library Club, '39, '40; Central Literary Club, '40, '41; Usher, '40, '41.

IRENE JEANETTE MILES

Entered from Mt. Creek School, '38; Red Cross Representative, '40, '41; East Tennessee Chorus, '39; Betty Co-Ed, '38; Concert, '39; Varsity Glee Club, '38, '39; Operetta, '38.

FREDERICK ALBERT MERTINS

Entered from First Lutheran School, '38; Grady Literary Society, '40, '41; Stage Crew, '40, '41; Band Officers, '40, '41; 4-H Club, '40, '41; Band, '39, '40, '41; Orchestra, '41.

JOHN ROY MILLER, JR.

Entered from Dickinson Junior High, '39; Bachelors Club, '41; R. O. T. C., '39; Basketball, '39, '40.

MARY RUTH MILLS

Entered from East Side Junior High, '38; Junior Girl Reserves, '40; Digest Sponsor, '41; Secretary-Treasurer of Home Room, '41.

SALLIE SHASH MIMMS

Entered from East Side Junior High, '38; Red Cross, '38, '39; Library Club, '38; Spinsters Club, '40, '41; Twixteens, '40; Archery Club, '40; May Day Festival, '39; Ice Cream Crew, '39, '40, '41; Newcomb Team, '39; Seventh Period Chorus, '40, '41.

DAVID THOMAS MINOR

Entered from Dickinson Junior High, '38; Secretary of Senior Class, '41; National Honor Society, '40, '41; Boys' Hi-Y, '39, '40, '41; Chaplain of Hi-Y, '40, '41; Volunteer Boys State, '40; Depression Club, '39, '40, '41; Color Guard, '39, '40, '41; Bible Club, '38, '39; Biology Club, '38, '39; Sports Club, '39, '40, '41; Archery Club, '40; Senior Council, '40, '41; Digest Sponsor, '38, '39.

EMILY JEAN MINOR

Entered from Bob Jones College Academy, '39.

GERALDINE LAYERNE MITCHELL

Entered from Brainerd Junior High, '38; Girl Reserves, '38; Girls' Battalion, '39; Candy Crew, '39; Digest Sponsor, '40.

LOIS FERN MOORE

Entered from Hardy Junior High, '37; Miss Demeanors Club, '40.

EMILY JEANNE MORGAN

Entered from East Side Junior High, '38; Girl Reserves, '38, '39; Spinsters Club, '39, '40, '41; President '38, '40; Program Chairman, '41; Digest Staff, '41; Honor Society, '41; Usher, '41; Ice Cream Crew, '40, '41.

LELLIE JEWEL MORRIS

Entered from Red Bank High School, '40; Member of Red Bank Junior High Orchestra and Central High; Member of Girls Battalion.

GEORGE L. NEALE

Entered from Brainerd Junior High, '36; R. O. T. C., '37, '38, '39; Sergeant '37; English Class Chairman, '38.

MELBA RUTH NICHOLSON

Entered from Red Bank Junior High, '39; S. P. Q. R. Club, '39; Girls' Hi-Y Club, '40, '41; Girl Reserves, '41.

ROBERT HARVEY NICHOLSON

Entered from Dickinson Junior High, '38; President of Sergeants Club, '39, '40; Vice-President of Officers Club, '40; Treasurer of Central Literary Society, '40; Sergeant-at-Arms of Depression Club, '40; Bachelors Club, '40; Depression Club, '40; Central Literary Society, '39, '40; S. P. Q. R., '38, '39, '40; Hiking Club, '38, '39, '40; Major in R. O. T. C.; Basketball Team; Officers Club Basketball Team; Initiation Committee of Depression Club; Digest Representative, '40; Secretary of Home Room, '40.

AGNES LOUISE NIXON

Entered from North Chattanooga Junior High, '37; Candy Crew, '38, '39; Central Literary Club, '38, '39; Digest Sponsor, '39, '40; Junior Girl Reserves, '39, '40; Library Club, '39, '40; Central Literary Club, '40, '41; Usher, '40, '41.

EVA RUTH NIXON

Entered from Fairmont Grammar School, '38; Library Club, '40, '41; National Honor Society, '41; Secretary Central Literary Club, '40, '41; Candy Crew, '39, '40; Library Assistant, '39, '40.

CLIFFORD O'NEAL

JACK JUNIOR O'NEAL Entered from East Lake Junior High, '38; Radio Club, '40.

HENRY OLIVER, JR.

Entered from Hardy Junior High, '37; R. O. T. C., '37, '38, '39; Drum Major '39; Swimming Team, '39; Red Cross, '37, '38, '39; All States Club, '40; Vice Chairman of Senior English Class.

MARY ELIZABETH OWEN

Entered from East Side Junior High, '39; We Modern Club, '40.

DOROTHEA MAE OWENS

Entered from East Lake Junior High, '39; We Moderns, '40.

HELEN GERTRUDE OWENS

Entered from East Lake Junior High, '39; We Moderns Club, '40.

BEULAH L. PARDEE

Entered from Brainerd Junior High, '37; S. P. Q. R., '39, '40; Girl Reserves, '39, '40; Honor Society, '40, '41; Girls' Battalion, '39, '40; Secretary Usher, '41; May Day, '39, '40; Club Editor Champion, '41; Digest Secretary, '40; Bookkeeper for Digest, '41; Junior Council, '40.

GRANT PARK

Entered from East Side Junior High, '37; Member of Archery Club, '41.

HELEN PARKER

Entered from East Lake Junior High, '38; Library Club.

LEE ALICE PARKER

Entered from Chattanooga High, '39.

DOROTHY LOUISE PAYNE

Entered from South Pittsburg Junior High, South Pittsburg, Tenn., '38; Girl Reserves, '39, '40, '41; Girls' Battalion, '40; Usher, '40, '41; Sports Club, '39; Digest Representative, '40, '41; Red Cross, '39.

ROBBIE JUNE PEACE

Entered from First Lutheran School, '38; Senate, '38, '39, '40, '41; Vice-President of Senate, '41; Red Cross, '41; Associate Editor of "Beacon" of Red Cross, '41; Digest, '41; National Honor Society, '41; Black Kats, '40, '41; Extra-Curricular Award, '38; Usher, '41; Recognition Service, '40; May Day, '38; Circus, '39; Tumblers, '39; Girls' Athletic Club, '38; Ace Club, '39; Girl Reserves, '38; Reporter for Girl Reserves, '39; S. P. Q. R., '38, '39; Library Assistant and Library Club, '38; Girl Scouts, '39; Bedminston Club, '41.

JOCELYN ANNE PEELER

Entered from Brainerd Junior High, '38; Girl Reserves, '38, '39; Varsity Glee Club, '38, '39, '40, '41; Sports, '38, '39, '40; Girls' Hi-Y, '40, '41; Secretary of Sophomore Class; Seventeeners, '38, '39, '40; Dramatic Club, '40, '41; Anchors Aweigh, '40; Camera, '39; Rockettes, '41; Usher; Secretary of National Society, '40, '41; Extra-Curricular Award, '39, '40; Sponsor of Company 1; S. P. Q. R., '39, '40; Opera, '39, '40; Concerts, '38, '39, '40, '41.

L. AUBREY PENDERGRASS Entered from Red Bank Junior High, '39; Treasurer of Senior Class; Captain of Company 1 in R. O. T. C.; Sergeants Club, '40; Secretary Officers Club, '41; Member of Boys' Hi-Y, '40, '41; Member of Depression Club, '41.

HELEN LOUISE PENDERGRASS

Entered from Red Bank Junior High, '39; Exclusive Club, '40, '41; May Day, '39, '40; Battalion, '39, '40.

VIRGINIA PERRY

Entered from Red Bank High School, '40; Member of Stamp Club.

AUGUST CHARLES PFITZER

Entered from First Lutheran School, '38; Grady Literary Society, '38, '39, '40, '41; Hiking Club, '38, '39; Hi-Y, '39, '40, '41; Dramatic Club, '39, '40; Senate, '38, '39, '40; Sergeants Club, '40; Officers Club, '41; Second Lieutenant in R. O. T. C.; Delegate to Boys' State; Secretary of Grady Literary Society, '41; Chaplain of Grady Literary Society, '40; Treasurer of Hi-Y, '40; S. P. Q. R., '39, '40; Honor Society, '40, '41.

DONALD WILLIAM PFITZER

Entered from First Lutheran, '38; Boys' Hi-Y, '39, '40; Grady Literary, '39; Biology Club, '39, '40, '41; President '41; Sergeants Club, '40; Treasurer; Officers' Club, '40.

JIMMIE MERLE PLEMONS

Entered from Hardy Junior High, '39; Stylette, '40; Battalion, '39, '40; Color Team, '39, '40; May Day, '39, '40; Parents Day, '39, '40; Circuit, '39; Varsity Basketball Team, '39, '40; Varsity Volleyball Team, '39, '40; Library, '39.

MARY PLESS

Entered from East Lake Junior High, '39; Red Cross, '40; Home Economics, '40, '41; Miss Demeanor, '40, '41; Camera, '40.

BILL LA MARR POPE

Entered from Brainerd Junior High, '38; Bank, '38, '39, '40, '41; Orchestra, '40, '41; Sergeants Club, '40; Bank Officers Club, '40; E. E. A. Orchestra, '41; Southeastern Teachers Orchestra, '41.

EDITH LOUISE PORTEN

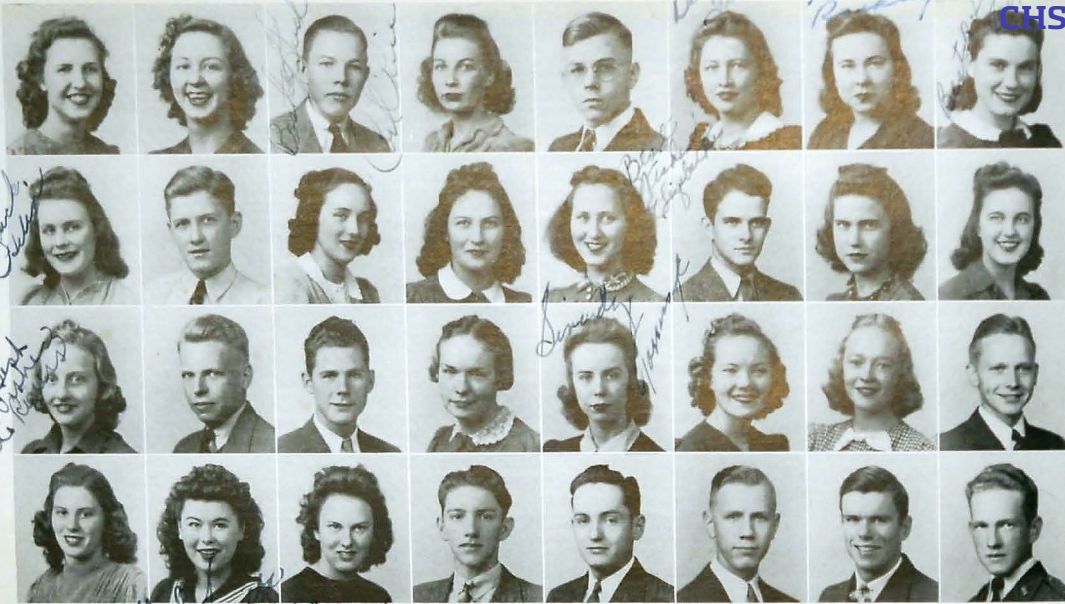
Entered from Lake View High School, Chicago, Ill., '40; Central Literary Society, '40.

BETTY POSTON

Entered from East Side Junior High, '39; Library, '40; Candy Crew.



CHS Library



NELLIE RUTH POTTS "Pottsie"
Entered from Hardy Junior High, '39; Exclusive Club, '39, '40, '41; Junior Red Cross Representative, '39, '40, '41; Digest Representative, '39, '40, '41; Physical Educational Club, '39; Art Masque, '39; Candy Crew, '40.

VIOLA WILMA POTTS "Vi"
Entered from East Side Junior High, '37; Usher, '40, '41; President of Stylette Club, '40, '41.

CARL CLIFFORD PRICE "Spider"
Entered from North Side Junior High, '37.

MARY FLORENCE PRICE "Phobie"
Entered from East Side Junior High, '38; Red Cross, '38, '39; Physical Education, '38, '39; Twix Teen, '40; Secretary Archery Club, '40, '41; Girls Battalion, '39, '40; May Day, '38, '39, '40, '41; Circus, '38, '39.

HARRY G. PRUETT, JR. "Prove It"
Entered from Brainerd Junior High, '38; Band Club, '38, '39, '40; Band Sergeant, '40, '41; Hiking Club, '38; Band, '38, '39, '40, '41.

IVANORA QUEEN
Entered from Brainerd Junior, '38.

KATHLEEN MARION RACKLEY "Catefats"
Entered from East Side Junior High, '38; Red Cross, '39, '40, '41; Digest Sponsor, '38, '40, '41; Digest Reporter, '39, '40; Digest Alumni Editor, '40, '41; Candy Crew, '40; Hiking Club, '40, '41; Stylette Club, '40, '41; Badminton Club, '40, '41; Physical Education Club, '38, '39; Typist for Red Cross Bulletin, '39, '40; Editor of the Red Cross Bulletin, '39, '40, '41.

ELLA CAPTOLIA RAGLE "Cap"
Entered from Hardy Junior High, '38; May Day, '38; Battalion, '39; Miss Demeanors, '39, '40, '41; Treasurer of Miss Demeanors, '40, '41.

HELEN RAE RAGLE
Entered from Hardy Junior High, '38; Physical Education, '38, '39; Girl Reserves, '38, '39; Red Cross, '39, '40, '41; May Day, '38; Dramatic Contest, '38; Miss Demeanors, Secretary, '39, '40, '41; Usher, '40; National Honor Society, '40; Senate, '40.

PAUL RAMSEY
Entered from North Fulton, '40; Band.

JEAN RANKIN "Jeanie"
Entered from East Side Junior High, '38; Red Cross, '39, '40, '41; Digest Sponsor, '39, '40; Band, '39, '40, '41; participated in Band Concerts, '39, '40; in Ace Club, '38, '39; Queen of Iris in Red Cross Flower Day Program, '40; Band Girls Club, '40, '41; Secretary of Red Cross, '41.

BETTY EVELYN RAY "Baby Ray"
Entered from East Lake Junior High, '39; Home Ec. Club, '40, '41; Chairman of Third and Fourth Period Bookkeeping Class, '40; Home Ec. Style Show, '40, '41.

DOROTHY ELIZABETH REID
Entered from East Lake Junior High, '39.

DAVID JOSEPH REYNOLDS "Uncle"
Entered from Brainerd Junior High, '38; President Freshman Class, '38; Extra Curriculum Award, '38; Boys' Hi-Y, '38, '39, '40, '41; Vice-President Boys' Junior Hi-Y, '39; Secretary Boys' Hi-Y, '41; Grady, '38, '39, '40, '41; Vice-President Grady, '41; Senate, '38, '39, '40, '41; Cabinet Member of Senate, '41; Presidential Candidate for Senate, '40; Dramatic Club, '39, '40, '41; President Dramatic Club, '41; Dramatic Club Play, '40; National Honor Society, '40, '41; Junior Play, '40; Depression Club, '41; Bank and Bookstore, '40, '41; Delegate State Hi-Y Conference, '40; Vice-President Senior Class, '41.

LAURA DELL REYNOLDS "Pop"
Entered from Dickinson Junior High, '38; Black Kate, '39, '40, '41; Junior Girl Reserves, '39; Vice-President Senior Girl Reserves, '40, '41; Ushers, '40, '41; National Honor Society, '40, '41; Red Cross, '40, '41; S. P. Q. R., '40; May Day, '40.

ERNESTINE RICHBOURG "Teeny"
Entered from East Side Junior High, '39.

ALICE VIRGINIA RIVERS "Dimples"
Entered from Hixson High, '38; Red Cross, '38, '39; May Day, '39; Girls Battalion, '38; Betty Maid, '40, '41; Home Room Representative for Red Cross, '39, '40.

FINLEY ROBBINS "Sam"
Entered from Red Bank High, '39; Hi-Y, '39, '40, '41; Depression Club, '40, '41; Digest Sponsor, '40, '41; Red Cross, '40, '41; Miracle Book Club, '40, '41.

BURL ROBERTS
Entered from Hardy Junior High, '38; Radio Club, '39, '40, '41.

FANNIE HELEN ROBERTS
Entered from East Lake Junior High, '38.

TOMMYE ROBERTS
Entered from Ooltewah High School, '39; Junior Red Cross, '39, '40, '41; Vagabonds, Treasurer, '41.

SYBIL IRENE ROBINSON "Little Chuffy"
Entered from East Side Junior High, '39; Hiking Club, '41; Betty Maid Club, '41; May Day, '39, '40, '41.

EVELYN HARRIET RODDY "Snoots"
Entered from Brainerd Junior High, '38; Bible Club Reporter, '39, '40, '41; Red Cross Club, '40, '41.

STEPHEN R. RODDY "Steve"
Entered from Brainerd Junior High, '38; Miracle Book Club, Treasurer, '39; Vice-President, '40, '41; Bachelors Club, '39, Secretary, '40, '41; Depression Club, '39, Secretary, '40, '41; Sea Scout Club, '41; Chairman of History Class, '40, '41; Sports Club, '40, '41.

MARTHA ALYCE ROGERS "Adeline"
Entered from East Lake Junior High, '38; May Day; Battalion.

EVELYN HARRIETTE ROSE
Entered from Brainerd Junior High, '38; Library Club, '38; Usher, '41; National Honor Society, '41.

MARY ELAINE ROYCE
Entered from East Side Junior High, '38; Girl Reserves, '38, '39; S. P. Q. R., '38, '39, '40; Red Cross, '40.

GRADY ROZZELL "Bob"
Entered from East Lake Junior High, '38; Bible Club.

BERT H. RUEF, JR. "Buddy"
Entered from Lookout Junior High School, '38; R. O. T. C., '38, '39, '40; Bachelors Club, '39, '40, '41; Depression Club, '39, '40, '41; Digest Sponsor, '39, '40; Chairman of Home Room, '39, '40; Home Room Representative Junior Red Cross, '39, '40.

EUGENE RUTEMEYER "Rudy"
Entered from Arsenal Technical Schools, Indianapolis, Ind., '40; Band; Industrial Arts Club, All States Club.

ROBERT SALES "Red"
Entered from North Side Junior High, '37; "C" Club, '38, '39, '40; Football Team, '38, '40; Baseball Team, '40, '41.

JAMES SAYLOR "Bud"
Entered from East Side Junior High, '39; Hi-Y; Hiking Club; Honor Society, '40, '41; Second Lieutenant in R. O. T. C., '41; S. P. Q. R.; Officers Club, '41.

NATALIE SCHLACK "Nat"
Entered from Brainerd Junior High, '39; Girl Reserves, '39, '40, '41; Usher, '41; Honor Society, '40, '41; Associate Editor of Digest, '41.

FLOYD SCHUBERT "Richard"
Entered from Hardy Junior High, '39; Boys' Hi-Y, '40, '41; Swimming Team.

ELIZABETH LORRINE SCOGGINS "Sister"
Entered from Charleston High School, '38; Betty Maid, '41.

DOROTHEA FRANCES SEARS "Pork"
Entered from East Lake Junior High, '39; Red Cross, '39, '40, '41; May Day, '39; Physical Education Club, '39.

MAXINE SEARS "Mackie"
Entered from DeKalb County High School in Fort Payne, Ala.; Literary Society, '40.

CLYDE W. SEDMAN
Entered from Hardy Junior High, '39; Digest Staff, '40; Sports Editor and Printing Staff, '41; Honor Society, '40, '41.

KATHERINE FAYE SEDMAN "Shorty"
Entered from Hardy Junior High, '39; Red Cross, '40, '41; Girl Reserve, '40; Miss Demeanors, '41; Stylette, '41.

ARCH GREY SEDMAN "Speedy"
Entered from Hardy Junior High, '38; Red Cross, '39.

DORA LOUISE SELLS "Dodie"
Entered from Lookout Junior High, '38; Red Cross, '41; Girl Reserves, '40, '41; Girls Battalion, '39, '40; May Day, '38, '39, '40, '41; Physical Education Club.

LESLIE SHACKLEFORD, JR. "Shack"
Entered from East Side Junior High, '38; Baseball, '40, '41.

FRANK LESTER SHELTON "Piggle"
Entered from East Lake Junior High, '37; R. O. T. C., '37, '38, '39.

GLADYS IRENE SHERWOOD "Renie"
Entered from East Lake Junior High, '38; We Moderns, '40, '41.

JOE A. SHIPLEY "Matie"
Entered from Brainerd Junior High, '37; Treasurer of Freshman Class of '38; Archery Club, '40; Member of Junior Council Class, '40; Member of Senior Council Class, '41.

MADGE STEWART SHIPMAN "Pug"
Entered from East Side Junior High, '39; May Day, '39, '40; Candy Crew, '39, '40, '41; Digest Chairman, '40; Home Room Chairman, '41; Red Cross, '41; Stylette, '41; Home Ec., '41.

DORIS SIMMONS "Tessie Belle"
Entered from East Side Junior High, '38; Red Cross, '38, '39, '40, '41; Tennis Club, '39; Digest Sponsor, '39; High Hats, '41; Rockettes, '41; Baton Club, '41; Dancers, '40, '41; Junior Council, '39.

DON H. SIMPSON "Mope"
Entered from Dickinson Junior High, '39; Camera Club, '39, '40, '41; Swimming Team, '40, '41; Orchestra, '39, '40, '41.

BETTY WINONA SMITH
Entered from Rome High School in Rome, Ga., '40; Red Cross, '40, '41; Hiking Club, '40, '41.

C. J. SMITH "Fatstuff"
Entered from North Chattanooga Junior High, '39; Book Club, '39; Hiking Club, '41.

GEORGE DOUGLAS SMITH
Entered from Brainerd Junior High, '38.

GENEVA SMITH "Jean"
Entered from Tyner High School, '39.

JULIAN SMITH
Entered from Boyd Junior High, '38; Stamp Club; Industrial Arts.

JEWELL KATHLEEN SMITH "Kitty"
Entered from Brainerd Junior High, '37; Red Cross; Bible Club.

MARGIE SMITH "Peg"
Entered from Selingsgrove High in Pa., '41.

CLARA MAE SNYDER "Screwball"
Entered from Lookout Junior High, '38; May Day, '40; Candy Crew, '39, '40; Stylette, '41.

MARGARET SPRINGEL
Entered from East Side Junior High, '39; Baseball Team; Football Team; "C" Club.

DAVID SPARKS "Sparky"
Entered from East Side Junior High, '39; Baseball Team; Football Team; "C" Club.

PEGGIE SUE SPARKS "Hedy"
Entered from East Side Junior High, '38; Girls' Hi-Y, '40, '41; Dramatic Club, '38, '39, '40, '41; Treasurer, '39, '40; Girl Reserves, '38, '39; Seventeeners, '39, '40, '41; Red Cross, '38, '39; Digest Secretary, '41; Junior Play, '40; Physical Education Club; Circus, '38; Usher, '41.

BETTY LAVERDA SPARROW "Duchess"
Entered from Thomasville High School in Thomasville, Ga., '38; Glee Club, '38; Secretary of Writers Club, '38; President of Entertainment Club, '38; Bible Club, '39; Band, '39, '40, '41; President of Band Girls Club, '41; National Honor Society, '41.

JOE ERNST SPEARMAN "Buddy"
Entered from Brainerd Junior High School, '38; Boys' Hi-Y, '38, '39, '40, '41; President of Stamp Club, '38, '39, '40; Camera Club, '39, '40; Biology Club, '39, '40, '41; Senate, '39, '40; Grady Literary Society, '38, '39, '40, '41; Officers Club, '41; Sergeants Club, '40; Officers Club, '41; Cadet Captain in R. O. T. C., '41.

JEWEL WARD SPENCER
Entered from Tullahoma High in '38.

MARY VIRGINIA SPURLING "Gennie"
Entered from East Side Junior High, '39; Seventeeners, '40; Orchestra, '40.

BLANCHE STACY
Entered from East Side Junior High, '38; Archery, '39, '40; S. P. Q. R., '38, '39; Twix Teen, '39; Girls Battalion, '39, '40.



CHS Library



WALES O. STANDIFER "Blow"
Entered from Brainerd Junior High, '39; Biology Club, '39, '40; Radio Club, '40; Girls' Reserve Club, '40; Officers Club, '41; Boys' Hi-Y, '39, '40, '41; Grady Literary Society, '41; Military Editor of Champion, '41; Sergeant in R. O. T. C., '40; First Lieutenant in R. O. T. C., '41.

JOHN D. STARGEL
Entered from East Lake Junior High, '38.

ALINE STEINMANN
Entered from East Side Junior High, '38.

ANNETTE STEPHENS "Shorty"
Entered from East Side Junior High, '38; Physical Ed. Club, '38; Ace Club, '38; Tumblers, '38; Circus, '38; Twixteens, '40.

CORINNE STEPHENS "Bebe"
Entered from Brainerd Junior High, '38; Girl Reserves, '38, '39, '40; S. P. Q. R., '39, '40; Black Kats, '40, '41; French Club, '39, '40; Tennis Club, '39, '40; Girls' Battalion, '39, '40; Seventeeners, '39, '40, '41; Rockettes, '41; May Day, '39.

NANCY JANE STEWART
Entered from East Lake Junior High, '39.

DOROTHY LEE STOKES "Dot"
Entered from Lookout Junior High, '39; Girls' Battalion, '40; Color Teams, '39, '40, '41.

SAM TATE STONER "Romero"
Entered from East Lake Junior High, '39; Red Cross, '40, '41.

HILDA STIFE
Entered from Chattanooga High School, '39; Miss Demeanors, '40, '41; Home Economics, '41.

FRANCES STRICKLAND "Francie Lou"
Entered from Hardy Junior High, '39; Usher, '41; Miss Demeanors Club, '40, '41; National Honor Society, '41.

TOMMIE LOU STRICKLAND "Sammie"
Entered from East Lake Junior High, '38; Varsity Glee Club, '40, '41; Girls' Hi-Y, '41.

MARTHA ELIZABETH STUTZ "Stutzie"
Entered from Dickinson Junior High, '38; Girl Reserves, '39, '40, '41; President, '40; S. P. Q. R., '38, '39, '40, '41; Red Cross, '39, '40, '41; National Honor Society, '41; Candy Crew, '40; Hiking Club, '38, '39, '40; Physical Ed. Club, '38; Archery Club, '40; Interclub Council, President of Girl Reserves of Chattanooga, '40; Girls' Hi-Y, '41; Dramatic Club, '40, '41; Central Literary Club, '40, '41; Cast of Junior Play, '40; Black Kats, '40, '41; Rockettes, '41; Usher, '41; Chairman of Ticket Committee for Senior Play, '41.

SALLY YERA SWEETEN "Sally"
Entered from Red Bank High School, '40; Black Kats, '40, '41; Red Cross, '40, '41; Dramatic Club, '41; Home Ec., '41; Girl Reserves, '40; Rockettes, '41.

SAMUEL CHESTER TALLANT
Entered from Brainerd Junior High, '38; Hi-Y, '38, '39; Band, '40, '41; Camera Club, '40, '41.

PEGGY TAYLOR
Entered from East Side Junior High, '39.

WILLIE MAE TEMPLETON "Billie"
Entered from Lookout Junior High, '38; Girl Reserves, '39; Red Cross, '39, '40, '41.

JUD TERRELL
Entered from Brainerd Junior High, '39; Radio Club; Biology Club, '40, '41; Biology Club Play, '40.

WILLIAM THOMAS "Billy"
Entered from East Side Junior High, '38.

ETHEL JULIA THOMPSON "Judy"
Entered from East Side Junior High, '39; Red Cross, '40.

HOWARD THOMPSON
Entered from East Side Junior High, '39; Bible Club, '39, '40; Chaplain, '40.

JOE THOMPSON "Tommy"
Entered from Dickinson Junior High, '37; Football, '37, '38, '40; Basketball Team, '38, '39, '40; Alternate Captain of Basketball Team, '40; "C" Club, '38, '39, '40; Treasurer of "C" Club, '40; "C" Club Frolic, '39, '40.

BESSIE THURMAN
Entered from East Lake Junior High, '39; Secretary of We Moderns Club, '40; Secretary of Vagabond Club, '40.

LAMAR TILLET "Lily Pond"
Entered from Dickinson Junior High, '39.

MARY JO TORBETT "Jo"
Entered from Brainerd Junior High, '38; Girl Reserves, '41; Home Ec., '41; S. P. Q. R., '39, '40, '41.

DOUGLAS MARION TRAUBER "Dug"
Entered from Brainerd Junior High, '38; Band.

JAMES MARTIN TREDWAY
Entered from North Chattanooga Junior High, '38; Boys' Hi-Y, '39, '40, '41; Archery Club, '39, '40; French Club, '39, '40.

GWENDOLYN TROTTER "Gwen"
Entered from Rossville Junior High, '40.

NANCY LEE TRUAX "Bugs"
Entered from East Side Junior High, '38; Betty Co-Ed Club, '38, '39; School Typist, '39, '40; Hiking Club, '40; Stylette Club, '40, '41; Vagabond Club, '40, '41; Red Cross, '40, '41.

CHARLIE TUCKER "Tuck"
Entered from Dickinson Junior High, '38; Track Team, '39, '40, '41; Captain, '40, '41; Bachelors Club, '39, '40, '41; Depression Club, '39, '40, '41; Sports Club, '39, '40, '41; Treasurer, '40; Sergeants Club, '39, '40; Officers Club, '41; "C" Club, '40, '41.

WILMA MARGUERITE TUCKER "Geet"
Entered from East Side Junior High, '38; Archery Club, '40.

DOROTHY EVELYN UNDERWOOD "Dottie"
Entered from Lookout Junior High, '39; Stylette Club, '41; Girl Reserves, '40, '41; Red Cross, '41; Girls' Battalion, '40; May Day, '39, '40.

JAMES WILLIAMS VALENTINE "Billy"
Entered from Red Bank Junior High, '38; Vice-President of Bachelors Club, '38, '39; President, '40, '41; Depression Club, '38, '39; Vice-President, '40, '41; Etiquette Club, '38, '39; Vice-President, '39, '40; Sports Club, '38, '39; Vice-President, '39, '40; Varsity Glee Club, '38, '39; Vice-President, '40, '41; Camera Club, '38, '39, '40, '41.

KEITH VERHEY
Entered from City High, '39; School Pianist; Pianist for Glee Club.

MELBA IRENE VICK
Entered from Brainerd Junior High, '38; Varsity Glee Club, '38, '39; Secretary, '40, '41; in Opera, "Patience," H. M. S. Pinafore, Musical Concert, '39, '40; Southeastern and East Tennessee Teachers Association, '38, '39, '40; Part in Junior Play, '39; Vice-President Sophomore Class, '38; Seventeeners, '38, '39; Girl Reserve, '37, '38, '39; Hi-Y, '40; Usher, '40; Parents Day, '38, '39; Christmas Play, '38, '39; Red Cross Flower Day, '38, '39; Elks Minstrel, '40.

WILLIAM THOMAS WALDEN "Wild Bill"
Entered from Dickinson Junior High, '35.

HERMAN PRESTON WALLER "Papa"
Entered from Hardy Junior High, '38.

HAROLD D. WARREN
Entered from Lookout Junior High, '38; National Honor Society, '40, '41.

MYRNA ELIZABETH WELGE
Entered from East Side Junior High, '39; Library Club, '39, '40; Home Room Digest Sponsor, '40, '41; National Honor Society, '41; Betty Maid, '41; May Day, '39, '40; Hiking Club, '41.

FRANCES WESTBROOK "Fanny"
Entered from East Lake Junior High, '39; Sophomore Girl Reserves, '39; Girls' Battalion, '40, '41; Red Cross, '41; May Day, '39, '40, '41.

GLENN ARTHUR WESTBROOK
Entered from Brainerd Junior High, '38; Stage Crew, '38, '39, '40, '41; Band, '38, '39, '40; Band Club, '38, '39, '40; Bachelors Club, '40, '41; V. G. C., '38, '39, '40, '41; President V. G. C., '41; Sergeants Club, '40; Etiquette Club, '39, '40; Sergeant R. O. T. C.

KENNETH J. WESTBROOK
Entered from Everett High School, '39.

WILLIAM A. WHITCOTTON "Bill"
Entered from East Side Junior High, '37; Officers Club.

ALBERT JARVIS WILKES "Winnie"
Entered from Brainerd Junior High, '38; 4-H Club, '39, '40.

FRANCES NELL WILLIAMS "Frits"
Entered from North Chattanooga Junior High, '38; Secretary of H. R., '40; Physical Education Club, '40; Literary Club, '41; Library Club, '39, '40, '41; Digest Sponsor, '41.

LOUISE WILLIAMS
Entered from Lookout Junior High, '39; Hi-Y, '39, '40; Miss Demeanors, '39, '40, '41; Battalion, '39, '40, '41; Physical Education, '39, '40; Junior Girl Reserves, '39, '40; May Day, '39, '40, '41; Red Cross, '41; Circus, '39, '40.

ROBERT T. WILLIAMS "Bob"
Entered from Dickinson, '37.

CHARLES LEWIS WILLIAMSON
Entered from Hardy Junior High, '38; Wrestling Team, '39, '40.

ROBERT WILLMO "Piggy"
Entered from Lookout Junior High, '39; Sergeants Club, '39, '40; Officers Club, '40, '41.

AVALON WILSON "Avon"
Entered from East Side Junior High, '38; Stylette, '41; Betty Maid, '41.

MARIAN FRANCES WILSON "Flur"
Entered from Brainerd Junior High, '38; Betty Maids Club, '40.

JUANITA JURIEL WILSON "Blondie"
Entered from East Lake Junior High, '39; Stylette Club, '41; Red Cross, '41; Band, '39.

MADGE LEATRICE WILSON "Dudd"
Entered from Hixson Junior High, '37; Betty Maids, '40.

MARY LEE WILSON
Entered from East Lake Junior High, '39; Stylette Club, '41; Red Cross, '40; Battalion, '39, '40; Tumblers, '39, '40; Circus, '39; May Day, '39, '40; Digest Sponsor, '40.

MARTHA WITT
Entered from East Side Junior High, '38; Seventeeners Club, '38, '39, '40; Girls' Hi-Y, '41.

DOROTHY IRENE WOMACK "Dot"
Entered from North Chattanooga Junior High, '38; National Honor Society, '40, '41; Girls' Hi-Y, '40, '41; Girl Reserve, '38, '39; Attendant Sophomore Party; Usher, '40, '41; Digest Sponsor, '40, '41; Star Fourteen, '38, '39; Central Literary Club, '39, '40, '41; Anchors Aweigh, '40, '41; Girls' Battalion, '40.

EVELYN WOMAC "Four Eyes"
Entered from Rogersville High School, '40; Band, '40.

FLORENE WOOD
Entered from East Side Junior High, '39; Spinsters, '39; Archers, '40; Ace, '41; Girls' Drill Squad, '39.

THERESA LOUISE WOODFIN "Babe"
Entered from Brainerd Junior High, '38; Varsity Glee Club, '38, '39, '40, '41; Nine Owls, '39, '40, '41; Red Cross, '38, '39, '40, '41; Spring Concert, '38, '39, '40; School Opera, '38, '39.

IRENE WORKMAN
Entered from North Chattanooga Junior High, '38.

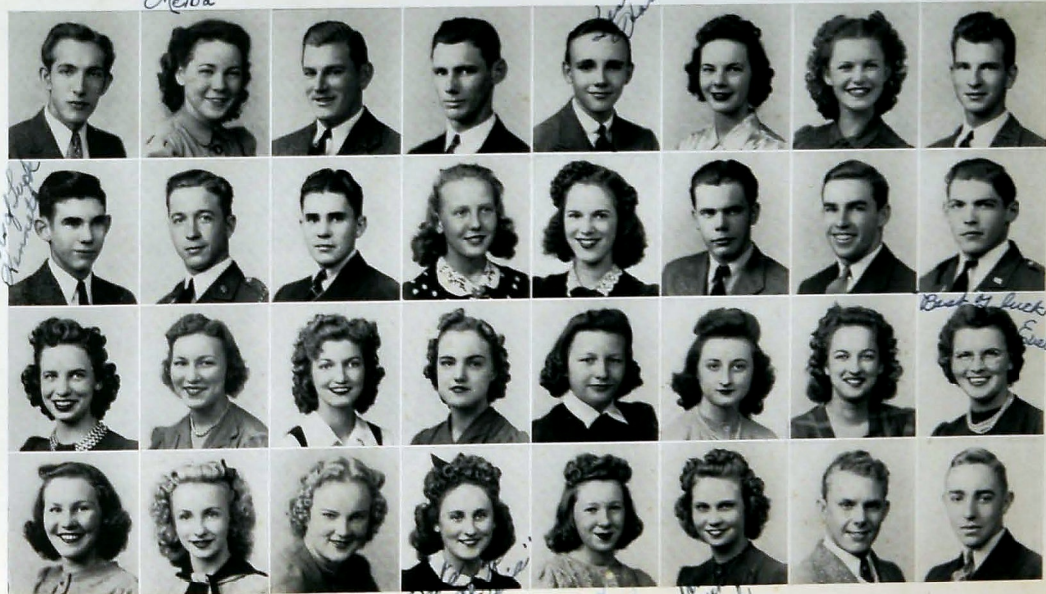
VIRGINIA WORKMAN "Jeanny"
Entered from East Side Junior High, '39; Spinsters, '39; Stylette Club, '40; Girls' Battalion, '39, '40; Digest Sponsor, '39, '40; May Day, '39, '40; President Home Room, '40; Red Cross, '40.

LILLIAN MARIE WRIGHT "Lily"
Entered from Brainerd Junior High, '38; Girl Reserves, '38; Tumblers, '38.

SARAH LYNN WRIGHT "Syrup"
Entered from East Side Junior High, '39; Girl Reserves, '39; Home Economics, '41; Red Cross, '41; We Moderns, '41.

JAMES JENNINGS WYATT

HOWARD YATES "Yokum"
Entered from Red Bank, '38.





DOROTHY ELSIE ZELINSKY "Dot"

Entered from East Lake Jr. High, '39; Spinsterettes, '40, '41; Girls Battalion, '40; Gym Office Force, '40, '41; National Honor Society, '41; German Club, '41.

JUANITA MARIE ZIMMERMAN "Nita"

Entered from East Side Jr. High, '39; National Honor Society, '40, '41; Ushers, '41; May Day, '39, '40; Committee Honor Book, Honor Society, '41; Wee Moderns Club, '41; Badminton Club, '39.

WARD ZIEGLER

Entered from Safe Creek, '38.

ROSANNA ZIMMERMAN "Ginger"

Entered from Brainerd Jr. High, '38; Red Cross Club, '39, '40; Band, '39, '40; May Day, '38, '39; Battalion, '38.

THE SENIOR CLASS



Three Year Honor Students and COMMENCEMENT SPEAKERS

GROVER McCOY CAMPBELL	Three Year Honor Student and Valedictorian
JESSIE NELL CARMICHAEL	Three Year Honor Student
JAMES CHARLES CARROLL	Poet
HELEN ANNE CRUMLEY	Three Year Honor Student
ANNA BARBARA FREUDENBERG	Three Year Honor Student
LOUISE KATHLEEN GEER	Three Year Honor Student
MACK N. JORDAN, JR.	Three Year Honor Student and Faculty Representative
THELMA BELLE KEOWN	Three Year Honor Student and Historian
MARY ELIZABETH McMILLAN	Three Year Honor Student
WILLIAM LUTHER MASINGILL	Prophet
ALICE CHRISTINE MEYER	Three Year Honor Student
BEULAH LEA PARDUE	Three Year Honor Student and Salutatorian
JOCELYN ANNE PEELER	Three Year Honor Student
LOUI AUBREY PENDERGRASS	Reader of the Will
ROBERT NEWTON SALES	Class Representative
NATALIE DEBORAH SCHLAK	Three Year Honor Student
JUANITA MARIE ZIMMERMAN	Three Year Honor Student



JUNIOR CLASS BOYS

James Harber Adenhold
Jack Robertson Agnew, Jr.
Calvin Dale Allison
Eugene Jarvis Anderson
Vestor Eugene Anderson
Gene Julian Andrews
Ray Warren Arnold
Bill Paul Baker
Dewey Wade Bass
Eugene Robert Bell
James Dunsen Benedict
William Albert Bird
Edwyn Bernard Bisplinghoff
Herbert Humphries Bivins
Bob Lester Blackwell
Wayne Marcel Blanchett
Edward Gaines Blevins
Henry Erwin Bowen
Jack Bradford
John William Bradley
Jack Terrell Brewer
Floyd Earl Britton
Clyde Robert Brooks
Jack Donald Brooks
Raymond Robert Brothers
Billy Broyles
C. D. Broyles
Carl Woodrow Byrd
Richard Charles Camp
George Copie Carden
Carl Robert Carpenter
Jim Carpenter
Claude Evan Carter
John B. Cash
Jack Andrew Castell
Charles Emmett Cates
Charles Lewis Chaylowsworth
Haskell McCoy Clark
Paul McClelland Cobble
Thomas Eugene Collum
Henry C. Colston
Samuel Allen Conner
James Kenneth Cook
William Howard Cooke
Alfred Harrison Cooper
James DeWitts Coppinger
William Bradlee Corley
Orville Ray Correll
Homer Earl Cowan
William Henry Cox
Charles Raymond Coyle
Nick Benjamin Crabtree
Calvin Finley Craddock
William Craighaud

Roy C. Craven
Warren Edgar Cressman
Scott Manning Crutchfield
James Arthur Davis
Robert Taylor Davis
Chris William Demos, Jr.
Irving Cooper Dennis
Fred Dial
Paul Dedrick Disney
Albert Vernon Dunlap
Bob Love Linn
Lewis L. Edmondson
Lloyd Eldridge
James Ervin
Haskell Robert Everett
Thomas Jack Faerber
Dean Raymond Falls
Robert Farley
Jack Farmer
Patrick James Farmer
John W. Finley
Robert Gleaves Fletcher
Charles Alvin Ford
Herbert Elliott Ford
Florence Harlow Forrest
Charlie Elliott Fox
Joe Francis Frassrand
Paul Howard Frost
Julian Carlton Grant
George Carl Gentry
Charles Gambill Gleaves
Lawrence Eugene Glenn
Louis William Goodner
Louis Edward Goodner
R. P. Goodner, Jr.
R. Alfred Graham
Billy Grant
John Alvin Grant
Arthur Clark Gray
William Kimbro Greene
Don Marshall Grove
Lynn Lynn Gross
Luther Glynn Gross
Paul Thomas Gross
James Calvin Gwin
Reginald Gwin
Bill Smith Hagaman
D. L. Haley
George William Hall
Robert Thomas Hall
Robert Glenn Hampton
Dennis Roy Hamrick
Eugene Willis Harris
Billy Hart

J. W. Henry
Joe Moore Henry
George Walter Hicks
Paul Mark Hicks
Thilly Higdon
Thomas Granville Hixon
A. G. Hobbs
Walton C. Hodge
James Holmes
Cooper Thurman Holt
James Marion Howard
Ray Carlton Huddleston
Louis Hendrex Hudson
Raymond Warren Hudson
Richard Francis Hullenster
William Roy Hyatt
James Minor Igo
Bill Patton Jackson
Hampton Monroe Jackson
Henry McCullough Jarrett
Clifford Anderson Jay
John Wesley Jeffery
Bill Johnson
George Edgar Johnson
Kenneth Kelly Johnson
William David Johnson
Ernest Marshall Jones
Joseph Keith
Ola B. Kelso, Jr.
Frank Sullivan Kimey
Billy Lee King
Joe Byrd King
William Harrell Kirkpatrick
David Francis Lane
George Langston
Edwin Gaines Lanford
Doyle Lee Larkin
George Gilbert Levi
Bruce Atkins Livingston
Oscar Thomas Long
Henry Rhodes Lowry, Jr.
Fred McBee
Danny Delano McBroom
Paul William McCay
Stewart Wilburn McCormick
Harold Claude McDonald
Milton W. McDonald
Marvin Alvin McDaniel
Robert M. McKnight
Billy Brown Miller
Claude Eastly Maxwell
George Edward Miller
John Franklin Miller
Willard Douglas Miller

Jeddrie Minor
Joseph Milton Mitchell
Voss Alexander Moore
Robert M. Morgan
William Edwin Morris
Jack Neale
Ed Dick Norris
George Conley O'Neal
Carl Harrison Owens
Morton Leland Pace
Bert Edward Page
William Hoyle Parham
Allen Joe Park
L. H. Park
Robert Cooper Pars
Edward Benton Patterson
W. L. Patterson
Charles LeBron Payne
William Edward Peace
Jack Ramey Peffer
Charles Edward Perkinson
Joseph Floyd Poe
Edward F. Poque
George Preston Poston
Bill Powell
William Pritchett
William James Purcell
Benton Edgington Reams
Travis Samuel Reed
Leland Edward Richbourg
James Hamilton Richey
Edward S. Riley
Edward Andrew Riordan
Buford Ellis Roberts
Charles Roy Roberts
Harold Tommie Roberts
Robert Linall Roberts
Albert Charles Robison
Robert Charles Robison
D. Jackson Rodgers
Julius Richard Rose
George Van R. Sabine
Bennie Charles Sandt
Glaisher William Sautter
Frank Ben Sells
Fillmore Millard Sessions, Jr.
John Paul Shelton
Robert Atherton Shelton
Bobby Neal Sherrill
Bill Charles Shipman
Rosa Simpson
Jim Edward Sken
Morley Marvin Slagle
John G. Smith, Jr.

Robert L. Smith
Edd Spain
James M. Stansifer
Bill McClain Stephens
Donald Check Sterchi
Maynard Clement Stewert
Guy Dawayne Stewart
Leonard Orvin Straker
Gabe Lipcomb Strong
Nevon Joseph Stuckey
James Verlen Swanson
Bob Lee Taylor
Edward Franklin Thomas
Lloyd Thomas
Kerry Douglas Thompson
John Keith Thompson
Herbert Easton Thornton
Allen Keith Tittle
James Malcolm Tittle
James Edward Travis
David Frank Trundle
Billy Roy Turner
Carl Douglas Turner
Wallace L. Turner
Fred Davis Underwood
Harvey Leroy Underwood
Vance McCoy Usher
Lendis B. Vetter
Billy L. Von Schaaf
John Maurice Wade
S. M. Wade
John Calvin Walker
Sam Wallace
Maurice Waller
George Dewey Wallis
Willie Joe Warren
Warren LeBon Watkins
Glenn Ernest West
Nelson Cornelius Westcott
J. L. Wheeler
Leon Clark Wheeler
Roy Howard Witmire
Gordon William Whittenbarger
Ed Wilcoxon
Clyde Willhoit
Ervin Williams
Eugene Williams
James Andrew Worley
John Max Worley
William Ezra Wyatt
William Russell Young
William Edward Younger
Leon Ziegler

JUNIOR CLASS GIRLS

Dorothy Louise Alexander
Dorothy Ann Anderson
Blanche Alford
Betty Joyce Arnold
Marjorie Ann Atchley
Martha Kate Atwood
Charlotte Nell Bailes
Ruby Esmene Barton
Mary Louise Bieley
Marilyn Ann Billingsly
Betty Joan Bliss
Gloria Louise Black
Bonnie Mae Black
Johnnye Clyde Blavins
Vivian Faye Blavins
Louise Bowling
Bettye Bradley
Pauline Brannan
Catherine Jane Brinson
Dorothy Ann Brock
Doris Virginia Brooks
Helen Eugenia Brown
Margaret Lois Brown
Olva Lee Brown
Sarah Ruth Brown
Myra Ann Bunker
Alma Pauline Bryan
Isabel Olline Bruce
Bobbie Burns
Beatrice Elizabeth Burt
Alice Louise Camp
Caroline Elizabeth Campbell
Doerthea Ann Caplan
Agness Lorraine Carden
Catherine Carpenter
Sara Evelyn Carroll
Shirley Pierce Carter
Edna Mae Chambers
Doris Loraine Champs
Evelyn Ruth Childs
Bonnie Dolores Childers
Peazy Elizabeth Clark
Martha Jane Clarke
Irene Mae Clement
Edna Charline Clark
Betty Doris Cobb
Sammie F. Cobb
Alice Genevieve Cobbleight
Helen Louise Cochran
Dorothy Althea Coffman
Nelda Joy Coleman
Virginia Rose Colwell
Delia Sue Connolly
Helen Louise Cooper
Edna Earl Couch
Mary Ruth Cox
Viola Ruth Cross
Mickey Lou Crows
Mae LaFaye Culver
Mary Lee Cummings

Betty Frances Cutten
Mary Elaine Curren
Frances Coranne Daniel
Dorothy Hester Davis
Ellen June Davis
Mary Louise Davis
Doris Dimple Dean
Doris Merle Dean
Sarah Louise Delzell
Madge Dickerson
Madeline Starr Dink
Dorothy Aileen Dodd
Patricia Ann Doughty
Georgia Maye Dudley
Barbara Dorrace Dunbar
Betty Louise Dunn
Betty Theola Ester
Dorothy Frances Echols
Virginia Isabell Edwards
Elder Amelia Eidson
Marian Ruth Elder
Anna Collett Elliott
Lona Kate Ellis
Edna Earle Evans
Betty June Evatt
Marjorie Knight Fearer
Elizabeth Jeanette Ferguson
Thelma Finley
Anna Lou Fine
Annes Winifred Francis
Betty Jean French
Evelyn Viola Frances
Margaret Elizabeth Fullam
Opal Virginia Gamble
Charlotte Faye Garrett
Frances Imogene Gass
Mary Will Gibbs
Helen Louise Gilreath
Nellie Elizabeth Gilreath
Martha Lorene Godfrey
Virginia Oneta Godfrey
Barbara Sue Goodberry
Annes T. Goodby
Dorothy May Green
Wray Denton Green
Bettye Jane Greene
Sara Ann Greenleaf
Nina Evelyn Gregory
Nina Jack Griffin
Mary Frances Gross
Juanita Elizabeth Hackler
Dorothy Brown Hale
Mildred Hale
Billie Ruth Hall
Maire Carleen Hall
Sarah Jane Hammonree
Dorothy Katharine Hanke
Susie Louise Hardin
Mary Louise Hardin

Avis Harper
 Charlene M. Harris
 Mary Frances Harris
 Dorothy Elizabeth Harrison
 Mary E. Harmon
 Constance Louise Harvey
 Pauline Matile Hartman
 Helen Ruth Harwood
 Addie Lucille Haygood
 Alva Hayes
 Alma Louise Headrick
 Nedra Anne Heinatz
 Mary Elizabeth Henderson
 Helen Elizabeth Henry
 Lela Marie Higdon
 Mary Catherine Higdon
 Charlotte Hilde
 Ann Hipp
 Johnnie Ruth Holloway
 Mary Elizabeth Horton
 Bertha Virginia Howell
 Anna Margaret Hudson
 Dorothy Louise Huff
 Jeanne Hulsey
 Doris Evelyn Hurl
 Betty Jean Ingle
 Mary Katherine Ingle
 Juanita Estelle Jackson
 Grace Charlene Jaccoway
 Jane Louise Johnston
 Anna Ruth Jones
 Evelyn Joan Jones
 Geraldine Parker Jones
 Mary Elizabeth Jones
 Miriam Frances Jones
 Cleeta Mae Jordan
 Mary Elizabeth Jordan
 Virginia Keen
 Lucille Kathleen Kingwood
 Hilda Ruth Kimbrough
 Alene Kirby
 Maryville Kimbrough
 Evelyn Elizabeth Kittrell
 Dorothy Don Knapp
 Evelyn Marie Lamb
 Eunice Allen Lambert
 Bethany
 Aveline Lawson
 Dorice Imogene Lawson
 Margaret Lawson
 Carolyn Patricia Lloyd
 Joetta Mae Lloyd
 Shirley Margaret McCroom
 Mary Annette McGann
 Eleanor Virginia McClure
 Willie Deann McCormick
 Mary Louise McDaniel
 Lorraine Marie McDowell
 Thelma Louise McDowell

Virginia Elizabeth McGuire
Mary Evelyn McKinney
Wanda McKinney
Frances Marie McMillan
Mary Elizabeth Maxwell
Betty Ann Magette
Emery Emoline Manly
Lois Miriam Marler
Betty Jane Marlow
Evelyn Elizabeth Marone
Jimmie Mae Marshall
Tommy Sue Martin
Lois Kathleen Massey
Mary Elizabeth Meadows
Eunette Willene Meredith
Anna Jean Meyer
Evelyn Elizabeth Miller
Hilda Miller
Iris LeVenne Miller
Jane Moldstad
Sarah Moldstad
Betty Ann Mollitt
Jayne Louise Newman
Mary Kathleen Newport
Kathleen Bernice Oliver
Rodella Oliver
Josephine Louise O'Rear
Genevieve Cecile O'Rear
Winifred Scott Orr
Josephine Evelyn Owsbey
Jane Nelline Parks
Mary Helen Parnum
Jerry Audrey Perry
Welma Ruth Perry
Martha Lou Phillips
Sarah Kathleen Prince
Frances Faye Probert
Katherine Marie Quinn
Betty Mae Reid
Margaret Imogene Ray
Mary Eudora Rickday
Sue Roark
Ann Roberts
Marsena Grace Rodgers
Doris Ruth Rodgers
Lorenne Rothwell
Frances Eloise Roy
Janetta Evelyn Royal
Norma H. Ruffer
Esther Aileen Ryder
Sarah Frances Sadler
Betty Mae St. Clair
Betty Frances Scoggins
Hazel Marie Seidman
Dorothy Ann Seibold
Elizabeth Serfel
Doris Anne Serrell
Dorris LeVenne Sharpe
Betty Jo Skeen

Betty Jane Smith
Betsy Ruth Smith
Edna Christine Smith
Ede Katherine Smith
Evelyn Smith
Evelyn Frances Smith
Inda Mae Smith
Myrle Stella Smith
Ruby Inez Smith
Verna Elizabeth Smith
Shirley Jean Souder
Shirley Jean Souder
Dorothy Sparks
Mary Guy Sprague
Mary Cynthia Steffer
Betsy Jean Standler
Louise Stansberry
Bettye Augusta Stewart
Elsie Virginia Stewart
Margaret Jean Stewart
Evelyn Rose Stewart
Betty Ann Strimppman
Margaret Ruth Stroud
Mildred Errastine Tallant
Nancy Elizabeth Taylor
Norma Kathleen Taylor
Bernice Ovline Team
Virginia Jean Thach
Lurlyne Thigpen
Bernice Ruth Thomas
Margaret Lee Thorburn
Mary Jane Thompson
Hilda Louise Tillett
Johnnie Ruth Tittle
Betty Fay Truett
Doris Beatty Turner
Sarah Elizabeth Varnell
Laboon Ella Verner
Patsy Sue Vaughn
Doris Vawter
Vivian Hilda Wade
Bettye Louise Wagner
Martha Lee Waldrop
Genevieve Lucille Walker
Clairis Ruth Walker
Jo Edith Walker
Dorothy Marie Wallace
Rose Lucrella Waller
Jane Louise Waller
Doro Lee Walters
Sarah Elizabeth Ward
Johnnie Washburn
Janet Elizabeth Waterhouse
Nancy Elizabeth Waters
Marquette Wilson
Myrtle Virginia Wilson
Ann Laura Womack
Earle Mae Worley
Mae Mae Worley
Dorothy Virginia Wright



SOPHOMORE CLASS BOYS

Rufus Abercrombie
Carlton Adams
Carl Akers
Charles Davis Alexander
Harry Reeve Alexander
Raleigh Hamilton Alexander
Herman Kenneth Alverson
William Boyd Anderson
James Burgess Athearn
Charles Axmacher
John Joseph Baker
Bobby Ballon
William Richard Borgerson
Marvin Barnes
Roy Martin Barrows
Kenneth McCallie Barry
Bill Harrison Beam
Glen Thomas Baker
Jake Beard
Billy Beene
Ollie Harrison Beene
James Wallace Bell
Howard Eugene Betts
L. J. Biggs
Walter Blygt
Kenneth Adam Bilderback
Jimmy Black
Earl Bland, Jr.
Clyde Allen Blaydock
Donald Leon Bevins
Ralph Harold Boogs
John Henry Bohannon
John Frank Bonds
Jack Revington Bowen
James Alexander Bowen
John Charles Bowen
Stanley Arlo Bowling
Harold Lenard Bracken
Samuel Bert Branharn
Carl Watson Bray
Billy L. Brewer
Billy Henry Brewer
Bobbie Larimore Brewer
Charles L. Brock
Giles Robert Brook
Charles Rouborn Brothack
John Clinton Brouhard
John Davis Brown
Wallace Brown
Robert Lewis Brown
Franklin Prince Broyles
James Carlton Caldwell
Ray Calloway
Dick Eugene Carmack
Hugh Glenn Carmichael
Harold Gordon Carpenter
Lee Clifford Carroll, Jr.
Paul Lavern Carson
James Travis Carter
Arthur Clyde Casey
Harold Pierce Casey
Melvin Clarence Cash

Walter Castings
Lewis Chadwick
Bob William Chamberlain
William Nelson Chambers
Albert Eugene Clark
James Thomas Cobble
Richard Coleman
Edwin Wallace Cooling
Vernon Weaver
Ferry William Craft
Carv Shepherd Craneford
Melville Chester Culpepper
William Oscar Daniel
Ernest Slater Davis
William Davis
Jerry Bobby Dean
John Cleveland Dellasmelt
William Robert Dempsey
Howard Austin Derrick
William Anderson Docker
Charles Vernon Duckett
Lamar Robert Duckene
Billie Lewis Draper
Harold Thomas Eaves
Willard Austin Edwards
Billy F. Eldridge
Hobert Elkins
William Lee Ellington
Robert Averil Elmore
John McGuire Erwin
Clarence Leonard Ellinger
Henry Buford Eubank
James Melvin Farmer
Charles Emory Farrar
Glenn Davis Fischer
Maurice A. Ford
Horace Milton Forstner
Harold Lee Foster
Glenn Ray Foster
Elmer Gordon Frank
Thomas Delaney Freeman
Robert Henry Fuzate
Charles Delane Fank
Ben Fastell
Leon Harmon Gamble
O. L. Gamble
H. D. Gang
John W. Gardner
John Harry Garner
Allen Gilliland
Herbert Jackson Gilbreath
Dan Girtan
Gerald Wayne Gledhill
Lamar Ray Gordon
Robert Emmett Grant
Brooksey Lee Greene
Byron Demmet Green
Paul Lavern Carson
James Travis Carter
Arthur Clyde Casey
Harold Pierce Casey
Melvin Clarence Cash

Charles Ed Gryder
Harry Guinn, Jr.
Edward Ernst Guntley
Clay Marshall Gupton
Leon Edward Leach
William Robert Haisten
Billy Hall
Leon Arbyan Haley
Stanley Lee Hall
James Woodford Hammock
Paul Jonathan Hammond
Warren Hanes
Henry Newton Hardan
Arnold Hugh Harris
Birdie Leland Harris
Clarine Harris
William Sutter Hayes
Reuben Hemstreet
Charles Agnew Henry
Climy Henry
George Hess
Bennie Hilburn
Herman Harold Hilburn
Walter Hill
James Herbert Holladay
Venices Hollis
Carl Houser
Edwin Eugene Howard
Nelson Hudson
George Jackson
Hughes
Robert McNab Huff
Herbert Ernest Paul Humbard
Robert Mercer Humphreys
William Sam Humphreys
Fred Wert Huntington
Joe Emory Hurn
Bill Igo
Willard Farmer Igo
William Houston
James A. Ivry, Jr.
Tommy Oden Jewell
Jesse Ernest Johnson
Joseph B. Johnson
Leonidas Edward Johnson
Edward Duncan Jolley
Charles Arnold Jones
Charles Edward Jones
Denny W. Jones
Winfred Calvin Jones
Edward Willard Jorges
Fred Garner Joyce
Harold James Kelly
Elmer Glenn Kile
George S. King
Herman Robert Krum
Buddy Lackey
Robert Lambin

Richard Delane Landis
Charles J. Langford
Carl Lee Lawton
Paul Alan Layton
Harry Edward Leach
Ted Sanford Letstead
Edwin Marvin Lehmann
Dick Leiper
James Lyle Legon
Charles David Livingston
H. Pete Llewellyn
John William Lloyd
Carl Steve Lonas
James Robert Looney
Hubert Curry Lovelace
Edward Wiley Lowe
Jack Mathew Lowery
William Robert Lundy
Charles Martin Lyles
Sam B. McIntire
Jack David Gregor
Bill Lee Kamey
Marvin Leon Marby
John Hubert Major
Douglas Paul Manning
John William Marler
Thomas Ernest Martin
William Thomas Massingill
Millon Edgar Matfil
Fred W. May
Willard Hamilton Mayes
Bill Mays
Edwin Allen Meeks
Leighton Alfred Meeks
Albert Brown Miller
Benjamin Franklin Miller
Carl Alvin Miller
Jordan David Miller
Luther Clyde Miller
Walter S. Miller, Jr.
James Bowen Moore
Charles Wayne Moreland
Robert Vernon Morgan
Willard Curtis Morrison
John Pinchoe Moss
Carl Mays
Frank Merrill Murphee
Herschel Wallace Nation
Clifford Baxter O'Neill
Clarence Clemmer Orr
Lester Jamison Owens
Joe Eldridge Parks
Ralph Jess Patrick
Robert Davis Peace
Thomas Parls
James Arthur Phillips
Charles Franklin Planzer
Herbert Andrew Poindexter
James Pope
Bobby Irvine Paston
Maurice Lee Patchford
Jack Hunter Raulston

Billy Richard Reed
Patricia Davis Adair
Gloria Elizabeth Addison
Bernice Alexander
Ava Jean Allen
Nelda Ruth Allen
Lydia Jo All
Betty Arnold
Willadean Arrant
Ruby Kathleen Ashley
Ella Anne Aucutt
Dolores Baker
Janet Daniel Bales
Marjorie Daphne Bales
Loretta Lottice Bales
Alice Jean Barker
Kitty Barker
Sarah Lovina Barnes
Mable Irene Barrett
Avis Marie Bass
Carolyn Willodean Bass
Audrey Elouise Bayne
Mary Jane Boyston
Dorothy Lee Bell
D. Elizabeth Bellis
Margaret Alice Benner
Nancy Jo Bennett
Rachel Yolanda Bennett
Beulah Bowman
Barbara Elaine Bracken
Fannie Bradford
Maxine Elizabeth Brannan
Inez Laura Brannum
Dorothy Lillian Brewer
Billie Brooks
Dorothy Olivia Brook
Mary Louise Brooks
Charlotte Ann Brown
Dorothy Evelyn Brown
Louisa Eudora Brown
Betty Sue Broyles
Christine Marie Buckele
Mable Camron Burkhalter
Josephine Irene Burhart
Ethel Lavina Burnette
Margaret Lillian Burnette
Jessie Ruth Burrow
Dorothy Nell Butcher
Irene Butler
Marjorie Ann Butler
Betty Fay Byrd
Hilda Blanche Calahan
Haley Irene Cameron
Erma Jean Campbell
Frances Louise Campbell
Virginia Lee Card
Betty Lou Carden
Mary Jo Carmichael
Betty Carl
Mary Wells Carter
Mary Jo Chambers
Lorine Mae Champion
Pearl Irene Clemmons
Virginia Estelle Collins
Billie Katherine Collins
Opal Colston

Patricia Davis Adair
Gloria Elizabeth Addison
Bernice Alexander
Ava Jean Allen
Nelda Ruth Allen
Lydia Jo All
Betty Arnold
Willadean Arrant
Ruby Kathleen Ashley
Ella Anne Aucutt
Dolores Baker
Janet Daniel Bales
Marjorie Daphne Bales
Loretta Lottice Bales
Alice Jean Barker
Kitty Barker
Sarah Lovina Barnes
Mable Irene Barrett
Avis Marie Bass
Carolyn Willodean Bass
Audrey Elouise Bayne
Mary Jane Boyston
Dorothy Lee Bell
D. Elizabeth Bellis
Margaret Alice Benner
Nancy Jo Bennett
Rachel Yolanda Bennett
Beulah Bowman
Barbara Elaine Bracken
Fannie Bradford
Maxine Elizabeth Brannan
Inez Laura Brannum
Dorothy Lillian Brewer
Billie Brooks
Dorothy Olivia Brook
Mary Louise Brooks
Charlotte Ann Brown
Dorothy Evelyn Brown
Louisa Eudora Brown
Betty Sue Broyles
Christine Marie Buckele
Mable Camron Burkhalter
Josephine Irene Burhart
Ethel Lavina Burnette
Margaret Lillian Burnette
Jessie Ruth Burrow
Dorothy Nell Butcher
Irene Butler
Marjorie Ann Butler
Betty Fay Byrd
Hilda Blanche Calahan
Haley Irene Cameron
Erma Jean Campbell
Frances Louise Campbell
Virginia Lee Card
Betty Lou Carden
Mary Jo Carmichael
Betty Carl
Mary Wells Carter
Mary Jo Chambers
Lorine Mae Champion
Pearl Irene Clemmons
Virginia Estelle Collins
Billie Katherine Collins
Opal Colston

Betty Blanche Cook
Peggy Lee Cooke
Lucille Anna Cox
Eloise Crawford
Carol Ann Cresswell
Glorinda Wallace Holder
Kathlene Hollingsworth
Mary Kathleen Holloway
Marguerite Hood
Margie Horton
Betty Elizabeth Daverson
Nanale Deal
Mamie Evelyn DeShazo
Roma Nell Dickert
Margaret Divine
Frances Downey
Mary Frances Durham
Evelyn Gens Drinnon
Alice Elizabeth Eaves
Virginia Louise Eckert
Ethel Leanna Edison
Betty June Elliott
Ollie May Elwe
Mell Jean Ennis
Aronelle Martha Estill
Margaret Eubank
Elsie Lee Ewton
Betty Jane Exell
Mary Elizabeth Fain
Genevieve Farley
Evelyn Leigh Farmer
Mary Katherine Ferris
Lily Jo Filer
Gertrude Evelyn Finley
Betty Fuller
Edna Willie Fuller
Margaret Jewell Fuller
Mary Louise Fuller
Gladys Irene Gaudier
Gladys Irene Gaudier
Margaret June Gattis
Lois Virginia Gazeaway
Virginia Ann Gerald
Barbara Allen Gill
Mary Harvey Gilbreath
Kathleen Landey Goldston
Betty Jane Good
Alice Elaine Grammer
Catherine D. Gray
Catherine Margaret Green
Violet F. Gregg
Margaret Lucille Gregory
Mary Elizabeth Griswold
Margaret Elizabeth Gross
Martha Jane Guinn
Rosalene Della Guinn
Margaret Ann Guth
Martha Frances Hale
Kathleen Josephine Hammonroe
Betty Jean Harris
Edna Earl Harris
Louise Harris
Mary Catherine Hartline
Sue Catherine Hawkins
Gertrude Elizabeth Heaps
Nettie Ruth Hearn
Lottie Louise Helton

Doris Brooks Henry
Gloria Lee Higdon
Nancy Sue Hill
Joyce Dolores Hoff
Carol Ann Holder
Glorinda Wallace Holder
Kathlene Hollingsworth
Mary Kathleen Holloway
Marguerite Hood
Margie Horton
Betty Elizabeth Daverson
Nanale Deal
Mamie Evelyn DeShazo
Roma Nell Dickert
Margaret Divine
Frances Downey
Mary Frances Durham
Evelyn Gens Drinnon
Alice Elizabeth Eaves
Virginia Louise Eckert
Ethel Leanna Edison
Betty June Elliott
Ollie May Elwe
Mell Jean Ennis
Aronelle Martha Estill
Margaret Eubank
Elsie Lee Ewton
Betty Jane Exell
Mary Elizabeth Fain
Genevieve Farley
Evelyn Leigh Farmer
Mary Katherine Ferris
Lily Jo Filer
Gertrude Evelyn Finley
Betty Fuller
Edna Willie Fuller
Margaret Jewell Fuller
Mary Louise Fuller
Gladys Irene Gaudier
Gladys Irene Gaudier
Margaret June Gattis
Lois Virginia Gazeaway
Virginia Ann Gerald
Barbara Allen Gill
Mary Harvey Gilbreath
Kathleen Landey Goldston
Betty Jane Good
Alice Elaine Grammer
Catherine D. Gray
Catherine Margaret Green
Violet F. Gregg
Margaret Lucille Gregory
Mary Elizabeth Griswold
Margaret Elizabeth Gross
Martha Jane Guinn
Rosalene Della Guinn
Margaret Ann Guth
Martha Frances Hale
Kathleen Josephine Hammonroe
Betty Jean Harris
Edna Earl Harris
Louise Harris
Mary Catherine Hartline
Sue Catherine Hawkins
Gertrude Elizabeth Heaps
Nettie Ruth Hearn
Lottie Louise Helton

Nancy Jeanne McSpadden
Gracie Alice McDonald
Betty Madewell
Levanie Elizabeth Malphus
Catherine Louise Marler
Frances Lucille Marler
Julia Frances Martin
Mildred Ellen Mason
Willie Elizabeth Mastigale
Katherine Elizabeth Maxwell
Louise Miles
Dolores Jean Miller
Elyne Myrie Miller
Evelyn Gertrude Miller
Mildred Minklin
Berlie Ann Moore
Maxine Moore
Christine Moore
Gertrude Ann Morgan
Ruth Elizabeth Morris
Billy Maxine Morton
Mable Elizabeth Mueller
Lena Grace Murdoch
Dorothy Alice Murphy
Frances Cogher Myers
Katherine Zelaz Norris
Agatha Nunley
Gladys Marie Oakland
Mary Jean Olson
Betty Sue O'Neal
Lois Elizabeth Overhoff
Carol Lucretia Thomas
Jean Peck Peoples
Virginia June Phillips
Layton Wilma Pippin
Flora Alice Price
Ruth Cagle Price
Geraldine Prichard
Luna Jean Prince
Theresa Myrtle Privette
Ninene Elizabeth Quinn
Martha Leigh Rains
Marjorie Dell Ray
Laura Gene Reese
Pauline Judy Reed
Kathryn Reeves
Grace Ernestine Richard
Betty Rose Richey
Sarah Riggs
Carolyn Janette Robertson
Mary Ella Roden
Mary June Rollins
Elsie Lou Roper
Cleo Alice Rowland
Anna Sue Ruda
Virginia Gae Russell
Edna Jane Rynier
Peggy Ann Sanders
Doris Dimple Scatterbee
Alma Marie Schlack
Kitty Edith Schneider
Mildred Alice Scott
Geraldine Hazel Sells
Nancy Marie Sertel
Nora Mae Shankle

Frances Louise Shedd
Gertrude Beatrice Sherry
Johnnie Ruth Shirley
Helen Louise Shropshire
Lucille Frances Simpson
Vestil Lee Sizemore
K. Geraldine Slatton
Geraldine Slatton
Catherine Beverly Smith
Christine Anita Smith
Frances Jean Smith
Mary Jo Smith
Mary Ruth Smith
Vernis Lee Smith
Genell Irene Smotherland
Dorothy Ruth Soper
Mary Frances Southerland
Leola Carolyn Stephens
Mildred May Stephens
Peggy Lou Starr
Betty Louise Strickland
Geraldine Ethel Sugge
Frankie Jo Swanson
Alma Jean Sylvester
Laura Jane Tallant
Wilma Louise Tallant
Jane Carolyn Talley
Anna Bernice Thomas
Bobbie Ruth Thomas
Annie Annette Thomas
Nancy Lucretia Thomas
Anna Ruth Thompson
Connie Thompson
Dorothy Jean Thurman
Myra Elizabeth Trimble
Jean Trotter
Mary Elizabeth Tucker
Doris June Turner
Berlie Jean Vance
Nana Mae Vandergriff
Mary Laura Vann
Jo Ann Villeret
Katherine Lucille Warren
Mary Frances Watkins
Ruth Carey Watkins
Betty Jeanne Wells
Mary Dove Whaley
Anita Elizabeth Wheeler
June Wheeler
Barbara Ann White
Sarah Frances White
Florence Whitcotton
Katie Marie Whitmore
Jeanne Wilkerson
Betty June Williams
Mary Ann Williams
Dorothy Nell Williamson
Reba Jean Worts
Inez Florence Wyatt
Priscilla Vance
Dorothy Jane Yantis
Gladys Elizabeth Young
Clemma Zachry



FRESHMAN CLASS BOYS

Robert Abeel	Tommy Costello	Ralph Heller	Allen Marlen	Vaden Sharp
Bobby Agnew	Billy Couch	Alvis Holland	Billy Martin	William Simons
Russell Aiken	George Couch	Jesse Hope	Billy May	O. C. Simpson
Paul Alexander	Robert Cowden	Henry Howard	Robert Meyer	Billy Sims
Jennie Allen	Harold Cox	Ernest Hudlow	Billy Miller	Edward Skates
Robert Augel	Walter Cox	Orville Hunsudker	Ralph Miller	Herschel Smith
Ernest Andrews	Julius Crumley	James Huskey	Thomas Miller	Leon Smith
Lewis Baker	A. O. Currey	Jack Ireland	Manyon Millican	Paul Smith
Harold Barrows	James Daniel	Basil Irwin	Leo Mills	Lawrence Spence
James Beard	Billy Davis	Elbert Jackson	Russell Mitts	George Spencer
Billy Beck	Robert Davis	Garland Jackson	Edwin Moorefield	Winthrop Stewart
George Bell	C. L. Denham	William Jackson	Gene Montgomery	Glenn Sturdivant
Charles Blaylock	Orvell Donahoo	Harvey Johnson	Ross Mosely	John Sweeten
George Bradford	Locklon Downs	Robert Jones	Marion Murphy	Everett Swingle
Edward Bray	Buddy Durham	Russell Kell	James Myers	Charles Talley
George Brewer	Alpha Eaton	Jimmy Kelley	Robert Nation	Donald Taylor
Paul Broadway	Murel Eaton	James Kelley	John Neal	Elmer Templeton
William Brock	W. L. Elington	Avery Knott	Harry Nettles	Jack Templeton
Charles Brooks	Billy Elrod	Dan Lamb	Richard Nicholson	James Templeton
Robert R. Brown	Billy Farmer	Carlen Lappin	Pate Oliver	Buddy Thomas
Terrell Brown	Bob Ferrillk	Carr Leavitt	Edwin Parke	Bob Thompson
William Brown	Clyde Fisher	George Lerch	Bob Parks	Marvin Thompson
John Buckner	Walford Ford	Billy Leverich	Clyde Parks	Murphy Thompson
George Burger	Robert Frist	Roy Levi	L. T. Patton	Ralph Thompson
Elmer Burns	Bryan Fryar	Dan Lewis	Frederick Payne	William Torrence
Lee Roy Cameron	William Gaitther	Leon Lewis	Thomas Perkinson	M. C. Trotter
Robert Cameron	Howard Garvey	Stanley Lominick	George Poe	Earl Underhill
Lloyd Camp	William Gentry	Kenneth Lonas	Herman Poole	Evans Varnell
Jack Card	Claude Gilley	William Long	Raymond Proctor	Robert Varner
John Carroll	Kenneth Goodwin	Joe Lovell	Robert Prystup	Charles Ward
Albert Carter	Robert Goza	Frank Lowe	Heber Ray	Lewis Ware
Billy Carter	Billy Greene	Herman Lowery	Val Reich	Jack Watkins
Melvin Carter	Wayne Griffith	Stanley McBroom	Wallace Roark	Billy Weaver
Wood Casey	Dewitt Griswold	O. K. McCullough	Grover Robinson	Marvus Westbrook
James Cash	James Guess	Cecil McDowell	Conroy Ryan	Don Wilhoite
George Cate	Gene Guhne	Donald McGuire	Johnny Sandifer	Don Williams
George Connally	Harold Harvey	Raymond McMahan	Lloyd Satterfield	James Wooten
Luther Cope	Milton Heaps	Roy McNabb	Clarence Scott	Clyde Worley
		Richard Mahaffey	Richard Sessions	



FRESHMAN CLASS GIRLS

Ila May Acuff	Mary Frances Couey	Nancy Higdon	Virginia Meyer	Virginia Sims
Alma Alder	Eloise Cox	Anna Higgins	Tressa Mills	Imogene Sledge
Vera Alder	Berna Creasman	Nancy Jo Hogue	Mary Minnick	Aze Sloan
Betty Allison	Nina Crowe	Juanita Houston	Evelyn Moates	Juanita Smith
Lucy Anderson	Dorothy Cummings	Lola Howard	Marjorie Moore	Jane Stanford
Dorothy Evans	Opal Cummings	Anna Hughes	Elizabeth Morton	Ada Stone
Norma Baker	Juanita Dickey	Wanda Humphrey	Walsie Moses	Betty Stone
Beatrice Barnes	Agnes Ducker	Eloise Hurst	Mary Nelle Murphree	Jacquelyn Stone
Mary Barnes	Martha Dudderar	Bettye Jackson	Mary O'Dell	Hannah Strickland
Elizabeth Barry	Betty Lee Duggan	Mable Jeffrey	Hazel Ogle	Frances Swope
Mary Baysden	Sue Dunn	Betty Johnson	Thelma Ogle	Glenda Taylor
Ida Beasley	Margaret Dyke	Janice Johnson	Wilma Pangle	Anna Teague
Edith Bune	Velma Eaves	Virginia Johnson	Dorothy Patten	Mary Joe Thomas
Charlotte Benedict	Lorraine Eidson	Ophelia Jones	Grace Pfitzer	Virginia Thomas
Nancy Binette	Amy Erwin	Peggy Keef	Mary Pfitzer	Joanna Thompson
Iris Blackwell	Marjorie Ferguson	Melva Kelley	Margie Pollard	Myra Thompson
Emilie Ann Bowen	Margaret Finnell	Betty Kinder	Billie Poorman	Martha Tillery
Barbara Bracken	Betty Fryar	Helen Kimgelou	Ruth Price	Vilette Tyler
Betty Bridewell	Lillian Fryar	Rose Mary Kirk	Therese Privette	Doris Underwood
Elizabeth Brooks	Donna Galloway	Louise Kriescher	Jouce Randall	Dollace Usher
Betty Brown	Dorothy June Gattis	Katherine Lancaster	Evelyn Ray	Mary Vaughn
Edna Brown	Virginia Gilbreath	Mable Layne	Ola Raybon	Elsie Vick
Frances Brown	Margaret Goldston	Billie Lee	Mary Jo Rhinehart	Gwendolyn Westbrook
Carolyn Broyles	Nina Gossett	Erma Lehman	Betty Riddle	Gloria Wheeler
Faye Burgess	Mary Gray	Marion Leonard	Sara Helen Ridge	Dorothy Whitaker
Dorthea Carlton	Edna Greene	Frances Loggins	Betty Robinson	Barbara White
Jane Carmichael	Zoanne Grove	Christine Long	Martina Rogers	Anna Whitehead
Helen Casey	Mildred Gunn	Barbara Love	Bettie Russell	Mary Whitten
Kathryn Chapman	Katherine Hall	Zeritza McBride	Betsy Ryerson	Helen Wilkes
Jackie Chester	Betty Hardy	Betty McClellan	Marian Sapper	Betty June Williams
Juanato Childers	Peggy Harris	Margaret McKinney	Jean Schild	Myrtle Williams
Faye Cloud	Peggy Hatcher	Sara McNichols	Doris Setliffe	Ruth Williams
Lorena Cobb	Elizabeth Hawkins	Elizabeth Manker	Nonivve Shipley	Lelia Witt
Jean Coleman	Grace Hennessee	Doris Mavity	Marilyn Shrader	Edith Wood
Betty Cook	Betty Henson	Evelyn Mays	Mary Alice Siddall	Clara Worley
		Mary Mertins		

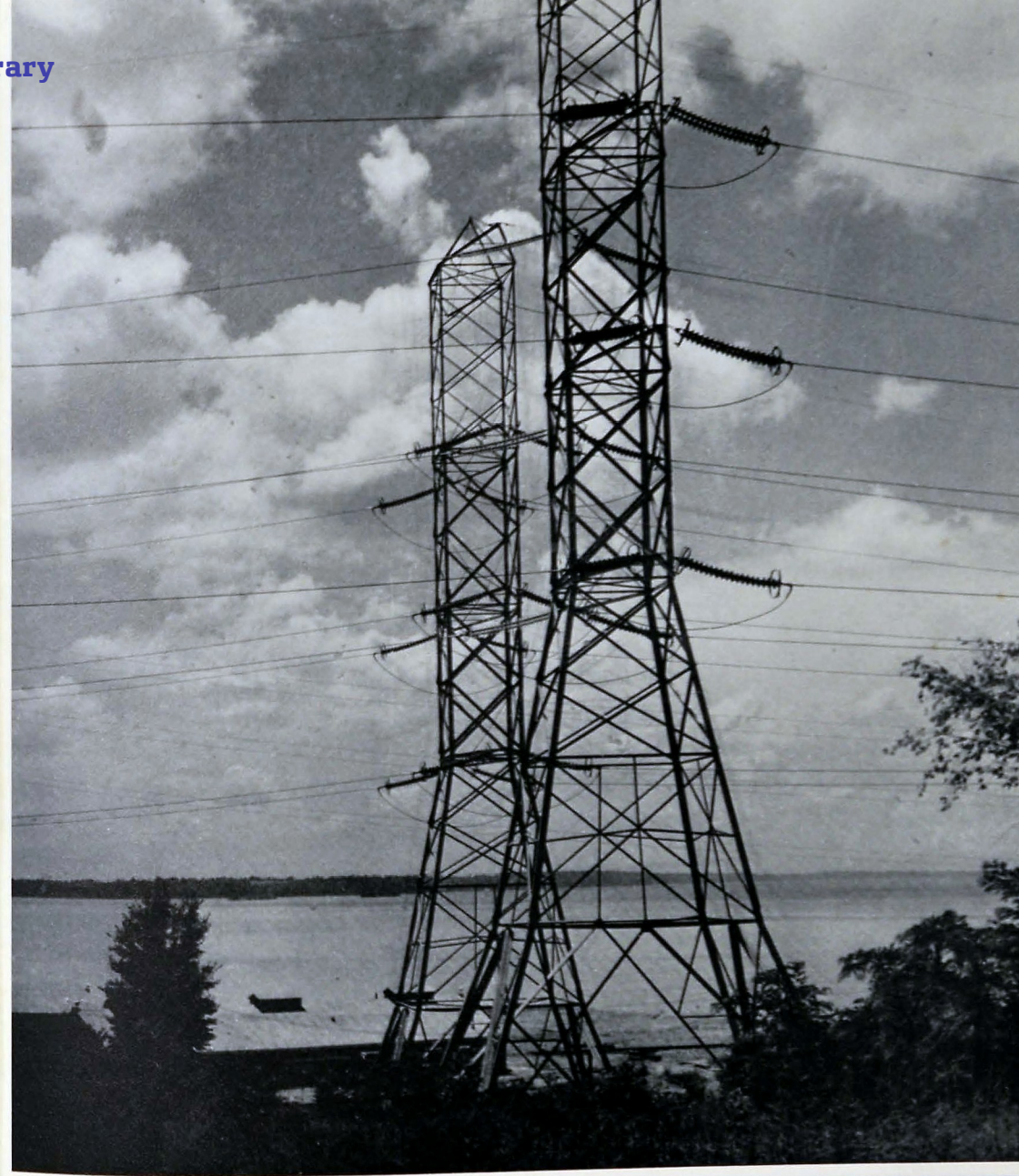


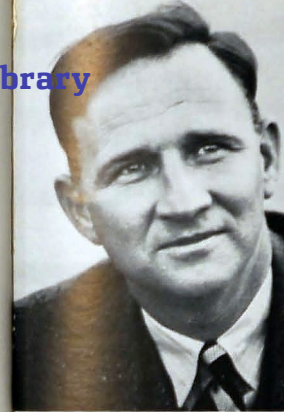
POWER

Dams mean electricity and electricity means power. Through a chain of dams, power has come to Chattanooga and the Tennessee Valley in very recent times.

If any one part of the country has been the "cynosure of neighboring eyes" in the last few years, it is the great Tennessee Valley which was to be the first government experiment for this type of development in the United States. With a chain of ten dams this development, which is proudly called the Great Lakes of the South, furnishes cheap electricity to both urban and rural sections. Located on both sides of the Tennessee River, Chattanooga is in the very heart of the Tennessee Valley Authority's vast improvement project of dams, soil conservation, reforestation and reclamation of eroded lands in this territory so long neglected.

Athletics





S. DEAN PETERSEN
Head Coach



GEORGE MCCOY
Line Coach



JOHN MICHAEL
Second Team Coach



RALPH OLINGER
Second Team Coach

T H E C O A C H E S

L E T T E R M E N

Front row, left to right: Coach George McCoy, Richard Grant, David Sparks, Ernest Coffelt, Coach Dean Petersen, Randall Cullom, Ben Miller, Walter Hill, Bill Gates, Coach Bales. Second row: Miles Stevens, Richard Coleman, Thomas Stubblefield, Walter Garvey, Harold Spurlock, Morton Pace, Robert Sales, Joe Thompson, Shirley

Gardenhire, Ed Patterson, Roy Etheridge, Charlie Tucker, Buford Roberts. Third row: Frank Blair, George Poston, Morgan Beaver, Donald Pfitzer, George Carden, Charles Stanley, Jack Deakins, Ralph Casey, Fred Helms, Fred McKenney, Ned Thaxton, Rufus Abercrombie, Eugene Shrader, Harold Short, Dewillis Coppinger, Ben Hudleston.



F O O T

B A L L

smashed Trojan plays time after time and then opened gaps for its own backs to scoot through.

Central, 44; Notre Dame, 0

In their second game of the season the bounding Purples met Notre Dame, a city foe, and after a free-scoring contest emerged victorious by a 44-0 score.

The great Central line duplicated its performance against Soddy-Daisy and held the Greenies scoreless. A comparatively light Purple backfield unreeled a dazzling exhibition of power plays. A crew of hard-running scat backs, headed by Walter Garvey, pistoned the Irish line into shreds.

The Notre Dame attack, led by its fine little captain, Don Fox, began to click in the last quarter, but lacked the power to thrust across a score.

Capt. Fred McKenney kicked a rare field goal in the second period.

Central, 21; Morristown, 6

A strong eleven from Morristown invaded Central and presented Purple fans with a fast and lively game before the Pounders emerged on the long end of a 21-6 score.

Coach Peter Sylar's Morristown outfit unfolded a baffling repertoire of delayed bucks, spins and laterals, but a fast-charging Purple line stayed on its toes and stopped several threats just in time.

The opponents drew first blood in the first period, but touchdown runs by Collum and Garvey and extra points

by Capt. McKenney iced this interesting game for the Pounders.

A fumbled punt returned early in the first period paved the way to Morristown's lone marker.

Central, 42; Stevenson, 0

A gallant but hopelessly outclassed aggregation from Stevenson High School were next to face the big guns of the Purple attack and went down to the tune of a 42-0 score.

In a night game on Frawley Field the game was played in a freezing temperature and drew only a handful of chilled Purple fans.

This proved to be another free-scoring contest, with Central's crew of fancy backs ripping off gains and scores almost at will. Every man on the Pounder squad saw service.

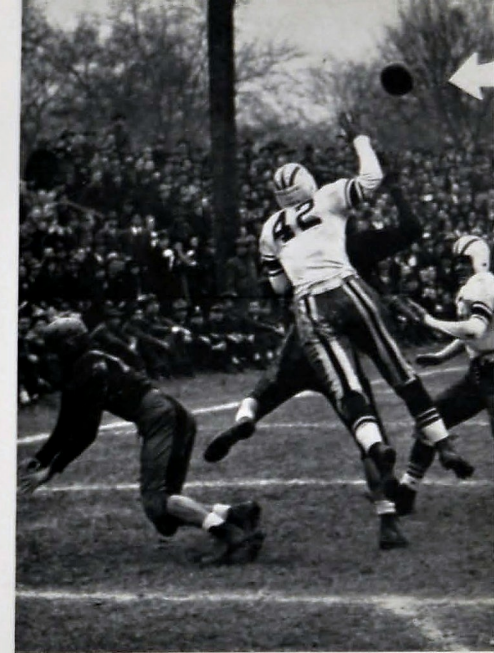
Stevenson was one of two Alabama teams met by Central; the other, Ensley High of Birmingham, came at a later date.

Central, 0; Bradley, 14

Inspired by the pre-game dedication of their fine new field, the Bradley Bears played straight heads-up football to defeat a fighting Purple eleven, 14-0.

The Bears capitalized on several lucky breaks and struck twice in the first half to lead by a twin touchdown margin.

The Pounders played an improved brand of ball in the second half, but were no match for tricky Bradley plays.



Left, Roberts; front, Coppinger, go for pass in City Game

Central had gone into this fray a decided favorite and this overconfidence proved to be their downfall. The furthest the Pounders could penetrate into Bear territory was the thirty-yard line. Here a strong line stopped all threats.

Central, 7; Asheville, 0

In their next game the high-flying Purples met a strong contingent of Asheville High School Red Devils.

The Red Devils boasted of a '39 victory over Central and the Pounders were out for revenge.

The game proved to be one of the closest of the year

Walt Hill



Patterson goes for touchdown against City

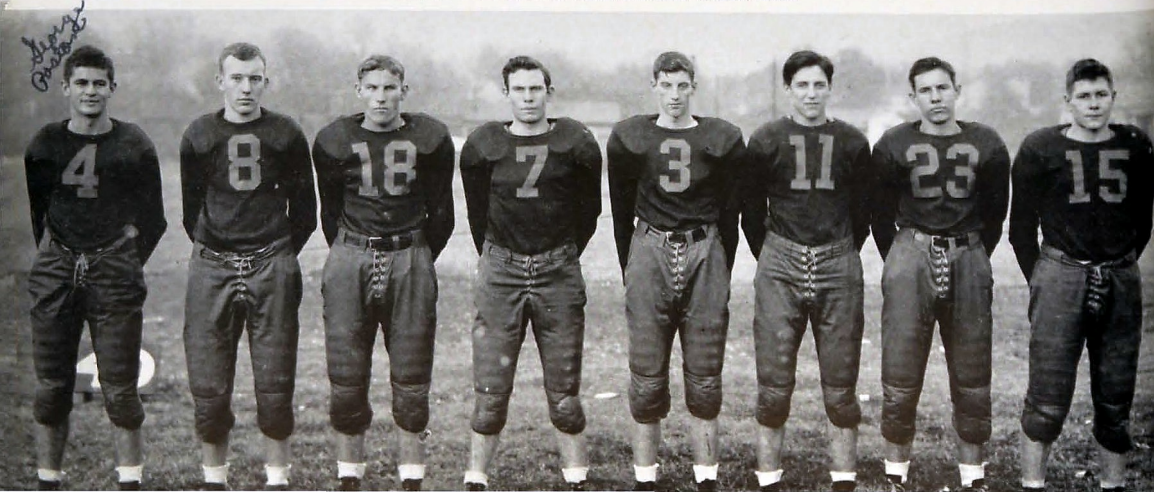
Central, 39; Soddy-Daisy, 0

In the first game of the season, under the arcs of Frawley Field, the 1940 Purple Pounders ushered in the football year with a crushing win over a battling Trojan eleven from Soddy-Daisy High School.

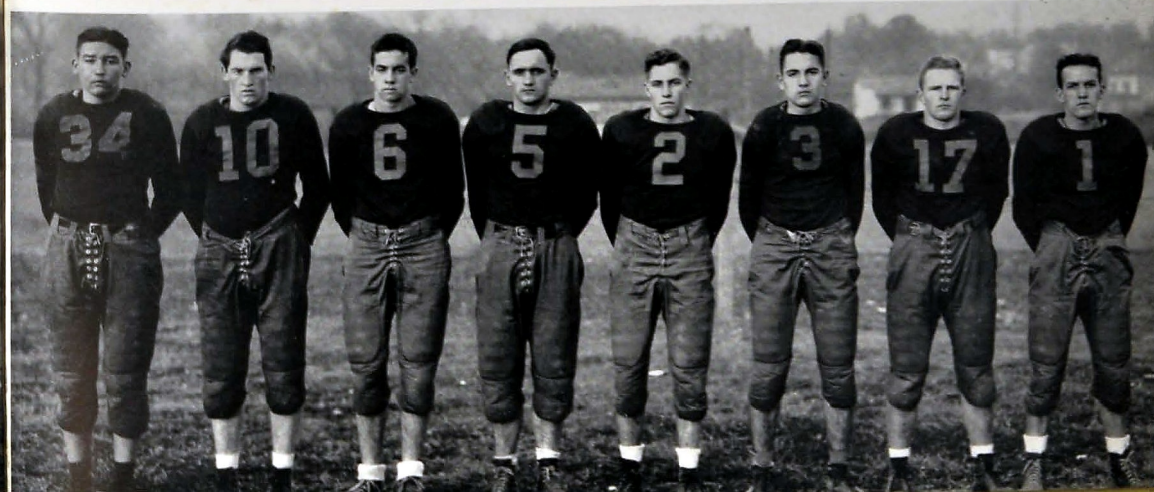
Central presented a triple set of backfield stars who struck hard and fast to score in every quarter. The Trojans, possessors of a '39 tie with the Purples, were outclassed from the first, and despite the efforts of a light backfield were no match for the Pounders.

A heavy Purple forewall, led by Capt. Fred McKenney,

Poston, Spann, Roberts, Garvey, Trundle, Gardenhire, Patterson, Stevens



Black, Reed, Cullom, Sparks, Grant, Baker, Coleman, Hill



F O O T

B A L L



Smith and Hill lead interference in Spring City game

and for the first time the locals appeared to have met their match.

With the time drawing perilously close, Walter Garvey dropped far back and let loose a pass intended for end Ben Huddleston. With a Devil on either side of him, Huddleston went into the air, made a spectacular catch and stumbled across the goal with the winning score.

Central, 20; Rome, 6

Infuriated by a 6-0 lead held by the Rome High Hill-toppers, the pulverizing Purples struck back with pent-up anger to smite the enemy a 20-6 loss.

This game was featured by fine line play on the part of both teams. Their forewalls were used for offensive work almost as much as for defense.

Walter Garvey sent a long booming eighty-yard punt to the Rome six-yard line to stop a last minute threat. Garvey also iced the victory with a beautiful forty-yard touchdown squirm through enemy territory.

This was an exceedingly fast contest, with both teams having fine offensive attacks.

Central, 51; Spring City, 0

In the only day game of the year, other than the annual city contest, the Central gridders ran roughshod over a stubborn but outclassed Spring City eleven.

Once more it was the same story. The great Purple forewall proved almost impenetrable while the speedy Central backs swivel-hipped their way to markers in every quarter.

Coach Petersen unleashed an eager group of Soph prospects in this game and the green men went to town to score almost as much as the power-packed regulars.

The invader attack, headed by Syl Harris, former Chattanooga athlete, failed in its consistency to score. A last minute pass failed to break the 51-0 score.

Central, 6; Erwin, 19

In one of the two losses of the season, the Central Purples bowed to a superior Erwin eleven by the score of 19-6.

This game was closer than the score might suggest. The Pounders struck deep into Erwin territory on several occasions, but failed to unleash a scoring play.

In the last quarter Walter Garvey filled the air with a bevy of passes and while many of them were good for long gains, the Erwin defense tightened as the goal drew near.

The game ended with the opponents still in the lead to place a black spot on the Central record.

Central, 19; Ensley, 6

Seeking revenge for a previous loss, the spirited Pounders annihilated a stubborn Ensley High eleven, 19-6.

The Birmingham team scored first and displayed a fine running attack built around Brown, a pile-driving fullback.

Central power plays began to click in the second quarter and, using an unorthodox attack, the locals smashed over three scores.

Capt. McKenney, Stephens, and Huddleston shone at their forewall posts, while backs Garvey and Gardenhire formed a scathing passing attack.

The Ensley team was the second Alabama team beaten by Central in the '40 campaign.

Central, 12; City, 12

In the most colorful of all of Chattanooga's football games the Pounders of Central and the Maroons of City



Trundle scoring against Spring City

met in an evenly matched contest and battled to a 12-12 tie before 8,000 excited spectators.

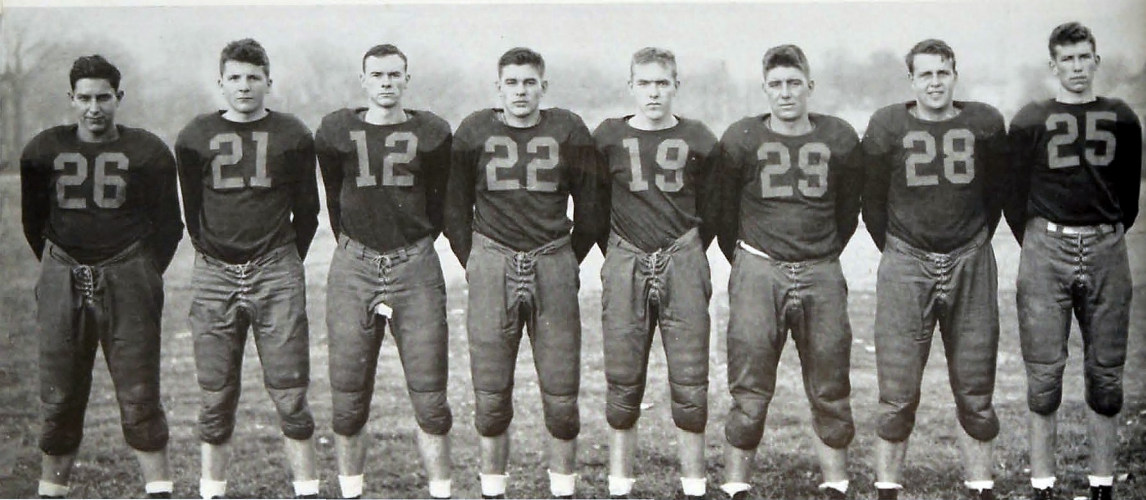
This game proved to be one of the best of the year, with both teams holding the lead from time to time.

Central scored first, but the Maroons came right back to knot the score at the half.

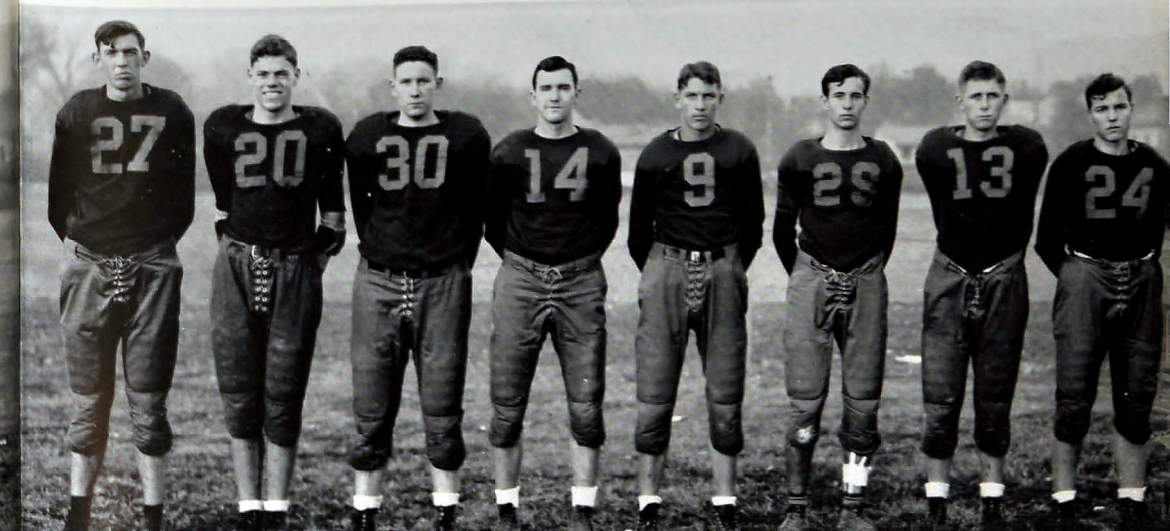
Spectacular runs by Cope of City and Garvey of Central featured the second half and left the score tied for the final time.

The tie ruined the Maroons' hopes for two successive wins over the Purples.

Short, Allison, Spurlock, Huddleston, Shrader, Carver, McKenney, Stanley



Smith, Helms, Thaxton, Thompson, Carden, Gryder, Coppinger, Miller



BASKETBALL

CHS Library

FIRST DISTRICT CHAMPIONS

RESULTS

Dec. 10—Central . 43; Soddy-Daisy . . 28	Here	Feb. 1—Central . 21; Knoxville . . . 46	There
Dec. 20—Central . 30; Red-Bank . . . 28	Here	Feb. 4—Central . 20; Bradley . . . 33	There
Dec. 23—Central . 30; Morristown . . 17;	Here	Feb. 6—Central . 23; Notre Dame . . 28	Here
Jan. 7—Central . 22; City 32	Auditorium	Feb. 11—Central . 29; Knoxville . . . 28	Here
Jan. 14—Central . 20; City 19	Here	Feb. 14—Central . 34; Bristol 37	Here
Jan. 17—Central . 34; Baylor 18	Auditorium	Feb. 17—Central . 35; Baylor 41	There
Jan. 20—Central . 19; McCallie 23	There	Feb. 18—Central . 23; McCallie . . . 21	Here
Jan. 21—Central . 36; Erwin 30	There	Feb. 21—Central . 35; Erwin 29	Here
Jan. 23—Central . 36; Morristown . . 26	There	Feb. 25—Central . 29; City 28	There
Jan. 24—Central . 30; Kingsport . . . 31	There	Feb. 27—Central . 30; Bradley . . . 31	Here
Jan. 25—Central . 36; Bristol 32	There	Mar. 3—Central . 26; Notre Dame . . 45	There
Jan. 27—Central . 42; Baylor 30	Here	Mar. 6—Central . 52; Dunlap 25	Dis. Tourn.
Jan. 30—Central . 40; Red-Bank . . . 29	There	Mar. 7—Central . 31; Soddy-Daisy . . 19	Dis. Tourn.
Jan. 31—Central . 27; Kingsport . . . 21	Here	Mar. 8—Central . 35; City 31	Dis. Tourn.
Mar. 11—Central . 25; Bradley 31		Reg. Tourn.	

Front Row—Thaxton, Beaver, Stonestreet
Second Row—Miller, Schulte, Gardenhire, Carden, Ethridge
Back Row—Manager Genung, Bisplinghoff, Shrader, Casey, Deakins, Coach Bales



ACTION

Central vs. City at Auditorium . . . Morristown here . . . the river . . . Another view of Central and City at the
Central and City in our gym . . . Central and City on Auditorium . . . We defeat City on our court.

• TRACK •



JACKSON BAKER

The track team, in its second year as a recognized sport at Central High School, had a very successful year, winning four meets out of six.

At the close of the season the Purple cinder-men entered the regional meet at Johnson City,

Tennessee, and emerged in second place, inferior to only Kingsport.

The following are the schools played and each score: Central 55, Lee High 49; Central 88, City 39; Central 49, Lee High 46; Central 65, City 35; Central 46, McCallie 67; Central 59, Baylor 88.

Outstanding men in their respective departments were: McKenney, Norvell, weights; Baker, dashes; Pace, 440 run; Pfitzer, pole vault; Watson, broad jump; Rhinehart, Ledbetter, Tucker, mile; Broyles, Abercrombie, hurdles.

Coached by Mr. George McCoy, who gave us our first organized track team, the men of the spikes and shorts reversed predictions often.

Central gave McCallie a real scare in the Blue meet. The confident Blues met real opposition in the locals and were sorely pressed before eking out a 67-46 victory.

Baylor's superior outfit had little trouble in stopping the Purples, who were no match for the veteran raiders.

Lee High and City High were both outclassed completely, as Central men took first place in nearly all of the events.

On February twenty-second, Captain Charlie Tucker won the Times Annual Five-Mile Race.

First Row: Coach Rodman, Pfitzer, Broyles, Baker, Coach McCoy, Abercrombie, Pace, Tucker, Huddleston
Back Row: Beard, Stevens, Hicks, Rhinehart, McKenney, Ledbetter, Coffelt, Watson



BASEBALL

Under the capable leadership of Central's veteran coach, Mr. P. W. Bales, the 1940 baseball team had a very successful season, winning six out of ten games on a hard schedule.

All nine of the hard-working ball players improved with each game to make a success out of an unpredictable season.

Mac Rhinehart was one of the most dependable men at his outfield post. Norvell, Satterfield, and Sales were also reliable teammates.

McCallie bowed twice to the Purples by scores of 5-3 and 17-7. City split two games, winning the first 9-8 and losing the second 6-5. Bradley also divided a two-game series, winning 9-3 and losing 3-2. Sewanee won one and lost one, 4-3 and 6-2. Central handed Kingsport a single defeat also, 13-9, the Indians won the second game 9-4.

Out of this schedule McCallie was the only rival to be defeated twice by the Purple diamonders.

For the first time, games were played on the new diamond at Frawley Field. This was the first



Fullum at bat

year a Central baseball team had played on a diamond that they could actually call their own. The baseball field is parallel to the football gridiron on the lower side of the Frawley stadium.

Front Row: Ethridge, Tindall, Rhinehart, Coach Bales, Sparks, Kimsey, Washburn
Back Row: Fullum, Birchfield, Sales, Garner, Thaxton, Copping, Shackelford, Sherrill, Richbourg





MINOR SPORTS

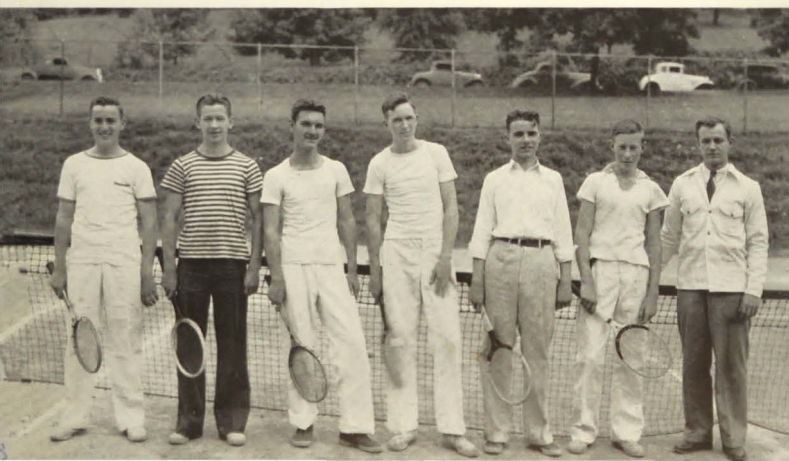
GOLF

Coach John W. Miller, W. A. Miller,
Smith, Blair, Land



SWIMMING

Bond, Schubert, Hendrix, Coffelt,
Grigsby, Oliver, Rose, Carden, Carver



TENNIS

Case, Sliger, Cornelison, Little, Towns,
Rogers, Coach Smith

CHS Library

CO-ED ACTIVITIES

ACES

Lucile Ballou, President; Betty Standifer,
Treasurer; Miss Sarah Hubbard, Sponsor



BADMINTON TEAM

Sarah Ann Henson, President; Lucile
Ballou, Treasurer; Miss Sarah Hubbard,
Sponsor



TUMBLERS

Miss Sarah Hubbard, Sponsor



TRANSPORTATION

Hardly to be surpassed by any city of its size in America are Chattanooga's transportation facilities. Like a great network, entering the city on every side, are the splendid systems of highways and railways and in the free space above are the airways growing more popular every day as a means of rapid transit. Entering and leaving the city daily are approximately fifty-eight passenger trains, 146 passenger buses and six air liners, not to mention the boats, automobiles and express trucks bearing passengers, foods and miscellaneous products to all parts of the country. As the Tennessee Valley terminal, Chattanooga is the center through which daily passes a great variety of both raw and finished products for home and foreign markets. Easily accessible, this great city is a hospitable thoroughfare to all sections and each year welcomes thousands of tourists attracted by her rich historic associations and unsurpassed scenic beauty.

Features



SENIOR SELECTIONS

•

GROVER CAMPBELL	Scholarship
THELMA KEOWN	Scholarship
ROBERT BURNETTE	Service
LOUISE GEER	Service
FRED HELMS	Leadership
ADAH HAMBLIN	Leadership
LUTHER MASINGILL	Personality
BETTY JO BOWEN	Personality
DAVID REYNOLDS	Dependability
EMILY JOHNSTON	Dependability
AUBREY PENDERGRASS	Friendliness
ETHEL LEWIS	Friendliness
FRED McKENNEY	Naturalness
PEGGIE SPARKS	Naturalness
GLEN WESTBROOK	Most Talented
MELBA VICK	Most Talented
WALTER GARVEY	Most Athletic
BETTY DUDDERAR	Most Athletic

SCHOLARSHIP

GROVER CAMPBELL

*Best of luck
Grover Campbell*

SERVICE

*Good wishes,
Louise*

ROBERT BURNETTE

LOUISE GEER



SCHOLARSHIP

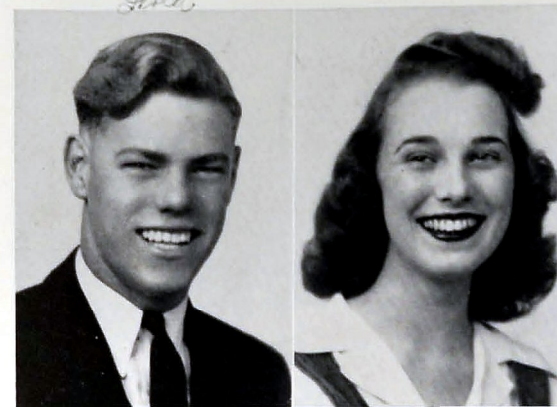
THELMA KEOWN

*Best of luck for always
Thelma*

LEADERSHIP

FRED HELMS

ADAH HAMBLIN



Personality • Dependability • Friendliness

Naturalness • Most Talented • Most Athletic

LUTHER MASINGILL

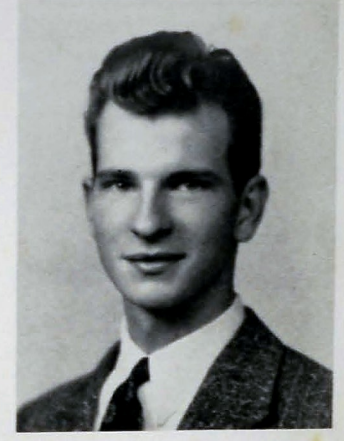
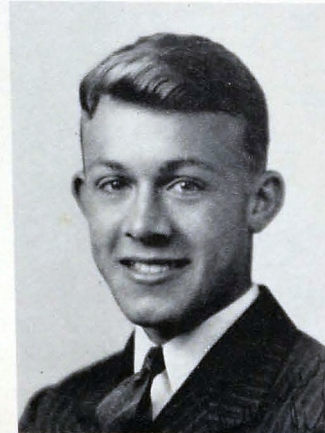
BETTY JO BOWEN

DAVID REYNOLDS

FRED MCKENNEY

PEGGIE SPARKS

GLENN WESTBROOK



EMILY JOHNSTON

AUBREY PENDERGRASS

ETHEL LEWIS

MELBA VICK

WALTER GARVEY

BETTY DUDDERAR

"Lots of Luck to a very good friend Melba"

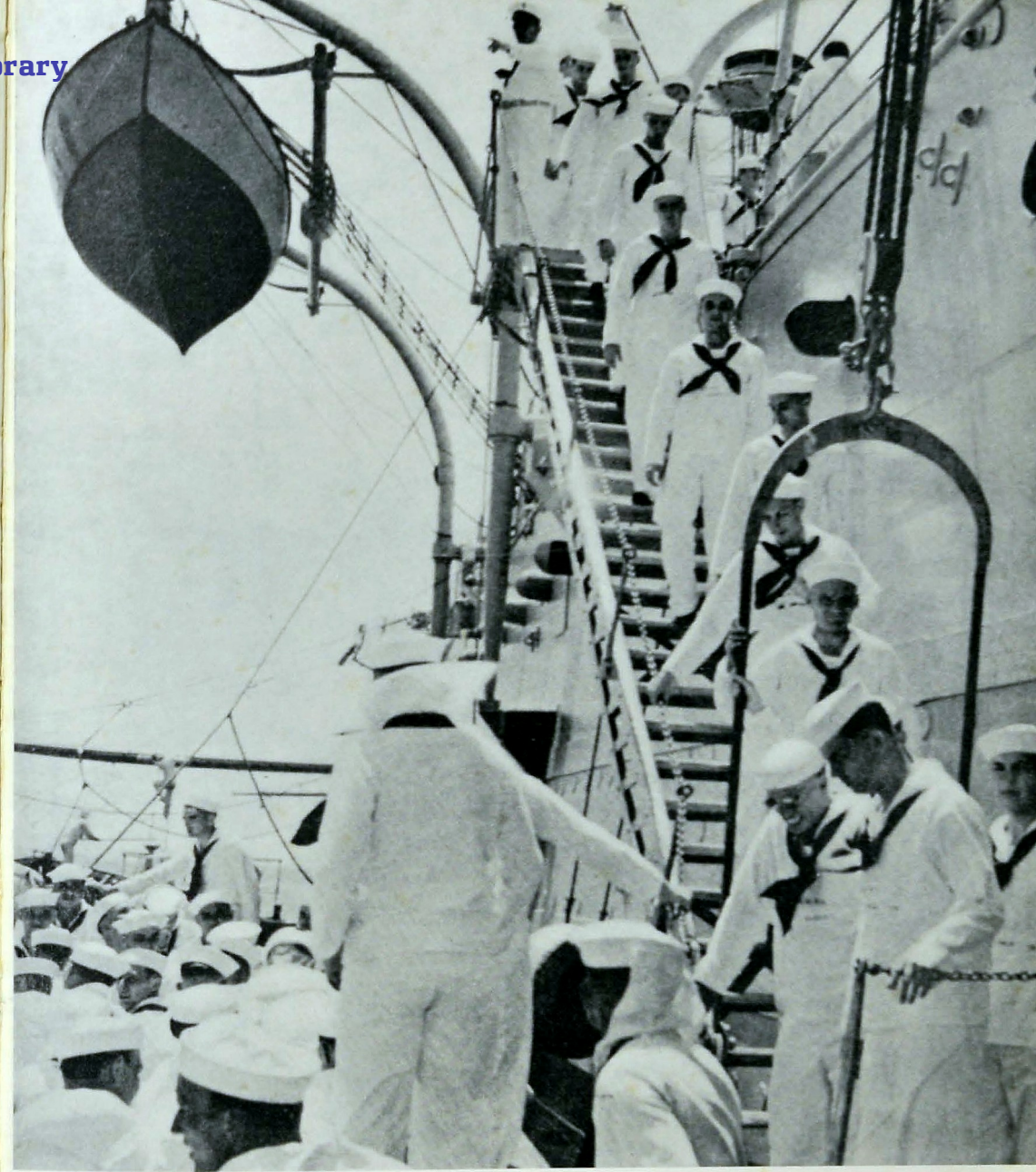
PREPAREDNESS

The measure of any country's preparedness to maintain peace or to adequately defend itself must be determined not only by her material and physical fitness but also by her moral and spiritual stamina.

For many years Chattanooga has had a close association with the country's defense program. Located at a little more than a stone's throw from the city is Fort Oglethorpe which, since the Spanish-American War, has been one of the outstanding army training posts. For a number of years The Sixth Cavalry and six detachments, numbering approximately 1400 men, in normal times have made Fort Oglethorpe their permanent station. In recent months there have been added a medical regiment and four surgical units, a reception and induction center for army registrants.

Throughout the country Chattanooga is known for her splendid churches and their excellent work in fostering the highest spiritual ideals.

Military



MILITARY OFFICERS AND SPONSORS



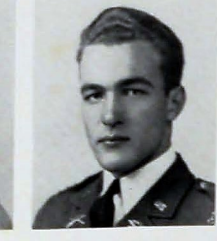
FRED MCKENNEY Colonel
ADAM HAMBLE Regimental Sponsor
DON HUDSON Major, First Battalion
JANE BREAKER First Battalion Sponsor
ROBERT NICHOLSON Major, Second Battalion
SARA HOLLEMAN Second Battalion Sponsor
PALMER KENYON Major, Third Battalion
EMILY JOHNSTON Third Battalion Sponsor
TOMMY GILLILAND Band Captain
BETTY DUDDERAR Band Sponsor
DONALD PFITZER Captain of Company A

BILLIE COLSTON Sponsor of Company A
BOYD EDGING Captain of Company B
BETTY JUNE CUMMINGS Sponsor of Company B
GROVER BLEDSOE Captain of Company E
MARGARET BROWDER Sponsor of Company E
AUBREY PENDERGRASS Captain of Company F
ETHEL LEWIS Sponsor of Company F
ALBERT JACKSON Captain of Company I
JOCELYN PEELER Sponsor of Company I
ROBERT HARRIS Captain of Company K
BETTYE JO BOWEN Sponsor of Company K

*Good Luck to
Don Hudson*



*Good Luck to
Emily*



*Good Luck to
Tommy*



*Good Luck to
Betty*



REGIMENTAL STAFF

FRED McKENNEY, Commanding Officer Colonel
TED EVANS, Executive Officer Lieutenant Colonel
RALPH CASEY, Regimental Adjutant Captain

PAT HUNERWADEL, Plans and Training Officer Captain
MACK JORDAN, Publicity Officer Captain
JOE SPEARMAN, Supply Officer Captain

FIRST BATTALION STAFF

DON HUDSON, Commander Major
ROBERT WILMONT, Battalion Adjutant First Lieutenant

PAUL COFER Second Lieutenant
FRED CHILDERS Sergeant

SECOND BATTALION STAFF

ROBERT NICHOLSON, Commander Major
FRED COFER, Battalion Adjutant First Lieutenant

CLAUDE JOHNSON Second Lieutenant
LOUIS GOODNER Sergeant

THIRD BATTALION STAFF

PALMER KENYON, Commander Major
DENNIS COOLE, Battalion Adjutant First Lieutenant

JOE MASON Second Lieutenant
BILL SHOOCRAFT Sergeant



COMPANY "A"

DONALD PFITZER Captain
CHARLIE TUCKER First Lieutenant

WILLIAM CATLETT Second Lieutenant
HENRY GARDENHIRE Second Lieutenant

SERGEANTS

GEORGE CARDEN First Sergeant
ED PATTERSON
HENRY COLSTON
JOE KING
ED BLEVINS

CORPORALS

MAYNARD STEVENS
RAY GREEN
BOB DUNN
JACK FAERBER
HAROLD THORTON
WARREN HAYNES

COMPANY "B"

BOYD EDGING Captain
WALES STANDIFER First Lieutenant

GRADY JACOWAY Second Lieutenant
ARTHUR LAWSON Second Lieutenant

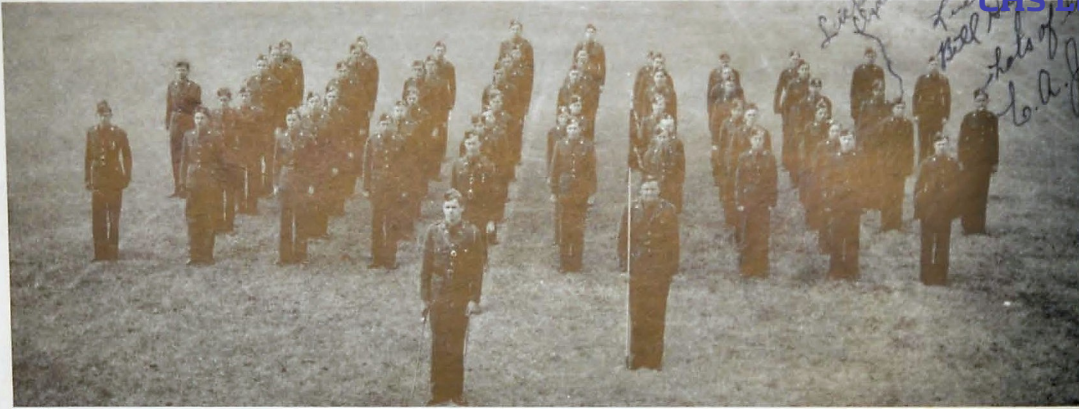
SERGEANTS

LOUIE GOODNER First Sergeant
JOE GRAHAM
ED WILCOXSON
BILL MARLIN
JAMES HOWARD

CORPORALS

JAMES IGOU
JACK BROOKS
LEBRON PAYNE
KENNETH JOHNSON
BILL STEPHENS
JOHN WALKER





COMPANY "E"

GROVER BLEDSOE Captain AUGUST PFITZER Second Lieutenant
HAROLD ELMORE First Lieutenant BOB BROWN Second Lieutenant

SERGEANTS

C. A. JAY PAUL SHELTON First Sergeant LLOYD THOMAS
 BILL HAGAMAN BILL YOUNGER

CORPORALS

JARVIS ANDERSON LOUIS HUDSON J. G. SMITH EDGAR SIMPSON
 BILL PEACE RICHARD CAMP

COMPANY "F"

AUBREY PENDERGRASS Captain WILLIAM WHITECOTTON Second Lieutenant
CHARLES RYMER First Lieutenant HARRIS KENYON Second Lieutenant

SERGEANTS

OSCAR LONG C. D. BROYLES First Sergeant GEORGE HALL
 GLYNN GROSS TOM HENSON

CORPORALS

WALLACE TURNER H. L. UNDERWOOD LYNN GROSS DEAN FALLS
 ALLAN PARKS JIM HOLDERMAN



COMPANY "I"

ALBERT JACKSON Captain BILL JOHNSTON Second Lieutenant
HAYES ALVERSON First Lieutenant ARBY DICKERT Second Lieutenant

SERGEANTS

RAYMOND BROTHERS DALE ALLISON First Sergeant HAROLD McCOY
 CLAUDE MAXWELL TED DICKERSON

CORPORALS

GENE ANDREWS WILBUR CHARLESWORTH HENRY JARRET LEONARD STRAKER
 HAMPTON JACKSON ROBERT SHELTON

COMPANY "K"

ROBERT HARRIS Captain JAMES SAYLOR Second Lieutenant
JACK MALONE First Lieutenant ROCHESTER DUTEIL Second Lieutenant

SERGEANTS

D. L. HALEY RICHARD ROSE First Sergeant ROBERT FLETCHER
 ROBERT TAYLOR EDWIN MORRIS

CORPORALS

EUGENE HARRIS BILL YOUNG HERBERT GILREATH JOE MITCHELL
 EUGENE WILLIAMS ERWIN WILLIAMS



INDUSTRY

With her humming factories and busy mills, Chattanooga years ago won for herself the name of "The Dynamo of Dixie." With more than 400 factories producing above 1500 different articles ranging from silk, wool, rayon, textiles to iron, steel, glass, wood, leather, furniture, enamel, and clay, Chattanooga has been long recognized as one of the foremost industrial cities of the South.

With her widely diversified manufacturing interests, Chattanooga is not only supplying the demand of regular markets but is turning her factories wherever possible and wherever the need arises to the production of such materials as America can use in her nationwide preparedness program.

A number of manufacturing plants in Chattanooga have for sometime been busy supplying a variety of products for this extensive program.

Organizations





CHAMPION STAFF

ROBERT BURNETTE	Editor-in-Chief
LUTHER MASINGILL	Senior Section Editor
MACK JORDAN	Business Manager
EMILY JOHNSTON	Feature Editor
BEULAH PARDUE	Club Editor
DON HUDSON	Photographic Editor
WALES STANDIFER	Military Editor
JIMMY CROCKETT	Sports Editor
CHARLSIE BOSS	Typist
GENEVIEVE COBLEIGH	Junior Editor
FRIEDA HOLDER	Sophomore Editor
MARJORIE MOORE	Freshman Editor
MISS SALLY MAY KING	Sponsor
MR. A. P. STEWART	Sponsor



CHS Library

AIRPLANE CLUB

FRED CHILDERS President
MARCELL BLANCETT Secretary
LOUIE GOODNER Treasurer
MR. J. J. FLETCHER Sponsor



ANCHORS AWEIGH

BETTY DUDDERAR President
IRENE ELLINGTON Vice-President
ETHEL LEWIS Secretary
ADAH HAMBLIN Treasurer
MISS LOUISE SUTTON Sponsor



BACHELOR'S CLUB

BILL VALENTINE President
ERNEST COFFELT Vice-President
STEVE RODDY Secretary
LEONARD GRIGSBY Treasurer
MR. J. ARLIE HOODENPYL Sponsor



BAND CLUB

HOWARD BUCHELE Captain
FRED HELMS First Lieutenant
JOE MANSFIELD Second Lieutenant
BILL ALLEN Second Lieutenant
BILL POPE Second Lieutenant
MR. E. S. VANOVER Sponsor

BATON CLUB

JOY JERNIGAN President
LEOLA DELZELL Vice-President
BETTY BINKS Secretary
BERNICE HUDSON Treasurer
MISS RUTH FAIN Sponsor



BETTY MAIDS

KATHRYNE BOATWRIGHT President
ALENE BOWER Vice-President
PEGGY McDANIEL Secretary-Treasurer
MISS IDA NICKEL Sponsor



BIBLE CLUB

H. D. GANG President
STEVE RODDY Vice-President
FRANCES FULLER Secretary
TRUITT KENDRICK Treasurer
MISS RACHEL McALLISTER Sponsor



BIOLOGY CLUB

DONALD PITZER President
NELL CARMICHAEL Vice-President
LOUISE GEER Secretary-Treasurer
MR. J. STEGAR HUNT Sponsor
MISS JO ORE Sponsor





CHS Library

BLACK KATS

JO ANN BROWN President
 BILLIE COLSTON Vice-President
 EMILY JOHNSTON Secretary
 SALLY VERA SWEETEN Treasurer
 MISS VESTA NELSON Sponsor

BOYS HI-Y—SENIOR

ROBERT BURNETTE President
 MACK JORDAN Vice-President
 DAVID REYNOLDS Secretary
 JOE SPEARMAN Treasurer
 MR. J. POPE DYER Sponsor

BOYS HI-Y—JUNIOR

JAMES IVY President
 ALBERT MILLER Vice-President
 JOE PARKS Secretary-Treasurer
 MR. MILTON ALLEN Sponsor

BLUE JACKETS

CHARLENE JACOWAY President
 MARY GUY SPRINGER Vice-President
 BETTY EVATT Secretary
 DOROTHY ECHOLS Treasurer
 MRS. SAM D. McALLISTER, JR. Sponsor

CENTRAL PRESS

JACK MALONE Foreman
 JAMES GREENE LUTHER IRELAND
 F. L. DAVIS MARTIN EAVES
 JOE THOMPSON ARCHIE FRYAR
 CLYDE SEDMAN CHARLES WILSON
 MR. JAMES L. MILBURN Sponsor

CANDY CREW

MRS. W. H. TEMPLETON Sponsor
 MR. W. H. TEMPLETON Sponsor

CENTRAL LITERARY SOCIETY

ANNA BARBARA FREUDENBERG President
 DOROTHY WOMACK Vice-President
 EVA RUTH NIXON Secretary
 ROBERT NICHOLSON Treasurer
 MRS. H. G. NELSON Sponsor

CAMERA CLUB

ARBY DICKERT President
 R. C. CRAVEN Vice-President
 IRENE ELLINGTON Secretary
 DONALD SIMPSON Treasurer
 MR. HARMON SMITH Sponsor





CHS Library

COMMERCIAL DEPARTMENT

COMMERCIAL WING OF CENTRAL
MRS. LYDA GORE RICE Sponsor

COMMERCIAL DEPARTMENT

BOOKKEEPING ROOM
MRS. LYDA GORE RICE Sponsor

DEPRESSION CLUB

LEONARD GRIGSBY President
BILL VALENTINE Vice-President
STEVE RODDY Secretary
LUTHER MASINGILL Treasurer
MRS. H. B. ROBINSON Sponsor

DIGEST

LOUISE GEER Editor-in-Chief
JIMMY CROCKETT Associate Editor
NATALIE SCHLACK Associate Editor
EMILY JOHNSTON Business Manager
MACK JORDAN Assistant Business Manager
JACK MALONE Press Foreman
MISS SALLY MAY KING Sponsor
MR. JAMES L. MILBURN Sponsor

DISCUSSION CLUB

DOROTHY GREENE President
EDNA EARLE EVANS Vice-President
JUANITA CRAWLEY Secretary
TOMMY MARTIN Treasurer
MISS JO MASTERSON Sponsor

DRAMATIC CLUB

DAVID REYNOLDS President
ARBY DICKERT Vice-President
MARY FRANCES GROSS Secretary
JERRY DEAN Treasurer
MR. J. ARLIE HOODENPYL Sponsor

EXCLUSIVE CLUB

MARTHA LOUISE COX President
MARION BUSBY Vice-President
LORENE ROTHWELL Secretary
CLARA MARIE KELLERHALS Treasurer
MR. J. ARLIE HOODENPYL Sponsor

GIRLS' BAND CLUB

BETTY SPARROW President
BETTY LITTLETON Vice-President
TEDDY CUSHMAN Secretary-Treasurer
MR. S. E. VANOVER Sponsor





CHS Library

GIRLS' BATTALION GROUP AT STADIUM

MISS SARAH HUBBARD Sponsor



BATTALION OFFICERS AND SPONSORS

MISS SARAH HUBBARD Sponsor



THE BATTALION AWAITING GAME

MISS SARAH HUBBARD Sponsor



GIRLS' BATTALION OVER THE FENCE

MISS SARAH HUBBARD Sponsor

SENIOR GIRL RESERVES

EDNA CLARK President
LAURA DELL REYNOLDS Vice-President
CHARLSIE BOSS Secretary
BILLIE DeFRIESE Treasurer
MRS. H. L. BARGER Sponsor



JUNIOR GIRL RESERVES

MARTHA JANE CLARK President
DORIS DEAN Vice-President
BETTY STIMPSON Secretary
GENEVIEVE COBLEIGH Treasurer
MISS FLORA E. BECK Sponsor



SOPHOMORE GIRL RESERVES

MIRIAM LEEPER President
BETTY SUE BARKER Vice-President
JEAN SMITH Secretary
ALMA SCHLACK Treasurer
MRS. EDNA C. JACOWAY Sponsor



FRESHMAN GIRL RESERVES

CAROLYN BROYLES President
DOROTHY SUE WHITAKER Vice-President
EDITH BEENE Secretary
GEANNE CARLTON Treasurer
MISS ANNE MOFFITT Sponsor





CHS Library

GIRLS' HI-Y

ADAH HAMBLEN President
 EMILY JOHNSTON Vice-President
 BILLIE COLSTON Secretary
 ELIZABETH GLAZE Treasurer
 MRS. JOHN A. SHELTON Sponsor
 MRS. ANNA B. LACEY Sponsor

GRADY LITERARY SOCIETY

MACK JORDAN President
 DAVID REYNOLDS Vice-President
 AUGUST PFITZER Secretary
 JOE SPEARMAN Treasurer
 MR. C. J. ANDERSON Sponsor

HOME ECONOMICS CLUB

BILLIE COLSTON President
 DOROTHY WALLACE Vice-President
 BETTY DUDDERAR Secretary
 JO ANN BROWN Treasurer
 MRS. MERCER CLEMENTSON Sponsor
 MRS. JANIE SHROPSHIRE Sponsor

HY HATS

JEANNE WILKERSON President
 ELLEN GARDENHIRE Vice-President
 BILLIE BROOKS Secretary
 KRISTEEN BUSBY Treasurer
 MR. GEORGE MCCOY Sponsor

ICE CREAM CREW

MR. C. J. ANDERSON Sponsor

LIBRARY CLUB

FRANK HENDRIX President
 LOUISE GEER Vice-President
 LUCILLE HAYGOOD Secretary-Treasurer
 MRS. CLARENCE KOLWYCK Sponsor

MISS DEMEANORS

MARGARET BROWDER President
 EULA MANNING Vice-President
 HELEN RAGLE Secretary
 CAPTOLIA RAGLE Treasurer
 MISS MARTHA BEAN Sponsor

NATIONAL HONOR SOCIETY

First Semester

FRED HELMS President
 MACK JORDAN Vice-President
 JOCELYN PEELER Secretary
 LOUISE GEER Treasurer

Second Semester

DAVID REYNOLDS President
 NATALIE SCHLACK Vice-President
 ADAM HAMBLEN Secretary
 ANNE HODGES Treasurer
 MRS. JOHN A. SHELTON Sponsor





CHS Library

NITE OWLS

CHARLOTTE FOWLER President
KATHRYN MAYER Vice-President
BETTY JO BOWEN Secretary
EVELYN JOHNSON Treasurer
MRS. A. B. ROGERS Sponsor

OFFICERS' CLUB

FRED McKENNEY President
ROBERT NICHOLSON Vice-President
AUBREY PENDERGRASS Secretary
DENNIS COOLE Treasurer
MRS. GEORGE RICE Sponsor

ORCHESTRA

BILL HART President
BILL POPE Vice-President
EDWARD POGUE Secretary-Treasurer
MR. K. W. JOHNS Sponsor

RED CROSS

GROVER BLEDSOE President
AILEEN INSCORE Vice-President
JACK CASSELL Vice-President
JO ANN BROWN Secretary
BETTYE JO BOWEN Treasurer
MISS IDA M. LONGLEY Sponsor
MRS. HAZEL BARTON Sponsor

ROCKETTE

NANCY JO BENNETTE President
SARA HOLLEMAN Vice-President
BETTY DUDDERAR Secretary
BETTY DAY Treasurer
MR. CLEBOURNE HATFIELD Sponsor

SENATE

ARBY DICKERT President
BOBBIE JUNE PEACE Vice-President
ELIZABETH GLAZE Secretary
JACK CASSELL Treasurer
MR. J. ARLIE HOODENPYL Sponsor
MISS BETTY MAE COLLINS Sponsor

SERGEANTS' CLUB

C. D. BROYLES President
BILL MARLIN Vice-President
LOUIE GOODNER Secretary
JOE GRAHAM Treasurer
MISS MINNIE LEE MORGAN Sponsor

SEVENTEENERS

SARA HOLLEMAN President
MADGE COOPER Vice-President
KATHLEEN MARTIN Secretary
HAZEL CARMACK Treasurer
MISS MINNIE LEE MORGAN Sponsor





SPINSTERETTES

FRANCES HENRY President
LILLIAN LING Vice-President
THELMA KEOWN Secretary
HAZEL CARMACK Treasurer
MRS. J. FRANK PRICE Sponsor



STAGE CREW

TOMMY BAYSTON Manager
BILL ALLEN Assistant Manager
MR. JACK R. RODMAN Sponsor



STAMP CLUB

BILL JOHNSTON President
AMOS JOHNSON Vice-President
BARBARA GILL Secretary
JULIAN SMITH Treasurer
MRS. H. G. NELSON Sponsor



STYLETTE

VIOLA POTTS President
CATHERINE COULSON Vice-President
DORIS GILES Secretary
CLARA MAE SNYDER Treasurer
MISS ELIZABETH JONES Sponsor

CHS Library

USHERS

EMILY JOHNSTON President
THELMA KEOWN Vice-President
CHARLIE BOSS Vice-President
BEULAH PARDUE Secretary
MISS MARGARET WAPLES Sponsor



VAGABOND CLUB

BETTYE McCLAIN President
RUTH GANT Vice-President
BESSIE THURMAN Secretary
TOMMYE ROBERTS Treasurer
MRS. A. G. SKATES Sponsor



VARSITY GLEE CLUB

GLEN WESTBROOK President
BILL VALENTINE Vice-President
MELBA VICK Secretary-Treasurer
MR. K. W. JOHNS Sponsor



WE MODERNS

EDNA EARLE EVANS President
VIRGINIA McGUIRE Vice-President
BESSIE THURMAN Secretary
JANE MOLSDALE Treasurer
MISS BESSYLEE WIGGS Sponsor

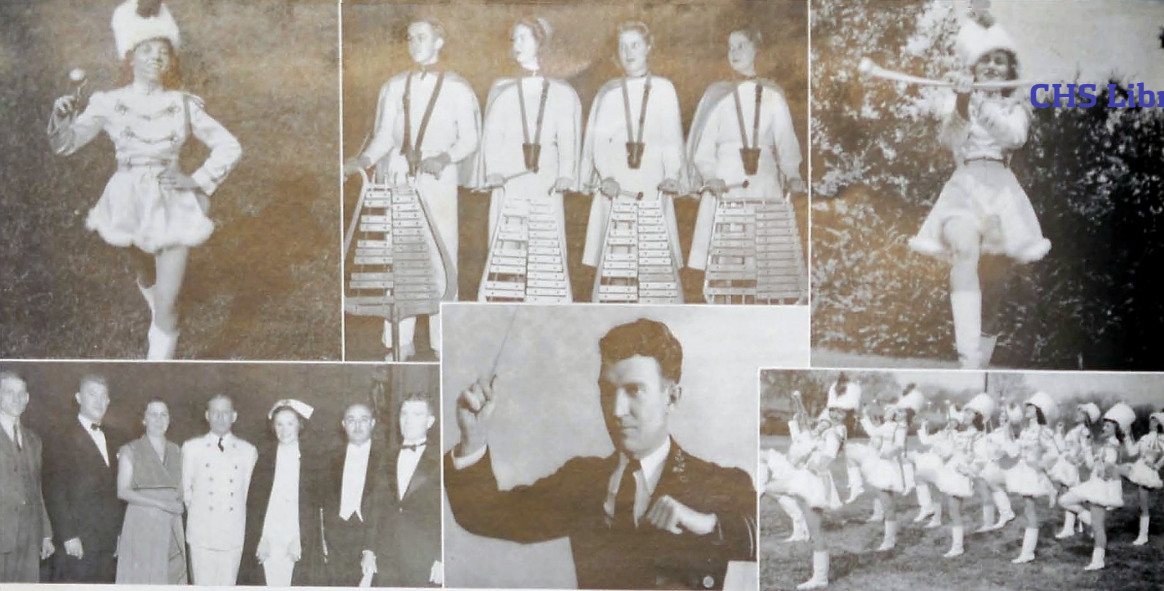


PATRONS

ALABAMA ENGRAVING COMPANY	Birmingham, Alabama
ATHLETIC HOUSE	Knoxville, Tennessee
BENSON PRINTING COMPANY	Nashville, Tennessee
L. G. BALFOUR COMPANY, Jewelers	Attleboro, Massachusetts
THE BOYS SHOP, 7-3248	622 Market Street
CABANA GRILL, Real Barbecue, 2-9310	1710 McCallie Avenue
CAMERON AND BARR BAKING COMPANY, 6-8176	1615 Cowart Street
C. E. CAMP, Esq., 7-2652	1516 Market Street
EARL CAMPBELL CLINIC, 7-3354	525 McCallie Avenue
CAMPBELL COAL AND SERVICE STATION, 2-9515	1409 Dodson Avenue
E. Y. CHAPIN, Esq., 6-8131	American Trust and Banking Co.
CHATTANOOGA ARMATURE WORKS, 2-2124	1215 Duncan Avenue
CHATTANOOGA BUTTON AND BADGE MFG. CO., 6-6934	109 East Seventh Street
CHATTANOOGA COCA-COLA BOTTLING CO., Inc., 6-5334	201 Broad Street
CHATTANOOGA GAS COMPANY, 6-0191	811 Broad Street
THE CHATTANOOGA MEDICINE COMPANY, 3-0030	3803 St. Elmo Avenue
CHATTANOOGA NEWS-FREE PRESS, 6-0171	117 East Tenth Street
CHEROKEE MOTOR COACH COMPANY, Inc., 7-3224	316 East Eleventh Street
CITIZENS MOTOR COMPANY, 6-8181	617 Broad Street
CLEMONS BROTHERS COMPANY, Furniture, 6-7151	West Eighth Street at Chestnut
COMMERCIAL STATIONERY SUPPLY COMPANY, 6-1241	737 Cherry Street
CRISMAN HARDWARE COMPANY, 7-1114	511 Market Street
DAVIDSON CLOTHING COMPANY, 6-1218	811 Market Street
ALEX DE FLOREO, Ice Cream and Lunches	511 Dadds Avenue
S. T. AND W. A. DEWEES COMPANY, Grocer, 9-1121	810 Market Street
DIXIE AUTO SUPPLY COMPANY, 3-1658	4915 Rossville Blvd.
EDDY'S GRILL, 2-9612	3050 Brainerd Road
EDMONDSON SCHOOL OF BUSINESS, 6-1259	Edmondson Building
EDWARDS AND LEBRON, Ltd., Jewelers, 6-7175	805 Market Street
THE FISCHER COMPANY, Jewelers, 6-0922	8 West Eighth Street
FOSTER ART GLASS COMPANY, 6-2081	2365 Rossville Blvd.
FOWLER BROTHERS, Furniture, 7-2174	701 Broad Street
FOX BROTHERS COMPANY, Wholesale Grocers, 6-3139	1215 King Street
GILMAN PAINT AND VARNISH COMPANY, 6-5181	216 West Eighth Street
EDITH GOETZ, Florist, 7-3345	James Building
GRANERT STUDIO, 6-7355	813½ Market Street
GRANT-PATTEN MILK COMPANY, Inc., 6-1294	1220 King Street
N. L. HACKNEY, 7-3424	122 East Eighth Street
HAMILTON COUNTY HERALD, 6-4033	617 Cherry Street
HAMILTON NATIONAL BANK, 7-1231	701 Market Street
HARDIE AND CAUDLE, Clothiers, 6-7032	809 Market Street
HAVERTY FURNITURE COMPANY, 6-5196	619 Market Street
H. K. HODGE, Groceries and Good Meats, 2-1156	2000 Willow Street
HOTEL PATTEN, 6-2141	Market at Eleventh Street
PEABODY HOWARD, Esq., 6-6969	Court House
JACOBS WHOLESALE CANDY COMPANY, 6-2728	925 Market Street
JO-ANN SHOP, 3-2028	201 Chickamauga Avenue
JOYS, Florist, 6-7168	Corner Georgia and Tenth
J. KASET, Wholesale Candy Company, Candy, 6-8711	1409 Carter Street
KAY'S ICE CREAM, 2-3032	3744 Brainerd Road

PATRONS

KIMBALL—Flowers, 2-4771	2409 McCallie
KING DOBBS AND COMPANY, Wholesale Grocers, 6-1251	246 East Eleventh Street
KINGSFORD PRESS	Kingsport, Tennessee
KOBLENTZ, MEN'S STORE, 6-2764	812 Market Street
S. H. KRESS AND COMPANY, 10c Store, 6-5631	708 Market Street
LANSFORD PIANO COMPANY, 6-0923	730 Cherry Street
L. C. LEACH AND COMPANY, Jewelers, 7-2841	738 Cherry Street
LEGRAND JEWELRY COMPANY, 6-6816	604 Market Street
LIGGETTS ICE CREAM COMPANY, 2-9535	1506 McCallie Avenue
LOVEMAN'S, INC., Department Store, 6-0161	800 Market Street
LOVEMAN BEAUTY SHOP, 6-0161	Loveman Office Bldg.
CARTER LUPTON, Esq., 6-8831	Chattanooga Bank Building
MR. AND MRS. FRENCH McCLANAHAN, 2-9233	2232 McCallie Avenue
MARTIN-THOMPSON COMPANY, Sporting Goods, 6-1269	706 Cherry Street
MILLER BROS. COMPANY, Department Store, 7-1251	629 Market Street
MOUNTAIN CITY STOVE COMPANY, 6-0211	1240 Market Street
NATIONAL SHIRT SHOPS, 6-9716	935 Market Street
NEWTON CHEVROLET COMPANY, 6-0181	329 Market Street
PALMER CLOTHES, 6-3834	825 Market Street
N. J. PARDUE, Real Estate, 7-1038	732 Georgia Avenue
T. H. PAYNE COMPANY, Office Supplies, 6-0138	821 Market Street
PEOPLES STUDIO AND CAMERA SHOP, 6-9480	Six East Ninth Street
QUINN DRUG COMPANY, 2-3168	1400 Dadds Avenue
REMINGTON RAND TYPEWRITER COMPANY, 6-2733	120 West Eighth Street
RHYNE PHARMACY, 3-0069	117 Chickamauga Avenue
RIDGE DRUG COMPANY, 2-1171	418 Dadds Avenue
RIDGE MOTOR SERVICE, 2-9161	909 Dadds Avenue
RIDGE SHOE SHOP, 2-9165	413 Dadds Avenue
W. F. SCHROEDER, 2-8124	2524 McCallie Avenue
R. K. SCHOLZE, Groceries, 2-2131	415 Dadds Avenue
SEARS-ROEBUCK AND COMPANY, 6-7344	Sixth at Market and Broad
SIES AND COMPANY, Jewelers, State Line	Rossville, Georgia
ZELMA F. SHERRILL, Circuit Court Clerk	Court House
SIGNAIGO AND CAMPBELL, Men's Clothing, 6-0223	813 Market Street
SKATES DRUG STORE, 3-1156	Rossville, Georgia
A. F. STEINHOEFEL, Jeweler, 6-6249	14 West Eighth Street
A. G. STIVERS LUMBER COMPANY, 6-7179	345 East Main Street
STOVALL HARDWARE COMPANY, 6-7101	711 Cherry Street
SWEET ELECTRIC COMPANY, 6-2412	921 Market Street
IRA F. TEMPLETON, Jewelers, 6-4628	12 West Eighth Street
THREE SISTERS, Women's Apparel, 6-2719	702 Market Street
TUNNEL DRUG STORE, 2-2156	3110 Brainerd Road
UNIVERSITY OF CHATTANOOGA, 6-7363	McCallie Avenue
U. S. 5c AND 10c STORES	113 Chickamauga Avenue, Rossville, Georgia
VIOLET STUDIO CAMERA SHOP, 6-1553	11 East Seventh Street
THE VOGUE, Junior Misses, Women's Fashions	719 Market Street
C. W. WALKERS KORNER, 2-4014	2446 Glass Street
WHITE SWAN LAUNDRY, 6-2103	227 East Eleventh Street
WILEY SCHOOL OF BUSINESS, 6-2231	Times Building
WILKINS CANDY COMPANY, 6-1151	1273 Market Street



CHS Library



S N A P

Joy Jernigan . . . Lockinspill Players . . . Bernice Hudson . . . Concert . . . E. S. Vanover . . . Majorettes . . . R. O. T. C. Leaders . . . Parents' Day . . . Sponsors . . . Typing . . . S. Dean Petersen . . . Parents . . . Officers and Sponsors . . . Senior Play Cast . . . Presentation of Sponsors



Sewing . . . Chemistry . . . Industrial Arts . . . Office Training . . . Physics . . . Art . . . Auto Mechanics . . . Auto Mechanics . . . Metal Work . . . Printing . . . Home Economics . . . Printing . . . Biology . . . Band . . . Band Room

S H O T S



THE END

Make bright the arrows,
Gather the shields;
Conquest narrows
The peaceful fields.

Stock well the quivers
With arrows bright.
The bowman feared
Need never fight.

Make bright the arrows
O peaceful and wise!
Gather the shields
Against surprise.
—Edna St. Vincent Millay.

America's extensive preparedness program is being wholeheartedly supported with the sincere hope that such a program will protect this country against war.

No price is too great to pay to save a land from the unspeakable horror, the futile devastation and the incredible tragedy which war inevitably brings in its wake.

May God bless America and may this country that we love maintain her dignity and greatness and lead the way to a righteous and just peace.

Kellie Tallant
Mrs J. D. Bales.
Estelle Dean Summers
Leonard Straker
James Swanson
Guthrie Stroud
Betty Stimpson
Robert Hall
Nick Crabtree
Robert Zuckey
Betty & Frances Seagrine
Marilyn Hurm
Marguerite Hood
Virginia Dyke
Hannah Elizabeth Strickland

CHS Library

CHS Library