



1940 CHAMPION

CENTRAL HIGH SCHOOL

CHATTANOOGA

TENNESSEE

HUGH CURTIS ERWIN • EDITOR-IN-CHIEF

J. R. BILLINGSLEY • BUSINESS MANAGER

COPYRIGHT, NINETEEN HUNDRED FORTY

1940

• THE • SENIORS • OF •
CENTRAL • HIGH • SCHOOL,
CHATTANOOGA, • TENNESSEE
PRESENT • THEIR • 1940 • ANNUAL



!! AMPION

AS THE YEARS come and go, Central of 1940 will be a precious memory to every member of this class. To attempt to portray in picture and story a thing so indefinable and intangible as a glorious year of high school life is indeed an ambitious undertaking. . . . As a part of that vast number who love this great institution, who have shared in her widespread activities and who have felt the profound influence which she exerts over those who choose her as their Alma Mater, we, the staff, are deeply appreciative of the privilege that has been ours. In years to come, when responsibilities of life press upon us and memory dims, if this volume of the Champion helps recall pleasantly friends and associations of Central of 1940, our efforts will not have been in vain.

FOR E W O R D



DEDICATION

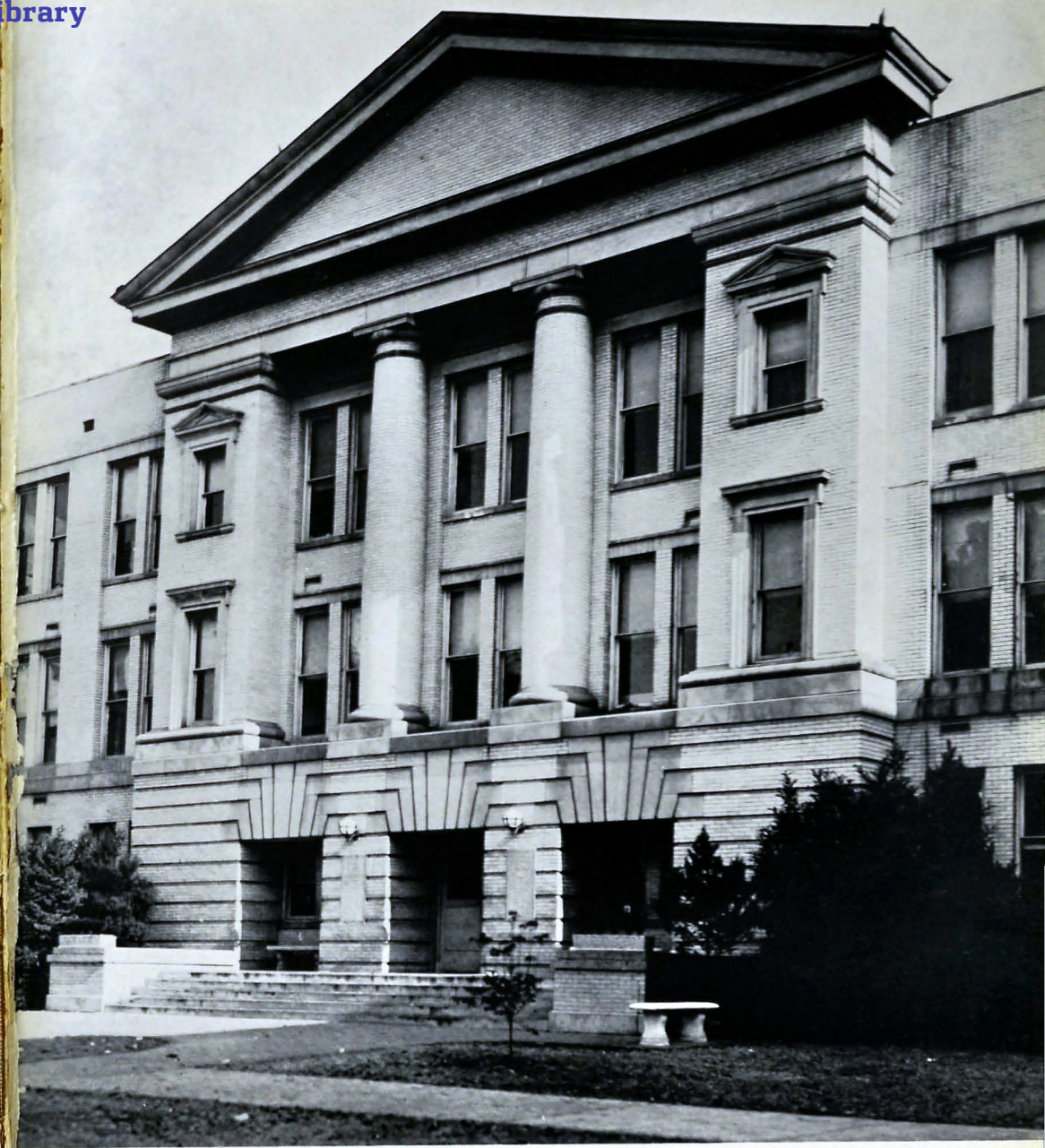
The ease and smoothness with which Central has moved in her steady round of progress for the last fifteen years may be attributed to a number of people, but to no individual is due more credit than to Lyda Gore Rice, head of the Commercial department. With her unusual ability, excellent training, and pleasing personality, Mrs. Rice has made for herself a special place in the hearts of Central students. No teacher has entered more whole-heartedly into her work, given more unselfishly of her time in service to various activities of the school or gained more completely the confidence and admiration of those with whom she has worked. As a token of our appreciation of her contribution to Central and of her promotion of the best interest of our Alma Mater, we respectfully dedicate this the Champion of 1940.

FOR FAITHFUL SERVICE TO OUR ALMA MATER



LYDA GORE RICE

ABILITY • UNSELFISH SERVICE • PERSONALITY



MAIN ENTRANCE

ALMA MATER

Our Principal . . .



S. E. Nelson



FACULTY

MILTON ALLEN
Music
University of Chattanooga, B.A.

CHARLES J. ANDERSON
Manual Arts
Lewis Institute, M. A.

WILLIAM P. BALES
History
University of Chattanooga, A.B.; Columbia
University, M.A.

MRS. GEORGE BARTON
Commerce
Missouri State Teachers College, B.S.

MISS FLORA E. BECK
Mathematics
University of Chattanooga, B.A.

MISS MARTHA BEAN
Social Science
Peabody College, B.S.

MRS. HARRY NELSON
English
University of Chattanooga, B.A.; University of
North Carolina, M.A.

MRS. HARRY L. BROWN
English
University of Chattanooga, B.A.

MRS. MERCER CLEMENTSON
Home Economics
Carson-Newman, B.A.; Carson-Newman, M.A.

MISS BETTY MAE COLLINS
Speech
Blue Mountain College, B.A.; Blue Mountain
College, B.E.; Northwestern University, M.A.

MRS. D. S. COUGHLIN
Economics
Peabody College, B.S.; Peabody College, M.A.

MISS EDNA KING CROSS
History
Centenary College, A.B.

MISS CARRIE DAVENPORT
Secretary

MISS MARY LOU DERRYBERRY
Latin
Tennessee College for Women, B.A.; Peabody
College, M.A.

MRS. HAROLD S. DUNCAN
Librarian
University of Tennessee, B.A.; Emory University,
B.A. in L.S.

J. POPE DYER
Social Science
Middle Tennessee Teachers College, B.S.; Uni-
versity of Tennessee, M.S.; Chattanooga Col-
lege of Law, LL.B.

MISS RUTH FAIN
Spanish
University of Tennessee, B.A.; National Uni-
versity of Mexico, M.A.

J. J. FLETCHER
Auto Mechanics

MISS DOROTHY C. FRENCH
English
University of Chattanooga, B.A.; Middleberry
College, M.A.

J. L. HAIR
Mathematics
Chattanooga College of Law, LL.B.

MISS VIRGINIA HARRELL
General Science
University of Chattanooga, B.S.



FACULTY

SERGEANT GEORGE M. HARRIS
Military Tactics

C. B. HATFIELD
Mechanical Drawing
University of Tennessee, B.S.; University of
Tennessee, M.S.

MISS MARGARET HAYS
Art
University of Tennessee, B.A.

J. ARLIE HOODENPYL
Chemistry
University of Chattanooga, B.S.

MISS EDMUND HOOSER
English
Peabody College, B.S.; Columbia University,
M.A.

MARSHALL G. HOWELL
Guidance
University of Chattanooga, B.S.; Columbia
University, M.A.; Chattanooga College of Law,
LL.B.

MISS SARA BANKSTON HUBBARD
Physical Education
Middle Tennessee State Teachers College, B.S.;
Peabody College, M.A.

JOHN STEGER HUNT
Biology
University of Chattanooga, A.B.
Peabody College, M.A.

MRS. WM. DUNLAP JACOWAY
Mathematics
Martha Washington, A.B.

MISS EARL R. JONES
History
Carson-Newman, A.B.; University of Tennessee,
M. A.

MISS ELIZABETH JONES
History
University of Chattanooga, B. A.

KENNETH W. JOHN
Music
Indiana State, B.S.

MRS. S. W. JOHNSON
History
University of Tennessee, B.A.; Columbia Uni-
versity, M.A.

MISS SALLY MAY KING
English
Agnes Scott College, A.B.; Columbia Uni-
versity, M.A.

MRS. CLARENCE KOLWYCK
Librarian
University of Tennessee, B.S.

MRS. ANNA B. LACEY
Dean of Girls

MISS GRACE LASATER
Registrar

MISS MARGUERITE LEHMAN
Mathematics
University of Chattanooga, A.B.; Columbia
University, M.A.

MISS CAROLINE LILLARD
Mathematics
University of Tennessee, A.B.

MRS. IDA MOORE LONGLEY
English
University of Chattanooga, B.A.; Columbia
University, M.A.

MISS JOSEPHINE LOVE
Secretary
Brenau College, A.B.



FACULTY

MISS JO MASTERSON
Social Science
Johnson City Teachers College, B.S.; Peabody College, M.A.

MISS RACHEL McALLISTER
Bible
University of Chattanooga, B.A.

GEORGE W. McCOY
Physical Education
University of Chattanooga, B.A.; Peabody College, M.A.

MAJOR D. M. McMILLIN
Military Tactics

JOHN B. MICHAEL
Commerce
Tennessee State Teachers College, B.S.

JAMES S. MILBURN
Printing
Indiana State Teachers College, B.S.; Indiana State Teachers College, M.S.

WILLARD MILLSAPS
Mathematics
Milligan College, B.S.

MISS ANNE MOFFITT
English
Carson-Newman, A.B.

MISS MINNIE LEE MORGAN
English
University of Chattanooga, B.A.

MISS ELLEN MULLENNIX
English
East Tennessee State Teachers College, B.S.; Columbia University, M.A.

MISS VESTA NELSON
English
University of Chattanooga, A. B.

MISS IDA NICKEL
Commerce
Nebraska State Teachers College, B.A.

R. E. OLINGER
Mathematics
University of Chattanooga, B.S.

MISS JO ORE
Biology
Carson-Newman, B.A.

MISS BEULAH B. PARKER
Mathematics
University of Chattanooga, B.A.

GEORGE C. PATTERSON
Physics
Murray State Teachers College, B.A.; Indiana University, M.A.

S. DEAN PETERSEN
Athletics
Alabama Polytechnic Institute, B.S.

MRS. J. FRANK PRICE
History
East Tennessee State Teachers College, B.S.; Peabody College, M.A.

MISS HELEN G. PRYOR
Latin
University of Chattanooga, B.A.; University of Virginia, M.A.

MRS. LYDA GORE RICE
Commerce
University of Kentucky, A.B.; Bowling Green Business University, B.C.S.; Chattanooga College of Law, LL.B.; Chattanooga College of Law, LL.M.

MISS MARY ELLEN RICE
Spanish
University of Chattanooga, A.B.



FACULTY

MISS IMOGENE ROBERTSON
Commerce
Eastern Teachers College, B.S.

MRS. H. B. ROBINSON
English
Shorter College, B.A.; Peabody College, M.A.

JACK R. RODMAN
General Science
University of Chattanooga, B.S.; University of Chattanooga, A.B.

MRS. A. D. ROGERS
English
University of Chattanooga, B.A.

MISS LILLIE SCHWARTZ
German
Ohio Wesleyan University, A.B.

MRS. JOHN A. SHELTON
English
Peabody College, B.S.; Columbia University, M.A.

MRS. J. E. SHROPSHIRE
Home Economics
University of Tennessee, A.B.

MRS. ALFRED G. SKATES
History
University of Chattanooga, A.B.; Columbia University, M.A.

HARMON M. SMITH
General Science
University of Chattanooga, B.S.

A. PIERCE STEWART
Mathematics
Emory University, Ph.B.; Columbia University, M.A.

G. M. SWINGLEY
Mathematics
Peabody College, LL.B.; University of Chattanooga, A.B.; Cumberland University, LL.B.

S. Q. TALLANT
Mathematics
Carson-Newman, A.B.

MISS MARGARET TAYLOR
Home Economics
University of Tennessee, B.S.

MRS. W. H. TEMPLETON
Home Economics
Peabody College, B.S.

W. H. TEMPLETON
Assistant Principal
Peabody College, B.S.; University of Chicago, M.A.

EDWARD S. VANOVER
Music
Ohio State, B.S.; Ohio State, M.A.

MISS DOROTHY WALKER
Commerce
Tennessee State Teachers College, B.S.; Peabody College, M.A.

MISS MARGARET WAPLES
French
University of Michigan, B.L.; University of Michigan, A.B.

ROBERT S. WHARTON
Manual Arts
Tennessee State Teachers College, B.S.

MISS BESSYLEE WIGGS
English
University of Chattanooga, B.A.

MISS ETHEL YORK
Home Economics
Peabody College, B.S.



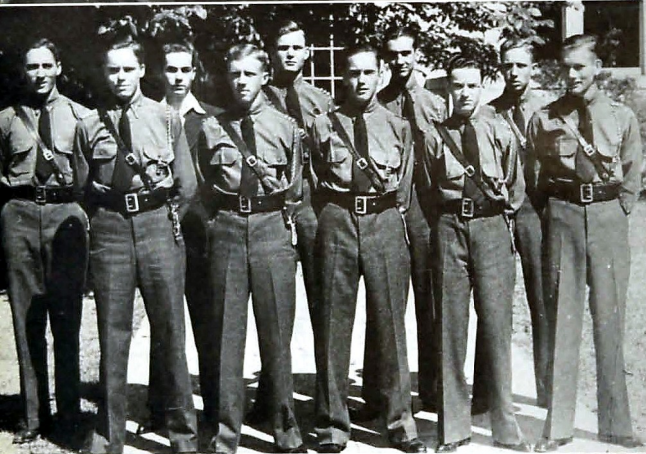
TAKING IT EASY

Sara Nell Vaughn, Juanita Hill, Reta Vaughn



READY TO RIDE

Billy Ray Smith with three escorts



GROUP OF CADET OFFICERS

Norvell, Thornburg, Allman, Kimbrough, Ratchford, O'Hara, Rose, Dean, Broyles, Taylor



INFORMAL

Front: Martha Beverley, Lillian Blair, Billie Stern, Roberta Crawley, Frances Rogers. Back: Rubie Archie, Ethel Williams, Dot Shedd, Rubyell Ellington, Nancy Timmons



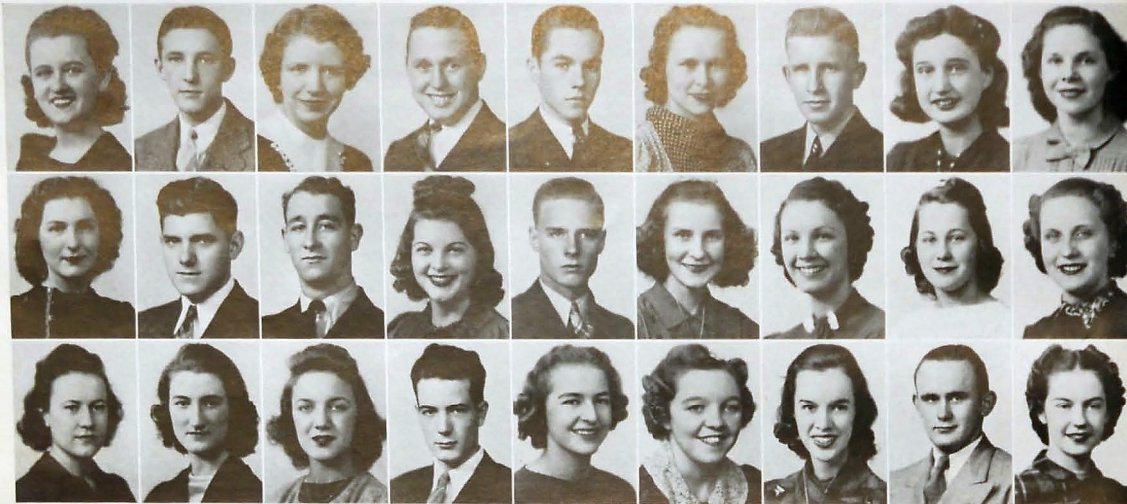
Cullom, Ratchford, Archie, Norvell, Marlow, Dean

SENIOR CLASS

OFFICERS

GLENN DEAN	President
WILSON NORVELL	Vice-President
RUBIE ARCHIE	Secretary
JOHN CULLOM	Treasurer
NORMAN RATCHFORD	Sergeant-at-Arms
JAMES MARLOW	Sergeant-at-Arms

1 9 4 0



LILLIAN JANE ACUFF "Lili"
Entered from East Side Junior High in '37. Tennis Club, '37; Bachelorettes, '38, '39; Red Cross, '37, '38, '39, '40; May Day, '37; Digest Sponsor, '38.

WARREN E. ADAIR
Entered from East Lake Junior High in '38.

MARY RUTH ALLEN
Entered from East Side Junior High in '38. Physical Education Club, '39; Band, '40.

WILBUR GRANT ALLEN
Entered from Brainerd Junior High in '37; Airplane Club, '39; Boy's Hi-Y, '39, '40; Digest Sponsor, '37.

ZACK T. ALLMAN
Entered from Red Bank Junior High in '37. Band Club, '37, '38, '39, '40; Sergeants' Club, '39; Officers' Club, '40; Captain of Band, '40.

GENEL EVA ANDERSON
Entered from East Lake Junior High in '37. Red Cross, '37, '38, '39, '40; Girl Reserves, '38; Sports Club, '40; Varsity Glee Club, '37, '38, '39, '40; Opera, '38, '39; Southeastern Chorus, '38, '40; East Tennessee Chorus, '40.

THOMAS MELVIN ANDERSON "Blondie"
Entered from Chattanooga High in '39. Airplane Club, '39, '40; Secretary Airplane Club, '39, President Airplane Club, '40.

MARIE CLAIRE ANDREA
Entered from Lash High School, Zanesville, Ohio, '40. Etiquette Club, '40; S. P. O. R., '40; Vice-President of Honorary Club in Zanesville, '40; Senior Play, '40.

MELBA ERNESTINE ANDREWS "Pansey"
Entered from Lookout Junior High in '38. Girl Reserves, '39, '40.

RUBIE MARGARET ARCHIE
Entered from G. P. S. in '37. Girls Hi-Y, '39, '40; Aces, '37, '38; Camera Club, '38; Tennis Club, '38; Home Economics Club, '38, '39, '40; Anchors Aweigh Club, '39, '40; Scouts, '38; Officers' Club, '40; Secretary Aces, '37; Treasurer Aces, '38; Treasurer Junior Class, '39; Secretary Senior Class, '40; May Queen, '39; Sponsor of the Second Battalion, '40; Digest Sponsor, '39.

FIELDING THEODORE ATCHLEY "Ted"
Entered from Brainerd Junior High in '37. Red Cross, '37, '38, '39, '40; President of Red Cross, '40.

JOHN AVANS
Entered from Canejo Grammar School, California, in '37. Airplane Club, '37, '38; Science Club, '37; Sergeants' Club, '39; Officers' Club, '40; Red Cross, '40; Swimming Team, '39; R. O. T. C. Lieutenant, '40.

DOROTHY EVELYN BAKER "Dotty"
Entered from Brainerd Junior High in '38. Red Cross, '38, '39; Girl Reserves, '39, '40; Girls' Hi-Y, '40.

JOSEPH MITCHELL BAKER
Entered from Coal Creek High School in '37.

ZELDA AILEEN BAKER "Dimples"
Entered from East Side Junior High in '37. Home Economics Club, '39, '40; Girls' Hi-Y, '40; Girl Reserves, '39, '40; Exclusive Club, '39, '40.

WANDA RUTH BALES
Entered from Brainerd Junior High in '37. Science Club, '37; Red Cross, '38, '39; Girls' Hi-Y, '40; National Honor Society, '40.

MARY LEE BALL
Entered from G. P. S. in '40. Etiquette Club, '40; Home Room Sponsor for Red Cross, '40.

FLORENCE MAE BARBER "Flo"
Entered from East Side Junior High in '37. Exclusive Club, '40; Vice-President Miracle Book Club, '40.

CAROLINE GERDA BARLACH
Entered from East Side Junior High in '37. Art Club, '37, '38; S. P. O. R., '39, '40; Hiking Club Secretary, '37, '38, '39, '40.

MOZELLE VERA BARRONTON "Moses"
Entered from East Lake Junior High in '37. National Honor Society, '39, '40.

GERALDINE BARRY "Gerry"
Entered from Notre Dame in '38. Varsity Glee Club, '38; Red Cross, '39.

JAMES BROWN BEARD
Entered from East Side Junior in '37.

ROSE ELMA BEENE
Entered from Red Bank Junior High in '38. Girls' Hi-Y, '39, '40; Central Literary Club, '39, '40; Treasurer Central Literary Club, '39; Secretary Central Literary Club, '40; Usher, '40; Red Cross Representative, '40; National Honor Society, '40.

NELDA LORRAINE BELCHER
Entered from East Side Junior High in '38. Athletic Club, '39; May Day, '39; Gym Teams; Newcomb, Soccer, Basketball, Volley Ball, German Bat Ball, '39.

BETTY JANE BENEDICT
Entered from Brainerd Junior High in '37. Secretary Miracle Book Club, '40; Girls' Hi-Y, '40; Girl Reserves, '39, '40; Program Chairman of Exclusive Club, '40; Home Economics Club, '40; Red Cross, '38, '39.

MARVINE EUGENE BENNETT
Entered from Chattanooga Vocational School in '39.

MARTHA BEVERLY
Entered from East Side Junior High in '37. Secretary and Treasurer of Tennis Club, '37; Home Economics Club, '37, '38; Treasurer of Home Economics Club, '38; Physical Education Club, '37; Red Cross, '38, '39; Band Club, '39; May Day, '38; Band, '39; Recognition Day, '39; Anchors Aweigh Club Secretary, '40; Hi-Y, '40; National Honor Society, '39, '40; Vice-President of Honor Society, '40; President of S. P. O. R., '40; Honorary Member of Officers' Club, '40; Usher, '40; Salutatorian of '40; Sponsor of R. O. T. C. Company G.

J. R. BILLINGSLEY, JR. "Primo"
Entered from Brainerd Junior High in '37. Band Club, '37, '38; Sergeants' Club, '39; Officers' Club, '40; Camera Club, '39; Business Manager of Champion, '40; Band Sergeant, '39; Band Lieutenant, '40; Chairman of Honor Society Pin Committee, '40; National Honor Society, '39, '40; Band, '37, '38, '39, '40; Book Store and Bank Force, '39, '40; Member of Senior Ring and Pin Committee; Extra Curricula Award, '37; President of Honor Society.

C. J. BIVENS, JR.
Entered from Brainerd Junior High in '35. Stamp Club, '35, '36; Printing Club, '35, '36, '37, '38; Camera Club, '37, '38, '39, '40; Boll Weevils, '36, '37, '38, '39, '40; Foreman of Print Shop for Digest Staff, '34, '37, '38; Manager of Boll Weevils, '39, '40; Vice-President of Camera Club, '39, '40; Digest Staff, '37, '38, '39; Photographic Editor of Champion, '40.

FRANCES ALLENE BLACK "Hessie"
Entered from Arnold School in '37. Girl Reserves, '38, '39; Library, '37, '38, '39; Girl Scouts, '38.

LILLIAN RUTH BLAIR
Entered from East Side Junior High in '37. Dramatic Club, '38, '39, '40; Red Cross, '37, '38, '39; Girl Reserves, '39, '40; Girls' Hi-Y, '40; Ace Club, '38; Vice-President of Girl Reserves, '39; President of Girl Reserves, '40; Vice-President of Girls' Hi-Y, '40; Secretary of Dramatic Club, '40; National Honor Society, '39, '40; Usher, '40; Sponsor of Company E in R. O. T. C., '40; Honorary Member of Officers' Club, '40; Song Leader of Junior Class, '39; Bank Staff, '38, '39, '40.

ROBERT HOWARD BLOALOCK
Entered from Brainerd Junior High in '35.

ALICE JEAN BLANTON
Entered from Chattanooga High in '39. Red Cross; Girls' Battalion, '39.

DORIS RAY BLOALOCK
Entered from Etowah High in '38. Girl Reserves, '39, '40; Secretary of Senior English Class; Circus, '38; Digest Sponsor, '38.

EARL W. BOLES
Entered from East Side Junior High in '38. Sergeants' Club, '39; Officers' Club, '40; Lieutenant in R. O. T. C., '40; Member of R. O. T. C., '38, '39, '40.

BETTY KATHRYN BOWMAN
Entered from East Side Junior High in '34. Candy Crew, '34, '37; S. P. O. R., '38; Biology Club, '37, '38; Sub-Deb, '38, '39; Girls' Hi-Y, '38, '39, '40; Secretary of Hi-Y, '40; Anchors Aweigh, '39, '40; Usher, '40.

LUCILLE BOWMAN "Cili"
Entered from East Side Junior High in '37. Athletic Club, '38; Physical Education, '39; Girl Reserves, '39, '40; Red Cross, '39, '40; May Day, '38, '39; Exclusive Club, '40; Girls' Battalion, '40; Usher, '40; National Honor Society, '40.

CLARA DESMA BOYD
Entered from East Lake Junior High in '37. Red Cross, '38; Varsity Glee Club, '39, '40; Gym Teams; Soccer, '38, '39; Softball, '37, '38, '39; Basketball, '37, '38; Volley Ball, '37, '38, '39.

EDITH BOYD "Sweetie"
Entered from Southern Junior College in '37.

CAROLYN ELAINE BRACKEN
Entered from Hixon High in '39.

CELESTE EILEEN BRADSHAW "Cebe"
Entered from Dickinson Junior High in '37. Red Cross, '38, '39, '40; Chorus, '38; Usher, '40.

CLIFFORD BARON BRAMLETT "C. B."
Entered from East Lake Junior High.

FRED CANFIELD BRAND "Frederick"
Entered from Red Bank Junior High in '38. Varsity Glee Club, '39, '40; Biology Club, '38, '39, '40; Non-Commissioned Officer, '39.

BARBARA ELOUISE BRANDT
Entered from East Side Junior High in '37. Science Club, '37; Sub-Deb Club, '37, '38; Hi-Y, '39, '40; Digest Sponsor, '39; Red Cross, '37, '38, '39, '40; Physical Education Club, '37; Girl Reserves, '39; Dramatic Club, '40; President of Ushers, '40; Treasurer of Hi-Y, '40; National Honor Society, '39, '40; Senate.

ALMO JEANNE BROOKS
Entered from East Side Junior High in '37. Red Cross, '38; Camera Club, '38, '39, '40; Stamp Club, '38; Sports, '38, '39, '40; Girl's Hi-Y, '39, '40; Girl Reserves, '39, '40; Social Chairman of Camera Club; Girls' Battalion, '39; Drum Major, '39, '40; Typing Pin Award in '38.

GRACE ALICE BROOKS "Gracie Mae"
Entered from Hardy Junior High in '37. Aces, '37, '38, '39, '40; Badminton, '39; Tennis, '39; Handicraft, '38; Girl Scouts, '38, '39; Physical Education Staff, '38, '39; Usher, '40; Lieutenant in Girls' Battalion, '39, '40; Gym Teams; Soccer, '37, '38; Basketball, '38; May Day, '37, '38, '39; Intramural, '37, '38, '39.

MORRIS JACKSON BROOKS "Jack"
Entered from Dickinson Junior High in '38. Band; Orchestra.

EVELYN LOUISE BROOME "Pebbles"
Entered from East Side Junior High in '37. Girl Reserves, '37, '38, '39; Ace Club, '37, '38; Red Cross, '38.

ALBERT G. BROWN
Entered from Mountain Creek in '37.

JOHN WESTLY BROWN
Entered from Sylacauga High, Sylacauga, Alabama, in '38. Biology Club, '38, '39, '40.

MONICA ROSE BROWN "Monie"
Entered from East Side Junior High in '37. Varsity Glee Club, '37, '38, '39, '40; Southeastern Chorus, '38, '39; East Tennessee Chorus, '39; Opera, '38, '39, '40; Red Cross, '33, '39; Betty Co-ed, '39; Digest, '38, '39.

ALLEN WILL BROYLES
Entered from Dickinson Junior High in '37. Biology Club, '38; Sports Club, '40; Officers' Club, '40; Sea Scout Club, '39; Sergeants' Club, '39; Grady Literary Society, '39; Depression Club, '40; President of Home Room, '37; Secretary and Treasurer of Sergeants' Club, '39; Vice-President of Officers' Club, '40; Secretary Sports Club, '40; Major in R. O. T. C., '40; Track Team, '39, '40; National Honor Society, '40.

EDWARD CLINTON BRYAN
Entered from East Side Junior High in '37. Bachelors' Club, '39, '40; Red Cross, '39.

ARTHUR A. BUNCH
Entered from Phillips High, Birmingham, Alabama, in '40. R. O. T. C.; Hi-Y, '39.



SENIOR CLASS OF CENTRAL HIGH SCHOOL



BILLIE VICTORIA BURDETTE
Entered from East Side Junior High in '38. Betty Co-ed, '38, '39, '40; Girl Reserves, '39; Red Cross, '38, '39, '40; Girls' Battalion; May Day.



MARTHA WESS BURGER "Hamburger," "Jew Baby"
Entered from Red Bank Junior High in '38. Physical Education Club, '39; Red Cross, '40; Captain of Gym Team, '38; May Day, '38; Topper Team, '38, '39.



GEORGE LEONARD BURKHART "Doc"
Entered from Lookout Junior High in '37. Library Club, '39, '40; Digest Sponsor, '40; Member of R. O. T. C.



FLORA ELIZABETH BUSH "Floogee"
Entered from Brainerd Junior High in '37. May Day, '38, '39; Soccer Team, '38.



BETTY JEAN CADE "Brown Eyes"
Entered from North Chattanooga Junior High in '37. Exclusive Club, '40.



FELTUS CAHOON "Tus"
Entered from Brainerd Junior High in '36. Varsity Glee Club, '38, '39.



CARRIE BELLE CAMP
Entered from Brainerd Junior High in '37. Physical Education Club, '37; Ace, '38, '39; Betty Co-ed, '39, '40; Ice Cream Crew, '39, '40; Girls' Battalion, Class and Color Teams, '37, '38, '39, '40; Captain of Pounders.



DENTON T. CAMP "Bookie"
Entered from Brainerd Junior High in '36. Red Cross, '37; Stage Crew, '38.



JOHNNIE JO CAPLAN
Entered from Chattanooga High in '39. Red Cross, Band, Simon Concert, '39.



EDDIE MAE GARDEN
Entered from East Lake Junior High in '37. Bible or Miracle Book Club, '38, '39, '40.

WILLIAM JASPER GARDEN "Willy"
Entered from Brainerd Junior High in '37. Boll Weevils, '38, '39, '40.

DETTIE CARLTON
Entered from East Side Junior High in '37. Tennis Club, '37; Anchors Aweigh, '40; Girls' Battalion, '39; Girls' Hi-Y, '40; Usher, '40.

KATHERINE ANNE CARTER
Entered from Red Bank Junior High in '38. Library Club, '38, '39, '40; S. P. O. R., '39, Hi-Y, '40; Exclusive Club, '40; Red Cross, '39; President of Library Club, '40; Usher, '40; Vice-President of Usher, '40; Digest Staff, '39, '40; Business Manager of Digest, '40; National Honor Society, '40.

ERMA ESTELLA CARTER "Shorty"
Entered from East Lake Junior High in '38. Girls' Battalion, '39, '40; Orchestra, '39, '40; Gym Teams: Tumblers, '39, '40; Volley Ball, '38, '39, '40; Basketball, '38, '39, '40; Softball, '38, '39, '40; Newcomb and Soccer, '38, '39, '40.

JESSE GLENN CARTER
Entered from North Chattanooga Junior High in '37. Member of R. O. T. C., '37, '40.

JAMES SHERIDAN CARTWRIGHT
Entered from East Side Junior High in '37. Airplane Club, '39; Digest Sponsor.

MARGARET JUNE CARVER "Pedra"
Entered from East Lake Junior High in '38. Girl Scouts, '38; Library Club, '39; Betty Co-ed, '39, '40.

MIRIAM HAZEL CASH "Tiny"
Entered from New Hope High School in '39.

NORMAN M. CASSELL
Entered from Dickinson Junior High in '38. S. P. O. R., '38; Red Cross, '39, '40; Vice-President of Red Cross, '40; Grady Literary Society, '38, '39, '40; Dramatic Club, '39, '40; Senate, '38, '39, '40; Officers' Club, '40; Sergeants' Club, '39; Lieutenant in R. O. T. C., '40; National Honor Society, '39, '40; Digest, '38; Senior Play, '40; Delegate to National Red Cross Convention in Washington, D. C.

BETTYE JO CAYCE
Entered from San Diego High, San Diego, California, in '38. Red Cross Home Room Representative, '40; National Honor Society, '39, '40; Drum Majorette, '40.

WILLIAM EDWARD CHAMBERS
Entered from Chattanooga High in '39. Bible or Miracle Book Club, '39; National Honor Society, '40.

RUTH E. CHARLESWORTH
Entered from Lookout Junior High in '38. Ace Club, '38, '39, '40; Tennis Club, '39; National Honor Society, '39, '40.

LAWRENCE EVERETT CHESTER
Entered from Martin Institute in '38. Boys' Hi-Y, '39, '40; Grady Literary Society, '40; Bank Staff, '38, '39, '40; National Honor Society, '40.

MOZELLE ALTA CHILDERS "Shorty"
Entered from East Side Junior High in '38. Girl Reserves Chaplain, '39; Girl Reserves Secretary, '40; Dramatic Club, '39, '40; Red Cross, '39.

HOWARD DAVID CITY
Entered from Brainerd Junior High in '37. Printing Club, '38, '39, '40.

RUTH WARD CLARK
Entered from Brainerd Junior High in '37. Science Club, '37; Red Cross, '38, '39; National Honor Society, '40.

WILLIAM THOMAS CLARK "Dum Dum"
Entered from Dickinson Junior High in '37.

MARGARET L'RAY CLARKE "Bernie"
Entered from East Side Junior High in '38. Girl Reserves, '38, '39, '40; Home Economics Club, Bible Club, Red Cross, President of Girl Reserves, '39; Girls' Battalion, May Day, '39; Social and Membership Chairman of Girl Reserves; Junior Member of Woman's Hospital Auxiliary to Represent Central Girl Reserves, '38, '39, '40.

THOMAS CLOSE, JR. "Tommy"
Entered from Hardy Junior High in '37. Printers' Club, '39, '40.

ALICE ROSE COBB "Sherry"
Entered from East Side Junior High in '38. Biology Club, '38, '39, '40; Miracle Book Club, '39, '40.

ALVIN WAYNE COFFMAN "Coffee"
Entered from Hardy Junior High in '37.

RAYMOND WALKER COLLINS "Wheatie"
Entered from East Side Junior High in '37. Boys' Hi-Y, '37.

THOMAS EDGAR COLSTON, JR.
Entered from Brainerd Junior High in '37. Sergeants' Club, '39; Officers' Club, '40; Lieutenant in R. O. T. C., '40.

PAUL HARRISON COMSTOCK
Entered from East Lake Junior High in '37. Digest Staff, '40.

DORRIS ALBERTA COOKE "Blondie"
Entered from East Side Junior High in '37. Red Cross, '37, '39; Betty Co-ed Club, '39; Girls' Battalion, '39.

FRANK RICHARDSON COOKE, JR.
Entered from Red Bank Junior High in '37.

AGNES COOPER
Entered from East Side Junior High in '37. Ace Club, '37, '38, '39, '40; Girl Reserves, '38, '40; Badminton Club, '40; Seven Girls' Varsity Gym Teams; May Day, '37, '38, '39, '40; Girl Scouts, '38; Girls' Battalion, '39, '40; Usher, '40; Digest Representative, '38, '40; National Honor Society, '40.

BILL M. COOPER
Entered from Lookout Junior High in '37. Red Cross; Home Room Representative, '39.

JACK COLEMAN CORNELISON "Shortcut"
Entered from East Side Junior High in '38. Bachelors' Club, '40; Officers' Club, '40; Grady Literary Society, '40; Depression Club, '40; Lieutenant in R. O. T. C., '40; Orchestra, '38, '39, '40; Tennis Team, '38, '39, '40; Basketball, '39, '40; Sergeants' Club, '39.

THOMAS GUINN CRAIGHEAD
Entered from Red Bank Junior High in '38. Camera Club, '39, '40; Boys' Hi-Y, '39; Bachelors' Club, '39, '40; Band Club, '38, '39, '40; Grady Literary Society, '38; Sports Club, '40; Band, '38, '39, '40; Varsity Glee Club, '38, '39, '40; Opera "Patience"; Spring Concert; Band Concert.

HANNAH ROBERTA CRAWLEY
Entered from Red Bank Junior High in '37. Girls' Hi-Y, '39, '40; President of Girls' Hi-Y, '40; Senate, '39, '40; Vice-President of Senate, '40; Correspondence Secretary of Anchors Aweigh Club, '40; Dramatic Club, '40; Honorary Member of Officers' Club, '40; National Honor Society, '39, '40; Senior Council, '40; Digest Sponsor, '38, '39, '40; Digest Staff, '38, '39, '40; Librarian for Digest, '39; News Editor for Digest, '40; Regimental Sponsor of R. O. T. C., '40; Usher, '40; Junior Class Secretary, '39; Ice Cream Crew, '39; Extra Curricula Award, '39; Circus, '37, D. A. R., '40.

DOROTHY EVELYNE CROWE "Dot"
Entered from East Lake Junior High in '38.

JOHN CULLOM
Entered from Lanier High School in '38. Varsity Football Team, '38, '39, '40; Captain of Football Team, '40; "C" Club, '38, '39, '40; Treasurer of "C" Club, '38; President of "C" Club, '40; Depression Club, '38, '39, '40; President of Depression Club, '38; Treasurer of Senior Class, '40.

LAWRENCE WAYNE CUNNINGHAM "Shorty"
Entered from Lookout Junior High in '38.

NETHIA VIRGINIA CUZZORT "Pinkie"
Entered from Brainerd Junior High in '37. Miracle Book Club, '40; Softball, '37, '38; Soccer, '38; Newcomb, '37.

EVERETT E. DABBS
Entered from East Side Junior High in '37. Red Cross, '39.

MARY ELIZABETH DALE
Entered from Park Junior High School, Knoxville, in '37. May Day, '37, '39; Physical Education Club, '37; Circus, '37; Girls' Battalion, '39.

EDWARD CARL DANTZLER
Entered from Dickinson Junior High in '37.

JAMES MELTON DAVIS "Bud"
Entered from East Side Junior High in '35. Camera Club, '38, '37, '38, '39; Airplane Club, '37.

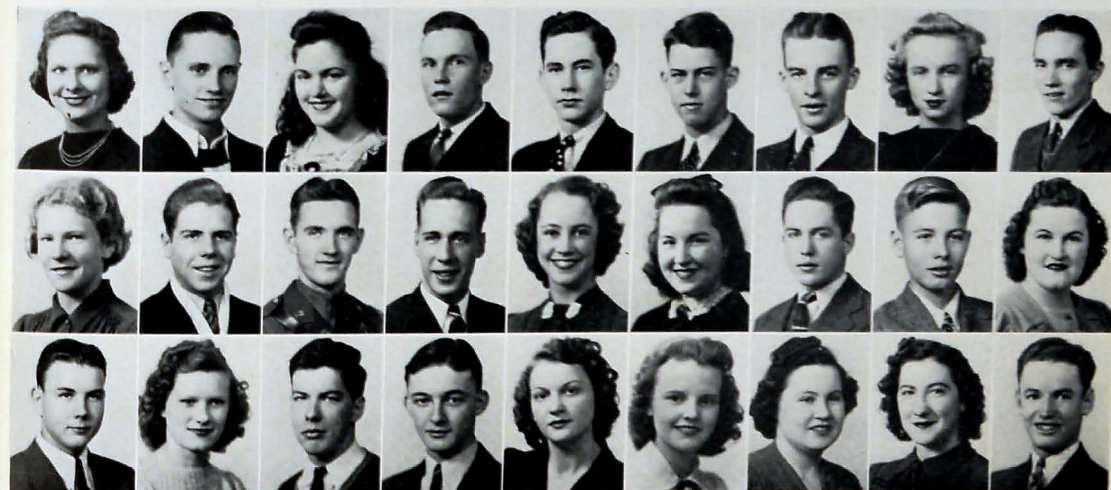
OLIVE JOSEPHINE DAVIS "Jo"
Entered from East Lake Junior High in '37. Physical Education Club, '38; May Day, '39.

RUTH C. DAVIS "Cookie"
Entered from Knoxville Central High in '37. Girl Reserves, '39, '40; Girls' Hi-Y, '40; Library Club, '37, '38; Science Club, '37; Hiking Club, '38, '39; Camera Club, '39; Physical Education Club, '37, '38; Social Chairman for Girl Reserves, '39; Treasurer of Girl Reserves, '40; Digest Sponsor, '39, '40; Home Room Representative, '40; May Day, '37, '38; Girls' Battalion, '39; Gym Circus, '37, '38.

NAOMI BEYRAL DEAKINS
Entered from Mountain Creek School in '37. Library Club.

SELPHIA LEE DEAL
Entered from East Side Junior High in '38. Ace Club; Girls' Battalion, '39, '40.

GLENN McAFEE DEAN, JR.
Entered from East Side Junior High in '38. Boys' Hi-Y, '38, '39, '40; Treasurer of Boys' Hi-Y, '39; President of Boys' Hi-Y, '38, '40; Grady Literary Society, '38, '39, '40; Treasurer of Grady Literary Society, '38, '39, '40; President of Grady Literary Society, '38, '39, '40; Biology Club, '38; Sports Club, '38, '39; Dramatic Club, '40; Sergeants' Club, '39; Officers' Club, '40; R. O. T. C., Sergeant in '39; Captain of Company G in '40; Star-14, '39; President of Sophomore Class, '38; President of Senior Class in '40; National Honor Society, '39, '40; Digest Staff, '39; King of Sophomore Class at Class Party, Senior Ring and Pin Committee; Bank and Bookstore Force.



SENIOR CLASS OF CENTRAL HIGH SCHOOL

NORA HELEN DEAN

Entered from East Side Junior High in '38. Physical Education Club, '38, '39; Secretary of Physical Education Club, '38; Gym Teams: Soccer, '38; Softball, '38; Newcomb, '38; Girls' Hi-Y, '40; Usher, '40; National Honor Society, '39, '40; Chairman of Honor Book Committee for National Honor Society; Miracle Book Club, '40; Girl Reserves, '40; Typist for Champion Staff, '40; Typist for Digest Staff, '39, '40; Girls' Battalion, '39, '40; May Day, '39; Won Fire Prevention Essay Contest, '39.

HURLEY A. DELANEY

Entered from Hixon High School in '39. Glee Club; Dramatic Club; Sports Club.

VIRGINIA LEE DELOZIER

Entered from East Side Junior High in '37. Sub-Deb Club, '38, '39; Girls' Hi-Y, '39, '40; May Day, '38, '39; Red Cross Home Room Representative, '40.

WALLACE EUGENE DE SHA

Entered from Dickinson Junior High in '38. Varsity Glee Club, '38, '39; Red Cross, '39; Operetta "H. M. S. Pinafore," '38; Sang at S. E. T. A., '38; Corporal in R. O. T. C., '39.

CHARLES JEROME DOBBS

Entered from East Lake Junior High in '38.

CHESLEY J. DONAHOO, JR.

Entered from East Side Junior High in '37.

JOSEPHINE LANNA DOREMUS

Entered from North Chattanooga Junior High in '37. Home Economics Club, '37, '38, '39, '40; Miracle Book Club, '40; Program Chairman of Home Economics Club, '40; Social Chairman of Miracle Book Club, '40.

JOE HAROLD DUNLAP

Entered from Huntsville High in '40. Etiquette Club, '40; Class Chairman, '40; Senior Council, '40; Depression Club, '40.

PEGGY JANE DURHAM

Entered from Pineville School in '37. Exclusive Club, '39, '40; Betty Co-ed Club, '40; Girls' Battalion, '39, '40.

RUTH ECHOLS

Entered from East Side Junior High in '37. Tennis Club in '37; Physical Club, '37; Sub-Deb Club, '38, '39, '40; May Day, '38, '39; Vice-President of Anchors Aweigh Club, '40; Secretary of Freshman Class, '37; Usher, '40; Girls' Hi-Y, '40.

HUBERT EARL EDWARDS

Entered from Chattanooga High School in '40.

RUBY LEE ELLINGTON

Entered from Chattanooga High School in '39. Camera Club, '39, '40; R. O. T. C. Sponsor, '40; Digest Sponsor.

CHARLTON L. ELLIS

Entered from Chattanooga High School in '37.

MARY ENGLISH

Entered from Brainerd Junior High in '37. Girls' Hi-Y, '37, '38, '39, '40.

MALCOLM NEIL EPPERSON

Entered from Lookout Junior High in '37.

MARGARETTE EPPERSON

Entered from Lookout Junior High in '37. Miracle Book Club, '40; Ice Cream Crew, '38; Athletic Club, '37, '38; Tumblers, '37, '38; Physical Education Club, '37, '38; May Day, '37, '38; Gym Teams: Basketball, '37, '38; Softball, '37, '38; Volley Ball, '37, '38; German Bat Ball, '37, '38; Newcomb, '38; Soccer, '37, '38.

CURTIS ERWIN, "Curt," "Squirt," "Runt," "Shorty"

Entered from Brainerd Junior High in '37. Boys' Hi-Y, '37, '38, '39, '40; Sergeant-at-Arms for Boys' Hi-Y, '38, '39; Editor-in-Chief of Champion Staff, '40; Circulation Manager of Digest, '39; Digest Staff, '39; National Honor Society, '39, '40; Chairman of National Honor Society Pageant Committee, '40; Extra Curricula Award, '37; Senior Play, '40; Chairman of Senior Ticket Sales; Class Representative at Commencement.

HOWARD EVANS

Entered from Hardy Junior High in '37. Digest Foreman, '38; Digest Staff, '38.

WINONA MARGARET EVANS

Entered from Dickinson Junior High in '37. Girls' Hi-Y, '37, '38, '39, '40; Physical Education Club, '38.

RAYMOND H. FAERBER

Entered from First Lutheran School in '37. Science Club, '37.

MIKE COSTELLO FARMER

Entered from Brainerd Junior High in '37.

HULBERT LEWIS FERGER

Entered from Dickinson Junior High in '37. Band Club, '37, '38, '39; Red Cross, '39, '40; Airplane Club, '37, '38, '39, '40; Consumers Research Club, '39; Bachelors' Club, '40; Band, '37, '38, '39; President of Home Room in '40; Depression Club, '40.

BERTHA LOU FIELDS

Entered from Lakeview High in '39. Girl Reserves; Home Economics Club; Usher, '40.

DORIS JUNE FISHER

Entered from East Lake Junior High in '38. Miracle Book Club, '39; Red Cross, '39.

MARY ANNA FITZGERALD

Entered from East Side Junior High. Red Cross, '37.

WILLIAM EARL FOLKNER

Entered from Red Bank Junior High in '37. Sergeant's Club, '38, '39; Officers' Club, '39, '40; Grady Literary Society, '39, '40; Stage Crew, '39, '40.

EDNA MARY FORD

Entered from East Side Junior High in '37. Physical Education Club, '38, '39; President of Physical Education Club, '38; Girl Reserves, '38, '39, '40; Red Cross, '38, '39, '40; Library Club, '38; Junior Song Leader, '39; Gym Captain, '38; May Day, '38; Chorus, '38, '40.

PRISCILLA FOREMAN

Entered from East Lake Junior High in '38. Ace Club, '38, '39, '40; Tumblers, '38, '39; Library Club, '38; Stamp Club, '38, '39; Tennis Club, '39; S. P. Q. R., '40; Girl Scouts, '39, '40; May Day, '38, '39, '40; Circus, '38, '39; Badminton Club, '39, '40; Gym Office Force, '39, '40; Hubbard Helpers, '39; President of Ace Club, '40; Treasurer of S. P. Q. R., '40; Lieutenant in Girls' Battalion, '39, '40; President of Tennis Club, '39; Patrol Leader of Scouts, '39, '40; National Honor Society, '40.

BEN FOXWORTH

Entered from East Side Junior High in '38. Red Cross, '38; Officers' Club, '40; Bachelors' Club, '39, '40; Star 14, '39; Vice-President of Star 14, '40; Grady Literary Society, '38, '39, '40; Vice-President of Grady Literary Society, '40; Senate, '38, '39, '40; Cabinet Member of Senate, '40; Dramatic Club, '39, '40; Lieutenant in R. O. T. C.

MARY FRANK

Entered from Lookout Junior High in '37. Ace Club, '39, '40; Tumblers, '38, '39; May Day, '37, '38, '39; Girls' Battalion, '39; Gym Teams, '37, '38, '39.

NOEL ELMER FRIZZEL

Entered from Mountain Creek Grammar School in '36. Printing Club, '38, '39, '40; National Honor Society, '39, '40.

RUTH FULLER

Entered from East Lake Junior High in '38. S. P. Q. R., '38, '39; Red Cross, '39; Senate, '40.

BERNICE FUNK

Entered from Grover Cleveland High School, New York, in '38. Ace Club, '38, '39; Badminton Club, '39; Tennis Club, '39; Senate; Girl Scouts, '39; Girls' Battalion; Gym Teams; Soccer Team; Humdingers Volley Ball Team.

MARY FRANCES GALLMAN

Entered from Brainerd Junior High in '37. Handicraft Club, '37; Girls' Battalion, '39, '40.

ANITA GANNAWAY

Entered from Brainerd Junior High in '36. Girls' Battalion, '38; May Day, '36.

GRACE E. GENUNG

Entered from Brainerd Junior High in '36. Physical Education Club, '37, '38; S. P. Q. R., '38; Circus, '36, '37, '38; May Day, '36, '37, '38; Girls' Drill Squad, '38, '39; Red Cross, '37; Miracle Book Club, '39.

JAMES GOODE

Entered from East Side Junior High in '37. Pilots' Club.

CLARA EVELYN GOODLET

Entered from East Lake Junior High in '38. Varsity Glee Club, '39, '40; Ace Club, '38, '39, '40; Gym Captain, '39, '40; May Day, '39; Firecrackers, '39, '40.

WINIFRED LESLEY GOODSON

Entered from Brainerd Junior High in '37. Home Economics Club, '39, '40; Physical Education, '38, '39; Library Club, '40; Vice-President of Home Room, '38; Vice-President of Home Economics Club, '40; Secretary Physical Education Club, '39; Chairman of Spanish Class, '39; Chairman of Latin Class, '38; Usher, '40; Vice-President of Ushers, '40; Digest Sponsor, '40; Girls' Battalion, '38; National Honor Society, '39, '40.

RALPH GORMAN

Entered from Dickinson Junior High in '33. Officers' Club, '40.

ROBERT GRAY

Entered from East Side Junior High in '37. Airplane Club; Officers' Club, '40; Lieutenant in R. O. T. C., '40.

ANN ELIZABETH GREEN

Entered from Dickinson Junior High in '38. S. P. Q. R., '38; Exclusive, '39, '40; President of Exclusive Club, '40; Hi-Y, '40; Digest, '40; Usher, '40; National Honor Society, '40.

MARY ELLEN GREEN

Entered from East Side Junior High in '38. Girls' Hi-Y, '39, '40; Varsity Glee Club, '39, '40; Home Room Secretary, '40; Home Room President, '38; National Honor Society, '39, '40; Usher, '40; School Pianist, '39, '40.

THOMAS LEE GRIFFIN

Entered from Jackson County High, Scottsboro, Alabama, in '36.

MARIE GRIMMING

Entered from Messick School in '38. Girls' Hi-Y, '39, '40; Anchors Aweigh, '39, '40; Home Economics Club, '39, '40; Red Cross, '38, '39; Betty Co-ed Club, '39; Digest Representative, '39.

WINONA GRISHAM

Entered from Grenada High, Grenada, Mississippi, in '40.

MARION GROVES

Entered from East Lake Junior High in '37. Miracle Book Club, '38, '39, '40; National Honor Society, '40.

BERTHA NELL GUTHRIE

Entered from East Lake Junior High in '37. Girls' Battalion, '39.

HELEN CORINNE HAGGARD

Entered from Brainerd Junior High in '37. Red Cross, '37, '38, '39, '40; Camera Club, '37, '40; S. P. Q. R., '37, '38, '40; Circus, '37, '40; Girl Reserves, '39, '40; Vice-President of Girl Reserves, '40; Usher, '40; Drum Major, '39, '40; Song Leader, '38; National Honor Society, '40; Gym Captain, '40; Bachelorette, '38; Digest Typist, '40; Physical Education Club, '37, '39, '40; Twix Teen Secretary, '40.

LENA MAE HALE

Entered from Fairmount in '37. Girl Scouts, '38; Home Economics Club, '39; Circus, '37, '38; Usher, '40; May Day, '37, '39; National Honor Society, '40.

WARREN HALE

Entered from North Chattanooga Junior High in '37. Biology Club, '38; Sports Club, '39, '40; Badminton Club, '39, '40; Officers' Club, '40; Bachelors' Club, '39, '40; Depression Club, '40; Sea Scout Club, '39; Lieutenant in R. O. T. C., '40; Grasscutters, '39; Officers' Football Team, '40; Runner-up in Badminton Tournament, '39.

EUGENE HALL

Entered from McCallie in '37. Depression Club, '38, '39; Bachelors' Club, '38, '39; Sea Scout Club, '38; Etiquette Club, '39.

RUTH MILDRED HAMBLEY

Entered from South Pittsburg High in '39.

BILL HAMMONTREE

Entered from East Lake Junior High in '38. Biology Club, '38.

1940



HENRY HANKINS "Hank"
Entered from East Lake Junior High in '38. Sergeant's Club, '39; Officers' Club, '40; Football, '39, '40; Sergeant in R. O. T. C., '39; Lieutenant in R. O. T. C., '40.

SARAH HANKS "Jo"
Entered from East Side Junior High in '38. Physical Education Club, '39; Volley Ball Team, '39.

JIMMY HARDIE "Shag"
Entered from East Side Junior High in '37. "C" Club, '39, '40; Treasurer "C" Club, '39, '40; Football, '37, '38, '39.

MARIANNE HARDIN
Entered from Texarkana High, Texarkana, Arkansas, in '40.

JUANITA HARGISS "Snooks"
Entered from Lookout Junior High in '37. Red Cross, '39, '40.

HELEN VIRGINIA HARRIS "Peggy"
Entered from Brainerd Junior High in '37. Home Economics Club, '39, '40; Betty Co-ed, '39, '40; Red Cross, '39; Treasurer of Betty Co-ed, '39; Vice-President of Betty Co-ed, '40; Secretary of Home Economics Club, '40; Girls' Battalion, '39; May Day, '39; Home Room Digest Sponsor.

E. J. HARTMAN "Chigger"
Entered from Nixon High in '37. Sergeant's Club, '39; Member of R. O. T. C., '38, '39, '40.

HAROLD HARWOOD
Entered from Brainerd Junior High in '38.

LODEMA HATCHER
Entered from Brainerd Junior High in '37. S. P. Q. R., '38; Biology Club, '40; Class Representative for S. P. Q. R., '38.

ELEANOR JEAN HAWKINS "Jeannie"
Entered from Memphis Central High in '38. Sub-Deb Club, '38, '39; Anchors Aweigh Club, '39, '40; Girl Reserves, '38, '39; Senate, '40; National Honor Society, '39, '40; Usher, '40.

DAN HAYS "Dirty Dan," "Dud"
Entered from Chattanooga High in '39. Depression Club, '39, '40.

MARIE HEAPS "Birdie"
Entered from Brainerd Junior High in '37. Girls' Battalion, '39; May Day, '37.

H. JACK HEARD
Entered from Hardy Junior High in '37. Pressman on Digest Staff, '38; Digest Foreman, '38.

NELL HENEGAR "Nellie"
Entered from North Chattanooga Junior High in '37. Red Cross, '39, '40; Library Club, '39.

BILL L. HERREN "Sam"
Entered from Lookout Junior High in '37.

BILLY TOM HICKS
Entered from Red Bank Junior High in '33. Bachelors' Club, '40; Track Team, '39; Airplane Club, '39; Vice-President of Airplane Club, '39.

EDNA HIGDON "Eddie"
Entered from Lookout Junior High in '37. Exclusive Club, '39, '40; Physical Education Club, '39; Drum Major, '39, '40; Simon Concert, '39; May Day, '38.

VIOLET HIGDON "Vi"
Entered from Hardy Junior High in '38.

EVELYN JANE HILL
Entered from Brainerd Junior High in '37. May Day, '38, '39; Digest Sponsor.

JAMES HILL "Jimmy"
Entered from Springville High in '40.

JUANITA HILL "Nita"
Entered from Dickinson Junior High in '37. Tennis Club, '37, '38, '39; Red Cross, '39, '40; Gym Circus, '39; Drill Squad, '37; Home Economics Exhibits, '38; Twix Teen, '40; Physical Education Teams, '39, '40.

DANIEL BOYD HOLLIS "Slugg"
Entered from East Lake Junior High in '38. Corporal in R. O. T. C., '38.

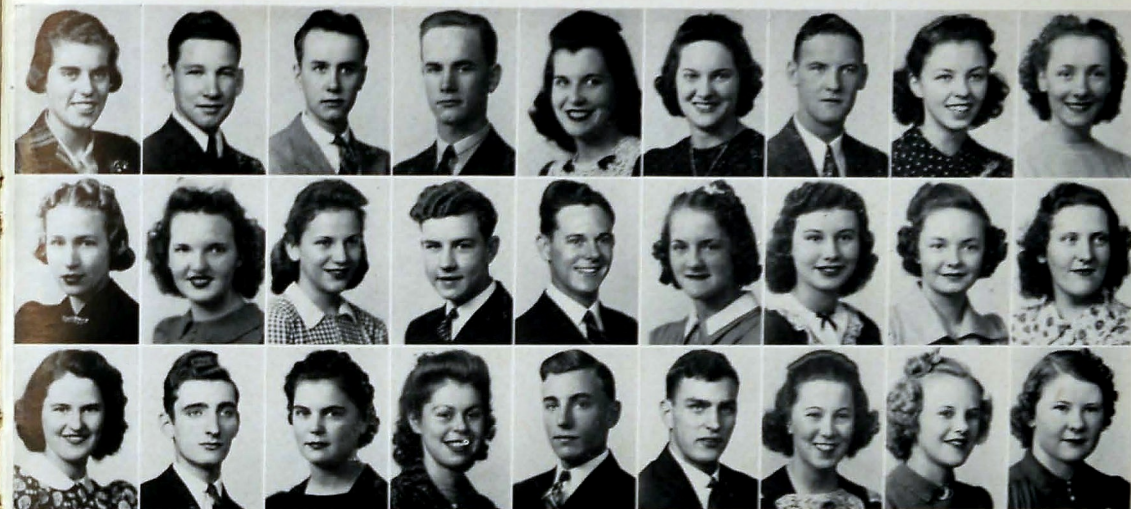
DAISY HOLLOWAY
Entered from Chattanooga Valley High in '39. Girls' Battalion, '39, '40; Biology Club, '39; Library Club, '39; Exclusive Club, '40.

ALICE CECILIA HOOPES "Pete"
Entered from North Chattanooga Junior High in '37. Red Cross, '38, '40; Home Economics Club, '39; Athletic, '37, '38; May Day, '38.

MARY ELIZABETH HOPSON "Pete"
Entered from East Lake Junior High in '37. Home Economics Club, '38; S. P. Q. R., '37, '39; Hi-Y, '39, '40; Usher, '40; Orchestra, '37, '39; Junior Play, '37; Light Opera, '38, '39; Class Day, '37, '40; Commencement, '37, '39; National Honor Society, '40.

BETTYE RUTHE HOUSLEY
Entered from Brainerd Junior High in '38. Red Cross, '38, '39; Physical Education Office Force, '39, '40; Girls' Battalion, '39, '40.

VIRGINIA HOWARD "Jena"
Entered from Brainerd Junior High in '37.



DOROTHY HOWELL "Dot"
Entered from East Side Junior High in '38. Red Cross, '38, '39, '40; Girl Reserves, '39, '40; Biology, '39, '40; Digest Sponsor, '39; Red Cross Representative, '39, '40; Biology Assistant, '40.

JAMES HUDLOW "Dick"
Entered from Brainerd Junior High in '36. 4-H Club.

HUBERT HUDSON
Entered from East Lake Junior High in '37. Aviation Club, '39.

CARL HUNTER
Entered from East Side Junior High in '37. Bachelors' Club, '40; Band Club, '38, '39, '40; Airplane, '37; Etiquette Club, '40; Sports Club, '39, '40; Boys' Hi-Y, '39; Officers' Club, '40; President of Varsity Glee Club, '39; President of Orchestra Club, '40; Lieutenant in Band, '40; Band, '38, '39, '40; Varsity Glee Club, '38, '39, '40; Band Concert, '39, '40; Spring Concert, '40; Opera "Patience," '39; Opera "H. M. S. Pinafore," Librarian of Varsity Glee Club, '39.

DOROTHA HYDE "Dotty"
Entered from Hardy Junior High in '38. Red Cross.

MARY ANNE JACKSON
Entered from East Side Junior High in '38. Aces, '38; Red Cross, '38, '39, '40; Library Club, '38, '39, '40; Girl Reserves, '39, '40; Ice Cream Crew, '39, '40; Miracle Book Club, '40; Supply Secretary of Sophomore Class, '38; On Finance Committee for Sophomore Party, '38; Refreshment Committee for Junior Party, '37; Refreshment Committee for Senior Party, '40; Vice-President of Library Club, '40; Chaplain of Red Cross, '40; Associate Editor of Red Cross Bulletin, "The Beacon," '40; Chairman of English Class, '40; Digest Reporter, '38; Digest Sponsor, '40; May Day, '39; National Honor Society, '40; Varsity Soccer Team, '38; Senate, '40; Hiking Club, '37, '40.

GEORGE JENNINGS "Georgie"
Entered from East Side Junior High in '37. Stamp Club, '38.

ALINE JENSEN "Jennefer"
Entered from Fountain City Grammar in '37. Digest Reporter, '37, '38; Digest Feature Editor, '39; Digest Editor, '40; Senate, '37, '38, '39, '40; Program Chairman, '39; Finance Chairman, '40; Red Cross, '37; Etiquette Club, '37, '38, '39, '40; Secretary of Etiquette, '40; Star-14, '39; Treasurer Star-14, '39; Dramatic Club, '39, '40; Vice-President of Dramatic Club, '40; Dramatic Club Play, '39; Etiquette Club Play, '39; Freshman Representative for Champion, '37; Sophomore Representative for Champion, '38; Girl Reserves, '38; Extra Curricula Award, '39; Extensive Speaking Winner, '39; National Honor Society, '39, '40; Hiking Club, '37, '38, '39, '40; S. P. Q. R., '37, '38, '39, '40.

DORIS VIRGINIA JOHNSON "Billie"
Entered from East Lake Junior High in '36. Ace, '38, '39, '40; Camera Club, '39, '40; Girl Reserves, '40; May Day, '39; Gym Captain, '38, '39, '40.

DOROTHY ELIZABETH JOHNSON "Dot"
Entered from Brainerd Junior High in '38.

CATHRYN MARY JOHNSON "Cat"
Entered from Brainerd Junior High in '36. Home Economics Club, '38, '39; Athletic Club, '36, '37; May Day, '37, '38.

RUBY ESTELLA JOHNSON "Sundae"
Entered from East Side Junior High in '38. Physical Education Club, '38; Athletic, '38; Ace, '38, '39; Biology, '38, '39, '40; Library Club, '38, '39; Red Cross, '40; Varsity Softball Team, '39.

PAUL EUGENE JOLLEY "Barnie"
Entered from Brainerd Junior High in '38.

BELMONT JOLLY "Bemo"
Entered from East Side Junior High in '37. Varsity Glee Club, '37; Red Cross Representative, '37, '40; Freshman President, '37; Home Room President, '37; Class Chairman, '38, '40; Opera, '37, '38; Concert, '37.

BETTY CAROLYN JOLLY "Peewee"
Entered from East Side Junior High in '38. Biology, '38, '39, '40; Girl Reserves, '38, '39, '40; Physical Education Club, '38.

ATHALA KATHRYN JONES
Entered from North Chattanooga Junior High in '37. May Day, '39, '40.

BARBARA JONES
Entered from Red Bank Junior High in '38. Ice Cream Crew, '40.

BOBBIE JONES
Entered from Winter Haven, Florida, in '39. Varsity

CLATICE JONES
Entered from Lookout Junior High in '38. National Honor Society, '39, '40; Usher, '40.

J. R. JONES "Slim"
Entered from East Side Junior High in '37. Boys' Hi-Y, '40; Junior Basketball Team, '37; Tennis Team, '40.

RUTH JONES "Shorty"
Entered from Lookout Junior High in '38. Ace Club, '38, '39, '40; Girl Reserves, '39, '40; Girls' Battalion, '38, '39, '40; May Day, '38; Gym Teams: Newcomb Color Team, '38; Varsity Soccer Team, '38, '39; Basketball Color Team, '38; Varsity Basketball Team, '39; Volley Ball Color Team, '38; Softball Color Team, '39; Glee Club.

UNA ANN JONES "Red"
Entered from Hardy Junior High in '38. Girl Reserves, '38, '39, '40; Girl Hi-Y, '39, '40; Girl Reserve Club Reporter, '39, '40; Red Cross, '39, '40; Girls' Battalion, '39, '40.

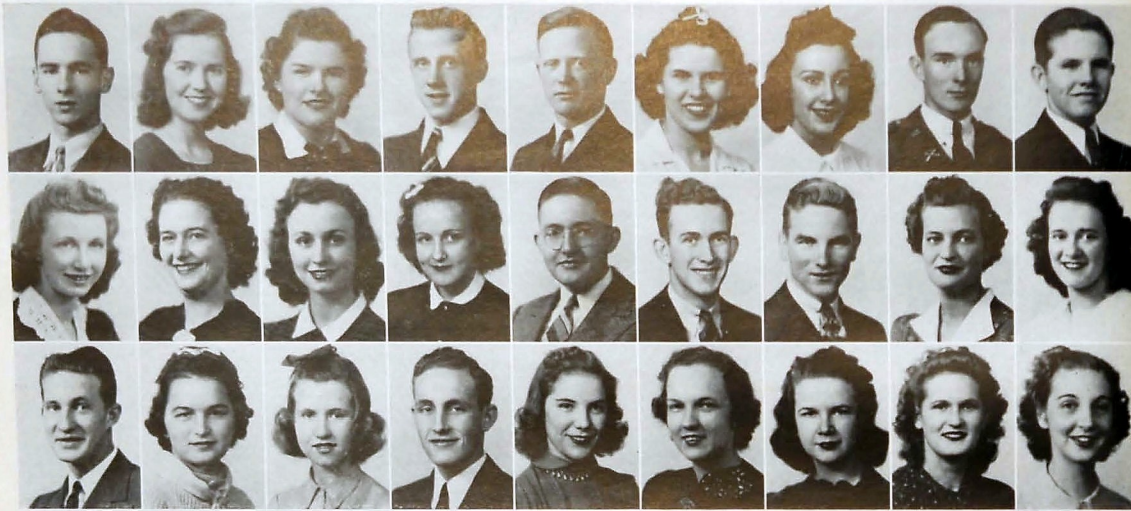
RAYMOND NED KELLEY
Entered from East Lake Junior High in '38. Miracle Book Club, '39, '40; Corporal in R. O. T. C., '38.

WILLIAM E. KELLEY "Goon"
Entered from Brainerd Junior High in '37. "C" Club, '39, '40; Secretary "C" Club, '40; Football, '37, '38, '39, '40.

ANN KELLY "Annie"
Entered from East Side Junior High in '38.

FAYE KEOWN "Blondie"
Entered from East Lake Junior High in '38. Candy Crew, '39; Physical Education Club, '39; Junior Council, '39; Senior Council, '40; National Honor Society, '40.

MARY ELIZABETH KEOWN
Entered from East Lake Junior High in '38. Physical Education Club, '38, '39; May Day, '39.



CARTER KEARNS
Entered from Western High School in '37.

IDA KERR "Sunny"
Entered from North Chattanooga Junior High in '38. Tennis Club, '38; Biology, '38; Digest Reporter, '38; Sports Editor of Digest, '39; Camera Club, '38; Stamp Club, '38, '39; Program Chairman of Biology Club, '38; Secretary of Camera Club, '40; Home Room President, '39; Senior Council, '40; Digest Sponsor, '40; Purple and Gold Color Newcomb Team, '38; Basketball, '38, '39; Volley Ball, '38, '39; National Honor Society, '40.

LYDIA KIGER
Entered from Brainerd Junior High in '37. Girls' Hi-Y, '38, '40; Red Cross, '38, '40; Usher, '40; Glee Club, '39, '40; Opera, '39, '40; East Tennessee Concert, '38, '39; Orchestra, '37, '38; Southeastern Concert, '38, '39.

RUTHERFORD HAYES KIMBROUGH "Ruddy"
Entered from Brainerd Junior High School in '37. Grady Literary Society, '40; Sergeants' Club, '39; Officers' Club, '40; Dramatic Club, '40; Captain in R. O. T. C.; Swimming Team, '39, '40.

WILLIAM WARREN KIMSEY "Fireball"
Entered from Dickinson Junior High in '37. Printing Club, '38.

JOY JEANNEA KING
Entered from Hampton High School, N. Y.

NADINE KING "Dean"
Entered from East Side Junior High in '37. Bachelorette Club, '38; Red Cross, '37, '38, '39; Treasurer of Red Cross, '40; Night Owls, '39, '40; Chorus, '37, '38; Tennis Club, '38; Girls' Battalion, '39.

GLADWIN KIRK "Skipper"
Entered from Brainerd Junior High in '37. Sergeants' Club, '39; Biology Club, '39, '40; Grady Literary Society, '39; Sea Scout Club, '39; Red and Gun Club, '39; Officers' Club, '40; President of Biology Club, '40; Staff Sergeant in R. O. T. C., '40; Regimental Captain and Adjutant in R. O. T. C., '40; Bylaws Chairman of Officers' Club, '40; Depression Club.

WILLIAM KIRK "Bill"
Entered from East Side Junior High in '38.

LUCILE LANE "Hon"
Entered from North Chattanooga Junior High in '37. Red Cross, '38, '40; Home Economics Club, '39; Athletic Club, '37, '38; May Day, '38.

LORRAINE LARIMORE "Boggy"
Entered from East Side Junior High in '36. Girl Reserve.

HELEN MAXINE LAWSON
Entered from Knoxville Central High in '38. Girl Reserve, '38, '39, '40; Sub-Deb Club, '38, '39; Anchors Aweigh, '38; Red Cross, '38, '39; President of Girl Reserves, '39; Treasurer of Sub-Deb Club, '39.

MARY LOUISE LAYNE "Lucy"
Entered from East Side Junior High in '38. Girl Reserves, '40; Miracle Book Club, '40; Digest Sponsor, '40; Digest Typist, '40; Drum Major, '39, '40.

JAMES RICHARD LAYTON "Dick"
Entered from East Side Junior High in '37. Boys' Hi-Y, '37, '38, '39, '40; Band Club, '37, '38, '39, '40; Band, '37, '38, '39, '40; Senior Council, '40; President of Band Club, '40.

JAMES LEDBETTER "Ally Oop"
Entered from East Side Junior High in '37. Track Team, '39.

R. E. LEE "Bob"
Entered from Lookout Junior High in '38.

ANNA MARIE LEHMAN "Annie"
Entered from First Lutheran School in '37. Red Cross, '39.

MILDRED PAULINE LEHMAN "Pinky"
Entered from First Lutheran School in '37. Girl Reserves, '38, '39, '40; Home Economics, '38, '39; Red Cross, '39, '40; Science Club, '37; Physical Education Club, '37; Orchestra, '38, '39, '40; Social Chairman of Girl Reserves, '38, '39; Digest Sponsor, '37, '38, '39; Red Cross Representative, '39, '40; Girls' Battalion, '39, '40; Southeastern and East Tennessee Orchestra Concert in Knoxville, '39; Delegate to Red Cross National Convention in Washington, D. C., '39; Delegate to Girl Reserves Conference in Kingsport in '38; Chairman of Freshmen Football Ticket Sales, '37.

WILLIAM LEHMAN "Boole"
Entered from Immanuel Lutheran School in '37.

BLANCHE LOUISE LEONARD
Entered from Lookout Junior High in '38. Physical Education Club, '38; Miracle Book Club, '39, '40; Red Cross, '39; Girl Reserves, '40; Girls' Hi-Y, '40; President of Miracle Book Club, '40; Secretary of Home Room, '38, '39, '40; Red Cross Representative, '38, '39; Secretary of English Class, '40; Digest Staff, '40; Gym Teams: Pennies, '38; Wheelies, '39, '40; National Honor Society, '40.

ALICE LINDEMAN
Entered from Immanuel Lutheran in '37. Girl Reserves, '39, '40; Red Cross, '39; Home Economics Club, '40; Exclusive, '39; Girls' Battalion.

CHARLES A. LINDSEY "Charlie"
Entered from Red Bank Junior High in '38. Red Cross, '38; Camera Club, '38, '39, '40; Sports Club, '39, '40; Etiquette Club, '40; Bachelors' Club, '39, '40; Wrestling Team, '39, '40; Treasurer of Bachelors' Club, '39; President of Bachelors' Club, '40; Treasurer of Camera Club, '40; Treasurer of Sports Club, '40; President of Home Room, '40; Digest Representative, '40.

NELL LITTLE "Little Nell"
Entered from Brainerd Junior High in '37. Vice-President of Bachelorettes, '37; Secretary of Bachelorettes, '38; Red Cross, '37, '38, '39, '40; Tennis Club, '37; Drum Major, '39, '40.

ESTHER MARIE LITTLE
Entered from Chattanooga High in '39. Betty Co-ed, '39; May Day, '39.

MURIEL ELIZABETH LLOYD
Entered from East Lake Junior High in '37. Hiking, '37, '38, '39, '40; S. P. O. R., '37; Etiquette Club, '38, '39, '40; President of Etiquette Club, '40; Girls' Hi-Y, '40; Senate, '37, '38, '39, '40; Red Cross, '40; Chaplain of Senate, '40.

CORA BEATRICE LONG
Entered from Brainerd Junior High in '37. Science Club, '37; Physical Education Club, '37, '38, '39; May Day, '39.

LORENA KATHERINE LYNCH "Eenie"
Entered from East Lake Junior High in '38. Girl Reserves, '39.

1 9 4 0

WALTER McBEE "Salty"
Entered from East Side Junior High. Watt Science Club; Red Cross; Sports Club.

JIMMIE LOURIE McCULURE "Pudgy"
Entered from East Lake Junior High in '38. Library Club, '38, '39; Betty Co-ed Club, '39, '40; Sports Club, '40; Anchors Aweigh; Digest Reporter of Library Club, '39; Secretary of Betty Co-ed Club, '40; Usher, '40.

J. T. McCORMICK "Jay"
Entered from East Lake Junior High in '38. Band Club, '38, '39, '40; Band, '37, '38, '39, '40; Boys' Hi-Y, '39, '40.

LAURA C. McCULLOUGH "Laurie"
Entered from Red Bank Junior High in '38. Athletic Club, '38, '39; Girl Reserves, '39, '40; Girls' Battalion, '39, '40; S. P. O. R., '40.

LOIS MacDONALD "Little Mac"
Entered from East Side Junior High in '37. Ace Club, '37, '38; Girls' Hi-Y, '38; May Day, '37, '39; Girls' Battalion, '39; Physical Education Club, '37; Girl Scouts, '37; Circus, '37.

RUTH McGINNIS "Annie"
Entered from Hardy Junior High in '37. Physical Education Club, '39; May Day, '38; Girls' Battalion, '40.

LUCILLE McGOWAN "Lucy"
Entered from East Side Junior High in '38. May Day, '39.

THEDA JEAN McKEEHAN
Entered from Chattanooga High in '39.

CLEO McMURRAY
Entered from Pineville in '37. Home Economics Club, '40; Candy Crew, '39, '40.

GERTRUDE CHRISTINA McNICHOLS "Peggy"
Entered from First Lutheran School in '37. Girls' Battalion, '39; May Day, '39.

NORMA McSPADEN
Entered from Tynnet Junior High in '37. Varsity Glee Club, '38, '39.

MARJORIE McWATERS "Shorty"
Entered from North Avenue Presbyterian School in '39. S. P. O. R.; Girl Reserves; French Club, '40; Red Cross.

MURIEL MAJURE
Entered from North Chattanooga Junior High. Camera Club, '39, '40; Girls' Hi-Y, '40; Home Economics Club, '40; Girls' Battalion.

VIOLET MANIER
Entered from East Side Junior High in '38. May Day, '38.

CLARENCE MANNING
Entered from Hardy Junior High in '38.

HUGH ROBERT MARLIN, JR. "Jack"
Entered from Brainerd Junior High in '37. Airplane Club, '38; Sergeants' Club, '39; Officers' Club, '40; First Lieutenant on Staff in R. O. T. C., '40.

JAMES MARLOW "Shorty"
Entered from Brainerd Junior High in '37. Boys' Hi-Y, '37, '38; Red Cross, '38; Sergeants' Club, '39; Officers' Club, '40; Sergeant-at-Arms of Grady Literary Society, '40; Etiquette Club, '39; Treasurer of Sophomore Class, '38; Vice-President of Junior Class, '39; Sergeant-at-Arms of Senior Class, '40; Senior Play Lead, '40; Reader of the Will at Class Day.

MELVA JEANETTE MARSHALL "Peggie"
Entered from Lakeview High School in '39. Junior Girl Reserves, '39; Senior Girl Reserves, '40; Red Cross, '39; Usher, '40; Girls' Battalion.

DONALD MARTIN "Duck"
Entered from Brainerd Junior High in '37. Red Cross, '38, '39, '40; Sergeants' Club, '38, '39; Officers' Club, '39, '40; R. O. T. C. Corporal, '38; Sergeant, '38, '39; Lieutenant Adjutant, '40.

FAYE LAWS MASON
Entered from Brainerd Junior High in '37. S. P. O. R., '39, '40; Secretary of S. P. O. R., '40; President of Home Room, '38; Home Room Digest Sponsor, '40; National Honor Society, '39, '40; Usher, '40; College File Committee for National Honor Society, '40.

JOEL MASON "Red"
Entered from Dickinson Junior High in '37.

MELBA MAXWELL
Entered from East Side Junior High in '38. Physical Education Club, '38; Girls' Battalion, '39, '40; Circus, '38; May Day, '38; Gym Teams: Volley Ball, Basketball, Soccer, '38.

GENEVIEVE MAY "Gene"
Entered from Dickinson Junior High in '38. Camera Club; Badminton Club, '39; Assistant Director of Varsity Glee Club, '40; Orchestra, '38, '39, '40; Concert Master of Orchestra for Opera in '38 and '39; S. E. T. E. A. Orchestra, '38, '39, '40; E. T. E. A., '38, '40.

HILLMAN RAY MAYFIELD
Entered from East Side Junior High in '38. Red Cross, '40; Boys' Hi-Y, '40; General Manager of Red Cross Bulletin, '40.

OLIVER EARL MAYO
Entered from Mountain Creek in '37. Science Club, '37; Printing Staff for Digest, '40.

CARLESS MEREDITH "Corky"
Entered from East Side Junior High in '37.

PAULINE ELIZABETH MEYER
Entered from First Lutheran School in '37. Red Cross, '37; Home Economics Club, '38, '39, '40; Treasurer of Home Economics Club, '40; Hi-Y, '40; Chorus, '37; National Honor Society, '40.



SENIOR CLASS OF CENTRAL

HIGH SCHOOL

SENIOR CLASS OF CENTRAL HIGH SCHOOL



RICHARD MILES "Dick"
Entered from Fairmount Junior High in '37.



FRANCES IRENE MILLER
Entered from Dickinson Junior High in '38.



W. A. MILLER
Entered from Brainerd Junior High in '36.
Golf Club, '38, '39; Golf Team, '38, '39.



RUTH MARGARET MITCHELL
Entered from Lakeview in '39. Girl Reserves,
'39, '40; Red Cross, '39; Sports Club, '39.



LOUISE MITTELHAUSER
Entered from Ponce de Leon High, Miami,
Florida, in '39. Senior Play Lead, '40.



JOE MORRIS "Smoker"
Entered from East Side Junior High in '38.
Sergeants' Club, '39; Officers' Club, '40; Of-
ficer in R. O. T. C.



MILDRED MORTON
Entered from Lookout Junior High in '38.
Ace Club, '38, '39, '40; Tumblers, '38, '39;
Girls' Battalion, '39; May Day, '38, '39.



RALPH MORTON
Entered in '36. Secretary of Home Room.



CHARLES MOSS "Moose"
Entered from East Side Junior High in '36.
Depression Club, '39; Bachelors' Club, '39;
Red Cross, '39; Home Room Representative;
Assistant Manager of Baseball Team, '38, '39;
Baseball Manager, '40.

JAMES MUNNS "Jim," "Jimmy"
Entered from Memphis Central High in '40.
President of Amateur Radio Club, '40.

C. V. MURR "Steve"
Entered from Chattanooga High in '39. Air-
plane Club, '39, '40.

WILLIE MAE NALE "Bill"
Entered from Daisy-Soddy High in '39. Red
Cross.

FRANCES MARIE NELSON "Fran"
Entered from Red Bank Junior High in '38.
Physical Education, '38; Athletic Club, '39;
Library Club, '38, '39; Red Cross, '38, '39, '40;
Girl Reserves, '39, '40; Biology Club, '40;
Social Editor of "Beacon," '40; Student Coun-
cil, '40; Biology Assistant, '39, '40; Home
Room Assistant, '39, '40; National Honor So-
ciety, '40.

ROBERT NICHOLAS "John"
Entered from Brainerd Junior High in '37.
Boll Weevils, '38, '39, '40; Assistant Manager
of Boll Weevils, '40.

JOE NICHOLSON, JR. "Bud"
Entered from Brainerd Junior High in '36.
R. O. T. C., '37, '38; Spanish Club, '39;
S. P. Q. R., '40.

FRANKIE MARIA NILES
Entered from Lakeview Junior High in '37.
Sports Club, '39, '40; Red Cross, '39;
Junior Girl Reserves, '39; Operetta, '37; As-
sistant to Queen of Sophomore Party.

SAM OLIVER NORMAN
Entered from Mountain Creek Grammar in '37.

RUBY ELEANOR NORRIS "Shorty"
Entered from East Side Junior High in '38.

WILSON NORVELL "Jerkerber"
Entered from Brainerd Junior High in '37.
'C' Club, '39, '40; Sergeants' Club, '39;
Officers' Club, '40; Grady Literary Society,
'39; Red Cross, '39; Depression Club, '39, '40;
Major in R. O. T. C., '40; Treasurer of Fresh-
man Class, '37; Vice-President of Sophomore
Class, '38; President of Junior Class, Vice-
President of Senior Class, '40; 'C' Club
Frolic, '39, '40; Football Team, '38, '39, '40;
Track Team, '39, '40; National Honor So-
ciety, '40; Historian at Class Day.

LOUIS GORDON OAKLEY
Entered from North Chattanooga Junior High
in '38. Sergeants' Club, '39; Officers' Club,
'40.

DOROTHY M. O'BRIEN "Dodo"
Entered from Red Bank Junior High in '38.
Library Club, '38, '39; Star Fourteen, '39, '40;
Senate, '39, '40; Red Cross, '38; Art Club, '38;
Secretary of Star Fourteen, '39; Usher, '40.

JOSEPH O'HARA
Entered from Notre Dame in '38. Sergeants'
Club, '39; Secretary of Officers' Club, '40;
Grady Literary Society, '40; Dramatic Club,
'40; Sergeant in R. O. T. C., '39; Captain of
Company A in R. O. T. C., '40.

GEORGE L. OWENS "Pargy"
Entered from East Lake Junior High in '37.
Boll Weevils, '38, '39, '40; Printing Club, '37,
'38, '39, '40; Digest Staff, '37, '38, '39, '40;
Stamp Club, '37, '38.

NAOMI PARK "Naker"
Entered from Apison in '37.

JOE PARKER "Joseph"
Entered from Chattanooga High in '39. Cam-
era Club, '39, '40; Class, '40.

MARION KATHERINE PARKER "Kitty"
Entered from East Side Junior High in '37.
Red Cross, '40; Red Cross Home Room Re-
presentative, '39; Physical Education Club, '37;
Athletic Club, '38; May Day, '39; Color Team,
'38; Home Economics Club, '38; Exclusive
Club, '40; Usher, '40; Home Room Athletic
Sponsor, '40.

WILLIAM PARKER
Entered from East Side Junior High in '37.

HAZEL JUNE PARKS "Junie"
Entered from Brainerd Junior High in '37. Home
Economics Club, '38, '39, '40; Betty Co-ed, '39, '40;
Red Cross, '39; President of Home Economics Club,
'40; President of Betty Co-ed Club, '39; Girls' Bat-
talion, '39.

LOUISE PAYNE "Blondie"
Entered from Red Bank Junior High in '38. Stamp
Club, '39; Girl Reserves, '40; Biology Club, '39, '40;
Secretary of Biology Club, '40.

ELIZABETH LOUISE PEACE "Betty"
Entered from First Lutheran School in '37. Home
Economics Club, '38, '39, '40; Science Club, '37; Red
Cross, '40; Physical Education Club, '38; Senate, '40;
Ace Club, '40.

VERNON W. PEARSON "Skinny"
Entered from East Lake Junior High in '38. Digest
Messenger.

NORMA PEDIGO
Entered from East Side Junior High in '37. Stamp
Club; Camera Club; Girl Reserves; Athletic Club;
Red Cross; Social Chairman of Camera Club, '38,
'39; Program Chairman of Stamp Club, '39; National
Honor Society, '39, '40; Honor Society Program Com-
mittee, '40; Digest Sponsor, '39; May Day, '37, '38;
Circus, '37, '38; Gym Teams, '37; Volley Ball,
Soccer, Basketball, '37; "Wildcat" Volley Ball,
Soccer, '38; Gold Color Teams, '37, '38.

MARY RUTH PEMBERTON "Ruthie"
Entered from East Lake Junior High in '38.

EDWARD PIERCE "Eddie"
Entered from Brainerd Junior High in '38. Band
Club, '38, '39, '40; Grady Literary Society, '38, '39,
'40; Depression Club, '38, '39, '40; 'C' Club, '40;
Sergeants' Club, '39, '40; Drum Major, '39, '40; Presi-
dent of Depression Club, '40; Vice-President of Or-
chestra, '40.

KATHRYN ANN PLANZER
Entered from East Lake Junior High in '38. Camera
Club, '38, '39, '40; Girl Reserves, '39, '40; May Day,
'39; Physical Education Club, '38, '39; Circus, '38;
Girls' Battalion, '38; Red Cross, '40.

DOROTHY MAE PORTER "Dot"
Entered from East Side Junior High in '37. Girls'
Hi-Y, '40; Girl Reserves, '39, '40; Ace Club, '37;
Circus, '37; Orchestra, '37, '38, '39, '40; Secretary and
Treasurer of Orchestra, '40; S. T. E. A., '38, '39, '40;
E. T. E. A., '37, '38, '40; Operetta, '37, '38, '39.

ALENE JEANNETTE POWELL
Entered from Brainerd Junior High in '37. Red
Cross, '38; Betty Co-ed, '39, '40; Digest Sponsor, '37,
'38; May Day, '38.

EDWARD STERLING PROCTOR, JR. "Bobbie"
Entered from Brainerd Junior High in '37. Digest
Staff, '39, '40.

MORRIS QUAYE "Quazy"
Entered from Red Bank Junior High in '38. S. P. Q. R.,
'38; Biology Club, '38, '39; Red Cross, '38; Bachelors'
Club, '39, '40; Star Fourteen, '39, '40; Senate,
'38, '39, '40; Dramatic Club, '39, '40; Etiquette Club,
'39, '40; President of Star Fourteen, '39, '40; President
of Senate, '40; Production Manager of Dramatic
Club, '40; Etiquette Club Play, '39; Director of
Dramatic Club Play, '39; Director of Senate Club
Play, '40; Senior Play, '40.

CREED W. QUINN "Cave-Man"
Entered from Red Bank Junior High in '38. Bachelors'
Club, '39; Sergeant-at-Arms of Bachelors' Club,
'40; Wrestling Team, '39, '40; Captain of Wrestling
Team, '40.

ALFRED QUINTON
Entered from East Lake Junior High in '37. Officers'
Club, '40; Lieutenant in R. O. T. C., '40.

GLADYS RAGLE
Entered from Hardy Junior High in '37. Ace Club,
'37, '38, '39, '40; Red Cross, '37, '40; National Honor
Society, '39, '40; Usher, '40; May Day, '38, '39; Circus,
'37; Girls' Battalion, '39, '40.

JEANETTE RAGLE
Entered from Hardy Junior High in '37. Physical
Education Club, '39; May Day, '37, '38, '39; Circus,
'37; Girls' Battalion, '39, '40.

WILLIAM L. RAGSDALE, JR. "Billy"
Entered from East Side Junior High in '38. Grady
Literary Society, '40; Artist for Red Cross, '40; Hon-
orable Mention in American Youth Forum Contest
(Art Division), '39; National Honor Society, '40.

NORMAN KENNETH RATCHFORD "Stogie"
Entered from East Lake Junior High in '38. Grady
Literary Society, '39; Sergeants' Club, '39; Varsity
Glee Club, '38, '39; Officers' Club, '40; President of
Sergeants' Club, '39; President of Officers' Club, '40;
Chairman of Membership Committee in Grady Liter-
ary Society, '40; Sergeant-at-Arms of Senior Class,
'40; Military Editor of the Champion, '40; R. O. T. C.,
'38; First Sergeant in R. O. T. C., '39; Colonel
in R. O. T. C., '40; Prophet at Class Day.

GILBERT L. RAULSTON
Entered from East Side Junior High in '37. Senate,
'37, '38, '39, '40; Cabinet Member of Senate, '40;
Biology Club, '38, '39, '40; Vice-President of Biology
Club, '40; Grady Literary Society, '38, '39, '40; Sen-
eants' Club, '39; Officers' Club, '40; Track Team,
'39; National Honor Society, '40.

JAMES REESE
Entered from North Chattanooga Junior High in '37.
Airplane Club, '39, '40; Pilots' Club, '39; Officers'
Club, '40; Vice-President of Airplane Club, '39, '40;
Lieutenant in R. O. T. C., '40.

EARL REED
Entered from East Side Junior High in '38. Boll
Weevils, '39.

LEON REEVES
Entered from North Chattanooga Junior High in '38.

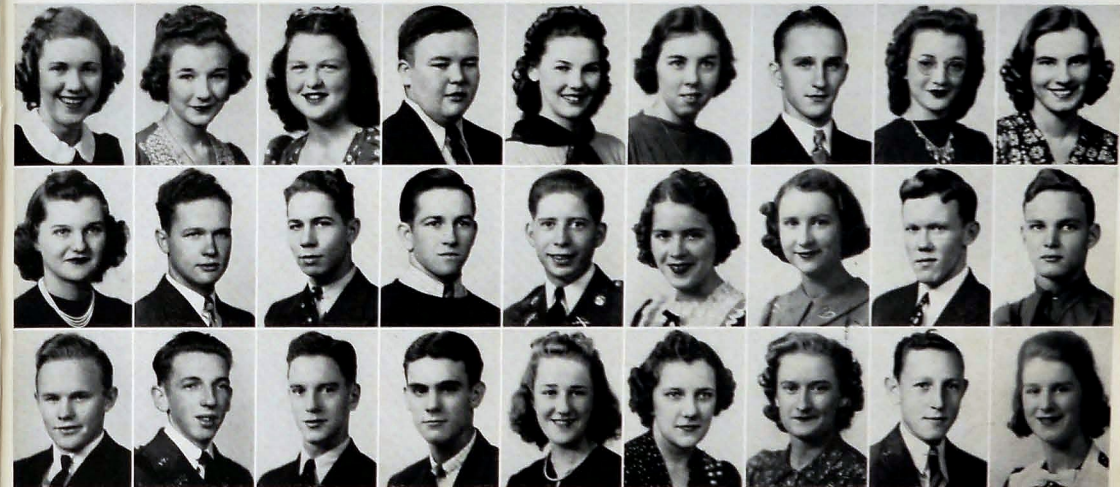
GEORGIA LORINE RHEA "Joe"
Entered from Hixson High in '39. Vice-President of
Book Club, '39.

REBECCA RHODES "Becca"
Entered from Tyner Junior High in '37. Stamp Club,
'38; Library Club, '40; Usher, '40.

VIRGINIA McFARLAND RICE "June"
Entered from East Side Junior High in '36. Home
Economics Club, '38, '37, '38, '39, '40; Girl Re-
serves, '39, '40; Exclusive Club, '39, '40; Treasurer of
Exclusive Club, '40; Social Chairman of Exclusive
Club, '39.

DEAN RICHESON
Entered from Red Bank Junior High in '38.

EDNA EARLE ROBINSON "Red"
Entered from Brainerd Junior High in '37. Library
Club, '39; Red Cross, '39, '40; Girl Reserves, '39, '40;
Betty Co-ed, '40; Hiking Club, '37; Varsity, '39; Red
Cross Representative, '39, '40; Opera, '39.



SENIOR CLASS OF CENTRAL HIGH SCHOOL

GEORGE WILEY ROBINSON

Entered from Brainerd Junior High in '37. S. P. Q. R., '38, '39.

RUTH ROBINSON

Entered from Brainerd Junior High in '37.

LAWRENCE RODGERS

Entered from Hardy Junior High in '35. Orchestra, '36, '37, '38; Printing, '38, '39, '40; Digest Printer, '40.

FRANCES ROGERS

Entered from Brainerd Junior High in '38. Nite Owl Club, '38, '39, '40; Camera Club, '39, '40; Etiquette Club, '40; Betty Co-ed Club, '39, '40; Secretary of Nite Owl Club, '39; President of Nite Owl Club, '40; Treasurer of Betty Co-ed Club, '40; Honorary Member of Officers' Club, '40; Sponsor of First Battalion in R. O. T. C., '40; Drum Major, '39, '40; Band Concert, '39; Simon Concert, '39.

JEANETTE ROGERS

Entered from Brainerd Junior High in '38. Red Cross, '38, '39; Miracle Book Club, '39; Red Cross Representative for Home Room, '38.

WARNELL ROGERS

Entered from East Lake Junior High in '38. Tennis Team, '38, '39, '40.

WAYMON ROSE

Entered from Brainerd Junior High in '37. Red Cross, '37, '38, '39, '40; Sergeants' Club, '39; Officers' Club, '40; R. O. T. C., '37, '38, '39, '40; Captain in R. O. T. C., '40; Sergeant in R. O. T. C., '39; Football, '38, '39.

LOUISE ROTH

Entered from Lookout Junior High in '38. Miracle Book Club, '39, '40; National Honor Society, '40.

SARAH ELIZABETH RUDD

Entered from Brainerd Junior High in '38. Red Cross, '40.

DAISY ST. CLAIR

Entered from Hardy Junior High in '38. Ace Club, '38, '39; Girls' Battalion, '39, '40; Gym Teams Volley Ball, '38, '39, '40; Basketball, '38, '39, '40; Newcomb, '38, '39; Softball, '38, '39, '40; Soccer, '38, '39, '40.

MARTHA EUGENIA SANDERS

Entered from Red Bank Junior High in '37. Physical Education Club, '37; Red Cross, '39, '40; Athletic Club, '38; Betty Co-ed Club, '39; May Day, '37, '39; Circus, '37; Red Cross Representative, '40; Band, '40; Digest Sponsor, '38; Band Club, '40; Class Chairman, '38; Twix-Teen, '40; Sports Club, '40.

VIVIAN SARGENT

Entered from Dickinson Junior High in '38. Athletic Club, '38, '39; Ace Club, '39, '40; Girl Reserves, '39, '40; Usher, '40; Exclusive Club, '40.

DORIS EILEEN SCARBROUGH

Entered from East Lake Junior High in '37. Biology Club, '37; Ace Club, '39, '40; Ice Cream Crew, '38; National Honor Society, '39, '40; Digest Staff, '38, '40; May Day, '37.

WILLIAM SCHAEFER

Entered from Brainerd Junior High in '37.

ALLAH GENEVA SCHMID

Entered from Red Bank Junior High in '38.

NANCY SEDMAN

Entered from Hardy Junior High in '35. Girls' Battalion.

THOMAS GORDON SEIBOLD

Entered from Brainerd Junior High in '38. Band Club, '38, '39, '40; Camera Club, '39; Officers' Club, '40; Lieutenant in Band, '40; National Honor Society, '39, '40; Band, '38, '39, '40; Band Concert, '39, '40; Senior Section Editor for Champion, '40; Vice-President of Band Club, '40; Valedictorian, '40.

BETTY FRANCES SHEARER

Entered from Red Bank Junior High in '37. Girl Reserves, '38, '39, '40; Sports Club, '39, '40; Home Economics Club, '40; Digest Sponsor; Girls' Battalion.

DOROTHY LUCILLE SHEDD

Entered from Brainerd Junior High in '37. Girls' Hi-Y, '37, '38, '39, '40; Sub-Deb, '39, '40; S. P. Q. R., '39, '40; Anchors Aweigh, '39, '40; Sports Club, '39, '40; Honorary Member of Officers' Club, '40; Vice-President of S. P. Q. R., '40; Girls' Battalion, '39, '40; May Day, '37, '38, '39, '40; Attendant to Sophomore Queen at Sophomore Party; President of Home Room, '40; Sponsor of Company B in R. O. T. C., '40; National Honor Society, '40.

BETTY JANE SHERMAN

Entered from North Chattanooga Junior High in '37. Physical Education Club, '38; Athletic Club, '38; Circus, '38; May Day, '37, '38, '39, '40; Home Economics Club, '38; Girl Reserves, '39, '40; Girls' Battalion, '39, '40.

FLOY RUTH SHERMAN

Entered from North Chattanooga Junior High. Red Cross, '37, '38, '39; Sports Club, '37, '38.

BILLY JOE SHERRILL

Entered from West Point High School, West Point, Georgia, in '39.

ROBERT H. SIMMS

Entered from East Side Junior High in '38. Grady Literary Society, '39, '40; Artist for Red Cross, '39, '40; Honorable Mention in American Youth Forum (Art Division), '39; National Honor Society, '40.

ALEXANDER CAMPBELL SIMPSON

Entered from Chattanooga High in '39. Home Room Red Cross Representative; Business Manager and Bookkeeper for Red Cross; Band, '39, '40; Sergeant in R. O. T. C. Band.

BEULAH NELL SIMPSON

Entered from East Lake Junior High in '38.

TOM SIMPSON

Entered from East Side Junior High in '38. "C" Club, '39; Football Team, '39, '40; Basketball Team, '39, '40.

DOROTHY ELIZABETH SIVLEY

Entered from Mountain Creek in '37. Miracle Book Club, '38, '39, '40; Exclusive Club, '39, '40; Girl Reserves, '39, '40; Varsity Glee Club, '37, '38.

BARBARA RUTH SMITH

Entered from North Chattanooga Junior High in '37. Exclusive Club, '39; Home Economics Club, '39; Assistant Program Chairman for Exclusive Club.

BILLY RAY SMITH

Entered from East Side Junior High in '37. Secretary of Sports Club, '39; Secretary of Athletic Club, '38, '39; Home Room Chairman, '39; Social Chairman of Home Room, '39; May Day, '37, '38, '39; Girl's Battalion, '39; Circus, '37, '38, '39; Gym Teams, 'Jeeps', 'Volley Ball and Soccer; Captain of "Jeeps", '37, '38; "Wildcats" Volley Ball and Soccer Teams; Purple Color Volley Ball and Soccer Teams, '37, '38.

LODEMA SMITH

Entered from Tyner Junior High in '38. Red Cross Representative; Senate.

LUCY OPHELIA SMITH

Entered from East Side Junior High in '38.

VERNON SMITH

Entered from Brainerd Junior High in '37. Golf Team, '38, '39, '40; Captain of Golf Team, '39, '40.

CHARLES SPANGLER

Entered from Hardy Junior High in '38. Depression Club, '39; Band Club, '39, '40; Band, '38, '39, '40.

REUBY JOSEPHINE SPARKS

Entered from West Hillsville High in '39. Girl Reserves, '39, '40; Program Chairman for Girl Reserves, '39.

VIRGINIA LEE SQUIBB

Entered from East Side Junior High in '37. S. P. Q. R., '37, '38, '39, '40; Hiking Club, '37, '38; Physical Education Club, '37, '38; Red Cross, '39, '40; Girl Reserves, '39, '40; May Day, '37, '38, '39; Digest Sponsor, '40; Senate, '39, '40; Stamp Club, '38, '39; Secretary of Senate, '40; Central Echoes, '38; Usher, '40; Digest, '39, '40; Times Page Editor, '40; Connected with Junior Class Party, '39; National Honor Society, '40.

EVELYN STAMPS

Entered from East Lake Junior High in '38.

BYRON STANDIFER

Entered from Mountain Creek in '37.

JACK STANDIFER

Entered from North Chattanooga Junior High in '38. Camera Club, '39, '40.

FLOYE AGNES STANSELL

Entered from East Lake Junior High in '37. Girls' Battalion, '39; Class Team Basketball, '37.

JOE STANSIFER

Entered from Lookout Junior High in '34.

MARTHA ANN STEAKLEY

Entered from Dickinson Junior High in '37. Physical Education Club, '37; Ace Club, '37, '38, '39, '40; Tennis Club, '39; Girl Scouts, '39, '40; Handicraft Club, '38; May Day, '37, '38, '39, '40; Circus, '37, '38, '39, '40; Badminton Club, '39, '40; Gym Office Force, '38, '39, '40; Hubbard Helpers, '39; President of Badminton Club, '39; Secretary and Treasurer of Ace Club, '40; Lieutenant in Girls' Battalion, '39; Major in Girls' Battalion, '40; Patrol Leader of Scouts.

MILES CLIFFORD STEPHENS

Entered from East Lake Junior High in '37. Football, '38, '39; Letterman, '38, '39.

FRED STERCHI

Entered from Hardy Junior High in '36.

BILLIE STERNE

Entered from Lookout Junior High in '38. Athletic Club, '38; Ace Club, '39, '40; Tennis Club, '39; President of Athletic Club, '38; Sponsor of Company F in R. O. T. C., '40; Honorary Member of Officers' Club, '40; National Honor Society, '40.

SIDNEY STEVENS

Entered from Athens High in '39. Stamp Club, '39; Red Cross, '39.

THOMAS STEWART

Entered from East Lake Junior High in '38. Bachelors' Club.

VALERIA ODELL STEWART

Entered from L. C. High, Lawrenceburg, Tennessee, in '37.

MARTHA FRANCES STOKES

Entered from Lookout Junior High in '37. Girl Reserves, '37; Etiquette, '37.

DOROTHY SULLIVAN

Entered from Hardy Junior High in '38. Red Cross, '39; Gym Teams; Newcomb, Volley Ball, '38.

TRESTER SULLIVAN

Entered from Signal Mountain Grammar School in '37.

BETTY FAY SWAFFORD

Entered from East Side Junior High in '37. Biology Club, '39, '40; Digest Sponsor, '37; May Day, '39; National Honor Society, '40.

BETTY SYLAR

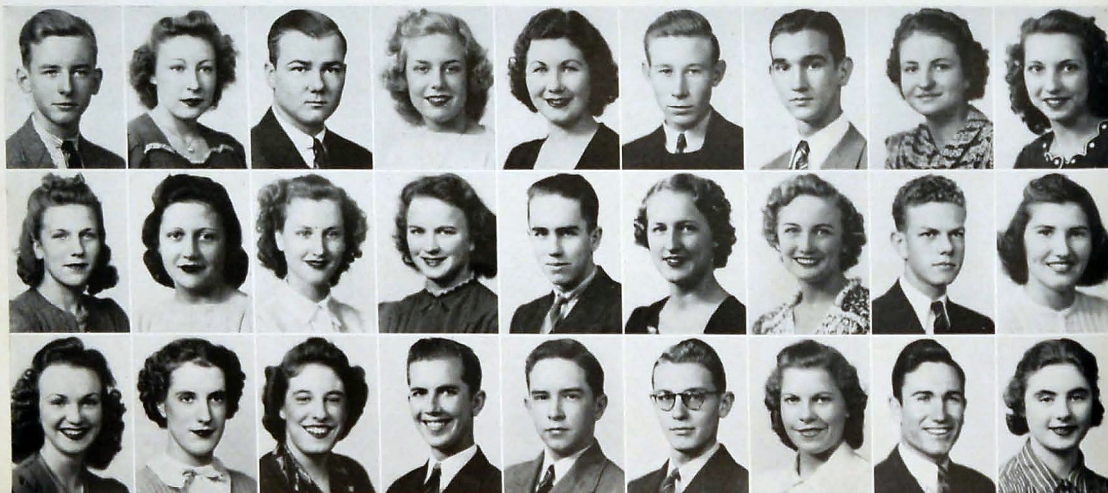
Entered from Brainerd Junior High in '37. Ace Club, '37, '38, '39; Girl Reserves, '39, '40; Girls' Hi-Y, '40; Dramatic Club, '40; Home Economics Club, '40; Ice Cream Crew, '39; May Day, '38, '39, '40; Vice-President of Ace Club, '38; Treasurer of Girl Reserves, '39; Secretary of Girls' Hi-Y, '40; Lieutenant in Girls' Battalion, '39, '40; Usher, '40; National Honor Society, '40; Digest Representative, '38; Feature Editor of Champion, '40; Attendant to Sophomore Queen at Sophomore Party, '38.

JANNIE TALLANT

Entered from East Lake Junior High in '38. S. P. Q. R., '38, '39, '40; Program Chairman for S. P. Q. R., '40; Girl Reserves, '38, '39, '40; National Honor Society, '39, '40; Usher, '40; Orchestra, '38, '39, '40; S. E. T. A., '38, '39, '40; E. T. T. A., '38, '40; Faculty Representative, '40.

BETTY LOU TAPP

Entered from Dickinson Junior High in '37. Badminton Club, '39; Drill Squad, '39.



1940

DAVID TARPLEY "Dave"
Entered from Hardy Junior High in '37. Boxing Team, '37, '38; Digest Staff, '39, '40; Pressman.

MARTHA TAYLOR
Entered from North Chattanooga Junior High in '37. Biology Club, '37, '38; Stamp Club, '37, '38, '39; Red Cross, '37, '38; Sports Club, '38, '39.

MILTON TAYLOR "Mih"
Entered from Mountain Creek in '37. Sergeants' Club, '39; Officers' Club, '40; Captain in R. O. T. C., '40.

DOROTHY TEMPLETON "Dot"
Entered from Brainerd Junior High in '38. Girl Reserves, '38; Varsity Glee Club, '38, '39; Usher, '40; Operetta, '38, '39; Digest Sponsor, '40.

HELEN THOMAE "Teenie"
Entered from Brainerd Junior High in '38. Red Cross, '38, '39; Ace Club, '38, '39, '40; Camera Club, '39, '40; Badminton Club, '39, '40; Sports Club, '39; Star Fourteen, '40; Vice-President of Ace Club, '40; National Honor Society, '39, '40; Usher, '40; Girls' Battalion, '39, '40; Junior Class Representative for Champion, '39; Gym Team: Varsity Soccer Team; Color Team: Basketball, Volley Ball, Newcomb.

DAN THOMAS
Entered from East Side Junior High in '38. Grady Literary Society, '38, '39, '40; Boys' Hi-Y, '39, '40; Secretary of Grady Literary Society, '40; Secretary of Boys' Hi-Y, '40; Treasurers Aide of National Honor Society, '40; Chairman of English Class, '40; Member of National Honor Society, '39, '40; Senior Council, '40; Poet at Class Day.

TRESSA REBA THOMAS
Entered from Brainerd Junior High in '38. Physical Education Club, '37, '38; National Honor Society, '39, '40; Usher, '40; Ring and Pin Committee and Trophy Case Committee for National Honor Society, '40.

BEN THOMPSON "Stogie"
Entered from Mountain Creek in '36. Grady Literary Society, '39; Sergeants' Club, '39; Officers' Club, '40; Dramatic Club, '40; Red Cross, '40; Vice-President of Sergeants' Club, '39; Social Chairman of Officers' Club, '40; First Sergeant of R. O. T. C., '39; Lieutenant Colonel of R. O. T. C., '40; Sergeant Football Team, '39; Officers' Football Team, '40.

MYRTLE THOMPSON
Entered from Lookout Junior High in '37. Science Club, '37; Exclusive Club, '40.

ROBERT THORNBURG
Entered from Hardy Junior High in '38. Grady Literary Society, '39; Sergeants' Club, '39; Dramatic Club, '39, '40; Officers' Club, '40; President of Dramatic Club, '40; Treasurer and Program Chairman of Officers' Club, '40; Digest Staff, '38; Local Editor of Digest, '39; R. O. T. C., '38; Sergeant in R. O. T. C., '37; Captain in R. O. T. C., '40; Sponsor of Girls' Battalion, '40; Dramatic Club Play, '39; Senior Play, '40; National Honor Society, '40.

NANCY TIMMONS "Yancy"
Entered from Hardy Junior High in '37. Biology, '39, '40; Orchestra, '37; Band, '37, '38, '39, '40; Dramatic Club, '40; Physical Education Club, '38; Sponsor of Company C in R. O. T. C., '40; Honorary Member of Officers' Club, '40.

MILTON TINDELL "Rub"
Entered from East Lake Junior High in '37. "C" Club, Depression Club, English Class Representative, '38; Alternate Captain of Football Team, '40; Football Team, '38, '40; Baseball, '39.

KATHERINE VIRGINIA TINKER "Katy"
Entered from Brainerd Junior High in '37. Usher, '40; National Honor Society, '40; May Day, '37, '38; Circus, '37; French Club, '40.

VELMA FRANCES TITTLE "Duda"
Entered from East Lake Junior High in '38.

ANNIE LEE TURNER
Entered in '35. Red Cross, '35, '36; Camera Club, '39, '40; Nite Owl Club, '40; Candy Crew.

HARRIETT SUE TURNER
Entered from Brainerd Junior High in '37. Varsity Glee Club, '38, '39; Ace Club, '38, '39, '40; Camera Club, '38, '39; Girls' Hi-Y, '39, '40; National Red Cross, '37, '38; Secretary of National Honor Society, '40; National Honor Society, '39, '40; Usher, '40; Extra Curricular Award, '39; Operetta, '38, '39; Attendant to May Queen, '39; Digest, '38, '39, '40; May Day, '37, '38; Local Editor of Digest, '39, '40; Bookstore, '38, '39, '40; Scouts, '39, '40; Operetta, '38, '39; Senior Play, '40; Senior Sponsor of Blue Jackets, '40; Anchors Aweigh, '40; May Queen, '40.

HOUSTON TURNER "Buck"
Entered from Brainerd Junior High in '37.

MAX MURRAY TURNER
Entered from Rossville High in '38. Airplane Club, '39; Biology Club, '38, '39; Grady Literary Society, '38; Red Cross, '38; Senior Play, '40.

JAMES VALENTINE "Billy"
Entered from Red Bank Junior High in '38. Camera Club, '38, '39, '40; Bachelors' Club, '39, '40; Varsity Glee Club, '39, '40; Sports, '38, '39, '40; Varsity Glee Club, '39, '40; Treasurer of Sports Club, '39; Vice-President of Sports Club, '40; Bachelors' Secretary, '39; Vice-President of Etiquette Club, '40; R. O. T. C.; Depression Club, '40.

VIRGINIA VAN DER CAMMEN "Jennie"
Entered from Brainerd Junior High in '37. Red Cross, '37, '38, '39; Betty Co-ed Club, '39, '40.

EVELYN LORRAINE VAN HOOSER

MARY ELIZABETH VARNER "Bet"
Entered from Fairmount Grammar School in '37.

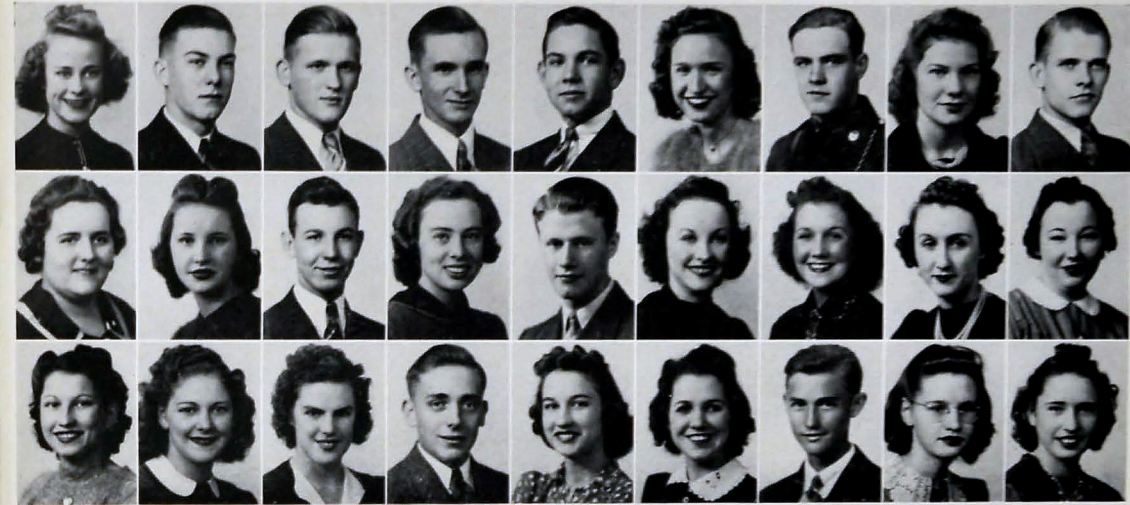
RETA VAUGHN "Bright Eyes"
Entered from East Side Junior High in '37. Tennis Club, '37, '39; Red Cross, '38, '39, '40; Betty Co-ed, '39; Gym Circus, '37, '39; May Day, '38, '39; Library Club, '37; Drill Squad, '39; Girls' Battalion, '39, '40; Physical Education Teams, '37, '38, '39; Twix Teen, '40.

SARA NELLE VAUGHN "Curly"
Entered from East Side Junior High in '37. Tennis Club, '37, '38, '39; Library Club, '37; Red Cross, '37, '38.

AMELIA ANNE WALKER
Entered from Dickinson Junior High in '38. Girl Reserves, '39, '40; S. P. O. R., '38, '39, '40; National Honor Society, '39, '40; Orchestra, '39; Usher, '40.

ERNESTINE WALKER "Tennie"
Entered from North Chattanooga Junior High in '38. Sports Club, '38, '39; Stamp Club, '37.

JIMMIE C. WALKER "Red Robin"
Entered from Dickinson Junior High in '37. Sports Club, '40; Etiquette Club, '40; Hiking Club, '37, '38, '39, '40; Sea Scout Club, '39; Bachelors, '39, '40; Depression Club, '39, '40; Camera Club, '39, '40; Red Cross, '40; President of Depression Club, '40; Secretary and Treasurer of Bachelors, '40; Digest Sponsor, '37; Home Room Red Cross Representative, '40; Swimming Team, '39, '40.



LOUISE WALKER "Pinky"
Entered from North Chattanooga Junior High in '37. Girl Reserves, '39, '40; Library Club, '40; Girl Scouts, '40; Literary, '39, '40; Office Force, '40.

HENRY ALBERT WALLER
Entered from Bradley High in '38. Orchestra, '38, '39, '40; Grady Literary Society, '38, '39, '40; Boil Weevils, '38, '39, '40; Manager of Projection, '40.

L. A. WARE "Tiffie"
Entered from Lookout Junior High in '37.

CHARLES WATERHOUSE "Brains"
Entered from Brainerd Junior High in '37. Camera Club, '39, '40.

HENRY MELVIN WEBB "Ignorant"
Entered from Tyner Junior High in '36.

CLAIRE ELIZABETH WELLS "Titter"
Entered from East Side Junior High in '36. Sub-Deb Club, '39.

ALTON B. WERNDLI
Entered from East Lake Junior High in '38. Airplane Club, '38; Officers' Club, '40; Officer in R. O. T. C., '40.

MARY KATHERINE WEST
Entered from Boyd Junior High, Knoxville, in '37. S. P. O. R., '37, '38, '39, '40; Hiking Club, '37, '38; Red Cross, '39, '40; May Day, '37, '39; Candy Crew, '39.

THAYER WESTBROOK "Nero"
Entered from East Lake Junior High in '37.

WILLIE BLANCHE WHEELER
Entered from Lookout Junior High in '38. Biology Club, '38, '39, '40; Miracle Book Club, '40; Red Cross Representative, '38; Vice-President History Class, '40; Treasurer of English Class, '40; Won School Essay on Insurance, '38; Won Essay on Bible, '37.

LILLIAN GENEVA WHITE "Ginger"
Entered from Waldens Ridge Grammar in '37. Library Club, '38, '40; Red Cross, '39; Latin Club, '37; May Day, '37, '38.

WARREN A. WHITE "Mother"
Entered from East Side Junior High in '37. Sports Club, '38, '39, '40; Bachelors' Club, '39, '40; Sergeants' Club, '39; Officers' Club, '40; Secretary and Treasurer of Sergeants' Club, '39; Sergeant in R. O. T. C., '39; First Lieutenant in R. O. T. C., '40; Made All Tournament in Club.

MARY LOU WHITMIRE "Doodlebug"
Entered from Fairmount Grammar in '37.

LEWIS WILKINS
Entered from Brainerd Junior High in '38. Airplane Club, '39, '40; Officers' Club, '40; Secretary of Radio Club.

DORIS LEE WILLBANKS "Rabbit"
Entered from East Side Junior High in '36. Girls' Hi-Y, '37, '38, '39; Home Economics Club; Digest Representative, '37, '38, '39; Girl Reserves, '38, '39; Social Chairman, '38; Candy Crew, '38; May Day, '38; Exclusive Club Secretary, '39; Digest Staff, Alumni Editor, '38; Copy Reader, '39; Home Room Red Cross Representative, '39; Glee Club Pianist, '39; Usher, '40; Home Room Secretary, '38.

ETHEL WILLIAMS
Entered from Dickinson Junior High in '37. May Day, '38; Gym Captain, '38; Girl Scouts, '37; Honorary Member of Officers' Club, '40; Sports Club, '38, '40; Band Club, '38, '40; Nite Owls, '40; Ace Club, '38; Tumblers, '37, '38; Band Sponsor, '40; Club Editor of Champion, '40; Band, '39, '40; Athletic Club, '38; Physical Education Club, '37; Digest Representative, '40; Attendant to Sophomore Queen at Sophomore Party, '38.

HILDA WILLIAMS "Miss Hilda"
Entered from Brainerd Junior High in '37.

MABEL FRANCES WILLIAMS "Mae Belle"
Entered from East Side Junior High in '37. Tennis Club, '37, '38; Red Cross, '39, '40.

PEARL ELIZABETH WILSON
Entered from North Chattanooga Junior High in '35. Gym Team: Basketball, '37.

VIRGINIA DARE WILSON
Entered from Dickinson Junior High in '38. Girl Reserves, '40; Red Cross, '40.

BETTY WOLFF "Betts"
Entered from Knoxville Central in '38. Girl Reserves, '38, '40; Latin Club, '38; Girl Scouts, '38; National Honor Society, '40.

JAMES LANNIS WOMACK "J. L."
Entered from East Side Junior High in '38. Boys' Hi-Y.

MARGARETTE ELIZABETH WOMACK "Greet Greet"
Entered from North Chattanooga Junior High in '38. Girl Reserves, '39; Girls' Hi-Y, '40; Etiquette Club, '40.

JOHNNIE FERN WOODLEE "Flowerpot"
Entered from East Side Junior High in '38. Gym Team: Newcomb Team, '38, '39.

WILEY OTIS WOODS, JR. "Jiggs"
Entered from Hardy Junior High in '38.

CHARLYNE WYRICK "Chalkie"
Entered from East Lake Junior High in '38. Girl Reserves, '38, '39, '40; Library Club, '39, '40; Secretary and Treasurer of Library Club, '40; S. P. O. R., '38, '39, '40; Program Chairman, '40; Girl Scouts, '39, '40; Literary, '38, '39; Vice-President, '39; Usher, '40; Office Force, '39, '40; National Honor Society, '40.

GERALDINE EVELYN WYRICK
Entered from East Lake Junior High in '38. Physical Education Club, '38.



ALL SMILES

Charles Lindsey, Irene Ellington



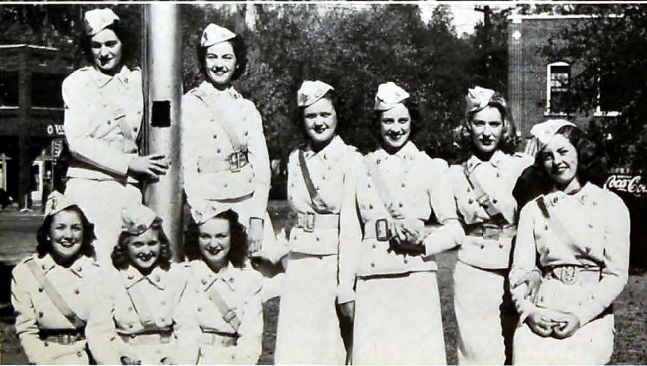
NOON DAY PAUSE

Irene Miles, Evelyn Morona, Nell Jo Morona and "Duck" Timmons



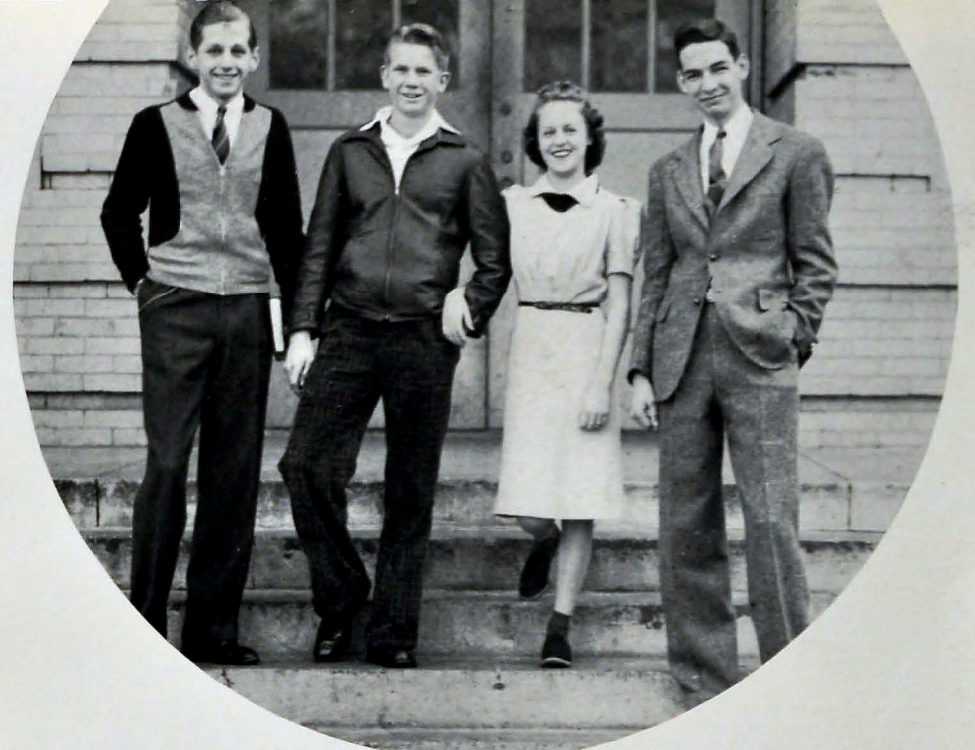
BETWEEN MATCHES

W. Miller, W. A. Miller, Bob Land, Frank Blair, Vernon Smith



FULL DRESS

Military sponsors waiting for the parade



Masingill, Coffelt, Johnston, Burnette

JUNIOR CLASS

OFFICERS

ROBERT BURNETTE	President
ERNEST COFFELT	Vice-President
LUTHER MASINGILL	Secretary
EMILY JOHNSTON	Treasurer

JUNIOR CLASS BOYS

Stanley Mack Abel
W. M. Acuff
Billy Joe Alverson
Hayes D. Alverson
William Brooks Allen
Ralph Murphy Anderson
Virgil Marcene Anderson
Bob A. Applegate
John Albert Arnold
Warren Edwin Bailey
Jackson Baker
Charles Franklin Barnes
Rufus Howard Berry
Tommy Eugene Bayston
Mack Dorse Beaver, Jr.
Morgan Jack Beaver
Robert Thayer Bell
Rome R. Benedict
Samuel Tony Benton
Billy Reid Birchfield
Jesse Clifford Blackmon
Frank P. Blair
Grover Bledsoe
Paul Hoyt Bonds
Winfred Eugene Bowman
David Enock Bracken
John Jennings Brown
Robert Glenn Brown
Herschel Howard Broyles
Rex Wilbur Bryant
Earl Howard Buchelo
Billy Durrell Bunch
Robert Briley Burnett
Grover McCoy Campbell
James Charles Carroll
Carl L. Carver
Ralph Daniel Casey
Wm. Allen Catlett
John O'Brien Christenbery
Robert Eugene Christenbery
Paul Franklin Clark
Chester Arthur Clark
George Stanley Clinton
James Brown Cochran
Paul Cofer, Jr.
Ernest Coffelt
Fred Leon Cofer, Jr.
W. C. Colwell, Jr.
Willard L. Conn
Dennis Charles Coole
Bill Brodie Corley
Leddell Cox
Earl Crabtree
John Albert Crabtree
Warren Edgar Cressman
Jimmie East Crockett
Jack Crow, Jr.
Randall Cullom
J. O. Cummins

Sanford Alvin Cunningham
Alton Carl Daniel
T. L. Davis
Jack Deakins
Arby Donald Dickert
Hoyt E. Dixon
Edwin Charles Donahoe
James Hampton Draper
William Chester Drinnon
Ralph T. Duckett
George Biddle Duda
Rochester Du Tell
Martin L. Eaves
Boyd Rutledge Edging
Hollis Lamar Eldridge
Harold Lane Elmore
Ted Clyde Evans
James H. Fann
W. D. Farley
Jack Ferris
Eugene Edward Finley
Bill Fiegal
Frank Pescud Fletcher
Arvel Ganett Forester
Jimmie Foster
Charlie Ellison Fox
Harold Laverne Fravel
Forest Weldon Fryar
A. G. Fuller
Hugh Dorsey Fuller
Henry Tate Gardenhire
Jim Forest Gardner
Charlie Johnston Garvey
Walter Hinton Garvey
William Allen Gates
W. G. Gentry
Jimmy Donald Genung
Grant Gwynn Genung, Jr.
Fred Gill
Tommy French Gilliland
Albert Foster Graham
Jack Johnson Grant
Arthur Clark Gray
James Porter Green, Jr.
Leonard Lewis Grigsby
Ralph Edwin Guider
John Benard Haddock
Bill F. Hale
Billy Pat Hall
Frank Brown Hallas
Roy Hamrick
Donald Brown Hancock
George Russell Hanks
Robert Don Harris
Richard Owen Hastings
James T. Hutton, Jr.
Frank L. Hendrix
Don Edward Henneker
Sam Bernard Henry

William Benton Henry
Jim Hicks
Fred Jerome Higgins
Frank Delmar Sherman
Emmett Haywood McLain
William E. McNabb
Thomas Granville Hixon, Jr.
Jim Halderman
Tommie Holland
Harold Lamar Holliday
Thomas Jefferson Holmes
William Marcus Hope
Lavoy Mitchell Howard, Jr.
Ben Huddleston
William Milton Huddleston
Charles Dennis Hudson
Don Edward Hudson
Richard Francis Hullender
Hugh Pat Hunerwadel
Fred Wert Huntington
John D. Hurst
Walter Ross Huskey
William Thurman Hutson
William Austin Ingram
Laurie Ireland
Clayton Carlisle Irwin
Albert Jackson
Henry Grady Jacoway
Arthur Jenkins, Jr.
Claude Igou Johnson
Eugene Guthrie Johnson
James Ralph Johnson
Bill Daniel Johnston
Robert Burchard Jones
Robert Thurston Jones
Tom Jones
Mack Neilly Jordan, Jr.
Joseph Keith
Bobby Wright Kelley
Ernest S. Kelley
Truitt William Kendrick
David Palmer Kenyon
James Harris Kenyon
John Junius Keown
Harlow Reed Kirk
John Nicholas Klein
Hilton Edward Kraeger
Bob Newell Land
Billy Garmon Landers
David Francis Lane
Edwin Gaines Lansford
George Thomas Lawson
Geordon Leonard
Ralph Levi
William Sam Linder
Ray Long
Pascal Cooper Lynott
Orville Monroe McClure
Kenneth McCormick

John Wesley McCoy
William Harrison McDaniel's
Ben Louis McDonald
Emmett Haywood McLain
William E. McNabb
George B. Magin
Jack Norwood Malone
Joe Trotman Mansfield
Richard James Massengale
Thomas Jefferson Masingill
Joe T. Mason
Wiley Massey
Foster C. Mathes
Frederick Albert Mertins
John Roy Miller
Willard Douglas Miller
David T. Minor
Edsel Ford Moffitt
Francis Eugene Moore, Jr.
Charles Clinton Morgan
Archib Brown Muse
Herbert Clarence Nappier
Robert Harvie Nicholson
Henry Newton Oliver, Jr.
George Conley O'Neal, Jr.
Jack O'Neal, Jr.
Great Park
Louie Aubrey Pendergrass
August Charles Pfitzer, Jr.
Donald William Pfitzer
Jack Allen Phillips
Bill LaMarr Pope
Albert Lee Potts
Carl Clifford Price
Harry Glenn Price
James Pyle
Joe Quinones
David Joseph Reynolds
James Hamilton Richey
Richard Dale Rivers
William Joseph Tobb
David Burl Roberts
Finley Robbins
Robert Eugene Robinson
Steve Robert Roddy
J. W. Roden
Daniel Jackson Rogers
Raymond Oscar Rowe
Woodville Grady Rozzell
Bert Ruef
Charles Blakeman Rymer
Bennie Charles Sands
James W. Saylor
Robert Floyd Schubert
James Allen Seagle
Clyde W. Sedman, Jr.
Gray Sedman
Marvin Odell Seibold
Leslie Shackelford

Frank Lester Shelton
Marvin Leroy Sherlin
Charles Delmar Sherman
Joe A. Shipley
William Duryed Shirley
J. R. Shrader
James Leonard Simmons
Donald Henra Simpson
Edgar Boss Simpson
Knouf Edward Sivley
Claude Jefferson Smith
George Smith
Julian Smith
David Harold Sparks
Joe Ernest Spearman
Harold Matthew Sparlock
Wales O. Standifer
William Thomas Standifer
John Starzill, Jr.
Cabe Lipscomb Strong
Samuel Chester Tallant
Fred Morgan Terrall
Sam Seldon Thatcher
William B. Thomas
Howard Joseph Thompson
William Leland Thurman
Lamar William Tillet
Allen Keith Little
James Martin Tredway
Jack Leonard Trimble
Raymond George Trimby
Bill Devern Tucker
Charlie Alexander Tucker
Carl Douglas Turner
Marion Louis Vann
Marion E. Venable
Landis Banar Vetter
Harold De Witt Warren
Edwin Prentice Watson
Glenn Arthur Westbrook
Kenneth Jean Westbrook
Reuben Lee Westbrook
Charles Edwin White
William Allen Whitecotton
Gordon W. Wittenbarger
Bob E. Wilcox
Owen Wister Williams
Robert T. Williams
Charles Williamson
Joe Hardin Williamson
Virginia Helen Cooper
Catherine Irene Coulton
Martha Louise Cox
Myrtice Evelyn Cox
Evelyn Ann Crabtree
Laura Pauline Craig
Gaynell Crawford
Patricia Elizabeth Criswell
Mamie Arene Crowder
Mary Nell Crowe

JUNIOR CLASS GIRLS

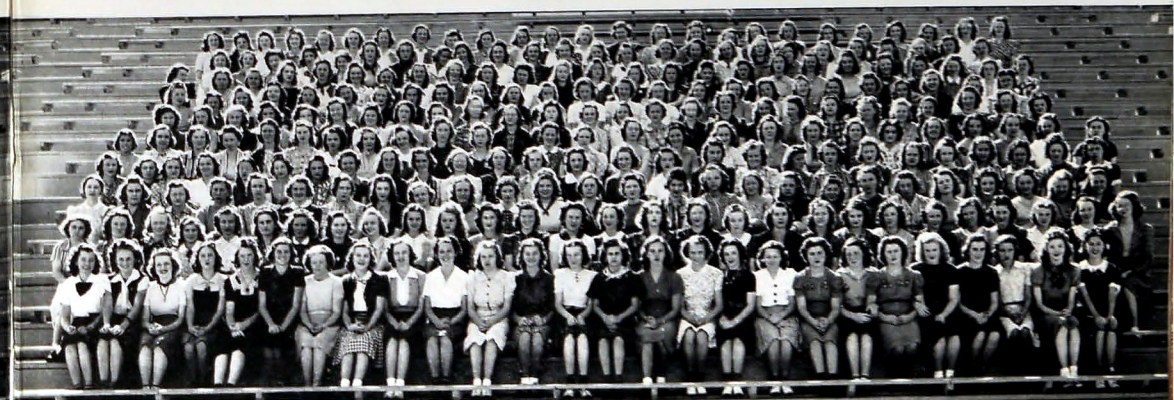
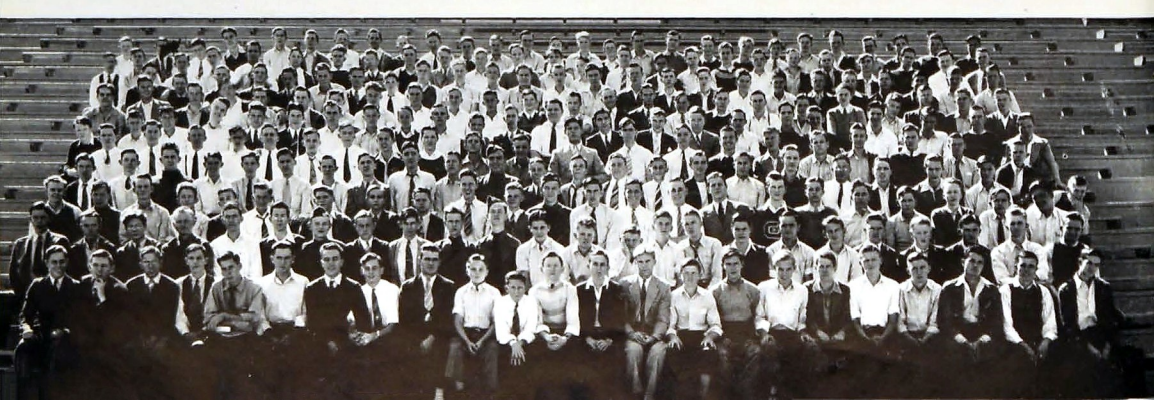
Marildia Sue Allen
Dorothy Nelle Allman
Dorthea Louise Alexander
Alice Virginia Anderson
Maye Belle Anderson
Doris Jean Arnold
Betty Louise Baker
Pat Lois Baker
Lucille Edna Ballou
Lela Cathryn Bond
Sara Elizabeth Barham
Emily Roberta Barry
Helen Sue Beene
Dorothy Lucille Bell
Mary Elizabeth Belvin
Ruth Eileen Billingsley
Lillian Elizabeth Black
Kathryn Louise Boatright
Charlie Mae Boss
Margaret Isabell Bouldin
Betty Bowen
Mary Allene Bower
Betty Jo Bowling
Reva Boyd
Mary Ruth Bradshaw
Elveda Jane Breaker
Vauda Mae Brewer
Eva Eleanor Brien
Rachael Christine Brooks
Margaret Louise Browder
Jo Ann Brown
Olva Lee Brown
Winifred Josephine Brown
Mary Elizabeth Bryant
Mary Louise Brunette
Mildred Ozella Burton
Alma Rozalee Cahoon
Hazel Ruth Carmack
Jessie Nell Carmichael
Dorothy Lynn Carroll
Betty McGregor Childers
Tommie Lee Childers
Lucille Clemons
Lorraine Clowes
Gloria Marie Colette
Mary Elizabeth Cowley
Edna Anna Clark
Shirley Wells Cole
Billie Stephenson Colston
Martha Elizabeth Conner
Edna Earle Cooke
Madge Marie Cooper
Virginia Helen Cooper
Catherine Irene Coulton
Martha Louise Cox
Myrtice Evelyn Cox
Evelyn Ann Crabtree
Laura Pauline Craig
Gaynell Crawford
Patricia Elizabeth Criswell
Mamie Arene Crowder
Mary Nell Crowe

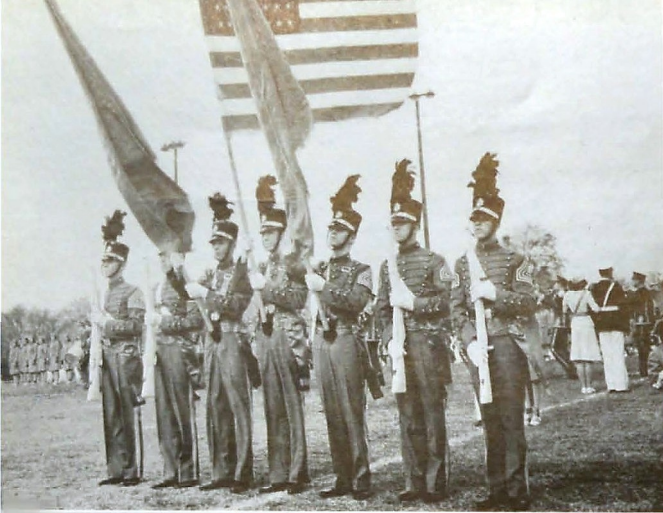
Helen Anne Crumley
Betty June Cummings
La Verne Curry
Teddy Elizabeth Cushman
Geraldine Davis
Lucille Pearl Davis
Betty Lou Day
Mary Estelle DeFries
Mary Elizabeth Derrick
Etta B. Douglas
Lois Ann DuBois
Betty Rae Dudderar
Ora Louise Dugan
Mary Katherine Durham
Rosalie Dutto
Virginia Vesta Dykes
Virginia Kathryn Elkins
Bobbie Lee Elrod
Ruth Espy
Juanita Faye Fambrough
Katherine Jeannette Ferguson
Mary Evelyn Fisher
Anna Barbara Freudenburg
Frances Elizabeth Fuller
Alma Ruth Gant
Ellen Frances Gardenhire
Louise Kathleen Geer
Fannie Louise Gerald
Doris Louise Giles
Gladys Gertrude Gilliland
Mary Katherine Gilneath
Margaret Elizabeth Glaze
Betty Nell Gleaves
Dorothy Golston
Charlotte Ann Gonia
Alice Kathryn Green
Margaree Lois Griffith
Betty Guthrie
Juanita Irene Hall
Ada Maude Hamblen
Jinnie Lee Hardin
Viola McAlister
Beulah Norma Harris
Hattie Elizabeth Harvey
Flora Nell Hawkins
Alice Elizabeth Haynes
Alnita Henderson
Frances Ophelia Henry
Sara Ann Henson
Ruthie Jane Hinds
Margaret Elizabeth Hobday
Alnita Henderson
Hilda May Hodges
Dorothy Elizabeth Holder
Sara Frances Holleman
Clara Elizabeth Hollis
Marlan Patricia Hollisway
Billie Faye Houser
Betty Ruth Houston
Virginia Woods Hudgens
Nancy Virginia Igou

Ellen Geneva Ingram
Frances Aileen Inscore
Mary Catherine Ireland
Amy Bernice Jenkins
Joy Elizabeth Jennigan
Ernestine Jobe
Dolly Louise Johnson
Evelyn Belle Johnson
Martha Lucille Johnson
Emily Johnston
Dorothy Mae Jolley
Frankie Ruth Jones
Leona A. Jones
Mary Frances Jones
Norma Grace Jones
Sarah Bettie Jones
Helen Louise Kammer
Cleo Nell Keith
Elizabeth Keith Kell
Bobbie Jean Kelley
Clara Marie Kellerhals
Thelma Belle Keown
Mildred Louise Killingsworth
Mildred Mae Killingsworth
Ruth Evelyn King
Helen Virginia Kirkpatrick
Margie Harriet Lackey
Betty Jo Lamb
Helen Luvene Lanford
Martha Frances Lawson
Mary Ruth Lawton
Margaret Irene Leonard
Kathleen Rackley
Virginia Ruth Leonard
Ruth Evelyn Levi
Ethel Louise Lewis
Mary Louise Lewis
Lillian Virginia Ling
Etta B. Douglass
Mary Ruth Lord
Georgien Rose Luther
Ernestine Sara Richbourg
Hazel Lee Rick
Pauline Reatha Ridge
Elsie Lee Riffery
Alice Virginia Rivers
Fannie Helen Roberts
Tommye Connelia Roberts
Sybil Irene Robinson
Evelyn Harriet Roddy
Martha Alice Rogers
Evelyn Harriette Rose
Juanita Evelyn Royal
Mary Elaine Royce
Mary Jane Sands
Stella Mae Sautter
Nattie Deborah Schlack
Elizabeth Lorraine Scoggins
Dorothy Sears
Maxine Delisies Sears
Katherine Faye Sedman
Dora Louise Sells
Clara Miriam Shaban

Edna Dorothy Mitchell
Lois Moore
Charlotte Ruth Moorefield
Emily Jeanne Morgan
Dorothy Ella Morris
Leilie Jewell Morris
Melba Ruth Nicholson
Agnes Louise Nixon
Mary Elizabeth Owen
Dorothea Mae Owens
Helen Gertrude Owens
Ruby Jewell Page
Ruth Euell Page
Beulah Lea Pardue
Helen Murel Parker
Lee Alice Parker
Frances Wilbyne Parks
Dorothy Louise Payne
Bobbie June Peace
Jacelyn Anne Peader
Helen Louise Pendergrass
Alice Marie Phillips
Thelma Lois Pickett
Merle Plemmons
Mary Elizabeth Pless
Edith Louise Porten
Betty Bruce Poston
Nelle Ruth Potts
Viola Wilma Potts
Mary Florence Price
Dorothy Louise Prystup
Ivanora Queen
Kathleen Rackley
Capitola Ella Ragle
Hellen Rae Ragle
Jean Elizabeth Rankin
Betty Evelyn Ray
Dorothy Elizabeth Reid
Laura Dell Reynolds
Virginia Katharine Richardson
Ernestine Sara Richbourg
Hazel Lee Rick
Pauline Reatha Ridge
Elsie Lee Riffery
Alice Virginia Rivers
Fannie Helen Roberts
Tommye Connelia Roberts
Sybil Irene Robinson
Evelyn Harriet Roddy
Martha Alice Rogers
Evelyn Harriette Rose
Juanita Evelyn Royal
Mary Elaine Royce
Mary Jane Sands
Stella Mae Sautter
Nattie Deborah Schlack
Elizabeth Lorraine Scoggins
Dorothy Sears
Maxine Delisies Sears
Katherine Faye Sedman
Dora Louise Sells
Clara Miriam Shaban

Gladys Irene Sherwood
Madge Shipman
Doris Virginia Simmons
Betty Winona Smith
Jodie Virginia Smith
Shirley Geneva Smith
Clara Mae Snyder
Peggie Sue Sparks
Betty Leveda Sparrow
Jewel Ward Spencer
Margaret Elizabeth Springel
Virginia Spurling
Marion Blanche Stacy
Sarah Alina Steinman
Annette Stephens
Mary Corinne Stephens
Mary Elizabeth Stewart
Rancy Jane Stewart
Sarah Hilda Ship
Dorothy Lee Stokes
Frances Lee Barney Strickland
Martha Elizabeth Strutz
Sally Vera Sweeten
E. Jeraldyn Tallent
Peggy Fay Taylor
Willie Mae Templeton
Ethel Julia Thompson
Vickey Kathryn Thompson
Mary Jo Torbett
Gwendolyn Glenna Trotter
Nancy Lee Trux
Dorothy Evelyn Underwood
Marion Louise Vann
Valda Jacqueline Vaughn
Melba Irene Vick
Arel Warren
Myrna Elizabeth Welge
Frances Maybelle Westbrook
Naomi Ruth Wilcox
Billie Margaret Williams
Frances Nell Williams
Mary Louise Williams
Avalon Wilson
Madge Leatrice Wilson
Marion Frances Wilson
Martha Faye Wilson
Mary Lee Wilson
Martha Elizabeth Witt
Dorothy Irene Womack
Evelyn Elizabeth Womack
Florence Edna Wood
Theresa Louise Woodfin
Emily Virginia Workman
Lillian Marie Wright
Sarah Lynn Wright
Doris Louise Yarbrough
Dorothy Elsie Zelinsky
Juanita Marie Zimmerman
Rosanna Francora Zimmerman





THE COLORS

Minor, Carrol, Hudson, Burnette, Robb, Haddock,
Camp



SPECTATORS AT FOOTBALL PRACTICE

Dorothy Sullivan, Billie Burdette, Dot Howell,
Frances Nelson, Dorothea Hyde, Anne Jones



PARENTS' DAY

Officers and their ladies



EARLY FOR THE GAME

Watching practice before taking seats in stand



Ward, Carden, Camp, Poston

SOPHOMORE CLASS

OFFICERS

GEORGE CARDEN	President
GEORGE POSTON	Vice-President
ALICE CAMP	Secretary
BETTY WARD	Treasurer

SOPHOMORE CLASS BOYS

Carlton Lee Roy Adams
Howard Phillip Adamson
Jones Harber Aderhold
Jack Robertson Agnew
Carl Clinton Akers
Paul Henry Alexander
Jack Allinder
Victor Eugene Anderson
Fred Dial
Jarvis Eugene Anderson
Gene Julian Andrews
Ray Warren Arnold
Earle Ace Amacker
James Bacon
William Paul Baker
Earnest Ireland Baugh
Hudson De Forest Bayne
Clarence Edward Bean
Oscar Elto Beard
James Jarry Beene
James Wallace Bell
Joseph Freeman Bell
Charles Beverly
Eugene Edward Bird
Edwyn Bernard Bischoff
Herbert Humphreys Bivens
Bob Lester Blackwell
Wayne Marcel Blancett
Jack Vernon Blacklock
Gains Edward Blevins
Marion Willis Block
Franklin John Bonds
Henry Ervin Bowen
James Alexander Bowen
Billy Bradley
Harold Leonard Bracken
Jack Terrell Brewer
Floyd Earl Britton
Charles Frank Brock
Carl Douglas Brooks
Clyde Reber Brooks
Jack Donald Brooks
Raymond Lester Brothers
John Clinton Bronhard
Billy Broyles
Carter David Broyles
Dan Burd
Bobbie Burris
Carl Woodrow Byrd
Melvin Arthur Byrd
Ray Galloway
Richard Charles Camp
George Cope Carden
Carl Robert Carpenter
Jim Carpenter
Lee Clifford Carroll
Claude Evan Carter
James Franklin Cartwright
Max Corly
John Bascom Cash
Jack Andrew Cassell
Charles Emmett Gates
Wilbur Keith Charlesworth
Lawrence Edward City
Haskell McCoy Clark
Sam Francis Cobb
Henry Chapman Colston
Opal Vince Colston
Samuel Allen Conner
Frank Homer Cook
Kenneth Cook
William Howard Cooke
Alfred Harrison Cooper
Bill Corley
Jimmy Edward Couch
Howard Ellis Cox
Charles Raymond Coyle
Ewing Crabtree
Nick Benjamin Crabtree

Finley Craddock
Billy Craighead
R. C. Craven
James Arthur Davis
Robert Taylor Davis
Chris William Demos
Irving Dennis
Fred Dial
Howard Dick
Ted Dickerson
Pat Disney
Bobby Malcolm Doss
Elbert Wiley Doss
Webster Bruce Drake
Albert Vernon Dunlap
Bobby Love Dunn
Edward Clarence Durham
Joseph Edwin Eaves
Lewis Louvain Edmondson
James Ervin
Clarence Lymay Eslinger
Dean Raymond Falls
Robert Ransom Farley
Pat Farmer
Joe Francis Frassrand
Jack Thomas Faerber
Eugene Leslie Floyd
Charles Francis Fridell
John Walter Finley
Ernest Luther Fitzgerald
Herbert Elliott Ford
Robert Gleaves Fletcher
Dan Eugene Fols
Charles William Gallant
Charles William Ginnoe
George Carl Gentry
Herman Gill
Cordell Phillip Gilley
James Leslie Givens
Charles Gambill Gleaves
Crawford Benton Godsey
James Giles Goldston
Louie William Goodner
Louis Edward Goodner
Rufus Pledger Goodner
Raymond Beecher Gorrell
James Goss
Walter Luther Gothard
Joe Alfred Graham
Billy Grant
Jack Grant
Harold Jennings Gray
Harry Green
Wray Deaton Green
Bob Earl Greene
William Kimbro Greene
Charles Edward Gregg
Louis Lynn Gross
Luther Glynn Gross
Don Marshall Gross
James Calvin Guinn
Reginald Gwin
Billy Smith Hagaman
D. L. Haley
George William Hall
Robert Thomas Hall
Walter Augustus Hall
Robert Glenn Hampton
Roy Hamrick
Warren Emil Hanes
John Gordon Hardin
Eugene Willis Harris
Billy Caswell Hart
Chester Elder Hatfield
Charles Robert Healy
Thomas Arnold Henson
Bob Solomon Henry
Jerry William Henry

Earl Edward Shipley
Joe Moore Henry
Carl Roger Hicks
George Walter Hicks
Billy Higdon
Clifford Clarence Hinds
Tillman William Hind
Alexander Gordon Hobbs
Walton Hodge
Howard Byrd Holder
Bert Grant Holland
James Perry Holmes
William Franklin Hoopes
James Maxion Howard
Harold Keith Huddleston
Roy Carlton Huddleston
Harry Maxwell Hudson
Louis Hendrix Hudson
Raymond Warren Hudson
Richard Hultender
Gilbert Louis Humphreys
Samuel Anderson Hunt
Sam Hunter
Fred Huntington
William Ray Hyatt
James Minor Isou
Jim Imrie
James Peyton Ireland
Bill Jackson
Hampton Monroe Jackson
Herbert Elliott Jarrett
Clifford Anderson Jay
John Wesley Jeffery
Claude Siler Jerigan
Charles Edward Jernighan
Tommy Edmond Jewell
George Edgar Johnson
Harold Cooper Johnson
Joseph Burton Johnson
Kenneth Kelly Johnson
Leonidas Edward Johnson
William Daniel Johnson
Willis Rudolph Johnson
Willis Arnold Jones
Ernest Marshall Jones
Robert Eugene Jones
Raymond Curtis Jones
Fred Joyce
Thomas Keller
Mac Lee Kelley
Ola Brunner Kelso
Frank Sullivan Kimsey
Billy Lee King
George King
Joe Byrl King
William Kirkpatrick
Claud Ernest Land
James Edward Langdale
George Washington Langston
Charles Lawson
Roy Carter Lee
Richard Julius Rose
Oliver Milton Rowland
Fred Archer Salmon
James Paul Sartin
Jack Nelson Satterfield
Glaissner William Saulter
Bill Allen Scheerer
Elly Lloyd Schoecraft
Warren Gordon Shelton
Albert Nathan Scott
Clarence Richard Scott
Frank Sells
Fillmore Sessions
Herbert Workman
John Paul Shelton
Morton Shelton
Robert Atherton Shelton
William Edwin Sherrie
Billy Charles Shipman

Harrison Edwin McMillan
Billy Brown Martin
Justin Harold Short
Thomas Anderson Martin
Sam Westly Marshall
Claude Maxwell
John Godson Smith
Alvin Sizemore Miller
George Edward Miller
John Franklin Miller
Al Thurman Mitchell
Joseph Milton Mitchell
Warren Monroe
Augustar Valin Moore
Voss Alexander Moore
Robert Morgan
Edward Morris
William Edwin Morris
Jack Neale
Ed Dick Norris
Winifred Scott Orr
Carl Harrison Owens
Vlad Rhea O'Rear
Morton Leland Pace
Bob Taylor
Donald Frank Taylor
John Franklin Templeton
John Thomas
Alvin Douglas Thompson
Joe Thomas Thompson
John Kelley Thompson
Herbert Eason Thornton
Fred Levi Thraikill
James Malcolm Tittle
Douglas Transgher
James Edward Trivis
Milton John Tribble
Bill Trimble
David Frank Trundle
Billy Lee Tucker
Bill Turner
Jel Stanley Turner
Wallace Lindsay Turner
Douglas Turner
Fred Davis Underwood
Harvey Leroy Underwood
Vance McCoy Usher
Billy Luman Von Schaaf
Londis Vetter
John Maurice Wade
S. M. Wade
Henry Albert Waller
John Calvin Walker
Maurice Edward Waller
George Walls
William Washburn
Elron Watson
Fred Eum Webb
Nelson Cornelius Westcott
John Wheeler
Charlie Ray White
James Wilburn Whitmire
James Edward Wilcoxon
R. S. Wilhoit
Glyde Wilhoite
Clay Erwin Williams
Milton Wyatt Williamson
Preston Eugene Williams
Charles Franklin Wilson
J. E. Wilson
Lawrence Earl Wood
Ralph William Wooten
Herbert Workman
John Paul Worley
William Ezra Wyatt
William Russell Young
William Edwin Younger
Leon Herman Ziegler

SOPHOMORE CLASS GIRLS

Juanita Adams
Elizabeth Albright
Dorothy Ann Anderson
Mary Rosalie Anderson
Cora Blanche Angel
Betty Joyce Arnold
Marjorie Inez Atchley
Martha Aulow
Charlotte Nell Bales
Ruby Onezma Barrington
Carolyn Willodean Bass
Anna Frances Baumsartner
Helen Louise Beene
Dorothy Lee Bell
Dora Elizabeth Bellis
Margaret Alice Bonner
Rachel Yolanda Bennett
Dorothy Best
Mary Louise Bigley
Mary Loraine Billingsley
Betty Joan Binks
Bonnie Mae Biolack
Johnnie Gladys Blevins
Vivian Fay Blevins
Louise Bowling
Betty Jane Bradley
Jessie Pauline Brannan
Audrey Myrtle Brannum
Dorothy Dare Brock
Virginia Virginia Brock
Maxine Fay Broome
Helen Eugenia Brown
Margaret Lois Brown
Sarah Ruth Brown
Olva Lee Brown
Myra Ann Bryan
Alma Pauline Buckner
Lad Grace Bullard
Isabel Ollie Bunch
Mary Helen Burke
Mabel Virginia Burnett
Catherine Edna Caldwell
Anna Lou Fine
Thelma Lee Finley
Charlotte Anna Fowler
Aline Georgia Fletcher
Agnes Winifred Francis
Betty Jean French
Margaret Fullam
Frances Imogene Gass
Mary Evelyn Gilbert
Katherine Gilliland
Elizabeth Gilreath
Bonnie Dean Goad
Martha Lorene Godfrey
Virginia Oneta Godfrey
Aline Alice Grammer
Catherine Ora Gray
Betty Jane Greene
Dorothy Mae Green
Vera Ann Grenning
Sola Frances Gregg
Norma Evelyn Gregory
Nina Jack Griffin
Mary Frances Gross
Juanita Hackler
Dorothy Hale
Billie Ruth Hall
Marie Caroline Hall

Della Sue Connally
Betty Blanche Cook
Peggy Lee Cooke
Evelyn Sarah Coughtry
Mary Frances Harris
Edna Earl Couch
Mary Ruth Cox
Viola Ruth Cross
Mickey Lou Crowe
Margaret La Faye Culver
Betty Elaine Cyree
Dorothy Hester Davis
Ella June Davis
Eva Ernestine Davis
Mary Louise Davis
Lucille Davis
Frances Coranne Daniel
Doris Marie Dean
Lois Delsell
Lillie Frances de Tournillon
Mamie Evelyn De Shazo
Madge Dickerson
Dorothy Aileen Dodd
Patricia Ann Doughty
Maxine Imogene Duncan
Barbara Dorrance Duncum
Beatrice Louise Dunn
Janice Jennie Dunn
Betty Theola Eaker
Dorothy Frances Echols
Helen Christine Echols
Edith Amelia Eidson
Ann Collett Elliott
Edna Earle Evans
Betty June Evatt
Marjorie Knight Ferger
Mary Evelyn Finch
Anna Lou Fine
Thelma Lee Finley
Charlotte Anna Fowler
Aline Georgia Fletcher
Agnes Winifred Francis
Betty Jean French
Margaret Fullam
Frances Imogene Gass
Mary Evelyn Gilbert
Katherine Gilliland
Elizabeth Gilreath
Bonnie Dean Goad
Martha Lorene Godfrey
Virginia Oneta Godfrey
Aline Alice Grammer
Catherine Ora Gray
Betty Jane Greene
Dorothy Mae Green
Vera Ann Grenning
Sola Frances Gregg
Norma Evelyn Gregory
Nina Jack Griffin
Mary Frances Gross
Juanita Hackler
Dorothy Hale
Billie Ruth Hall
Marie Caroline Hall

Katherine Hammontree
Sara Jane Hammontree
Bobbie June Harvey
Gertrude Katherine Harris
Sarah Hanks
Louise Sue Harden
Mary Alice Hardin
Betty Jeanne Harding
Avis Tyree Harper
Charlene Harris
Mary Louise Harris
Dorothy Elizabeth Harrison
Mary Katherine Hartline
Avonne Lorraine Hartman
Helen Ruth Harwood
Frances Virginia Hayes
Lorene Josephine Hayes
Ardie Lucille Haygood
Alma Louise Headrick
Nedra Anne Heilmatz
Mary Elizabeth Henderson
Dorothy Reed Henley
Dorothy Elizabeth Henson
Dorothy Muriel Henox
Dorothy Herron
Helen Elizabeth Henry
Lela Marie Higdon
Charlotte Hill
Minnie Lee Hinds
Mary Ann Hipp
Mamie Elizabeth Horne
Bertha Virginia Hotelen
Anna Margaret Hudson
Dorothy Louise Huff
Dorothy Ludivene Huff
Jeanne Hulsey
Doris Evelyn Hyer
Betty Jean Ingle
Mary Katherine Ingle
Geraldine Mae Ivey
Juanita Estelle Jackson
Louise Josephine Jackson
Grace Charlotte Jacoway
Margie Lonita Johnson
Jane Louise Johnston
Anna Ruth Jones
Laurin Joyce Jones
Geraldine Jones
Margaret Jones
Mary Elizabeth Jones
Cletta Mae Jordan
Mary Elizabeth Jordan
Virginia Keown
Frances Anita Kilgore
Lucille Killingsworth
Hilda Kimbrough
Helen Margene Kintzlow
Garnelle Kintzlow
Dorothy Don Knapp
Evelyn Lamb
Betty Jo Landenberger
Betty Mae Langston
Avinelle Lawrence
Mary Finley Lawrence
Dorice Imogene Lawson
Jeanne Iris Leavitt
Frances Evelyn Le Croy
Sara Ledford
Ethel Virginia Lewis
Betty Lindeman
Willodean Lindsey
Carolyn Patricia Lloyd
Dorothy Jeanne Lockwood

Joetta McAmis
Shirley McBroome
Mary Annette McCann
Eleanor Virginia McClure
Mary Frances McConkey
Lorraine Marie McDonald
Thelma McDowell
Virginia McGuire
Mary Evelyn McKinney
Frances McKillian
Evelyn Ann Mabery
Mary Elizabeth Madewell
Betty Jane Magette
Emory Emoline Manley
Dovie Lee Marier
Betty Marlowe
Evelyn Marona
Jimmie Lou Martin
Lois Kathleen Massey
Mary Elizabeth Meadows
Eunetta Willene Meredith
Evelyn Elizabeth Miller
Hildie Miller
Iris Miller
Geraldine Mitchell
Jane Moldale
Sara Moldale
Helen Catherine Morton
Melba Moshell
Betty Ann Mullis
Joybina Newman
Mary Kathleen Newport
Frances Louise O'Rear
Genevieve O'Rear
Josephine Evelyn Onby
Kathleen Bernice Oliver
Rodelia Oliver
Billie Jean Parks
June Parks
Dorothy Elizabeth Parker
Frances Parsons
Mary Helen Patton
Audrey Perry
Martha Lou Phillips
Sarah Prince
Betty Rae Privette
Elizabeth Hope Quinn
Katherine Marie Quinn
Bessie Ramsey
Betty Mae Rand
Inogene Ray
Laurie Gene Reese
Jewell Dean Reno
Eudora Kiddick
Sara Riggs
Sue Roark
Adella Ann Roberts
Marsena Grace Rodgers
Doris Ruth Rogers
Betty Lorene Rothwell
Frances Roy
Juanita Royal
Esther Rymer
Jane Rymer
Sarah Frances Sadler
Clara Mae St. Clair
Thelma Ruth Sargent
Betty Frances Scoggins
Hazel Marie Sedman
Dorothy Seibold
Elizabeth Sertel
Nancy Sertel
Doris Anne Sewell
Louise Nora Shankle
Doris La Vane Sharpe
Josephine Shelton
Sue Edith Sherrill
Evelyn Louise Simpson

Betty Skeen
Betty Jane Smith
Edna Smith
Edna Christine Smith
Eva Katherine Smith
Evelyn Smith
Inda Mae Smith
Lucille Kathleen Smith
Lucy Smith
Mary Stella Smith
Ruby Inez Smith
Vernie Ella Smith
Julia Lois Snyder
Shirley Jean Souder
Betty Jean Southerland
Mary Frances Southerland
Dorothy Sparks
Mary Sue Springer
Mary Steffler
Una Lou Stafford
Betty Jane Standifler
Louise Stanberry
Betty Augusta Stewart
Elnie Virginia Stewart
Margaret Stewart
Valeria Odell Stewart
Betty Ann Stimpson
Bernie Lou Strickland
Margaret Ruth Stroud
Fay Marie Stroudivant
Lillian Sarah Sutherland
Nellie Tallant
Nellie Tallant
Jean Cate Tarwater
Norma Kathleen Taylor
Bernice Owline Team
Virginia Teach
Lurline Thigpen
Dorothy Jean Thomas
Fannie Rae Thomas
Connie Thompson
Louise Helen Thompson
Mary Jane Thompson
Mary Bessie Thurman
Louise Tillet
Mamie Jean Tippin
Johnnie Ruth Tittle
Betty Fay Trotter
Wilma Marguerite Tucker
Sarah Elizabeth Varnell
Labonetta Varner
Pattie Sue Vaughn
Doris Vawter
Vivian Hilda Wade
Betty Louise Wagner
Genevieve Lucille Walker
Ruth Walker
Jo Edith Walker
Doris Ruth Wallace
Jane Leola Wallin
Janet Waterhouse
Dora Lee Walters
Betty Ward
Willie Joe Warren
Mary Frances Watkins
Thelma Helen Westbrook
Julia Irene Wheeler
Florence Mildred Whitecotton
Jeanne Wilkerson
Ophelia Marie Wilkinson
Betty Williams
Juanita Muriel Wilson
Marguerite Wilson
Myrtle Wilson
Anna Laura Womac
Earla Mae Worley
Edna Mae Worley
Bertha Lee Winkle





PARKING SPACE

Beatrice Smyth, Dot Howell, Billie Burdette,
Frances Nelson, James Chase



LEAVING

Boys, girls and books hurry from building



IN A ROW

R. Crawley, N. Ratchford, R. Archie, A. Broyles,
B. Sterne, W. Rose, F. Rogers, W. Norvell, L.
Blair, M. Taylor



FUTURE SENIORS

Group of freshman girls in exit from Frawley
Field



Barker, Schlack, Gilliland, Leeper

FRESHMAN CLASS

OFFICERS

MIRIAM LEEPER	President
ALLEN GILLILAND	Vice-President
ALMA SCHLACK	Secretary
KITTY BARKER	Treasurer

FRESHMAN CLASS BOYS

Rufus Abercrombie
Edward Lee Adamson
Charles David Alexander
Calvin Dale Allison
Billy H. Anderson
Jack Hastings Annis
Jim Bacon
James Daniel Bales
Alvin Thomas Bayles
Jake Oscar Beard
James Wallace Beard
George Marvin Bell
Kenneth Adams Bildenback
Charles Lynn Blalock
John Henry Bohannon
John Charles Bowen
Stanley Bowling
Billy Lannie Brewer
Paul Hubert Broadway
Charles Brock
Charles Burbon Brotback
Edward Theodore Brown
Robert Lewis Brown
Jimmie Caldwell
Clarence Reece Camp
Dick Eugene Carmack
Paul Laverne Carson
Harold Pierce Casey
Walter Washington Castings
Walter Spencer Cobb
Jimmie Coleman
Richard Coleman
Edwin Wallace Covington
William Henry Cox
Billy Williams Crabtree
William Franklin Davis
John Cleveland Delashsmith
Henry Allen Doremus
John Tate Doremus
Paul Dedrick Disney
Lamar Robert Ruchene
William Anderson Ducker
Charles Vernon Duckett
Edwin Foster Eaves
Willard Austin Edwards
Billy Frank Eldridge

Robert Bert Elkins
Robert Arvin Elmore
Billy Henry Elrod
John McNeal Erwin
Carl Clayton Evans
Haskell Robert Everett
Tommy David Farr
Charles Emery Farrar
James Roy Farris
Glenn David Fischer
Buford Allen Follis
Ben Franklin Ford
Wallace Mitchell Ford
Charles Alvin Ford
Horace Milton Forstner
Eugene Foster
Herman Grover Fravel
Charles Funk
Ben Fussell
H. D. Gang
John Gardner
Allen Gilliland
Dan Chedister Girtton
Victor Adair Greene
Norman Young Grindle
Charles Edward Gryder
Harry Guinn
Stanley Lee Hall
James Woodruff
Harold Elward Harvey
James Lee Harvey
Rob Roy Hatcher
Jack Nelson Hennessee
Charles Avery Henry
Walter Hill
James Herbert Holladay
Carl Dean Houser
Edwin Eugene Howard
Robert McNabb Huff
Hubert Ernest Paul Humbard
Willard F. Igou
William Houston Igou
Ernest Edwin
Edward Dewitt Jolley
Denney Wilbur Jones
Fred Allen Jones

Edward William Jorge
Charles Edward Kilgore
Richard Delano Landis
George Washington Langston
Charles Lankford
Kenneth Layne
Paul Alan Layton
Edwin Marion Lehman
Dick Hudson Leiper
Leon Smith Lewis
Steve Lonas
Willy Edward Lowe
Jack Matthew Lowery
William Robert Lundy
Sam B. McEntire
Curtis Leaman McKinney
John Herbert Major
W. L. Mathis
Charles Evett Matthews
Milton Edgar Mathil
William Hamilton Mayes
Bill Mays
Edwin Allen Meeks
Leighton Alfred Meeks
Albert Benjamin Miller
Benjamin Franklin Miller
Earl Clay Miller
George Brown Miller
Wallace Miller
Robert Broughton Miller
James Russell Mitts
James Allen Moffitt
Billy Morton
John Pinoche Moss
Carl Munns
Francis Coster Myers
Herschel Wallace Nation
Ralph Ogile
Lester Jaminson Owens
Jimmie Howard Palmer
Jack Ellsworth Parker
Joe Eldridge Parks
Charles Pearson
James Arthur Phillips
Robert Allen Pickett
Herbert Andrew Poindexter

Herman Poole
Maurice James Potter
William Earle Powell
Billy William Pritchett
Kenneth Prophaier
Maurice Lee Ratchford
Edward Byrd Rawlston
Hebert Millard Ray
Charles Henry Reeves
Howard Ansel Reeves
Wilbur Mac Rhinehart
Robert Lindsay Rhodes
Clyde Alvin Riggs
Loisell Windford Rightmire
George Finch Robertson
Carey Wagner Robinson
James F. Robinson
Rufus Cobb Sands
O. C. Simpson
Clifford Danton Smith
Lowery Taylor Smith
Paul Alvin Smith
Ronald Smith
William Erwin Sturdivant
Grady Douglas Swope
Nex Walter Thaxton
Buddy Thomas
Robert Lee Thompson
Robert McGinn Travis
Charles Edward Varnell
Evans William Varnell
Raymond Wade
James Edward Wallace
Joe Gilbert Wallace
Sam Wallace
John Wesley Webb
Ernest Patrick West
Riley A. Westbrook
Frank Andrew Wheeler
Charles Edwin
John F. Wilhelm
Berch Reed Wilhite
Clyde Willhoit
Rhoten William Willhoit
Milton Wooden

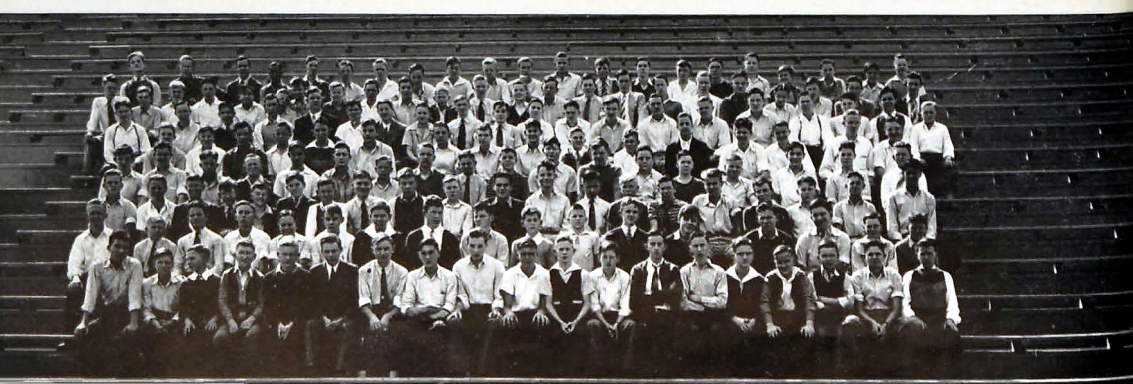
FRESHMAN CLASS GIRLS

Betty Arnold
Frances Willadean Arrant
Dolores Jo Baker
Norma Jean Baker
Marjorie Daphne Bales
Bobby Aline Ballou
Betty Sue Barker
Avis Marie Bass
Mary Jane Bayston
Nancy Jo Bennett
Harriet Ellen Benton
Rosalea Blake
Metha Bracken
Beulah Bradford
Edna Louise Bragg
Dorothy Lillian Brewer
Louise Bridgman
Mary Louise Brooks
Dorothy Evelyn Brown
Lola Eudora Brown
Bettie Sue Broyles
Ethel Lavina Burnette
Margaret Lillian Burnette
Irene Butler
Haley Irene Cameron
Betty Lou Carden
Mary Jo Carmichael
Mayme Evelyn Carter
Daisy Case
Mary Jo Chambers
Lorene Mae Champion
Peral Irene Clemons
Lorena Adair Cobb
Virginia Estelle Coffin
Mabel Anne Criswell
Opal Irene Cummings
Geneva Virginia Cunningham
Marjorie Oleta Daugherty
Roma Nell Dickert
Willie Louise Draper

Virginia Louise Eckert
Ethel Leona Eidson
Mary Ruth Eller
Mell Jean Ennis
Precious Yvonne Ervin
Ruby Loraine Espy
Avonelle Martha Estill
Bettye Jeanne Ezell
Genevieve Fraley
Sammie Louise Farmer
Lilly Jo Filler
Charlotte Rosetta Finch
Gertrude Evelyn Finley
Lillian Juanita Fryer
Edna Willie Fuller
Mary Levantache Fulmer
Opal Virginia Gamble
Ruth Imogene Geren
Mary Harvey Gilreath
Kathleen Langley Goldston
Margaret Elizabeth Gross
Margaret Ann Guth
Dimple Beatrice Harden
Patsy Ann Harr
Betty Jean Harris
Edna Earle Harris
Elizabeth Gertrude Heaps
Joyce Delorice Hoff
Mergie Horton
Jane Eloise Howell
Irene Gloria Jacoy
Eva Ruby James
Jacquelyn Jameson
Barbara Lucile Jensen
Alice Catherine Johnson
Irene Johnson
June Johnson
Katherine Margaret Johnson
Ruth Johnson
Kathleen Lucy Jones
Ruth Evelyn Jones
Willie Lois Jones

Lena Jacqueline Keef
Orpha Juanita Kesley
Mildred Marie Kinser
Louise Kinzlow
Lela Audrey Kirby
Mary Ruth Kline
Thelma Mae Lankford
Miriam Evanns Leeper
Beverley Juanita Lewis
Mildred Liner
Nellie Ruth Ling
Betty Louise Long
Betty Vesta Luther
Jeritza Gwendolyn McBride
Grace Alice MacDonald
Willowdean McCormick
Mary June McNish
Nancy Jeanne McSpedden
Levonie Elizabeth Malphus
Jules Frances Martin
Williw Elizabeth Messingill
Louise Miles
Dolores Juanita Miller
Evelyn Gertrude Miller
Gertrude Ann Morgan
Marlys Jean Olsen
Betty Sue O'Neal
Lois Elizabeth Overturf
Mary Frances Parham
Helen Elaine Parton
Carol Juanita Peavy
Margaret Ann Poss
Marjorie Larson Powers
Flora Alice Price
Lura Jean Prince
Edna Elizabeth Rea
Carolyn Janette Robertson
Mary Ella Roden
Anna Sue Rudd
Virginia Gae Russell
Doris Dimple Satterlee
Alma Marie Schlack

Kitty Edith Schneider
Helen Maurice Schrader
Mildred Alice Scott
Minnie Mae Scott
Geraldine Hazel Salls
Mary Eleanor Sessions
Nora Mae Shankle
Frances Louise Shedd
Elizabeth Anne Shelton
Mary Ruth Sivley
Mirian Deslavah Skiles
Geraldine Rittie Slatton
Anita Christine Smith
Frances Elizabeth Smith
Catherine Beverly Smith
Sora Elizabeth Smith
Mildred Josephine Stanford
Mildred May Stephens
Peggy Stott
Betty Louise Strickland
Ethell Dean Summers
Laura Jane Tallant
Jane Carolyn Talley
Frances Geneva Tate
Bobbie Ruth Thomas
Nancy Loretta Thomas
Doris June Turner
Betty Jean Vance
Nelle Imogene Vandergriff
Ella Pauline Walker
Katherine Lucille Warren
Nettie Louise Watkins
Frances Odella Webb
Anita Elizabeth Wheeler
Katie Marie Whitmire
Virginia Dare Wilson
Reba Jean Wortz
Juanita Wright
Dorothy Jane Yantis





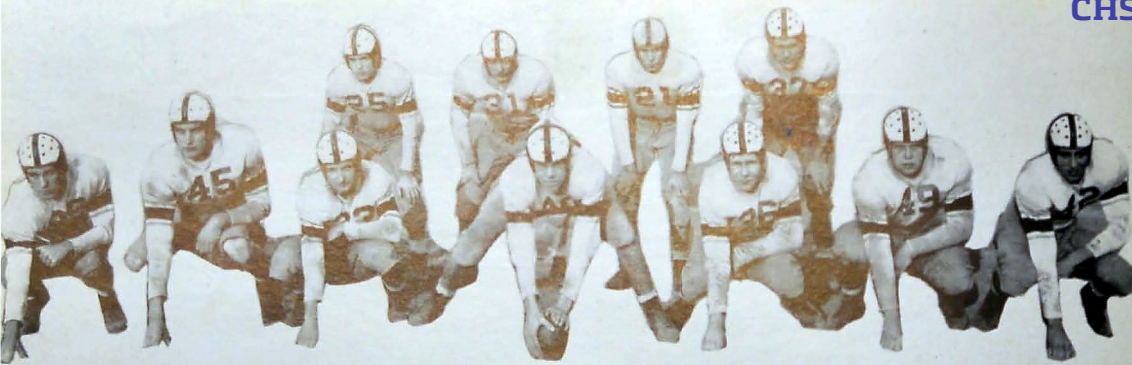
ROTUNDA
Looking Up

ATHLETICS



'C' CLUB

JOHN BASKETT	Football	BILL HICKS	Track
MORGAN BEAVER	Basketball	WILLIAM KELLEY	Football
BILL BIRCHFIELD	Football	WARREN KIMSEY	Baseball
ALLEN BROOKS	Track	JIMMY LEDBETTER	Track
C. L. CARVER	Football	FRED McKENNEY	Football, Track
RALPH CASEY	Basketball	WILSON NORVELL	Football, Track
ERNEST COFFELT	Football Manager, Swimming	ED PIERCE	Cheerleader
DeWILLIS COPPENGHER	Baseball	DONALD PFITZER	Track
RALPH CLEVINGER	Basketball Manager	GILBERT RAULSTON	Track
THOMAS CLARK	Basketball	MAC RHINEHART	Football, Basketball, Baseball
JOHN CULLOM	Football	ROBERT SALES	Football
JACK DEAKINS	Basketball	HAROLD SHORT	Football
ROY ETHRIDGE	Baseball	TOM SIMPSON	Basketball
RAYMOND FULLUM	Football	M. C. STEPHENS	Football
SHIRLEY GARDENHIRE	Football, Basketball	MILES STEVENS	Football
WALTER GARVEY	Football	JOE THOMPSON	Basketball
WAYNE HAMMIL	Basketball	MILTON TINDELL	Football
JIMMIE HARDIE	Football	TOMMY WALKER	Football
FRED HELMS	Football	CHARLIE WHITE	Football
		S. DEAN PETERSEN	Sponsor



Back Row—Cullom, Stephens, Garvey, Tindell
Front Row—Rhinehart, Kelley, Baskett, Helms, Stevens, McKenney, Norvell

F O O T B A L L

Late in August Coach Petersen met the squad of 1939 on Frawley Field for the first football practice of the year. With Red Cullom, captain, and Milton Tindell as alternate-captain, this nucleus of nine lettermen from the 1938 City Champs and some thirty-five other hopefuls began preparation for the hard schedule they were soon to face.

The Purples opened the season on Frawley Field September 8, against Soddy-Daisy. The boys met sturdy opposition and managed to end in a 7-7 deadlock. The fine play of Charles White and Harold Short greatly aided the team in this scrap.

After a tie in the first game, Central entered the second more determined than ever to beat her foe, Notre Dame, who had been picked as winners over the Pounders. Under the leadership of Cullom and Tindell, Central cracked the Greenies 6-0 in a hard-fought City Prep contest.

For the third game Central traveled to Morristown where they received their first defeat of the season. This game was exciting as both teams scored freely and ended 25-18 in Morristown's favor.

The Central-Kingsport fray, played on Frawley Field, was one of the best games of the year. Many thrills occurred while fans were held in suspense throughout the game. Central took the lead twice with passes completed from Cullom to Norvell only to be on the short end of the score, 20-14. The line play was especially good on the part of McKenney, Kelley, Helms, Norvell, and Stevens. Cullom, Tindell, and Rhinehart also deserve much credit for their excellent playing in this game.

After taking the bumps in a couple of games, Central came back with a great showing against a fast Rome team. The Purples

played a fine brand of ball both on offense and defense to whip Rome 19-6. Buddy Stevens and Raymond Fullum helped pave the way for this victory.

Central next met Etowah on Frawley Field and truned on the biggest scoring spree since 1918 by outdoing Etowah 53-0. This was a fine comeback for the Purple Pounders.

The last game on the hard schedule was a City Prep contest with Chattanooga High, and one which decided the City Champs for '39. City was highly favored over the Pounders but the eleven wildcats of Central would not give up until the final whistle.

This game was filled with hard running and tackling which made fans squirm in their seats.

With the Central team work the Pounders managed to push over a touchdown in the last period only to miss the extra point. Almost in the face of a victory for Central, City took the ball and marched down the field and chalked up a score of 7 to Central's 6.

Although not victorious on the field through the season as a whole, this team was never beaten in spirit, a fact shown decisively in that last memorable struggle on Chamberlain Field, December 2, before a record-making crowd of 8,000. This team was victorious even in defeat.

Results of the season were as follows: Soddy-Daisy, 7; Central 7. Notre Dame, 0; Central, 6. Morristown, 25; Central, 18. Kingsport, 20; Central, 14. Evansville, 40; Central, 6. Asheville, 19; Central, 0. Bradley, 7; Central, 6. Rome, 6; Central, 19. Etowah, 0; Central, 53. Erwin, 6; Central, 6. Ensley, 14; Central, 13. City, 7; Central, 6.

COACHES

S. DEAN PETERSEN
Head Coach

GEORGE MCCOY
Line Coach

JOHN MICHAEL
Second Team Coach

RALPH OLINGER
Second Team Coach



LETTERMEN

JOHN BASKETT Guard
BILL BIRCHFIELD Back
C. L. CARVER Tackle

JOHN CULLOM (CAPTAIN) Back
RAYMOND FULLUM Back
SHIRLEY GARDENHIRE End

WALTER GARVEY Back
FRED HELMS Center
WILLIAM KELLEY Tackle

FRED MCKENNEY Tackle
WILSON NORVELL End
MAC RHINEHART End

HAROLD SHORT Tackle
M. C. STEPHENS Back
MILES STEVENS Guard

MILTON TINDELL (ALTERNATE CAPT.) Back
TOMMY WALKER Guard
CHARLIE WHITE Guard





REMINDERS OF THE SEASON

GARVEY
RETURNING PUNT

CHEER AND SONG LEADERS

(Standing) Richard Camp, Ed Pierce,
Charles Rymer, James Hammick.
(Kneeling) Peggy Cook, Helen Hag-
gard, Betty Jo Bowen.



TINDELL
DRIVING

FOOTBALL MANAGERS

Frank Blair, Bill Gates, Ernest Coffelt,
Charles Gates, Thurman Hutson, Ed
Covington.



SECOND TEAM (or) GRASS CUTTERS

(Back Row) Thompson, Hobbs, Stan-
ley, Thaxton, Raulston, Cullom.
(Middle Row) Cooke, Allison, Duck-
ett, Kelley, Allender, Read, Grant.
(Front Row) Graham, Hullender,
Trundle, Ligon, Hill, Richberg.

NORVELL GOES
FOR A PASS



VARSITY SQUAD

(Back Row) Smith, McKenney, Rhine-
hart, Helms, Kelley, Norvell, Carver,
Coppenger. (Middle Row) Short,
White, Fullum, Stephens, Tindell, Ste-
vens, Birchfield, Spurlock. (Front
Row) Coleman, Gardenhire, Baskett,
Patterson, Cullom, Poston, Carden,
Roberts, Garvey.

STEPHENS
SCORING





Ferdinand Oliver, winner 1940 "Times" Five Mile Race

The spring of 1939 found approximately fifteen boys going out for Central's first track team since 1930.

The principal men on the team were Fred McKenney, a good man in the field events; Jackson Baker, a fast runner from Brainerd Junior High; Wilson Norvell, an all-around event man; Gilbert Raulston, Jimmy Ledbetter, Ferdinand Oliver, Lamont Hall, and Charles Crabtree, all of whom were good runners.

This group with the aid of Coaches George McCoy and Jack Rodman developed into a

T R A C K

good team. Although they were defeated in the two meets, they gave evidence of great improvement.

Since Central had not had a track team for several years, these boys had to pay the price of inexperience and lack of equipment, but under existing circumstances made a good showing even with more experienced teams.

The first meet was held at Lee High in Chickamauga, Georgia. All the boys showed their ability to do their special events. McKenney, Baker, and Norvell were high scorers in this meet. Lee High won by a score of 47½ to Central's 38½.

The last meet, a hard-fought contest because of the rivalry between the schools, was with Chattanooga High School. Central made a good attempt, but City had the advantage of experience and won 71½ to 50½.

Seated: Broyles, Baker, Pfitzer, McKenney, Norvell, Oliver
Standing: Raulston, Hicks, Ledbetter, Du Tiel, Bowman, Coach McCoy



B A S E B A L L



Co-Captain J. R. Ligon—pitching

Though Central's baseball team began the season in the spring of 1939 with poor prospects, good work on the part of Coaches Bales and Millsaps, together with excellent team work, led to a triumphant season as City Champions.

Herman Morris and J. R. Ligon, both stellar players, were the co-captains.

The season started off very slowly with the team losing to Darlington 15-0. Things looked gloomy indeed, but the boys fought hard and managed to win every game remaining on the schedule.

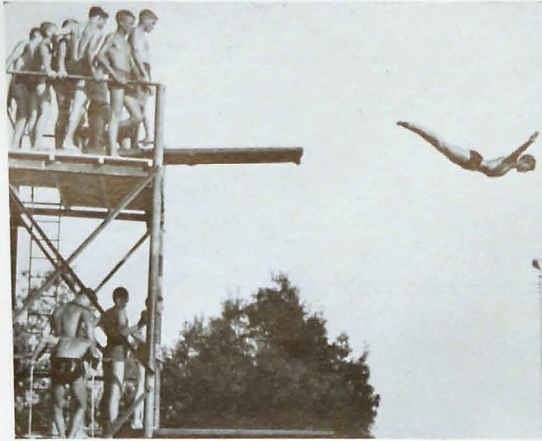
Mac Rhinehart, a new addition to the team, was the spark plug in hitting, and with the co-operation of the other players helped win the fourth consecutive City Championship.

The Champions beat Chattanooga High twice, Bradley and McCallie twice, and finally came out victorious over Darlington by a score of 13-0, the team which had piled up such a large score and handed the Central team their only defeat.

The team, composed of Morris, Ligon, Satterfield, Geton, Kimsey, Tindell, Rhinehart, Bonine, Scarbrough, Belvin, Magette, and Coppinger, deserve much credit for the fine performance which they showed in 1939. This splendid record is a challenge to succeeding teams to maintain the high standard set up by the team of '39.

Seated: Nichols, Morris, Belvin, Rhinehart, Ligon, Scarbrough, Coppinger, Magette
Standing: Coach Bales, Kimsey, Jackson, Bonine, Satterfield, Geton, Coleman, Ethridge, Manager Moss





Southern Champion Percy Walters doing the "swan" dive

SWIMMING

tion on the All-American team.

In their first meet the team was swamped by Darlington 48 to 18. In the next meet they tied McCallie, who were later State Champions, and came out with a score of 33 to 33. Central lost to Castle Heights, who

were later Mid-South Champions.

Coach Jack Rodman worked hard and did a good job in rounding out the boys in fine shape for their tough competition.

The following is the record of the year's events: 50-yard dash freestyle—Tittle, Kimbrough; 100-yard dash freestyle—Tittle, Oliver; 100-yard dash backstroke—Avans, Frazier; 220-yard dash freestyle relay—Carden, Avans, Walters; 160-yard freestyle relay—Manning, Carver, Williams, Kimbrough; diving—Walters and Coffelt.

The swimming team composed of Bill Carden, Percy Walters, J. D. Manning, Ruddy Kimbrough, Ernest Coffelt, C. L. Carver, John Avans, Bill Frazier, and Alan Tittle met stiff competition from the beginning to the end of the season.

All the boys were good sports, showed a fine spirit, and stayed in and fought to the last although the scores chalked up against them. The outstanding stars probably were Carden and Walters. Percy, with his unusual skill on the spring board, was the Southeastern Diving Champion and was also given honorable men-

Coach Rodman, Coffelt, Manning, Harsh, Kimbrough, Tittle, Frazier, Carroll, Oliver, Carden, Carver



GOLF

In the spring of '39 a group of four boys started practicing for what was to be Central High's Golf Team.

The lack of experience was at first a source of worry to K. W. Johns, the coach, but a fighting Central team never gives up even when the odds are against them.

These boys worked hard to get in shape for their tough opponents.

The golf team is composed of four men who are arranged in order of hitting ability. This team consisted of Vernon Smith, captain and number one man, followed by Willard Miller, a good little man; next came W. A. Miller, the brother of Willard, who was also a good hitter;



Bob Lend and W. A. Miller watching. W. Miller putting

the last but not the smallest was Frank Blair, who had a good all-round average.

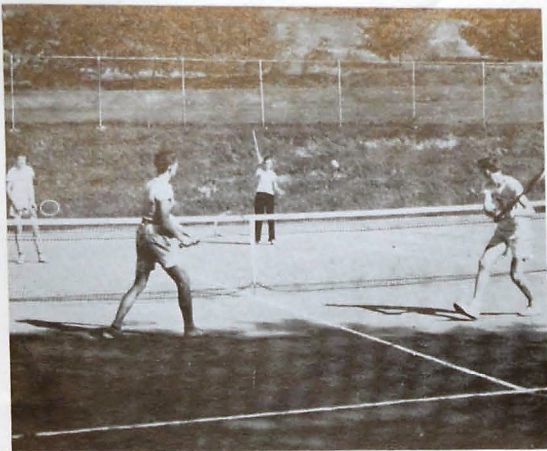
Owing to the inexperience of the team their season ended in a tie, two wins and two losses. They defeated McCallie and Chattanooga High, but lost to Baylor.

The team was entered in the Southern Prep Tournament held on the Riverview course. Central did well to place fifth against the good teams who entered.

With all members returning this year, the prospects for a successful season are bright.

Coach Johns, W. Miller, W. A. Miller, Smith, Blair, Lend





"Warming up" before the McCallie matches

The tennis team suffered considerable loss because of the graduation of Joe Hammack, Henry Hobday, and Earl Silvers. However, as a few of the regulars of '38—Roy Towns, Albert Little, and J. C. Rogers—returned and helped make up the new squad, the prospects for the season looked bright after all.

The first few weeks were spent eliminating and preparing for the beginning of the season. In spite of handicaps, all Central teams improved as the season progressed.

Under the leadership of the new coach, Mr.

TENNIS

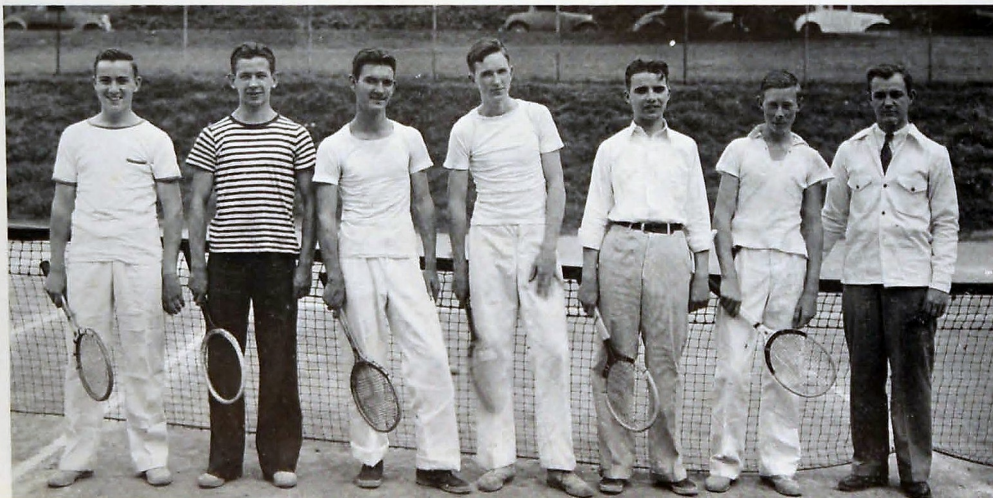
Harmon Smith, an outstanding player in the city, and of Mr. Jack Rodman, the swimming coach, Central's team was soon in trim.

The schedule played was a hard one, but the Central racketeers managed to overcome much of the opposition.

Central played all the high schools of the city, including McCallie, Baylor, Notre Dame, and Chattanooga High; and two out-of-town schools, Bradley and T. M. I. Though Central didn't take the city crown, they played a fine brand of tennis.

It is hoped that the long-anticipated courts on Frawley Field will be ready for use by the teams of 1940 and that a better season is ahead.

Case, Sliger, Cornelson, Little, Towns, Rogers, Coach Smith



BASKETBALL

Champions of East Tennessee! That is the tune to which Central returned from the Regional Tournament at Kingsport March 16. Added to this triumphant record is the possibility of an additional title which might make the Purples hardwood champions of Tennessee.

Under circumstances not so promising, Coach Bales began the season with only one regular but several very enthusiastic new comers. With the election of Mac Rhinehart as captain and Joe Thompson as alternate, things began to take shape and prospects for a good season loomed ahead. Never has a team had a better liked or more capable leader than Rhinehart. Many times these basketballers faced men larger physically but never were they surpassed in courage, determination, and sheer fighting power.

The starting line-up consisted of: Forwards—Tom Simpson and Ralph Casey; center, Mac Rhinehart; guards—Joe Thompson and Shirley Gardenhire. These with later recruits pushed the winning streak forward.

Central ended the City Championship in a tie with McCallie. Later in the Eleventh District meet she was a runner-up but lost to Bradley by a close score.

Sweet was revenge over Bradley at Kingsport, March 16, in the Regional meet when Central proudly bore away the trophy as champions of East Tennessee.

In successive contests Rhinehart and Simpson were selected on the All-City and later on the All-Tournament teams both at Cleveland and Kingsport. Rhinehart made all-state.

The season of 1940 will always be outstanding as one of the best in Central's hardwood history.



Left: Casey, Gardenhire with ball, in Eleventh District Tournament game with Charleston.

RESULTS OF THE SEASON

Central 21: Charleston . . . 20	Central 23: Erwin . . . 36
Central 38: Soddy Daisy . . . 26	Central 23: Kingsport . . . 37
Central 30: Etowah . . . 20	Central 36: Bristol . . . 33
Central 48: Kingsport . . . 31	Central 38: Erwin . . . 30
Central 33: Englewood . . . 26	Central 23: Baylor . . . 19
Central 24: McMinn . . . 26	Central 30: Morristown . . . 25
Central 25: City . . . 31	Central 18: McCallie . . . 37
Central 24: Bradley . . . 23	Central 40: Notre Dame . . . 34
Central 30: City . . . 22	Central 25: Bristol . . . 21
Central 35: Soddy Daisy . . . 30	Central 36: Knoxville City . . . 21
Central 27: Notre Dame . . . 19	Central 35: McCallie . . . 23
Central 18: Knoxville City . . . 31	Central 36: Baylor . . . 30
Central 30: Morristown . . . 21	Central 38: City . . . 27

Eleventh District Tournament

Central 58: Red Bank . . . 17	Central 27: City . . . 26
Central 28: Charleston . . . 24	Central 28: Bradley . . . 35

East Tennessee Tournament

Central 28: Sevierville . . . 24	Central 44: Chuckey . . . 20
Central 44: Knoxville City . . . 33	Central 21: Bradley . . . 19

State Tournament

Central 34: Grand Junction . . . 33	Central 26: Father Ryan . . . 45
Central 26: Springfield . . . 34	

Seated: Gardenhire, Thompson, Rhinehart, Casey, Simpson
Standing: Hammel, Beaver, Deakins, Clarke, Coach Bales, Blackman, Cornelson, Miller, Ethridge



C O - E D

S P O R T S

BASKETBALL

TUMBLERS

RELAYS

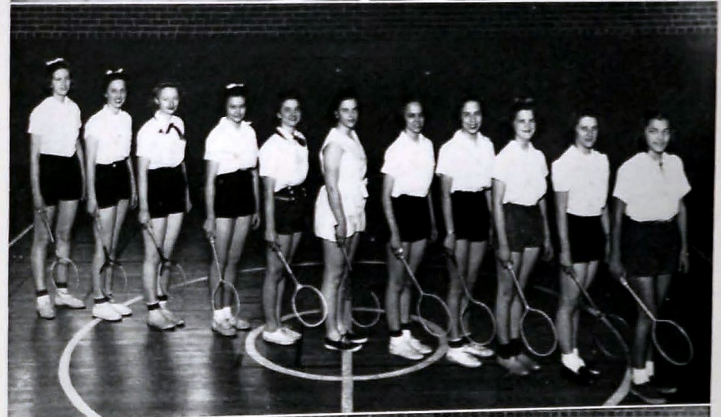
BADMINTON

DODGE BALL

ACES

SOCCER

OFFICE FORCE





MAJORETTES

Betty Jo Bowen and Helen Haggard

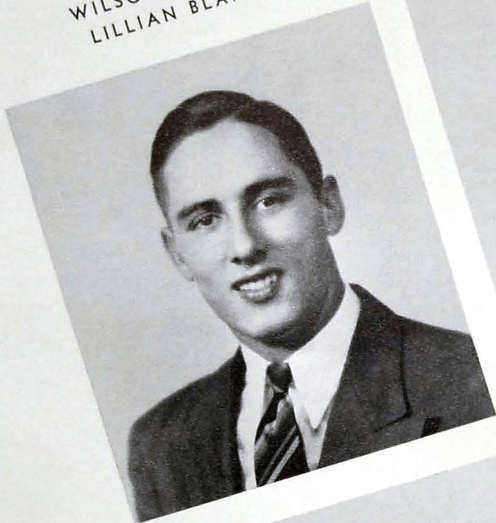
FEATURES

SENIOR STATISTICS

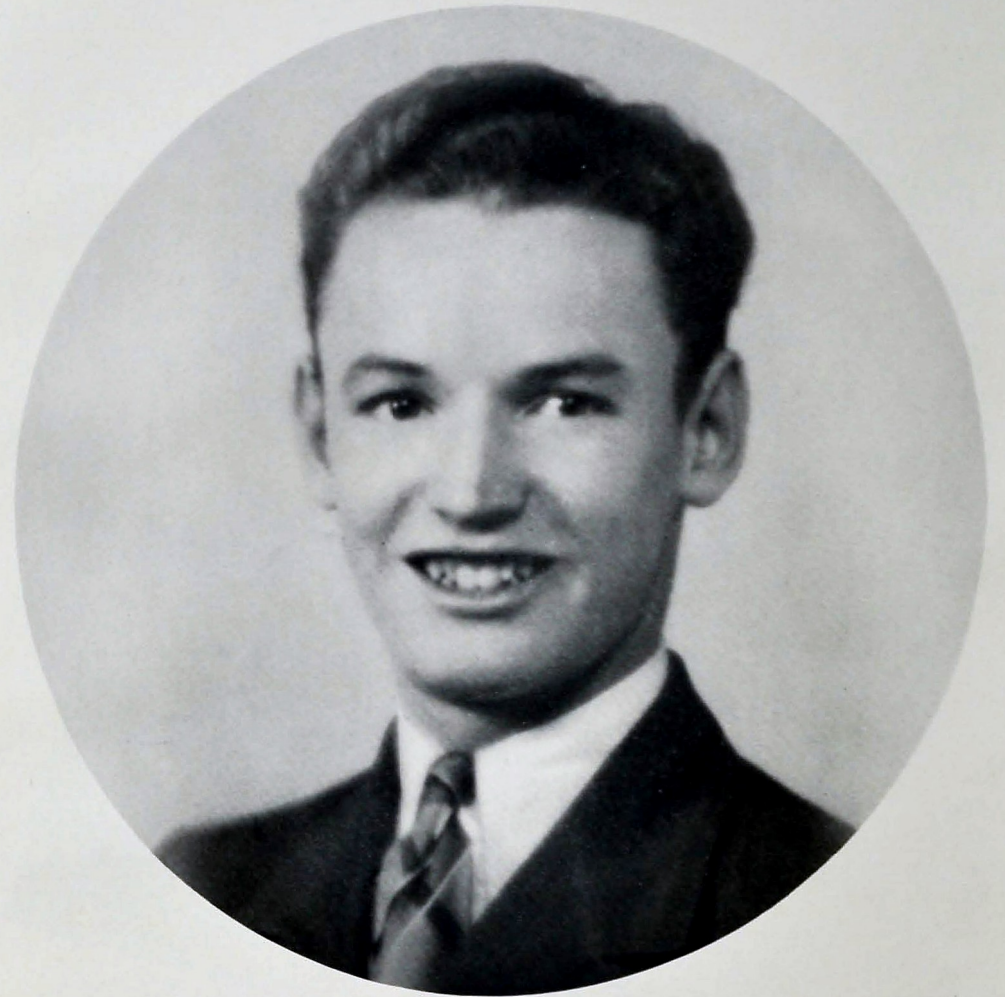
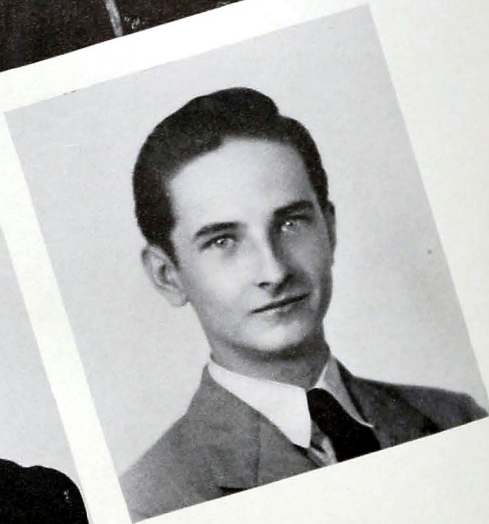
BY VOTE OF THE CLASS

GLENN DEAN	Service
ROBERTA CRAWLEY	Service
WILSON NORVELL	Leadership
RUBIE ARCHIE	Leadership
CURTIS ERWIN	Dependability
LILLIAN BLAIR	Dependability
NORMAN RATCHFORD	Personality
ETHEL WILLIAMS	Personality
ROBERT THORNBURG	Friendliness
BETTY SYLAR	Friendliness
GORDON SEIBOLD	Scholarship
MARTHA BEVERLY	Scholarship
J. R. BILLINGSLEY, JR.	Naturalness
MARY ELLEN GREENE	Naturalness
JOHN CULLOM	Athletic
MARTHA STEAKLEY	Athletic
JAMES MARLOW	Adaptability
HARRIETT SUE TURNER	Adaptability

WILSON NORVELL
LILLIAN BLAIR

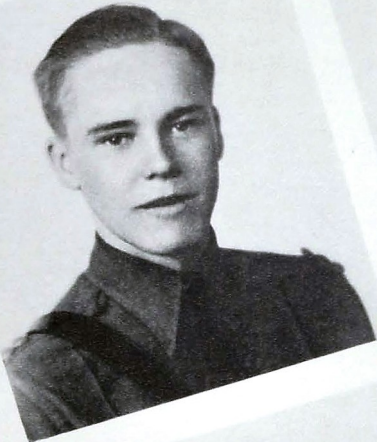


RUBIE ARCHIE
CURTIS ERWIN



Glenn Dean

ROBERT THORNBURG
ETHEL WILLIAMS



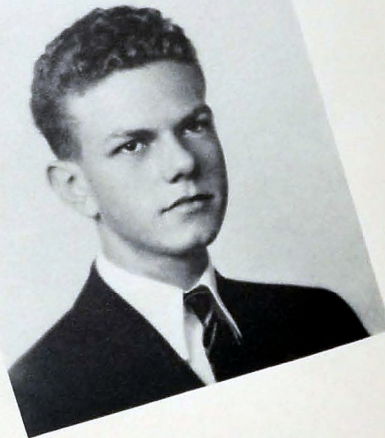
BETTY SYLAR
NORMAN RATCHFORD



Roberta Crawley

J. R. BILLINGSLEY, JR.
MARTHA BEVERLY

MARY ELLEN GREENE
GORDON SEIBOLD



JOHN CULLOM
HARRIETT SUE TURNER

MARTHA STEAKLEY
JAMES MARLOW



T H E G I R L S ' B A T T A L I O N

Three Year Honor Students and

COMMENCEMENT SPEAKERS

MARIE CLAIRE ANDREAE	Three Year Honor Student
MARTHA BEVERLY	Three Year Honor Student and Salutatorian
J. R. BILLINGSLEY, JR.	Three Year Honor Student
NORA HELEN DEAN	Three Year Honor Student
CURTIS ERWIN	Class Representative
LESLEY WINIFRED GOODSON	Three Year Honor Student
JEAN HAWKINS	Three Year Honor Student
ALINE JENSEN	Three Year Honor Student
CLATICE ARLINE JONES	Three Year Honor Student
EUGENIA FAYE KEOWN	Three Year Honor Student
MARJORIE McWATERS	Three Year Honor Student
JAMES MARLOW	Reader of the Will
WILSON NORVELL	Historian
NORMAN RATCHFORD	Prophet
THOMAS GORDON SEIBOLD	Three Year Honor Student and Valedictorian
JANNIE ELIZABETH TALLANT	Three Year Honor Student and Faculty Representative
HELEN THOMAE	Three Year Honor Student
DAN ANDERSON THOMAS	Three Year Honor Student and Poet
AMELIA ANN WALKER	Three Year Honor Student





CAMPUS VIEW

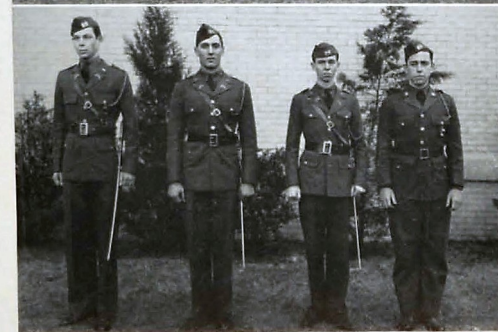
ORGANIZATIONS



Seated—Billingsley, Seibold, Dean, Erwin, Camp, Norvell
Standing—Sylar, Ratchford, Williams, Leeper, Hodges

CHAMPION STAFF

CURTIS ERWIN	Editor-in-Chief
J. R. BILLINGSLEY, JR.	Business Manager
GORDON SEIBOLD	Senior Editor
BETTY SYLAR	Feature Editor
NORMAN RATCHFORD	Military Editor
WILSON NORVELL	Sports Editor
ETHEL WILLIAMS	Club Editor
C. J. BIVENS	Photographic Editor
HELEN DEAN	Typist
ANNE HODGES	Junior Editor
ALICE CAMP	Sophomore Editor
MIRIAM LEEPER	Freshman Editor
MISS SALLY MAY KING	Sponsor
MR. A. PIERCE STEWART	Sponsor



C E N T R A L ' S

REGIMENTAL STAFF

BEN THOMPSON Lieutenant Colonel
Executive Officer
JOHNNY AVANS Captain
Intelligence Officer
GLADWIN KIRK Regimental Captain
Adjutant
NORMAN RATCHFORD Colonel
Commanding Officer
JAMES REESE Captain
WARREN WHITE Captain
Publicity Officer

FIRST BATTALION STAFF

DONALD MARTIN First Lieutenant
WILSON NORVELL Major
ROBERT GRAY Second Lieutenant
FRED COFER Sergeant

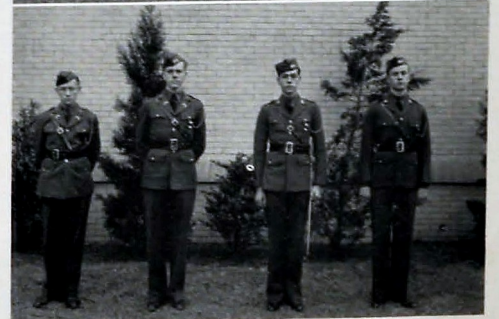
R E G I M E N T

SECOND BATTALION STAFF

HUGH MARLIN First Lieutenant
ALLEN BROYLES Major
NORMAN CASSELL Second Lieutenant
BILLY STANDIFER Sergeant

BAND OFFICERS

J. R. BILLINGSLEY, JR. Second Lieutenant
GORDON SEIBOLD First Lieutenant
ZACK ALLMAN Captain
CARL HUNTER Second Lieutenant



MILITARY SPONSORS AND

OFFICERS WHO SELECTED THEM



WILSON NORVELL
Major, First Battalion

ALLEN BROYLES
Major, Second Battalion

JOSEPH O'HARA
Captain, Company A

FRANCES ROGERS
Sponsor, Company B

RUBIE ARCHIE
Sponsor, Second Battalion

RUBY LEE ELLINGTON
Sponsor, Company A

RUDDY KIMBROUGH
Captain, Company B

MILTON TAYLOR
Captain, Company E

GLENN DEAN
Captain, Company G

DOROTHY SHEDD
Sponsor, Company B

LILLIAN BLAIR
Sponsor, Company E

MARTHA BEVERLY
Sponsor, Company G

ROBERT THORNBERG
Captain, Company C

WAYMON ROSE
Captain, Company F

ZACK ALLMAN
Captain, Band

NANCY TIMMONS
Sponsor, Company C

BILLIE STERN
Sponsor, Company F

ETHEL WILLIAMS
Sponsor, Band



NORMAN RATCHFORD
Colonel

ROBERTA CRAWLEY
Regimental Sponsor





Members of the Staff

DIGEST

ALINE JENSON	Editor-in-Chief	NATALIE SCHLACK	Exchange Editor
VIRGINIA SQUIBB	Times Page Editor	JEAN HAWKINS	Feature Editor
ROBERTA CRAWLEY	News Editor	LOUISE GEER	Librarian
JIMMY CROCKETT	Sports Editor	ANN HODGES	Girls' Sports Editor
ELIZABETH GLAZE	Club Editor	HARRIETT SUE TURNER	Local Editor
DORIS WILLBANKS	Copy Reader		

BUSINESS STAFF

ANN CARTER	Business Manager	MACK JORDAN	Advertising Manager
CURTIS ERWIN	Circulation Manager	BEULAH PARDUE	Secretary
EMILY JOHNSTON	Assistant Circulation Manager	JOCELYN PEELER	Secretary
ALICE CAMP	Bookkeeper	VIRGINIA ANN ALEXANDER	Secretary
LYDIA KIGER			Secretary

PRINTING STAFF

NOEL FRIZZELL	Foreman	BYRON STANDIFER	Make-up Man
DAVID CITY	Compositor	EARL MAYO	Pressman
BOBBY PROCTOR	Compositor	DAVID TARPLEY	Pressman
VANCE YOUNG	Compositor	GEORGE OWENS	Pressman
EDWIN ROBERTS	Make-up Man	TRESTER SULLIVAN	Pressman
PAUL COMSTOCK	Make-up Man	MISS SALLY MAY KING	Sponsor
LAWRENCE RODGERS	Make-up Man	MR. JAMES L. MILBURN	Sponsor

EDITOR JENSON
Working With Some of Staff

REPORTERS

Edwin Lansford	Clyde Sedman
Jo Ann Brown	Bobby Peace
Rochester DuTeil	Geraldine Jones
Eileen Scarbrough	Edward Pierce
Paul Bond	Kathleen Rackley
Grover Campbell	Fred Helms
Wanda McKinney	Jean Leavitt
Betty Day	Edward Thomas
Helen Crumley	Thelma Keown
James Howard	

MESSENGER

Vernon Pearson

TYPISTS

Sara Nell Vaughn	Helen Dean
Louise Layne	Helen Haggard
Blanche Leonard	Lillian Ling



Printing Department Personnel

PRINT SHOP

NOEL E. FRIZZELL, Foreman

CLYDE BROOKS

JACK BROOKS

JAMES CARPENTER

DAVID CITY

LAWRENCE CITY

JAMES GREENE

DAN GROVE

WARREN HANES

LUTHER IRELAND

RAYMOND JONES

VERNON PEARSON

BOBBIE PROCTOR

CLYDE SEDMAN

MARVIN SEIBOLD

DILL TRIMBLE

THOMAS GRIFFIN

JOHN CRABTREE

ARTHUR JENKINS

R. E. LEE

SAM NORMAN

JACK O'NEAL

LAWRENCE RODGERS

JOHN STARGEL

TRESTER SULLIVAN

GARNETT MANSFIELD

GEORGE OWENS

BYRON STANDIFER

CHARLES WILSON

FELTUS CAHOON

GEORGE BURKHART

JACK MALONE

FRED MERTINS

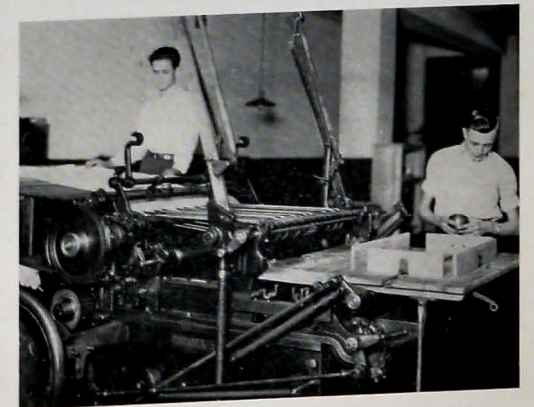
NEIL EPPERSON

JOHN HURST

J. C. BROUHARD

EARL MAYO

JAMES L. MILBURN, Instructor



Noel Frizzell

The New Press

Trester Sullivan



HOME ECONOMICS CLUB

OFFICERS

JUNE PARKS	President
LESLEY GOODSON	Vice-President
HELEN HARRIS	Secretary
PAULINE MEYER	Treasurer
BILLIE COLSTON	Program Chairman
JOSEPHINE DOREMUS	Program Chairman
MRS. JANE L. SHROPSHIRE	Sponsor
MRS. MERCER CLEMENTSON	Sponsor

MEMBERS

Doris Wilbanks
Barbara Smith
Betty Benedict
Lena Mae Hale
Betty Sylar
Betty Baker
Catherine Bond
Betty Ray

Mary Pless
Alice Meyer
Norma Jones
Jane Breaker
Marie Grimming
Betty Dudderar
Bobbie Ruth Hodges
Jo Ann Brown
Flora Nell Hawkins

Bertha Fields
Betty Shearer
Muriel Majure
Cleo McMurray
Ruth Evelyn King
Alice Lindeman
Rubie Archie
Zelda Baker



COMMERCE DEPARTMENT

BACK ROW

BILL EDWARDS
MARTHA BEVERLY

ANNA L. WOMACK
ROBERT BURNETTE
LILLIAN BLAIR

LAWRENCE CHESTER
HARRIETT S. TURNER

FRONT ROW

TEDDY CUSHMAN
J. R. BILLINGSLEY, JR.

MAC ERWIN
GLENN DEAN

JUNE TURNER
MRS. LYDA G. RICE, Sponsor



SENATE

OFFICERS

MORRIS QUAVE	President	GILBERT RAULSTON	Chairman of Rules and Regulations Committee
ROBERTA CRAWLEY	Vice-President	ELIZABETH GLAZE . . .	Chairman of Program Committee
VIRGINIA SQUIBB	Secretary	MURIEL LLOYD	Chaplain
ALINE JENSEN	Chairman of Finance Committee	MISS BETTY MAE COLLINS	Sponsor
BEN FOXWORTH	Chairman of Membership Committee	MR. ARLIE HOODENPYL	Sponsor
NORMAN CASSELL	Chairman of Publicity Committee		

MEMBERS

Virginia Anderson	Arby Dickert	Dorothy O'Brien
Pat Baker	Rochester Du Teil	Betty Peace
Edwin Bisplinghoff	Louie Goodner	Bobby Peace
Mary Ruth Bradshaw	Jean Hawkins	August Pfitzer
Barbara Brandt	James Howard	David Reynolds
Bob Brown	Jimmy Hunerwadel	Joe Spearman
Jack Cassell	Betty Ingle	Bill Stevens
Dorothy Davis	Mary Anne Jackson	Ben Thompson
Doris Dean	Mack Jordan	Jack Trimble
Glenn Dean	Betty Lamb	Amelia Walker
	Edwin Lansford	
	Bill Lloyd	
	Mary Francis McConkey	



NATIONAL HONOR SOCIETY

OFFICERS

First Semester

GLENN DEAN	President	DAN THOMAS	Treasurer's Aide
MARTHA BEVERLY	Vice-President	MRS. JOHN A. SHELTON	Sponsor
HARRIETT SUE TURNER	Secretary	MR. J. S. HUNT	Faculty Treasurer
MISS GRACE LASATER	Faculty Secretary		

OFFICERS

Second Semester

J. R. BILLINGSLEY, JR.	President	JANNIE TALLANT	Secretary
LILLIAN BLAIR	Vice-President	NORMAN CASSELL	Treasurer's Aide

MEMBERS

Mozell Barronton	Dorothy Shedd	Betty Sylar	Ann Elizabeth Green
J. R. Billingsley, Jr.	Martha Beverly	Agnes Cooper	Wanda Bales
Barbara Brandt	Lillian Blair	Frances Nelson	William Ragsdale
Betty Jo Cayce	Norman Cassell	John Baskett	Ida Keer
Roberta Crawley	Ruth Charlesworth	Charlyne Wyrick	Gilbert Raulston
Helen Dean	Glenn Dean	Allen Broyles	Anne Carter
Noel Frizzell	Curtis Erwin	Lucille Bowman	Robert Simms
Mary Ellen Green	Lesley Goodson	Helen Haggard	William Edward Chambers
Aline Jensen	Jean Hawkins	Rose Elma Beene	Ruth Ward Clark
Faye Laws Mason	Clatice Jones	Lawrence Chester	Lena Mae Hale
Gladys Ragle	Norma Pedigo	Marion Groves	Faye Keown
Jannie Tallant	Gordon Seibold	Mary Elizabeth Hopson	Katherine Tinker
Dan Thomas	Helen Thoma	Pauline Meyer	Betty Swafford
Amelia Walker	Harriett Sue Turner	Billie Sterne	Blanche Louise Leonard
Mary Ann Jackson	Eileen Scarbrough	Betty Lee Wolf	Lucy Smith
Priscilla Foreman	Virginia Squibb	Louise Roth	Tressa Thomas
	Wilson Norvell	Robert Thornburg	



VARSITY GLEE CLUB

OFFICERS

CARL HUNTER	President	GLENN WESTBROOK	Librarian
JAMES MARLOW	Vice-President	GENE MAY	Assistant Director
MELBA VICK	Secretary-Treasurer	MR. K. W. JOHN	Director

MEMBERS

Eva Anderson	Louis Goodner	Gene May
Martha Atwood	Mary Frances Gross	Irene Miles
Bill Baker	Henry Hankins	George Musgraves
Rome Benedict	Mary Elizabeth Henderson	June Parks
Clara Boyd	A. G. Hobbs	Jocelyn Peeler
Fred Brand	Charles Hudson	Eudora Riddick
Monica Rose Brown	Carl Hunter	Richard Rivers
Alice Camp	Charlene Jacoway	Tommie Lou Strickland
Marchita Cochran	Emily Johnston	James Valentine
Madge Cooper	Bobbie Jones	Melba Vick
Thomas Craighead	Leona Jones	Glenn Westbrook
Evelyn Goodlet	Lydia Kiger	Riley Westbrook
Louie Goodner	James Marlow	Theresa Woodfin

ACCOMPANISTS

Mary Ellen Green	Mary Louise Bigley
------------------	--------------------



ORCHESTRA

OFFICERS

CARL HUNTER	President	DOROTHY PORTER	Secretary-Treasurer
EDDIE PIERCE	Vice-President	HOWARD THOMAS	Librarian-Assistant Director
MR. K. W. JOHN	Director		

VIOLIN

Jane Johnston
(Concert and Master)
Gene May
Mary Hopson
Donald Simpson
Bill Tarwater
Howard Thompson
Jannie Tallant
Pauline Buckner
Estelle Carter
Bettye Skeen
H. L. Underwood
Frances Ray
Harris Kenyon
Kathryn Green
Lellie Morris
Mary Frances Watkins
Jimmie Bales

VIOLO

Dorothy Porter
Marie Kinser
Nellie Tallant
Marcheta Cochran

CELLO

Mildred Lehman
Maxine Morton
Ruth Ling
Nancy Bennett

BASS VIOLIN

Paul Shelton
Marjorie Daugherty
Hazel Clement
Glenn Fisher
Ernest Johnson

FLUTE

Bob Brown

OBOE

Jimmy Couch

CLARINET

Ed Poque
Eleanor Brien
Den Girton

BASSOON

Ed Pierce

DRUM

Maurice Waller
Charles Watson
Betty Arnold

PIANO

Virginia Hudgens



ANCHORS AWEIGH CLUB

BETTY BOWMAN President
 RUTH ECHOLS Vice-President
 MARTHA BEVERLY Secretary
 IRENE ELLINGTON Treasurer
 MISS MARY ELLEN RICE Sponsor



BACHELORS CLUB

CHARLES LINDSAY President
 BILLY VALENTINE Vice-President
 J. C. WALKER Secretary and Treasurer
 MR. ARLIE HOODENPYL Sponsor



BETTY CO-ED CLUB

JUNE PARKS President
 JIMMIE McCLURE Vice-President
 HELEN HARRIS Secretary
 FRANCES ROGERS Treasurer
 MISS JO MASTERSON Sponsor



BIBLE CLUB

BLANCHE LEONARD President
 FLORENCE BARBER Vice-President
 BETTY JANE BENEDICT Secretary
 STEVE RODDY Treasurer
 MISS RACHAEL McALLISTER Sponsor

BIOLOGY CLUB

GLADWIN KIRK President
 GILBERT L. RAULSTON Vice-President
 LOUISE PAYNE Secretary
 LOUISE PAYNE Treasurer
 J. STEGER HUNT Sponsor
 MISS JO ORE Sponsor



BOYS HI-Y—(SENIOR)

GLENN DEAN President
 MACK JORDAN Vice-President
 DAN THOMAS Secretary
 DONALD PFITZER Treasurer
 MR. J. POPE DYER Sponsor



BOYS HI-Y—(JUNIOR)

FRED DIAL President
 BILL STEVENS Vice-President
 EDWIN LANSFORD Secretary
 JAMES HOWARD Treasurer
 MR. MILTON ALLEN Sponsor



CAMERA CLUB

SIDNEY MAJURE President
 IDA KERR Secretary
 CHARLES LINDSEY Treasurer
 MISS VIRGINIA HARRELL Sponsor



CANDY CREW

CLEO McMURRAY LOUISE GEER
 DOROTHY MITCHELL
 ANNA BARBARA FREUDENBERG
 MR. AND MRS. W. H. TEMPLETON, Sponsors

CENTRAL BLUE JACKETS

GERALDINE JONES President
 BETTY MARLOW Vice-President
 DORIS DEAN Secretary
 MARY GUY SPRINGER Treasurer
 HARRIETT SUE TURNER Senior Adviser
 MISS CARRIE DAVENPORT Sponsor

CENTRAL LITERARY CLUB

LAURA DELL REYNOLDS President
 ELIZABETH KELL Vice-President
 ROSE ELMA BEENE Secretary
 MARIAN VANN Treasurer
 MRS. HARRY NELSON Sponsor

DEPRESSION CLUB

J. C. WALKER President
 EDWARD PIERCE Vice-President
 ALLAN BROYLES Secretary
 EUGENE HALL Treasurer
 MRS. HENRY B. ROBINSON Sponsor

DRAMATIC CLUB

ROBERT THORNBURG President
 ALINE JENSEN Vice-President
 LILLIAN BLAIR Secretary
 PEGGY SPARKS Treasurer
 MISS ELLEN MULLENNIX Sponsor

ETIQUETTE CLUB

MURIEL LLOYD President
 BILLY VALENTINE Vice-President
 ALINE JENSEN Secretary
 MORRIS QUAVE Treasurer
 MISS DOROTHY FRENCH Sponsor

EXCLUSIVE CLUB

ANN ELIZABETH GREEN President
 PEGGY DURHAM Vice-President
 DORIS WILBANKS Secretary
 VIRGINIA RICE Treasurer
 MRS. D. S. COUGHLIN Sponsor

GIRLS HI-Y

ROBERTA CRAWLEY President
 LILLIAN BLAIR Vice-President
 BETTY BOWMAN Secretary
 BETTY SYLAR Acting Secretary
 BARBARA BRANDT Treasurer
 MRS. JOHN A. SHELTON Sponsor
 MRS. ANNA B. LACEY Sponsor





GIRLS RESERVES—(SENIOR)

LILLIAN BLAIR President
HELEN HAGGARD Vice-President
MOZELLE CHILDERS Secretary
RUTH DAVIS Treasurer
MRS. HARRY BROWN Sponsor



GIRLS RESERVES—(JUNIOR)

MARTHA STUTZ President
CHARLSIE BOSS Vice-President
LOUISE GEER Secretary
HELEN CRUMLEY Treasurer
MISS FLORA BECK Sponsor



GIRLS RESERVES—(SOPHOMORE)

MARTHA JANE CLARK President
BETTY MARLOW Vice-President
MARY FRANCES McCONKEY Secretary
DORIS HYER Treasurer
MRS. W. D. JACOWAY Sponsor



GIRLS RESERVES—(FRESHMEN)

JUNE TURNER President
DOROTHY BREWER Vice-President
BETTY SUE BARKER Secretary
BOBBIE THOMAS Treasurer
MISS ANN MOFFITT Sponsor

GRADY LITERARY SOCIETY

GLENN DEAN President
BEN FOXWORTH Vice-President
DAN THOMAS Secretary
MACK JORDAN Treasurer
MR. C. J. ANDERSON Sponsor



ICE CREAM CREW

SALLY MIMMS RUBY JOHNSON
MARTHA LOUISE COX
BARBARA JONES
EMILY MORGAN
MR. C. J. ANDERSON, Sponsor



BLACK CATS

JO ANN BROWN President
VIRGINIA ANDERSON Vice-President
EMILY JOHNSTON Secretary
FLORA NELL HAWKINS Treasurer
ELIZABETH GLAZE Program Chairman
MISS VESTA NELSON Sponsor



NITE OWLS

FRANCES ROGERS President
CHARLOTTE FOWLER Vice-President
BETTY JO BOWEN Secretary
EVELYN JOHNSON Treasurer
MRS. A. B. ROGERS Sponsor





OFFICERS CLUB

NORMAN RATCHFORD President
ALLEN BROYLES Vice-President
JOSEPH O'HARA Secretary
ROBERT THORNBURG Treasurer
MISS EDNA CROSS Sponsor



SERGEANTS CLUB

TED EVANS President
RALPH CASEY Vice-President
ROBERT HARRIS Secretary
DONALD PFIZER Treasurer
MISS VESTA NELSON Sponsor



SEVENTEENERS CLUB

BETTY DAY President
SARA HOLLEMAN Vice-President
DOROTHY NELLE ALLMAN Secretary
MELBA VICK Sponsor
MISS MINNIE LEE MORGAN Sponsor



SPINSTERETTES

EMILY MORGAN President
MARY DERRICK Vice-President
ETHEL LEWIS Secretary
PATTY CRISWELL Treasurer
MRS. J. FRANK PRICE Sponsor

SPORTS CLUB

RUBIE ARCHIE President
JAMES VALENTINE Vice-President
ALLEN BROYLES Secretary
CHARLES LINDSEY Treasurer
MR. JOHN B. MICHAEL Sponsor



STAGE CREW

C. J. BIVENS Manager
ROBERT NICHOLAS Associate Manager
HAROLD MAYS Electrician
ALBERT WALLER Projection Manager
GEORGE OWENS Fly Floor Manager
MR. JACK RODMAN Sponsor



S. P. Q. R. CLUB

MARTHA BEVERLY President
DOROTHY SHEDD Vice-President
FAYE MASON Secretary
PRISCILLA FOREMAN Treasurer
MISS MARY LOU DERRYBERRY Sponsor



USHERS

BARBARA BRANDT President
ANN CARTER Vice-President
LESLEY GOODSON Vice-President
MISS MARGARET WAPLES Sponsor



PATRONS

ACME COAL CO., 6-1183 622 East 9th Street
 ARCHER PAPER COMPANY, 6-3189 1124-1126 Market Street
 ASPHALT ROOFING & SIDING CO., 6-8121 1108 McCallie Avenue
 ATHLETIC HOUSE Knoxville, Tennessee
 L. G. BALFOUR CO., Jewelers Attleboro, Massachusetts
 BAKERS GROCERY, 6-9221 201 Dayton Boulevard
 BENNETT-HUBBARD CANDY CO., 6-0015 234 East 11th Street
 BENSON PRINTING COMPANY Nashville, Tennessee
 BRADLEY & BANDY, Drugs, 6-4145 601 Market Street
 STANLEY BODIE U. S. Boat Yard
 THE BOYS SHOP, 7-3248 622 Market Street
 CAMERON & BARR BAKING CO., 6-8176 1615 Cowart
 C. E. CAMP, Esq., 7-2652 1516 Market Street
 DR. EARL R. CAMPBELL, 7-3354 525 McCallie Avenue
 E. Y. CHAPIN, Esq., 6-8131 American Trust & Banking Co.
 CHATTANOOGA ARMATURE WORKS, 2-2124 1215 Duncan Avenue
 CHATTANOOGA BUTTON & BADGE MFG. CO., 6-6934 109 East 7th Street
 CHATTANOOGA COCA-COLA BOTTLING CO., Inc., 6-5334 201 Broad Street
 CHATTANOOGA GAS CO., 6-0191 811 Broad Street
 THE CHATTANOOGA MEDICINE CO., 3-0030 3803 St. Elmo Avenue
 C. ELIAMS CROS. CO., Furniture, 6-7151 West 8th Street at Chestnut
 COMMERCIAL STATIONERY & SUPPLY CO., 6-1241 737 Cherry Street
 CONTOR BROS., Men's Clothing, 6-3023 529 Market Street
 CRISMAN HARDWARE COMPANY, 7-1114 511 Market Street
 DAVIDSON CLOTHING CO., 6-1218 811 Market Street
 ALEX De FLOREO, Ice Cream and Lunches 511 Dodds Avenue
 S. T. & W. A. DEWEES CO., Grocers, 7-1121 810 Market Street
 ECKERDS, Drugs 732 Market Street
 EDDY'S GRILL, 2-9612 3850 Brainerd Road
 EDMONDSON SCHOOL OF BUSINESS, 6-1259 Edmondson Building
 EDWARDS & LeBRON, Ltd., Jewelers, 6-7175 805 Market Street
 THE FISHER COMPANY, Jewelers, 6-0922 801 Market Street
 FOWLER BROS. CO., Furniture, 7-2174 701 Broad Street
 FOX BROS. CO., Wholesale Grocers, 6-3139 1215 King
 GORDON GAMBILL & CO., Insurance, 7-1482 116 East 7th Street
 GEORGE'S PLACE, Sandwiches, 6-9531 129 East 8th Street
 GINGHAM GIRL BEAUTY SHOP, 2-9215 2105 McCallie Avenue
 EDITH GOETZ, Florist, 7-3345 James Building
 H. W. GRANERT, Photographer, 6-7335 813 1-2 Market Street
 GRANT-PATTEN MILK CO., Inc., 6-1294 1220 King
 GULF GAS, W. F. SCHROEDER, 2-8214 2524 McCallie Avenue
 HAMILTON CIGAR STAND Hamilton National Bank Building
 HAMILTON COUNTY HERALD, 6-4033 617 Cherry Street
 HARDIE & CAUDLE, Clothiers, 6-7032 809 Market Street
 HARRIS & HOGSHEAD, Optometrists, 6-7545 13 East 8th Street
 HAVERY FURNITURE CO., 6-5196 619 Market Street
 HENDERSON & COLEMAN, Clothiers, 6-2814 1000 Market Street
 HOTEL PATTEN, 6-2141 Market at Eleventh
 C. C. HOWARD FURNITURE CO., 7-3254 55 East Main Street
 PEABODY HOWARD, Esq., 6-6969 Court House
 MR. AND MRS. W. T. HUTSON, 7-2502 1051 Englewood Avenue
 JACOBS WHOLESALE CANDY CO., 6-2728 925 Market Street
 JIMMIE'S FOOD MARKET 1922 Dayton Boulevard
 JOY'S, Florist, 6-7168 817 Market Street
 J. KASET WHOLESALE CO., Candy, 6-8711 1409 Carter Street
 KAYS ICE CREAM, 2-3032 3744 Brainerd Road
 KINGSPORT PRESS Kingsport, Tennessee
 C. D. KENNY CO., Wholesale Grocers, 6-5104 1302 Market Street

PATRONS

INEZ KIMBALL, Florist, 2-4771 2409 McCallie Avenue
 KING-DOBBS & CO., Wholesale Grocers, 6-1251 246 East 11th Street
 KOBLENTZ, Men's Store, 6-2764 812 Market Street
 S. H. KRESS & CO., 10c Store, 6-5631 708 Market Street
 J. C. LANSFORD PIANO CO., 6-0923 730 Cherry Street
 L. C. LEACH & CO., Jewelers, 7-2841 738 Cherry Street
 LeGRAND JEWELRY COMPANY, 6-6816 604 Market Street
 LIGGETTS ICE CREAM CO., 2-9535 1506 McCallie Avenue
 LING PRINTING CO., 7-3414 825 Chestnut Street
 LOVEMAN'S, Inc., Department Store, 6-0161 800 Market Street
 MARTIN-THOMPSON COMPANY, Sporting Good 6-1289 411 Provident Bldg.
 MAMIE SHARRENBARGER, Mass. Mut. Life Ins. Co.s, 7-3373 706 Cherry Street
 McDONALD GROCERY CO., 2-3125 2602 East Main Street
 MCKENZIE SCHOOL, 6-7157 401 Oak Street
 MILLER BROS. CO., Department Store, 7-1251 629 Market Street
 FLETCHER R. MORGAN, Attorney, 6-5732 Volunteer Building
 MOUNTAIN CITY STOVE CO., 6-0211 1240 Market Street
 MUTUAL DRUG CO., 2-1127 McCallie and Willow
 MUXEN-CASEY CO., Inc., Confectioners, 6-1325 217 West 9th Street
 NATIONAL SHIRT SHOPS, 6-9716 735 Market Street
 NEWTON-CHEVROLET CO., 6-0181 329 Market Street
 OSCAR'S SANDWICH SHOP, 2-9369 2522 McCallie Avenue
 PALMER CLOTHES, 6-3834 825 Market Street
 T. H. PAYNE CO., Office Supplies, 6-0138 821 Market Street
 PEOPLES STUDIO, Photographs, 6-9480 10 East 9th Street
 PHOTO-PROCESS ENGRAVING COMPANY Atlanta, Georgia
 POLLOCK'S, Co-Ed Shoes, 6-8862 722 Market Street
 POWELL MATTRESS CO., 6-1363 615 East Main Street
 QUINN DRUG CO., 2-3168 1400 Dodds Avenue
 THE READ HOUSE, 6-4121 West 9th Street
 RIDGE DRUG CO., 2-1171 418 Dodds Avenue
 RIDGE MOTOR SERVICE, 2-9161 909 Dodds Avenue
 RIDGE SHOE SHOP, 2-9165 413 Dodds Avenue
 RHYNE PHARMACY, 3-0069 117 Chickamauga Avenue
 R. K. SCHOLZE, Grocer, 2-2131 415 Dodds Avenue
 SEARS, ROEBUCK & CO., 6-7344 539 Market Street
 ZELMA F. SHERRILL, Circuit Court Clerk Court House
 SKATES DRUG STORE, 3-1156 Rossville, Georgia-Tennessee
 SPANISH GARDENS, Lunches, 2-9233 2232 McCallie Avenue
 A. F. STEINHOEFEL, Jeweler, 6-6249 14 West 8th Street
 A. G. STIVERS LUMBER CO., 6-7179 345 East Main Street
 STOVALL HARDWARE CO., 6-7101 711 Cherry Street
 TEMPLETON'S, Inc., Jewelry, 6-7628 12 West 8th Street
 W. H. TITTLE AUTO CO., 6-0127 341 Chestnut Street
 TURNER BROS. FUNERAL HOME, 6-2116 1805 McCallie Avenue
 UNIVERSITY OF CHATTANOOGA, 6-7363 McCallie Avenue
 VIOLET STUDIO CAMERA SHOP, 6-1553 11 East 7th Street
 THE VOGUE, Ladies' Ready-to-Wear, 6-5123 719 Market Street
 WHITE SWAN LAUNDRY, 6-2103 227 East 11th Street
 WILEY SCHOOL OF BUSINESS, 6-2231 Times Building
 WILKINS CANDY CO., 6-1151 1273 Market Street
 WILLIAMS GLASS & FRAME CO., 6-8353 4 East 11th Street
 WILLOW PHARMACY, 2-2171 2015 Chamberlain Ave.
 WALTER A. WOOD SUPPLY CO., Hardware, 3-0012 4517 Rossville
 F. W. WOOLWORTH CO., 10c Store, 6-7036 729 Market Street
 A FRIEND
 A FRIEND
 A FRIEND

T H E A U R O R A B O R E A L I S O F T H E Y E A R



AS The Champion of 1940 comes to a conclusion, these pages seem indeed inadequate to the portrayal of so eventful a year.

No artist, however skillful, could do justice to a panorama of a senior year so filled with its own characteristic happenings and colorful personalities.

The emotions that have entered into the varied activities—the joys and sorrows, the fears and hopes, the disappointments and thrills of sheer happiness are far too subtle for the brush of the artist or the tongue of an orator. These are the priceless things which memory alone can safeguard for us; these are the things we shall carry in our heart of hearts and cherish through the years, because they are a part of The Central we love.

CENTRAL HIGH SCHOOL

CHATTAHOOGA

TENNESSEE

CHS Library