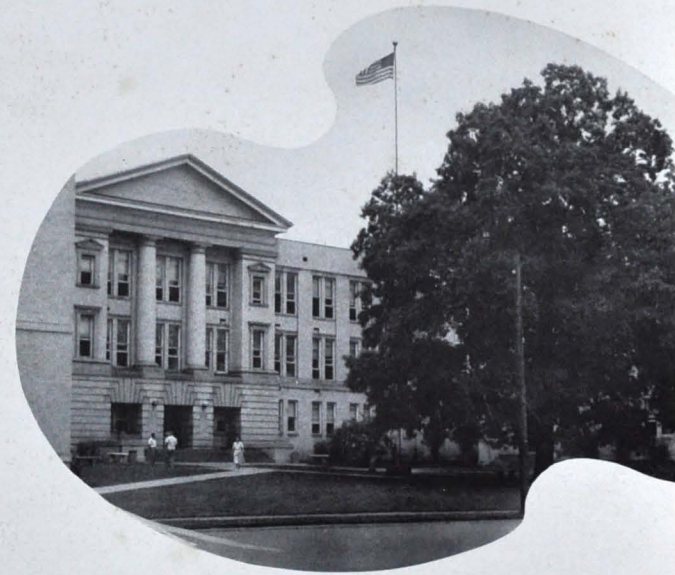


The Champion

1952



*These recorded days of '52 we
hope bring happy memories of
Central to each of you — The
Staff.*

*What a wonderful school
is ours to love*



with its ups and its downs and its joys
 what a wonderful
 banner of purple and gold



we it heart for our girls and



KEN HUDGINS
President of the Senior Class

ARDEENA KELLIS
Valedictorian



what a wonderful school that I love so well

with its wonderful rep so high ---



so you've heard of a school that's true as blue



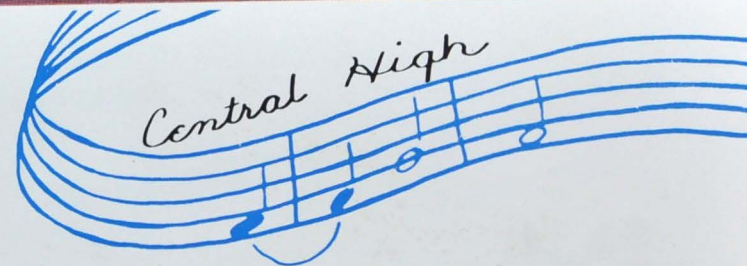


CENTRAL HIGH

1952

Champion

DONNA FAYE BLESSING, EDITOR
ARLENE HILLIS, BUSINESS MANAGER



ANNUAL PUBLICATION OF
CENTRAL HIGH SCHOOL, CHATTANOOGA, TENN.



Dedication

To

MRS. REBA FULTS

Throughout her years at Central, by her kindness, friendliness, and understanding of her students, Mrs. Reba Fults has proved herself a wonderful friend as well as an inspiring teacher. Her wise counsel, unlimited patience, and cheerful manner as well as her splendid co-operation, distinguish her and challenge us. It is with great pleasure that the Senior Class dedicates this, the 1952 volume of the CHAMPION to Mrs. Fults.





Dear Seniors:

I trust that your years at Central High School have been happy ones and that you will always remember them pleasantly.

You may think that this is the happiest time of your lives; however, as we advance in years, we really grow happier, if we live intelligently. Living is a complex process and an increase of difficulties and responsibilities enriches our minds and adds to the variety of life. To say that youth is happier than maturity is like saying that the view from the bottom of the tower is better than the view from the top. As we live or ascend, the range of our views widens and the horizon is pushed farther away. Finally, as we reach the summit of our lives, it is as if we had the world at our feet.

For you to live full and happy lives is my genuine wish. May His guiding hand ever be with you as you ascend the "tower of life."

Sincerely yours,

W. H. Millsaps

The **PRINCIPAL SPEAKS**



FACULTY

First Row:

GORDON M. ATCHLEY.....*Science*
W. P. BALES.....*History*
MRS. LINNIE M. BARGER.....*English*
MRS. HAZEL L. BARTON.....*Commercial*
EDWIN BOHR.....*Science*

Second Row:

LT. COL. GEORGE A. BONE.....*Military*
ED BROWN.....*Mathematics*
MRS. EDNA H. BROWN.....*Registrar*
CARL CHAPMAN.....*English*
MRS. BERNYCE CLEMENTSON.....*Home Economics*

Third Row:

MRS. MARY COOPER.....*Nurse*
MISS PATSY JEAN COOPER.....*Music*
MISS CHRISTINA COPPINGER.....*Secretary*
MISS EDNA CROSS.....*History*
MISS ELSA DENNISON.....*Science*

Fourth Row:

MISS MARY LOU DERRYBERRY.....*Art*
MRS. ANNA A. DYER.....*Secretary*
MR. J. POPE DYER.....*Social Science*
MISS BONNIE MARY EICHORN.....*Mathematics*
E. B. ETTER.....*Mathematics, Athletics*

Fifth Row:

MISS RUTH FAIN.....*English*
STANLEY J. FARMER.....*Physical Education*
E. N. FIELDS.....*Economics*
MRS. LORA D. FLENNIKEN.....*Speech*
MR. J. J. FLETCHER.....*Industrial Arts*

Sixth Row:

MRS. REBA LOU FULTS.....*Economics*
SFC WILLIAM H. GREEN.....*Military*
SGT. ROBERT L. HALL.....*Military*
MRS. MARGARET T. HAMMACK.....*Physical Education*
MISS BOBBIE RUTH HODGES.....*English*

Seventh Row:

J. ARLE HOODENPYL.....*Chemistry*
MISS EDMUND HOOSER.....*English*
MISS SARAH HUBBARD.....*Physical Education*
MRS. EDNA C. JACOWAY.....*Mathematics*
KENNETH JOHN.....*Music*

Eighth Row:

MISS EARL JONES.....*History*
MISS SALLY MAY KING.....*English*
DAVID G. LITZ.....*Mathematics*
MRS. VIRGINIA W. LOGAN.....*School Mother*
MISS RACHEL McALLISTER.....*Bible*

FACULTY

First Row:

LT. SPENCER E. MILLARD.....*Military*
CAPT. ROBERT G. MILLER.....*Military*
WILLARD MILLSAPS.....*Mathematics*
MISS ANNE MOFFITT.....*English*
MISS MINNIE LEE MORGAN.....*English*

Second Row:

MISS ELLEN MULLENIX.....*Librarian*
MRS. E. M. NAGEL.....*Cafeteria*
LESTER NEWTON.....*General Science*
MISS RUBY NIPPER.....*Commercial*
RALPH E. OLINGER.....*Assistant Principal*

Third Row:

EVERETT O'NEAL.....*Assistant Principal*
MISS JOE ORE.....*Biology*
MRS. HELEN H. PARNELL.....*Grecia*
MRS. AUGUSTA J. PEOPLES.....*English*
MRS. J. FRANK PRICE.....*History*

Fourth Row:

MISS HELEN PRYOR.....*English*
SFC DANIEL H. REVILL.....*Military*
MISS MARY ELLEN RICE.....*Spanish*
A. B. ROBERTSON.....*Mathematics*
MRS. ELIZABETH ROBINSON.....*English*

Fifth Row:

MRS. BLANCHE ROGERS.....*English*
MRS. MARY R. SANDERS.....*Librarian*
O. E. SCOTT.....*Printing*
J. M. SEATON.....*Industrial Arts*
MISS PAULINE SHEARER.....*Commercial*
MRS. ANNIE C. SHELTON.....*English*

Sixth Row:

MRS. JANIE SHROPSHIRE.....*Home Economics*
MRS. VIRGINIA M. SKATES.....*History*
GORDON W. SMITH.....*Diversified Occupation*
SAM T. STONER.....*History*
S. Q. TALLANT.....*Mathematics*
MISS EDITH TAYLOR.....*Commercial*

Seventh Row:

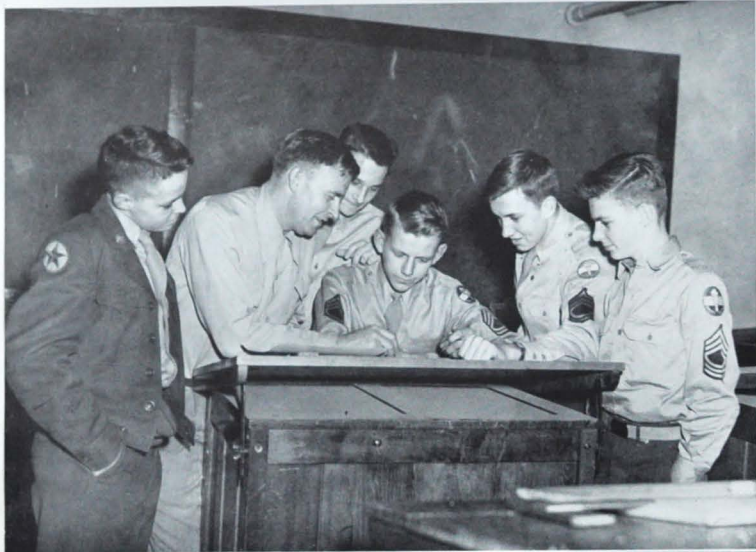
MISS MARGARET TAYLOR.....*Home Economics*
W. H. TEMPLETON.....*Mathematics*
MRS. ETHEL TEMPLETON.....*Home Economics*
MISS FRANCES TIERNAN.....*Social Science*
C. G. TOWERY.....*Biology*
B. H. WALKER.....*Music*

Eighth Row:

MISS DOROTHY WALKER.....*Commercial*
MRS. FLORA B. WARE.....*Mathematics*
R. S. WHARTON.....*Industrial Arts*
RAYMOND L. WILLMORE.....*Military*
MISS ETHEL YORK.....*English*
LUTHER YOUNG.....*Mathematics*

Not Pictured:

MISS JEAN PORTER.....*Bible*
MISS LILLIE SCHWARTZ.....*Latin and French*



The
CLASSES



Sing it purty, girls

First Row:

DANIEL JOSEPH ACOSTA, "Dan," Entered from East Side, '49; Disc and Diamond Society; Officers Club; Vice-President; Sergeants Club; Neatest Cadet; Honor Platoon; Piping Squad; R.O.T.C., Second Lieutenant, M. P. Club.

JACK K. ALLISON, Entered from East Side, '48; "C" Club, '49, '50, '51, Vice-President, '52; Freshman Class, '49, Vice-President; Sophomore Class, '50, Vice-President.

JACK W. ARNOLD, "Rabbit," Entered from Rossville Grammar School, '49; Purple and Gold Band, '48, '49, '50, '51, '52.

WOODROW C. ATHERTON, "Woodie," Entered from East Side, '49.

BOB NORRIS BAILEY, "Rick," Entered from McCallie, '48; Bank Staff, '48, '49; Disc and Diamond Society; Sergeants Club; Interschol Leadership Council; Officers Club; President; Key Club; Treasurer; R.O.T.C., Second Lieutenant; Boys' H.Y.

BETTY JANE BAILEFF, "Candy," Entered from East Side, '49; T. and I. Club, '51, '52.

DAVID AUSTIN BAIN, "Wong," Entered from Lookout Junior High School, '48; T. and I. Club, '51, '52; Sergeants Club, '50, '51; Honor Platoon, '50, '51; Library Staff, '48, '49.

Second Row:

DORIS LAVONE BANKSTON, "Red," Entered from Hardy Junior High School, '49.

VIRGINIA PAULINE BARBEE, "Polly," Entered from Hardy Junior High School, '49.

BETSY ROSS BARLEY, "Shorty," Entered from Lookout Junior High School, '49.

SARAH ANN BARROWS, Entered from East Side Junior High, '49; Spanish Club, '51; Ushers, '52.

BETTY JEAN BASKETTE, "Bet," Entered from Lookout Junior High School, '49; Office Force, '51, '52; Twixtons, '50, President, '51, '52; L.I.C., '51, '52; Battalion, '49, '50, '51, '52.

JOHN RICHARD BAYLESS, Entered from McMinn County High School, '50.

CAROLYN MOZELL BEARD, "Ma," Entered from East Side, '49; Bible Club, '50, '51.

Third Row:

BARBARA JEWEL BELL, "Barb," Entered from East Side Junior High, '49; Ushers, '52; Bible Club, '51; "Y" Teens, '49.

BILL BENSON, Entered from East Side Junior High, '49; Sergeants Club.

BARBARA BICE, "Barb," Entered from North Chattanooga Junior High, '49.

MACKLYN WARREN BISHOP, "Mack," Entered from Lookout Junior High School, '48; "C" Club, '51, '52.

JOHN WILLIAM BLACK, "Bill," Entered from East Side, '48; "C" Club, '48, '49, '50, '51; Disc and Diamond, '50, '51, Captain, '51; Boys' H.Y., '50, '51; R.O.T.C., Lieutenant Colonel; Boxing Team; Football Team; Senior Class, Sergeant-at-Arms.

MARY EVELYN BLACK, Entered from Brainerd Junior High School, '49.

HELEN CATHERINE BLACKMON, "Cathy," Entered from East Lake, '47.

Fourth Row:

HOWARD BLAIN, "Gobbler," Entered from Lookout Junior High, '49; "C" Club; Officers Club; Stage Crew.

GARY LEE BLASSINGAME, "Blass," Entered from Dickinson, '49; M. P. Club; Boxing Team; Band.

DONNA EAYE BLESSING, "Donkey Face," Entered from East Side Junior High, '48; Freshman Class Secretary, '49; "Y" Teens, '48, '49; Ushers, '51, '52; Secretary, '51, '52; Announcers Club, '49, '50, '51, '52; President, '51, '52; Spinstrettes Club, '49, '50, '51, '52, Vice-President, '51, '52; Interschol Leadership Council, '51, '52; Treasurer, '51, '52; Girls' H.Y., '51, '52; Junior Play Cast, '51; Service Award, '52; Girls' Battalion, '49, '50, '51, '52; Honor Society, '51, '52; President, '51; Allied Youth, '51, '52; CHAMPION Staff, '51, '52, Editor.

ROMA JEAN BONDS, "Half-Pint," Entered from Tyner, '51; Charm Club, '51; "Digest," '51; Pirates Club, '52; President, '52; News Editor, "Digest," '52.

DIXIE KAY BOWLIN, Entered from Clinton, '51; Bible Club; History Club.

BOB BOWMAN, "Cocksman," Entered from East Side Junior High, '48; Officers Club; Disc and Diamond; Neatest Cadet.

DONNA JOAN BOWMAN, "Jo," Entered from Decatur Junior High, '51; Silhouette, '51, '52; Varsity Glee Club, '51, '52.

Fifth Row:

JACQUELINE LOUISE BOYD, Entered from East Lake Junior High, '48; Bible Club, '51, '52.

JIMMY BOYD, "Jim," Entered from Lookout Junior High, '49.

JOHN T. BRADLEY, "Curley," Entered from East Side Junior High, '49; M. P. Club, '50, '51, '52.

SYLVIA ANN BRITT, "Sivva," Entered from Chattanooga High, '51; Varsity Glee Club, '51, '52; Girls' Battalion, '50, '51, '52; Girls' H.Y., '51, '52; Twixton Club, '52; Girls' Glee Club, '51.

GRITCHEN YVONNE BRITTON, "Gret," Entered from Brainerd, '48; "Digest," Business Staff; Associate Business Manager, '52; Girls' Tri-Hi-Y, Treasurer, '52; Allied Youth, '52; President; CHAMPION Staff, '51; Bible Club, '50; Silhouettes, '50; Bank and Bookstore Staff, '50; Varsity Glee Club, '49, '51, '52; Battalion, '50.

BARBARA ANN BROCK, "Bobby," Entered from North Side, '48; Merry Macs, '49; Trail Trotters, '50; Silhouettes, '51; Home Room President, '52.

THOMAS BRUMLOW, Entered from Hardy Junior High, '48; M. P. Club, '48, '49, '50, '51; Sergeants Club, '50, '51.

Sixth Row:

JAMES RICHARD BUFFINGTON, Entered from Brainerd Junior High, '48; Announcers Club, '51, '52; Bank and Bookstore Staff, '51, '52; Sergeants Club, '51, President, '51; Boys' H.Y., '50, '51, Vice-President, '52; Key Club, Treasurer, '51, President, '52; Senate, '51, '52; Disc and Diamond, '50, '51, '52; Officers Club, '52; Junior Class Treasurer, '51.

NANCY EMMA BURNETTE, "Horse," Chattanooga Valley, '49; Girls' H.Y., '51; Vagabonds, Chaplain, '51; Interschol Leadership Council, '51; "Digest" Staff, Bookkeeper, '49, '50, '51; Ushers, '51.

GLORIA JEAN CAIN, Entered from East Side, '49; Pirates Club.

CLARA RITA CALDWELL, "Reet," Entered from East Side Junior High, '48; Anchors Aweigh Club, '51; Interschol Leadership Council, '50, '51, '52, President, '51, '52; National Honor Society, '51, '52.

PEGGY ELIZABETH CAMPBELL, "Peg," Entered from North Chattanooga, '49; Bible Club, '51.

STARR CANFIELD, Entered from Brainerd, '49.

DON ALLEN CANNON, Entered from Dickinson, '48; All State Band, '49, '50, '51, '52; All County Band, '49, '50, '51, '52; Swing Band, '50, '51, '52; Disc and Diamond Society; Purple and Gold Band, '48, '49, '50, '51, '52; Band Ensemble, '48, '49, '50, '51; All State Band Festival; Officers Club, '51, '52; Sergeants Club, '50, '51.

Seventh Row:

ROY EARL CAPEHART, "Zapart," Entered from Brainerd Junior High, '49, '50, '51; Purple and Gold Band, '49, '50; Swing Band, '50, '51, '52; Orchestra, '50, '51, '52.

DOROTHY CARTWRIGHT, "Dot," Entered from Hardy Junior High, '49, '50; Bible Club, Vice-President, '50, '51, '52; Ushers, '51, '52.

BEVERLY ALLEN CASEY, "Casey," Entered from Brainerd Junior High, '49, '50; Key Club, '51, '52; Disc and Diamond Society, '50, '51, '52; Honor Platoon, '50, '51; M. P. Club, '50, '51, '52; Rifle Team, '50, '51; Sergeants Club, '51; Officers Club, '52.

DORIS MARIE CASTLE, "Dorley May," Entered from Dickinson, '48; "Digest" Staff, '49, '51; Associate Business Manager, '52; Battalion, '49, Lieutenant, '50, Major, '51, '52; Nite Owls, '49, '50, '51, Vice-President, '52; "Y" Teens, Vice-President, '49, '50; E.T.A., '49; Girls' H.Y., '49, '50, '51, '52; Physical Education Staff, '49, '50, '51, '52; "Y" Teens Conference Delegate, '49; Interclub Council "Y" Teens Secretary, '49; Youth Choir Council, '50, '51, '52; May Day Leader, '50, '51; Ave Club, '51, '52; Alternate Candidate to Girls' State, '51; Interschol Leadership Council, '51, '52; R.O.T.C. Sponsor, Company F, '52; Swimming Club, '51, '52; Red Cross, President, '52; National Honor Society, '51, '52.

DARRELL EUGENE CATES, "Studioul," Entered from Brainerd Junior High, '49; "Digest" Staff.

NELLIE RUTH CAVIN, "Tommie," Entered from Lookout Junior High, '49; Ushers, '52; Battalion.

THOMAS WALTER CAWOOD, "T. W.," Entered from East Lake Junior High, '48; Boxing Team; Glee Club.



SENIORS



Count it right, girls

First Row:

JOANN CHASE, "Jody," Entered from Lookout Junior High, '49; Merry Macs, '51, '52; Battalion, '50, '51, '52.

FATSY JEAN CHRISTIE, Entered from East Side, '48.

BETTY MARIE CLINE, "Betty," Entered from Signal Mountain, '48.
PATTY JANE COBBLE, Entered from Manchester High, '50; Shove-Offs, Secretary, '52; Hi-Y, '52; L.L.C., '52; Ushers, '52; Senior Play Cast, '52; Youth Center Council, '51, '52; Battalion.

Y. L. COKER, Entered from Brainerd Junior High, '49; Roughhouse Martin's Band.

PATRA ANN COLEMAN, "Pat," Entered from Dickinson Junior High, '48; "Y" Teens, '49, '50; Library Staff, '49, '50; Shove-Offs, '49, '50; '51, '52; Vice-President, '52; Office Force, '50, '51, '52; Camera Club, '51, '52; Vice-President, '51, Secretary, '52; Battalion, '49, '50, '51, '52; Youth Center Council, '51, '52; Tumblers, '50, '51.

SARA ELIZABETH COLLINS, "Red," Entered from Dickinson, '48; L.L.C., '51, '52; Honor Society, Treasurer, '51, '52; CHAMPION Staff, '52; Girls Hi-Y, '50, '51, '52; Vice-President, '52; Ushers, '52; President, '52; Glee Club, '49, '50, '51, '52; Vice-President; Spinsters, '50, '51, '52; Secretary; Junior Play Cast; Senior Play Cast; Allied Youth.

Second Row:

JAMES WILLIAM COLQUITT, Entered from Brainerd Junior High, '49.

JOANN COLQUITT, "Jody," Entered from Brainerd, '49; Bible Club.

JO ANNE COLWELL, "Jody," Entered from Brainerd, '49; Vice-President, Pirates.

BETTYE COMPTON, "Gyp," Entered from Lookout Junior High, '49; Battalion, '49, '50, '51; Twixteen Club, '51, '52; Secretary and Treasurer, Office Force, '51, '52.

JOE WILEY CONNER, "Tiny," Entered from White Oak, '48; Weight Lifting Team.

BILLIE JANE COOK, "Shorty," Entered from East Side, '49; Ushers, '51, '52.

WAYNE COOPER, "Buddy," Entered from Hardy Junior High, '49.

Third Row:

JOANN COOPER, "Jo," Entered from Hardy, '50.

NANCY ELIZABETH COPE, "Shorty," Entered from East Side, '50; Gad-A-Bout, '51.

GLEN RAY COPELAND, "Bo," Entered from Dickinson, '48; "Digest," '51, '52; Sports Editor; Boxing Team, '50; R.O.T.C., Second Lieutenant; Boys Hi-Y, Chaplain, '51, '52; Senate, Chaplain, '51, '52; Key Club, '51, '52; Allied Youth, '52; Disc and Diamond, First Sergeant, '51, '52; Officers Club, '52; Senior Play Cast, '51.

JACKIE CORN, "Curly," Entered from Dickinson, '48; Officers Club, Sergeant-at-Arms; M. P. Club; Honor Platoon; Sergeants Club; Second Lieutenant, R.O.T.C.; Firing Squad, Commander.

MARGUERITE ALVINE CORN, "Peggy," Entered from Dickinson Jr. High, '49; Ushers, '51, '52; Girls Hi-Y, '51, '52; Library Staff, '50, '51.

JULIUS EDWIN CORNES, "Undertaker," Entered from Dickinson, '48; T. and I. Club, '51, '52; Vice-President, Sergeants Club, '50, '51; Library Staff, '48, '49, '50; Cheerleader, '49, '50, '51, '52; Key Club, '50, '51, '52.

JOYCE LEE CRAIG, "Joyce," Entered from Lakeview High, '50; Silhouette, '51, '52.

Fourth Row:

GEORGE E. CRAWFORD, "Fat Boy," Entered from East Lake Jr. High, '48; Sergeants Club, '51; M.P. Club, '51; Digest Staff, '50, '51.

WILLIAM DARREL CRAWFORD, Entered from East Side, '49; Officers Club.

RALPH EDWARD CRESWELL, "Cortez," Entered from Lookout, '49; C. Club; Football team; Boxing team; Golf team; Track team.

PETER TURNEY CROWNOVER, JR., "Pete," Entered from Brainerd Jr. High, '49; C. Club; Disc and Diamond; Officers Club; R.O.T.C., First Lieutenant.

MARY ANN CRYTZ, "Babe," Entered from Hardy Jr. High, '49; Gadabouts, '49, Treasurer, '50.

CAROLYN ELIZABETH CUNNINGHAM, "Shorty Liz," Entered from Brainerd Jr. High, '49; Silhouette Club, '49, '51; Purple and Gold Band, '49; Orchestra, '49.

CLIFFORD DALE CURL, "Curly," Entered from East Side Jr. High, '49; Library Staff, '50; Senate Talent Program, '50, '51, '52; Band, '50; Band Ensemble, '50; Military Band, '50; Varsity Glee Club, '50, '51, '52; Swing Band, '50, '51, '52; Champion Nite, '50, '51, '52; Orchestra, '51; Honor Platoon, '51; Senate, '51, Program Chairman, '52; Senate Cabinet, '52; Senate Play Cast, '51; Disc and Diamond Society, '51, '52; Key Club, Program Chairman, '51, '52; National Honor Society, '51, '52; Boys Hi-Y, '51, Secretary, '52; Officers Club, '52; Senior Play Cast, '52; Champion Staff, Feature Editor, '52; Delegate to Blue Ridge, '51; Talent Award, '52.

Fifth Row:

LILLIE ARLEANA DEAN, "Rusty," Entered from Hampstead Hill Jr., Baltimore, Maryland, '48.

WILLIAM BEN DEANES, Entered from Brainerd Jr. High, '50.

FATSY RUTH DELZELL, "Pat," Entered from Hardy, '49.

JAMES EUGENE DILLARD, Entered from Lookout Jr. High, '49.

FRANCES LEONA DOBBINS, "Pony," Entered from East Lake Jr. High, '49; T. and I. Club, '51, '52.

MARY ELIZABETH DOBBINS, Entered from East Side Jr. High, '49; Y-Teens, '49, '50; Varsity Glee Club, '49, '50.

JUDY ANN DONAGHY, Entered from Brainerd Jr. High School, '49; Charn Club, '49, '50; Girls Battalion, '49, '50, '51, '52.

Sixth Row:

SAMMY ANDERSON DORSEY, "Bo," Entered from East Side Jr. High, '49; Junior Play Cast, '51; Senior Play Cast, '52; Key Club, '51, '52; L.L.C., '51, '52; Disc and Diamond, '51; Senate, '51, '52.

PAUL S. DOWNEY, "Eustace," Entered from Phillips High School, '51; M.P. Club; Disc and Diamond; Sergeants Club.

BARBARA JEAN DUTTON, "Babe," Entered from Brainerd Jr. High, '49; Shove Offs, '49, '50, '51, '52; Ushers, '50, '51; Y Teens, '49, '50; Battalion, '49, '50, '51, '52.

WYATT EARL, "Tex," Entered from East Side Jr. High, '48.

LESLIE PAUL ELLIS, Entered from Marion County High School, '50.

BERNARD EUGENE EPPERSON, "Eppier," Entered from Lookout Jr. High, '49; C. Club, '49, '50, '51, '52; Officers Club, '52; Sergeant at Arms of Senior Class, '52; R.O.T.C., Major, '52; Basketball team, Alternate Captain, '52; Baseball team, '49, '50, '51, '52; Boxing team, '50.

BARBARA JEAN ESTES, Entered from Lookout Jr. High, '48; Charn Club, '48, '49; Shove Offs, '49, '50; Silhouette, '50, '51.

Seventh Row:

JAMES WILLIAM EVERHART, "Jimmy," Entered from Brainerd Jr. High, '49; Disc and Diamond; Sergeants Club; Honor Platoon; Officers Club, Treasurer, L.L.C.; Senate; Boys Hi-Y, Sergeant at Arms.

ROSA LEE FARMER, Entered from East Lake Jr. High, '50.

RONALD A. FARRIS, Entered from Dickinson, '48; Library Staff, '49, '50; Senate, '49; Officers Club, '52; Camera Club, '50, '51, '52; President.

MARTHA ANN FORD, Entered from Notre Dame, '50; Gadabouts, '51; Purple and Gold Band, '50, '51, '52; Band Ensemble, '51, '52; Band Boosters Club, '50, '51, '52.

REX ABBOTT FORD, Entered from East Lake Jr. High, '48; L.L.C.; Announcers Club; Boys Hi-Y; Key Club; Bank and Bookstore Staff; Officers Club; Disc and Diamond Society; Honor Society; Youth Center Council.

MARY LOUISE FORREST, Entered from Hardy Jr. High, '47; Allied Youth, '52.

EMILY ANN FORTSON, "Emil," Entered from Brainerd Jr. High, '49; Library Staff, '49; Band, '49, '50, '51; Orchestra, '51; Senior Play Cast, '52.



SENIORS



Bicycle Built for two

First Row:

BETTY JEAN FOSTER, Entered from Lookout Jr. High, '49.
DELOISE JO ANN FRANK, "Jo," Entered from Brainerd Jr. High, '48.

JOSEPH L. FRANK, "Joe Frank," Entered from Brainerd Jr. High, '49; Disc and Diamond, '50, '51, '52; M.P. Club, '50, '51; Honor Platoon, '50, '51; Sergeants Club, '51; Officers Club, '52; Rifle team, '50, '51.

CAITER D. FRANKS, "Skeeter," Entered from Dickinson, '49; Band, '49, '50, '51, '52; Military Band, '48, '50, '51, '52; Drum Major; Swing Band, '50, '51; Champion Night Ensemble.

VIRGINIA KAY FRY, "Tookey," Entered from East Side Jr. High, '48; Purple and Gold Band, '49; Band Ensemble, '49; Digest Staff, '49, '50; Anchors Aweigh, Secretary, '51; Vice-President, '52; Battalion, '50, '51, '52; Y-Teens, '49, '50; Tumblers, '49, '50, '51; Bank and Bookstore Staff, '51; Treasurer, '52; Secretary, Junior Class; L.L.C., '51; Vice-President, '52; Honor Society, '51, '52; Candidate for J. C. Queen Contest, '51; Junior Play Cast, '51; Candidate for Homecoming Queen, '52; Champion Staff, Associate Editor, '52; R.O.T.C., Regimental Sponsor, '52; Volunteer Girl State, '51; Delegate from Tri-Hi-X to Conventions at Blue Ridge, N. C. and Cleveland, Ohio, '51.

JACK LESLIE FRYAR, Entered from Lookout Jr. High, '48; C. Club, '49, '50, '51, '52; Officers Club, '51, '52; Football Captain, '51, '52; Treasurer of Senior Class, '51, '52; Lieutenant Colonel, R.O.T.C., '51, '52; Baseball, '50, '51, '52.

FRANK FULLER, Entered from Dickinson, '48; Bank and Bookstore Staff, '49, '50, '51, '52; President, '52; Sophomore Class President, '49, '50; Boys Hi-Y, '50, '51, '52; President, '52; President, City-Wide Hi-Y, '51, '52; Senate, '49, '50, '51, '52; Treasurer, '52; Senate Play, '50; Vice-President, Junior Class, '50, '51; Interschool Leadership Council, '50, '51, '52; City-Wide Representative; Cheerleader, '50, '51, '52; Head Cheerleader, '51, '52; Volunteer Boys' State, '51; Youth Center Council, '50, '51, '52; Vice-President, '51, '52; Junior Play, '51; National Honor Society, '51, '52; Announcers Club, '50, '51, '52; Senior Play, '51; County Youth Day, '51; Major, R.O.T.C.; Disc and Diamond, '50, '51, '52; Second Lieutenant, '51, '51, '52; Officers Club, '51, '52; Senate Cabinet, '51, '52; Key Club, '51, '52; Secretary, '51, '52.

Second Row:

PEGGY FULLER.

GERRY FUNDINGER, "Shortie," Entered from Brainerd Jr. High, '49; Cheerleader, '49, '50; Head Cheerleader, '51, '52; Twixteen Club, '49; Anchors Aweigh Club, '50; Secretary, '51, '52; Junior Play Cast, Senior Play Cast; Digest Staff, '50, '51, '52; Battalion, '49, '50; R.O.T.C. Sponsor, '51, '52.

DOUGLAS LA'AVAN GAY, "Gump," Entered from East Lake Jr. High, '49.

JO ANNE GILLIAND, Entered from Brainerd Jr. High, '49; Silhouette Club, '49, '50, '51; Drill Squad, '49, '50, '51, '52.

ROBERT VIRGIL GLADDEN, Entered from Lookout Jr. High, '49; Officers Club.

IRVIN RAY GOGGIN, "Square Head," Entered from Dickinson Jr. High, '49.

BILL RAY GOODNER, "Pancho," Entered from Hardy Jr. High, '49; C. Club.

Third Row:

PEGGY JOYCE GOSNETT, "Peg," Entered from Lookout Jr. High, '48; Ushers, '51; Battalion, '49; R.O.T.C. Sponsor, '51.

BEVERLY JEAN GRAYSON, Entered from Nathan I. Bachman, '48; Bible Club.

JUANITA LOUISE GREEN, "Baby," Entered from North Side, '48.

ELMER ALBERT GROTH, "Buddy," Entered from New Orleans, Louisiana, '48; Library Staff, '48, '49; Boxing Team, '49, '50; Band, '49, '51; C. Club, '50, '51, '52; Orchestra, '51, '52; Disc and Diamond Society, '50, '51, '52; Military Band, '50, '51.

MERCEDES GIULIANI, "Sadie," "Gulies," Entered from Manual High, Indiana, '50; Clothing Honor.

I. JOSEPH HACKER, "Joe," Entered from Asheville, North Carolina, '51; Varsity Glee Club, '51, '52; Bible Club, '51, '52; Allied Youth, '51, '52; Honor Platoon, '51, '52.

CHARLOTTE ANN HACKLER, "Charlie," Entered from Lakeview, '48.

Fourth Row:

ALFRED GENE HALL, "Punchy," Entered from Brainerd, '49; C. Club; Boxing team, '49, '50, '51, '52; Co-Captain, '51; Officers Club.

SHIRLEY LEE HALL, Entered from Brainerd, '49.

RAYMOND GERALD HAMILTON, "Red," Entered from Sevier County High, '50.

CHARLES NELSON HARRIS, "Red," Entered from Brainerd Jr. High, '50.

NORMA JEAN HARRISON, Entered from Dickinson Jr. High, '49; Bible Club, '51, '52.

CAROLYN ANN HATCH, "Carolyn Hatch," Entered from Brainerd Jr. High, '49.

THOMAS HAPS, "Screwy," Entered from Brainerd Jr. High, '48; M. P. Club, '49, '50, '51, '52; Sergeants Club, '50, '51; R.O.T.C., First Lieutenant.

Fifth Row:

BARBARA ANN HILL, "Babs," Entered from Walnut Grove, '49; L.L.C., '51, '52; Bible Club, '50, '51, '52; Allied Youth, '51, '52.

JEANETTE HILLIARD, Entered from North Chattanooga Jr. High, '49; Bible Club, '51.

ARLENE FAYE HILLIS, Entered from Brainerd, '49; Battalion, '49, '50, '51, '52; Junior Play, '50; Vice-President, Senate, '51, '52; Spinsterettes, President, '51, '52; National Honor Society, '51, '52; L.L.C. Secretary, '51, '52; City-Wide L.L.C. Treasurer, '51, '52; Champion Staff, Business Manager, '51, '52; Delegate to Boys and Girls County Day, '50; Bank and Bookstore Staff, Vice-President, '49, '50, '51, '52; Girls Hi-Y, '51, '52; Candidate for Homecoming Queen.

MARY FRANCES HIXON, "Speedy," Entered from Brainerd Jr. High, '49.

PATRICIA J. HOLDAM, "Pat," Entered from Tyner, '48; Y-Teens, '50.

RYRON DUANE HOLDER, "Barney," Entered from Brainerd Jr. High, '48; President of Freshman Class, '49.

SARAH R. HOLT, "Cherry," Entered from South Pittsburgh, '51, '52; Library Staff, '51, '52.

Sixth Row:

CHARLES ROWLAND HOWARD, Entered from East Side, '48.

KENNETH EUGENE HUGHINS, "Stud," Entered from Lookout Jr. High, '49; Senior Class President; R.O.T.C., Colonel; Football team, Alternate Captain; Baseball, Alternate Captain; Boxing team, Captain; C. Club, President; Officers Club.

HERBERT ALLEN HUGHES, "Static," Entered from Dickinson, '48; Band, Orchestra, Glee Club; Swing Band.

ROBERT A. HULLANDER, "Bobby," Entered from East Side Jr. High, '50; Honor Platoon, Rifle Team; Disc and Diamond.

MARY JOAN HUNTER, "Jo," Entered from Union County High, '50; Bible Club, '51, '52.

KARL LEWIS JACKSON, Entered from East Side Jr. High, '49.

CLAYDE LEWIS JACOBS, "Jake," Entered from Uniontown Senior High, '51.

Seventh Row:

MARGARET ANN JARRITT, Entered from East Side Jr. High, '48; L.L.C., '52; Ushers, '52; Library Staff, '51; Allied Youth, '52; National Honor Society, '52.

STANLEY NELSON JENKINS, "Jenkins," Entered from East Side Jr. High, '48.

CHARLES JOHNSON

MARTHA FRANCES JOHNSON, "Brownie," Entered from Brainerd Jr. High, '49; Ushers, '51, '52; Digest Staff, '51, '52; News Editor, '51, '52; Bible Club, '51, '52; Twix-Teens, '52.

WAYNE MCCALLIE JOHNSON, Entered from Hardy Jr. High, '49.

BARBARA JEAN JONES, "Bobbie," Entered from Brainerd, '49; L.L.C., '51, '52; Ushers, '52.

CAROLYN JOYCE JONES, Entered from Hardy Jr. High, '49; Home Economics Club, '49, '50; Girls Battalion, '50, '51, '52; Office Staff, '51, '52.



SENIORS



National Honor Society

First Row:

DOROTHY DALE JONES, "Dot," Entered from Northside Jr. High, '49; Band Ensemble, '51, '52; Band, '50, '51, '52; Allied Youth, '52; All County Band, '51, '52.

JANE VEDERA JORDAN, Entered from Columbus High, Columbus, Georgia, '50.

JO ANN KELLEY, "Josie," Entered from East Side Jr. High, '48; Silhouette, '49, '50; Twixteen, '51, '52.

NANCY KELLEY, "Nan," Entered from Brainerd Jr. High, '49; Anchors Aweigh, '51, '52; L.C., '51, '52; Varsity Glee Club, '50, '51, '52; Physical Ed Staff, '49, '50, '51; Battalion, Lieutenant, '50, '51.

MARY ARDEENA KELLS, "Deena," Entered from Brainerd Jr. High, '48; Varsity Glee Club, '49, '50, '51, '52; Library Staff, '49; Y-Teen, '49, '50; Secretary, '49; Badminton Club, '49; Spinnettes, '50, '51, '52; Girls Hi-Y, '51, '52; Ushers, '51, '52; Senate, '49, '50, '51, '52; Senate Cabinet, '52; National Honor Society, '51, '52; Interschol Leadership Council, '51, '52; Senior Play, '51.

DORIS ANN KENDALL, Entered from Hardy Jr. High, '49; Merry Macs, '49, '50; T. and I. Club, '51, '52.

MARY KATHERINE KENNEDY, Entered from East Side Jr. High, '48; Treasurer of Freshman Class, '48; Twixteen Club, '48, '49; Y-Teens, '48, '49; Anchors Aweigh Club, '50, '51; R.O.T.C. Sponsor, '51, '52; Girls Battalion, '50, '51, '52; Digest Staff, '50, '51, '52.

Second Row:

BOBBY KILE, "Shotgun," Entered from Brainerd Jr. High, '49; Officers Club, '52.

ELSA LOUISE KING, "Lou," Entered from East Lake Jr. High, '49; Y-Teen Club, '49; Basketball team, '49, Manager, '50.

WILLIAM FINLEY KNOWLES, "Billy," Entered from East Side Jr. High, '49; Camera Club, '49; Disc and Diamond Society, '50, '51, '52; M.P. Club, '49, '50, '51; Sergeants Club, '50, '51; Treasurer, Senate, '51, '52; President, Senior Play, '50, '51; Junior Play, '51; Boys Hi-Y, '50, '51, '52; Piring Squad, '51; Champion Staff, '51, '52; Officers Club, '51, '52; Secretary, Delegate to Blue Ridge, '51; R.O.T.C., Major, '51, '52.

BOBBIE NELL KOLWYCK, Entered from Lookout, '49; Nite Owls, '50, '51; Treasurer, '52; Battalion, '49, '50, '51, '52; Lieutenant, '51, '52; Physical Education Staff, '51, '52; Ace Club, '51, '52; R.O.T.C. Sponsor, '51, '52; Red Cross, Secretary, '51, '52; Swimming Club, '51, '52.

JOHN WILLIAM KRAUSE, JR., "Billy," Entered from Lutheran Elementary, '48; Bank and Bookstore Staff, '49, '50; Disc and Diamond Society, '50, '51, '52; Sergeants Club, '51.

DOTTIE KUBLEY, "Dot," Entered from Dickinson, '48; Battalion, '49, '50, '51; Twixteen Club, Y-Teen, '49, '50.

LOWERY LEE LACKY, Entered from Anniston High, Alabama, '48; C. Club, '50, '51, '52; Officers Club, '52; R.O.T.C., Major; Football team, '49, '50, '51, '52.

Third Row:

CATHERINE GAY LANE, "Katy," Entered from Brainerd, '49; Ushers, '52; Bible Club, '51, '52; Art Awards, '51; Library Staff, '51.

PEGGY ANN LANGFORD, "Peg," Entered from Tyner, '51; Varsity Glee Club, '51; Pirates Club, '52, Secretary.

WILLIAM EBERT LANKFORD, "Bill," Entered from East Side Jr. High, '49.

CLYDE REGINALD LASATER, "Blow," "Reggie," Entered from East Lake, '48; Band, '48, '49, '50, '51, '52; Band Ensemble, '48, '49, '50, '51, '52; Disc and Diamond; Sergeants Club, '50, '51; Swing Band; All County Band, '48, '49, '50, '51, '52; Military Captain; Band, First Lieutenant; Band Boosters Club, '50, '51; All State Junior Band Clinic, '48, '49.

FRANCES EARLINE LAXSON, Entered from Brainerd, '48; Silhouette Club, '48, '49; Battalion, '49, '50, '51, '52; Hi-Y, Chaplain, '50, '51, '52; Senate, '51, '52; L.C., '51, '52; Ushers, '51, '52.

IRA V. LEE, "Punchie," Entered from East Side, '47; C. Club; T. and I. Club; Boxing team, '49, '50, '51.

MARGARET ELIZABETH LEICH, "Bettie," Entered from Brainerd Jr. High, '49.

Fourth Row:

LINDA ARDEN LESLIE, Entered from Brainerd, '49; Silhouette, '50, '51, '52; Battalion, '49, '50, '51.

BONNIE MAE LIEBE, "Honey," Entered from East Lake, '50; Merry Macs Club, Social Chairman.

RAYMOND WESLEY LING, "Mo-Mo," Entered from Northside, '49; Officers Club, C. Club, Class Officer; Lieutenant Colonel, R.O.T.C.

SUE ANN LINK, "Suzie," Entered from Lookout Jr. High, '49; Girls Hi-Y, '48, '50, '51, '52; Digest, '50, '51, '52; Twixteen Club, '51, '52; Battalion, '49, '50, '51, '52; Swimming Club, '51.

CARL VAN LITTLE, "Little Duda," Entered from East Lake, '47.

RONNIE B. LOCKE, "Big Foot," Entered from East Side, '48.

MARY KATHERINE LONG, "Kitty," Entered from Chattanooga High, '50.

Fifth Row:

RALPH EDWIN LONG, JR., "Spider," Entered from Brainerd, '49; C. Club, '50.

BARBARA ANN LOYD, "Bobbie," Entered from Hardy Jr. High, '49; Varsity Glee Club, '51, '52; Girls Drill Battalion.

MARY KATHERINE McARTHUR, "Katie," Entered from East Lake Jr. High, '48.

WILLIAM CLYDE McBRAYER, "Bill," "Mac," Entered from Lookout Jr. High, '49; C. Club; Disc and Diamond; Officers Club; Secretary of Senior Class; R.O.T.C., Captain; Football Team; Basketball team; Bowling team; Baseball team.

VIOLET MAE McCLINTON, "Blondie," Entered from Hardy Jr. High, '49.

BILL WINSTRED McCORMICK, "Mack," Entered from East Lake, '48; Band, '48, '49, '50, '51, '52; Band Ensemble, '49, '50, '51, '52; Band Captain, '51, '52; Sergeants Club, '50, '51; Disc and Diamond, '50, '51, '52; Swing Band, '50, '51, '52; All County Band, '49, '50, '51, '52; Band Boosters, '50, '51, '52.

DORIS McCORMICK, Entered from Cumberland High, '51.

Sixth Row:

MARIE KATHERINE McCRARY, Entered from Nathan L. Bachman, '48; Future Teacher of America, President; Honor Society, I.L.C.; Ushers; Library Staff, President; Digest Staff, Editor-in-Chief; Allied Youth.

FRED DAVID McDaniel, Entered from Brainerd Jr. High, '50; Disc and Diamond Club; Officers Club; Rifle team, Captain, '51, '52; R.O.T.C., First Lieutenant.

JOYCE ELEANOR McDONALD, "Goolie," Entered from East Side, '48; Twixteens, '48; Trail Trotters, '48; Shove Offs, '48, '49, '50, '51, '52, President.

MARTHA ANN McDOWELL, "Motty," Entered from East Lake Jr. High, '49; Bible Club.

PATSY LEVAUNE McDOWELL, "Pat," Entered from Nathan L. Bachman, '49.

MARGARET MATLEEN McKAGI, "Mattie," Entered from East Lake, '49; Girls Hi-Y, '50, '51; Ace Club, '51.

MARITHA NELLE McKOWN, "Poochie," Entered from Brainerd Jr. High, '49; Silhouette Club, '49, '50, '51, Secretary, '51; Office Staff, '50, '51; Purple and Gold Band, '49, '50.

Seventh Row:

WINIFRED SUE McLAUGHLIN, "Winnie," Entered from East Side Jr. High, '48.

PAUL McNABB McNABB, "Scrappy," Entered from East Lake, '49; Digest Staff, '50, '51.

CHARLES RAY McNUITT, Entered from East Lake Jr. High, '49; T. and I., '52; Parliamentarian.

CARRIE McPHERSON, Entered from Lookout Jr. High, '49; Physical Ed Staff, '49, '50; Battalion, '49, '50.

HELEN MORENE McWILLIAMS, "Mac," Entered from East Side Jr. High, '49; T. and I. Club; Basketball, '50; Girls Glee Club, '50.

FLORA GRACE MADDIN, "Flo," Entered from Murphy High, Mobile, Alabama, '50; Bible Club, '51, '52.

CARL WAYNE MALSTROM, "Mouse," Entered from Brainerd, '49; Stage Crew, '50, '51, '52; Projection Crew.



SENIORS



Senior Play cast "Not In A Thousand Years"

First Row:

ROBERT LEE MANNING, "Goat," Entered from East Lake Jr. High, '49.

WELDON ROLAND MARKHAM, "Twin," Entered from Lanier High, Montgomery, Phillips High, Birmingham, '51; Sergeants Club; Digest Representative; Beginners Band; Neatest Cadet.

WILBOURNE CLAUDE MARKHAM, "Twin," Entered from Lanier High, Montgomery, Phillips High, Birmingham, '51; Sergeants Club; Beginners Band; Boxing team; Neatest Cadet.

JOHN RUFFHAUSE MARTIN, "Rough House," Entered from East Side, '47; Disc and Diamond; C. Club; Boxing team; Football team; Stage Crew, Manager.

ROBBIE HELEN MARTIN, "Shorty," Entered from Hardy Jr. High, '48; Girls Tri Hi-Y, '48, '49, '50, '51, '52.

PAT B. MAY, "Pat," Entered from Notre Dame, '49; Sergeants Club, '50, '51; Disc and Diamond Society, '50, '51, '52; Officers Club, '51, '52.

WANDA JEANETTE MEALOR, Entered from East Side Jr. High, '50; I.L.C., '51; Varsity Glee Club, '49, '50, '51; Library Staff, '49; Honor Society, '52.

Second Row:

C. DEWITT MILLER, JR., "Dee," Entered from Hardy Jr. High, '48; Boys Hi-Y.

WANDA LOIS MILLER, Entered from East Side, '49.

SARAH JOANNE MILTON, "Jo," Entered from Lookout, '48; Band, '49, '50, '51; Tri Hi-Y, '49, '50; Shave Off; Varsity Glee Club, '50, '51, '52; Basketball team, '50.

GLENN RAE MITCHELL, "Honey," Entered from East Side, '49; Ushers, '51, '52.

GENEVA MONDAY, Entered from Lookout Jr. High, '49; Ushers, '51, '52; Twixteens, '51, '52; Battalion, '50, '51, '52; R.O.T.C. Sponsor.

JOHN HARRINGTON MOORE, "Lass," Entered from Redondo Union High School, '49; Camera Club, Vice-President; Champion Staff, Sports Editor; Disc and Diamond; Sergeants Club; Officers Club; First Lieutenant, R.O.T.C.

PEGGY JEAN MOORE, "Bunny," Entered from Louisville High, '50; Allied Youth; Senior Play.

Third Row:

AMOS JOSEPH MORGAN, Entered from Brainerd, '49; M.P. Club; Sergeants Club.

DORIS JEAN MORGAN, "Dot," Entered from White Oak, '48; Digest Representative, '48; Battalion, '49, '50, '51; Spinsterettes, Treasurer, '51; Charm Club, '49.

NORMA JANE MORRIS, "Janie," Entered from East Side, '49; Charm Club, '49, '50; Gadabouts, '50, '51.

DAVID PRUETT MORRISON, Entered from Lookout Jr. High, '49; R.O.T.C., Captain, '52; Printing Staff, '50, '51, '52; Officers Club, '52.

ANN MOTT, "Wataahi," Entered from Enterprise, Alabama, '51; Glee Club.

JANE GRACE NAPIER, Entered from Brainerd Jr. High, '49; Spanish Club, '51; Gadabouts, '51; Red Cross, '51, '52.

CHARLES EDWARD NAVE, "Skip," Entered from Lafayette, '49; Stage Crew.

Fourth Row:

WANDA FRANCES O'HARA, "Irish," Entered from Coolidge High, Arizona, '51.

BETTY LOUISE O'NEAL, "Sug," Entered from Dickinson, '49; Merry Macs, '50, '51, President, '51; Bible Club, '49, '50.

CLAUDETTE PACK, "Doc," Entered from City High, '50; Ace Club, '51, '52; Ushers, '51, '52.

ROSALIE MAXINE PADGETT, "Rosie," Entered from East Side, '48; Merry Mac Club.

CHARLOTTE RUTH PARKER, Entered from Dickinson, '49.

JOYE EVELYN PARKER, Entered from East Lake Jr. High, '49; Spinsterette, '49, '50, '51, '52, Social Chairman; Girls Hi-Y, '51, '52; Ushers, '51, '52; R.O.T.C. Sponsor, '51, '52; Library Staff, '49, '50.

FRED O. PARSONS, Entered from Brainerd, '48; C. Club, '51, '52; Football team, '49, '50, '51.

Fifth Row:

DAVID DELANO PATTON, "Dave," Entered from Roseville High, '48; C. Club; Officers Club; Sergeant-at-Arms of Senior Class; R.O.T.C., Company Commander.

BILLIE RUTH PAYNE, "Bill," Entered from Lookout Jr. High, '49; Ushers; Library Staff, '51.

FRANKLIN PEARSON, "Frank," Entered from Tellico Plains High, '51.

IMOGENE LOIS PEDIGO, "Pokey," Entered from East Side, '48; Girls Hi-Y, '49, '50, '51; Nite Owls, '49, '50, '51, President, '52; Gym Officer Force, '49, '50, '51, '52; Senate, '50, '51, Secretary, '52; Battalion, '50, '51; Candidate for Home Coming Queen, '51; Gadabouts, '48.

RAYMOND EUGENE PENDLEY, Entered from Brainerd Jr. High, '49; Officers Club, '51, '52; Sergeants Club, '50, '51; Neatest Cadet Medal, '51.

FORD GORDON PETERS, "Flash," Entered from East Side Jr. High, '48; "Digest," '50; Camera Club, '50, '51, '52, Vice-President; Senate, '51, '52; I.L.C., '51, '52; Officers Club, '52; Sergeants Club, '51; CHAM-PION Staff, '52.

MARY ANN PICKETT, "Corky," Entered from Lutheran Elementary, '48.

Sixth Row:

MABEL BERNICE PITTS, Entered from Dickinson, '49; Merry Macs, '51, '52, Secretary.

ALICE YVONNE PLEDGER, "Billie," Entered from White Oak, '48; Charm Club, '49; Twixteen Club, '51; Battalion, '49, '50, '51.

MARY FRANCES POE, "Bunch," Entered from Hardy Jr. High, '49; Ushers, '51, '52; Bible Club, '51, '52.

L. D. POOLE, Entered from Hardy, '49; Rifle team.

JACK PRATT, "Jackie," Entered from Brainerd Jr. High, '49; Senate; Glee Club Accompanist; Orchestra Accompanist; Senior Play Prompter.

BARBARA RUTH PRICHARD, "Moosey," Entered from East Side Jr. High, '48; Silhouettes, '49, '50; Twixteens, '51, '52; R.O.T.C. Sponsor, '51, '52.

MILDRED JO ANN PROCTOR, Entered from North Side, '49; Ushers; T. and L. Club; Merry Macs.

Seventh Row:

CARL RICHARD QUINN, Entered from East Lake Jr. High, '49.

DAVID TRUETT RAULSTON, "D. T." Entered from East Side Jr. High, '49; R.O.T.C., Master Sergeant.

BARBARA ANN REED, "Bobbie," Entered from Hardy Jr. High, '49; Merry Macs, '49, '50.

PATSY RUTH REED, "Pat," Entered from City High, '50; Bible Club, '51, '52.

JAMES NEIL REEVES, "Pete," Entered from East Side Junior High, '48; M.P. Club.

JAMES TERRY RICHARDSON, Entered from Hardy, '49.

DOROTHY ANN RICH, "Dot," Entered from Brainerd Jr. High, '49; Bible Club, '50, '51; Bible Club, Secretary, '51, '52; Senior Red Cross Representative; Ushers, '51, '52.



SENIORS



Jack Fryar, 1952 Football Captain

First Row:

SALLY FRANCES RIDGE, "Sal," Entered from Nathan Bachman, '49; Anchors Aweigh Club, '50, '51.

BETTY JEAN RIGGS, "Jeanie," Entered from East Lake Jr. High, '49.

WAYNE HENDRIX ROBERTS, Entered from Brainerd Jr. High, '49.

DON HOONE ROBINSON, Entered from Brainerd Jr. High, '48; National Honor Society, '51, '52; Sergeants Club, '50, '51.

JO ANN ROCKHOLT, "Jo," Entered from Brainerd, '49; Charn Club, '49, '50; Girls' Battalion, '49, '50, '51, '52; Vagabonds, '50.

CLEVELAND IRA ROGERS, Entered from Lookout Jr. High, '49.

JOSEPH FRANKLIN ROGERS, "Bo," Entered from Hardy, '49.

Second Row:

LINDA ROGERS, "Lin," Entered from Northside Jr. High, '49.

ADDIE JEAN RUNYAN, Entered from Lookout Jr. High, '49; Ushers, '51, '52; National Honor Society, '51, '52; Associate Editor, CHAMPION Staff, '52.

HOWARD DENVER RUNYAN, Entered from Lookout Jr. High, '49.

BETTY GRACE RUSH, Entered from Hardy Jr. High, '49; Merry Macs, '49, '50; Basketball team, '49, '50, '51, '52; Alternate Captain, '51, '52; Ace Club, '49, '50; Y-Teens, '49, '50; "Digest" Staff, '50; Senate, '49, '50; Allied Youth, '51, '52; Girls' C. Club, '50, '51, '52.

DON TAYLOR SANLAND, "Snug," Entered from East Lake Jr. High, '49; Sharp Shooter Medal.

LOIS SAXON, "Pukey," Entered from Gadsden, Alabama, '48; Merry Macs, Secretary; Cashier in Cafeteria; R.O.T.C. Sponsor.

CLARENCE EDWARD SCHROYER, "Ed," Entered from East Side Jr. High, '49; Officers Club; M.P. Club.

Third Row:

CHARLES CARLYLE SGOUGGS, "Charlie," Entered from Chicago, Illinois, '48; T. and L. Club; Camera Club.

JUANITA FAY SCOTT, "Nita," Entered from East Side, '49; "Digest" Staff.

PEGGY JEAN SELLS, "Peg Leg," Entered from Hardy, '48; Silhouette Club, Vice-President; Gym Staff, Basketball Team; Girls' C. Club.

PAULINE VERNIE SHAW, "Polly," Entered from Brainerd Jr. High, '48; Interscholastic Leadership Council, '51, '52; National Honor Society, '51, '52; CHAMPION Staff, Typist, '51, '52; Girls' Tri-Hi-Y, '50, '51, '52, Secretary, '52; Library Staff, '49, '50, President, '50, Membership Chairman, '49; Ushers, '51, '52, Vice-President, '51, '52; Allied Youth, '52; Charn Club, '49, '50.

ANNA RUTH SHELL, Entered from Tyner High, '51.

JACKIE SHERRILL, "Jack," Entered from East Lake, '49; Officers Club.

LOUIS PATRICK SHIPLEY, "Pat," Entered from Hardy Jr. High, '49; M.P. Club.

Fourth Row:

THELMA CHRISTINE SIMMONS, "Cricket," Entered from Hardy Jr. High, '49; Ushers, '51; Girls' Battalion, '49.

JUANITA JO SIMON, Entered from East Side Jr. High, '49; Gadsden, '49; Silhouette, '50, '51, '52; Girls' Basketball team, '50, '51, '52; Girls' C. Club, '50, '51, '52.

MILDRED LOUISE SITTON, "Milly," Entered from Signal Mountain, '48; Art Club, '48, '49; Bible Club, '48, '49; Home Economics Club, '49, '50; Twixteen Club, '51, '52.

BOBBY EUGENE SIVLEY, Entered from East Lake Jr. High, '49; T. and L. Club, '51, '52.

MINNIE LEE SKATES, "Cookie," Entered from East Lake Jr. High, '49; Ace Club; Allied Youth; Ushers Club.

LONA RUTH SKELTON, Entered from Lookout, '48.

HERBERT MILTON SLATTON, Entered from East Side Jr. High, '49; "Digest" Staff, '49, '50; R.O.T.C., '51.

Fifth Row:

ALLEN RAY SMITH, "Buddy," Entered from Wheelwright, Kentucky, '51.

BETTY LYNN SMITH, "Bet," Entered from Brainerd Jr. High, '49; Band, '49, '50, '51, '52; Band Boosters Club, '50, '51; Spinstertettes, '49, '50, '51, '52; Senate, '51, '52; Junior Red Cross Representative, '51, '52; Ushers, '51, '52; Band Sponsor, '51, '52; Senior Play Cast, '51, '52.

CHARLES CECIL SMITH, "Jackie," Entered from Lookout Jr. High, '49; Boys' Hi-Y, '50, '51, '52; Varsity Glee Club, '50, '51, '52; Bible Club, '50, '51, Treasurer, '51, '52; Allied Youth, '51, '52; R.O.T.C., Second Lieutenant.

DORIS CHRISTINE SMITH, "Teenie," Entered from Lookout Jr. High, '48.

GENEVA LAYONNE SMITH, "Sissy Bill," Entered from Lookout Jr. High, '49; Ushers, '51; Honor Society, '51; Merry Macs, '50, Treasurer; Future Teacher, '50; Battalion, '50.

HAZEL MARIE SMITH, "Butch," Entered from Hardy Jr. High, '50; Silhouette Club, '50, '51.

JIMMIE LEE SMITH, "Jim," Entered from Lookout Jr. High, '49; L.L.C.; Ushers; Library Staff.

Sixth Row:

JOE ALLEN SMITH, Entered from East Side Jr. High, '50; Stage Crew, Projection Manager.

MARGARET ANNETTE SMITH, "Half-Pint," Entered from Dickinson Jr. High, '49; Military Band, Sponsor, '51; Marching Band, First Lieutenant, '51; Band Ensemble, '49, '50, '51, '52; Band Boosters Club, '50, '51, '52; All County Band, '50, '51, '52; East Tennessee State Competition Festival, '50, Superior Rating.

EVELYN SNYDER, Entered from Lookout Jr. High, '49; Silhouettes, '49, '50; Twixteens, '51, '52; Battalion, '50, '51, '52.

NORMA JANE SPARKS, "Susie," Entered from Brainerd Jr. High, '49, '50.

NORMAN T. SPARKS, "Sparky," Entered from Maplewood High, St. Louis, '50; Track, '50, '51, '52; Boxing, '51, '52; Basketball, '50, '51, '52; Allied Youth, '51, '52; M.P. Club, '50, '51, '52; Sergeants Club, '51, '52; Disc and Diamond, '50, '51, '52.

ANN HOYT SPAULDING, Entered from Brainerd Jr. High, '49; Battalion, '49, '50; Varsity Glee Club, '50, '51, '52; Spanish Club, '51, Secretary, '51; Silhouette Club, '50, '51, '52, Treasurer, '51, '52.

CHARLOTTE STALEY, "Shorty," "Squirt," Entered from Lookout Jr. High, '48; National Honor Society, '51, '52; Interscholastic Leadership Council, '51, '52; Ace Club, '48, '49, '50, President, '51, '52; "Digest" Staff, '51, Associate Editor, '51, '52; Girls' Battalion, '50, '51, First Lieutenant, '51, '52; Charn Club, '50; Twixteen Club, '50; Ushers, '51, '52; Girls' State, '50, '51; R.O.T.C. Sponsor; Assistant Pianist for Girls' Glee Club, '50, '51.

Seventh Row:

ROBERT CHARLES STAKELY, "R. C.," Entered from East Side Jr. High, '49.

GENE ALAN STANFIELD, "Stink," Entered from Huntington, West Virginia, '48; Sergeants Club; Band Letter Club; Second Battalion Staff, First Lieutenant; Officers Club; Military Band; Band.

BILLY ROSS STOKES, "Bill," Entered from Hardy Jr. High, '50.

L. M. STRINGFIELD, "Stringhead," Entered from Lookout Jr. High, '49; M.P. Club, '49, '50, '51; Sergeants Club, '50, '51; Honor Platoon, '50, '51.

TOM FORREST STROUD, "Heavy," Entered from Lutheran, '48; Boys' Junior Hi-Y, '48, '49; Sergeants Club, '50, '51; Band, East Tennessee Band, '50, '51; Band Boosters Club, '50, '51, '52; Band, First Lieutenant, '51, '52; Band Ensemble, '50, '51; Allied Youth, '52; All County Band, '49, '50, '51, '52.

MARTIN FREDERICK STUTZ, Entered from Lutheran Elementary, '49.

BOBBY STYLES, Entered from East Side, '49.



SENIORS



Our Head Majorette

First Row:

PEGGY ANN SULLIVAN, "Peg." Entered from East Side, '49; Twix-teen Club, '49; Shove-Off Club, '50, '51, '52; Y-Teens, '49, Treasurer.

MARY LUCILLE SULLY, "Lucy." Entered from Brainerd, '49; Ace Club; Honor Society, Vice-President; Shove-Offs, Treasurer, '51, '52; Basketball Team, '51.

ROBERT MONROE SWAFFORD, "Bob." Entered from Hardy, '49; "Digest" Staff, Sergeant's Club.

NANCY CAROL SWIGER, "Nan." Entered from Washington Jr. High, Parkersburg, West Virginia, '48; "Digest," '49, '50, Circulation Manager, '51, '52; Usher, '51, '52; Merry Macs, '50, '51, '52, Vice-President, '51, '52; Junior Play, '50; Senior Play, '51.

PATRICIA LEE TABER, "Pat." Entered from Dickinson Jr. High, '48; Merry Macs, '50; Y-Teens, '49.

NINA MADGE TALLANT, "Honey." Entered from East Lake Jr. High, '49; Bible Club, '50, '51, Treasurer; President, '51, '52; Hi-Y, '50, '51, '52; Ushers, '51, '52; Home Economics, '50, '51; Varsity Glee Club, '50, '51, '52.

LOUIS EVERETT TAYLOR, "Louie." Entered from East Lake Jr. High, '48.

Second Row:

WILMA DELORES TAYLOR, Entered from Central, Murfreesboro, '48; Girls' G. Club, '49, '50, '51, '52; Girls' Hi-Y, '51, '52; Girls' Basketball team, '49, '50, '51, '52; Captain, '51, '52; Red Cross, Vice-President, '51, '52; Ace Club, '50, '51; Nite Owls, '50.

MARGARET KAY THOMAS, Entered from Dickinson Jr. High, '49; Silhouette, '49, '50; Nite Owls, '50, '51, '52, Secretary, '51, '52.

ANNIE GRACE THOMASON, "Gracie." Entered from East Lake, '49; Silhouette Club, '49, '50, '51, '52, Social Chairman, Publicity Chairman; Library Staff, '49, '50, '51, '52, President, '51, '52; Vice-President, '50, Secretary, '49; L.L.C., '51, '52; Girls' Glee Club, '49, '50.

EVADENE PEGGY THRONCHERRY, "Peg." Entered from East Side Jr. High, '48; Charm Club, '49, Social Chairman; Y-Teens, '49, '50; Shove-Offs, '50; Ace Club, '50, Secretary; Battalion, Lieutenant, '50, Captain, '51; Swimming Club, '49; Honor Society, '50; "Digest" Staff, '50; Girls' Physical Ed. Staff, '49; "Digest" Representative, '50.

AUDREY JEAN TITTSWORTH, "Jeannie." Entered from Dickinson, '48; Anchors Aweigh, Secretary, '49, '50, '51, '52; "Digest" Staff, '49, '50; Y-Teens, '48, '49; Girls' Hi-Y, '51, '52; National Honor Society, Secretary, '51, '52; R.O.T.C. Sponsor, '51, '52; Bank and Bookstore Staff, '49, '50; Secretary, '51, '52; Announcers Club, '51, '52; Battalion, '49, '50, '51, '52.

JO ANN ROCKHOLT TREW, "Jo." Entered from Brainerd, '49; Charm Club, '49, '50; T. and I. Club, '51, '52; Y-Teens, '49, '50.

CHARLES RAY TURNER, "Ray." Entered from Brainerd, '49; M.P. Club, '49, '50.

Third Row:

CAROL FAYE UNDERWOOD, Entered from Red Bank High, '50; Gadabouts, '49, '50.

MARY ALICE UNDERWOOD, "Smokey." Entered from Signal Mountain, '48; Spontaneous Club, '49, '50, '51, '52; Girls' Glee Club, '49.

JOAN STARR VANCE, "Twinkle." Entered from East Lake Jr. High, '49; Varsity Glee Club, '51, '52; Youth Center Art Exhibit, First Prize, Pencil Drawing, '49; Second Art Premium County Fair, '49; Crandal Art Honor, '49; First and Second Art Premium, '50; First Place Crandal Art Award, Central Exhibit; Third Place, Senior Division, Halloween Painting Contest; CHAMPION Staff, Art Editor; Talent award.

KENNETH WAYNE VANDERGRIFF, "Mopp." Entered from Northside Jr. High, '49; Key Club, '50, '51; R.O.T.C., Second Lieutenant; Sergeant's Club, '50, '51.

JIMMY VICE, "Jim." Entered from Pell City High, '50.

ROY L. WADDLE, Entered from Hardy Jr. High, '48; Disc and Diamond, '49, '50, '51, '52; Stage Crew, '50, '51, '52.

THELMA RUTH WALKER, Entered from North Chattanooga, '49.

Fourth Row:

CHARLES BO WALLEN, "Cotton." Entered from Lookout Jr. High, '49; Sergeants Club, '50, '51; Allied Youth Post, '51, '52; Junior Play, '50, '51; Senior Play, '51, '52; Band, '49, '50, '51, '52; Band Letter, '49, '50, '51, '52; Band Ensemble, '49, '50, '51, '52; All County Band, '49, '50, '51, '52; Band Letter, '50, '51, '52; R.O.T.C., Lieutenant, '51, '52.

BEVERLY JANE WALLIS, "Bev." Entered from Memphis, Central, '50; Silhouette, '51, '52; Ushers, '52.

DOROTHY WATERHOUSE, "Dottie." Entered from Brainerd, '48; Nite Owls, '49, '50, '51, '52; "Digest" Staff, '50, '51, Associate Circulation Manager, '52; Girls' Battalion, '50, Lieutenant, '51, Captain, '52; Physical Education Staff, '50, '51, '52; Y-Teens, '49, '50; Girls' Hi-Y, '50, '51, '52; National Honor Society, '51, '52; Ace Club, '51, Vice-President, L.L.C., '52; Swimming Club, '51, '52; R.O.T.C. Sponsor.

PEGGY JEANNE WATKINS, "Peg." Entered from Lookout Jr. High, '49; Nite Owls, '51, '52; Physical Ed. Staff, '50, '51, '52; Battalion, '51, '52, Lieutenant, '52; Ace Club, '52; Silhouettes, '49, '50; Swimming Club, '51, '52; R.O.T.C. Sponsor.

SHERILY ANN WEAR, "Freckles." Entered from Brainerd, '48; L.L.C., '51, '52; Ushers, '51, '52; Senate, '51, '52; Allied Youth, '51, '52.

JOE LEE WEAVER, Entered from Brainerd, '48; Glee Club, '49, '50, '51, '52; Varsity Glee Club, '51, President; Junior Play, '51; Senior Play, '51.

Fifth Row:

BARBARA JEAN WEBB, "Barb" or "Boba." Entered from Hardy Jr. High, '49; L.L.C., '51, '52; Bible Club, '49, '50, '51, '52; Ushers, '51, '52; Allied Youth, '51, '52.

HAZEL CHRISTINE WELCH, Entered from City, '50; Usher, '51, '52; "Digest" Staff, '51, '52.

JACKIE WAYNE WELCH, Entered from Brainerd, '49.

JO ANN WELCH, "Jo." Entered from Dickinson, '49; Band Ensemble, '51, Secretary; Allied Youth Council; Superior rating in East Tennessee State Competition Festival, '51; All County Band, '51, '52; Band, '49, '50, '51, '52.

DOROTHY MARIE WESSLE, "Dot." Entered from Brainerd Jr. High, '49; Shove-Offs, '49, '50, '51, '52; Twixteens, '49, '50; Swimming Club, '49, '50, '51; Y-Teens, '49, '50; Battalion, '49, '50, '51, '52; Ushers, '51, '52; Senate, '51, '52; Senior Play Cast, '52; "Digest" Staff, '50, '51, '52; Allied Youth, '51, '52.

PATRICIA SUE WESTBROOK, "Pat." Entered from Brainerd Jr. High, '49; Varsity Glee Club, '49, '50, '51, '52; Ink Spots, '49, '50; T. and I. Club, '51, '52; East Tennessee Teachers Meeting, '50, '51.

LILLIE GERALDINE WHALEY, "Gerald." Entered from East Side, '49; "Digest."

Sixth Row:

RALPH LEE WHITE, Entered from Brainerd, '50; Stage Crew.

BETTYE JO WHITMIRE, "Jo-Jo." Entered from Nathan L. Bachman, '48; T.T.A. Bible Club.

LINDA GAIL WILHOITE, "Pug." Entered from Brainerd, '49; Anchors Aweigh Club, Vice-President; Girls' Battalion; Girls' Glee Club.

EARL DOUGLAS WILLIAMS, "Webster." Entered from Brainerd, '50.

GEORGE AUSTIN WILLIAMS, "Big G." Entered from West Side Grammar, '48.

JIMMY LEWIS WILLIAMS, "Big Willie." Entered from North Chattanooga Jr. High, '49; Disc and Diamond Society; C. Club.

PATRICIA ANN WILLIAMS, "Pat." Entered from East Side, '49; Anchors Aweigh, President, '51, '52; Vice-President, Office Force; Announcers Club, Treasurer, '51, '52; Girls' Hi-Y, '50, '51, '52; Cheerleader, '50, '51, '52; Head Songleader, '52; Sponsor, '52; CHAMPION Staff, '52; Junior Play Cast; Senior Play Cast; L.L.C., '50, '51, '52; Physical Ed. Staff, '49, '50; Library Staff, '49; Home Coming Guest; Secretary of Sophomore Class.

Seventh Row:

PAUL WINFREY, "Hoot." Entered from East Side, '48; Roughswe's Band.

RICHARD H. WITT, "Little Kitty." Entered from Brainerd Jr. High, '49.

MARTHA LINDA WOMACK, "Mart." Entered from Brainerd Jr. High, '49; "Digest" Staff, '49, '50, '51, '52, Business Manager, '51, '52; L.L.C., '50, '51, '52; Ushers, '51, '52; Girls' Hi-Y, '51, '52; Ace Club, '51, '52; Badminton Club, '49; CHAMPION Staff, '51, '52, Senior Representative; National Honor Society.

BLITHE LOUISE WOOD, Entered from Massena Jr. High, Massena, New York, '48; Girls' Hi-Y, '51, '52; L.L.C., '51, '52; Ushers, '51, '52; CHAMPION Staff Representative; Bible Club, '50, '51, '52; Ace Club, '48, '49, '50; Honor Society, '52.

DELILA ROENA YOW, "Dee." Entered from Hardy Jr. High, '50; Varsity Glee Club, '50, '51, '52.

VIRGINIA LEE ZOTT, "Ginnie." Entered from St. Louis, Missouri, '49; Silhouettes, President, '51, '52, '53; L.L.C.; Art Club.

NOT PICTURED

Bobby Bearden, Nickey Bell, Philip Darr, Charles Dunn, Norma Evans, Leonard Allen Finster, Edwin Lee Harris, Lawrence Hudson, Ida Jean Jackson, James Morgan, Betty Jo Renfro, John Riley, Richard St. Clair, Jimmy Sloan, Charlotte Thomas, Hugh Wooden, David Frater, Victor Genter, Don Smith.



SENIORS



THE SOPHOMORE GIRLS

FIRST ROW:

Jo Ann McKinney
Marlene Johns
Wanda Trimble
Marilyn Holder
Jo Shannon
Nancy Carter
Nancy Lawson
Ellen Nixon
Charlotte Wingo
Carolyn Rice
Lucille Richey
Barbara Peters
Vera Moore
Jo Ann Holmes
Delores Bryson
Mary Alice Bass
Imogene Bowman
Aline Baker
Patricia Jankins
Catherine McCutchen
Peggy Hayes
Doris Ayers
Frances Black
Frances Achley
Mary Jo Noll
Rachel Parr
Barbara Hill
Patricia Tanner
Martha Collins
Lois Hayes
Sue Broadway
Marilyn Green
Mary Alice Morgan
Dorothy Sutherland
Muriel Mooney
Mabel Connert
Vivian Huskey
Joetta Henry
Joan Barry
Barbara Quinn
Sue Templeton

SECOND ROW:

Ida McCord
Gale McCord
Mary Ann Coffey
Patsy Smith
Hazel Thompson
Barbara Cooper
Eva Mae Lively
Phyllis Lewis
Elizabeth Carroll
Jadena Head
Janet Adair
Naomi Wilkey
Leta Ridge
Louise Lumpkin
Mary Hale
Mary Dell Chester
Shirley Benefield
Bobbie Alton
Marie Clayton
Frances Madewell
Doris Potts
Elizabeth Clark
Virginia Strickland
Shirley Graham
Doris Hixon
Shirley McGee
Gara Burgess
Sally Lela
Dorothy Jewell
Marion Rowell
Sandra Smith
Jackie Carter
Barbara Lacy
Charles Anderson
Marilyn May
Sue McDonald
Joyce Higdon

THIRD ROW:

Nina Mabey
Margaret Limer
Gail Britt
Jo Ann Humble
Myra Jones
Theresa McCormick
Ronella Moyers
Nancy DeLay
Edith Daugherty
Lorene Pickett
Sue Warr
Mary Ann Childers
Edna Harris
Phyllis McCasoon
Betty Patter
Rose England
Joyce Welch
Carolyn Watkins
Barbara Hooper
Maurena Reid
Carolyn Slatton
Jacqueline Kittle
Charlotte Wooten
Barbara Adams
Rosell Fordham
Ann Winstead
Ruth Mulligan
Julia Moore
Billie Mulligan
Juanita McBrayer
Gayle McBrayer
Wynold Hodnett
Joanette Andrews
Jean Ervin
Phyllis McBrayer
Patsy Witt
Barbara Beets
Ann Hightower
Barbara Foster

FOURTH ROW:

Dianne Campbell
Betty Jo Worley
Delores Fossitt
Shirley O'Beir
Pat Manning
Juanita Malcom
Mary Dee Howe
Edna Cavin
Dorcen McCullough
Barbara Bailey
Katherine Shultz
Shirley Randolph
Susie Miller
Barbara Weeks
Jo Anne Reid
Mary Jackson
Bertha Daffron
Teresa Murray
Patricia Jacobs
Barbara Wall
Martha Stone
Barbara Hadden
Doris Bowling
Marilyn Talley
Christina Stegall
Joy Hill
Barbara Hill
Louise Farr
Ann Ruffington
Jo Ann Arnold
Bobbie Dean Lee
Katherine Owanby
Virginia O'Dell

FIFTH ROW:

Donnae Coffey
Douglas Craig
Frank Neyman
Walter Everhart
Tommy Harris
Bill McCaillie
John Harvey
John Ball
Fred Osborne
Robert Cope
Charles LaFever
Harvey Palmer
Richard Russell
Harold Lane
David Mason
Jim Caldwell
Harold James
David Bohring
Roger Smith
Mac Pendley
Jack Kinser
Perry Shipley
Robert Searbent
Wayne Wolfe
Leroy Varnell
Jimmy Stedfield
Billy Heaton

SIXTH ROW:

Jeannette Tate
Betty Jo Worley
Delores Fossitt
Shirley O'Beir
Pat Manning
Juanita Malcom
Mary Dee Howe
Edna Cavin
Dorcen McCullough
Barbara Bailey
Katherine Shultz
Shirley Randolph
Susie Miller
Barbara Weeks
Jo Anne Reid
Mary Jackson
Bertha Daffron
Teresa Murray
Patricia Jacobs
Barbara Wall
Martha Stone
Barbara Hadden
Doris Bowling
Marilyn Talley
Christina Stegall
Joy Hill
Barbara Hill
Louise Farr
Ann Ruffington
Jo Ann Arnold
Bobbie Dean Lee
Katherine Owanby
Virginia O'Dell

SEVENTH ROW:

Wina Tucker
George Collins
Mary Jane Duke
Louise Harty
Willa Miller
Johnnie Schleich
Sue Maxwell
Marilyn Sparks
Willa Tucker
George Collins
Mary Jane Duke
Louise Harty
Willa Miller
Johnnie Schleich
Sue Maxwell
Marilyn Sparks

EIGHTH ROW:

Barbara Allison
Doris Baggett
Charlotte Bradford
Ann Brady
Shirley Burnett
Ella Burns
Selma Ryan
Sarah Cargile
Barbara Casey

NINTH ROW:

Bobbie Carlton
Carol Carpenter
Barbara Fricks
Barbara Hawkins
Joyce Sharp
Jo Ann Johnson
Barbara Dotson
Barbara Saxon
Carol Millican
Elizabeth Runyan
Delores Aycock
Jacquelyn Harris
Barbara Sanders
Emily Napier
Joanne Maynard
Barbara Schrader
Yonny White
Nene Rogers
Frances Mckerley
Jo Moyers
Carol Hechle
Janice Teague
Pat Pickens
Joy Mosteller
Jane Wilson
Martha Standridge
Frances Michaels
Yonny Simpson
Priscilla Henegar
Linda Brannon
Shirley Gann

NOT PICTURED

Barbara Allison
Doris Baggett
Charlotte Bradford
Ann Brady
Shirley Burnett
Ella Burns
Selma Ryan
Sarah Cargile
Barbara Casey



THE SOPHOMORE BOYS

FIRST ROW:

Don Miller
Arthur Suits
Clarence Baird
John Dyer
Robert Jones
Raymond Kerley
Jerry P. Huling
Jimmy Kellis
James Skidmore
Robert Thomas
Richard Clinton
J. W. Irwin
James McConathy
Charles Garrett
Joe Naffziger
Joe Mathis
Jimmy Wilson
Lee Davenport
Ray Adams
Melvin Mathis
Roy Davenport
Bobby McCurry
Fred Chambers
Charles Vick
John Sargent
Elmer Garley
Ray Stokes
Billy Higgins
Charles Holmes
David Silver

SECOND ROW:

Stacye Perkins
Jimmy Ellison
Harold Haven
Jackie Carter
Howard Westbrook
Larry Putnam
Robert L. Kingston
Charles Champion
Thomas Shultes
Bill Howard
Ruey Dooley
Archie Currence
Stanley Howard
Thomas Shultes
Ronald Grant
Jacky Monteth
Larry Korte
Paul Black
Ed Vines
Harry Strongman
Ronald Clarkson
Clyde Bell
Claude Hemphill
Glenn Chamberlain
Kenneth Baker
Billy Heaton

THIRD ROW:

Hal Bridges
Bill Pickett
Robert Shuptrine
Clyde Miller

FOURTH ROW:

Bobby McMutt
Douglas Coffey
Larry North
William Parton
Ralph Moore
Leonard Morris
Bernard Jackson
Robert McChaffey
Wayne Hutcherson
William Hircenman
Neil Barnes
Johnny Hayes
Lamar Pusey
Curtis Unger
Vance Fry
Billy Long
Olin Kidd
Robert Vanor
Bill Watkins
Don Mahaffey
Jack Kinser
Perry Shipley
Robert Searbent
Wayne Wolfe
Leroy Varnell
Jimmy Stedfield
Billy Heaton

FIFTH ROW:

Tom Johnson
Douglas Craig
Frank Neyman
Walter Everhart
Tommy Harris
Bill McCaillie
John Harvey
John Ball
Fred Osborne
Robert Cope
Charles LaFever
Harvey Palmer
Richard Russell
Harold Lane
David Mason
Jim Caldwell
Harold James
David Bohring
Roger Smith
Mac Pendley
Jack Kinser
Perry Shipley
Robert Searbent
Wayne Wolfe
Leroy Varnell
Jimmy Stedfield
Billy Heaton

SIXTH ROW:

Raymond Lee Powell
J. N. Howard
Donald Prince
Paul Campbell
Johnny Arnold
Billy King
George Collins
Sherwin Anderson
Darwin Kennedy
Robert Wright
Bill Hayslock
Tommy Miller
Ronald Eldson
David Shearin
Sammy Owen

SEVENTH ROW:

Gene Erb
Doug Henderson
Bill King
Chester Stalley
Ted Gray
Donald Ball
Lloyd Rich
Wayman Poole
David Power
John Jones
Spencer Thompson
Kenneth Shelf
Jimmy Perry
Lamar Eaton
Richard Staten

EIGHTH ROW:

Jack Garner
James Ed Garner
Billy Henderson
James McLaughlin
Charles Allen
Frank Abston
Bill McArthur
Bobby Hoppe
Jerry Garner
Ray Howell
Billy Smith
Delbert Butler
Eddie Newell
Harold Dunn
Paul Ashley

NINTH ROW:

Darwin Branan
Donald Templeton
Jimmy Hunter
James McLaughlin
Charles Allen
Frank Abston
Bill McArthur
Bobby Hoppe
Jerry Garner
Ray Howell
Billy Smith
Delbert Butler
Eddie Newell
Harold Dunn
Paul Ashley

NOT PICTURED

Fred Ashby
Herbert Baggett
Richard Baggett
Ray Barnes
Henry Bookout
Edward Stark
James Cannon
Jimmy Carlton
Tommy Chase
Luther Davis
James Dickson
Bruce Cover
Ronald Edmon
Ronald Fletcher



THE FRESHMAN GIRLS

FIRST ROW:

Sally Kelly
Jo Ann Morgan
Clarine Abbott
Shirley Abbott
Yvonne McGlohen
Ruth Lewis
Nancy Wade
Sarnell Davis
Ann Love
Mary Armstrong
Charlotte Brown
Jo Ann Moore
Patricia Ann Eibson
Betty Jean Frazier
Ann Davis
Dolores Brannon
Charlotte Childress
Nancy Crowe
Shirley Childress

SECOND ROW:

Romanza Cooper
Nellie Childers
Janie Lee
Betty Scroggins
Barbara Pope
Madeline Tucker
Barbara Johnson
Polly Howard
Beverly Nolan
Claire Pollard
Sue Morgan
Charlotte Rogan
Patsy Guthrie
Beverly Howard
Kathleen Barnette
Katherine Bahaunon
Pat Boyd
Sue Birdwell

THIRD ROW:

Barbara Crazie
Eva Jane Smith
Sandra Battle
Nina Barrows
Judy Lee
Martha Phillips
Jo Ann Casey
Barbara Waldrop
Betty Shaw
Donna Bakes
Gloria Wood
Faye Lawson
Dorothy Frank
Geneva Parler
Mary Alice Templeton

FOURTH ROW:

Marilyn Johnson
Carolyn Suggs
Betty Stewart
Ann Suggs
Rachel Carpenter
Janet Walker
Wanda Rogers
Lynn McGuffey
Carol Gordy
Katherine Jones
Jane Sittion

FIFTH ROW:

Willie Lee Jordan
Betty Nelson
Sandra Hollfield
Barbara Davis
Barbara Brickett
Doris Prichard
Joyce Robbs
Pat Schrohr
Bette Sudderth
Betty Gass
Charlotte Stansberry
Cynthia Beck
June Malstrom
Thelma Jones
Lola Humble
Ray Dean Evans
Sherill Vandergriff

SIXTH ROW:

Pat Adams
Patsy Powell
Barbara Monday
Janet Willard
Pat Locklear
Yelma McDonald
Judy Wilson
Yvonne Bales
Joan Turner
Sheila Betts
Charles Wallace
Jean Turner
Mary Nell Howman
Jo Ann Dunn
Jo Ann Miles
Frances Griffith
Marjorie Brown

SEVENTH ROW:

Jo Ann Hardyman
Phyllis Lewis
Helen Smith
Naoma Everton
Barbara Pritchard
Adda Standridge
Nancy Couch
Sue Sealf
Ann Millan
Marguerite Rightmire
Janet Henderson
Dolores Mabae
Barbara Fricke
Betty Royal
Peggy Hargraves
Carol Marcus

EIGHTH ROW:

Dot Cox
Elsie Wilson
Selma Washam
Harriet Witt
Virginia McKamy
Carol Stork
Betty Stroud
Carolyn Lilley
Sylvia Newton
Loretta Muse
Dorothy Young
Norma Hixon
Bobby Guber
Joyce Wilson
Earnestine Holdam
Nellie Gossett
Wanda Payne
Ann Hollomon
Betty Sharp

NOT PICTURED

Mildred Abbot
Betty Craft
Barbara Dotson
Frances Elrod

Charlotte Evans
Sue Fitzgerald
Rosemary Fry
Peggy Hargraves

Garen Jackson
Maggie Kelsey
Cynthia Liles
Juanita McBryar

Patsy McDowell
Peggie Moon
Jenna Morrison

Jo Ann Newman
Charlotte Peden
Polly Powell

Wanda Roddy
Elizabeth Strickland
Helen Terry



THE FRESHMAN BOYS

FIRST ROW:

Donald Powell
Floyd Butler
Bobby Jones
Carlton Austin
Johnny Long
Everett Gossett
John Bolton
Billy Elliot
Joseph Cannon
Phillip Schiff
Tommy Brandon
Glenn Hawkins
Marvin Easley
Carl Seale
Richard Champion

SECOND ROW:

Jerry Willard
Ray Collins
Jimmy Renegar
Frederick Randall
Joseph Hawkins
French Tripp
Leslie Greenburg
Melvin Lofly
Arnold Janeway
Billy Pickett
Bobby Hartman
Bobby Stanfor
Harold Janeway
Kenneth Williams

THIRD ROW:

Don Statton
Joe Morgan
John Lee
Billy Morgan
Clifford Stewart
Don Bridgman
Lebron Tatum
Jimmie Bennett
Bob McCutcheon
Larry Kling
Charles Gaston
Raymond Rich
Ted Gilreath
Larry Cooper

FOURTH ROW:

Robert Rightmire
Troy Matthews
Kenneth Wilcox
Jackie Pell
Stanley Barry
Billy Johnston
Freddie Howard
Jimmy McAllister
Bill Dempsey
Larry Kling
Julian Roberts
Mac Eagle
Johnny Dunbar

FIFTH ROW:

Kenneth Dodd
David Carpenter
Dewey Layne
Austin Cline
Jimmy Snyder
Hugh Griffith
Bill Fisher
Buddy Henson
Bill Alonso
Gene Astry
Joel Hawkins
Frank Oliver
Ronnie Cook

SIXTH ROW:

Edward Howard
David Garrett
Shan Whiteaker
Harry Gross
Jimmy Thomas
James Bolton
Bobby Guber
Jimmy Huskey
Harvey Shell
Slate Wilcox
Billy Manning
George Evans
George Gray
Douglas Nolan
Wade Green

SEVENTH ROW:

Sal Maglie
David Garrett
Shan Whiteaker
Harry Gross
Jimmy Thomas
James Bolton
Bobby Guber
Jimmy Huskey
Harvey Shell
Slate Wilcox
Billy Manning
George Evans
George Gray
Douglas Nolan
Wade Green

EIGHTH ROW:

Wayne Carlton
Kenneth Dye
Gene Ward
Charles Gons
Houston Clark
Bobby Sterchi
Fred Sterchi, III
Travis Miles
Larry Bales
Byron Elkins
Ezekiel Kennedy
Tommy Brackett
Larry Smartt
Raymond Smartt
Donald Allen

NOT PICTURED

Steve Boyd
Odell Braden
Lloyd Brooks
Tommy Chase

Noel Crawley
Willie Duggan
Ted Gilreath

Buddy Holland
Micky Kennedy
Jack Kincer

James McCommon
Bobby McNutt
Ray Moss

Melvin Perkinson
James Phillips
Fredry Reeves

David Rehring
Raymond Rich
Joe Smith

Roger Smith
Roy Smith
Terry Still

Clayton Stewart
James Strickland
Fred Wrinkle



The
MILITARY

ROTC AT CENTRAL HIGH

LIEUTENANT COLONEL GEORGE A. BONE

Colonel was most fortunate in the choice of a career which made it possible for Colonel George A. Bone to receive P.M.A. and T. of the high schools of Chattanooga. Instead of entering the Japan land force, Colonel Bone graduated from Western Kentucky University in 1914. He enlisted in the army in 1918 and was called to active duty as a second lieutenant. Before coming to Central in the fall of 1919, he was on occupation duty in Hokkaido, Japan.

Colonel Bone has been a great inspiration, not only to the R.O.T.C. Regiment, but to the school as a whole. He has shown much interest in Central and its activities. His gentle nature and willingness to take each student have won him a place in the heart of each member of the staff.

CAPTAIN ROBERT G. MILLER

Having been born in Chattanooga, to Captain Robert G. Miller, in early childhood Captain Miller moved from Colorado to St. Albans, West Virginia, where he was graduated from St. Albans High School. The following year he attended Marine-Harvey College in Charleston, West Virginia.

In 1914 he joined the National Guard. In 1917 he was promoted to a First Lieutenant. Immediately after the declaration of World War II, he was called to active duty. He was assigned to the 1st Infantry Division in 1917. He returned to the states to attend Officers Candidate School at Fort Benning, Georgia where upon completion of his schooling he

Sergeant Williams has been in the army thirteen years. During World War II he attended an Officers Candidate School and was commissioned, serving later in the European Theater of Operations in the transportation corps.

In 1917 he was released from the army, but wanting to serve his country further, he re-enlisted in 1918, at his present grade. Before coming to Central, he was attached to a military intelligence group in Fort Bragg, North Carolina.

SERGEANT FIRST CLASS DANIEL H. REVELL

A fine and efficient instructor is Sergeant Dan Revell from Durham, North Carolina. He graduated from Madison High School at Durham, North Carolina.

Sergeant Revell entered the army in 1918. After completing his basic training in Fort Bragg, North Carolina, he was sent overseas. There he served in the European Theater of Operations for thirty-six months. During his tour he landed and twenty-three days on the front lines. He was in such battles as: the Battle of France, the Battle of the Bulge, and the Battle of Germany. Later he served in the Army of Occupation in Germany. Central is fortunate to have a man of such rich experience in the P.M.A. and T. staff.

SERGEANT FIRST CLASS VERNON BASS

The Central R.O.T.C. is pleased to have Sergeant Bass return after a year's absence. Since the first of this school term, he has handled the job of supply sergeant.



REGIMENTAL STAFF

COLONEL KENNETH HUDGINS

Regimental Commander

LIEUTENANT COLONEL JACK FRYAR

Regimental Executive Officer

MAJOR FRANK FULLER

S-1, Adjutant

MAJOR LOWERY LACKEY

S-2, Intelligence

MAJOR BERNARD EPPERSON

S-3, Plans and Training

MAJOR BILLY KNOWLES

S-4, Supply Officer

FIRST LIEUTENANT GORDON PETERS

Photographer

MASTER SERGEANT JOHN PARKS

Regimental Sergeant Major

MASTER SERGEANT PAUL GREENBERG

Operations Sergeant

MASTER SERGEANT THOMAS INGLE

Supply Sergeant

MASTER SERGEANT STANLEY BAKER

Public Relations NCO



OFFICERS AND STAFF

FIRST BATTALION STAFF

LIEUTENANT COLONEL BILLY BLACK *Battalion Commander*

MAJOR REX FORD *Battalion Executive Officer*

CAPTAIN JACK ALLISON *Battalion Adjutant*

FIRST LIEUTENANT DON ROBINSON *Intelligence Officer*

FIRST LIEUTENANT JACKIE SHERRILL *Supply Officer*

MASTER SERGEANT JOHN RAYLESS *Battalion Sergeant Major*

SECOND BATTALION STAFF

LIEUTENANT COLONEL RAYMOND LING *Battalion Commander*

MAJOR RICHARD BUFFINGTON *Battalion Executive Officer*

CAPTAIN PAT MAV *Battalion Adjutant*

FIRST LIEUTENANT FRED McDANIELS *Intelligence Officer*

FIRST LIEUTENANT PETE CROWNOVER *Supply Officer*

MASTER SERGEANT DON ROBINSON *Battalion Sergeant Major*

was commissioned a Second Lieutenant. Shortly after that, he was promoted to a First Lieutenant.

Although released from active duty in 1919 Captain Miller was recalled the same year as a regular army officer and assigned to Army Occupation Duty in Italy where he joined the Eighty-ninth Division. After serving three years on occupation duty, he returned to the states and was assigned to the P.M.A. and T. staff of Chattanooga High School where he has been for the past two years. In May, 1919, he was promoted to his present rank. He was transferred from CHS High to Central January, 1921, replacing Lieutenant Spencer E. Millard as assistant P.M.A. and T., who was transferred to CHS. Central is pleased to welcome Captain Miller as a member of the R.O.T.C. staff.

MASTER SERGEANT RAY L. WILLMORE

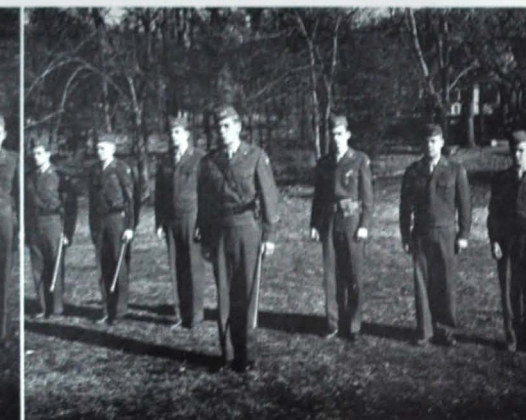
Master Sergeant Ray L. Willmore, native of Danvers, Illinois, was assigned to the Central Regiment in October, 1921.

After graduating from Central High School in Charlotte, North Carolina, Sergeant Bone entered the army in 1912. He served throughout the European Theater with the First and Seventh Armored Divisions. Sergeant Bone fought in the Battle of the Bulge and the Four Black.

SERGEANT FIRST CLASS WILLIAM H. GREEN

Sergeant Green, a former Central student, entered the army in 1941. After taking his basic training at Camp Robinson, Arkansas, Sergeant Green was sent to Europe in the Army of Occupation.

In July, 1949, Sergeant Green was sent to Korea where he served only seven days before he was wounded. He returned to the United States in September, 1950, and has recovered considerably from his wounds. His capability has been shown by his outstanding work in the military department.





MAJOR REX FORD

GERRY FUNDERGER



LT. COL. BILL BLACK

ARLENE HILLIS



COL. KEN HIGGINS



BOBBIE NELL KOLWYCK



LT. COL. RAYMOND LING



KATHERINE KENNEDY



MAJ. RICHARD BUFFINGTON



PAT WILLIAMS



MAJOR FRANK FULLER

KAY FRY



MAJOR LOWERY LACKEY

PEGGY GOSSETT



LT. COL. JACK FRYAR



CHARLOTTE STALEY



MAJ. BERNARD EPPERSON



PEGGY WATKINS



MAJ. BILL KNOWLES



DOTTIE WATERHOUSE

MILITARY OFFICERS AND SPONSORS



CAPT. BILL McBRAYER



IMOGENE PEDIGO



CAPT. REGINALD LASATER



MARGARET SMITH



CAPT. JIMMY WILLIAMS



BARBARA PRICHARD



CAPT. JACK ALLISON

VIRGINIA ROTT



CAPT. PAT MAY

JOYE PARKER



CAPT. PRUETT MORRISON



GENEVA MONDAY



CAPT. HOWARD BLAIN



JEAN TITTSWORTH



CAPT. DAVID PATTON



DORIS CASTLE



CAPT. BILL LANKFORD



LOIS SAXON



ROTC

COMPANY A

BILL M-BRAYER *Captain*
 BOB BOWMAN *First Lieutenant*
 ROBERT GLADDEN *Second Lieutenant*
 BOB BAILEY *Second Lieutenant*
 JIMMY PACK *First Sergeant*

COMPANY B

PRUETT MORRISON *Captain*
 JOHN MOORE *First Lieutenant*
 ROBERT KILE *Second Lieutenant*
 RONALD FARRIS *Second Lieutenant*
 GLENN COPELAND *Second Lieutenant*
 GEORGE PATTERSON *First Sergeant*

COMPANY C

JIMMY WILLIAMS *Captain*
 JIMMY EVERHART *First Lieutenant*
 DAN ACOSTA *Second Lieutenant*
 JOIE FRANK *Second Lieutenant*
 CLIFFORD CURL *Second Lieutenant*
 DON DUNCAN *First Sergeant*

COMPANIES

COMPANY E

HOWARD BLAIN *Captain*
 ED SCHROYER *First Lieutenant*
 WAYNE VANDERGRIFT *Second Lieutenant*
 JACKIE CORN *Second Lieutenant*
 ALLEN CASEY *Second Lieutenant*
 RAYMOND PENDLY *Second Lieutenant*
 JAMES LONG *First Sergeant*

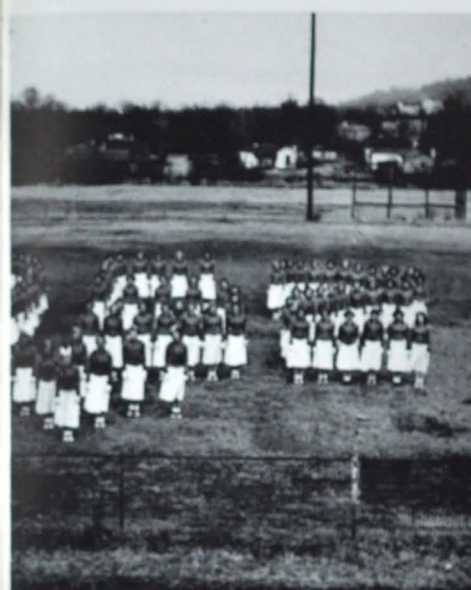
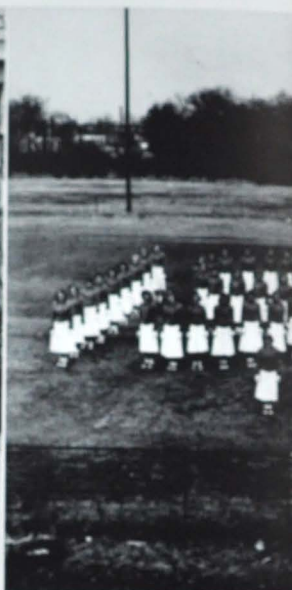
COMPANY F

DAVID PATTON *Captain*
 TOMMY HEAPS *First Lieutenant*
 DARRELL CRAWFORD *Second Lieutenant*
 RICHARD WITT *Second Lieutenant*
 BILLY SMITH *Second Lieutenant*
 KENNY RIGGS *First Sergeant*

COMPANY G

WILLIAM LANKFORD *Captain*
 JOE A. SMITH *First Lieutenant*
 PAT SHIPLEY *Second Lieutenant*
 HOWARD WALLER *Second Lieutenant*
 RALPH WHITE *Second Lieutenant*
 GEORGE WESTBROOK *First Sergeant*





The FEATURES



KAY FRY
Associate Editor

DONNA BLESSING
Editor

JEAN RUNYAN
Associate Editor

THE 1952 CHAMPION

STAFF

DONNA FAYE BLESSING	Editor	JOHN MOORE	Sports Editor
JEAN RUNYAN	Associate Editor	SARA COLLINS	Club Editor
KAY FRY	Associate Editor	GORDON PETERS	Photographer
ARLENE HILLIS	Excuse a Manager	PAULINE SHAW	Typist
PAT WILLIAMS	Feature Editor	STARR VANCE	Art Editor
CLIFFORD CURL	Feature Editor	BETTY GROSS	Junior Editor
BLYTHE WOOD	Senior Editor	BARBARA WALL	Sophomore Editor
MARTHA WOMACK	Senior Editor	CAROLYN DILLEY	Pre-man Editor
BILL KNOWLES	Military Editor	MISS SALLY MAY KING	Sponsor
MR. G. C. TOWERY	Sponsor		

Front—Blessing, Fry, Runyan—Peters, Hillis, Gross, Wood, Womack, Curl, Collins, Knowles,
Vance, Shaw, Wall, Williams, Moore.



SENIOR CLASS

OFFICERS

KEN HUDGINS	President
JIM WILLIAMS	Vice-President
BILL McBRAYER	Secretary
JACK FRYAR	Treasurer
BILL BLACK	Sergeant-at-arms
BERNARD EPPERSON	Sergeant-at-arms
RAYMOND LING	Sergeant-at-arms
DAVID PATTON	Sergeant-at-arms

JUNIOR CLASS

OFFICERS

JIMMY PACK	President
DON DUNCAN	Vice-President
KAY HOFFMEYER	Secretary
DOT WOOD	Treasurer



SOPHOMORE CLASS

OFFICERS

BOBBY HOPPE	President
MAX PARRIS	Vice-President
MYRA HOBBS	Secretary
DOYLE DICKSON	Treasurer

FRESHMAN CLASS

OFFICERS

LESLIE GREENBURG	President
TED GILREATH	Vice-President
RONNIE COOK	Secretary
JIMMY BARKLEY	Treasurer

Top: SENIORS

Left: JUNIORS



SOPHOMORES



FRESHMEN





FRANK FULLER
Mr. Central
KAY FRY
Miss Central



TOP PICTURE: Mr. and Miss Central and their attendants are pictured at the Riverview home of Mrs. and Mr. Bill Penny, President of the Central Alumni Association. Reading left to right: Doris Castle, Jack Fryar, Mrs. Reba Fuels, Mr. W. H. Millsaps, Kay Fry, Miss Central; Frank Fuller, Mr. Central; Pat Williams, Ken Hudgins, Arlene Hillis, and Jimmy Williams. In front is Connie Ragan, flower girl.
BOTTOM PICTURE: Following the chapel ceremony where Frank Fuller was crowned Mr. Central and Kay Fry, Miss Central, there was a reception held in the library. Reading from left to right: Mrs. Reba Fuels, to whom THE CHAMPION was dedicated; Frank Fuller, Mr. Central; Kay Fry, Miss Central; Mr. W. H. Millsaps, and in front are Marlene Coulter and Charles Cooper.

SENIOR DAY
COURT

SENIOR



Torcbearer
KAY FRY
FRANK FULLER



Leadership
ARLENE HILLIS
KEN HUDGINS

Scholarship
MABEL McCRARY
DON ROBINSON



Best All-Round
PAT WILLIAMS
BILL McBRAYER

Service
DONNA BLESSING
RICHARD BUFFINGTON



PERSONALITIES



Most Likely to Succeed
CHARLOTTE STAILEY
JACK FRYAR

SENIOR PERSONALITIES



Dependability
DORIS CASTLE
REX FORD



Courtesy
SARA COLLINS
BILL KNOWLES

Friendliness
IMOGENE PEDIGO
JIMMY WILLIAMS



Most Talented
STARR VANCE
CLIFFORD CURL

Wittiest
PEGGY SELLS
PAUL WINFREY



Most Athletic
BETTY RUSH
BERNARD EPPERSON

Cutest Couple
BOBBIE NELL KOLWYCK
KEN HUDGINS





BETTY SMITH



HILLBILLIES FROM WHOOPIN' HOLLER

BATTALION OFFICERS AND ESCORTS



PAUSE...DRINK

Coca-Cola



When you want a photograph, you want a fine photograph and that's the only kind your official photographer takes!

Photograph Studio — 750-455 - Floor

Miller Bros.

CHATTANOOGA'S COMPLETE SHOPPING CENTER



JUNIOR PLAY CAST "GLAMOUR BOY"



DOC (REPUBLICAN) HODGES



"COME HITHER TWINE"



THE BROWLERS



WRAP IT GOOD



WE'RE SORRY



LAST YEAR THEY GAVE, THIS YEAR THEY RECEIVE



CAFETERIA FORCE



"FUTURE HOUSEWIVES"



I BET IT WILL BE 7777

BELLYOTS



THEY GOT OUR ADS

"RUN, RABBIT, RUN"

BABY CENTRALITES



Kutie

JUDY

Scoggins

Glenn

Ooosh Cold!!!

"Bang Bang"

bashful!

Bait

idoo

Barful Dis



Hecked

Amity

Whispering

Cats

Queen "Puck"

Sleepy Time Gal

Live Bugs

LOVER

SCOTTY

How Low WOH MARY

Watermelon

"Mossy"

Sorry YANCKEY!!

Tombays

Lord's Day

Gean







The
ATHLETICS



Coaches J. L. "Lew" Newton, Stanley Farmer, E. B. "Red" Etter, Jake Seaton, and Gordon Atchley

E. B. ETTER

This makes the sixth year for E. B. "Red" Etter as head coach at Central High. He has proved himself many times by bringing victory to the Purple and Gold with his brand of smart football. This year has been one of his best.

After graduating from Central in 1925, Etter went to the University of Chattanooga where he got his B.A. degree. He gained his experience at Morgan School, Pittsburg, Tennessee, and Hendersonville, North Carolina. From 1925 until 1932 he coached at Brainerd Junior High. He came to Central as assistant coach in 1933 and succeeded Jake Peterson as head coach in 1935.

Hardly could a person be more popular than Coach Etter has been at Central High School. During his coaching years, he has developed into one of the outstanding high school coaches of the South, renowned wherever he goes for his fine spirit and athletic ability.

COACH STANLEY "BOOMER" FARMER

Coach Stanley Farmer, though at one time a member of one of Central's rival teams on the gridiron, has proved to be one of our greatest and most loyal coaches.

After graduating from Chattanooga High School, Farmer attended Emory and Henry College in Virginia. He coached a short time at Chattanooga High before going into the Navy. He joined Central's coaching staff after leaving the service in 1947.

His kind manner and understanding way of doing things has won him a place in the hearts of all Centralians.

J. M. SEATON

One of the most valuable coaches on the Central High staff is "Boaty" Seaton, whose job in training the men of the future as coach of the "B" team.

After graduating from East Tennessee State Teachers College in 1935, Seaton went to Buddy-Inley where he served as assistant football and basketball coach. During the years between 1932 and 1933, he was employed at DuPont Company before coming to Central as an instructor in the Industrial Arts Department.

In his years here he has played an important part in building the material for victory teams of the future.

GORDON ATCHLEY

Among Central coaches is another former gridiron owner, Gordon Atchley. After graduating from Red Bank, he attended the University of Chattanooga.

Though this is only his second year at Central as a teacher and coach, he has won many friends and is well liked by all who know him. He has played an important role in helping to develop Central ends and backfield men. He also coaches "B" team basketball.

Along with his coaching duties, he serves as a teacher of biology and general science.

J. L. NEWTON

Now in his tenth year of coaching at Central High is J. L. "Lew" Newton. He has proved his ability many times by helping to build invulnerable lines.

In 1930 Coach Newton graduated from Carson-Newman College and went from there to Pulling Water Grammar School. He joined the coaching staff at Central in 1932.

Because of the great interest he has shown in football and in Central, Coach Newton has become one of the most popular men on the staff. Along with the Knoll-hole Gang Baseball Team and also with boxing teams.



LACKEY
PACK

DUNCAN
FRYAR

TILLMAN
TATE

LING
WILLIAMS

HUTCHESON
HOPPE

With hardly a blench of defeat on their record, the Central Purple Pounders rounded out, on Saturday evening, November 30, one of the finest football seasons in the history of Central sports. The only time the team failed to chalk up a victory was in the game against Miami, when they lost by only two points, 14 to 12.

With some twenty returning lettermen and only about three weeks of practice before the first game, Red Etter soon molded his material into what proved to be a championship team. After a great deal of hard work on the part of both coaches and players, Central launched one of the most successful seasons in the history of the school.

CENTRAL, 20; FAYETTEVILLE, 0 September 7

A thrill packed crowd, many of whom traveled from Chattanooga, saw the Purple Pounders move to an impressive 20-0 victory over the hard-unshaking Tigers of Fayetteville, Tennessee. The first touchdown came with the opening series of plays of the second half when Central moved 85 yards in 16 plays with the opening kickoff. Bobby Hoppe ended the surge by scoring from the five yard line. Fryar added the extra point. The second score was again credited to Hoppe, this time on a ten yard run around end and Fryar's second kick was good. Billy Hale took his turn to hit

the scoring lineup, taking a punt and racing 73 yards for the score.

Great line play stopped the Tigers on the Central 16 yard line as the game ended. Great play by Fryar, Epperson and McBrayer held the Tigers in check.

Manager Jerry Garner, Dickie Boquet, Bill Blaylock, and Jerry Dickson



CENTRAL HIGH'S PURPLE

POUNDERS



BRENNEMAN
MASON

CANNON
LOCKE

FUSON
McBRAYER

KILLINGSWORTH
BISHOP

McKENZIE
EPPERSON

CENTRAL, 25; KNOX YOUNG, 0

September 13

In their first home game the high-geared Purple Pounders, led by Jimmy Williams, rolled to a decisive 25-0 victory over the Yellow Jackets of Knox Young.

Williams scored his first on a pass from Pack that carried 43 yards. Again it was Williams on a hard blast over the middle from the one yard line. His third for the night came on a delayed pinch-out from quarterback Kenny Riggs. The final tally for the night game came after Creswell took a lateral from Hudgins. The play was good for ten yards and six points.

Outstanding play in the line by Epperson, Fryar, Patton and Duncan held Young to a minimum in net yards gained.

CENTRAL, 13; O'KEEFE, 7

September 20

For their third game of the year, the Pounders of Central met a scrappy O'Keefe team from Atlanta. This, the closest game to date, found Central coming out on top, 13-7.

Early in the first quarter Williams scored to end a 54 yard drive and put the Purple and Gold ahead, 6-0. It was not long until Jimmy Newcomer, Backy back from Atlanta, returned a kick 54 yards and added the extra point to put O'Keefe ahead, 7-6. This was the first score of the year against Central. After taking the kickoff, the Pounders again marched 53 yards to score and regain the lead, 13-7. The score came with Williams pounding through the middle from the one yard line.

Outstanding line play by the Central forward wall, led by Duncan, Epperson and Killingsworth, kept the Irish tamed for most of the game.

CENTRAL, 32; KINGSPORT, 13

September 28

The Central Purple Pounders took to the road for the second time this year, this time going North to meet the Kingsport Indians. Red Ester's men hit the air to roll over the Indians, 32-13.

The undisputed star of this game was Jimmy Pack who tossed three touchdown passes. His passes, which were flying almost every play, gave the Pounders a total net gain of 281 yards through the air. The first score came after Williams took a five yard pass from Pack and sprinted 37 yards for the score. Hale ran 15 yards for the

Tillman looks 'em over



EATON
PARSONS

IGOU

PATTON

HALE

CRESWELL
HUDGINS

BISHOP
BLACK

RIGGS
CROWNOVER

second score after the Purples had recovered a fumble on their own 45. Fryar added the extra point. The third score came when Hudgins took a pass from Pack and lateraled to Igou who went on to score. Igou took a pass, this time from Hale to end the half with Central out ahead, 21-0.

Kingsport scored their first T.D. early in the third when Dick Warren went over from the 34. Pack's third touchdown pass was to Tillman which ended a 67 yard drive. Bill Ring scored the second Kingsport touchdown, going over from the one yard line. Thus the game ended, Central 32, Kingsport 13.

Williams scores against Baylor



CENTRAL, 38; RED BANK, 0

October 6

In a cool night air, resounding with cheers and yells, the Purple Pounders of Central met the Red Bank Lions on Chamberlain Field.

During most of the first quarter it seemed that neither team could move. On the second down of the game, Red Bank surprised Central with a quick kick that rolled dead on the ten. Soon Central took over on the forty yard line after a kick. A few plays later, Williams took a pass from Pack and went sixty yards for a touchdown. Fryar added the extra point, and the quarter ended 7-0 in Central's favor.

Early in the second quarter, Red Bank recovered a fumble on the Central ten. Three plays later Tillman punted from the end zone. On the return, Red Bank fumbled on the thirty-eight, where Don Duncan picked up the ball and raced sixty-two yards for a touchdown. The whole play covered ninety-seven yards. Soon after Williams went seventy yards to score on a Statue of Liberty play. As the half ended, Central led 30-0.

The third quarter was sparked by the brilliant playing of Tommy Tillman, Backy back, who plunged through the middle and ran sixty yards for the score, with the Lions unable to stop him.

The fourth quarter found the third and fourth teams, with Eaton and Riggs, forcing their way to the Red Bank seventeen. As the siren sounded to end the game, Riggs went for Central's final touchdown to make the score 38-0.

CENTRAL, 12; MIAMI CENTRAL, 14

October 13

A well-rounded group of fans followed the Purple Pounders all the way to Miami, only to see them lose a close one to the Sting-ers by two points, Miami, 14-Central, 12.



Tillman and Hoppe in the Clear



Williams finds his Opening

The Pounders outdid the Stingers in everything but scoring, the difference being in extra points. Miami scored in the first and second quarters and Central tallied in the second and fourth quarters.

Miami's first score came on a thirty-four yard pass play in the first quarter. Their second quarter score came on another fine pass play. Central but what would have been the winning touchdown when Williams dropped a pass in the end zone. Piper scored both touchdowns for Miami. For Central it was Hoppe and McBrayer who shared scoring honors.

The small but fast backfield teamed with the hard charging line led by Captain Jack Fryer played a great game and deserved anything but the defeat that was given to them.

CENTRAL, 48; TYNER, 7

October 20

On this first cool night of the year fans headed out the highway to see the Purple Pounders of Central meet the always scrappy Tyner Hillhoppers and win 48-7.

Central was paced by Jimmy Williams and Bobby Hoppe who scored two touchdowns apiece. Other scores were made by Tillman, Massey, and Tate. The Pounders were able to score in every quarter and held Tyner scoreless in the first three until Bobby Mc-Kamey was able to go over for a touchdown. Ronald Ray added the extra point for Tyner.

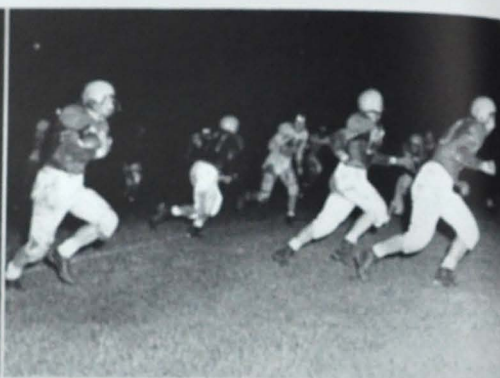
Ralph Creswell, Bernard Epperson and Bill Black played well on defense and were a big factor in keeping Tyner from scoring.

CENTRAL, 27; BRADLEY, 7

October 27

The powerful Purple Pounders, meeting in mean-spirited fashion, romped over the Bradley Bears, 27-7, in their last road trip game of the season. The maids were running over with fans, many of whom had come from Chattanooga to see the over-gate Bears in completely unfamiliar to Central High.

Tommy Tillman got the machine moving when he took a Bradley punt on the second play of the game and raced 90 yards for a touchdown. The Pounders kicked to the Bears but took over three plays later. On the first play from scrimmage, Jimmy Williams went over the middle and 34 yards down the field for the second score, before the fans had a chance to get seated. As it is shown that he could make the rally lineup, Bobby Hoppe made another one of his many breath-taking catches in the end zone. Pack made all three extra points with the score standing, 21-0 at the end of the first quarter. From here out it was a different game. The Bears brought up all their strength and both teams fought to a near stand-still. The next score came in the third frame when Pack completed a 12 yard pass to Williams who added his second score of the night. Pack missed the point after the touchdown and the Pounders were ahead, 27-0. Bradley came back with the kicked



Patton leads all-around protection for Hoppe

and a 53 yard drive to score their only six-pointer of the game. The extra point was good and that ended the scoring for the night. Captain Jack Fryer led the line the whole night as they put forth all they had to do a great job of taming the Bradley Bears.

CENTRAL, 33; ST. ALOYSIUS, 7

November 3

Some 5,000 local fans braved the near freezing weather to see the Purple Pounders dig into the frosty turf, hand St. Aloysius of New Orleans a 33-7 defeat, and run their record to eight wins against one defeat.

It was a fast moving game for the Pounders in which five men ran up six points each. Everything seemed to explode after Tommy Tillman set off the spark with a back-breaking 92 yard touchdown run on the second play of the game. Following right behind Tillman was Frank Igou who raced 53 yards after taking a short pass from Pack to make the score at the end of the first quarter, 12-0.

The second quarter started in the same way with Jimmy Williams taking his turn at this point by scoring on a one yard buck. Four minutes later the ball was again on the one yard line. This time it was left to Billy Hale, who gave a repeat performance of what had happened a few moments before. Pack added the extra point and the half ended, 26-0.

Aloysius came back hard in the third quarter, after intercepting a Pounder pass. Four plays later Ralph Schindler pushed over from the two. The extra point was good and the score stood, 26-7. Central's next score came when Bobby Hoppe made a breath-taking catch of a Pack pass and ran on into the end zone to end all scor-

ing for the night and give the Enormous a 33-7 victory. Had it not been for the great play of the entire line, such a victory could not have been possible.

CENTRAL, 14; LOUISVILLE MANUAL, 0

November 9

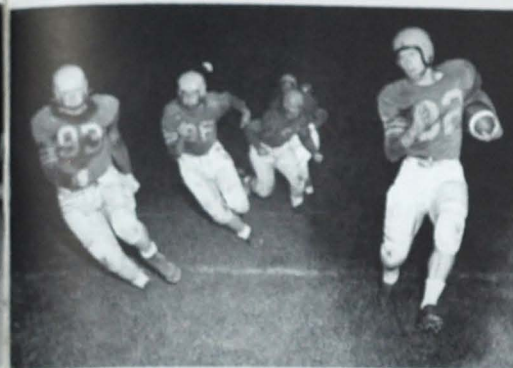
In a one by six, one by land attack which netted two touchdowns and another notch on their victory string, the Purple Pounders rolled over Louisville Manual, 14-0, in one of the hardest fought homecoming games of recent years.

Central pounded off to a quick start after Bill McBrayer intercepted a Manual pass on the second play of the game. Four plays later the Pounders had a touchdown which had sent Tommy Tillman over from the one yard line. Jimmy Pack added the extra point and the score stood 7-0. Early in the second quarter the Purple Pounders sustained a hard fought 30 yard drive which ended when Pack passed to Ken Hodgins in the end zone. Pack again found the range and put on the final trimmings making the score 14-0. Though this was to be the last score of the night, few people left their seats until the final whistle was blown. The second half was mainly a battle of the lines which seemed almost invincible

Central's huge charging line from end to end was surely the big factor in their victory with fine pass defense of Bill Black and Bobby Hoppe.

The last whistle of the Bachel game did not end the football season for Central. There were still several honors to be given them before the record books could be closed. First there was the State Championship which was won by the Pounders. Central was picked by both the A.P. and Professor Lickhouse. Next we had seven men picked on the various all-city teams. The boys who took the spotlight on the local scenes were: Jack Fryer, Bernard Epperson, Bill McBrayer, Don Duncan, Jimmy Pack, Jimmy Williams and Tommy Tillman. Bernard Epperson also was awarded the Tom McKan award for the most valuable player in Chattanooga. Going still higher for state honors were Epperson, Pack, and McBrayer who were placed on the First All-State team. Tommy Tillman made the third team with Jack Fryer and Don Duncan getting three men on the All-State first team. The final honors came to Bernard Epperson who made the All-Southern team.

With a great string of victories and all the awards that were given, this team will go down as one of the greatest teams in the history of Central.



Pack cuts wide



Williams goes all the way

and allowed both teams very little yardage by land and even less by air. Central's pass defense, led by Bobby Hoppe and Billy Black meant suicide for the Manual quarterback who completed only four out of 25 passes.

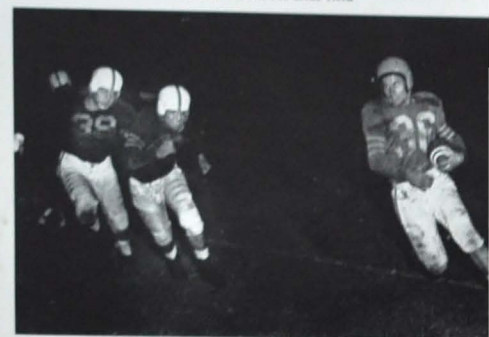
Getting away from football and turning to the lighter side of the half time, the Home-Coming Queen was announced. The lucky girl proved to be Pat Williams. The Court consisted of Kay Fry, Arlene Hillis and Inesene Pedigo. This fine half-time show along with a smashing victory sent most of the spectators home happy.

CENTRAL, 26; BAYLOR, 20

November 30

The largest crowd of the season saw the Central Pounders overcome a 13-0 lead in the first quarter and fight to a 26-20 victory over the Red Raiders of Baylor.

Baylor took a quick lead, scoring two touchdowns in the first three minutes of the game. They came on an intercepted pass and a blocked kick. The overwhelming lead was not to last long, for the powerful Purple and Gold, led by Bobby Hoppe, came back with great force to lead 14-13 at the half and go ahead 20-13 at the end of the third frame. Jimmy Williams banged over for all three touchdowns. Early in the fourth quarter, Zeke Rolfe scored for Baylor after an intercepted pass to tie up the game, 20-20. With five minutes left, the able Tommy Tillman plowed over from the fifteen with the winning touchdown to make it a final 26-20.



Tillman looks for clear field



BOYS BASKETBALL TEAM

Left to Right: Jimmy Pack, Bill Goodner, Bernard Epperson, Bill McCallie, Paul Kincer, Paul Potter, Frank Igou, Billy Johnson, J. D. Lewis

B A S K E T B A L L

Central	39; Alumni	52
Central	41; Hixson	36
Central	40; Ooltawah	41
Central	43; Murray County	48
Central	31; Soddy Daisy	29
Central	56; Bradley	71
Central	60; Norris High	46
Central	34; Morristown	43

Central	31; Oak Ridge	65
Central	58; Morristown	52
Central	60; Red Bank	43
Central	48; Bradley	49
Central	21; McCallie	31
Central	49; Tyner	38
Central	48; Marion County	33
Central	52; Murray County	57
Central	42; Rossville	58
Central	34; Marion County	50
Central	47; Red Bank	46
Central	43; Rossville	54
Central	59; McCallie	47
Central	46; Bradley	49
Central	58; Kirkman	21
Central	58; Red Bank	61

Bales gives last minute instructions to Captain Igou



The Balrsboys, led by Frank Igou and Bernard Epperson, put on many fine showings during the season. The record of nine wins against twelve defeats does not give this group of boys the credit they are due. The loss of Bernard Epperson greatly handicapped the team, but they soon filled the gap by such men as Paul Potter and Dan Wade. Playing all-around good ball the whole season were Jimmy Pack, Paul Kincer and Bill "Poncho" Goodner. Although these basketballers didn't have too many stand-out games, they played well at all times and combined their efforts to build up the score. One cannot overlook the fact that many times these boys were beaten by one point in the last seconds of the game. In the



Potter racks two

Free ball

Two points for Goodner

Pack hooks one



Times Cup Tournament the net defeat was by one point in a two minute overtime period and again by three points in closing minutes of the semifinals of the Ninth District Championship.

Much credit for the success of their team and teams

of the past is due to the tireless efforts of Coach Bales who for many years has been using all his spare time to bring Central Championship teams in both basketball and baseball. The school and team owe him many thanks and much praise for his fine work.



David Patton, Paul Greenman, Ralph Cresswell, Fred Greenman, Gordon Smith, Coach

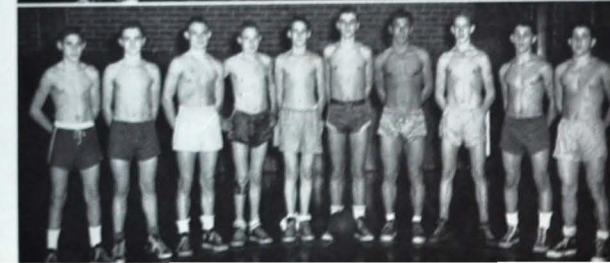
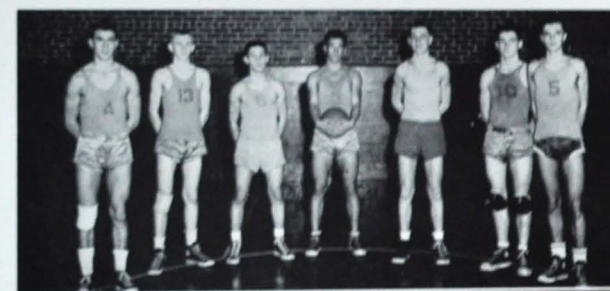
GOLF, "B" TEAM AND FRESHMAN BASKETBALL, AND BOXING

Top picture: Max Farris, Shewen Anderson, Ronnie Cook, Charlie Central, Fred Osborne, Hal Dodge, James Dan
Bottom picture: Eddie Blacklock, David Carpenter, Warren Carlson, Don Allen, Raymond Rich, Hutton Cook, Charlie Central, Frank Patten, Ronald Cook, Ted Gilmore

The Central High Boxing Team, paired by Gene Hall, racked up a good season record. Their first showing was in the Golden Gloves. When the last fight was over and the points were totaled, Central boys took trophies in High School, Sub Novice, Golden Gloves Open, and the Best Squad. In winning the Golden Gloves Open, Central sent Ken Hodgins, Jack Allison, Ralph Cresswell, and Gene Hall to Nashville.

Three of the four men met their match in Nashville. The only man to weather the storm was Gene Hall. The next step for this classy champion was Chicago where he represented the South in the quarterfinals of the National Golden Gloves. By continuing his winning record and going as far as any Chattanooga boxer had ever gone, he was invited to return to Chicago for the semifinals in March. Here he set his aim high. He won his first fight by decision and needed only one more win to enter the finals. Here the string ran out for the courageous boxer from Chattanooga. He was handed his first defeat in four years of boxing and thirty-one fights by bowing to James Hairston of Kansas City who went on to win the championship.

It was through the efforts of boxers like Gene Hall, David Patton, Ken Hodgins, Jack Allison, Ralph Cresswell and others that Central won national renown in the field of boxing in 1932.





First Row: Jimmy Stone, Sammy Hunter, Eddie Caylor, Ken Helgins, Bill Milligan, Paul Vance, John Fletcher. Second Row: Bill Morgan, Jimmy Hale, Jimmy Pack, Thomas Hoffmann, Joe Taylor, Budie Shandberg, Tom Fox, Bernard Epperson, Richard In. Carr, Lane Henry.

BASKETBALL

SCHEDULE AND SCORES

Central . . .	29; Sweetwater . . .	37 . . .	Here
Central . . .	47; Sweetwater . . .	53 . . .	There
Central . . .	41; Tyner . . .	32 . . .	Here
Central . . .	31; Red Bank . . .	43 . . .	Here
Central . . .	46; Marion . . .	32 . . .	Here
Central . . .	39; Red Bank . . .	43 . . .	There



Girls' Basketball Team of 1952

B A S E B A L L

It was with deep regret that Central heard of the retirement of W. P. Bales from the staff of coaches. The announcement was made by Principal W. H. Millsaps at a coaches' luncheon on March 22.

Mr. Bales, affectionately known to his boys as "Bang B.," began his coaching career at Chattanooga High School in 1921 and the following year joined the staff of Central where he has served as basketball and baseball coach for thirty years. During this time Mr. Bales has sent forth many championship teams in these two favorite sports and at the same time has turned down many offers for better-paying jobs, but, in loyalty to the school, he preferred to serve Central.

During his years at Central Coach Bales has not only made an enviable record in sports but has also drawn to himself a host of friends and admirers who know him as a fair and an enthusiastic coach, a scholar, and gentleman of the highest type.

Mr. Bales will continue his work at Central as Head of the History Department.



Coach "Bang B." Bales



First Row: Betty Stroud, Jo Ann Reid, Jo Ann Casey, Geraldine Lee, Joannette Andrews, Barbara Waldrop, Betty Ruth, Wilma Taylor, Justine Simon, Patsy Smith, Maxine Dutton, Barbara Pope. Second Row: Wilma Ducker, Betty Scroggins, Jo Ann Simpson, Peggy Bell, Laveta Wor, Jo Ann McKinney.

Central . . .	50; Tyner . . .	27 . . .	There	Central . . .	22; Bradley . . .	56 . . .	There
Central . . .	42; Bradley . . .	43 . . .	Here	Central . . .	37; Lakeview . . .	35 . . .	Here
Central . . .	47; Marion . . .	24 . . .	There	Central . . .	71; Whitwell . . .	30 . . .	Red Bank
Central . . .	52; Lakeview . . .	47 . . .	There	Central . . .	59; Soddy Daisy . . .	69 . . .	Red Bank

G I R L ' S A C T I V I T I E S





BATTALION OFFICERS



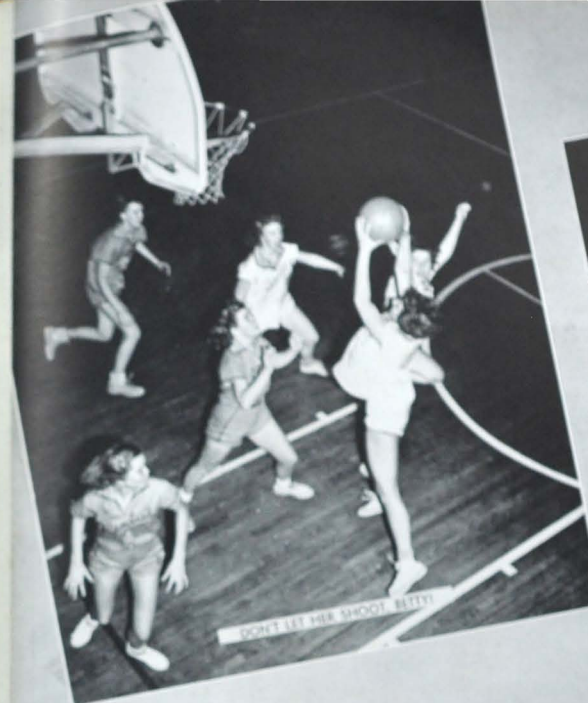
1952 BATTALION



GYM OFFICE FORCE



ACE CLUB



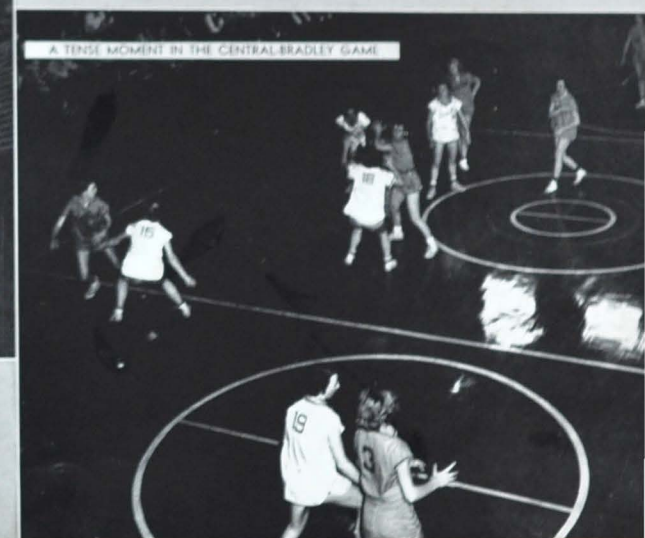
DON'T LET HER SHOOT, BETTY!



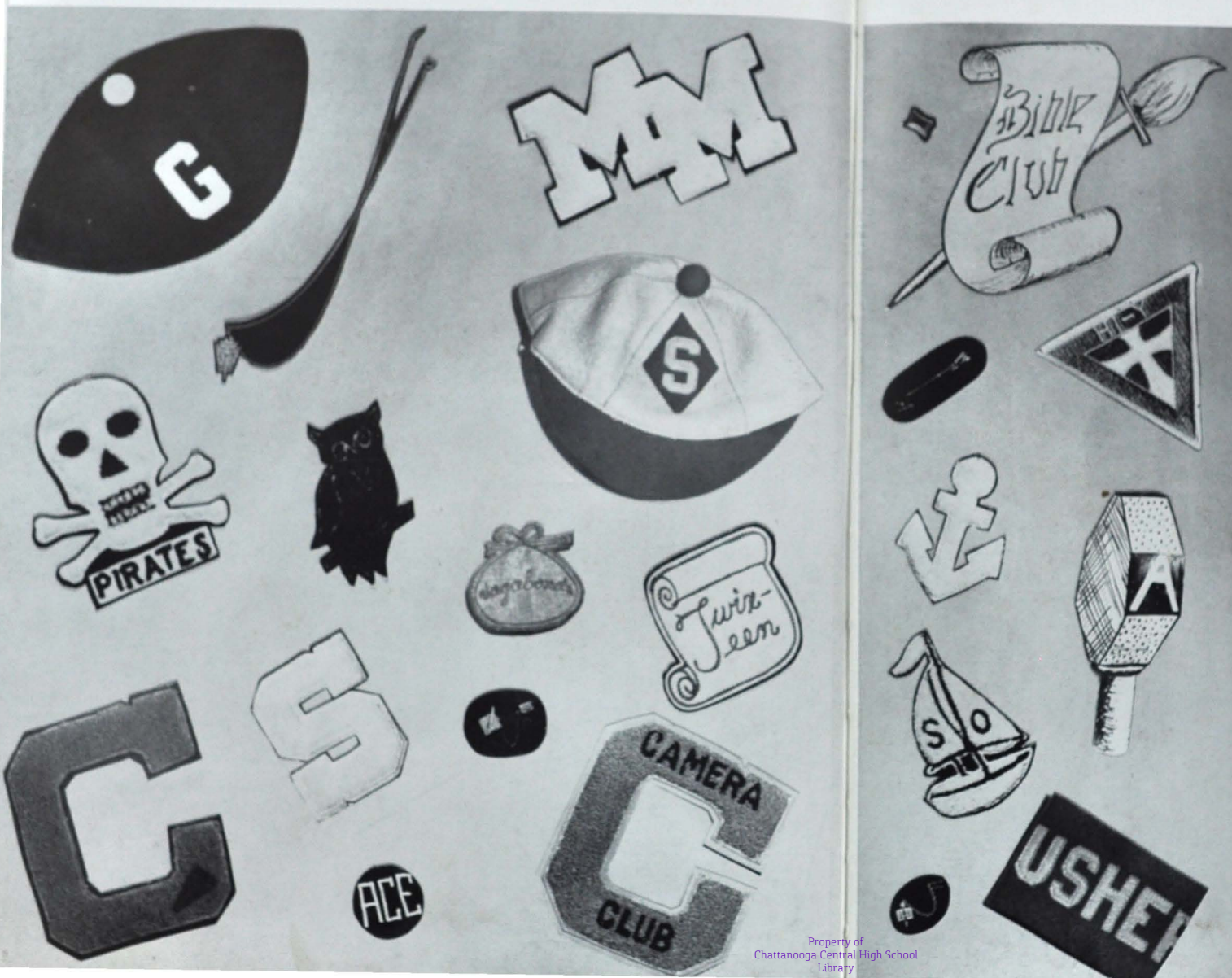
CENTRAL SCORES



WOY NEVER GIVES UP



A TENSE MOMENT IN THE CENTRAL-BRADLEY GAME



The
ACTIVITIES

ALLIED YOUTH

OFFICERS

GRETCHEN BRITTON *President*
 DAN WADE *Vice-President*
 JOYCE JOHNSON *Secretary*
 DOTSY WEAVER *Treasurer*
 MR. CARL CHAPMAN *Sponsor*



ANCHORS AWEIGH CLUB

OFFICERS

PAT WILLIAMS *President*
 KAY FRY *Vice-President*
 GERRY FUNDINGER *Secretary*
 JEAN TITTSWORTH *Treasurer*
 MRS. KERA FULTS *Sponsor*



ANNOUNCERS' CLUB

OFFICERS

DONNA FAYE BLESSING *President*
 REX FORD *Vice-President*
 CAROLE NORRELL *Secretary*
 PAT WILLIAMS *Treasurer*
 MRS. KEN FLENNIKEN *Sponsor*



BAND

OFFICERS

BILL McCORMICK *Captain*
 BETTY SMITH *Sponsor*
 REGINALD LASATER *Lieutenant*
 JOHN RILEY *Lieutenant*
 TOM STROUD *Lieutenant*
 MARGARET SMITH *Lieutenant*
 MR. B. H. WALKER *Sponsor*



BAND ENSEMBLE

OFFICERS

HOWARD WALLER *President*
 MARGARET SMITH *Vice-President*
 BETTY SMITH *Secretary-Treasurer*
 MR. B. H. WALKER *Sponsor*



BANK AND BOOKSTORE STAFF

OFFICERS

FRANK FULLER *President*
 ARLENE HILLIS *Vice-President*
 JEAN TITTSWORTH *Secretary*
 KAY FRY *Treasurer*
 MISS RUBY NIPPER *Sponsor*



BIBLE CLUB

OFFICERS

NINA TALLANT *President*
 DOROTHY CARTWRIGHT *Vice-President*
 DOROTHY RICH *Secretary*
 CHARLES SMITH *Treasurer*
 MISS RACHAEL McALLISTER *Sponsor*



BOYS' HLY

OFFICERS

FRANK FULLER *President*
 RICHARD BUFFINGTON *Vice-President*
 CLIFFORD CURL *Secretary*
 REX FORD *Treasurer*
 GLEN COPELAND *Chaplain*
 JIMMY EVERHART *Sergeant-at-Arms*
 MR. J. POPE DYER *Sponsor*



CAMERA CLUB OFFICERS

RONALD FARRIS *President*
JOHN MOORE *Vice-President*
PAT COLEMAN *Secretary*
GORDON PETERS *Treasurer*
MR. C. G. TOWERY *Sponsor*



CHEER LEADERS

OFFICERS

FRANK FULLER *Head Cheer Leader*
MRS. MARGARET HAMMACK *Sponsor*



DIGEST STAFF OFFICERS

MABEL McCARY *Editor-in-Chief*
CHARLOTTE STALEY *Assistant Editor*
GERALDINE WHALEY *Assistant Editor*
MARTHA WOMACK *Business Manager*
DORIS CASTLE *Assistant Business Manager*
GRETCHEN BRITTON *Assistant Business Manager*
JAMES MORGAN *Foreman*
MISS SALLY MAY KING *Sponsor*
MR. SAM STONER *Sponsor*
MR. O. E. SCOTT *Sponsor*

DISC AND DIAMOND SOCIETY OFFICERS

BILL BLACK *Captain*
JOE FRANK *First Lieutenant H*
BILL McBRAYER *First Lieutenant I*
BOB BAILEY *First Lieutenant F*
RICHARD BUFFINGTON *Second Lieutenant F*
BOB BOWMAN *Second Lieutenant S*
REX FORD *Lieutenant T*
FRANK FULLER *Second Lieutenant I*
GLEN COPELAND *First Sergeant*
CAPTAIN ROBERT G. MILLER *Sponsor*

GADABOUTS OFFICERS

MARILYN SPRIGGS *President*
MARILYN HOLDER *Vice-President*
SHIRLEY LEWIS *Secretary*
FREDA SIMMONS *Treasurer*
MISS PAULINE SHEAKER *Sponsor*



GIRLS' HLY OFFICERS

KAY FRY *President*
SARA COLLINS *Vice-President*
PAULINE SHAW *Secretary*
GRETCHEN BRITTON *Treasurer*
EARLINE LAXSON *Chaplain*
MRS. NEWT LOGAN *Sponsor*
MISS ROBBIE RUTH HODGES *Sponsor*



INTERSCHOOL LEADERSHIP COUNCIL OFFICERS

RITA CALDWELL *President*
KAY FRY *Vice-President*
ARLENE HILLIS *Secretary*
DONNA BLESSING *Treasurer*
MISS FRANCES TIERNAN *Sponsor*



JUNIOR BOYS' HLY OFFICERS

LESLIE GREENBURG *President*
LEE GOODNER *Vice-President*
WALTER WILLIAMS *Secretary-Treasurer*
RICHARD PARHAM *Sergeant-at-Arms*
MR. SAM STONER *Sponsor*



KEY CLUB

OFFICERS

RICHARD BUFFINGTON *President*
 KEX FORD *Vice-President*
 FRANK FULLER *Secretary*
 BOB BAILEY *Treasurer*
 MR. EVERETTE FIELDS *Sponsor*



LIBRARY STAFF

OFFICERS

GRACE THOMASON *President*
 JEANETTE MULLIS *Vice-President*
 WILMA STALLINGS *Secretary*
 MYRA HOBBS *Treasurer*
 MRS. MARY SANDERS *Sponsor*
 MISS ELLEN MULLENNIX *Sponsor*



MERRY MACS CLUB

OFFICERS

BETTY O'NEAL *President*
 NANCY SWIGER *Vice-President*
 LOIS SAXON *Secretary*
 GENEVA SMITH *Treasurer*
 MR. L. V. YOUNG *Sponsor*



MILITARY BAND

OFFICERS

REGINALD LASATER *Captain*
 JOHN RILEY *First Lieutenant*
 BILLY McCORMICK *Second Lieutenant*
 CARTER FRANKS *Second Lieutenant*
 R. M. WEST *Technical Sergeant*
 TOM STROUD *Staff Sergeant*
 BOBBY HENEGAR *Staff Sergeant*
 JERRY PAYNE *Staff Sergeant*
 MR. B. H. WALKER *Sponsor*



MILITARY HONOR PLATOON

OFFICERS

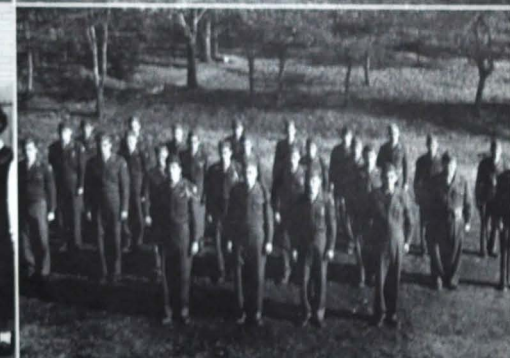
BOBBY BEARDEN *Commander*
 TOMMY INGLE *Assistant Commander*
 GEORGE PATTERSON *Secretary-Treasurer*
 SERGEANT W. H. GREEN *Sponsor*



M. P. CLUB

OFFICERS

CHARLES TINNON *President*
 GEORGE PATTERSON *Vice-President*
 GEORGE PATTERSON *Secretary*
 SERGEANT W. H. GREEN *Sponsor*



NITE-OWLS

OFFICERS

IMOGENE PEDIGO *President*
 DORIS CASTLE *Vice-President*
 KAY THOMAS *Secretary*
 BOBBIE KOLWYCK *Treasurer*
 MISS BONNIE EICHORN *Sponsor*

OFFICERS' CLUB

OFFICERS

BOB BAILEY *President*
 DAN ACOSTA *Vice-President*
 BILLY KNOWLES *Secretary*
 JIMMY EVERHART *Treasurer*
 SERGEANT D. H. REVILL *Sponsor*

OFFICE FORCE

OFFICERS

PAT COLEMAN *President*
 PAT WILLIAMS *Vice-President*
 MARTHA MCGOWN *Secretary*
 BETTY BASKETTE *Treasurer*
 MISS CHRISTINA COPPINGER *Sponsor*

ORCHESTRA

OFFICERS

JOHN PARKS *President*
 ED MEYER *Vice-President*
 ELMER GROTH *Secretary-Treasurer*
 MR. K. W. JOHN *Sponsor*



PIRATES CLUB

OFFICERS

JEAN BONDS *President*
 JO ANN COLWELL *Vice-President*
 PEGGY LANGFORD *Secretary*
 GLORIA CAIN *Treasurer*
 MRS. HELEN PARNELL *Sponsor*

RED CROSS

OFFICERS

DORIS CASTLE *President*
 WILMA TAYLOR *Vice-President*
 BOBBIE NELL KOLWYCK *Secretary*
 DIXIE GRIFFIN *Treasurer*
 MRS. H. B. ROBINSON *Sponsor*
 MISS EDITH TAYLOR *Sponsor*



RIFLE TEAM

OFFICERS

FRED McDANIEL *Captain*
 BOBBY BEARDEN *Co-Captain*
 TOMMY INGLE *Secretary*
 SERGEANT VERNON BASS *Sponsor*



SENATE

OFFICERS

BILLY KNOWLES *President*
 ARLENE HILLIS *Vice-President*
 IMOGENE PEDIGO *Secretary*
 FRANK FULLER *Treasurer*
 MRS. KEN FLENNIKEN *Sponsor*
 MR. J. A. HOODENPYL *Sponsor*



SENATE CABINET

OFFICERS

BILLY KNOWLES *President*
 ARLENE HILLIS *Vice-President*
 IMOGENE PEDIGO *Secretary*
 FRANK FULLER *Treasurer*
 MRS. KEN FLENNIKEN *Sponsor*
 MR. J. A. HOODENPYL *Sponsor*



SERGEANTS' CLUB

OFFICERS

DAN WADE *President*
 TOMMY INGLE *Vice-President*
 MARVIN TURNER *Secretary*
 SERGEANT RAY WILLMORE *Sponsor*

SHOVE-OFFS

OFFICERS

JOYCE McDONALD *President*
 PAT COLEMAN *Vice-President*
 PATTY COBBLE *Secretary*
 LUCILE SULLY *Treasurer*
 MRS. FLORA WARE *Sponsor*



SILHOUETTE CLUB

OFFICERS

VIRGINIA ZOTT *President*
 PEGGY SELLS *Vice-President*
 MARTHA McKOWN *Secretary*
 ANN SPAULDING *Treasurer*
 MR. EDWIN BOHR *Sponsor*



SPINSTERETTE CLUB

OFFICERS

ARLENE HILLS *President*
 DONNA FAYE BLESSING *Vice-President*
 SARA COLLINS *Secretary*
 DORIS MORGAN *Treasurer*
 MR. K. W. JOHN *Sponsor*



STAGE CREW

OFFICERS

ROY WADDLE *President*
 CHARLES NAVE *Vice-President*
 JOE SMITH *Secretary-Treasurer*
 WAYNE MALSTROM *Projection Manager*
 MR. RALPH OLINGER *Sponsor*



TWIXTEENS

OFFICERS

BETTY BASKETTE *President*
 ROSE ENGLAND *Vice-President*
 BETTY COMPTON *Secretary-Treasurer*
 MR. DAVID G. LITZ *Sponsor*



USHERS

OFFICERS

SARA COLLINS *President*
 PAULINE SHAW *Vice-President*
 DONNA BLESSING *Secretary-Treasurer*
 MISS EDNA CROSS *Sponsor*



VAGABONDS

OFFICERS

ALLINE HELTON *President*
 MARLENE COULTER *Vice-President*
 MARY BECKER *Secretary*
 BILLIE SMARTT *Treasurer*
 MISS YORK *Sponsor*
 MRS. MARGARET HAMMACK *Sponsor*

VARSITY GLEE CLUB

OFFICERS

JOE WEAVER *President*
 SARA COLLINS *Vice-President*
 R. C. COOK *Secretary-Treasurer*
 MR. K. W. JOHN *Director*



NATIONAL HONOR SOCIETY



OFFICERS

<i>First Semester</i>		<i>Second Semester</i>	
DONNA BLESSING	President	SARA COLLINS	President
LUCILLE SULLEY	Vice-President	JEAN RUNYAN	Vice-President
JEAN TITTSWORTH	Secretary	ARLENE HILLIS	Secretary
SARA COLLINS	Treasurer's Aid	CLIFFORD CURL	Treasurer's Aid

MEMBERS

John Bayless	Gerry Fundinger	Jack Pratt	Lucille Sulley
Donna Blessing	Frank Fuller	Patsy Reed	Nina Tallant
Gretchen Britton	Arlene Hillis	Betty Renfro	Wilma Taylor
Nancy Burnette	Bobby Hallander	Don Robinson	Peggy Throneberry
Rita Caldwell	Margaret Jarrett	Jean Runyan	Jean Titteworth
Dorothy Cartwright	Nancy Kelley	Pauline Shaw	Beverly Wallis
Doris Castle	Mary Ardena Kellis	Christine Simmons	Dottie Waterhouse
Nellie Cavin	Bobbie Nell Kolwyck	Christine Smith	Barbara Webb
Patty Cobble	Mabel McCrary	Geneva Smith	Geraldine Whaley
Pat Coleman	Jeanette Meador	Jimmie Lee Smith	Pat Williams
Sara Collins	Glenna Mitchell	Evelyn Snyder	Martha Womack
Clifford Curl	Billie Ruth Payne	Charlotte Stalley	Blythe Wood
Rex Ford	Mary Ann Pickett	Peggy Sullivan	Virginia Zorn
Kay Fry			

PATRONS

A Friend	2-6148	306 Dodds Avenue
Acuff Variety Shop	6-9845	522 East Main Street
Ralph Ahlman	3-3451	Manufacturers Road
American Lava Corporation	9-4359	3202 Ivy Street
Anderson Coal Company	6-3184	1222 Market Street
Archer Paper Company	6-1233	520 East Tenth Street
Blessing-Waterhouse Company	8-9341	2213 McCallie Avenue
Bob's Do-Nut Shop	6-5376	Broad at Main
Jack Bowen ESSO Servi-Center	8-0713	1400 McCallie Avenue
Norman Bowen Texaco Service Station	2-1373	3114 Brainerd Road
Brainerd Varnell Hardware Company	5-4531	326 East Main Street
Bryan Furniture Co.	6-6034	923 Market Street
C & S Jewelers	7-4533	323 McCallie Avenue
Earl Campbell Clinic	2-3124	1211 Duncan Avenue
Central High Parent-Teachers Association	7-3131	1126 King Street
Chattanooga Armature Works	6-6934	205 East Eighth Street
Chattanooga Bakery, Inc.	9-5148	311 Broad Street
Chattanooga Button and Badge Mfg. Co.	6-4106	201 Broad Street
Chatta Chaps Company	6-7341	1400 McCallie Avenue
Chattanooga Coca-Cola Bottling Company	2-1187	314 West Main Street
Chattanooga Venetian Blind Company	7-2039	342 Brainerd Road
Cobble Brothers Machinery Company	2-3148	8220 East Fourth Street
Cokers Store	84-0931	305 Chickamauga Avenue
Colonial Bakery	7-5117	45 East Main Street
Conn's Music Store	2-2515	3207 Brainerd Road
Cox and Moore Furniture Company	7-1374	511 Market Street
Craig's Dry Goods Co.	84-1514	Rossville Blvd.
Crisman Hardware Co.	7-2304	1120 King Street
Dayle May Jewelers	4-1590	3301 Brainerd Road
Dixie Portland Flour Co.	4-7112	2202 McCallie Avenue
Dixie Roofing and Siding Company	8-4415	1910 Dodds Avenue
John R. Dabbins, Electrical Contractor	3-4660	Cummings Highway
Dodds Avenue Cleaners	9-1418	2605 East Main Street
Duggan's Lookout Valley Grocery	6-1614	823 Cherry Street
Duncan Electric Company	6-1259	110 West Eighth Street
Eaves Badge and Emblem Company	4-1321	2109 McCallie Avenue
Edmondson's School of Business	84-2193	1303 McFarland Avenue
Epperson Ambulance Service	7-1539	526 Broad Street
"Ernie"	6-5235	8 West Eighth Street
Fashion Cleaners	7-5531	246 East Eleventh Street
Faulkner Sign Company	2-0174	401 Dodds Avenue
The Fischer Company	6-3181	321 Broad Street
Fleetwood Coffee Company	7-1482	702 Cherry Street
The Flower Box	2-1375	Main and Dodds
Furlow-Cate, Inc.	9-2531	3601 Brainerd Road
Gordon Gambill and Company	7-1541	1214 Broad Street
Haskins Pharmacy	6-2728	219 East Tenth Street
Hodge Furniture Company	84-4601	301 Chickamauga Avenue
The Home Stores	6-7168	1000 Georgia Avenue
Jacobs Wholesale Candy Company	2-3018	3744 Brainerd Road
The Jo-Ann Shop	9-4324	2409 McCallie Avenue
Joy's Flowershop	6-2764	812 Market Street
Kay's Ice Cream		
Kimball's Florist		
Koblentz, Incorporated		

PATRONS

S. H. Kress and Company	6-5834	708 Market Street
Lansford Piano Company	6-7184	731 Cherry Street
L. C. Leach & Company, Jewelers	7-4844	728 Cherry Street
LaGrand Jewelry Company	7-6648	604 Market Street
Lookout Valley Drug Company	7-6081	Cummings Highway
Lookout Valley Food Market	7-8470	Cummings Highway
Loveman's Incorporated	6-0062	800 Market Street
Jimmie Lusk Drive-In	84-9373	813 Chickamauga Avenue
"Luther"		
Tum McGee, Jeweler	6-0718	731 Cherry Street
Marlin and Derryberry Service Station	2-9215	2101 East Main Street
Martin-Thompson Company	7-1373	706 Cherry Street
Manning's Sandwiches	2-8388	3008 North Street
Martin Machinery and Supply Company	9-3444	1212 McCallie Avenue
Matthews Pharmacy	2-3168	1200 Dodds Avenue
May Brothers Service Station	2-9176	3567 Brainerd Road
Mid-South Supply Company	6-4111	102 East Eleventh Street
Mike's Bar-B-Q	2-9131	4311 Rosville Boulevard
Miller Brothers Company	7-1215	Seventh and Market Street
Mountain City Stove Company	6-3167	1240 Market Street
Moore and King Drugs	6-4194	816 Market Street
Monnell's Garage	2-5111	3417 East Main Street
Ray Moss Dairy	2-7847	Bonny Oaks Drive
Murray-Daugherty Insurance Company	81-0831	Ellis Building, Rosville
Mutual Drug Company	2-1123	2100 McCallie Avenue
Oscar Sandwich Shop	2-9159	1512 McCallie Avenue
Paramount Cleaners Incorporated	2-1129	2511 East Main Street
T. H. Payne Co.	6-0138	821 Market Street
Cecil D. Pearce Gulf Station	4-9177	3101 Brainerd Road
Peerless Woolen Mill	84-1531	Rosville
Perfection Laundry	2-1177	2112 McCallie Avenue
Bill Penny Tire Service	2-1118	1401 North Dodson Avenue
Personality Shop	89-1431	115 Chickamauga Avenue
Picketts	6-1121	814 Market Street
Read House	6-4121	West Ninth Street
Rhine Pharmacy	84-1148	117 Chickamauga Avenue
Sarvis Business Machine Service	2-0741	2209 McCallie Avenue
Service Pharmacy, Inc.	4-1128	3018 Rosville Boulevard
R. K. Scholtze Grocery	2-0153	415 Dodds Avenue
The Shoe Renewery	6-0131	802 Broad Street
Shumackers	7-1216	827 Broad Street
Southern Bell Telephone Company	6-9011	919 Lindsay Street
Southern Blow Pipe and Roofing Company	6-2728	109 North Highland Park Avenue
Stovall Hardware Company	6-7101	711 Cherry Street
Tennessee Egg Company	6-5188	414 West Sixteenth Street
University of Chattanooga	6-7161	McCallie Avenue
Violet Camera Shop	5-2312	9 East Seventh Street
The Vogue	4-2676	3517 Brainerd Road
Walley's Grill	2-9108	1606 McCallie Avenue
H. W. Walldorf	6-5662	804 Cherry Street
F. M. Wilhoit Texaco Station	9-1822	2600 McCallie Avenue
H. T. Wilhoit Gulf Station	2-8214	2324 McCallie Avenue
Williams Flowers	5-1237	1042 McCallie Avenue
Willie's Super Market	2-4643	9013 Rosville Boulevard
Willow Pharmacy	2-2171	Willow and Chamberlin Avenue

Designed, printed, and bound by BENSON PRINTING CO., Nashville, Tenn.

